

TECHNICAL MANUAL

ORGANIZATIONAL AND DIRECT SUPPORT  
MAINTENANCE REPAIR PARTS AND SPECIAL TOOLS LIST  
FOR

RADIO SET AN/PRC-25  
(NSN 5820-00-857-0759)

Distribution authorized to the Department of Defense and DOD contractors only for official use or for administration or operational purposes. This determination was made on 28 July 1988. Other requests for this document will be referred to Commander, US Army Communications-Electronics Command and Fort Monmouth, ATTN: AMSEL-LC-ME-P, Fort Monmouth, NJ 07703-5000.

DESTRUCTION NOTICE-Destroy by any method that will prevent disclosure of contents or reconstruction of the document.

---

HEADQUARTERS, DEPARTMENT OF THE ARMY  
1 NOVEMBER 1988



Technical Manual

HEADQUARTERS  
DEPARTMENT OF THE ARMY

No. 11-5820-398-34P

Washington, DC, 1 November 1988

DIRECT SUPPORT AND GENERAL SUPPORT MAINTENANCE  
REPAIR PARTS AND SPECIAL TOOLS LIST

FOR

RADIO SET AN/PRC-25  
(NSN 5820-00-857-0759)

Current as of 1 August 1988

REPORTING ERRORS AND RECOMMENDING IMPROVEMENTS

You can help improve this manual. If you find any mistakes or if you know of a way to improve the procedures, please let us know. Mail your letter, DA Form 2028 (Recommended Changes to Publications and Blank Forms), or DA Form 2028-2 located in back of this manual direct to: Commander, US Army Communications-Electronics Command and Fort Monmouth, ATTN: AMSEL-LC-ME-PS, Fort Monmouth, New Jersey 07703-5000. In either case, a reply will be furnished direct to you.

Table of Contents

			Page	Illus/ Figure
Section	I.	Introduction . . . . .	1	
	II.	Repair Parts List . . . . .	1-1	
Group	00	Radio Set AN/PRC-25 . . . . .	1-1	1
	01	Antenna AT-271A/PRC . . . . .	2-1	2
	05	Receiver-Transmitter RT-505/PRC-25..	3-1	3
		0501 Battery Box Assembly		
		CY-2562/PRC-25 . . . . .	4-1	4
		0502 Front Panel Assembly A30 . . . . .	5-1	5
		0503 Chassis Assembly A27 . . . . .	6-1	6
Section	III.	Special Tools List (Not applicable)		
	IV.	Cross-reference Indexes		
		National Stock Number Index . . . . .	I-1	
		Part Number Index . . . . .	I-3	
		Figure and Item Number Index . . . . .	I-7	

\*This manual supersedes TM 11-5820-398-34P, 13 September 1978.



## SECTION I

INTRODUCTION

---

**1. Scope**

This manual lists and authorizes spares and repair parts; special tools; special test, measurement, and diagnostic equipment (TMDE); and other special support equipment required for performance of direct support and general support maintenance of the AN/PRC-25. It authorizes the requisitioning, issue, and disposition of spares, repair parts and special tools as indicated by the source, maintenance and recoverability (SMR) codes. NO parts authorized at organizational maintenance level.

**2. General**

This Repair Parts and Special Tools List is divided into the following sections:

a. Section II. Repair Parts List. A list of spares and repair parts authorized by this RPSTL for use in the performance of maintenance. The list also includes parts which must be removed for replacement of the authorized parts. Parts list are composed of functional groups in ascending item number sequence. Figure numbers are listed directly beneath the group header.

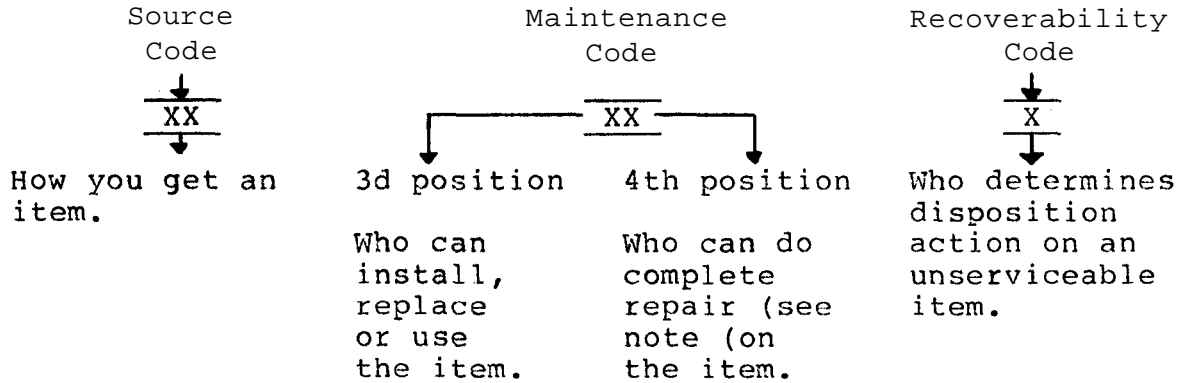
b. Section III. Special Tools List. Not applicable.

c. Section IV. Cross-Reference Indexes. A list, in National item identification number (NIIN) sequence, of all National stock numbered items appearing in the listing, followed by a list in alphameric sequence of all part numbers appearing in the listings. National stock numbers and part numbers are cross-referenced to each illustration figure and item number appearance. The figure number and item number index lists figure and item numbers in numeric sequence and cross-references National stock number, Federal Supply Code for Manufacturer and part numbers.

**3. Explanation of Columns (Section II and III)**

a. Item No. (Column (1)). Indicates the number used to identify items called out in the illustration.

b. SMR code (Column (2)). The source, maintenance, and recoverability (SMR) code is a five-position code containing supply/requisitioning information, maintenance category authorization criteria, and disposition instruction, as shown in the following breakout:



**NOTE**

Complete repair: Maintenance capacity, capability, and authority to perform all corrective maintenance tasks of the "repair" function in a use/user environment in order to restore serviceability to a failed item.

(1) Source code. The source code tells you how to get an item needed for maintenance, repair, or overhaul of an end item/equipment. Explanations of source codes follows:

<u>Code</u>	<u>Explanation</u>
<p>PA PB PC PD PE PF PG</p>	<p>Stocked items: use the applicable NSN to request/requisition items with these source codes. They are authorized to the category indicated by the code entered in the third position of the SMR code.</p>

**NOTE**

Items coded PC are subject to deterioration.

<p>KD KF KB</p>	<p>Items with these codes are not to be requested/requisitioned individually. They are part of a kit which is authorized to the maintenance category indicated in the third position of the SMR code. The complete kit must be requisitioned and applied.</p>
-------------------------	---

<u>Code</u>	<u>Explanation</u>
MO - Made at org/AVUM category	Items with these codes are not to be requested/requisitioned individually. They must be made from bulk material which is identified by the part number in the description and usable on code (UOC) column and listed in the Bulk Material group of the repair parts list. If the item is authorized to you by the third position code of the SMR code, but the source code indicates it is made at a higher category, order the item from the higher category of maintenance.
MF - Made at DS/AVIM category	
MH - Made at GS category	
ML - Made at Specialized Repair Activity (SRA)	
MD - Made at Depot	

AO - Assembled by org/AVUM category	Items with these codes are not to be requested/requisitioned individually. The parts that make up the assembled item must be requisitioned or fabricated and assembled at the category of maintenance indicated by the source code. If the third position code of the SMR code authorizes you to replace the item, but the source code indicates the item is assembled at a higher category, order the item from the higher category of maintenance.
AF - Assembled by DS/AVIM category	
AH - Assembled by GS category	
AL - Assembled by SRA	
AD - Assembled by Depot	

<u>Code</u>	<u>Explanation</u>
XA - Do not requisition an "XA" coded item. Order its next higher assembly.	
XB - If an "XB" item is not available from salvage, order it using the FCSM and part number given.	
XC - Installation drawing, diagram, instruction sheet, field service drawing, that is identified by manufacturer's part number .	
XD - Item is not stocked. Order an "XD" coded item through normal supply channels using the FSCM and part number given, if not available.	

**NOTE**

Cannibalization or controlled exchange, when authorized, may be used as a source of supply for items with the above source codes, except for those source coded "XA" or those aircraft support items restricted by requirements of AR 750-1.

(2) Maintenance code. Maintenance codes tell you the category of maintenance authorized to USE and REPAIR support items. The maintenance codes are entered in the third and fourth positions of the SMR code as follows:

(a) The maintenance code entered in the third position tells you the lowest maintenance category authorized to remove, replace, and use an item. The maintenance code entered in the third position will indicate authorization to one of the following categories of maintenance.

<u>Code</u>	<u>Application/Explanation</u>
C -	Crew or operator maintenance done within organizational or aviation maintenance.
O -	Organizational or aviation unit category can remove, replace, and use the item.
F -	Direct support or aviation intermediate category can remove, replace, and use the item.
H -	General support category can remove, replace, and use the item.
L -	Specialized repair activity can remove, replace, and use the item.
D -	Depot category can remove, replace, and use the item.

(b) The maintenance code entered in the fourth position tells whether or not the item is to be repaired and identifies the lowest maintenance category with the capability to do complete repair (i.e., perform all authorized repair functions). This position will contain one of the following maintenance codes.

**NOTE**

Some limited repair may be done on the item at a lower category of maintenance, if authorized by the Maintenance Allocation Chart (MAC) and SMR codes.

<u>Code</u>	<u>Application/Explanation</u>
O -	Organizational or aviation unit is the lowest category that can do complete repair of the item.
F -	Direct support or aviation intermediate is the lowest category that can do complete repair of the item.
H -	General support is the lowest category that can do complete repair of the item.
L -	Specialized repair activity (designate the specialized repair activity) is the lowest category that can do complete repair of the item.
D -	Depot is the lowest category that can do complete repair of the item.



<u>Code</u>	<u>Application/Explanation</u>
z -	Nonreparable. No repair is authorized.
B -	No repair is authorized. (No parts or special tools are authorized for the maintenance of a "B" coded item.) However, the item may be reconditioned by adjusting, lubricating, etc., at the user category.

(3) Recoverability code. Recoverability codes are assigned to items to indicate the disposition action on unserviceable items. The recoverability code is entered in the fifth position of the SMR Code as follows:

<u>Recoverability codes</u>	<u>Application/Explanation</u>
Z -	Nonreparable item. When unserviceable, condemn and dispose of the item at the category of maintenance shown in the third position of SMR code.
O -	Reparable item. When uneconomically repairable, condemn and dispose of the item at organizational or aviation unit category.
F -	Reparable item. When uneconomically repairable, condemn and dispose of the item at direct support or aviation intermediate category.
H -	Reparable item. When uneconomically repairable, condemn and dispose of the item at general support category.
D -	Reparable item. When beyond lower category repair capability, return to depot. Condemnation and disposal of item not authorized below depot category.
L -	Reparable item. Condemnation and disposal not authorized below specialized repair activity (SRA).
A -	Item requires special handling or condemnation procedures because of specific reasons (e.g., precious metal content, high dollar value, critical material, or hazardous material). Refer appropriate manuals/directives for specific instructions.

c. FSCM (Column (3)). The Federal Supply Code for Manufacturer (FSCM) is a 5-digit numeric code which is used to identify the manufacturer, distributor, or Government agency, etc., that supplies the item.

d. Part Number (Column (4)). Indicates the primary number used by the manufacturer (individual, company, firm, corporation, or Government activity), which controls the design and characteristics of the item by means of its engineering drawings, specifications, standards, and inspection requirements to identify an item or range of items.

**NOTE**

When you use an NSN to requisition an item, the item you receive may have a different part number from the part ordered.

e. Description and Usable on Code (UOC) (Column (5)). This column includes the following information.

(1) The Federal item name and, when required, a minimum description to identify the item.

(2) The statement "END OF FIGURE" appears just below the last item description in Column (5) for a given figure in both section II and section III

f. Qty (Column (6)). Indicates the quantity of the item used in the breakout shown on the illustration figure, which is prepared for a functional group, subfunctional group, or an assembly. A "V" appearing in this column in lieu of a quantity indicates that the quantity is variable and the quantity may vary from application to application.

**4. Explanation of Columns (Section IV)**

National Stock Number (NSN) Index.

(1) Stock number column. This column lists the NSN by National item identification number (NIIN) sequence. The NIIN consists of the last nine digits of the NSN. When using this column to locate an item, ignore the first four digits of the NSN. When requisitioning items use the complete NSN (13 digits).

(2) Fig. column. This column lists the number of the figure where the item is identified/located. The illustrations are in numerical sequence in sections II and III.

(3) Item column. The item number identifies the item associated with the figure listed in the adjacent Fig. column. This item is also identified by the NSN listed on the same line.

b. Part Number Index. Part numbers in this index are listed by part number in ascending alphameric sequence.

(1) FSCM column. This column lists the Federal supply code for manufacturer.

(2) Part number column. This column indicates the part number assigned to the item.

(3) Stock number column. This column lists the National stock number for the associated part number and manufacturer identified in the part number and FSCM columns to the left.

(4) Fig. column. This column lists the number of the figure where the item is identified/located in sections II and III.

(5) Item column. The item number is that number assigned to the item as it appears in the figure referenced in the adjacent figure number column.

c. Figure and Item Number Index.

(1) Fig. column. This column lists the number of the figure where the item is identified/located in sections II and III.

(2) Item column. The item number is that number assigned to the item as it appears in the figure referenced in the adjacent figure number column.

(3) Stock number column. This column lists the National stock number for the item.

(4) FSCM column. The Federal supply code for manufacturer (FSCM) is a 5-digit numeric code used to identify the manufacturer, distributor, or Government agency, etc., that supplies the item.

(5) Part number column. Indicates the primary number used by the manufacturer (individual, firm, corporation, or Government activity), which controls the design and characteristics of the item by means of its engineering drawings, specifications, standards, and inspection requirements to identify an item or range of item.

## 5. Special Information

a. Associated Publications. The publications listed below pertain to the AN/PRC-75 and its components:

TM 11-5820-398-12, Radio Set AN/PRC-25 (including Receiver-Transmitter, Radio RT-505/PRC-25)

TM 11-5820-358-20P, Radio Set AN/PRC-25 (To be published)

TM 11-5820-398-35, Radio Set AN/PRC-25

TM 11-5965-257-15, Handset H-138/U

TM 11-5965-280-12, Radio Set H-189/GR

b. National Stock Numbers. National stock numbers (NSN's) that are missing from P source coded items have been applied for and will be added to this TM by future change/revision when they are entered in the Army Master Data File (AMDF). Until the NSN's are established and published, submit exception requisitions to: Commander, US Army Communications-Electronics Command and Fort Monmouth, ATTN: AMSEL-LC-MM, Fort Monmouth, NJ 07703-5000 for the part to support your equipment.

## 6. How to Locate Repair Parts

a. When National stock number or part number is not known.

(1) First. Using the table of contents, determine the assembly group or subassembly group to which the item belongs. This is necessary since figures are prepared for assembly groups and subassembly groups, and listings are divided into the same groups.

(2) Second. Find the figure covering the assembly group or subassembly group to which the item belongs.

(3) Third. Identify the item on the figure and note the item number.

(4) Fourth. Refer to the Repair Parts List for the figure to find the part number for the item number noted on the figure.

(5) Fifth. Refer to the Part Number Index to find the NSN, if assigned.

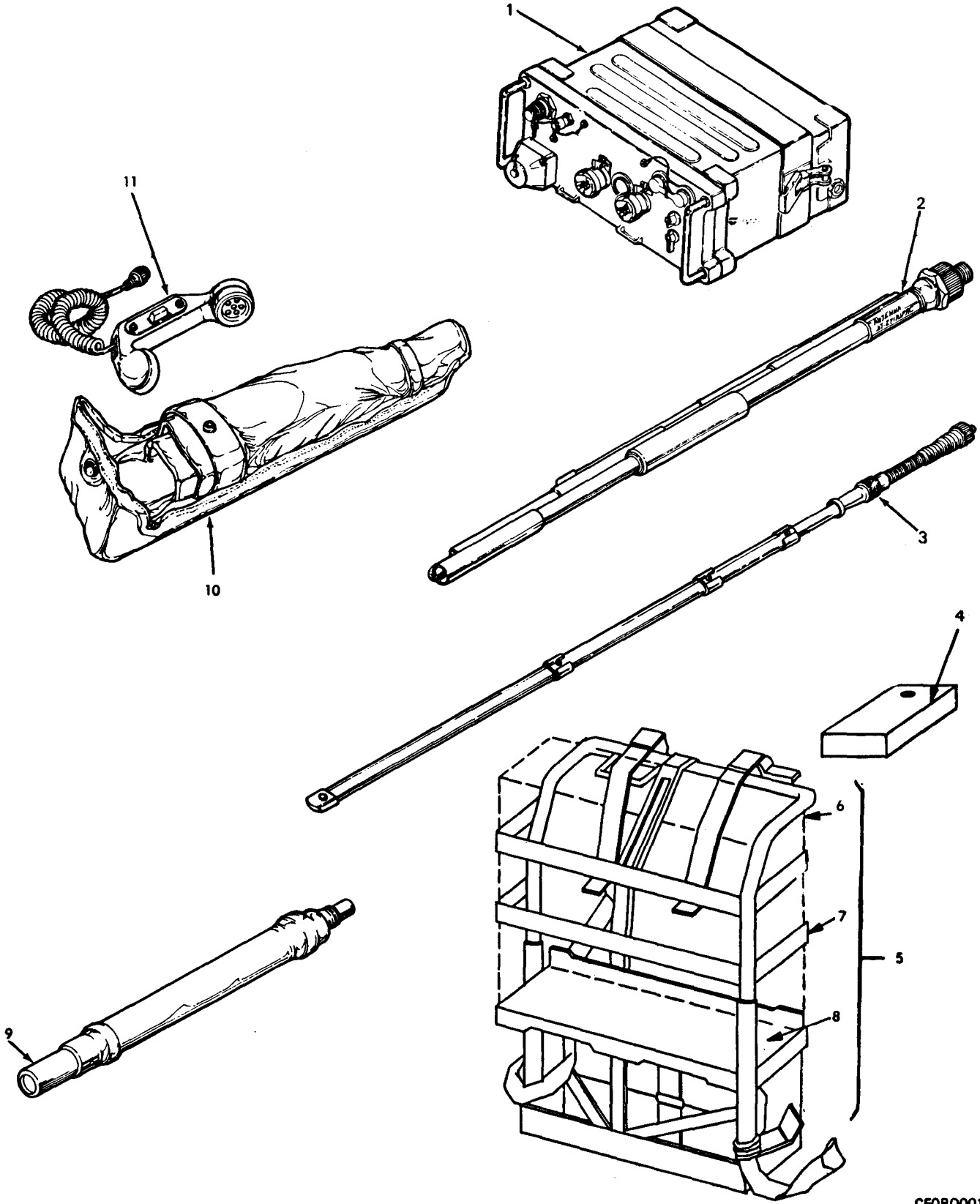
b. When National stock number or part number is known.

(1) First. Using the index of National stock numbers and part numbers, find the pertinent National stock number or part number. The NSN index is in National item identification number (NIIN) sequence (para 4a(1)). The part numbers in the part number index are listed in ascending alphameric sequence (para 4b). Both indexes cross-reference you to the illustration figure and item number of the item you are looking for.

(2) Second. After finding the figure and item number, verify that the item is the one you're looking for, then locate the item number in the repair parts list for the figure.

## 7. Abbreviations

Not applicable.



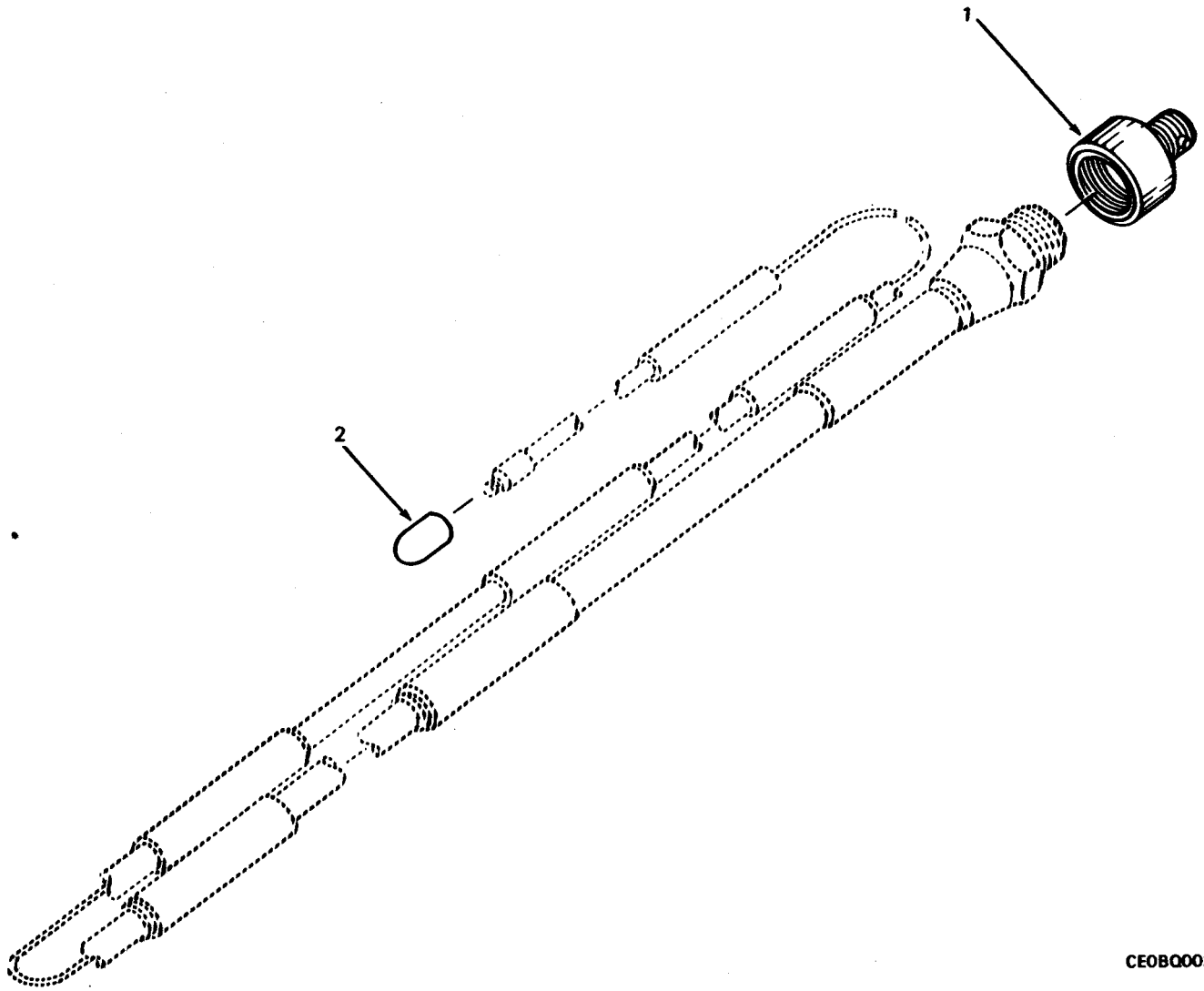
CE0BQ001

Figure 1. Radio Set AN/PRC-25



(1) ITEM NO	(2) SMR CODE	(3) FSCM	(4) PART NUMBER	(5) DESCRIPTION AND USABLE ON CODE (UOC)	(6) QTY
GROUP 00 RADIO SET AN/PRC-25					
FIGURE 1					
1	PAODD	80058	RT-505/PRC-25	RECEIVER-TRANSMITTE (SEE FIGURE 3 FOR BREAKDOWN)	1
2	PAOZZ	80058	AT-271A/PRC	ANTENNA (SEE FIGURE 2 FOR BREAKDOWN)	1
3	PAOZZ	80058	AT-892/PRC-25	ANTENNA	1
4	PCOZA	80058	BA4386PRC25	BATTERY, DRY	1
4	PCOZA	80058	BA-5598/U	BATTERY, NONRECHARG (FOR ARTIC USE)	1
5	PAOZZ	80058	ST-138/PRC-25	HARNES, ELECTRICAL	1
6	PAOOO	81349	MIL-S-43835	FRAME, FIELD PACK	1
7	XBOZZ	81349	MIL-S-43828	STRAP, WEBBING	1
8	XBOZZ	81349	MIL-F-43834	SHELF, CARGO, SUPPORT	1
9	PAOZZ	80058	AB-591/PRC-25	SUPPORT, ANTENNA	1
10	PAOZZ	80058	CW-503/PRC-25	BAG, ACCESSORY	1
11	PAOZZ	80063	SM-C-544246	MICROPHONE ELEMENT	1

END OF FIGURE



CE0BQ002

**Figure 2. Antenna AT-271A/PRC**



## SECTION II

TM11-5820-398-34P

(1) ITEM NO	(2) SMR CODE	(3) FSCM	(4) PART NUMBER	(5) DESCRIPTION AND USABLE ON CODE (UOC)	(6) QTY
-------------------	--------------------	-------------	-----------------------	---	------------

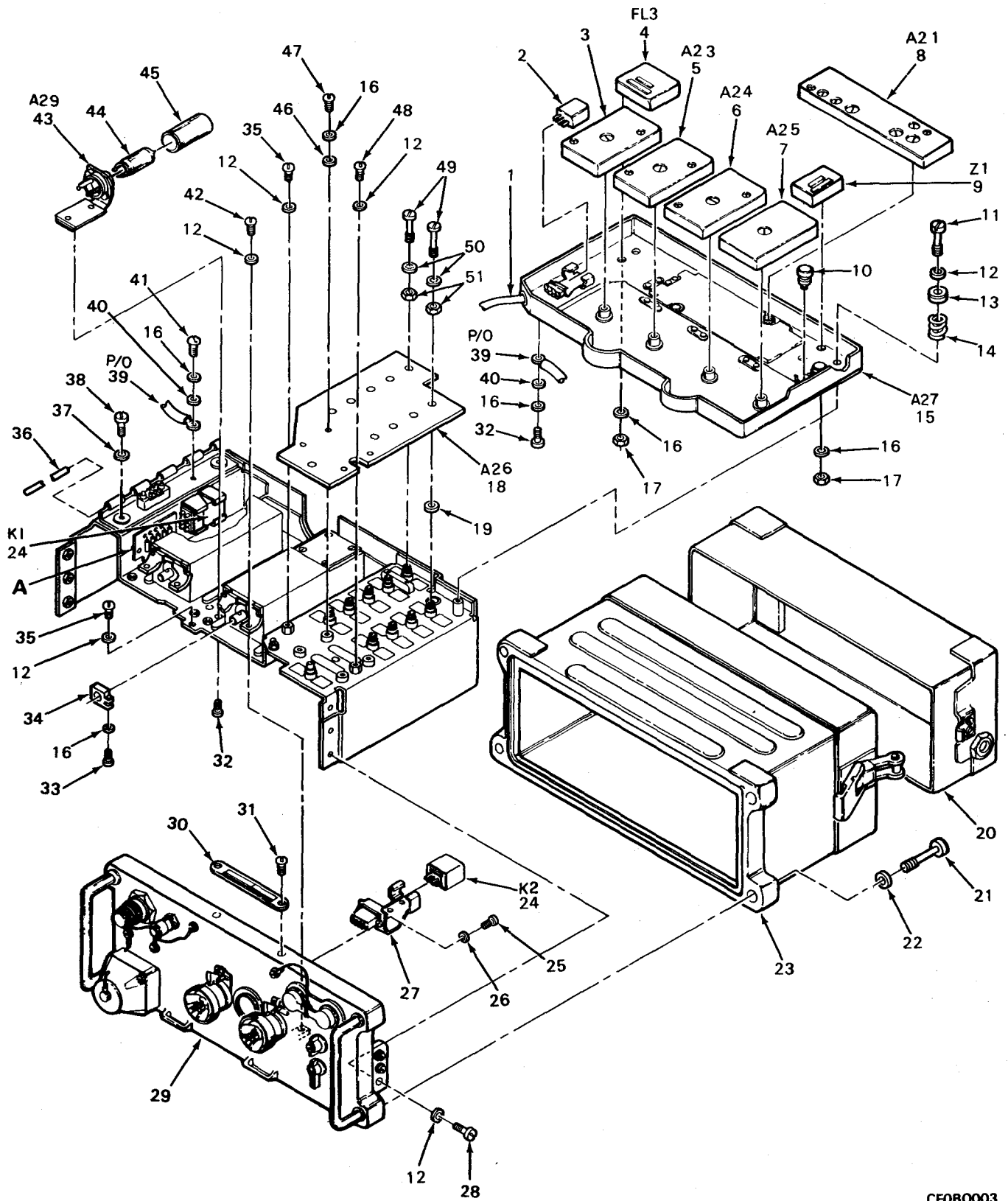
GROUP 01 ANTENNA AT-271A/PRC

FIGURE 2

1	PAOZZ	80063	SM-B-182386	ADAPTER, ANTENNA TO	1
2	PAOZZ	80063	SM-B-91329	CAP	1

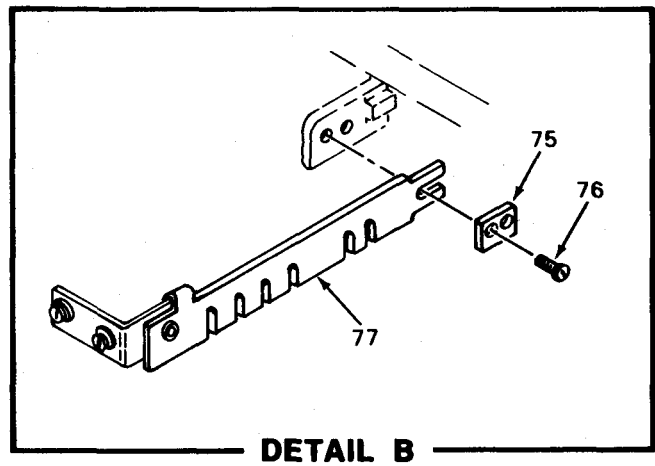
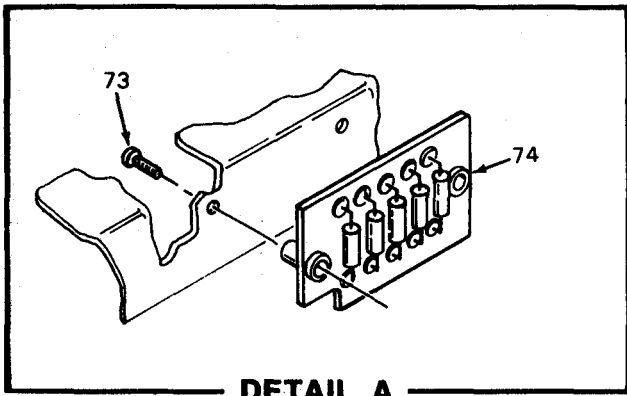
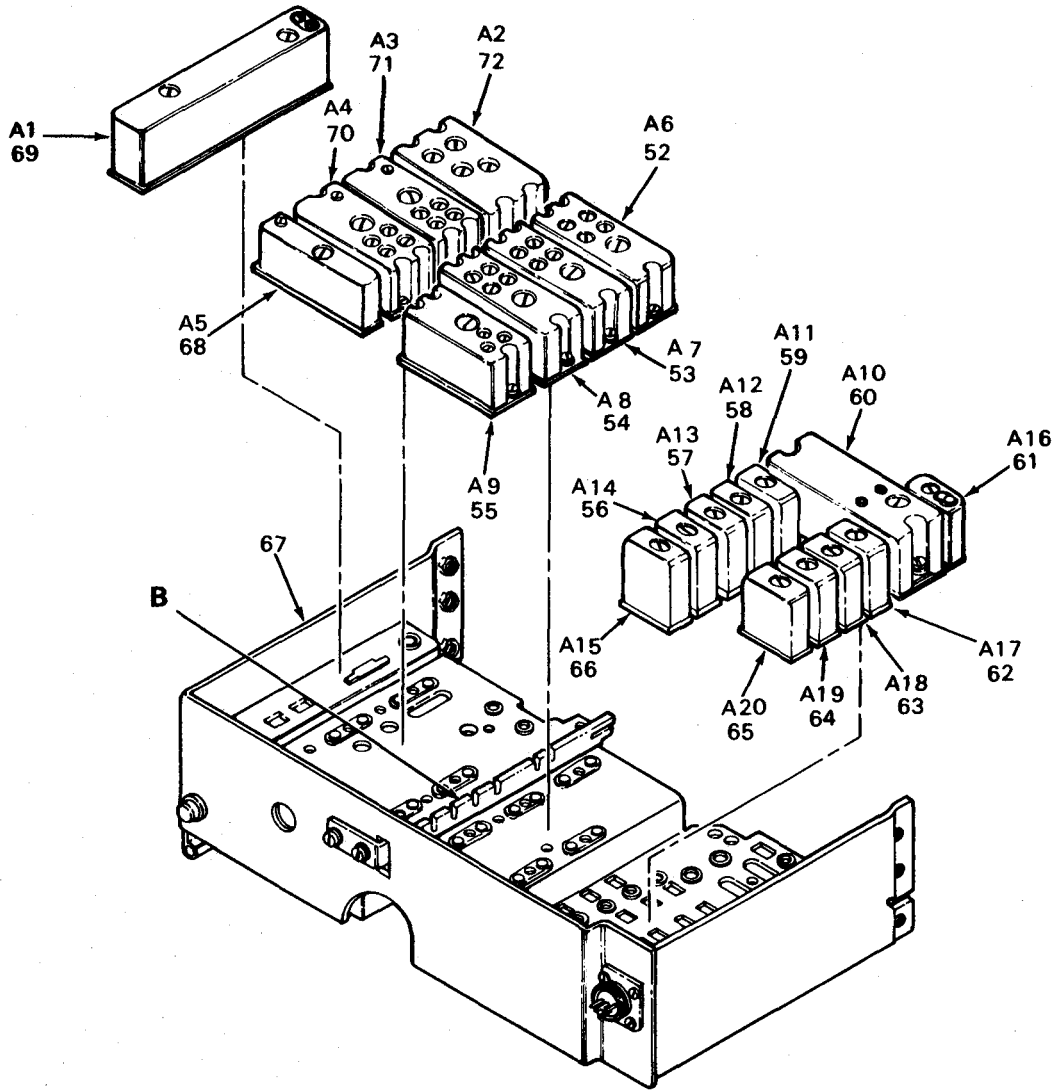
END OF FIGURE





CE080003

Figure 3. Receiver-Transmitter RT-505/PRC-25 (Sheet 1 of 2)



CE0BQ004

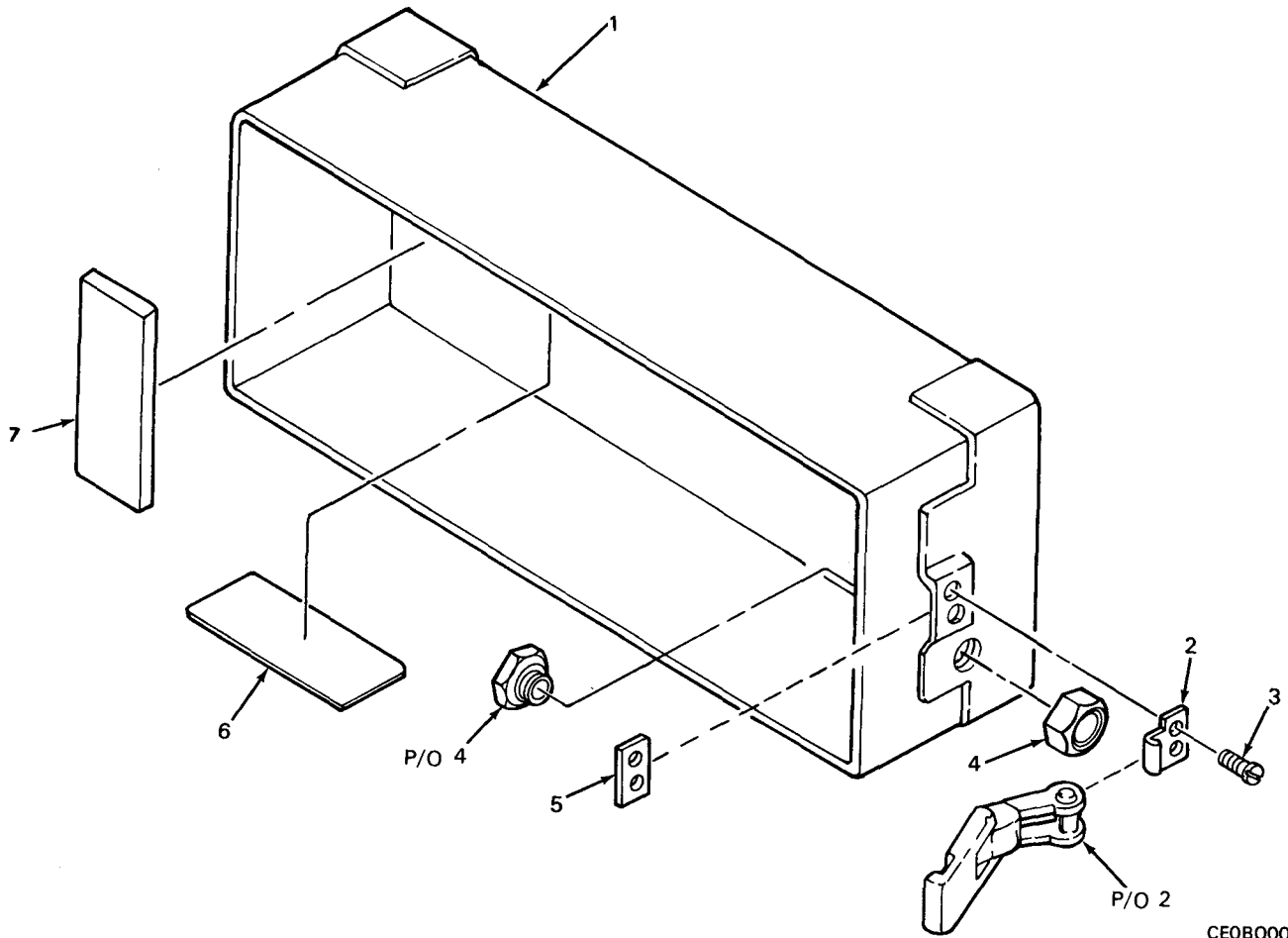
Figure 3. Receiver-Transmitter RT-505/PRC-25 (Sheet 2 of 2)

(1) ITEM NO	(2) SMR CODE	(3) FSCM	(4) PART NUMBER	(5) DESCRIPTION AND USABLE ON CODE (UOC)	(6) QTY
GROUP 05 RECEIVER-TRANSMITTER RT-505/PRC-25					
FIGURE 3					
1	XBDZZ	80063	SM-D-447781	WIRING ASSEMBLY, RT-	1
2	PAFZZ	80063	SM-C-447085	RELAY, ELECTROMAGNET	1
3	PAFZZ	80063	SM-D-447314	AMPLIFIER, AUDIO FRE	1
4	PAFZZ	80063	SM-D-447251	FILTER, BAND PASS	1
5	PAFZZ	80063	SM-D-447316	GENERATOR, REFERENCE	1
6	PAFZZ	80063	SM-D-447318	TONE SQUELCH ASSEMB	1
7	PAFZZ	80063	SM-D-447113	AMPLIFIER, AUDIO FRE	1
8	PAFZZ	80063	SM-D-447177	AMPLIFIER, INTERMEDI	1
9	PAFZZ	80063	SM-D-447353	DISCRIMINATOR, ELECT	1
10	PAHZZ	80063	SM-B-447784	KNOB	2
11	PAHZZ	80063	SM-B-447066-3	SCREW, EXTERNALLY RE	3
12	PAHZZ	96906	MS35338-41	WASHER, LOCK	17
13	PAHZZ	80063	SM-B-447930	WASHER, RECESSED	3
14	PAHZZ	96906	MS24585C238	SPRING, HELICAL, COMP	3
15	PAFZZ	80063	SM-D-447472	RECEIVER SUBASSEMBL	1
16	PAFZZ	96906	MS35338-40	WASHER, LOCK	12
17	PAFZZ	96906	MS35649-242	NUT, PLAIN, HEXAGON	4
18	PAHZZ	80063	SM-D-447593	BACKPLANE ASSEMBLY	1
19	PAHZZ	80063	SM-B-447043-1	SHIM	5
20	PAOZZ	80063	SMD447322	BATTERY BOX (SEE FIGURE 4 FOR BREAKDOWN)	1
21	PAFZZ	80063	SM-B-447224	SCREW, EXTERNALLY RE	4
22	XBFZZ	80063	SM-B-447694-2	WASHER, LOCK	4
23	PAOHH	80063	SM-D-447351	CASE, RECEIVER-TRANS	1
24	XBHZZ	71482	RY4YY1A3P	RELAY, CRYSTAL CAN	2
25	PAHZZ	96906	MS35206-203	SCREW, MACHINE	2
26	PAHZZ	96906	MS35338-39	WASHER, LOCK	2
27	XBHZZ	80063	SM-C-875638	SOCKET, RELAY	1
28	PAHZZ	96906	MS35206-225	SCREW, MACHINE	6
29	PAHZZ	80063	SM-D-449063	PANEL ASSEMBLY (SEE FIGURE 5 FOR BREAKDOWN)	1
30	MDHZZ	80063	SM-B-447249	PLATE IDENTIFICATIO (FOR INSTRUCTIONS SEE SB 11-631.)	1
31	XBHZZ	80063	SMB447445-7	SCREW, EXTERNALLY RE	2
32	PAHZZ	96906	MS35206-212	SCREW, MACHINE	4
33	PAHZZ	96906	MS16995-9	SCREW, CAP, SOCKET HE	2
34	PAHZZ	80063	SM-B-447575	CLAMP, HUB	2
35	PAHZZ	96906	MS35223-27	SCREW, MACHINE	2
36	PAHZZ	80063	SM-C-447121-3	PIN, STRAIGHT, HEADLE	1
37	PAHZZ	96906	MS35338-156	WASHER, LOCK	2
38	PAHZZ	80063	SM-B-447066-4	SCREW, EXTERNALLY RE	2
39	PAHZZ	80063	SM-B-447771	LEAD, ELECTRICAL	1
40	PAHZZ	96906	MS35335-85	WASHER, LOCK	2
41	PAHZZ	96906	MS35223-13	SCREW, MACHINE	1
42	PAHZZ	96906	MS35206-228	SCREW, MACHINE	4
43	PAHZA	80063	SM-D-447425	POWER AMPLIFIER ASY	1
44	XBHZZ	80063	SM-B-447721-46	TUBE, VACUUM	1

(1) ITEM NO	(2) SMR CODE	(3) FSCM	(4) PART NUMBER	(5) DESCRIPTION AND USABLE ON CODE (UOC)	(6) QTY
45	PAHZZ	81349	M24251-6-5	SHIELD,ELECTRON TUB	1
46	PAHZZ	96906	MS27183-3	WASHER,FLAT	4
47	PAHZZ	96906	MS35206-214	SCREW,MACHINE	4
48	PAHZZ	80063	SM-B-447019	SCREW,EXTERNALLY RE	2
49	PAHZZ	80063	SM-B-447958	SCREW,ASSEMBLED WAS	10
50	XBHZZ	80063	SM-B-447721-69	WASHER,LOCK	10
51	PAHZZ	80063	SM-B-447960	NUT,PLAIN,HEXAGON	10
52	PAFZZ	80063	SM-D-447557	AMPLIFIER SUBASSEMB	1
53	PAFZZ	80063	SM-D-447558	AMPLIFIER,RADIO FRE	1
54	PAFZZ	80063	SM-D-447559	AMPLIFIER,RADIO FRE	1
55	PAFZZ	80063	SM-D-447554	OSCILLATOR,CRYSTAL	1
56	PAFZZ	80063	SM-D-621272	MIXER STAGE,FREQUEN	1
57	PAFZZ	80063	SM-D-447448	FILTER,BAND PASS	1
58	PAFZZ	80063	SM-D-447447	MIXER STAGE,FREQUEN	1
59	PAFDD	80063	SM-D-447446	DISCRIMINATOR,ELECT	1
60	PAFZZ	80063	SM-D-447407	GENERATOR,PULSE	1
61	PAFZZ	80063	SM-D-447451	REGULATOR,VOLTAGE	1
62	PAFZZ	80063	SM-D-447452	COMPARATOR,SIGNAL	1
63	XBZZ	80063	SM-D-447453	AMPLIFIER ASSEMBLY	1
64	PAFZZ	80063	SM-D-447454	QUARTER WAVE NETWOR	1
65	PAFZZ	80063	SM-D-447455	AMPLIFIER-OSCILLATO	1
66	PAFZZ	80063	SM-D-447450	OSCILLATOR,CRYSTAL	1
67	XDDDD	80063	SM-D-447131	CHASSIS ASSEMBLY (SEE FIGURE 6 FOR BREAKDOWN)	1
68	PAFZZ	80063	SM-D-447462	MIXER STAGE,FREQUEN	1
69	PAFZZ	80063	SM-C-447269	POWER SUPPLY	1
70	PAFZZ	80063	SM-D-447556	AMPLIFIER,RADIO FRE	1
71	PAFZZ	80063	SM-D-447555	AMPLIFIER,RADIO FRE	1
72	PAFZZ	80063	SM-D-447620	AMPLIFIER SUBASSEMB	1
73	PADZZ	96906	MS35206-202	SCREW,MACHINE	2
74	PAHZZ	80063	SM-C-447795	NETWORK,DECOUPLING	1
75	XBZZ	80063	SM-B-447785	PLATE,WASHER	1
76	PADZZ	80063	SM-B-447786	SCREW,CAP,SOCKET HE	2
77	XBZZ	80063	SM-C-447601	BAR ASSEMBLY	1

END OF FIGURE





CE0BQ005  
|

Figure 4. Battery Box Assembly CY-2562/PRC-25



(1) ITEM NO	(2) SMR CODE	(3) FSCM	(4) PART NUMBER	(5) DESCRIPTION AND USABLE ON CODE (UOC)	(6) QTY
GROUP 0501 BATTERY BOX ASSEMBLY CY-2562/PRC-25					
FIGURE 4					
1	XBFZZ	80063	SMD447264	CASE ASSEMBLY	1
2	PAFZZ	80063	SM-C-447321-2	STRIKE, CATCH	2
3	XBFZZ	80063	SM-B-447348-1	SCREW, MACHINE	4
4	PAOZZ	80063	SM-D-447322-1	VALVE, SAFETY RELIEF	1
5	PAFZZ	80063	SM-B-447265	NUT, PLATE	2
6	PAFZZ	80063	SM-B-447461	PLATE, IDENTIFICATIO	1
7	PAOZZ	80063	SM-B-447320	PAD, CUSHIONING	2
END OF FIGURE					



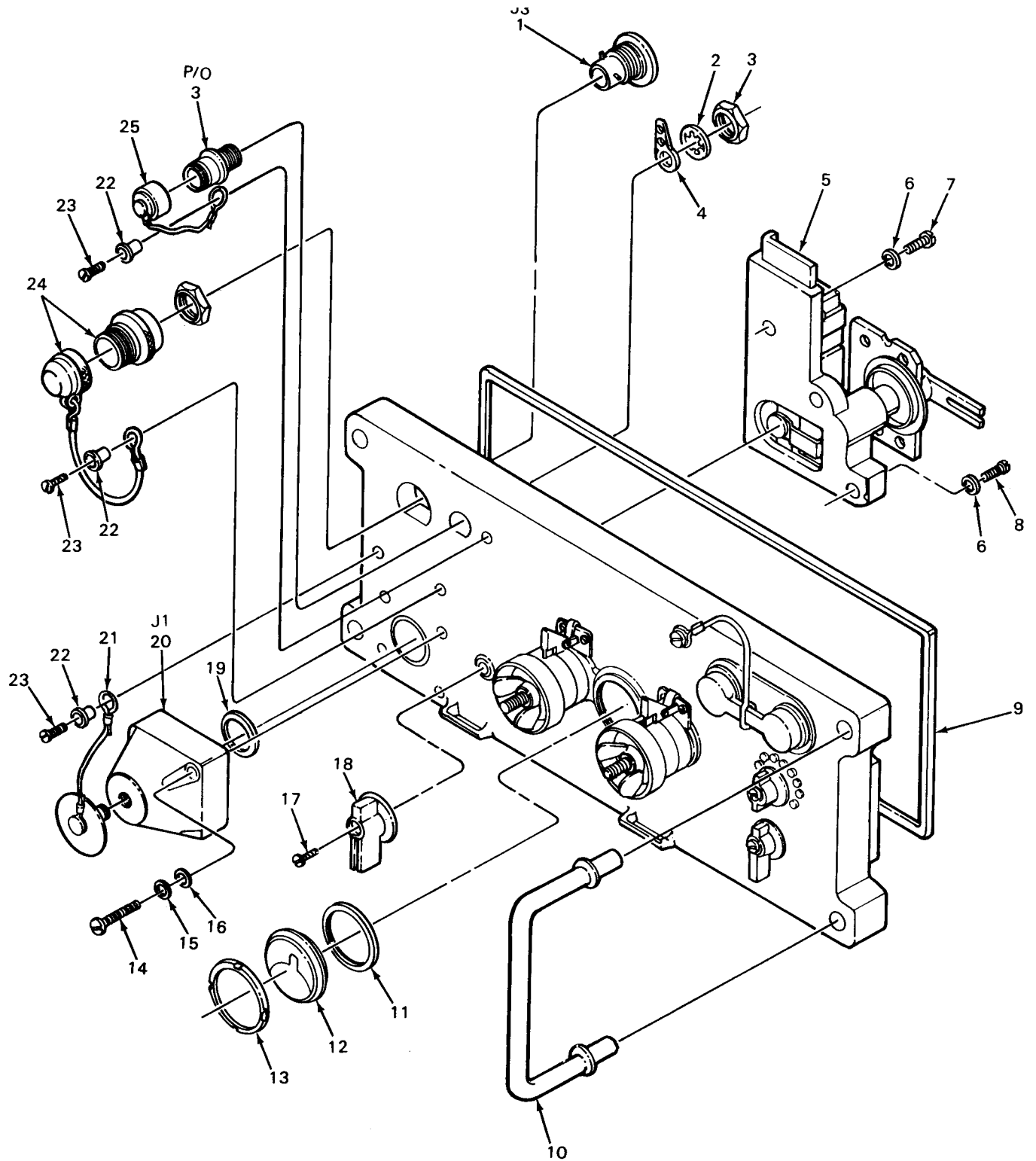
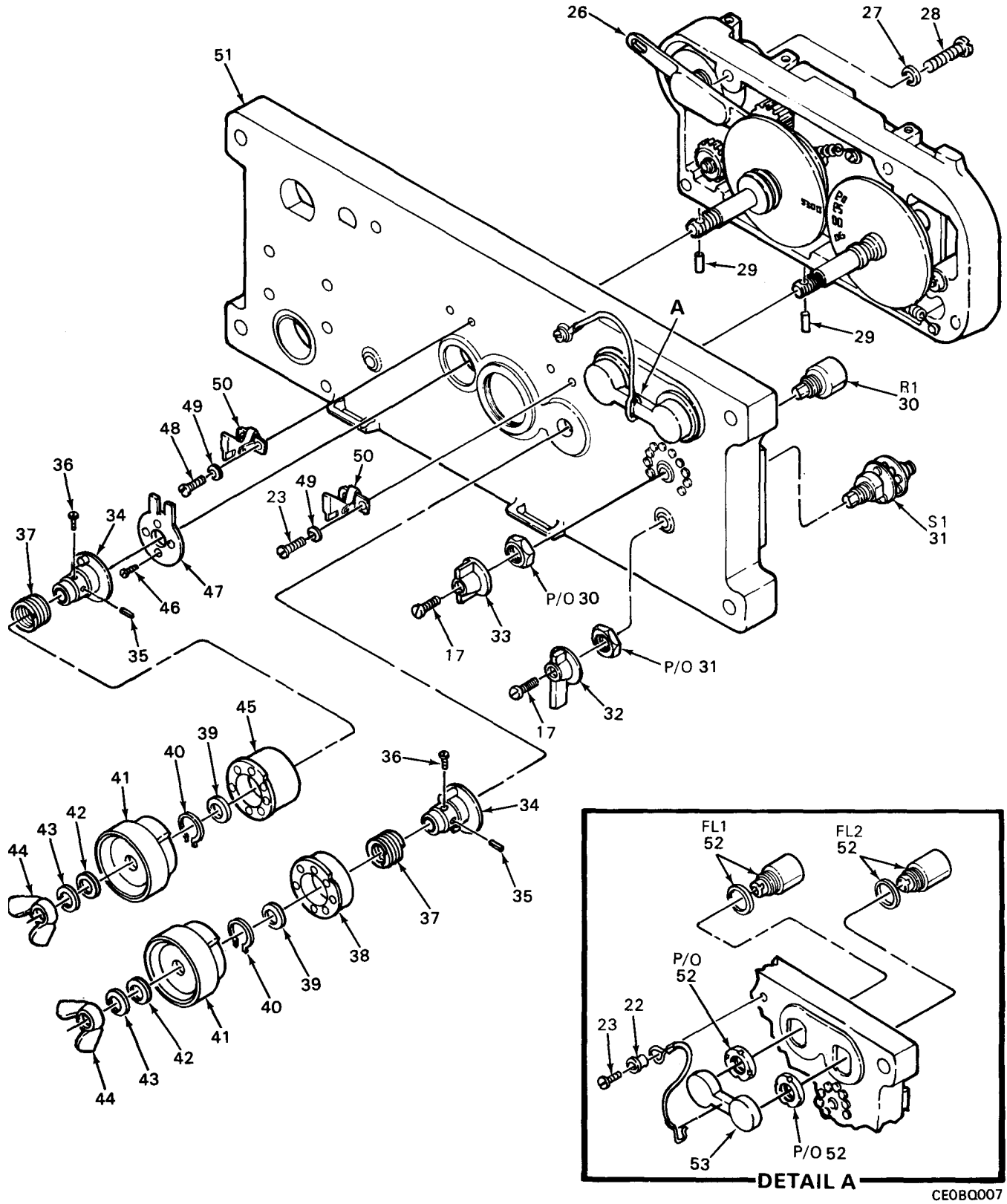


Figure 5. Front Panel Assembly A30 (Sheet 1 of 2)



CE0BQ007

Figure 5. Front Panel Assembly A30 (Sheet 2 of 2)

(1) ITEM NO	(2) SMR CODE	(3) FSCM	(4) PART NUMBER	(5) DESCRIPTION AND USABLE ON CODE (UOC)	(6) QTY
GROUP 0502 FRONT PANEL ASSEMBLY A30					
FIGURE 5					
1	PAHZZ	80058	U-318/U	CONNECTOR, RECEPTACL	1
2	PAHZZ	96906	MS35333-110	WASHER, LOCK	1
3	PAHZZ	80058	UG-1873/U	CONNECTOR, RECEPTACL	1
4	XBHZZ	80063	SM-B-447725	TERMINAL, LUG	1
5	PAHZZ	80063	SM-D-447313	NETWORK, IMPEDENCE, M	1
6	PAHZZ	96906	MS35338-135	WASHER, LOCK	3
7	PAHZZ	96906	MS-51957-14	SCREW, MACHINE	1
8	PAHZZ	96906	MS-51957-16	SCREW, MACHINE	2
9	PAFZZ	80063	SM-B-447355	GASKET	1
10	PAFZZ	80063	SM-B-447221	HANDLE, BOW	2
11	PAHZZ	80063	SM-B-447223	GASKET	1
12	PAHZZ	80063	SM-B-447225	WINDOW, DIAL	1
13	PAHZZ	80063	SM-B-447222	BEZEL, INSTRUMENT MO	1
14	XBFBZZ	80063	SM-B-447445-6	SCREW, MACHINE	4
15	PAFZZ	80063	SM-B-447694-4	WASHER, LOCK	4
16	PAFZZ	80063	SM-B-447694-6	WASHER, FLAT	4
17	XBOZZ	80063	SM-B-447445-5	SCREW, MACHINE	3
18	PAOZZ	96906	MS91525-2AP3S0Z	KNOB	1
19	PAFZZ	96906	MS28775-020	PACKING, PREFORMED	1
20	PAFZZ	80063	SM-C-447102	CONNECTOR, RECEPTACL	1
21	PAOZZ	80063	SM-B-447439	COVER, ELECTRICAL CO	1
22	PAOZZ	80063	SM-B-447392	BUSHING, SLEEVE	4
23	PAOZZ	80063	SM-B-447445-4	SCREW, MACHINE	6
24	PAHZZ	80058	U-317/U	CONNECTOR, PLUG, ELEC	1
25	PAOZZ	80063	SM-C-447403	COVER, ELECTRICAL CO	1
26	PAHZZ	80063	SM-D-447350	DRIVE, TUNING	1
27	PAHZZ	96906	MS35338-41	WASHER, LOCK	5
28	XBHZZ	80063	SM-B-447968	SCREW, MACHINE	5
29	PAHZZ	80063	SM-B-447302-2	PIN, SPRING	2
30	XBHZZ	71590	BA1401-003	RESISTOR, VARIABLE, N	1
31	PAHZZ	80063	SM-C-447094	SWITCH, ROTARY	1
32	PAOZZ	80063	SM-C-447052	KNOB	1
33	XBOZZ	96906	MS91524	KNOB, RADIO	1
34	PAOZZ	80063	SM-C-447287	SLEEVE ASSEMBLY, TRA	2
35	PAOZZ	80063	SM-B-447302-3	PIN, SPRING	2
36	PAOZZ	96906	MS51981-8	SETSCREW	2
37	PAOZZ	80063	SM-B-447304	SPRING, HELICAL, COMP	2
38	PAOZZ	80063	SM-C-447976-1	KNOB	1
39	PAOZZ	80063	SM-B-447303	WASHER, FLAT	2
40	PAOZZ	96906	MS16624-1037	RING, RETAINING	2
41	PAOZZ	80063	SM-C-447306	KNOB	2
42	XBOZZ	80063	SM-B-447107-5	WASHER, FLAT	2
43	PAOZZ	80063	SM-B-447694-1	WASHER, LOCK	2
44	PAOZZ	80063	SM-B-447308	NUT, PLAIN, WING	2
45	PAOZZ	80063	SM-C-447976-2	KNOB	1
46	PAHZZ	96906	MS51959-2	SCREW, MACHINE	4
47	PAHZZ	80063	SM-B-447299	PLATE, MOUNTING, TRAN	1

(1) ITEM NO	(2) SMR CODE	(3) FSCM	(4) PART NUMBER	(5) DESCRIPTION AND USABLE ON CODE (UOC)	(6) QTY
48	XBHZZ	80063	SM-B-447445-3	SCREW, MACHINE	2
49	PAHZZ	80063	SM-B-447694-3	WASHER, LOCK	4
50	PAHZZ	80063	SM-C-447307	DIAL-KNOB LOCK, ELEC	2
51	PAFZZ	80063	SM-D-449063	PANEL ASSEMBLY	1
52	PAHZZ	80063	SM-D-447367	FILTER, RADIO INTERF	2
53	PAOZZ	80063	SM-B-447440	CAP, PROTECTIVE, DUST	1

END OF FIGURE



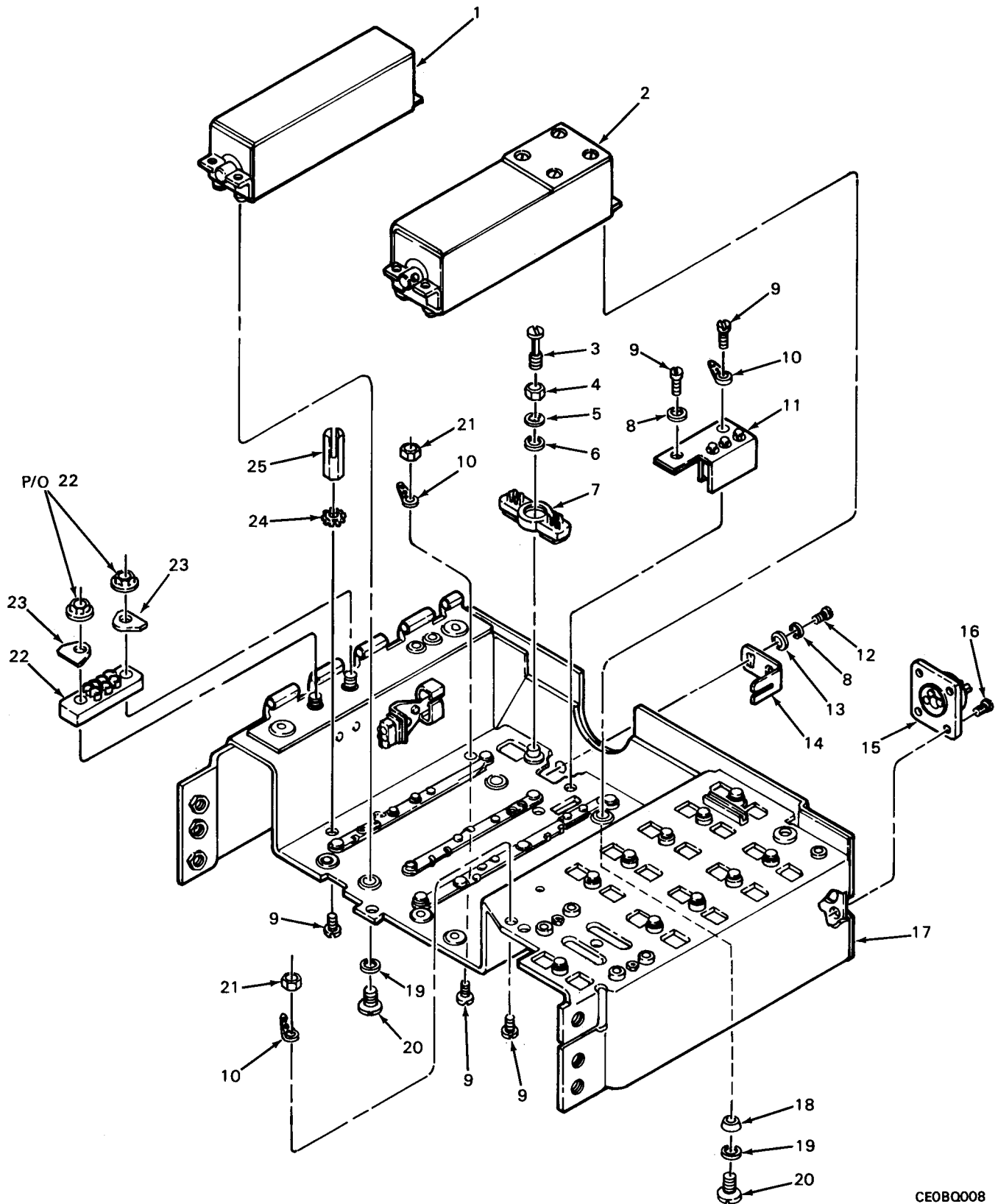


Figure 6. Chassis Assembly A27



(1) ITEM NO	(2) SMR CODE	(3) FSCM	(4) PART NUMBER	(5) DESCRIPTION AND USABLE ON CODE (UOC)	(6) QTY
GROUP 0503 CHASSIS ASSEMBLY A27					
FIGURE 6					
1	PAHZZ	80063	SM-D-447137	CAPACITOR, VARIABLE	1
2	PAHZZ	80063	SM-D-447138	CAPACITOR, VARIABLE	1
3	PAHZZ	80063	SM-B-447958	SCREW, ASSEMBLED WAS	1
4	PAHZZ	80063	SM-B-447960	NUT, PLAIN, HEXAGON	1
5	PAHZZ	78189	1210-06	WASHER, LOCK	1
6	PAHZZ	80063	SM-B-447043-2	SPACER, RING	1
7	PAHZZ	80063	SM-D-447180	CONNECTOR, PLUG, ELEC	1
8	PAHZZ	96906	MS35338-40	WASHER, LOCK	3
9	PAHZZ	96906	MS35206-212	SCREW, MACHINE	5
10	PAHZZ	78189	2204-04-00	TERMINAL, LUG	3
11	PAHZZ	80063	SM-B-447661	SWITCH SUBASSEMBLY	1
12	PAHZZ	96906	MS35223-13	SCREW, MACHINE	2
13	PAHZZ	96906	MS27183-4	WASHER, FLAT	2
14	XBHZZ	80063	SM-B-447971	SUPPORT	1
15	PAHZZ	80063	SM-C-447075	CONNECTOR, RECEPTACL	1
16	PAHZZ	96906	MS35206-214	SCREW, MACHINE	4
17	XBDZZ	80063	SM-D-447352	CHASSIS ASSEMBLY	1
18	PAHZZ	80063	SM-B-447665	WASHER, SPRING TENSI	2
19	PAHZZ	96906	MS35338-41	WASHER, LOCK	6
20	PAHZZ	96906	MS35206-225	SCREW, MACHINE	6
21	PAHZZ	96906	MS35649-242	NUT, PLAIN, HEXAGON	2
22	PAHZZ	95238	SM7-20SGDF	CONNECTOR, RECEPTACL	1
23	XBHZZ	80063	SM-B-447951	WASHER, SPECIAL	2
24	PAHZZ	96906	MS35335-85	WASHER, LOCK	1
25	PAHZZ	80063	SM-B-447766	TERMINAL, STUD	1

END OF FIGURE



## CROSS-REFERENCE INDEXES

## NATIONAL STOCK NUMBER INDEX

STOCK NUMBER	FIG.	ITEM	STOCK NUMBER	FIG.	ITEM
5820-00-007-9542	3	56	5820-00-889-3803	1	3
5310-00-022-8847	5	2	5330-00-892-4293	5	11
5310-00-045-4007	3	12	5820-00-892-8094	1	5
	5	27	5935-00-892-9119	5	1
	6	19	5935-00-892-9139	5	20
5305-00-054-5647	5	23	5305-00-901-6855	3	49
5305-00-054-5648	5	7		6	3
5305-00-054-5650	5	8	6135-00-926-8322	1	4
5305-00-068-5276	3	33	5820-00-930-0723	2	2
5820-00-086-7138	1	10	9320-00-930-0724	4	7
5985-00-086-7149	1	9	5355-00-930-0728	5	38
5340-00-134-3493	4	2	5355-00-930-0729	5	45
5310-00-257-6223	6	5	5305-00-930-0736	3	76
5820-00-295-7122	2	1	5310-00-930-0758	3	51
4820-00-296-9677	4	4		6	4
9905-00-404-5959	4	6	5965-00-933-6896	1	11
5305-00-405-8960	3	41	5310-00-933-8118	5	6
	6	12	5310-00-934-9739	3	17
5820-00-419-9634	3	43		6	21
5340-00-497-9853	4	5	5305-00-937-3846	3	48
5310-00-543-2410	3	16	5310-00-937-4458	3	13
	6	8	5820-00-937-6793	5	47
5310-00-543-5060	3	26	5940-00-937-9929	6	25
5330-00-585-7723	5	19	5310-00-939-1063	3	40
5985-00-646-2365	1	2		6	24
5355-00-656-1358	5	18	5935-00-948-2719	6	22
5940-00-682-2477	6	10	5310-00-950-1310	6	13
5365-00-715-1152	5	40	5310-00-951-4679	3	46
5305-00-716-7833	5	36	5305-00-951-5164	3	38
5305-00-762-7482	3	73	5355-00-951-5165	5	41
5305-00-764-2966	5	46	5915-00-951-5203	3	4
5820-00-813-0192	3	29	5310-00-951-5660	5	49
	5	51	5310-00-951-5661	5	15
5315-00-823-8740	5	35	5945-00-951-6458	3	2
5935-00-832-4904	5	3	5935-00-951-6473	6	7
5315-00-847-3735	5	39	5935-00-951-6474	6	15
5820-00-857-0934	1	1	5315-00-951-7377	3	36
5960-00-860-7710	3	45	6140-00-952-1798	3	20
5310-00-869-4199	3	37	6110-00-957-1460	3	61
5995-00-889-1087	3	39	5820-00-957-1513	3	72
5310-00-889-2583	5	39	5955-00-973-1476	3	55
5310-00-889-2584	6	18	5820-00-973-1477	3	69
5310-00-889-2585	5	16	5820-00-973-1505	3	34
5310-00-889-2586	5	43	5820-00-973-1506	3	9
5305-00-889-3023	3	11	3120-00-973-1508	5	22
5305-00-889-3024	3	21	5820-00-973-1622	3	5
5305-00-889-3118	3	25	5820-00-973-1623	3	6
5360-00-889-3298	3	14	5820-00-973-1624	3	7
5360-00-889-3299	5	37	5820-00-973-1731	3	23
5355-00-889-3424	5	32	5340-00-973-1732	5	53

## CROSS-REFERENCE INDEXES

## NATIONAL STOCK NUMBER INDEX

STOCK NUMBER	FIG.	ITEM	STOCK NUMBER	FIG.	ITEM
5935-00-973-1733	5	21			
5355-00-973-1734	5	50			
5935-00-973-1859	5	24			
5820-00-973-2401	3	15			
5910-00-973-2489	6	1			
5910-00-973-2821	6	2			
5820-00-973-3578	3	71			
5820-00-973-3579	3	70			
5820-00-973-3580	3	68			
5820-00-973-3581	3	52			
5820-00-973-3582	3	53			
5820-00-973-3583	3	54			
5820-00-973-3585	3	60			
5820-00-973-3595	3	58			
5915-00-973-3596	3	57			
5963-00-973-3598	3	66			
5820-00-973-3600	3	62			
5820-00-973-3602	3	65			
5820-00-973-3603	3	8			
5820-00-973-3604	3	3			
5310-00-973-3697	5	44			
5820-00-973-3957	5	5			
5330-00-973-3960	5	9			
5355-00-973-3962	5	12			
5820-00-973-3963	5	26			
5999-00-973-4011	3	18			
5355-00-973-4334	3	10			
5820-00-973-4335	3	64			
5820-00-973-4336	3	74			
5930-00-978-2110	5	31			
5935-00-978-4357	5	25			
5930-00-983-3962	6	11			
6695-00-983-8797	5	13			
5305-00-984-4982	3	28			
	6	20			
5305-00-984-4984	3	35			
5305-00-984-4988	3	42			
5915-00-985-0867	5	52			
5305-00-993-0190	3	47			
	6	16			
5305-00-993-0191	3	32			
	6	9			
6135-01-034-2239	1	4			
8465-01-073-8326	1	6			
5365-01-099-3418	3	19			
5365-01-099-3420	6	6			
5820-01-099-9173	5	34			
5340-01-101-5645	5	10			
5820-01-210-9954	3	59			

## CROSS-REFERENCE INDEXES

FSCM	PART NUMBER	PART NUMBER INDEX		FIG.	ITEM
		STOCK	NUMBER		
80058	AB-591/PRC-25	5985-00-086-7149		1	9
80058	AT-271A/PRC	5985-00-646-2365		1	2
80058	AT-892/PRC-25	5820-00-889-3803		1	3
80058	BA-5598/U	6135-01-034-2239		1	4
71590	BA1401-003			5	30
80058	BA4386PRC25	6135-00-926-8322		1	4
80058	CW-503/PRC-25	5820-00-086-7138		1	10
81349	MIL-F-43834			1	8
81349	MIL-S-43828			1	7
81349	MIL-S-43835	8465-01-073-8326		1	6
96906	MS-51957-14	5305-00-054-5648		5	7
96906	MS-51957-16	5305-00-054-5650		5	8
96906	MS16624-1037	5365-00-715-1152		5	40
96906	MS16995-9	5305-00-068-5276		3	33
96906	MS24585C238	5360-00-889-3298		3	14
96906	MS27183-3	5310-00-951-4679		3	46
96906	MS27183-4	5310-00-950-1310		6	13
96906	MS28775-020	5330-00-585-7723		5	19
96906	MS35206-202	5305-00-762-7482		3	73
96906	MS35206-203	5305-00-889-3118		3	25
96906	MS35206-212	5305-00-993-0191		3	32
				6	9
96906	MS35206-214	5305-00-993-0190		3	47
				6	16
96906	MS35206-225	5305-00-984-4982		3	28
				6	20
96906	MS35206-228	5305-00-984-4988		3	42
96906	MS35223-13	5305-00-405-8960		3	41
				6	12
96906	MS35223-27	5305-00-984-4984		3	35
96906	MS35333-110	5310-00-022-8847		5	2
96906	MS35335-85	5310-00-939-1063		3	40
				6	24
96906	MS35338-135	5310-00-933-8118		5	6
96906	MS35338-156	5310-00-869-4199		3	37
96906	MS35338-39	5310-00-543-5060		3	26
96906	MS35338-40	5310-00-543-2410		3	16
				6	8
96906	MS35338-41	5310-00-045-4007		3	12
				5	27
				6	19
96906	MS35649-242	5310-00-934-9739		3	17
				6	21
96906	MS51959-2	5305-00-764-2966		5	46
96906	MS51981-8	5305-00-716-7833		5	36
96906	MS91524			5	33
96906	MS91525-2AP3S0Z	5355-00-656-1358		5	18
81349	M24251-6-5	5960-00-860-7710		3	45
80058	RT-505/PRC-25	5820-00-857-0934		1	1
71482	RY4YY1A3P			3	24
80063	SM-B-182386	5820-00-295-7122		2	1

## CROSS-REFERENCE INDEXES

FSCM	PART NUMBER	PART NUMBER INDEX		FIG.	ITEM
		STOCK NUMBER			
80063	SM-B-447019	5305-00-937-3846		3	48
80063	SM-B-447043-1	5365-01-099-3418		3	19
80063	SM-B-447043-2	5365-01-099-3420		6	6
80063	SM-B-447066-3	5305-00-889-3023		3	11
80063	SM-B-447066-4	5305-00-951-5164		3	38
80063	SM-B-447107-5			5	42
80063	SM-B-447221	5340-01-101-5645		5	10
80063	SM-B-447222	6695-00-983-8797		5	13
80063	SM-B-447223	5330-00-892-4293		5	11
80063	SM-B-447224	5305-00-889-3024		3	21
80063	SM-B-447225	5355-00-973-3962		5	12
80063	SM-B-447249			3	30
80063	SM-B-447265	5340-00-497-9853		4	5
80063	SM-B-447299	5820-00-937-6793		5	47
80063	SM-B-447302-2	5315-00-847-3735		5	29
80063	SM-B-447302-3	5315-00-823-8740		5	35
80063	SM-B-447303	5310-00-889-2583		5	39
80063	SM-B-447304	5360-00-889-3299		5	37
80063	SM-B-447308	5310-00-973-3697		5	44
80063	SM-B-447320	9320-00-930-0724		4	7
80063	SM-B-447348-1			4	3
80063	SM-B-447355	5330-00-973-3960		5	9
80063	SM-B-447392	3120-00-973-1508		5	22
80063	SM-B-447439	5935-00-973-1733		5	21
80063	SM-B-447440	5340-00-973-1732		5	53
80063	SM-B-447445-3			5	48
80063	SM-B-447445-4	5305-00-054-5647		5	23
80063	SM-B-447445-5			5	17
80063	SM-B-447445-6			5	14
80063	SM-B-447461	9905-00-404-5959		4	6
80063	SM-B-447575	5820-00-973-1505		3	34
80063	SM-B-447661	5930-00-983-3962		6	11
80063	SM-B-447665	5310-00-889-2584		6	18
80063	SM-B-447694-1	5310-00-889-2586		5	43
80063	SM-B-447694-2			3	22
80063	SM-B-447694-3	5310-00-951-5660		5	49
80063	SM-B-447694-4	5310-00-951-5661		5	15
80063	SM-B-447694-6	5310-00-889-2585		5	16
80063	SM-B-447721-46			3	44
80063	SM-B-447721-69			3	50
80063	SM-B-447725			5	4
80063	SM-B-447766	5940-00-937-9929		6	25
80063	SM-B-447771	5995-00-889-1087		3	39
80063	SM-B-447784	5355-00-973-4334		3	10
80063	SM-B-447785			3	75
80063	SM-B-447786	5305-00-930-0736		3	76
80063	SM-B-447930	5310-00-937-4458		3	13
80063	SM-B-447951			6	23
80063	SM-B-447958	5305-00-901-6855		3	49
				6	3
80063	SM-B-447960	5310-00-930-0758		3	51

## CROSS-REFERENCE INDEXES

FSCM	PART NUMBER	PART NUMBER INDEX		FIG.	ITEM
		STOCK	NUMBER		
80063	SM-B-447960	5310-00-930-0758		6	4
80063	SM-B-447968			5	28
80063	SM-B-447971			6	14
80063	SM-B-91329	5820-00-930-0723		2	2
80063	SM-C-447052	5355-00-889-3424		5	32
80063	SM-C-447075	5935-00-951-6474		6	15
80063	SM-C-447085	5945-00-951-6458		3	2
80063	SM-C-447094	5930-00-978-2110		5	31
80063	SM-C-447102	5935-00-892-9139		5	20
80063	SM-C-447121-3	5315-00-951-7377		3	36
80063	SM-C-447269	5820-00-973-1477		3	69
80063	SM-C-447287	5820-01-099-9173		5	34
80063	SM-C-447306	5355-00-951-5165		5	41
80063	SM-C-447307	5355-00-973-1734		5	50
80063	SM-C-447321-2	5340-00-134-3493		4	2
80063	SM-C-447403	5935-00-978-4357		5	25
80063	SM-C-447601			3	77
80063	SM-C-447795	5820-00-973-4336		3	74
80063	SM-C-447976-1	5355-00-930-0728		5	38
80063	SM-C-447976-2	5355-00-930-0729		5	45
80063	SM-C-544246	5965-00-933-6896		1	11
80063	SM-C-875638			3	27
80063	SM-D-447113	5820-00-973-1624		3	7
80063	SM-D-447131			3	67
80063	SM-D-447137	5910-00-973-2489		6	1
80063	SM-D-447138	5910-00-973-2821		6	2
80063	SM-D-447177	5820-00-973-3603		3	8
80063	SM-D-447180	5935-00-951-6473		6	7
80063	SM-D-447251	5915-00-951-5203		3	4
80063	SM-D-447313	5820-00-973-3957		5	5
80063	SM-D-447314	5820-00-973-3604		3	3
80063	SM-D-447316	5820-00-973-1622		3	5
80063	SM-D-447318	5820-00-973-1623		3	6
80063	SM-D-447322-1	4820-00-296-9677		4	4
80063	SM-D-447350	5820-00-973-3963		5	26
80063	SM-D-447351	5820-00-973-1731		3	23
80063	SM-D-447352			6	17
80063	SM-D-447353	5820-00-973-1506		3	9
80063	SM-D-447367	5915-00-985-0867		5	52
80063	SM-D-447407	5820-00-973-3585		3	60
80063	SM-D-447425	5820-00-419-9634		3	43
80063	SM-D-447446	5820-01-210-9954		3	59
80063	SM-D-447447	5820-00-973-3595		3	58
80063	SM-D-447448	5915-00-973-3596		3	57
80063	SM-D-447450	5963-00-973-3598		3	66
80063	SM-D-447451	6110-00-957-1460		3	61
80063	SM-D-447452	5820-00-973-3600		3	62
80063	SM-D-447453			3	63
80063	SM-D-447454	5820-00-973-4335		3	64
80063	SM-D-447455	5820-00-973-3602		3	65
80063	SM-D-447462	5820-00-973-3580		3	68

## CROSS-REFERENCE INDEXES

FSCM	PART NUMBER	PART NUMBER INDEX		FIG.	ITEM
		STOCK NUMBER			
80063	SM-D-447472	5820-00-973-2401		3	15
80063	SM-D-447554	5955-00-973-1476		3	55
80063	SM-D-447555	5820-00-973-3578		3	71
80063	SM-D-447556	5820-00-973-3579		3	70
80063	SM-D-447557	5820-00-973-3581		3	52
80063	SM-D-447558	5820-00-973-3582		3	53
80063	SM-D-447559	5820-00-973-3583		3	54
80063	SM-D-447593	5999-00-973-4011		3	18
80063	SM-D-447620	5820-00-957-1513		3	72
80063	SM-D-447781			3	1
80063	SM-D-449063	5820-00-813-0192		3	29
				5	51
80063	SM-D-621272	5820-00-007-9542		3	56
80063	SMB447445-7			3	31
80063	SMD447264			4	1
80063	SMD447322	6140-00-952-1798		3	20
95238	SM7-20SGDF	5935-00-948-2719		6	22
80058	ST-138/PRC-25	5820-00-892-8094		1	5
80058	U-317/U	5935-00-973-1859		5	24
80058	U-318/U	5935-00-892-9119		5	1
80058	UG-1873/U	5935-00-832-4904		5	3
78189	1210-06	5310-00-257-6223		6	5
78189	2204-04-00	5940-00-682-2477		6	10



## CROSS-REFERENCE INDEXES

FIGURE AND ITEM NUMBER INDEX				
FIG.	ITEM	STOCK NUMBER	FSCM	PART NUMBER
1	1	5820-00-857-0934	80058	RT-505/PRC-25
1	2	5985-00-646-2365	80058	AT-271A/PRC
1	3	5820-00-889-3803	80058	AT-892/PRC-25
1	4	6135-00-926-8322	80058	BA4386PRC25
1	4	6135-01-034-2239	80058	BA-5598/U
1	5	5820-00-892-8094	80058	ST-138/PRC-25
1	6	8465-01-073-8326	81349	MIL-S-43835
1	7		81349	MIL-S-43828
1	8		81349	MIL-F-43834
1	9	5985-00-086-7149	80058	AB-591/PRC-25
1	10	5820-00-086-7138	80058	CW-503/PRC-25
1	11	5965-00-933-6896	80063	SM-C-544246
2	1	5820-00-295-7122	80063	SM-B-182386
2	2	5820-00-930-0723	80063	SM-B-91329
3	1		80063	SM-D-447781
3	2	5945-00-951-6458	80063	SM-C-447085
3	3	5820-00-973-3604	80063	SM-D-447314
3	4	5915-00-951-5203	80063	SM-D-447251
3	5	5820-00-973-1622	80063	SM-D-447316
3	6	5820-00-973-1623	80063	SM-D-447318
3	7	5820-00-973-1624	80063	SM-D-447113
3	8	5820-00-973-3603	80063	SM-D-447177
3	9	5820-00-973-1506	80063	SM-D-447353
3	10	5355-00-973-4334	80063	SM-B-447784
3	11	5305-00-889-3023	80063	SM-B-447066-3
3	12	5310-00-045-4007	96906	MS35338-41
3	13	5310-00-937-4458	80063	SM-B-447930
3	14	5360-00-889-3298	96906	MS24585C238
3	15	5820-00-973-2401	80063	SM-D-447472
3	16	5310-00-543-2410	96906	MS35338-40
3	17	5310-00-934-9739	96906	MS35649-242
3	18	5999-00-973-4011	80063	SM-D-447593
3	19	5365-01-099-3418	80063	SM-B-447043-1
3	20	6140-00-952-1798	80063	SMD447322
3	21	5305-00-889-3024	80063	SM-B-447224
3	22		80063	SM-B-447694-2
3	23	5820-00-973-1731	80063	SM-D-447351
3	24		71482	RY4YY1A3P
3	25	5305-00-889-3118	96906	MS35206-203
3	26	5310-00-543-5060	96906	MS35338-39
3	27		80063	SM-C-875638
3	28	5305-00-984-4982	96906	MS35206-225
3	29	5820-00-813-0192	80063	SM-D-449063
3	30		80063	SM-B-447249
3	31		80063	SMB447445-7
3	32	5305-00-993-0191	96906	MS35206-212
3	33	5305-00-068-5276	96906	MS16995-9
3	34	5820-00-973-1505	80063	SM-B-447575
3	35	5305-00-984-4984	96906	MS35223-27
3	36	5315-00-951-7377	80063	SM-C-447121-3
3	37	5310-00-869-4199	96906	MS35338-156

## CROSS-REFERENCE INDEXES

FIGURE AND ITEM NUMBER INDEX				
FIG.	ITEM	STOCK NUMBER	FSCM	PART NUMBER
3	38	5305-00-951-5164	80063	SM-B-447066-4
3	39	5995-00-889-1087	80063	SM-B-447771
3	40	5310-00-939-1063	96906	MS35335-85
3	41	5305-00-405-8960	96906	MS35223-13
3	42	5305-00-984-4988	96906	MS35206-228
3	43	5820-00-419-9634	80063	SM-D-447425
3	44		80063	SM-B-447721-46
3	45	5960-00-860-7710	81349	M24251-6-5
3	46	5310-00-951-4679	96906	MS27183-3
3	47	5305-00-993-0190	96906	MS35206-214
3	48	5305-00-937-3846	80063	SM-B-447019
3	49	5305-00-901-6855	80063	SM-B-447958
3	50		80063	SM-B-447721-69
3	51	5310-00-930-0758	80063	SM-B-447960
3	52	5820-00-973-3581	80063	SM-D-447557
3	53	5820-00-973-3582	80063	SM-D-447558
3	54	5820-00-973-3583	80063	SM-D-447559
3	55	5955-00-973-1476	80063	SM-D-447554
3	56	5820-00-007-9542	80063	SM-D-621272
3	57	5915-00-973-3596	80063	SM-D-447448
3	58	5820-00-973-3595	80063	SM-D-447447
3	59	5820-01-210-9954	80063	SM-D-447446
3	60	5820-00-973-3585	80063	SM-D-447407
3	61	6110-00-957-1460	80063	SM-D-447451
3	62	5820-00-973-3600	80063	SM-D-447452
3	63		80063	SM-D-447453
3	64	5820-00-973-4335	80063	SM-D-447454
3	65	5820-00-973-3602	80063	SM-D-447455
3	66	5963-00-973-3598	80063	SM-D-447450
3	67		80063	SM-D-447131
3	68	5820-00-973-3580	8-0063	SM-D-447462
3	69	5820-00-973-1477	80063	SM-C-447269
3	70	5820-00-973-3579	80063	SM-D-447556
3	71	5820-00-973-3578	80063	SM-D-447555
3	72	5820-00-957-1513	80063	SM-D-447620
3	73	5305-00-762-7482	96906	MS35206-202
3	74	5820-00-973-4336	80063	SM-C-447795
3	75		80063	SM-B-447785
3	76	5305-00-930-0736	80063	SM-B-447786
3	77		80063	SM-C-447601
4	1		80063	SMD447264
4	2	5340-00-134-3493	80063	SM-C-447321-2
4	3		80063	SM-B-447348-1
4	4	4820-00-296-9677	80063	SM-D-447322-1
4	5	5340-00-497-9853	80063	SM-B-447265
4	6	9905-00-404-5959	80063	SM-B-447461
4	7	9320-00-930-0724	80063	SM-B-447320
5	1	5935-00-892-9119	80058	U-318/U
5	2	5310-00-022-8847	96906	MS35333-110
5	3	5935-00-832-4904	80058	UG-1873/U
5	4		80063	SM-B-447725

## CROSS-REFERENCE INDEXES

FIG.	ITEM	FIGURE AND ITEM NUMBER INDEX		
		STOCK NUMBER	FSCM	PART NUMBER
5	5	5820-00-973-3957	80063	SM-D-447313
5	6	5310-00-933-8118	96906	MS35338-135
5	7	5305-00-054-5648	96906	MS-51957-14
5	8	5305-00-054-5650	96906	MS-51957-16
5	9	5330-00-973-3960	80063	SM-B-447355
5	10	5340-01-101-5645	80063	SM-B-447221
5	11	5330-00-892-4293	80063	SM-B-447223
5	12	5355-00-973-3962	80063	SM-B-447225
5	13	6695-00-983-8797	80063	SM-B-447222
5	14		80063	SM-B-447445-6
5	15	5310-00-951-5661	80063	SM-B-447694-4
5	16	5310-00-889-2585	80063	SM-B-447694-6
5	17		80063	SM-B-447445-5
5	18	5355-00-656-1358	96906	MS91525-2AP3SOZ
5	19	5330-00-585-7723	96906	MS28775-020
5	20	5935-00-892-9139	80063	SM-C-447102
5	21	5935-00-973-1733	80063	SM-B-447439
5	22	3120-00-973-1508	80063	SM-B-447392
5	23	5305-00-054-5647	80063	SM-B-447445-4
5	24	5935-00-973-1859	80058	U-317/U
5	25	5935-00-978-4357	80063	SM-C-447403
5	26	5820-00-973-3963	80063	SM-D-447350
5	27	5310-00-045-4007	96906	MS35338-41
5	28		80063	SM-B-447968
5	29	5315-00-847-3735	80063	SM-B-447302-2
5	30		71590	BA1401-003
5	31	5930-00-978-2110	80063	SM-C-447094
5	32	5355-00-889-3424	80063	SM-C-447052
5	33		96906	MS91524
5	34	5820-01-099-9173	80063	SM-C-447287
5	35	5315-00-823-8740	80063	SM-B-447302-3
5	36	5305-00-716-7833	96906	MS51981-8
5	37	5360-00-889-3299	80063	SM-B-447304
5	38	5355-00-930-0728	80063	SM-C-447976-1
5	39	5310-00-889-2583	80063	SM-B-447303
5	40	5365-00-715-1152	96906	MS16624-1037
5	41	5355-00-951-5165	80063	SM-C-447306
5	42		80063	SM-B-447107-5
5	43	5310-00-889-2586	80063	SM-B-447694-1
5	44	5310-00-973-3697	80063	SM-B-447308
5	45	5355-00-930-0729	80063	SM-C-447976-2
5	46	5305-00-764-2966	96906	MS51959-2
5	47	5820-00-937-6793	80063	SM-B-447299
5	48		80063	SM-B-447445-3
5	49	5310-00-951-5660	80063	SM-B-447694-3
5	50	5355-00-973-1734	80063	SM-C-447307
5	51	5820-00-813-0192	80063	SM-D-449063
5	52	5915-00-985-0867	80063	SM-D-447367
5	53	5340-00-973-1732	80063	SM-B-447440
6	1	5910-00-973-2489	80063	SM-D-447137
6	2	5910-00-973-2821	80063	SM-D-447138

## CROSS-REFERENCE INDEXES

FIG.	ITEM	FIGURE AND ITEM NUMBER INDEX		
		STOCK NUMBER	FSCM	PART NUMBER
6	3	5305-00-901-6855	80063	SM-B-447958
6	4	5310-00-930-0758	80063	SM-B-447960
6	5	5310-00-257-6223	78189	1210-06
6	6	5365-01-099-3420	80063	SM-B-447043-2
6	7	5935-00-951-6473	80063	SM-D-447180
6	8	5310-00-543-2410	96906	MS35338-40
6	9	5305-00-993-0191	96906	MS35206-212
6	10	5940-00-682-2477	78189	2204-04-00
6	11	5930-00-983-3962	80063	SM-B-447661
6	12	5305-00-405-8960	96906	MS35223-13
6	13	5310-00-950-1310	96906	MS27183-4
6	14		80063	SM-B-447971
6	15	5935-00-951-6474	80063	SM-C-447075
6	16	5305-00-993-0190	96906	MS35206-214
6	17		80063	SM-D-447352
6	18	5310-00-889-2584	80063	SM-B-447665
6	19	5310-00-045-4007	96906	MS35338-41
6	20	5305-00-984-4982	96906	MS35206-225
6	21	5310-00-934-9739	96906	MS35649-242
6	22	5935-00-948-2719	95238	SM7-20SGDF
6	23		80063	SM-B-447951
6	24	5310-00-939-1063	96906	MS35335-85
6	25	5940-00-937-9929	80063	SM-B-447766

RECOMMENDED CHANGES TO EQUIPMENT TECHNICAL PUBLICATIONS



THEN... JOT DOWN THE DOPE ABOUT IT ON THIS FORM. CAREFULLY TEAR IT OUT. FOLD IT AND DROP IT IN THE MAIL!

SOMETHING WRONG WITH THIS PUBLICATION?

FROM: (PRINT YOUR UNIT'S COMPLETE ADDRESS)  
 Commander  
 Stateside Army Depot  
 ATTN: AMSTA-US  
 Stateside, N.J. 07703-5007

DATE SENT  
 10 July 1975

PUBLICATION NUMBER: TM 11-5840-340-20P  
 PUBLICATION DATE: 23 Jan 78  
 PUBLICATION TITLE: Radar Set AN/PRC-76

BE EXACT... PIN-POINT WHERE IT IS				IN THIS SPACE TELL WHAT IS WRONG AND WHAT SHOULD BE DONE ABOUT IT:
PAGE NO	PARA-GRAPH	FIGURE NO	TABLE NO	
33				For item 2, change the NSN to read: 5835-00-134-9186. Reason: Accuracy.
44		19		Identify the cover on the junction box (item no. 5). Reason: It is a separate item and is not called out on figure 19.
45				Add the cover of the junction box as an item in the listing for figure 19. Reason: Same as above

TEAR ALONG PERFORATED LINE

SAMPLE

PRINTED NAME, GRADE OR TITLE, AND TELEPHONE NUMBER: SSG I. M. DeSpirit of 999-1776  
 SIGN HERE: *SSG I. M. DeSpirit*

FILL IN YOUR  
UNIT'S ADDRESS

FOLD BACK

DEPARTMENT OF THE ARMY

OFFICIAL BUSINESS

**SAMPLE**

Commander  
US Army Communications-Electronics Command  
and Fort Monmouth  
ATTN: AMSEL-LC-ME-PS  
Fort Monmouth, New Jersey 07703-5000

TEAR ALONG PERFORATED LINE

RECOMMENDED CHANGES TO EQUIPMENT TECHNICAL PUBLICATIONS



THEN...JOT DOWN THE DOPE ABOUT IT ON THIS FORM. CAREFULLY TEAR IT OUT, FOLD IT AND DROP IT IN THE MAIL.

**SOMETHING WRONG WITH THIS PUBLICATION?**

FROM: (PRINT YOUR UNIT'S COMPLETE ADDRESS)

DATE SENT

PUBLICATION NUMBER

TM 11-5820-398-34P

PUBLICATION DATE

1 November 88

PUBLICATION TITLE

Radio Set AN/PRC-25

BE EXACT PIN-POINT WHERE IT IS

PAGE NO.	PARA-GRAPH	FIGURE NO.	TABLE NO.
----------	------------	------------	-----------

IN THIS SPACE TELL WHAT IS WRONG AND WHAT SHOULD BE DONE ABOUT IT:

TEAR ALONG PERFORATED LINE

PRINTED NAME GRADE OR TITLE AND TELEPHONE NUMBER

SIGN HERE

DA FORM 2028-2  
1 JUL 79

PREVIOUS EDITIONS ARE OBSOLETE

P.S.--IF YOUR OUTFIT WANTS TO KNOW ABOUT YOUR RECOMMENDATION MAKE A CARBON COPE OF THIS AND GIVE IT TO YOUR HEADQUARTERS.

FILL IN YOUR  
UNIT'S ADDRESS

FOLD BACK

DEPARTMENT OF THE ARMY

OFFICIAL BUSINESS

Commander  
US Army Communications-Electronics Command  
and Fort Monmouth  
ATTN: AMSEL-LC-ME-PS  
Fort Monmouth, New Jersey 07703-5000

TEAR ALONG PERFORATED LINE



RECOMMENDED CHANGES TO EQUIPMENT TECHNICAL PUBLICATIONS



THEN...JOT DOWN THE DOPE ABOUT IT ON THIS FORM. CAREFULLY TEAR IT OUT, FOLD IT AND DROP IT IN THE MAIL.

SOMETHING WRONG WITH THIS PUBLICATION?

FROM: (PRINT YOUR UNIT'S COMPLETE ADDRESS)

DATE SENT

PUBLICATION NUMBER

TM 11-5820-398-34P

PUBLICATION DATE

1 November 88

PUBLICATION TITLE

Radio Set AN/PRC-25

BE EXACT PIN-POINT WHERE IT IS

PAGE NO.

PARA-GRAPH

FIGURE NO.

TABLE NO.

IN THIS SPACE TELL WHAT IS WRONG AND WHAT SHOULD BE DONE ABOUT IT:

TEAR ALONG PERFORATED LINE

PRINTED NAME GRADE OR TITLE AND TELEPHONE NUMBER

SIGN HERE

DA FORM 2028-2  
1 JUL 79

PREVIOUS EDITIONS ARE OBSOLETE

P.S.--IF YOUR OUTFIT WANTS TO KNOW ABOUT YOUR RECOMMENDATION MAKE A CARBON COPE OF THIS AND GIVE IT TO YOUR HEADQUARTERS.

FILL IN YOUR  
UNIT'S ADDRESS



FOLD BACK

DEPARTMENT OF THE ARMY



OFFICIAL BUSINESS

TEAR ALONG PERFORATED LINE

Commander  
US Army Communications-Electronics Command  
and Fort Monmouth  
ATTN: AMSEL-LC-ME-PS  
Fort Monmouth, New Jersey 07703-5000



FILL IN YOUR  
UNIT'S ADDRESS

FOLD BACK

DEPARTMENT OF THE ARMY

OFFICIAL BUSINESS

Commander  
US Army Communications-Electronics Command  
and Fort Monmouth  
ATTN: AMSEL-LC-ME-PS  
Fort Monmouth, New Jersey 07703-5000

TEAR ALONG PERFORATED LINE

By Order of the Secretary of the Army:

**CARL E. VUONO**  
*General, United States Army*  
*Chief of Staff*

Official:

**R.L. DILWORTH**  
*Brigadier General, United States Army*  
*The Adjutant General*

**DISTRIBUTION:**

To be distributed in accordance with DA Form 12-51 DS/GS requirements for AN/PRC-25.





