

TECHNICAL MANUAL

**ORGANIZATIONAL, DIRECT SUPPORT, AND
GENERAL SUPPORT MAINTENANCE
REPAIR PARTS AND SPECIAL TOOLS LIST
(INCLUDING DEPOT MAINTENANCE REPAIR PARTS
AND SPECIAL TOOLS)**

FOR

**REPAIR FACILITY, ELECTRONIC EQUIPMENT
OA-8991 / MSM**

(NSN 6625-01-070-4404)

**HEADQUARTERS, DEPARTMENT OF THE ARMY
24 AUGUST 1983**

TECHNICAL MANUAL }
 }
 No. 11-5410-217-24P }

HEADQUARTERS
 DEPARTMENT OF THE ARMY
 WASHINGTON, DC, 24 August 1983

**ORGANIZATIONAL, DIRECT SUPPORT, AND
 GENERAL SUPPORT MAINTENANCE
 REPAIR PARTS AND SPECIAL TOOLS LIST
 (INCLUDING DEPOT MAINTENANCE REPAIR PARTS AND SPECIAL TOOLS)
 FOR
 REPAIR FACILITY, ELECTRONIC EQUIPMENT
 OA-8991 /MSM
 (NSN 6625-01-070-4404)
 Current as of 15 September 1982**

REPORTING ERRORS AND RECOMMENDING IMPROVEMENTS

You can help improve this manual. If you find any mistakes or if you know of a way to improve the procedures, please let us know. Mail your letter, DA Form 2028 (Recommended Changes to Publications and Blank Forms), or DA Form 2028-2 located in back of this manual directly to: Commander, US Army Communications-Electronics Command and Fort Monmouth, ATTN: DR-SELME-MP, Fort Monmouth, NJ 07703.

In either case, a reply will be furnished directly to you.

| SECTION | GROUP | | Page | Illus Figure |
|---------|-------|--|------|-----------------|
| I. | | Introduction | 1 | |
| II. | | Repair Parts List | 5 | |
| | 00 | Repair Facility OA-8991/MSM | 5 | 1 |
| | 01 | Van, Repair Facility..... | 13 | 2 |
| | | 0101 Electrical Installation | 25 | 3 |
| | | 010101 Raceway Installation (See next higher assembly for breakdown) | | |
| | | 01010102 Meter Box Assembly | 31 | 4 |
| | | 01010103 Power Entrance Box Assembly | 33 | 5 |
| | | 0101010301 Cable Assembly (See next higher assembly for breakdown) | | |
| | | 01010104 Air Conditioner (See TM 5-4120-308-25P or TM 5-4120-360-24P for parts) | | |
| | | 01010105 Paneling Installation (No parts authorized) | | |
| | | 0101010501 Van, Modified XM-991 (No parts authorized) | | |
| | | 010102 Fixture Assembly (See next higher assembly for breakdown) | | |
| | | 010103 Fixture Assembly (See next higher assembly for breakdown) | | |
| | | 010104 Fixture Assembly (See next higher assembly for breakdown) | | |
| | | 010105 Fixture Assembly (See next higher assembly for breakdown) | | |
| | | 010106 Cable Assembly (See next higher assembly for breakdown) | | |
| | | 0102 Emergency Lighting | 35 | 6 |
| | | 0103 Telephone Set TA-312/PT (See TM 11-5805-201-20P and TM 11-5830-221-34P) | | |
| | | 0105 Digital Multimeter (See TM 11-6625-2953-40P for parts) | | |
| | | 010107 Probe Assembly (See next higher assembly for breakdown) | | |

| | | | Page | Illus Figure | |
|-------|---------|--|---|-----------------|--|
| GROUP | 02 | Cable Assembly | 37 | 7 | |
| | 02 | Cable Assembly | 39 | 8 | |
| | 04 | Intercom Set LS-147F/FI (See TM 11-5830-256-23P for parts) | | | |
| | 05 | M10 Alarm (See TM 3-6665-225-12 for parts) | | | |
| | 06 | M256 Detector (No parts authorized) | | | |
| | 07 | M11 Decontamination (See TM 3-4230-204-12+ for parts) | | | |
| | 09 | Oven (See next higher assembly for breakdown) | | | |
| | 12 | Lantern (See next higher assembly for breakdown) | | | |
| | SECTION | III. | Special Tools List (Not applicable) | | |
| | | IV. | National Stock Number and Part Number Index | 40 | |

SECTION I

INTRODUCTION

1. Scope

This manual lists spares and repair parts; special tools; special test, measurements, and diagnostic equipment (TMDE); and other special support equipment required for performance of organizational, direct support, and general support maintenance of the OA-8991/MSM. It authorizes the requisitioning and issue of spares and repair parts as indicated by the source and maintenance codes.

2. General

This Repair Parts and Special Tools List is divided into the following sections:

a. *Section II. Repair Parts List.* A list of spares and repair parts authorized for use in performance of maintenance. The list also includes parts which must be removed for replacement of the authorized parts. Parts list are composed of functional groups in numeric sequence, with the parts in each group listed in figure and item number sequence.

b. *Section III. Special Tools List.* Not applicable.

c. *Section IV. National Stock Number and Part Number Index.* A list, in National item identification number (NIIN) sequence, of all National stock numbers (NSN) appearing in the listings, followed by a list, in alphanumeric sequence, of all part numbers appearing in the listings. National stock numbers and part numbers are cross-referenced to each illustration figure and item number appearance.

3. Explanation of Columns

a. *Illustration.* This column is divided as follows:

- (1) Figure number. Indicates the figure number of the illustration on which the item is shown.
- (2) Item number. The number used to identify item called out in the illustration.

b. *Source, Maintenance, and Recoverability (SMR) Codes.*

(1) Source code. Source codes indicate the manner of acquiring support items for maintenance, repair, or overhaul of end items. Source codes are entered in the first and second positions of the Uniform SMR Code format as follows:

| <i>Code</i> | <i>Definition</i> |
|-------------|---|
| PA- | Item procured and stocked for anticipated or known usage. |
| PD- | Support item, excluding support equipment, procured for initial issue or outfitting and stocked only for subsequent or additional |

| <i>Code</i> | <i>Definition</i> |
|-------------|---|
| | initial issues or outfittings. Not subject to automatic replenishment. |
| PE- | Support equipment procured and stocked for initial issue or outfitting to specified maintenance repair activities. |
| KF- | An item of a maintenance kit and not purchased separately. Maintenance kit defined as a kit that provides an item that can be replaced at organizational or intermediate levels of maintenance. |
| MF- | Item to be manufactured or fabricated at the direct support maintenance level. |
| XA- | Item is not procured or stocked because the requirements for the item will result in the replacement of the next higher assembly. |
| XB- | Item is not procured or stocked. If not available through salvage, requisition. |
| XC- | Installation drawing, diagram, instruction sheet, field service drawing that is identified by manufacturer's part number. Item is not procured or stocked and cannot be requisitioned. |
| XD- | A support item that is not stocked. When required, item will be procured through normal supply channels. |

NOTE

Cannibalization or salvage may be used as a source of supply for any items source coded above except those coded XA and aircraft support items as restricted by AR 700-42.

(2) Maintenance code. Maintenance codes are assigned to indicate the levels of maintenance authorized to USE and REPAIR support items. The maintenance codes are entered in the third and fourth positions of the Uniform SMR Code format as follows:

(a) The maintenance code entered in the third position will indicate the lowest maintenance level authorized to remove, replace, and use the support item. The maintenance code entered in the third position will indicate one of the following levels of maintenance:

| <i>Code</i> | <i>Application/Explanation</i> |
|-------------|--|
| O- | Support item is removed, replaced, used at the organizational level. |
| F- | Support item is removed, replaced, used at the direct support level. |

(b) The maintenance code entered in the fourth position indicates whether the item is to be repaired and identifies the lowest maintenance level with the capability to perform complete repair (i.e., all authorized maintenance functions). This position will contain one of the following maintenance codes:

| <i>Code</i> | <i>Application/Explanation</i> |
|-------------|--|
| O- | The lowest maintenance level capable of complete repair of the support item is the organizational level. |
| F- | The lowest maintenance level capable of complete repair of the support item is the direct support level. |
| D- | The lowest maintenance level capable of complete repair of the support item is the depot level. |
| Z- | Nonreparable. No repair is authorized. |

(3) *Recoverability code*. Recoverability codes are assigned to support items to indicate the disposition action of unserviceable items. The recoverability code is entered in the fifth position of the Uniform SMR Code format as follows:

| <i>Recoverability codes</i> | <i>Definition</i> |
|-----------------------------|---|
| Z- | Nonreparable item. When unserviceable, condemn and dispose at the level indicated in position 3. |
| O- | Reparable item. When uneconomically repairable, condemn and dispose at organizational level. |
| F- | Reparable item. When uneconomically repairable, condemn and dispose at the direct support level. |
| D- | Reparable item. When beyond lower level repair capability, return to depot. Condemnation and disposal not authorized below depot level. |

c. *National Stock Number*. Indicates the National stock number assigned to the item and will be used for requisitioning purposes.

d. *Part Number*. Indicates the primary number used by the manufacturer (individual, company, firm, corporation, or Government activity), which controls the design and characteristics of the item by means of its engineering drawings, specifications, standards, and inspection requirements to identify an item or range of items.

NOTE

When a stock numbered item is requisitioned, the repair part received may have a different part number than the part being replaced.

e. *Federal Supply Code for Manufacturer (FSCM)*. The FSCM is a 5-digit numeric code listed in SB 708-42 which is used to identify the manufacturer, distributor, or Government agency, etc.

f. *Description*. Indicates the Federal item name

and, if required, a minimum description to identify the item.

g. *Unit of Measure (U/M)*. Indicates the standard of the basic quantity of the listed item as used in performing the actual maintenance function. This measure is expressed by a two-character alphabetical abbreviation (e.g., ea., in, pr, etc.). When the unit of measure differs from the unit of issue, the lowest unit of issue that will satisfy the required units of measure will be requisitioned.

h. *Quantity Incorporated in Unit*. Indicates the quantity of the item used in the breakout shown on the illustration figure, which is prepared for a functional group, subfunctional group, or an assembly. A "V" appearing in this column in lieu of a quantity indicates that no specific quantity is applicable, (e.g., shims, spacers, etc.).

4. Special Information

a. Detailed manufacturing instructions for items source coded to be manufactured or fabricated are found in TM 11-5410-217-14 (to be published).

b. The following publications pertain to OA-8991/MSM and its components:

TM 3-4230-204-12+P, Decontaminating Apparatus, Portable, DS2, 1 1/2 Quart, ABC-M11.

TM 3-6665-225-12, Alarm, Chemical Agent, Automatic: Portable, Manpack, M8 Fixed Emplacement, M10 for Trucks, Utility: 1/4-Ton, M11; Truck: 3/4-Ton, M12; Truck: 2 1/2-Ton, M13; Full-Track, Armored Personnel Carriers and Recovery Vehicles, M14; Carrier, Command and Reconnaissance, Armored: M15 w/Power Supply for Truck, Utility: 1/4-Ton, M16; Truck: 3/4-Ton, M17 and Truck: 2 1/2-Ton, M18.

TM 5-4120-308-15, Air Conditioner, Compact Vertical, 208V, 3-Phase, 50/60 Hz, 18, 000 BTU Cooling, 12, 000 BTU Heating (KECO Industries Inc., Model F18T-2).

TM 5-4120-308-25P, Air Conditioner, Compact Vertical, 208V, 3-Phase, 50/60 Hz, 18, 000 BTU Cooling, 12, 000 BTU Heating (KECO Industries Inc., Model F18T-2).

TM 5-4120-360-14, Air Conditioner, Vertical, Compact Type 1, Vertical Size C, 18, 000 BTU/HR, 208V, 3 Phase, 50/60 Hz (KECO Model F18T-2).

TM 5-4120-360-24P, Air Conditioner, Vertical, Compact Type 1, Vertical Size C, 18, 000 BTU/HR, 208V, 3 Phase, 50/60 Hz (KECO Model F18T-2).

TM 11-5410-217-14, Repair Facility, Electronic Equipment OA-8991/MSM (to be published).

TM 11-5805-201-12, Telephone Set TA-312/ PT.

TM 11-5805-201-20P, Telephone Set TA-312/ PT.

TM 11-5805-201-34P, Telephone Set TA-312/PT.
 TM 11-5805-201-35, Telephone Set TA-312/PT.
 TM 11-5830-256-13+P, Intercommunication Station LS-147/FI.
 TM 11-5830-256-23P, Intercommunication Station LS-147/FI.
 TM 11-6625-2953-14, Multimeter AN/USM-451.
 TM 11-6625-2953-40P, Multimeter AN/USM-451.

c. National stock numbers (NSN's) that are missing from P source coded items have been applied for and will be added to this TM by future change/revision when they are entered in the Army Master Data File (AMDF). Until the NSN's are established and published, submit exception requisitions to: Commander, US Army Communications-Electronics Command and Fort Monmouth, ATTN: DR-SEL-MM, Fort Monmouth, NJ 07703 for the part required to support your equipment.

5. How to Locate Repair Parts

a. When National stock number or part number is unknown.

(1) *First.* Using the table of contents, determine the functional group within which the item belongs. This is necessary since illustrations are prepared for functional groups and listings are divided into the same groups.

(2) *Second.* Find the illustration covering the functional group to which the item belongs.

(3) *Third.* Identify the item on the illustration and note the illustration figure and item number of the item.

(4) *Fourth.* Using the Repair Parts Listing, find the figure and item number noted on the illustration.

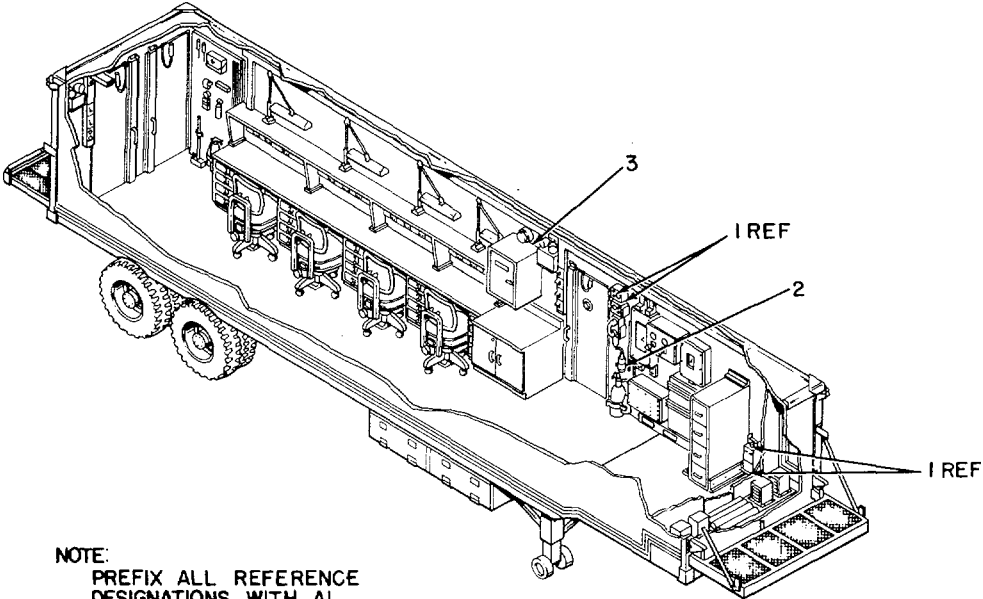
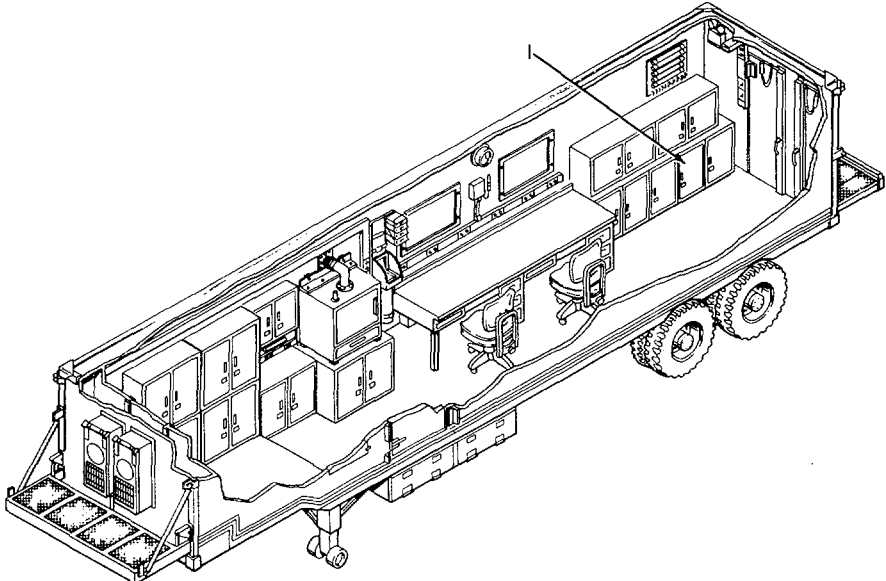
b. When National stock number or part number is known.

(1) *First.* Using the Index of National Stock Numbers and Part Numbers, find the pertinent National stock number or part number. This index is in NIIN sequence followed by a list of part numbers in alphanumeric sequence, cross-referenced to the illustration figure number and item number.

(2) *Second.* After finding the figure and item number, locate the figure and item number in the repair parts list.

6. Abbreviations

Not applicable.



NOTE:
PREFIX ALL REFERENCE
DESIGNATIONS WITH AI

EL8BP014

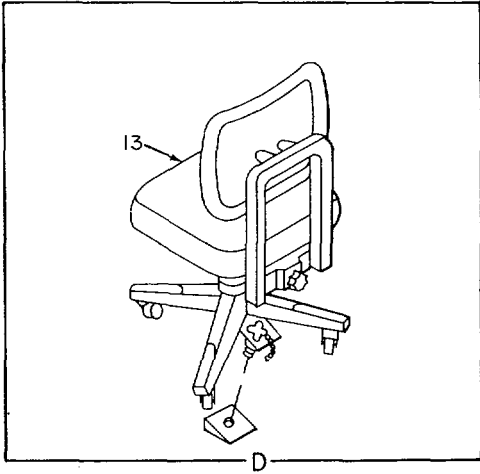
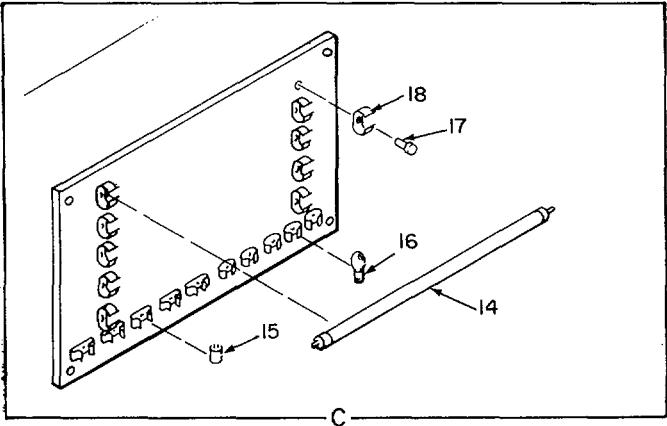
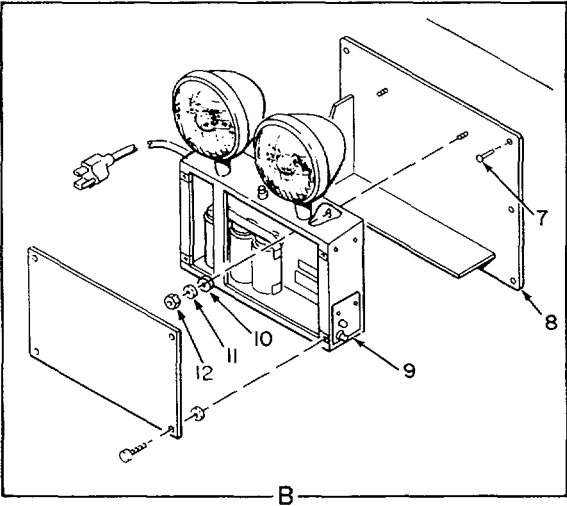
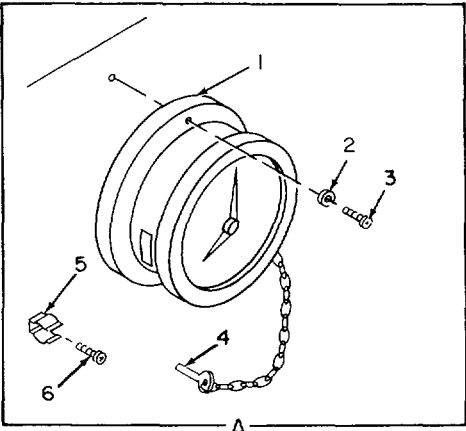
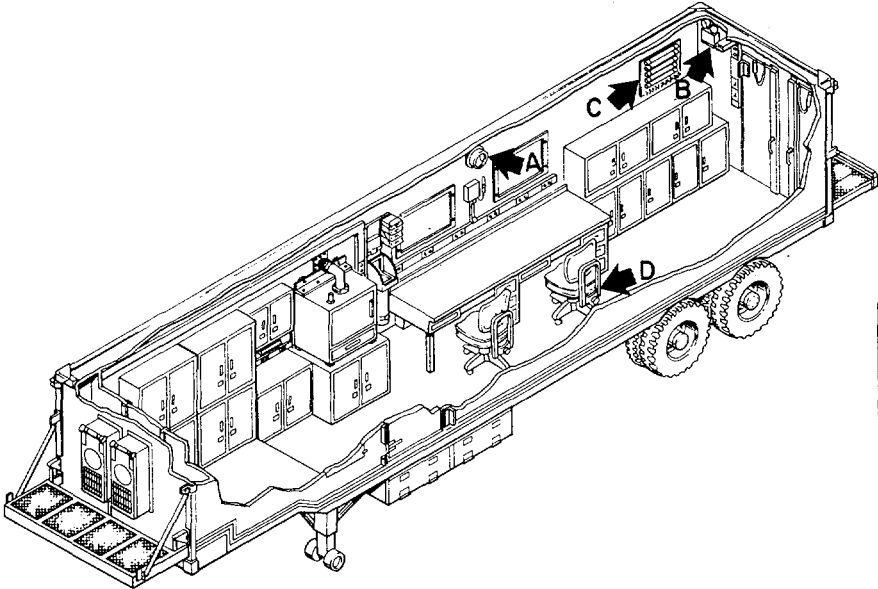
EL8BP014

Figure 1. Repair Facility OA-8991/MSM.

SECTION II

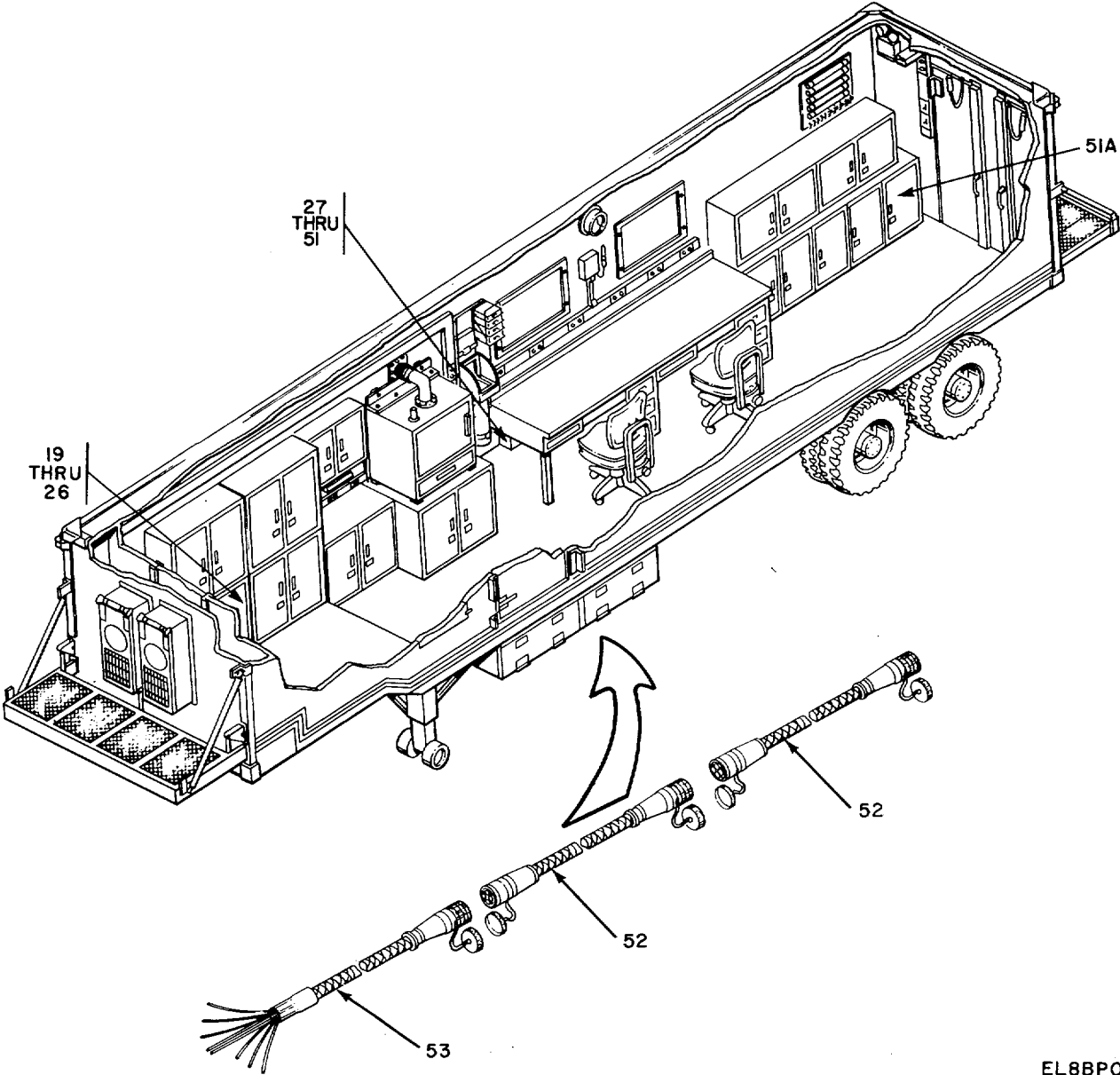
TM 11-5410-217-24P

| (1) ILLUSTRATION | | (2) | (3) | (4) | (5) | (6) | (7) | (8) |
|---------------------|--------------------|-------------|-----------------------------|-------|----------------|--------------------------------------|-----|--------------------------|
| (a) FIG NO. | (b) ITEM NO. | SMR CODE | NATIONAL STOCK NUMBER | FSCM | PART NUMBER | DESCRIPTION USABLE ON CODE | U/M | QTY INC IN UNIT |
| 1 | 1 | XDODD | | 80058 | M10 | GROUP 00 REPAIR FACILITY OA-8991/MSM | | |
| 1 | 2 | XDODD | 4230-00-720-1618 | 81361 | D5-51-269 | ALARM, CHER AGENT10 | EA | 1 |
| 1 | 3 | XDODD | | 81361 | D5-77-2001 | DEP REPORTED STK-NO | EA | 1 |
| | | | | | 5 | DETECTOR UNIT M256 | EA | 1 |



EL8BP015

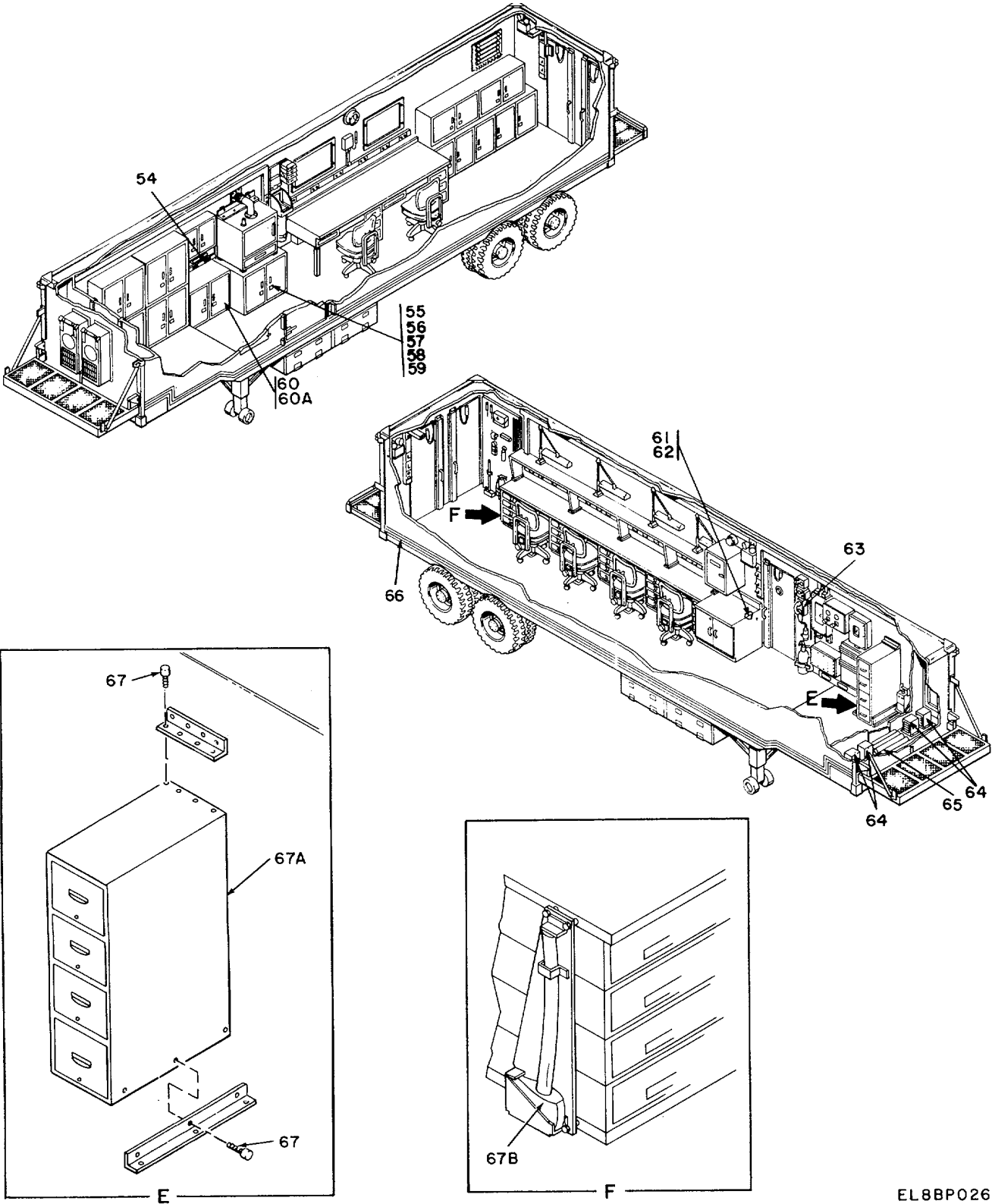
Figure 2. Van, Repair Facility (Sheet 1 of 7).



EL8BP016

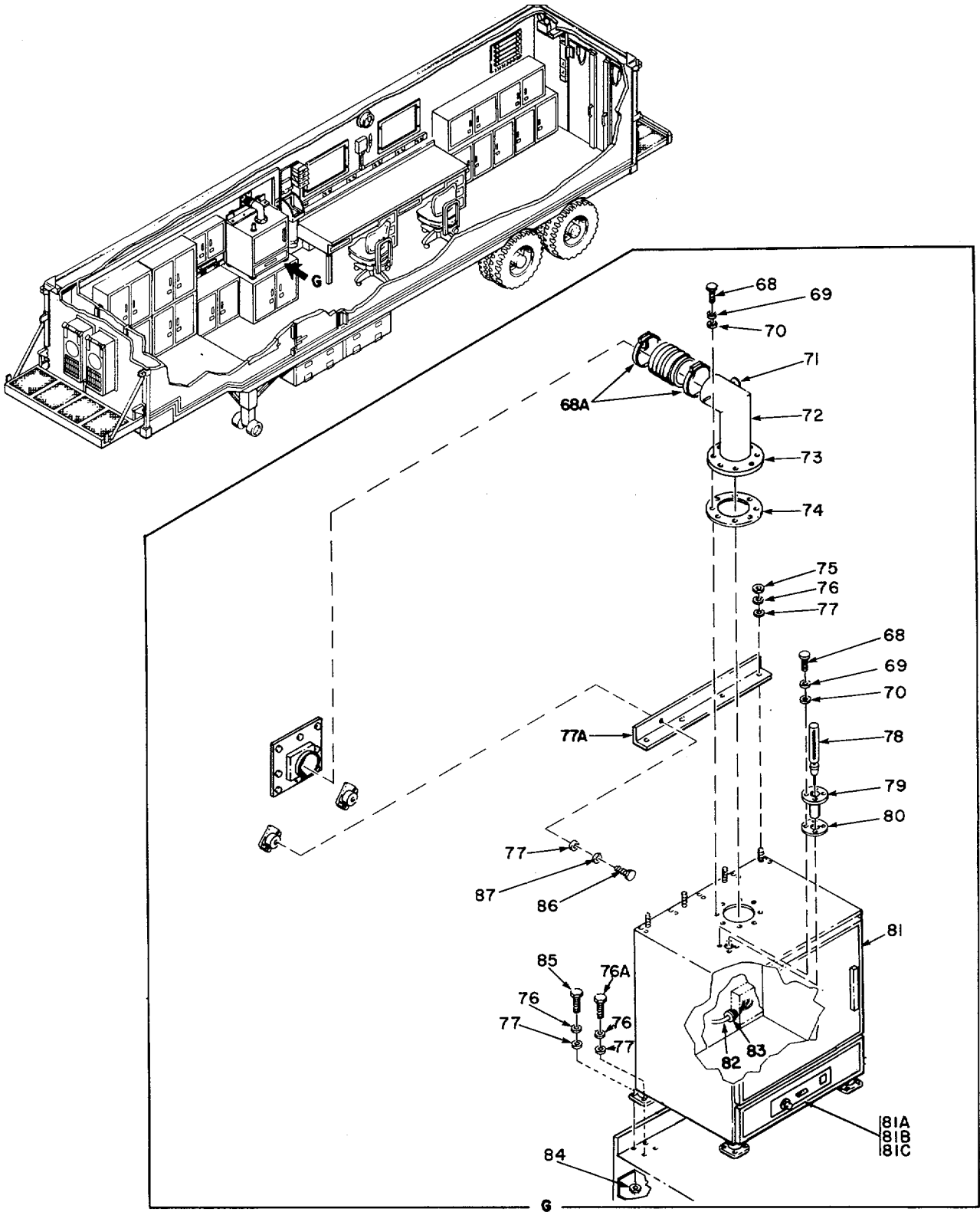
EL8BP016

Figure 2. Van, Repair Facility (Sheet 2 of 7).



EL8BP026

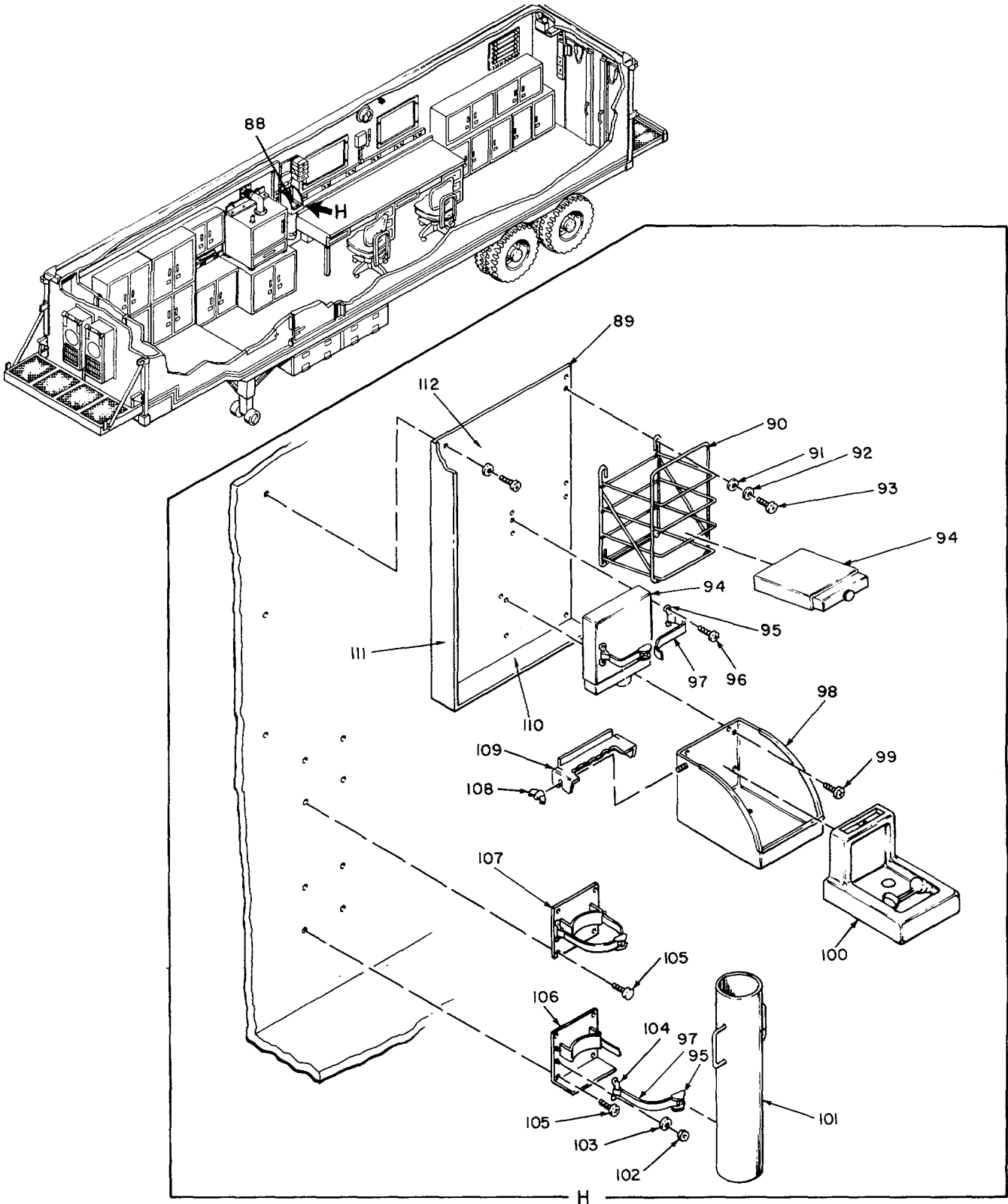
Figure 2. Van, Repair Facility (Sheet 3 of 7).



EL8BP018

EL8BP018

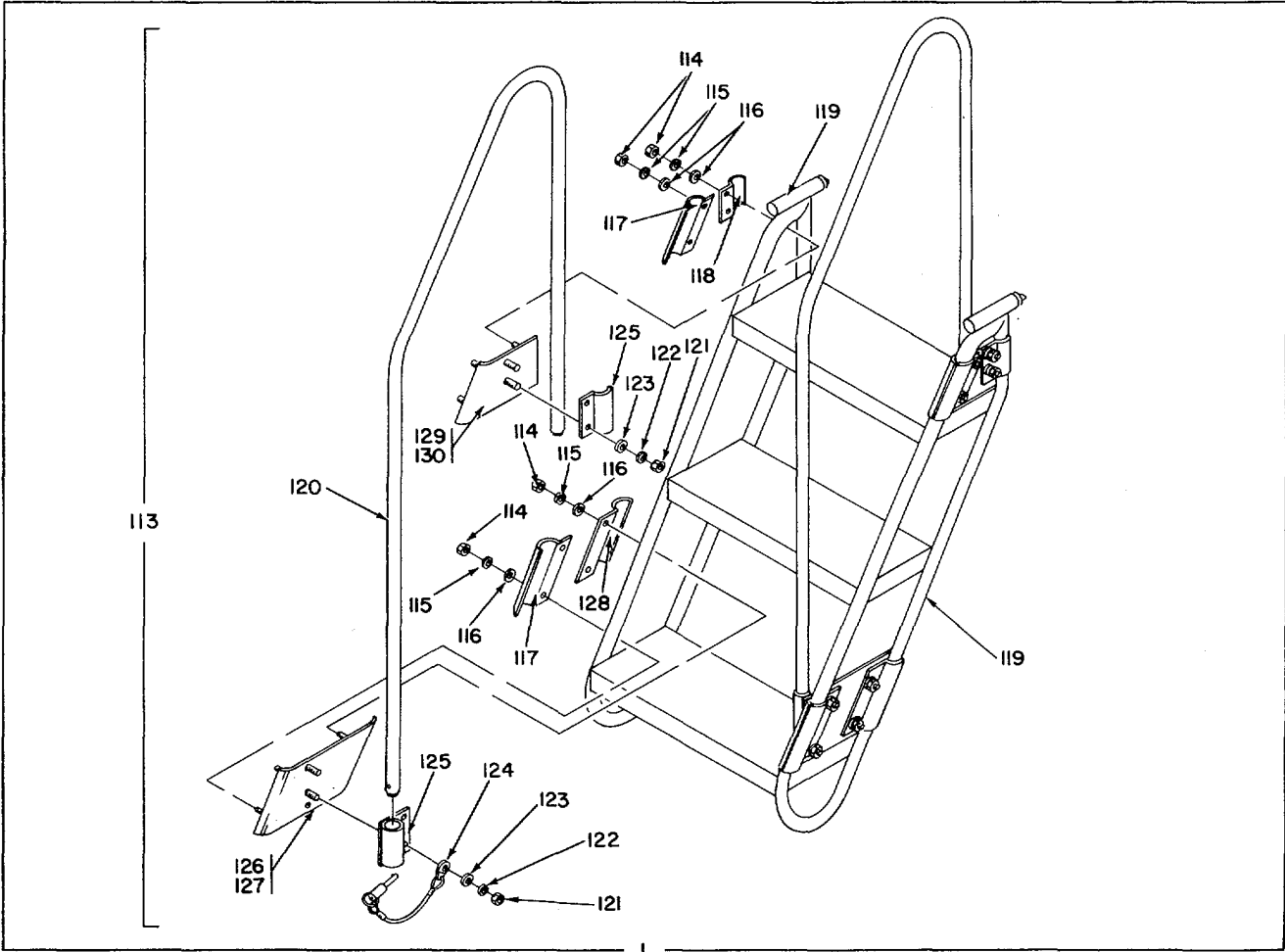
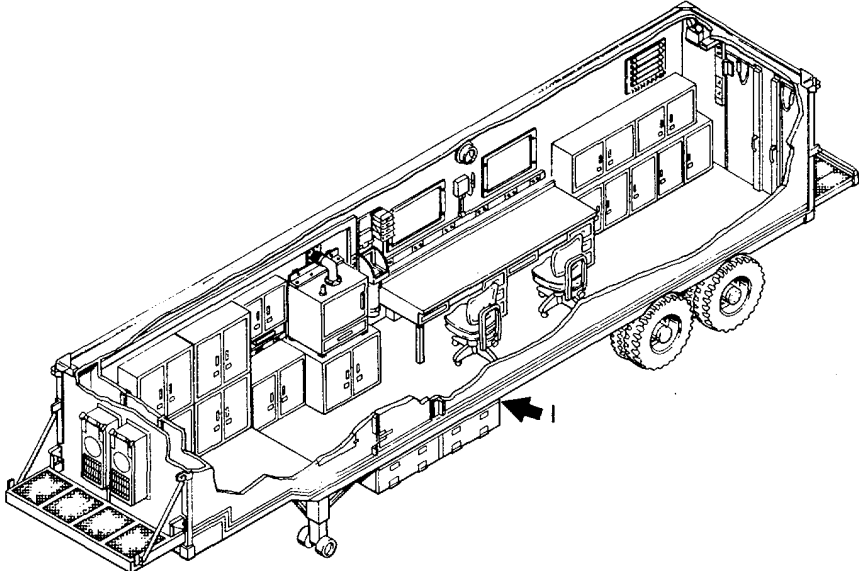
Figure 2. Van, Repair Facility (Sheet 4 of 7).



EL8BP019

EL8BP019

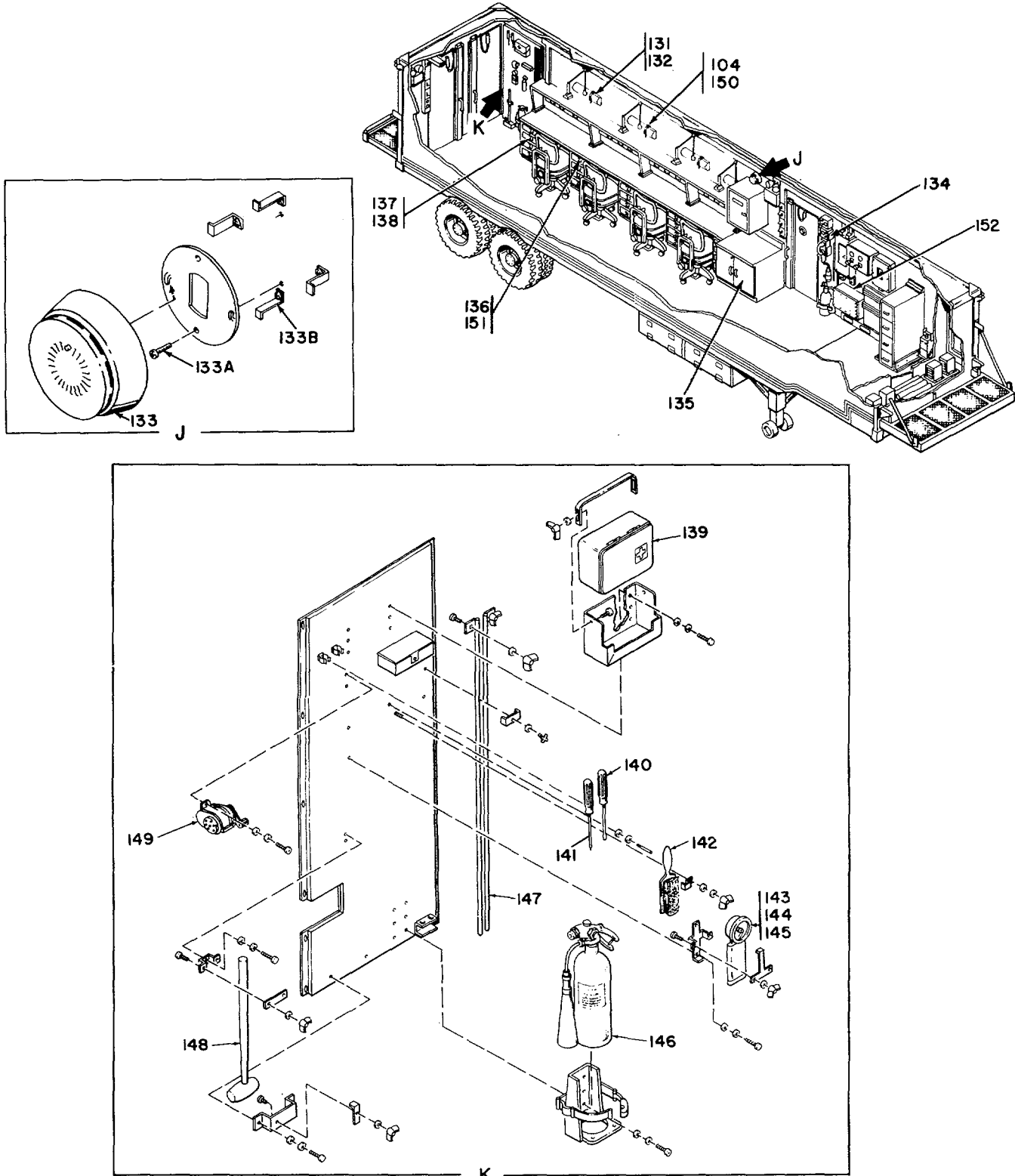
Figure 2. Van, Repair Facility (Sheet 5 of 7).



EL8BP021

Figure 2. Van, Repair Facility (Sheet 6 of 7).

EL8BP021



EL 88P022

EL8BP022

Figure 2. Van, Repair Facility (Sheet 7 of 7).

SECTION II

TM 11-5410-217-24P

| (1) ILLUSTRATION | | (2) | (3) | (4) | (5) | (6) DESCRIPTION | (7) | (8) |
|------------------------------|--------------------|-------------|-----------------------------|-------|----------------------|---------------------------|-----|--------------------------|
| (a) FIG NO. | (b) ITEM NO. | SMR CODE | NATIONAL STOCK NUMBER | FSCM | PART NUMBER | USABLE ON CODE | U/M | QTY INC IN UNIT |
| GROUP 01 VAN REPAIR FACILITY | | | | | | | | |
| 2 | 1 | PAOZZ | | 81349 | MIL-C-11L4 TYPE A | CLOCK | EA | 1 |
| 2 | 2 | PAOZZ | 5310-00-9B3-8483 | 96906 | MS27183-5 | WASHER,FLAT | EA | 3 |
| 2 | 3 | PAOZZ | 5305-00-021-3620 | 96906 | MS35307-307 | SCREW,CAP, HEXAGON H..... | EA | 12 |
| 2 | 4 | XDOZZ | | 56996 | B4008466 | KEY ASSY | EA | 1 |
| 2 | 5 | XDOZZ | 5999-00-879-6320 | 81349 | M24066/2-304 | CLIP, EA..... | EA | 1 |
| 2 | 6 | PAOZZ | 5305-00-059-3667 | 96906 | MS1958-71 | SCREW, MACHINE..... | EA | 3 |
| 2 | 7 | PADZZ | 5305-00-147-3241 | 96906 | MS35307-271 | SCREW,PH | EA | 10 |
| 2 | 8 | XDOZZ | | 56996 | 84008049 | BRACKET ASSY | EA | 2 |
| 2 | 9 | PADOO | | 80538 | CC-2-BH-SRS- CP-M | EMERGENCY LIGHTING | EA | 2 |
| 2 | 10 | PAOZZ | 5310-00-883-9384 | 96906 | MS15795-842 | WASHER,FLAT | EA | 4 |
| 2 | 11 | PAOZZ | 5310-00-933-8120 | 96906 | MS35338-138 | WASHER, LOCK | EA | 6 |
| 2 | 12 | PAOZZ | 5310-00-934-9765 | 96906 | MS35650-304 | NUT, PLAIN, HEXAGON | EA | 6 |
| 2 | 13 | XDOZZ | 7110-01-094-5655 | 80063 | SC-D-539551 | CHAIR, ROTARY..... | EA | 4 |
| 2 | 14 | XDOZZ | 6240-00-152-2996 | 80063 | SC-C-539495 | LAMP, FLUORESCENT..... | EA | 5 |
| 2 | 15 | PAOZZ | | 80063 | SC-C-539504 | LAMP,STARTER | EA | 5 |
| 2 | 16 | PAOZZ | | 08806 | 25T8DC | LAMP, INCANDESCENT..... | EA | 5 |
| 2 | 17 | PAOZZ | 5305-00-497-7410 | 96906 | MS51861-53C | SCREW, TAPPING,THREA..... | EA | 4 |
| 2 | 18 | PAOZZ | | 80063 | SC-C-539529-1 | CLIP, SPRING | EA | 15 |
| 2 | 19 | PEOZZ | 3439-00-267-7151 | 17794 | 6019-0011 | HOT CUBBY ASSEMBLY..... | EA | 4 |
| 2 | 20 | PEOZZ | 3426-01-067-3616 | 17794 | PE-200A | PLATING UNIT, SWAB | EA | 2 |
| 2 | 21 | PEOZZ | 5130-01-041-2278 | 17794 | PPF-30 | EYELETING, FUSED,SY..... | EA | 2 |
| 2 | 23 | PEOZZ | | 17794 | PP200C | ZERO PWR SWITCH | EA | 4 |
| 2 | 23A | XDOZZ | | 17794 | 1336-0014 | PUMP | EA | 1 |
| 2 | 23B | XDOZZ | | 17794 | 1309-0015 | FILTER, FELT..... | EA | 1 |
| 2 | 24 | XDOZZ | | 17794 | 7005-0011 | MACHINING SYSTEM,MI..... | EA | 4 |
| 2 | 25 | PAOZZ | | 56996 | B4008670 | WISE ASSEMBLY | EA | 1 |
| 2 | 26 | KFOZZ | | 56996 | B4008740 | WISE KIT..... | EA | 4 |
| 2 | 27 | PEOZZ | 5140-00-289-8910 | 81348 | GGGT558-2 | TOOL BOX, PORTABLE..... | EA | 4 |
| 2 | 28 | PEOZZ | | 80244 | GGG-P-468TYP1 CL1 | PLIERS,CUTTING | EA | 4 |
| 2 | 29 | PEOZZ | 5120-00-293-3486 | 81349 | GGG-P-471TYP2 CL2 | PLIERS..... | EA | 4 |
| 2 | 30 | PEOZZ | 5120-00-239-8250 | 81348 | GGG-P-471TY11 CL2 | PLIERS..... | EA | 4 |
| 2 | 31 | PEOZZ | 5120-00-293-3481 | 81348 | GGG-P-471TY12 CL1 | PLIERS..... | EA | 4 |
| 2 | 32 | PEOZZ | 5120-00-236-2140 | 81348 | GGG-S-121TYP1 CL1 | SCREWDRIVER,FLAT TI..... | EA | 4 |
| 2 | 33 | PEOZZ | 5120-00-227-7377 | 81348 | GGG-S-121TYP1 CL8 | SCREWDRIVER,FLAT TI..... | EA | 4 |
| 2 | 34 | PEOZZ | 5120-00-278-1270 | 81349 | GGG-S-121TYP6 CL1 | SCREWDRIVER, FLAT P1..... | EA | 4 |
| 2 | 35 | PEOZZ | 5120-00-233-6985 | 81349 | GGG-T-870TYP3 | TWEEZERS,CRAFTSMANS | EA | 4 |
| 2 | 36 | PEOZZ | 5110-00-175-3629 | 17794 | 7016-0003 | KNIFE,CRAFTSNANS | EA | 5 |
| 2 | 37 | PEOZZ | | 56996 | 84008642 | MAGNIFIER..... | EA | 5 |

SECTION II

TM 11-5410-217-24P

| (1) ILLUSTRATION | | (2) | (3) | (4) | (5) | (6) | (7) | (8) |
|---------------------|--------------------|-------------|-----------------------------|-------|----------------|-------------------------------------|-----|--------------------------|
| (a) FIG NO. | (b) ITEM NO. | SMR CODE | NATIONAL STOCK NUMBER | FSCM | PART NUMBER | DESCRIPTION USABLE ON CODE | U/M | QTY INC IN UNIT |
| 2 | 38 | PEOZZ | 4940-00-492-4728 | 17794 | HP150 | ENVIROMENTAL PROBE | EA | 4 |
| 2 | 39 | PEOZZ | 4940-00-492-4739 | 17794 | 7014-0001 | VACUUM CLEANER SYS..... | EA | 4 |
| 2 | 40 | PEOZZ | 4240-00-052-3776 | 81348 | GGG531 | GOGGLES, INDUSTRIAL..... | EA | 4 |
| 2 | 41 | PAOZZ | 3439-00-260-7719 | 17794 | LS-15 | SOLDERING KIT..... | EA | 4 |
| 2 | 42 | PEOZZ | 3439-00-269-8404 | 17194 | TP-15 | THERMAL PARTING MOD..... | EA | 4 |
| 2 | 43 | PEOZZ | 3439-00-041-1985 | 17194 | CT-15 | CONDUCTIVE TWEEZER..... | EA | 4 |
| 2 | 43A | XC | | 99999 | MISSION TOOLS | MISSION TOOLS | EA | 1 |
| 2 | 44 | PEOZZ | 3439-00-853-8760 | 80058 | TL-905/U | SOLDERING IRON, ELEC..... | EA | 4 |
| 2 | 45 | PEOZZ | 3439-00-973-2249 | 71612 | 46 | HEAT SINK SOLDER..... | EA | 4 |
| 2 | 46 | PEOZZ | 5999-00-879-6320 | 76545 | 34C | CLIP, ELECTRICAL..... | EA | 4 |
| 2 | 47 | PEOZZ | 5120-00-247-0864 | 81349 | GGG-T-870TY | P1..... TWEEZERS, CRAFTSMAN CL2 | EA | 5 |
| 2 | 48 | PEOZZ | | 17794 | 7010-0023 | DESOLDERING TOOL, ELT..... | EA | 4 |
| 2 | 49 | PEOZZ | | 17794 | TS-15 | STRIP TWEEZTRIP..... | EA | 4 |
| 2 | 50 | PEOZZ | 3439-00-155-459T | 17794 | 7009-0005 | RESISTWEEZ ASSY | EA | 4 |
| 2 | 50A | PEOZZ | | 78525 | YANKEE135A | ND..... SCREW DRIVER, PH 351D | EA | 4 |
| 2 | 51 | PEOZZ | 5110-00-239-8253 | 81348 | GGG-P-468TY | P1..... PLIERS, DIAGONAL CU CL1 | EA | 8 |
| 2 | 51A | PEOZZ | 4940-00-492-4739 | 17794 | 7014-0001 | VACUUM CLEANER SYS..... | EA | 4 |
| 2 | 52 | MFFFF | | 80063 | SC-D-883963 | GR..... CABLE ASSEMBLY, POWE 9-3 | EA | 2 |
| 2 | 53 | MFFFF | | 80063 | SC-D-883964 | GR..... CABLE ASSEMBLY, POWE 9-2 | EA | 1 |
| 2 | 54 | PAOOO | | 61562 | XX-15 | LIGHT, BLACK..... | EA | 1 |
| 2 | 55 | PEOZZ | | 56996 | B4008569 | BINOCULAR HEAD | EA | 1 |
| 2 | 56 | PEOZZ | | 56996 | B4008570 | MICROSCOPE BASE | EA | 1 |
| 2 | 57 | PEOZZ | | 56996 | B4008571 | EYEPIECE..... | EA | 1 |
| 2 | 58 | PEOZZ | | 56996 | B4008572 | FOCUSING UNIT | EA | 1 |
| 2 | 59 | PAFZZ | 6150-00-495-1214 | 80063 | SC-B-539492 | LEAD, ELECTRICAL..... | EA | 2 |
| 2 | 60 | PEOOO | 5180-00-064-5178 | 80058 | TK-101/G | TOOL KIT, ELECTRONIC..... | EA | 1 |
| 2 | 60A | KFOZZ | | 95356 | 0122 | MASTER TOOL KIT | EA | 4 |
| 2 | 61 | PAFZZ | 5305-00-497-7410 | 96906 | MS51861-53C | SCREW, TAPPING, THREA..... | EA | 16 |
| 2 | 62 | PAOZZ | 5310-00-883-9384 | 96906 | MS15795-842 | WASHER, FLAT | EA | 100 |
| 2 | 63 | PDOFD | 5805-00-543-0012 | 80058 | TA-312/PT | TELEPHONE SET..... | EA | 1 |
| 2 | 64 | XDFZZ | | 97403 | 13217E6150 | HEATER, ELEC | EA | 4 |
| 2 | 65 | XDOZZ | | 76381 | 8210 | TABLE MAT, STATIC | EA | 4 |
| 2 | 66 | NOT USED | | | | | | |
| 2 | 67 | PAOZZ | 5305-00-993-2459 | 96906 | MS35207-283 | SCREW, MACHINE | EA | 7 |
| 2 | 67A | XDOZZ | | 56996 | B4008679-002 | FILE CABINET MOD..... | EA | 1 |
| 2 | 67B | XDDZZ | 5110-00-115-5049 | 80063 | SC-C-539451 | AXE, SINGLE BIT | EA | 1 |
| 2 | 68 | PAFZZ | 5305-00-054-6674 | 96906 | MS51957-49 | SCREW, MACHINE | EA | 4 |
| 2 | 68A | PAFZZ | 4730-00-908-6293 | 96906 | MS35842-15 | CLAMP, HOSE..... | EA | 2 |
| 2 | 69 | PAFZZ | 5310-00-225-5328 | 96906 | MS15795-841 | WASHER, FLAT | EA | 4 |
| 2 | 70 | PAFZZ | 5310-00-933-8119 | 96906 | MS35338-137 | WASHER, LOCK..... | EA | 4 |

SECTION II

TM 11-5410-217-24P

| (1) ILLUSTRATION | | (2) | (3) | (4) | (5) | (6) | (7) | (8) |
|---------------------|--------------------|-------------|-----------------------------|-------|----------------|-----------------------------------|-----|--------------------------|
| (a) FIG NO. | (b) ITEM NO. | SMR CODE | NATIONAL STOCK NUMBER | FSCM | PART NUMBER | DESCRIPTION USABLE ON CODE | U/M | QTY INC IN UNIT |
| 2 | 71 | XDFZZ | | 39428 | 1787K12 | DAMPER | EA | 1 |
| 2 | 72 | XDFZZ | | 56996 | B4008711 | VENT, TOP | EA | 1 |
| 2 | 73 | XDFZZ | | 56996 | B4008715 | VENT, TOP ASSY | EA | 1 |
| 2 | 74 | PAFZZ | | 56996 | B4008712 | GASKET, VENT | EA | 1 |
| 2 | 75 | PAFZZ | 5310-00-997-1888 | 96906 | MS35649-2252 | NUT, PLAIN, HEXAGON | EA | |
| 64 | | | | | | | | |
| 2 | 76 | PAOZZ | 5310-00-933-8121 | 96906 | MS35338-139 | WASHER, LOCK | EA | 124 |
| 2 | 76A | PAOZZ | 5305-00-137-3033 | 96906 | MS51861-27C | SCREW, TAPPING THREA | EA | 3 |
| 2 | 77 | PAOZZ | 5310-00-582-5677 | 96906 | MS15795-810 | WASHER, FLAT | EA | 158 |
| 2 | 77A | XDOZZ | | 56996 | B4008556 | ANGLE (OVEN) | EA | 1 |
| 2 | 78 | PAOZZ | | 39428 | 3922K51 | THERMOMETER, OVEN | EA | 1 |
| 2 | 79 | XDFZZ | | 56996 | B4008760 | FEED-THRU, OVEN THER | EA | 1 |
| 2 | 80 | XDFZZ | | 56996 | B4008761 | GASKET, THERM | EA | 1 |
| 2 | 81 | PAOOO | 6625-01-127-3593 | 56996 | B4008558 | OVEN | EA | 1 |
| 2 | 81A | PAOZZ | | 56996 | B4008585-004 | CABLE ASSEMBLY | EA | 1 |
| 2 | 81B | PAOZZ | 5930-01-124-8390 | 48619 | 239097 | THERMOSTAT | EA | 1 |
| 2 | 81C | PAOZZ | 4540-01-124-3417 | 48619 | 247278 | HEATING ELEMENT, ELE | EA | 1 |
| 2 | 82 | PAFZZ | 5975-00-844-7083 | 59730 | 2542 | BOX CONNECTOR, ELEC | EA | 1 |
| 2 | 83 | PAFZZ | | 80063 | SC-C-681078-3 | LOCKNUT, ELECTRICAL | EA | 1 |
| 2 | 84 | PAOZZ | 5310-01-025-6444 | 96906 | MS51941-10 | NUT, PLAIN, PLATE | EA | 16 |
| 2 | 85 | PAOZZ | 5305-00-021-3668 | 96906 | MS35307-310 | SCREW, CAP, HEXAGON H | EA | 4 |
| 2 | 86 | PAOZZ | 5305-00-721-5665 | 96906 | MS35307-361 | SCREW, CAP, HEXAGON H | EA | 2 |
| 2 | 87 | PAOZZ | 5310-00-984-7042 | 96906 | MS35338-141 | WASHERLOCK | EA | 2 |
| 2 | 88 | XC | | 56996 | B4008767 | EYE WASH, INST | EA | 1 |
| 2 | 89 | XDFZZ | | 56996 | B4008742 | MTG BD EYE WASH | EA | 1 |
| 2 | 90 | XDFZZ | | 56996 | B4008744 | BRKT, EYE BAT 8 | EA | 1 |
| 2 | 91 | PAFZZ | 5310-00-968-5208 | 80205 | NAS1070-416 | WASHER, FLAT | EA | 4 |
| 2 | 92 | PAFZZ | 5310-00-082-1404 | 96906 | MS27183-6 | WASHER, FLAT | EA | 4 |
| 2 | 93 | PAFZZ | 5305-00-151-3723 | 96906 | MS35493-35 | SCREW, WOOD | EA | 4 |
| 2 | 94 | XBOZZ | | 00236 | 401 | REFILLS, EYEBATH | GL | V |
| 2 | 95 | XDFZZ | 5340-00-238-9411 | 80063 | SC-A-47792-4 | LOOP, STRAP FASTENER | EA | 4 |
| 2 | 96 | PAFZZ | 5305-00--249-2665 | 96906 | MS35494-32 | SCREW, WOOD | EA | 4 |
| 2 | 97 | XDFZZ | | 56996 | B4008442-001 | STRAP ASSEMBLY | EA | 1 |
| 2 | 98 | XDFZZ | | 56996 | B4008768 | HOLDER, EYE WASH | EA | 1 |
| 2 | 99 | PAFZZ | 5305-01-116-3523 | 96906 | MS35494-58 | SCREWOOD | EA | 4 |
| 2 | 100 | XDFZZ | | 00236 | 400 | FLASH FLOOD EYEBATH | EA | 1 |
| 2 | 101 | XOOZZ | | 56996 | B4008770 | CONTAINER, WATER, WAS | EA | 1 |
| 2 | 102 | PAFZZ | 5310-00-982-6813 | 96906 | MS21044-C06 | NUT, SELF-LOCKING, HE | EA | 8 |
| 2 | 103 | PAFZZ | 5310-00-880-5976 | 96906 | MS15795-806 | WASHER, FLAT | EA | 8 |
| 2 | 104 | PAFZZ | | 56996 | B4008443 | STRAP ASSY | EA | 4 |
| 2 | 105 | PAFZZ | 5305-00-432-7954 | 96906 | MS51861-39 | SCREW, TAPPING, THREA | EA | 8 |

SECTION II

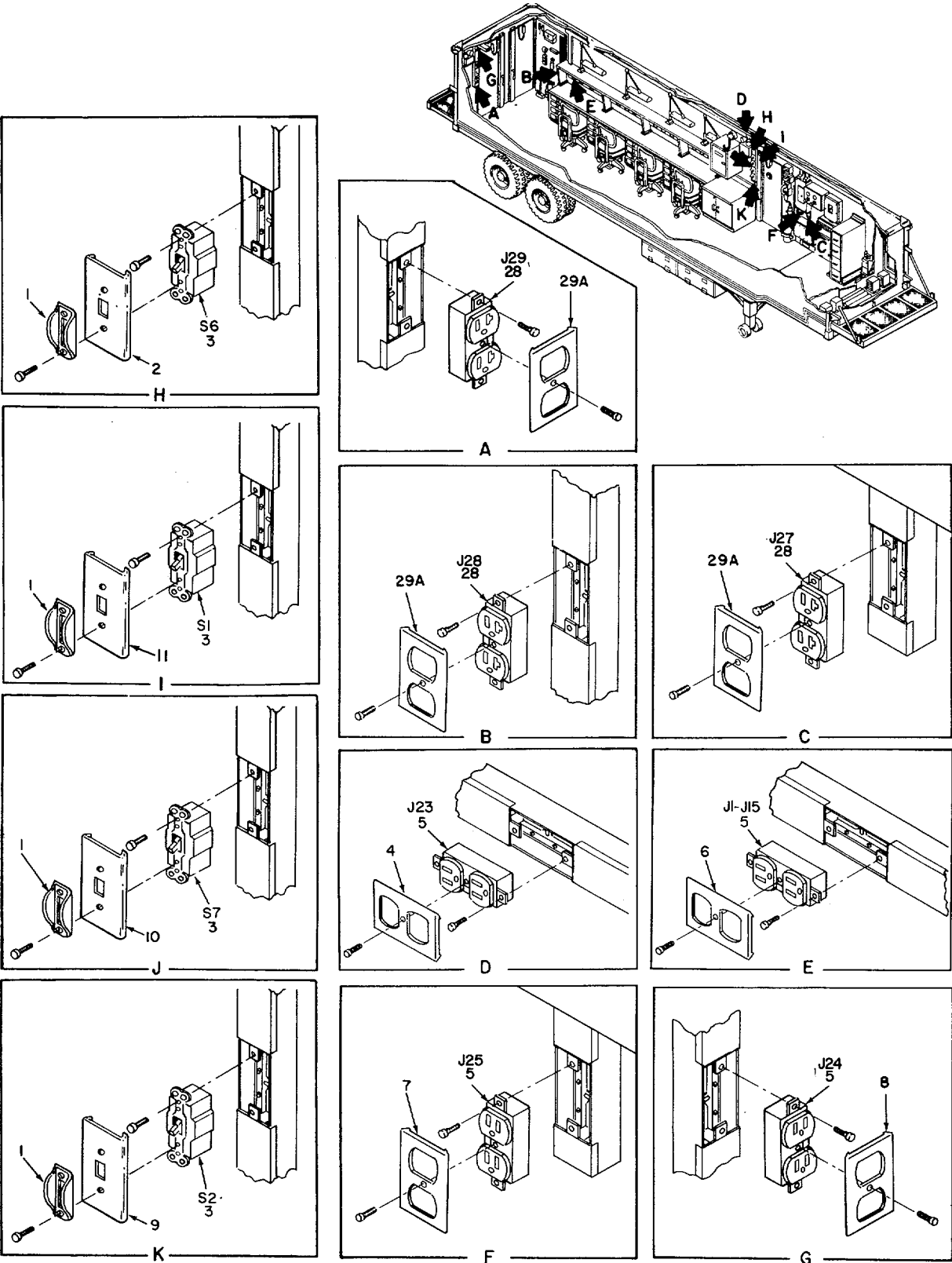
TM 11-5410-217-24P

| (1) ILLUSTRATION | | (2) | (3) | (4) | (5) | (6) | (7) | (8) | |
|---------------------|--------------------|-------------|-----------------------------|------------------|----------------|-----------------------------------|--------------------|--------------------------|----|
| (a) FIG NO. | (b) ITEM NO. | SMR CODE | NATIONAL STOCK NUMBER | FSCM | PART NUMBER | DESCRIPTION USABLE ON CODE | U/M | QTY INC IN UNIT | |
| 2 | 106 | XDFZZ | | 56996 | B4008774 | SPRT, WASTE CNTNR | EA | 1 | |
| 2 | 107 | XDFZZ | | 56996 | B4008773 | SPRT, WASTE CNTNR | EA | 1 | |
| 2 | 108 | PAFZZ | | 96906 | MS35425-71 | NUT, PLAIN, WING | EA | 2 | |
| 2 | 109 | XDOZZ | | 56996 | B4008769 | CAP, EYE WASH | EA | 1 | |
| 2 | 110 | XDFZZ | | 56996 | B4008742-1 | MHTG D BOTTOM..... | EA | 1 | |
| 2 | 111 | XDFZZ | | 56996 | B4008742-2 | MTG BD SIDE | EA | 1 | |
| 2 | 112 | XDFZZ | | 56996 | B4008742-3 | MTG BD BACK..... | EA | 1 | |
| 2 | 113 | XDFZZ | | 56996 | B4008145 | LADDER ASSY | EA | 1 | |
| 2 | 114 | PAFZZ | 5310-00-250-9477 | 96906 | MS35649-2254 |NUT, PLAIN, HEXAGON | EA | | |
| 16 | 2 | 115 | PAFZZ | 5310-00-582-5677 | 96906 | MS15795-810 | WASHER, FLAT | EA | 16 |
| 2 | 116 | PAFZZ | 5310-00-933-8121 | 96906 | MS35338-139 | WASHER, LOCK..... | EA | 16 | |
| 2 | 117 | XDFZZ | | 56996 | B4008751 | CLIP,LADDER LEFT | EA | 3 | |
| 2 | 118 | XDFZZ | | 56996 | B4008752 | CLIP,TOP, LADDER | EA | 2 | |
| 2 | 119 | XDFZZ | | 19207 | 11684608 | LADDER | EA | 1 | |
| 2 | 120 | XDFZZ | | 56996 | B4008746 | HANDRAIL | EA | 1 | |
| 2 | 121 | PAFZZ | 5310-01-043-0041 | 96906 | MS35649-2316 |NUT, PLAIN, HEXAGON | EA | 8 | |
| 2 | 122 | PAFZZ | 5310-00-974-6623 | 96906 | MS35338-140 | WASHER, LOCK..... | EA | 8 | |
| 2 | 123 | PAFZZ | 5310-00-625-5756 | 96906 | MS15795-812 | WASHER,FLAT | EA | 8 | |
| 2 | 124 | PAFZZ | | 56996 | B4008764 | PIN AND LANYARD..... | EA | 2 | |
| 2 | 125 | XDFZZ | | 56996 | B4008753 | PLATE, HANDRAIL, LADD | EA | 4 | |
| 2 | 126 | XDFZZ | | 56996 | B4003749 | LADDER PLATE BOTTOM..... | EA | 1 | |
| 2 | 127 | XDFZZ | | 56996 | B4008750 | LADDER PLATE BOTTOM..... | EA | 1 | |
| 2 | 128 | XDFZZ | | 56996 | B4008726 | CLIP, LADDER RIGHT..... | EA | 3 | |
| 2 | 129 | XDFZZ | | 56996 | B4008748 | LADDER PLATE TOP RI | EA | 1 | |
| 2 | 130 | XDFZZ | | 56996 | B4008747 | LADDER PLATE TOP LE..... | EA | 1 | |
| 2 | 131 | XDOOO | | 81348 | W-L-312TYPE3 | LAMP DESK | EA | 4 | |
| 2 | 132 | PAOZZ | 6240-00-152-2982 | 08806 | F15T8CW | LAMP, FLUORESCENT..... | EA | 1 | |
| 2 | 133 | PAOZZ | | 56996 | B4008757 | SMOKE DETECTOR..... | EA | 1 | |
| 2 | 133A | PAFZZ | 5305-00-432-4169 | 96906 | MS51861-14 | SCREW, TAPPING, THREA | EA | 4 | |
| 2 | 133B | PAFZZ | | 56996 | B4008775 | STRAP, SUPPORT | EA | 4 | |
| 2 | 134 | PDOFF | 5830-01-008-3126 | 80058 | LS-147F/F1 | INTERCOMMUNICATION | EA | 1 | |
| 2 | 135 | PDOHD | 6625-01-060-6804 | 80058 | AN/USM-451 | MULTIMETER..... | EA | 1 | |
| 2 | 136 | XDOZZ | 6625-01-116-2292 | 52942 | 2064 | STRAP, WRIST,STATIC | EA | 4 | |
| 2 | 137 | XDOZZ | | 81348 | W-L-661TYPE1 |DROP LIGHT | EA | 1 | |
| 2 | 138 | PAOZZ | | 08806 | 60W | LAMP, VACUUM | EA | 1 | |
| 2 | 139 | XDOZZ | | 80063 | SC-D-681425 | FIRST AID KIT | EA | 1 | |
| 2 | 140 | PEOZZ | 5120-00-451-8250 | 80063 | SC-C-539502 | SCREWDRIVER | EA | 1 | |
| 2 | 141 | PEOZZ | 5120-00-240-8716 | 80063 | SC-C-539894 | SCREWDRIVER, CROSS T | EA | 1 | |
| 2 | 142 | XDOZZ | 7920-00-178-8315 | 80063 | SC-C-539469 | BRUSH,DUSTING,BENCH..... | EA | 1 | |
| 2 | 143 | XDDZZ | 6230-00-729-9614 | 32532 | 2106-7 | LANTERN..... | EA | 1 | |

SECTION II

TM 11-5410-217-24P

| (1) ILLUSTRATION | | (2) | (3) | (4) | (5) | (6) | (7) | (8) |
|---------------------|--------------------|-------------|-----------------------------|-------|----------------|-----------------------------------|-----|--------------------------|
| (a) FIG NO. | (b) ITEM NO. | SMR CODE | NATIONAL STOCK NUMBER | FSCM | PART NUMBER | DESCRIPTION USABLE ON CODE | U/M | QTY INC IN UNIT |
| 2 | 144 | PAOZZ | 6240-00-155-7786 | 08806 | PR2 | LAMP, INCANDESCENT | EA | 1 |
| 2 | 145 | PAOZZ | 6135-01-103-6514 | 90303 | SIZE D | BATTERY, MERCURY | EA | 4 |
| 2 | 146 | XDOZZ | 4210-00-270-4512 | 80063 | SC-D-539482 | EXTINGUISHER, FIRE, C..... | EA | 2 |
| 2 | 147 | XDFZZ | 5975-00-224-5260 | 80063 | SC-D-14158 | ROD, GROUND MX-148/G | EA | 2 |
| 2 | 148 | XDOZZ | 5120-01-110-9193 | 76732 | 8D-8 | HAMMER, HAND | EA | 1 |
| 2 | 149 | PEOZZ | 7520-00-162-6178 | 80063 | SC-C-539503 | SHARPENER, PENCL | EA | 1 |
| 2 | 150 | PAFZZ | | 56996 | B4008442-005 | STRAP ASSY | EA | 4 |
| 2 | 151 | PEDZZ | 4940-01-05-0041 | 17794 | 6993-0037 | CIR-KIT SELECTOR PA | EA | 4 |
| 2 | 152 | XDFFF | | 56996 | 84008513 | PWR ENTRANCE BOX | EA | 1 |
| 17/(18BLANK) | | | | | | | | |



EL8BP029

EL8BP029

Figure 3. Electrical Installation (Sheet 1 of 6).

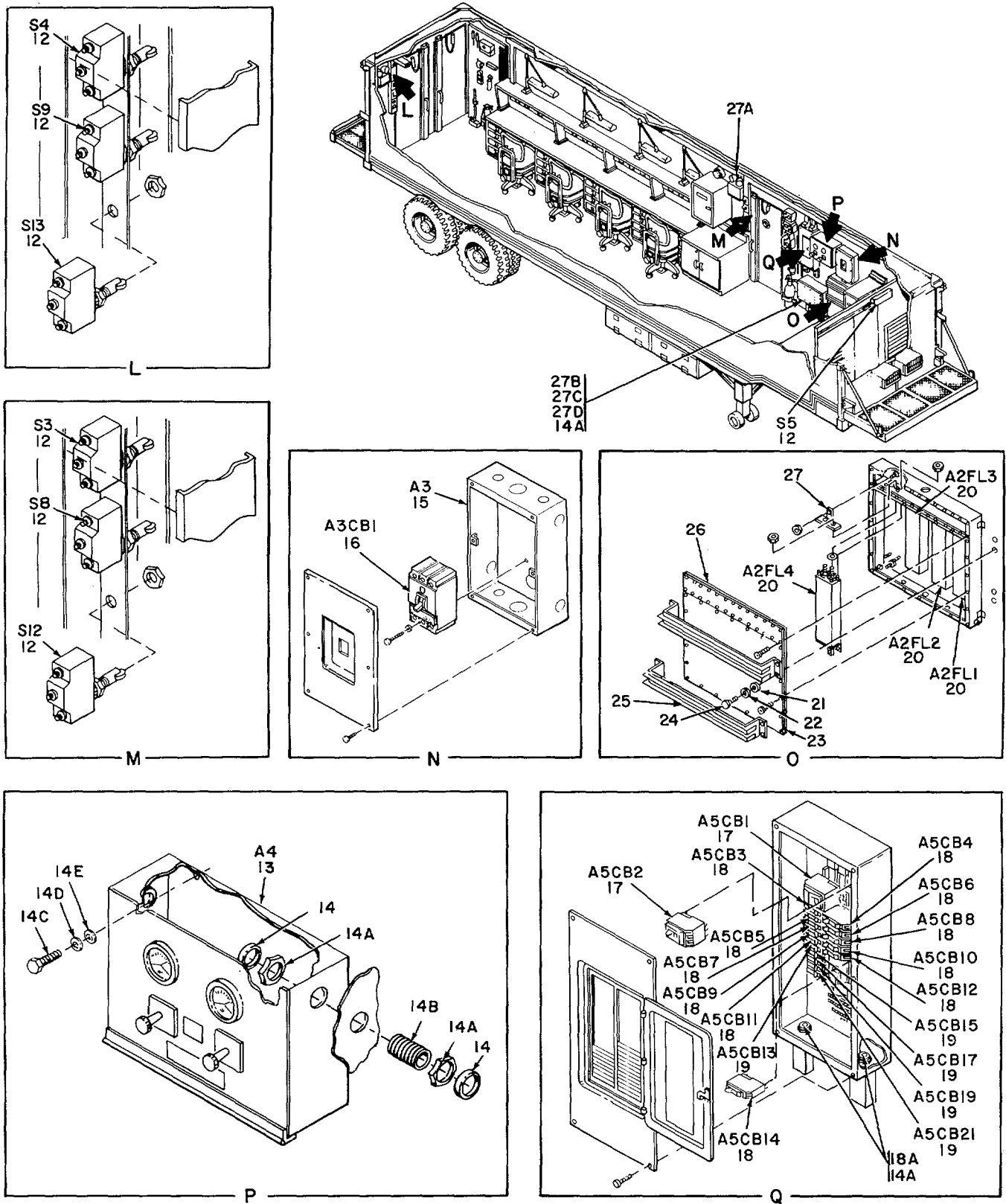


Figure 3. Electrical Installation (Sheet 2 of 6).

EL8BP030

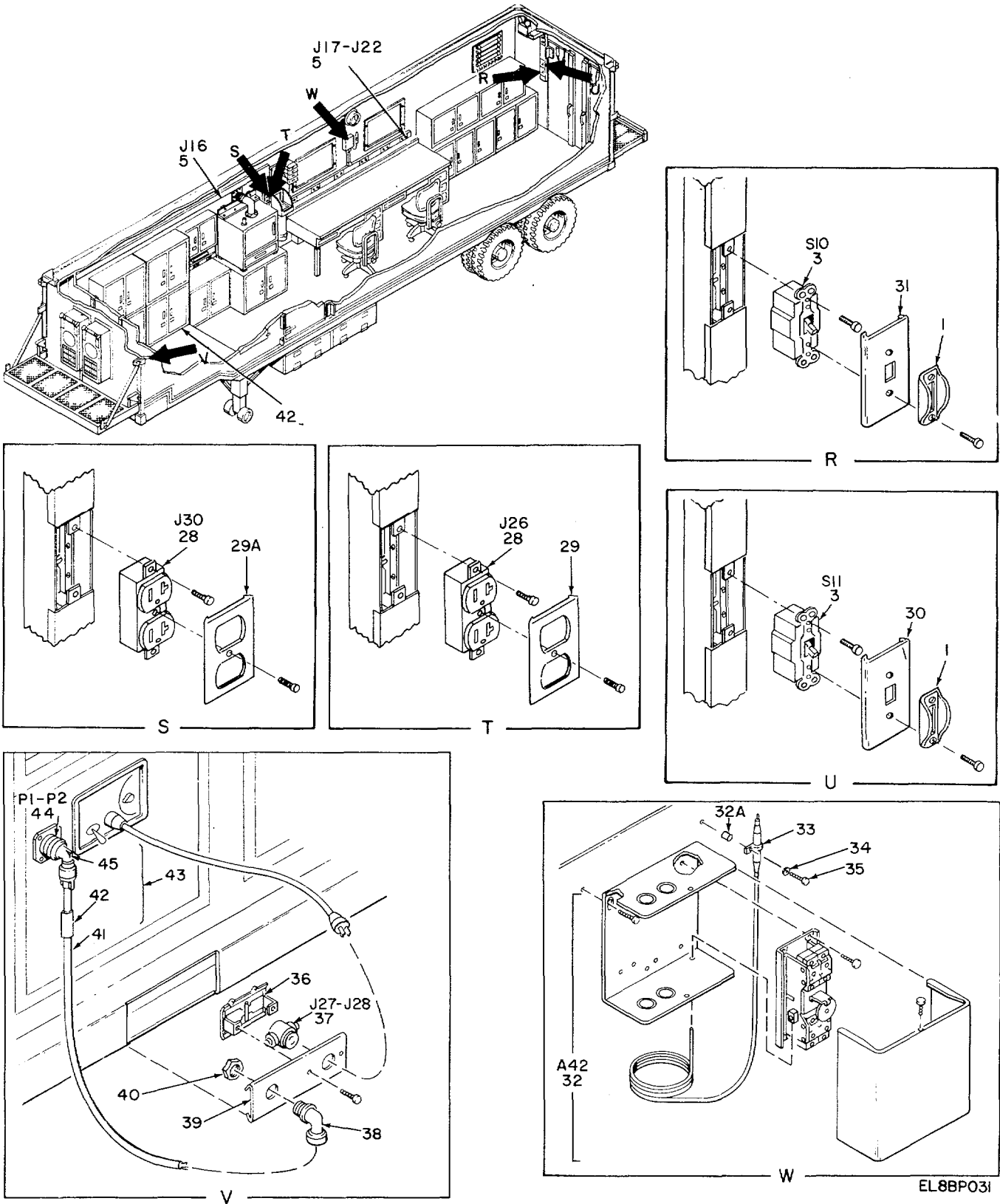
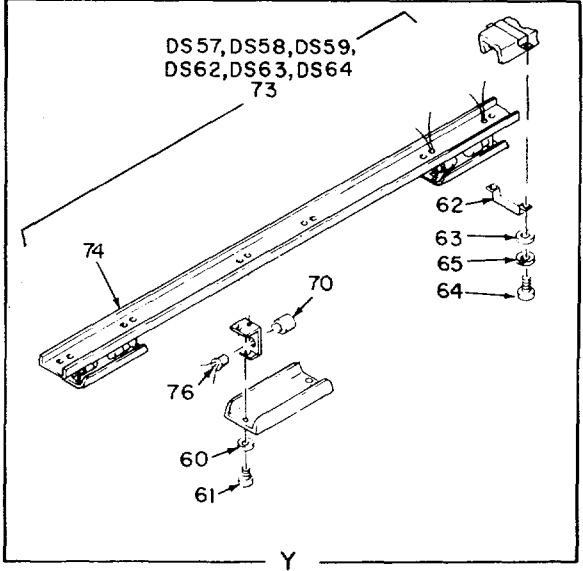
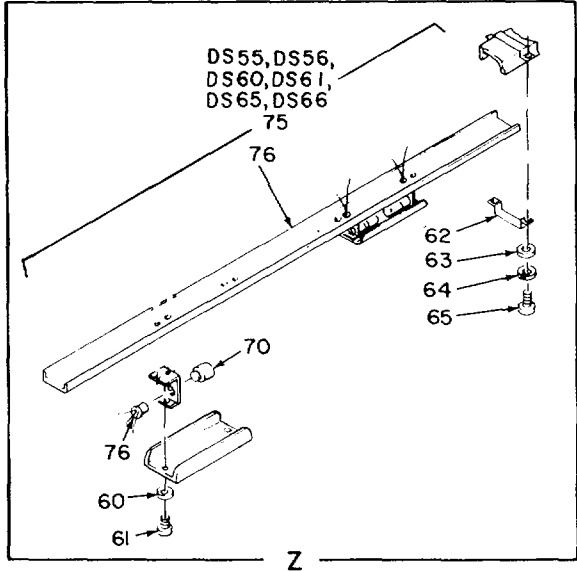
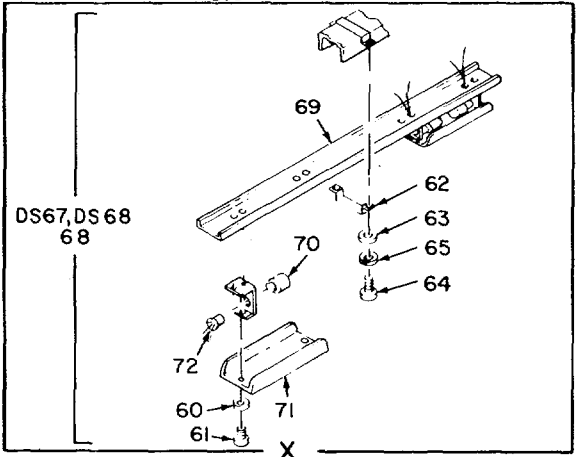
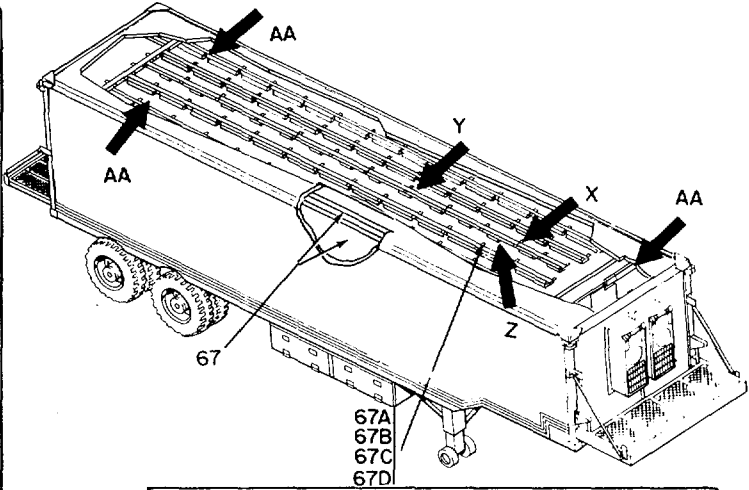
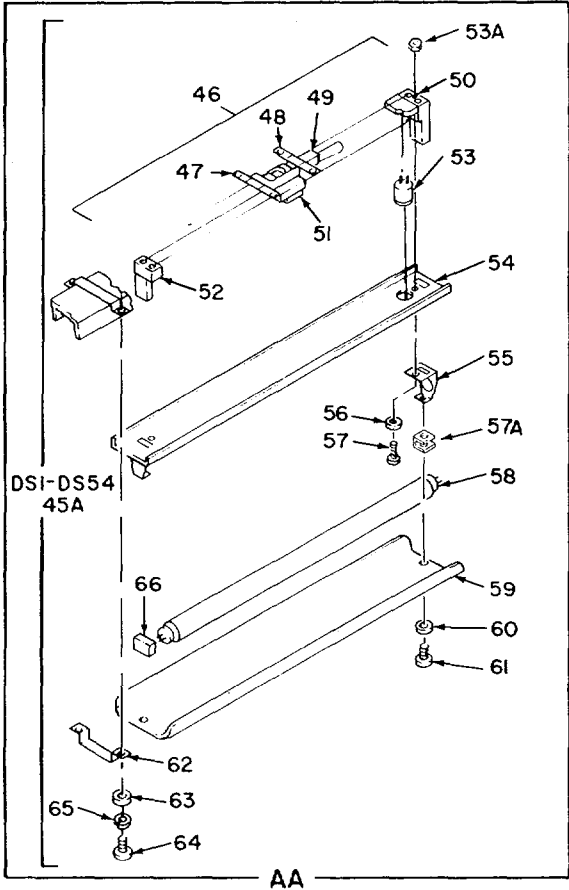


Figure 3. Electrical Installation (Sheet 3 of 6).

EL8BP031



EL8BP025

EL8BP025

Figure 3. Electrical Installation (Sheet 4 of 6).

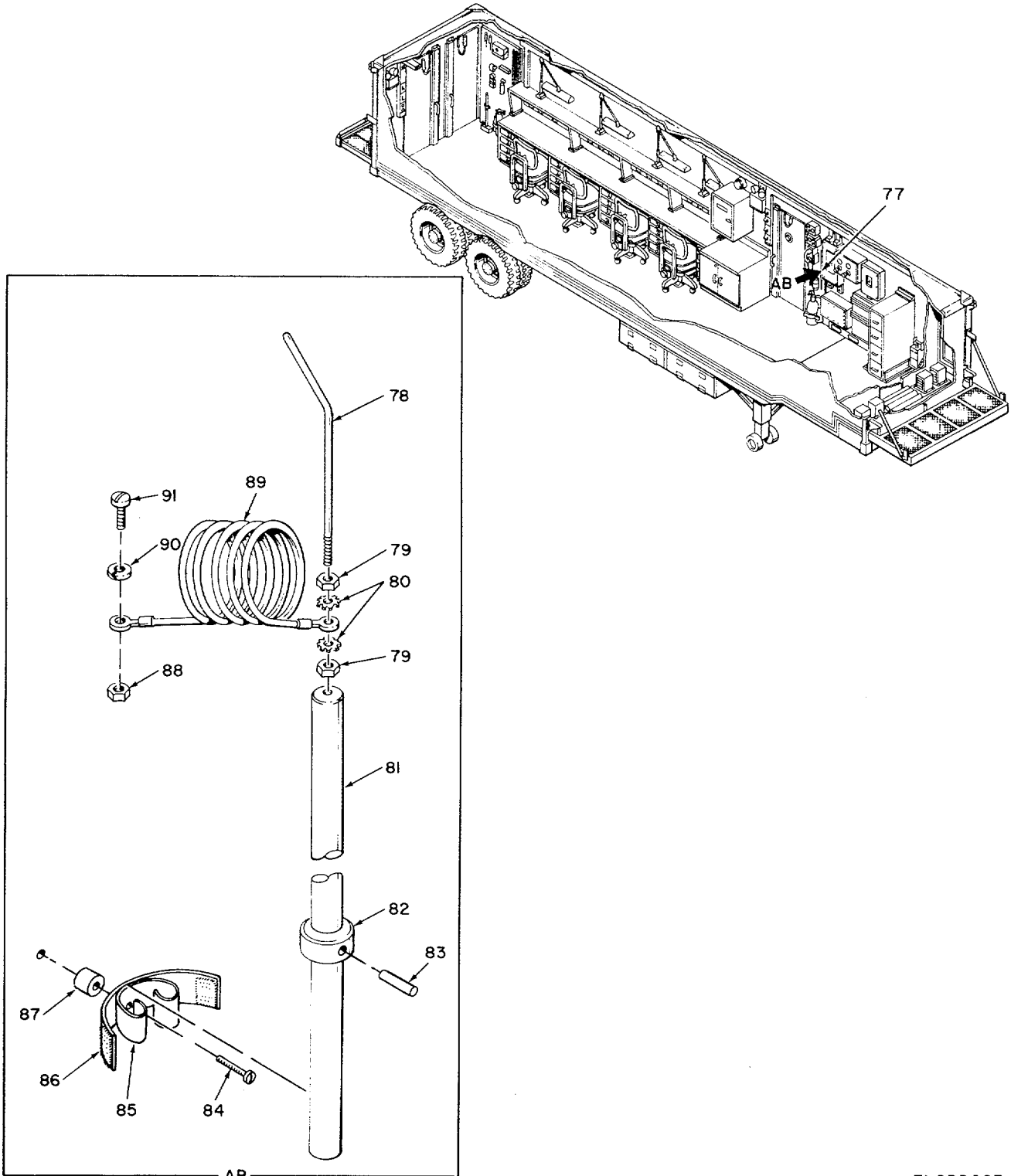
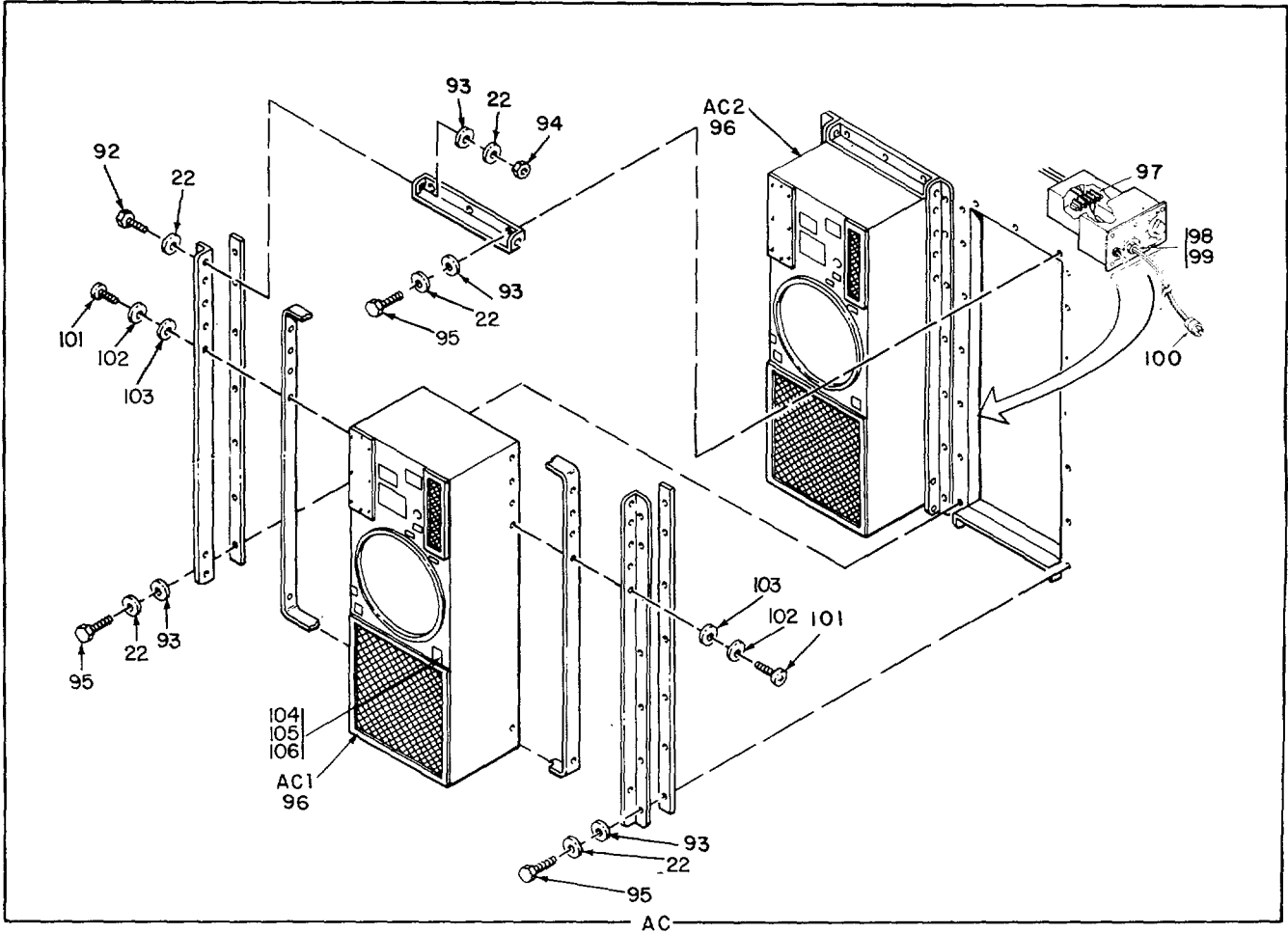
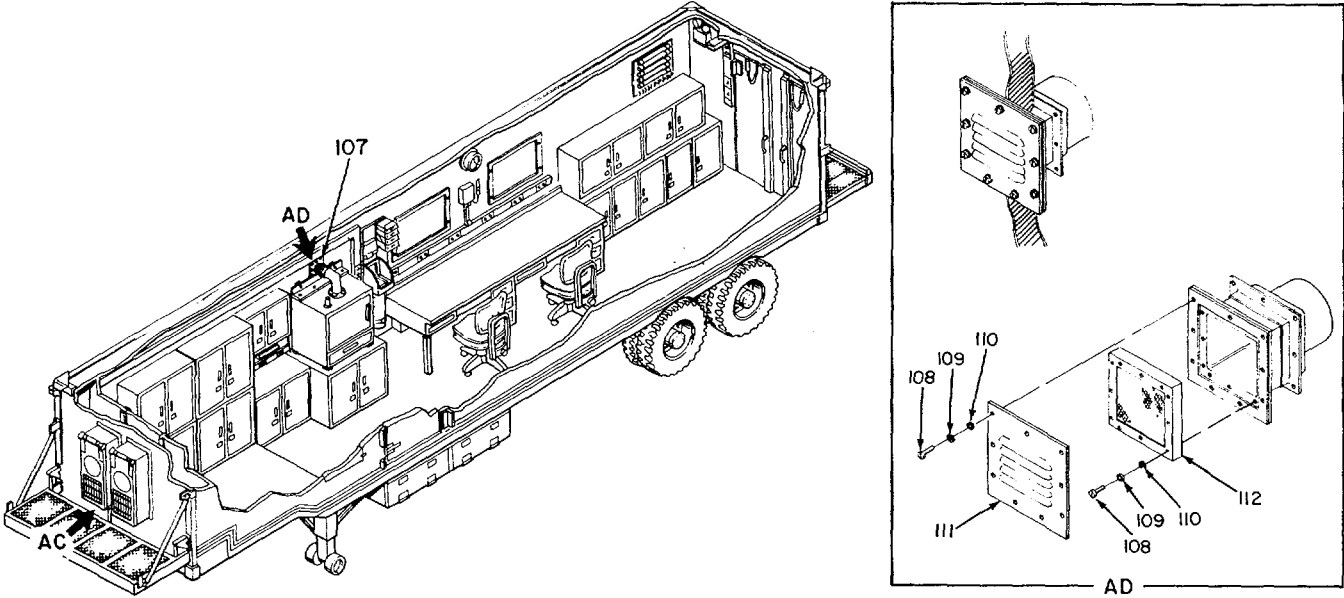


Figure 3. Electrical Installation (Sheet 5 of 6).

EL8BP023



EL8BP017

EL8BP017

Figure 3. Electrical Installation (Sheet 6 of 6).

| (1) ILLUSTRATION | | (2) | (3) | (4) | (5) | (6) DESCRIPTION | (7) | (8) |
|------------------------------------|--------------------|-------------|-----------------------------|-------|----------------|----------------------------|-----|--------------------------|
| (a) FIG NO. | (b) ITEM NO. | SMR CODE | NATIONAL STOCK NUMBER | FSCM | PART NUMBER | USABLE ON CODE | U/M | QTY INC IN UNIT |
| GROUP 0101 ELECTRICAL INSTALLATION | | | | | | | | |
| 3 | 1 | XDFZZ | | 56996 | B4008471 | GUARD, SWITCH | EA | 6 |
| 3 | 2 | XDFZZ | | 56996 | B4008579-001 | COVER, SWITCH | EA | 1 |
| 3 | 3 | PAOZZ | | 81348 | WS896/12-3A | SWITCH..... | EA | 6 |
| 3 | 4 | XDFZZ | | 56996 | B4008577 | COVER, RECEPTACLE..... | EA | 1 |
| 3 | 5 | PAFZZ | 5935-01-111-5568 | 81348 | WC596/12-2 | CONNECTOR, RECEPTACL..... | EA | 25 |
| 3 | 6 | XDFZZ | | 56996 | B4008575 | COVER, RECP, DUPLEX | EA | 22 |
| 3 | 7 | XDFZZ | | 56996 | B4008405 | COVER, RECEPTACLE..... | EA | 1 |
| 3 | 8 | XDFZZ | | 56996 | B4008576 | COVER, RECEPTACLE..... | EA | 1 |
| 3 | 9 | XDFZZ | | 56996 | B4008581-002 | COVER, SWITCH | EA | 1 |
| 3 | 10 | XDFZZ | | 56996 | B4008581-001 | COVER, SWITCH | EA | 1 |
| 3 | 11 | XDFZZ | | 56996 | B4008579-002 | COVER, SWITCH | EA | 1 |
| 3 | 12 | PAFZZ | | 91929 | BZ2RQ181-T | MICROSWITCH, INTERLO..... | EA | 7 |
| 3 | 13 | XDFFF | | 56996 | B4008038 | METER BOX ASSY..... | EA | 1 |
| 3 | 14 | XDFZZ | 5975-00-803-9934 | 59730 | 227 | BUSHING, ELECTRICAL..... | EA | 6 |
| 3 | 14B | XDFZZ | | 56996 | B4008117 | NIPPLE | EA | 2 |
| 3 | 14C | PAFZZ | 5305-00-207-2297 | 96906 | MS35307-312 | SCREW, CAP, HEXAGON H..... | EA | 8 |
| 3 | 14D | PAFZZ | 5310-00-933-8121 | 96906 | MS35338-139 | WASHER, LOCK | EA | 8 |
| 3 | 14E | PAFZZ | 5310-00-582-5677 | 96906 | MS15795-810 | WASHER, FLAT | EA | 8 |
| 3 | 15 | XDFZZ | | 56996 | B4008390 | ENCLOSURE..... | EA | 1 |
| 3 | 16 | PAOZZ | 5925-01-122-4739 | 81922 | KAL36100 | CIRCUIT BREAKER..... | EA | 1 |
| 3 | 17 | PAOZZ | 5925-01-100-3631 | 81348 | WC375/03-004 | CIRCUIT BREAKER..... | EA | 2 |
| 3 | 18 | PAOZZ | 5925-01-042-0109 | 81348 | WC375/01-002 | CIRCUIT BREAKER..... | EA | 11 |
| 3 | 19 | PAOZZ | 5925-01-111-7562 | 81348 | WC375/01-003 | CIRCUIT BREAKER..... | EA | 5 |
| 3 | 20 | PAFZZ | 5915-01-124-7037 | 02777 | F-3569 | FILTER, RADIO FREQUE..... | EA | 4 |
| 3 | 21 | PAFZZ | 5310-00-081-4219 | 96906 | MS27183-12 | WASHER, FLAT | EA | 12 |
| 3 | 22 | PAFZZ | 5310-00-974-6623 | 96906 | MS35338-140 | WASHER, LOCK | EA | 66 |
| 3 | 23 | PAFZZ | | 56996 | B4008119 | GASKET..... | EA | 1 |
| 3 | 24 | PAFZZ | 5305-00-988-1724 | 96906 | MS35206-280 | SCREW, MACHINE | EA | 8 |
| 3 | 25 | PAFZZ | | 56996 | B4008355 | STRAP ASSEMBLY..... | EA | 2 |
| 3 | 26 | PAFZZ | | 56996 | B4008120 | GASKET..... | EA | 1 |
| 3 | 27 | PAFZZ | | 02777 | 4.900.0069-4 | BUS CONDUCTOR..... | EA | 4 |
| 3 | 27A | XBFZZ | | 56996 | B4008082 | RACEWAY INSTAL | EA | 1 |
| 3 | 27B | XDFZZ | 5975-00-577-8518 | 59730 | 1942 | CHASE NIPPLE, CONDUI..... | EA | 6 |
| 3 | 27C | XDFZZ | 5975-00-152-1075 | 02470 | 95-32 | LOCKNUT, ELECTRICALL..... | EA | 6 |
| 3 | 27D | XDFZZ | 5975-00-710-0876 | 59730 | 1947 | CHASE NIPPLE, CONDUI..... | EA | 1 |
| 3 | 28 | PAFZZ | 5935-01-058-9269 | 81348 | WC596/40-2 | CONNECTOR, RECEPTACL..... | EA | 5 |
| 3 | 29 | XDFZZ | | 56996 | B4008578 | COVER, RECEPTACLE..... | EA | 1 |
| 3 | 29A | XDFZZ | | 56996 | B4008701 | COVER, RECEPTACLE..... | EA | 4 |

| (1) ILLUSTRATION | | (2) | (3) | (4) | (5) | (6) DESCRIPTION | (7) | (8) |
|---------------------|--------------------|-------------|-----------------------------|-------|----------------|----------------------------|-----|--------------------------|
| (a) FIG NO. | (b) ITEM NO. | SMR CODE | NATIONAL STOCK NUMBER | FSCM | PART NUMBER | USABLE ON CODE | U/M | QTY INC IN UNIT |
| 3 | 30 | XDFZZ | | 56996 | B4008580 | COVER, SWITCH | EA | 1 |
| 3 | 31 | XDFZZ | | 56996 | B4008582 | COVER, SWITCH | EA | 1 |
| 3 | 32 | PAOZZ | | 56996 | B4008359 | THEROSTAT | EA | 1 |
| 3 | 32A | XDOZZ | | 56996 | B4008677-001 | STANDOFF | EA | 2 |
| 3 | 33 | PAFZZ | 5340-00-187-6023 | 96906 | MS21122-6 | CLAMP, LOOP | EA | 1 |
| 3 | 34 | PAOZZ | 5310-00-809-8546 | 96906 | MS27183-8 | WASHER,FLAT | EA | 2 |
| 3 | 35 | PAOZZ | 5305-00-497-7409 | 96906 | MS51861-52C | SCREW, TAPPING,THREA | EA | 2 |
| 3 | 35 | XDFZZ | | 56996 | B4008178 | BRACKET | EA | 4 |
| 3 | 37 | PAFZZ | | 81348 | WC596/19-1 | CONNECTOR,RECEPTACL..... | EA | 2 |
| 3 | 38 | PAFZZ | | 56996 | B4008474 | CONNECTOR,STRAIN | EA | 4 |
| 3 | 39 | XDFZZ | | 56996 | B4008172 | COVER, RACEWAY | EA | 4 |
| 3 | 40 | PAFZZ | | 80063 | SC-C-681078-3 | LOCKNUT, ELECTRICA..... | EA | 4 |
| 3 | 41 | XBFZZ | | 81349 | CO-0440F-0665 | CABLE | FT | 1 |
| 3 | 42 | NFFZZ | | 80063 | SC-C-681320-9 | BAND, IDENT | EA | 1 |
| 3 | 43 | PAFFF | | 56996 | B4008378 | CABLE ASSEMBLY POWE | EA | 2 |
| 3 | 44 | PAFZZ | | 96906 | MS3108A22-225 | CONNECTOR | EA | 1 |
| 3 | 45 | PAFZZ | | 96906 | MS3056-12A | ADAPTER | EA | 1 |
| 3 | 45A | XDOOO | | 56996 | B4008160 | FIXTURE ASSY | EA | 54 |
| 3 | 46 | PAOOO | | 56996 | B4008347 | SUB ASSEMBLY, FIXTU | EA | 1 |
| 3 | 47 | XDOZZ | | 80063 | SC-C-539558 | COVER, BALLASTT..... | EA | 2 |
| 3 | 48 | XDDZZ | 6250-00-408-2639 | 80063 | SC-8-539568 | SUPPORT BALLAST | EA | 2 |
| 3 | 49 | PAOZZ | 5915-01-073-6128 | 80063 | SC-C-681186 | FILTER, RADIO FREQUE..... | EA | 1 |
| 3 | 50 | PAOZZ | 6210-01-106-6116 | 80063 | SC-C-681183 | MOUNT, LAMP | EA | 1 |
| 3 | 51 | PAOZZ | 6250-00-804-3449 | 80063 | SC-C-681185 | BALLAST,LAMP..... | EA | 1 |
| 3 | 52 | PAOZZ | 6210-01-106-6116 | 80063 | SC-C-681183 | MOUNT, LAMP | EA | 1 |
| 3 | 53 | PAOZZ | | 80063 | SC-C-539504 | LAMP,STARTER..... | EA | 1 |
| 3 | 53A | PAOZZ | 5310-00-680-6627 | 96906 | MS25082-1 | NUT,PLAIN,HEXAGON..... | EA | 2 |
| 3 | 54 | XDOZZ | | 56996 | B4008240 | COVER | EA | 1 |
| 3 | 55 | XDOZZ | 6250-00-449-7859 | 80063 | SC-C-681035 | COVER, LAMP..... | EA | 2 |
| 3 | 56 | PAOZZ | 5310-00-045-3296 | 96906 | MS35338-43 | WASHER,LOCK | EA | 2 |
| 3 | 57 | PAOZZ | 5305-00-989-7434 | 96906 | MS35207-263 | SCREW,MACHINE | EA | 2 |
| 3 | 57A | XDFZZ | 5310-00-14-8453 | 96906 | MS90724-7 | NUT, SHEET SPRING | EA | 2 |
| 3 | 58 | PAOZZ | | 80063 | SC-D-539495 | LAMP,FLUORESCENT..... | EA | 1 |
| 3 | 59 | XDOZZ | 6210-00-921-6682 | 80063 | SC-C-539466 | WINDOW, LIGHTING FIX..... | EA | 1 |
| 3 | 60 | PAOZZ | 5310-00-809-8544 | 96906 | MS27183-7 | WASHER,FLAT | EA | 4 |
| 3 | 61 | PAOZZ | 5305-00-984-6195 | 96906 | MS35206-245 | SCREW,MACHINE | EA | 2 |
| 3 | 62 | XDOZZ | | 50996 | B4008174-001 | CLIP, COVER | EA | 50 |
| 3 | 63 | PAOZZ | 5310-00-983-8483 | 96906 | MS27183-5 | WASHER, FLAT | EA | 10 |
| 3 | 64 | PAOZZ | 5305-00-984-4988 | 96906 | MS35206-5 | SCREW,MACHIN..... | EA | 10 |
| 3 | 65 | PADZZ | 5310-00-045-4007 | 96906 | MS35338-41 | WASHER,LOCK | EA | 10 |

SECTION II

TM 11-5410-217-24P

| (1) ILLUSTRATION | | (2) | (3) | (4) | (5) | (6) | (7) | (8) |
|---------------------|--------------------|-------------|-----------------------------|-------|----------------|-----------------------------------|-----|--------------------------|
| (a) FIG NO. | (b) ITEM NO. | SMR CODE | NATIONAL STOCK NUMBER | FSCM | PART NUMBER | DESCRIPTION USABLE ON CODE | U/M | QTY INC IN UNIT |
| 3 | 66 | XDOZZ | 6210-00-757-9694 | 80063 | SC-C-539498 | 7LOCK, LAMP FLUORESC | EA | 2 |
| 3 | 67 | XBFZZ | | 56996 | B4008083 | PANELING & DUCT..... | EA | 1 |
| 3 | 67A | XDFZZ | | 56996 | B4008174 | CLIPCOVER | EA | 79 |
| 3 | 67B | PAFZZ | 5305-00-98-4988 | 96906 | MS35206-25 | SCREW,MACHNE | EA | 158 |
| 3 | 67C | PAFZZ | 5310-00-045-4007 | 96906 | MS35338-41 | WASHER, LOCK | EA | 158 |
| 3 | 67D | PAFZZ | 5310-00-983-8483 | 96906 | MS27183-5 | WASHER,FLAT | EA | 100 |
| 3 | 68 | XDOOO | | 56996 | B4008162 | FIXTURE ASSY | EA | 1 |
| 3 | 69 | XDOZZ | | 56996 | B4008349 | COVER | EA | 1 |
| 3 | 70 | PAOZZ | | 08806 | 25T8DC | LAMP INCANDESCENT | EA | 4 |
| 3 | 71 | XDOZZ | 6210-00-451-8350 | 80063 | SC-C-539466-1 | WINDOW,LIGHTING FIX..... | EA | 2 |
| 3 | 72 | PAOZZ | 6250-00-995-9074 | 80063 | SC-C-681207 | LAMPHOLDER | EA | 4 |
| 3 | 73 | XDOOO | | 56996 | B4008161 | FIXTURE ASSY | EA | 2 |
| 3 | 74 | XDOZZ | | 56996 | B4008241 | COVER | EA | 1 |
| 3 | 75 | XDOOO | | 56996 | B4008159 | FIXTURE ASSY | EA | 3 |
| 3 | 76 | XDOZZ | | 56996 | B4008239 | COVER | EA | 1 |
| 3 | 77 | XDFFF | | 56996 | B4008734 | PROBE, SHORTING ASSY | EA | 1 |
| 3 | 78 | PAFZZ | | 56996 | B4008735 | ROD,THREADED END | EA | 1 |
| 3 | 79 | PAFZZ | 5310-00-855-1102 | 96906 | MS35649-2255 | NUT,PLAIN, HEXAGON..... | EA | 2 |
| 3 | 80 | PAFZZ | 5310-00-022-8834 | 96906 | MS35333-108 | WASHER,LOCK | EA | 2 |
| 3 | 80 | XDFZZ | | 56996 | B4008736 | HANDLE, PROBE | EA | 1 |
| 3 | 82 | XDFZZ | | 56996 | B4008737 | COLLAR, PROBE | EA | 1 |
| 3 | 83 | XDFZZ | 5315-00-844-3965 | 96906 | MS16562-48 | PIN,SPRING | EA | 1 |
| 3 | 84 | XDFZZ | 5305-00-954-8998 | 96906 | MS35214-61 | SCREW,MACHINE | EA | 2 |
| 3 | 85 | XDFZZ | | 56996 | B4008758 | SPRING,CLIP HLDR..... | EA | 2 |
| 3 | 86 | XOFZZ | | 56996 | B4008776 | STRAP,PROBE..... | EA | 2 |
| 3 | 87 | XDFZZ | | 56996 | B4008677-002 | STAND OFF | EA | 2 |
| 3 | 87 | PAFZZ | | 56996 | B4008677-002 | INSULATOR, STANDOFF | EA | 2 |
| 3 | 88 | PAFZZ | 5310-00-939-2653 | 96906 | MS51969-1 | NUT, PLAIN HEXAGON..... | EA | 4 |
| 3 | 89 | PAFZZ | | 56996 | B4008738 | CABLE ASSEMBLY, POWE | EA | 1 |
| 3 | 90 | PAFZZ | 5310-00-942-5109 | 96906 | MS35335-89 | WASHER,LOCK | EA | 7 |
| 3 | 91 | PAOZZ | 5305-00-954-8152 | 96906 | MS35215-59 | SCREW,MACHINE | EA | 6 |
| 3 | 92 | PAFZZ | 5306-00-637-9675 | 96906 | MS35307-332 | BOLT, MACHINE | EA | 8 |
| 3 | 93 | PAFZZ | 5310-00-625-5756 | 96906 | MS15795-812 | WASHER,FLAT | EA | 74 |
| 3 | 94 | PAFZZ | 5310-00-767-0445 | 96906 | MS51971-2 | NUT, PLAIN,HEXAGON..... | EA | 8 |
| 3 | 95 | PAFZZ | 5306-00-637-9674 | 96906 | MS35307-336 | BOLT,MACHINE | EA | B |
| 3 | 96 | XDFDD | | 56996 | B4008506 | AIR CON MOD | EA | 2 |
| 3 | 97 | XDFZZ | 5940-00-983-6122 | 81349 | 39T8-2 | TERMINAL BOARD | EA | 1 |
| 3 | 98 | XDFZZ | | 56996 | B4008280-001 | STRAIN RELIEFCONN | EA | 1 |
| 3 | 99 | XDFZZ | | 80063 | SC-C-681078-2 | LOCKNUT | EA | 1 |
| 3 | 100 | PAFZZ | | 56996 | B4008321-003 | CABLE ASSEMBLY | EA | 1 |

SECTION II

TM 11-5410-217-24P

| (1) ILLUSTRATION | | (2) | (3) | (4) | (5) | (6) | (7) | (8) |
|---------------------|--------------------|-------------|-----------------------------|-------|---------------------|-----------------------------------|-----|--------------------------|
| (a) FIG NO. | (b) ITEM NO. | SMR CODE | NATIONAL STOCK NUMBER | FSCM | PART NUMBER | DESCRIPTION USABLE ON CODE | U/M | QTY INC IN UNIT |
| 3 | 101 | PAFZZ | 5305-00-059-3661 | 96906 | MS51958-65 | SCREW,MACHINE | EA | 20 |
| 3 | 102 | PAFZZ | 5310-00-883-9384 | 96906 | MS15795-842 | WASHER,FLAT | EA | 20 |
| 3 | 103 | PAFZZ | 5310-00-933-8120 | 96906 | MS35338-138 | WASHER, LOCK | EA | 20 |
| 3 | 104 | XDFZZ | | 56996 | B4008481 | GASKET..... | EA | 1 |
| 3 | 105 | XDFZZ | | 80063 | SC-C-539759-1 | RIVET, DOME HD..... | EA | 4 |
| 3 | 106 | XDFZZ | | 56996 | B4008480 | COVER | EA | 1 |
| 3 | 107 | XDFZZ | | 56996 | B4008702 | OVEN EXHAUST,INST..... | EA | 1 |
| 3 | 108 | PAFZZ | 5305-00-054-6674 | 96906 | MS51957-49 | SCREW,MACHINE | EA | 8 |
| 3 | 109 | PAFZZ | 5310-00-933-8119 | 96906 | MS35338-137 | WASHER, LOCK | EA | 21 |
| 3 | 110 | PAFZZ | 5310-00-225-5328 | 96906 | MS15795-841 | WASHER, FLAT | EA | 21 |
| 3 | 111 | XDFZZ | | 56996 | B4008705 | LOUVER COVER PLATE | EA | 1 |
| 3 | 112 | XDFZZ | | 56996 | B4008707 | EMI/RFI PANEL | EA | 1 |
| | | | | | 28/(29BLANK) | | | |

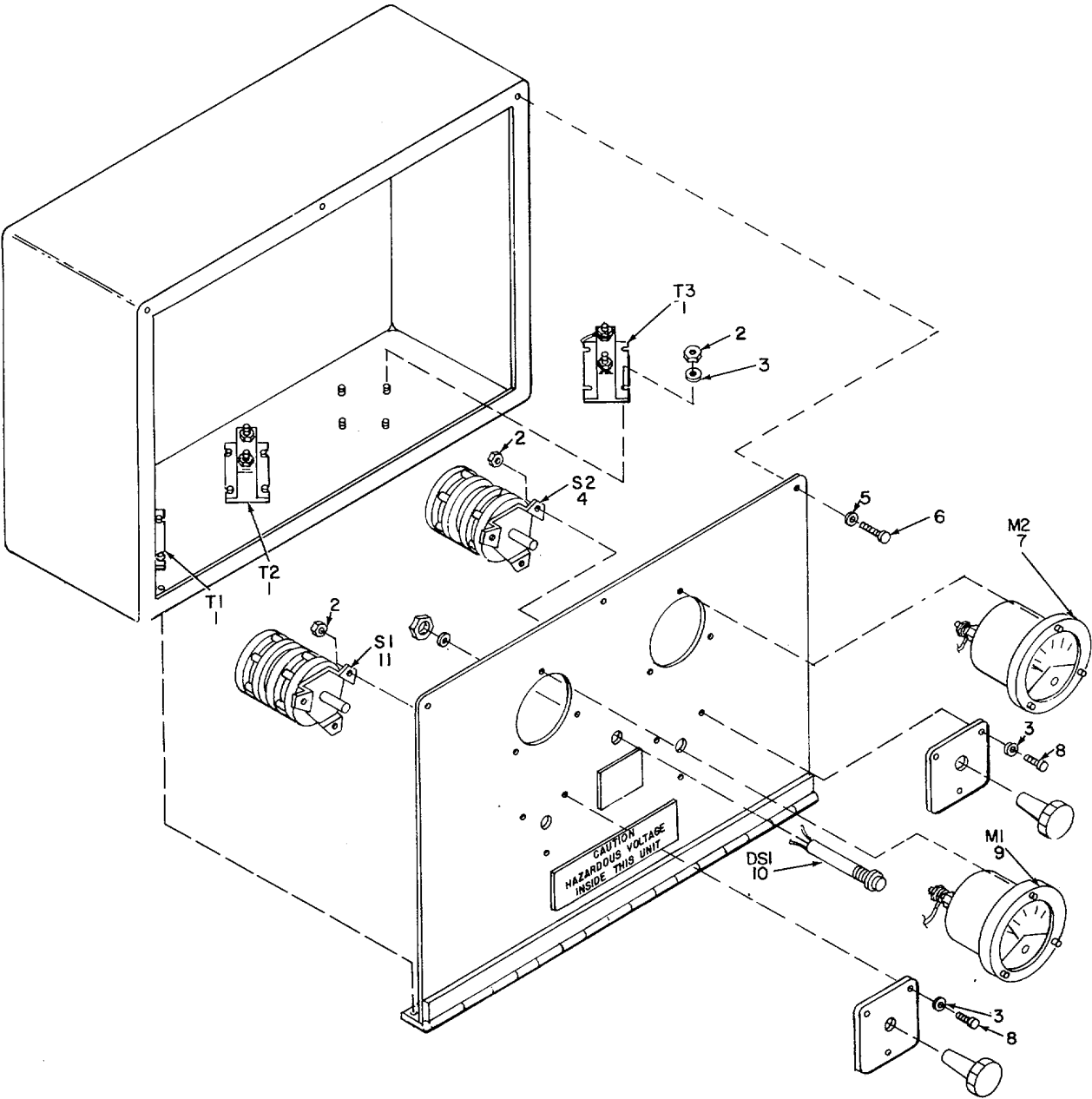


Figure 4. Meter Box.

EL8BP009

SECTION II

TM 11-5410-217-24P

| (1) ILLUSTRATION | | (2) | (3) | (4) | (5) | (6) | (7) | (8) |
|---------------------|--------------------|-------------|-----------------------------|-------|----------------|-----------------------------------|-----|--------------------------|
| (a) FIG NO. | (b) ITEM NO. | SMR CODE | NATIONAL STOCK NUMBER | FSCM | PART NUMBER | DESCRIPTION USABLE ON CODE | U/M | QTY INC IN UNIT |
| | | | | | | GROUP 01010102 METER BOX ASSEMBLY | | |
| 4 | 1 | PAFZZ | | 53498 | 802-943-U-RLLS | TRANSFORMER | EA | 3 |
| 4 | 2 | PAFZZ | 5310-00-811-3494 | 96906 | MS2104ND8 | NUT,SELF-LOCKING,HE | EA | 18 |
| 4 | 3 | PAFZZ | 5310-00-809-8544 | 96906 | MS27183-7 | WASHER,FLAT | EA | 18 |
| 4 | 4 | PAFZZ | 5930-00-570-5477 | 82121 | 2410H | SWITCH,ROTARY | EA | 1 |
| 4 | 5 | PAFZZ | 5310-00-014-5850 | 96906 | MS27183-42 | WASHER,FLAT | EA | 3 |
| 4 | 6 | PAFZZ | 5305-00-989-6265 | 96906 | MS35207-262 | SCREW, MACHINE | EA | 3 |
| 4 | 7 | PAFZZ | 6625-00-538-9710 | 8349 | MR36W200ACAAAR | AMMETER..... | EA | 1 |
| 4 | 8 | PAFZZ | 5305-00-984-6193 | 96906 | HS35206-245 | SCREW,MACH..... | EA | 6 |
| 4 | 9 | PAFZZ | | 81349 | MR36W300ACWR | VOLTMETER..... | EA | 1 |
| 4 | 10 | PAFZZ | 6625-01-135-3274 | 52797 | 2A-5D5 | INDICATOR,PHASE SEQ..... | EA | 1 |
| 4 | 11 | PAFZZ | 5930-00-148-8929 | 82121 | 2405H | SWITCH, ROTARY | EA | 1 |
| 31 | | | | | | | | |

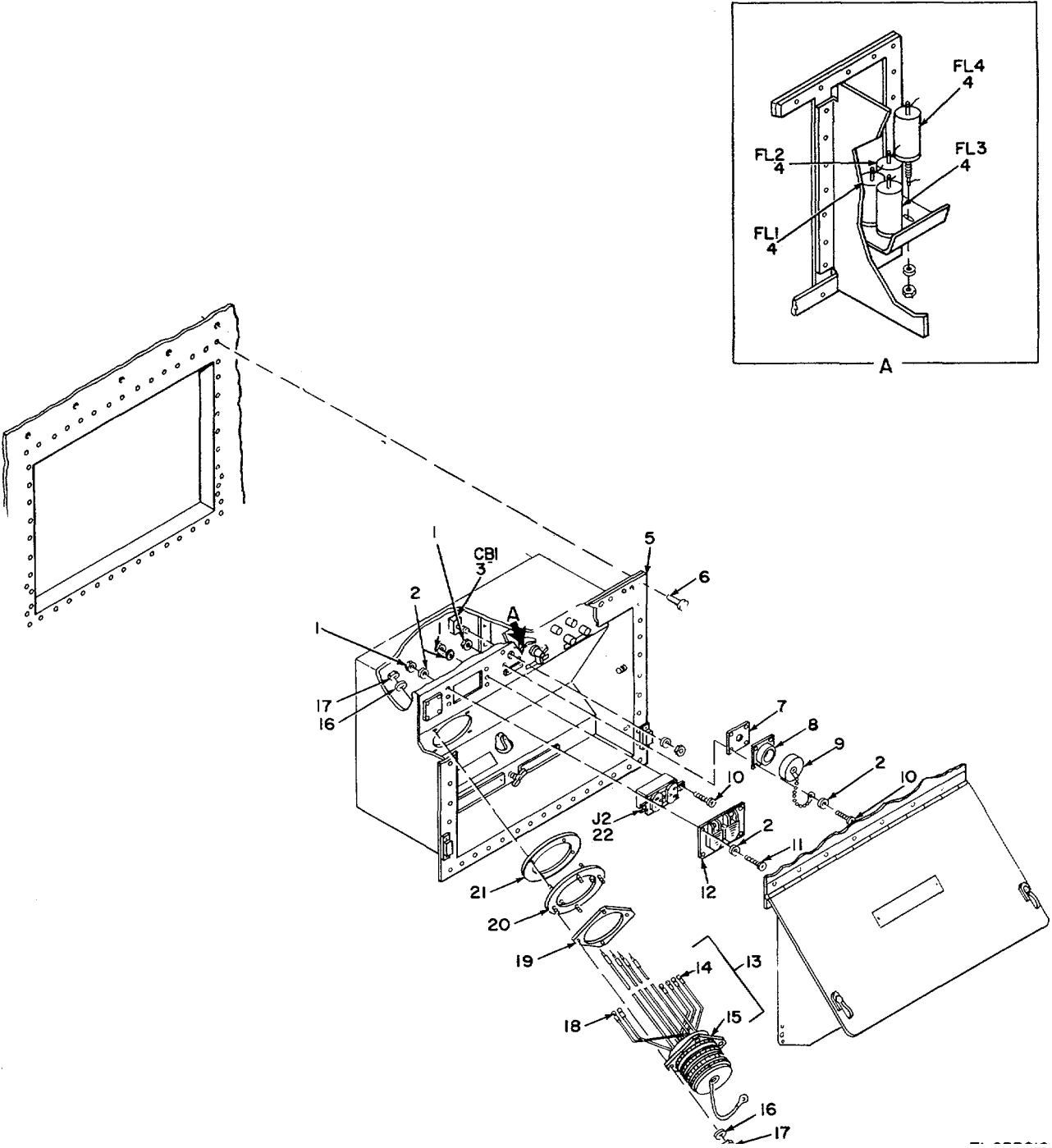


Figure 5. Power Entrance Box.

EL8BP010

SECTION II

TM 11-5410-217-24P

| (1) ILLUSTRATION | | (2) | (3) | (4) | (5) | (6) | (7) | (8) |
|---------------------|--------------------|-------------|-----------------------------|-------|----------------|--|-----|--------------------------|
| (a) FIG NO. | (b) ITEM NO. | SMR CODE | NATIONAL STOCK NUMBER | FSCM | PART NUMBER | DESCRIPTION USABLE ON CODE | U/M | QTY INC IN UNIT |
| | | | | | | GROUP 01010103 POWER ENTRANCE BOX ASSEMBLY | | |
| 5 | 1 | PAFZZ | 5310-00-807-1465 | 96906 | MS21042-06 | NUT,SELF-LOCKING,EX..... | EA | 16 |
| 5 | 2 | PAFZZ | 5310-00-983-84B3 | 96906 | MS27183-5 | WASHER,FLAT | EA | 16 |
| 5 | 3 | PAFZZ | 5925-00-686-3297 | 96906 | MS25244-5 | CIRCUIT BREAKER | EA | 1 |
| 5 | 4 | PAFZZ | 5915-00-946-5369 | 56289 | JWm7-112Z | FILTER | EA | 4 |
| 5 | 5 | XDFFF | | 56996 | B4008514 | BOX ASSY | EA | 1 |
| 5 | 6 | PAFZZ | 5320-00-490-5523 | 81349 | M24243/7-A606H | RIVET,BLIND..... | EA | 42 |
| 5 | 7 | PAFZZ | | 80063 | SC-C-681422 | GASKET,CONNECIOR | EA | 1 |
| 5 | 8 | PAFZZ | | 74545 | 10-37093-323 | CONNECTOR..... | EA | 1 |
| 5 | 9 | XDFZZ | 5935-00-137-4879 | 96906 | MS25043-28D | COVER,ELECTRICAL CO..... | EA | 1 |
| 5 | 10 | PAFZZ | 5305-00-889-3001 | 96906 | MS35206-231 | SCREW,MACHINE | EA | 4 |
| 5 | 11 | PAFZZ | 5305-00-9B4-4992 | 96906 | MS35206-232 | SCREW,MACHINE | EA | 4 |
| 5 | 12 | XDFZZ | | 80063 | SC-C-681092 | COVER,WEATHERPROOF | EA | 1 |
| 5 | 13 | PAFFF | 5995-01-134-6634 | 56996 | B4008273 | CABLE ASSEMBLY, POWER | EA | 1 |
| 5 | 14 | PAFZZ | 5940-00-114-1305 | 96906 | MS25036-116 | TERMINALLUGG | EA | 4 |
| 5 | 15 | PAFZZ | | 96906 | MS90558C44412P | CONNECTOR,RECEPTAC..... | EA | 1 |
| 5 | 16 | XAOZZ | | 96906 | SZ27183-11 | WASHER,FLAT | EA | 8 |
| 5 | 17 | XADZZ | | 96906 | MS51922-1 | NUT,SELF-LOCKING,HE | EA | 6 |
| 5 | 18 | PAFZZ | 5940-00-143-4775 | 96906 | MS25036-156 | TERINAL,LUG | EA | 2 |
| 5 | 19 | PAFZZ | | 56996 | B4008477 | GASKET | EA | 1 |
| 5 | 20 | XDFZZ | | 56996 | B4008270 | PLATE,CONN ADAPT | EA | 1 |
| 5 | 21 | PAFZZ | | 56996 | B4008478 | GASKET | EA | 1 |
| 5 | 22 | PAFZZ | 5935-01-111-5568 | 81348 | WC596/12-2 | CONNECT,RECEPTACLE | EA | 1 |

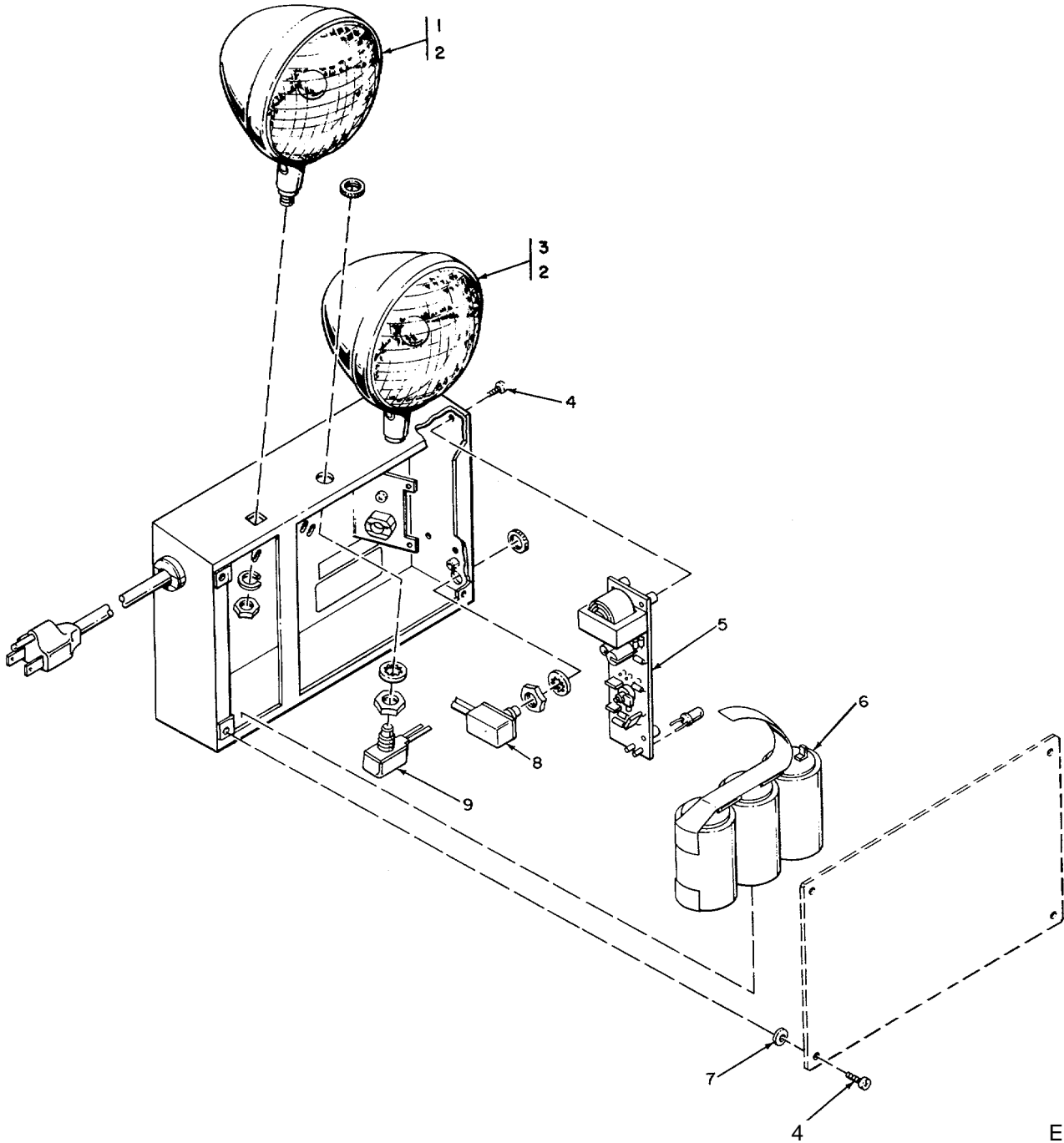


Figure 6. Emergency Lighting.

EL8BP011

SECTION II

TM 11-5410-217-24P

| (1) ILLUSTRATION | | (2) | (3) | (4) | (5) | (6) | (7) | (8) |
|---------------------|--------------------|-------------|-----------------------------|-------|----------------|-----------------------------------|-----|--------------------------|
| (a) FIG NO. | (b) ITEM NO. | SMR CODE | NATIONAL STOCK NUMBER | FSCM | PART NUMBER | DESCRIPTION USABLE ON CODE | U/M | QTY INC IN UNIT |
| | | | | | | GROUP 0102 EMERGENCY LIGHTING | | |
| 6 | 1 | PAOZZ | | 80538 | 610689-3 | LAMPHEAD ASSEMBLY | EA | 2 |
| 6 | 2 | PAOZZ | 6740-01-072-2278 | 08806 | 7613 | LAMP,INCANDESCNT..... | EA | 2 |
| 6 | 3 | PAOZZ | | 80538 | 610689-1 | LAMPHEAD ASSEMBLY | EA | 2 |
| 6 | 4 | PAOZZ | | 33525 | 726016 | SCREW,MACHINE | EA | 8 |
| 6 | 5 | PAOZZ | | 80538 | 610692-1 | PRINTED CIRCUIT BD | EA | 1 |
| 6 | 6 | PAOZZ | 6135-01-134-6633 | 80538 | 610518 | BATTERY ASSEMBLY..... | EA | 1 |
| 6 | 7 | PAOZZ | | 33525 | 719T36 | WASHER,FIBRE | EA | 4 |
| 6 | 8 | PAOZZ | | 80538 | 610814 | SWITCH | EA | 1 |
| 6 | 9 | PAOZZ | | 80536 | 610815 | SWITCH | EA | 1 |
| 35 | | | | | | | | |

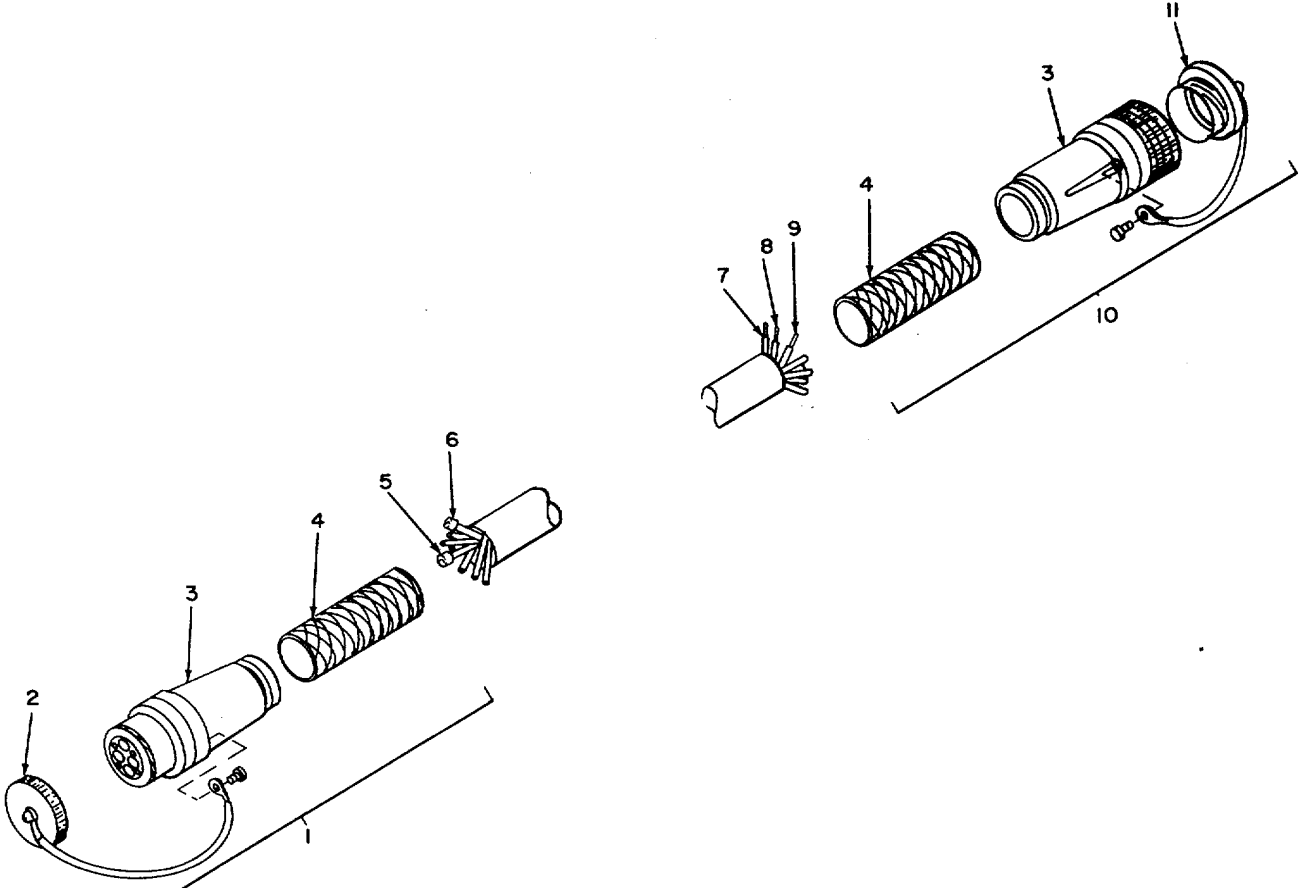


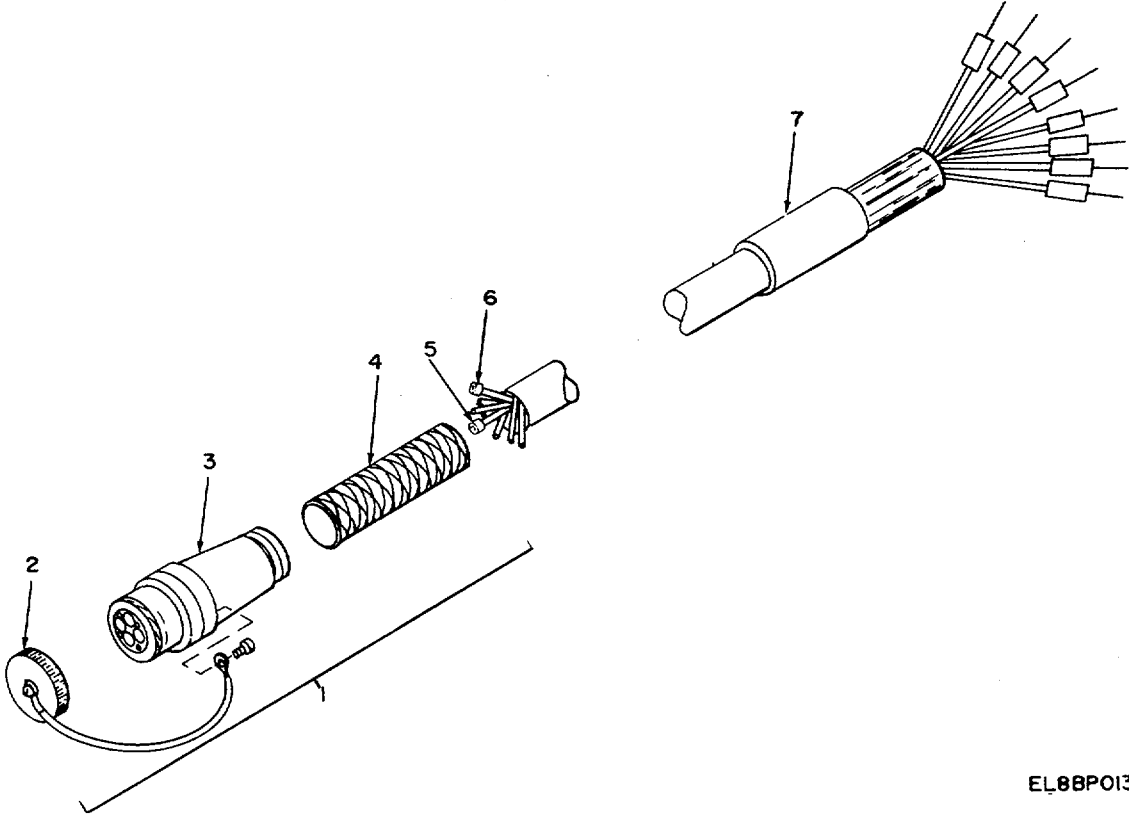
Figure 7. Cable Assembly.

EL8BP012

SECTION II

TM 11-5410-217-24P

| (1) ILLUSTRATION | | (2) | (3) | (4) | (5) | (6) | (7) | (8) |
|---------------------|--------------------|-------------|-----------------------------|-------|--------------------|-----------------------------------|-----|--------------------------|
| (a) FIG NO. | (b) ITEM NO. | SMR CODE | NATIONAL STOCK NUMBER | FSCM | PART NUMBER | DESCRIPTION USABLE ON CODE | U/M | QTY INC IN UNIT |
| | | | | | | GROUP 02 CABLE ASSEMBLY | | |
| 7 | 1 | PAFZZ | 5935-01-092-1037 | 96906 | MS90557C44412 S | CONNECTOR,PLUG,ELEC..... | EA | 2 |
| 7 | 2 | XDFZZ | | 96906 | MS90563-7C | COVER,ELEC..... | EA | 2 |
| 7 | 3 | PADZZ | | 96906 | MS23747-15 | GLAND,CABLE SEALIN..... | EA | 2 |
| 7 | 4 | PAFZZ | | 96906 | MS90561-15 | STRAIN RELIEF..... | EA | 2 |
| 7 | 5 | PAFZZ | | 96906 | MS90560-3 | CONTACT ELECTRICAL..... | EA | 1 |
| 7 | 6 | PAFZZ | | 96906 | MS90560-8 | CONTACT,ELECTRICAL..... | EA | 1 |
| 7 | 7 | PAFZZ | | 96906 | MS90559-6 | CONTACT,ELECTRICAL..... | EA | 1 |
| 7 | 8 | PAFZZ | | 96906 | MS90559-5 | CONTACT ELECTRICAL..... | EA | 1 |
| 7 | 9 | PAFZZ | 5999-01-108-8602 | 96906 | MS90559-14 | CONTACT,ELECTRICAL..... | EA | 1 |
| 7 | 10 | PAFZZ | 5935-01-092-1038 | 96906 | MS90556C44412 P | CONNECTOR,PLUG,ELEC..... | EA | 2 |
| 7 | 11 | XDFZZ | | 96906 | MS90564-7C | COVER,ELEC..... | EA | 2 |



EL8BP013

EL8BP013

Figure 8. Cable Assembly.

SECTION II

TM 11-5410-217-24P

| (1) ILLUSTRATION | | (2) | (3) | (4) | (5) | (6) | (7) | (8) |
|---------------------|--------------------|-------------|-----------------------------|-------|--------------------|-----------------------------------|-----|--------------------------|
| (a) FIG NO. | (b) ITEM NO. | SMR CODE | NATIONAL STOCK NUMBER | FSCM | PART NUMBER | DESCRIPTION USABLE ON CODE | U/M | QTY INC IN UNIT |
| | | | | | | GROUP 03 CABLE ASSEMBLY | | |
| 7 | 1 | PAFZZ | 5935-01-092-1037 | 96906 | MS90557C44412 S | CONNECTOR,PLUG,ELEC..... | EA | 1 |
| 7 | 2 | XDFZZ | | 96906 | MS90563-7C | COVER,ELEC..... | EA | 1 |
| 7 | 3 | PADZZ | | 96906 | MS23747-15 | GLAND,CABLE SEALIN..... | EA | 1 |
| 8 | 4 | PAFZZ | | 96906 | MS90561-15 | STRAIN RELIEF..... | EA | 1 |
| 8 | 5 | PAFZZ | | 96906 | MS90560-3 | CONTACT ELECTRICAL..... | EA | 1 |
| 8 | 6 | PAFZZ | | 96906 | MS90560-8 | CONTACT, ELECTRICAL..... | EA | 1 |
| 8 | 7 | PADZZ | | 94025 | 902A014-4-03/42 | END SEAL..... | EA | 1 |
| | | | | | 39 | | | |

SECTION IV

TM 11-5410-217-24P

NATIONAL STOCK NUMBER INDEX

| STOCK NUMBER | FIG. | ITEM | STOCK NUMBER | FIG. | ITEM |
|------------------|------|------|-------------------|------|------|
| 5310-00-014-5850 | 4 | 5 | 5306-00-637-9675 | 3 | 92 |
| 5305-00-021-3620 | 2 | 3 | 5310-00-680-6627 | 3 | 53A |
| 5305-00-021-3668 | 2 | 85 | 5925-00-686-3297 | 5 | 3 |
| 5310-00-022-8834 | 3 | 80 | 5975-00-710-0876 | 3 | 270 |
| 3439-00-041-1985 | 2 | 43 | 4230-00-720-1618 | 1 | 2 |
| 5310-00-045-3296 | 3 | 56 | 5305-00-721-5665 | 2 | 86 |
| 5310-00-045-4007 | 3 | 65 | 6230-00-729-9614 | 2 | 143 |
| 5310-00-045-4007 | 3 | 67C | 6210-00-757-9694 | 3 | 66 |
| 4240-00-052-3776 | 2 | 40 | 5310-00-767-0445 | 3 | 94 |
| 5305-00-054-6674 | 2 | 68 | 5975-00-803-9934 | 3 | 14 |
| 5305-00-054-6674 | 3 | 108 | 6250-00-804-3449 | 3 | 51 |
| 5305-00-059-3661 | 3 | 101 | 5310-00-807-1465 | 5 | 1 |
| 5305-00-059-3667 | 2 | 6 | 5310-00-809-8544 | 3 | 60 |
| 5180-00-064-5178 | 2 | 60 | 5310-00-809-8544 | 4 | 3 |
| 5310-00-081-4219 | 3 | 21 | 5310-00-809-8546 | 3 | 34 |
| 5310-00-082-1404 | 2 | 92 | 5310-00-811-3494 | 4 | 2 |
| 5940-00-114-1305 | 5 | 14 | 5315-00-844-3965 | 3 | 83 |
| 5110-00-115-5049 | 2 | 68B | 5975-00-844-7083 | 2 | 82 |
| 5305-00-137-3033 | 2 | 76A | 3439-00-853-8760 | 2 | 44 |
| 5935-00-137-4879 | 5 | 9 | 5310-00-855-1102 | 3 | 19 |
| 5940-00-143-4775 | 5 | 18 | 5999-00-819-6320 | 2 | 5 |
| 5310-00-144-8453 | 3 | 57A | 5999-00-819-6320 | 2 | 46 |
| 5305-00-147-3241 | 2 | 7 | 5310-00-880-5976 | 2 | 103 |
| 5930-00-148-8929 | 4 | 11 | 5310-00-883-9384 | 2 | 10 |
| 5305-00-151-3723 | 2 | 93 | 5310-00-883-9384 | 2 | 62 |
| 5975-00-152-1075 | 3 | 27C | 5310-00-908-9384 | 3 | 102 |
| 6240-00-152-2982 | 2 | 132 | 5305-00-889-3001 | 5 | 10 |
| 6240-00-152-2996 | 2 | 14 | 4730-00-908-6293 | 2 | 68A |
| 3439-00-155-4597 | 2 | 50 | 6210-00-921-6682 | 3 | 59 |
| 6240-00-155-7786 | 2 | 144 | 5310-00-933-8119 | 2 | 10 |
| 7520-00-162-6178 | 2 | 149 | 5310-00-933-8119 | 3 | 109 |
| 5110-00-175-3629 | 2 | 36 | 5310-00-933-8120 | 2 | 11 |
| 7920-00-178-8315 | 2 | 142 | 5310-00-933-8120 | 3 | 103 |
| 5340-00-187-6023 | 3 | 33 | 5310-00-933-8121 | 2 | 76 |
| 5305-00-207-2297 | 3 | 14C | 5310-00-933-8121 | 2 | 116 |
| 5975-00-224-5260 | 2 | 147 | 5310-00-433-8121 | 3 | 140 |
| 5310-00-225-5328 | 2 | 69 | 5310-00-934-9765 | 2 | 12 |
| 5310-00-225-5328 | 3 | 110 | 5310-00-942-5109 | 3 | 90 |
| 5120-00-227-7377 | 2 | 33 | 5915-00-946-5369 | 5 | 4 |
| 5120-00-233-6985 | 2 | 35 | 5305-00-954-8152 | 3 | 91 |
| 5120-00-236-2140 | 2 | 32 | 5305-00-954-8998 | 3 | 80 |
| 5340-00-238-9411 | 2 | 95 | 5310-00-968-5208 | 2 | 91 |
| 5120-00-239-8250 | 2 | 30 | 3439-00-973-2249 | 2 | 45 |
| 5110-00-239-8253 | 2 | 51 | 5310-00-974-6623 | 2 | 122 |
| 5120-00-240-8716 | 2 | 141 | 5310-00-914-6623 | 3 | 22 |
| 5120-00-247-0864 | 2 | 47 | 5310-00-374-6623 | 3 | 22 |
| 5305-00-249-2665 | 2 | 96 | 5310-00-982-6813 | 2 | 102 |
| 5310-00-250-9477 | 2 | 114 | 5940-00-983-6122 | 3 | 97 |
| 3439-00-260-7719 | 2 | 41 | 5310-00-983-8483 | 2 | 2 |
| 3439-00-267-7151 | 2 | 19 | 5310-00-983-8483 | 3 | 60 |
| 3439-00-269-8404 | 2 | 42 | 5310-00-983-8483 | 3 | 670 |
| 4210-00-270-4512 | 2 | 146 | 5310-00-983-8483 | 5 | 2 |
| 5120-00-278-1270 | 2 | 34 | 5305-00-934-4988 | 3 | 64 |
| 5140-00-289-8910 | 2 | 27 | 5309-00-934-4988 | 3 | 67B |
| 5120-00-293-3481 | 2 | 31 | 5305-00-964-4992 | 5 | 11 |
| 5120-00-293-3486 | 2 | 29 | 5305-02-964-6193 | 3 | 61 |
| 6250-00-408-2639 | 3 | 48 | 5305-00-984-6193 | 4 | 6 |
| 5305-00-432-4169 | 2 | 133A | 5310-00-964-7042 | 2 | 87 |
| 5305-00-432-7954 | 2 | 105 | 5305-00-988-1724 | 3 | 24 |
| 6250-00-449-1859 | 3 | 55 | 5305-00-989-6265 | 4 | 6 |
| 5120-00-451-8250 | 2 | 140 | 5305-00-939-7434 | 3 | 57 |
| 6210-00-451-8350 | 3 | 71 | 5305-00-993-2459 | 2 | 67 |
| 5320-00-490-5523 | 5 | 6 | 6250-00-995-9074 | 3 | 72 |
| 4940-00-492-4728 | 2 | 38 | 5310-00-997-1888 | 2 | 70 |
| 4940-00-492-4739 | 2 | 39 | 5830-01-038-3126 | 2 | 134 |
| 4940-00-492-4739 | 2 | 51A | 5310-01-325-6444 | 2 | 84 |
| 6150-00-495-1214 | 2 | 59 | 5130-01-041-2278 | 2 | 21 |
| 5305-00-497-7409 | 3 | 35 | 5925-01-042-0109 | 3 | 18 |
| 5305-00-497-7410 | 2 | 17 | 5310-01-043-0041 | 2 | 121 |
| 5305-00-497-7410 | 2 | 61 | 4940-01-054-0041 | 2 | 151 |
| 6625-00-538-9710 | 4 | 7 | 5935-01-058-9269 | 3 | 28 |
| 5805-00-543-0012 | 2 | 63 | 6625-011-060-6804 | 2 | 135 |
| 5930-00-510-5477 | 4 | 4 | 3426-01-061-3616 | 2 | 20 |
| 5975-00-577-8518 | 3 | 27B | 6240-01-072-2278 | 6 | 2 |
| 5310-00-582-5677 | 2 | 77 | 5915-01-073-6128 | 3 | 49 |
| 5310-00-582-5677 | 2 | 115 | 5935-01-092-1037 | 7 | 1 |
| 5310-00-582-5677 | 3 | 14E | 5935-01-092-1037 | 8 | 1 |
| 5310-00-625-5756 | 2 | 123 | 5935-01-092-1038 | 7 | 10 |
| 5310-00-625-5756 | 3 | 93 | 7110-01-094-5655 | 2 | 13 |
| 5306-00-637-9674 | 3 | 95 | 5925-01-100-3631 | 3 | 17 |

| STOCK NUMBER | | FIG. | NATIONAL STOCK NUMBER INDEX | | FIG. | ITEM | |
|------------------|--------------|------------|-----------------------------|------------------|------------------|------------|----------|
| FSCM | PART NUMBER | FIGURE NO. | ITEM NO. | FSCM | PART NUMBER | FIGURE NO. | ITEM NO. |
| 6135-01-103-6514 | | 2 | 145 | 5305-01-116-3523 | | 2 | 99 |
| 6210-01-106-6116 | | 3 | 50 | 5925-01-122-4739 | | 3 | 16 |
| 6210-01-106-6116 | | 3 | 52 | 4540-01-124-3417 | | 2 | 81C |
| 5999-01-108-8602 | | 7 | 9 | 5915-01-124-7037 | | 3 | 20 |
| 5120-01-110-9193 | | 2 | 148 | 5930-01-124-8390 | | 2 | 81B |
| 5935-01-111-5568 | | 3 | 5 | 6625-01-127-3593 | | 2 | 81 |
| 5935-01-111-5568 | | 5 | 22 | 6135-01-134-6633 | | 6 | 6 |
| 5925-01-111-7562 | | 3 | 19 | 5995-01-134-6634 | | 5 | 13 |
| 6625-01-116-2292 | | 2 | 136 | 6625-01-135-3274 | | 4 | 10 |
| 80058 | AN/USM-451 | 2 | 135 | 56996 | B4008679-002 | 2 | 67A |
| 91929 | 8Z2RQ181-T | 3 | 12 | 56996 | B4008701 | 3 | 29A |
| 56996 | B4008038 | 3 | 13 | 56996 | B4008702 | 3 | 107 |
| 56996 | B4008049 | 2 | 8 | 56996 | B4008705 | 3 | 111 |
| 56996 | B4008082 | 3 | 27A | 56996 | B4008707 | 3 | 112 |
| 56996 | B4008083 | 3 | 67 | 56996 | B4008711 | 2 | 72 |
| 56996 | B4008117 | 3 | 148 | 56996 | B4008712 | 2 | 74 |
| 56996 | B4008119 | 3 | 23 | 56996 | B4008715 | 2 | 73 |
| 56996 | B4008120 | 3 | 26 | 56996 | B4008726 | 2 | 128 |
| 56996 | B4008159 | 3 | 75 | 56996 | B4008734 | 3 | 77 |
| 56996 | B4008160 | 3 | 45A | 56996 | B4008735 | 3 | 78 |
| 56996 | B4008161 | 3 | 73 | 56996 | B4008736 | 3 | 81 |
| 56996 | B4008162 | 3 | 68 | 56996 | B4008137 | 3 | 82 |
| 56996 | B4008172 | 3 | 39 | 56996 | B4008738 | 3 | 89 |
| 56996 | B4008174 | 3 | 67A | 56996 | B4008740 | 2 | 26 |
| 56996 | B4008174-001 | 3 | 62 | 56996 | B4008742 | 2 | 89 |
| 56996 | B4008178 | 3 | 36 | 56996 | B4008742-1 | 2 | 110 |
| 56996 | B4008239 | 3 | 76 | 56996 | B4008742-2 | 2 | 111 |
| 56996 | B4008240 | 3 | 54 | 56996 | B4008142-3 | 2 | 112 |
| 56996 | B4008241 | 3 | 74 | 56996 | B4008744 | 2 | 90 |
| 56996 | B4008270 | 5 | 20 | 56996 | B4008745 | 2 | 113 |
| 56996 | B4008273 | 5 | 13 | 56996 | B4008746 | 2 | 120 |
| 56996 | B4008280-001 | 3 | 98 | 56996 | B4008741 | 2 | 130 |
| 56996 | B4008321-003 | 3 | 100 | 56996 | B4008743 | 2 | 129 |
| 56996 | B4008347 | 3 | 46 | 56996 | B4008749 | 2 | 126 |
| 56996 | B4008349 | 3 | 69 | 56996 | B4008750 | 2 | 127 |
| 56996 | B4008355 | 3 | 25 | 56996 | B4008751 | 2 | 117 |
| 56996 | B4008359 | 3 | 32 | 56996 | B4008752 | 2 | 118 |
| 56996 | B4008378 | 3 | 43 | 56996 | B4008753 | 2 | 125 |
| 56996 | B4008390 | 3 | 15 | 56996 | B4008757 | 2 | 133 |
| 56996 | B4008405 | 3 | 7 | 56996 | B4008758 | 3 | 85 |
| 56996 | B4008442-001 | 2 | 97 | 56996 | B4008760 | 2 | 79 |
| 56996 | B4008442-005 | 2 | 150 | 56996 | B4008761 | 2 | 80 |
| 56996 | B4008443 | 2 | 104 | 56996 | B4008764 | 2 | 124 |
| 56996 | B4008466 | 2 | 4 | 56996 | B4008768 | 2 | 98 |
| 56996 | B4008471 | 3 | 1 | 56996 | B4008769 | 2 | 109 |
| 56996 | B4008474 | 3 | 38 | 56996 | B4008770 | 2 | 101 |
| 56996 | B4008477 | 5 | 19 | 56996 | B4008773 | 2 | 107 |
| 56996 | B4008478 | 5 | 21 | 56996 | B4008774 | 2 | 106 |
| 56996 | B4008480 | 3 | 106 | 56996 | B4008715 | 2 | 133B |
| 56996 | B4008481 | 3 | 104 | 56996 | B4008776 | 3 | 86 |
| 56996 | B4008506 | 3 | 96 | 80538 | CC-2-BH-SRS-CP-M | 2 | 9 |
| 56996 | B4008513 | 2 | 152 | 17794 | CT-15 | 2 | 43 |
| 56996 | B4008514 | 5 | 5 | 81349 | CO-0440F-0665 | 3 | 41 |
| 56996 | B4008556 | 2 | 77A | 81361 | D5-51-269 | 1 | 2 |
| 56996 | B4008558 | 2 | 81 | 81361 | D5-77-2001 | 1 | 3 |
| 56996 | B4008569 | 2 | 55 | 02777 | F-3569 | 3 | 20 |
| 56996 | B4008570 | 2 | 56 | 08806 | F15T8CW | 2 | 132 |
| 56996 | B4008571 | 2 | 57 | 80244 | GGG-P-468TYP1CL1 | 2 | 28 |
| 56996 | B4008572 | 2 | 58 | 81348 | GGG-P-46UTYP1CL1 | 2 | 51 |
| 56996 | B4008575 | 3 | 6 | 81349 | GGG-P-471TYP2CL2 | 2 | 29 |
| 56996 | B4008576 | 3 | 8 | 81348 | GGG-P-471TY11CL2 | 2 | 30 |
| 56996 | B4008577 | 3 | 4 | 81348 | GGG-P-471TYL2CL1 | 2 | 31 |
| 56996 | B4008578 | 3 | 29 | 81348 | GGG-S-121TYP1CL1 | 2 | 32 |
| 56996 | B4008579-001 | 3 | 2 | 81348 | GGG-S-121TYP1CL8 | 2 | 33 |
| 56996 | B4008579-002 | 3 | 11 | 81349 | GGG-S-121TYP6CL1 | 2 | 34 |
| 56996 | B4008580 | 3 | 30 | 81349 | GGG-T-870TYP1CL2 | 2 | 47 |
| 56996 | B4008581-001 | 3 | 10 | 81349 | GGG-T-870TYP3 | 2 | 35 |
| 56996 | B4008581-002 | 3 | 9 | 81348 | GGGT558-2 | 2 | 27 |
| 56996 | B4008582 | 3 | 31 | 81348 | GGG531 | 2 | 40 |
| 56996 | B4008585-004 | 2 | 81A | 17794 | HP150 | 2 | 38 |
| 56996 | B4008642 | 2 | 37 | 56289 | JW17-1122 | 5 | 4 |
| 56996 | B4008670 | 2 | 25 | 81922 | KAL36100 | 3 | 16 |
| 56996 | B4008677-001 | 3 | 32A | 80058 | LS-147F/F1 | 2 | 134 |
| 56996 | B4008677-002 | 3 | 87 | 17794 | LS-15 | 2 | 41 |
| 56996 | B4008677-002 | 3 | 87 | 81349 | MIL-C-1194TYPE A | 2 | 1 |

| FSCM | PART NUMBER | FIGURE NO. | ITEM NO. | FSCM | PART NUMBER | FIGURE NO. | ITEM NO. |
|-------|---------------|------------|----------|-------|------------------|------------|----------|
| 99999 | MISSION TOOLS | 2 | 43A | 96906 | MS35649-2255 | 3 | 79 |
| 81349 | MR36W200ACAAR | 4 | 7 | 96906 | MS35649-2316 | 2 | 121 |
| 81349 | MR36W300ACWR | 4 | 9 | 96906 | MS35650-304 | 2 | 12 |
| 96906 | MS15795-806 | 2 | 103 | 96906 | MS35842-15 | 2 | 68A |
| 96906 | MS15795-810 | 2 | 77 | 96906 | MS51861-14 | 2 | 133A |
| 96906 | MS15795-810 | 2 | 115 | 96906 | MS51861-27C | 2 | 76A |
| 96906 | MS15795-810 | 3 | 14E | 96906 | MS51861-39 | 2 | 105 |
| 96906 | MS15795-812 | 2 | 123 | 96906 | MS51861-52C | 3 | 35 |
| 96906 | MS15795-812 | 3 | 93 | 96906 | MS51861-53C | 2 | 17 |
| 96906 | MS15795-841 | 2 | 69 | 96906 | MS51861-53C | 2 | 68 |
| 96906 | MS15795-841 | 3 | 110 | 96906 | MS51922-1 | 5 | 17 |
| 96906 | MS15795-842 | 2 | 10 | 96906 | MS51941-10 | 2 | 84 |
| 96906 | MS15795-842 | 2 | 62 | 96906 | MS51957-49 | 2 | 68 |
| 96906 | MS15795-842 | 3 | 102 | 96906 | MS51957-49 | 3 | 108 |
| 96906 | MS16562-48 | 3 | 83 | 96906 | MS51958-65 | 3 | 101 |
| 96906 | MS21042-06 | 5 | 1 | 96906 | MS51958-71 | 2 | 6 |
| 96906 | MS21044-C06 | 2 | 102 | 96906 | MS51971-2 | 3 | 94 |
| 96906 | MS21044N08 | 4 | 2 | 96906 | MS90556C44412P | 7 | 10 |
| 96906 | MS21122-6 | 3 | 33 | 96906 | MS90557C44412S | 7 | 1 |
| 96906 | MS23747-15 | 7 | 3 | 96906 | M590557C44412S | 8 | 1 |
| 96906 | MS23747-15 | 8 | 3 | 96906 | MS90558C44412P | 5 | 15 |
| 96906 | MS25036-116 | 5 | 14 | 96906 | MS90559-14 | 7 | 9 |
| 96906 | MS25036-156 | 5 | 18 | 96906 | MS90559-5 | 7 | 8 |
| 96906 | MS25043-28D | 5 | 9 | 96906 | MS90559-6 | 7 | 7 |
| 96906 | MS25082-1 | 3 | 53A | 96906 | MS90560-3 | 7 | 5 |
| 96906 | MS25244-5 | 5 | 3 | 96906 | MS90560-3 | 8 | 5 |
| 96906 | MS27183-11 | 5 | 16 | 96906 | MS90560-8 | 7 | 6 |
| 96906 | MS27183-12 | 3 | 21 | 96906 | MS90560-8 | 8 | 6 |
| 96906 | MS27183-42 | 4 | 5 | 96906 | MS90561-15 | 7 | 4 |
| 96906 | MS27183-5 | 2 | 2 | 96906 | MS90561-15 | 8 | 4 |
| 96906 | MS27183-5 | 3 | 63 | 96906 | MS90563-7C | 7 | 2 |
| 96906 | MS27183-5 | 3 | 61D | 96906 | MS90563-7C | 8 | 2 |
| 96906 | MS27183-5 | 5 | 2 | 96906 | MS90564-7C | 7 | 11 |
| 96906 | MS27183-6 | 2 | 92 | 96906 | MS90724-7 | 3 | 57A |
| 96906 | MS27183-7 | 3 | 60 | 80058 | M10 | 1 | 1 |
| 96906 | MS27183-7 | 4 | 3 | 81349 | M24066/2-304 | 2 | 5 |
| 96906 | MS27183-8 | 3 | 34 | 81349 | M24243/7-A606H | 5 | 6 |
| 96906 | MS3056-12A | 3 | 45 | 80205 | NAS1070-416 | 2 | 91 |
| 96906 | MS3108A22-22S | 3 | 44 | 17794 | PE-200A | 2 | 20 |
| 96906 | MS35206-231 | 5 | 10 | 17794 | PFP-30 | 2 | 21 |
| 96906 | MS35206-232 | 5 | 11 | 17794 | PP200C | 2 | 23 |
| 96906 | MS35206-245 | 3 | 61 | 08806 | PR2 | 2 | 144 |
| 96906 | MS35206245 | 4 | 8 | 80063 | SC-A-417792-4 | 2 | 95 |
| 96906 | MS35206-25 | 3 | 64 | 80063 | SC-B-539492 | 2 | 59 |
| 96906 | MS35206-25 | 3 | 67B | 80063 | SC-8-539568 | 3 | 48 |
| 96906 | MS35206-280 | 3 | 24 | 80063 | SC-C-539451 | 2 | 67B |
| 96906 | MS35207-262 | 4 | 6 | 80063 | SC-C-539466 | 3 | 59 |
| 96906 | MS35207-263 | 3 | 57 | 80063 | SC-C-539466-1 | 3 | 71 |
| 96906 | MS35207-283 | 2 | 67 | 80063 | SC-C-539469 | 2 | 142 |
| 96906 | MS35214-61 | 3 | 84 | 80063 | SC-C-539495 | 2 | 14 |
| 96906 | MS35215-59 | 3 | 91 | 80063 | SC-C-539498 | 3 | 66 |
| 96906 | MS35307-271 | 2 | 7 | 80063 | SC-C-539502 | 2 | 140 |
| 96906 | MS35307-307 | 2 | 3 | 80063 | SC-C-539503 | 2 | 149 |
| 96906 | MS35307-310 | 2 | 85 | 80063 | SC-C-539504 | 2 | 15 |
| 96906 | MS35307-312 | 3 | 14C | 80063 | SC-C-539504 | 3 | 53 |
| 96906 | MS35307-332 | 3 | 92 | 80063 | SC-C-539529-1 | 2 | 18 |
| 96906 | MS35307-336 | 3 | 95 | 80063 | SC-C-539558 | 3 | 47 |
| 96906 | MS35307-361 | 2 | 86 | 80063 | SC-C-539759- | 3 | 105 |
| 96906 | MS35333-108 | 3 | 80 | 80063 | SC-C-539894 | 2 | 141 |
| 96906 | MS35335-89 | 3 | 90 | 80063 | SC-C-681035 | 3 | 55 |
| 96906 | MS35338-137 | 2 | 70 | 80063 | SC-C-681078-2 | 3 | 99 |
| 96906 | MS35338-137 | 3 | 109 | 80063 | SC-C-681078-3 | 2 | 83 |
| 96906 | MS35338-138 | 2 | 11 | 80063 | SC-C-681078-3 | 3 | 40 |
| 96906 | MS35338-138 | 3 | 103 | 80063 | SC-C-681092 | 5 | 12 |
| 96906 | MS35338-139 | 2 | 76 | 80063 | SC-C-681183 | 3 | 50 |
| 96906 | MS35338-139 | 2 | 116 | 80063 | SC-C-681183 | 3 | 52 |
| 96906 | MS35338-139 | 3 | 14D | 80063 | SC-C-681185 | 3 | 51 |
| 96906 | MS35338-140 | 2 | 122 | 80063 | SC-C-681186 | 3 | 49 |
| 96906 | MS35338-140 | 3 | 22 | 80063 | SC-C-681207 | 3 | 72 |
| 96906 | MS35338-140 | 3 | 22 | 80063 | SC-C-681320-9 | 3 | 42 |
| 96906 | MS35338-141 | 2 | 87 | 80063 | SC-C-681422 | 5 | 7 |
| 96906 | MS35338-41 | 3 | 65 | 80063 | SC-D-14158 | 2 | 147 |
| 96906 | MS35338-41 | 3 | 67C | 80063 | SC-D-539482 | 2 | 146 |
| 96906 | MS35338-43 | 3 | 56 | 80063 | SC-D-539495 | 3 | 58 |
| 96906 | MS35425-71 | 2 | 108 | 80063 | SC-D-539551 | 2 | 13 |
| 96906 | MS35493-35 | 2 | 93 | 80063 | SC-D-681425 | 2 | 139 |
| 96906 | MS35494-32 | 2 | 96 | 80063 | SC-D-883963GR9-3 | 2 | 52 |
| 96906 | MS35494-58 | 2 | 99 | 80063 | SC-D-883964GR9-2 | 2 | 53 |
| 96906 | MS35649-2252 | 2 | 75 | 90303 | SIZE D | 2 | 145 |
| 96906 | MS35649-2254 | 2 | 114 | 80058 | TA-312/PT | 2 | 63 |

| FSCM | PART NUMBER | FIGURE NO. | ITEM NO. | FSCM | PART NUMBER | FIGURE NO. | ITEM NO. |
|-------|------------------|------------|----------|-------|-----------------|------------|----------|
| 80058 | TK-101/G | 2 | 60 | 08806 | 25T8DC | 2 | 16 |
| 80058 | TL-905/U | 2 | 44 | 08806 | 25T8DC | 3 | 70 |
| 17794 | TP-15 | 2 | 42 | 59730 | 2542 | 2 | 82 |
| 17794 | TS-15 | 2 | 49 | 76545 | 34C | 2 | 46 |
| 81348 | W-L-312TYPE3 | 2 | 131 | 81349 | 39TB-2 | 3 | 97 |
| 81348 | W-L-661TYPE1CL2 | 2 | 137 | 39428 | 3922K51 | 2 | 78 |
| 81348 | WC375/01-002 | 3 | 18 | 02777 | 4.900.0069-4 | 3 | 27 |
| 81348 | WC375/01-003 | 3 | 19 | 00236 | 400 | 2 | 100 |
| 81348 | WC375/03-004 | 3 | 17 | 00236 | 401 | 2 | 94 |
| 81348 | WC596/12-2 | 3 | 5 | 71612 | 46 | 2 | 45 |
| 81348 | WC596/12-2 | 5 | 22 | 08806 | 60W | 2 | 138 |
| 81348 | WC596/19-1 | 3 | 37 | 17794 | 6019-0011 | 2 | 19 |
| 81348 | WC596/40-2 | 3 | 28 | 80538 | 610518 | 6 | 6 |
| 81348 | WS896/12-3A | 3 | 3 | 80538 | 610689-1 | 6 | 3 |
| 61562 | XX-15 | 2 | 54 | 80538 | 610689-3 | 6 | 1 |
| 78525 | YANKEE135AND351D | 2 | 50A | 80538 | 610692-1 | 6 | 5 |
| 95356 | 0122 | 2 | 60A | 80538 | 610814 | 6 | d |
| 74545 | 10-37093-323 | 5 | 8 | 80536 | 610815 | 6 | 9 |
| 19207 | 11684608 | 2 | 119 | 17794 | 6993-0037 | 2 | 151 |
| 17794 | 1309-0015 | 2 | 23B | 17794 | 1005-0011 | 2 | 24 |
| 97403 | 13217E6150 | 2 | 64 | 17794 | 7009-3005 | 2 | 50 |
| 17794 | 1336-0014 | 2 | 23A | 17794 | 7014-0001 | 2 | 39 |
| 39428 | 1787K12 | 2 | 71 | 17794 | 7014-0001 | 2 | 51A |
| 59730 | 1942 | 3 | 27B | 17794 | 7016-0003 | 2 | 36 |
| 59730 | 1947 | 3 | 27D | 33525 | 719736 | 6 | 7 |
| 52797 | 24-5D5 | 4 | 10 | 33525 | 726016 | 6 | 4 |
| 52942 | 2064 | 2 | 136 | 08806 | 7613 | 6 | 2 |
| 32532 | 2106-7 | 2 | 143 | 76732 | 8D-8 | 2 | 148 |
| 59730 | 227 | 3 | 14 | 53498 | 802-943-U-RLLS | 4 | 1 |
| 48619 | 239097 | 2 | 81B | 76381 | 8210 | 2 | 65 |
| 82121 | 2405H | 4 | 11 | 94025 | 902A014-4-03/42 | 8 | 7 |
| 82121 | 2410H | 4 | 4 | 02470 | 95-32 | 3 | 27C |
| 48619 | 247278 | 2 | 81C | | | | |

LATEST NATIONAL STOCK NUMBER ASSIGNMENTS

| STOCK NUMBER | FIGURE NO. | ITEM NO. |
|------------------|------------|----------|
| 5310-00-939-2653 | 3 | 88 |

LATEST PART NUMBER ASSIGNMENTS

| FSCM | PART NUMBER | FIGURE NO. | ITEM NO. |
|-------|-------------|------------|----------|
| 56996 | B4008767 | 2 | 88 |
| 96906 | MS51969-1 | 3 | 88 |
| 17794 | 7010-0023 | 2 | 48 |

By Order of the Secretary of the Army:

Official:

JOHN A. WICKHAM, JR.
General, United States Army
Chief of Staff

ROBERT M. JOYCE
Major General, United States Army
The Adjutant General

Distribution:

To be distributed in accordance with Special List.

*U.S. GOVERNMENT PRINTING OFFICE: 1992 - 311-831161047

RECOMMENDED CHANGES TO EQUIPMENT TECHNICAL PUBLICATIONS



THEN... JOT DOWN THE DOPE ABOUT IT ON THIS FORM. CAREFULLY TEAR IT OUT, FOLD IT AND DROP IT IN THE MAIL!

SOMETHING WRONG WITH THIS PUBLICATION?

FROM: (PRINT YOUR UNIT'S COMPLETE ADDRESS)

DATE SENT

PUBLICATION NUMBER

PUBLICATION DATE

PUBLICATION TITLE

BE EXACT... PIN-POINT WHERE IT IS

IN THIS SPACE TELL WHAT IS WRONG AND WHAT SHOULD BE DONE ABOUT IT:

PAGE NO

PARA-GRAPH

FIGURE NO

TABLE NO

TEAR ALONG PERFORATED LINE

PRINTED NAME, GRADE OR TITLE, AND TELEPHONE NUMBER

SIGN HERE:

DA FORM 2028-2
1 JUL 79

PREVIOUS EDITIONS ARE OBSOLETE.

P.S.—IF YOUR OUTFIT WANTS TO KNOW ABOUT YOUR RECOMMENDATION MAKE A CARBON COPY OF THIS AND GIVE IT TO YOUR HEADQUARTERS.

PIN: 053205-000