

VERVALLEN

# TM 5-2330-211-25P

DEPARTMENT OF THE ARMY TECHNICAL MANUAL

N5-110

ORGANIZATIONAL, FIELD,  
AND DEPOT MAINTENANCE REPAIR PARTS  
AND SPECIAL TOOL LISTS

✓ TRAILER, LOW BED: 60 TON;  
4 DUAL FRONT WHEELS  
8 DUAL REAR WHEELS  
MIL SPEC T-2405  
(ROGERS MODEL DW-60-LS-6)  
FSN 2330-368-2836 ✓



HEADQUARTERS, DEPARTMENT OF THE ARMY  
JANUARY 1962

29 MAR 1962  
HQGS, STAF AO

TECHNICAL MANUAL

No. 5-2330-211-25P

HEADQUARTERS,  
DEPARTMENT OF THE ARMY  
WASHINGTON 25, D.C., 29 January 1962

**ORGANIZATIONAL, FIELD, AND DEPOT MAINTENANCE REPAIR PARTS  
AND SPECIAL TOOL LISTS**

**TRAILER, LOW BED: 60 TON;**

**4 DUAL FRONT WHEELS**

**8 DUAL REAR WHEELS**

**MIL SPEC T-2405**

**(ROGERS MODEL DW-60-LS-6)**

**FSN 2330-368-2836**

*(Ref: TM 5-9205)*

	Paragraph	Page
<b>SECTION I. INTRODUCTION</b>		
General	1	iii
Explanation of repair parts and tool lists	2	iii
Federal stock numbers and manufacturers' part numbers	3	viii
Abbreviations	4	viii
Federal supply code for manufacturers	5	viii
Comments and suggestions	6	ix
 <b>II. REPAIR PARTS LISTS</b>		
<b>GROUP 06. ELECTRICAL SYSTEM (ENGINE AND VEHICULAR):</b>		
0608 -Miscellaneous items		1
0609.1-Head, tail, and marker lights		1
0617 -Trailer couplings		2
 <b>10. FRONT AXLE:</b>		
1001 -Housing, beam, housing covers, plugs		2
1001.1-Axle and tongue, housing, drawbar, lunette		5
 <b>11. REAR AXLE:</b>		
1100 -Rear axle assembly		5
1101 -Housing, beam, housing covers, plugs		7
 <b>12. BRAKES (OTHER THAN SPECIAL PURPOSE):</b>		
1201 -Hand brakes		7
1202 -Service brakes		10
1206 -Mechanical brake controls		13
1208.1-Air brake system		14
1208.3-Brake chambers, diaphragms, valves, filters		15
1209.3-Air reservoir, fittings		23
 <b>13. WHEELS AND TRACKS:</b>		
1311 -Wheel assembly		24
1313 -Tires, tubes		26
 <b>15. FRAME:</b>		
1501 -Frame assembly		29
1501.1-Platforms, superstructures, ramps, catwalks		29
1506 -Fifth wheel		29

\*This manual supersedes DA Supply Manual ENG 7 & 8-9205, 19 April 1955, including C 1, 23 June 1960.

GROUP 16. SPRINGS AND SHOCK ABSORBERS:	
1601.1—Front springs.....	29
1602 —Auxiliary springs.....	30
22. MISCELLANEOUS BODY, CHASSIS OR HULL, AND ACCESSORY ITEMS:	
2202.1—Mirrors, reflectors, personnel heaters, defrosters, wipers, air horn.....	30
2210 —Data plates and instruction holders.....	30
95. GENERAL USE STANDARDIZED PARTS:	
9500.1—Standard hardware and parts.....	30
9901 —Parts peculiar with more than one application.....	34
FEDERAL STOCK NUMBER AND PART NUMBER INDEX.....	35

## SECTION I

### INTRODUCTION

#### 1. General

a. This manual lists the repair parts and special tools for organizational, field, and depot maintenance. It indicates the allowance factors and repair parts required to be stocked by organizational maintenance (2d echelon), as their prescribed load. It indicates the guide quantity factors to be used for initial repair parts stockage by field maintenance (3d and 4th echelons), and recommends quantities of repair parts for depot maintenance (5th echelon). Information and data contained herein serve as requisitioning reference material, and as a guide to determine stockage quantities of repair parts.

b. Price information for stock-type repair parts may be obtained from applicable DA type 2-series supply manuals.

c. Repair parts lists are arranged as follows:

- (1) Individual parts and major assemblies are listed alphabetically by item name within the functional groups.
- (2) Assembly components and subassemblies are indented and listed alphabetically by item name under major assemblies.
- (3) Standard hardware, bulk material, and parts peculiar with more than one application are listed in functional groups 9500.1, 9500.2, and 9901 respectively.

d. Allowances are based on 1,500 hours operation per year.

#### 2. Explanation of Repair Parts and Tool Lists

a. *Source Codes.* This column is as follows:

- (1) *Technical service.* This column lists the basic number of the technical service assigned supply responsibility for the part. Blank spaces denote Corps of Engineers supply responsibility. General Engineer supply parts are identified by the letters GE in parentheses, following the nomenclature in the description column.

Other technical service basic numbers are—

- 9—Ordnance Corps
- 10—Quartermaster Corps
- 55—Transportation Corps

(2) *Source.* The selection status and source of supply for each part is indicated by one of the following code symbols:

(a) P—applied to repair parts which are high mortality parts, procured by technical services, stocked in and supplied from the technical service depot system, and authorized for use at indicated maintenance echelons.

(b) P1—applied to repair parts which are low mortality parts, procured by technical services, stocked only in and supplied from technical service key depots, and authorized for installation at indicated maintenance echelons.

(c) M—applied to repair parts which are not procured or stocked but are to be manufactured by using units at indicated maintenance echelons.

(d) A—applied to assemblies which are not procured or stocked as such but made up of two or more units, each of which carry individual stock numbers and descriptions and are procured and stocked and can be assembled by units at indicated maintenance echelons.

(e) X—applied to parts and assemblies which are not procured or stocked, the mortality of which is normally below that of the applicable end item, and the failure of which should result in retirement of the end item from service.

(f) X1—applied to repair parts which are not procured or stocked, the requirement for which will be supplied by use of next higher component or assembly.

(g) X2—applied to repair parts which are not stocked. The indicated maintenance echelon requiring such repair parts will attempt to obtain from salvage; if not obtainable from salvage, such repair parts will be requisitioned with supporting justification through normal supply channels.

(h) C—applied to repair parts authorized for local procurement. If not obtainable

TABLE II

AUTHORIZED STOCKAGE

7	10	15	30	1	1	1	1	2	2	2	2	2	3	3	3	4	4	4	5	5	5	6	6	7	7	7	8	8	8	8	9	9	10	10	11	12	14	15	17	18	20	21	23	24	26	27	29	30
	7	14	28	1	1	1	1	1	2	2	2	2	3	3	3	3	4	4	4	5	5	5	6	6	7	7	7	7	8	8	8	9	10	10	12	13	15	16	17	19	20	22	23	25	26	28	29	
	9	13	27	1	1	1	1	2	2	2	2	3	3	3	3	4	4	4	5	5	5	6	6	7	7	7	7	8	8	8	9	10	11	12	14	15	16	18	19	20	22	23	24	26	27			
	6	12	25	1	1	1	1	2	2	2	2	3	3	3	4	4	4	5	5	5	6	6	7	7	7	7	7	7	7	7	8	9	10	11	13	14	15	16	18	19	20	21	23	24	25			
	5	11	23	1	1	1	1	2	2	2	2	3	3	3	4	4	4	5	5	5	6	6	6	6	7	7	7	7	7	7	8	9	10	12	13	14	15	16	17	18	20	21	22	23				
	4	19	17	1	1	1	1	2	2	2	2	3	3	3	4	4	4	5	5	5	6	6	6	7	7	7	7	7	7	8	9	10	11	12	13	14	15	16	17	18	19	20	21					
	3	16	15	1	1	1	1	2	2	2	2	3	3	3	4	4	4	5	5	5	6	6	6	7	7	7	7	7	8	9	10	11	12	13	14	15	16	17	18	19	20	21						
	2	14	13	1	1	1	1	2	2	2	2	3	3	3	4	4	4	5	5	5	6	6	6	7	7	7	7	8	9	10	11	12	13	14	15	16	17	18	19	20	21							
	1	12	11	1	1	1	1	2	2	2	2	3	3	3	4	4	4	5	5	5	6	6	6	7	7	7	7	8	9	10	11	12	13	14	15	16	17	18	19	20	21							
	4	8	7	1	1	1	1	2	2	2	2	3	3	3	4	4	4	5	5	5	6	6	7	7	7	7	8	9	10	11	12	13	14	15	16	17	18	19	20	21								
	3	6	5	1	1	1	1	2	2	2	2	3	3	3	4	4	4	5	5	5	6	6	7	7	7	7	8	9	10	11	12	13	14	15	16	17	18	19	20	21								
	2	4	3	1	1	1	1	2	2	2	2	3	3	3	4	4	4	5	5	5	6	6	7	7	7	7	8	9	10	11	12	13	14	15	16	17	18	19	20	21								
	1	2	1	1	1	1	1	2	2	2	2	3	3	3	4	4	4	5	5	5	6	6	7	7	7	7	8	9	10	11	12	13	14	15	16	17	18	19	20	21								
4	3	2	1	1	2	3	4	5	6	7	8	9	10	11	12	13	14	15	16	17	18	19	20	21	22	23	24	25	26	27	28	29	30	35	40	45	50	55	60	65	70	75	80	85	90	95	100	

ALLOWANCE FACTOR

NUMBER OF PRESCRIBED LOADS

EXAMPLE: IF USING UNIT HAS TWO (2) PRESCRIBED LOADS, QUANTITY OR NUMBER OF EQUIPMENTS IS FOUR (4), AND THE ALLOWANCE FACTOR IS TEN (10), THEN THE AUTHORIZED STOCKAGE IS ONE (1).

- (3) If the quantity of repair parts authorized for stockage or the number of equipment per prescribed load is larger than that shown in table II the following mathematical formula will be used:

*Quantity of equipment to be supported multiplied by the listed allocation factor, divided by 100.*

Fractions derived from the use of the above formula will be rounded to whole numbers as follows:

If the result is 1 or more and includes a fraction that is .5 or more, the quantity is rounded to the next higher number.

*Example:* If the number of equipment supported is 30 and the allowance factor for 100 equipments is 5, the following formula would be used:

$$30 \times 5 \div 100 = 1.5$$

The resulting fraction is 1.5, therefore, the stockage is 2.

If the result is 1 or more and includes a fraction of less than .5, the quantity is rounded to the next lower number. When the computed result is less than 1, organizational maintenance is authorized a minimum stockage of 1. When the computed result is less than .5, no quantity is authorized for field and depot maintenance.

*Example:* If the number of equipment supported is 30 and the allowance factor for 100 equipments is 28, the following formula would be used:

$$30 \times 28 \div 100 = 8.4$$

The resulting fraction is less than .5, therefore, the stockage is 8.

- (4) Repair parts required to perform organizational maintenance, which are not authorized for stockage, are identified by an asterisk and are to be requisitioned for immediate use only.
- (5) In the guide quantity columns for field maintenance, additional repair parts which may be required to perform maintenance, but not authorized for stockage, are listed without a guide quantity factor. These items are identified by an asterisk and are to be requisitioned for immediate use only.
- (6) Parts that may be required for depot maintenance, in addition to those allocated are identified by an asterisk. These parts are

to be requisitioned, when required, if not obtainable from reclamation, fabrication or local procurement.

h. *Organizational Maintenance 15-Day Level, 2d Echelon.* The quantity determined using the procedure described above is one prescribed load for a 15-day period. This formula will not be used when the authorized stockage is insufficient to repair one end item and/or assembly. A minimum stockage sufficient to repair one end item and/or assembly is authorized. These repair parts are identified by the following note in the description column (minimum stockage of \_\_\_\_\_ is authorized). The quantities contained in the prescribed load must be on hand or on order at all times. Major commanders will determine the number of prescribed loads that second echelon units will carry. WHEN MAJOR COMMANDERS AUTHORIZE MORE THAN ONE PRESCRIBED LOAD, USE THE FOLLOWING FORMULA, instead of the one shown above or when it is not covered in table II. Multiply the number of equipments by the number of prescribed loads authorized, times the allowance factor, then divide by 100.

*Example:*

No. of equipments	No. of prescribed loads	Allowance factor	No. of parts authorized for stockage
30	x 3	x 5	÷ 100 = 4.5 = 5

i. *Field Maintenance 15-Day Level, 3d and 4th Echelons.*

- (1) *Third echelon.* This column lists the initial guide quantity allowance factors of repair parts authorized for initial stockage by Engineer Field Maintenance Shops (non-TOE), Engineer Field Maintenance Companies, Direct Support (TOE 5-157), and similar TOE units to provide 3d echelon maintenance for Engineer equipment and to provide organizational maintenance repair parts for supported units for a 15-day period. Additional repair parts are allocated by an asterisk for immediate use only. Upon establishment of supply records, recorded demand experience will be used to compute stockage objectives on authorized repair parts. Review of stockage objectives will be performed in the time cycle prescribed by major commanders. Repair parts allocated for immediate use only may be stocked when demand experience indicates a stockage of at least one.

(2) *Fourth echelon.* This column lists initial guide quantity allocation factors of repair parts authorized for initial stockage by Engineer Field Maintenance Shops (non-TOE), Engineer Heavy Maintenance Companies (TOE 5-278), and similar TOE units to provide 4th echelon maintenance for Engineer equipment for a 15-day period. Additional repair parts are allocated by an asterisk for immediate use only. Upon establishment of supply records, recorded demand experience will be used to compute stockage objectives on authorized repair parts. Review of the stockage objectives will be performed in the time cycle prescribed by major commanders. Repair parts allocated for immediate use only may be stocked when demand experience indicates a stockage objective of at least one.

(3) *Units with TOE capability of performing partial or complete field maintenance for organic Engineer equipment.* Units organized under TOE's 5-115, 5-117, 5-129, 5-328, and similar TOE's with the TOE capability of performing partial or complete field maintenance for organic Engineer equipment will be authorized to stock 3d and/or 4th echelon repair parts only when specific agreements are made between the commander of the designated Engineer Parts Supply Activity, normally Direct Support Units (DSU) and using unit. Parts so furnished are in addition to the prescribed load and will be adjusted as demands indicate.

(4) *Units with TOE mission to provide maintenance for Engineer equipment of supported units.* Units organized under TOE's such as 5-214 and 5-500 with the assigned mission to provide field maintenance for Engineer equipment of supported units are authorized to stock 3d and 4th echelon repair parts. These repair parts will be issued from the appropriate parts supply activity (parts depot and/or DSU). Such stockage is in addition to the prescribed load and will be adjusted as demands indicate.

**j.** *Depot Maintenance, 5th Echelon.* This column lists the quantity of repair parts recommended for

Engineer Depot Maintenance Shops (non-TOE) to provide depot maintenance for 100 equipments. Additional repair parts are allocated by an asterisk, for immediate use only. Explanation of the asterisk allowance is contained in **g** above.

**k.** *Illustrations.*

- (1) *Figure number.* Indicates the number of the illustration in which the part is shown.
- (2) *Item number.* Indicates the reference number used to point out the part in the illustration.

### 3. Federal Stock Numbers and Manufacturers' Part Numbers

Listed alpha-numerically in the back of this manual are the requisitioning numbers shown in the Federal stock number and/or description column. The alphabetical O is listed as a numerical 0 (zero).

*Example of index sequence:*

A	BX5-27	38.50
AAA	T295	3830-141-4957
A1/2X3	O124	3848 212
A1-950	1-77	389/100.2
A1A22	2530-048-7342	389/100-18
B	2815-097-5429	3895-128-7642

### 4. Abbreviations

v	volt(s)
lg	long (length)
mtg	mounting(s)
thd	thread(s)(ed)
id	inside diameter(s)
od	outside diameter(s)
dia	diameter(s)
thk	thick(ness)
w	wide (width)
lh	left hand
rh	right hand
rl	roll
w/	with
cont	continued
deg	degree(s)

### 5. Federal Supply Code for Manufacturers

51501	Rogers Bros. Corp.
75175	KD Lamp Division of Northeast Capital Corp.
63810	Warner Electric Brake and Clutch Co.
81336	Corps of Engineers
29510	Hough, Frank G., Co., Inc.
95879	Alemite Division of Stewart Warner Corp.
78500	Timken Detroit Axle Co.
56697	Standard Forge and Axle Co., Inc.
71843	Cleveland Hardware and Forging Co.
06853	Bendix-Westinghouse, Automotive Air Brake Co.
61848	Unit Rig and Equipment Co.
09386	Budd Co., The, Wheel Division
73195	Firestone Steel Products Co.

### 6. Comments and Suggestions

Report all deficiencies in this manual on DA Form 2028. Submit recommendations for changes, additions, or deletions to repair parts allocation and allowance factors, and other data. Additional data on climatic and terrain conditions of operation,

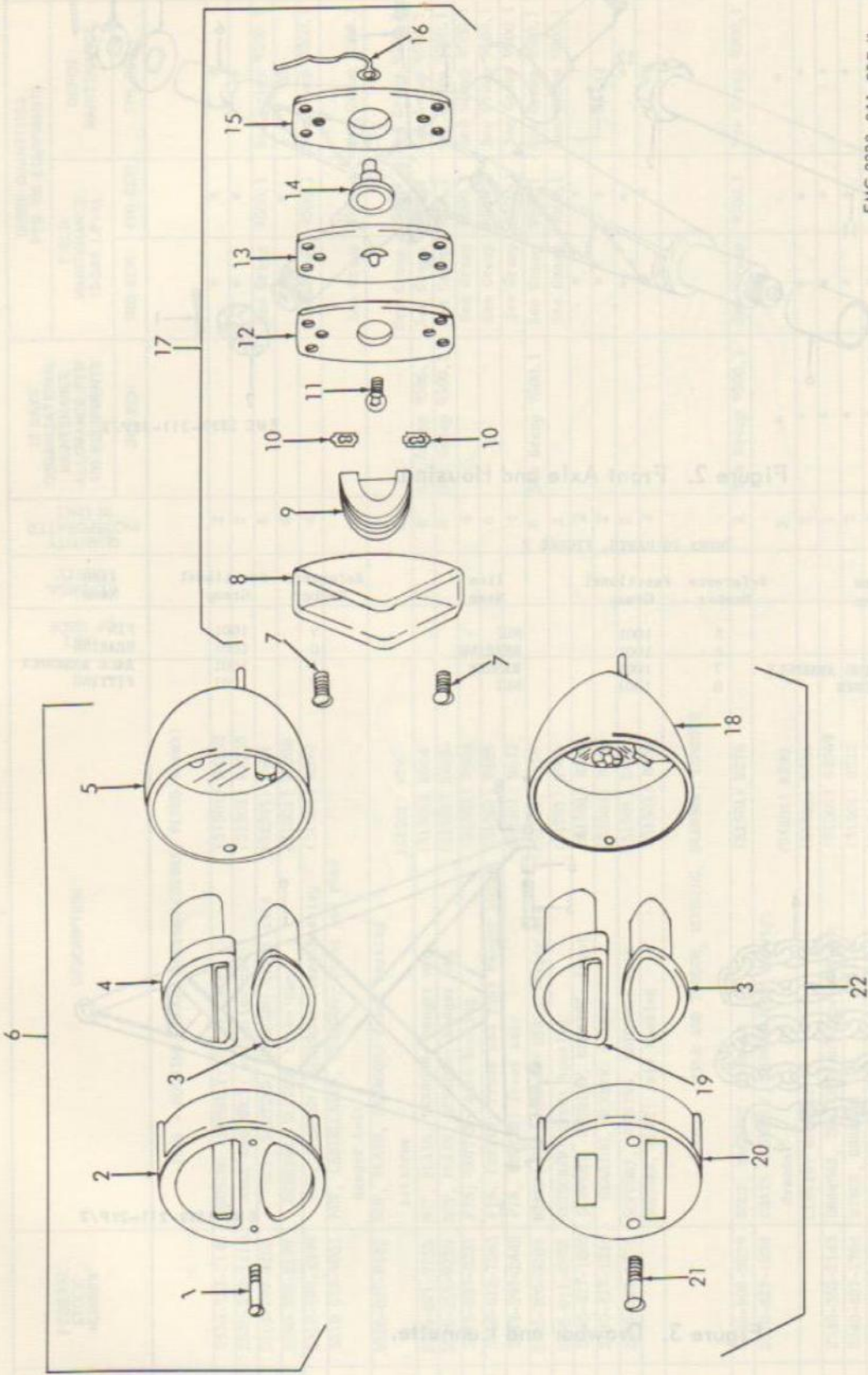
operational age of the equipment, and the hours operated in the period covered by item 7 of DA Form 2028 are desired. Submit to the commanding officer, U.S. Army Engineer Maintenance Center, Corps of Engineers, ATTN: EMCDDM-S, P.O. Box 119, Columbus 16, Ohio. Direct communication is authorized.

DA Form 2028	DA Form 2028	DA Form 2028	DA Form 2028	DA Form 2028	DA Form 2028	DA Form 2028	DA Form 2028	DA Form 2028
10	10	10	10	10	10	10	10	10
20	20	20	20	20	20	20	20	20
30	30	30	30	30	30	30	30	30
40	40	40	40	40	40	40	40	40
50	50	50	50	50	50	50	50	50
60	60	60	60	60	60	60	60	60
70	70	70	70	70	70	70	70	70
80	80	80	80	80	80	80	80	80
90	90	90	90	90	90	90	90	90
100	100	100	100	100	100	100	100	100



TECHNICAL SERVICE SOURCE	SOURCE	MAINTNANCE	RECOVERABILITY	FEDERAL STOCK NUMBER	DESCRIPTION	UNIT OF ISSUE	EXPENDABILITY	QUANTITY INCORPORATED IN UNIT	15 DAYS ORGANIZATIONAL MAINTENANCE ALLOWANCES PER 100 EQUIPMENTS				GUIDE QUANTITIES PER 100 EQUIPMENTS			ILLUSTRATIONS	
									2ND ECH	3RD ECH	4TH ECH	5TH ECH	FIELD MAINTENANCE 15-DAY LEVEL	DEPOT MAINTENANCE	FIG. NO.		ITEM NO.
SECTION II. REPAIR PARTS LIST																	
GROUP 06 - ELECTRICAL SYSTEM (ENGINE AND VEHICULAR)																	
0606 - MISCELLANEOUS ITEMS																	
X2	0			5340-374-2244	CLAMP ASSEMBLY, ELECTRICAL CABLE			66									
10	X2	0		5325-496-3395	GROMMET, RUBBER: wiring	(51501) R230		10									
	P1	0		5930-250-5635	SWITCH, ROTARY: light and wiring	(51501) R435		1									
	X2	0		5940-279-9772	TERMINAL BOARD: wiring and light	(51501) R372		2									
0609.1 - HEAD, TAIL AND MARKER LIGHTS																	
9	X2	0		6220-427-1065	LIGHT, MARKER, CLEARANCE: amber service, 6v	(75175) 541-006AMBER		2							17		
	X1				BODY: light	(75175) 32013		8							8		
	X2	0		5975-427-1063	CABLE NIPPLE, ELECTRICAL: rubber; 1/8 in. od cable	(75175) 4684		8							14		
	X2	0		6220-374-2071	CLIP, LENS	(75175) 1996		16							10		
9	P	0		6220-641-1159	GASKET: backplate	(75175) 5172		8	5	6					15		
9	P	0		6220-378-9199	GASKET: lens	(75175) 31821		8	5	6					12		
	P	0		6240-012-5588	LAMP; INCANDESCENT: 6v, No. 55	(75175) 55		8	13	15	1				11		
9	X2	0		6220-496-3033	LEAD, ELECTRICAL: backplate	(75175) 7136		8							16		
9	P1	0		6220-496-3015	LENS, CLEARANCE, MARKER LIGHT: amber (Used with LIGHT, Stock No. 6220-427-1065 only)	(75175) 4393		2							9		
9	P1	0		6220-427-1098	LENS, LIGHT: blackout, amber (Used with LIGHT, Stock No. 6220-427-1068 only)	(75175) 8091		2							9		
9	P1	0		6220-496-3034	LENS, LIGHT: blackout clearance, red, (Used with LIGHT, Stock No. 6220-427-1090 Only)	(75175) 8013		2							9		
9	P1	0		6220-496-3014	LENS, LIGHT: clearance, red (Used with LIGHT, Stock No. 6220-427-1066 only)	(75175) 4392		2							9		
	X2	0			PLATE, BACK: light	(75175) 87464		8							13		
	P	0		5305-496-3032	SCREW, EXTERNALLY RELIEVED BODY: body	(75175) 6777		16							7		
9	X2	0		6220-427-1086	LIGHT, MARKER, CLEARANCE: red, service, 6v (Same as LIGHT, Stock No. 6220-427-1065, except where individual components are annotated)	(75175) 541-006RED		2									

TECHNICAL SERVICE	SOURCE	SOURCE CODES		FEDERAL STOCK NUMBER	DESCRIPTION	UNIT OF ISSUE	EXPENDABILITY	QUANTITY INCORPORATED IN UNIT	15 DAYS ORGANIZATIONAL MAINTENANCE ALLOWANCE PER 100 EQUIPMENTS				GUIDE QUANTITIES PER 100 EQUIPMENTS			ILLUSTRATIONS		
		RECOVERABILITY	MAINTENANCE						2ND ECH	3RD ECH	4TH ECH	5TH ECH	FIELD MAINTENANCE 15-DAY LEVEL	DEPOT MAINTENANCE	FIG. NO.	ITEM NO.		
					0609, 1 - HEAD, TAIL, AND MARKER LIGHTS (cont)													
	9 X2 0			6220-427-1090	LIGHT, SPECIAL PURPOSE, VEHICULAR: marker, blackout clearance, red (Same as LIGHT, Stock No. 6220-427-1005, except where individual components are annotated)			2	*	*	*	*	*	*				
	9 X2 0			6220-427-1008	LIGHT, SPECIAL PURPOSE, VEHICULAR: marker clearance; blackout; amber (Same as LIGHT, Stock No. 6220-427-1005, except where individual components are annotated)			2	*	*	*	*	*	*				
	9 X2 0			6220-424-1504	STOPLIGHT-TAILLIGHT, VEHICULAR: blackout			1	*	*	*	*	*	*			22	
	X1			6220-371-7506	BODY: light			1	*	*	*	*	*	*			18	
	9 P 0			6220-374-2001	LAMP, INCANDESCENT: upper; 6v			1	*	*	*	*	*	*			19	
	9 P 0			6220-376-8104	LAMP UNIT, TAILLIGHT: lower; 6 to 8v			1	See Group 9901	See Group 9901	See Group 9901	See Group 9901	See Group 9901	See Group 9901			3	
	X2 0			6220-374-2073	RETAINER, LENS: blackout and tail			1	*	*	*	*	*	*			20	
	9 X2 0			6220-427-1099	STOPLIGHT-TAILLIGHT, VEHICULAR: blackout service; 6v			1	*	*	*	*	*	*			6	
	X1			6220-371-7506	BODY: light			1	*	*	*	*	*	*			5	
	X2 0				COVER: stop and blackout tail			1	*	*	*	*	*	*			2	
	9 P 0			6220-374-2078	LAMP, INCANDESCENT: upper; 6v			1	*	*	*	*	*	*			4	
	9 P 0			6220-376-8104	LAMP UNIT, TAILLIGHT: lower 6 to 8v			1	See Group 9901	See Group 9901	See Group 9901	See Group 9901	See Group 9901	See Group 9901			3	
	9 P 0			5305-010-0770	SCREW, MACHINE: cover to body mtg			2	See Group 9500.1	See Group 9500.1	See Group 9500.1	See Group 9500.1	See Group 9500.1	See Group 9500.1			1	
	9 P 0			5305-010-0770	SCREW, MACHINE: retainer to body mtg			See Group 9500.1	See Group 9500.1	See Group 9500.1	See Group 9500.1	See Group 9500.1	See Group 9500.1	See Group 9500.1	See Group 9500.1			21
					0617 - TRAILER COUPLINGS													
	X2 0			6145-427-2002	CABLE, ASSEMBLY, SPECIAL PURPOSE, ELECTRICAL			1	*	*	*	*	*	*				
	P1 0			5935-201-3325	CONNECTOR, RECEPTACLE, ELECTRICAL: trailer, front			1	*	*	*	*	*	*				
	X2 0			5935-364-8547	COVER, COUPLING SOCKET			1	*	*	*	*	*	*				
					GROUP 10 - FRONT AXLE													
	P1 F			2530-427-1774	BEARING, SLEEVE: axle housing			4	*	*	*	*	*	*			6	
	P1 F			5306-353-2148	BOLT, HANGER: front			4	*	*	*	*	*	*				
	9 P F			5306-263-6693	BOLT, SQUARE NECK: longitudinal shaft			4	See Group 9500.1	See Group 9500.1	See Group 9500.1	See Group 9500.1	See Group 9500.1	See Group 9500.1			11	
	P 0			4730-289-4918	FITTING, LUBRICATION: front and rear hangers			6	See Group 9500.1	See Group 9500.1	See Group 9500.1	See Group 9500.1	See Group 9500.1	See Group 9500.1			12	
	9 X2 F			2330-427-1881	HANGER, AXLE HOUSING BEARING			2	*	*	*	*	*	*				



EMC 2330-211-25P/1

Figure 1. Service and Clearance Lights.

INDEX TO PARTS, FIGURE 1

Reference Number	Functional Group	Item Name	Reference Number	Functional Group	Item Name	Reference Number	Functional Group	Item Name
1	0609.1	SCREW	13	0609.1	PLATE	18	0609.1	BODY
2	0609.1	COVER	14	0609.1	CABLE NIPPLE	19	0609.1	LAMP
3	0609.1	LAMP UNIT	15	0609.1	GASKET	20	0609.1	RETAINER
4	0609.1	LAMP	16	0609.1	LEAD	21	0609.1	SCREW
5	0609.1	BODY	17	0609.1	LIGHT	22	0609.1	STP TAILLIT
6	0609.1	STP TAILLIT						

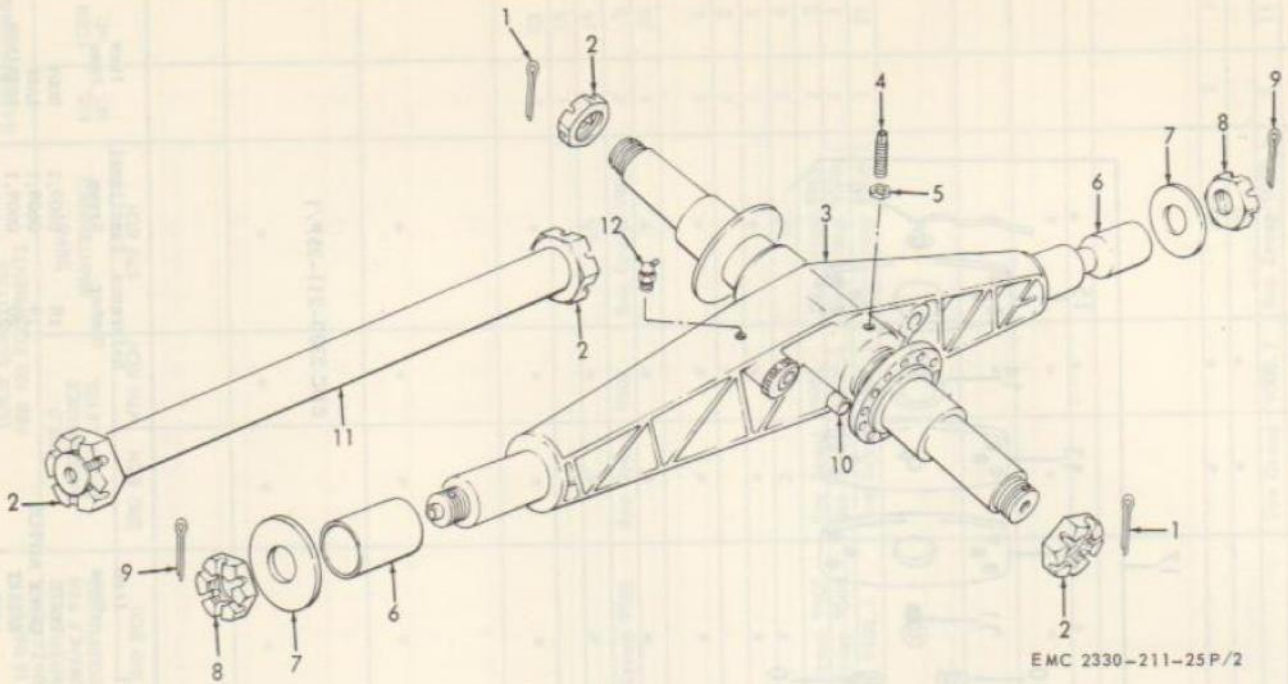


Figure 2. Front Axle and Housing.

INDEX TO PARTS, FIGURE 2

Reference Number	Functional Group	Item Name	Reference Number	Functional Group	Item Name	Reference Number	Functional Group	Item Name
1	1001	PIN	5	1001	NUT	9	1001	PIN
2	1001	NUT	6	1001	BEARING	10	1001	BEARING
3	1001	HOUSING ASSEMBLY	7	1001	WASHER	11	1001	AXLE ASSEMBLY
4	1001	SETSCREW	8	1001	NUT	12	1001	FITTING

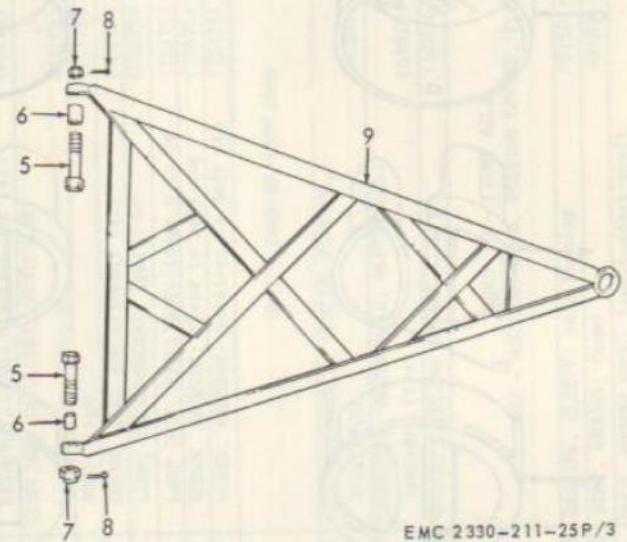
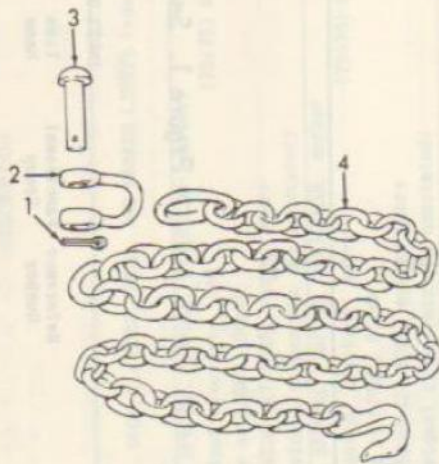
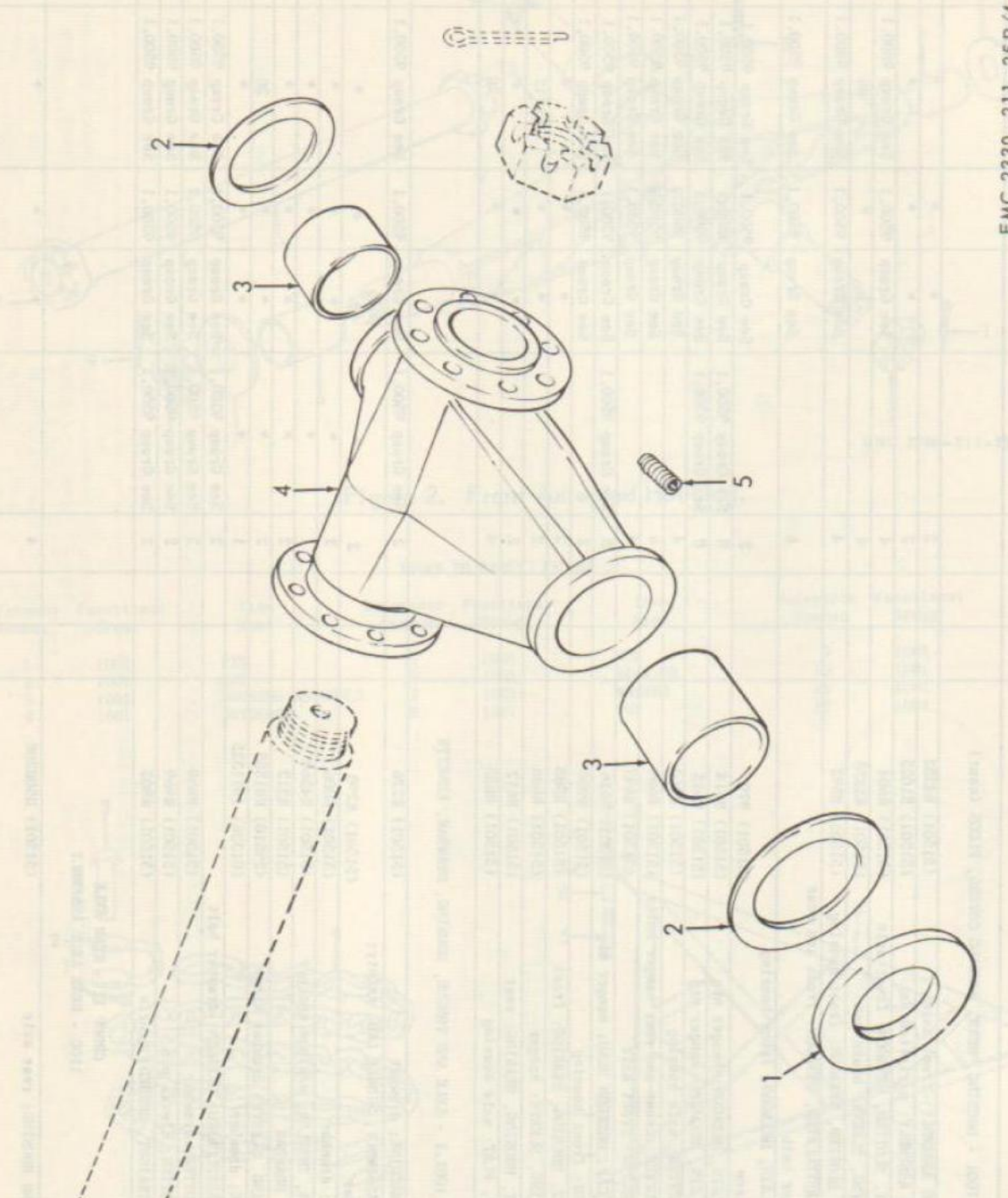


Figure 3. Drawbar and Lunnette.

INDEX TO PARTS, FIGURE 3

Reference Number	Functional Group	Item Name	Reference Number	Functional Group	Item Name	Reference Number	Functional Group	Item Name
1	1001.1	PIN	4	1001.1	CHAIN ASSEMBLY	7	1001.1	NUT
2	1001.1	CLEVIS	5	1001.1	BOLT	8	1001.1	PIN
3	1001.1	PIN	6	1001.1	BEARING	9	1001.1	DRAWBAR

TECHNICAL SERVICE	SOURCE CODES			FEDERAL STOCK NUMBER	DESCRIPTION	UNIT OF ISSUE	EXPENDABILITY	QUANTITY INCORPORATED IN UNIT	15 DAYS ORGANIZATIONAL MAINTENANCE ALLOWANCE PER 100 EQUIPMENTS			GUIDE QUANTITIES PER 100 EQUIPMENTS		ILLUSTRATIONS		
	RECOVERABILITY	MAINTENANCE	SOURCE						2ND ECH	3RD ECH	4TH ECH	5TH ECH	FIELD MAINTENANCE 15-DAY LEVEL	DEPOT MAINTENANCE	FIG. NO.	ITEM NO.
					1001 - HOUSING, BEAM, HOUSING COVERS, PLINGS (cont)											
	X2	F		2530-353-2140	HOUSING ASSEMBLY: front axle (51501) R4352			2		*	*	*	*	*	2	3
	X2	F		2530-353-2110	AXLE ASSEMBLY: w/slotted nut (51501) R1025			2		*	*	*	*	*	2	11
	P	F		5310-189-4400	NUT, SLOTTED, HEXAGON: front axle (51501) R604			4		See Group	9500,1	See Group	9500,1	See Group	9500,1	2
	P	F		2530-353-2129	BEARING, SLEEVE: brake cam (51501) R3238			4		1	*	40	*	*	2	10
	P	F		5310-189-4399	NUT, SLOTTED, HEXAGON: front housing (51501) R592			4		See Group	9500,1	See Group	9500,1	See Group	9500,1	2
9	P	F		5310 010-6601	NUT, CASTELLATED, HEXAGON: front and rear hanger bolt			6		See Group	9500,1	See Group	9500,1	See Group	9500,1	2
9	P	F		5310-021-6442	NUT, PLAIN, HEXAGON: front housing setscrew (51501) 979			2		See Group	9500,1	See Group	9500,1	See Group	9500,1	2
9	P	O		5310-021-9753	NUT, PLAIN, HEXAGON: hanger mtg (51501) R614			6		See Group	9500,1	See Group	9500,1	See Group	9500,1	17
9	P	O		5310-265-9220	NUT, PLAIN, HEXAGON: hanger mtg (51501) R615			6		See Group	9500,1	See Group	9500,1	See Group	9500,1	17
9	P	F		5315-059-0237	PIN, COTTER: axle housing (51501) R964			4		See Group	9500,1	See Group	9500,1	See Group	9500,1	2
9	P	F		5315-013-7263	PIN, COTTER: front and rear hanger bolts (51501) R609			6		See Group	9500,1	See Group	9500,1	See Group	9500,1	2
9	P	F		5315-297-2443	PIN, COTTER: front axle (51501) R617			4		See Group	9500,1	See Group	9500,1	See Group	9500,1	2
9	P	O		5305-206-3209	SCREW, CAP, HEXAGON HEAD: hanger mtg (51501) R616			6		See Group	9500,1	See Group	9500,1	See Group	9500,1	17
9	P	F		5305-011-2982	SETScrew: front housing (51501) R906			2		*	*	*	*	*	2	4
X2	F			2530-427-1690	SUPPORT, HOUSING, BEARING: front (51501) R646			2		*	*	12	*	*		
P1	F			2530-427-1010	BEARING, SLEEVE: hanger (51501) R612			2		*	*	*	*	*		
X2	F			2530-427-1875	SUPPORT, HOUSING, BEARING: rear (51501) R612			2		*	*	*	*	*		
P1	F				WASHER, FLAT: axle housing (51501) R653			4		*	*	*	*	*	20	7
					1001.1 - AXLE AND TONGUE, HOUSING, DRAWBAR, LINETTE											
P	O			5306-608-8539	BOLT, MACHINE: drawbar (51501) R276			2		See Group	9500,1	See Group	9500,1	See Group	9500,1	3
X2	O			2510-427-1824	CHAIN ASSEMBLY, SINGLE LEG: safety: drawbar (51501) R290			2		*	*	*	*	*	3	4
X2	O				CLEVIS: drawbar (51501) R006			2		*	*	*	*	*	3	2
X2	O			2540-353-2143	DRAWBAR, TRAILER: w/hinge and eye (51501) R4369			1		*	*	*	*	*	3	9
X2	O			2540-427-1784	HINGE, DRAWBAR (51501) R312			2		*	*	*	*	*		
P1	O			3030-430-9648	BEARING, SLEEVE: drawbar hinge (29510) K01555			2		*	*	*	*	*	20	6
9	X2	O		2330-353-2707	LINETTE: drawbar (81336) 1671325			1		*	*	*	*	*		
9	P	O		5310-010-9881	NUT, CASTELLATED, HEXAGON: drawbar bolt (51501) R609			2		See Group	9500,1	See Group	9500,1	See Group	9500,1	3
9	P	O		5315-013-7263	PIN, COTTER: drawbar (51501) R969			2		See Group	9500,1	See Group	9500,1	See Group	9500,1	3
9	P	O		5315-013-7204	PIN, COTTER: clevis pin (51501) R969			2		See Group	9500,1	See Group	9500,1	See Group	9500,1	3
P	O			5315-634-4903	PIN, STRAIGHT, HEADED: clevis (51501) R805			2		See Group	9500,1	See Group	9500,1	See Group	9500,1	3
					GROUP 11 - REAR AXLE 1100 - REAR AXLE ASSEMBLY											
X2	F				AXLE AND HOUSING: rear axle (51501) D50R20E			4		*	*	*	*	*		



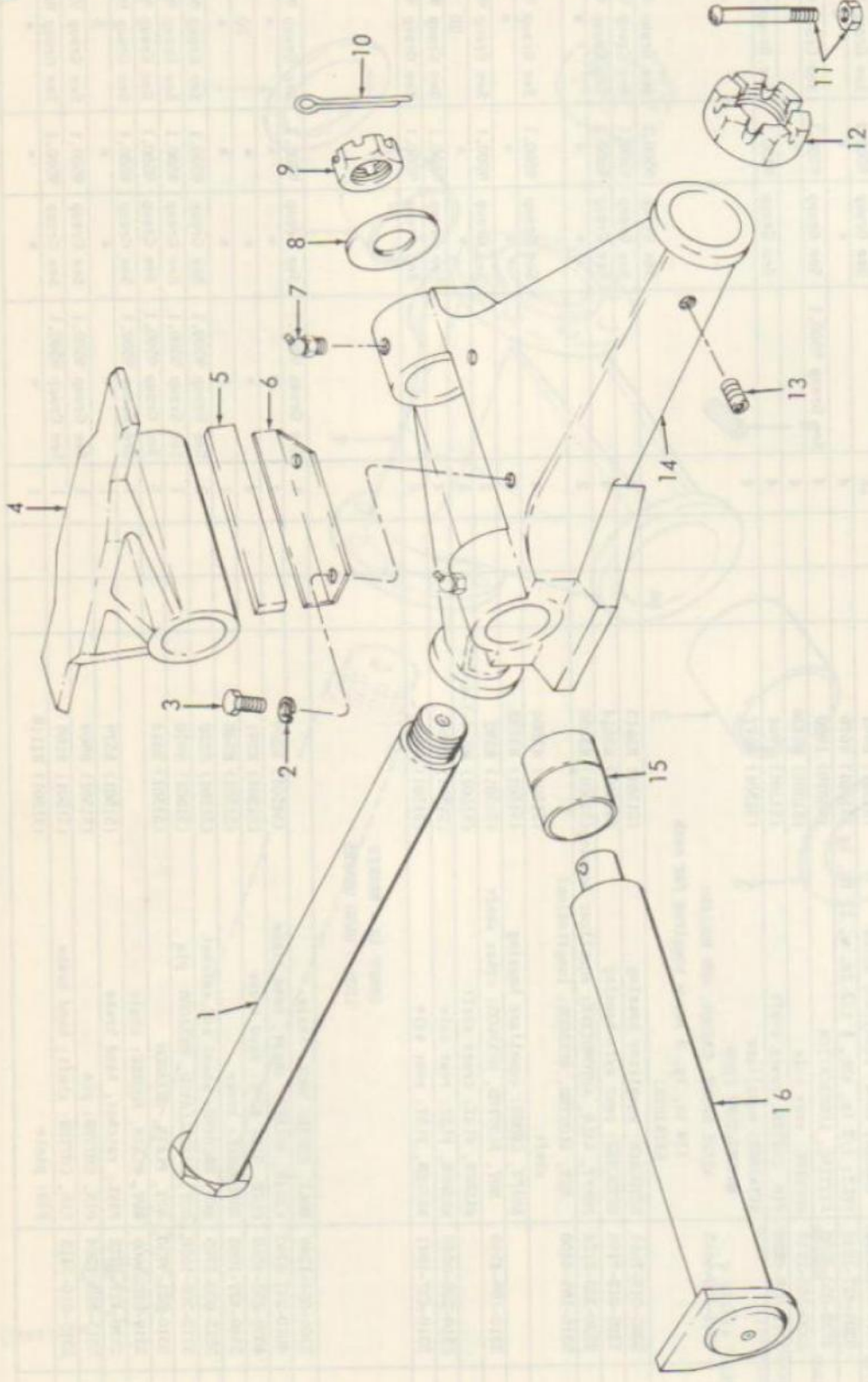
INDEX TO PARTS, FIGURE 4

Reference Number	Functional Group	Item Name
1	1101	WASHER
2	1101	WASHER
3	1101	BEARING
4	1101	HOUSING
5	1101	SETSCREW

EMC 2330-211-25P/4

Figure 4. Rear Axle and Housing.

TECHNICAL SERVICE	SOURCE CODES			FEDERAL STOCK NUMBER	DESCRIPTION	UNIT OF ISSUE	EXPENDABILITY	QUANTITY INCORPORATED IN UNIT	15 DAYS ORGANIZATIONAL MAINTENANCE ALLOWANCE PER 100 EQUIPMENTS			GUIDE QUANTITIES PER 100 EQUIPMENTS			ILLUSTRATIONS		
	SOURCE	MAINTENANCE	RECOVERABILITY						2ND ECH	3RD ECH	FIELD MAINTENANCE 15-DAY LEVEL		DEPOT MAINTENANCE	FIG. NO.	ITEM NO.		
											4TH ECH	5TH ECH					
					1101 - HOUSING, BEAM, HOUSING COVERS, FLUXES												
	X2	F			BEARING: equalizer housing (51501) R3750			2		*	*	*	*	5	4		
	P	F		2530-427-1775	BEARING, SLEEVE: rear, longitudinal shaft (51501) B65-75			0		2	*	00	*	4	3		
	X2	F		2530-353-2142	EQUALIZER: rear axle housing (51501) R4358			2		*	*	*	*	5	14		
	P	F		2530-496-3152	BEARING, SLEEVE (51501) R675			0		3	1	00	*	5	15		
9	P	F		5305-017-9937	SCREW, CAP, HEXAGON HEAD: rear axle equalizer (51501) R620			16		See Group 9500.1	See Group 9500.1	See Group 9500.1	See Group 9500.1	5	3		
9	P	F		5310-261-7340	WASHER, LOCK: equalizer screw (51501) R993			16		See Group 9500.1	See Group 9500.1	See Group 9500.1	See Group 9500.1	5	2		
10	P1	F		0905-427-1044	FELT: 1/2 in. thk, 1 1/2 in. w, 12 in. lg (51501) R676			4		*	*	4	*	5	5		
	P	O		4730-050-4200	FITTING, LUBRICATION (95079) 1900			4		See Group 9500.1	See Group 9500.1	See Group 9500.1	See Group 9500.1	5	7		
	X2	H		2330-353-2133	HOUSING: rear axle (51501) R3436			4			*	*	*	4	4		
9	P	F		5313-059-0237	PIN, COTTER: cross shaft (51501) R964			4		See Group 9500.1	See Group 9500.1	See Group 9500.1	See Group 9500.1	5	10		
	M	F			RETAINER: equalizer (51501) R677			4						5	6		
	P	F		9515-230-6615	MANUFACTURE FROM: STEEL SHEET, CARBON, HOT ROLLED; (14 in. lg, 8 in. w required for each RETAINER)	LB											
9	P	F		5305-013-7661	SETScrew: equalizer housing (51501) R3613			4		See Group 9500.2	See Group 9500.2	See Group 9500.2	See Group 9500.2	5	13		
9	P	F		5305-013-9196	SETScrew: rear axle housing (51501) R3614			4		See Group 9500.1	See Group 9500.1	See Group 9500.1	See Group 9500.1	4	3		
	X2	F		2530-333-2124	SHAFT, AXLE, AUTOMOTIVE: equalizer housing (51501) R3030			2		*	*	*	*	5	1		
	P	F		5310-189-4400	NUT, SLOTTED, HEXAGON: longitudinal shaft (51501) R3084			4		See Group 9500.1	See Group 9500.1	See Group 9500.1	See Group 9500.1	5	12		
	X2	F			SHAFT, CROSS: equalizer housing (51501) R3782			2		*	*	*	*	5	16		
	P	F		5310-109-4399	NUT, SLOTTED, HEXAGON: cross shaft (51501) R592			2		See Group 9500.1	See Group 9500.1	See Group 9500.1	See Group 9500.1	5	9		
	P1	F			WASHER, FLAT: cross shaft (51501) W2-4-1-4-3-0			4		*	*	20	*	5	0		
	P	F		5310-220-6540	WASHER, FLAT: rear axle (51501) R664			4		See Group 9500.1	See Group 9500.1	See Group 9500.1	See Group 9500.1	4	1		
	P	F		5310-427-1041	WASHER, FLAT: rear axle (51501) R361			0		See Group 9500.1	See Group 9500.1	See Group 9500.1	See Group 9500.1	4	2		
					GROUP 12 - BRAKES 1201 - BAND BRAKES												
9	P	O		5306-059-1249	BOLT, SQUARE NECK: chain (51501) R289			1		See Group 9500.1	See Group 9500.1	See Group 9500.1	See Group 9500.1	6	0		
55	X2	O		4010-247-0763	CHAIN, WELDED: shaft, hand brake (51501) R291			1		*	*	*	*	6	7		
55	P1	O		4030-233-0568	CLIP, WIRE ROPE: hand brake (51501) R548			4		*	*	20	*	6	24		
	X2	O		5340-427-1003	HANDWHEEL: brake (51501) R548			1		*	*	*	*	6	1		
	P	O		5315-050-5765	KEY, MACHINE: wheel and ratchet (51501) R320			2		See Group 9500.1	See Group 9500.1	See Group 9500.1	See Group 9500.1	6	2		
	P	O		5310-208-1650	NUT, CASTELLATED, HEXAGON: pin (51501) R970			1		See Group 9500.1	See Group 9500.1	See Group 9500.1	See Group 9500.1	6	11		
9	P	O		5310-021-9753	NUT, PLAIN, HEXAGON (51501) R614			5		See Group 9500.1	See Group 9500.1	See Group 9500.1	See Group 9500.1	6	10		
9	P	O		5310-010-5606	NUT, PLAIN, SQUARE: chain (51501) R579			1		See Group 9500.1	See Group 9500.1	See Group 9500.1	See Group 9500.1	6	5		
9	X2	O		2330-427-2322	PANEL: ratchet, hand brake (51501) R969			1		*	*	5	*	6	9		
9	P	O		5315-013-7204	PIN, COTTER: pin (51501) R109			1		See Group 9500.1	See Group 9500.1	See Group 9500.1	See Group 9500.1	6	12		
9	P	O		5315-010-3413	PIN, COTTER: shaft; hand brake (51501) R109			1		See Group 9500.1	See Group 9500.1	See Group 9500.1	See Group 9500.1	6	6		
	X2	O			PIN: plate (51501) R1118			1		*	*	*	*	6	10		



EMC 2330-211-25P/5

Figure 5. Axle Housing Equalizer.

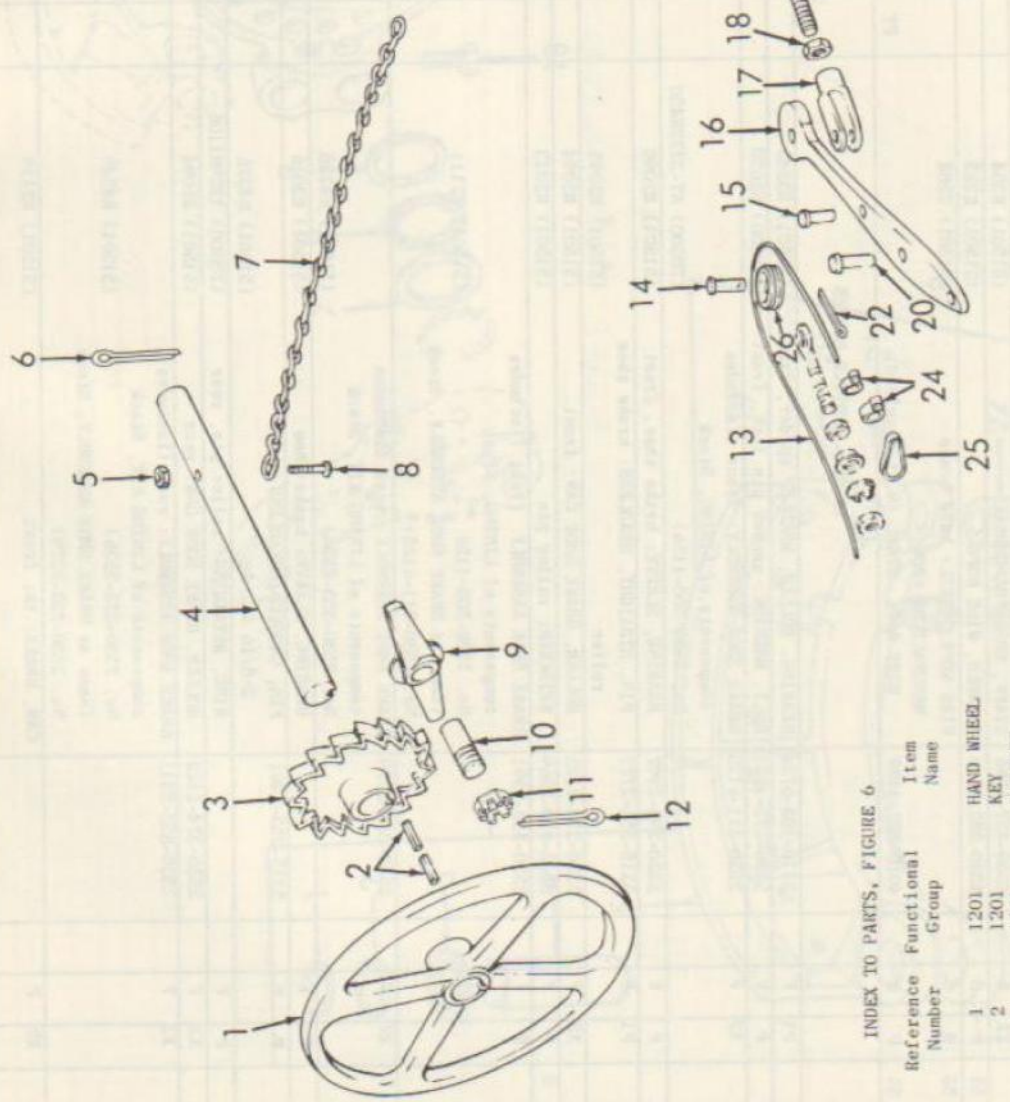
INDEX TO PARTS, FIGURE 5

Reference Number	Functional Group	Item Name	Reference Number	Functional Group	Item Name	Reference Number	Functional Group	Item Name
1	1101	SHAFT	9	1101	NUT	13	1101	SETSCREW
2	1101	WASHER	10	1101	PIN	14	1101	EQUALIZER
3	1101	SCREW	11	1101	BOLT W/NUT	15	1101	BEARING
4	1101	BEARING	12	1101	NUT	16	1101	SHAFT



INDEX TO PARTS, FIGURE 6 (cont)

Reference Number	Functional Group	Item Name
16	1206	LEVER
17	1206	CLEVIS
18	1206	NUT
18	1201	NUT
19	1206	ROD
20	1206	PIN
21	1206	ROD
22	1206	PTN
23	1206	LEVER
24	1201	CLIP
25	1201	THIMBLE
26	1201	PULLEY



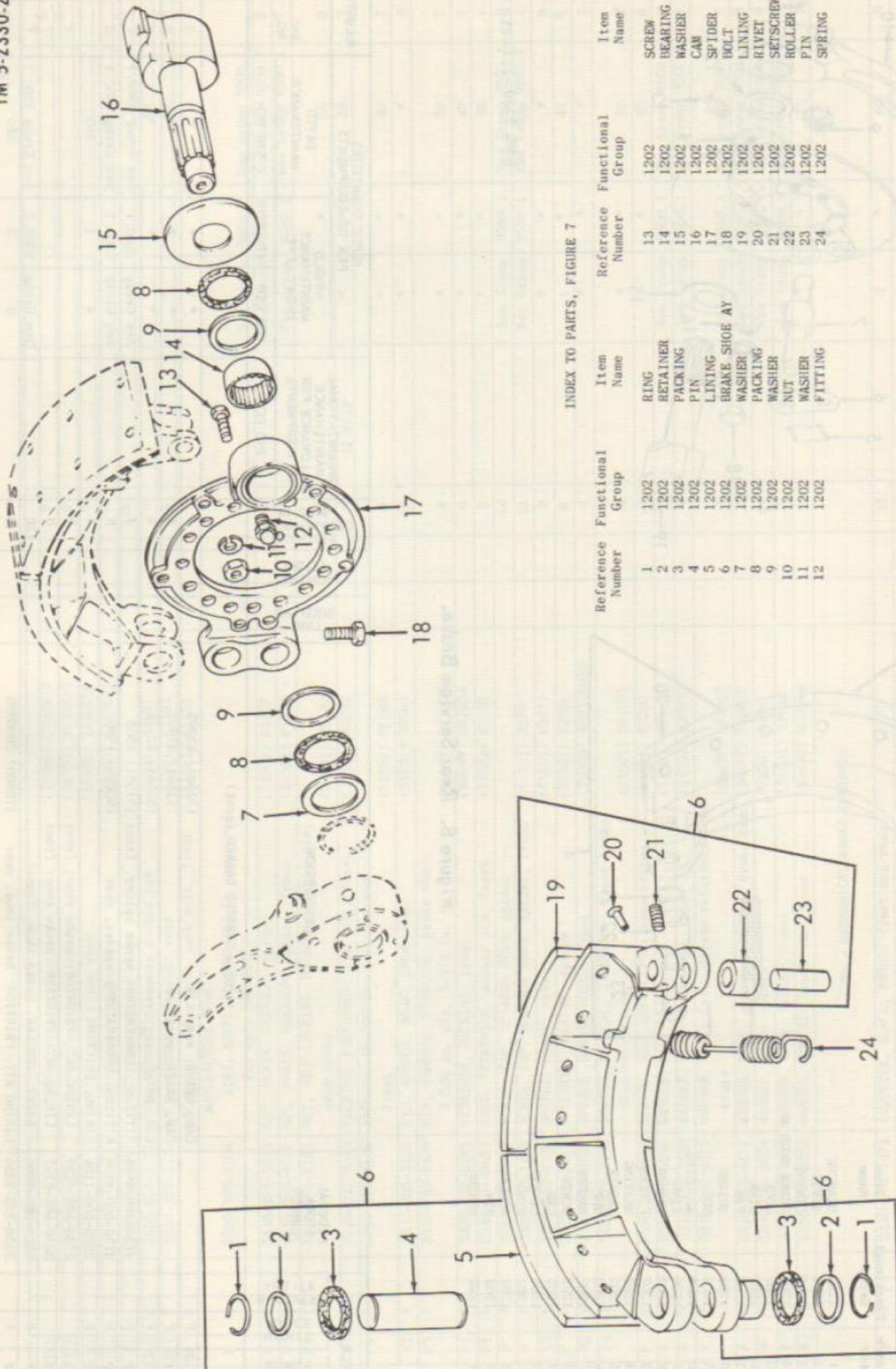
INDEX TO PARTS, FIGURE 6

Reference Number	Functional Group	Item Name
1	1201	HAND WHEEL
2	1201	KEY
3	1201	RATCHET
4	1201	STAFF
5	1201	NUT
6	1201	PIN
7	1201	CHAIN
8	1201	BOLT
9	1201	PAWL
10	1201	PIN
11	1201	NUT
12	1201	PIN
13	1201	WIRE ROPE
14	1201	PIN
15	1206	PIN

EMC 2330-211-25P/6

Figure 6. Hand Brake and related parts.

TECHNICAL SERVICE	SOURCE CODES			FEDERAL STOCK NUMBER	DESCRIPTION	UNIT OF ISSUE	EXPENDABILITY	QUANTITY INCORPORATED IN UNIT	15 DAYS ORGANIZATIONAL MAINTENANCE ALLOWANCE PER 100 EQUIPMENTS			GUIDE QUANTITIES PER 100 EQUIPMENTS			ILLUSTRATIONS		
	SOURCE	MAINTENANCE	RECOVERABILITY						FIELD MAINTENANCE 15-DAY LEVEL	DEPOT MAINTENANCE	3RD ECH	4TH ECH	5TH ECH	FIG. NO.	ITEM NO.		
					1201 - BAND BRAKES (cont)												
	P	0		5315-353-2795	PIN, STRAIGHT, HEADED: pulley	(51501) R215		2	See Group 9500.1	See Group 9500.1	See Group 9500.1	See Group 9500.1	See Group 9500.1	6	14		
	X2	0		2530-427-2320	PULLEY, GROOVE: handwheel	(51501) R345		1	*	*	*	*	*	6	26		
	X2	0			PULLEY: walking beam	(51501) P21		1	*	*	*	*	*	6	3		
	9	X2	0	2530-427-2321	RATCHET, HANDWHEEL: brake	(51501) R549		1	*	*	*	*	15	6			
	9	P1	0	5340-249-5902	SPRING, HELICAL, EXTENSION	(81336) 16T1454		3	*	*	*	*	*	6			
	X2	0		2530-427-1766	STAFF, BRAKE HANDWHEEL	(51501) R354		1	*	*	*	*	*	6	4		
	55	P	0	4030-282-2510	THIMBLE, WIRE ROPE	(51501) R223		2	See Group 9500.1	See Group 9500.1	See Group 9500.1	See Group 9500.1	See Group 9500.1	6	25		
	55	M	0		WIRE ROPE, STEEL: hand brake	(51501) R282		1						6	13		
	55	P	0	4010-222-4489	MANUFACTURE FROM: WIRE ROPE, STEEL, (9 ft required)		FT		See Group 9500.2	See Group 9500.2	See Group 9500.2	See Group 9500.2	See Group 9500.2				
					1202 - SERVICE BRAKES												
	P1	F		3110-183-6724	BEARING, ROLLER, NEEDLE: spider, front	(51501) R3542		4	*	*	*	*	24	7	14		
	P	F		5306-272-4221	BOLT, MACHINE: anchor pin lock, front	(78500) S2650		4	See Group 9500.1	See Group 9500.1	See Group 9500.1	See Group 9500.1	See Group 9500.1	7	18		
	X2	F		2530-211-6125	BRAKE SHOE ASSEMBLY: front (Includes components of LINING, Stock No. 2530-508-1126)	(78500) A7-3222H450		4	*	*	*	*	*	7	6		
	P	F		2530-293-5997	BEARING, SLEEVE: brake shoe, front	(51501) R2098		16	4	4	4	4	96				
	P1	F		5315-353-2777	PIN, STRAIGHT, HEADLESS: brake shoe roller	(51501) R2095		8	*	*	*	*	36	7	23		
	X2	F		2530-374-2123	ROLLER, BRAKE SHOE CAM: front	(51501) R2094		8	See Group 9901	See Group 9901	See Group 9901	See Group 9901	See Group 9901	7	22		
	9	P	F	5305-010-2569	SETScrew: roller pin	(51501) R3013		8	See Group 9500.1	See Group 9500.1	See Group 9500.1	See Group 9500.1	See Group 9500.1	7	21		
	P	F		2530-353-2391	BRAKE SHOE ASSEMBLY: front (Includes components of LINING, Stock No. 2530-508-1126 (Same as BRAKE SHOE ASSEMBLY, Stock No. 2530-211-6125)	(51501) R2111		4	*	*	*	*	*	7	6		
	X2	F		2530-353-2279	BRAKE SHOE ASSEMBLY: rear (Includes components of LINING KIT, Stock No. 2530-353-2526)	(51501) R4248		8	*	*	*	*	*	8	4		
	P	F		5315-353-2461	BEARING, SLEEVE: brake shoe	(51501) R3016		16	2	2	2	2	80	8	1		
	P	F			PIN, GROOVED, HEADLESS: rear 2-5/16 in. lg	(51501) R4376		16	2	2	2	2	80	8	23		
	P	F		2530-374-2123	RING, RETAINING: roller pin, rear	(78500) 1229H1105		16	2	2	2	2	80	8	21		
	X2	F		2530-353-2311	BRAKE SHOE ASSEMBLY: rear (Includes components of LINING KIT, Stock No. 2530-353-2526) (Same as BRAKE SHOE ASSEMBLY, Stock No. 2530-353-2279)	(51501) R2094		16	See Group 9901	See Group 9901	See Group 9901	See Group 9901	See Group 9901	8	22		
	X2	F			CAM, BRAKE: lb; front	(51501) R2119		4	*	*	*	*	*	7	16		

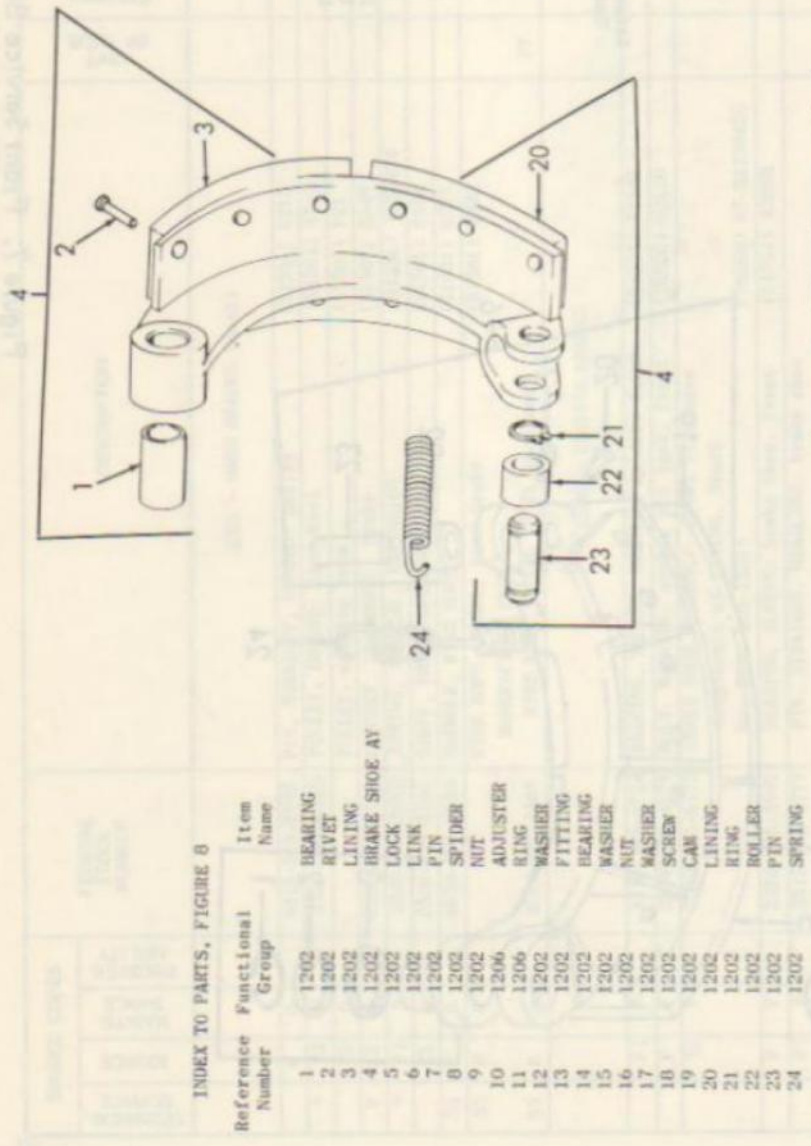


INDEX TO PARTS, FIGURE 7

Reference Number	Item Name	Functional Group	Reference Number	Item Name	Functional Group
1	RING	1202	13	SCREW	1202
2	RETAINER	1202	14	BEARING	1202
3	PACKING	1202	15	WASHER	1202
4	PIN	1202	16	CAM	1202
5	LINING	1202	17	SPIDER	1202
6	BRAKE SHOE AY	1202	18	BOLT	1202
7	WASHER	1202	19	LINING	1202
8	PACKING	1202	20	RIVET	1202
9	WASHER	1202	21	SETScrew	1202
10	NUT	1202	22	ROLLER	1202
11	WASHER	1202	23	PIN	1202
12	FITTING	1202	24	SPRING	1202

EMC 2330-211-25P/7

Figure 7. Front Service Brake.



INDEX TO PARTS, FIGURE 8

Reference Number	Functional Group	Item Name
1	1202	BEARING
2	1202	RIVET
3	1202	LINING
4	1202	BRAKE SHOE AY
5	1202	LOCK
6	1202	LINK
7	1202	PIN
8	1202	SPIDER
9	1202	NUT
10	1206	ADJUSTER
11	1206	RING
12	1202	WASHER
13	1202	FITTING
14	1202	BEARING
15	1202	WASHER
16	1202	NUT
17	1202	WASHER
18	1202	SCREW
19	1202	CAM
20	1202	LINING
21	1202	RING
22	1202	ROLLER
23	1202	PIN
24	1202	SPRING

EMC 2330-211-25P/8

Figure 8. Rear Service Brake.

TECHNICAL SERVICE SOURCE	SOURCE	RECOVERABILITY	FEDERAL STOCK NUMBER	DESCRIPTION	UNIT OF ISSUE	EXPENDABILITY	QUANTITY INCORPORATED IN UNIT	15 DAYS ORGANIZATIONAL MAINTENANCE ALLOWANCE PER 100 EQUIPMENTS			GUIDE QUANTITIES PER 100 EQUIPMENTS			ILLUSTRATIONS
								2ND ECH	3RD ECH	4TH ECH	5TH ECH	FIELD MAINTENANCE 15-DAY LEVEL	DEPOT MAINTENANCE	
				1202 - SERVICE BRAKES (cont)										
	X2	F	(51501) R2993	CAM, BRAKE: rear, lh		4		*	*	*	8	19		
	X2	F	(51501) R2992	CAM, BRAKE: rear, rh		4		*	*	*	8	19		
	X2	F	(51501) R2118	CAM, BRAKE: rh; front		4		*	*	*	7	16		
	P	F	4730-249-491B	FITTING, LUBRICATION: brake spider, front (51501) R503		4		See Group	9500.1	See Group	9500.1	7	12	
	P	F	4730-050-4208	FITTING, LUBRICATION: spider, rear (95079) 1900		8		See Group	9500.1	See Group	9500.1	8	13	
	P	F	2530-500-1126	LINING, FRICTION		4		4	1	160				
	X1		2530-602-4239	LINING SET, FRICTION: brake shoe; front		8						7	5	
	X1		3010-602-0167	LINING SET, FRICTION: brake shoe; front		8						7	19	
9	P	F	5320-050-9090	RIVET, TUBULAR: brake shoe, front		128		See Group	9500.1	See Group	9500.1	7	20	
	P	F	2530-353-2526	LINING KIT, FRICTION: brake shoe, rear (78500) 2000085		8		8	2	320				



TECHNICAL SERVICE	SOURCE CODES			FEDERAL STOCK NUMBER	DESCRIPTION	UNIT OF ISSUE	EXPENDBILITY	QUANTITY INCORPORATED IN UNIT	15 DAYS ORGANIZATIONAL MAINTENANCE ALLOWANCES PER 100 EQUIPMENTS			GUIDE QUANTITIES PER 100 EQUIPMENTS			ILLUSTRATIONS		
	SOURCE	MAINTENANCE	RECOVERABILITY						2ND ECH	3RD ECH	FIELD MAINTENANCE 15-DAY LEVEL		DEPT MAINTENANCE	FIG. NO.	ITEM NO.		
											4TH ECH	5TH ECH					
					1206 - MECHANICAL BRAKE CONTROLS (cont)												
	X2	F		2530-427-1034	EQUALIZER: brake lever	(51501) 4372		4			*	*	*				
	X2	0			LEVER, HAND BRAKE: cable	(51501) 888-0-18		1	*	*	*	*	5	6	16		
	X2	0			LEVER: walking beam	(51501) 84365		2	*	*	*	*	*	6	23		
9	P	0		5310-275-5507	NUT, CASTELLATED, HEXAGON: walking beam	(51501) 8634		2	See Group 9500.1	See Group 9500.1	See Group 9500.1	See Group 9500.1	See Group 9500.1	6	18		
9	P	0		5310-021-9753	NUT, PLAIN, HEXAGON: push and pull rod	(51501) 8614		4	See Group 9500.1	See Group 9500.1	See Group 9500.1	See Group 9500.1	See Group 9500.1	6	18		
9	P	F		5315-059-0706	PIN, COTTER: brake equalizer	(51501) 8107		0									
9	P	0		5315-013-7204	PIN, COTTER: handbrake	(51501) 8969		8	See Group 9500.1	See Group 9500.1	See Group 9500.1	See Group 9500.1	See Group 9500.1	6	22		
	P1	0		5315-664-4903	PIN, STRAIGHT, HEADED: clevis and yoke end	(71843) 2708-1/2-0A		4	See Group 9500.1	See Group 9500.1	See Group 9500.1	See Group 9500.1	See Group 9500.1	6	20		
	P	0		5315-427-2533	PIN, STRAIGHT, HEADED: walking beam	(81336) 2074252		2	See Group 9500.1	See Group 9500.1	See Group 9500.1	See Group 9500.1	See Group 9500.1	6	20		
	P1	F		5340-202-0061	RING, RETAINING: brake cam and slack adjuster front and rear	(51501) 82204		12			3	1	100	8	11		
	X2	0			ROD: hand brake	(51501) 84445		1	*	*	*	*	*	6	19		
	X2	0		5340-255-0243	CLEVIS; ROD END	(71843) 2708-0A		2	See Group 9901	See Group 9901	See Group 9901	See Group 9901	See Group 9901	6	17		
	P	0		5315-276-3718	PIN, STRAIGHT, HEADED: clevis	(71843) 2708-1/2-0A		2	See Group 9500.1	See Group 9500.1	See Group 9500.1	See Group 9500.1	See Group 9500.1	6	15		
	X2	0			ROD: hand brake	(51501) 84446		1	*	*	*	*	*	6	21		
	X2	0		5340-255-0243	CLEVIS; ROD END	(71843) 2708-0A		1	See Group 9901	See Group 9901	See Group 9901	See Group 9901	See Group 9901	6	17		
	P	0		5315-276-3718	PIN, STRAIGHT, HEADED: clevis	(71843) 2708-1/2-0A		1	See Group 9500.1	See Group 9500.1	See Group 9500.1	See Group 9500.1	See Group 9500.1	6	15		
	X2	0			ROD: hand brake	(51501) 84447		1	*	*	*	*	*	6	21		
	X2	0		5340-255-0243	CLEVIS; ROD END	(71843) 2708-0A		2	See Group 9901	See Group 9901	See Group 9901	See Group 9901	See Group 9901	6	17		
	P	0		5315-276-3718	PIN, STRAIGHT, HEADED: clevis	(71843) 2708-1/2-0A		2	See Group 9500.1	See Group 9500.1	See Group 9500.1	See Group 9500.1	See Group 9500.1	6	15		
	X2	0			ROD, PULL; walking beam	(51501) 84384		2	*	*	*	*	*	6	21		
	X2	0			ROD, PUSH; walking beam	(51501) 84383		2	*	*	*	*	*	6	21		
	P1	F		5310-427-1754	WASHER, BALL SOCKET: brake equalizer	(51501) 8507		12					44				
9	P	F		5310-543-4488	WASHER, FLAT: brake equalizer	(51501) 8988		8									
9	P	F		5310-010-3546	WASHER, FLAT: brake equalizer, ball socket	(51501) 8987		4									
	P1	0			WASHER, FLAT: lever	(51501) 8656		2	*	*	*	*	12				
					1206.1 - AIR BRAKE SYSTEM												
	P	0		4730-243-9153	ADAPTER, STRAIGHT, PIPE TO TUBE: air reservoir to emergency valve, air filter	(51501) 8528		4	See Group 9500.1	See Group 9500.1	See Group 9500.1	See Group 9500.1	See Group 9500.1	6	15		
	P	0		4730-209-1207	ADAPTER, STRAIGHT, PIPE TO TUBE: quick release valve	(66853) 205053		10	See Group 9500.1	See Group 9500.1	See Group 9500.1	See Group 9500.1	See Group 9500.1	6	15		
	P1	0		4730-737-7007	ADAPTER ASSEMBLY, PIPE TO CUTOFF COCK	(66853) 205499		2	*	*	*	*	12				
	P	0		4730-202-6669	BUSHING, PIPE: reducer, air cylinder	(51501) 8465		2	See Group 9500.1	See Group 9500.1	See Group 9500.1	See Group 9500.1	See Group 9500.1	6	15		
	P	0		5340-514-2726	CLAMP LOOP: air line	(66853) 202639		1	See Group 9500.1	See Group 9500.1	See Group 9500.1	See Group 9500.1	See Group 9500.1	6	15		
	P	0		5340-737-7780	CLAMP LOOP: tubing, airbrake	(66853) 200406		1	See Group 9500.1	See Group 9500.1	See Group 9500.1	See Group 9500.1	See Group 9500.1	6	15		
	X2	0		4730-595-0083	COUPLING HALF, QUICK-DISCONNECT	(66853) 220165		2	*	*	*	*	*				
9	X2	0		2530-293-4176	DUMMY COUPLING: hose coupling cover	(51501) 8483		2	*	*	*	*	*				
	P	0		4730-209-0155	ELBOW, PIPE TO TUBE: air brake	(66853) 205029		1	See Group 9500.1	See Group 9500.1	See Group 9500.1	See Group 9500.1	See Group 9500.1	6	15		
	P	0		4730-209-0050	ELBOW, PIPE TO TUBE: pipe nipple	(51501) 8525		2	See Group 9500.1	See Group 9500.1	See Group 9500.1	See Group 9500.1	See Group 9500.1	6	15		

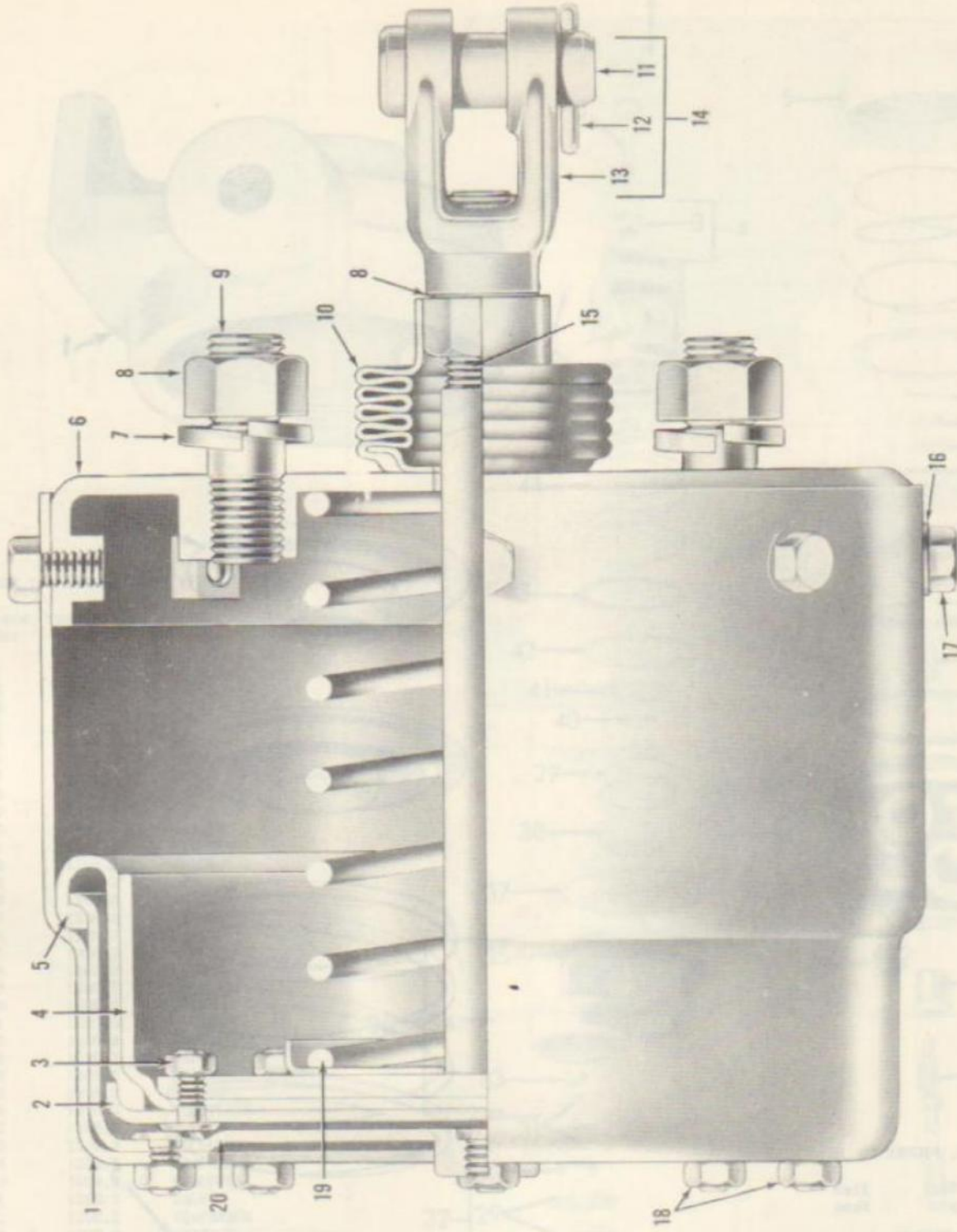
P1	0		HOSE, JUMPER	(51501) R475									*	*			6	
P1	0	2530-426-027B	HOSE ASSEMBLY, RUBBER: Jumper	(06053) 215592									*	*			6	
P1	0		HOSE ASSEMBLY: quick release valve	(51501) R4444									*	*			0	
M	0		INSULATION SLEEVING															
P	0	5640-425-1033	INSULATION SLEEVING, THERMAL (10 ft required)			FT					See Group 9500.2		See Group 9500.2				See Group 9500.2	
M	0		LOOM: conduit															
P	0	5975-132-6694	MANUFACTURE FROM: TUBE, FLEXIBLE, NONMETALLIC ELECTRICAL (GE) (8 ft required)	(51501) R451		FT					See Group 9500.2		See Group 9500.2				See Group 9500.1	
P	0	4730-108-1066	NIPPLE, PIPE: quick release valve (GE)	(51501) R1130													12	
P1	0	5305-276-9943	SCREW, MACHINE: clamp	(06053) 205103													See Group 9500.1	
P	0	4730-200-9490	TEE, PIPE TO TUBE: air filter	(06053) 205177													See Group 9500.1	
P	0	4730-200-9491	TEE, PIPE TO TUBE: airbrake	(06053) 205104													See Group 9500.1	
P	0	4730-200-9494	TEE, PIPE TO TUBE: airbrake														See Group 9500.1	
M	0		TUBING COPPER: air pressure line															
P	0	4710-047-4402	MANUFACTURE FROM: TUBE, COPPER (30 ft required)			FT					See Group 9500.2		See Group 9500.2				See Group 9500.2	
M	0		TUBING, COPPER: airbrake															
P	0	4710-426-0112	MANUFACTURE FROM: TUBE, COPPER (48 ft required)			FT					See Group 9500.2		See Group 9500.2				See Group 9500.2	
P1	0	R	1200.3 - BRAKE CHAMBERS, DIAPHRAGMS, VALVES, FILTERS															
P1	0	2530-353-0426	CHAMBER ASSEMBLY: roto front air brakes (type 36)	(06053) 222256													4	9
X2	0	2530-353-0465	BELLOWS, RUBBER: push rod	(06053) 231393													*	9
X1	0		BODY: roto chamber	(06053) 231533													*	10
X2	0		BOLT, MACHINE: body	(06053) 231512													*	1
X2	0		BOLT, MACHINE: diaphragm	(06053) 231474													*	
X2	0		CLAMP: outer diaphragm	(06053) 226889													*	20
X2	0	2530-376-0063	CLAMP, ROTARY CHAMBER DIAPHRAGM: inner	(06053) 222257													*	2
X2	0	5340-202-6935	CLEVIS ASSEMBLY, ROD END	(06053) 216797													*	14
P1	0		CLEVIS	(06053) 204270													*	13
P	0	5315-010-3305	PIN, COTTER: steel, 1/8 in. dia, 1 in. lg	(06053) 203019													See Group 9500.1	12
P1	0	5315-201-6615	PIN, STRAIGHT, HEADED	(06053) 210797													4	11
X2	0		COVER: body	(06053) 222260													*	6
P1	0	2530-353-0467	DIAPHRAGM, CHAMBER BRAKE: roto	(06053) 231534													*	5
X2	0	2530-376-0068	GUIDE, DIAPHRAGM	(06053) 231536													*	4
X2	0		NUT, KNURLED: outer diaphragm body	(06053) 203145													*	18
X2	0		NUT, PLAIN, HEXAGON	(06053) 214150													*	3
P1	0		NUT, PLAIN, HEXAGON: push rod	(06053) 204781													*	20
X2	0		NUT, PLAIN, HEXAGON: roto-chamber cover studs	(06053) 203006													*	8
X2	0	2530-353-0427	ROD, PUSH, ROTD: chamber	(06053) 222258													*	15
P	0	5305-266-6337	SCREW, CAP, HEXAGON HEAD: cover	(06053) 231826													See Group 9500.1	17
P1	0		SPRING, HELICAL, COMPRESSION: diaphragm	(06053) 231540													*	19
P1	0		SPRING, CLAMP: inner	(06053) 237043													*	10

TECHNICAL SERVICE	SOURCE CODES		FEDERAL STOCK NUMBER	DESCRIPTION	UNIT OF ISSUE	EXPENDABILITY	QUANTITY INCORPORATED IN UNIT	GUIDE QUANTITIES PER 100 EQUIPMENTS				ILLUSTRATIONS	
	SOURCE	MAINTENANCE						RECOVERABILITY	FIELD MAINTENANCE 15-DAY LEVEL	DEPOT MAINTENANCE	FIG. NO.	ITEM NO.	
								2ND ECH	3RD ECH	4TH ECH	5TH ECH		
				1208.3 - BRAKE CHAMBERS, DIAPHRAGMS, VALVES, FILTERS (cont)									
X2	0			STUD, BREATHER	(06053) 231044		2	*	*	*	*		
X2	0			STUD, BREATHER	(06053) 234404		2	*	*	*	*		
P	0		5307-292-5946	STUD, PLAIN, ROTO; chamber cover	(06053) 230675		4	See Group 9500.1	See Group 9500.1	See Group 9500.1	See Group 9500.1	9	9
X2	0			WASHER, LOCK; body bolt	(06053) 202982		16	*	*	*	*		
9	P	0	5310-011-5549	WASHER, LOCK; cover	(06053) 201504		16	See Group 9500.1	See Group 9500.1	See Group 9500.1	See Group 9500.1	9	16
X2	0			WASHER, LOCK; diaphragm	(06053) 202981		16	*	*	*	*		
X2	0			WASHER, LOCK; roto-chamber cover studs	(06053) 202987		4	*	*	*	*	9	7
X2	0		2530-350-6492	CLEANER ASSEMBLY; brake	(06053) 221474		2	*	*	*	*		
9	P	0	5306-207-9782	BOLT, MACHINE; air cleaner cover	(06053) 203788		8	See Group 9500.1	See Group 9500.1	See Group 9500.1	See Group 9500.1		
X2	0			COVER; air cleaner	(06053) 230106		2	*	*	*	*		
P	0		2530-523-0212	FILTER ELEMENT	(06053) 221053		2	13	13	1	200		
P1	0		5330-426-0376	GASKET; air cleaner cover	(06053) 230109		2	*	*	*	30		
P	0		4730-012-7951	PLUG, PIPE; air cleaner (GE)	(06053) 230111		2	See Group 9500.1	See Group 9500.1	See Group 9500.1	See Group 9500.1		
X2	0			SUPPORT, STRAINER	(06053) 214171		2	*	*	*	*		
9	P	0	5310-012-6214	WASHER, LOCK; air cleaner cover	(06053) 202982		8	See Group 9500.1	See Group 9500.1	See Group 9500.1	See Group 9500.1		
P	0		4020-350-6495	COCK, PLUG; shut off	(06053) 217799		1	See Group 9500.1	See Group 9500.1	See Group 9500.1	See Group 9500.1		
P1	0		2530-732-4628	CYLINDER ASSEMBLY; air brake	(06053) 220878		2	*	*	*	4	14	14
X2	F			BODY; cylinder	(06053) 213060		2	*	*	*	*	14	10
X2	F		5340-282-6939	CLEVIS, ROD END; push rod	(06053) 220090		2	*	*	*	*	14	1
X2	0		2530-361-6659	COVER, BREATHER	(06053) 212369		2	*	*	*	*	14	7
X2	F		2530-426-0339	COVER ASSEMBLY; brake cylinder	(06053) 220079		2	*	*	*	*	14	27
X2	F			BODY; end cover	(06053) 213886		2	*	*	*	*	14	26
P1	F			BUSHING	(06053) 213087		2	*	*	*	10	14	25
X2	F		2530-275-6136	CUP, COMPRESSION	(06053) 213875		2	*	*	*	*	14	15
X2	F			CUP, WASHER; piston	(06053) 213076		2	*	*	*	*	14	16
P1	F		5330-202-3565	FELT, MECHANICAL, PREFORMED	(06053) 213070		2	*	*	*	20	14	14
P1	0		5330-202-3566	FELT, MECHANICAL, PREFORMED	(06053) 213081		2	*	*	*	20	14	5
X2	F		2530-426-0242	FOLLOWER, PISTON, BRAKE CYLINDER	(06053) 213877		2	*	*	*	*	14	17
P1	F		2530-426-0244	GASKET; brake cylinder cover	(06053) 213084		2	*	*	*	30	14	9
X2	F		2530-426-0239	GUIDE, PISTON ROD, BRAKE CYLINDER	(06053) 213072		2	*	*	*	*	14	11
P1	F			LOCKWIT; piston	(06053) 213074		2	*	*	*	12	14	20
9	P	F	5310-265-9220	NUT, PLAIN, HEXAGON; yoke	(06053) 203008		2	See Group 9500.1	See Group 9500.1	See Group 9500.1	See Group 9500.1	14	28
P1	F		2530-426-0236	PISTON, BRAKE CYLINDER	(06053) 213869		2	*	*	*	10	14	18
P1	0			RING, RETAINING; felt oiler	(06053) 213003		2	*	*	*	10	14	4
X2	F		2530-426-0237	ROD, PISTON, BRAKE CYLINDER	(06053) 213870		2	*	*	*	*	14	2
X2	F		2530-426-0161	SCREEN, STRAINER	(06053) 204145		2	*	*	*	*	14	8
X2	F		5340-253-6079	SPRING, HELICAL, COMPRESSION	(06053) 213079		2	*	*	*	5	14	12
P	0		5310-274-7022	WASHER, FLAT; felt oiler	(06053) 213082		2	See Group 9500.1	See Group 9500.1	See Group 9500.1	See Group 9500.1	14	3
P	F		5310-426-0240	WASHER, FLAT; piston	(06053) 213073		2	See Group 9500.1	See Group 9500.1	See Group 9500.1	See Group 9500.1	14	19
P1	0		5310-569-0968	WASHER, OILER; felt	(06053) 213080		2	*	*	*	12	14	6
P1	F		5310-426-0238	WASHER, RECESSED; piston rod	(06053) 213071		2	*	*	*	12	14	13
P1	0		4730-192-9450	NIPPLE, PIPE; check valve (close)	(51501) 8466		1	See Group 9500.1	See Group 9500.1	See Group 9500.1	See Group 9500.1	14	13



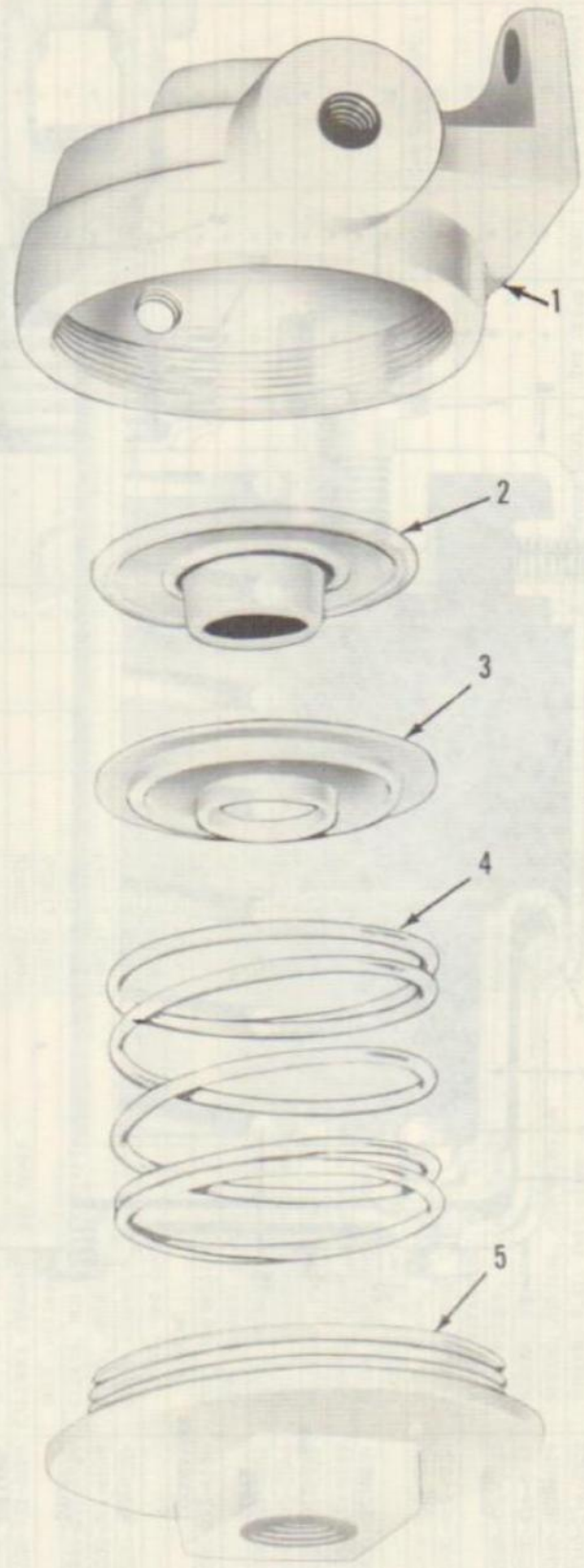
INDEX TO PARTS, FIGURE 9

Reference Number	Functional Group	Item Name
1	1200,3	BODY
2	1200,3	CLAMP
3	1200,3	NUT
4	1200,3	GUIDE
5	1200,3	DIAPHRAGM
6	1200,3	COVER
7	1200,3	LOCKWASHER
8	1200,3	NUT
9	1200,3	STUD
10	1200,3	BELLOWS
11	1200,3	PIN
12	1200,3	PIN
13	1200,3	CLEVIS
14	1200,3	CLEVIS ASSEMBLY
15	1200,3	ROD
16	1200,3	WASHER
17	1200,3	SCREW
18	1200,3	NUT
19	1200,3	SPRING
20	1200,3	CLAMP



EMC 2330-211-25P/9

Figure 9. Chamber Assembly Air Brake.

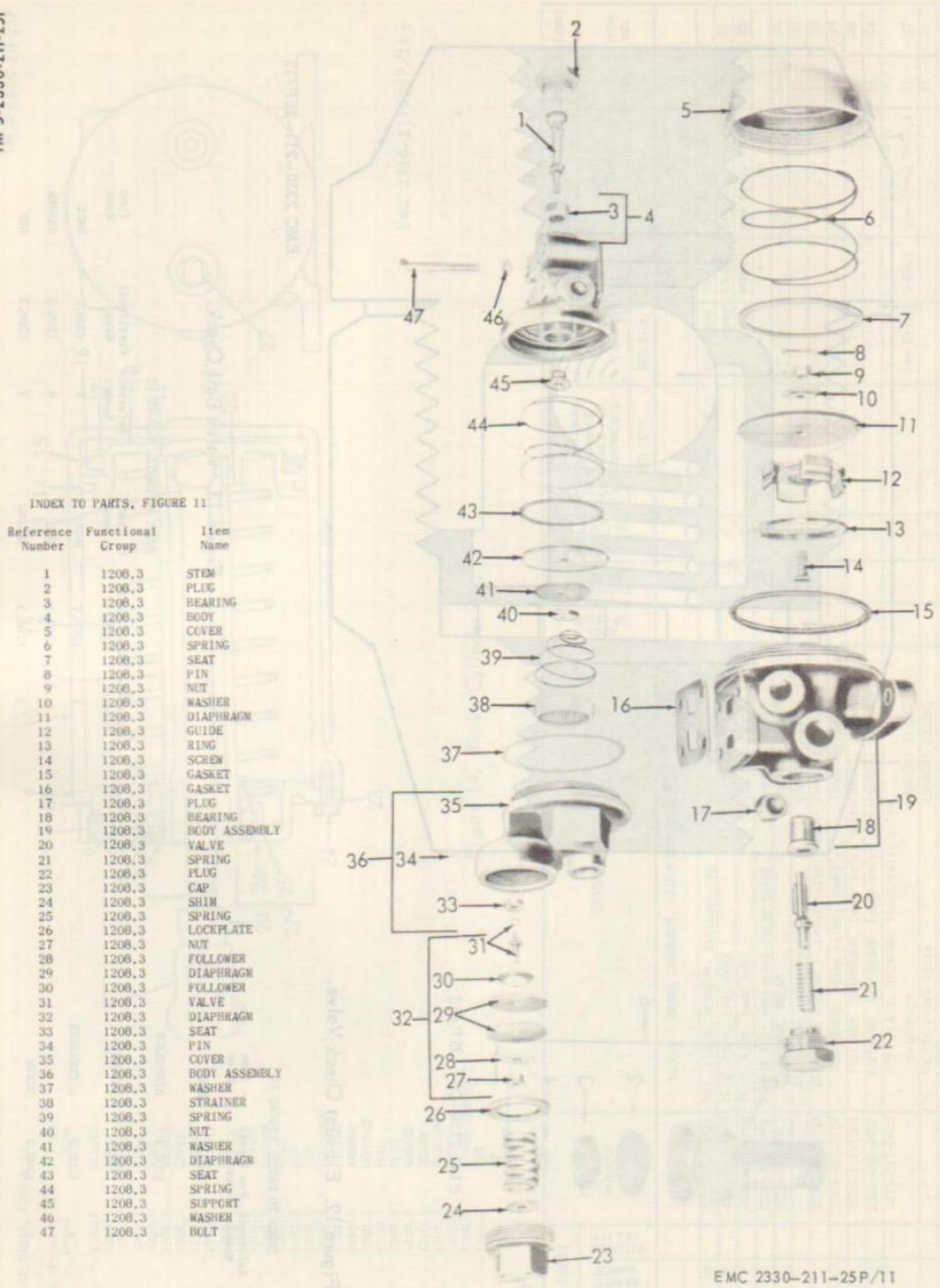


INDEX TO PARTS, FIGURE 10

Reference Number	Functional Group	Item Name
1	1206.3	BODY
2	1206.3	DIAPHRAGM
3	1206.3	SEAT
4	1206.3	SPRING
5	1206.3	CAP

EMC 2330-211-25P/10

Figure 10. Quick Release Valve.

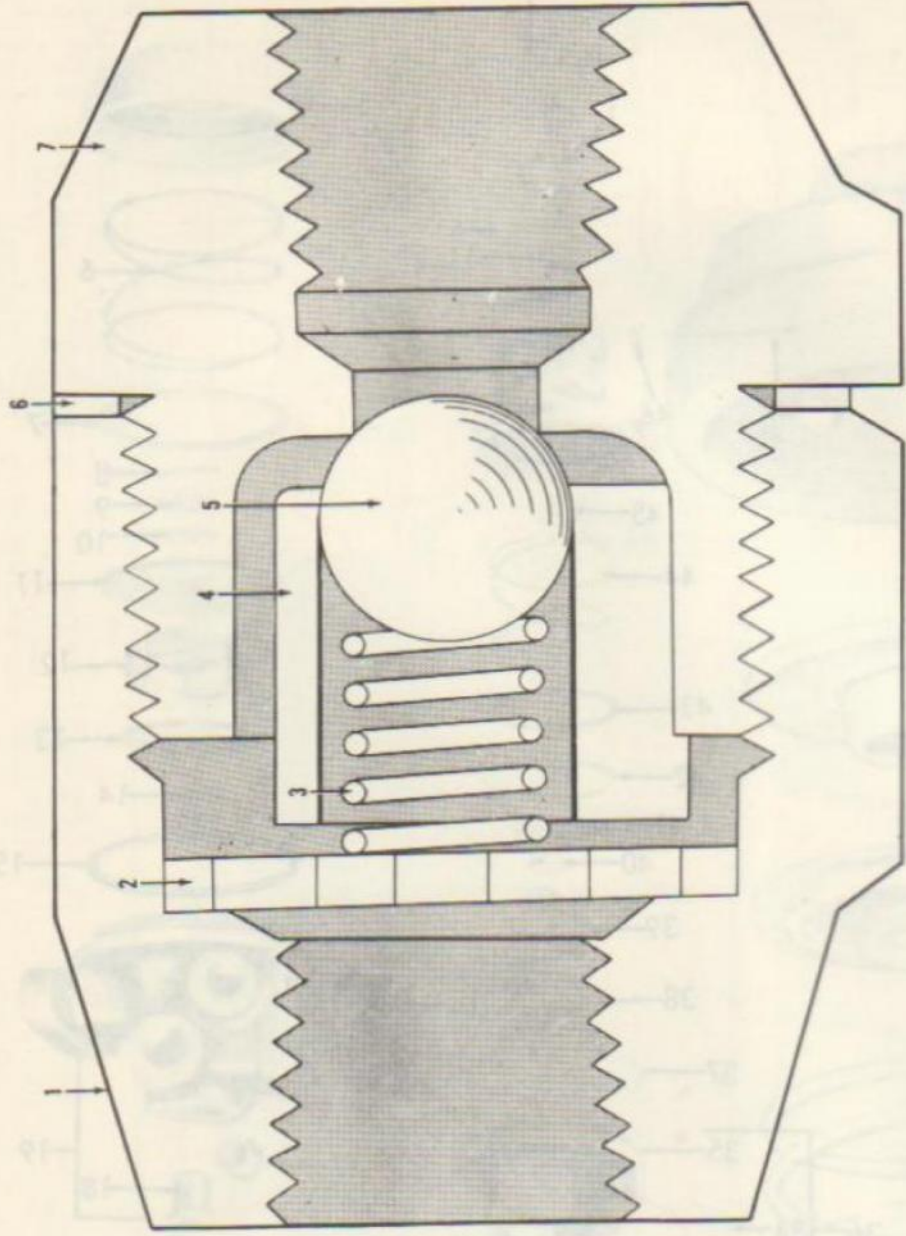


INDEX TO PARTS, FIGURE 11

Reference Number	Functional Group	Item Name
1	1208,3	STEM
2	1208,3	PLUG
3	1208,3	BEARING
4	1208,3	BODY
5	1208,3	COVER
6	1208,3	SPRING
7	1208,3	SEAT
8	1208,3	PIN
9	1208,3	NUT
10	1208,3	WASHER
11	1208,3	DIAPHRAGM
12	1208,3	GUIDE
13	1208,3	RING
14	1208,3	SCREW
15	1208,3	GASKET
16	1208,3	GASKET
17	1208,3	PLUG
18	1208,3	BEARING
19	1208,3	BODY ASSEMBLY
20	1208,3	VALVE
21	1208,3	SPRING
22	1208,3	PLUG
23	1208,3	CAP
24	1208,3	SHIM
25	1208,3	SPRING
26	1208,3	LOCKPLATE
27	1208,3	NUT
28	1208,3	FOLLOWER
29	1208,3	DIAPHRAGM
30	1208,3	FOLLOWER
31	1208,3	VALVE
32	1208,3	DIAPHRAGM
33	1208,3	SEAT
34	1208,3	PIN
35	1208,3	COVER
36	1208,3	BODY ASSEMBLY
37	1208,3	WASHER
38	1208,3	STRAINER
39	1208,3	SPRING
40	1208,3	NUT
41	1208,3	WASHER
42	1208,3	DIAPHRAGM
43	1208,3	SEAT
44	1208,3	SPRING
45	1208,3	SUPPORT
46	1208,3	WASHER
47	1208,3	BOLT

EMC 2330-211-25P/11

Figure 11. Emergency Relay Valve Assembly.

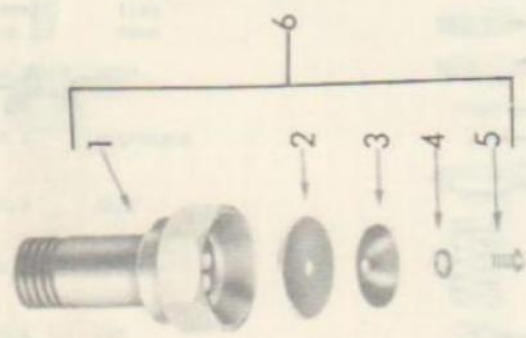


EMC 2330-211-25P/13

Figure 13. Valve Ball Check.

INDEX TO PARTS, FIGURE 13

Reference Number	Functional Group	Item Name	Reference Number	Functional Group	Item Name
1	1200.3	BODY	5	1200.3	BALL
2	1200.3	SEAT	6	1200.3	WASHER
3	1200.3	SPRING	7	1200.3	NUT
4	1200.3	GUIDE			

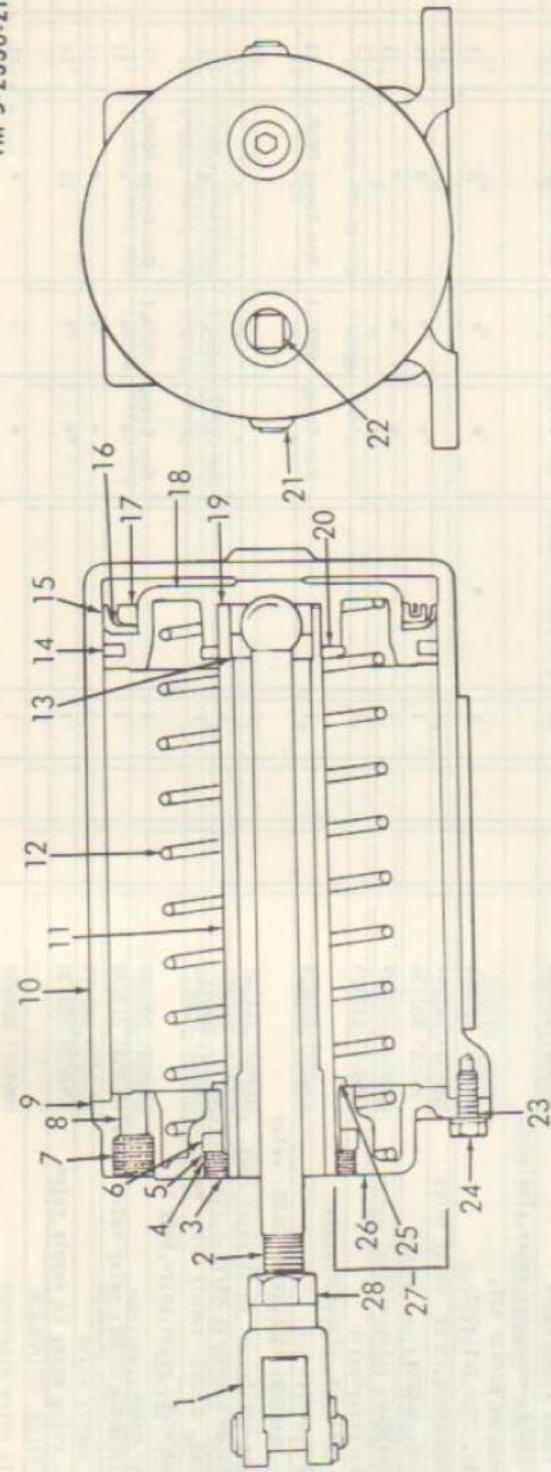


EMC 2330-211-25P/12

Figure 12. Exhaust Check Valve.

INDEX TO PARTS, FIGURE 12

Reference Number	Functional Group	Item Name
1	1200.3	BODY
2	1200.3	DIAPHRAGM
3	1200.3	WASHER
4	1200.3	LOCKWASHER
5	1200.3	SCREW
6	1200.3	VALVE ASSEMBLY



EMC 2330-211-25P/14

Figure 14. Brake Cylinder Air.

INDEX TO PARTS, FIGURE 14

Reference Number	Functional Group	Item Name
1	1208.3	CLEVIS
2	1208.3	ROD
3	1208.3	WASHER
4	1208.3	RING
5	1208.3	FELT
6	1208.3	WASHER
7	1208.3	COVER
8	1208.3	SCREEN
9	1208.3	GASKET
10	1208.3	BODY
11	1208.3	GUIDE
12	1208.3	SPLITTING
13	1208.3	WASHER
14	1208.3	FELT
15	1208.3	CUP
16	1208.3	CUP
17	1208.3	FOLLOWER
18	1208.3	PISTON
19	1208.3	WASHER
20	1208.3	LOCKNUT
21	1208.3	PLUG
22	1208.3	PLUG
23	1208.3	WASHER
24	1208.3	SCREW
25	1208.3	BUSHING
26	1208.3	BODY
27	1208.3	COVER ASSEMBLY
28	1208.3	NUT

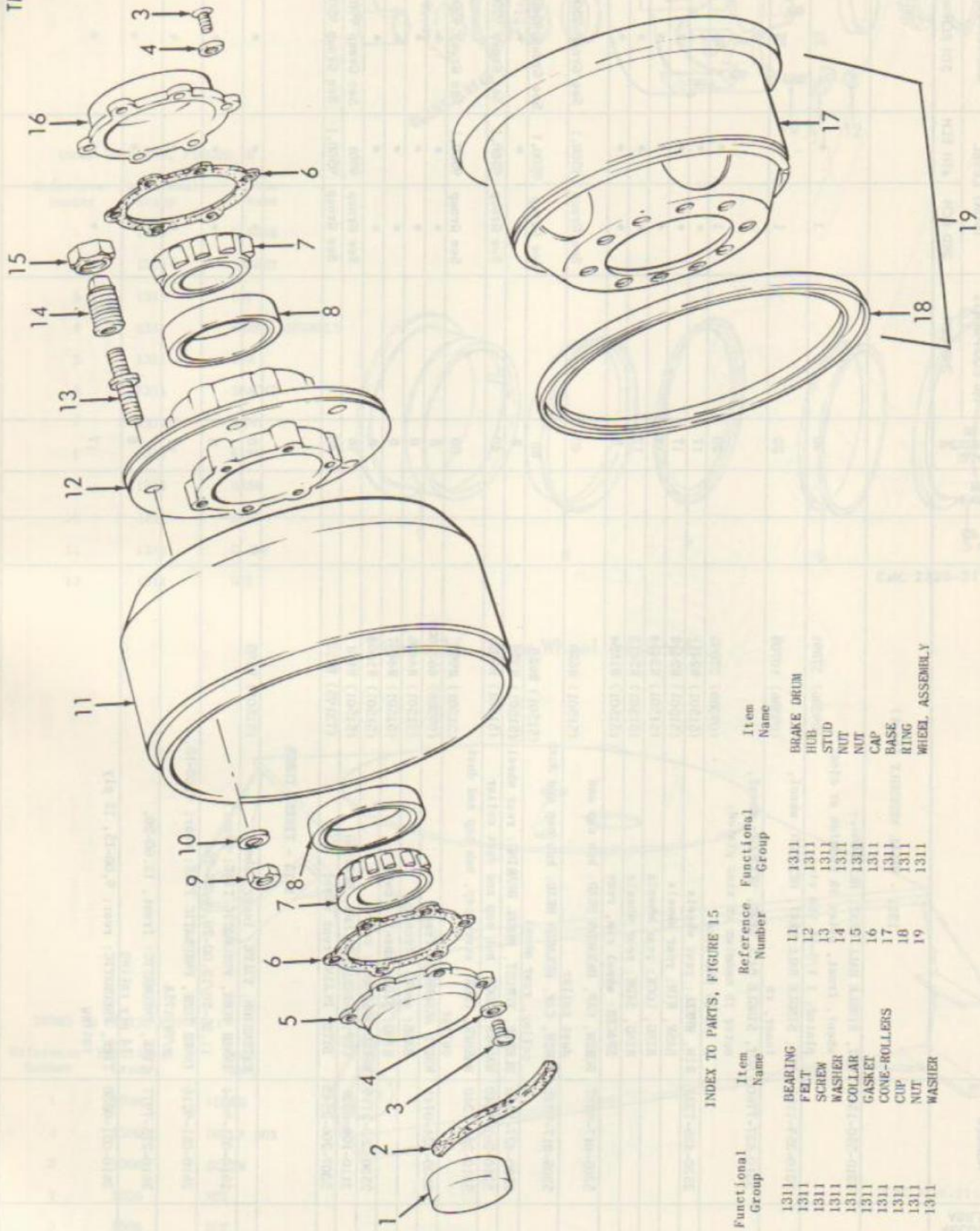
TECHNICAL SERVICE	SOURCE	MAINTNANCE	RECOVERABILITY	FEDERAL STOCK NUMBER	DESCRIPTION	UNIT OF ISSUE	EXPENDABILITY	QUANTITY INCORPORATED IN UNIT	15 DAYS ORGANIZATIONAL MAINTENANCE ALLOWANCE PER 100 EQUIPMENTS	GUIDE QUANTITIES PER 100 EQUIPMENTS			ILLUSTRATIONS
										FIELD MAINTENANCE 15-DAY LEVEL	DEPOT MAINTENANCE	ITEM NO.	
	9 P 0			5310-265-9219	NUT, PLAIN, HEXAGON; cylinder mtg (51501) R971			12	See Group 9500.1				
	P F			4730-044-4680	PLUG, PIPE; body (GE) (06853) 230178			4	See Group 9500.1	See Group 9500.1			
	P F			4730-044-4704	PLUG, PIPE; body (GE) (06853) 230049			2	See Group 9500.1	See Group 9500.1	14	21	
	P1 F			2530-701-4992	REPAIR KIT; emergency relay valve (06853) 221385			1	See Group 9500.1	See Group 9500.1	14	22	
	X1			2530-311-6977	DIAPHRAGM, RELAY (06853) 202695			1	*	*	20	11	11
	X1				DIAPHRAGM; relay valve (06853) 234758			1				11	42
	X1			2530-447-1145	DIAPHRAGM ASSEMBLY; relay valve, lower (06853) 221135			2				11	32
	X1			2530-447-1120	DIAPHRAGM; relay valve, lower (06853) 213227			4				11	29
	X1			2530-447-1104	FOLLOWER, DIAPHRAGM; lower relay valve (06853) 211541			1				11	28
	X1			2530-698-6977	FOLLOWER, DIAPHRAGM; lower relay valve (06853) 211595			1				11	30
9 P F				5310-012-0622	NUT, PLAIN, HEXAGON; lower relay valve diaphragm (06853) 211542			1		See Group 9500.1		11	27
X1					VALVE; relay valve (06853) 232865			1				11	31
X1				5330-245-5428	GASKET; supply valve cover (06853) 211367			1				11	15

TECHNICAL SERVICE SOURCE	SOURCE CODES			FEDERAL STOCK NUMBER	DESCRIPTION	UNIT OF ISSUE	EXPENDABILITY	QUANTITY INCORPORATED IN UNIT	15 DAYS ORGANIZATIONAL MAINTENANCE ALLOWANCE PER 100 EQUIPMENTS				GUIDE QUANTITIES PER 100 EQUIPMENTS			ILLUSTRATIONS	
	RECOVERABILITY	MAINTENANCE	SOURCE						2ND ECH	3RD ECH	4TH ECH	5TH ECH	FIELD MAINTENANCE 15-DAY LEVEL	DEPOT MAINTENANCE	FIG. NO.	ITEM NO.	
																	3RD ECH
					1206,3 - BRAKE CHAMBERS, DIAPHRAGMS, VALVES, FILTERS (cont)												
X1				2530-371-3908	PLUG, MACHINE THREAD: supply valve, brass, 1-16 thd size			1								11	22
X1				2530-377-8772	RING, GUIDE: supply valve			1								11	13
X1				5340-256-9643	SPRING, HELICM., COMPRESSION: relay valve diaphragm			1								11	44
X1				5340-256-9646	SPRING, HELICAL COMPRESSION: supply valve			1								11	21
X1				2530-397-6771	STEM, EMERGENCY VALVE: relay			1								11	1
X1				4620-523-8179	VALVE, RELAY, AIRBRAKE: supply			1								11	20
X1				2530-246-7000	SPRING, HELICM. COMPRESSION: relay valve diaphragm			1								11	39
9 P	0			5305-527-5316	SCREW, CAP, HEXAGON HEAD: cylinder mtg			12	See Group 9500,1	See Group 9500,1	See Group 9500,1	See Group 9500,1					
9 P	F			5305-527-4196	SCREW, CAP, HEXAGON HEAD: end cover mtg			0								14	24
P1	0			2530-377-8780	VALVE, BAL. CHECK: air brake			2	*	*	*	10					
X2	0				BALL, BEARING: check valve			2	*	*	*	5				13	5
X1					BODY: check valve			2								13	1
X2	0				GUIDE, VALVE, BAL.			2	*	*	*	*				13	4
P1	0			5310-495-1275	NUT, PLAIN, CAP			2	*	*	*	10				13	7
X2	0				SEAT, SPRING			2	*	*	*	5				13	2
X2	0			2530-398-6756	SPRING, HELICM., COMPRESSION: check valve			2	*	*	*	5				13	3
P	0			5310-245-5500	WASHER FLAT: check valve			2	See Group 9500,1	See Group 9500,1	See Group 9500,1	See Group 9500,1				13	6
X2	0	R		2530-353-0400	VALVE ASSEMBLY: emergency relay (Includes components of REPAIR KIT, Stock No. 2530-701-4992)												
X1					BODY, EMERGENCY VALVE: relay valve			1	*	*	*	5				11	
P1	F			3120-293-5957	BEARING, SLEEVE			1								11	4
X2	F			2530-426-8322	BODY ASSEMBLY: relay valve			1	*	*	*	6				11	3
X1					COVER: relay valve			1	*	*	*	*				11	36
9 P	F			5315-187-1601	PIN, STRAIGHT, HEADLESS: relay valve cover			1								11	35
X1					SEAT, PRESSURE REGULATING VALVE: relay valve cover			1	See Group 9500,1	See Group 9500,1	See Group 9500,1	See Group 9500,1				11	34
X1					BODY ASSEMBLY: supply valve			1								11	33
P1	F			2530-376-0061	BEARING, SLEEVE: supply valve body			1								11	19
9 P	F			5306-558-4203	BOLT, MACHINE: relay valve body to supply valve			4								11	18
X2	F			2530-426-8221	CAP, DIAPHRAGM COVER: relay valve cover			1	See Group 9500,1	See Group 9500,1	See Group 9500,1	See Group 9500,1				11	47
X2	F				COVER: supply valve			1	*	*	*	*				11	23
P1	F			2530-311-8980	GASKET: relay valve to supply valve			1	*	*	*	*				11	5
X2	F			2530-397-6779	GUIDE, VALVE, DIAPHRAGM: supply valve diaphragm			1	*	*	*	15				11	16
								1	*	*	*	*				11	12

X2	F	2330-426-8219	LOCKPLATE, DIAPHRAGM SUPPORT: relay valve (06853) 213226	1	*	*	*	11	26
P	F	5310-262-5388	NUT, CASTELLATED, HEXAGON: supply valve diaphragm (06853) 203227	1	See Group	9500.1	See Group	9500.1	9
P	F	5310-189-8433	NUT, PLAIN, HEXAGON: relay valve diaphragm (06853) 200029	1	See Group	9500.1	See Group	9500.1	40
9	P	5315-017-9252	PIN, COTTER: supply valve diaphragm (06853) 203016	1	See Group	9500.1	See Group	9500.1	8
X2	F	4730-378-2705	PLUG, MACHINE THREAD: relay valve body (06853) 202741	1	*	*	*	11	2
P1	F	4730-288-8572	PLUG, PIPE: supply valve, 1/4-18 thd size (GE) (06853) 203046	2	*	*	12	11	17
9	P	5305-207-0912	SCREW, CAP, HEXAGON HEAD: supply valve diaphragm (06853) 204651	1	See Group	9500.1	See Group	9500.1	14
X2	F	2530-374-1729	SEAT, DIAPHRAGM SPRING: relay valve (06853) 202737	1	*	*	5	11	43
X2	F	2530-374-1728	SEAT, DIAPHRAGM SPRING: supply valve diaphragm (06853) 202697	1	*	*	5	11	7
X2	F	2530-426-8220	SHIM: relay valve cover cap (as required) (06853) 213229		*	*	*	11	24
P1	F	5340-256-7203	SPRING, HELICAL, COMPRESSION: relay valve valve lower diaphragm (06853) 213228	1	*	*	5	11	25
P1	F	2530-256-9645	SPRING, HELICAL COMPRESSION: supply valve diaphragm (06853) 202698	1	*	*	5	11	6
X2	F	2530-374-1723	STRAINER, AIR: relay valve cover (06853) 204055	1	*	*	*	11	38
X2	F	5310-245-5498	SUPPORT, DIAPHRAGM: relay valve (06853) 202743	1	*	*	*	11	45
P1	F	5310-262-4752	WASHER, FLAT: relay valve cover (06853) 202747	1	*	*	10	11	37
P	F	5310-010-3320	WASHER, LOCK: relay valve body to supply valve (06853) 213387	1	See Group	9500.1	See Group	9900.1	41
9	P	3120-523-0159	WASHER, THRUST: supply valve diaphragm (06853) 202982	4	See Group	9500.1	See Group	9500.1	46
X2	0	2530-506-1425	VALVE ASSEMBLY: exhaust check (06853) 221087	1	*	*	10	11	10
X1	0	2530-712-1976	BODY: exhaust check valve (06853) 214231	1	*	*	5	12	6
P1	0	5305-285-4540	DIAPHRAGM, AIR EXHAUST FITTING (06853) 214232	1	*	*	15	12	2
9	P	5310-447-1121	SCREW, MACHINE: exhaust check valve (06853) 214235	1	See Group	9500.1	See Group	9500.1	5
9	P	5310-019-0669	WASHER, LOCK: diaphragm screw (06853) 214234	1	*	*	10	12	3
X2	0	2530-367-3673	VALVE ASSEMBLY: quick release (06853) 205000	1	*	*	5	12	4
X1	0	2530-397-6704	BODY ASSEMBLY (61046) 980498	1					1
X2	0	2530-698-6974	CAP, VALVE (06853) 211028	1	*	*	*	10	5
P1	0	2530-246-7004	DIAPHRAGM, AIRBRAKE (06853) 237925	1	*	*	15	10	2
X2	0	5310-010-3325	SEAT, SPRING (06853) 202587	1	*	*	5	10	3
9	P	5310-261-7340	SPRING, HELICAL, COMPRESSION: diaphragm (06853) 202588	12	See Group	9500.1	See Group	9500.1	4
9	P	5310-010-3325	WASHER, LOCK: cylinder mtg (51501) R999	8	See Group	9500.1	See Group	9500.1	23
9	P	5310-261-7340	WASHER, LOCK: end cover mtg (06853) 202983	8	See Group	9500.1	See Group	9500.1	23
1209.3 - AIR RESERVOIR, FITTINGS									
P	0	4730-243-9153	ADAPTER, STRAIGHT, PIPE TO TUBE: air reservoir (GE) (51501) R528	1	See Group	9500.1	See Group	9500.1	
X2	0	2530-496-2587	BRACKET ASSEMBLY: air reservoir (06853) 205093	2	*	*	*		
P	0	4820-142-3036	COCK, DRAIN: air reservoir (51501) R519	1	See Group	9500.1	See Group	9500.1	
9	P	5310-655-9544	NUT, PLAIN, HEXAGON: reservoir mtg (51501) R974	2	See Group	9500.1	See Group	9500.1	

TECHNICAL SERVICE	SOURCE	SOURCE CODES		FEDERAL STOCK NUMBER	DESCRIPTION	UNIT OF ISSUE	EXPENDABILITY	QUANTITY INCORPORATED IN UNIT	15 DAYS ORGANIZATIONAL MAINTENANCE ALLOWANCES PER 100 EQUIPMENTS			GUIDE QUANTITIES PER 100 EQUIPMENTS			ILLUSTRATIONS		
		RECOVERABILITY	MAINTENANCE						2ND ECH	3RD ECH	4TH ECH	5TH ECH	FIELD MAINTENANCE 15-DAY LEVEL	DEPOT MAINTENANCE	FIG. NO.	ITEM NO.	
					1209.3 - AIR RESERVOIR, FITTINGS (cont)												
	P	0		4730-010-3867	PLUG, PIPE: air reservoir (GE) (51501) R473			1	See Group 9500.1			See Group 9500.1	See Group 9500.1				
	P	0		5305-017-9943	SCREW, CAP, HEXAGON HEAD: reservoir mtg (51501) R981			2	See Group 9500.1			See Group 9500.1	See Group 9500.1				
	X2	0		2530-377-8776	TANK, PRESSURE: air brake (51501) R513			1	*			*	*				
	P	0		5310-261-7340	WASHER, LOCK: reservoir mtg (51501) R993			2	See Group 9500.1			See Group 9500.1	See Group 9500.1				
					GROUP 13 - WHEELS AND TRACKS 1311 - WHEEL ASSEMBLY												
	P	F			BEARING, SLEEVE: thrust (51501) R1167			4				3	80		15	1	
	X2	F		2530-447-7797	CAP, GREASE, WHEEL HUB: front and rear (51501) R622			12				*	*		15	19	
	X2	F		2530-353-2137	CLAMP, RIM: rear wheels (51501) R3510			48				*	*		16	11	
	P	F		2330-427-2330	COLLAR, DUST: front and rear wheels (81336) 20T4068			12				*	*		15	5	
	10	P	F	8305-141-5656	FELT STRIP: dust collar, front and rear wheels (51501) R644			12				10	2	480	15	2	
	P	F		3110-142-4362	CONE AND ROLLERS, TAPERED ROLLER BEARING: front and rear wheels (51501) R603			24				8	2	240	15	7	
	M	F			GASKET: hub cap and dust collar, front MANUFACTURE FROM: (81336) 20T4160			8							15	6	
	P	F		5330-233-5646	PAPER, GASKET (GE) MANUFACTURE FROM: (81336) 20T4160	YD		16				See Group 9500.2	See Group 9500.2	See Group 9500.2	16	2	
	M	F			MANUFACTURE FROM:												
	P	F		5330-233-5646	PAPER, GASKET (GE) (51501) R4268	YD		2				See Group 9500.2	See Group 9500.2	See Group 9500.2			
	X2	F		2530-703-2720	HUB AND DRUM ASSEMBLY: front, 1h (56697) UB1106-1			4				*	*		15	11	
	P	F		2530-694-0550	HUB, WHEEL (51501) H20			4				*	*		15	12	
	P	F		3110-100-0337	CUP, TAPERED ROLLER BEARING (51501) R601			8				See Group 9901	See Group 9901	See Group 9901	15	8	
	P	F		5307-637-1084	STUD, SHOULDERED: hub, 1h, both 3/4-16 thd size; 3-19/32 in. lg (09386) 13909 (Used with HUB AND DRUM ASSEMBLY, Stock No. (51501) R4268 only)			20				1	*	75	15	13	
	X2	F			HUB AND DRUM ASSEMBLY: front rh (51501) R4269 (Same as HUB AND DRUM ASSEMBLY, Stock No. (51501) R4268, except where individual components are annotated)			2				*	*	*			
	P	F		5310-265-9220	NUT, PLAIN, HEXAGON: drum (51501) R615			20				See Group 9500.1	See Group 9500.1	See Group 9500.1	15	9	
	P	F		5307-637-0856	STUD, SHOULDERED: hub, rh, both ends 3/4-16 thd size; 3-19/32 in. lg (09386) 13908 (Used with HUB AND DRUM ASSEMBLY, Stock No. (51501) R4269 only)			20				1	*	75	15	14	
	P	F		5310-010-3326	WASHER, LOCK: drum (51501) R992			20				See Group 9500.1	See Group 9500.1	See Group 9500.1	15	10	
	P	F		5310-359-1161	NUT, INNER, WHEEL LOCK: 1h (09386) 10709			20				1	*	75	15	16	
	P	F		5310-222-7225	NUT, PLAIN, HEXAGON: rear wheels (51501) R621			48				See Group 9500.1	See Group 9500.1	See Group 9500.1	16	12	



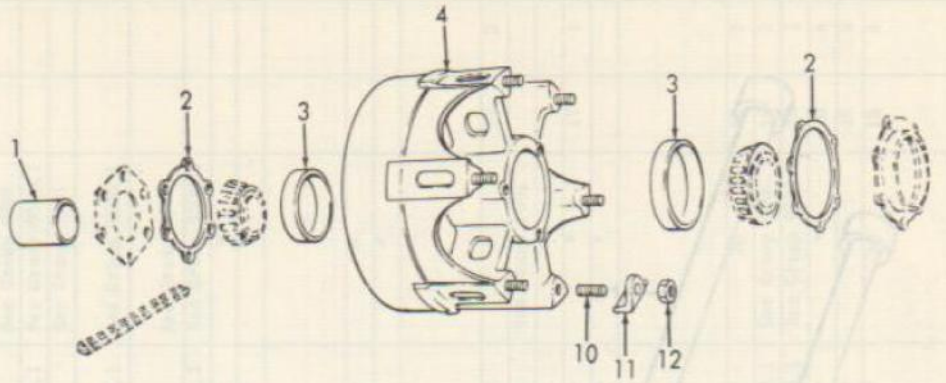


INDEX TO PARTS, FIGURE 15

Reference Number	Functional Group	Item Name	Reference Number	Functional Group	Item Name
1	1311	BEARING	11	1311	BRAKE DRUM
2	1311	FELT	12	1311	HUB
3	1311	SCREW	13	1311	STUD
4	1311	WASHER	14	1311	NUT
5	1311	COLLAR	15	1311	NUT
6	1311	GASKET	16	1311	CAP
7	1311	CONE-ROLLERS	17	1311	BASE
8	1311	CUP	18	1311	RING
9	1311	NUT	19	1311	WHEEL ASSEMBLY
10	1311	WASHER			

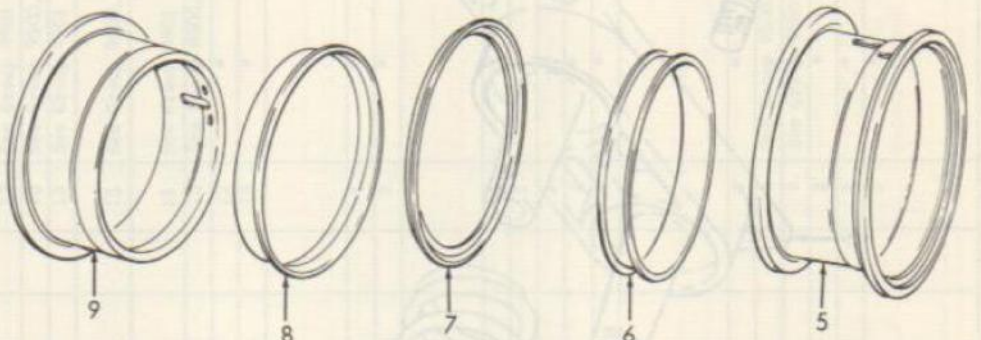
Figure 15. Front Wheel Assembly.

TECHNICAL SERVICE	SOURCE	SOURCE MAINTENANCE RECOVERABILITY	FEDERAL STOCK NUMBER	DESCRIPTION	UNIT OF ISSUE	EXPENDABILITY	QUANTITY INCORPORATED IN UNIT	15 DAYS ORGANIZATIONAL MAINTENANCE ALLOWANCE PER 100 EQUIPMENTS			GUIDE QUANTITIES PER 100 EQUIPMENTS			ILLUSTRATIONS		
								2ND ECH	3RD ECH	4TH ECH	FIELD MAINTENANCE 15-DAY LEVEL	DEPOT MAINTENANCE	FIG. NO.	ITEM NO.		
				1311 - WHEEL ASSEMBLY (cont)												
P	F		5310-550-1528	NUT, SINGLE BALL SEAT, HEXAGON: wheel, front, outer rh cadmium or zinc plated; 1 1/8-16 thd size (09386) 37891			20		1	*		75		15	17	
P	F		5310-359-1162	NUT, SINGLE BALL SEAT, HEXAGON: wheel, inner, rh (09386) 10708			20		1	*		75		15	15	
P	F		5310-637-7760	NUT, SINGLE BALL SEAT, HEXAGON: wheel, outer lh cadmium or zinc plated; 1 1/8-16 thd size (09386) 37892			20		1	*		75		15	18	
X2	F		2530-426-7324	RIM, WHEEL: rear wheels (51501) R2411			17		*	*		*		16	5	
X2	F			BASE, RIM: rear wheels (51501) R2412			17		*	*		*		16	9	
X2	F			RING, LOCK: rear wheels (51501) R2414			17		*	*		*		16	8	
X2	F			RING, SIDE: rear wheels (51501) R2413			17		*	*		*		16	7	
X2	F			SPACER: wheel rim, rear (51501) R1654			8		*	*		*		16	6	
9	P	F	5306-017-9837	SCREW, CAP, HEXAGON HEAD: hub cap and dust collar (51501) R620			40		See Group	9500,1		See Group 9500,1		15	3	
9	P	F	5306-017-9837	SCREW, CAP, HEXAGON HEAD: hub cap and dust collar, rear wheel (51501) R620			80		See Group	9500,1		See Group 9500,1				
X2	F		2530-427-1060	SLEEVE, THRUST, WHEEL BEARING: rear wheel (51501) R350			8		*	*		*		16	1	
9	P	F	5310-261-7340	WASHER, LOCK: hub cap and dust collar (51501) R993			40		See Group	9500,1		See Group 9500,1		15	4	
9	P	F	5310-261-7340	WASHER, LOCK: screw cap, hub cap and dust collar (51501) R993			80		See Group	9500,1		See Group 9500,1				
X2	F		2530-324-0741	WHEEL ASSEMBLY: front (09386) 6630000			8		*	*		*		15	22	
X2	F			BASE: wheel, front (51501) R4406			8		*	*		*		15	20	
X2	F			RING, SIDE: wheel, front (51501) R4407			8		*	*		*		15	21	
X2	F		2530-353-2119	WHEEL ASSEMBLY: rear (51501) R1663			8		*	*		*		16	4	
9	P	F	3110-100-0337	CUP, TAPERED ROLLER, BEARING (51501) R601			16		See Group	9901		See Group 9901		16	3	
P	F		5307-206-2543	STUD, PLAIN: rear wheel (73195) BT52			48		See Group	9500,1		See Group 9500,1		16	10	
				1313 - TIRES, TUBES												
X2	F			EXTENSION, VALVE: inner tubes (51501) R195			8		*	*		*				
9	P	F	2610-051-9454	INNER TUBE, PNEUMATIC TIRE: front; 11.25-20/12.00-20, w/TR-70A			8		*	*		*				
9	P	F	2610-051-9216	INNER TUBE, PNEUMATIC TIRE: rear; 9.00-15, w/TR-175A			17		*	*		*				
9	P	F	2610-275-7977	TIRE, PNEUMATIC: front, 12.00-20, 14 ply rating			8		*	*		*				
9	P	F	2610-051-0830	TIRE, PNEUMATIC: rear; 9.00-15, 12 ply rating			17		*	*		*				



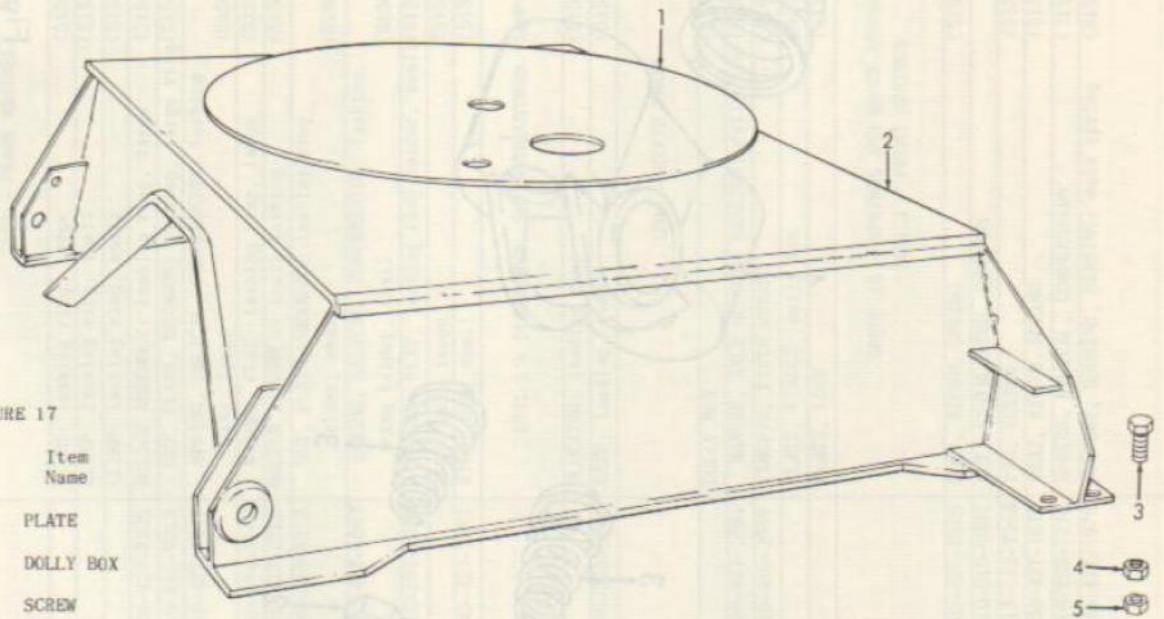
INDEX TO PARTS, FIGURE 16

Reference Number	Functional Group	Item Name
1	1311	SLEEVE
2	1311	GASKET
3	1311	CUP
4	1311	WHEEL ASSEMBLY
5	1311	RIM
6	1311	SPACER
7	1311	RING
8	1311	RING
9	1311	BASE
10	1311	STUD
11	1311	CLAMP
12	1311	NUT



EMC 2330-211-25P/16

Figure 16. Rear Wheel Assembly.

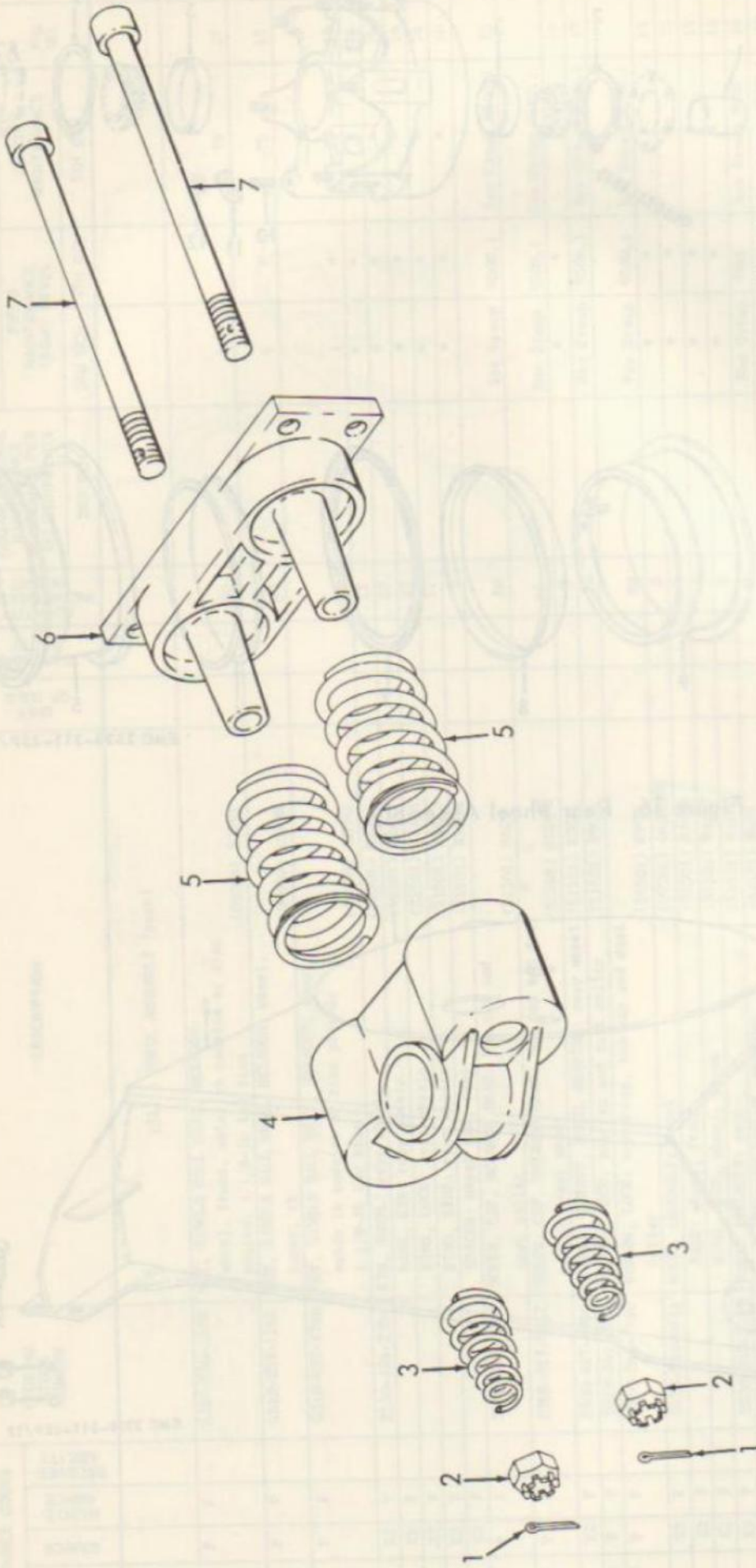


INDEX TO PARTS, FIGURE 17

Reference Number	Functional Group	Item Name
1	1506	PLATE
2	1506	DOLLY BOX
3	1506	SCREW
4	1506	NUT
5	1506	NUT

EMC 2330-211-25P/17

Figure 17. Dolly Box.



EMC 2330-211-25P/18

Figure 13. Spring Assembly.

INDEX TO PARTS, FIGURE 13

Reference Number	Functional Group	Item Name	Reference Number	Functional Group	Item Name
1	1601.1	PIN	5	1601.1	SPRING
2	1601.1	NUT	6	1601.1	SEAT
			7	1601.1	BOLT

TECHNICAL SERVICE	SOURCE CODES			FEDERAL STOCK NUMBER	DESCRIPTION	UNIT OF ISSUE	EXPENDABILITY	QUANTITY INCORPORATED IN UNIT	15 DAYS ORGANIZATIONAL MAINTENANCE ALLOWANCE PER 100 EQUIPMENTS			GUIDE QUANTITIES PER 100 EQUIPMENTS			ILLUSTRATIONS		
	RECOVERABILITY	MAINTENANCE	SOURCE						2ND ECH	3RD ECH	4TH ECH	5TH ECH	FIELD MAINTENANCE 15-DAY LEVEL		DEPOT MAINTENANCE	FIG. NO.	ITEM NO.
													3RD ECH	4TH ECH			
					GROUP 15 - FRAME 1501 - FRAME ASSEMBLY												
	X2	0			CLAMP: lashing ring, large (51501) R571			12	*	*	*	*	*				
	X2	0			CLAMP: lashing ring, small (51501) R3754			3	*	*	*	*	*				
	X2	0			CLAMP: lashing ring, small (51501) R3755			1	*	*	*	*	*				
	X2	0			HOLDER ASSEMBLY: lashing ring, large (51501) R313			13	See Group 9901	See Group 9901	See Group 9901	See Group 9901	See Group 9901				
	P	0			NUT, PLAIN, HEXAGON: lashing, large ring (51501) R794			13	See Group 9500.1	See Group 9500.1	See Group 9500.1	See Group 9500.1	See Group 9500.1				
	X2	0			SPRING, HELICAL, COMPRESSION: lashing ring, large (51501) 10			13	See Group 9901	See Group 9901	See Group 9901	See Group 9901	See Group 9901				
9	P	0			WASHER, FLAT: lashing ring, large (51501) R991			13	See Group 9500.1	See Group 9500.1	See Group 9500.1	See Group 9500.1	See Group 9500.1				
	X2	0			HOLDER ASSEMBLY: small lashing (51501) R313			13	See Group 9901	See Group 9901	See Group 9901	See Group 9901	See Group 9901				
	P	0			NUT, PLAIN, HEXAGON: lashing ring holder, small (51501) R794			13	See Group 9500.1	See Group 9500.1	See Group 9500.1	See Group 9500.1	See Group 9500.1				
	X2	0			SPRING, HELICAL, COMPRESSION: lashing ring holder, small (51501) 10			13	See Group 9901	See Group 9901	See Group 9901	See Group 9901	See Group 9901				
9	P	0			WASHER, FLAT: lashing ring holder, small (51501) R991			13	See Group 9500.1	See Group 9500.1	See Group 9500.1	See Group 9500.1	See Group 9500.1				
	X2	0			RING, DEE: large (51501) R542			12	*	*	*	*	*				
	X2	0			RING, DEE: small (51501) R564			13	*	*	*	*	*				
					1501.1 - PLATFORMS, SUPERSTRUCTURES, RAMPS, CATWALKS												
	X2	0			BLOCKING: loading ramp (51501) R1067			4	*	*	*	*	*				
	X2	0			RAMP: loading, steel (51501) R4355			2	*	*	*	*	*				
					1506 - FIFTH WHEEL												
	X2	0			DOLLY BOX (51501) R4364			1	*	*	*	*	*		17	2	
9	X2	F			HANGER, AXLE HOUSING BEARING: dolly box (51501) 7-35H			2		See Group 1001	See Group 1001	See Group 1001	See Group 1001				
	X2	0			KINGPIN, FIFTH WHEEL (74410) T400			1	*	*	*	*	*				
	X2	0			PLATE, CIRCLE: dolly box (51501) R4363			1	*	*	*	*	*		17	1	
	X2	0			PLATE, LOCK (51501) R1113			2	*	*	*	*	*				
					GROUP 16 - SPRINGS AND SHOCK ABSORBERS 1601.1 - FRONT SPRINGS												
	P1	0			BOLT, RECOIL SPRING (51501) R609			4	*	*	*	*	*		10	7	
9	P	0			NUT, CASTELLATED, HEXAGON (51501) R609			4	See Group 9500.1	See Group 9500.1	See Group 9500.1	See Group 9500.1	See Group 9500.1		10	2	
9	P	0			PIN, CUTTER (51501) R609			4	See Group 9500.1	See Group 9500.1	See Group 9500.1	See Group 9500.1	See Group 9500.1		10	1	
	X2	0			SEAT, RECOIL SPRING (51501) R649			2	*	*	*	*	*		10	6	
	X2	0			SPRING, HELICAL, COMPRESSION (51501) R61.3			4	*	*	*	*	*		10	5	
	P1	0			SUPPORT, HOUSING, BEARING: main spring (51501) R612			2	*	*	*	*	*		10	4	

TECHNICAL SERVICE	SOURCE	MAINTN	RECOVER-ABILITY	FEDERAL STOCK NUMBER	DESCRIPTION	UNIT OF ISSUE	EXPEN-DABILITY	QUANTITY INCORPORATED IN UNIT	GUIDE QUANTITIES PER 100 EQUIPMENTS				ILLUSTRATIONS			
									15 DAYS ORGANIZATIONAL MAINTENANCE ALLOWANCES PER 100 EQUIPMENTS	FIELD MAINTENANCE 15-DAY LEVEL	DEPOT MAINTENANCE	3RD ECH	4TH ECH	5TH ECH	FIG. NO.	ITEM NO.
					1602 - AUXILIARY SPRINGS											
	X2	0		2510-427-1872	SPRING, HELICM., COMPRESSION (51501) 5			4	*	*	*	*	*	18	3	
					GROUP 22 - MISCELLANEOUS BODY, CHASSIS OR HULL AND ACCESSORY ITEMS											
					2202.1 - MIRRORS, REFLECTORS, DEFROSTERS, WIPERS, AIR HORN											
10	P	0		9905-263-1163	REFLECTOR, INDICATING, CLEARANCE: amber (51501) R424			6	6	7	*	*	*	36		
10	P	0		9905-263-1166	REFLECTOR, INDICATING, CLEARANCE: red (51501) R425			4	*	4	1	*	*	24		
					2210 - DATA PLATES AND INSTRUCTION HOLDERS											
X2	F			9905-803-9431	PLATE, IDENTIFICATION: Corps of Engineers (GE)			1	*	*	*	*	*	*		
X2	0			2590-774-4284	PLATE, IDENTIFICATION: emergency (06653) 201499			1	*	*	*	*	*	*		
9	X2	0		2590-329-7695	PLATE, IDENTIFICATION: service (06653) 201500			1	*	*	*	*	*	*		
					GROUP 95 - GENERAL USE STANDARDIZED PARTS											
					9500.1 - STANDARD HARDWARE AND PARTS											
P	0			4730-209-1207	ADAPTER, STRAIGHT, PIPE TO TUBE: brass, one end male, 1/8-27 thd size, other end male, 3/8 in. tube, 17/32-24 thd size			10	*	*	*	*	*	40		
P	0			4730-243-9153	ADAPTER, STRAIGHT, PIPE TO TUBE: brass, one end male, 3/8-18 thd size, other end male, 1/2 in. tube, 11/16-20 thd size (GE)			5	*	*	*	*	*	25		
9	P	0		5306-207-9782	BOLT, MACHINE: 5/16-18 thd size, 1 in. lg			8	*	*	*	*	*	36		
9	P	F		5306-261-1855	BOLT, MACHINE: 5/16-18 thd size, 2 1/0 in. lg			4	*	*	*	*	*	20		
P	F			5306-272-4221	BOLT, MACHINE: 3/8-16 thd size, 5/8 in. lg			4	*	*	*	*	*	20		
9	P	F		5306-010-1672	BOLT, MACHINE: 5/8-11 thd size; 4-1/2 in. lg			2	*	*	*	*	*	12		
P	0			5306-608-8539	BOLT, MACHINE: 1-1/4 thd size, 5 in. lg			2	*	*	*	*	*	12		
9	P	0		5306-059-1249	BOLT, SQUARE NECK: 3/8-16 thd size, 2 1/4 in. lg			1	*	*	*	*	*	10		
9	P	F		5306-263-6693	BOLT, SQUARE NECK: 7/16-14 thd size, 4 1/2 in. lg, w/nut			4	*	*	*	*	*	20		
P	0			4730-202-6669	BUSHING, PIPE: female end, 1/4-18 thd size, male end, 1/2-14 thd size (GE)			2	*	*	*	*	*	12		
P	0			5340-514-2726	CLAMP, LOOP: cadmium plated, 9/16 in. id, 1/4 in. screw size			1	*	*	*	*	*	10		
P	0			5340-737-7780	CLAMP, LOOP: cadmium plated, 23/32 in. id, 1/4 in. screw size			1	*	*	*	*	*	10		

P	0	4020-142-3036	COCK, BRAIN: brass body, male end, 1/4-10 thd size				1	*	*	*	10
P	0	4020-350-6495	COCK, PLUG: brass, 1/2-14 thd size				1	*	*	*	10
P	0	4730-209-6060	ELBOW, PIPE TO TUBE: brass, one end male, 1/4-16 thd size, other end male, 3/8 in. tube, 17/32-24 thd size				2	*	*	*	12
P	0	4730-209-0155	ELBOW, PIPE TO TUBE: brass, one end male, 3/8-18 thd size, other end male, 3/8 in. tube, 17/32-24 thd size				1	*	*	*	10
P	0	4730-050-4208	FITTING, LUBRICATION: cadmium or zinc plated, 1/8-27 thd size				12	*	*	*	44
P	0	4730-209-4918	FITTING, LUBRICATION: 65 deg, 1/8-27 thd size				10	*	*	*	40
P	0	5315-050-5765	KEY, MACHINE: 4 in. lg, 1/4 in. square				2	*	*	*	12
P	0	4730-192-9450	NIPPLE, PIPE: 1/4-20 thd size, 7/8 in. lg (GE)				1	*	*	*	10
P	0	4730-108-1066	NIPPLE, PIPE: 3/8-18 thd size, 2 in. lg (GE)				1	*	*	*	10
P	F	5310-262-5398	NUT, CASTELLATED, HEXAGON: 1/4-28 thd size				1	*	*	*	10
P	0	5310-208-1650	NUT, CASTELLATED, HEXAGON: 3/4 in.				1	*	*	*	10
P	0	5310-275-5507	NUT, CASTELLATED, HEXAGON: 1-14 thd size				2	*	*	*	12
P	0	5310-010-9881	NUT, CASTELLATED, HEXAGON: 1 1/4-12 thd size				12	*	*	*	44
P	0	5310-021-0504	NUT, KNUBBED: 1/4-28 thd size				16	*	*	*	55
P	F	5310-109-6433	NUT, PLAIN, HEXAGON: brass, 1/4-28 thd size				1	*	*	*	10
P	0	5310-012-1359	NUT, PLAIN, HEXAGON: cadmium or zinc chromate, 5/8-10 thd size				8	*	*	*	36
P	F	5310-012-0622	NUT, PLAIN, HEXAGON: cadmium or zinc plated, No. 9-32 thd size				1	*	*	*	10
P	0	5310-265-9213	NUT, PLAIN, HEXAGON: 1/4-28 thd size				26	*	*	*	105
P	F	5310-222-7235	NUT, PLAIN, HEXAGON: 3/8-11 thd size				48	*	*	*	215
P	0	5310-655-9544	NUT, PLAIN, HEXAGON: 3/8-16 thd size				2	*	*	*	12
P	F	5310-265-9217	NUT, PLAIN, HEXAGON: 1/2-20 thd size				32	*	*	*	135
P	F	5310-265-9218	NUT, PLAIN, HEXAGON: 9/16-18 thd size				64	*	*	*	295
P	F	5310-021-0442	NUT, PLAIN, HEXAGON: 5/8-11 thd size				2	*	*	*	12
P	0	5310-265-9219	NUT, PLAIN, HEXAGON: 5/8-10 thd size				17	*	*	*	60
P	0	5310-021-9753	NUT, PLAIN, HEXAGON: 3/4-16 thd size				30	*	*	*	125
P	0	5310-265-9220	NUT, PLAIN, HEXAGON: 3/4-16 thd size				1	*	*	*	10
P	0	5310-010-5606	NUT, PLAIN, SQUARE: 3/8-16 thd size				2	*	*	*	12
P	F	5310-012-5553	NUT, PLAIN, SQUARE: 5/8-11 thd size				6	*	*	*	30
P	F	5310-109-4399	NUT, SLOTTED, HEXAGON: 2-12 thd size				16	*	*	*	55
P	F	5310-109-4400	NUT, SLOTTED, HEXAGON: 2 1/2-12 thd size				1	*	*	*	10
P	F	5315-017-9252	PIN, COTTER: cadmium or zinc plated, 1/16 in. dia, 1 in. lg				10	*	*	*	40
P	0	5315-013-7204	PIN, COTTER: cadmium or zinc plated, 1/8 in. dia, 1 1/2 in. lg				6	*	*	*	36
P	F	5315-059-0206	PIN, COTTER: cadmium or zinc plated, 3/16 in. dia, 1 in. lg				12	*	*	*	44
P	0	5315-013-7263	PIN, COTTER: cadmium or zinc plated, 3/16 in. dia, 2 in. lg					*	*	*	

SOURCE CODES				FEDERAL STOCK NUMBER	DESCRIPTION	UNIT OF ISSUE	EXPENDABILITY	QUANTITY INCORPORATED IN UNIT	GUIDE QUANTITIES PER 100 EQUIPMENTS					ILLUSTRATIONS			
TECHNICAL SERVICE	SOURCE	MAINTN	RECOVERABILITY						15 DAYS ORGANIZATIONAL MAINTENANCE ALLOWANCE PER 100 EQUIPMENTS			FIELD MAINTENANCE 15-DAY LEVEL			DEPT MAINTENANCE	FIG. NO.	ITEM NO.
									2ND ECH	3RD ECH	4TH ECH	5TH ECH					
					9500.1 - STANDARD HARDWARE AND PARTS (cont)												
9	P	F		5315-059-0237	PIN, COTTER; cadmium or zinc plated, 3/8 in. dia, 3 in. lg			8		*	*		36				
9	P	F		5315-297-2443	PIN, COTTER; cadmium or zinc plated, 3/8 in. dia, 4 in. lg			4		*	*		20				
	P	O		5315-010-3395	PIN, COTTER; 1/8 in. dia, 1 in. lg			1		*	*		10				
9	P	O		5315-010-3413	PIN, COTTER; 3/16 in. dia, 2 1/2 in. lg			1		*	*		10				
	P	O		5315-353-2795	PIN, STRAIGHT, HEADED; shank, 5/8 in. dia, 2 1/4 in. lg			2		*	*		12				
	P	O		5315-427-2333	PIN, STRAIGHT, HEADED; shank, 3/4 in. dia, 2 in. lg underhead			2		*	*		12				
	P	O		5315-664-9903	PIN, STRAIGHT, HEADED; shank, 3/4 in. dia, 2 3/4 in. lg			6		*	*		30				
9	P	F		5315-197-1601	PIN, STRAIGHT, HEADLESS; 1/8 in. dia, 1 1/32 in. lg			1		*	*		10				
	P	F		4730-044-4600	PLUG, PIPE; galvanized, 1/8-27 thd size (GE)			4		*	*		20				
	P	F		4730-044-4704	PLUG, PIPE; galvanized, 1/2-14 thd size (GE)			2		*	*		12				
	P	O		4730-012-7951	PLUG, PIPE; 1/4-10 thd size (GE)			2		*	*		12				
	P	O		4730-010-3067	PLUG, PIPE; 3/8-16 thd size (GE)			1		*	*		10				
9	P	F		5300-050-0090	RIVET, TUBULAR; brass; No. 6, 1/2 in. lg			120		*	*		500				
9	P	F		5305-207-0912	SCREW, CAP, HEXAGON HEAD; cadmium or zinc chromate, 1/4-20 thd size, 5/8 in. lg			1		*	*		10				
9	P	F		5305-527-4196	SCREW, CAP, HEXAGON HEAD; cadmium or zinc chromate, 3/8-16 thd size, 1 in. lg			8		*	*		36				
9	P	F		5305-017-9037	SCREW, CAP, HEXAGON HEAD; 3/8-16 thd size, 3/4 in. lg			146		*	*		705				
9	P	O		5305-017-9043	SCREW, CAP, HEXAGON HEAD; 3/8-16 thd size, 1 1/2 in. lg			2		*	*		12				
	P	O		5305-266-6337	SCREW, CAP, HEXAGON HEAD; 3/8-24 thd size, 5/8 in. lg			16		*	*		55				
9	P	F		5305-018-1433	SCREW, CAP, HEXAGON HEAD; 1/2-20 thd size, 1 3/4 in. lg			32		*	*		140				
9	P	F		5305-285-5177	SCREW, CAP, HEXAGON HEAD; 9/16-10 thd size, 1 1/4 in. lg			64		*	*		295				
9	P	O		5305-527-5316	SCREW, CAP, HEXAGON HEAD; 5/8-10 thd size, 1 1/2 in. lg			12		*	*		44				
	P	O		5305-206-3209	SCREW, CAP, HEXAGON HEAD; 3/4-10 thd size, 2 in. lg			8		*	*		36				
9	P	O		5305-496-3032	SCREW, EXTERNALLY RELIEVED BODY; cadmium or zinc plated, 1/4-20 thd size, 1 1/32 in. lg			16		*	*		55				



9	P	0	5305-265-4540	SCREW, MACHINE: cadmium or zinc plated, No. 6-32 thd size, 5/16 in. lg	1	*	*	*	*	10
9	P	0	5305-010-0770	SCREW, MACHINE: No. 10-32 thd size, 1 1/4 in. lg	4	*	*	*	*	20
9	P	F	5305-010-2569	SETScrew: 1/4-20 thd size, 1/4 in. lg	8	*	*	*	*	36
9	P	F	5305-013-9196	SETScrew: 5/8-11 thd size, 1 in. lg	4	*	*	*	*	20
9	P	F	5305-011-2982	SETScrew: 5/8-11 thd size, 1 1/2 in. lg	2	*	*	*	*	12
9	P	F	5305-013-7661	SETScrew: 3/4-10 thd size, 1 1/2 in. lg	4	*	*	*	*	20
9	P	F	5307-206-2543	STUD, PLAIN: both ends 5/8-11 thd size, 2 1/2 in. lg	48	*	*	*	*	215
	P	0	4730-288-9494	TEE, PIPE TO TUBE: brass, one end male, 1/4-18 thd size, 2nd and 3rd ends male, 3/8 in. tube, 17/32-24 thd size	1	*	*	*	*	10
	P	0	4730-288-9490	TEE, PIPE TO TUBE: brass 1st and 2nd ends male, 3/8 in. tube, 17/32-24 thd size, 3rd end male, 1/4-18 thd size	1	*	*	*	*	10
	P	0	4730-288-9491	TEE, PIPE TO TUBE: brass, 1st end male, 3/8-18 thd size, 2nd and 3rd end male, 3/8 in. tube, 17/32-24 thd size	1	*	*	*	*	10
55	P	0	4030-282-2510	THIMBLE, WIRE ROPE: 11/16 in. w, 1 5/16 in. lg	2	*	*	*	*	12
	P	F	5310-262-4752	WASHER, FLAT: brass, 0.266 in. id, 1 1/2 in. od, 0.064 in. thk	1	*	*	*	*	10
9	P	0	5310-194-1540	WASHER, FLAT: cadmium or zinc chromate, 0.281 in. id, 0.625 in. od, 0.063 in. thk	26	*	*	*	*	105
9	P	F	5310-543-4488	WASHER, FLAT: cadmium or zinc chromate, 0.656 in. id, 1.313 in. od, 0.095 in. thk	8	*	*	*	*	36
	P	0	5310-245-5500	WASHER, FLAT: copper, 0.607 in. id, 1.125 in. od, 0.034 in. thk	1	*	*	*	*	10
	P	F	5310-426-0240	WASHER, FLAT: 1/2 in. id, 3/4 in. od, 1/16 in. thk	2	*	*	*	*	12
9	P	F	5310-010-3346	WASHER, FLAT: 13/16 in. id, 1-1/2 in. od, 1/8 in. thk	4	*	*	*	*	20
	P	F	5310-262-4471	WASHER, FLAT: 1 17/32 in. id, 2 in. od, 0.0625 in. thk	16	*	*	*	*	55
9	P	F	5310-350-5550	WASHER, FLAT: 1.531 in. id, 2.439 in. od, 0.120 in. thk	12	*	*	*	*	44
	P	0	5310-274-7822	WASHER, FLAT: 1.083 in. id, 2.614 in. od, 1/32 in. thk	2	*	*	*	*	12
	P	F	5310-220-6548	WASHER, FLAT: 2 1/2 in. id, 5 1/4 in. od, 3/8 in. thk	4	*	*	*	*	20
	P	F	5310-427-1841	WASHER, FLAT: 3 1/2 in. id, 5 1/4 in. od, 1/8 in. thk	8	*	*	*	*	36
9	P	0	5310-012-0214	WASHER, LOCK: cadmium or zinc plated, 0.319 in. id, 0.591 in. od, 0.078 in. thk	8	*	*	*	*	36
9	P	0	5310-019-0669	WASHER, LOCK: phosphor bronze, 0.145 in. id, 0.285 in. od, 0.019 in. thk	1	*	*	*	*	10

TECHNICAL SERVICE SOURCE	SOURCE MAINTNANCE RECOVERABILITY	FEDERAL STOCK NUMBER	DESCRIPTION	UNIT OF ISSUE	EXPENDABILITY	QUANTITY INCORPORATED IN UNIT	15 DAYS ORGANIZATIONAL MAINTENANCE ALLOWANCE PER 100 EQUIPMENTS			GUIDE QUANTITIES PER 100 EQUIPMENTS			ILLUSTRATIONS	
							2ND ECH	3RD ECH	4TH ECH	5TH ECH	FIELD MAINTENANCE 15-DAY LEVEL	DEPOT MAINTENANCE		FIG. NO.
9500, 1 - STANDARD HARDWARE AND PARTS (cont)														
9	P	F	5310-010-3320	WASHER, LOCK: 0.319 in. id, 0.591 in. od, 0.078 in. thk		4		*	*					
9	P	0	5310-261-7340	WASHER, LOCK: 0.302 in. id, 0.600 in. od, 0.094 in. thk		146		*	*					
9	P	0	5310-011-5549	WASHER, LOCK: 0.391 in. id, 0.601 in. od, 0.036 in. thk		16		*	*					
9	P	F	5310-010-3323	WASHER, LOCK: 0.509 in. id, 0.875 in. od, 0.125 in. thk		32		*	*					
9	P	F	5310-010-3324	WASHER, LOCK: 0.573 in. id, 0.979 in. od, 0.141 in. thk		64		*	*					
9	P	0	5310-010-3325	WASHER, LOCK: 0.636 in. id, 1.006 in. od, 0.156 in. thk		12		*	*					
9	P	F	5310-010-3326	WASHER, LOCK: 0.763 in. id, 1.279 in. od, 0.188 in. thk		20		*	*					
9500, 2 - BULK MATERIAL														
P	0		5640-425-1033	INSULATION SLEEVING, THERMAL: 9/16 in. id	FT			*	*					
P	F		5330-233-5046	PAPER, GASKET: 36 in. w, 1/32 in. thk (GE)	YD			*	*					
P	F		9515-230-6615	STEEL SHEET, CARBON, HOT ROLLED: 1/8 in. thk, 4 ft w	LB			*	*					
P	0		4710-047-4402	TUBE, COPPER: 3/8 in. dia	FT			*	*					
P	0		4710-426-0112	TUBE, COPPER: 1/2 in. dia	FT			*	*					
P	0		5975-132-6694	TUBE, FLEXIBLE, NONMETALLIC, ELECTRICAL (GE)	FT			*	*					
55	P	0	4010-222-1409	WIRE ROPE, STEEL: 1/4 in. dia	FT			*	*					
	P	F	9505-190-9104	WIRE, STEEL, CARBON: 0.0475 in. dia	RL			*	*					
9901 - PARTS PECULIAR WITH MORE THAN ONE APPLICATION														
X2	0		5340-255-0243	CLEVIS, ROD END		9		*	*					
9	P	F	3110-100-0337	CLIP, TAPERED ROLLER BEARING		24		*	*					
X2	0		2330-427-2325	HOLDER ASSEMBLY		26		*	*					
9	P	0	6220-376-6104	LAMP, UNIT, TAILLIGHT: lower 6 to 8y		2		*	*					
X2	F		2530-374-2123	ROLLER, BRAKE SHOE CAM		16		*	*					
X2	0		2510-427-1047	SPRING, HELICAL, COMPRESSION		26		*	*					

FEDERAL STOCK NUMBER AND PART NUMBER INDEX

TM 5-2330-211-25P

NUMBER	CODE	PAGE	NUMBER	CODE	PAGE	NUMBER	CODE	PAGE	NUMBER	CODE	PAGE
A3211A833	70500	13	R320	51501	7	R549	51501	10	UB1106-1	56697	24
A7-322291450	78500	10	R3230	51501	5	R564	51501	29	UB5014	56697	13
BT52	73195	26	R3300	51501	13	R571	51501	29	WB8-0-18	51501	14
HO-541-006AMBER	75175	2	R3411	51501	13	R579	51501	7	W2-4-1-4-3-8	51501	7
HO-541-006RED	75175	2	R3436	51501	7	R583	51501	2, 12	10	51501	29
B65-75	51501	7	R3437	51501	13	R588	51501	5	10708	09386	26
D50R20E	51501	5	R345	51501	10	R592	51501	5, 7	10709	09386	24
F20	51501	24	R350	51501	26	R601	51501	24, 26	11933B	63010	2
K01555	29510	5	R3510	51501	24	R603	51501	24	1229M1105	70500	10
P21	51501	10	R354	51501	24	R604	51501	5	13988	09386	24
R1025	51501	5	R3542	51501	10	R609	51501	29	13989	09386	24
R1067	51501	29	R361	51501	7	R61-3	51501	29	1611325	81336	5
R107	51501	14	R3613	51501	7	R612	51501	5, 29	1611454	81336	10
R109	51501	7	R3614	51501	7	R614	51501	5, 7, 14	1980	95879	7, 12
R110	51501	13	R372	51501	1				1996	75175	1
R1113	51501	29	R3754	51501	29	R615	51501	5, 24	2074068	81336	24
R1118	51501	7	R3755	51501	29	R616	51501	5	2074160	81336	24
R1130	51501	15	R3758	51501	7	R620	51501	7, 26	2014252	81336	14
R1167	51501	24	R378	51501	13	R621	51501	24	2000086	70500	12
R1570	51501	13	R3782	51501	7	R622	51501	24	200029	66853	23
R1654	51501	26	R387	51501	2	R634	51501	14	200406	66853	14
R1663	51501	26	R3984	51501	7	R644	51501	24	201499	66853	30
R190	51501	13	R424	51501	30	R645	51501	2	201500	66853	30
R195	51501	26	R4248	51501	10	R646	51501	5	201504	66853	16
R2093	51501	13	R4249	51501	10	R647	51501	5	202587	66853	23
R2094	51501	10	R425	51501	30	R648	51501	2	202588	66853	23
R2095	51501	10	R4268	51501	24	R649	51501	29	202639	66853	14
R2098	51501	13	R4269	51501	24	R653	51501	5	202690	66853	22
R2100	51501	13	R435	51501	1	R656	51501	7	202691	66853	22
R2102	51501	13	R4352	51501	5	R664	51501	7	202692	66853	22
R2111	51501	10	R4355	51501	29	R667	51501	13	202693	66853	22
R2113	51501	13	R4358	51501	7	R675	51501	7	202695	66853	21
R2116	51501	13	R4363	51501	29	R676	51501	7	202696	66853	23
R2118	51501	12	R4364	51501	29	R677	51501	7	202697	66853	23
R2119	51501	10	R4369	51501	5	R679	51501	5, 29	202698	66853	23
R215	51501	10	R4373	51501	13	R794	51501	29	202699	66853	22
R2283	51501	13	R4376	51501	10	R805	51501	5	202735	66853	22
R2284	51501	14	R4383	51501	14	R906	51501	5	202736	66853	22
R230	51501	1	R4384	51501	14	R964	51501	5, 7	202737	66853	23
R2411	51501	26	R4385	51501	14	R969	51501	14	202741	66853	22
R2412	51501	26	R4386	51501	13	R970	51501	7	202743	66853	23
R2413	51501	26	R4404	51501	26	R971	51501	21	202747	66853	22
R2414	51501	26	R4406	51501	15	R974	51501	23	202749	66853	22
R276	51501	5	R4407	51501	14	R980	51501	22	202969	66853	22
R289	51501	7	R4444	51501	15	R981	51501	24	202981	66853	16
R290	51501	5	R4446	51501	14	R986	51501	5	202982	66853	16
R291	51501	7	R4447	51501	14	R987	51501	14	202983	66853	16
R2986	51501	13	R451	51501	15	R988	51501	14	202987	66853	16
R2991	51501	13	R465	51501	14	R991	51501	14	203009	66853	16
R2992	51501	12	R466	51501	15	R992	51501	14	203016	66853	23
R3013	51501	10	R473	51501	16	R993	51501	24	203019	66853	15
R3016	51501	10	R475	51501	24			7, 24, 26	203046	66853	23
R3030	51501	7	R483	51501	15	R999	51501	23	203227	66853	15
R3064	51501	13	R513	51501	14	S2650	70500	10	203379	66853	23
R307	51501	14	R519	51501	23	T400	74410	29	203388	66853	22
R312	51501	5	R525	51501	14	UB1004	56697	13	203788	66853	16
R313	51501	29	R528	51501	14, 23	UB1008-1	56697	13	203788	66853	16
R3161	51501	13	R542	51501	29	UB1017	56697	13	204056	66853	23
R3182	51501	13	R548	51501	7	UB1021	51501	13	204145	66853	16

TM 5-2330-211-25P



FEDERAL STOCK NUMBER AND PART NUMBER INDEX

TM 5-2330-211-25P

NUMBER	CODE	PAGE
5310-359-1161		24
5310-359-1162		26
5310-426-8238		16
5310-426-8240		16, 33
5310-427-1754		14
5310-427-1941		7, 33
5310-447-1121		23
5310-495-1275		22
5310-543-4488		14, 33
5310-550-1528		26
5310-569-0968		16
5310-637-7760		26
5310-655-9544		23, 31
5315-010-3385		15, 32
5315-010-3413		7, 32
5315-013-7204		5, 7, 14, 31
5315-013-7263		5, 31
5315-017-9252		23, 31
5315-050-5765		7, 31
5315-059-0206		14, 31
5315-059-0237		5, 7, 32
5315-187-1601		22, 32
5315-276-3716		14

NUMBER	CODE	PAGE
5315-281-6613		15
5315-297-2443		5, 32
5315-353-2125		13
5315-353-2461		10
5315-353-2777		10, 32
5315-353-2795		14, 32
5315-427-2333		5, 14, 32
5315-664-4903		13
5315-703-0489		12, 32
5320-058-9890		13
5330-058-9897		13
5325-496-3393		1
5330-202-3565		16
5330-202-3566		16
5330-233-5846		24, 34
5330-245-5428		21
5330-247-8648		13
5330-247-8649		13
5330-426-8376		16
5330-427-2193		13
5340-249-5902		10
5340-253-6879		16
5340-255-0243		13, 14, 34

NUMBER	CODE	PAGE
5340-256-7203		23
5340-256-9643		22
5340-256-9646		22
5340-281-3629		13
5340-282-0061		14
5340-282-6935		15
5340-282-6939		16
5340-374-2244		1
5340-427-1803		7
5340-427-2891		29
5340-514-2726		14, 30
5340-737-7780		14, 30
541-006AMBER	75175	1
541-006RED	75175	1
55		1
5640-425-1033		15, 34
5930-258-5635		1
5935-201-3325		2
5935-384-8547		2
5940-279-9772		1
5973-132-6694		15, 34
5975-427-1063		1
6145-427-2882		2

NUMBER	CODE	PAGE
6220-371-7586		2
6220-374-2071		1
6220-374-2073		2
6220-374-2078		2
6220-374-2081		2
6220-376-8104		2, 34
6220-378-9199		1
6220-424-1504		2
6220-427-1005		2
6220-427-1006		1
6220-427-1088		1
6220-427-1098		2
6220-427-1099		1
6220-496-3014		2
6220-496-3015		1
6220-496-3033		1
6220-496-3034		1
6220-641-1159		1
6240-012-5588		1
66380083	09386	26
6777	75175	1
6798	75175	2

NUMBER	CODE	PAGE
7-35H		2, 29
7136	51501	1
8013	75175	1
8039-6V	75175	2
8040-6V	75175	2
8041-6V	75175	2
8045	75175	2
8091	75175	1
8305-141-5656		24
8305-427-1844		7
87464	75175	1
950-16	75175	2
9505-198-9104		13, 34
951-16	75175	2
9515-230-6615		7, 34
979	51501	5
988498	61848	23
9905-263-1163		30
9905-263-1166		30
9905-803-9431		30

BY ORDER OF THE SECRETARY OF THE ARMY:

G. H. DECKER,  
General, United States Army,  
Chief of Staff.

Official:

J. C. LAMBERT,  
Major General, United States Army,  
The Adjutant General.

Distribution:

Active Army:

USASA (2)	Memphis GENDEP (4)	North Central Div Engr (none)
DCSLOG (1)	Sharpe GENDEP (4)	Engr Fld Maint Shops (2)
CNGB (1)	Engr Sec, GENDEP (10)	Engr Dep Maint Shops (2)
Tech Stf, DA (1) except	Engr Dep (10) except	USAERDL (3)
CofEngrs (3)	Granite City Engr Dep (14)	Engr Cen (5)
USA Maint Bd (1)	USA Trans Tml Comd (2)	AMS (3)
USCONARC (3)	Army Tml (1)	USA Engr Proc Ofc (10)
USAARTYBD (2)	OSA (2)	EMC (26)
USAARMBD (2)	Engr Dist (2) except	ESCO (10)
USAIB (2)	Buffalo Engr Dist (1)	Fld Comd, DASA (8)
USARADB (2)	Chicago Engr Dist (1)	AFSSC (1)
USAABELCTBD (2)	Detroit Engr Dist (1)	USACOMZEUR (2)
USAAVNBD (2)	Alaska Engr Dist (1)	USAREUR Engr Sup Con Agcy (10)
ARADCOM (2)	Los Angeles Engr Dist (1)	USAREUR Engr Proc Cen (2)
ARADCOM Rgn (2)	New Orleans Engr Dist (1)	USA Corps (1)
OS Maj Comd (5) except	New York Engr Dist (1)	MAAG (1)
USASETAF (2)	Louisville Engr Dist (1)	JBUSMC (1)
USARJ (10)	Pittsburgh Engr Dist (1)	Units org under fol TOE:
MDW (1)	San Francisco Engr Dist (1)	5-5 (2)
Armies (2)	Omaha Engr Dist (1)	5-6 (2)
Corps (2)	Seattle Engr Dist (1)	5-8 (2)
Div (2)	Kansas City Engr Dist (1)	5-48 (2)
Engr Bde (1)	Baltimore Engr Dist (1)	5-129 (2)
Svc Colleges (2)	Ft Worth Engr Dist (1)	5-237 (5)
Br Svc Sch (2) except	Eastern Ocean Engr Dist (1)	5-262 (5)
USAES (20)	Philadelphia Engr Dist (1)	5-267 (1)
USMA (2)	Rock Island Engr Dist (1)	5-278 (5)
GENDEP (2) except	St Louis Engr Dist (1)	5-79 (2)
Schenectady GENDEP (4)	St Paul Engr Dist (1)	5-500 (BC, EA, EB) (2)
Atlanta GENDEP (4)	Div Engr (2) except	17 (2)
Utah GENDEP (4)	Lower Miss Valley Div Engr (none)	55-117 (2)

NG: State AG (3).

USAR: Units—same as Active Army except allowance is one copy to each unit.

For explanation of abbreviations used, see AR 320-50.

TM 5-2330-211-25P TRAILER, LOW BED-1962

REGISTREERD  
- 1 OKT. 1933  
STAF ADI GEN

TECHNICAL MANUAL

Organizational, Field, and Depot Maintenance Repair Parts and Special Tool Lists

TRAILER, LOW BED: 60 TON; 4 DUAL FRONT WHEELS, 8 DUAL REAR WHEELS;  
MIL SPEC T-2405 (ROGERS MODEL DW-60-LS-6) FSN 2330-368-2836

(Ref: TM 5-9205)

TM 5-2330-211-25P }  
CHANGES No. 1 }

HEADQUARTERS,  
DEPARTMENT OF THE ARMY  
WASHINGTON 25, D.C., 18 April 1963

TM 5-2330-211-25P, 29 January 1962, is changed as follows:

Page iv, paragraph 2.

g. (Superseded) 15-Day Organizational Maintenance Allowance Per 100 Equipments. Shown for each repair part is either an allowance factor or an asterisk (\*) allocation which indicates the following:

- (1) An allowance factor is shown for each repair part authorized for stockage for the purpose of computing the quantity of repair parts to be stocked as the prescribed load. This factor is based on past experience with similar items and the latest mortality data for 1,500 hours operation per year, and is the average quantity required to provide organizational maintenance for 100 items of equipment for a 15-day period under average combat conditions.

- (2) Repair parts required to perform organizational maintenance, which are not authorized for stockage, are identified by an asterisk and are to be requisitioned for immediate use only.

Table I is the Prescribed Load Listing of items quantitatively allocated in this technical manual and lists the combat essential items required to support the end item of equipment. It indicates the average quantity required to provide organizational maintenance for 1-5 and/or 6-10 items of equipment for a 15-day period under average combat conditions.

Note. Combat essential items which must be stocked or on order at organizational maintenance at all times, regardless of demand, will be identified in the allowance column by a quantity in parentheses.

Table I. Prescribed Load Listing  
(Superseded)

Federal stock No.	Description	Functional group	Minimum stockage authorization	Unit of issue	15 Days organizational maintenance allowances	
					1-5	6-10
2530-523-8212	FILTER ELEMENT (06853) 221053.....	1208.3			1	1
6220-374-2078	LAMP, INCANDESCENT: upper; 6 v (75175) 8039-6v.....	0609.1			(1)	(1)
6220-374-2081	LAMP, INCANDESCENT: upper; 6 v (75175) 8041-6v.....	0609.1			(1)	(1)
6220-376-8104	LAMP, UNIT, TAILLIGHT: lower 6 to 8 v.....	9901			(1)	(1)
6220-378-9199	GASKET: lens (75175) 31821.....	0609.1				1
6220-641-1159	GASKET: backplate (75175) 5172.....	0609.1				1
6240-012-5588	LAMP, INCANDESCENT: 6 v, No. 55 (75175) 55.....	0609.1			1	1
9905-263-1163	REFLECTOR, INDICATING, CLEARANCE: amber (51501) R424.	2202.1			1	1



- (3) The quantity obtained from the use of Table I is one prescribed load for a 15-day period. This quantity will not be used when the authorized stockage is insufficient to repair one end item and/or assembly. A minimum stockage sufficient to repair one end item and/or assembly is authorized. These repair parts are identified by the following note in the description column (minimum stockage of ..... is authorized). The quantities contained in the prescribed load must be on hand or on order at all times. Units and organizations authorized additional prescribed loads will multiply the number of prescribed loads by the appropriate end item spread column of 1-5 or 6-10.

*Note.* An exception is made for those units and organizations required to have on hand, boxed or packaged prescribed load(s) pursuant to a special mission assignment. Such prescribed load(s) will be computed or selected separately from quantities authorized for stockage at permanent station.

- (4) Subsequent changes to allowances will be limited as follows:
- (a) No decrease in the stated quantity of Combat Essential Items is authorized.
  - (b) No change in the range of items is authorized. If additional items are considered necessary, a recommendation should be forwarded to the technical services activity having cognizance of the MPLL (Master Prescribed Load List) or Prescribed Load of Repair Parts for exception or revision to the allowance list.
  - (c) Decreases in the stated quantity of items other than Combat Essential Items are authorized to a minimum quantity of one and increases in the stated quantity are authorized for all items when justified by demand and usage experience. Detailed procedures for performing these adjustments are prescribed in AR 735-35.

*Page vii.*

*h. (Superseded) Guide Quantities Per 100 Equipments.* Shown for each repair part ap-

plicable to 3d, 4th, and/or 5th echelon maintenance is either an allowance factor or an asterisk allocation which indicates the following:

- (1) A guide quantity factor is shown for each part authorized to be stocked by field maintenance and supply support activities (3d and 4th echelons), and the number of repair parts recommended for depot maintenance (5th echelon). This factor is based on the latest mortality data for 1,500 hours operation per year and is the average quantity required by the various maintenance echelons to provide maintenance and supply support for 100 items of equipment for a 15-day period under average combat conditions.
- (2) The quantities of repair parts authorized for stockage are determined using the following mathematical formula:

*Quantity of equipment to be supported, multiplied by the listed allowance factor, divided by 100.*

Fractions derived from the use of the above formula will be rounded to whole numbers as follows:

If the result is 1 or more and includes a fraction that is 0.5 or more, the quantity is rounded to the next higher number.

*Example:* If the number of equipment supported is 30 and the allowance factor for 100 equipments is 5, the following formula would be used:

$$30 \times 5 \div 100 = 1.5$$

The resulting fraction is 0.5; therefore, the stockage is 2.

If the result is 1 or more and includes a fraction of less than 0.5, the quantity is rounded to the next lower number. When the computed result is less than 0.5, no quantity is authorized for field and depot maintenance. However, if the item is combat essential, a quantity of 1 is authorized.

*Example:* If the number of equipment supported is 30 and the allowance factor for 100 equipments is 28, the following formula would be used:

$$30 \times 28 \div 100 = 8.4$$

The resulting fraction is less than 0.5; therefore, the stockage is 8.

- (3) In the guide quantity columns for field maintenance, additional repair parts which may be required to perform maintenance, but not authorized for stockage, are listed without a guide quantity factor. These items are identified by an asterisk.
- (4) Parts that may be required for depot maintenance, in addition to those allocated, are identified by an asterisk. These parts are to be requisitioned, when required, if not obtainable from reclamation, fabrication, or local procurement.
- (5) Combat essential items of a critical nature which must be stocked at field maintenance at all times, regardless of demand will be identified in the allowance column by inclosing the allowance factor in parentheses. Parts authorized for use but not for initial stockage will be identified with an asterisk in the allowance column.

*Page vi.* Table II, Authorized Stockage. Deleted.

*Page vii,* paragraph 2i(1). So much of line 8 that reads "Maintenance for Engineer" is changed to read Maintenance for Mobility Command.

*Page viii.* (2) So much of line 8 that reads "for Engineer equipment" is changed to read for Mobility Command equipment.

(3) So much of line 3 that reads "organic Engineer equipment" is changed to read organic Mobility Command equipment. So much of line 7 that reads "for organic Engineer" is changed to read for organic Mobility Command.

(4) So much of line 2 that reads "for Engineer equipment" is changed to read for Mobility Command equipment. So much of line 6 that reads "Engineer equipment of" is changed to read Mobility Command equipment of.

*Page ix.*

## 6. Comments and Suggestions (Superseded)

Report all deficiencies in this manual on DA Form 2028. Submit recommendations for changes, additions, or deletions to repair parts allocation and allowance factors and other data. Additional data on climatic and terrain conditions of operation, operational age of the equipment, and the hours operated in the period covered by item 7 of DA Form 2028 are desired. Submit to the Commanding Officer, U.S. Army Mobility Support Center, ATTN: SMOMS-MS, P.O. Box 119, Columbus 16, Ohio. Direct communication is authorized.

Page Line	Action	Source codes				Federal stock No.	Description	Unit of issue	Expendability	Quantity incorporated in unit	15 days organizational maintenance allowance per 100 equipments			Guide quantities per 100 equipments			Illustrations	
		Technical service	Source	Maintenance	Recoverability						2d ech	3d ech	4th ech	5th ech	Field maintenance 18-day level	Depot maintenance	Fig. No.	Item No.
		a	b	c	d	e	f	g	h	i	j	k	l	m	n	o		
2							0609.1—HEAD, TAIL, AND MARKER LIGHTS											
6	Ch cols j and k--					6220-374-2081	LAMP * * *			1	(1)	(2)						
11	Ch cols j and k--					6220-374-2078	LAMP * * *			1	(1)	(2)						
34							9901—PARTS PECULIAR WITH MORE THAN ONE APPLICATION			2	(1)	(3)						
4	Ch cols j and k--					6220-376-8104	LAMP UNIT, TAILLIGHT											

By Order of the Secretary of the Army:

EARLE G. WHEELER,  
General, United States Army,  
Chief of Staff.

Official:

J. C. LAMBERT,  
Major General, United States Army,  
The Adjutant General.

Distribution:

*Active Army:*

USASA (2)  
DCSLOG (1)  
CNGB (1)  
TSG (1)  
CofEngrs (3)  
CSigO (1)  
CofT (1)  
USA Maint Bd (1)  
USAARTYBD (2)  
USAARMBD (2)  
USAIB (2)  
USARADB (2)  
USA Abn Elct & SPWAR Bd (2)  
USAAVNBD (2)  
USCONARC (3)  
USAMC (5)  
OS Maj Comd (5) except  
    USARJ (10)  
MDW (1)  
Armies (2)  
Corps (2)  
USA Corps (1)  
Div (2)  
Engr Bde (1)  
USMA (2)  
Svc Colleges (2)  
Br Svc Sch (2) except  
    USAES (20)  
GENDEP (OS) (10)  
Engr Dep (OS) (10)  
Army Dep (2)

USA Trans Tml Comd (2)  
Army Tml (1)  
USAOSA (2)  
Engr Dist (2)  
Div Engr (2)  
Engr Fld Maint Shops (2)  
USAERDL (3)  
Engr Cen (5)  
AMS (3)  
Chicago Engr Proc Ofc (10)  
USA Mbl Spt Cen (36)  
ESCO (10)  
Fld Comd, DASA (8)  
USACOMZEUR (2)  
USAREUR Engr Sup Con Agey (10)  
USAREUR Engr Proc Cen (2)  
MAAG (1)  
JBUSMC (1)

Units org under fol TOE:

Two copies each UNOINDC:

5-5  
5-6  
5-48  
5-129  
5-237 (5)  
5-262 (5)  
5-267 (1)  
5-278 (5)  
5-279  
5-500 (BC, EA, EB)  
55-117

NG: State AG (3).

USAR: Units—same as Active Army except allowance is one copy to each unit.

For explanation of abbreviations used see AR 320-50.

☆ U. S. GOVERNMENT PRINTING OFFICE: 1963-650611



CHANGE

NO. 2

HEADQUARTERS  
DEPARTMENT OF THE ARMY  
Washington, D. C. 22 May 1970

**Organizational, Field  
and Depot Maintenance Repair Parts  
and Special Tool Lists  
TRAILER, LOW BED: 60 TON; 4 DUAL  
FRONT WHEELS, 8 DUAL REAR WHEELS  
MIL SPEC T-2405  
(ROGERS MODEL DW-60-LS-6)  
FSN 2330-368-2836)**

*Page iv.* Subparagraph 2*g*, is superseded as follows:

*g.* 15-Day Organizational Maintenance Allowance, Column 7 of Section II and Column 3 of Table 1.

(1) Indicated in each subcolumn opposite the first appearance of each item is the total quantity of items authorized for the number of equipments supported. Subsequent appearances of the same item will have the letters "REF" in the allowance columns. Items authorized for use as required but not for initial stockage are identified with an asterisk in the allowance column.

(2) The quantitative allowances for organizational level of maintenance represents one initial prescribed load for a 15-day period for the number of equipments supported. Units and organizations authorized additional prescribed loads will multiply the number of prescribed loads authorized by the quantity of repair parts reflected in the density column applicable to the total quantity of repair parts authorized.

(3) Organizational units providing maintenance for more than 100 of these equipments shall determine the total quantity of parts required by converting the equipment quantity to a decimal factor by placing a decimal point before the next to last digit of the number to indicate hundredths, and multiplying the decimal factor by the parts quantity authorized in the 51-100 allowance for 51-100 equipments is 40; for 150 equipments multiply 40 by 1.50 or 60 parts required.

(4) Subsequent changes to allowances will be limited as follows: No change in the range of items is authorized. If additional items are considered necessary, recommendation should be forwarded to US Army Tank-Automotive Command, AMSTA-MT, for exception or revision to the allowance list. Revisions to the range of items authorized will be made by the US Army Tank-Automotive Command, AMSTA-MT, based on engineering experience, demand data, or TAERS information."

*Page ix, paragraph 6.* So much of lines 9, 10, and 11 that reads "Commanding Officer, US Army Mobility Support Center, ATTN: SMOMS-MS, P. O. Box 119, Columbus 16, Ohio." is changed to read Commanding General, US Army Tank-Automotive Command, ATTN: AMSTA-MT, Warren, Mich. 48090.

*Page v.* Table I. Prescribed Load Listing. Is superseded as follows:

**TABLE I — PRESCRIBED LOAD ALLOWANCE**

(1) Federal stock No.	(2) Description	(3) 15-Day organizational maintenance allowance			
		(a)	(b)	(c)	(d)
		1-5	6-20	21-50	51-100
	GROUP 06—ELECTRICAL SYSTEM				
	0609—LIGHTS				
6220-374-2078	LAMP, INCANDESCENT (6V)	2	3	6	9
6220-374-2081	LAMP, INCANDESCENT (6V)	2	3	6	9
6220-376-8104	LAMP UNIT	2	3	6	9
6220-378-9199	GASKET	*	1	2	3
6220-427-1098	LENS, BLACKOUT, AMBER	1	2	4	6
6220-496-3014	LENS, CLEARANCE, RED	1	2	4	6
6220-496-3015	LENS, MARKER LIGHT, AMBER	1	2	4	6
6220-496-3034	LENS, BLACKOUT, RED	1	2	4	6
6240-012-5588	LAMP, INCANDESCENT (6V, No.55)	2	3	6	9
	GROUP 12—BRAKES				
	1202—SERVICE BRAKES				
2530-211-6125	BRAKE SHOE, FRONT	1	2	3	5
2530-353-2311	BRAKE SHOE, REAR	1	2	3	5
	1208—AIR BRAKE SYSTEM				
2530-350-6492	CLEANER ASSEMBLY	1	1	1	2
2530-353-0408	VALVE ASSEMBLY, EMERGENCY RELAY	1	1	1	2
2530-353-0426	CHAMBER ASSEMBLY	1	1	1	2
2530-377-8780	VALVE, BALL CHECK	1	1	1	2
2530-426-8278	HOSE ASSEMBLY, JUMPER	1	1	1	2
2530-506-1425	VALVE ASSEMBLY, EXHAUST CHECK	1	1	1	2
2530-732-4628	CYLINDER ASSEMBLY, AIR BRAKE	1	1	1	2
	GROUP 13—WHEELS				
	1311—WHEEL ASSEMBLY				
3110-100-0337	CUP, TAPERED BEARING	1	1	1	2
3110-142-4362	CONE AND ROLLERS	1	1	1	2
8305-141-5656	FELT STRIP	1	1	1	2
	1313—TIRES AND TUBES				
2610-051-9216	INNER TUBE	*	1	2	3
2610-051-9454	INNER TUBE	*	1	2	3
2610-294-4801	TIRE, PNEUMATIC	*	1	2	3
2610-540-4725	TIRE, PNEUMATIC	*	1	2	3
	GROUP 22—BODY OR CHASSIS				
	2202—ACCESSORY ITEMS				
9905-263-1163	REFLECTOR, AMBER	*	1	1	2
9905-263-1166	REFLECTOR, RED	*	1	1	2

By Order of the Secretary of the Army:

W. C. WESTMORELAND,  
General, United States Army,  
Chief of Staff.

Official:

KENNETH G. WICKHAM,  
Major General, United States Army,  
The Adjutant General.

Distribution:

To be distributed in accordance with DA Form 12-39 (qty rqr block no. 198) Organizational Maintenance requirements for Semitrailer: Low Bed, M172.