

TECHNICAL MANUAL

**ORGANIZATIONAL, DIRECT SUPPORT AND
GENERAL SUPPORT MAINTENANCE
REPAIR PARTS AND SPECIAL TOOLS LIST
FOR**

**POWER SUPPLY PP-2953/U, PP-2953A/U,
PP-2953B/U, AND PP-2953C/U
(NSN 6130-00-985-7899)**

Distribution authorized to the Department of Defense and DOD contractors only for official use or for administration or operational purposes. This determination was made on 26 August 1988. Other requests for this document will be referred to Commander, US Army Communications-Electronics Command and Fort Monmouth, ATTN: AMSEL-LC-ME-P, Fort Monmouth, NJ 07703-5000.

DESTRUCTION NOTICE - Destroy by any method that will prevent disclosure of contents or reconstruction of the document.

**HEADQUARTERS, DEPARTMENT OF THE ARMY
15 DECEMBER 1988**

Technical Manual

No. 11-6130-233-24P

HEADQUARTERS
DEPARTMENT OF THE ARMY
Washington, DC, 15 December 1988

ORGANIZATIONAL, DIRECT SUPPORT AND GENERAL SUPPORT MAINTENANCE
REPAIR PARTS AND SPECIAL TOOLS LIST

FOR

POWER SUPPLY PP-2953/U, PP-2953A/U,
PP-2953B/U, AND PP-2953C/U
(NSN 6130-00-985-7899)

Current as of 15 September 1988

REPORTING ERRORS AND RECOMMENDING IMPROVEMENTS

You can help improve this manual. If you find any mistakes or if you know of a way to improve the procedures, please let us know. Mail your letter, DA Form 2028 (Recommended Changes to Publications and Blank Forms), or DA Form 2028-2 located in back of this manual direct to: Commander, US Army Communications-Electronics Command and Fort Monmouth, ATTN: AMSEL-LC-ME-PS, Fort Monmouth, New Jersey 07703-5000. In either case, a reply will be furnished direct to you.

Table of Contents

		Page	Illus/ Figure
Section	I.	Introduction	1
	II.	Repair Parts List	1-1
Group	00	Power Supply PP-2953/U, PP-2953A/U, PP-2953B/U, and PP-2953C/U	1-1 1
	01	Base Plate Assembly (A1)	2-1 2
		0101 Rectifier and Regulator Assembly (A1A1)	3-1 3
		010101 Circuit Board Assembly (A1A1A1)	4-1 4
		010102 Electronic Component Assembly (A1A1A2)	5-1 5
	02	Front Cover Assembly (A2)	6-1 6

*This manual supersedes TM 11-6130-233-24P, 10 July 1978.

Table of Contents-Continued

			Page	Illus/ Figure
Group	Ø3	Front Panel Assembly (A3)	7-1	7
	Ø4	Housing Assembly (A4)	8-1	8
	Ø5	Top Cover Assembly (A5)	9-1	9
	Ø6	Wiring Harness	10-1	10
Section	III.	Special Tools List (Not applicable)		
	IV.	Cross-Reference Indexes		
		National Stock Number Index	I-1	
		Part Number Index	I-3	
		Figure and Item Number Index	I-7	

SECTION I

INTRODUCTION

1. Scope

This manual lists and authorizes spares and repair parts; special tools; special test, measurement, and diagnostic equipment (TMDE); and other special support equipment required for performance of organizational, direct support, and general support maintenance of the PP-2953/U, PP-2953A/U, PP-2953B/U, and PP-2953C/U. It authorizes the requisitioning, issue, and disposition of spares, repair parts and special tools as indicated by the source, maintenance and recoverability (SMR) codes.

2. General

This Repair Parts and Special Tools List is divided into the following sections:

a. Section II. Repair Parts List. A list of spares and repair parts authorized by this RPSTL for use in the performance of maintenance. The list also includes parts which must be removed for replacement of the authorized parts. Parts list are composed of functional groups in ascending item number sequence. Figure numbers are listed directly beneath the group header.

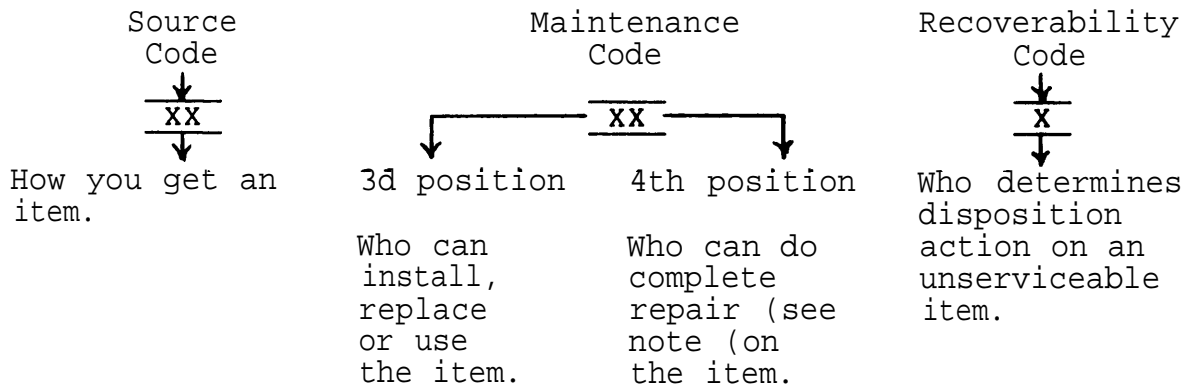
b. Section III. Special Tools List. Not applicable.

c. Section IV. Cross-Reference Indexes. A list, in National item identification number (NIIN) sequence, of all National stock numbered items appearing in the listing, followed by a list in alphameric sequence of all part numbers appearing in the listings. National stock numbers and part numbers are cross-referenced to each illustration figure and item number appearance. The figure number and item number index lists figure and item numbers in numeric sequence and cross-references National stock number, Federal Supply Code for Manufacturer and part numbers.

3. Explanation of Columns (Section II and III)

a. Item No. (Column (1)). Indicates the number used to identify items called out in the illustration.

b. SMR Code (Column (2)). The source, maintenance, and recoverability (SMR) code is a five-position code containing Supply/requisitioning information, maintenance category authorization criteria, and disposition instruction, as shown in the following breakout:



NOTE

Complete repair: Maintenance capacity, capability, and authority to perform all corrective maintenance tasks of the "repair" function in a use/user environment in order to restore serviceability to a failed item.

(1) Source code. The source code tells you how to get an item needed for maintenance, repair, or overhaul of an end item/equipment. Explanations of source codes follows:

Code	Explanation
<div style="border: 1px solid black; padding: 2px; display: inline-block;"> PA PB PC PD PE PF PG </div>	<p>Stocked items: use the applicable NSN to request/requisition items with these source codes. They are authorized to the category indicated by the code entered in the third position of the SMR code.</p>

NOTE

Items coded PC are subject to deterioration.

<div style="border: 1px solid black; padding: 2px; display: inline-block;"> KD KF KB </div>	<p>Items with these codes are not to be requested/requisitioned individually. They are part of a kit which is authorized to the maintenance category indicated in the third position of the SMR code. The complete kit must be requested and applied.</p>
---	---

<u>Code</u>	<u>Explanation</u>
MO - Made at org/AVUM category	Items with these codes are not to be requested/requisitioned individually. They must be made from bulk material which is identified by the part number in the description and usable on code (UOC) column and listed in the Bulk Material group of the repair parts list. If the item is authorized to you by the third position code of the SMR code, but the source code indicates it is made at a higher category, order the item from the higher category of maintenance.
MF - Made at DS/AVIM category	
MH - Made at GS category	
ML - Made at Specialized Repair Activity (SRA)	
MD - Made at Depot	

AO - Assembled by org\AVUM category	Items with these codes are not to be requested/requisitioned individually. The parts that make up the assembled item must be requisitioned or fabricated and assembled at the category of maintenance indicated by the source code. If the third position code of the SMR code authorizes you to replace the item, but the source code indicates the item is assembled at a higher category, order the item from the higher category of maintenance.
AF - Assembled by DS/AVIM category	
AH - Assembled by GS category	
AL - Assembled by SRA	
AD - Assembled by Depot	

<u>Code</u>	<u>Explanation</u>
XA - Do not requisition an "XA" coded item. Order its next higher assembly.	
XB - If an "XB" item is not available from salvage, order it using the FCSM and part number given.	
XC - Installation drawing, diagram, instruction sheet, field service drawing, that is identified by manufacturer's part number.	
XD - Item is not stocked. Order an "XD" coded item through normal supply channels using the FCSM and part number given, if not available.	

NOTE

Cannibalization or controlled exchange, when authorized, may be used as a source of supply for items with the above source codes, except for those source coded "XA" or those aircraft support items restricted by requirements of AR 750-1.

(2) Maintenance code. Maintenance codes tell you the category of maintenance authorized to USE and REPAIR support items. The maintenance codes are entered in the third and fourth positions of the SMR code as follows:

(a) The maintenance code entered in the third position tells you the lowest maintenance category authorized to remove, replace, and use an item. The maintenance code entered in the third position will indicate authorization to one of the following categories of maintenance.

<u>Code</u>	<u>Application/Explanation</u>
C -	Crew or operator maintenance done within organizational or aviation maintenance.
O -	Organizational or aviation unit category can remove, replace, and use the item.
F -	Direct support or aviation intermediate category can remove, replace, and use the item.
H -	General support category can remove, replace, and use the item.
L -	Specialized repair activity can remove, replace, and use the item.
D -	Depot category can remove, replace, and use the item.

(b) The maintenance code entered in the fourth position tells whether or not the item is to be repaired and identifies the lowest maintenance category with the capability to do complete repair (i.e., perform all authorized repair functions). This position will contain one of the following maintenance codes.

NOTE

Some limited repair may be done on the item at a lower category of maintenance, if authorized by the Maintenance Allocation Chart (MAC) and SMR codes.

<u>Code</u>	<u>Application/Explanation</u>
O -	Organizational or aviation unit is the lowest category that can do complete repair of the item.
F -	Direct support or aviation intermediate is the lowest category that can do complete repair of the item.
H -	General support is the lowest category that can do complete repair of the item.
L -	Specialized repair activity (designate the specialized repair activity) is the lowest category that can do complete repair of the item.
D -	Depot is the lowest category that can do complete repair of the item.

<u>Code</u>	<u>Application/Explanation</u>
-------------	--------------------------------

- | | |
|-----|--|
| Z - | Nonreparable. No repair is authorized. |
| B - | No repair is authorized. (No parts or special tools are authorized for the maintenance of a "B" coded item.) However, the item may be reconditioned by adjusting, lubricating, etc., at the user category. |

(3) Recoverability code. Recoverability codes are assigned to items to indicate the disposition action on unserviceable items. The recoverability code is entered in the fifth position of the SMR Code as follows:

<u>Recoverability Codes</u>	<u>Application/Explanation</u>
-----------------------------	--------------------------------

- | | |
|-----|--|
| Z - | Nonreparable item. When unserviceable, condemn and dispose of the item at the category of maintenance shown in the third position of SMR code. |
| O - | Reparable item. When uneconomically repairable, condemn and dispose of the item at organizational or aviation unit category. |
| F - | Reparable item. When uneconomically repairable, condemn and dispose of the item at direct support or aviation intermediate category. |
| H - | Reparable item. When uneconomically repairable, condemn and dispose of the item at general support category. |
| D - | Reparable item. When beyond lower category repair capability, return to depot. Condemnation and disposal of item not authorized below depot category. |
| L - | Reparable item. Condemnation and disposal not authorized below specialized repair activity (SRA). |
| A - | Item requires special handling or condemnation procedures because of specific reasons (e.g., precious metal content, high dollar value, critical material, or hazardous material). Refer appropriate manuals/directives for specific instructions. |

c. FSCM (Column (3)). The Federal Supply Code for Manufacturer (FSCM) is a 5-digit numeric code which is used to identify the manufacturer, distributor, or Government agency, etc., that supplies the item.

d. Part Number (Column (4)). Indicates the primary number used by the manufacturer (individual, company, firm, corporation, or Government activity), which controls the design and characteristics of the item by means of its engineering drawings, specifications, standards, and inspection requirements to identify an item or range of items.

NOTE

When you use an NSN to requisition an item, the item you receive may have a different part number from the part ordered.

e. Description and Usable on Code (UOC) (Column (5)). This column includes the following information.

(1) The Federal item name and, when required, a minimum description to identify the item.

(2) Usable on code, when applicable (para 5).

(3) The statement "END OF FIGURE" appears just below the last item description in Column (5) for a given figure in both section II and section III

f. Qty (Column (6)). Indicates the quantity of the item used in the breakout shown on the illustration figure, which is prepared for a functional group, subfunctional group, or an assembly. A "V" appearing in this column in lieu of a quantity indicates that the quantity is variable and the quantity may vary from application to application.

4. Explanation of Columns (Section IV)

a. National Stock Number (NSN) Index.

(1) Stock number column. This column lists the NSN by National item identification number (NIIN) sequence. The NIIN consists of the last nine digits of the NSN. When using this column to locate an item, ignore the first four digits of the NSN. When requisitioning items use the complete NSN (13 digits).

(2) Fig. column. This column lists the number of the figure where the item is identified/located. The illustrations are in numerical sequence in sections II and III.

(3) Item column. The item number identifies the item associated with the figure listed in the adjacent Fig. column. This item is also identified by the NSN listed on the same line.

b. Part Number Index. Part numbers in this index are listed by part number in ascending alphameric sequence.

(1) FSCM column. This column lists the Federal supply code for manufacturer.

(2) Part number column. This column indicates the part number assigned to the item.

(3) Stock number column. This column lists the National stock number for the associated part number and manufacturer identified in the part number and FSCM columns to the left.

(4) Fig. column. This column lists the number of the figure where the item is identified/located in sections II and III.

(5) Item column. The item number is that number assigned to the item as it appears in the figure referenced in the adjacent figure number column.

c. Figure and Item Number Index.

(1) Fig. column. This column lists the number of the figure where the item is identified/located in sections II and III.

(2) Item column. The item number is that number assigned to the item as it appears in the figure referenced in the adjacent figure number column.

(3) Stock number column. This column lists the National stock number for the item.

(4) FSCM column. The Federal supply code for manufacturer (FSCM) is a 5-digit numeric code used to identify the manufacturer, distributor, or Government agency, etc., that supplies the item.

(5) Part number column. Indicates the primary number used by the manufacturer (individual, firm, corporation, or Government activity), which controls the design and characteristics of the item by means of its engineering drawings, specifications, standards, and inspection requirements to identify an item or range of item.

5. Special Information

a. Usable on Code. The usable on code appears in the lower left corner of the description column heading. Usable on codes are shown as "UOC: " in the description column (justified left) on the first line applicable item description nomenclature. Uncoded items are applicable to all models. Identification of the usable on codes used in this RPSTL are:

<u>Code</u>	<u>Used on</u>
2WG	PP-2953/U
4JD	PP-2953A/U
4JE	PP-2953B/U
CQ2	PP-2953C/U

b. Associated Publications. The following publications pertain to the PP-2953/U, PP-2953A/U, PP-2953B/U, and PP-2953C/U and their components:

- SB 11-631, Identification Plates and Name Plates for Communication Equipment
- TM 11-6130-233-12, Power Supply, PP-2953/U, PP-2953A/U, PP-2953B/U, and PP-2953C/U
- TM 11-6130-233-25, Power Supply, PP-2953/U, PP-2953A/U, PP-2953B/U, and PP-2953C/U

c. National Stock Numbers. National stock numbers (NSN's) that are missing from P source coded items have been applied for and will be added to this TM by future change/revision when they are entered in the Army Master Data File (AMDF). Until the NSN's are established and published, submit exception requisitions to: Commander, US Army Communications-Electronics Command and Fort Monmouth, ATTN: AMSEL-LC-MM, Fort Monmouth, NJ 07703-5000 for the part to support your equipment.

6. How to Locate Repair Parts

a. When National stock number or part number is not known.

(1) First. Using the table of contents, determine the assembly group or subassembly group to which the item belongs. This is necessary since figures are prepared for assembly groups and subassembly groups, and listings are divided into the same groups.

(2) Second. Find the figure covering the assembly group or subassembly group to which the item belongs.

(3) Third. Identify the item on the figure and note the item number.

(4) Fourth. Refer to the Repair Parts List for the figure to find the part number for the item number noted on the figure.

(5) Fifth. Refer to the Part Number Index to find the NSN, if assigned.

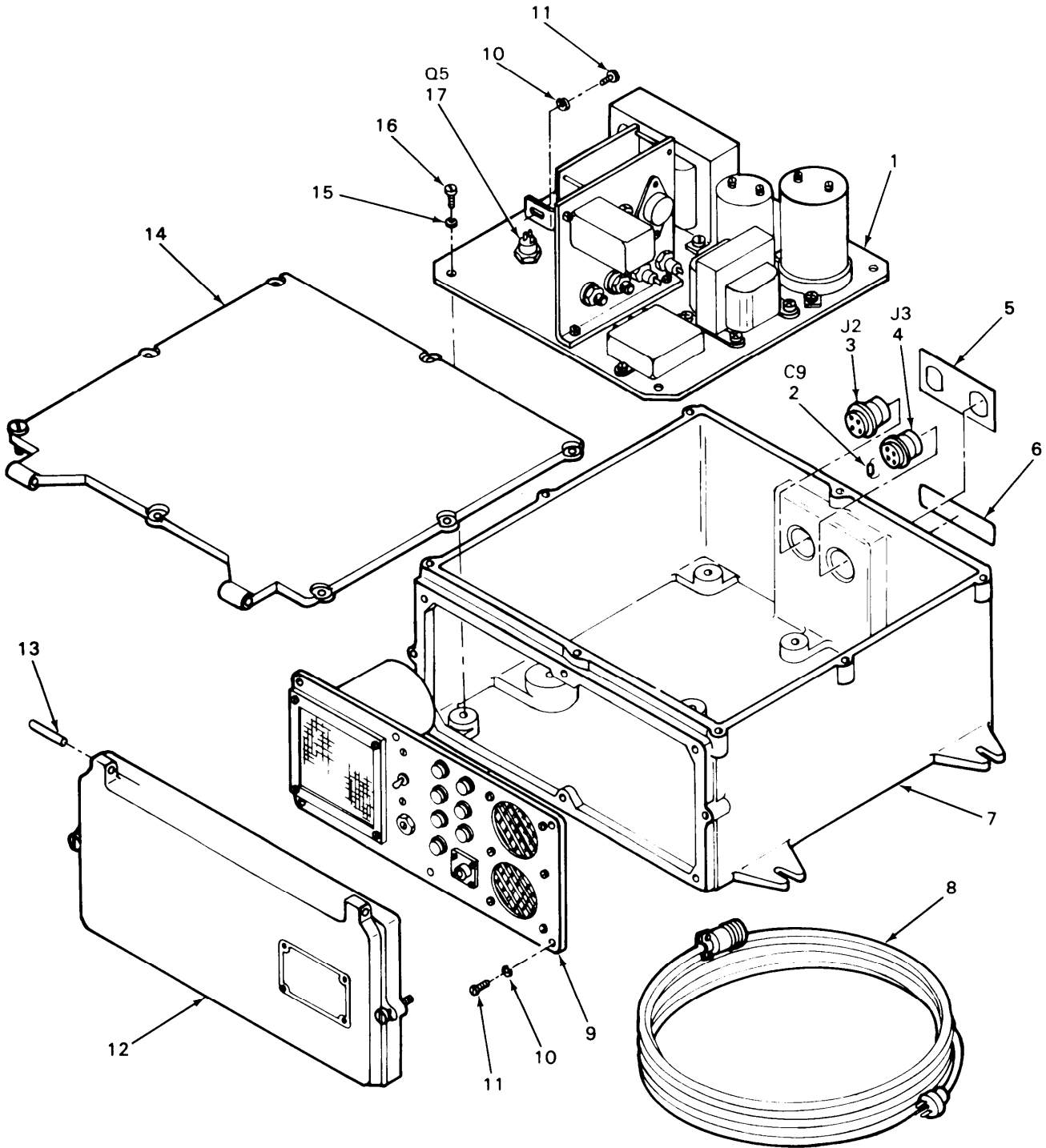
b. When National stock number or part number is known.

(1) First. Using the index of National stock numbers and part numbers, find the pertinent National stock number or part number. The NSN index is in National item identification number (NIIN) sequence (para 4a(1)). The part numbers in the part number index are listed in ascending alphameric sequence (para 4b). Both indexes cross-reference you to the illustration figure and item number of the item you are looking for.

(2) Second. After finding the figure and item number, verify that the item is the one you're looking for, then locate the item number in the repair parts list for the figure.

7. Abbreviations

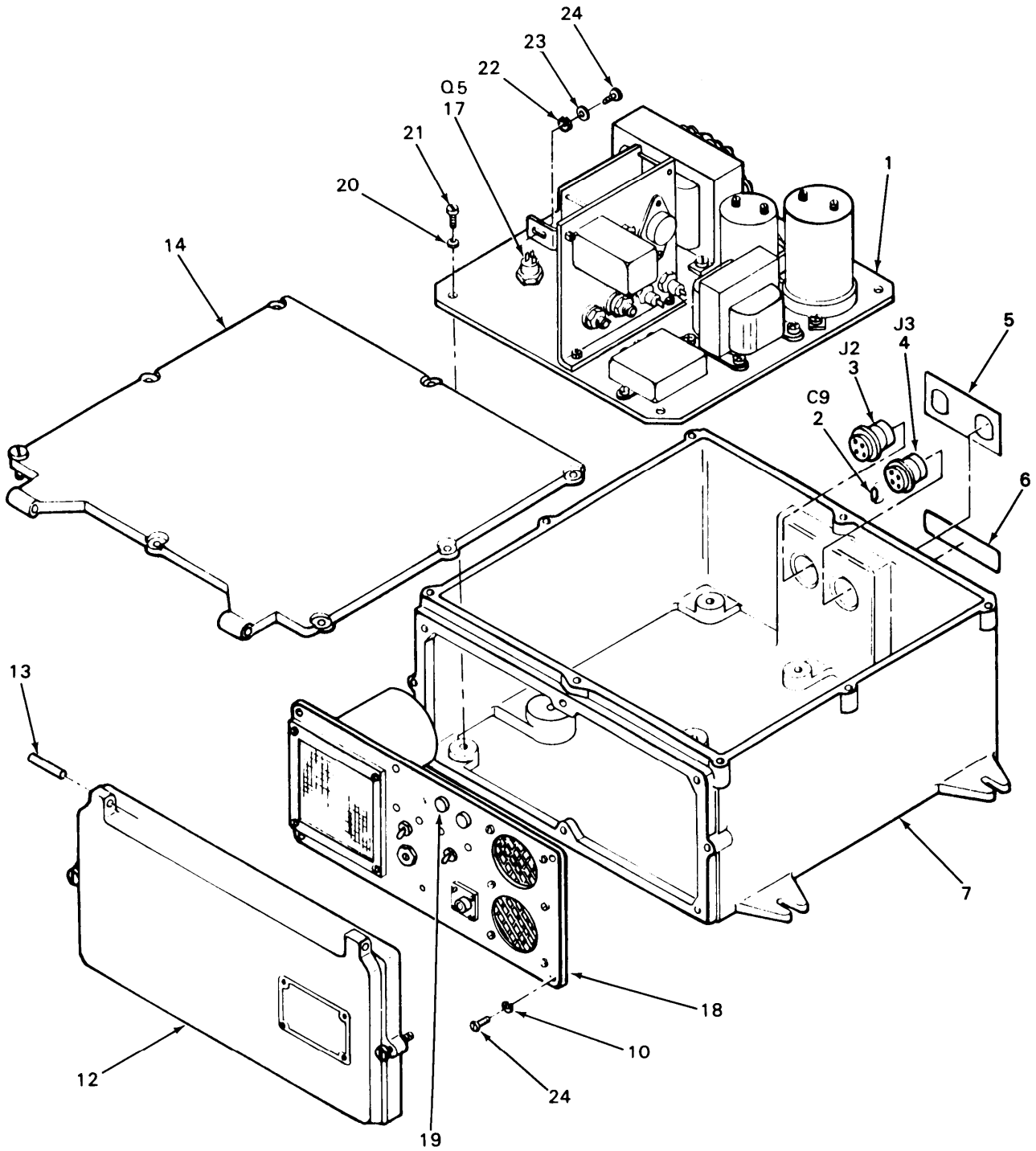
Not applicable.



PP-2953/U AND PP-2953A/U

DL4HN001

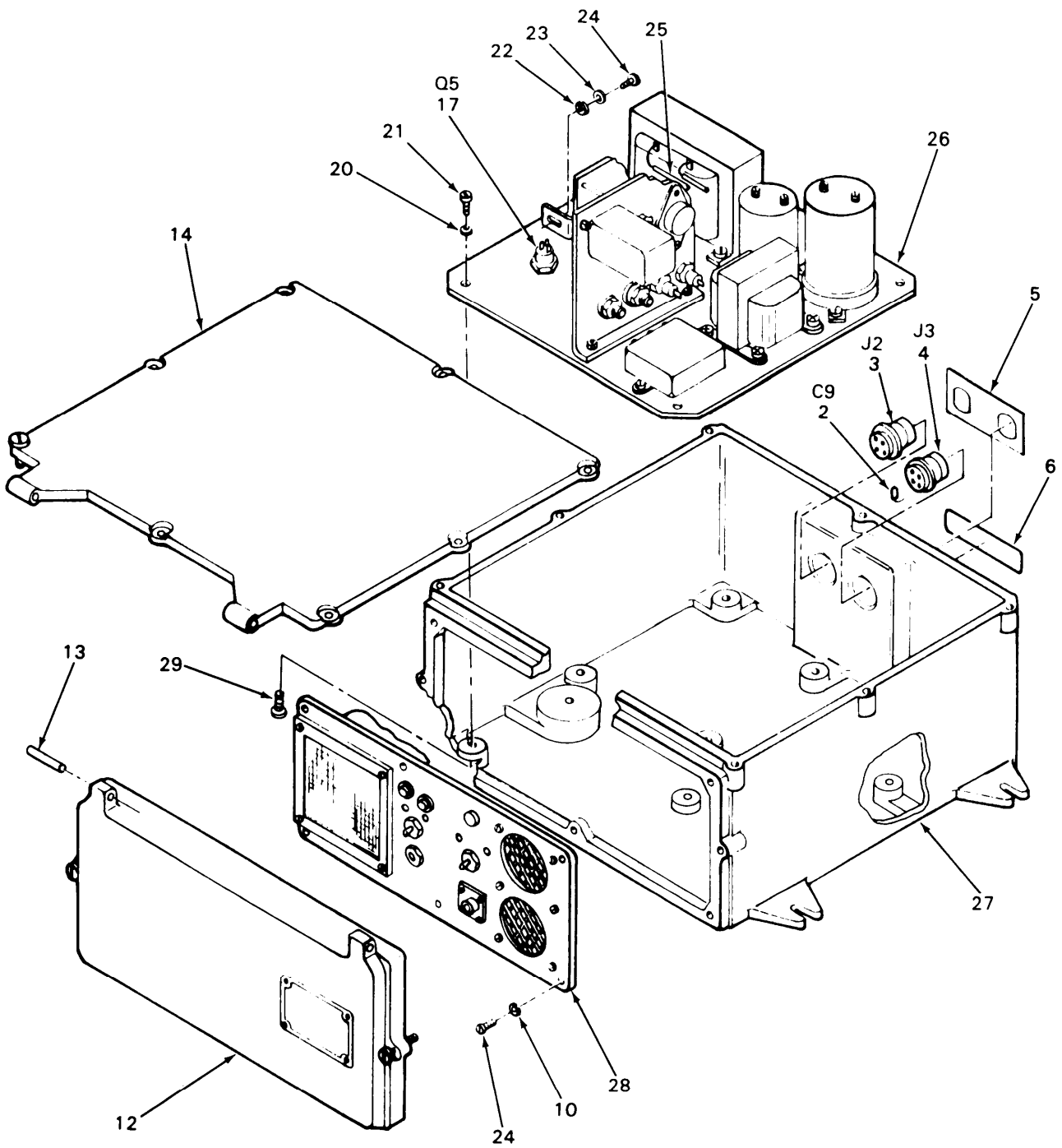
Figure 1. Power Supply PP-2953/U, PP-2953A/U, PP-2953B/U, and PP-2953C/U (Sheet 1 of 3)



PP-2953B/U

DL4HN002

Figure 1. Power Supply PP-2953/U, PP-2953A/U, PP-2953B/U, and PP-2953C/U (Sheet 2 of 3)



PP-2953C/U

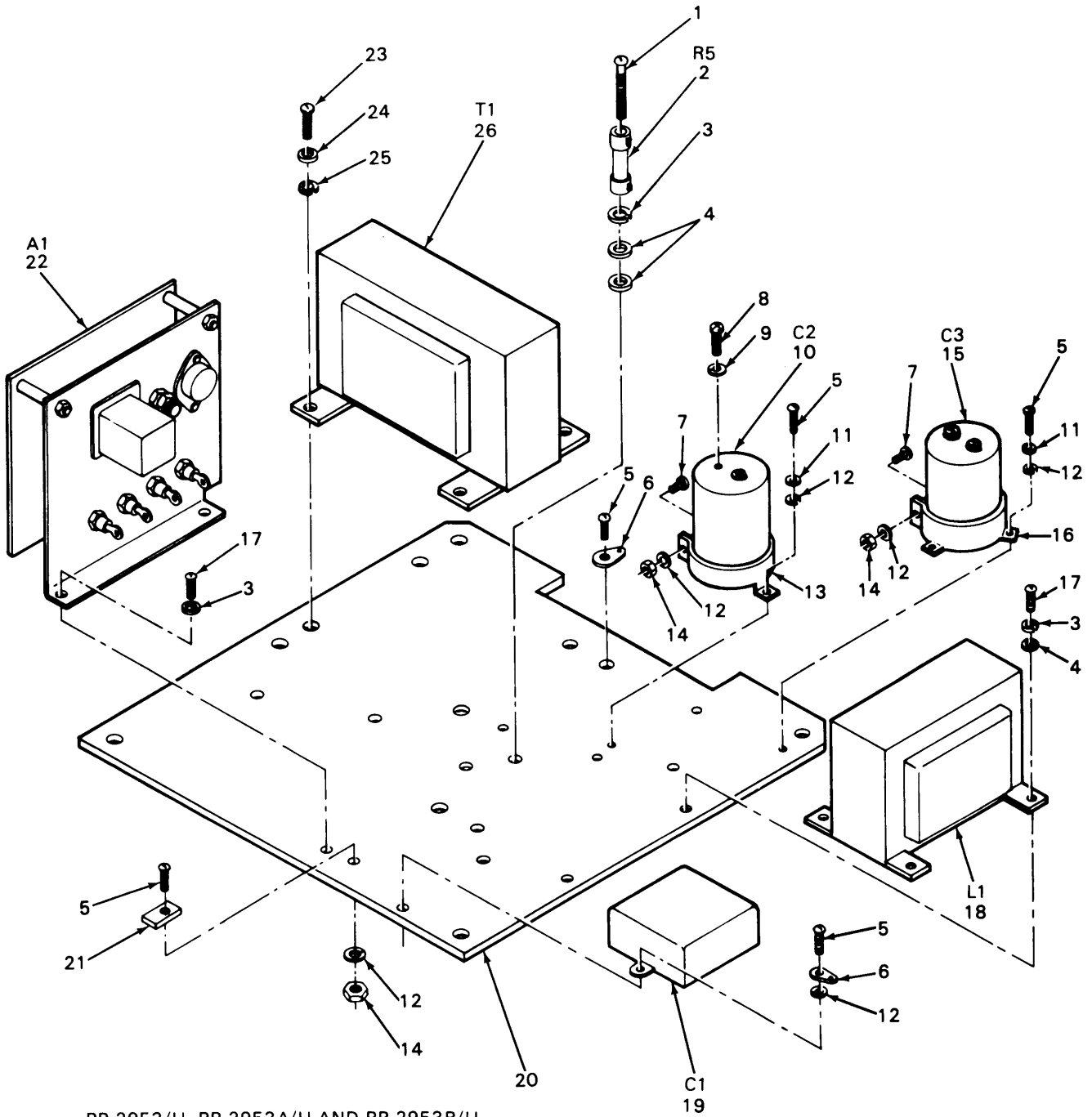
DL4HN003

Figure 1. Power Supply PP-2953/U, PP-2953A/U, PP-2953B/U, and PP-2953C/U (Sheet 3 of 3)

(1) ITEM NO	(2) SMR CODE	(3) FSCM	(4) PART NUMBER	(5) DESCRIPTION AND USABLE ON CODE (UOC)	(6) QTY
				GROUP 00 POWER SUPPLY PP-2953/U, PP-2953A/U, PP-2953B/U, PP-2953C/U	
				FIGURE 1	
1	PAFFF	80063	SM-D-450385	PLATE ASSEMBLY, BASE (SEE FIGURE 2 FOR BREAKDOWN) UOC: 2WG, 4JD, 4JE	1
2	PAFZZ	81349	CK63AW103M	CAPACITOR, FIXED, CER	1
3	PAFZZ	81349	MW20F(M)A00	CONNECTOR, RECEPTACL	1
4	PAFZZ	81349	MW20M(M)A00	CONNECTOR, PLUG	1
5	XBFZZ	80063	SM-B-450406	PLATE, CONNECTOR	1
6	MDFZZ	80063	SM-B-450390	PLATE, IDENTIFICATIO (FOR INSTRUCTIONS SEE SB 11-631.)	1
7	PAFFZ	80063	SMD391746	CASE, POWER SUPPLY (SEE FIGURE 8 FOR BREAKDOWN) UOC: 2WG, 4JD, 4JE	1
8	PAOZZ	80058	CX-4524/U	CABLE ASSY, POWER EL UOC: 2WG, 4JD	1
9	PAFFF	80063	SM-D-450384	PANEL ASSY, FRONT (SEE FIGURE 7 FOR BREAKDOWN) UOC: 2WG, 4JD	1
10	PAFZZ	96906	MS35333-37	WASHER, LOCK	6
11	PAFZZ	96906	MS35206-228	SCREW, MACHINE UOC: 2WG, 4JD	6
12	PAFFZ	80063	SM-D-450389	FRONT COVER ASSEMBL (SEE FIGURE 6 FOR BREAKDOWN)	1
13	PAFZZ	96906	MS16562-39	PIN, SPRING	2
14	PAFFZ	80063	SM-C-450386	COVER, POWER SUPPLY (SEE FIGURE 9 FOR BREAKDOWN)	1
15	PAFZZ	96906	MS35335-33	WASHER, LOCK UOC: 2WG, 4JD	6
16	PAFZZ	88044	AN500-416-8	SCREW, MACHINE UOC: 2WG, 4JD	6
17	PAFZZ	80063	SM-B-450422	TRANSISTOR	1
18	PAFFF	80063	SM-D-350037	PANEL ASSY, FRONT (SEE FIGURE 7 FOR BREAKDOWN) UOC: 4JE	1
19	PAFZZ	80063	SM-D-350040-1	DIMOUNT CAPS UOC: 4JE	2
20	PAFZZ	96906	MS35338-44	WASHER, LOCK UOC: 4JE	6
20	PAFZZ	96906	MS35338-44	WASHER, LOCK UOC: CQ2	10
21	PAFZZ	96906	MS35206-280	SCREW, MACHINE UOC: CQ2, 4JE	6
22	PAFZZ	96906	MS35335-30	WASHER, LOCK UOC: 4JE	1
23	PAFZZ	96906	MS27183-6	WASHER, FLAT UOC: 4JE	1
24	PAFZZ	96906	MS35206-229	SCREW, MACHINE	7

(1) ITEM NO	(2) SMR CODE	(3) FSCM	(4) PART NUMBER	(5) DESCRIPTION AND USABLE ON CODE (UOC)	(6) QTY
25	XBHHH	80063	SM-D-351554	UOC:4JE WIRING ASSEMBLY (SEE FIGURE 10 FOR BREAKDOWN)	1
26	PAFFF	80063	SM-D-351548	UOC:CQ2,4JE PLATE ASSEMBLY,BASE (SEE FIGURE 2 FOR BREAKDOWN)	1
27	XBFZZ	80063	SM-D-351550	UOC:CQ2 HOUSING (SEE FIGURE 8 FOR BREAKDOWN)	1
28	PAFFF	80063	SM-D-351549	UOC:CQ2 PANEL ASSY,FRONT (SEE FIGURE 7 FOR BREAKDOWN)	1
29	PAFZZ	97534	S-10-32X1/4/N	UOC:CQ2 SCREW,SEAL UOC:CQ2	1

END OF FIGURE

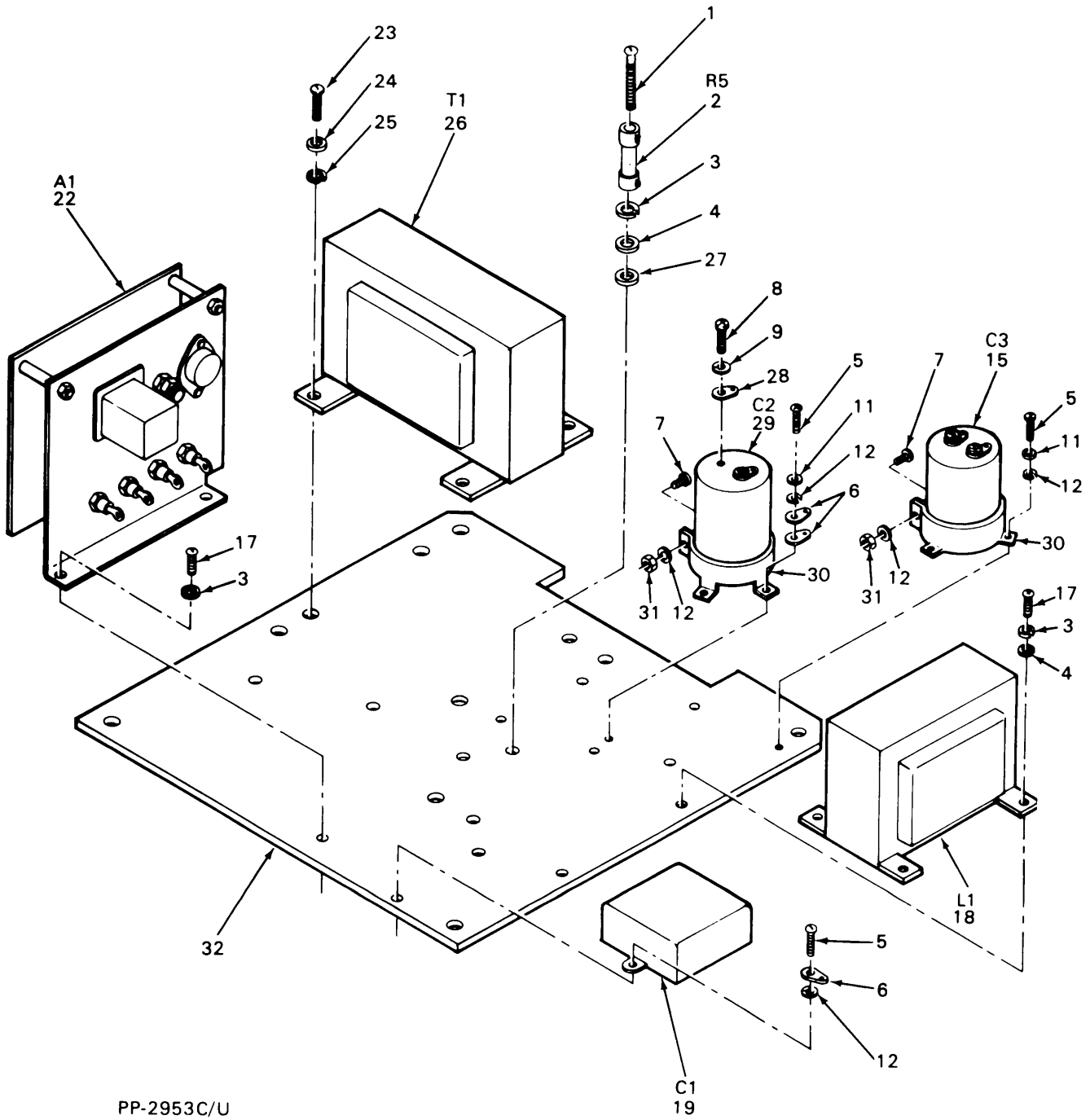


PP-2953/U, PP-2953A/U AND PP-2953B/U

NOTE: FOR COMPLETE REFERENCE DESIGNATION
PREFIX WITH A1

DL4HN004

Figure 2. Base Plate Assembly (A1) (Sheet 1 of 2)



PP-2953C/U

NOTE: FOR COMPLETE REFERENCE DESIGNATION
PREFIX WITH A1

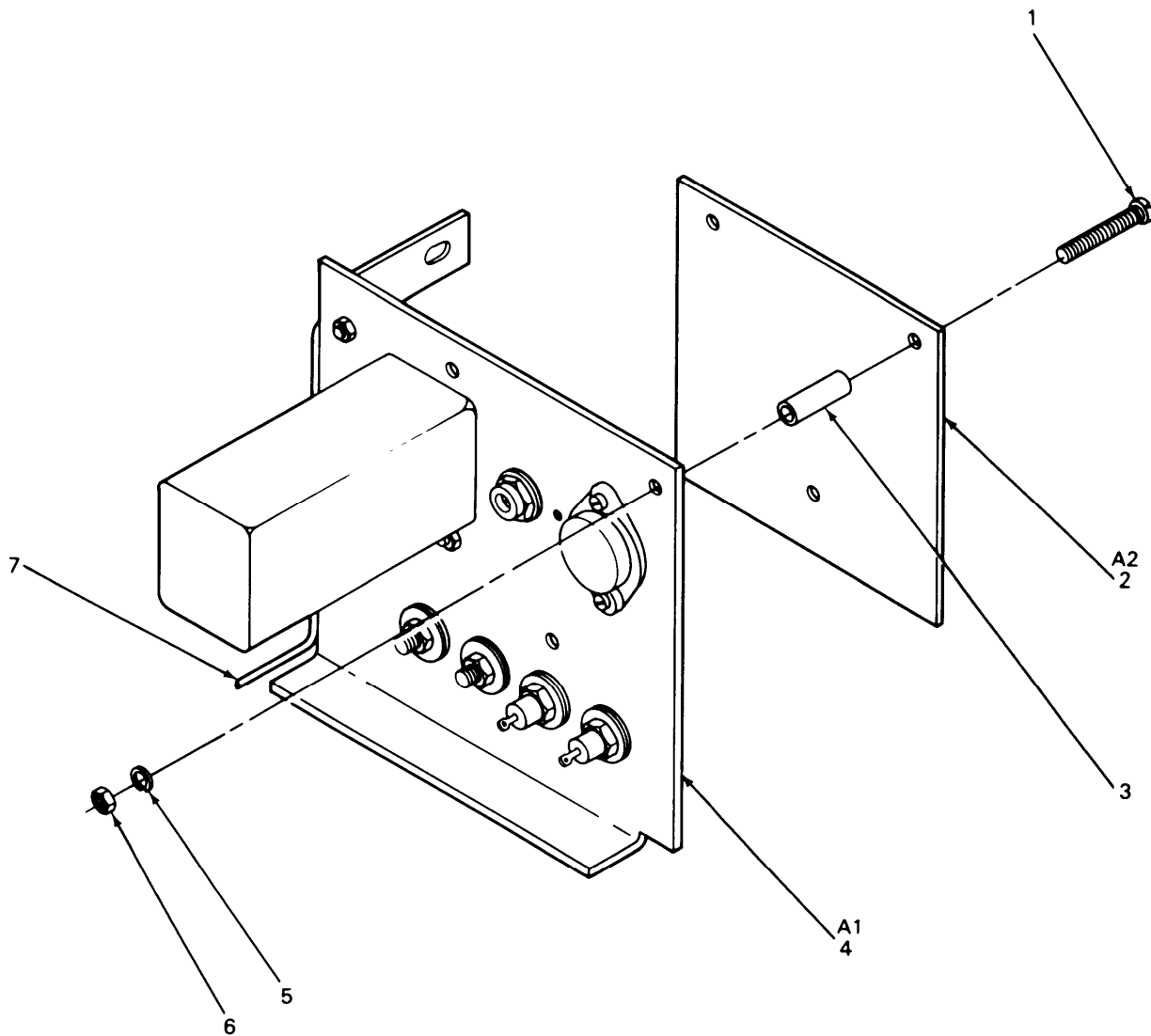
DL4HN005

Figure 2. Base Plate Assembly (A1) (Sheet 2 of 2)

(1) ITEM NO	(2) SMR CODE	(3) FSCM	(4) PART NUMBER	(5) DESCRIPTION AND USABLE ON CODE (UOC)	(6) QTY
GROUP 01 BASE PLATE ASSEMBLY (A1)					
FIGURE 2					
1	PAFZZ	96906	MS35206-255	SCREW,MACHINE	1
2	PAFZZ	81349	RW32V151	RESISTOR, FIXED, WIRE	1
3	PAFZZ	96906	MS35338-42	WASHER, LOCK	7
4	PAFZZ	96906	MS27183-7	WASHER, FLAT UOC: 2WG, 4JD, 4JE	6
4	PAFZZ	96906	MS27183-7	WASHER, FLAT UOC: CQ2	5
5	PAFZZ	96906	MS35206-229	SCREW, MACHINE UOC: 2WG, 4JD	12
5	PAFZZ	96906	MS35206-229	SCREW, MACHINE UOC: CQ2	8
6	PAFZZ	96906	MS77068-2	TERMINAL, LUG UOC: 2WG, 4JD, 4JE	2
6	PAFZZ	96906	MS77068-2	TERMINAL, LUG UOC: CQ2	3
7	PAFZZ	96906	MS35206-231	SCREW, MACHINE	2
8	PAFZZ	96906	MS35207-260	SCREW, MACHINE	4
9	PAFZZ	96906	MS35338-43	WASHER, LOCK	4
10	PAFZZ	81349	CE71C681J	CAPACITOR, FIXED, ELE UOC: 2WG, 4JD, 4JE	1
11	PAFZZ	96906	MS27183-6	WASHER, FLAT UOC: 2WG, 4JD	5
11	PAFZZ	96906	MS27183-6	WASHER, FLAT UOC: CQ2	6
12	PAFZZ	96906	MS35335-30	WASHER, LOCK UOC: 2WG, 4JD	13
12	PAFZZ	96906	MS35335-30	WASHER, LOCK UOC: CQ2	10
13	PAFZZ	98281	VR3	CLAMP, CAPACITOR UOC: 2WG, 4JD, 4JE	1
14	PAFZZ	88044	MS35649-262	NUT, PLAIN, HEXAGON UOC: 2WG, 4JD, 4JE	6
15	PAFZZ	81349	CE71C562G	CAPACITOR, FIXED, ELE	1
16	PAFZZ	98281	VR10	CLAMP, CAPACITOR UOC: 2WG, 4JD, 4JE	1
17	PAFZZ	96906	MS35206-245	SCREW, MACHINE	6
18	PAFZZ	97520	BE-1085	INDUCTOR, POWER	1
19	PAFZZ	80063	SM-B-450411	CAPACITOR, FIXED, PAP	1
20	PAFZZ	80063	SM-D-450394	PLATE, BASE UOC: 2WG, 4JD, 4JE	1
21	PAFZZ	06383	TM1S6	MOUNT, TIE UOC: 2WG, 4JD, 4JE	4
22	PAFFF	80063	SM-C-450388	RECTIFIER AND REGUL (SEE FIGURE 3 FOR BREAKDOWN)	1
23	PAFZZ	96906	MS35206-280	SCREW, MACHINE UOC: 2WG, 4JD	4
24	PAFZZ	96906	MS27183-10	WASHER, FLAT	4
25	PAFZZ	96906	MS35338-44	WASHER, LOCK	4

(1) ITEM NO	(2) SMR CODE	(3) FSCM	(4) PART NUMBER	(5) DESCRIPTION AND USABLE ON CODE (UOC)	(6) QTY
				UOC:2WG,4JD	
26	PAFZZ	97520	BE-1086	TRANSFORMER, POWER	1
27	PAFZZ	86928	5604-54	WASHER, SHOULDER	2
				UOC:CQ2	
28	PAFZZ	96906	MS35431-7	TERMINAL, LUG	4
				UOC:CQ2	
29	PAFZZ	81349	CE71C182H	CAPACITOR, FIXED, ELE	1
				UOC:CQ2	
30	PAFZZ	98281	VR8	CLAMP, CAPACITOR	2
				UOC:CQ2	
31	PAFZZ	96906	MS35649-262	NUT, PLAIN, HEXAGON	2
				UOC:CQ2	
32	XBFZZ	80063	SM-D-351546	PLATE, BASE	1
				UOC:CQ2	

END OF FIGURE



NOTE: FOR COMPLETE REFERENCE DESIGNATION
PREFIX WITH A1A1

DL4HN006

Figure 3. Rectifier and Regulator Assembly (A1A1)

(1) ITEM NO	(2) SMR CODE	(3) FSCM	(4) PART NUMBER	(5) DESCRIPTION AND USABLE ON CODE (UOC)	(6) QTY
GROUP 0101 RECTIFIER AND REGULATOR ASSEMBLY (A1A1)					
FIGURE 3					
1	PAFZZ	96906	MS51957-125	SCREW, MACHINE	3
2	PAFFF	80063	SM-C-450418	CIRCUIT CARD ASSEMB (SEE FIGURE 4 FOR BREAKDOWN)	1
3	PAFZZ	80063	SM-C-450388-1	SPACER	3
4	PAFFF	80063	SM-C-450404	ELECTRONIC COMPONENT (SEE FIGURE 5 FOR BREAKDOWN)	1
5	PAFZZ	96906	MS35335-30	WASHER, LOCK UOC: 2WG, 4JD	3
6	PAFZZ	96906	MS35649-262	NUT, PLAIN, HEXAGON UOC: 2WG, 4JD, 4JE	3
7	XBFZZ	80063	SM-D-450426	HARNES WIRING UOC: 2WG, 4JD	1
END OF FIGURE					

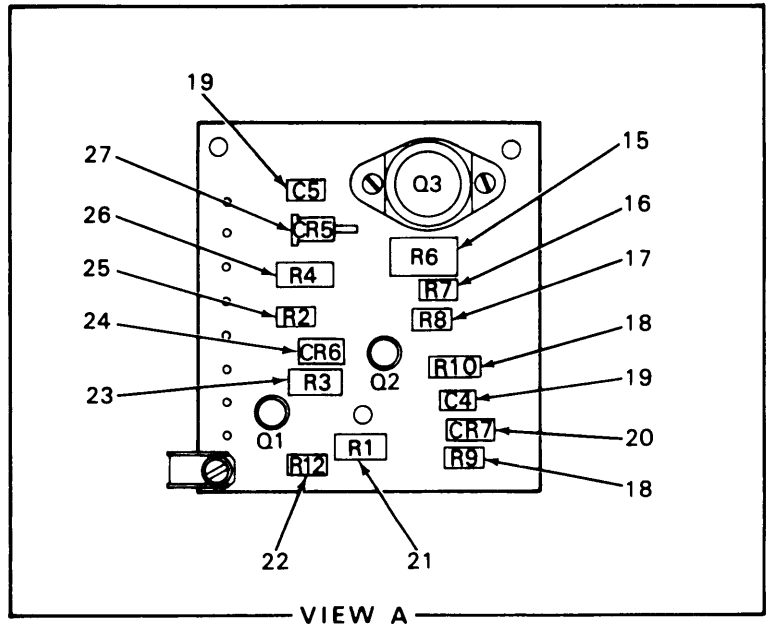
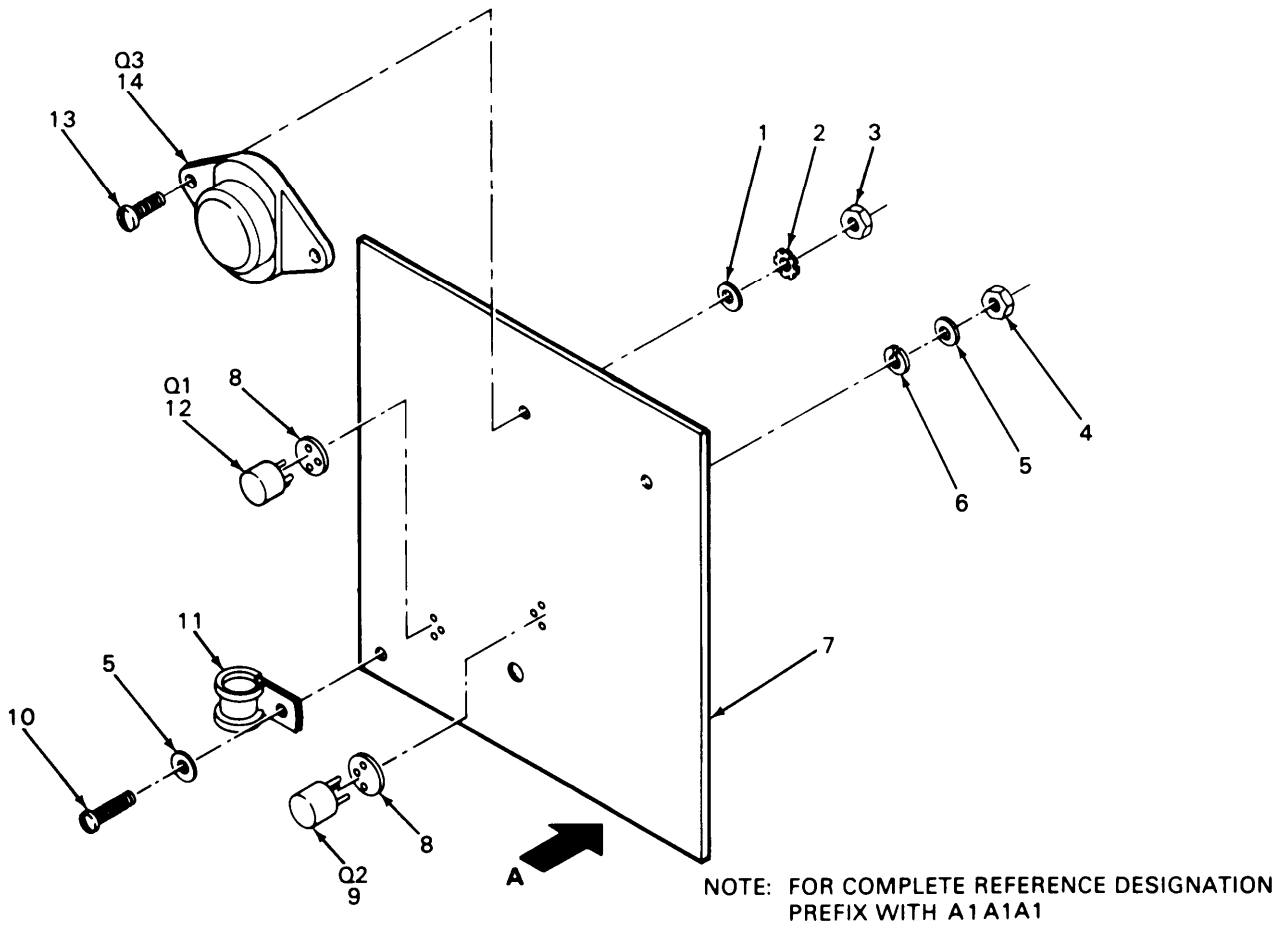
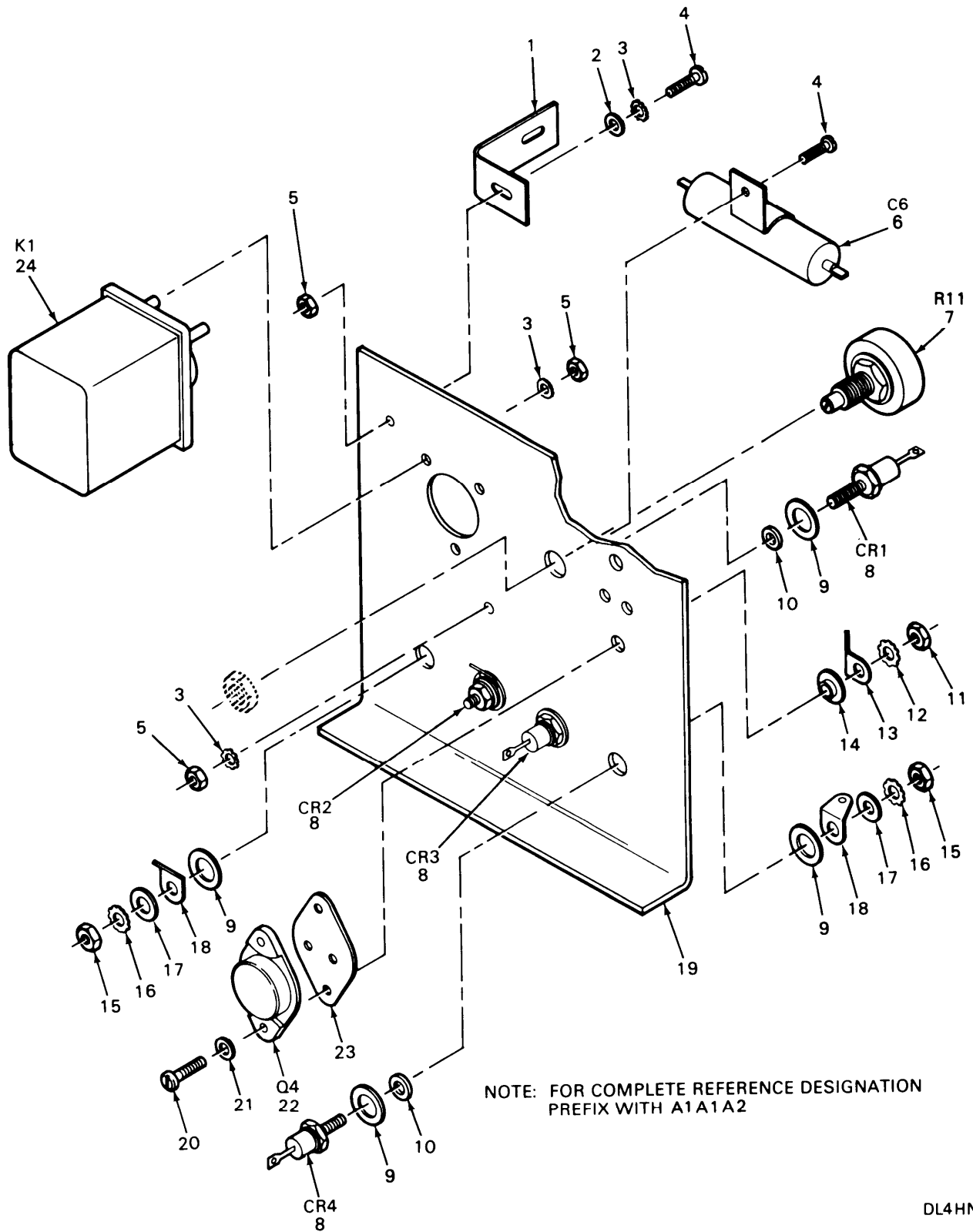


Figure 4. Circuit Board Assembly (A1A1A1)

(1) ITEM NO	(2) SMR CODE	(3) FSCM	(4) PART NUMBER	(5) DESCRIPTION AND USABLE ON CODE (UOC)	(6) QTY
GROUP 010101 CIRCUIT BOARD ASSEMBLY (A1A1A1)					
FIGURE 4					
1	PAFZZ	96906	MS15795-804	WASHER, FLAT UOC: 2WG, 4JD, 4JE	2
2	PAFZZ	96906	MS35335-57	WASHER, LOCK	2
3	PAFZZ	96906	MS35649-244	NUT, PLAIN, HEXAGON	2
4	PAFZZ	96906	MS35649-262	NUT, PLAIN, HEXAGON UOC: 2WG, 4JD, 4JE	1
5	PAFZZ	96906	MS15795-805	WASHER, FLAT	2
6	PAFZZ	96906	MS35335-30	WASHER, LOCK UOC: 2WG, 4JD	1
7	XBFZZ	80063	SM-D-450415	CIRCUIT BOARD	1
8	XBFZZ	49671	8977887-1	TRANSISTOR PAD	2
9	PAFZZ	81349	JAN2N404A	TRANSISTOR	1
10	PAFZZ	96906	MS35206-230	SCREW, MACHINE	1
11	PAFZZ	96906	MS25281-3	CLAMP	1
12	PAFZZ	81349	2N697	SEMICONDUCTOR DEVIC	1
13	PAFZZ	96906	MS51975-15	SCREW, MACHINE	2
14	PAFZZ	81349	JAN2N297A	TRANSISTOR	1
15	PAFZZ	81349	RCR42G221JS	RESISTOR, FIXED, COMP	1
16	PAFZZ	81349	RCR20G103JS	RESISTOR, FIXED, COMP	1
17	PAFZZ	81349	RCR20G122JS	RESISTOR, FIXED, COMP	1
18	PAFZZ	81349	RCR20G222JS	RESISTOR, FIXED, COMP	2
19	PAFZZ	81349	M39003-01-3076	CAPACITOR, FIXED, ELE	2
20	PAFZZ	81349	JAN1N752A	SEMICONDUCTOR DEVIC	1
21	PAFZZ	81349	RCR32G102JS	RESISTOR, FIXED, COMP	1
22	PAFZZ	81349	RC20GF471K	RESISTOR, FIXED, COMP	1
23	PAFZZ	81349	RCR32G821JS	RESISTOR, FIXED, COMP	1
24	PAFZZ	81349	1N3033B	SEMICONDUCTOR DEVIC	1
25	PAFZZ	81349	RC20GF102K	RESISTOR, FIXED, COMP	1
26	PAFZZ	81349	RC32GF2R7K	RESISTOR	1
27	PAFZZ	81349	1N538	SEMICONDUCTOR DEVIC	1

END OF FIGURE

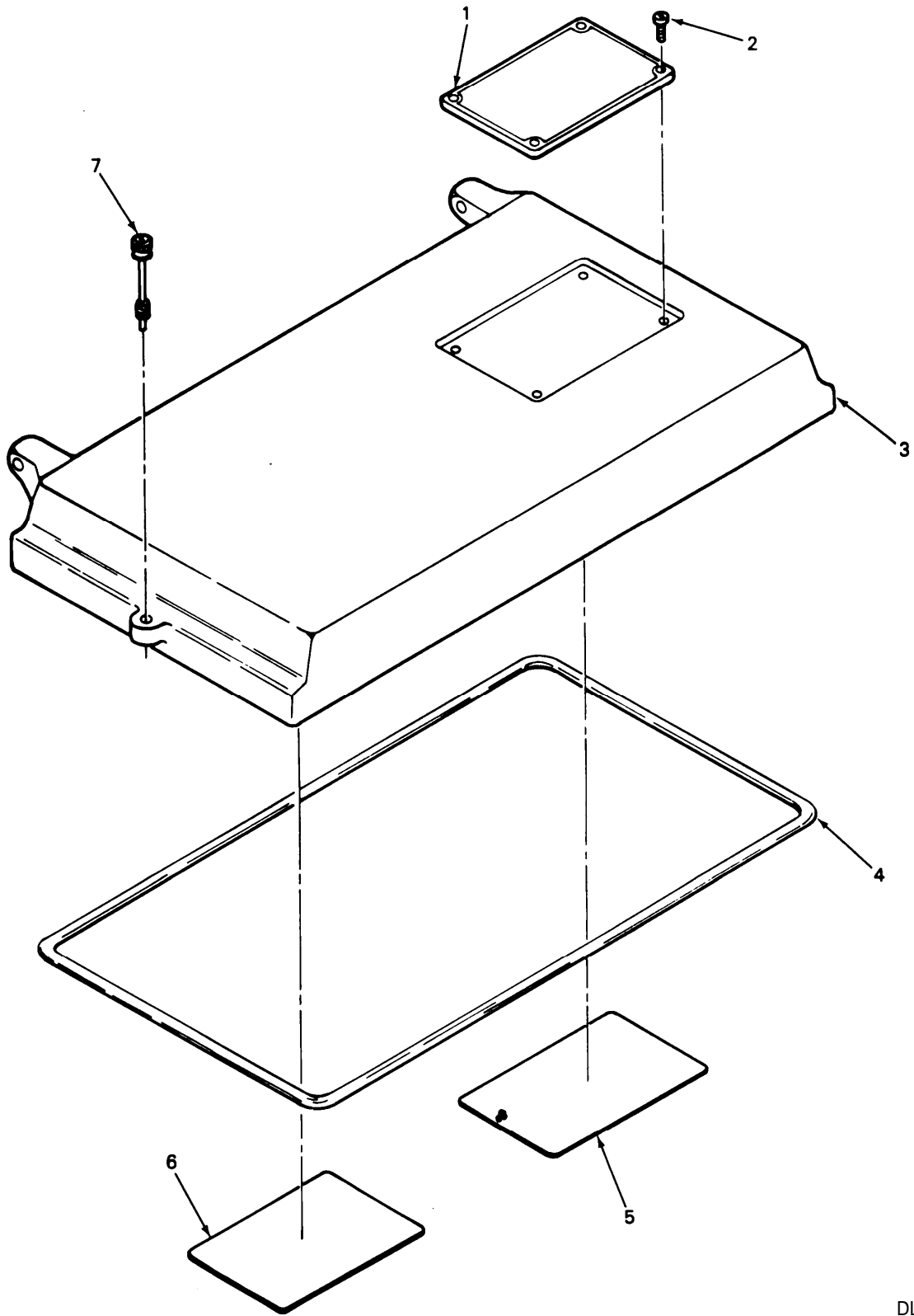


DL4HN008

Figure 5. Electronic Component Assembly (A1A1A2)

(1) ITEM NO	(2) SMR CODE	(3) FSCM	(4) PART NUMBER	(5) DESCRIPTION AND USABLE ON CODE (UOC)	(6) QTY
GROUP 010102 ELECTRONIC COMPONENT ASSEMBLY (A1A1A2)					
FIGURE 5					
1	XBFZZ	80063	SM-B-450407	BRACKET	1
2	PAFZZ	96906	MS27183-6	WASHER, FLAT UOC: 2WG, 4JD	1
3	PAFZZ	96906	MS35335-30	WASHER, LOCK UOC: 2WG, 4JD	5
4	PAFZZ	96906	MS35206-229	SCREW, MACHINE UOC: 2WG, 4JD	2
5	PAFZZ	96906	MS35649-262	NUT, PLAIN, HEXAGON UOC: 2WG, 4JD, 4JE	5
6	PAFZZ	72928	XHF27619JT-10	CAPACITOR, FIXED, PAP	1
7	PAFZZ	81349	RA20LASB751A	RESISTOR, VARIABLE, W	1
8	PAFZZ	81349	JAN-1N1202A	SEMICONDUCTOR DEVIC	4
9	PAFZZ	80063	SM-B-351542	INSULATOR, WASHER	8
10	PAFZZ	80063	SM-B-351543	RING, INSULATING	4
11	PAFZZ	96906	MS35649-242	NUT, PLAIN, HEXAGON UOC: 2WG, 4JD, 4JE	2
12	PAFZZ	96906	MS35335-29	WASHER, LOCK UOC: 2WG, 4JD	2
13	PAFZZ	96906	MS35431-2	TERMINAL, LUG	1
14	PAFZZ	80063	SM-B-350043	WASHER, SHOULDERED A	2
15	PAFZZ	96906	MS35650-302	NUT, PLAIN, HEXAGON	4
16	PAFZZ	96906	MS35335-32	WASHER, LOCK	4
17	PAFZZ	96906	MS27183-8	WASHER, FLAT	4
18	PAFZZ	96906	MS35431-8	TERMINAL, LUG	4
19	XBFZZ	80063	SM-C-450387	PLATE, PANEL	1
20	PAFZZ	96906	MS35206-217	SCREW, MACHINE	2
21	PAFZZ	96906	MS27183-3	WASHER, FLAT UOC: CQ2, 2WG, 4JD	2
22	PAFZZ	81349	2N1560A	SEMICONDUCTOR DEVIC	1
23	PAFZZ	80063	SM-B-350044	GASKET	1
24	PAFZZ	80063	SM-B-450413	RELAY, ELECTROMAGNET	1

END OF FIGURE



DL4HN009

Figure 6. Front Cover Assembly (A2)

(1) ITEM NO	(2) SMR CODE	(3) FSCM	(4) PART NUMBER	(5) DESCRIPTION AND USABLE ON CODE (UOC)	(6) QTY
GROUP 02 FRONT COVER ASSEMBLY (A2)					
FIGURE 6					
1	MDFZZ	80063	SM-C-450400	PLATE, IDENTIFICATIO (FOR INSTRUCTIONS SEE SB 11-631.)	1
2	PAFZZ	96906	MS24630-9	SCREW, TAPPING, THREA	4
3	XBFZZ	80063	SM-D-450397	COVER, POWER SUPPLY	1
4	XBFZZ	03818	2-275	SEAL, RUBBER, ROUND	1
5	MDFZZ	80063	SM-C-351541	PLATE, IDENTIFICATIO (FOR INSTRUCTIONS SEE SB 11-631.1)	1
6	MDFZZ	80063	SM-C-450399	PLATE, INSTRUCTION (FOR INSTRUCTIONS SEE SB 11-631.)	1
7	PAFZZ	80063	SM-B-450417	SCREW, EXTERNALLY RE	2

END OF FIGURE

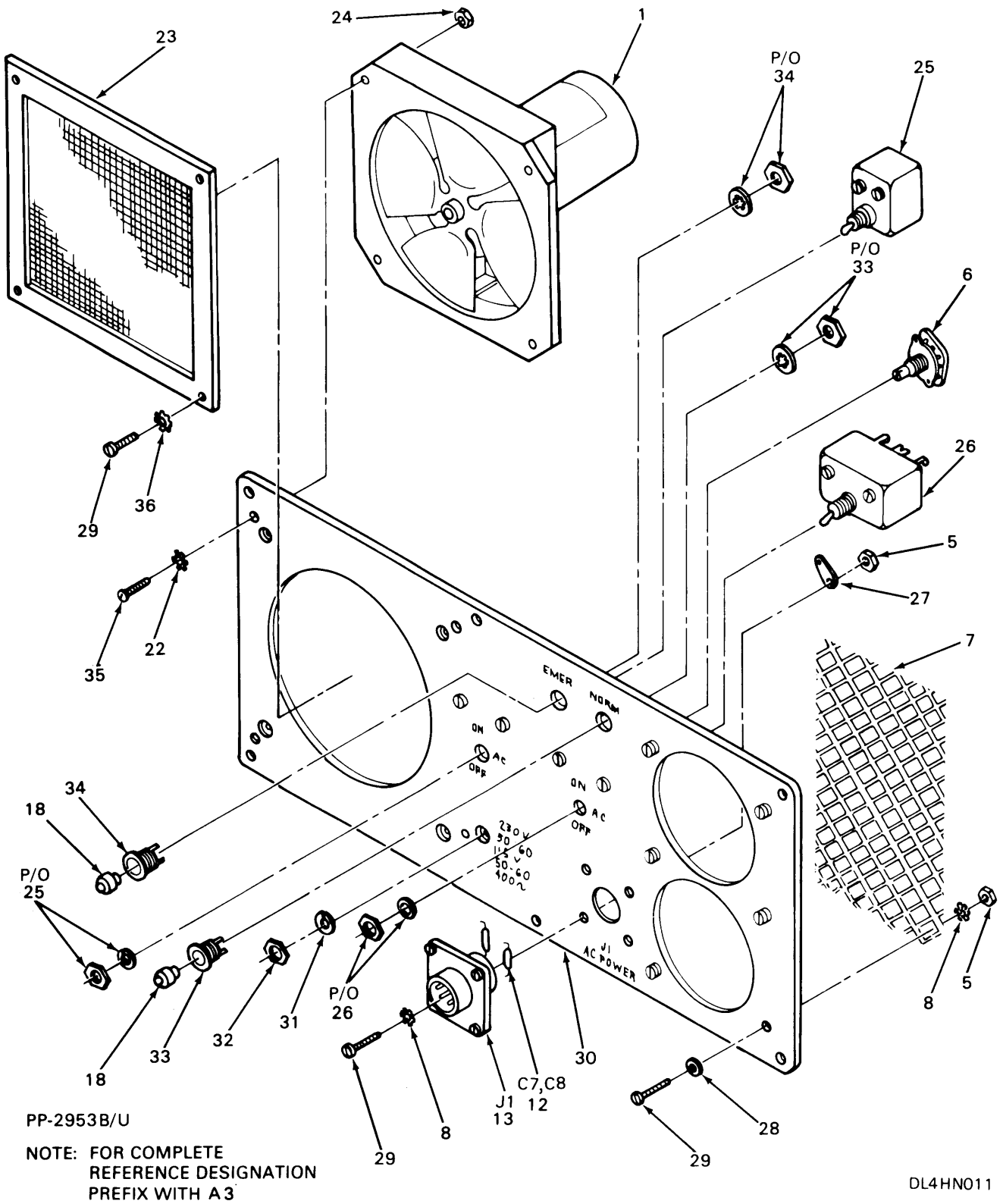


Figure 7. Front Panel Assembly (A3) (Sheet 2 of 3)

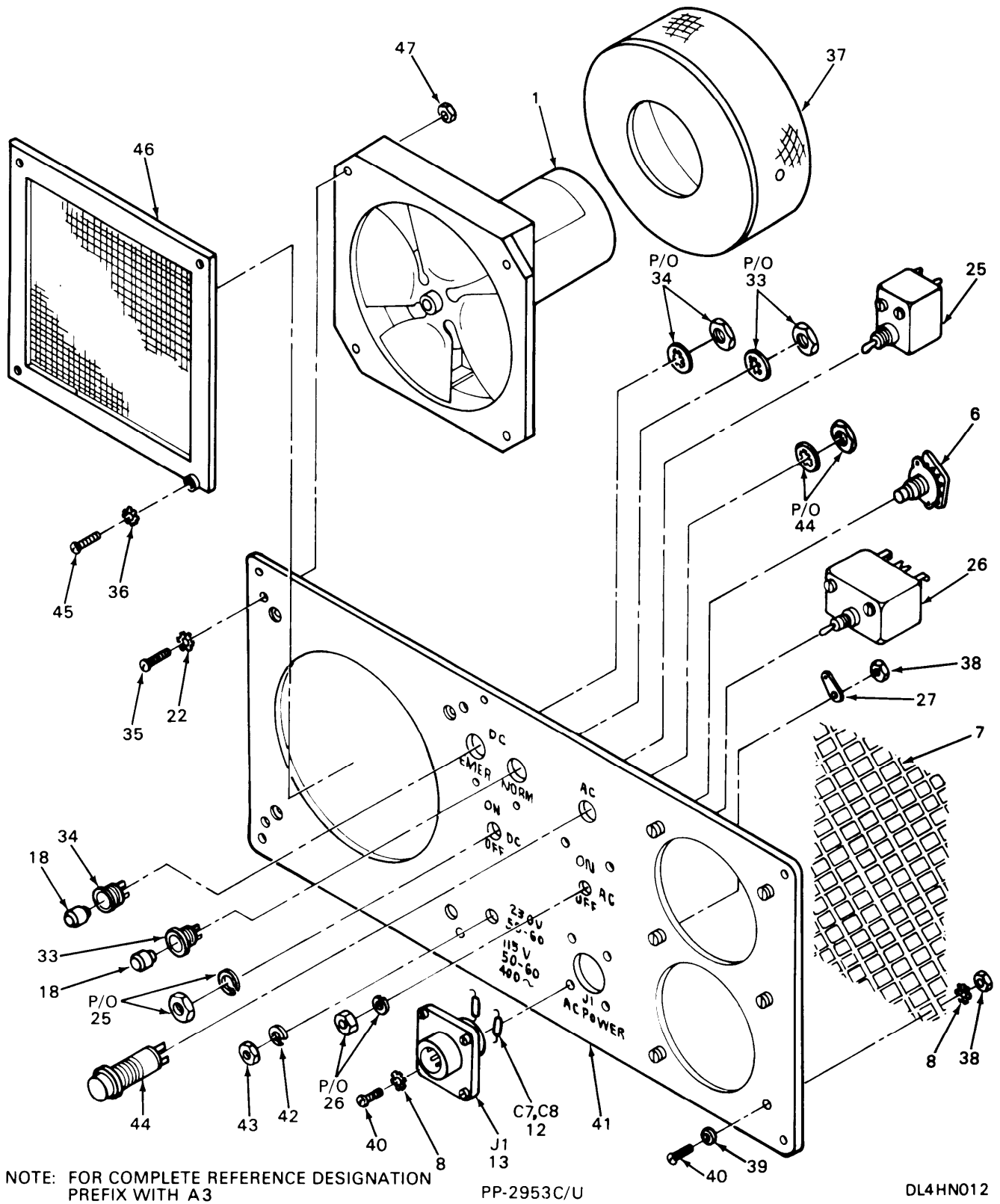
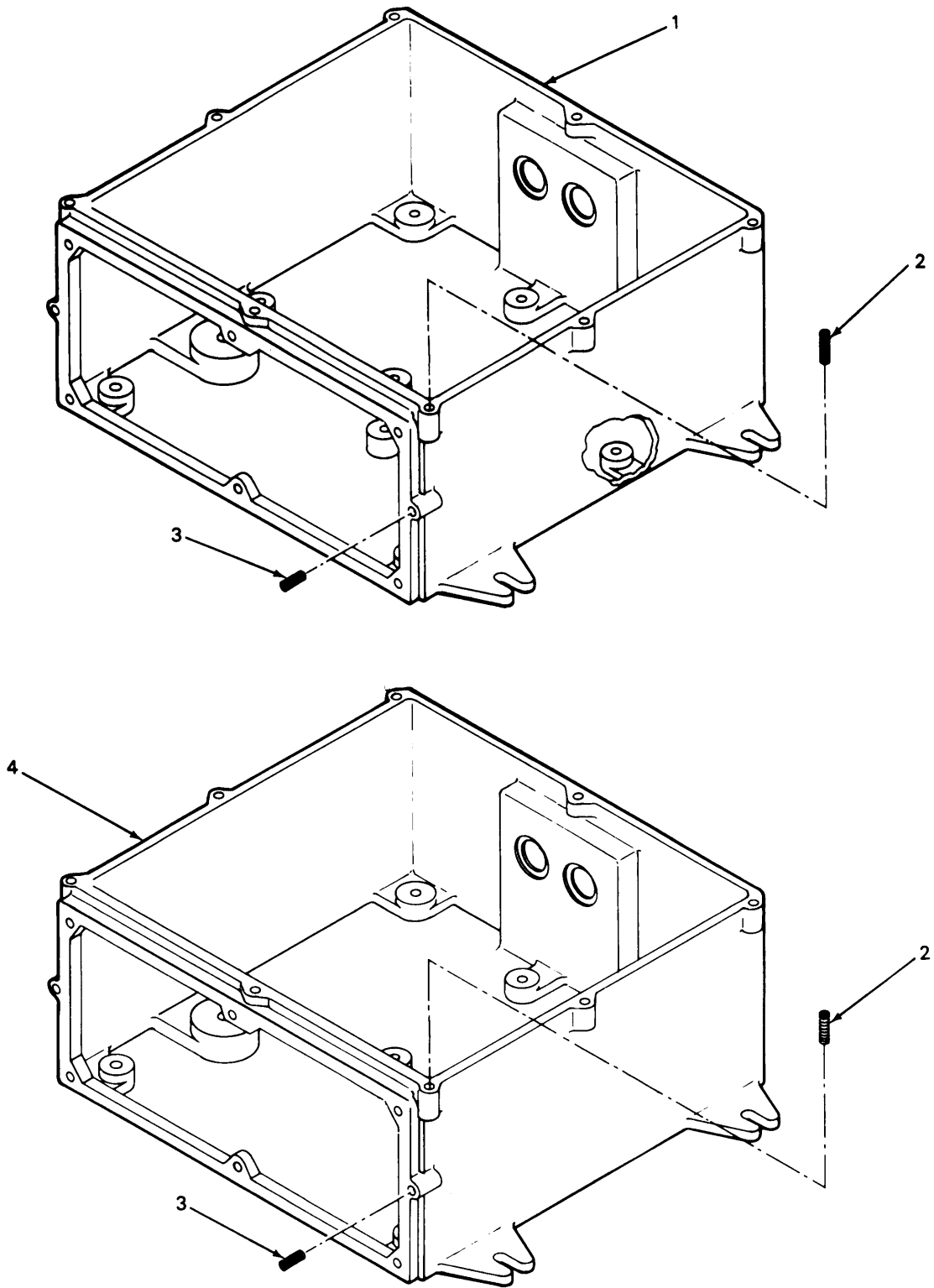


Figure 7. Front Panel Assembly (A3) (Sheet 3 of 3)

(1) ITEM NO	(2) SMR CODE	(3) FSCM	(4) PART NUMBER	(5) DESCRIPTION AND USABLE ON CODE (UOC)	(6) QTY
GROUP 03 FRONT PANEL ASSEMBLY (A3)					
FIGURE 7					
1	PAFZZ	80063	SM-C-450391	BLOWER ASSEMBLY	1
2	PAFZZ	96906	MS35206-228	SCREW, MACHINE UOC: 2WG, 4JD	2
3	PAFZZ	88044	AN3226-2	SWITCH, TOGGLE UOC: 2WG, 4JD	1
4	PAFZZ	96906	MS35431-1	TERMINAL, LUG UOC: 2WG, 4JD	1
5	PAFZZ	96906	MS35649-42	NUT, HEX UOC: 2WG, 4JD, 4JE	10
6	PAFZZ	11236	212-21066-2	SWITCH, ROTARY	1
7	PAFZZ	80063	SM-B-450421	SCREEN, AIRCRAFT GRO	1
8	PAFZZ	96906	MS35335-29	WASHER, LOCK UOC: 2WG, 4JD	14
8	PAFZZ	96906	MS35335-29	WASHER, LOCK UOC: CQ2, 4JE	10
9	PAFZZ	96906	MS15795-203	WASHER, FLAT UOC: 2WG, 4JD	6
10	PAFZZ	96906	MS35206-215	SCREW, MACHINE UOC: 2WG, 4JD	14
11	XBFZZ	80063	SM-C-450403	PANEL, FRONT, MARKING UOC: 2WG, 4JD	1
12	PAFZZ	81349	CK63AW103M	CAPACITOR, FIXED, CER	2
13	PAFZZ	96906	MS3112E12-3P	CONNECTOR	1
14	PAOZZ	81349	5920-892-9861	FUSE UOC: 2WG, 4JD	1
15	PAFZZ	81349	FHN20G	FUSEHOLDER, EXTRACTO UOC: 2WG, 4JD	5
16	PAOZZ	81349	F03A250V3A	FUSE, CARTRIDGE UOC: 2WG, 4JD	4
17	PAFZZ	81349	LH73-1	LIGHT, INDICATOR UOC: 2WG, 4JD	2
18	PAOZZ	96906	MS25237-327	LAMP, INCANDESCENT	2
19	PAOZZ	81349	LC12RN	LENS, LIGHT UOC: 2WG, 4JD	1
20	PAOZZ	81349	LC12CN2	LENS, LIGHT UOC: 2WG, 4JD	1
21	PAFZZ	96906	MS35190-238	SCREW, MACHINE UOC: 2WG, 4JD	4
22	PAFZZ	96906	MS35335-30	WASHER, LOCK UOC: 2WG, 4JD	4
23	PAFZZ	80063	SM-C-450408	SCREEN ASSEMBLY UOC: 2WG, 4JD, 4JE	1
24	PAFZZ	88044	MS35649-262	NUT, PLAIN, HEXAGON UOC: 2WG, 4JD, 4JE	4
25	XBFZZ	80063	SM-C-350033	CIRCUIT BREAKER UOC: CQ2, 4JE	1
26	XBFZZ	80063	SM-C-350034	CIRCUIT BREAKER AC UOC: CQ2, 4JE	1

(1) ITEM NO	(2) SMR CODE	(3) FSCM	(4) PART NUMBER	(5) DESCRIPTION AND USABLE ON CODE (UOC)	(6) QTY
27	PAFZZ	96906	MS77068-1	TERMINAL, LUG UOC: CQ2, 4JE	1
28	PAFZZ	96906	MS27183-3	WASHER, FLAT UOC: 4JE	6
29	PAFZZ	96906	MS35206-215	SCREW, MACHINE UOC: 4JE	14
30	XBFZZ	80063	SM-C-350036	PANEL, FRONT UOC: 4JE	1
31	PAFZZ	88044	AN936-A616S	WASHER, LOCK UOC: 4JE	1
32	PAFZZ	96906	MS25082-20	NUT, PLAIN, HEXAGON UOC: 4JE	1
33	XADZZ	80063	SM-B-450166-2	LIGHT, INDICATOR UOC: CQ2, 4JE	1
34	PAFZZ	81349	LC36CD2	LENS, LIGHT UOC: CQ2, 4JE	1
35	PAFZZ	96906	MS35190-238	SCREW, MACHINE UOC: CQ2, 4JE	4
36	PAFZZ	96906	MS35338-40	WASHER, LOCK UOC: CQ2, 4JE	4
37	PAFZZ	80063	SM-C-786740	SHIELD, FAN MOTOR UOC: CQ2	1
38	PAFZZ	96906	MS35649-242	NUT, PLAIN, HEXAGON UOC: CQ2	10
39	PAFZZ	96906	MS15795-804	WASHER, FLAT UOC: CQ2	6
40	PAFZZ	96906	MS35206-216	SCREW, MACHINE UOC: CQ2	10
41	XBFZZ	80063	SM-D-351545	PANEL UOC: CQ2	1
42	PAFZZ	96906	MS35333-42	WASHER, LOCK UOC: CQ2	1
43	PAFZZ	96906	MS25082-20	NUT, PLAIN, HEXAGON UOC: CQ2	1
44	PAFZZ	80063	SM-B-351539	LAMP ASSEMBLY UOC: CQ2	1
45	PAFZZ	80063	SM-B-351544	SCREW, EXTERNALLY RE UOC: CQ2	4
46	PAFZZ	80063	SM-C-786743	SCREEN ASSEMBLY UOC: CQ2	1
47	PAFZZ	96906	MS35649-262	NUT, PLAIN, HEXAGON UOC: CQ2	4

END OF FIGURE



DL4HN013

Figure 8. Housing Assembly (A4)

(1) ITEM NO	(2) SMR CODE	(3) FSCM	(4) PART NUMBER	(5) DESCRIPTION AND USABLE ON CODE (UOC)	(6) QTY
GROUP 04 HOUSING ASSEMBLY (A4)					
FIGURE 8					
1	XBFZZ	80063	SM-D-351550-1	HOUSING UOC: CQ2	1
2	PAFZZ	96906	MS21209-C0820	INSERT, SCREW THREAD	8
3	PAFZZ	96906	MS21209-F1-15	INSERT, SCREW THREAD	2
4	XBFZZ	80063	SM-D-450393-1	HOUSING UOC: 2WG, 4JD, 4JE	1
END OF FIGURE					

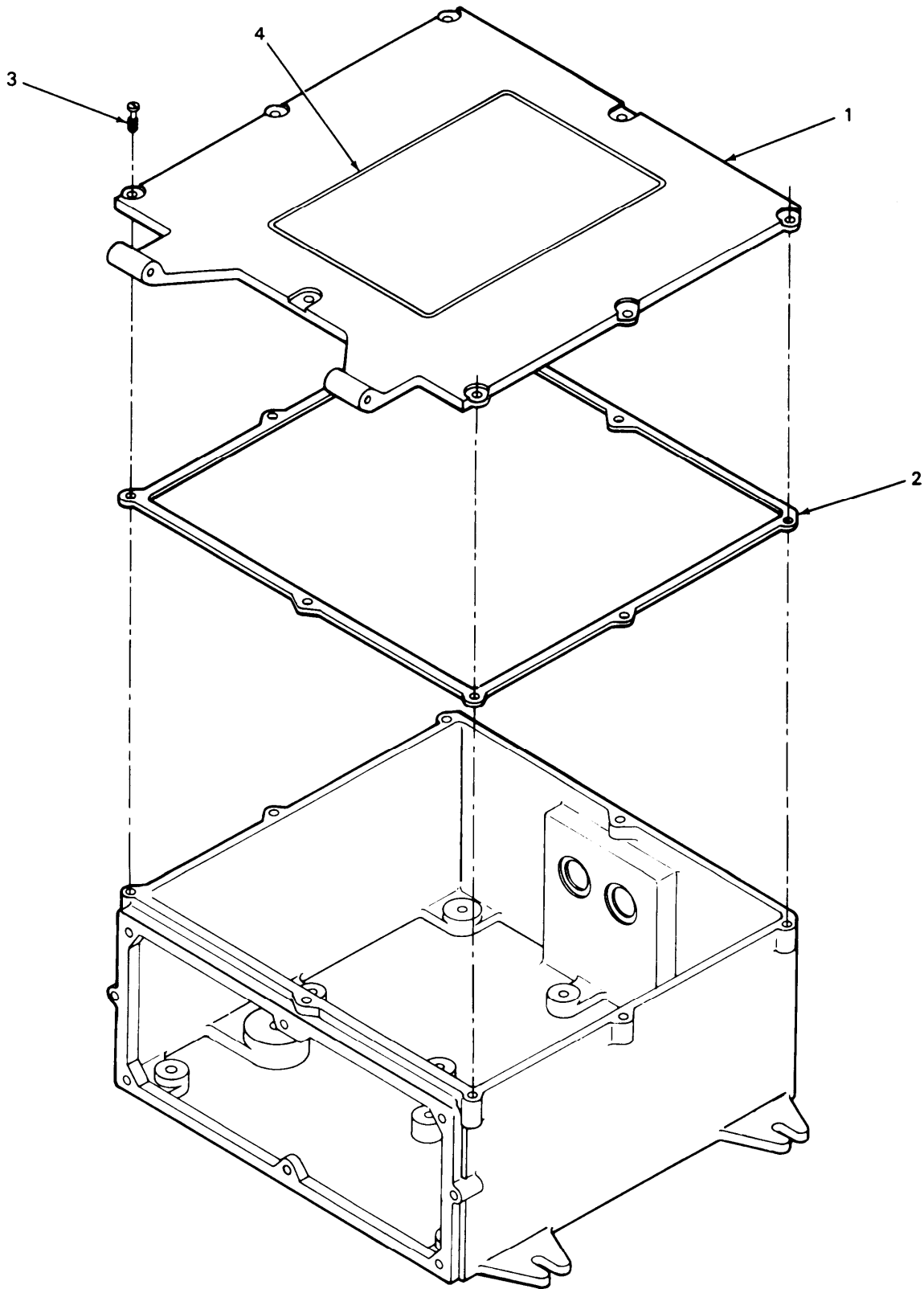
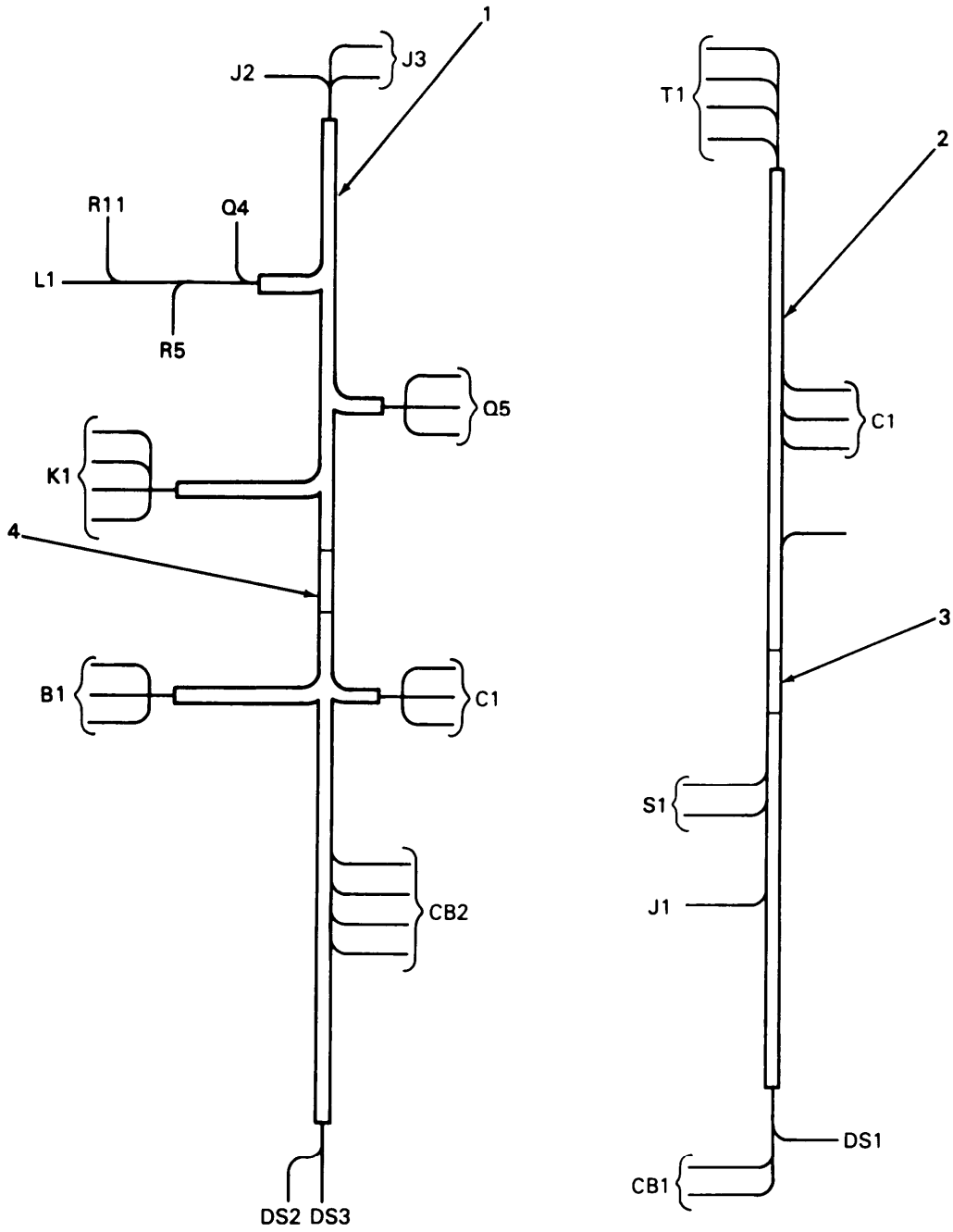


Figure 9. Top Cover Assembly (A5)

(1) ITEM NO	(2) SMR CODE	(3) FSCM	(4) PART NUMBER	(5) DESCRIPTION AND USABLE ON CODE (UOC)	(6) QTY
GROUP 05 TOP COVER ASSEMBLY (A5)					
FIGURE 9					
1	XBFZZ	80063	SM-D-450396	COVER,POWER SUPPLY	1
2	XBFZZ	80063	SM-D-450401	GASKET	1
3	PAFZZ	80063	SM-B-350039	SCREW,EXTERNALLY R	8
4	XBFZZ	80063	SM-C-786741	LABEL,WARNING	1

END OF FIGURE



DL4HN015

Figure 10. Wiring Harness

(1) ITEM NO	(2) SMR CODE	(3) FSCM	(4) PART NUMBER	(5) DESCRIPTION AND USABLE ON CODE (UOC)	(6) QTY
GROUP 06 WIRING HARNESS					
FIGURE 10					
1	XBHZZ	80063	SM-D-450426	HARNESS, WIRING UOC: CQ2, 4JE	1
2	XBHZZ	80063	SM-D-450424	HARNESS ASSEMBLY UOC: CQ2, 4JE	1
3	PAHZZ	80063	SM-C-786742-1	BAND, WARNING UOC: CQ2, 4JE	10
4	PAHZZ	80063	SM-C-786742-2	BAND, WIRING UOC: CQ2, 4JE	13
END OF FIGURE					

CROSS-REFERENCE INDEXES

NATIONAL STOCK NUMBER INDEX

STOCK NUMBER	FIG.	ITEM	STOCK NUMBER	FIG.	ITEM
5310-00-045-3296	2	9	5310-00-582-5965	2	25
5310-00-045-3299	2	3	5310-00-595-7237	7	42
5305-00-052-8878	6	2	5310-00-596-7691	5	16
5310-00-058-3599	4	2	5940-00-614-0537	7	4
5950-00-059-3060	2	26	5310-00-616-3554	5	12
5305-00-059-4553	7	21		7	8
	7	35		7	8
5935-00-071-1235	1	3	5940-00-681-8183	5	13
6210-00-079-8943	7	20	5940-00-681-8184	5	18
5310-00-082-1404	1	23	5940-00-682-2477	7	27
	2	11	5940-00-683-4339	2	28
	2	11	5905-00-721-2639	5	7
	5	2	5340-00-721-6936	8	2
5305-00-088-9044	2	8	5310-00-722-5998	4	5
5905-00-110-0196	4	25	5945-00-728-0617	5	24
5905-00-115-3565	4	23	6130-00-763-0098	7	23
5905-00-121-9861	4	21	5310-00-782-1349	4	1
5310-00-138-4062	5	14		7	39
5905-00-141-0591	4	16	5340-00-800-7874	8	3
5905-00-141-0592	4	17	5310-00-809-4058	2	24
5905-00-141-1168	4	18	5310-00-809-8544	2	4
6240-00-155-7836	7	18		2	4
5310-00-159-6321	7	32	5310-00-809-8546	5	17
	7	43	6210-00-813-8265	7	17
5905-00-171-2005	4	22	5961-00-821-8976	4	14
6130-00-191-1548	1	14	5910-00-822-5683	1	2
5310-00-209-0786	1	15		7	12
5310-00-209-0788	1	22	5940-00-827-2653	2	6
	2	12		2	6
	2	12	5905-00-844-2256	2	2
	3	5	5315-00-844-6796	1	13
	4	6	5961-00-850-9438	4	24
	5	3	5910-00-851-6485	5	6
	7	22	5910-00-869-4855	2	10
5305-00-221-6116	3	1	5305-00-889-2997	7	10
5920-00-296-1517	7	16		7	29
5905-00-412-1121	4	15	5305-00-889-2998	7	40
5930-00-417-3093	7	6	5305-00-889-2999	5	20
5305-00-419-0583	9	3	5305-00-889-3000	4	10
5330-00-419-5938	5	23	5305-00-889-3001	2	7
6130-00-444-2239	1	7	5910-00-889-4412	2	15
5910-00-465-9830	2	29	5961-00-902-3444	1	17
5910-00-495-0042	4	19	5910-00-909-7402	2	19
5310-00-543-2410	7	36	5305-00-930-6279	6	7
5340-00-543-3931	4	11	5999-00-930-6621	3	2
5920-00-556-0144	7	15	5310-00-934-9739	5	11
5961-00-577-6214	4	27		7	38
5310-00-579-0079	1	10	5310-00-934-9747	2	14
5310-00-582-5965	1	20		2	31
	1	20		3	6

CROSS-REFERENCE INDEXES

NATIONAL STOCK NUMBER INDEX

STOCK NUMBER	FIG.	ITEM	STOCK NUMBER	FIG.	ITEM
5310-00-934-9747	4	4			
	5	5			
	7	24			
	7	47			
5310-00-934-9748	4	3			
5310-00-934-9751	5	15			
5961-00-935-0138	5	8			
5310-00-951-4679	5	21			
	7	9			
	7	28			
5305-00-984-4988	1	11			
	7	2			
5305-00-984-4989	1	24			
	2	5			
	2	5			
	5	4			
5305-00-984-6193	2	17			
5305-00-984-6203	2	1			
5961-00-985-9134	4	9			
5305-00-988-1724	1	21			
	2	23			
5961-00-995-2310	4	20			
6210-01-004-6159	7	34			
6130-01-017-3080	7	37			
5305-01-018-2863	7	45			
5970-01-136-7724	5	9			
6130-01-141-3929	1	12			
5820-01-160-4441	3	4			
1730-01-178-5906	7	7			

CROSS-REFERENCE INDEXES

FSCM	PART NUMBER	PART NUMBER INDEX		FIG.	ITEM
		STOCK	NUMBER		
88044	AN3226-2			7	3
88044	AN500-416-8			1	16
88044	AN936-A616S			7	31
97520	BE-1085			2	18
97520	BE-1086	5950-00-059-3060		2	26
81349	CE71C182H	5910-00-465-9830		2	29
81349	CE71C562G	5910-00-889-4412		2	15
81349	CE71C681J	5910-00-869-4855		2	10
81349	CK63AW103M	5910-00-822-5683		1	2
				7	12
80058	CX-4524/U			1	8
81349	FHN20G	5920-00-556-0144		7	15
81349	F03A250V3A	5920-00-296-1517		7	16
81349	JAN-1N1202A	5961-00-935-0138		5	8
81349	JAN1N752A	5961-00-995-2310		4	20
81349	JAN2N297A	5961-00-821-8976		4	14
81349	JAN2N404A	5961-00-985-9134		4	9
81349	LC12CN2	6210-00-079-8943		7	20
81349	LC12RN			7	19
81349	LC36CD2	6210-01-004-6159		7	34
81349	LH73-1	6210-00-813-8265		7	17
96906	MS15795-203	5310-00-951-4679		7	9
96906	MS15795-804	5310-00-782-1349		4	1
				7	39
96906	MS15795-805	5310-00-722-5998		4	5
96906	MS16562-39	5315-00-844-6796		1	13
96906	MS21209-C0820	5340-00-721-6936		8	2
96906	MS21209-F1-15	5340-00-800-7874		8	3
96906	MS24630-9	5305-00-052-8878		6	2
96906	MS25082-20	5310-00-159-6321		7	32
				7	43
96906	MS25237-327	6240-00-155-7836		7	18
96906	MS25281-3	5340-00-543-3931		4	11
96906	MS27183-10	5310-00-809-4058		2	24
96906	MS27183-3	5310-00-951-4679		5	21
				7	28
96906	MS27183-6	5310-00-082-1404		1	23
				2	11
				2	11
				5	2
96906	MS27183-7	5310-00-809-8544		2	4
				2	4
96906	MS27183-8	5310-00-809-8546		5	17
96906	MS3112E12-3P			7	13
96906	MS35190-238	5305-00-059-4553		7	21
				7	35
96906	MS35206-215	5305-00-889-2997		7	10
				7	29
96906	MS35206-216	5305-00-889-2998		7	40
96906	MS35206-217	5305-00-889-2999		5	20
96906	MS35206-228	5305-00-984-4988		1	11

CROSS-REFERENCE INDEXES

FSCM	PART NUMBER	PART NUMBER INDEX		FIG.	ITEM
		STOCK	NUMBER		
96906	MS35206-228	5305-00-984-4988		7	2
96906	MS35206-229	5305-00-984-4989		1	24
				2	5
				2	5
				5	4
96906	MS35206-230	5305-00-889-3000		4	10
96906	MS35206-231	5305-00-889-3001		2	7
96906	MS35206-245	5305-00-984-6193		2	17
96906	MS35206-255	5305-00-984-6203		2	1
96906	MS35206-280	5305-00-988-1724		1	21
				2	23
96906	MS35207-260	5305-00-088-9044		2	8
96906	MS35333-37	5310-00-579-0079		1	10
96906	MS35333-42	5310-00-595-7237		7	42
96906	MS35335-29	5310-00-616-3554		5	12
				7	8
				7	8
96906	MS35335-30	5310-00-209-0788		1	22
				2	12
				2	12
				3	5
				4	6
				5	3
				7	22
96906	MS35335-32	5310-00-596-7691		5	16
96906	MS35335-33	5310-00-209-0786		1	15
96906	MS35335-57	5310-00-058-3599		4	2
96906	MS35338-40	5310-00-543-2410		7	36
96906	MS35338-42	5310-00-045-3299		2	3
96906	MS35338-43	5310-00-045-3296		2	9
96906	MS35338-44	5310-00-582-5965		1	20
				1	20
				2	25
96906	MS35431-1	5940-00-614-0537		7	4
96906	MS35431-2	5940-00-681-8183		5	13
96906	MS35431-7	5940-00-683-4339		2	28
96906	MS35431-8	5940-00-681-8184		5	18
96906	MS35649-242	5310-00-934-9739		5	11
				7	38
96906	MS35649-244	5310-00-934-9748		4	3
88044	MS35649-262	5310-00-934-9747		2	14
				2	31
				3	6
				4	4
				5	5
				7	24
				7	47
96906	MS35649-42			7	5
96906	MS35650-302	5310-00-934-9751		5	15
96906	MS51957-125	5305-00-221-6116		3	1
96906	MS51975-15			4	13

CROSS-REFERENCE INDEXES

FSCM	PART NUMBER	PART NUMBER INDEX		FIG.	ITEM
		STOCK NUMBER			
96906	MS77068-1	5940-00-682-2477		7	27
96906	MS77068-2	5940-00-827-2653		2	6
				2	6
81349	MW20F(M)A00	5935-00-071-1235		1	3
81349	MW20M(M)A00			1	4
81349	M39003-01-3076	5910-00-495-0042		4	19
81349	RA20LASB751A	5905-00-721-2639		5	7
81349	RRC20G103JS	5905-00-141-0591		4	16
81349	RRC20G122JS	5905-00-141-0592		4	17
81349	RRC20G222JS	5905-00-141-1168		4	18
81349	RRC32G102JS	5905-00-121-9861		4	21
81349	RRC32G821JS	5905-00-115-3565		4	23
81349	RRC42G221JS	5905-00-412-1121		4	15
81349	RC20GF102K	5905-00-110-0196		4	25
81349	RC20GF471K	5905-00-171-2005		4	22
81349	RC32GF2R7K			4	26
81349	RW32V151	5905-00-844-2256		2	2
97534	S-10-32X1/4/N			1	29
80063	SM-B-350039	5305-00-419-0583		9	3
80063	SM-B-350043	5310-00-138-4062		5	14
80063	SM-B-350044	5330-00-419-5938		5	23
80063	SM-B-351539			7	44
80063	SM-B-351542	5970-01-136-7724		5	9
80063	SM-B-351543			5	10
80063	SM-B-351544	5305-01-018-2863		7	45
80063	SM-B-450166-2			7	33
80063	SM-B-450390			1	6
80063	SM-B-450406			1	5
80063	SM-B-450407			5	1
80063	SM-B-450411	5910-00-909-7402		2	19
80063	SM-B-450413	5945-00-728-0617		5	24
80063	SM-B-450417	5305-00-930-6279		6	7
80063	SM-B-450421	1730-01-178-5906		7	7
80063	SM-B-450422	5961-00-902-3444		1	17
80063	SM-C-350033			7	25
80063	SM-C-350034			7	26
80063	SM-C-350036			7	30
80063	SM-C-351541			6	5
80063	SM-C-450386	6130-00-191-1548		1	14
80063	SM-C-450387			5	19
80063	SM-C-450388			2	22
80063	SM-C-450388-1			3	3
80063	SM-C-450391			7	1
80063	SM-C-450399			6	6
80063	SM-C-450400			6	1
80063	SM-C-450403			7	11
80063	SM-C-450404	5820-01-160-4441		3	4
80063	SM-C-450408	6130-00-763-0098		7	23
80063	SM-C-450418	5999-00-930-6621		3	2
80063	SM-C-786740	6130-01-017-3080		7	37
80063	SM-C-786741			9	4

CROSS-REFERENCE INDEXES

FSCM	PART NUMBER	PART NUMBER INDEX		FIG.	ITEM
		STOCK NUMBER			
80063	SM-C-786742-1			10	3
80063	SM-C-786742-2			10	4
80063	SM-C-786743			7	46
80063	SM-D-350037			1	18
80063	SM-D-350040-1			1	19
80063	SM-D-351545			7	41
80063	SM-D-351546			2	32
80063	SM-D-351548			1	26
80063	SM-D-351549			1	28
80063	SM-D-351550			1	27
80063	SM-D-351550-1			8	1
80063	SM-D-351554			1	25
80063	SM-D-450384			1	9
80063	SM-D-450385			1	1
80063	SM-D-450389	6130-01-141-3929		1	12
80063	SM-D-450393-1			8	4
80063	SM-D-450394			2	20
80063	SM-D-450396			9	1
80063	SM-D-450397			6	3
80063	SM-D-450401			9	2
80063	SM-D-450415			4	7
80063	SM-D-450424			10	2
80063	SM-D-450426			3	7
				10	1
80063	SMD391746	6130-00-444-2239		1	7
06383	TM1S6			2	21
98281	VR10			2	16
98281	VR3			2	13
98281	VR8			2	30
72928	XHF27619JT-10	5910-00-851-6485		5	6
81349	1N3033B	5961-00-850-9438		4	24
81349	1N538	5961-00-577-6214		4	27
03818	2-275			6	4
81349	2N1560A			5	22
81349	2N697			4	12
11236	212-21066-2	5930-00-417-3093		7	6
86928	5604-54			2	27
81349	5920-892-9861			7	14
49671	8977887-1			4	8

CROSS-REFERENCE INDEXES

FIGURE AND ITEM NUMBER INDEX				
FIG.	ITEM	STOCK NUMBER	FSCM	PART NUMBER
1	1		80063	SM-D-450385
1	2	5910-00-822-5683	81349	CK63AW103M
1	3	5935-00-071-1235	81349	MW20F(M)A00
1	4		81349	MW20M(M)A00
1	5		80063	SM-B-450406
1	6		80063	SM-B-450390
1	7	6130-00-444-2239	80063	SMD391746
1	8		80058	CX-4524/U
1	9		80063	SM-D-450384
1	10	5310-00-579-0079	96906	MS35333-37
1	11	5305-00-984-4988	96906	MS35206-228
1	12	6130-01-141-3929	80063	SM-D-450389
1	13	5315-00-844-6796	96906	MS16562-39
1	14	6130-00-191-1548	80063	SM-C-450386
1	15	5310-00-209-0786	96906	MS35335-33
1	16		88044	AN500-416-8
1	17	5961-00-902-3444	80063	SM-B-450422
1	18		80063	SM-D-350037
1	19		80063	SM-D-350040-1
1	20	5310-00-582-5965	96906	MS35338-44
1	20	5310-00-582-5965	96906	MS35338-44
1	21	5305-00-988-1724	96906	MS35206-280
1	22	5310-00-209-0788	96906	MS35335-30
1	23	5310-00-082-1404	96906	MS27183-6
1	24	5305-00-984-4989	96906	MS35206-229
1	25		80063	SM-D-351554
1	26		80063	SM-D-351548
1	27		80063	SM-D-351550
1	28		80063	SM-D-351549
1	29		97534	S-10-32X1/4/N
2	1	5305-00-984-6203	96906	MS35206-255
2	2	5905-00-844-2256	81349	RW32V151
2	3	5310-00-045-3299	96906	MS35338-42
2	4	5310-00-809-8544	96906	MS27183-7
2	4	5310-00-809-8544	96906	MS27183-7
2	5	5305-00-984-4989	96906	MS35206-229
2	5	5305-00-984-4989	96906	MS35206-229
2	6	5940-00-827-2653	96906	MS77068-2
2	6	5940-00-827-2653	96906	MS77068-2
2	7	5305-00-889-3001	96906	MS35206-231
2	8	5305-00-088-9044	96906	MS35207-260
2	9	5310-00-045-3296	96906	MS35338-43
2	10	5910-00-869-4855	81349	CE71C681J
2	11	5310-00-082-1404	96906	MS27183-6
2	11	5310-00-082-1404	96906	MS27183-6
2	12	5310-00-209-0788	96906	MS35335-30
2	12	5310-00-209-0788	96906	MS35335-30
2	13		98281	VR3
2	14	5310-00-934-9747	88044	MS35649-262
2	15	5910-00-889-4412	81349	CE71C562G
2	16		98281	VR10

CROSS-REFERENCE INDEXES

FIG.	ITEM	FIGURE AND ITEM NUMBER INDEX		
		STOCK NUMBER	FSCM	PART NUMBER
2	17	5305-00-984-6193	96906	MS35206-245
2	18		97520	BE-1085
2	19	5910-00-909-7402	80063	SM-B-450411
2	20		80063	SM-D-450394
2	21		06383	TM1S6
2	22		80063	SM-C-450388
2	23	5305-00-988-1724	96906	MS35206-280
2	24	5310-00-809-4058	96906	MS27183-10
2	25	5310-00-582-5965	96906	MS35338-44
2	26	5950-00-059-3060	97520	BE-1086
2	27		86928	5604-54
2	28	5940-00-683-4339	96906	MS35431-7
2	29	5910-00-465-9830	81349	CE71C182H
2	30		98281	VR8
2	31	5310-00-934-9747	96906	MS35649-262
2	32		80063	SM-D-351546
3	1	5305-00-221-6116	96906	MS51957-125
3	2	5999-00-930-6621	80063	SM-C-450418
3	3		80063	SM-C-450388-1
3	4	5820-01-160-4441	80063	SM-C-450404
3	5	5310-00-209-0788	96906	MS35335-30
3	6	5310-00-934-9747	96906	MS35649-262
3	7		80063	SM-D-450426
4	1	5310-00-782-1349	96906	MS15795-804
4	2	5310-00-058-3599	96906	MS35335-57
4	3	5310-00-934-9748	96906	MS35649-244
4	4	5310-00-934-9747	96906	MS35649-262
4	5	5310-00-722-5998	96906	MS15795-805
4	6	5310-00-209-0788	96906	MS35335-30
4	7		80063	SM-D-450415
4	8		49671	8977887-1
4	9	5961-00-985-9134	81349	JAN2N404A
4	10	5305-00-889-3000	96906	MS35206-230
4	11	5340-00-543-3931	96906	MS25281-3
4	12		81349	2N697
4	13		96906	MS51975-15
4	14	5961-00-821-8976	81349	JAN2N297A
4	15	5905-00-412-1121	81349	RCR42G221JS
4	16	5905-00-141-0591	81349	RCR20G103JS
4	17	5905-00-141-0592	81349	RCR20G122JS
4	18	5905-00-141-1168	81349	RCR20G222JS
4	19	5910-00-495-0042	81349	M39003-01-3076
4	20	5961-00-995-2310	81349	JAN1N752A
4	21	5905-00-121-9861	81349	RCR32G102JS
4	22	5905-00-171-2005	81349	RC20GF471K
4	23	5905-00-115-3565	81349	RCR32G821JS
4	24	5961-00-850-9438	81349	1N3033B
4	25	5905-00-110-0196	81349	RC20GF102K
4	26		81349	RC32GF2R7K
4	27	5961-00-577-6214	81349	1N538
5	1		80063	SM-B-450407

CROSS-REFERENCE INDEXES

FIG.	ITEM	FIGURE AND ITEM NUMBER INDEX		
		STOCK NUMBER	FSCM	PART NUMBER
5	2	5310-00-082-1404	96906	MS27183-6
5	3	5310-00-209-0788	96906	MS35335-30
5	4	5305-00-984-4989	96906	MS35206-229
5	5	5310-00-934-9747	96906	MS35649-262
5	6	5910-00-851-6485	72928	XHF27619JT-10
5	7	5905-00-721-2639	81349	RA20LASB751A
5	8	5961-00-935-0138	81349	JAN-1N1202A
5	9	5970-01-136-7724	80063	SM-B-351542
5	10		80063	SM-B-351543
5	11	5310-00-934-9739	96906	MS35649-242
5	12	5310-00-616-3554	96906	MS35335-29
5	13	5940-00-681-8183	96906	MS35431-2
5	14	5310-00-138-4062	80063	SM-B-350043
5	15	5310-00-934-9751	96906	MS35650-302
5	16	5310-00-596-7691	96906	MS35335-32
5	17	5310-00-809-8546	96906	MS27183-8
5	18	5940-00-681-8184	96906	MS35431-8
5	19		80063	SM-C-450387
5	20	5305-00-889-2999	96906	MS35206-217
5	21	5310-00-951-4679	96906	MS27183-3
5	22		81349	2N1560A
5	23	5330-00-419-5938	80063	SM-B-350044
5	24	5945-00-728-0617	80063	SM-B-450413
6	1		80063	SM-C-450400
6	2	5305-00-052-8878	96906	MS24630-9
6	3		80063	SM-D-450397
6	4		03818	2-275
6	5		80063	SM-C-351541
6	6		80063	SM-C-450399
6	7	5305-00-930-6279	80063	SM-B-450417
7	1		80063	SM-C-450391
7	2	5305-00-984-4988	96906	MS35206-228
7	3		88044	AN3226-2
7	4	5940-00-614-0537	96906	MS35431-1
7	5		96906	MS35649-42
7	6	5930-00-417-3093	11236	212-21066-2
7	7	1730-01-178-5906	80063	SM-B-450421
7	8	5310-00-616-3554	96906	MS35335-29
7	8	5310-00-616-3554	96906	MS35335-29
7	9	5310-00-951-4679	96906	MS15795-203
7	10	5305-00-889-2997	96906	MS35206-215
7	11		80063	SM-C-450403
7	12	5910-00-822-5683	81349	CK63AW103M
7	13		96906	MS3112E12-3P
7	14		81349	5920-892-9861
7	15	5920-00-556-0144	81349	FHN20G
7	16	5920-00-296-1517	81349	F03A250V3A
7	17	6210-00-813-8265	81349	LH73-1
7	18	6240-00-155-7836	96906	MS25237-327
7	19		81349	LC12RN
7	20	6210-00-079-8943	81349	LC12CN2

CROSS-REFERENCE INDEXES

FIG.	ITEM	FIGURE AND ITEM NUMBER INDEX		
		STOCK NUMBER	FSCM	PART NUMBER
7	21	5305-00-059-4553	96906	MS35190-238
7	22	5310-00-209-0788	96906	MS35335-30
7	23	6130-00-763-0098	80063	SM-C-450408
7	24	5310-00-934-9747	88044	MS35649-262
7	25		80063	SM-C-350033
7	26		80063	SM-C-350034
7	27	5940-00-682-2477	96906	MS77068-1
7	28	5310-00-951-4679	96906	MS27183-3
7	29	5305-00-889-2997	96906	MS35206-215
7	30		80063	SM-C-350036
7	31		88044	AN936-A616S
7	32	5310-00-159-6321	96906	MS25082-20
7	33		80063	SM-B-450166-2
7	34	6210-01-004-6159	81349	LC36CD2
7	35	5305-00-059-4553	96906	MS35190-238
7	36	5310-00-543-2410	96906	MS35338-40
7	37	6130-01-017-3080	80063	SM-C-786740
7	38	5310-00-934-9739	96906	MS35649-242
7	39	5310-00-782-1349	96906	MS15795-804
7	40	5305-00-889-2998	96906	MS35206-216
7	41		80063	SM-D-351545
7	42	5310-00-595-7237	96906	MS35333-42
7	43	5310-00-159-6321	96906	MS25082-20
7	44		80063	SM-B-351539
7	45	5305-01-018-2863	80063	SM-B-351544
7	46		80063	SM-C-786743
7	47	5310-00-934-9747	96906	MS35649-262
8	1		80063	SM-D-351550-1
8	2	5340-00-721-6936	96906	MS21209-C0820
8	3	5340-00-800-7874	96906	MS21209-F1-15
8	4		80063	SM-D-450393-1
9	1		80063	SM-D-450396
9	2		80063	SM-D-450401
9	3	5305-00-419-0583	80063	SM-B-350039
9	4		80063	SM-C-786741
10	1		80063	SM-D-450426
10	2		80063	SM-D-450424
10	3		80063	SM-C-786742-1
10	4		80063	SM-C-786742-2

By Order of the Secretary of the Army:

Official:

CARL E. VUONO
General, United States Army
Chief of Staff

R.L. DILWORTH
Brigadier General, United States Army
The Adjutant General

DISTRIBUTION:

To be distributed in accordance with DA Form 12-31 unit and DS/GS requirements for PP-2953, A, B, C/U.

RECOMMENDED CHANGES TO EQUIPMENT TECHNICAL PUBLICATIONS



THEN... JOT DOWN THE DOPE ABOUT IT ON THIS FORM. CAREFULLY TEAR IT OUT. FOLD IT AND DROP IT IN THE MAIL!

SOMETHING WRONG WITH THIS PUBLICATION?

FROM (PRINT YOUR UNIT'S COMPLETE ADDRESS)
 Commander
 Stateside Army Depot
 ATTN: AMSTA-US
 Stateside, N.J. 07703-5007

DATE SENT
 10 July 1975

PUBLICATION NUMBER TM 11-5840-340-20P	PUBLICATION DATE 23 Jan 78	PUBLICATION TITLE Radar Set AN/PRC-76
--	-------------------------------	--

BE EXACT PIN-POINT WHERE IT IS

PAGE NO	PARA-GRAPH	FIGURE NO	TABLE NO
33			
44		19	
45			

IN THIS SPACE TELL WHAT IS WRONG AND WHAT SHOULD BE DONE ABOUT IT:

For item 2, change the NSN to read: 5835-00-134-9186.
Reason: Accuracy.

Identify the cover on the junction box (item no. 5).
Reason: It is a separate item and is not called out on figure 19.

Add the cover of the junction box as an item in the listing for figure 19.
Reason: Same as above

SAMPLE

PRINTED NAME GRADE OR TITLE AND TELEPHONE NUMBER
 SSG I. M. DeSpirit of 999-1776

SIGN HERE

TEAR ALONG PERFORATED LINE

FILL IN YOUR
UNIT'S ADDRESS

FOLD BACK

DEPARTMENT OF THE ARMY

OFFICIAL BUSINESS

Commander
US Army Communications-Electronics Command
and Fort Monmouth
ATTN: AMSEL-LC-ME-PS
Fort Monmouth, New Jersey 07703-5000

TEAR ALONG PERFORATED LINE

THE METRIC SYSTEM AND EQUIVALENTS

WEIGHT MEASURE

1 Centimeter = 10 Millimeters = 0.01 Meters = 0.3937 Inches
 1 Meter = 100 Centimeters = 1000 Millimeters = 39.37 Inches
 1 Kilometer = 1000 Meters = 0.621 Miles

WEIGHTS

1 Gram = 0.001 Kilograms = 1000 Milligrams = 0.035 Ounces
 1 Kilogram = 1000 Grams = 2.2 lb.
 1 Metric Ton = 1000 Kilograms = 1 Megagram = 1.1 Short Tons

LIQUID MEASURE

1 Milliliter = 0.001 Liters = 0.0338 Fluid Ounces
 1 Liter = 1000 Milliliters = 33.82 Fluid Ounces

SQUARE MEASURE

1 Sq. Centimeter = 100 Sq. Millimeters = 0.155 Sq. Inches
 1 Sq. Meter = 10,000 Sq. Centimeters = 10.76 Sq. Feet
 1 Sq. Kilometer = 1,000,000 Sq. Meters = 0.386 Sq. Miles

CUBIC MEASURE

1 Cu. Centimeter = 1000 Cu. Millimeters = 0.06 Cu. Inches
 1 Cu. Meter = 1,000,000 Cu. Centimeters = 35.31 Cu. Feet

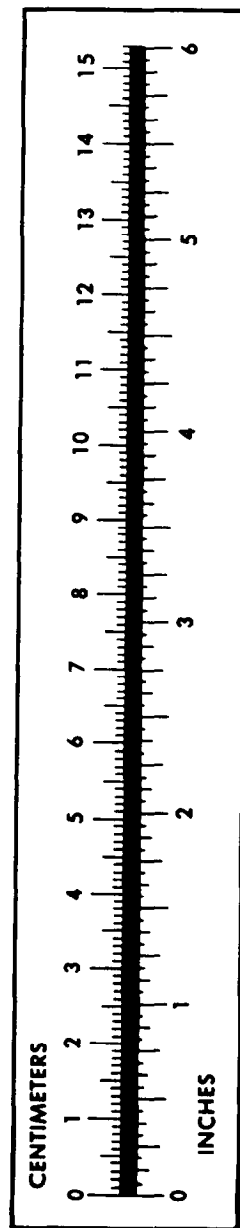
TEMPERATURE

$5/9(^{\circ}\text{F} - 32) = ^{\circ}\text{C}$
 212° Fahrenheit is equivalent to 100° Celsius
 90° Fahrenheit is equivalent to 32.2° Celsius
 32° Fahrenheit is equivalent to 0° Celsius
 $9/5^{\circ}\text{C} + 32 = ^{\circ}\text{F}$

APPROXIMATE CONVERSION FACTORS

TO CHANGE	TO	MULTIPLY BY
Inches	Centimeters	2.540
Feet	Meters	0.305
Yards	Meters	0.914
Miles	Kilometers	1.609
Square Inches	Square Centimeters	6.451
Square Feet	Square Meters	0.093
Square Yards	Square Meters	0.836
Square Miles	Square Kilometers	2.590
Acres	Square Hectometers	0.405
Cubic Feet	Cubic Meters	0.028
Cubic Yards	Cubic Meters	0.765
Fluid Ounces	Milliliters	29.573
its	Liters	0.473
arts	Liters	0.946
allons	Liters	3.785
Ounces	Grams	28.349
Pounds	Kilograms	0.454
Short Tons	Metric Tons	0.907
Pound-Feet	Newton-Meters	1.356
Pounds per Square Inch	Kilopascals	6.895
Miles per Gallon	Kilometers per Liter	0.425
Miles per Hour	Kilometers per Hour	1.609

TO CHANGE	TO	MULTIPLY BY
Centimeters	Inches	0.394
Meters	Feet	3.280
Meters	Yards	1.094
Kilometers	Miles	0.621
Square Centimeters	Square Inches	0.155
Square Meters	Square Feet	10.764
Square Meters	Square Yards	1.196
Square Kilometers	Square Miles	0.386
Square Hectometers	Acres	2.471
Cubic Meters	Cubic Feet	35.315
Cubic Meters	Cubic Yards	1.308
Milliliters	Fluid Ounces	0.034
Liters	Pints	2.113
Liters	Quarts	1.057
ers	Gallons	0.264
ms	Ounces	0.035
ograms	Pounds	2.205
Metric Tons	Short Tons	1.102
Newton-Meters	Pounds-Feet	0.738
Kilopascals	Pounds per Square Inch	0.145
ometers per Liter	Miles per Gallon	2.354
ometers per Hour	Miles per Hour	0.621



PIN: 006661-000