

101.11:
11-5410-212-14 P

TM 11-5410-212-14P

UNIVERSITY OF VIRGINIA
ALDERMAN LIBRARY

FEB 5 1991

GOVERNMENT DOCUMENTS

TECHNICAL MANUAL

**OPERATOR'S, ORGANIZATIONAL, DIRECT SUPPORT,
AND GENERAL SUPPORT MAINTENANCE REPAIR
PARTS AND SPECIAL TOOLS LISTS
(INCLUDING DEPOT MAINTENANCE REPAIR PARTS
AND SPECIAL TOOLS)**

FOR

**SHELTER, ELECTRICAL EQUIPMENT
S-318/G (NSN 5411-00-763-2339)
AND
S-318A/G (NSN 5411-00-116-7086)**

HEADQUARTERS, DEPARTMENT OF THE ARMY

UNIVERSITY OF VIRGINIA LIBRARY



25 JUNE 1984

Digitized by Google

91-104-P

TECHNICAL MANUAL }
 No. 11-5410-212-14P }

HEADQUARTERS
 DEPARTMENT OF THE ARMY
 Washington, DC, 25 June 1984

**OPERATORS, ORGANIZATIONAL, DIRECT SUPPORT, AND GENERAL SUPPORT MAINTENANCE
 REPAIR PARTS AND SPECIAL TOOLS LIST (INCLUDING DEPOT MAINTENANCE
 REPAIR PARTS AND SPECIAL TOOLS)**

FOR

**SHELTER, ELECTRICAL EQUIPMENT
 S-318/G (NSN 5411-00-763-2339)
 AND
 S-318A/G (NSN 5411-00-116-7086)**

Current as of 21 March 1984

REPORTING ERRORS AND RECOMMENDING IMPROVEMENTS

You can help improve this manual. If you find any mistakes or if you know of a way to improve the procedures, please let us know. Mail your letter, DA Form 2028 (Recommended Changes to Publications and Blank Forms), or DA Form 2028-2 located in back of this manual direct to: Commander US Army Communications-Electronics Command and Fort Monmouth, ATTN: DRSEL-ME-MP, Fort Monmouth, New Jersey 07703. A reply will be furnished direct to you.

TABLE OF CONTENTS

	Page	Illus Figure
Section I. Introduction	1	
II. Repair Parts List	5	
Group 00 Shelter, Electrical Equipment S-318/G and S-318A/G	5	1
01 Door Assembly (S-318A/G)	9	2
Door Assembly (S-318/G)	11	3
0101 Large Door Assembly (S-318A/G)	13	4
010101 Large Door Latch Assembly (S-318A/G)	15	5
Large Door Latch Assembly (S-318/G)	19	6
0102 Small Door Assembly (S-318A/G)	23	7
Small Door Assembly (S-318/G)	27	8
010201 Small Door Latch Assembly (S-318A/G)	31	9
Small Door Latch Assembly (S-318/G)	33	10
02 Door Brace Assembly	37	11
03 Pan Assembly, Recessed Step	39	12
04 Lifting and Tie Eye Assembly	41	13
Section III. Special Tools List (Not Applicable)		
Section IV. National Stock Number and Part Number Index	43	
Appendix A. COMPONENT OF END ITEM LIST (Not Applicable)		
B. ADDITIONAL AUTHORIZATION LIST (Not Applicable)		

*This manual supersedes TM 11-5410-212-15P, 10 January 1967.

TABLE OF CONTENTS (CONT)

	Page	Ilus Figure
C. MAINTENANCE ALLOCATION		
Section I. Introduction.....	C-1	
II. Maintenance Allocation Chart.....	C-3	
III. Tools and Test Equipment Requirements.....	C-4	
IV. Remarks	C-5	
Appendix D. EXPENDABLE SUPPLIES AND MATERIALS LIST (Not Applicable)		

SECTION I

INTRODUCTION

1. Scope

This manual lists spares and repair parts; special tools; special test, measurement, and diagnostic equipment (TMDE), and other special support equipment required for performance of operator's, organizational, direct support, and general support maintenance of the S-318/G and S-318A/G Electrical Equipment Shelter. It authorizes requisitioning and issue of spares and repair parts as indicated by the source and maintenance codes.

2. General

This Repair Parts and Special Tools List is divided into the following sections:

a. Section II. Repair Parts List. A list of spares and repair parts authorized for use in the performance of maintenance. The list also includes parts which must be removed for replacement of the authorized parts. Parts lists are composed of functional groups in numeric sequence, with the parts in each group listed in figure and item number sequence.

b. Section III. Special Tools List. Not applicable.

c. Section IV. National Stock Number and Part Number Index. A list, in National item identification number (NIIN) sequence, of all National stock numbers (NSN) appearing in the listings, followed by a list, in alphameric sequence, of all part numbers appearing in the listings. National stock numbers and part numbers are cross-referenced to each illustration figure and item number appearance.

3. Explanation of Columns

a. Illustration. This column is divided as follows:

(1) *Figure number.* Indicates the figure number of the illustration on which the item is shown.

(2) *Item number.* The number used to identify item called out in the illustration.

b. Source, Maintenance, and Recoverability (SMR) Codes.

(1) *Source code.* Source codes indicate the manner of acquiring support items for maintenance, repair, or overhaul of end items. Source codes are entered in the first and second positions of the Uniform SMR Code format as follows:

<i>Code</i>	<i>Definition</i>
-------------	-------------------

PA —Item procured and stocked for anticipated or known usage.

XB —Item is not procured or stocked. If not available through salvage, requisition.

NOTE

Cannibalization or salvage may be used as a source of supply for any items source coded above except those coded XA and aircraft support items as restricted by AR 750-1.

(2) *Maintenance code.* Maintenance codes are assigned to indicate the levels of maintenance authorized to USE and REPAIR support items. The maintenance codes are entered in the third and fourth positions of the Uniform SMR Code format as follows:

(a) The maintenance code entered in the third position will indicate the lowest maintenance level authorized to remove, replace, and use the support item. The maintenance code entered in the third position will indicate one of the following levels of maintenance:

<i>Code</i>	<i>Application/Explanation</i>
-------------	--------------------------------

O — Support item is removed, replaced, used at the organizational level.

F — Support item is removed, replaced, used at the direct support level.

- H — Support item is removed, replaced, used at the general support level.
- D — Support items that are removed, replaced, used at depot, mobile depot, specialized repair activity only.

(b) The maintenance code entered in the fourth position indicates whether the item is to be repaired and identifies the lowest maintenance level with the capability to perform complete repair (i.e., all authorized maintenance functions). This position will contain one of the following maintenance codes:

Code	Application/Explanation
F —	The lowest maintenance level capable of complete repair of the support item is the direct support level.
H —	The lowest maintenance level capable of complete repair of the support item is the general support level.
Z —	Nonreparable. No repair is authorized.

(3) *Recoverability code.* Recoverability codes are assigned to support items to indicate the disposition action on unserviceable items. The recoverability code is entered in the fifth position of the Uniform SMR Code format as follows:

Recoverability Code	Definition
Z —	Nonreparable item. When unserviceable, condemn and dispose at the level indicated in position 3.
F —	Reparable item. When uneconomically reparable condemn and dispose at the direct support level.
H —	Reparable item. When uneconomically reparable, condemn and dispose at the general support level.

c. National Stock Number. Indicates the National stock number assigned to the item and will be used for requisitioning purposes.

d. Federal Supply Code for Manufacturer (FSCM). The FSCM is a 5-digit numeric code listed in SB 708-41/42 which is used to identify the

manufacturer, distributor, or Government agency, etc.

e. Part Number. Indicates the primary number used by the manufacturer (individual, company, firm, corporation, or Government activity), which controls the design and characteristics of the item by means of its engineering drawings, specifications, standards, and inspection requirements to identify an item or range of items.

NOTE

When a stock numbered item is requisitioned, the repair part received may have a different part number than the part being replaced.

f. Description. Indicates the Federal item name and, if required, a minimum description to identify the item.

g. Unit of Measure (U/M). Indicates the standard of the basic quantity of the listed item as used in performing the actual maintenance function. This measure is expressed by a two-character alphabetical abbreviation (e.g., ea, in, pr, etc). When the unit of measure differs from the unit of issue, the lowest unit of issue that will satisfy the required units of measure will be requisitioned.

h. Quantity Incorporated in Unit. Indicates the quantity of the item used in the breakout shown on the illustration figure, which is prepared for a functional group, subfunctional group, or an assembly. A "V" appearing in this column in lieu of a quantity indicates that no specific quantity is applicable, (e.g., shims, spacers, etc).

4. Special Information

a. Usable on codes are shown in the description column. Uncoded items are applicable to all models. Identification of the usable on codes used in this publication are:

Code	Used On
AIQ	S-318A/G
FET	S-318/G

b. The following publications pertain to the S-318/G and S-318A/G and its components:

TB 43-0124 Maintenance and Repair Procedures for Shelters, Electrical Equipment.

c. National stock numbers (NSN's) that are missing from P source coded items have been applied for and will be added to this TM by future change/revision when they are entered in the Army Master Data File (AMDF). Until the NSN's are established and published, submit exception requisitions to Commander, US Army Communications-Electronics Command and Fort Monmouth, ATTN: DRSEL-MM, Fort Monmouth, NJ 07703 for the part required to support your equipment.

5. How to Locate Repair Parts

a. When National stock number or part number is unknown.

(1) *First.* Using the table of contents, determine the functional group within which the item belongs. This is necessary since illustrations are prepared for functional groups and listings and divided into the same groups.

(2) *Second.* Find the illustration covering the functional group to which the item belongs.

(3) *Third.* Identify the item on the illustration and note the illustration figure and item number of the item.

(4) *Fourth.* Using the Repair Parts Listing, find the figure and item number noted on the illustration.

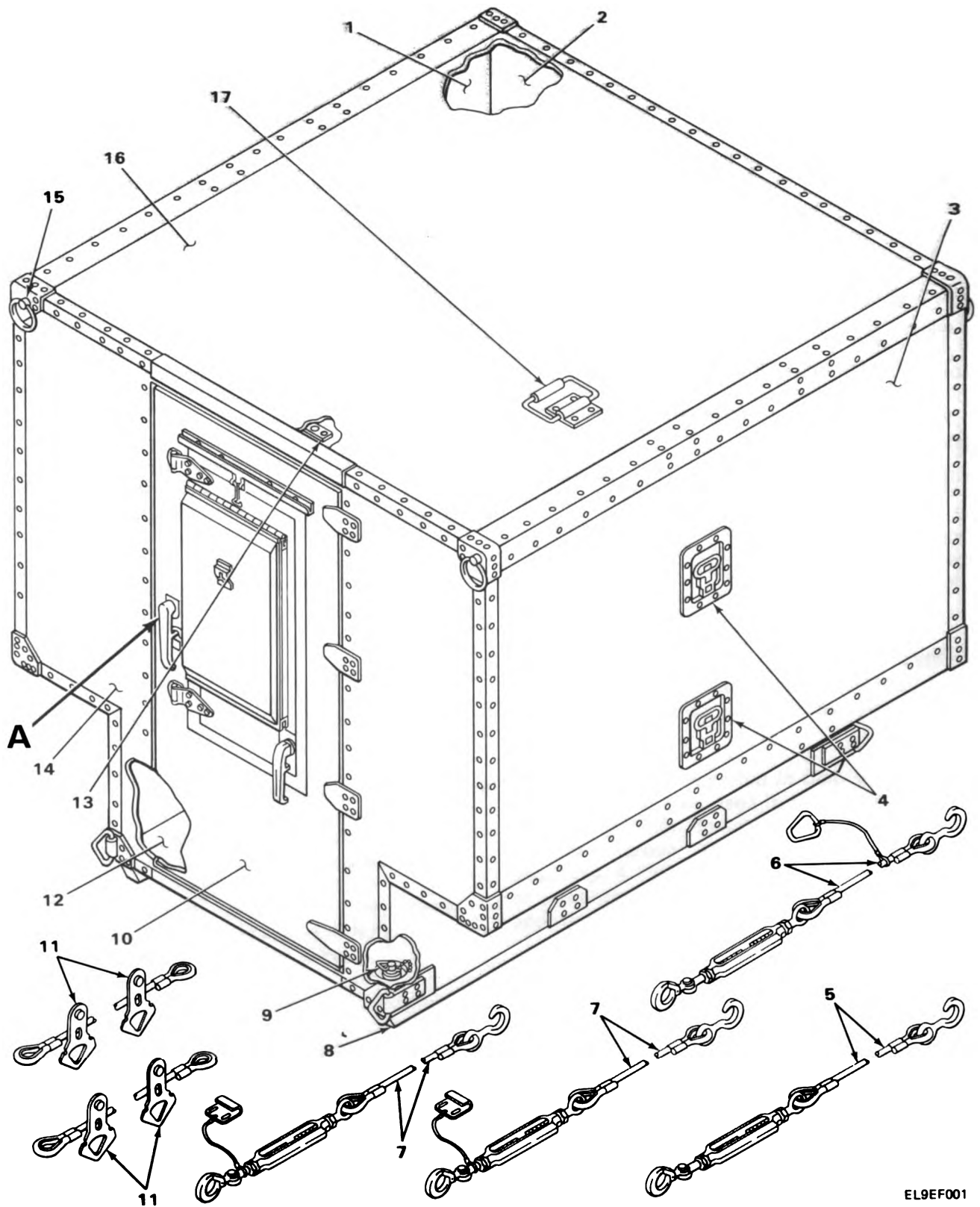
b. When National stock number or part number is known.

(1) *First.* Using the Index of National Stock Numbers and Part Numbers, find the pertinent National stock number or part number. This index is in NIIN sequence followed by a list of part numbers in alphameric sequence, cross-referenced to the illustration figure number and item number.

(2) *Second.* After finding the figure and item number, locate the figure and item number in the repair parts list.

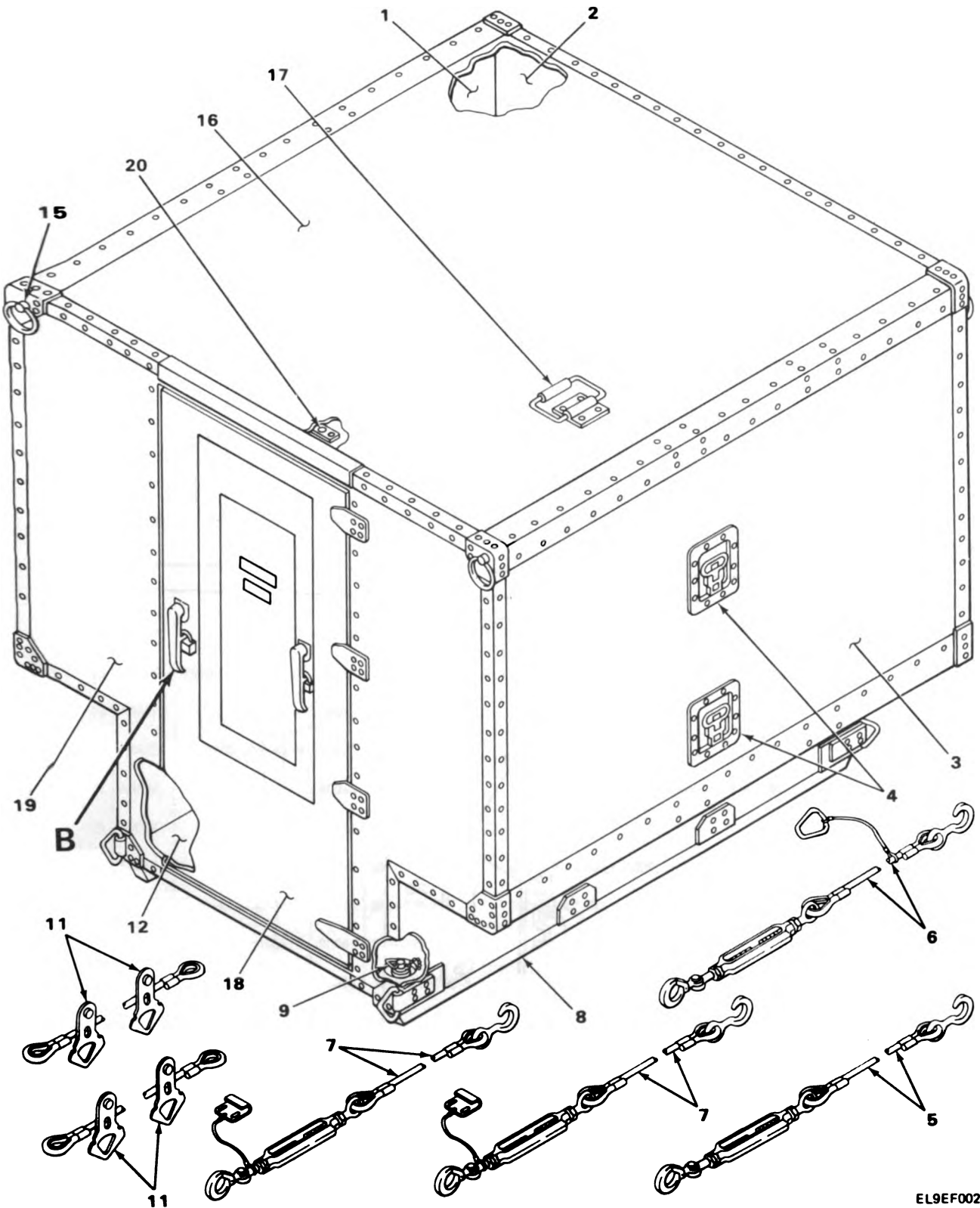
6. Abbreviations

Not applicable.



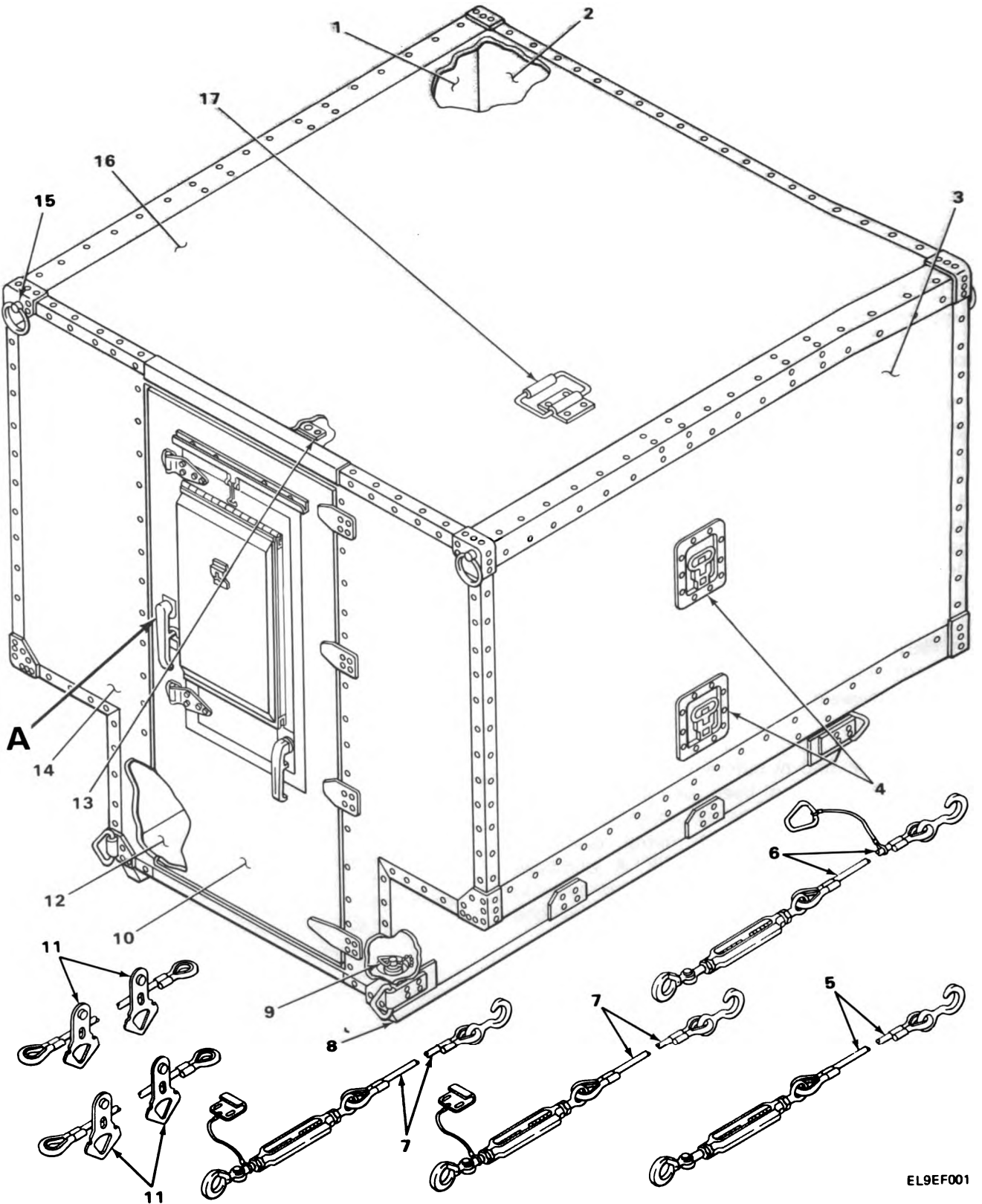
EL9EF001

FIGURE 1. SHELTER, ELECTRICAL EQUIPMENT, S-318/G AND S-318A/G (SHEET 1 OF 3).



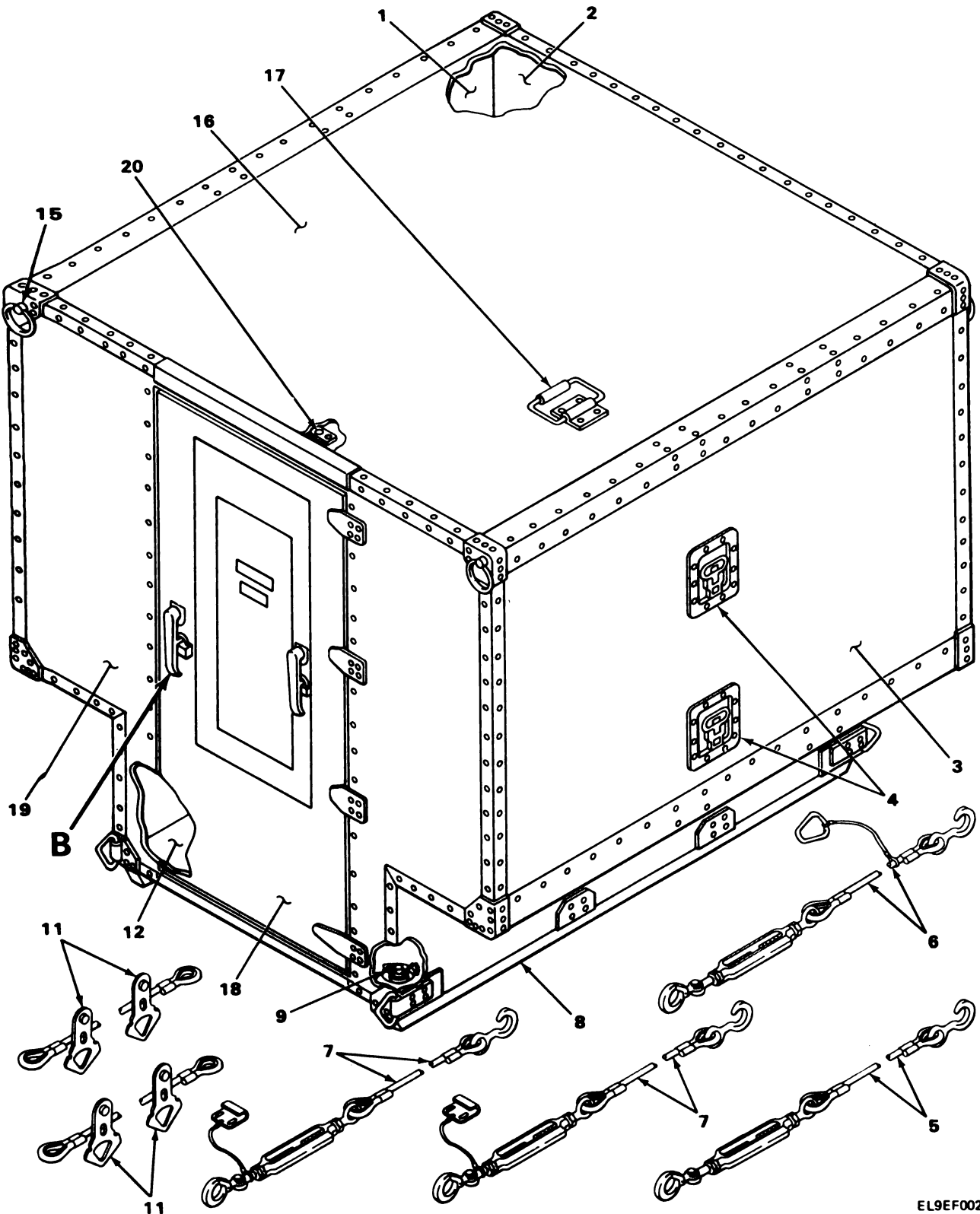
EL9EF002

FIGURE 1. SHELTER, ELECTRICAL EQUIPMENT, S-318/G AND S-318A/G (SHEET 2 OF 3).



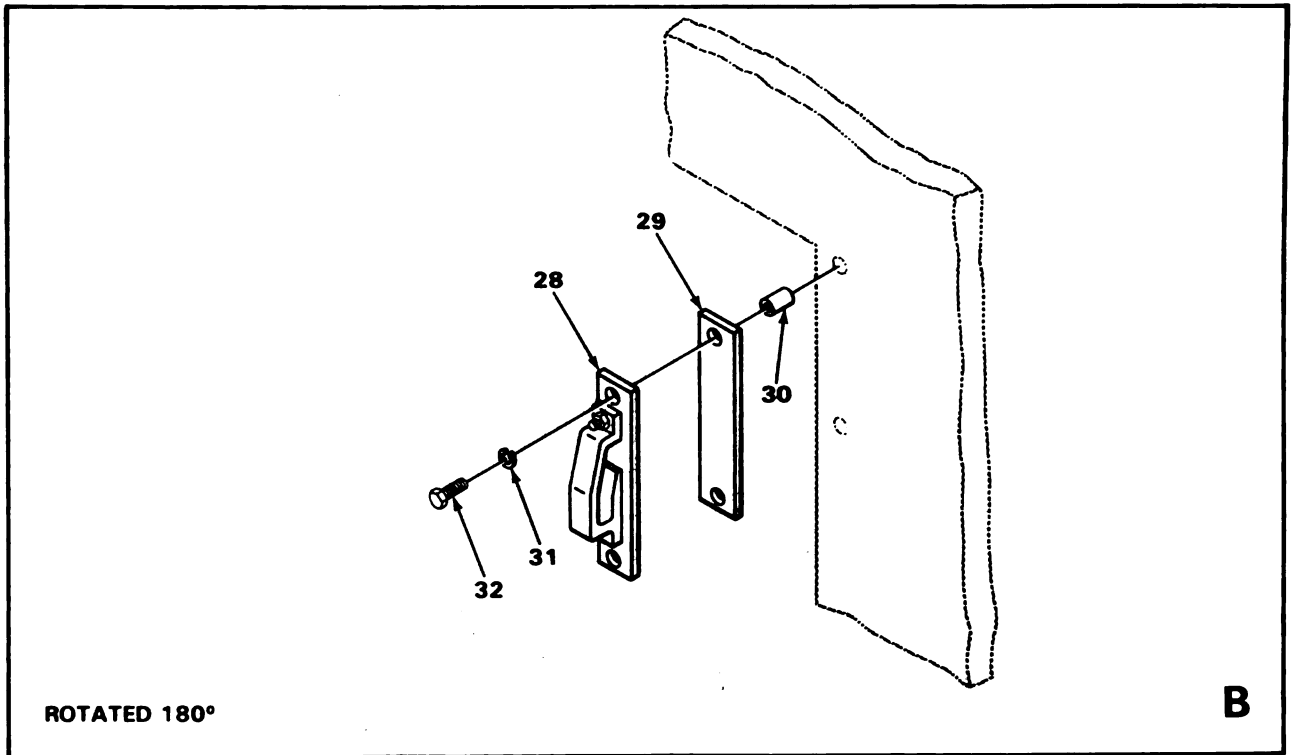
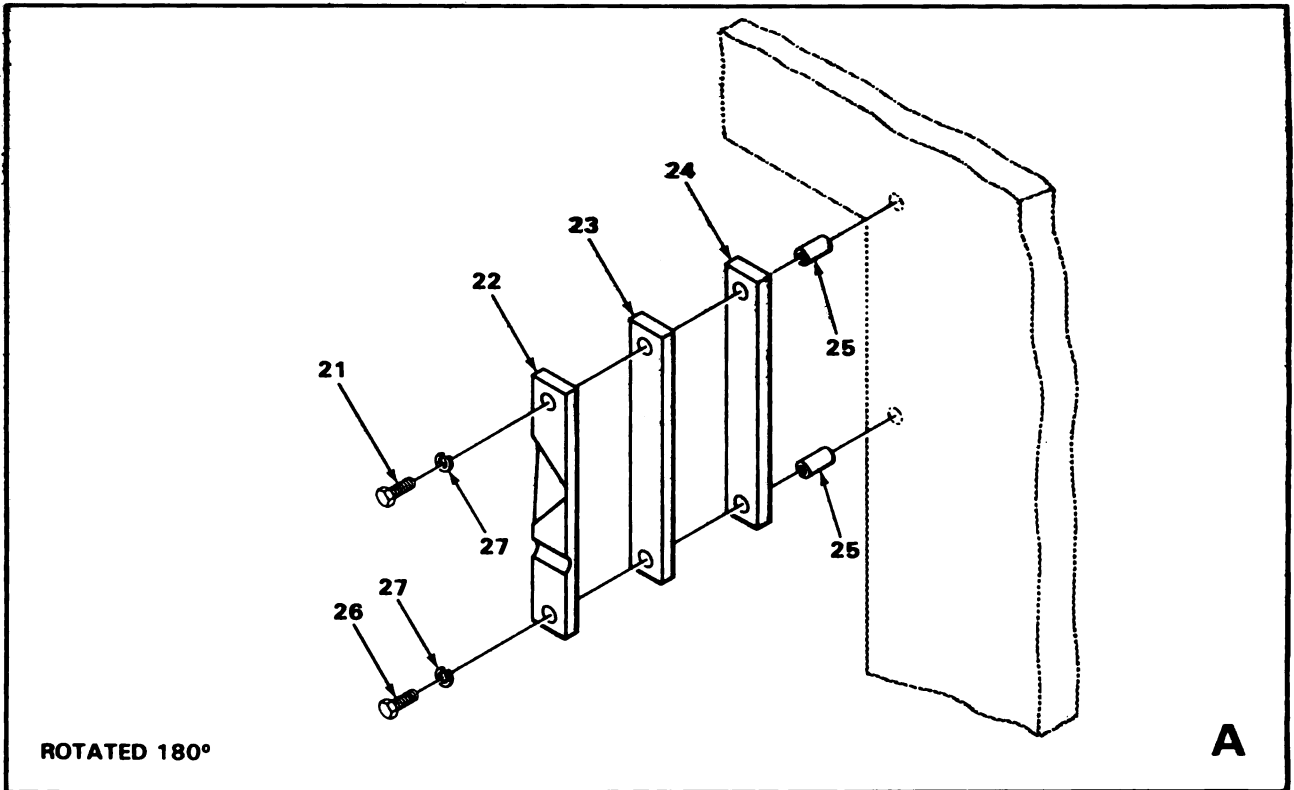
EL9EF001

FIGURE 1. SHELTER, ELECTRICAL EQUIPMENT, S-318/G AND S-318A/G (SHEET 1 OF 3).



EL9EF002

FIGURE 1. SHELTER, ELECTRICAL EQUIPMENT, S-318/G AND S-318A/G (SHEET 2 OF 3).



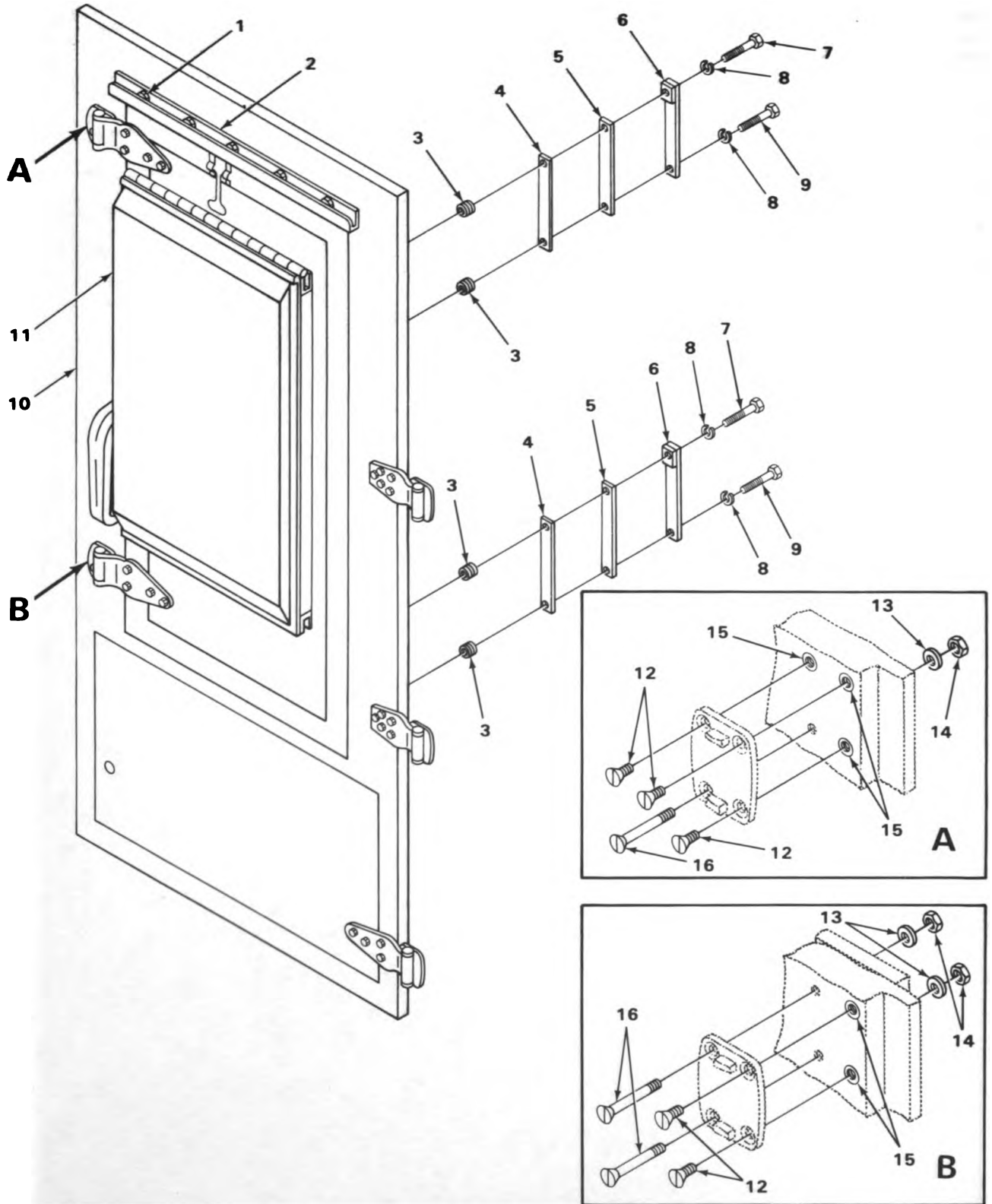
EL9EF022

FIGURE 1. SHELTER, ELECTRICAL EQUIPMENT, S-318/G AND S-318A/G (SHEET 3 OF 3).

REPAIR PARTS LIST

(1) ILLUS- TRATION		(2)	(3)	(4)	(5)	(6)	(7)	(8)
(a) FIG. NO.	(b) ITEM NO.	SMR CODE	NATIONAL STOCK NUMBER	FSCM	PART NUMBER	DESCRIPTION	USABLE ON CODE	U/M QTY INC IN UNIT
						GROUP 00 SHELTER, ELECTRICAL EQUIPMENT S-318/G AND S-318A/G		
1	1	XBDZZ		80063	SM-D-564750	PANEL ASSY,ROADSIDE.....		EA 1
1	2	XBDZZ		80063	SM-D-564701	PANEL ASSEMBLY.....		EA 1
1	3	XBDZZ		80063	SM-D-564751	PANEL ASSY,CURBSIDE.....		EA 1
1	4	PAHHH	5340-01-114-2139	19220	AL3-575709	STEP ASSY,FOLDING (SEE FIGURE 12 FOR BREAKDOWN)....		EA 2
1	5	PAOZZ	4010-00-937-0792	80063	SM-C-564739GR111	WIRE ROPE ASSEMBLY.....		EA 1
1	6	PAOZZ	4010-00-937-0790	80063	SM-C-564739GR1	WIRE ROPE ASSEMBLY.....		EA 1
1	7	PAOZZ	4010-00-937-0791	80063	SM-C-564739GR11	WIRE ROPE ASSEMBLY.....		EA 2
1	8	PAHZZ	5340-00-937-0610	80063	SM-C-564784	RUNNER,METAL.....		EA 2
1	9	PAFZZ	4510-00-121-6096	80063	SM-C-318484	PLUG,FLOOR DRAIN.....		EA 1
1	10	XBFHH		80063	SM-D-499954	DOOR ASSEMBLY (SEE FIGURE 2 FOR BREAKDOWN).....	AIQ	EA 1
1	11	PAOZZ	4010-00-187-3745	80063	SM-C-564739GP4	WIRE ROPE ASSEMBLY.....		EA 2
1	12	XBDZZ		80063	SM-D-564778	FLOOR ASSEMBLY.....		EA 1
1	13	XBFFF		80063	SC-D-595053	DOOR BRACE ASSEMBLY (SEE FIGURE 11 FOR BREAKDOWN)....	AIQ	EA 1
1	14	XBDZZ		80063	SM-D-499961	PANEL ASSEMBLY,REAR.....	AIQ	EA 1
1	15	PAFFF	2540-00-937-0609	80063	SM-B-564728	LIFTING EYE ASSY (SEE FIGURE 13 FOR BREAKDOWN).....		EA 4
1	16	XBDZZ		80063	SM-D-564783	PANEL ASSEMBLY,ROOF.....		EA 1
1	17	PAHZZ	5340-00-950-4099	98003	HA945SS2RG	HANDLE,BAIL.....		EA 1
1	18	XBFHH		80063	SM-D-564781	DOOR ASSEMBLY (SEE FIGURE 3 FOR BREAKDOWN).....	FET	EA 1
1	19	XBDZZ		80063	SM-D-564718	PANEL ASSEMBLY,REAR.....	FET	EA 1
1	20	PAFFF	5340-00-937-0906	80063	SM-C-564735	BRACE ASSEMBLY,DOOR (SEE FIGURE 11 FOR BREAKDOWN)...		EA 1
1	21	PAFZZ	5305-00-225-3840	96906	MS90725-7	SCREW,CAP,HEX HD.....	AIQ	EA 3
1	22	PAFZZ	5410-00-231-6429	80063	SC-C-200154	KEEPER,SHELTER.....	AIQ	EA 3
1	23	XBFZZ		80063	SC-B-200153-3	SHIM,KEEPER.....	AIQ	EA 3
1	24	PAFZZ	5365-00-301-5354	80063	SM-B-442511	SHIM,LAMINATED.....	AIQ	EA 3
1	25	PAHZZ	5340-00-616-5058	73957	S25020-12	INSERT,SCREW THREAD.....	AIQ	EA 6
1	26	PAFZZ	5305-00-071-2242	96906	MS90725-9	SCREW,CAP,HEXAGON H.....	AIQ	EA 3
1	27	PAFZZ	5310-00-883-9417	96906	MS35338-158	WASHER,LOCK.....	AIQ	EA 6

(1) ILLUS- TRATION		(2)	(3)	(4)	(5)	(6)		(7)	(8)
(a) FIG. NO.	(b) ITEM NO.	SMR CODE	NATIONAL STOCK NUMBER	FSCM	PART NUMBER	DESCRIPTION	USABLE ON CODE	U/M	QTY INC IN UNIT
1	28	XBFZZ		80063	SM-B-564848	FROST BREAKER.....	FET	EA	3
1	29	XBFZZ		80063	SM-B-564859	SHIM.....	FET	EA	V
1	30	PAHZZ	5310-00-413-0002	03481	S25B260	NUT,PLAIN,BLIND.....	FET	EA	6
1	31	PAFZZ	5310-00-933-8121	96906	MS35338-82	WASHER, LOCK.....	FET	EA	6
1	32	PAFZZ	5305-00-021-3620	96906	MS35307-7	SCREW,CAP,HEXAGON H.....	FET	EA	6



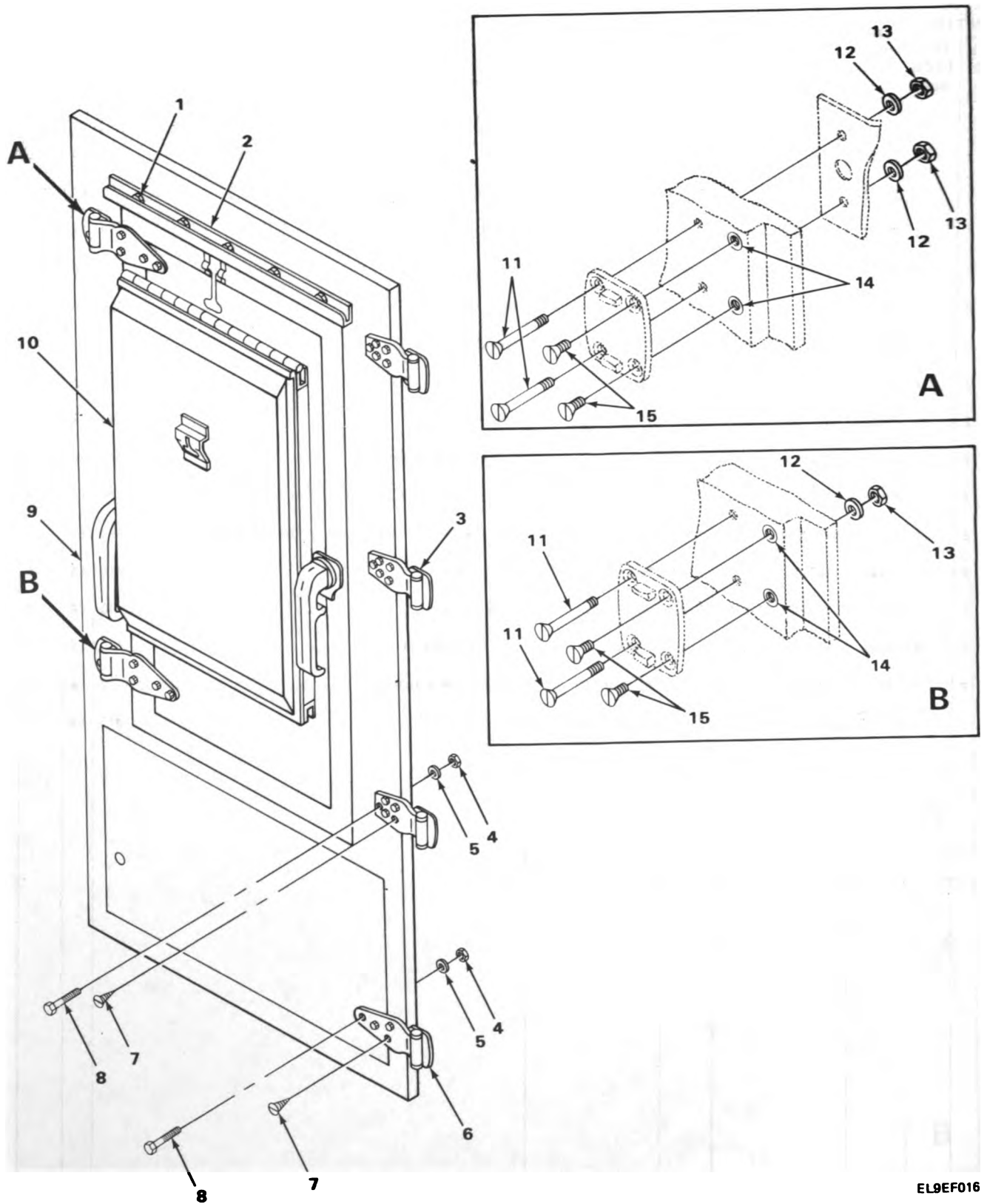
EL9EF003

FIGURE 2. DOOR ASSEMBLY (S-318A/G).

SECTION II

TM11-5410-212-14P

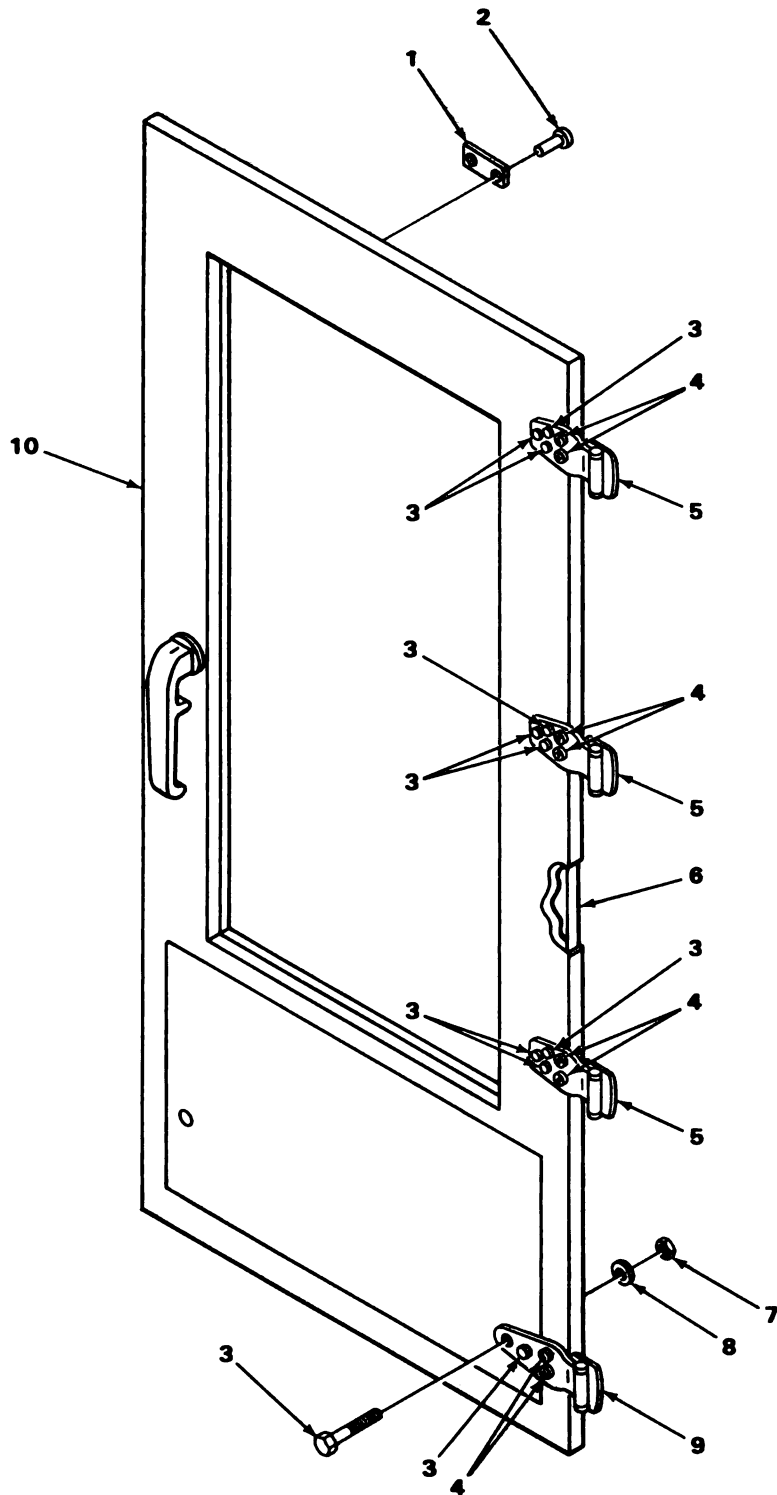
(1) ILLUS- TRATION		(2)	(3)	(4)	(5)	(6)		(7)	(8)
(a) FIG. NO.	(b) ITEM NO.	SMR CODE	NATIONAL STOCK NUMBER	FSCM	PART NUMBER	DESCRIPTION	USABLE ON CODE	U/M	QTY INC IN UNIT
GROUP 01 DOOR ASSEMBLY									
2	1	PAFZZ	5305-00-052-8887	96906	MS24630-24	SCREW, TAPPING, THREA.....	AIQ	EA	5
2	2	XBFZZ		80063	SM-B-564782	MOLDING, DRIP.....	AIQ	EA	1
2	3	PAHZZ	5340-00-616-5058	73957	S25020-12	INSERT, SCREW THREAD.....	AIQ	EA	4
2	4	PAFZZ	5365-00-301-5354	80063	SM-B-442511	SHIM.....	AIQ	EA	2
2	5	PAFZZ		80063	SC-B-200153-5	SHIM, KEEPER.....	AIQ	EA	2
2	6	PAFZZ	5410-00-231-6429	80063	SC-C-200154	KEEPER, SHELTER.....	AIQ	EA	2
2	7	PAFZZ	5305-00-072-2241	96906	MS90725-10	SCREW, CAP, HEXAGON H.....	AIQ	EA	2
2	8	PAFZZ	5310-00-883-9417	96906	MS35338-158	WASHER, LOCK.....	AIQ	EA	4
2	9	PAFZZ	5305-00-071-2242	96906	MS90725-9	SCREW, CAP, HEXAGON H.....	AIQ	EA	2
2	10	PAHHH	5410-00-182-8581	80063	SM-D-499952	DOOR ASSEMBLY (SEE FIGURE 4 FOR BREAKDOWN).....	AIQ	EA	1
2	11	PAHHH	5410-00-182-8583	80063	SM-D-499953	DOOR ASSEMBLY (SEE FIGURE 7 FOR BREAKDOWN).....	AIQ	EA	1
2	12	PAFZZ	5305-00-954-4295	96906	MS35190-287	SCREW, MACHINE.....	AIQ	EA	5
2	13	PAFZZ	5310-00-809-8546	96906	MS27183-8	WASHER, FLAT.....	AIQ	EA	3
2	14	PAFZZ	5310-00-207-8551	72962	22NTM02	NUT, SELF-LOCKING.....	AIQ	EA	3
2	15	PAHZZ	5340-00-825-5905	73957	HS25020-50	INSERT, SCREW THREAD.....	AIQ	EA	5
2	16	PAFZZ	5305-00-959-2690	96906	MS35191-280	SCREW, MACHINE.....	AIQ	EA	3



EL9EF016

FIGURE 3. DOOR ASSEMBLY (S-318/G).

(1) ILLUS- TRATION		(2)	(3)	(4)	(5)	(6)		(7)	(8)
(a) FIG. NO.	(b) ITEM NO.	SMR CODE	NATIONAL STOCK NUMBER	FSCM	PART NUMBER	DESCRIPTION	USABLE ON CODE	U/M	QTY INC IN UNIT
3	1	PAFZZ	5305-00-052-8887	96906	MS24630-24	SCREW, TAPPING, THREA.....	FET	EA	5
3	2	XBFZZ		80063	SM-B-564782	MOLDING, DRIP.....	FET	EA	1
3	3	PAFZZ	5340-00-937-0766	80063	SM-B-564793	HINGE, TEE.....	FET	EA	3
3	4	PAFZZ	5310-00-558-8548	72962	21TU040	NUT, SELF-LOCKING HE.....	FET	EA	11
3	5	PAFZZ	5310-00-809-4058	96906	MS27183-10	WASHER, FLAT.....	FET	EA	11
3	6	PAFZZ	5340-00-937-0851	80063	SM-B-564861	HINGE, TEE.....	FET	EA	1
3	7	PAFZZ	5305-00-855-0836	96906	MS24615-38	SCREW, TAPPING, THREA.....	FET	EA	8
3	8	PAFZZ		80063	SM-D-564781-4	BOLT, CARRIAGE 1/4-20 X 2 IN.....	FET	EA	11
3	9	XBHZZ		80063	SM-D-564765	DOOR PANEL ASSY.....	FET	EA	1
3	10	XBHHH		80063	SM-D-564789	PANEL, DOOR (SEE FIGURE 8 FOR BREAKDOWN).....	FET	EA	1
3	11	PAFZZ	5305-00-959-2690	96906	MS35191-280	SCREW, MACHINE.....	FET	EA	4
3	12	PAFZZ	5310-00-809-8546	96906	MS27183-8	WASHER, FLAT.....	FET	EA	4
3	13	PAFZZ	5310-00-840-5381	72962	22NTM04	NUT, SELF-LOCKING, HE.....	FET	EA	4
3	14	PAHZZ	5340-00-825-5905	73957	HS25020-50	INSERT, SCREW THREAD.....	FET	EA	4
3	15	PAFZZ	5305-00-954-4295	96906	MS35190-287	SCREW, MACHINE.....	FET	EA	4



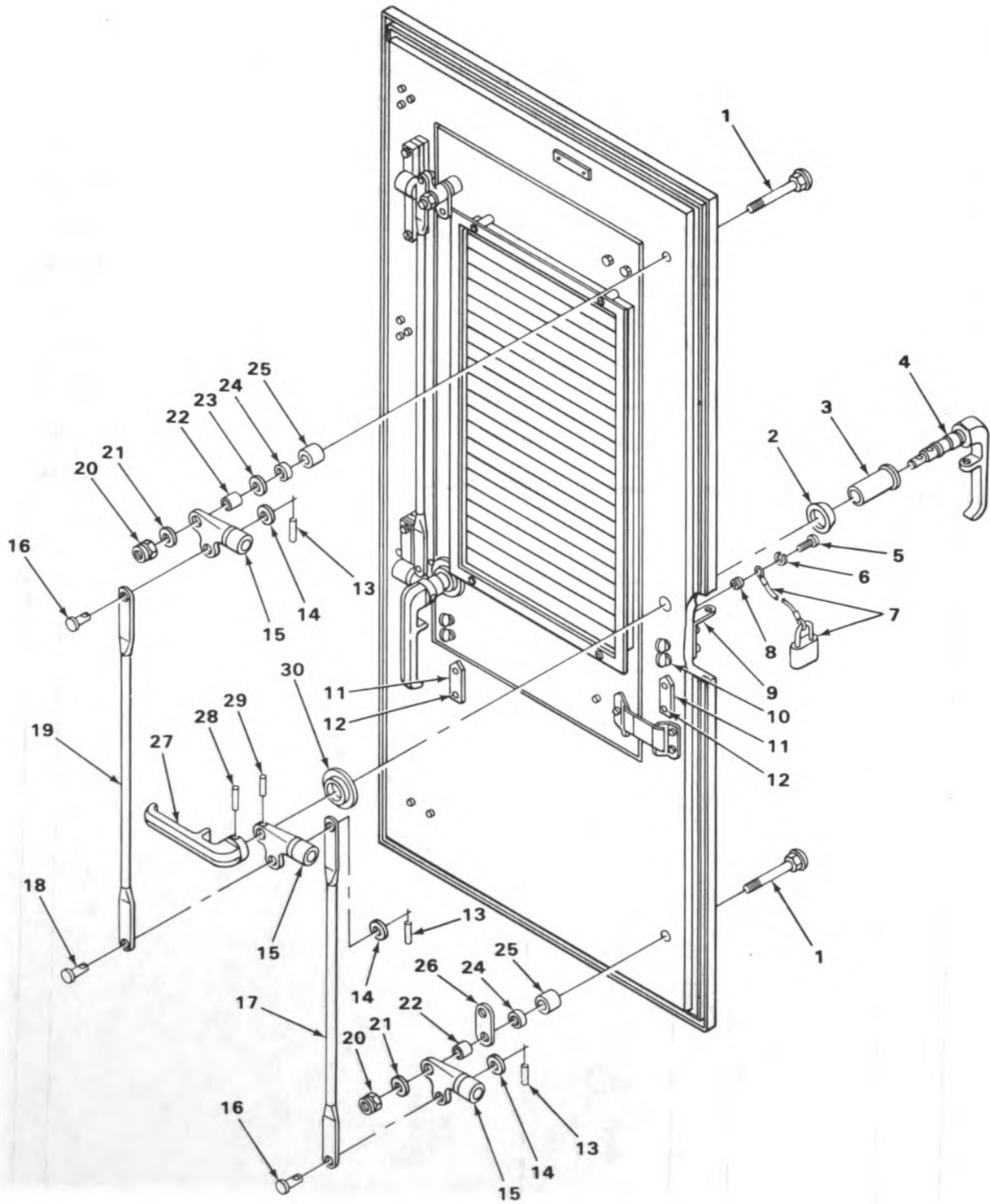
EL9EF004

FIGURE 4. LARGE DOOR ASSEMBLY (S-318A/G).

SECTION II

TM11-5410-212-14P

(1) ILLUS- TRATION		(2)	(3)	(4)	(5)	(6)	(7)	(8)	
(a) FIG. NO.	(b) ITEM NO.	SMR CODE	NATIONAL STOCK NUMBER	FSCM	PART NUMBER	DESCRIPTION	USABLE ON CODE	U/M	QTY INC IN UNIT
						GROUP 0101 LARGE DOOR ASSEMBLY			
4	1	XBHZZ		80063	SM-C-564811	PLATE, INSTRUCTION.....	AIQ	EA	1
4	2	PAHZZ	5320-00-417-5827	07707	AD41H	RIVET, BLIND.....	AIQ	EA	2
4	3	PAFZZ		80063	SM-D-499952-1	BOLT, CARRIAGE 1/4-20 X 2 IN.....	AIQ	EA	11
4	4	PAFZZ	5305-00-855-0836	96906	MS24615-38	SCREW, TAPPING, THREA.....	AIQ	EA	8
4	5	PAFZZ	5340-00-937-0766	80063	SM-B-564793	HINGE, TEE.....	AIQ	EA	3
4	6	PAFZZ	5330-00-298-2895	80063	SM-D-499952-4	GASKET.....	AIQ	EA	1
4	7	PAFZZ	5310-00-014-5847	72962	21NTU040	NUT, SELF LOCKING.....	AIQ	EA	11
4	8	PAFZZ	5310-00-809-4058	96906	MS27183-10	WASHER, FLAT.....	AIQ	EA	11
4	9	PAFZZ	5340-00-937-0851	80063	SM-B-564861	HINGE, TEE.....	AIQ	EA	1
4	10	XBHZZ		80063	SM-D-499948	DOOR PANEL ASSY.....	AIQ	EA	1



EL9EF005

FIGURE 5. LARGE DOOR LATCH ASSEMBLY (S-318A/G).

(1) ILLUS- TRATION		(2)	(3)	(4)	(5)	(6)		(7)	(8)
(a) FIG. NO.	(b) ITEM NO.	SMR CODE	NATIONAL STOCK NUMBER	FSCM	PART NUMBER	DESCRIPTION	USABLE ON CODE	U/M	QTY INC IN UNIT
						GROUP 010101 LARGE DOOR LATCH ASSEMBLY			
5	1	PAHZZ	5306-00-152-5495	96906	MS35751-162	BOLT, SQUARE NECK.....	AIQ	EA	2
5	2	PAHZZ	5310-00-316-8084	80063	SM-B-442513	WASHER, CONVEX.....	AIQ	EA	1
5	3	XBHZZ		80063	SC-B-200151	SLEEVE, HANDLE SHAFT.....	AIQ	EA	1
5	4	PAFZZ		80063	SM-C-499955	HANDLE ASSEMBLY.....	AIQ	EA	1
5	5	PAOZZ	5305-00-984-6193	96906	MS35206-245	SCREW, MACHINE.....	AIQ	EA	1
5	6	PAOZZ	5310-00-869-4199	96906	MS35338-156	WASHER, LOCK.....	AIQ	EA	1
5	7	PAOZZ		80063	SC-C-595537	PADLOCK.....	AIQ	EA	1
5	8	PAHZZ	5340-00-526-2168	73957	16432-12	INSERT, SCREW THREAD.....	AIQ	EA	1
5	9	XBHZZ		80063	SM-B-442506	EMERGENCY HASP.....	AIQ	EA	1
5	10	XBHZZ		80063	SM-B-499943	THUMBSCREW.....	AIQ	EA	2
5	11	XBHZZ		80063	SM-B-564688	PLATE, INSTRUCTION.....	AIQ	EA	2
5	12	PAHZZ	5320-00-957-3582	11078	AD42S	RIVET, BLIND.....	AIQ	EA	4
5	13	PAHZZ	5315-00-841-4442	96906	MS171530	PIN, SPRING.....	AIQ	EA	3
5	14	PAHZZ	5310-00-279-9026	80063	SM-B-435902	WASHER, FLAT.....	AIQ	EA	3
5	15	PAHZZ	5340-00-229-5747	80063	SC-C-200141	LATCH ARM ASSEMBLY.....	AIQ	EA	3
5	16	PAHZZ	5315-00-008-9066	80063	SM-B-435903-1	PIN, STRAIGHT, HEADED.....	AIQ	EA	2
5	17	PAHZZ		80063	SC-D-563202GRV11 I	TIE ROD, LOWER.....	AIQ	EA	1
5	18	PAHZZ	5315-00-008-9067	80063	SM-B-435903-2	PIN, STRAIGHT, HEADED.....	AIQ	EA	1
5	19	PAHZZ		80063	SC-D-563202GRV11	TIE ROD, UPPER.....	AIQ	EA	1
5	20	PAHZZ	5310-00-245-8826	96906	MS16228-10C	NUT, SELF-LOCKING, HE.....	AIQ	EA	2
5	21	PAHZZ	5310-00-301-4558	80063	SC-B-200146	WASHER, FLAT.....	AIQ	EA	2
5	22	PAHZZ	5365-00-263-9560	80063	SC-B-200145	SPACER, SLEEVE.....	AIQ	EA	2
5	23	PAHZZ	5310-00-301-4626	80063	SM-B-442507	WASHER, FLAT.....	AIQ	EA	1
5	24	XBFZZ		80063	SM-B-442508	WASHER.....	AIQ	EA	2
5	25	XBHZZ		80063	SM-B-615259-7	SPACER.....	AIQ	EA	2
5	26	PAHZZ	5340-01-082-3431	80063	SC-B-595073	DETENT.....	AIQ	EA	1
5	27	PAFZZ	5340-00-794-4610	80063	SM-B-113596-1	HANDLE, DOOR.....	AIQ	EA	1

(1) ILLUS- TRATION		(2)	(3)	(4)	(5)	(6)		(7)	(8)
(a) FIG. NO.	(b) ITEM NO.	SMR CODE	NATIONAL STOCK NUMBER	FSCM	PART NUMBER	DESCRIPTION	USABLE ON CODE	U/M	QTY INC IN UNIT
5	28	PAFZZ	5315-00-846-8337	96906	MS171659	PIN, SPRING.....	AIQ	EA	1
5	29	PAFZZ	5315-00-928-2336	96906	MS35675-41	PIN, GROOVED, HEADLES.....	AIQ	EA	1
5	30	PAHZZ	5310-00-307-1519	80063	SC-B-200150	NUT, PLAIN, ROUND.....	AIQ	EA	1



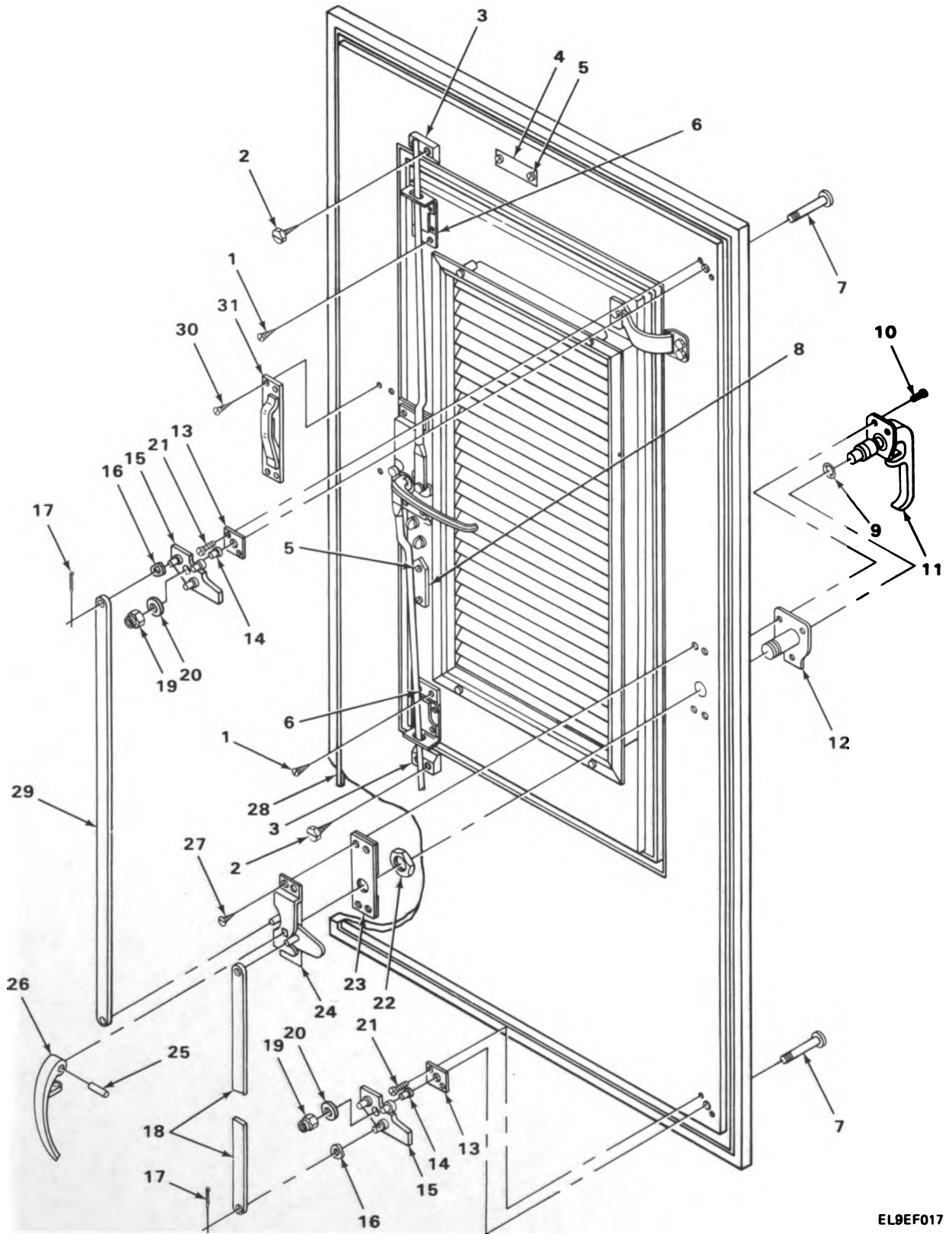


FIGURE 6. LARGE DOOR LATCH ASSEMBLY (S-318/G).

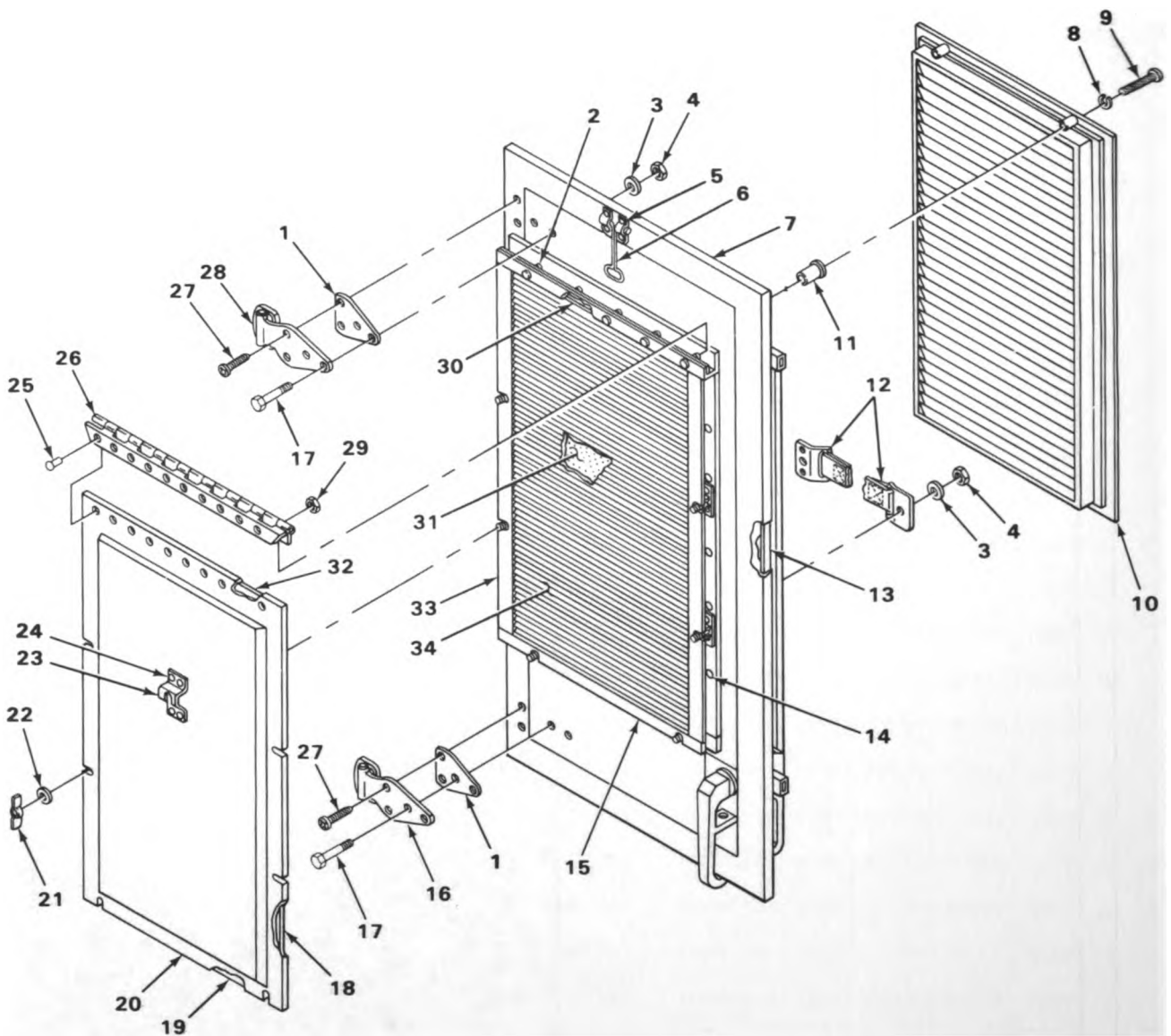
EL9EF017

SECTION II

TM11-5410-212-14P

(1) ILLUS- TRATION		(2)	(3)	(4)	(5)	(6)	(7)	(8)	
(a) FIG. NO.	(b) ITEM NO.	SMR CODE	NATIONAL STOCK NUMBER	FSCM	PART NUMBER	DESCRIPTION	USABLE ON CODE	U/M	QTY INC IN UNIT
6	1	PAHZZ	5305-00-969-6912	96906	MS24615-29	SCREW, TAPPING, THREA.....	FET	EA	4
6	2	PAHZZ		80063	SM-D-564781-12	SCREW #10 X 5/8 IN HEX HD.....	FET	EA	4
6	3	PAHZZ		80063	SM-B-564675	PLATE, END CASE.....	FET	EA	2
6	4	XBHZZ		80063	SM-C-564811	PLATE, INSTRUCTION.....	FET	EA	1
6	5	PAHZZ	5305-00-052-8887	96906	MS24630-24	SCREW, TAPPING, THREA.....	FET	EA	4
6	6	XBHZZ		80063	SM-B-564850	BLOCK, GUIDE ROD.....	FET	EA	2
6	7	PAHZZ		80063	SM-D-564781-8	BOLT, CARRIAGE STL 3/8-16 X 3 IN.....	FET	EA	2
6	8	XBHZZ		80063	SM-B-564688	PLATE, INSTRUCTION.....	FET	EA	1
6	9	PAFZZ	5330-00-298-2866	95272	01-020	PACKING, PREFORMED.....	FET	EA	1
6	10	PAFZZ		80063	SM-D-564781-5	SCREW, SELF TAPPING #10 X 7/8 IN.....	FET	EA	3
6	11	PAFZZ	5340-01-138-9067	80063	SM-C-564849	HANDLE, DOOR.....	FET	EA	1
6	12	XBHZZ		80063	SM-B-564815	SLEEVE ASSY.....	FET	EA	1
6	13	XBHZZ		80063	SM-B-564662	BLOCK, LATCH MOUNTIN.....	FET	EA	2
6	14	PAHZZ	3120-00-301-4383	80063	SM-B-564843	BUSHING, SLEEVE.....	FET	EA	2
6	15	PAHZZ	5340-00-937-0806	80063	SM-B-564792	LATCH SET, RIM.....	FET	EA	2
6	16	PAHZZ	5310-00-286-0565	19220	5646-7	WASHER, SPRING.....	FET	EA	2
6	17	PAHZZ	5315-00-307-1480	19220	9X121	PIN, COTTER.....	FET	EA	2
6	18	PAHZZ	3040-00-435-4481	80063	SM-C-564726	CONNECTING LINK.....	FET	EA	1
6	19	PAHZZ	5310-00-014-5855	72962	21NE066	NUT, SELF LOCKING, HE.....	FET	EA	2
6	20	PAHZZ	5310-00-080-6004	96906	MS27183-14	WASHER, FLAT.....	FET	EA	2
6	21	PAHZZ	5305-00-855-0836	96906	MS24615-38	SCREW, TAPPING #10 X 3/4 IN.....	FET	EA	4
6	22	PAHZZ	5310-00-308-1532	80063	SM-B-564669	NUT, PLAIN SQUARE.....	FET	EA	1
6	23	PAHZZ		80063	SM-B-564840	SPACER.....	FET	EA	1
6	24	PAHZZ	5340-00-937-0907	80063	SM-B-564844	LATCH SET, MORTISE.....	FET	EA	1
6	25	PAFZZ		80063	SM-D-564781-22	PIN, GROOVE.....	FET	EA	1
6	26	PAFZZ	5340-00-489-0747	19220	18-5655-1	HANDLE, DOOR.....	FET	EA	1
6	27	PAHZZ		80063	SM-D-564781-6	SCREW, SELF TAP #14 X 1 1/4 IN.....	FET	EA	4
6	28	PAFZZ	5330-00-937-1066	80063	SM-C-564781-10	RUBBER STRIP.....	FET	EA	1

(1) ILLUS- TRATION		(2)	(3)	(4)	(5)	(6)	(7)	(8)	
(a) FIG. NO.	(b) ITEM NO.	SMR CODE	NATIONAL STOCK NUMBER	FSCM	PART NUMBER	DESCRIPTION	USABLE ON CODE	U/M	QTY INC IN UNIT
6	29	PAHZZ		80063	SM-C-564856	TIE ROD, UPPER.....	FET	EA	1
6	30	PAHZZ		80063	SM-D-564781-15	SCREW, SELF TAP #10 X 1/2 IN.....	FET	EA	4
6	31	XBHZZ		80063	SM-C-564846	FROST, BREAKER ASSY.....	FET	EA	1



EL9EF006

FIGURE 7. SMALL DOOR ASSEMBLY (S-318A/G).

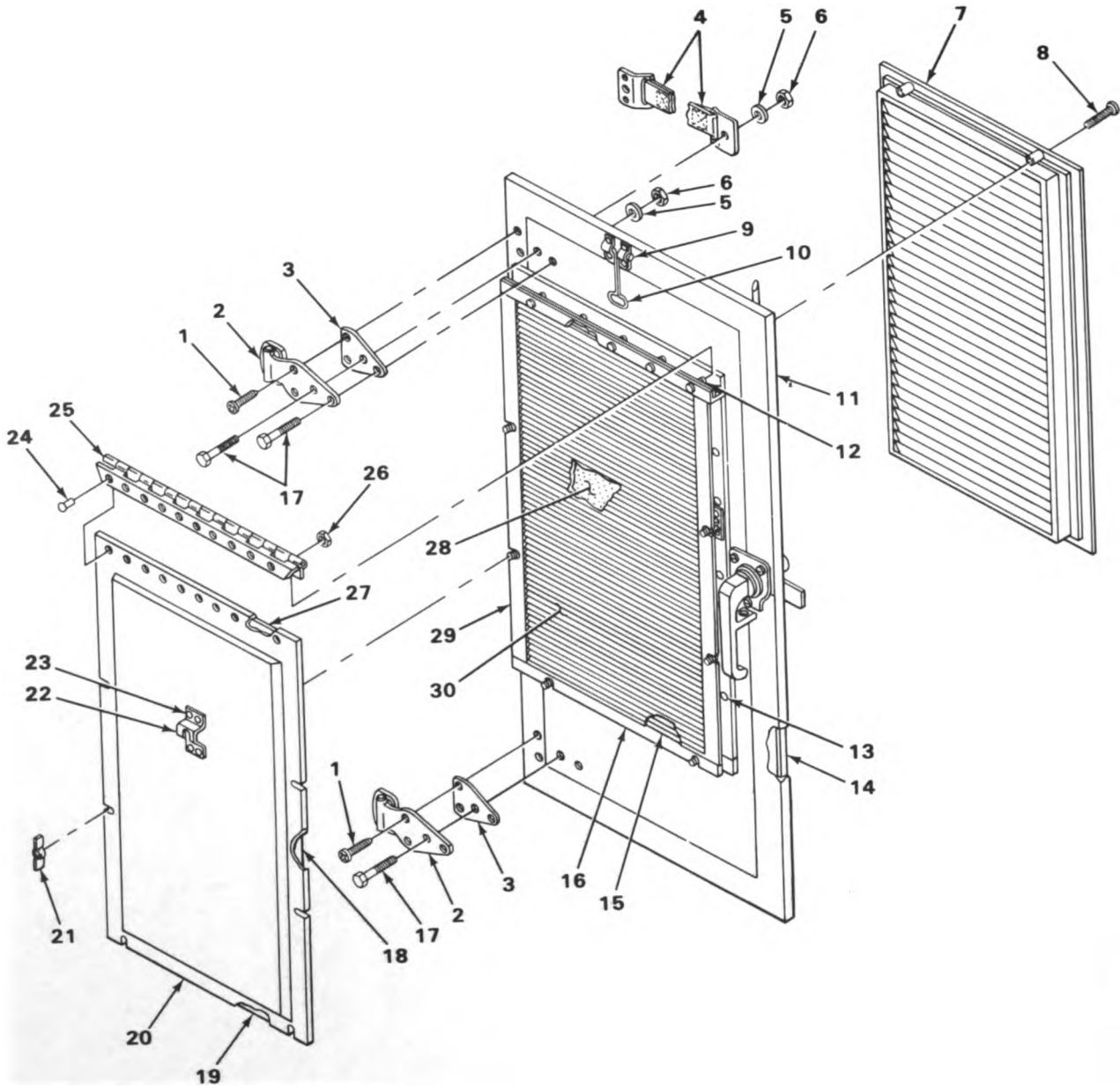
SECTION II

TM11-5410-212-14P

(1) ILLUS- TRATION		(2)	(3)	(4)	(5)	(6)		(7)	(8)
(a) FIG. NO.	(b) ITEM NO.	SMR CODE	NATIONAL STOCK NUMBER	FSCM	PART NUMBER	DESCRIPTION	USABLE ON CODE	U/M	QTY INC IN UNIT
						GROUP 0102 SMALL DOOR ASSEMBLY			
7	1	PAHZZ	5365-00-304-8717	80063	SM-B-564860	SPACER, PLATE.....	AIQ	EA	2
7	2	PAHZZ		80063	SM-C-374178	SHIM.....	AIQ	EA	1
7	3	PAHZZ	5310-00-809-4058	96906	MS27183-10	WASHER, FLAT.....	AIQ	EA	4
7	4	PAHZZ	5310-00-014-5847	72962	21NTU040	NUT, SELF-LOCKING, HE.....	AIQ	EA	4
7	5	PAHZZ	5320-00-952-4161	07707	AD66S	RIVET, BLIND.....	AIQ	EA	4
7	6	PAHZZ		80063	SM-B-564851-2	DOOR HOLDER, T-LATCH.....	AIQ	EA	1
7	7	XBHZZ		80063	SM-D-499939	DOOR PANEL ASSY.....	AIQ	EA	1
7	8	PAFZZ	5310-00-933-8119	96906	MS35338-137	WASHER, LOCK.....	AIQ	EA	4
7	9	PAFZZ	5305-00-984-6198	96906	MS35206-250	SCREW, MACHINE.....	AIQ	EA	4
7	10	XBFZZ		80063	SM-D-564768	DIR VANE ASSY.....	AIQ	EA	1
7	11	PAHZZ	5310-00-308-1238	03481	S8-240	NUT, PLAIN, BLIND.....	AIQ	EA	4
7	12	PAHZZ	5340-01-142-1790	80063	SM-C-564791	STRAP, WEBBING.....	AIQ	EA	1
7	13	PAFZZ	5330-00-937-0065	80063	SMC564839-1281N	RUBBER STRIP.....	AIQ	EA	1
7	14	PAHZZ	5320-00-874-4471	07707	AD45H	RIVET, BLIND.....	AIQ	EA	20
7	15	PAHZZ		80063	SM-C-564818	FRAME, BOTTOM.....	AIQ	EA	1
7	16	PAHZZ	5340-00-937-0852	80063	SM-B-564862	HINGE, TEE.....	AIQ	EA	1
7	17	PAHZZ		80063	SM-D-499953-2	BOLT, CARRIAGE 1/4-20 X 2 IN.....	AIQ	EA	4
7	18	PAFZZ	5330-00-298-2929	80063	SM-B-564802-1	SEAL, RUBBER STR.....	AIQ	EA	2
7	19	PAFZZ	5330-00-298-2942	80063	SM-B-564802-3	SEAL, RUBBER STR.....	AIQ	EA	1
7	20	XBHZZ		80063	SM-D-564799	PANEL ASSY, DR C.....	AIQ	EA	1
7	21	PAHZZ	5310-00-063-6716	96906	MS35426-14	NUT, PLAIN WING.....	AIQ	EA	6
7	22	PAHZZ	5310-00-880-5977	96906	MS15795-811	WASHER, FLAT.....	AIQ	EA	6
7	23	PAHZZ		80063	SM-B-564851-1	KEEPER, T-LATCH.....	AIQ	EA	1
7	24	PAHZZ	5320-00-952-4159	07707	AD64S	RIVET, BLIND.....	AIQ	EA	4
7	25	PAHZZ	5320-00-932-1972	07707	AD42H	RIVET, BLIND.....	AIQ	EA	10
7	26	PAHZZ		80063	SM-C-564801	HINGE.....	AIQ	EA	1
7	27	PAHZZ	5305-00-883-0630	96906	MS24615-36	SCREW, TAPPING, THREA.....	AIQ	EA	4
7	28	PAHZZ		80063	SM-B-499963	HINGE.....	AIQ	EA	1

(1) ILLUS- TRATION		(2) SMR CODE	(3) NATIONAL STOCK NUMBER	(4) FSCM	(5) PART NUMBER	(6) DESCRIPTION		(7) U/M	(8) QTY INC IN UNIT
(a) FIG. NO.	(b) ITEM NO.						USABLE ON CODE		
7	29	PAHZZ	5310-00-208-9255	72962	79NM02	NUT, SELF LOCKING, HE.....	AIQ	EA	5
7	30	PAFZZ	5330-00-298-2881	80063	SM-D-499953-9	RUBBER, STRIP.....	AIQ	EA	1
7	31	PAOZZ	4130-00-937-0789	80063	SM-B-564804	FILTER, MEDIA AIR.....	AIQ	EA	1
7	32	PAFZZ	5330-00-298-2945	80063	SM-B-564802-2	RUBBER STRIP.....	AIQ	EA	1
7	33	XBHZZ		80063	SM-D-564702	FRAME.....	AIQ	EA	1
7	34	XBHZZ		80063	SM-C-564758	LOUVER ASSY.....	AIQ	EA	1





EL9EF018

FIGURE 8. SMALL DOOR ASSEMBLY (S-318/G).

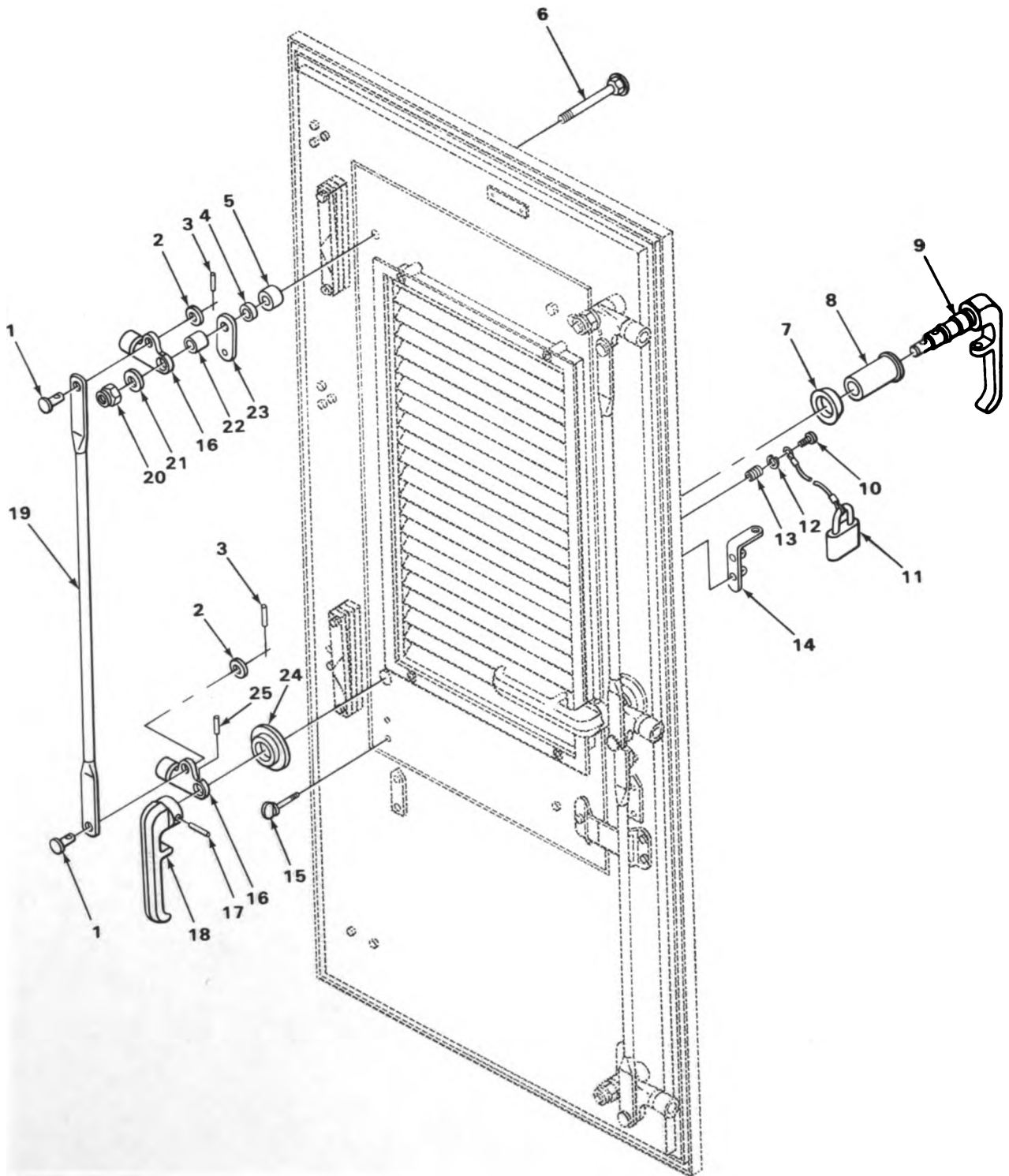
SECTION II

TM11-5410-212

(1) ILLUS- TRATION		(2)	(3)	(4)	(5)	(6)	(7)
(a) FIG. NO.	(b) ITEM NO.	SMR CODE	NATIONAL STOCK NUMBER	FSCM	PART NUMBER	DESCRIPTION	USABLE ON CODE
8	1	PAHZZ	5305-00-883-0630	96906	MS24615-36	SCREW, TAPPING THREA.....	FET EA
8	2	PAHZZ	5340-00-937-0852	80063	SM-B-564862	HINGE, TEE.....	FET EA
8	3	PAHZZ	5365-00-304-8717	80063	SM-B-564860	SHIM.....	FET EA
8	4	PAHZZ	5340-01-142-1790	80063	SM-C-564791	STRAP, WEBBING.....	FET EA
8	5	PAHZZ	5310-00-809-4058	96906	MS27183-10	WASHER, FLAT.....	FET EA
8	6	PAHZZ	5310-00-984-6610	72962	79NTE040	NUT, SELF-LOCKING, HE.....	FET EA
8	7	XBFZZ		80063	SM-D-564768	DIR VANE ASSEMBLY.....	FET EA
8	8	PAFZZ	5305-00-984-6198	96906	MS35225-50	SCREW, MACHINE.....	FET EA
8	9	PAHZZ	5320-00-952-4161	07707	AD66S	RIVET, BLIND.....	FET EA
8	10	PAHZZ		80063	SM-B-564851-2	DOOR HOLDER, T-LATCH.....	FET EA
8	11	XBHZZ		80063	SM-C-564816	PANEL, DOOR.....	FET EA
8	12	PAFZZ		80063	SM-C-374178	SHIM.....	FET EA
8	13	PAHZZ	5320-00-874-4471	07707	AD45H	RIVET, BLIND.....	FET EA
8	14	PAFZZ	5330-00-937-1065	80063	SMC564839-1281N	RUBBER STRIP.....	FET EA
8	15	PAFZZ	5330-00-298-2881	80063	SM-D-499953-9	RUBBER STRIP.....	FET EA
8	16	XBHZZ		80063	SM-C-564818	FRAME, BOTTOM.....	FET EA
8	17	PAHZZ		80063	SM-D-564789-6	BOLT, CARRIAGE 1/4-20 X 2 IN.....	FET EA
8	18	PAFZZ	5330-00-298-2929	80063	SM-B-564802-1	SEAL, RUBBER STR.....	FET EA
8	19	PAFZZ	5330-00-298-2942	80063	SM-B-564802-3	SEAL, RUBBER STR.....	FET EA
8	20	XBHZZ		80063	SM-C-564799	PANEL ASSY, DOOR.....	FET EA
8	21	PAHZZ	5310-00-063-6716	96906	MS35426-14	NUT, PLAIN WING.....	FET EA
8	22	PAHZZ		80063	SM-B-564851-1	KEEPER, T-LATCH.....	FET EA
8	23	PAHZZ	5320-00-952-4159	07707	AD64S	RIVET, BLIND.....	FET EA
8	24	PAFZZ	5320-00-932-1972	07707	AD42H	RIVET, BLIND.....	FET EA
8	25	PAHZZ		80063	SM-C-564801	HINGE.....	FET EA
8	26	PAFZZ	5310-00-208-9255	72962	79NM02	NUT, SELF-LCKING, HE.....	FET EA
8	27	PAFZZ	5330-00-298-2945	80063	SM-B-564802-2	RUBBER STRIP.....	FET EA
8	28	PAOZZ	4130-00-937-0789	80063	SM-B-564804	FILTER MEDIA, AIR.....	FET EA

(1) ILLUS- TRATION		(2)	(3)	(4)	(5)	(6)		(7)	(8)
(a) FIG. NO.	(b) ITEM NO.	SMR CODE	NATIONAL STOCK NUMBER	FSCM	PART NUMBER	DESCRIPTION	USABLE ON CODE	U/M	QTY INC IN UNIT
8	29	XBHZZ		80063	SM-B-564702	FRAME ASSY.....	FET	EA	1
8	30	XBHZZ		80063	SM-C-564758	LOUVER ASSY.....	FET	EA	1

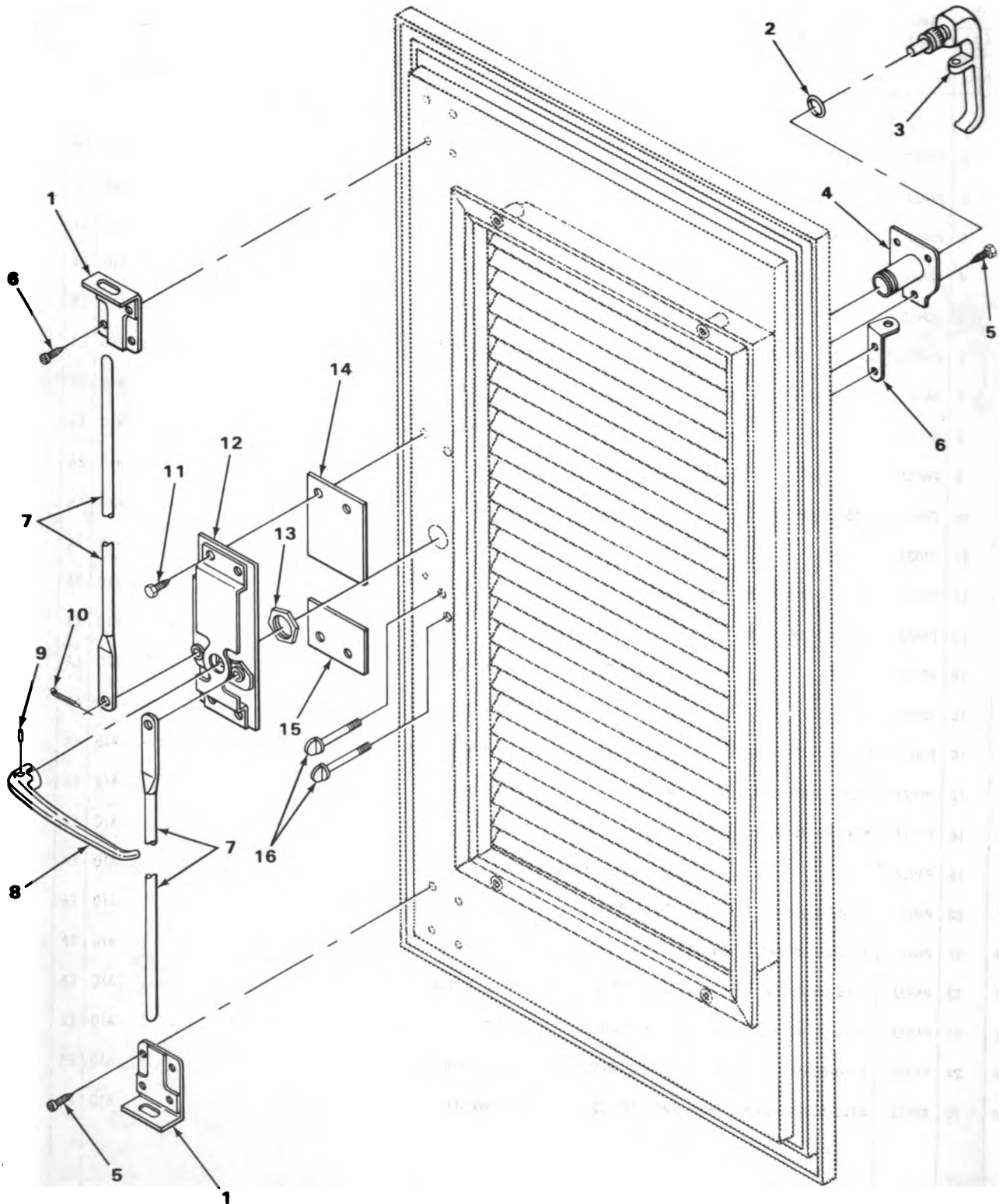




EL9EF007

FIGURE 9. SMALL DOOR LATCH ASSEMBLY (S-318A/G).

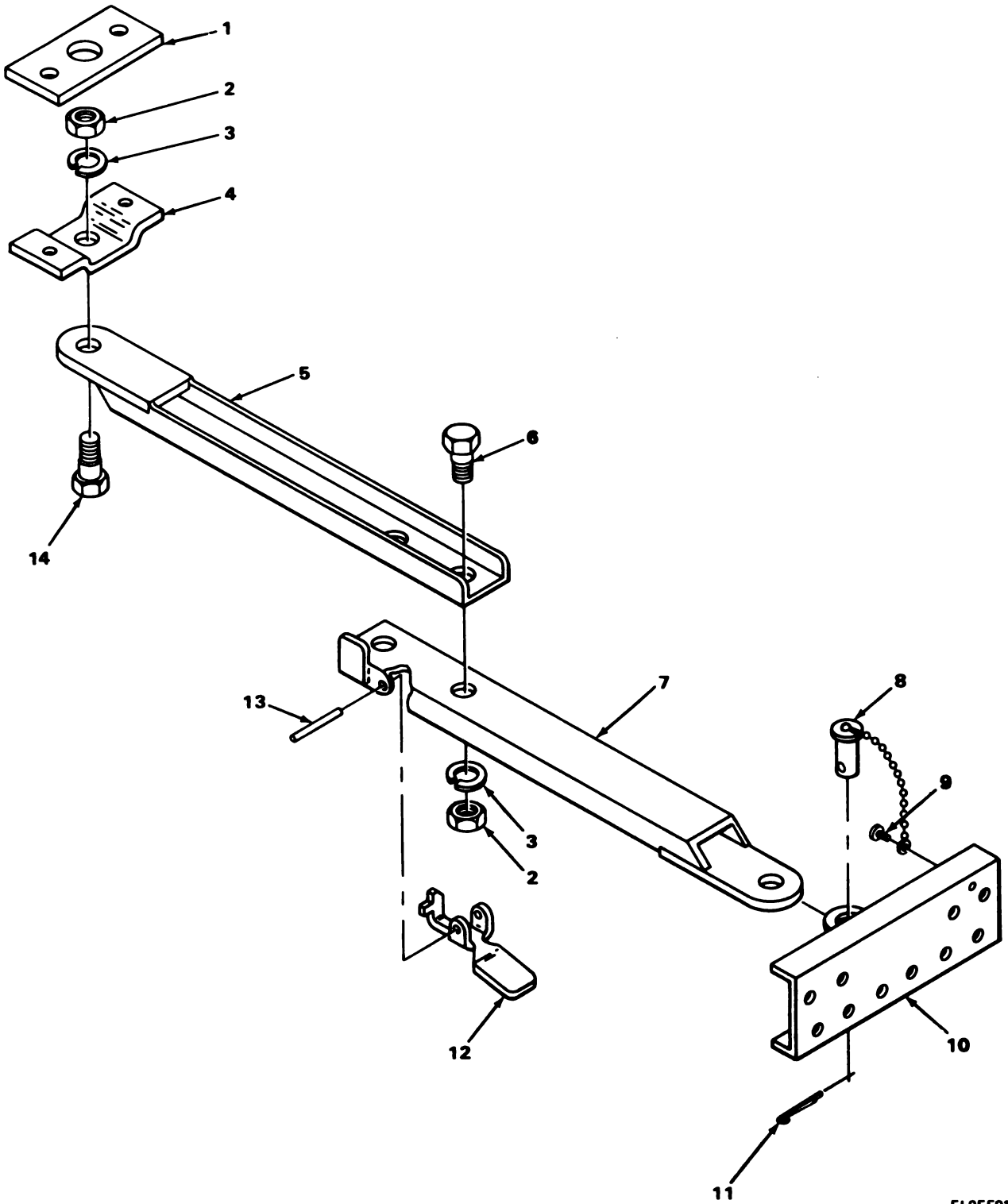
(1) ILLUS- TRATION		(2)	(3)	(4)	(5)	(6)		(7)	(8)
(a) FIG. NO.	(b) ITEM NO.	SMR CODE	NATIONAL STOCK NUMBER	FSCM	PART NUMBER	DESCRIPTION	USABLE ON CODE	U/M	QTY INC IN UNIT
						GROUP 010201 SMALL DOOR LATCH ASSEMBLY			
9	1	PAHZZ	5315-00-008-9066	80063	SM-D-435903-1	PIN, STRAIGHT, HEADED.....	AIQ	EA	2
9	2	PAHZZ	5310-00-279-9026	80063	SM-B-435902	WASHER, FLAT.....	AIQ	EA	2
9	3	PAHZZ	5315-00-841-4442	96906	MS171530	PIN, SPRING.....	AIQ	EA	2
9	4	PAHZZ	5365-00-303-0131	80063	SM-B-442509	SHIM.....	AIQ	EA	1
9	5	XBHZZ		80063	SM-B-615259-7	SPACER.....	AIQ	EA	1
9	6	PAHZZ	5306-00-152-5495	96906	MS35751-162	BOLT, SQUARE NECK.....	AIQ	EA	1
9	7	PAHZZ	5310-00-316-8084	80063	SM-D-442513	WASHER, CONVEX.....	AIQ	EA	1
9	8	XBHZZ		80063	SC-B-200151	SLEEVE, HANDLE SHAFT.....	AIQ	EA	1
9	9	PAFZZ		80063	SM-C-499955	HANDLE.....	AIQ	EA	1
9	10	PAOZZ	5305-00-984-6193	96906	MS35206-245	SCREW, MACHINE.....	AIQ	EA	1
9	11	PAOZZ		80063	SC-C-595537	PADLOCK.....	AIQ	EA	1
9	12	PAOZZ	5310-00-869-4199	96906	MS35338-156	WASHER, LOCK.....	AIQ	EA	1
9	13	PAHZZ	5340-00-526-2168	73957	16432-12	INSERT, SCREW THREA.....	AIQ	EA	1
9	14	XBHZZ		80063	SM-B-442506	HASP, EMERGENCY.....	AIQ	EA	1
9	15	XBHZZ		80063	SM-D-499943	THUMBSCREW.....	AIQ	EA	2
9	16	PAHZZ	5340-00-229-5747	80063	SC-C-200141	LATCH ARM ASSEMBLY.....	AIQ	EA	2
9	17	PAFZZ	5315-00-846-8337	96906	MS171659	PIN, SPRING.....	AIQ	EA	1
9	18	PAFZZ	5340-00-794-4610	80063	SM-B-113596-1	HANDLE, DOOR.....	AIQ	EA	1
9	19	PAHZZ		80063	SC-D-563202GR1X	TIE ROD.....	AIQ	EA	1
9	20	PAHZZ	5310-00-245-8826	96906	MS16228-10C	NUT, SELF-LOCKING, HE.....	AIQ	EA	1
9	21	PAHZZ	5310-00-301-4558	80063	SC-B-200146	WASHER, FLAT.....	AIQ	EA	1
9	22	PAHZZ	5365-00-263-9560	80063	SC-B-200145	SPACER, SLEEVE.....	AIQ	EA	1
9	23	PAHZZ	5340-01-082-3431	80063	SC-B-595073	DETENT.....	AIQ	EA	1
9	24	PAHZZ	5310-00-307-1519	80063	SC-B-200150	NUT, PLAIN, ROUND.....	AIQ	EA	1
9	25	XBFZZ	5315-00-928-2336	96906	MS35675-41	PIN, GROOVED.....	AIQ	EA	1



EL9EF019

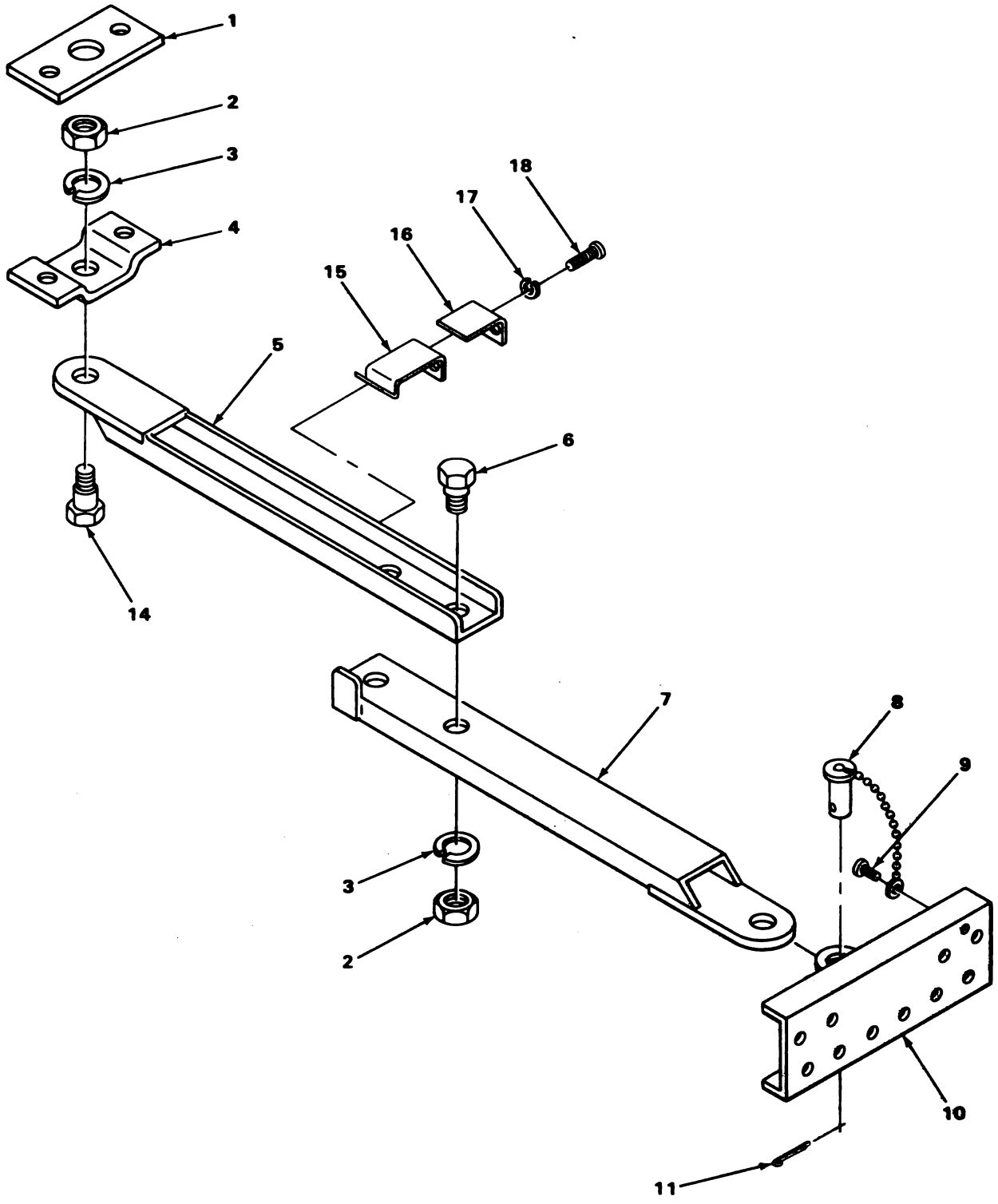
FIGURE 10. SMALL DOOR LATCH ASSEMBLY (S-318/G).

(1) ILLUS- TRATION		(2)	(3)	(4)	(5)	(6)	(7)	(8)	
(a) FIG. NO.	(b) ITEM NO.	SMR CODE	NATIONAL STOCK NUMBER	FSCM	PART NUMBER	DESCRIPTION	USABLE ON CODE	U/M	QTY INC IN UNIT
10	1	PAHZZ	5340-00-133-2134	19220	5646-51	GUIDE, LATCH ROD.....	FET	EA	2
10	2	PAFZZ	5330-00-298-2866	95272	01-020	PACKING, PREFORMED.....	FET	EA	1
10	3	PAFZZ		80063	SM-D-564819	HANDLE, DOOR.....	FET	EA	1
10	4	XBHZZ		80063	SM-B-564815	SLEEVE ASSY.....	FET	EA	1
10	5	PAHZZ		80063	SM-D-564789-10	SCREW, SELF TAP #10 X 7/8 IN RD HD.....	FET	EA	11
10	6	XBFZZ		80063	SM-B-328340	HASP, EMERGENCY EXIT.....	FET	EA	1
10	7	PAHZZ	5410-00-435-4482	80063	SM-B-564795	TIE ROD, SHELTER.....	FET	EA	2
10	8	PAFZZ	5340-00-489-0747	19220	18-5655-1	HANDLE, DOOR.....	FET	EA	1
10	9	PAFZZ	5315-00-316-6474	73997	GP1-0625X0875-12	PIN, GROOVED HEADLES.....	FET	EA	1
10	10	PAFZZ	5315-00-703-9395	96906	MS24665-1	PIN, COTTER.....	FET	EA	2
10	11	PAHZZ		80063	SM-D-564789-11	SCREW, SELF-TAP #14 X 1/4 IN.....	FET	EA	4
10	12	PAHZZ	5340-00-937-0805	80063	SM-B-564841	LATCH SET, MORTISE.....	FET	EA	1
10	13	PAHZZ	5310-00-308-1532	80063	SM-B-564669	NUT, PLAIN, SQUARE.....	FET	EA	1
10	14	PAHZZ	5365-00-304-8719	80063	SM-B-564668-2	SPACER, PLATE.....	FET	EA	1
10	15	PAHZZ		80063	SM-B-564668-1	SHIM.....	FET	EA	1
10	16	XBFZZ		80063	SM-D-564789-4	THUMBSCREW.....	FET	EA	2



EL9EF013

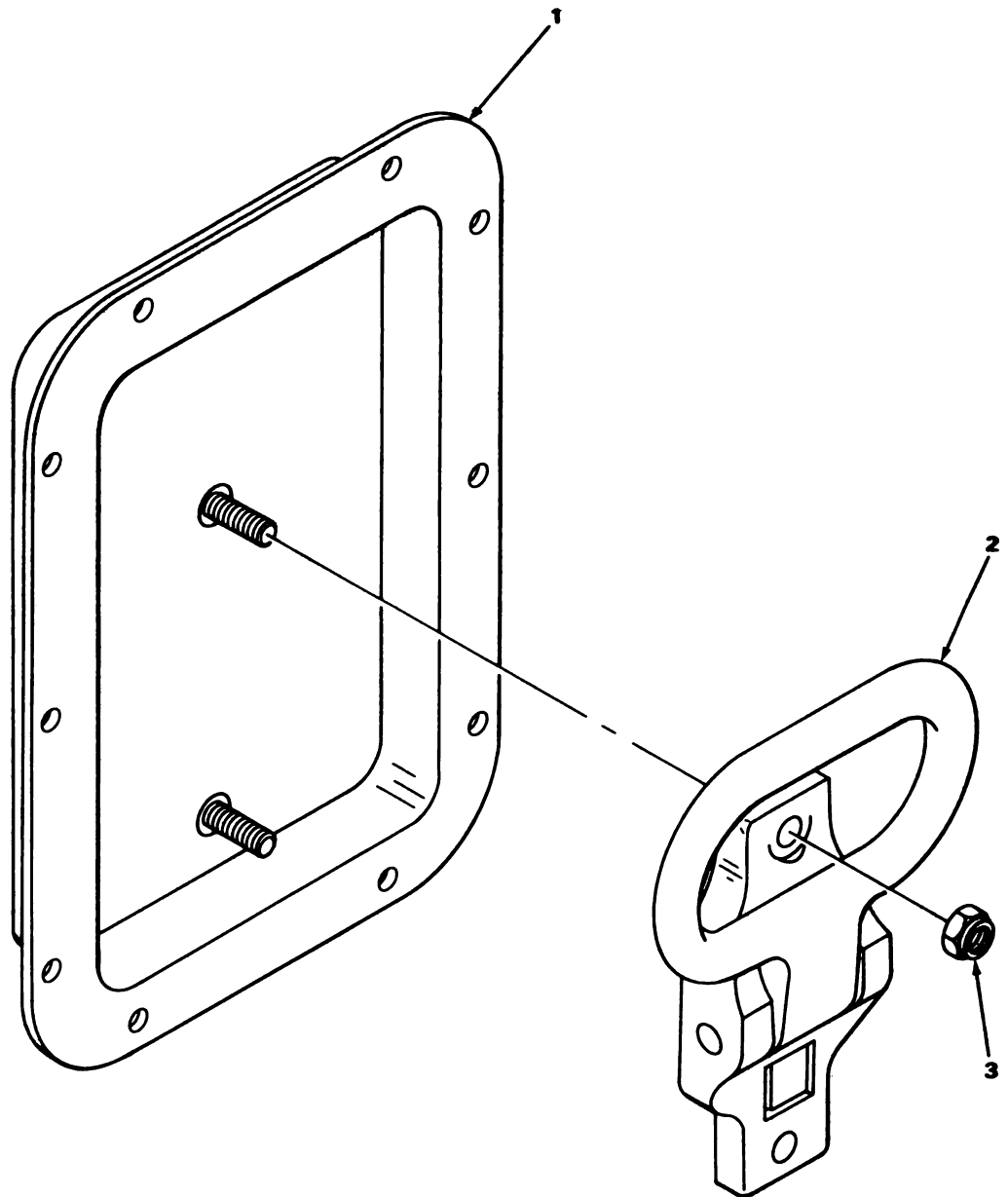
FIGURE 11. DOOR BRACE ASSEMBLY (SHEET 1 OF 2).



EL9EF014

FIGURE 11. DOOR BRACE ASSEMBLY (SHEET 2 OF 2).

(1) ILLUS- TRATION		(2)	(3)	(4)	(5)	(6)		(7)	(8)
(a) FIG. NO.	(b) ITEM NO.	SMR CODE	NATIONAL STOCK NUMBER	FSCM	PART NUMBER	DESCRIPTION	USABLE ON CODE	U/M	QTY INC IN UNIT
						GROUP 02 DOOR BRACE ASSEMBLY			
11	1	PAFZZ	5365-00-301-5349	80063	SM-B-564736	SPACER, PLATE		EA	1
11	2	PAFZZ	5310-00-543-2628	96906	MS35690-602	NUT, PLAIN HEXAGON		EA	2
11	3	PAFZZ	5310-00-543-2410	96906	MS35338-40	WASHER, LOCK		EA	2
11	4	XBFZZ		80063	SM-B-564736	BRACKET		EA	1
11	5	XBFZZ		80063	SM-C-564733	BRACE ASSY		EA	1
11	6	PAFZZ	5306-00-139-7382	80063	SM-B-564727-1	BOLT, SHOULDER		EA	1
11	7	XBFZZ		80063	SM-C-564734	BRACE ASSY		EA	1
11	8	PAFZZ		80063	SM-B-564813	CHAIN AND PIN		EA	1
11	9	PAFZZ	5305-00-432-4164	96906	MS51861-25	SCREW, TAPPING, THREA		EA	1
11	10	XBFZZ		80063	SM-C-318442	BRKT, DOOR STOP		EA	1
11	11	PAFZZ	5315-00-842-3044	96906	MS24665-283	PIN, COTTER		EA	1
11	12	PAFZZ		80063	SC-C-595039	CATCH, DOOR BRACEAIQ	EA	1
11	13	PAFZZ	5315-00-290-5333	96906	MS171536	PIN, SPRINGAIQ	EA	1
11	14	PAFZZ	5306-00-139-7381	80063	SM-B-564727-2	BOLT, SHOULDER		EA	1
11	15	PAFZZ	5340-00-307-1561	80063	SM-B-564738	CLIP, SPRING TENSIONFET	EA	1
11	16	PAFZZ	5360-00-302-9910	80063	SM-B-564737	SPRING, FLATFET	EA	1
11	17	PAFZZ	5310-00-045-4007	96906	MS35338-41	WASHER, LOCKFET	EA	2
11	18	PAFZZ	5305-00-984-4988	96906	MS35206-25	SCREW, MACHINEFET	EA	2



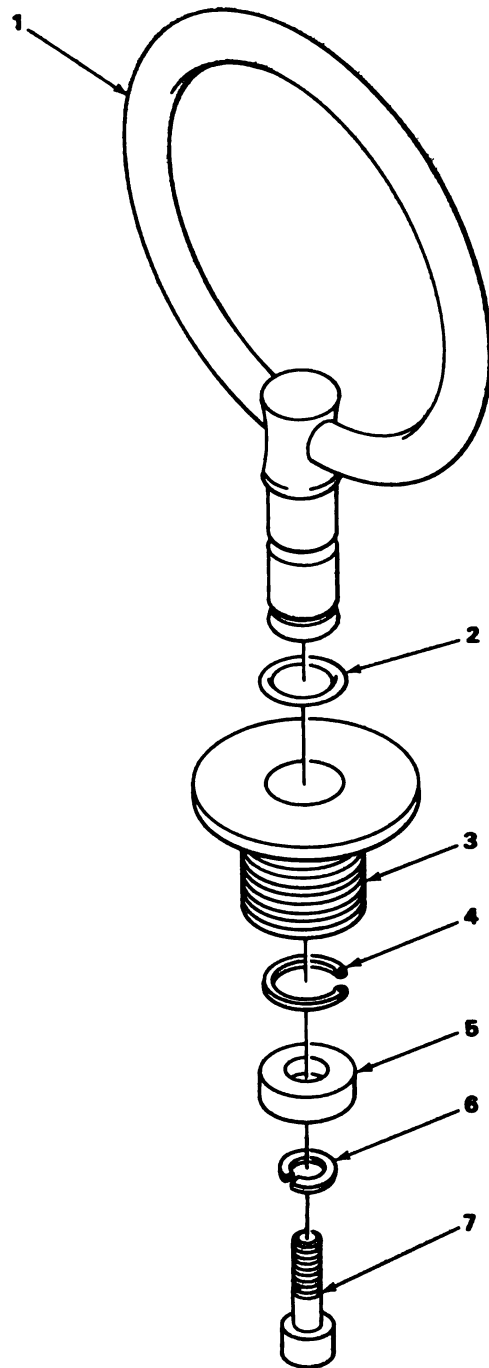
EL9EF015

FIGURE 12. PAN ASSEMBLY, RECESSED STEP.

SECTION II

TM11-5410-212-14P

(1) ILLUS- TRATION		(2)	(3)	(4)	(5)	(6)	(7)	(8)
(a) FIG. NO.	(b) ITEM NO.	SMR CODE	NATIONAL STOCK NUMBER	FSCM	PART NUMBER	DESCRIPTION	USABLE ON CODE	U/M QTY INC IN UNIT
						GROUP 03 PAN ASSEMBLY, RECESSED STEP		
12	1	XBHZZ		19220	AL16175	PAN, RECESSED.....		EA 1
12	2	PAFZZ	5410-00-919-4958	19220	1-575709-50	STEP, FOLDING.....		EA 1
12	3	PAFZZ	5310-00-245-3424	96906	MS17829-5C	NUT, SELF-LOCKING, HE.....		EA 2



EL9EF021

FIGURE 13. LIFTING AND TIE EYE ASSEMBLY.

(1) ILLUS- TRATION		(2)	(3)	(4)	(5)	(6)	(7)	(8)
(a) FIG. NO.	(b) ITEM NO.	SMR CODE	NATIONAL STOCK NUMBER	FSCM	PART NUMBER	DESCRIPTION	USABLE ON CODE	QTY INC IN UNIT
						GROUP 04 LIFTING AND TIE EYE ASSEMBLY		
13	1	PAFZZ		80063	SM-C-564711	RING AND STUD ASSY.....		EA 1
13	2	PAFZZ	5330-00-298-3840	96906	MS29513-014	O-RING.....		EA 1
13	3	PAFZZ		80063	SM-B-564720	COLLAR.....		EA 1
13	4	PAFZZ	5365-00-310-5941	79136	5160-59	RING, RETAINING.....		EA 1
13	5	PAFZZ		80063	SM-B-564719	CAP.....		EA 1
13	6	PAFZZ	5310-00-407-9566	96906	MS35338-45	WASHER, LOCK.....		EA 1
13	7	PAFZZ	5305-00-225-7210	96906	MS16995-62	SCREW, CAP, SOCKET HE.....		EA 1

NATIONAL STOCK NUMBER AND PART NUMBER INDEX

NATIONAL STOCK NUMBER	FIGURE NO.	ITEM NO.	NATIONAL STOCK NUMBER	FIGURE NO.	ITEM NO.
5315-00-008-9066	5	16	5310-00-301-4626	5	23
5315-00-008-9066	9	1	5365-00-301-5349	11	1
5315-00-008-9067	5	18	5365-00-301-5354	1	24
5310-00-014-5847	4	7	5365-00-301-5354	2	4
5310-00-014-5847	7	4	5360-00-302-9910	11	16
5310-00-014-5855	6	19	5365-00-303-0131	9	4
5305-00-021-3620	1	32	5365-00-304-8717	7	1
5310-00-045-4007	11	17	5365-00-304-8717	8	3
5305-00-052-8887	2	1	5365-00-304-8719	10	14
5305-00-052-8887	3	1	5315-00-307-1480	6	17
5305-00-052-8887	6	5	5310-00-307-1519	5	30
5310-00-063-6716	7	21	5310-00-307-1519	9	24
5310-00-063-6716	8	21	5340-00-307-1561	11	15
5305-00-071-2242	1	26	5310-00-308-1238	7	11
5305-00-071-2242	2	9	5310-00-308-1532	6	22
5305-00-072-2241	2	7	5310-00-308-1532	10	13
5310-00-080-6004	6	20	5365-00-310-5941	13	4
4510-00-121-6096	1	9	5315-00-316-6474	10	9
5340-00-133-2134	10	1	5310-00-316-8084	5	2
5306-00-139-7381	11	14	5310-00-316-8084	9	7
5306-00-139-7382	11	6	5310-00-407-9566	13	6
5306-00-152-5495	5	1	5310-00-413-0002	1	30
5306-00-152-5495	9	6	5320-00-417-5827	4	2
5410-00-182-8581	2	10	5305-00-432-4164	11	9
5410-00-182-8583	2	11	3040-00-435-4481	6	18
4010-00-187-3745	1	11	5410-00-435-4482	10	7
5310-00-207-8551	2	14	5340-00-489-0747	6	26
5310-00-208-9255	7	29	5340-00-489-0747	10	8
5310-00-208-9255	8	26	5340-00-526-2168	5	8
5305-00-225-3840	1	21	5340-00-526-2168	9	13
5305-00-225-7210	13	7	5310-00-543-2410	11	3
5340-00-229-5747	5	15	5310-00-543-2628	11	2
5340-00-229-5747	9	16	5310-00-558-8548	3	4
5410-00-231-6429	1	22	5340-00-616-5058	1	25
5410-00-231-6429	2	6	5340-00-616-5058	2	3
5310-00-245-3424	12	3	5315-00-703-9395	10	10
5310-00-245-8826	5	20	5340-00-794-4610	5	27
5310-00-245-8826	9	20	5340-00-794-4610	9	18
5365-00-263-9560	5	22	5310-00-809-4058	3	5
5365-00-263-9560	9	22	5310-00-809-4058	4	8
5310-00-279-9026	5	14	5310-00-809-4058	7	3
5310-00-279-9026	9	2	5310-00-809-4058	8	5
5310-00-286-0565	6	16	5310-00-809-8546	2	13
5315-00-290-5333	11	13	5310-00-809-8546	3	12
5330-00-298-2866	6	9	5340-00-825-5905	2	15
5330-00-298-2866	10	2	5340-00-825-5905	3	14
5330-00-298-2881	7	30	5310-00-840-5381	3	13
5330-00-298-2881	8	15	5315-00-841-4442	5	13
5330-00-298-2895	4	6	5315-00-841-4442	9	3
5330-00-298-2929	7	18	5315-00-842-3044	11	11
5330-00-298-2929	8	18	5315-00-846-8337	5	28
5330-00-298-2942	7	19	5315-00-846-8337	9	17
5330-00-298-2942	8	19	5305-00-855-0836	3	7
5330-00-298-2945	7	32	5305-00-855-0836	4	4
5330-00-298-2945	8	27	5305-00-855-0836	6	21
5330-00-298-3840	13	2	5310-00-869-4199	5	6
3120-00-301-4383	6	14	5310-00-869-4199	9	12
5310-00-301-4558	5	21	5320-00-874-4471	7	14
5310-00-301-4558	9	21	5320-00-874-4471	8	13
			5310-00-880-5977	7	22

NATIONAL STOCK NUMBER AND PART NUMBER INDEX

NATIONAL STOCK NUMBER	FIGURE NO.	ITEM NO.
5305-00-883-0630	7	27
5305-00-883-0630	8	1
5310-00-883-9417	1	27
5310-00-883-9417	2	8
5410-00-919-4958	12	2
5315-00-928-2336	5	29
5315-00-928-2336	9	25
5320-00-932-1972	7	25
5320-00-932-1972	8	24
5310-00-933-8119	7	8
5310-00-933-8121	1	31
5330-00-937-0065	7	13
2540-00-937-0609	1	15
5340-00-937-0610	1	8
5340-00-937-0766	3	3
5340-00-937-0766	4	5
4130-00-937-0789	7	31
4130-00-937-0789	8	28
4010-00-937-0790	1	6
4010-00-937-0791	1	7
4010-00-937-0792	1	5
5340-00-937-0805	10	12
5340-00-937-0806	6	15
5340-00-937-0851	3	6
5340-00-937-0851	4	9
5340-00-937-0852	7	16
5340-00-937-0852	8	2
5340-00-937-0906	1	20
5340-00-937-0907	6	24
5330-00-937-1065	8	14
5330-00-937-1066	6	28
5340-00-950-4099	1	17
5320-00-952-4159	7	24
5320-00-952-4159	8	23
5320-00-952-4161	7	5
5320-00-952-4161	8	9
5305-00-954-4295	2	12
5305-00-954-4295	3	15
5320-00-957-3582	5	12
5305-00-959-2690	2	16
5305-00-959-2690	3	11
5305-00-969-6912	6	1
5305-00-984-4988	11	18
5305-00-984-6193	5	5
5305-00-984-6193	9	10
5305-00-984-6198	7	9
5305-00-984-6198	8	8
5310-00-984-6610	8	6
5340-01-082-3431	5	26
5340-01-082-3431	9	23
5340-01-114-2139	1	4
5340-01-138-9067	6	11
5340-01-142-1790	7	12
5340-01-142-1790	8	4

NATIONAL STOCK NUMBER AND PART NUMBER INDEX

FSCM	PART NUMBER	NATIONAL STOCK NUMBER	FIGURE NO.	ITEM NO.	FSCM	PART NUMBER	NATIONAL STOCK NUMBER	FIGURE NO.	ITEM NO.
07707	AD41H	5320-00-417-5827	4	2	96906	MS35338-40	5310-00-543-2410	11	3
07707	AD42H	5320-00-932-1972	7	25	96906	MS35338-41	5310-00-045-4007	11	17
07707	AD42H	5320-00-932-1972	8	24	96906	MS35338-45	5310-00-407-9566	13	6
11078	AD42S	5320-00-957-3582	5	12	96906	MS35338-82	5310-00-933-8121	1	31
07707	AD45H	5320-00-874-4471	7	14	96906	MS35426-14	5310-00-063-6716	7	21
07707	AD45H	5320-00-874-4471	8	13	96906	MS35426-14	5310-00-063-6716	8	21
07707	AD64S	5320-00-952-4159	7	24	96906	MS35675-41	5315-00-928-2336	5	29
07707	AD64S	5320-00-952-4159	8	23	96906	MS35675-41	5315-00-928-2336	9	25
07707	AD66S	5320-00-952-4161	7	5	96906	MS35690-602	5310-00-543-2628	11	2
07707	AD66S	5320-00-952-4161	8	9	96906	MS35751-162	5306-00-152-5495	5	1
19220	AL16175		12	1	96906	MS35751-162	5306-00-152-5495	9	6
19220	AL3-575709	5340-01-114-2139	1	4	96906	MS51861-25	5305-00-432-4164	11	9
73957	GP1-0625X0875-12	5315-00-316-6474	10	9	96906	MS90725-10	5305-00-072-2241	2	7
98003	HA9455S2RG	5340-00-950-4099	1	17	96906	MS90725-7	5305-00-225-3840	1	21
73957	HS25020-50	5340-00-825-5905	2	15	96906	MS90725-9	5305-00-071-2242	1	26
73957	HS25020-50	5340-00-825-5905	3	14	96906	MS90725-9	5305-00-071-2242	2	9
96906	MS15795-811	5310-00-880-5977	7	22	80063	SC-B-200145	5365-00-263-9560	5	22
96906	MS16228-10C	5310-00-245-8826	5	20	80063	SC-B-200145	5365-00-263-9560	9	22
96906	MS16228-10C	5310-00-245-8826	9	20	80063	SC-B-200146	5310-00-301-4558	5	21
96906	MS16995-62	5305-00-225-7210	13	7	80063	SC-B-200146	5310-00-301-4558	9	21
96906	MS171530	5315-00-841-4442	5	13	80063	SC-B-200150	5310-00-307-1519	5	30
96906	MS171530	5315-00-841-4442	9	3	80063	SC-B-200150	5310-00-307-1519	9	24
96906	MS171536	5315-00-290-5333	11	13	80063	SC-B-200151		5	3
96906	MS171659	5315-00-846-8337	5	28	80063	SC-B-200151		9	8
96906	MS171659	5315-00-846-8337	9	17	80063	SC-B-200153-3		1	23
96906	MS17829-5C	5310-00-245-3424	12	3	80063	SC-B-200153-5		2	5
96906	MS24615-29	5305-00-969-6912	6	1	80063	SC-B-595073	5340-01-082-3431	5	26
96906	MS24615-36	5305-00-883-0630	7	27	80063	SC-B-595073	5340-01-082-3431	9	23
96906	MS24615-36	5305-00-883-0630	8	1	80063	SC-C-200141	5340-00-229-5747	5	15
96906	MS24615-38	5305-00-855-0836	3	7	80063	SC-C-200141	5340-00-229-5747	9	16
96906	MS24615-38	5305-00-855-0836	4	4	80063	SC-C-200154	5410-00-231-6429	1	22
96906	MS24615-38	5305-00-855-0836	6	21	80063	SC-C-200154	5410-00-231-6429	2	6
96906	MS24630-24	5305-00-052-8887	2	1	80063	SC-C-595039		11	12
96906	MS24630-24	5305-00-052-8887	3	1	80063	SC-C-595537		5	7
96906	MS24630-24	5305-00-052-8887	6	5	80063	SC-C-595537		9	11
96906	MS24665-1	5315-00-703-9395	10	10	80063	SC-D-563202GRIX		9	19
96906	MS24665-283	5315-00-842-3044	11	11	80063	SC-D-563202GRVII		5	17
96906	MS27183-10	5310-00-809-4058	3	5		I			
96906	MS27183-10	5310-00-809-4058	4	8	80063	SC-D-563202GRVII		5	19
96906	MS27183-10	5310-00-809-4058	7	3	80063	SC-D-595053		1	13
96906	MS27183-10	5310-00-809-4058	8	5	80063	SM-B-113596-1	5340-00-794-4610	5	27
96906	MS27183-14	5310-00-080-6004	6	20	80063	SM-B-113596-1	5340-00-794-4610	9	18
96906	MS27183-8	5310-00-809-8546	2	13	80063	SM-B-328340		10	6
96906	MS27183-8	5310-00-809-8546	3	12	80063	SM-B-435902	5310-00-279-9026	5	14
96906	MS29513-014	5330-00-298-3840	13	2	80063	SM-B-435902	5310-00-279-9026	9	2
96906	MS35190-287	5305-00-954-4295	2	12	80063	SM-B-435903-1	5315-00-008-9066	5	16
96906	MS35190-287	5305-00-954-4295	3	15	80063	SM-B-435903-1	5315-00-008-9066	9	1
96906	MS35191-280	5305-00-959-2690	2	16	80063	SM-B-435903-2	5315-00-008-9067	5	18
96906	MS35191-280	5305-00-959-2690	3	11	80063	SM-B-442506		5	9
96906	MS35206-245	5305-00-984-6193	5	5	80063	SM-B-442506		9	14
96906	MS35206-245	5305-00-984-6193	9	10	80063	SM-B-442507	5310-00-301-4626	5	23
96906	MS35206-25	5305-00-984-4988	11	18	80063	SM-B-442508		5	24
96906	MS35206-250	5305-00-984-6198	7	9	80063	SM-B-442509	5365-00-303-0131	9	4
96906	MS35225-50	5305-00-984-6198	8	8	80063	SM-B-442511	5365-00-301-5354	1	24
96906	MS35307-7	5305-00-021-3620	1	32	80063	SM-B-442511	5365-00-301-5354	2	4
96906	MS35338-137	5310-00-933-8119	7	8	80063	SM-B-442513	5310-00-316-8084	5	2
96906	MS35338-156	5310-00-869-4199	5	6	80063	SM-B-442513	5310-00-316-8084	9	7
96906	MS35338-156	5310-00-869-4199	9	12	80063	SM-B-499943		5	10
96906	MS35338-158	5310-00-883-9417	1	27	80063	SM-B-499943		9	15
96906	MS35338-158	5310-00-883-9417	2	8	80063	SM-B-499963		7	28

NATIONAL STOCK NUMBER AND PART NUMBER INDEX

FSCM	PART NUMBER	NATIONAL STOCK NUMBER	FIGURE NO.	ITEM NO.	FSCM	PART NUMBER	NATIONAL STOCK NUMBER	FIGURE NO.	ITEM NO.
80063	SM-B-564662		6	13	80063	SM-C-564726	3040-00-435-4481	6	18
80063	SM-B-564668-1		10	15	80063	SM-C-564733		11	5
80063	SM-B-564668-2	5365-00-304-8719	10	14	80063	SM-C-564734		11	7
80063	SM-B-564669	5310-00-308-1532	6	22	80063	SM-C-564735	5340-00-937-0906	1	20
80063	SM-B-564669	5310-00-308-1532	10	13	80063	SM-C-564739GP4	4010-00-187-3745	1	11
80063	SM-B-564675		6	3	80063	SM-C-564739GR1	4010-00-937-0790	1	6
80063	SM-B-564688		5	11	80063	SM-C-564739GR11	4010-00-937-0791	1	7
80063	SM-B-564688		6	8	80063	SM-C-564739GR111	4010-00-937-0792	1	5
80063	SM-B-564702		8	29	80063	SM-C-564758		7	34
80063	SM-B-564719		13	5	80063	SM-C-564758		8	30
80063	SM-B-564720		13	3	80063	SM-C-564781-10	5330-00-937-1066	6	28
80063	SM-B-564727-1	5306-00-139-7382	11	6	80063	SM-C-564784	5340-00-937-0610	1	8
80063	SM-B-564727-2	5306-00-139-7381	11	14	80063	SM-C-564791	5340-01-142-1790	7	12
80063	SM-B-564728	2540-00-937-0609	1	15	80063	SM-C-564791	5340-01-142-1790	8	4
80063	SM-B-564736	5365-00-301-5349	11	1	80063	SM-C-564799		8	20
80063	SM-B-564736		11	4	80063	SM-C-564801		7	26
80063	SM-B-564737	5360-00-302-9910	11	16	80063	SM-C-564801		8	25
80063	SM-B-564738	5340-00-307-1561	11	15	80063	SM-C-564811		4	1
80063	SM-B-564782		2	2	80063	SM-C-564811		6	4
80063	SM-B-564782		3	2	80063	SM-C-564816		8	11
80063	SM-B-564792	5340-00-937-0806	6	15	80063	SM-C-564818		7	15
80063	SM-B-564793	5340-00-937-0766	3	3	80063	SM-C-564818		8	16
80063	SM-B-564793	5340-00-937-0766	4	5	80063	SM-C-564846		6	31
80063	SM-B-564795	5410-00-435-4482	10	7	80063	SM-C-564849	5340-01-138-9067	6	11
80063	SM-B-564802-1	5330-00-298-2929	7	18	80063	SM-C-564856		6	29
80063	SM-B-564802-1	5330-00-298-2929	8	18	80063	SM-D-499939		7	7
80063	SM-B-564802-2	5330-00-298-2945	7	32	80063	SM-D-499948		4	10
80063	SM-B-564802-2	5330-00-298-2945	8	27	80063	SM-D-499952	5410-00-182-8581	2	10
80063	SM-B-564802-3	5330-00-298-2942	7	19	80063	SM-D-499952-1		4	3
80063	SM-B-564802-3	5330-00-298-2942	8	19	80063	SM-D-499952-4	5330-00-298-2895	4	6
80063	SM-B-564804	4130-00-937-0789	7	31	80063	SM-D-499953	5410-00-182-8583	2	11
80063	SM-B-564804	4130-00-937-0789	8	28	80063	SM-D-499953-2		7	17
80063	SM-B-564813		11	8	80063	SM-D-499953-9	5330-00-298-2881	7	30
80063	SM-B-564815		6	12	80063	SM-D-499953-9	5330-00-298-2881	8	15
80063	SM-B-564815		10	4	80063	SM-D-499954		1	10
80063	SM-B-564840		6	23	80063	SM-D-499961		1	14
80063	SM-B-564841	5340-00-937-0805	10	12	80063	SM-D-564701		1	2
80063	SM-B-564843	3120-00-301-4383	6	14	80063	SM-D-564702		7	33
80063	SM-B-564844	5340-00-937-0907	6	24	80063	SM-D-564718		1	19
80063	SM-B-564848		1	28	80063	SM-D-564750		1	1
80063	SM-B-564850		6	6	80063	SM-D-564751		1	3
80063	SM-B-564851-1		7	23	80063	SM-D-564765		3	9
80063	SM-B-564851-1		8	22	80063	SM-D-564768		7	10
80063	SM-B-564851-2		7	6	80063	SM-D-564768		8	7
80063	SM-B-564851-2		8	10	80063	SM-D-564778		1	12
80063	SM-B-564859		1	29	80063	SM-D-564781		1	18
80063	SM-B-564860	5365-00-304-8717	7	1	80063	SM-D-564781-12		6	2
80063	SM-B-564860	5365-00-304-8717	8	3	80063	SM-D-564781-15		6	30
80063	SM-B-564861	5340-00-937-0851	3	6	80063	SM-D-564781-22		6	25
80063	SM-B-564861	5340-00-937-0851	4	9	80063	SM-D-564781-4		3	8
80063	SM-B-564862	5340-00-937-0852	7	16	80063	SM-D-564781-5		6	10
80063	SM-B-564862	5340-00-937-0852	8	2	80063	SM-D-564781-6		6	27
80063	SM-B-615259-7		5	25	80063	SM-D-564781-8		6	7
80063	SM-B-615259-7		9	5	80063	SM-D-564783		1	16
80063	SM-C-318442		11	10	80063	SM-D-564789		3	10
80063	SM-C-318484	4510-00-121-6096	1	9	80063	SM-D-564789-10		10	5
80063	SM-C-374178		7	2	80063	SM-D-564789-11		10	11
80063	SM-C-374178		8	12	80063	SM-D-564789-4		10	16
80063	SM-C-499955		5	4	80063	SM-D-564789-6		8	17
80063	SM-C-499955		9	9					
80063	SM-C-564711		13	1					

NATIONAL STOCK NUMBER AND PART NUMBER INDEX

FSCM	PART NUMBER	NATIONAL STOCK NUMBER	FIGURE NO.	ITEM NO.
80063	SM-D-564799		7	20
80063	SM-D-564819		10	3
80063	SMC564839-128IN	5330-00-937-0065	7	13
80063	SMC564839-128IN	5330-00-937-1065	8	14
03481	S25B260	5310-00-413-0002	1	30
73957	S25020-12	5340-00-616-5058	1	25
73957	S25020-12	5340-00-616-5058	2	3
03481	S8-240	5310-00-308-1238	7	11
95272	01-020	5330-00-298-2866	6	9
95272	01-020	5330-00-298-2866	10	2
19220	1-575709-50	5410-00-919-4958	12	2
73957	16432-12	5340-00-526-2168	5	8
73957	16432-12	5340-00-526-2168	9	13
19220	18-5655-1	5340-00-489-0747	6	26
19220	18-5655-1	5340-00-489-0747	10	8
72962	21NE066	5310-00-014-5855	6	19
72962	21NTU040	5310-00-014-5847	4	7
72962	21NTU040	5310-00-014-5847	7	4
72962	21TU040	5310-00-558-8548	3	4
72962	22NTM02	5310-00-207-8551	2	14
72962	22NTM04	5310-00-840-5381	3	13
79136	5160-59	5365-00-310-5941	13	4
19220	5646-51	5340-00-133-2134	10	1
19220	5646-7	5310-00-286-0565	6	16
72962	79NM02	5310-00-208-9255	7	29
72962	79NM02	5310-00-208-9255	8	26
72962	79NTE040	5310-00-984-6610	8	6
19220	9X121	5315-00-307-1480	6	17

APPENDIX C

MAINTENANCE ALLOCATION CHART

Section I INTRODUCTION

C-1. General

This appendix provides a summary of the maintenance operations for Shelters, Electrical Equipment S-318/G and S-318A/G. It authorizes categories of maintenance for specific maintenance functions on repairable items and components and the tools and equipment required to perform each function. This appendix may be used as an aid in planning maintenance operations.

C-2. Maintenance Functions

Maintenance functions will be limited to and defined as follows:

a. Inspect. To determine the serviceability of an item by comparing its physical, mechanical, and/or electrical characteristics with established standards through examination.

b. Test. To verify serviceability and to detect incipient failure by measuring the mechanical or electrical characteristics of an item and comparing those characteristics with prescribed standards.

c. Service. Operations required periodically to keep an item in proper operating condition, i.e., to clean (includes decontaminate, when required) to preserve, to drain, to paint, or to replenish fuel, lubricants, hydraulic fluids, or compressed air supplies.

d. Align. To adjust specified variable elements of an item to bring about optimum or desired performance.

e. Install. The act of emplacing, seating, or fixing into position an item, part, module (component or assembly) in a manner to allow the proper functioning of the equipment or system.

f. Replace. The act of substituting a serviceable like-type part, subassembly, or module (component or assembly) for an unserviceable counterpart.

g. Repair. The application of maintenance services (inspect, test, service, adjust, align, calibrate, replace) or other maintenance actions (welding, grinding, riveting, straightening, facing, remachining, or resurfacing) to restore serviceability to an item by correcting specific damage, fault, malfunction, or failure in a part, subassembly, module (component or assembly), end item, or system.

h. Overhaul. That maintenance effort (service/action) necessary to restore an item to completely serviceable/operational condition as prescribed by maintenance standards in appropriate technical publications (i.e., DMWR). Overhaul is normally the highest degree of maintenance performed by the Army. Overhaul does not normally return an item to like-new condition.

C-3. Column Entries

a. Column 1, Group Number. Column 1 lists functional group numbers, the purpose of which is to identify components, assemblies, subassemblies, and modules with the next higher assembly.

b. Column 2, Component/Assembly. Column 2 contains the names of components, assemblies, subassemblies, and modules for which maintenance is authorized.

c. Column 3, Maintenance Function. Column 3 lists the functions to be performed on the item listed in column 2. When items are listed without maintenance functions, it is solely for the purpose of having the group numbers in the MAC and RPSTL coincide.

d. Column 4, Maintenance Category. Column 4 specifies, by the listing of a "work time" figure in the appropriate subcolumn(s), the lowest level of maintenance authorized to perform the function listed in column 3. This figure represents the active time required to perform that maintenance function at the indicated category of

maintenance. If the number or complexity of the tasks within the listed maintenance function varies at different maintenance categories, appropriate "work time" figures will be shown for each category. The "work time" figure represents the average time required to restore an item (assembly, subassembly, component, module, end item, or system) to a serviceable condition under typical field operating conditions. This time includes preparation time, troubleshooting time, and quality assurance/quality control time in addition to the time required to perform the specific tasks identified for the maintenance functions authorized in the maintenance allocation chart. Subcolumns of column 4 are as follows:

- C - Operator/Crew
- O - Organizational
- F - Direct Support
- H - General Support
- D - Depot

e. Column 5, Tools and Equipment. Column 5 specifies, by code, those common tool sets (not individual tools) and special tools, TMDE, and support equipment required to perform the designated function.

f. Column 6, Remarks. Column 6 contains an alphabetic code which leads to the remark in section IV, Remarks, which is pertinent to the item opposite the particular code.

C-4. Tool and Test Equipment Requirements (Section III)

a. Tool or Test Equipment Reference Code. The numbers in this column coincide with

the numbers used in the tools and equipment column of the MAC. The numbers indicate the applicable tool or test equipment for the maintenance functions.

b. Maintenance Category. The codes in this column indicate the maintenance category allocated the tool or test equipment.

c. Nomenclature. This column lists the noun name and nomenclature of the tools and test equipment required to perform the maintenance functions.

d. National/NATO Stock Number. This column lists the National/NATO stock number of the specific tool or test equipment.

e. Tool Number. This column lists the manufacturer's part number of the tool followed by the Federal Supply Code for manufacturers (5-digit) in parentheses.

C-5. Remarks (Section IV)

a. Reference Code. This code refers to the appropriate item in section II, column 6.

b. Remarks. This column provides the required explanatory information necessary to clarify items appearing in section II.

**Section II MAINTENANCE ALLOCATION CHART
FOR
Shelter, Electrical Equipment S-318/G and S-318A/G**

(1) GROUP NUMBER	(2) COMPONENT/ ASSEMBLY	(3) MAINTENANCE FUNCTION	(4) MAINTENANCE CATEGORY					(5) TOOLS AND EQPT	(6) REMARKS
			C	O	F	H	D		
00	SHELTER, ELECTRICAL EQUIPMENT S-318/G AND S-318A/G	Inspect		0.5					A B C D E F
		Service		0.5				1	
		Repair		0.5				1	
		Repair			1.0			1,2,3	
		Repair				2.0		1,2,3	
		Repair					8.0	4	
01	DOOR ASSEMBLY	Replace			0.5			1,2	G H
		Repair			0.5			1,2	
		Repair				1.0		1,2	
0101	LARGE DOOR ASSEMBLY	Replace				1.0			
		Repair				1.0			
010101	LARGE DOOR LATCH ASSEMBLY	Replace				1.0			
		Repair				1.0			
0102	SMALL DOOR ASSEMBLY	Replace				1.0			G H
		Repair			0.5				
		Repair				1.0			
010201	SMALL DOOR LATCH ASSEMBLY	Replace				1.0			
		Repair				1.0			
02	DOOR BRACE ASSEMBLY	Repair			0.5			1,2	
03	PAN ASSEMBLY RECESSED STEP	Repair			0.5			1,2	J
04	LIFTING & TIE EYE ASSEMBLY	Replace			0.5			1,2	I

**Section III TOOL AND TEST EQUIPMENT REQUIREMENTS
FOR
SHELTER, ELECTRICAL EQUIPMENT, S-318/G AND S-318A/G**

TOOLS OR TEST EQUIPMENT REF CODE	MAINTENANCE CATEGORY	NOMENCLATURE	NATIONAL/NATO STOCK NUMBER	TOOL NUMBER
1	F,H,D,O	TOOLS AND MATERIALS LISTED IN TB 43-0124		
2	F,H	TOOL KIT, GENERAL MECHANICS	5180-00-978-2276	
3	F,H	TOOL KIT, ELECTRONIC EQUIPMENT SHELTER TK-144/G	5180-00-973-4369	
4.	D	DEPOT FACILITIES		

Section IV REMARKS

Reference Code	Remarks
A	Visual inspection.
B	Preventive maintenance. Lubricate door hinges, latch mechanism and stop. Clean interior and exterior, paint touchup and change air filter.
C	Temporary repair of minor skin punctures. Replace individual sling assemblies.
D	Permanent skin patches (punctures not to exceed 4 3/4" x 10 3/4"). Replace threaded parts, drain plug and attached parts.
E	Repair of larger skin punctures and delaminated skin. Replacement of skid assembly.
F	Repair during the overhaul of an end item of which the shelter is part.
G	Replace rain flap, EMI and weather gaskets, directional vane and honeycomb assemblies.
H	Replace all parts.
i	Replace ring assembly.
J	Replace step.

NOTE

Refer to maintenance and repair procedure manual, TB 43-0124 for the above maintenance procedures.

By Order of the Secretary of the Army:

Official:

JOHN A. WICKHAM JR.
General, United States Army
Chief of Staff

ROBERT M. JOYCE
Major General, United States Army
The Adjutant General

DISTRIBUTION:

To be distributed in accordance with DA Form 12-51C requirements
for S-318/G.

RECOMMENDED CHANGES TO EQUIPMENT TECHNICAL PUBLICATIONS



THEN... JOT DOWN THE DOPE ABOUT IT ON THIS FORM. CAREFULLY TEAR IT OUT. FOLD IT AND DROP IT IN THE MAIL!

SOMETHING WRONG WITH THIS PUBLICATION?

FROM (PRINT YOUR UNIT'S COMPLETE ADDRESS)
 Commander
 Stateside Army Depot
 ATTN: AMSTA-US
 Stateside, N.J. 07703

DATE SENT
 10 July 1975

PUBLICATION NUMBER TM 11-5840-340-12	PUBLICATION DATE 23 Jan 74	PUBLICATION TITLE Radar Set AN/PRC-76
---	-------------------------------	--

BE EXACT. PIN-POINT WHERE IT IS

PAGE NO	PARA-GRAPH	FIGURE NO	TABLE NO
2-25	2-28		
3-10	3-3		3-1
5-6	5-8		

IN THIS SPACE TELL WHAT IS WRONG AND WHAT SHOULD BE DONE ABOUT IT:

Recommend that the installation antenna alignment procedure be changed throughout to specify a 2° IFF antenna lag rather than 1°.

REASON: Experience has shown that with only a 1° lag, the antenna servo system is too sensitive to wind gusting in excess of 25 knots, and has a tendency to rapidly accelerate and decelerate as it hunts, causing strain to the drive train. Hunting is minimized by adjusting the lag to 2° without degradation of operation.

Item 5, Function column. Change "2 db" to "3db."

REASON: The adjustment procedure for the TRANS POWER FAULT indicator calls for a 3 db (500 watts) adjustment to light the TRANS POWER FAULT indicator.

Add new step f.1 to read, "Replace cover plate removed in step e.1, above."

REASON: To replace the cover plate.

Zone C 3. On J1-2, change "+24 VDC to "+5 VDC."

REASON: This is the output line of the 5 VDC power supply. +24 VDC is the input voltage.

F03 S

PRINTED NAME, GRADE OR TITLE, AND TELEPHONE NUMBER
 SSG I. M. DeSpiritof 999-1776

SIGN HERE

DA FORM 2028-2
 1 JUL 79

PREVIOUS EDITIONS ARE OBSOLETE.

PS --IF YOUR OUTFIT WANTS TO KNOW ABOUT YOUR RECOMMENDATION MAKE A CARBON COPY OF THIS AND GIVE IT TO YOUR HEADQUARTERS

FILL IN YOUR
UNIT'S ADDRESS

FOLD BACK

DEPARTMENT OF THE ARMY

OFFICIAL BUSINESS

Commander
US Army Communications-Electronics
Command and Fort Monmouth
ATTN: DRSEL-ME-MP
Fort Monmouth, N.J. 07703

TEAR ALONG PERFORATED LINE

RECOMMENDED CHANGES TO EQUIPMENT TECHNICAL PUBLICATIONS



THEN... JOT DOWN THE DOPE ABOUT IT ON THIS FORM. CAREFULLY TEAR IT OUT. FOLD IT AND DROP IT IN THE MAIL!

SOMETHING WRONG WITH THIS PUBLICATION?

FROM: (PRINT YOUR UNIT'S COMPLETE ADDRESS)

DATE SENT

PUBLICATION NUMBER
TM 11-5410-212-14P

PUBLICATION DATE
25 June 1984

PUBLICATION TITLE
SHELTER, ELECTRICAL EQUIPMENT
S-318/G AND S-318/AG

BE EXACT... PIN-POINT WHERE IT IS

IN THIS SPACE TELL WHAT IS WRONG AND WHAT SHOULD BE DONE ABOUT IT:

PAGE NO	PARA-GRAPH	FIGURE NO	TABLE NO

PRINTED NAME, GRADE OR TITLE, AND TELEPHONE NUMBER

SIGN HERE



