

RESTRICTED

M5-013

DEPARTMENT OF THE ARMY
SUPPLY CATALOG

ORD 7 SNL G-503

GROUP G

ORGANIZATIONAL MAINTENANCE ALLOWANCES

FOR

TRUCK, 1/4-TON, 4 X 4,
COMMAND RECONNAISSANCE
(FORD, MODEL GPW; WILLYS, MODEL MB)

Supersedes ORD 7 SNL G-503, 13 October 1949, including C 1, 21 February 1950, C 2, 14 April 1950, and C 3, 26 October 1950

Ref; TM 9-803

THIS CATALOG IS CORRECT TO 28 MAY 1951

DEPARTMENT OF THE ARMY

JUNE 1951

RESTRICTED

DEPARTMENT OF THE ARMY
WASHINGTON 25, D.C., 28 June 1951

Department of the Army Supply Catalog ORD 7 SNL G-503 is published for the information and guidance of all concerned.

[AG 461 (14 Jun 51)]

BY ORDER OF THE SECRETARY OF THE ARMY:

OFFICIAL:

WM. E. BERGIN
Major General, USA
Acting The Adjutant General

J. LAWTON COLLINS
Chief of Staff, United States Army

DISTRIBUTION:

Tech Svc (1); Arm & Svc Bd (2); AFF (2); AA Comd (2); OS Maj Comd (10); Base Comd (2); MDW (3); Log Comd (5); A (20); CHQ (2); D (2); B 5 (1); R 2, 5, 7 (1), 9 (2); Bn 2, 3, 5-8 (1), 9 (2), 10, 11, 17, 19, 44, 55 (1); C 2-8 (1), 9 (2), 10, 11, 17, 19, 44, 55 (1); FC (2); Sch (5) except 9 (50); Gen Dep (2); Dep 9 (10); PE (Ord 0) (5), OSD (2); PG 9 (10); Ars 9 (10); Dist 9 (10); SPECIAL DISTRIBUTION.

For explanation of distribution formula, see SR 310-90-1.

CONTENTS

	<i>Page</i>
INTRODUCTION.....	2
SET, ON VEHICLE MATERIAL.....	5
SPARE PARTS FOR TRUCK.....	5
TOOLS AND EQUIPMENT FOR TRUCK.....	5
EQUIPMENT ISSUED BY OTHER TECHNICAL SERVICES.....	5
ORGANIZATIONAL SPARE PARTS FOR TRUCK:	
GROUP 01—ENGINE.....	6
GROUP 02—CLUTCH.....	19
GROUP 03—FUEL SYSTEM.....	21
GROUP 04—EXHAUST SYSTEM.....	27
GROUP 05—COOLING SYSTEM.....	30
GROUP 06—ELECTRICAL SYSTEM.....	32
GROUP 07—TRANSMISSION.....	51
GROUP 08—TRANSFER.....	51
GROUP 09—PROPELLER SHAFT.....	53
GROUP 10—FRONT AXLE.....	54
GROUP 11—REAR AXLE.....	56
GROUP 12—BRAKES.....	57
GROUP 13—WHEELS, HUBS, AND DRUMS.....	66
GROUP 14—CONTROLS.....	68
GROUP 15—FRAME AND BRACKETS.....	73
GROUP 16—SPRINGS AND SHOCK ABSORBERS.....	73
GROUP 17—HOOD, FENDERS AND SPLASH SHIELDS.....	77
GROUP 18—BODY.....	79
GROUP 20—CAPSTAN.....	83
GROUP 22—MISCELLANEOUS ACCESSORIES.....	84
ORGANIZATIONAL TOOLS AND EQUIPMENT FOR TRUCK.....	91
MISCELLANEOUS MATERIAL.....	92
TOOLS AND EQUIPMENT FOR TRUCK.....	92
ARMAMENT FOR TRUCK.....	92
EQUIPMENT ISSUED BY OTHER TECHNICAL SERVICES.....	93
ARTICLES FOR INSTRUCTIONAL PURPOSES.....	93
APPLICABLE CLEANING AND PRESERVING MATERIALS.....	94
NOTES.....	96

MAJOR ITEM

The Truck, $\frac{1}{4}$ -ton, 4 x 4, command reconnaissance (Ford, Model GPW; Willys, Model MB) is stored, issued, and reviewed under ORD 3 SNL G-1. This major item is nonexpendable.

INTRODUCTION

1. GENERAL. *a.* This is a list of spare parts and equipment issued to the *using* arm or service for operation of the matériel and for performing organizational maintenance. It supplements tables of organization and equipment, tables of basic allowances, and tables of allowances.

b. The Federal Item Identification Number column lists those numbers approved by the Munitions Board Cataloging Agency. These numbers should not be confused with Federal Standard Stock catalog numbers which are utilized by the Ordnance Corps for tools, lubricants, etc.

c. An explanation of symbols used throughout this catalog is included under NOTES.

d. Ordnance installations will find classification codes in ORD 5-2, Alphabetical Index to Stock List of All Items, for Federal stock numbers listed herein.

e. Additional applications of items listed in this publication, if any, are contained in the Department of the Army Supply Catalog ORD 5-5 series.

f. For prices of items contained herein, see the appropriate catalog of the ORD 5-3 series.

g. For full information relative to the Ordnance Section of the Department of the Army Supply Catalog, including its purposes and uses, the procedure followed, and the principles employed in its compilation, see ORD 1.

2. REQUISITION NOTE. *a.* If the exact item requisitioned is not furnished or other action is necessary, the action taken by the supplying agency will be indicated on prescribed forms by standard symbols explaining the exact nature of the action.

b. When requisitioning an item containing the note "Issue until stock is exhausted, then use," the requisitioning agency will requisition the item being exhausted and not the superseding item, whether the supersession is to an individual item or to a kit, set, or assembly. All requisitions received by supplying agencies will be processed accordingly.

c. Requisitions for replacement of items which are the responsibility of technical services other than the Ordnance Corps will be submitted to that technical service indicated in the reference symbol column.

3. UNIT OF ISSUE. The Unit of Issue column lists the unit of issue used for each item. This may be in the form of an actual unit of issue, such as "oz," "lb," etc, or merely by the use of "each" designated by "ea."

4. QUANTITY INCORPORATED IN UNIT. The Quantity Incorporated in Unit column lists quantities for the following: *a.* For vehicle spare parts which are not indented, the quantity indicates the number of those parts required for the particular use indicated by the subgroup title only. These quantities do *not* indicate the total quantities of the parts required for the major item since the part may be used in more than one subgroup.

b. For vehicle spare parts which are indented (attaching parts), the quantity indicates the number of those parts required for attaching the item under which the attaching part is listed. These quantities do *not* indicate the total quantities of the attaching parts required for the major item or subgroup since the attaching parts may be used in more than one subgroup and may also be used more than once within a subgroup.

5. PLAN FOR MAINTENANCE. *a.* Maintenance operations to be performed are indicated by the spare parts herein authorized for initial issue or by a symbol signifying authority to requisition them for organizational maintenance.

b. Where the same part is common to two or more vehicles assigned to the same unit, the part should be issued on the basis of the total number of vehicles to which the part applies.

6. MAJOR ITEM DESIGNATION. The major item covered by this catalog is designated as a general purpose vehicle, as defined in SR 700-110-1.

7. COMPONENTS OF KITS, SETS, AND ASSEMBLIES. Whenever any doubt might exist as to what items are included as components of kits, sets, or assemblies, an explanatory note or complete listing of such components is shown.

8. ATTACHING PARTS. Attaching parts, such as bolts, nuts, screws, washers, etc, are indented immediately under the item which they attach. Whenever similar items having the same attaching parts, such as front and rear oil seal retainers, are listed, they are placed one immediately following the other and the attaching parts for both are covered by a single listing under the second item.

9. DEFINITION OF LOCATIONAL TERMS. All like parts pertinent to the vehicle which are not interchangeable are designated *left* or *right* with respect to the vehicle when it is viewed from the rear facing forward. The front of the vehicle is the direction faced by the driver. All engine parts, *left* or *right*, *front* or *rear*, are designated from a position at the rear of the engine facing forward. The flywheel end is the rear of the engine.

10. DESCRIPTION. All items are listed with their complete nomenclature, with the exception noted in *a* below. *a.* Items appearing within a subgroup that lists components of and items related to only 1 assembly or subassembly automatically assume as part of their official nomenclature the title of the pertinent subgroup. (Example—"GASKET, sediment bowl," is an entry in subgroup 0302. The complete nomenclature of the item is "GASKET, fuel pump sediment bowl," "Fuel Pump" being the subgroup title.) Exceptions to this rule are those items which have SNL type reference symbols other than "G," or items which have dimensional nomenclature, or items in which the noun is identical to the subgroup heading.

b. Items appearing within a subgroup that lists *more than one* assembly or *more than one* group of related items, are listed with their complete nomenclature (Example—"SWITCH, ignition, assembly" is an entry in subgroup 0607. The complete nomenclature of the item is as shown, while the title of the subgroup is "Instrument Panel Gages, Switches, and Circuit Breakers.")

11. ABBREVIATIONS. The following abbreviations appear in this catalog:

adj.....	adjustable, adjusting	hv-duty.....	heavy duty
alloy-S.....	alloy steel	ID.....	inside diameter
al-oxide.....	aluminum oxide	in.....	inch (es)
amp.....	ampere	incand.....	incandescent
assy.....	assembly	jt.....	joint
AWG.....	American Wire Gage	lb.....	pound (s)
bbl.....	barrel	lg.....	long
bn.....	battalion	lgh.....	length
br.....	brass	LH.....	left hand
brg.....	bearing	lt.....	light
btry.....	battery	lubr.....	lubrication
cal.....	caliber	mach.....	machine
cand-bay-base.....	candelabra bayonet base	med.....	medium
cap.....	capacity	mfd.....	microfarad
cd.....	cadmium	mfr's.....	manufacturer's
comp.....	complete	min.....	miniature
cop.....	copper	min-bay-base.....	miniature bayonet base
cp.....	candlepower	mm.....	millimeter
dbl-tun-fil.....	double tungsten filament	mmfd.....	micromicrofarad
dc.....	direct current	MWO.....	Modification Work Order
deg.....	degree	N.....	National Thread Form
diam.....	diameter	NC.....	National Coarse Thread
elec.....	electric, electrical	neg.....	negative
ext-teeth.....	external teeth (lock washer)	NF.....	National Fine Thread
fil.....	filament	NPT.....	National Taper Pipe Thread
fil-hd.....	fillister head	NS.....	National Form Thread, Special Pitch
flex.....	flexible	od.....	olive drab
ft.....	foot	OD.....	outside diameter
gal.....	gallon	opng.....	opening (s)
hex.....	hexagonal	oz.....	ounce (s)
hex hd.....	hexagon head	phos-ctd.....	phosphate coated
hdl.....	handle	pkg.....	package
hr.....	hour	pos.....	positive
hv.....	heavy	pr.....	pair

pt. pint
 pt. point
 qt. quart
 rd. round
 rd-end. round end
 rd-pt. round point
 rect. rectangular
 RH. right hand
 rtc. ratchet
 S. steel
 SAE. Society of Automotive Engineers
 sgle. single
 sgle-hd. single head
 sgle-tun-fil. single tungsten filament
 s-fin. semifinished

sp. special
 sq. square
 sq-hd. square head
 SR. Special Regulations
 stght. straight
 thd. thread, threaded
 thk. thick
 tnd. tinned
 trp. troop
 v. volt
 w/. with
 w/o. without
 yd. yard
 zn-pltd. zinc plated

12. MANUFACTURERS' SYMBOLS. The following is a list of symbols preceding the part number for manufacturers appearing in this catalog:

<i>Symbol</i>	<i>Manufacturer</i>
AC	A C Spark Plug Div (GMC)
AL	Electric Auto-Lite Co (The)
BX	Bendix Products Div
CA	Columbus Auto Parts Co
CB	The Electric Auto Lite Co, Lamp Div
CNC	Cinch Mfg Corp
DM	Douglas Mfg Co
DTC	Tobe Deutschmann Corp
FM	Ford Motor Co
FR	Fram Corp
HH	Houdaille Hershey Corp
HLH	Holland Hitch Co
HP	Harris Products Co
HR	Harrison Radiator Div
KHW	Kelsey Hayes Wheel Co
KS	Kings-Seely Corp

<i>Symbol</i>	<i>Manufacturer</i>
LK	Link-Belt Co
LO	Wagner Electric Co
MAE	Monroe Auto Equipment Co
MW	Motor Wheel Corp
PU	Purolator Products, Inc
RG	Ross Gear & Tool Co
RMC	Rich Mfg Corp
SP	Dana Corp
SPW	Sparks-Withington Co
TP	Thompson Products, Inc
TRI	Trico Products Corp
TRU	American Chain & Cable Co
WEB	Warner-Electric Brake Mfg Co
WG	Warner Gear Div
WO	Willys-Overland Motors, Inc

13. SUGGESTIONS. Notice of discrepancies or suggested changes should be directed to the Chief of Ordnance, Washington 25, D.C., ATTENTION: ORDFM-Pub.

(1)	(2)	(3)	(4)	(5)	(6)	(7)
STOCK NO.	MANUFACTURER'S PART NO.	ORDNANCE PART NO.	DESCRIPTION	UNIT OF ISSUE	ORGANIZATIONAL ALLOWANCES PER SET ON VEHICLE MATERIAL 5701321	REFERENCE SYMBOLS
			SET, ON VEHICLE MATERIAL			
			The set listed hereunder is issued initially with the major item.			
G503-5701321	5701321	SET, on vehicle material ¹	set	NX
			A complete list of components of this set are listed under the subheadings below. These components may be requisitioned separately, for replacement purposes, under their individual stock number.			
			SPARE PARTS FOR TRUCK			
G503-7387807	KHW-33702 WO-801762	7387807	RIM, w/DISK (16 x 4.50 E, safety type).	ea	1	X
H014-0511250	511250	TIRE, pneumatic, truck and bus, 6-ply, mud and snow tread, 6.00-16 (new).	ea	1	H-14 X
H014-0519246	519246	TUBE, pneumatic tire, truck and bus, 6.00-16 (new).	ea	1	H-14 X
			TOOLS AND EQUIPMENT FOR TRUCK			
41-B-15	41-B-15	BAG, tool, empty.....	ea	1	J-17 NX
			CATALOG, ORD 7 SNL G-503, Organizational Maintenance Allowances ² .	ea	1	AG X
			FORM (ENVELOPE), WDAGO No. 478 MWO and major unit assy replacement record and organizational equipment file ² .	ea	1	AG NX
41-J-66	41-J-66	JACK, automobile, screw type, cap 1½ ton.	ea	1	J-17 NX
			MANUAL, technical, 9-803 ²	ea	1	AG X
			ORDER, lubr, 9-803 ²	ea	1	AG X
41-P-1652	41-P-1652	PLIERS, comb, slip jt, w/cutter, nominal size 8 in.	ea	1	J-17 NX
41-S-1076	41-S-1076	SCREWDRIVER, common, hv-duty, integral hdl, lgh of blade 6 in., width of blade ⅜ in., lgh overall 11¼ in.	ea	1	J-17 NX
41-W-487	41-W-487	WRENCH, adj, sgle open end, jaw opng 1⅝ in., lgh 10 in.	ea	1	J-17 NX
41-W-1962-50	41-W-1962-50	WRENCH, plug, stght, bar, sq, size of plug ⅜ in., lgh overall 2½ in. (drain and filler plugs).	ea	1	J-17 NX
41-W-3837-25	41-W-3837-25	WRENCH, wheel stud nut, sgle-hd off-socket, hex, size of opng ¾ in., lgh 9¼ in.	ea	1	J-17 NX
			EQUIPMENT ISSUED BY OTHER TECHNICAL SERVICES			
58-1603.010-700	BRACKET, fire extinguisher, carbon tetrachloride, 1 qt (wall type).	ea	1	ENG X
58-4276.300-005	EXTINGUISHER, fire, carbon tetrachloride, hand, 1 qt, w/o brackets ³ .	ea	1	ENG NX

For explanation of footnotes, see NOTES, page 96.

(1) STOCK NO.	(2) FEDERAL ITEM IDENTIFI- CATION NO.	(3) MANUFACTURER'S PART NO.	(4) ORDNANCE PART NO.	(5) DESCRIPTION	(6) UNIT OF ISSUE	(7) QUAN- TITY IN CORP. IN UNIT	(8) ORGANIZATIONAL ALLOWANCES				(9) REFERENCE SYMBOLS	
							NO. OF MAJOR ITEMS PER					
							1-15 (a)	16-35 (b)	36-85 (c)	86-185 (d)		
				ORGANIZATIONAL SPARE PARTS FOR TRUCK—Continued								
				GROUP 01—ENGINE—Continued								
				0101—Cylinder Head and Block—Continued								
G503-7741411		WO-640149	7741411	HEAD, cylinder, assy—Continued	ea	1	%	%	%			X
G503-7371138		WO-A1548 FM-GPW6067	7371138	STUD, S, cd or zn-pltd, $\frac{7}{16}$ -14NC x $\frac{7}{16}$ -20NF x $3\frac{3}{8}$.	ea	1	%	%	%			X
G503-7324919		WO-376373	7324919	PLUG, pipe, countersunk, $\frac{3}{8}$ in (cylinder block oil line).	ea	2			X
				0102—Crankshaft								
G503-7371228		WO-334103 FM-GPW6353	7371228	GASKET, oil slinger (Used w/ENGINES WO-A1388 and WO-A5497).	ea	1	1			X
G503-7371163		WO-387633 FM-GPW6319	7371163	NUT, front w/PIN, assy (hand crank).....	ea	1	%			X
G503-7371280		WO-637098 FM-GPW6700	7371280	PACKING, front end (in chain cover) (Used w/ENGINES WO-A1388 and WO- A5497).	ea	1	1			X
G503-7371162		WO-638113 FM-GPW6312	7371162	PULLEY, fan and generator drive (used on vehicles equipped with 6 volt generator) (issue until stock is exhausted, then use PULLEY 7744470).	ea			X
G503-7744470		WO-645623	7744470	PULLEY, fan and generator drive (used on vehicles equipped with 6 volt generator).	ea	1	%			X
G503-7713390		FM-GPWS6312	7713390	PULLEY, fan and generator drive (used on vehicles equipped with 12 volt generator).	ea	1	%			X
G503-7371158		WO-375920 FM-GPW6287	7371158	RETAINER, (front) packing (used w/EN- GINES WO-A1388 and WO-A5497).	ea	1	1			X
G503-7744469		WO-643839	7744469	SEAL, oil, front (used w/ENGINES WO- 646865, WO-647845, and WO-804050) (issue until stock is exhausted, then use SEAL 7375028).	ea			X
G740-7375028		WO-647468	7375028	SEAL, oil, front (used w/ENGINES WO- 646865, WO-647845, and WO-804050).	ea	1	1			X

G503-7371376	WO-A1124	7371376	SHIELD (fan drive) pulley.....	ea	1	%	%	X
G503-7371226	WO-630262	7371226	SHIM, adj (front) (0.002).....	ea	†	1	1	X
G503-7371161	FM-GPW6342B	7371161	SLINGER, oil.....	ea	1	1	1	X
G503-7743818	FM-GPW6310	7743818	WASHER, fan pulley shield retaining bolt.....	ea	6	%	%	X
G503-7336451	WO-A6701	7336451	WASHER (fan) pulley shield.....	ea	6	%	%	X
G503-7371160	WO-A1125	7371160	WASHER, thrust.....	ea	1	1	1	X
	WO-634796							
	FM-GPW6308							
			0103—Flywheel					
G503-7371501	WO-375217	7371501	COVER (housing) timing hole.....	ea	1	%	%	X
H101-0172427		172427	SCREW, tapping, ¼-20NC-2 x ½.....	ea	1	%	%	X
H001-7025681		120380	WASHER, lock, ¼ in.....	ea	1	%	%	X
			0105.1—Valves					
G740-7375032	WO-800827	7375032	CAP, rotator (exhaust).....	ea	4	%	1	X
G740-7375033	WO-800826	7375033	LOCK (exhaust), valve spring retainer.....	ea	8	%	2	X
G503-7371238	WO-375994	7371238	LOCK (intake), valve spring retainer, lower.....	ea	8	%	2	X
	FM-GPW6546							
G740-7375034	WO-800828	7375034	RETAINER (exhaust), valve spring.....	ea	4	%	1	X
G503-7371236	WO-637044	7371236	RETAINER (intake), valve spring, lower.....	ea	4	%	1	X
G503-7371235	FM-GPW6514	7371235	SPRING.....	ea	8	%	1	X
G503-7036580	WO-638636	7036580	VALVE, exhaust (issue until stock is exhausted, then use VALVE 7375035, CAP 7375032, LOCK 7375033, and RETAINER 7375034).	ea			†	X
	FM-GPW6513							
	RMC-A366							
	WO-637183							
	FM-GPW6505							
G740-7375035	WO-800829	7375035	VALVE, exhaust (rotor type).....	ea	4	%	1	X
G503-7036579	RMC-A365	7036579	VALVE, intake.....	ea	4	%	1	X
	WO-637182							
	FM-GPW6507							
G503-7368266	WO-639044	7368266	COVER, (compartment) (issue until stock is exhausted, then use COVER 7371237).	ea			†	X
G503-7371237	FM-GPW6519	7371237	COVER, valve spring (compartment).....	ea	1	%	%	X
G503-7741420	WO-630303	7741420	BOLT, hex-hd, S, ⅝-18NC x 3¼ (Used w/ENGINES WO-646865 and WO-647845).	ea	1	%	%	X
G503-7741421	WO-6455093							
	WO-645094	7741421	BOLT, hex-hd, S, ⅝-18NC-2 x ⅜ (Used w/ENGINES WO-646865 and WO-647845).	ea	1	%	%	X
G503-7324839	WO-639052	7324839	BOLT, hex-hd, S, ⅝-18NC-2 x 3¼ (rear) (Used w/ENGINES WO-A1388 and WO-A5497).	ea	1	%	%	X
	FM-355452S							

(1) STOCK NO.	(2) FEDERAL ITEM IDENTIFI- CATION NO.	(3) MANUFACTURER'S PART NO.	(4) ORDNANCE PART NO.	(5) DESCRIPTION	(6) UNIT OF ISSUE	(7) QUAN- TITY IN CORP. UNIT	(8) ORGANIZATIONAL ALLOWANCES				(9) REFERENCE SYMBOLS
							NO. OF MAJOR ITEMS PER				
							1-15 (a)	16-35 (b)	36-85 (c)	86-186 (d)	
ORGANIZATIONAL SPARE PARTS FOR TRUCK—Continued											
GROUP 01—ENGINE—Continued											
0105.2—Tappets—Continued											
				COVER, valve spring—Continued							
G503-7324838		WO-632158 FM-355451S	7324838	BOLT, hex-hd, S, $\frac{5}{16}$ -18NC-2 x $4\frac{1}{8}$ (front) (Used w/ENGINES WO- A1388 and WO-A5497).	ea	1	%	%	%		X
G503-0194032		WO-51875 FM-GPW6555A		GASKET, valve (compartment), cover bolt (also available as part of GASKET SETS 7744322 and 7371419).	ea	2	1	1	1		X
G503-0194022		WO-630305 FM-GPW6521		GASKET, valve spring (compartment), cover (also available as part of GASKET SETS 7744322 and 7371419).	ea	1	1	1	1		X
G503-7371258		WO-640020 FM-GPW6549B	7371258	SCREW, adjusting, valve tappet (clearance).	ea	8	%	%	1		X
0105.3—Camshaft											
G503-7741408		WO-641055	7741408	PLATE, thrust (Used w/ENGINES WO- 646865, WO-647845, and WO-804050) (issue until stock is exhausted, then use PLATE 7744320).	ea					†	X
G503-7744320		WO-644963	7744320	PLATE, thrust (Used w/ENGINES WO- 646865, WO-647845, and WO-804050).	ea	1			1		X
H001-5454521			180120	SCREW, cap, $\frac{3}{8}$ -16NC-3 x $\frac{3}{4}$	ea	2			%		X
H001-7017681			138489	WASHER, lock, external teeth, $\frac{3}{8}$ in....	ea	2			%		X
G503-7371153		WO-375907 FM-GPW6243	7371153	PLUNGER, thrust (Used w/ENGINES WO-A1388 and WO-A5497).	ea	1			1		X
G503-7741407		WO-641049	7741407	SPACER, thrust plate (Used w/ENGINES WO-686865, WO-647845, and WO- 804050).	ea	1			1		X
G503-7371154		WO-375908 FM-GPW6244	7371154	SPRING, thrust plunger (Used w/EN- GINES WO-A1388 and WO-A5497).	ea	1			1		X

G503-7371155	WO-375900 FM-GPW6245	7371155	WASHER, thrust (sprocket) (Used w/ENGINES WO-A1388 and WO-A5497).	ea	1	1	1	X
G503-7036574	LK-S40936 WO-638457 FM-GPW6260	7036574	0105.5—Timing Chain and Gears CHAIN, drive, camshaft (timing) (Used w/ENGINES WO-A1388 and WO-A5497).	ea	1	1	1	X
G503-7371087	FM-GPW6016	7371087	COVER, timing chain, assy (Used w/ENGINES WO-A1388 and WO-A5497) (issue until stock is exhausted, then use COVER 7371135).	ea	1	†	1	X
G503-7371135	WO-A1190 FM-GPW6054	7371135	COVER, timing chain, assy (Used w/ENGINES WO-A1388 and WO-A5497).	ea	1	1	1	X
G503-7741409	WO-643842B	7741409	COVER, timing gear, assy (Used w/ENGINES WO-646865, WO-647845, and WO-804050).	ea	1	1	1	X
H001-5455221	018-1635	181635	BOLT, mach, $\frac{3}{8}$ -24NF-3 x $\frac{3}{4}$	ea	3	%	%	X H-1
H001-5455261	018-1637	181637	BOLT, mach, $\frac{3}{8}$ -24NF-3 x 1.....	ea	1	%	%	X H-1
H001-4027541	225831	NUT, hex, $\frac{3}{8}$ -24NF-2.....	ea	8	%	%	X H-1
H001-1312481	113237	STUD, $\frac{3}{8}$ -16NC ($\frac{1}{16}$) x $\frac{3}{8}$ -24NF-2 ($\frac{5}{8}$) x $1\frac{1}{16}$	ea	4	%	%	X H-1
H001-7025741	120382	WASHER, lock, $\frac{3}{8}$ in.....	ea	8	%	%	X H-1
G503-7371088	WO-630359 FM-GPW6020	7371088	GASKET, front plate to cylinder block (Used w/ENGINES WO-A1388 and WO-A5497).	ea	1	1	1	X
G503-7741427	WO-641096	7741427	GASKET, front plate to cylinder block (Used w/ENGINES WO-646865, WO-647845, and WO-804050).	ea	1	1	1	X
G503-7371159	WO-630365 FM-GPW6288	7371159	GASKET, timing chain (or gear) cover.....	ea	1	1	1	X
G503-7741419	WO-641283	7741419	GEAR, driven, camshaft (Used w/ENGINES WO-646865, WO-67845,4 and WO-804050).	ea	1	1	1	X
H001-5421941	122260	SCREW, cap, $\frac{7}{16}$ -14NC-3 x $1\frac{1}{8}$	ea	1	%	%	X H-1
H101-0131100	131100	WASHER, lock, $\frac{7}{16}$ in.....	ea	1	%	%	X H-1
G503-7741406	WO-642520 WO-641048 WO-641282	7741406	WASHER, plain, sp.....	ea	1	1	1	X
G503-7741415	7741415	GEAR, drive crankshaft (Used w/ENGINES WO-646865, WO-647845, and WO-804050).	ea	1	1	1	X
G503-7741426	WO-641143	7741426	PLATE, front, assy (Used w/ENGINES WO-646865, WO-647845, and WO-804050).	ea	1	%	%	X
H001-4027541	225831	NUT, hex, $\frac{3}{8}$ -24NF-2.....	ea	2	%	%	X H-1
H001-5454521	180120	SCREW, cap, $\frac{3}{8}$ -16NC-3 x $\frac{3}{4}$	ea	3	%	%	X H-1

(1) STOCK NO.	(2) FEDERAL ITEM IDENTIFICATION NO.	(3) MANUFACTURER'S PART NO.	(4) ORDNANCE PART NO.	(5) DESCRIPTION	(6) UNIT OF ISSUE	(7) QUANTITY IN CORP. IN UNIT	(8) ORGANIZATIONAL ALLOWANCES				(9) REFERENCE SYMBOLS	
							NO. OF MAJOR ITEMS PER					
							1-15 (a)	16-35 (b)	36-85 (c)	86-188 (d)		
												CO. BTRY OR TRP
ORGANIZATIONAL SPARE PARTS FOR TRUCK—Continued												
GROUP 01—ENGINE—Continued												
0105.5—Timing Chain and Gears—Continued												
H001-1312481			113237	PLATE, front, assy—Continued STUD, $\frac{3}{8}$ -16NC ($\frac{5}{16}$) x $\frac{3}{8}$ -24NF-2 ($\frac{5}{8}$) x 1 $\frac{1}{16}$.	ea	2						X
H001-7017681			138489	WASHER, lock, external teeth, $\frac{3}{8}$ in.	ea	3						X
H001-7025741			120382	WASHER, lock, $\frac{3}{8}$ in.	ea	2						X
G503-7371089		WO-A1463	7371089	PLATE, mounting front, assy (Used w/ENGINES WO-A1388 and WO-A5497).	ea	1						X
G503-7741414		WO-641281	7741414	SPACER, camshaft (crankshaft) gear (Used w/ENGINES WO-646865, WO-647845, and WO-804050).	ea	1			1			X
G503-7371176		WO-630727 FM-GPW6342A	7371176	SPACER, camshaft (crankshaft) sprocket (Used w/ENGINES WO-A1388 and WO-A5497).	ea	1			1			X
G503-7036571		LK-S351171 FM-GPW6256	7036571	SPROCKET, camshaft, 36 teeth (Used w/ENGINES WO-A1388 and WO-A5497).	ea	1			1			X
G503-7371755		WO-638458 WO-634850	7371755	BOLT, hex-hd, $\frac{3}{8}$ -24NF-? x 1 $\frac{1}{4}$.	ea	4			1			X
G503-7371157		FM-355499S WO-315932	7371157	WASHER, lock sprocket to camshaft ($\frac{3}{8}$ in).	ea	4			1			X
G503-7036572		FM-GPW6269 LK-S35116-1 WO-638459 FM-GPW6306	7036572	SPROCKET, crankshaft, 18 teeth (Used w/ENGINES WO-A1388 and WO-A5497).	ea	1			1			X
G503-7371270		WO-634813 FM-GPW6642	7371270	GASKET, relief (valve) spring retainer (also available as part of GASKET SETS 7376362).	ea	1						X
G503-7371275		EAT-ER7200 WO-630518 FM-GPW6663	7371275	PLUNGER, relief.	ea	1						X

G503-7371271	7371271	RETAINER, relief plunger (valve) spring...	ea	1	%	%	%	%	X
G503-7371268	7371268	SHIM (pressure) relief plunger (valve) spring.	ea	1	%	%	%	%	X
G740-7372586	7372586	SPRING, relief plunger (pressure relief valve) (Used w/PUMP 7375072 and 7744586).	ea	1	%	%	%	%	X
G503-7371273	7371273	SPRING; relief plunger (valve) (Used w/ PUMP 7371260 and 7741410).	ea	1	%	%	%	%	X
G740-7372588	7372588	0106.2—Oil Filter BRACKET, mounting (on engine) (issue until stock is exhausted, then use BRACK- ET 7372588).	ea	X
G740-7372588	7372588	BRACKET, mounting (on engine).....	ea	1	1	X
G503-7743537	7743537	CLAMP, assy.....	ea	2	1	X
H001-5453821	018-1595	181595	BOLT, mach, 5/16-24NF-3 x 3/4 (clamp to bracket).	ea	4	%	H-1
H001-4027521	221157	NUT, hex, 5/16-24NF-2 (clamp to bracket)	ea	4	%	H-1
H101-0120373	120373	NUT, sq, 5/16-18NC-2 (clamp to filter screw).	ea	2	%	H-1
H001-5150831	133129	SCREW, mach, 5/16-18NC-2 x 2 1/2 (clamp to filter).	ea	2	%	H-1
H001-7025711	120214	WASHER, lock, 5/16 in (clamp to bracket)	ea	4	%	H-1
H001-7043711	120393	WASHER, plain, 5/16 in (clamp to bracket).	ea	4	%	H-1
G509-0131990	B245928	COVER, assy.....	ea	1	%	%	%	1	X
H016-054046	8-E-1000	ELEMENT, oil filter.....	ea	1	1	2	2	3	H-16
H016-0540501	540501	FILTER, oil, assy (w/o clamp).....	ea	1	1	H-16
G503-0194033	7039934	GASKET, cover.....	ea	1	1	2	2	3	X
G503-7703975	7703975	GASKET, cover bolt (screw).....	ea	1	1	2	2	3	X
G518-7000997	7000997	GROMMET, rubber, 1 1/2 ID, split (bracket).	ea	1	%	X
G503-7521238	7521238	PLUG, drain.....	ea	1	%	%	%	%	X
G532-7744158	7744158	SCREW, sp, hex-hd, 7/16-20NF-2 x 1 1/16 (cover).	ea	1	%	%	%	1	X

(1) STOCK NO.	(2) FEDERAL ITEM IDENTIFICATION NO.	(3) MANUFACTURER'S PART NO.	(4) ORDNANCE PART NO.	(5) DESCRIPTION	(6) UNIT OF ISSUE	(7) QUANTITY IN CORP. IN UNIT	(8) ORGANIZATIONAL ALLOWANCES				(9) REFERENCE SYMBOLS
							NO. OF MAJOR ITEMS PER				
							1-15 (a)	16-35 (b)	36-85 (c)	86-186 (d)	
ORGANIZATIONAL SPARE PARTS FOR TRUCK—Continued											
GROUP 01—ENGINE—Continued											
0106.2—Oil Filter—Continued											
G503-7702564		PU-25757 WO-A1234 FM-GPW18685A	7702564	SPRING, cover bolt.....	ea	1	%	1	1		X
G503-7371287		WO-630298 FM-GPW6762	7371287	BAFFLE, ventilator.....	ea	1	%	%	%		X
H006-0502912			502912	CLAMP, hose, 7/8 in (air cleaner pipe to oil filler pipe).	ea	2	%	%	%		X
H006-0260850			137422	ELBOW, flared tube, inverted, 90 deg, 5/16 in tube, 1/8 in male pipe end (ventilator line to body).	ea	1	%	%	%		X
H006-0260811			143343	ELBOW, flared tube, inverted, 90 deg, 5/16 in tube, 1/4 in male pipe end (ventilator line to valve).	ea	1	%	%	%		X
G503-7371272		WO-630299 FM-GPW6648	7371272	GASKET, ventilator to valve spring compartment cover (also available as part of GASKET SETS 7371419 and 7744322).	ea	1	%	%	%		X
G503-7371328		WO-A6918 FM-GPW6771	7371328	HOSE, air cleaner tube (pipe), to oil filler tube pipe.	ea	1	%	%	%		X
G503-7371285		WO-A6922 FM-GPW6756	7371285	LINE, ventilator valve, assy (issue until stock is exhausted, then use LINE 7347770).	ea					†	X
G503-7347770		WO-641083	7347770	LINE, ventilator valve, assy.....	ea	1	%	%	%		X
G503-7371289		WO-A6915 FM-GPW6763C	7371289	PIPE, oil filler, assy (issue until stock is exhausted, then use PIPE 7375055).	ea					†	X
G740-7375055		WO-801148	7375055	PIPE, oil filler, assy.....	ea	1	%	%	%		X
G503-0407837		WO-A5165 FM-GPW6763B		PIPE, oil filler, assy (funnel type).....	ea	1	%	%	%		X
G740-5336400		WO-A6895 FM-GPW6769	A336400	VALVE, ventilator, assy.....	ea	1	%	%	%		X

G503-7368267	WO-A5105	7368267	VENTILATOR, crankcase, assy.	ea	1	%	%	%	%	%	X
H001-4167561	FM-GPW6770	120368	NUT, hex, 5/16-24NF-2.	ea	1	%	%	%	%	%	H-1
H101-0213901		213901	SCREW, cap, 5/16-24NF-2 x 5/8.	ea	1	%	%	%	%	%	H-1
H001-7018711		120638	WASHER, lock, 5/16 in.	ea	1	%	%	%	%	%	H-1
H004-0327701		120523	0106.6—Oil Pan, Gage and Lines CLIP, closed, S, cd or zn-pltd, 3/8 in OD, tube hole for 1/4 in bolt (oil pressure gage to dash).	ea	1	%	%	%	%	%	H-4
H001-4135661		120361	NUT, mach, No 10-24NC-2.	ea	1	%	%	%	%	%	H-1
H001-5148231		132830	SCREW, mach, No 10-24NC-2 x 3/8.	ea	1	%	%	%	%	%	H-1
H001-7025621		120217	WASHER, lock, No 10.	ea	1	%	%	%	%	%	H-1
H104-0125928		125928	CLIP, closed, S, cd or zn-pltd, 7/16 in OD tube, hole for 3/8 in bolt (oil filter line to front engine plate).	ea	1	%	%	%	%	%	H-4
H006-0214315		137405	CONNECTOR, flared tube, inverted, 1/4 in tube, 1/8 in male pipe end (oil filter outlet line).	ea	1	%	%	%	%	%	H-6
H006-0260807		137421	ELBOW, flared tube, inverted, 90 deg, 1/4 in tube, 1/8 in male pipe end (oil filter inlet line (1) and oil pressure gage line to block (1)).	ea	2	%	%	%	%	%	H-6
G740-7372557	WO-641050	7372557	FITTING, oil, timing gear (lubricating).	ea	1	%	%	%	%	%	X
G503-7371290	WO-A6525 FM-GPW6766C	7371290	GAGE, oil level, w/filler CAP, assy (bayonet type) (used with pipe WO-A6915).	ea	1	%	%	%	%	%	X
G503-0132455	WO-A5168 FM-GPW6766B		GAGE, oil level, w/filler CAP, assy (bayonet type) (used with pipe WO-A5165).	ea	1	%	%	%	%	%	X
G503-7371284	WO-314338 FM-GPW6734	7371284	GASKET, drain plug (also available as part of GASKET SET WO-A1538).	ea	1	%	%	%	%	%	X
G503-7371530	WO-A7280 FM-GPW6789	7371530	GASKET, oil filler pipe cap.	ea	1	%	%	%	%	%	X
G503-7697867	WO-662420	7697867	GROMMET, water temperature (oil pres- sure) gage (line).	ea	1	%	%	%	%	%	X
G503-0217815	WO-A1197 FM-GPW18667		LINE, flexible, oil filter inlet, assy.	ea	1	%	%	%	%	%	X
G503-0217816	WO-A1198 FM-GPW18666		LINE, flexible, oil filter outlet and oil pres- sure gage, assy (line to block).	ea	2	%	%	%	%	%	X
G503-7371182	WO-A1450 FM-GPW9316	7371182	LINE, oil pressure gage, assy (issue until stock is exhausted, then use TUBING 44-T-5080-15 and 2 NUTS 142432).	ea							X
H006-0230210		142432	NUT, flared tube, inverted, 1/4 in (oil pres- sure line to gage).	ea	2	%	%	%	%	%	H-6

(1) STOCK NO.	(2) FEDERAL ITEM IDENTIFI- CATION NO.	(3) MANUFACTURER'S PART NO.	(4) ORDNANCE PART NO.	(5) DESCRIPTION	(6) UNIT OF ISSUE	(7) QUAN- TITY IN- CORP. IN UNIT	(8) ORGANIZATIONAL ALLOWANCES				(9) REFERENCE SYMBOLS
							NO. OF MAJOR ITEMS PER				
							1-15 (a)	16-35 (b)	36-85 (c)	BN (d)	
				ORGANIZATIONAL SPARE PARTS FOR TRUCK—Continued							
				GROUP 01—ENGINE—Continued							
				0106.6—Oil Pan, Gage and Lines—Continued							
G503-0340661		WO-639979 FM-GPW6727		PLUG, drain, oil pan, 5/8 in.	ea	1	%	%	%		X
H007-0218065			44-T-5080-15	TUBING, seamless, size 1/4 in (oil pressure gage line).	ft	†	%	%	%		X
				0108—Intake and Exhaust Manifolds, and Heat Control							
G503-7371394		WO-636438 FM-GPW9462	7371394	BEARING (bushing type), heat control valve shaft.	ea	2	%	%	%		X
G503-7371388		WO-634811 FM-GPW9435	7371388	GASKET, intake to exhaust manifold (issue until stock is exhausted, then use GASKET SET WO-A7835) (also available as part of GASKET SET WO-A17402, WO-640635).	ea	†	X
G503-0194021		WO-638640 FM-GPW9448	GASKET, intake and exhaust manifold (issue until stock is exhausted, then use GASKET SET WO-A7835) (also available as part of GASKET SET WO-A17402, WO-640635).	ea	†	X
G503-0194027		WO-A7835 FM-GPW18323	GASKET SET, manifold.	ea	%	%	1	1	X
				Composed of: 1 GASKET, exhaust pipe flange (subgroup 0401) ⁴ 1 GASKET, intake and exhaust manifold (subgroup 0108) ⁵ 1 GASKET, intake to exhaust manifold (subgroup 0108) ⁵							
G503-7371396		WO-634811 WO-637211 FM-GPW9465	7371396	KEY, heat control valve (counterweight) lever.	ea	1	%	%	%		X

G503-7371392	WO-637210	7371392	LEVER, counterweight, heat control valve spring.	ea	1	%	%	%	%	X
H001-4135661	FM-GPW9458	120361	NUT, mach screw, No 10-24NC-2.....	ea	1	%	%	%	H-1	X
H001-5148281	120910	SCREW, mach, No 10-24NC-2 x 3/4.....	ea	1	%	%	%	H-1	X
G503-7371387	FM-GPW9428	7371387	MANIFOLD, exhaust, with heat control valve, assy (issue until stock is exhausted, then use MANIFOLD 7371502).	ea	1	%	%	%		X
G503-7371502	WO-A912	7371502	MANIFOLD, exhaust, w/heat control VALVE, assy.	ea	1	%	%	%		X
G503-7371184	FM-GPW9426 FM-GPW9424	7371184	MANIFOLD, intake, assy (issue until stock is exhausted, then use MANIFOLD 7371215).	ea	1	%	%	%		X
G503-7371215	WO-A1166	7371215	MANIFOLD, intake, assy.....	ea	1	%	%	%		X
H001-4167601	FM-GPW9424B	120369	NUT, hex, 3/8-24NF-2.....	ea	7	%	%	%	H-1	X
H101-0215366	215366	SCREW, cap, 5/16-18NC-2 x 1.....	ea	4	%	%	%	H-1	X
H101-0111318	111318	STUD, 3/8-16NC(5/16) x 3/8-24NF-2(5/8) x 1 1/16.	ea	2	%	%	%	H-1	X
H101-0112209	112209	STUD, 3/8-16NC (5/16) x 3/8-24NF-2(5/8) x 1 15/16.	ea	2	%	%	%	H-1	X
G503-7701013	WO-300143	7701013	STUD, 3/8-16NC-3 (9/16) x 3/8-24NF-2 (5/8) x 1 1/2.	ea	3	%	%	%		X
H001-7021771	FM-88042S	138538	WASHER, lock, internal teeth, 5/16 in.....	ea	4	%	%	%	H-1	X
G503-7371389	WO-344732	7371389	WASHER, manifold clamp.....	ea	2	%	%	%		X
H006-0283905	FM-GPW9443	219190	PLUG, pipe, 1/4 in (intake manifold).....	ea	2	%	%	%	H-6	X
G503-7371391	WO-637206	7371391	SHAFT, heat control valve.....	ea	1	%	%	%		X
G503-7371397	FM-GPW9456	7371397	SPRING, heat control valve.....	ea	1	%	%	%		X
G503-7371395	WO-637208	7371395	STOP, heat control valve spring.....	ea	1	%	%	%		X
G503-7371393	FM-GPW9467	7371393	VALVE, heat control.....	ea	1	%	%	%		X
G503-7371398	WO-639743	7371398	WASHER, heat control valve spring.....	ea	1	%	%	%		X
	FM-GPW9463									
	WO-636439									
	FM-GPW9460									
	WO-637209									
	FM-GPW9484									
GROUP 02—CLUTCH											
0200—Housing											
G503-7371341	WO-630103	7371341	COVER, inspection.....	ea	1	%	%	%		X
H001-5025501	012-4001	214001	BOLT, mach, 1/4-20NC-2 x 1/2.....	ea	2	%	%	%	H-1	X
H001-7017621	121753	WASHER, lock, external teeth, 1/4 in.....	ea	2	%	%	%	H-1	X

For explanation of footnotes, see NOTES, page 96.

(1) STOCK NO.	(2) FEDERAL ITEM IDENTIFICATION NO.	(3) MANUFACTURER'S PART NO.	(4) ORDNANCE PART NO.	(5) DESCRIPTION	(6) UNIT OF ISSUE	(7) QUANTITY IN CORP. IN UNIT	(8) ORGANIZATIONAL ALLOWANCES				(9) REFERENCE SYMBOLS	
							NO. OF MAJOR ITEMS PER					
							CO, BTRY OR TRP	BN	16-35 (b)			
									1-15 (a)	36-85 (c)		86-186 (d)
ORGANIZATIONAL SPARE PARTS FOR TRUCK—Continued												
GROUP 02—CLUTCH—Continued												
				0201—Disk and Pressure Plate								
G503-7741423		WO-642918	7741423	DISK, w/FACING, assy (used w/pressure PLATE 7347772)	ea	1			%%	%%		X
G503-7347772		WO-801300	7347772	PLATE, pressure, w/COVER, assy.....	ea	1			%%	%%		X
G503-7324841		WO-630129 FM-355476S	7324841	SCREW, cap, sp, hex-hd 5/16-18NC-2 x 1 1/4.	ea	6			%%	%%		X
H001-7025711			120214	WASHER, lock, 5/16 in.....	ea	6			%	%		X
0202—Clutch Release Mechanism												
G503-7368260		FM-GPW7509 WO-A180	7368260	BRACKET, control frame (tube) (on frame)	ea	1		%	%	%		X
H001-4027521			221157	NUT, hex, 5/16-24NF-2.....	ea	2		%	%	%		X
H101-0213901			213901	SCREW, cap, 5/16-24NF-2 x 5/8.....	ea	2		%	%	%		X
H001-7025711			120214	WASHER, lock 5/16 in.....	ea	2		%	%	%		X
G503-7371345		FM-GPW7530 WO-A5102	7371345	CABLE, control assy (tube lever to release fork).	ea	1		%	%	%		X
H001-0518021			106751	KEY, Woodruff, 3/16 x 3/4 (pedal to shaft).....	ea	1		%	%	%		X
G503-7371336		FM-GPW7503 WO-A1355	7371336	LEVER, control, w/TUBE, assy.....	ea	1		%	%	%		X
H001-4027521			221157	NUT, hex. 5/16-24NF-2 (adjusting control tube lever cable).	ea	1		%	%	%		X
G503-7368262		WO-A1360	7368262	PAD, pedal (w/SHAFT), assy.....	ea	1		%	%	%		X
G503-7371342		FM-GPW7520 WO-A10269 WO-A405	7371342	PEDAL, assy.....	ea	1		%	%	%		X
H001-4027521			221157	NUT, hex, 5/16-24NF-2.....	ea	1		%	%	%		X
H001-4417435			137171	PIN, cotter, 3/32 x 1.....	ea	1		%	%	%		X
H101-0215417			215417	SCREW, cap, 5/16-24NF-2 x 1 3/4.....	ea	1		%	%	%		X
H001-7025711			120214	WASHER, lock, 5/16 in.....	ea	1		%	%	%		X

G503-7326118	FM-73880S	7326118	PIN, clevis, S, 5/16 x 2 7/32 (control lever cable adjusting yoke).	ea	1	%	%	%	%	X
H001-0811361	WO-339043	108643	PIN, cotter, 5/32 x 1 3/8 (pedal shaft)	ea	1	%	%	%	H-1	X
G503-7371340	FM-GPW7517	7371340	RETAINER, control tube (spring) (19/32 thick).	ea	2	%	%	%	%	X
G503-7371343	WO-A177	7371343	ROD, pedal shaft lever to control tube	ea	1	%	%	%	%	X
H001-0811037	FM-GPW7521	103372	PIN, cotter, 3/32 x 1/2	ea	2	%	%	%	H-1	X
G503-7371337	WO-A499	7371337	SEAL, dust, control tube	ea	2	%	%	%	%	X
G503-7340237	FM-GPW7512	7340237	SHAFT, brake pedal, assy	ea	1	%	%	%	%	X
G170-0213775	WO-A887	A246558	SPRING, helical, accelerator bulkhead bracket (control tube).	ea	1	%	%	%	%	X
G503-0389783	FM-GPW7545	SPRING, retracting, pedal	ea	1	%	%	%	%	X
G170-0392287	WO-A178	A246557	STUD, ball, S (control tube), 7/16 14 NC	ea	2	%	%	%	%	X
H101-0219433	FM-GPW7514	219433	NUT, hex, 7/16-14NC-2	ea	1	%	%	%	H-1	X
H001-7126761	WO-A181	187128	WASHER, lock, 7/16 in	ea	2	%	%	%	H-1	X
G503-7371364	FM-GPW7539	7371364	WASHER (dust seal) control tube (felt) (5/8 OD x 1/4 thick).	ea	2	%	%	%	%	X
G740-7372827	WO-A176	7372827	WASHER, sp, S, 1 1/2 in ID, 1 1/2 in OD, 1/8 in thk.	ea	3	%	%	%	%	X
G503-7371363	FM-356561S	7371363	YOKE, rod end adjustable, control (lever) cable.	ea	1	%	%	%	%	X
	WO-A498									
	FM-GPW7532									
	WO-632177									
GROUP 03—FUEL SYSTEM										
			0301—Carburetor							
G503-0131592	CAR-539S	CARBURETOR, assy (issue until stock is exhausted, then use CARBURETOR 7743886).	ea	X
	WO-A1223									
G503-7743886	CAR-698S	7743886	CARBURETOR, assy	ea	1	%	%	%	1	X
	WO-647843									
H001-4167601	120369	NUT, hex, 3/8-24NF-2	ea	2	%	%	%	H-1	X
H101-0111318	111318	STUD, 3/8-16NC (5/16) x 3/8-24NF-2 (5/8) x 1 11/16	ea	2	%	%	%	H-1	X
H001-7025741	120382	WASHER, lock, 3/8 in	ea	2	%	%	%	H-1	X
G503-7371358	CAR-1A55S	7371358	GASKET, to intake manifold (flange, w/ DIFFUSER, assy) (also available as part of GASKET SET 7744322).	ea	1	%	%	%	1	X
	WO-A6357			ea						

(1) STOCK NO.	(2) FEDERAL ITEM IDENTIFI- CATION NO.	(3) MANUFACTURER'S PART NO.	(4) ORDNANCE PART NO.	(5) DESCRIPTION	(6) UNIT OF ISSUE	(7) QUAN- TITY IN- CORP. IN UNIT	(8) ORGANIZATIONAL ALLOWANCES				(9) REFERENCE SYMBOLS		
							NO. OF MAJOR ITEMS PER						
							CO. BTRY OR TRP						
							1-15 (a)	16-35 (b)	36-85 (c)	86-185 (d)			
ORGANIZATIONAL SPARE PARTS FOR TRUCK—Continued													
GROUP 03—FUEL SYSTEM—Continued													
0302—Fuel Pump													
G085-3002200		AC-1523096	C115921	GASKET, (sediment) bowl to cover.....	ea	1	2	2	4	6		X	
G503-5261672		WO-115656 AC-838263	A261672	GASKET, fuel pump to cylinder block.....	ea	1	2	3	4	6		X	
G503-7744275		WO-638737 AC-1538886	7744275	PUMP, fuel, assy (issue until stock is ex- hausted, then use PUMP 7735772).	ea					†		X	
H001-5453161	018-0078		180078	BOLT, mach, $\frac{5}{16}$ -18NC-3 x $\frac{7}{8}$	ea	2	%	%	%	%		H-1	
H001-7025711			120214	WASHER, lock, $\frac{5}{16}$ in.....	ea	2	%	%	%	%		H-1	
G503-0345876		AC-1537766		PUMP, fuel, assy (issue until stock is ex- hausted, then use PUMP 7735772).	ea					†		X	
G503-7735772		WO-A1220 AC-1538312	7735772	PUMP, fuel, assy.....	ea	1	1	2	3	4		X	
		WO-A8323											
0304—Air Cleaner													
G503-7371404		V. C-A1451 FM-GFW9686A	7371404	BUSHING, air intake horn to air tube and carburetor (issue until stock is exhausted, then use SEALS 7371405 and 7371406).	ea					†		X	
G503-7036575		1'SL-461389	7036575	CLAMP, air cleaner to carburetor hose (pipe to air cleaner hose) ($2\frac{1}{2}$ in ID).	ea	2	%	%	%	%		X	
G503-7371399		WO-635097 FM-GPW9653	7371399	CLAMP, hose, carburetor to air intake horn (air intake elbow, assy) ($2\frac{1}{2}$ ID x $\frac{1}{2}$).	ea	1	%	%	%	%		X	
H006-0502922		WO-A281 FM-GPW9628	502922	CLAMP, hose, $2\frac{1}{4}$ in (carburetor air intake elbow to air cleaner hose).	ea	2	%	%	%	%		X	
G503-7371002		WO-A1515 FM-GPW2250	7371002	CLAMP, hose, $2\frac{1}{2}$ in ID (pipe to carburetor air intake elbow seal (1) and air cleaner outlet pipe seal (1)).	ea	2	%	%	%	%		X	
G503-7041784		HH-613300 WO-A5621 FM-GPW18205B	7041784	CLEANER, air, assy.....	ea	1	%	%	%	%		X	

G503-7324837	WO-115905 FM-355253S	7324837	SCREW, wing, 1/4-20NC-2 x 3/4.....	ea	6	%	%	%	%	X
H001-7025681	HH-613387	120380	WASHER, lock, 1/4 in.....	ea	6	%	%	%	%	X
G503-0169093	WO-A5630 FM-GPW9617		ELEMENT, w/wing BOLT (assy).....	ea	1	%	%	%	%	X
G503-7010485	HH-613314 WO-A5633 FM-GPW9623	7010485	GASKET, carburetor body (lower).....	ea	1	%	%	%	%	X
G503-7010486	HH-613313 WO-A5632 FM-GPW9621	7010486	GASKET, element to upper body.....	ea	1	%	%	%	%	X
G503-7371400	WO-A463 FM-GPW9632	7371400	HORN (elbow carburetor air intake).....	ea	1	%	%	%	%	X
G503-7701460	WO-A1224 FM-GPW9627	7701460	HORN, air intake (issue until stock is exhausted, then use HORN 7371400).	ea	1	%	%	%	†	X
G085-2101430	FM-91C8260		HOSE, air cleaner to carburetor air intake elbow.	ea	1	%	%	%	%	X
G740-7375119	WO-800602	7375119	HOSE, flexible, to air intake pipe (air tube).	ea	1	%	%	%	%	X
G503-7371403	WO-A1311 FM-GPW9652B	7371403	HOSE, pipe to air cleaner.....	ea	1	%	%	%	%	X
G503-7371405	WO-A17317 FM-GPW9686B	7371405	SEAL, air intake horn to air tube (air cleaner outlet pipe).	ea	1	%	%	%	%	X
G503-7371406	WO-A17318 FM-GPW9633	7371406	SEAL, air intake horn to carburetor (elbow).	ea	1	%	%	%	%	X
G503-7371402	WO-A6911 FM-GPW9637B	7371402	TUBE (pipe), w/BRACKET, assy.....	ea	1	%	%	%	%	X
G503-7371401	WO-A1290 FM-GPW9637A FM-GPW9637	7371401	TUBE (pipe), w/BRACKET, assy.....	ea	1	%	%	%	%	X
			0306—Fuel Tanks, Lines and Fittings							
G502-0131577	FM-GPW9030B WO-A6333	7004942 C116754	CAP, filler (neck), fuel tank, w/CHAIN, assy (4 5/8 in OD) (used with TANK WO-A15507).	ea	1	%	%	%	1	2
G503-7702557	AC-850042 FM-GPW9030A WO-A1254	7702557	CAP, filler (neck), fuel tank, w/CHAIN, assy (2 7/8 in OD) (used with TANK 7368275).	ea	1	%	%	%	1	2
G503-0139920	FO-HA8031 FM-CPW9288 WO-A1325		CONNECTION, flexible fuel line.....	ea	2	%	%	%	%	X
G503-7743730	FM-GPW9035B WO-1275	7743730	GASKET, fuel tank cap (used with CAP 7702557).	ea	1	%	%	%	1	2

(1) STOCK NO.	(2) FEDERAL ITEM IDENTIFICATION NO.	(3) MANUFACTURER'S PART NO.	(4) ORDNANCE PART NO.	(5) DESCRIPTION	(6) UNIT OF ISSUE	(7) QUANTITY IN CORP. UNIT	(8) ORGANIZATIONAL ALLOWANCES				(9) REFERENCE SYMBOLS
							NO. OF MAJOR ITEMS PER				
							1-15 (a)	16-35 (b)	36-85 (c)	86-186 (d)	
ORGANIZATIONAL SPARE PARTS FOR TRUCK—Continued											
GROUP 03—FUEL SYSTEM—Continued											
0306—Fuel Tanks, Lines and Fittings—Continued											
G503-0407836		FM-GPW9289 WO-A1368		LINE (fuel), flexible connection (line) to fuel pump, assy.	ea	1	%	%	%	%	X
G503-7371181		FM-GPW9282 WO-A1367	7371181	LINE, fuel filter to flexible connection (line), assy (5/16 in OD x 26 in lgh) (issue until stock is exhausted, then use TUBING 44-T-5080-20 and (2) NUT 142427).	ea		%			†	X
G503-7371183		FM-GPW9369 WO-A1369	7371183	LINE, fuel pump to carburetor, assy (5/16 in OD x 18 1/2 in lgh) (issue until stock is exhausted, then use TUBING 44-T-5080-20 and (2) NUT 142427).	ea					†	X
G503-7371180		FM-GPW9237B WO-A15598	7371180	LINE, fuel tank to flexible connection (fuel filter, assy) (5/16 in OD x 56 in lgh) (issue until stock is exhausted, then use TUBING 44-T-5080-20 and (2) NUT 142427).	ea					†	X
H006-0230208			142427	NUT, inverted flared tube fitting, 5/16 in (fuel lines).	ea	6	%	%	%	%	H-6
H006-0283905			219190	PLUG, pipe, 1/4 in (fuel tank drain).....	ea	1	%	%	%	%	H-6
G503-7368273		FM-GPW9095 WO-A1472	7368273	STRAP, hold down, fuel tank, inner, assy....	ea	2	%	%	%	%	X
G503-7368274		FM-GPW9057 WO-A1477	7368274	STRAP, hold down, fuel tank, outer, assy....	ea	2	%	%	%	%	X
H001-4027521			221157	NUT, hex, 5/16-24NF-2.....	ea	2	%	%	%	%	H-1
H001-4057561			107822	NUT, jam, 5/16-24NF (Willys only).....	ea	2	%	%	%	%	H-1
H101-0215417			215417	SCREW, cap, 5/16-24NF-2 x 1 3/4.....	ea	2	%	%	%	%	H-1
H001-7025711			120214	WASHER, lock, 5/16 in.....	ea	2	%	%	%	%	H-1
H007-0218080			44-T-5080-20	TUBING, seamless, size 5/16 in.....	ft	†	%	%	%	%	H-7

0309—Fuel Filter

G501-7744141	AC-1595823 WO-A1261	7744141	ELEMENT, assy	ea	1	%	1	1	X
G503-7703977	AC-1595848 WO-A7850	7703977	FILTER, fuel, assy (paper element) (issue until stock is exhausted, then use FILTER 7743726).	ea				†	X
G503-0183053	AC-1595235 WO-A1255	7727451	FILTER, fuel, auxiliary carburetor (assy) (brass element) (issue until stock is exhausted, then use FILTER 7743726).	ea				†	X
G503-7743726	AC-1504486	7743726	FILTER, fuel, w/bleed valve assy (brass element) (includes BUSHINGS, ELBOW and VALVE).	ea	1	%	%	%	X
H001-5455261	018-1637	181637	BOLT, mach, 3/8-24NF-3 x 1	ea	2	%	%	%	X
H001-4027541		225831	NUT, hex, 3/8-24NF-2	ea	2	%	%	%	X
H001-7025741		120382	WASHER, lock, 3/8 in.	ea	2	%	%	%	X
H001-7043741		120394	WASHER, plain, 3/8 in.	ea	2	%	%	%	X
G085-3002320	AC-853562 WO-A1257	A291727	GASKET, bowl cover screw (issue until stock is exhausted, then use GASKET SET WO-A6883).	ea				†	X
G085-3002280	AC-853558 WO-A1259	A291725	GASKET, cover (sediment bowl) (issue until stock is exhausted, then use GASKET SET WO-A6883).	ea				†	X
G085-3002300	AC-853572 WO-A1260	A291726	GASKET, element (issue until stock is exhausted, then use GASKET SET WO-A6883).	ea				†	X
G503-0194028	WO-A6883		GASKET SET	ea		%	4	6	X
	AC-853562 WO-A1257		Composed of:						
	AC-853572 WO-A1260		1 GASKET, cover screw (subgroup 0309) ⁵						
	AC-853558 WO-A1259		1 GASKET, element (subgroup 0309) ⁵						
			1 GASKET, sediment bowl (subgroup 0309) ⁵						
G503-7371451	FM-GPW9752 WO-633013	7371451	0312—Accelerator, Linkage and Choke Controls	ea	1	%	1	1	X
G503-7368257	FM-GPW9751 WO-A1173	7368257	BLOCK, adjusting, throttle (control) rod	ea	1	%	1	1	X
			CLIP, throttle rod retracting spring (accelerator control rod return spring) (mounted under carburetor stud nut to manifold).	ea	1	%	1	1	X

For explanation of footnotes, see NOTES, page 96.

(1) STOCK NO.	(2) FEDERAL ITEM IDENTIFI- CATION NO.	(3) MANUFACTURER'S PART NO.	(4) ORDNANCE PART NO.	(5) DESCRIPTION	(6) UNIT OF ISSUE	(7) QUAN- TITY IN CORP. UNIT	(8) ORGANIZATIONAL ALLOWANCES				(9) REFERENCE SYMBOLS	
							NO. OF MAJOR ITEMS PER					
							1-15 (a)	16-35 (b)	36-85 (c)	86-186 (d)		
				ORGANIZATIONAL SPARE PARTS FOR TRUCK—Continued								
				GROUP 03—FUEL SYSTEM—Continued								
				0312—Accelerator, Linkage and Choke Controls—Continued								
G503-7368258	FM-GPW9745 WO-639610	7368258		CLIP, throttle rod retracting spring (acceler- ator control rod return spring) (throttle control rod).	ea	1	%	%	1			X
G503-7371413	FM-GPW9731B WO-651298	7371413		CONNECTION, accelerator pedal (hinge) (issue until stock is exhausted, then use PEDAL 7743757).	ea				†			X
G503-7371407	SHA-PM943 WO-A1301 FM-GPW9700	7371407		CONTROL, choke, assy (23 $\frac{3}{4}$ in long) (issue until stock is exhausted, then use CONTROL 7371452).	ea				†			X
G503-7704013	FM-GPW9775 SHA-PM977 WO-A5106	7704013		CONTROL, throttle, assy (26 $\frac{7}{8}$ in long) (issue until stock is exhausted, then use CONTROL 7371452).	ea				†			X
G503-7371452	FM-GPW9775B WO-A7517	7371452		CONTROL, throttle or choke, assy (blank knob 26 $\frac{7}{8}$ in long).	ea	2	%	%	1			X
H001-4167601		120369		NUT, hex, $\frac{3}{8}$ -24NF-2.....	ea	1	%	%	%			H-1
H001-7021801		138542		WASHER, lock, $\frac{3}{8}$ in.....	ea	1	%	%	%			H-1
G503-7371453	FM-GPW9778 WO-A7518	7371453		KNOB, throttle or choke control, w/ PLUNGER and WIRE, assy (blank 26 $\frac{7}{8}$ in long).	ea	2	%	%	1			X
G503-7371411	FM-GPW9726 WO-A1910	7371411		LEVER (pedal) cross shaft, w/BRACKET, assy.	ea	1	%	%	1			X
H001-4167521		120367		NUT, hex, $\frac{1}{4}$ -28NF-2.....	ea	1	%	%	%			H-1
H101-0144532		144532		STUD, $\frac{1}{4}$ -20NC ($\frac{3}{8}$) x $\frac{1}{4}$ -28NF-2 ($\frac{1}{16}$ x $\frac{7}{8}$).	ea	2	%	%	%			H-1
H001-7025681		120380		WASHER, lock, $\frac{1}{4}$ in.....	ea	2	%	%	%			H-1
G503-7371447	FM-GPW9735A WO-A1083	7371447		PEDAL, accelerator, assy (issue until stock is exhausted, then use PEDAL 7743757).	ea				†			X
G503-7371448	FM-GPW9735B WO-A6851	7371448		PEDAL, accelerator, w/HINGE and link (connecting ROD), assy (issue until stock is exhausted, then use PEDAL 7743757).	ea				†			X

G503-7743757	WO-640720	7743757	PEDAL, accelerator, w/HINGE and link (connecting ROD), assy.	ea	1	%	1	1	X
H101-0123854	102-3854	123854	BOLT, mach, No 10-24NC-2 x 1/2	ea	2	%	%	H-1	X
H001-4135661		120361	NUT, mach screw, No 10-24NC-2	ea	2	%	%	H-1	X
H001-7025621		120217	WASHER, lock, No 10	ea	2	%	%	H-1	X
H001-0811026		107761	PIN, cotter, 1/8 x 5/8 (pedal connecting rod)	ea	1	%	%	H-1	X
G503-7371450	FM-GPW9742 WO-A1175	7371450	ROD (control), throttle	ea	1	%	1	1	X
G503-7371409	FM-GPW9730	7371409	SHAFT, cross (pedal), assy (issue until stock is exhausted, then use LEVER 7371411).	ea				†	X
G503-7371410	WO-A1172 FM-GPW9739 WO-A1243	7371410	SHAFT, cross (pedal), w/LEVER, assy (issue until stock is exhausted, then use LEVER 7371411).	ea				†	X
G503-7371449	FM-GPW9737 WO-632174	7371449	SPRING (pedal) cross shaft	ea	1	%	1	1	X
G503-7371454	FM-GPW9795	7371454	SPRING, pedal hinge	ea	1	%	1	1	X
G503-7371455	WO-650483 FM-GPW9799 WO-633011	7371455	SPRING, retracting (return, pedal)	ea	1	%	1	1	X
G503-7371193	FM-GPW11474 WO-372438	7371193	STOP, choke or throttle control wire (issue until stock is exhausted, then use STOP 7371194).	ea				†	X
G503-7371194	FM-GPW11495 WO-A8834	7371194	STOP, choke or throttle control wire, w/SCREW, assy.	ea	1	%	1	1	X
H001-7043681		120392	WASHER, plain, 1/4 in (pedal connecting rod pin).	ea	1	%	%	H-1	X
GROUP 04—EXHAUST SYSTEM									
0401—Muffler, Exhaust and Tail Pipe									
G503-7371047	WO-A15498 FM-GPW5265	7371047	BRACKET (support), exhaust pipe extension (deep mud type muffler).	ea	1	%	%	%	X
H101-0215408		215408	SCREW, cap, 5/16-24NF-2 x 1	ea	1	%	%	H-1	X
H001-4027521		221157	NUT, hex, 5/16-24NF-2	ea	1	%	%	H-1	X
H001-7045561		120387	WASHER, plain, 5/16 in	ea	1	%	%	H-1	X
G503-7048734	WO-A9086 FM-GPW5253	7048734	BRACKET (support), muffler front clamp (Willys) (deep mud type muffler).	ea	1	%	%	%	X
H001-4027521		221157	NUT, hex, 5/16-24NF-2	ea	2	%	%	H-1	X
H101-0213901		213901	SCREW, cap, 5/16-24NF-2 x 5/8	ea	2	%	%	H-1	X
H001-7025711		120214	WASHER, lock, 5/16 in	ea	2	%	%	H-1	X
G503-7371048	WO-A9084 FM-GPW5266	7371048	BRACKET (support), muffler rear clamp (deep mud type muffler).	ea	1	%	%	%	X
H001-4171561		121917	NUT, hex, 5/16-24NF-3	ea	1	%	%	H-1	X
H001-5419861		121661	SCREW, cap, 5/16-24NF-3 x 1 (bracket to frame).	ea	1	%	%	H-1	X
H001-7025711		120214	WASHER, lock, 5/16 in	ea	1	%	%	H-1	X

(1) STOCK NO.	(2) FEDERAL ITEM IDENTIFI- CATION NO.	(3) MANUFACTURER'S PART NO.	(4) ORDNANCE PART NO.	(5) DESCRIPTION	(6) UNIT OF ISSUE	(7) QUAN- TITY IN- CORP. IN UNIT	(8) ORGANIZATIONAL ALLOWANCES				(9) REFERENCE SYMBOLS
							NO. OF MAJOR ITEMS PER				
							CO, BTRY OR TRP				
							1-15 (a)	16-35 (b)	36-85 (c)	86-186 (d)	
ORGANIZATIONAL SPARE PARTS FOR TRUCK—Continued											
GROUP 04—EXHAUST SYSTEM —Continued											
				0401—Muffler, Exhaust and Tail Pipe —Continued							
G503-7371044		WO-A657 FM-GPW5262	7371044	BRACKET, support, muffler.....	ea	2	%	%	%	%	X
H001-4167561			120368	NUT, hex, 5/16-24NF-2.....	ea	2	%	%	%	%	X
H001-5026421			213907	SCREW, cap, 5/16-24NF-2 x 7/8.....	ea	2	%	%	%	%	X
H001-7025711			120214	WASHER, lock, 5/16 in.....	ea	2	%	%	%	%	X
G503-7371050		WO-636004 FM-GPW5270	7371050	CLAMP, exhaust pipe.....	ea	1	%	%	%	%	X
H001-4027521			221157	NUT, hex, 5/16-24NF-2.....	ea	1	%	%	%	%	X
H101-0215435			215435	SCREW, cap, 5/16-24NF-2 x 1 1/8.....	ea	1	%	%	%	%	X
H001-7025711			120214	WASHER, lock, 5/16 in.....	ea	1	%	%	%	%	X
H001-7045561			120387	WASHER, plain, 5/16 in.....	ea	1	%	%	%	%	X
G503-7371043		WO-A9082 FM-GPW5251B	7371043	CLAMP, exhaust pipe (extension support bracket) (deep mud type muffler).	ea	1	%	%	%	%	X
H001-4027521			221157	NUT, hex, 5/16-24NF-2.....	ea	1	%	%	%	%	X
H101-0215408			215408	SCREW, cap, 5/16-24NF-2 x 1.....	ea	1	%	%	%	%	X
H001-7025711			120214	WASHER, lock, 5/16 in.....	ea	1	%	%	%	%	X
H001-7045561			120387	WASHER, plain, 5/16 in.....	ea	1	%	%	%	%	X
G503-7371042		WO-A1300 FM-GPW5251	7371042	CLAMP, exhaust pipe (to guard plate).....	ea	1	%	%	%	%	X
H001-3015371	012-6353		126353	BOLT, sq-nk, 5/16-18NC-2A x 7/8.....	ea	1	%	%	%	%	X
H001-4026521			220070	NUT, hex, 5/16-18NC-2.....	ea	2	%	%	%	%	X
H001-5026121			216921	SCREW, cap, 5/16-18NC-2 x 3/4.....	ea	1	%	%	%	%	X
H001-7025711			120214	WASHER, lock, 5/16 in.....	ea	2	%	%	%	%	X
H001-7043711			120393	WASHER, plain, 5/16 in (used as spacer).	ea	1	%	%	%	%	X
G503-7371045		WO-A655 FM-GPW5264 FM-GPW5264A	7371045	CLAMP, support, muffler (round type).....	ea	2	%	%	%	%	X
H001-4027521			221157	NUT, hex, 5/16-24NF-2.....	ea	2	%	%	%	%	X

(1) STOCK NO.	(2) FEDERAL ITEM IDENTIFI- CATION NO.	(3) MANUFACTURER'S PART NO.	(4) ORDNANCE PART NO.	(5) DESCRIPTION	(6) UNIT OF ISSUE	(7) QUAN- TITY IN CORP. UNIT	(8) ORGANIZATIONAL ALLOWANCES				(9) REFERENCE SYMBOLS	
							NO. OF MAJOR ITEMS PER					
							CO. BTRY OR TRP	BN	BN			
									1-15 (a)	16-35 (b)		36-85 (c)
ORGANIZATIONAL SPARE PARTS FOR TRUCK—Continued												
GROUP 05—COOLING SYSTEM												
0501—Radiator and Expansion Tank												
G503-7347343		WO-A6942	7347343	CAP, filler assy (neck) (used w/RADIATOR WO-A6491) (issue until stock is exhausted, then use CAP 7347601).	ea	1	%	%	1	†		X
G503-7347601		AC-850573	7347601	CAP, filler neck, w/SEAL, assy (pressure type).	ea	1	%	%	1			X
G503-0131549		AC-846709 WO-A1215	7734710	CAP (filler neck), radiator and surge tank (pressure type) (issue until stock is ex- hausted, then use CAP 7347601).	ea	1	%	%	1	†		X
G501-5262210		AC-846732 WO-A1216	A262210	GASKET, radiator filler (neck) cap (used w/CAP WO-A1215).	ea	1	%	%	1	2		X
G503-7347342		WO-A6941	7347342	RADIATOR, w/TANK and SHROUD, assy (used on vehicles equipped w/surge TANK).	ea	1	%	%	%			X
G503-7371375		WO-A1214	7371375	RADIATOR, w/TANK and SHROUD, assy.	ea	1	%	%	%			X
H101-0126452	012-6452		126452	BOLT, sq-nk, 3/16-14NC-2 x 1 1/2	ea	2	%	%	%			X
H001-4167621			124573	NUT, hex, 3/16-14NC-2	ea	4	%	%	%			X
H001-7124761			178571	WASHER, lock, internal-external teeth, 3/16 x 1.070.	ea	2	%	%	%			X
H001-7043771			120395	WASHER, plain, 3/16 in.	ea	2	%	%	%			X
G503-7701327		WO-A4413	7701327	SHIM, radiator to support bracket	ea	2	%	%	%			X
0503—Water Lines, Hoses, Pipes and Fittings												
H096-0502910			502910	CLAMP, hose, 5/8 in (expansion tank to radiator pipe hose).	ea	4	%	%	%			X
H006-0502920			502920	CLAMP, hose, 1 7/8 in (radiator water hose)	ea	8	%	%	%			X
H106-0103647			103647	COCK, drain, 1/4 in male pipe end	ea	1	%	%	%			X

G503-7375438	RG-504373	7375438	COVER, housing, side, assy.....	ea	1	X
H101-0215366	215366	SCREW, cap, 5/16-18NC-2 x 1.....	ea	4	H-1
H001-7018711	120638	WASHER, lock, 5/16 in.....	ea	4	H-1
G503-7367859	RG-400025	7367859	CUP, ball, camshaft thrust bearing.....	ea	2	X
	WO-639102									
	FM-GPW3552									
G503-7696368	RG-T129001	7696368	GASKET, housing side cover.....	ea	1	X
	WO-639119									
	FM-GPW3581									
G503-7767293	RG-T13086	7767293	GEAR, steering, w/o WHEEL, assy.....	ea	1	X
	WO-A1239									
	FM-GPW3504									
H101-0124372	012-4372	124372	BOLT, mach, 7/16-20NF-2 x 4.....	ea	1	X
H001-4167641	120370	NUT, hex, 7/16-20NF-2.....	ea	3	H-1
H101-0215642	215642	SCREW, cap, 7/16-20NF-2 x 3.....	ea	2	H-1
G503-7324849	WO-638381	7324849	WASHER, plain, S, 1/2 ID, 1 1/4 OD, 1/8 thk.	ea	1	X
	FM-356439S									
G503-7696379	RG-503284	7696379	HOUSING, assy.....	ea	1	X
	WO-A740									
	FM-GPW3548									
G503-7371028	WO-1199	7371028	JACKET (tube), w/BEARING, assy.....	ea	1	X
	FM-GPW3509									
H001-4185641	124929	NUT, jam, 7/16-20NF-2 (Pitman shaft ad- justing screw).	ea	1	X
H006-0283900	219188	PLUG, pipe, 1/8 in (filler, housing).....	ea	1	H-6
G503-7696371	RG-401100	7696371	RING, retaining, shaft cam thrust bearing...	ea	2	X
	WO-639103									
	FM-GPW3589									
G503-7371029	FM-GPW3521	7371029	RING, snap (jacket bearing spring seat) (GPW).	ea	1	X
G503-7696342	RG-021116	7696342	SCREW, adjusting, Pitman shaft (inside cover).	ea	1	X
	WO-639118									
	FM-GPW3577									
H013-0500017	500017	SEAL, oil, type MW, 7/8 x 1.312 x 1/4 (Pitman shaft housing).	ea	1	X
G503-7696348	RG-028093	7696348	SEAT, jacket upper (bearing spring).....	ea	1	X
	WO-639192									
	FM-GPW3518									
G503-7696400	RG-7698-4-5-8	7696400	SHAFT, arm, w/LEVER (Pitman), assy.....	ea	1	X
	WO-A745									
	FM-GPW3575									
G503-7371097	RG-503308	7371097	SHAFT, w/integral WORM assy (wheel NUT).	ea	1	X
	WO-A8838									
	WO-A742									
G503-7371030	WO-638918	7371030	SHIM, mounting, housing adjusting, hous- ing to frame side rail).	ea	2	X
	FM-GPW3563									

(1) STOCK NO.	(2) FEDERAL ITEM IDENTIFICATION NO.	(3) MANUFACTURER'S PART NO.	(4) ORDNANCE PART NO.	(5) DESCRIPTION	(6) UNIT OF ISSUE	(7) QUANTITY IN CORP. IN UNIT	(8) ORGANIZATIONAL ALLOWANCES				(9) REFERENCE SYMBOLS	
							NO. OF MAJOR ITEMS PER					
							CO, BTRY OR TRP	BN	36-85 (c)	86-186 (d)		
				ORGANIZATIONAL SPARE PARTS FOR TRUCK—Continued								
				GROUP 14—CONTROLS—Continued								
				1401.5—Steering Gear—Continued								
G503-7371431		WO-A6760 FM-GPW18374	7371431	SHIM SET, adj, housing upper cover.....	ea							X
		WO-639108 FM-GPW3593		Composed of: 2 SHIM (0.002) (subgroup 1401.5) ⁵								
		WO-639109 FM-GPW3594		2 SHIM (0.003) (subgroup 1401.5) ⁵								
		WO-639110 FM-GPW3595		2 SHIM (0.010) (subgroup 1401.5) ⁵								
G503-7696350		WO-639108 FM-GPW3593	7696350	SHIM (housing upper cover), 0.002 thk (issue until stock is exhausted, then use SHIM SET 7371431).	ea							X
G503-7696351		RG-033047 WO-639109 FM-GPW3594	7696351	SHIM (housing upper cover), 0.003 thk (issue until stock is exhausted, then use SHIM SET 7371431).	ea							X
G503-7696352		RG-033048 WO-639110 FM-GPW3595	7696352	SHIM (housing upper cover), 0.010 thk (issue until stock is exhausted, then use SHIM SET 7371431).	ea							X
G503-7696370		RG-401090 WO-639191 FM-GPW3520	7696370	SPRINGS, jacket upper bearing.....	ea	1						X
G503-7371032		WO-A6343 WO-A6858 WO-A535 FM-GPW3600A FM-GPW3600A3	7371032	WHEEL, assy (issue until stock is exhausted, then use WHEEL 7375336).	ea							X
G740-7375336		WO-800737	7375336	WHEEL, assy.....	ea	1						X
G503-7371096		RG-026988 WO-A633 FM-GPW3655	7371096	NUT, sp, hex 1 ³ / ₁₆ -20;NC-2.....	ea	1						X

GROUP 15—FRAME AND BRACKETS

1503—Towing Pintle

G529-7010531	WO-A6393	7010531	BOLT, eye, S, cd, 1 1/4 eye, 1/2-13NC-2, 1 1/2 (Used w/PINTLE 7061999).	ea	2	%	%	%	%	X
H001-4167661	FM-GPW5186	120378	NUT, hex, 1/2-13NC-2	ea	2	%	%	%	%	H-1
H001-7025801		120384	WASHER, lock, 1/2 in.	ea	2	%	%	%	%	H-1
45-F-451		45-F-451	FITTING, lubricating, hydraulic-type, 1/4-28NS, male (lock latch retaining pin (1) and lock (1)) (note 2).	ea	2	%	%	%	%	H-16
G503-7061999	WO-A593	7061999	PINTLE (towing, w/o eye BOLTS), assy (issue until stock is exhausted, then use PINTLE 7073209).	ea					†	X
G503-7073209	FM-GPW5182	7073209	PINTLE (towing), assy.	ea	1	%	%	%	%	X
H001-5456941	HLH-T60B	181667	BOLT, mach, 7/16-20NF-3 x 1 1/8	ea	4	%	%	%	%	H-1
H001-4171641		121949	NUT, hex, 7/16-20NF-3	ea	4	%	%	%	%	H-1
H101-0131100		131100	WASHER, lock, 7/16 in.	ea	4	%	%	%	%	H-1

1504—Spare Wheel Carrier

G503-7099909	WO-A2359	7099909	BRACKET, assy.	ea	1	%	%	%	%	X
H001-5026111	FM-GPW1433B	214018	BOLT, mach, 5/16-18NC-2 x 5/8	ea	2	%	%	%	%	H-1
H001-4026521		220070	NUT, hex, 5/16-18NC-2	ea	4	%	%	%	%	H-1
H101-0215369		215369	SCREW, cap, 5/16-18NC-2 x 1 1/4	ea	2	%	%	%	%	H-1
H001-7025711		120214	WASHER, lock, 5/16 in.	ea	4	%	%	%	%	H-1

GROUP 16—SPRINGS AND SHOCK ABSORBERS

1601.1—Front Springs

G503-7371064	WO-384228	7371064	BOLT, pivot, front right and rear left and right spring to shackle (rear bracket) (used on vehicles w/o torque SPRING).	ea	2	%	%	%	%	X
G503-7735822	FM-GPW5468	7735822	BOLT, "U", spring (to axle housing) (right (1) and left (2)) (8 leaf spring) (used on vehicles w/o torque SPRING).	ea	3	%	%	%	%	X
G503-7371090	WO-A513	7371090	BOLT, "U", spring shackle, LH thd.	ea	1	%	%	%	%	X
G503-7735833	FM-GPW5778	7735833	BOLT, "U", spring shackle, RH thd.	ea	1	%	%	%	%	X
G503-7697860	WO-A514	7697860	BUMPER, front and rear axle (on frame) (rubber).	ea	2	%	%	%	%	X

For explanation of footnotes, see NOTES, page 96.

(1) STOCK NO.	(2) FEDERAL ITEM IDENTIFI- CATION NO.	(3) MANUFACTURER'S PART NO.	(4) ORDNANCE PART NO.	(5) DESCRIPTION	(6) UNIT OF ISSUE	(7) QUAN- TITY IN CORP. UNIT	(8) ORGANIZATIONAL ALLOWANCES				(9) REFERENCE SYMBOLS	
							NO. OF MAJOR ITEMS PER					
							1-15 (a)	16-35 (b)	36-85 (c)	86-186 (d)		
				ORGANIZATIONAL SPARE PARTS FOR TRUCK—Continued								
				GROUP 16—SPRINGS AND SHOCK ABSORBERS—Continued								
				1601.1—Front Springs—Continued								
G503-7371085		WO-359039 FM-GPW5781	7371085	BUSHING, spring eye.....	ea	2			%			X
G503-7371062		WO-A8255 FM-GPW5463B	7371062	BUSHING, spring shackle, LH thd, assy.....	ea	1			%			X
G503-7371063		WO-A8256 WO-634432 FM-GPW5464	7371063	BUSHING, spring shackle, RH thd, assy (lower right (1), upper left (1) and upper right (1)).	ea	3			%			X
G503-7371082		WO-A8578 FM-GPW5705C	7371082	CLIP, spring to axle, left front and left right rear.	ea	2			%			X
G503-7371058		WO-A574 FM-GPW5453	7371058	CLIP, spring to axle, right front.....	ea	1			%			X
G503-7371060		WO-A8291 FM-GPW5455B	7371060	CLIP, spring to axle, right front.....	ea	1			%			X
G503-7371059		WO-A8289 FM-GPW5453B	7371059	CLIP, spring to axle, right front.....	ea	1			%			X
G503-7697861		WO-A6326 FM-GPW5601	7697861	LOCK, shackle bolt, left, assy.....	ea	1			%			X
G503-7371061		WO-339372 FM-GPW5456	7371061	NUT, sp, hex, 7/16-20NF-2 (right spring to axle housing U-bolt (4), left (4)).	ea	8			%			X
G503-5333811		WO-638539 FM-35625S8	A333811 5333811	NUT, sp, hex (1 1/16 in) S, zn-pltd, 7/16-20NF-4 (right spring to axle housing U-bolt (4), left (4)).	ea	8			%			X
G053-7735843		WO-A1252 FM-GPW5482	7735843	RETAINER, grease seal, shackle (bearing)...	ea	4			%			X
G503-7735842		WO-A515 FM-GPW5481	7735842	SEAL, grease, shackle (bearing).....	ea	4			%			X
G503-7371114		WO-A8463 WO-645548 FM-GPW5310B	7371114	SPRING, front, left or right, 10 leaf, assy....	ea	2			%			X

(1) STOCK NO.	(2) FEDERAL ITEM IDENTIFICATION NO.	(3) MANUFACTURER'S PART NO.	(4) ORDNANCE PART NO.	(5) DESCRIPTION	(6) UNIT OF ISSUE	(7) QUANTITY IN CORP. IN UNIT	(8) ORGANIZATIONAL ALLOWANCES				(9) REFERENCE SYMBOLS	
							NO. OF MAJOR ITEMS PER					
							CO, BTRY OR TRP	BN	BN			
									1-15 (a)	16-35 (b)		36-85 (c)
ORGANIZATIONAL SPARE PARTS FOR TRUCK—Continued												
GROUP 17—HOOD, FENDERS AND SPLASH SHIELDS—Continued												
1702—Splash Shields—Continued												
				APRON, splash (engine), right fender, assy—Continued								
H001-7025711			120214	WASHER, lock, $\frac{5}{16}$ in.	ea	1			%		H-1	X
H001-7025741			120382	WASHER, lock, $\frac{3}{8}$ in.	ea	4			%		H-1	X
H001-7043711			120393	WASHER, plain, $\frac{5}{16}$ in.	ea	1			%		H-1	X
H001-7043741			120394	WASHER, plain, $\frac{3}{8}$ in.	ea	4			%		H-1	X
G503-7371376		FM-GPW8240	7371376	SHIELD, crankshaft pulley (splash, radiator shell to frame, front crossmember):	ea	1			%			X
G134-0124047		WO-A1124 FM-20309S2		BOLT, hex-hd, $\frac{1}{4}$ -28NF-2 x $\frac{1}{2}$ (issue until stock is exhausted, then use BOLT 224022).	ea				†			X
H101-0224022			224022	BOLT, hex-hd, $\frac{1}{4}$ -28NF x $\frac{1}{2}$.	ea	6			%		H-1	X
H001-4167521			120367	NUT, hex, $\frac{1}{4}$ -28NF-2.	ea	6			%		H-1	X
H001-7025681			120380	WASHER, lock, $\frac{1}{4}$ in.	ea	6			%		H-1	X
G503-7336451		FM-356376S WO-A1125	7336451	WASHER, plain, $\frac{1}{2}$ x $\frac{5}{8}$.	ea	6			%			X
G503-7697851		WO-A3059 FM-GPW16684	7697851	BRACKET, catch.	ea	2			%			X
H001-4167501			120375	NUT, hex, $\frac{1}{4}$ -20NC-2.	ea	4			%		H-1	X
H101-0214582			214582	SCREW, cap, $\frac{1}{4}$ -20NC-2 x $\frac{5}{8}$.	ea	4			%		H-1	X
H001-7025681			120380	WASHER, lock, $\frac{1}{4}$ in.	ea	4			%		H-1	X
H001-7043681			120392	WASHER, plain, $\frac{1}{4}$ in.	ea	4			%		H-1	X
G503-7698438		WO-A3780 FM-GTB16849A	7698438	BUMPER, windshield, hood top (assy) (on hood top).	ea	2			%			X
G503-7371580		WO-A2896 FM-GPW16892	7371580	CATCH, hold down, hood, assy.	ea	2			%			X
H001-4167501			120375	NUT, hex, $\frac{1}{4}$ -20NC-2.	ea	4			%		H-1	X
H101-0214582			214582	SCREW, cap, $\frac{1}{4}$ -20NC-2 x $\frac{5}{8}$.	ea	4			%		H-1	X

(1) STOCK NO.	(2) FEDERAL ITEM IDENTIFI- CATION NO.	(3) MANUFACTURER'S PART NO.	(4) ORDNANCE PART NO.	(5) DESCRIPTION	(6) UNIT OF ISSUE	(7) QUAN- TITY IN- CORP. IN UNIT	(8) ORGANIZATIONAL ALLOWANCES				(9) REFERENCE SYMBOLS	
							NO. OF MAJOR ITEMS PER					
							CO, BTRY OR TRP	BN	36-85 (c)	86-186 (d)		
				ORGANIZATIONAL SPARE PARTS FOR TRUCK—Continued								
				GROUP 18—BODY—Continued								
				1804—Windshield, Glove Compartment And Safety Strap—Continued								
G503-7743844		WO-A2227 FM-GP1103482	7743844	CLAMP, windshield, assy.....	ea	2	X
G503-7371820		WO-A2226 FM-GP1103014 FM-GP1103014A	7371820	FRAME, windshield, w/GLASS, assy (used with hand type wiper) (issue until stock is exhausted, then use FRAME 7099459).	ea	1	X
G503-7099459		WO-A12759 FM-GP1103014B	7099459	FRAME, windshield glass, w/GLASS, assy (used with vacuum type wiper).	ea	1	X
G540-7091769		WO-A2238 FM-B45482C	7091769	KNOB, windshield adjusting arm (5/16-18NC- 2).	ea	2	X
G503-7326119		WO-A2214 FM-355449S2	7326119	SCREW, thumb (windshield pivot), 3/8- 24NF-2.	ea	2	X
G503-7371886		WO-A2483 FM-99W8103311 AN-S384	7371886	SPACER, windshield adjusting arm.....	ea	2	X
G503-7324848		WO-A2220 FM-356373S2	7324848	WASHER, S, 2 1/32 ID, 1 OD, 0.015 thk, 3/32 crown (spring, windshield adjusting arm knob).	ea	4	X
G503-7324847		WO-A4260 FM-356361S7 AN-S1044	7324847	WASHER, windshield adjusting arm spring (knob).	ea	2	X
G503-7371819		WO-A3210 FM-GPW1103010	7371819	WINDSHIELD, assy (issue until stock is exhausted, then use WINDSHIELD .7740835).	ea	X
G503-7740835		WO-A12758	7740835	WINDSHIELD, assy.....	ea	1	X
G503-7698465		WO-A2982 FM-GPW112110	7698465	1805—Cab Floors COVER (access), transmission (drain plug).	ea	1	X

G503-7698466	WO-A2919	7698466	RING, gear shift lever housing cover.....	ea	1	%	%	%	X
G503-7698486	FM-GPW1112119	7698486	SEAL, brake cylinder inspection (hole) cover.	ea	1	%	%	%	X
G503-7371825	WO-A2932	7371825	SEAL (dust, transmission), gear shift lever housing cover (rubber).	ea	1	%	%	%	X
G503-7698487	FM-GPW111137A	7698487	SEAL, transmission (access) cover.....	ea	1	%	%	%	X
		WO-A3783								
		FM-GPW1111286A								
		WO-A2994								
		FM-GPW1112116A								
				1806—Seats, Trim and Crash Pads						
G503-7741329	WO-A11729	7741329	BACK, front seat (back), assy.....	ea	2	%	%	%	X
H101-0111687		111687	SCREW, tapping, No 10 x 1/2.....	ea	20	%	%	%	X
H001-1513004		121324	WASHER, finishing, No 10.....	ea	20	%	%	%	X
G503-7741330	WO-A11731	7741330	BACK rear seat (back), assy.....	ea	1	%	%	%	X
H101-0111687		111687	SCREW, tapping, No 10 x 1/2.....	ea	7	%	%	%	X
H001-1513004		121324	WASHER, finishing, No 10.....	ea	7	%	%	%	X
G503-7698442	WO-A2453	7698442	BRACKET, pivot, front seat.....	ea	2	%	%	%	X
		FM-GPW1162-552								
H001-0912102		216407	RIVET, rd-hd, 3/8 x 5/8.....	ea	2	%	%	%	X
G503-7698443	WO-A2787	7698443	BRACKET (retaining), rear seat back frame.	ea	2	%	%	%	X
		FM-GPW1162-402								
G503-7744208	WO-A12400	7744208	CUSHION, driver's seat, assy.....	ea	1	%	%	%	X
H101-0111687		111687	SCREW, tapping, No 10 x 1/2.....	ea	10	%	%	%	X
H001-1513004		121324	WASHER, finishing, No 10.....	ea	10	%	%	%	X
G503-7698444	WO-A11730	7698444	CUSHION, front (passenger's) seat, assy.....	ea	1	%	%	%	X
		FM-GPW1162-900C								
H101-0111687		111687	SCREW, tapping, No 10 x 1/2.....	ea	10	%	%	%	X
H001-1513004		121324	WASHER, finishing, No 10.....	ea	10	%	%	%	X
G503-7768173	WO-A11732	7768173	CUSHION rear seat assy.....	ea	1	%	%	%	X
H101-0111687		111687	SCREW, tapping, No 10 x 1/2.....	ea	5	%	%	%	X
H001-1513004		121324	WASHER, finishing, No 10.....	ea	5	%	%	%	X
G503-7698461	WO-A2783	7698461	FRAME, rear seat back, assy (issue until stock is exhausted, then use BACK 7741330).	ea	%	%	%	X
G503-7698463	WO-A2905	7698463	PAD, front seat back (issue until stock is exhausted, then use BACK 7741329).	ea	%	%	%	X
G503-7698462	FM-GPW1164-812B	7698462	PAD, rear seat back (issue until stock is exhausted, then use BACK 7741330).	ea	%	%	%	X
G503-7698445	WO-A2908	7698445	TRIM, front seat back, assy (issue until stock is exhausted, then use BACK 7741329).	ea	%	%	%	X
		FM-GPW1166-800B								
G503-7698435	WO-A2987	7698435	TRIM, rear seat back, assy (issue until stock is exhausted, then use BACK 7741330).	ea	%	%	%	X
		FM-GPW166-600								

(1) STOCK NO.	(2) FEDERAL ITEM IDENTIFI- CATION NO.	(3) MANUFACTURER'S PART NO.	(4) ORDNANCE PART NO.	(5) DESCRIPTION	(6) UNIT OF ISSUE	(7) QUAN- TITY IN- CORP. IN UNIT	(8) ORGANIZATIONAL ALLOWANCES				(9) REFERENCE SYMBOLS	
							NO. OF MAJOR ITEMS PER					
							1-15 (a)	16-35 (b)	36-85 (c)	86-186 (d)		
												CO. BTRY OR TRP
				ORGANIZATIONAL SPARE PARTS FOR TRUCK—Continued								
				GROUP 18—Body—Continued								
				1806—Seats, Trim and Crash Pads —Continued								
G503-7698434		WO-A2988 FM-GPW1163-804C	7698434	TRIM, rear seat cushion, comp, assy (issue until stock is exhausted, then use CUSHION 7768173).	ea							X
				1808—Tool Compartment, Stowage Clamps, and Straps								
G503-6578296			D78296	CASE, rifle (universal), w/HOLDER, assy.	ea	1	%	%	%			X
G503-7698436		WO-A2995 FM-GPW1128256	7698436	CLAMP, axe, front, assy.	ea	1						X
G503-7698437		WO-A2894 FM-GPW1128254	7698437	CLAMP, axe, rear, assy.	ea	1						X
G503-7698459		WO-A2503 FM-GPW1146102A	7698459	SEAL, tool compartment lid (issue until stock is exhausted, then use SEAL 7743813).	ea							X
G503-7744399		WO-A3933	7744399	SEAL, tool compartment lid (issue until stock is exhausted, then use SEAL 7743813).	ea							X
G503-7743813		WO-A3934	7743813	SEAL, tool compartment (lid).	ea	4						X
G503-7698489		WO-A4127 FM-GPW1140334	7698489	STRAP, spare gasoline can, w/BUCKLE, assy.	ea	1	%	%	%			X
G503-7698490		WO-A4128 FM-GPW1140334	7698490	STRAP, spare gasoline can, w/end TIP, assy.	ea	1	%	%	%			X
G503-7698452		WO-A4130 FM-GPW1140348	7698452	SUPPORT, spare gasoline can.	ea	1						X
G503-7743508		WO-A2744 FM-GPW1129069	7743508	1812—Body BRACKET, left (top bow) hand rail, front, assy.	ea	1	%	%	%			X

G503-7743509	WO-A2745	7743509	BRACKET, right (top bow) band rail, front, assy.	ea	1	%	%	%	%	X
H001-4026521	FM-GPW1129068	220070	NUT, hex, 5/16-18NC-2.....	ea	2	%	%	%	%	X
H101-0214612	214612	SCREW, cap, 5/16-18NC-2 x 1/2.....	ea	2	%	%	%	%	X
H001-7025711	120214	WASHER, lock, 5/16 in.....	ea	2	%	%	%	%	X
GROUP 20—CAPSTAN											
2001.1—Capstan											
G503-7375826	WO-A9215	7375826	CAPSTAN (winch) (issue until stock is exhausted, then use CAPSTAN 7520297).	ea	1	†	X
G503-7520297	LK-WZ88-37 WO-640807	7520297	CAPSTAN (winch), assy.....	ea	1	%	%	%	%	X
H001-5090661	012-0629	120629	BOLT, mach, 1/4-20NC-2 x 1/8.....	ea	8	%	%	%	%	X
H001-4135741	134551	NUT, mach screw, 1/4-20NC-2.....	ea	8	%	%	%	%	X
H001-7025681	120380	WASHER, lock, 1/4 in.....	ea	8	%	%	%	%	X
45-F-437	45-F-437	FITTING, lubricating, hydraulic type, drive, 1/4 in (spool shaft) (used w/CAPSTAN 7520297).	ea	1	%	%	%	%	X
2001.3—Drive Shaft											
G503-7375839	WO-A9210	7375839	BRACKET, support, w/BEARINGS, assy...	ea	1	X
H101-0139041	013-9041	139041	BOLT, set, 5/16-24NF-3 x 1/4 (spline shaft yoke).	ea	1	%	%	%	%	X
G503-7347350	WO-A9157	7347350	JOINT, universal, front, assy.....	ea	1	%	%	%	%	X
G503-7347351	WO-A9158	7347351	JOINT, universal, rear, assy.....	ea	1	%	%	%	%	X
H001-0518013	103646	KEY, Woodruff, 1/8 x 3/4 (spline shaft yoke).	ea	1	%	%	%	%	X
G503-7375822	WO-A9201	7375822	PIN, universal joint, front.....	ea	1	%	%	%	%	X
H001-5421241	120758	SCREW, cap, 3/8-24NF-3 x 7/8 (support bracket).	ea	3	%	%	%	%	X
G503-7375823	WO-A9202	7375823	SHAFT, drive, assy.....	ea	1	%	%	%	%	X
G503-7375824	WO-A9214	7375824	SHAFT, spline.....	ea	1	%	%	%	%	X
G503-7375825	WO-A9194	7375825	SPACER, support bracket.....	ea	3	X
H001-7025741	120382	WASHER, lock, 3/8 in (support bracket screw).	ea	3	%	%	%	%	X
2001.5—Controls											
H002-0100130	104919	BALL, 5/16 in (detent, shifter shaft).....	ea	1	%	%	%	%	X
G503-7371122	FM-GPA5642	7371122	KEY, shaft to clutch.....	ea	1	%	%	%	%	X
G503-7375718	WO-A9196	7375718	ROD, shift.....	ea	1	%	%	%	%	X
G503-7375719	WO-A9206	7375719	SHAFT, shifter.....	ea	1	%	%	%	%	X
G503-7375837	WO-A9207	7375837	SHIFTER, driver shaft hub.....	ea	1	%	%	%	%	X
G503-7375838	WO-A9203	7375838	SPRING, shifter shaft detent ball.....	ea	1	%	%	%	%	X

(1) STOCK NO.	(2) FEDERAL ITEM IDENTIFI- CATION NO.	(3) MANUFACTURER'S PART NO.	(4) ORDNANCE PART NO.	(5) DESCRIPTION	(6) UNIT OF ISSUE	(7) QUAN- TITY IN CORP. UNIT	(8) ORGANIZATIONAL ALLOWANCES				(9) REFERENCE SYMBOLS	
							NO. OF MAJOR ITEMS PER					
							1-15 (a)	16-35 (b)	36-85 (c)	86-186 (d)		
				ORGANIZATIONAL SPARE PARTS FOR TRUCK—Continued								
				GROUP 22—MISCELLANEOUS ACCES- SORIES								
				2201—Top Covers, Bow and Curtains								
G503-7743538		FM-GPW1151272	7743538	BOW, top, front, assy (issue until stock is exhausted, then use BOW 7698484).	ea	1	%	%	†		X	
G503-7698484		WO-A2897 FM-GPW1151266	7698484	BOW, top, w/footman LOOP, assy.....	ea	1	%	%	%		X	
G503-7698483		FM-GPW1151268	7698483	BOW, top, w/hand RAIL, assy (issue until stock is exhausted, then use BOW 7698484).	ea	1	%	%	†		X	
G503-7335204			7335204	BRACKET, left door hinge, w/NUT and WASHER, assy (also available as part of KIT 5701207) (Used w/COVER 7721446).	ea	1	%	%	%		X	
G503-7335205			7335205	BRACKET, right door hinge, w/NUT and WASHER, assy (also available as part of KIT 5701207) (Used w/COVER 7721446).	ea	1	%	%	%		X	
H001-4026521			220070	NUT, hex, 5/16-18NC-2.....	ea	2		%	%		H-1	X
H001-7023711			120379	WASHER, lock, 5/16 in.....	ea	2		%	%		H-1	X
G503-7698447		WO-A2754 FM-GPW1153030	7698447	BRACKET, top bow pivot.....	ea	2		%	%		X	X
H002-0543486			543486	BUCKLE, 1 in (rear curtain and top cover strap).	ea	7		%	%		H-2	X
H002-0582935			582935	CAP, rivet type fastener (side curtain to rear curtain (12) and side curtain to top cover (4)).	ea	16		%	%		H-2	X
G503-7335217			7335217	CLAMP, windshield frame, assy (also available as part of KIT 5701207) (Used w/COVER 7721446).	ea	2		%	%			X
H002-0101260			502109	CLIP, end, 1 in (rear curtain and top cover strip).	ea	7		%	%		H-2	X
G503-7698480		WO-A3070 FM-GPW1102980	7698480	COVER, headlight (canvas).....	ea	2		%	%			X

(1) STOCK NO.	(2) FEDERAL ITEM IDENTIFI- CATION NO.	(3) MANUFACTURER'S PART NO.	(4) ORDNANCE PART NO.	(5) DESCRIPTION	(6) UNIT OF ISSUE	(7) QUAN- TITY IN CORP. UNIT	(8) ORGANIZATIONAL ALLOWANCES				(9) REFERENCE SYMBOLS	
							NO. OF MAJOR ITEMS PER					
							CO, BTRY OR TRP	BN	BN			
									1-15 (a)	16-35 (b)		36-85 (c)
				ORGANIZATIONAL SPARE PARTS FOR TRUCK—Continued								
				GROUP 22—MISCELLANEOUS ACCES- SORIES—Continued								
				2201—Top Covers, Bow and Curtains —Continued								
				KIT, enclosure, top and side curtain —Continued								
			7335155	1 CURTAIN, side left, assy (sub- group 2201) ⁴								
			7335156	1 CURTAIN, side right, assy (sub- group 2201) ⁴								
			7335175	1 DOOR, left, assy (subgroup 2201) ⁴								
			7335176	1 DOOR, right, assy (subgroup 2201) ⁴								
			7335191	1 SOCKET, door hinge, left, assy (subgroup 2201) ⁴								
			7355192	1 SOCKET, door hinge, right, assy (subgroup 2201) ⁴								
			7335218	1 SUPPORT, top cover, left door (subgroup 2201) ⁴								
			7335219	1 SUPPORT, top cover, right door (subgroup 2201) ⁴								
G503-7698440		WO-A2168	7698440	LOOP, footman.....	ea	6				%	%	X
		FM-GPW1154810A										
H101-0123854	012-3854		123854	BOLT, mach, No 10-24NC-2 x 1/2.....	ea	12				%	%	H-1
H001-7025621			120217	WASHER, lock, No 10.....	ea	12				%	%	H-1
G503-7698479		WO-A2901	7698479	PIVOT, top bow, assy.....	ea	2				%	%	X
		FM-GPW1151270										
H009-0852898			33-P-4952-500	PLASTIC, 20 in x 50 in (rear curtain window pane (1), left and right door pane (4) and side curtain window pane (4)) (0.030).	ea	9				%	%	H-9
H002-0582939			582939	PLATE, fastener stud (side curtain to rear curtain (6) and side curtain to top cover (2)).	ea	8				%	%	H-2

G503-7326119	WO-A2214	7326119	SCREW, thumb (top bow socket) $\frac{3}{8}$ -24NF-2 x 1.920. (MB)	ea	2	%	%	X
G503-7743560	FM-GP1150498	7743560	SCREW, thumb (top bow socket) $\frac{5}{16}$ -18NC-x 1.920. (GPW)	ea	2	%	%	X
G503-7335191		7335191	SOCKET, left door hinge, assy (Used w/COVER 7721446) (also available as part of KIT 5701207).	ea	1	%	%	X
G503-7335192		7335192	SOCKET, right door hinge, assy (Used w/COVER 7721446) (also available as part of KIT 5701207).	ea	1	%	%	X
H102-0114305		114305	STUD, flush type push button fastener (door).	ea	4	%	H-2	X
H102-0114305		114305	STUD, flush type push button fastener (side curtain) (Used w/CURTAIN 7698477 and 7698478).	ea	14	%	H-2	X
H102-0116266		116266	STUD, small turnbutton fastener (side curtain to rear curtain (6) and side curtain to top cover (2)).	ea	8	%	H-2	X
G503-7335218		7335218	SUPPORT, top cover, left door (Used w/COVER 7721446) (also available as part of KIT 5701207).	ea	1	%	%	X
G503-7335219		7335219	SUPPORT, top cover, right door, (Used w/COVER 7721446) (also available as part of KIT 5701207).	ea	1	%	%	X
H102-0426686		426686	WASHER, large turnbutton fastener eyelet (rear curtain (6) and side curtain to top cover (12)).	ea	18	%	H-2	X
H002-0211745		106476	WASHER, push button fastener eyelet (top cover to windshield).	ea	10	%	H-2	X
H102-0114307		114307	WASHER, tub rivet base flush type push button fastener stud (door).	ea	4	%	H-2	X
H009-0100890		27-W-918	WEBBING, width 1 in (rear curtain and top cover strap).	yd	1	%	H-9	X
2202—Mirrors, Reflectors and Windshield Wipers								
H002-0547250		547250	ARM, adjustable (8 in to 11 in) (rear view mirror) (outside).	ea	1	%	H-2	X
H017-0500810		500810	ARM, windshield wiper, adj, 8 to 11½, assy (used with vacuum wiper).	ea	2	%	H-17	X
G503-7002982	WO-A2512 FM-GPI7535	7002982	ARM, windshield wiper, w/BLADE, assy (used with WIPER 7372259).	ea	2	%	%	X

For explanation of footnotes, see NOTES, page 96.

(1) STOCK NO.	(2) FEDERAL ITEM IDENTIFICATION NO.	(3) MANUFACTURERS PART NO.	(4) ORDNANCE PART NO.	(5) DESCRIPTION	(6) UNIT OF ISSUE	(7) QUANTITY IN-CORP. IN UNIT	(8) ORGANIZATIONAL ALLOWANCES				(9) REFERENCE SYMBOLS				
							NO. OF MAJOR ITEMS PER								
							CO, BTRY OR TRP	BN	1-15 (a)	16-35 (b)		36-85 (c)	86-186 (d)		
				ORGANIZATIONAL SPARE PARTS FOR TRUCK—Continued											
				GROUP 22—MISCELLANEOUS ACCESSORIES—Continued											
				2202—Mirrors, Reflectors and Windshield Wipers—Continued											
G503-7002981		WO-A4687 FM-GP17528	7002981	BLADE, windshield wiper (used with WIPER 7372259) (issue until stock is exhausted, then use ARM 7002982).	ea	X		
H017-0500812		500812	BLADE, windshield wiper arm, 8 1/4 in long (used with WIPER 5700002)	ea	2	H-17	X
H006-0210030		144035	BUSHING, pipe, 1/4 x 1/8 (reducing, windshield wiper line to intake manifold).	ea	1	H-6	X
H006-0214315		137405	CONNECTOR, flared tube, inverted, 1/4 in tube, 1/8 in male pipe end (windshield wiper line).	ea	2	H-6	X
G503-7743536		FM-GP17531	7743536	HANDLE, windshield wiper, w/KNOB, assy (issue until stock is exhausted, then use HANDLE 7036573).	ea	X
G503-7036573		TRI-80540 WO-A11432 FM-GPW17526	7036573	HANDLE, windshield wiper, w/tie ROD, assy.	ea	1	X
G503-7735526		TRI-S1071X WO-A12874 FM-GPW18395	7735526	KIT (repair), windshield wiper vacuum motor (issue until stock is exhausted, then use MOTOR 500844).	ea	X
G503-7099461		WO-640527 FM-GPW17536	7099461	LINE, windshield wiper, vacuum, assy (issue until stock is exhausted, then use TUBING 44-T-5080-15).	ea	X
G503-7371844		WO-A2934 FM-21CS17682B	7371844	MIRROR, rear view (outside), w/ARM, assy (issue until stock is exhausted, then use MIRROR 547202 and ARM 547250).	ea	X
H002-0547202		547202	MIRROR, rear view (outside, w/WASHER and NUT, assy).	ea	1	H-2	X

H017-0500844	500844	MOTOR, windshield wiper, vacuum operated, assy.	ea	2	%	%	%	%	X
H006-0230210	142432	NUT, inverted, flared tube fitting, 1/4 in (windshield wiper line).	ea	1	%	%	%	%	X H-6
H101-0116001	116001	NUT, mach screw, No 12-24NC-2 (windshield wiper arm).	ea	2	%	%	%	%	X H-1
H017-0506101	506101	REFLECTOR, ruby, 4 1/2 in diam (ruby lens).	ea	4	%	%	%	%	X H-17
G503-7099460 TRI-79513 WO-A12751 FM-11C17489	7099460	TEE, windshield wiper vacuum line.....	ea	1	%	%	%	%	X
H007-0878000	33-T-233	TUBING, ID 7/8 in (vacuum windshield wiper).	ft	†	%	%	%	%	X H-7
H007-0218065	44-T-5080-15	TUBING, seamless, size 1/4 in (windshield wiper line).	ft	†	%	%	%	%	X H-7
H101-0131199	131199	WASHER, lock, No 12 (windshield wiper arm nut).	ea	2	%	%	%	%	X H-1
G503-7324836 FM-35130S2	7324836	WASHER, plain, sp, S, phos-ctd, 5/8 ID, 1/2 OD windshield wiper arm.	ea	2	%	%	%	%	X
G503-5700002	5700002	WIPER, windshield, hand, tension type, assy (single hand type) (issue until stock is exhausted, then use WIPER 7372259).	ea	X
G503-7372259 WO-A2586 FM-GP17500	7372259	WIPER, windshield, hand, sgle, assy (single hand type).	ea	1	%	%	%	%	X
G503-7002980 WO-A11433 FM-GPW17500	7002980	WIPER, windshield, hand, tandem, assy (hand type) (issue until stock is exhausted, then use components).	ea	X
2208.1—Speedometer										
G503-7044232 SW-777F1.1038	7044232	ADAPTER (assy).....	ea	1	X
G503-7706760 AL-SPS1100R WO-A1343 FM-GPW17261A	7706760	CASING, drive, flexible shaft, assy (issue until stock is exhausted, then use SHAFT 7744255).	ea	X
G503-7537427 SP-18-453-2 WO-A1512 FM-GPW17271	7537427	GEAR, driven.....	ea	1	X
G503-7744255 WO-A1267 FM-GPW17260 FM-GPW17260A	7744255	SHAFT, flexible, drive (w/CORE and CASING, assy).	ea	1	X
G503-7373169 SP-18-454-2 WO-636396 FM-GPW17333	7373169	SLEEVE, driven gear (in transfer case).....	ea	1	X
G116-0401031 AL-SPK4003 KS-40355 WO-A8180	B266142	SPEEDOMETER, assy.....	ea	1	X

(1) STOCK NO.	(2) FEDERAL ITEM IDENTIFICATION NO.	(3) MANUFACTURER'S PART NO.	(4) ORDNANCE PART NO.	(5) DESCRIPTION	(6) UNIT OF ISSUE	(7) QUANTITY IN CORP. IN UNIT	(8) ORGANIZATIONAL ALLOWANCES				(9) REFERENCE SYMBOLS	
							NO. OF MAJOR ITEMS PER					
							1-15 (a)	16-35 (b)	36-85 (c)	86-186 (d)		
				ORGANIZATIONAL SPARE PARTS FOR TRUCK—Continued								
				GROUP 22—MISCELLANEOUS ACCESSORIES—Continued								
				2210—Vehicular Data Plates								
G503-7697856		WO-A1330	7697856	PLATE, caution (road speed and cooling system drain).	ea	1	%	%	%	%		X
G503-7040940		FM-GPW1101-621A	7040940	PLATE, instruction, arc welder.	ea	1	%	%	%	%		X
G503-7540463		KHW-25696	7540463	PLATE, instruction, combat wheels.	ea	1	%	%	%	%		X
		WO-A5472										
		FM-GPW1045										
G503-7040936			7040936	PLATE, instruction, governor control.	ea	1	%	%	%	%		X
G503-7743811		WO-A1331	7743811	PLATE, shifting, instruction (gear shift)	ea	1	%	%	%	%		X
		FM-GPW1101627A1		(transmission and transfer) (MB and GPW)								
G503-7768200		WO-A17344	7768200	PLATE, name, vehicle (MB).	ea	1	%	%	%	%		X
G503-7768201		FM-GPW110629A1	7768201	PLATE, vehicle name (GPW).	ea	1	%	%	%	%		X
		FM-GPW110629A2										
		FM-GPW110629A3										
		FM-GPW110629A4										
G503-7732278			7732278	PLATE, vehicle shipping data (GPW).	ea	1	%	%	%	%		X
G503-7732279			7732279	PLATE, vehicle shipping data (MB).	ea	1	%	%	%	%		X

(1)	(2)	(3)	(4)	(5)			(6)	(7)
STOCK NO.	ORDNANCE PART NO.	DESCRIPTION	UNIT OF ISSUE	ORGANIZATIONAL ALLOWANCES			REFERENCE SYMBOLS	FIG. NO.
				TOOL SET, 2nd Ech, Set A Special, Basic	TOOL SET, 2nd Ech, Set B Special, Basic	TOOL SET, 2nd Ech, Set B Special		
				(a)	(b)	(c)		
		ORGANIZATIONAL TOOLS AND EQUIPMENT FOR TRUCK						
		TOOL SET, 2nd Ech, Set A, Special, Basic.	set	6	NX
		TOOL SET, 2nd Ech, Set B, Special, Basic.	set	6	NX
		TOOL SET, 2nd Ech, Set B, Special.	set	6	NX
		Any item listed hereunder may be requisitioned separately under its own Federal stock number.						
41-A-18-251	41-A-18-251	ADAPTER, puller, steering wheel.	ea	1	J-6 NX	3
41-C-2554-400	41-C-2554-400	COMPRESSOR, shock absorber rubber grommet.	ea	1	J-6 NX	3
41-P-2951-850	41-P-2951-850	PULLER, steering ballcrank shaft.	ea	1	J-6 NX
41-R-2374-750	41-R-2374-750	REMOVER and REPLACER, brg cup (spindle pin), thd 3/4 in-16NF-2 female.	ea	1	J-6 NX
41-R-2374-845	41-R-2374-845	REMOVER and REPLACER, brg cup (wheel), thd 1 1/4-12NF-2 female.	ea	1	J-6 NX
41-S-1047-300	41-S-1047-300	SCREW, remover and replacer (brg cup), thd 3/4 in-16NF-2, lgh in.	ea	1	J-6 NX
41-S-1047-330	41-S-1047-330	SCREW, remover and replacer (brg sleeve), thd 1 1/4-12NF-2, lgh 9 in.	ea	1	J-6 NX	3
41-W-3825-200	41-W-3825-200	WRENCH, wheel bearing nut, sgle-end, tubular, hex, size of opng 2 1/8 in, lgh 3.56 in.	ea	2	2	J-6 NX	3

For explanation of footnotes, see NOTES, page 96.

(1)	(2)	(3)	(4)	(5)	(6)	(7)	(8)
STOCK NO.	FEDERAL ITEM IDENTIFICATION NO.	ORDNANCE PART NO.	DESCRIPTION	UNIT OF ISSUE	ORGANIZATIONAL ALLOWANCES PER MAJOR ITEM	REFERENCE SYMBOLS	FIG. NO.
			MISCELLANEOUS MATERIAL				
			The items under the subheadings below are NOT issued with the major item, but issued as organizational equipment and installed by the using troops.				
			Tools and Equipment for Truck				
41-A-1277		41-A-1277	AXE, hdl, chopping, sgle bit, std grade, wt, 4 lb ⁹ .	ea	1	J-17 NX
H014-0540013		540013	CHAIN, pneumatic tire, truck, sgle (type TS) 600-16 ¹⁰ .	pr	2	H-14 NX
		7729648	KIT, winterization, artic.	ea	7	G-249 NX
			Consisting of:				
		7720468	1 KIT, closure, hard top.			G-249 NX
G249-5701207		5701207	1 KIT, enclosure, soft top.			G-249 NX
		7726633	1 KIT, heater, personnel.			G-249 NX
			Consisting of:				
		7720530	1 COVER, radiator, assy.			G-249 NX
		7720529	1 DEFROSTER, assy.			G-249 NX
		7729643	1 HEATER, personnel, assy.			G-249 NX
		7720581	1 PRIMER, assy.			G-249 NX
			1 KIT, heater, power plant.			G-249 NX
			Consisting of:				
		7720527	1 COVER, hood.			G-249 NX
		7729645	1 HEATER, btry box, assy.			G-249 NX
		7729646	1 HEATER, power plant, assy.			G-249 NX
		7729644	1 RECEPTACLE, slave, assy.	ea	1	J-17 NX
41-S-3170		41-S-3170	SHOVEL, general purpose, "D" hdl, plain back, strap pattern, rd-pt ⁹ .				
			Armament For Truck				
			For organizational maintenance allowances see the ORD 7 portion of the SNL indicated in parentheses.				
A001-7142393	714-2393	7142393	GUN, machine, cal..30, Browning, M1919A4, flex (SNL A-6) ⁹ .	ea	1	A-1 NX
			or				
A001-7265636	726-5636	7265636	GUN, machine, cal..50, Browning, M2 heavy barrel, flex (SNL A-39) ⁹ .	ea	1	A-1 NX
			or				
A001-7265703	726-5703	7265703	RIFLE, automatic, cal..30, Browning, M1918A2 (A4) ⁹ .	ea	1	A-1 NX
A055-7069767	706-9767	7069767	MOUNT, truck, pedestal, M31C (SNL A-55, Sec 18) ⁹ .	ea	1	A-1 NX
			or				
A055-6906266	690-6266	6906266	MOUNT, machine gun, cal..30, M48 (SNL A-55, Sec 32) ⁹ .	ea	1	A-1 NX

For explanation of footnotes, see NOTES, page 96.

(1)	(2)	(3)	(4)	(5)	(6)	(7)	(8)
STOCK NO.	FEDERAL ITEM IDENTIFICATION NO.	ORDNANCE PART NO.	DESCRIPTION	UNIT OF ISSUE	ORGANIZATIONAL ALLOWANCES PER MAJOR ITEM	REFERENCE SYMBOLS	FIG. NO.
			MISCELLANEOUS MATERIAL—Continued				
			Armament for Truck—Continued				
			The Armament listed hereunder is not issued with the vehicle but issued as individual Armament as per T/O&E and installed by the using troops. For Organizational Maintenance Allowances see ORD 7 portion of the SNL indicated in parentheses.				
B001-7265698	726-5698	7265698	RIFLE, US cal..30, M1 (SNL B-21) ⁹	ea	1	B-1 NX
			Equipment Issued By Other Technical Services				
42-D-1280	DRUM, inflammable liquid gasoline, S, w/carrying hdl, cap 5 gal ⁹ .	ea	1	QMC NX
9-221-200	KIT, first aid, motor vehicle, 12 unit ⁹	ea	1	MED X	
			Articles for Instructional Purposes				
			The following item WILL NOT BE TAKEN into the field upon permanent change of station, or into an oversea command. Units will turn in all equipment to the commanding officer of the station from which they depart. The receiving officer will make a report to the army commander without delay, showing number, type, and condition of items received.				
			GRAPHIC TRAINING AID 9-25 (Preventive Maintenance, Automotive) ⁸ .	ea	AG NX

For explanation of footnotes, see NOTES, page 96.

(1)	(2)	(3)	(4)	(5)	(6)
STOCK NO.	ORDNANCE PART NO.	DESCRIPTION	UNIT OF ISSUE	ORGANIZATIONAL ALLOWANCES	REFERENCE SYMBOLS
				PER MAJOR ITEM	
		Applicable Cleaning and Preserving Materials			
		The following items are extracted from ORD 3 SNL K-1, unless otherwise indicated in column 6, and are requisitioned as required. For usage, see TM 9-850 and TM 9-2851.			
		ALCOHOL, denatured,			
51-A-1932	51-A-1932	1 gal.....	ea		K-1 X
51-A-1938	51-A-1938	5 gal.....	ea		K-1 X
		BRUSH, acid, flat, bristle, bristles $\frac{3}{8}$ x $\frac{3}{4}$ in, lgh overall $5\frac{3}{4}$ in.	ea		ENG X
		BRUSH, chassis and running gear, fiber brush part 5 x $6\frac{1}{2}$ in, lgh overall $21\frac{3}{4}$ in.	ea		ENG X
		BRUSH, cleaning, bristle hatchet type, brush part $\frac{5}{8}$ x $3\frac{3}{8}$ in, lgh overall 20 in.	ea		ENG X
		BRUSH, cleaning, bristle, rd, $1\frac{1}{2}$ in diam.....	ea		ENG X
		BRUSH, paint, flat, metal bound, med grade, 3 x $3\frac{1}{4}$ in.....	ea		ENG NX
		CARBON TETRACHLORIDE			
51-C-768	51-C-768	1 lb.....	ea		K-1 X
51-C-772	51-C-772	1 qt.....	ea		K-1 X
51-C-775	51-C-775	1 gal.....	ea		K-1 X
		CEMENT, rubber, natural, non-vulcanizing,			
52-C-1450	52-C-1450	2 oz tube.....	ea		K-1 X
52-C-1452	52-C-1452	1 pt tube.....	ea		K-1 X
52-C-1454	52-C-1454	1 qt can.....	ea		K-1 X
42-C-20363-50	42-C-20363-50	CLOTH, abrasive, al-oxide, sheet 9 x 11 in, grade 3/0-120, 50 sheet sleeve.	pkg		K-1 X
		CLOTH, wiping, cotton,			
27-C-2684-880	27-C-2684-880	5 lb bag.....	ea		K-1 X
27-C-2690	27-C-2690	100 lb bale.....	ea		K-1 X
		COMPOUND, antifreeze (ethylene glycol type),			
51-C-1554-15	51-C-1554-15	1 gal (zone of interior issue only).....	ea		K-1 X
51-C-1554-20	51-C-1554-20	1 gal export packed (for export shipment only).....	ea		K-1 X
51-C-1554-35	51-C-1554-35	55 gal (for issue to depots, arsenals, motor pools, etc)....	ea		K-1 X
51-C-1568-500	51-C-1568-500	COMPOUND, cleaning, pkg containing 1 lb of cleaner and 4 oz of neutralizer.	ea		K-1 X
51-C-1588-775	51-C-1588-775	COMPOUND, inhibitor, corrosion, 5 oz (for water and ethylene glycol) (5 oz inhibits 4 gal water or water-ethylene glycol solution used for second season. Not required for new ethylene glycol-water solution).	ea		K-1 X
		COMPOUND, insulation, ignition,			
52-C-3099	52-C-3099	2 oz bottle.....	ea		K-1 X
52-C-3099-5	52-C-3099-5	1 qt.....	ea		K-1 X
52-C-3099-20	52-C-3099-20	5 gal (for base shops, depots, arsenals, etc only).....	ea		K-1 X
52-C-3099-55	52-C-3099-55	55 gal (for base shops, depots, arsenals, etc only).....	ea		K-1 X
51-C-1661	51-C-1661	COMPOUND, water repellent w/cotton applicator and gauze pad $\frac{1}{2}$ cc glass vial (for use only on vehicle windshields, etc in landing operations).	ea		K-1 X
		ENAMEL, rust inhibiting, od.....	ea		ENG X
		ENAMEL, synthetic, gloss.....	ea		ENG X
		ENAMEL, synthetic, lustreless.....	ea		ENG X
51-F-360-725	51-F-360-725	FLUID, hydraulic, brake, 1 gal.....	ea		K-1 X
51-F-363-15	51-F-363-15	FLUID, shock absorber, hv, 1 gal (For Houde shock absorbers).	ea		K-1 X

(1)	(2)	(3)	(4)	(5)	(6)
STOCK NO.	ORDNANCE PART NO.	DESCRIPTION	UNIT OF ISSUE	ORGANIZATIONAL ALLOWANCES PER MAJOR ITEM	REFERENCE SYMBOLS
		Applicable Cleaning and Preserving Materials —Continued			
		GREASE, lubr, general purpose,			
		No 0 (chassis grease No 0).....	ea	QMC X
		No 1 (chassis grease No 1).....	ea	QMC X
		No 2 (wheel bearing grease No 2).....	ea	QMC X
		LUBRICANT, chain, exposed gear and wire rope,			
		5 lb, grade A (for use in cold weather).....	ea	QMC X
		5 lb, grade B (for use in warm weather).....	ea	QMC X
		5 lb, grade C (for use in hot weather).....	ea	QMC X
		LUBRICANT, gear, universal,			
		Grade 75 (GO 75).....	ea	QMC X
		Grade 90 (GO 90).....	ea	QMC X
		OIL, lubr, engine,			
		SAE 10 (OE 10).....	ea	QMC X
		SAE 30 (OE 30).....	ea	QMC X
		SAE 50 (OE 50).....	ea	QMC X
		OIL, lubr, lt,			
14-0-1339	14-0-1339	1 qt.....	ea	K-1 X
14-0-1339-15	14-0-1339-15	1 gal.....	ea	K-1 X
		OIL, lubr, preservative, sp,			
14-0-2833-992	14-0-2833-992	2 oz (oblong screw top can).....	ea	K-1 X
14-0-2833-994	14-0-2833-994	4 oz (oblong can w/spout).....	ea	K-1 X
14-0-2834-10	14-0-2834-10	1 qt.....	ea	K-1 X
		PAINT, gasoline soluble, lustreless.....	ea	ENG X
		SPONGE, cellulose, coarse pore, rect,			
41-S-4037	41-S-4037	Size 6 (med), 1 ³ / ₈ x 3 ¹ / ₄ x 5 in.....	ea	K-1 X
41-S-4039	41-S-4039	Size 10 (large), 2 ¹ / ₄ x 4 ³ / ₈ x 6 ¹ / ₄ in.....	ea	K-1 X
		THINNER, enamel, synthetic.....	ea	ENG X
		THINNER, paint, volatile mineral spirits (can be used in lieu of SOLVENT, dry cleaning).	ea	ENG X

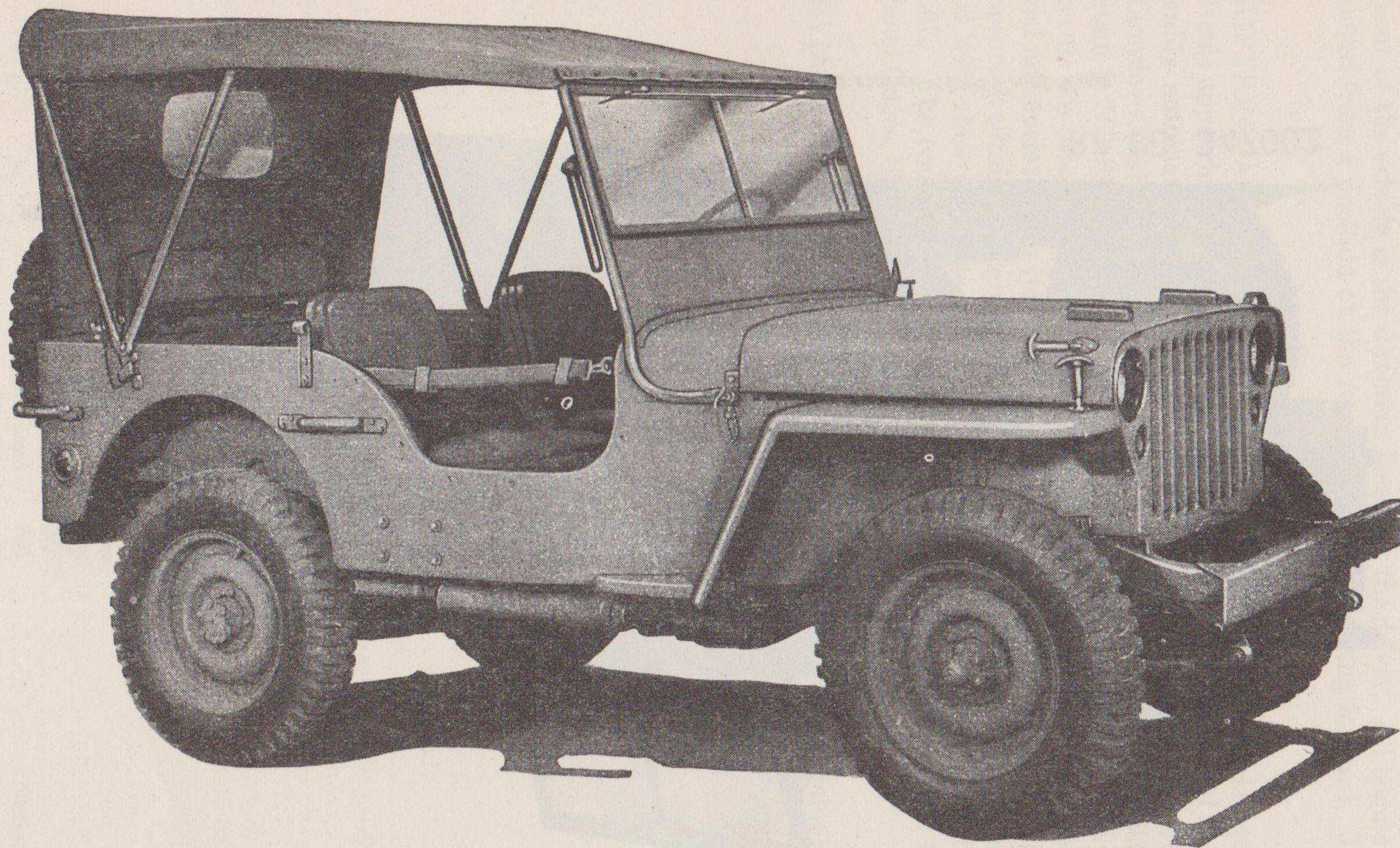
NOTES

Explanation of Symbols

- J-17 SNL symbols such as J-17, H-1, K-1, etc, refer to the SNL in which the item is reviewed.
- NX Items marked NX are nonexpendable.
- X Items marked X are expendable.
- ‡ As required.
- % The percent symbol (%) indicates additional items not carried by this category of maintenance, but which may be requisitioned when needed for replacement.
- %% The double percent symbol (%%) indicates items which may be requisitioned and installed by this category of maintenance, when approved by the supporting ordnance officer.
- † Available for issue until stock is exhausted. The requisitioning agency will take necessary action to issue the *superseding* or *preferred* item. The supplying agency will take necessary action to issue the superseded item until stock is exhausted.
- AG The Adjutant General
- ENG Corps of Engineers
- MED Army Medical Service
- QMC Quartermaster Corps.

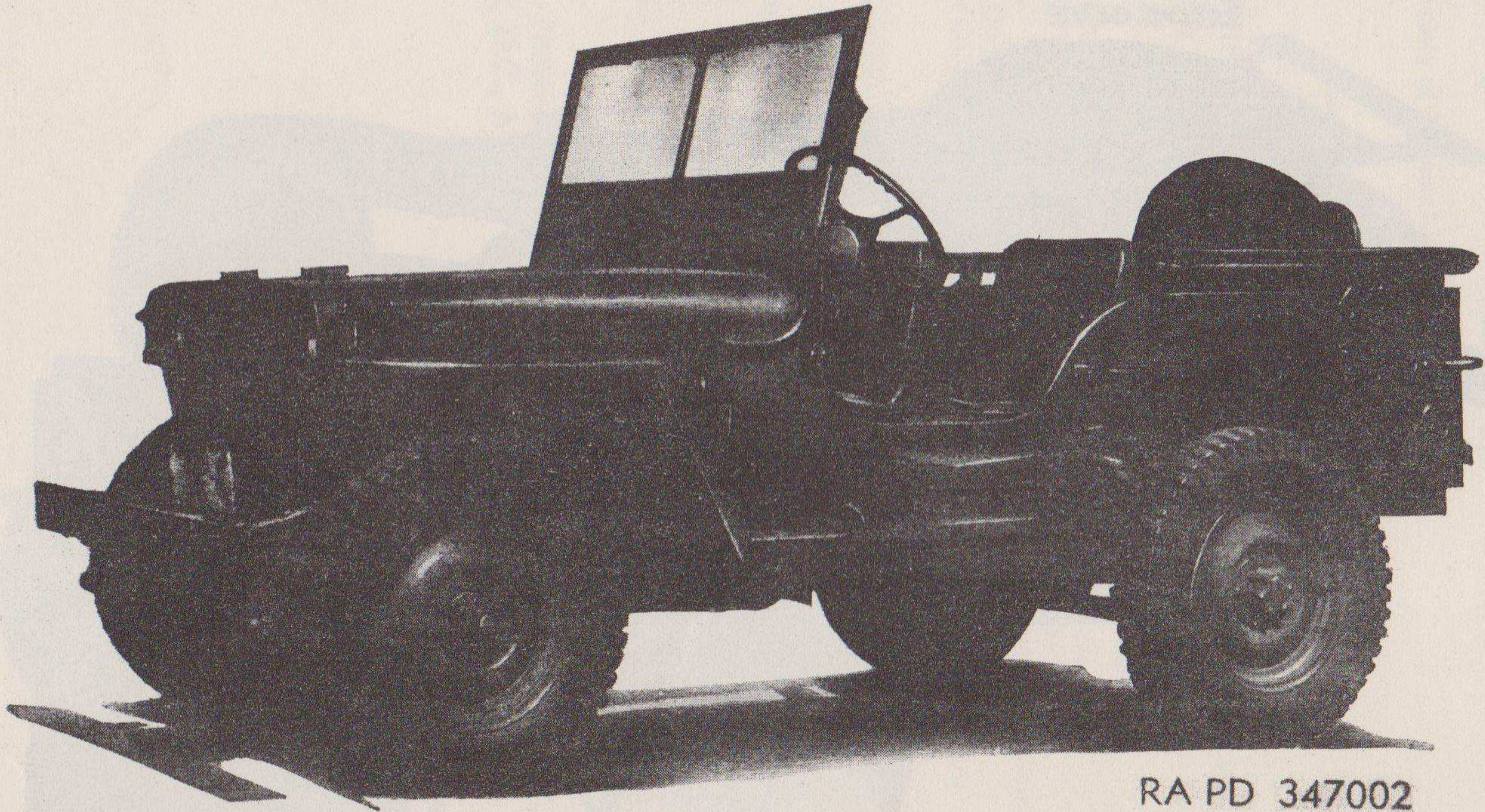
Footnotes

- ¹One SET 5701321 is authorized per major item.
- ²One per major item to accompany matériel. Additional copies, when required, to be requisitioned from The Adjutant General.
- ³Authorized only under the following conditions: When operated as a patrol car for fire and security protections; when continually operated in areas where fire protection is not available; when operated in areas where ammunition or other hazardous materials are stored; or when commanding officer deems it necessary to protect valuable experimental equipment mounted on or being transported in the vehicle.
- ⁴Also available separately; see subgroup indicated.
- ⁵Also available separately until stock is exhausted; see subgroup indicated.
- ⁶Allowances authorized in applicable T/A and T/O&E. Not to be requisitioned as a set. Requisition items under individual stock numbers.
- ⁷To be issued on basis of oversea commanders' requisitions.
- ⁸One per organization; to schools and training centers as required. See SR 310-20-3.
- ⁹Allowances authorized in applicable T/A or T/O&E.
- ¹⁰Issued on the basis of oversea commanders' requisitions (see SB 9-99).



RA PD 342253

Figure 1. Truck, 1/4-Ton, 4 x 4, Command Reconnaissance—Right Front View.



RA PD 347002

Figure 2. Truck, 1/4-Ton, 4 x 4, Command Reconnaissance—Left Front View.

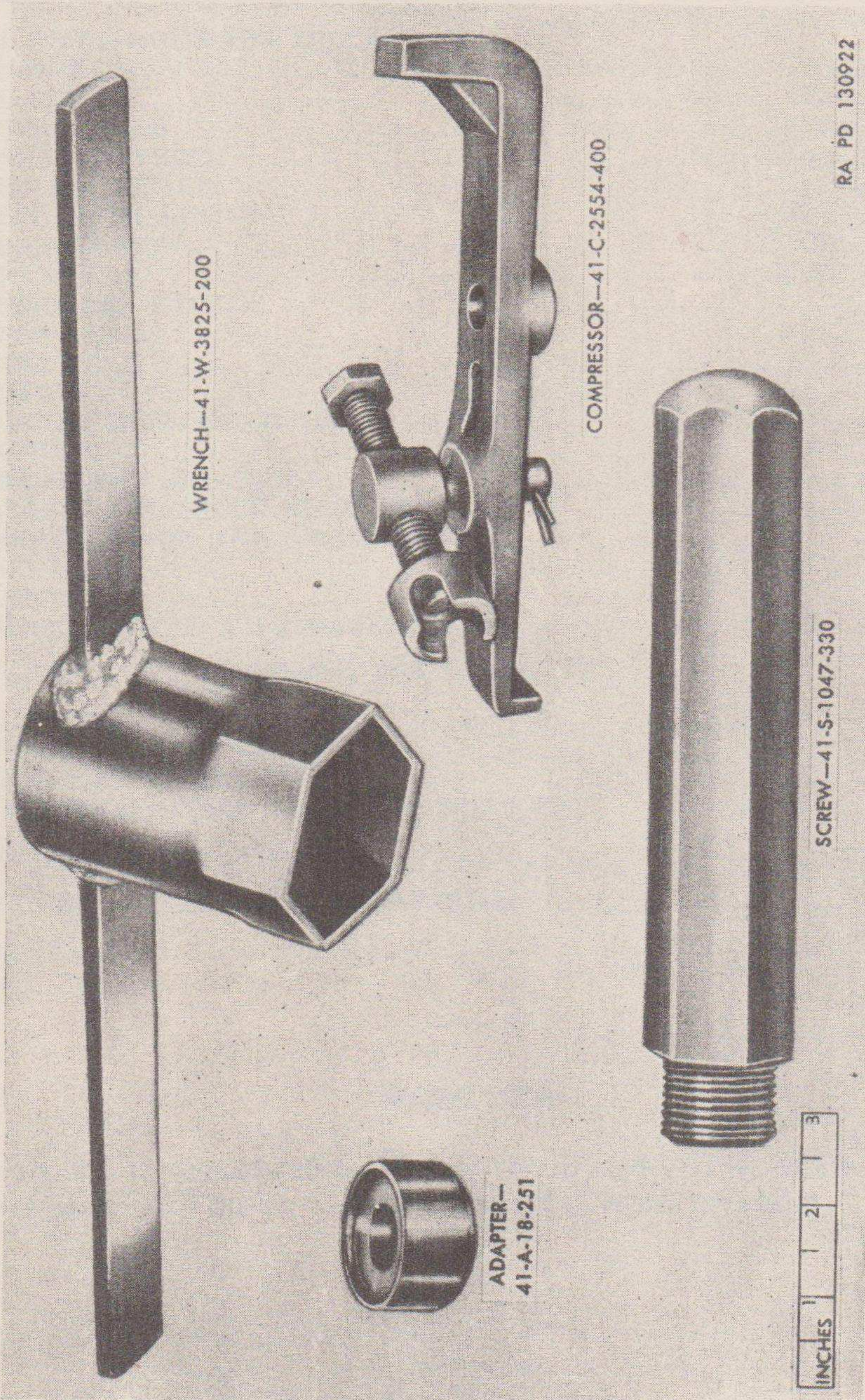


Figure 3. Tools and Equipment For Truck, $\frac{1}{4}$ -Ton, 4 x 4, Command Reconnaissance.