

TECHNICAL MANUAL

**OPERATOR'S, ORGANIZATIONAL, DIRECT SUPPORT,
AND GENERAL SUPPORT**

MAINTENANCE REPAIR PARTS AND SPECIAL TOOLS LISTS
(INCLUDING DEPOT MAINTENANCE REPAIR PARTS AND SPECIAL TOOLS)

FOR

DISTRIBUTION BOX J-2317/U

AND

DISTRIBUTION BOX J-2317A/U
(NSN 6110-00-937-4964)

HEADQUARTERS, DEPARTMENT OF THE ARMY

SEPTEMBER 1976

TECHNICAL MANUAL

NO. 11-6110-243-14P

HEADQUARTERS
DEPARTMENT OF THE ARMY
WASHINGTON, DC, 8 September 1976

OPERATOR'S, ORGANIZATIONAL, DIRECT SUPPORT, AND GENERAL SUPPORT
MAINTENANCE REPAIR PARTS AND SPECIAL TOOLS LISTS
(INCLUDING DEPOT MAINTENANCE REPAIR PARTS AND SPECIAL TOOLS)
FOR
DISTRIBUTION BOX J-2317/U
AND
DISTRIBUTION BOX J-2317A/U
(NSN 6110-00-937-4964)
Current as of 3 June 1976

REPORTING OF ERRORS

You can improve this manual by recommending improvements using DA Form 2028-2 (Test) located in the back of the manual. Simply tear out the self addressed form, fill it out as shown on the sample, fold it where shown, and drop it in the mail.

If there are no blank DA Form 2028-2 (Test) in the back of your manual, use the standard DA Form 2028 (Recommended Changes to Publications and Blank Forms) and forward to the Commander, US Army Electronics Command, ATTN: DRSEL-MA-Q, Fort Monmouth, New Jersey 07703.

In either case a reply will be furnished direct to you.

TABLE OF CONTENTS

	Page	Illus Figure
SECTION I. Introduction.....	1	
II. Basic issue items list (Not applicable)		
III. Items troop installed or authorized list (Not applicable)		
IV. Repair parts list.....	5	
GROUP 00 Distribution Boxes J-2317/U and J-2317A/U	5	1
01 Cable assembly (A2), (A3), (A4), (A5).....	7	2
02 Panel assembly (A6).....	9	3
03 Housing and cover assembly (A1) (Use on J-2317A/U only)	11	4
SECTION V. Special tools list (Not applicable)		
VI. National stock number and part number index	12	
APPENDIX Maintenance allocation	13	
SECTION I. Introduction.....	13	
II. Maintenance allocation chart	15	

*This manual TM 11-6110-243-15P, 12 April 1972, including all changes.

SECTION I

INTRODUCTION

1. Scope

This manual lists repair parts and special tools required for performance of direct support and general support maintenance of the J-2317/U and J-2317A/U.

2. General

This Repair Parts and Special Tools List is divided into the following sections:

- a. *Section II. Basic Issue Items List.* Not applicable.
- b. *Section III. Items Troop Installed or Authorize List.* Not applicable.
- c. *Section IV. Repair Parts List.* A list of repair parts authorized for use in the performance of maintenance. The list also includes parts which must be removed for replacement of the authorized parts. Par lists are composed of functional groups in ascending numerical sequence, with the parts in each group listed in figure and item number sequence.
- d. *Section V. Special Tools List.* Not applicable.
- e. *Section VI. National Stock Number and Part Number Index.* A list, in ascending National item identification number (NIIN, last 9 digits) sequence, of all National stock numbers appearing in the listings, followed by a list, in alphameric sequence, of all part numbers appearing in the listings. National stock number and part numbers are cross-referenced to each illustration figure and item number appearance.

3. Explanation of Columns

The following provides an explanation of columns found in the tabular listings:

- a. *Illustration.* This column is divided as follows:
 - (1) *Figure number.* Indicates the figure number of the illustration in which the item is shown.
 - (2) *Item number.* The number used to identify each item called out in the illustration.
- b. *Source, Maintenance, and Recoverability Code (SMR)*
 - (1) *Source code.* Source codes are assigned to support items to indicate the manner of acquiring support items for maintenance, repair, or overhaul of end items. Source codes are entered in the first and second positions of the Uniform SMR Code format as follows:

<i>Code</i>	<i>Definition</i>
PA	Item procured and stocked for anticipated or known usage.
XD	A support item that is not stocked. When required, item will be procured through normal supply channels.

NOTE

Cannibalization or salvage may be used as a source of supply for any items source coded above except those coded XA, XD, and aircraft support items as restricted by AR 700-42.

(2) *Maintenance code.* Maintenance codes are assigned to indicate the levels of maintenance authorized to USE and REPAIR support items. The maintenance codes are entered in the third and fourth positions of the Uniform SMR Code format as follows:

(a) The maintenance code entered in the third position will indicate the lowest maintenance level authorized to remove, replace, and use the support item. The maintenance code entered in the third position will indicate one of the following levels of maintenance:

<i>Code</i>	<i>Application/Explanation</i>
F	Support item is removed, replaced, used at the direct support level.

(b) The maintenance code entered in the fourth position indicates whether the item is to be repaired and identifies the lowest maintenance level with the capability to perform complete repair (i.e., all authorized maintenance functions). This position will contain one of the following maintenance codes:

<i>Code</i>	<i>Application/Explanation</i>
F	The lowest maintenance level capable of complete repair of the support item is the direct support level.
Z	Nonreparable. No repair is authorized.

(3) *Recoverability code.* Recoverability codes are assigned to support items to indicate the disposition action on unserviceable items. The recoverability code is entered in the fifth position of the Uniform SMR Code format as follows:

<i>Recoverability Codes</i>	<i>Definition</i>
Z	Nonreparable item. When unserviceable, condemn and dispose at the level indicated in position 3.
F	Reparable item. When uneconomically repairable, condemn and dispose at the direct support level.

c. *National Stock Number.* Indicates the National stock number assigned to the item and will be used for requisitioning purposes.

d. *Part Number.* Indicates the primary number used by the manufacturer (individual, company, firm corporation, or Government activity), which controls the design and characteristics of the item by means of its engineering drawings, specifications stands, an inspection requirements, to identify an item or range items.

NOTE

When a stock numbered item is requisitioned, the repair part received may have a different part number than the part being replaced.

e. *Federal Supply Code for Manufacturer (FSCM)* The FSCM is a 5-digit numeric code listed in SB 708-42 which is used to identify the manufacturer, distributor or Government agency, etc.

f. *Description.* Indicates the Federal item name and, if required, a minimum description to identify the item.

g. *Unit of Measure (UIM).* Indicates the standard the basic quantity of the listed item as used in performing the actual maintenance function. This measure is expressed by a two-character alphabetical abbreviation (e.g., ea., in, pr, etc.). When the unit of measure differs from the unit of issue, the lowest unit of issue that will satisfy the required units of measure will be requisitioned.

h. *Quantity Incorporated in Unit.* Indicates the quantity of the item used in the breakout shown on the illustration figure, which is prepared for a functional, group, subfunctional group, or an assembly.

4. Special Information

a. Usable on codes are shown in the description column. Uncoded items are applicable to all models. Identification of the usable on codes used in this publication are:

<i>Code</i>	<i>Used</i>
2T7	J-2317/U
2T6	J-2317A /U

b. The following publication pertains to the J-2317/U and J-2317A/U and their components: TM 11-5935-205-14P, Connectors, Receptacle, Electrical U-187/G and U-187A/G

5. How to Locate Repair Parts

a. When National stock number or part number is unknown.

(1) *First.* Using the table of contents, determine the functional group within which the repair part belongs. This is necessary, since illustrations are prepared for functional groups and listings are divided into the same groups

(2) *Second.* Find the illustration covering the functional group to which the repair part belongs.

(3) *Third.* Identify the repair part on the illustration and note the illustration figure and item number of the repair part.

(4) *Fourth.* Using the Repair Parts Listing, find the figure and item number noted on the illustration.

b. When National stock number or part number is known.

(1) *First.* Using the Index of National Stock Numbers and Part Numbers, find the pertinent National stock number or part number. This index is in ascending NIIN sequence followed by a list of part numbers in ascending alphameric sequence, cross-referenced to the illustration figure number and item number.

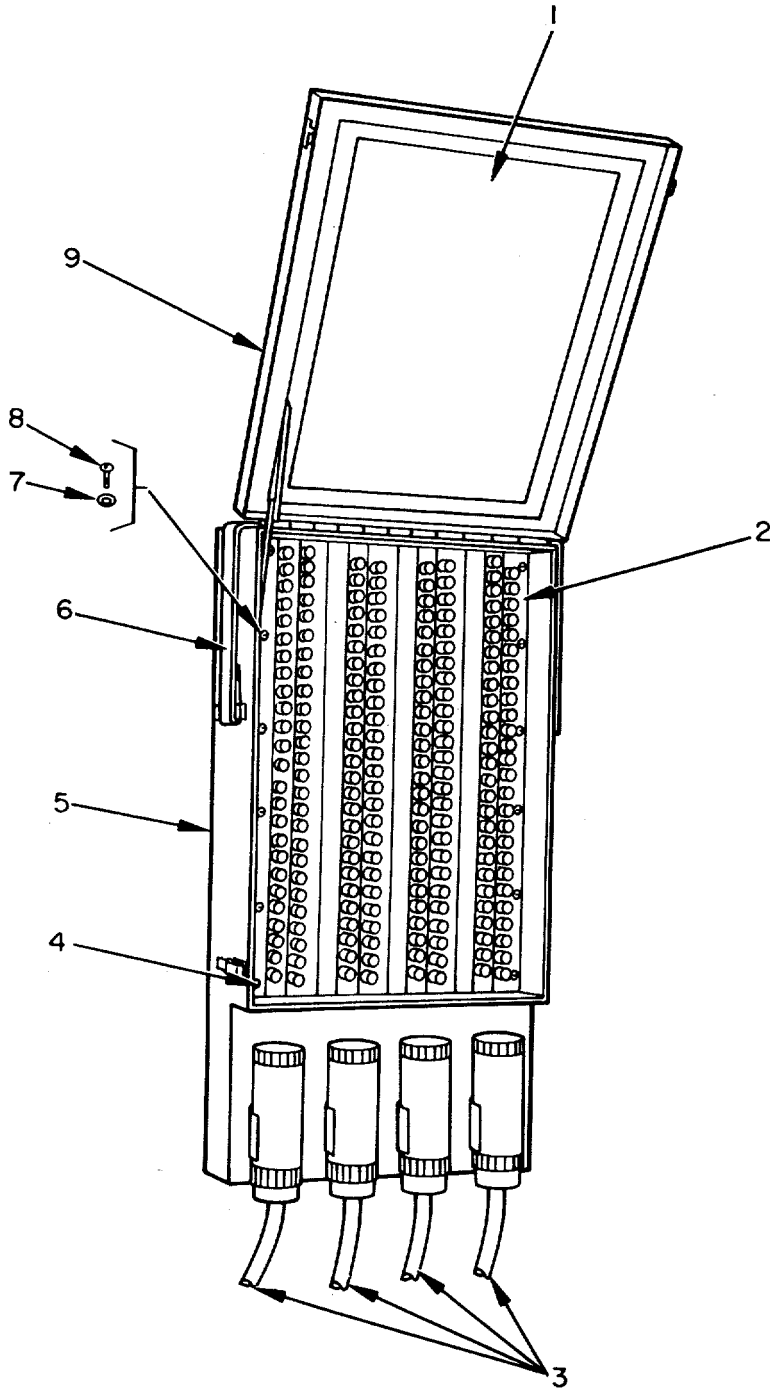
(2) *Second.* After finding the figure and item number, locate the figure and item number in the repair parts list.

6. Abbreviations

Not applicable.

7. Items Comprising an Operable Equipment

The J-2317/U and J-2317A/U comprises the operable equipment.



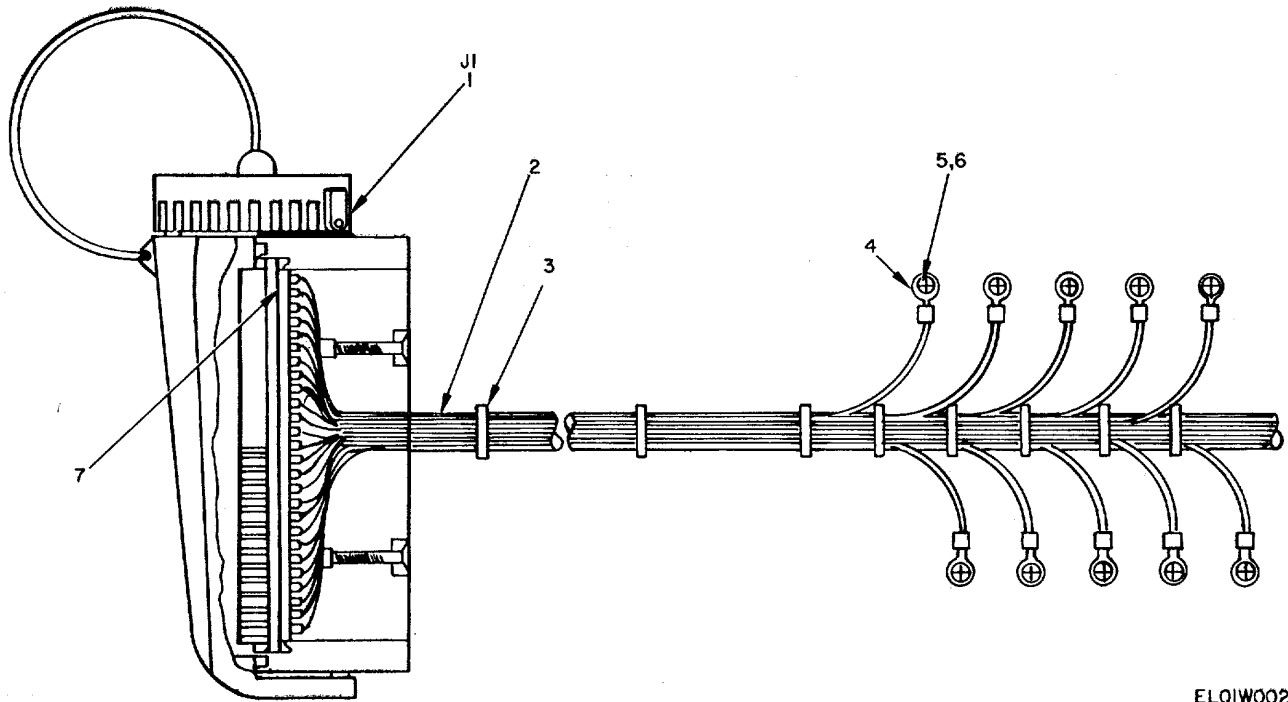
ELOIWOOI

Figure 1. Distribution Boxes J-2317/U and J-2317A/U.

SECTION IV

TM 11-6110-243-14P

(1) ILLUSTRATION		(2)	(3)	(4)	(5)	(6)	(7)	(8)
(a) FIG NO.	(b) ITEM NO.	SMR CODE	NATIONAL STOCK NUMBER	FSCM	PART NUMBER	DESCRIPTION <i>USABLE ON CODE</i>	U/M	QTY INC IN UNIT
						GROUP 00 DISTRIBUTION BOXES J-2317/U J-2317A/U		
1	1	XDFZZ		80063	SCD555843	BOARD,WRITING	EA	1
1	2	XDFFF		80063	SCD555838	PANEL ASSEMBLY	EA	1
1	3	XDFFF		80063	SCD555841	CABLE ASSEMBLY	EA	4
1	4	XDFZZ		80063	SCD555840	PLATE, CONNECTOR	EA	1
1	5	XDFZZ		80063	SCC555844	GASKET, HOUSING	EA	1
1	6	XDFZZ		80063	SCC555846	STRAP ASSEMBLY	EA	1
1	7	XDFZZ		80063	SCD555826-2	WASHER,SEAL	EA	26
1	8	PAFZZ	5305-00-054-6671	96906	MS35233-46	SCREW,PAN HEAD	EA	26
1	9	XDFFF		80063	SCD555827	HOUSING AND COVER ASSEMBLY 2T6	EA	1



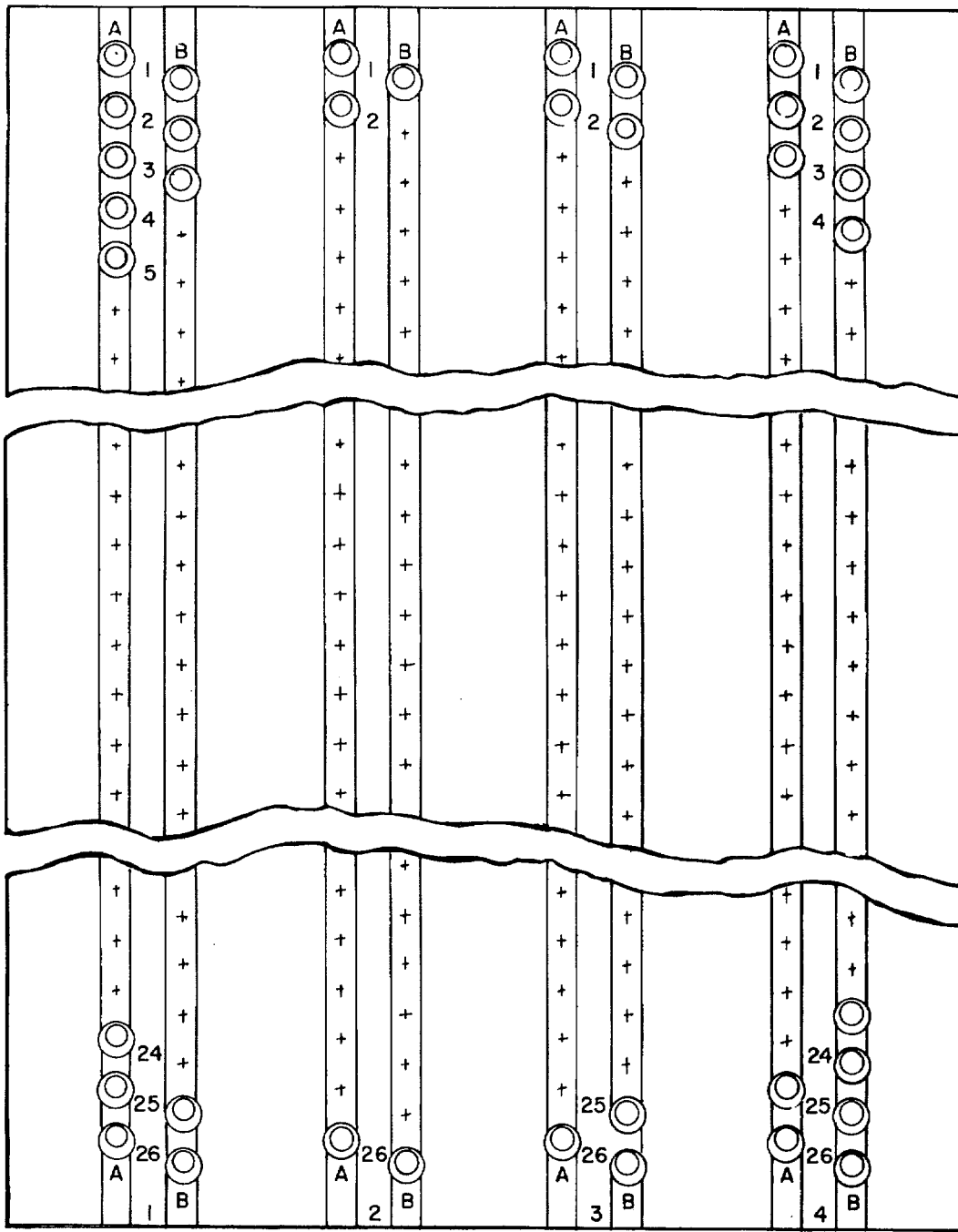
ELOIW002

Figure 2. Cable Assembly (A2), (A3), (A4), (A5).

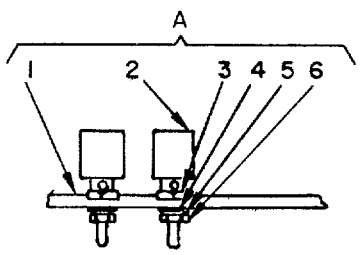
SECTION IV

TM 11-6110-243-14P

(1) ILLUSTRATION		(2)	(3)	(4)	(5)	(6)	(7)	(8)
(a) FIG NO.	(b) ITEM NO.	SMR CODE	NATIONAL STOCK NUMBER	FSCM	PART NUMBER	DESCRIPTION <i>USABLE ON CODE</i>	U/M	QTY INC IN UNIT
						GROUP 01 CABLE ASSEMBLY (A2), (A3), (A4), (A5)		
2	1	PAFFF	5935-00-045-9832	80058	U187AG	CONNECTOR, RECEPTACLE, ELECTRICAL	EA	1
2	2	XDFZZ		80063	SCD555842	HARNESS,WIRE	EA	1
2	3	XDFZZ		96906	MS17821-4-9	CABLE TIE	EA	33
2	4	XDFZZ		80063	SCD555842-3	TERMINAL,LUG	EA	11
2	5	PAFZZ	5310-00-045-4007	96906	MS35337 - 23	WASHER,LOCK	EA	10
2	6	PAFZZ	5305-00-054-6671	96906	MS35233-46	SCREW, PAN HEAD	EA	10
2	7	PAFZZ	5330-00-580-5308	80063	SMB173834	GASKET	EA	1



A



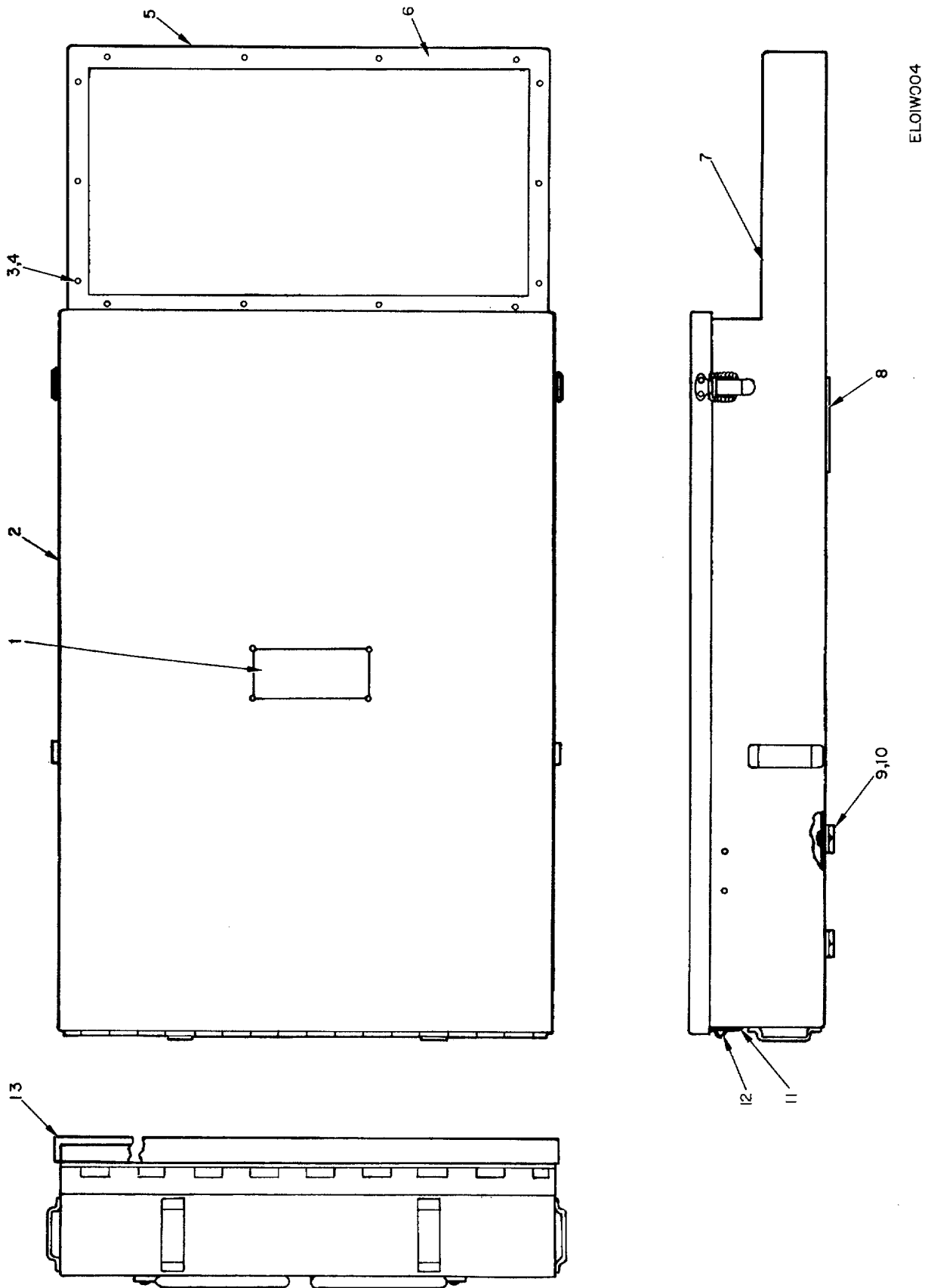
ELOIW003

Figure 3. Panel Assembly (A6).

SECTION IV

TM 11-6110-243-14P

(1) ILLUSTRATION		(2)	(3)	(4)	(5)	(6)	(7)	(8)
(a) FIG NO.	(b) ITEM NO.	SMR CODE	NATIONAL STOCK NUMBER	FSCM	PART NUMBER	DESCRIPTION <i>USABLE ON CODE</i>	U/M	QTY INC IN UNIT
						GROUP 02 PANEL ASSEMBLY (A6)		
3	1	XDFZZ		80063	SCD555839	PANEL	EA	1
3	2	PAFZZ	5940-00-823-1804	80063	SCC136011GP3	POST, BINDING	EA	208
3	3	PAFZZ	5310-00-584-7800	96906	MS15795-708	WASHER, FLAT	EA	208
3	4	XDFZZ		96906	MS35337-100	WASHER, LOCK	EA	416
3	5	PAFZZ	5310-00-019-0672	96906	MS35333-107	WASHER, LOCK	EA	208
3	6	XDFZZ		96906	MS35650-106	NUT, HEXAGON	EA	416



ELOIW004

Figure 4. Housing and Cover Assembly (A1) (use on J-2317A/U only).

SECTION IV

TM 11-6110-243-14P

(1) ILLUSTRATION		(2)	(3)	(4)	(5)	(6)	(7)	(8)
(a) FIG NO.	(b) ITEM NO.	SMR CODE	NATIONAL STOCK NUMBER	FSCM	PART NUMBER	DESCRIPTION <i>USABLE ON CODE</i>	U/M	QTY INC IN UNIT
						GROUP 03 HOUSING AND COVER ASSEMBLY (A1)		
4	1	XDFZZ		80063	SCB555847	NAMEPLATE 2T6	EA	1
4	2	XDFZZ		80063	SCD555833	COVER 2T6	EA	1
4	3	PAFZZ	5305-00-054-6671	96906	MS35233-46	SCREW, PAN HEAD 2T6	EA	14
4	4	PAFZZ	5330-00-715-2750	80063	SCD555826-2	WASHER, SEAL 2T6	EA	14
4	5	XDFZZ		80063	SCD555829	HOUSING 2T6	EA	1
4	6	XDFZZ		80063	SCC555845	GASKET 2T6	EA	1
4	7	XDFZZ		80063	SCD555828	HOUSING ASSEMBLY 2T6	EA	1
4	8	XDFZZ		22887	0711012-67	NAMEPLATE 2T6	EA	1
4	9	PAFZZ	5330-00-993-7665	80063	SCD555827-2	WASHER, SEAL 2T6	EA	8
4	10	PAFZZ	5310-00-584-7800	96906	MS15795-708	WASHER, FLAT 2T6	EA	8
4	11	XDFZZ		80063	SCD555836	BRACKET, FENCE HOOK 2T6	EA	4
4	12	XDFZZ		80063	SCD555835	HOOK, FENCE 2T6	EA	2
4	13	PAFZZ	5330-00-832-9923	80063	SCC555848	GASKET, COVER 2T6	EA	1

SECTION VI NATIONAL STOCK NUMBER AND PART NUMBER INDEX TM11-6110-243-14P

NOTE: LATEST NATIONAL STOCK NUMBER ASSIGNMENTS ARE INCLUDED AT END OF INDEX

STOCK NUMBER	FIGURE NO.	ITEM NO.	STOCK NUMBER	FIGURE NO.	ITEM NO.
5310-00-019-0672	3	5	5310-00-584-7800	3	3
5935-00-045-9832	2	1	5310-00-584-7800	4	10
5330-00-580-5308	2	7	5330-00-832-9923	4	13

PART NUMBER	FSCM	FIG. NO.	ITEM NO.	PART NUMBER	FSCM	FIG. NO.	ITEM NO.
MS15795-708	96906	3	3	SCD555827-2	80063	4	9
MS15795-708	96906	4	10	SCD555828	80063	4	7
MS17821-4-9	96906	2	3	SCD555829	80063	4	5
MS35233-46	96906	1	8	SCD555833	80063	4	2
MS35233-46	96906	2	6	SCD555835	80063	4	12
MS35233-46	96906	4	3	SCD555836	80063	4	11
MS35333-107	96906	3	5	SCD555838	80063	1	2
MS35337-100	96906	3	4	SCD555839	80063	3	1
MS35337-23	96906	2	5	SCD555840	80063	1	4
MS35650-106	96906	3	6	SCD555841	80063	1	3
SCB555847	80063	4	1	SCD555842	80063	2	2
SCC136011GP3	80063	3	2	SCD555842-3	80063	2	4
SCC555844	80063	1	5	SCD555843	80063	1	1
SCC555845	80063	4	6	SMB173834	80063	2	7
SCC555846	80063	1	6				
SCC555B48	80063	4	13	U187AG	80058	2	1
SCD555826-2	80063	1	7				
SCD555826-2	80063	4	4	0711012-67	22887	4	8
SCD555827	80063	1	9				

LATEST NATIONAL STOCK NUMBER ASSINGMENTS

STOCK NUMBER	FIGURE NO.	ITEM NO.
5310-00-045-4007	2	5
5305-00-054-6671	1	8
5305-00-054-6671	2	6
5305-00-054-6671	4	3
5330-00-715-2750	4	4
5940-00-823-1804	3	2
5330-00-993-7665	4	9

APPENDIX

MAINTENANCE ALLOCATION

SECTION I. INTRODUCTION

A-1. General

This appendix provides a summary of the maintenance operations for the J-2317/U and J-2317A/U. It authorizes categories of maintenance for specific maintenance functions on repairable items and components and the tools and equipment required to perform each function. This appendix may be used as an aid in planning maintenance operations.

A-2. Maintenance Function

Maintenance functions will be limited to and defined as follows:

- a. Inspect.* To determine the serviceability of an item by comparing its physical, mechanical, and/or electrical characteristics with established standards through examination.
- b. Test.* To verify serviceability and to detect incipient failure by measuring the mechanical or electrical characteristics of an item and comparing those characteristics with prescribed standards.
- c. Service.* Operations required periodically to keep an item in proper operating condition, i.e., to clean, preserve, drain, paint, or to replenish fuel/lubricants/hydraulic fluids or compressed air supplies.
- d. Adjust.* Maintain within prescribed limits by bringing into proper or exact position, or by setting the operating characteristics to the specified parameters.
- e. Align.* To adjust specified variable elements of an item to about optimum or desired performance.
- f. Calibrate.* To determine and cause corrections to be made or to be adjusted on instruments or test measuring and diagnostic equipment used in precision measurement. Consists of the comparison of two instruments, one of which is a certified standard of known accuracy, to detect and adjust any discrepancy in the accuracy of the instrument being compared.
- g. Install.* The act of emplacing, seating, or fixing into position an item, part, module (component or assembly) in a manner to allow the proper functioning of the equipment/system.
- h. Replace.* The act of substituting a serviceable like-type part, subassembly, model (component or assembly) for an unserviceable counterpart.
- i. Repair.* The application of maintenance services (inspect, test, service, adjust, align, calibrate, replace) or other maintenance actions (welding, grinding, riveting, straightening, facing, remachining, or resurfacing) to restore serviceability to an item by correcting specific damage, fault, malfunction, or failure in a part, subassembly, module/component/assembly, end item or system. This function does not include the trial and error replacement of running spare type items such as fuses, lamps, or electron tubes.
- j. Overhaul.* That periodic maintenance effort (service/action) necessary to restore an item to a completely serviceable/operational condition as prescribed by maintenance standards (e.g., DMWR) in appropriate technical publications. Overhaul is normally the highest degree of maintenance performed by the Army. Overhaul does not normally return an item to like-new condition.
- k. Rebuild.* Consists of those services/actions necessary for the restoration of unserviceable equipment to a like-new condition in accordance with original manufacturing standards. Rebuild is the highest degree of material maintenance applied to Army equipment. The rebuild operation includes the act of returning to zero those age measurements (hours, miles, etc.) considered in classifying Army equipment/components.

A-3. Column Entries

- a. Column 1; Group Number.* Column 1 lists group numbers, the purpose of which is to identify components, assemblies, subassemblies and modules with the next higher assembly.
- b. Column 2, Component/Assembly.* Column 2 contains the noun names of components, assemblies, subassemblies, and modules for which maintenance is authorized.
- c. Column 3, Maintenance Functions.* Column 3 lists the functions to be performed on the item listed in column 2. When items are listed without maintenance functions, it is solely for purpose of having the group numbers in the MAC and RPSTL coincide.
- d. Column 4, Maintenance Category.* Column 4 specifies, by the listing of a "worktime" figure in the appropriate subcolumn(s), the lowest level of maintenance authorized to perform the function listed in column 3. This figure represents the active time required to perform that maintenance function at the indicated

category of maintenance. If the number or complexity of the tasks within the listed maintenance function vary at different maintenance categories, appropriate "worktime" figures will be shown for each category. The number of man-hours specified by the "worktime" figure represents the average time required to restore an item (assembly, subassembly, component, module, end item or system) to a serviceable condition under typical field operating conditions. This time includes preparation time, troubleshooting time and quality assurance/quality control time in addition to the time required to perform the specific tasks identified for the maintenance functions authorized in the maintenance allocation chart. Subcolumns of column 4 are as follows:

- C—Operator/Crew
- O—Organizational
- F—Direct Support
- H—General Support Depot

e. *Column 5, Tools and Equipment.* Column 5 specifies by code, those common tool sets (not individual tools) and special tools, test, and support equipment required to perform the designated function.

A-4. Tool and Test Equipment Requirements

(Table 1)

a. *Tool or Test Equipment Reference Code.* The numbers in this column coincide with the numbers used in the tools and equipment column of the MAC. The numbers indicate the applicable tool or test equipment for the maintenance functions.

b. *Maintenance Category.* The codes in this column indicate the maintenance category allocated the tool or test equipment.

c. *Nomenclature.* This column lists the noun name and nomenclature of the tools and test equipment required to perform the maintenance functions.

d. *National/NATO Stock Number.* This column lists the National/NATO stock number of the specific tool or test equipment.

e. *Tool Number.* This column lists the manufacturer's part number of the tool followed by the Federal Supply Code for manufacturers (5-digit) in parentheses.

SECTION II. MAINTENANCE ALLOCATION CHART
FOR
DISTRIBUTION BOXES J-2317/U AND J-2317A/U

(1) GROUP NUMBER	(2) COMPONENT ASSEMBLY	(3) MAINTENANCE FUNCTION	(4) MAINTENANCE CATEGORY					(5) TOOLS AND EQUIP	(6) REMARKS
			C	O	F	H	D		
00	DISTRIBUTION BOXES J-2317/U AND J-2317A/U	Inspect Test Repair		0.1	0.3 0.4			1,3 1,2	
01	CABLE ASSEMBLY(A2, A3, A4, A5)	Inspect Test Service Repair		0.1	0.2 0.3			1 1.2	
02	PANEL ASSEMBLY (A6)	Inspect Test Service Repair		0.1	0.2 0.1 0.3			3 1,2	
03	HOUSING AND COVER ASSEMBLY (A1) (Use on J-2317A/U only)	Inspect Service Repair		0.1 0.1	0.2			1,2	

(1) Continuity

TABLE 1
 TOOL AND TEST EQUIPMENT REQUIREMENTS
 FOR
 DISTRIBUTION BOXES J-2317/U AND J-2317A/U

TOOL OR TEST EQUIPMENT REF CODE	MAINTENANCE CATEGORY	NOMENCLATURE	NATIONAL/NATO STOCK NUMBER	TOOL NUMBER
1 2 3	0 O,F,H,D F,H,D	MULTIMETER AN/URM-105() TOO: EQUIPMENT TE-49 MULTIMETER AN/USM-223	6625-00-581-2036 5180-00-408-1863 6625-00-999-7465	

By Order of the Secretary of the Army:

FRED C. WEYLAND
General, United States Army
Chief of Staff

Official:

PAUL T. SMITH
Major General, United States Army
The Adjutant General

DISTRIBUTION:

Active Army
 USASA (2)
 COE (1)
 TSG (1)
 USAARENDBD (1)
 DARCOM (1)
 TRADOC (2)
 OS Maj Comd (4)
 LOGCOMDS (3)
 MICOM (2)
 TECOM (2)
 USAREUR (10)
 USACC (4)
 MDW (1)
 Armies (2)
 Corps (2)
 HISA (Ft Monmouth) (33)
 Svc Colleges (1)
 USASESS (5)
 USAADS (2)
 USAFAS (2)
 USAARMS (2)
 USAIS (2)
 USAES (2)
 USAICS (3)
 MAAG (1)
 USARMIS (1)
 Sig FLDMS (1)
 USAERDAA (1)
 USAERDAW (1)


Instl (2) except
 Fort Gillem (10)
 Fort Gordon (10)
 Fort Huachuca (10)
 Ft. Richardson (ECOM) (2)
 LBAD (14)
 SAAD (30)
 TOAD (14)
 SHAD (3)
 Units org under fol TOE: (1 cy each unit)
 11-15 29-134
 11-16 29-136
 11-17
 11-18
 11-19
 11-85
 11-86
 11-97
 11-95
 11-96
 11-97
 11-102
 11-117
 11-302
 11-327
 11-347
 11-357
 11-367
 11-500 (AA-AC)

NG: State AG (3); Units-Same as Active Army except allowance is one copy per unit.

USAR: None

For explanation of abbreviations used, see AR 3 10-50.

RECOMMENDED CHANGES TO EQUIPMENT TECHNICAL PUBLICATIONS

<h2 style="margin: 0;">SOMETHING WRONG WITH PUBLICATION</h2>				
 <p style="margin: 0;"><i>THEN...JOT DOWN THE DOPE ABOUT IT ON THIS FORM. CAREFULLY TEAR IT OUT, FOLD IT AND DROP IT IN THE MAIL.</i></p>		FROM: (PRINT YOUR UNIT'S COMPLETE ADDRESS)		
PUBLICATION NUMBER		DATE SENT		
PUBLICATION DATE		PUBLICATION TITLE		
BE EXACT PIN-POINT WHERE IT IS				
PAGE NO.	PARA-GRAPH	FIGURE NO.	TABLE NO.	IN THIS SPACE, TELL WHAT IS WRONG AND WHAT SHOULD BE DONE ABOUT IT.
PRINTED NAME, GRADE OR TITLE AND TELEPHONE NUMBER			SIGN HERE	

