

TECHNICAL MANUAL

OPERATOR'S, ORGANIZATIONAL, DIRECT
SUPPORT, AND GENERAL SUPPORT
MAINTENANCE REPAIR PARTS AND
SPECIAL TOOLS LISTS
(INCLUDING DEPOT MAINTENANCE
REPAIR PARTS **AND SPECIAL TOOLS**)

FOR

SHELTERS, ELECTRICAL
EQUIPMENT

S-280A/G

(NSN 5410-00-999-6022)

AND

S-280 B/G

(NSN 5410-00-1 17-2868)

TECHNICAL MANUAL

No. 11-5410-213-14P }

HEADQUARTERS
DEPARTMENT OF THE ARMY
WASHINGTON, D.C., 21 April 1978

**OPERATOR'S, ORGANIZATIONAL, DIRECT SUPPORT, AND
GENERAL SUPPORT MAINTENANCE
REPAIR PARTS AND SPECIAL TOOLS LISTS
(INCLUDING DEPOT MAINTENANCE REPAIR PARTS AND SPECIAL
TOOLS)
FOR
SHELTERS. ELECTRICAL EQUIPMENT
S-280A/G (NSN 5410-00-999-6022)
AND
S-280B/G (NSN 5410-00-117-2868)**

Current as of 21 October 1977

REPORTING OF ERRORS

You can improve this manual by recommending improvements using DA Form 2028-2 (Test) located in the back of the manual. Simply tear out the self-addressed form, fill it out as shown on the sample, fold it where shown, and drop it in the mail.

If there are no blank DA Form 2028-2 (Test) in the back of your manual, use the standard DA Form 2028 (Recommended Changes to Publications and Blank Forms) and forward to the Commander, US Army Communication & Electronics Materiel Readiness Command, ATTN: DRSEL-MA-Q, Fort Monmouth, NJ 07703.

In either case a reply will be furnished direct to you.

Table of Contents

			Page	Illus- Figure
SECTION	I.	Introduction	1	
	II.	Repair parts list	5	
Group	00.	Shelters, Electrical Equipment S-280A/G, S-280B/G.	5	1-8
	01.	Door assembly	5	9-17
SECTION	III.	Special tools list (Not applicable)		
	IV.	National stock number and part number index	44	
APPENDIX	A.	Components of end item list (Not applicable)		
	B.	Additional authorization list (Not applicable)		
	C.	Maintenance allocation		

● This manual supersedes TM 11-5410-213-14P, 24 September 1975.

TM 11-5410-213-14P

SECTION I. Introduction49

II. Maintenance allocation chart5 I

III. Tools and test equipment requirements 52

IV. Remarks53

A P P E N D I X D . Expendable supplies and materials list (Nonapplicable)

SECTION I INTRODUCTION

1. scope

This manual lists spares and repair parts; special tools; special test, measurement, and diagnostic equipment (TMDE), and other special support equipment required for performance of operator's, organizational, direct support, and general support maintenance of the S-280A/G and S-280B/G. It authorizes the requisitioning and issue of spares and repair parts as indicated by the source and maintenance codes.

2. General

This Repair Parts and Special Tools List is divided into the following sections:

a. *Section II. Repair Parts List.* A list of spares and repair parts authorized for use in the performance of maintenance. The list also includes parts which must be removed for replacement of the authorized parts. Parts lists are composed of functional groups in numeric sequence, with the parts in each group listed in figure and item number sequence.

b. *Section III. Special Tools List.* Not applicable.

c. *Section IV. National Stock Number and Part Number Index* A list, in National item identification number (NIIN) sequence, of all National stock numbers (NSN) appearing in the listing, followed by a list, in alphameric sequence, of all part numbers appearing in the listings. National stock numbers and part numbers are cross-referenced to each illustration figure and item number appearance.

3. Explanation of Columns

a. *Illustration.* This column is divided as follows:

(1) *Figure number.* Indicates the figure number of the illustration on which the item is shown.

(2) *Item number.* The number used to identify item called out in the illustration.

b. *Source, Maintenance, and Recoverability (SMR) Codes.*

(1) *Source code.* Source codes indicate the manner of acquiring support items for maintenance, repair, or overhaul of end items. Source codes are entered in the first and second positions of the Uniform SMR Code format as follows:

Code	Definition
PA	Item procured and stocked for anticipated or known usage.

Code

XD – A support item that is not stocked. When required, item will be procured through normal supply channels.

NOTE

Cannibalization or salvage may be used as a source of supply for any items source coded above except those coded XA and aircraft support items as restricted by AR 700-42.

(2) *Maintenance code.* Maintenance codes are assigned to indicate the levels of maintenance authorized to USE and REPAIR support items. The maintenance codes are entered in the third and fourth positions of the Uniform SMR Code format as follows:

(a) The maintenance code entered in the third position will indicate the lowest maintenance level authorized to remove, replace, and use the support item. The maintenance code entered in the third position will indicate one of the following levels of maintenance

Code

Application/Explanation

O—Support item is removed, replaced, used at the organizational level.

F—Support item is removed, replaced, used at the direct support level.

H—Support item is removed, replaced, used at the general support level.

(b) *The maintenance code entered in the fourth position indicates whether the item is to be repaired and identifies the lowest maintenance level with the capability to perform complete repair (i.e., all authorized maintenance functions). This position will contain one of the following maintenance codes:*

Code

Application/Explanation

F- The lowest maintenance level capable of complete repair of the support item is the direct support level.

H—The lowest maintenance level capable of complete repair of the support item is the general support level.

Z—Nonreparable. No repair is authorized.

(3) *Recoverability code.* Recoverability codes are assigned to support items to indicate the disposition action on unserviceable items. The recoverability code is entered in the fifth position of the Uniform SMR Code format as follows:

Recoverability
codes

Definition

Z—Nonreparable item. When unserviceable, condemn and dispose at the level indicated in position 3.

F—Reparable item. When uneconomically reparable, condemn and dispose at the direct Support level.

H—Reparable item. When uneconomically reparable, condemn and dispose at the general support level.

c. *National Stock Number.* Indicates the National stock number assigned to the item and will be used for requisitioning purposes.

d. *Part Number.* Indicates the primary number used by the manufacturer (individual, company, firm, corporation, or Government activity), which controls the design and characteristics of the item by means of its engineering drawings, specifications, standards, and inspection requirements to identify an item or range of items.

NOTE

When a stock numbered item is requisitioned the repair part received may have a different part number than the part being replaced.

e. *Federal Supply Code for Manufacturer (FSCM).* The FSCM is a 5-digit numeric code listed in SB 708-42 which is used to identify the manufacturer, distributor, or Government agency, etc.

f. *Description* Indicates the Federal item name and, if required, a minimum description to identify the item.

g. *Unit of Measure (U/M)* Indicates the standard of the basic quantity of the listed item as used in performing the actual maintenance function. This measure is expressed by a two-character alphabetical abbreviation (e.g., ea, in, pr, etc). When the unit of measure differs from the unit of issue, the lowest unit of issue that will satisfy the required units of measure will be requisitioned.

h. *Quantity Incorporated in Unit.* Indicates the quantity of the item used in the breakout shown on

the illustration figure, which is prepared for a functional group, subfunctional group, or an assembly.

4. *Special Information*

Usable on codes are shown in the description column. Uncoded items are applicable to all models. Identification of the usable on codes used in this publication are

code	<i>Used on</i>
3MN	S-280A/G
BMC	S-280B/G

5. How to Locate Repair Parts

a. When National stock number or part number is unknown.

(1) *First.* Using the table of contents, determine the functional group within which the item belongs. This is necessary since illustrations are prepared for functional groups and listings are divided into the same groups.

(2) *Second* Find the illustration covering the functional group to which the item belongs.

(3) *Third* Identify the item on the illustration and note the illustration figure and item number of the item.

(4) *Fourth.* Using the Repair Parts Listing, find the figure and item number noted on the illustration.

b. *When* National stock number or part number is known.

(1) *First.* Using the Index of National Stock Numbers and Part Numbers, find the pertinent National stock number or part number. This index is in NIIN sequence followed by a list of part numbers in alphameric sequence, cross-referenced to the illustration figure number and item number.

(2) *Second* After finding the figure and item number, locate the figure and item number in the repair parts list.

6. Abbreviations

Not applicable.

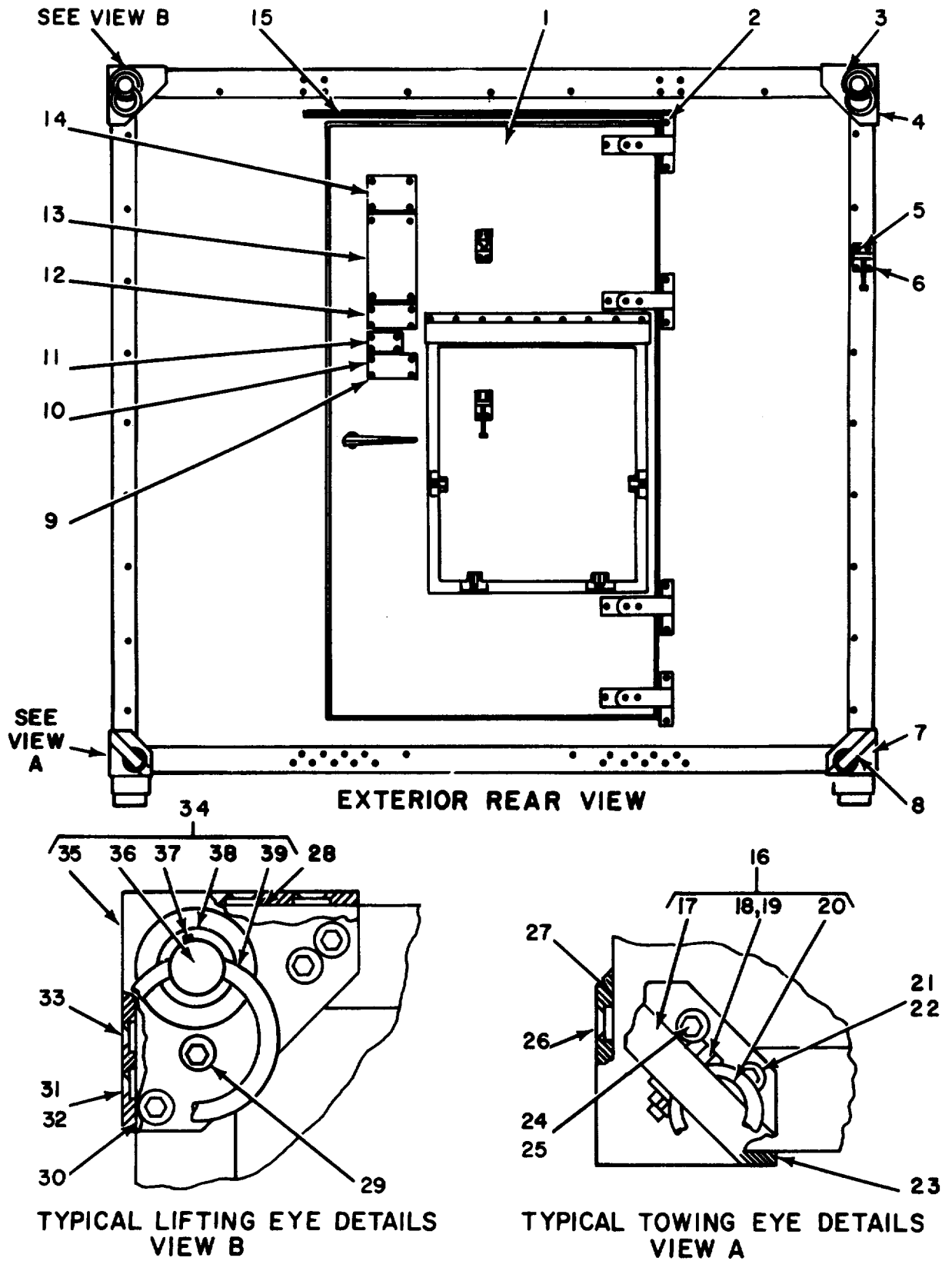


Figure 1. Shelters, Electrical Equipment S-280A/G and S-280/G

SECTION II						TM11-5410-213-14P		
(1)	(2)	(3)	(4)	(5)	(6)	(7)	(8)	
ILLUSTRATION								
(A)	(B)	NATIONAL			DESCRIPTION		QTY	
FIG	ITEM	STOCK	PART	FSCM		USABLE ON CODE	INC	
NO.	NO.	NUMBER	NUMBER				IN	
							UNIT	
GROUP 00 SHELTERS, ELECTRICAL EQUIPMENT								
S-280A/G AND S-280B/G								
1	1	PAFHH	5410-00-407-4953	SMD450461	80063	DOOR ASSEMBLY	EA 1	
							BMC	
1	1	XDFHH		SMD555531	80063	DOOR ASSEMBLY	3MN EA 1	
1	2	PAHZZ	5320-00-874-4471	AD45H	7707	RIVET, BLIND USED ON S-280B/G CONTRACT DAAB05-69-C-0114 (MAGLINE) ONLY	EA 7	
							BMC	
1	2	PAHZZ	5320-00-582-3494	MS20600AD4W4	96906	RIVET, BLIND USED ONLY ON S-280A/G AND THE DAAB05-67-C-2509 (EMC) CONTRACT VERSION OF THE S-280B/G MODELS	EA 7	
1	3	PAFFF	2540-00-937-0326	SMD555537GRII	80063	LIFTING EYE ASSEMBLY	EA 1	
1	4	PAFZZ	3040-00-919-5154	SMD555536-2	80063	BRACKET, EYE, ROTATING	EA 1	
1	5	PAHZZ	5340-00-928-8999	SMB555598-1	80063	T-LATCH ASSEMBLY, LOUVER COVER	EA 1	
1	6	PAHZZ	5320-00-874-4470	AD68H	7707	RIVET, BLIND USED ONLY ON S-280A/G AND THE DAAB05-67-C-2509 (EMC) CONTRACT VERSION OF THE S-280B/G MODELS	EA 4	
1	6	PAHZZ	5320-00-813-4144	MS20600AD6W7	96906	RIVET, BLIND	3MN EA 4	
1	7	XDFFF		SMD317088GRIII	80063	TOWING EYE ASSEMBLY	EA 1	
1	8	XDFZZ		SMD317087-3	80063	FITTING	EA 1	
1	9	PAHZZ	5320-00-582-3304	MS20600AD4W2	96906	RIVFT, BLIND	EA 24	
1	10	XDHZZ		SMB317089	80063	PLATE, PAINT, INSTRUCTION	EA 1	
1	11	XDHZZ		SMB340031	80063	PLATE, AIRBORNE INSTRUCTION	EA 1	
1	12	XDHZZ		SMB165463	80063	NAMEPLATE	EA 1	
1	13	XDHZZ		SMC165466	80063	PLATE, TRANSPORTATION	EA 1	
1	14	XDHZZ		SMB555555	80063	PLATE, DATA, AIRCRAFT LOADING	EA 1	
1	15	XDFZZ		SMB165303	80063	DRIP MOLD, DOOR	EA 1	
1	16	PAFFF	2540-00-914-8962	SMD317088GRIV	80063	TOWING EYE ASSEMBLY	EA 1	
1	17	PAFZZ	3040-00-919-5001	SMD317087-4	80063	BRACKET, EYE, ROTATING	EA 1	
1	18	PAFZZ	5306-00-584-4911	AN7C22A	88044	BOLT, HEXAGON HEAD	EA 1	
1	19	PAFZZ	5310-00-088-0552	MS21044N7	96906	NUT, SELF-LOCKING	EA 1	
1	20	PAFZZ	3940-00-933-4474	SMB165462	80063	EYE, TOWING	EA 1	
1	21	PAFZZ	5305-00-717-5467	MS35307-362	96906	SCREW, HEXAGON HEAD USED ON S-280B/G CONTRACT DAAB05-69-C-0114 (MAGLINE) ONLY	EA 8	
							BMC	
1	21	PAFZZ	5305-00-208-1429	MS35307-363	96906	SCREW, HEXAGON HEAD USED ONLY ON S-280A/G AND THE DAAB05-67-C-2509 (FMC) CONTRACT VERSION OF THE S-280B/G MODELS	EA 12	
1	22	PAFZZ	5310-00-984-7042	MS35338-141	96906	WASHER, LOCK USED ON S-280B/G CONTRACT DAAB05-69-C-0114 (MAGLINE) ONLY	EA 12	
							BMC	
1	22	PAFZZ	5310-00-637-9541	MS35338-46	96906	WASHER, LOCK USED ONLY ON S-280A/G AND THE DAAB05-67-C-2509 (EMC) CONTRACT VERSION OF THE S-280B/G MODELS	EA 12	
1	23	PAFZZ	5365-00-001-4731	SMB165483-3	80063	SPACER, PLATE	EA 2	
1	24	PAFZZ	5310-00-929-6449	S37B285	3481	RIVNUT	EA 33	
1	25	PAFZZ	5305-00-021-3740	MS35307-364	96906	SCREW, HEXAGON HEAD USED ONLY ON S-280A/G AND THE DAAB05-67-C-2509 (EMC) CONTRACT VERSION OF THE S-280B/G MODELS	EA 4	
1	26	PAFZZ	5305-00-934-0198	SMB555568-1	80063	SCREW, CAP, FLAT HEAD	EA 10	
1	27	XDFZZ		SMB165483-4	80063	SHIM, FITTING	EA 2	
1	28	PAFZZ	5365-00-001-4733	SMB165483-1	80063	SHIM, FITTING	EA 2	

SECTION II						TM11-5410-213-14P		
(1)	(2)	(3)	(4)	(5)	(6)	(7)	(8)	
ILLUSTRATION								
(A)	(B)	NATIONAL			DESCRIPTION		QTY	
FIG	ITEM	STOCK	PART			USABLE ON CODE	INC	
NO.	NO.	NUMBER	NUMBER	FSCM			IN	
							U/M	
							UNIT	
1	29	PAFZZ	5310-00-595-6057	MS15795-815	96906	WASHER,FLAT USED ON S-280B/G CONTRACT DAAB05-69-C-0114(MAGLINE)ONLY BMC	EA	12
1	29	PAFZZ	5310-00-809-4061	MS27183-15	96906	WASHER,FLAT USED ONLY ON S-280A/G AND THE DAAB05-67-C 2509(EMC)CONTRACT VERSION OF THE S-280B/G MODELS	EA	12
1	30	PAFZZ	5365-00-020-6591	SMB165483-2	80063	SPACER,PLATE	EA	2
1	31	PAFZZ	5305-00-938-4012	SMB555568-3	80063	SCREW,FLAT HEAD	EA	11
1	32	PAFZZ	5310-00-413-4935	S37B115	3481	RIVNUT	EA	4
1	33	PAFZZ	5305-00-934-0196	SMB555568-2	80063	SCREW,FLAT HEAD	EA	18
1	34	PAFFF	2540-00-937-0325	SMD555537GRI	80063	LIFTING EYE ASSEMBLY	EA	1
1	35	XDFZZ		SMD555536-1	80063	CASTING,LIFT EYE	EA	1
1	36	PAFZZ	5315-00-933-4976	SMC555548	80063	PIN,SWIVEL	EA	1
1	37	PAFZZ	5305-00-753-4451	MS51021-42	96906	SETSCREW	EA	2
1	38	PAFZZ	5365-00-001-1944	SMB555547	80063	SPACER	EA	1
1	39	XDFZZ		SMC555540	80063	RING ASSEMBLY	EA	1

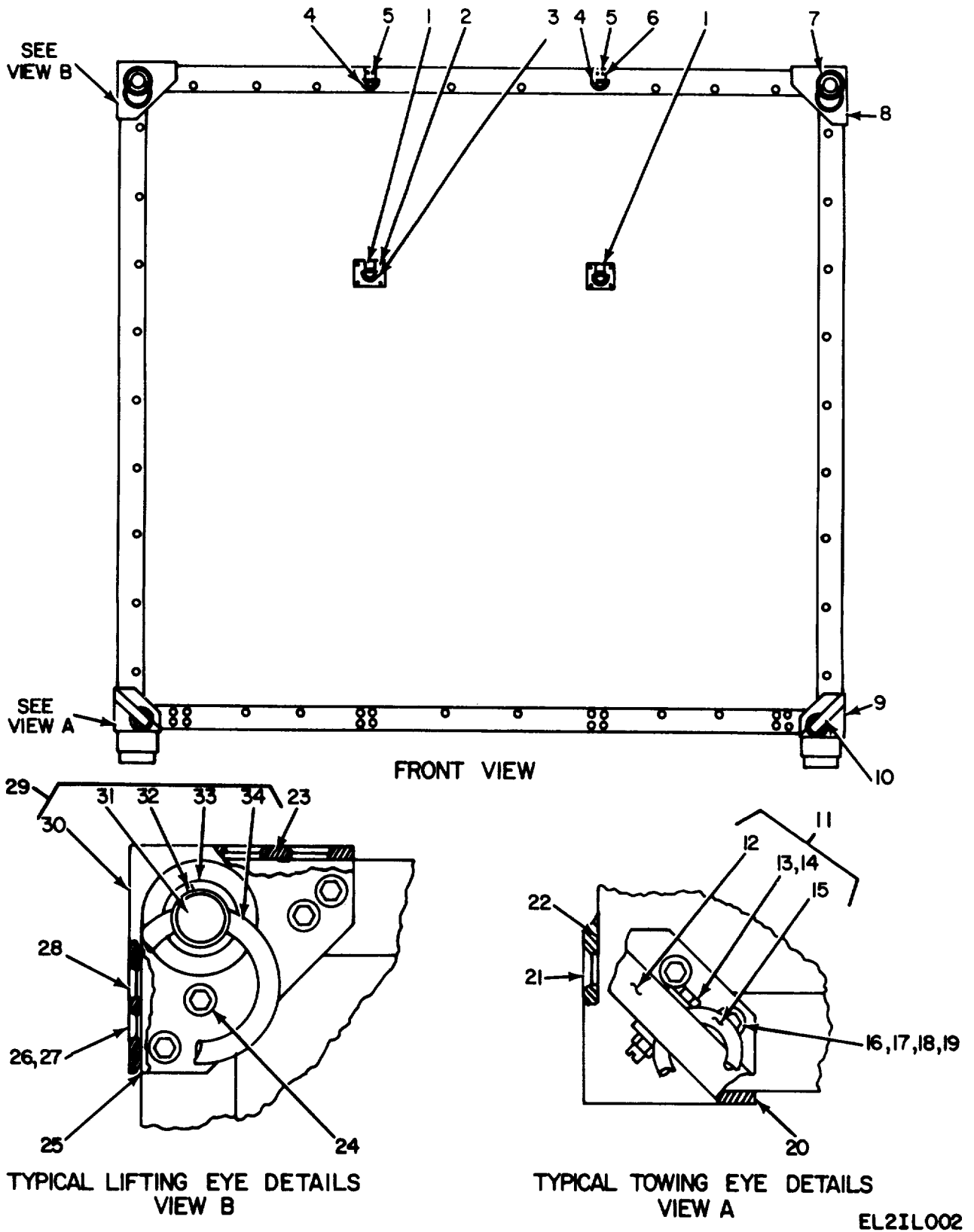
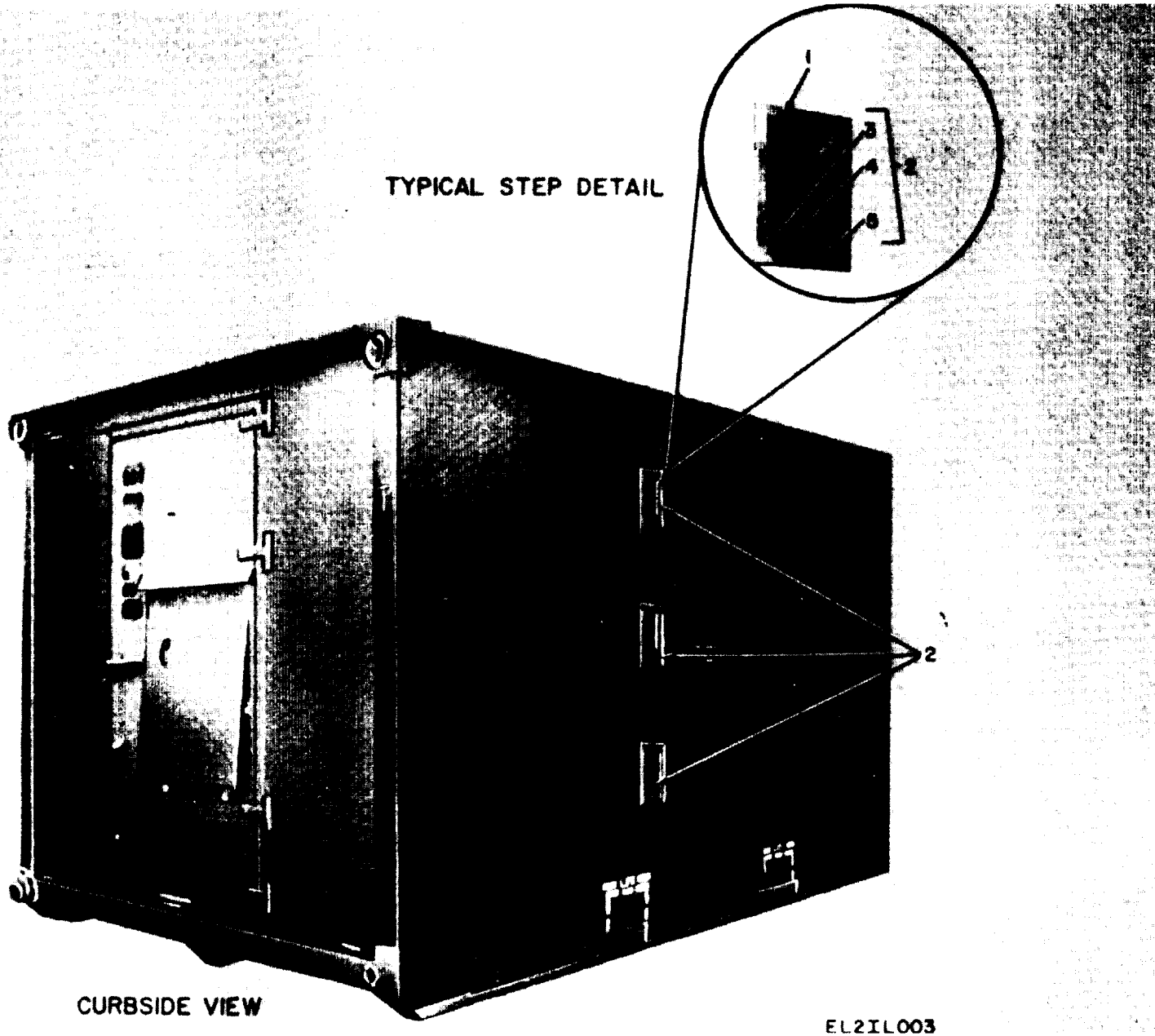


Figure 2. Shelters, Electrical Equipment S-280A/G and S-280B/G, Exterior View.

SECTION II						TM11-5410-213-14P		
(1)	(2)	(3)	(4)	(5)	(6)	(7)	(8)	
ILLUSTRATION								
(A)	(B)	NATIONAL	PART		DESCRIPTION		QTY	
FIG	ITEM	STOCK	NUMBER	FSCM		USABLE ON CODE	INC	
NO.	NO.	NUMBER	NUMBER				IN	
							UNIT	
2	1	XDFZZ		SMB165332	80063	D-RING ASSEMBLY	EA	2
2	2	PAFZZ	5320-00-721-5387	MS20600AD8W3	96906	RIVET, BLIND	EA	8
2	3	PAFZZ	5320-00-117-7288	MS20426AD6-8	96906	RIVET USED ON S-230B/G CONTRACT DAA5-69-C-0114 (MAGLINE) ONLY BMC	EA	4
2	3	PAFZZ	5320-00-721-5385	MS20600AD8W5	96906	RIVET, BLIND USED ONLY ON S-280A/G AND THE DAAB05-67-C-2509 (EMC) CONTRACT VERSION OF THE S-280B/G MODELS	EA	8
2	4	XDFZZ		SMB165399	80063	D-RING	EA	2
2	5	XDFZZ		SMB165331	80063	CLAMP	EA	2
2	6	XDFZZ		MS20000AD8W-6	96906	RIVET	EA	2
2	7	PAFFF	2540-00-933-4064	SMD555537GR4	80063	LIFTING EYE ASSEMBLY	EA	1
2	8	PAFZZ	3040-00-919-5049	SMD555536-4	80063	CASTING, LIFT EYE	EA	1
2	9	PAFFF	2540-00-916-6080	SMD317088GRII	80063	TOWING EYE ASSEMBLY	EA	1
2	10	PAFZZ	5340-00-937-1597	SMD317087-2	80063	BRACKET, EYE, ROTATING	EA	1
2	11	XDFFF		SMD317088GRI	80063	TOWING EYE ASSEMBLY	EA	1
2	12	PAFZZ	3040-00-919-5156	SMD317087-1	80063	BRACKET, EYE	EA	1
2	13	PAFZZ	5306-00-584-4911	AN7C22A	88044	BOLT, HEXAGON HEAD	EA	1
2	14	PAFZZ	5310-00-088-0552	MS21044N7	96906	NUT, SELF-LOCKING	EA	1
2	15	PAFZZ	3940-00-933-4474	SMB165462	80063	EYE, TOWING	EA	1
2	16	PARZZ	5310-00-721-5414	S37B285	3481	RIVNUT	EA	40
2	17	PAFZZ	5310-00-595-6057	MS15795-815	96906	WASHER, FLAT USED ON S-280B/G CONTRACT DAAB05-69-C-0114 (MAGLINE) ONLY BMC	EA	12
2	17	PAFZZ	5310-00-809-4061	MS27183-15	96906	WASHER, FLAT USED ONLY ON S-280A/G AND THE DAAB05-67-C-2509 (EMC) CONTRACT VERSION OF THE S-280B/G MODELS	EA	12
2	18	PAFZZ	5305-00-021-3740	MS35307-364	96906	SCREW, HEXAGON HEAD	EA	4
2	19	PAFZZ	5310-00-984-7042	MS35338-141	96906	WASHER, LOCK USED ON S-280B/G CONTRACT DAAB05-69-C-0114 (MAGLINE) ONLY BMC	EA	12
2	19	PAFZZ	5310-00-637-9541	MS35338-46	96906	WASHER, LOCK USED ONLY ON S-280A/G AND THE DAAB05-67-C-2509 (EMC) CONTRACT VERSION OF THE S-280B/G MODELS	EA	12
2	20	PAFZZ	5365-00-001-4731	SMB165483-3	80063	SPACER, PLATE	EA	2
2	21	PAFZZ	5305-00-934-0198	SMB555568-1	80063	SCREW, FLAT HEAD	EA	10
2	22	XDFZZ		SMB165483-4	80063	SHIM, FITTING	EA	2
2	23	PAFZZ	5365-00-001-4733	SMB165483-1	80063	SHIM, FITTING	EA	2
2	24	PAFZZ	5305-00-717-5467	MS35307-362	96906	SCREW, HEXAGON HEAD USED ON S-280B/G CONTRACT DAAB05-69-C-0114 (MAGLINE) ONLY BMC	EA	10
2	24	PAFZZ	5305-00-208-1429	MS35307-363	96906	SCREW, HEXAGON HEAD USED ONLY ON S-280A/G AND THE DAAB05-67-C-2509 (EMC) CONTRACT VERSION OF THE S-280B/G MODELS	EA	12
2	25	PAFZZ	5365-00-020-6591	SMB165483-2	80063	SPACER, PLATE	EA	2
2	26	PAFZZ	5305-00-938-4012	SMB555563-3	80063	SCREW, FLAT HEAD	EA	4
2	27	PAFZZ	5310-00-413-4935	S37B115	3481	RIVNUT	EA	4
2	28	PAFZZ	5305-00-934-0196	SMB555568-2	80063	SCREW, FLAT HEAD	EA	18
2	29	PAFFF	5410-00-933-0849	SMD555537GR3	80063	LIFTING EYE ASSEMBLY	EA	1
2	30	XDHZZ		SMD555536-3	80063	CASTING, LIFT EYE	EA	1
2	31	PAFZZ	5315-00-933-4976	SMC555548	80063	PIN, SWIVEL	EA	1
2	32	PAFZZ	5305-00-753-4451	MS51021-42	96906	SETScrew	EA	2

SECTION II		TM11-5410-213-14P						
(1)	(2)	(3)	(4)	(5)	(6)	(7)	(8)	
ILLUSTRATION								
(A)	(B)		NATIONAL		DESCRIPTION		QTY	
FIG	ITEM	SMR	STOCK	PART			INC	
NO.	NO.	CODE	NUMBER	NUMBER	FSCM	USABLE ON CODE	IN	
							UNIT	
2	33	PAFZZ	5365-00-001-1944	SMB555547	80063	SPACER	EA	1
2	34	PAFZZ	5410-00-927-1197	SMC555540	80063	RING ASSEMBLY	EA	1



CURBSIDE VIEW

EL2IL003

Figure 3. Shelters, Electrical Equipment S-280A/G and S-280B/G, Exterior Rear View.

SECTION II						TM11-5410-213-14P			
(1)	(2)	(3)	(4)	(5)	(6)		(7)	(8)	
ILLUSTRATION									
(A)	(B)	NATIONAL			DESCRIPTION			QTY	
FIG	ITEM	STOCK	PART	FSCM		USABLE ON CODE	U/M	INC	
NO.	NO.	NUMBER	NUMBER					IN	
								UNIT	
3	1	PAFZZ	5320-00-952-4159	AD64S	7707	RIVET,BLIND USED ON S-280B/G CONTRACT DAAB05-69-C-0114(MAGLINE) ONLY	BMC	EA	30
3	1	PAFZZ	5320-00-721-5387	MS20600AD8W3	96906	RIVET,BLIND USED ON CONTRACT DAAB05-67-C-2509(EMC) ONLY	BMC	EA	21
3	1	PAFZZ	5320-00-721-5386	MS20600AD8W4	96906	RIVET,BLIND	3MN	EA	9
3	2	XDFHH		SMD555567	80063	STEP AND PAN ASSEMBLY		EA	3
3	3	PAFZZ	5410-00-919-4958	1-575709-50	19220	STEP		EA	1
3	4	PAFZZ	5310-00-139-7357	15949	19220	NUT, LOCKING		EA	2
3	5	XDHZZ		914361	83205	PAN, RECESSED OR		EA	1
3	5	XDHZZ		AL4-575709-50	19220	PAN, RECESSED		EA	1

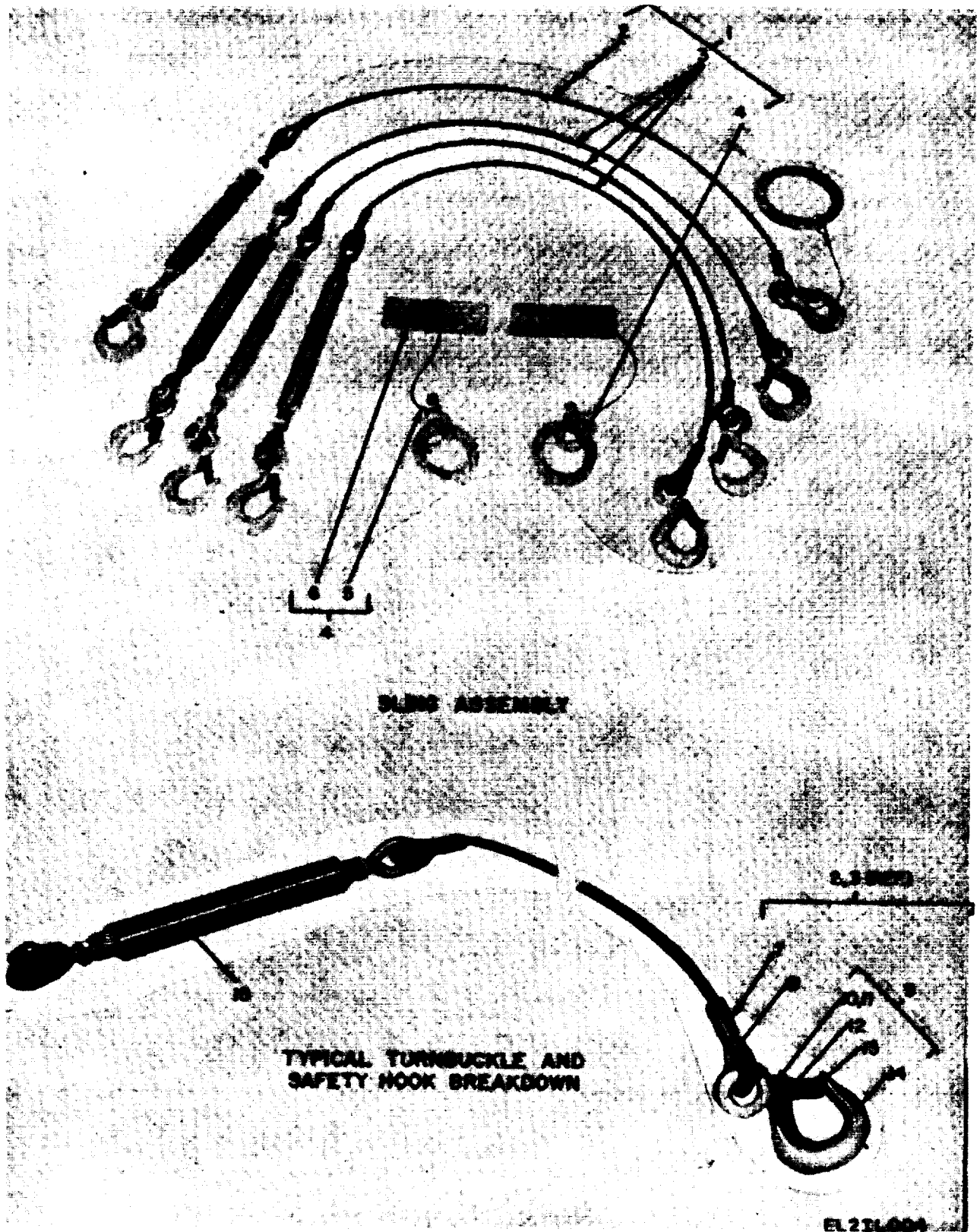


Figure 4. Shelters, Electrical Equipment S-280A/G and S-280B/G, Lifting and Tiedown Sling.

SECTION II						TM11-5410-213-14P		
(1)	(2)	(3)	(4)	(5)	(6)	(7)	(8)	
ILLUSTRATION								
(A)	(B)	NATIONAL			DESCRIPTION		QTY	
FIG	ITEM	STOCK	PART	FSCM		USABLE ON CODE	INC	
NO.	NO.	NUMBER	NUMBER				IN	
							UNIT	
4	1	PAOHH 3940-00-846-9858	SCD36423	80063	SLING, MULTIPLE LEG		EA 1	
4	2	PAOHH 5410-00-403-9535	SCC36424GR11	80063	WIRE ROPE ASSEMBLY AND LIFT RING		EA 1	
4	3	XDOHH	SCC36424GR1	80063	WIRE ROPE ASSEMBLY		EA 3	
4	4	PAOHH 4030-00-956-5820	SCC90674	80063	PLATE AND RING ASSEMBLY		EA 2	
4	5	PAHZZ 4030-00-431-5536	28-1C	76691	SLEEVE		EA 2	
4	6	XDHZZ	SCC90676	80063	PLATE		EA 1	
4	7	PAHZZ 4030-00-445-6210	28-23H5	76691	SLEEVE		EA 2	
4	8	XDHZZ	SCC36424-6	80063	THIMBLE		EA 2	
4	9	XDHHH	SCC351470	80063	SAFETY HOOK ASSEMBLY		EA 2	
4	10	PAHZZ 5305-00-464-1740	SCB351474	80063	SCREW, MACHINE		EA 1	
4	11	PAHZZ 5310-00-982-4999	MS21044C04	96906	NUT		EA 1	
4	12	XDHZZ	SCC351473	80063	SPRING		EA 1	
4	13	PAHZZ 5340-00-457-0579	SCC351472	80063	KEEPER		EA 1	
4	14	XDHZZ	SCC351471	80063	HOOK		EA 1	
4	15	XDHZZ	SCC36424-5	80063	TURNBUCKLE		EA 1	

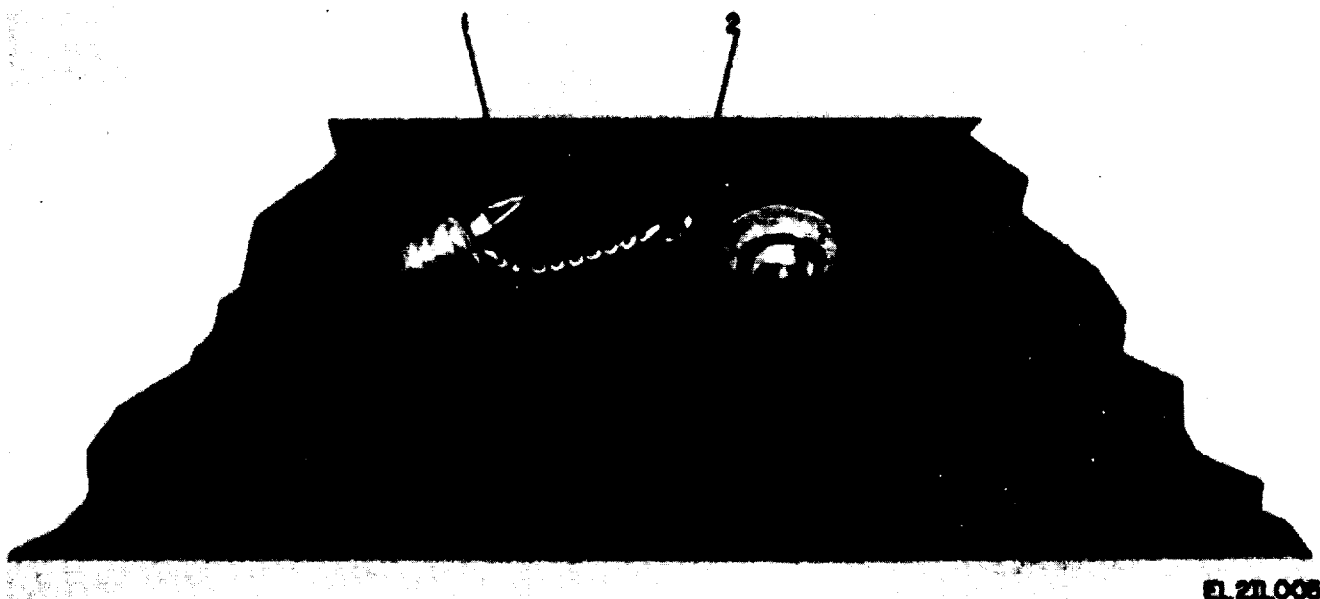
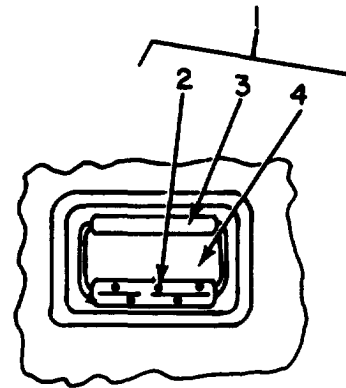
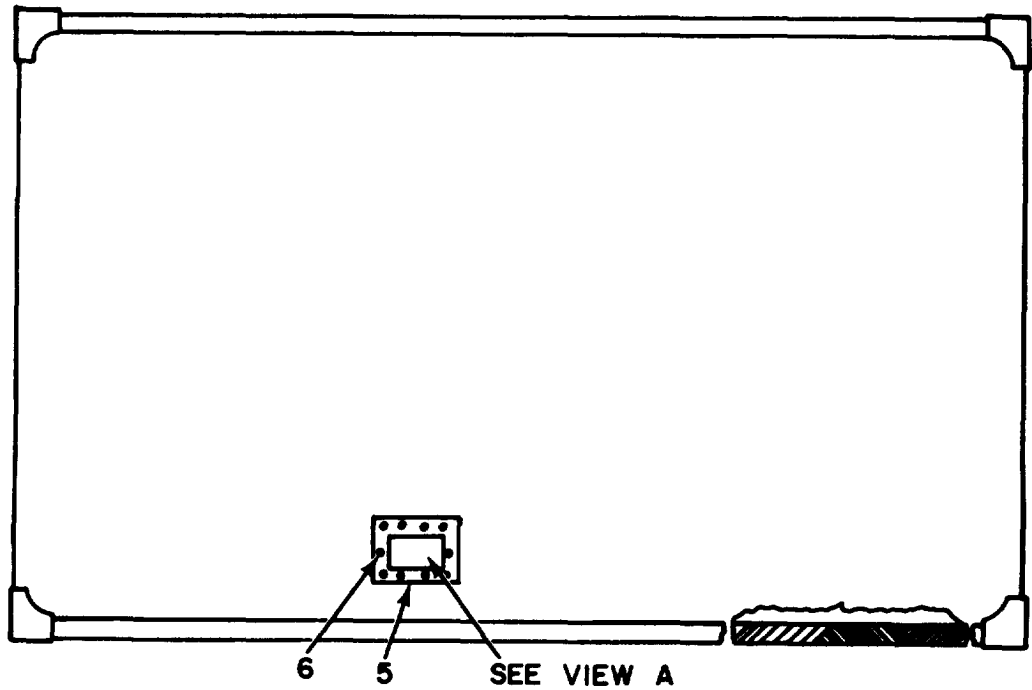


Figure 5. Shelters, Electrical Equipment S-280A/G and S-280B/G, Drain Plug, RFI Shielded.

SECTION II						TM11-5410-213-14P		
(1)	(2)	(3)	(4)	(5)	(6)		(7)	(8)
ILLUSTRATION								
(A)	(B)	NATIONAL			DESCRIPTION			QTY
FIG	ITEM	STOCK	PART					INC
NO.	NO.	CODE	NUMBER	NUMBER	FSCM	USABLE ON CODE	U/M	IN
								UNIT
5	1	PAOZZ	4510-00-933-9953	SMB165462	80063	PLUG,DRAIN	EA	1
5	2	PAOZZ	5305-00-014-9247	MS35494-131	96906	SCREW,WOOD	EA	1



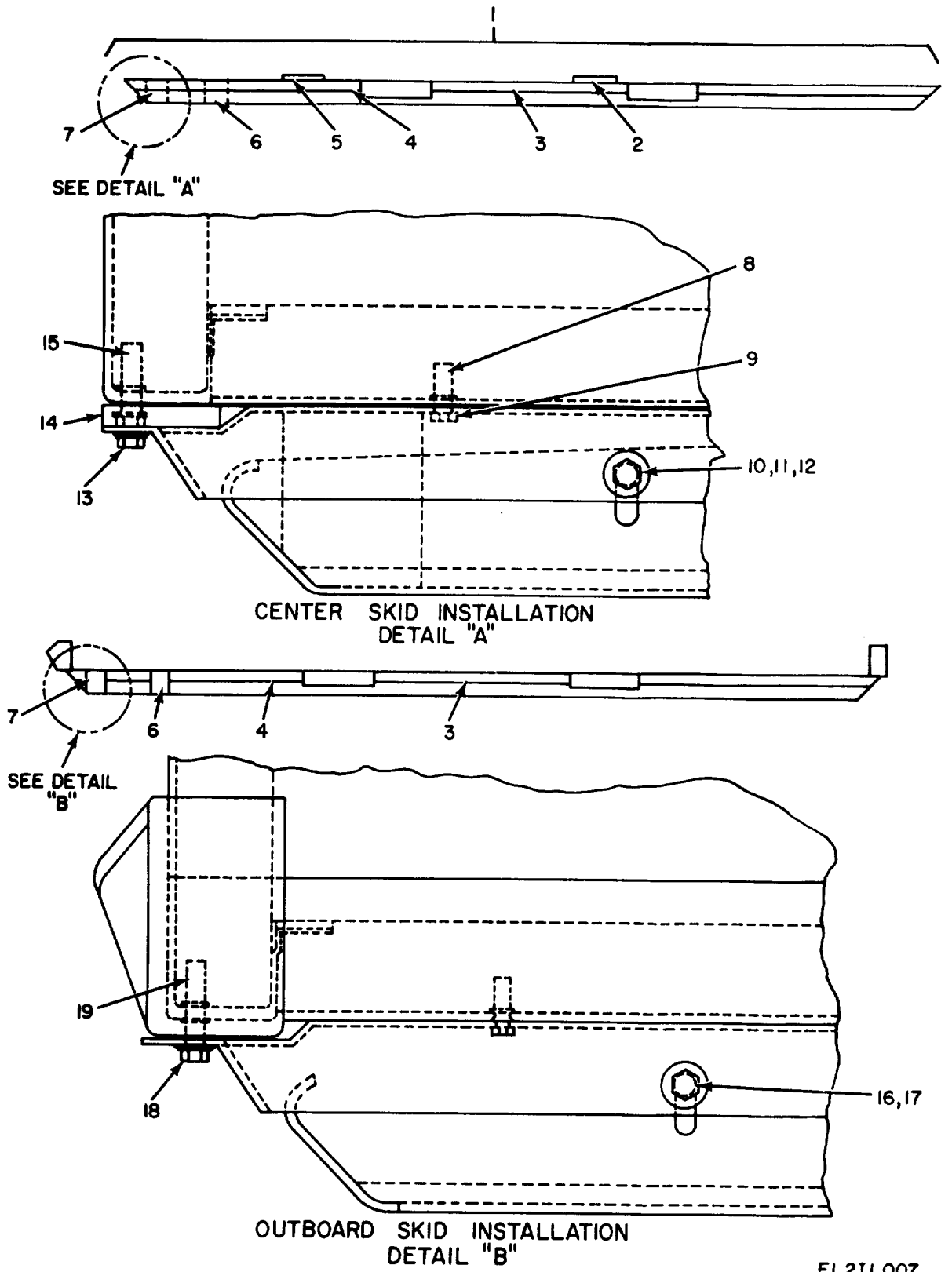
HAND HOLD ASSY.
VIEW A



EL21L006

Figure 6. Shelters, Electrical Equipment S-280A/G and S-280B/G, Exterior Roof View.

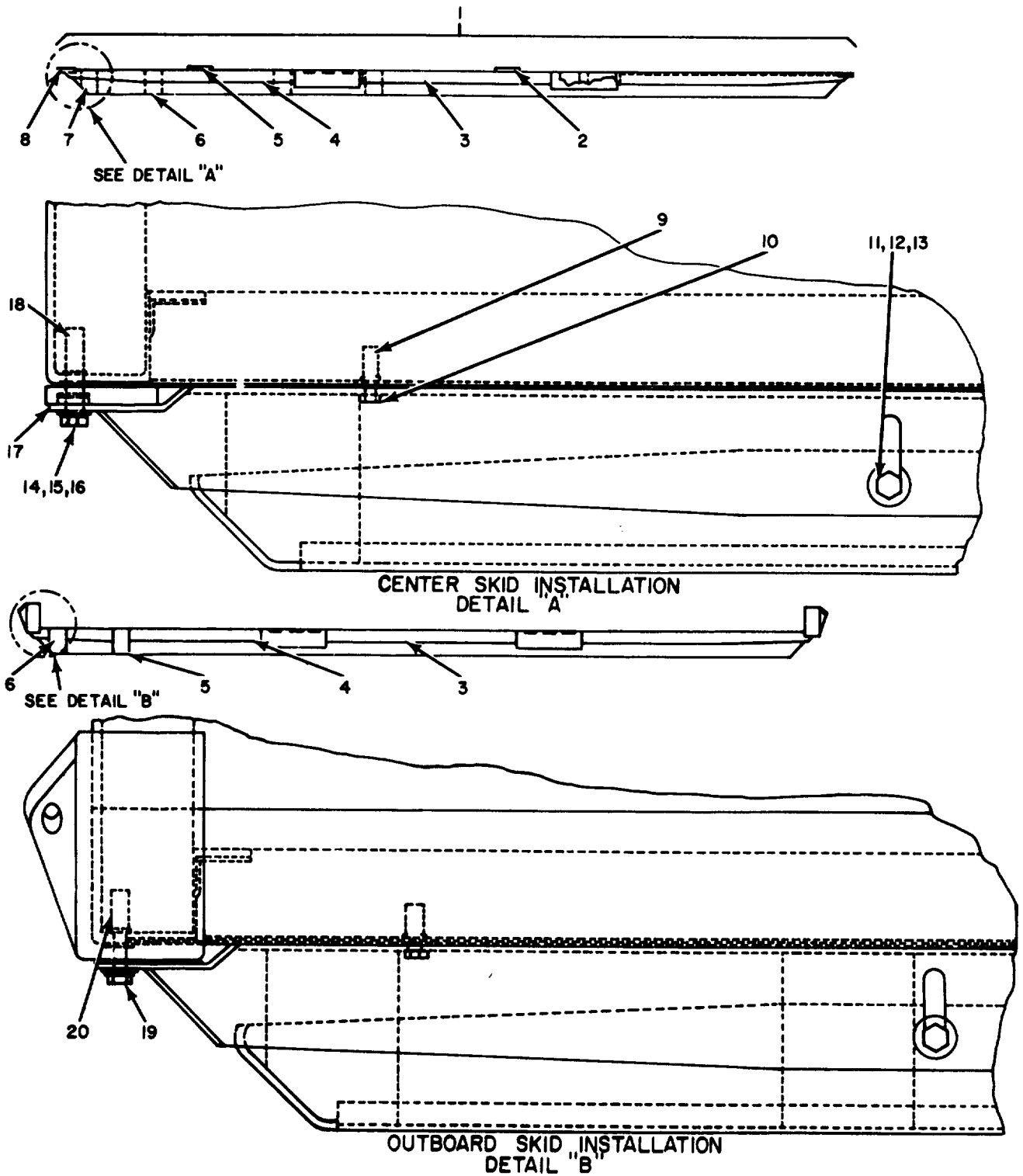
SECTION II						TM11-5410-213-14P		
(1)	(2)	(3)	(4)	(5)	(6)		(7)	(8)
ILLUSTRATION								
(A)	(B)	NATIONAL			DESCRIPTION			QTY
FIG	ITEM	STOCK	PART					INC
NO.	NO.	NUMBER	NUMBER	FSCM		USABLE ON CODE	U/M	IN
								UNIT
6	1	PAHHH	5410-00-933-0845	SMC165382	80063	HAND HOLD ASSEMBLY,ROOF	EA	1
6	2	PAHZZ	5320-00-117-6853	MS20470AD6-8	96906	RIVET,SOLID	EA	5
6	3	PAHZZ	5340-00-836-1938	H945SS2RG	98003	HANDLE,BAIL TYPE	EA	1
6	4	XDHZZ		SMC165383	80063	PAN,HAND HOLD	EA	1
6	5	PAHZZ	5320-00-582-3304	MS20600AD4W2	96906	RIVET,BLIND USED ONLY ON S-280A/G AND THE DAAB05-67-C-2509(EMC)CONTRACT VERSION OF THE S-280B/G MODELS	EA	8
6	5	PAHZZ	5320-00-957-3582	AD42S	7707	RIVET,BLIND USED ON S-280B/G CONTRACT DAAB05-69-C-0114(MAGLINE) ONLY	BMC EA	8
6	6	PAHZZ	5320-00-952-4162	AD43S	7707	RIVET,BLIND USFD ON S-280B/G CONTRACT DAAB05-69-C-0114 (MAGLINE) ONLY	BMC EA	2
6	6	PAHZZ	5320-00-582-3305	MS20600AD4W3	96906	RIVET,BLIND USED ONLY ON S-280A/G AND THE DAAB05-67-C-2509(EMC) CONTRACT VERSION OF THE S-250B/G MODELS	EA	2



EL21L007

Figure 7. Shelters, Electrical Equipment S-280A/G and S-280B/G, Skid Assembly, Model A.

SECTION II		TM11-5410-213-14P						
(1)	(2)	(3)	(4)	(5)	(6)		(7)	(8)
ILLUSTRATION								
(A)	(B)	NATIONAL	PART		DESCRIPTION			QTY
FIG	ITEM	STOCK	NUMBER	FSCM		USABLE ON CODE	U/M	INC
NO.	NO.	NUMBER	NUMBER					IN
								UNIT
7	1	PAHHH 3990-00-916-6083	SMB555502	80063	SKID ASSEMBLY 3MN		3MN EA	3
7	2	PAHZZ 5365-00-024-6680	SMD555503-1	80063	SHIM,CENTER,SKID 3MN		3MN EA	1
7	3	XDHZZ	SMD317078	80063	BRACKET,MOUNTING,SKID 3MN		3MN EA	6
7	4	XDHZZ	SMC555517	80063	BRACKET,MOUNTING,WELDMENT,SKID 3MN		3MN EA	6
7	5	PAHZZ 5365-00-001-1940	SMD555503-2	80063	SHIM,CENTER,SKID 3MN		3MN EA	2
7	6	PAHZZ 5340-00-933-4512	SMC555515-1	80063	MOUNT,SHOCK,SKID 3MN		3MN EA	18
7	7	PAHZZ 5340-00-928-8998	SMC555515-2	80063	MOUNT,SHOCK,SKID 3MN		3MN EA	6
7	8	PAHZZ 5310-00-929-6452	S25B211	3481	RIVNUT 3MN		3MN EA	14
7	9	PAHZZ 5305-00-702-4523	MS35307-306	96906	SCREW 3MN		3MN EA	14
7	10	PAHZZ 5310-00-050-6646	MS17830-6C	96906	NUT,PLAIN,HEXAGON 3MN		3MN EA	6
7	11	PAHZZ 5310-00-042-6759	MS35338-83	96906	WASHER,LOCK 3MN		3MN EA	2
7	12	PAHZZ 5310-00-802-4701	MS15795-813	96906	WASHER,FLAT 3MN		3MN EA	2
7	13	PAHZZ 5306-00-637-9674	MS35307-336	96906	BOLT,MACHINE 3MN		3MN EA	2
7	14	PAHZZ 5365-00-168-6760	SMC555549	80063	SHIM,CENTER,SKID ENDS 3MN		3MN EA	2
7	15	PAHZZ 5310-00-937-5949	S31B500	83187	RIVNUT 3MN		3MN EA	2
7	16	PAHZZ 5305-00-964-0636	MS35307-378	96906	SCREW,HEXAGON HEAD 3MN		3MN EA	24
7	17	PAHZZ 5310-00-595-6057	MS15795-815	96906	WASHER,FLAT 3MN		3MN EA	2
7	18	PAHZZ 5306-00-655-6170	MS35307-338	96906	SCREW,HEXAGON HEAD 3MN		3MN EA	2
7	19	PAHZZ 5310-00-987-9070	S31B275	3481	RIVNUT 3MN		3MN EA	4



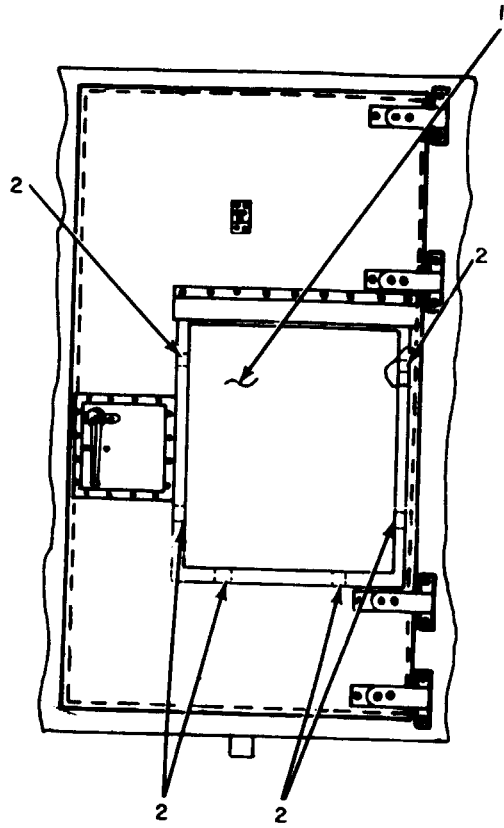
EL21L008

Figure 8. Shelters, Electrical Equipment S-280A/G and S-280B/G, Skid Assembly, Model B.

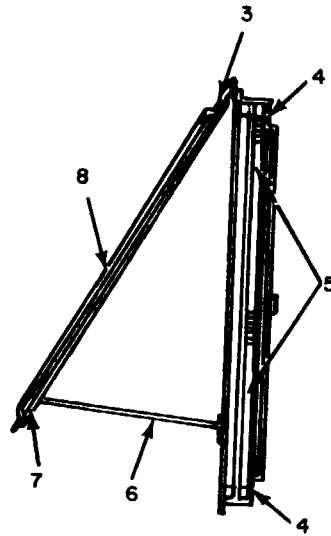
SECTION II

TM11-5410-213-14P

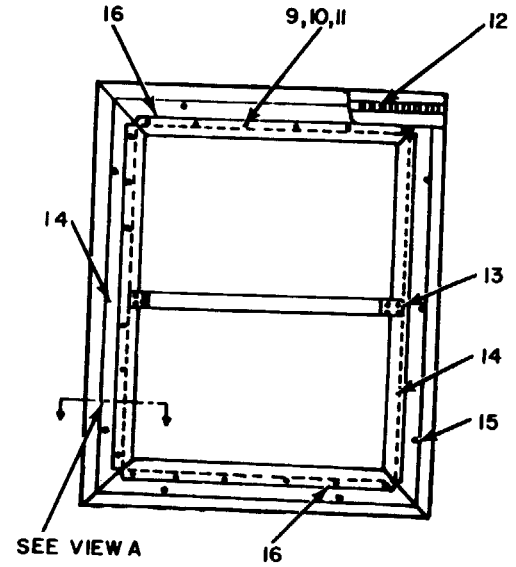
(1) ILLUSTRATION (A) (B) FIG ITEM NO. NO.	(2) SMR CODE	(3) NATIONAL STOCK NUMBER	(4) PART NUMBER	(5) FSCM	(6) DESCRIPTION USABLE ON CODE	(7) BMC	(8) QTY INC IN UNIT
8 1	PAHHH	5410-00-107-1198	SMD162194	80063	SKID ASSEMBLY	BMC	EA 31
8 2	PAHZZ	5365-00-168-6760	SMC555549	80063	SHIM,CENTER,SKID ENDS,SELECT	BMC	EA 1
8 3	PAHZZ	5340-00-928-8998	SMC555515-2	80063	MOUNT,SHOCK,SKID	BMC	EA 2
8 4	PAHZZ	5340-00-794-4243	SMC555515-3	80063	MOUNT,SHOCK,SKID	BMC	EA 6
8 5	PAHZZ	5365-00-001-1940	SMD555503-2	80063	SHIM,CENTER,SKID ENDS,SELECT	BMC	EA V
8 5	PAHZZ	5365-00-024-6680	SMD555503-1	80063	SHIM,CENTER,SKID ENDS,SELECT	BMC	EA V
8 5	PAHZZ	5365-00-434-6944	SCD595500	80063	SHIM,CENTER,SKID ENDS,SELECT	BMC	EA 1
8 6	PAHZZ	5410-00-290-8866	SCD595499	80063	MOUNTING BRACKET,SKID USED ON S-280B/G CONTRACT DAAB05-69-C-0114(MAGLINE) ONLY	BMC	EA 1
8 6	PAHZZ	5410-00-407-4954	SCD200138	80063	BRACKET,MOUNING,SKID USED ON S-280B/G CONTRACT DAAB05-69-C-0114(MAGLINE) ONLY	BMC	EA 2
8 7	PAHZZ	5410-00-407-4955	SCC200139	80063	BRACKET,MOUNTING,SKID	BMC	EA 1
8 8	XDHZZ		SMB165496-2	80063	PLATE,FORK-LIFT,SKID	BMC	EA 1
8 9	PAHZZ	5310-00-929-6452	S25B211	3481	RIVNUT	BMC	EA 74
8 10	PAHZZ	5305-00-702-4523	MS35307-306	96906	BOLT,MACHINE	BMC	EA 58
8 11	PAHZZ	5310-00-726-7700	79NB066	72962	NUT,PLAIN,HEXAGON	BMC	EA 6
8 12	PAHZZ	5310-00-595-6057	MS15795-815	96906	WASHER,FLAT	BMC	EA 12
8 13	XDHZZ		SMB162201	80063	BOLT,HEXAGON HEAD	BMC	EA 6
8 14	PAHZZ	5310-00-802-4701	MS15795-813	96906	WASHER,FLAT	BMC	EA 6
8 15	PAHZZ	5310-00-974-6623	MS35338-140	96906	WASHER,LOCK	BMC	EA 2
8 16	PAHZZ	5306-00-637-9674	MS35307-336	96906	BOLT,MACHINE	BMC	EA 2
8 17	PAHZZ	5365-00-168-6758	SMB162196-1	80063	SHIM,SKID	BMC	EA 6
8 18	PAHZZ	5310-00-937-5949	S31B500	83187	RIVNUT	BMC	EA 2
8 19	PAHZZ	5306-00-655-6170	MS35307-338	96906	SCREW,HEXAGON HEAD	BMC	EA 2
8 20	PAHZZ	5310-00-177-7674	S10B216	3481	RIVNUT USED ON CONTRACT DAAB05-69-C-0114(MAGLINE) ONLY	BMC	EA 8
8 20	PAHZZ	5310-00-987-9070	S31B275	3481	RIVNUT USED ON CONTRACT DAAB05-67-C-2509(EMC) ONLY	BMC	EA 4



DOOR, EXTERIOR VIEW



AIR INLET ASSEMBLY
INTERIOR VIEW



GASKET ASSEMBLY
TYPICAL BOTH SIDES
VIEW A

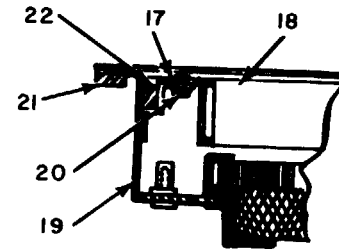


Figure 9. Door Assembly, S-280A/G Shelter.

EL2IL009

SECTION II						TM11-5410-213-14P			(7)	(8)
(1)	(2)	(3)	(4)	(5)	(6)					
ILLUSTRATION										
(A)	(B)	NATIONAL			DESCRIPTION				QTY	
FIG	ITEM	STOCK	PART	FSCM		USABLE ON CODE		U/M	INC	
NO.	NO.	NUMBER	NUMBER						IN	
									UNIT	
GROUP 01 DOOR ASSEMBLY										
9	1	XDHHH	SMB555528GR2	80063	FILTER ASSEMBLY, INLET			3MN EA	1	
9	2	PAHZZ	5325-00-281-8638	MS21332-1	96906	FASTENER, SNAPSLIDE		3MN EA	6	
9	3	XDHZZ		S10B80	3481	RIVNUT		3MN EA	10	
9	4	PAHZZ	5330-00-931-8224	SMB555564-2	80063	GASKET		3MN EA	2	
9	5	PAOZZ	4130-00-933-4477	SM-C-317069-2	80063	FILTER, AIR		3MN EA	2	
9	6	XDHZZ		SMC317063	80063	COVER, WELDMENT		3MN EA	1	
9	7	PAHZZ	5315-00-881-2253	MS16562-221	96906	PIN, SPRING		3MN EA	2	
9	8	XDHZZ		SMD317073	80063	COVER, WELDMENT		3MN EA	1	
9	9	XDHZZ		MS35233-46	96906	SCREW, MACHINE		3MN EA	28	
9	10	PAHZZ	5310-00-045-3299	MS35338-42	96906	WASHER, LOCK		3MN EA	28	
9	11	PAHZZ	5310-00-934-9759	MS35649-284	96906	NUT, PLAIN, HEXAGON		3MN EA	28	
9	12	PAHZZ	5340-00-709-9814	MS35821-2A	96906	HINGE, BUTT		3MN EA	1	
9	13	XDHZZ		SMC555529	80063	DIVIDER STRIP ASSEMBLY		3MN EA	1	
9	14	XDHZZ		SMC317064-2	80063	FRAME, AIR FILTER		3MN EA	2	
9	15	PAHZZ	5320-00-243-3933	MS20427F4-5	96906	RIVET		3MN EA	4	
9	16	XDHZZ		SMC317064-3	80063	FRAME, AIR FILTER		3MN EA	2	
9	17	PAHZZ	5305-00-725-4197	MS51960-5	96906	SCREW, MACHINE		3MN EA	22	
9	18	PAHZZ	5410-00-916-6082	SMD555519	80063	LOUVER, METAL		3MN EA	1	
9	19	XDHZZ		SMD317072	80063	FILTER BOX WELDMENT		3MN EA	1	
9	20	XDHZZ		SMD555528-3	80063	NUT, CLINCH		3MN EA	22	
9	21	PAHZZ	5330-00-933-4514	SMB555584	80063	GASKET		3MN EA	2	
9	22	PAHZZ	5330-00-917-6093	SMB555564-1	80063	GASKET		3MN EA	2	

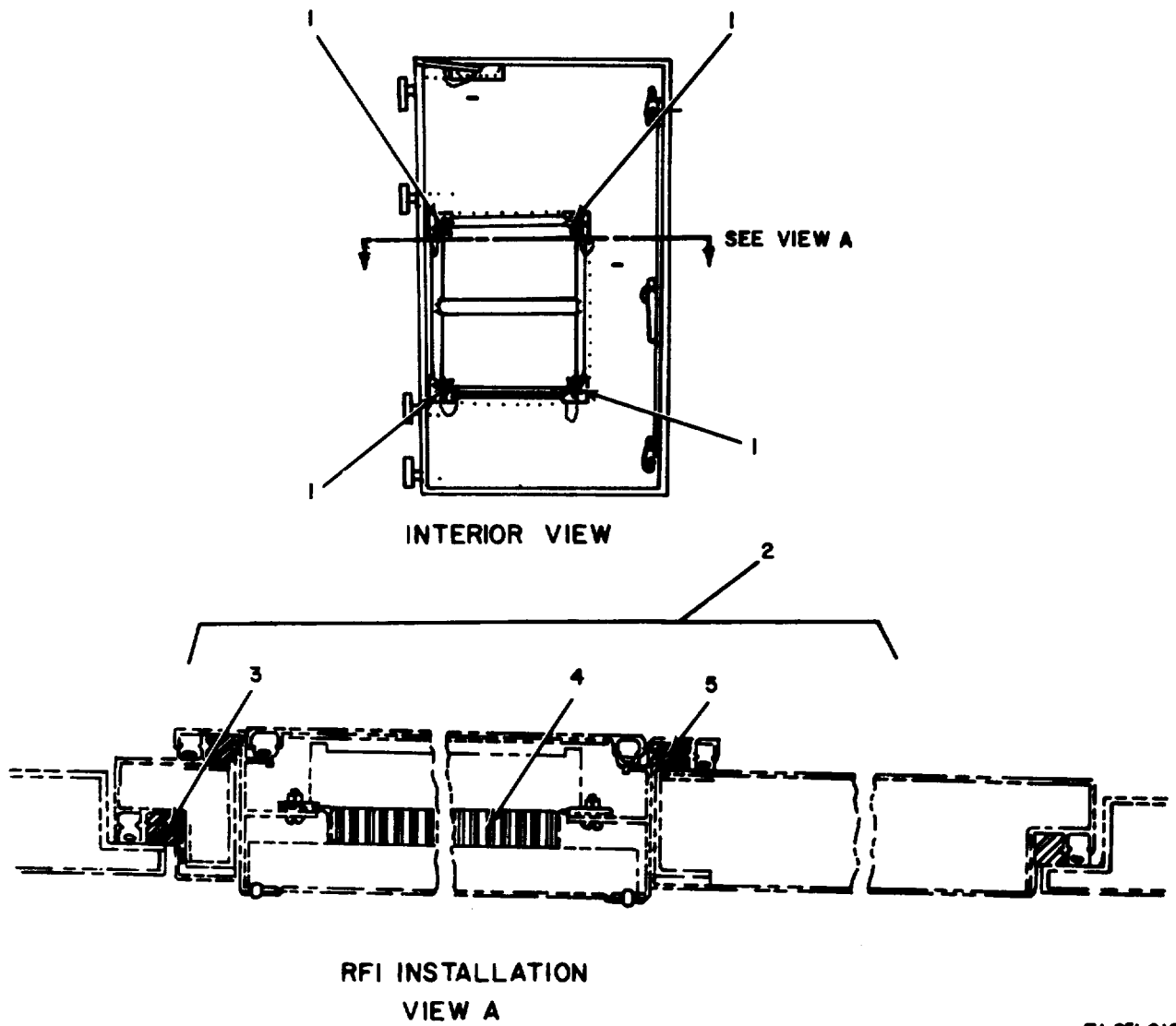
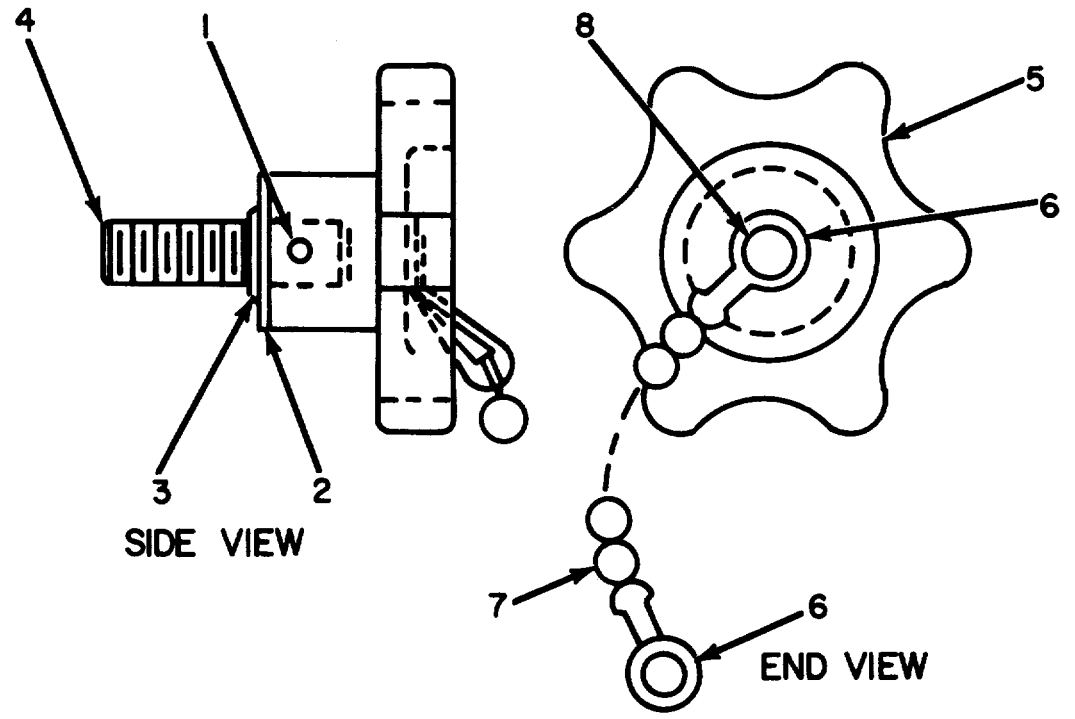


Figure 10. Door Assembly, S-280B/G Shelter.

EL21LO10

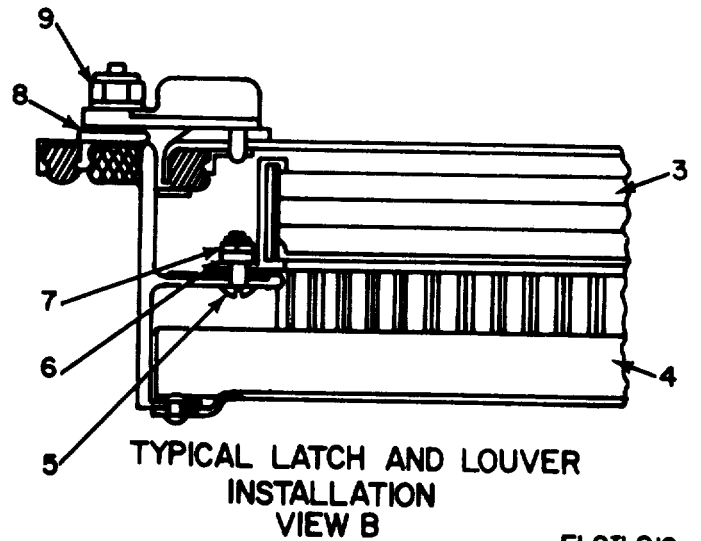
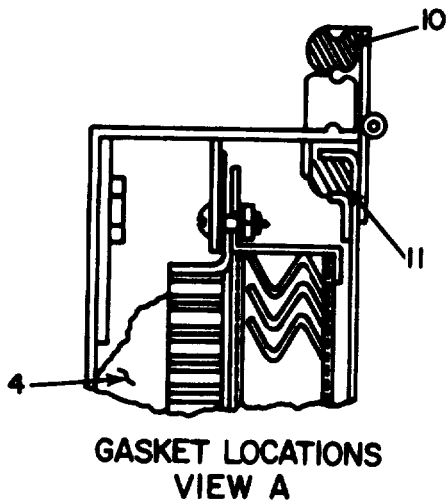
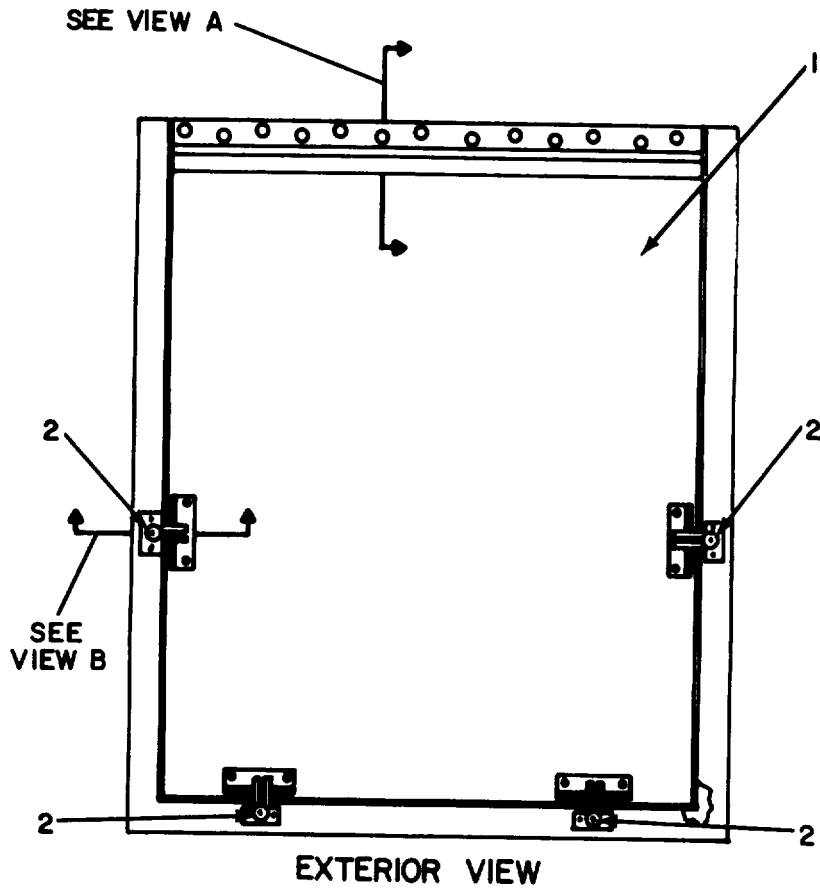
SECTION II						TM11-5410-213-14P				
(1)	(2)	(3)	(4)	(5)	(6)		(7)	(8)		
ILLUSTRATION										
(A)	(B)		NATIONAL		DESCRIPTION				QTY	INC
FIG	ITEM	SMR	STOCK	PART					IN	UNIT
NO.	NO.	CODE	NUMBER	NUMBER	FSCM	USABLE ON CODE		U/M		
10	1	XDHHH		SMC450441	80063	KNOB ASSEMBLY		BMC	EA	4
10	2	PAHZZ	5410-00-937-5248	SCD621052	80063	MODIFICATION KIT,RFI MK-1079/G		BMC	EA	1
10	3	PAHZZ	5999-00-136-5803	SMB564670-3	80063	FILTER,RFI		BMC	EA	1
10	4	PAHZZ	5915-00-007-2526	SMC450478	80063	FILTER,RFI		BMC	EA	1
10	5	PAHZZ	5999-00-025-9059	SMB564670-4	80063	SHIELD,RFI		BMC	EA	1



EL2ILO11

Figure 11. Door assembly, Air Filter Removal Knob.

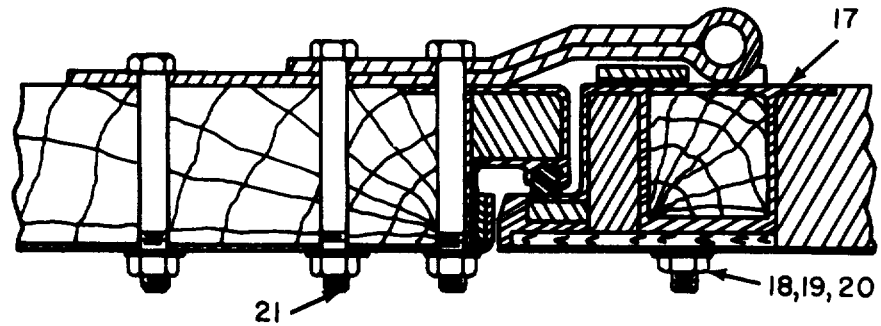
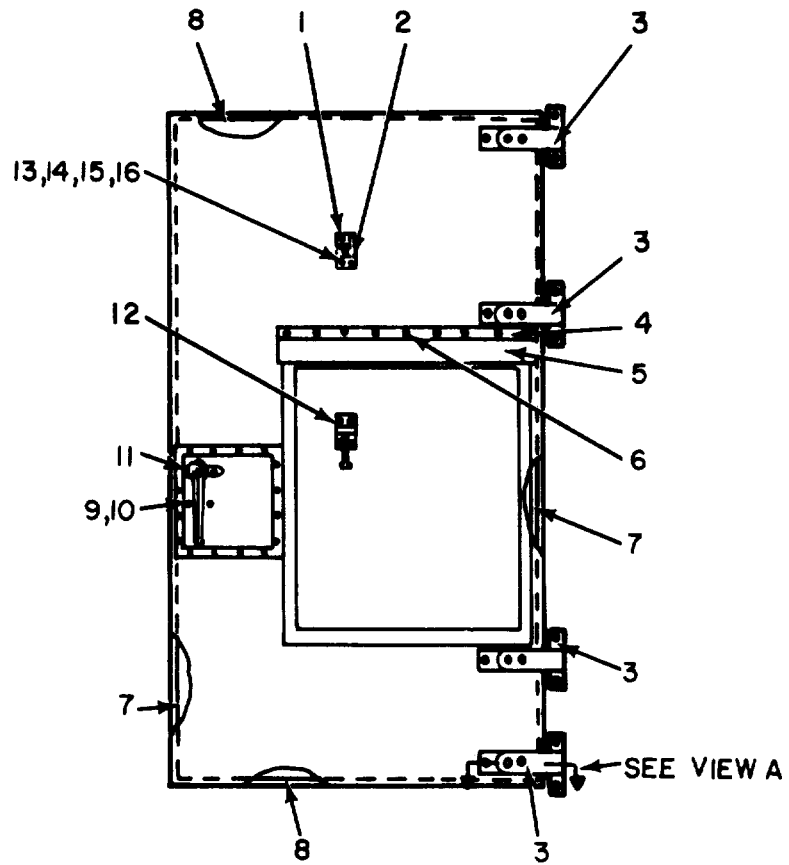
SECTION II						TM11-5410-213-14P		
(1)	(2)	(3)	(4)	(5)	(6)		(7)	(8)
ILLUSTRATION								
(A)	(B)	NATIONAL			DESCRIPTION			QTY
FIG	ITEM	STOCK	PART					INC
NO.	NO.	NUMBER	NUMBER	FSCM		USABLE ON CODE	U/M	IN
								UNIT
11	1	PAHZZ	5315-00-058-9720	MS16562-207	96906	PIN, SPRING	EA	1
11	2	PAHZZ	5310-00-595-6057	MS15795-815	96906	WASHER, FLAT	EA	4
11	3	PAHZZ	5365-00-804-7642	5100-35H	79136	RING, RETAINING	EA	1
11	4	XDHZZ		SMB113604	80063	STUD	EA	1
11	5	XDHZZ		SMC615263	80063	KNOB, CASTING	EA	1
11	6	XDHZZ		13ANOFFSET	70892	FASTENER, CHAIN	EA	2
11	7	XDHZZ		SMC450441-3	80063	CHAIN, BEAD	EA	1
11	8	PAHZZ	5305-00-253-5625	MS21318-46	96906	SCREW, DRIVE	EA	1



EL2IL012

Figure 12. Door Assembly, Emergency Exit Panel.

SECTION II						TM11-5410-213-14P			
(1)	(2)	(3)	(4)	(5)	(6)		(7)	(8)	
ILLUSTRATION									
(A)	(B)	NATIONAL			DESCRIPTION			QTY	
FIG	ITEM	STOCK	PART	FSCM		USABLE ON CODE	U/M	INC	
NO.	NO.	NUMBER	NUMBER					IN	
								UNIT	
12	1	XDHHH		SMD450462	80063	PANEL ASSEMBLY, EMERGENCY EXIT	BMC	EA	1
12	2	PAHZZ	5340-00-118-0018	SMB450447	80063	LATCH, COVER	BMC	EA	4
12	3	XDHZZ		SMD615264	80063	LOUVER ASSEMBLY, INTAKE	BMC	EA	1
12	4	PAOZZ	9330-00-107-1165	SMC450466	80063	FILTER, AIR	BMC	EA	2
12	5	PAHZZ	5305-00-984-6193	MS35223-45	96906	SCREW, MACHINE USED ON CONTRACT DAAB05-67-0-2509(EMC) ONLY	BMC	EA	94
12	5	XDHZZ		SMD450462-10	80063	SCREW, MACHINE USED ON S-280B/G CONTRACT DAAB05-69-C-0114(MAGLINE) ONLY	BMC	EA	94
12	6	PAHZZ	5310-00-933-8119	MS35338-80	96906	WASHER, LOCK	BMC	EA	94
12	7	PAHZZ	5310-00-934-9757	MS35649-282	96906	NUT, PLAIN, HEXAGON USED ON CONTRACT DAAB05-67-C-2509(EMC) ONLY	BMC	EA	94
12	7	PAHZZ	5310-00-934-9757	MS35649-282	96906	NUT, PLAIN, HEXAGON USED ON CONTRACT DAAB05-69-C-0114(MAGLINE) ONLY	BMC	EA	94
12	8	PAHZZ	5310-00-145-2217	101-1-4-31	2751	WASHER, NYLON	BMC	EA	8
12	9	PAHZZ	5310-00-014-5847	2INTU040	72962	NUT, PLAIN, HEXAGON	BMC	EA	1
12	10	PAHZZ	5330-00-179-0304	SMC564839-106IN	80063	GASKET, PANEL, EMERGENCY	BMC	EA	1
12	11	PAHZZ	5330-00-179-0303	SMC564839-96IN	80063	GASKET, LOUVER	BMC	EA	1



TYPICAL HINGE INSTALLATION
VIEW A

EL2ILO13

Figure 13. Door Assembly, Exterior View.

SECTION II						TM11-5410-213-14P		
(1)	(2)	(3)	(4)	(5)	(6)		(7)	(8)
ILLUSTRATION								
(A)	(B)	NATIONAL	PART		DESCRIPTION			QTY
FIG	ITEM	STOCK	NUMBER	FSCM		USABLE ON CODE	U/M	INC
NO.	NO.	NUMBER	NUMBER					IN
								UNIT
13	1	PAHZZ	5340-00-493-9235	SMB555598-2	80063	KEEPER, TOP LATCH	EA	1
13	2	PAHZZ	5320-00-582-3276	MS20600AD6W4	96906	RIVET, BLIND	3MN EA	8
13	3	PAHZZ	5340-00-917-6104	SMC317057	80063	HINGE ASSEMBLY	EA	4
13	4	XDHZZ		SMB450465	80063	STRIP, DRIP CAP	BMC EA	1
13	4	XDHZZ		SMD555531-3	80063	STRIP, DRIP, CAP ALUMINUM	3MN EA	1
13	5	PAHZZ	9320-00-134-9663	SMB555572-6	80063	DRIP CAP	EA	1
13	6	PAHZZ	5320-00-952-4159	AD64S	7707	RIVET, BLIND	BMC EA	21
13	6	PAHZZ	5320-00-582-3304	MS20600AD4W2	96906	RIVET, BLIND	3MN EA	9
13	7	XDHZZ		SMB555573-2	80063	STRIP, INSULATING	3MN EA	2
13	8	XDHZZ		SMB555573-1	80063	STRIP, INSULATING	3MN EA	2
13	9	PAHZZ	5305-00-267-8974	MS90726-8	96906	BOLT, HEXAGON HEAD	3MN EA	2
13	10	PAHZZ	5310-00-301-4558	SCB200146	80063	WASHER, FLAT	3MN EA	2
13	11	PAHZZ	5305-00-533-5446	MS35493-53	96906	SCREW, WOOD	BMC EA	2
13	11	XDHZZ		MS35208-67	96906	SCREW, WOOD	3MN EA	2
13	12	PAHZZ	5340-00-928-8999	SMB555598-1	80063	LATCH ASSEMBLY, LOUVER COVER	EA	1
13	13	PAHZZ	5305-00-984-7364	MS35206-273	96906	SCREW, MACHINE	BMC EA	4
13	14	PAHZZ	5310-00-809-8546	MS27183-8	96906	WASHER, FLAT	BMC EA	4
13	15	PAHZZ	5310-00-045-3296	MS35338-43	96906	WASHER, LOCK	BMC EA	4
13	16	PAHZZ	5310-00-934-9758	MS35649-202	96906	NUT, PLAIN, HEXAGON	BMC EA	4
13	17	PAHZZ	5365-00-163-2814	SMB162197-1	80063	SPACER, PLATE	EA	1
13	17	PAHZZ	5365-00-235-0014	SMB162197-2	80063	SPACER, PLATE	EA	1
13	17	PAHZZ	5365-00-169-6052	SMB162197-3	80063	SPACER, PLATE	EA	1
13	17	PAHZZ	5365-00-177-1927	SMB162197-4	80063	SPACER, PLATE	EA	1
13	18	PAHZZ	5306-00-182-1513	AN5C25A	88044	BOLT, HEXAGON HEAD USED ON S-280B/G AND THE DAAB05-67-C-2509 (EMC) CONTRACT VERSION OF THE S-280B/G MODELS	EA	8
13	18	PAHZZ	5306-00-182-1512	AN5C24A	88044	BOLT, HEXAGON HEAD USED ONLY ON S-280A/G AND THE DAAB05-67-C-2509 (EMC) CONTRACT VERSION OF THE S-280B/G MODELS	BMC EA	8
13	19	PAHZZ	5310-00-625-5756	MS15795-812	96906	WASHER, FLAT USED ON S-280B/G CONTRACT DAAB05-67-C-0114 (MAGLINE) ONLY	EA	8
13	19	PAHZZ	5310-00-081-4219	MS27183-12	96906	WASHER, FLAT USED ONLY ON S-280BA/G AND THE DAAB05-67-C-2509 (EMC) CONTRACT VERSION OF THE S-280B/G MODELS	BMC EA	8
13	20	PAHZZ	5310-00-807-1469	MS21042-5	96906	NUT, SELF-LOCKING	EA	8
13	21	PAHZZ	5306-00-182-1514	AN5C26A	88044	BOLT, HEXAGON HEAD	EA	8

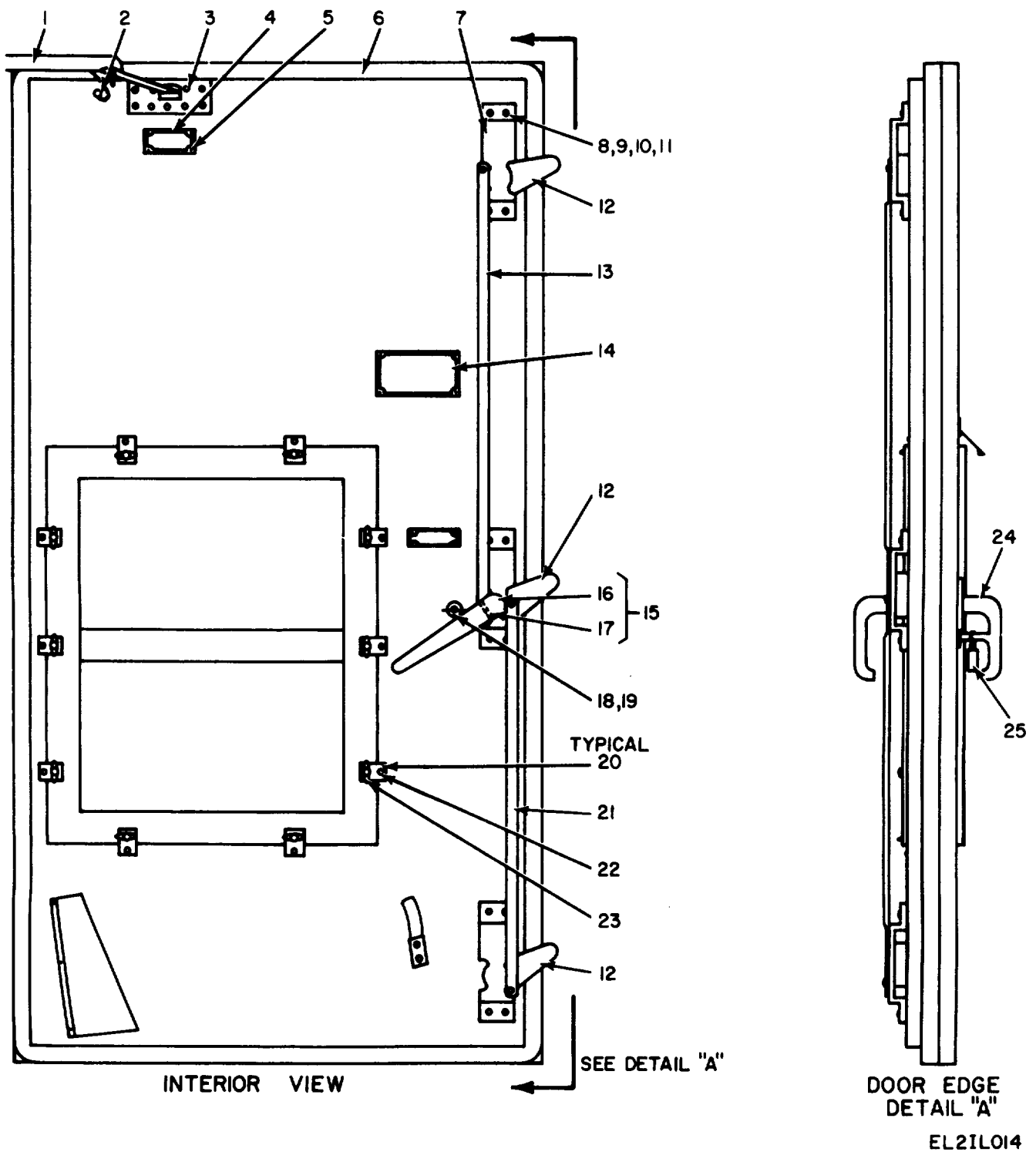


Figure 14. Door Assembly, Interior View, S-280A/G Shelter.

SECTION II						TM11-5410-213-14P			
(1)	(2)	(3)	(4)	(5)	(6)		(7)	(8)	
ILLUSTRATION									
(A)	(B)	NATIONAL			DESCRIPTION			QTY	
FIG	ITEM	STOCK	PART	FSCM		USABLE ON CODE	U/M	INC	
NO.	NO.	NUMBER	NUMBER					IN	
								UNIT	
14	1	XDHXX		SMD317071	80063	BRACE ASSEMBLY, DOOR	3MN	EA	1
14	2	PAHZZ	5305-00-533-5446	MS35493-53	96906	SCREW, WOOD	3MN	EA	1
14	3	PAHZZ	5305-00-052-6923	MS24629-59	96906	SCREW, MACHINE	3MN	EA	10
14	4	XDHZZ		SMB165337	80063	PLATE, INSTRUCTION	3MN	EA	1
14	5	PAHZZ	5320-00-582-3304	MS20600AD4W2	96906	RIVET, BLIND	3MN	EA	8
14	6	PAHZZ	5330-00-916-6086	SMB555582	80063	GASKET	3MN	EA	1
14	7	PAHHH	5340-00-917-6091	SMD555535	80063	DOOR LATCH ASSEMBLY	3MN	EA	1
14	8	PAHZZ	5306-00-151-2617	AN5-26A	88044	BOLT, CARRIAGE	3MN	EA	8
14	9	PAHZZ	5310-00-582-5677	MS15795-810	96906	WASHER, FLAT, STEEL	3MN	EA	12
14	10	PAHZZ	5310-00-903-5966	MS51971-1	96906	NUT, PLAIN, HEXAGON	3MN	EA	10
14	11	PAHZZ	5310-00-933-8121	MS35338-139	96906	WASHER, LOCK	3MN	EA	12
14	12	XDHZZ		SMD555535-2	80063	FROST BREAKER	3MN	EA	3
14	13	XDHZZ		SMC555565GR1	80063	ROD, LATCH, MODIFIED	3MN	EA	1
14	14	XDHZZ		SMB165327	80063	PLATE, INSTRUCTION	3MN	EA	1
14	15	PAHHH	5340-00-917-6103	SMD555535-1	80063	HANDLE ASSEMBLY	3MN	EA	1
14	16	PAHZZ	5340-00-974-9847	AL15818	19220	HANDLE, INSIDE	3MN	EA	1
14	17	PAHZZ	5315-00-168-2931	27X405C	19220	PIN, GROVE	3MN	EA	1
14	18	PAHZZ	5305-00-946-2371	SMB165364	80063	THUMBSCREW	3MN	EA	1
14	19	PAHZZ	5310-00-917-9916	SMB555595	80063	WASHER, CRIMP, MESH	3MN	EA	1
14	20	XDHZZ		SMB555583	80063	CLIP, LOCKING	3MN	EA	10
14	21	XDHZZ		SMC555565GR2	80063	ROD, LATCH, MODIFIED	3MN	EA	1
14	22	XDHZZ		MS35495-1	96906	SCREW, WOOD	3MN	EA	10
14	23	PAHZZ	5305-00-934-9906	SMB555570	80063	THUMBSCREW	3MN	EA	10
14	24	PAHZZ	5340-00-973-2655	AL5624-52	19220	HANDLE ASSEMBLY, OUTSIDE	3MN	EA	1
14	25	PAOZZ	5340-00-682-1508	MS35647-3	96906	PADLOCK AND KEY	3MN	EA	1

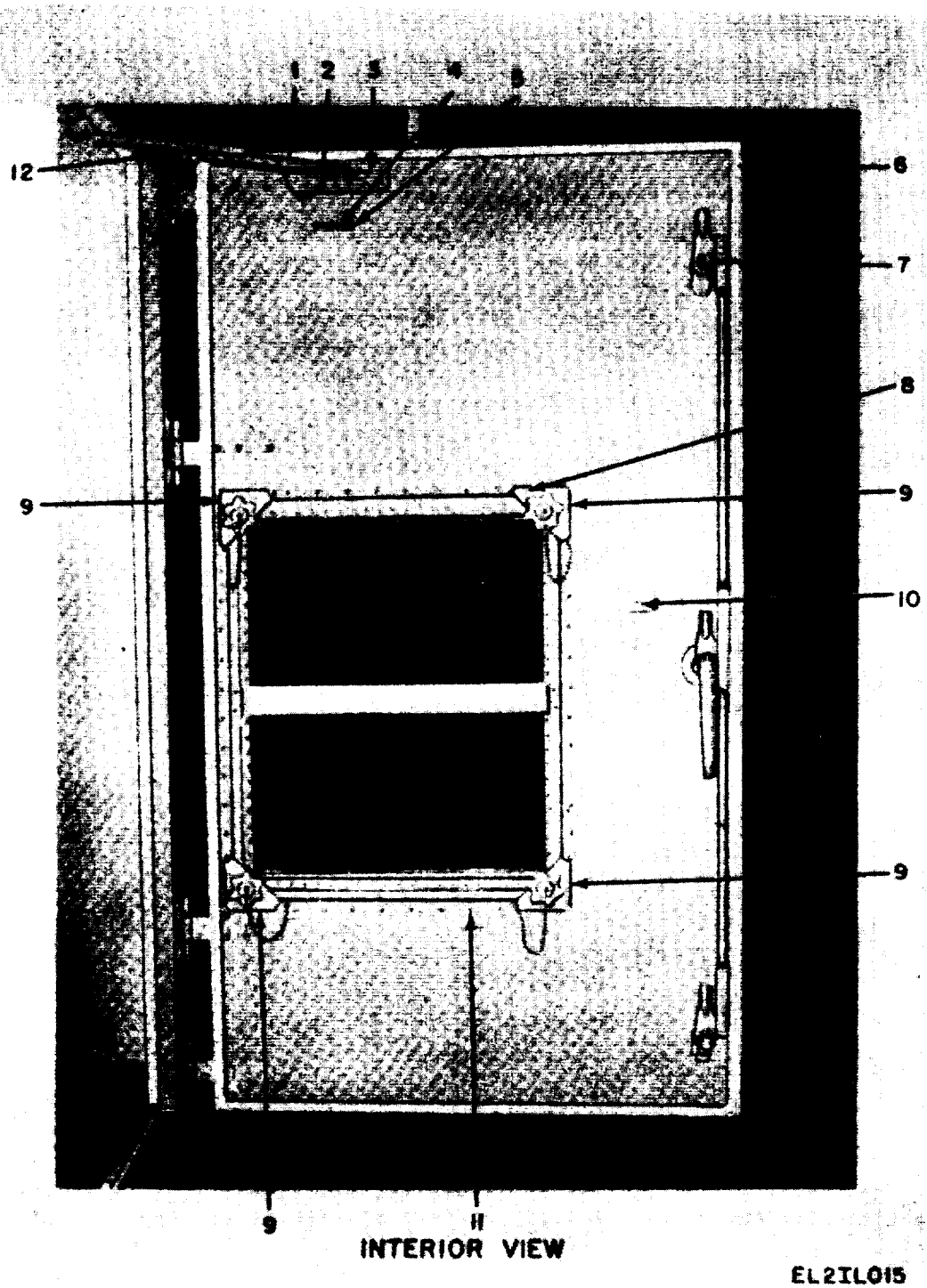


Figure 15. Door Assembly, Interior View, S-280B/G Shelter.

SECTION II						TM11-5410-213-14P			
(1)	(2)	(3)	(4)	(5)	(6)		(7)	(8)	
ILLUSTRATION									
(A)	(B)	NATIONAL			DESCRIPTION			QTY	
FIG	ITEM	STOCK	PART					INC	
NO.	NO.	NUMBER	NUMBER	FSCM		USABLE ON CODE	U/M	IN	
								UNIT	
15	1	XDHZZ		SCC200135	80063	ANGLE, DOOR STOP	BMC	EA	1
15	2	PAHZZ	5305-00-052-7436	MS24617-54	96906	SCREW, TYPE A	BMC	EA	10
15	3	PAHZZ	5306-00-637-8062	AN101011	88044	BOLT, MACHINE	BMC	EA	6
15	4	XDHZZ		SMC564811	80063	PLATE, INSTRUCTION	BMC	EA	1
15	5	PAHZZ	5320-00-582-3304	MS20600AD4W2	96906	RIVET, BLIND	BMC	EA	6
15	6	PAHZZ	5330-00-179-0305	SMC564839-205IN	80063	GASKET, LOUVER	BMC	EA	1
15	7	PAHHH	5340-00-794-4440	SCD200140	80063	DOOR LATCH ASSEMBLY	BMC	EA	1
15	8	PAHZZ	5320-00-408-9928	AD68ABS	7707	RIVET, BLIND	BMC	EA	8
15	9	XDHZZ		SMC450443	80063	RETAINER, AIR INLET, CORNER CAST	BMC	EA	4
15	10	XDHZZ		SMB165334	80063	PLATE, INSTRUCTION	BMC	EA	1
15	11	PAHZZ	5320-00-882-8385	AD66H	7707	RIVET, BLIND	BMC	EA	36
15	12	PAHHH	5410-00-107-4105	SCC200156	80063	BRACE ASSEMBLY, DOOR	BMC	EA	1

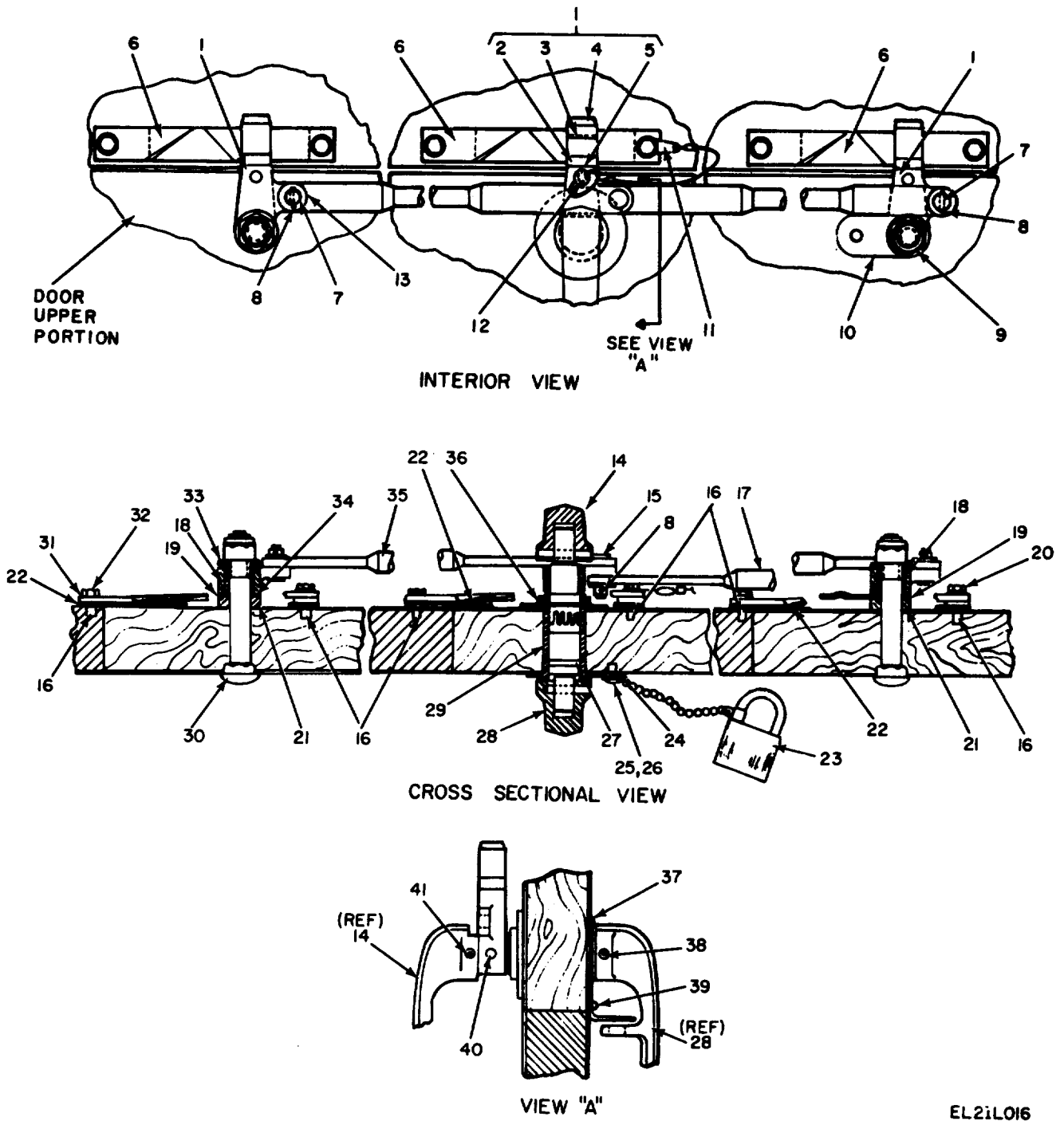


Figure 16. Door Assembly, Latch and Handle S-280B/G Shelter.

EL2iL016

SECTION II						TM11-5410-213-14P			(7)	(8)
(1)	(2)	(3)	(4)	(5)	(6)					
ILLUSTRATION										
(A)	(B)	NATIONAL			DESCRIPTION				QTY	
FIG	ITEM	STOCK	PART	FSCM		USABLE ON CODE		U/M	INC	
NO.	NO.	NUMBER	NUMBER						IN	
									UNIT	
16	1	PAHZZ	5340-00-229-5747	SCC200141	80063	LATCH ARM ASSEMBLY		BMC EA	3	
16	2	XDHZZ		SCB200144	80063	ROLLER-EXTENSION		BMC EA	1	
16	3	PAHZZ	5315-00-826-3251	MS16562-223	96906	PIN, SPRING		BMC EA	1	
16	4	XDHZZ		SCB200143	80063	ROLLER-LATCH		BMC EA	1	
16	5	XDHZZ		SCC200142	80063	ARM-LATCH		BMC EA	1	
16	6	PAHZZ	5410-00-231-6429	SCC200154	80063	KEEPER		BMC EA	3	
16	7	PAHZZ	5315-00-075-5828	MS20392-5C23	96906	PIN, END SECTION		BMC EA	2	
16	8	PAHZZ	1015-01-019-7117	MS171526	96906	PIN, SPRING		BMC EA	3	
16	9	PAHZZ	5310-00-406-7240	MS17830-10C	96906	NUT, SELF-LOCKING		BMC EA	2	
16	10	XDHZZ		SCB595073	80063	DETENT, LATCH ARM		BMC EA	1	
16	11	XDHZZ		52413	84256	LANYARD ASSEMBLY		BMC EA	1	
16	12	PAHZZ	5340-00-786-4798	BLDC4-09	84256	PIN, SHEAR		BMC EA	1	
16	13	PAHZZ	5310-00-183-4355	AN960C616L	88044	WASHER, FLAT		BMC EA	3	
16	14	PAHZZ	5340-00-794-4610	SMB113596-1	80063	HANDLE, INSIDE		BMC EA	1	
16	15	PAHZZ	5315-00-957-2649	MS20392-5C33	96906	PIN, CENTER SECTION		BMC EA	1	
16	16	PAHZZ	5340-00-852-4506	MS35914-151	96906	INSERT, TAP LOCK		BMC EA	6	
16	17	PAHZZ	5340-00-793-1099	SCD56320GRI	80063	ROD, LATCH, LOWER		BMC EA	1	
16	18	PAHZZ	5365-00-263-9560	SCB200145	80063	SPACER		BMC EA	2	
16	19	XDHZZ		SC0200140-8	80063	WASHER, SHIM		BMC EA	2	
16	20	PAHZZ	5305-00-207-8253	MS35307-308	96906	SCREW, HEXAGON HEAD		BMC EA	3	
16	21	PAHZZ	5365-00-173-7010	SMB615259-1	80063	SPACER		BMC EA	2	
16	22	PAHZZ	5365-00-168-6762	SCB200153-2	80063	SPACER, PLATE		BMC EA	3	
16	22	PAHZZ	5365-00-168-6761	SCB200153-1	80063	SPACER, PLATE		BMC EA	3	
16	22	PAHZZ	5365-00-163-2815	SCB200153-4	80063	SPACER, PLATE		BMC EA	3	
16	23	PAOZZ	5340-00-682-1508	MS35647-3	96906	PADLOCK AND KEY		BMC EA	1	
16	24	PAHZZ	5340-00-143-0394	MS35914-149	96906	INSERT, TAP LOCK		BMC EA	1	
16	25	PAHZZ	5305-00-050-9230	MS51957-64	96906	SCREW, MACHINE		BMC EA	1	
16	26	PAHZZ	5310-00-869-9576	MS35338-157	96906	WASHER, LOCK		BMC EA	1	
16	27	PAHZZ	5330-00-248-3847	MS29513-115	96906	O-RING		BMC EA	1	
16	28	PAHZZ	5340-00-794-4612	SMC113597	80063	HANDLE ASSEMBLY, OUTSIDE		BMC EA	1	
16	29	XDHZZ		SCB200151	80063	SLEEVE, SHAFT		BMC EA	1	

SECTION II						TM11-5410-213-14P				
(1)	(2)	(3)	(4)	(5)	(6)		(7)	(8)		
ILLUSTRATION										
(A)	(B)		NATIONAL		DESCRIPTION				QTY	INC
FIG	ITEM	SMR	STOCK	PART					IN	UNIT
NO.	NO.	CODE	NUMBER	NUMBER	FSCM	USABLE ON CODE	U/M			
16	30	XDHZZ		SMB162200	80063	BOLT, CARRIAGE	BMC	EA	2	
16	31	PAHZZ	5310-00-883-9417	MS35338-158	96906	WASHER, LOCK	BMC	EA	6	
16	32	PAHZZ	5305-00-021-3620	MS35307-307	96906	SCREW, HEXAGON HEAD	BMC	EA	3	
16	33	PAHZZ	5310-00-301-4558	SCB200146	80063	WASHER, FLAT	BMC	EA	2	
16	34	PAHZZ	5365-00-037-8762	SMB615259-2	80063	SPACER	BMC	EA	1	
16	35	PAHZZ	5340-00-794-4595	SCD563202GR11	80063	ROD-LATCH	BMC	EA	1	
16	36	XDHZZ		SCB200150	80063	NUT, SLEEVE	BMC	EA	1	
16	37	XDHZZ		SMC615255	80063	PLATE, ESCUTCHEON	BMC	EA	1	
16	38	PAHZZ	5315-00-846-8337	MS171659	96906	PIN, SPRING	BMC	EA	1	
16	39	PAHZZ	5305-00-533-5446	MS35493-53	96906	SCREW, WOOD	BMC	EA	1	
16	40	PAHZZ	5315-00-062-5417	MS35674-41	96906	PIN, GROOVED	BMC	EA	1	
16	41	PAHZZ	5315-00-846-8337	MS171659	96906	PIN, SPRING	BMC	EA	1	

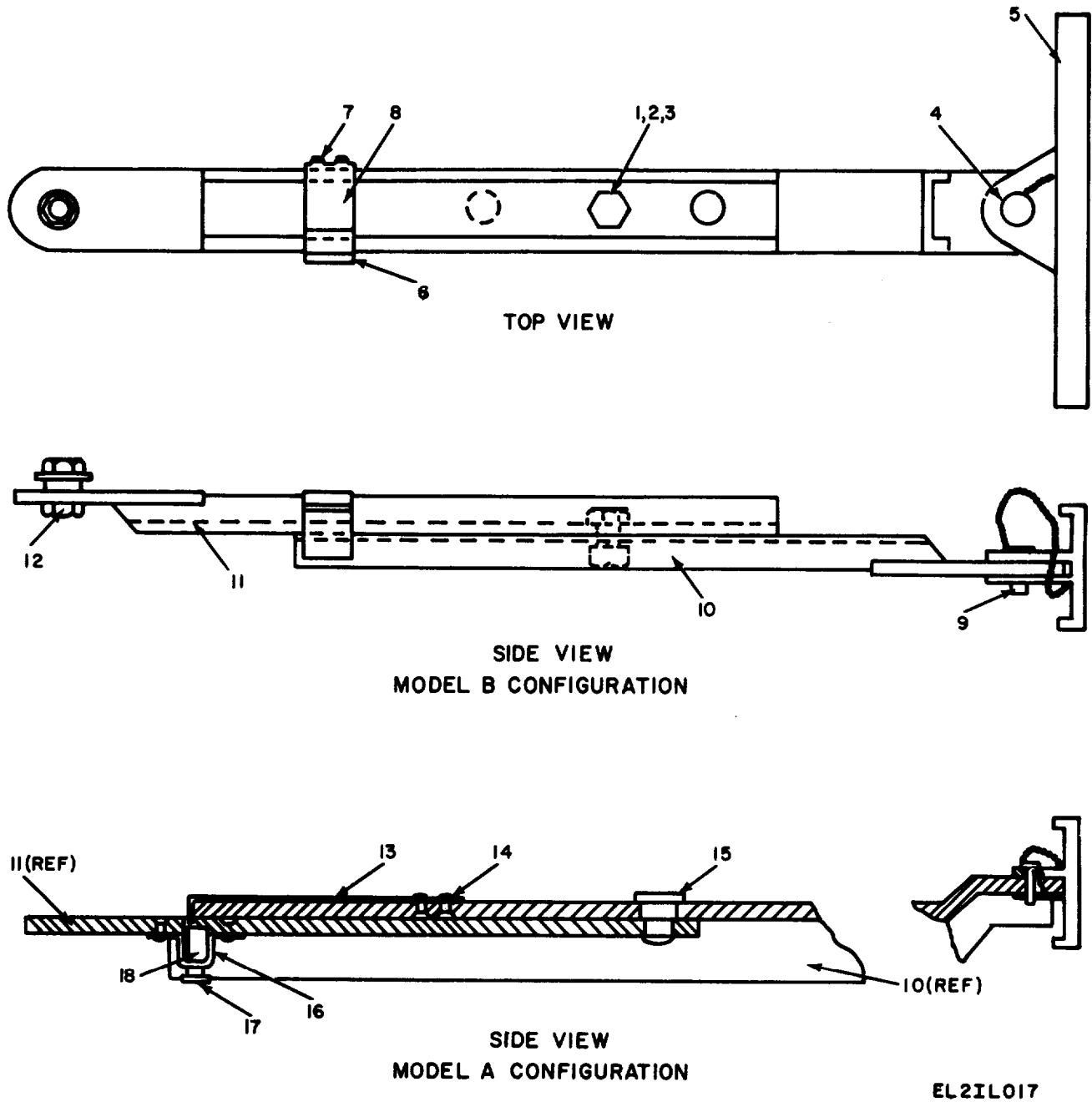


Figure 17. Door Assembly, Brace and Mounting Bracket.

SECTION II						TM11-5410-213-14P			(7)	(8)
(1)	(2)	(3)	(4)	(5)	(6)					
ILLUSTRATION										
(A)	(B)	NATIONAL			DESCRIPTION				QTY	
FIG	ITEM	STOCK	PART	FSCM		USABLE ON CODE	U/M	INC	IN	
NO.	NO.	NUMBER	NUMBER					IN	UNIT	
17	1	PAHZZ	5305-00-891-9069	SMB165488	80063	SCREW, SHOULDER	BMC	EA	1	
17	2	XDHZZ		52NTE066	72962	NUT, HEXAGON, LOCKING	BMC	EA	2	
17	3	PAHZZ	5310-00-080-6004	MS27183-14	96906	WASHER, FLAT	BMC	EA	2	
17	4	PAHZZ	4010-00-436-3300	SMB340027	80063	CHAIN AND PIN ASSEMBLY		EA	1	
17	5	XDHZZ		SMC340028	80063	BRACKET, DOOR STUD		EA	1	
17	6	PAHZZ	5340-00-307-1561	SMB564738	80063	CATCH		EA	1	
17	7	PAHZZ	5305-00-984-4988	MS35206-228	96906	SCREW, MACHINE	BMC	EA	2	
17	8	PAHZZ	5360-00-302-9910	SMB564737	80063	SPRING		EA	1	
17	9	PAHZZ	5315-00-839-2326	MS24655-281	96906	PIN, COTTER		EA	1	
17	10	XDHZZ		SCC200157	80063	BRACE ASSEMBLY	BMC	EA	1	
17	10	XDHZZ		SMC317081	80063	BRACE, DOOR	3MN	EA	1	
17	11	XDHZZ		SCC200158	80063	BRACE ASSEMBLY	BMC	EA	1	
17	11	XDHZZ		SMC317054	80063	BRACE, DOOR	3MN	EA	1	
17	12	PAHZZ	5306-00-139-7381	SMB564727-2	80063	SCREW, SHOULDER		EA	1	
17	13	XDHZZ		SMB555577	80063	SPRING, LOCKING	3MN	EA	1	
17	14	PAHZZ	5320-00-584-0672	MS20426AD3-6	96906	RIVET, FLAT HEAD	3MN	EA	4	
17	15	XDHZZ		SMB555576	80063	PIN, PIVOT	3MN	EA	1	
17	16	XDHZZ		SMB555575	80063	BRACKET	3MN	EA	1	
17	17	XDHZZ		MS35222-64	96906	SCREW, PAN HEAD	3MN	EA	1	
17	18	XDHZZ		8334-SS-10-32	6540	STANDOFF	3MN	EA	1	

NATIONAL STOCK NUMBER AND PART NUMBER INDEX

NOTE: LATEST NATIONAL STOCK NUMBER AND PART NUMBER ASSIGNMENTS ARE INCLUDED AT END OF INDEX

STOCK NUMBER	FIGURE NO.	ITEM NO.	STOCK NUMBER	FIGURE NO.	ITEM NO.
5365-00-001-1940	7	5	5365-00-263-9560	16	18
5365-00-001-1940	8	5	5305-00-267-8974	13	9
5365-00-001-1944	1	38	5325-00-281-8638	9	2
5365-00-001-1944	2	33	5410-00-290-8866	8	6
5365-00-001-4731	1	23	5310-00-301-4558	13	10
5365-00-001-4731	2	20	5310-00-301-4558	16	33
5365-00-001-4733	1	28			
5365-00-001-4733	2	23	5360-00-302-9910	17	8
5915-00-007-2526	10	4			
			5340-00-307-1561	17	6
5310-00-014-5847	12	9	5410-00-407-4953	1	1
5365-00-020-6591	1	30			
5365-00-020-6591	2	25	5410-00-407-4954	8	6
5305-00-021-3620	16	32	5410-00-407-4955	8	7
5305-00-021-3740	1	25	5320-00-408-9928	15	8
5305-00-021-3740	2	18	5310-00-413-4935	2	27
5365-00-024-6680	7	2	4030-00-431-5536	4	5
5999-00-025-9059	10	5	4010-00-436-3300	17	4
5365-00-037-8762	16	34			
5310-00-042-6759	7	11	5340-00-457-0579	4	13
5310-00-045-3296	13	15	5305-00-464-1740	4	10
5310-00-045-3299	9	10	5340-00-493-9235	13	1
5305-00-050-9230	16	25	5305-00-533-5446	14	2
5305-00-052-7436	15	2	5320-00-582-3276	13	2
5315-00-058-9720	11	1	5320-00-582-3304	1	9
5315-00-062-5417	16	40			
			5320-00-582-3304	6	5
5315-00-075-5828	16	7	5320-00-582-3304	13	6
			5320-00-582-3304	14	5
5310-00-080-6004	17	3	5320-00-582-3304	15	5
5310-00-081-4219	13	19	5320-00-582-3305	6	6
5310-00-088-0552	1	19	5320-00-582-3494	1	2
5310-00-088-0552	2	14	5310-00-582-5677	14	9
9330-00-107-1165	12	4	5320-00-584-0672	17	14
5410-00-107-1198	8	1	5306-00-584-4911	1	18
5410-00-107-4105	15	12	5306-00-584-4911	2	13
			5310-00-595-6057	1	29
5320-00-117-6853	6	2	5310-00-595-6057	2	17
5340-00-118-0018	12	2	5310-00-595-6057	7	17
			5310-00-595-6057	8	12
9320-00-134-9663	13	5	5310-00-595-6057	11	2
5999-00-136-5803	10	3			
5310-00-139-7357	3	4	5310-00-625-5756	13	19
5306-00-139-7381	17	12	5306-00-637-8062	15	3
			5310-00-637-9541	1	22
5340-00-143-0394	16	24	5310-00-637-9541	2	19
5310-00-145-2217	12	8	5306-00-637-9674	7	13
5365-00-163-2814	13	17	5306-00-637-9674	8	16
5365-00-163-2815	16	22	5306-00-655-6170	7	18
5315-00-168-2931	14	17	5306-00-655-6170	8	19
5365-00-168-6758	8	17	5340-00-682-1508	14	25
5365-00-168-6760	7	14	5340-00-682-1508	16	23
5365-00-168-6760	8	2			
			5305-00-702-4523	7	9
5365-00-168-6761	16	22	5305-00-702-4523	8	10
5365-00-168-6762	16	22	5305-00-717-5467	1	21
			5305-00-717-5467	2	24
5365-00-169-6052	13	17	5320-00-721-5385	2	3
5365-00-173-7010	16	21	5320-00-721-5386	3	1
5365-00-177-1927	13	17	5320-00-721-5387	2	2
5310-00-177-7674	8	20	5320-00-721-5387	3	1
5330-00-179-0303	12	11	5305-00-753-4451	1	37
5330-00-179-0305	15	6	5305-00-753-4451	2	32
5306-00-182-1512	13	18	5340-00-786-4798	16	12
5306-00-182-1513	13	18			
5310-00-183-4355	16	13	5340-00-793-1099	16	17
5305-00-207-8253	16	20	5340-00-794-4243	8	4
5305-00-208-1429	1	21			
5305-00-208-1429	2		5340-00-794-4440	15	7
5340-00-229-5747	16	1	5340-00-794-4610	16	14
5410-00-231-6429	16	6			
			5340-00-794-4612	16	28
5365-00-235-0014	13	17	5310-00-802-4701	7	12
5330-00-248-3847	16	27	5310-00-802-4701	8	14
5305-00-253-5625	11	8	5310-00-807-1469	13	20

NATIONAL STOCK NUMBER AND PART NUMBER INDEX

STOCK NUMBER	FIGURE NO.	ITEM NO.	STOCK NUMBER	FIGURE NO.	ITEM NO.		
5310-00-809-4061	1	29	5410-00-933-0845	6	1		
5310-00-809-4061	2	17	3940-00-933-4474	1	20		
5310-00-809-8546	13	14	3940-00-933-4474	2	15		
5320-00-813-4144	1	6					
5315-00-839-2326	17	9	4130-00-933-4477	9	5		
5315-00-846-8337	16	38	5340-00-933-4512	7	6		
5315-00-846-8337	16	41	4510-00-933-9953	5	1		
3940-00-846-9858	4	1	5305-00-934-0196	1	33		
5340-00-852-4506	16	16	5305-00-934-0196	2	28		
5310-00-869-9576	16	26					
5320-00-874-4470	1	6	5310-00-934-9757	12	7		
			5310-00-934-9758	13	16		
5320-00-874-4471	1	2	5410-00-937-5248	10	2		
5315-00-881-2253	9	7	5310-00-937-5949	7	15		
5320-00-882-8385	15	11	5310-00-937-5949	8	18		
5310-00-883-9417	16	31	5320-00-952-4159	3	1		
5310-00-903-5966	14	10	5320-00-952-4159	13	6		
5410-00-916-6082	9	18					
3990-00-916-6083	7	1	5320-00-952-4162	6	6		
5330-00-916-6086	14	6	4030-00-956-5820	4	4		
5340-00-917-6091	14	7	5315-00-957-2649	16	15		
5340-00-917-6104	13	3	5320-00-957-3582	6	5		
5410-00-919-4958	3	3	5340-00-973-2655	14	24		
3040-00-919-5156	2	12	5310-00-974-6623	8	15		
5340-00-928-8999	1	5	5340-00-974-9847	14	16		
5340-00-928-8999	13	12	5305-00-984-4988	17	7		
5310-00-929-6449	1	24	5310-00-984-7042	1	22		
5310-00-929-6452	7	8	5310-00-984-7042	2	19		
5310-00-929-6452	8	9	5305-00-984-7364	13	13		
PART NUMBER	FSCM	FIG. NO.	ITEM NO.	PART NUMBER	FSCM	FIG. NO.	ITEM NO.
AD45H	7707	1	2	MS20600AD4W2	96906	15	5
AD66H	7707	15	11	MS20600AD4W3	96906	6	6
AL4-575709-50	19220	3	5	MS20600AD4W4	96906	1	2
AL5624-52	19220	14	24	MS20600AD6W4	96906	13	2
AN101011	88044	15	3	MS20600AD6W7	96906	1	6
AN5-26A	88044	14	8	MS20600AD8W3	96906	3	1
AN5C24A	88044	13	18	MS20600AD8W4	96906	3	1
AN5C25A	88044	13	18	MS20600AD8W5	96906	2	3
AN5C26A	88044	13	21	MS21042-5	96906	13	20
AN7C22A	88044	1	18	MS21044N7	96906	1	19
AN7C22A	88044	2	13	MS21318-46	96906	11	8
AN960C616L	88044	16	13	MS21332-1	96906	9	2
				MS24617-54	96906	15	2
BLDC4-09	84256	16	12	MS24629-59	96906	14	3
H945SS2RG	98003	6	3	MS24655-281	96906	17	9
				MS27183-12	96906	13	19
MS15795-810	96906	14	9	MS27183-14	96906	17	3
MS15795-812	96906	13	19	MS27183-15	96906	1	29
MS15795-813	96906	7	12	MS27183-15	96906	2	17
MS15795-813	96906	8	14	MS27183-8	96906	13	14
MS15795-815	96906	1	29	MS29513-115	96906	16	27
MS15795-815	96906	2	17	MS35206-228	96906	17	7
MS15795-815	96906	7	17	MS35208-67	96906	13	11
MS15795-815	96906	8	12	MS35222-64	96906	17	17
MS15795-815	96906	11	2	MS35223-45	96906	12	5
MS16562-207	96906	11	1	MS35233-46	96906	9	9
MS16562-221	96906	9	7	MS35307-306	96906	7	9
MS16562-223	96906	16	3	MS35307-306	96906	8	10
MS171526	96906	16	8	MS35307-307	96906	16	32
MS171659	96906	16	38	MS35307-308	96906	16	20
MS171659	96906	16	41	MS35307-336	96906	7	13
MS17830-10C	96906	16	9	MS35307-336	96906	8	16
MS17830-6C	96906	7	10	MS35307-338	96906	7	18
MS20000AD8W-6	96906	2	6	MS35307-338	96906	8	19
				MS35307-362	96906	1	21
MS20392-5C23	96906	16	7	MS35307-362	96906	2	24
MS20392-5C33	96906	16	16	MS35307-363	96906	1	21
MS20426AD3-6	96906	17	14	MS35307-363	96906	2	24
MS20426AD6-8	96906	2	3	MS35307-364	96906	1	25
MS20427F4-5	96906	9	15	MS35307-364	96906	2	18
MS20470AD6-8	96906	6	2	MS35307-378	96906	7	16
MS20600AD4W2	96906	1	9	MS35338-140	96906	8	15
MS20600AD4W2	96906	6	5	MS35338-141	96906	1	22
MS20600AD4W2	96906	13	6	MS35338-141	96906	2	19

NATIONAL STOCK NUMBER AND PART NUMBER INDEX

PART NUMBER	FIG. NO.	ITEM NO.	PART NUMBER	FIG. NO.	ITEM NO.
MS35338-157	96906	16	26	SMB162196-1	80063 8 17
MS35338-158	96906	16	31	SMB162197-1	80063 13 17
MS35338-42	96906	9	10	SMB162197-2	80063 13 17
MS35338-43	96906	13	15	SMB162197-3	80063 13 17
MS35338-46	96906	1	22	SMB162197-4	80063 13 17
MS35338-46	96906	2	19	SMB162200	80063 16 30
MS35338-80	96906	12	6	SMB162201	80063 8 13
MS35338-83	96906	7	11	SMB165303	80063 1 15
MS35493-53	96906	14	2	SMB165327	80063 14 14
MS35493-53	96906	16	39	SMB165331	80063 2 5
MS35494-131	96906	5	2	SMB165332	80063 2 1
MS35495-1	96906	14	22	SMB165334	80063 15 10
				SMB165337	80063 14 4
				SMB165364	80063 14 18
MS35647-3	96906	14	25	SMB165399	80063 2 4
MS35647-3	96906	16	23	SMB165452	80063 5 1
MS35649-202	96906	13	16	SMB165462	80063 1 20
MS35649-282				SMB165462	80063 2 15
MS35649-284	96906	9	11	SMB165463	80063 1 12
	96906	12	7	SMB165483-1	80063 1 28
MS35674-41	96906	16	40	SMB165483-1	80063 2 23
MS35821-2A	96906	9	12	SMB165483-2	80063 1 30
MS35914-149	96906	16	24	SMB165483-2	80063 2 25
MS35914-151	96906	16	16	SMB165483-3	80063 1 23
MS51021-42	96906	1	37	SMB165483-3	80063 2 20
MS51021-42	96906	2	32	SMB165483-4	80063 1 27
MS51957-64	96906	16	25	SMB165483-4	80063 2 22
MS51960-5	96906	9	17	SMB165488	80063 17 1
MS51971-1	96906	14	10	SMB165496-2	80063 8 8
MS90726-8	96906	13	9	SMB317089	80063 1 10
				SMB340027	80063 17 4
				SMB340031	80063 1 11
				SMB450447	80063 12 2
				SMB450465	80063 13 4
				SMB555502	80063 7 1
				SMB555528GR2	80063 9 1
SCB200143	80063	16	4	SMB555547	80063 1 38
SCB200144	80063	16	2	SMB555547	80063 2 33
SCB200145	80063	16	18	SMB555555	80063 1 14
SCB200146	80063	13	10	SMB555564-1	80063 9 22
SCB200146	80063	16	33	SMB555564-2	80063 9 4
SCB200150	80063	16	36	SMB555568-1	80063 1 26
SCB200151	80063	16	29	SMB555568-1	80063 2 21
SCB200153-1	80063	16	22	SMB555568-2	80063 1 33
SCB200153-2	80063	16	22	SMB555568-2	80063 2 28
SCB200153-4	80063	16	22	SMB555568-3	80063 1 31
SCB351474	80063	4	10	SMB555568-3	80063 2 26
SCB595073	80063	16	10	SMB555570	80063 14 23
				SMB555572-6	80063 13 5
				SMB555573-1	80063 13 8
SCC200135	80063	15	1	SMB555573-2	80063 13 7
SCC200139	80063	8	7	SMB555575	80063 17 16
SCC200141	80063	16	1	SMB555576	80063 17 15
SCC200142	80063	16	5	SMB555577	80063 17 13
SCC200154	80063	16	6	SMB555582	80063 14 6
SCC200156	80063	15	12	SMB555583	80063 14 20
SCC200157	80063	17	10	SMB555584	80063 9 21
SCC200158	80063	17	11	SMB555595	80063 14 19
SCC351470	80063	4	9	SMB555598-1	80063 1 5
SCC351471	80063	4	14	SMB555598-1	80063 13 12
SCC351472	80063	4	13	SMB555598-2	80063 13 1
SCC351473	80063	4	12	SMB564670-3	80063 10 3
SCC36424-5	80063	4	15	SMB564670-4	80063 10 5
SCC36424-6	80063	4	8	SMB564727-2	80063 17 12
SCC36424GRI	80063	4	3	SMB564737	80063 17 8
SCC36424GRII	80063	4	2	SMB564738	80063 17 6
SCC90674	80063	4	4	SMB615259-1	80063 16 21
SCC90676	80063	4	6	SMB615259-2	80063 16 34
SCD200138	80063	8	6	SMC113597	80063 16 28
SCD200140	80063	15	7	SMC165382	80063 6 1
SCD200140-8	80063	16	19	SMC165383	80063 6 4
SCD36423	80063	4	1	SMC165466	80063 1 13
SCD563202GRI	80063	16	17	SMC317054	80063 17 11
SCD563202GRII	80063	16	35	SMC317057	80063 13 3
SCD595499	80063	8	6	SMC317063	80063 9 6
SCD595500	80063	8	5	SMC317064-2	80063 9 14
SCD621052	80063	10	2	SMC317064-3	80063 9 16
SM-C-317069-2	80063	9	5	SMC317081	80063 17 10
SMB113596-1	80063	16	14	SMC340028	80063 17 5
SMB113604	80063	11	4	SMC450441	80063 10 1

NATIONAL STOCK NUMBER AND PART NUMBER INDEX

PART NUMBER	FSCM	FIG. NO.	ITEM NO.	PART NUMBER	FSCM	FIG. NO.	ITEM NO.
SMC450441-3	80063	11	7	SMD555519	80063	9	18
SMC450443	80063	15	9	SMD555528-3	80063	9	20
SMC450466	80063	12	4	SMD555531	80063	1	1
SMC450478	80063	10	4	SMD555531-3	80063	13	4
SMC555515-1	80063	7	6	SMD555535	80063	14	7
SMC555515-2	80063	7	7	SMD555535-1	80063	14	15
SMC555515-2	80063	8	3	SMD555535-2	80063	14	12
SMC555515-3	80063	8	4	SMD555536-1	80063	1	35
SMC555517	80063	7	4	SMD555536-2	80063	1	4
SMC555529	80063	9	13	SMD555536-3	80063	2	30
SMC555540	80063	1	39	SMD555536-4	80063	2	8
SMC555548	80063	1	36	SMD555537GRI	80063	1	34
SMC555548	80063	2	31	SMD555537GRII	80063	1	3
SMC555549	80063	7	14	SMD555537GR3	80063	2	29
SMC555549	80063	8	2	SMD555537GR4	80063	2	7
SMC555565GRI	80063	14	13	SMD555567	80063	3	2
SMC555565GR2	80063	14	21	SMD615264	80063	12	3
SMC564811	80063	15	4	S10B216	3481	8	20
SMC564839-106IN	80063	12	10	S10B80	3481	9	3
SMC564839-205IN	80063	15	6	S25B211	3481	7	8
SMC564839-96IN	80063	12	11	S25B211	3481	8	9
SMC615255	80063	16	37	S31B275	3481	7	19
SMC615263	80063	11	5	S31B275	3481	8	20
SMD162194	80063	8	1	S31B500	83187	7	15
SMD317071	80063	14	1	S31B500	83187	8	18
SMD317072	80063	9	19	S37B115	3481	1	32
SMD317073	80063	9	8	S37B115	3481	2	27
SMD317078	80063	7	3	S37B285	3481	1	24
SMD317087-1	80063	2	12	S37B285	3481	2	16
SMD317087-2	80063	2	10	1-575709-50	19220	3	3
SMD317087-3	80063	1	8	101-1-4-31	2751	12	8
SMD317087-4	80063	1	17	15949	19220	3	4
SMD317088GRI	80063	2	11	2INTU040	72962	12	9
SMD317088GRII	80063	2	9	27X405C	19220	14	17
SMD317088GRIII	80063	1	7	28-1C	76691	4	5
SMD317088GRIV	80063	1	16	28-23H5	76691	4	7
SMD450461	80063	1	1	5100-35H	79136	11	3
SMD450462	80063	12	1	52NTE066	72962	17	2
SMD450462-10	80063	12	5	52413	84256	16	11
SMD555503-1	80063	7	2	79NE066	72962	8	11
SMD555503-2	80063	7	5	8334-SS-10-32	6540	17	18
				914361	83205	3	5

LATEST NATIONAL STOCK NUMBER ASSIGNMENTS

STOCK NUMBER	FIG. NO.	ITEM NO.	STOCK NUMBER	FIG. NO.	ITEM NO.
5310-00-050-6646	7	10	3040-00-919-5049	2	8
5305-00-052-6923	14	3	3040-00-919-5154	1	4
5320-00-117-7288	2	3	5410-00-927-1197	2	34
5305-00-151-2617	14	8	5340-00-928-8998	8	3
5306-00-182-1514	13	21	5410-00-933-0849	2	9
5320-00-243-3933	9	15	2540-00-933-4064	2	7
5410-00-403-9535	4	2	5315-00-933-4976	1	36
5310-00-406-7240	16	9	5315-00-933-4976	2	31
5310-00-413-4935	1	32	5310-00-933-8119	12	6
4030-00-445-6210	4	7	5310-00-933-8121	14	11
5305-00-533-5446	16	39	5305-00-934-0198	1	26
5340-00-709-9814	9	12	5310-00-934-9759	9	11
5310-00-721-5414	2	16	2540-00-937-0325	1	34
5305-00-725-4197	9	17	2540-00-937-0326	1	3
5310-00-726-7700	8	11	5340-00-937-1597	2	10
5365-00-804-7642	11	3	5305-00-938-4012	1	31
5315-00-826-3251	16	3	5305-00-938-4012	2	26
5340-00-836-1938	6	3	5305-00-946-2371	14	18
2540-00-914-8962	1	16	5305-00-964-0636	7	16
2540-00-916-6080	2	9	5305-00-984-6193	12	5
5330-00-917-6093	9	22	5310-00-987-9070	7	19
5340-00-917-6103	14	15	5310-00-987-9070	8	20
3040-00-919-5001	1	17			

NATIONAL STOCK NUMBER AND PART NUMBER INDEX
 LATEST PART NUMBER ASSIGNMENTS

PART NUMBER	FSCM	FIG. NO.	ITEM NO.	PART NUMBER	FSCM	FIG. NO.	ITEM NO.
AD43S	7707	6	6	MS21044N7	96906	2	14
AD64S	7707	3	1	MS35206-273	96906	13	13
AD64S	7707	13	6	MS35338-139	96906	14	11
AD68ABS	7707	15	8	SMC555540	80063	2	34
AD68H	7707	1	6	SMD555503-1	80063	8	5
AL15818	19200	14	16	SMB555503-2	80063	8	5
MS20600AD8W3	96906	2	2	13ANOFFSET	70892	11	6

ADDITIONAL LATEST NATIONAL STOCK NUMBER ASSIGNMENTS

ADDITIONAL LATEST PART NUMBER ASSIGNMENTS

STOCK NUMBER	FIGURE NO.	ITEM NO.	PART NUMBER	FSCM	FIG. NO.	ITEM NO.
5305-00-014-9247	5	2				
5330-00-179-0304	12	10	MS21044C04	96906	4	11
5305-00-533-5446	13	11	MS35493-53	96906	13	11
5340-00-794-4595	16	35	MS35649-282	96906	12	7
5305-00-891-9069	17	1				
5310-00-917-9916	14	19				
5340-00-928-8998	7	7				
5330-00-931-8224	9	4				
5330-00-933-4514	9	21				
5305-00-934-0198	2	21				
5310-00-934-9757	12	7				
5305-00-934-9906	14	23				
5310-00-982-4999	4	11				
5310-00-982-4999	16	8				

APPENDIX C

MAINTENANCE ALLOCATION

Section 1. INTRODUCTION

C-1. General

This appendix provides a summary of the maintenance operations for . It authorizes categories of maintenance for specific maintenance functions on repairable items and components and the tools and equipment required to perform each function. This appendix may be used as an aid in planning maintenance operations.

C-2. Maintenance Function

Maintenance functions will be limited to and defined as follows:

a. Inspect. To determine the serviceability of an item by comparing its physical, mechanical, and/or electrical characteristics with established standards through examination.

b. Test. To verify serviceability and to detect incipient failure by measuring the mechanical or electrical characteristics of an item and comparing those characteristics with prescribed standards.

c. Service. Operations required periodically to keep an item in proper operating condition, i.e., to clean (decontaminate), to preserve, to drain, to paint, or to replenish fuel, lubricants, hydraulic fluids, or compressed air supplies.

d. Adjust. To maintain, within prescribed limits, by bringing into proper or exact position, or by setting the operating characteristics to the specified parameters.

e. Align. To adjust specified variable elements of an item to bring about optimum or desired performance.

f. Calibrate. To determine and cause corrections to be made or to be adjusted on instruments or test measuring and diagnostic equipments used in precision measurement. Consists of comparisons of two instruments, one of which is a certified standard of known accuracy, to detect and adjust any discrepancy in the accuracy of the instrument being compared.

g. Install. The act of emplacing, seating, or fixing into position an item, part, module (component or assembly) in a manner to allow the proper functioning of the equipment or system.

h. Replace. The act of substituting a serviceable like type part, subassembly, or module (component or assembly) for an unserviceable counterpart.

i. Repair. The application of maintenance services (inspect, test, service, adjust, align, calibrate, replace) or other maintenance actions (welding, grinding, riveting, straightening, facing, remachining, or resurfacing) to restore serviceability to an item by correcting specific damage, fault, malfunction, or failure in a part, subassembly, module (component or assembly), end item, or system.

j. Overhaul That maintenance effort (service/action) necessary to restore an item to a completely serviceable/operational condition as prescribed by maintenance standards (i.e., DMWR) in appropriate technical publications. Overhaul is normally the highest degree of maintenance performed by the Army. Overhaul does not normally return an item to like new condition.

k. Rebuild Consists of those services/actions necessary for the restoration of unserviceable equipment to a like new condition in accordance with original manufacturing standards. Rebuild is the highest degree of materiel maintenance applied to Army equipment. The rebuild operation includes the act of returning to zero those age measurements (hours, miles, etc.) considered in classifying Army equipments/components.

C-3. Column Entries

a. Column 1, Group Number. Column 1 lists group numbers, the purpose of which is to identify components, assemblies, subassemblies, and modules with the next higher assembly.

b. Column 2, Component/Assembly. Column 2 contains the noun names of components, assemblies, subassemblies, and modules for which maintenance is authorized.

c. Column 3, Maintenance Functions. Column 3 lists the functions to be performed on the item listed in column 2. When items are listed without maintenance functions, it is solely for purpose of having the group numbers in the MAC and RPSTL coincide.

d. Column 4, Maintenance Category. Column 4 specifies, by the listing of a "work time" figure in the appropriate subcolumn (s), the lowest level of maintenance authorized to perform the function listed in column 3. This figure represents the active

time required to perform that maintenance function at the indicated category of maintenance. If the number or complexity of the tasks within the listed maintenance function vary at different maintenance categories, appropriate "work time" figures will be shown for each category. The number of task-hours specified by the "work time" figure represents the average time required to restore an item (assembly, subassembly, component, module, end item or system) to a serviceable condition under typical field operating conditions. This time includes preparation time, troubleshooting time and quality assurance/quality control time in addition to the time required to perform the specific tasks identified for the maintenance functions authorized in the maintenance allocation chart. Subcolumns of column 4 areas follows:

- C-Operator/Crew
- O-Organizational
- F-Direct Support
- H-General Support
- D-Depot

e. Column 5, Tools and Equipment. Column 5 specifies by code those common tools sets (not individual tools) and special tools, test, and support equipment required to perform the designated function.

f. Column 6, Remarks. Column 6 contains an alphabetic code which leads to the remark in section IV, Remarks, which is pertinent to the item op

posite the particular code.

C-4. Tool and Test Equipment Requirements (Sec. III)

a. Tool or Test Equipment Reference Code. The numbers in this column coincide with the numbers used in the tools and equipment column of the MAC. The numbers indicate the applicable tool or test equipment for the maintenance functions.

b. Maintenance Category. The codes in this column indicate the maintenance category allocated the tool or test equipment.

c. Nomenclature. This column lists the noun name and nomenclature of the tools and test equipment required to perform the maintenance functions,

d. National/NATO Stock Number. This column lists the National/NATO stock number of the specific tool or test equipment.

e. Tool Number. This column lists the manufacturer's part number of the tool followed by the Federal Supply Code for manufacturers (5-digit) in parentheses.

C-5. Remarks (Sec. IV)

a. Reference Code. This code refers to the appropriate item in section II, column 6.

b. Remarks. This column provides the required explanatory information necessary to clarify items appearing in section II.

(Next printed page is 51.)

SECTION II MAINTENANCE ALLOCATION CHART

TM11-5410-213-14P

FOR
SHELTERS, ELECTRICAL EQUIPMENT S-280A/G AND S-280B/G

(1) GROUP NUMBER	(2) COMPONENT/ASSEMBLY	(3) MAINTENANCE FUNCTION	(4) MAINTENANCE CATEGORY					(5) TOOLS AND EQPT.	(6) REMARKS
			C	O	F	H	D		
00	SHELTERS, ELECTRICAL EQUIPMENT S-280A/G AND S-280B/G	Inspect		0.5					A
		Service		0.5					B
		Replace				1.0			C
		Repair		1.0				3,6	
		Repair			1.0			1,4	
		Repair					1.0		1,2,5
01	DOOR ASSEMBLY	Overhaul					5.0		D
		Rebuild					10.0		D
		Inspect		0.2					A
		Service		0.2					B
		Replace			1.0			1	
		Repair		0.5				3,6	
		Repair				2.0		1,2,5	E

SECTION III TOOL AND TEST EQUIPMENT REQUIREMENTS
FOR
SHELTERS, ELECTRICAL EQUIPMENT S-280A/G AND S-280B/G

TOOL OR TEST EQUIPMENT REF CODE	MAINTENANCE CATEGORY	NOMENCLATURE	NATIONAL/NATO STOCK NUMBER	TOOL NUMBER
1	F,H,D	TOOL KIT, AUTOMOTIVE MECHANICS	5180-00-754-0641	
2	H,D	TOOL KIT, ELECTRONIC EQUIPMENT SHELTER TK-144/G	5180-00-973-4369	
3	0	REPAIR KIT, ELECTRIC MK-680/G	5410-00-793-2021	
4	F	REPAIR KIT, ELECTRIC MK-681/G		
5	H	MAINTENANCE KIT, ELECTRONIC EQUIPMENT MK-679/G	5410-00-973-2936	
6	0	TOOLS AVIALABLE TO OPERATOR AND ORGANIZATIONAL MAINTENANCE PERSONNEL		

SECTION IV. REMARKS

TM-11-5410-213-14P

REFERENCE CODE	REMARKS
A	VISUAL INSPECTION
B	PREVENTIVE MAINTENANCE
C	BY REPLACEMENT OF LIFTING AND TIE DOWN SLING ASSEMBLY PIECE PARTS, DRAIN PLUG AND ATTACHING HARWARE: MINOR SHELTER SKIN REPAIR
D	DEPOT FACILITIES
E	BY REPLACEMENT OF AIR FILTERS AND PADLOCK: MINOR SKIN REPAIR OF DOOR ASSEMBLY

RECOMMENDED CHANGES TO EQUIPMENT TECHNICAL MANUALS



SOMETHING WRONG WITH THIS MANUAL?

THEN...JOT DOWN THE DOPE ABOUT IT ON THIS FORM, TEAR IT OUT, FOLD IT AND DROP IT IN THE MAIL!

FROM: (YOUR UNIT'S COMPLETE ADDRESS)

Commander
Stateside Army Depot
ATTN: AMSTA-US
Stateside, N.J. 07703

DATE 10 July 1975

PUBLICATION NUMBER

TM 11-5840-340-12

DATE

23 Jan 74

TITLE

Radar Set AN/SPC-76

BE EXACT...PIN-POINT WHERE IT IS

IN THIS SPACE TELL WHAT IS WRONG AND WHAT SHOULD BE DONE ABOUT IT:

PAGE NO.	PARA-GRAPH	FIGURE NO.	TABLE NO.
2-25	2-28		
3-10	3-3		3-1
5-6	5-8		
		F03	

Recommend that the installation antenna alignment procedure be changed throughout to specify a 2° IFF antenna lag rather than 1°.

REASON: Experience has shown that with only a 1° lag, the antenna servo system is too sensitive to wind gusting in excess of 27 knots, and has a tendency to rapidly accelerate and decelerate as it hunts, causing strain to the drive train. Hunting is minimized by adjusting the lag to 2° without degradation of operation.

Item 5, Function column. Change "2 db" to "3db."

REASON: The adjustment procedure for the TRANS POWER FAULT indicator calls for a 3 db (500 watts) adjustment to light the TRANS POWER FAULT indicator.

Add new step f.1 to read, "Replace cover plate removed in step e.1, above."

REASON: To replace the cover plate.

Zone C 3. On J1-2, change "+24 VDC to "+5 VDC."

REASON: This is the output line of the 5 VDC power supply. + 24 VDC is the input voltage.

TYPED NAME, GRADE OR TITLE, AND TELEPHONE NUMBER

SSG I. M. DeSpirito 999-1776

SIGN HERE:

SSG I. M. DeSpirito

DA FORM 2028-2 (TEST) 1 AUG 74

P.S.--IF YOUR OUTFIT WANTS TO KNOW ABOUT YOUR MANUAL "FIND," MAKE A CARBON COPY OF THIS AND GIVE IT TO YOUR HEADQUARTERS.

HISA 1686-75

TEAR ALONG DOTTED LINE

RECOMMENDED CHANGES TO EQUIPMENT TECHNICAL MANUALS



SOMETHING WRONG WITH THIS MANUAL?

THEN... JOT DOWN THE DOPE ABOUT IT ON THIS FORM, TEAR IT OUT, FOLD IT AND DROP IT IN THE MAIL!

FROM: (YOUR UNIT'S COMPLETE ADDRESS)

DATE

PUBLICATION NUMBER

TM 11-5410-213-14P

DATE

21 ~~6~~ 78

TITLE

BE EXACT... PIN-POINT WHERE IT IS

IN THIS SPACE TELL WHAT IS WRONG AND WHAT SHOULD BE DONE ABOUT IT:

PAGE NO.

PARA-GRAPH

FIGURE NO.

TABLE NO.

TEAR ALONG DOTTED LINE

TYPED NAME, GRADE OR TITLE, AND TELEPHONE NUMBER

SIGN HERE:

DA FORM 2028-2 (TEST)
1 AUG 74

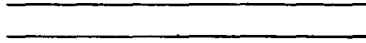
P.S.--IF YOUR OUTFIT WANTS TO KNOW ABOUT YOUR MANUAL "FIND," MAKE A CARBON COPY OF THIS AND GIVE IT TO YOUR HEADQUARTERS.

FILL IN YOUR
UNIT'S ADDRESS



FOLD BACK

DEPARTMENT OF THE ARMY



OFFICIAL BUSINESS

Commander
US Army Communications and Electronics
Materiel Readiness Command
ATTN: DRSEL-MA-Q
Fort Monmouth, NJ 07703

FOLD BACK

TEAR ALONG DOTTED LINE

RECOMMENDED CHANGES TO EQUIPMENT TECHNICAL MANUALS



SOMETHING WRONG WITH THIS MANUAL?

THEN... JOT DOWN THE DOPE ABOUT IT ON THIS FORM, TEAR IT OUT, FOLD IT AND DROP IT IN THE MAIL!

FROM: (YOUR UNIT'S COMPLETE ADDRESS)

DATE

PUBLICATION NUMBER

TM 11-5410-213-24P

DATE

21 ~~SEP~~ 78

TITLE

BE EXACT... PIN-POINT WHERE IT IS

IN THIS SPACE TELL WHAT IS WRONG AND WHAT SHOULD BE DONE ABOUT IT:

PAGE NO.	PARA-GRAPH	FIGURE NO.	TABLE NO.
----------	------------	------------	-----------

TEAR ALONG DOTTED LINE

TYPED NAME, GRADE OR TITLE, AND TELEPHONE NUMBER

SIGN HERE:

FILL IN YOUR
UNIT'S ADDRESS

FOLD BACK

DEPARTMENT OF THE ARMY

OFFICIAL BUSINESS

Commander
US Army Communications and Electronics
Materiel Readiness Command
ATTN: DRSEL-MA-Q
Fort Monmouth, NJ 07703

FOLD BACK

TEAR ALONG DOTTED LINES

RECOMMENDED CHANGES TO EQUIPMENT TECHNICAL MANUALS



THEN... JOT DOWN THE DOPE ABOUT IT ON THIS FORM, TEAR IT OUT, FOLD IT AND DROP IT IN THE MAIL!

SOMETHING WRONG WITH THIS MANUAL?

FROM: (YOUR UNIT'S COMPLETE ADDRESS)

DATE

PUBLICATION NUMBER

TM 11-5410-213-24P

DATE

21 ~~Jan~~ ^{Feb} 78

TITLE

BE EXACT... PIN-POINT WHERE IT IS

IN THIS SPACE TELL WHAT IS WRONG AND WHAT SHOULD BE DONE ABOUT IT:

PAGE NO.	PARA-GRAPH	FIGURE NO.	TABLE NO.

TEAR ALONG DOTTED LINE

TYPED NAME, GRADE OR TITLE, AND TELEPHONE NUMBER

SIGN HERE:

DA FORM 1 AUG 74 2028-2 (TEST)

P.S.--IF YOUR OUTFIT WANTS TO KNOW ABOUT YOUR MANUAL "FIND," MAKE A CARBON COPY OF THIS AND GIVE IT TO YOUR HEADQUARTERS.

FILL IN YOUR
UNIT'S ADDRESS

FOLD BACK

DEPARTMENT OF THE ARMY

OFFICIAL BUSINESS

Commander
US Army Communications and Electronics
Materiel Readiness Command
ATTN: DRSEL-MA-Q
Fort Monmouth, NJ 07703

FOLD BACK

TEAR ALONG DOTTED LINE

By Order of the Secretary of the Army:

BERNARD W. ROGERS
 General United States Army
 Chief of Staff

Official

J.C. PENNINGTON
Brigadier United States Army
The Adjutant General

Distribution:

Active Army:	6-200
	6-201
HISA (Ft Monmouth) (33)	6-615
USAINSCOM (2)	6-617
COE (1)	7
TSG (1)	11-35
USAARENBD (1)	11-45
DARCOM (1)	11-46
TRADOC (2)	11-85
OS Maj Comd (4)	11-86
TECOM (2)	11-95
USACC (4)	11-97
MDW (1)	11-98
Armies (2)	11-116
Corps (2)	11-117
Svc Colleges (1)	11-122
USAIGS (5)	11-137
USAADS (2)	11-327
USAFAS (2)	11-347
USAARMS (2)	11-357
USAIS (2)	11-377
USAES (2)	11-500 (AA-AC)
USAICS (3)	17
MAAG (1)	29-1
USARMIS (1)	29-11
USAERDAA (1)	29-15
USAERDAW (1)	29-51
USAEPG (2)	29-25
Army Dep (1) except	29-35
Fort Carson (5)	29-41
Fort Gillem (10)	29-51
Fort Gordon (10)	29-55
Fort Huachuca (10)	29-85
Ft. Richardson (ECOM Ofc) (2)	29-86
LBAD (14)	29-87
SAAD (30)	29-134
TOAD (14)	29-136
SHAD (3)	31-105
USA Dep (1)	31-106
Sig Sec USA Dep (1)	32-52
	32-56
	32-57
Units org under fol TOE:	32-78
1-128	32-500
1-207	37
5-115	55-89
5-116	55-99
	57

NG: None

USAR: None

For explanation of abbreviations used see, AR 310-50

