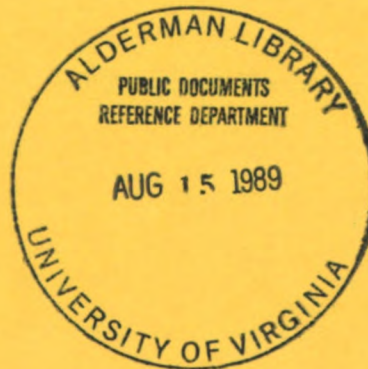


D 101.11:
11-5805-243-34 P

TM 11-5805-243-34P

TECHNICAL MANUAL

**DIRECT SUPPORT AND GENERAL SUPPORT MAINTENANCE
REPAIR PARTS AND SPECIAL TOOLS LISTS
(INCLUDING DEPOT MAINTENANCE REPAIR PARTS AND SPECIAL TOOLS)
FOR
TELEPHONE SET TA-1/PT
(NSN 5805-00-521-1320)**



HEADQUARTERS, DEPARTMENT OF THE ARMY
JANUARY 1977





TECHNICAL MANUAL }
 No. 11-5805-243-34P }

HEADQUARTERS
 DEPARTMENT OF THE ARMY
 WASHINGTON, DC, 17 JANUARY 1977

**DIRECT SUPPORT AND GENERAL SUPPORT MAINTENANCE
 REPAIR PARTS AND SPECIAL TOOLS LISTS
 (INCLUDING DEPOT MAINTENANCE REPAIR PARTS AND SPECIAL TOOLS)
 FOR
 TELEPHONE SET TA-1/PT
 (NSN 5805-00-521-1320)
 Current as of 20 October 1976**

REPORTING OF ERRORS

You can improve this manual by recommending improvements using DA Form 2028-2 (Test) located in the back of the manual. Simply tear out the self-addressed form, fill it out as shown on the sample, fold it where shown, and drop it in the mail.

If there are no blank DA Form 2028-2 (Test) in the back of your manual, use the standard DA Form 2028 (Recommended Changes to Publications and Blank Forms) and forward to the Commander, US Army Electronics Command, ATTN: DRSEL-MA-Q, Fort Monmouth, New Jersey 07703.

In either case a reply will be furnished direct to you.

Table of Contents

	Page	Illustration Figure
SECTION I. Introduction	1	
II. Repair parts list	5	
Group 00. Telephone Set TA-1/PT		
Telephone Set TA-1/PT	5	1
Telephone Set TA-1/PT, chassis removed	7	2
Telephone Set TA-1/PT, chassis assembly	9	3
Telephone Set TA-1/PT, chassis base, exploded view	11	4
Telephone Set TA-1/PT, handset, exploded view	13	5
Telephone Set TA-1/PT, handset cord assembly	14	6
SECTION III. Special tools list (Not applicable)		
IV. National stock number and part number index	15	

*This manual supersedes TM 11-5805-243-34P, 27 January 1976.

SECTION I

INTRODUCTION

1. Scope

This manual lists spares and repair parts; special tools; special test, measurement, and diagnostic equipment (TMDE), and other special support equipment required for performance of direct support and general support maintenance of the TA-1/PT. It authorizes the requisitioning and issue of spares and repair parts as indicated by the source and maintenance codes.

2. General

This Repair Parts and Special Tools List is divided into the following sections:

a. *Section II. Repair Parts List.* A list of spares and repair parts authorized for use in the performance of maintenance. The list also includes parts which must be removed for replacement of the authorized parts. Parts lists are composed of functional groups in numeric sequence, with the parts in each group listed in figure and item number sequence.

b. *Section III. Special Tools List.* Not applicable.

c. *Section IV. National Stock Number and Part Number Index.* A list, in National item identification number (NIIN) sequence, of all National stock numbers (NSN) appearing in the listings, followed by a list, in alphabetic sequence, of all part numbers appearing in the listings. National stock numbers and part numbers are cross-referenced to each illustration figure and item number appearance.

3. Explanation of Columns

a. *Illustration.* This column is divided as follows:

(1) *Figure number.* Indicates the figure number of the illustration on which the item is shown.

(2) *Item number.* The number used to identify item called out in the illustration.

b. *Source, Maintenance, and Recoverability (SMR) Codes.*

(1) *Source code.* Source codes indicate the manner of acquiring support items for maintenance, repair, or overhaul of end items. Source codes are entered in the first and second positions of the Uniform SMR Code format as follows:

<i>Code</i>	<i>Definition</i>
-------------	-------------------

PA	Item procured and stocked for anticipated or known usage.
----	---

XD	A support item that is not stocked. When required, item will be procured through normal supply channels.
----	--

NOTE

Cannibalization or salvage may be used as a source of supply for any items source coded above except those coded XA and aircraft support items as restricted by AR 700-42.

(2) *Maintenance code.* Maintenance codes are assigned to indicate the levels of maintenance authorized to USE and REPAIR support items. The maintenance codes are entered in the third and fourth positions of the Uniform SMR Code format as follows:

(a) The maintenance code entered in the third position will indicate the lowest maintenance level authorized to remove, replace, and use the support item. The maintenance code entered in the third position will indicate one of the following levels of maintenance:

<i>Code</i>	<i>Application/Explanation</i>
O	Support item is removed, replaced, used at the organizational level.
F	Support item is removed, replaced, used at the direct support level.

(b) The maintenance code entered in the fourth position indicates whether the item is to be repaired and identifies the lowest maintenance level with the capability to perform complete repair (i.e., all authorized maintenance functions). This position will contain one of the following maintenance codes:

<i>Code</i>	<i>Application/Explanation</i>
F	The lowest maintenance level capable of complete repair of the support item is the direct support level.
Z	Nonreparable. No repair is authorized.

(3) *Recoverability code.* Recoverability codes are assigned to support items to indicate the disposition action on unserviceable items. The recoverability code is entered in the fifth position of the Uniform SMR Code format as follows:

<i>Recoverability codes</i>	<i>Definition</i>
Z	Nonreparable item. When unserviceable, condemn and dispose at the level indicated in position 3.
F	Reparable item. When uneconomically reparable, condemn and dispose at the direct support level.

c. *National Stock Number.* Indicates the National stock number assigned to the item and will be used for requisitioning purposes.

d. *Part Number.* Indicates the primary number used by the manufacturer (individual, company, firm, cor-

poration, or Government activity), which controls the design and characteristics of the item by means of its engineering drawings, specifications, standards, and inspection requirements to identify an item or range of items.

NOTE

When a stock-numbered item is requisitioned, the repair part received may have a different part number than the part being replaced.

e. Federal Supply Code for Manufacturer (FSCM). The FSCM is a 5-digit numeric code listed in SB 708-42 which is used to identify the manufacturer, distributor, or Government agency, etc.

f. Description. Indicates the Federal item name and, if required, a minimum description to identify the item.

g. Unit of Measure (U/M). Indicates the standard of the basic quantity of the listed items as used in performing the actual maintenance function. This measure is expressed by a two-character alphabetical abbreviation (e.g., ea, in, pr, etc). When the unit of measure differs from the unit of issue, the lowest unit of issue that will satisfy the required units of measure will be requisitioned.

h. Quantity Incorporated in Unit. Indicates the quantity of the item used in the breakout shown on the illustration figure, which is prepared for a functional group, subfunctional group, or an assembly.

4. Special Information

The following publications pertain to the TA-PT and its components:

TM 11-2300-369-15-1, Installation of Telephone Sets TA-312/PT and TA-1/PT with Reel Equipment CE-11 in Gun, AAA, 20MM, XM167

TM 11-5805-243-12, Telephone Set TA-1/PT (TO 31W1-2PT-421)

TM 11-5805-243-20P, Telephone Set TA-1/PT

TM 11-5805-243-35, Telephone Set TA-1/PT (TO 31W1-2PT-402)

5. How to Locate Repair Parts

a. When National stock number or part number is unknown.

(1) *First.* Using the table of contents, determine the functional group within which the item belongs. This is necessary since illustrations are prepared for functional groups and listings are divided into the same groups.

(2) *Second.* Find the illustration covering the functional group to which the item belongs.

(3) *Third.* Identify the item on the illustration and note the illustration figure and item number of the item.

(4) *Fourth.* Using the Repair Parts Listing, find the figure and item number noted on the illustration.

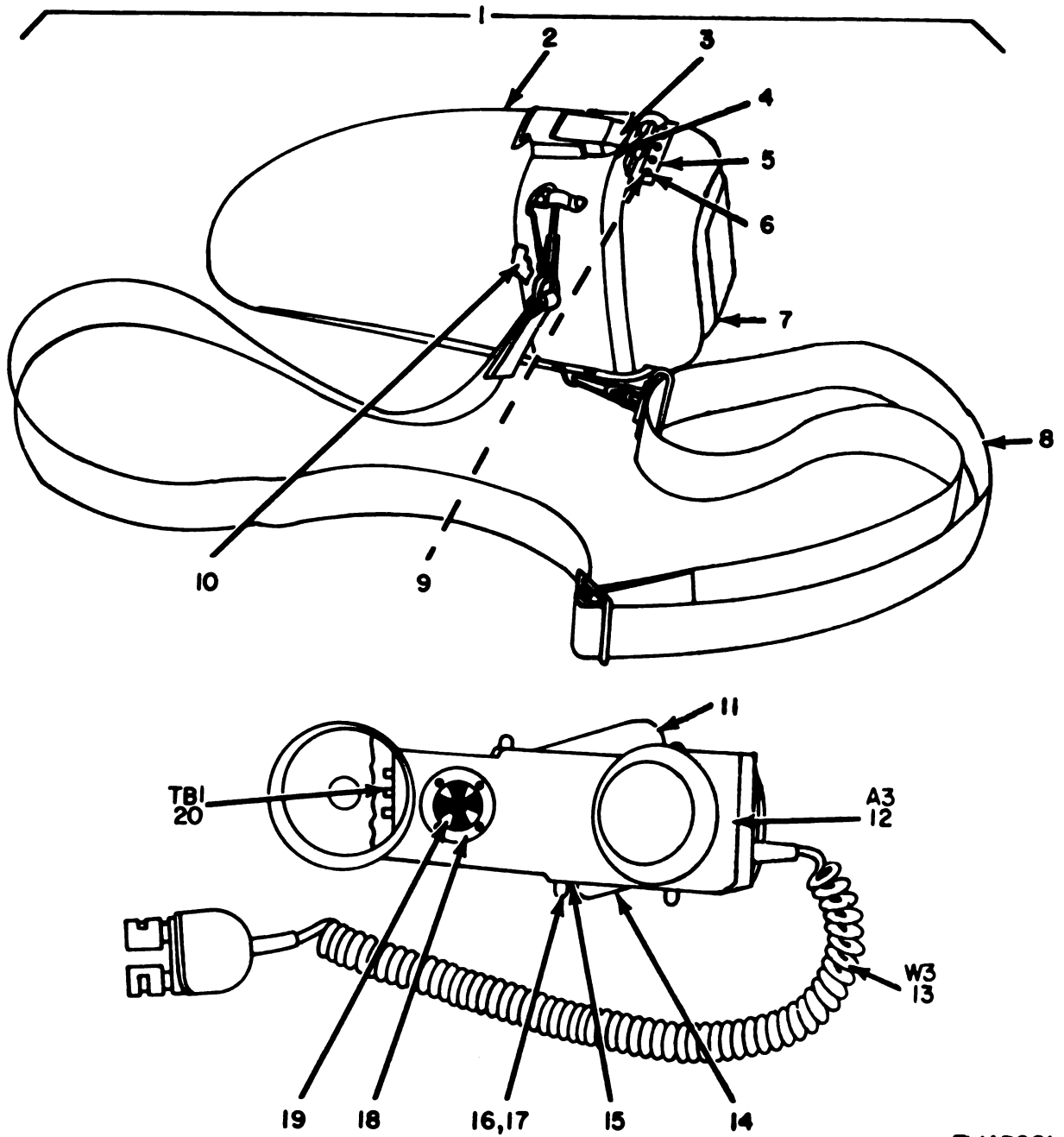
b. When National stock number or part number is known.

(1) *First.* Using the Index of National Stock Numbers and Part Numbers, find the pertinent National stock number or part number. This index is in NIIN sequence followed by a list of part numbers in alpha numeric sequence, cross-referenced to the illustration figure number and item number.

(2) *Second.* After finding the figure and item number, locate the figure and item number in the repair parts list.

6. Abbreviations

Not applicable.



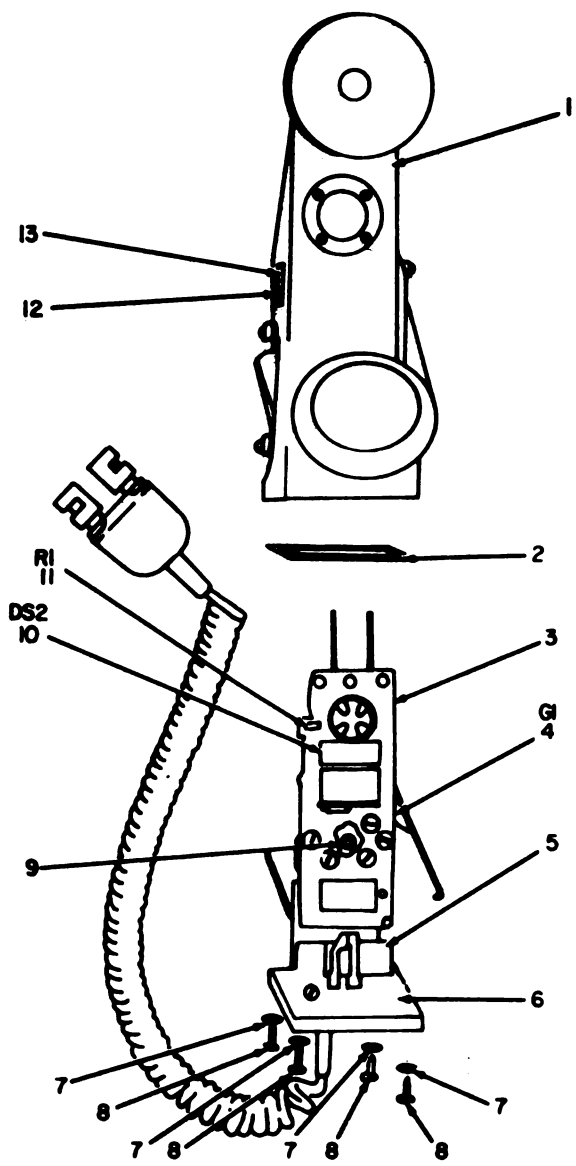
ELIAPOOI

Figure 1. Telephone Set TA-1/PT.

SECTION 11

TM11-5005-243-34P

(1) ILLUSTRATION		(2)	(3)	(4)	(5)	(6)	(7)	(8)
(a) FIG NO.	(b) ITEM NO.	SNR CODE	NATIONAL STOCK NUMBER	PART NUMBER	FPCM	DESCRIPTION	USABLE ON CODE	QTY INC IN UNIT
GROUP 00 TELEPHONE SET TA-1/PT								
1	1	PAQZ	5005-00-543-1001	SMD143140	00063	CASE, TELEPHONE		EA 1
1	2	XDFZZ		SMD143135	00063	CASE, BOTTOM		EA 1
1	3	XDFZZ		SMB143130	00063	CATCH, LUGGAGE		EA 1
1	4	XDFZZ		SMB143129	00063	PIN, STRAIGHT HEADED		EA 1
1	5	XDFZZ		SMB143126	00063	PLATE, MOUNTING		EA 1
1	6	XDFZZ	5330-00-970-2130	SMB143125	00063	RIVET, SOLID		EA 4
1	7	XDFZZ		SNC143132	00063	COVER, TELEPHONE		EA 1
1	8	PAQZ	0465-00-269-0602	SMB170376	00063	STRAP, CARRYING		EA 1
1	9	XDFZZ		SMB143127	00063	WASHER, FLAT		EA 1
1	10	PAFZZ	5330-00-698-0413	SNC168934	00063	GASKET		EA 1
1	11	PAQZ	9965-00-698-0422	SNC143045	00063	COVER, BOOT, DUST AND MOISTURE SEAL		EA 1
1	12	XDFFF		SMD109379	00063	COVER ASSEMBLY, HANDSET		EA 1
1	13	PAFZZ	9995-00-823-2148	SMB169034	00063	CORD ASSEMBLY, ELECTRICAL		EA 1
1	14	PAQZ	9965-00-698-0424	SNC143762	00063	COVER, BOOT, DUST AND MOISTURE SEAL		EA 1
1	15	PAQZ	5005-00-766-3407	SMB169070	00063	CONTAINER, SWITCH COVER		EA 1
1	16	XDFZZ		SMB169073	00063	, CAP		EA 2
1	17	XDFZZ		SMB169062	00063	SCN. M. MACHINE		EA 2
1	18	PAFZZ	9965-00-698-0430	SNC168967	00063	VISUAL INDICATOR ASSEMBLY		EA 1
1	19	PAFZZ	9965-00-292-9809	SMB169064	00063	WINDOW, OBSERVATION		EA 1
1	20	XDFFZ		SNC169028	00063	TERMINAL BOARD		EA 1



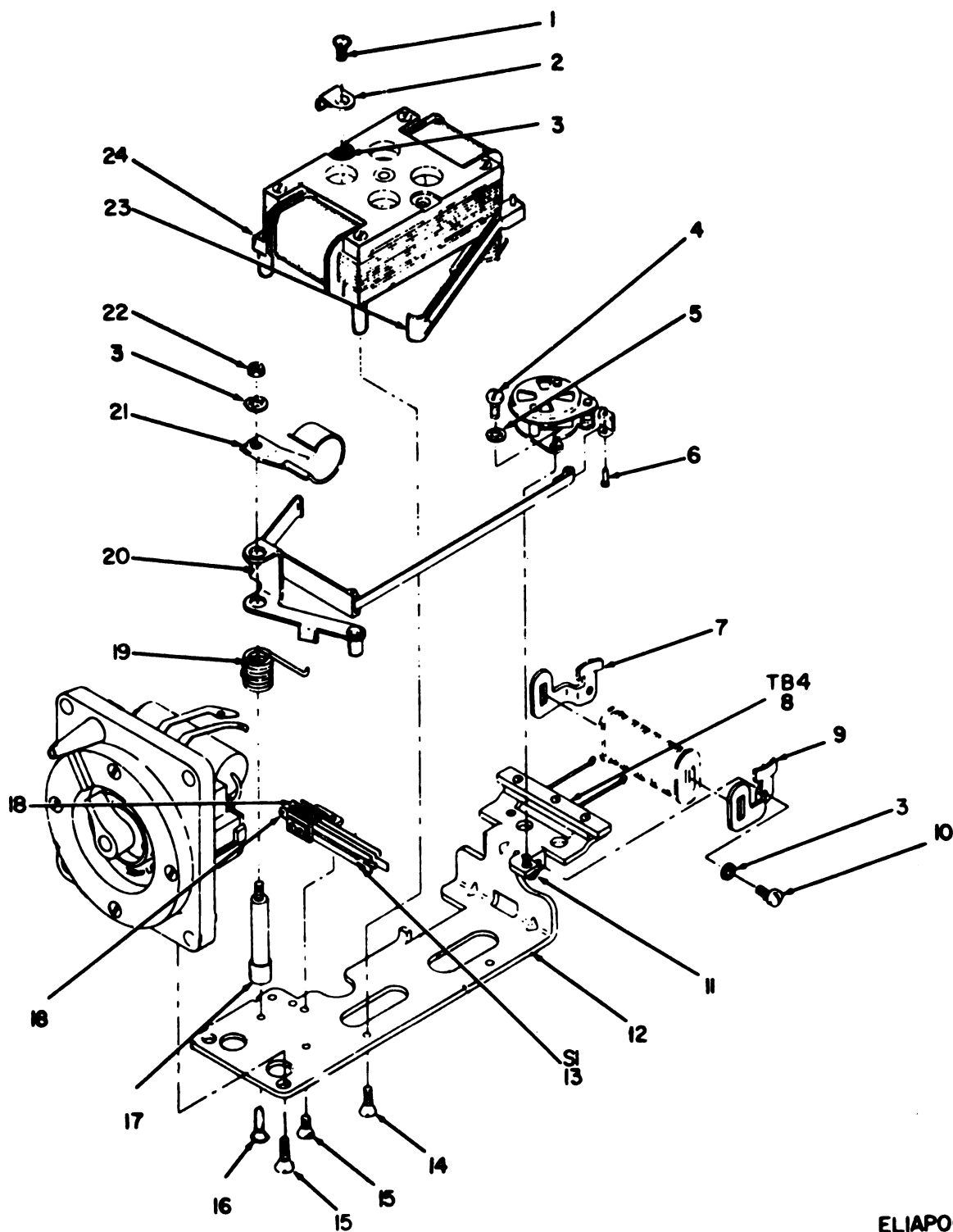
ELIAP002

Figure 2. Telephone Set TA-1/PT, Chassis Removed.

SECTION II

TM11-5009-243-349

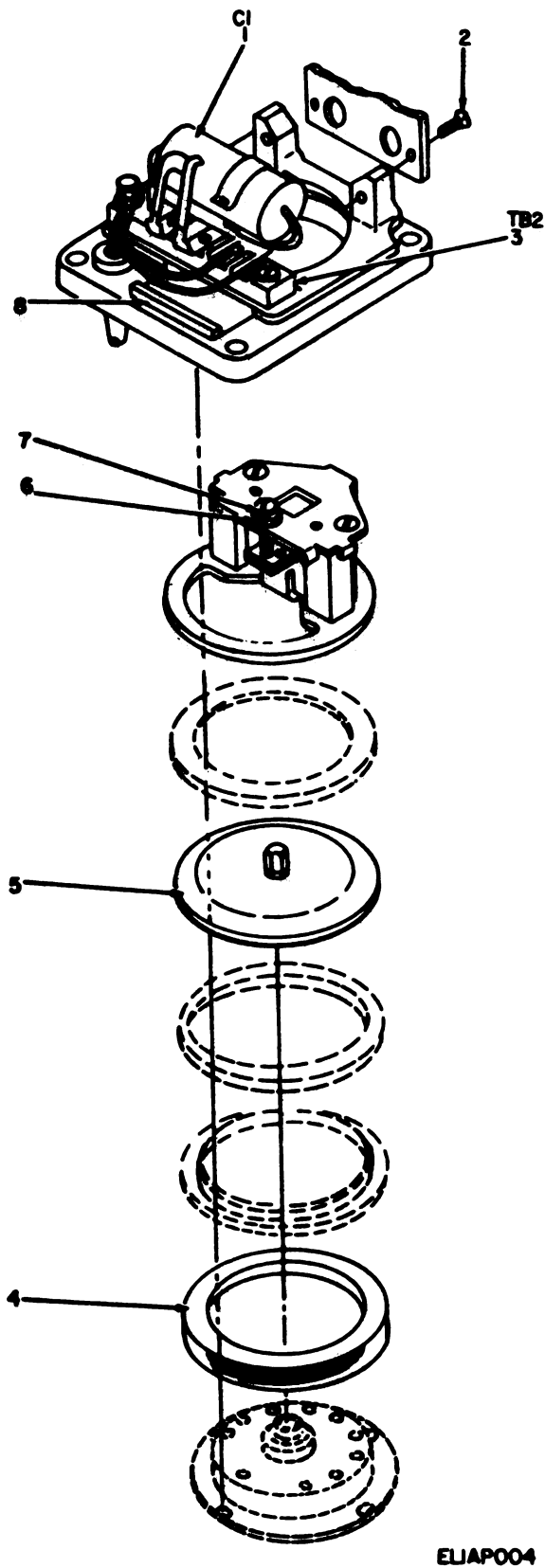
(1) ILLUSTRATION		(2)	(3)	(4)	(5)	(6) DESCRIPTION	(7)	(8)
(a) FIG NO.	(b) ITEM NO.	SMB CODE	NATIONAL STOCK NUMBER	PART NUMBER	FSCM	USABLE ON CODE	U/M	QTY INC IN UNIT
2	1	XDFZZ		SMC168985	80063	HOUSING, HANDSET	EA	1
2	2	PAFZZ	5330-00-978-2130	SMB143125	80063	GASKET	EA	1
2	3	XDFZZ		SMD189374	80063	CHASSIS ASSEMBLY	EA	1
2	4	PAFZZ	5805-00-698-0429	SMD189375	80063	GENERATOR	EA	1
2	5	PAFZZ	6350-00-698-0417	SMC168369	80063	BUZZER	EA	1
2	6	PAFZZ	9965-00-698-0423	SMC168986	80063	COVER	EA	1
2	7	XDFZZ	5310-00-056-2735	MS35338-56	96906	WASHER, LOCK	EA	4
2	8	PAFZZ	5305-00-957-6263	MS35241-9	96906	SCREW, MACHINE	EA	4
2	9	XDFZZ		SMD189379-2	80063	BALL BEARING	EA	1
2	10	PAFZZ	9965-00-698-0421	SMC189366	80063	COIL, SIGNAL TRIPPING	EA	1
2	11	PAFZZ	5905-00-195-6451	RC20GF472K	81349	RESISTOR, FIXED, COMPOSITION	EA	1
2	12	XDFZZ	5305-00-253-5606	MS21318-7	96906	SCREW, DRIVE	EA	4
2	13	XDFZZ		SMB168966	80063	PLATE, IDENTIFICATION	EA	1



ELIAP003

Figure 3. Telephone Set TA-1/PT, Chassis Assembly.

(a) ILLUSTRATION		(b) SMM CODE	(c) NATIONAL STOCK NUMBER	(d) PART NUMBER	(e) FSCM	(f) DESCRIPTION	(g) USABLE ON CODE	(h) U/M	(i) QTY INC IN UNIT
(1) FIG NO.	(2) ITEM NO.								
3	1	XDFZZ	5305-00-043-6637	MS35225-12	96906	SCREW, MACHINE		EA	1
3	2	XDFZZ		SMB169072	80063	CLIP, ELECTRICAL		EA	1
3	3	XDFZZ	5310-00-193-7577	MS35333-36	96906	WASHER, LOCK		EA	3
3	4	XDFZZ	5305-00-762-7482	MS35206-202	96906	SCREW, MACHINE		EA	2
3	5	XDFZZ	5310-00-056-2735	MS35138-56	96906	WASHER, LOCK		EA	2
3	6	XDFZZ		SMB169046	80063	PIN, STRAIGHT, HEADLESS		EA	1
3	7	XDFZZ		SMB169022-2	80063	POLE PIECE		EA	1
3	8	PAFZZ	5940-00-615-8711	SMB169048	80063	TERMINAL BOARD		EA	1
3	9	XDFZZ		SMB169022-1	80063	POLE PIECE		EA	1
3	10	XDFZZ	5305-00-958-5483	MS35241-20	96906	SCREW, MACHINE		EA	2
3	11	XDFZZ	5305-00-812-3549	MS35214-5	96906	SCREW, MACHINE		EA	3
3	12	XDFZZ		SMB168902	80063	PLATE, MOUNTING		EA	1
3	13	PAFZZ	5805-00-698-0416	SMC189365	80063	CONTACT ASSEMBLY, ELECTRICAL		EA	1
3	14	XDFZZ	5305-00-959-2345	MS35241-10	96906	SCREW, MACHINE		EA	1
3	15	XDFZZ		SMB169043	80063	SCREW, MACHINE		EA	2
3	16	XDFZZ	5305-00-988-1167	MS35206-204	96906	SCREW, MACHINE		EA	1
3	17	XDFZZ		SMB169017	80063	TERMINAL, STUD		EA	1
3	18	XDFZZ		SMB169050	80063	CONTACT, ELECTRICAL		EA	2
3	19	PAFZZ	5360-00-588-2321	SMB169047	80063	SPRING, HELICAL TORSION		EA	1
3	20	PAFZZ	5965-00-698-0432	SMC189386	80063	LEVER ASSEMBLY		EA	1
3	21	XDFZZ		SMB169042	80063	RETAINER, CAPACITOR		EA	1
3	22	XDFZZ		SMB169075	80063	NUT, PLAIN, HEXAGON		EA	1
3	23	PAFZZ	5965-00-698-0431	SMC168920	80063	LEVER ASSEMBLY, CRANKING GENERATOR		EA	1
3	24	XDFZZ		SMB189389	80063	INSULATOR, PLATE		EA	1



ELIAP004

Figure 4. Telephone Set TA-1/PT, Chassis Base, Exploded View.

SECTION LI

TM11-5009-249-949

(1) ILLUSTRATION		(2)	(3)	(4)	(5)	(6) DESCRIPTION	(7)	(8) QTY INC IN UNIT
(a) FIG NO	(b) ITEM NO	SM ⁹ CODE	NATIONAL STOCK NUMBER	PART NUMBER	FSCM	USABLE ON CODE	U/M	
4	1	PAFZZ	5910-00-913-0226	M18312-02-0433	81349	CAPACITOR, FIXED, PAPER	EA	1
4	2	XDFZZ	5305-00-716-7815	MS51049-9	96906	SETSCREW	EA	2
4	3	PAFZZ	5940-00-072-5536	SMB169012	80063	TERMINAL BOARD	EA	1
4	4	XDFZZ		SMB169020	80063	RING, RETAINING	EA	1
4	5	XDFZZ		SMB169007	81349	DIAPHRAM, BUZZER	EA	1
4	6	XDFZZ		SMB169018	80063	NUT, ROUND	EA	1
4	7	XDFZZ		SMB169019	80063	WASHER, FLAT	EA	1
4	8	PAFZZ	5940-00-653-3391	SMB169029	80063	BLOCK, MOUNTING	EA	1

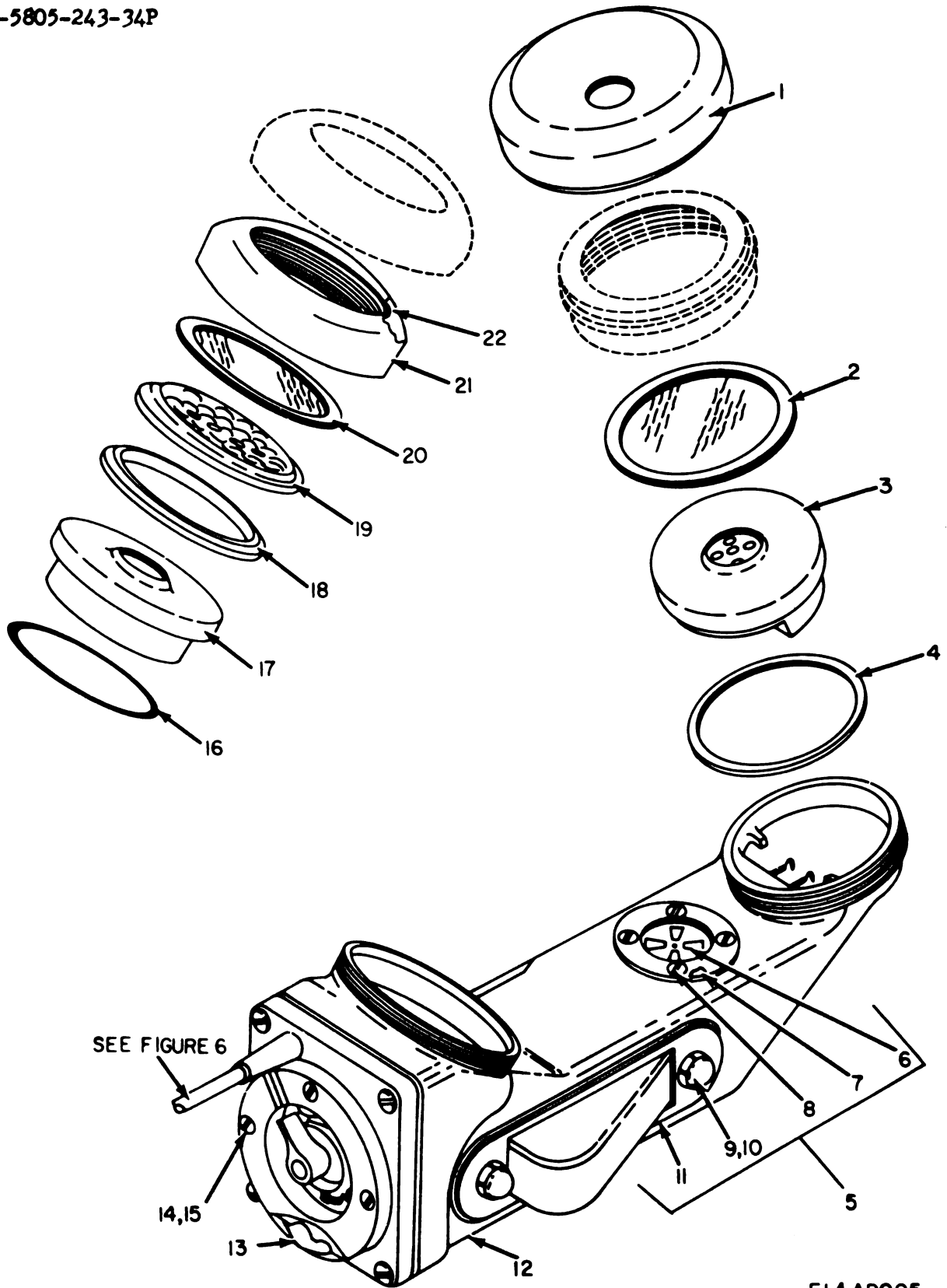
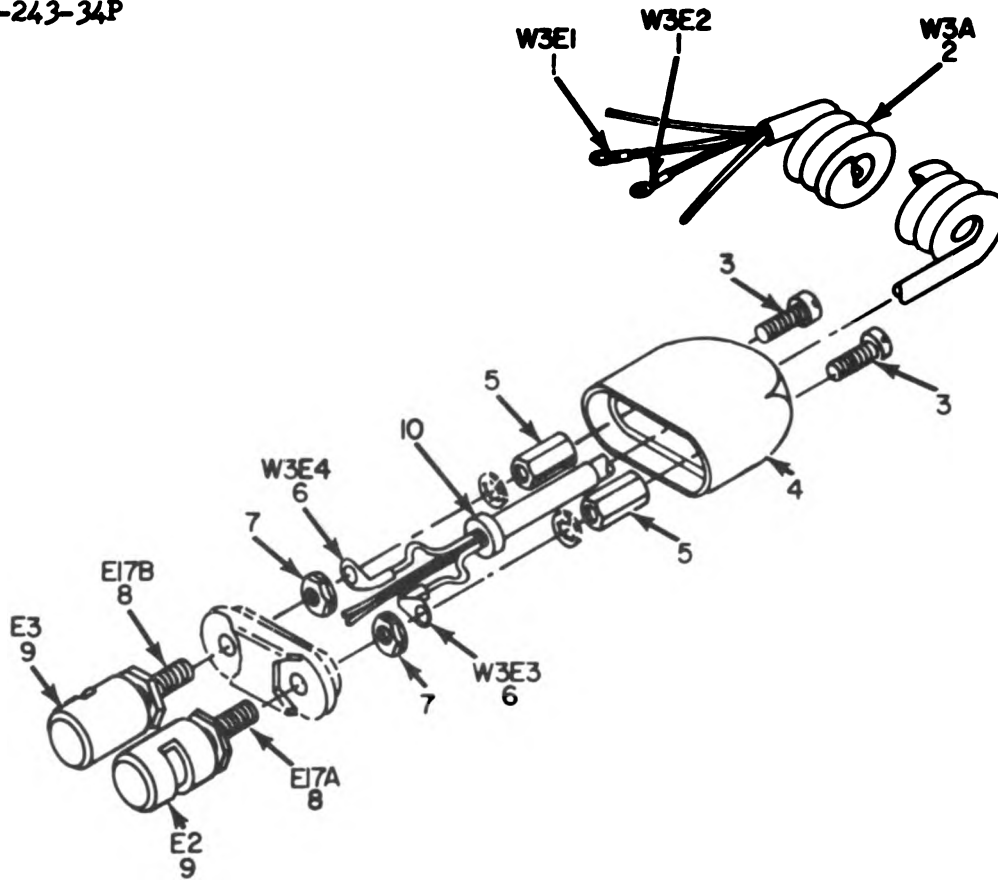


Figure 5. Telephone Set TA-1/PT, Handset, Exploded View.

SECTION II

7041-6000-203-249

(1) ILLUSTRATION		(2)	(3)	(4)	(5)	(6)	(7)	(8)
FIG NO.	ITEM NO.	SNR CODE	NATIONAL STOCK NUMBER	PART NUMBER	FSCM	DESCRIPTION	USABLE ON CODE	QTY INC IN UNIT
5	1	PA022	9999-00-162-1259	SMB143122	90063	CAP, ELECTRICAL	EA	1
5	2	PA022	9965-00-698-0428	SK0169076GRP2	90063	DIAPHRAM, MOISTURE PREVENTING	EA	1
5	3	PA022	9965-00-341-9311	SC0169086	90063	EARPHONE ELEMENT TA-118/PT	EA	1
5	4	PA022	9330-00-698-0414	SMB169079	90063	BASKET	EA	1
5	5	NDF22		SMD109378	90063	HOUSING ASSEMBLY	EA	8
5	6	NDF22		SMB169063	90063	COVER, WINDOW	EA	8
5	7	PAF22	9330-00-698-0412	SMB169065	90063	GASKET	EA	8
5	8	NDF22		SMB169074	90063	SCREW, MACHINE	EA	4
5	9	XDO22	5310-00-527-5234	SMB169073	90063	NUT, PLAIN, CAP	EA	2
5	10	NDF22		SMB169062	90063	SCREW, MACHINE	EA	2
5	11	XDO22	9809-00-766-3408	SMB169071	90063	RETAINER, GENERATOR COVER	EA	1
5	12	NDF22		SMD169061	90063	HOUSING, HANDSET	EA	1
5	13	PAF22	5340-00-064-5426	SNC109372	90063	CLIP, SPRING TENSION	EA	3
5	14	XDF22	9309-00-984-4984	NS33206-227	96906	SCREW, MACHINE	EA	4
5	15	NDF22	5310-00-579-0079	NS33333-20	96906	WASHER, LOCK	EA	4
5	16	PA022	9330-00-698-0411	SMB169021	90063	GASKET	EA	8
5	17	PA022	9965-00-341-9312	SC0169109	90063	MICROPHONE ELEMENT TA-123/PT	EA	8
5	18	PA022	9965-00-698-0434	SMB169081	90063	SUPPORT, RESONATOR	EA	1
5	19	PA022	9965-00-698-0433	SMB169082	90063	RESONATOR, TRANSMITTER	EA	1
5	20	PA022	9965-00-698-0426	SMB169076GRP1	90063	DIAPHRAM, MOISTURE PREVENTING	EA	1
5	21	PA022	9999-00-577-9566	SMB143123	90063	CAP, ELECTRICAL	EA	1
5	22	NDF22	9330-00-698-0411	SMB169021	90063	PACKING, PREFORMED	EA	1



ELIAP006

Figure 6. Telephone Set TA-1/PT, Handset Cord Assembly.

(1) ILLUSTRATION		(2)	(3)	(4)	(5)	(6) DESCRIPTION	(7)	(8)
(a) FIG NO.	(b) ITEM NO.	SMR CODE	NATIONAL STOCK NUMBER	PART NUMBER	FSCM	UNABLE ON CODE	U.M.	QTY IN UNIT
6	1	XDFZZ		41376	00779	TERMINAL, LUG	EA	2
6	2	XDFZZ		SM8169034-3	90063	CORD, ELECTRICAL, FIVE FEET	EA	1
6	3	XDFZZ		MS35271-43	96906	SCREW, MACHINE	EA	2
6	4	PAFZZ	5965-00-698-0425	SM8169030	80063	COVER	EA	1
6	5	PAFZZ	5310-00-655-9276	SM8169031	80063	SPACER, SLEEVE	EA	2
6	6	XDFZZ		42796-1	00779	TERMINAL, LUG	EA	2
6	7	XDFZZ		SM8169075	80063	NUT, PLAIN, HEXAGON	EA	2
6	8	PAFZZ	5940-00-642-2413	SM8169033	80063	POST, BINDING	EA	2
6	9	PAOZZ	5940-00-254-2243	SCC76202-2	80063	CAP, ELECTRICAL	EA	2
6	10	XDFZZ	5805-00-698-9239	SM8169032	80063	INSULATOR, SLEEVE	EA	1

SECTION IV

NATIONAL STOCK NUMBER AND PART NUMBER INDEX

TM11-5005-243-34P

NOTE: LATEST NATIONAL STOCK NUMBER AND PART NUMBER ASSIGNMENTS ARE INCLUDED AT END OF INDEX.

STOCK NUMBER	FIGURE NO.	ITEM NO.	STOCK NUMBER	FIGURE NO.	ITEM NO.
5305-00-043-6637	3	1	5965-00-698-0422	1	11
5340-00-064-5426	5	13	5965-00-698-0423	2	6
5940-00-072-5536	4	3	5965-00-698-0424	1	14
5999-00-162-1259	5	1	5965-00-698-0425	6	4
5905-00-195-6451	2	11	5965-00-698-0426	5	20
5305-00-253-5606	2	12	5965-00-698-0428	5	2
5940-00-254-2243	6	9	5805-00-698-0429	2	4
8465-00-269-0681	1	8	5965-00-698-0430	1	18
5965-00-292-9889	1	19	5965-00-698-0431	3	23
5965-00-341-9311	5	3	5965-00-698-0432	3	20
5965-00-341-9312	5	17	5965-00-698-0433	5	19
5805-00-543-1881	1	1	5965-00-698-0434	5	18
5999-00-577-9566	5	21	5805-00-698-5239	6	10
5360-00-588-2321	3	19	5805-00-766-3407	1	15
5940-00-642-2413	6	8	5805-00-766-3408	5	11
5940-00-653-3391	4	8	5305-00-812-3549	3	11
5310-00-655-9276	6	5	5910-00-913-0226	4	1
5330-00-698-0411	5	16	5305-00-957-6263	2	8
5330-00-698-0411	5	22	5305-00-959-2345	3	14
5330-00-698-0412	5	7	5330-00-978-2130	1	6
5330-00-698-0414	5	4	5330-00-978-2130	2	2
5805-00-698-0416	3	13	5305-00-984-4984	5	14
6350-00-698-0417	2	5	5305-00-988-1167	3	16
5965-00-698-0421	2	10			

PART NUMBER	FSCN	FIG. NO.	ITEM NO.	PART NUMBER	FSCN	FIG. NO.	ITEM NO.
MS21318-7	96906	2	12	SMB169050	80063	3	18
MS35206-204	96906	3	16	SMB169062	80063	1	17
MS35206-227	96906	5	14	SMB169062	80063	5	10
MS35214-5	96906	3	11	SMB169063	80063	5	6
MS35225-12	96906	3	1	SMB169064	80063	1	19
				SMB169065	80063	5	7
MS35241-10	96906	3	14	SMB169070	80063	1	15
MS35241-20	96906	3	10	SMB169071	80063	5	11
MS35241-9	96906	2	8	SMB169072	80063	3	2
MS35271-43	96906	6	3	SMB169073	80063	1	16
				SMB169073	80063	5	9
				SMB169074	80063	5	8
				SMB169075	80063	3	22
MS35333-20	96906	5	15	SMB169075	80063	6	7
MS51049-9	96906	4	2	SMB169076GRP1	80063	5	20
M18312-02-0433	81349	4	1	SMB169076GRP2	80063	5	2
RC20GF472K	81349	2	11	SMB169079	80063	5	4
SCC76202-2	80063	6	9	SMB169081	80063	5	18
SCDL169086	80063	5	3	SMB169082	80063	5	19
SCDL169109	80063	5	17	SMB170376	80063	1	8
SMB143122	80063	5	1	SMB189389	80063	3	24
SMB143123	80063	5	21	SNC143132	80063	1	7
SMB143125	80063	1	6	SNC143762	80063	1	14
SMB143125	80063	2	2	SNC143845	80063	1	11
SMB143126	80063	1	5	SNC168369	80063	2	5
SMB143127	80063	1	9	SNC168920	80063	3	23
SMB143129	80063	1	4	SNC168934	80063	1	10
SMB143130	80063	1	3	SNC168967	80063	1	18
SMB168966	80063	2	13	SNC168985	80063	2	1
SMB169007	81349	4	5	SNC168986	80063	2	6
SMB169017	80063	3	17	SNC169012	80063	4	3
SMB169018	80063	4	6	SNC189365	80063	3	13
SMB169019	80063	4	7	SNC189366	80063	2	10
SMB169020	80063	4	4	SNC189372	80063	5	13
SMB169021	80063	5	16	SNC189386	80063	3	20
SMB169021	80063	5	22	SMD143135	80063	1	2
SMB169022-1	80063	3	9	SMD143140	80063	1	1
SMB169029	80063	4	8	SMD168902	80063	3	12
SMB169030	80063	6	4	SMD169061	80063	5	12
SMB169031	80063	6	5	SMD189374	80063	2	3
SMB169032	80063	6	10	SMD189375	80063	2	4
SMB169033	80063	6	8	SMD189378	80063	5	5
SMB169034	80063	1	13	SMD189379	80063	1	12
SMB169042	80063	3	21	SMD189379-2	80063	2	9
SMB169043	80063	3	15	41376	00779	6	1
SMB169047	80063	3	19	42796-1	00779	6	6

SECTION IV

LATEST NATIONAL STOCK NUMBER ASSIGNMENTS

STOCK NUMBER	FIGURE NO.	ITEM NO.
5310-00-056-2735	2	7
5310-00-056-2735	3	5
5310-00-193-7577	3	3
5310-00-527-5234	5	9
5310-00-579-0079	5	15
5940-00-615-8711	3	8
5330-00-698-0413	1	10
5305-00-716-7815	4	2
5303-00-762-7482	3	4
5995-00-823-2148	1	13
5305-00-958-5483	3	10

LATEST PART NUMBER ASSIGNMENTS

PART NUMBER	FSCN	FIGURE NO.	ITEM NO.
MS35206-202	96906	3	4
MS35333-36	96906	3	3
MS35338-56	96906	2	7
MS35338-56	96906	3	5
8MB169022-2	80063	3	7
8MB169034-3	80063	6	2
8MB169046	80063	3	6
8MB169048	80063	3	8
8MC169028	80063	1	20

RECOMMENDED CHANGES TO EQUIPMENT TECHNICAL MANUALS



SOMETHING WRONG WITH THIS MANUAL?

THEN... JOT DOWN THE DOPE ABOUT IT ON THIS FORM. TEAR IT OUT, FOLD IT AND DROP IT IN THE MAIL!

FROM: (YOUR UNIT'S COMPLETE ADDRESS)

Commander
Stateside Army Depot
ATTN: AMSTA-US
Stateside, N.J. 07703

DATE 10 July 1975

PUBLICATION NUMBER

TM 11-5840-340-12

DATE

23 Jan 74

TITLE

Radar Set AN/SPC-76

BE EXACT... PIN-POINT WHERE IT IS

PAGE NO.	PARA-GRAPH	FIGURE NO.	TABLE NO.
2-25	2-28		
3-10	3-3		3-1
5-6	5-8		
		F03	

IN THIS SPACE TELL WHAT IS WRONG AND WHAT SHOULD BE DONE ABOUT IT:

Recommend that the installation antenna alignment procedure be changed through to specify a 2° IFF antenna lag rather than 1°.

REASON: Experience has shown that with only a 1° lag, the antenna servo system is too sensitive to wind gusting in excess of 20 knots, and has a tendency to rapidly accelerate and decelerate as it hunts, causing strain to the drive train. Hunting is minimized by adjusting the lag to 2° without degradation of operation.

Item 5, Function column. Change "2 db" to "3db."

REASON: The adjustment procedure for the TRANS POWER FAULT indicator calls for a 3 db (500 watts) adjustment to light the TRANS POWER FAULT indicator.

Add new step f.1 to read, "Replace cover plate removed in step e.1, above."

REASON: To replace the cover plate.

Zone C 3. On J1-2, change "+24 VDC to "+5 VDC."

REASON: This is the output line of the 5 VDC power supply. + 24 VDC is the input voltage.

TYPED NAME, GRADE OR TITLE, AND TELEPHONE NUMBER

SSG I. M. DeSpirito 999-1776

SIGN HERE:

SSG I. M. DeSpirito

DA FORM 2028-2 (TEST)

P.S.--IF YOUR OUTFIT WANTS TO KNOW ABOUT YOUR MANUAL "FIND," MAKE A CARBON COPY OF THIS AND GIVE IT TO YOUR HEADQUARTERS.

HTSA 1686-75





SOMETHING WRONG WITH THIS MANUAL?

THEN... JOT DOWN THE DOPE ABOUT IT ON THIS FORM, TEAR IT OUT, FOLD IT AND DROP IT IN THE MAIL!

FROM: (YOUR UNIT'S COMPLETE ADDRESS)

DATE

PUBLICATION NUMBER

DATE

TITLE

BE EXACT... PIN-POINT WHERE IT IS

IN THIS SPACE TELL WHAT IS WRONG AND WHAT SHOULD BE DONE ABOUT IT:

PAGE NO.

PARA-GRAPH

FIGURE NO.

TABLE NO.

TEAR ALONG DOTTED LINE

TYPED NAME, GRADE OR TITLE, AND TELEPHONE NUMBER

SIGN HERE:

DA FORM 1 AUG 76 2028-2 (TEST)

P.S.--IF YOUR OUTFIT WANTS TO KNOW ABOUT YOUR MANUAL "FIND" MAKE A CARBON COPY OF THIS AND GIVE IT TO YOUR HEADQUARTERS.

FILL IN YOUR
UNIT'S ADDRESS

FOLD BACK

DEPARTMENT OF THE ARMY

OFFICIAL BUSINESS
PENALTY FOR PRIVATE USE, \$300

POSTAGE AND FEES PAID
DEPARTMENT OF THE ARMY
DOD-814



Commander
US Army Electronics Command
ATTN: DRSEL-MA-Q
Fort Monmouth, New Jersey 07703

FOLD BACK

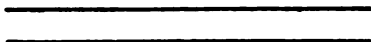
TEAR ALONG DOTTED LINE

REVERSE OF DA FORM 2925-2 (TEST)

FILL IN YOUR
UNIT'S ADDRESS

FOLD BACK

DEPARTMENT OF THE ARMY



OFFICIAL BUSINESS

PENALTY FOR PRIVATE USE, \$300

POSTAGE AND FEES PAID
DEPARTMENT OF THE ARMY
DOD-314



Commander
US Army Electronics Command
ATTN: DRSEL-MA-Q
Fort Monmouth, New Jersey 07703

TEAR ALONG DOTTED LINE

FOLD BACK

REVERSE OF DA FORM 2026-2 (TEST)

FILL IN YOUR
UNIT'S ADDRESS

FOLD BACK

DEPARTMENT OF THE ARMY

OFFICIAL BUSINESS
PENALTY FOR PRIVATE USE, \$300

POSTAGE AND FEES PAID
DEPARTMENT OF THE ARMY
DCC-314



Commander
US Army Electronics Command
ATTN: DRSEL-MA-Q
Fort Monmouth, New Jersey 07703

TEAR ALONG DOTTED LINE

FOLD BACK

REVERSE OF DA FORM 2025-2 (TEST)

By Order of the Secretary of the Army:

BERNARD W. ROGERS
General, United States Army
Chief of Staff

Official:

PAUL T. SMITH
Major General, United States Army
The Adjutant General

DISTRIBUTION:

Active Army:

- USASA (2)
- COE (1)
- TSG (1)
- USAARENBD (1)
- DARCOM (1)
- TRADOC (2)
- OS Maj Comd (4)
- LOGCOMDS (3)
- MICOM (2)
- TECOM (2)
- USAJFKCENMA (2)
- USATSCH (2)
- USATTC (2)
- USACC (4)
- MDW (1)
- Armies (2)
- Corps (2)
- HISA (Ft Monmouth) (33)
- Svc Colleges (1)
- USASIGS (5)
- USAADS (2)
- USAFAS (2)
- USAARMS (2)
- USAIS (2)
- USAES (2)
- USAICS (3)
- MAAG (1)
- USARMIS (1)
- Harry Diamond Labs (2)
- Installations (2) except
 - Fort Carson (5)
 - Fort Gillem (10)
 - Fort Gordon (10)
 - Fort Huachuca (10)
 - Ft Richardson (ECOM Gfc) (2)
 - LEAD (14)
 - SAAD (30)
 - TOAD (14)
 - SHAD (3)
- SigFLDMS (1)
- USAERDAA (1)
- USAERDAW (1)
- Units Org under fol TOE: (1)
 - 11-97
 - 11-98
 - 11-117
 - 11-127
 - 11-500 (AA-AC)
 - 29-56

NG: State AG (3); Units - Same as Active Army

USAR: None

For explanation of abbreviations used see, AR 310-50





