

**TECHNICAL MANUAL**

**UNIT, INTERMEDIATE DIRECT SUPPORT AND  
GENERAL SUPPORT MAINTENANCE  
REPAIR PARTS AND SPECIAL TOOLS LIST  
FOR  
TRANSMISSION TEST SET AN/USM-608  
(NSN 6625-01-246-8206)**

**Distribution authorized to the Department of Defense and DOD contractors only for official use or for administration or operational purposes. This determination was made on 23 October 1987. Other requests for this document will be referred to Commander, US Army Communications-Electronics Command and Fort Monmouth, ATTN: ANSEL-ME-P, Fort Monmouth, NJ 07706-5000.**

**DESTRUCTION NOTICE—Destroy by any method that will prevent disclosure of contents or reconstruction of the document.**



**UNIT, INTERMEDIATE DIRECT SUPPORT AND  
 GENERAL SUPPORT MAINTENANCE  
 REPAIR PARTS AND SPECIAL TOOLS LIST  
 FOR  
 TRANSMISSION TEST SET AN/USM-608  
 (NSN 6625-01-246-8206)  
 Current as of 15 May 1988**

**REPORTING ERRORS AND RECOMMENDING IMPROVEMENTS**  
 You can help improve this manual if you find any mistakes or if you know of a way to improve the procedures, please let us know. Mail your letter, DA Form 2028 (Recommended Changes to Publications and Blank Forms), or DA Form 2028-2, located in back of this manual direct to: Commander, US Army Communications-Electronics Command and Fort Monmouth, ATTN: AMSEL-LC-ME-MP, Fort Monmouth, NJ 077035000. In either case, a reply will be furnished to you.

**Table of Contents**

		<b>Page</b>	<b>Illus Figure</b>
SECTION	I.	Introduction.....	1
	II.	Repair Parts List.....	1-1
GROUP	00	Transmission Test Set AN/USM-608 .....	1-1      1
	01	Keyboard Assembly.....	2-1      2
	02	DSP Board Assembly (No parts authorized)	
	03	Interface Board (No parts authorized)	
	04	Faraday Board (No parts authorized)	
SECTION	III.	Special Tools List (Not applicable)	
	IV.	Cross-Reference Indexes	
		National Stock Number Index.....	I-1
		Part Number Index.....	I-2
		Figure and Item Number Index.....	I-5

SECTION I

INTRODUCTION

**1. Scope**

This manual lists and authorizes spares and repair parts; special tools; special test, measurement, and diagnostic equipment (TMDE); and other special support equipment required for performance of unit, intermediate direct support and general maintenance of the AN/USM-608. It authorizes the requisitioning, issue, and disposition of spares, repair parts and special tools as indicated by the source, maintenance and recoverability (SMR) codes.

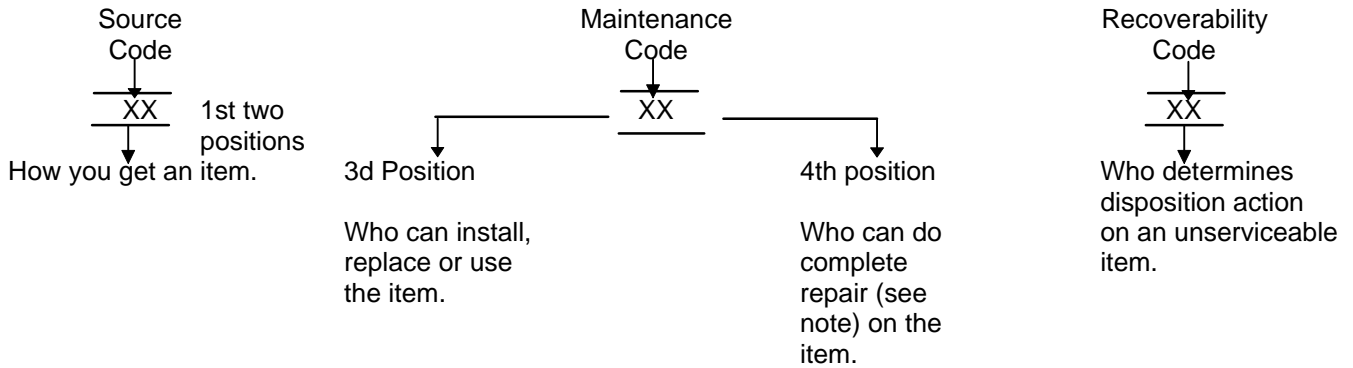
**2. General**

This Repair Parts and Special Tools List is divided into the following sections:

- a. *Section II. Repair Parts List.* A list of spares and repair parts authorized by this RPSTL for use in the performance of maintenance. The list also includes parts which must be removed for replacement of the authorized parts. Parts lists are composed of functional groups in ascending numeric sequence, with the parts in each group listed in ascending item number sequence. Figure numbers are listed directly beneath the group header.
- b. *Section III. Special Tools List.* Not applicable.
- c. *Section IV Cross-Reference Indexes.* A list, in National item identification number (NIIN) sequence, of all National stock numbered items appearing in the listing, followed by a list in alphameric sequence of all part numbers appearing in the listings. National stock numbers and part numbers are cross-referenced to each illustration figure and item number appearance. The figure number and item number index lists figure and item numbers in numeric sequence and cross-references National stock number, Federal Supply Code for Manufacturer and part numbers.

**3. Explanation of Columns (Section II and III)**

- a. *Item No. (Column (1)).* Indicates the number used to identify items called out in the illustration.
- b. *SMR Code (Column (2)).* The source, maintenance, and recoverability (SMR) code is a five-position code containing supply/requisitioning information, maintenance category authorization criteria, and disposition instruction, as shown in the following breakout:



**NOTE**

**Complete repair Maintenance capacity, capability, and authority to perform all corrective maintenance tasks of the "Repair" function in a use/user environment in order to restore serviceability to a failed item.**

(1) *Source code.* The source code tells you how to get an item needed for maintenance, repair, or overhaul of an end item/equipment. Explanations of source codes follows:

*Code*

*Explanation*

PA  
PB  
PC  
PD  
PE  
PF  
PG

Stocked items: use applicable NSN to request and/or requisition items with these source codes. They are authorized to the category indication by the code entered in the third position of the SMR code

**NOTE**

**Items coded PC are subject to deterioration.**

KB  
KD  
KF

Items with these codes are not to be requested and/or requisitioned individually. They are part of a kit which is authorized to the maintenance category indicated in the third position of the SMR code. The complete kit must be requisitioned and applied.

MO - Made at org/  
AVUM category  
MF - Made at DS/  
AVIM category  
MH - Made at GS  
category  
ML - Made at Specialized  
Repair Activity (SRA)  
MD - Made at Depot

Items with these codes are not to be requested and/or requisitioned individually. They must be made from bulk material which is identified by the part number in the description and usable on code (UOC) column and listed in the Bulk Material group of the repair parts list. If the item is authorized to you by the third position code of the SMR code, but the source code indicates it is made at a higher category, order the item from the higher category of maintenance.

AO - Assembled by  
Org/AVUM  
category  
AF - Assembled by  
DS/AVIM  
category  
AH - Assembled by  
GS category  
AL - Assembled by  
SRA  
AD - Assembled by  
Depot

Items with these codes are not to be requested and/or requisitioned individually. The parts that make up the assembled item must be requisitioned or fabricated and assembled at the category of maintenance indicated by the source code. If the third position code of the SMR code authorizes you to replace the item, but the source code indicates the item is assembled at a higher category, order the item from the higher category of maintenance.

<i>Code</i>	<i>Explanation</i>
XA--	Do not requisition an "XA" coded item. Order its next higher assembly.
XB--	If an "XB" item is not available from salvage, order it using the FSCM and part number given.
XC--	Installation drawing, diagram, instruction sheet, field service drawing, that is identified by manufacturers part number.
XD--	Item is not stocked. Order an "XD" coded item through normal supply channels using the FSCM and part number given, if no NSN is available.

**NOTE**

**Cannibalization or controlled exchange, when authorized, may be used as a source of supply for items with the above source codes, except for those source coded "XA" or those aircraft support items restricted by requirements of AR 750-1.**

(2) *Maintenance code.* Maintenance codes tell you the category of maintenance authorized to USE and REPAIR support items. The maintenance codes are entered in the third and fourth positions of the SMR code as follows

(a) The maintenance code entered in the third position tells you the lowest maintenance category authorized to remove, replace, and use an item. The maintenance code entered in the third position will indicate authorization to one of the following categories of maintenance.

<i>Code</i>	<i>Explanation</i>
C--	Crew or operator maintenance done within organizational or aviation maintenance.
O--	Organizational or aviation unit category can remove, replace, and use the item.
F--	Direct support or aviation intermediate category can remove, replace, and use the item.
H--	General support category can remove, replace, and use the item.
L--	Specialized repair activity can remove, replace, and use the item.
D--	Depot category can remove, replace, and use the item.

(b) The maintenance code entered in the fourth position tells whether or not the item is to be repaired and identifies the lowest maintenance category with the capability to do complete repair (i.e., perform all authorized repair functions). This position will contain one of the following maintenance codes.

**NOTE**

**Some limited repair may be done on the item at a lower category of maintenance, if authorized by the Maintenance Allocation Chart (MAC) and SMR codes.**

<i>Code</i>	<i>Application/Explanation</i>
O--	Organizational or aviation unit is the lowest category that can do complete repair of the item.
F--	Direct support or aviation intermediate is the lowest category that can do complete repair of the item.
H--	General support is the lowest category that can do complete repair of the item.
L--	Specialized repair activity (designate the specialized repair activity) is the lowest category that can do complete repair of the item.
D--	Depot is the lowest category that can do complete repair of the item.
Z--	Nonreparable. No repair is authorized.
B--	No repair is authorized. (No parts or special tools are authorized for the maintenance of a "B" coded item.) However, the item may be reconditioned by adjusting, lubricating, etc., at the user category.

(3) *Recoverability code.* Recoverability codes are assigned to items to indicate the disposition action on unserviceable items. The recoverability code is entered in the fifth position of the SMR Code as follows:

<i>Recoverability codes</i>	<i>Application/Explanation</i>
Z--	Nonreparable item. When unserviceable, condemn and dispose of the item at the category of maintenance shown in the third position of SMR Code.
O--	Reparable item. When uneconomically repairable, condemn and dispose of the item at organizational or aviation unit category.
F--	Reparable item. When uneconomically repairable, condemn and dispose of the item at direct support or aviation intermediate category.

*Recoverability  
codes*

*Application/Explanation*

- H--Reparable item. When uneconomically reparable, condemn and dispose of the item at general support category.  
 D--Reparable item. When beyond lower category repair capability, return to depot. Condemnation and disposal of item not authorized below depot category.  
 L--Reparable item. Condemnation and disposal not authorized below specialized repair activity (SRA).  
 A--Item requires special handling or condemnation procedures because of specific reasons (e.g., precious metal content, high dollar value, critical material, or hazardous material). Refer to appropriate manuals/directives for specific instructions.

c. *FSCM (Column (3))*. The Federal Supply Code for Manufacturer (FSCM) is a 5-digit numeric code which is used to identify the manufacturer, distributor, or Government agency, etc., that supplies the item.

d. *Part Number (Column (4))*. Indicates the primary number used by the manufacturer (individual, company, firm, corporation, or Government activity), which controls the design and characteristics of the item by means of its engineering drawings, specifications, standards, and inspection requirements to identify an item or range of items.

**NOTE**

**When you use a NSN to requisition an item, the item you receive may have a different part number from the part ordered.**

e. *Description and Usable on Code (UOC) (Column (5))*. This column includes the following information.

(1) The Federal item name and, when required, a minimum description to identify the item.

(2) The statement 'END OF FIGURE' appears just below the last item description in Column (5) for a given figure in both section II and section I.

f. *Qty (Column (6))*. Indicates the quantity of the item used in the breakout shown on the illustration figure, which is prepared for a functional group, subfunctional group, or an assembly. A 'v' appearing in this column in lieu of a quantity indicates that the quantity is variable and the quantity may vary from application to application.

**4. Explanation of Columns (Section IV)**

a. *National Stock Number (NSN) Index.*

(1) *Stock number column*. This column lists the NSN by National item identification number (NIIN) sequence. The NIIN consists of the last nine digits of the NSN. When using this column to locate an item, ignore the first four digits of the NSN. When requisitioning items use the complete NSN (13 digits).

(2) *Fig. column*. This column lists the number of the figure where the item is identified/located. The illustrations are in numerical sequence in sections H and m.

(3) *Item column*. The item number identifies the item associated with the figure listed in the adjacent Fig. column. This item is also identified by the NSN listed on the same line.

b. *Part Number Index*. Part numbers in this index are listed by part number in Ascending alphameric sequence.

(1) *FSCM column*. This column lists the Federal supply code for manufacturer (FSCM).

(2) *Part number column*. This column indicates the part number assigned to the item.

(3) *Stock number column*. This column lists the National stock number for the associated part number and manufacturer identified in the part number and FSCM columns to the left.

(4) *Fig. column*. This column lists the number of the figure where the item is identified/located in sections II and III.

(5) *Item column*. The item number is that number assigned to the item as it appears in the figure referenced in the adjacent figure number column.

c. *Figure and Item Number Index.*

(1) *Fig. column*. This column lists the number of the figure where the item is identified/located in sections II and III.

(2) *Item column*. The item number is that number unassigned to the item as it appears in the figure referenced in the adjacent figure number column.

(3) *Stock number column*. This column lists the National stock number for the item.

(4) *FSCM column.* The Federal supply code for manufacturer (FSCM) is a 5-digit numeric code used to identify the manufacturer, distributor, or Government agency, etc., that supplies the item.

(5) *Part number column.* Indicates the primary number used by the manufacturer (individual, firm, corporation, or Government activity), which controls the design and characteristics of the item by means of its engineering drawings, specifications, standards, and inspection requirements to identify an item or range of items.

## 5. Special Information

a. *Associated Publications.* The publications listed below pertain to the AN/USM-608 and its components: TM 11-6625-3187-20, Transmission Test Set AN/USM-608 TM 11-6625-3187-24, Transmission Test Set AN/USM-608

b. *National Stock Numbers.* National stock numbers (NSN's) that are missing from P source coded items have been applied for and will be added to this TM by future change/revision when they are entered in the Army Master Data File (AMDF). Until the NSN's are established and published, submit exception requisitions to: Commander, US Army Communications-Electronics Command and Fort Monmouth, ATTN: AMSEL-LC-MM, Fort Monmouth, NJ 07703-5000 for the part required to support your equipment.

## 6. How to Locate Repair Parts

a. When National stock number or part number is not known.

(1) *First.* Using the table of contents, determine the assembly group or subassembly group to which the item belongs. This is necessary since figures are prepared for assembly groups and subassembly groups, and listings are divided into the same groups.

(2) *Second.* Find the figure covering the assembly group or subassembly group to which the item belongs.

(3) *Third.* Identify the item on the figure and note the item number.

(4) *Fourth.* Refer to the Repair Parts List for the figure to find the part number for the item number noted on the figure.

(5) *Fifth.* Refer to the Part Number Index to find the NSN, if assigned.

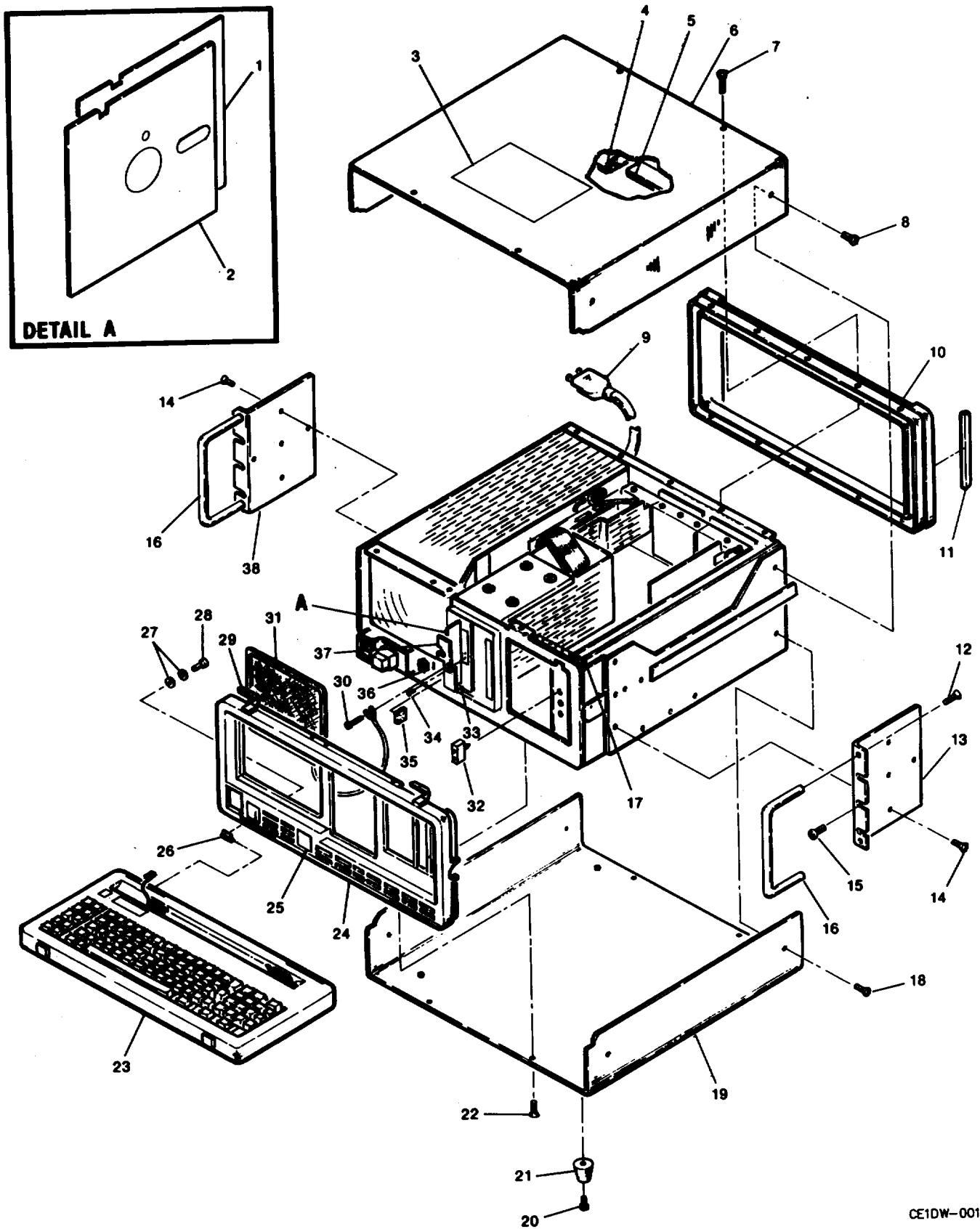
b. When National stock number or part number is known.

(1) *First.* Using the index of National stock numbers and part numbers, find the pertinent National stock number or part number. The NSN index is in National item identification number (NIIN) sequence (para 4a(1)). The part numbers in the part number index are listed in ascending alphameric sequence (para 4b). Both indexes cross-reference you to the illustration figure and item number of the item you are looking for.

(2) *Second.* After finding the figure and item number, verify that the item is the one you're looking for, then locate the item number in the repair parts list for the figure.

## 7. Abbreviations

Not applicable.



CE1DW-001

Figure 1. Transmission Test Set AN/USM-608 (sheet 1 of 3 sheets).



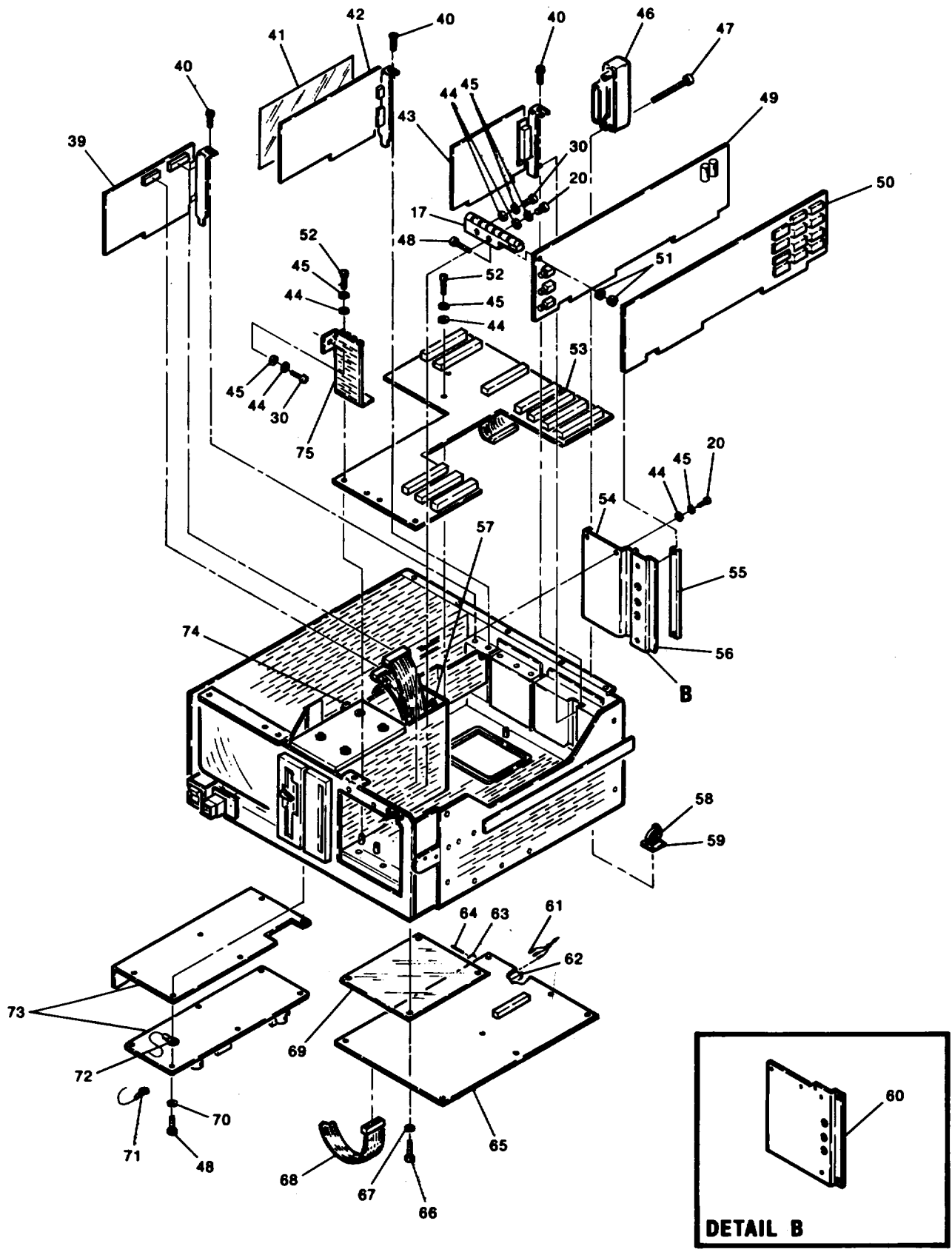


Figure 1. Transmission Test Set AN/USM-608 (sheet 2 of 3 sheets).

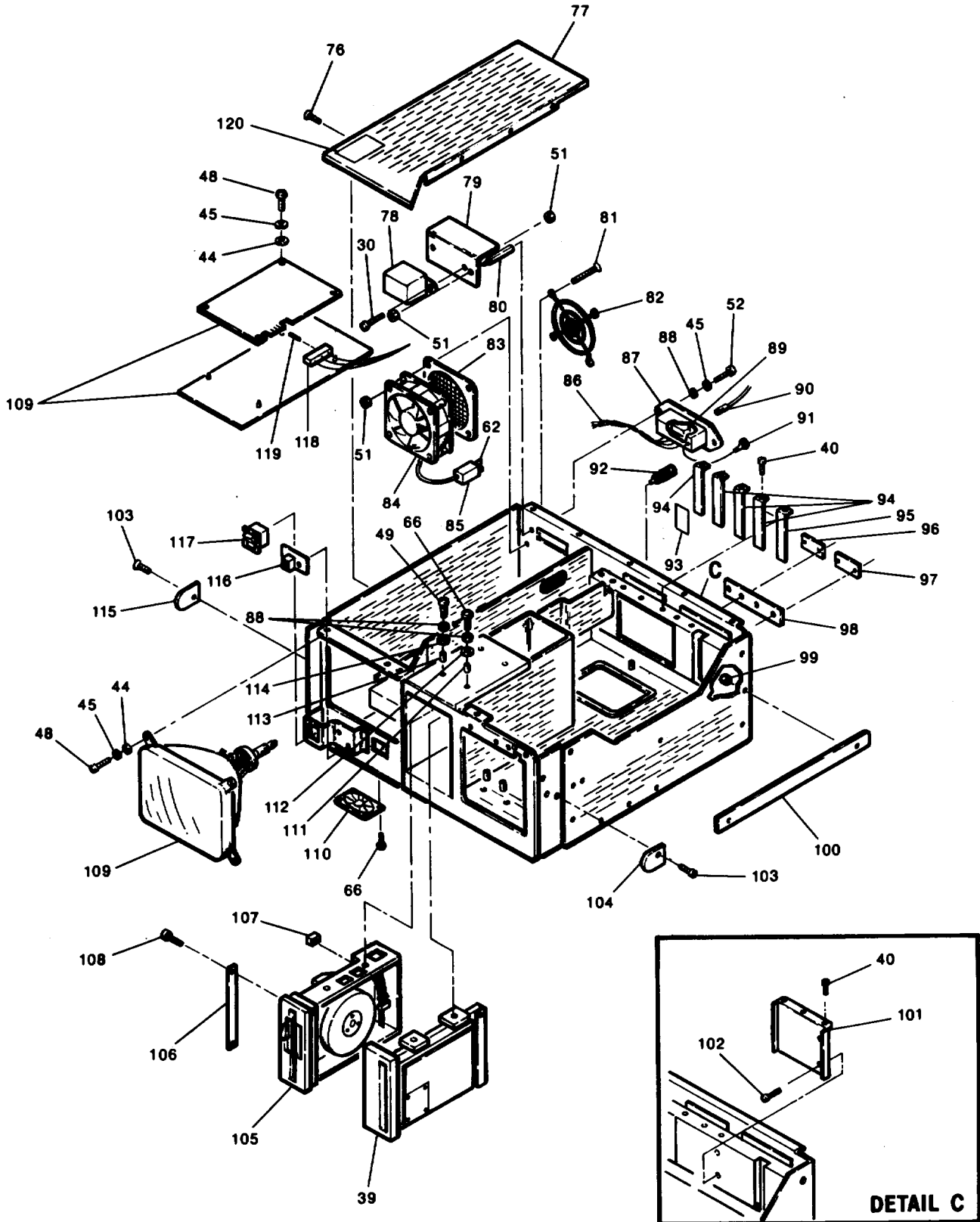


Figure 1. Transmission Test Set An/USM-608 (sheet 3 of 3 sheets).

SECTION II					
(1)	(2)	(3)	(4)	(5)	(6)
ITEM NO	SMR CODE	FSCM	PART NUMBER	DESCRIPTION AND USABLE ON CODES (UOC)	QTY
GROUP 00 TRANSMISSION TEST SET AN/USM-608					
FIGURE 1					
1	PAOZZ	40244	70500001	DISK, FLEXIBLE.....	1
2	PAOZZ	94961	5179	DISK, FLEXIBLE.....	6
3	XBHZZ	40244	OD16000167	LABEL .....	1
4	XBHZZ	40244	68000053	GASKET .....	1
5	XBHZZ	40244	68000052	RUBBER STRIP .....	1
6	XBHZZ	40244	15000073	COVER ASSY, TOP .....	1
7	PAHZZ	40244	67140011	SCREW, MACHINE .....	4
8	PAHZZ	40244	67140003	SCREW, MACHINE .....	4
9	PAHZZ	80126	C-3122-02M-GY	CABLE ASSEMBLY, POWE.....	1
10	XBHZZ	40244	16000007	BEZEL, REAR .....	1
11	XBHZZ	40244	16000006	BUMPER STRIP.....	2
12	PAHZZ	40244	67170020	SCREW, MACHINE .....	4
13	XBHZZ	40244	15000162	BRACKET, MOUNTING, RH .....	1
14	PAHZZ	40244	67140011	SCREW, MACHINE .....	12
15	PAHZZ	98587	H47-16	SCREW, MACHINE .....	4
16	XBHZZ	05791	7380	HANDLE .....	2
17	XBHZZ	40244	15000141	SHIELD, GROUND, INTER .....	1
18	PAHZZ	40244	67140003	SCREW, MACHINE .....	4
19	XBHZZ	40244	15000074	COVER ASSY, BOTTOM .....	1
20	PAHZZ	96906	MS35206-228	SCREW, MACHINE.....	9
21	XBHZZ	83330	2182	BUMPER, PLASTIC.....	4
22	PAHZZ	40244	67140011	SCREW, MACHINE .....	4
23	XBHHH	40244	93000002A	KEYBOARD ASSY SEE FIGURE 2 FOR BREAKDOWN.....	1
24	XBHZZ	40244	16000004	BEZEL, FRONT .....	1
25	XBHZZ	40244	15000200	PLATE, IDENT.....	1
26	XBHZZ	40244	15000008	HINGE, HALF, MALE .....	2
27	PAHZZ	86928	5710-144-30	WASHER, FLAT .....	8
28	PAHZZ	40244	67900025	RIVET .....	4
29	XBHZZ	94222	07-10-205-64	LATCH, FRONT.....	2
30	PAHZZ	96906	MS35206-226	SCREW, MACHINE .....	3
31	PAHZZ	40244	16000101	FILTER, LIGHT, CATHOD.....	1
32	PAHZZ	05276	2112	PLUG, TELEPHONE .....	1
33	XBHZZ	40244	15000066	INSERT.....	1
34	PAHZZ	96906	MS35190-221	SCREW, MACHINE .....	4
35	PAHZZ	96906	MS3367-4	STRAP, TIEDOWN, ELECT .....	10
36	PAHZZ	34899	2643002401	SHIELDING BEAD, ELEC .....	1
37	XBHZZ	40244	15000065	LEVER, LOCK .....	1
38	XBHZZ	40244	15000163	BRACKET, MOUNTING, LH.....	1
39	PAHZZ	40244	70000014	DISK DRIVE, UNIT CONSISTS OF DISK..... DRIVE AND CONTROLLER CARD.....	1
40	PAHZZ	96906	MS35206-213	SCREW, MACHINE .....	8
41	PAHZZ	40244	16000051	SEAL, NONMETALLIC SP .....	1
42	PAHZZ	40244	92000010A	CONTROLLER BOARD .....	1
43	PAHZZ	58589	ZT1444	CIRCUIT CARD ASSEMB .....	1
44	PAHZZ	96906	MS35338-41	WASHER, LOCK .....	23

SECTION II

(1) ITEM NO	(2) SMR CODE	(3) FSCM	(4) PART NUMBER	(5) DESCRIPTION AND USABLE ON CODES (UOC)	(6) QTY
45	PAHZZ	96906	MS35338-41	WASHER, LOCK .....	25
46	PAHZZ	40244	93910014	CONNECTOR, ADAPTOR.....	1
47	PAHZZ	96906	MS35206-230	SCREW, MACHINE.....	2
48	PAHZZ	96906	MS35206-230	SCREW, MACHINE.....	15
49	PAHDZ	40244	92000003A	CIRCUIT CARD ASSEMB.....	1
50	PAHDZ	40244	AD92000001	CIRCUIT CARD ASSEMB.....	1
51	XBHZZ	40244	67230005	NUT, SELF-LOCKING .....	9
52	PAHZZ	96906	MS35206-231	SCREW, MACHINE .....	11
53	PAHZZ	40244	A92000008	BACKPLANE ASSEMBLY .....	1
54	XBHZZ	40244	15000110	PANEL, BLANK USED ONLY ON S/H 061 AND SUBS .....	1
55	XBHZZ	06915	RCG-2	GUIDE, CIRCUIT CARD.....	2
56	XBHZZ	40244	15000085	PANEL, I/O, TMS USED ONLY ON S/N 0061 AND SUBS.....	1
57	XBHZZ	40244	91000029	STRAP, GROUND.....	1
58	PAHZZ	96906	MS3367-5	CABLE TIE .....	5
59	PAHZZ	85480	MPNY-750NA	PAD, MOUNTING .....	4
60	XBHZZ	40244	15000067	PANEL, COVER, I/O USED ONLY ON S/N 001-060 .....	1
61	PAHZZ	27264	08-50-0114	CONTACT, ELECTRICAL .....	7
62	PAHZA	22526	68290-004	CONNECTOR, RECEPTACL .....	1
63	PAHZZ	14304	J40-0023-005	CONNECTOR BODY, PLUG.....	1
64	PAHZZ	27264	02-06-1132	CONTACT, ELECTRICAL .....	2
65	PAHDA	40244	92000809A	FARADAY BOARD .....	1
66	PAHZZ	96906	MS35207-213	SCREW, MACHINE. ....	13
67	PAHZZ	96906	MS35338-21	WASHER, LOCK .....	9
68	PAHZZ	40244	91000027	CABLE ASSEMBLY, SPEC.....	1
69	PAHZZ	40244	16000050	SEAL, NONMETALLIC SP .....	1
70	PAHZZ	96906	MS35333-37	WASHER, LOCK .....	6
71	PAHZZ	59730	RB1333	TERMINAL, LUG .....	5
72	PAHZZ	40244	9100003S	STRIP, ELECTRICAL GR.....	1
73	PAHZZ	40244	70000021	POWER SUPPLY .....	1
74	XBHZZ	77969	6409	BUMPER, RUBBER.....	2
75	XBHZZ	40244	15000068	BRACKET, SUPPORT, CAR USED ONLY ON S/N 061 AND.... SUBS.....	1
76	PAHZZ	MS969	06MS35191-235	SCREW, MACHINE.....	2
77	XBHZZ	40244	15000079	COVER, HV .....	1
78	PAHZZ	05245	3EPI	FILTER, RADIO FREQUE .....	1
79	XBHZZ	40244	15000077	OVER, PLATE .....	1
80	XBHZZ	06540	9751-SS-0632	SPACER, STANDOFF.....	2
81	PAHZZ	40244	67130050	SCREW, MACHINE .....	4
82	XBHZZ	99743	08130	GUARD, FAN.....	1
83	PAHZZ	99743	06450-M	FILTER ELEMENT, AIRC.....	1
84	PAHZZ	99743	4710PL-04W-B30	FAN, TUBEAXIAL.....	1
85	PAHZZ	27264	15-31-1021	CONNECTOR, RECEPTACL.....	1
86	PAHZZ	40244	91000031	CABLE ASSEMBLY, POWE.....	1
87	PAHZZ	05245	6VMZ2	INPUT MODULE, AC .....	1
88	PAHZZ	88044	AN960-6	WASHER, FLAT .....	6
89	PAZZ	81349	F02B125V4A	FUSE, CARTRIDGE 110 VOLT OPERATION.....	1
90	PAHZZ	14726	S05075	CONNECTOR, PLUG, ELEC.....	5
91	PAHZZ	.40244	91000036	STRIP, ELECTRICAL OR.....	1
92	PAHZZ	91833	7007	POST, BINDING, ELECTR.....	1

SECTION II					
(1)	(2)	(3)	(4)	(5)	(6)
ITEM	SMR		PART	DESCRIPTION AND USABLE ON CODES (UOC)	QTY
NO	CODE	FSCM	NUMBER		
93	XBHZZ	40244	16000181	LABEL, IDENT.....	1
94	XBHZZ	40244	15000115	PANEL, BLANK USED ONLY ON S/N 061 AND SUBS.....	4
95	XBHZZ	40244	15000120	PANEL, BLANK USED ONLY ON S/N 061 AND SUBS.....	1
96	XBHZZ	40244	16000162	LABEL, SERIAL NUMBER.....	1
97	XBHZZ	40244	15000072	PLATE, COVER, CONN.....	1
98	PAHZZ	40244	15000046	PLATE, RETAINING, ELE.....	1
99	XBHZZ	40244	67220005	NUT, SELF-LOCKING.....	4
100	XBHZZ	40244	15000030	RETAINER.....	2
101	XBHZZ	40244	15000138	PANEL, COVER, I/O USED ONLY ON S/N 001-060.....	1
102	PAHZZ	40244	67160020	SCREW, TAPPING, THREA.....	2
103	PAHZZ	96906	MS35191-268	SCREW, MACHINE.....	2
104	XBHZZ	40244	15000010	OVER STRIP, RH.....	1
105	PAHZZ	50356	FD55B	DISK DRIVE, UNIT.....	1
106	XBHZZ	40244	15000080	SPACER, FRAME.....	1
107	PAHZZ	27264	15-29-1024	CONNECTOR, PLUG, ELEC.....	3
108	PAHZZ	96906	MS35206-241	SCREW, MACHINE.....	2
109	PAHZZ	65374	BHD700-TS-31-POE	TERMINAL, DATA PROCE CONSISTS OF CRT, ADAPTER.... BOARD AND CIRCUIT CARD ASSEMBLY.....	1
110	PAHZZ	01534	B0200	LOUDSPEAKER, PERMANE.....	1
111	XBHZZ	40244	68000511	SPACER, INSULATED.....	4
112	PAHZZ	80357	G-1163R	GROMMET, NONMETALLIC.....	4
113	XBHZZ	40244	68000510	SPACER, INSULATED.....	4
114	PAHZZ	80357	G-3164R	GROMMET, NONMETALLIC.....	4
115	XBHZZ	40244	15000009	COVER STRIP, LH.....	1
116	PAHZZ	40244	10000016	CONNECTOR, PCB, ,KB.....	1
117	PAHZZ	27172	1832.1037	SWITCH, POWER.....	1
118	PAHZZ	40244	HD91000006	ABLE ASSEMBLY, POWE.....	1
119	PAHZZ	27264	15-04-0219	POLARIZING KEY, ELEC.....	1
120	XBHZZ	40244	16000159	LABEL ,WARNING.....	1

END OF FIGURE

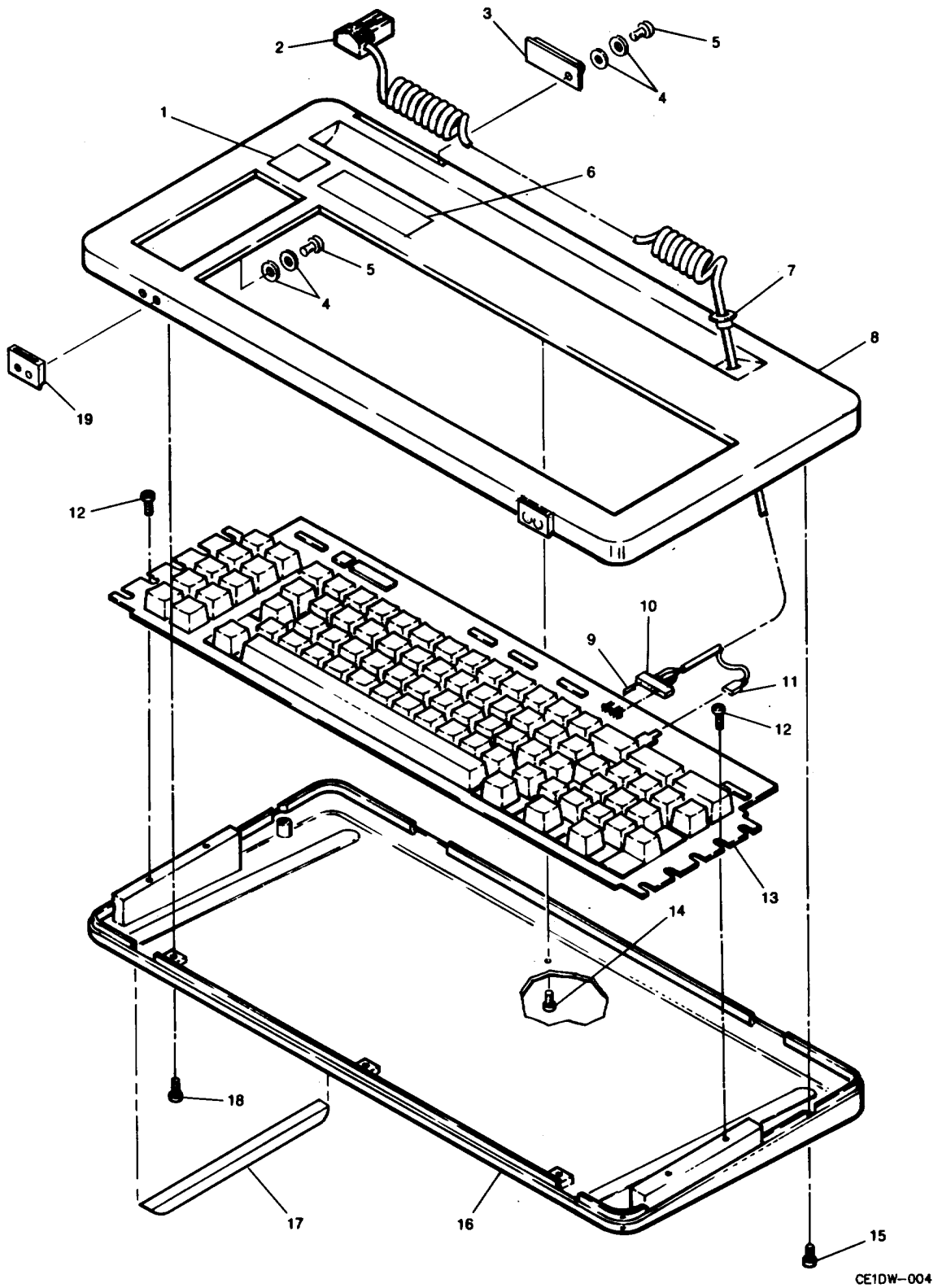


Figure 2. Keyboard Assembly.

CE1DW-004

SECTION II					
(1)	(2)	(3)	(4)	(5)	(6)
ITEM NO	SMR CODE	FSCM	PART NUMBER	DESCRIPTION AND USABLE ON CODES (UOC)	QTY
GROUP 01 KEYBOARD ASSEMBLY					
FIGURE 2					
1	XBHZZ	40244	15000200	PLATE, IDENT.....	1
2	PAHZZ	40244	91000023	CABLE ASSEMBLY, SPEC.....	1
3	XBHZZ	40244	15000007	HINGE, HALF, FEMALE.....	2
4	PAHZZ	86928	5710-144-30	WASHER, FLAT.....	8
5	PAHZZ	40244	67900025	RIVET.....	4
6	XBHZZ	40244	16000164	LABEL, WARNING.....	1
7	XBHZZ	28520	2047	BUSHING, STRAIN RELI.....	1
8	XBHZZ	40244	16000002	PLATE, TOP, KEYBOARD.....	1
9	PAHZZ	22526	65307-001	POLARIZING KEY, ELEC.....	1
10	PAHZZ	22526	65039-031	CONNECTOR BODY, PLUG.....	1
11	PAHZZ	14726	XS09769	TERMINAL, QUICK DISC.....	1
12	PAHZZ	96906	MS24693-548	SCREW, MACHINE.....	4
13	PAHZZ	51181	U03002002	KEYBOARD, DATA ENTRY.....	1
14	PAHZZ	40244	67130006	SCREW, MACHINE.....	2
15	PAHZZ	40244	67130047	SCREW, MACHINE.....	2
16	XBHZZ	40244	16000003	PLATE ,BOTTOM, KEYBOA.....	1
17	XBHZZ	40244	16000006	BUMPER STRIP.....	2
18	PAHZZ	40244	67130038	SCREW, MACHINE.....	3
19	XBHZZ	94222	07-12-201-64	LATCH.....	2

END OF FIGURE

## CROSS- REFERENCE-INDEXES

NATIONAL STOCK NUMBER INDEX					
STOCK NUMBER	FIG.	ITEM	STOCK NUMBER	FIG.	ITEM
5935-00-003-7012	1	32	5999-01-269-9004	1	72
5310-00-045-4007	1	44	5999-01-269-9005	1	91
	1	45	5999-01-269-9009	1	50
5310-00-167-0816	1	88	5999-01-269-9010	1	49
5940-00-283-5280	1	71	6625-01-270-0028	2	13
5999-00-539-3825	1	64	5330-01-270-1674	1	41
5310-00-543-2410	1	67	5305-01-271-3254	1	8
5310-00-579-0079	1	70		1	18
5975-00-727-5153	1	35	5305-01-271-3255	2	15
5305-00-889-3000	1	47	5305-01-271-4341	1	7
	1	48		1	14
5305-00-889-3001	1	52		1	22
5305-00-889-3116	1	40	5305-01-271-5909	2	18
5305-00-957-7814	2	12	5305-01-272-2568	1	12
5305-00-958-4345	1	66			
5305-00-958-5483	1	34			
5305-00-984-4983	1	30			
5305-00-984-4988	1	20			
5305-00-984-6189	1	108			
5305-00-984-7360	1	103			
5935-01-006-1359	2	9			
5920-01-006-2768	1	89			
5935-01-012-6247	2	10			
5340-01-048-6713	1	59			
5935-01-097-7630	1	119			
5935-01-101-2522	1	90			
5915-01-140-9767	1	78			
5935-01-158-9821	1	85			
5999-01-173-7364	1	61			
5935-01-175-0237	1	107			
5310-01-184-7706	1	27			
	2	4			
5940-01-194-2510	2	11			
5935-01-208-4767	1	63			
5950-01-232-5875	1	36			
5305-01-266-5002	1	15			
5995-01-268-2378	1	9			
4140-01-268-2428	1	84			
5940-01-268-6414	1	92			
6130-01-268-6659	1	73			
5965-01-269-0684	1	110			
5935-01-269-0841	1	62			
5320-01-269-1317	1	28			
	2	5			
7045-01-269-2581	1	1			
5330-01-269-5055	1	69			
5999-01-269-5076	1	43			
6625-01-269-8974	1	31			
5935-01-269-8986	1	98			
5999-01-269-9003	1	53			



## NATIONAL STOCK NUMBER AND PART NUMBER INDEX

FSCM	PART NUMBER	PART NUMBER INDEX		FIG.	ITEM
			STOCK NUMBER		
40244	AD92000001		5999-01-269-9009	1	50
88044	AN960-6		5310-00-167-0816	1	88
40244	A92000008		5999-01-269-9003	1	53
65374	BHD700-TS-31-POE			1	109
01534	B0200		5965-01-269-0684	1	110
80126	C-3122-02M-GY		5995-01-268-2378	1	9
50356	FD55B			1	105
81349	F02B125V4A		5920-01-006-2768	1	89
80357	0-1163R			1	112
80357	G-3164R			1	114
40244	HD91000006			1	118
98587	H47-16		5305-01-266-5002	1	15
14304	J40-0023-005		5935-01-208-4767	1	63
85480	MPNY-750NA		5340-01-048-6713	1	59
96906	MS24693-548		5305-00-957-7814	2	12
96906	MS3367-4		5975-00-727-5153	1	35
96906	MS3367-5			1	58
96906	MS35190-221		5305-00-958-5483	1	34
96906	MS35191-268		5305-00-9S4-7360	1	103
96906	MS35206-213		5305-00-S89-3116	1	40
96906	MS35206-226		5305-00-984-4983	1	30
96906	MS35206-228		5305-00-984-4988	1	20
96906	MS35206-230		5305-00-S89-3000	1	47
				1	48
96906	MS35206-231		5305-00-889-3001	1	52
96906	MS35206-241		5305-00-984-6189	1	108
96906	MS35207-213		5305-00-958-4345	1	66
96906	MS35333-37		5310-00-579-0079	1	70
96906	MS35338-21		5310-00-543-2410	1	67
96906	MS35338-41		5310-00-045-4007	1	44
				1	45
40244	OD16000167			1	3
59730	RB1333		5940-00-283-5280	1	71
06915	RCG-2			1	55
14726	S05075		5935-01-101-2522	1	90
51181	U03002002		6625-01-270-0028	2	13
14726	XS09769		5940-01-194-2510	2	11
58589	ZT1444		5999-01-269-5076	1	43
27264	02-06-1132		5999-00-539-3825	1	64
MS969	06MS35191-235			1	76
99743	06450-M			1	83
94222	07-10-205-64			1	29
94222	07-12-201-64			2	19
27264	08-50-0114		5999-01-173-7364	1	61
99743	08130			1	82
40244	10000016			1	116
27264	15-04-0219		5935-01-097-7630	1	119
27264	15-29-1024		5935-01-175-0237	1	107
27264	15-31-1021		5935-01-158-9821	1	85
40244	15000007			2	3
40244	15000008			1	26

## NATIONAL STOCK NUMBER AND PART NUMBER INDEX

FSCM	PART NUMBER	PART NUMBER INDEX		FIG.	ITEM
			STOCK NUMBER		
40244	15000009			1	115
40244	15000010			1	104
40244	15000030			1	100
40244	15000046	5935-01-269-8986		1	98
40244	15000065			1	37
40244	15000066			1	33
40244	15000067			1	60
40244	15000068			1	75
40244	15000072			1	97
40244	15000073			1	6
40244	15000074			1	19
40244	15000077			1	79
40244	15000079			1	77
40244	15000080			1	106
40244	15000085			1	56
40244	15000110			1	54
40244	15000115			1	94
40244	15000120			1	95
40244	15000138			1	101
40244	15000141			1	17
40244	15000162			1	13
40244	15000163			1	38
40244	15000200			1	25
				2	1
40244	16000002			2	8
40244	16000003			2	16
40244	16000004			1	24
40244	16000006			1	11
				2	17
40244	16000007			1	10
40244	16000050	5330-01-269-5055		1	69
40244	16000051	5330-01-270-1674		1	41
40244	16000101	6625-01-269-8974		1	31
40244	16000159			1	120
40244	16000162			1	96
40244	16000164			2	6
40244	16000181			1	93
27172	1832.1037			1	117
28520	2047			2	7
05276	2112	5935-00-003-7012		1	32
83330	2182			1	21
34899	2643002401	5950-01-232-5875		1	36
05245	3EP1	5915-01-140-9767		1	78
99743	4710PL-04W-B30	4140-01-268-2428		1	84
94961	5179			1	2
86928	5710-144-30	5310-01-184-7706		1	27
				2	4
05245	6VM2			1	87
77969	6409			1	74
22526	65039-031	5935-01-012-6247		2	10
22526	65307-001	5935-01-006-1359		2	9

## NATIONAL STOCK NUMBER AND PART NUMBER INDEX

FSCM	PART NUMBER	PART NUMBER INDEX		FIG.	ITEM
			STOCK NUMBER		
40244	67130006			2	14
40244	67130038		5305-01-271-5909	2	18
40244	67130047		5305-01-271-3255	2	15
40244	67130050			1	81
40244	67140003		5305-01-271-3254	1	8
				1	18
40244	67140011		5305-01-271-4341	1	7
				1	14
				1	22
40244	67160020			1	102
40244	67170020		5305-01-272-2568	1	12
40244	67220005			1	99
40244	67230005			1	51
40244	67900025		5320-01-269-1317	1	28
				2	5
40244	68000052			1	5
40244	68000053			1	4
40244	68000510			1	113
40244	68000511			1	111
22526	68290-004		5935-01-269-0841	1	62
40244	70000014			1	39
40244	70000021		6130-01-268-6659	1	73
91833	7007		5940-01-268-6414	1	92
40244	70500001		7045-01-269-2581	1	1
05791	7380			1	16
40244	91000023			2	2
40244	91000027			1	68
40244	91000029			1	57
40244	91008031			1	86
40244	91000035		5999-01-269-9004	1	72
40244	91000036		5999-01-269-9005	1	91
40244	92000003A		5999-01-269-9010	1	49
40244	92000009A			1	65
40244	92000010A			1	42
40244	93000002A			1	23
40244	93000004			1	46
06540	9751-SS-0632			1	80

## CROSS REFERENCE INDEXES

FIG.	ITEM	FIGURE AND ITEM NUMBER INDEX STOCK NUMBER	FSCM	PART NUMBER
1	1	7045-01-269-2581	40244	70500001
1	2		94961	5179
1	3		40244	OD16000167
1	4		40244	68000053
1	5		40244	68000052
1	6		40244	15000073
1	7	5305-01-271-4341	40244	67140011
1	8	5305-01-271-3254	40244	67140003
1	9	5995-01-268-2378	80126	C-3122-02M-GY
1	10		40244	16000007
1	11		40244	16000006
1	12	5305-01-272-2568	40244	67170020
1	13		40244	15000162
1	14	5305-01-271-4341	40244	67140011
1	15	5305-01-266-5002	98587	H47-16
1	16		05791	7380
1	17		40244	15000141
1	18	5305-01-271-3254	40244	67140003
1	19		40244	15000074
1	20	5305-00-984-4988	96906	MS35206-228
1	21		83330	2182
1	22	5305-01-271-4341	40244	67140011
1	23		40244	93000002A
1	24		40244	16000004
1	25		40244	15000200
1	26		40244	15000008
1	27	5310-01-184-7706	86928	5710-144-30
1	28	5320-01-269-1317	40244	67900025
1	29		94222	07-10-205-64
1	30	5305-00-984-4983	96906	MS35206-226
1	31	6625-01-269-8974	40244	16000101
1	32	5935-00-003-7012	05276	2112
1	33		40244	15000066
1	34	5305-00-958-5483	96906	MS35190-221
1	35	5975-00-727-5153	96906	MS3367-4
1	36	5950-01-232-5875	34899	2643002401
1	37		40244	15000065
1	38		40244	15000163
1	39		40244	70000014
1	40	5305-00-889-3116	96906	MS35206-213
1	41	5330-01-270-1674	40244	16000051
1	42		40244	92000010A
1	43	5999-01-269-5076	58589	ZT1444
1	44	5310-00-045-4007	96906	MS35338-41
1	45	5310-00-045-4007	96906	M535338-41
1	46		40244	93000004
1	47	5305-00-889-3000	96906	MS35206-230
1	48	5305-00-889-3000	96906	MS35206-230
1	49	5999-01-269-9010	40244	92000003A
1	50	5999-01-269-9009	40244	AD92000001
1	51		40244	67230005

## CROSS REFERENCE INDEXES

FIG.	ITEM	FIGURE AND ITEM NUMBER INDEX STOCK NUMBER	FSCM	PART NUMBER
1	52	5305-00-889-3001	96906	MS35206-231
1	53	5999-01-269-9003	40244	A92000008
1	54		40244	15000110
1	55		06915	RCG-2
1	56		40244	15000085
1	57		40244	91000029
1	58		96906	M53367-5
1	59	5340-01-048-6713	85480	MPNY-750NA
1	60		40244	15000067
1	61	5999-01-173-7364	27264	08-50-0114
1	62	5935-01-269-0841	22526	68290-004
1	63	5935-01-208-4767	14304	J40-0023-005
1	64	5999-00-539-3825	27264	02-06-1132
1	65		40244	92000009A
1	66	5305-00-958-4345	96906	MS35207-213
1	67	5310-00-543-2410	96906	MS35338-21
1	68		40244	91000027
1	69	5330-01-269-5055	40244	16000050
1	70	5310-00-579-0079	96906	MS35333-37
1	71	5940-00-283-5280	59730	RB1333
1	72	5999-01-269-9004	40244	91000035
1	73	6130-01-268-6659	40244	70000021
1	74		77969	6409
1	75		40244	15000068
1	76		MS969	06MS35191-235
1	77		40244	15000079
1	78	5915-01-140-9767	05245	3EP1
1	79		40244	15000077
1	80		06540	9751-S5-0632
1	81		40244	67130050
1	82		99743	08130
1	83		99743	06450-M
1	84	4140-01-268-2428	99743	4710PL-04W-B30
1	85	5935-01-158-9821	27264	15-31-1021
1	86		40244	91000031
1	87		05245	6VM2
1	88	5310-00-167-0816	88044	AN960-6
1	89	5920-01-006-2768	81349	F02B125V4A
1	90	5935-01-101-2522	14726	S05075
1	91	5999-01-269-9005	40244	91000036
1	92	5940-01-268-6414	91833	7007
1	93		40244	16000181
1	94		40244	15000115
1	95		40244	15000120
1	96		40244	16000162
1	97		40244	15000072
1	98	5935-01-269-8986	40244	15000046
1	99		40244	67220005
1	100		40244	15000030
1	101		40244	15000138
1	102		40244	67160020

## CROSS REFERENCE INDEXES

FIG.	ITEM	FIGURE AND ITEM NUMBER INDEX STOCK NUMBER	FSCM	PART NUMBER
1	103	5305-00-984-7360	96906	MS35191-268
1	104		40244	15000010
1	105		50356	FD55B
1	106		40244	15000080
1	107	5935-01-175-0237	27264	15-29-1024
1	108	5305-00-984-6189	96906	MS35206-241
1	109		65374	BHD700-TS-31-POE
1	110	5965-01-269-0684	01534	B0200
1	111		40244	68000511
1	112		80357	G-1163R
1	113		40244	68000510
1	114		80357	G-3164R
1	115		40244	15000009
1	116		40244	10000016
1	117		27172	1832.1037
1	118		40244	HD91000006
1	119	5935-01-097-7630	27264	15-04-0219
1	120		40244	16000159
2	1		40244	15000200
2	2		40244	91000023
2	3		40244	15000007
2	4	5310-01-184-7706	86928	5710-144-30
2	5	5320-01-269-1317	40244	67900025
2	6		40244	16000164
2	7		28520	2047
2	8		40244	16000002
2	9	5935-01-006-1359	22526	65307-001
2	10	5935-01-012-6247	22526	65039-031
2	11	5940-01-194-2510	14726	XS09769
2	12	5305-00-957-7814	96906	MS24693-S48
2	13	6625-01-270-0028	51181	U03002002
2	14		40244	67130006
2	15	5305-01-271-3255	40244	67130047
2	16		40244	16000003
2	17		40244	16000006
2	18	5305-01-271-5909	40244	67130038
2	19		94222	07-12-201-64

By Order of the Secretary of the Army:

Official:

R.L. DILWORTH  
*Brigadier General, United States Army*  
*The Adjutant General*

CARL E. VUONO  
*General, United States Army*  
*Chief of Staff*

DISTRIBUTION:

To be distributed in accordance with DA Form 12-36 unit and DS/GS requirements for AN/USM-608.

RECOMMENDED CHANGES TO EQUIPMENT TECHNICAL PUBLICATIONS



**SOMETHING WRONG WITH THIS PUBLICATION?**

THEN... JOT DOWN THE DOPE ABOUT IT ON THIS FORM, CAREFULLY TEAR IT OUT, FOLD IT AND DROP IT IN THE MAIL!

FROM: (PRINT YOUR UNIT'S COMPLETE ADDRESS)

DATE SENT

PUBLICATION NUMBER

PUBLICATION DATE

PUBLICATION TITLE

BE EXACT... PIN-POINT WHERE IT IS

PAGE NO.

PARA-GRAPH

FIGURE NO.

TABLE NO.

IN THIS SPACE TELL WHAT IS WRONG AND WHAT SHOULD BE DONE ABOUT IT:

TEAR ALONG PERFORATED LINE

PRINTED NAME, GRADE OR TITLE, AND TELEPHONE NUMBER

SIGN HERE:

DA FORM 2028-2  
1 JUL 79

PREVIOUS EDITIONS ARE OBSOLETE.

P.S.—IF YOUR OUTFIT WANTS TO KNOW ABOUT YOUR RECOMMENDATION MAKE A CARBON COPY OF THIS AND GIVE IT TO YOUR HEADQUARTERS.



