

**TECHNICAL MANUAL**

**GENERAL SUPPORT MAINTENANCE  
REPAIR PARTS AND SPECIAL TOOLS LISTS**

**FOR**

**TEST SET, RELAY**

**TS-836/UGM-1**

**(NSN 6625-00-077-2986) (EIC: KHH)**

**DISTRIBUTION STATEMENT A** – Approved for public release; distribution is unlimited.

\*THIS MANUAL, TOGETHER WITH TM 11-6625-620-20P, DATED 28 FEBRUARY 1979, SUPERSEDES TM 11-6625-620-25P-3, DATED 26 August 1976.

---

**HEADQUARTERS, DEPARTMENT OF THE ARMY**  
**28 FEBRUARY 1979**



CHANGE }  
NO. 1 }

**HEADQUARTERS  
DEPARTMENT OF THE ARMY**  
Washington, D.C., 21 July 2006

**GENERAL SUPPORT MAINTENANCE REPAIR PARTS AND SPECIAL  
TOOLS LISTS**

**FOR**

**TEST SET, RELAY  
TS-836/UGM-1  
(NSN 6625-00-077-2986) (EIC: KHH)**

**HAZARDOUS MATERIAL INFORMATION** – This document has been reviewed for the presence of solvents containing hazardous materials as defined by the EPCRA 302 and 313 lists by the AMCOM G-4 (Logistics) Environmental Division. As of the base document, dated 28 February 1979, all references to solvents containing hazardous materials have been removed from this document by substitution with non-hazardous or less hazardous materials where possible.

**OZONE DEPLETING CHEMICAL INFORMATION** – This document has been reviewed for the presence of Class I ozone depleting chemicals by the AMCOM G-4 (Logistics) Environmental Division. As of the base document, dated 28 February 1979, all references to Class I ozone depleting chemicals have been removed from this document by substitution with chemicals that do not cause atmospheric ozone depletion.

**DISTRIBUTION STATEMENT A** – Approved for public release; distribution is unlimited.

TM 11-6625-620-40P-3, dated 28 February 1979, is changed as follows:

1. Remove old pages and insert new pages as indicated below.
2. New or changed text is indicated by a vertical bar in the outer margin of the page.
3. Added illustrations are indicated by a vertical bar adjacent to the illustration identification number. Changed illustrations are indicated by a miniature pointing hand adjacent to the updated area and a vertical bar adjacent to the illustration identification number.

**Remove Pages**

None  
i/(ii Blank)  
DA Forms 2028-2  
Cover

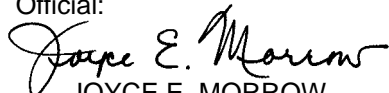
**Insert Pages**

A/(B Blank)  
i and ii  
DA Forms 2028  
Cover

4. File this change sheet in front of the publication for reference purposes.

By Order of the Secretary of the Army:

Official:

  
JOYCE E. MORROW  
*Administrative Assistant to the  
Secretary of the Army*  
0612410

PETER J. SCHOOMAKER  
*General, United States Army  
Chief of Staff*

DISTRIBUTION:

To be distributed in accordance with the Initial Distribution Number (IDN) 363810,  
requirements for TM 11-6625-620-40P-3.

INSERT LATEST CHANGED PAGES. DESTROY SUPERSEDED PAGES.

**LIST OF EFFECTIVE PAGES**

**NOTE**

The portion of the text affected by the changes is indicated by a vertical line in the outer margin of the page. Changes to illustrations are indicated by shaded or screened areas, or by miniature pointing hands.

Date of issue for original and changed pages are:

Original 0 28 February 1979  
 Change 1 21 July 2006

TOTAL NUMBER OF PAGES IN THIS PUBLICATION IS 36, CONSISTING OF THE FOLLOWING:

| Page<br>No.        | * Change<br>No. |
|--------------------|-----------------|
| Cover.....         | 1               |
| A .....            | 1               |
| B Blank .....      | 1               |
| i and ii.....      | 1               |
| 1 and 2 .....      | 0               |
| 3 Blank .....      | 0               |
| 4 through 22 ..... | 0               |

\*Zero in this column indicates an original page.



TECHNICAL MANUAL }  
 NO. 11-6625-620-40P-3 }

HEADQUARTERS  
 DEPARTMENT OF THE ARMY  
 Washington, D.C., 28 February 1979

**GENERAL SUPPORT MAINTENANCE REPAIR PARTS  
 AND SPECIAL TOOLS LISTS  
 FOR  
 TEST SET, RELAY  
 TS-836/UGM-1  
 (NSN 6625-00-077-2986) (EIC: KHH)**

*Current as of 27 September 1978*

**REPORTING ERRORS AND RECOMMENDING IMPROVEMENTS**

You can help improve this manual. If you find any mistakes or if you know of a way to improve the procedures, please let us know. Mail your letter or DA Form 2028 (Recommended Changes to Publications and Blank Forms) directly to: Commander, U. S. Army Aviation and Missile Command, AMSAM-MMC-MA-NP, Redstone Arsenal, AL 35898-5000. A reply will be furnished to you. You may also provide DA Form 2028 information to AMCOM via email, fax or the World Wide Web. Our fax number is: DSN 788-6546 or Commercial 256-842-6546. Our email address is: [2028@redstone.army.mil](mailto:2028@redstone.army.mil). Instructions for sending an electronic 2028 may be found at the back of this manual immediately preceding the hardcopy 2028. For the World Wide Web use: <https://amcom2028.redstone.army.mil>.

**HAZARDOUS MATERIAL INFORMATION**

This document has been reviewed for the presence of solvents containing hazardous materials as defined by the EPCRA 302 and 313 lists by the AMCOM G-4 (Logistics) Environmental Division. As of the base document, dated 28 February 1979, references to solvents containing hazardous materials have been removed from this document by substitution with non-hazardous or less hazardous materials where possible.

**OZONE DEPLETING CHEMICAL INFORMATION**

This document has been reviewed for the presence of Class I ozone depleting chemicals by the AMCOM G-4 (Logistics) Environmental Division. As of the base document, dated 28 February 1979, all references to Class I ozone depleting chemicals have been removed from this document by substitution with chemicals that do not cause atmospheric ozone depletion.

**DISTRIBUTION STATEMENT A** – Approved for public release; distribution is unlimited.

\*This manual, together with TM 11-6625-620-20P, dated 28 February 1979, supersedes TM 11-6625-620-25P-3, dated 26 August 1976.

TABLE OF CONTENTS

|         |      | Page   | Illus<br>Figure |
|---------|------|--|-----------------|
| SECTION | I.   | INTRODUCTION.....                                | 1               |
|         | II.  | Repair Parts List.....                           | 5               |
| Group   | 03   | Relay Test Set TS-836/UGM-1 .....                | 5               |
|         |      | 0301 Relay Test Set                              |                 |
|         |      | 030101 Front Panel Assembly .....                | 7               |
|         |      | Socket Assembly .....                            | 9               |
|         |      | 030102 Rear Panel Assembly .....                 | 11              |
|         |      | 030103 Chassis Assembly .....                    | 13              |
|         |      | Assembly Board A2 .....                          | 15              |
|         |      | Assembly Board A3 .....                          | 17              |
|         |      | Assembly Board TB1 and TB2 .....                 | 19              |
|         | III. | Special Tools List (Not applicable)              |                 |
|         | IV.  | National Stock Number and Part Number Index..... | 20              |



# SECTION I

## INTRODUCTION

---

### 1. Scope

This manual lists spares and repair parts; special tools; special test, measurement, and diagnostic equipment (TMDE), and other special support equipment required for performance, of general support maintenance of the TS-836/UGM-1. It authorizes the requisitioning and issue of spares and repair parts as indicated by the source and maintenance codes.

### 2. General

This Repair Parts and Special Tools List is divided into the following sections:

*a. Section II. Repair Parts List.* A list of spares and repair parts authorized for use in the performance of maintenance. The list also includes parts which must be removed for replacement of the authorized parts. Parts lists are composed of functional groups in numeric sequence, with the parts in each group listed in figure and item number sequence.

*b. Section III. Special Tools List.* Not applicable.

*c. Section IV. National Stock Number and Part Number Index.* A list, in National item identification number (NIIN) sequence, of all National stock numbers (NSN) appearing in the listings, followed by a list, in alphanumeric sequence, of all part numbers appearing in the listings. National stock numbers and part numbers are cross-referenced to each illustration figure and item number appearance.

### 3. Explanation of Columns

*a. Illustration.* This column is divided as follows:

(1) *Figure number.* Indicates the figure number of the illustration on which the item is shown.

(2) *Item number.* The number used to identify item called out in the illustration.

*b. Source, Maintenance, and Recoverability (SMR) Codes.*

(1) *Source code.* Source codes indicate the manner of acquiring support items for maintenance, repair, or overhaul of end items. Source codes are entered in the first and second positions of the Uniform SMR Code format as follows:

| <i>Code</i> | <i>Definition</i>   |
|-------------|---|
| PA          | Item procured and stocked for anticipated or known usage. |

|    |  |
|----|--|
| XD | A support item that is not stocked. When required, item will be procured through normal supply channels. |
|----|--|

### NOTE

Cannibalization or salvage may be used as a source of supply for any items source coded above except those coded XA and aircraft support items as restricted by AR 700-42.

(2) *Maintenance code.* Maintenance codes are assigned to indicate the levels of maintenance authorized to USE and REPAIR support items. The maintenance codes are entered in the third and fourth positions of the Uniform SMR Code format as follows:

(a) The maintenance code entered in the third position will indicate the lowest maintenance level authorized to remove, replace, and use the support item. The maintenance code entered in the third position will indicate one of the following levels of maintenance:

| <i>Code</i> | <i>Application/Explanation</i>  |
|-------------|---|
| O           | Support item is removed, replaced, used at the organizational level.  |
| H           | Support item is removed, replaced, used at the general support level. |

(b) The maintenance code entered in the fourth position indicates whether the item is to be repaired and identifies the lowest maintenance level with the capability to perform complete repair (i.e., all authorized maintenance functions). This position will contain one of the following maintenance codes:

| <i>Code</i> | <i>Application/Explanation</i>  |
|-------------|---|
| H           | The lowest maintenance level capable of complete repair of the support item is the general support level. |
| Z           | Nonreparable. No repair is authorized.  |

(3) *Recoverability code.* Recoverability codes are assigned to support items to indicate the disposition action on unserviceable items. The recoverability code is entered in the fifth position of the Uniform SMR Code format as follows:

| <i>Recoverability codes</i> | <i>Definition</i>   |
|-----------------------------|---|
| Z                           | Nonreparable item. When unserviceable, condemn and dispose at the level indicated in position 3.  |
| D                           | Reparable item. When beyond lower level repair capability, return to depot. Condemnation and disposal not authorized below depot level. |

*c. National Stock Number.* Indicates the National stock number assigned to the item and will be used for requisitioning purposes.

*d. Part Number.* Indicates the primary number used by the manufacturer (individual, company, firm, corporation, or Government activity), which controls the design and characteristics of the item by means of its engineering drawings, specifications, standards, and inspection requirements to identify an item or range of items.

**NOTE**

When a stock-numbered item is requisitioned, the repair part received may have a different part number than the part being replaced.

*e. Federal Supply Code for Manufacturer (FSCM).* The FSCM is a 5-digit numeric code listed in SB 708-42 which is used to identify the manufacturer, distributor, or Government agency, etc.

*f. Description.* Indicates the Federal item name and, if required, a minimum description to identify the item.

*g. Unit of Measure (U/M).* Indicates the standard of the basic quantity of the listed item as used in performing the actual maintenance function. This measure is expressed by a two-character alphabetical abbreviation (e.g., ea, in, pr, etc). When the unit of measure differs from the unit of issue, the lowest unit of issue that will satisfy the required units of measure will be requisitioned.

*h. Quantity Incorporated in Unit.* Indicates the quantity of the item used in the breakout shown on the illustration figure, which is prepared for a functional group, subfunctional group, or an assembly.

**4. Special Information**

The following publications pertain to the TS-836/UGM-1 and its components:

TM 11-6625-620-12, Test Set, Teletypewriter AN/UGM-1

TM 11-6625-620-20P, Test Set, Teletypewriter AN/UGM-1

TM 11-6625-620-45-3, Test Set, Relay TS-836/UGM-1

**5. How to Locate Repair Parts**

*a. When National stock number or part number is unknown.*

(1) *First.* Using the table of contents, determine the functional group within which the item belongs. This is necessary since illustrations are prepared for functional groups and listings are divided into the same groups.

(2) *Second.* Find the illustration covering the functional group to which the item belongs.

(3) *Third.* Identify the item on the illustration and note the illustration figure and item number of the item.

(4) *Fourth.* Using the Repair Parts Listing, find the figure and item number noted on the illustration.

*b. When National stock number or part number is known.*

(1) *First.* Using the Index of National Stock Numbers and Part Numbers, find the pertinent National stock number or part number. This index is in NIIN sequence followed by a list of part number in alphanumeric sequence, cross-referenced to the illustration figure number and item number.

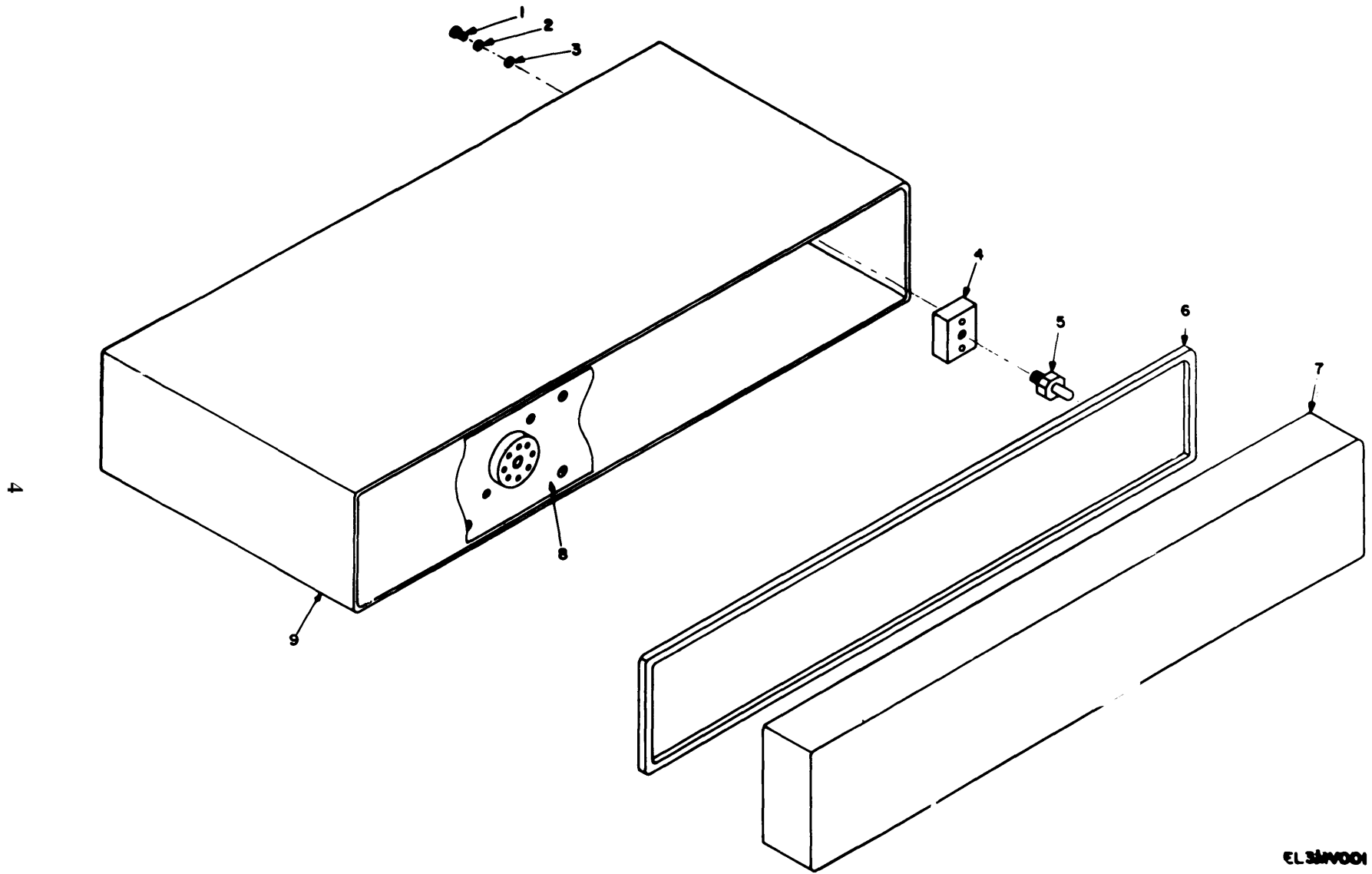
(2) *Second.* After finding the figure and item number, locate the figure and item number in the repair parts list.

**6. Abbreviations**

Not applicable.

(Next printed page is 4)





4

Figure 1. Relay Test Set TS-836/UGM-I

ELSIWOOI

| SECTION II                           |      |          |                  | TM11-6625-620-40P-3 |             |                  |     |  |      |
|--------------------------------------|------|----------|------------------|---------------------|-------------|------------------|-----|--|------|
| (1)                                  | (2)  | (3)      | (4)              | (5)                 | (6)         | (7)              | (8) |  |      |
| ILLUSTRATION                         |      |          |                  |                     |             |                  |     |  |      |
| (A)                                  | (B)  | NATIONAL |                  |                     | DESCRIPTION |                  | QTY |  | INC  |
| FIG                                  | ITEM | STOCK    | PART             |                     |             |                  | IN  |  | IN   |
| NO.                                  | NO.  | CODE     | NUMBER           | NUMBER              | FSCM        | USABLE ON CODE   | U/M |  | UNIT |
| GROUP 03 RELAY TEST SET TS-836/UGM-1 |      |          |                  |                     |             |                  |     |  |      |
| 1                                    | 1    | PAHZZ    | 5305-00-054-6655 | MS35233-31          | 96906       | SCREW,MACHINE    | EA  |  | 4    |
| 1                                    | 2    | PAHZZ    | 5310-00-880-5976 | MS15795-806         | 96906       | WASHER,FLAT      | EA  |  | 4    |
| 1                                    | 3    | XDHZZ    |                  | SMB552633-1         | 80063       | WASHER,SEAL      | EA  |  | 4    |
| 1                                    | 4    | XDHZZ    |                  | SMB552562           | 80063       | RECEPT,GUIDE PIN | EA  |  | 2    |
| 1                                    | 5    | XDHZZ    |                  | SMB552737           | 80063       | PIN,GUIDE        | EA  |  | 2    |
| 1                                    | 6    | XDHZZ    |                  | SMB552563           | 80063       | GASKET           | EA  |  | 1    |
| 1                                    | 7    | XDHZZ    |                  | SMD552556           | 80063       | COVER,TEST SET   | EA  |  | 1    |
| 1                                    | 8    | XDHHD    |                  | SMD552655           | 80063       | TEST SET,RELAY   | EA  |  | 1    |
| 1                                    | 9    | XDHZZ    |                  | SMD552547           | 80063       | CASE,TEST SET    | EA  |  | 1    |

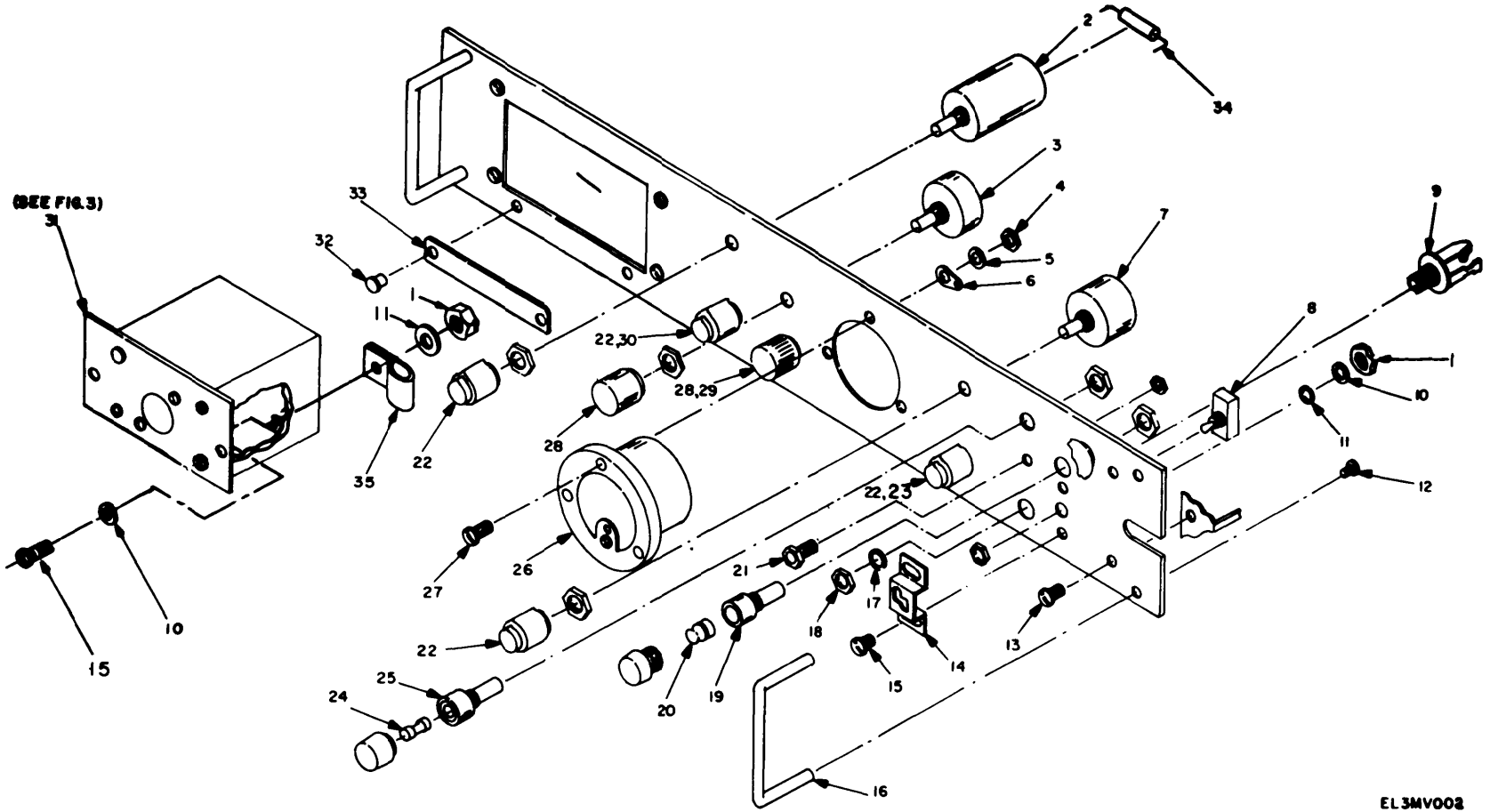


Figure 2. Front Panel Assembly

EL3MVO08

| SECTION II<br>(1)<br>ILLUSTRATION |                    |             |                             | TM11-6625-620-40P-3 |       |   |                   |     |     |                                 |  |
|-----------------------------------|--------------------|-------------|-----------------------------|---------------------|-------|---|-------------------|-----|-----|---------------------------------|--|
| (A)<br>FIG<br>NO.                 | (B)<br>ITEM<br>NO. | SMR<br>CODE | NATIONAL<br>STOCK<br>NUMBER | PART<br>NUMBER      | FSCM  | DESCRIPTION   | USABLE<br>ON CODE | U/M | (7) | (8)<br>QTY<br>INC<br>IN<br>UNIT |  |
| GROUP 030101 FRONT PANEL ASSEMBLY |                    |             |                             |                     |       |   |                   |     |     |                                 |  |
| 2                                 | 1                  | PAHZZ       | 5310-00-934-9761            | MS35649-264         | 96906 | NUT,PLAIN,HEXAGON                                   |                   |     | EA  | 3                               |  |
| 2                                 | 2                  | XDHZZ       |                             | SMA552583           | 80063 | SWITCH,ROTARY                                       |                   |     | EA  | 1                               |  |
| 2                                 | 3                  | PAHZZ       | 5905-00-752-3834            | RA20NASD201A        | 81349 | RESISTOR,VARIABLE,W                                 |                   |     | EA  | 1                               |  |
| 2                                 | 4                  | PAHZZ       | 5310-00-934-9739            | MS35649-242         | 96906 | NUT,PLAIN,HEXAGON                                   |                   |     | EA  | 3                               |  |
| 2                                 | 5                  | PAHZZ       | 5310-00-543-2410            | MS35337-21          | 96906 | WASHER,LOCK   |                   |     | EA  | 3                               |  |
| 2                                 | 6                  | PAHZZ       | 5940-00-614-0537            | MS35431-1           | 96906 | TERMINAL,LUG  |                   |     | EA  | 1                               |  |
| 2                                 | 7                  | XDHZZ       |                             | SMA552640           | 80063 | SWITCH,ROTARY                                       |                   |     | EA  | 1                               |  |
| 2                                 | 8                  | PAHZZ       | 5930-00-615-9376            | MS35059-21          | 96906 | SWITCH,TOGGLE                                       |                   |     | EA  | 1                               |  |
| 2                                 | 9                  | XDHZZ       |                             | SMB552132           | 80063 | JACK,TELEPHONE                                      |                   |     | EA  | 1                               |  |
| 2                                 | 10                 | PAHZZ       | 5310-00-983-8483            | MS27183-5           | 96906 | WASHER,FLAT   |                   |     | EA  | 3                               |  |
| 2                                 | 11                 | PAHZZ       | 5310-00-011-1041            | MS35338-79          | 96906 | WASHER  |                   |     | EA  | 3                               |  |
| 2                                 | 12                 | PAHZZ       | 5305-00-958-5473            | MS35239-50          | 96906 | SCREW,MACHINE                                       |                   |     | EA  | 4                               |  |
| 2                                 | 13                 | PAHZZ       | 5305-00-054-6668            | MS35233-43          | 96906 | SCREW,MACHINE                                       |                   |     | EA  | 4                               |  |
| 2                                 | 14                 | XDHZZ       |                             | SMB552791           | 80063 | STOP,SWITCH   |                   |     | EA  | 1                               |  |
| 2                                 | 15                 | PAHZZ       | 5305-00-068-6533            | MS35233-29          | 96906 | SCREW,MACHINE                                       |                   |     | EA  | 3                               |  |
| 2                                 | 16                 | XDHZZ       |                             | SMB434359-3         | 80063 | HANDLE,BOW  |                   |     | EA  | 2                               |  |
| 2                                 | 17                 | XDHZZ       |                             | SMB552135           | 80063 | WASHER,NON-   |                   |     | EA  | 1                               |  |
| 2                                 | 18                 | XDHZZ       |                             | SMB552657           | 80063 | NUT,PLAIN,HEXAGON                                   |                   |     | EA  | 1                               |  |
| 2                                 | 19                 | PAHZZ       | 6210-00-808-8604            | MS25257-4           | 96906 | LIGHT,INDICATOR                                     |                   |     | EA  | 1                               |  |
| 2                                 | 20                 | PAOZZ       | 6240-00-892-4420            | MS25252NE2D         | 96906 | LAMP,GLOW   |                   |     | EA  | 1                               |  |
| 2                                 | 21                 | PAHZZ       | 5935-00-681-5690            | MS16108-7A          | 96906 | JACK,TIP  |                   |     | EA  | 2                               |  |
| 2                                 | 22                 | PAOZZ       | 5355-00-556-0145            | MS91528-1K2B        | 96906 | KNOB  |                   |     | EA  | 4                               |  |
| 2                                 | 23                 | XDHZZ       |                             | SMA552638           | 80063 | SWITCH,ROTARY                                       |                   |     | EA  | 1                               |  |
| 2                                 | 24                 | PAOZZ       | 5920-00-199-9498            | F02B250V1-2A        | 81349 | FUSE,CARTRIDGE                                      |                   |     | EA  | 2                               |  |
| 2                                 | 25                 | PAHZZ       | 5920-00-556-0144            | FHN20G              | 81349 | FUSEHOLDER,EXTRACTO                                 |                   |     | EA  | 2                               |  |
| 2                                 | 26                 | PAHZZ       | 6625-00-003-6103            | SMB552642           | 80063 | METER,SPECIAL SCALE                                 |                   |     | EA  | 1                               |  |
| 2                                 | 27                 | PAHZZ       | 5305-00-889-3000            | MS35225-30          | 96906 | SCREW,MACHINE                                       |                   |     | EA  | 3                               |  |
| 2                                 | 28                 | PAOZZ       | 5355-00-556-0151            | MS91528-1D2B        | 96906 | KNOB  |                   |     | EA  | 2                               |  |
| 2                                 | 29                 | PAHZZ       | 5905-00-643-5626            | RV4NAYS502A         | 81349 | RESISTOR,VARIABLE,N                                 |                   |     | EA  | 1                               |  |
| 2                                 | 30                 | PAHZZ       | 5930-00-951-6501            | SMA552639           | 80063 | SWITCH,ROTARY                                       |                   |     | EA  | 1                               |  |
| 2                                 | 31                 | XDHZZ       |                             | SMC552659           | 80063 | ASSEMBLY TEST SCKT SEE FIGURE 3 FOR PARTS BREAKDOWN |                   |     | EA  | 1                               |  |
| 2                                 | 32                 | PAHZZ       | 5305-00-175-3230            | MS21318-14          | 96906 | SCREW,DRIVE   |                   |     | EA  | 2                               |  |
| 2                                 | 33                 | XDHZZ       |                             | SMB552730           | 80063 | PLAT  |                   |     | EA  | 1                               |  |
| 2                                 | 34                 | PAHZZ       | 5910-00-823-1140            | CP05A1KC683K3       | 81349 | CAPACITOR,FIXED,PAP                                 |                   |     | EA  | 1                               |  |
| 2                                 | 35                 | PAHZZ       | 5340-00-988-3210            | MS25281-4           | 96906 | CLAMP,LOOP  |                   |     | EA  | 1                               |  |

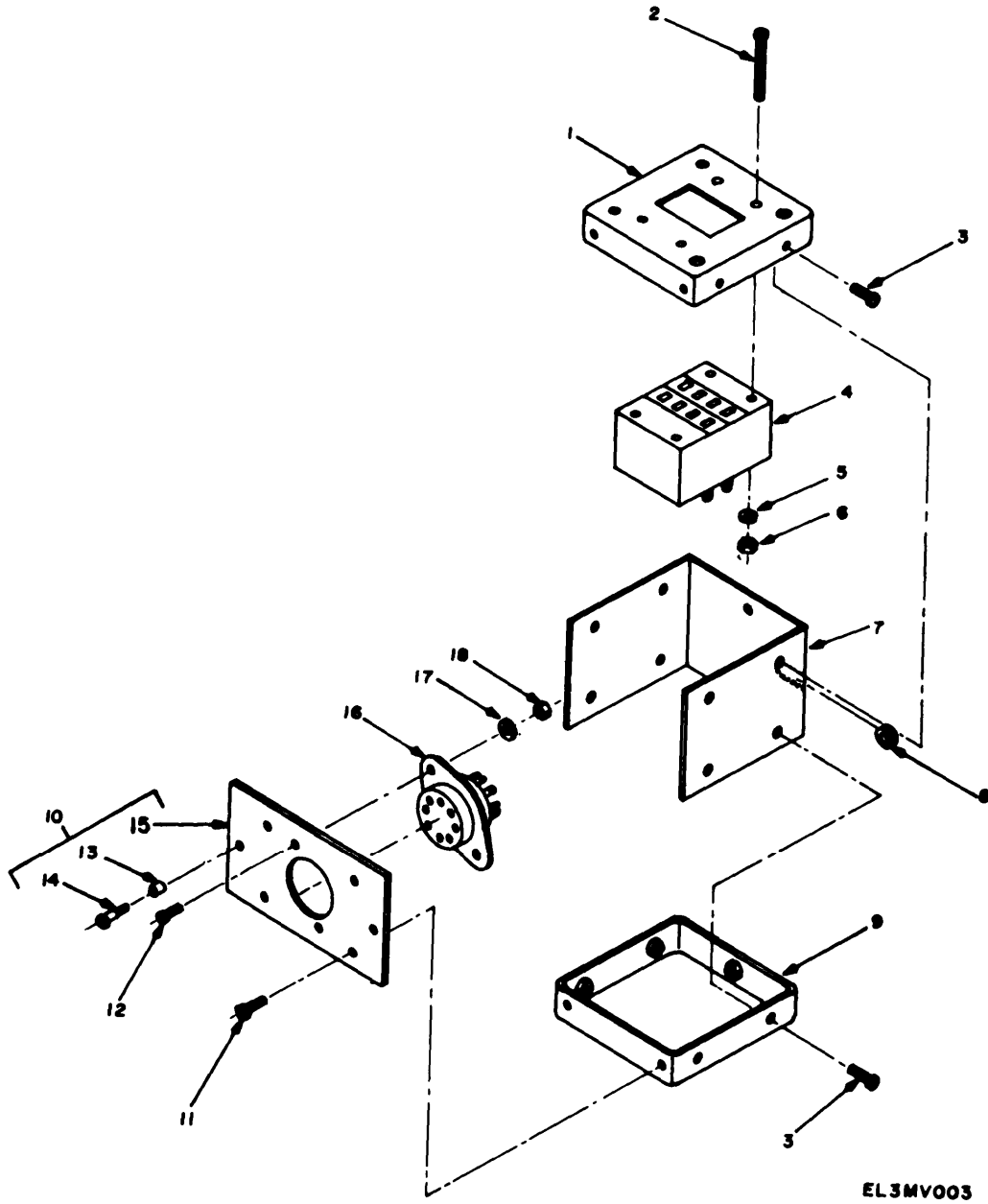


Figure 3. Socket Assembly



| SECTION II<br>(1)<br>ILLUSTRATION |                    | TM11-6625-620-40P-3 |                             |                |       |   |                | (7) | (8)                      |
|-----------------------------------|--------------------|---------------------|-----------------------------|----------------|-------|---|----------------|-----|--------------------------|
| (A)<br>FIG<br>NO.                 | (B)<br>ITEM<br>NO. | SMR<br>CODE         | NATIONAL<br>STOCK<br>NUMBER | PART<br>NUMBER | FSCM  | DESCRIPTION                             | USABLE ON CODE | U/M | QTY<br>INC<br>IN<br>UNIT |
| 3                                 | 1                  | XDHZZ               |                             | SMC552679GRP1  | 80063 | BRACKET,ANGLE                           |                | EA  | 1                        |
| 3                                 | 2                  | PAHZZ               | 5305-00-059-4552            | MS35239-36     | 96906 | SCREW,MACHINE                           |                | EA  | 4                        |
| 3                                 | 3                  | PAHZZ               | 5305-00-054-6651            | MS35233-27     | 96906 | SCREW,MACHINE                           |                | EA  | 10                       |
| 3                                 | 4                  | XDHZZ               |                             | SMB552682      | 80063 | SOCKET                                  |                | EA  | 1                        |
| 3                                 | 5                  | PAHZZ               | 5310-00-933-8118            | MS35338-78     | 96906 | WASHER,SPLIT                            |                | EA  | 4                        |
| 3                                 | 6                  | PAHZZ               | 5310-00-934-9748            | MS35649-244    | 96906 | NUT,PLAIN HEX                           |                | EA  | 4                        |
| 3                                 | 7                  | XDHZZ               |                             | SMB552683      | 80063 | COVER,SOCKET                            |                | EA  | 1                        |
| 3                                 | 8                  | PAHZZ               | 5325-00-174-5317            | MS35489-4      | 96906 | GROMMET,RUBBER USE WITH UNSHIELED CABLE |                | EA  | 1                        |
| 3                                 | 8                  | PAHZZ               | 5325-00-291-9366            | MS35489-11     | 96906 | GROMMET,RUBBER USE WITH SHIELED CABLE   |                | EA  | 1                        |
| 3                                 | 9                  | XDHZZ               |                             | SMC552679GRP2  | 80063 | BRACKET,ANGLE                           |                | EA  | 1                        |
| 3                                 | 10                 | XDHZZ               |                             | SMC552674      | 80063 | PANEL,ASSEMBLY                          |                | EA  | 1                        |
| 3                                 | 11                 | PAHZZ               | 5305-00-068-6529            | MS35233-28     | 96906 | SCREW,MACHINE                           |                | EA  | 4                        |
| 3                                 | 12                 | PAHZZ               | 5305-00-054-6655            | MS35233-31     | 96906 | SCREW,MACHINE                           |                | EA  | 2                        |
| 3                                 | 13                 | XDHZZ               |                             | SMB552676      | 80063 | SPACER,SLEEVE                           |                | EA  | 2                        |
| 3                                 | 14                 | XDHZZ               |                             | SMB552677      | 80063 | SCREW,PANEL                             |                | EA  | 2                        |
| 3                                 | 15                 | XDHZZ               |                             | SMC552574-1    | 80063 | PANEL,FRONT                             |                | EA  | 1                        |
| 3                                 | 16                 | PAHZZ               | 5935-00-063-5789            | TS101P01       | 81349 | SOCKET,PLUG-IN ELEC                     |                | EA  | 1                        |
| 3                                 | 17                 | PAHZZ               | 5310-00-011-1041            | MS35338-79     | 96906 | WASHER                                  |                | EA  | 2                        |
| 3                                 | 18                 | PAHZZ               | 5310-00-934-9761            | MS35649-264    | 96906 | NUT,PLAIN,HEXAGON                       |                | EA  | 2                        |

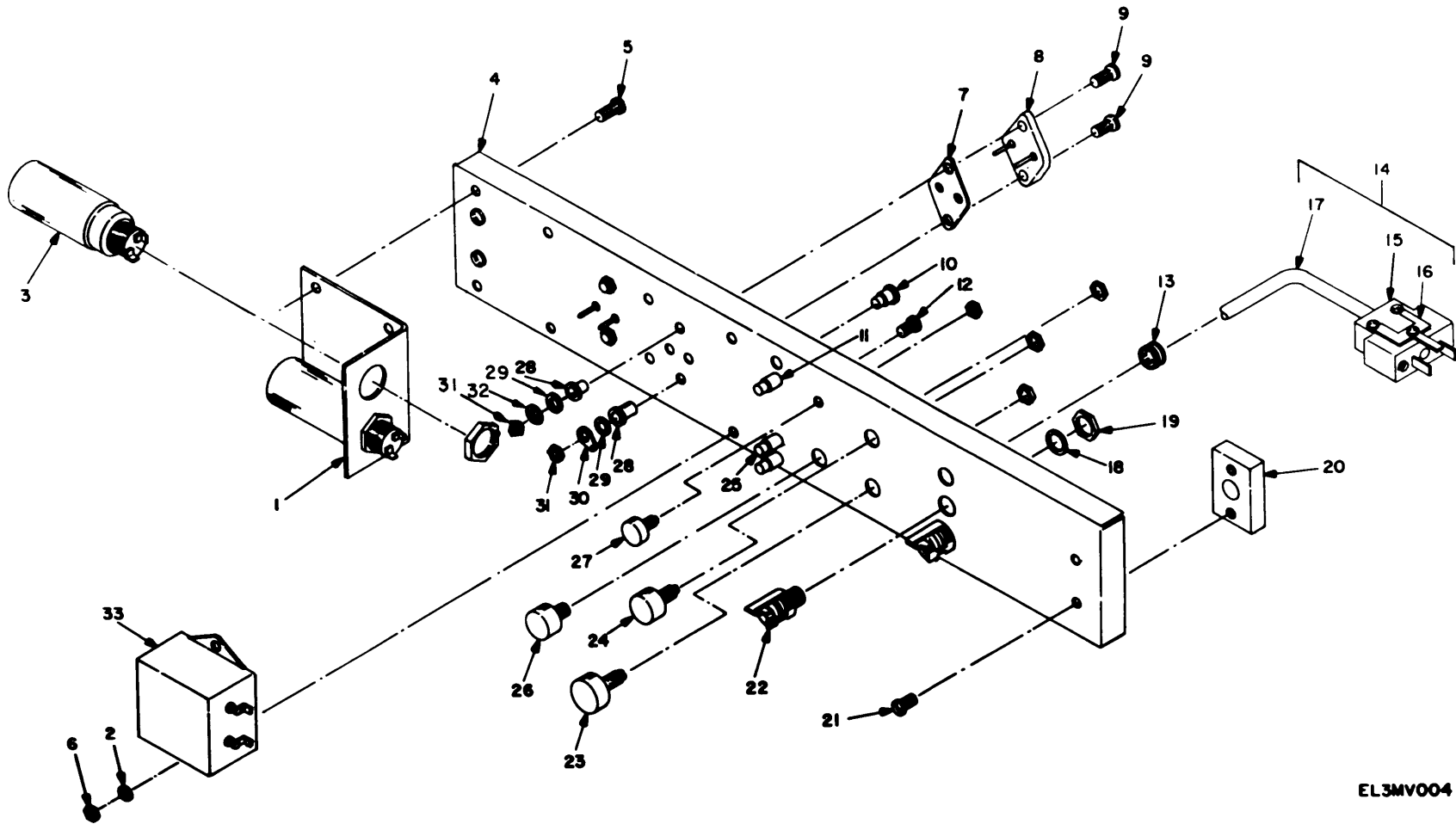


Figure 4. Rear Panel Assembly

EL3MVO04

| SECTION II<br>(1)<br>ILLUSTRATION |                    |             |                                    | TM11-6625-620-40P-3   |             |                       |        |         |            |                                 |  |
|-----------------------------------|--------------------|-------------|------------------------------------|-----------------------|-------------|-----------------------|--------|---------|------------|---------------------------------|--|
| (A)<br>FIG<br>NO.                 | (B)<br>ITEM<br>NO. | SMR<br>CODE | (3)<br>NATIONAL<br>STOCK<br>NUMBER | (4)<br>PART<br>NUMBER | (5)<br>FSCM | (6)<br>DESCRIPTION    | USABLE | ON CODE | (7)<br>U/M | (8)<br>QTY<br>INC<br>IN<br>UNIT |  |
| GROUP 030102 REAR PANEL ASSEMBLY  |                    |             |                                    |                       |             |                       |        |         |            |                                 |  |
| 4                                 | 1                  | XDHZZ       |                                    | SMB552669             | 80063       | BRACKET, ANGLE        |        |         | EA         | 1                               |  |
| 4                                 | 2                  | PAHZZ       | 5310-00-011-1041                   | MS35338-79            | 96906       | WASHER                |        |         | EA         | 2                               |  |
| 4                                 | 3                  | PAHZZ       | 5910-00-938-4900                   | CE41C111M             | 81349       | CAPACITOR, FIXED, ELE |        |         | EA         | 2                               |  |
| 4                                 | 4                  | XDHZZ       |                                    | SMD552668             | 80063       | PANEL, MOUNTING       |        |         | EA         | 1                               |  |
| 4                                 | 5                  | PAHZZ       | 5305-00-068-6529                   | MS35233-28            | 96906       | SCREW, MACHINE        |        |         | EA         | 4                               |  |
| 4                                 | 6                  | PAHZZ       | 5310-00-934-9761                   | MS35649-264           | 96906       | NUT, PLAIN, HEXAGON   |        |         | EA         | 2                               |  |
| 4                                 | 7                  | XDHZZ       |                                    | SMB552159-1           | 80063       | INSULATOR PLATE       |        |         | EA         | 2                               |  |
| 4                                 | 8                  | PAHZZ       | 5961-00-821-8976                   | JAN2N297A             | 81349       | TRANSISTOR            |        |         | EA         | 2                               |  |
| 4                                 | 9                  | PAHZZ       | 5305-00-889-3001                   | MS35225-31            | 96906       | SCREW, MACHINE        |        |         | EA         | 4                               |  |
| 4                                 | 10                 | XDHZZ       |                                    | SMB552623-3           | 80063       | JACK, TIP             |        |         | EA         | 2                               |  |
| 4                                 | 11                 | XDHZZ       |                                    | SMB552623-8           | 80063       | JACK, TIP             |        |         | EA         | 1                               |  |
| 4                                 | 12                 | PAHZZ       | 5305-00-068-6533                   | MS35233-29            | 96906       | SCREW, MACHINE        |        |         | EA         | 2                               |  |
| 4                                 | 13                 | XDHZZ       |                                    | SMB552740             | 80063       | BUSHING, STRAIN       |        |         | EA         | 1                               |  |
| 4                                 | 14                 | PAHZZ       | 5995-00-480-1326                   | SMB552741             | 80063       | CABLE ASSEMBLY, POWE  |        |         | EA         | 1                               |  |
| 4                                 | 15                 | PAHZZ       | 5935-00-843-7362                   | UP131M                | 81349       | CONNECTOR, PLUG, ELEC |        |         | EA         | 1                               |  |
| 4                                 | 16                 | XDHZZ       |                                    | SMB430875             | 80063       | TERMINAL, LUG         |        |         | EA         | 1                               |  |
| 4                                 | 17                 | PAHZZ       | 6145-00-284-0579                   | CO03MGF3-18-0340      | 81349       | CABLE, POWER, ELECTRI |        |         | EA         | 1                               |  |
| 4                                 | 18                 | XDHZZ       |                                    | SMB552135             | 80063       | WASHER, NON-          |        |         | EA         | 2                               |  |
| 4                                 | 19                 | XDHZZ       |                                    | SMB552657             | 80063       | NUT, PLAIN, HEXAGON   |        |         | EA         | 2                               |  |
| 4                                 | 20                 | XDHZZ       |                                    | SMB552663             | 80063       | RECEPTACLE PIN        |        |         | EA         | 2                               |  |
| 4                                 | 21                 | PAHZZ       | 5305-00-765-4352                   | MS35249-38            | 96906       | SCREW, MACHINE        |        |         | EA         | 4                               |  |
| 4                                 | 22                 | XDHZZ       |                                    | SMB552132             | 80063       | JACK, TELEPHONE       |        |         | EA         | 2                               |  |
| 4                                 | 23                 | PAHZZ       | 5905-00-808-5487                   | RA30LASB501A          | 81349       | RESISTOR, VARIABLE, W |        |         | EA         | 1                               |  |
| 4                                 | 24                 | PAHZZ       | 5905-00-577-7341                   | RA20LASB502A          | 81349       | RESISTOR, VARIABLE, W |        |         | EA         | 1                               |  |
| 4                                 | 25                 | XDHZZ       |                                    | SMB552623-1           | 80063       | JACK, TIP             |        |         | EA         | 1                               |  |
| 4                                 | 26                 | PAHZZ       | 5905-00-681-1197                   | RA20LASB102A          | 81349       | RESISTOR, VARIABLE, W |        |         | EA         | 1                               |  |
| 4                                 | 27                 | PAHZZ       | 5905-00-567-2331                   | RF061UB152KK          | 81349       | RESISTOR, VARIABLE, W |        |         | EA         | 1                               |  |
| 4                                 | 28                 | XDHZZ       |                                    | SMB552159-2           | 80063       | SPACER, SLEEVE        |        |         | EA         | 4                               |  |
| 4                                 | 29                 | PAHZZ       | 5310-00-880-5976                   | MS15795-806           | 96906       | WASHER, FLAT          |        |         | EA         | 4                               |  |
| 4                                 | 30                 | XDHZZ       |                                    | SMB552159-3           | 80063       | TERMINAL LUG          |        |         | EA         | 2                               |  |
| 4                                 | 31                 | PAHZZ       | 5310-00-934-9739                   | MS35649-242           | 96906       | NUT, PLAIN, HEXAGON   |        |         | EA         | 4                               |  |
| 4                                 | 32                 | PAHZZ       | 5305-00-054-5653                   | SMB552159-5           | 80063       | WASHER, LOCK          |        |         | EA         | 2                               |  |
| 4                                 | 33                 | PAHZZ       | 5915-00-230-8529                   | SMB552612             | 80063       | FILTER, RADIO FREQUE  |        |         | EA         | 1                               |  |

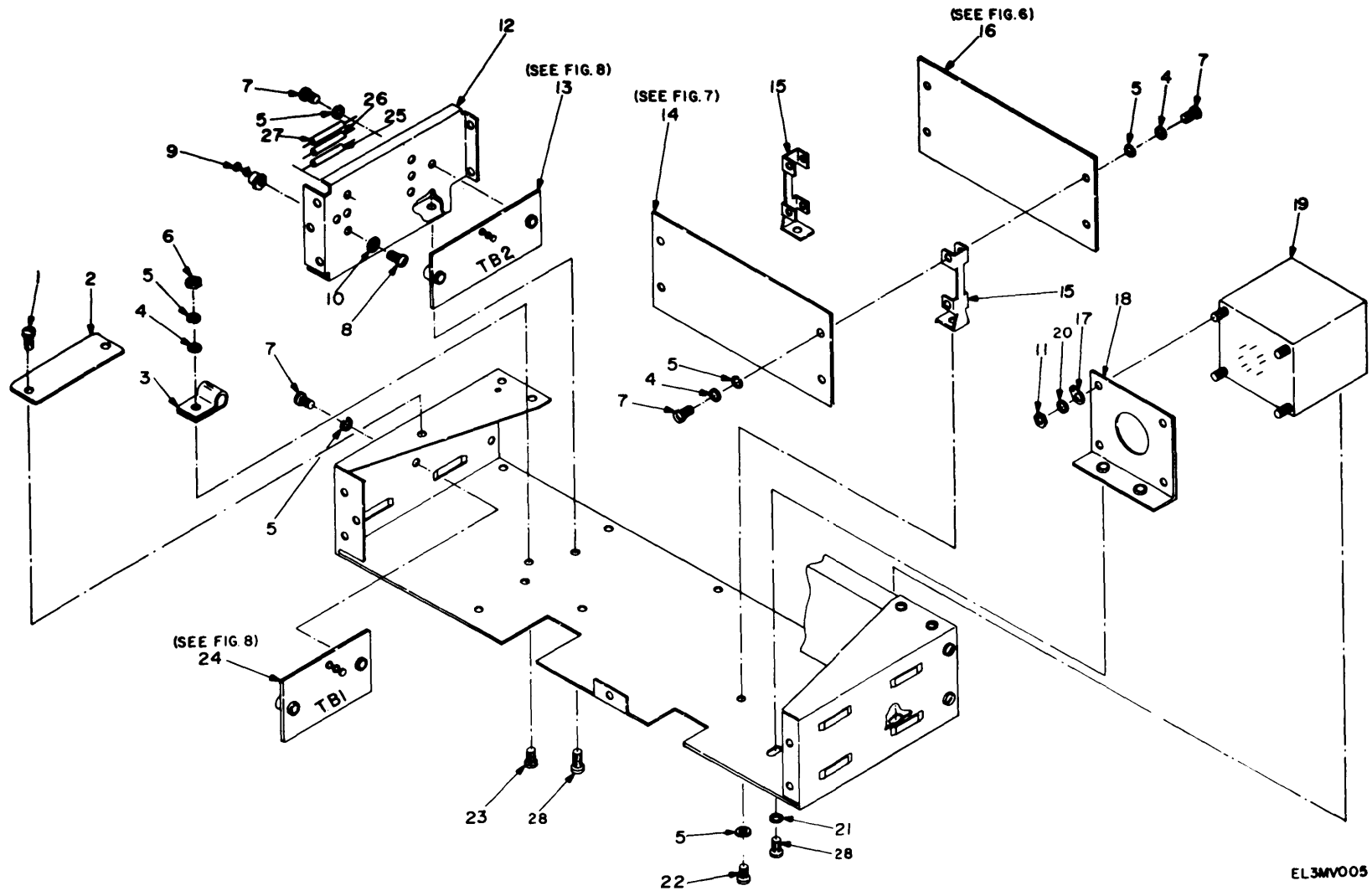


Figure 5. Chassis Assembly

EL3MVO05

| SECTION II<br>(1)<br>ILLUSTRATION |                    |                    |                                    | TM11-6625-620-40P-3   |             |   |                       |                                 |    |
|-----------------------------------|--------------------|--------------------|------------------------------------|-----------------------|-------------|---|-----------------------|---------------------------------|----|
| (A)<br>FIG<br>NO.                 | (B)<br>ITEM<br>NO. | (2)<br>SMR<br>CODE | (3)<br>NATIONAL<br>STOCK<br>NUMBER | (4)<br>PART<br>NUMBER | (5)<br>FSCM | (6)<br>DESCRIPTION                                    | (7)<br>USABLE ON CODE | (8)<br>QTY<br>INC<br>IN<br>UNIT |    |
| GROUP 030103 CHASSIS ASSEMBLY     |                    |                    |                                    |                       |             |   |                       |                                 |    |
| 5                                 | 1                  | PAHZZ              | 5305-00-175-3230                   | MS21318-14            | 96906       | SCREW,DRIVE   |                       | EA                              | 2  |
| 5                                 | 2                  | XDHZZ              |                                    | SMB552653             | 80063       | FLAT  |                       | EA                              | 1  |
| 5                                 | 3                  | PAHZZ              | 5340-00-721-5315                   | MS25281-5             | 96906       | CLAMP,LOOP  |                       | EA                              | 1  |
| 5                                 | 4                  | PAHZZ              | 5310-00-983-8483                   | MS27183-5             | 96906       | WASHER,FLAT   |                       | EA                              | 9  |
| 5                                 | 5                  | PAHZZ              | 5310-00-011-1041                   | MS35338-79            | 96906       | WASHER,LOCK   |                       | EA                              | 15 |
| 5                                 | 6                  | PAHZZ              | 5310-00-934-9761                   | MS35649-264           | 96906       | NUT,PLAIN,HEXAGON                                     |                       | EA                              | 1  |
| 5                                 | 7                  | PAHZZ              | 5305-00-068-6533                   | MS35233-29            | 96906       | SCREW,MACHINE   |                       | EA                              | 12 |
| 5                                 | 8                  | PAHZZ              | 5305-00-054-6651                   | MS35233-27            | 96906       | SCREW,MACHINE   |                       | EA                              | 6  |
| 5                                 | 9                  | XDHZZ              |                                    | SMB434365             | 80063       | TERMINAL,STUD   |                       | EA                              | 6  |
| 5                                 | 10                 | PAHZZ              | 5310-00-011-1041                   | MS35338-79            | 96906       | WASHER  |                       | EA                              | 6  |
| 5                                 | 11                 | PAHZZ              | 5310-00-934-9759                   | MS35649-284           | 96906       | NUT,PLAIN,HEX   |                       | EA                              | 4  |
| 5                                 | 12                 | XDHZZ              |                                    | SMC552566             | 80063       | BRACKET,MOUNTING                                      |                       | EA                              | 1  |
| 5                                 | 13                 | XDHZZ              |                                    | SMC552661             | 80063       | ASSEMBLY BOARD TB2 SEE FIGURE 8 FOR PARTS BREAKDOWN   |                       | EA                              | 1  |
| 5                                 | 14                 | PAHHD              | 6625-00-405-9106                   | SMD552465             | 80063       | CIRCUIT CARD ASSEMB SEE FIGURE 7 FOR PARTS BREAKDOWN  |                       | EA                              | 1  |
| 5                                 | 15                 | XDHZZ              |                                    | SMB552671             | 80063       | BRACKET,ANGLE   |                       | EA                              | 2  |
| 5                                 | 16                 | PAHHD              | 6625-00-461-0657                   | SMD552464             | 80063       | CIRCUIT CARD ASSEMB SEE FIGURE 6 FOR PARTS BREAKDOWN  |                       | EA                              | 1  |
| 5                                 | 17                 | XDHZZ              |                                    | SMB552169-1           | 80063       | TERMINAL,LUG  |                       | EA                              | 1  |
| 5                                 | 18                 | XDHZZ              |                                    | SMB552557             | 80063       | BRACKET,ANGLE   |                       | EA                              | 1  |
| 5                                 | 19                 | PAHZZ              | 5950-00-954-8557                   | SMC552672             | 80063       | TRANSFORMER,POWER,S                                   |                       | EA                              | 1  |
| 5                                 | 20                 | PAHZZ              | 5310-00-054-1830                   | MS35338-80            | 96906       | WASHER  |                       | EA                              | 4  |
| 5                                 | 21                 | PAHZZ              | 5310-00-880-5978                   | MS15795-807           | 96906       | WASHER,FLAT   |                       | EA                              | 2  |
| 5                                 | 22                 | PAHZZ              | 5305-00-068-6529                   | MS35233-28            | 96906       | SCREW,MACHINE   |                       | EA                              | 2  |
| 5                                 | 23                 | XDHZZ              |                                    | MS35233-30            | 96906       | SCREW,MACHINE   |                       | EA                              | 1  |
| 5                                 | 24                 | PAHHD              | 6625-00-405-9128                   | SMC552660             | 80063       | ELECTRONIC COMPONENT SEE FIGURE 8 FOR PARTS BREAKDOWN |                       | EA                              | 1  |
| 5                                 | 25                 | PAHZZ              | 5905-00-682-1158                   | RN80B3321F            | 81349       | RESISTOR,FIXED,FILM                                   |                       | EA                              | 1  |
| 5                                 | 26                 | XDHZZ              |                                    | RN80B6651F            | 81349       | REISTOR,FIXED,FILM                                    |                       | EA                              | 1  |
| 5                                 | 27                 | XDHZZ              |                                    | RN80B1431F            | 81349       | REISTOR,FIXED,FILM                                    |                       | EA                              | 1  |
| 5                                 | 28                 | PAHZZ              | 5305-00-054-6668                   | MS35233-43            | 96906       | SCREW,MACHINE   |                       | EA                              | 2  |

14

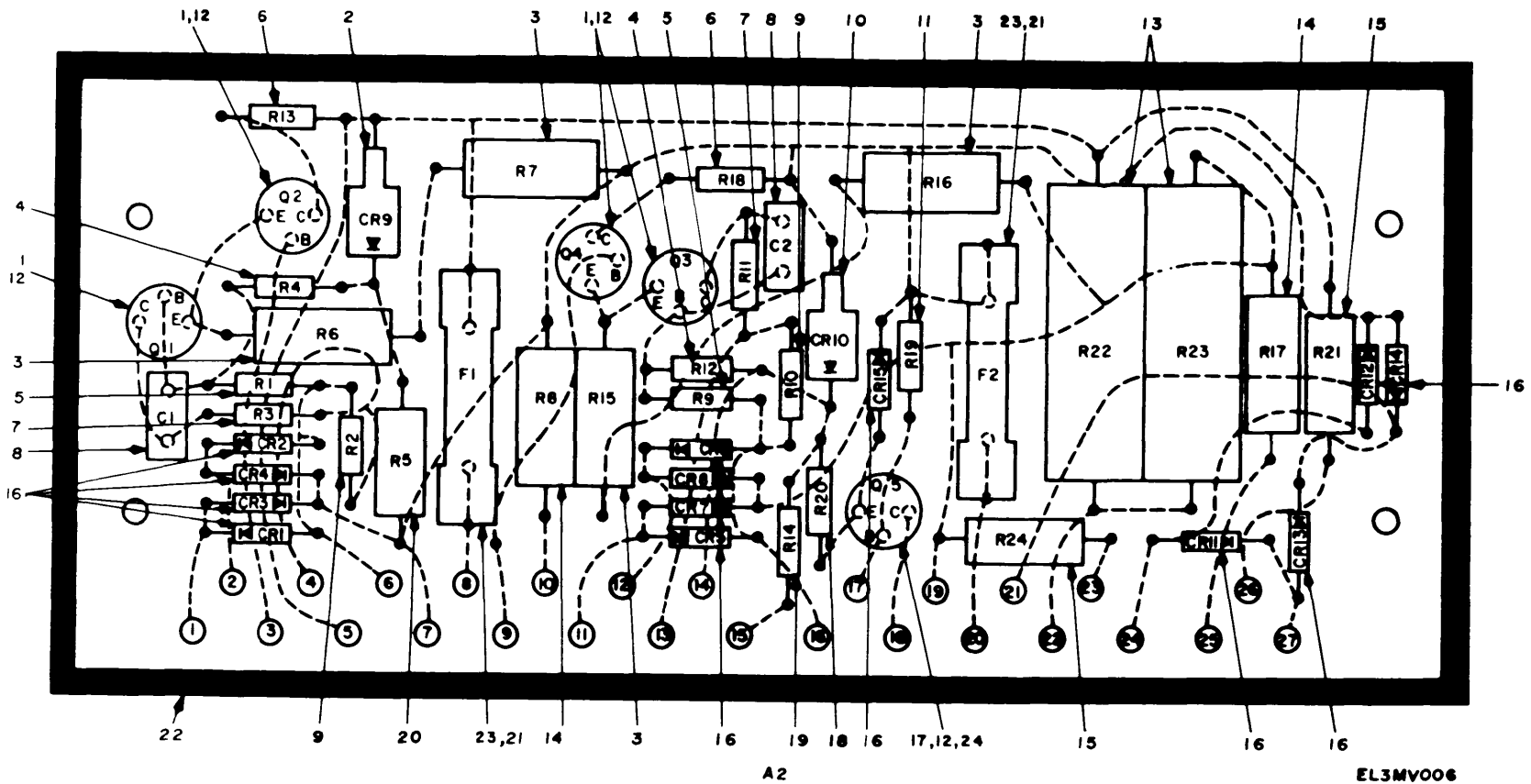


Figure 6. Assembly Board A2

| SECTION II<br>(1)<br>ILLUSTRATION |                    | TM11-6625-620-40P-3 |                                    |                       |             |                       |                | (7) | (8)                      |
|-----------------------------------|--------------------|---------------------|------------------------------------|-----------------------|-------------|-----------------------|----------------|-----|--------------------------|
| (A)<br>FIG<br>NO.                 | (B)<br>ITEM<br>NO. | (2)<br>SMR<br>CODE  | (3)<br>NATIONAL<br>STOCK<br>NUMBER | (4)<br>PART<br>NUMBER | (5)<br>FSCM | (6)<br>DESCRIPTION    | USABLE ON CODE | U/M | QTY<br>INC<br>IN<br>UNIT |
| 6                                 | 1                  | PAHZZ               | 5961-00-892-3473                   | JAN2N526              | 81349       | TRANSISTOR            |                | EA  | 4                        |
| 6                                 | 2                  | PAHZZ               | 5961-00-853-1065                   | 1N3026B               | 81349       | SEMICONDUCTOR         |                | EA  | 1                        |
| 6                                 | 3                  | XDHZZ               |                                    | RC42GF302F            | 81349       | RESISTOR, FIXED       |                | EA  | 4                        |
| 6                                 | 4                  | PAHZZ               | 5905-00-279-1876                   | RC20GF222J            | 81349       | RESISTOR, FIXED, COMP |                | EA  | 2                        |
| 6                                 | 5                  | PAHZZ               | 5905-00-279-2522                   | RC20GF154J            | 81349       | RESISTOR, FIXED, COMP |                | EA  | 2                        |
| 6                                 | 6                  | PAHZZ               | 5905-00-279-3511                   | RC20GF511J            | 81349       | RESISTOR, FIXED, COMP |                | EA  | 2                        |
| 6                                 | 7                  | PAHZZ               | 5905-00-195-6806                   | RC20GF102J            | 81349       | RESISTOR, FIXED, COMP |                | EA  | 2                        |
| 6                                 | 8                  | XDHZZ               |                                    | CM05FD301JN3          | 81349       | CAPCITOR, FIXEDMICA   |                | EA  | 2                        |
| 6                                 | 9                  | PAHZZ               | 5905-00-299-1971                   | RC20GF822J            | 81349       | RESISTOR, FIXED, COMP |                | EA  | 2                        |
| 6                                 | 10                 | PAHZZ               | 5961-00-826-0491                   | 1N3024B               | 81349       | SEMICONDUCTOR DVC D   |                | EA  | 1                        |
| 6                                 | 11                 | PAHZZ               | 5905-00-279-1757                   | RC20GF152J            | 81349       | RESISTOR, FIXED, COMP |                | EA  | 1                        |
| 6                                 | 12                 | XDHZZ               |                                    | SMB552177-1           | 80063       | INSULATOR, WASHER     |                | EA  | 5                        |
| 6                                 | 13                 | XDHZZ               |                                    | RB58CE30101C          | 81349       | RESISTOR, FIXED       |                | EA  | 2                        |
| 6                                 | 14                 | PAHZZ               | 5905-00-279-1963                   | RC42GF133J            | 81349       | RESISTOR, FIXED, COMP |                | EA  | 2                        |
| 6                                 | 15                 | XDHZZ               |                                    | SMB552764             | 80063       | RESISTOR, FIXED       |                | EA  | 2                        |
| 6                                 | 16                 | PAHZZ               | 5961-00-577-6084                   | 1N645                 | 81349       | SEMICONDUCTOR DEVIC   |                | EA  | 13                       |
| 6                                 | 17                 | PAHZZ               | 5961-00-853-6093                   | SMC552187             | 81349       | TRANSISTOR            |                | EA  | 1                        |
| 6                                 | 18                 | PAHZZ               | 5905-00-185-8510                   | RC20GF103J            | 81349       | RESISTOR, FIXED, COMP |                | EA  | 1                        |
| 6                                 | 19                 | PAHZZ               | 5905-00-279-1880                   | RC20GF272J            | 81349       | RESISTOR, FIXED, COMP |                | EA  | 1                        |
| 6                                 | 20                 | PAHZZ               | 5905-00-369-6923                   | RC32GF223J            | 81349       | RESISTOR, FIXED, COMP |                | EA  | 1                        |
| 6                                 | 21                 | XDHZZ               |                                    | SMB552752             | 80063       | CLIP, ELECTRICAL      |                | EA  | 2                        |
| 6                                 | 22                 | XDHZZ               |                                    | SMD552494             | 80063       | PRINTED               |                | EA  | 1                        |
| 6                                 | 23                 | PAHZZ               | 5920-00-296-0451                   | FO2A250V1-8A          | 81349       | FUSE, CARTRIDGE       |                | EA  | 2                        |
| 6                                 | 24                 | XDHZZ               |                                    | SMB954314             | 80063       | HEATSINK              |                | EA  | 1                        |

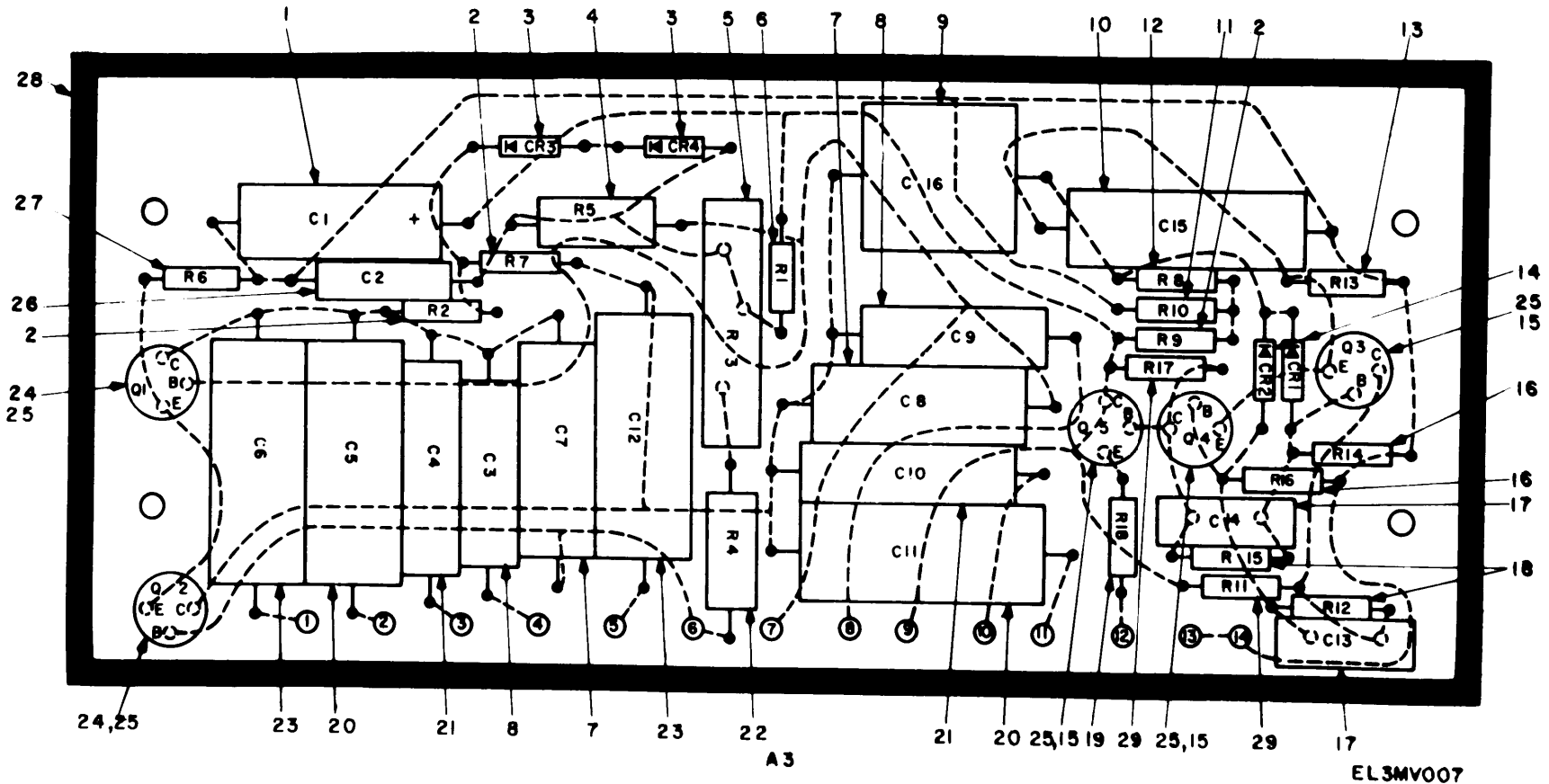
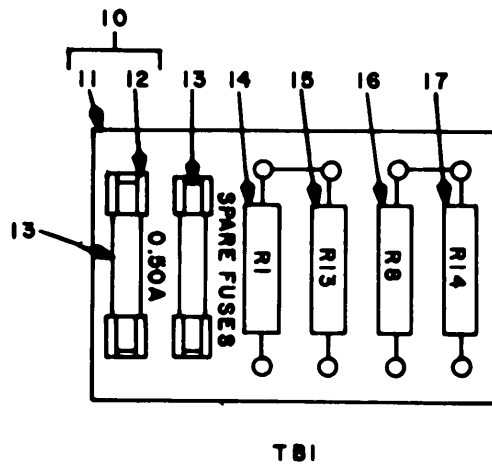
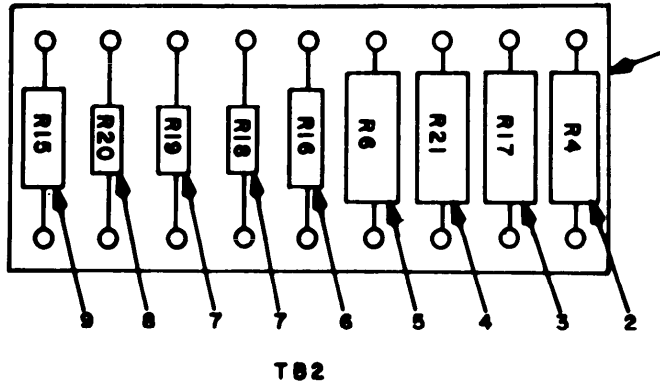


Figure 7. Assembly Board A3



| SECTION II<br>(1)<br>ILLUSTRATION |                    |                    |                                    | TM11-6625-620-40P-3   |             |                       |        |    |      |            |                                 |
|-----------------------------------|--------------------|--------------------|------------------------------------|-----------------------|-------------|-----------------------|--------|----|------|------------|---------------------------------|
| (A)<br>FIG<br>NO.                 | (B)<br>ITEM<br>NO. | (2)<br>SMR<br>CODE | (3)<br>NATIONAL<br>STOCK<br>NUMBER | (4)<br>PART<br>NUMBER | (5)<br>FSCM | (6)<br>DESCRIPTION    | USABLE | ON | CODE | (7)<br>U/M | (8)<br>QTY<br>INC<br>IN<br>UNIT |
| 7                                 | 1                  | XDHZZ              |                                    | CSR13P476M0362        | 81349       | CAPACITO              |        |    |      | EA         | 1                               |
| 7                                 | 2                  | PAHZZ              | 5905-00-279-2019                   | RC20GF512J            | 81349       | RESISTOR, FIXED, COMP |        |    |      | EA         | 2                               |
| 7                                 | 3                  | PAHZZ              | 5961-00-577-6084                   | 1N645                 | 81349       | SEMICONDUCTOR DEVIC   |        |    |      | EA         | 2                               |
| 7                                 | 4                  | PAHZZ              | 5905-00-062-5677                   | RN65D6812F            | 81349       | RESISTOR, FIXED, FILM |        |    |      | EA         | 1                               |
| 7                                 | 5                  | XDHZZ              |                                    | SMB552763             | 80063       | RESISTOR, VARIABLE    |        |    |      | EA         | 1                               |
| 7                                 | 6                  | PAHZZ              | 5905-00-279-3503                   | RC20GF682J            | 81349       | RESISTOR, FIXED, COMP |        |    |      | EA         | 1                               |
| 7                                 | 7                  | PAHZZ              | 5910-00-232-3159                   | SMB552757-10          | 80063       | CAPACITOR, FIXED, PLA |        |    |      | EA         | 2                               |
| 7                                 | 8                  | PAHZZ              | 5910-00-233-4021                   | SMB552757-12          | 80063       | CAPACITOR, FIXED, PLA |        |    |      | EA         | 2                               |
| 7                                 | 9                  | PAHZZ              | 5910-00-727-4005                   | CM30FD152JN3          | 81349       | CAPACITOR, FIXED, MIC |        |    |      | EA         | 1                               |
| 7                                 | 10                 | XDHZZ              |                                    | CP09A1KB103K1         | 81349       | CAPACITOR, FIXED, PAP |        |    |      | EA         | 1                               |
| 7                                 | 11                 | PAHZZ              | 5905-00-195-6806                   | RC20GF102J            | 81349       | RESISTOR, FIXED, COMP |        |    |      | EA         | 1                               |
| 7                                 | 12                 | PAHZZ              | 5905-00-279-3504                   | RC20GF472J            | 81349       | RESISTOR, FIXED, COMP |        |    |      | EA         | 1                               |
| 7                                 | 13                 | PAHZZ              | 5905-00-171-2006                   | RC20GF271J            | 81349       | RESISTOR, FIXED, COMP |        |    |      | EA         | 1                               |
| 7                                 | 14                 | PAHZZ              | 5961-00-556-2091                   | 1N270                 | 81349       | SEMICONDUCTOR         |        |    |      | EA         | 2                               |
| 7                                 | 15                 | PAHZZ              | 5961-00-892-0800                   | JAN2N1304             | 81349       | TRANSISTOR            |        |    |      | EA         | 3                               |
| 7                                 | 16                 | PAHZZ              | 5905-00-249-4200                   | RC20GF912J            | 81349       | RESISTOR, FIXED, COMP |        |    |      | EA         | 2                               |
| 7                                 | 17                 | XDHZZ              |                                    | CM06FD471JN3          | 81349       | CAPACITOR, FIXEDMICA  |        |    |      | EA         | 2                               |
| 7                                 | 18                 | PAHZZ              | 5905-00-279-3498                   | RC20GF433J            | 81349       | RESISTOR, FIXED, COMP |        |    |      | EA         | 2                               |
| 7                                 | 19                 | PAHZZ              | 5905-00-279-1880                   | RC20GF272J            | 81349       | RESISTOR, FIXED, COMP |        |    |      | EA         | 1                               |
| 7                                 | 20                 | PAHZZ              | 5910-00-232-3165                   | SMB552757-9           | 80063       | CAPACITOR, FIXED, PLA |        |    |      | EA         | 2                               |
| 7                                 | 21                 | PAHZZ              | 5910-00-232-3160                   | SMB552757-11          | 80063       | CAPACITOR, FIXED, PLA |        |    |      | EA         | 2                               |
| 7                                 | 22                 | PAHZZ              | 5905-00-857-5620                   | RN65D3012F            | 81349       | RESISTOR, FIXED, FILM |        |    |      | EA         | 1                               |
| 7                                 | 23                 | PAHZZ              | 5910-00-233-4022                   | SMB552757-8           | 80063       | CAPACITOR, FIXED, PLA |        |    |      | EA         | 2                               |
| 7                                 | 24                 | PAHZZ              | 5961-00-837-7262                   | JAN2N697              | 81349       | TRANSISTOR            |        |    |      | EA         | 2                               |
| 7                                 | 25                 | XDHZZ              |                                    | SMB552177-1           | 80063       | INSULATOR, WASHER     |        |    |      | EA         | 5                               |
| 7                                 | 26                 | XDHZZ              |                                    | CSR13G475M0642        | 81349       | CAPACITO              |        |    |      | EA         | 1                               |
| 7                                 | 27                 | PAHZZ              | 5905-00-104-8350                   | RC20GF221J            | 81349       | RESISTOR, FIXED, COMP |        |    |      | EA         | 1                               |
| 7                                 | 28                 | XDHZZ              |                                    | SMD552495             | 80063       | PRINTED               |        |    |      | EA         | 1                               |
| 7                                 | 29                 | PAHZZ              | 5905-00-185-8510                   | RC20GF103J            | 81349       | RESISTOR, FIXED, COMP |        |    |      | EA         | 2                               |



**EL3MV008**

Figure 8. Assembly Board TB1 and TB2

| SECTION II   |      | TM11-6625-620-40P-3 |                  |              |                             |                | (7) | (8)  |
|--------------|------|---------------------|------------------|--------------|-----------------------------|----------------|-----|------|
| (1)          | (2)  | (3)                 | (4)              | (5)          | (6)                         |                | (7) | (8)  |
| ILLUSTRATION |      |                     |                  |              |                             |                |     |      |
| (A)          | (B)  | NATIONAL            | PART             |              | DESCRIPTION                 |                |     | QTY  |
| FIG          | ITEM | STOCK               | NUMBER           | FSCM         |                             | USABLE ON CODE | U/M | INC  |
| NO.          | NO.  | NUMBER              | NUMBER           |              |                             |                |     | IN   |
|              |      |                     |                  |              |                             |                |     | UNIT |
| 8            | 1    | XDHZZ               | SMC552691        | 80063        | TERMINAL BOARD              |                | EA  | 1    |
| 8            | 2    | PAHZZ               | 5905-00-556-3051 | RN7587501F   | 81349 RESISTOR, FIXED, FILM |                | EA  | 1    |
| 8            | 3    | PAHZZ               | 5905-00-553-2181 | RN7581000F   | 81349 RESISTOR, FIXED, FILM |                | EA  | 1    |
| 8            | 4    | PAHZZ               | 5905-00-552-4131 | RN7581651F   | 81349 RESISTOR, FIXED, FILM |                | EA  | 1    |
| 8            | 5    | PAHZZ               | 5905-00-892-7207 | RN70D1502F   | 81349 RESISTOR, FIXED, FILM |                | EA  | 1    |
| 8            | 6    | PAHZZ               | 5905-00-200-9631 | RN70B3010F   | 81349 RESISTOR, FIXED, FILM |                | EA  | 1    |
| 8            | 7    | PAHZZ               | 5905-00-811-4821 | RN65D1000F   | 81349 RESISTOR, FIXED, FILM |                | EA  | 2    |
| 8            | 8    | PAHZZ               | 5905-00-964-0706 | RN65D24R9F   | 81349 RESISTOR, FIXED, FILM |                | EA  | 1    |
| 8            | 9    | PAHZZ               | 5905-00-249-4190 | RC42GF562J   | 81349 RESISTOR, FIXED, COMP |                | EA  | 1    |
| 8            | 10   | XDHZZ               | SMC552685        | 80063        | TERMINAL BOARD              |                | EA  | 1    |
| 8            | 11   | PAHZZ               | 5940-00-408-0420 | SMC552685-1  | 80063 TERMINAL, BOARD       |                | EA  | 1    |
| 8            | 12   | XDHZZ               | SMB552690        | 80063        | CLIP, ELECTRICAL            |                | EA  | 4    |
| 8            | 13   | PAOZZ               | 5920-00-199-9498 | F02B250V1-2A | 81349 FUSE, CARTRIDGE       |                | EA  | 2    |
| 8            | 14   | XDHZZ               |                  | RW57G561     | 81349 RESISTOR, FIXED       |                | EA  | 1    |
| 8            | 15   | XDHZZ               |                  | RW57G621     | 81349 RESISTOR, FIXED       |                | EA  | 1    |
| 8            | 16   | PAHZZ               | 5905-00-279-1962 | RC42GF132J   | 81349 RESISTOR, FIXED, COMP |                | EA  | 1    |
| 8            | 17   | PAHZZ               | 5905-00-256-8352 | RC42GF122J   | 81349 RESISTOR, FIXED, COMP |                | EA  | 1    |

SECTION IV NATIONAL STOCK NUMBER AND PART NUMBER INDEX TM11-6625-620-40P-3  
 NOTE: LATEST NATIONAL STOCK NUMBER AND PART NUMBER ASSIGNMENTS ARE INCLUDED AT END OF INDEX.

| STOCK NUMBER     | FIGURE NO. | ITEM NO. | STOCK NUMBER     | FIGURE NO. | ITEM NO. |
|------------------|------------|----------|------------------|------------|----------|
| 6625-00-003-6103 | 2          | 26       | 5905-00-279-3511 | 6          | 6        |
| 5310-00-011-1041 | 2          | 11       | 6145-00-284-0579 | 4          | 17       |
| 5310-00-011-1041 | 3          | 17       | 5325-00-291-9366 | 3          | 8        |
| 5310-00-011-1041 | 4          | 2        | 5920-00-296-0451 | 6          | 23       |
| 5310-00-011-1041 | 5          | 5        | 5905-00-299-1971 | 6          | 9        |
| 5310-00-011-1041 | 5          | 10       | 5905-00-369-6923 | 6          | 20       |
|                  |            |          | 6625-00-405-9106 | 5          | 14       |
|                  |            |          | 6625-00-405-9128 | 5          | 24       |
| 5310-00-054-1830 | 5          | 20       | 5940-00-408-0420 | 8          | 11       |
| 5305-00-054-5653 | 4          | 32       | 6625-00-461-0657 | 5          | 16       |
| 5305-00-054-6651 | 3          | 3        | 5995-00-480-1326 | 4          | 14       |
| 5305-00-054-6651 | 5          | 8        | 5310-00-543-2410 | 2          | 5        |
| 5305-00-054-6655 | 1          | 1        | 5905-00-552-4131 | 8          | 4        |
| 5305-00-054-6655 | 3          | 12       | 5905-00-553-2181 | 8          | 3        |
| 5305-00-054-6668 | 2          | 13       | 5920-00-556-0144 | 2          | 25       |
| 5305-00-054-6668 | 5          | 28       | 5355-00-556-0145 | 2          | 22       |
| 5305-00-059-4552 | 3          | 2        | 5355-00-556-0151 | 2          | 28       |
|                  |            |          | 5961-00-556-2091 | 7          | 14       |
|                  |            |          | 5905-00-556-3051 | 8          | 2        |
|                  |            |          | 5905-00-567-2331 | 4          | 27       |
|                  |            |          | 5961-00-577-6084 | 6          | 16       |
|                  |            |          | 5961-00-577-6084 | 7          | 3        |
| 5905-00-062-5677 | 7          | 4        | 5905-00-577-7341 | 4          | 24       |
| 5935-00-063-5789 | 3          | 16       | 5940-00-614-0537 | 2          | 6        |
| 5305-00-068-6529 | 3          | 11       | 5930-00-615-9376 | 2          | 8        |
| 5305-00-068-6529 | 4          | 5        | 5905-00-643-5626 | 2          | 29       |
| 5305-00-068-6529 | 5          | 22       | 5905-00-681-1197 | 4          | 26       |
| 5305-00-068-6533 | 2          | 15       | 5935-00-681-5690 | 2          | 21       |
| 5305-00-068-6533 | 4          | 12       | 5905-00-682-1158 | 5          | 25       |
| 5305-00-068-6533 | 5          | 7        |                  |            |          |
| 5905-00-104-8350 | 7          | 27       |                  |            |          |
| 5905-00-171-2006 | 7          | 13       | 5340-00-721-5315 | 5          | 3        |
| 5325-00-174-5317 | 3          | 8        | 5910-00-727-4005 | 7          | 9        |
| 5305-00-175-3230 | 2          | 32       | 5905-00-752-3834 | 2          | 3        |
| 5305-00-175-3230 | 5          | 1        | 5305-00-765-4352 | 4          | 21       |
| 5905-00-185-8510 | 6          | 18       | 5905-00-808-5487 | 4          | 23       |
| 5905-00-185-8510 | 7          | 29       | 6210-00-808-8604 | 2          | 19       |
| 5905-00-195-6806 | 6          | 7        | 5905-00-811-4821 | 8          | 7        |
| 5905-00-195-6806 | 7          | 11       | 5961-00-821-8976 | 4          | 8        |
| 5920-00-199-9498 | 2          | 24       | 5910-00-823-1140 | 2          | 34       |
| 5920-00-199-9498 | 8          | 13       | 5961-00-826-0491 | 6          | 10       |
| 5905-00-200-9631 | 8          | 6        | 5935-00-843-7362 | 4          | 15       |
| 5915-00-230-8529 | 4          | 33       | 5961-00-853-1065 | 6          | 2        |
| 5910-00-232-3159 | 7          | 7        | 5961-00-853-6093 | 6          | 17       |
| 5910-00-232-3160 | 7          | 21       | 5905-00-857-5620 | 7          | 22       |
| 5910-00-232-3165 | 7          | 20       | 5310-00-880-5976 | 1          | 2        |
| 5910-00-233-4021 | 7          | 8        | 5310-00-880-5976 | 4          | 29       |
| 5910-00-233-4022 | 7          | 23       | 5310-00-880-5978 | 5          | 21       |
| 5905-00-249-4190 | 8          | 9        | 5305-00-889-3000 | 2          | 27       |
| 5905-00-249-4200 | 7          | 16       | 5305-00-889-3001 | 4          | 9        |
| 5905-00-256-8352 | 8          | 17       | 5961-00-892-0800 | 7          | 15       |
|                  |            |          | 5905-00-892-7207 | 8          | 5        |
| 5905-00-279-1757 | 6          | 11       | 5310-00-933-8118 | 3          | 5        |
| 5905-00-279-1876 | 6          | 4        | 5310-00-934-9759 | 5          | 11       |
| 5905-00-279-1880 | 6          | 19       | 5910-00-938-4900 | 4          | 3        |
| 5905-00-279-1880 | 7          | 19       | 5930-00-951-6501 | 2          | 30       |
| 5905-00-279-1962 | 8          | 16       | 5950-00-954-8557 | 5          | 19       |
| 5905-00-279-1963 | 6          | 14       | 5305-00-958-5473 | 2          | 12       |
| 5905-00-279-2019 | 7          | 2        | 5905-00-964-0706 | 8          | 8        |
| 5905-00-279-2522 | 6          | 5        | 5310-00-983-8483 | 2          | 10       |
| 5905-00-279-3498 | 7          | 18       | 5310-00-983-8483 | 5          | 4        |
| 5905-00-279-3503 | 7          | 6        | 5340-00-988-3210 | 2          | 35       |
| 5905-00-279-3504 | 7          | 12       |                  |            |          |

| PART NUMBER      | FSCM  | FIG NO | ITEM NO | PART NUMBER | FSCM  | FIG NO | ITEM NO |
|------------------|-------|--------|---------|-------------|-------|--------|---------|
| CE41C111M        | 81349 | 4      | 3       | MS15795-806 | 96906 | 1      | 2       |
| CM05FD301JN3     | 81349 | 6      | 8       | MS15795-806 | 96906 | 4      | 29      |
| CM06FD471JN3     | 81349 | 7      | 17      | MS15795-807 | 96906 | 5      | 21      |
| CM30FD152JN3     | 81349 | 7      | 9       | MS16108-7A  | 96906 | 2      | 21      |
| CO03MGF3-18-0340 | 81349 | 4      | 17      | MS21318-14  | 96906 | 2      | 32      |
| CP05A1KC683K3    | 81349 | 2      | 34      | MS21318-14  | 96906 | 5      | 1       |
| CP09A1KB103K1    | 81349 | 7      | 10      | MS25252NE2D | 96906 | 2      | 20      |
| CSR13F476M0362   | 81349 | 7      | 1       | MS25257-4   | 96906 | 2      | 19      |
| CSR13G475M0642   | 81349 | 7      | 26      | MS25281-4   | 96906 | 2      | 35      |
| FHN20G           | 81349 | 2      | 25      | MS25281-5   | 96906 | 5      | 3       |
| FO2A250V1-8A     | 81349 | 6      | 23      | MS27183-5   | 96906 | 2      | 10      |
| FO2B250V1-2A     | 81349 | 2      | 24      | MS27183-5   | 96906 | 5      | 4       |
| FO2B250V1-2A     | 81349 | 8      | 13      | MS35059-21  | 96906 | 2      | 8       |

NATIONAL STOCK NUMBER AND PART NUMBER INDEX

| PART NUMBER  | FSCM  | FIG. NO. | ITEM NO. | PART NUMBER   | FSCM  | FIG. NO. | ITEM NO. |
|--------------|-------|----------|----------|---------------|-------|----------|----------|
| MS35225-30   | 96906 | 2        | 27       | RP061UB152KK  | 81349 | 4        | 27       |
| MS35225-31   | 96906 | 4        | 9        | RV4NAYS502A   | 81349 | 2        | 29       |
| MS35233-27   | 96906 | 3        | 3        | RW57G561      | 81349 | 8        | 14       |
| MS35233-27   | 96906 | 5        | 8        | RW57G621      | 81349 | 8        | 15       |
| MS35233-28   | 96906 | 3        | 11       | SMA552583     | 80063 | 2        | 2        |
| MS35233-28   | 96906 | 4        | 5        | SMA552638     | 80063 | 2        | 23       |
| MS35233-28   | 96906 | 5        | 22       | SMA552639     | 80063 | 2        | 30       |
| MS35233-29   | 96906 | 2        | 15       | SMA552640     | 80063 | 2        | 7        |
| MS35233-29   | 96906 | 4        | 12       | SMB430875     | 80063 | 4        | 16       |
| MS35233-29   | 96906 | 5        | 7        | SMB434359-3   | 80063 | 2        | 16       |
| MS35233-30   | 96906 | 5        | 23       | SMB434365     | 80063 | 5        | 9        |
| MS35233-31   | 96906 | 1        | 1        | SMB552132     | 80063 | 2        | 9        |
| MS35233-31   | 96906 | 3        | 12       | SMB552132     | 80063 | 4        | 22       |
| MS35233-43   | 96906 | 2        | 13       | SMB552135     | 80063 | 2        | 17       |
| MS35233-43   | 96906 | 5        | 28       | SMB552135     | 80063 | 4        | 18       |
| MS35239-36   | 96906 | 3        | 2        | SMB552159-1   | 80063 | 4        | 7        |
| MS35239-50   | 96906 | 2        | 12       | SMB552159-2   | 80063 | 4        | 28       |
| MS35249-38   | 96906 | 4        | 21       | SMB552159-3   | 80063 | 4        | 30       |
| MS35337-21   | 96906 | 2        | 5        | SMB552159-5   | 80063 | 4        | 32       |
| MS35338-78   | 96906 | 3        | 5        | SMB552169-1   | 80063 | 5        | 17       |
| MS35338-79   | 96906 | 2        | 11       | SMB552177-1   | 80063 | 6        | 12       |
| MS35338-79   | 96906 | 3        | 17       | SMB552177-1   | 80063 | 7        | 25       |
| MS35338-79   | 96906 | 4        | 2        | SMB552557     | 80063 | 5        | 18       |
| MS35338-79   | 96906 | 5        | 5        | SMB552562     | 80063 | 1        | 4        |
| MS35338-79   | 96906 | 5        | 10       | SMB552563     | 80063 | 1        | 6        |
| MS35338-80   | 96906 | 5        | 20       | SMB552612     | 80063 | 4        | 33       |
| MS35431-1    | 96906 | 2        | 6        | SMB552623-1   | 80063 | 4        | 25       |
| MS35489-11   | 96906 | 3        | 8        | SMB552623-3   | 80063 | 4        | 10       |
| MS35489-4    | 96906 | 3        | 8        | SMB552623-8   | 80063 | 4        | 11       |
| MS35649-244  | 96906 | 3        | 6        | SMB552633-1   | 80063 | 1        | 3        |
| MS35649-284  | 96906 | 5        | 11       | SMB552642     | 80063 | 2        | 26       |
|              |       |          |          | SMB552653     | 80063 | 5        | 2        |
|              |       |          |          | SMB552657     | 80063 | 2        | 18       |
|              |       |          |          | SMB552657     | 80063 | 4        | 19       |
|              |       |          |          | SMB552663     | 80063 | 4        | 20       |
|              |       |          |          | SMB552669     | 80063 | 4        | 1        |
|              |       |          |          | SMB552671     | 80063 | 5        | 15       |
| MS91528-1D2B | 96906 | 2        | 28       | SMB552676     | 80063 | 3        | 13       |
| MS91528-1K2B | 96906 | 2        | 22       | SMB552677     | 80063 | 3        | 14       |
| RA20LASB102A | 81349 | 4        | 26       | SMB552682     | 80063 | 3        | 4        |
| RA20LASB502A | 81349 | 4        | 24       | SMB552683     | 80063 | 3        | 7        |
| RA20NASD201A | 81349 | 2        | 3        | SMB552690     | 80063 | 8        | 12       |
| RA30LASB501A | 81349 | 4        | 23       | SMB552730     | 80063 | 2        | 33       |
| RB58CE30101C | 81349 | 6        | 13       | SMB552737     | 80063 | 1        | 5        |
| RC20GF102J   | 81349 | 6        | 7        | SMB552740     | 80063 | 4        | 13       |
| RC20GF102J   | 81349 | 7        | 11       | SMB552741     | 80063 | 4        | 14       |
| RC20GF103J   | 81349 | 6        | 18       | SMB552752     | 80063 | 6        | 21       |
| RC20GF103J   | 81349 | 7        | 29       | SMB552757-10  | 80063 | 7        | 7        |
| RC20GF152J   | 81349 | 6        | 11       | SMB552757-11  | 80063 | 7        | 21       |
| RC20GF154J   | 81349 | 6        | 5        | SMB552757-12  | 80063 | 7        | 8        |
| RC20GF221J   | 81349 | 7        | 27       | SMB552757-8   | 80063 | 7        | 23       |
| RC20GF222J   | 81349 | 6        | 4        | SMB552757-9   | 80063 | 7        | 20       |
| RC20GF271J   | 81349 | 7        | 13       | SMB552763     | 80063 | 7        | 5        |
| RC20GF272J   | 81349 | 6        | 19       | SMB552764     | 80063 | 6        | 15       |
| RC20GF272J   | 81349 | 7        | 19       | SMB552791     | 80063 | 2        | 14       |
| RC20GF433J   | 81349 | 7        | 18       | SMB954314     | 80063 | 6        | 24       |
| RC20GF472J   | 81349 | 7        | 12       | SMC552187     | 81349 | 6        | 17       |
| RC20GF511J   | 81349 | 6        | 6        | SMC552566     | 80063 | 5        | 12       |
| RC20GF512J   | 81349 | 7        | 2        | SMC552574-1   | 80063 | 3        | 15       |
| RC20GF682J   | 81349 | 7        | 6        | SMC552659     | 80063 | 2        | 31       |
| RC20GF822J   | 81349 | 6        | 9        | SMC552660     | 80063 | 5        | 24       |
| RC20GF912J   | 81349 | 7        | 16       | SMC552661     | 80063 | 5        | 13       |
| RC32GF223J   | 81349 | 6        | 20       | SMC552672     | 80063 | 5        | 19       |
| RC42GF122J   | 81349 | 8        | 17       | SMC552674     | 80063 | 3        | 10       |
| RC42GF132J   | 81349 | 8        | 16       | SMC552679GRP1 | 80063 | 3        | 1        |
| RC42GF133J   | 81349 | 6        | 14       | SMC552679GRP2 | 80063 | 3        | 9        |
| RC42GF302F   | 81349 | 6        | 3        | SMC552685     | 80063 | 8        | 10       |
| RC42GF562J   | 81349 | 8        | 9        | SMC552685-1   | 80063 | 8        | 11       |
| RN65D1000F   | 81349 | 8        | 7        | SMC552691     | 80063 | 8        | 1        |
| RN65D24R9F   | 81349 | 8        | 8        | SMD552464     | 80063 | 5        | 16       |
| RN65D3012F   | 81349 | 7        | 22       | SMD552465     | 80063 | 5        | 14       |
| RN65D6812F   | 81349 | 7        | 4        | SMD552494     | 80063 | 6        | 22       |
| RN70B3010F   | 81349 | 8        | 6        | SMD552495     | 80063 | 7        | 28       |
| RN70D1502F   | 81349 | 8        | 5        | SMD552547     | 80063 | 1        | 9        |
| RN75B1000F   | 81349 | 8        | 3        | SMD552556     | 80063 | 1        | 7        |
| RN75B1651F   | 81349 | 8        | 4        | SMD552655     | 80063 | 1        | 8        |
| RN75B7501F   | 81349 | 8        | 2        | SMD552668     | 80063 | 4        | 4        |
| RN80B1431F   | 81349 | 5        | 27       | TS101P01      | 81349 | 3        | 16       |
| RN80B3321F   | 81349 | 5        | 25       | UP131M        | 81349 | 4        | 15       |
| RN80B6651F   | 81349 | 5        | 26       | 1N270         | 81349 | 7        | 14       |

| PART NUMBER | NATIONAL STOCK NUMBER AND FSCM | FIG. NO. | PART NUMBER AND ITEM NO. | INDEX PART NUMBER | FSCM | FIG. NO. | ITEM NO. |
|-------------|--------------------------------|----------|--------------------------|-------------------|------|----------|----------|
| 1N3024B     | 81349                          | 6        | 10                       |                   |      |          |          |
| 1N3026B     | 81349                          | 6        | 2                        |                   |      |          |          |
| 1N1645      | 81349                          | 6        | 16                       |                   |      |          |          |
| IN645       | 81349                          | 7        | 3                        |                   |      |          |          |

## LATEST NATIONAL STOCK NUMBER ASSIGNMENTS

| STOCK NUMBER     | FIGURE NO. | ITEM NO. |
|------------------|------------|----------|
| 5961-00-837-7262 | 7          | 24       |
| 6240-00-892-4420 | 2          | 20       |
| 5310-00-937-9739 | 2          | 4        |
| 5310-00-934-9739 | 4          | 31       |
| 5310-00-934-9748 | 3          | 6        |
| 5310-00-934-9461 | 2          | 6        |
| 5310-00-934-9761 | 3          | 18       |
| 5310-00-934-9761 | 4          | 6        |
| 5310-00-964-9761 | 5          | 6        |

## LATEST PART NUMBER ASSIGNMENTS

| PART NUMBER | FSCM  | NO. | FIG. NO. | ITEM |
|-------------|-------|-----|----------|------|
| JAN2N697    | 81349 | 7   | 24       |      |
| MS35649-242 | 96906 | 2   | 4        |      |
| MS35649-242 | 96906 | 4   | 31       |      |
| MS35649-264 | 96906 | 2   | 1        |      |
| MS35649-264 | 96906 | 3   | 18       |      |
| MS35649-264 | 96906 | 4   | 6        |      |
| MS35649-264 | 96906 | 5   | 6        |      |

## ADDITIONAL LATEST NATIONAL STOCK NUMBER ASSIGNMENT

| STOCK NUMBER     | FIGURE NO. | ITEM NO. |
|------------------|------------|----------|
| 5961-00-892-3473 | 6          | 1        |

## ADDITIONAL LATEST PART NUMBER ASSIGNMENTS

| PART NUMBER | FSCM  | FIG. NO. | ITEM NO. |
|-------------|-------|----------|----------|
| JAN2N1304   | 81349 | 7        | 15       |
| JAN2N526    | 81349 | 6        | 1        |
| JAN2N297A   | 81349 | 4        | 8        |

By Order of the Secretary of the Army:

BERNARD W. ROGERS  
*General, United States Army*  
*Chief of Staff*

Official:

J. C. PENNINGTON  
*Major General, United States Army*  
*The Adjutant General*

DISTRIBUTION:

*Active Army:*

|                         |                               |            |
|-------------------------|-------------------------------|------------|
| HISA (Ft Monmouth) (26) | Ft Carson (5)                 | 11-38(1)   |
| USAINSCOM (2)           | Ft Gillem (10)                | 11-97(1)   |
| COE(1)                  | Ft Gordon (10)                | 11-98(1)   |
| TSG(1)                  | Ft Huachuca ( 10)             | 11-117(1)  |
| USAARENBD(1)            | Ft Richardson (CERCOM Ofc (2) | 11-215(1)  |
| DARCOM (1)              | Army Dep ( 1 ) except         | 11-216(1)  |
| TRADOC (2)              | LBAD (14)                     | 11-302(1)  |
| OS Maj Comd (4)         | SAAD (30)                     | 11-327(1)  |
| TECOM (2)               | SHAD (3)                      | 11-347(1)  |
| USACC (4)               | TOAD (14)                     | 11-357(1)  |
| Armies (2)              | USA Dep (1)                   | 11-367 (1) |
| Corps (2)               | Sig Sec USA Dep (1)           | 11-368(1)  |
| Svc Colleges(1)         | Units org under fol TOE:      | 11-377(1)  |
| USASIGS (5)             | 29-207 (2)                    | 29-51 (1)  |
| USAADS (2)              | 29-610 (2)                    | 29-55(1)   |
| USAFAS (2)              | 6-615(1)                      | 29-57 (1)  |
| USAARMS (2)             | 6-616(1)                      | 29-102(1)  |
| USAIS (2)               | 7(1)                          | 29-105(1)  |
| USAES (2)               | 10-207 (1)                    | 29-134 (1) |
| USAICS (3)              | 11-15(1)                      | 29-136(1)  |
| MAAG (1)                | 11-16(1)                      | 29-207 (1) |
| USARMIS(1)              | 11-17(1)                      | 29-245 (1) |
| USAERDAA (1)            | 11-19(1)                      | 29-247 (1) |
| USAERDAW (1)            | 11-35(1)                      | 29-500 (1) |
| HQ 7th Sig Comd (5)     | 11-37(1)                      | 57(1)      |
|                         | 11-38(1)                      | 57-100(1)  |
|                         |                               | 67(1)      |
|                         |                               | 77-100(1)  |

*NC: None*

*USAR: None*

For explanation of abbreviations used, see AR 2310-50.





## ***These are the instructions for sending an electronic 2028***

The following format must be used if submitting an electronic 2028. The subject line must be exactly the same and all fields must be included; however only the following fields are mandatory: 1, 3, 4, 5, 6, 7, 8, 9, 10, 13, 15, 16, 17, and 27.

From: "Whomever" <whomever@wherever.army.mil>

To: 2028@redstone.army.mil

Subject: DA Form 2028

1. **From:** Joe Smith
2. **Unit:** home
3. **Address:** 4300 Park
4. **City:** Hometown
5. **St:** MO
6. **Zip:** 77777
7. **Date Sent:** 19-OCT-93
8. **Pub no:** 55-2840-229-23
9. **Pub Title:** TM
10. **Publication Date:** 04-JUL-85
11. **Change Number:** 7
12. **Submitter Rank:** MSG
13. **Submitter FName:** Joe
14. **Submitter MName:** T
15. **Submitter LName:** Smith
16. **Submitter Phone:** 123-123-1234
17. **Problem:** 1
18. **Page:** 2
19. **Paragraph:** 3
20. **Line:** 4
21. **NSN:** 5
22. **Reference:** 6
23. **Figure:** 7
24. **Table:** 8
25. **Item:** 9
26. **Total:** 123
27. **Text:**

This is the text for the problem below line 27.





|   |  |                        |
|---|--|------------------------|
| <b>TO:</b> (Forward direct to addressee listed in publication)<br>Commander, U.S. Army Aviation and Missile Command<br>ATTN: AMSAM-MMC-MA-NP<br>Redstone Arsenal, 35898 | <b>FROM:</b> (Activity and location) (Include ZIP Code)<br>MSG, Jane Q. Doe<br>1234 Any Street<br>Nowhere Town, AL 34565 | <b>DATE</b><br>8/30/02 |
|---|--|------------------------|

**PART II - REPAIR PARTS AND SPECIAL TOOL LISTS AND SUPPLY CATALOGS/SUPPLY MANUALS**

| PUBLICATION NUMBER |          |          | DATE                  | TITLE         |            |          |                                    |                    |
|--------------------|----------|----------|-----------------------|---------------|------------|----------|------------------------------------|--------------------|
| PAGE NO.           | COLM NO. | LINE NO. | NATIONAL STOCK NUMBER | REFERENCE NO. | FIGURE NO. | ITEM NO. | TOTAL NO. OF MAJOR ITEMS SUPPORTED | RECOMMENDED ACTION |
|                    |          |          |                       |               |            |          |                                    |                    |

**PART III - REMARKS** (Any general remarks, corrections, or suggestions for improvement of publications and blank forms. Additional blank sheets may be used if more space is needed.)

**EXAMPLE**

|   |   |           |
|---|---|-----------|
| TYPED NAME, GRADE OR TITLE<br>MSG, Jane Q. Doe, SFC | TELEPHONE EXCHANGE/AUTOVON,<br>PLUS EXTENSION<br>788-1234 | SIGNATURE |
|---|---|-----------|

|   |  |      |
|---|--|------|
| <b>RECOMMENDED CHANGES TO PUBLICATIONS AND<br/>BLANK FORMS</b><br><br>For use of this form, see AR 25-30; the proponent agency is ODISC4. | Use Part II (reverse) for Repair Parts and Special Tool Lists (RPSTL) and Supply Catalogs/Supply Manuals (SC/SM) | DATE |
|---|--|------|

|   |   |
|---|---|
| TO: (Forward to proponent of publication or form)(Include ZIP Code) | FROM: (Activity and location)(Include ZIP Code) |
|---|---|

**PART 1 - ALL PUBLICATIONS (EXCEPT RPSTL AND SC/SM) AND BLANK FORMS**

|                         |      |       |
|-------------------------|------|-------|
| PUBLICATION/FORM NUMBER | DATE | TITLE |
|-------------------------|------|-------|

| ITEM NO. | PAGE NO. | PARA-GRAPH | LINE NO. * | FIGURE NO. | TABLE NO. | RECOMMENDED CHANGES AND REASON |
|----------|----------|------------|------------|------------|-----------|--------------------------------|
|          |          |            |            |            |           |                                |

*\* Reference to line numbers within the paragraph or subparagraph.*

|                            |  |           |
|----------------------------|--|-----------|
| TYPED NAME, GRADE OR TITLE | TELEPHONE EXCHANGE/<br>AUTOVON, PLUS EXTENSION | SIGNATURE |
|----------------------------|--|-----------|

|  |   |             |
|--|---|-------------|
| <b>TO:</b> (Forward direct to addressee listed in publication) | <b>FROM:</b> (Activity and location) (Include ZIP Code) | <b>DATE</b> |
|--|---|-------------|

**PART II - REPAIR PARTS AND SPECIAL TOOL LISTS AND SUPPLY CATALOGS/SUPPLY MANUALS**

|                           |             |              |
|---------------------------|-------------|--------------|
| <b>PUBLICATION NUMBER</b> | <b>DATE</b> | <b>TITLE</b> |
|---------------------------|-------------|--------------|

| PAGE NO. | COLM NO. | LINE NO. | NATIONAL STOCK NUMBER | REFERENCE NO. | FIGURE NO. | ITEM NO. | TOTAL NO. OF MAJOR ITEMS SUPPORTED | RECOMMENDED ACTION |
|----------|----------|----------|-----------------------|---------------|------------|----------|------------------------------------|--------------------|
|          |          |          |                       |               |            |          |                                    |                    |

**PART III - REMARKS** (Any general remarks or recommendations, or suggestions for improvement of publications and blank forms. Additional blank sheets may be used if more space is needed.)

|                            |  |           |
|----------------------------|--|-----------|
| TYPED NAME, GRADE OR TITLE | TELEPHONE EXCHANGE/AUTOVON, PLUS EXTENSION | SIGNATURE |
|----------------------------|--|-----------|

|   |  |      |
|---|--|------|
| <b>RECOMMENDED CHANGES TO PUBLICATIONS AND<br/>BLANK FORMS</b><br><br>For use of this form, see AR 25-30; the proponent agency is ODISC4. | Use Part II (reverse) for Repair Parts and Special Tool Lists (RPSTL) and Supply Catalogs/Supply Manuals (SC/SM) | DATE |
|---|--|------|

|   |   |
|---|---|
| TO: (Forward to proponent of publication or form)(Include ZIP Code) | FROM: (Activity and location)(Include ZIP Code) |
|---|---|

**PART 1 - ALL PUBLICATIONS (EXCEPT RPSTL AND SC/SM) AND BLANK FORMS**

|                         |      |       |
|-------------------------|------|-------|
| PUBLICATION/FORM NUMBER | DATE | TITLE |
|-------------------------|------|-------|

| ITEM NO. | PAGE NO. | PARA-GRAPH | LINE NO. * | FIGURE NO. | TABLE NO. | RECOMMENDED CHANGES AND REASON |
|----------|----------|------------|------------|------------|-----------|--------------------------------|
|          |          |            |            |            |           |                                |

*\* Reference to line numbers within the paragraph or subparagraph.*

|                            |  |           |
|----------------------------|--|-----------|
| TYPED NAME, GRADE OR TITLE | TELEPHONE EXCHANGE/<br>AUTOVON, PLUS EXTENSION | SIGNATURE |
|----------------------------|--|-----------|

|  |   |             |
|--|---|-------------|
| <b>TO:</b> (Forward direct to addressee listed in publication) | <b>FROM:</b> (Activity and location) (Include ZIP Code) | <b>DATE</b> |
|--|---|-------------|

**PART II - REPAIR PARTS AND SPECIAL TOOL LISTS AND SUPPLY CATALOGS/SUPPLY MANUALS**

|                    |      |       |
|--------------------|------|-------|
| PUBLICATION NUMBER | DATE | TITLE |
|--------------------|------|-------|

| PAGE NO. | COLM NO. | LINE NO. | NATIONAL STOCK NUMBER | REFERENCE NO. | FIGURE NO. | ITEM NO. | TOTAL NO. OF MAJOR ITEMS SUPPORTED | RECOMMENDED ACTION |
|----------|----------|----------|-----------------------|---------------|------------|----------|------------------------------------|--------------------|
|          |          |          |                       |               |            |          |                                    |                    |

**PART III - REMARKS** (Any general remarks or recommendations, or suggestions for improvement of publications and blank forms. Additional blank sheets may be used if more space is needed.)

|                            |  |           |
|----------------------------|--|-----------|
| TYPED NAME, GRADE OR TITLE | TELEPHONE EXCHANGE/AUTOVON, PLUS EXTENSION | SIGNATURE |
|----------------------------|--|-----------|



|   |  |      |
|---|--|------|
| <b>RECOMMENDED CHANGES TO PUBLICATIONS AND<br/>BLANK FORMS</b><br><br>For use of this form, see AR 25-30; the proponent agency is ODISC4. | Use Part II (reverse) for Repair Parts and Special Tool Lists (RPSTL) and Supply Catalogs/Supply Manuals (SC/SM) | DATE |
|---|--|------|

|   |   |
|---|---|
| TO: (Forward to proponent of publication or form)(Include ZIP Code) | FROM: (Activity and location)(Include ZIP Code) |
|---|---|

**PART 1 - ALL PUBLICATIONS (EXCEPT RPSTL AND SC/SM) AND BLANK FORMS**

|                         |      |       |
|-------------------------|------|-------|
| PUBLICATION/FORM NUMBER | DATE | TITLE |
|-------------------------|------|-------|

| ITEM NO. | PAGE NO. | PARA-GRAPH | LINE NO. * | FIGURE NO. | TABLE NO. | RECOMMENDED CHANGES AND REASON |
|----------|----------|------------|------------|------------|-----------|--------------------------------|
|          |          |            |            |            |           |                                |

*\* Reference to line numbers within the paragraph or subparagraph.*

|                            |  |           |
|----------------------------|--|-----------|
| TYPED NAME, GRADE OR TITLE | TELEPHONE EXCHANGE/<br>AUTOVON, PLUS EXTENSION | SIGNATURE |
|----------------------------|--|-----------|

|  |   |             |
|--|---|-------------|
| <b>TO:</b> (Forward direct to addressee listed in publication) | <b>FROM:</b> (Activity and location) (Include ZIP Code) | <b>DATE</b> |
|--|---|-------------|

**PART II - REPAIR PARTS AND SPECIAL TOOL LISTS AND SUPPLY CATALOGS/SUPPLY MANUALS**

|                    |      |       |
|--------------------|------|-------|
| PUBLICATION NUMBER | DATE | TITLE |
|--------------------|------|-------|

| PAGE NO. | COLM NO. | LINE NO. | NATIONAL STOCK NUMBER | REFERENCE NO. | FIGURE NO. | ITEM NO. | TOTAL NO. OF MAJOR ITEMS SUPPORTED | RECOMMENDED ACTION |
|----------|----------|----------|-----------------------|---------------|------------|----------|------------------------------------|--------------------|
|          |          |          |                       |               |            |          |                                    |                    |

**PART III - REMARKS** (Any general remarks or recommendations, or suggestions for improvement of publications and blank forms. Additional blank sheets may be used if more space is needed.)

|  |
|--|
|  |
|--|

|                            |  |           |
|----------------------------|--|-----------|
| TYPED NAME, GRADE OR TITLE | TELEPHONE EXCHANGE/AUTOVON, PLUS EXTENSION | SIGNATURE |
|----------------------------|--|-----------|



