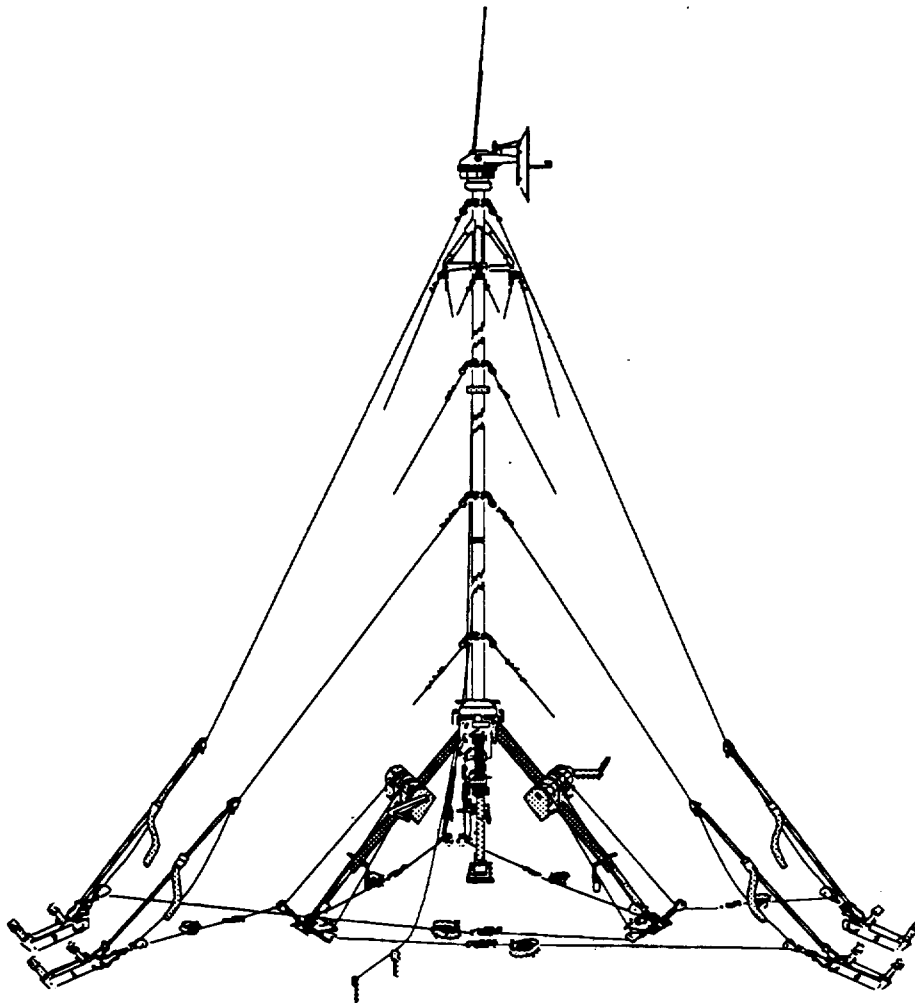

Technical Manual
UNIT AND DIRECT SUPPORT MAINTENANCE
REPAIR PARTS AND SPECIAL TOOLS LIST



MAST
AB-1373/TRC
(NSN 5985-01-333-9687) (EIC: N/A)

Distribution is authorized to Department of Defense and DOD contractors only for official use or for administration or operational purposes. This determination was made on 1 August, 1991. Other requests for this document will be referred to Commander, US Army Communications-Electronics Command and Fort Monmouth, ATIMN; AMSEL-LC-LM-LT, Fort Monmouth, NJ 07703-5007.

DESTRUCTION NOTICE - Destroy by any method that will prevent disclosure of contents or reconstruction of the document.

**UNIT AND DIRECT SUPPORT MAINTENANCE
 REPAIR PARTS AND SPECIAL TOOLS LIST
 FOR
 MAST AB-1373/TRC
 (NSN 5985-01-333-9687) (EIC: N/A)**

Current as of 15 May 1993

REPORTING ERRORS AND RECOMMENDING IMPROVEMENTS

You can help improve this manual. If you find any mistakes or if you know of a way to improve the procedures, please let us know. Mail your letter, DA Form 2028 (Recommended Changes to Publications and Blank Forms) or DA Form 2028-2 located in back of this manual direct to: Commander, U.S. Army Communications-Electronics Command and Fort Monmouth, ATTN: AMSEL-LC-LM-LT, Fort Monmouth, New Jersey 07703-5007. A reply will be furnished to you.

TABLE OF CONTENTS

	Page	Illus/ Figure
Section I. INTRODUCTION.....	1	
Section II. REPAIR PARTS LIST	1-1	
Group 00 Mast AB-1373/TRC	1-1	1
Group 01 Mast Assembly	2-1	2
0101 Tripod, Antenna.....	3-1	3
010101 Support, Antenna.....	4-1	4
010102 Support, Antenna.....	5-1	5
0102 Winch, Drum, Hand Operated.....	6-1	6
010201 Winch Lifting, 2-Speed.....	7-1	7
010202 Antenna Elevator Group	8-1	8
0103 Winch, Drum, Hand Operated.....	9-1	9
Group 02 Positioner System	10-1	10
0201 Antenna Control Group	11-1	11
020101 Front Panel	12-1	12
0202 Positioner	13-1	13
020201 Azimuth Assembly	14-1	14
02020101 Actuator, Electro-Mechanical, Rotary.....	15-1	15
02020102 Cable Assembly, Special Purposes	16-1	16
020202 Elevation Assembly.....	17-1	17
02020201 Actuator, Electro-Mechanical, Rotary.....	18-1	18
0203 Item Deleted		
0204 Cable Assembly, W2.....	19-1	19

TABLE OF CONTENTS - CONTINUED

			Page	Illus/ Figure
Section III	SPECIAL TOOLS LIST	Not applicable		
Section IV.	CROSS-REFERENCE INDEXES.		I-1	
	National Stock Number Index.		I-1	
	Part Number Index.		I-3	
	Figure and Item Number Index.		I-7	

SECTION I INTRODUCTION

1. SCOPE

This RPSTL lists and authorizes spares and repair parts; special tools; special test, measurement, and diagnostic equipment (TMDE); and other special support equipment required for the performance of organizational and direct support maintenance of the Mast. It authorizes the requisitioning, issue, and disposition of spares, repair parts and special tools as indicated by the source, maintenance, and recoverability (SMR) codes.

2. GENERAL

This Repair Parts and Special Tools List is divided into the following sections:

a. Section II. Repair Parts List. A list of spares and repair parts authorized by this RPSTL for use in the performance of maintenance. This list also includes parts which must be removed for replacement of the authorized parts. Parts lists are composed of functional groups in ascending item number sequence, with the parts in each group listed in ascending item number sequence. Figure numbers are listed directly beneath the group header. Bulk materials are listed in item name sequence. Repair part kits are listed separately in their own functional group within Section II. Repair parts for reparable special tools are also listed in this section. Items listed are shown on the associated illustration.

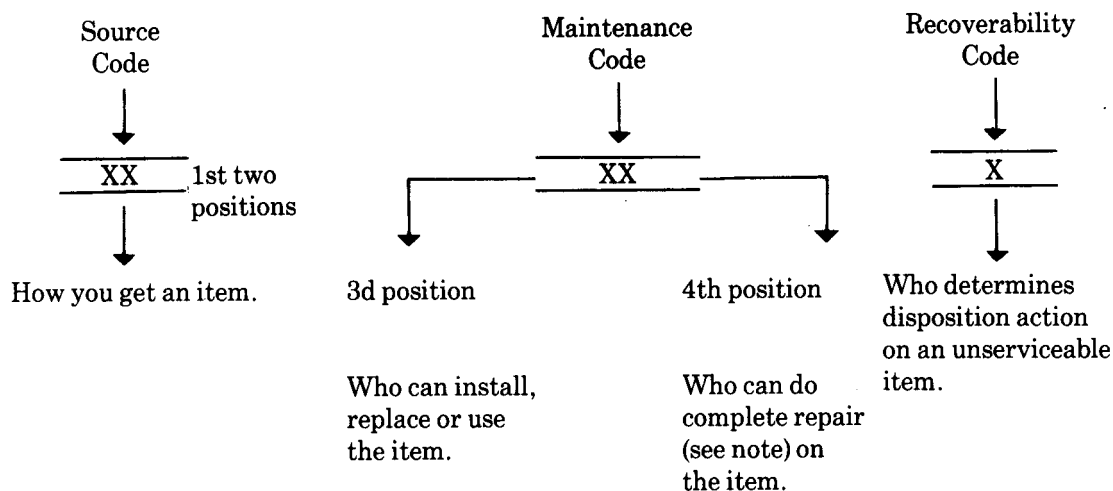
b. Section III. Special Tools List. A list of special tools, special TMDE, and other special support equipment authorized by this RPSTL as indicated by Basis of Issue (BOI) information in (column (5)) for the performance of maintenance.

c. Section IV Cross-Reference Indexes. A list, in National item identification number (NIN) sequence, of all National stock numbered items appearing in the listing, followed by a list in alphameric sequence of all part numbers appearing in the listings. National stock numbers and part numbers are cross-referenced to each illustration figure and item number appearance. The figure number and item number index lists figure and item numbers in numeric sequence and cross-references National stock number, Commercial and Government Entity Code, and part numbers.

3. EXPLANATION OF COLUMNS (Section II and III)

a. Item No. (Column (1)). Indicates the number used to identify items called out in the illustrations.

b. SMR Code (Column (2)). The source, maintenance, and recoverability (SMR) code is a five-position code containing supply/requisitioning information, maintenance category authorization criteria and disposition instruction, as shown in the following breakout:



NOTE

Complete repair: Maintenance capacity, capability, and authority to perform all corrective maintenance tasks of the "repair" function in a use/user environment in order to restore serviceability to a failed item.

(1) Source code. The source code tells you how to get an item needed for maintenance, repair, or overhaul of an end item/equipment. Explanations of source codes follows:

Code

Explanation

PA
PB
PC
PD
PE
PF
PG

Stocked items: use the applicable NSN to request/requisition items with these source codes. They are authorized to the level indicated by the code entered in the third position of the SMR code.

NOTE

Items coded PC are subject to deterioration.

KD
KF
KB

Items with these codes are not to be requested/requisitioned individually. They are part of a kit which is authorized to the maintenance category indicated in the third position of the SMR code. The complete kit must be requisitioned and applied.

MO—Made at org/
AVUM category
MF—Made at DS/
AVUM category
MH—Made at GS
category
ML—Made at
Specialized
Repair Activity
(SRA)
MD—Made at Depot

Items with these codes are not to be requested/requisitioned individually. They must be made from bulk material which is identified by the part number in the description and usable on code (UOC) column and listed in the Bulk Material group of the repair parts list. If the item is authorized to you by the third position code of the SMR code, but the source code indicates it is made at a higher category, order the item from the higher category of Made at Depot maintenance.

AO —Assembled by
org/AVUM
category
AF —Assembled by
DS/AVUM
category
AH —Assembled by
GS category
AL —Assembled by
SRA
AD —Assembled by
Depot

Items with these codes are not to be requested/requisitioned individually. The parts that make up the assembled item must be requisitioned or fabricated and assembled at the category of maintenance indicated by the source code. If the third position code of the SMR code authorizes you to replace the item, but the category source code indicates the item is assembled at a higher category, Assembled by SRA order the item from the higher category of maintenance. Assembled by Depot

Code	Explanation
XA -	Do not requisition an "XA" coded item. Order its next higher assembly.
XB -	If an "XB" item is not available from salvage, order it using the CAGEC and part number given.
XC -	Installation drawing, diagram, instruction sheet, field service drawing, that is identified by manufacturer's part number.
XD -	Item is not stocked. Order an "XD" coded item through normal supply channels using the CAGEC and part number given, if no NSN is available.

NOTE

Cannibalization or controlled exchange, when authorized, may be used as a source of supply for items with the above source codes, except for those source coded "XA" or those aircraft support items restricted by requirements of AR 750-1.

(2) Maintenance code. Maintenance codes tell you the category of maintenance authorized to USE and REPAIR support items. The maintenance codes are entered in the third and fourth positions of the SMR code as follows:

(a) The maintenance code entered in the third position tells you the lowest maintenance category authorized to remove, replace, and use an item. The maintenance code entered in the third position will indicate authorization to one of the following categories of maintenance.

Code	Application/Explanation
C -	Crew or operator maintenance done within organizational or aviation maintenance.
O -	Organizational or aviation unit category can remove, replace, and use the item.
F -	Direct support or aviation intermediate category can remove, replace, and use the item.
H -	General support category can remove, replace, and use the item.
L -	Specialized repair activity can remove, replace, and use the item.
D -	Depot category can remove, replace, and use the item.

(b) The maintenance code entered in the fourth position tells whether or not the item is to be repaired and identifies the lowest maintenance category with the capability to do complete repair (i.e., perform all authorized repair functions). This position will contain one of the following maintenance codes.

NOTE

Some limited repair may be done on the item at a lower category of maintenance, if authorized by the Maintenance Allocation Chart (MAC) and SMR codes.

Code	Explanation
O -	Organizational or aviation unit is the lowest category that can do complete repair of the item.
F -	Direct support or aviation intermediate is the lowest category that can do complete repair of the item.
H -	General support is the lowest category that can do complete repair of the item.
L -	Specialized repair activity (designate the specialized repair activity) is the lowest category that can do complete repair of the item.
D -	Depot is the lowest category that can do complete repair of the item.
Z -	Nonreparable. No repair is authorized.
B -	No repair is authorized. (No parts or special tools are assigned for the maintenance of a "B" coded item.) However, the item may be reconditioned by adjusting, lubricating, etc., at the user category.

(3) Recoverability code. Recoverability codes are assigned to items to indicate the disposition action on unserviceable items. The recoverability code is entered in the fifth position of the SMR code as follows:

Recoverability

Code	Application/Explanation
Z -	Nonreparable item. When unserviceable, condemn and dispose of the item at the category of maintenance shown in the third position of SMR code.
0 -	Reparable item. When uneconomically repairable, condemn and dispose of the item at organizational or aviation unit category.

Recoverability

Code	Application/Explanation
F -	Reparable item. When uneconomically repairable, condemn and dispose of the item at direct support or aviation intermediate category.
H -	Reparable item. When uneconomically repairable, condemn and dispose of the item at general support category.
D -	Reparable item. When beyond lower category repair capability, return to depot. Condemnation and disposal of item not authorized below depot category.
L -	Reparable item. Condemnation and disposal not authorized below specialized repair activity (SRA).
A -	Item requires special handling or condemnation procedures because of specific reasons (e.g., precious metal content, high dollar value, critical material, or hazardous material. Refer to appropriate manuals/directives for specific instructions.

c. *CAGEC (Column (3)).* The Commercial and Government Entity Code (CAGEC) is a 5-digit numeric code which is used to identify the manufacturer, distributor, or Government agency, etc., that supplies the item.

d. *Part Number (Column (4)).* Indicates the primary number used by the manufacturer (individual, company, firm, corporation, or Government activity), which controls the design and characteristics of the item by means of its engineering drawings, specifications, standards, and inspection requirements to identify an item or range of items.

NOTE

When you use an NSN to requisition an item, the item you receive may have a different part number from the part ordered.

e. *Description and Usable on Code (UOC) (Column (5)).* This column includes the following information.

(1) The Federal item name and, when required, a minimum description to identify the item.

(2) The physical security classification of the item is indicated by the parenthetical entry (insert applicable physical security classification abbreviation, e.g., Phy Sec C1 (C) - Confidential, Phy Sec C1 (S) - Secret, Phy Sec C1 (T) - Top Secret).

(3) Items that are included in kits and sets are listed below the name of the kit or set.

(4) Spare/repair parts that make up an assembled item are listed immediately following the assembled item line entry.

(5) Part numbers for bulk materials are referenced in this column in the line entry for the item to be manufactured/fabricated.

(6) When the item is not used with all serial numbers of the same model, the effective serial numbers are shown on the last line of the description (before UOC).

(7) Usable on code, when applicable (para 5).

(8) In the Special Tools section, the basis of issue (BOI) appears as the last line in the entry for each special tool, special TMDE, and other special support equipment. When density of equipments supported exceeds density spread indicated in the basis of issue, the total authorization is increased proportionately.

(9) The statement "END OF FIGURE" appears just below the last item description in Column (5) for a given figure in both section II and section III.

f. *Qty (Column (6)).* Indicates the quantity of the item used in the breakout shown on the illustration figure, which is prepared for a functional group, subfunctional group, or an assembly. A "V" appearing in this column in lieu of a quantity indicates that the quantity is variable and the quantity may vary from application to application.

4. EXPLANATION OF COLUMNS (Section IV)

a. *National Stock Number (NSN) Index.*

(1) *Stock number column.* This column lists the NSN by National item identification number (NIIN) sequence. The NIIN consists of the last nine digits of the NSN. When using this column to locate an item, ignore the first four digits of the NSN. When requisitioning items use the complete NSN (13 digits) sequence.

(2) *Fig. column.* This column lists the number of the figure where the item is identified/located. The illustrations are in numerical sequence in sections II and III.

(3) *Item column.* The item number identifies the item associated with the figure listed in the adjacent Fig. column. This item is also identified by the NSN listed on the same line.

b. *Part Number Index.* Part numbers in this index are listed by part number in ascending alphameric sequence.

(1) *CAGEC column.* This column lists the Commercial and Government Entity Code (CAGEC).

(2) *Part number column.* This column indicates the part number assigned to the item.

(3) *Stock number column.* This column lists the National stock number for the associated part number and manufacturer identified in the part number and CAGEC columns to the left.

(4) *Fig. column.* This column lists the number of the figure where the item is identified/located in sections II and III.

(5) *Item column.* The item number is that number assigned to the item as it appears in the figure referenced in the adjacent figure number column.

c. *Figure and Item Number Index.*

(1) *Fig. column.* This column lists the number of the figure where the item is identified/located in sections II and III

(2) *Item column.* The item number is that number assigned to the item as it appears in the figure referenced in the adjacent figure number column

(3) *Stock number column.* This column lists the National stock number for the item.

(4) *CAGEC column.* The Commercial and Government Entity Code (CAGEC) is a 5-digit numeric code used to identify the manufacturer, distributor, or Government agency, etc., that supplies the item.

(5) *Part number column.* Indicates the primary number used by the manufacturer (individual, firm, corporation, or Government activity), which controls the design and characteristics of the item by means of its engineering drawings, specifications, standards, and inspection requirements to identify an item or range of items.

5. SPECIAL INFORMATION

a. *Usable on Code.* Not applicable.

b. *Fabrication Instructions.* Bulk materials required to manufacture items are listed in the bulk material functional group of this RPSTL. Part numbers for bulk materials are also referenced in the description column of the line item entry for the item to be manufactured/fabricated.

c. *Kits.* Line item entries for repair part kits appear in a group in section II (refer to table of contents).

d. *Index Numbers.* Items which have the word BULK in the figure column will have an index number shown in the item number column. This index number is a cross-reference between the National Stock Number/Part Number Index and the bulk material list in section II.

e. *Associated Publications.* The publications listed below pertain to the Antenna Support Group.

<u>Publication</u>	<u>Short Title</u>
TM 11-5820-864-12	Radio Repeater Set AN/TRC-174
TM 11-5820-865-12	Radio Terminal Set AN/TRC-173
TM 11-5820926-12	Radio Repeater Set AN/TRC-138A
TM 11-5820931-12	Radio Terminal Set AN/TRC-17
TM 11-5820-1088-12	Radio Terminal Set AN/TRC-175A
TM 11-5820-1089-12	Radio Repeater Set AN/TRC-174A
TM 11-5820-1090-12	Radio Terminal Set AN/TRC-173A

<u>Publication</u>	<u>Short Title</u>
TM 11-5820-1091-12	Radio Repeater Set AN/TRC-138B
TM 11-5985-392-13/-23P	Antenna Support Group OE-481/TRC
TM 11-5985-394-13	Mast AB-1373/TRC

f Illustrations - Listing. Only those parts coded "C" or "O" in the third position of the SMR code are listed in the tabular listing; therefore, there may be a break in the item number sequence, figure number and page number. Only illustrations containing organizational or aviation unit authorized items appear in this RPSTL.

h. National Stock Numbers. National stock numbers (NSN's) that are missing from P source coded items have been applied for and will be added to this TM by future change/revision when they are entered in the Army Master Data File (AMDF). Until the NSN's are established and published, submit exception requisitions to: Commander, US Army Communications-Electronics Command and Fort Monmouth, ATTN: AMSEL-LC-MM, Fort Monmouth, NJ 07703-5007 for the part required to support your equipment.

6. HOW TO LOCATE REPAIR PARTS

a. When National stock number or part number is not known.

(1) *First.* Using the table of contents, determine the assembly group or subassembly group to which the item belongs. This is necessary since figures are prepared for assembly groups and subassembly groups, and listings are divided into the same groups.

(2) *Second.* Find the figure covering the assembly group or subassembly group to which the item belongs.

(3) *Third.* Identify the item on the figure and note the item number.

(4) *Fourth.* Refer to the Repair Parts Lists for the figure to find the part number for the item number noted on the figure.

(5) *Fifth.* Refer to the Part Number Index to find the NSN, if assigned.

b. When National stock number or part number is known.

(1) *First.* Using the index of National stock numbers and part numbers, find the pertinent National stock number or part number. The NSN index is in National item identification number (NIIN) sequence (para 4a(1)). The part numbers in the part number index are listed in ascending alphameric sequence (para 4b). Both indexes cross-reference you to the illustration figure and item number of the item you are looking for.

(2) *Second.* After finding the figure and item number, verify that the item is the one you're looking for, then locate the item number in the repair parts list for the figure.

7. ABBREVIATIONS

Not applicable.

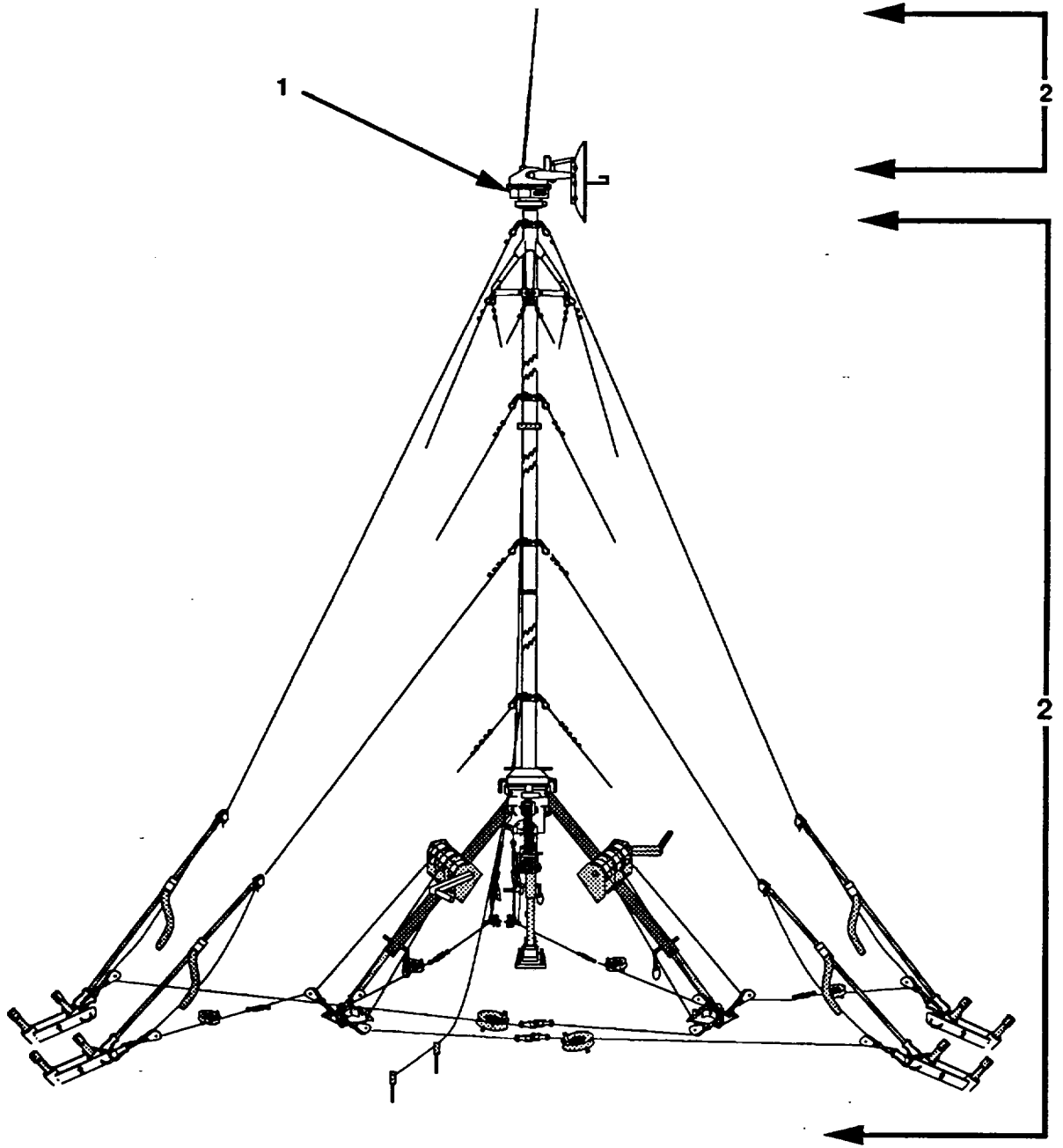


Figure 1. Mast AB-1373/TRC

SECTION II

TM 11-5985-394-23P

(1) ITEM NO	(2) SMR CODE	(3) CAGEC	(4) PART NUMBER	(5) DESCRIPTION AND USABLE ON CODES (UOC)	(6) QTY
-------------------	--------------------	--------------	-----------------------	--	------------

GROUP 00 MAST AB-1373/TRC

FIGURE 1

1	XB0FF	80063	A3157300-001	POSITIONER SYSTEM (SEE FIGURE 10 FOR DETAILS)	1
2	XB0FF	80063	A3156801-001	MAST ASSEMBLY (SEE FIGURE 2 FOR DETAILS)	1

END OF FIGURE

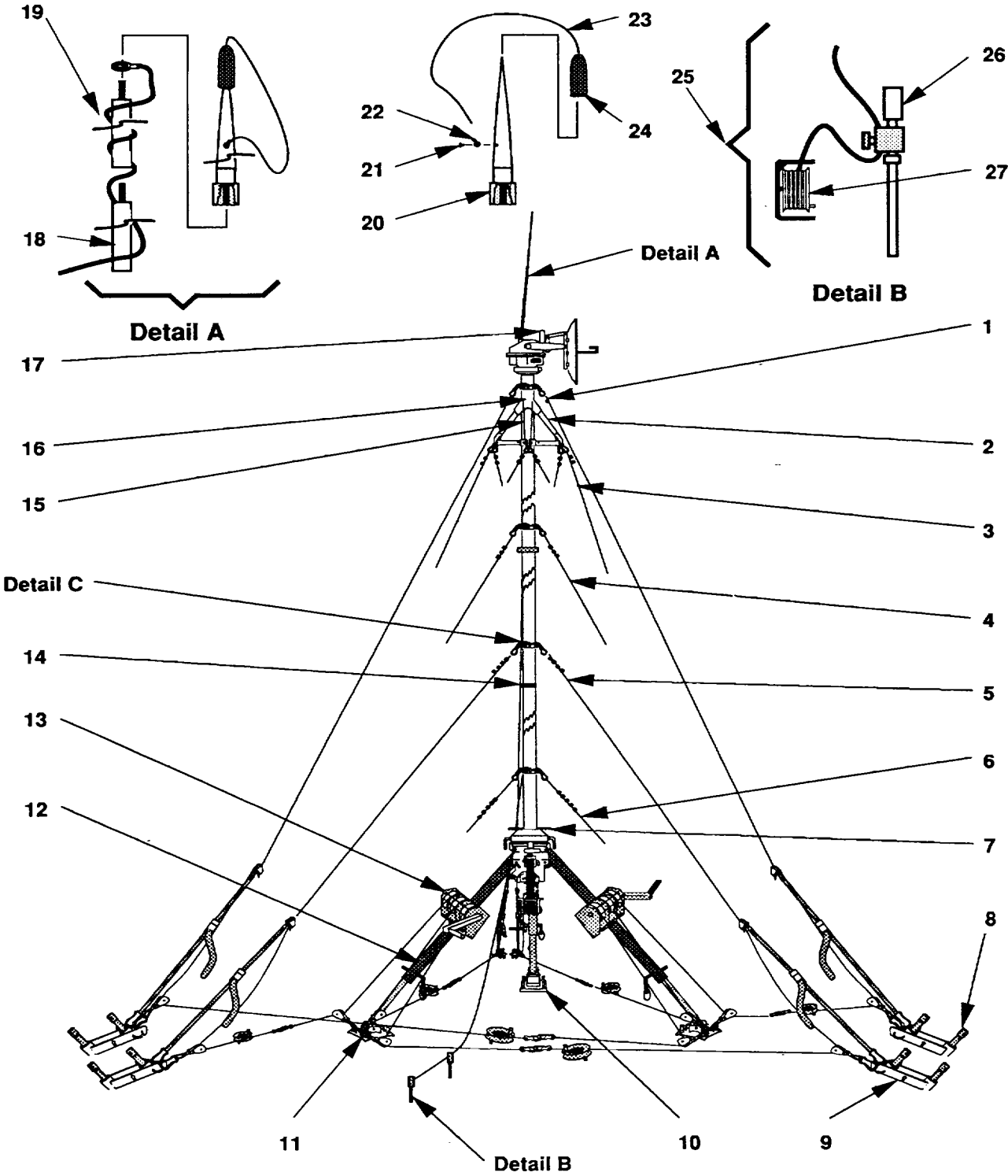
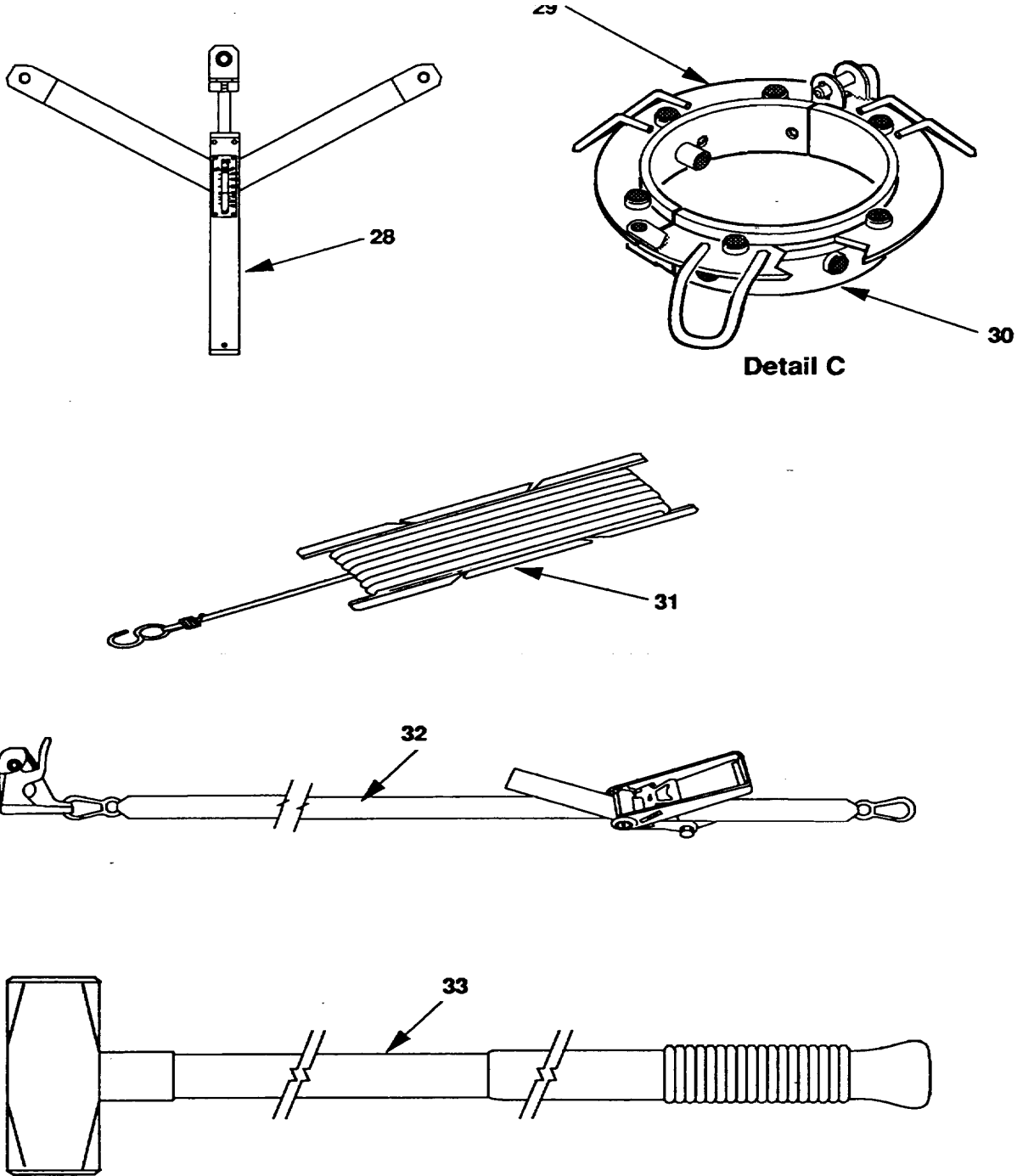
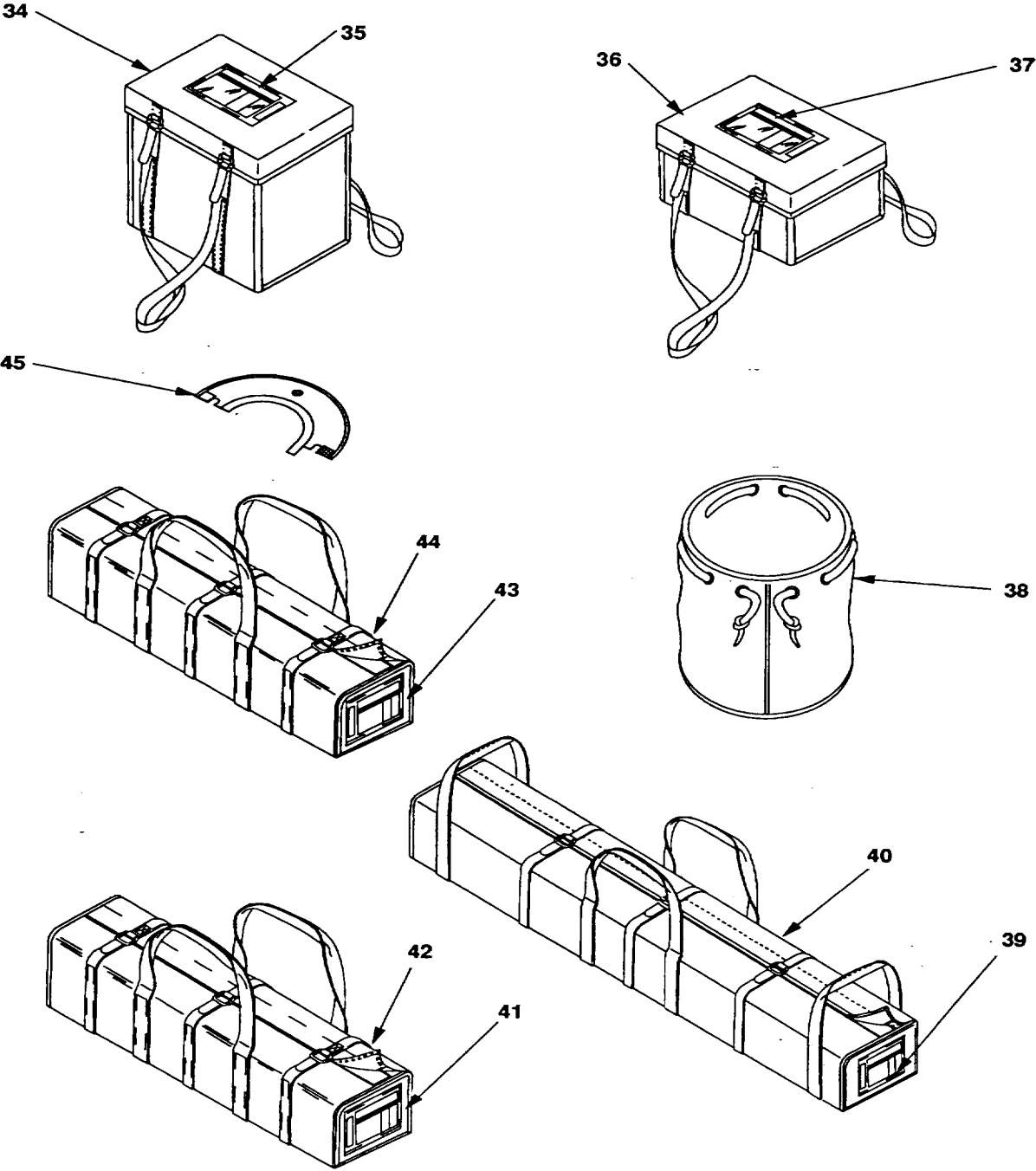


Figure 2. Mast Assembly (Sheet 1 of 3)



CE2M1003

Figure 2. Mast Assembly (Sheet 2 of 3)



CE2M004

Figure 2. Mast Assembly (Sheet 3 of 3)

SECTION II

TM 11-5985-394-23P

(1) ITEM NO	(2) SMR CODE	(3) CAGEC	(4) PART NUMBER	(5) DESCRIPTION AND USABLE ON CODES (UOC)	(6) QTY
GROUP 01 MAST ASSEMBLY					
FIGURE 2					
1	PA0ZZ	80063	A3157151-001	WIRE ROPE ASSEMBLY,	3
2	PA0ZZ	80063	A3156818-001	SUPPORT, ANTENNA.....	3
3	PA0ZZ	80063	A3156816-001	WIRE ROPE ASSEMBLY,	6
4	PA0ZZ	80063	A3156814-001	WIRE ROPE ASSEMBLY,	3
5	PA0ZZ	80063	A3157152-001	WIRE ROPE ASSEMBLY,	3
6	PA0ZZ	80063	A3156810-001	WIRE ROPE ASSEMBLY,	3
7	PA0ZZ	80063	A3156808-001	PIN, STRAIGHT, HEADLE.....	3
8	PA0ZZ	80063	A3156820-001	GUY ATTACHMENT.....	12
9	PA0ZZ	80063	A3156821-001	GUY ATTACHMENT.....	6
10	PA00F	80063	A3156805-001	WINCH, DRUM, HAND OPE (SEE FIGURE 6 FOR DETAILS)	1
11	PA0ZZ	80063	A3156803-001	ANCHOR, GUY.....	12
12	XB000	80063	A3156804-001	TRIPOD, ANTENNA (SEE FIGURE 3 FOR DETAILS).....	1
13	PB000	80063	A3157140-001	WINCH, DRUM, HAND OPE (SEE FIGURE 9 FOR DETAILS)	2
14	PA0ZZ	81337	6-1-5876	FASTNER TAPE, HOOK	8
15	PA0ZZ	80063	A3156813-001	MAST SECTION	21
16	PA0ZZ	80063	A3157166-001	SUPPORT, ANTENNA	1
17	PA0ZZ	80063	A3157201-001	BRACKET, MOUNTING	1
18	PA0ZZ	80063	A3157042-001	LIGHTING ROD LOWER	1
19	PB0ZZ	80063	A3157041-001	LIGHTNING ROD UPPER	1
20	XB0ZZ	80063	A3157049-001	ROD, POINTED	1
21	PA0ZZ	80063	A3157189-001	RIVET, BLIND	1
22	PA0ZZ	80063	A3157063-001	TERMINAL, LUG	1
23	PA0ZZ	80063	6Z7920	ROPE, FIBROUS	1
24	PA0ZZ	80063	A3157004-001	CAP, PROTECTIVE, DUST	1
25	XB000	80063	A3156802-001	GROUND ROD ASSEMBLY.....	1
26	PA0ZZ	80063	A3157032-001	ROD, GROUND	2
27	PA0ZZ	80063	A3157043-001	CABLE ASSEMBLY AND.....	1
28	PA0ZZ	80063	A3156823-001	TENSIOMETER, DIAL IN	1
29	PB0ZZ	80063	A3156912-001	SUPPORT RING, ANTENN	4
30	PB0ZZ	80063	A3156868-001	SUPPORT RING, ANTENN	8
31	PA0ZZ	80063	A3156811-001	ROPE, FIBROUS	1
32	PA0ZZ	80063	A3156822-001	FASTENER, CLAMP KIT	18
33	PA0ZZ	80063	A3156807-001	HAMMER, HAND	1
34	PA0ZZ	80063	A3157147-001	BAG, TOOLS AND SPARE.....	2
35	XB0ZZ	80063	A3156825-001	LABEL, BAG	2
36	PA0ZZ	80063	A3156826-001	BAG, TOOLS AND SPARE	1
37	XB0ZZ	80063	A3156827-001	LABEL, BAG	1
38	PA0ZZ	80063	A3156830-001	BAG, TOOLS AND SPARE	1
39	XB0ZZ	80063	A3156832-001	LABEL, BAG	1
40	PA0ZZ	80063	A3156831-001	BAG, TOOLS AND SPARE.....	1
41	XB0ZZ	80063	A3156829-001	LABEL, BAG	3
42	PA0ZZ	80063	A3156828-001	BAG, TOOLS AND SPARE.....	3
43	XB0ZZ	80063	A3157208-001	LABEL, BAG	1
44	PA0ZZ	80063	A3157212-001	BAG, TOOLS AND SPARE.....	1

SECTION II

TM 11-5985-394-23P

(1) ITEM NO	(2) SMR CODE	(3) CAGEC	(4) PART NUMBER	(5) DESCRIPTION AND USABLE ON CODES (UOC)	(6) QTY
45	PA0ZZ	80063	A3157158-001	COVER, ACCESS.....	1

END OF FIGURE

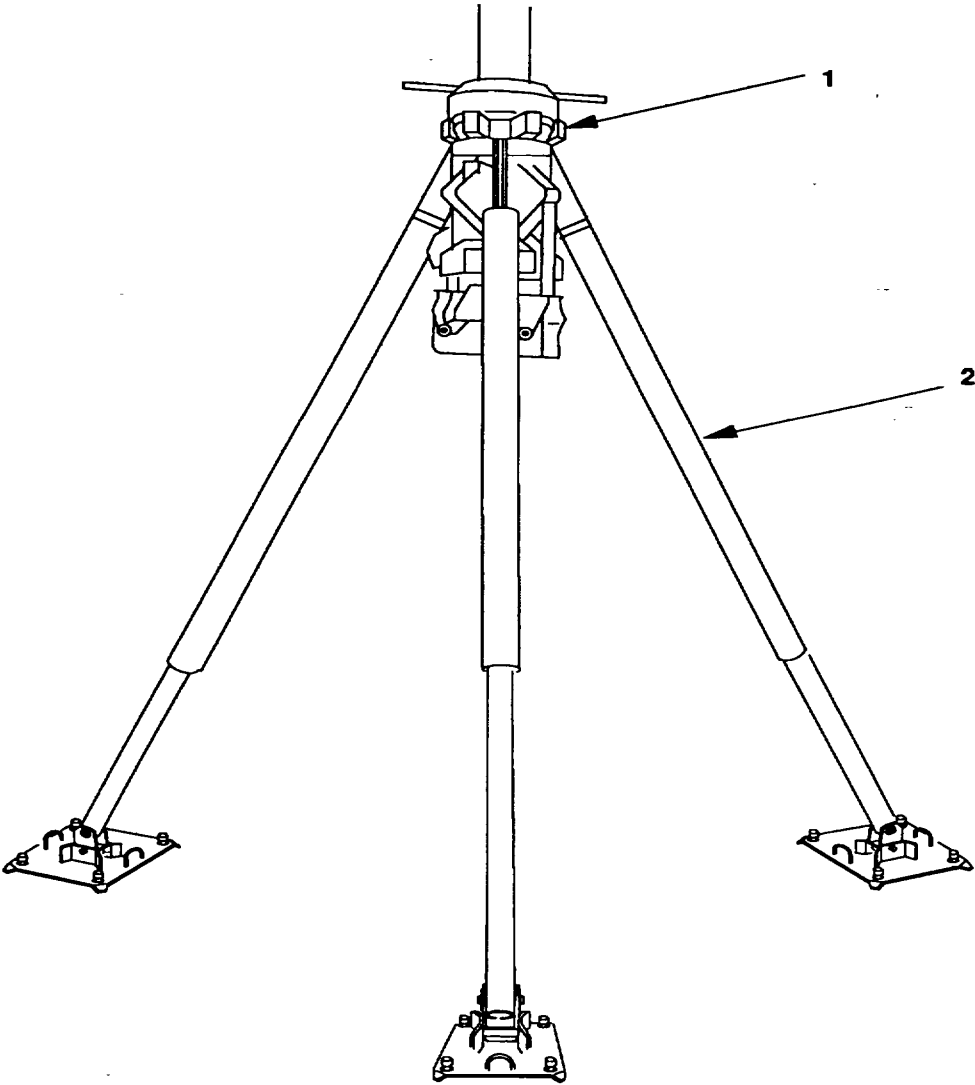


Figure 3. Tripod, Antenna

SECTION II

TM 11-5985-394-23P

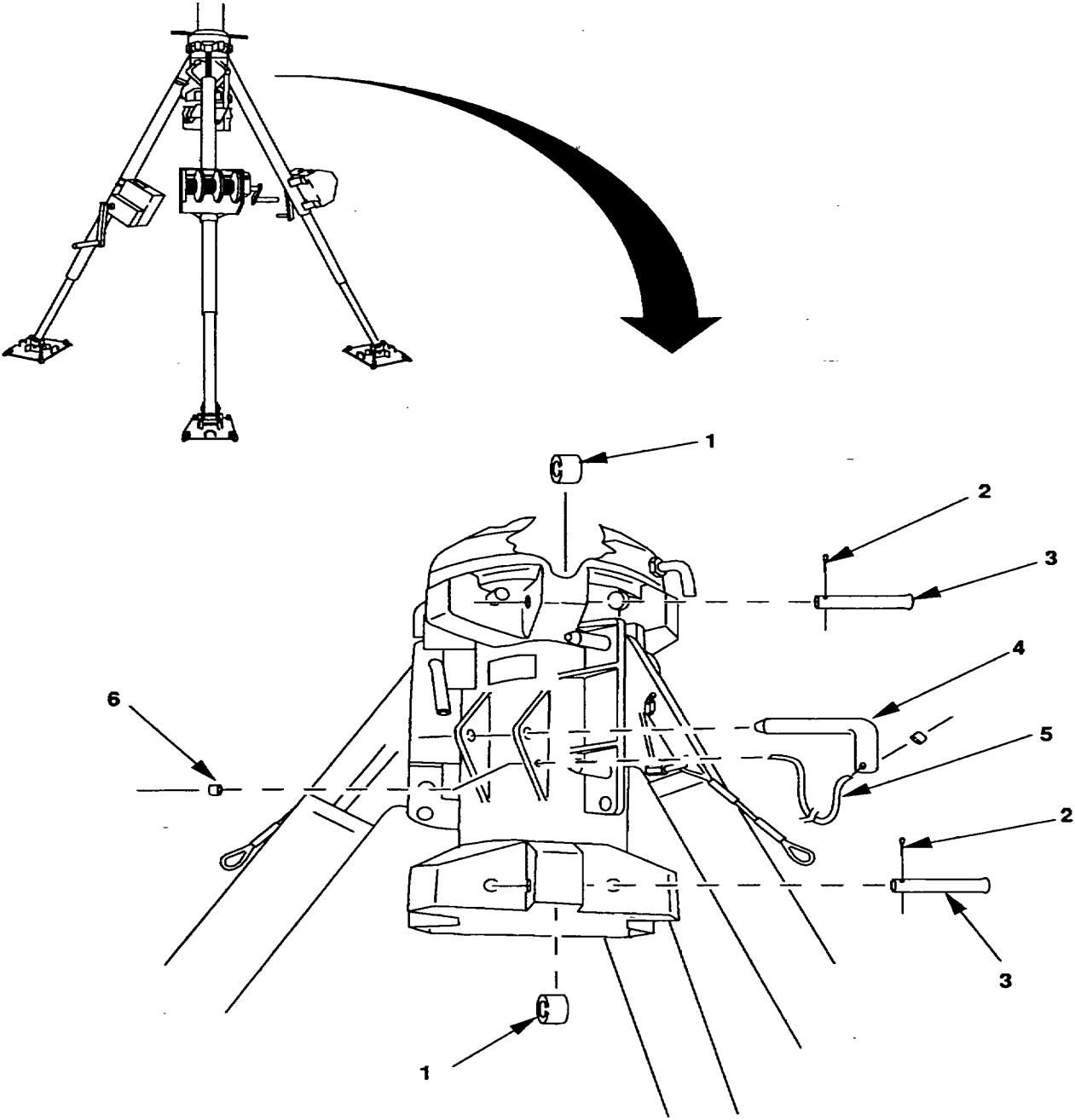
(1) ITEM NO	(2) SMR CODE	(3) CAGEC	(4) PART NUMBER	(5) DESCRIPTION AND USABLE ON CODES (UOC)	(6) QTY
-------------------	--------------------	--------------	-----------------------	--	------------

GROUP 0101 TRIPOD, ANTENNA

FIGURE 3

1	PBOOO 80063		A3156835-001	SUPPORT, ANTENNA (SEE FIGURE 4 FOR DETAILS)	1
2	PBOOO 80063		A3156834-001	SUPPORT, ANTENNA (SEE FIGURE 5 FOR DETAILS)	3

END OF FIGURE



CE2M1006

Figure 4. Support, Antenna

SECTION II

TM 11-5985-394-23P

(1) ITEM NO	(2) SMR CODE	(3) CAGEC	(4) PART NUMBER	(5) DESCRIPTION AND USABLE ON CODES (UOC)	(6) QTY
GROUP 010101 SUPPORT, ANTENNA					
FIGURE 4					
1	PA0ZZ	80063	A3156888-001	ROLLER, BEARING	12
2	PA0ZZ	80063	A3157176-003	PIN, COTTER	12
3	PA0ZZ	80063	A3156887-001	SHAFT, SHOULDERED	12
4	PA0ZZ	80063	A3156886-001	PIN, LOCK	3
5	MF0ZZ	81349	MIL-W-83420/4	LANYARD	3
6	PA0ZZ	80063	A3156858-001	SPACER, SLEEVE.....	6

END OF FIGURE

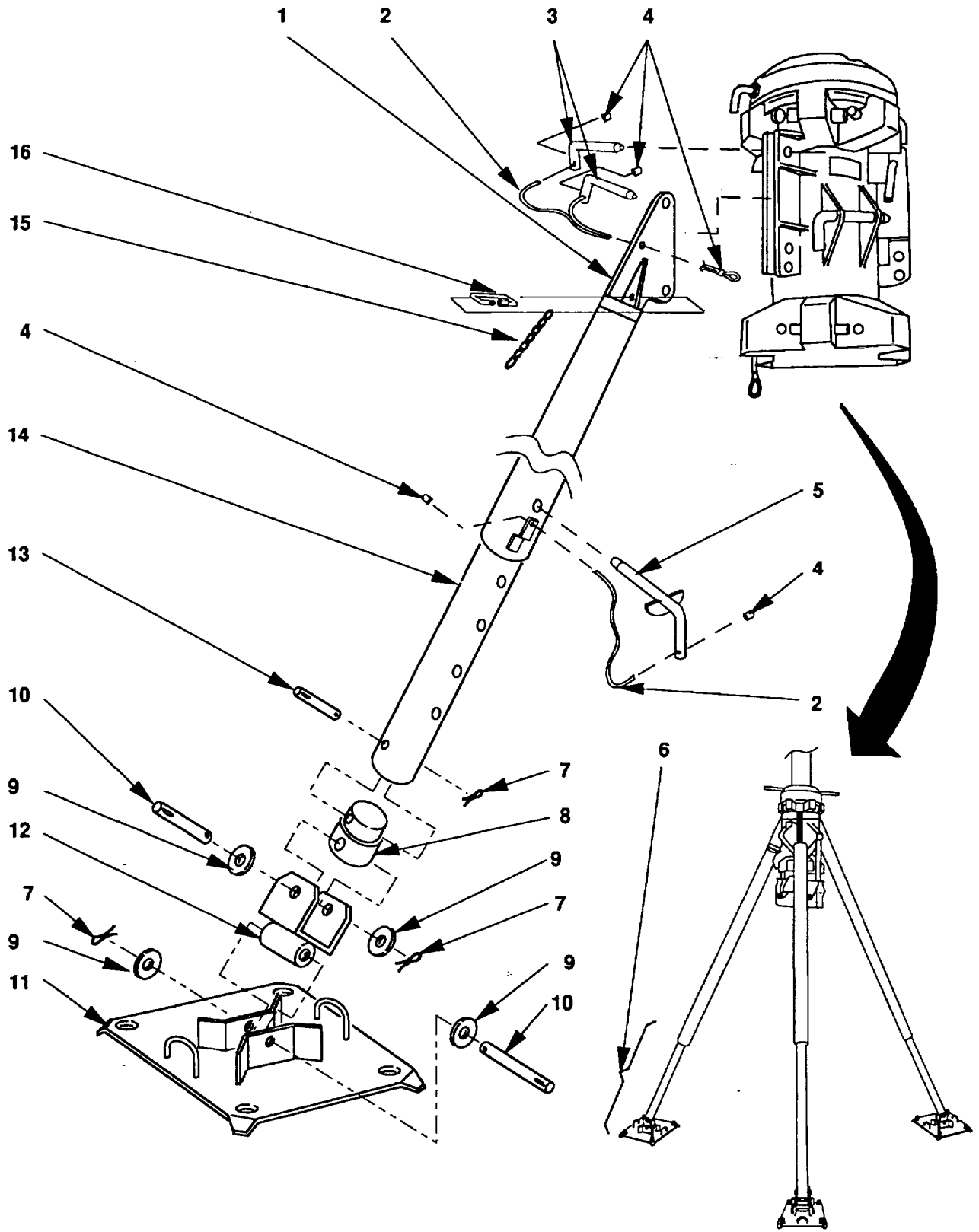


Figure 5. Support, Antenna

SECTION II

TM 11-5985-394-23P

(1) ITEM NO	(2) SMR CODE	(3) CAGEC	(4) PART NUMBER	(5) DESCRIPTION AND USABLE ON CODES (UOC)	(6) QTY
GROUP 010102 SUPPORT, ANTENNA					
FIGURE 5					
1	PB0FF	80063	A3156931-001	SUPPORT, ANTENNA.....	1
2	MF0ZZ	81349	MIL-W-83420 TYPE 2COMPB	LANYARD	2
3	PA0ZZ	80063	A3156886-001	PIN, LOCK.....	2
4	PA0ZZ	80063	A3156858-001	SPACER, SLEEVE.....	5
5	PA0ZZ	80063	A3156924-001	PIN, LOCK.....	1
6	PD000	80063	A3156927-001	SUPPORT, ANTENNA.....	1
7	PA0ZZ	80063	A3157176-003	PIN, COTTER	3
8	PA0ZZ	80063	A3156922-001	PIN, STRAIGHT, HEADLE	1
9	PA0ZZ	80063	A3157177-004	WASHER, FLAT.....	4
10	PA0ZZ	80063	A3156895-001	PIN, STRAIGHT, HEADED	2
11	PA0ZZ	80063	A3156920-001	PLATE, BASE, TOWER SU.....	1
12	PA0ZZ	80063	A3156921-001	BRACKET, LEVER.....	1
13	PA0ZZ	80063	A3156896-001	PIN, STRAIGHT, HEADED	1
14	PA0ZZ	80063	A3156923-001	TUBE, METALLIC	1
15	PA0ZZ	80063	A3156933-001	WIRE ROPE ASSEMBLY	1
16	PA0ZZ	80063	A3157073-001	RING, CONNECTING, ROU	1

END OF FIGURE

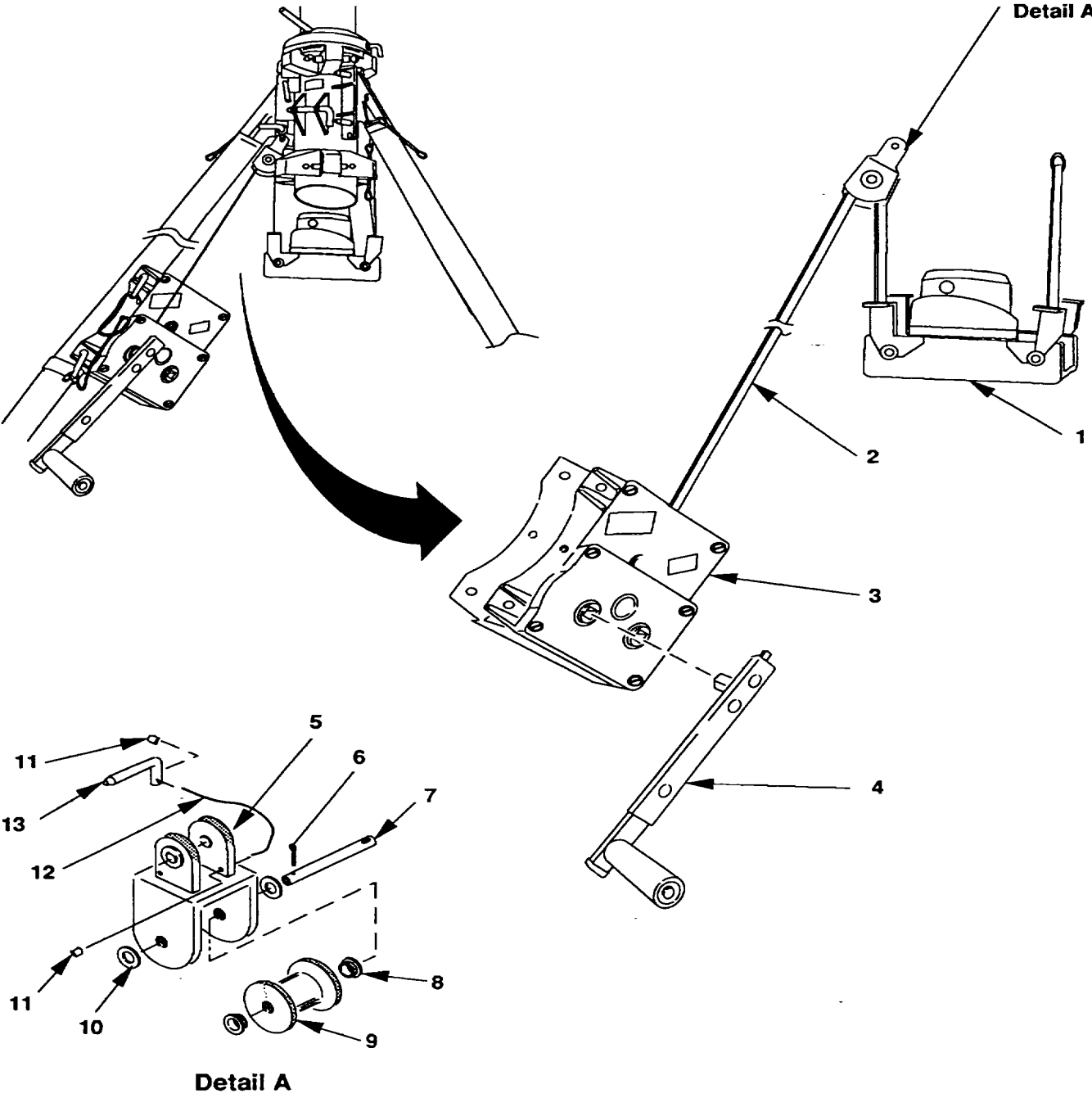


Figure 6. Winch, Drum, Hand Operated

SECTION II					
(1)	(2)	(3)	(4)	(5)	(6)
ITEM	SMR		PART	DESCRIPTION AND USABLE ON CODES (UOC)	QTY
NO	CODE	CAGEC	NUMBER		
GROUP 0102 WINCH, DRUM, HAND, OPERATED					
FIGURE 6					
1	PB000	80063	A3156863-001	ANTENNA ELEVATOR GR (SEE FIGURE 8 FOR DETAILS)	1
2	PA0ZZ	80063	A3156865-001	BELT, FLAT	1
3	XB000	80063	A3156839-001	WINCH, LIFTING 2 SP (SEE FIGURE 7 FOR DETAILS)	1
4	PA0ZZ	80063	A3156866-001	CRANK, HAND.....	1
5	XB000	80063	A3156864-001	PULLEY, LIFTING BELT.....	1
6	PA0ZZ	80063	A3157176-002	PIN, COTTER	1
7	PA0ZZ	80063	A3156843-001	SHAFT, SHOULDERED	1
8	PA0ZZ	80063	A3157213-001	BUSHING	2
9	PA0ZZ	80063	A3156904-001	PULLEY, FLAT.....	1
10	PA0ZZ	80063	A3157177-003	WASHER, FLAT.....	2
11	PA0ZZ	80063	A3156858-001	SPACER, SLEEVE.....	2
12	MF0ZZ	81349	MIL-W-83420/4	LANYARD	1
13	PA0ZZ	80063	A3156886-001	PIN, LOCK.....	1

END OF FIGURE

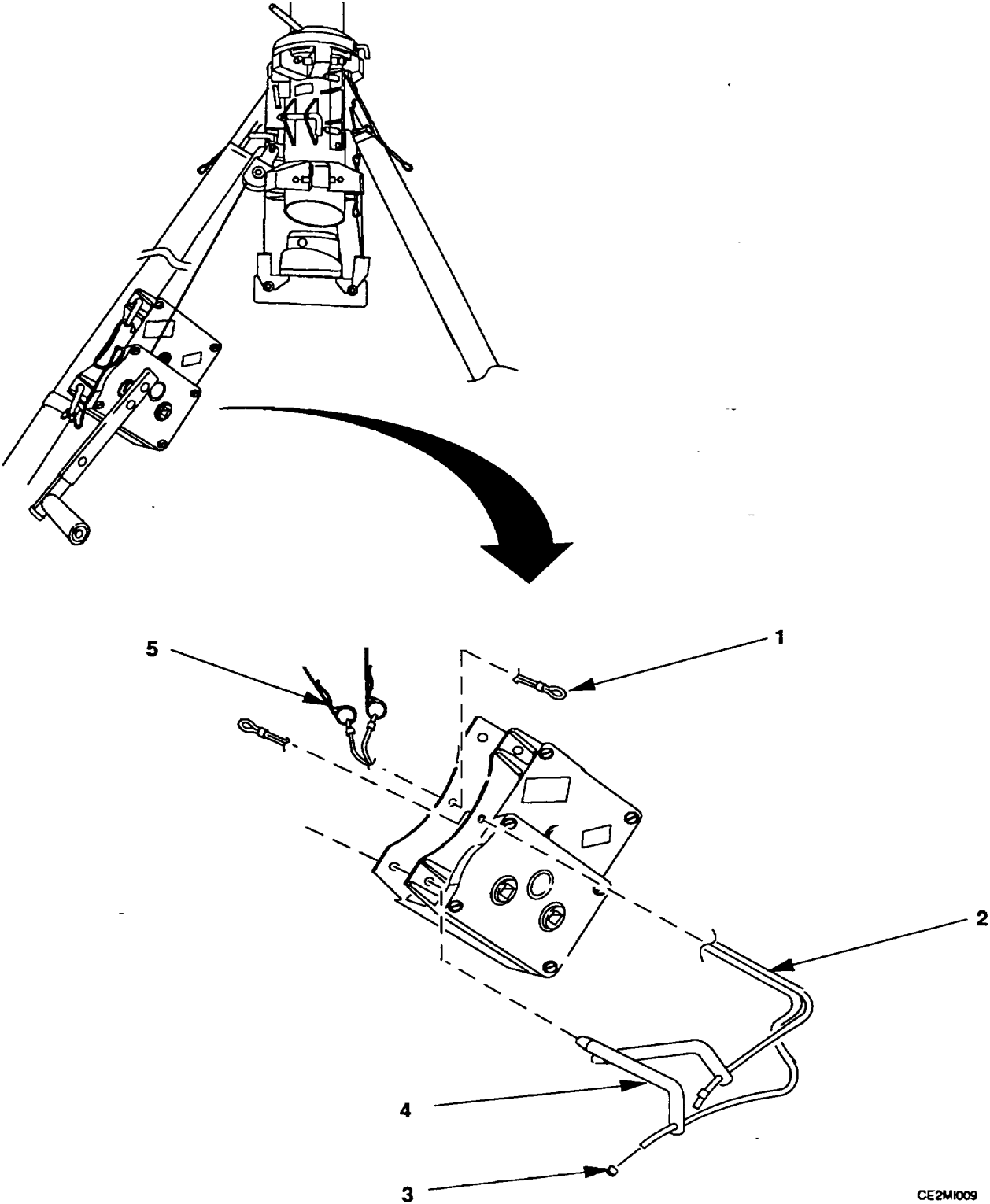


Figure 7. Winch Lifting, 2-Speed

SECTION II

TM 11-5985-394-23P

(1) ITEM NO	(2) SMR CODE	(3) CAGEC	(4) PART NUMBER	(5) DESCRIPTION AND USABLE ON CODES (UOC)	(6) QTY
GROUP 010201 WINCH LIFTING, 2-SPEED					
FIGURE 7					
1	MF0ZZ	81349	MIL-W-83420/2	LANYARD LANYARD 450 MM LONG	1
2	MF0ZZ	81349	MIL-W-83420/4	LANYARD LANYARD 600 MM LONG	1
3	PA0ZZ	80063	A3156858-001	SPACER, SLEEVE.....	6
4	PA0ZZ	80063	A3156847-001	PIN, LOCK.....	2
5	PA0ZZ	80063	A3156861-001	CLIP, SPRING TENSION	2

END OF FIGURE

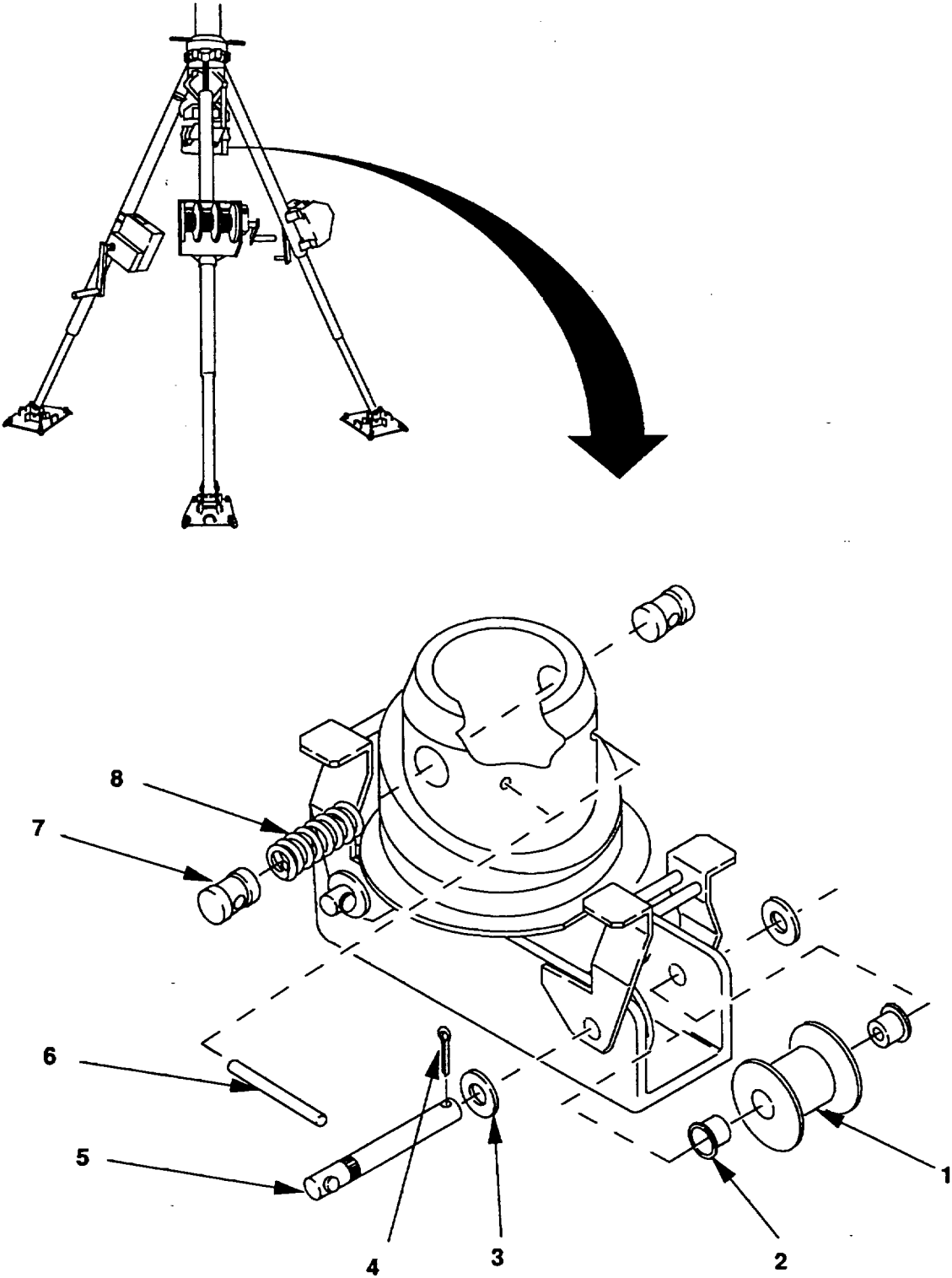


Figure 8. Antenna Elevator Group

SECTION II

TM 11-5985-394-23P

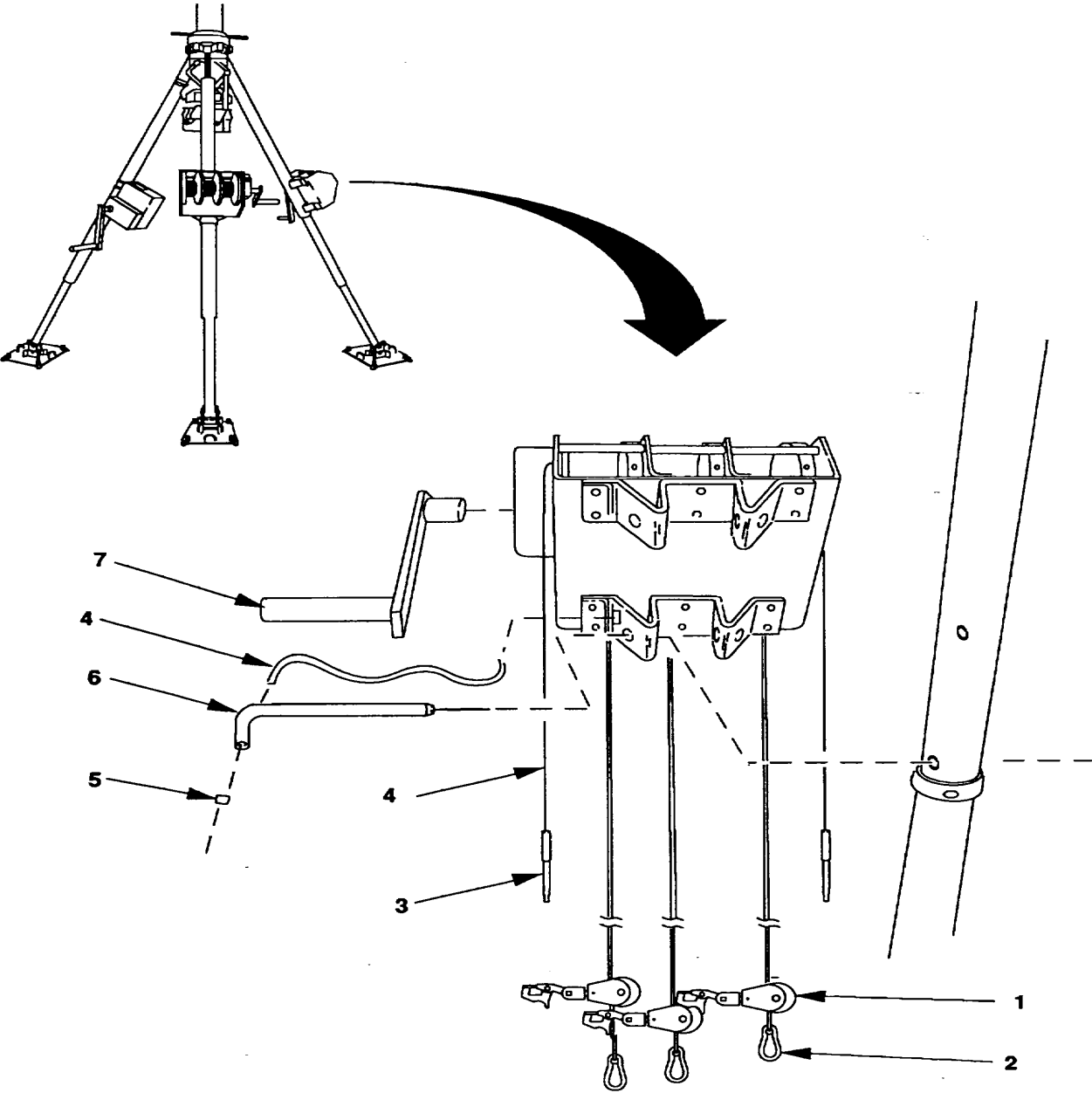
(1) ITEM NO	(2) SMR CODE	(3) CAGEC	(4) PART NUMBER	(5) DESCRIPTION AND USABLE ON CODES (UOC)	(6) QTY
-------------------	--------------------	--------------	-----------------------	--	------------

GROUP 010202 ANTENNA ELEVATOR GROUP

FIGURE 8

1	PA0ZZ	80063	A3156904-001	PULLEY, FLAT.....	2
2	PA0ZZ	80063	A3157213-001	BUSHING	4
3	PA0ZZ	80063	A3157177-003	WASHER, FLAT.....	4
4	PA0ZZ	80063	A3157176-002	PIN, COTTER	2
5	PA0ZZ	80063	A3156906-001	SHAFT, SHOULDERED	2
6	PA0ZZ	80063	A3156903-001	PIH, STRAIGHT, KNURLE	2
7	PA0ZZ	80063	A3156898-001	PIN, STRAIGHT, HEADLE.....	2
8	PA0ZZ	80063	A3156900-001	SPRING, HELICAL, COMP.....	1

END OF FIGURE



CE2MI011

Figure 9. Winch, Drum, Hand Operated

SECTION II

TM 11-5985-394-23P

(1) ITEM NO	(2) SMR CODE	(3) CAGEC	(4) PART NUMBER	(5) DESCRIPTION AND USABLE ON CODES (UOC)	(6) QTY
-------------------	--------------------	--------------	-----------------------	--	------------

GROUP 0103 WINCH, DRUM, HAND OPERATED

FIGURE 9

1	PA0ZZ	80063	A3157162-001	PULLEY, GROOVE.....	3
2	PA0ZZ	80063	A3157036-001	GUY.....	3
3	PA0ZZ	80063	A3156992-001	PIN, SHOULDER, HEADLE.....	2
4	MF0ZZ	81349	MIL-W-83420/4	LANYARD.....	4
5	PA0ZZ	80063	A3156858-001	SPACER, SLEEVE.....	8
6	PA0ZZ	80063	A3156956-001	PIN, LOCK.....	2
7	PA0ZZ	80063	A3156987-001	CRANK, HAND.....	1

END OF FIGURE

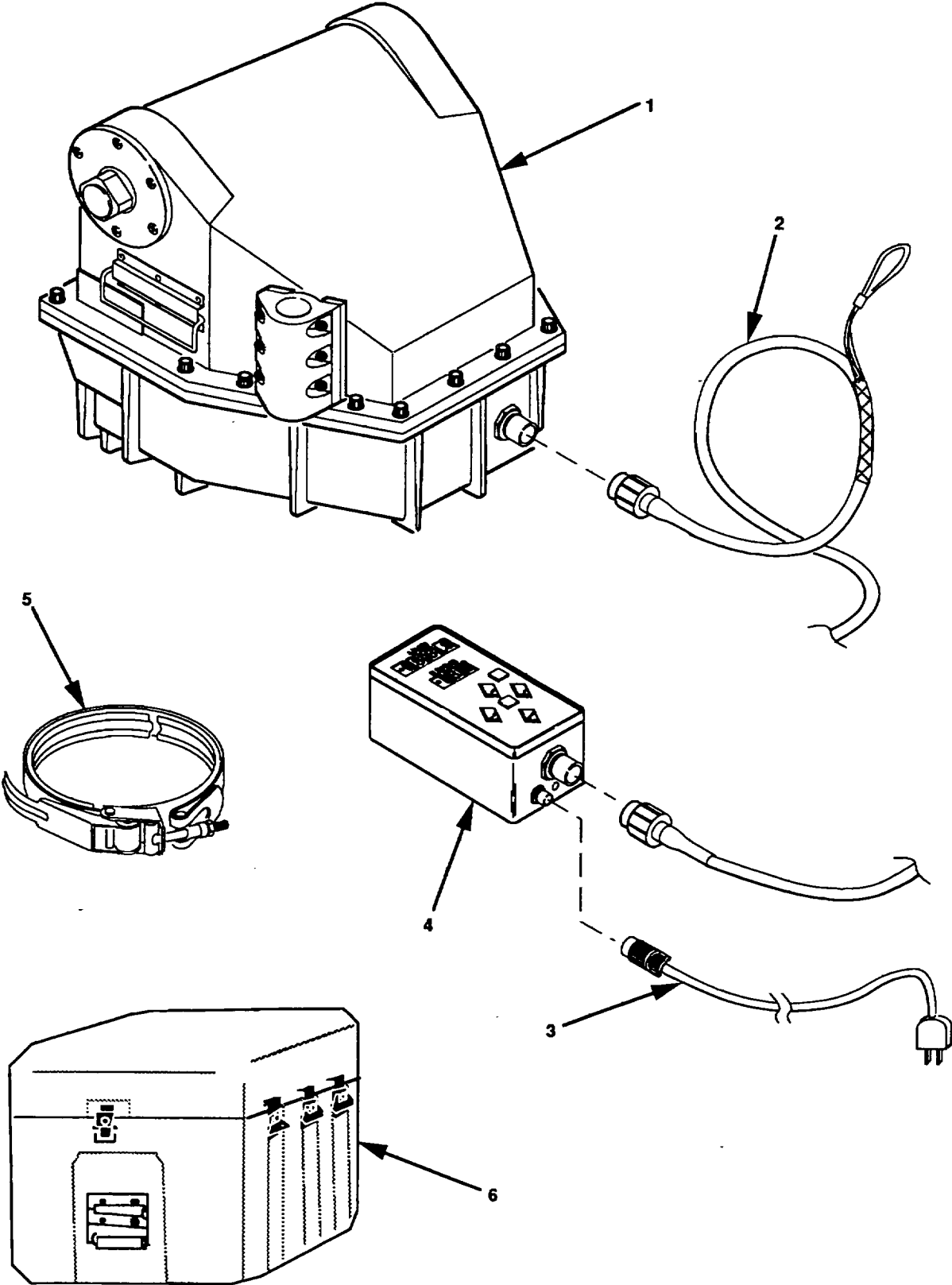
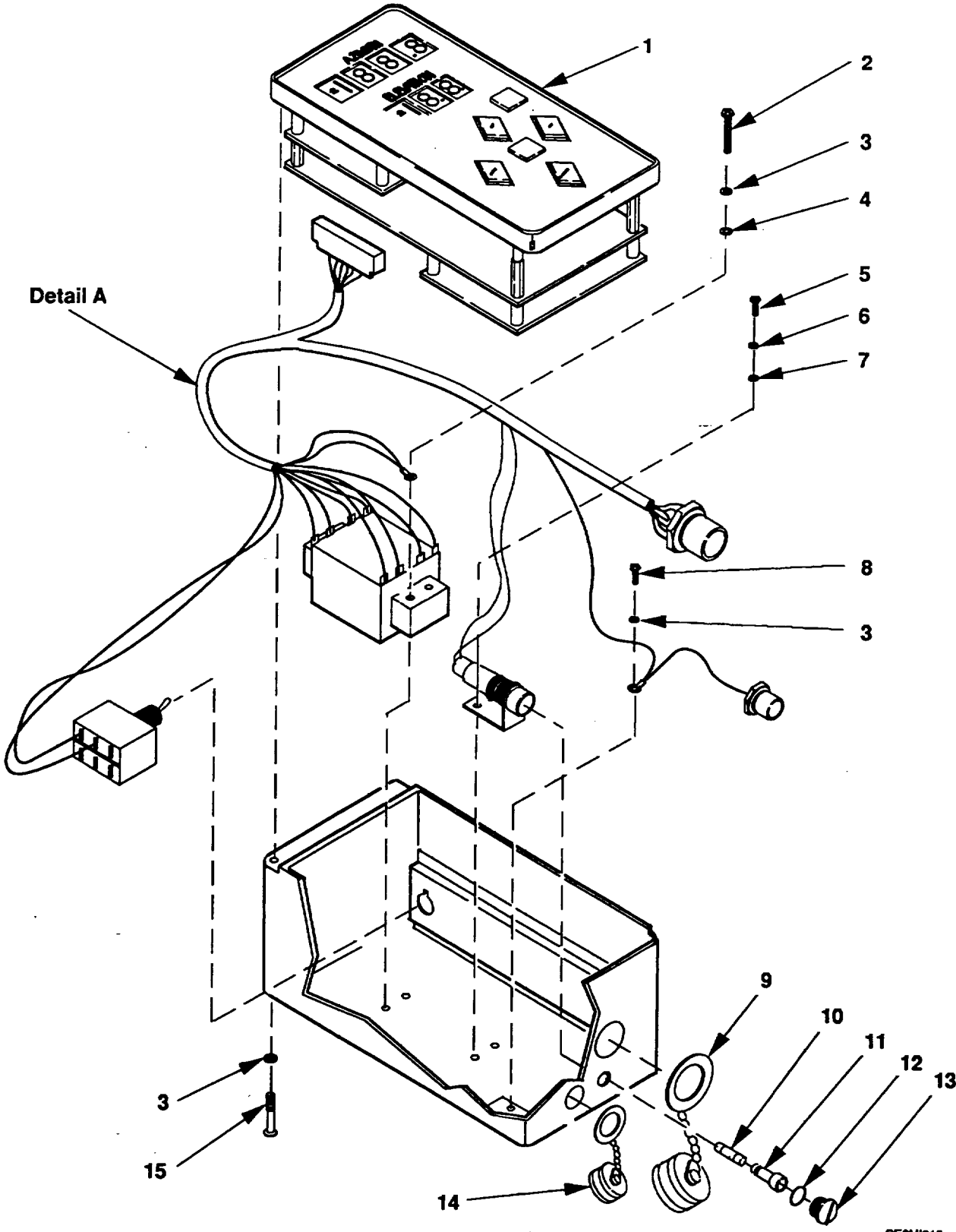


Figure 10. Positioner System

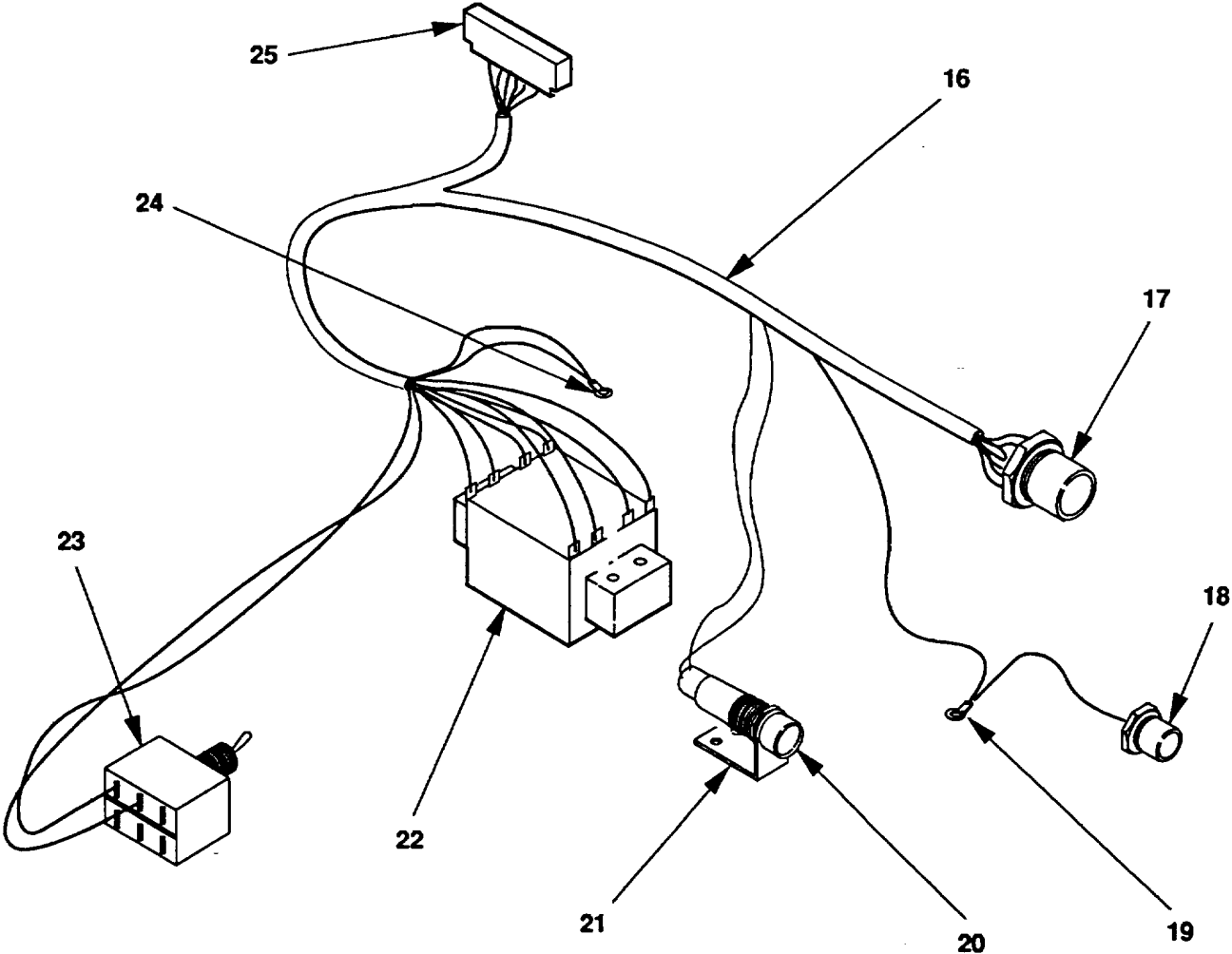
SECTION II					
(1)	(2)	(3)	(4)	(5)	(6)
ITEM	SMR		PART		
NO	CODE	FSCM	NUMBER	DESCRIPTION AND USABLE ON CODES (UOC)	QTY
GROUP 02 POSITIONER SYSTEM					
FIGURE 10					
1	XB0FF	80063	A3157301-001	POSITIONER (SEE FIGURE 13 FOR DETAILS).....	1
2	PA0FF	80063	A3157303-001	CABLE ASSEMBLY, SPEC.....	1
3	PA0FF	80063	A3156763-001	CABLE ASSEMBLY, POWE (SEE FIGURE 19..... FOR DETAILS)	1
4	PB0FF	80063	A3157302-001	ANTENNA CONTROL GRO (SEE FIGURE 11..... FOR DETAILS)	1
5	PA0ZZ	80063	A3156778-001	RING, RETAINING	1
6	XB0ZZ	80063	A3156776-001	CASE, TRANSIT.....	1

END OF FIGURE



CE2M1013

Figure 11. Antenna Control Group (Sheet 1 of 2)



Detail A

Figure 11. Antenna Control Group (Sheet 2 of 2)

SECTION II

TM 11-5985-394-23P

(1) ITEM NO	(2) SMR CODE	(3) FSCM	(4) PART NUMBER	(5) DESCRIPTION AND USABLE ON CODES (UOC)	(6) QTY
GROUP 0201 ANTENNA CONTROL GROUP					
FIGURE 11					
1	XBFFF	80063	A3157424-001	FRONT PANEL (SEE FIGURE 12 FOR..... DETAILS)	1
2	PAFZZ	96906	MS51957-33	SCREW, MACHINE	4
3	PAFZZ	96906	M535338-136	WASHER, LOCK	9
4	PAFZZ	80063	A3157325-003	WASHER, FLAT	2
5	PAFZZ	96906	MS51957-14	SCREW, MACHINE	2
6	PAFZZ	96906	MS35338-135	WASHER, LOCK	2
7	PAFZZ	80063	A3157325-002	WASHER, FLAT	2
8	PAFZZ	96906	M551957-26	SCREW, MACHINE	1
9	PAFZZ	81349	D38999/33W15N	COVER, ELECTRICAL COO	1
10	PAOZA	81349	F02B250V1-2AS	FUSE, CARTRIDGE.....	1
11	PAOZZ	S3629	FEK.0031.1661-00	FUSEHOLDER, RECEPTAC	1
12	PAOZZ	80063	A3157319-001	PACKING, PREFORMED	1
13	PAOZZ	80063	A3157485-001	SCREW, MACHINE	1
14	PAFZZ	81349	D38999/33W9N	COVER, ELECTRICAL COO	1
15	PAFZZ	06540	852-SS-20	SCREW, PANEL FASTENE.....	4
16	PAFFF	80063	A3157490-001	CABLE ASSEMBLY, SPEC.....	1
17	PAFZZ	81349	D38999/24WD19SN	CONNECTOR, RECEPTACL.....	1
18	PAFZZ	81349	D38999/24WA98PN	CONNECTOR, RECEPTACL.....	1
19	PAFZZ	06383	PN14-6R	TERMINAL, LUG.....	1
20	PAFZZ	S3629	FEU.0031.1681-00	FUSEHOLDER, RECEPTAC	1
21	PAFZZ	80063	A3157433-001	FUSEHOLDER, BLOCK.....	1
22	PAFZZ	80063	A3157412-001	TRANSFORMER, POWER	1
23	PAFZA	96906	M524656-231	SWITCH, TOGGLE	1
24	PAFZZ	06383	PN18-6R	TERMINAL, LUG.....	1
25	PAFZZ	80063	A3157404-001	CONNECTOR, RECEPTACL.....	1

END OF FIGURE

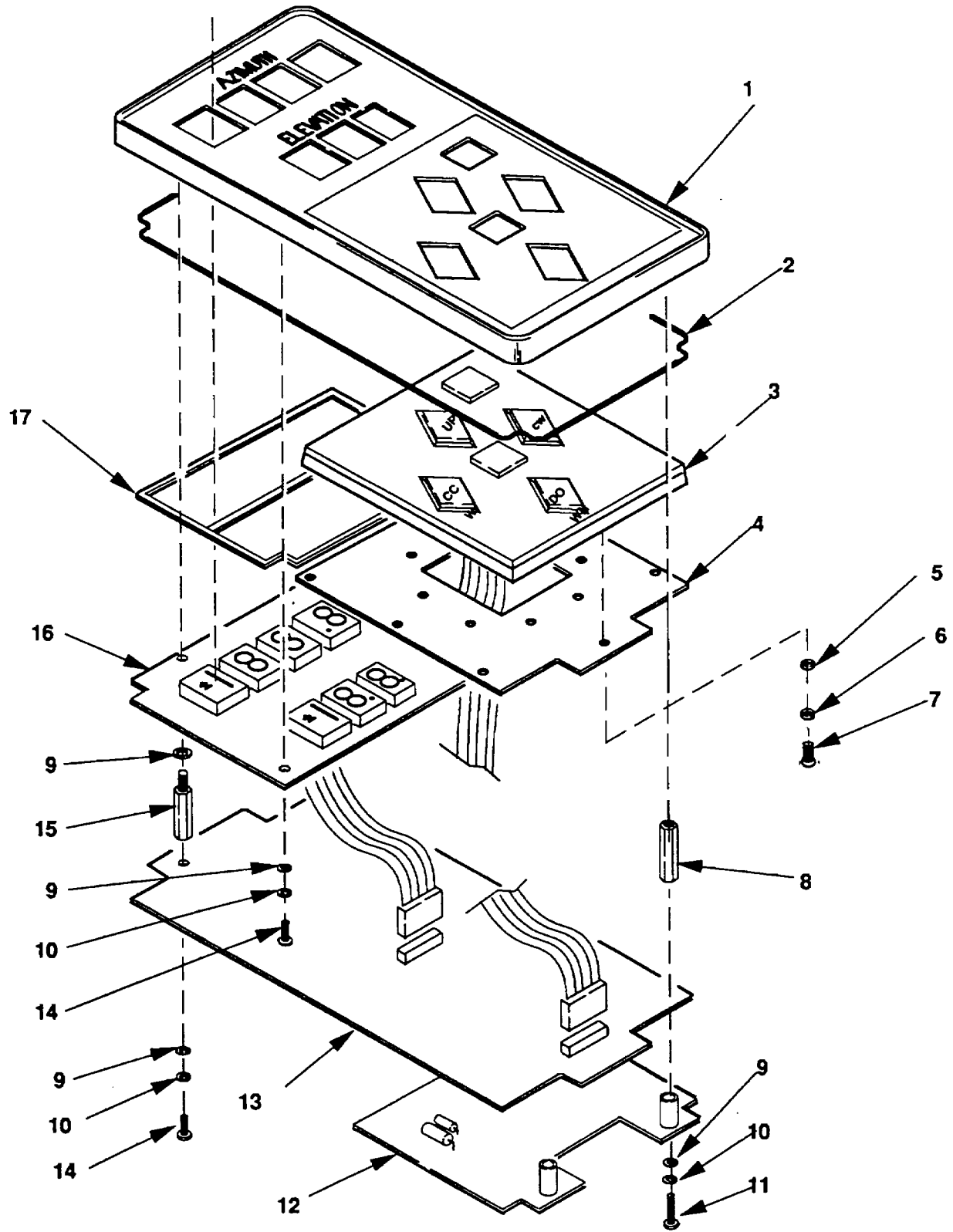


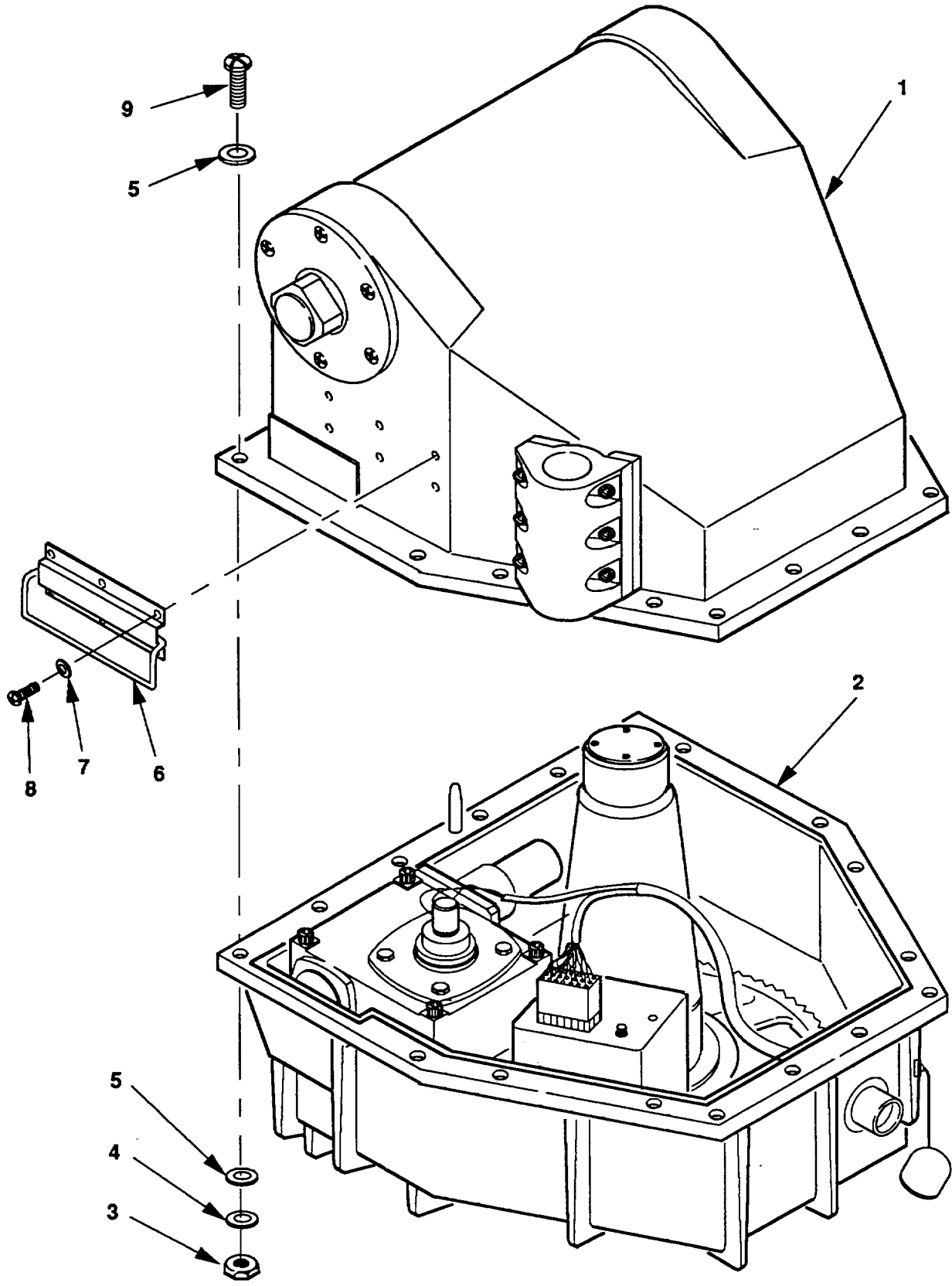
Figure 12. Front Panel

SECTION II

TM 11-5985-394-23P

(1) ITEM NO	(2) SMR CODE	(3) FSCM	(4) PART NUMBER	(5) DESCRIPTION AND USABLE ON CODES (UOC)	(6) QTY
GROUP 020101 FRONT PANEL					
FIGURE 12					
1	PAFZZ	80063	A3157427-001	PANEL ELECTRICAL-EL	1
2	PAFZZ	80063	A3157444-001	PACKING, PREFORMED.....	1
3	PAFZZ	80063	A3157457-001	CONTROL, KEYSER	1
4	PAFZZ	80063	A3157480-001	PLATE, MOUNTING	1
5	PAFZZ	80205	NAS620C2	WASHER, FLAT	7
6	PAFZZ	96906	MS35338-134	WASHER, LOCK	7
7	PAFZZ	96906	MS51957-4	SCREW, MACHINE	7
8	PAFZZ	80205	NA51831C4C17	POST, ELECTRICAL-MEC.....	3
9	PAFZZ	80063	A3157325-003	WASHER, FLAT	9
10	PAFZZ	96906	MS35338-136	WASHER, LOCK	7
11	PAFZZ	96906	MS51957-31	SCREW, MACHINE	3
12	PAFZZ	80063	A3157435-001	CIRCUIT CARD ASSEMB	1
13	XAFFF	80063	A3157437-001	CCA, CONTROL.....	1
14	PAFZZ	96906	MS51957-27	SCREW, MACHINE	4
15	PAFZZ	80205	NAS1829C4E12	POST, ELECTRICAL-MEC.....	2
16	PAFZZ	80063	A3157436-001	CIRCUIT CARD ASSEMB	1
17	PAFZZ	80063	A3157413-001	FILTER ELEMENT, INTA	1

END OF FIGURE



CE2M1016

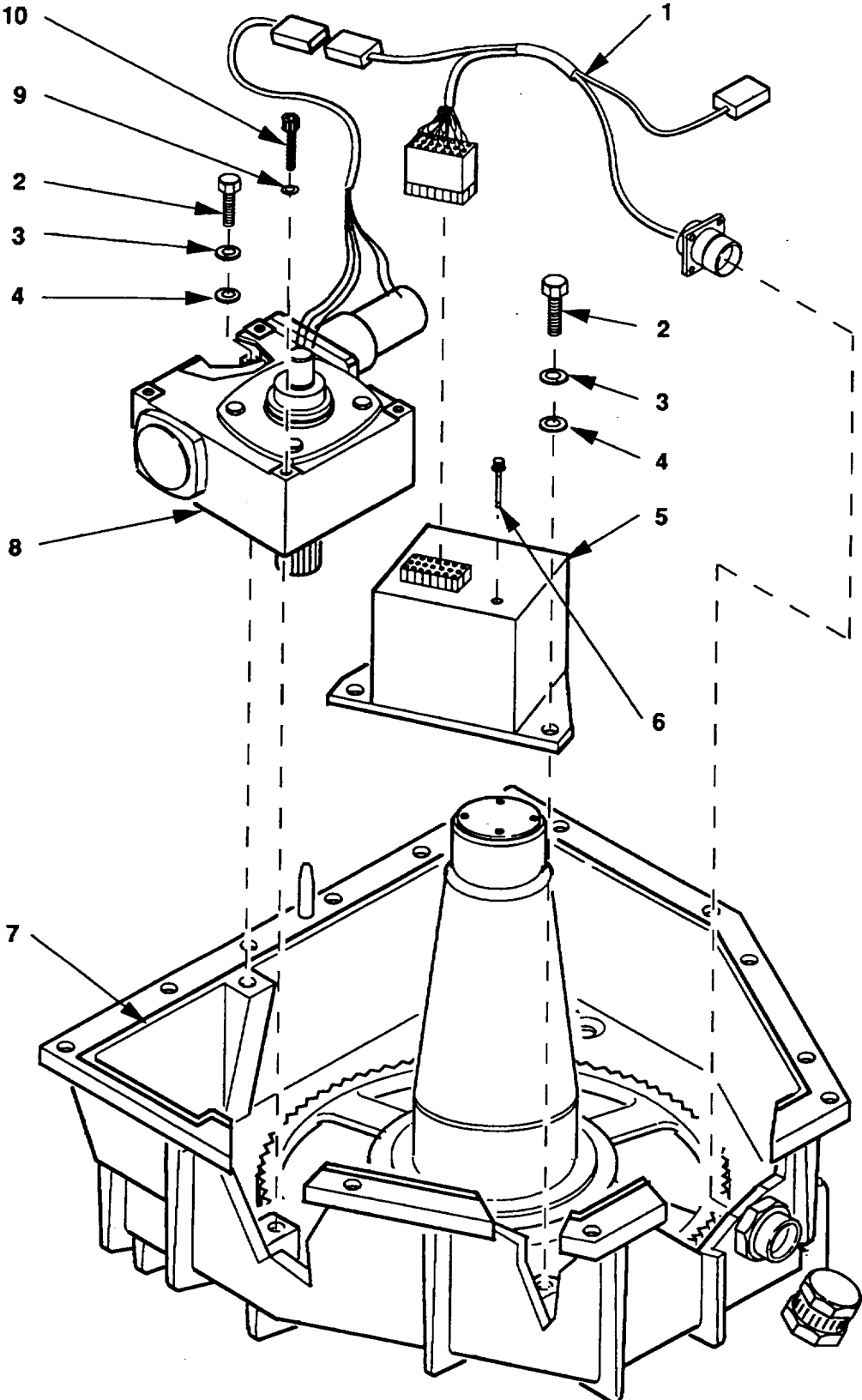
Figure 13. Positioner

SECTION II

TM 11-5985-394-23P

(1) ITEM NO	(2) SMR CODE	(3) FSCM	(4) PART NUMBER	(5) DESCRIPTION AND USABLE ON CODES (UOC)	(6) QTY
GROUP 0202 POSITIONER					
FIGURE 13					
1	XBFFF	80063	A3157341-001	ELEVATION ASSEMBLY (SEE FIGURE 17 FOR DETAILS)	1
2	XBFFF	80063	A3157340-001	AZIMUTH ASSEMBLY (SEE FIGURE 14..... FOR DETAILS)	1
3	PAFZZ	96906	MS35649-2254B	NUT, PLAIN, HEXAGON	17
4	PAFZZ	96906	MS35338-139B	WASHER, LOCK	17
5	PAFZZ	80205	NA5620C416P	WASHER, FLAT	34
6	PAFZZ	80063	A3157332-001	HANDLE, MANUAL CONTR.....	2
7	PAFZZ	96906	MS35338-136B	WASHER, LOCK	12
8	PAFZZ	96906	MS51957-28B	SCREW, MACHINE	12
9	PAFZZ	96906	MS16995-54B	SCREW, CAP, SOCKET HE	17

END OF FIGURE



CE2M1017

Figure 14. Azimuth Assembly (Sheet 1 of 2)

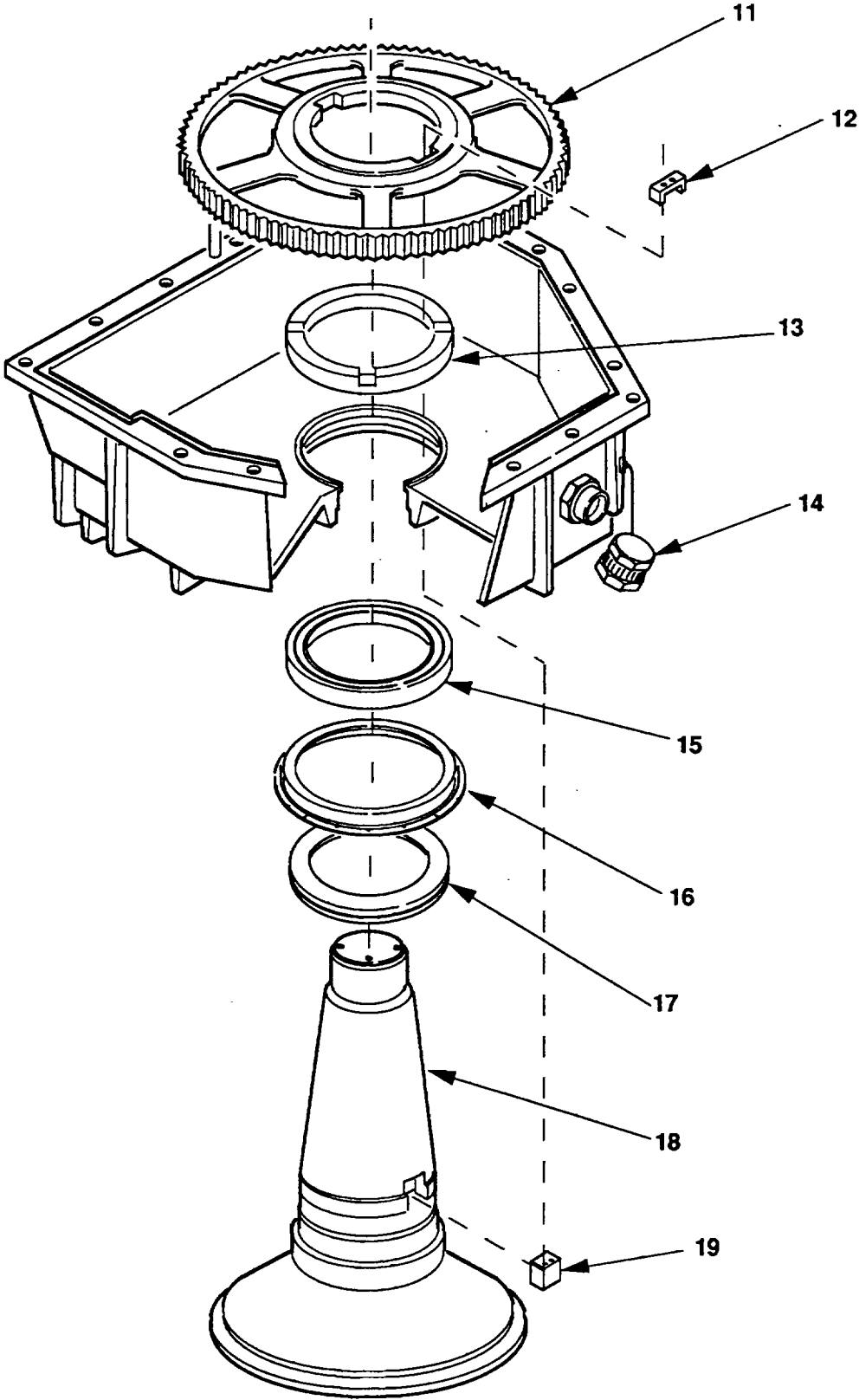
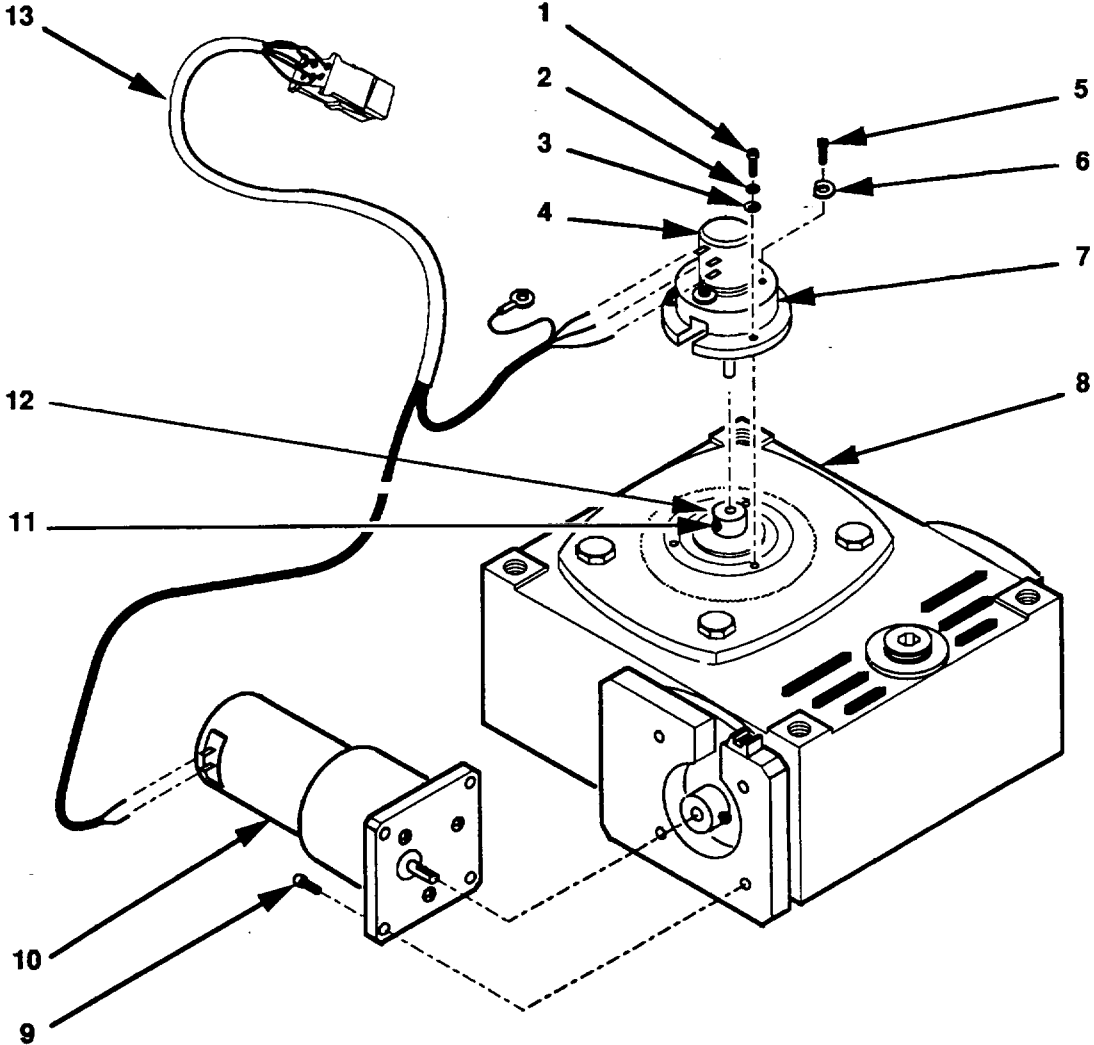


Figure 14. Azimuth Assembly (Sheet 2 of 2)

SECTION II					
(1)	(2)	(3)	(4)	(5)	(6)
ITEM	SMR	FSCM	PART	DESCRIPTION AND USABLE ON CODES (UOC)	QTY
NO	CODE		NUMBER		
GROUP 020201 AZIMUTH ASSEMBLY					
FIGURE 14					
1	PBFFF	80063	A3157491-001	CABLE ASSEMBLY, SPEC (SEE FIGURE 16..... FOR DETAILS)	1
2	PAFZZ	96906	M516995-26	SCREW, CAP, SOCKET HE	1
3	PAFZZ	96906	M535338-137	WASHER, LOCK	1
4	PAFZZ	96906	M515795-807	WASHER, FLAT	1
5	PAFZZ	80063	A3157305-001	ACTUATOR, ELECTRO-ME	1
6	PAFZZ	75915	218.200	FUSE, CARTRIDGE	1
7	PAFZZ	80063	A3157396-001	PACKING, PREFORMED.....	1
8	PAFFF	80063	A3157307-001	ACTUATOR, ELECTRO-ME (SEE FIGURE 15	1
				FOR DETAILS)	
9	PAFZZ	96906	M535338-139	WASHER, LOCK	3
10	PAFZZ	96906	M516997-70	SCREW, CAP, SOCKET HE	3
11	PAFZZ	80063	A3157352-001	GEAR, SPUR.....	1
12	PAFZZ	80063	A3157366-001	CLAMP, HUB.....	2
13	PAFZZ	80063	A3157376-001	SPACER, RING	1
14	PAFZZ	81349	D38999/33W15N	COVER, ELECTRICAL CO.....	1
15	PAFZZ	80063	A3157311-001	BALL, BEARING	1
16	PAFZZ	80063	A3157337-001	COVER, ACCESS	1
17	PAFZZ	80063	A3157374-001	SEAL, PLAIN ENCASED	1
18	PAFZZ	80063	A3157354-001	SHAFT, SHOULDERED	1
19	PAFZZ	80063	A3157375-001	KEY, MACHINE	2

END OF FIGURE



CE2M019

Figure 15. Actuator, Electro-Mechanical, Rotary

SECTION II

TM 11-5985-394-23P

(1) ITEM NO	(2) SMR CODE	(3) FSCM	(4) PART NUMBER	(5) DESCRIPTION AND USABLE ON CODES (UOC)	(6) QTY
-------------------	--------------------	-------------	-----------------------	--	------------

GROUP 02020101 ACTUATOR, ELECTRO-
MECHANICAL ROTARY

FIGURE 15

1	PAFZZ	96906	M516995-17	SCREW, CAP, SOCKET HE	3
2	PAFZZ	96906	M535338-136	WASHER, LOCK	3
3	PAFZZ	96906	MS15795-805	WASHER, FLAT	3
4	PAFZZ	80063	A3157519-001	RESISTOR, VARIABLE	1
5	PAFZZ	96906	M551957-12	SCREW, MACHINE	3
6	PAFZZ	80063	A3157521-001	WASHER FLAT	3
7	PAFZZ	80063	A3157522-001	PLATE, MOUNTING	1
8	PDFFF	80063	A3157314-001	ACTUATOR, ELECTRO-ME	1
9	PAFZZ	96906	M516995-25	SCREW, CAP, SOCKET HE	4
10	PAFZZ	80063	A3157518-001	MOTOR, DIRECT CURREN.....	1
11	PAFZZ	80063	A3157525-001	SETSCREW	1
12	PAFZZ	80063	A3157526-001	BEARING, SLEEVE	1
13	PAFZZ	80063	A3157492-001	CABLE ASSEMBLY, SPEC.....	1

END OF FIGURE

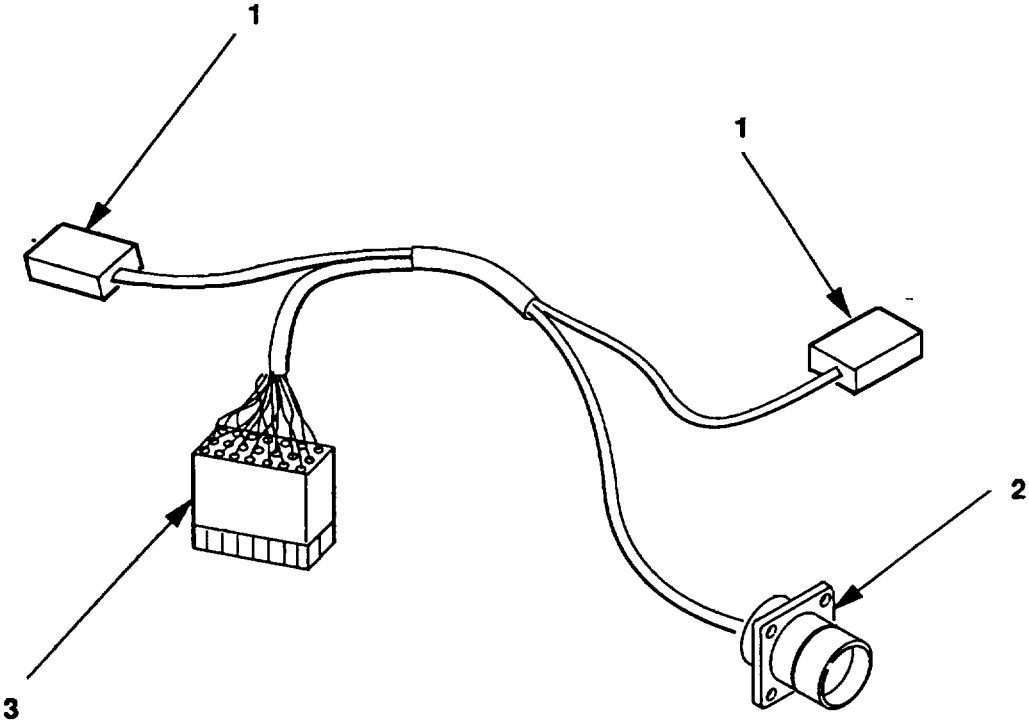


Figure 16. Cable Assembly, Special purposes

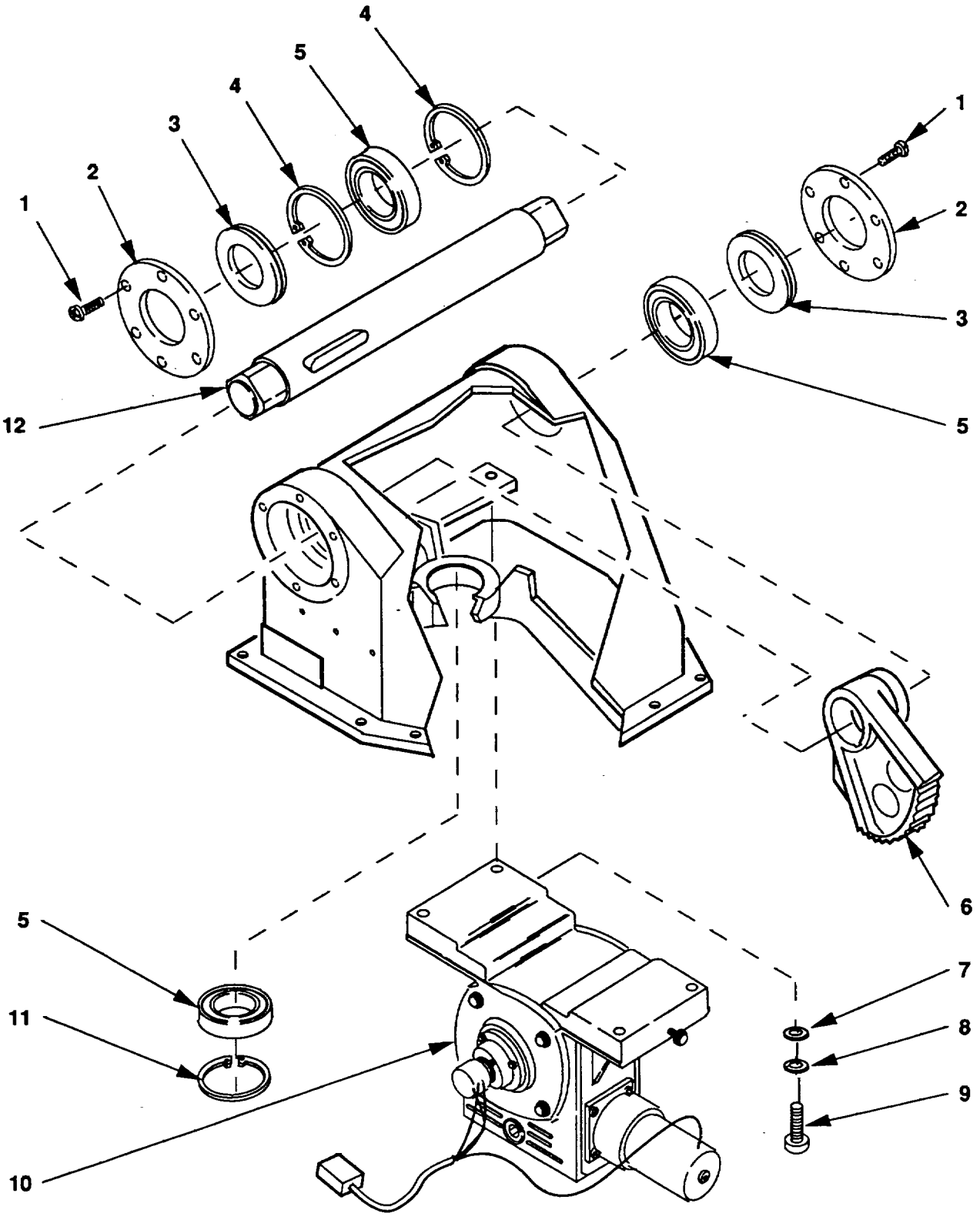
SECTION II					
(1)	(2)	(3)	(4)	(5)	(6)
ITEM	SMR	FSCM	PART	DESCRIPTION AND USABLE ON CODES (UOC)	QTY
NO	CODE		NUMBER		

GROUP 02020102 CABLE ASSEMBLY,
SPECIAL PURPOSES

FIGURE 16

1	PAFZZ	09922	SMS6R-1	CONNECTOR, PLUG, ELEC.....	2
2	PAFZA	81349	D38999/24WD19PN	CONNECTOR, RECEPTACL	1
3	PAFZZ	09922	SMS24P-1	CONNECTOR BODY, PLUG.....	1

END OF FIGURE



CE2M1021

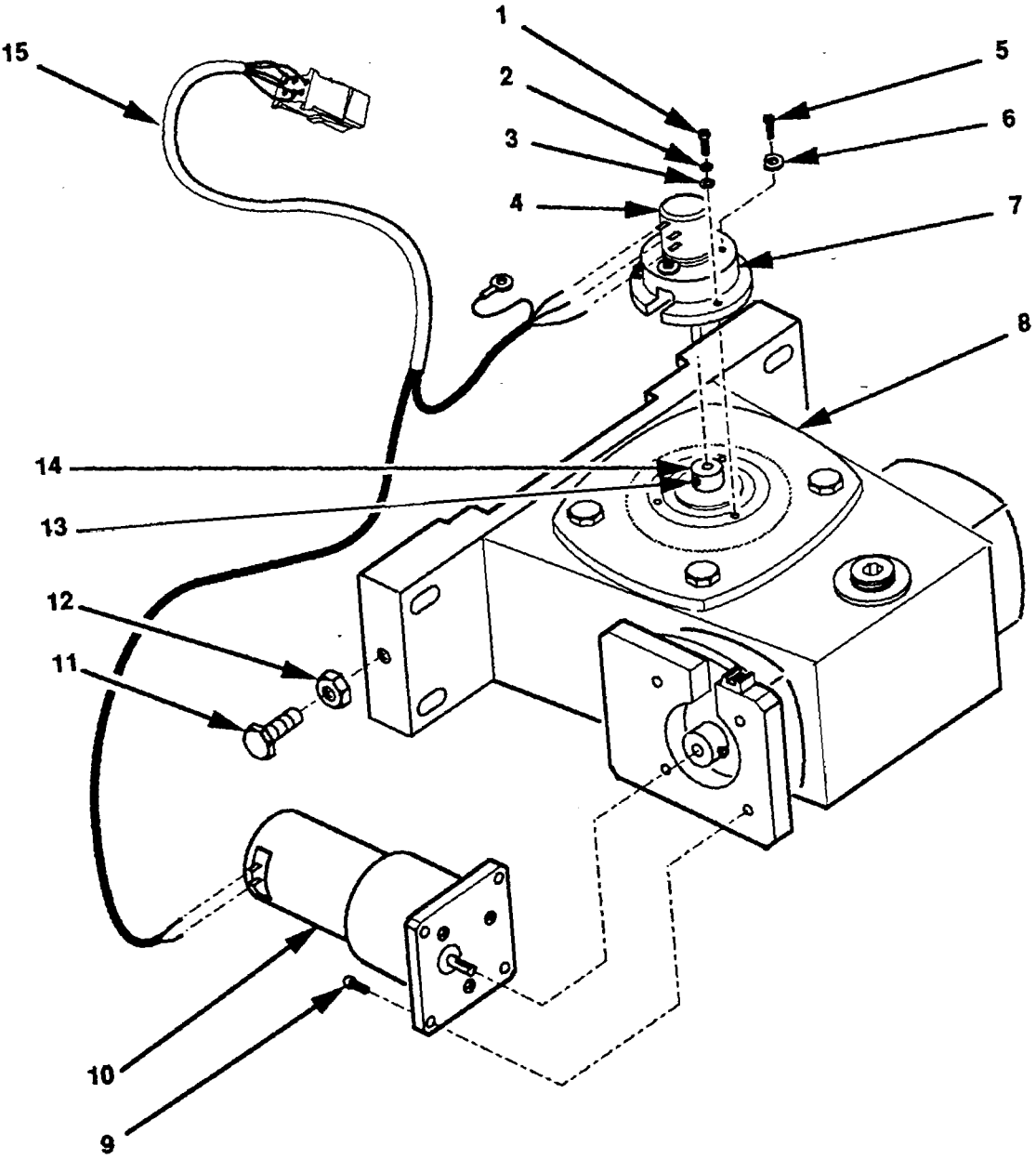
Figure 17. Elevation Assembly

SECTION II

TM 11-5985-394-23P

(1) ITEM NO	(2) SMR CODE	(3) FSCM	(4) PART NUMBER	(5) DESCRIPTION AND USABLE ON CODES (UOC)	(6) QTY
GROUP 020202 ELEVATION ASSEMBLY					
FIGURE 17					
1	PAFZZ	96906	MS51959-29	SCREW, MACHINE	12
2	PAFZZ	80063	A3157350-001	COVER, ACCESS	2
3	PAFZZ	80063	A3157373-001	SEAL, PLAIN ENCASED	2
4	PAFZZ	80063	A3157508-001	RING, RETAINING	2
5	PAFZZ	80063	A3157312-001	BEARING, BALL AND RO	3
6	PAFZZ	80063	A3157382-001	GEAR, SPUR	1
7	PAFZZ	96906	MS15795-811	WASHER, FLAT	4
8	PAFZZ	96906	MS35338-140	WASHER, LOCK	4
9	PAFZZ	80204	B1821BH031C150N	BOLT, MACHINE	4
10	PAFFF	80063	A3157308-001	ACTUATOR, ELECTRO-ME (SEE FIGURE 18 FOR DETAILS)	1
11	PAFZZ	80063	A3157509-001	RING, RETAINING	1
12	XBFZZ	80063	A3157343-001	SHAFT, ELEVATION	1

END OF FIGURE



CE2M101

Figure 18. Actuator, Electro-Mechanical, Rotary

SECTION II

TM 11-5985-394-23P

(1) ITEM NO	(2) SMR CODE	(3) FSCM	(4) PART NUMBER	(5) DESCRIPTION AND USABLE ON CODES (UOC)	(6) QTY
GROUP 02020201 ACTUATOR, ELECTRO-MECHANICAL ROTARY					
FIGURE 18					
1	PAFZZ	96906	MS16995-17	SCREW, CAP, SOCKET HE	3
2	PAFZZ	96906	MS35338-136	WASHER, LOCK	3
3	PAFZZ	96906	MS15795-805	WASHER, FLAT	3
4	PAFZZ	80063	A3157519-001	RESISTOR, VARIABLE	1
5	PAFZZ	96906	MS51957-12	SCREW, MACHINE	3
6	PAFZZ	80063	A3157521-001	WASHER FLAT	3
7	PAFZZ	80063	A3157522-001	PLATE, MOUNTING	1
8	PDFFF	80063	A3157315-001	ACTUATOR, ELECTRO-ME ACTUATOR,	1
ELEVATION DRIVE.....					
9	PAFZZ	96906	M516995-25	SCREW, CAP, SOCKET HE	4
10	PAFZZ	80063	A3157518-001	MOTOR, DIRECT CURREN.....	1
11	PAFZZ	96906	MS35307-305	SCREW, CAP, HEXAGON H	2
12	PAFZZ	96906	M551971-1	NUT, PLAIN, HEXAGON	2
13	PAFZZ	80063	A3157525-001	SETSCREW	1
14	PAFZZ	80063	A3157526-001	BEARING, SLEEVE.....	1
15	PAFZZ	80063	A3157492-002	CABLE ASSEMBLY, SPEC.....	1

END OF FIGURE

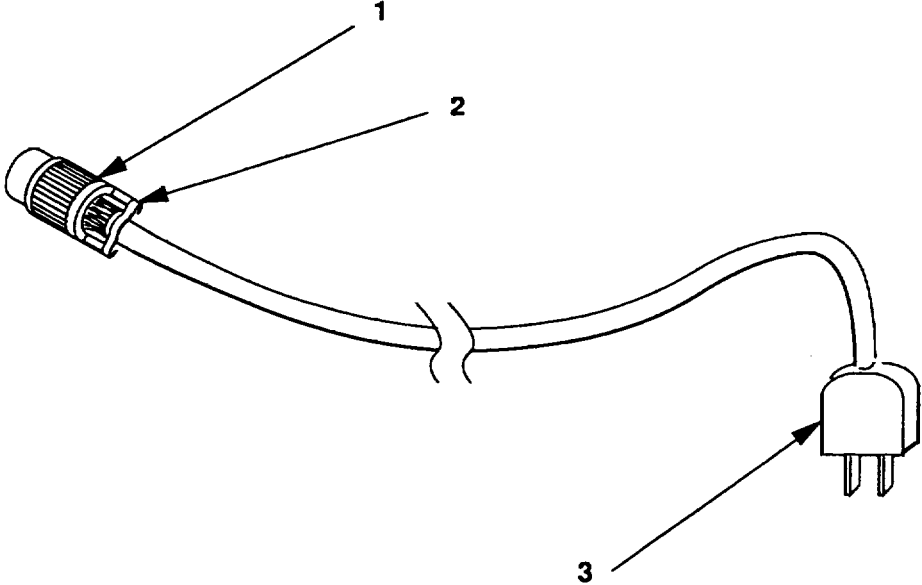


Figure 19. Cable Assembly, W2

SECTION II					
(1)	(2)	(3)	(4)	(5)	(6)
ITEM	SMR	FSCM	PART	DESCRIPTION AND USABLE ON CODES (UOC)	QTY
NO	CODE		NUMBER		
GROUP 0204 CABLE ASSEMBLY, W2					
FIGURE 19					
1	PAFZA	81349	D38999/26WA98SN	CONNECTOR, PLUG, ELEC.....	1
2	PAFZZ	81349	M85049/38S-9W	CLAMP, CABLE, ELECTRI.....	1
3	PAFZZ	80063	A3156765-001	CONNECTOR, PLUG, ELEC.....	1

END OF FIGURE

**CROSS- REFERENCE-INDEXES
NATIONAL STOCK NUMBER INDEX**

STOCK NUMBER	FIG	ITEM	STOCK NUMBER	FIG	ITEM
5305-00-021-3616	18	11	5305-01-232-6728	15	11
5310-00-043-4708	12	5		18	13
5305-00-054-5638	12	7	5340-01-246-8425	12	8
5305-00-054-5646	15	5	5920-01-251-7998	14	6
	18	5	5935-01-267-6620	11	17
5305-00-054-5648	11	5	5935-01-267-6621	16	2
5305-00-054-6650	11	8	5935-01-282-9838	11	18
5305-00-054-6651	12	14	5935-01-300-2279	11	9
5305-00-054-6655	12	11		14	14
5305-00-054-6657	11	2	5310-01-309-9476	13	5
8315-00-106-5973	2	14	5935-01-321-8973	19	2
5940-00-113-8179	11	19	4710-01-348-2243	5	14
5940-00-204-8966	11	24	5940-01-348-2244	2	22
5310-00-224-0747	13	7	5920-01-348-2245	11	21
5306-00-226-4831	17	9	5310-01-348-2246	5	9
5310-00-232-0744	11	7	5975-01-348-2247	2	26
4020-00-242-4083	2	23	5330-01-348-2248	12	2
5310-00-243-4764	13	4	5330-01-348-2249	14	7
5920-00-280-9320	11	10	5330-01-348-2250	11	12
5305-00-448-6500	13	8	5935-01-348-2253	19	3
5310-00-554-2407	11	4	5935-01-348-2254	11	25
	12	9	5320-01-348-2255	2	21
5310-00-680-6745	17	7	3110-01-348-2256	14	15
5310-00-722-5998	15	3	3110-01-348-2257	17	5
	18	3	5365-01-348-2258	4	6
5305-00-727-8832	17	1		5	4
5310-00-880-5978	14	4		6	11
5930-00-892-9714	11	23		7	3
5310-00-903-5966	18	12		9	5
5310-00-928-2690	12	6	5340-01-348-2260	14	16
5310-00-929-6395	11	3	5340-01-348-2261	17	2
	12	10	5995-01-348-2263	10	3
	15	2	5995-01-348-2265	10	2
	18	2	5995-01-348-2267	15	13
5310-00-933-8118	11	6	5995-01-348-2268	14	1
5310-00-933-8119	14	3	5995-01-348-2269	18	15
5310-00-933-8121	14	9	5995-01-348-2270	11	16
5305-00-959-0382	15	1	4010-01-348-2295	5	15
	18	1	4010-01-348-2298	2	6
5310-00-974-6623	17	8	4010-01-348-2299	2	4
5305-00-978-9389	14	10	4010-01-348-2300	2	5
5305-00-988-7601	15	9	4010-01-348-2301	2	1
	18	9	4010-01-348-2302	2	3
5305-00-988-7602	14	2	4030-01-348-2303	2	11
5935-01-013-9679	16	1	4030-01-348-2304	2	8
5305-01-016-5521	13	9	4030-01-348-2305	2	9
5310-01-064-5484	13	3	5985-01-348-2319	3	2
5935-01-072-3922	16	3	5985-01-348-2320	2	16
5935-01-190-7605	19	1	5985-01-348-2321	2	29
5340-01-223-7961	12	15	5315-01-348-2331	14	19

**CROSS- REFERENCE-INDEXES
NATIONAL STOCK NUMBER INDEX**

STOCK NUMBER	FIG	ITEM	STOCK NUMBER	FIG	ITEM
5315-01-348-2332	4	2	5340-01-348-5885	5	12
	5	7	3950-01-349-2445	2	13
5315-01-348-2333	5	10	5985-01-349-2663	2	2
5315-01-348-2334	5	13	5340-01-349-2671	2	17
5315-01-348-2335	7	4	5985-01-349-2683	2	15
5315-01-348-2336	9	3	5360-01-349-2684	8	8
5315-01-348-2337	8	6	5120-01-349-2687	2	33
3040-01-348-2338	14	12	3020-01-349-2688	9	1
3040-01-348-2339	4	3	3020-01-349-2689	6	9
3040-01-348-2340	8	5		8	1
3040-01-348-2341	14	18	5340-01-349-2690	2	24
5985-01-348-2342	10	4	5340-01-349-2692	7	5
5985-01-348-2343	6	1	4020-01-349-5327	2	31
5445-01-348-2351	5	11	5985-01-349-9226	3	1
4730-01-348-2352	2	32	5315-01-349-9228	9	6
2940-01-348-2366	12	17	5315-01-349-9229	8	7
5340-01-348-2369	13	6	5315-01-349-9230	2	7
5340-01-348-2370	9	7	3030-01-349-9231	6	2
3020-01-348-2371	17	6	3020-01-349-9233	14	11
3010-01-348-2372	17	10	5340-01-349-9244	12	4
3010-01-348-2373	18	8	5315-01-350-5780	5	8
3010-01-348-2374	14	8	6635-01-350-5843	2	28
3010-01-348-2375	15	8	5365-01-350-5864	17	11
3010-01-348-2376	14	5	5995-01-350-5878	2	27
5895-01-348-2380	12	3	5365-01-351-1452	5	16
5305-01-348-2383	11	13	5365-01-351-1453	17	4
5998-01-348-2389	12	12	5905-01-353-9889	15	4
5998-01-348-2390	12	16		18	4
5365-01-348-2411	14	13	5310-01-353-9897	15	6
5330-01-348-4098	14	17		18	6
5330-01-348-4099	17	3	3120-01-353-9899	6	8
5950-01-348-4100	11	22		8	2
4010-01-348-4101	9	2	3120-01-353-9901	15	12
8105-01-348-4102	2	34		18	14
8105-01-348-4103	2	36	5340-01-353-9905	2	45
8105-01-348-4104	2	42	8105-01-353-9917	2	44
8105-01-348-4105	2	38	6105-01-353-9922	15	10
8105-01-348-4106	2	40		18	10
5985-01-348-4108	5	1	5920-01-353-9932	2	19
5315-01-348-4110	4	4	5340-01-353-9937	15	7
	5	3		18	7
	6	13	5985-01-354-4412	5	6
5315-01-348-4111	5	5	3950-01-354-9432	2	10
5340-01-348-4113	6	4	5935-01-355-1037	11	14
5305-01-348-5763	11	15	5310-01-355-4074	6	10
5920-01-348-5769	11	20		8	3
5920-01-348-5770	11	11	5315-01-355-9714	6	6
3110-01-348-5810	4	1		8	4
5985-01-348-5871	2	30	5365-01-359-3565	10	5
3040-01-348-5878	6	7			

**CROSS-REFERENCE INDEX
PART NUMBER INDEX**

CAGEC	PART NUMBER	STOCK NUMBER	FIG	ITEM
80063	A3156763-001	5995-01-348-2263	10	3
80063	A3156765-001	5935-01-348-2253	19	3
80063	A3156776-001		10	6
80063	A3156778-001	5365-01-359-3565	10	5
80063	A3156801-001		1	2
80063	A3156802-001		2	25
80063	A3156803-001	4030-01-348-2303	2	11
80063	A3156804-001		2	12
80063	A3156805-001	3950-01-354-9432	2	10
80063	A3156807-001	5120-01-349-2687	2	33
80063	A3156808-001	5315-01-349-9230	2	7
80063	A3156810-001	4010-01-348-2298	2	6
80063	A3156811-001	4020-01-349-5327	2	31
80063	A3156813-001	5985-01-349-2683	2	15
80063	A3156814-001	4010-01-348-2299	2	4
80063	A3156816-001	4010-01-348-2302	2	3
80063	A3156818-001	5985-01-349-2663	2	2
80063	A3156820-001	4030-01-348-2304	2	8
80063	A3156821-001	4030-01-348-2305	2	9
80063	A3156822-001	4730-01-348-2352	2	32
80063	A3156823-001	6635-01-350-5843	2	28
80063	A3156825-001		2	35
80063	A3156826-001	8105-01-348-4103	2	36
80063	A3156827-001		2	37
80063	A3156828-001	8105-01-348-4104	2	42
80063	A3156829-001		2	41
80063	A3156830-001	8105-01-348-4105	2	38
80063	A3156831-001	8105-01-348-4106	2	40
80063	A3156832-001		2	39
80063	A3156834-001	5985-01-348-2319	3	2
80063	A3156835-001	5985-01-349-9226	3	1
80063	A3156839-001		6	3
80063	A3156843-001	3040-01-348-5878	6	7
80063	A3156847-001	5315-01-348-2335	7	4
80063	A3156858-001	5365-01-348-2258	4	6
			5	4
			6	11
			7	3
			9	5
80063	A3156861-001	5340-01-349-2692	7	5
80063	A3156863-001	5985-01-348-2343	6	1
80063	A3156864-001		6	5
80063	A3156865-001	3030-01-349-9231	6	2
80063	A3156866-001	5340-01-348-4113	6	4
80063	A3156868-001	5985-01-348-5871	2	30
80063	A3156886-001	5315-01-348-4110	4	4
			5	3
			6	13
80063	A3156887-001	3040-01-348-2339	4	3
80063	A3156888-001	3110-01-348-5810	4	1
80063	A3156895-001	5315-01-348-2333	5	10

**CROSS-REFERENCE INDEX
PART NUMBER INDEX**

CAGEC	PART NUMBER	STOCK NUMBER	FIG	ITEM
80063	A3156896-001	5315-01-348-2334	5	13
80063	A3156898-001	5315-01-349-9229	8	7
80063	A3156900-001	5360-01-349-2684	8	8
80063	A3156903-001	5315-01-348-2337	8	6
80063	A3156904-001	3020-01-349-2689	6	9
			8	1
80063	A3156906-001	3040-01-348-2340	8	5
80063	A3156912-001	5985-01-348-2321	2	29
80063	A3156920-001	5445-01-348-2351	5	11
80063	A3156921-001	5340-01-348-5885	5	12
80063	A3156922-001	5315-01-350-5780	5	8
80063	A3156923-001	4710-01-348-2243	5	14
80063	A3156924-001	5315-01-348-4111	5	5
80063	A3156927-001	5985-01-354-4412	5	6
80063	A3156931-001	5985-01-348-4108	5	1
80063	A3156933-001	4010-01-348-2295	5	15
80063	A3156956-001	5315-01-349-9228	9	6
80063	A3156987-001	5340-01-348-2370	9	7
80063	A3156992-001	5315-01-348-2336	9	3
80063	A3157004-001	5340-01-349-2690	2	24
80063	A3157032-001	5975-01-348-2247	2	26
80063	A3157036-001	4010-01-348-4101	9	2
80063	A3157041-001	5920-01-353-9932	2	19
80063	A3157042-001		2	18
80063	A3157043-001	5995-01-350-5878	2	27
80063	A3157049-001		2	20
80063	A3157063-001	5940-01-348-2244	2	22
80063	A3157073-001	5365-01-351-1452	5	16
80063	A3157140-001	3950-01-349-2445	2	13
80063	A3157147-001	8105-01-348-4102	2	34
80063	A3157151-001	4010-01-348-2301	2	1
80063	A3157152-001	4010-01-348-2300	2	5
80063	A3157158-001	5340-01-353-9905	2	45
80063	A3157162-001	3020-01-349-2688	9	1
80063	A3157166-001	5985-01-348-2320	2	16
80063	A3157176-002	5315-01-355-9714	6	6
			8	4
80063	A3157176-003	5315-01-348-2332	4	2
			5	7
80063	A3157177-003	5310-01-355-4074	6	10
			8	3
80063	A3157177-004	5310-01-348-2246	5	9
80063	A3157189-001	5320-01-348-2255	2	21
80063	A3157201-001	5340-01-349-2671	2	17
80063	A3157208-001		2	43
80063	A3157212-001	8105-01-353-9917	2	44
80063	A3157213-001	3120-01-353-9899	6	8
			8	2
80063	A3157300-001		1	1
80063	A3157301-001		10	1
80063	A3157302-001	5985-01-348-2342	10	4

**CROSS-REFERENCE INDEX
PART NUMBER INDEX**

CAGEC	PART NUMBER	STOCK NUMBER	FIG	ITEM
80063	A3157303-001	5995-01-348-2265	10	2
80063	A3157305-001	3010-01-348-2376	14	5
80063	A3157307-001	3010-01-348-2374	14	8
80063	A3157308-001	3010-01-348-2372	17	10
80063	A3157311-001	3110-01-348-2256	14	15
80063	A3157312-001	3110-01-348-2257	17	5
80063	A3157314-001	3010-01-348-2375	15	8
80063	A3157315-001	3010-01-348-2373	18	8
80063	A3157319-001	5330-01-348-2250	11	12
80063	A3157325-002	5310-00-232-0744	1	7
80063	A3157325-003	5310-00-554-2407	11	4
			12	9
80063	A3157332-001	5340-01-348-2369	13	6
80063	A3157337-001	5340-01-348-2260	14	16
80063	A3157340-001		13	2
80063	A3157341-001		13	1
80063	A3157343-001		17	12
80063	A3157350-001	5340-01-348-2261	17	2
80063	A3157352-001	3020-01-349-9233	14	11
80063	A3157354-001	3040-01-348-2341	14	18
80063	A3157366-001	3040-01-348-2338	14	12
80063	A3157373-001	5330-01-348-4099	17	3
80063	A3157374-001	5330-01-348-4098	14	17
80063	A3157375-001	5315-01-348-2331	14	19
80063	A3157376-001	5365-01-348-2411	r4	13
80063	A3157382-001	3020-01-348-2371	17	6
80063	A3157396-001	5330-01-348-2249	14	7
80063	A3157404-001	5935-01-348-2254	11	25
80063	A3157412-001	5950-01-348-4100	11	22
80063	A3157413-001	2940-01-348-2366	12	17
80063	A3157424-001		11	1
80063	A3157427-001		12	1
80063	A3157433-001	5920-01-348-2245	11	21
80063	A3157435-001	5998-01-348-2389	12	12
80063	A3157436-001	5998-01-348-2390	12	16
80063	A3157437-001		12	13
80063	A3157444-001	5330-01-348-2248	12	2
80063	A3157457-001	5895-01-348-2380	12	3
80063	A3157480-001	5340-01-349-9244	12	4
80063	A3157485-001	5305-01-348-2383	11	13
80063	A3157490-001	5995-01-348-2270	11	16
80063	A3157491-001	5995-01-348-2268	14	1
80063	A3157492-001	5995-01-348-2267	15	13
80063	A3157492-002	5995-01-348-2269	18	15
80063	A3157508-001	5365-01-351-1453	17	4
80063	A3157509-001	5365-01-350-5864	17	11
80063	A3157518-001	6105-01-353-9922	15	10
			18	10
80063	A3157519-001	5905-01-353-9889	15	4
			18	4
80063	A3157521-001	5310-01-353-9897	15	6

**CROSS-REFERENCE INDEX
PART NUMBER INDEX**

CAGEC	PART NUMBER	STOCK NUMBER	FIG	ITEM
80063	A3157521-001	5310-01-353-9897	18	6
80063	A3157522-001	5340-01-353-9937	15	7
			18	7
80063	A3157525-001	5305-01-232-6728	15	11
			18	13
80063	A3157526-001	3120-01-353-9901	15	12
			18	14
80204	B1821BH031C150N	5306-00-226-4831	17	9
81349	D38999/24WA98PN	5935-01-282-9838	11	18
81349	D38999/24WD19PN	5935-01-267-6621	16	2
81349	D38999/24WD19SN	5935-01-267-6620	11	17
81349	D38999/26WA985N	5935-01-190-7605	19	1
81349	D38999/33W15N	5935-01-300-2279	11	9
			14	14
81349	D38999/33W9N	5935-01-355-1037	11	14
S3629	FEK.0031.1661-00	5920-01-348-5770	11	11
S3629	FEU.0031.1681-00	5920-01-348-5769	11	20
81349	F02B250V1-2AS	5920-00-280-9320	11	10
81349	MIL-W-83420/2		7	1
81349	MIL-W-83420/4		4	5
			6	12
			7	2
			9	4
81349	MIL-W-83420TYPE2 COMPB		5	2
96906	MS15795-805	5310-00-722-5998	15	3
			18	3
96906	M515795-807	5310-00-880-5978	14	4
96906	MS15795-811	5310-00-680-6745	17	7
96906	M516995-17	5305-00-959-0382	15	1
			18	1
96906	M516995-25	5305-00-988-7601	15	9
			18	9
96906	M516995-26	5305-00-988-7602	14	2
96906	MS16995-54B	5305-01-016-5521	13	9
96906	MS16997-70	5305-00-978-9389	14	10
96906	M524656-231	5930-00-892-9714	11	23
96906	MS35307-305	5305-00-021-3616	18	11
96906	MS35338-134	5310-00-928-2690	12	6
96906	MS35338-135	5310-00-933-8118	11	6
96906	MS35338-136	5310-00-929-6395	11	3
			12	10
			15	2
			18	2
96906	MS35338-136B	5310-00-224-0747	13	7
96906	MS35338-137	5310-00-933-8119	14	3
96906	MS35338-139	5310-00-933-8121	14	9
96906	MS35338-139B	5310-00-243-4764	13	4
96906	MS35338-140	5310-00-974-6623	17	8
96906	MS35649-2254B	5310-01-064-5484	13	3
96906	MS51957-12	5305-00-054-5646	15	5

**CROSS-REFERENCE INDEX
PART NUMBER INDEX**

CAGEC	PART NUMBER	STOCK NUMBER	FIG	ITEM
96906	MS51957-12	5305-00-054-5646	18	5
96906	MS51957-14	5305-00-054-5648	11	5
96906	MS51957-26	5305-00-054-6650	11	8
96906	M551957-27	5305-00-054-6651	12	14
96906	MS51957-28B	5305-00-448-6500	13	8
96906	M551957-31	5305-00-054-6655	12	11
96906	M551957-33	5305-00-054-6657	11	2
96906	MS51957-4	5305-00-054-5638	12	7
96906	MS51959-29	5305-00-727-8832	17	1
96906	MS51971-1	5310-00-903-5966	18	12
81349	M85049/38S-9W	5935-01-321-8973	19	2
80205	NAS1829C4E12	5340-01-223-7961	12	15
80205	NAS1831C4C17	5340-01-246-8425	12	8
80205	NAS620C2	5310-00-043-4708	12	5
80205	NAS620C416P	5310-01-309-9476	13	5
06383	PN14-6R	5940-00-113-8179	11	19
06383	PN18-6R	5940-00-204-8966	11	24
09922	SMS24P-1	5935-01-072-3922	16	3
09922	SMS6R-1	5935-01-013-9679	16	1
75915	218.200	5920-01-251-7998	14	6
81337	6-1-5876	8315-00-106-5973	2	14
80063	6Z7920	4020-00-242-4083	2	23
06540	852-55-20	5305-01-348-5763	11	15

CROSS REFERENCE INDEXES

FIG	ITEM	FIGURE AND ITEM NUMBER INDEX STOCK NUMBER	CAGEC	PART NUMBER
1	1	80063		A3157300-001
1	2	80063		A3156801-001
2	1	4010-01-348-2301	80063	A3157151-001
2	2	5985-01-349-2663	80063	A3156818-001
2	3	4010-01-348-2302	80063	A3156816-001
2	4	4010-01-348-2299	80063	A3156814-001
2	5	4010-01-348-2300	80063	A3157152-001
2	6	4010-01-348-2298	80063	A3156810-001
2	7	5315-01-349-9230	80063	A3156808-001
2	8	4030-01-348-2304	80063	A3156820-001
2	9	4030-01-348-2305	80063	A3156821-001
2	10	3950-01-354-9432	80063	A3156805-001
2	11	4030-01-348-2303	80063	A3156803-001
2	12		80063	A3156804-001
2	13	3950-01-349-2445	80063	A3157140-001
2	14	8315-00-106-5973	81337	6-1-5876
2	15	5985-01-349-2683	80063	A3156813-001
2	16	5985-01-348-2320	80063	A3157166-001
2	17	5340-01-349-2671	80063	A3157201-001
2	18		80063	A3157042-001
2	19	5920-01-353-9932	80063	A3157041-001
2	20		80063	A3157049-001
2	21	5320-01-348-2255	80063	A3157189-001
2	22	5940-01-348-2244	80063	A3157063-001
2	23	4020-00-242-4083	80063	6Z7920
2	24	5340-01-349-2690	80063	A3157004-001
2	25		80063	A3156802-001
2	26	5975-01-348-2247	80063	A3157032-001
2	27	5995-01-350-5878	80063	A3157043-001
2	28	6635-01-350-5843	80063	A3156823-001
2	29	5985-01-348-2321	80063	A3156912-001
2	30	5985-01-348-5871	80063	A3156868-001
2	31	4020-01-349-5327	80063	A3156811-001
2	32	4730-01-348-2352	80063	A3156822-001
2	33	5120-01-349-2687	80063	A3156807-001
2	34	8105-01-348-4102	80063	A3157147-001
2	35		80063	A3156825-001
2	36	8105-01-348-4103	80063	A3156826-001
2	37		80063	A3156827-001
2	38	8105-01-348-4105	80063	A3156830-001
2	39		80063	A3156832-001
2	40	8105-01-348-4106	80063	A3156831-001
2	41		80063	A3156829-001
2	42	8105-01-348-4104	80063	A3156828-001
2	43		80063	A3157208-001
2	44	8105-01-353-9917	80063	A3157212-001
2	45	5340-01-353-9905	80063	A3157158-001
3	1	5985-01-349-9226	80063	A3156835-001
3	2	5985-01-348-2319	80063	A3156834-001
4	1	3110-01-348-5810	80063	A3156888-001
4	2	5315-01-348-2332	80063	A3157176-003

CROSS REFERENCE INDEXES

FIG	ITEM	FIGURE AND ITEM NUMBER INDEX STOCK NUMBER	CAGEC	PART NUMBER
4	3	3040-01-348-2339	80063	A3156887-001
4	4	5315-01-348-4110	80063	A3156886-001
4	5		81349	MIL-W-83420/4
4	6	5365-01-348-2258	80063	A3156858-001
5	1	5985-01-348-4108	80063	A3156931-001
5	2		81349	MIL-W-83420TYPE2 COMPB
5	3	5315-01-348-4110	80063	A3156886-001
5	4	5365-01-348-2258	80063	A3156858-001
5	5	5315-01-348-4111	80063	A3156924-001
5	6	5985-01-354-4412	80063	A3156927-001
5	7	5315-01-348-2332	80063	A3157176-003
5	8	5315-01-350-5780	80063	A3156922-001
5	9	5310-01-348-2246	80063	A3157177-004
5	10	5315-01-348-2333	80063	A3156895-001
5	11	5445-01-348-2351	80063	A3156920-001
5	12	5340-01-348-5885	80063	A3156921-001
5	13	5315-01-348-2334	80063	A3156896-001
5	14	4710-01-348-2243	80063	A3156923-001
5	15	4010-01-348-2295	80063	A3156933-001
5	16	5365-01-351-1452	80063	A3157073-001
6	1	5985-01-348-2343	80063	A3156863-001
6	2	3030-01-349-9231	80063	A3156865-001
6	3		80063	A3156839-001
6	4	5340-01-348-4113	80063	A3156866-001
6	5		80063	A3156864-001
6	6	5315-01-355-9714	80063	A3157176-002
6	7	3040-01-348-5878	80063	A3156843-001
6	8	3120-01-353-9899	80063	A3157213-001
6	9	3020-01-349-2689	80063	A3156904-001
6	10	5310-01-355-4074	80063	A3157177-003
6	11	5365-01-348-2258	80063	A3156858-001
6	12		81349	MIL-W-83420/4
6	13	5315-01-348-4110	80063	A3156886-001
7	1		81349	MIL-W-83420/2
7	2		81349	MIL-W-83420/4
7	3	5365-01-348-2258	80063	A3156858-001
7	4	5315-01-348-2335	80063	A3156847-001
7	5	5340-01-349-2692	80063	A3156861-001
8	1	3020-01-349-2689	80063	A3156904-001
8	2	3120-01-353-9899	80063	A3157213-001
8	3	5310-01-355-4074	80063	A3157177-003
8	4	5315-01-355-9714	80063	A3157176-002
8	5	3040-01-348-2340	80063	A3156906-001
8	6	5315-01-348-2337	80063	A3156903-001
8	7	5315-01-349-9229	80063	A3156898-001
8	8	5360-01-349-2684	80063	A31.56900-001
9	1	3020-01-349-2688	80063	A3157162-001
9	2	4010-01-348-4101	80063	A3157036-001
9	3	5315-01-348-2336	80063	A3156992-001
9	4		81349	MIL-W-83420/4

CROSS REFERENCE INDEXES

FIG	ITEM	FIGURE AND ITEM NUMBER INDEX STOCK NUMBER	CAGEC	PART NUMBER
9	5	5365-01-348-2258	80063	A3156858-001
9	6	5315-01-349-9228	80063	A3156956-001
9	7	5340-01-348-2370	80063	A3156987-001
10	1		80063	A3157301-001
10	2	5995-01-348-2265	80063	A3157303-001
10	3	5995-01-348-2263	80063	A3156763-001
10	4	5985-01-348-2342	80063	A3157302-001
10	5	5365-01-359-3565	80063	A3156778-001
10	6		80063	A3156776-001
11	1		80063	A3157424-001
11	2	5305-00-054-6657	96906	M551957-33
11	3	5310-00-929-6395	96906	MS35338-136
11	4	5310-00-554-2407	80063	A3157325-003
11	5	5305-00-054-5648	96906	M5S51957-14
11	6	5310-00-933-8118	96906	M5S35338-135
11	7	5310-00-232-0744	80063	A3157325-002
11	8	5305-00-054-6650	96906	M551957-26
11	9	5935-01-300-2279	81349	D38999/33W15N
11	10	5920-00-280-9320	81349	F02B250V1-2AS
11	11	5920-01-348-5770	S3629	FEK.0031.1661-00
11	12	5330-01-348-2250	80063	A3157319-001
11	13	5305-01-348-2383	80063	A3157485-001
11	14	5935-01-355-1037	81349	D38999/33W9N
11	15	5305-01-348-5763	06540	852-55-20
11	16	5995-01-348-2270	80063	A3157490-001
11	17	5935-01-267-6620	81349	D38999/24WD195N
11	18	5935-01-282-9838	81349	D38999/24WA98PN
11	19	5940-00-113-8179	06383	PN14-6R
11	20	5920-01-348-5769	S3629	FEU.0031.1681-00
11	21	5920-01-348-2245	80063	A3157433-001
11	22	5950-01-348-4100	80063	A3157412-001
11	23	5930-00-892-9714	96906	M524656-231
11	24	5940-00-204-8966	06383	PN18-6R
11	25	5935-01-348-2254	80063	A3157404-001
12	1		80063	A3157427-001
12	2	5330-01-348-2248	80063	A3157444-001
12	3	5895-01-348-2380	80063	A3157457-001
12	4	5340-01-349-9244	80063	A3157480-001
12	5	5310-00-043-4708	80205	NAS620C2
12	6	5310-00-928-2690	96906	M535338-134
12	7	5305-00-054-5638	96906	MS51957-4
12	8	5340-01-246-8425	80205	NAS1831C4C17
12	9	5310-00-554-2407	80063	A3157325-003
12	10	5310-00-929-6395	96906	MS35338-136
12	11	5305-00-054-6655	96906	M5S51957-31
12	12	5998-01-348-2389	80063	A3157435-001
12	13		80063	A3157437-001
12	14	5305-00-054-6651	96906	M551957-27
12	15	5340-01-223-7961	80205	NAS1829C4E12
12	16	5998-01-348-2390	80063	A3157436-001
12	17	2940-01-348-2366	80063	A3157413-001

CROSS REFERENCE INDEXES

FIG	ITEM	FIGURE AND ITEM NUMBER INDEX STOCK NUMBER	CAGEC	PART NUMBER
13	1		80063	A3157341-001
13	2		80063	A3157340-001
13	3	5310-01-064-5484	96906	MS35649-2254B
13	4	5310-00-243-4764	96906	MS35338-139B
13	5	5310-01-309-9476	80205	NAS620C416P
13	6	5340-01-348-2369	80063	A3157332-001
13	7	5310-00-224-0747	96906	MS35338-136B
13	8	5305-00-448-6500	96906	MS51957-28B
13	9	5305-01-016-5521	96906	MS16995-54B
14	1	5995-01-348-2268	80063	A3157491-001
14	2	5305-00-988-7602	96906	MS16995-26
14	3	5310-00-933-8119	96906	M535338-137
14	4	5310-00-880-5978	96906	MS15795-807
14	5	3010-01-348-2376	80063	A3157305-001
14	6	5920-01-251-7998	75915	218.200
14	7	5330-01-348-2249	80063	A3157396-001
14	8	3010-01-348-2374	80063	A3157307-001
14	9	5310-00-933-8121	96906	M535338-139
14	10	5305-00-978-9389	96906	MS16-997-70
14	11	3020-01-349-9233	80063	A3157352-001
14	12	3040-01-348-2338	80063	A3157366-001
14	13	5365-01-348-2411	80063	A3157376-001
14	14	5935-01-300-2279	81349	D38999/33W15N
14	15	3110-01-348-2256	80063	A3157311-001
14	16	5340-01-348-2260	80063	A3157337-001
14	17	5330-01-348-4098	80063	A3157374-001
14	18	3040-01-348-2341	80063	A3157354-001
14	19	5315-01-348-2331	80063	A3157375-001
15	1	5305-00-959-0382	96906	MS16995-17
15	2	5310-00-929-6395	96906	MS35338-136
15	3	5310-00-722-5998	96906	MS15795-805
15	4	5905-01-353-9889	80063	A3157519-001
15	5	5305-00-054-5646	96906	MS51957-12
15	6	5310-01-353-9897	80063	A3157521-001
15	7	5340-01-353-9937	80063	A3157522-001
15	8	3010-01-348-2375	80063	A3157314-001
15	9	5305-00-988-7601	96906	M516995-25
15	10	6105-01-353-9922	80063	A3157518-001
15	11	5305-01-232-6728	80063	A3157525-001
15	12	3120-01-353-9901	80063	A3157526-001
15	13	5995-01-348-2267	80063	A3157492-001
16	1	5935-01-013-9679	09922	SMS6R-1
16	2	5935-01-267-6621	81349	D38999/24WD19PN
16	3	5935-01-072-3922	09922	SMS24P-1
17	1	5305-00-727-8832	96906	MS51959-29
17	2	5340-01-348-2261	80063	A3157350-001
17	3	5330-01-348-4099	80063	A3157373-001
17	4	5365-01-351-1453	80063	A3157508-001
17	5	3110-01-348-2257	80063	A3157312-001
17	6	3020-01-348-2371	80063	A3157382-001
17	7	5310-00-680-6745	96906	M515795-811

CROSS REFERENCE INDEXES

FIG	ITEM	FIGURE AND ITEM NUMBER INDEX STOCK NUMBER	CAGEC	PART NUMBER
17	8	5310-00-974-6623	96906	M535338-140
17	9	5306-00-226-4831	80204	B1821BH031C150N
17	10	3010-01-348-2372	80063	A3157308-001
17	11	5365-01-350-5864	80063	A3157509-001
17	12		80063	A3157343-001
18	1	5305-00-959-0382	96906	M516995-17
18	2	5310-00-929-6395	96906	M535338-136
18	3	5310-00-722-5998	96906	M515795-805
18	4	5905-01-353-9889	80063	A3157519-001
18	5	5305-00-054-5646	96906	M551957-12
18	6	5310-01-353-9897	80063	A3157521-001
18	7	5340-01-353-9937	80063	A3157522-001
18	8	3010-01-348-2373	80063	A3157315-001
18	9	5305-00-988-7601	96906	M516995-25
18	10	6105-01-353-9922	80063	A3157518-001
18	11	5305-00-021-3616	96906	M35307-305
18	12	5310-00-903-5966	96906	M551971-1
18	13	5305-01-232-6728	80063	A3157525-001
18	14	3120-01-353-9901	80063	A3157526-001
18	15	5995-01-348-2269	80063	A3157492-002
19	1	5935-01-190-7605	81349	D38999/26WA98SN
19	2	5935-01-321-8973	81349	M85049/38S-9W
19	3	5935-01-348-2253	80063	A3156765-001

TM 11-5895-394-23P

By Order of the Secretary of the Army:

GORDON R. SULLIVAN
General, United States Army
Chief of Staff

Official: 
MILTON H. HAMILTON
Administrative Assistant to the
Secretary of the Army
03715

DISTRIBUTION:

To be distributed in accordance with DA Form 12-36-E, block 9424, requirements for TM 11-5985-394-23P.

☆ U.S.GOVERNMENT PRINTING OFFICE : 1995 - 164-836

RECOMMENDED CHANGES TO EQUIPMENT TECHNICAL PUBLICATIONS



THEN... JOT DOWN THE DOPE ABOUT IT ON THIS FORM, CAREFULLY TEAR IT OUT, FOLD IT AND DROP IT IN THE MAIL!

SOMETHING WRONG WITH THIS PUBLICATION?

FROM: (PRINT YOUR UNIT'S COMPLETE ADDRESS)

DATE SENT

PUBLICATION NUMBER

TM 11-5825-270-10

PUBLICATION DATE

23 Jul 81

PUBLICATION TITLE

Radio Frequency R-2176/FRN

BE EXACT... PIN-POINT WHERE IT IS

PAGE NO.	PARA-GRAPH	FIGURE NO.	TABLE NO.

IN THIS SPACE TELL WHAT IS WRONG AND WHAT SHOULD BE DONE ABOUT IT:

TEAR ALONG PERFORATED LINE

PRINTED NAME, GRADE OR TITLE, AND TELEPHONE NUMBER

SIGN HERE:

DA FORM 2028-2 JUL 78

PREVIOUS EDITIONS ARE OBSOLETE.

P.S.—IF YOUR OUTFIT WANTS TO KNOW ABOUT YOUR RECOMMENDATION MAKE A CARBON COPY OF THIS AND GIVE IT TO YOUR HEADQUARTERS.

