

**UNIT, DIRECT SUPPORT, AND  
GENERAL SUPPORT MAINTENANCE  
REPAIR PARTS AND SPECIAL TOOLS LIST  
(INCLUDING DEPOT MAINTENANCE REPAIR  
PARTS AND SPECIAL TOOLS)**

**FOR**

**TEST SET, TELEPHONE TS-3647/G  
(NSN 6625-01-145-2463)(EIC:N/A)**

**Distribution authorized to the Department of Defense and DOD contractors only for official use or for administrative or operational purposes. The determination was made on 15 August 1994. Other requests for this document will be referred to Commander, US Army Communications-Electronics Command and Fort Monmouth, ATTN: AMSEL-LC-LM-LT, New Jersey 07703-5007.**

**DESTRUCTION NOTICE - Destroy by any method that will prevent disclosure of contents or reconstruction of this document.**

---

**DEPARTMENTS OF THE ARMY, THE NAVY, AND THE AIR FORCE**

**1 DECEMBER 1994**

Technical Manual  
No. 11-5805-703-24P  
Technical Manual  
EE163-EA-PLL-010/E154TS3647  
Technical Order  
No. 31W2-2G-347

DEPARTMENTS OF THE ARMY,  
THE NAVY,  
AND THE AIR FORCE

Washington, DC, 1 December 1994

**UNIT, DIRECT SUPPORT AND  
GENERAL SUPPORT MAINTENANCE  
REPAIR PARTS AND SPECIAL TOOLS LIST  
(INCLUDING DEPOT MAINTENANCE REPAIR PARTS AND SPECIAL TOOLS)  
FOR  
TEST SET, TELEPHONE TS-3647/G  
(NSN 6625-01-145-2463) (EIC: N/A)**

Current as of 1 September 1994

**REPORTING ERRORS AND RECOMMENDING IMPROVEMENTS**

You can help improve this manual. If you find any mistakes, or if you know of a way to improve the procedures, please let us know. Mail your letter, DA Form 2028 (Recommended Changes to Publications and Blank Forms) or DA Form 2028-2 located in back of this manual direct to: Commander, US Army Communications-Electronics Command and Fort Monmouth, ATTN: AMSEL-LC-LM-LT, Fort Monmouth, New Jersey 07703-5007.

For Air Force, submit AFTO Form 22 (Technical Order System Publication Improvement Report and Reply) in accordance with paragraph 6-5, Section VI, TO 00-5-1. Forward direct to prime ALC/MST.

For Navy, mail comments to the Commander, Space and Naval Warfare Systems Command, ATTN: SPAWAR 8122, Washington, DC 20363-5100.

In either case a reply will be furnished direct to you.

**Table of Contents**

			<b>Page</b>	<b>Illus. Figure</b>
<b>Section</b>	<b>I.</b>	<b>Introduction</b>	<b>1</b>	
	<b>II.</b>	<b>Repair Parts List</b>		
<b>Group</b>	<b>00</b>	<b>Test Set, Telephone TS-3647/G</b>	<b>1-1</b>	<b>1</b>
	<b>01</b>	<b>Control Panel Assembly</b>	<b>2-1</b>	<b>2</b>
		<b>0101 Orderwire Circuit Card Assembly</b>	<b>3-1</b>	<b>3</b>
	<b>02</b>	<b>Cable Assembly, Special Purpose W2</b>	<b>4-1</b>	<b>4</b>
	<b>02</b>	<b>Cable Assembly, Special Purpose W1</b>	<b>4-1</b>	<b>4</b>

\*This manual supersedes TM 11-5805-703-24P, 5 August 1985

Table of Contents (Continued)

Section Section		Page	Illus. Figure
III.	SPECIAL TOOLS LIST (Not Applicable)		
IV.	CROSS-REFERENCE INDEXES		
	National stock number index	I-1	
	Part number Index	I-3	
	Figure and Item number index	I-8	

## SECTION I INTRODUCTION

### 1. SCOPE

This joint Army, Navy, and Air Force manual lists and authorizes spares and repair parts required for the performance of unit, intermediate, direct and general support, and depot maintenance of the Test Set, Telephone TS-3647/G. It authorizes the requisitioning, issue, and disposition of spares, repair parts, and special tools as indicated by the source, maintenance, and recoverability (SMR) codes.

### 2. GENERAL

This Repair Parts and Special Tools List is divided into the following sections:

*a. Section II. Repair Parts List.* A list of spares and repair parts authorized by this RPSTL for use in the performance of maintenance. This list also includes parts which must be removed for replacement of the authorized parts. Parts lists are composed of functional groups in ascending item number sequence, with the parts in each group listed in ascending item number sequence. Figure numbers are listed directly beneath the group header. Bulk materials are listed in item name sequence. Repair part kits are listed separately in their own function group within Section II. Repair parts for repairable special tools are also listed in this section. Items listed are shown on the associated illustration.

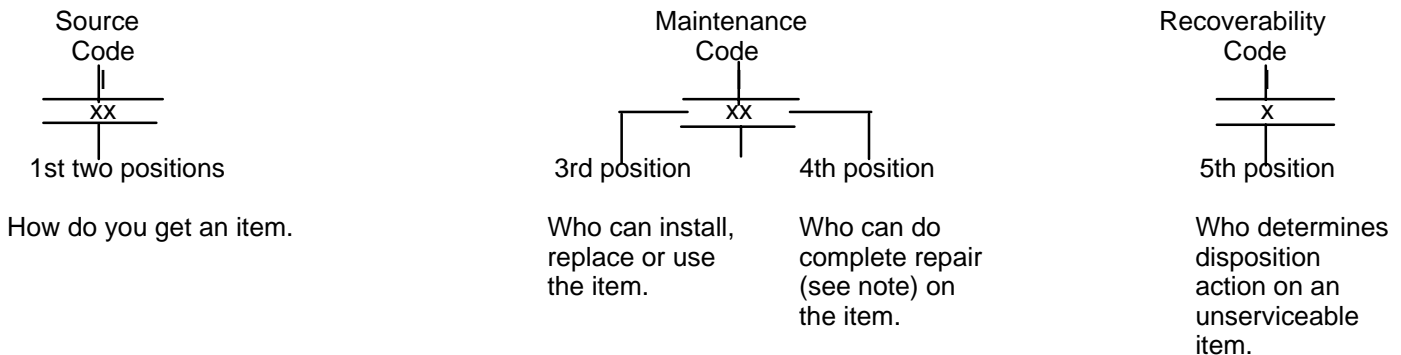
*b. Section III. Special Tools List.* A list of special tools, special TMDE, and other special support equipment authorized by this RPSTL as indicated by Basis of Issue (BOI) information in (column (5)) for the performance of maintenance.

*c. Section IV Cross-Reference Indexes.* A list, in National Item Identification Number (NIIN) sequence, of all National stock numbered items appearing in the listing, followed by a list in alphanumeric sequence of all part numbers appearing in the listings. National stock numbers and part numbers are cross-referenced to each illustration figure and item number appearance. The figure number and item number index lists figure and item numbers in numeric sequence and cross-references National stock number, Commercial and Government Entity Code, and part numbers.

### 3. EXPLANATION OF COLUMNS (Section II and III)

a. Item No. (Column (1)). Indicates the number used to identify items called out in the illustrations.

b. SMR Code (Column (2)). The source, maintenance, and recoverability (SMR) code is a five-position code containing supply/requisitioning information, maintenance category authorization criteria, and disposition instruction, as shown in the following breakout:



**NOTE**

**Complete repair: Maintenance capacity, capability, and authority to perform all corrective maintenance tasks of the "repair" function in a use/user environment in order to restore serviceability to a failed item.**

(1) Source Code. The source code tells you how to get an item needed for maintenance, repair, or overhaul of an end item/ equipment. Explanations of source codes follows:

**Code**

**Explanation**

PA  
P  
PC  
PD  
PE  
PF  
PG

Stocked items; use the applicable NSN to request/requisition items with these source codes. They are authorized to the level indicated by the code entered in the 3rd position of the SMR code.

KD  
KF  
KB

**NOTE**  
**Items coded PC are subject to deterioration.**

Items with these codes are not to be requested/requisitioned individually. They are part of a kit which is authorized to the maintenance level indicated in the 3rd position of the SMR code. The complete kit must be requisitioned and applied.

MO- Made at unit/  
AVUM Level  
MF- Made at DS/AVIM  
Level  
MH- Made at GS Level  
ML- Made at SRA  
MD- Made at Depot

Items with these codes are not to be requested/requisitioned individually. They must be made from bulk material which is identified by the part number in the DESCRIPTION AND USABLE ON CODE (UOC) column and listed in the bulk material group of the repair parts list of the RPSTL. If the item is authorized to you by the 3rd position code of the SMR code, but the source code indicates it is made at a higher level, order the item from the higher level of maintenance.

AO- Assembled by  
unit/AVUM level  
AF- Assembled by  
DS/AVIM level  
AH- Assembled by  
GS level  
AL- Assembled by  
SRA  
AD- Assembled by  
Depot

Items with these codes are not to be requested/requisitioned individually. The parts that make up the assembled item must be requisitioned or fabricated and assembled at the level of maintenance indicated by the source code. If the 3rd position code of the SMR code authorizes you to replace the item, but the source code indicates the item is assembled at a higher level, order the item from the higher level of maintenance.

XA - Do not requisition an "XA" coded item. Order the next higher assembly.

XB - If an "XB" item is not available from salvage, order it using the CAGEC and part number given.

XC - Installation drawing, diagram, instruction sheet, field service drawing, that is identified by manufacturer's part number.

XD - Item is not stocked. Order an "XD" coded item through normal supply channels using the CAGEC and part number given, if no NSN is available.

**NOTE**

**Cannibalization or controlled exchange, when authorized, may be used as a source of supply for items with the above source codes except for those source coded "XA" or those aircraft support items restricted by the requirements of AR-750-1.**

(2) *Maintenance Code.* Maintenance codes tell you the category of maintenance authorized to USE and REPAIR support items. The maintenance codes are entered in the third and fourth positions of the SMR code as follows:

(a) The maintenance code entered in the third position tells you the lowest maintenance category authorized to remove, replace, and use an item. The maintenance code entered in the third position will indicate authorization to one of the following categories of maintenance.

<b>Code</b>	<b>Application/Explanation</b>
-------------	--------------------------------

- C - Crew or operator maintenance done within organizational or aviation maintenance.
- O - Organizational or aviation unit category can remove, replace, and use the item.
- F - Direct support or aviation intermediate category can remove, replace, and use the item.
- H - General support category can remove, replace, and use the item.
- L - Specialized repair activity can remove, replace, and use the item.
- D - Depot category can remove, replace, and use the item.

(b) The maintenance code entered in the fourth position tells whether or not the item is to be repaired and identifies the lowest maintenance category with the capability to do complete repair (i.e., perform all authorized repair functions). This position will contain one of the following maintenance codes.

**NOTE**

**Some limited repair may be done on the item at a lower category of maintenance, if authorized by the Maintenance Allocation Chart (MAC) and SMR codes.**

<b>Code</b>	<b>Explanation</b>
-------------	--------------------

- O - Organization or aviation unit is the lowest category that can do complete repair of the item.
- F - Direct support or aviation intermediate is the lowest category that can do complete repair of the item.
- H - General support is the lowest category that can do complete repair of the item.
- L - Specialized repair activity (designate the specialized repair activity) is the lowest category that can do complete repair of the item.
- D - Depot is the lowest category that can do complete repair of the item.
- Z - Nonreparable. No repair is authorized.
- B - No repair is authorized. (No parts or special tools are assigned for the maintenance of a "B" coded item.) However, the item may be reconditioned by adjusting, lubricating, etc., at the user category.

(3) *Recoverability code.* Recoverability codes are assigned to items to indicate the disposition action on unserviceable items. The recoverability code is entered in the fifth position of the SMR code as follows:

**Recoverability  
Code**

**Application/Explanation**

- Z - Nonreparable item. When unserviceable, condemn and dispose of the item at the category of maintenance shown in the third position of SMR code.
- 0 - Reparable item. When uneconomically reparable, condemn and dispose of the item at organizational or aviation unit category.
- F - Reparable item. When uneconomically reparable, condemn and dispose of the item at direct support or aviation intermediate category.
- H - Reparable item. When uneconomically reparable, condemn and dispose of the item at general support category.
- D - Reparable item. When beyond lower category repair capability, return to depot.  
Condemnation and disposal of item not authorization below depot category.
- L - Reparable item. Condemnation and disposal not authorized below specialized repair activity (SRA).
- A - Item requires special handling or condemnation procedures because of specific reasons (e.g., precious metal content, high dollar value, critical material, or hazardous material.) Refer to appropriate manuals/directives for specific instructions.

c. *CAGEC (Column (3)).* The Commercial and Government Entity Code (CAGEC) is a 5-digit numeric code which is used to identify the manufacturer, distributor, of Government agency, etc., that supplies the item.

d. *Part Number (Column (4)).* Indicates the primary number used by the manufacturer (individual, company, firm, corporation, or Government activity), which controls the design and characteristics of the item by means of its engineering drawings, specifications, standards, and inspection requirements to identify an item or range of items.

**NOTE**

**When you use an NSN to requisition an item, the item you receive may have a different part number from the part ordered.**

- e. Description of Usable on Code (UOC) (Column (5)). This column includes the following information.
- (1) The Federal item name and, when required, a minimum description to identify the item.
  - (2) The physical security classification of the item is indicated by the parenthetical entry, e.g., Phy Sec C1 (C) - Confidential, Phy Sec C1 (S) - Secret, Phy Sec C1 (T) - Top Secret.
  - (3) Items that are included in kits and sets are listed below the name of the kit or set.
  - (4) Spare/repair parts that make up an assembled item are listed immediately following the assembled item line entry.
  - (5) Part numbers for bulk materials are referenced in this column in the line entry for the item to be manufactured/fabricated.
  - (6) When the item is not used with all serial numbers of the same model, the effective serial numbers are shown on the last line of the description (before UOC).

(7) Usable on code, when applicable (para 5).

(8) In the Special Tools section, the basis of issue (BOI) appears as the last line in the entry for each special tool, special TMDE, and other special support equipment. When density of equipments supported exceeds density spread indicated in the basis of issue, the total authorization is increased proportionately.

(9) The statement "END OF FIGURE" appears just below the last item description in Column (5) for a given figure in both section II and III.

f. *Qty (Column (6))*. Indicates the quantity of the item used in the breakout shown on the illustration figure, which is prepared for a functional group, subfunctional group, or an assembly. A "V" appearing in this column in lieu of a quantity indicates that the quantity is variable and the quantity may vary from application to application.

#### 4. EXPLANATION OF COLUMNS (Section IV)

##### a. *National Stock Number (NSN) Index.*

(1) *National stock number column*. This column lists the NSN by National item identification number (NIIN) sequence. The NIIN consists of the last nine digits of the NSN. When using this column to locate an item, ignore the first digits of the NSN. When requisitioning items use the complete NSN (13 digits) sequence.

(2) *Figure number column*. This column lists the number of the figure where the item is identified/located. The illustrations are in numerical sequence in sections II and III.

(3) *Item number column*. The item number identifies the item associated with the figure listed in the adjacent Figure column. This item is also identified by the NSN listed on the same line.

##### b. *Part Number Index.* Part numbers in this index are listed by part number in ascending alphanumeric sequence.

(1) *CAGEC column*. This column lists the Commercial and Government Entity Code (CAGEC).

(2) *Part number column*. This column indicates the part number assigned to the item.

(3) *Stock number column*. This column lists the National stock number for the associated part number and manufacturer identified in the part number and CAGEC columns to the left.

(4) *Figure column*. This column lists the number of the figure where the item is identified/located in sections II and III.

(5) *Item column*. The item number is that number assigned to the item as it appears in the figure referenced in the adjacent figure number column.

##### c. *Figure and Item Number Index.*

(1) *Fig. column*. This column lists the number of the figure where the item is identified/located in sections II and III.

(2) *Item column*. The item number is that number assigned to the item as it appears in the figure referenced in the adjacent figure number column.

(3) *Stock number column*. This column lists the National stock number for the item.



(4) *CAGEC column.* The Commercial and Government Entity Code (CAGEC) is a 5-digit numeric code used to identify the manufacturer, distributor, or Government agency, etc., that supplies the item.

(5) *Part number column.* Indicates the primary number used by the manufacturer (individual, firm, corporation, or Government activity), which controls the design and characteristics of the item by means of its engineering drawings, specifications, standards, and inspection requirements to identify an item or range of items.

## 5. SPECIAL INFORMATION

a. *Associated Publications.* The publications listed below pertain to the TS-3647/G, and its components:

TM 11-5805-703-14,	Test Set, Telephone TS-3647/G
TM 11-5805-703-34,	Test Set, Telephone TS-3647/G

b. *National Stock Numbers.* National stock numbers (NSNs) that are missing from P source coded items have been applied for and will be added to this TM by future change/revision when they are entered in the Army Master Data File (AMDF). Until the NSNs are established and published, submit an exception requisition to: Commander, US Army Communications-Electronics Command and Fort Monmouth, ATTN: AMSEL-LC-MM, Fort Monmouth, NJ 07703-5007 for the part required to support your equipment.

## 6. HOW TO LOCATE REPAIR PARTS.

a. *When National stock number or part number is not known.*

(1) *First.* Using the table of contents, determine the assembly group or subassembly group to which the item belongs. This is necessary since figures are prepared for assembly groups and subassembly groups, and listings are divided into the same groups.

(2) *Second.* Find the figure covering the assembly group or subassembly group to which the item belongs.

(3) *Third.* Identify the item on the figure and note the item number.

(4) *Fourth.* Refer to the Repair Parts Lists for the figure to find the part number for the item number noted on the figure.

(5) *Fifth.* Refer to the Part Number Index to find the NSN, if assigned.

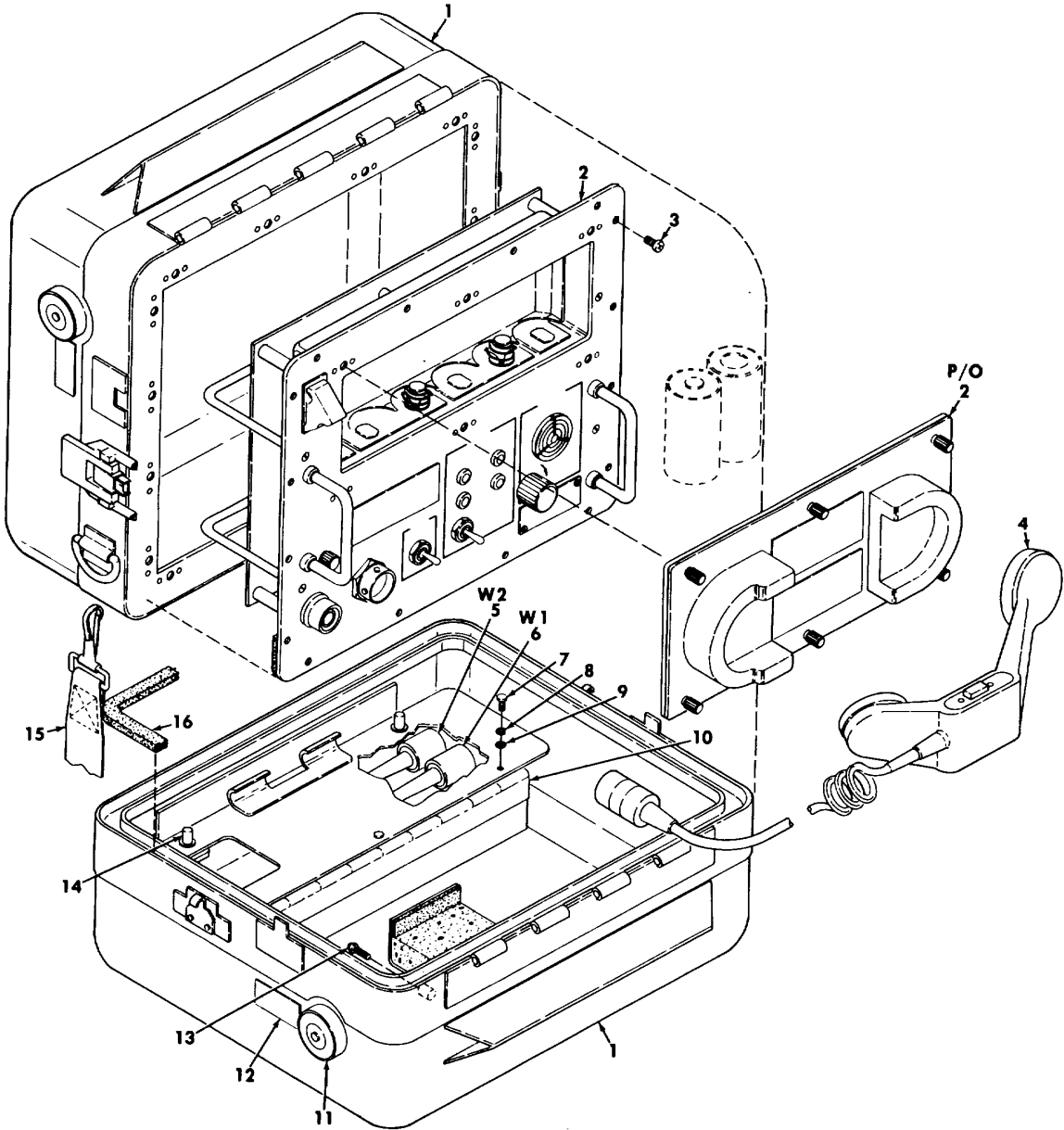
b. *When National stock number or part number is known.*

(1) *First.* Using the index of National stock numbers and part numbers, find the pertinent National stock number or part number. The NSN index is in National item identification number (NIIN) sequence (para 4a(1)). The part numbers in the part number index are listed in ascending alphanumeric sequence (para 4b). Both indexes cross-reference you to the illustration figure and item number of the item you are looking for.

(2) *Second.* After finding the figure and item number, verify that the item is the one you're looking for, then locate the item number in the repair parts list for the figure.

## 7. ABBREVIATIONS

Not applicable.



EL1VW001

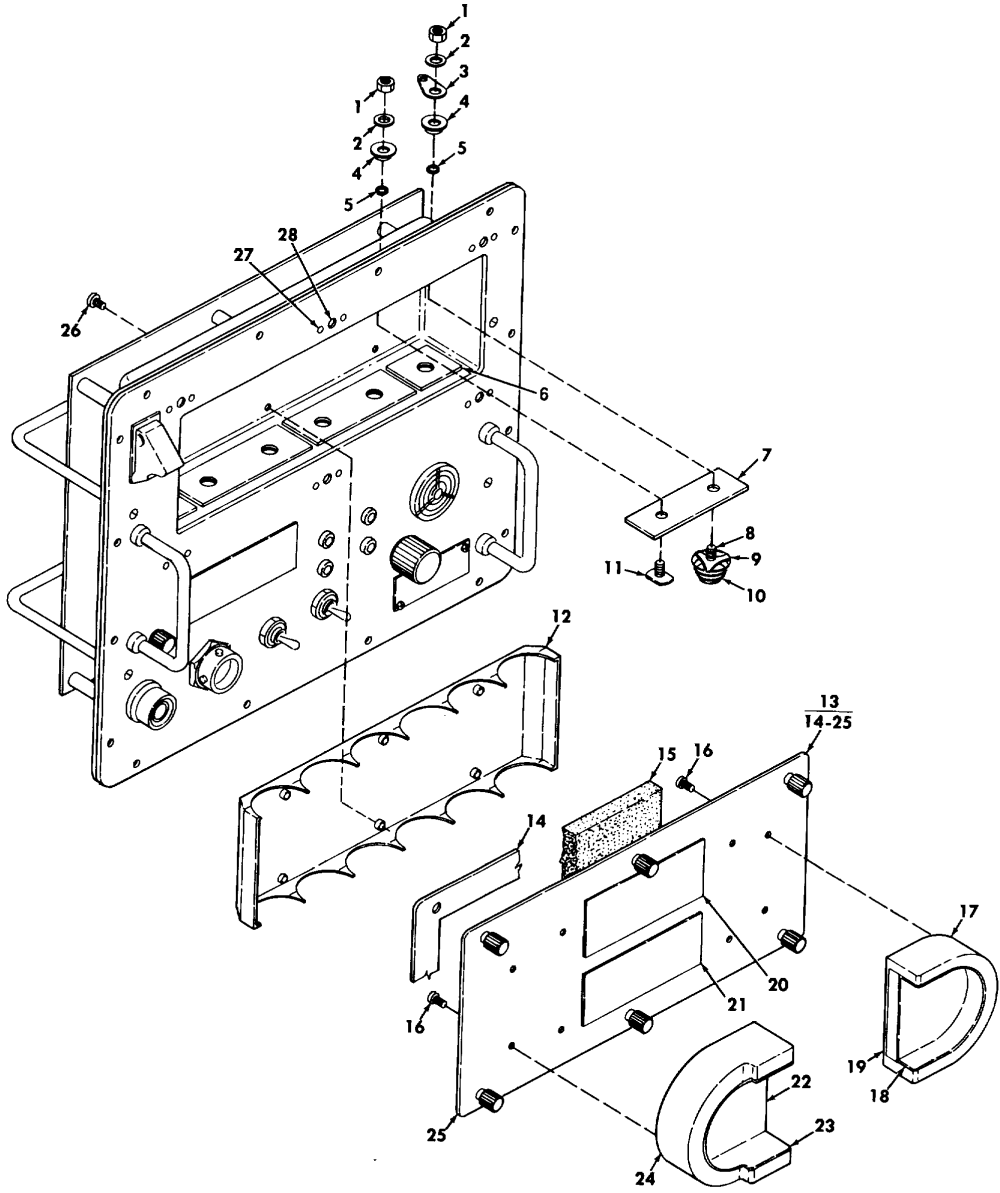
Figure 1. Test Set, Telephone TS-3647/G.

## SECTION II

TM11-5805-703-24P

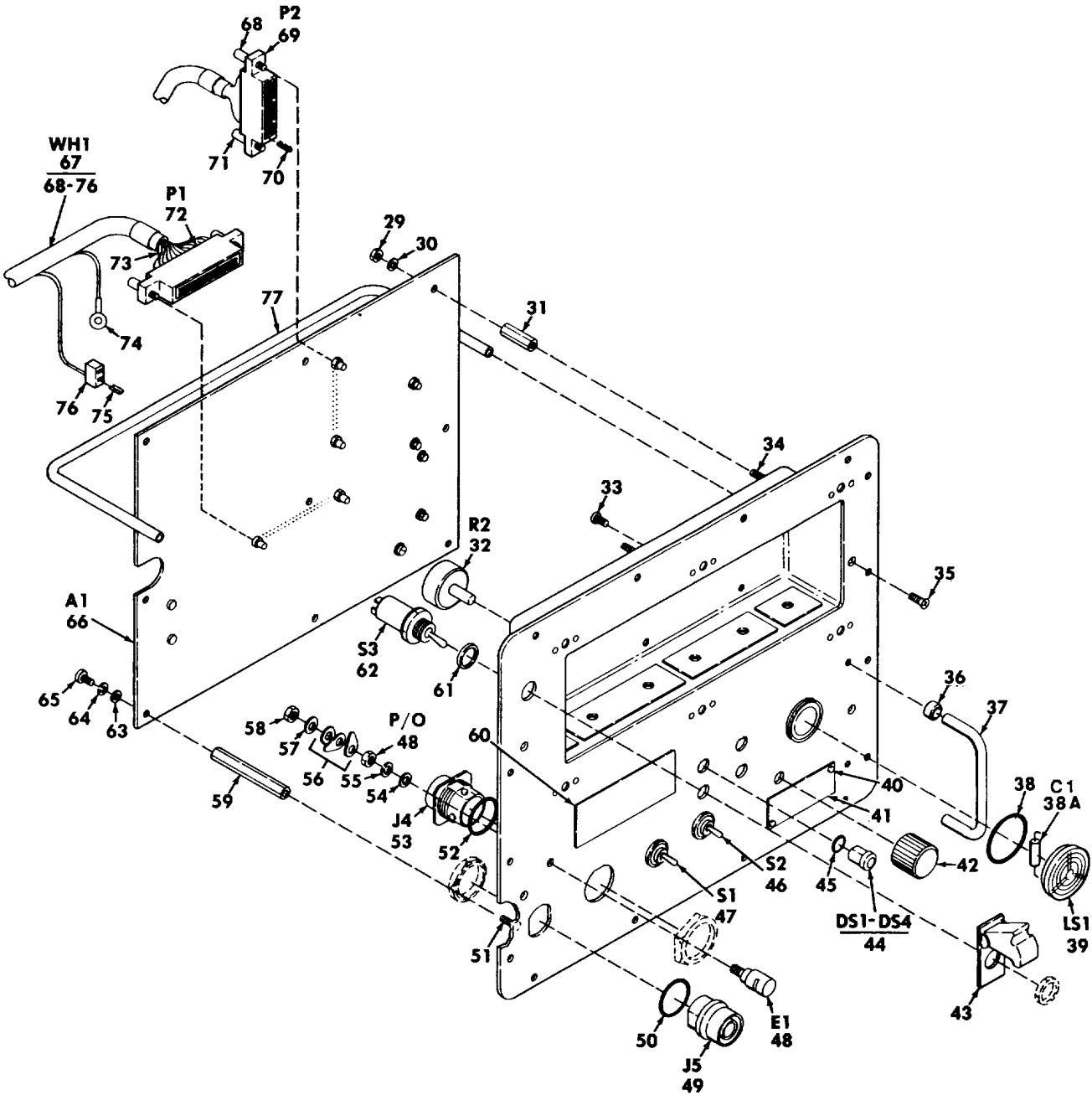
(1)	(2)	(3)	(4)	(5)	(6)
ITEM NO	SMR CODE	FSCM	PART NUMBER	DESCRIPTION AND USABLE ON CODES(UOC)	QTY
				GROUP 00 TEST SET, TELEPHONE TS-3647/G	
				FIGURE 1	
1	XBFDD	80063	SM-D-984794	CASE, TELEPHONE.....	1
2	XBFDD	80063	SM-D-984820	CONTROL PANEL ASSY SEE FIG 2 FOR ..... BK DN .....	1
3	PAFZZ	96906	MS51957-47	SCREW, MACHINE .....	16
4	PAOZZ	80058	H-250/U	HANDSET .....	1
5	PAODD	80063	SM-C-884363	CABLE ASSEMBLY, SPEC SEE FIG 4 FOR..... BK DN .....	1
6	PAODD	80063	SM-B-884364	CABLE ASSEMBLY, SPEC SEE FIG 4 FOR..... BK DN .....	1
7	PAFZZ	96906	MS3212-27	SCREW, MACHINE .....	16
8	PADZZ	96906	MS35338-136	WASHER, LOCK .....	3
9	PADZZ	96906	MS15795-807	WASHER, FLAT .....	3
10	XBDZZ	53031	TC67H08-03	HINGE ASSEMBLY.....	1
11	PAFZZ	53031	TC78V14-25-35	VALVE, PRESSURE EQUA.....	2
12	XBFZZ	53031	TC10OP73	LABEL .....	2
13	PAFZZ	80063	SM-B-984783	BOLT, MACHINE .....	1
14	PAFZZ	53031	TC10P82-1	FASTENER SET .....	2
15	PAOZZ	81349	MIL-S-1698	SLING, BAG AND CASE .....	1
16	PAFZZ	53031	XTC20R07-07	SEAL, SPECIAL.....	1

END OF FIGURE



EL1VW002

Figure 2. Control Panel Assembly.  
(Sheet 1 of 2)



EL1VW003

Figure 2. Control Panel Assembly.  
(Sheet 2 of 2)

## SECTION II

TM11-5805-703-24P

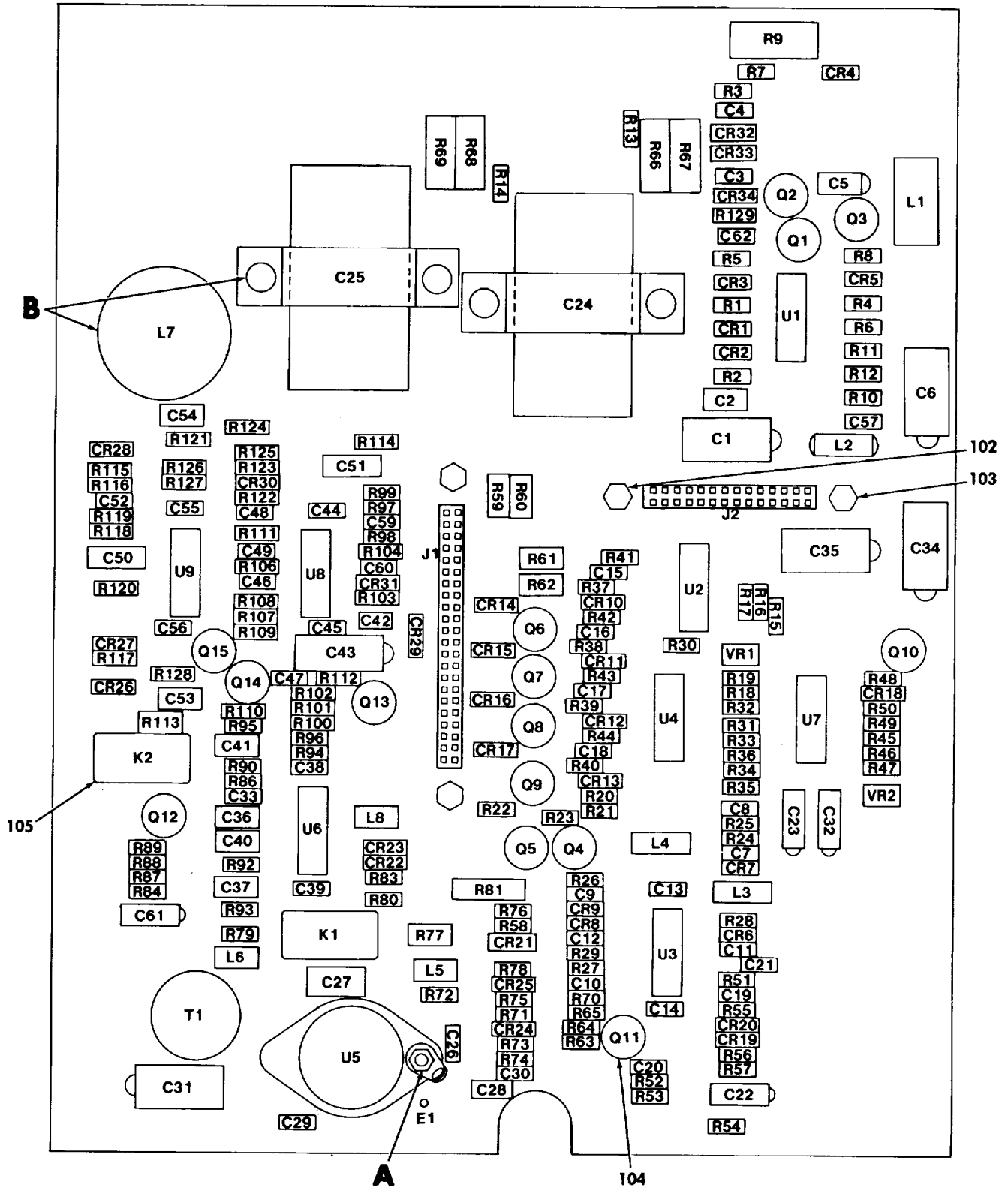
(1)	(2)	(3)	(4)	(5)	(6)
ITEM NO	SMR CODE	FSCM	PART NUMBER	DESCRIPTION AND USABLE ON CODES(UOC)	QTY
GROUP 01 CONTROL PANEL ASSEMBLY					
FIGURE 2					
1	PADZZ	96906	MS21044C06	NUT, SELF-LOCKING, HE .....	12
2	PADZZ	96906	MS15795-806	WASHER,FLAT .....	12
3	PADZZ	96906	MS77066-2	TERMINAL, LUG.....	12
4	PADZZ	80063	SM-B-984781	WASHER SHOULDERED .....	12
5	PADZZ	81349	M25988/1-007	PACKING, PREFORMED .....	12
6	PADZZ	80063	SM-B-984821	INSULATOR, PLATE .....	2
7	PADZZ	80063	SM-B-984822	INSULATOR, PLATE .....	5
8	PADZZ	80063	SM-B-984784	SCREW, MACHINE .....	6
9	PADZZ	80063	SM-C-984780	RETAINER, HELICAL CO.....	6
10	PADZZ	80063	SM-A-984844	SPRING, HELICAL, COMP.....	6
11	PADZZ	80063	SM-B-984782	SCREW, MACHINE .....	6
12	XBDZZ	80063	SM-D-984789	BATTERY CRADLE ASSY .....	1
13	XBOFF	80063	SM-D-984786	COVER ASSEMBLY .....	1
14	PAFZZ	80063	SM-C-984849	GASKET.....	1
15	XBFZZ	80063	SM-B-984847	BUMPER.....	1
16	PAFZZ	96906	M53212-12	SCREW,MACHINE .....	8
17	XBFZZ	80063	SM-B-984800	RETAINER ASSY .....	1
18	XBFZZ	80063	SM-B-984853	STRIP .....	1
19	XBFZZ	80063	SM-B-984855	PAD .....	1
20	XBFZZ	80063	SM-A-984920-14	MARKER, IDENT .....	1
21	XBFZZ	80063	SM-A-984920-11	MARKER, IDENT .....	1
22	XBFZZ	80063	SM-B-984854	PAD.....	1
23	XBFZZ	80063	SM-B-984882	STRIP.....	1
24	XBFZZ	80063	SM-B-984799	RETAINER ASSY .....	1
25	XBFZZ	80063	SM-D-984798	COVER ASSY.....	1
26	PADZZ	96906	MS3212-11L	SCREW, SELF-LOCKING .....	6
27	PADZZ	96906	MS20426AD3-4	RIVET, SOLID.....	12
28	PADZZ	80205	NAS1474C08	NUT, SELF-LOCKING, PL.....	6
29	PAFZZ	96906	MS21044C06	NUT, SELF-LOCKING, HE .....	4
30	PAFZZ	96906	MS51859-3	WASHER, FLAT .....	8
31	PADZZ	80205	NAS43DD1-20	SPACER, SLEEVE.....	4
32	PAFZZ	81349	RV4SAYS102A	RESISTOR, VARIABLE, .....	1
33	PAFZZ	96906	MS3212-14L	SCREW, SELF-LOCKING .....	6
34	PADZZ	81349	M63540/1-14C	STUD, SELF-LOCKING .....	7
35	PAFZZ	96906	MS51959-29	SCREW, MACHINE .....	2
36	PAFZZ	06540	16019-SS-6B	FERRULE .....	4
37	PAFZZ	06540	10219-SS-0632-6B	HANDLE, BOW .....	2
38	PAFZZ	96906	MS28775-024	PACKING, PREFORMED .....	1
38A	PADZZ	81349	MS9003/01-3076	CAPACITOR, FIXED,ELE .....	1
39	PAFZZ	80063	SM-B-984929	ALARM, AUDIBLE, ELECT.....	1
40	PADZZ	96906	MS20470B3-5	RIVET, SOLID.....	2
41	XBDZZ	80063	SM-C-876429-8	PLATE, IDENT .....	1
42	PAOZZ	96906	MS91528-0N2B	KNOB .....	1
43	PAFZZ	96906	MS25214-2	GUARD, SWITCH.....	1
44	PADZZ	81349	JANTXM19500/52102	LIGHT EMITTING DIOD .....	4
45	PADZZ	96906	MS28775-011	PACKING, PREFORMED.....	4
46	PAFZZ	96906	MS90311-271	SWITCH, TOGGLE .....	1

## SECTION II

TM11-5805-703-24P

(1)	(2)	(3)	(4)	(5)	(6)
ITEM NO	SMR CODE	FSCM	PART NUMBER	DESCRIPTION AND USABLE ON CODES(UOC)	QTY
47	PAFZZ	96906	MS24524-30	SWITCH, TOGGLE.....	1
48	PAFZZ	81349	PB08NAO1	POST, BINDING, ELECTR.....	1
49	PAFZZ	81349	U-183/U	CONNECTOR, RECEPTACL.....	1
50	PAFZZ	18565	10-00-3550-1214	PACKING, PREFORMED.....	1
51	PADZZ	81349	M63540/1-16C	STUD, SELF-LOCKING.....	3
52	PADZZ	18565	10-00-2069-1214	SHIELDING GASKET, EL.....	1
53	PADZZ	96906	MS3474W14-18P	CONNECTOR, RECEPTACL.....	1
54	PADZZ	88044	AN960C516	WASHER, FLAT.....	1
55	PADZZ	96906	MS35338-139	WASHER, LOCK.....	1
56	PADZZ	96906	MS0035431-7	TERMINAL, LUG.....	3
57	PADZZ	96906	MS35333-107	WASHER, LOCK.....	1
58	PADZZ	96906	MS35650-304	NUT, PLAIN, HEXAGON.....	1
59	PADZZ	80205	NAS1786A08-30	POST, ELECTRICAL-MEC.....	7
60	XBFZZ	80063	SM-A-876756-1	MARKER, IDENT.....	1
61	PAFZZ	96906	MS25196-1	PACKING WIITH RETAIN.....	3
62	PAFZZ	96906	MS90310-211	SWITCH, TOGGLE.....	1
63	PAFZZ	96906	MS15795-807	WASHER, FLAT.....	7
64	PAFZZ	96906	MS35338-137	WASHER, LOCK.....	7
65	PAFZZ	96906	MS51957-43	SCREW, MACHINE.....	7
66	PAFDD	80063	SM-D-884683	CIRCUIT CARD ASSEMB SEE FIG 3 FOR.....	1
				BK DN.....	
67	XBDDD	80063	SM-D-984895	WIRING HARNESS.....	1
68	PADZZ	00779	86603-1	JACKSCREW, ELECTRICA.....	2
68	PADZZ	84134	2-86672-1	BODY, CONNECTOR, ELEC.....	1
70	PADZZ	00779	86571-6	CONTACT, ELECTRICAL.....	44
71	PADZZ	00779	87185-1	JACKSCREW, ELECTRICA.....	2
72	PADZZ	80063	SM-A-876920-15	CONNECTOR BODY, RECE.....	1
73	PADZZ	06090	D-181-1222-90/9	SPLICE, CONDUCTOR.....	6
74	PADZZ	96906	M525036-101	TERMINAL, LUG.....	4
75	PADZZ	00779	87165-1	CONTACT, ELECTRICAL.....	8
76	PADZZ	00779	87176-2	CONNECTOR BODY, PLUG.....	4
77	PAFZZ	80063	SM-C-984848	HANDLE, BOW.....	2

END OF FIGURE



PREFIX ALL REFERENCE DESIGNATIONS WITH A1

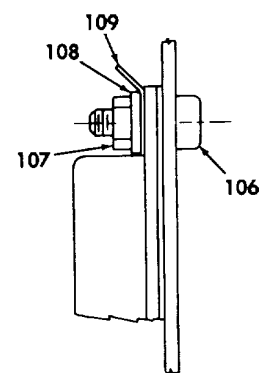
EL1VW004

Figure 3. Orderwire Circuit Card Assembly. (Sheet 1 of 2)

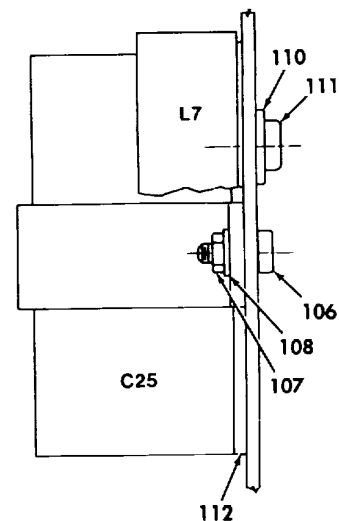


LEGEND

REF DES	ITEM NO.	REF DES	ITEM NO.	REF DES	ITEM NO.	REF DES	ITEM NO.	REF DES	ITEM NO.
C1	1	C60	25	Q3	42	R45	46	R107	88
C2	2	C61	14	Q4	43	R46	46	R108	72
C3	3	C62	25A	Q5	43	R47	56	R109	89
C4	4			Q6	40	R48	59	R110	90
C5	5	CR1	26	Q7	40	R49	60	R111	89
C6	1	CR2	26	Q8	40	R50	46	R112	70
C7	6	CR3	26	Q9	40	R51	61	R113	75
C8	7	CR4	26	Q10	40	R52	58	R114	91
C9	6	CR5	27	Q11	44	R53	58	R115	54
C10	7	CR6	28	Q12	40	R54	62	R116	92
C11	8	CR7	28	Q13	40	R55	63	R117	93
C12	8	CR8	28	Q14	45	R56	64	R118	88
C13	9	CR9	28	Q15	40	R57	54	R119	88
C14	9	CR10	29			R58	65	R120	46
C15	10	CR11	29	R1	46	R59	66	R121	46
C16	10	CR12	29	R2	47	R60	66	R122	46
C17	10	CR13	29	R3	48	R61	66	R123	94
C18	10	CR14	29	R4	48	R62	66	R124	95
C19	11	CR15	29	R5	46	R63	67	R125	94
C20	12	CR16	29	R6	49	R64	46	R126	95
C21	13	CR17	29	R7	48	R65	68	R127	46
C22	14	CR18	29	R8	48	R66	69	R128	46
C23	15	CR19	29	R9	50	R67	69	R129	48
C24	16	CR20	29	R10	51	R68	69		
C25	16	CR21	30	R11	46	R69	69	T1	96
C26	12	CR22	29	R12	52	R70	70		
C27	17	CR23	29	R13	53	R71	71	U1	97
C28	9	CR24	31	R14	53	R72	72	U2	98
C29	9	CR25	31	R15	54	R73	73	U3	99
C30	4	CR26	30	R16	53	R74	74	U4	97
C31	18	CR27	29	R17	53	R75	46	U5	100
C32	15	CR28	29	R18	55	R76	46	U6	99
C33	7	CR29	31	R19	55	R77	75	U7	97
C34	1	CR30	29	R20	51	R78	76	U8	99
C35	1	CR31	31	R21	56	R79	76	U9	99
C36	2	CR32	29	R22	51	R80	76		
C37	2	CR33	29	R23	56	R81	77	VR1	101
C38	9	CR34	29	R24	54	R83	76	VR2	101
C39	9			R25	57	R84	78		
C40	2	E1	32	R26	54	R86	79		
C41	2			R27	57	R87	80		
C42	13	J1	33	R28	58	R88	65		
C43	19	J2	33A	R29	58	R89	46		
C44	9			R30	59	R90	49		
C45	9	K1	34	R31	60	R92	81		
C46	20	K2	34	R32	46	R93	82		
C47	13			R33	46	R94	83		
C48	21	L1	35	R34	46	R95	84		
C49	22	L2	36	R35	46	R96	85		
C50	23	L3	37	R36	60	R97	86		
C51	23	L4	37	R37	56	R98	87		
C52	20	L5	38	R38	56	R99	54		
C53	24	L6	38	R39	56	R100	80		
C54	24	L7	39	R40	56	R101	65		
C55	9	L8	38	R41	46	R102	46		
C56	9			R42	46	R103	54		
C57	9	Q1	40	R43	46	R104	70		
C59	25	Q2	41	R44	46	R106	51		



A



B

PREFIX ALL REFERENCE DESIGNATIONS WITH A1

EL1VW005

Figure 3. Orderwire Circuit Card Assembly.  
(Sheet 2 of 2)

## SECTION II

TM11-5805-703-24P

(1)	(2)	(3)	(4)	(5)	(6)
ITEM NO	SMR CODE	FSCM	PART NUMBER	DESCRIPTION AND USABLE ON CODES(UOC)	QTY
GROUP 0101 ORDERWIRE CIRCUIT CARD ASSEMBLY FIGURE 3					
1	PADZZ	81349	M39003/01-8103	CAPACITOR, FIXED, ELE.....	4
2	PADZZ	81349	M39014/05-2291	CAPACITOR, FIXED, CER.....	5
3	PADZZ	81349	M39014/05-2251	CAPACITOR, FIXED, CER.....	1
4	PADZZ	81349	M39014/05-2246	CAPACITOR, FIXED, CER.....	2
5	PADZZ	81349	M39003/01-8004	CAPACITOR, FIXED, ELE.....	1
6	PADZZ	81349	M39014/05-2254	CAPACITOR, FIXED, CER.....	2
7	PADZZ	81349	M39014/05-2222	CAPACITOR, FIXED, CER.....	3
8	PADZZ	81349	M39014/05-2227	CAPACITOR, FIXED, CER.....	2
9	PADZZ	81349	M39014-05-2273	CAPACITOR, FIXED, CER.....	11
10	PADZZ	81349	M39014/02-1417	CAPACITOR, FIXED, CER.....	4
11	PADZZ	81349	M39014/05-2233	CAPACITOR, FIXED, CER.....	1
12	PADZZ	81349	M39014-05-2255	CAPACITOR, FIXED, CER.....	2
13	PADZZ	81349	M39014-02-1419	CAPACITOR, FIXED, CER.....	3
14	PADZZ	81349	M39003/01-3009	CAPACITOR, FIXED, ELE.....	2
15	PADZZ	81349	M39003/01-3024	CAPACITOR, FIXED, ELE.....	2
16	PADZZ	80063	SM-A-984802-3	CAPACITOR, FIXED, MET.....	2
17	PADZZ	81349	M39014/05-2319	CAPACITOR, FIXED, CER.....	1
18	PADZZ	81349	M39003/01-8043	CAPACITOR, FIXED, ELE.....	1
19	PADZZ	81349	M39003/01-8088	CAPACITOR, FIXED, ELE.....	1
20	PADZZ	81349	M39014/05-2267	CAPACITOR, FIXED, CER.....	2
21	PADZZ	81349	M39014/05-2248	CAPACITOR, FIXED, CER.....	1
22	PADZZ	81349	M39014/05-2264	CAPACITOR, FIXED, CER.....	1
23	PADZZ	81349	CFR04RSA393FM	CAPACITOR, FIXED, PLA.....	2
24	PADZZ	81349	M39014/05-2303	CAPACITOR, FIXED, CER.....	2
25	PADZZ	81349	M39014/05-2242	CAPACITOR, FIXED, CER.....	2
25A	PADZZ	81349	CK12BX102M	CAPACITOR, FIXED, CER.....	1
26	PADZZ	81349	JANTX1N4150-1	SEMICONDUCTOR DEVIC.....	4
27	PADZZ	81349	JAN1N5615	SEMICONDUCTOR DEVIC.....	1
28	PADZZ	81349	JANIN5711	SEMICONDUCTOR DEVIC.....	4
29	PADZZ	81349	JANTX1N4148-1	SEMICONDUCTOR DEVIC.....	19
30	PADZZ	81349	JANIN5614	SEMICONDUCTOR DEVIC.....	2
31	PADZZ	80063	SM-A-876333	SEMICONDUCTOR DEVIC.....	4
32	PADZZ	81349	M55155/23XH02	TERMINAL, STUD.....	1
33	PADZZ	14933	86099-27-D-44	CONNECTOR, RECEPTACL.....	1
33A	PADZZ	14933	86099-27-D-28	CONNECTOR, RECEPTACL.....	1
34	PADZZ	81349	M39016/6-116P	RELAY, ELECTROMAGNET.....	2
35	PADZZ	80063	SM-A-959300	REACTOR.....	1
36	PADZZ	10001	2222283-1	COIL, RADIO FREQUENC.....	1
37	PADZZ	96906	MS75089-11	COIL, RADIO FREQUENC.....	2
38	PADZZ	96906	MS75089-16	COIL, RADIO FREQUENC.....	3
39	PADZZ	09969	ITP-1431-18	TRANSFORMER, POWER.....	1
40	PADZZ	81349	JANTX2N2222A	TRANSISTOR.....	9
41	PADZZ	81349	JAN2N2907A	TRANSISTOR.....	1
42	PADZZ	81349	JAN2N3421	TRANSISTOR.....	1
43	PADZZ	81349	JANTX2N2369A	TRANSISTOR.....	2
44	PADZZ	81349	JAN2N3823	TRANSISTOR.....	1
45	PADZZ	80063	SM-A-984996	TRANSISTOR.....	1

## SECTION II

TM11-5805-703-24P

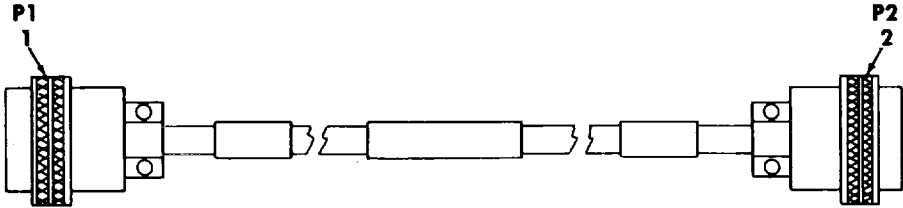
(1)	(2)	(3)	(4)	(5)	(6)
ITEM NO	SMR CODE	FSCM	PART NUMBER	DESCRIPTION AND USABLE ON CODES(UOC)	QTY
46	PADZZ	81349	RLR07C1002GS	RESISTOR, FIXED, FILM.....	24
47	PADZZ	81349	RLR07C5600GS	RESISTOR, FIXED, FILM.....	1
48	PADZZ	81349	RLR07C2201GS	RESISTOR, FIXED, FILM.....	5
49	PADZZ	81349	RLR07C1502GS	RESISTOR, FIXED, FILM.....	2
50	PADZZ	81349	RCR42G820JS	RESISTOR, FIXED, COMP.....	1
51	PADZZ	81349	RLR07C2702GS	RESISTOR, FIXED, FILM.....	4
52	PADZZ	81349	RLR07C2872FS	RESISTOR, FIXED, FILM.....	1
53	PADZZ	81349	RLR07C3831FS	RESISTOR, FIXED, FILM.....	4
54	PADZZ	81349	RLR07C1001GS	RESISTOR, FIXED, FILM.....	7
55	PADZZ	81349	RLR07C2741FS	RESISTOR, FIXED, FILM.....	2
56	PADZZ	81349	RLR07C1202GS	RESISTOR, FIXED, FILM.....	7
57	PADZZ	81349	RLR07C5100GS	RESISTOR, FIXED, FILM.....	2
58	PADZZ	81349	RLR07C1004GS	RESISTOR, FIXED, FILM.....	4
59	PADZZ	81349	RLR07C5601GS	RESISTOR, FIXED, FILM.....	2
60	PADZZ	81349	RLR07C6802GS	RESISTOR, FIXED, FILM.....	3
61	PADZZ	81349	RLR07C180GS	RESISTOR, FIXED, FILM.....	1
62	PADZZ	81349	RCR07G185JS	RESISTOR, FIXED, COMP.....	1
63	PADZZ	81349	RLR07C1802GS	RESISTOR, FIXED, FILM.....	1
64	PADZZ	81349	RCR07G335JS	RESISTOR, FIXED, COMP.....	1
65	PADZZ	81349	RLR07C3001GS	RESISTOR, FIXED, FILM.....	3
66	PADZZ	81349	RLR20C6800GS	RESISTOR, FIXED, FILM.....	4
67	PADZZ	81349	RLR07C6490FS	RESISTOR, FIXED, FILM.....	1
68	PADZZ	81349	RLR07C1203GS	RESISTOR, FIXED, FILM.....	1
69	PADZZ	81349	RCR32G275JS	RESISTOR, FIXED, COMP.....	4
70	PADZZ	81349	RLR07C4702GS	RESISTOR, FIXED, FILM.....	3
71	PADZZ	81349	RLR07C1302GS	RESISTOR, FIXED, FILM.....	1
72	PADZZ	81349	RLR07C6201GS	RESISTOR, FIXED, FILM.....	2
73	PADZZ	81349	RLR07C6200GS	RESISTOR, FIXED, FILM.....	1
74	PADZZ	81349	RLR07C3013FS	RESISTOR, FIXED, FILM.....	1
75	PADZZ	81349	RLR20C1500GS	RESISTOR, FIXED, FILM.....	2
76	PADZZ	81349	RCR07G104JS	RESISTOR, FIXED, COMP.....	4
77	PADZZ	81349	RLR32C2000GS	RESISTOR, FIXED, FILM.....	1
78	PADZZ	81349	RLR07C1602GS	RESISTOR, FIXED, FILM.....	1
79	PADZZ	81349	RLR07C9102GS	RESISTOR, FIXED, FILM.....	1
80	PADZZ	81349	RLR07C1201GS	RESISTOR, FIXED, FILM.....	2
81	PADZZ	81349	RLR07C5900FS	RESISTOR, FIXED, FILM.....	1
82	PADZZ	81349	RLR07C2002FS	RESISTOR, FIXED, FILM.....	1
83	PADZZ	81349	RLR07C2871FS	RESISTOR, FIXED, FILM.....	1
84	PADZZ	81349	RLR07C1401FS	RESISTOR, FIXED, FILM.....	1
85	PADZZ	81349	RLR07C51R0GS	RESISTOR, FIXED, FILM.....	1
86	PADZZ	81349	RLR07C1500GS	RESISTOR, FIXED, FILM.....	1
87	PADZZ	81349	RLR07C4302GS	RESISTOR, FIXED, FILM.....	1
88	PADZZ	81349	RLR07C3301GS	RESISTOR, FIXED, FILM.....	3
89	PADZZ	81349	RLR07C5101GS	RESISTOR, FIXED, FILM.....	2
90	PADZZ	81349	RLR07C1333FS	RESISTOR, FIXED, FILM.....	1
91	PADZZ	81349	RLR07C6492FS	RESISTOR, FIXED, FILM.....	1
92	PADZZ	81349	RLR07C4701GS	RESISTOR, FIXED, FILM.....	1
93	PADZZ	81349	RLR07C4703GS	RESISTOR, FIXED, FILM.....	1
94	PADZZ	81349	RLR07C1003GS	RESISTOR, FIXED, FILM.....	2
95	PADZZ	81349	RCR07G225JS	RESISTOR, FIXED, COMP.....	2
96	PADZZ	31669	PICO-3905	TRANSFORMER, AUDIO F.....	1
97	PADZZ	81349	M38510/11201BCB	MICROCIRCUIT, LINEAR.....	3

## SECTION II

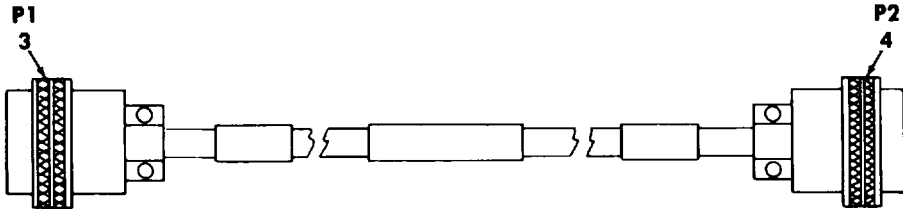
TM11-5805-703-24P

(1)	(2)	(3)	(4)	(5)	(6)
ITEM NO	SMR CODE	FSCM	PART NUMBER	DESCRIPTION AND USABLE ON CODES(UOC)	QTY
98	PADZZ	14933	8302401EC	COUPLER, OPTOELECTRO .....	1
99	PADZZ	81349	M38510/11004BCC	MICROCIRCUIT, LINEAR.....	4
100	PADZZ	80063	SM-A-984994	MICROCIRCUIT, LINEAR.....	1
101	PADZZ	81349	JANIN4619	SEMICONDUCTOR DEVIC.....	2
102	PADZZ	80063	SM-B-984913	JACKSCREW, ELECTRICA .....	2
103	PADZZ	80063	SM-B-984917	JACKSCREW, ELECTRICA .....	2
104	PADZZ	81349	M38527/01-030D	MOUNTING, PAD, ELECTR.....	1
105	PADZZ	81349	M38527-6-01D	MOUNTING, PAD, ELECTR.....	2
106	PADZZ	96906	MS51957-29	SCREW, MACHINE .....	6
107	PADZZ	96906	MS21083-C06	NUT, SELF-LOCKING, HE .....	6
108	PADZZ	96906	MS15795-805	HASHER, FLAT .....	10
109	PADZZ	96906	MS0035431-3	TERMINAL, LUG.....	1
110	PADZZ	96906	MS15795-804	WASHER, FLAT .....	5
111	PADZZ	96906	MS51957-15	SCREW, MACHINE .....	1
112	PADZZ	80063	SM-B-984997-5	INSULATOR, PLATE .....	2

END OF FIGURE



**SPECIAL PURPOSE CABLE ASSEMBLY, W2**



**SPECIAL PURPOSE CABLE ASSEMBLY, W1**

EL1VW006

Figure 4. Special Purpose Cable Assemblies.

SECTION II

TM11-5805-703-24P

(1)	(2)	(3)	(4)	(5)	(6)
ITEM NO	SMR CODE	FSCM	PART NUMBER	DESCRIPTION AND USABLE ON CODES(UOC)	QTY
				GROUP 02 SPECIAL PURPOSE CABLE ASSEMBLIES	
				FIGURE 4	
1	PADZZ	96906	MS3126F14-18S	CONNECTOR, PLUG, ELEC.....	1
2	PADZZ	96906	MS3476W12-10S	CONNECTOR, PLUG, ELEC.....	1
3	PADZZ	96906	MS3126F14-18S	CONNECTOR, PLUG, ELEC.....	1
4	PADZZ	96906	MS3476W16-8P	CONNECTOR, PLUG, ELEC.....	1

END OF FIGURE

## CROSS REFERENCE INDEXES

STOCK NUMBER	FIGURE	NATIONAL STOCK NUMBER INDEX ITEM	STOCK NUMBER	FIGURE	ITEM
5910-00-007-2003	3	14	5330-00-582-2133	2	45
5910-00-010-8721	3	13	5961-00-584-4527	3	29
5310-00-019-0672	2	57	5950-00-603-7154	3	37
5940-00-050-2308	3	109	5930-00-660-3950	2	47
5305-00-054-5649	3	111	5940-00-683-4339	2	56
5305-00-054-6653	3	106	5365-00-684-5979	2	31
5305-00-054-6668	2	65	5310-00-722-5998	3	108
5305-00-054-6672	1	3	5305-00-727-8832	2	35
5910-00-098-9281	3	25A	5310-00-782-1349	3	110
5961-00-104-8426	3	44	5330-00-806-8769	2	61
5905-00-110-0388	3	76	5940-00-813-0698	2	74
5910-00-113-5488	3	12	5940-00-816-6103	2	3
5910-00-113-5562	3	4	5935-00-823-0667	2	49
5910-00-113-5610	3	2	5930-00-835-6197	2	43
5910-00-113-9447	3	22	5961-00-858-3826	3	40
5910-00-113-9453	3	10	5310-00-880-5976	2	2
5320-00-117-6938	2	27	5310-00-880-5978	1	9
5905-00-126-6677	3	64		2	63
5905-00-126-6710	3	62	5930-00-905-7807	2	62
5310-00-140-4894	2	30	5310-00-914-9118	2	28
5910-00-144-4381	3	15	5961-00-925-3777	3	41
5905-00-152-8755	3	50	5310-00-925-9646	3	107
5910-00-163-7238	3	9	5940-00-926-0015	3	32
5310-00-167-0803	2	54	5310-00-929-6395	1	8
5910-00-171-0022	3	17	5930-00-931-9710	2	46
5910-00-185-4822	3	20	5310-00-933-8119	2	64
5961-00-192-5942	3	42	5310-00-933-8121	2	55
5910-00-208-4889	3	11	5310-00-934-9765	2	58
5961-00-232-3279	3	28	5940-00-937-5237	2	48
5320-00-236-3883	2	40	5310-00-982-6813	2	1
5961-00-237-2384	3	30		2	29
5910-00-238-6404	3	24	5999-01-015-3901	3	104
5905-00-252-1671	3	95	5340-01-020-5513	2	36
5910-00-262-0717	3	21	5950-01-037-6903	3	38
8465-00-269-0682	1	15	5999-01-039-7213	2	70
5910-00-305-9514	3	7	5905-01-053-5786	3	47
5910-00-308-6707	3	8	5905-01-053-5789	3	80
5961-00-311-2860	3	701	5999-01-056-1646	2	75
5910-00-321-8167	3	6	5905-01-058-4608	3	66
5910-00-323-9323	3	25	5905-01-058-6423	3	75
5961-00-404-9136	3	27	5935-01-068-1622	4	1
5950-00-419-7588	3	36		4	3
5961-00-420-3668	3	43	5961-01-070-7446	3	26
5305-00-455-2638	1	7	5935-01-076-9451	4	2
5999-00-481-5513	3	105	5905-01-085-1164	3	54
5905-00-484-0275	3	69	5962-01-103-0540	3	99
5305-00-520-5568	2	16	5935-01-109-3788	4	4
5330-00-571-9549	2	5	5999-01-113-2913	2	52
5910-00-572-5364	3	3	5935-01-117-6322	2	76
5905-00-581-0447	2	32	5935-01-130-1811	2	72

## CROSS-REFERENCE-INDEXES

STOCK NUMBER ITEM	NATIONAL STOCK NUMBER INDEX		STOCK NUMBER	FIG.	
	FIG.	ITEM			
5935-01-136-4023	2	53	5940-01-189-4886	2	73
5905-01-137-0109	3	70	5340-01-191-0696	2	37
5905-01-137-6153	3	61	5340-01-191-2053	1	14
5905-01-138-6261	3	88	5945-01-191-9857	3	34
5905-01-138-7901	3	53	5305-01-192-5735	2	26
5905-01-139-0810	3	55	5305-01-193-7594	2	33
5905-01-139-5314	3	46	5355-01-198-8587	2	42
5905-01-143-4723	3	92	5307-01-199-5373	2	34
5905-01-145-4541	3	85	5970-01-199-7085	2	7
5340-01-145-4718	2	59	5910-01-200-3959	3	16
5905-01-146-4350	3	86	5980-01-201-4483	2	44
5905-01-146-6671	3	49	5307-01-203-2197	2	51
5905-01-146-6672	3	56	5961-01-206-4434	3	45
5905-01-146-6673	3	63	5910-01-212-0079	3	23
5905-01-149-1143	3	59	6350-01-215-0904	2	39
5905-01-150-4503	3	71	5935-01-244-2453	3	102
5905-01-150-4517	3	73	5935-01-244-4079	3	103
5905-01-151-1186	3	48	5965-01-247-4723	1	4
5905-01-151-1187	3	94	5910-01-250-1345	3	19
5905-01-152-7986	3	57	5910-01-255-4968	3	1
5905-01-153-7443	3	89	5910-01-267-7119	3	18
5905-01-154-7399	3	65	5910-01-275-7253	3	5
5905-01-157-5610	3	93	5330-01-276-5832	2	14
5905-01-157-5612	3	58	5970-01-278-8807	2	6
5905-01-159-7537	3	60	5306-01-278-9617	1	13
5905-01-159-7538	3	68	5305-01-280-5687	2	11
5905-01-162-0730	3	78	5305-01-280-5688	2	8
5905-01-162-0731	3	51	5310-01-280-5803	2	4
5905-01-162-0732	3	87	5340-01-280-6337	2	9
5905-01-165-5221	3	72	5360-01-282-4846	2	10
5905-01-165-8592	3	79	5970-01-285-9530	3	112
5935-01-171-8859	2	71	5962-01-286-2238	3	97
5935-01-171-8860	2	68	5905-01-313-3522	3	77
5995-01-175-7332	1	5	5950-01-363-1029	3	39
5905-01-176-7333	3	82	5935-01-385-9364	3	33A
5905-01-179-0982	3	74	5935-01-385-9377	3	33
5995-01-180-1424	1	6			
5905-01-180-4357	3	52			
5905-01-180-8916	3	67			
5905-01-181-3198	3	81			
5998-01-183-5828	2	66			
5905-01-186-4904	3	83			
5905-01-186-6848	3	91			
5950-01-186-9394	3	35			
5950-01-186-9398	3	96			
5905-01-187-7374	3	90			
5961-01-187-7426	3	31			
5935-01-187-8009	2	68			
5962-01-188-2043	3	100			
4820-01-189-1661	1	11			



CAGEC	PART NUMBER	PART NUMBER INDEX STOCK NUMBER	FIG.	ITEM
88044	AN960C516	5310-00-167-0803	2	54
81349	CFR04RSA393FM	5910-01-212-0079	3	23
81349	CK12BX102M	5910-00-098-9281	3	25A
06090	D-181-1222-90/9	5940-01-189-4886	2	73
80058	H-250/U	5965-01-247-4723	1	4
09969	ITP-1431-18	5950-01-363-1029	3	39
81349	JANTXM19500/5210 2	5980-01-201-4483	2	44
81349	JANTXIN4148-1	5961-00-584-4527	3	29
81349	JANTXIN4150-1	5961-01-070-7446	3	26
81349	JANTX2N2222A	5961-00-858-3826	3	40
81349	JANTX2N2369A	5961-00-420-3668	3	43
81349	JANIN4619	5961-00-311-2860	3	101
81349	JANIN5614	5961-00-237-2384	3	30
81349	JANIN5615	5961-00-404-9136	3	27
81349	JANIN5711	5961-00-232-3279	3	28
81349	JAN2N2907A	5961-00-925-3777	3	41
81349	JAN2N3421	5961-00-192-5942	3	42
81349	JAN2N3823	5961-00-104-8426	3	44
81349	MIL-S-1698	8465-00-269-0682	1	15
96906	MS0035431-3	5940-00-050-2308	3	109
96906	MS0035431-7	5940-00-683-4339	2	56
96906	MS15795-804	5310-00-782-1349	3	110
96906	MS15795-805	5310-00-722-5998	3	108
96906	MS15795-806	5310-00-880-5976	2	2
96906	MS15795-807	5310-00-880-5978	1	9
			2	63
96906	MS20426AD3-4	5320-00-117-6938	2	27
96906	MS20470B3-5	5320-00-236-3883	2	40
96906	MS21044C06	5310-00-982-6813	2	1
			2	29
96906	MS21083-C06	5310-00-925-9646	3	107
96906	MS24524-30	5930-00-660-3950	2	47
96906	MS25036-101	5940-00-813-0698	2	74
96906	MS25196-1	5330-00-806-8769	2	61
96906	MS25214-2	5930-00-835-6197	2	43
96906	MS28775-011	5330-00-582-2133	2	45
96906	MS28775-024		2	38
96906	MS3126F14-185	5935-01-068-1622	4	1
			4	3
96906	M5S3212-11L	5305-01-192-5735	2	26
96906	MS3212-12	5305-00-520-5568	2	16
96906	MS3212-14L	5305-01-193-7594	2	33
96906	MS3212-27	5305-00-455-2638	1	7
96906	MS3474W14-18P	5935-01-136-4023	2	53
96906	MS3476W12-10S	5935-01-076-9451	4	2
96906	MS3476W16-8P	5935-01-109-3788	4	4
96906	MS35333-107	5310-00-019-0672	2	57
96906	MS35338-136	5310-00-929-6395	1	8
96906	MS35338-137	5310-00-933-8119	2	64
96906	MS35338-139	5310-00-933-8121	2	55

CAGEC	PART NUMBER	PART NUMBER INDEX STOCK NUMBER	FIG.	ITEM
96906	MS35650-304	5310-00-934-9765	2	58
96906	MS51859-3	5310-00-140-4894	2	30
96906	MS51957-15	5305-00-054-5649	3	111
96906	MS51957-29	5305-00-054-6653	3	106
96906	MS51957-43	5305-00-054-6668	2	65
96906	MS51957-47	5305-00-054-6672	1	3
96906	MS51959-29	5305-00-727-8832	2	35
96906	MS75089-11	5950-00-603-7154	3	37
96906	MS75089-16	5950-01-037-6903	3	38
96906	MS77066-2	5940-00-816-6103	2	3
81349	MS9003/01-3076		2	38A
96906	MS90310-211	5930-00-905-7807	2	62
96906	MS90311-271	5930-00-931-9710	2	46
96906	MS91528-ON2B	5355-01-198-8587	2	42
81349	M25988/1-007	5330-00-571-9549	2	5
81349	M38510/11004BCC	5962-01-103-0540	3	99
81349	M38510/11201BCB	5962-01-286-2238	3	97
81349	M38527-6-01D	5999-00-481-5513	3	105
81349	M38527/01-030D	5999-01-015-3901	3	104
81349	M39003/01-3009	5910-00-007-2003	3	14
81349	M39003/01-3024	5910-00-144-4381	3	15
81349	M39003/01-8004	5910-01-275-7253	3	5
81349	M39003/01-8043	5910-01-267-7119	3	18
81349	M39003/01-8088	5910-01-250-1345	3	19
81349	M39003/01-8103	5910-01-255-4968	3	1
81349	M39014-02-1419	5910-00-010-8721	3	13
81349	M39014-05-2255	5910-00-113-5488	3	12
81349	M39014-05-2273	5910-00-163-7238	3	9
81349	M39014/02-1417	5910-00-113-9453	3	10
81349	M39014/05-2222	5910-00-305-9514	3	7
81349	M39014/05-2227	5910-00-308-6707	3	8
81349	M39014/05-2233	5910-00-208-4889	3	11
81349	M39014/05-2242	5910-00-323-9323	3	25
81349	M39014/05-2246	5910-00-113-5562	3	4
81349	M39014/05-2248	5910-00-262-0717	3	21
81349	M39014/05-2251	5910-00-572-5364	3	3
81349	M39014/05-2254	5910-00-321-8167	3	6
81349	M39014/05-2264	5910-00-113-9447	3	22
81349	M39014/05-2267	5910-00-185-4822	3	20
81349	M39014/05-2291	5910-00-113-5610	3	2
81349	M39014/05-2303	5910-00-238-6404	3	24
81349	M39014/05-2319	5910-00-171-0022	3	17
81349	M39016/6-116P	5945-01-191-9857	3	34
81349	M55155/23XH02	5940-00-926-0015	3	32
81349	M63540/1-14C	5307-01-199-5373	2	34
81349	M63540/1-16C	5307-01-203-2197	2	51
80205	NAS1474C08	5310-00-914-9118	2	28
80205	NAS1786A08-30	5340-01-145-4718	2	59
80205	NAS43DD1-20	5365-00-684-5979	2	31
81349	PB08NAO1	5940-00-937-5237	2	48
31669	PICO-3905	5950-01-186-9398	3	96

CAGEC	PART NUMBER	PART NUMBER INDEX STOCK NUMBER	FIG.	ITEM
81349	RCR07G104JS	5905-00-110-0388	3	76
81349	RCR07G185JS	5905-00-126-6710	3	62
81349	RCR07G225JS	5905-00-252-1671	3	95
81349	RCR07G335JS	5905-00-126-6677	3	64
81349	RCR32G275JS	5905-00-484-0275	3	69
81349	RCR42G820JS	5905-00-152-8755	3	50
81349	RLR07C1001GS	5905-01-085-1164	3	54
81349	RLR07C1002GS	5905-01-139-5314	3	46
81349	RLR07C1003GS	5905-01-151-1187	3	94
81349	RLR07C1004GS	5905-01-157-5612	3	58
81349	RLR07C1201GS	5905-01-053-5789	3	80
81349	RLR07C1202GS	5905-01-146-6672	3	56
81349	RLR07C1203GS	5905-01-159-7538	3	68
81349	RLR07C1302GS	5905-01-150-4503	3	71
81349	RLR07C1333FS	5905-01-187-7374	3	90
81349	RLR07C1401FS		3	84
81349	RLR07C1500GS	5905-01-146-4350	3	86
81349	RLR07C1502GS	5905-01-146-6671	3	49
81349	RLR07C1602G5	5905-01-162-0730	3	78
81349	RLR07C180GS	5905-01-137-6153	3	61
81349	RLR07C1802GS	5905-01-146-6673	3	63
81349	RLR07C2002FS	5905-01-176-7333	3	82
81349	RLR07C2201GS	5905-01-151-1186	3	48
81349	RLR07C2702GS	5905-01-162-0731	3	51
81349	RLR07C2741FS	5905-01-139-0810	3	55
81349	RLR07C2871FS	5905-01-186-4904	3	83
81349	RLR07C2872FS	5905-01-180-4357	3	52
81349	RLR07C3001GS	5905-01-154-7399	3	65
81349	RLR07C3013FS	5905-01-179-0982	3	74
81349	RLR07C3301GS	5905-01-138-6261	3	88
81349	RLR07C3831FS	5905-01-138-7901	3	53
81349	RLR07C4302GS	5905-01-162-0732	3	87
81349	RLR07C4701GS	5905-01-143-4723	3	92
81349	RLR07C4702GS	5905-01-137-0109	3	70
81349	RLR07C4703GS	5905-01-157-5610	3	93
81349	RLR07C51R0GS	5905-01-145-4541	3	85
81349	RLR07C5100GS	5905-01-152-7986	3	57
81349	RLR07C5101GS	5905-01-153-7443	3	89
81349	RLR07C5600GS	5905-01-053-5786	3	47
81349	RLR07C5601GS	5905-01-149-1143	3	59
81349	RLR07C5900FS	5905-01-181-3198	3	81
81349	RLR07C6200GS	5905-01-150-4517	3	73
81349	RLR07C6201GS	5905-01-165-5221	3	72
81349	RLR07C6490FS	5905-01-180-8916	3	67
81349	RLR07C6492FS	5905-01-186-6848	3	91
81349	RLR07C6802GS	5905-01-159-7537	3	60
81349	RLR07C9102GS	5905-01-165-8592	3	79
81349	RLR20C1500GS	5905-01-058-6423	3	75
81349	RLR20C6800GS	5905-01-058-4608	3	66
81349	RLR32C2000GS	5905-01-313-3522	3	77
81349	RV4SAYS102A	5905-00-581-0447	2	32

CAGEC	PART NUMBER	PART NUMBER INDEX STOCK NUMBER	FIG.	ITEM
80063	SM-A-876333	5961-01-187-7426	3	31
80063	SM-A-876756-1		2	60
80063	SM-A-876920-15	5935-01-130-1811	2	72
80063	SM-A-959300	5950-01-186-9394	3	35
80063	SM-A-984802-3	5910-01-200-3959	3	16
80063	SM-A-984844	5360-01-282-4846	2	10
80063	SM-A-984920-11		2	21
80063	SM-A-984920-14		2	20
80063	SM-A-984994	5962-01-188-2043	3	100
80063	SM-A-984996	5961-01-206-4434	3	45
80063	SM-B-884364	5995-01-180-1424	1	6
80063	SM-B-984781	5310-01-280-5803	2	4
80063	SM-B-984782	5305-01-280-5687	2	11
80063	SM-B-984783	5306-01-278-9617	1	13
80063	SM-B-984784	5305-01-280-5688	2	8
80063	SM-B-984799		2	24
80063	SM-B-984800		2	17
80063	SM-B-984821	5970-01-278-8807	2	6
80063	SM-B-984822	5970-01-199-7085	2	7
80063	SM-B-984847		2	15
80063	SM-B-984853		2	18
80063	SM-B-984854		2	22
80063	SM-B-984855		2	19
80063	SM-B-984882		2	23
80063	SM-B-984913	5935-01-244-2453	3	102
80063	SM-B-984917	5935-01-244-4079	3	103
80063	SM-B-984929	6350-01-215-0904	2	39
80063	SM-B-984997-5	5970-01-285-9530	3	112
80063	SM-C-876429-8		2	41
80063	SM-C-884363	5995-01-175-7332	1	5
80063	SM-C-984780	5340-01-280-6337	2	9
80063	SM-C-984848		2	77
80063	SM-C-984849	5330-01-276-5832	2	14
80063	SM-D-884683	5998-01-183-5828	2	66
80063	SM-D-984786		2	13
80063	SM-D-984789		2	12
80063	SM-D-984794		1	1
80063	SM-D-984798		2	25
80063	SM-D-984820		1	2
80063	SM-D-984895		2	67
53031	TC1OP73		1	12
53031	TCIOP82-1	5340-01-191-2053	1	14
53031	TC67H08-03		1	10
53031	TC78V14-25-35	4820-01-189-1661	1	11
81349	U-183/U	5935-00-823-0667	2	49
53031	XTC20R07-07		1	16
18565	10-00-2069-1214	5999-01-113-2913	2	52
18565	10-00-3550-1214		2	50
06540	10219-SS-0632-6B	5340-01-191-0696	2	37
06540	16019-SS-6B	5340-01-020-5513	2	36
84134	2-86672-1	5935-01-187-8009	2	68

CAGEC	PART NUMBER	PART NUMBER INDEX STOCK NUMBER	FIG.	ITEM
10001	2222283-1	5950-00-419-7588	3	36
14933	8302401EC		3	98
14933	86099-27-D-28	5935-01-385-9364	3	33A
14933	86099-27-D-44	5935-01-385-9377	3	33
00779	86571-6	5999-01-039-7213	2	70
00779	86603-1	5935-01-171-8860	2	68
00779	87165-1	5999-01-056-1646	2	75
00779	87176-2	5935-01-117-6322	2	76
00779	87185-1	5935-01-171-8859	2	71

## CROSS-REFERENCE INDEXES

## FIGURE AND ITEM NUMBER INDEX

FIG.	ITEM	STOCK NUMBER	CAGEC	PART NUMBER
1	1		80063	SM-D-984794
1	2		80063	SM-D-984820
1	3	5305-00-054-6672	96906	MS51957-47
1	4	5965-01-247-4723	80058	H-250/U
1	5	5995-01-175-7332	80063	SM-C-884363
1	6	5995-01-180-1424	80063	SM-B-884364
1	7	5305-00-455-2638	96906	MS3212-27
1	8	5310-00-929-6395	96906	MS35338-136
1	9	5310-00-880-5978	96906	MS15795-807
1	10		53031	TC67H08-03
1	11	4820-01-189-1661	53031	TC78V14-25-35
1	12		53031	TC1OP73
1	13	5306-01-278-9617	80063	SM-B-984783
1	14	5340-01-191-2053	53031	TC1OP82-1
1	15	8465-00-269-0682	81349	MIL-S-1698
1	16		53031	XTC20R07-07
2	1	5310-00-982-6813	96906	MS21044C06
2	2	5310-00-880-5976	96906	MS15795-806
2	3	5940-00-816-6103	96906	MS77066-2
2	4	5310-01-280-5803	80063	SM-B-984781
2	5	5330-00-571-9549	81349	M25988/1-007
2	6	5970-01-278-8807	80063	SM-B-984821
2	7	5970-01-199-7085	80063	SM-B-984822
2	8	5305-01-280-5688	80063	SM-B-984784
2	9	5340-01-280-6337	80063	SM-C-984780
2	10	5360-01-282-4846	80063	SM-A-984844
2	11	5305-01-280-5687	80063	SM-B-984782
2	12		80063	SM-D-984789
2	13		80063	SM-D-984786
2	14	5330-01-276-5832	80063	SM-C-984849
2	15		80063	SM-B-984847
2	16	5305-00-520-5568	96906	MS3212-12
2	17		80063	SM-B-984800
2	18		80063	SM-B-984853
2	19		80063	SM-B-984855
2	20		80063	SM-A-984920-14
2	21		80063	SM-A-984920-11
2	22		80063	SM-B-984854
2	23		80063	SM-B-984882
2	24		80063	SM-B-984799
2	25		80063	SM-D-984798
2	26	5305-01-192-5735	96906	MS3212-11L
2	27	5320-00-117-6938	96906	MS20426AD3-4
2	28	5310-00-914-9118	80205	NAS1474C08
2	29	5310-00-982-6813	96906	MS21044C06
2	30	5310-00-140-4894	96906	MS51859-3
2	31	5365-00-684-5979	80205	NAS43DD1-20
2	32	5905-00-581-0447	81349	RV4SAYS102A
2	33	5305-01-193-7594	96906	MS3212-14L
2	34	5307-01-199-5373	81349	M63540/1-14C
2	35	5305-00-727-8832	96906	MS51959-29

## CROSS-REFERENCE INDEXES

## FIGURE AND ITEM NUMBER INDEX

FIG.	ITEM	STOCK NUMBER	CAGEC	PART NUMBER
2	36	5340-01-020-5513	06540	16019-SS-6B
2	37	5340-01-191-0696	06540	10219-SS-0632-6B
2	38		96906	MS28775-024
2	38A		81349	MS9003/01-3076
2	39	6350-01-215-0904	80063	SM-B-984929
2	40	5320-00-236-3883	96906	MS20470B3-5
2	41		80063	SM-C-876429-8
2	42	5355-01-198-8587	96906	MS91528-ON2B
2	43	5930-00-835-6197	96906	MS25214-2
2	44	5980-01-201-4483	81349	JANTXM19500/5210 2
2	45	5330-00-582-2133	96906	MS28775-011
2	46	5930-00-931-9710	96906	MS90311-271
2	47	5930-00-660-3950	96906	MS24524-30
2	48	5940-00-937-5237	81349	PB08NAOI
2	49	5935-00-823-0667	81349	U-183/U
2	50		18565	10-00-3550-1214
2	51	5307-01-203-2197	81349	M63540/1-16C
2	52	5999-01-113-2913	18565	10-00-2069-1214
2	53	5935-01-136-4023	96906	MS3474W14-18P
2	54	5310-00-167-0803	88044	AN960C516
2	55	5310-00-933-8121	96906	MS35338-139
2	56	5940-00-683-4339	96906	MS0035431-7
2	57	5310-00-019-0672	96906	MS35333-107
2	58	5310-00-934-9765	96906	MS35650-304
2	59	5340-01-145-4718	80205	NAS1786A08-30
2	60		80063	SM-A-876756-1
2	61	5330-00-806-8769	96906	MS25196-1
2	62	5930-00-905-7807	96906	MS90310-211
2	63	5310-00-880-5978	96906	MS15795-807
2	64	5310-00-933-8119	96906	MS35338-137
2	65	5305-00-054-6668	96906	MS51957-43
2	66	5998-01-183-5828	80063	SM-D-884683
2	67		80063	SM-D-984895
2	68	5935-01-171-8860	00779	86603-1
2	68	5935-01-187-8009	84134	2-86672-1
2	70	5999-01-039-7213	00779	86571-6
2	71	5935-01-171-8859	00779	87185-1
2	72	5935-01-130-1811	80063	SM-A-876920-15
2	73	5940-01-189-4886	06090	D-181-1222-90/9
2	74	5940-00-813-0698	96906	MS25036-101
2	75	5999-01-056-1646	00779	87165-1
2	76	5935-01-117-6322	00779	87176-2
2	77		80063	SM-C-984848
3	1	5910-01-255-4968	81349	M39003/01-8103
3	2	5910-00-113-5610	81349	M39014/05-2291
3	3	5910-00-572-5364	81349	M39014/05-2251
3	4	5910-00-113-5562	81349	M39014/05-2246
3	5	5910-01-275-7253	81349	M39003/01-8004
3	6	5910-00-321-8167	81349	M39014/05-2254
3	7	5910-00-305-9514	81349	M39014/05-2222

## CROSS-REFERENCE INDEXES

## FIGURE AND ITEM NUMBER INDEX

FIG.	ITEM	STOCK NUMBER	CAGEC	PART NUMBER
3	8	5910-00-308-6707	81349	M39014/05-2227
3	9	5910-00-163-7238	81349	M39014-05-2273
3	10	5910-00-113-9453	81349	M39014/02-1417
3	11	5910-00-208-4889	81349	M39014/05-2233
3	12	5910-00-113-5488	81349	M39014-05-2255
3	13	5910-00-010-8721	81349	M39014-02-1419
3	14	5910-00-007-2003	81349	M39003/01-3009
3	15	5910-00-144-4381	81349	M39003/01-3024
3	16	5910-01-200-3959	80063	SM-A-984802-3
3	17	5910-00-171-0022	81349	M39014/05-2319
3	18	5910-01-267-7119	81349	M39003/01-8043
3	19	5910-01-250-1345	81349	M39003/01-8088
3	20	5910-00-185-4822	81349	M39014/05-2267
3	21	5910-00-262-0717	81349	M39014/05-2248
3	22	5910-00-113-9447	81349	M39014/05-2264
3	23	5910-01-212-0079	81349	CFR04RSA393FM
3	24	5910-00-238-6404	81349	M39014/05-2303
3	25	5910-00-323-9323	81349	M39014/05-2242
3	25A	5910-00-098-9281	81349	CK12BX102M
3	26	5961-01-070-7446	81349	JANTXIN4150-1
3	27	5961-00-404-9136	81349	JAN1N5615
3	28	5961-00-232-3279	81349	JAN1N5711
3	29	5961-00-584-4527	81349	JANTX1N4148-1
3	30	5961-00-237-2384	81349	JAN1N5614
3	31	5961-01-187-7426	80063	SM-A-876333
3	32	5940-00-926-0015	81349	M55155/23XH02
3	33	5935-01-385-9377	14933	86099-27-D-44
3	33A	5935-01-385-9364	14933	86099-27-D-28
3	34	5945-01-191-9857	81349	M39016/6-116P
3	35	5950-01-186-9394	80063	SM-A-959300
3	36	5950-00-419-7588	10001	2222283-1
3	37	5950-00-603-7154	96906	MS75089-11
3	38	5950-01-037-6903	96906	MS75089-16
3	39	5950-01-363-1029	09969	ITP-1431-18
3	40	5961-00-858-3826	81349	JANTX2N2222A
3	41	5961-00-925-3777	81349	JAN2N2907A
3	42	5961-00-192-5942	81349	JAN2N3421
3	43	5961-00-420-3668	81349	JANTX2N2369A
3	44	5961-00-104-8426	81349	JAN2N3823
3	45	5961-01-206-4434	80063	SM-A-984996
3	46	5905-01-139-5314	81349	RLR07C1002GS
3	47	5905-01-053-5786	81349	RLR07C5600GS
3	48	5905-01-151-1186	81349	RLR07C2201GS
3	49	5905-01-146-6671	81349	RLR07C1502GS
3	50	5905-00-152-8755	81349	RCR42G820JS
3	51	5905-01-162-0731	81349	RLR07C2702GS
3	52	5905-01-180-4357	81349	RLR07C2872FS
3	53	5905-01-138-7901	81349	RLR07C3831FS
3	54	5905-01-085-1164	81349	RLR07C1001GS
3	55	5905-01-139-0810	81349	RLR07C2741FS
3	56	5905-01-146-6672	81349	RLR07C1202GS



## CROSS-REFERENCE INDEXES

## FIGURE AND ITEM NUMBER INDEX

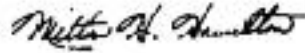
FIG.	ITEM	STOCK NUMBER	CAGEC	PART NUMBER
3	57	5905-01-152-7986	81349	RLR07C5100GS
3	58	5905-01-157-5612	81349	RLR07C1004GS
3	59	5905-01-149-1143	81349	RLR07C5601GS
3	60	5905-01-159-7537	81349	RLR07C6802GS
3	61	5905-01-137-6153	81349	RLR07C180GS
3	62	5905-00-126-6710	81349	RRC07G185JS
3	63	5905-01-146-6673	81349	RLR07C1802GS
3	64	5905-00-126-6677	81349	RRC07G335JS
3	65	5905-01-154-7399	81349	RLR07C3001GS
3	66	5905-01-058-4608	81349	RLR20C6800GS
3	67	5905-01-180-8916	81349	RLR07C6490FS
3	68	5905-01-159-7538	81349	RLR07C1203GS
3	69	5905-00-484-0275	81349	RRC32G275JS
3	70	5905-01-137-0109	81349	RLR07C4702GS
3	71	5905-01-150-4503	81349	RLR07C1302GS
3	72	5905-01-165-5221	81349	RLR07C6201GS
3	73	5905-01-150-4517	81349	RLR07C6200GS
3	74	5905-01-179-0982	81349	RLR07C3013FS
3	75	5905-01-058-6423	81349	RLR20C1500GS
3	76	5905-00-110-0388	81349	RRC07G104JS
3	77	5905-01-313-3522	81349	RLR32C2000GS
3	78	5905-01-162-0730	81349	RLR07C1602GS
3	79	5905-01-165-8592	81349	RLR07C9102GS
3	80	5905-01-053-5789	81349	RLR07C1201GS
3	81	5905-01-181-3198	81349	RLR07C5900FS
3	82	5905-01-176-7333	81349	RLR07C2002FS
3	83	5905-01-186-4904	81349	RLR07C2871FS
3	84		81349	RLR07C1401FS
3	85	5905-01-145-4541	81349	RLR07C51R0GS
3	86	5905-01-146-4350	81349	RLR07C1500GS
3	87	5905-01-162-0732	81349	RLR07C4302GS
3	88	5905-01-138-6261	81349	RLR07C3301GS
3	89	5905-01-153-7443	81349	RLR07C5101GS
3	90	5905-01-187-7374	81349	RLR07C1333FS
3	91	5905-01-186-6848	81349	RLR07C6492FS
3	92	5905-01-143-4723	81349	RLR07C4701GS
3	93	5905-01-157-5610	81349	RLR07C4703GS
3	94	5905-01-151-1187	81349	RLR07C1003GS
3	95	5905-00-252-1671	81349	RRC07G225JS
3	96	5950-01-186-9398	31669	PICO-3905
3	97	5962-01-286-2238	81349	M38510/11201BCB
3	98		14933	8302401EC
3	99	5962-01-103-0540	81349	M38510/11004BCC
3	100	5962-01-188-2043	80063	SM-A-984994
3	101	5961-00-311-2860	81349	JATILN4619
3	102	5935-01-244-2453	80063	SM-B-984913
3	103	5935-01-244-4079	80063	SM-B-984917
3	104	5999-01-015-3901	81349	M38527/01-030D
3	105	5999-00-481-5513	81349	M38527-6-O1D
3	106	5305-00-054-6653	96906	M551957-29
3	107	5310-00-925-9646	96906	MS21083-C06

## CROSS-REFERENCE INDEXES

FIG.	ITEM	FIGURE AND ITEM NUMBER INDEX		PART NUMBER
		STOCK NUMBER	CAGEC	
3	108	5310-00-722-5998	96906	M515795-805
3	109	5940-00-050-2308	96906	MS0035431-3
3	110	5310-00-782-1349	96906	MS15795-804
3	111	5305-00-054-5649	96906	MS51957-15
3	112	5970-01-285-9530	80063	SM-B-984997-5
4	1	5935-01-068-1622	96906	MS3126F14-18S
4	2	5935-01-076-9451	96906	MS3476W12-10S
4	3	5935-01-068-1622	96906	MS3126F14-18S
4	4	5935-01-109-3788	96906	MS3476W16-8P

By Order of the Secretary of the Army:

Official:



MILTON H. HAMILTON  
*Administrative Assistant to the  
Secretary of the Army*

GORDON R. SULLIVAN  
*General, United States Army  
Chief of Staff*

By Order of the Secretary of the Navy:

ROBERT AILES  
*Rear Admiral, United States Navy  
Command, Space and Naval Warfare  
Systems Command*

By Order of the Secretary of the Air Force:

Official:


CHARLES D. McDONALD  
*General, United States Air Force  
Commander, Air Force  
Logistics Command*

LARRY D. WELSH  
*General, United States Air Force  
Chief of Staff*

**DISTRIBUTION:**

To be distributed in accordance with DA Form 12-51-E, block 0230 requirements for TM 11-5805-703-24P.

RECOMMENDED CHANGES TO EQUIPMENT TECHNICAL PUBLICATIONS



## SOMETHING WRONG WITH THIS PUBLICATION?

THEN... JOT DOWN THE DOPE ABOUT IT ON THIS FORM, CAREFULLY TEAR IT OUT, FOLD IT AND DROP IT IN THE MAIL!

FROM: (PRINT YOUR UNIT'S COMPLETE ADDRESS)

---

DATE SENT

PUBLICATION NUMBER

PUBLICATION DATE

PUBLICATION TITLE

BE EXACT... PIN-POINT WHERE IT IS				IN THIS SPACE TELL WHAT IS WRONG AND WHAT SHOULD BE DONE ABOUT IT:
PAGE NO.	PARA-GRAPH	FIGURE NO.	TABLE NO.	

PRINTED NAME, GRADE OR TITLE, AND TELEPHONE NUMBER

SIGN HERE:

TEAR ALONG PERFORATED LINE

DA FORM 2028-2  
1 JUL 79

PREVIOUS EDITIONS  
• ARE OBSOLETE.

P.S.—IF YOUR OUTFIT WANTS TO KNOW ABOUT YOUR RECOMMENDATION MAKE A CARBON COPY OF THIS AND GIVE IT TO YOUR HEADQUARTERS.

# THE METRIC SYSTEM AND EQUIVALENTS

## WEIGHT MEASURE

1 Centimeter = 10 Millimeters = 0.01 Meters = 0.3937 Inches  
 1 Meter = 100 Centimeters = 1000 Millimeters = 39.37 Inches  
 1 Kilometer = 1000 Meters = 0.621 Miles

## WEIGHTS

1 Gram = 0.001 Kilograms = 1000 Milligrams = 0.035 Ounces  
 1 Kilogram = 1000 Grams = 2.2 lb.  
 1 Metric Ton = 1000 Kilograms = 1 Megagram = 1.1 Short Tons

## LIQUID MEASURE

1 Milliliter = 0.001 Liters = 0.0338 Fluid Ounces  
 1 Liter = 1000 Milliliters = 33.82 Fluid Ounces

## SQUARE MEASURE

1 Sq. Centimeter = 100 Sq. Millimeters = 0.155 Sq. Inches  
 1 Sq. Meter = 10,000 Sq. Centimeters = 10.76 Sq. Feet  
 1 Sq. Kilometer = 1,000,000 Sq. Meters = 0.386 Sq. Miles

## CUBIC MEASURE

1 Cu. Centimeter = 1000 Cu. Millimeters = 0.06 Cu. Inches  
 1 Cu. Meter = 1,000,000 Cu. Centimeters = 35.31 Cu. Feet

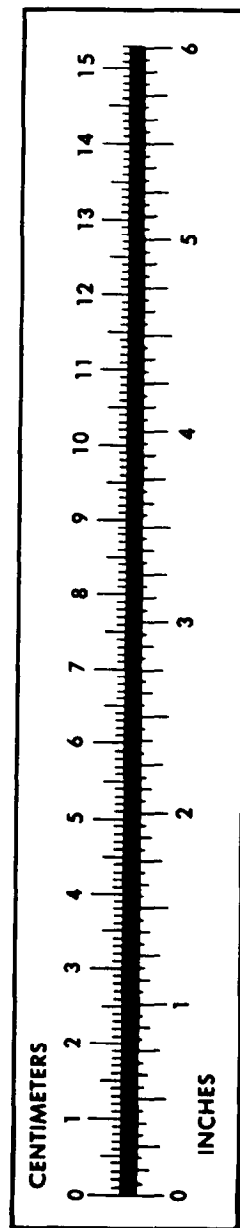
## TEMPERATURE

$5/9(^{\circ}\text{F} - 32) = ^{\circ}\text{C}$   
 212° Fahrenheit is equivalent to 100° Celsius  
 90° Fahrenheit is equivalent to 32.2° Celsius  
 32° Fahrenheit is equivalent to 0° Celsius  
 $9/5^{\circ}\text{C} + 32 = ^{\circ}\text{F}$

## APPROXIMATE CONVERSION FACTORS

TO CHANGE	TO	MULTIPLY BY
Inches	Centimeters	2.540
Feet	Meters	0.305
Yards	Meters	0.914
Miles	Kilometers	1.609
Square Inches	Square Centimeters	6.451
Square Feet	Square Meters	0.093
Square Yards	Square Meters	0.836
Square Miles	Square Kilometers	2.590
Acres	Square Hectometers	0.405
Cubic Feet	Cubic Meters	0.028
Cubic Yards	Cubic Meters	0.765
Fluid Ounces	Milliliters	29.573
its	Liters	0.473
arts	Liters	0.946
allons	Liters	3.785
Ounces	Grams	28.349
Pounds	Kilograms	0.454
Short Tons	Metric Tons	0.907
Pound-Feet	Newton-Meters	1.356
Pounds per Square Inch	Kilopascals	6.895
Miles per Gallon	Kilometers per Liter	0.425
Miles per Hour	Kilometers per Hour	1.609

TO CHANGE	TO	MULTIPLY BY
Centimeters	Inches	0.394
Meters	Feet	3.280
Meters	Yards	1.094
Kilometers	Miles	0.621
Square Centimeters	Square Inches	0.155
Square Meters	Square Feet	10.764
Square Meters	Square Yards	1.196
Square Kilometers	Square Miles	0.386
Square Hectometers	Acres	2.471
Cubic Meters	Cubic Feet	35.315
Cubic Meters	Cubic Yards	1.308
Milliliters	Fluid Ounces	0.034
Liters	Pints	2.113
Liters	Quarts	1.057
ers	Gallons	0.264
ms	Ounces	0.035
ograms	Pounds	2.205
Metric Tons	Short Tons	1.102
Newton-Meters	Pounds-Feet	0.738
Kilopascals	Pounds per Square Inch	0.145
ometers per Liter	Miles per Gallon	2.354
ometers per Hour	Miles per Hour	0.621



**PIN: 058239-000**