

TECHNICAL MANUAL

ORGANIZATIONAL AND DIRECT SUPPORT  
MAINTENANCE REPAIR PARTS AND SPECIAL TOOLS LIST

FOR

INTERCOMMUNICATIONS SET  
AN/VIC-1(V)  
(NSN 5830-00-856-3273)

Distribution authorized to the Department of Defense and DOD contractors only for official use or for administration or operational purposes. This determination was made on 1 August 1988. Other requests for this document will be referred to Commander, US Army Communications-Electronics Command and Fort Monmouth, ATTN: AMSEL-LC-ME-P, Fort Monmouth, NJ 07703-5000.

DESTRUCTION NOTICE-Destroy by any method that will prevent disclosure of contents or reconstruction of the document.

---

HEADQUARTERS, DEPARTMENT OF THE ARMY  
1 NOVEMBER 1988

Technical Manual

HEADQUARTERS

DEPARTMENT OF THE ARMY

No. 11-5830-340-23P

Washington, DC, 1 November 1988

ORGANIZATIONAL AND DIRECT SUPPORT  
 MAINTENANCE REPAIR PARTS AND SPECIAL TOOLS LIST

FOR

INTERCOMMUNICATIONS SET  
 AN/VIC-1 (V)

Current as of 1 September 1988

REPORTING ERRORS AND RECOMMENDING IMPROVEMENTS

You can help improve this manual. If you find any mistakes or if you know of a way to improve the procedures, please let us know. Mail your letter, DA Form 2028 (Recommended Changes to Publications and Blank Forms), or DA Form 2028-2 located in back of this manual direct to: Commander, US Army Communications-Electronics Command and Fort Monmouth, ATTN: AMSEL-LC-ME-PS, Fort Monmouth, New Jersey 07703-5000. In either case, a reply will be furnished direct to you.

Table of Contents

Section		Page	Illus/ Figure
	I. Introduction .....	1	
	II. Repair Parts List .....	1-1	
Group	00 Intercommunication Set		
	AN/VIC-1 (V) .....	1-1	1
	01 Audio Frequency Amplifier		
	AM-1780/VRC. . . . .	2-1	2
	02 Audio Frequency Amplifier		
	AM-7046/VRC .....	3-1	3
	02 Intercommunications Control		
	Set C-2296/VRC. . . . .	4-1	4
	03 Intercommunications Control		
	Set C-2297/VRC. . . . .	5-1	5
	04 Intercommunications Control		
	Set C-2298/VRC. . . . .	6-1	6
	04 Intercommunications Control		
	Set C-10456/VRC. . . . .	7-1	7

Table of Contents-Continued

			Page	Illus/ Figure
Group	04	Intercommunications Control		
		Set C-10680/VRC . . . . .	8-1	8
	05	Mounting Hardware,		
		AN/VIC-1 (V) . . . . .	9-1	9
Section	III.	Special Tools List (Not applicable)		
	IV.	Cross-Reference Indexes		
		National Stock Number Index . . . . .	I-1	
		Part Number Index . . . . .	I-3	
		Figure and Item Number Index . . . . .	I-7	

## SECTION 1

INTRODUCTION

---

## 1. Scope

This manual lists and authorizes spares and repair parts; special tools; special test, measurement, and diagnostic equipment (TMDE); and other special support equipment required for performance of organizational and direct support maintenance of the AN/VIC-1(V). It authorizes the requisitioning, issue, and disposition of spares, repair parts and special tools as indicated by the source, maintenance and recoverability (SMR) codes.

## 2. General

This Repair Parts and Special Tools List is divided into the following sections:

a. Section II. Repair Parts List. A list of spares and repair parts authorized by this RPSTL for use in the performance of maintenance. The list also includes parts which must be removed for replacement of the authorized parts. Parts list are composed of functional groups in ascending item number sequence. Figure numbers are listed directly beneath the group header.

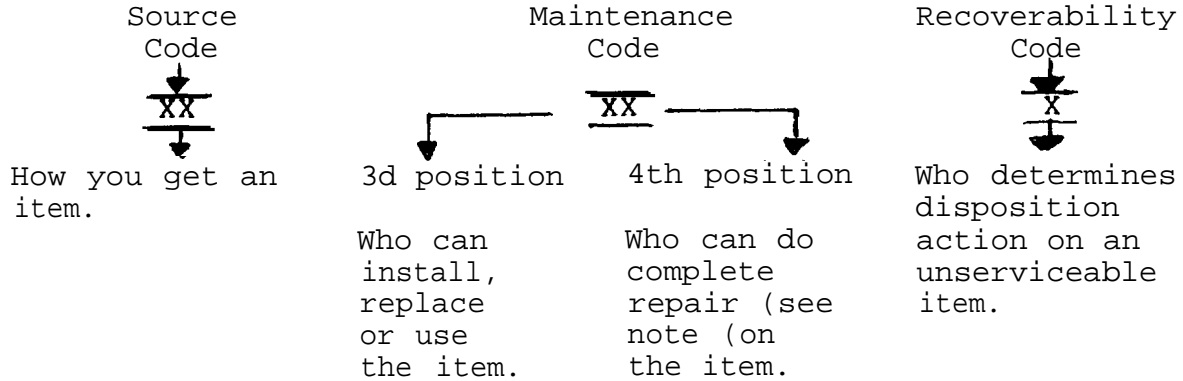
b. Section III. Special Tools List. Not applicable.

c. Section IV. Cross-Reference Indexes. A list, in National item identification number (NIIN) sequence, of all National stock numbered items appearing in the listing, followed by a list in alphanumeric sequence of all part numbers appearing in the listings. National stock numbers and part numbers are cross-referenced to each illustration figure and item number appearance. The figure number and item number index lists figure and item numbers in numeric sequence and cross-references National stock number, Federal Supply Code for Manufacturer and part numbers.

## 3. Explanation of Columns (Section II and III)

a. Item No. (Column (1)). Indicates the number used to identify items called out in the illustration.

b. SMR Code (Column (2)). The source, maintenance, and recoverability (SMR) code is a five-position code containing supply/requisitioning information, maintenance category authorization criteria, and disposition instruction, as shown in the following breakout:



NOTE

Complete repair: Maintenance capacity, capability, and authority to perform all corrective maintenance tasks of the "repair" function in a use/user environment in order to restore serviceability to a failed item.

(1) Source code. The source code tells you how to get an item needed for maintenance, repair, or overhaul of an end item/equipment. Explanations of source codes follows:

<u>Code</u>	<u>Explanation</u>
PA PB PC PD PE PF PG	Stocked items: use the applicable NSN to request/requisition items with these source codes. They are authorized to the category indicated by the code entered in the third position of the SMR code.

NOTE

Items coded PC are subject to deterioration.

KD KF KB	Items with these codes are not to be requested/requisitioned individually. They are part of a kit which is authorized to the maintenance category indicated in the third position of the SMR code. The complete kit must be requested and applied.
----------------	--

<u>Code</u>	<u>Explanation</u>
MO - Made at org/AVUM category	Items with these codes are not to be requested/requisitioned individually. They must be made from bulk material which is identified by the part number in the description and usable on code (UOC) column and listed in the Bulk Material group of the repair parts list. If the item is authorized to you by the third position code of the SMR code, but the source code indicates it is made at a higher category, order the item from the higher category of maintenance.
MF - Made at DS/AVIM category	
MH - Made at GS category	
ML - Made at Specialized Repair Activity (SRA)	
MD - Made at Depot	

AO - Assembled by org/AVUM category	Items with these codes are not to be requested/requisitioned individually. The parts that make up the assembled item must be requisitioned or fabricated and assembled at the category of maintenance indicated by the source code. If the third position code of the SMR code authorizes you to replace the item, but the source code indicates the item is assembled at a higher category, order the item from the higher category of maintenance.
AF - Assembled by DS/AVIM category	
AH - Assembled by GS category	
AL - Assembled by SRA	
AD - Assembled by Depot	

<u>Code</u>	<u>Explanation</u>
XA - Do not requisition an "XA" coded item. Order its next higher assembly.	
XB - If an "XB" item is not available from salvage, order it using the FCSM and part number given.	
XC - Installation drawing, diagram, instruction sheet, field service drawing, that is identified by manufacturer's part number.	
XD - Item is not stocked. Order an "XD" coded item through normal supply channels using the FCSM and part number given, if not available.	

NOTE

Cannibalization or controlled exchange, when authorized, may be used as a source of supply for items with the above source codes, except for those source coded "XA" or those aircraft support items restricted by requirements of AR 750-1.

(2) Maintenance code. Maintenance codes tell you the category of maintenance authorized to USE and REPAIR support items. The maintenance codes are entered in the third and fourth positions of the SMR code as follows:

(a) The maintenance code entered in the third position tells you the lowest maintenance category authorized to remove, replace, and use an item. The maintenance code entered in the third position will indicate authorization to one of the following categories of maintenance.

<u>Code</u>	<u>Application/Explanation</u>
C -	Crew or operator maintenance done within organizational or aviation maintenance.
O -	organizational or aviation unit category can remove, replace, and use the item.
F -	Direct support or aviation intermediate category can remove, replace, and use the item.
H -	General support category can remove, replace, and use the item.
L -	Specialized repair activity can remove, replace, and use the item.
D -	Depot category can remove, replace, and use the item.

(b) The maintenance code entered in the fourth position tells whether or not the item is to be repaired and identifies the lowest maintenance category with the capability to do complete repair (i.e., perform all authorized repair functions). This position will contain one of the following maintenance codes.

NOTE

Some limited repair may be done on the item at a lower category of maintenance, if authorized by the Maintenance Allocation Chart (MAC) and SMR codes.

<u>Code</u>	<u>Application/Explanation</u>
O -	Organizational or aviation unit is the lowest category that can do complete repair of the item.
F -	Direct support or aviation intermediate is the lowest category that can do complete repair of the item.
H -	General support is the lowest category that can do complete repair of the item.
L -	Specialized repair activity (designate the specialized repair activity) is the lowest category that can do complete repair of the item.
D -	Depot is the lowest category that can do complete repair of the item.

<u>Code</u>	<u>Application/Explanation</u>
Z -	Nonreparable. No repair is authorized.
B -	No repair is authorized. (No parts or special tools are authorized for the maintenance of a "B" coded item.) However, the item may be reconditioned by adjusting, lubricating, etc., at the user category.

(3) Recoverability code. Recoverability codes are assigned to items to indicate the disposition action on unserviceable items. The recoverability code is entered in the fifth position of the SMR Code as follows:

<u>Recoverability codes</u>	<u>Application/Explanation</u>
Z -	Nonreparable item. When unserviceable, condemn and dispose of the item at the category of maintenance shown in the third position of SMR code.
O -	Reparable item. When uneconomically repairable, condemn and dispose of the item at organizational or aviation unit category.
F -	Reparable item. When uneconomically repairable, condemn and dispose of the item at direct support or aviation intermediate category.
H -	Reparable item. When uneconomically repairable, condemn and dispose of the item at general support category.
D -	Reparable item. When beyond lower category repair capability, return to depot. Condemnation and disposal of item not authorized below depot category.
L -	Reparable item. Condemnation and disposal not authorized below specialized repair activity (SRA).
A -	Item requires special handling or condemnation procedures because of specific reasons (e.g., precious metal content, high dollar value, critical material, or hazardous material). Refer appropriate manuals/directives for specific instructions.

c. FSCM (Column (3)) The Federal Supply Code for Manufacturer (FSCM;) is a 5-digit numeric which is used to identify the manufacturer, distributor, or Government agency, etc., that supplies the item.

d. Part Number (Column (4)). Indicates the primary number used by the manufacturer (individual, company, firm, corporation, or Government activity), which controls the design and characteristics of the item by means of its engineering drawings, specifications, standards, and inspection requirements to identify an item or range of items.



NOTE

When you use an NSN to requisition an item, the item you receive may have a different part number from the part ordered.

e. Description and Usable on Code (UOC) (Column (5)). This column includes the following information.

(1) The Federal item name and, when required, a minimum description to identify the item.

(2) The statement "END OF FIGURE" appears just below the last item description in Column (5) for a given figure in both section II and section III

f. Qty (Column (6)). Indicates the quantity of the item used in the breakout shown on the illustration figure, which is prepared for a functional group, subfunctional group, or an assembly. A "V" appearing in this column in lieu of a quantity indicates that the quantity is variable and the quantity may vary from application to application.

4. Explanation of Columns (Section IV)

a. National Stock Number (NSN) Index.

(1) Stock number column. This column lists the NSN by National item identification number (NIIN) sequence. The NIIN consists of the last nine digits of the NSN. When using this column to locate an item, ignore the first four digits of the NSN. When requisitioning items use the complete NSN (13 digits).

(2) Fig. column. This column lists the number of the figure where the item is identified/located. The illustrations are in numerical sequence in sections II and III.

(3) Item column. The item number identifies the item associated with the figure listed in the adjacent Fig. column. This item is also identified by the NSN listed on the same line.

b. Part Number Index. Part numbers in this index are listed by part number in ascending alphameric sequence.

(1) FSCM column. This column lists the Federal supply code for manufacturer.

(2) Part number column. This column indicates the part number assigned to the item.

(3) Stock number column. This column lists the National stock number for the associated part number and manufacturer identified in the part number and FSCM columns to the left.

(4) Fig. column. This column lists the number of the figure where the item is identified/located in sections II and III.

(5) Item column. The item number is that number assigned to the item as it appears in the figure referenced in the adjacent figure number column.

c. Figure and Item Number Index.

(1) Fig. column. This column lists the number of the figure where the item is identified/located in sections II and III.

(2) Item column. The item number is that number assigned to the item as it appears in the figure referenced in the adjacent figure number column.

(3) Stock number column. This column lists the National stock number for the item.

(4) FSCM column. The Federal supply code for manufacturer (FSCM) is a 5-digit numeric code used to identify the manufacturer, distributor, or Government agency, etc., that supplies the item.

(5) Part number column. Indicates the primary number used by the manufacturer (individual, firm, corporation, or Government activity), which controls the design and characteristics of the item by means of its engineering drawings, specifications, standards, and inspection requirements to identify an item or range of item.

## 5. Special Information

a. Fabrication Instructions. Detailed fabrication instructions for items source coded to be manufactured or fabricated are found in SB 11-631.

b. Associated Publications. The publications listed below pertain to the AN/VIC-1 (V) and its components:

SB 11-631, Identification Plates and Name Plates for Communications Equipment

TM 11-5830-340-12, Control, Intercommunication Set AN/VIC-1 (V), and Control C-10680/VRC.

TM 11-5830-340-30, Intercommunication Set AN/VIC-1 (V)

c. National Stock Number. National stock numbers (NSN'S) that are missing from P source coded items have been applied for and will be added to this TM by future change/revision when they are entered in the Army Master Data File (AMDF). Until the NSN'S are established and published, submit exception requisitions to: Commander, US Army Communications-Electronics Command and Fort Monmouth, ATTN: AMSEL-LC-MM, Fort Monmouth, NJ 07703-5000 for the part to support your equipment.

## 6. How to Locate Repair Parts

a. When National stock number or part number is not known.

(1) First. Using the table of contents, determine the assembly group or subassembly group to which the item belongs. This is necessary since figures are prepared for assembly groups and subassembly groups, and listings are divided into the same groups.

(2) Second. Find the figure covering the assembly group or subassembly group to which the item belongs.

(3) Third. Identify the item on the figure and note the item number.

(4) Fourth. Refer to the Repair Parts List for the figure to find the part number for the item number noted on the figure.

(5) Fifth. Refer to the Part Number Index to find the NSN, if assigned.

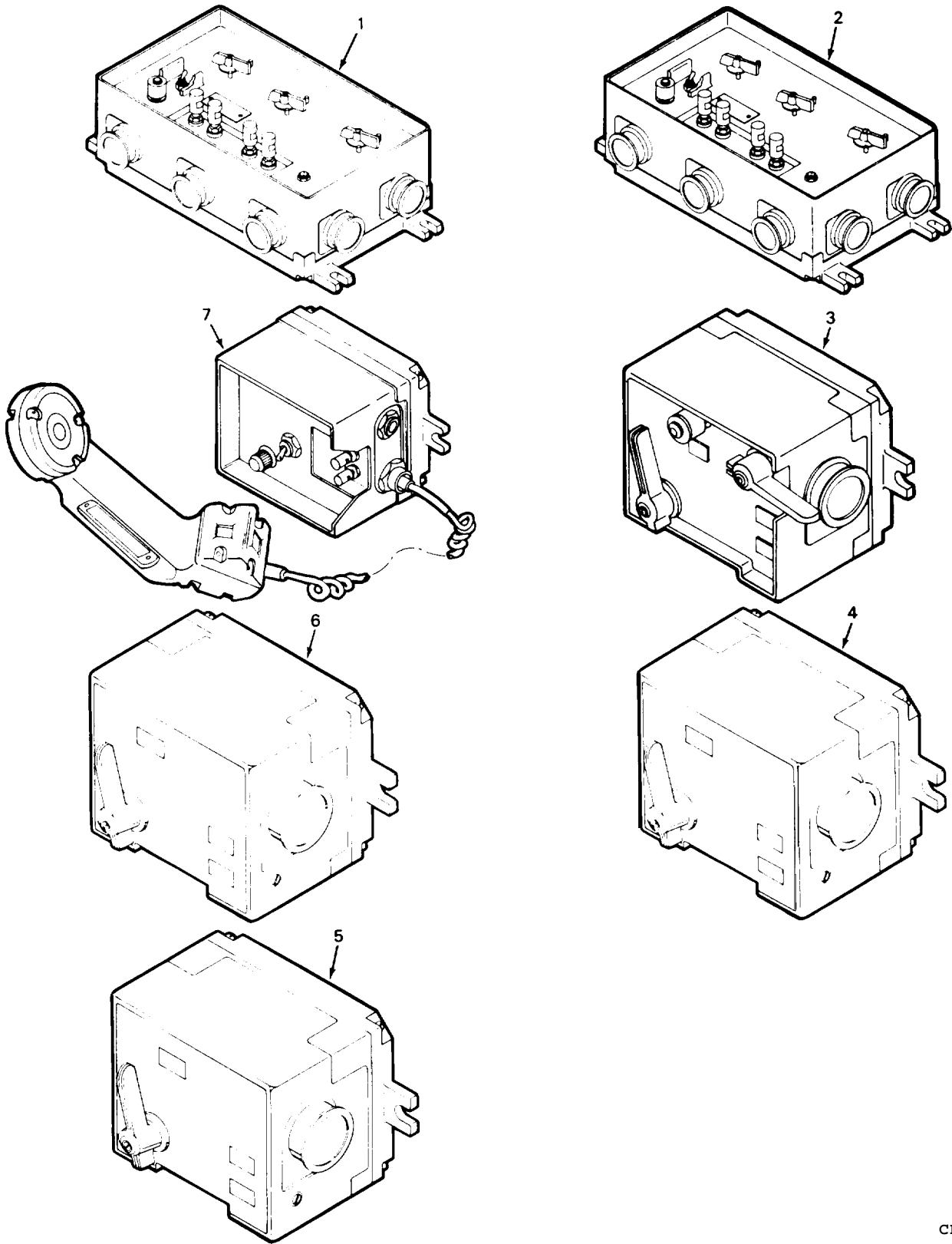
b. When National stock number or part number is known.

(1) First. Using the index of National stock numbers and part numbers, find the pertinent National stock number or part number. The NSN index is in National item identification number (NIIN) sequence (para 4a (1) ). The part numbers in the part number index are listed in ascending alphameric sequence (para 4b). Both indexes cross-reference you to the illustration figure and item number of the item you are looking for.

(2) Second. After finding the figure and item number, verify that the item is the one you're looking for, then locate the item number in the repair parts list for the figure.

## 7. Abbreviations

Not applicable.



CEOAS001

Figure 1. Intercommunication Set AN/VIC-1(V)

SECTION II			TM11-5830-340-23P			
(1)	(2)	(3)	(4)	(5)	(6)	
ITEM	SMR	FSCM	PART			
	CODE		NUMBER			
GROUP 00 INTERCOMMUNICATION SET						
AN/VIC-1(V)						
FIGURE 1						
1	PAOFF	80058	AM-1780/VRC	AMPLIFIER,AUDIO FRE (SEE FIGURE 2		1
				FOR BREAKDOWN) . . . . .		
2	PAOFF	80058	AM-7046/VRC	AMPLIFIER,AUDIO FRE (SEE FIGURE 3		1
				FOR BREAKDOWN) . . . . .		
3	PAOHH	80058	C-2297/VRC	CONTROL,INTERCOMMUN (SEE FIGURE 5		1
				FOR BREAKDOWN) . . . . .		
4	PAOFF	80058	C-10680/VRC	CONTROL,INTERCOMMUN (SEE FIGURE 8		1
				FOR BREAKDOWN) . . . . .		
5	PAOFF	80058	C-2298/VRC	CONTROL,INTERCOMMUN (SEE FIGURE 6		1
				FOR BREAKDOWN) . . . . .		
6	PAOFF	80058	C-10456/VRC	CONTROL,INTERCOMMUN (SEE FIGURE 7		1
				FOR BREAKDOWN) . . . . .		
7	PAOHH	80058	C-2296/VRC	CONTROL,INTERCOMMUN (SEE FIGURE 4		1
				FOR BREAKDOWN) . . . . .		

END OF FIGURE

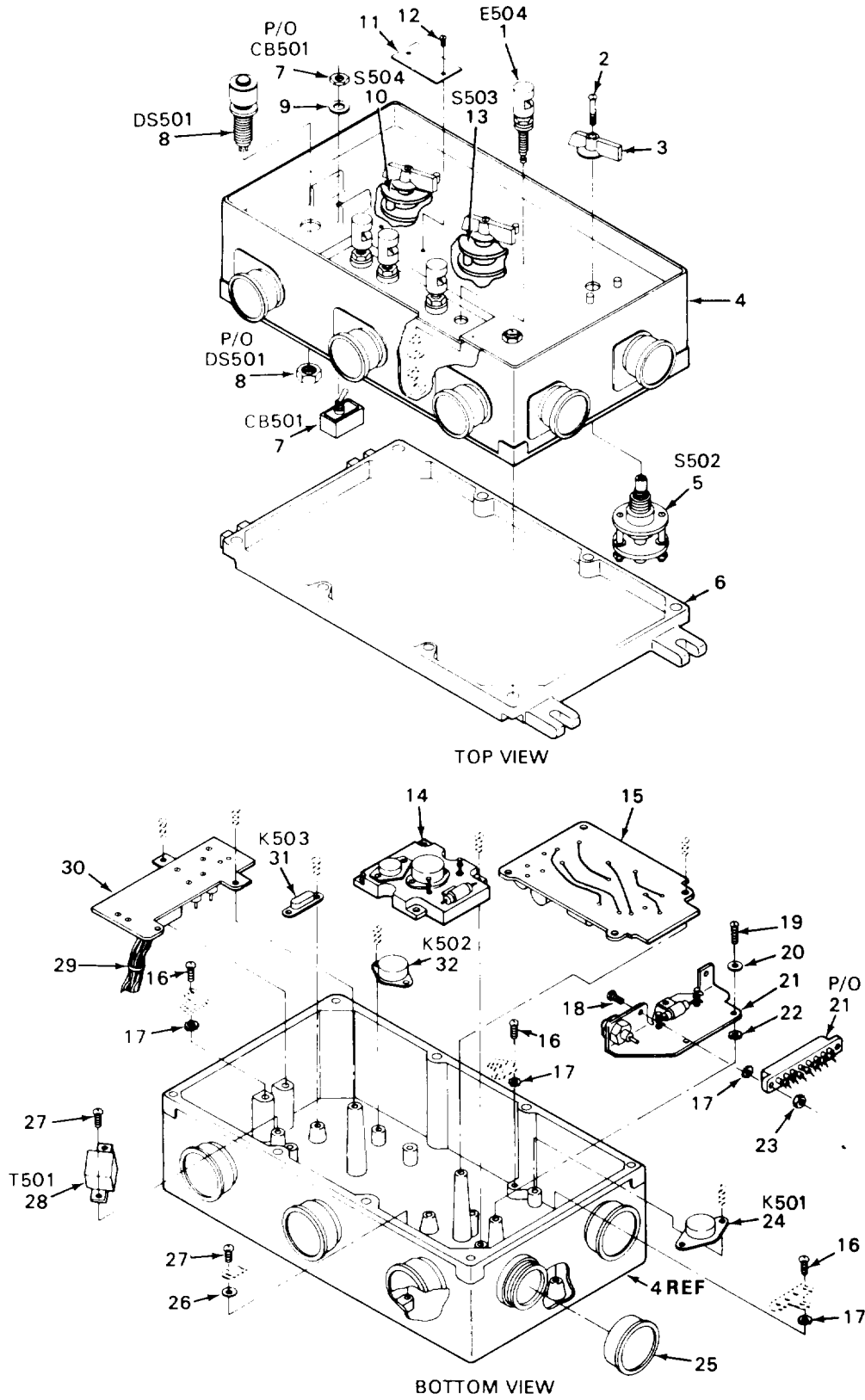
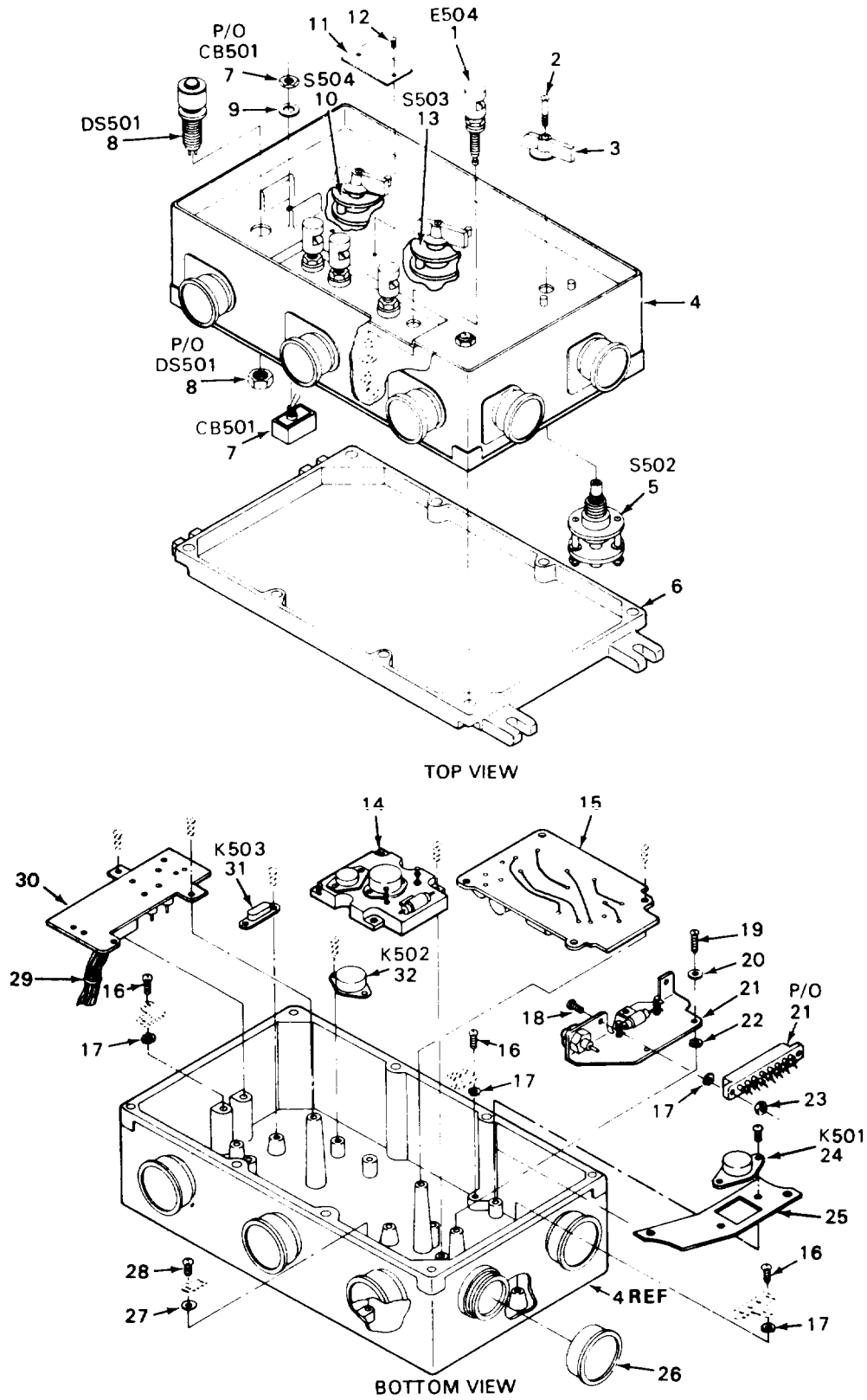


Figure 2. Audio Frequency Amplifier AM-1780/VRC

SECTION II			TM11-5830-340-23P		(5)	(6)
(1)	(2)	(3)	(4)			
ITEM NO	SMR CODE	FSCM	PART NUMBER	DESCRIPTION AND USABLE ON CODES(UOC)		QTY
GROUP 01 AUDIO FREQUENCY AMPLIFIER						
AM-1780/VRC						
FIGURE 2						
1	PAOZZ	81349	PB08NA01	POST,BINDING,ELECTR		4
2	PAOZZ	96906	MS21090-0621	SCREW,SELF-LOCKING		3
3	PAOZZ	96906	MS91525-2AP3S0Z	KNOB		3
4	XBFZZ	80063	SM-D-415289	HOUSING ASSY		1
5	PAFZZ	80063	SM-D-415286	SWITCH,ROTARY		1
6	PAOZZ	80063	SM-C-415292	COVER ASSEMBLY		1
7	PAFZZ	80063	SM-D-414917-2	CIRCUIT BREAKER		1
8	PAOZZ	80063	SM-C-415155	LIGHT, INDICATOR		1
9	PAFZZ	80063	SM-B-414390	WASHER, LOCK		1
10	PAFZZ	80063	SM-D-415285	SWITCH,ROTARY		1
11	MDOZZ	80063	SM-C-415288	PLATE, IDENTIFICATI (FOR INSTRUCTIONS SEE SB 11-631)		1
12	PAFZZ	96906	MS35206-201	SCREW,MACHINE		2
13	PAFZZ	80063	SM-D-415284	SWITCH,ROTARY		1
14	PAFZZ	80063	SM-D-415295	AMPLIFIER,AUDIO FRE.		1
15	XBFZZ	80063	SM-C-165925	AMPLIFIER ASSEMBLY		1
16	PAFZZ	96906	MS35223-13	SCREW,MACHINE		3
17	PAFZZ	96906	MS35335-29	WASHER, LOCK		4
18	PAFZZ	96906	MS35206-217	SCREW,MACHINE		2
19	XBFZZ	80063	SM-C-413884-10	SCREW		2
20	XBFZZ	96906	MS15795-7	WASHER, FLAT		2
21	XBFZZ	80063	SC-C-436076	ZENER RES DIO ASSY		1
22	PAFZZ	96906	MS35338-42	WASHER, LOCK		2
23	PAFZZ	80063	SM-C-413525-5	NUT, SELF-LOCKING,HE		2
24	PAFZZ	81349	M5757/1-026	RELAY, ELECTROMAGNET		1
25	PAFZZ	80063	SM-B-104328	COVER,ELECTRICAL CO		10
26	PAFZZ	96906	MS35335-30	WASHER,LOCK		3
27	PAFZZ	96906	MS35206-226	SCREW,MACHINE		5
28	PAFZZ	80063	SM-D-415279	TRANSFORMER,POWER		1
29	XBFZZ	80063	SM-E-415326	WIRING HARNESS ASSY		1
30	PAFZZ	80063	SM-C-366087	FILTER ASSEMBLY, ELE		1
31	PAFZZ	81349	M5757/10-064	RELAY,ELECTROMAGNET		1
32	PAFZZ	81349	M5757/7-003	RELAY,ELECTROMAGNET		1

END OF FIGURE



CEOAS003

Figure 3. Audio Frequency Amplifier AM-7046/VRC



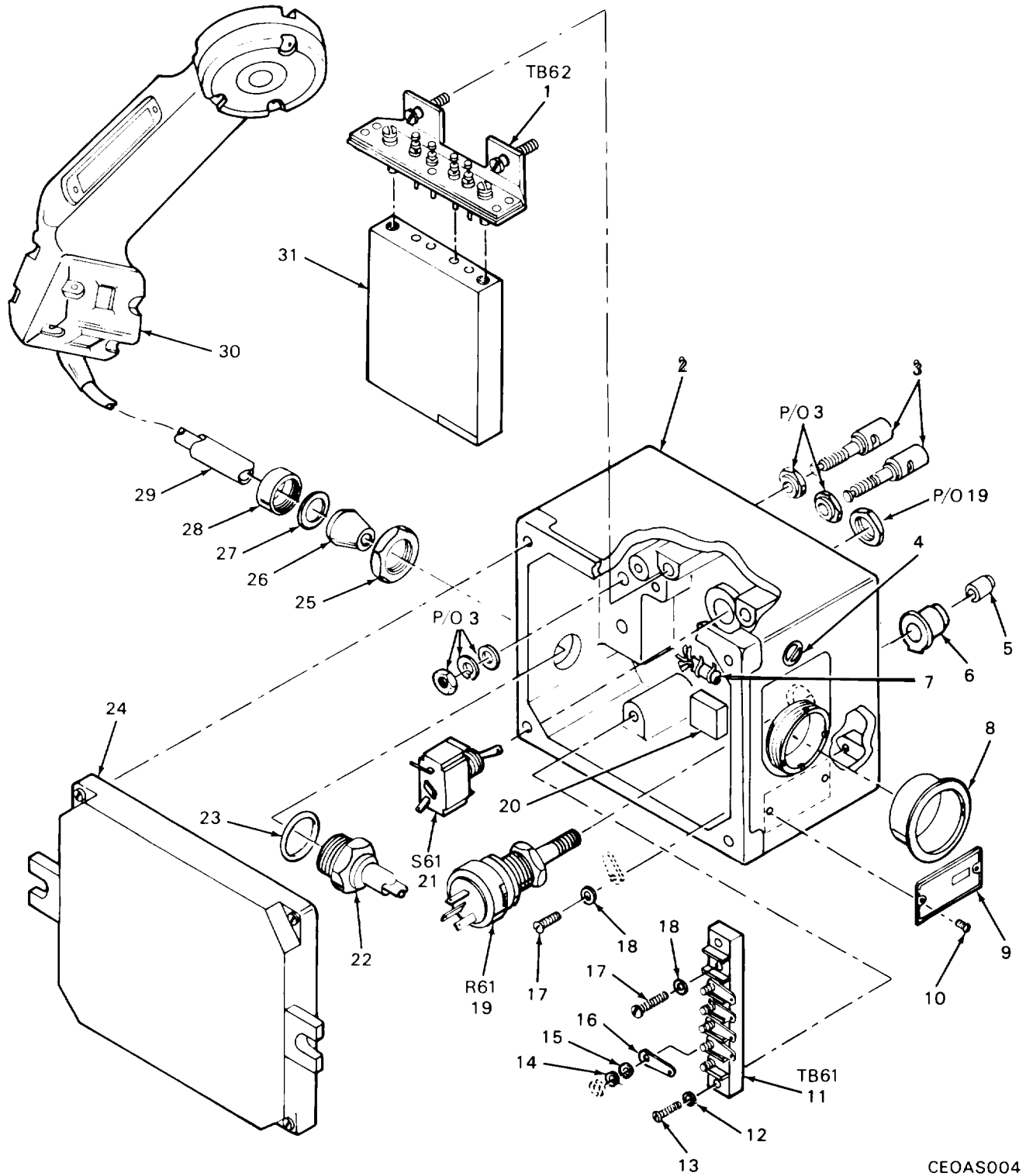
SECTION II			TM11-5830-340-23P	(5)	(6)
(1)	(2)	(3)	(4)		
ITEM	SMR	FSCM	PART	DESCRIPTION AND USABLE ON CODES(UOC)	QTY
NO	CODE		NUMBER		

GROUP 01 AUDIO FREQUENCY AMPLIFER  
AM-7046/VRC

FIGURE 3

1	PAFZZ	81349	PB08NA01	POST,BINDING,ELECTR . . . . .	4
2	PAFZZ	03038	LP35223-27	SCREW,MACHINE . . . . .	3
3	PAOZZ	96906	MS91525-2AP3SOZ	KNOB . . . . .	3
4	XBFZZ	80063	SM-D-415289	HOUSING ASSEMBLY . . . . .	1
5	PAFZZ	80063	SM-D-415286	SWITCH,ROTARY . . . . .	1
6	PAOZZ	80063	SM-C-415292	COVER ASSEMBLY . . . . .	1
7	XBFZZ	73135	77-109-2	CIRCUIT BREAKER . . . . .	1
8	XBOZZ	96312	174-8430-0112-20	LIGHT . . . . .	1
			3		
9	XBFZZ	78189	1720-20	WASHER,LOCK . . . . .	1
10	PAFZZ	80063	SM-D-415285	SWITCH,ROTARY . . . . .	1
11	MDFZZ	80063	SM-C-988095	PLATE,IDENTIFICATIO (FOR INSTRUCTIONS SEE SB 11-631) . . . . .	1
12	PAFZZ	96906	MS35206-201	SCREW,MACHINE . . . . .	2
13	PAFZZ	80063	SM-D-415284	SWITCH,ROTARY . . . . .	1
14	PAFZZ	80063	SM-D-415295	AMPLIFIER,AUDIO FRE . . . . .	1
15	XBFZZ	80063	SM-C-165925	AMPLIFIER ASSEMBLY . . . . .	1
16	PAFZZ	96906	MS35223-13	SCREW,MACHINE . . . . .	3
17	PAFZZ	96906	MS35335-29	WASHER,LOCK . . . . .	4
18	PAFZZ	96906	MS-51957-17	SCREW,MACHINE . . . . .	2
19	XBFZZ	80063	SM-C-413884-10	SCREW,MACHINE . . . . .	2
20	XBFZZ	96906	MS15795-7	WASHER,FLAT . . . . .	2
21	XBFZZ	80063	SC-C-436076	ZENER DIODE RES ASS.....	1
22	PAFZZ	96906	MS35338-42	WASHER,LOCK . . . . .	2
23	PAFZZ	30655	F92-1660-40	NUT,SELF-LOCKING,HE . . . . .	2
24	PAFZZ	81349	M5757/1-026	RELAY,ELECTROMAGNET . . . . .	1
25	XBFZZ	80063	SM-C-988092	BRACKET . . . . .	1
26	PAOZZ	99017	B-714	COVER,ELECTRICAL CO . . . . .	10
27	PAFZZ	96906	MS35335-30	WASHER,LOCK . . . . .	3
28	PAFZZ	96906	MS35206-226	SCREW,MACHINE . . . . .	4
29	XBFZZ	80063	SM-E-988098	WIRING HARNESS ASSY . . . . .	1
30	PAFZZ	80063	SM-C-366087	FILTER ASSEMBLY,ELE . . . . .	1
31	XBFZZ	56623	BR8-600A17-F1-26	RELAY . . . . .	2
			V		
32	PAFZZ	81349	M5757/7-003	RELAY,ELECTROMAGNET . . . . .	1

END OF FIGURE



CEOAS004

Figure 4. Intercommunications Control Set C-2296/VRC

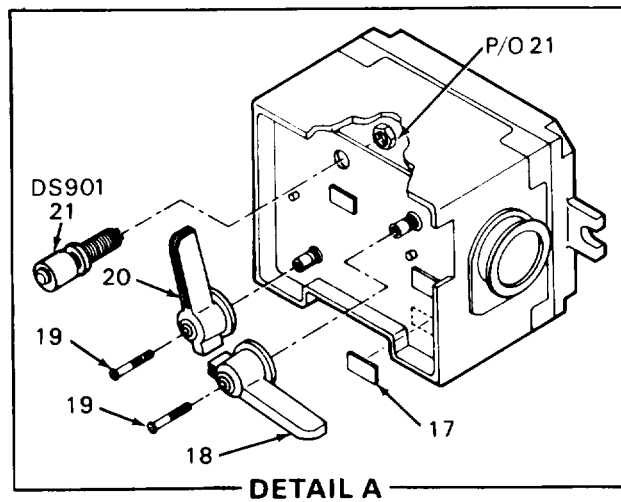
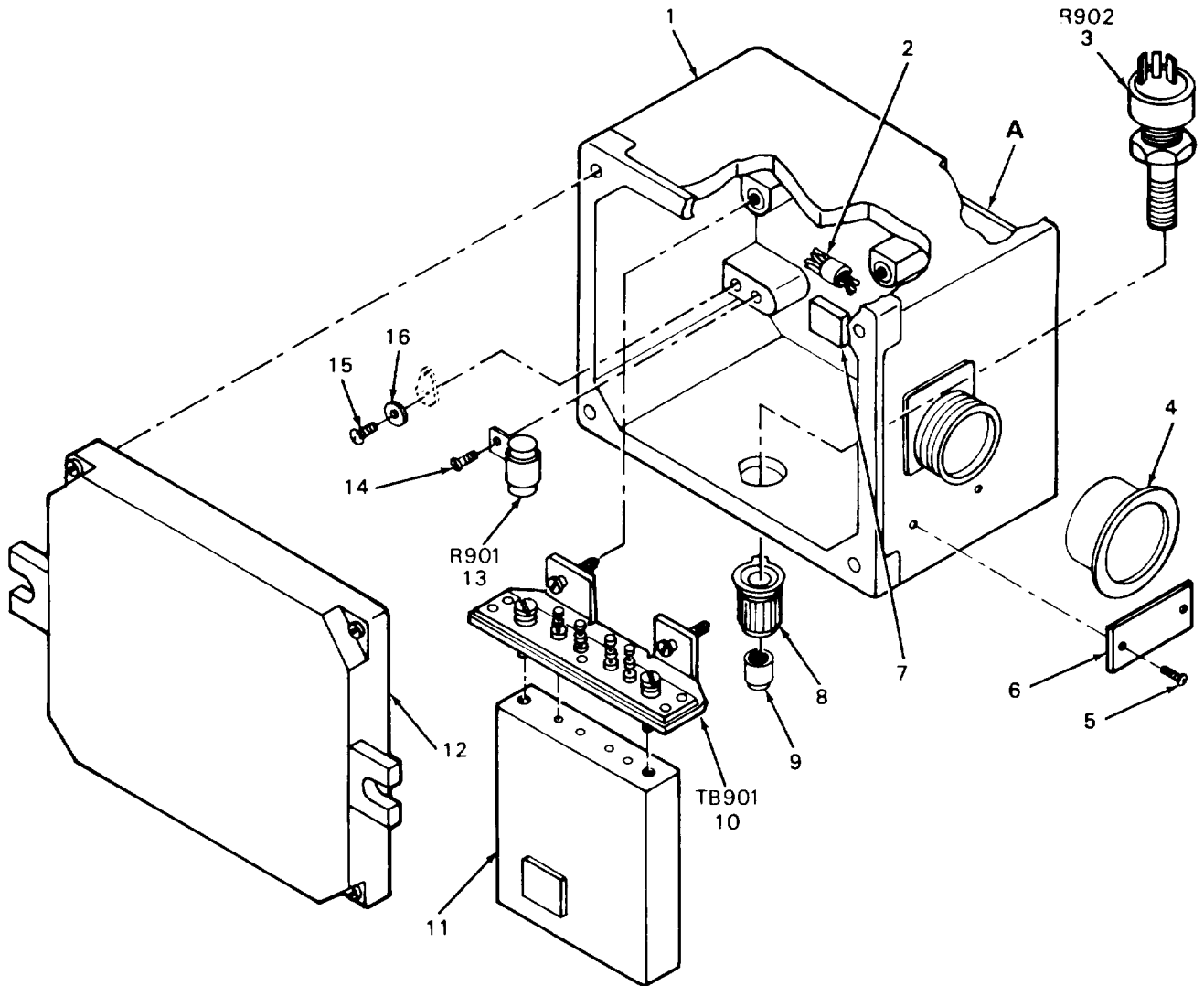
SECTION II		TM11-5830-340-23P		(5)	(6)
(1)	(2)	(3)	(4)		
ITEM	SMR	FSCM	PART		
	CODE		NUMBER	DESCRIPTION AND USABLE ON CODES(UOC)	QTY

GROUP 02 INTERCOMMUNICATIONS CONTROL  
SET C-2296/VRC

FIGURE 4

1	PAFZZ	80063	SM-C-415193	TERMINAL BOARD	1
2	XBFZZ	80063	SM-D-415249	HOUSING ASSEMBLY	1
3	PAFZZ	81349	PB08NA01	POST,BINDING,ELECTR	2
4	PAFZZ	80063	SM-C-414131-2	SCREW,MACHINE	1
5	PAFZZ	02615	S7892	NUT,SLEEVE	1
6	PAOZZ	80063	SM-C-414399	KNOB	1
7	XBFZZ	80063	SM-D-415244	WIRING HARNESS ASST	1
8	PAOZZ	80063	SM-B-104328	COVER,ELECTRICAL CO	1
9	MDFZZ	80063	SM-C-415243	PLATE,IDENT (FOR INSTRUCTIONS SEE SB 11-631)	1
10	PAFZZ	96906	MS21318-13	SCREW,DRIVE	2
11	XBFZZ	88223	25TB6	TERMINAL BOARD	1
12	PAFZZ	96906	MS27183-3	WASHER,FLAT	2
13	PAFZZ	96906	MS35265-16	SCREW,MACHINE	1
14	PAFZZ	96906	MS35338-40	WASHER,LOCK	6
15	PAFZZ	96906	MS35335-29	WASHER,LOCK	6
16	XBFZZ	79963	11B SPECIAL	TERMINAL,LUG	6
17	PAOZZ	96906	MS35206-225	SCREW,MACHINE	2
18	PAFZZ	96906	MS35335-30	WASHER,LOCK	2
19	PAFZZ	80063	SM-D-415189	RESISTOR,VARIABLE,N	1
20	XBFZZ	80063	SM-C-415192-1	PAD,RUBBER	1
21	XBFZZ	96306	211ST1192-8	SWITCH,TOGGLE	1
22	PAFZZ	88044	AN3064-6	CHASE NIPPLE,CONDUIT	1
23	PAFZZ	96906	MS28775-115	PACKING,PREFORMED	1
24	PAOZZ	80063	SM-D-415254	COVER ASSEMBLY	1
25	PAFZZ	88044	AN3066-6	LOCKNUT,ELECTRICAL	1
26	PAFZZ	80063	SM-B-415142-2	BUSHING,RUBBER	1
27	PAFZZ	88044	AN3067W3	WASHER,FLAT	1
28	PAFZZ	88044	AN3054-6	NUT,COUPLING,ELECTR	1
29	XBFZZ	80063	SM-B-415256	BUSHING	1
30	PAFZD	81349	H207VRC	HANDSET	1
31	PAFZZ	80063	SM-C-415198	AMPLIFIER,AUDIO FRE	1

END OF FIGURE



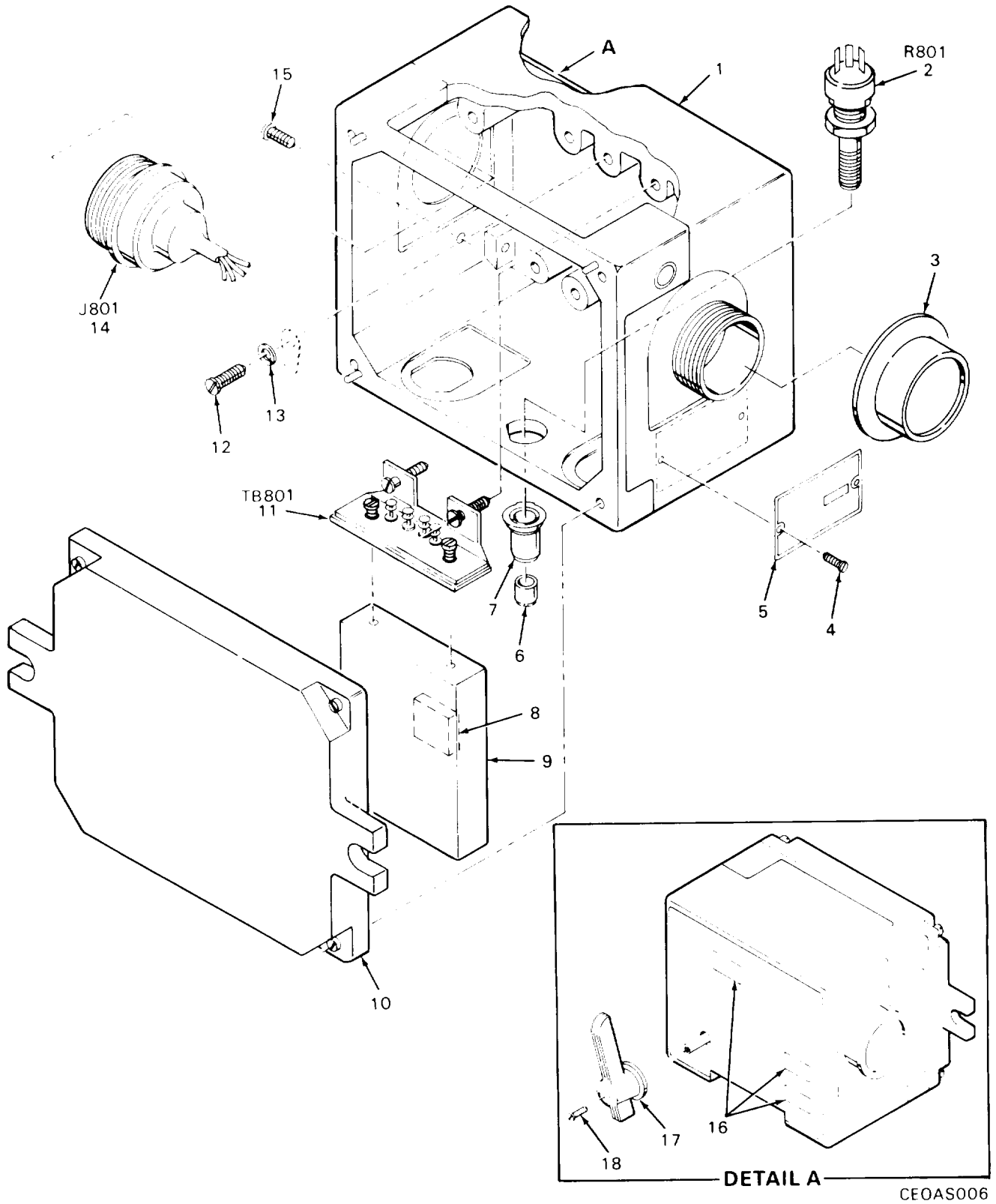
CEOAS005

Figure 5. Intercommunications Control Set C-2297/VRC

SECTION II			TM11-5830-340-23P			(6)
(1)	(2)	(3)	(4)	(5)		
ITEM NO	SMR CODE	FSCM	PART NUMBER	DESCRIPTION AND USABLE ON CODES(UOC)	GROUP 03 INTERCOMMUNICATIONS CONTROL SET C-2297	QTY
FIGURE 5						
1	XBFZZ	80063	SM-D-415231	HOUSING ASSY . . . . .		1
2	XBFZZ	80063	SM-D-415237	WIRING HARNESS ASSY . . . . .		1
3	PAFZZ	80063	SM-D-415189	RESISTOR,VARIABLE,N . . . . .		2
4	PAOZZ	80063	SM-B-104328	COVER,ELECTRICAL CO . . . . .		2
5	PAFZZ	96906	MS21318-13	SCREW,DRIVE . . . . .		1
6	MDFZZ	80063	SM-C-415226	PLATE,IDENT (FOR INSTRUCTIONS SEE SB 11-631) . . . . .		1
7	XBFZZ	80063	SM-C-415192-1	PAD . . . . .		1
8	PAOZZ	80063	SM-C-414399	KNOB . . . . .		1
9	PAFZZ	80063	SM-B-414395	NUT,SLEEVE . . . . .		1
10	PAFZZ	80063	SM-C-415193	TERMINAL BOARD . . . . .		1
11	PAFZZ	80063	SM-C-415198	AMPLIFIER,AUDIO FRE . . . . .		1
12	PAOZZ	80063	SM-D-415228	COVER ASSEMBLY . . . . .		1
13	PAFZZ	01121	GM1515	RESISTOR,FIXED,COMP . . . . .		1
14	PAFZZ	96906	MS35206-226	SCREW,MACHINE . . . . .		1
15	PAFZZ	96906	MS35206-225	SCREW,MACHINE . . . . .		1
16	PAFZZ	96906	MS35335-30	WASHER,LOCK . . . . .		1
17	PAFZZ	80063	SM-B-415154-1	PLATE,IDENTIFICATIO . . . . .		3
18	PAOZZ	96906	MS91525-3	KNOB . . . . .		1
19	PAFZZ	03038	LP35223-27	SCREW,SELF-LOCKING . . . . .		2
20	PAOZZ	80063	SM-D-415223	KNOB . . . . .		1
21	XBOZZ	96312	203-0410-0112-92	LIGHT,INDICATOR . . . . .		1

2

END OF FIGURE



CEOAS006

Figure 6. Intercommunications Control Set C-2298/VRC

SECTION II			TM11-5830-340-23P			
(1)	(2)	(3)	(4)	(5)	(6)	
ITEM NO	SMR CODE	FSCM	PART NUMBER	DESCRIPTION AND USABLE ON CODES(UOC)	QTY	
GROUP 04 INTERCOMMUNICATIONS CONTROL						
SET C-2298/VRC						
FIGURE 6						
1	XBFZZ	80063	SM-C-415265	HOUSING ASSY . . . . .	1	
2	PAFZZ	80063	SM-D-415189	RESISTOR, VARIABLE 100 K . . . . .	1	
3	PAOZZ	80063	SM-B-104328	COVER ELECTRICAL . . . . .	2	
4	PAFZZ	96906	MS21318-13	SCREW DRIVE . . . . .	2	
5	MDFZZ	80063	SM-C-415263	PLATE,IDENTIFICATIO (FOR INSTRUCTIONS SEE SB 11-631) . . . . .	1	
6	PAOZZ	80063	SM-C-414399	KNOB . . . . .	1	
7	PAFZZ	80063	SM-B-414395	NUT,SLEVE . . . . .	1	
8	XBFZZ	80063	SM-C-415192-1	PAD,RUBBER . . . . .	1	
9	PAFZZ	80063	SM-C-415198	AMPLIFIER,AUDIO . . . . .	1	
10	PAOZZ	80063	SM-D-415270	PLATE,ELECTRICIAL . . . . .	1	
11	PAFZZ	80063	SM-C-415193	TERMINAL BOARD . . . . .	1	
12	PAFZZ	96906	MS35206-225	SCREW,MACHINE . . . . .	1	
13	PAFZZ	96906	MS35335-30	WASHER,LOCK . . . . .	1	
14	XBFZZ	80063	SM-D-415272	WIRING HARNESS ASSY . . . . .	1	
15	PAFZZ	80063	SM-C-414131-2	SCREW,MACHINE . . . . .	1	
16	PAFZZ	80063	SM-B-415154-1	PLATE,INDENTIFICATI. . . . .	3	
17	PAOZZ	80063	SM-D-415223	KNOB . . . . .	1	
18	PAFZZ	80063	SM-B-415262-1	SCREW,SELF-LOCKING . . . . .	1	

END OF FIGURE

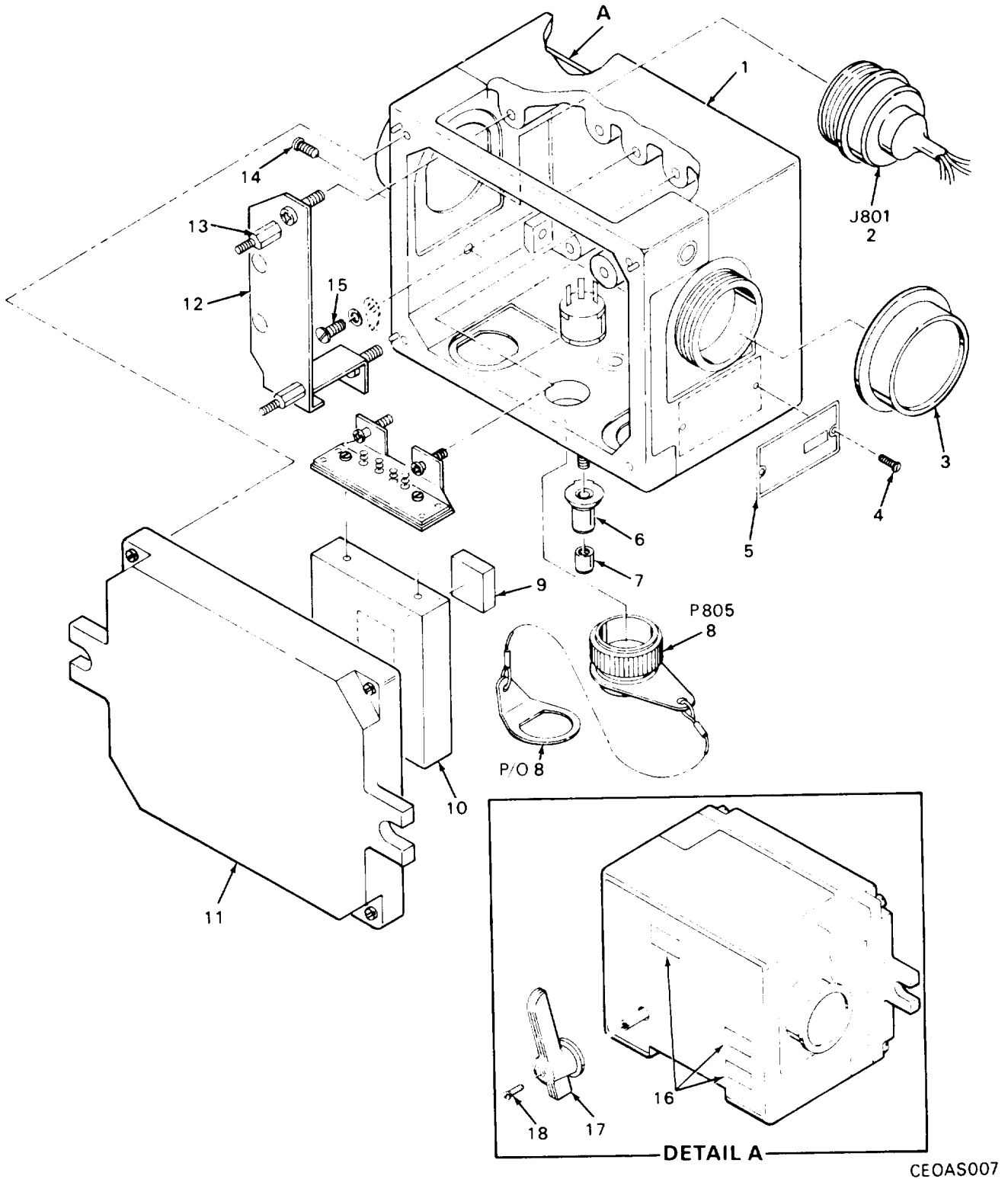


Figure 7. Intercommunications Control Set C-10456/VRC



SECTION II			TM11-5830-340-23P		
(1)	(2)	(3)	(4)	(5)	(6)
ITEM	SMR		PART		
NO	CODE	FSCM	NUMBER	DESCRIPTION AND USABLE ON CODES(UOC)	QTY

GROUP 04 INTERCOMMUNICATIONS CONTROL  
SET C-10456/VRC

FIGURE 7

1	XBFZZ	56996	B4001091	HOUSING ASSEMBLY . . . . .	1
2	XBFZZ	56996	B4001095	WIRING HARNESS ASSY . . . . .	1
3	PAOZZ	80063	SM-B-104328	COVER,ELECTRICAL CO . . . . .	2
4	PAFZZ	96906	MS21318-13	SCREW,DRIVE . . . . .	2
5	MDFZZ	56996	B4001096	PLATE,IDENT (FOR INSTRUCTIONS SEE SB 11-631) . . . . .	1
6	PAOZZ	80063	SM-C-414399	KNOB . . . . .	1
7	PAFZZ	02615	S7892	NUT,SLEEVE . . . . .	1
8	PAOZA	56996	B4001124	RECEPTACLE-COVER AS . . . . .	1
9	XBFZZ	80063	SM-C-415192-1	PAD . . . . .	1
10	PAFZZ	80063	SM-C-415198	AMPLIFIER,AUDIO FARE . . . . .	1
11	PAOZZ	80063	SM-D-415270	PLATE,ELECTRICAL SH . . . . .	1
12	XBFZZ	56996	B4001093	BRACKET ASSY . . . . .	1
13	PAFZZ	96906	MS21042L02	NUT,SELF-LOCKING,EX . . . . .	2
14	PAFZZ	80063	SM-C-414131-2	SCREW,MACHINE . . . . .	1
15	PAFZZ	96906	MS35206-227	SCREW,MACHINE . . . . .	1
16	PAFZZ	80063	SM-B-415154-1	PLATE,IDENTIFICATIO . . . . .	3
17	PAOZZ	80063	SM-D-415223	KNOB . . . . .	1
18	XBFZZ	80205	NAS1190-06P51	SCREW, SELFLKG, PNH . . . . .	1

END OF FIGURE

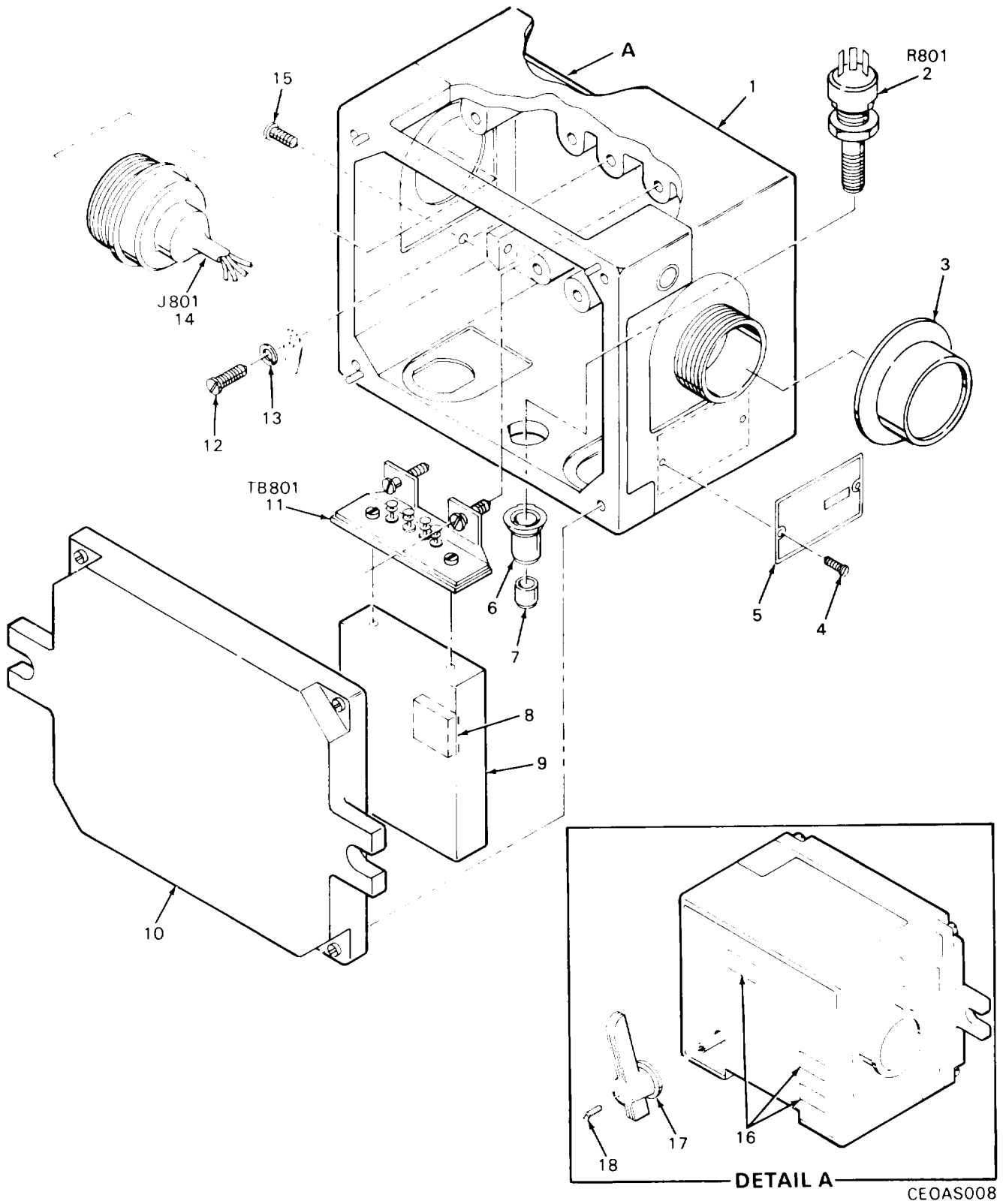


Figure 8. Intercommunications Control Set C-10680/VRC

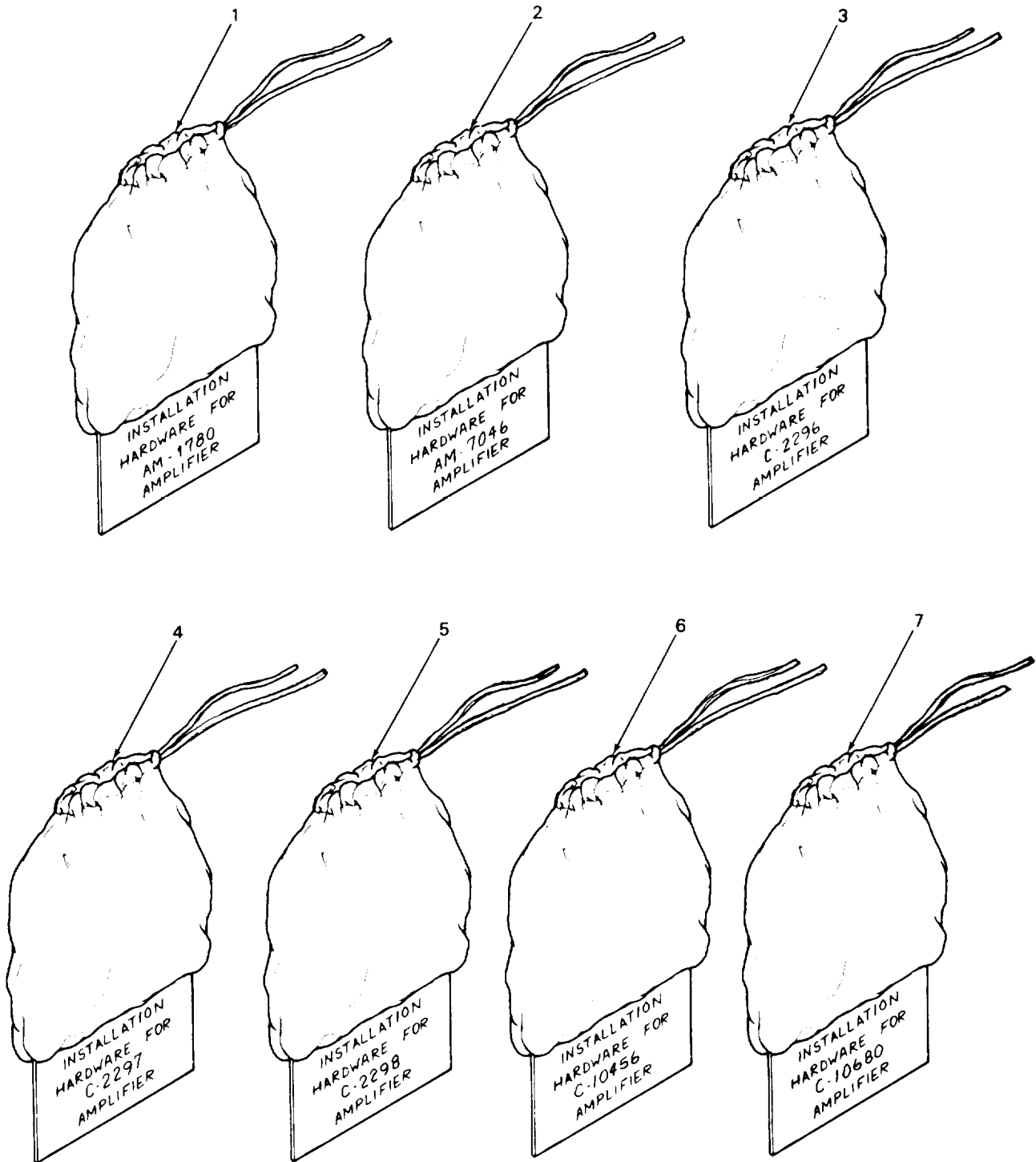
SECTION II			TM 11-5830-340-23P	(5)	(6)
(1)	(2)	(3)	(4)		
ITEM	SMR		PART	DESCRIPTION AND USABLE ON CODES(UOC)	QTY
NO	CODE	FSCM	NUMBER		

GROUP 04 INTERCOMMUNICATIONS CONTROL  
SET C-10680/VRC

FIGURE 8

1	XBFZZ	80063	SM-C-415265	HOUSING ASSY. . . . .	1
2	PAFZZ	80063	SM-D-415189	RESISTOR,VARIABLE,N. . . . .	1
3	PAOZZ	80063	SM-B-104328	COVER,ELECTRICAL CO. . . . .	2
4	PAFZZ	96906	MS21318-13	SCREW,DRIVE. . . . .	2
5	MDFZZ	80063	SM-C-988103	PLATE,IDENT (FOR INSTRUCTIONS SEE SB 11-631) . . . . .	1
6	PAOZZ	80063	SM-C-414399	KNOB. . . . .	1
7	PAFZZ	02615	S7892	NUT,SLEEVE. . . . .	1
8	XBFZZ	80063	SM-C-415192-1	PAD. . . . .	1
9	PAFZZ	80063	SM-C-415198	AMPLIFIER,AUDIO FRE . . . . .	1
10	PAOZZ	80063	SM-D-415270	PLATE,ELECTRICAL SH . . . . .	1
11	PAFZZ	80063	SM-C-415193	TERMINAL BOARD . . . . .	1
12	PAFZZ	96906	MS35206-225	SCREW,MACHINE. . . . .	1
13	PAFZZ	96906	MS35335-30	WASHER,LOCK. . . . .	1
14	XBFZZ	80063	SM-D-988106	WIRING HARNESS ASHY. . . . .	1
15	PAFZZ	80063	SM-C-414131-2	SCREW,MACHINE. . . . .	1
16	PAFZZ	80063	SM-B-415154-1	PLATE, IDENTIFICATIO. . . . .	3
17	PAOZZ	80063	SM-D-415223	KNOB. . . . .	1
18	PAFZZ	03038	LP35223-27	SCREW,SELF-LOCKING . . . . .	1

END OF FIGURE



CEOAS009

Figure 9. Mounting Hardware, AN/VIC-1(V)

SECTION II  
 (1) (2) (3) (4) (5) (6)  
 ITEM SMR PART  
 NO CODE FSCM NUMBER DESCRIPTION AND USABLE ON CODES(UOC) QTY

GROUP 05 MOUNTING HARDWARE KIT

FIGURE 9

1	XBFZZ	80063	SM-B-415322	MOUNTING HDW KIT .....	1
2	XBFZZ	80063	SM-B-400109-8	MOUNTING HDW KIT .....	1
3	XBFZZ	80063	SM-B-415268	MOUNTING HDW KIT .....	1
4	XBFZZ	80063	SM-B-415252	MOUNTING HDW KIT .....	1
5	XBFZZ	80063	SM-B-415234	MOUNTING HDW KIT .....	1
6	XBFZZ	80063	SM-B-415269	MOUNTING HDW KIT .....	1
7	XBFZZ	80063	SM-B-145269	MOUNTING HDW KIT .....	1

END OF FIGURE

## SECTION IV

TM11-5830-340-23P

## CROSS-REFERENCE INDEXES

STOCK NUMBER	FIG.	NATIONAL STOCK NUMBER ITEM	STOCK INDEX STOCK NUMBER	FIG.	ITEM
5310-00-045-3299	2	22	5355-00-853-6384	6	6
	3	22		7	6
5305-00-054-5651	3	18		8	6
5940-00-082-4622	4	1	5310-00-853-9676	4	5
	5	10		5	9
	6	11		6	7
	8	11		7	7
5310-00-167-5041	2	9		8	7
5310-00-209-0788	2	26	5820-00-856-4762	2	1 4
	3	27		3	1 4
	4	18	5305-00-865-3895	2	2
	5	16	5905-00-865-5014	5	1 3
	6	13	5905-00-865-6301	4	1 9
	8	13		5	2
5305-00-245-8836	4	4		6	3
	6	15		8	2
	7	14	5925-00-866-2198	2	7
	8	15	5310-00-880-7010	7	1 3
5305-00-253-5609	4	10	6210-00-882-3615	2	8
	5	5	5950-00-883-8321	2	8
	6	4	5820-00-886-3152	4	3 1 1
	7	4		5	1 1
	8	4		6	9 0
5975-00-295-9325	4	28		7	9
5975-00-296-0534	4	25		8	9
5305-00-405-8960	2	16	5930-00-886-9564	2	5
	3	16		3	5
5365-00-408-3126	4	26	5305-00-889-2999	2	1 8
5915-00-409-9094	2	30	5930-00-889-5918	2	1 3 3
	3	30		3	1 3
5310-00-530-0120	4	27	5930-00-889-5919	2	1 0
5310-00-543-2410	4	14		3	1 0
5305-00-543-5058	4	13	5820-00-892-3337	1	7
5975-00-548-6514	4	22	5830-00-892-3338	1	5
5330-00-579-7916	4	23	5830-00-892-3339	1	5
5310-00-582-9176	2	23	5820-00-892-3342	1	1
	3	23	5935-00-933-3752	2	2 5
5310-00-616-3554	2	17		3	2 6
	3	17		4	2
	4	15		5	8
5355-00-656-1358	2	3		6	8
	3	3		7	3 3
5965-00-686-7067	4	30		8	3 3
5355-00-781-0319	5	18	5940-00-937-5237	2	3
5355-00-823-9809	5	20		3	1 1
	6	17		4	1 1
	7	17	5310-00-951-4679	4	3
	8	17	5305-00-984-4982	4	1 2
5355-00-853-6384	4	6		4	1 7
	5	8		5	1 5
				6	1 2

## SECTION IV

## CROSS-REFERENCE INDEXES

STOCK NUMBER	FIG.	NATIONAL STOCK NUMBER INDEX STOCK NUMBER	FIG.	ITEM
5305-00-984-4982	8	12		
5305-00-984-4983	2	27		
	3	28		
	5	14		
5305-00-984-4984	7	15		
5305-00-990-8386	2	12		
	3	12		
5820-01-028-1078	4	24		
5820-01-028-1954	2	6		
	3	6		
5820-01-028-2625	6	10		
	7	11		
	8	10		
5945-01-062-5153	2	32		
	3	32		
5945-01-062-5154	2	24		
	3	24		
5830-01-082-0804	1	6		
5305-01-133-0155	3	2		
	5	19		
	8	18		
5830-01-137-4120	1	4		
5820-01-138-5789	1	2		
9905-01-146-5572	5	17		
	6	16		
	7	16		
	8	16		
5945-01-169-7941	2	31		
5935-01-260-2822	7	8		

## SECTION IV

TM11-5830-340-23P

## CROSS-REFERENCE INDEXES

FSCM	PART NUMBER	PART NUMBER INDEX STOCK NUMBER	FIG.	ITEM
80058	AM-1780/VRC	5820-00-892-3342	1	1
80058	AM-7046/VRC	5820-01-138-5789	1	2
88044	AN3054-6	5975-00-295-9325	4	28
88044	AN3064-6	5975-00-548-6514	4	22
88044	AN3066-6	5975-00-296-0534	4	25
88044	AN3067W3	5310-00-530-0120	4	27
99017	B-714	5935-00-933-3752	3	26
56623	BR8-600A17-F1-26		3	31
56996	B4001091		7	1
56996	B4001093		7	12
56996	B4001095		7	2
56996	B4001096		7	5
56996	B4001124	5935-01-260-2822	7	8
80058	C-10456/VRC	5830-01-082-0804	1	6
80058	C-10680/VRC	5830-01-137-4120	1	4
80058	C-2296/VRC	5820-00-892-3337	1	7
80058	C-2297/VRC	5830-00-892-3338	1	3
80058	C-2298/VRC	5830-00-892-3339	1	5
30655	F92-1660-40	5310-00-582-9176	3	23
01121	GM1515	5905-00-865-5014	5	13
81349	H207VRC	5965-00-686-7067	4	30
03038	LP35223-27	5305-01-133-0155	3	2
			5	19
			8	18
96906	MS-51957-17	5305-00-054-5651	3	18
96906	MS15795-7		2	20
			3	20
96906	MS21042L02	5310-00-880-7010	7	13
96906	MS21090-0621	5305-00-865-3895	2	2
96906	MS21318-13	5305-00-253-5609	4	10
			5	5
			6	4
			7	4
			8	4
96906	MS27183-3	5310-00-951-4679	4	12
96906	MS28775-115	5330-00-579-7916	4	23
96906	MS35206-201	5305-00-990-8386	2	12
			3	12
96906	MS35206-217	5305-00-889-2999	2	18
96906	MS35206-225	5305-00-984-4982	4	17
			5	15
			6	12
			8	12
96906	MS35206-226	5305-00-984-4983	2	27
			3	28
			5	14
96906	MS35206-227	5305-00-984-4984	7	15
96906	MS35223-13	5305-00-405-8960	2	16
96906	MS35265-16	5305-00-543-5058	3	16
			4	13



## SECTION IV

## CROSS-REFERENCE INDEXES

FSCM	PART NUMBER	PART NUMBER INDEX STOCK NUMBER	FIG.	ITEM
96906	MS35335-29	5310-00-616-3554	2	17
			3	17
			4	15
96906	MS35335-30	5310-00-209-0788	2	26
			3	27
			4	18
			5	16
			6	13
			8	13
96906	MS35338-40	5310-00-543-2410	4	14
96906	MS35338-42	5310-00-045-3299	2	22
			3	22
96906	MS91525-2AP3SOZ	5355-00-656-1358	2	3
			3	3
96906	MS91525-3	5355-00-781-0319	5	18
81349	M5757/1-026	5945-01-062-5154	2	24
			3	24
81349	M5757/10-064	5945-01-169-7941	2	31
81349	M5757/7-003	5945-01-062-5153	2	32
			3	32
80205	NAS1190-06P51		7	18
81349	PB08NA01	5940-00-937-5237	2	1
			3	1
			4	3
80063	SC-C-436076		2	21
			3	21
80063	SM-B-104328	5935-00-933-3752	2	25
			4	8
			5	4
			6	3
			7	3
			8	3
80063	SM-B-145269		9	7
80063	SM-B-400109-8		9	2
80063	SM-B-414390	5310-00-167-5041	2	9
80063	SM-B-414395	5310-00-853-9676	5	9
			6	7
80063	SM-B-415142-2	5365-00-408-3126	4	26
80063	SM-B-415154-1	9905-01-146-5572	5	17
			6	16
			7	16
			8	16
80063	SM-B-415234		9	5
80063	SM-B-415252		9	4
80063	SM-B-415256		4	29
80063	SM-B-415262-1		6	18
80063	SM-B-415268		9	3
80063	SM-B-415269		9	6
80063	SM-B-415322		9	1
80063	SM-C-165925		2	15
			3	15

## SECTION IV

TM11-5830-340-23P

## CROSS-REFERENCE INDEXES

FSCM	PART NUMBER	PART NUMBER INDEX STOCK NUMBER	FIG.	ITEM
80063	SM-C-366087	5915-00-409-9094	2	30
80063	SM-C-413525-5	5310-00-582-9176	2	30
80063	SM-C-413884-10		2	23
			2	19
80063	SM-C-414131-2	5305-00-245-8836	4	19
			6	4
			7	15
			8	14
80063	SM-C-414399	5355-00-853-6384	4	15
			5	6
			6	8
			6	6
			7	6
			8	6
80063	SM-C-415155	6210-00-882-3615	2	8
80063	SM-C-415192-1		4	8
			5	20
			6	7
			7	8
			8	9
80063	SM-C-415193	5940-00-082-4622	4	8
			5	1
			6	10
			8	11
80063	SM-C-415198	5820-00-886-3152	4	11
			5	31
			6	11
			7	9
			8	10
80063	SM-C-415226		5	9
80063	SM-C-415243		4	6
80063	SM-C-415263		6	9
80063	SM-C-415265		6	5
			8	1
			8	1
80063	SM-C-415288		2	11
80063	SM-C-415292	5820-01-028-1954	2	6
			2	6
			3	6
80063	SM-C-988092		3	25
80063	SM-C-988095		3	11
80063	SM-C-988103		8	5
80063	SM-D-414917-2	5925-00-866-2198	2	7
80063	SM-D-415189	5905-00-865-6301	4	19
			5	3
			6	2
			8	2
80063	SM-D-415223	5355-00-823-9809	5	20
			6	17
			7	17
			8	17
80063	SM-D-415228		5	12
			5	1

CROSS-REFERENCE INDEXES  
PART NUMBER INDEX

FSCM	PART NUMBER	STOCK NUMBER	FIG.	ITEM
80063	SM-D-415237		5	2
80063	SM-D-415244		4	7
80063	SM-D-415249		4	2
80063	SM-D-415254	5820-01-028-1078	4	24
80063	SM-D-415270	5820-01-028-2625	6	10
			7	11
			8	10
80063	SM-D-415272		6	14
80063	SM-D-415279	5950-00-883-8321	2	28
80063	SM-D-415284	5930-00-889-5918	2	13
			2	13
80063	SM-D-415285	5930-00-889-5919	2	10
			3	10
80063	SM-D-415286	5930-00-886-9564	2	5
			3	5
80063	SM-D-415289		2	4
			3	4
80063	SM-D-415295	5820-00-856-4762	2	14
			3	14
80063	SM-D-988106		8	14
80063	SM-E-415326		2	29
80063	SM-E-988098		3	29
02615	S7892	5310-00-853-9676	4	5
			7	7
			8	7
79963	11B SPECIAL		4	16
78189	1720-20		3	9
96312	174-8430-0112-20		3	8
	3			
96312	203-0410-0112-92		5	21
	2			
96306	211ST1192-8		4	21
88223	25TB6		4	11
73135	77-109-2		3	7

## SECTION IV

TM11-5830-340-23P

## CROSS-REFERENCE INDEXES

FIG.	ITEM	FIGURE AND ITEM NUMBER INDEX STOCK NUMBER	FSCM	PART NUMBER
1	1	5820-00-892-3342	80058	AM-1780/VRC
1	2	5820-01-138-5789	80058	AM-7046/VRC
1	3	5830-00-892-3338	80058	C-2297/VRC
1	4	5830-01-137-4120	80058	C-10680/VRC
1	5	5830-00-892-3339	80058	C-2298/VRC
1	6	5830-01-082-0804	80058	C-10456/VRC
1	7	5820-00-892-3337	80058	C-2296/VRC
2	1	5940-00-937-5237	81349	PB08NA01
2	2	5305-00-865-3895	96906	MS21090-0621
2	3	5355-00-656-1358	96906	MS91525-2AP3SOZ
2	4		80063	SM-D-415289
2	5	5930-00-886-9564	80063	SM-D-415286
2	6	5820-01-028-1954	80063	SM-C-415292
2	7	5925-00-866-2198	80063	SM-D-414917-2
2	8	6210-00-882-3615	80063	SM-C-415155
2	9	5310-00-167-5041	80063	SM-B-414390
2	10	5930-00-889-5919	80063	SM-D-415285
2	11		80063	SM-C-415288
2	12	5305-00-990-8386	96906	MS35206-201
2	13	5930-00-889-5918	80063	SM-D-415284
2	14	5820-00-856-4762	80063	SM-D-415295
2	15		80063	SM-C-165925
2	16	5305-00-405-8960	96906	MS35223-13
2	17	5310-00-616-3554	96906	MS35335-29
2	18	5305-00-889-2999	96906	MS35206-217
2	19		80063	SM-C-413884-10
2	20		96906	MS15795-7
2	21		80063	SC-C-436076
2	22	5310-00-045-3299	96906	MS35338-42
2	23	5310-00-582-9176	80063	SM-C-413525-5
2	24	5945-01-062-5154	81349	M5757/1-026
2	25	5935-00-933-3752	80063	SM-B-104328
2	26	5310-00-209-0788	96906	MS35335-30
2	27	5305-00-984-4983	96906	MS35206-226
2	28	5950-00-883-8321	80063	SM-D-415279
2	29		80063	SM-E-415326
2	30		80063	SM-C-366087
2	31	5915-00-409-9094	80063	M5757/10-064
2	32	5945-01-169-7941	81349	M5757/7-003
2	1	5945-01-062-5153	81349	PB08NA01
3	2	5940-00-937-5237	81349	LP35223-27
3	3	5305-01-133-0155	03038	MS91525-2AP3SOZ
3	4	5355-00-656-1358	96906	SM-D-415289
3	5		80063	SM-D-415286
3	6	5930-00-886-9564	80063	SM-C-415292
3	7	5820-01-028-1954	80063	77-109-2
3	8		73135	174-8430-0112-20
3			96312	3
3	9		78189	1720-20
3	10	5930-00-889-5919	80063	SM-D-415285
3	11		80063	SM-C-988095

## CROSS-REFERENCE INDEXES

FIG.	ITEM	FIGURE AND ITEM NUMBER INDEX		PART NUMBER
		STOCK NUMBER	FSCM	
3	12	5305-00-990-8386	96906	MS35206-201
3	13	5930-00-889-5918	80063	SM-D-415284
3	14	5820-00-856-4762	80063	SM-D-415295
3	15		80063	SM-C-165925
3	16	5305-00-405-8960	96906	MS35223-13
3	17	5310-00-616-3554	96906	MS35335-29
3	18	5305-00-054-5651	96906	MS-51957-17
3	19		80063	SM-C-413884-10
3	20		96906	MS15795-7
3	21		80063	SC-C-436076
3	22	5310-00-045-3299	96906	MS35338-42
3	23	5310-00-582-9176	30655	F92-1660-40
3	24	5945-01-062-5154	81349	M5757/1-026
3	25		80063	SM-C-988092
3	26	5935-00-933-3752	99017	B-714
3	27	5310-00-209-0788	96906	MS35335-30
3	28	5305-00-984-4983	96906	MS35206-226
3	29		80063	SM-E-988098
3	30	5915-00-409-9094	80063	SM-C-366087
3	31		56623	BR8-600A17-F1-26
3	32	5945-01-062-5153	81349	M5757/7-003
4	1	5940-00-082-4622	80063	SM-C-415193
4	2		80063	SM-D-415249
4	3	5940-00-937-5237	81349	PB08NA01
4	4	5305-00-245-8836	80063	SM-C-414131-2
4	5	5310-00-853-9676	02615	S7892
4	6	5355-00-853-6384	80063	SM-C-414399
4	7		80063	SM-D-415244
4	8		80063	SM-B-104328
4	9	5935-00-933-3752	80063	SM-C-415243
4	10	5305-00-253-5609	96906	MS21318-13
4	11		88223	25TB6
4	12	5310-00-951-4679	96906	MS27183-3
4	13	5305-00-543-5058	96906	MS35265-16
4	14	5310-00-543-2410	96906	MS35338-40
4	15	5310-00-616-3554	96906	MS35335-29
4	16		79963	11B SPECIAL
4	17	5305-00-984-4982	96906	MS35206-225
4	18	5310-00-209-0788	96906	MS35335-30
4	19	5905-00-865-6301	80063	SM-D-415189
4	20		80063	SM-C-415192-1
4	21		96306	211ST1192-8
4	22	5975-00-548-6514	88044	AN3064-6
4	23	5330-00-579-7916	96906	MS28775-115
4	24	5820-01-028-1078	80063	SM-D-415254
4	25	5975-00-296-0534	88044	AN3066-6
4	26	5365-00-408-3126	80063	SM-B-415142-2
4	27	5310-00-530-0120	88044	AN3067W3
4	28	5975-00-295-9325	88044	AN3054-6
4	29		80063	SM-B-415256

## SECTION IV

## TM11-5830-340-23P

## CROSS-REFERENCE INDEXES

FIG.	ITEM	FIGURE AND ITEM NUMBER STOCK NUMBER	INDEX FSCM	PART NUMBER
4	30	5965-00-686-7067	81349	H207VRC
4	31	5820-00-886-3152	80063	SM-C-415198
5	1		80063	SM-D-415231
5	2		80063	SM-D-415237
5	3	5905-00-865-6301	80063	SM-D-415189
5	4	5935-00-933-3752	80063	SM-B-104328
5	5	5305-00-253-5609	96906	MS21318-13
5	6		80063	SM-C-415226
5	7		80063	SM-C-415192-1
5	8	5355-00-853-6384	80063	SM-C-414399
5	9	5310-00-853-9676	80063	SM-B-414395
5	10	5940-00-082-4622	80063	SM-C-415193
5	11	5820-00-886-3152	80063	SM-C-415198
5	12		80063	SM-D-415228
5	13	5905-00-865-5014	01121	GM1515
5	14	5305-00-984-4983	96906	MS35206-226
5	15	5305-00-984-4982	96906	MS35206-225
5	16	5310-00-209-0788	96906	MS35335-30
5	17	9905-01-146-5572	80063	SM-B-415154-1
5	18	5355-00-781-0319	96906	MS91525-3
5	19	5305-01-133-0155	03038	LP35223-27
5	20	5355-00-823-9809	80063	SM-D-415223
5	21		96312	203-0410-0112-92
6				2
6	1		80063	SM-C-415265
6	2		80063	SM-D-415189
6	3	5905-00-865-6301	80063	SM-B-104328
6	4	5935-00-933-3752	80063	SM-B-104328
6	5	5305-00-253-5609	96906	MS21318-13
6	6		80063	SM-C-415263
6	7	5355-00-853-6384	80063	SM-C-414399
6	8	5310-00-853-9676	80063	SM-B-414395
6	9		80063	SM-C-415192-1
6	10	5820-00-886-3152	80063	SM-C-415198
6	11	5820-01-028-2625	80063	SM-D-415270
6	12	5940-00-082-4622	80063	SM-C-415193
6	13	5305-00-984-4982	96906	MS35206-225
6	14	5310-00-209-0788	96906	MS35335-30
6	15		80063	SM-D-415272
6	16	5305-00-245-8836	80063	SM-C-414131-2
6	17	9905-01-146-5572	80063	SM-B-415154-1
6	18	5355-00-823-9809	80063	SM-D-415223
7	1		80063	SM-B-415262-1
7	2		56996	B4001091
7	3		56996	B4001095
7	4	5935-00-933-3752	80063	SM-B-104328
7	5	5305-00-253-5609	96906	MS21318-13
7	6		56996	B4001096
7	7	5355-00-853-6384	80063	SM-C-414399
7	8	5310-00-853-9676	02615	S7892
7	9	5935-01-260-2822	56996	B4001124
			80063	SM-C-415192-1

## SECTION IV

TM11-5830-340-23P

## CROSS-REFERENCE INDEXES

FIG .	ITEM	FIGURE AND ITEM NUMBER INDEX		PART NUMBER
		STOCK NUMBER	FSCM	
7	10	5820-00-886-3152	80063	SM-C-415198
7	11	5820-01-028-2625	80063	SM-D-415270
7	12		56996	B4001093
7	13	5310-00-880-7010	96906	MS21042L02
7	14	5305-00-245-8836	80063	SM-C-414131-2
7	15	5305-00-984-4984	96906	MS35206-227
7	16	9905-01-146-5572	80063	SM-B-415154-1
7	17	5355-00-823-9809	80063	SM-D-415223
7	18		80205	NAS1190-06P51
8	1		80063	SM-C-415265
8	2	5905-00-865-6301	80063	SM-D-415189
8	3	5935-00-933-3752	80063	SM-B-104328
8	4	5305-00-253-5609	96906	MS21318-13
8	5		80063	SM-C-988103
8	6	5355-00-853-6384	80063	SM-C-414399
8	7	5310-00-853-9676	02615	S7892
8	8		80063	SM-C-415192-1
8	9	5820-00-886-3152	80063	SM-C-615198
8	10	5820-01-028-2625	80063	SM-D-415270
8	11	5940-00-082-4622	80063	SM-C-415193
8	12	5305-00-984-4982	96906	MS35206-225
8	13	5310-00-209-0788	96906	MS35335-30
8	14		80063	SM-D-988106
8	15	5305-00-245-8836	80063	SM-C-414131-2
8	16	9905-01-146-5572	80063	SM-B-415154-1
8	17	5355-00-823-9809	80063	SM-D-415223
8	18	5305-01-133-0155	03038	LP35223-27
9	1		80063	SM-B-415322
9	2		80063	SM-B-400109-8
9	3		80063	SM-B-415268
9	4		80063	SM-B-415252
9	5		80063	SM-B-415234
9	6		80063	SM-B-415269
9	7		80063	SM-B-145269

By Order of the Secretary of the Army:

Official:

CARL E. VUONO  
*General, United States Army*  
*Chief of Staff*

R.L. DILWORTH  
*Brigadier General, United States Army*  
*The Adjutant General*

DISTRIBUTION :

To be distributed in accordance with DA Form 12-51 Unit and  
DS/GS requirements for AN/VI C-1 ( V ) .

\*U.S. GOVERNMENT PRINTING OFFICE: 1989- 612-085/00049



RECOMMENDED CHANGES TO EQUIPMENT TECHNICAL PUBLICATIONS



THEN... JOT DOWN THE DOPE ABOUT IT ON THIS FORM. CAREFULLY TEAR IT OUT. FOLD IT AND DROP IT IN THE MAIL!

SOMETHING WRONG WITH THIS PUBLICATION?

FROM (PRINT YOUR UNIT'S COMPLETE ADDRESS)  
 Commander  
 Stateside Army Depot  
 ATTN: AMSTA-US  
 Stateside, N.J. 07703-5007

DATE SENT  
 10 July 1975

PUBLICATION NUMBER TM 11-5840-340-20P	PUBLICATION DATE 23 Jan 78	PUBLICATION TITLE Radar Set AN/PRC-76
--	-------------------------------	--

BE EXACT PIN-POINT WHERE IT IS				IN THIS SPACE TELL WHAT IS WRONG AND WHAT SHOULD BE DONE ABOUT IT:
PAGE NO	PARA-GRAPH	FIGURE NO	TABLE NO	
33				For item 2, change the NSN to read: 5835-00-134-9186. Reason: Accuracy.
44		19		Identify the cover on the junction box (item no. 5). Reason: It is a separate item and is not called out on figure 19.
45				Add the cover of the junction box as an item in the listing for figure 19. Reason: Same as above

SAMPLE

PRINTED NAME, GRADE OR TITLE AND TELEPHONE NUMBER SSG I. M. DeSpirt of 999-1776	SIGN HERE 
--	---------------

TEAR ALONG PERFORATED LINE

RECOMMENDED CHANGES TO EQUIPMENT TECHNICAL PUBLICATIONS



THEN...JOT DOWN THE DOPE ABOUT IT ON THIS FORM. CAREFULLY TEAR IT OUT, FOLD IT AND DROP IT IN THE MAIL.

SOMETHING WRONG WITH THIS PUBLICATION?

FROM: (PRINT YOUR UNIT'S COMPLETE ADDRESS)

DATE SENT

PUBLICATION NUMBER

TM 11-5830-340-23P

PUBLICATION DATE

1 Nov 1988

PUBLICATION TITLE

Intercommunications  
Set AN/VIC-1(V)

BE EXACT PIN-POINT WHERE IT IS

PAGE NO.

PARA-GRAPH

FIGURE NO.

TABLE NO.

IN THIS SPACE TELL WHAT IS WRONG AND WHAT SHOULD BE DONE ABOUT IT:

TEAR ALONG PERFORATED LINE

PRINTED NAME GRADE OR TITLE AND TELEPHONE NUMBER

SIGN HERE

DA FORM 2028-2  
1 JUL 79

PREVIOUS EDITIONS ARE OBSOLETE

P.S.--IF YOUR OUTFIT WANTS TO KNOW ABOUT YOUR RECOMMENDATION MAKE A CARBON COPE OF THIS AND GIVE IT TO YOUR HEADQUARTERS.

FILL IN YOUR  
UNIT'S ADDRESS

FOLD BACK

DEPARTMENT OF THE ARMY

\_\_\_\_\_  
\_\_\_\_\_  
\_\_\_\_\_

OFFICIAL BUSINESS  
PENALTY FOR PRIVATE USE \$300

POSTAGE AND FEES PAID  
DEPARTMENT OF THE ARMY  
DOD 314



TEAR ALONG PERFORATED LINE

Commander  
US Army Communications-Electronics Command  
and Fort Monmouth  
ATTN: AMSEL-LC-ME-PS  
Fort Monmouth, New Jersey 07703-5000

# THE METRIC SYSTEM AND EQUIVALENTS

## WEIGHT MEASURE

1 Centimeter = 10 Millimeters = 0.01 Meters = 0.3937 Inches  
 1 Meter = 100 Centimeters = 1000 Millimeters = 39.37 Inches  
 1 Kilometer = 1000 Meters = 0.621 Miles

## WEIGHTS

1 Gram = 0.001 Kilograms = 1000 Milligrams = 0.035 Ounces  
 1 Kilogram = 1000 Grams = 2.2 lb.  
 1 Metric Ton = 1000 Kilograms = 1 Megagram = 1.1 Short Tons

## LIQUID MEASURE

1 Milliliter = 0.001 Liters = 0.0338 Fluid Ounces  
 1 Liter = 1000 Milliliters = 33.82 Fluid Ounces

## SQUARE MEASURE

1 Sq. Centimeter = 100 Sq. Millimeters = 0.155 Sq. Inches  
 1 Sq. Meter = 10,000 Sq. Centimeters = 10.76 Sq. Feet  
 1 Sq. Kilometer = 1,000,000 Sq. Meters = 0.386 Sq. Miles

## CUBIC MEASURE

1 Cu. Centimeter = 1000 Cu. Millimeters = 0.06 Cu. Inches  
 1 Cu. Meter = 1,000,000 Cu. Centimeters = 35.31 Cu. Feet

## TEMPERATURE

$5/9(^{\circ}\text{F} - 32) = ^{\circ}\text{C}$   
 212° Fahrenheit is equivalent to 100° Celsius  
 90° Fahrenheit is equivalent to 32.2° Celsius  
 32° Fahrenheit is equivalent to 0° Celsius  
 $9/5^{\circ}\text{C} + 32 = ^{\circ}\text{F}$

## APPROXIMATE CONVERSION FACTORS

TO CHANGE	TO	MULTIPLY BY
Inches	Centimeters	2.540
Feet	Meters	0.305
Yards	Meters	0.914
Miles	Kilometers	1.609
Square Inches	Square Centimeters	6.451
Square Feet	Square Meters	0.093
Square Yards	Square Meters	0.836
Square Miles	Square Kilometers	2.590
Acres	Square Hectometers	0.405
Cubic Feet	Cubic Meters	0.028
Cubic Yards	Cubic Meters	0.765
Fluid Ounces	Milliliters	29.573
its	Liters	0.473
arts	Liters	0.946
allons	Liters	3.785
Ounces	Grams	28.349
Pounds	Kilograms	0.454
Short Tons	Metric Tons	0.907
Pound-Feet	Newton-Meters	1.356
Pounds per Square Inch	Kilopascals	6.895
Miles per Gallon	Kilometers per Liter	0.425
Miles per Hour	Kilometers per Hour	1.609

TO CHANGE	TO	MULTIPLY BY
Centimeters	Inches	0.394
Meters	Feet	3.280
Meters	Yards	1.094
Kilometers	Miles	0.621
Square Centimeters	Square Inches	0.155
Square Meters	Square Feet	10.764
Square Meters	Square Yards	1.196
Square Kilometers	Square Miles	0.386
Square Hectometers	Acres	2.471
Cubic Meters	Cubic Feet	35.315
Cubic Meters	Cubic Yards	1.308
Milliliters	Fluid Ounces	0.034
Liters	Pints	2.113
Liters	Quarts	1.057
ers	Gallons	0.264
ms	Ounces	0.035
ograms	Pounds	2.205
Metric Tons	Short Tons	1.102
Newton-Meters	Pounds-Feet	0.738
Kilopascals	Pounds per Square Inch	0.145
ometers per Liter	Miles per Gallon	2.354
ometers per Hour	Miles per Hour	0.621



**PIN: 064791-000**