

TECHNICAL MANUAL

**ORGANIZATIONAL MAINTENANCE REPAIR PARTS
AND SPECIAL TOOLS LISTS**

FOR

**MULTIPLEXER TD-352/U
(NSN 5805-00-900-8199)**

Distribution authorized to the Department of Defense and DOD contractors only for official use or for administrative or operational purposes. This determination was made on 1 February 1991. Other requests for this document will be referred to Commander, US Army Communications-Electronics Command and Fort Monmouth, ATTN: AM-SEL-LC-LM-LT, Fort Monmouth, NJ 07703-5000.

DESTRUCTION NOTICE - Destroy by any method that will prevent disclosure of contents or reconstruction of the document.

HEADQUARTERS, DEPARTMENT OF THE ARMY
1 JULY 1991

Technical Manual

No. 11-5805-367-20P-3-1

HEADQUARTERS
DEPARTMENT OF THE ARMY
Washington, DC, 1 July 1991

**ORGANIZATIONAL SUPPORT
REPAIR PARTS AND SPECIAL TOOLS LIST
FOR
MULTIPLEXER TD-352/U
(NSN 5805-00-900-8199)**

Current as of 1 March 1991

REPORTING ERRORS AND RECOMMENDING IMPROVEMENTS

You can help improve this manual. If you find any mistakes or if you know of a way to improve the procedures, please let us know. Mail your letter, DA Form 2028 (Recommended Changes to Publications and Blank Forms), or DA Form 2028-2 located in back of this manual direct to: Commander, US Army Communications-Electronics Command and Fort Monmouth, ATTN: AMSEL-LC-LM-LT, Fort Monmouth, New Jersey 07703-5000. In either case, a reply will be furnished to you.

Table of Contents

Section		Page	Illus/ Figure
	I. Introduction	1	
	II. Repair Parts List.....	2-1	
Group	00 Multiplexer TD-352/U (No parts authorized)		
	Multiplexer TD-352/U, Panel	2-1	2
	Multiplexer TD-352/U, Chassis (No parts authorized)		
	Multiplexer TD-352/U, Front View Panel Removed (No parts authorized)		
	Multiplexer TD-352/U, Chassis	5-1	5
	Multiplexer TD-352/U, Section View (No parts authorized)		
	Multiplexer TD-352/U, Terminal Board Assembly, (No parts authorized)		
	01 Power Supply (2A1) (No parts authorized)		

*This manual supersedes TM 11-5805-367-20P-3-1, 1 June 1986.

Table of Contents-continued

		Page	Illus/ Figure	
Group	0101	Circuit Card Assembly (21A1) (No parts authorized)		
	0102	Circuit Card Assembly (21A2) (No parts authorized)		
	02	Power Supply (2A19).....	11-1	11
	03	Circuit Card Assembly (2A2) (No parts authorized)		
	04	Circuit Card Assembly (2A3) (No parts authorized)		
Section	III.	Special Tools List (Not applicable)		
	IV.	Cross-Reference Indexes		
		National Stock Number Index.....	I-1	
		Part Number Index	I-2	
	Figure and Item Number Index	I-3		

SECTION 1

INTRODUCTION

1. Scope

This manual lists and authorizes spares and repair parts; special tools; special test, measurement, and diagnostic equipment (TMDE); and other special support equipment required for performance of organizational maintenance of the TD-352/U. It authorizes the requisitioning, issue, and disposition of spares, repair parts and special tools as indicated by the source, maintenance and recoverability (SMR) codes.

2. General

This Repair Parts and Special Tools List is divided into the following sections:

a. Section II. Repair Parts List. A list of spares and repair parts authorized by this RPSTL for use in the performance of maintenance. The list also includes parts which must be removed for replacement of the authorized parts. Parts lists are composed of functional groups in ascending numeric sequence, with the parts in each group listed in ascending item number sequence. Figure numbers are listed directly beneath the group header.

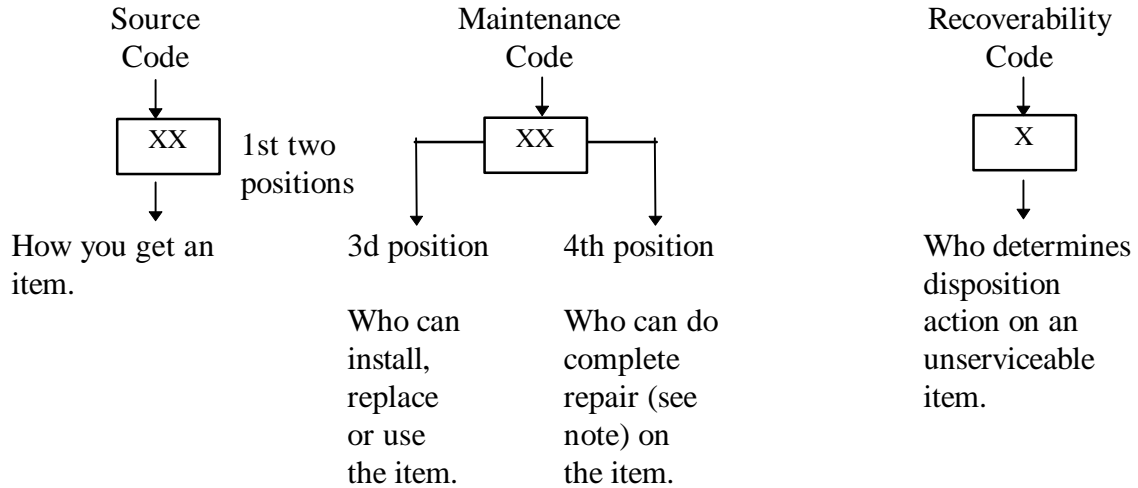
b. Section III. Special Tools List. Not applicable.

c. Section IV. Cross-Reference Indexes. A list, in National item identification number (NIIN) sequence, of all National stock numbered items appearing in the listing, followed by a list in alphanumeric sequence of all part numbers appearing in the listings. National stock numbers and part numbers are cross-referenced to each illustration figure and item number appearance. The figure number and item number index lists figure and item numbers in numeric sequence and cross-references National stock number, Federal Supply Code for Manufacturer and part numbers.

3. Explanation of Columns (Section II and III)

a. Item No. (Column (1)). Indicates the number used to identify items called out in the illustration.

b. SMR Code (Column (2)). The source, maintenance, and recoverability (SMR) code is a five-position code containing supply/requisitioning information, maintenance category authorization criteria, and disposition instruction, as shown in the following breakout:



NOTE

Complete repair: Maintenance capacity, capability, and authority to perform all corrective maintenance tasks of the repair function in a use/user environment in order to restore serviceability to a failed item.

(1) Source code. The source code tells you how to get an item needed for maintenance, repair, or overhaul of an end item/equipment. Explanations of source codes follows:

<u>Code</u>	<u>Explanation</u>
PA PB PC PD PE PF PG	Stocked items: use the applicable NSN to request/requisition items with these source codes. They are authorized to the category indicated by the code entered in the third position of the SMR code.

NOTE

Items coded PC are subject to deterioration.

KD KF KB	Items with these codes are not to be requested/requisitioned individually. They are part of a kit which is authorized to the maintenance category indicated in the third position of the SMR code. The complete kit must be requisitioned and applied.
----------------	--

<u>Code</u>	<u>Explanation</u>
<p>MO - Made at org/AVUM category</p> <p>MF - Made at DS/AVIM category</p> <p>MH - Made at GS category</p> <p>ML - Made at Specialized Repair Activity (SRA) Made at Depot</p>	<p>Items with these codes are not to be requested/requisitioned individually. They must be made from bulk material which is identified by the part number in the description and usable on code (UOC) column and listed in the Bulk Material group of the repair parts list. If the item is authorized to you by the third position code of the SMR code, but the source code indicates it is made at a higher category, order the item from the higher category of maintenance.</p>
<p>AO - Assembled by or/AVUM category</p> <p>AF - Assembled by DS/AVIM category</p> <p>AH - Assembled by GS category</p> <p>AL - Assembled by SRA</p> <p>AD - Assembled by Depot</p>	<p>Items with these codes are not to be requested/requisitioned individually. The parts that make up the assembled item must be requisitioned or fabricated and assembled at the category of maintenance indicated by the source code. If the third position code of the SMR code authorizes you to replace the item, but the source code indicates the item is assembled at a higher category, order the item from the higher category of maintenance.</p>

<u>Code</u>	<u>Explanation</u>
<p>XA -</p> <p>XB -</p> <p>XC -</p> <p>XD -</p>	<p>Do not requisition an "XA" coded item. Order its next higher assembly.</p> <p>If an "XB" item is not available from salvage, order it using the FSCM and part number given.</p> <p>Installation drawing, diagram, instruction sheet, field service drawing, that is identified by manufacturer's part number.</p> <p>Item is not stocked. Order an "XD" coded item through normal supply channels using the FSCM and part number given, if no NSN is available.</p>

NOTE

Cannibalization or controlled exchange, when authorized, may be used as a source of supply for items with the above source codes, except for those source coded "XA" or those aircraft support items restricted by requirements of AR 750-1.

(2) Maintenance code. Maintenance codes tell you the category of maintenance authorized to USE and REPAIR support items. The maintenance codes are entered in the third and fourth positions of the SMR code as follows:

(a) The maintenance code entered in the third position tells you the lowest maintenance category authorized to remove, replace, and use an item. The maintenance code entered in the third position will indicate authorization to one of the following categories of maintenance.

<u>Code</u>	<u>Application/Explanation</u>
C -	Crew or operator maintenance done within organizational or aviation maintenance.
O -	Organizational or aviation unit category can remove, replace, and use the item.
F -	Direct support or aviation intermediate category can remove, replace, and use the item.
H -	General support category can remove, replace, and use the item.
L -	Specialized repair activity can remove, replace, and use the item.
D -	Depot category can remove, replace, and use the item.

(b) The maintenance code entered in the fourth position tells whether or not the item is to be repaired and identifies the lowest maintenance category with the capability to do complete repair (i.e., perform all authorized repair functions). This position will contain one of the following maintenance codes.

NOTE

Some limited repair may be done on the item at a lower category of maintenance, if authorized by the Maintenance Allocation Chart (MAC) and SMR codes.

<u>Code</u>	<u>Application/Explanation</u>
O -	Organizational or aviation unit is the lowest category that can do complete repair of the item.
F -	Direct support or aviation intermediate is the lowest category that can do complete repair of the item.
H -	General support is the lowest category that can do complete repair of the item.
L -	Specialized repair activity (designate the specialized repair activity) is the lowest category that can do complete repair of the item.
D -	Depot is the lowest category that can do complete repair of the item.

<u>Code</u>	<u>Application/Explanation</u>
Z -	Nonreparable. No repair is authorized.
B -	No repair is authorized. (No parts or special tools are authorized for the maintenance of a B coded item.) However, the item may be reconditioned by adjusting, lubricating, etc., at the user category.

(3) Recoverability code. Recoverability codes are assigned to items to indicate the disposition action on unserviceable items. The recoverability code is entered in the fifth position of the SMR Code as follows:

<u>Recoverability codes</u>	<u>Application/Explanation</u>
Z -	Nonreparable item. When unserviceable, condemn and dispose of the item at the category of maintenance shown in the third position of SMR code.
O -	Reparable item. When uneconomically repairable, condemn and dispose of the item at organizational or aviation unit category.
F -	Reparable item. When uneconomically repairable, condemn and dispose of the item at direct support or aviation intermediate category.
H -	Reparable item. When uneconomically repairable, condemn and dispose of the item at general support category.
D -	Reparable item. When beyond lower category repair capability return to depot. Condemnation and disposal of item not authorized below depot category.
L -	Reparable item. Condemnation and disposal not authorized below specialized repair activity (SRA).
A -	Item requires special handling or condemnation procedures because of specific reasons (e.g., precious metal content, high dollar value, critical material, or hazardous material). Refer appropriate manuals/directives for specific instructions.

c. FSCM (Column (3)). The Federal Supply Code for Manufacturer (FSCM) is a 5-digit numeric code which is used to identify the manufacturer, distributor, or Government agency, etc., that supplies the item.

d. Part Number (Column (4)). Indicates the primary number used by the manufacturer (individual, company, firm, corporation, or Government activity), which controls the design and characteristics of the item by means of its engineering drawings, specifications, standards, and inspection requirements to identify an item or range of items.

NOTE

When you use an NSN to requisition an item, the item you receive may have a different part number from the part ordered.

e. Description and Usable on Code (UOC) (Column (5)). This column includes the following information.

(1) The Federal item name and, when required, a minimum description to identify the item.

(2) The statement END OF FIGURE appears just below the last item description in Column (5) for a given figure in both section II and section III.

f. Qty (Column (6)). Indicates the quantity of the item used in the breakout shown on the illustration figure, which is prepared for a functional group, subfunctional group, or an assembly. A "V" appearing in this column in lieu of a quantity indicates that the quantity is variable and the quantity may vary from application to application.

4. Explanation of Columns (Section IV)

a. National Stock Number (NSN) Index.

(1) Stock number column. This column lists the NSN by National item identification number (NIIN) sequence. The NIIN consists of the last nine digits of the NSN. When using this column to locate an item, ignore the first four digits of the NSN. When requisitioning items use the complete NSN (13 digits).

(2) Fig. column. This column lists the number of the figure where the item is identified/located. The illustrations are in numerical sequence in sections II and III.

(3) Item column. The item number identifies the item associated with the figure listed in the adjacent Fig. column. This item is also identified by the NSN listed on the same line.

b. Part Number Index. Part numbers in this index are listed by part number in ascending alphanumeric sequence.

(1) FSCM column. This column lists the Federal Supply Code for Manufacturer (FSCM).

(2) Part number column. This column indicates the part number assigned to the item.

(3) Stock number column. This column lists the National stock number for the associated part number and manufacturer identified in the part number and FSCM columns to the left.

(4) Fig. column. This column lists the number of the figure where the item is identified/located in sections II and III.

(5) Item column. The item number is that number assigned to the item as it appears in the figure referenced in the adjacent figure number column.

c. Figure and Item Number Index.

(1) Fig. column. This column lists the number of the figure where the item is identified/located in sections II and III.

(2) Item column. The item number is that number assigned to the item as it appears in the figure referenced in the adjacent figure number column.

(3) Stock number column. This column lists the National stock number for the item.

(4) FSCM column. The Federal Supply Code for Manufacturer (FSCM) is a 5-digit numeric code used to identify the manufacturer, distributor, or Government agency, etc., that supplies the item.

(5) Part number column. Indicates the primary number used by the manufacturer (individual, firm, corporation, or Government activity), which controls the design and characteristics of the item by means of its engineering drawings, specifications, standards, and inspection requirements to identify an item or range of item.

5. Special Information

a. Associated Publications. The publications listed below pertain to the TD-352/U and its components:

TM 11-5805-367-12, Multiplexers TD-202/U, TD-203/U, TD-204/U, TD-352/U, and TD-353/U, Restorer, Pulse Form, TD-206/U and Converter, Telephone Signal CV-1548/G and CV-1548A/G
 TM 11-5805-367-35/3, Multiplexers TD-352/U and TD-353/U

b. Illustrations - Listing. The illustrations in this RPSTL are identical to those published in TM 11-5805-367-34P-3-1. Only those parts coded "C" or "O" in the third position of the SMR code are listed in the tabular listing; therefore, there may be a break in the item number sequence, figure number and page number. Only illustrations containing organizational or aviation unit authorized items appear in this RPSTL.

b. National Stock Numbers. National stock numbers (NSN's) that are missing from P source coded items have been applied for and will be added to this TM by future change/revision when they are entered in the Army Master Data File (AMDF). Until the NSN's are established and published, submit exception requisitions to: Commander, US Army Communications-Electronics Command and Fort Monmouth, ATTN: AMSEL-LC-MM, Fort Monmouth, New Jersey 07703-5000 for the part required to support your equipment.

6. How to Locate Repair Parts

a. When National stock number or part number is not known.

(1) First. Using the table of contents, determine the assembly group or subassembly group to which the item belongs. This is necessary since figures are prepared for assembly groups and subassembly groups, and listings are divided into the same groups.

(2) Second. Find the figure covering the assembly group or subassembly group to which the item belongs.

(3) Third. Identify the item on the figure and note the item number.

(4) Fourth. Refer to the Repair Parts List for the figure to find the part number for the item number noted on the figure.

(5) Fifth. Refer to the Part Number Index to find the NSN, if assigned.

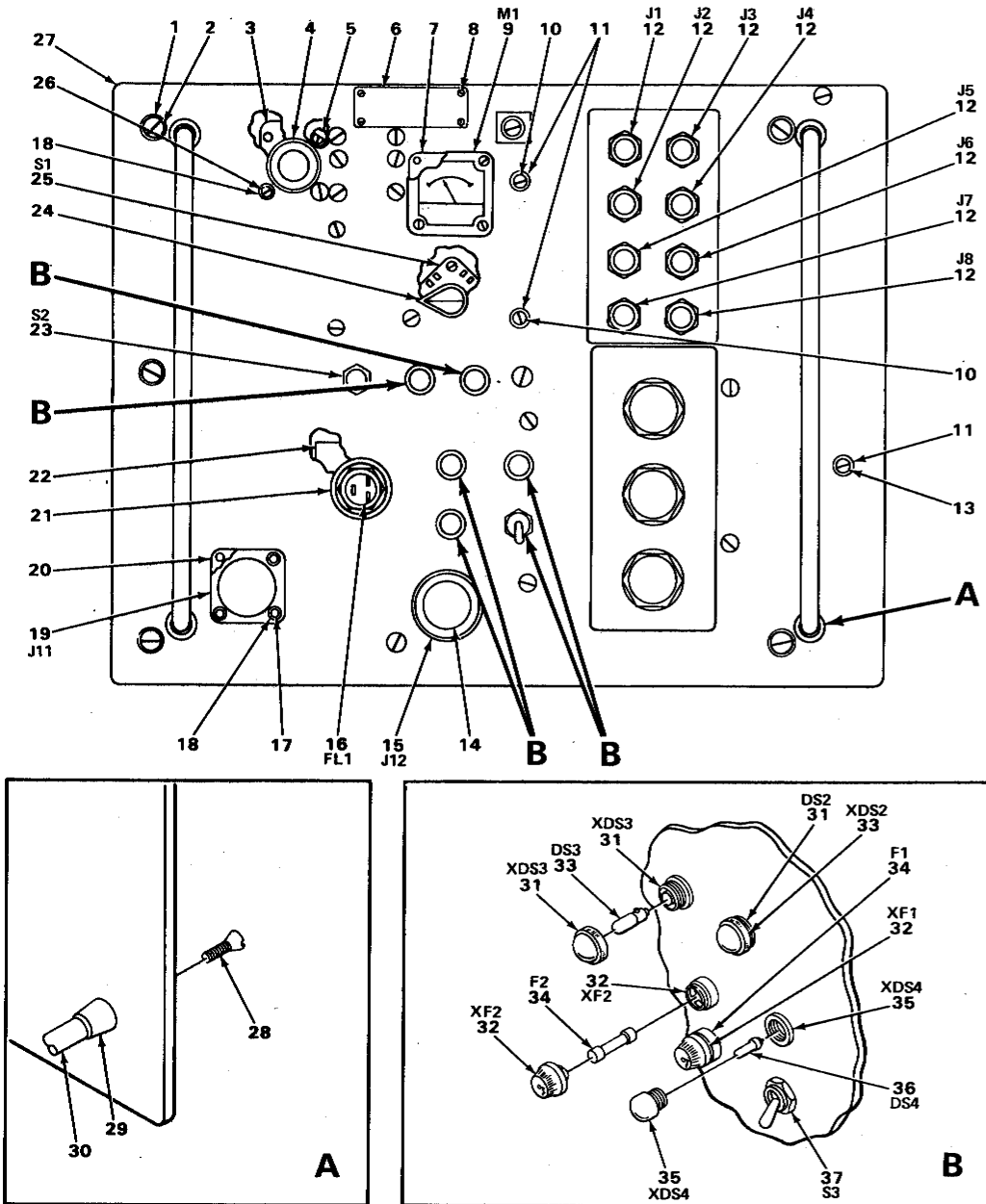
b. When National stock number or part number is known.

(1) First. Using the index of National stock numbers and part numbers, find the pertinent National stock number or part number. The NSN index is in National item identification number (NIIN) sequence (pare 4a(1)). The part numbers in the part number index are listed in ascending alphanumeric sequence (pare 4b). Both indexes cross-reference you to the illustration figure and item number of the item you are looking for.

(2) Second. After finding the figure and item number, verify that the item is the one you're looking for, then locate the item number in the repair parts list for the figure.

7. Abbreviations

Not applicable.



EL3WH042

Figure 2. Multiplexer TD-352/U, Panel

SECTION II

TM 11-5805-367-20P-3-1

(1) ITEM NO	(2) SMR CODE	(3) FSCM	(4) PART NUMBER	(5) DESCRIPTION AND USABLE ON CODES (UOC)	(6) QTY
GROUP 00 MULTIPLEXER TD-352/U PANEL					
FIGURE 2					
24	PAOZZ	96906	MS91528-1K2B	KNOB	1
31	PAOZZ	90063	SM-B-526677	LIGHT, INDICATOR	2
32	PAOZZ	81349	FHN20G	FUSEHOLDER, EXTRACTO	REF
33	PAOZZ	96906	MS25237-327	LAMP, INCANDESCENT	2
34	PAOZZ	81349	F02B250V3A	FUSE, CARTRIDGE	2
35	PAOZZ	80063	SM-B-528524	LIGHT INDICATOR	1
36	PAOSS	81349	M15098/11-001	LAMP, GLOW	1

END OF FIGURE

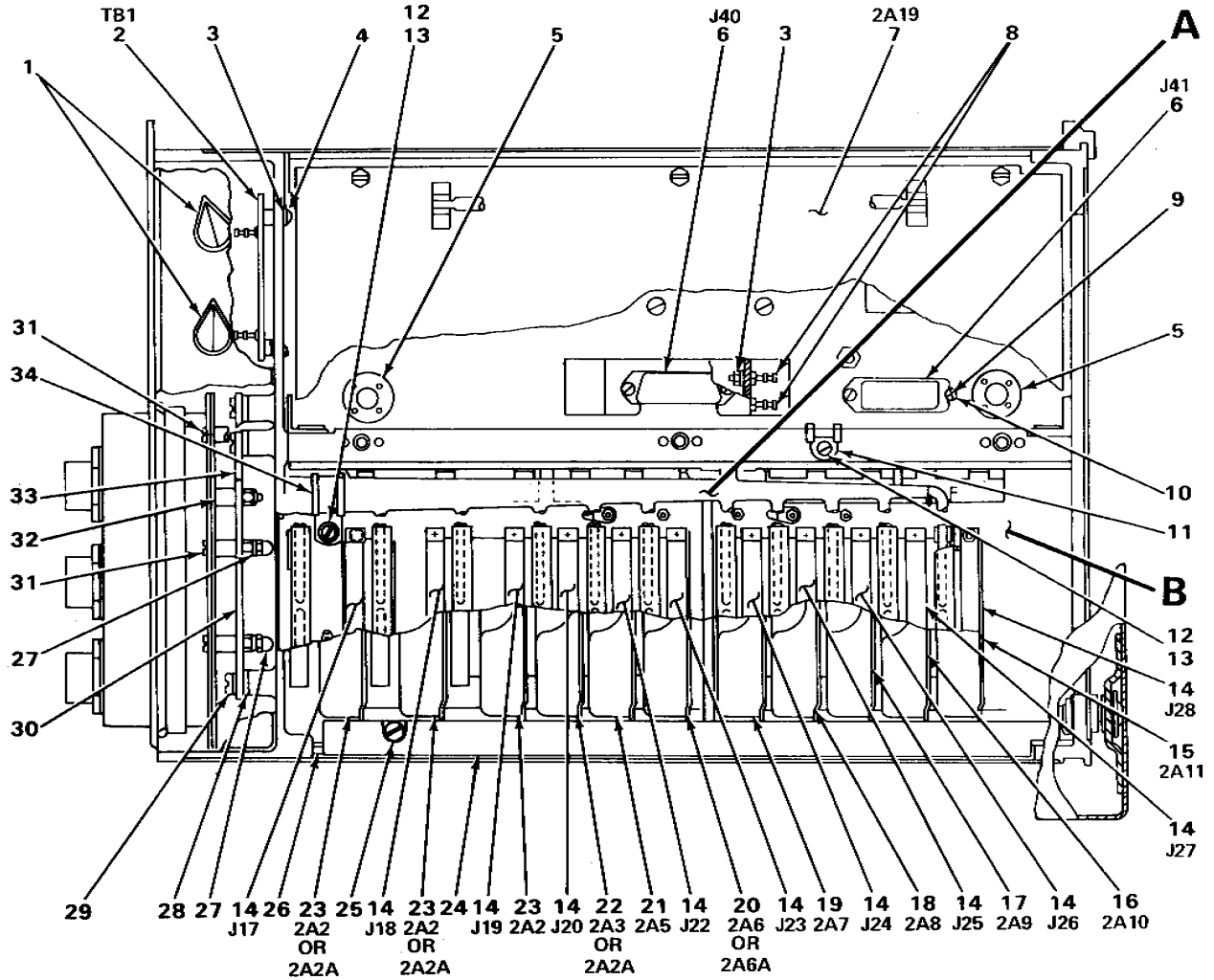
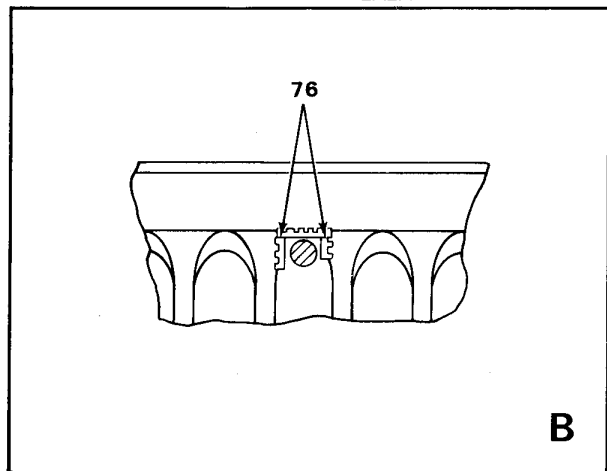
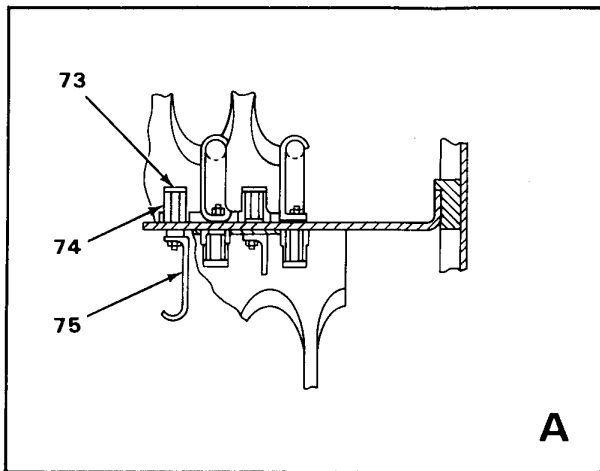
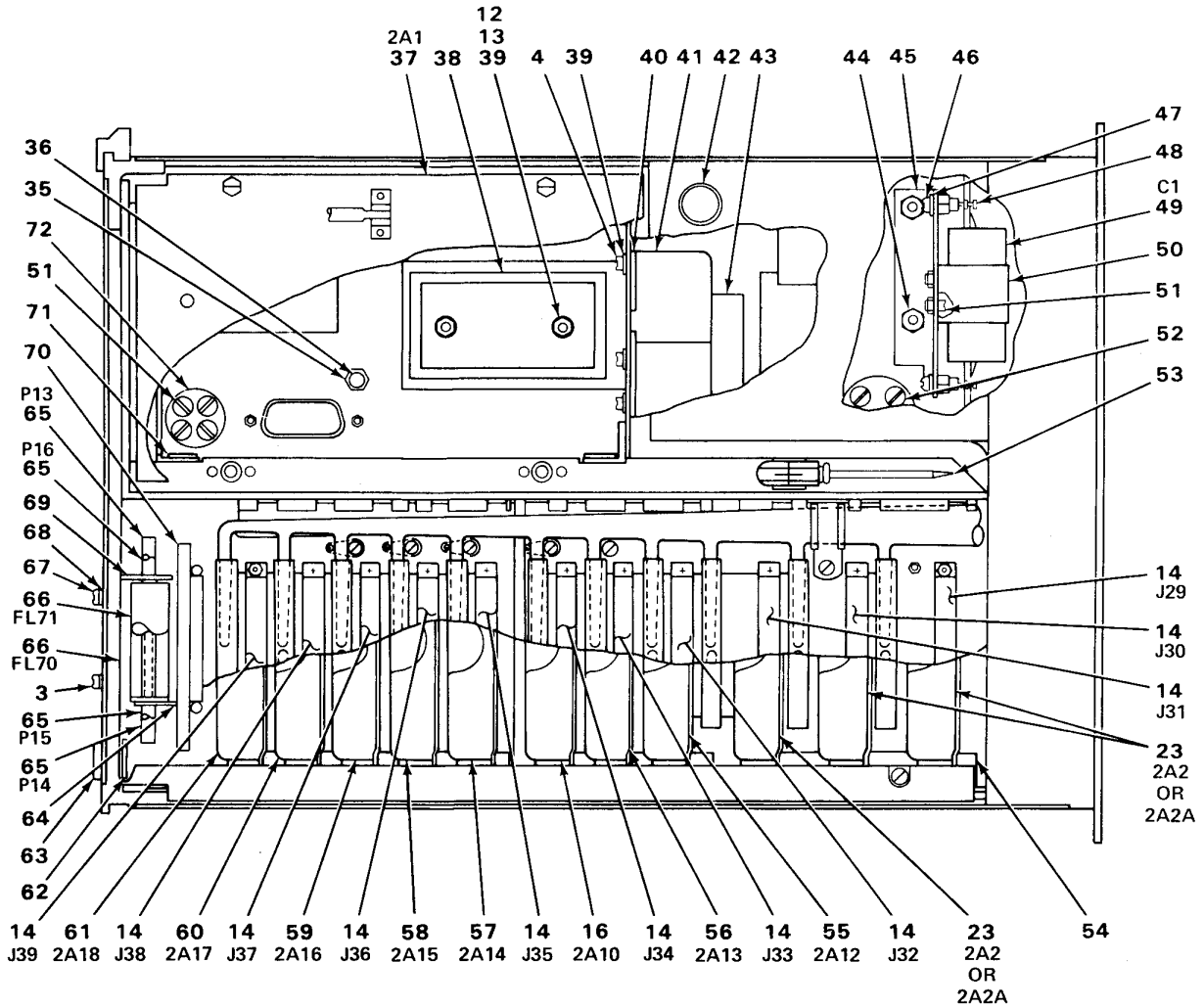


Figure 5. Multiplexer TD-352/U, Chassis (Sheet 1 of 2)



EL3WH046

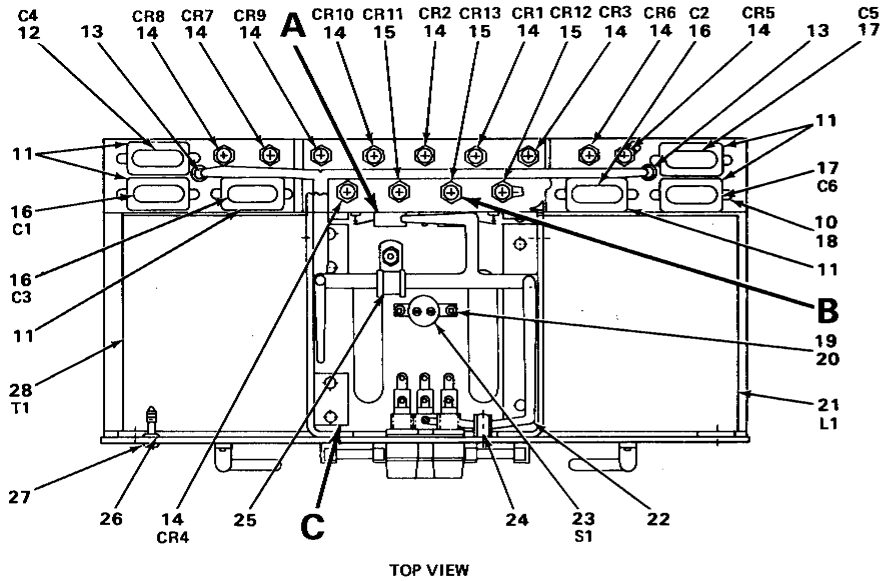
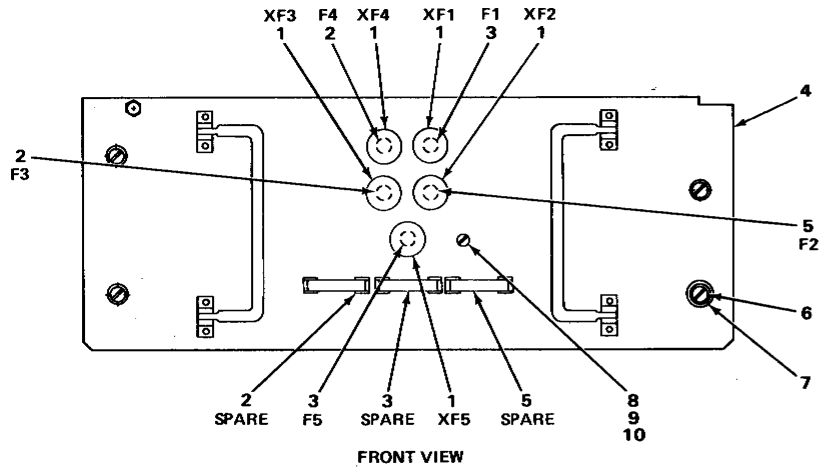
Figure 5. Multiplexer TD-352/U, Chassis (Sheet 2 of 2)

SECTION II

TM 11-5805-367-20P-3-1

(1) ITEM NO	(2) SMR NO	(3) CAGEC	(4) PART NUMBER	(5) DESCRIPTION AND USABLE ON CODES (UOC)	(6) QTY
				GROUP 00 MULTIPLEXER TD-352/U CHASSIS	
				FIGURE 5	
7	PAODD	80063	SME526587	POWER SUPPLY	1.....
15	PAODD	80063	SM-D-526548	MULTIPLEXER SUBASSE	1.....
16	PAODD	80063	SM-D-526569	MULTIPLEXER SUBASSE	2.....
17	PAODD	80063	SMD526566	MULTIPLEXER SUBASSE	1.....
18	PAODD	80063	SM-D-526563	MULTIPLEXER SUBASSE	1.....
19	PAODD	80063	SM-D-526560	MULTIPLEXER SUBASSE	1.....
20	PAODD	80063	A3010745	PANEL ASSEMBLY .2A6, GERMANIUM.....	1.....
20	PAOLL	80063	A3010745	PANEL ASSEMBLY .2A6A SILICONIZED	1.....
21	PAODD	80063	SM-D-526557	MULTIPLEXER SUBASSE	1.....
22	PAODD	80063	SMD526539	MULTIPLEXER SUBASSE	1.....
23	PAODD	80063	A3043529	PANEL ASSEMBLY .282, GERMANIUM	6.....
23	PAOZZ	80063	A3043529	PANEL ASSEMBLY 2A2A, SILICONIZED	1.....
37	PAODD	80063	SME526530	POWER SUPPLY	1.....
55	PAODD	80063	SCDL526754	MULTIPLEXER SUBASSE	1.....
56	PAODD	80063	SC-D-L526762	MULTIPLEXER SUBASSE	1.....
57	PAODD	80063	SM-D-526554	MULTIPLEXER SUBASSE	1.....
58	PAODD	80063	SMD526575	MULTIPLEXER SUBASSE	1.....
59	PAODD	80063	SM-D-526584	MULTIPLEXER SUBASSE	1.....
60	PAODD	80063	SMD526578	MULTIPLEXER SUBASSE	1.....
61	PAODD	80063	SM-D-526581	MULTIPLEXER SUBASSE	1.....

END OF FIGURE



NOTE:
 PREFIX ALL REFERENCE
 DESIGNATIONS WITH 2A19.

EL3WH007

Figure 11. Power Supply ((2A19))

SECTION II

TM 11-5805-367-20P-3-1

(1) ITEM NO	(2) SMR CODE	(3) FSCM	(4) PART NUMBER	(5) DESCRIPTION AND USABLE ON CODES (UOC)	(6) QTY
				GROUP 02 POWER SUPPLY (2A2)	
				FIGURE 11	
2	PAOZZ	81349	F02A250V2A	FUSE, CARTRIDGE.....	3.....
5	PAOZZ	81349	F02A250V05A	FUSE, CARTRIDGE.....	2.....

END OF FIGURE

CROSS-REFERENCE INDEXES

STOCK NUMBER	NATIONAL STOCK NUMBER INDEX		STOCK NUMBER	FIG.	ITEM
	FIG.	ITEM			
6240-00-155-7836	2	33			
5920-00-280-4960	11	2			
5920-00-284-6787	11	5			
5920-00-556-0144	2	3			
5355-00-556-0145	2	24			
6210-00-583-3329	2	35			
6210-00-617-1551	2	31			
6240-00-892-4420	2	36			
6130-00-914-5770	5	37			
5805-00-916-5963	5	17			
5805-00-916-5964	5	61			
5805-00-926-7287	5	60			
5805-00-944-8144	5	21			
5805-00-944-8885	5	58			
5805-00-944-8942	5	22			
5805-00-945-1075	5	15			
5805-00-945-1094	5	16			
5805-00-945-1121	5	57			
5805-00-945-1130	5	55			
5805-00-945-1180	5	19			
5805-00-945-3824	5	18			
6130-00-947-3383	5	7			
5805-00-974-9941	5	59			
5920-01-028-5727	2	34			
5805-01-184-6893	5	20			
	5				
5805-01-187-0197	5	23			
	5	23			
	12	30			

CROSS-REFERENCE INDEXES

CAGEC	PART NUMBER	PART NUMBER INDEX		FIG.	ITEM
			STOCK NUMBER		
80063	A3010745	5805-01-184-6893		5	20
				5	20
80063	A3043529	5805-01-187-0197		5	23
				5	23
				12	30
81349	FHN20G	5920-00-556-0144		2	32
81349	F02A250V2A	5920-00-280-4960		11	2
81349	F02A250V5A	5920-00-284-6787		11	5
81349	F02B250V3A	5920-01-5727		2	34
96906	MS25237-327	6240-00-155-7836		2	33
96906	MS91528-1K2B	5355-00-556-0145		2	24
81349	M15098/11-001	6240-00-892-4420		2	36
80063	SC-D-L526762			5	56
80063	SCDL526754	5805-00-945-1130		5	55
81349	SM-B-526508-5			24	14
80063	SM-B-526677	6210-00-617-1551		2	31
80063	SM-B-528524	6210-00-583-3329		2	35
80063	SM-D-526548	5805-00-945-1075		5	15
80063	SM-D-526554	5805-00-945-1121		5	57
80063	SM-D-526557	5805-00-944-8144		5	21
80063	SM-D-526560	5805-00-945-1180		5	19
80063	SM-D-526563	5805-00-945-3824		5	18
80063	SM-D-526569	5805-00-945-1094		5	16
80063	SM-D-526581	5805-00-916-5964		5	61
80063	SM-D-526584	5805-00-974-9941		5	59
80063	SMD526539	5805-00-944-8942		5	22
80063	SMD526566	5805-00-916-5963		5	17
80063	SMD526575	5805-00-944-8885		5	58
80063	SMD526578	5805-00-926-7287		5	60
80063	SME526530	6130-00-914-5770		5	37
80063	SME526587	6130-00-947-3383		5	7

CROSS-REFERENCE INDEXES

FIG.	ITEM	FIGURE AND ITEM NUMBER INDEX		PART NUMBER
		STOCK NUMBER	CAGEC	
2	24	5355-00-556-0145	96906	MS91528-1K2B
2	31	6210-00-617-1551	80063	SM-B-526677
2	32	5920-00-556-0144	81349	FHN20G
2	33	6240-00-155-7836	96906	MS25237-327
2	34	5920-01-028-5727	81349	F02B250V3A
2	35	6210-00-583-3329	80063	SM-B-528524
2	36	6240-00-892-4420	81349	M15098/11-001
5	7	6130-00-947-3383	80063	SME526587
5	15	5805-00-945-1075	80063	SM-D-526548
5	16	5805-00-945-1094	80063	SM-D-526569
5	17	5805-916-5963	80063	SMD526566
5	18	5805-00-945-3824	80063	SM-D-526563
5	19	5805-00-945-1180	80063	SM-D-526560
5	20	5805-01-184-6893	80063	A3010745
5	20	5805-01-184-6893	80063	A3010745
5	21	5805-00-944-8144	80063	SM-D-526557
5	22	5805-00-944-8942	80063	SMD526539
5	23	5805-01-187-0197	80063	A3043529
5	23	5805-01-187-0197	80063	A3043529
5	37	6130-00-914-5770	80063	SME526530
5	55	5805-00-945-1130	80063	SCDL526754
5	56		80063	SC-D-L526762
5	57	5805-00-945-1121	80063	SM-D-526554
5	58	5805-00-944-8885	80063	SMD526575
5	59	5805-00-974-9941	80063	SM-D-526584
5	60	5805-00-926-7287	80063	SMD526578
5	61	5805-00-916-5964	80063	SM-D-526581
11	2	5920-00-280-4960	81349	F02A250V2A
11	5	5920-00-284-6787	81349	F20A250V5A
12	30	5805-01-187-0197	80063	A3045329
24	14		81349	SM-B-526508-5

By Order of the Secretary of the Army:

CARL E. VUONO
General, United States Army
Chief of Staff

Official:

PATRICIA P. HICKERSON
Colonel, United States Army
The Adjutant General

DISTRIBUTION:

To be distributed in accordance with DA Form 12-51-E, block 0516,
Unit and Direct Support/General Support maintenance requirements for
TM 11-5805-367-20P-3-1.

RECOMMENDED CHANGES TO EQUIPMENT TECHNICAL PUBLICATIONS



*THEN...JOT DOWN THE
DOPE ABOUT IT ON THIS FORM.
CAREFULLY TEAR IT OUT, FOLD IT
AND DROP IT IN THE MAIL.*

SOMETHING WRONG WITH PUBLICATION

FROM: (PRINT YOUR UNIT'S COMPLETE ADDRESS)

DATE SENT

PUBLICATION NUMBER
TM 11-5805-367-20P-3-1

PUBLICATION DATE
1 July 1991

PUBLICATION TITLE
Multiplexer TD-352/U

BE EXACT PIN-POINT WHERE IT IS

PAGE NO.	PARA-GRAPH	FIGURE NO.	TABLE NO.

IN THIS SPACE, TELL WHAT IS WRONG AND WHAT SHOULD BE DONE ABOUT IT.

TEAR ALONG PERFORATED LINE

PRINTED NAME, GRADE OR TITLE AND TELEPHONE NUMBER

SIGN HERE

DA FORM 1 JUL 79 **2028-2**

PREVIOUS EDITIONS ARE OBSOLETE.

P.S.--IF YOUR OUTFIT WANTS TO KNOW ABOUT YOUR RECOMMENDATION MAKE A CARBON COPY OF THIS AND GIVE IT TO YOUR HEADQUARTERS.

THE METRIC SYSTEM AND EQUIVALENTS

WEIGHT MEASURE

1 Centimeter = 10 Millimeters = 0.01 Meters = 0.3937 Inches
 1 Meter = 100 Centimeters = 1000 Millimeters = 39.37 Inches
 1 Kilometer = 1000 Meters = 0.621 Miles

WEIGHTS

1 Gram = 0.001 Kilograms = 1000 Milligrams = 0.035 Ounces
 1 Kilogram = 1000 Grams = 2.2 lb.
 1 Metric Ton = 1000 Kilograms = 1 Megagram = 1.1 Short Tons

LIQUID MEASURE

1 Milliliter = 0.001 Liters = 0.0338 Fluid Ounces
 1 Liter = 1000 Milliliters = 33.82 Fluid Ounces

SQUARE MEASURE

1 Sq. Centimeter = 100 Sq. Millimeters = 0.155 Sq. Inches
 1 Sq. Meter = 10,000 Sq. Centimeters = 10.76 Sq. Feet
 1 Sq. Kilometer = 1,000,000 Sq. Meters = 0.386 Sq. Miles

CUBIC MEASURE

1 Cu. Centimeter = 1000 Cu. Millimeters = 0.06 Cu. Inches
 1 Cu. Meter = 1,000,000 Cu. Centimeters = 35.31 Cu. Feet

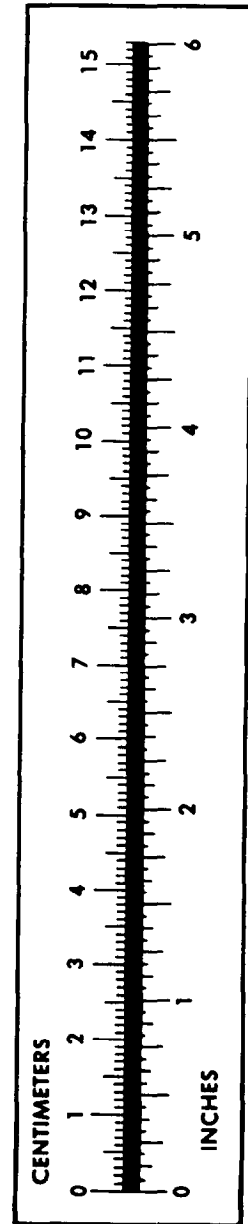
TEMPERATURE

$5/9(^{\circ}\text{F} - 32) = ^{\circ}\text{C}$
 212° Fahrenheit is equivalent to 100° Celsius
 90° Fahrenheit is equivalent to 32.2° Celsius
 32° Fahrenheit is equivalent to 0° Celsius
 $9/5^{\circ}\text{C} + 32 = ^{\circ}\text{F}$

APPROXIMATE CONVERSION FACTORS

TO CHANGE	TO	MULTIPLY BY
Inches	Centimeters	2.540
Feet	Meters	0.305
Yards	Meters	0.914
Miles	Kilometers	1.609
Square Inches	Square Centimeters	6.451
Square Feet	Square Meters	0.093
Square Yards	Square Meters	0.836
Square Miles	Square Kilometers	2.590
Acres	Square Hectometers	0.405
Cubic Feet	Cubic Meters	0.028
Cubic Yards	Cubic Meters	0.765
Fluid Ounces	Milliliters	29.573
its	Liters	0.473
arts	Liters	0.946
allons	Liters	3.785
Ounces	Grams	28.349
Pounds	Kilograms	0.454
Short Tons	Metric Tons	0.907
Pound-Feet	Newton-Meters	1.356
Pounds per Square Inch	Kilopascals	6.895
Miles per Gallon	Kilometers per Liter	0.425
Miles per Hour	Kilometers per Hour	1.609

TO CHANGE	TO	MULTIPLY BY
Centimeters	Inches	0.394
Meters	Feet	3.280
Meters	Yards	1.094
Kilometers	Miles	0.621
Square Centimeters	Square Inches	0.155
Square Meters	Square Feet	10.764
Square Meters	Square Yards	1.196
Square Kilometers	Square Miles	0.386
Square Hectometers	Acres	2.471
Cubic Meters	Cubic Feet	35.315
Cubic Meters	Cubic Yards	1.308
Milliliters	Fluid Ounces	0.034
Liters	Pints	2.113
Liters	Quarts	1.057
ers	Gallons	0.264
ms	Ounces	0.035
ograms	Pounds	2.205
Metric Tons	Short Tons	1.102
Newton-Meters	Pounds-Feet	0.738
Kilopascals	Pounds per Square Inch	0.145
ometers per Liter	Miles per Gallon	2.354
ometers per Hour	Miles per Hour	0.621



PIN: 033795-000