

## TECHNICAL MANUAL

# ORGANIZATIONAL, DIRECT SUPPORT AND GENERAL SUPPORT MAINTENANCE REPAIR PARTS AND SPECIAL TOOLS LIST (INCLUDING DEPOT MAINTENANCE REPAIR PARTS AND SPECIAL TOOLS)

FOR  
COUNTER, ELECTRONIC  
TD-1225A(V)1/U  
(NSN 6625-01-103-2958) (EIC: KR4)  
AND  
COUNTER, ELECTRONIC  
TD-1225A(V)2/U  
(NSN 6625-01-121-6934) (EIC: KR5)

**WARNING** – This document contains technical data whose export is restricted by the Arms Export Control Act (Title 22, U. S. C., Sec 2751 et seq) or the Export Administration Act of 1979, as amended, Title 50, U.S.C., App. 2401 et seq.. Violations of these export laws are subject to severe criminal penalties. Disseminate in accordance with provisions of DOD Directive 5230.25.

**DISTRIBUTION STATEMENT D** – Distribution authorized to Department of Defense and DoD contractors only to protect critical technical data on systems or hardware. This determination was made Oct 1986. Other requests shall be referred to: Program Manager, TMDE, ATTN: SFAE-CS-FT-T-TEMOD, Redstone Arsenal, AL 35898-5000.

**DESTRUCTION NOTICE** – Destroy by any method that will prevent disclosure of contents or reconstruction of the document.

\*THIS MANUAL SUPERSEDES TM 11-6625-3014-24P, DATED 21 JUNE 1984.

---

HEADQUARTERS, DEPARTMENT OF THE ARMY  
15 AUGUST 1987



CHANGE }  
No. 2 }

Headquarters  
Department of the Army  
Washington, D.C., 7 May 2007

**ORGANIZATIONAL, DIRECT SUPPORT AND GENERAL SUPPORT  
MAINTENANCE REPAIR PARTS AND SPECIAL TOOLS LIST  
(INCLUDING DEPOT MAINTENANCE REPAIR PARTS AND SPECIAL TOOLS)**

**FOR**

**COUNTER, ELECTRONIC TD-1225A(V)1/U  
(NSN 6625-01-103-2958) (EIC: KR4)**

**AND**

**COUNTER, ELECTRONIC TD-1225A(V)2/U  
(NSN 6625-01-121-6934) (EIC: KR5)**

**HAZARDOUS MATERIAL INFORMATION** – This document has been reviewed for the presence of solvents containing hazardous materials as defined by the EPCRA 302 and 313 lists by the Engineering, Environment, and Logistics Oversight Office. As of the base document through Change 1, dated 1 April 1989, all references to solvents containing hazardous materials have been removed from this document by substitution with non-hazardous or less-hazardous materials where possible.

**OZONE DEPLETING CHEMICAL INFORMATION** – This document has been reviewed for the presence of Class I ozone depleting chemicals by the Engineering, Environment, and Logistics Oversight Office. As of the base document through Change 1, dated 1 April 1989, all references to Class I ozone depleting chemicals have been removed from this document by substitution with chemicals that do not cause atmospheric ozone depletion.

**WARNING** – This document contains technical data whose export is restricted by the Arms Export Control Act (Title 22, U. S. C., Sec 2751 et seq) or the Export Administration Act of 1979, as amended, Title 50, U.S.C., App. 2401 et seq.. Violations of these export laws are subject to severe criminal penalties. Disseminate in accordance with provisions of DOD Directive 5230.25.

**DISTRIBUTION STATEMENT D** – Distribution authorized to Department of Defense and DoD contractors only to protect critical technical data on systems or hardware. This determination was made Oct 1986. Other requests shall be referred to: Program Manager, TMDE, ATTN: SFAE-CS-FT-T-TEMOD, Redstone Arsenal, AL 35898-5000.

**DESTRUCTION NOTICE** – Destroy by any method that will prevent disclosure of contents or reconstruction of the document.

TM 11-6625-3014-24P, dated 15 August 1987, is changed as follows:

1. Remove old pages and insert new pages as indicated below. New or changed material is indicated by a vertical bar in the outer margin of the page.

**Remove Pages**

None  
i and ii/(Blank)  
3 through 5/(6 Blank)

**Insert Pages**

A/(B Blank)  
i and ii  
3 through 5/(6 Blank)

TM 11-6625-3014-24P  
C2

**Remove Pages**

DA Forms 2028-2  
Cover

**Insert Pages**

DA Forms 2028  
Cover

2. File this change sheet in front of the publication for reference purposes.

By Order of the Secretary of the Army:

Official:



JOYCE E. MORROW  
*Administrative Assistant to the  
Secretary of the Army*  
0533303

GEORGE W. CASEY, JR.  
*General, United States Army  
Chief of Staff*

Distribution:

To be distributed in accordance with the initial distribution number (IDN) 510545,  
requirements for TM 11-6625-3014-24P.

Change)  
)  
No. 1)

HEADQUARTERS  
DEPARTMENT OF THE ARMY  
Washington, DC, 1 April 1989

ORGANIZATIONAL, DIRECT SUPPORT, AND GENERAL SUPPORT  
MAINTENANCE REPAIR PARTS AND SPECIAL TOOLS LIST  
( INCLUDING DEPOT MAINTENANCE REPAIR PARTS AND SPECIAL TOOLS

FOR

COUNTER, ELECTRONIC TD-1225A(V)1/U  
(NSN 6625-01-103-2958)

AND

COUNTER, ELECTRONIC TD-1225A(V)2/U  
(NSN 6625-01-121-6934)

TM 11-6625-3014-24P, 15 August 1987 is changed as follows:

1. Remove old pages and insert new pages as indicated below. New or changed material is indicated by a vertical bar in the margin of the page. Added or revised illustrations are indicated by a vertical bar adjacent to the identification number. An asterisk in the left margin of the parts list indicates a change in the line item.

**Remove pages  
i/(ii blank)**

Figure 1A (Sheet 1 through 6 of 6)  
1-1 through 1-3  
Figure 2  
2-1  
1-1 through 1-6

**Insert pages  
i/(ii blank)**

Figure 1A (Sheet 1 through 6 of 6)  
1A-1 through 1A-4  
1A-5 and Figure 2  
2-1  
1A-1 through 1A-6

2. File this change sheet in the front of the publication for reference purposes.

**Distribution authorized to the Department of Defense and DOD contractors only for official use or administration or operational purposes. This determination was made on 2 December 1988. Other requests for this document will be referred to Commander, US Army Communications-Electronics Command and Fort Mammouth, ATTN: AMSEL-LC-ME-P, Fort Mammouth, NJ 07703-5000**

**DESTRUCTION NOTICE-Destro by any method that will prevent disclosure of contents or reconstruction of document**

By Order of the Secretary of the Army:

**Official:**

**CARL E. VUONO**  
*General, United States Army*  
*Chief of Staff*

**WILLIAM J. MEEHAN 11**  
*Brigadier General, United States Army*  
*The Adjutant General*

**DISTRIBUTION:**

To be distributed in accordance with DA Form 12-51 unit and DS/GS requirements for TD-1225, A/U.

INSERT LATEST CHANGED PAGES. DESTROY SUPERSEDED PAGES.

**LIST OF EFFECTIVE PAGES**

**NOTE**

ON CHANGED PAGES, THE PORTION OF THE TEXT AFFECTED BY THE LATEST CHANGE IS INDICATED BY A VERTICAL LINE OR OTHER CHANGE SYMBOL IN THE OUTER MARGIN OF THE PAGE.

Date of issue for original and changed pages are:

Original 0 15 August 1987  
 Change 1 1 April 1989  
 Change 2 7 May 2007

Total number of pages in this publication is 68 consisting of the following:

Page No.	* Change No.	Page No.	*Change No.
Cover .....	2	Figure 1 (SH. 1 through 6).....	0
Blank .....	2	1-1 through 1-7 .....	0
A .....	2	Blank.....	0
B Blank .....	2	Figure 1A (SH. 1 through 6).....	0
i .....	2	1A-1 through 1A-5.....	1
ii .....	2	Figure 2 .....	0
1.....	0	Figure 2 (SH. 1 and 2).....	0
2.....	0	2-1 .....	1
3.....	0	Blank.....	1
4.....	2	I-1 through I-4.....	0
5.....	2	IA-1 through IA-6 .....	1
6 Blank.....	2		

\* Zero in this column indicates an original page.





TECHNICAL MANUAL

No. 11-6625-3014-24P



HEADQUARTERS  
Department of the Army  
Washington D.C., 15 August 1987

**ORGANIZATIONAL, DIRECT SUPPORT  
AND GENERAL SUPPORT MAINTENANCE REPAIR PARTS AND SPECIAL TOOLS LIST  
(INCLUDING DEPOT MAINTENANCE REPAIR PARTS AND SPECIAL TOOLS)**

**FOR**

**COUNTER, ELECTRONIC TD-1225A(V)1/U  
(NSN 6625-01-103-2958) (EIC: KR4)**

**AND**

**COUNTER, ELECTRONIC TD-1225A(V)2/U  
(NSN 6625-01-121-6934) (EIC: KR5)**

**REPORTING ERRORS AND RECOMMENDING IMPROVEMENTS**

You can help improve this manual. If you find any mistakes or if you know of a way to improve the procedures, please let us know. Mail your letter or DA Form 2028 (Recommended Changes to Publications and Blank Forms) directly to: Commander, U. S. Army Aviation and Missile Command, AMSAM-MMC-MA-NP, Redstone Arsenal, AL 35898-5000. A reply will be furnished to you. You may also provide DA Form 2028 information to AMCOM via email, fax or the World Wide Web. Our fax number is: DSN 788-6546 or Commercial 256-842-6546. Our email address is: [2028@redstone.army.mil](mailto:2028@redstone.army.mil). Instructions for sending an electronic 2028 may be found at the back of this manual immediately preceding the hardcopy 2028. For the World Wide Web use: <https://amcom2028.redstone.army.mil>.

**HAZARDOUS MATERIAL INFORMATION**

This document has been reviewed for the presence of solvents containing hazardous materials as defined by the EPCRA 302 and 313 lists by the Engineering, Environment, and Logistics Oversight Office. As of the base document through Change 1, dated 1 April 1989, all references to solvents containing hazardous materials have been removed from this document by substitution with non-hazardous or less hazardous materials where possible.

**OZONE DEPLETING CHEMICAL INFORMATION**

This document has been reviewed for the presence of Class I ozone depleting chemicals by the Engineering, Environment, and Logistics Oversight Office. As of the base document through Change 1, dated 1 April 1989, all references to Class I ozone depleting chemicals have been removed from this document by substitution with chemicals that do not cause atmospheric ozone depletion.

**WARNING** – This document contains technical data whose export is restricted by the Arms Export Control Act (Title 22, U. S. C., Sec 2751 et seq) or the Export Administration Act of 1979, as amended, Title 50, U.S.C., App. 2401 et seq.. Violations of these export laws are subject to severe criminal penalties. Disseminate in accordance with provisions of DOD Directive 5230.25.

**DISTRIBUTION STATEMENT D** – Distribution authorized to Department of Defense and DoD contractors only to protect critical technical data on systems or hardware. This determination was made Oct 1986. Other requests shall be referred to: Program Manager, TMDE, ATTN: SFAE-CS-FT-T-TEMOD, Redstone Arsenal, AL 35898-5000.

**DESTRUCTION NOTICE** – Destroy by any method that will prevent disclosure of contents or reconstruction of the document.

TABLE OF CONTENTS

			Page	Illus Figure
SECTION	I.	Introduction .....	1	
	II.	Repair.....	1-1	
GROUP	00	Electronic Counter TD-1225A(V)1/U .....	1-1	1
SECTION	III.	Special Tools List (Not Applicable)		
SECTION	IV	National Stock Number and Part Number Index.....	1-1	
SECTION	V.	Repair Parts List .....	1A-1	
GROUP	00	Electronic Counter TD-1225A(V)2/U .....	1A-1	1A
	01	Crystal Oscillator Assembly (A24)) .....	2-1	2
SECTION	VI.	Special Tools List (Not Applicable)		
SECTION	VII.	National Stock Number and Part Number Index.....	1-1	

# SECTION I

## INTRODUCTION

---

### 1. Scope

This manual lists and authorizes spares and repair parts; special tools; special test, measurement, and diagnostic equipment (TMDE); and other special support equipment required for performance of organizational, direct support, and general support maintenance of the TD-1225A(V)1/U and TD-1225A(V)2/U. It authorizes the requisitioning, issue, and disposition of spares, repair parts and special tools as indicated by the source, maintenance and recoverability (SMR) codes.

### 2. General

This Repair Parts and Special Tools List is divided into the following sections:

a. *Sections II and V. Repair Parts List.* A list of spares and repair parts authorized by this RPSTL for use in the performance of maintenance. The list also includes parts which must be removed for replacement of the authorized parts. Parts lists are composed of functional groups in ascending numeric sequence, with the parts in each group listed in ascending item number sequence. Figure numbers are listed directly beneath the group header,

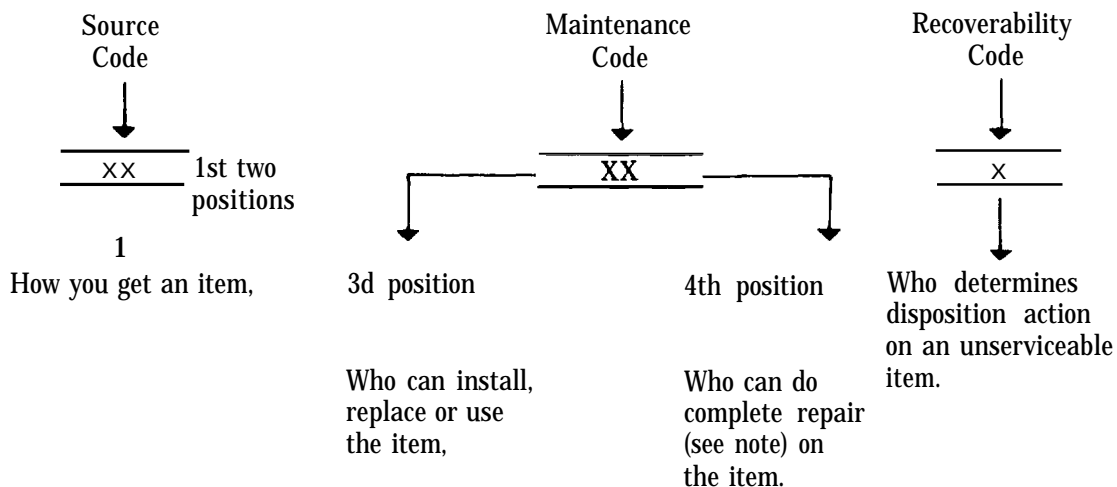
b. *Sections III and VI. Special Tools List.* Not applicable.

c. *Sections IV and VII. National Stock Number and Part Number Index.* A list, in National item identification number (N I IN) sequence, of all National stock numbered items appearing in the listing, followed by a list in alphameric sequence of all part numbers appearing in the listings. National stock numbers and part numbers are cross-referenced to each illustration figure and item number appearance.

### 3. Explanation of Columns (Sections ii, III, V and VI)

a. *Item No. (Column (1)).* Indicates the number used to identify items called out in the illustration.

b. *SMR Code (Column (2)).* The source, maintenance, and recoverability (SMR) code is a five-position code containing supply/requisitioning information, maintenance category authorization criteria, and disposition instruction, as shown in the following breakout:



#### NOTE

Complete repair: Maintenance capacity, capability, and authority to perform all corrective maintenance tasks of the "Repair" function in a use/user environment in order to restore serviceability to a failed item.

**TM 11-6625-3014-24P**

(1) *Source code.* The source code tells you how to get an item needed for maintenance, repair, or overhaul of an end item/equipment. Explanations of source codes follows:

<i>Code</i>	<i>Explanation</i>
PA PB PC PD PE PF PG	<p>Stocked items; use the applicable NSN to request/requisition items with these source codes. They are authorized to the category indicated by the code entered in the third position of the SMR code.</p> <p style="text-align: center;">NOTE</p> <p>Items coded PC are subject to deterioration.</p>
KD KF KB	<p>Items with these codes are not to be requested/requisitioned individually. They are part of a kit which is authorized to the maintenance category indicated in the third position of the SMR code. The complete kit must be requisitioned and applied.</p>

MO- Made at org/AVUM category MF- Made at DS/AVUM category MH- Made at GS category ML- Made at Specialized Repair Activity (SRA) MD- Made at Depot
AO- Assembled by org/AVUM category AF- Assembled by DS/AVIM category AH- Assembled by GS category AL- Assembled by SRA AD- Assembled by Depot

Items with these codes are not to be requested/requisitioned individually. They must be made from bulk material which is identified by the part number in the description and usable on code (UOC) column and listed in the Bulk Material group of the repair parts list. If the item is authorized to you by the third position code of the SMR code, but the source code indicates it is made at a higher category, order the item from the higher category of maintenance.

Items with these codes are not to be requested/requisitioned individually. The parts that make up the assembled item must be requisitioned or fabricated and assembled at the category of maintenance indicated by the source code. If the third position code of the SMR code authorizes you to replace the item, but the source code indicates the item is assembled at a higher category, order the item from the higher category of maintenance.

- XA—Do not requisition an “XA” coded item. Order its next higher assembly.
- XB- If an “XB” item is not available from salvage, order it using the FSCM and part number given.
- XC- Installation drawing, diagram, instruction sheet, field service drawing, that is identified by manufacturers part number.
- XD-Item is not stocked. Order an “XD” coded item through normal supply channels using the FSCM and part number given, if no NSN is available.

NOTE

Cannibalization or controlled exchange, when authorized, may be used as a source of supply for items with the above source codes, except for those source coded "XA" or those aircraft support items restricted by requirements of AR 750-1.

(2) *Maintenance code.* Maintenance codes tell you the category of maintenance authorized to USE and REPAIR support items. The maintenance codes are entered in the third and fourth positions of the SMR code as follows:

(a) The maintenance code entered in the third position tells you the lowest maintenance category authorized to remove, replace, and use an item. The maintenance code entered in the third position will indicate authorization to one of the following categories of maintenance.

codes

*Application/Explanation*

- C- Crew or operator maintenance done within organizational or aviation maintenance.
- O- Organizational or aviation unit category can remove, replace, and use the item.
- F- Direct support or aviation intermediate category can remove, replace, and use the item.
- H- General support category can remove, replace, and use the item.
- L- Specialized repair activity can remove, replace, and use the item.
- D- Depot category can remove, replace, and use the item.

(b) The maintenance code entered in the fourth position tells whether or not the item is to be repaired and identifies the lowest maintenance category with the capability to do complete repair (i.e., perform all authorized repair functions). This position will contain one of the following maintenance codes.

NOTE

Some limited repair may be done on the item at a lower category of maintenance, if authorized by the Maintenance Allocation Chart (MAC) and SMR codes.

code

*Application/Explanation*

- O- Organizational or aviation unit is the lowest category that can do complete repair of the item.
- F- Direct support or aviation intermediate is the lowest category that can do complete repair of the item.
- H- General support is the lowest category that can do complete repair of the item.
- L- Specialized repair activity (designate the specialized repair activity) is the lowest category that can do complete repair of the item.
- D- Depot is the lowest category that can do complete repair of the item.
- Z- Nonreparable. No repair is authorized.
- B- No repair is authorized. (No parts or special tools are authorized for the maintenance of a "B" coded item). However, the item may be reconditioned by adjusting, lubricating, etc., at the user category.

(3) *Recoverability code.* Recoverability codes are assigned to items to indicate the disposition action on unserviceable items. The recoverability y code is entered in the fifth position of the SMR Code as follows:

*Recoverability codes*

*Application/Explanation*

- Z- Nonreparable Item. When unserviceable, condemn and dispose of the item at the category of maintenance shown in the third position of SMR Code.
- O- Repairable item. When uneconomically repairable, condemn and dispose of the item at organizational or aviation unit category.
- F- Repairable item. When uneconomically repairable, condemn and dispose of the item at direct support or aviation intermediate category.
- H- Repairable item. When uneconomically repairable, condemn and dispose of the item at general support category.
- D- Repairable item. When beyond lower category repair capability, return to depot. Condemnation and disposal of item not authorized below depot category.

L- Repairable items. Condemnation and disposal not authorized below Specialized Repair Activity (SRA).

A- Item requires special handling or condemnation procedures because of specific reasons (e.g. precious metal content, high dollar value, critical material, or hazardous material). Refer to appropriate manuals/directives for specific instructions.

c. *FSCM (Column (3))*. The Federal Supply Code for Manufacturer (FSCM) is a 5-digit numeric code which is used to identify the manufacturer, distributor, or Government agency, etc., that supplies the item.

d. *Part Number (Column (4))*. Indicates the primary number used by the manufacturer (individual, company, firm, corporation, or Government activity), which controls the design and characteristics of the item by means of its engineering drawings, specifications, standards, and inspection requirements to identify an item or range of items.

#### NOTE

When you use a NSN to requisition an item, the item you receive may have a different part number from the part ordered.

e. *Description and Usable on Code (UOC) (Column (5))*. This column includes the following information.

(1) The Federal item name and, when required, a minimum description to identify the item.

(2) The statement "END OF FIGURE" appears just below the last item description in Column (5) for a given figure in both Section II and Section III.

f. *Qty (Column (6))*. Indicates the quantity of the item used in the breakout shown on the illustration figure, which is prepared for a functions group, sub-functional group, or an assembly. A "V" appearing in this column in lieu of a quantity indicates that the quantity is variable and the quantity may vary from application to application.

#### 4. Explanation of Columns (Sections VI and VII)

a. *National Stock Number (NSN) Index*.

(1) *Stock Number Column*. This column lists the NSN by National Item Identification Number (NIIN) sequence. The NIIN consists of the last nine digits of the NSN. When using this column to locate an item, ignore the first four digits of the NSN. When requisitioning items use the complete NSN (13 digits).

(2) *Fig. Column*. This column lists the number of the figure where the item is identified/located. The illustrations are in numerical sequence in Sections II, III, V and VI.

(3) *Item Column*. The item number identifies the item associated with the figure listed in the adjacent Fig. column. This item is also identified by the NSN listed on the same line.

b. *Part Number Index*. Part numbers in this index are listed by part number in ascending alphanumeric sequence.

(1) *FSCM Column*. This column lists the Federal Supply Code for Manufacturer (FSCM).

(2) *Part Number Column*. This column indicates the part number assigned to the item.

#### 4 Change 2

(3) *Stock Number Column.* This column lists the National Stock Number for the associated part number and the manufacturer identified in the part number and FSCM columns to the left.

(4) *Fig. Column.* This column lists the number of the figure where the item is identified/located in Sections II, III, V and VI.

(5) *Item Column.* The item number is that number assigned to the item as it appears in the figure referenced in the adjacent figure number column.

## 5. Special Information

*Associated Publications.* The publications listed below pertain to the TD-1225A(V)1/U and TD-1225A(V)2/U and their components:

TM 11-6625-3014-14, Microwave, Frequency Counter, TD-1225A(V)1/U  
 TM 11-6625-3014-14-1, Microwave, Frequency Counter, TD-1225A(V)2/U

## 6. How to Locate Repair Parts

a. *When* National Stock Number or part number is not known.

(1) *First.* Using the table of contents, determine the assembly group or subassembly group to which the item belongs. This is necessary since figures are prepared for assembly groups and subassembly groups, and listings are divided into the same groups.

(2) *Second.* Find the figure covering the assembly group or subassembly group to which the item belongs.

(3) *Third.* Identify the items on the figure and note the item number.

(4) *Fourth.* Refer to the Repair Parts List for the figure to find the part number for the item number noted on the figure.

(5) *Fifth.* Refer to the Part Number Index to find the NSN, if assigned.

b. *When* National Stock Number or part number is known.

(1) *First.* Using the index of National Stock Numbers and part numbers, find the pertinent National Stock Number or part number. The NSN index is in National Item Identification Number (NIIN) sequence (para 4a(1)). The part numbers in the part number index are listed in ascending alphanumeric sequence (para 4b). Both indexes cross-reference you to the illustration figure and item number of the item you are looking for.

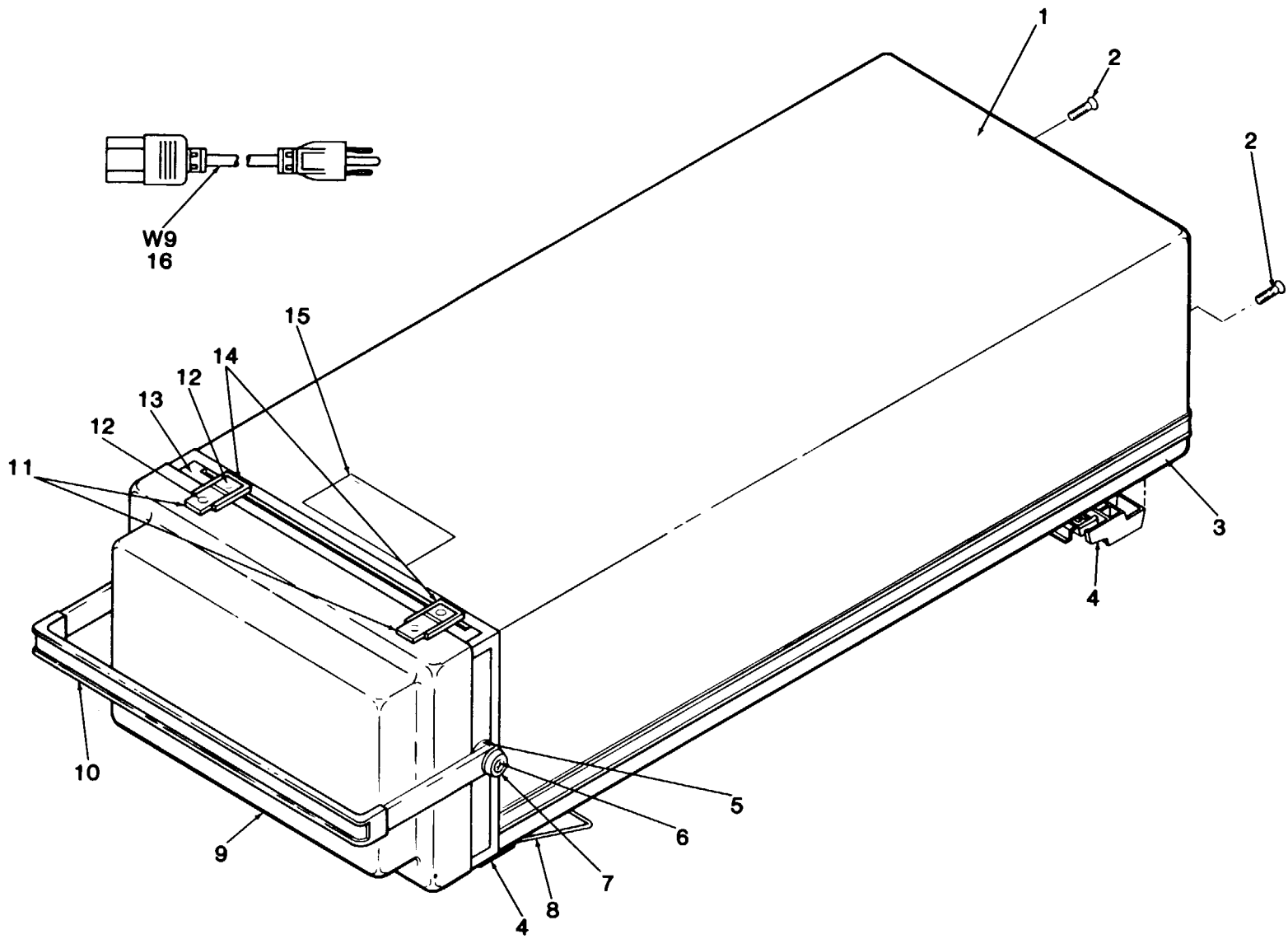
(2) *Second.* After finding the figure and item number, verify that the item is the one you're looking for, then locate the item number in the repair parts list for the figure.

## 7. Abbreviations

Not applicable.







TM11 - 6625-3014-24P

Figure 1.(1/6)

Figure 1. Electronic Counter, TD-1225A(V)1/U (Sheet 1 of 6).

EL8IH001

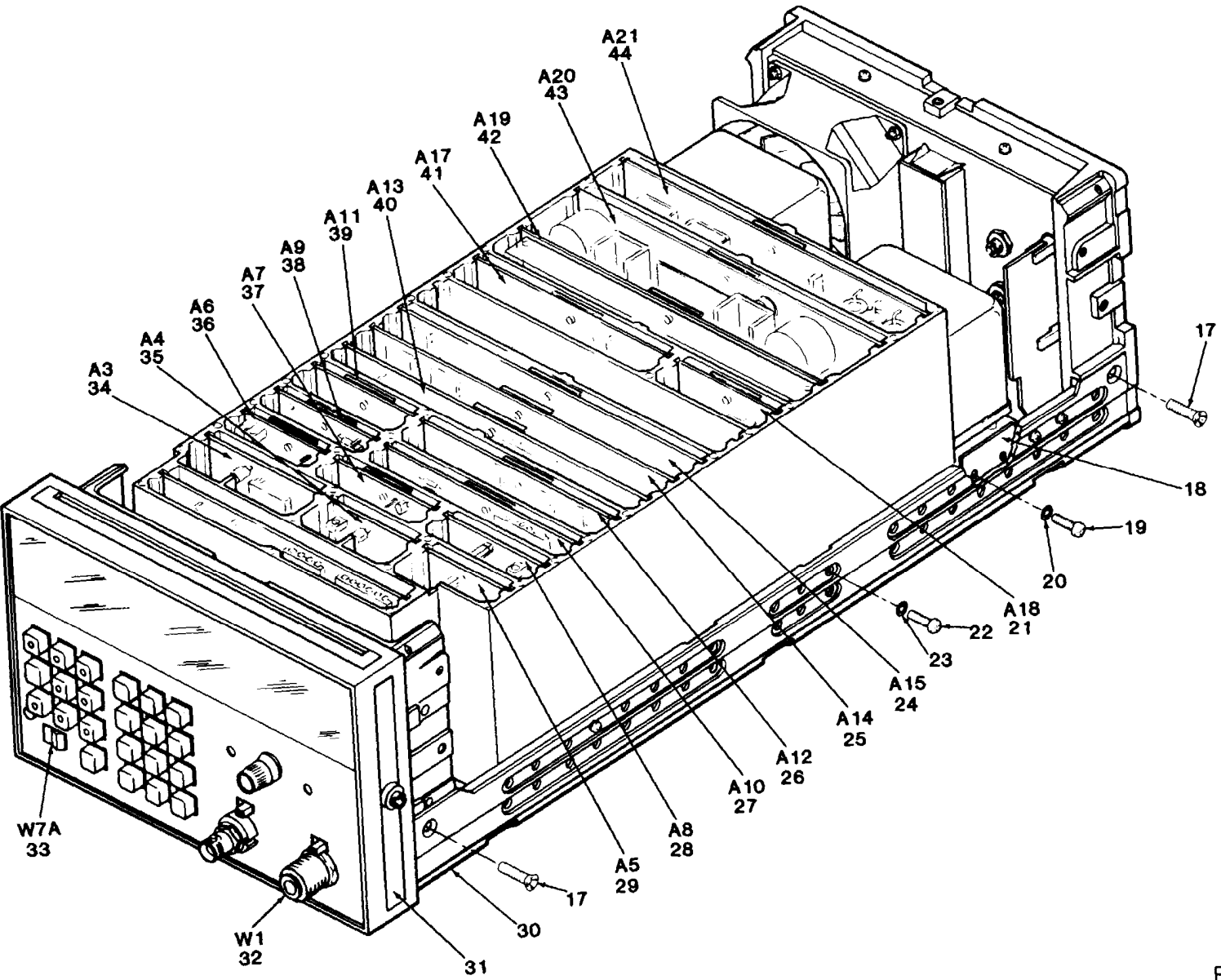
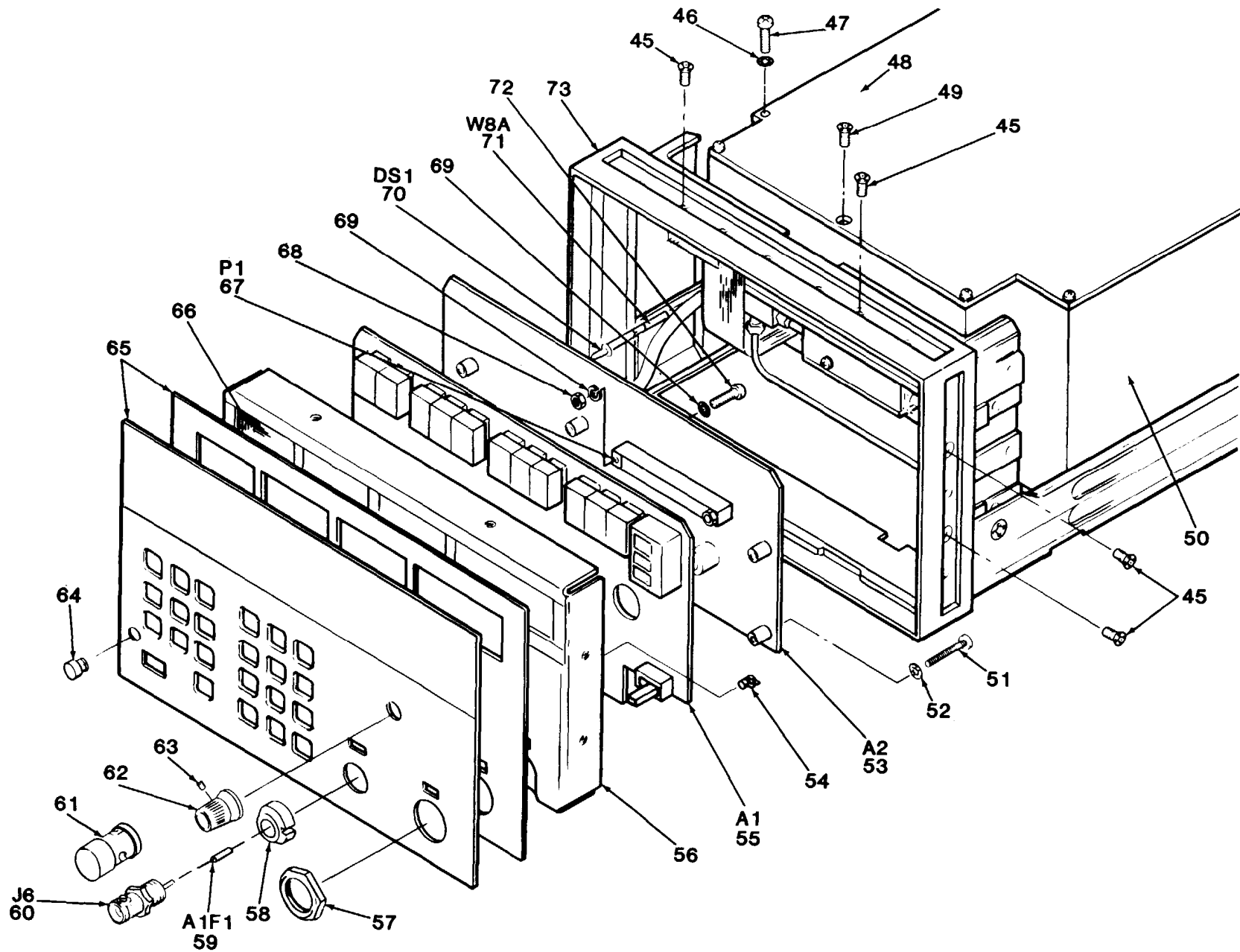


Figure 1. Electronic Counter,TD-1225A(V)/U (SHEET 2 OF 6)

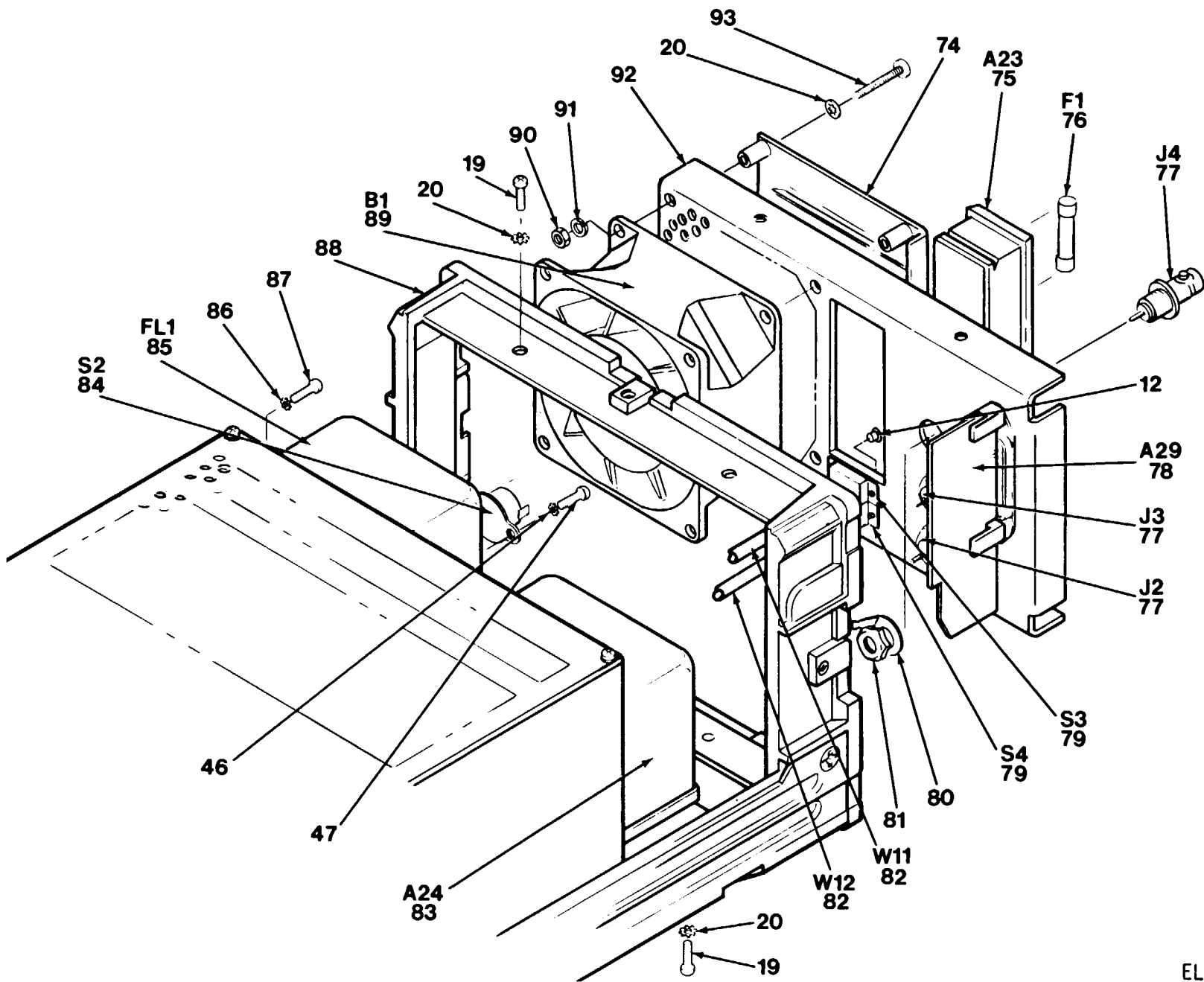
EL8IH002



TM11-6625-3014-24P

EL81 H003

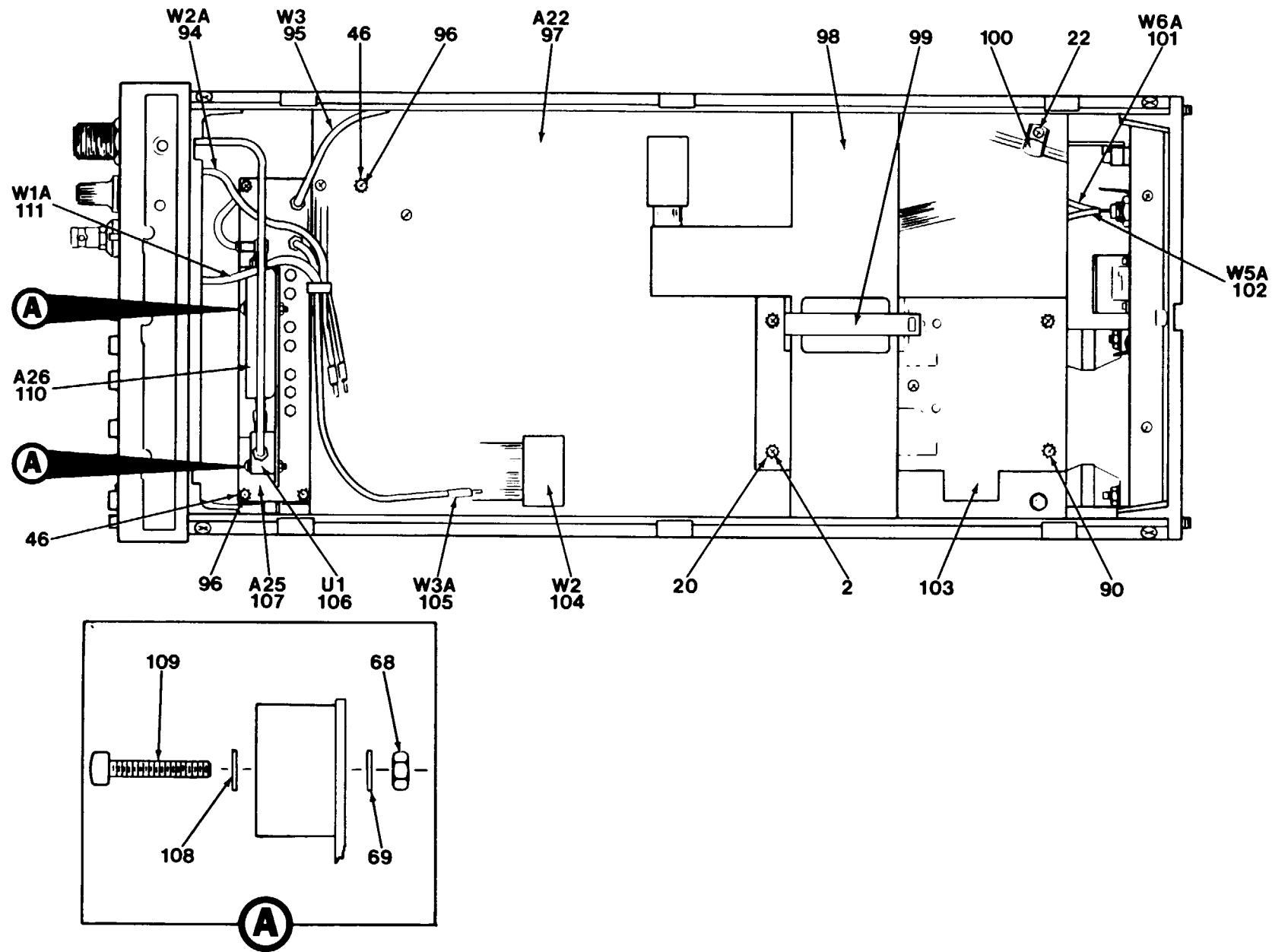
Figure 1. Electronic Counter, TD-1225A(V)I/U (Sheet 3 of 6).



TM11-6625-3014-24P

Figure 1. Electronic Counter, TD-1225A(V)1/U (Sheet 4 of 6).

EL8IH004



TM11-6625-3014-24P

EL8IH005

Figure 1. Electronic Counter, TD-1225A(V)1/U (Sheet 5 of 6).

REF DES	ITEM NO	REF DES	ITEM NO	REF DES	ITEM NO	REF DES	ITEM NO	REF DES	ITEM NO	REF DES	ITEM NO
A1	55	W5A	102								
A1F1	59	W6A	101								
A2	53	W7A	33								
A3	34	W8A	71								
A4	35	W9	16								
A5	29	W11	82								
A6	36	W12	82								
A7	37										
A8	28										
A9	38										
A10	27										
A11	39										
A12	26										
A13	40										
A14	25										
A15	24										
A17	41										
A18	21										
A19	42										
A20	43										
A21	44										
A22	97										
A23	75										
A24	83										
A25	107										
A26	110										
A29	78										
B1	89										
DS1	70										
F1	76										
FL1	85										
J2	77										
J3	77										
J4	77										
J6	60										
P1	67										
S2	84										
S3	79										
U1	106										
W1	32										
W1 A	111										
W2	104										
W2A	94										
W3	95										
W3A	105										

EL81 H006

Figure 1. Electronic Counter, TD-1225A(V)1/U (Sheet 6 of 6),

SECTION II TM11-6625-3014-24P (5) (6)

(1) ITEM NO	(2) SMR CODE	(3) FSCM	(4) PART NUMBER	(5) DESCRIPTION AND USABLE ON CODES(UOC)	(6) QTY
-------------------	--------------------	-------------	-----------------------	---	------------

GROUP 00 ELECTRONIC COUNTER  
TD-1225A(V)I/U

FIGURE 1

1	PAHZZ	28480	5060-9823	COVER, TOP	1
2	PAHZZ	96906	MS51957-27	SCREW, MACHINE	1
3	PAHZZ	28480	5061-1940	COVER, BOTTOM	1
4	PAHZZ	28480	5040-7201	BUMPER, PLASTIC	4
5	PAHZZ	28480	0380-0004	SPACER, SLEEVE	2
6	PAHZZ	96906	MS51957-46	SCREW, MACHINE	2
7	PAHZZ	28480	5040-7216	BUSHING, SLEEVE	2
8	PAHZZ	28480	1460-1345	CLIP, RETAINING	2
9	PAHZZ	28480	4040-1724	COVER, DUST	1
10	PAHZZ	28480	05342-91003	HANDLE, BAIL	1
11	PAHZZ	28480	05342-91005	CATCH, CLAMPING	3
12	PAHZZ	96906	MS16535-156	RIVET, TUBULAR	6
13	PAHZZ	28480	5040-7203	TRIM, CABINET	1
14	XBHZZ	28480	05342-91004	LATCH, GRIP	3
15	PAHZZ	28480	4420-16462-1	PLATE, IDENT	1
16	PAHZZ	16428	KH7081	CABLE ASSEMBLY, POWE	1
17	PAHZZ	96906	MS24693C46	SCREW, MACHINE	8
18	XBHZZ	28480	05342-00008	BRKT, MTG, BOARD	2
19	PAHZZ	96906	MS51957-26	SCREW, MACHINE	2
20	PAHZZ	96906	MS35335-29	WASHER, LOCK	2
21	PAHZZ	28480	05342-60068	CIRCUIT CARD ASSET	1
22	PAHZZ	96906	MS51957-42	SCREW, MACHINE	6
23	PAHZZ	96906	MS35335-59	WASHER, LOCK	6
24	PAHZZ	28480	05342-60015	CIRCUIT CARD ASSET	1
25	PAHZZ	28480	05342-60014	CIRCUIT CARD ASSEMB	1
26	PAHZZ	28480	05342-60012	CIRCUIT CARD ASSEMB	1
27	PAHZZ	28480	05342-60010	CIRCUIT CARD ASSEMB	1
28	PAHZZ	28480	05342-60008	CIRCUIT CARD ASSET	1
29	PAHZZ	28480	05342-60005	CIRCUIT CARD ASSEMB	1
30	XBHZZ	28480	5020-8837	STRUT, CORNER	2
31	PAHZZ	28480	5040-7217	ADAPTER, HANDLE	2
32	PAHZZ	28480	8120-2482	CABLE ASSEMBLY, RADI	1
33	PAHZZ	28480	05342-60111	CABLE ASSEMBLY, SPE	1
34	PAHZZ	28480	05342-60040	CIRCUIT CARD ASSEM	1
35	PAHZZ	28480	05342-60004	CIRCUIT CARD ASSEM	1
36	PAHZZ	28480	05342-60006	CIRCUIT CARD ASSEM	1
37	PAHZZ	28480	05342-60007	CIRCUIT CARD ASSEMB	1
38	PAHZZ	28480	05342-60009	CIRCUIT CARD ASSET	1
39	PAHZZ	28480	05342-60011	CIRCUIT CARD ASSET	1
40	PAHZZ	28480	05342-60013	CIRCUIT CARD ASSEMB	1
41	PAHZZ	28480	05342-60017	CIRCUIT CARD ASSENT	1
42	PAHZZ	28480	05342-60019	CIRCUIT CARD ASSEMB	1
43	PAHZZ	28480	05342-60020	CIRCUIT CARD ASSEMB	1
44	PAHZZ	28480	05342-60069	CIRCUIT CARD ASSET	1
45	PAHZZ	96906	MS51959-26	SCREW, MACHINE	8
46	PAHZZ	96906	MS35335-57	WASHER, LOCK	31

SECTION II			TM11-6625-3014-24P			(6)
(1)	(2)	(3)	(4)		(5)	
ITEM NO	SMR CODE	FSCM	PART NUMBER	DESCRIPTION AND USABLE ON CODES(UOC)		QTY
47	PAHZZ	96906	MS51957-19	SCREW,MACHINE		31
48	PAHZZ	28480	05342-00003	COVER, ACCESS		1
49	PAHZZ	96906	MS51959-1	SCREW,MACHINE		6
50	XBHZZ	28480	05342-20105	HOUSING,MAIN		1
51	PAHZZ	96906	MS51957-19	SCREW,MACHINE		5
52	PAHZZ	96906	MS35333-70	WASHER, LOCK		5
53	PAHZZ	28480	05342-60002	CIRCUIT CARD ASSEMB		1
54	XBHZZ	78553	C43040-017-4	RETAINING, CLIP		3
55	PAHZZ	28480	05342-60041	CIRCUIT CARD ASSET		1
56	XBHZZ	28480	05342-00002	PANEL, FRONT		1
57	PAHZZ	28480	2950-0095	NUT,PLAIN,HEXAGON		1
58	PAHZZ	28480	05342-20211	NUT,BODY		1
59	PAHZZ	75915	275-125	FUSE,CARTRIDGE		1
60	PAHZZ	28480	05305-60205	CONNECTOR,RECEPTACL		1
61	PAHZZ	28480	1250-0207	CONNECTOR, ELECTRICA		1
62	PAHZZ	28480	0370-1005	KNOB		1
63	PAHZZ	96906	MS51963-9	SETSCREW		2
64	PAHZZ	56769	CLF280RTP	LENS ASSEMBLY		1
65	XBHZZ	28480	05342-20112	PANEL, FRONT		1
66	PAHZZ	28480	05342-00005	SHIELD,RFI		1
67	PAHZZ	06928	B201U042	CONNECTOR,PLUG		1
68	PAHZZ	96906	MS35649-224	NUT,PLAIN,HEXAGON		2
69	PAHZZ	96906	MS35333-69	WASHER, LOCK		4
70	PAHZZ	28480	1990-0324	LIGHT EMITTING DIOD		1
71	PAHZZ	28480	05342-60132	CABLE ASSEMBLY,RAD		1
72	PAHZZ	96906	MS51957-8	SCREW,MACHINE		2
73	XBHZZ	28480	5020-8815	FRAME, FRONT		1
74	PAHZZ	28480	05342-00022	COVER, FAN		1
75	PAHZZ	28480	0960-0444	MODULE, POWER		1
76	PAHZZ	75915	313-750	FUSE, CARTRIDGE		1
77	PAHZZ	81349	M39012/21-0002	CONNECTOR,RECEPTACL		3
78	PAHZZ	28480	05342-60029	CIRCUIT CARD ASSET		1
79	PAHZZ	82389	11PL091B	SWITCH,SLIDE		2
80	PAHZZ	79963	720-380H	TERMINAL, LUG		3
81	PAHZZ	42498	A12708	NUT,PLAIN, HEXAGON		3
82	PAHZZ	28480	05342-60129	CABLE ASSEMBLY,RAD		2
83	PAHZZ	28480	10811-60101	CRYSTAL OSCILLATOR		1
84	PAHZZ	01295	20704L	SWITCH,THEROSTATIC		1
85	PAHZZ	28480	9135-0142	FILTER, LOW PASS		1
86	PAHZZ	96906	MS35338-136	WASHER, LOCK		2
87	PAHZZ	96906	MS51957-25	SCREW,MACHINE		2
88	XBHZZ	28480	5020-8816	FRAME,REAR		1
89	PAHZZ	23936	8124	FAN, TUBEAXIAL		1
90	PAHZZ	96906	MS35649-264	NUT,PLAIN,HEXAGON		4
91	PAHZZ	96906	MS35333-71	WASHER, LOCK		4
92	XBHZZ	28480	05342-00021	PANEL,REAR		1
93	PAHZZ	96906	MS51957-33	SCREW,MACHINE		4
94	PAHZZ	28480	05342-60121	CABLE ASSEMBLY,RAD		1
95	PAHZZ	28480	05342-60105	CABLE ASSEMBLY,RAD		1
96	PAHZZ	96906	MS51957-15	SCREW,MACHINE		35
97	PAHZZ	28480	05342-60067	CIRCUIT CARD ASSET		1
98	PAHZZ	28480	05342-00028	GUARD, CABLE		1



SECTION II			TM11-6625-3014-24P			
(1)	(2)	(3)	(4)		(5)	(6)
ITEM	SMR		PART			
NO	CODE	FSCM	NUMBER		DESCRIPTION AND USABLE ON CODES(UOC)	QTY
99	PAHZZ	06383	FCM2A14		CLAMP, CABLE . . . . .	1
100	PAHZZ	73734	1550		STRAP, RETAINING . . . . .	3
101	PAHZZ	28480	05342-60131		CABLE ASSEMBLY, RAD . . . . .	1
102	PAHZZ	28480	05342-60130		CABLE ASSEMBLY,RAD . . . . .	1
103	PAHZZ	28480	05342-00004		PLATE, ELEC SHLD . . . . .	1
104	PAHZZ	52072	CAD24P02261DC011		CABLE ASSEMBLY,SPE . . . . .	1
105	PAHZZ	28480	05342-60103		CABLE ASSEMBLY,RAD . . . . .	1
106	PAHZZ	28480	5088-7022		CIRCUIT CARD ASSEMB . . . . .	1
107	PAHZZ	28480	05342-60025		CIRCUIT CARD ASSEMB . . . . .	1
108	PAHZZ	96906	MS15795-802		WASHER,FLAT . . . . .	2
109	PAHZZ	96906	MS51957-10		SCREW,MACHINE . . . . .	1
110	PAHZZ	28480	05342-60026		CIRCUIT CARD ASSET . . . . .	1
111	PAHZZ	28480	05342-60102		CABLE ASSEMBLY,RAD . . . . .	1

END OF FIGURE

## NATIONAL STOCK NUMBER AND PART NUMBER INDEX

STOCK NUMBER	NATIONAL STOCK NUMBER INDEX		STOCK NUMBER	FIG.	ITEM
	FIG.	ITEM			
6150-00-008-5075	1	<b>10</b>	6625-01-089-0075	1	22
5305-00-054-5642	1	<b>70</b>	6625-01-089-0076	<b>1</b>	21
5305-00-054-5645	1	<b>107</b>	6625-01-089-0077	1	35
5305-00-054-5649	1	<b>95</b>	6625-01-089-0078	1	20
5305-00-054-5653	1	<b>42</b>	6625-01-089-0079	<b>1</b>	36
	1	<b>48</b>	6625-01-089-0080	<b>1</b>	37
5305-00-054-6649	1	<b>86</b>	6625-01-089-0082	1	<b>38</b>
5305-00-054-6650	1	<b>14</b>	6625-01-089-0084	1	105
5305-00-054-6651	1	<b>4</b>	6625-01-089-0085	1	104
5305-00-054-6657	1	<b>72</b>	6625-01-096-5943	1	9
5305-00-054-6667	1	<b>17</b>	6625-01-096-8911	1	3
5310-00-058-3599	1	<b>41</b>	6625-01-121-9241	1	52
	2	<b>3</b>	6625-01-121-9242	1	29
5305-00-088-9667	1	<b>2</b>	6625-01-121-9243	1	30
5355-00-100-6778	<b>1</b>	<b>58</b>	6625-01-121-9244	1	31
5340-00-244-5748	1	<b>99</b>	6625-01-121-9245	1	23
6625-00-434-3251	<b>1</b>	<b>73</b>	6625-01-121-9246	1	33
5905-00-506-6617	1	<b>13</b>	6625-01-121-9247	1	34
5310-00-543-4652	1	<b>67</b>	6625-01-121-9248	1	19
5310-00-550-3715	1	<b>49</b>	6625-01-121-9249	1	16
5955-00-571-9496	1	<b>82</b>	6625-01-121-9250	1	39
5310-00-595-6761	1	<b>106</b>	6625-01-121-9251	1	96
5310-00-614-3552	1	<b>18</b>	6625-01-121-9252	1	108
5310-00-616-3554	1	<b>15</b>	6625-01-121-9253	<b>1</b>	77
5310-00-616-3555	1	<b>90</b>	6625-01-136-3812	2	14
5305-00-717-6950	1	<b>59</b>	5920-01-157-2768	2	6
5920-00-755-3235	<b>1</b>	<b>75</b>	5910-01-157-6652	2	16
5305-00-763-3356	2	<b>10</b>	5955-01-158-9713	2	15
5305-00-763-6961	1	<b>40</b>	5995-01-167-8825	1	27
5305-00-766-2422	1	<b>44</b>	5935-01-170-6319	1	47
5935-00-853-7596	1	<b>76</b>	4920-01-174-0039	1	28
5920-00-879-8408	<b>1</b>	<b>56</b>	5995-01-178-5957	1	69
5305-00-891-1732	2	<b>11</b>	6625-01-203-9149	1	109
5305-00-902-2136	1	<b>12</b>	6625-01-203-9150	1	93
5310-00-929-6395	1	<b>85</b>	6625-01-203-9151	1	103
5920-00-932-6977	<b>1</b>	<b>74</b>	6625-01-203-9157	1	94
5310-00-934-9748	2	<b>2</b>	6625-01-206-7901	1	8
5310-00-934-9761	1	<b>89</b>	5995-01-212-6954	1	102
5310-00-938-2013	<b>1</b>	<b>66</b>	5995-01-212-6955	1	81
5940-00-993-9338	2	<b>9</b>	5915-01-213-1276	1	84
5940-01-016-5118	1	<b>79</b>	5310-01-214-4696	1	54
5961-01-051-3996	1	<b>68</b>	5340-01-215-4985	1	51
5935-01-058-1289	1	<b>57</b>	6625-01-234-7171	1	26
5999-01-058-7852	1	<b>60</b>	5930-01-248-9554	1	78
5340-01-062-6736	1	<b>7</b>			
5340-01-063-2862	1	<b>6</b>			
4140-01-064-5526	1	<b>88</b>			
6625-01-088-9513	1	<b>50</b>			
6625-01-089-0073	1	<b>24</b>			
6625-01-089-0074	1	<b>32</b>			

## NATIONAL STOCK NUMBER AND PART NUMBER INDEX

FSCM	PART NUMBER	PART NUMBER INDEX STOCK NUMBER	FIG.	ITEM
42498	A12708	5310-00-282-4653	1	81
06928	B201U042	5935-01-170-6319	1	67
52072	CAD24P02261DC011	5995-01-212-6954	1	104
56769	CLF280RTP	5999-01-058-7852	1	64
78553	C43040-017-4		1	54
06383	FCM2A14		1	99
16428	KH7081	6150-00-008-5075	1	16
96906	MS15795-802	5310-00-595-6761	1	108
96906	MS16535-156	5320-00-826-0329	1	12
96906	MS24693C46	5305-00-902-2136	1	17
96906	MS35333-69	5310-00-543-4652	1	69
96906	!1s35333-70	5310-00-550-3715	1	52
96906	MS35333-71	5310-00-616-3555	1	91
96906	MS35335-29	5310-00-616-355%	1	20
96906	MS35335-57	5310-00-058-3599	1	46
96906	MS35335-59	5310-00-614-3552	1	23
96906	MS35338-136	5310-00-929-6395	1	86
96906	MS35649-224	5310-00-938-2013	1	68
96906	MS35649-264	5310-00-934-9761	1	90
96906	MS51957-10	5305-00-054-5645	1	109
96906	MS51957-15	5305-00-054-5649	1	96
96906	MS51957-19	5305-00-054-5653	1	47
			1	51
96906	MS51957-25	5305-00-054-6649	1	87
96906	MS51957-26	5305-00-054-6650	1	19
96906	MS51957-27	5305-00-054-6651	1	2
96906	MS51957-33	5305-00-054-6657	1	93
96906	MS51957-42	5305-00-054-6667	1	22
96996	MS51957-46	5305-00-054-6671	1	6
96906	MS51957-8	5305-00-054-5642	1	72
96906	MS51959-1	5305-00-766-2422	1	49
96906	MS51959-26	5305-00-763-6961	1	45
96906	MS51963-9	5305-00-717-6950	1	63
81349	M39012/21-0002	5935-00-853-7596	1	77
28480	0370-1005	5355-00-100-6778	1	62
28480	0380-0004	5365-01-062-3630	1	5
28480	05305-60205	5935-01-058-1289	1	60
28480	05342-00002		1	56
28480	05342-00003		1	48
28480	05342-00004		1	03
28480	05342-00005		1	66
28480	05342-00008		1	18
28480	05342-00021		1	92
28480	05342-00022		1	74
23480	05342-00028		1	98
28480	05342-20105		1	50
28480	05342-20112		1	65
28480	05342-20211	5310-01-250-6580	1	58
28480	05342-60002	6625-01-088-9513	1	53
28480	05342-60004	6625-01-121-9243	1	35
28480	05342-60005	6625-01-089-0073	1	29

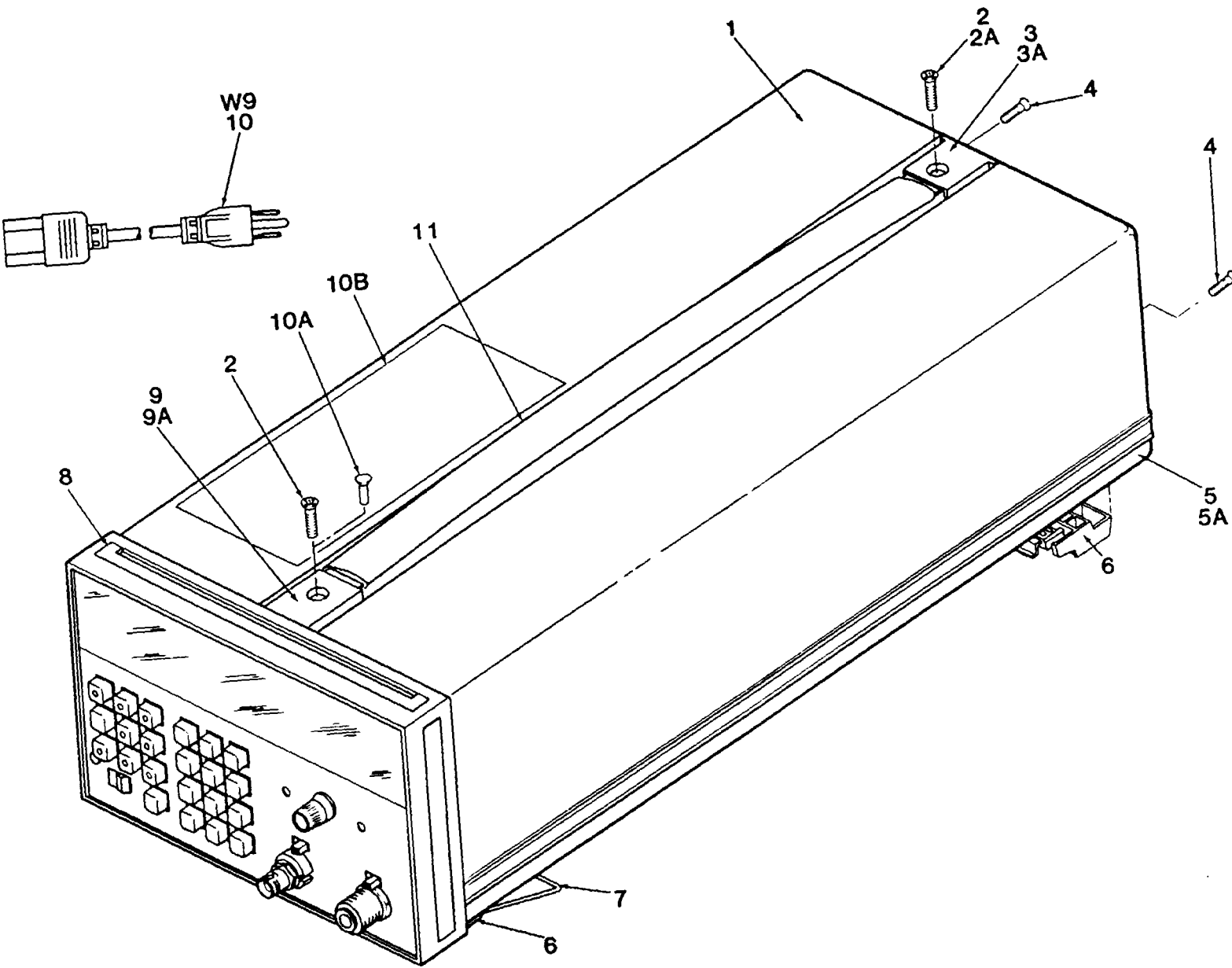
## NATIONAL STOCK NUMBER AND PART NUMBER INDEX

FSCM	PART NUMBER	PART NUMBER INDEX STOCK NUMBER	FIG.	ITEM
28480	05342-60006	6625-01-121-9244	1	36
28480	05342-60007	6625-01-089-0074	1	37
28480	05342-60008	6625-01-121-9245	1	28
28480	05342-60009	6625-01-121-9246	1	38
28480	05342-60010	6625-01-089-0075	1	27
28480	05342-60011	6625-01-121-9247	1	39
28480	05342-60012	6625-01-089-0076	1	26
28480	05342-60013	6625-01-089-0077	1	40
28480	05342-60014	6625-01-089-0078	1	25
26480	05342-60015	6625-01-121-9248	1	24
28480	05342-60017	6625-01-089-0079	1	41
28480	05342-60019	6625-01-089-0080	1	42
28480	05342-60020	6625-01-089-0082	1	43
28480	05342-60025	6625-01-089-0084	1	107
28480	05342-60026	6625-01-121-9252	1	110
28480	05342-60029	6625-01-121-9253	1	78
28480	05342-60040	6625-01-121-9242	1	34
28480	05342-60041	6625-01-121-9241	1	55
28480	05342-60067	6625-01-121-9251	1	97
28480	05342-60068	6625-01-121-9249	1	21
28480	05342-60069	6625-01-121-9250	1	44
28480	05342-60102	6625-01-203-9149	1	111
28480	05342-60103	6625-01-203-9151	1	105
28480	05342-60105	6625-01-203-9157	1	95
28480	05342-60111	4920-01-174-0039	1	33
28480	05342-60121	6625-01-203-9150	1	94
28480	05342-60129	5995-01-212-6955	1	82
28480	05342-60130	5995-01-178-5956	1	102
28480	05342-60131	5995-01-248-2604	1	101
28480	05342-60132	5995-01-178-5957	1	71
28480	05342-91003		1	10
28480	05342-91004		1	14
28480	05342-91005	5340-01-252-4916	1	11
28480	0960-0444	6625-00-434-3251	1	75
28480	10811-60101	5955-01-178-5178	1	83
82389	11PL091B	5930-01-248-9554	1	79
28480	1250-0207	5985-00-472-5028	1	61
28480	1460-1345	5340-01-062-6736	1	8
73734	1550	5340-00-244-5748	1	100
28480	1990-0324	5961-01-051-3996	1	70
01295	20704L		1	84
75915	275-125	5920-00-879-8408	1	59
28480	2950-0095	5310-01-214-4696	1	57
75915	313-750	5920-00-755-3235	1	76
28480	4040-1724		1	9
28480	4420-16462-1		1	15
28480	5020-8815		1	73
28480	5020-8816		1	88
28480	5020-8837		1	30
28480	5040-7201	5340-01-063-2862	1	4
28480	5040-7203	6625-01-206-7901	1	13

## NATIONAL STOCK NUMBER AND PART NUMBER INDEX

FSCM	PART NUMBER	PART NUMBER INDEX STOCK NUMBER	FIG.	ITEM
28480	5040-7216	3120-01-077-7200	1	7
28480	5040-7217		1	31
28480	5060-9823		1	1
28480	5061-1940		1	3
28480	5088-7022	6625-01-089-0085	1	106
79963	720-380H	5940-01-016-5118	1	80
2840	8120-2482	5995-01-167-8825	1	32
23936	8124	4140-01-064-5526	1	89
28480	9135-0142	5915-01-213-1276	1	85

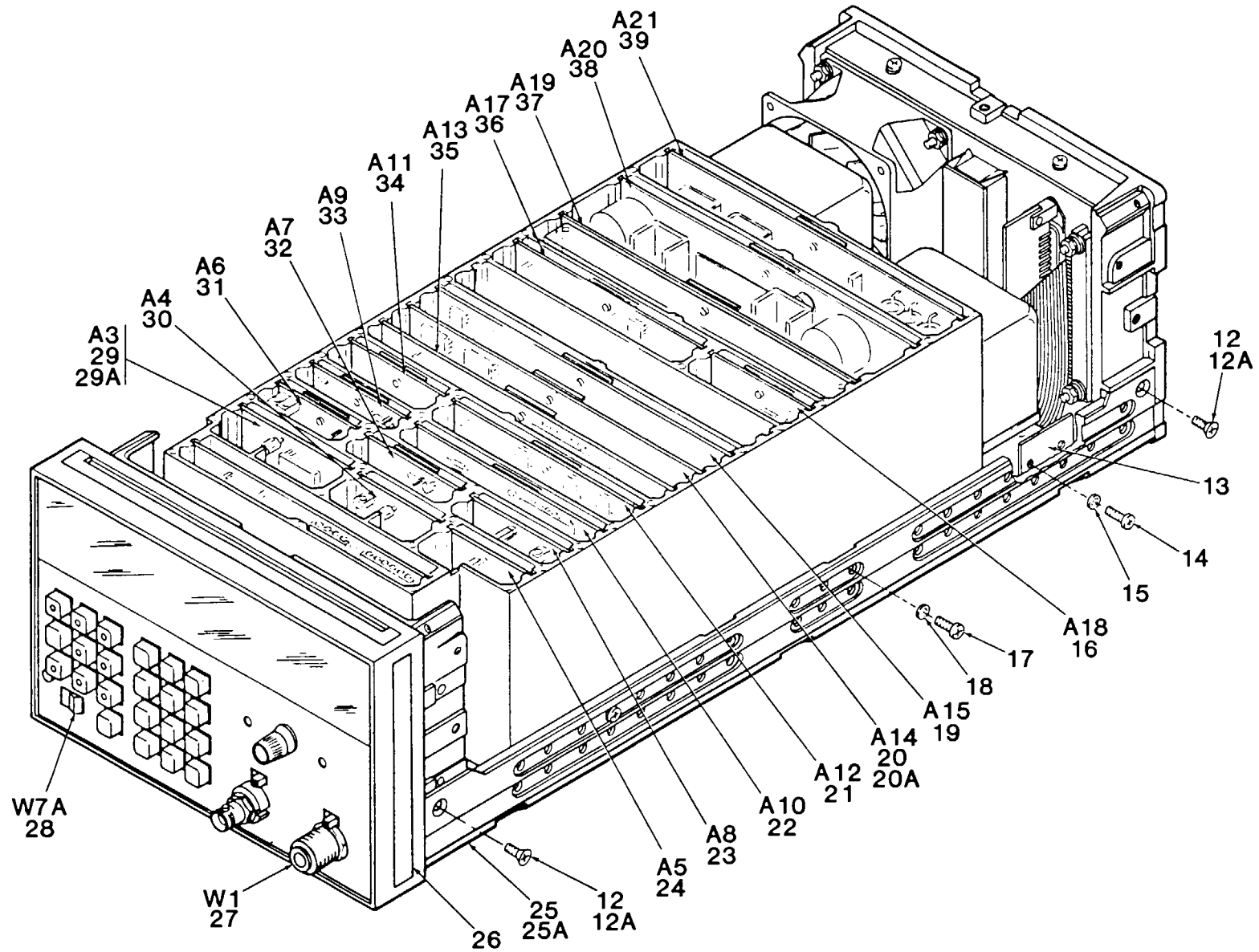




TM11-6625-3014-24P C01

EL8IH007

Figure 1A. Electronic Counter, TD-1225A(V)2/U (Sheet 1 of 6).

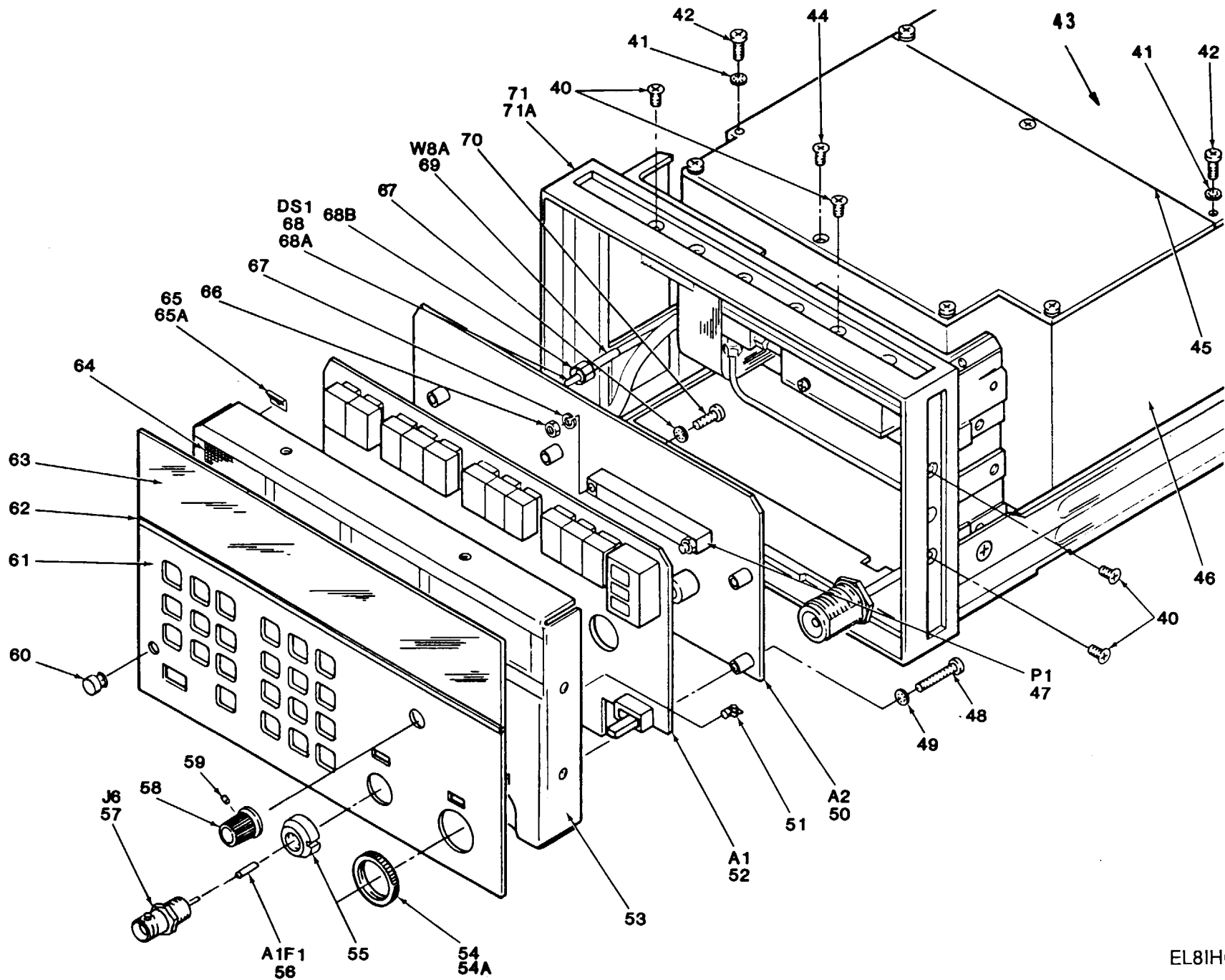


TM11-6625-3014-24P 001

Figure 1A. Electronic Counter, TD-1225A(V)2/U (Sheet 2 of 6).

EL8IH008

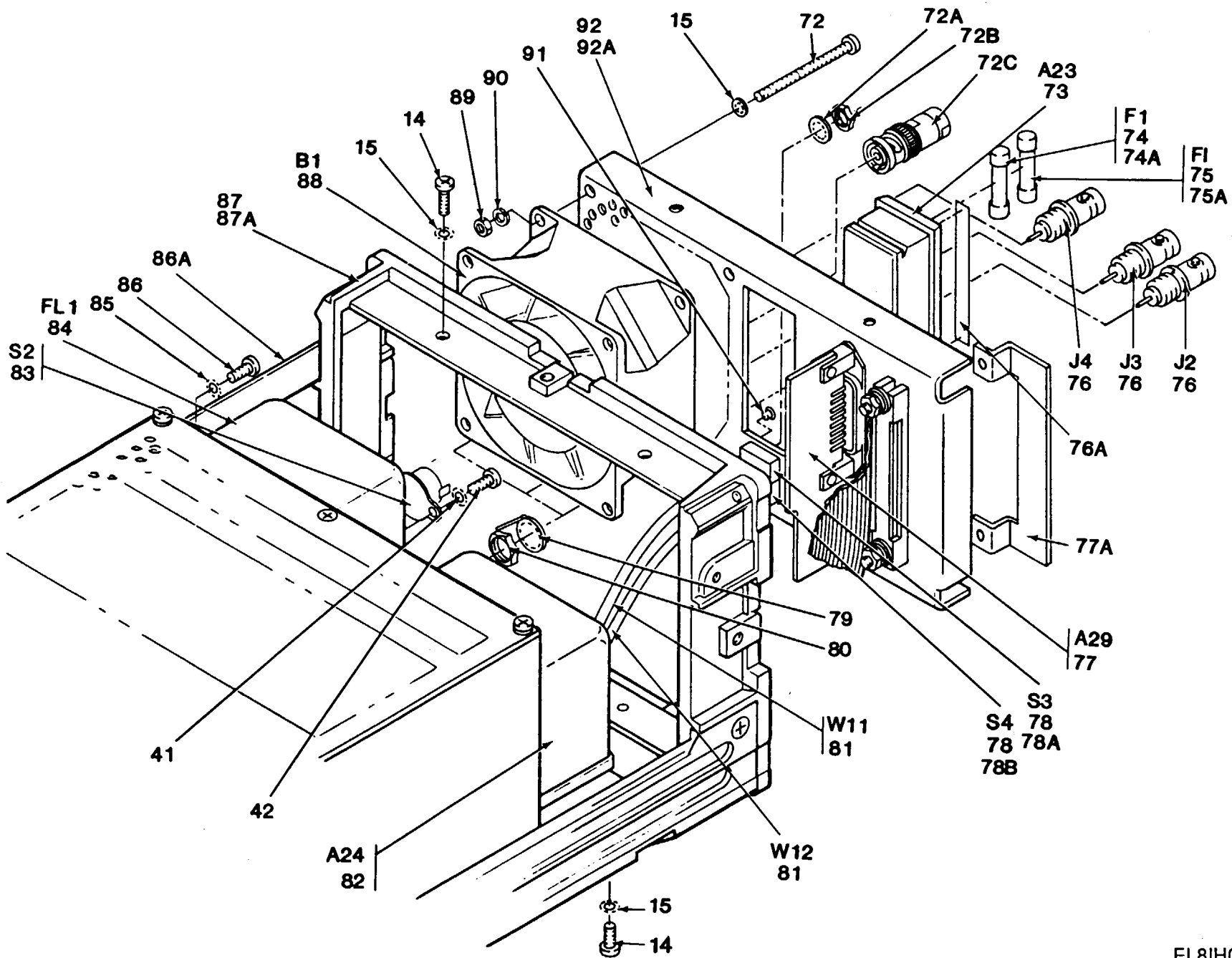




TM11-6625-3014-24P 001

Figure 1A. Electronic Counter, TD-1225A(V)2/U (Sheet 3 of 6).

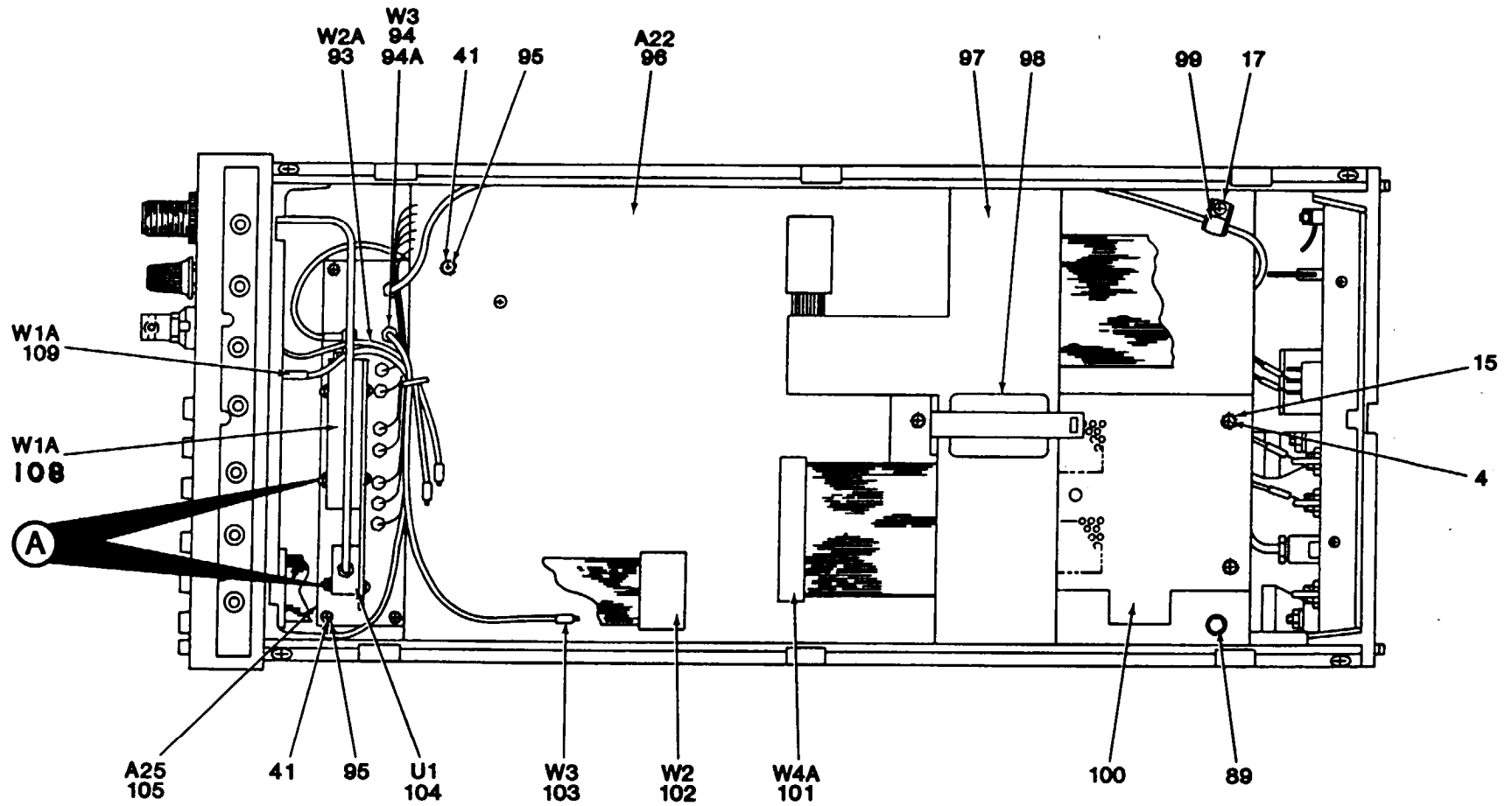
EL8IH009



TM11-6625-3014-24P C01

Figure 1A. Electronic Counter, TD-1225A(V)2/U (Sheet 4 of 6).

EL8IH010



TM11-6625-3014-24P C01

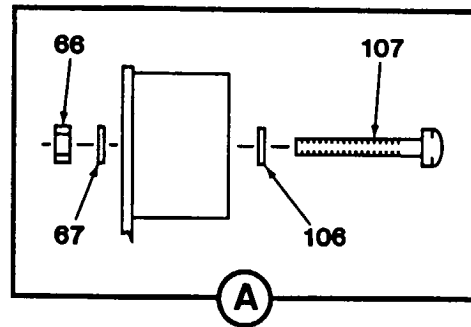
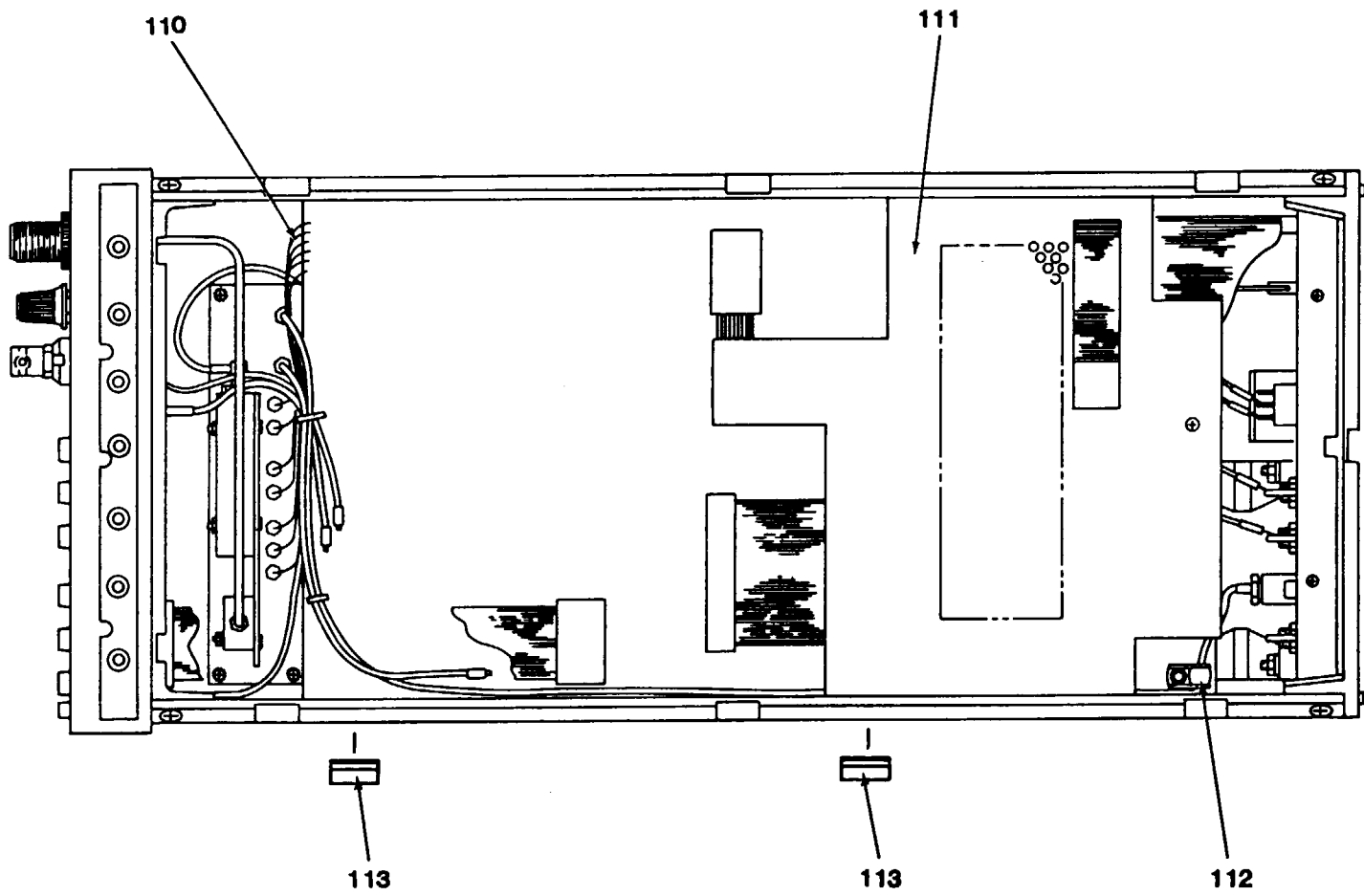


Figure 1A. Electronic Counter, TD-1225A(V)2/U (Sheet 5 of 6).

EL8IH011



TM11-6625-3014-24P CO1

EL8IH012

Figure 1A. Electronic Counter, TD-1225A(V)2/U (Sheet 6 of 6).

## SECTION V

TM11-6625-3014-24P

(1) ITEM NO	(2) SMR CODE	(3) FSCM	(4) PART NUMBER	(5) DESCRIPTION AND USABLE ON CODE (UOC)	(6) QTY
GROUP 00 ELECTRONIC COUNTER					
TD-1225A(V)2/U					
FIGURE 1A					
1	PAHZZ	28480	5001-0423	COVER, TOP	1
2	PAOZZ	96906	MS24693C270	SCREW, MACHINE FOR EQUIPMENT WITH SERIAL NUMBER PREFIX FROM 2136A TO 2232A	2
2A	PAHZZ	28480	0515-1132	SCREW, MACHINE FOR EQUIPMENT WITH SERIAL NUMBER PREFIX 2746A AND HIGHER	1
3	PAOZZ	28480	5040-7220	CAP, HANDLE STRAP FOR EQUIPMENT WITH SERIAL NUMBER PREFIX FROM 2136A TO 2232A	1
3A	PAHZZ	28480	5041-6820	BRACKET, LEVER FOR EQUIPMENT WITH SERIAL NUMBER PREFIX 2746A AND HIGHER	1
4	PAHZZ	96906	MS51957-27	SCREW, MACHINE	4
5	XBHZZ	28480	5061-1940	COVER, TEST SET FOR EQUIPMENT WITH SERIAL NUMBER PREFIX FROM 2136A TO 2232A	1
5A	XBHZZ	28480	05342-60141	COVER, BOTTOM FOR EQUIPMENT WITH SERIAL NUMBER PREFIX 2746A AND HIGHER	1
6	PAHZZ	28480	5040-7201	BUMPER, NOMETALLIC	4
7	PAHZZ	28480	1460-1345	CLIP, RETAINING	2
8	PAHZZ	28480	5040-7203	TRIM, CABINET	1
9	PAOZZ	28480	5040-7219	CAP STRAP HANDLE FOR EQUIPMENT WITH SERIAL NUMBER PREFIX FROM 2136A TO 2232A	1
9A	PAHZZ	28480	5041-6819	RETAINER, HANDLE FOR EQUIPMENT WITH SERIAL NUMBER PREFIX 2746A AND HIGHER	1
10	PAOZZ	16428	17743	CABLE ASSEMBLY, POWE	1
10A	XBHZZ	12014	R4003X5/16	RIVET, TUBULAR FOR EQUIPMENT WITH SERIAL NUMBER PREFIX 2746A AND HIGHER	1
10B	XBHZZ	28480	7120-6827	CARD, OPERATING INST FOR EQUIPMENT WITH SERIAL NUMBER PREFIX 2746A AND HIGHER	1
11	PAOZZ	28480	5060-9804	HANDLE, STRAP	1
12	PAHZZ	96906	MS24693C46	SCREW, MACHINE FOR EQUIPMENT WITH SERIAL NUMBER PREFIX FROM 2136A 2232A	8
12A	PAHZZ	28480	0515-1331	SCREW, MACHINE FOR EQUIPMENT WITH SERIAL NUMBER PREFIX 2746A AND HIGHER	8
13	XBHZZ	28480	05342-00008	BRKT, MTG, BOARD	2
14	PAHZZ	96906	MS51957-26	SCREW, MACHINE	4
15	PAHZZ	96906	MS35335-29	WASHER, LOCK	4

SECTION (1)	V (2)	(3)	TM11-6625-3014-24P (4)	CO1 (5)	(6)
ITEM	SMR CODE	FSCM	PART NUMBER	DESCRIPTION AND USABLE ON CODES(UOC)	QTY
16	PAHZZ	28480	05342-60068	CIRCUIT CARD ASSEMB . . . . .	1
17	PAHZZ	96906	MS51957-42	SCREW,MACHINE . . . . .	6
18	PAHZZ	96906	MS35335-59	WASHER, LOCK . . . . .	6
19	PAHZZ	28480	05342-60015	CIRCUIT CARD ASSEMB . . . . .	1
20	PAHZZ	28480	05342-60014	CIRCUIT CARD ASSEMB FOR EQUIPMENT WITH SERIAL NUMBER PREFIX FROM 2136A T02232A . . . . .	1
20A	PAHZZ	28480	05342-60072	CIRCUIT CARD ASSY FOR EQUIPMENT WITH SERIAL NUMBER PREFIX 2746A AND HIGHER . . . . .	1
21	PAHZZ	28480	05342-60012	CIRCUIT CARD ASSEMB . . . . .	1
22	PAHZZ	28480	05342-60010	CIRCUIT CARD ASSEMB . . . . .	1
23	PAHZZ	28480	05342-60008	CIRCUIT CARD ASSEMB . . . . .	1
24	PAHZZ	28480	05342-60005	CIRCUIT CARD ASSEMB . . . . .	1
25	25XBHZ	28480	5020-8837	STRUT,CORNER FOR EQUIPMENT WITH SERIAL NUMBER PREFIX FROM 2136A TO 2232A . . . . .	2
25A	XBHZZ	28480	5021-5837	STRUT,CORNER FOR EQUIPMENT WITH SERIAL NUMBER PREFIX 2746A AND HIGHER . . . . .	2
26	PAHZZ	28480	5001-0439	PAD,CUSHIONING . . . . .	2
27	PAHZZ	28480	8120-2482	CABLE ASSEMBLY,RADI . . . . .	1
28	PAHZZ	28480	05342-60111	CABLE ASSEMBLY,SPEC . . . . .	1
29	PAHZZ	28480	05342-60040	CIRCUIT CARD ASSEMB FOR EQUIPMENT WITH SERIAL NUMBER PREFIX FROM 2136A T02232A . . . . .	1
29A	PAHZZ	28480	05342-60042	CIRCUIT CARD ASSY FOR EQUIPMENT WITH SERIAL NUMBER PREFIX 2746A AND HIGHER . . . . .	1
30	PAHZZ	28480	05342-60004	CIRCUIT CARD ASSEMB . . . . .	1
31	PAHZZ	28480	05342-60006	CIRCUIT CARD ASSEMB . . . . .	1
32	PAHZZ	28480	05342-60007	CIRCUIT CARD ASSEMB . . . . .	1
33	PAHZZ	28480	05342-60009	CIRCUIT CARD ASSEMB . . . . .	1
34	PAHZZ	28480	05342-60011	CIRCUIT CARD ASSEMB . . . . .	1
35	PAHZZ	28480	05342-60013	CIRCUIT CARD ASSEMB . . . . .	1
36	PAHZZ	28480	05342-60017	CIRCUIT CARD ASSEMB . . . . .	1
37	PAHZZ	28480	05342-60019	CIRCUIT CARD ASSEMB . . . . .	1
38	PAHZZ	28480	05342-60020	CIRCUIT CARD ASSEMB . . . . .	1
39	PAHZZ	28480	05342-60069	CIRCUIT CARD ASSEMB . . . . .	1
40	PAHZZ	96906	MS51959-26	SCREW,MACHINE . . . . .	8
41	PAHZZ	96906	MS35335-57	WASHER, LOCK . . . . .	3 1
42	PAHZZ	96906	MS51957-19	SCREW,MACHINE . . . . .	3 1
43	PAHZZ	28480	05342-00030	COVER,ACCESS . . . . .	1
44	PAHZZ	96906	MS51959-1	SCREW,MACHINE . . . . .	6
45	PAHZZ	28480	05342-00031	COVER,ACCESS . . . . .	1
46	XBHZZ	28480	05342-20105	HOUSING,MAIN . . . . .	1
47	PAHZZ	06928	B201U042	CONNECTOR,RECEPTACL . . . . .	1
48	PAHZZ	96906	MS51957-19	SCREW,MACHINE . . . . .	5
49	PAHZZ	96906	MS35333-70	WASHER, LOCK . . . . .	5
50	PAHZZ	28480	05342-60002	CIRCUIT CARD ASSEMB . . . . .	1
51	PAHZZ	78553	C43040-017-4	CLIP . . . . .	1
52	PAHZZ	28480	05342-60041	CIRCUIT CARD ASSEMB . . . . .	1

SECTION V			TM11-6625-3014-24P	C01	
(1)	(3)	(4)	(5)		
ITEM	SMR	FSCM	PART	DESCRIPTION AND USABLE ON CODES(UOC)	
N O	CODE		NUMBER		
53	XBHZZ	28480	05342-00034	PANEL,FRONT	1
54	PAHZZ	28480	2950-0095	NUT FOR EQUIPMENT WITH SERIAL NUMBER PREFIX FROM 2136A TO 2232A. . .	1
54A	PAHZZ	28480	0590-0505	NUT,PLAIN,KNURLED FOR EQUIPMENT WITH SERIAL NUMBER PREFIX 2746A AND HIGHER . . . . .	1
55	PAHZZ	28480	05343-20211	NUT,CONNECTOR	1
56	PAOZZ	75915	275-125	FUSE,CARTRIDGE	1
57	PAOZZ	28480	05305-60205	CONNECTOR,RECEPTACL	1
58	PAOZZ	28480	0370-1005	KNOB	1
59	PAOZZ	96906	MS51963-9	SETSCREW	2
60	PAHZZ	56769	CLF280RTP	LENS ASSEMBLY	1
61	XBHZZ	28480	05342-00035	PANEL, FRONT	1
62	XBHZZ	28480	5040-6927	STRIP,DIVIDER	1
63	XBHZZ	28480	05342-20116	WINDOW,OBSVR	1
64	XBHZZ	28480	05342-00036	SHIELD,RFI	1
65	XBHZZ	28480	1460-0553	CLIP,ELECTRICAL FOR EQUIPMENT WITH SERIAL NUMBER PREFIX FROM 2136A TO 2232A . . . . .	2
65A	XBHZZ	28480	05342-00042	CLIP,RETAINING FOR EQUIPMENT WITH SERIAL NUMBER PREFIX 2746A AND HIGHER . . . . .	1
66	PAHZZ	96906	MS35649-224	NUT,PLAIN,HEXAGON	2
67	PAHZZ	96906	MS35333-69	WASHER, LOCK	4
68	PAHZZ	28480	1990-0324	LIGHT EMITTING DIOD FOR EQUIPMENT WITH SERIAL NUMBER PREFIX FROM 2136A T02232A . . . . .	1
68A	PAHZZ	28480	1990-0891	LIGHT EMITTING DIO FOR EQUIPMENT WITH SERIAL NUMBER PREFIX 2746A AND HIGHER . . . . .	1
68B	XBHZZ	28480	1400-0560	HOLDER,SEMICOND DVC JOR EQUIPMENT WITH SERIAL NUMBER PREFIX 2746A AND HIGHER . . . . .	1
69	PAHZZ	28480	05342-60132	CABLE ASSEMBLY FOR EQUIPMENT WITH SERIAL NUMBER PREFIX FROM 2136A TO 2232A . . . . .	1
70	PAHZZ	96906	MS51957-8	SCREW,MACHINE	2
71	XBHZZ	28480	5020-8815	FRAME,FRONT FOR EQUIPMENT WITH SERIAL NUMBER PREFIX FROM 2136A TO 2232A . . . . .	1
71A	XBHZZ	28480	5021-5815	FRAME,FRONT FOR EQUIPMENT WITH SERIAL NUMBER PREFIX 2746A AND HIGHER . . . . .	1
72	PAHZZ	96906	MS51957-33	SCREW,MACHINE	4
72A	PAHZZ	96906	MS35333-74	WASHER,LOCK FOR EQUIPMENT WITH SERIAL NUMBER PREFIX 2746A AND HIGHER . . . . .	1
72B	PAHZZ	09353	7807	NUT,PLAIN,HEXAGON FOR EQUIPMENT WITH SERIAL NUMBER PREFIX 2746A AND HIGHER . . . . .	1
72C	PAHZZ	28480	1250-0207	DUMMY LOAD,ELECTRIC FOR EQUIPMENT WITH SERIAL NUMBER PREFIX 2746A AND HIGHER . . . . .	1

SECTION V			TM11-6625-3014-24P	C01	
(1)	(2)	(3)	(4)	(5)	
ITEM	SMR	FSCM	PART		
NO	CODE		NUMBER		DESCRIPTION AND USABLE ON CODES(UOC)
73	PAHZZ	28480	0960-0444		HIGHER . . . . . 1
74	PAOZZ	75915	279-100		MODULE,POWER . . . . . 1
74A	PAOZZ	75915	313001		FUSE,CARTRIDGE FOR EQUIPMENT WITH SERIAL NUMBER PREFIX FROM 2136A TO 2232A . . . . . 1
75	PAOZZ	75915	313-750		FUSE,CARTRIDGE FOR EQUIPMENT WITH SERIAL NUMBER PREFIX 2746A AND HIGHER . . . . . 1
75A	PAOZZ	81349	F02B250V1-2A		FUSE,CARTRIDGE FOR EQUIPMENT WITH SERIAL NUMBER PREFIX FROM 2136A TO 2232A . . . . . 1
76	PAHZZ	81349	M39012/21-0002		FUSE,CARTRIDGE FOR EQUIPMENT WITH SERIAL NUMBER PREFIX 2746A AND HIGHER . . . . . 1
76A	XBHZZ	28480	7121-5108		CONNECTOR,RECEPTACL . . . . . 3
77	PAHZZ	28480	05342-60029		PLATE,INFORMATION FOR EQUIPMENT WITH SERIAL NUMBER PREFIX 2746A AND HIGHER . . . . . 1
77A	XBHZZ	28480	05342-00017		CIRCUITCARD ASSEMB . . . . . 1
78	PAHZZ	82389	11PL091B		COVER,ACCESS FOR EQUIPMENT WITH SERIAL NUMBER PREFIX 2746A AND HIGHER . . . . . 1
78A	PAHZZ	28480	3101-0163		SWITCH,SLIDE FOR EQUIPMENT WITH SERIAL NUMBER PREFIX FROM 2136A TO 2232A . . . . . 1
78B	PAHZZ	81349	MS75029-23		SWITCH,TOGGLE FOR EQUIPMENT WITH SERIAL NUMBER PREFIX 2746A AND HIGHER . . . . . 1
79	PAHZZ	79963	720-380H		SWITCH,TOGGLE FOR EQUIPMENT WITH SERIAL NUMBER PREFIX 2746A AND HIGHER . . . . . 1
80	PAHZZ	73734	9002NP		SWITCH,TOGGLE FOR EQUIPMENT WITH SERIAL NUMBER PREFIX 2746A AND HIGHER . . . . . 3
81	PAHZZ	28480	05342-60129		TERMINAL, LUG . . . . . 3
82	PAHDZ	28480	10811-60111		LOCKNUT,TUBE FITTIN . . . . . 1
83	PAHZZ	01295	20704L		CABLE ASSEMBLY . . . . . 1
84	PAHZZ	28480	9135-0142		OSCILLATOR,CRYSTAL . . . . . 1
85	PAHZZ	96906	MS35338-136		SWITCH, THEROSTATIC . . . . . 1
86	PAHZZ	96906	MS51957-25		FILTER, LOW PASS . . . . . 1
86A	XBHZZ	28480	05342-00045		WASHER> LOCK . . . . . 2
87	XBHZZ	28480	5020-8816		SCREW,MACHINE . . . . . 2
87A	XBHZZ	28480	5021-5816		SUPPORT,STRUT FOR EQUIPMENT WITH SERIAL NUMBER PREFIX 2746A AND HIGHER . . . . . 1
88	PAHZO	23936	8124		FRAME,REAR FOR EQUIPMENT WITH SERIAL NUMBER PREFIX FROM 2136A TO 2232A . . . . . 1
89	PAHZZ	96906	MS35649-264		FRAME,REAR FOR EQUIPMENT WITH SERIAL NUMBER PREFIX 2746A AND HIGHER . . . . . 1
90	PAHZZ	96906	MS35333-71		FAN, TUBEAXIAL . . . . . 1
91	PAHZZ	90906	MS16535-156		NUT, PLAIN,HEXAGON . . . . . 4
					WASHER, LOCK . . . . . 4
					RIVET,TUBULAR FOR EQUIPMENT WITH . . . . . 1



(1) ITEM NO	(2) SMR CODE	(3) FSCM	(4) PART NUMBER	(5) DESCRIPTION AND USABLE ON CODE (UOC)	(6) QTY
92	XBHZZ	28480	05342-00001	SERIAL NUMBER PREFIX FROM 2136A TO 2232A PANEL,REAR FOR EQUIPMENT WITH SERIAL NUMBER PREFIX FROM 2136A TO 2232A	1
92A	XBHZZ	28480	05342-00038	PANEL,REAR FOR EQUIPMENT WITH SERIAL NUMBER PREFIX 2746A AND HIGHER	1
93	PAHZZ	28480	05342-60121	CABLE ASSEMBLY,SPEC	1
94	PAHZZ	28480	05342-60105	CABLE ASSEMBLY,SPEC FOR EQUIPMENT WITH SERIAL NUMBER PREFIX FROM 2136A TO 2232A	1
94A	PAHZZ	28480	05342-60138	CABLE ASSY,RAD FREQ FOR EQUIPMENT WITH SERIAL NUMBER PREFIX 2746A AND HIGHER	1
95	PAHZZ	96906	MS51957-15	SCREW,MACHINE	35
96	PAHZZ	28480	05342-60067	CIRCUIT CARD ASSEMB	1
97	PAHZZ	28480	05342-00028	PROTECTOR,ELECTRICA FOR EQUIPMENT WITH SERIAL NUMBER PREFIX FROM 2136A TO 2232A	1
98	PAHZZ	06383	FCM2A14	CLAMP,CABLE FOR EQUIPMENT WITH SERIAL NUMBER PREFIX FROM 2136A TO 2232A	1
99	PHAZZ	73734	1550	STRAP,RETAINING FOR EQUIPMENT WITH SERIAL NUMBER PREFIX FROM 2136A TO 2232A	3
100	XBHZZ	28480	05342-00004	PLATE,ELECTRICAL SH FOR EQUIPMENT WITH SERIAL NUMBER PREFIX FROM 2136A TO 2232A	1
101	PAHZZ	28480	05342-60109	CABLE ASSEMBLY,SPEC	1
102	PAHZZ	52072	CAD24P02261DC011	CABLE ASSEMBLY	1
103	XBHZZ	28480	05342-60103	CABLE ASSEMBLY,RAD	1
104	PAHZZ	28480	5088-7022	CIRCUIT CARD ASSEMB	1
105	PAHZZ	28480	05342-60025	CIRCUIT CARD ASSEMB	1
106	PAHZZ	96906	MS15795-802	WASHER,FLAT	2
107	PAHZZ	96906	MS51957-10	SCREW,MACHINE	1
108	PAHZZ	28480	05342-60026	CIRCUIT CARD ASSEMB	1
109	PAHZZ	28480	05342-60102	CABLE ASSEMBLY,SPEC	1
110	PAHZZ	28480	05342-60133	CABLE ASSY,SP ELEC FOR EQUIPMENT WITH SERIAL NUMBER PREFIX 2746A AND HIGHER	1
111	XBHZZ	28480	05342-00044	PLATE,ELEC SHIELD FOR EQUIPMENT WITH SERIAL NUMBER PREFIX 2746A AND HIGHER	1
112	XBHZZ	28480	1400-0053	CLAMP,LOOP FOR EQUIPMENT WITH SERIAL NUMBER PREFIX 2746A AND HIGHER	1
113	PAHZZ	06915	HUC-4	STRAP,RETAINING FOR EQUIPMENT WITH SERIAL NUMBER PREFIX 2746A AND HIGHER	2

END OF FIGURE



PREFIX ALL REFERENCE  
DESIGNATORS WITH A24.

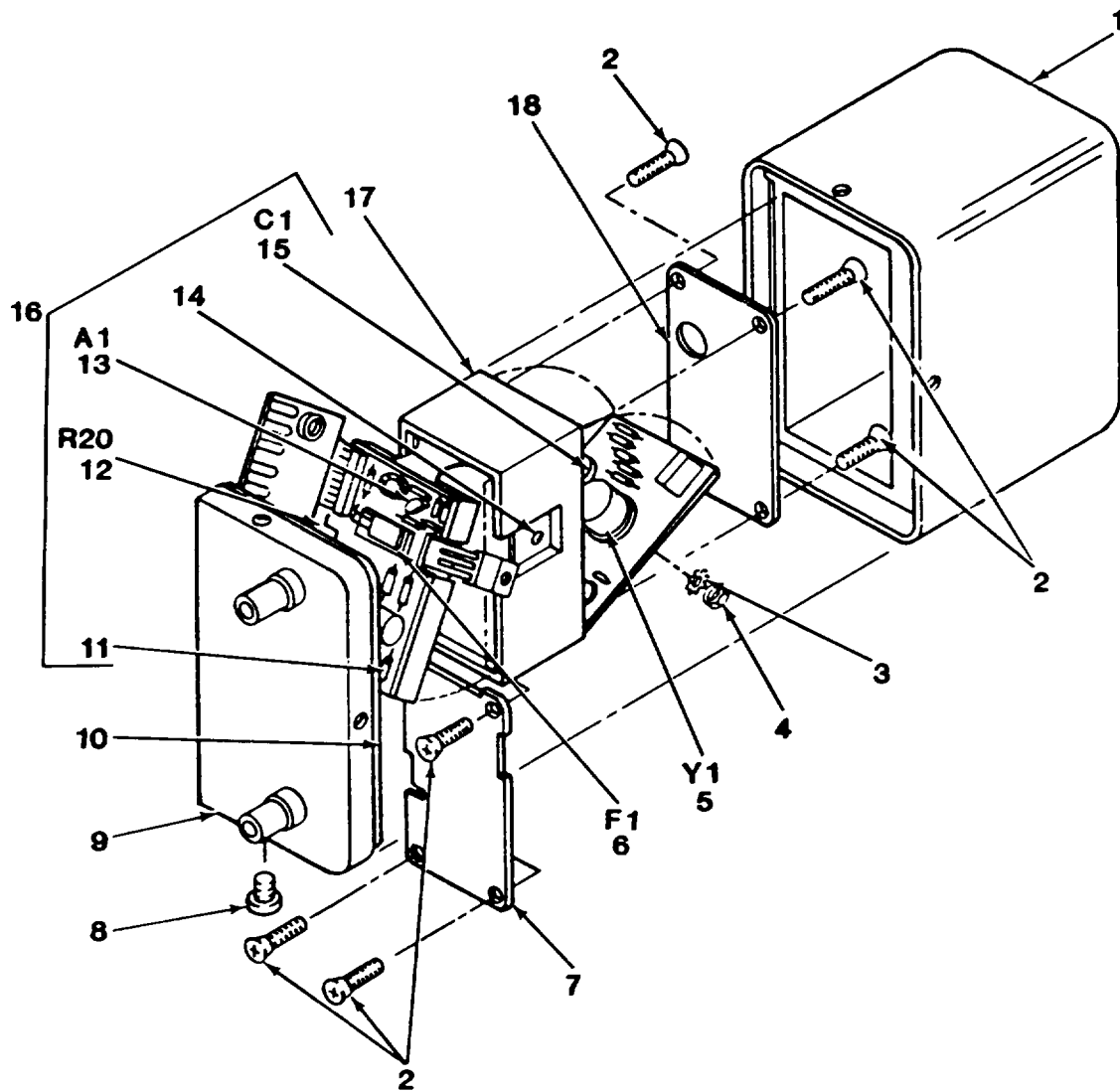


Figure 2. A24 Crystal Oscillator Assembly



(1) ITEM NO	(2) SMR CODE	(3) FSCM	(4) PART NUMBER	(5) DESCRIPTION AND USABLE ON CODE (UOC)	(6) QTY
GROUP 01 CRYSTAL OSCILLATOR ASSEMBLY(A24)					
FIGURE 2					
1	PADZZ	28480	10811-20206	HOUSING	1
2	PADZZ	96906	MS51959-5	SCREW,MACHINE	8
3	PADZZ	96906	MS35335-57	WASHER,LOCK	1
4	PADZZ	96906	MS35649-244	NUT,PLAIN,HEXAGON	1
5	PADZZ	28480	5080-0094	CRYSTAL UNIT,QUARTZ	1
6	PADZZ	27012	PIC0TEMP6109	FUSE LINE,THERMAL	1
7	PADZZ	28480	10811-20202	COVER,ACCESS	1
8	PADZZ	13499	327-0015-010	SETSCREW	3
9	PADZZ	28480	10811-20211	COVER,ACCESS	1
10	XBDZZ	28480	10811-40001	INSULATOR,PLATE	1
11	PADZZ	28480	0360-0124	TERMINAL,STUD PART OF REPLACEMENT KIT, ITEM NUMBER 16	2
12	PADZZ	81349	RNC50K1331FS	RESISTOR,FIXED,FILM PART OF REPLACEMENT KIT, ITEM NUMBER 16	1
13	PADZZ	28480	10811-60001	CIRCUIT CARD ASSEMB PART OF REPLACEMENT KIT, ITEM NUMBER 16	1
14	XBDZZ	55285	7610-10-10	INSULATOR,TRANSISTO PART OF REPLACEMENT KIT, ITEM NUMBER 16	2
15	PADZZ	91293	8097	CAPACITOR,VARIABLE, PART OF REPLACEMENT KIT, ITEM NUMBER 16	1
16	PAHZZ	28480	10811-60114	KIT,REPLACEMENT REPLACEMENT KIT CONTAINS ITEM NUMBER 11 THROUGH 15.	1
17	XBDZZ	28480	10811-60106	OVEN,CRYSTAL	1
18	PADZZ	28480	10811-20203	COVER,ACCESS	1

END OF FIGURE



NATIONAL STOCK NUMBER AND PART NUMBER INDEX

NATIONAL STOCK NUMBER INDEX					
STOCK NUMBER	FIG.	ITEM	STOCK NUMBER	FIG.	ITEM
6150-00-008-5075	1A	16	6625-01-089-0078	1A	25
5305-00-054-5642	1A	72	6625-01-089-0079	1A	41
5305-00-054-5645	1A	109	6625-01-089-0080	1A	42
5305-00-054-5649	1A	96	6625-01-089-0082	1A	43
5305-00-054-5653	1A	47	6625-01-089-0084	1A	107
	1A	51	6625-01-089-0085	1A	106
5305-00-054-6649	1A	87	6625-01-121-9241	1A	55
5305-00-054-6650	1A	19	6625-01-121-9242	1A	34
5305-00-054-6651	1A	2	6625-01-121-9243	1A	35
5305-00-054-6657	1A	93	6625-01-121-9244	1A	36
5305-00-054-6667	1A	22	6625-01-121-9245	1A	28
5305-00-054-6671	1A	6	6625-01-121-9246	1A	38
5310-00-058-3599	1A	46	6625-01-121-9247	1A	39
5355-00-100-6778	1A	62	6625-01-121-9248	1A	24
5340-00-244-5748	1A	100	6625-01-121-9249	1A	21
5310-00-282-4653	1A	81	6625-01-121-9250	1A	44
6625-00-434-3251	1A	75	6625-01-121-9251	1A	97
5985-00-472-5028	1A	61	6625-01-121-9252	1A	110
5310-00-543-4652	1A	69	6625-01-121-9253	1A	78
5310-00-550-3715	1A	52	5995-01-167-8825	1A	32
5310-00-595-6761	1A	108	5935-01-170-6319	1A	67
5310-00-614-3552	1A	23	4920-01-174-0039	1A	33
5310-00-616-3554	1A	20	5955-01-178-5178	1A	83
5310-00-616-3555	1A	91	5995-01-178-5956	1A	102
5305-00-717-6950	1A	63	5995-01-178-5957	1A	71
5920-00-755-3235	1A	76	6625-01-203-9149	1A	111
5305-00-763-6961	1A	45	6625-01-203-9150	1A	94
5305-00-766-2422	1A	49	6625-01-203-9151	1A	105
5320-00-826-0329	1A	12	6625-01-203-9157	1A	95
5935-00-853-7596	1A	77	6625-01-206-7901	1A	13
5920-00-879-8408	1A	59	5995-01-212-6954	1A	104
5305-00-902-2136	1A	17	5995-01-212-6955	1A	82
5310-00-929-6395	1A	86	5915-01-213-1276	1A	85
5310-00-934-9761	1A	90	5310-01-214-4696	1A	57
5310-00-938-2013	1A	68	5995-01-248-2604	1A	101
5940-01-016-5118	1A	80	5930-01-248-9554	1A	79
5961-01-051-3996	1A	70	5310-01-250-6580	1A	58
5935-01-058-1289	1A	60	5340-01-252-4916	1A	11
5999-01-058-7852	1A	64			
5365-01-062-3630	1A	5			
5340-01-062-6736	1A	8			
5340-01-063-2862	1A	4			
4140-01-064-5526	1A	89			
3120-01-077-7200	1A	7			
6625-01-088-9513	1A	53			
6625-01-089-0073	1A	29			
6625-01-089-0074	1A	37			
6625-01-089-0075	1A	27			
6625-01-089-0076	1A	26			
6625-01-089-0077	1A	40			

SECTION IV

NATIONAL STOCK NUMBER AND PART NUMBER INDEX

PART NUMBER INDEX				
FSCM	PART NUMBER	STOCK NUMBER	FIG.	ITEM
06928	B201U042	5935-01-170-6319	1A	47
52072	CAD24P02261DC011	5995-01-212-6954	1A	102
56769	CLF280RTP	5999-01-058-7852	1A	60
78553	C43040-017-4	5340-01-215-4985	1A	51
06383	FCM2A14		1A	98
16428	KH7081	6150-00-008-5075	1A	10
96906	MS15795-802	5310-00-595-6761	1A	106
90906	MS16535-156		1A	91
96906	MS24693C270	5305-00-088-9667	1A	2
96906	MS24693C46	5305-00-902-2136	1A	12
96906	MS35333-69	5310-00-543-4652	1A	67
96906	MS35333-70	5310-00-550-3715	1A	49
96906	MS35333-71	5310-00-616-3555	1A	90
96906	MS35335-29	5310-00-616-3554	1A	15
96906	MS35335-57	5310-00-058-3599	1A	41
			2	3
96906	MS35335-59	5310-00-614-3552	1A	18
96906	MS35338-136	5310-00-929-6395	1A	85
96906	MS35649-224	5310-00-938-2013	1A	66
96906	MS35649-244	5310-00-934-9748	2	2
96906	MS35649-264	5310-00-934-9761	1A	89
96906	MS51957-10	5305-00-054-5645	1A	107
96906	MS51957-15	5305-00-054-5649	1A	95
96906	MS51957-19	5305-00-054-5653	1A	42
			1A	48
96906	MS51957-25	5305-00-054-6649	1A	86
96906	MS51957-26	5305-00-054-6650	1A	14
96906	MS51957-27	5305-00-054-6651	1A	4
96906	MS51957-33	5305-00-054-6657	1A	72
96906	MS51957-42	5305-00-054-6667	1A	17
96906	MS51957-8	5305-00-054-5642	1A	70
96906	MS51959-1	5305-00-766-2422	1A	44
96906	MS51959-26	5305-00-763-6961	1A	40
96906	MS51959-5	5305-00-763-3356	2	10
96906	MS51963-9	5305-00-717-6950	1A	59
81349	M39012/21-0002	5935-00-853-7596	1A	76
27012	PICOTEMP6109	5920-01-157-2768	2	6
81349	RNC50K1331FS	5905-00-506-6617	2	13
28480	0360-0124	5940-00-993-9338	2	9
28480	0370-1005	5355-00-100-6778	1A	58
28480	05305-60205	5935-01-058-1289	1A	57
28480	05342-00001		1A	92
28480	05342-00004		1A	100
28480	05342-00008		1A	13
28480	05342-00028		1A	97
28480	05342-00030		1A	43
28480	05342-00031		1A	45
28480	05342-00034		1A	53
28480	05342-00035		1A	61
28480	05342-00036		1A	64
28480	05342-20105		1A	46



SECTION IV

NATIONAL STOCK NUMBER AND PART NUMBER INDEX

PART NUMBER INDEX				
FSCM	PART NUMBER	STOCK NUMBER	FIG.	ITEM
28480	05342-20116		1A	63
28480	05342-60002	6625-01-088-9513	1A	50
28480	05342-60004	6625-01-121-9243	1A	30
28480	05342-60005	6625-01-089-0073	1A	24
28480	05342-60006	6625-01-121-9244	1A	31
28480	05342-60007	6625-01-089-0074	1A	32
28480	05342-60008	6625-01-121-9245	1A	23
28480	05342-60009	6625-01-121-9246	1A	33
28480	05342-60010	6625-01-089-0075	1A	22
28480	05342-60011	6625-01-121-9247	1A	34
28480	05342-60012	6625-01-089-0076	1A	21
28480	05342-60013	6625-01-089-0077	1A	35
28480	05342-60014	6625-01-089-0078	1A	20
28480	05342-60015	6625-01-121-9248	1A	19
28480	05342-60017	6625-01-089-0079	1A	36
28480	05342-60019	6625-01-089-0080	1A	37
28480	05342-60020	6625-01-089-0082	1A	38
28480	05342-60025	6625-01-089-0084	1A	105
28480	05342-60026	6625-01-121-9252	1A	108
28480	05342-60029	6625-01-121-9253	1A	77
28480	05342-60040	6625-01-121-9242	1A	29
28480	05342-60041	6625-01-121-9241	1A	52
28480	05342-60067	6625-01-121-9251	1A	96
28480	05342-60068	6625-01-121-9249	1A	16
28480	05342-60069	6625-01-121-9250	1A	39
28480	05342-60102	6625-01-203-9149	1A	109
28480	05342-60103	6625-01-203-9151	1A	103
28480	05342-60105	6625-01-203-9157	1A	94
28480	05342-60109		1A	101
28480	05342-60111	4920-01-174-0039	1A	28
28480	05342-60121	6625-01-203-9150	1A	93
28480	05342-60129	5995-01-212-6955	1A	81
28480	05342-60132	5995-01-178-5957	1A	69
28480	05343-20211		1A	55
28480	0960-0444	6625-00-434-3251	1A	73
28480	10811-20202		2	8
28480	10811-20203		2	17
28480	10811-20206		2	1
28480	10811-20211		2	12
28480	10811-40001		2	7
28480	10811-60001	6625-01-136-3812	2	14
28480	10811-60106	5955-01-158-9713	2	15
28480	10811-60111	5955-00-571-9496	1A	82
82389	11PL091B	5930-01-248-9554	1A	78
28480	1460-0553		1A	65
28480	1460-1345	5340-01-062-6736	1A	7
73734	1550	5340-00-244-5748	1A	99
28480	1990-0324	5961-01-051-3996	1A	68
01295	20704L		1A	83
75915	275-125	5920-00-879-8408	1A	56
75915	279-100	5920-00-932-6977	1A	74

SECTION IV

NATIONAL STOCK NUMBER AND PART NUMBER INDEX

PART NUMBER INDEX				
FSCM	PART NUMBER	STOCK NUMBER	FIG.	ITEM
28480	2950-0095	5310-01-214-4696	1A	54
75915	313-750	5920-00-755-3235	1A	75
13499	327-0015-010	5305-00-891-1732	2	11
28480	5001-0423		1A	1
28480	5001-0439	6625-01-234-7171	1A	26
28480	5020-8815		1A	71
28480	5020-8816		1A	87
28480	5020-8837		1A	25
28480	5040-6927		1A	62
28480	5040-7201	5340-01-063-2862	1A	6
28480	5040-7203	6625-01-206-7901	1A	8
28480	5040-7219	6625-01-096-5943	1A	9
28480	5040-7220	6625-01-096-8911	1A	3
28480	5060-9804		1A	11
28480	5061-1940		1A	5
28480	5080-0094		2	4
28480	5088-7022	6625-01-089-0085	1A	104
79963	720-380H	5940-01-016-5118	1A	79
55285	7610-10-10		2	5
91293	8097	5910-01-157-6652	2	16
28480	8120-2482	5995-01-167-8825	1A	27
23936	8124	4140-01-064-5526	1A	88
73734	9002NP		1A	80
28480	9135-0142	5915-01-213-1276	1A	84

CROSS-REFERENCE INDEXES

NATIONAL STOCK NUMBER INDEX

STOCK NUMBER	FIG.	ITEM	STOCK NUMBER	FIG.	ITEM
5305-00-054-5642	1A	70	6625-01-089-0073	1A	24
5305-00-054-5645	1A	107	6625-01-089-0074	1A	32
5305-00-054-5649	1A	95	6625-01-089-0075	1A	22
5305-00-054-5653	1A	42	6625-01-089-0076	1A	21
	1A	48	6625-01-089-0077	1A	35
5305-00-054-6649	1A	86	6625-01-089-0078	1A	20
5305-00-054-6650	1A	14	6625-01-089-0079	1A	36
5305-00-054-6651	1A	4	6625-01-089-0080	1A	37
5305-00-054-6657	1A	72	6625-01-089-0082	1A	38
5305-00-054-6667	1A	17	6625-01-089-0084	1A	105
5310-00-058-3599	1A	41	6625-01-089-0085	1A	104
	2	3	5340-01-096-4804	1A	11
5305-00-088-9667	1A	2	6625-01-096-5943	1A	9
5355-00-100-6778	1A	58	6625-01-096-8911	1A	3
5920-00-199-9498	1A	75A	5310-01-104-4546	1A	54A
5340-00-244-5748	1A	99	6150-01-111-1717	1A	10
5340-00-419-3311	1A	113	6625-01-121-9241	1A	52
6625-00-434-3251	1A	73	6625-01-121-9242	1A	29
5985-00-472-5028	1A	72C	6625-01-121-9243	1A	30
5905-00-506-6617	2	12	6625-01-121-9244	1A	31
5310-00-543-4652	1A	67	6625-01-121-9245	1A	23
5310-00-550-3715	1A	49	6625-01-121-9246	1A	33
5310-00-595-6761	1A	106	6625-01-121-9247	1A	34
5310-00-614-3552	1A	18	6625-01-121-9248	1A	19
5310-00-616-3554	1A	15	6625-01-121-9249	1A	16
5310-00-616-3555	1A	90	6625-01-121-9250	1A	39
5305-00-717-6950	1A	59	6625-01-121-9251	1A	96
5920-00-755-3235	1A	75	6625-01-121-9252	1A	108
5305-00-763-3356	2	2	6625-01-121-9253	1A	77
5305-00-763-6961	1A	40	6625-01-136-3812	2	13
5305-00-766-2422	1A	44	5920-01-157-2768	2	6
5935-00-853-7596	1A	76	5910-01-157-6652	2	15
5920-00-879-8408	1A	56	5995-01-167-8825	1A	27
5305-00-891-1732	2A	8	5935-01-170-6319	1A	47
5305-00-902-2136	1A	12	6150-01-174-0039	1A	28
5310-00-929-6395	1A	85	5995-01-178-5957	1A	69
5920-00-932-6977	1A	74	5955-01-199-2762	2	5
5310-00-934-9748	2	4	5995-01-203-9149	1A	109
5310-00-934-9761	1A	89	6625-01-203-9150	1A	93
5310-00-938-2013	1A	66	6625-01-203-9152	1A	101
5930-00-947-8318	1A	78B	6625-01-203-9157	1A	94
5940-00-993-9338	2	11	6625-01-206-7901	1A	8
5940-01-016-5118	1A	79	5995-01-212-6954	1A	102
5980-01-051-3996	1A	68	5995-01-212-6955	1A	81
5935-01-058-1289	1A	57	5915-01-213-1276	1A	84
5999-01-058-7852	1A	60	5310-01-214-4696	1A	54
5340-01-062-6736	1A	7	5340-01-215-4985	1A	51
5340-01-063-2862	1A	6	4730-01-228-0319	1A	80
4140-01-064-5526	1A	88	6625-01-234-7171	1A	26
6625-01-088-9513	1A	50	6625-01-234-7180	1A	3A

CROSS-REFERENCE INDEXES

NATIONAL STOCK NUMBER INDEX

STOCK NUMBER	FIG.	ITEM	STOCK NUMBER	FIG.	ITEM
5305-01-239-1280	1A	2A			
5305-01-239-1283	1A	12A			
5930-01-248-9554	1A	78			
5340-01-263-8713	1A	9A			

SECTION VII

CROSS-REFERENCE INDEXES

PART NUMBER INDEX				
FSCM	PART NUMBER	STOCK NUMBER	FIG.	ITEM
06928	B201U042	5935-01-170-6319	1A	47
52072	CAD24P02261DC011	5995-01-212-6954	1A	102
56769	CLF280RTP	5999-01-058-7852	1A	60
78553	C43040-017-4	5340-01-215-4985	1A	51
06383	FCM2A14		1A	98
81349	F02B250V1-2A	5920-00-199-9498	1A	75A
06915	HUC-4	5340-00-419-3311	1A	113
96906	MS15795-802	5310-00-595-6761	1A	106
90906	MS16535-156		1A	91
96906	MS24693C270	5305-00-088-9667	1A	2
96906	MS24693C46	5305-00-902-2136	1A	12
96906	MS35333-69	5310-00-543-4652	1A	67
96906	MS35333-70	5310-00-550-3715	1A	49
96906	MS35333-71	5310-00-616-3555	1A	90
96906	MS35333-74		1A	72A
96906	MS35335-29	5310-00-616-3554	1A	15
96906	MS35335-57	5310-00-058-3599	1A	41
			2	3
96906	MS35335-59	5310-00-614-3552	1A	18
96906	MS35338-136	5310-00-929-6395	1A	85
96906	MS35649-224	5310-00-938-2013	1A	66
96906	MS35649-244	5310-00-934-9748	2	4
96906	MS35649-264	5310-00-934-9761	1A	89
96906	MS51957-10	5305-00-054-5645	1A	107
96906	MS51957-15	5305-00-054-5649	1A	95
96906	MS51957-19	5305-00-054-5653	1A	42
			1A	48
96906	MS51957-25	5305-00-054-6649	1A	86
96906	MS51957-26	5305-00-054-6650	1A	14
96906	MS51957-27	5305-00-054-6651	1A	4
96906	MS51957-33	5305-00-054-6657	1A	72
96906	MS51957-42	5305-00-054-6667	1A	17
96906	MS51957-8	5305-00-054-5642	1A	70
96906	MS51959-1	5305-00-766-2422	1A	44
96906	MS51959-26	5305-00-763-6961	1A	40
96906	MS51959-5	5305-00-763-3356	2	2
96906	MS51963-9	5305-00-717-6950	1A	59
81349	MS75029-23	5930-00-947-8318	1A	78B
81349	M39012/21-0002	5935-00-853-7596	1A	76
27012	PICOTEMP6109	5920-01-157-2768	2	6
81349	RNC50K1331FS	5905-00-506-6617	2	12
12014	R4003X5/16		1A	10A
28480	0360-0124	5940-00-993-9338	2	11
28480	0370-1005	5355-00-100-6778	1A	58
28480	0515-1132	5305-01-239-1280	1A	2A
28480	0515-1331	5305-01-239-1283	1A	12A
28480	05305-60205	5935-01-058-1289	1A	57
28480	05342-00001		1A	92
28480	05342-00004		1A	100
28480	05342-00008		1A	13
28480	05342-00017		1A	77A

SECTION VII

CROSS-REFERENCE INDEXES

PART NUMBER INDEX				
FSCM	PART NUMBER	STOCK NUMBER	FIG.	ITEM
28480	05342-00028		1A	97
28480	05342-00031		1A	43
			1A	45
28480	05342-00034		1A	53
28480	05342-00035		1A	61
28480	05342-00036		1A	64
28480	05342-00038		1A	92A
28480	05342-00042		1A	65A
28480	05342-00044		1A	111
28480	05342-00045		1A	86A
28480	05342-20105		1A	46
28480	05342-20116		1A	63
28480	05342-60002	6625-01-088-9513	1A	50
28480	05342-60004	6625-01-121-9243	1A	30
28480	05342-60005	6625-01-089-0073	1A	24
28480	05342-60006	6625-01-121-9244	1A	31
28480	05342-60007	6625-01-089-0074	1A	32
28480	05342-60008	6625-01-121-9245	1A	23
28480	05342-60009	6625-01-121-9246	1A	33
28480	05342-60010	6625-01-089-0075	1A	22
28480	05342-60011	6625-01-121-9247	1A	34
28480	05342-60012	6625-01-089-0076	1A	21
28480	05342-60013	6625-01-089-0077	1A	35
28480	05342-60014	6625-01-089-0078	1A	20
28480	05342-60015	6625-01-121-9248	1A	19
28480	05342-60017	6625-01-089-0079	1A	36
28480	05342-60019	6625-01-089-0080	1A	37
28480	05342-60020	6625-01-089-0082	1A	38
28480	05342-60025	6625-01-089-0084	1A	105
28480	05342-60026	6625-01-121-9252	1A	108
28480	05342-60029	6625-01-121-9253	1A	77
28480	05342-60040	6625-01-121-9242	1A	29
28480	05342-60041	6625-01-121-9241	1A	52
28480	05342-60042		1A	29A
28480	05342-60067	6625-01-121-9251	1A	96
28480	05342-60068	6625-01-121-9249	1A	16
28480	05342-60069	6625-01-121-9250	1A	39
28480	05342-60072		1A	20A
28480	05342-60102	5995-01-203-9149	1A	109
28480	05342-60103		1A	103
28480	05342-60105	6625-01-203-9157	1A	94
28480	05342-60109	6625-01-203-9152	1A	101
28480	05342-60111	6150-01-174-0039	1A	28
28480	05342-60121	6625-01-203-9150	1A	93
28480	05342-60129	5995-01-212-6955	1A	81
28480	05342-60132	5995-01-178-5957	1A	69
28480	05342-60133		1A	110
28480	05342-60138		1A	94A
28480	05342-60141		1A	5A
28480	05343-20211		1A	55
28480	0590-0505	5310-01-104-4546	1A	54A

SECTION VII

CROSS-REFERENCE INDEXES

PART NUMBER INDEX				
FSCM	PART NUMBER	STOCK NUMBER	FIG.	ITEM
28480	0960-0444	6625-00-434-3251	1A	73
28480	10811-20202		2	7
28480	10811-20203		2	18
28480	10811-20206		2	1
28480	10811-20211		2	9
28480	10811-40001		2	10
28480	10811-60001	6625-01-136-3812	2	13
28480	10811-60106		2	17
28480	10811-60111		1A	82
28480	10811-60114		2	16
82389	11PL091B	5930-01-248-9554	1A	78
28480	1250-0207	5985-00-472-5028	1A	72C
28480	1400-0053		1A	112
28480	1400-0560		1A	68B
28480	1460-0553		1A	65
28480	1460-1345	5340-01-062-6736	1A	7
73734	1550	5340-00-244-5748	1A	99
16428	17743	6150-01-111-1717	1A	10
28480	1990-0324	5980-01-051-3996	1A	68
28480	1990-0891		1A	68A
01295	20704L		1A	83
75915	275-125	5920-00-879-8408	1A	56
75915	279-100	5920-00-932-6977	1A	74
28480	2950-0095	5310-01-214-4696	1A	54
28480	3101-0163		1A	78A
75915	313-750	5920-00-755-3235	1A	75
75915	313001		1A	74A
13499	327-0015-010	5305-00-891-1732	2	8
28480	5001-0423		1A	1
28480	5001-0439	6625-01-234-7171	1A	26
28480	5020-8815		1A	71
28480	5020-8816		1A	87
28480	5020-8837		1A	25
28480	5021-5815		1A	71A
28480	5021-5816		1A	87A
28480	5021-5837		1A	25A
28480	5040-6927		1A	62
28480	5040-7201	5340-01-063-2862	1A	6
28480	5040-7203	6625-01-206-7901	1A	8
28480	5040-7219	6625-01-096-5943	1A	9
28480	5040-7220	6625-01-096-8911	1A	3
28480	5041-6819	5340-01-263-8713	1A	9A
28480	5041-6820	6625-01-234-7180	1A	3A
28480	5060-9804	5340-01-096-4804	1A	11
28480	5061-1940		1A	5
28480	5080-0094	5955-01-199-2762	2	5
28480	5088-7022	6625-01-089-0085	1A	104
28480	7120-6827		1A	10B
28480	7121-5108		1A	76A
79963	720-380H	5940-01-016-5118	1A	79
55285	7610-10-10		2	14

SECTION VII

CROSS-REFERENCE INDEXES

PART NUMBER INDEX				
FSCM	PART NUMBER	STOCK NUMBER	FIG.	ITEM
09353	7807		1A	72B
91293	8097	5910-01-157-6652	2	15
28480	8120-2482	5995-01-167-8825	1A	27
23936	8124	4140-01-064-5526	1A	88
73734	9002NP	4730-01-228-0319	1A	80
28480	9135-0142	5915-01-213-1276	1A	84



By Order of the Secretary of the Army:

**CARL E. VUONO**  
*General, United States Army*  
*Chief of Staff*

Official:

**R.L. DILWORTH**  
*Brigadier General, United States Army*  
*The Adjutant General*

DISTRIBUTION:

To be distributed in accordance with DA Form 12-51 literature requirements for TD-1225(V)1.



## **These are the instructions for sending an electronic 2028**

The following format must be used if submitting an electronic 2028. The subject line must be exactly the same and all fields must be included; however only the following fields are mandatory: 1, 3, 4, 5, 6, 7, 8, 9, 10, 13, 15, 16, 17, and 27.

**From:** "Whomever" <whomever@wherever.army.mil>

**To:** 2028@redstone.army.mil

**Subject:** DA Form 2028

- 1. From: Joe Smith**
- 2. Unit: home**
- 3. Address: 4300 Park**
- 4. City: Hometown**
- 5. St: MO**
- 6. Zip: 77777**
- 7. Date Sent: 19-OCT-93**
- 8. Pub no: 55-2840-229-23**
- 9. Pub Title: TM**
- 10. Publication Date: 04-JUL-85**
- 11. Change Number: 7**
- 12. Submitter Rank: MSG**
- 13. Submitter FName: Joe**
- 14. Submitter MName: T**
- 15. Submitter LName: Smith**
- 16. Submitter Phone: 123-123-1234**
- 17. Problem: 1**
- 18. Page: 2**
- 19. Paragraph: 3**
- 20. Line: 4**
- 21. NSN: 5**
- 22. Reference: 6**
- 23. Figure: 7**
- 24. Table: 8**
- 25. Item: 9**
- 26. Total: 123**
- 27. Text:**

This is the text for the problem below line 27.





<b>TO:</b> (Forward direct to addressee listed in publication) Commander, U.S. Army Aviation and Missile Command ATTN: AMSAM-MMC-MA-NP Redstone Arsenal, 35898	<b>FROM:</b> (Activity and location) (Include ZIP Code) MSG, Jane Q. Doe 1234 Any Street Nowhere Town, AL 34565	<b>DATE</b> 8/30/02
---	--	------------------------

**PART II - REPAIR PARTS AND SPECIAL TOOL LISTS AND SUPPLY CATALOGS/SUPPLY MANUALS**

PUBLICATION NUMBER			DATE	TITLE				
PAGE NO.	COLM NO.	LINE NO.	NATIONAL STOCK NUMBER	REFERENCE NO.	FIGURE NO.	ITEM NO.	TOTAL NO. OF MAJOR ITEMS SUPPORTED	RECOMMENDED ACTION

**PART III - REMARKS** (Any general remarks, corrections, or suggestions for improvement of publications and blank forms. Additional blank sheets may be used if more space is needed.)

**EXAMPLE**

TYPED NAME, GRADE OR TITLE MSG, Jane Q. Doe, SFC	TELEPHONE EXCHANGE/AUTOVON, PLUS EXTENSION 788-1234	SIGNATURE
---	--	-----------

<b>RECOMMENDED CHANGES TO PUBLICATIONS AND BLANK FORMS</b>  For use of this form, see AR 25-30; the proponent agency is ODISC4.	Use Part II (reverse) for Repair Parts and Special Tool Lists (RPSTL) and Supply Catalogs/Supply Manuals (SC/SM)	DATE
---	--	------

TO: (Forward to proponent of publication or form)(Include ZIP Code)	FROM: (Activity and location)(Include ZIP Code)
---	---

**PART 1 - ALL PUBLICATIONS (EXCEPT RPSTL AND SC/SM) AND BLANK FORMS**

PUBLICATION/FORM NUMBER	DATE	TITLE
-------------------------	------	-------

ITEM NO.	PAGE NO.	PARA-GRAPH	LINE NO. *	FIGURE NO.	TABLE NO.	RECOMMENDED CHANGES AND REASON

*\* Reference to line numbers within the paragraph or subparagraph.*

TYPED NAME, GRADE OR TITLE	TELEPHONE EXCHANGE/ AUTOVON, PLUS EXTENSION	SIGNATURE
----------------------------	--	-----------

<b>TO:</b> (Forward direct to addressee listed in publication)	<b>FROM:</b> (Activity and location) (Include ZIP Code)	<b>DATE</b>
--	---	-------------

**PART II - REPAIR PARTS AND SPECIAL TOOL LISTS AND SUPPLY CATALOGS/SUPPLY MANUALS**

<b>PUBLICATION NUMBER</b>	<b>DATE</b>	<b>TITLE</b>
---------------------------	-------------	--------------

PAGE NO.	COLM NO.	LINE NO.	NATIONAL STOCK NUMBER	REFERENCE NO.	FIGURE NO.	ITEM NO.	TOTAL NO. OF MAJOR ITEMS SUPPORTED	RECOMMENDED ACTION

**PART III - REMARKS** (Any general remarks or recommendations, or suggestions for improvement of publications and blank forms. Additional blank sheets may be used if more space is needed.)

TYPED NAME, GRADE OR TITLE	TELEPHONE EXCHANGE/AUTOVON, PLUS EXTENSION	SIGNATURE
----------------------------	--	-----------



<b>RECOMMENDED CHANGES TO PUBLICATIONS AND BLANK FORMS</b>  For use of this form, see AR 25-30; the proponent agency is ODISC4.	Use Part II (reverse) for Repair Parts and Special Tool Lists (RPSTL) and Supply Catalogs/Supply Manuals (SC/SM)	DATE
---	--	------

TO: (Forward to proponent of publication or form)(Include ZIP Code)	FROM: (Activity and location)(Include ZIP Code)
---	---

**PART 1 - ALL PUBLICATIONS (EXCEPT RPSTL AND SC/SM) AND BLANK FORMS**

PUBLICATION/FORM NUMBER	DATE	TITLE
-------------------------	------	-------

ITEM NO.	PAGE NO.	PARA-GRAPH	LINE NO. *	FIGURE NO.	TABLE NO.	RECOMMENDED CHANGES AND REASON

*\* Reference to line numbers within the paragraph or subparagraph.*

TYPED NAME, GRADE OR TITLE	TELEPHONE EXCHANGE/ AUTOVON, PLUS EXTENSION	SIGNATURE
----------------------------	--	-----------

<b>TO:</b> (Forward direct to addressee listed in publication)	<b>FROM:</b> (Activity and location) (Include ZIP Code)	<b>DATE</b>
--	---	-------------

**PART II - REPAIR PARTS AND SPECIAL TOOL LISTS AND SUPPLY CATALOGS/SUPPLY MANUALS**

<b>PUBLICATION NUMBER</b>	<b>DATE</b>	<b>TITLE</b>
---------------------------	-------------	--------------

PAGE NO.	COLM NO.	LINE NO.	NATIONAL STOCK NUMBER	REFERENCE NO.	FIGURE NO.	ITEM NO.	TOTAL NO. OF MAJOR ITEMS SUPPORTED	RECOMMENDED ACTION

**PART III - REMARKS** (Any general remarks or recommendations, or suggestions for improvement of publications and blank forms. Additional blank sheets may be used if more space is needed.)

TYPED NAME, GRADE OR TITLE	TELEPHONE EXCHANGE/AUTOVON, PLUS EXTENSION	SIGNATURE
----------------------------	--	-----------

<b>RECOMMENDED CHANGES TO PUBLICATIONS AND BLANK FORMS</b>  For use of this form, see AR 25-30; the proponent agency is ODISC4.	Use Part II (reverse) for Repair Parts and Special Tool Lists (RPSTL) and Supply Catalogs/Supply Manuals (SC/SM)	DATE
---	--	------

TO: (Forward to proponent of publication or form)(Include ZIP Code)	FROM: (Activity and location)(Include ZIP Code)
---	---

**PART 1 - ALL PUBLICATIONS (EXCEPT RPSTL AND SC/SM) AND BLANK FORMS**

PUBLICATION/FORM NUMBER	DATE	TITLE
-------------------------	------	-------

ITEM NO.	PAGE NO.	PARA-GRAPH	LINE NO. *	FIGURE NO.	TABLE NO.	RECOMMENDED CHANGES AND REASON

*\* Reference to line numbers within the paragraph or subparagraph.*

TYPED NAME, GRADE OR TITLE	TELEPHONE EXCHANGE/ AUTOVON, PLUS EXTENSION	SIGNATURE
----------------------------	--	-----------

<b>TO:</b> (Forward direct to addressee listed in publication)	<b>FROM:</b> (Activity and location) (Include ZIP Code)	<b>DATE</b>
--	---	-------------

**PART II - REPAIR PARTS AND SPECIAL TOOL LISTS AND SUPPLY CATALOGS/SUPPLY MANUALS**

<b>PUBLICATION NUMBER</b>	<b>DATE</b>	<b>TITLE</b>
---------------------------	-------------	--------------

PAGE NO.	COLM NO.	LINE NO.	NATIONAL STOCK NUMBER	REFERENCE NO.	FIGURE NO.	ITEM NO.	TOTAL NO. OF MAJOR ITEMS SUPPORTED	RECOMMENDED ACTION

**PART III - REMARKS** (Any general remarks or recommendations, or suggestions for improvement of publications and blank forms. Additional blank sheets may be used if more space is needed.)

TYPED NAME, GRADE OR TITLE	TELEPHONE EXCHANGE/AUTOVON, PLUS EXTENSION	SIGNATURE
----------------------------	--	-----------



