
TECHNICAL MANUAL

**ORGANIZATIONAL, DIRECT SUPPORT, AND GENERAL SUPPORT
MAINTENANCE REPAIR PARTS AND SPECIAL TOOLS LISTS
(INCLUDING DEPOT MAINTENANCE REPAIR PARTS AND SPECIAL TOOLS**

FOR

**TEST SET, RADIO FREQUENCY, POWER AN/URM-120
(NSN 6625-00-790-2746)**

HEADQUARTERS, DEPARTMENT OF THE ARMY

29 AUGUST 1978

**ORGANIZATIONAL, DIRECT SUPPORT, AND GENERAL SUPPORT
 MAINTENANCE REPAIR PARTS AND SPECIAL TOOLS LISTS
 (INCLUDING DEPOT MAINTENANCE REPAIR PARTS AND SPECIAL TOOLS)
 FOR
 TEST SET, RADIO FREQUENCY, POWER AN/URM-120
 (NSN 6625-00-790-2746)**

Current as of 30 April 1978

REPORTING OF ERRORS

You can improve this manual by recommending improvements using DA Form 2028-2 located in the back of the manual. Simply tear out the self addressed form, fill it out as shown on the sample, fold it where shown, and drop it in the mail,

If there are no blank DA Forms 2028-2 in the back of your manual, use the standard DA Form 2028 (Recommended Changes to Publications and Blank Forms) and forward to the Commander, US Army Communications and Electronics Materiel Readiness Command, ATTN: DRSEL-MA-Q, Fort Monmouth, NJ 07703.

In either case a reply will be furnished direct to you.

	Page	Illus Figure
SECTION I. Introduction	1	
II. Repair parts list	5	
GROUP 01 Case, Meter CY-2606/URM-120 (NSN 6625-00-965-1476)	5	1
02 Coupler, Directional CU-753/URM-120 (NSN 5985-00-790-0210) or	7	2
Coupler, Directional CU-754/URM-120 (NSN 6625-00-887-0186) or	9	3
Coupler, Directional CU-755/URM-120 (NSN 6625-00-887-0187)	11	4
03 Wattmater TS-1285/URM-120 (NSN 6625-00-965-1477)	13	5
SECTION III. Special tools list (Not applicable)		
IV. National stock number and part number index	15	

*This manual supersedes TM 11-6625-446-40P, 19 April 1974.

SECTION I INTRODUCTION

1. Scope

This manual lists spares and repair parts; special tools; special test, measurement, and diagnostic equipment (TMDE), and other special support equipment required for performance of organizational, direct support, and general support maintenance of the AN/URM-120. It authorizes the requisitioning and issue of spares and repair parts as indicated by the source and maintenance codes.

2. General

This Repair Parts and Special Tools List is divided into the following sections:

a. Section II. Repair Parts List. A list of spares and repair parts authorized for use in the performance of maintenance. The list also includes parts which must be removed for replacement of the authorized parts. Parts lists are composed of functional groups in numeric sequence, with the parts in each group listed in figure and item number sequence.

b. Section III. Special Tools List. Not applicable.

c. Section IV. National Stock Number and Part Number Index. A list, in National item identification number (NIIN) sequence, of all National stock numbers (NSN) appearing in the listings, followed by a list, in alphameric sequence, of all part numbers appearing in the listings. National stock numbers and part numbers are cross-referenced to each illustration figure and item number appearance.

3. Explanation of Columns

a. Illustration. This column is divided as follows:

(1) *Figure number.* Indicates the figure number of the illustration on which the item is shown.

(2) *Item number.* The number used to identify item called out in the illustration.

b. Source, Maintenance, and Recoverability (SMR) Codes.

(1) *Source code.* Source codes indicate the manner of acquiring support items for maintenance, repair, or overhaul of end items. Source codes are entered in the first and second positions of the Uniform SMR Code format as follows:

<i>Code</i>	<i>Definition</i>
PA -	Item procured and stocked for anticipated or known usage.
XD -	A support item that is not stocked. When required, item will be procured through normal supply channels.

NOTE

Cannibalization or salvage may be used as a source of supply for any items source coded above except those coded XA and aircraft support items as restricted by AR 700-42.

(2) *Maintenance code.* Maintenance codes are assigned to indicate the levels of maintenance authorized to USE and REPAIR support items. The maintenance codes are entered in the third and fourth positions of the Uniform SMR Code format as follows:

(a) The maintenance code entered in the third position will indicate the lowest maintenance level authorized to remove, replace, and use the support item. The maintenance code entered in the third position will indicate one of the following levels of maintenance:

<i>Code</i>	<i>Application/Explanation</i>
O -	Support item is removed, replaced, used at the organizational level.
D -	Support items that are removed, replaced, used at depot, mobile depot, specialized repair activity only.

(b) The maintenance code entered in the fourth position indicates whether the item is to be repaired and identifies the lowest maintenance level with the capability to perform complete repair (i.e., all authorized maintenance functions). This position will contain one of the following maintenance codes:

<i>Code</i>	<i>Application/Explanation</i>
D -	The lowest maintenance level capable of complete repair of the support item is the depot level.
Z -	Nonreparable. No repair is authorized.

(3) *Recoverability code.* Recoverability codes are assigned to support items to indicate the disposition action on unserviceable items. The recoverability code is entered in the fifth position of the Uniform SMR Code format as follows:

<i>Recoverability codes</i>	<i>Definition</i>
Z -	Nonreparable item. When unserviceable, condemn and dispose at the level indicated in position 3.
D -	Reparable item. When beyond lower level repair capability, return to depot. Condemnation and disposal not authorized below depot level.

c. National Stock Number. Indicates the National stock number assigned to the item and will be used for requisitioning purposes.

d. Part Number. Indicates the primary number used by the manufacturer (individual, company, firm, corporation, or Government activity), which controls the design and characteristics of the item by means of its engineering drawings, specifications, standards, and inspection requirements to identify an item or range of items.

NOTE

When a stock numbered item is requisitioned, the repair part received may have a different part number than the part being replaced.

e. Federal Supply Code for Manufacturer (FSCM). The FSCM is a 5-digit numeric code listed in SB 708-42 which is used to identify the manufacturer, distributor, or Government agency, etc.

f. Description. Indicates the Federal item name and, if required, a minimum description to identify the item.

g. Unit of Measure (U/M). Indicates the standard of the basic quantity of the listed item as used in performing the actual maintenance function. This measure is expressed by a two-character alphabetical abbreviation (e.g., ea, in, pr, etc). When the unit of measure differs from the unit of issue, the lowest unit of issue that will satisfy the required units of measure will be requisitioned.

h. Quantity Incorporated in Unit. Indicates the quantity of the item used in the breakout shown on the illustration figure, which is prepared for a functional group, subfunctional group, or an assembly.

4. Special Information

The following publications pertain to the AN/URM-120 and its components:
TM 11-6625-446-15, Wattmeter AN/URM-120

5. How to Locate Repair Parts

a. When National stock number or part number is unknown.

(1) *First.* Using the table of contents, determine the functional group within which the item belongs. This is necessary since illustrations are prepared for functional groups and listings are divided into the same groups.

(2) *Second.* Find the illustration covering the functional group to which the item belongs.

(3) *Third.* Identify the item on the illustration and note the illustration figure and item number of the item.

(4) *Fourth.* Using the Repair Parts Listing, find the figure and item number noted on the illustration.

b. When National stock number or part number is known.

(1) *First.* Using the Index of National Stock Numbers and Part Numbers, find the pertinent National stock number or part number. This index is in NIIN sequence followed by a list of part numbers in alphameric sequence, cross-referenced to the illustration figure number and item number.

(2) *Second.* After finding the figure and item number, locate the figure and item number in the repair parts list.

6. Abbreviations

Not applicable.

(Next printed page is 4)

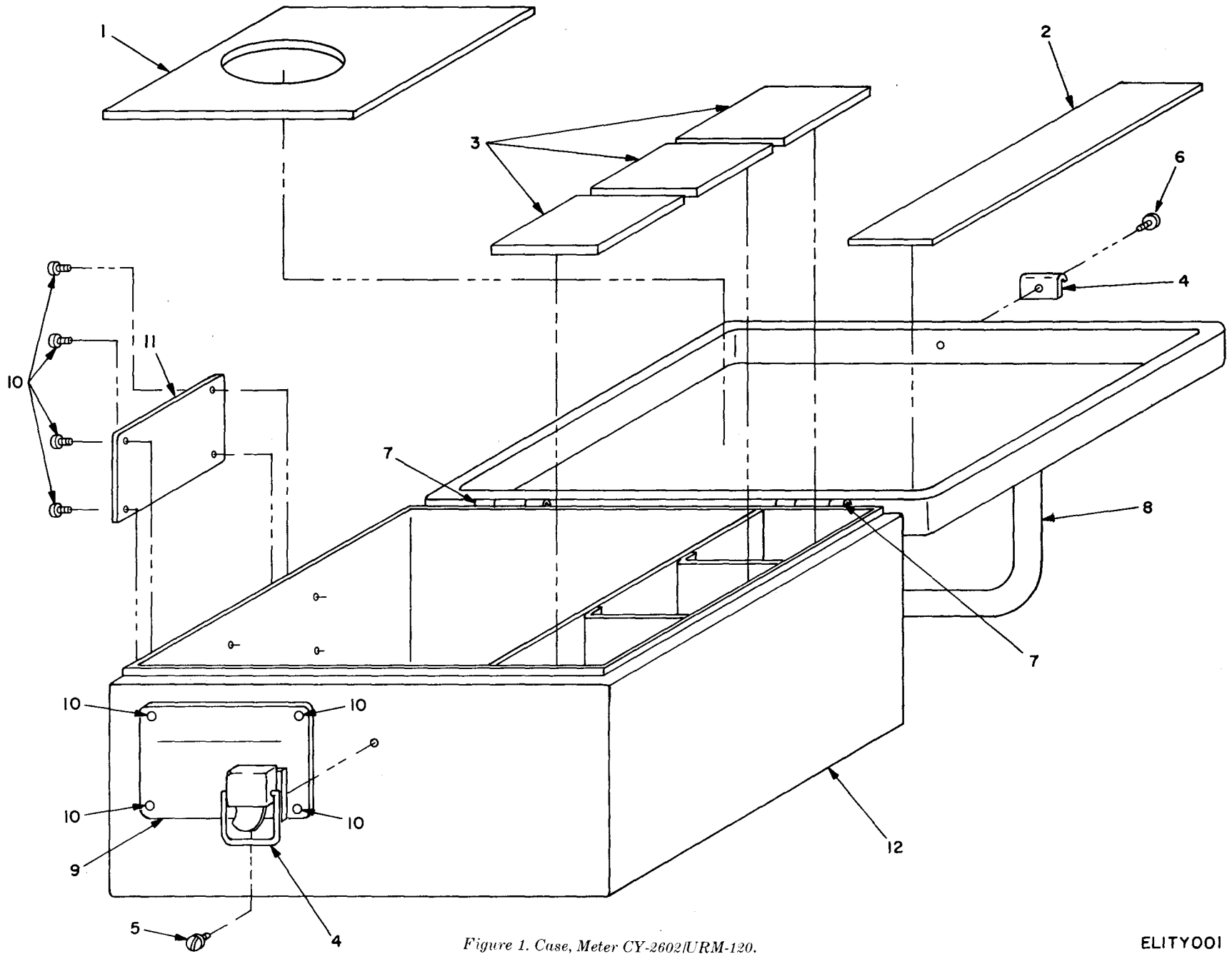


Figure 1. Case, Meter CY-2602/URM-120.

ELITYOOI

SECTION II (1) ILLUSTRATION (A) (B) FIG ITEM NO NO		(2) SMR CODE	(3) NATIONAL STOCK NUMBER	(4) PART NUMBER	(5) FSCM	TM11-6625-446-24P (6) DESCRIPTION	USABLE ON CODE	(7) U/M	(8) QTY INC IN UNIT
						GROUP 01: CASE, METER CY-2606/URM-120			
1	4	XDDZZ		100551	00341	PAD,CUSHIONING,RUBBER		EA	1
1	2	XDDZZ		100549	00341	PAD,CUSHIONING,RUBBER		EA	1
1	3	XDDZZ		100550	00341	PAD,CUSHIONING,RUBBER		EA	3
1	4	PADZZ	5340-00-950-8676	15797	14608	LATCH		EA	1
1	5	XDDZZ		9-64DIAx1-4LRND HDRIVET	00341	RIVET,SOLID		EA	1
1	6	XDDZZ		1-8DIAx1-4LRND HDRIVET	00341	RIVET,SOLID		EA	1
1	7	XDDZZ		100547	00341	HINGE		EA	2
1	8	XDDZZ		100546	00341	HANDLE		EA	1
1	9	XDDZZ		100553	00341	PLATE,IDENTIFICATION		EA	8
1	10	PADZZ	5320-00-240-1913	H100	57771	RIVET		EA	8
1	11	XDDZZ		100552	00341	PLATE,IDENTIFICATION		EA	1
1	12	XDDZZ		100539	00341	CASE		EA	1

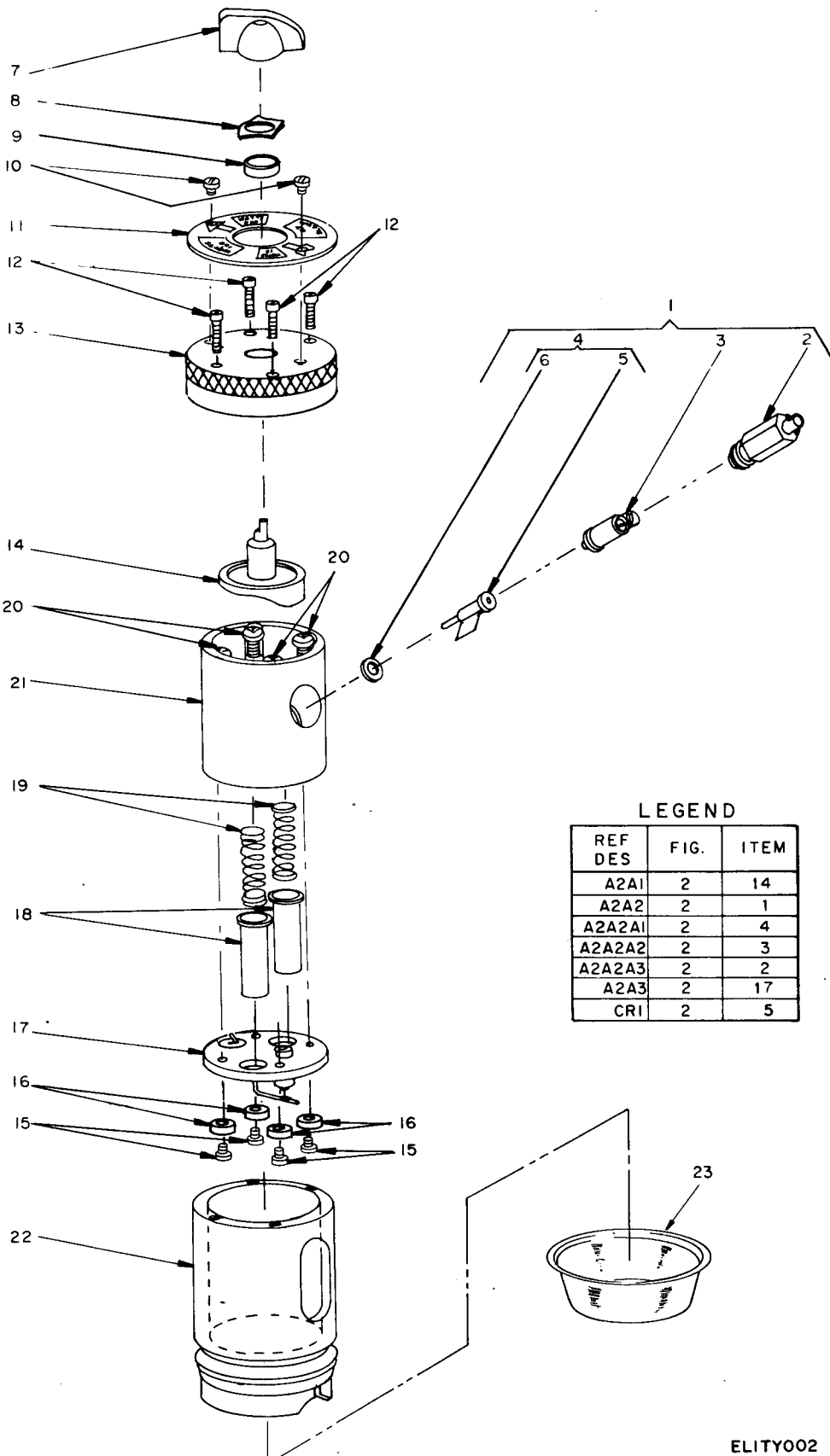


Figure 2. Coupler, Directional CU-753/URM-120.

SECTION II (1) ILLUSTRATION (A) (B) FIG ITEM NO NO		(2) SMR CODE	(3) NATIONAL STOCK NUMBER	(4) PART NUMBER	(5) FSCM	TM11-6625-446-24P (6) DESCRIPTION	USABLE ON CODE	(7) U/M	(8) QTY INC IN UNIT
GROUP 02: COUPLER, DIRECTIONAL CU-753/URM-120									
2	1	PADZZ	5961-01-051-1342	100514-1	00341	CRYSTAL DIODE ASSEMBLY,RF		EA	1
2	2	XDDZZ		100510	00341	NUT ASSEMBLY,SPECIAL		EA	1
2	3	PADZZ	5915-01-050-6618	100504-1	00341	ASSEMBLY,RESISTOR-CAPACITOR		EA	1
2	3	PADZZ	5915-01-050-6618	100504-1	00341	ASSEMBLY,RESISTOR-CAPACITOR		EA	1
2	4	PADZZ	5955-01-050-8446	100508-1	00341	ASSEMBLY,CRYSTAL		EA	1
2	5	PADZZ	5961-00-738-6462	100506	00341	SEMICONDUCTOR DEVICE,DIODE		EA	1
2	6	XDDZZ		100505	00341	WASHER,SPECIAL		EA	1
2	7	XDDZZ		2223	83330	KNOB		EA	1
2	8	XDDZZ		1-41DX1-20DX005 THKSPRWSHR	00341	WASHER,SPRING,TENSION		EA	1
2	9	XDOZZ		100526	00341	SPACER		EA	1
2	10	XDOZZ		2-56UNC-2AX1-8	00341	SCREW,MACHINE		EA	2
2	10	XDDZZ		2-56UNC-2AX1-8	00341	SCREW,MACHINE RNDHDMACHSCR		EA	2
2	11	XDDZZ		100881	00341	PLATE,POWER SELECTION		EA	1
2	12	XDDZZ		4-40UNC-2AX9-16 SKTHDMACHSCR	00341	SCREW,MACHINE		EA	4
2	13	XDDZZ		100489	00341	KNOB		EA	1
2	14	XDDZZ		100521	00341	CAM,SLIDE ASSEMBLY		EA	1
2	15	XDDZZ		4-40UNC-2AX3-8 FILHDMACHSCR	00341	SCREW,MACHINE		EA	4
2	16	XDDZZ		100529	00341	BUSHING,SPACER		EA	4
2	17	PADZZ	6625-01-050-6793	100515	00341	PROBE ASSEMBLY,RF		EA	1
2	18	XDDZZ		100518	00341	HOUSING,SPRING		EA	2
2	19	PADZZ	5360-00-463-0340	LC-032E-15SS	84830	SPRING,HELICAL		EA	2
2	20	XDDZZ		10-32UNC-2AX5-8	00341	SCREW,MACHINE		EA	4
2	21	XDDZZ		100513	00341	BLOCK,SLIDE		EA	1
2	22	XDDZZ		100488-2	00341	HOUSING,SLIDE		EA	1
2	23	PAOZZ	5340-00-290-7241	221	99017	CAP		EA	1

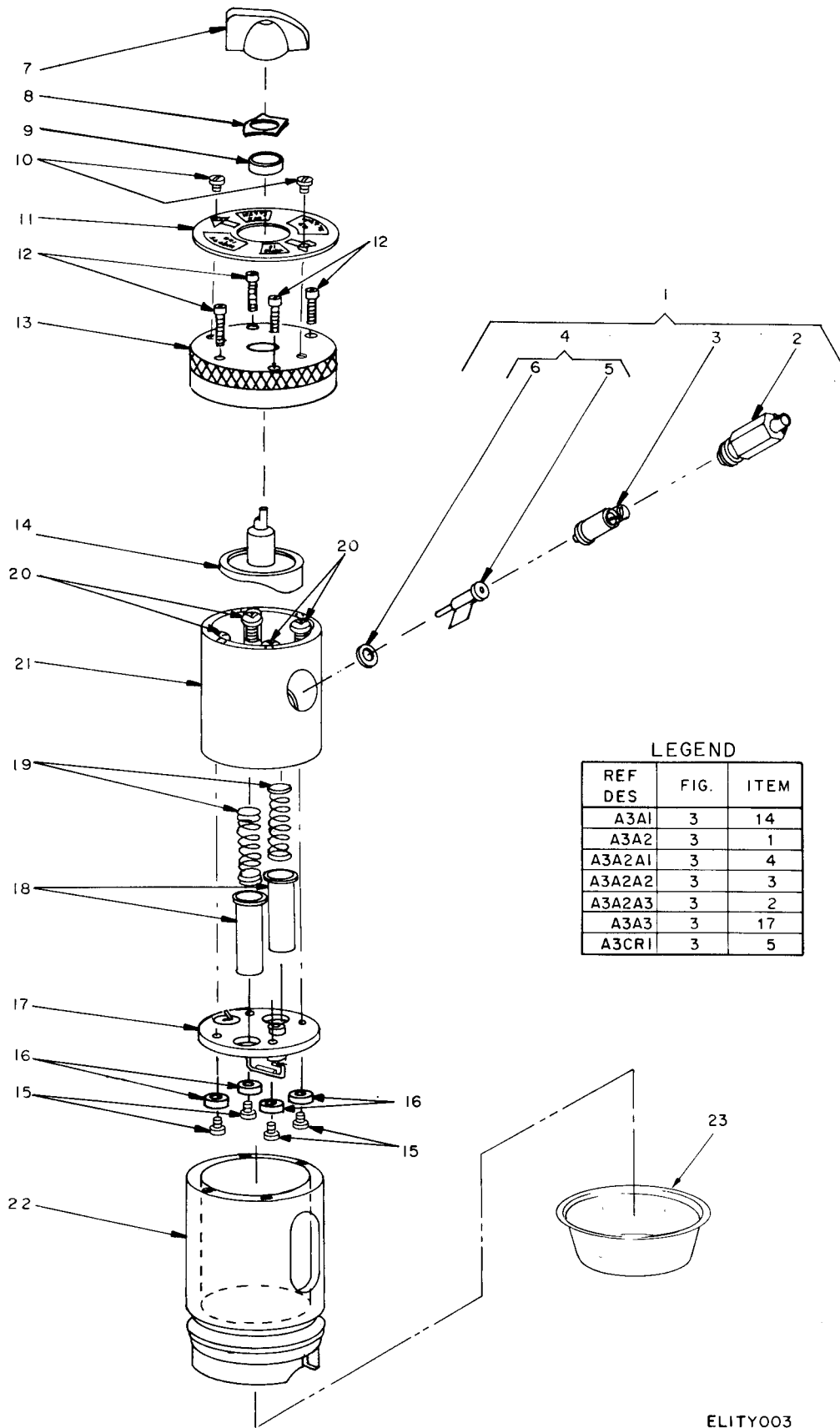
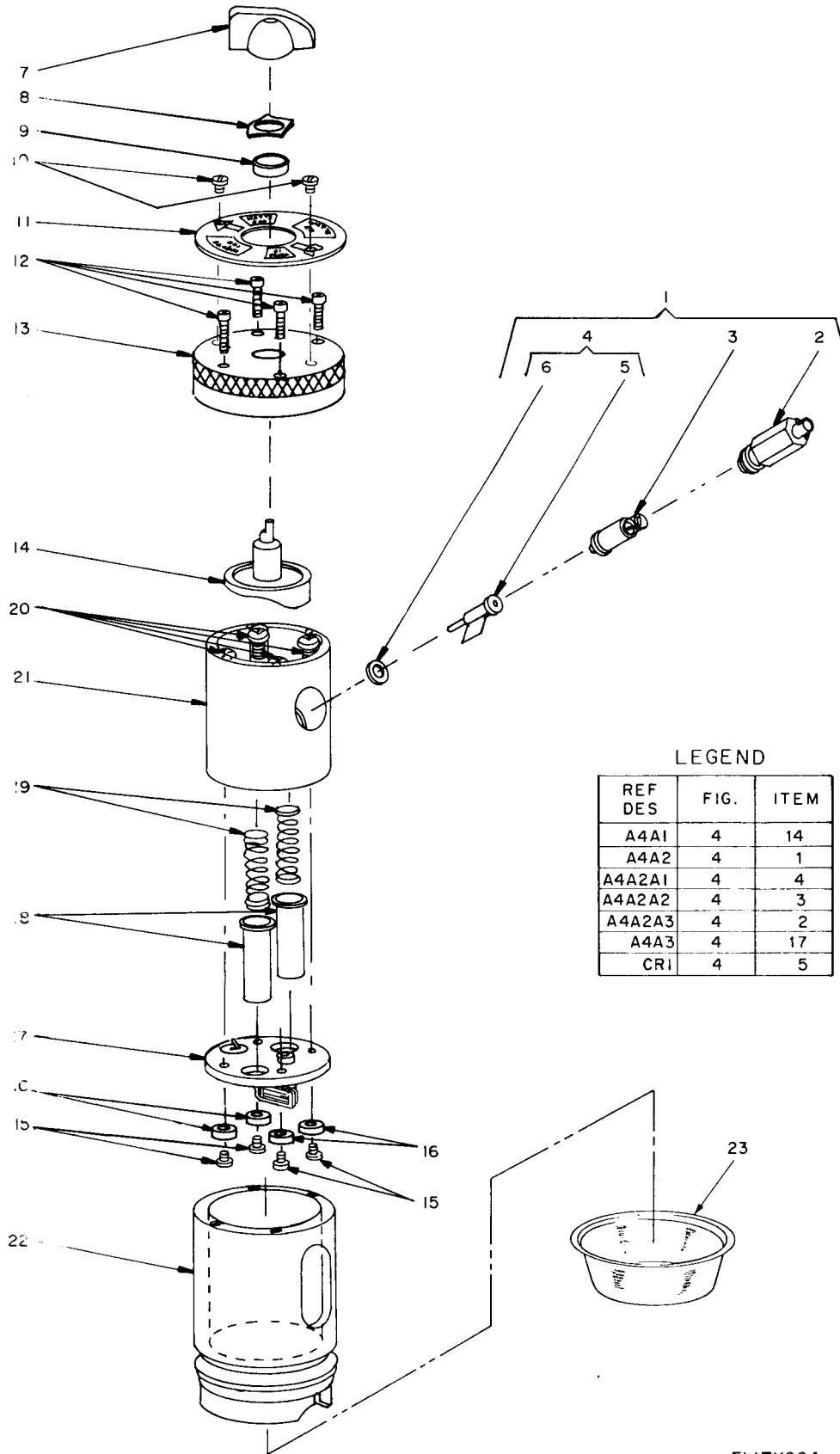


Figure 3. Coupler, Directional CU-754/URM-120.

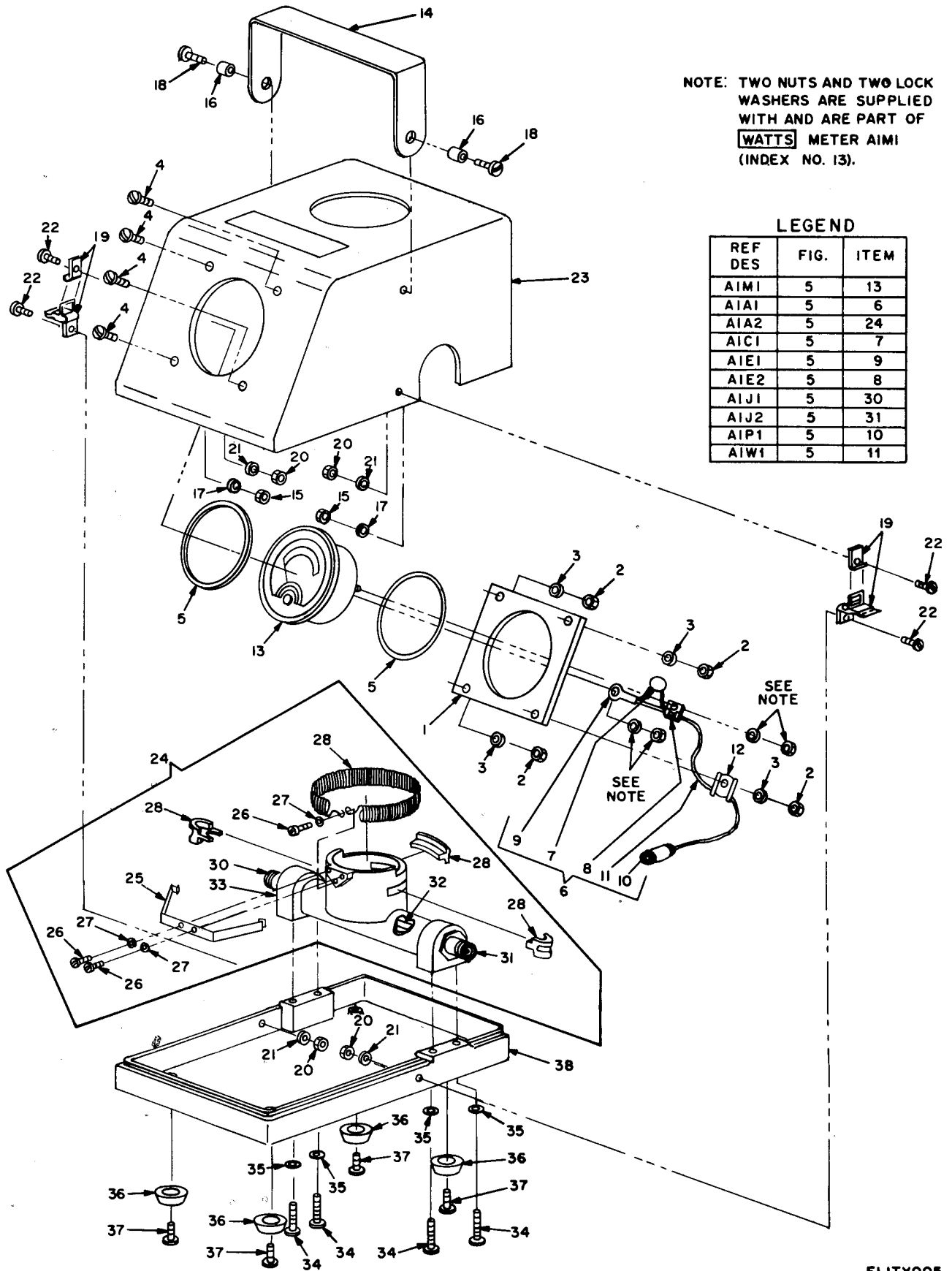
SECTION II (1) ILLUSTRATION (A) (B) FIG ITEM NO NO		(2) SMR CODE	(3) NATIONAL STOCK NUMBER	(4) PART NUMBER	(5) FSCM	TM11-6625-446-24P (6) DESCRIPTION	USABLE ON CODE	(7) U/M	(8) QTY INC IN UNIT
						GROUP 02: COUPLER,DIRECTIONAL CU-754/URM-120			
3	1	PADZZ	5961-01-051-1342	100514-1	00341	CRYSTAL DIODE ASEMBLY,RF		EA	1
3	2	XDDZZ		100510	00341	NUT ASSEMBLY,SPECIAL		EA	1
3	3	PADZZ	5915-01-050-6618	100504-1	00341	ASSEMBLY,RESISTOR-CAPACITOR		EA	1
3	4	XDDZZ		100508-1	00341	ASSEMBLY,CRYSTAL		EA	1
3	5	PADZZ	5961-00-738-6462	100506	00341	SEMICONDUCTOR DEVICE,DIODE		EA	1
3	6	XDDZZ		100505	00341	WASHER,SPECIAL		EA	1
3	7	XDDZZ		2223	83330	KNOB		EA	1
3	8	XDDZZ		1-41DX1-20DX005 THKSPRWSHR	00341	WASHER,SPRING,TENSION		EA	1
3	9	XD0ZZ		100526	00341	SPACER		EA	1
3	10	XDDZZ		2-56UNC-2AX1-8 RNDHDMACHSCR	00341	SCREW,MACHINE		EA	2
3	11	XDDZZ		100880-1	00341	PLATE,POWER SELECTION		EA	1
3	12	XDDZZ		4-40UNC-2AX9-16 SKTHDMACHSCR	00341	SCREW,MACHINE		EA	1
3	13	XDDZZ		100489	00341	KNOB		EA	1
3	14	XDDZZ		100521	00341	CAM,SLIDE ASSEMBLY		EA	1
3	15	XDDZZ		4-40UNC-2AX3-8 FILHDMACHSCR	00341	SCREW,MACHINE		EA	4
3	16	XDDZZ		100529	00341	BUSHING,SPACER		EA	4
3	17	PADZZ	6625-01-050-4041	100516	00341	PROBE ASSEMBLY,RF		EA	1
3	18	XDDZZ		100518	00341	HOUSING,SPRING		EA	2
3	19	PADZZ	5360-00-463-0340	LC-032E-15SS	84830	SPRING,HELICAL		EA	2
3	20	XDDZZ		10-32UNC-2AX5-8 SKTHDMACHSCR	00341	SCREW,MACHINE		EA	4
3	21	XDDZZ		100513	00341	BLOCK,SLIDE		EA	1
3	22	XDDZZ		100488-1	00341	HOUSING,SLIDE		EA	1
3	23	PAOZZ	5340-00-290-7241	221	99017	CAP		EA	1



ELITY004

Figure 4. Coupler, Directional CU-755/URM-120.

SECTION II (1) ILLUSTRATION (A) (B) FIG ITEM NO NO		(2) SMR CODE	(3) NATIONAL STOCK NUMBER	(4) PART NUMBER	(5) FSCM	TM11-6625-446-24P (6) DESCRIPTION	USABLE ON CODE	(7) U/M	(8) QTY INC IN UNIT
						GROUP 02: COUPLER,DIRECTIONAL CU-755/URM-120			
4	1	PADZZ	5961-01-051-5683	100514-2	00341	CRYSTAL DIODE ASSEMBLY,RF		EA	1
4	2	XDDZZ		100510	00341	NUT ASSEMBLY,SPECIAL		EA	1
4	3	PADZZ	5915-01-051-3352	100504-2	00341	ASSEMBLY,RESISTOR-CAPACITOR		EA	1
4	4	PADZZ	5955-01-050-6696	100508-2	00341	ASSEMBLY,CRYSTAL		EA	1
4	5	PADZZ	5961-00-738-6461	100507	00341	SEMICONDUCTOR DEVICE,DIODE		EA	1
4	6	XDDZZ		100505	00341	WASHER,SPECIAL		EA	1
4	7	XD0ZZ		2223	83330	KNOB		EA	1
4	8	XDDZZ		1-41DX1-20DX005 THKSPRWSHR	00341	WASHER,SPRING,TENSION		EA	1
4	9	XD0ZZ		100526	00341	SPACER		EA	1
4	10	XDDZZ		2-56UNC-2AX1-8 RNDHDMACHSCR	00341	SCREW,MACHINE		EA	2
4	11	XDDZZ		100880-2	00341	PLATE,POWER SELECTION		EA	1
4	12	XDDZZ		4-40UNC-2AX9-16 SKTHDMACHSCR	00341	SCREW,MACHINE		EA	4
4	13	XDDZZ		100489	00341	KNOB		EA	1
4	14	XDDZZ		100521	00341	CAM,SLIDE ASSEMBLY		EA	1
4	15	XDDZZ		4-40UNC-2AX3-8 FILHDMACHSCR	00341	SCREW,MACHINE		EA	4
4	16	XDDZZ		100529	00341	BUSHING,SPACER		EA	4
4	17	PADZZ	6625-01-050-4042	100517	00341	PROBE ASSEMBLY,RF		EA	1
4	18	XDDZZ		100518	00341	HOUSING,SPRING		EA	2
4	19	PADZZ	5360-00-463-0340	LC-032E-15SS	84830	SPRING,HELICAL		EA	2
4	20	XDDZZ		10-32UNC-2AX5-8 SKTHDMACHSCR	00341	SCREW,MACHINE		EA	4
4	21	XDDZZ		100513	00341	BLOCK,SLIDE		EA	1
4	22	XDDZZ		100488-1	00341	HOUSING,SLIDE		EA	1
4	23	PA0ZZ	5340-00-290-7241	221	99017	CAP		EA	1



NOTE: TWO NUTS AND TWO LOCK WASHERS ARE SUPPLIED WITH AND ARE PART OF **WATTS** METER AIMI (INDEX NO. 13).

LEGEND

REF DES	FIG.	ITEM
AIMI	5	13
AIA1	5	6
AIA2	5	24
AIC1	5	7
AIE1	5	9
AIE2	5	8
AIJ1	5	30
AIJ2	5	31
AIP1	5	10
AIW1	5	11

ELITY005

Figure 5. Wattmeter TS-1285/URM-120.

SECTION II (1) ILLUSTRATION (A) (B) FIG ITEM NO NO		(2) SMR CODE	(3) NATIONAL STOCK NUMBER	(4) PART NUMBER	(5) FSCM	TM11-6625-446-24P (6) DESCRIPTION	(7) USABLE ON CODE U/M	(8) QTY INC IN UNIT
						GROUP 03: WATTMETER TS-1285/URM-120		
5	1	XDDZZ		100544	00341	BRACKET, MOUNTING, METER	EA	1
5	2	XDDZZ		6-32UNCHEXNUT	00341	NUT, HEXAGONAL	EA	4
5	3	XDDZZ		6LOCKWSHR	00341	WASHER, LOCK	EA	4
5	4	XDDZZ		6-32UNC-2AX3-4 PANHDMACHSCR	00341	SCREW, MACHINE	EA	4
5	5	PADZZ	5330-00-541-2252	MS29513-148	96906	PACKING, PREFORMED	EA	2
5	6	XD0ZZ		100559	00341	METER AND CABLE ASSEMBLY	EA	1
5	7	XDDZZ		811000-0-01UF- 450VDC	72982	CAPACITOR, FIXED CERAMIC DIELECTRIC	EA	1
5	8	PADZZ	5940-00-113-8184	MS25036-150	96906	TERMINAL, LUG	EA	1
5	9	PADZZ	5940-00-258-2118	107	79963	TERMINAL, LUG	EA	1
5	10	XDDZZ		KM51-08	91836	CONNECTOR, PLUG, ELECTRICAL, BNC	EA	1
5	11	PADZZ	6145-01-005-1729	RG-174/U	80058	CABLE, RADIO FREQUENCY	EA	1
5	12	PADZZ	5340-00-985-6633	NAS1397P2B	95987	CLAMP, ELECTRICAL CONDUCTOR, STRAIN	EA	1
5	13	XDDZZ		100557	00341	METER	EA	1
5	14	XDDZZ		100545	00341	STRAP, CARRYING	EA	1
5	15	XDDZZ		10-32HEXNUT	00341	NUT, HEXAGONAL	EA	2
5	16	XDDZZ		100556	00341	SPACER, STRAP	EA	2
5	17	XDDZZ		10SPLITWSHR	00341	WASHER, LOCK, SPLIT, NUMBER 10	EA	2
5	18	XDDZZ		10-32UNF-2AX1-2 TRUSSHDMACHSCR	00341	SCREW, MACHINE	EA	2
5	19	XDDZZ		41	00341	LATCH	EA	2
5	20	XDDZZ		4-40HEXNUT	00341	NUT, HEXAGONAL	EA	4
5	21	XDDZZ		4INTLT00THLOC KWSHR	00341	WASHER, LOCK	EA	4
5	22	XDDZZ		4-40UNC-2AX5-16 PANHDMACHSCR	00341	SCREW, MACHINE	EA	4
5	23	XDDZZ		100540	00341	CASE, TOP	EA	1
5	24	XD0DD		100555	00341	MAIN LINE ASSEMBLY	EA	1
5	25	XDDZZ		100535	00341	SPRING, LOCK	EA	1
5	26	PDDZZ	5305-00-054-5649	MS51957-15	96906	SCREW, MACHINE	EA	3
5	27	PDDZZ	5310-00-933-8118	MS35338-135	96906	WASHER, LOCK	EA	3
5	28	XD0ZZ		100565	00341	SPRING, EXTENSION	EA	1
5	29	XDDZZ		100534	00341	CLAMP, PRESSURE	EA	3
5	30	PAOZZ	5935-01-050-4285	100537	00341	CONNECTOR, RECEPTACLE, ELECTRICAL	EA	1

SECTION II		TM11-6625-446-24P						
(1)	(2)	(3)	(4)	(5)	(6)	(7)	(8)	
ILLUSTRATION							QTY	
(A)	(B)	NATIONAL			DESCRIPTION		INC	
FIG	ITEM	STOCK	PART	FSCM		USABLE ON CODE	IN	
NO	NO	NUMBER	NUMBER				UNIT	
5	31	PAOZZ	5935-01-050-4272	100536	00341	CONNECTOR, PLUG, ELECTRICAL	EA	1
5	32	XDDZZ		100533	00341	CONDUCTOR, INNER	EA	1
5	33	XDOZZ		100532	00341	MAIN BODY	EA	1
5	34	XDDZZ		10-24UNC-2AX1-4 PANHDMACHSCR	00341	SCREW, MACHINE	EA	4
5	35	XDDZZ		10SPLITLOCKSWHR	00341	WASHER, LOCK	EA	4
5	36	PADZZ	5340-00-598-1842	253	70485	BUMPER, RUBBER	EA	4
5	37	XDDZZ		8-38TYPURNDHD MACHSCR	00341	SCREW, MACHINE	EA	4
5	38	XDDZZ		100542	00341	CASE, BOTTOM	EA	1

SECTION IV NATIONAL STOCK NUMBER AND PART NUMBER INDEX

STOCK NUMBER	NO	ITEM NO	STOCK NUMBER	FIG NO	ITEM NO
5305-00-054-5649	5	26	5340-00-290-7241	3	23
5940-00-113-8184	5	8	5340-00-290-7241	4	23
5320-00-240-1913	1	10	6145-01-005-1729	5	11
5940-00-258-2118	5	9	6625-01-050-4041	3	17
5360-00-463-0340	2	19	6625-01-050-4042	4	17
5360-00-463-0340	3	19	5935-01-050-4272	5	31
5360-00-463-0340	4	19	5935-01-050-4285	5	30
5330-00-541-2252	5	5	5915-01-050-6618	2	3
5340-00-598-6842	5	36	5915-01-050-6618	3	3
5961-00-738-6461	4	5	5955-01-050-6696	4	4
5961-00-738-6462	2	5	6625-01-050-6793	2	17
5961-00-738-6462	3	5	5955-01-050-8446	2	4
5310-00-933-8118	5	27	5961-01-051-1342	2	1
5340-00-950-8676	1	4	5961-01-051-1342	3	1
5340-00-985-6633	5	12	5915-01-051-3352	4	3
5340-00-290-7241	2	23	5961-01-051-5683	4	1

TM11-6625-446-24P
SECTION IV NATIONAL STOCK NUMBER AND PART NUMBER INDEX (CONTINUED)

PART NUMBER	FSCM	FIG NO	ITEM NO	PART NUMBER	FSCM	FIG NO	ITEM NO
H100	57771	1	10	100514-1	00341	2	1
KM51-08	91836	5	10	100514-1	00341	3	1
LC-032E-15SS	84830	2	19	100514-2	00341	4	1
LC-032E-15SS	84830	3	19	100515	00341	2	17
LC-032E-15SS	84830	4	19	100516	00341	3	17
MS25036-150	96906	5	8	100517	00341	4	17
MS29513-148	96906	5	5	100518	00341	2	18
MS35338-135	96906	5	27	100518	00341	3	18
MS51957-15	96906	5	26	100518	00341	4	18
NAS1397P2B	95987	5	12	100521	00341	2	14
RG-174/U	80058	5	11	100521	00341	3	14
1-41DX1-20DX005THK	00341	2	8	100521	00341	4	14
SPRWSHR				100526	00341	2	9
1-41DX1-20DX005THK	00341	3	8	100526	00341	3	9
SPRWSHR				100526	00341	4	9
1-41DX1-20DX005THK	00341	4	8	100529	00341	2	16
SPRWSHR				100529	00341	3	16
1-8DIAx1-4LRNDHD	00341	1	6	100529	00341	4	16
RIVET				100532	00341	5	33
10-24UNC-2AX	00341	5	34	100533	00341	5	32
1-4PANHDMACHSCR				100534	00341	5	29
10-32HEXNUT	00341	5	15	100535	00341	5	25
10SPLITLOCKWSHR	00341	5	35	100536	00341	5	31
10SPLITWSHR	00341	5	17	100537	00341	5	30
10-32UNC-2AX5-	00341	2	20	100539	00341	1	12
8SKTHDMACHSCR				100540	00341	5	23
10-32UNC-2AX5-	00341	3	20	100542	00341	5	38
8SKTHDMACHSCR				100544	00341	5	1
10-32UNC-2AX5-	00341	4	20	100545	00341	5	14
8SKTHDMACHSCR				100546	00341	1	8
10-32UNF-2AX1-	00341	5	18	100547	00341	1	7
2TRUSSHDMACHSCR				100549	00341	1	2
100448-1	00341	3	22	100550	00341	1	3
100448-1	00341	4	22	100551	00341	1	1
100448-2	00341	2	22	100552	00341	1	11
100489	00341	2	13	100553	00341	1	9
100489	00341	3	13	100555	00341	5	24
100489	00341	4	13	100556	00341	5	16
100504-1	00341	2	3	100557	00341	5	13
100504-1	00341	3	3	100559	00341	5	6
100504-2	00341	4	3	100565	00341	5	28
100505	00341	2	6	100880-1	00341	3	11
100505	00341	3	6	100880-2	00341	4	11
100505	00341	4	6	100881	00341	2	11
100506	00341	2	5	107	79963	5	9
100506	00341	3	5	15797	14608	1	4
100507	00341	4	5	2-56UNC-2AX1-	00341	2	10
100508-1	00341	2	4	8RNDHDMACHSCR			
100508-1	00341	3	4	2-56UNC-2AX1-	00341	3	10
100508-2	00341	4	4	8RNDHDMACHSCR			
100510	00341	2	2	2-56UNC-2AX1-	00341	4	10
100510	00341	3	2	8RNDHDMACHSCR			
100510	00341	4	2	2223	83330	2	7
100513	00341	2	21	2223	83330	3	7
100513	00341	3	21	2223	83330	4	7
100513	00341	4	21	253	70485	5	36

SECTION IV NATIONAL STOCK NUMBER AND PART NUMBER INDEX (CONTINUED)

PART NUMBER	FSCM	FIG NO	ITEM NO	PART NUMBER	FSCM	FIG NO	ITEM NO
4-40HEXNUT	00341	5	20	4IN1LTOOTH	00341	5	21
4-40UNC-2AX3-8FILHDMACHSCR	00341	2	15	LOCKWSHR			
4-40UNC-2AX3-8FILHDMACHSCR	00341	3	15	41	00341	5	19
4-40UNC-2AX3-8FILHDMACHSCR	00341	4	15	6LOCKWSHR	00341	5	3
4-40UNC-2AX3-8FILHDMACHSCR	00341	5	22	6-32UNCHEXNUT	00341	5	2
4-40UNC-2AX5-16PANHDMACHSCR	00341	2	12	6-32UNC-2AX3-4PANHDMACHSCR	00341	5	4
4-40UNC-2AX9-16SKTHDMACHSCR	00341	3	12	8-38TYPURN	00341	5	37
4-40UNC-2AX9-16SKTHDMACHSCR	00341	4	12	DHDMACHSCR			
				811000-0-01UF-450VDC			
				9-64DIAX1-4LRNDHDRIVET	00341	1	5

By Order of the Secretary of the Army:

BERNARD W. ROGERS
General, United States Army
Chief of Staff

Official:

J. C. PENNINGTON
Brigadier General, United States Army
The Adjutant General

Distribution:

Active Army:

HISA (Ft Monmouth) (26)
 USAINSCOM (2)
 COE (1)
 TSG (1)
 USAARENBD (1)
 DARCOM (1)
 TRADOC (2)
 OS Maj Comd (4)
 TECOM (2)
 USACC (4)
 MDW (1)
 Armies (2)
 Corps (2)
 Svc Colleges (1)
 USASIGS (5)
 USAADS (2)
 USAFAS (2)
 USAARMS (2)
 USAIS (2)
 USAES (3)
 USAICS (3)
 MAAG (1)

USARMIS (1)
 USAERDAA (1)
 USAERDAW (1)
 USAJFKCENMA (1)
 USACRTC (1)
 FT Carson (5)
 Ft Gillem (10)
 Ft Gordon (10)
 Ft Huachuca (10)
 Ft Richardson (CERCOM Ofc) (2)
 Army Dep (1) except
 LBAD (14)
 SAAD (30)
 SHAD (10)
 TOAD (3)
 USA Dep (1)
 Sig Sec USA Dep (1)
 Units Org Under Fol TOE:
 29-207
 29-610
 (2 each)

ARNG. None

USAR. None

For explanation of abbreviations used, see AR 310-50.

RECOMMENDED CHANGES TO EQUIPMENT TECHNICAL MANUALS



SOMETHING WRONG WITH THIS MANUAL?

THEN... JOT DOWN THE DOPE ABOUT IT ON THIS FORM, TEAR IT OUT, FOLD IT AND DROP IT IN THE MAIL!

FROM: (YOUR UNIT'S COMPLETE ADDRESS)

Commander
Stateside Army Depot
ATTN: AMSTA-US
Stateside, N.J. 07703

DATE 10 July 1975

PUBLICATION NUMBER

TM 11-5840-340-12

DATE

23 Jan 74

TITLE

Radar Set AN/SPC-76

BE EXACT... PIN-POINT WHERE IT IS

IN THIS SPACE TELL WHAT IS WRONG AND WHAT SHOULD BE DONE ABOUT IT:

PAGE NO.	PARA-GRAPH	FIGURE NO.	TABLE NO.	
2-25	2-28			<p>Recommend that the installation antenna alignment procedure be changed throughout to specify a 2° IFF antenna lag rather than 1°.</p> <p>REASON: Experience has shown that with only a 1° lag, the antenna servo system is too sensitive to wind gusting in excess of 25 knots, and has a tendency to rapidly accelerate and decelerate as it hunts, causing strain to the drive train. Hunting is minimized by adjusting the lag to 2° without degradation of operation.</p>
3-10	3-3		3-1	<p>Item 5, Function column. Change "2 db" to "3db."</p> <p>REASON: The adjustment procedure for the TRANS POWER FAULT indicator calls for a 3 db (500 watts) adjustment to light the TRANS POWER FAULT indicator.</p>
5-6	5-8			<p>Add new step f.1 to read, "Replace cover plate removed in step e.1, above."</p> <p>REASON: To replace the cover plate.</p>
		FO3		<p>Zone C 3. On J1-2, change "+24 VDC to "+5 VDC."</p> <p>REASON: This is the output line of the 5 VDC power supply. + 24 VDC is the input voltage.</p>

TYPED NAME, GRADE OR TITLE, AND TELEPHONE NUMBER

SSG I. M. DeSpirito 999-1776

SIGN HERE:

SSG I. M. DeSpirito

DA FORM 2028-2
1 AUG 74

P.S.—IF YOUR OUTFIT WANTS TO KNOW ABOUT YOUR MANUAL "FIND" MAKE A CARBON COPY OF THIS AND GIVE IT TO YOUR HEADQUARTERS.

HISA 1686-75

TEAR ALONG DOTTED LINE

RECOMMENDED CHANGES TO EQUIPMENT TECHNICAL MANUALS



THEN... JOT DOWN THE DOPE ABOUT IT ON THIS FORM, TEAR IT OUT, FOLD IT AND DROP IT IN THE MAIL!

SOMETHING WRONG WITH THIS MANUAL?

FROM: (YOUR UNIT'S COMPLETE ADDRESS)

DATE

PUBLICATION NUMBER

TM 11-6625-416-21P

DATE

29 Aug 78

TITLE

TEST SET, FREQUENCY,
POWER AN/URM-120

BE EXACT... PIN-POINT WHERE IT IS

IN THIS SPACE TELL WHAT IS WRONG AND WHAT SHOULD BE DONE ABOUT IT:

PAGE NO.	PARA-GRAPH	FIGURE NO.	TABLE NO.
----------	------------	------------	-----------

TEAR ALONG DOTTED LINE

TYPED NAME, GRADE OR TITLE, AND TELEPHONE NUMBER

SIGN HERE:

DA FORM 2028-2
1 AUG 74

P.S.--IF YOUR OUTFIT WANTS TO KNOW ABOUT YOUR MANUAL "FIND," MAKE A CARBON COPY OF THIS AND GIVE IT TO YOUR HEADQUARTERS.

FILL IN YOUR
UNIT'S ADDRESS

FOLD BACK

DEPARTMENT OF THE ARMY

OFFICIAL BUSINESS
PENALTY FOR PRIVATE USE, \$300

POSTAGE AND FEES PAID
DEPARTMENT OF THE ARMY
DOD-314



Commander
US Army Communications and
Electronics Materiel Readiness Command
ATTN: DRSEL-MA-Q
Fort Monmouth, New Jersey 07703

TEAR ALONG DOTTED LINE

FOLD BACK

RECOMMENDED CHANGES TO EQUIPMENT TECHNICAL MANUALS



SOMETHING WRONG WITH THIS MANUAL?

THEN... JOT DOWN THE DOPE ABOUT IT ON THIS FORM, TEAR IT OUT, FOLD IT AND DROP IT IN THE MAIL!

FROM: (YOUR UNIT'S COMPLETE ADDRESS)

DATE

PUBLICATION NUMBER

TM 11-6625-446-24P

DATE

29 Aug 78

TITLE

TEST SET, FREQUENCY, POWER AN/URM-120

BE EXACT... PIN-POINT WHERE IT IS

PAGE NO.

PARA-GRAPH

FIGURE NO.

TABLE NO.

IN THIS SPACE TELL WHAT IS WRONG AND WHAT SHOULD BE DONE ABOUT IT:

TEAR ALONG DOTTED LINE

TYPED NAME, GRADE OR TITLE, AND TELEPHONE NUMBER

SIGN HERE:

DA FORM 2028-2
1 AUG 74

P.S.--IF YOUR OUTFIT WANTS TO KNOW ABOUT YOUR MANUAL "FIND," MAKE A CARBON COPY OF THIS AND GIVE IT TO YOUR HEADQUARTERS.

FILL IN YOUR
UNIT'S ADDRESS

FOLD BACK

DEPARTMENT OF THE ARMY

OFFICIAL BUSINESS
PENALTY FOR PRIVATE USE, \$300

POSTAGE AND FEES PAID
DEPARTMENT OF THE ARMY
DOD-314



Commander
US Army Communications and
Electronics Materiel Readiness Command
ATTN: DRSEL-MA-Q
Fort Monmouth, New Jersey 07703

TEAR ALONG DOTTED LINE

FOLD BACK

RECOMMENDED CHANGES TO EQUIPMENT TECHNICAL MANUALS



SOMETHING WRONG WITH THIS MANUAL?

THEN... JOT DOWN THE DOPE ABOUT IT ON THIS FORM, TEAR IT OUT, FOLD IT AND DROP IT IN THE MAIL!

FROM: (YOUR UNIT'S COMPLETE ADDRESS)

DATE

PUBLICATION NUMBER

TM 11-6625-446-24P

DATE

29 Aug 78

TITLE

TEST SET, FREQUENCY, POWER AN/URM-120

BE EXACT... PIN-POINT WHERE IT IS

IN THIS SPACE TELL WHAT IS WRONG AND WHAT SHOULD BE DONE ABOUT IT:

PAGE NO.	PARA-GRAPH	FIGURE NO.	TABLE NO.
----------	------------	------------	-----------

TEAR ALONG DOTTED LINE

TYPED NAME, GRADE OR TITLE, AND TELEPHONE NUMBER

SIGN HERE:

DA FORM 2028-2
1 AUG 74

P.S.--IF YOUR OUTFIT WANTS TO KNOW ABOUT YOUR MANUAL "FIND," MAKE A CARBON COPY OF THIS AND GIVE IT TO YOUR HEADQUARTERS.

FILL IN YOUR
UNIT'S ADDRESS

FOLD BACK

DEPARTMENT OF THE ARMY

OFFICIAL BUSINESS

PENALTY FOR PRIVATE USE, \$300

POSTAGE AND FEES PAID
DEPARTMENT OF THE ARMY
DOD-314



Commander
US Army Communications and
Electronics Materiel Readiness Command
ATTN: DRSEL-MA-Q
Fort Monmouth, New Jersey 07703

TEAR ALONG DOTTED LINE

FOLD BACK

THE METRIC SYSTEM AND EQUIVALENTS

WEIGHT MEASURE

1 Centimeter = 10 Millimeters = 0.01 Meters = 0.3937 Inches
 1 Meter = 100 Centimeters = 1000 Millimeters = 39.37 Inches
 1 Kilometer = 1000 Meters = 0.621 Miles

WEIGHTS

Gram = 0.001 Kilograms = 1000 Milligrams = 0.035 Ounces
 1 Kilogram = 1000 Grams = 2.2 lb.
 1 Metric Ton = 1000 Kilograms = 1 Megagram = 1.1 Short Tons

LIQUID MEASURE

1 Milliliter = 0.001 Liters = 0.0338 Fluid Ounces
 1 Liter = 1000 Milliliters = 33.82 Fluid Ounces

SQUARE MEASURE

1 Sq. Centimeter = 100 Sq. Millimeters = 0.155 Sq. Inches
 1 Sq. Meter = 10,000 Sq. Centimeters = 10.76 Sq. Feet
 1 Sq. Kilometer = 1,000,000 Sq. Meters = 0.386 Sq. Miles

CUBIC MEASURE

1 Cu. Centimeter = 1000 Cu. Millimeters = 0.06 Cu. Inches
 1 Cu. Meter = 1,000,000 Cu. Centimeters = 35.31 Cu. Feet

TEMPERATURE

$5/9(^{\circ}\text{F} - 32) = ^{\circ}\text{C}$
 212° Fahrenheit is equivalent to 100° Celsius
 90° Fahrenheit is equivalent to 32.2° Celsius
 32° Fahrenheit is equivalent to 0° Celsius
 $9/5^{\circ}\text{C} + 32 = ^{\circ}\text{F}$

APPROXIMATE CONVERSION FACTORS

TO CHANGE	TO	MULTIPLY BY
Inches	Centimeters	2.540
Feet	Meters	0.305
Yards	Meters	0.914
Miles	Kilometers	1.609
Square Inches	Square Centimeters	6.451
Square Feet	Square Meters	0.093
Square Yards	Square Meters	0.836
Square Miles	Square Kilometers	2.590
Acres	Square Hectometers	0.405
Cubic Feet	Cubic Meters	0.028
Cubic Yards	Cubic Meters	0.765
Fluid Ounces	Milliliters	29.573
its	Liters	0.473
arts	Liters	0.946
allons	Liters	3.785
Ounces	Grams	28.349
Pounds	Kilograms	0.454
Short Tons	Metric Tons	0.907
Pound-Feet	Newton-Meters	1.356
Pounds per Square Inch	Kilopascals	6.895
Miles per Gallon	Kilometers per Liter	0.425
Miles per Hour	Kilometers per Hour	1.609

TO CHANGE	TO	MULTIPLY BY
Centimeters	Inches	0.394
Meters	Feet	3.280
Meters	Yards	1.094
Kilometers	Miles	0.621
Square Centimeters	Square Inches	0.155
Square Meters	Square Feet	10.764
Square Meters	Square Yards	1.196
Square Kilometers	Square Miles	0.386
Square Hectometers	Acres	2.471
Cubic Meters	Cubic Feet	35.315
Cubic Meters	Cubic Yards	1.308
Milliliters	Fluid Ounces	0.034
Liters	Pints	2.113
Liters	Quarts	1.057
ers	Gallons	0.264
ms	Ounces	0.035
ograms	Pounds	2.205
Metric Tons	Short Tons	1.102
Newton-Meters	Pounds-Feet	0.738
Kilopascals	Pounds per Square Inch	0.145
ometers per Liter	Miles per Gallon	2.354
ometers per Hour	Miles per Hour	0.621

