

**TECHNICAL MANUAL**

**DIRECT SUPPORT AND GENERAL SUPPORT**

**MAINTENANCE REPAIR PARTS AND**

**SPECIAL TOOLS LIST**

**(INCLUDING DEPOT MAINTENANCE REPAIR**

**PARTS AND SPECIAL TOOLS)**

**FOR**

**MULTIPLEXER, TIME**

**DIVISION DIGITAL**

**TD-1069/G**

**(NSN 5805-01-028-8425)**



**DIRECT SUPPORT AND GENERAL SUPPORT MAINTENANCE  
 REPAIR PARTS AND SPECIAL TOOLS LIST  
 (INCLUDING DEPOT MAINTENANCE REPAIR  
 PARTS AND SPECIAL TOOLS)  
 FOR  
 MULTIPLEXER, TIME DIVISION DIGITAL  
 TD-1069/G  
 (NSN 5805-01-028-8425)**

Current as of 14 January 1983

**REPORTING ERRORS AND RECOMMENDING IMPROVEMENTS**  
 You can help improve this manual. If you find any mistakes or if you know of a way to improve the procedures, please let us know. Mail your letter, DA Form 2028 (Recommended Changes to Publications and Blank Forms), or DA Form 2028-2 located in back of this manual direct to Commander, US Army Communications-Electronics Command and Fort Monmouth, ATTN: DR-SEL-ME-MP Fort Monmouth, NJ 07703.  
 In either case, a reply will be furnished direct to you.

**Table of Contents**

Section		Page	Illus Figure
I.	Introduction . . . . .	1	
II.	Repair Parts List . . . . .	5	
Group 00	Multiplexer, Time Division Digital TD-1069/G . . . . .	5	1
01	Chassis, Electrical Equipment. . . . .	7	2
	0101 Chassis (No parts authorized)		
	0102 Nest Assembly . . . . .	11	3
	0103 Harness Assembly. . . . .	13	4
	010301 Harness Piece Parts (No parts authorized)		
	010302 Cable Assembly, Switch . . . . .	15	5
	010303 Cable Assembly, Channel/Mux . . . . .	17	6
	010304 Cable Assembly, Power Supply . . . . .	19	7
	010305 Cable Assembly, Channel . . . . .	21	8
	010306 Cable Assembly, Channel/Demux . . . . .	23	9
02	Switch Assembly . . . . .	25	10
03	Power Supply Assembly . . . . .	27	11
	Chassis Machining. . . . .	31	12
	Heat Sink Assembly. . . . .	33	13
	Printed Wiring Board Assembly, Regulator/Control . . . . .	37	14

- GROUP 04    Printed Wiring Board Assembly, Channel Digital Data (No parts authorized)
- 05 Printed Wiring Board Assembly, Channel Frequency Shift Keying Data (No parts authorized)
- 08 Printed Wiring Board Assembly, Digital Clock Pulse Generator (No parts authorized)
- 07 Printed Wiring Board Assembly, Alarm Memory (No parts authorized)
- 08 Printed Wiring Board Assembly, Digital Controller (No parts authorized)
- 09 Printed Wiring Board Assembly, Absorber Overvoltage (No parts authorized)

Section	III.	Special Tools List (Not applicable)	
	IV.	National Stock Number and Part Number Index.....	39

# SECTION I

## INTRODUCTION

### 1. Scope

This manual lists spares and repair parts; special tools; special test, measurement, and diagnostic equipment (TMDE), and other special support equipment required for performance of direct support and general support maintenance of the TD-1069/G. It authorizes the requisitioning and issue of spares and repair parts as indicated by the source and maintenance codes.

### 2. General

This Repair Parts and Special Tools List is divided into the following sections:

*a. Section II. Repair Parts List.* A list of spares and repair parts authorized for use in the performance of maintenance. The list also includes parts which must be removed for replacement of the authorized parts. Parts lists are composed of functional groups in numeric sequences, with the parts in each group listed in figure and item number sequence.

*b. Section III, Special Tools List.* Not applicable.

*c. Section IV. National Stock Number and Part Number Index.* A list, in National item identification number (NIIN) sequence, of all National stock numbers (NSN) appearing in the listings followed by a list, in alphanumeric sequence, of all part numbers appearing in the listings. National stock numbers and part numbers are cross-referenced to each illustration figure and item number appearance.

### 3. Explanation of Columns

*a. Illustration.* This column is divided as follows:

(1) *Figure number.* Indicates the figure number of the illustration on which the item is shown.

(2) *Item number.* The number used to identify item called out in the illustration.

*b. Source, Maintenance, and Recoverability (SMR) Codes.*

(1) *Source code.* Source codes indicate the manner of acquiring support items for maintenance, repair, or overhaul of end items. Source codes are entered in the first and second positions of the Uniform SMR Code format as follows:

<i>Code</i>	<i>Definition</i>
PA—	Item procured and stocked for anticipated or known usage.
MD—	Item to be manufactured or fabricated at the depot maintenance level.
AH—	Item to be assembled at general support maintenance level.

<i>Code</i>	<i>Definition</i>
AD—	Item to be assembled at depot maintenance level.
XA—	Item is not procured or stocked because the requirements for the item will result in the replacement of the next higher assembly.
XD—	A support item that is not stocked. When required, item will be procured through normal supply channels.

### NOTE

Cannibalization or salvage maybe used as a source of supply for any items source coded above except those coded XA and aircraft support items as restricted by AR 700-42.

(2) *Maintenance code.* Maintenance codes are assigned to indicate the levels of maintenance authorized to USE and REPAIR support items. The maintenance codes are entered in the third and fourth positions of the Uniform SMR Code format as follows:

(a) The maintenance code entered in the third position will indicate the lowest maintenance level authorized to remove, replace, and use the support item. The maintenance code entered in the third position will indicate one of the following levels of maintenance:

<i>code</i>	<i>Application/Explanation</i>
O—	Support item is removed, replaced, used at the organizational level.
F—	Support item is removed, replaced, used at the direct support level.
H—	Support item is removed, replaced, used at the general support level.
D—	Support items that are removed, replaced, used at depot, mobile depot, specialized repair activity only.

(b) The maintenance code entered in the fourth position indicates whether the item is to be repaired and identifies the lowest maintenance level with the capability to perform complete repair (i.e., all authorized maintenance functions). This position will contain one of the following maintenance codes:

<i>code</i>	<i>Application/Explanation</i>
H—	The lowest maintenance level capable of complete repair of the support item is the general support level.
D—	The lowest maintenance level capable of complete repair of the support item is the depot

<i>Code</i>	<i>Application/Explanation</i>
-------------	--------------------------------

level.

Z- Nonreparable. No repair is authorized.

(3) *Recoverability code*. Recoverability codes are assigned to support items to indicate the disposition action on unserviceable items. The recoverability code is entered in the fifth position of the Uniform SMR Code format as follows:

<i>Recoverability codes</i>	<i>Definition</i>
Z-	Nonreparable item. When unserviceable, condemn and dispose at the level indicated in position 3.
H-	Reparable item. When uneconomically repairable, condemn and dispose at the general support level.
D-	Reparable item. When beyond lower level repair capability, return to depot. Condemnation and disposal not authorized below depot level.

*c. National Stock Number*. Indicates the National stock number assigned to the item and will be used for requisitioning purposes.

*d. Federal Supply Code for Manufacturer (FSCM)*. The FSCM is a 5-digit numeric code listed in SB 708-41/42 which is used to identify the manufacturer, distributor, or Government agency, etc.

*e. Part Number*. Indicates the primary number used by the manufacturer (individual, company, firm, corporation, or Government activity), which controls the design and characteristics of the item by means of its engineering drawings, specifications, standards, and inspection requirements to identify an item or range of items.

**NOTE**

When a stock numbered item is requisitioned, the repair part received may have a different part number than the part being replaced.

*f. Description* Indicates the Federal item name and, if required, a minimum description to identify the item.

*g. Unit of Measure (U/M)*. Indicates the standard of the basic quantity of the listed item as used in performing the actual maintenance function. This measure is expressed by a two-character alphabetical abbreviation (e.g., ea, in, pr, etc). When the unit of measure differs from the unit of issue, the lowest unit of issue that will satisfy the required units of measure will be requisitioned.

*h. Quantity Incorporated in Unit*. Indicates the quantity of the item used in the breakout shown on the illustration figure, which is prepared for a functional group, subfunctional group, or an assembly.

**4. Special Information**

*a.* Detailed manufacturing instructions for items source coded to be manufactured or fabricated are found in TM 11-5805-638-14.

*b.* Detailed assembly instructions for items source coded to be assembled are found in TM 11-5805-638-14. Assembly components are listed immediately following the item to be assembled.

*c.* The following publications pertain to the TD-1069/G and its components:  
 TM 11-5805-638-14, Multiplexer, Time Division Digital, TD-1069/G (To be published).  
 TM 11-5805-638-20P, Multiplexer, Time Division Digital TD-1069/G (To be published).

*d.* National stock numbers (NSN's) that are missing from P source coded items have been applied for and will be added to this TM by future change/revision when they are entered in the Army Master Data File (AMDF). Until the NSN's are established and published, submit exception requisitions to: Commander, US Army Communications-Electronics Command and Fort Monmouth, ATTN: DR-SE L-MM, Fort Monmouth, NJ 07703 for the part required to support your equipment.

**5. How to Locate Repair Parts**

*a.* When National stock number or part number is unknown.

(1) *First*. Using the table of contents, determine the functional group within which the item belongs. This is necessary since illustrations are prepared for functional groups and listings are divided into the same groups.

(2) *Second* Find the illustration covering the functional group to which the item belongs.

(3) *Third*. Identify the item on the illustration and note the illustration figure and item number of the item.

(4) *Fourth*. Using the Repair Parts Listing, find the figure and item number noted on the illustration.

*b.* When National stock number or part number is known.

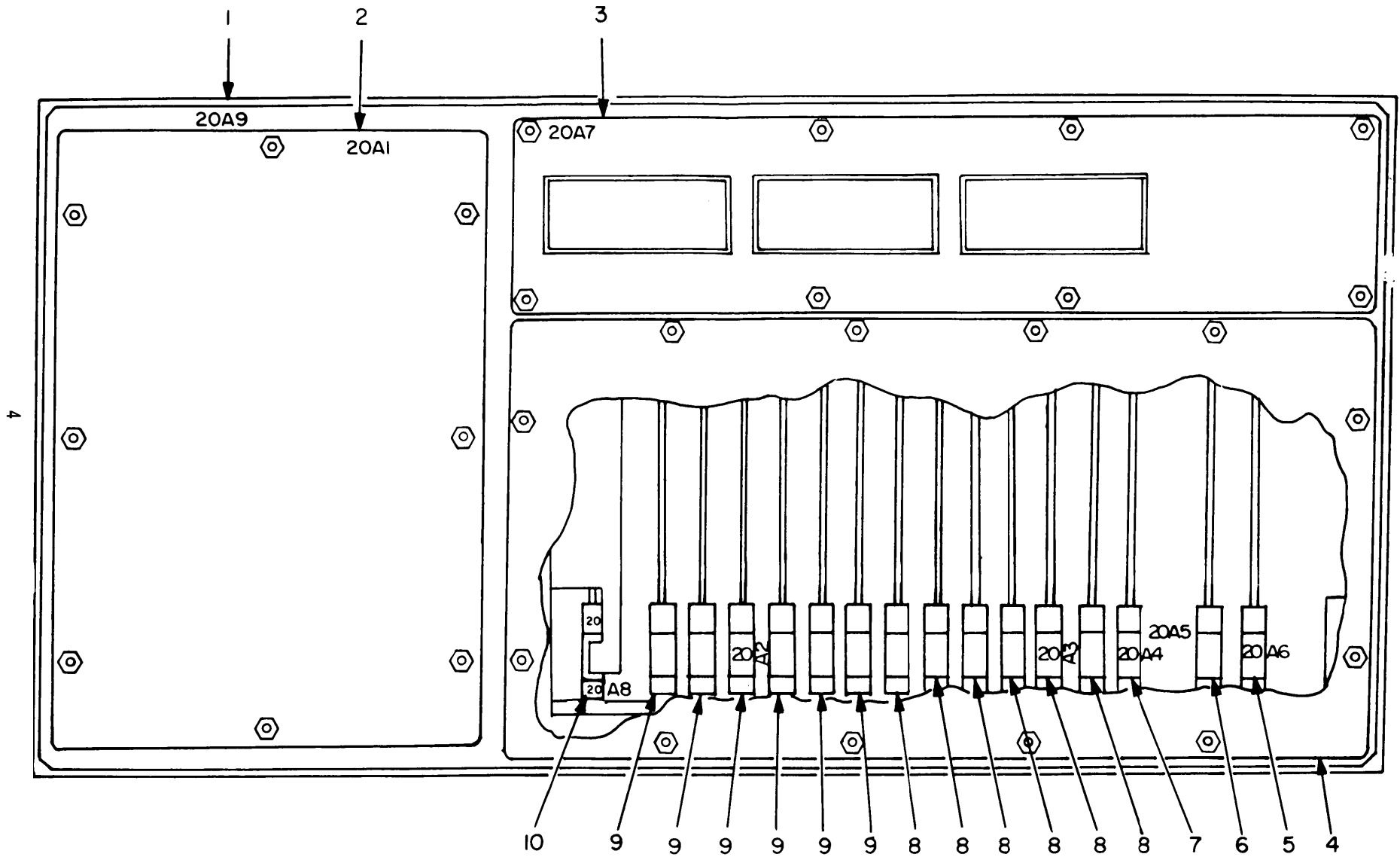
(1) *First*. Using the Index of National Stock Number and Part Numbers, find the pertinent National stock number or part number. This index is in NIIN sequence followed by a list of part numbers in alphanumeric sequence, cross-reference to the illustration figure number and item number.

(2) *Second*. After finding the figure and item number, locate the figure and item number in the repair parts list.

**6. Abbreviations**

Not applicable.





TM 11-5805-638-34P

Figure 1. Multiplexer Time Division Digital TD-1069/G.



SECTION II

(1) ILLUSTRATION (a) (b) FIG ITEM NO NO	(2) SMR CODE	(3) NATIONAL STOCK NUMBER	(4) FSCM	(5) PART NUMBER	(6) DESCRIPTION USABLE ON CODE	(7) U/M	(8) QTY INC IN UNIT
GROUP 00 MULTIPLEXER, TIME DIVISION							
DIGITAL (20)							
1	1	ADFDD	56996	B4007498	CHASSIS,ELEC EQPT	EA	1
1	2	PAOHH	5805-01-119-2723	56996	B4007701	POWER SUPPLY	EA 1
1	3	PAOHH	5805-01-143-2807	56996	B4007515	CIRCUIT CARD ASSEMB	EA 1
1	4	XDDZZ		56996	B4007609	FRONT COVER ASSY	EA 1
1	5	PAODD	5805-01-119-2788	56996	B4007509	CIRCUIT CARD ASSEMB	EA 1
1	6	PAODD	5805-01-119-2784	56996	B4007512	CIRCUIT CARD ASSEMB	EA 1
1	7	PAODD	5805-01-119-2787	56996	B4007506	CIRCUIT CARD ASSEMB	EA 1
1	8	PAODD	5805-01-119-2786	56996	B4007503	CIRCUIT CARD ASSEMB	EA 6
1	9	PAODD	5805-01-119-2785	56996	B4007500	CIRCUIT CARD ASSEMB	EA 6
1	10	PAODD	5805-01-119-2783	56996	B4007517	PRINTED WIRING BOAR	EA 1

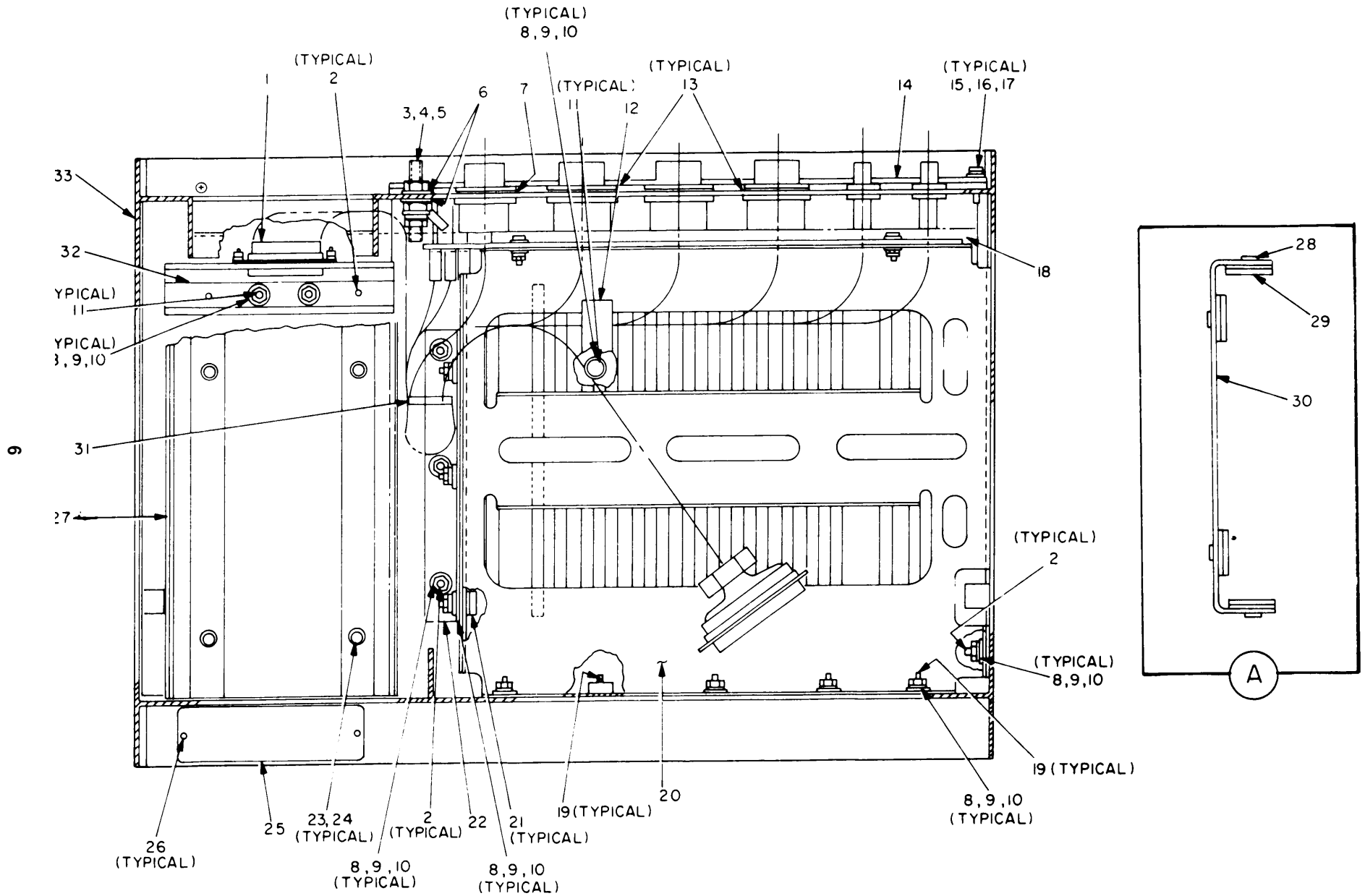
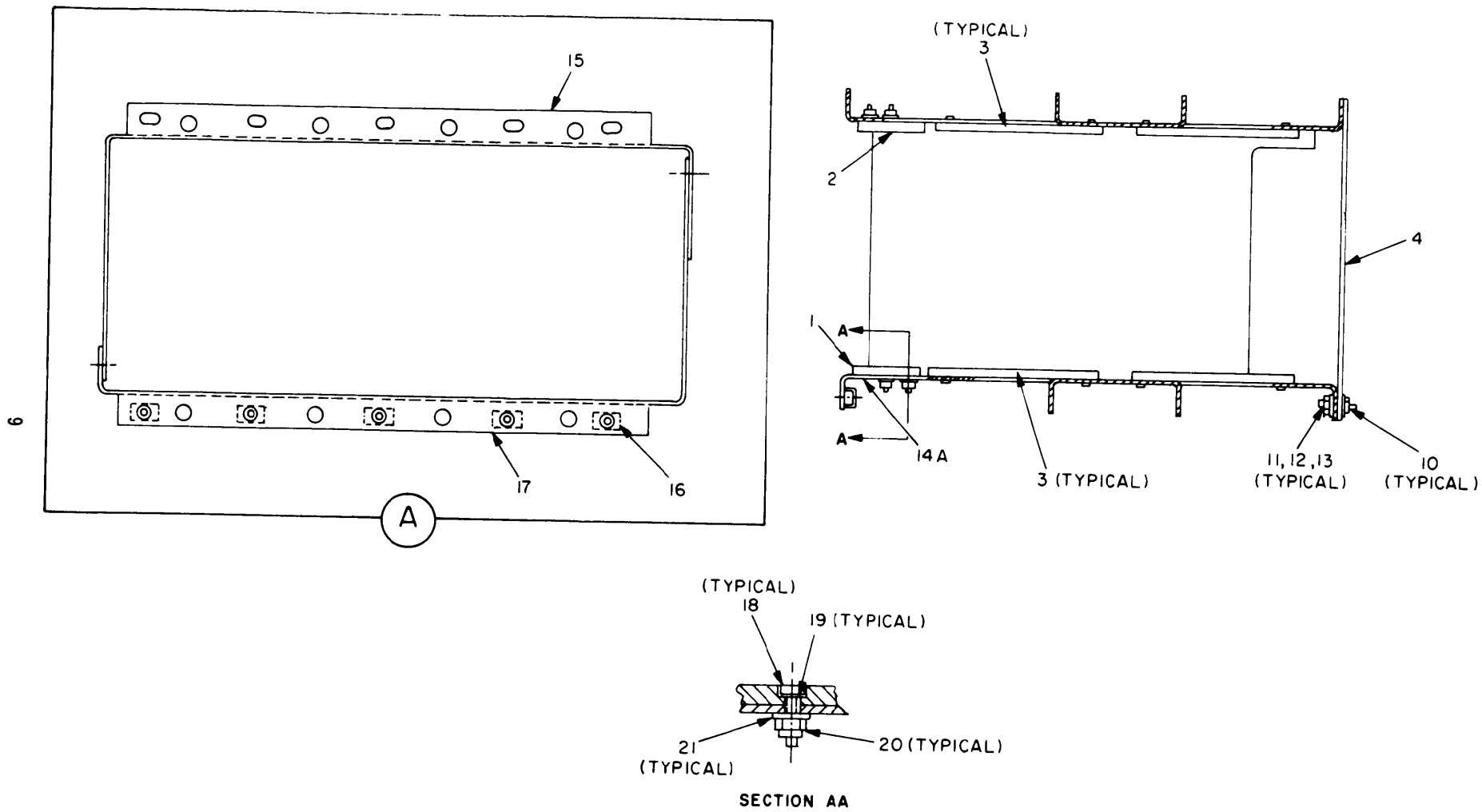


Figure 2. Chassis, Electrical Equipment.

SECTION II

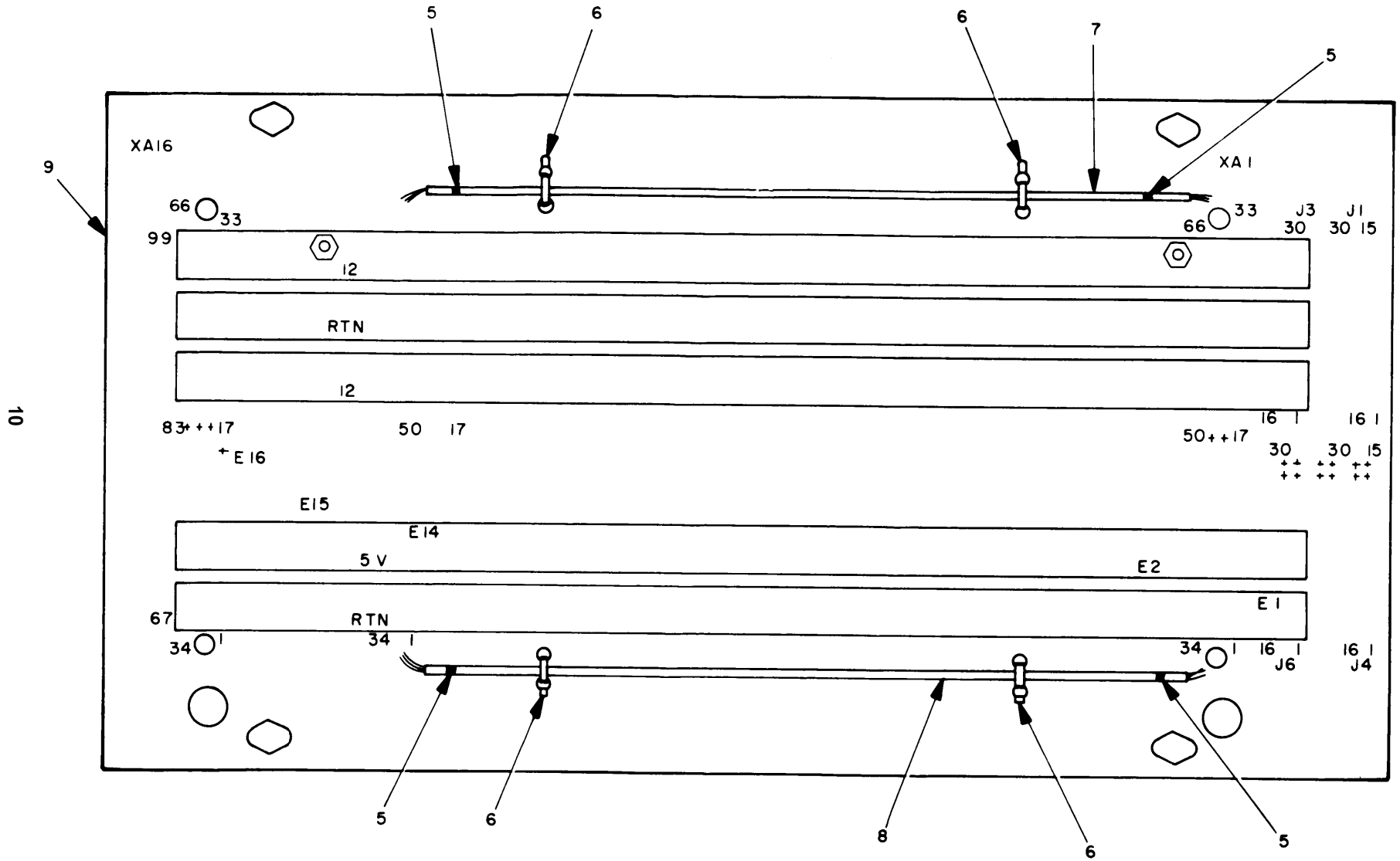
(1) ILLUSTRATION (a) (b) FIG ITEM NO NO	(2) SMR CODE	(3) NATIONAL STOCK NUMBER	(4) FSCM	(5) PART NUMBER	(6) DESCRIPTION USABLE ON CODE	(7) U/M	(8) QTY INC IN UNIT
GROUP 01 CHASSIS,ELECTRICAL EQPT(20A9)							
2	1	AFFHH		56996 B4007661	HARNES ASSEMBLY	EA	1
2	2	XDDZZ		96906 MS24693-50B	SCREW,MACHINE	EA	11
2	3	PADZZ	5310-00-933-8121	96906 MS35338-139	WASHER,LOCK	EA	1
2	4	PADZZ	5310-00-400-5503	96906 MS35650-3254	NUT,PLAIN,HEXAGON	EA	2
2	5	XDDZZ		80205 1454C4-D108	ROD,CONT THREAD	EA	1
2	6	XDDZZ	5310-00-193-7577	96906 MS35333-36	WASHER,LOCK	EA	2
2	7	XDDZZ		56996 B4007670-1	WASHER,FLAT	EA	1
2	8	PADZZ	5310-00-934-9759	96906 MS35649-284	NUT,PLAIN,HEXAGON	EA	20
2	9	PADZZ	5310-00-933-8119	96906 MS35338-137	WASHER,LOCK	EA	20
2	10	PADZZ	5310-00-225-5328	96906 MS15795-841	WASHER,FLAT	EA	21
2	11	XDDZZ		96906 MS24693-51B	SCREW,MACHINE	EA	3
2	12	XDDZZ	5340-00-104-7550	96906 MS25281-F11	CLAMP,LOOP	EA	1
2	13	XDDZZ		56996 B4007670-2	WASHER,FLAT	EA	3
2	14	XDHZZ		56996 B4007615	REAR COVER ASSEMBLY	EA	1
2	15	PADZZ	5305-00-150-3425	96906 MS51957-46B	SCREW,MACHINE	EA	12
2	16	PADZZ	5310-00-420-0639	96906 MS15795-841B	WASHER,FLAT	EA	12
2	17	PADZZ	5310-00-224-0748	96906 MS35338-137B	WASHER,LOCK	EA	12
2	18	XDDZZ		56996 B4007580-2	RUBBER STRIP,SPONGE	EA	1
2	19	PADZZ	5305-00-079-5835	96906 MS24693-C50	SCREW,MACHINE	EA	10
2	20	XDDZZ		56996 B4007640	NEST ASSEMBLY	EA	1
2	21	PADZZ	5305-00-054-6671	96906 MS51957-46	SCREW,MACHINE	EA	3
2	22	XDDDD		56996 B4007532	NEST,SIDE	EA	1
2	23	PADZZ	5305-00-054-6650	96906 MS51957-26	SCREW,MACHINE	EA	4
2	24	XDDZZ		80205 620C6L	WASHER,FLAT	EA	4
2	25	MDDZZ		56996 B4007656	PLATE,IDENT	EA	1
2	26	XDDZZ		96906 MS16535A22	RIVET,TUBULAR	EA	2
2	27	XDHZZ		56996 B4007657	TRAY ASSEMBLY	EA	1
2	28	XAHZZ		96906 MS16535-155	RIVET,TUBULAR	EA	8
2	29	XAHZZ		56996 B4007626	GUIDE	EA	4
2	30	XAHZZ		56996 B4007627	TRAY	EA	1
2	31	XDDZZ	5975-00-156-3253	96906 MS3367-2-9	STRAP,TIEDOWN,ELECT	EA	1
2	32	XDDZZ		56996 B4007653	NUT,PLATE	EA	1
2	33	XDDDD		56996 B4007524	CHASSIS	EA	1





TM 11-5805-638-34P

Figure 3. Nest Assembly (Sheet 1 of 2).



TM 11-5805-638-34P

Figure 3. Nest Assembly (Sheet 2 of 2).

## SECTION II

(1) ILLUSTRATION (a) (b) FIG ITEM NO NO	(2) SMR CODE	(3) NATIONAL STOCK NUMBER	(4) FSCM	(5) PART NUMBER	(6) DESCRIPTION USABLE ON CODE	(7) U/M	(8) QTY INC IN UNIT
GROUP 0102 NEST ASSEMBLY							
3	1	XDDZZ		56996 B4007527-1	GUIDE,CARD	EA	1
3	2	XDDZZ		56996 B4007527-2	GUIDE,CARD	EA	1
3	3	XDDZZ		22589 A-42870-4	CARD GUIDE	EA	64
3	4	XDDDD		56996 B4007525	BASE PLATE ASSY	EA	1
3	5	XDDZZ		81349 M23053/5-104-5	INSULATION SLEEVING	FT	1
3	6	XDDZZ	5975-00-727-5153	96906 MS3367-4-9	STRAP,TIEDOWN,ELECT	EA	4
3	7	MDDZZ		56996 B4007776-2	CABLE,SPCL PRP ELEC	FT	32
3	8	XDDZZ		56996 B4007776-1	CABLE,SPCL PRP,ELEC	FT	5
3	9	XDDZZ		56996 B4007641	BASE PL W SUBASSY	EA	1
3	10	PADZZ	5305-00-054-6654	96906 MS51957-30	SCREW,MACHINE	EA	10
3	11	PADZZ	5310-00-880-5976	96906 MS15795-806	WASHER,FLAT	EA	20
3	12	PADZZ	5310-00-929-6395	96906 MS35338-136	WASHER,LOCK	EA	10
3	13	PADZZ	5310-00-934-9761	96906 MS35649-264	NUT,PLAIN,HEXAGON	EA	10
3	14	XDDDD		56996 B4007639	NEST	EA	1
3	15	XADZZ		56996 B4007533	NEST, TOP	EA	1
3	16	XDDZZ		72962 12NC4284-2-82	NUT,SELF-LOCKING,CL	EA	5
3	17	XADZZ		56996 B4007534	NEST,BOTTOM	EA	1
3	18	PADZZ	5305-00-054-5649	96906 MS51957-15	SCREW,MACHINE	EA	6
3	19	XDDZZ		80205 620C4L	WASHER,FLAT	EA	6
3	20	PADZZ	5310-00-177-1332	96906 MS17830-04C	NUT,SELF-LOCKING,HE	EA	6
3	21	PADZZ	5310-00-782-1349	96906 MS15795-804	WASHER,FLAT	EA	6

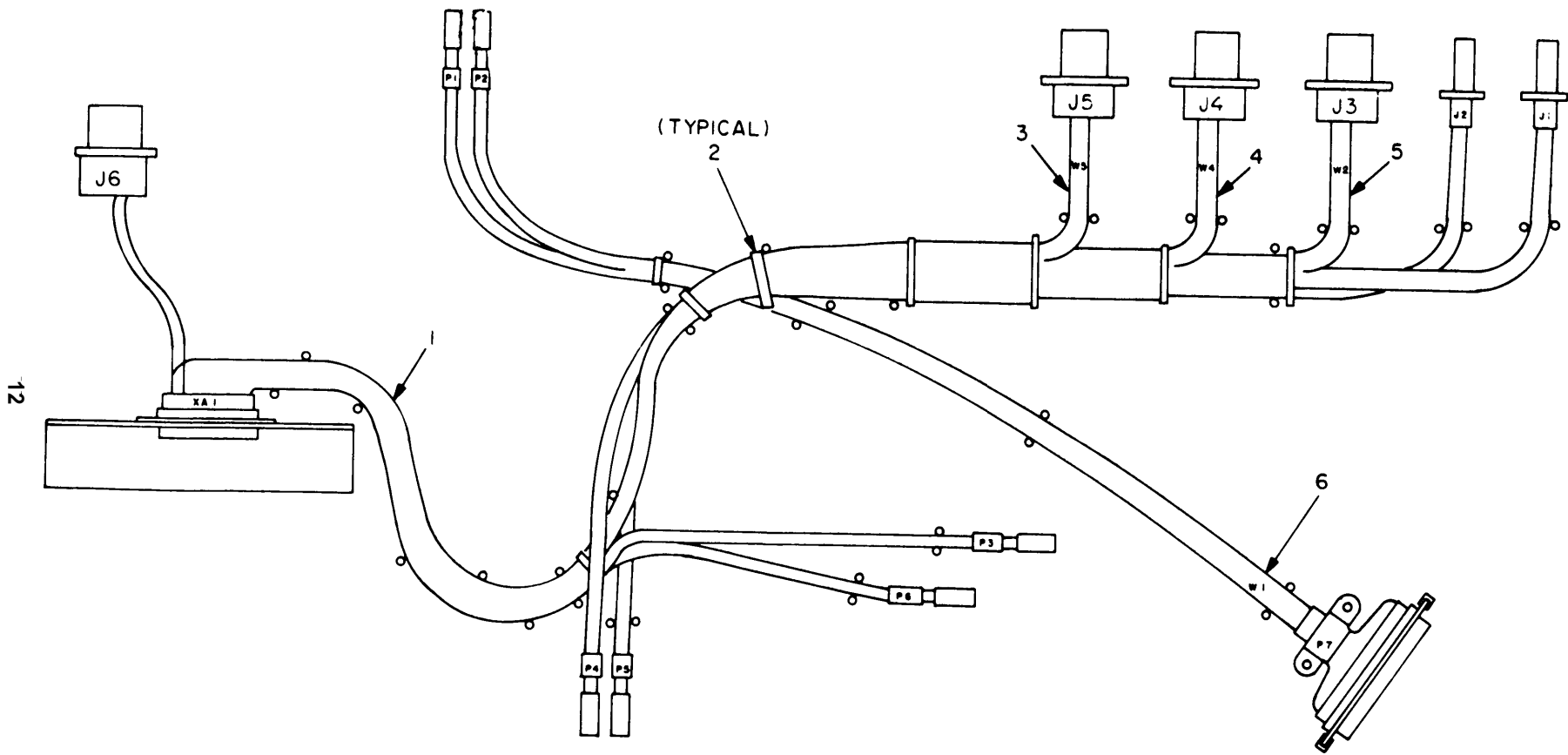


Figure 4. Harness Assembly.



SECTION II

(1)	(2)	(3)	(4)	(5)	(6)	(7)	(8)	
ILLUSTRATION					DESCRIPTION		QTY	
(a)	(b)	NATIONAL					INC	
FIG	ITEM	SMR	STOCK	PART			IN	
NO	NO	CODE	NUMBER	FSCM	NUMBER	USABLE ON CODE	U/M	UNIT
GROUP 0103 HARNESS ASSY								
4	1	PAHZZ	5995-01-142-8270	56996	B4007596	CABLE,POWER SUPPLY	EA	1
4	2	XDHZZ	5975-00-074-2072	96906	MS3367-1-9	STRAP,TIEDOWN,ELECT	EA	3
4	3	PAFHH	5995-01-125-6702	56996	B4007599	CABLE ASSEMBLY,POWE	EA	1
4	4	PAFHH	5995-01-125-6701	56996	B4007597	CABLE ASSEMBLY,POWE	EA	1
4	5	PAFHH	5995-01-125-6700	56996	B4007598	CABLE ASSEMBLY,POWE	EA	1
4	6	PAFHH	5995-01-125-6699	56996	B4007595	CABLE ASSEMBLY,POWE	EA	1

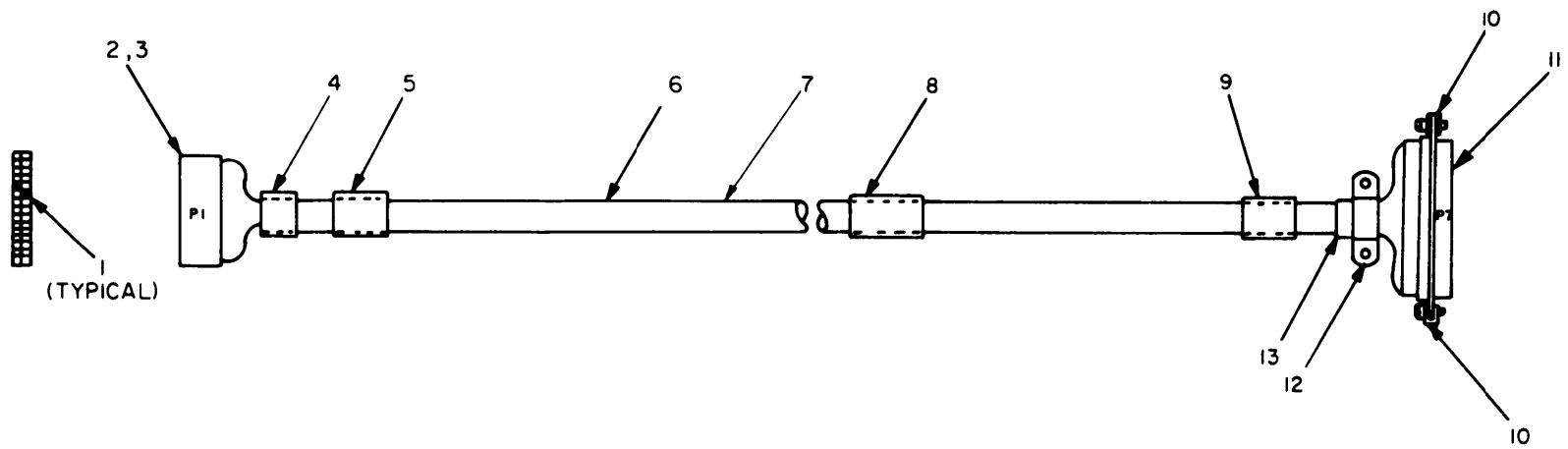


Figure 5. Cable Assembly, Switch.

SECTION II

(1) ILLUSTRATION (a) FIG NO	(2) (b) ITEM NO	(3) SMR CODE	(4) NATIONAL STOCK NUMBER	(5) FSCM PART NUMBER	(6) DESCRIPTION  USABLE ON CODE  GROUP 010302 HARNESS, SWITCH ASSY. (W1)	(7) QTY INC IN U/M	(8) UNIT
5	1	XDHZZ	5935-01-006-1359	22526 65307-001	POLARIZING KEY,ELEC	EA	2
5	2	PAHZZ	5935-01-125-6738	56996 B4007575-1	CONNECTOR BODY,RECE	EA	1
5	3	PAHZZ	5999-01-125-6698	56996 B4007576-1	CONTACT,ELECTRICAL	EA	28
5	4	XDHZZ	5970-00-812-2967	81349 M23053/5-108-0	INSULATION SLEEVING	FT	1
5	5	XDHZZ		56996 B4007654-1	BAND MARKER,CABLE	EA	1
5	6	XDHZZ		56996 B4007665-1	CABLE,FORMED	EA	1
5	7	XDHZZ		81851 1/2EXPANDOPTNAT	SLEEVING,BRAID	FT	2
5	8	XDHZZ		56996 B4007654-2	BAND MARKER,CABLE	EA	1
5	9	XDHZZ		56996 B4007654-3	BAND MARKER,CABLE	EA	1
5	10	XDHZZ	5935-01-093-5354	81349 M24308/25-6	JACKSCREW,ELECTRICA	EA	2
5	11	PAHZZ	5935-00-976-5425	81349 M24308/2-4	CONNECTOR,RECEPTACL	EA	1
5	12	XDHZZ	5935-01-006-7901	81349 M24308/21-4	SHIELD,ELECTRICAL C	EA	1
5	13	PAHZZ	5365-00-721-7554	96906 MS3420-10A	BUSHING,RUBBER	EA	1

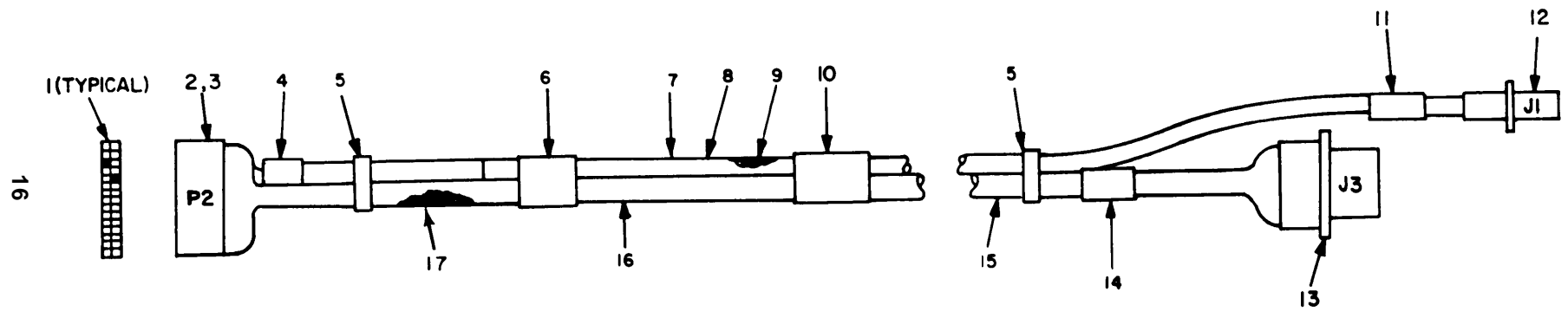
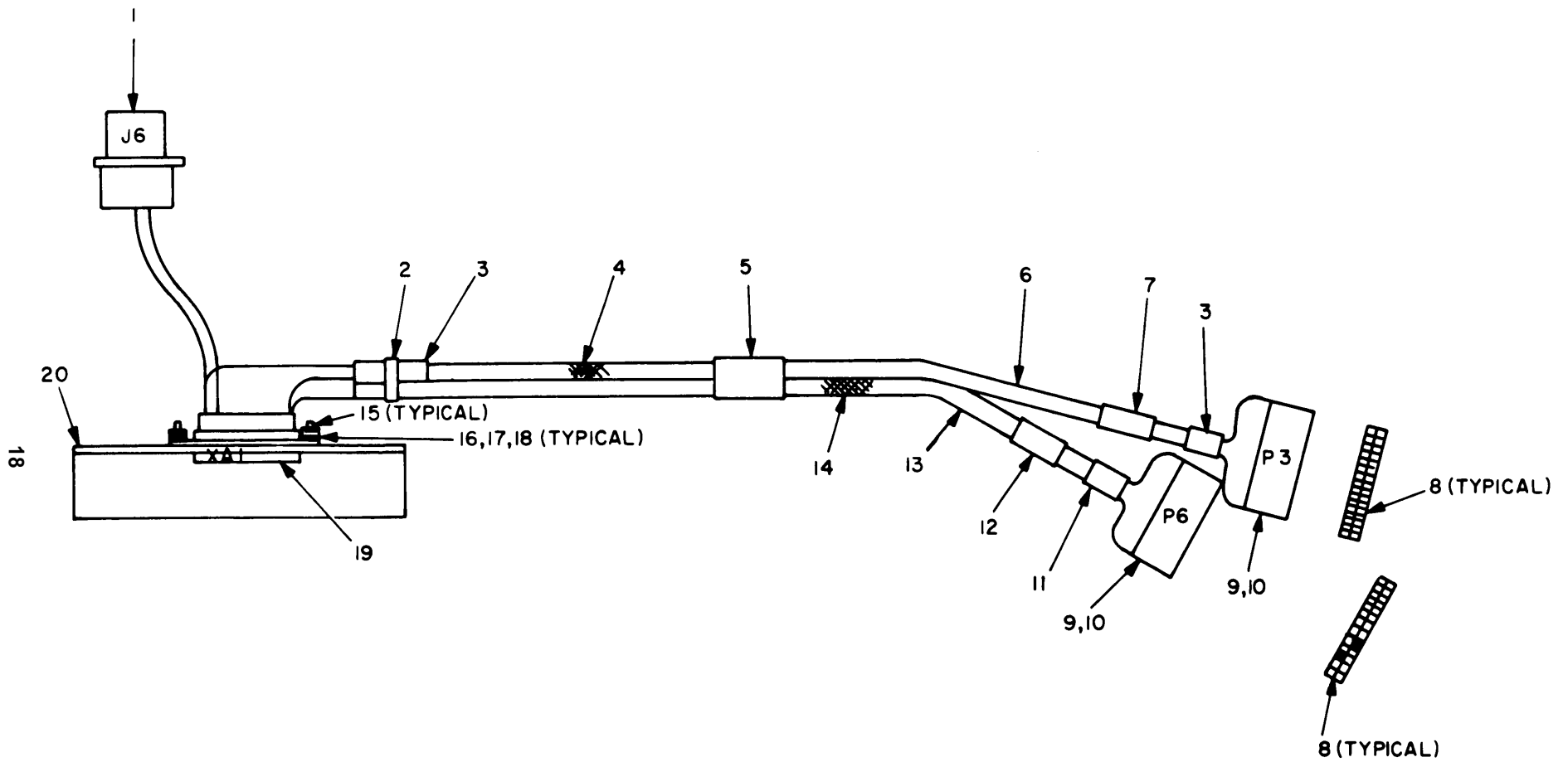


Figure 6. Cable Assembly, Channel/Mux.

SECTION II

(1) ILLUSTRATION (a) (b) FIG ITEM NO NO	(2) SMR CODE	(3) NATIONAL STOCK NUMBER	(4) FSCM	(5) PART NUMBER	(6) DESCRIPTION  USABLE ON CODE  GROUP 010303 HARNESS, CHANNEL/MUX(W2)	(7) U/M	(8) QTY INC IN UNIT
6 1	XDHZZ	5935-01-006-1359	22526	65307-001	POLARIZING KEY,ELEC	EA	2
6 2	PAHZZ	5935-01-125-6738	56996	B4007575-1	CONNECTOR BODY,RECE	EA	1
6 3	PAHZZ	5999-01-125-6698	56996	B4007576-1	CONTACT,ELECTRICAL	EA	20
6 4	XDHZZ	5970-00-954-1624	81349	M23053/5-107-0	INSULATION SLEEVING	FT	1
6 5	XDHZZ	5975-00-074-2072	96906	MS3367-1-9	STRAP,TIEDOWN,ELECT	EA	2
6 6	XDHZZ		56996	B4007654-4	MARKER BAND	EA	1
6 7	XDHZZ		56996	B4007668	CABLE,TWINAX	EA	1
6 8	XAHZZ		81349	M17/045-RG108	CABLE,RF	FT	2
6 9	XDHZZ	5940-01-079-1647	81349	M7928/5-3	SPLICE,CONDUCTOR	EA	2
6 10	XDHZZ		56996	B4007654-5	MARKER BAND	EA	1
6 11	XDHZZ		56996	B4007654-7	MARKER BAND	EA	1
6 12	PAHZZ	5935-01-125-6715	56996	B4007584-1	CONNECTOR,RECEPTACL	EA	1
6 13	PAHZZ	5935-00-813-4720	96906	MS3114E14-19P	CONNECTOR,RECEPTACL	EA	1
6 14	XDHZZ		56996	B4007654-6	MARKER BAND	EA	1
6 15	XDHZZ		81851	1/2EXPANDOPTNAT	SLEEVING,BRAID	FT	2
6 16	XDHZZ		56996	B4007663	CABLE,FORMED	EA	1
6 17	PAHZZ	6145-00-194-9829	81348	QQB575R36T375	BRAID,WIRE	FT	2

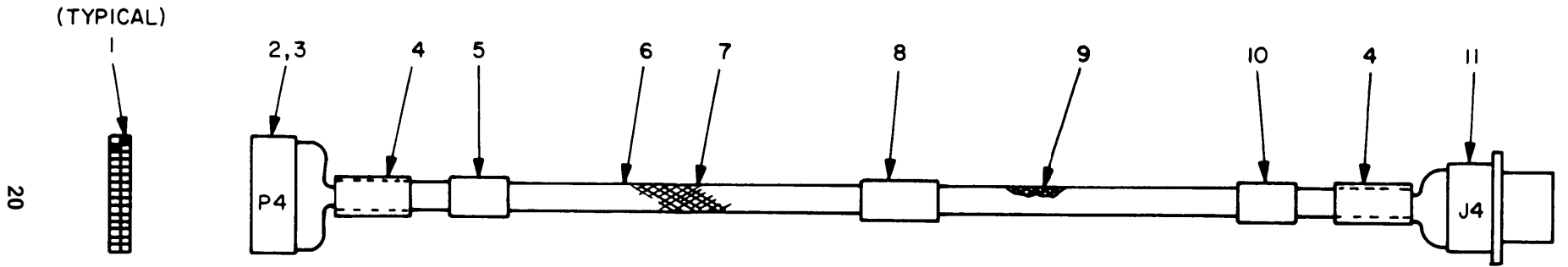


TM 11-5805-638-34P

Figure 7. Cable Assembly, Power Supply.

SECTION II

(1) ILLUSTRATION (a) (b) FIG ITEM NO NO	(2) SMR CODE	(3) NATIONAL STOCK NUMBER	(4) FSCM	(5) PART NUMBER	(6) DESCRIPTION  USABLE ON CODE  GROUP 010304 HARNESS, POWER SUPPLY (W3)	(7) U/M	(8) QTY INC IN UNIT
7 1	XDHZZ	5935-00-845-2537	96906	MS3114E12-3P	CONNECTOR, RECEPTACL	EA	1
7 2	XDHZZ	5975-00-074-2072	96906	MS3367-1-9	STRAP, TIEDOWN, ELECT	EA	1
7 3	XAHZZ		81349	M23053/5-107-0	INSULATION SLEEVING	FT	1
7 4	XAHZZ		81851	1/4EXPANDOPTNAT	SLEEVING, BRAID	FT	2
7 5	XDHZZ		56996	B4007654-11	MARKER BAND	EA	1
7 6	XDHZZ		56996	B4007672	CABLE, FORMED	EA	1
7 7	XDHZZ		56996	B4007654-10	MARKER BAND	EA	1
7 8	XDHZZ	5935-01-032-6681	36378	1003373-01	KEY, POLARIZING, ELEC	EA	4
7 9	XDHZZ	5935-01-125-6738	56996	B4007575-1	CONN, BODY, ELEC, RCPT	EA	2
7 10	XDHZZ	5999-01-125-6698	56996	B4007576-1	CONTACT, ELEC, CRP	EA	20
7 11	XDHZZ		56996	B4007585-32	WIRE, ELECTRICAL	FT	1
7 12	XDHZZ		56996	B4007654-13	MARKER BAND	EA	1
7 13	XDHZZ		56996	B4007671	CABLE ASSY. FORMED	EA	1
7 14	XAHZZ		81851	1/2EXPANDOPTNAT	SLEEVING, BRAID	FT	2
7 15	XDHZZ	5305-00-054-5639	96906	MS51957-5	SCREW, MACHINE	EA	2
7 16	XDHZZ	5310-00-595-6761	96906	MS15795-802	WASHER, FLAT	EA	2
7 17	XDHZZ	5310-00-928-2690	96906	MS35338-134	WASHER, LOCK	EA	2
7 18	XDHZZ	5310-00-938-2013	96906	MS35649-224	NUT, PLAIN, HEXAGON	EA	2
7 19	XDHZZ	5935-01-018-5678	81349	M24308/2-25	CONNECTOR, RECEPTACL	EA	1
7 20	XDHZZ		56996	B4007531	BRACKET, CONNECTOR	EA	1



20

Figure 8. Cable Assembly, Channel.



## SECTION II

(1)	(2)	(3)	(4)	(5)	(6)	(7)	(8)	
ILLUSTRATION					DESCRIPTION		QTY	
(a)	(b)	NATIONAL					INC	
FIG	ITEM	SMR	STOCK	PART			IN	
NO	NO	CODE	NUMBER	FSCM	NUMBER	USABLE ON CODE	U/M	UNIT
						GROUP 010305 HARNESS, CHANNEL (W4)		
8	1	XDHZZ	5935-01-006-1359	22526	65307-001	POLARIZING KEY,ELEC	EA	2
8	2	PAHZZ	5935-01-125-6738	56996	B4007575-1	CONNECTOR BODY,RECE	EA	1
8	3	PAHZZ	5999-01-125-6698	56996	B4007576-1	CONTACT,ELECTRICAL	EA	17
8	4	XDHZZ	5970-00-812-2967	81349	M23053/5-108-0	INSULATION SLEEVING	FT	1
8	5	XDHZZ		56996	B4007654-14	MARKER BAND	EA	1
8	6	XDHZZ		56996	B4007667	CABLE,FORMED	EA	1
8	7	XDHZZ		81851	1/2EXPANDOPTNAT	SLEEVING,BRAID	FT	2
8	8	XDHZZ		56996	B4007654-15	MARKER BAND	EA	1
8	9	XDHZZ	6145-00-194-9829	81348	QQB575R36T375	BRAID,WIRE	FT	2
8	10	XDHZZ		56996	B4007654-16	MARKER BAND	EA	1
8	11	PAHZZ	5935-00-813-4720	96906	MS3114E14-19P	CONNECTOR,RECEPTACL	EA	1

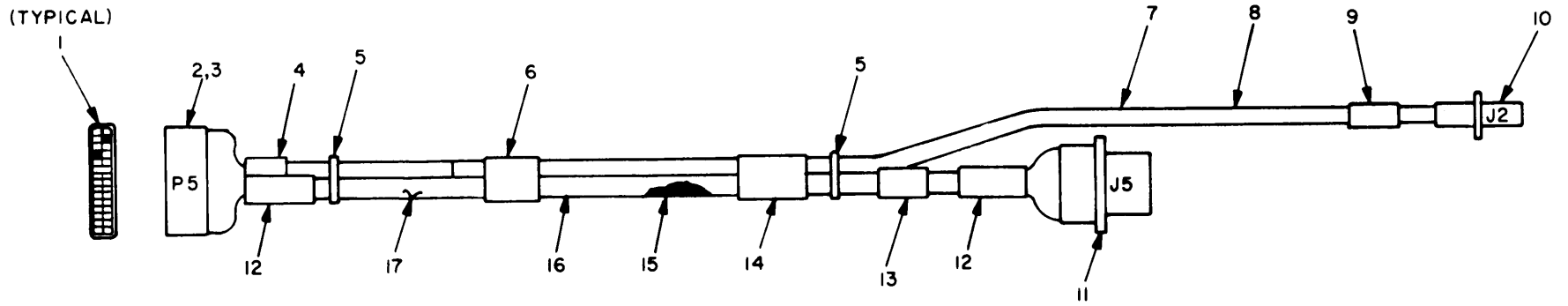


Figure 9. Cable Assembly, Channel/Demux.

SECTION II

(1) ILLUSTRATION (a) (b) FIG ITEM NO NO	(2) SMR CODE	(3) NATIONAL STOCK NUMBER	(4) FSCM	(5) PART NUMBER	(6) DESCRIPTION  USABLE ON CODE  GROUP 010306 HARNESS, CHANNEL/DEMUX (W5)	(7) QTY INC IN U/M	(8) UNIT
9 1	XDHZZ	5935-01-006-1359	22526	65307-001	POLARIZING KEY, ELEC	EA	2
9 2	PAHZZ	5935-01-125-6738	56996	B4007575-1	CONNECTOR BODY, RECE	EA	1
9 3	PAHZZ	5999-01-125-6698	56996	B4007576-1	CONTACT, ELECTRICAL	EA	20
9 4	XDHZZ	5970-00-954-1624	81349	M23053/5-107-0	INSULATION SLEEVING	FT	1
9 5	XDHZZ	5975-00-074-2072	96906	MS3367-1-9	STRAP, TIEDOWN, ELECT	EA	2
9 6	XDHZZ		56996	B4007654-17	BAND MARKER, CABLE	EA	1
9 7	XDHZZ		56996	B4007664-1	CABLE, TWINAX	EA	1
9 8	XAHZZ		81349	M17/045-RG108	CABLE, RF	FT	2
9 9	XDHZZ		56996	B4007654-20	BAND MARKER, CABLE	EA	1
9 10	PAHZZ	5935-01-125-6715	56996	B4007584-1	CONNECTOR, RECEPTACL	EA	1
9 11	PAHZZ	5935-00-813-4720	96906	MS3114E14-19P	CONNECTOR, RECEPTACL	EA	1
9 12	XDHZZ	5970-00-812-2967	81349	M23053/5-108-0	INSULATION SLEEVING	FT	1
9 13	XDHZZ		56996	B4007654-19	BAND MARKER, CABLE	EA	1
9 14	XDHZZ		56996	B4007654-18	BAND MARKER, CABLE	EA	1
9 15	PAHZZ	6145-00-194-9829	81348	QQB575R36T375	BRAID, WIRE	FT	1
9 16	XDHZZ		81851	1/2EXPANDOPTNAT	SLEEVING, BRAID	FT	1
9 17	XDHZZ		56996	B4007669	CABLE, FORMED	EA	1

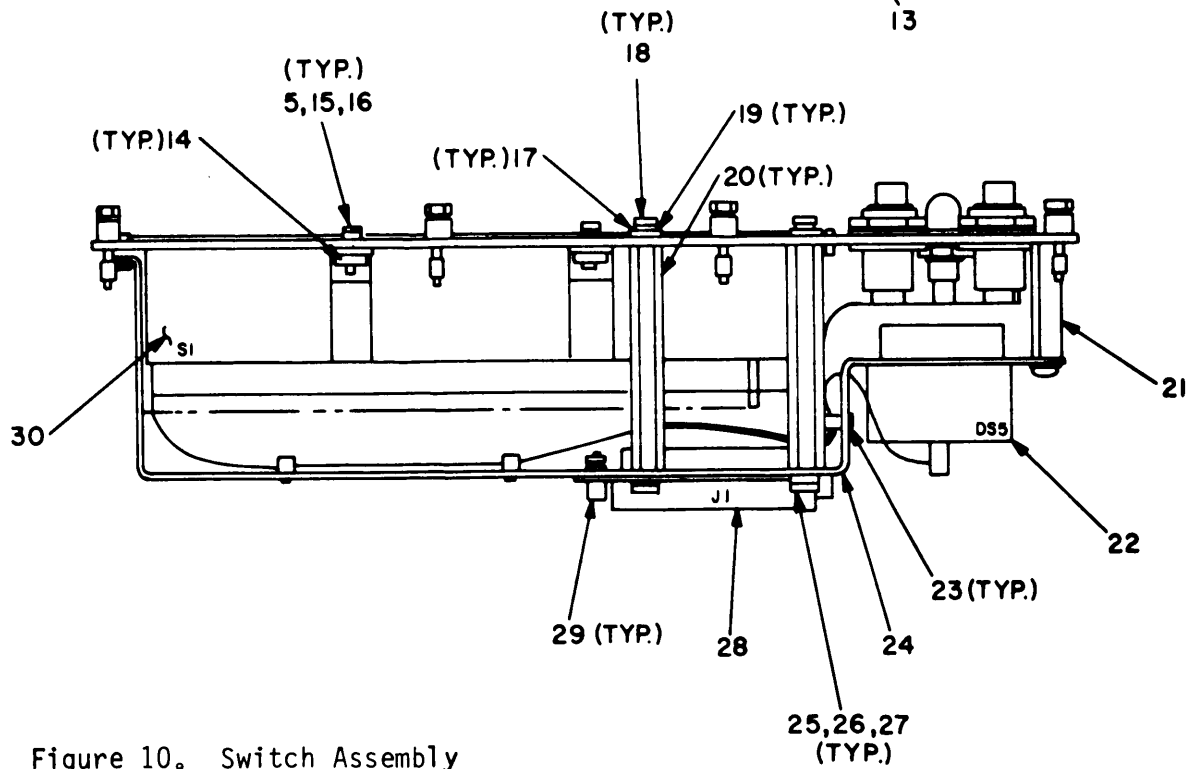
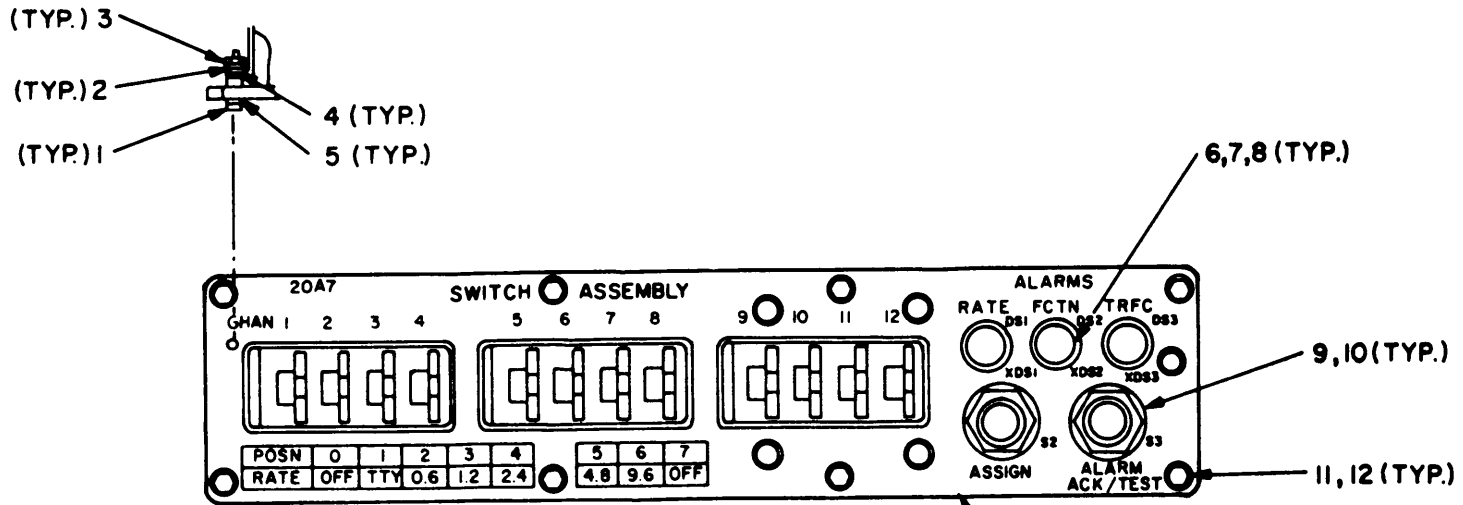
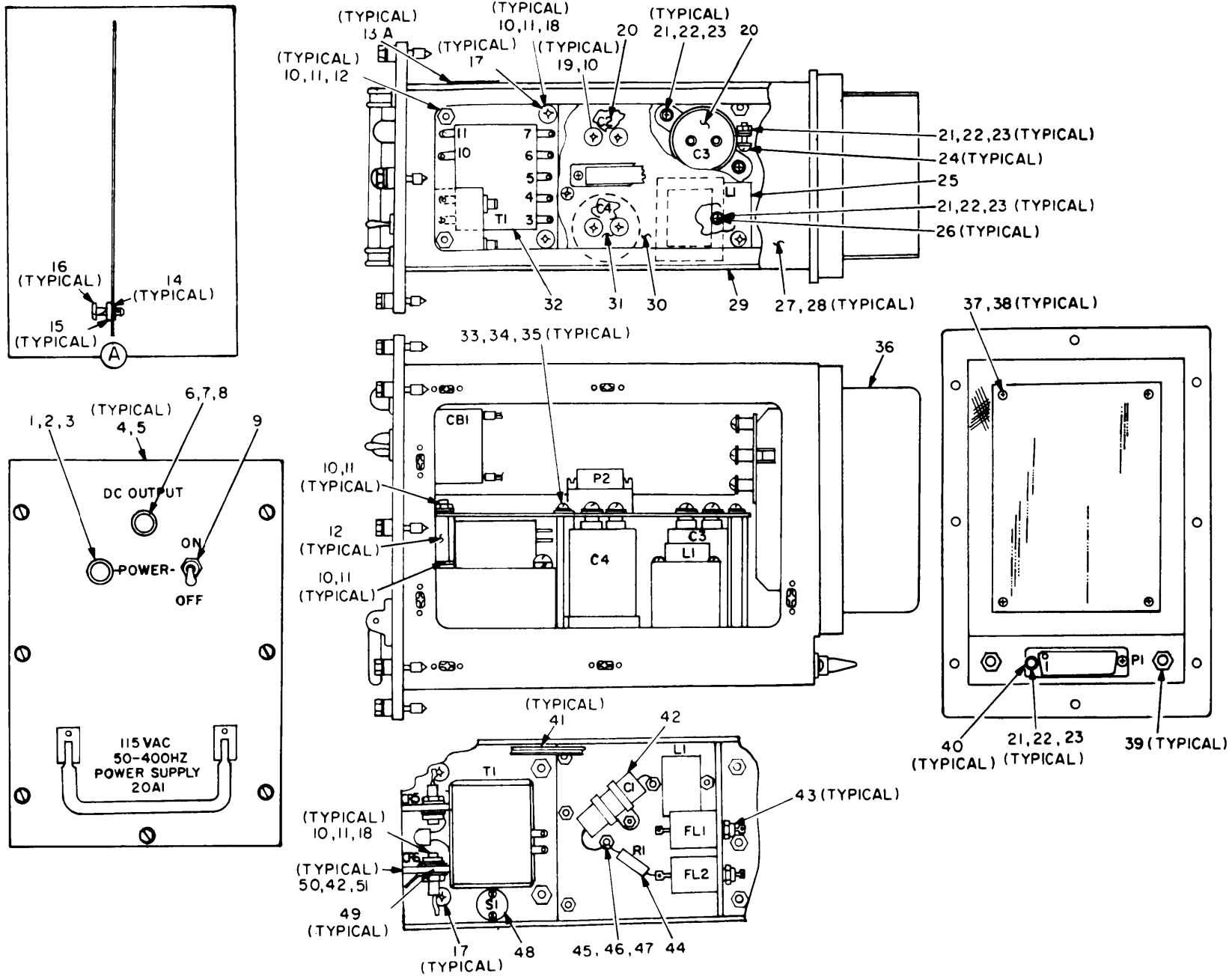


Figure 10. Switch Assembly

## SECTION II

(1) ILLUSTRATION (a) FIG NO	(2) (b) ITEM NO	(3) SMR CODE	(4) NATIONAL STOCK NUMBER	(5) FSCM PART NUMBER	(6) DESCRIPTION  USABLE ON CODE	(7) U/M	(8) QTY INC IN UNIT
GROUP 02 SWITCH ASSY, (20A7)							
10	1	PAHZZ	5305-00-256-7471	96906 MS51957-7B	SCREW, MACHINE	EA	4
10	2	PAHZZ	5310-00-928-2690	96906 MS35338-134	WASHER, LOCK	EA	4
10	3	PAHZZ	5310-00-938-2013	96906 MS35649-224	NUT, PLAIN, HEXAGON	EA	4
10	4	XDHZZ		80205 620C2	WASHER, FLAT, ROC DIA	EA	4
10	5	XDHZZ		56996 B4007592-2	WASHER, FLAT	EA	8
10	6	PAHZZ	6210-00-410-2530	81349 LC12RT2	LENS, LIGHT	EA	3
10	7	PAHZZ	6240-01-125-6709	56996 B4007571	LAMP, INCANDESCENT	EA	3
10	8	PAHZZ	6210-00-813-8265	81349 LH73/1	LIGHT, INDICATOR	EA	3
10	9	PAHZZ	5930-00-501-1755	96906 MS25089-3F	SWITCH, PUSH	EA	2
10	10	XDHZZ		56996 B4007655	WASHER	EA	2
10	11	PAHZZ		56996 B4007581-1	SCREW, EXTERNALLY RE	EA	8
10	12	PAHZZ	5310-00-224-0748	96906 MS35338-137B	WASHER, LOCK	EA	8
10	13	XDHZZ		56996 B4007536	PANEL ASSY, SWITCH	EA	1
10	14	XDHZZ		569963 B4007642	NUT, PLATE	EA	2
10	15	PAHZZ	5310-00-177-1301	96906 MS35338-134B	WASHER, LOCK	EA	4
10	16	PAHZZ	5305-00-182-9411	96906 MS51957-5B	SCREW, MACHINE	EA	4
10	17	PAHZZ	5310-00-194-3648	96906 MS15795-806B	WASHER, FLAT	EA	5
10	18	PAHZZ	5305-00-469-5382	96906 MS51957-30B	SCREW, MACHINE	EA	5
10	19	PAHZZ	5310-00-224-0747	96906 MS35338-136B	WASHER, LOCK	EA	5
10	20	XDHZZ		80205 1786CO6-40	POST, ELEC-MECH EQPT	EA	4
10	21	XDHZZ		80205 1786CO6-20	POST, ELEC-MECH	EA	1
10	22	PAHZZ	6350-01-125-6679	56996 B4007553-1	ALARM, AUDIBLE	EA	1
10	23	XDHZZ	5975-00-727-5153	96906 MS3367-4-9	STRAP, TIEDOWN, ELECT	EA	3
10	24	XDHZZ		56996 B4007535	BRACKET, ALARM/CONN	EA	1
10	25	PAHZZ	5305-00-054-6654	96906 MS51957-30	SCREW, MACHINE	EA	5
10	26	PAHZZ	5310-00-880-5976	96906 MS15795-806	WASHER, FLAT	EA	5
10	27	PAHZZ	5310-00-929-6395	96906 MS35338-136	WASHER, LOCK	EA	5
10	28	PAHZZ	5935-00-410-9252	81349 M24308/4-4	CONNECTOR, RECEPTACL	EA	1
10	29	XDHZZ		81349 M24308/26-01	SCREW LOCK ASSEMBLY	EA	2
10	30	PAHZZ	5930-01-125-6739	56996 B4007572-1	SWITCH, CODE INDICAT	EA	1



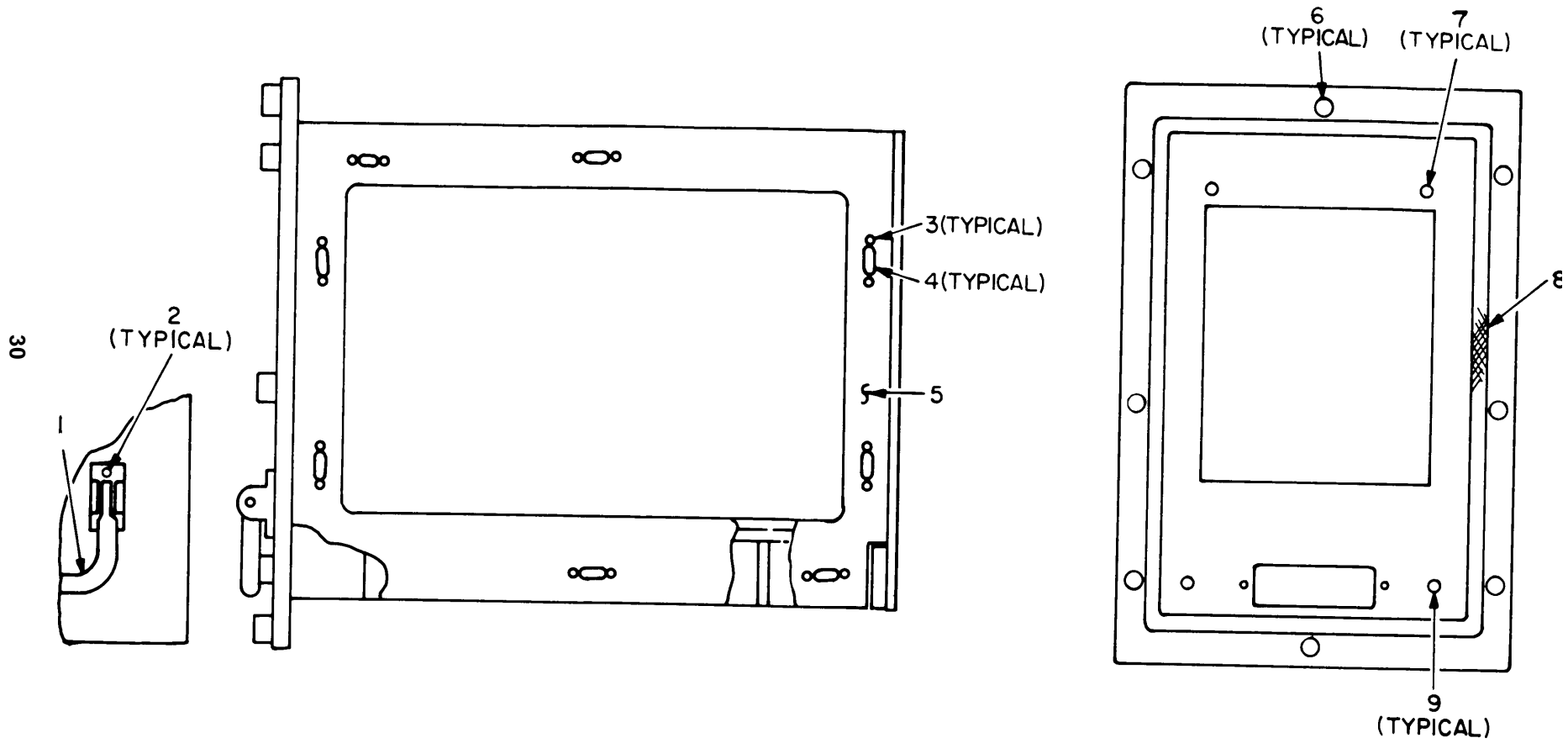
SECTION II								
(1)	(2)	(3)	(4)	(5)	(6)	(7)	(8)	
ILLUSTRATION					DESCRIPTION		QTY	
(a)	(b)	NATIONAL		PART			INC	
FIG	ITEM	STOCK		NUMBER	USABLE ON CODE		IN	
NO	NO	NUMBER	FSCM	NUMBER		U/M	UNIT	
GROUP 03 POWER SUPPLY (20A1)								
11	1	PAHZZ	6210-00-163-5117	81349	LH74/2	LIGHT, INDICATOR	EA 1	
11	2	PAHZZ	6210-00-078-7626	81349	LC13CN2	LENS, LIGHT	EA 1	
11	3	PAHZZ	6240-00-723-3378	81349	M15098/11-002	LAMP, GLOW	EA 1	
11	4	XDHZZ		56996	B4007743-1	FASTENER, PANEL	EA 8	
11	5	PAHZZ	5310-00-224-0748	96906	MS35338-137B	WASHER, LOCK	EA 8	
11	6	PAHZZ	6240-01-125-6709	56996	B4007571	LAMP, INCANDESCENT	EA 1	
11	7	PAHZZ	6210-00-813-8265	81349	LH73/1	LIGHT, INDICATOR	EA 1	
11	8	PAHZZ	6210-00-023-7029	81349	LC12GT2	LENS, LIGHT	EA 1	
11	9	PAHZZ		81349	M39019/03-311	CIRCUIT BREAKER	EA 1	
11	10	PAHZZ	5310-00-933-8120	96906	MS35338-138	WASHER, LOCK	EA 14	
11	11	XDHZZ	5310-00-595-6772	10001	842555	WASHER, FLAT	EA 11	
11	12	XDHZZ		06540	9757-SS-1032	STANDOFF	EA 2	
11	13	XDHZZ		56996	B4007711	COVER ASSEMBLY, SIDE	EA 2	
11	14	XDHZZ	5310-00-849-1984	73342	6862093	WASHER, SPLIT	EA 10	
11	15	XDHZZ		71286	12S1-12-1BB	STUD ASSEMBLY, TURNL	EA 4	
11	16	XDHZZ		71286	12S1-14-1BB	STUD ASSEMBLY, TURNL	EA 6	
11	17	PAHZZ	5305-00-059-3667	96906	MS51958-71	SCREW, MACHINE	EA 4	
11	18	PAHZZ	5310-00-145-2244	96906	MS25082-C3	NUT, PLAIN, HEXAGON	EA 2	
11	19	PAHZZ	5305-00-050-9225	96906	MS51957-59	SCREW, MACHINE	EA 6	
11	20	PAHZZ	5910-01-125-6689	56996	B4007725-1	CAPACITOR, FIXED, ELE	EA 2	
11	21	PAHZZ	5310-00-595-6211	96906	MS15795-803	WASHER, FLAT	EA 24	
11	22	PAHZZ	5310-00-933-8118	96906	MS35338-135	WASHER, LOCK	EA 12	
11	23	PAHZZ	5310-00-934-9748	96906	MS35649-244	NUT, PLAIN, HEXAGON	EA 13	
11	24	PAHZZ	5305-00-054-5650	96906	MS51957-16	SCREW, MACHINE	EA 9	
11	25	PAHZZ	5950-01-131-2359	56996	B4007724-1	INDUCTOR, AUDIO	EA 1	
11	26	XDHZZ		56996	B4007754	SCREW, MACHINE	EA 2	
11	27	XDHZZ		56996	B4007709	COVER, TOP & BOTTOM	EA 2	
11	28	XDHZZ		56996	B4007718	LABEL, CAUTION	EA 1	
11	29	XDHZZ		56996	B4007705	CHASSIS, MACHINING	EA 1	
11	30	PAHHH	5805-01-125-6737	56996	B4007716	CIRCUIT CARD ASSEMB	EA 1	
11	31	PAHZZ	5910-01-125-6690	56996	B4007725-2	CAPACITOR, FIXED, ELE	EA 1	
11	32	PAHZZ	5950-01-131-8069	56996	B4007723-1	TRANSFORMER, POWER	EA 1	
11	33	PAHZZ	5310-00-929-6395	96906	MS35338-136	WASHER, LOCK	EA 3	
11	34	PAHZZ	5310-00-722-5998	96906	MS15795-805	WASHER, FLAT	EA 3	
11	35	XDHZZ		06540	9751-32-SS-0632	STANDOFF	EA 3	
11	36	AHHHH		56996	B4007713	HEAT SINK ASSY	EA 1	
11	37	PAHZZ	5310-00-194-3647	96906	MS15795-803B	WASHER, FLAT	EA 4	
11	38	PAHZZ	5305-00-465-6745	96906	MS51957-16B	SCREW, MACHINE	EA 4	
11	39	XDHZZ		56996	B4007728-1	PIN, SHEAR	EA 2	

## SECTION II

(1)	(2)	(3)	(4)	(5)	(6)	(7)	(8)
ILLUSTRATION					DESCRIPTION		QTY
(a)	(b)	NATIONAL		PART			INC
FIG	ITEM	SMR	STOCK		USABLE ON CODE		IN
NO	NO	CODE	NUMBER	FSCM	NUMBER	U/M	UNIT
11	40	PAHZZ	5305-00-054-5649	96906	MS51957-15	EA	2
11	41	XDHZZ	5940-00-681-8184	96906	MS0035431-8	EA	3
11	42	XDHZZ		81349	M83421/01-0192P	EA	1
11	43	PAHZZ	5915-01-125-6711	56996	B4007719-1	EA	2
11	44	XDHZZ		81349	RLR32C75R0GR	EA	1
11	45	XDHZZ	5940-00-926-0040	81349	SE21XE03	EA	1
11	46	PAHZZ	5310-00-595-6761	96906	MS15795-802	EA	1
11	47	PAHZZ	5310-00-928-2690	96906	MS35338-134	EA	1
11	48	PAHZZ	5930-00-428-6643	81349	M24236/1-0835	EA	1
11	49	XDHZZ	5970-01-091-7360	08289	TW-200-280-050TS	EA	4
11	50	PAHZZ	5961-00-935-0138	81349	JAN1N1202A	EA	2
11	51	PAHZZ	5970-01-038-0918	08289	MW625-197-002	EA	4





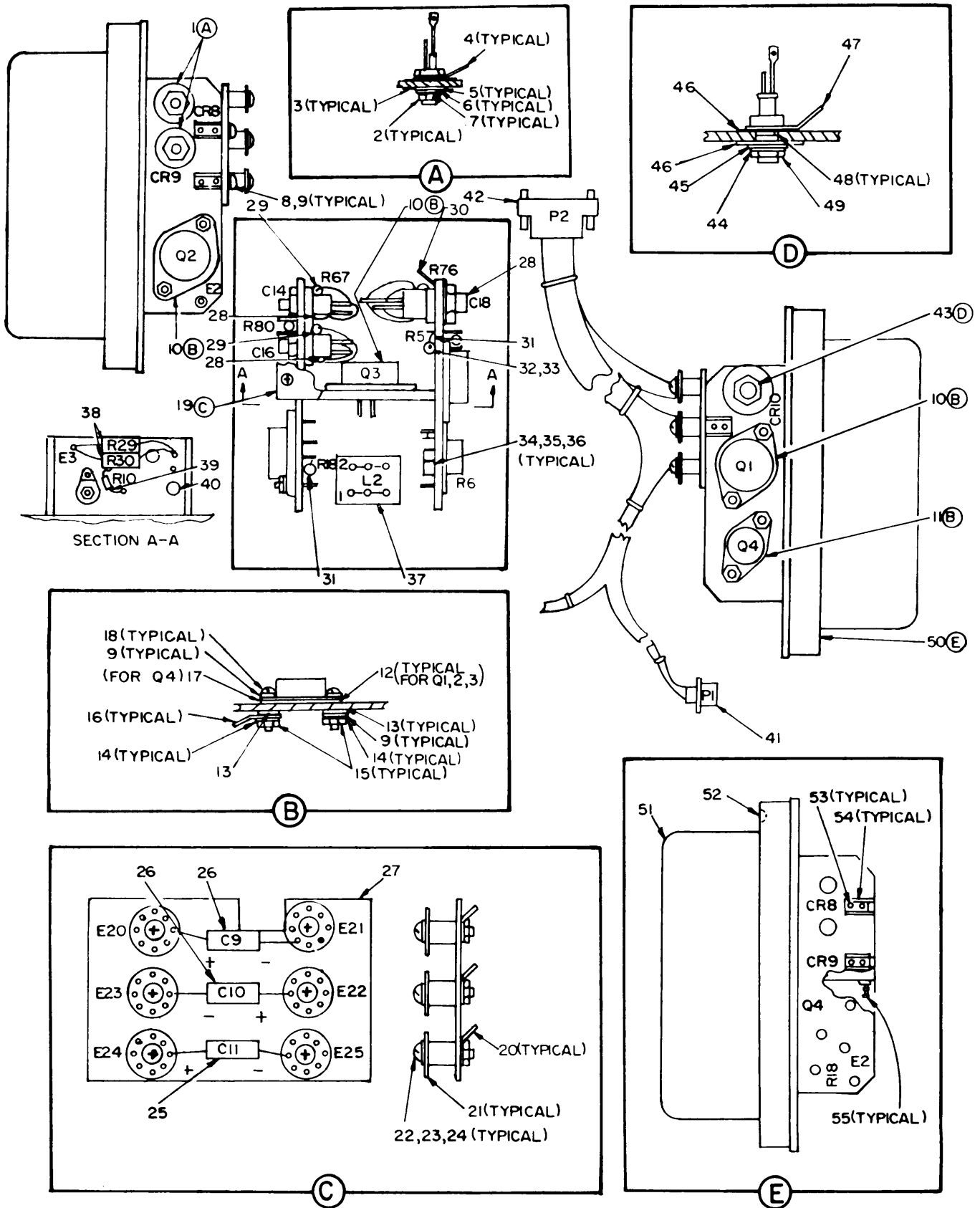


TM 11-5805-638-34P

Figure 12. Chassis, Machining.

SECTION II

(1)	(2)	(3)	(4)	(5)	(6)	(7)	(8)
ILLUSTRATION					DESCRIPTION		QTY
(a)	(b)	NATIONAL		PART			INC
FIG	ITEM	SMR	STOCK	FSCM	USABLE ON CODE	U/M	IN
NO	NO	CODE	NUMBER	NUMBER			UNIT
12	1	XDHZZ	5340-01-136-7187	08730	88-1	HANDLE,BAIL	EA 1
12	2	XDHZZ	5320-00-243-8375	96906	MS20470A2-5	RIVET,SOLID	EA 4
12	3	PAHZZ	5320-00-117-6929	96906	MS20426AD2-4	RIVET,SOLID	EA 40
12	4	PAHZZ	5325-00-960-5106	71286	12R1-1BB	RECEPTACLE,TURNLOCK	EA 20
12	5	XDHZZ		56996	B4007706	CHAS DIP BRZ ASSY	EA 1
12	6	XDHZZ		06540	6252D-SS-0832-6B	RETAINER,PNL SCREW	EA 8
12	7	PAHZZ	5310-00-071-0199	46384	YC3-3002-2	NUT,SELF-LOCKING,CL	EA 4
12	8	PAHZZ	5999-01-133-1940	12881	01-0102-0171	SHIELDING GASKET,EL	EA 1
12	9	PAHZZ	5340-00-999-1181	96906	MS21209C4-10	INSERT,SCREW THREAD	EA 2



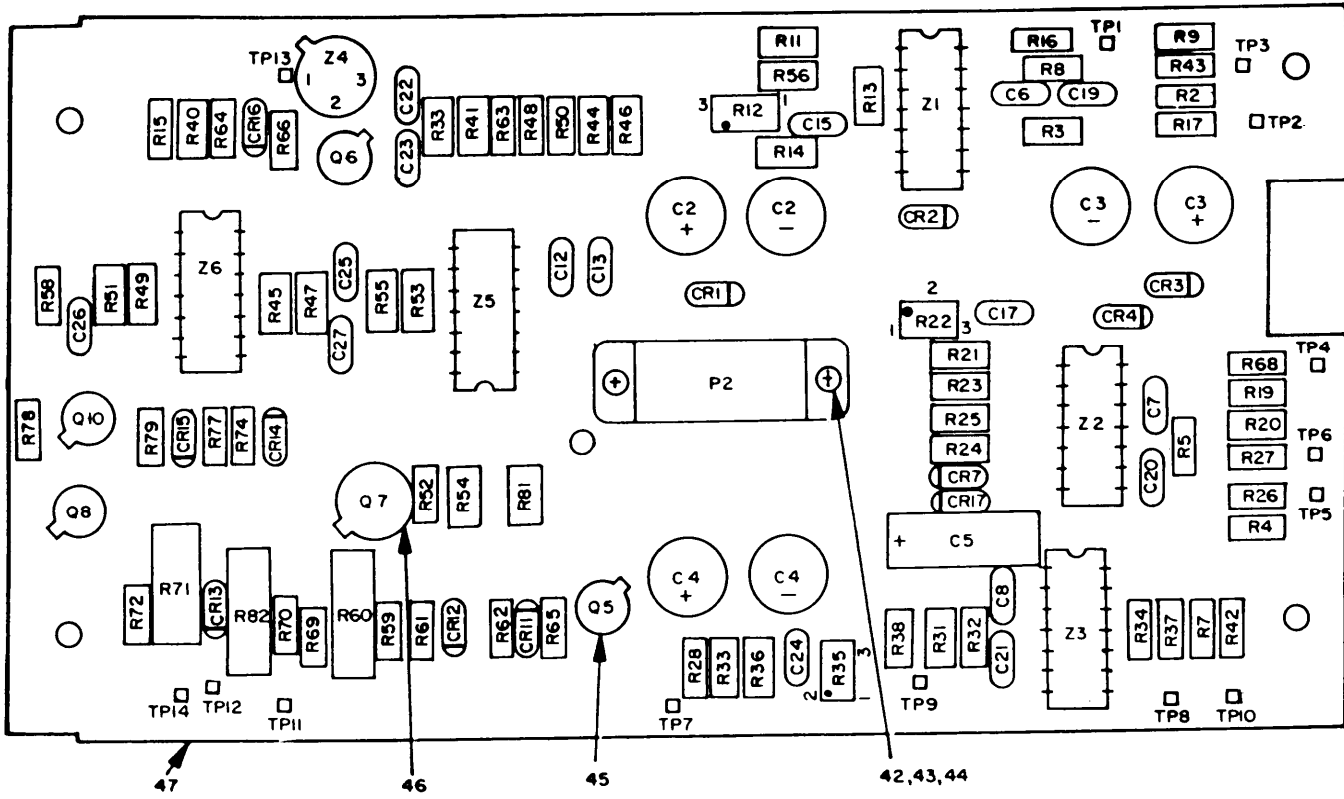
## SECTION II

(1)	(2)	(3)	(4)	(5)	(6)	(7)	(8)
ILLUSTRATION					DESCRIPTION		QTY
(a)	(b)	NATIONAL		PART			INC
FIG	ITEM	STOCK		NUMBER			IN
NO	NO	NUMBER	FSCM	NUMBER	USABLE ON CODE	U/M	UNIT
13	1	PAHZZ	5961-00-061-8603	81349	JAN2N1771A	SEMICONDUCTOR DEVIC	EA 2
13	2	PAHZZ	5310-00-145-2244	96906	MS25082-C3	NUT, PLAIN, HEXAGON	EA 2
13	3	PAHZZ	5970-01-038-0918	08289	MW625-197-002	INSULATOR, WASHER	EA 4
13	4	XDHZZ	5940-00-681-8184	96906	MS0035431-8	TERMINAL, LUG	EA 2
13	5	XDHZZ	5310-00-595-6772	10001	842555	WASHER, FLAT	EA 2
13	6	PAHZZ	5310-00-933-8120	96906	MS35338-138	WASHER, LOCK	EA 2
13	7	PAHZZ	5970-01-091-7360	08289	TW-200-280-050TS	INSULATOR, WASHER	EA 4
13	8	PAHZZ	5305-00-054-5648	96906	MS51957-14	SCREW, MACHINE	EA 3
13	9	PAHZZ	5310-00-595-6211	96906	MS15795-803	WASHER, FLAT	EA 15
13	10	PAHZZ	5961-00-858-8960	81349	JAN2N5038	TRANSISTOR	EA 3
13	11	PAHZZ	5961-01-082-8807	81349	JAN2N3879	TRANSISTOR	EA 1
13	12	PAHZZ	5970-00-023-6246	19203	9287758	INSULATOR, PLATE	EA 2
13	13	PAHZZ	5970-00-906-4011	08863	N5342	INSULATOR, BUSHING	EA 6
13	14	PAHZZ	5310-00-933-8118	96906	MS35338-135	WASHER, LOCK	EA 6
13	15	PAHZZ	5310-00-934-9748	96906	MS35649-244	NUT, PLAIN, HEXAGON	EA 6
13	16	PAHZZ	5940-00-614-0537	96906	MS35431-1	TERMINAL, LUG	EA 3
13	17	PAHZZ	5970-00-952-1231	08289	DM-101	INSULATOR, PLATE	EA 1
13	18	PAHZZ	5305-00-054-5651	96906	MS51957-17	SCREW, MACHINE	EA 6
13	19	XDHZZ		56996	B4007738	TERMINAL BOARD	EA 1
13	20	PAHZZ	5940-00-050-2308	96906	MS0035431-3	TERMINAL, LUG	EA 6
13	21	PAHZZ	5940-00-939-7825	81349	SE26XF03	TERMINAL, STUD	EA 6
13	22	PAHZZ	5305-00-054-5651	96906	MS51957-17	SCREW, MACHINE	EA 6
13	23	PAHZZ	5310-00-933-8118	96906	MS35338-135	WASHER, LOCK	EA 6
13	24	PAHZZ	5310-00-934-9748	96906	MS35649-244	NUT, PLAIN, HEXAGON	EA 6
13	25	XDHZZ	5910-00-412-9235	81349	M39003/01-2981	CAPACITOR, FIXED, ELE	EA 1
13	26	XDHZZ	5910-00-144-4381	81349	M39003/01-3024	CAPACITOR, FIXED, ELE	EA 2
13	27	XDHZZ		56996	B4007736	TERMINAL BOARD	EA 1
13	28	PAHZZ	5910-00-010-8718	81349	M39014/02-1338	CAPACITOR, FIXED, CER	EA 3
13	29	PAHZZ	5905-01-047-1529	81349	RLR07C1001GR	RESISTOR, FIXED, FILM	EA 2
13	30	PAHZZ	5905-00-479-1769	81349	RLR20C3900GR	RESISTOR, FIXED, FILM	EA 1
13	31	PAHZZ		81349	RWR81SR536FR	RESISTOR, FIXED, WIRE	EA 2
13	32	PAHZZ	5310-00-194-3647	96906	MS15795-803B	WASHER, FLAT	EA 1
13	33	PAHZZ	5310-00-224-0746	96906	MS35338-135B	WASHER, LOCK	EA 1
13	34	PAHZZ	5905-00-407-0124	81349	RWR89S51R1FR	RESISTOR, FIXED, WIRE	EA 1
13	35	PAHZZ	5305-00-224-0783	96906	MS51957-4B	SCREW, MACHINE	EA 4
13	36	PAHZZ	5310-00-177-1301	96906	MS35338-134B	WASHER, LOCK	EA 4
13	37	PAHZZ	5950-01-131-2360	56996	B4007727-1	INDUCTOR, AUDIO	EA 1
13	38	PAHZZ	5905-00-433-4348	81349	RWR89SR154FR	RESISTOR, FIXED, WIRE	EA 2
13	39	PAHZZ	5905-00-401-8683	81349	RLR07C2700GR	RESISTOR, FIXED, FILM	EA 1
13	40	PAHZZ	5970-00-016-1705	81349	M23053/2-103-0	INSULATION SLEEVING	EA 1

## SECTION II

(1)	(2)	(3)	(4)	(5)	(6)	(7)	(8)
ILLUSTRATION					DESCRIPTION		QTY
(a)	(b)	NATIONAL		PART			INC
FIG	ITEM	SMR	STOCK		USABLE ON CODE		IN
NO	NO	CODE	NUMBER	FSCM	NUMBER	U/M	UNIT
13	41	PAHZZ	5935-00-489-9999	81349	M24308/4-3		EA 1
13	42	PAHZZ	5935-01-125-6716	56996	B4007732-1		EA 1
13	43	PAHZZ	5961-00-846-5808	81349	JAN2N682		EA 1
13	44	PAHZZ	5310-00-582-5677	96906	MS15795-810		EA 1
13	45	PAHZZ	5310-00-933-8121	96906	MS35338-139		EA 1
13	46	XDHZZ	5310-01-007-6898	08289	MW750-255-002		EA 2
13	47	PAHZZ	5940-00-714-0678	79963	558-257		EA 1
13	48	PAHZZ	5970-00-977-2714	08289	TW516-25		EA 2
13	49	PAHZZ	5310-00-137-3134	96906	MS25082-C4		EA 1
13	50	PAHZZ		56996	B4007714		EA 1
13	51	XDHZZ		56996	B4007715		EA 1
13	52	PAHZZ	5999-01-131-6212	12881	01-0404-1849		EA 1
13	53	XDHZZ	5320-00-243-8356	96906	MS20470AD2-4		EA 6
13	54	XDHZZ	5310-00-861-9282	72962	F22LHA27M22-40		EA 7
13	55	XDHZZ	5940-00-051-6257	81349	SE079B01		EA 4





LEGEND

REF. DES.	ITEM NO.	REF. DES.	ITEM NO.	REF. DES.	ITEM NO.	REF. DES.	ITEM NO.	REF. DES.	ITEM NO.	REF. DES.	ITEM NO.		
CR1	1	C12	7	Q7	11	R17	19	R36	24	R52	29	R70	34
CR2	1	C13	7	Q8	10	R19	14	R37	19	R53	16	R71	35
CR3	1	C15	6	Q10	10	R20	15	R38	19	R54	25	R72	36
CR4	1	C17	6	R2	12	R21	16	R39	25	R55	25	R74	12
CR7	2	C19	6	R3	13	R22	17	R40	26	R56	20	R77	31
CR11	3	C20	6	R4	12	R23	20	R41	25	R58	13	R78	32
CR12	3	C21	6	R5	13	R24	18	R42	19	R59	19	R79	12
CR13	3	C22	6	R7	13	R25	18	R43	19	R60	30	R81	13
CR14	3	C23	6	R8	14	R26	19	R44	27	R61	31	R82	37
CR15	4	C24	6	R9	15	R27	19	R45	28	R62	19	Z1	38
CR16	3	C25	8	R11	16	R28	19	R46	25	R63	32	Z2	38
CR17	2	C26	8	R12	17	R31	15	R47	25	R64	31	Z3	38
C5	5	C27	8	R13	18	R32	21	R48	25	R65	12	Z4	39
C6	6	P2	9	R14	18	R33	22	R49	25	R66	12	Z5	40
C7	6	Q5	10	R15	13	R34	23	R50	27	R68	19	Z6	41
C8	6	Q6	10	R16	19	R35	17	R51	28	R69	33		

Figure 14. Printed Wiring Board Assembly, Regulator/Control.



SECTION II								
(1)	(2)	(3)	(4)	(5)	(6)	(7)	(8)	
ILLUSTRATION					DESCRIPTION		QTY	
(a)	(b)	NATIONAL		PART			INC	
FIG	ITEM	STOCK		NUMBER	USABLE ON CODE		IN	
NO	NO	NUMBER	FSCM	NUMBER		U/M	UNIT	
14	1	PAHZZ 5961-00-421-3002	81349	JAN1N5550	SEMICONDUCTOR DEVIC	EA	4	
14	2	PAHZZ 5961-00-237-2384	81349	JAN1N5614	SEMICONDUCTOR DEVIC	EA	2	
14	3	PAHZZ 5961-00-175-8467	81349	JAN1N4150	SEMICONDUCTOR DEVIC	EA	5	
14	4	PAHZZ 5961-00-164-9827	81349	JAN1N4106	SEMICONDUCTOR DEVIC	EA	1	
14	5	PAHZZ 5910-00-144-4383	81349	M39003-01-2067	CAPACITOR, FIXED, ELE	EA	1	
14	6	PAHZZ 5910-00-010-8718	81349	M39014/02-1338	CAPACITOR, FIXED, CER	EA	11	
14	7	PAHZZ 5910-00-143-0501	81349	M39014/02-1332	CAPACITOR, FIXED, CER	EA	2	
14	8	PAHZZ 5910-00-010-8666	81349	M39014/01-1357	CAPACITOR, FIXED, CER	EA	3	
14	9	PAHZZ 5935-01-125-6712	56996	B4007731-1	CONNECTOR, PLUG, ELEC	EA	1	
14	10	PAHZZ 5961-00-951-8757	81349	JAN2N2222A	TRANSISTOR	EA	5	
14	11	PAHZZ 5961-00-925-3777	81349	JAN2N2907A	TRANSISTOR	EA	1	
14	12	PAHZZ 5905-01-047-1529	81349	RLR07C1001GR	RESISTOR, FIXED, FILM	EA	6	
14	13	PAHZZ 5905-00-240-7960	81349	RLR07C27R0GR	RESISTOR, FIXED, FILM	EA	6	
14	14	PAHZZ 5905-00-138-7395	81349	RNC55H1872FS	RESISTOR, FIXED, FILM	EA	2	
14	15	PAHZZ 5905-00-169-3419	81349	RNC55H5360FS	RESISTOR, FIXED, FILM	EA	3	
14	16	PAHZZ 5905-00-153-0135	81349	RNC55H1212FS	RESISTOR, FIXED, FILM	EA	3	
14	17	PAHZZ 5905-00-350-1807	81349	RT26C2W102	RESISTOR, VARIABLE, W	EA	3	
14	18	PAHZZ 5905-00-403-4447	81349	RNC55H2741FS	RESISTOR, RIXED, FILM	EA	4	
14	19	PAHZZ 5905-01-047-1531	81349	RLR07C1002GR	RESISTOR, FIXED, FILM	EA	12	
14	20	PAHZZ 5905-00-151-4659	81349	RNC55H44641FS	RESISTOR, FIXED, FILM	EA	2	
14	21	PAHZZ 5905-00-480-5195	81349	RNC55H7151FS	RESISTOR, FIXED, FILM	EA	1	
14	22	PAHZZ 5905-00-481-8453	81349	RNC55H2051FS	RESISTOR, FIXED, FILM	EA	1	
14	23	PAHZZ 5905-00-458-9263	81349	RLR07C1000GR	RESISTOR, FIXED, FILM	EA	1	
14	24	PAHZZ 5905-00-256-5051	81349	RNC55H5621FS	RESISTOR, FIXED, FILM	EA	1	
14	25	PAHZZ 5905-00-137-4815	81349	RNC55H1052FS	RESISTOR, FIXED, FILM	EA	8	
14	26	PAHZZ 5905-00-138-7399	81349	RNC55H5111FS	RESISTOR, FIXED, FILM	EA	1	
14	27	PAHZZ 5905-00-236-0513	81349	RNC55H3482FS	RESISTOR, FIXED, FILM	EA	2	
14	28	PAHZZ 5905-00-139-1923	81349	RNC55H4422FS	RESISTOR, FIXED, FILM	EA	2	
14	29	PAHZZ 5905-00-186-2210	81349	RNC55H9091FS	RESISTOR, FIXED, FILM	EA	1	
14	30	PAHZZ 5905-01-019-9367	81349	RWR89S86R6FR	RESISTOR, FIXED, WIRE	EA	1	
14	31	PAHZZ 5905-00-438-0505	81349	RLR07C4701GR	RESISTOR, FIXED, FILM	EA	4	
14	32	PAHZZ 5905-00-401-8683	81349	RLR07C2700GR	RESISTOR, FIXED, FILM	EA	2	
14	33	PAHZZ 5905-00-419-2822	81349	RLR07C2001GR	RESISTOR, FIXED, FILM	EA	1	
14	34	PAHZZ 5905-00-490-0247	81349	RLR07C7500GR	RESISTOR, FIXED, FILM	EA	1	
14	35	PAHZZ 5905-00-574-4950	81349	RLR32C4700GR	RESISTOR, FIXED, FILM	EA	1	
14	36	PAHZZ 5905-00-256-8426	81349	RLR07C75R0GR	RESISTOR, FIXED, FILM	EA	1	
14	37	PAHZZ 5905-00-006-9039	81349	RWR89S4020FR	RESISTOR, FIXED, WIRE	EA	1	
14	38	PAHZZ 5962-00-417-1080	81349	M38510/10201BCB	MICROCIRCUIT, LINEAR	EA	3	
14	39	PAHZZ	34333	SG1503T/883B	MICROCIRCUIT, LINEAR	EA	1	
14	40	XDHZZ 5962-01-088-3862	81349	M38510/11201BCB	MICROCIRCUIT, LINEAR	EA	1	

## SECTION II

(1)	(2)	(3)	(4)	(5)	(6)	(7)	(8)
ILLUSTRATION					DESCRIPTION		QTY
(a)	(b)	NATIONAL		PART			INC
FIG	ITEM	SMR	STOCK		USABLE ON CODE		IN
NO	NO	CODE	NUMBER	FSCM	NUMBER	U/M	UNIT
14	41	PAHZZ	5962-01-080-6488	81349	M38510/11001BCB		EA 1
14	42	PAHZZ	5310-00-716-5618	96906	MS51859-1		EA 2
14	43	XDHZZ	5310-00-595-6761	96906	MS15795-802		EA 2
14	44	PAHZZ	5310-00-938-2013	96906	MS35649-224		EA 2
14	45	XDHZZ	5999-00-079-9011	13103	7717-93-DAP		EA 5
14	46	XDHZZ	5999-00-466-3226	13103	7717-94DAP		EA 1
14	47	XAHZZ		56996	B4007717-1		EA 1

## NATIONAL STOCK NUMBER AND PART NUMBER INDEX

STOCK NUMBER	FIGURE NO.	ITEM NO.	STOCK NUMBER	FIGURE NO.	ITEM NO.
5905-00-006-9039	14	37	5905-00-401-8683	13	39
5910-00-010-8666	14	8	5905-00-401-8683	14	32
5910-00-010-8718	13	28	5905-00-403-4447	14	18
5910-00-010-8718	14	6	5905-00-407-0124	13	34
5970-00-016-1705	13	40	6210-00-410-2530	10	6
5970-00-023-6246	13	12	5935-00-410-9252	10	28
6210-00-023-7029	11	8	5910-00-412-9235	13	25
5940-00-050-2308	13	20	5962-00-417-1080	14	38
5305-00-050-9225	11	19	5905-00-419-2822	14	33
5940-00-051-6257	13	55	5310-00-420-0639	2	16
5305-00-054-5639	7	15	5961-00-421-3002	14	1
5305-00-054-5648	13	8	5930-00-428-6643	11	48
5305-00-054-5649	3	18	5905-00-433-4348	13	38
5305-00-054-5649	11	40	5905-00-438-0505	14	31
5305-00-054-5650	11	24	5905-00-458-9263	14	23
5305-00-054-5651	13	18	5305-00-465-6745	11	38
5305-00-054-5651	13	22	5999-00-466-3226	14	46
5305-00-054-6650	2	23	5305-00-469-5382	10	18
5305-00-054-6654	3	10	5905-00-479-1769	13	30
5305-00-054-6654	10	25	5905-00-480-5195	14	21
5305-00-054-6671	2	21	5905-00-481-8453	14	22
5305-00-059-3667	11	17	5935-00-489-9999	13	41
5961-00-061-8603	13	1	5905-00-490-0247	14	34
5310-00-071-0199	12	7	5930-00-501-1755	10	9
5975-00-074-2072	4	2	5905-00-574-4950	14	35
5975-00-074-2072	6	5	5310-00-582-5677	13	44
5975-00-074-2072	7	2	5310-00-595-6211	11	21
5975-00-074-2072	9	5	5310-00-595-6211	13	9
6210-00-078-7626	11	2	5310-00-595-6761	7	16
5305-00-079-5835	2	19	5310-00-595-6761	11	46
5999-00-079-9011	14	45	5310-00-595-6761	14	43
5340-00-104-7550	2	12	5310-00-595-6772	11	11
5320-00-117-6929	12	3	5310-00-595-6772	13	5
5310-00-137-3134	13	49	5940-00-614-0537	13	16
5905-00-137-4815	14	25	5940-00-681-8184	11	41
5905-00-138-7395	14	14	5940-00-681-8184	13	4
5905-00-138-7399	14	26	5940-00-714-0678	13	47
5905-00-139-1923	14	28	5310-00-716-5618	14	42
5910-00-143-0501	14	7	5365-00-721-7554	5	13
5910-00-144-4381	13	26	5310-00-722-5998	11	34
5910-00-144-4383	14	5	6240-00-723-3378	11	3
5310-00-145-2244	11	18	5975-00-727-5153	3	6
5310-00-145-2244	13	2	5975-00-727-5153	10	23
5305-00-150-3425	2	15	5310-00-782-1349	3	21
5905-00-151-4659	14	20	5970-00-812-2967	5	4
5905-00-153-0135	14	16	5970-00-812-2967	8	4
5975-00-156-3253	2	31	5970-00-812-2967	9	12
6210-00-163-5117	11	1	5935-00-813-4720	6	13
5961-00-164-9827	14	4	5935-00-813-4720	8	11
5905-00-169-3419	14	15	5935-00-813-4720	9	11
5961-00-175-8467	14	3	6210-00-813-8265	10	8
5310-00-177-1301	10	15	6210-00-813-8265	11	7
5310-00-177-1301	13	36	5935-00-845-2537	7	1
5310-00-177-1332	3	20	5961-00-846-5808	13	43
5305-00-182-9411	10	16	5310-00-849-1984	11	14
5905-00-186-2210	14	29	5961-00-858-8960	13	10
5310-00-193-7577	2	6	5310-00-861-9282	13	54
5310-00-194-3647	11	37	5310-00-880-5976	3	11
5310-00-194-3647	13	32	5310-00-880-5976	10	26
5310-00-194-3648	10	17	5970-00-906-4011	13	13
6145-00-194-9829	6	17	5961-00-925-3777	14	11
6145-00-194-9829	8	9	5940-00-926-0040	11	45
6145-00-194-9829	9	15	5310-00-928-2690	7	17
5310-00-224-0746	13	33	5310-00-928-2690	10	2
5310-00-224-0747	10	19	5310-00-928-2690	11	47
5310-00-224-0748	2	17	5310-00-929-6395	3	12
5310-00-224-0748	10	12	5310-00-929-6395	10	27
5310-00-224-0748	11	5	5310-00-929-6395	11	33
5305-00-224-0783	13	35	5310-00-933-8118	11	22
5310-00-225-5328	2	10	5310-00-933-8118	13	14
5905-00-236-0513	14	27	5310-00-933-8118	13	23
5961-00-237-2384	14	2	5310-00-933-8119	2	9
5905-00-240-7960	14	13	5310-00-933-8120	13	6
5320-00-243-8356	13	53	5310-00-933-8120	13	6
5320-00-243-8375	12	2	5310-00-933-8121	2	3
5905-00-256-5051	14	24	5310-00-933-8121	13	45
5305-00-256-7471	10	1	5310-00-934-9748	11	23
5905-00-256-8426	14	36	5310-00-934-9748	13	15
5905-00-350-1807	14	17	5310-00-934-9748	13	24
5310-00-400-5503	2	4	5310-00-934-9759	2	8

## NATIONAL STOCK NUMBER AND PART NUMBER INDEX

STOCK NUMBER	FIGURE NO.	ITEM NO.	STOCK NUMBER	FIGURE NO.	ITEM NO.
5310-00-934-9761	3	13	5805-01-119-2785	1	9
5961-00-935-0138	11	50	5805-01-119-2786	1	8
5310-00-938-2013	7	18	5805-01-119-2787	1	7
5310-00-938-2013	10	3	5805-01-119-2788	1	5
5310-00-938-2013	14	44	6350-01-125-6679	10	22
5940-00-939-7825	13	21	5910-01-125-6689	11	20
5961-00-951-8757	14	10	5910-01-125-6690	11	31
5970-00-952-1231	13	17	5999-01-125-6698	5	3
5970-00-954-1624	6	4	5999-01-125-6698	6	3
5970-00-954-1624	9	4	5999-01-125-6698	7	10
5325-00-960-5106	12	4	5999-01-125-6698	8	3
5935-00-976-5425	5	11	5999-01-125-6698	9	3
5970-00-977-2714	13	48	5995-01-125-6699	4	6
5340-00-999-1181	12	9	5995-01-125-6700	4	5
5935-01-006-1359	5	1	5995-01-125-6701	4	4
5935-01-006-1359	6	1	5995-01-125-6702	4	3
5935-01-006-1359	8	1	6240-01-125-6709	10	7
5935-01-006-1359	9	1	6240-01-125-6709	11	6
5935-01-006-7901	5	12	5915-01-125-6711	11	43
5310-01-007-6898	13	46	5935-01-125-6712	14	9
5935-01-018-5678	7	19	5935-01-125-6715	6	12
5905-01-019-9367	14	30	5935-01-125-6715	9	10
5935-01-032-6681	7	8	5935-01-125-6716	13	42
5970-01-038-0918	11	51	5805-01-125-6737	11	30
5970-01-038-0918	13	3	5935-01-125-6738	5	2
5905-01-047-1529	13	29	5935-01-125-6738	6	2
5905-01-047-1529	14	12	5935-01-125-6738	7	9
5905-01-047-1531	14	19	5935-01-125-6738	8	2
5940-01-079-1647	6	9	5935-01-125-6738	9	2
5962-01-080-6488	14	41	5930-01-125-6739	10	30
5961-01-082-8807	13	11	5950-01-131-2359	11	25
5962-01-088-3862	14	40	5950-01-131-2360	13	37
5970-01-091-7360	11	49	5999-01-131-6212	13	52
5970-01-091-7360	13	7	5950-01-131-8069	11	32
5935-01-093-5354	5	10	5999-01-133-1940	12	8
5805-01-119-2723	1	2	5340-01-136-7187	12	1
5805-01-119-2783	1	10	5995-01-142-8270	4	1
5805-01-119-2784	1	6	5805-01-143-2807	1	3

FSCM	PART PART NUMBER	FIG. NO.	ITEM NO.	FSCM	PART PART NUMBER	FIG. NO.	ITEM NO.
22589	A-42870-4	3	3	56996	B4007585-32	7	11
56996	B4007498	1	1	56996	B4007592-2	10	5
56996	B4007500	1	9	56996	B4007595	4	6
56996	B4007503	1	8	56996	B4007596	4	1
56996	B4007506	1	7	56996	B4007597	4	4
56996	B4007509	1	5	56996	B4007598	4	5
56996	B4007512	1	6	56996	B4007599	4	3
56996	B4007515	1	3	56996	B4007609	1	4
56996	B4007517	1	10	56996	B4007615	2	14
56996	B4007524	2	33	56996	B4007626	2	29
56996	B4007525	3	4	56996	B4007627	2	30
56996	B4007527-1	3	1	56996	B4007639	3	14
56996	B4007527-2	3	2	56996	B4007640	2	20
59669	B4007531	7	20	56996	B4007641	3	9
56996	B4007532	2	22	56996	B4007642	10	14
56996	B4007533	3	15	56996	B4007653	2	32
56996	B4007534	3	17	56996	B4007654-1	5	5
56996	B4007535	10	24	56996	B4007654-10	7	7
56996	B4007536	10	13	56996	B4007654-11	7	5
56996	B4007553-1	10	22	56996	B4007654-13	7	12
56996	B4007571	10	7	56996	B4007654-14	8	5
56996	B4007571	11	6	56996	B4007654-15	8	8
56996	B4007572-1	10	30	56996	B4007654-16	8	10
56996	B4007575-1	5	2	56996	B4007654-17	9	6
56996	B4007575-1	6	2	56996	B4007654-18	9	14
56996	B4007575-1	7	9	56996	B4007654-19	9	13
56996	B4007575-1	8	2	56996	B4007654-2	5	8
56996	B4007575-1	9	2	56996	B4007654-20	9	9
56996	B4007576-1	5	3	56996	B4007654-3	5	9
56996	B4007576-1	6	3	56996	B4007654-4	6	6
56996	B4007576-1	7	10	56996	B4007654-5	6	10
56996	B4007576-1	8	3	56996	B4007654-6	6	14
56996	B4007576-1	9	3	56996	B4007654-7	6	11
56996	B4007580-2	2	18	56996	B4007655	10	10
56996	B4007581-1	10	11	56996	B4007656	2	25
56996	B4007584-1	6	12	56996	B4007657	2	27
56996	B4007584-1	9	10	56996	B4007661	2	1

## NATIONAL STOCK NUMBER AND PART NUMBER INDEX

FSCM	PART NUMBER	FIGURE NO.	ITEM NO.	FSCM	PART NUMBER	FIGURE NO.	ITEM NO.
56996	B4007663	6	16	96906	MS24693-C50	2	19
56996	B4007664-1	9	7	96906	MS24693-50B	2	2
56996	B4007665-1	5	6	96906	MS24693-51B	2	11
56996	B4007667	8	6	96906	MS25082-C3	11	18
56996	B4007668	6	7	96906	MS25082-C3	13	2
56996	B4007669	9	17	96906	MS25082-C4	13	49
56996	B4007670-1	2	7	96906	MS25089-3F	10	9
56996	B4007670-2	2	13	96906	MS25281-F11	2	12
56996	B4007671	7	13	96906	MS3114E12-3P	7	1
56996	B4007672	7	6	96906	MS3114E14-19P	6	13
56996	B4007701	1	2	96906	MS3114E14-19P	8	11
56996	B4007705	11	29	96906	MS3114E14-19P	9	11
56996	B4007706	12	5	96906	MS3367-1-9	4	2
56996	B4007709	11	27	96906	MS3367-1-9	6	5
56996	B4007711	11	13	96906	MS3367-1-9	7	2
56996	B4007713	11	36	96906	MS3367-1-9	9	5
56996	B4007714	13	50	96906	MS3367-2-9	2	31
56996	B4007715	13	51	96906	MS3367-4-9	3	6
56996	B4007716	11	30	96906	MS3367-4-9	10	23
56996	B4007717-1	14	49	96906	MS3420-10A	5	13
56996	B4007718	11	28	96906	MS35333-36	2	6
56996	B4007719-1	11	43	96906	MS35338-134	7	17
56996	B4007723-1	11	32	96906	MS35338-134	10	2
56996	B4007724-1	11	25	96906	MS35338-134	11	47
56996	B4007725-1	11	20	96906	MS35338-134B	10	15
56996	B4007725-2	11	31	96906	MS35338-134B	13	36
56996	B4007727-1	13	37	96906	MS35338-135	11	22
56996	B4007728-1	11	39	96906	MS35338-135	13	14
56996	B4007731-1	14	9	96906	MS35338-135	13	23
56996	B4007732-1	13	42	96906	MS35338-135B	13	33
56996	B4007736	13	27	96906	MS35338-136	3	12
56996	B4007738	13	19	96906	MS35338-136	10	27
56996	B4007743-1	11	4	96906	MS35338-136	11	33
56996	B4007754	11	26	96906	MS35338-136B	10	19
56996	B4007776-1	3	8	96906	MS35338-137	2	9
56996	B4007776-2	3	7	96906	MS35338-137B	2	17
08289	DM-101	13	17	96906	MS35338-137B	10	12
72962	F22LHA27M22-40	13	54	96906	MS35338-137B	11	5
81349	JAN1N1202A	11	50	96906	MS35338-138	11	10
81349	JAN1N4106	14	4	96906	MS35338-138	13	6
81349	JAN1N4150	14	3	96906	MS35338-139	2	3
81349	JAN1N5550	14	1	96906	MS35338-139	13	45
81349	JAN1N5614	14	2	96906	MS35431-1	13	16
81349	JAN2N1771A	13	1	96906	MS35649-224	7	18
81349	JAN2N2222A	14	10	96906	MS35649-224	10	3
81349	JAN2N2907A	14	11	96906	MS35649-224	14	44
81349	JAN2N3879	13	11	96906	MS35649-244	11	23
81349	JAN2N5038	13	10	96906	MS35649-244	13	15
81349	JAN2N682	13	43	96906	MS35649-244	13	24
81349	LC12GT2	11	8	96906	MS35649-264	3	13
81349	LC12RT2	10	6	96906	MS35649-284	2	8
81349	LC13CN2	11	2	96906	MS35650-3254	2	4
81349	LH73/1	10	8	96906	MS51859-1	14	42
81349	LH73/1	11	7	96906	MS51957-14	13	8
81349	LH74/2	11	1	96906	MS51957-15	3	18
96906	MS0035431-3	13	20	96906	MS51957-15	11	40
96906	MS0035434-8	11	41	96906	MS51957-16	11	24
96906	MS0035431-8	13	4	96906	MS51957-16B	11	38
96906	MS15795-802	7	16	96906	MS51957-17	13	18
96906	MS15795-802	11	46	96906	MS51957-17	13	22
96906	MS15795-802	14	43	96906	MS51957-26	2	23
96906	MS15795-803	11	21	96906	MS51957-30	3	10
96906	MS15795-803	13	9	96906	MS51957-30	10	25
96906	MS15795-803B	11	37	96906	MS51957-30B	10	18
96906	MS15795-803B	13	32	96906	MS51957-4B	13	35
96906	MS15795-804	3	21	96906	MS51957-46	2	21
96906	MS15795-805	11	34	96906	MS51957-46B	2	15
96906	MS15795-806	3	11	96906	MS51957-5	7	15
96906	MS15795-806	10	26	96906	MS51957-5B	10	16
96906	MS15795-806B	10	17	96906	MS51957-59	11	19
96906	MS15795-810	13	44	96906	MS51957-7B	10	1
96906	MS15795-841	2	10	96906	MS51958-71	11	17
96906	MS15795-841B	2	16	08289	MW625-197-002	11	51
96906	MS16535-155	2	28	08289	MW625-197-002	13	3
96906	MS16535A22	2	26	08289	MW750-255-002	13	46
96906	MS17830-04C	3	20	81349	M15098/11-002	11	3
96906	MS20426AD2-4	12	3	81349	M17/045-RG108	6	8
96906	MS20470AD2-4	13	53	81349	M17/045-RG108	9	8
96906	MS20470A2-5	12	2	81349	M23053/2-103-0	13	40
96906	MS21209C4-10	12	9	81349	M23053/5-104-5	3	5

SECTION IV

NATIONAL STOCK NUMBER AND PART NUMBER INDEX

FSCM	PART NUMBER	FIGURE NO.	ITEM NO.	FSCM	PART NUMBER	FIGURE NO.	ITEM NO.
81349	M23053/5-107-0	6	4	81349	RNC55H5111FS	14	26
81349	M23053/5-107-0	7	3	81349	RNC55H5360FS	14	15
81349	M23053/5-107-0	9	4	81349	RNC55H5621FS	14	24
81349	M23053/5-108-0	5	4	81349	RNC55H7151FS	14	21
81349	M23053/5-108-0	8	4	81349	RNC55H9091FS	14	29
81349	M23053/5-108-0	9	12	81349	RT26C2W102	14	17
81349	M24236/1-0835	11	48	81349	RWR81SR536FR	13	31
81349	M24308/2-25	7	19	81349	RWR89SR154FR	13	38
81349	M24308/2-4	5	11	81349	RWR89S4020FR	14	37
81349	M24308/21-4	5	12	81349	RWR89S51R1FR	13	34
81349	M24308/25-6	5	10	81349	RWR89S86R6FR	14	30
81349	M24308/26-01	10	29	81349	SE079B01	13	55
81349	M24308/4-3	13	41	81349	SE21XE03	11	45
81349	M24308/4-4	10	28	81349	SE26XF03	13	21
81349	M38510/10201BCB	14	38	34333	SG1503T/883B	14	39
81349	M38510/11001BCB	14	41	08289	TW-200-280-050TS	11	49
81349	M38510/11201BCB	14	40	08289	TW-200-280-050TS	13	7
81349	M39003-01-2067	14	5	08289	TW516-25	13	48
81349	M39003/01-2981	13	25	46384	YC3-3002-2	12	7
81349	M39003/01-3024	13	26	12881	01-0102-0171	12	8
81349	M39014/01-1357	14	8	12881	01-0404-1849	13	52
81349	M39014/02-1332	14	7	81851	1/2EXPANDOPTNAT	5	7
81349	M39014/02-1338	13	28	81851	1/2EXPANDOPTNAT	6	15
81349	M39014/02-1338	14	6	81851	1/2EXPANDOPTNAT	7	14
81349	M39019/03-311	11	9	81851	1/2EXPANDOPTNAT	8	7
81349	M7928/5-3	6	9	81851	1/2EXPANDOPTNAT	9	16
81349	M83421/01-0192P	11	42	81851	1/4EXPANDOPTNAT	7	4
08863	N5342	13	13	36378	1003373-01	7	8
81348	QQB575R36T375	6	17	72962	12NC4284-2-82	3	16
81348	QQB575R36T375	8	9	71286	12R1-1BB	12	4
81348	QQB575R36T375	9	15	71286	12S1-12-1BB	11	15
81349	RLR07C1000GR	14	23	71286	12S1-14-1BB	11	16
81349	RLR07C1001GR	13	29	80205	1454C4-D108	2	5
81349	RLR07C1001GR	14	12	80205	1786C06-20	10	21
81349	RLR07C1002GR	14	19	80205	1786C06-40	10	20
81349	RLR07C2001GR	14	33	79963	558-257	13	47
81349	RLR07C27R0GR	14	13	80205	620C2	10	4
81349	RLR07C2700GR	13	39	80205	620C4L	3	19
81349	RLR07C2700GR	14	32	80205	620C6L	2	24
81349	RLR07C4701GR	14	31	06540	6252D-SS-0832-6B	12	6
81349	RLR07C75R0GR	14	36	22526	65307-001	5	1
81349	RLR07C7500GR	14	34	22526	65307-001	6	1
81349	RLR20C3900GR	13	30	22526	65307-001	8	1
81349	RLR32C4700GR	14	35	22526	65307-001	9	1
81349	RLR32C75R0GR	11	44	73342	6862093	11	14
81349	RNC55H1052FS	14	25	13103	7717-93-DAP	14	45
81349	RNC55H1212FS	14	16	13103	7717-94DAP	14	46
81349	RNC55H1872FS	14	14	10001	842555	11	11
81349	RNC55H2051FS	14	22	10001	842555	13	5
81349	RNC55H2741FS	14	18	08730	88-1	12	1
81349	RNC55H3482FS	14	27	19203	9287758	13	12
81349	RNC55H4422FS	14	28	06540	9751-32-SS-0632	11	35
81349	RNC55H4641FS	14	20	06540	9757-SS-1032	11	12

RECOMMENDED CHANGES TO EQUIPMENT TECHNICAL PUBLICATIONS



THEN... JOT DOWN THE DOPE ABOUT IT ON THIS FORM. CAREFULLY TEAR IT OUT. FOLD IT AND DROP IT IN THE MAIL!

SOMETHING WRONG WITH THIS PUBLICATION?

FROM (PRINT YOUR UNIT'S COMPLETE ADDRESS)  
 Commander  
 Stateside Army Depot  
 ATTN: AMSTA-US  
 Stateside, N.J. 07703

DATE SENT  
 10 July 1975

PUBLICATION NUMBER TM 11-5840-340-20P	PUBLICATION DATE 23 Jan 78	PUBLICATION TITLE Radar Set AN/PRC-76
--	-------------------------------	--

BE EXACT. PIN-POINT WHERE IT IS				IN THIS SPACE TELL WHAT IS WRONG AND WHAT SHOULD BE DONE ABOUT IT:
PAGE NO	PARA-GRAPH	FIGURE NO	TABLE NO	
33				For item 2, change the NSN to read: 5835-00-134-9186. <u>Reason:</u> Accuracy.
44		19		Identify the cover on the junction box (item no. 5). <u>Reason:</u> It is a separate item and is not called out on figure 19.
45				Add the cover of the junction box as an item in the listing for figure 19. <u>Reason:</u> Same as above

TEAR ALONG PERFORATED LINE

SAMPLE

PRINTED NAME, GRADE OR TITLE, AND TELEPHONE NUMBER  
 SSG I. M. DeSpirit of 999-1776

SIGN HERE





RECOMMENDED CHANGES TO EQUIPMENT TECHNICAL PUBLICATIONS



THEN...JOT DOWN THE DOPE ABOUT IT ON THIS FORM. CAREFULLY TEAR IT OUT, FOLD IT AND DROP IT IN THE MAIL.

SOMETHING WRONG WITH THIS PUBLICATION?

FROM: (PRINT YOUR UNIT'S COMPLETE ADDRESS)

DATE SENT

PUBLICATION NUMBER

TM 11-5805-638-34P

PUBLICATION DATE

30 JUN 83

PUBLICATION TITLE Multiplexer, Time Division Digital TD-1069/G

BE EXACT PIN-POINT WHERE IT IS

PAGE NO.	PARA-GRAPH	FIGURE NO.	TABLE NO.

IN THIS SPACE TELL WHAT IS WRONG AND WHAT SHOULD BE DONE ABOUT IT:

TEAR ALONG PERFORATED LINE

PRINTED NAME GRADE OR TITLE AND TELEPHONE NUMBER

SIGN HERE

TEAR ALONG PERFORATED LINE

Commander  
US Army Communications-Electronics Command  
and Fort Monmouth  
ATTN: DRSEL-ME-MP  
Fort Monmouth, New Jersey 07703

RECOMMENDED CHANGES TO EQUIPMENT TECHNICAL PUBLICATIONS



THEN...JOT DOWN THE DOPE ABOUT IT ON THIS FORM. CAREFULLY TEAR IT OUT, FOLD IT AND DROP IT IN THE MAIL.

SOMETHING WRONG WITH THIS PUBLICATION?

FROM: (PRINT YOUR UNIT'S COMPLETE ADDRESS)

DATE SENT

PUBLICATION NUMBER

TM 11-5805-638-34P

PUBLICATION DATE

30 JUN 83

PUBLICATION TITLE Multiplexer, Time

Division Digital TD-1069/G

BE EXACT PIN-POINT WHERE IT IS

PAGE NO.	PARA-GRAPH	FIGURE NO.	TABLE NO.

IN THIS SPACE TELL WHAT IS WRONG AND WHAT SHOULD BE DONE ABOUT IT:

PRINTED NAME GRADE OR TITLE AND TELEPHONE NUMBER

SIGN HERE

TEAR ALONG PERFORATED LINE

REVERSE OF DA FORM 2028-2

TEAR ALONG PERFORATED LINE

Commander  
US Army Communications-Electronics Command  
and Fort Monmouth  
ATTN: DRSEL-ME-MP  
Fort Monmouth, New Jersey 07703

RECOMMENDED CHANGES TO EQUIPMENT TECHNICAL PUBLICATIONS



THEN...JOT DOWN THE DOPE ABOUT IT ON THIS FORM. CAREFULLY TEAR IT OUT, FOLD IT AND DROP IT IN THE MAIL.

**SOMETHING WRONG WITH THIS PUBLICATION?**

FROM: (PRINT YOUR UNIT'S COMPLETE ADDRESS)

DATE SENT

PUBLICATION NUMBER

TM 11-5805-638-34P

PUBLICATION DATE

30 JUN 83

PUBLICATION TITLE Multiplexer, Time

Division Digital TD-1069/G

BE EXACT PIN-POINT WHERE IT IS

PAGE NO.

PARA-GRAPH

FIGURE NO.

TABLE NO.

IN THIS SPACE TELL WHAT IS WRONG AND WHAT SHOULD BE DONE ABOUT IT:

TEAR ALONG PERFORATED LINE

PRINTED NAME GRADE OR TITLE AND TELEPHONE NUMBER

SIGN HERE

DA FORM 2028-2  
1 JUL 79

PREVIOUS EDITIONS ARE OBSOLETE

P.S.--IF YOUR OUTFIT WANTS TO KNOW ABOUT YOUR RECOMMENDATION MAKE A CARBON COPY OF THIS AND GIVE IT TO YOUR HEADQUARTERS.

TEAR ALONG PERFORATED LINE

Commander  
US Army Communications-Electronics Command  
and Fort Monmouth  
ATTN: DRSEL-ME-MP  
Fort Monmouth, New Jersey 07703

By Order of the Secretary of the Army:

Official:

ROBERT M. JOYCE  
*Major General United States Army*  
*The Adjutant General*

E. C. MEYER  
*General United States Army*  
*Chief of Staff*







