

**TECHNICAL MANUAL**

**UNIT, DIRECT SUPPORT, AND  
GENERAL SUPPORT MAINTENANCE  
REPAIR PARTS AND SPECIAL TOOLS LIST  
FOR**

**TEST SET, ELECTRICAL CABLE  
TS-4165/G**

**(NSN 6625-01-255-4248) (EIC: N/A)**

Distribution authorized to the Department of Defense and DOD contractors only for official use or for administrative or operational purposes. This determination was made on 1 June 1992. Other requests for this document will be referred to Commander, US Army Communications-Electronics Command and Fort Monmouth, ATTN: AMSEL-LC-LM-LT, Fort Monmouth, New Jersey 07703-5007.

DESTRUCTION NOTICE - Destroy by any method that will prevent disclosure of contents or reconstruction of the document.

---

**HEADQUARTERS, DEPARTMENT OF THE ARMY**

**15 MAY 1993**



**UNIT, DIRECT SUPPORT, AND GENERAL SUPPORT MAINTENANCE  
REPAIR PARTS AND SPECIAL TOOLS LIST  
FOR  
TEST SET, ELECTRICAL CABLE (TS-4165/G)  
(NSN 6625-01-255-4248) (EIC: N/A)  
Current as of 15 February 1993**

**REPORTING ERRORS AND RECOMMENDING IMPROVEMENTS**

You can help improve this manual, If you find any mistakes, or if you know of away to improve the procedures, please let us know. Mail your letter, DA Form 2028 (Recommended Changes to Publications and Blank Forms), or DA Form 2028-2 located in the back of this manual direct to: Commander, U. S. Army Communications- Electronics Command and Fort Monmouth, ATTN: AMSEL-LC-LM-LT, Fort Monmouth, New Jersey 07703-5007.

In either case, a reply will be furnished to you.

**TABLE OF CONTENTS**

		Page	Illus/ Figure
Section 1	introduction .....	1	
Section 2	Repair Parts List .....	1-1	
Group 00	Test Set, Electrical Cable TS-4165/G .....	1-1	1
01	Chassis .....	2-1	2
02	Battery Pack, .....	3-1	3
03	Main Board CCA:A1 .....	4-1	4
04	Front Panel Assembly .....	5-1	5
0401	Front Panel CCA:A2 .....	6-1	6
05	Power Supply Assembly:A3 .....	7-1	7
0501	Power Supply CCA:A3A1 .....	8-1	8
06	Driver/Sampler CCA:A4 (No Parts Authorized) .....		
07	Chart Recorder Assembly:A10 .....	9-1	9
Section 3	Special Tools List (not applicable) .....		
Section 4	Cross-Reference indexes		
	National Stock Number Index .....	1-1	
	Part Number index .....	1-5	
	Figure and Item Number index. ....	1-14	



## Section L INTRODUCTION

### 1. SCOPE.

This manual lists and authorizes spares and repair parts; special tools; special test, measurement, and diagnostic equipment (TMDE); and other special support equipment required for performance of organizational, direct support, and general support maintenance of the Test Set, Electrical Cable TS-4165/G. It authorizes the requisitioning, issue, and disposition of spares, repair parts and special tools as indicated by the source, maintenance and recoverability (SMR) codes.

### 2. GENERAL.

This Repair Parts and Special Tools List is divided into the following sections:

a. Section II. Repair Parts List. A list of spares and repair parts authorized by this RPSTL for use in the performance of maintenance. The list also includes parts which must be removed for replacement of the authorized parts. Parts lists are composed of functional groups in ascending alphanumeric sequence, with the parts in each group listed in ascending figure and item number sequence. Bulk materials are listed in item name sequence. Repair parts kits are listed separately in their own functional group within Section II. Repair parts for reparable special tools are also listed in this section. Items listed are shown on the associated illustration(s) /figures(s).

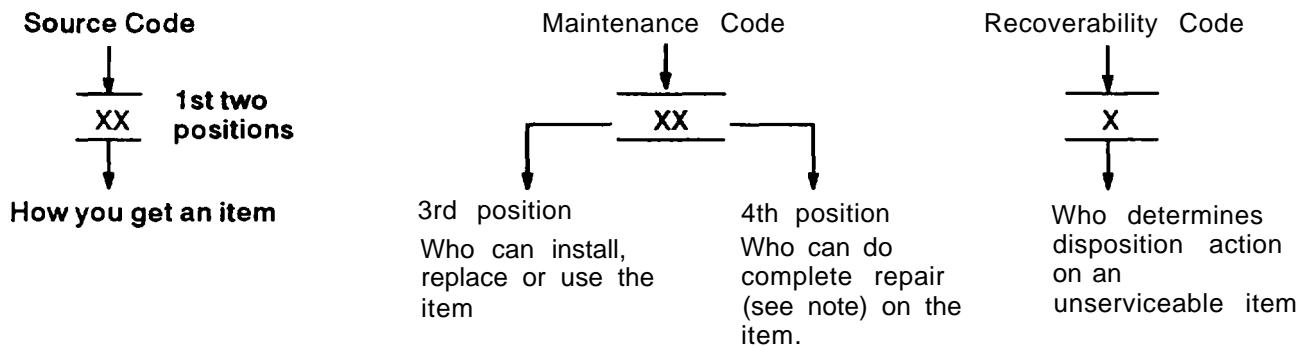
b. Section III. Special Tools List. Not applicable.

c. Section IV Cross-reference indexes. A list, in National item identification number (NIIN) sequence, of all National stock numbered items appearing in the listing, followed by a list in alphanumeric sequence of all part numbers appearing in the listings. National stock numbers and part numbers are cross-referenced to each illustration figure and item number appearance. The figure and item number index lists figure and item numbers in numeric sequence and cross-references National stock number, Commercial and Government Entity Code, and part numbers,

### 3. EXPLANATION OF COLUMNS (SECTIONS II AND III).

a. Item No. (Column (1)). Indicates the number used to identify items called out in the illustration.

b. SMR Code (Column (2)). The source, maintenance, and recoverability (SMR) code is a 5-position code containing supply/requisitioning information, maintenance category authorization criteria, and disposition instruction, as shown in the following breakout:



#### NOTE

Complete Repair: Maintenance capacity, capability, and authority to perform all corrective maintenance tasks of the "repair" function in a use/user environment in order to restore serviceability to a failed item.

- (1) Source Code. The source code tells you how to get an item needed for maintenance, repair, or overhaul of an end item/equipment. Explanations of source codes follows:

Code	Explanation
PA PB PC** PD PE PF PG	Stocked items; use the applicable NSN to request/requisition items with these source codes, They are authorized to the category indicated by the code entered in the 3rd position of the SMR code.

**NOTE**

\*\* Items coded PC are subject to deterioration.

KD KF KB
----------------

Items with these codes are not to be requested or requisitioned individually. They are part of a kit which is authorized to the maintenance category indicated in the 3rd position of the SMR code. The complete kit must be requisitioned and applied.

MO <b>Made at org/AVUM category</b> MF <b>Made at DS/AVUM category</b> MH <b>Made at GS category</b> ML <b>Made at Specialized Repair Activity (SRA)</b> MD <b>Made at Depot</b>
--

Items with these codes are not to be requested or requisitioned individually. They must be made from bulk material which is identified by the part number in the DESCRIPTION AND USABLE ON CODE (UOC) column and listed in the Bulk Material group of the repair parts list in this RPSTL. If the item is authorized to you by the 3rd position code of the SMR code, but the source code indicates it is made at a higher level, order the item from the higher level of maintenance.

AO <b>Assembled by org/AVUM category</b> AF <b>Assembled by DS/AVIM category</b> AH <b>Assembled by GS category</b> AL <b>Assembled by SRA</b> AD <b>Assembled by Depot</b>
---

Items with these codes are not to be requested or requisitioned individually. The parts that make up the assembled item must be requisitioned or fabricated and assembled at the level of maintenance indicated by the source code. If the 3rd position code of the SMR code authorizes you to replace the item, but the source code indicates the item is assembled at a higher level, order the item from the higher level of maintenance,

<b>Code</b>	Explanation
XA -	Do not requisition an "XA" coded item. Order its next higher assembly. (Also refer to the NOTE below.)
XB -	If an "XB" item is not available from salvage, order it using the CAGEC and part number given,
xc -	Installation drawing, diagram, instruction sheet, field service drawing, that is identified by manufacturer's part number.
XD -	Item is not stocked. Order an "XD" coded item through normal supply channels using the CAGEC and part number given, if no NSN is available.

**NOTE**

Cannibalization or controlled exchange, when authorized, may be used as a source of supply for items with the above source codes, except for those source coded "XA" or those

aircraft support items restricted by requirements of AR 750-1.

(2) Maintenance Code. Maintenance codes tell you the category of maintenance authorized to USE and REPAIR support items. The maintenance codes are entered in the third and fourth positions of the SMR Code as follows:

(a) The maintenance code entered in the third position tells you the lowest maintenance category authorized to remove, replace, and use an item. The maintenance code entered in the third position will indicate authorization to one of the following categories of maintenance.

Code	Application/Explanation
C -	Crew or operator maintenance done within organizational or aviation unit maintenance.
O -	organizational or aviation unit category can remove, replace, and use the item.
F -	Direct support or aviation intermediate level can remove, replace, and use the item,
H -	General support level can remove, replace, and use the item.
L -	Specialized repair activity can remove, replace, and use the item.
D -	Depot level can remove, replace, and use the item,

(b) The maintenance code entered in the fourth position tells whether or not the item is to be repaired and identifies the lowest maintenance category with the capability to do complete repair (i.e., perform all authorized repair functions). This position will contain one of the following maintenance codes.

**NOTE**

Some limited repair may be done on the item at a lower level of maintenance, if authorized by the Maintenance Allocation Chart (MAC) and SMR codes.

Code	Application/Explanation
O -	Organizational or aviation unit is the lowest category that can do complete repair of the item.
F -	Direct support or aviation intermediate is the lowest category that can do complete repair of the item.
H -	General support is the lowest category that can do complete repair of the item.
L -	Specialized repair activity (designate the specialized repair activity) is the lowest category that can do complete repair of the item,
D -	Depot is the lowest category that can do complete repair of the item.
Z -	Nonreparable. No repair is authorized.
B -	No repair is authorized. (No parts or special tools are assigned for the maintenance of a "B" coded item). 'However, the item may be recoditioned by adjusting, lubricating, etc., at the user category.

(3) Recoverability Code. Recoverability codes are assigned to items to indicate the disposition action on unserviceable items. The recoverability code is entered in the fifth position of the SMR Code as follows:

Code	Application/Explanation
Z	– Nonreparable item. When unserviceable, condemn and dispose of the item at the category of maintenance shown in third position of SMR Code.
O	– Reparable item. When uneconomically reparable, condemn and dispose of the item at organizational or aviation unit category.
F	– Reparable item. When uneconomically reparable, condemn and dispose of the item at the direct support or aviation intermediate category.
H	– Reparable item. When uneconomically reparable, condemn and dispose of the item at the general support category.
D	– Reparable item. When beyond lower level repair capability, return to depot, Condemnation and disposal of item not authorized below depot category.
L	– Reparable item. Condemnation and disposal not authorized below specialized repair activity (SRA).
A	– Item requires special handling or condemnation procedures because of specific reasons (e. g., precious metal content, high dollar value, critical material, or hazardous material). Refer to appropriate manuals/directives for specific instructions.

c. CAGEC (Column (3)). The Commercial and Government Entity Code (CAGEC) is a 5-digit numeric code which is used to identify the manufacturer, distributor, or Government agency, etc., that supplies the item.

d. Part Number (Column (4)). Indicates the primary number used by the manufacturer (individual, company, firm, corporation, or Government activity), which controls the design and characteristics of the item by means of its engineering drawings, specifications, standards, and inspection requirements to identify an item or range of items.

### NOTE

When you use a NSN to requisition an item, the item you receive may have a different part number from the part ordered.

e. Description and Usable on Code (UOC) (Column (5)). This column includes the following information:

- (1) The Federal item name and, when required, a minimum description to identify the item.
- (2) The statement “ENDOF FIGURE” appears just below the last item description in Column 5 for a given figure in both Section II and Section III.

f. QTY (Column (6)). Indicates the quantity of the item used in the breakout shown on the illustration figure, which is prepared for a functional group, subfunctional group, or an assembly. A “V” appearing in this column in lieu of a quantity indicates that the quantity is variable and the quantity may vary from application to application.

#### 4. EXPLANATION OF COLUMNS (SECTION IV).

a. National Stock Number (NSN) Index.

- (1) Stock Number Column. This column lists the NSN by National item identification number (NIIN) sequence. The NIIN consists of the last nine digits of the NSN. When using this column to locate



an item, ignore the first four digits of the NSN. When requisitioning items use the complete NSN (13 digits) sequence.

- (2) Fig. Column. This column lists the number of the figure where the item is identified/located. The figures are in numerical order in Section II and Section III,
- (3) Item Column The item number identifies the item associated with the figure listed in the adjacent Fig. column. This item is also identified by the NSN listed on the same line.

b. Part Number Index. Part numbers in this index are listed by part number in ascending alphanumeric sequence.

- (1) CAGEC Column. This column lists the Commercial and Government Entity Code (CAGEC).
- (2) Part Number Column. This column indicates the part number assigned to the item.
- (3) Stock Number Column. This column lists the National stock number for the associated part number and manufacturer identified in the part number and CAGEC columns to the left.
- (4) Fig. Column. This column lists the number of the figure where the item is identified/located in Section II and III.
- (5) Item Column. The item number is that number assigned to the item as it appears in the figure referenced in the adjacent figure number column.

c. Figure and item Number index.

- (1) Fig. Column. This column lists the number of the figure where the item is identified/located in Section II and III.
- (2) item Column. The item number is that number assigned to the item as it appears in the figure referenced in the adjacent figure number column.
- (3) Stock Number Column. This column lists the National stock number for the item.
- (4) CAGEC Column. The Commercial and Government Entity Code (CAGEC) is a 5-digit numeric code used to identify the manufacturer, distributor, or Government agency, etc., that supplies the item.
- (5) Part Number Column. Indicates the primary number used by the manufacturer (individual, firm, corporation, or Government activity), which controls the design and characteristics of the item by means of its engineering drawings, specifications, standards, and inspection requirements to identify an item or range of items.

## 5. SPECIAL INFORMATION.

a. Associated Publications. The publications that pertain to the TS-4165/G and its components.

TM 11-6625-3240-14 Operator's, Unit, Direct Support, and General Support Maintenance Manual  
for Test Set, Electrical Cable TS-4165/G

TM 750-244-2 Procedures for Destruction of Electronics Materiel to Prevent Enemy Use  
(Electronics Command)

b. National Stock Numbers. National stock numbers (NSN's) that are missing from P source coded items have been applied for and will be added to this TM by future change/revision when they are entered in the Army Master Data File (AMDF). Until the NSN's are established and published, submit exception requisitions to: Commander, U.S. Army Communications-Electronics Command and Fort Monmouth,

ATTN: AMSEL-LC-MM, Fort Monmouth, NJ 07703-5007 for the part required to support your equipment.

## 6. HOW TO LOCATE REPAIR PARTS

a. When National stock number or part number is not known.

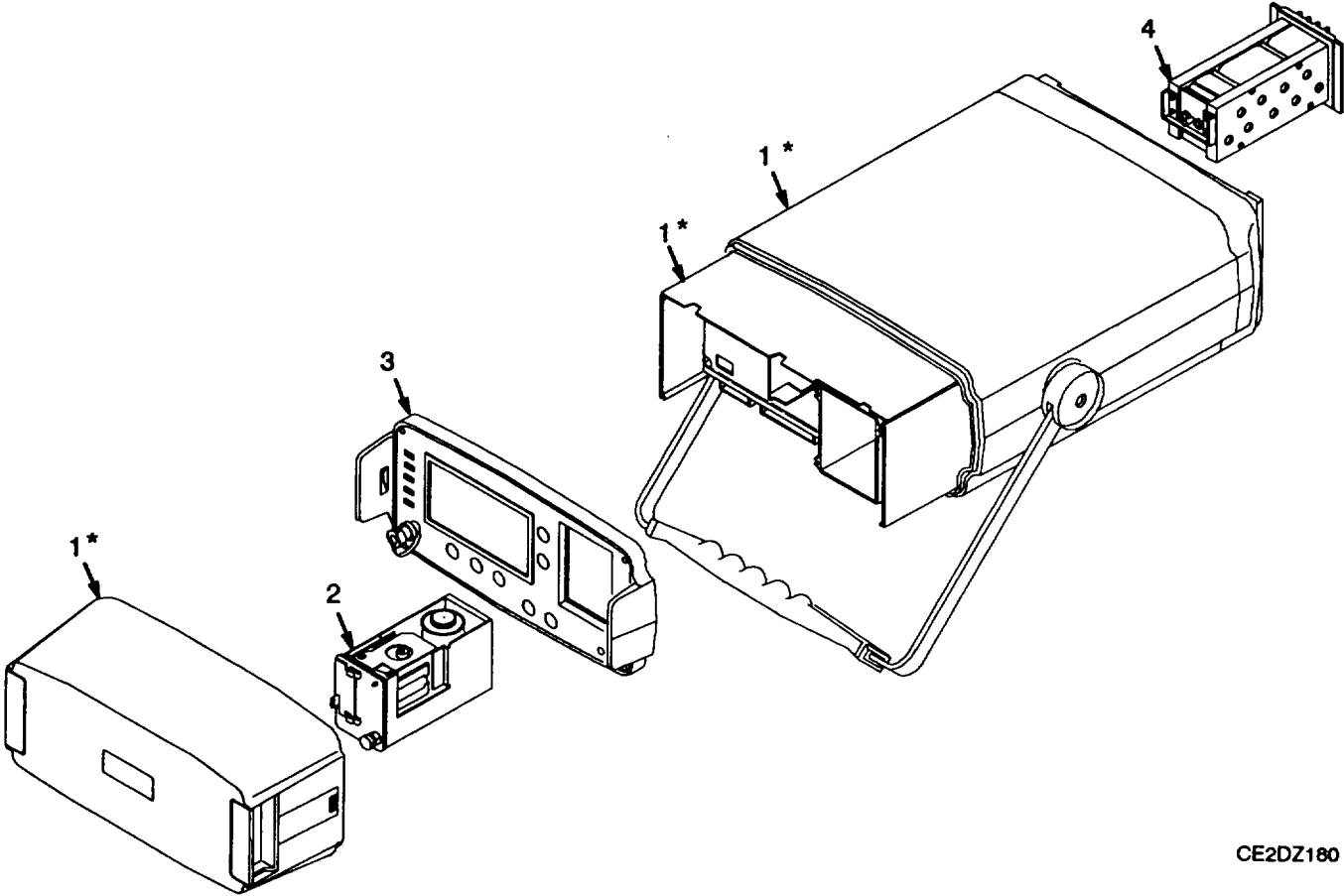
- (1) First. Using the table of contents, determine the assembly group or subassembly group to which the item belongs. This is necessary since figures are prepared for assembly groups and subassembly groups, and listings are divided into the same groups,
- (2) Second. Find the figure covering the assembly group or subassembly group to which the item belongs.
- (3) Third. Identify the item on the figure and note the item number.
- (4) Fourth. Refer to the Repair Parts Lists for the figure to find the part number for the item number noted on the figure.
- (5) Fifth. Refer to the Part number Index to find the NSN, if assigned.

b. When National stock number or part number is known.

- (1) First. Using the index of National stock numbers and part numbers, find the pertinent National stock number or part number. The NSN index is in National item identification number (NIIN) sequence (para 4a(1)). The part numbers in the part number index are listed in ascending alphanumeric sequence (para 4b). Both indexes cross-reference you to the illustration figure and item number of the item you are looking for.
- (2) Second. After finding the figure and item number, verify that the item is the one you are looking for, then locate the item number in the repair parts list for the figure.

## 7. ABBREVIATIONS

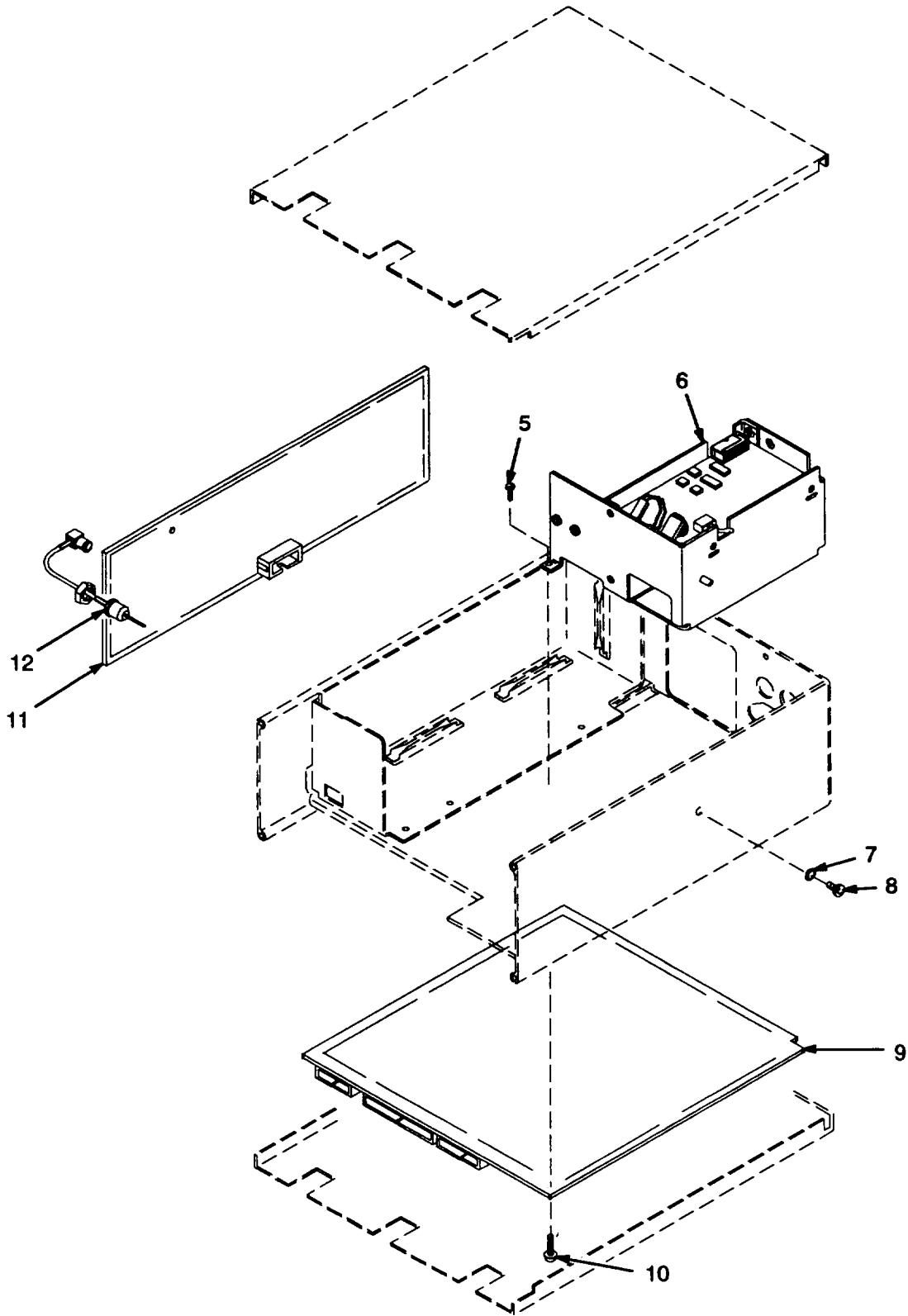
Not applicable.



CE2DZ180

\*Part of Chassis Group

Figure 1. Test Set, Electrical Cable TS-4165/G (Sheet 1 of 2)



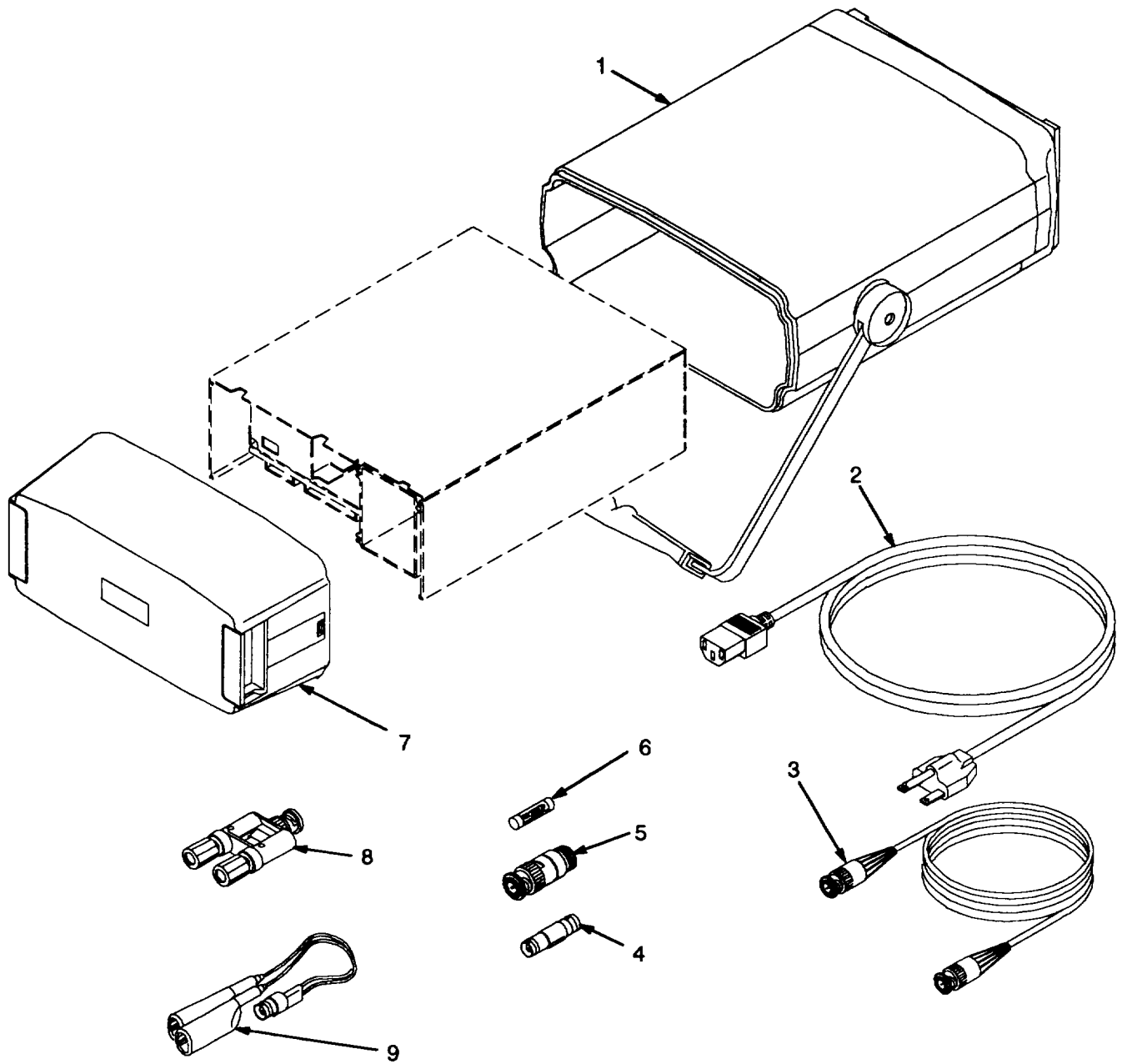
CE2DZ181

Figure 1. Test Set, Electrical Cable TS-4165/G (Sheet 2 of 2)

## SECTION II TM11-6625-3240-24P

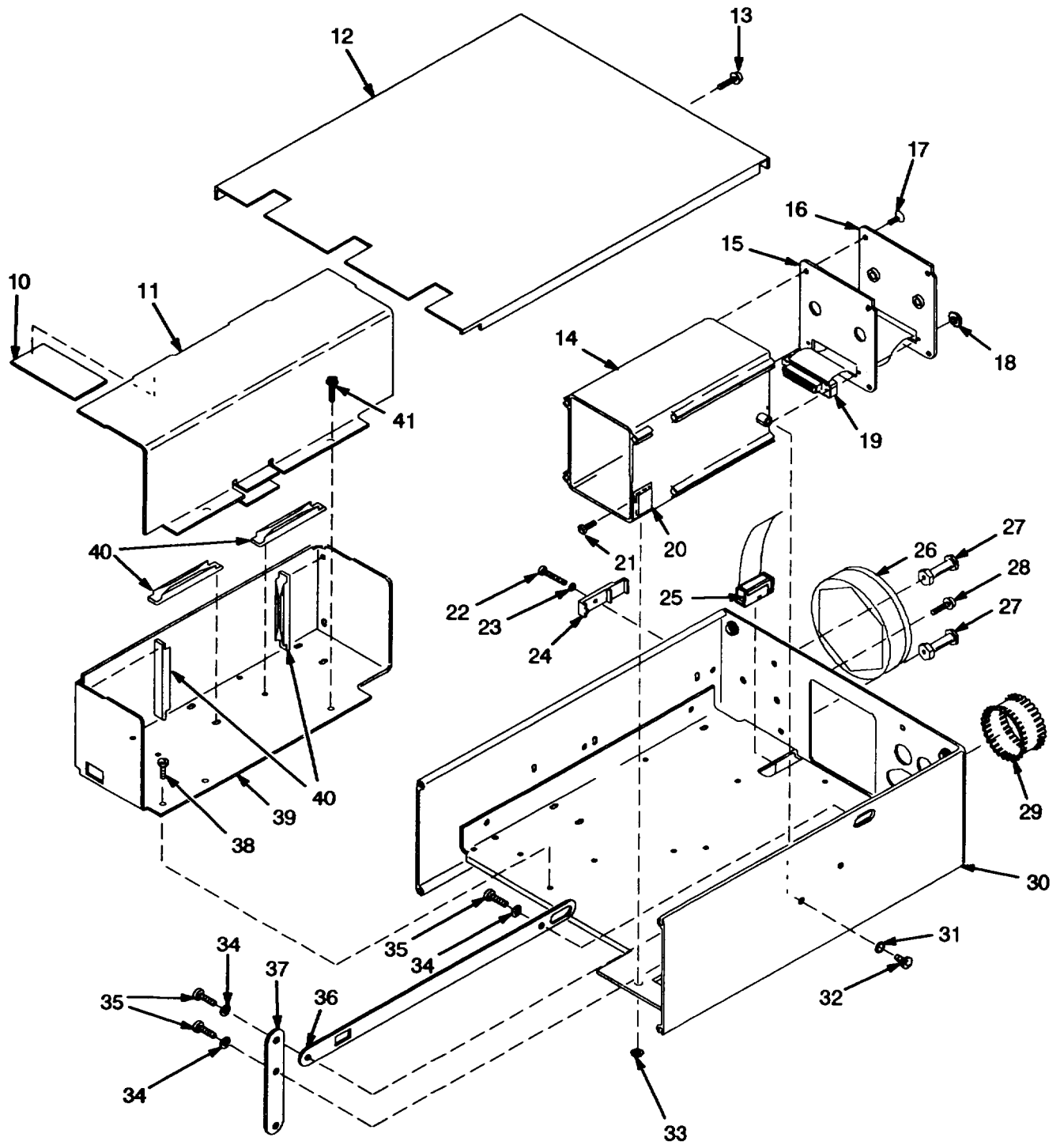
(1) ITEM NO	(2) SMR CODE	(2) CAGEC	(4) PART NUMBER	(5) DESCRIPTION AND USABLE ON CODES (UOC)	(6) QTY
				GROUP 00 TEST SET, ELECTRICAL CABLE TS-4165/G	
				FIGURE 1	
1	XCHHH	80009	CHAS GRP	CHASSIS GROUP SEE FIGURE 2 FOR PARTS BREAKDOWN	1
2	PAOHH	80009	YT1S	CHART, RECORDING INS SEE FIGURE 9 FOR PARTS BREAKDOWN	1
3	XCHHH	80009	FRONT PNL	FRONT PANEL GRP SEE FIGURE 5 FOR PARTS BREAKDOWN	1
4	PAOHH	80009	016-0813-01	BATTERY ASSEMBLY SEE FIGURE 3 FOR PARTS BREAKDOWN	1
5	PAHZZ	80009	211-0105-00	SCREW, MACHINE	1
6	PAHHH	80009	620-0477-02	POWER SUPPLY SEE FIGURE 7 FOR PARTS BREAKDOWN	1
7	PAHZZ	96906	MS122027	WASHER, LOCK	1
8	PAHZZ	80009	211-0198-00	SCREW, MACHINE	1
9	PAHHH	80009	672-1253-03	CIRCUIT CARD ASSEMB SEE FIGURE 4 FOR PARTS BREAKDOWN	1
10	PAHZZ	93907	821-01655-024	SCREW, MACHINE	9
11	PAHDD	80009	670-9291-02	CIRCUIT CARD ASSEMB	1
12	PAHZZ	80009	174-0955-00	CABLE ASSEMBLY, RADI	1

END OF FIGURE



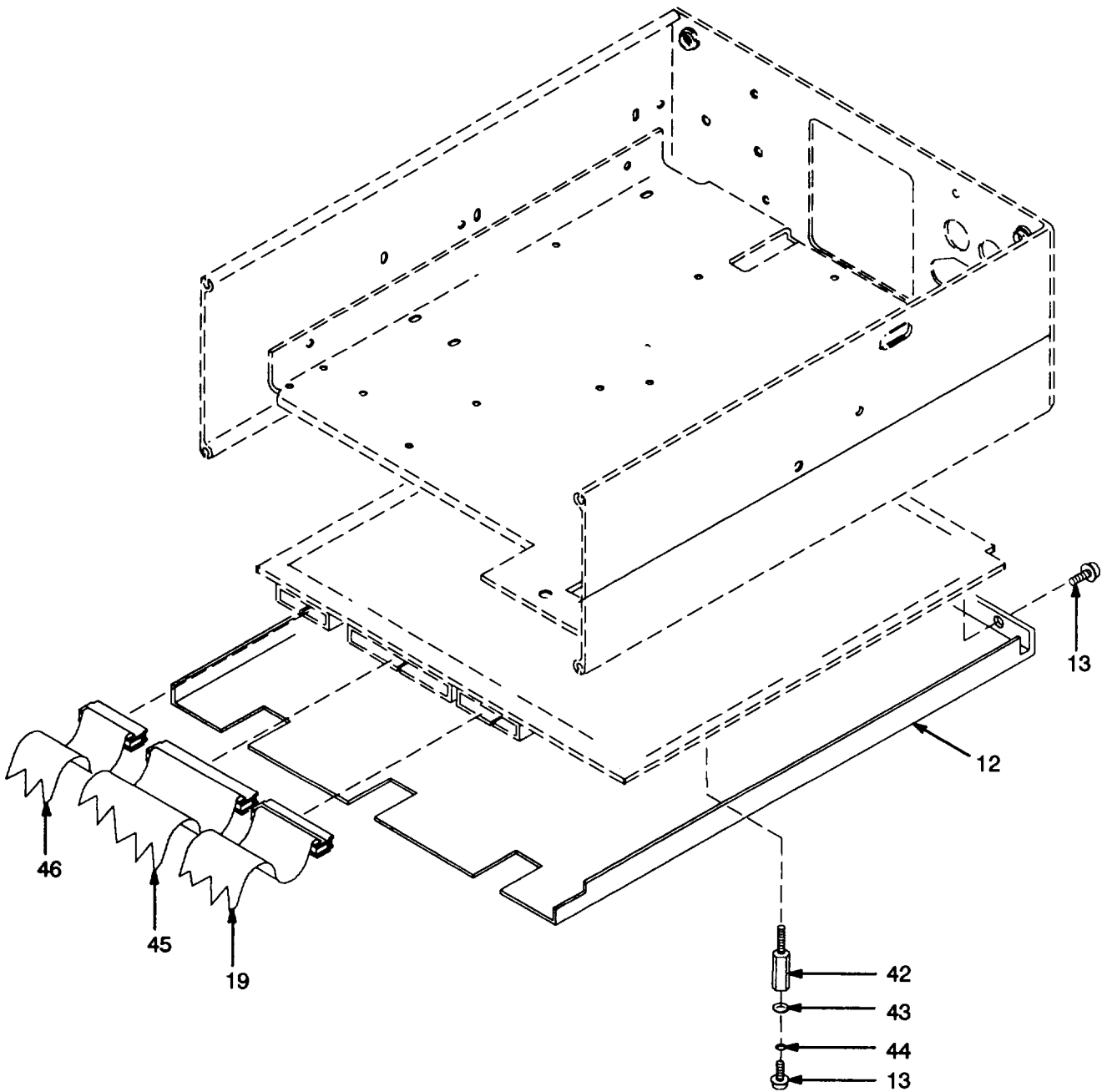
CE2DZ182

Figure 2. Chassis (Sheet 1 of 3)



CE2DZ163

Figure 2. Chassis (Sheet 2 of 3)



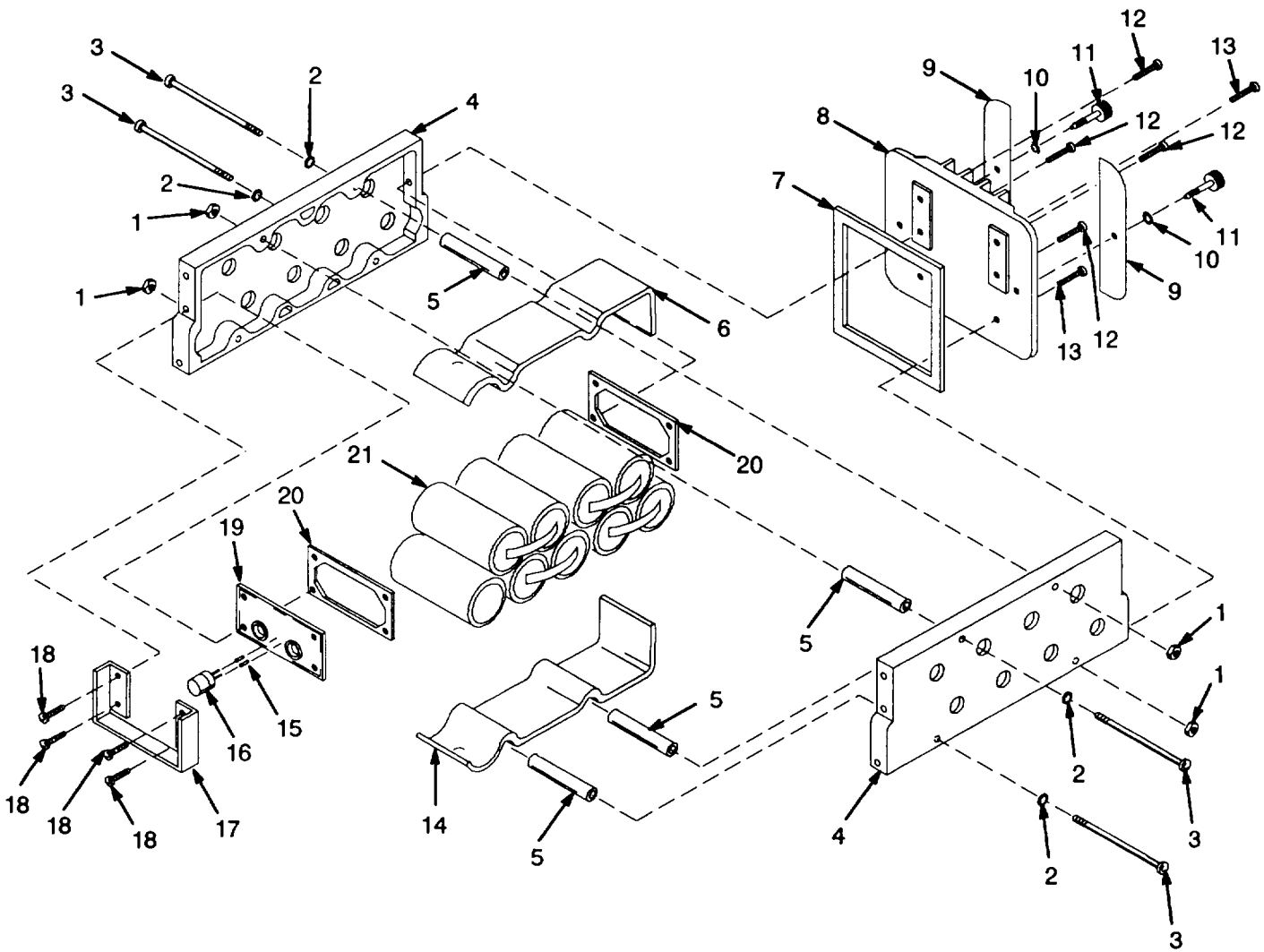
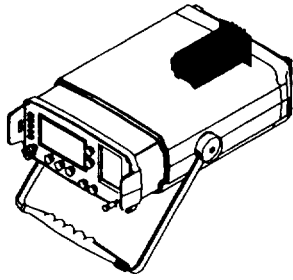
CE2DZ184

Figure 2. Chassis (Sheet 3 of 3)



(1) ITEM NO	(2) SMR CODE	(3) CAGEC	(4) PART NUMBER	(5) DESCRIPTION AND USABLE ON CODES (UOC)	(6) QTY
GROUP 01 CHASSIS					
FIGURE 2					
1	XBHZZ	80009	437-0338-00	COVER, TEST SET	1
2	PAHZZ	70903	FH49061	CABLE ASSEMBLY, POWE	1
3	PAHZZ	80009	012-1350-00	CABLE ASSEMBLY, POWE	1
4	PAHZZ	81349	M55339/16-00914	ADAPTER, CONNECTOR	1
5	PAHZZ	80009	011-0123-00	DUMMY LOAD, ELECTRIC	1
6	PAHZZ	81349	F02B250V3/10A	FUSE, CARTRIDGE	1
7	XBHZZ	80009	437-0402-00	COVER, SCOPE	1
8	PAHZZ	96906	MS90578-1441	ADAPTER, CONNECTOR	1
9	PAHZZ	80009	013-0261-00	ADAPTER, CONNECTOR	1
10	PAHZZ	80009	348-0974-00	GASKET	2
11	XBHZZ	80009	200-3123-00	COVER, TEST SET	1
12	XBHZZ	80009	337-2193-04	SHIELD, ELEC	2
13	PAHZZ	93907	821-01655-024	SCREW, MACHINE	7
14	XBHZZ	80009	441-1687-00	CHAS, ELEC EQUIP	1
15	PAHZZ	80009	348-0975-00	GASKET	1
16	XBHZZ	80009	333-3433-00	PANEL, BLANK	1
17	PAHZZ	80009	213-0123-00	SCREW, TAPPING	4
18	PAHZZ	78189	211-041800-00	NUT, PLAIN, ASSEMBLED	2
19	PAHZZ	80009	174-0950-00	CABLE ASSEMBLY, SPEC	1
20	XBHZZ	80009	200-3453-00	COVER, TEST SET	1
21	PAHZZ	80009	211-0097-00	SCREW, MACHINE	2
22	PAHZZ	99551	833656	NUT, PLAIN, SQUARE	1
23	PAHZZ	80009	210-0055-00	WASHER	1
24	XBHZZ	80009	407-1694-00	BRACKET, ANGLE	1
25	PAHZZ	80009	174-0953-00	CABLE ASSEMBLY, SPEC	1
26	PAHZZ	80009	256-0570-00	INDICATOR, HUMIDITY	1
27	PAHZZ	80009	129-0562-00	POST, ELECTRICAL-MEC	2
28	PAHZZ	93907	821-01655-024	SCREW, MACHINE	2
29	PAHZZ	80009	337-3225-00	SHIELD, ELECTRICAL C	1
30	XBHZZ	80009	441-1682-02	CHASSIS, MAIN	1
31	PAHZZ	96906	MS35333-38	WASHER, LOCK	1
32	PAHZZ	80009	212-0001-00	SCREW, MACHINE	1
33	PAHZZ	97403	13214E3291-3	NUT, PLAIN, ASSEMBLED	1
34	PAHZZ	80009	210-0851-00	WASHER	3
35	PAHZZ	80009	211-0005-00	SCREW, MACHINE	3
36	XBHZZ	80009	384-1674-01	EXTENSION SHAFT	1
37	PAHZZ	80009	105-0954-01	LEVER, REMOTE CONTRO	1
38	PAHZZ	80009	211-0007-00	SCREW, MACHINE	1
39	XBHZZ	80009	441-1683-00	CHAS, ELEC EQUIP	1
40	XBHZZ	06915	TCG1-2.500-03	HLDR, ELEC CARD	4
41	PAHZZ	93907	821-01655-024	SCREW, MACHINE	2
42	PAHZZ	80009	129-1092-00	POST, ELECTRICAL-MEC	1
43	PAHZZ	80009	210-1307-00	WASHER, LOCK	1
44	PAHZZ	86928	5714-147-20N	WASHER, FLAT	1
45	PAHZZ	80009	174-0951-00	CABLE ASSEMBLY, SPEC	1
46	PAHZZ	80009	174-0952-00	CABLE ASSEMBLY, RADI	1

END OF FIGURE



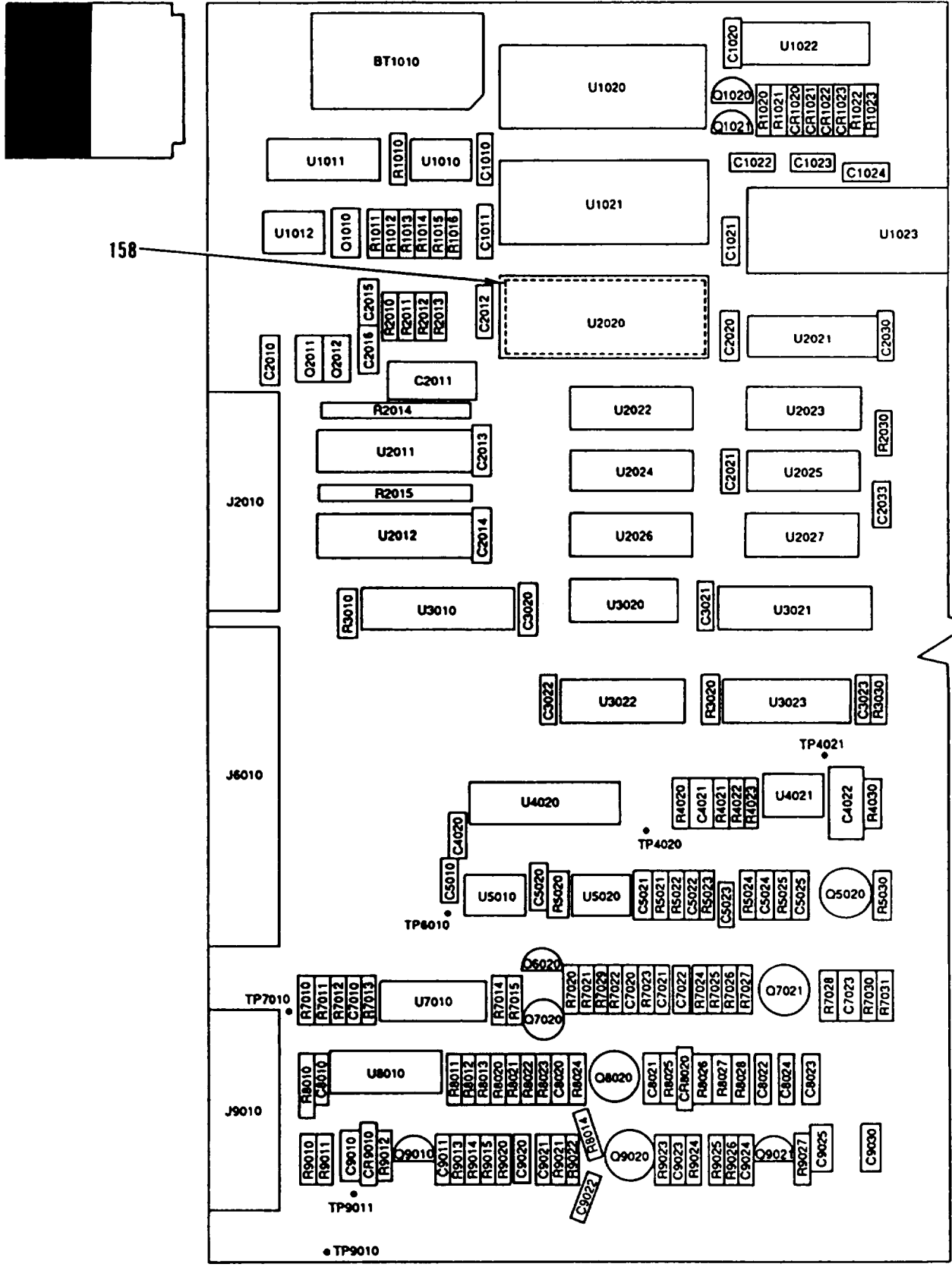
CE2DZ185

Figure 3. Battery Pack

(1) ITEM NO	(2) SMR CODE	(3) CAGEC	(4) PART NUMBER	(5) DESCRIPTION AND USABLE ON CODES (UOC)	(6) QTY
GROUP 02 BATTERY PACK					
FIGURE 3					
1	PAHZZ	73743	12161-50	NUT, PLAIN, HEXAGON	4
2	PAHZZ	59783	210-0054-00	WASHER, LOCK	4
3	PAHZZ	80009	211-0194-00	SCREW, MACHINE	4
4	XBHZZ	80009	343-0349-01	BRACKET, MTG	2
5	PAHZZ	80009	361-0776-00	SPACER, SLEEVE	4
6	PAHZZ	80009	214-2343-00	HEAT SINK, ELECTRICAL	1
7	PAHZZ	80009	348-1143-01	SHIELDING GASKET, EL	1
8	XBHZZ	80009	333-1990-02	PANEL, BLANK	1
9	XBHZZ	80009	334-6867-00	LABEL	1
10	PAHZZ	86928	5612-32-31	WASHER, FLAT	2
11	PAHZZ	06540	6130-SS-0632	SCREW, EXTERNALLY RE	2
12	PAHZZ	80009	211-0198-00	SCREW, MACHINE	4
13	PAHZZ	80009	213-0267-00	SCREW, TAPPING	2
14	PAHZZ	80009	214-2344-00	HEAT SINK, ELECTRICAL	1
15	PAHZZ	00779	50462-7	CONTACT, ELECTRICAL	2
16	PAOZZ	75915	273.003	FUSE, WIRE	1
17	XBHZZ	80009	337-2762-00	PLATE, ELEC SHLD	1
18	PAHZZ	96906	MS35206-213	SCREW, MACHINE	4
19	PAHZZ	80009	670-6592-00	TEST SET SUBASSEMBL	1
20	XBHZZ	80009	386-2435-00	BRACKET, MTG	2
21	PAHZZ	80009	146-0065-00	BATTERY, STORAGE	1

END OF FIGURE





CE2DZ186

Figure 4. Main Board CCA: A1 (Sheet 1 of 4)



TM 11-6625-3240-24P

REF DES	ITEM NO	REF DES	ITEM NO	REF DES	ITEM NO	REF DES	ITEM NO	REF DES	ITEM NO
BT1010	1	C2043	11	C7042	5	Q9010	39	R4023	67
CR1020	2	C2044	5	C7043	9	Q9020	40	R4030	57
CR1021	2	C2045	14	C8010	5	Q9021	39	R4031	68
CR1022	2	C2046	12	C8020	24	R1010	44	R4032	62
CR1023	2	C3020	5	C8021	23	R1011	45	R4040	69
CR3031	2	C3021	5	C8022	19	R1012	45	R4041	56
CR4030	3	C3022	5	C8023	5	R1013	45	R4042	70
CR4031	2	C3023	5	C8024	25	R1014	46	R4043	71
CR4032	4	C3030	15	C8040	26	R1015	47	R4044	72
CR5030	4	C3040	16	C9010	10	R1016	48	R4045	73
CR5040	2	C3041	17	C9011	21	R1020	45	R4046	55
CR8020	2	C3042	18	C9020	6	R1021	45	R4047	74
CR9010	2	C3043	19	C9021	5	R1022	45	R4048	75
C1010	5	C3044	6	C9022	21	R1023	45	R5020	76
C1011	5	C3045	5	C9023	5	R1032	49	R5021	45
C1020	5	C3046	5	C9024	21	R1033	50	R5022	77
C1021	5	C3047	15	C9025	5	R1035	51	R5023	78
C1022	6	C3048	6	C9030	5	R2010	48	R5024	75
C1023	6	C4020	5	C9031	9	R2011	47	R5025	75
C1024	6	C4021	6	C9032	6	R2012	46	R5026	79
C1030	7	C4022	20	C9033	6	R2013	46	R5030	80
C1031	5	C4030	5	C9034	5	R2014	50	R5031	81
C1032	6	C4040	21	C9035	9	R2015	50	R5032	48
C1040	5	C4041	9	J2010	27	R2030	52	R5033	79
C1041	5	C5010	19	J5040	28	R2031	52	R5034	82
C1042	8	C5020	6	J6010	29	R2033	53	R5035	83
C1043	5	C5021	6	J9010	30	R2034	54	R6030	79
C2010	5	C5022	5	L5030	31	R2040	55	R6031	84
C2011	9	C5023	6	L5040	32	R2041	56	R6032	85
C2012	5	C5024	22	Q1010	33	R2042	56	R6033	55
C2013	5	C5025	22	Q1020	34	R2043	57	R6040	81
C2014	5	C5030	21	Q1021	35	R3010	48	R6041	86
C2015	10	C5031	21	Q1030	34	R3020	58	R6042	87
C2016	11	C5032	23	Q1031	35	R3030	48	R6043	88
C2020	5	C5033	19	Q2011	33	R3031	59	R6044	89
C2021	5	C5040	19	Q2012	33	R3032	60	R6045	90
C2030	5	C5041	5	Q3030	36	R3033	61	R6046	91
C2031	5	C5042	5	Q4030	37	R3034	62	R6047	92
C2032	5	C6030	5	Q4031	38	R3035	45	R7010	93
C2033	5	C6031	22	Q4040	39	R3036	63	R7011	48
C2034	5	C6032	5	Q5020	40	R3037	64	R7012	48
C2035	5	C7010	10	Q5030	38	R3038	65	R7013	94
C2036	5	C7020	21	Q5031	41	R3039	60	R7014	95
C2037	5	C7021	5	Q5032	42	R3040	46	R7015	95
C2038	5	C7022	6	Q6020	39	R3041	57	R7020	96
C2039	12	C7023	22	Q7020	38	R3042	66	R7021	97
C2040	13	C7030	13	Q7021	43	R4020	58	R7022	65
C2041	13	C7040	19	Q7030	38	R4021	62	R7023	48
C2042	5	C7041	5	Q8020	43	R4022	46	R7024	98

Figure 4. Main Board CCA: A1 (Sheet 3 of 4)

**TM 11-6625-3240-24P**

REF DES	ITEM NO	REF DES	ITEM NO	REF DES	ITEM NO	REF DES	ITEM NO	REF DES	ITEM NO
R7025	98	R8041	107	TP2040	116	U1043	130	U3020	146
R7026	98	R8042	108	TP3040	116	U2011	131	U3021	143
R7027	48	R8043	109	TP3041	116	U2012	132	U3022	142
R7028	79	R8044	47	TP4020	116	U2020	133	U3023	147
R7029	99	R8045	47	TP4021	116	U2021	121	U3040	148
R7030	81	R8046	47	TP4040	116	U2022	121	U3041	149
R7031	65	R8047	45	TP6010	116	U2023	128	U3042	150
R7032	100	R9010	93	TP7010	116	U2024	121	U4020	145
R7033	101	R9011	110	TP9010	116	U2025	118	U4021	151
R7034	79	R9012	111	TP9011	116	U2026	121	U4040	152
R7040	75	R9013	65	TP9040	116	U2027	118	U5010	149
R8010	97	R9014	96	TP9041	116	U2030	134	U5020	153
R8011	102	R9015	99	U1010	117	U2031	135	U5040	150
R8012	103	R9020	97	U1011	118	U2032	136	U6040	152
R8013	57	R9021	48	U1012	119	U2033	137	U7010	118
R8014	79	R9022	80	U1020	120	U2034	138	U7040	150
R8020	98	R9023	48	U1021	120	U2036	136	U8010	154
R8021	68	R9024	81	U1022	121	U2037	139	U8040	152
R8022	104	R9025	65	U1023	122	U2040	140	U8041	150
R8023	45	R9026	112	U1030	123	U2041	141	U9030	155
R8024	48	R9027	57	U1031	124	U2042	137	VR3030	156
R8025	105	R9030	113	U1032	125	U2043	142	VR6030	157
R8026	65	R9031	114	U1034	126	U2044	143		
R8027	65	R9032	115	U1040	127	U2045	144		
R8028	65	TP1040	116	U1041	128	U2046	145		
R8040	106	TP1041	116	U1042	129	U3010	143		

**Figure 4. Main Board CCA: A1 (Sheet 4 of 4)**



(1) ITEM NO	(2) SMR CODE	(3) CAGEC	(4) PART NUMBER	(5) DESCRIPTION AND USABLE ON CODES (UOC)	(6) QTY
GROUP 03 MAIN BOARD CCA: A1					
FIGURE 4					
1	PAHZZ	81855	LTC-7P	BATTERY, NONRECHARGE	1
2	PAHZZ	01295	A1108	SEMICONDUCTOR DEVIC	9
3	PAHZZ	80131	1N4152	SEMICONDUCTOR DEVIC	1
4	PAHZZ	81349	JAN1N5712	SEMICONDUCTOR DEVIC	2
5	XBHZZ	04222	MD015E224ZAA	CAPACITOR, FIXED, CER	48
6	PAHZZ	31433	C330C102J2G5CA	CAPACITOR, FIXED, CER	14
7	PAHZZ	80009	283-0190-00	CAPACITOR, FIXED, CER	1
8	PAHZZ	80009	290-1087-00	CAPACITOR, FIXED, ELE	1
9	PAHZZ	80009	290-0748-00	CAPACITOR, FIXED, ELE	5
10	PAHZZ	80009	283-0111-00	CAPACITOR, FIXED, CER	3
11	PAHZZ	80009	283-0238-00	CAPACITOR, FIXED, CER	2
12	PAHZZ	59660	805030Y5D0 102K	CAPACITOR, FIXED, CER	2
13	PAHZZ	81349	M39014/02-1419	CAPACITOR, FIXED, CER	3
14	PAHZZ	81349	M39014/22-1094	CAPACITOR, FIXED, CER	1
15	PAHZZ	80009	283-0181-00	CAPACITOR, FIXED, CER	2
16	PAHZZ	80009	283-0107-00	CAPACITOR, FIXED, CER	1
17	PAHZZ	81349	M39014/02-1350	CAPACITOR, FIXED, CER	1
18	PAHZZ	80009	283-0108-00	CAPACITOR, FIXED, CER	1
19	PAHZZ	18796	8121N145C0G101J	CAPACITOR, FIXED, CER	6
20	PAHZZ	14752	232A1B224J	CAPACITOR, FIXED, MET	1
21	PAHZZ	80009	283-0422-00	CAPACITOR, FIXED, CER	7
22	PAHZZ	81349	M39014/02-1360	CAPACITOR, FIXED, CER	4
23	PAHZZ	81349	CCR75CG510GS	CAPACITOR, FIXED, CER	2
24	PAHZZ	80009	283-0010-00	CAPACITOR, FIXED, CER	1
25	PAHZZ	80009	283-0348-00	CAPACITOR, FIXED, CER	1
26	PAHZZ	80009	283-0156-00	CAPACITOR, FIXED, CER	1
27	PAHZZ	53387	3592-5002	CONNECTOR, RECEPTACL	1
28	PAHZZ	53387	2514-6002UB	CONNECTOR, RECEPTACL	1
29	PAHZZ	53387	3593-5002	CONNECTOR, RECEPTACL	1
30	PAHZZ	28480	1251-8158	CONNECTOR, RECEPTACL	1
31	PAHZZ	80009	120-1606-00	TRANSFORMER, RADIO F	1
32	PAHZZ	80009	108-0509-00	COIL, RADIO FREQUENC	1
33	PAHZZ	59993	IRFD9120	SEMICONDUCTOR DEVIC	3
34	PAHZZ	18876	10212257-1	TRANSISTOR	2
35	PAHZZ	80009	151-0188-00	TRANSISTOR	2
36	PAHZZ	80009	151-0276-01	TRANSISTOR	1
37	PAHZZ	80009	151-1078-00	TRANSISTOR	1
38	PAHZZ	80009	151-0441-00	TRANSISTOR	4
39	PAHZZ	80009	151-0271-00	TRANSISTOR	4
40	PAHZZ	81349	JAN2N2920	SEMICONDUCTOR DEVIC	2
41	PAHZZ	81349	JANTX2N4416A	TRANSISTOR	1
42	PAHZZ	04713	2N3810	SEMICONDUCTOR DEVIC	1
43	PAHZZ	80009	151-0139-00	SEMICONDUCTOR DEVIC	2
44	PAHZZ	81349	RNC55K4750FS	RESISTOR, FIXED, FILM	1
45	PAHZZ	81349	RNC60K1002FS	RESISTOR, FIXED, FILM	11
46	PAHZZ	81349	RNC55K1003FS	RESISTOR, FIXED, FILM	5
47	PAHZZ	81349	RNC55K2002FS	RESISTOR, FIXED, FILM	5

## SECTION II TM11-6625-3240-24P

(1) ITEM NO	(2) SMR CODE	(3) CAGEC	(4) PART NUMBER	(5) DESCRIPTION AND USABLE ON CODES (UOC)	(6) QTY
48	PAHZZ	81349	RNC55K1000FS	RESISTOR, FIXED, FILM	12
49	PAHZZ	81349	RNC60K3483FS	RESISTOR, FIXED, FILM	1
50	PAHZZ	01121	110A103	RESISTOR NETWORK, FI	3
51	PAHZZ	81349	RNC55K4992FS	RESISTOR, FIXED, FILM	1
52	PAHZZ	80009	321-0239-00	RESISTOR	2
53	PAHZZ	81349	RNC55K1102FS	RESISTOR, FIXED, FILM	1
54	PAHZZ	80009	311-0634-00	RESISTOR, VARIABLE, N	1
55	PAHZZ	80009	321-0139-00	RESISTOR, FIXED, FILM	3
56	PAHZZ	81349	RNC55K2430FS	RESISTOR, FIXED, FILM	3
57	PAHZZ	81349	RNC55K2000FS	RESISTOR, FIXED, FILM	5
58	PAHZZ	81349	RNC55K1212FS	RESISTOR, FIXED, FILM	2
59	PAHZZ	81349	RNC55K4992FS	RESISTOR, FIXED, FILM	1
60	PAHZZ	81349	RNC55K2492FS	RESISTOR, FIXED, FILM	2
61	PAHZZ	81349	RNC60K5110FS	RESISTOR, FIXED, FILM	1
62	PAHZZ	81349	RNC60K5111FS	RESISTOR, FIXED, FILM	3
63	PAHZZ	81349	RNC55K3321FS	RESISTOR, FIXED, FILM	1
64	PAHZZ	81349	RNC55K1822FS	RESISTOR, FIXED, FILM	1
65	PAHZZ	81349	RNC55K1502FS	RESISTOR, FIXED, FILM	8
66	PAHZZ	81349	RNC60K6190FS	RESISTOR, FIXED, FILM	1
67	PAHZZ	81349	RNC55J40R2FS	RESISTOR, FIXED, FILM	1
68	PAHZZ	81349	RNC55K2372FS	RESISTOR, FIXED, FILM	2
69	PAHZZ	81349	RNC55J8251FS	RESISTOR, FIXED, FILM	1
70	PAHZZ	81349	RNC55K2490FS	RESISTOR, FIXED, FILM	1
71	PAHZZ	81349	RNC55K2550FS	RESISTOR, FIXED, FILM	1
72	PAHZZ	81349	RNC55K2610FS	RESISTOR, FIXED, FILM	1
73	PAHZZ	81349	RNC55K2670FS	RESISTOR, FIXED, FILM	1
74	PAHZZ	81349	RNC55K2870FS	RESISTOR, FIXED, FILM	1
75	PAHZZ	81349	RNC55J10R0FS	RESISTOR, FIXED, FILM	4
76	PAHZZ	81349	RNC55K1273FS	RESISTOR, FIXED, FILM	1
77	PAHZZ	81349	RNC55K3162FS	RESISTOR, FIXED, FILM	1
78	PAHZZ	81349	RNC55K4990FS	RESISTOR, FIXED, FILM	1
79	PAHZZ	80009	321-0068-00	RESISTOR, FIXED, FILM	6
80	PAHZZ	81349	RNC55J8061FS	RESISTOR, FIXED, FILM	2
81	PAHZZ	81349	RNC60K2001FS	RESISTOR, FIXED, FILM	4
82	PAHZZ	81349	RNC55K8060FS	RESISTOR, FIXED, FILM	1
83	PAHZZ	59873	321-0250-00	RESISTOR, FIXED, FILM	1
84	PAHZZ	81349	RNC55K5231FS	RESISTOR, FIXED, FILM	1
85	PAHZZ	81349	RNC55K4021FS	RESISTOR, FIXED, FILM	1
86	PAHZZ	81349	RNC55H5130BS	RESISTOR, FIXED, FILM	1
87	PAHZZ	81349	RNC55K6490FS	RESISTOR, FIXED, FILM	1
88	PAHZZ	81349	RNC55J8250FS	RESISTOR, FIXED, FILM	1
89	PAHZZ	81349	RNC55K1021FS	RESISTOR, FIXED, FILM	1
90	PAHZZ	81349	RNC55K1301FS	RESISTOR, FIXED, FILM	1
91	PAHZZ	81349	RNC55K1621FS	RESISTOR, FIXED, FILM	1
92	PAHZZ	81349	RNC55K2051FS	RESISTOR, FIXED, FILM	1
93	PAHZZ	81349	RNC55K1500FS	RESISTOR, FIXED, FILM	2
94	PAHZZ	81349	RNC55K1210FS	RESISTOR, FIXED, FILM	1
95	PAHZZ	81349	RNC60K3920FS	RESISTOR, FIXED, FILM	2
96	PAHZZ	81349	RNC55H1652BS	RESISTOR, FIXED, FILM	2
97	PAHZZ	81349	RNC55K24R3FS	RESISTOR, FIXED, FILM	3
98	PAHZZ	81349	RNC55K1001FS	RESISTOR, FIXED, FILM	4
99	PAHZZ	81349	RNC55K3572FS	RESISTOR, FIXED, FILM	2

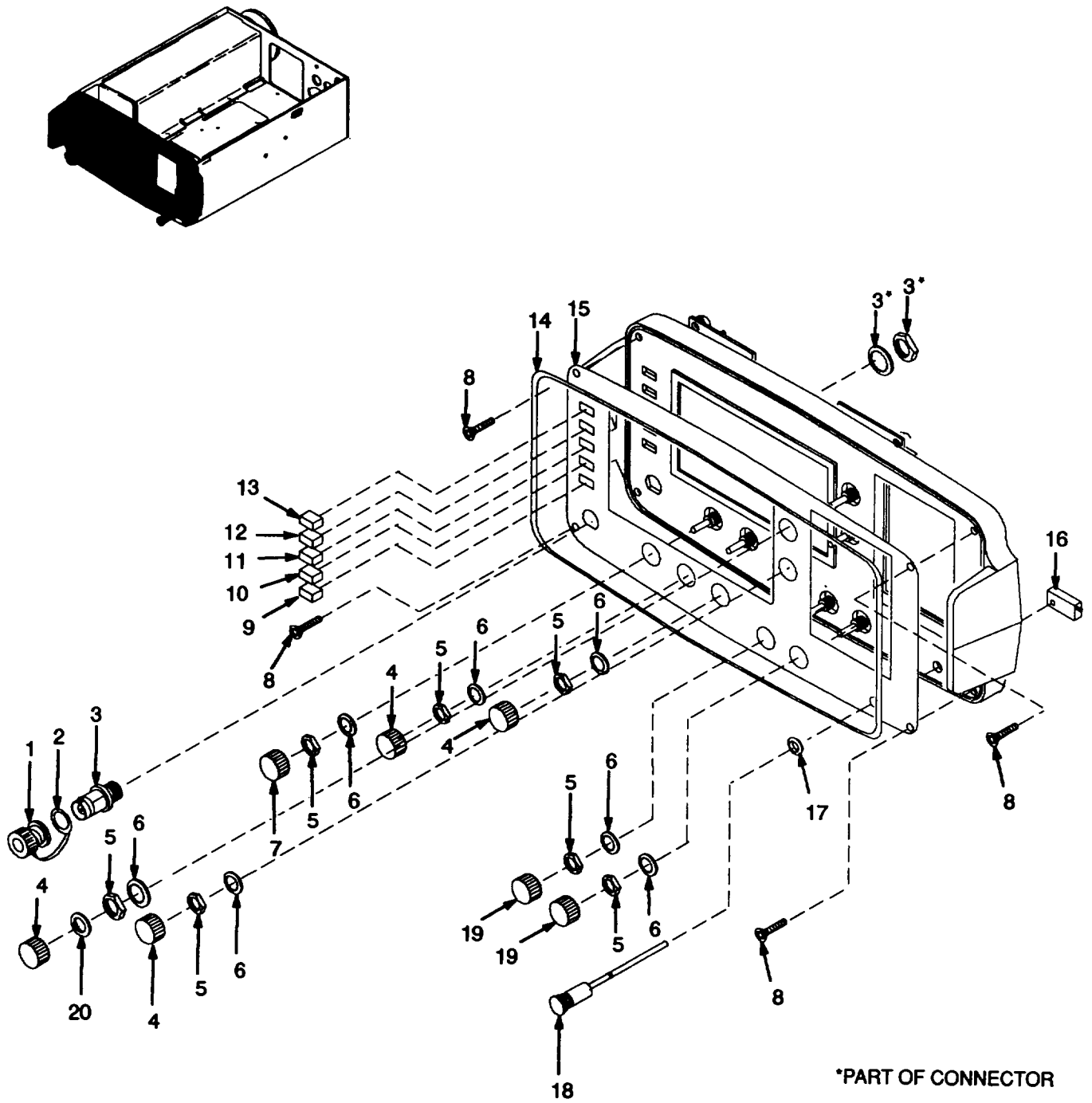
## SECTION II TM11-6625-3240-24P

(1) ITEM NO	(2) SMR CODE	(3) CAGEC	(4) PART NUMBER	(5) DESCRIPTION AND USABLE ON CODES (UOC)	(6) QTY
100	PAHZZ	81349	RNC55K6040FS	RESISTOR, FIXED, FILM	1
101	PAHZZ	81349	RNC55K6191FS	RESISTOR, FIXED, FILM	1
102	PAHZZ	81349	RNC55K1742FS	RESISTOR, FIXED, FILM	1
103	PAHZZ	81349	RNC55J1252BS	RESISTOR, FIXED, FILM	1
104	PAHZZ	81349	RNC55K8661FS	RESISTOR, FIXED, FILM	1
105	PAHZZ	81349	RNC55K6340FS	RESISTOR, FIXED, FILM	1
106	PAHZZ	81349	RNC55H40R0BS	RESISTOR, FIXED, FILM	1
107	PAHZZ	81349	RNC55K2100FS	RESISTOR, FIXED, FILM	1
108	PAHZZ	81349	RNC60K1331FS	RESISTOR, FIXED, FILM	1
109	PAHZZ	81349	RNC55J8451BS	RESISTOR, FIXED, FILM	1
110	PAHZZ	59873	321-0258-00	RESISTOR, FIXED, FILM	1
111	PAHZZ	81349	RNC55K3010FS	RESISTOR, FIXED, FILM	1
112	PAHZZ	81349	RNC55K2671FS	RESISTOR, FIXED, FILM	1
113	PAHZZ	81349	RNC55K7152FS	RESISTOR, FIXED, FILM	1
114	PAHZZ	81349	RN65F2492F	RESISTOR, FIXED, FILM	1
115	PAHZZ	80009	311-0633-00	RESISTOR, VARIABLE, N	1
116	PAHZZ	59873	214-0579-00	TERMINAL, LUG	14
117	PAHZZ	0B0A9	DS1210	MICROCIRCUIT, DIGITA	1
118	PAHZZ	67268	5962-8969501CA	MICROCIRCUIT, DIGITA	4
119	PAHZZ	80009	156-1225-00	MICROCIRCUIT, LINEAR	1
120	PAHZZ	80009	156-2769-00	MICROCIRCUIT, DIGITA	2
121	PAHZZ	01295	SN74HC138N	MICROCIRCUIT, DIGITA	5
122	PAHZZ	80009	156-2587-00	MICROCIRCUIT, DIGITA	1
123	PAHZZ	27014	MM54C30J/883B	MICROCIRCUIT, DIGITA	1
124	PAHZZ	81349	M38510/65702BCA	MICROCIRCUIT, DIGITA	1
125	PAHZZ	27014	MM74C240N	MICROCIRCUIT, DIGITA	1
126	PAHZZ	07263	UA78L05AWC	MICROCIRCUIT, LINEAR	1
127	PAHZZ	81349	M38510/65003BCA	MICROCIRCUIT, DIGITA	1
128	PAHZZ	81349	M38510/65302BCA	MICROCIRCUIT, DIGITA	2
129	PAHZZ	81349	M38510/65102BCA	MICROCIRCUIT, DIGITA	1
130	PAHZZ	27014	MM54HC32J/883B	MICROCIRCUIT, DIGITA	1
131	PAHZZ	27014	MM54HC245J/883B	MICROCIRCUIT, DIGITA	1
132	PAHZZ	27014	MM54HC244J	MICROCIRCUIT, DIGITA	1
133	PAHZZ	80009	160-4412-09	MICROCIRCUIT, MEMORY	1
134	PAHZZ	34371	MD82C54B	MICROCIRCUIT, DIGITA	1
135	PAHZZ	75378	MXO-55GA-3I-20M	OSCILLATOR, CRYSTAL	1
136	PAHZZ	01295	SN74ALS175N	MICROCIRCUIT, DIGITA	2
137	PAHZZ	13499	205-0027-002	MICROCIRCUIT, DIGITA	2
138	PAHZZ	01295	SN74ALS02N	MICROCIRCUIT, DIGITA	1
139	PAHZZ	01295	SN74ALS161BN	MICROCIRCUIT, DIGITA	1
140	PAHZZ	14933	5962-8688301CA	MICROCIRCUIT, DIGITA	1
141	PAHZZ	80009	156-2768-00	MICROCIRCUIT, LINEAR	1
142	PAHZZ	81349	M38510/65308BEA	MICROCIRCUIT, DIGITA	2
143	PAHZZ	01295	SN74HC374NP3	MICROCIRCUIT, DIGITA	3
144	PAHZZ	81349	M38510/33003BCA	MICROCIRCUIT, DIGITA	1
145	XBHZZ	24355	AD7534JN	MICROCIRCUIT, DIGITA	2
146	PAHZZ	81349	M38510/65101BCA	MICROCIRCUIT, DIGITA	1
147	PAHZZ	80009	156-0927-02	MICROCIRCUIT, DIGITA	1
148	PAHZZ	04713	MC1403UDS	MICROCIRCUIT, LINEAR	1
149	PAHZZ	81349	M38510/10104BPB	MICROCIRCUIT, LINEAR	2
150	PAHZZ	02735	CA3160E	MICROCIRCUIT, LINEAR	4
151	XBHZZ	80009	156-1699-00	MICROCIRCUIT, LINEAR	1

## SECTION II TM11-6625-3240-24P

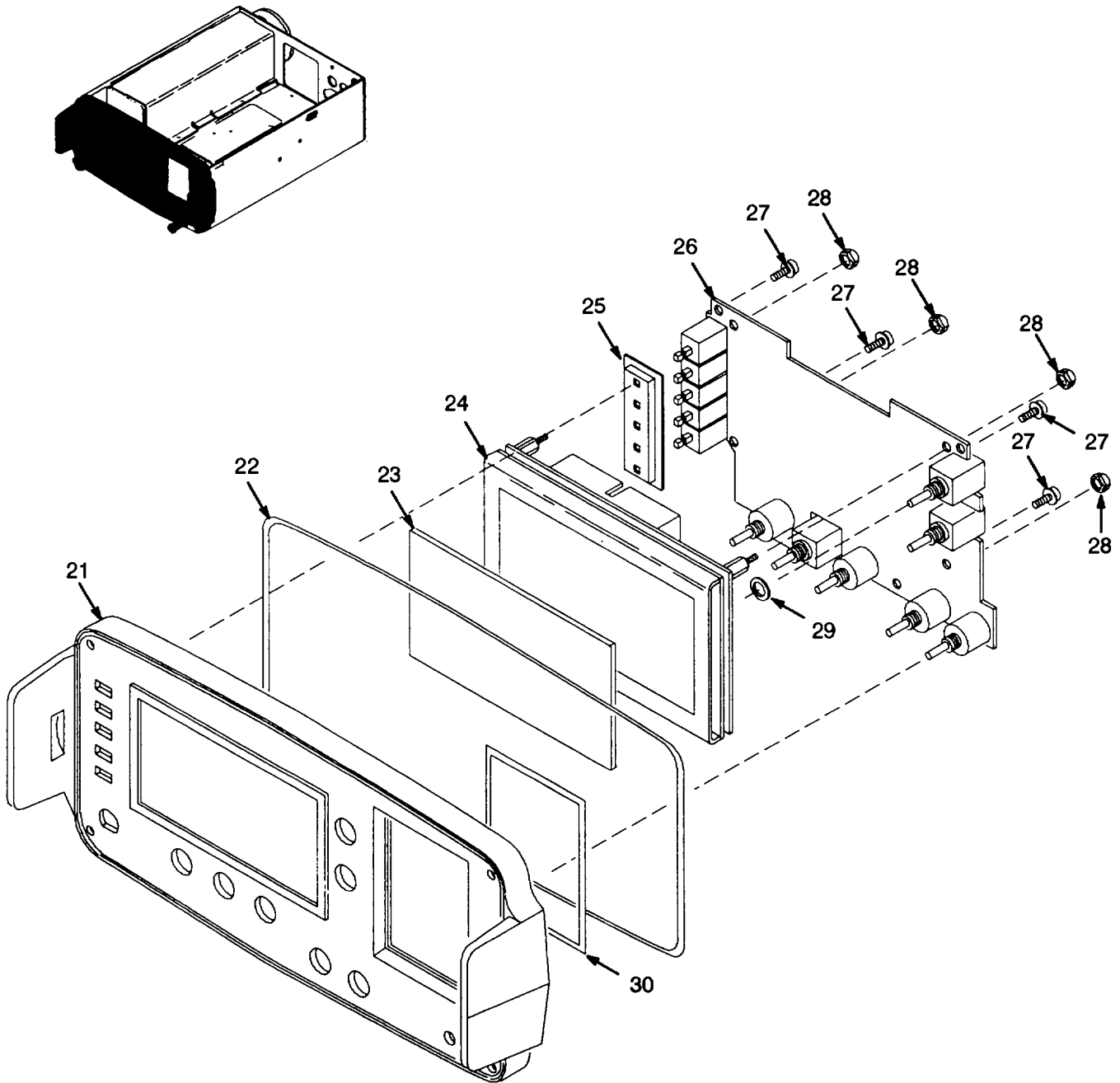
(1) ITEM NO	(2) SMR CODE	(3) CAGEC	(4) PART NUMBER	(5) DESCRIPTION AND USABLE ON CODES (UOC)	(6) QTY
152	PAHZZ	94580	10063973-101	MICROCIRCUIT,DIGITA	3
153	PAHZZ	80009	156-1156-00	MICROCIRCUIT,LINEAR	1
154	PAHZZ	81349	M38510/33001BCA	MICROCIRCUIT,DIGITA	1
155	PAHZZ	04939	13084664	MICROCIRCUIT,LINEAR	1
156	PAHZZ	80009	152-0647-00	SEMICONDUCTOR DEVIC	1
157	PAHZZ	80009	152-0514-00	SEMICONDUCTOR DEVIC	1
158	PAHZZ	09922	DILB28P-108	SOCKET,PLUG-IN ELEC	1

END OF FIGURE



CE2DZ168

Figure 5. Front Panel Assembly (Sheet 1 of 2)



CE2DZ189

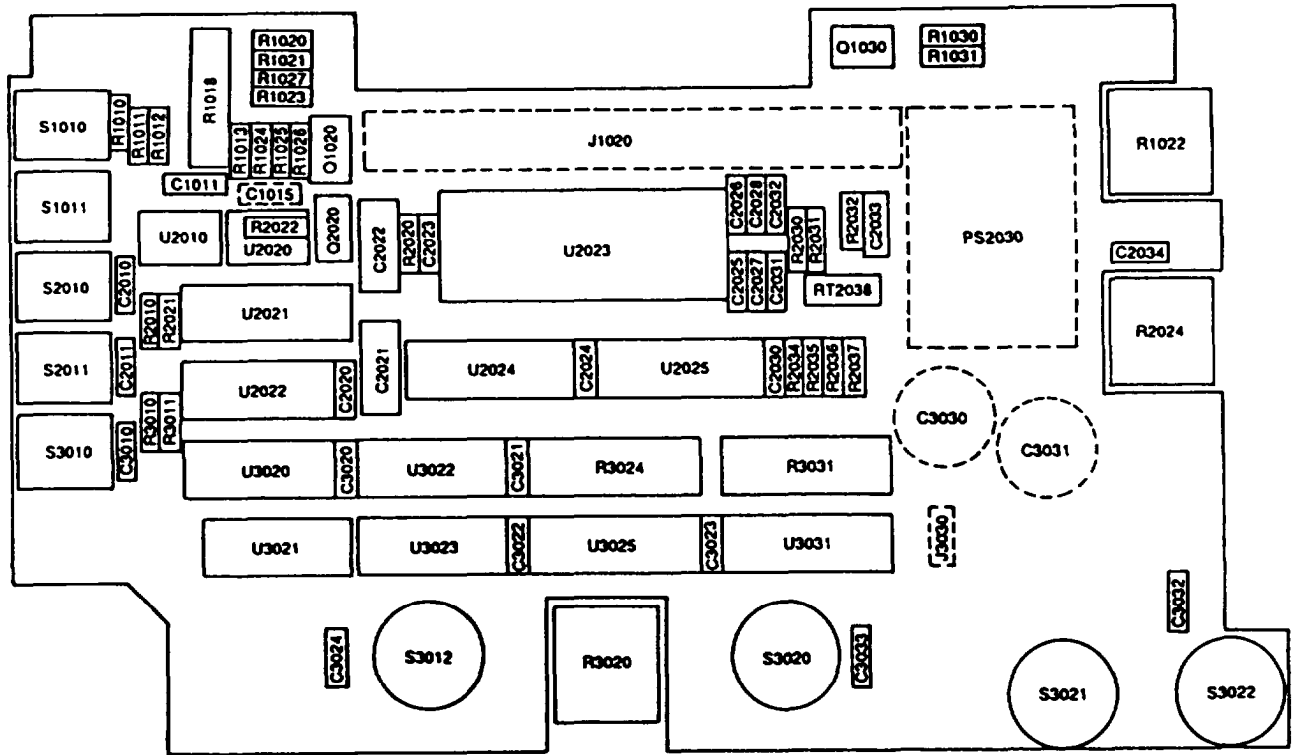
Figure 5. Front Panel Assembly (Sheet 2 of 2)

(1) ITEM NO	(2) SMR CODE	(3) CAGEC	(4) PART NUMBER	(5) DESCRIPTION AND USABLE ON CODES (UOC)	(6) QTY
GROUP 04 FRONT PANEL ASSEMBLY					
FIGURE 5					
1	XBHZZ	81349	M39012/25-0015	COVER,ELECTRICAL CO	1
2	PAHZZ	80009	346-0045-00	STRAP	1
3	PAHZZ	91836	752-17-9	CONNECTOR,RECEPTACL	1
4	PAHZZ	80009	366-2097-00	KNOB	4
5	PAHZZ	73743	2X20319-402	NUT,PLAIN,HEXAGON	1
6	PAHZZ	99193	S8154-6-020	WASHER,FLAT	7
7	PAHZZ	80009	366-2104-00	KNOB	1
8	PAHZZ	80009	213-0718-00	SCREW,TAPPING	4
9	PAHZZ	80009	366-0655-04	PUSH BUTTON	1
10	PAHZZ	80009	366-0655-03	PUSH BUTTON	1
11	PAHZZ	80009	366-0655-02	PUSH BUTTON	1
12	PAHZZ	80009	366-0655-01	PUSH BUTTON	1
13	PAHZZ	80009	366-0655-05	PUSH BUTTON	1
14	PAHZZ	80009	348-0477-00	RUBBER STRIP	1
15	XBHZZ	80009	334-6664-01	MARKER,IDENT	1
16	XBHZZ	80009	220-0961-00	BRACKET,MTG	1
17	PAHZZ	80009	354-0674-00	PACKING,PREFORMED	1
18	XBHZZ	80009	384-1675-00	EXTENSION SHAFT	1
19	PAHZZ	80009	366-2098-00	KNOB	2
20	PAHZZ	80009	348-1145-01	SEAL,NONMETALLIC RO	1
21	XBHZZ	80009	386-5307-02	COVER,SCOPE	1
22	XBHZZ	80009	348-1116-00	SEAL,RBR STRIP	1
23	XBHZZ	80009	331-0502-01	WINDOW,OBSV	1
24	PAHZZ	80009	672-1241-00	DISPLAY,OPTOELECTRO	1
25	PAHZZ	80009	348-0920-00	SHIELDING GASKET,EL	1
26	PAHHH	80009	672-1251-01	CIRCUIT CARD ASSEMB FOR PARTS BREAKDOWN SEE FIGURE 6	1
27	PAHZZ	80009	211-0658-00	SCREW,ASSEMBLED WAS	4
28	PAHZZ	72962	F22NM62	NUT,SELF-LOCKING,HE	4
29	PAHZZ	80009	354-0581-00	PACKING,PREFORMED	3
30	PAHZZ	80009	348-1144-00	SHIELDING GASKET,EL	1

END OF FIGURE



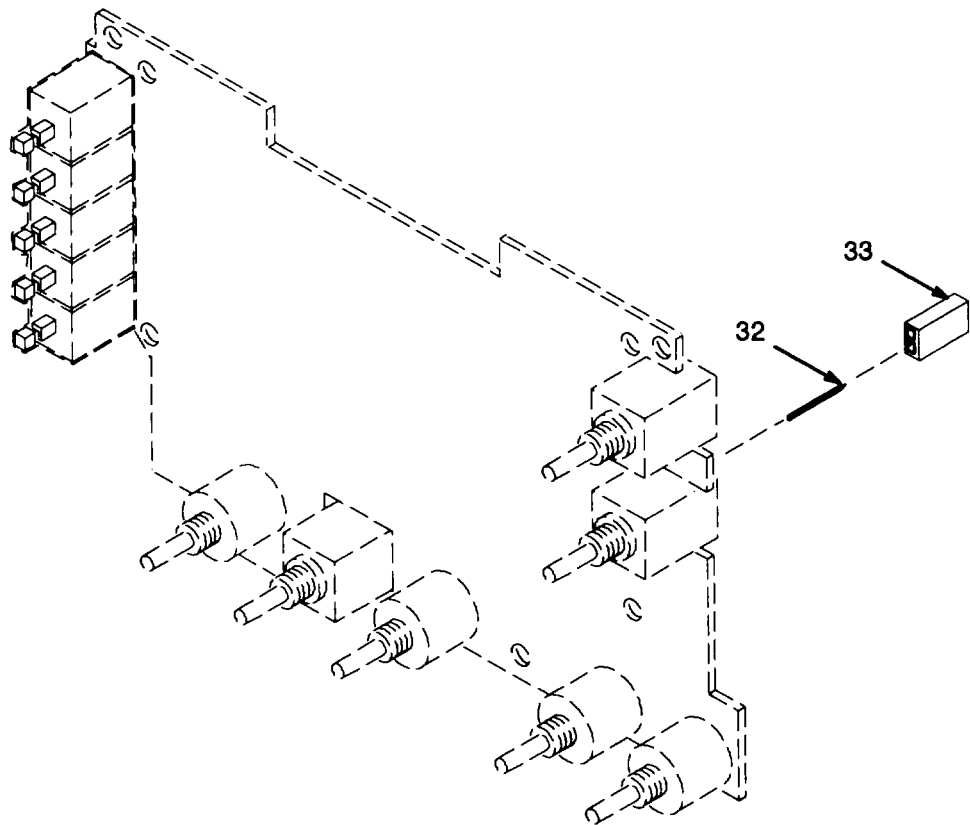




CE2DZ190

REF DES	ITEM NO	REF DES	ITEM NO	REF DES	ITEM NO	REF DES	ITEM NO	REF DES	ITEM NO
C1011	1	C3010	2	R1012	13	R2030	11	S3020	23
C1015	1	C3020	2	R1013	14	R2031	11	S3021	24
C2010	2	C3021	2	R1018	15	R2032	14	S3022	22
C2011	2	C3022	2	R1020	13	R2034	11	U2010	25
C2020	2	C3023	2	R1021	11	R2035	11	U2020	26
C2021	3	C3024	2	R1022	16	R2036	11	U2021	27
C2022	3	C3030	5	R1023	11	R2037	11	U2022	28
C2023	2	C3031	5	R1024	11	R3010	11	U2023	29
C2024	2	C3032	2	R1025	11	R3011	11	U2024	30
C2025	4	C3033	2	R1026	11	R3020	16	U2025	30
C2026	4	J1020	6	R1027	11	R3024	20	U3020	31
C2027	4	PS2030	7	R1030	11	R3031	20	U3021	31
C2028	4	Q1020	8	R1031	17	S1010	21	U3022	31
C2030	2	Q1030	8	R2010	11	S1011	21	U3023	31
C2031	4	Q2020	9	R2020	18	S2010	21	U3025	30
C2032	4	RT2038	10	R2021	11	S2011	21	U3031	30
C2033	2	R1010	11	R2022	19	S3010	21		
C2034	2	R1011	12	R2024	16	S3012	22		

Figure 6. Front Panel CCA: A2 (Sheet 1 of 2)



CE2DZ191

Figure 6. Front Panel CCA:A2 (Sheet 2 of 2)

(1) ITEM NO	(2) SMR CODE	(3) CAGEC	(4) PART NUMBER	(5) DESCRIPTION AND USABLE ON CODES (UOC)  GROUP 0401 FRONT PANEL CCA: A2  FIGURE 6	(6) QTY
1	PAHZZ	81349	CCR06CG102GS	CAPACITOR, FIXED, CER	2
2	XBHZZ	04222	MD015E224ZAA	CAPACITOR, FIXED, CER	16
3	PAHZZ	80009	290-0974-00	CAPACITOR, FIXED, ELE	2
4	PAHZZ	81349	M39014/22-1058	CAPACITOR, FIXED, CER	6
5	PAHZZ	80009	290-0919-00	CAPACITOR, FIXED, ELE	2
6	PAHZZ	53387	3596-6002	CONNECTOR, RECEPTACL	1
7	PAHZZ	80009	119-2370-00	POWER SUPPLY	1
8	PAHZZ	59993	IRFD9120	SEMICONDUCTOR DEVIC	2
9	PAHZZ	80009	151-1121-00	TRANSISTOR	1
10	PAHZZ	80009	307-0751-00	RESISTOR, THERMAL	1
11	PAHZZ	81349	RNC55K1003FS	RESISTOR, FIXED, FILM	18
12	PAHZZ	81349	RNC55H4991FS	RESISTOR, FIXED, FILM	1
13	PAHZZ	81349	RNC55K1000FS	RESISTOR, FIXED, FILM	2
14	PAHZZ	81349	RNC55J40R2FS	RESISTOR, FIXED, FILM	2
15	PAHZZ	02111	43P203	RESISTOR, VARIABLE, N	1
16	PAHZZ	80009	311-2400-00	RESISTOR, VARIABLE, N	3
17	PAHZZ	80009	321-0059-00	RESISTOR, FIXED, FILM	1
18	PAHZZ	81349	RNC55J10R0FS	RESISTOR, FIXED, FILM	1
19	PAHZZ	91637	CMF55116G27403F	RESISTOR, FIXED, FILM	1
20	PAHZZ	81349	M8340102M3000GB	RESISTOR NETWORK, FI	2
21	PAHZZ	80009	260-2091-00	SWITCH, PUSH	5
22	PAHZZ	80009	260-2269-01	SWITCH, ROTARY	2
23	PAHZZ	80009	260-2270-01	SWITCH, ROTARY	1
24	PAHZZ	80009	260-2287-01	SWITCH, ROTARY	1
25	PAHZZ	30554	79-9882-3	MICROCIRCUIT, LINEAR	1
26	PAHZZ	80009	156-1225-00	MICROCIRCUIT, LINEAR	1
27	PAHZZ	24355	AD7524UQ	MICROCIRCUIT, LINEAR	1
28	PAHZZ	27014	MM54HC32J/883B	MICROCIRCUIT, DIGITA	1
29	PAHZZ	01295	ADC0808MJB	MICROCIRCUIT, DIGITA	1
30	PAHZZ	18714	CD54HC253F/3A	MICROCIRCUIT, DIGITA	4
31	PAHZZ	81349	M38510/65101BCA	MICROCIRCUIT, DIGITA	4
32	PAHZZ	80009	131-1343-00	CONTACT ASSEMBLY, EL	1
33	PAHZZ	96214	972487-0001	CONNECTOR, PLUG, ELEC	1

END OF FIGURE

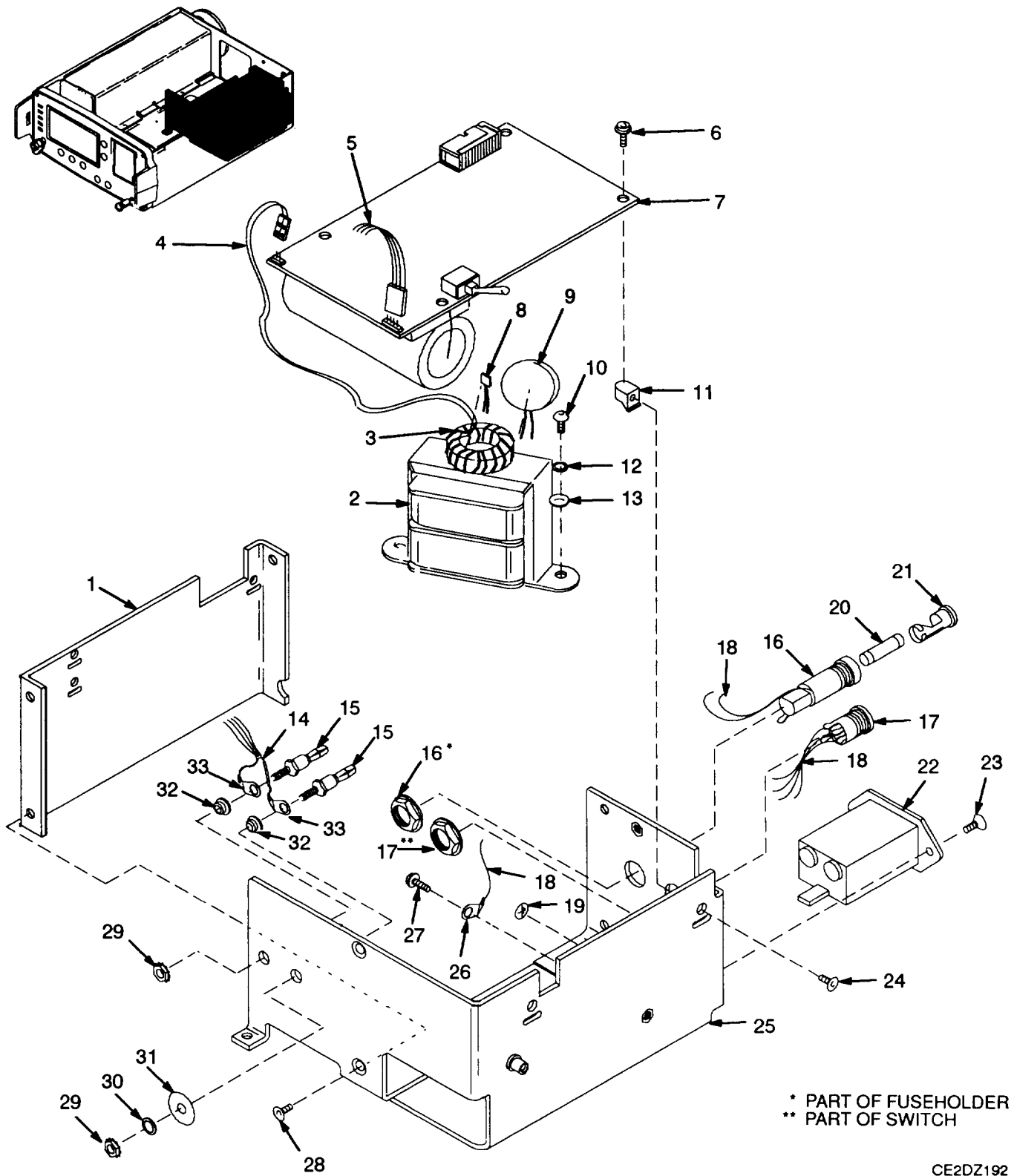


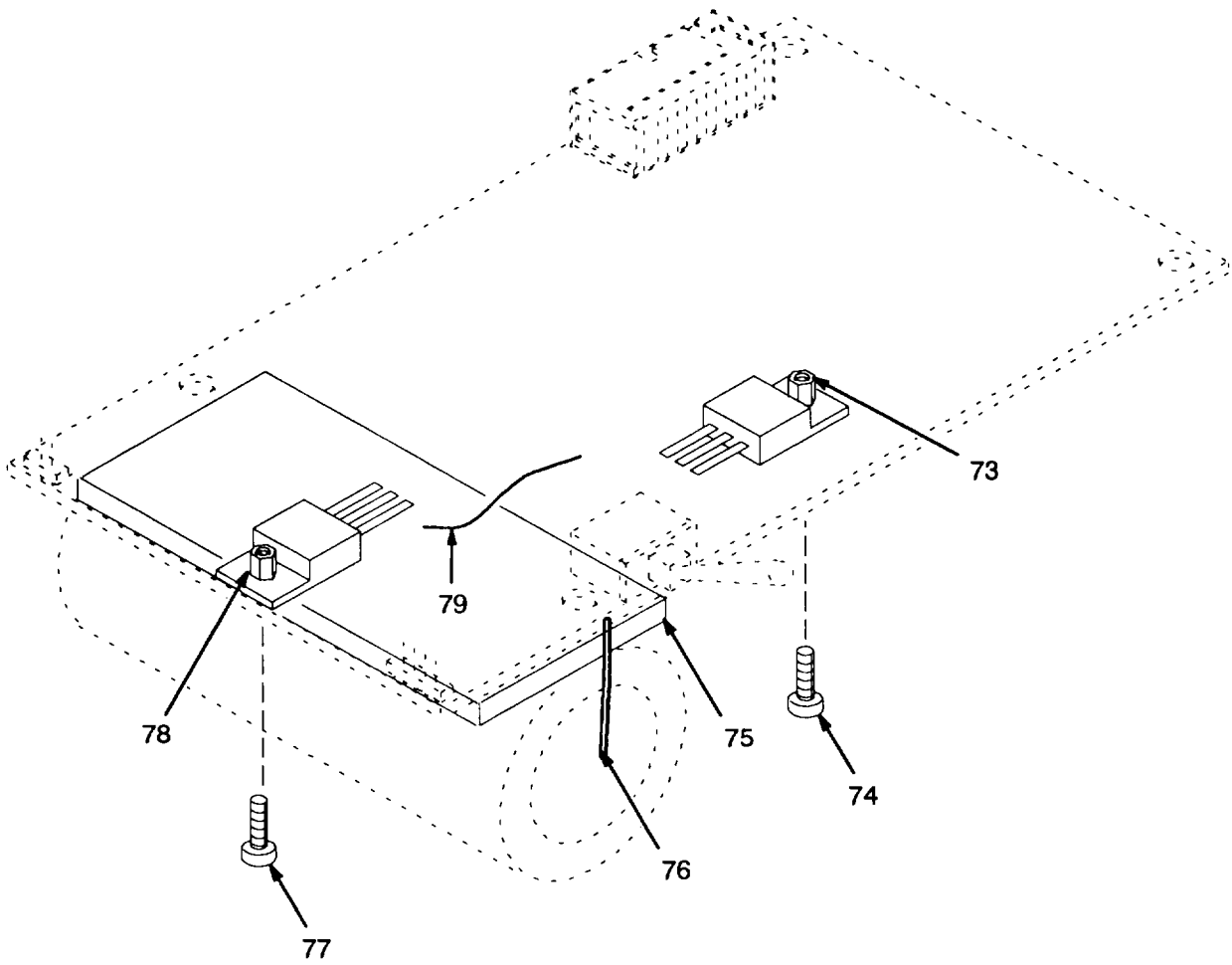
Figure 7. Power Supply Assembly:A3

(1) ITEM NO	(2) SMR CODE	(3) CAGEC	(4) PART NUMBER	(5) DESCRIPTION AND USABLE ON CODES (UOC)	(6) QTY
GROUP 05 POWER ASSEMBLY: A3					
FIGURE 7					
1	XBHZZ	80009	441-1685-00	CHAS,ELEC EQUIP	1
2	PAHZZ	08449	DP-241-6-24	TRANSFORMER,POWER	1
3	PAHZZ	80009	120-1458-00	TRANSFORMER,RADIO F	1
4	PAHZZ	80009	174-0954-00	CABLE ASSEMBLY,SPEC	1
5	PAHZZ	80009	174-0957-00	CABLE ASSEMBLY,SPEC	1
6	PAHZZ	93907	821-01655-024	SCREW,MACHINE	4
7	PAHHH	80009	670-9286-03	CIRCUIT CARD ASSEMB SEE FIGURE 8	1
8	PAHZZ	03508	V130LA20A	FOR PARTS BREAKDOWN	
9	PAHZZ	81349	M39014/02-1350	RESISTOR,VOLTAGE SE	1
10	PAHZZ	80009	212-0112-00	CAPACITOR, FIXED,CER	1
11	PAHZZ	80009	220-0547-01	SCREW,MACHINE	2
12	PAHZZ	96906	MS35333-38	NUT,BLOCK	4
13	PAHZZ	94117	15882P1	WASHER, LOCK	2
14	PAHZZ	81349	M39014/02-1350	WASHER, FLAT	2
15	PAHZZ	74970	023-0026-001	CAPACITOR, FIXED,CER	1
16	PAHZZ	80009	204-0832-00	PLUG, TIP	2
17	PAHZZ	61935	033-4501	FUSEHOLDER, EXTRACTO	1
18	PAHZZ	80009	198-5460-01	SWITCH, ROTARY	1
19	XBHZZ	80009	334-3379-01	WIRE, ELECTRICAL	1
20	PAHZZ	81349	F03B250V15/100A	MARKER, IDENT	1
21	PAHZZ	80009	200-2264-00	FUSE, CARTRIDGE	1
22	PAHZZ	80009	119-3488-00	FUSEHOLDER SUBASSEM	1
23	PAHZZ	80009	211-0101-00	FILTER,RADIO FREQUE	1
24	PAHZZ	83385	211-0105-00	SCREW,MACHINE	2
25	XBHZZ	80009	441-1684-01	SCREW,MACHINE	4
26	PAHZZ	80009	210-0202-00	CHAS,ELEC EQUIP	1
27	PAHZZ	80009	211-0658-00	TERMINAL,LUG	1
28	PAHZZ	80009	211-0105-00	SCREW,ASSEMBLED WAS	1
29	PAHZZ	59873	210-0457-00	SCREW,MACHINE	4
30	PAHZZ	80009	210-0803-00	NUT, PLAIN, HEXAGON	2
31	PAHZZ	80009	210-0933-00	WASHER, FLAT	2
32	PAHZZ	80009	210-0975-00	INSULATOR, WASHER	1
33	PAHZZ	80009	210-0202-00	WASHER, SHOULDERED	2
				TERMINAL,LUG	2

END OF FIGURE







CE2DZ194

Figure 8. Power Supply CCA:A3A1 (Sheet 2 of 2)



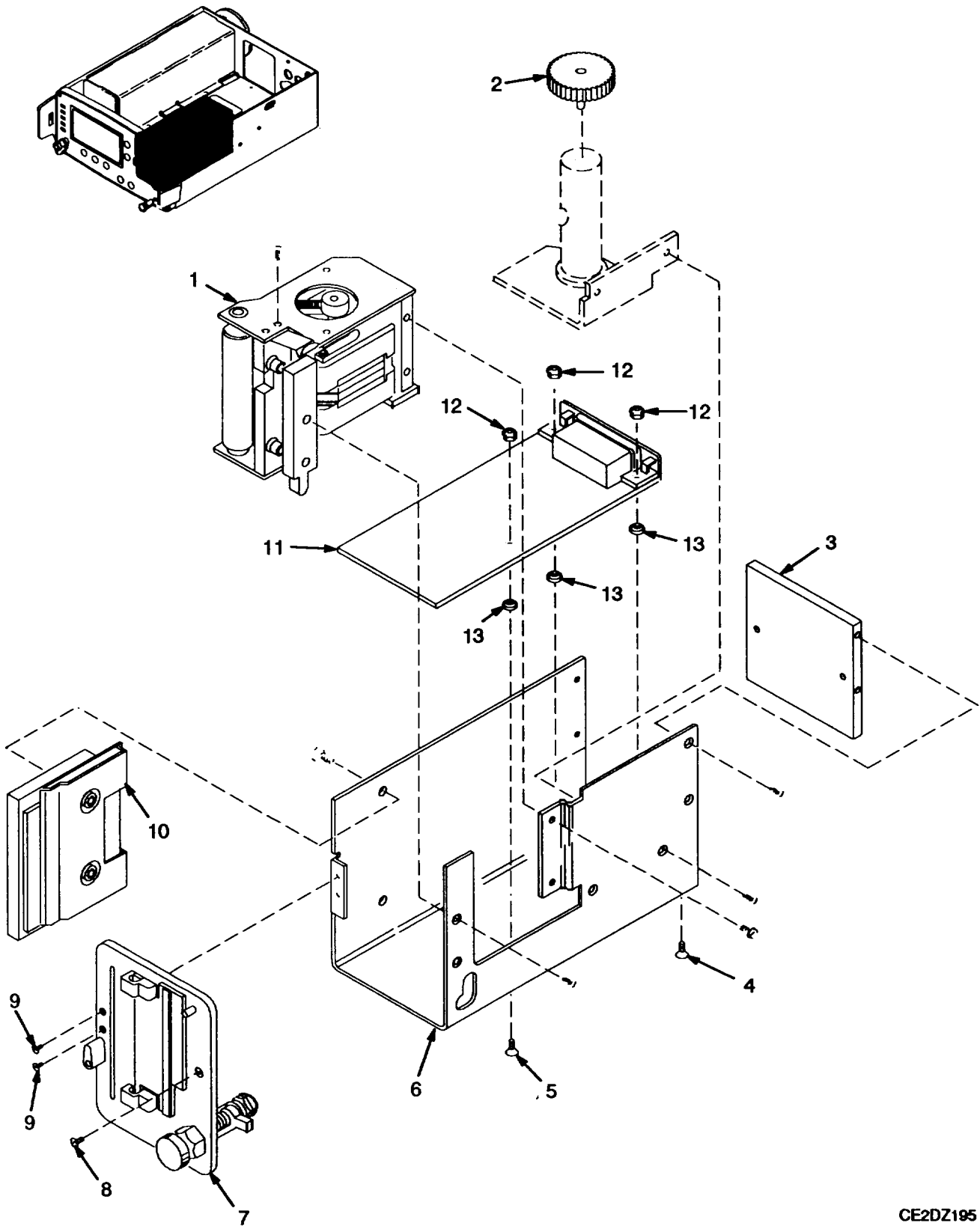
(1) ITEM NO	(2) SMR CODE	(3) CAGEC	(4) PART NUMBER	(5) DESCRIPTION AND USABLE ON CODES (UOC)  GROUP 0501 POWER SUPPLY CCA: A3A1  FIGURE 8	(6) QTY
1	PAHZZ	80009	152-0406-00	RECTIFIER, SEMICONDU	1
2	PAHZZ	01295	A1108	SEMICONDUCTOR DEVIC	4
3	PAHZZ	80009	152-0582-00	SEMICONDUCTOR DEVIC	3
4	PAHZZ	80009	152-0581-00	SEMICONDUCTOR DEVIC	2
5	PAHZZ	80009	152-0779-00	RECTIFIER, SEMICONDU	1
6	PAHZZ	04713	MUR115	SEMICONDUCTOR DEVIC	2
7	PAHZZ	80009	152-0655-00	SEMICONDUCTOR DEVIC	1
8	PAHZZ	80131	1N5819	SEMICONDUCTOR DEVIC	1
9	PAHZZ	80131	1N4152	SEMICONDUCTOR DEVIC	1
10	PAHZZ	80063	152-0333-00	SEMICONDUCTOR DEVIC	2
11	PAHZZ	56289	53D268	CAPACITOR, FIXED, ELE	1
12	PAHZZ	05397	C320C103K2R5CA	CAPACITOR, FIXED, CER	2
13	PAHZZ	31433	C330C102J2G5CA	CAPACITOR, FIXED, CER	3
14	XBHZZ	04222	MD015E224ZAA	CAPACITOR, FIXED, CER	3
15	PAHZZ	80009	283-0107-00	CAPACITOR, FIXED, CER	1
16	PAHZZ	81349	M39014/02-1419	CAPACITOR, FIXED, CER	3
17	PAHZZ	90201	TDC106K025NLF	CAPACITOR, FIXED, ELE	2
18	PAHZZ	81349	M39014/02-1360	CAPACITOR, FIXED, CER	4
19	PAHZZ	55680	UVX1V101MPA	CAPACITOR, FIXED, ELE	3
20	PAHZZ	56289	196D685X0035KA1	CAPACITOR, FIXED, ELE	1
21	PAHZZ	81349	M39014/02-1356	CAPACITOR, FIXED, CER	1
22	PAHZZ	18796	8131N145C0G332J	CAPACITOR, FIXED, CER	1
23	PAHZZ	90201	VTL22S100	CAPACITOR, FIXED, ELE	1
24	PAHZZ	80009	283-0010-00	CAPACITOR, FIXED, CER	1
25	PAHZZ	56289	513D476M063CC4	CAPACITOR, FIXED, ELE	1
26	PAHZZ	22526	65500-136	CONTACT ASSEMBLY, EL	1
27	PAHZZ	53387	3598-5002	CONNECTOR, RECEPACL	1
28	PAHZZ	22526	65576-131	CONTACT ASSEMBLY, EL	1
29	PAHZZ	80009	108-1230-00	COIL, RADIO FREQUENC	2
30	PAHZZ	59993	IRFD9120	SEMICONDUCTOR DEVIC	4
31	PAHZZ	80009	151-0736-00	TRANSISTOR	2
32	PAHZZ	80009	151-0188-00	TRANSISTOR	1
33	PAHZZ	80131	2N5769	TRANSISTOR	1
34	PAHZZ	59993	IRF530	TRANSISTOR	1
35	PAHZZ	80009	151-1063-00	TRANSISTOR	2
36	PAHZZ	81349	RWR80SR100FS	RESISTOR, FIXED, WIRE	2
37	PAHZZ	81349	RNC55K1001FS	RESISTOR, FIXED, FILM	3
38	PAHZZ	81349	RNC60K2001FS	RESISTOR, FIXED, FILM	2
39	PAHZZ	81349	RNC55J1622FS	RESISTOR, FIXED, FILM	1
40	PAHZZ	81349	RNC55K3321FS	RESISTOR, FIXED, FILM	2
41	PAHZZ	81349	RNC55K2490FS	RESISTOR, FIXED, FILM	2
42	PAHZZ	81349	RNC55K1402FS	RESISTOR, FIXED, FILM	1
43	PAHZZ	81349	RNC55K2002FS	RESISTOR, FIXED, FILM	1
44	PAHZZ	81349	RNC55K9090FS	RESISTOR, FIXED, FILM	1
45	PAHZZ	81349	RNC55K1102FS	RESISTOR, FIXED, FILM	1
46	PAHZZ	81349	RLR07C9530FS	RESISTOR, FIXED, FILM	1
47	PAHZZ	81349	RNC55K2741FS	RESISTOR, FIXED, FILM	1

## SECTION II TM11-6625-3240-24P

(1) ITEM NO	(2) SMR CODE	(3) CAGEC	(4) PART NUMBER	(5) DESCRIPTION AND USABLE ON CODES (UOC)	(6) QTY
48	PAHZZ	81349	RNC55J1372FS	RESISTOR, FIXED, FILM	1
49	PAHZZ	01121	BB27G5	RESISTOR, FIXED, COMP	2
50	PAHZZ	81349	RNC55K4641FS	RESISTOR, FIXED, FILM	1
51	PAHZZ	81349	RNC55K1302FS	RESISTOR, FIXED, FILM	1
52	PAHZZ	81349	RWR89S4R02FS	RESISTOR, FIXED, WIRE	1
53	PAHZZ	81349	RNC55K1003FS	RESISTOR, FIXED, FILM	3
54	PAHZZ	81349	RNR60C5112FS	RESISTOR, FIXED, FILM	1
55	PAHZZ	81349	RNC60K1002FS	RESISTOR, FIXED, FILM	2
56	PAHZZ	81349	RNC55K1000FS	RESISTOR, FIXED, FILM	1
57	PAHZZ	81349	RNC55H4220FS	RESISTOR, FIXED, FILM	1
58	PAHZZ	81349	RNC60K5111FS	RESISTOR, FIXED, FILM	1
59	PAHZZ	80009	321-0239-00	RESISTOR	2
60	PAHZZ	81349	RNC55K2432FS	RESISTOR, FIXED, FILM	1
61	PAHZZ	81349	RWR80S1R10FS	RESISTOR, FIXED, WIRE	1
62	PAHZZ	09353	E101SD1AQE	SWITCH, TOGGLE	1
63	PAHZZ	59873	214-0579-00	TERMINAL, LUG	4
64	PAHZZ	80009	120-1608-00	TRANSFORMER, POWER	1
65	PAHZZ	80009	120-0487-00	TRANSFORMER, RADIO F	1
66	PAHZZ	28480	1826-0428	MICROCIRCUIT, LINEAR	2
67	PAHZZ	04713	MC1403UDS	MICROCIRCUIT, LINEAR	2
68	PAHZZ	80009	156-1225-00	MICROCIRCUIT, LINEAR	2
69	PAHZZ	14933	7901101CB	MICROCIRCUIT, DIGITA	1
70	PAHZZ	13499	351-1271-010	MICROCIRCUIT, LINEAR	1
71	PAHZZ	67268	7901401FB	MICROCIRCUIT, DIGITA	1
72	PAHZZ	81349	JAN1N756A	SEMICONDUCTOR DEVIC	1
73	PAHZZ	80009	210-0561-00	NUT, PLAIN, HEXAGON	1
74	PAHZZ	80009	211-0507-00	SCREW, MACHINE	1
75	XBHZZ	80009	253-0188-00	TAPE, PRESS SENS	1
76	PAHZZ	80009	162-0503-00	INSULATION SLEEVING	1
77	PAHZZ	80009	211-0507-00	SCREW, MACHINE	1
78	PAHZZ	80009	210-0561-00	NUT, PLAIN, HEXAGON	1
79	PAHZZ	80009	175-2054-05	WIRE, ELECTRICAL	1

END OF FIGURE





CE2DZ195

Figure 9. Chart Recorder Assembly

(1) ITEM NO	(2) SMR CODE	(3) CAGEC	(4) PART NUMBER	(5) DESCRIPTION AND USABLE ON CODES (UOC)	(6) QTY
GROUP 07 CHART RECORDER ASSEMBLY: A10					
FIGURE 9					
1	PAHZZ	54318	31310000	MOTOR, UNIVERSAL	1
2	PAHZZ	54318	12676001	THUMBSCREW	1
3	XBHZZ	54318	22354002	PANEL, BLANK	1
4	PAHZZ	80009	211-0102-00	SCREW, MACHINE	2
5	PAHZZ	80009	211-0038-00	SCREW, MACHINE	1
6	XBHZZ	54318	31268-101	FRAME	1
7	XBHZZ	80009	200-3498-00	COVER, TEST SET	1
8	PAHZZ	80009	211-0038-00	SCREW, MACHINE	1
9	PAHZZ	80009	211-0087-00	SCREW, MACHINE	2
10	PAHZZ	54318	30995014	PRINT HEAD, AUTOMATI	1
11	PAHZZ	80009	118-7614-01	CIRCUIT CARD ASSEMB	1
12	PAHZZ	72962	22NM40	NUT, SELF-LOCKING, HE	3
13	PAHZZ	04713	B51547F014	INSULATOR, BUSHING	3

END OF FIGURE



## CROSS-REFERENCE INDEXES

## NATIONAL STOCK NUMBER INDEX

STOCK NUMBER	FIG.	ITEM	STOCK NUMBER	FIG.	ITEM
5910-00-001-7570	4	26	5905-00-250-5839	4	60
5905-00-004-6118	4	65	5905-00-250-5986	4	51
5305-00-005-0795	8	74		4	59
	8	77	6685-00-251-8931	2	26
5905-00-005-2698	4	104	5905-00-254-2451	4	74
5905-00-005-2903	8	57	5905-00-258-5411	4	99
5305-00-005-8235	2	32	5905-00-259-4433	4	89
5910-00-010-8721	4	13	5905-00-270-1285	4	103
	8	16	5905-00-270-1403	8	50
5961-00-048-7106	4	4	5905-00-270-1431	4	71
5310-00-052-3632	2	33	5905-00-270-4959	4	76
5310-00-081-8087	5	28	5905-00-273-9871	4	73
5910-00-081-8436	4	12	5310-00-274-4579	5	6
5961-00-104-8378	4	40	5905-00-284-8275	4	87
5310-00-113-1494	2	34	5905-00-295-4768	4	80
5910-00-113-5286	8	21	5905-00-308-6307	4	44
5910-00-113-5465	4	22	5905-00-348-2707	4	92
	8	18	5905-00-348-2708	8	47
5910-00-113-5499	4	17	5961-00-350-8371	8	10
	7	9	5910-00-368-2380	8	17
	7	14	5961-00-404-5537	4	36
5905-00-138-1285	4	81	5935-00-410-1399	2	8
	8	38	5905-00-412-0819	4	77
5905-00-138-6996	8	60	5905-00-415-6002	4	93
5961-00-138-7433	8	1	5961-00-417-4108	8	33
5905-00-139-1676	4	90	5310-00-418-2622	3	2
5905-00-140-7143	4	63	5905-00-419-3906	8	54
	8	40	5905-00-426-7095	4	45
5905-00-142-0931	4	62		8	55
	8	58	5905-00-431-5161	8	42
5905-00-147-4196	8	48	5905-00-431-5163	4	64
5305-00-150-4794	3	11	5905-00-431-7820	4	53
5905-00-151-4679	4	69		8	45
5905-00-152-8444	8	39	5905-00-431-7825	4	58
5905-00-164-1753	4	105	5905-00-431-7832	8	44
5961-00-189-1266	4	39	5905-00-432-0380	4	48
5905-00-189-2469	4	49		6	13
5905-00-196-6868	8	51		8	56
5905-00-200-9669	4	113	5905-00-432-0381	4	98
5905-00-208-4293	4	46		8	37
	6	11	5905-00-432-0400	4	57
	8	53	5905-00-432-0402	4	47
5905-00-211-1889	4	102		8	43
5905-00-214-2927	4	61	5905-00-432-0408	4	112
5950-00-220-6631	4	32	5905-00-432-0414	4	111
5905-00-224-6113	4	86	5905-00-432-0416	4	85
5905-00-227-5072	4	95	5905-00-432-0420	4	78
5905-00-231-3204	4	115	5905-00-432-0425	4	100
5310-00-231-4954	5	5	5905-00-432-0429	4	82
5905-00-232-9853	4	97	5905-00-432-6373	4	91

## CROSS-REFERENCE INDEXES

## NATIONAL STOCK NUMBER INDEX

STOCK NUMBER	FIG.	ITEM	STOCK NUMBER	FIG.	ITEM
5905-00-432-6376	4	107	5940-00-935-8313	4	116
5905-00-432-6378	4	70		8	63
	8	41	5962-01-003-2578	4	152
5905-00-432-6388	4	101	5961-01-005-9744	4	38
5905-00-432-9149	4	72	5905-01-008-4703	4	109
5910-00-436-7110	4	18	5961-01-011-4957	4	41
5910-00-436-7154	4	10	5910-01-019-6513	4	16
5905-00-437-1696	4	79		8	15
5310-00-439-4711	2	22	5905-01-026-0507	7	8
5950-00-451-2440	8	65	5910-01-026-2176	4	19
5905-00-452-0726	4	68	5905-01-027-5491	6	15
5905-00-475-8262	4	110	5999-01-032-5408	8	26
5905-00-476-4688	4	88	5905-01-033-3499	4	96
5961-00-479-7329	4	2	5935-01-037-3476	2	4
	8	2	5910-01-039-3056	4	15
5905-00-481-1110	6	12	5970-01-047-5712	9	13
5905-00-481-1328	4	94	5962-01-049-5245	4	126
5905-00-481-1329	4	56	5905-01-050-0327	4	67
5905-00-482-5044	4	55		6	14
5910-00-490-2943	4	20	5962-01-062-5106	8	70
5310-00-492-2138	7	32	5310-01-063-8974	7	13
5905-00-494-5891	8	49	5310-01-065-2270	7	30
5905-00-495-4953	4	84	5910-01-067-0871	4	9
5905-00-497-0820	4	54	5905-01-077-5772	4	75
5961-00-548-1964	4	154		6	18
5961-00-559-0070	2	31	5910-01-079-1390	8	23
	7	12	5962-01-082-4482	4	155
5305-00-559-8743	2	17	5310-01-083-9591	2	44
5310-00-562-3401	7	11	5905-01-086-7115	6	17
5920-00-661-0530	7	20	5920-01-087-0836	7	21
5905-00-721-2376	4	108	5962-01-089-5357	4	123
5905-00-721-2387	4	66	5905-01-091-3883	4	83
5920-00-741-5418	2	6	5905-01-092-2835	4	50
5305-00-763-7822	9	5	5962-01-099-8515	8	71
	9	8	5910-01-104-2160	8	20
5305-00-764-2966	9	9	5910-01-105-3458	8	25
5940-00-827-2653	7	26	5999-01-106-0815	3	15
	7	33	5340-01-107-7022	5	2
5310-00-836-2458	1	7	5962-01-109-4231	8	69
5310-00-836-3520	2	18	5905-01-110-3091	8	36
5310-00-841-8106	7	29	5935-01-110-3183	4	158
5961-00-845-6458	8	72	5910-01-112-6104	4	11
5910-00-879-5921	4	24	5935-01-112-7286	7	15
	8	24	5985-01-112-7348	2	5
5305-00-889-3116	3	18	5305-01-113-2259	5	8
5961-00-892-8706	4	34	5365-01-115-1105	3	5
5961-00-899-8924	4	3	5970-01-115-1940	7	31
	8	9	5330-01-116-9498	5	14
5910-00-900-1209	8	22	5962-01-123-8136	4	119
5905-00-900-2724	4	114		6	26



## CROSS-REFERENCE INDEXES

## NATIONAL STOCK NUMBER INDEX

STOCK NUMBER	FIG.	ITEM	STOCK NUMBER	FIG.	ITEM
5962-01-123-8136	8	68	5962-01-191-3468	4	148
5962-01-123-9584	4	147		8	67
5910-01-123-9818	4	21	5910-01-191-6304	4	25
5920-01-124-7200	7	16	5961-01-196-4902	4	37
5910-01-125-6224	8	12	5962-01-200-8146	4	132
5305-01-126-1185	1	8	5962-01-200-8147	4	131
	3	12	5910-01-214-1044	4	6
5962-01-126-3888	6	25		6	1
5305-01-126-8796	1	10		8	13
	2	13	5961-01-214-3127	8	34
	2	28	5961-01-216-2048	8	31
	2	41	5970-01-217-8705	8	76
	7	6	5910-01-218-8287	6	5
5999-01-127-3667	6	32	5905-01-219-4300	6	10
5961-01-127-8402	8	7	6145-01-221-4300	8	79
5962-01-129-3847	8	66	5305-01-222-0822	5	27
5950-01-131-3814	7	2		7	27
5310-01-133-8637	8	73	5905-01-222-7088	4	52
	8	78		8	59
5962-01-134-1786	4	149	5961-01-223-9425	4	33
5935-01-138-0638	6	6		6	8
5910-01-141-5549	6	4		8	30
5310-01-150-5764	2	23	5310-01-225-5229	9	12
5962-01-152-0238	6	27	5910-01-226-3582	6	3
5962-01-155-2487	4	153	5962-01-226-5664	4	125
5305-01-155-4343	2	38	5962-01-237-8931	4	143
5962-01-155-8007	6	29	5962-01-240-5627	4	127
5305-01-156-3734	2	21	5962-01-240-8265	4	146
5310-01-156-6423	3	1		6	31
5305-01-158-6229	7	23	5961-01-243-1933	6	9
5305-01-161-0880	1	5	5962-01-243-6443	6	30
	7	24	5962-01-244-4824	4	128
	7	28	5305-01-246-3841	3	13
5935-01-165-1782	6	33	5962-01-248-1936	4	138
5962-01-165-3089	4	150	5935-01-252-1416	4	28
5961-01-166-7503	8	4	5962-01-252-4836	4	137
5962-01-171-3774	4	130	5962-01-258-3493	4	140
	6	28	5905-01-259-9396	4	106
5910-01-171-8693	4	14	5961-01-265-6894	4	42
5905-01-172-7471	8	61	5961-01-267-4608	8	5
5962-01-173-7737	4	154	5910-01-267-8130	4	23
5961-01-174-1221	8	8	6135-01-268-6726	4	1
5961-01-176-1729	4	35	5962-01-268-7771	4	129
	8	32	5962-01-271-8225	4	142
5961-01-177-1335	4	43	5305-01-272-8308	9	4
5961-01-181-7429	4	156	5935-01-276-0614	4	29
5910-01-184-3391	4	7	5962-01-277-3331	4	124
5905-01-184-5287	8	46	5962-01-280-3480	4	134
5905-01-186-6827	8	52	5935-01-287-2307	4	27
5305-01-186-7583	2	35	5962-01-292-9208	4	144

## CROSS-REFERENCE INDEXES

## NATIONAL STOCK NUMBER INDEX

STOCK NUMBER	FIG.	ITEM	STOCK NUMBER	FIG.	ITEM
5935-01-300-8972	4	30	5995-01-335-8980	2	19
5310-01-308-7447	2	43	5995-01-335-8981	2	25
6130-01-309-9025	1	6	5995-01-335-8982	2	45
5998-01-309-9083	5	26	5999-01-335-9485	3	7
5330-01-311-0008	5	29	5995-01-335-9585	7	4
5962-01-322-3316	4	139	5995-01-335-9586	7	5
5962-01-324-6612	4	118	5995-01-336-2709	2	46
5961-01-325-1777	8	6	5995-01-336-2710	1	12
5962-01-327-2415	4	136	3040-01-336-3463	2	37
5962-01-327-2419	4	121	6130-01-336-6586	6	7
5962-01-327-6566	4	117	6140-01-336-6632	1	4
5999-01-334-7397	3	14	5355-01-336-7069	5	19
5999-01-334-7603	8	28	6140-01-336-7122	3	21
5999-01-334-7948	5	30	5330-01-336-7592	2	10
5999-01-334-7960	3	6	5355-01-337-8391	5	4
5962-01-334-8159	4	122	5355-01-337-8392	5	7
5340-01-334-8279	2	27	5905-01-338-8114	6	20
5330-01-334-8573	5	17	5980-01-338-9774	5	24
5330-01-334-8576	2	15	5998-01-339-8156	7	7
5950-01-334-8625	4	31	5905-01-342-2694	6	16
5950-01-334-8626	7	3	5962-01-342-5647	4	133
5950-01-334-8628	8	29	5998-01-342-5679	9	11
5950-01-334-8630	8	64	5930-01-342-5788	7	17
5340-01-334-8693	2	42	5998-01-342-6546	1	11
5930-01-334-9555	6	23	7025-01-343-2753	9	10
5962-01-334-9637	4	120	6105-01-344-4704	9	1
5910-01-334-9678	8	19	5920-01-350-8640	3	16
5910-01-334-9680	4	8	5330-01-351-7895	5	20
5910-01-334-9681	8	11	5998-01-352-1052	1	9
5930-01-334-9745	6	2	5995-01-352-5506	2	3
5930-01-334-9748	8	62	5995-01-353-4785	7	18
5305-01-334-9972	7	10			
5930-01-335-2772	6	24			
5310-01-335-2947	3	10			
5915-01-335-3020	7	22			
5962-01-335-3204	4	141			
5930-01-335-4871	5	13			
5930-01-335-4872	5	12			
5930-01-335-4873	5	11			
5930-01-335-4874	5	10			
5930-01-335-4875	5	9			
5905-01-335-4877	6	19			
5961-01-335-4964	8	35			
6625-01-335-6092	3	19			
5935-01-335-6965	5	3			
5935-01-335-7264	2	29			
5305-01-335-7408	3	3			
5935-01-335-8039	8	27			
5961-01-335-8181	8	3			
5955-01-335-8352	4	135			

## CROSS-REFERENCE INDEXES

CAGEC	PART NUMBER	PART NUMBER INDEX STOCK NUMBER	FIG.	ITEM
01295	ADC0808MJB	5962-01-155-8007	6	29
24355	AD7524UQ	5962-01-152-0238	6	27
24355	AD7534JN		4	145
01295	A1108	5961-00-479-7329	4	2
			8	2
01121	BB27G5	5905-00-494-5891	8	49
04713	B51547F014	5970-01-047-5712	9	13
02735	CA3160E	5962-01-165-3089	4	150
81349	CCR06CG102GS	5910-01-214-1044	6	1
81349	CCR75CG510GS	5910-01-267-8130	4	23
18714	CD54HC253F/3A	5962-01-243-6443	6	30
80009	CHAS GRP		1	1
91637	CMF55116G27403F	5905-01-335-4877	6	19
05397	C320C103K2R5CA	5910-01-125-6224	8	12
31433	C330C102J2G5CA	5910-01-214-1044	4	6
			8	13
09922	DILB28P-108	5935-01-110-3183	4	158
08779	DP-241-6-24	5950-01-131-3814	7	2
0B0A9	DS1210	5962-01-327-6566	4	117
09353	E101SD1AQE	5930-01-334-9748	8	62
70903	FH49061		2	2
80009	FRONT PNL		1	3
81349	F02B250V3/10A	5920-00-741-5418	2	6
81349	F03B250V15/100A	5920-00-661-0530	7	20
72962	F22NM62	5310-00-081-8087	5	28
59993	IRFD9120	5961-01-223-9425	4	33
			6	8
			8	30
59993	IRF530	5961-01-214-3127	8	34
81349	JANTX2N4416A	5961-01-011-4957	4	41
81349	JAN1N5712	5961-00-048-7106	4	4
81349	JAN1N756A	5961-00-845-6458	8	72
81349	JAN2N2920	5961-00-104-8378	4	40
81855	LTC-7P	6135-01-268-6726	4	1
04713	MC1403UDS	5962-01-191-3468	4	148
			8	67
04222	MD015E224ZAA		4	5
			6	2
			8	14
34371	MD82C54B	5962-01-280-3480	4	134
27014	MM54C30J/883B	5962-01-089-5357	4	123
27014	MM54HC244J	5962-01-200-8146	4	132
27014	MM54HC245J/883B	5962-01-200-8147	4	131
27014	MM54HC32J/883B	5962-01-171-3774	4	130
			6	28
27014	MM74C240N	5962-01-226-5664	4	125
96906	MS122027	5310-00-836-2458	1	7
96906	MS35206-213	5305-00-889-3116	3	18
96906	MS35333-38	5310-00-559-0070	2	31
			7	12
96906	MS90578-1441	5935-00-410-1399	2	8

## CROSS-REFERENCE INDEXES

CAGEC	PART NUMBER	PART NUMBER INDEX STOCK NUMBER	FIG.	ITEM
04713	MUR115	5961-01-325-1777	8	6
75378	MXO-55GA-3I-20M	5955-01-335-8352	4	135
81349	M38510/10104BPE	5962-01-134-1786	4	149
81349	M38510/33001BCA	5962-01-173-7737	4	154
81349	M38510/33003BCA	5962-01-292-9208	4	144
81349	M38510/65003BCA	5962-01-240-5627	4	127
81349	M38510/65101BCA	5962-01-240-8265	4	146
			6	31
81349	M38510/65102BCA	5962-01-268-7771	4	129
81349	M38510/65302BCA	5962-01-244-4824	4	128
81349	M38510/65308BEA	5962-01-271-8225	4	142
81349	M38510/65702BCA	5962-01-277-3331	4	124
81349	M39012/25-0015		5	1
81349	M39014/02-1350	5910-00-113-5499	4	17
			7	9
			7	14
81349	M39014/02-1356	5910-00-113-5286	8	21
81349	M39014/02-1360	5910-00-113-5465	4	22
			8	18
81349	M39014/02-1419	5910-00-010-8721	4	13
			8	16
81349	M39014/22-1058	5910-01-141-5549	6	4
81349	M39014/22-1094	5910-01-171-8693	4	14
81349	M55339/16-00914	5935-01-037-3476	2	4
81349	M8340102M3000GB	5905-01-338-8114	6	20
81349	RLR07C9530FS	5905-01-184-5287	8	46
81349	RNC55H1652BS	5905-01-033-3499	4	96
81349	RNC55H40R0BS	5905-01-259-9396	4	106
81349	RNC55H4220FS	5905-00-005-2903	8	57
81349	RNC55H4991FS	5905-00-481-1110	6	12
81349	RNC55H5130BS	5905-00-224-6113	4	86
81349	RNC55J10R0FS	5905-01-077-5772	4	75
			6	18
81349	RNC55J1252BS	5905-00-270-1285	4	103
81349	RNC55J1372FS	5905-00-147-4196	8	48
81349	RNC55J1622FS	5905-00-152-8444	8	39
81349	RNC55J40R2FS	5905-01-050-0327	4	67
			6	14
81349	RNC55J8061FS	5905-00-295-4768	4	80
81349	RNC55J8250FS	5905-00-476-4688	4	88
81349	RNC55J8251FS	5905-00-151-4679	4	69
81349	RNC55J8451BS	5905-01-008-4703	4	109
81349	RNC55K1000FS	5905-00-432-0380	4	48
			6	13
			8	56
81349	RNC55K1001FS	5905-00-432-0381	4	98
			8	37
81349	RNC55K1003FS	5905-00-208-4293	4	46
			6	1
			8	53
81349	RNC55K1021FS	5905-00-259-4433	4	89

## CROSS-REFERENCE INDEXES

CAGEC	PART NUMBER	PART NUMBER INDEX STOCK NUMBER	FIG.	ITEM
81349	RNC55K1102FS	5905-00-431-7820	4	53
			8	45
81349	RNC55K1210FS	5905-00-481-1328	4	94
81349	RNC55K1212FS	5905-00-431-7825	4	58
81349	RNC55K1273FS	5905-00-270-4959	4	76
81349	RNC55K1301FS	5905-00-139-1676	4	90
81349	RNC55K1302FS	5905-00-196-6868	8	51
81349	RNC55K1402FS	5905-00-431-5161	8	42
81349	RNC55K1500FS	5905-00-415-6002	4	93
81349	RNC55K1502FS	5905-00-004-6118	4	65
81349	RNC55K1621FS	5905-00-432-6373	4	91
81349	RNC55K1742FS	5905-00-211-1889	4	102
81349	RNC55K1822FS	5905-00-431-5163	4	64
81349	RNC55K2000FS	5905-00-432-0400	4	57
81349	RNC55K2002FS	5905-00-432-0402	4	47
			8	43
81349	RNC55K2051FS	5905-00-348-2707	4	92
81349	RNC55K2100FS	5905-00-432-6376	4	107
81349	RNC55K2372FS	5905-00-452-0726	4	68
81349	RNC55K24R3FS	5905-00-232-9853	4	97
81349	RNC55K2430FS	5905-00-481-1329	4	56
81349	RNC55K2432FS	5905-00-138-6996	8	60
81349	RNC55K2490FS	5905-00-432-6378	4	70
			8	41
81349	RNC55K2492FS	5905-00-250-5839	4	60
81349	RNC55K2550FS	5905-00-270-1431	4	71
81349	RNC55K2610FS	5905-00-432-9149	4	72
81349	RNC55K2670FS	5905-00-273-9871	4	73
81349	RNC55K2671FS	5905-00-432-0408	4	112
81349	RNC55K2741FS	5905-00-348-2708	8	47
81349	RNC55K2870FS	5905-00-254-2451	4	74
81349	RNC55K3010FS	5905-00-432-0414	4	111
81349	RNC55K3162FS	5905-00-412-0819	4	77
81349	RNC55K3321FS	5905-00-140-7143	4	63
			8	40
81349	RNC55K3572FS	5905-00-258-5411	4	99
81349	RNC55K4021FS	5905-00-432-0416	4	85
81349	RNC55K4641FS	5905-00-270-1403	8	50
81349	RNC55K4750FS	5905-00-308-6307	4	44
81349	RNC55K4990FS	5905-00-432-0420	4	78
81349	RNC55K4992FS	5905-00-250-5986	4	51
			4	59
81349	RNC55K5231FS	5905-00-495-4953	4	84
81349	RNC55K6040FS	5905-00-432-0425	4	100
81349	RNC55K6191FS	5905-00-432-6388	4	101
81349	RNC55K6340FS	5905-00-164-1753	4	105
81349	RNC55K6490FS	5905-00-284-8275	4	87
81349	RNC55K7152FS	5905-00-200-9669	4	113
81349	RNC55K8060FS	5905-00-432-0429	4	82
81349	RNC55K8661FS	5905-00-005-2698	4	104
81349	RNC55K9090FS	5905-00-431-7832	8	44

## CROSS-REFERENCE INDEXES

CAGEC	PART NUMBER	PART NUMBER INDEX STOCK NUMBER	FIG.	ITEM
81349	RNC60K1002FS	5905-00-426-7095	4	45
			8	55
81349	RNC60K1331FS	5905-00-721-2376	4	108
81349	RNC60K2001FS	5905-00-138-1285	4	81
			8	38
81349	RNC60K3483FS	5905-00-189-2469	4	49
81349	RNC60K3920FS	5905-00-227-5072	4	95
81349	RNC60K5110FS	5905-00-214-2927	4	61
81349	RNC60K5111FS	5905-00-142-0931	4	62
			8	58
81349	RNC60K6190FS	5905-00-721-2387	4	66
81349	RNR60C5112FS	5905-00-419-3906	8	54
81349	RN65F2492F	5905-00-900-2724	4	114
81349	RWR80SR100FS	5905-01-110-3091	8	36
81349	RWR80S1R10FS	5905-01-172-7471	8	61
81349	RWR89S4R02FS	5905-01-186-6827	8	52
01295	SN74ALS02N	5962-01-248-1936	4	138
01295	SN74ALS161BN	5962-01-322-3316	4	139
01295	SN74ALS175N	5962-01-327-2415	4	136
01295	SN74HC138N	5962-01-327-2419	4	121
01295	SN74HC374NP3	5962-01-237-8931	4	143
99193	S8154-6-020	5310-00-274-4579	5	6
06915	TCG1-2.500-03		2	40
90201	TDC106K025NLF	5910-00-368-2380	8	17
07263	UA78L05AWC	5962-01-049-5245	4	126
55680	UVX1V101MPA	5910-01-334-9678	8	19
90201	VTL22S100	5910-01-079-1390	8	23
03508	V130LA20A	5905-01-026-0507	7	8
80009	YT1S		1	2
80009	011-0123-00	5985-01-112-7348	2	5
80009	012-1350-00	5995-01-352-5506	2	3
80009	013-0261-00		2	9
80009	016-0813-01	6140-01-336-6632	1	4
74970	023-0026-001	5935-01-112-7286	7	15
61935	033-4501	5930-01-342-5788	7	17
80131	1N4152	5961-00-899-8924	4	3
			8	9
80131	1N5819	5961-01-174-1221	8	8
94580	10063973-101	5962-01-003-2578	4	152
18876	10212257-1	5961-00-892-8706	4	34
80009	105-0954-01	3040-01-336-3463	2	37
80009	108-0509-00	5950-00-220-6631	4	32
80009	108-1230-00	5950-01-334-8628	8	29
01121	110A103	5905-01-092-2835	4	50
80009	118-7614-01	5998-01-342-5679	9	11
80009	119-2370-00	6130-01-336-6586	6	7
80009	119-3488-00	5915-01-335-3020	7	22
80009	120-0487-00	5950-00-451-2440	8	65
80009	120-1458-00	5950-01-334-8626	7	3
80009	120-1606-00	5950-01-334-8625	4	31
80009	120-1608-00	5950-01-334-8630	8	64

## CROSS-REFERENCE INDEXES

CAGEC	PART NUMBER	PART NUMBER INDEX STOCK NUMBER	FIG.	ITEM
73743	12161-50	5310-01-156-6423	3	1
28480	1251-8158	5935-01-300-8972	4	30
54318	12676001		9	2
80009	129-0562-00	5340-01-334-8279	2	27
80009	129-1092-00	5340-01-334-8693	2	42
04939	13084664	5962-01-082-4482	4	155
80009	131-1343-00	5999-01-127-3667	6	32
97403	13214E3291-3	5310-00-052-3632	2	33
80009	146-0065-00	6140-01-336-7122	3	21
80009	151-0139-00	5961-01-177-1335	4	43
80009	151-0188-00	5961-01-176-1729	4	35
			8	32
80009	151-0271-00	5961-00-189-1266	4	39
80009	151-0276-01	5961-00-404-5537	4	36
80009	151-0441-00	5961-01-005-9744	4	38
80009	151-0736-00	5961-01-216-2048	8	31
80009	151-1063-00	5961-01-335-4964	8	35
80009	151-1078-00	5961-01-196-4902	4	37
80009	151-1121-00	5961-01-243-1933	6	9
80063	152-0333-00	5961-00-350-8371	8	10
80009	152-0406-00	5961-00-138-7433	8	1
80009	152-0514-00	5961-00-548-1964	4	157
80009	152-0581-00	5961-01-166-7503	8	4
80009	152-0582-00	5961-01-335-8181	8	3
80009	152-0647-00	5961-01-181-7429	4	156
80009	152-0655-00	5961-01-127-8402	8	7
80009	152-0779-00	5961-01-267-4608	8	5
80009	156-0927-02	5962-01-123-9584	4	147
80009	156-1156-00	5962-01-155-2487	4	153
80009	156-1225-00	5962-01-123-8136	4	119
			6	26
			8	68
80009	156-1699-00		4	151
80009	156-2587-00	5962-01-334-8159	4	122
80009	156-2768-00	5962-01-335-3204	4	141
80009	156-2769-00	5962-01-334-9637	4	120
94117	15882P1	5310-01-063-8974	7	13
80009	160-4412-09	5962-01-342-5647	4	133
80009	162-0503-00	5970-01-217-8705	8	76
80009	174-0950-00	5995-01-335-8980	2	19
80009	174-0951-00	5995-01-335-8982	2	45
80009	174-0952-00	5995-01-336-2709	2	46
80009	174-0953-00	5995-01-335-8981	2	25
80009	174-0954-00	5995-01-335-9585	7	4
80009	174-0955-00	5995-01-336-2710	1	12
80009	174-0957-00	5995-01-335-9586	7	5
80009	175-2054-05	6145-01-221-4300	8	79
28480	1826-0428	5962-01-129-3847	8	66
56289	196D685X0035KA1	5910-01-104-2160	8	20
80009	198-5460-01	5995-01-353-4785	7	18
04713	2N3810	5961-01-265-6894	4	42

## CROSS-REFERENCE INDEXES

CAGEC	PART NUMBER	PART NUMBER INDEX STOCK NUMBER	FIG.	ITEM
80131	2N5769	5961-00-417-4108	8	33
73743	2X20319-402	5310-00-231-4954	5	5
80009	200-2264-00	5920-01-087-0836	7	21
80009	200-3123-00		2	11
80009	200-3453-00		2	20
80009	200-3498-00		9	7
80009	204-0832-00	5920-01-124-7200	7	16
13499	205-0027-002	5962-01-252-4836	4	137
59873	210-0054-00	5310-00-418-2622	3	2
80009	210-0055-00	5310-01-150-5764	2	23
80009	210-0202-00	5940-00-827-2653	7	26
			7	33
59873	210-0457-00	5310-00-841-8106	7	29
80009	210-0561-00	5310-01-133-8637	8	73
			8	78
80009	210-0803-00	5310-01-065-2270	7	30
80009	210-0851-00	5310-00-113-1494	2	34
80009	210-0933-00	5970-01-115-1940	7	31
80009	210-0975-00	5310-00-492-2138	7	32
80009	210-1307-00	5310-01-308-7447	2	43
80009	211-0005-00	5305-01-186-7583	2	35
80009	211-0007-00	5305-01-155-4343	2	38
80009	211-0038-00	5305-00-763-7822	9	5
			9	8
80009	211-0087-00	5305-00-764-2966	9	9
80009	211-0097-00	5305-01-156-3734	2	21
80009	211-0101-00	5305-01-158-6229	7	23
80009	211-0102-00	5305-01-272-8308	9	4
80009	211-0105-00	5305-01-161-0880	1	5
			7	24
			7	28
80009	211-0194-00	5305-01-335-7408	3	3
80009	211-0198-00	5305-01-126-1185	1	8
			3	12
78189	211-041800-00	5310-00-836-3520	2	18
80009	211-0507-00	5305-00-005-0795	8	74
			8	77
80009	211-0658-00	5305-01-222-0822	5	27
			7	27
80009	212-0001-00	5305-00-005-8235	2	32
80009	212-0112-00	5305-01-334-9972	7	10
80009	213-0123-00	5305-00-559-8743	2	17
80009	213-0267-00	5305-01-246-3841	3	13
80009	213-0718-00	5305-01-113-2259	5	8
59873	214-0579-00	5940-00-935-8313	4	116
			8	63
80009	214-2343-00	5999-01-334-7960	3	6
80009	214-2344-00	5999-01-334-7397	3	14
72962	22NM40	5310-01-225-5229	9	12
80009	220-0547-01	5310-00-562-3401	7	11
80009	220-0961-00		5	16



## CROSS-REFERENCE INDEXES

CAGEC	PART NUMBER	PART NUMBER INDEX STOCK NUMBER	FIG.	ITEM
54318	22354002		9	3
14752	232A1B224J	5910-00-490-2943	4	20
53387	2514-6002UB	5935-01-252-1416	4	28
80009	253-0188-00		8	75
80009	256-0570-00	6685-00-251-8931	2	26
80009	260-2091-00		6	21
80009	260-2269-01	5930-01-334-9745	6	22
80009	260-2270-01	5930-01-334-9555	6	23
80009	260-2287-01	5930-01-335-2772	6	24
75915	273.003	5920-01-350-8640	3	16
80009	283-0010-00	5910-00-879-5921	4	24
			8	24
80009	283-0107-00	5910-01-019-6513	4	16
			8	15
80009	283-0108-00	5910-00-436-7110	4	18
80009	283-0111-00	5910-00-436-7154	4	10
80009	283-0156-00	5910-00-001-7570	4	26
80009	283-0181-00	5910-01-039-3056	4	15
80009	283-0190-00	5910-01-184-3391	4	7
80009	283-0238-00	5910-01-112-6104	4	11
80009	283-0348-00	5910-01-191-6304	4	25
80009	283-0422-00	5910-01-123-9818	4	21
80009	290-0748-00	5910-01-067-0871	4	9
80009	290-0919-00	5910-01-218-8287	6	5
80009	290-0974-00	5910-01-226-3582	6	3
80009	290-1087-00	5910-01-334-9680	4	8
80009	307-0751-00	5905-01-219-4300	6	10
54318	30995014	7025-01-343-2753	9	10
80009	311-0633-00	5905-00-231-3204	4	115
80009	311-0634-00	5905-00-497-0820	4	54
80009	311-2400-00	5905-01-342-2694	6	16
54318	31268-101		9	6
54318	31310000	6105-01-344-4704	9	1
80009	321-0059-00	5905-01-086-7115	6	17
80009	321-0068-00	5905-00-437-1696	4	79
80009	321-0139-00	5905-00-482-5044	4	55
80009	321-0239-00	5905-01-222-7088	4	52
			8	59
59873	321-0250-00	5905-01-091-3883	4	83
59873	321-0258-00	5905-00-475-8262	4	110
80009	331-0502-01		5	23
80009	333-1990-02		3	8
80009	333-3433-00		2	16
80009	334-3379-01		7	19
80009	334-6664-01		5	15
80009	334-6867-00		3	9
80009	337-2193-04		2	12
80009	337-2762-00		3	17
80009	337-3225-00	5935-01-335-7264	2	29
80009	343-0349-01		3	4
80009	346-0045-00	5340-01-107-7022	5	2

## CROSS-REFERENCE INDEXES

CAGEC	PART NUMBER	PART NUMBER INDEX STOCK NUMBER	FIG.	ITEM
80009	348-0477-00	5330-01-116-9498	5	14
80009	348-0920-00		5	25
80009	348-0974-00	5330-01-336-7592	2	10
80009	348-0975-00	5330-01-334-8576	2	15
80009	348-1116-00		5	22
80009	348-1143-01	5999-01-335-9485	3	7
80009	348-1144-00	5999-01-334-7948	5	30
80009	348-1145-01	5330-01-351-7895	5	20
13499	351-1271-010	5962-01-062-5106	8	70
80009	354-0581-00	5330-01-311-0008	5	29
80009	354-0674-00	5330-01-334-8573	5	17
53387	3592-5002	5935-01-287-2307	4	27
53387	3593-5002	5935-01-276-0614	4	29
53387	3596-6002	5935-01-138-0638	6	6
53387	3598-5002	5935-01-335-8039	8	27
80009	361-0776-00	5365-01-115-1105	3	5
80009	366-0655-01	5930-01-335-4872	5	12
80009	366-0655-02	5930-01-335-4873	5	11
80009	366-0655-03	5930-01-335-4874	5	10
80009	366-0655-04	5930-01-335-4875	5	9
80009	366-0655-05	5930-01-335-4871	5	13
80009	366-2097-00	5355-01-337-8391	5	4
80009	366-2098-00	5355-01-336-7069	5	19
80009	366-2104-00	5355-01-337-8392	5	7
80009	384-1674-01		2	36
80009	384-1675-00		5	18
80009	386-2435-00		3	20
80009	386-5307-02		5	21
80009	407-1694-00		2	24
02111	43P203	5905-01-027-5491	6	15
80009	437-0338-00		2	1
80009	437-0402-00		2	7
80009	441-1682-02		2	30
80009	441-1683-00		2	39
80009	441-1684-01		7	25
80009	441-1685-00		7	1
80009	441-1687-00		2	14
00779	50462-7	5999-01-106-0815	3	15
56289	513D476M063CC4	5910-01-105-3458	8	25
56289	53D268	5910-01-334-9681	8	11
86928	5612-32-31	5310-01-335-2947	3	10
86928	5714-147-20N	5310-01-083-9591	2	44
14933	5962-8688301CA	5962-01-258-3493	4	140
67268	5962-8969501CA	5962-01-324-6612	4	118
06540	6130-SS-0632	5305-00-150-4794	3	11
80009	620-0477-02	6130-01-309-9025	1	6
22526	65500-136	5999-01-032-5408	8	26
22526	65576-131	5999-01-334-7603	8	28
80009	670-6592-00	6625-01-335-6092	3	19
80009	670-9286-03	5998-01-339-8156	7	7
80009	670-9291-02	5998-01-342-6546	1	11

## CROSS-REFERENCE INDEXES

CAGEC	PART NUMBER	PART NUMBER INDEX STOCK NUMBER	FIG.	ITEM
80009	672-1241-00	5980-01-338-9774	5	24
80009	672-1251-01	5998-01-309-9083	5	26
80009	672-1253-03	5998-01-352-1052	1	9
91836	752-17-9	5935-01-335-6965	5	3
30554	79-9882-3	5962-01-126-3888	6	25
14933	7901101CB	5962-01-109-4231	8	69
67268	7901401FB	5962-01-099-8515	8	71
59660	805030Y5D0 102K	5910-00-081-8436	4	12
18796	8121N145C0G101J	5910-01-026-2176	4	19
18796	8131N145C0G332J	5910-00-900-1209	8	22
93907	821-01655-024	5305-01-126-8796	1	10
			2	13
			2	28
			2	41
			7	6
99551	833656	5310-00-439-4711	2	22
96214	972487-0001	5935-01-165-1782	6	33

## CROSS-REFERENCE INDEXES

FIG.	ITEM	FIGURE AND ITEM NUMBER INDEX		PART NUMBER
		STOCK NUMBER	CAGEC	
1	1		80009	CHAS GRP
1	2		80009	YT1S
1	3		80009	FRONT PNL
1	4	6140-01-336-6632	80009	016-0813-01
1	5	5305-01-161-0880	80009	211-0105-00
1	6	6130-01-309-9025	80009	620-0477-02
1	7	5310-00-836-2458	96906	MS122027
1	8	5305-01-126-1185	80009	211-0198-00
1	9	5998-01-352-1052	80009	672-1253-03
1	10	5305-01-126-8796	93907	821-01655-024
1	11	5998-01-342-6546	80009	670-9291-02
1	12	5995-01-336-2710	80009	174-0955-00
2	1		80009	437-0338-00
2	2		70903	FH49061
2	3	5995-01-352-5506	80009	012-1350-00
2	4	5935-01-037-3476	81349	M55339/16-00914
2	5	5985-01-112-7348	80009	011-0123-00
2	6	5920-00-741-5418	81349	F02B250V3/10A
2	7		80009	437-0402-00
2	8	5935-00-410-1399	96906	MS90578-1441
2	9		80009	013-0261-00
2	10	5330-01-336-7592	80009	348-0974-00
2	11		80009	200-3123-00
2	12		80009	337-2193-04
2	13	5305-01-126-8796	93907	821-01655-024
2	14		80009	441-1687-00
2	15	5330-01-334-8576	80009	348-0975-00
2	16		80009	333-3433-00
2	17	5305-00-559-8743	80009	213-0123-00
2	18	5310-00-836-3520	78189	211-041800-00
2	19	5995-01-335-8980	80009	174-0950-00
2	20		80009	200-3453-00
2	21	5305-01-156-3734	80009	211-0097-00
2	22	5310-00-439-4711	99551	833656
2	23	5310-01-150-5764	80009	210-0055-00
2	24		80009	407-1694-00
2	25	5995-01-335-8981	80009	174-0953-00
2	26	6685-00-251-8931	80009	256-0570-00
2	27	5340-01-334-8279	80009	129-0562-00
2	28	5305-01-126-8796	93907	821-01655-024
2	29	5935-01-335-7264	80009	337-3225-00
2	30		80009	441-1682-02
2	31	5310-00-559-0070	96906	MS35333-38
2	32	5305-00-005-8235	80009	212-0001-00
2	33	5310-00-052-3632	97403	13214E3291-3
2	34	5310-00-113-1494	80009	210-0851-00
2	35	5305-01-186-7583	80009	211-0005-00
2	36		80009	384-1674-01
2	37	3040-01-336-3463	80009	105-0954-01
2	38	5305-01-155-4343	80009	211-0007-00
2	39		80009	441-1683-00

## CROSS-REFERENCE INDEXES

FIG.	ITEM	FIGURE AND ITEM NUMBER INDEX		PART NUMBER
		STOCK NUMBER	CAGEC	
2	40		06915	TCG1-2.500-03
2	41	5305-01-126-8796	93907	821-01655-024
2	42	5340-01-334-8693	80009	129-1092-00
2	43	5310-01-308-7447	80009	210-1307-00
2	44	5310-01-083-9591	86928	5714-147-20N
2	45	5995-01-335-8982	80009	174-0951-00
2	46	5995-01-336-2709	80009	174-0952-00
3	1	5310-01-156-6423	73743	12161-50
3	2	5310-00-418-2622	59873	210-0054-00
3	3	5305-01-335-7408	80009	211-0194-00
3	4		80009	343-0349-01
3	5	5365-01-115-1105	80009	361-0776-00
3	6	5999-01-334-7960	80009	214-2343-00
3	7	5999-01-335-9485	80009	348-1143-01
3	8		80009	333-1990-02
3	9		80009	334-6867-00
3	10	5310-01-335-2947	86928	5612-32-31
3	11	5305-00-150-4794	06540	6130-SS-0632
3	12	5305-01-126-1185	80009	211-0198-00
3	13	5305-01-246-3841	80009	213-0267-00
3	14	5999-01-334-7397	80009	214-2344-00
3	15	5999-01-106-0815	00779	50462-7
3	16	5920-01-350-8640	75915	273.003
3	17		80009	337-2762-00
3	18	5305-00-889-3116	96906	MS35206-213
3	19	6625-01-335-6092	80009	670-6592-00
3	20		80009	386-2435-00
3	21	6140-01-336-7122	80009	146-0065-00
4	1	6135-01-268-6726	81855	LTC-7P
4	2	5961-00-479-7329	01295	A1108
4	3	5961-00-899-8924	80131	1N4152
4	4	5961-00-048-7106	81349	JAN1N5712
4	5		04222	MD015E224ZAA
4	6	5910-01-214-1044	31433	C330C102J2G5CA
4	7	5910-01-184-3391	80009	283-0190-00
4	8	5910-01-334-9680	80009	290-1087-00
4	9	5910-01-067-0871	80009	290-0748-00
4	10	5910-00-436-7154	80009	283-0111-00
4	11	5910-01-112-6104	80009	283-0238-00
4	12	5910-00-081-8436	59660	805030Y5D0 102K
4	13	5910-00-010-8721	81349	M39014/02-1419
4	14	5910-01-171-8693	81349	M39014/22-1094
4	15	5910-01-039-3056	80009	283-0181-00
4	16	5910-01-019-6513	80009	283-0107-00
4	17	5910-00-113-5499	81349	M39014/02-1350
4	18	5910-00-436-7110	80009	283-0108-00
4	19	5910-01-026-2176	18796	8121N145C0G101J
4	20	5910-00-490-2943	14752	232A1B224J
4	21	5910-01-123-9818	80009	283-0422-00
4	22	5910-00-113-5465	81349	M39014/02-1360
4	23	5910-01-267-8130	81349	CCR75CG510GS

## CROSS-REFERENCE INDEXES

FIG.	ITEM	FIGURE AND ITEM NUMBER INDEX STOCK NUMBER	CAGEC	PART NUMBER
4	24	5910-00-879-5921	80009	283-0010-00
4	25	5910-01-191-6304	80009	283-0348-00
4	26	5910-00-001-7570	80009	283-0156-00
4	27	5935-01-287-2307	53387	3592-5002
4	28	5935-01-252-1416	53387	2514-6002UB
4	29	5935-01-276-0614	53387	3593-5002
4	30	5935-01-300-8972	28480	1251-8158
4	31	5950-01-334-8625	80009	120-1606-00
4	32	5950-00-220-6631	80009	108-0509-00
4	33	5961-01-223-9425	59993	IRFD9120
4	34	5961-00-892-8706	18876	10212257-1
4	35	5961-01-176-1729	80009	151-0188-00
4	36	5961-00-404-5537	80009	151-0276-01
4	37	5961-01-196-4902	80009	151-1078-00
4	38	5961-01-005-9744	80009	151-0441-00
4	39	5961-00-189-1266	80009	151-0271-00
4	40	5961-00-104-8378	81349	JAN2N2920
4	41	5961-01-011-4957	81349	JANTX2N4416A
4	42	5961-01-265-6894	04713	2N3810
4	43	5961-01-177-1335	80009	151-0139-00
4	44	5905-00-308-6307	81349	RNC55K4750FS
4	45	5905-00-426-7095	81349	RNC60K1002FS
4	46	5905-00-208-4293	81349	RNC55K1003FS
4	47	5905-00-432-0402	81349	RNC55K2002FS
4	48	5905-00-432-0380	81349	RNC55K1000FS
4	49	5905-00-189-2469	81349	RNC60K3483FS
4	50	5905-01-092-2835	01121	110A103
4	51	5905-00-250-5986	81349	RNC55K4992FS
4	52	5905-01-222-7088	80009	321-0239-00
4	53	5905-00-431-7820	81349	RNC55K1102FS
4	54	5905-00-497-0820	80009	311-0634-00
4	55	5905-00-482-5044	80009	321-0139-00
4	56	5905-00-481-1329	81349	RNC55K2430FS
4	57	5905-00-432-0400	81349	RNC55K2000FS
4	58	5905-00-431-7825	81349	RNC55K1212FS
4	59	5905-00-250-5986	81349	RNC55K4992FS
4	60	5905-00-250-5839	81349	RNC55K2492FS
4	61	5905-00-214-2927	81349	RNC60K5110FS
4	62	5905-00-142-0931	81349	RNC60K5111FS
4	63	5905-00-140-7143	81349	RNC55K3321FS
4	64	5905-00-431-5163	81349	RNC55K1822FS
4	65	5905-00-004-6118	81349	RNC55K1502FS
4	66	5905-00-721-2387	81349	RNC60K6190FS
4	67	5905-01-050-0327	81349	RNC55J40R2FS
4	68	5905-00-452-0726	81349	RNC55K2372FS
4	69	5905-00-151-4679	81349	RNC55J8251FS
4	70	5905-00-432-6378	81349	RNC55K2490FS
4	71	5905-00-270-1431	81349	RNC55K2550FS
4	72	5905-00-432-9149	81349	RNC55K2610FS
4	73	5905-00-273-9871	81349	RNC55K2670FS
4	74	5905-00-254-2451	81349	RNC55K2870FS

## CROSS-REFERENCE INDEXES

FIG.	ITEM	FIGURE AND ITEM NUMBER INDEX STOCK NUMBER	CAGEC	PART NUMBER
4	75	5905-01-077-5772	81349	RNC55J10R0FS
4	76	5905-00-270-4959	81349	RNC55K1273FS
4	77	5905-00-412-0819	81349	RNC55K3162FS
4	78	5905-00-432-0420	81349	RNC55K4990FS
4	79	5905-00-437-1696	80009	321-0068-00
4	80	5905-00-295-4768	81349	RNC55J8061FS
4	81	5905-00-138-1285	81349	RNC60K2001FS
4	82	5905-00-432-0429	81349	RNC55K8060FS
4	83	5905-01-091-3883	59873	321-0250-00
4	84	5905-00-495-4953	81349	RNC55K5231FS
4	85	5905-00-432-0416	81349	RNC55K4021FS
4	86	5905-00-224-6113	81349	RNC55H5130BS
4	87	5905-00-284-8275	81349	RNC55K6490FS
4	88	5905-00-476-4688	81349	RNC55J8250FS
4	89	5905-00-259-4433	81349	RNC55K1021FS
4	90	5905-00-139-1676	81349	RNC55K1301FS
4	91	5905-00-432-6373	81349	RNC55K1621FS
4	92	5905-00-348-2707	81349	RNC55K2051FS
4	93	5905-00-415-6002	81349	RNC55K1500FS
4	94	5905-00-481-1328	81349	RNC55K1210FS
4	95	5905-00-227-5072	81349	RNC60K3920FS
4	96	5905-01-033-3499	81349	RNC55H1652BS
4	97	5905-00-232-9853	81349	RNC55K24R3FS
4	98	5905-00-432-0381	81349	RNC55K1001FS
4	99	5905-00-258-5411	81349	RNC55K3572FS
4	100	5905-00-432-0425	81349	RNC55K6040FS
4	101	5905-00-432-6388	81349	RNC55K6191FS
4	102	5905-00-211-1889	81349	RNC55K1742FS
4	103	5905-00-270-1285	81349	RNC55J1252BS
4	104	5905-00-005-2698	81349	RNC55K8661FS
4	105	5905-00-164-1753	81349	RNC55K6340FS
4	106	5905-01-259-9396	81349	RNC55H40R0BS
4	107	5905-00-432-6376	81349	RNC55K2100FS
4	108	5905-00-721-2376	81349	RNC60K1331FS
4	109	5905-01-008-4703	81349	RNC55J8451BS
4	110	5905-00-475-8262	59873	321-0258-00
4	111	5905-00-432-0414	81349	RNC55K3010FS
4	112	5905-00-432-0408	81349	RNC55K2671FS
4	113	5905-00-200-9669	81349	RNC55K7152FS
4	114	5905-00-900-2724	81349	RN65F2492F
4	115	5905-00-231-3204	80009	311-0633-00
4	116	5940-00-935-8313	59873	214-0579-00
4	117	5962-01-327-6566	0B0A9	DS1210
4	118	5962-01-324-6612	67268	5962-8969501CA
4	119	5962-01-123-8136	80009	156-1225-00
4	120	5962-01-334-9637	80009	156-2769-00
4	121	5962-01-327-2419	01295	SN74HC138N
4	122	5962-01-334-8159	80009	156-2587-00
4	123	5962-01-089-5357	27014	MM54C30J/883B
4	124	5962-01-277-3331	81349	M38510/65702BCA
4	125	5962-01-226-5664	27014	MM74C240N

## CROSS-REFERENCE INDEXES

FIG.	ITEM	FIGURE AND ITEM NUMBER INDEX		PART NUMBER
		STOCK NUMBER	CAGEC	
4	126	5962-01-049-5245	07263	UA78L05AWC
4	127	5962-01-240-5627	81349	M38510/65003BCA
4	128	5962-01-244-4824	81349	M38510/65302BCA
4	129	5962-01-268-7771	81349	M38510/65102BCA
4	130	5962-01-171-3774	27014	MM54HC32J/883B
4	131	5962-01-200-8147	27014	MM54HC245J/883B
4	132	5962-01-200-8146	27014	MM54HC244J
4	133	5962-01-342-5647	80009	160-4412-09
4	134	5962-01-280-3480	34371	MD82C54B
4	135	5955-01-335-8352	75378	MXO-55GA-3I-20M
4	136	5962-01-327-2415	01295	SN74ALS175N
4	137	5962-01-252-4836	13499	205-0027-002
4	138	5962-01-248-1936	01295	SN74ALS02N
4	139	5962-01-322-3316	01295	SN74ALS161BN
4	140	5962-01-258-3493	14933	5962-8688301CA
4	141	5962-01-335-3204	80009	156-2768-00
4	142	5962-01-271-8225	81349	M38510/65308BEA
4	143	5962-01-237-8931	01295	SN74HC374NP3
4	144	5962-01-292-9208	81349	M38510/33003BCA
4	145		24355	AD7534JN
4	146	5962-01-240-8265	81349	M38510/65101BCA
4	147	5962-01-123-9584	80009	156-0927-02
4	148	5962-01-191-3468	04713	MC1403UDS
4	149	5962-01-134-1786	81349	M38510/10104BPP
4	150	5962-01-165-3089	02735	CA3160E
4	151		80009	156-1699-00
4	152	5962-01-003-2578	94580	10063973-101
4	153	5962-01-155-2487	80009	156-1156-00
4	154	5962-01-173-7737	81349	M38510/33001BCA
4	155	5962-01-082-4482	04939	13084664
4	156	5961-01-181-7429	80009	152-0647-00
4	157	5961-00-548-1964	80009	152-0514-00
4	158	5935-01-110-3183	09922	DILB28P-108
5	1		81349	M39012/25-0015
5	2	5340-01-107-7022	80009	346-0045-00
5	3	5935-01-335-6965	91836	752-17-9
5	4	5355-01-337-8391	80009	366-2097-00
5	5	5310-00-231-4954	73743	2X20319-402
5	6	5310-00-274-4579	99193	S8154-6-020
5	7	5355-01-337-8392	80009	366-2104-00
5	8	5305-01-113-2259	80009	213-0718-00
5	9	5930-01-335-4875	80009	366-0655-04
5	10	5930-01-335-4874	80009	366-0655-03
5	11	5930-01-335-4873	80009	366-0655-02
5	12	5930-01-335-4872	80009	366-0655-01
5	13	5930-01-335-4871	80009	366-0655-05
5	14	5330-01-116-9498	80009	348-0477-00
5	15		80009	334-6664-01
5	16		80009	220-0961-00
5	17	5330-01-334-8573	80009	354-0674-00
5	18		80009	384-1675-00



## CROSS-REFERENCE INDEXES

FIG.	ITEM	FIGURE AND ITEM NUMBER INDEX		PART NUMBER
		STOCK NUMBER	CAGEC	
5	19	5355-01-336-7069	80009	366-2098-00
5	20	5330-01-351-7895	80009	348-1145-01
5	21		80009	386-5307-02
5	22		80009	348-1116-00
5	23		80009	331-0502-01
5	24	5980-01-338-9774	80009	672-1241-00
5	25		80009	348-0920-00
5	26	5998-01-309-9083	80009	672-1251-01
5	27	5305-01-222-0822	80009	211-0658-00
5	28	5310-00-081-8087	72962	F22NM62
5	29	5330-01-311-0008	80009	354-0581-00
5	30	5999-01-334-7948	80009	348-1144-00
6	1	5910-01-214-1044	81349	CCR06CG102GS
6	2		04222	MD015E224ZAA
6	3	5910-01-226-3582	80009	290-0974-00
6	4	5910-01-141-5549	81349	M39014/22-1058
6	5	5910-01-218-8287	80009	290-0919-00
6	6	5935-01-138-0638	53387	3596-6002
6	7	6130-01-336-6586	80009	119-2370-00
6	8	5961-01-223-9425	59993	IRFD9120
6	9	5961-01-243-1933	80009	151-1121-00
6	10	5905-01-219-4300	80009	307-0751-00
6	11	5905-00-208-4293	81349	RNC55K1003FS
6	12	5905-00-481-1110	81349	RNC55H4991FS
6	13	5905-00-432-0380	81349	RNC55K1000FS
6	14	5905-01-050-0327	81349	RNC55J40R2FS
6	15	5905-01-027-5491	02111	43P203
6	16	5905-01-342-2694	80009	311-2400-00
6	17	5905-01-086-7115	80009	321-0059-00
6	18	5905-01-077-5772	81349	RNC55J10R0FS
6	19	5905-01-335-4877	91637	CMF55116G27403F
6	20	5905-01-338-8114	81349	M8340102M3000GB
6	21		80009	260-2091-00
6	22	5930-01-334-9745	80009	260-2269-01
6	23	5930-01-334-9555	80009	260-2270-01
6	24	5930-01-335-2772	80009	260-2287-01
6	25	5962-01-126-3888	30554	79-9882-3
6	26	5962-01-123-8136	80009	156-1225-00
6	27	5962-01-152-0238	24355	AD7524UQ
6	28	5962-01-171-3774	27014	MM54HC32J/883B
6	29	5962-01-155-8007	01295	ADC0808MJB
6	30	5962-01-243-6443	18714	CD54HC253F/3A
6	31	5962-01-240-8265	81349	M38510/65101BCA
6	32	5999-01-127-3667	80009	131-1343-00
6	33	5935-01-165-1782	96214	972487-0001
7	1		80009	441-1685-00
7	2	5950-01-131-3814	08779	DP-241-6-24
7	3	5950-01-334-8626	80009	120-1458-00
7	4	5995-01-335-9585	80009	174-0954-00
7	5	5995-01-335-9586	80009	174-0957-00
7	6	5305-01-126-8796	93907	821-01655-024

## CROSS-REFERENCE INDEXES

FIG.	ITEM	FIGURE AND ITEM NUMBER INDEX		PART NUMBER
		STOCK NUMBER	CAGEC	
7	7	5998-01-339-8156	80009	670-9286-03
7	8	5905-01-026-0507	03508	V130LA20A
7	9	5910-00-113-5499	81349	M39014/02-1350
7	10	5305-01-334-9972	80009	212-0112-00
7	11	5310-00-562-3401	80009	220-0547-01
7	12	5310-00-559-0070	96906	MS35333-38
7	13	5310-01-063-8974	94117	15882P1
7	14	5910-00-113-5499	81349	M39014/02-1350
7	15	5935-01-112-7286	74970	023-0026-001
7	16	5920-01-124-7200	80009	204-0832-00
7	17	5930-01-342-5788	61935	033-4501
7	18	5995-01-353-4785	80009	198-5460-01
7	19		80009	334-3379-01
7	20	5920-00-661-0530	81349	F03B250V15/100A
7	21	5920-01-087-0836	80009	200-2264-00
7	22	5915-01-335-3020	80009	119-3488-00
7	23	5305-01-158-6229	80009	211-0101-00
7	24	5305-01-161-0880	83385	211-0105-00
7	25		80009	441-1684-01
7	26	5940-00-827-2653	80009	210-0202-00
7	27	5305-01-222-0822	80009	211-0658-00
7	28	5305-01-161-0880	80009	211-0105-00
7	29	5310-00-841-8106	59873	210-0457-00
7	30	5310-01-065-2270	80009	210-0803-00
7	31	5970-01-115-1940	80009	210-0933-00
7	32	5310-00-492-2138	80009	210-0975-00
7	33	5940-00-827-2653	80009	210-0202-00
8	1	5961-00-138-7433	80009	152-0406-00
8	2	5961-00-479-7329	01295	A1108
8	3	5961-01-335-8181	80009	152-0582-00
8	4	5961-01-166-7503	80009	152-0581-00
8	5	5961-01-267-4608	80009	152-0779-00
8	6	5961-01-325-1777	04713	MUR115
8	7	5961-01-127-8402	80009	152-0655-00
8	8	5961-01-174-1221	80131	1N5819
8	9	5961-00-899-8924	80131	1N4152
8	10	5961-00-350-8371	80063	152-0333-00
8	11	5910-01-334-9681	56289	53D268
8	12	5910-01-125-6224	05397	C320C103K2R5CA
8	13	5910-01-214-1044	31433	C330C102J2G5CA
8	14		04222	MD015E224ZAA
8	15	5910-01-019-6513	80009	283-0107-00
8	16	5910-00-010-8721	81349	M39014/02-1419
8	17	5910-00-368-2380	90201	TDC106K025NLF
8	18	5910-00-113-5465	81349	M39014/02-1360
8	19	5910-01-334-9678	55680	UVX1V101MPA
8	20	5910-01-104-2160	56289	196D685X0035KA1
8	21	5910-00-113-5286	81349	M39014/02-1356
8	22	5910-00-900-1209	18796	8131N145C0G332J
8	23	5910-01-079-1390	90201	VTL22S100
8	24	5910-00-879-5921	80009	283-0010-00

## CROSS-REFERENCE INDEXES

FIG.	ITEM	FIGURE AND ITEM NUMBER INDEX STOCK NUMBER	CAGEC	PART NUMBER
8	25	5910-01-105-3458	56289	513D476M063CC4
8	26	5999-01-032-5408	22526	65500-136
8	27	5935-01-335-8039	53387	3598-5002
8	28	5999-01-334-7603	22526	65576-131
8	29	5950-01-334-8628	80009	108-1230-00
8	30	5961-01-223-9425	59993	IRFD9120
8	31	5961-01-216-2048	80009	151-0736-00
8	32	5961-01-176-1729	80009	151-0188-00
8	33	5961-00-417-4108	80131	2N5769
8	34	5961-01-214-3127	59993	IRF530
8	35	5961-01-335-4964	80009	151-1063-00
8	36	5905-01-110-3091	81349	RWR80SR100FS
8	37	5905-00-432-0381	81349	RNC55K1001FS
8	38	5905-00-138-1285	81349	RNC60K2001FS
8	39	5905-00-152-8444	81349	RNC55J1622FS
8	40	5905-00-140-7143	81349	RNC55K3321FS
8	41	5905-00-432-6378	81349	RNC55K2490FS
8	42	5905-00-431-5161	81349	RNC55K1402FS
8	43	5905-00-432-0402	81349	RNC55K2002FS
8	44	5905-00-431-7832	81349	RNC55K9090FS
8	45	5905-00-431-7820	81349	RNC55K1102FS
8	46	5905-01-184-5287	81349	RLR07C9530FS
8	47	5905-00-348-2708	81349	RNC55K2741FS
8	48	5905-00-147-4196	81349	RNC55J1372FS
8	49	5905-00-494-5891	01121	BB27G5
8	50	5905-00-270-1403	81349	RNC55K4641FS
8	51	5905-00-196-6868	81349	RNC55K1302FS
8	52	5905-01-186-6827	81349	RWR89S4R02FS
8	53	5905-00-208-4293	81349	RNC55K1003FS
8	54	5905-00-419-3906	81349	RNR60C5112FS
8	55	5905-00-426-7095	81349	RNC60K1002FS
8	56	5905-00-432-0380	81349	RNC55K1000FS
8	57	5905-00-005-2903	81349	RNC55H4220FS
8	58	5905-00-142-0931	81349	RNC60K5111FS
8	59	5905-01-222-7088	80009	321-0239-00
8	60	5905-00-138-6996	81349	RNC55K2432FS
8	61	5905-01-172-7471	81349	RWR80S1R10FS
8	62	5930-01-334-9748	09353	E101SD1AQE
8	63	5940-00-935-8313	59873	214-0579-00
8	64	5950-01-334-8630	80009	120-1608-00
8	65	5950-00-451-2440	80009	120-0487-00
8	66	5962-01-129-3847	28480	1826-0428
8	67	5962-01-191-3468	04713	MC1403UDS
8	68	5962-01-123-8136	80009	156-1225-00
8	69	5962-01-109-4231	14933	7901101CB
8	70	5962-01-062-5106	13499	351-1271-010
8	71	5962-01-099-8515	67268	7901401FB
8	72	5961-00-845-6458	81349	JAN1N756A
8	73	5310-01-133-8637	80009	210-0561-00
8	74	5305-00-005-0795	80009	211-0507-00
8	75		80009	253-0188-00

## CROSS-REFERENCE INDEXES

FIG.	ITEM	FIGURE AND ITEM NUMBER INDEX		PART NUMBER
		STOCK NUMBER	CAGEC	
8	76	5970-01-217-8705	80009	162-0503-00
8	77	5305-00-005-0795	80009	211-0507-00
8	78	5310-01-133-8637	80009	210-0561-00
8	79	6145-01-221-4300	80009	175-2054-05
9	1	6105-01-344-4704	54318	31310000
9	2		54318	12676001
9	3		54318	22354002
9	4	5305-01-272-8308	80009	211-0102-00
9	5	5305-00-763-7822	80009	211-0038-00
9	6		54318	31268-101
9	7		80009	200-3498-00
9	8	5305-00-763-7822	80009	211-0038-00
9	9	5305-00-764-2966	80009	211-0087-00
9	10	7025-01-343-2753	54318	30995014
9	11	5998-01-342-5679	80009	118-7614-01
9	12	5310-01-225-5229	72962	22NM40
9	13	5970-01-047-5712	04713	B51547F014

RECOMMENDED CHANGES TO EQUIPMENT TECHNICAL PUBLICATIONS



THEN... JOT DOWN THE DOPE ABOUT IT ON THIS FORM. CAREFULLY TEAR IT OUT. FOLD IT AND DROP IT IN THE MAIL.

SOMETHING WRONG WITH THIS PUBLICATION?

FROM (PRINT YOUR UNIT'S COMPLETE ADDRESS)  
 Commander  
 Stateside Army Depot  
 ATTN: AMSTA-US  
 Stateside, N.J. 07703-5007

DATE SENT  
 10 July 1975

PUBLICATION NUMBER  
 TM 11-5840-340-12

PUBLICATION DATE  
 23 Jan 74

PUBLICATION TITLE  
 Radar Set AN/PRC-76

BE EXACT PIN-POINT WHERE IT IS			
PAGE NO	PARA-GRAPH	FIGURE NO	TABLE NO
2-25	2-28		
3-10	3-3		3-1
5-6	5-8		
		F03	

IN THIS SPACE TELL WHAT IS WRONG AND WHAT SHOULD BE DONE ABOUT IT:

Recommend that the installation antenna alignment procedure be changed throughout to specify a 2° IFF antenna lag rather than 1°.

REASON: Experience has shown that with only a 1° lag, the antenna servo system is too sensitive to wind gusting in excess of 25 knots, and has a tendency to rapidly accelerate and decelerate as it hunts, causing strain to the drive train. Hunting is minimized by adjusting the lag to 2° without degradation of operation.

Item 5, Function column. Change "2 db" to "3db."

REASON: The adjustment procedure for the TRANS POWER FAULT indicator calls for a 3 db (500 watts) adjustment to light the TRANS POWER FAULT indicator.

Add new step f.1 to read, "Replace cover plate removed in step e.1, above."

REASON: To replace the cover plate.

Zone C 3. On J1-2, change "+24 VDC to "+5 VDC."

REASON: This is the output line of the 5 VDC power supply. +24 VDC is the input voltage.

TEAR ALONG

PRINTED NAME GRADE OR TITLE AND TELEPHONE NUMBER  
 SSG I. M. DeSpiritof 999-1776

SIGN HERE

FILL IN YOUR UNIT'S ADDRESS

FOLD BACK

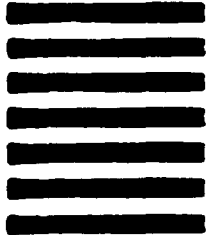
DEPARTMENT OF THE ARMY

\_\_\_\_\_  
\_\_\_\_\_

OFFICIAL BUSINESS



NO POSTAGE  
NECESSARY  
IF MAILED  
IN THE  
UNITED STATES



**BUSINESS REPLY MAIL**  
FIRST CLASS MAIL PERMIT NO. 144 RED BANK, NJ

POSTAGE WILL BE PAID BY

Commander  
US Army Communications-Electronics Command  
and Fort Monmouth  
ATTN: AMSEL-LC-ME-PS  
Fort Monmouth, New Jersey 07703-9988

**SAMPLE**



FOLD BACK

TEAR ALONG PERFORATED LINE



FILL IN YOUR  
UNIT'S ADDRESS

FOLD BACK

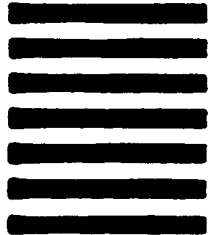
DEPARTMENT OF THE ARMY

\_\_\_\_\_  
\_\_\_\_\_

OFFICIAL BUSINESS



NO POSTAGE  
NECESSARY  
IF MAILED  
IN THE  
UNITED STATES



**BUSINESS REPLY MAIL**  
FIRST CLASS MAIL PERMIT NO 144 RED BANK NJ

POSTAGE WILL BE PAID BY

Commander  
US Army Communications-Electronics Command  
and Fort Monmouth  
ATTN: AMSEL-LC-ME-PS  
Fort Monmouth, New Jersey 07703-9988

TEAR ALONG PERFORATED LINE



FOLD BACK





FILL IN YOUR  
UNIT'S ADDRESS

FOLD BACK

DEPARTMENT OF THE ARMY

\_\_\_\_\_  
\_\_\_\_\_

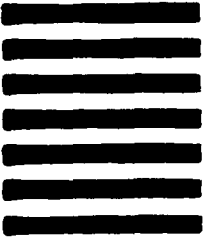
OFFICIAL BUSINESS

**BUSINESS REPLY MAIL**  
FIRST CLASS MAIL PERMIT NO. 144 RED BANK NJ

POSTAGE WILL BE PAID BY

Commander  
US Army Communications-Electronics Command  
and Fort Monmouth  
ATTN: AMSEL-LC-ME-PS  
Fort Monmouth, New Jersey 07703-9988

NO POSTAGE  
NECESSARY  
IF MAILED  
IN THE  
UNITED STATES



FOLD BACK

TEAR ALONG PERFORATED LINE



FILL IN YOUR  
UNIT'S ADDRESS

FOLD BACK

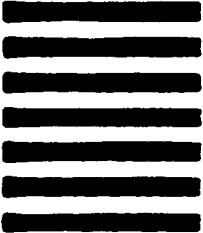
DEPARTMENT OF THE ARMY

\_\_\_\_\_  
\_\_\_\_\_

OFFICIAL BUSINESS



NO POSTAGE  
NECESSARY  
IF MAILED  
IN THE  
UNITED STATES



**BUSINESS REPLY MAIL**  
FIRST CLASS MAIL PERMIT NO 144 RED BANK NJ

POSTAGE WILL BE PAID BY

Commander  
US Army Communications-Electronics Command  
and Fort Monmouth  
ATTN: AMSEL-LC-ME-PS  
Fort Monmouth, New Jersey 07703-9988

TEAR ALONG PERFORATED LINE

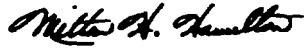


FOLD BACK

By Order of the Secretary of the Army:

GORDON R. SULLIVAN  
*General, United States Army*  
*Chief of Staff*

Official:



MILTON H. HAMILTON  
*Administrative Assistant to the*  
Secretary of the Army

03603

Distribution:

To be distributed in accordance with DA Form 12-36-E, block 9415, requirements for  
TM 11-6625-3240-24P.





