

TECHNICAL MANUAL

ORGANIZATIONAL, DIRECT SUPPORT, AND  
GENERAL SUPPORT MAINTENANCE  
REPAIR PARTS AND SPECIAL TOOLS LIST  
FOR

**MULTIMETER AN/USM-223  
(NSN 6625-00-999-7465)**

**Distribution authorized to the Department of Defense and DOD contractors only for official use or for administration or operational purposes. This determination was made on 23 April 1987. Other requests for this document will be referred to Commander, US Army Communications-Electronics Command and Fort Monmouth, ATTN: AMSEL-ME-P, Fort Monmouth, NJ 07703-5000.**

DESTRUCTION NOTICE—Destroy by any method that will prevent disclosure of contents or reconstruction of the document.

---

HEADQUARTERS, DEPARTMENT OF THE ARMY  
15 AUGUST 1987

**ORGANIZATIONAL, DIRECT SUPPORT, AND  
 GENERAL SUPPORT MAINTENANCE  
 REPAIR PARTS AND SPECIAL TOOLS LIST  
 FOR**

**MULTIMETER AN/USM-223  
 (NSN 6625-00-999-7465)**

Current as of 15 May 1987

**REPORTING ERRORS AND RECOMMENDING IMPROVEMENTS**

**You can help improve this manual. If you find any mistakes or if you know of a way to improve the procedures, please let us know. Mail your letter, DA Form 2028 (Recommended Changes to Publications and Blank Forms), or DA Form 2028-2 located in back of this manual direct to: Commander, US Army Communications-Electronics Command and Fort Monmouth, ATTN: AMSEL-ME-MP, Fort Monmouth, NJ 07703-5000. In either case, a reply will be furnished direct to you.**

Table of Contents

	Page	Illus Figure
SECTION I. Introduction .....	1	
II. Repair Parts List .....	1-1	
GROUP 00 Multimeter AN/USM-223 .....	1-1	1
01 Multimeter ME-297/U .....	2-1	2
0101 Final Panel Assembly .....	3-1	3
010101 Printed Circuit Board Assembly (A1) .....	4-1	4
010102 Printed Circuit Board Assembly (A2).....	5-1	5
0102 Case Assembly .....	6-1	6
0103 Cover Assembly .....	7-1	7
02 Test Lead Assembly CX-927/U .....	8-1	8
03 Test Lead Set CX-1331/U .....	9-1	9
SECTION III. Special Tools List (Nonapplicable)		
IV. National Stock Number and Part Number Index .....	1-1	

\*This manual supersedes TM 11-6625-654-24P, 29 March 1978, including Change 1, 12 December 1979.

# SECTION I

## INTRODUCTION

---

### 1. Scope

This manual lists and authorizes spares and repair parts; special tools; special test, measurement, and diagnostic equipment (TMDE); and other special support equipment required for performance of direct support and general support maintenance of the AN/USM-223. It authorizes the requisitioning, issue, and disposition of spares, repair parts and special tools as indicated by the source, maintenance and recoverability (SMR) codes.

### 2. General

This Repair Parts and Special Tools List is divided into the following sections:

*a. Section II. Repair Parts List.* A list of spares and repair parts authorized by this RPSTL for use in the performance of maintenance. The list also includes parts which must be removed for replacement of the authorized parts. Parts lists are composed of functional groups in ascending numeric sequence, with the parts in each group listed in ascending item number sequence. Figure numbers are listed directly beneath the group header.

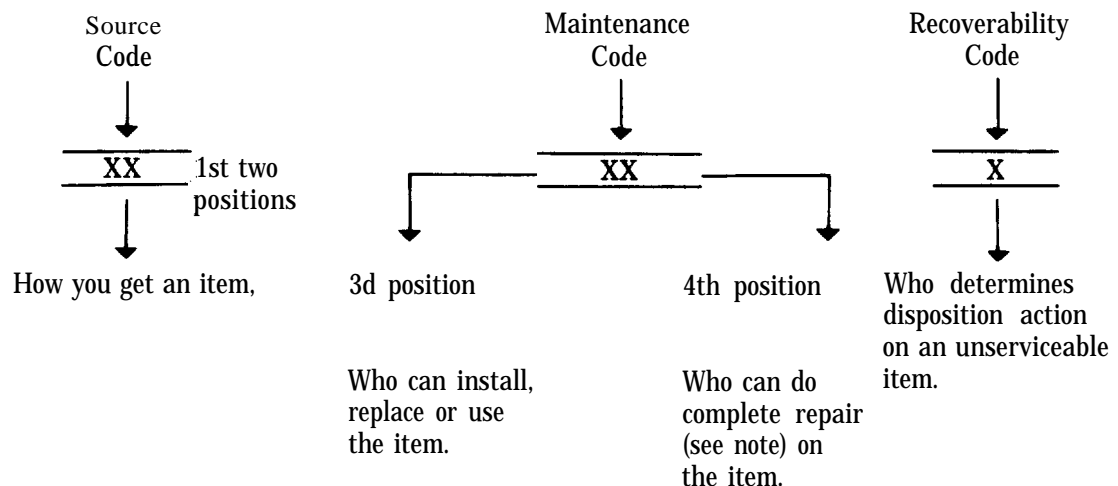
*b. Section III. Special Tools List.* Not applicable.

*c. Section IV. National Stock Number and Part Number Index.* A list, in National item identification number (NIIN) sequence, of all National stock numbered items appearing in the listing, followed by a list in alphameric sequence of all part numbers appearing in the listings. National stock numbers and part numbers are cross-referenced to each illustration figure and item number appearance.

### 3. Explanation of Columns (Section II and III)

*a. Item No. (Column (1)).* Indicates the number used to identify items called out in the illustration.

*b. SMR Code (Column (2)).* The source, maintenance, and recoverability (SMR) code is a five-position code containing supply/requisitioning information, maintenance category authorization criteria, and disposition instruction, as shown in the following breakout:



#### NOTE

Complete repair: Maintenance capacity, capability, and authority to perform all corrective maintenance tasks of the "Repair" function in a use/user environment in order to restore serviceability to a failed item.

(1) *Source code.* The source code tells you how to get an item needed for maintenance, repair, or overhaul of an end item/equipment. Explanations of source codes follows:

<i>Code</i>	<i>Explanation</i>
PA PB PC PD PE PF PG	Stocked items; use the applicable NSN to request/requisition items with these source codes. They are authorized to the category indicated by the code entered in the third position of the SMR code. <p style="text-align: center;"><b>NOTE</b></p> Items coded PC are subject to deterioration.

KD KF KB	Items with these codes are not to be requested/requisitioned individually. They are part of a kit which is authorized to the maintenance category indicated in the third position of the SMR code. The complete kit must be requisitioned and applied.
----------------	--

MO—Made at org/AVUM category MF—Made at DS/AVUM category MH—Made at GS category ML—Made at Specialized Repair Activity (SRA) MD—Made at Depot	Items with these codes are not to be requested/requisitioned individually. They must be made from bulk material which is identified by the part number in the description and usable on code (UOC) column and listed in the Bulk Material group of the repair parts list. If the item is authorized to you by the third position code of the SMR code, but the source code indicates it is made at a higher category, order the item from the higher category of maintenance.
---	---

AO— Assembled by org/AVUM category AF— Assembled by DS/AVIM category AH—Assembled by GS category AL— Assembled by SRA AD— Assembled by Depot	Items with these codes are not to be requested/requisitioned individually. The parts that make up the assembled item must be requisitioned or fabricated and assembled at the category of maintenance indicated by the source code. If the third position code of the SMR code authorizes you to replace the item, but the source code indicates the item is assembled at a higher category, order the item from the higher category of maintenance.
--	--

XA—Do not requisition an “XA” coded item. Order its next higher assembly.

XB— If an “XB” item is not available from salvage, order it using the FSCM and part number given.

XC— Installation drawing, diagram, instruction sheet, field service drawing, that is identified by manufacturers part number.

XD—Item is not stocked. Order an “XD” coded item through normal supply channels using the FSCM and part number given, if no NSN is available.

## NOTE

Cannibalization or controlled exchange, when authorized, may be used as a source of supply for items with the above source codes, except for those source coded "XA" or those aircraft support items restricted by requirements of AR 750-1.

(2) Maintenance code. Maintenance codes tell you the category of maintenance authorized to USE and REPAIR support items. The maintenance codes are entered in the third and fourth positions of the SMR code as follows:

(a) The maintenance code entered in the third position tells you the lowest maintenance category authorized to remove, replace, and use an item. The maintenance code entered in the third position will indicate authorization to one of the following categories of maintenance.

*Code*

*Application/Explanation*

C- Crew or operator maintenance done within organizational or aviation maintenance.

O-Organizational or aviation unit category can remove, replace, and use the item.

F- Direct support or aviation intermediate category can remove, replace, and use the item.

H-General support category can remove, replace, and use the item.

L- Specialized repair activity can remove, replace, and use the item.

D-Depot category can remove, replace, and use the item.

(b) The maintenance code entered in the fourth position tells whether or not the item is to be repaired and identifies the lowest maintenance category with the capability to do complete repair (i.e., perform all authorized repair functions). This position will contain one of the following maintenance codes.

## NOTE

**Some** limited repair may be done on the item at a lower category of maintenance, if authorized by the Maintenance Allocation Chart (MAC) and SMR codes.

*Code*

*Application/Explanation*

O-Organizational or aviation unit is the lowest category that can do complete repair of the item.

F- Direct support or aviation intermediate is the lowest category that can do complete repair of the item.

H-General support is the lowest category that can do complete repair of the item.

L- Specialized repair activity (designate the specialized repair activity) is the lowest category that can do complete repair of the item.

D-Depot is the lowest category that can do complete repair of the item.

Z- Nonreparable. No repair is authorized.

B-No repair is authorized. (No parts or special tools are authorized for the maintenance of a "B" coded item). However, the item may be reconditioned by adjusting, lubricating, etc., at the user category.

(3) *Recoverability code*. Recoverability codes are assigned to items to indicate the disposition action on unserviceable items. The recoverability code is entered in the fifth position of the SMR Code as follows:

*Recoverability codes*

*Application/Explanation*

Z- Nonreparable Item. When unserviceable, condemn and dispose of the item at the category of maintenance shown in the third position of SMR Code.

O-Reparable item. When uneconomically reparable, condemn and dispose of the item at organizational or aviation unit category.

F- Reparable item. When uneconomically reparable, condemn and dispose of the item at direct support or aviation intermediate category.

H-Reparable item. When uneconomically reparable, condemn and dispose of the item at general support category.

D-Reparable item. When beyond lower category repair capability, return to depot. Condemnation and disposal of item not authorized below depot category.

Recoverability  
codes

Application/Explanation

L—Reparable item. Condemnation and disposal not authorized below specialized repair activity (SRA).  
A—Item requires special handling or condemnation procedures because of specific reasons (e.g., precious metal content, high dollar value, critical material, or hazardous material). Refer to appropriate manuals/directives for specific instructions.

*c. FSCM (Column (3)).* The Federal Supply Code for Manufacturer (FSCM) is a 5-digit numeric code which is used to identify the manufacturer, distributor, or Government agency, etc., that supplies the item.

*d Part Number (Column (4)).* Indicates the primary number used by the manufacturer (individual, company, firm, corporation, or Government activity), which controls the design and characteristics of the item by means of its engineering drawings, specifications, standards, and inspection requirements to identify an item or range of items.

#### NOTE

When you use a NSN to requisition an item, the item you receive may have a different part number from the part ordered.

*e. Description and Usable on Code (UOC) (Column (5)).* This column includes the following information.

(1) The Federal item name and, when required, a minimum description to identify the item.

(2) The statement "END OF FIGURE" appears just below the last item description in Column (5) for a given figure in both section II and section III.

*f. Qty (Column (6)).* Indicates the quantity of the item used in the breakout shown on the illustration figure, which is prepared for a functional group, subfunctional group, or an assembly. A "V" appearing in this column in lieu of a quantity indicates that the quantity is variable and the quantity may vary from application to application.

#### 4. Explanation of Columns (Section IV)

*a. National Stock Number (NSN) Index.*

(1) *Stock number column.* This column lists the NSN by National item identification number (NIIN) sequence. The NIIN consists of the last nine digits of the NSN. When using this column to locate an item, ignore the first four digits of the NSN. When requisitioning items use the complete NSN (13 digits).

(2) *Fig. column.* This column lists the number of the figure where the item is identified/located. The illustrations are in numerical sequence in sections II and III.

(3) *Item column.* The item number identifies the item associated with the figure listed in the adjacent Fig. column. This item is also identified by the NSN listed on the same line.

*b. Part Number Index.* Part numbers in this index are listed by part number in ascending alphameric sequence.

(1) *FSCM column.* This column lists the Federal supply code for manufacturer (FSCM).

(2) *Part number column.* This column indicates the part number assigned to the item.

(3) *Stock number column.* This column lists the National stock number for the associated part number and manufacturer identified in the part number and FSCM columns to the left.

(4) *Fig. column.* This column lists the number of the figure where the item is identified/located in sections H and III.

(5) *Item column.* The item number is that number assigned to the item as it appears in the figure referenced in the adjacent figure number column.

#### 5. Special Information

*a. Associated Publications.* The publication listed below pertains to the AN/USM-23 and its components:

TM 11-6625-654-14, Multimeter AN/USM-223

*b. National Stock Numbers.* National stock numbers (NSN's) that are missing from P source coded items have been applied for and will be added to this TM by future change/revision when they are entered in the Army Master Data File (AMDF). Until the NSN's are established and published, submit exception requisitions to: Commander, US Army Communications-Electronics Command and Fort

Monmouth, ATTN: AMSEL-MM, Fort Monmouth, NJ 07703-5000 for the part required to support your equipment.

## 6. How to Locate Repair Parts.

a. When National stock number or part number is not known.

(1) *First.* Using the table of contents, determine the assembly group or subassembly group to which the item belongs. This is necessary since figures are prepared for assembly groups and subassembly groups, and listings are divided into the same groups.

(2) *Second.* Find the figure covering the assembly group or subassembly group to which the item belongs.

(3) *Third.* Identify the item on the figure and note the item number.

(4) *Fourth.* Refer to the Repair Parts List for the figure to find the part number for the item number noted on the figure.

(5) *Fifth.* Refer to the Part Number Index to find the NSN, if assigned.

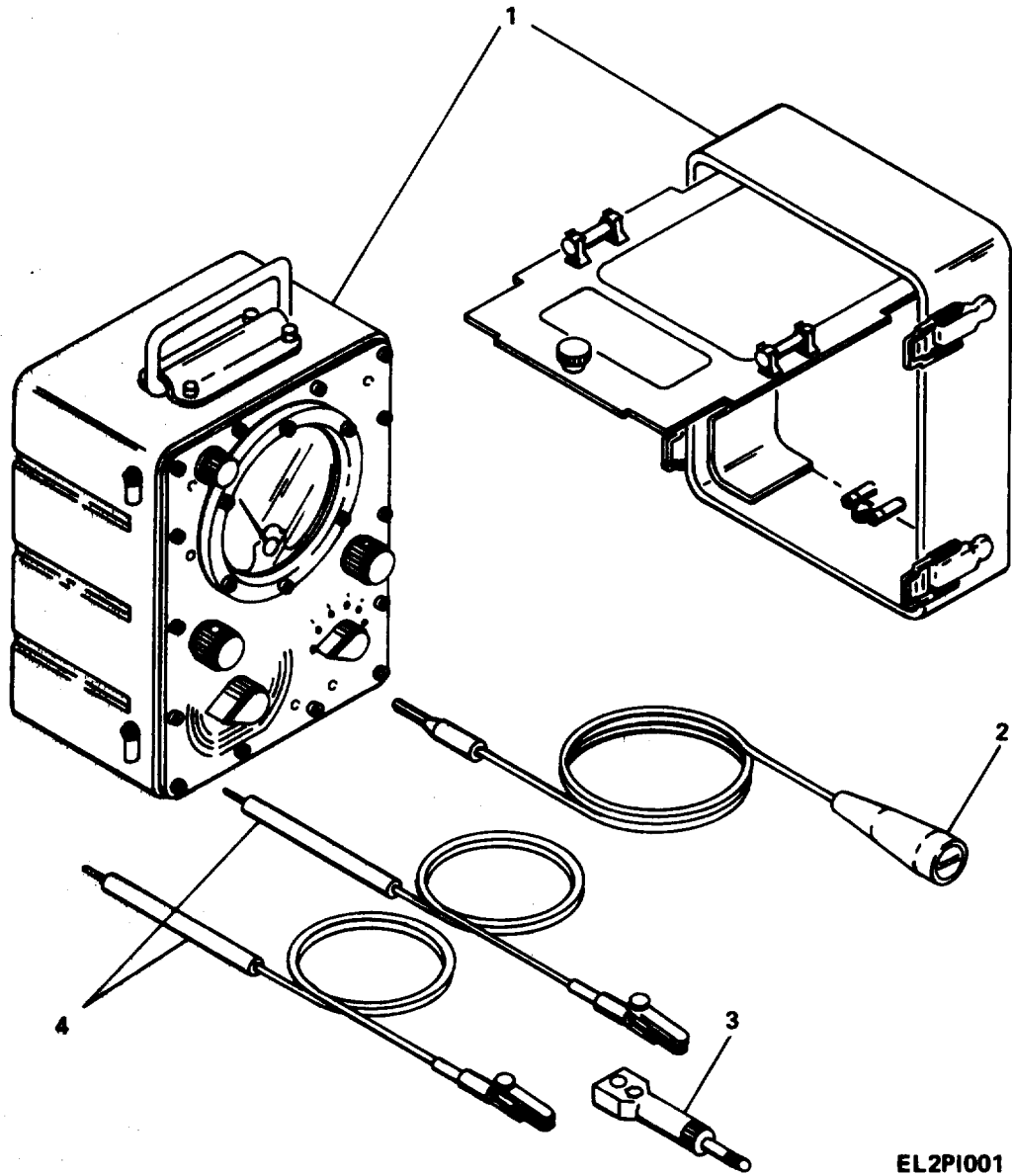
b. When National stock number or part number is known.

(1) *First.* Using the index of National stock numbers and part numbers, find the pertinent National stock number or part number. The NSN index is in National item identification number (NIIN) sequence (para 4a(1)). The part numbers in the part number index are listed in ascending alphameric sequence (para 4b). Both indexes cross-reference you to the illustration figure and item number of the item you are looking for.

(2) *Second.* After finding the figure and item number, verify that the item is the one you're looking for, then locate the item number in the repair parts list for the figure.

## 7. Abbreviations

Not applicable.

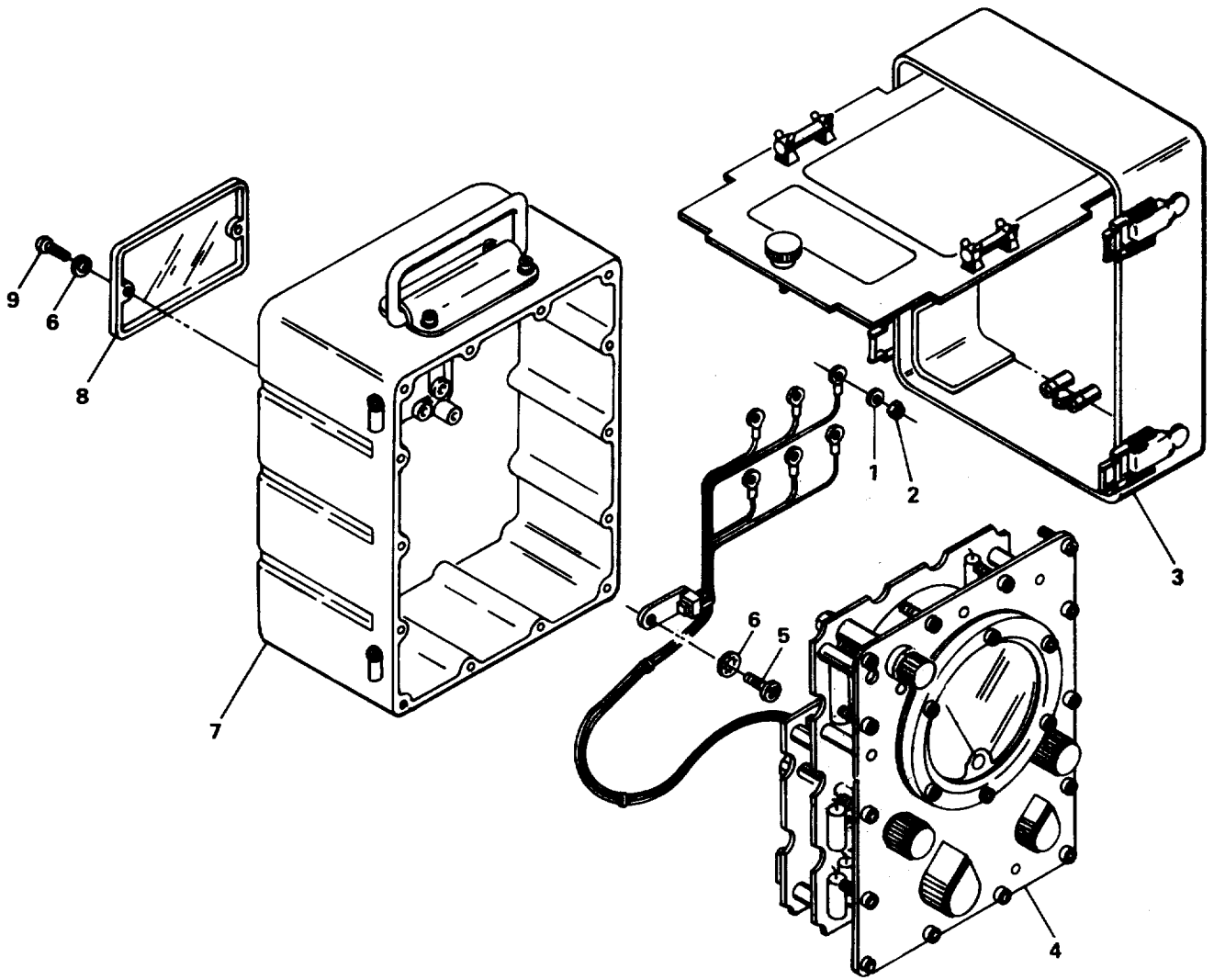


EL2PI001

Figure 1. Multimeter AN/USM-223



SECTION II		TM11-6625-654-24P				
(1)	(2)	(3)	(4)	(5)	(6)	PCN X43CXXC064R PAGE 1
ITEM NO	SMR CODE	FSCM	PART NUMBER	DESCRIPTION AND USABLE ON CODE (UOC)	QTY	TM-CODE CBX
				GROUP 00 MULTIMETER AN/USM-223		
				FIGURE 1		PRINTER:
1	PAOHH	55026	T00377	MULTIMETER,DIGITAL (SEE FIGURE 2 FOR BREAKDOWN)	1	Shoot all print-out and illustration pages at 100%.
2	PAOHH	80058	CX-927/U(4FT)	LEAD,TEST ASSY (SEE FIGURE 8 FOR BREAKDOWN)	1	Only shoot left-hand side of print-out pages.
3	PAOZZ	80058	MX-1572/U	ADAPTER,TEST	1	
4	PAOHH	80058	CX-1331/U	LEAD,TEST SET (SEE FIGURE 9 FOR BREAKDOWN)	1	Illustration page MUST be an even page facing the first page of matching RPSTL page which IS an odd page. If there are multiple Illustration pages for the same figure, the LAST page of the multiple illustration MUST be an even page. To accomplish this, blank pages have been inserted. Please DO NOT remove them. Trim size: 8 1/2" x 11"
				END OF FIGURE		



EL2P1002

Figure 2. Multimeter ME-297/U

SECTION II			TM11-6625-654-24P			PCN X43CXXC064R PAGE 2
(1)	(2)	(3)	(4)	(5)	(6)	TM-CODE CBX
ITEM NO	SMR CODE	FSCM	PART NUMBER	DESCRIPTION AND USABLE ON CODE (UOC)	QTY	
				GROUP 01 MULTIMETER ME-297/U		
				FIGURE 2		
1	PAHZZ	96906	MS35333-70	WASHER, LOCK	6	
2	PAHZZ	96906	MS35649-244	NUT, PLAIN, HEXAGON	6	
3	PAOOO	80063	SM-C-551654	COVER, TEST SET (SEE FIGURE 7 FOR BREAKDOWN)	1	
4	PAHHH	80063	SM-D-621309	TEST SET SUBASSEMBL (SEE FIGURE 3 FOR BREAKDOWN)	1	
5	PAOZZ	96906	MS51957-27	SCREW, MACHINE	1	
6	PAOZZ	96906	MS35333-71	WASHER, LOCK	3	
7	PAHHH	80063	SM-D-551652	CASE, TEST SET (SEE FIGURE 6 FOR BREAKDOWN)	1	
8	PAOZZ	80063	SM-B-551655	COVER, BATTERY	1	
9	PAOZZ	96906	MS51957-28	SCREW, MACHINE	2	
				END OF FIGURE		

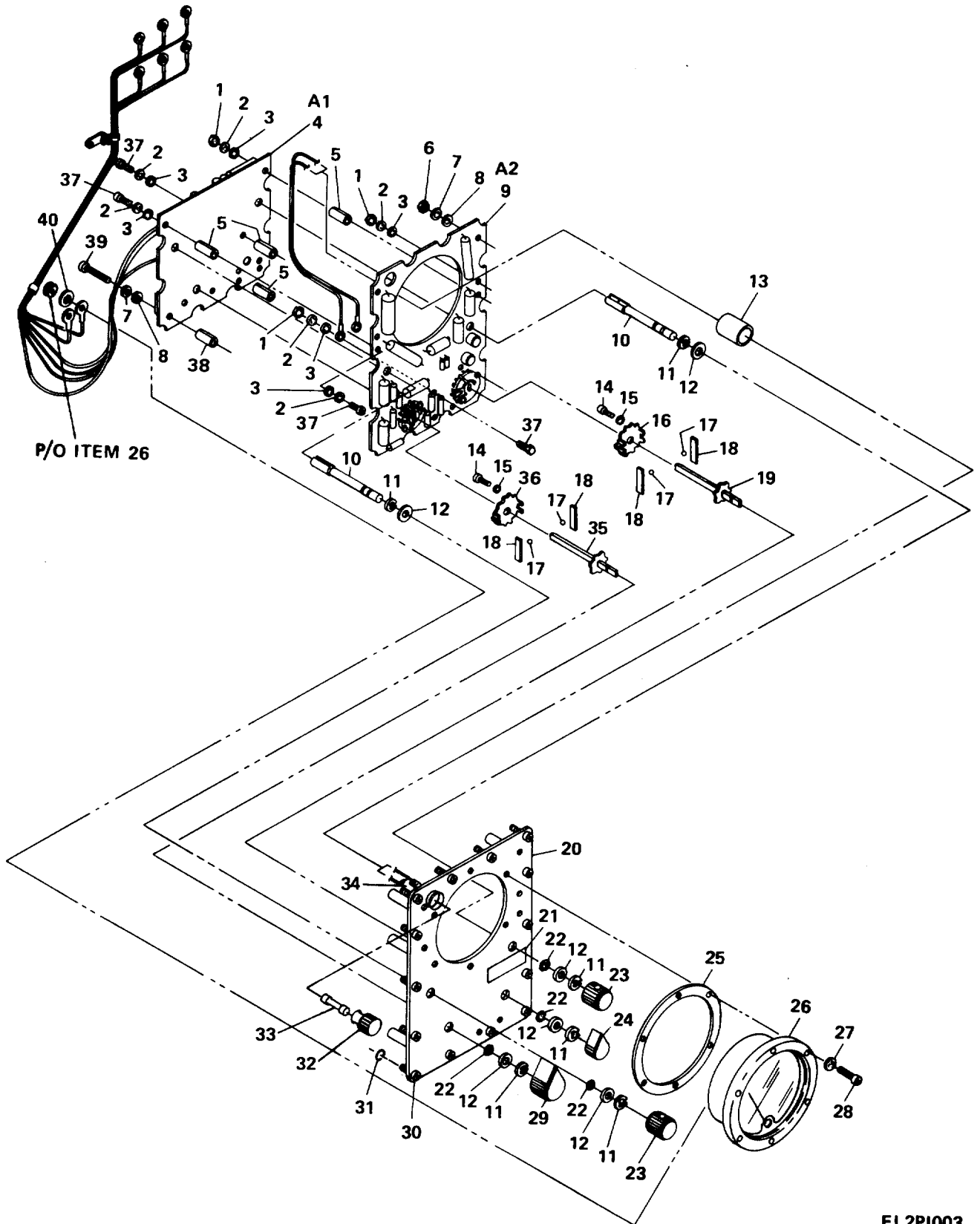
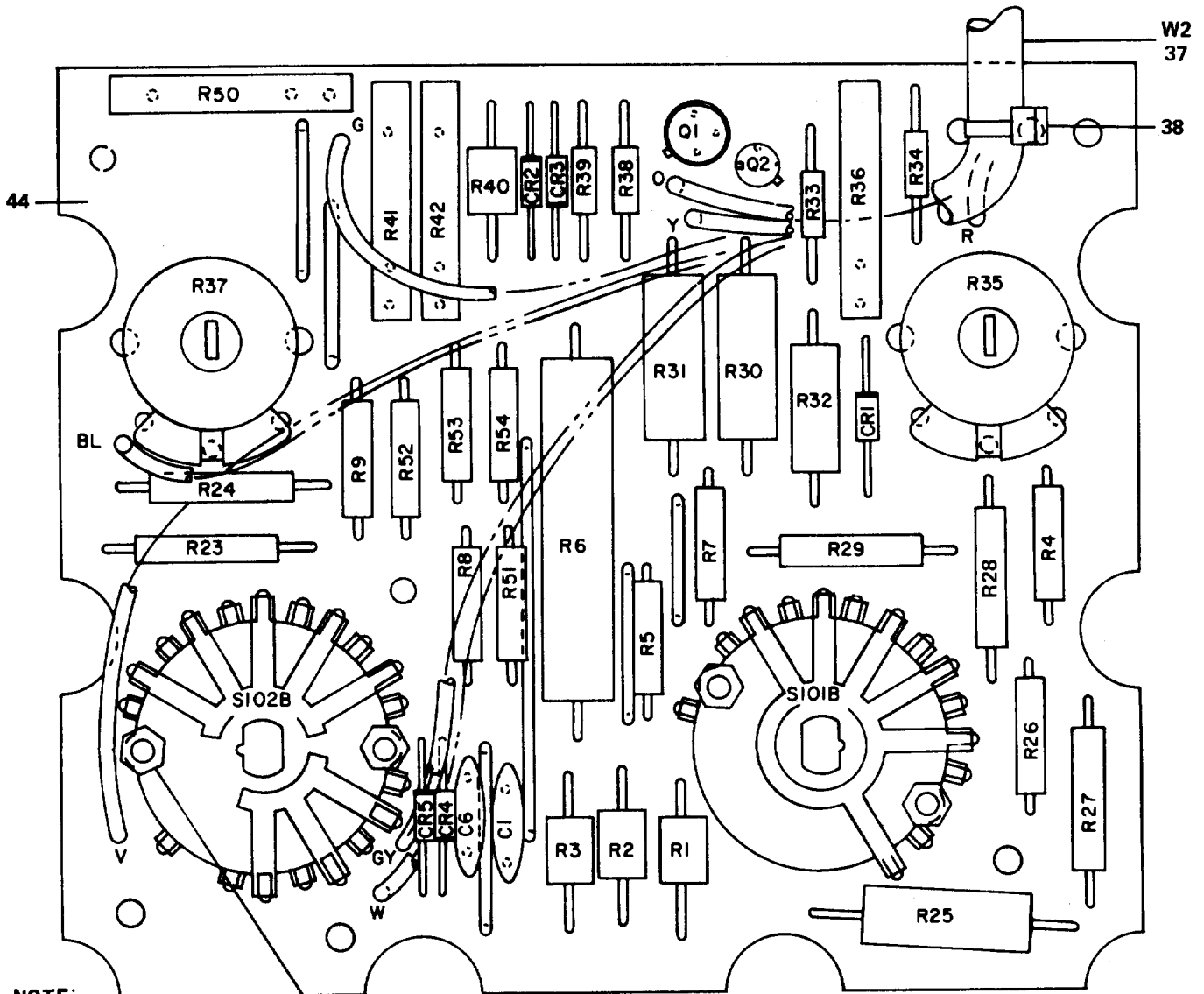


Figure 3. Final Panel Assembly

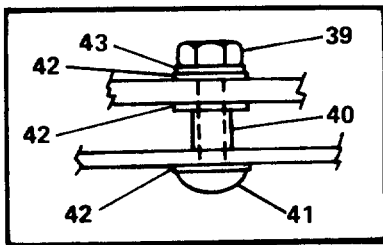
SECTION II			TM11-6625-654-24P			PCN X43CXXC064R PAGE 3
(1)	(2)	(3)	(4)	(5)	(6)	TM-CODE CBX
ITEM	SMR		PART			
NO	CODE	FSCM	NUMBER	DESCRIPTION AND USABLE ON CODE (UOC)	QTY	
GROUP 0101 FINAL PANEL ASSEMBLY						
FIGURE 3						
1	PAHZZ	96906	MS35649-244	NUT,PLAIN,HEXAGON	6	
2	PAHZZ	96906	MS35333-70	WASHER,LOCK	10	
3	PAHZZ	96906	MS15795-803	WASHER,FLAT	10	
4	PAHHH	80063	SM-D-621324	PRINTED CIRCUIT BOA (SEE FIGURE 4 FOR BREAKDOWN)	1	
5	XBHZZ	80063	SM-B-621347	SPACER	4	
6	PAHZZ	96906	MS35649-264	NUT,PLAIN,HEXAGON	2	
7	PAHZZ	96906	MS35333-71	WASHER,LOCK	4	
8	PAHZZ	96906	MS15795-805	WASHER,FLAT	4	
9	XBHHH	80063	SM-D-621328	PTD BOARD ASSY,A2 (SEE FIGURE 5 FOR BREAKDOWN)	1	
10	PAHZZ	80063	SM-C-621320	SHAFT ASSEMBLY,FLEX	1	
11	PAHZZ	96906	MS16624-4025	RING,RETAINING	6	
12	XBHZZ	80063	SM-B-621354	WASHER,KNOB,NYLON	6	
13	PAHZZ	81349	MIL-I-23053/2	SLEEVING,BLACK	1	
14	PAHZZ	96906	MS51957-2	SCREW,MACHINE	4	
15	PAHZZ	96906	MS35333-69	WASHER,LOCK	4	
16	XBHZZ	80063	SM-B-621318	PLATE,DETENT,FCTN	1	
17	PAHZZ	96906	MS19059-85	BALL,STEEL	4	
18	PAHZZ	80063	SM-B-621315	SPRING,FLAT	4	
19	XBHZZ	80063	SM-C-621310	SHAFT ASSY,FUNCTION	1	
20	PAHHH	55026	T00377	MULTIMETER,DIGITAL	1	
21	MDHZZ	80063	SM-B-551680	NAMEPLATE (FOR INSTRUCTIONS, SEE SB 11-631)	1	
22	PAHZZ	96906	MS28775-010	PACKING,PREFORMED	4	
23	PAOZZ	96906	MS91528-102B	KNOB	2	
24	PAOZZ	96906	MS91528-1P2B	KNOB	1	
25	PAHZZ	80063	SM-B-551677	GASKET	1	
26	PAHZZ	80063	SM-C-551679	METER,REPLACEMENT	1	
27	PAHZZ	96906	MS35338-136B	WASHER,LOCK	6	
28	PAHZZ	96906	MS51957-31B	SCREW,MACHINE	6	
29	PAOZZ	96906	MS91528-2P2B	KNOB	1	
30	PAHZZ	80063	SM-B-551658	SCREW,EXTERNALLY RE	14	
31	PAHZZ	96906	MS28775-005	PACKING,PREFORMED	14	
32	PAHZZ	81349	FHN26G1	FUSEHOLDER,EXTRACTO	1	
33	PAOZZ	81349	F02A250V21/2 AMP	FUSE,2 1/2 AMP	1	
34	PAHZZ	80063	SM-C-621327	FUSEHOLDER,EXTRACTO	1	
35	XBHZZ	80063	SM-C-621339	SHAFT ASSY,RANGE	1	
36	XBHZZ	80063	SM-C-621316	PLATE,DETENT,RANGE	1	
37	PAHZZ	96906	MS51957-14	SCREW,MACHINE	5	
38	XBHZZ	80063	SM-B-621346	SPACER	2	
39	PAHZZ	96906	MS51957-33	SCREW,MACHINE	2	
40	PAHZZ	96906	MS35333-74	WASHER,LOCK	2	

END OF FIGURE



**DETAIL A**

NOTE:  
PREFIX REFERENCE  
DESIGNATORS WITH A1



**DETAIL A**

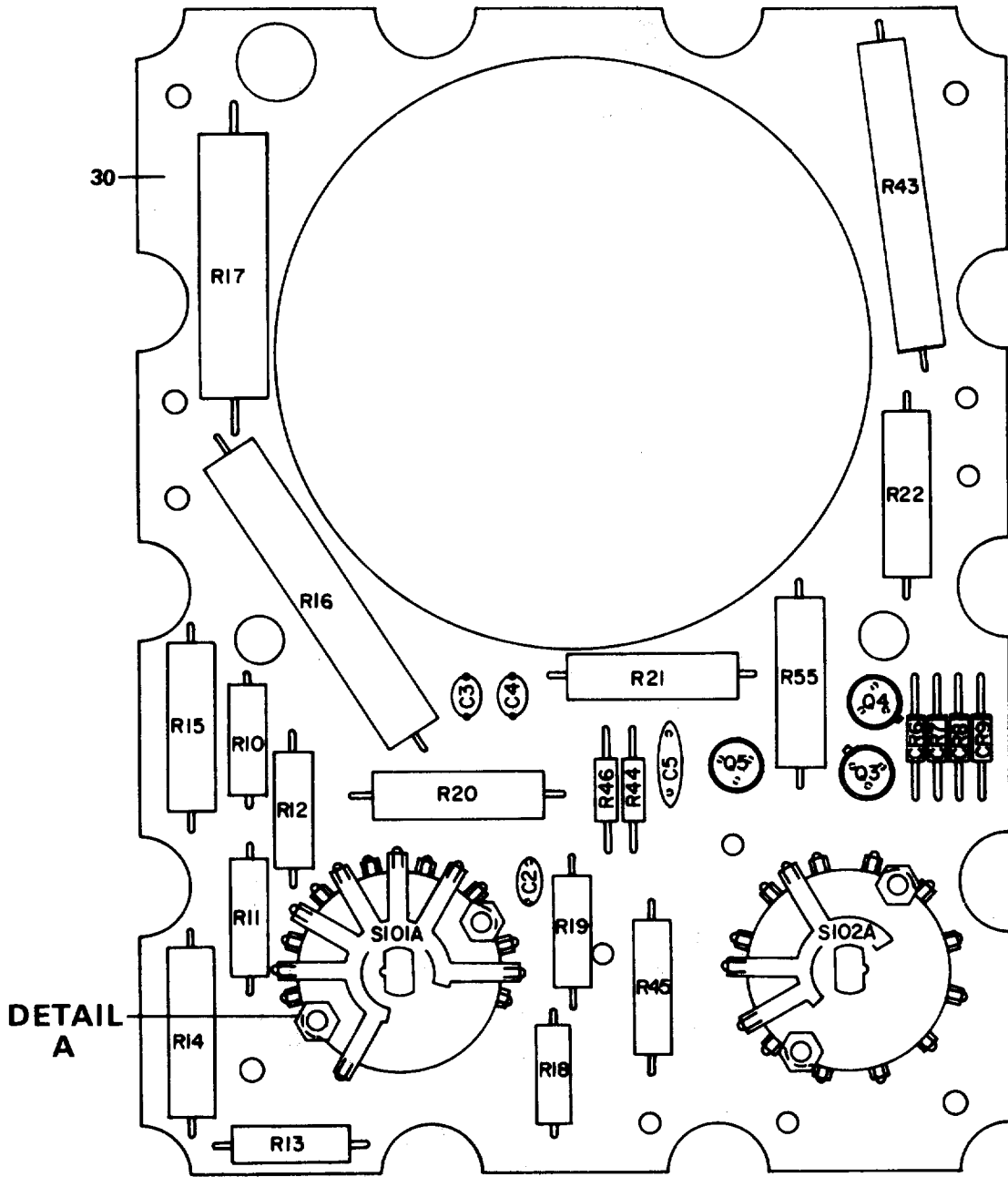
REF DES	ITEM NO.	REF DES	ITEM NO.	REF DES	ITEM NO.	REF DES	ITEM NO.	REF DES.	ITEM NO.
CR1	1	R1	7	R23	16	R32	25	R41	33
CR2	2	R2	8	R24	17	R33	26	R42	29
CR3	2	R3	9	R25	18	R34	27	R50	34
CR4	3	R4	10	R26	19	R35	28	R51	14
CR5	3	R5	11	R27	20	R36	29	R52	15
C1	4	R6	12	R28	21	R37	30	R53	15
C6	4	R7	13	R29	22	R38	31	R54	15
Q1	5	R8	14	R30	23	R39	31	S101B	35
Q2	6	R9	15	R31	24	R40	32	S102B	36

EL2P1004

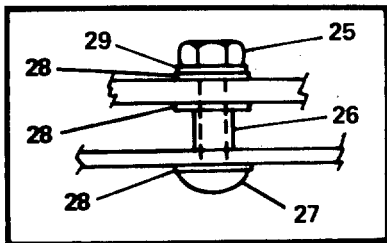
Figure 4. Printed Circuit Board Assembly (A1)

(1) ITEM NO	(2) SMR CODE	(3) FSCM	(4) PART NUMBER	(5) DESCRIPTION AND USABLE ON CODE (UOC)	(6) QTY
GROUP 010101 PRINTED CIRCUIT BOARD ASSEMBLY (A1)					
FIGURE 4					
1	PAHZZ	8149	JAN-1N753A	SEMICONDUCTOR DEVIC	1
2	PAHZZ	81349	1N276	SEMICONDUCTOR DEVIC	2
3	PAHZZ	81349	JAN1N483B	SEMICONDUCTOR DEVIC	2
4	PAHZZ	81349	CK63AW103M	CAPACITOR, FIXED, CER	2
5	PAHZZ	81349	2N2608	TRANSISTOR	1
6	PAHZZ	81349	2N697	TRANSISTOR, SIGNAL	1
7	XBHZZ	80063	SM-D-621324-9	RESISTOR	1
8	XBHZZ	80063	SM-D-621324-8	RESISTOR	1
9	XBHZZ	80063	SM-D-621324-6	RESISTOR	1
10	XBHZZ	80063	SM-D-621324-15	RESISTOR	1
11	XBHZZ	80063	SM-D-621324-13	RESISTOR	1
12	XBHZZ	80063	SM-B-621372	RESISTOR	1
13	XBHZZ	80063	SM-D-621324-11	RESISTOR	1
14	XBHZZ	80063	SM-D-621324-10	RESISTOR	2
15	PAHZZ	81349	RWR89S1001FS	RESISTOR, FIXED, WIRE	4
16	XBHZZ	80063	SM-D-621324-2	RESISTOR	1
17	XBHZZ	80063	SM-D-621324-4	RESISTOR	1
18	XBHZZ	80063	SM-D-621324-14	RESISTOR	1
19	XBHZZ	80063	SM-D-621324-16	RESISTOR	1
20	XBHZZ	80063	SM-D-621324-1	RESISTOR	1
21	XBHZZ	80063	SM-D-621324-3	RESISTOR	1
22	XBHZZ	80063	SM-D-621324-5	RESISTOR	1
23	PAHZZ	81349	RW74U20R0F	RESISTOR	1
24	PAHZZ	81349	RWR74S2870FS	RESISTOR, FIXED, WIRE	1
25	PAHZZ	81349	RCR42G103JS	RESISTOR, FIXED, COMP	1
26	PAHZZ	81349	RLR20C2402GS	RESISTOR, FIXED, FILM	1
27	PAHZZ	81349	RLR20C5101GS	RESISTOR, FIXED, FILM	1
28	PAHZZ	80063	SM-B-621340-1	RESISTOR	1
29	PAHZZ	81349	M39015/1-008PP	RESISTOR, VARIABLE, W	2
30	PAHZZ	80063	SM-B-621340-2	RESISTOR, VARIABLE, N	1
31	PAHZZ	81349	RLR20C1001GR	RESISTOR, FIXED, FILM	2
32	PAHZZ	80063	SM-B-621357	RESISTOR, FIXED, WW	1
33	PAHZZ	81349	M39015/1-004PP	RESISTOR, VARIABLE, W	1
34	PAHZZ	81349	M39015/1-003PP	RESISTOR, VARIABLE, W	1
35	PAHZZ	80063	SM-B-621330	SWITCH SECTION, ROTA	1
36	PAHZZ	80063	SM-B-621329	SWITCH SECTION, ROTA	1
37	XBHZZ	80063	SM-D-621325	WIRING HARNESS, MAIN	1
38	PAHZZ	96906	MS3367-4	STRAP, TIEDOWN, ELECT	1
39	PAHZZ	80205	NAS671C-4	NUT, PLAIN, HEXAGON	4
40	XBHZZ	80063	SM-B-621342	SPACER	4
41	PAHZZ	96906	MS51957-18	SCREW, MACHINE	1
42	PAHZZ	96906	MS35338-135	WASHER, LOCK	4
43	XBHZZ	80063	SM-B-621343	WASHER, FLAT	12
44	PAHZZ	80063	SM-D-621322	PRINTED CIRCUIT BOA	1

END OF FIGURE



DETAIL A



DETAIL A

REF DES	ITEM NO.	REF DES	ITEM NO.	REF DES	ITEM NO.	REF DES.	ITEM NO.
CR6	1	Q3	6	R15	13	R43	19
CR7	1	Q4	6	R16	14	R44	20
CR8	1	Q5	7	R17	15	R45	21
CR9	1	R10	8	R18	16	R46	22
C2	2	R11	9	R19	9	R55	18
C3	3	R12	10	R20	17	S101A	23
C4	4	R13	11	R21	18	S102A	24
C5	5	R14	12	R22	18		

NOTE:  
PREFIX REFERENCE DESIGNATORS  
DESIGNATORS WITH A2

EL2PI006

Figure 5. Printed Circuit Board Assembly (A2)



SECTION II		TM11-6625-654-24P					PCN X43CXXC064R PAGE 5
(1)	(2)	(3)	(4)	(5)	(6)		TM-CODE CBX
ITEM	SMR		PART				
NO	CODE	FSCM	NUMBER	DESCRIPTION AND USABLE ON CODE (UOC)	QTY		
GROUP 010102 PRINTED CIRCUIT BOARD							
ASSEMBLY (A2)							
FIGURE 5							
1	PAHZZ	81349	JAN1N645	SEMICONDUCTOR DEVIC	4		
2	PAHZZ	81349	CK60AX470M	CAPACITOR, FIXED, CER	1		
3	PAHZZ	81349	CK60BX100K	CAPACITOR, FIXED, CER	1		
4	PAHZZ	81349	CK60BX2R2K	CAPACITOR, FIXED, CER	1		
5	PAHZZ	81349	CK62AW472M	CAPACITOR, FIXED, CER	1		
6	PAHZZ	81349	JAN-2N2219A	TRANSISTOR	2		
7	PAHZZ	02735	2N5573	TRANSITOR	1		
8	PAHZZ	81349	RW79U8251F	RESISTOR, FIXED, WIRE	1		
9	XBHZZ	91637	SM-D-621328-2	RESISTOR	2		
10	PAHZZ	81349	RNC70K1503FS	RESISTOR, FIXED, FILM	1		
11	XBHZZ	91637	SM-D-621328-4	RESISTOR	1		
12	XBHZZ	91637	SM-D-621328-5	RESISTOR	1		
13	XBHZZ	91637	SM-D-621328-6	RESISTOR	1		
14	PAHZZ	81349	RN80D1005F	RESISTOR	1		
15	XBHZZ	77764	EBMW	RESISTOR	1		
16	PAHZZ	81349	RW79U7501F	RESISTOR, FIXED, WIRE	1		
17	PAHZZ	81349	RN75B2003F	RESISTOR, FIXED, FILM	1		
18	XBHZZ	91637	SM-D-621328-3	RESISTOR	3		
19	XBHZZ	77764	ROX-2	RESISTOR 4M OHMS 1W	1		
20	PAHZZ	81349	RCR20G101JM	RESISTOR	1		
21	XBHZZ	91637	CW-5-5	RESISTOR, 3 OHMS 6.5	1		
22	PAHZZ	81349	RCR020G102JS	RESISTOR, FIXED, COMP	1		
23	PAHZZ	80063	SM-B-621331	SWITCH SECTION, ROTA	1		
24	PAHZZ	80063	SM-B-621332	SWITCH SECTION, ROTA	1		
25	PAHZZ	80205	NAS671C-4	NUT, PLAIN, HEXAGON	4		
26	PAHZZ	76854	3-5115-102	SPACER, SLEEVE	4		
27	PAHZZ	96906	MS51957-18	SCREW, MACHINE	4		
28	XBHZZ	76854	2-1185-113	WASHER, FLAT	12		
29	PAHZZ	96906	MS35338-135	WASHER, LOCK	4		
30	XAHZZ	80063	SM-D-621326	BOARD, PRINTED CKT	1		

END OF FIGURE

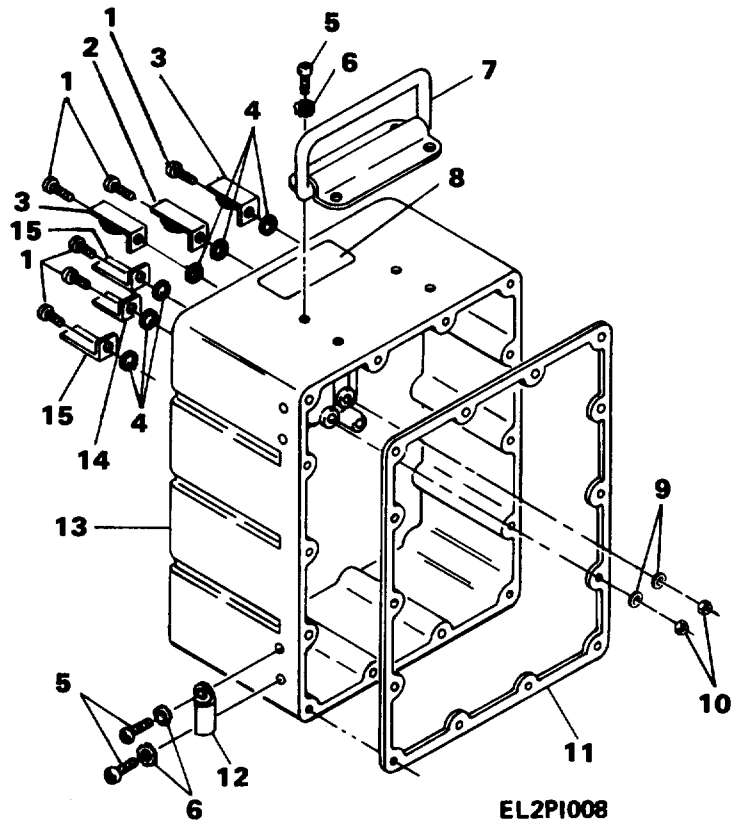


Figure 6. Case Assembly

SECTION II		TM11-6625-654-24P				
(1)	(2)	(3)	(4)	(5)	(6)	PCN X43CX
ITEM	SMR		PART			TM-CODE C
NO	CODE	FSCM	NUMBER	DESCRIPTION AND USABLE ON CODE (UOC)	QTY	
GROUP 0102 CASE ASSEMBLY						
FIGURE 6						
1	PAHZZ	96906	MS3212-5	SCREW,MACHINE	6	
2	XBHZZ	80063	SM-B-551662	CONTACT,ELECTRICAL	1	
3	PAHZZ	80063	SM-B-551663	CONTACT,ELECTRICAL	2	
4	PAHZZ	96906	MS28775-006	PACKING,PREFORMED	6	
5	PAHZZ	96906	MS51957-26	SCREW,MACHINE	12	
6	PAHZZ	96906	MS35335-58	WASHER,LOCK	12	
7	XBHZZ	80063	SM-C-551665	HANDLE	1	
8	MDHZZ	80063	SM-B-551666	NAMEPLATE FOR INSTRUCTIONS, SEE SB 11-631	1	
9	XBHZZ	80063	SM-A-946329	WASHER,FLAT	6	
10	PAHZZ	96906	MS35649-244	NUT,PLAIN,HEXAGON	6	
11	PAHZZ	80063	SM-C-551656	GASKET	1	
12	PAHZZ	80063	SM-B-621345	CATCH,TOPS	4	
13	PAHZZ	80063	SM-D-551690	CASE,TEST SET	1	
14	PAHZZ	80063	SM-B-551664-2	CONTACT,ELECTRICAL	1	
15	PAHZZ	80063	SM-B-551664-1	CONTACT,ELECTRICAL	2	
END OF FIGURE						

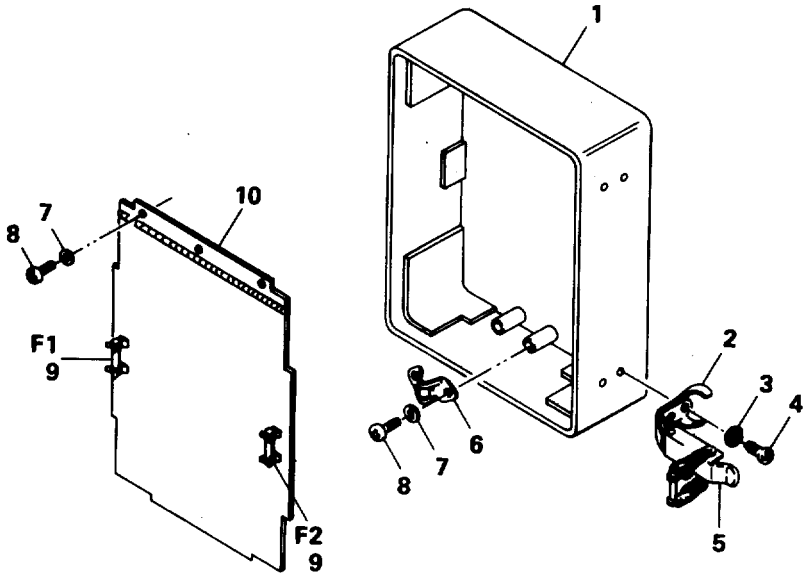


Figure 7. Cover Assembly

(1) ITEM NO	(2) SMR CODE	(3) FSCM	(4) PART NUMBER	(5) DESCRIPTION AND USABLE ON CODE (UOC)	(6) QTY
-------------------	--------------------	-------------	-----------------------	---	------------

## GROUP 0103 COVER ASSEMBLY

## FIGURE 7

1	PAOZZ	80063	SM-D-551693	COVER,TEST SET	1
2	PAOZZ	80063	SM-B-621351	LOOP RETAINER	1
3	PAOZZ	96906	MS35335-58	WASHER,LOCK	8
4	PAHZZ	96906	MS51957-26	SCREW,MACHINE	8
5	XBOZZ	14608	15824AND15794AND 15822	CATCH,CLAMPING	4
6	XBOZZ	80063	SM-C-551654-1	CLIP-STUD RECEIVER	1
7	PAOZZ	96906	MS35333-70	WASHER,LOCK	5
8	PAOZZ	96906	MS51957-13	SCREW,MACHINE	5
9	PAOZZ	81349	F02A250V21/2A	FUSE,2.5 AMP	2
10	PAOZZ	80063	SM-C-551668	COVER,MULTIMETER	1

END OF FIGURE

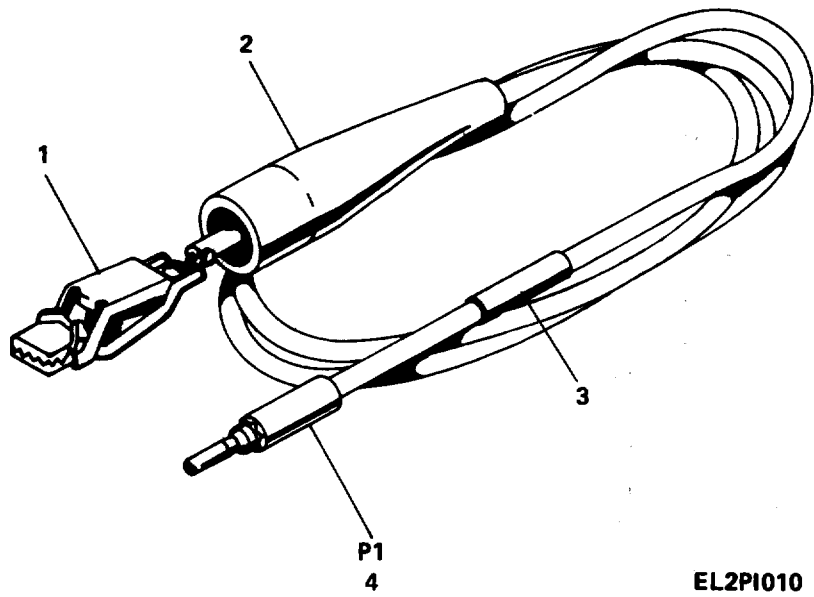
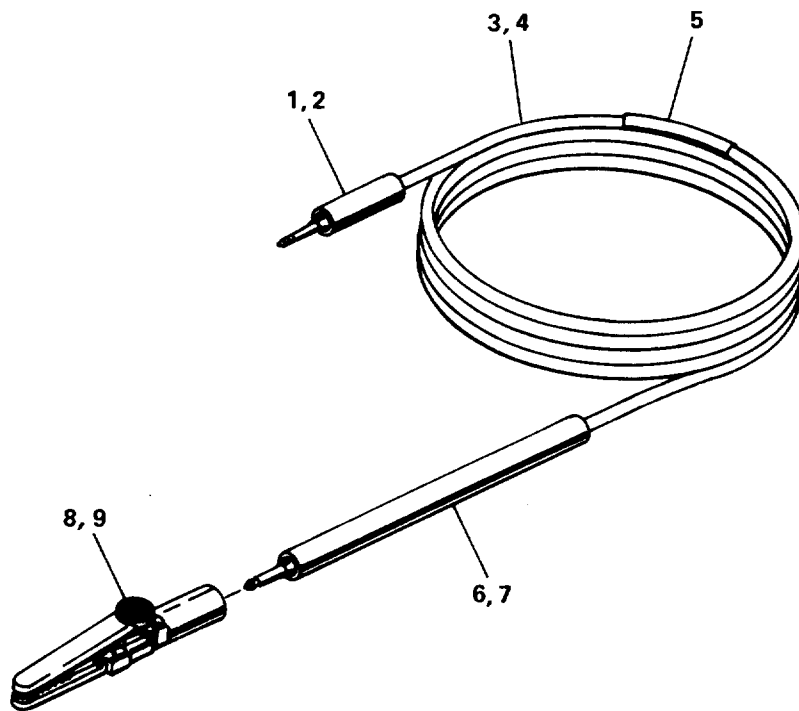


Figure 8. Test Lead Assembly CX-927/U

SECTION II TM11-6625-654-24P

(1) ITEM NO	(2) SMR CODE	(3) FSCM	(4) PART NUMBER	(5) DESCRIPTION AND USABLE ON CODE (UOC)	(6) QTY	PCN X43CXXC064R TM-CODE CBX	PAGE 8
				GROUP 02 TEST LEAD ASSEMBLY CX-927/U			
				FIGURE 8			
1	PAHZZ	76545	27	CLIP,ELECTRICAL	4		
2	XBHZZ	76545	29	INSULATOR,RED	5		
3	PAHZZ	80063	SM-B-165914	BAND,MARKER	6		
4	XBHZZ	83330	212	PLUG,RED	2		
				END OF FIGURE			



EL2PI011

Figure 9. Test Lead Set CX-1331/U



(1) ITEM NO	(2) SMR CODE	(3) FSCM	(4) PART NUMBER	(5) DESCRIPTION AND USABLE ON CODE (UOC)	(6) QTY
GROUP 03 TEST LEAD SET CX-1331/U					
FIGURE 9					
1	PAHZZ	80058	MX-1906/U	PROD,TEST	1
2	PAHZZ	80058	MX-1907/U	PROD,TEST	1
3	XBHZZ	80063	SC-C-6878-1	CABLE,TL-G RED	1
4	XBHZZ	80063	SC-C-6878-2	CABLE,TL-G BLACK	1
5	XBHZZ	80063	SC-B-165914	BAND,IDENTIFICATION	2
6	PAHZZ	80058	MX-1909/U	PROD,TEST	1
7	PAHZZ	80058	MX-1910/U	PROD,TEST	1
8	PAHZZ	91802	1410D1	CLIP,ELECTRICAL	1
9	PAHZZ	91802	1410D2	CLIP,ELECTRICAL	1

END OF FIGURE

## NATIONAL STOCK NUMBER AND PART NUMBER INDEX

STOCK NUMBER	NATIONAL FIG.	STOCK NUMBER ITEM	INDEX STOCK NUMBER	FIG.	ITEM
5305-00-006-9408	6	1	5940-00-702-5260	9	9
5905-00-039-9528	4	33	5310-00-722-5998	3	8
5910-00-051-6214	5	4	5961-00-752-6121	4	1
5305-00-054-5636	3	14	5910-00-822-5683	4	4
5305-00-054-5647	7	8	5910-00-823-1068	5	5
5305-00-054-5648	3	37	5961-00-892-0734	4	3
5305-00-054-5652	4	41	5920-00-892-9311	3	32
	5	27		3	34
5305-00-054-6650	6	5	5905-00-926-8708	4	31
	7	4	5905-00-931-5830	5	16
5305-00-054-6651	2	5	5310-00-933-8118	4	42
5305-00-054-6652	2	9		5	29
5305-00-054-6657	3	39	5310-00-934-9748	2	2
5961-00-087-6047	5	1		3	1
5905-00-101-1630	4	34		6	10
5905-00-110-0196	5	22	5310-00-934-9761	3	6
5961-00-137-5470	5	7	5961-00-943-9203	4	5
5905-00-184-7703	4	25	5961-00-949-1432	5	6
5310-00-208-3786	4	39	5910-00-983-5388	5	3
	5	25	5355-00-989-4269	3	23
5310-00-209-1366	6	6	5365-01-004-4820	5	26
	7	3	5330-01-006-3950	3	25
5310-00-224-0747	3	27	6625-01-008-9224	3	4
5905-00-240-8319	5	8	5905-01-014-7735	4	30
5905-00-256-1175	4	29	6625-01-023-6092	7	10
5330-00-292-0580	6	4	6625-01-024-0570	2	3
5340-00-355-9839	7	2	5999-01-036-1142	4	44
6625-00-390-5716	1	4	6625-01-036-8355	3	26
5905-00-433-1182	5	10	6625-01-036-8419	2	7
5305-00-448-6456	3	28	6625-01-036-8907	6	13
6625-00-500-4508	1	3	5999-01-036-9499	6	3
5310-00-543-4652	3	15	5999-01-036-9500	6	14
5310-00-550-3715	2	1	5999-01-037-0927	6	15
	3	2	5930-01-081-3520	4	36
	7	7	5340-01-082-3684	6	12
5905-00-552-5162	5	17	5930-01-082-4343	5	24
5355-00-582-3804	3	29	5930-01-085-0058	4	35
5330-00-584-0266	3	22	5930-01-093-9517	5	23
5310-00-595-6211	3	3	5330-01-096-8826	6	11
5961-00-615-0095	4	2	6135-01-099-5976	2	8
5310-00-616-3555	2	6	5905-01-110-3094	4	15
	3	7	6625-01-112-0118	7	1
5355-00-616-9604	3	24	6625-01-138-0757	2	4
5999-00-621-3276	8	1	5905-01-138-7889	4	27
5330-00-631-1346	3	31	5999-01-139-2512	1	1
6625-00-643-8541	9	2		3	20
6625-00-643-8543	9	1	5905-01-143-9877	4	24
6625-00-643-8544	9	7	5905-01-187-7373	4	26
5975-00-669-9473	8	3			
5999-00-702-5256	9	8			

## NATIONAL STOCK NUMBER AND PART NUMBER INDEX

FSCM	PART NUMBER INDEX PART NUMBER	STOCK NUMBER	FIG.	ITEM
81349	CK60AX470M		5	2
81349	CK60BX100K	5910-00-983-5388	5	3
81349	CK60BX2R2K	5910-00-051-6214	5	4
81349	CK62AW472M	5910-00-823-1068	5	5
81349	CK63AW103M	5910-00-822-5683	4	4
91637	CW-5-5		5	21
80058	CX-1331/U	6625-00-390-5716	1	4
80058	CX-927/U(4FT)		1	2
77764	EBMW		5	15
81349	FHN26G1	5920-00-892-9311	3	32
81349	F02A250V21/2A		3	33
			7	9
81349	JAN-1N753A	5961-00-752-6121	4	1
81349	JAN-2N2219A	5961-00-949-1432	5	6
81349	JAN1N483B	5961-00-892-0734	4	3
81349	JAN1N645	5961-00-087-6047	5	1
81349	MIL-I-23053/2		3	13
96906	MS15795-803	5310-00-595-6211	3	3
96906	MS15795-805	5310-00-722-5998	3	8
96906	MS16624-4025		3	11
96906	MS19059-85		3	17
96906	MS28775-005	5330-00-631-1346	3	31
96906	MS28775-006	5330-00-292-0580	6	4
96906	MS28775-010	5330-00-584-0266	3	22
96906	MS3212-5	5305-00-006-9408	6	1
96906	MS3367-4		4	38
96906	MS35333-69	5310-00-543-4652	3	15
96906	MS35333-70	5310-00-550-3715	2	1
			3	2
			7	7
96906	MS35333-71	5310-00-616-3555	2	6
			3	7
96906	MS35333-74		3	40
96906	MS35335-58	5310-00-209-1366	6	6
			7	3
96906	MS35338-135	5310-00-933-8118	4	42
			5	29
96906	MS35338-136B	5310-00-224-0747	3	27
96906	MS35649-244	5310-00-934-9748	2	2
			3	1
			6	10
96906	MS35649-264	5310-00-934-9761	3	6
96906	MS51957-13	5305-00-054-5647	7	8
96906	MS51957-14	5305-00-054-5648	3	37
96906	MS51957-18	5305-00-054-5652	4	41
			5	27
96906	MS51957-2	5305-00-054-5636	3	14
96906	MS51957-26	5305-00-054-6650	6	5
			7	4
96906	MS51957-27	5305-00-054-6651	2	5
96906	MS51957-28	5305-00-054-6652	2	9

## NATIONAL STOCK NUMBER AND PART NUMBER INDEX

FSCM	PART NUMBER	PART NUMBER INDEX STOCK NUMBER	FIG.	ITEM
96906	MS51957-31B	5305-00-448-6456	3	28
96906	MS51957-33	5305-00-054-6657	3	39
96906	MS91528-1P2B	5355-00-616-9604	3	24
96906	MS91528-102B	5355-00-989-4269	3	23
96906	MS91528-2P2B	5355-00-582-3804	3	29
80058	MX-1572/U	6625-00-500-4508	1	3
80058	MX-1906/U	6625-00-643-8543	9	1
80058	MX-1907/U	6625-00-643-8541	9	2
80058	MX-1909/U		9	6
80058	MX-1910/U	6625-00-643-8544	9	7
81349	M39015/1-003PP	5905-00-101-1630	4	34
81349	M39015/1-004PP	5905-00-039-9528	4	33
81349	M39015/1-008PP	5905-00-256-1175	4	29
80205	NAS671C-4	5310-00-208-3786	4	39
			5	25
81349	RCR020G102JS	5905-00-110-0196	5	22
81349	RCR20G101JM		5	20
81349	RCR42G103JS	5905-00-184-7703	4	25
81349	RLR20C1001GR	5905-00-926-8708	4	31
81349	RLR20C2402GS	5905-01-187-7373	4	26
81349	RLR20C5101GS	5905-01-138-7889	4	27
81349	RNC70K1503FS	5905-00-433-1182	5	10
81349	RN75B2003F	5905-00-552-5162	5	17
81349	RN80D1005F		5	14
77764	ROX-2		5	19
81349	RWR74S2870FS	5905-01-143-9877	4	24
81349	RWR89S1001FS	5905-01-110-3094	4	15
81349	RW74U20R0F		4	23
81349	RW79U7501F	5905-00-931-5830	5	16
81349	RW79U8251F	5905-00-240-8319	5	8
80063	SC-B-165914		9	5
80063	SC-C-6878-1		9	3
80063	SC-C-6878-2		9	4
80063	SM-A-946329		6	9
80063	SM-B-165914	5975-00-669-9473	8	3
80063	SM-B-551655	6135-01-099-5976	2	8
80063	SM-B-551658		3	30
80063	SM-B-551662		6	2
80063	SM-B-551663	5999-01-036-9499	6	3
80063	SM-B-551664-1	5999-01-037-0927	6	15
80063	SM-B-551664-2	5999-01-036-9500	6	14
80063	SM-B-551666		6	8
80063	SM-B-551677	5330-01-006-3950	3	25
80063	SM-B-551680		3	21
80063	SM-B-621315		3	18
80063	SM-B-621318		3	16
80063	SM-B-621329	5930-01-081-3520	4	36
80063	SM-B-621330	5930-01-085-0058	4	35
80063	SM-B-621331	5930-01-093-9517	5	23
80063	SM-B-621332	5930-01-082-4343	5	24
80063	SM-B-621340-1		4	28

## NATIONAL STOCK NUMBER AND PART NUMBER INDEX

FSCM	PART NUMBER	PART NUMBER INDEX STOCK NUMBER	FIG.	ITEM
80063	SM-B-621340-2	5905-01-014-7735	4	30
80063	SM-B-621342		4	40
80063	SM-B-621343		4	43
80063	SM-B-621345	5340-01-082-3684	6	12
80063	SM-B-621346		3	38
80063	SM-B-621347		3	5
80063	SM-B-621351	5340-00-355-9839	7	2
80063	SM-B-621354		3	12
80063	SM-B-621357		4	32
80063	SM-B-621372		4	12
80063	SM-C-551654	6625-01-024-0570	2	3
80063	SM-C-551654-1		7	6
80063	SM-C-551656	5330-01-096-8826	6	11
80063	SM-C-551665		6	7
80063	SM-C-551668	6625-01-023-6092	7	10
80063	SM-C-551679	6625-01-036-8355	3	26
80063	SM-C-621310		3	19
80063	SM-C-621316		3	36
80063	SM-C-621320		3	10
80063	SM-C-621327	5920-00-892-9311	3	34
80063	SM-C-621339		3	35
80063	SM-D-551652	6625-01-036-8419	2	7
80063	SM-D-551690	6625-01-036-8907	6	13
80063	SM-D-551693	6625-01-112-0118	7	1
80063	SM-D-621309	6625-01-138-0757	2	4
80063	SM-D-621322	5999-01-036-1142	4	44
80063	SM-D-621324	6625-01-008-9224	3	4
80063	SM-D-621324-1		4	20
80063	SM-D-621324-10		4	14
80063	SM-D-621324-11		4	13
80063	SM-D-621324-13		4	11
80063	SM-D-621324-14		4	18
80063	SM-D-621324-15		4	10
80063	SM-D-621324-16		4	19
80063	SM-D-621324-2		4	16
80063	SM-D-621324-3		4	21
80063	SM-D-621324-4		4	17
80063	SM-D-621324-5		4	22
80063	SM-D-621324-6		4	9
80063	SM-D-621324-8		4	8
80063	SM-D-621324-9		4	7
80063	SM-D-621325		4	37
80063	SM-D-621326		5	30
80063	SM-D-621328		3	9
91637	SM-D-621328-2		5	9
91637	SM-D-621328-3		5	18
91637	SM-D-621328-4		5	11
91637	SM-D-621328-5		5	12
91637	SM-D-621328-6		5	13
55026	T00377	5999-01-139-2512	1	1
			3	20

## NATIONAL STOCK NUMBER AND PART NUMBER INDEX

FSCM	PART NUMBER	PART NUMBER INDEX STOCK NUMBER	FIG.	ITEM
81349	1N276	5961-00-615-0095	4	2
91802	1410D1	5999-00-702-5256	9	8
91802	1410D2	5940-00-702-5260	9	9
14608	15824AND15794AND 15822		7	5
76854	2-1185-113		5	28
81349	2N2608	5961-00-943-9203	4	5
02735	2N5573	5961-00-137-5470	5	7
81349	2N697		4	6
83330	212		8	4
76545	27	5999-00-621-3276	8	1
76545	29		8	2
76854	3-5115-102	5365-01-004-4820	5	26

By Order of the Secretary of the Army:

Official:

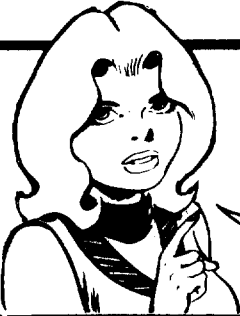
CARL E. VUONO  
General, United States Army  
Chief of Staff

R.L. DILWORTH  
Brigadier General, United States Army  
The Adjutant General

DISTRIBUTION :

To be distributed in accordance with DA Form 12-36 literature requirements for AN/USM-223.

RECOMMENDED CHANGES TO EQUIPMENT TECHNICAL PUBLICATIONS



THEN... JOT DOWN THE DOPE ABOUT IT ON THIS FORM. CAREFULLY TEAR IT OUT. FOLD IT AND DROP IT IN THE MAIL!

SOMETHING WRONG WITH THIS PUBLICATION?

FROM (PRINT YOUR UNIT'S COMPLETE ADDRESS)  
 Commander  
 Stateside Army Depot  
 ATTN: AMSTA-US  
 Stateside, N.J. 07703-5007

DATE SENT  
 10 July 1975

PUBLICATION NUMBER TM 11-5840-340-20P	PUBLICATION DATE 23 Jan 78	PUBLICATION TITLE Radar Set AN/PRC-76
--	-------------------------------	--

BE EXACT PIN-POINT WHERE IT IS				IN THIS SPACE TELL WHAT IS WRONG AND WHAT SHOULD BE DONE ABOUT IT:
PAGE NO	PARA-GRAPH	FIGURE NO	TABLE NO	
33				For item 2, change the NSN to read: 5835-00-134-9186. Reason: Accuracy.
44		19		Identify the cover on the junction box (item no. 5). Reason: It is a separate item and is not called out on figure 19.
45				Add the cover of the junction box as an item in the listing for figure 19. Reason: Same as above

SAMPLE

PRINTED NAME, GRADE OR TITLE, AND TELEPHONE NUMBER  
 SSG I. M. DeSpirit of 999-1776

SIGN HERE

TEAR ALONG PERFORATED LINE



FILL IN YOUR  
UNIT'S ADDRESS

FOLD BACK

DEPARTMENT OF THE ARMY

\_\_\_\_\_  
\_\_\_\_\_

POSTAGE AND FEES PAID  
DEPARTMENT OF THE ARMY  
DOD 314



OFFICIAL BUSINESS  
PENALTY FOR PRIVATE USE \$300

**SAMPLE**

Commander  
US Army Communications-Electronics Command  
and Fort Monmouth  
ATTN: AMSEL-ME-MP  
Fort Monmouth, New Jersey 07703-5007

TEAR ALONG PERFORATED LINE

RECOMMENDED CHANGES TO EQUIPMENT TECHNICAL PUBLICATIONS



**SOMETHING WRONG WITH THIS PUBLICATION?**

*THEN...JOT DOWN THE DOPE ABOUT IT ON THIS FORM. CAREFULLY TEAR IT OUT, FOLD IT AND DROP IT IN THE MAIL.*

FROM: (PRINT YOUR UNIT'S COMPLETE ADDRESS)

DATE SENT

PUBLICATION NUMBER  
TM 11-6625-654-24P

PUBLICATION DATE  
15 August 1987

PUBLICATION TITLE  
Multimeter AN/USM-223

BE EXACT PIN-POINT WHERE IT IS

PAGE NO.	PARA-GRAPH	FIGURE NO.	TABLE NO.

**IN THIS SPACE TELL WHAT IS WRONG AND WHAT SHOULD BE DONE ABOUT IT:**

TEAR ALONG PERFORATED LINE

PRINTED NAME GRADE OR TITLE AND TELEPHONE NUMBER

SIGN HERE

FILL IN YOUR  
UNIT'S ADDRESS

FOLD BACK

DEPARTMENT OF THE ARMY

\_\_\_\_\_  
\_\_\_\_\_

OFFICIAL BUSINESS  
PENALTY FOR PRIVATE USE \$300

POSTAGE AND FEES PAID  
DEPARTMENT OF THE ARMY  
DOD 314



TEAR ALONG PERFORATED LINE

Commander  
US Army Communications-Electronics Command  
and Fort Monmouth  
ATTN: AMSEL-ME-MP  
Fort Monmouth, New Jersey 07703-5007

# THE METRIC SYSTEM AND EQUIVALENTS

## WEIGHT MEASURE

1 Centimeter = 10 Millimeters = 0.01 Meters = 0.3937 Inches  
 1 Meter = 100 Centimeters = 1000 Millimeters = 39.37 Inches  
 1 Kilometer = 1000 Meters = 0.621 Miles

## WEIGHTS

1 Gram = 0.001 Kilograms = 1000 Milligrams = 0.035 Ounces  
 1 Kilogram = 1000 Grams = 2.2 lb.  
 1 Metric Ton = 1000 Kilograms = 1 Megagram = 1.1 Short Tons

## LIQUID MEASURE

1 Milliliter = 0.001 Liters = 0.0338 Fluid Ounces  
 1 Liter = 1000 Milliliters = 33.82 Fluid Ounces

## SQUARE MEASURE

1 Sq. Centimeter = 100 Sq. Millimeters = 0.155 Sq. Inches  
 1 Sq. Meter = 10,000 Sq. Centimeters = 10.76 Sq. Feet  
 1 Sq. Kilometer = 1,000,000 Sq. Meters = 0.386 Sq. Miles

## CUBIC MEASURE

1 Cu. Centimeter = 1000 Cu. Millimeters = 0.06 Cu. Inches  
 1 Cu. Meter = 1,000,000 Cu. Centimeters = 35.31 Cu. Feet

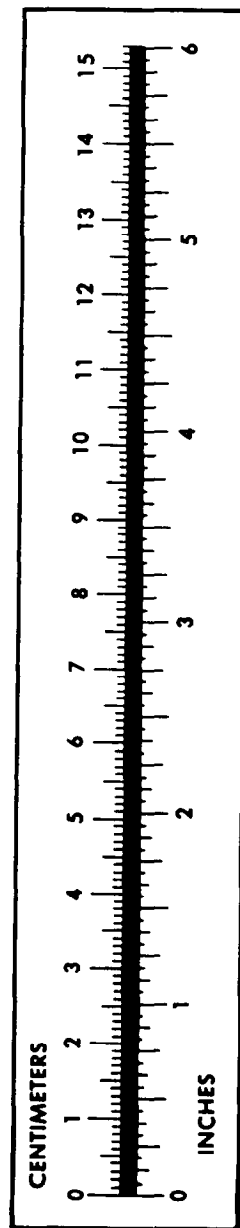
## TEMPERATURE

$5/9(^{\circ}\text{F} - 32) = ^{\circ}\text{C}$   
 212° Fahrenheit is equivalent to 100° Celsius  
 90° Fahrenheit is equivalent to 32.2° Celsius  
 32° Fahrenheit is equivalent to 0° Celsius  
 $9/5^{\circ}\text{C} + 32 = ^{\circ}\text{F}$

## APPROXIMATE CONVERSION FACTORS

TO CHANGE	TO	MULTIPLY BY
Inches	Centimeters	2.540
Feet	Meters	0.305
Yards	Meters	0.914
Miles	Kilometers	1.609
Square Inches	Square Centimeters	6.451
Square Feet	Square Meters	0.093
Square Yards	Square Meters	0.836
Square Miles	Square Kilometers	2.590
Acres	Square Hectometers	0.405
Cubic Feet	Cubic Meters	0.028
Cubic Yards	Cubic Meters	0.765
Fluid Ounces	Milliliters	29.573
its	Liters	0.473
arts	Liters	0.946
allons	Liters	3.785
Ounces	Grams	28.349
Pounds	Kilograms	0.454
Short Tons	Metric Tons	0.907
Pound-Feet	Newton-Meters	1.356
Pounds per Square Inch	Kilopascals	6.895
Miles per Gallon	Kilometers per Liter	0.425
Miles per Hour	Kilometers per Hour	1.609

TO CHANGE	TO	MULTIPLY BY
Centimeters	Inches	0.394
Meters	Feet	3.280
Meters	Yards	1.094
Kilometers	Miles	0.621
Square Centimeters	Square Inches	0.155
Square Meters	Square Feet	10.764
Square Meters	Square Yards	1.196
Square Kilometers	Square Miles	0.386
Square Hectometers	Acres	2.471
Cubic Meters	Cubic Feet	35.315
Cubic Meters	Cubic Yards	1.308
Milliliters	Fluid Ounces	0.034
Liters	Pints	2.113
Liters	Quarts	1.057
ers	Gallons	0.264
ms	Ounces	0.035
ograms	Pounds	2.205
Metric Tons	Short Tons	1.102
Newton-Meters	Pounds-Feet	0.738
Kilopascals	Pounds per Square Inch	0.145
ometers per Liter	Miles per Gallon	2.354
ometers per Hour	Miles per Hour	0.621



**PIN: 033794-000**