

TECHNICAL MANUAL

ORGANIZATIONAL, INTERMEDIATE, DIRECT SUPPORT  
AND GENERAL SUPPORT MAINTENANCE  
REPAIR PARTS AND SPECIAL TOOLS LIST

FOR

DUAL TRACE AMPLIFIER

AM-6785/U

(NSN 6625-01-361-531 8)

AND

AM-6785A/U

(NSN 6625-01- 132-0244)

**Distribution authorized to the Department of Defense and DOD contractors only for official use or for administration or operational purposes. This determination was made on 16 July 1987. Other requests for this document will be referred to Commander, US Army Communications-Electronics Command and Fort Monmouth, ATTN: AMSEL-ME-P, Fort Monmouth, NJ 07703-5000.**

**DESTRUCTION NOTICE—Destroy by any method that will prevent disclosure of contents or reconstruction of the document.**

---

HEADQUARTERS, DEPARTMENT OF THE ARMY

15 APRIL 1989



**ORGANIZATIONAL, INTERMEDIATE, DIRECT SUPPORT  
AND GENERAL SUPPORT MAINTENANCE  
REPAIR PARTS AND SPECIAL TOOLS LIST  
FOR  
DUAL TRACE AMPLIFIER  
AM-6785/U  
(NSN 6625-01-361-5318)  
AND  
AM-6785A/U  
(NSN 6625-01-132-0244)**

Current as of 1 July 1987

**REPORTING ERRORS AND RECOMMENDING IMPROVEMENTS**

You can help improve this manual. If you find any mistakes or if you know of a way to improve the procedures, please let us know. Mail your letter, DA Form 2028 (Recommended Changes to Publications and Blank Forms), or DA Form 2028-2, located in the back of this manual direct to: Commander, US Army Communications-Electronics Command, and Fort Monmouth, ATTN: AMSEL-ME-MP, Fort Monmouth, NJ 07703-5000.

In either case, a reply will be furnished direct to you.

**Table of Contents**

		Page	Illus Figure
Section	I. Introduction .....	1	
	II. Repair Parts List .....	1-1	
Group	00 Dual Trace Amplifier, AM-6785/U .....	1-1	1
	01 Circuit Card Assembly: Amplifier (A2) .....	2-1	2
	00 Dual Trace Amplifier, AM-6785A/U .....	1A-1	1A
	01 Circuit Card Assembly: Amplifier (A2) .....	2A-1	2A

\* This manual supersedes TM 11-6625-2737-24P, 12 July 1977.

Table of Contents — Continued

		Page	Illus Figure
Section	III. Special Tools List (Not applicable)		
	IV. Cross-Reference Indexes		
	National Stock Number Index . . . . .	I-1	
	Part Number Index . . . . .	I-2	
	Figure and Item Number Index . . . . .	I-3	

## SECTION I. INTRODUCTION

### 1. Scope.

This RPSTL lists and authorizes spares and repair parts; special tools; special test, measurement, and diagnostic equipment (TMDE); and other special support equipment required for performance of organizational, intermediate, direct support, and general support maintenance of the AM-6785/U and AM-6785A/U. It authorizes the requisitioning, issue, and disposition of spares, repair parts and special tools as indicated by the source, maintenance and recoverability (SMR) codes.

### 2. General.

In addition to Section I, Introduction, this Repair Parts and Special Tools List is divided into the following sections:

**a. Section II. Repair Parts List.** A list of spares and repair parts authorized by this RPSTL for use in the performance of maintenance. The list also includes parts which must be removed for replacement of the authorized parts. Parts lists are composed of functional groups in ascending alphanumeric sequence, with the parts in each group listed in ascending figure and item number sequence. Bulk materials are listed in item name sequence. Repair parts kits are listed separately in their own functional group within Section II. Repair parts for repairable special tools are also listed in this section. Items listed are shown on the associated illustration(s)/figure(s).

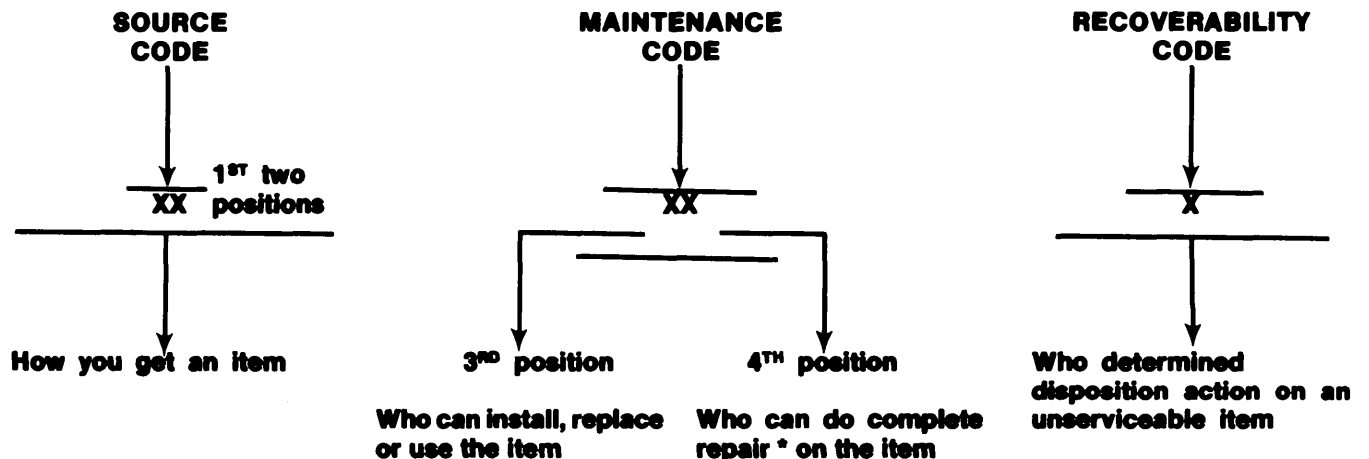
**b. Section III. Special Tools List.** Not authorized.

**c. Section IV. Cross-Reference Indexes.** A list, in National item identification number (NIIN) sequence, of all National stock numbered items appearing in the listing, followed by a list in alphanumeric sequence of all part numbers appearing in the listings. National stock numbers and part numbers are cross-referenced to each illustration figure and item number appearance. The figure number and item numbers in numeric sequence and cross-references National stock number, Federal Supply Code for Manufacturer and part numbers.

### 3. Explanation of Columns (Sections II and III).

**a. ITEM NO. (Column (1)).** Indicates the number used to identify items called out in the illustration.

**b. SMR CODE (Column (2)).** The Source, Maintenance, and Recoverability (SMR) code is a 5-position code containing supply/requisitioning information, maintenance category authorization criteria, and disposition instruction, as shown in the following breakout:



\* Complete Repair: Maintenance capacity, capability, and authority to perform all corrective maintenance tasks of the "Repair" function in a use/user environment in order to restore serviceability to a failed item.

(1) **Source code.** The source code tells you how to get an item needed for maintenance, repair, or overhaul of an end item/equipment. Explanations of source codes follow :

CODE	EXPLANATION
PA PB PC** PD PE PF PG	Stocked items; use the applicable NSN to request/requisition items with these source codes. They are authorized to the category indicated in the 3 <sup>RD</sup> position of the SMR code.  **NOTE: <i>Items coded PC are subject to deterioration.</i>
KD KF KB	Items with these codes are not to be requested/requisitioned individually. They are part of a kit which is authorized to the maintenance category indicated in the 3 <sup>RD</sup> position of the SMR code. The complete kit must be requisitioned and applied.
MO — (Made at org/AVUM Level) MF — (Made at DS/AVIM Level) MH — (Made at GS Level) ML — (Made at Specialized Repair Act (SRA)) MD — (Made at Depot)	Items with these codes are not to be requested/requisitioned individually. They must be made from bulk material which is identified by the part number in the <b>DESCRIPTION AND USABLE ON CODE (UOC)</b> column and listed in the Bulk Material group of the repair parts list in this RPSTL. If the item is authorized to you by the 3 <sup>RD</sup> position code of the SMR code, but the source code indicates it is made at a higher level, order the item from the higher level of maintenance.
AO — (Assembled by org/AVUM Level) AF — (Assembled by DS/AVIM Level) AH — (Assembled by GS Category) AL — (Assembled by SRA) AD — (Assembled by Depot)	Items with these codes are not to be requested/requisitioned individually. The parts that make up the assembled item must be requisitioned or fabricated and assembled at the level of maintenance indicated by the source code. If the 3 <sup>RD</sup> position code of the SMR code authorizes you to replace the item, but the source code indicates the item is assembled at a higher level, order the item from the higher level of maintenance.
XA — Do not requisition an "XA"-coded item. Order its next higher assembly. (Also, refer to the NOTE below.) XB — If an "XB" item is not available from salvage, order it using the FSCM and part number given. XC — Installation drawing, diagram, instruction sheet, field service drawing, that is identified by manufacturer's part number. XD — Item is not stocked. Order an "XD"-coded item through normal supply channels using the FSCM and part number given, if no NSN is available.	

**NOTE:** *Cannibalization or controlled exchange, when authorized, may be used as a source of supply for items with the above source codes, except for those source coded "X4" or those aircraft support items restricted by requirements AR 700-42.*

**(2) Maintenance Code.** Maintenance codes tell you the level(s) of maintenance authorized to USE and REPAIR support items. The maintenance codes are entered in the 3<sup>RD</sup> and 4<sup>TH</sup> positions of the SMR code as follows:

**(a)** The maintenance code entered in the 3<sup>RD</sup> position tells you the lowest maintenance level authorized to remove, replace, and use an item. The maintenance code entered in the 3<sup>RD</sup> position will indicate authorization to one of the following levels of maintenance.

CODE	APPLICATION/EXPLANATION
C	— Crew or operator maintenance done within organizational or aviation unit maintenance.
O	— Organizational or aviation unit category can remove, replace, and use the item.
F	— Direct support or aviation intermediate level can remove, replace, and use the item.
H	— General support level can remove, replace, and use the item.
L	— Specialized repair activity can remove, replace, and use the item.
D	— Depot level can remove, replace, and use the item.

**(b)** The maintenance code entered in the 4<sup>TH</sup> position tells whether or not the item is to be repaired and identifies the lowest maintenance level with the capability to do complete repair (i.e., perform all authorized repair functions.) **(NOTE: Some limited repair may be done on the item at a lower category of maintenance, if authorized by the Maintenance Allocation Chart (MAC) and SMR codes.)** This position will contain one of the following maintenance codes.

CODE	APPLICATION/EXPLANATION
O	— Organizational or (aviation unit) is the lowest level that can do complete repair of the item.
F	— Direct support or aviation intermediate is the lowest level that can do complete repair of the item.
H	— General support is the lowest level that can do complete repair of the item.
L	— Specialized repair activity (designate the specialized repair activity) is the lowest level that can do complete repair of the item.
D	— Depot is the lowest level that can do complete repair of the item.
Z	— Non-reparable. No repair is authorized.
B	— No repair is authorized. (No parts or special tools are authorized for the maintenance of a “B” coded item) : However, the item may be reconditioned by adjusting, lubricating, etc., at the user level.

**(3) Recoverability Code.** Recoverability codes are assigned to items to indicate the disposition action on unserviceable items. The recoverability code is entered in the 5<sup>TH</sup> position of the SMR code as follows:

**RECOVERABILITY  
CODES**

**APPLICATION/EXPLANATION**

Z	— Non-reparable item. When unserviceable, condemn and dispose of the item at the level of maintenance shown in the 3 <sup>RD</sup> position of the SMR code.
O	— Reparable item. When uneconomically repairable, condemn and dispose of the item at organizational or aviation unit level.
F	— Reparable item. When uneconomically repairable, condemn and dispose of the item at the direct support or aviation intermediate level.
H	— Reparable item. When uneconomically repairable, condemn and dispose of the item at the general support level.
D	— Reparable item. When beyond lower level repair capability, return to depot. Condemnation and disposal of item not authorized below depot level.
L	— Reparable item. Condemnation and disposal not authorized below specialized repair activity (SRA).
A	— Item requires special handling or condemnation procedures because of specific reasons (e.g., precious metal content, high dollar value, critical material, or hazardous material). Refer to appropriate manuals/directives for specific instructions.

**c. FSCM (Column (3)).** The Federal Supply Code for Manufacturer (FSCM) is a 5-digit numeric code which is used to identify the manufacturer, distributor, or Government agency, etc., that supplies the item.

**d. PART NUMBER (Column (4)).** Indicates the primary number used by the manufacturer (individual, company, firm, corporation, or Government activity), which controls the design and characteristics of the item by means of its engineering drawings, specifications standards, and inspection requirements to identify an item or range of items.

**NOTE :** *When you use a NSN to requisition an item, the item you receive may have a different part number from the part ordered.*

**e. DESCRIPTION AND USABLE ON CODE (UOC) (Column (5)).** (Not Applicable)

**f. QTY (Column (6)).** The QTY (quantity per figure column) indicates the quantity of the item used in the breakout shown on the illustration figure, which is prepared for a functional group, subfunctional group, or an assembly. A "V" appearing in this column in lieu of a quantity indicates that the quantity is variable and the quantity may vary from application to application.

**4. Explanation of Columns (Section IV).**

**a. NATIONAL STOCK NUMBER (NSN) INDEX.**

**(1) STOCK NUMBER Column.** This column lists the NSN by National item identification number (NIIN) sequence. The NIIN consists of the last nine digits of the NSN (i.e., 5305-01-674-1467). When using this column to locate an item, ignore the first 4 digits of the NSN. However, the complete NSN should be used when ordering items by stock number.

**(2) FIG. Column.** This column lists the number of the figure where the item is identified/located. The figures are in numerical order in Section II and Section III.

**(3) ITEM Column.** The item number identifies the item associated with the figure listed in the adjacent FIG. column. This item is also identified by the NSN listed on the same line.



**b. PART NUMBER INDEX.** Part numbers in this index are listed by part number in ascending alphanumeric sequence (i.e., vertical arrangement of letter and number combination which places the first letter or digit of each group in order A through Z, followed by the numbers 0 through 9 and each following letter or digit in like order).

**(1) FSCM Column.** The Federal Supply Code for Manufacturer (FSCM) is a 5-digit numeric code used to identify the manufacturer, distributor, or Government agency, etc., that supplies the item.

**(2) PART NUMBER Column.** Indicates the primary number used by the manufacturer (individual, firm, corporation, or Government activity), which controls the design and characteristics of the item by means of its engineering drawings, specifications standards, and inspection requirements to identify an item or range of items.

**(3) STOCK NUMBER Column.** This column lists the NSN for the associated part number and manufacturer identified in the PART NUMBER and FSCM columns to the left.

**(4) FIG. Column.** This column lists the number of the figure where the item is identified/located in section II and III.

**(5) ITEM Column.** The item number is that number assigned to the item as it appears in the figure referenced in the adjacent figure number column.

**5. Special Information.**

**a. ASSOCIATED PUBLICATIONS.** The publication(s) listed below pertain to AM-6785/U and AM-6785A/U and their components:

PUBLICATION	SHORT TITLE
TM 11-6625-3190-14	Dual Trace Amplifier

**6. How to Locate Repair Parts.**

**a. When National Stock Number is Not Known.**

**(1) First.** Using the table of contents, determine the assembly group or subassembly group to which the item belongs. This is necessary since figures are prepared for assembly groups and subassembly groups, and listings are divided into the same groups.

**(2) Second.** Find the figure covering the assembly group or subassembly group to which the item belongs.

**(3) Third.** Identify the item on the figure and note the item number.

**(4) Fourth.** Refer to the Repair Parts List for the figure to find the part number for the item number noted on the figure.

**(5) Fifth.** Refer to the Part Number Index to find the NSN, if assigned.

**b. When National Stock Number or Part Number is Known:**

**(1) First.** Using the Index of National Stock Numbers and Part Numbers, find the pertinent National Stock Number or Part Number. The NSN index is in National Item Identification Number (NIIN) sequence (see 4.1 (1)). The part numbers in the Part Number index are listed in ascending alphanumeric sequence (see 4.b). Both indexes cross-reference you to the illustration figure and item number of the item you are looking for.

**(2) Second.** After finding the figure and item number, verify that the item is the one you're looking for, then locate the item number in the repair parts list for the figure.

**7. Abbreviations.** (Not Applicable)

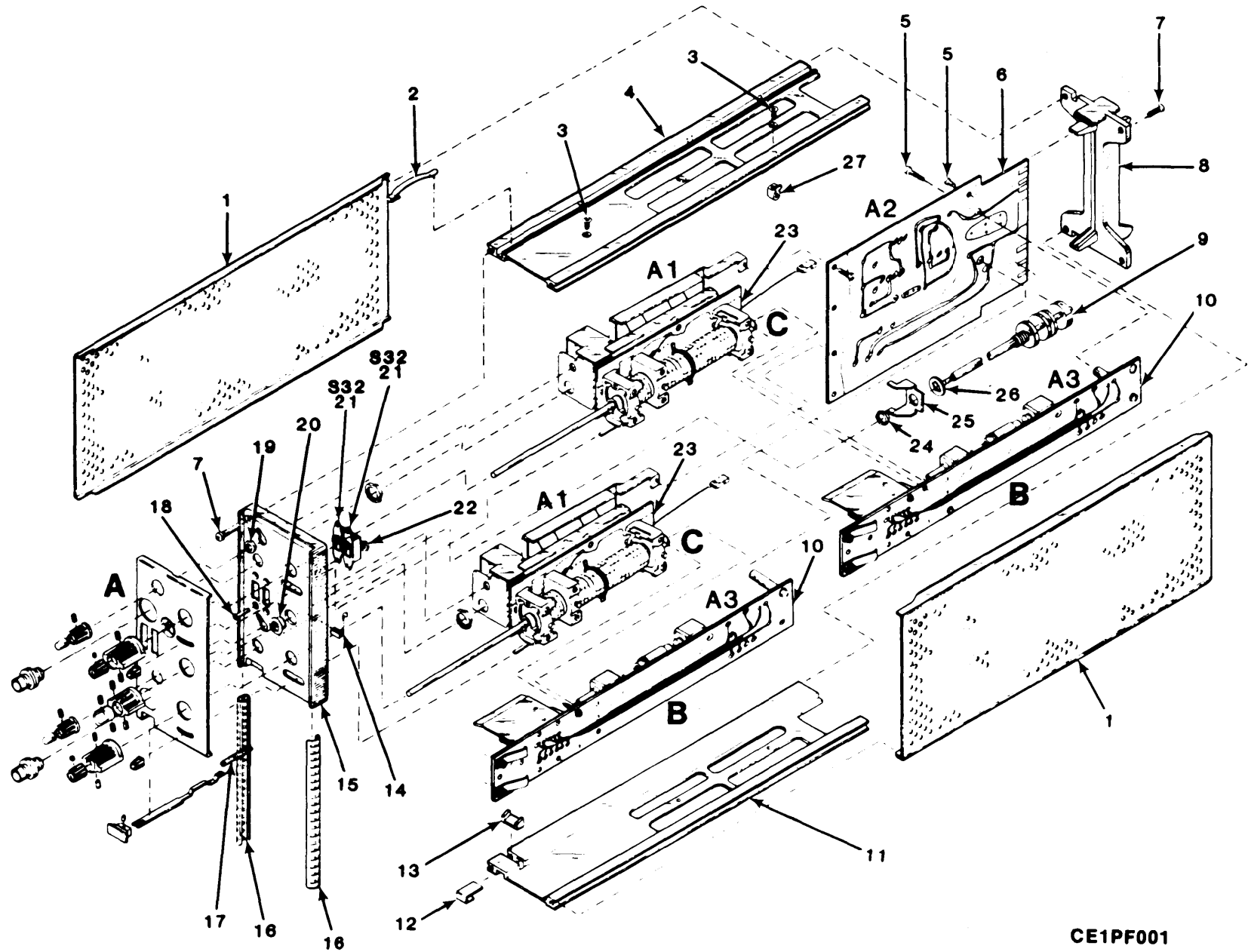


Figure 1. Dual Trace Amplifier AM-6785/U (Sheet 1 of 5)

CE1PF001

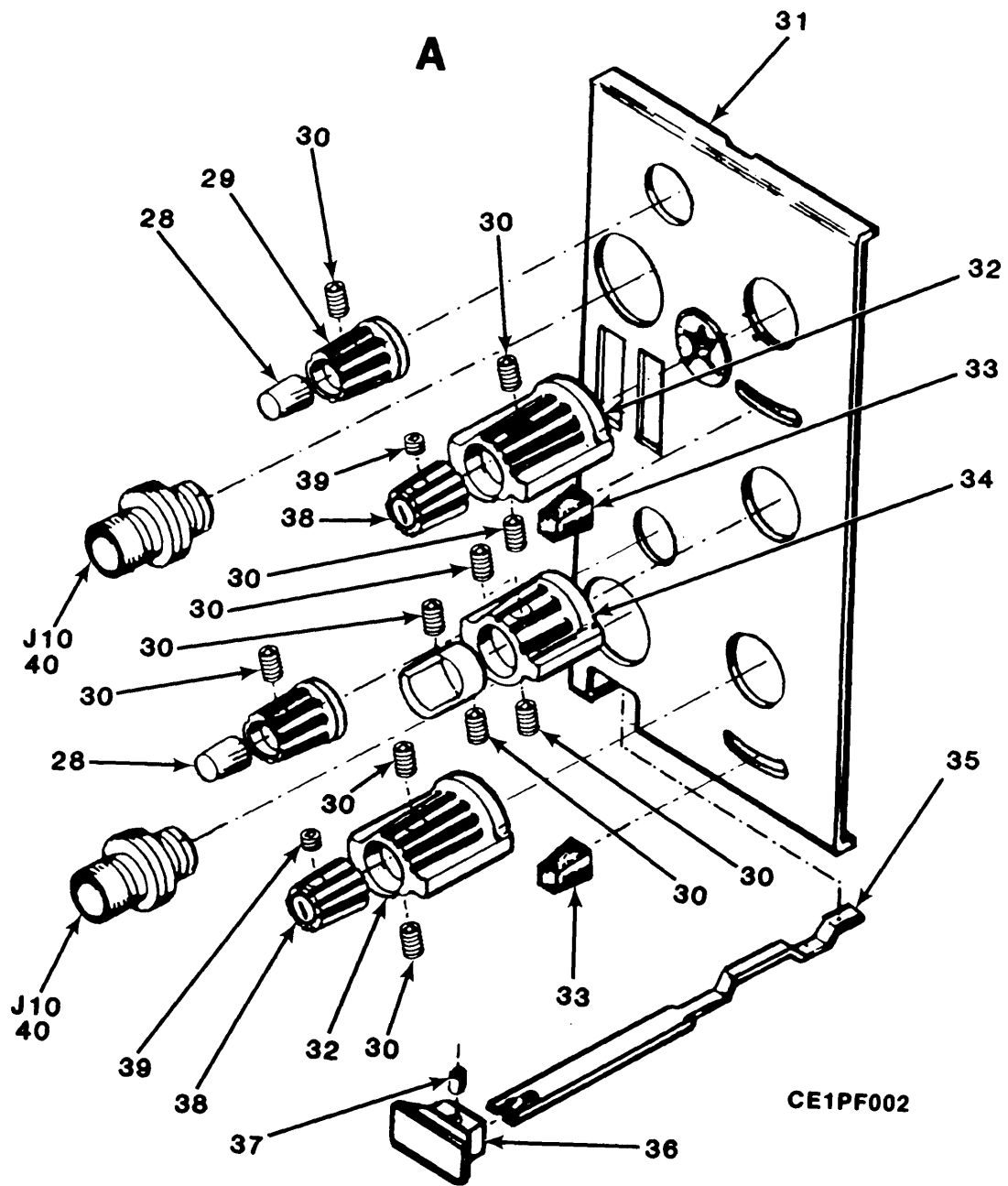
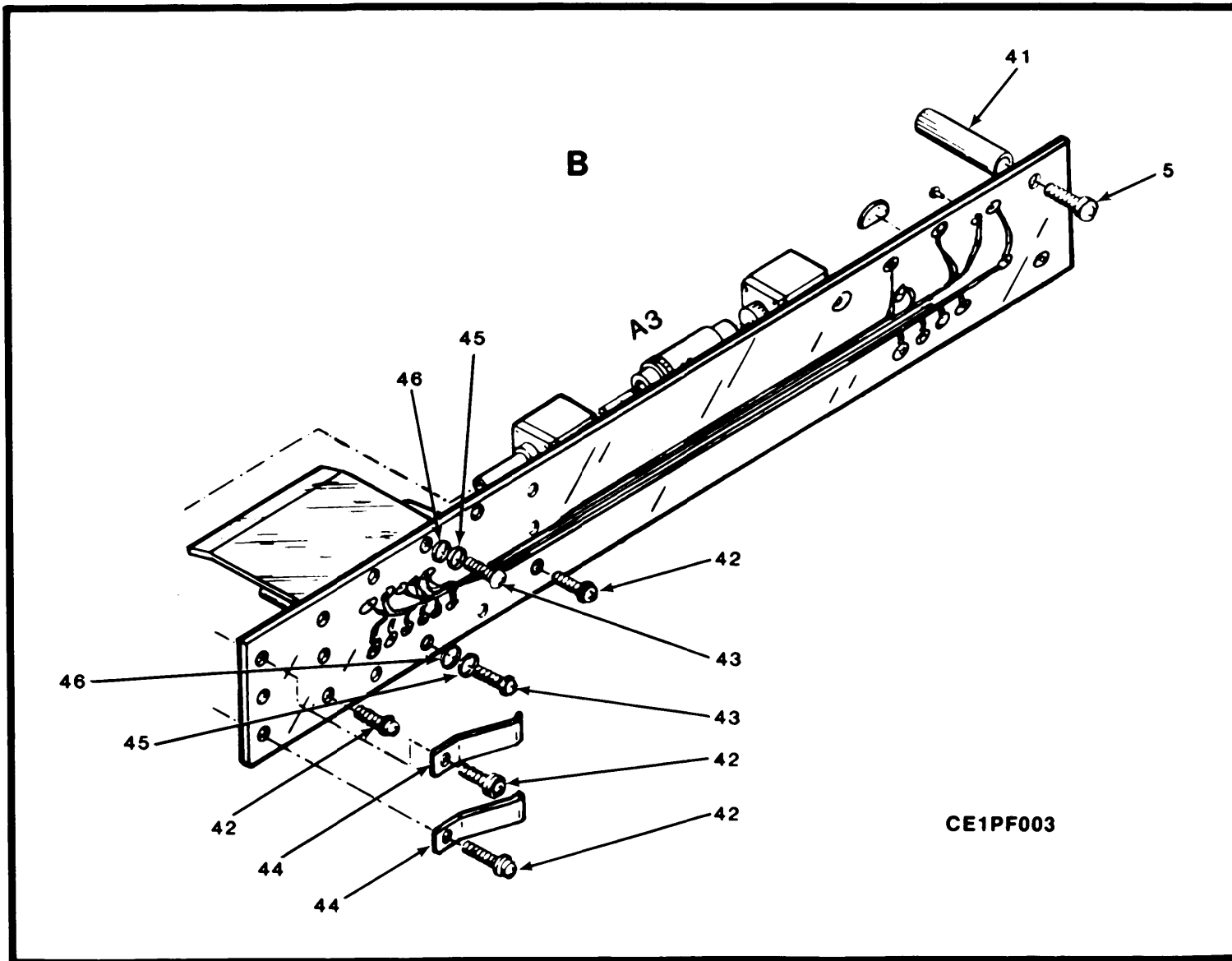
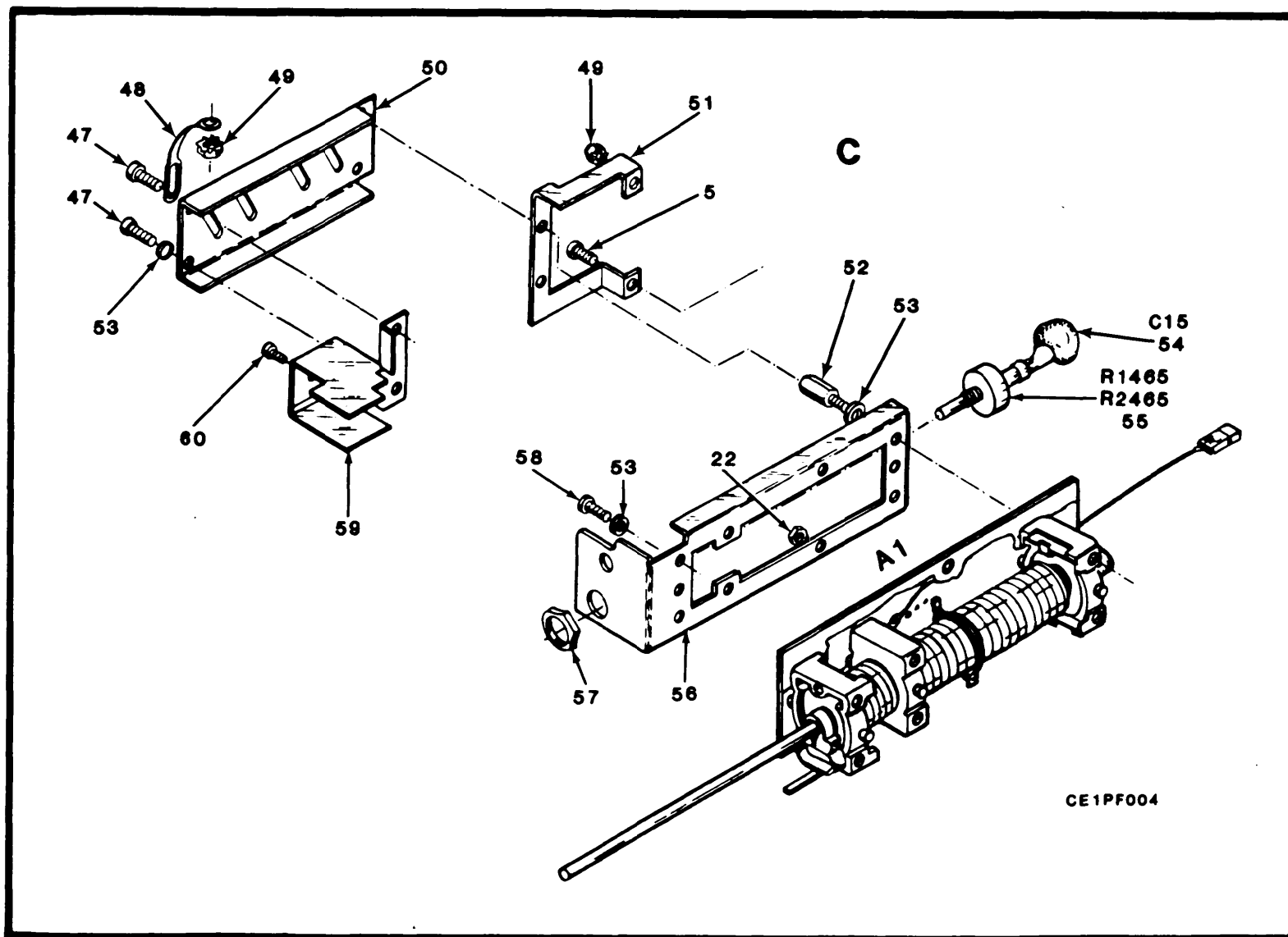


Figure 1. Dual Trace Amplifier AM-6785/U (Sheet 2 of 5)



CE1PF003

Figure 1. Dual Trace Amplifier AM-6785/U (Sheet 3 of 5)



CE1PF004

Figure 1. Dual Trace Amplifier AM-6785/U (Sheet 4 of 5)

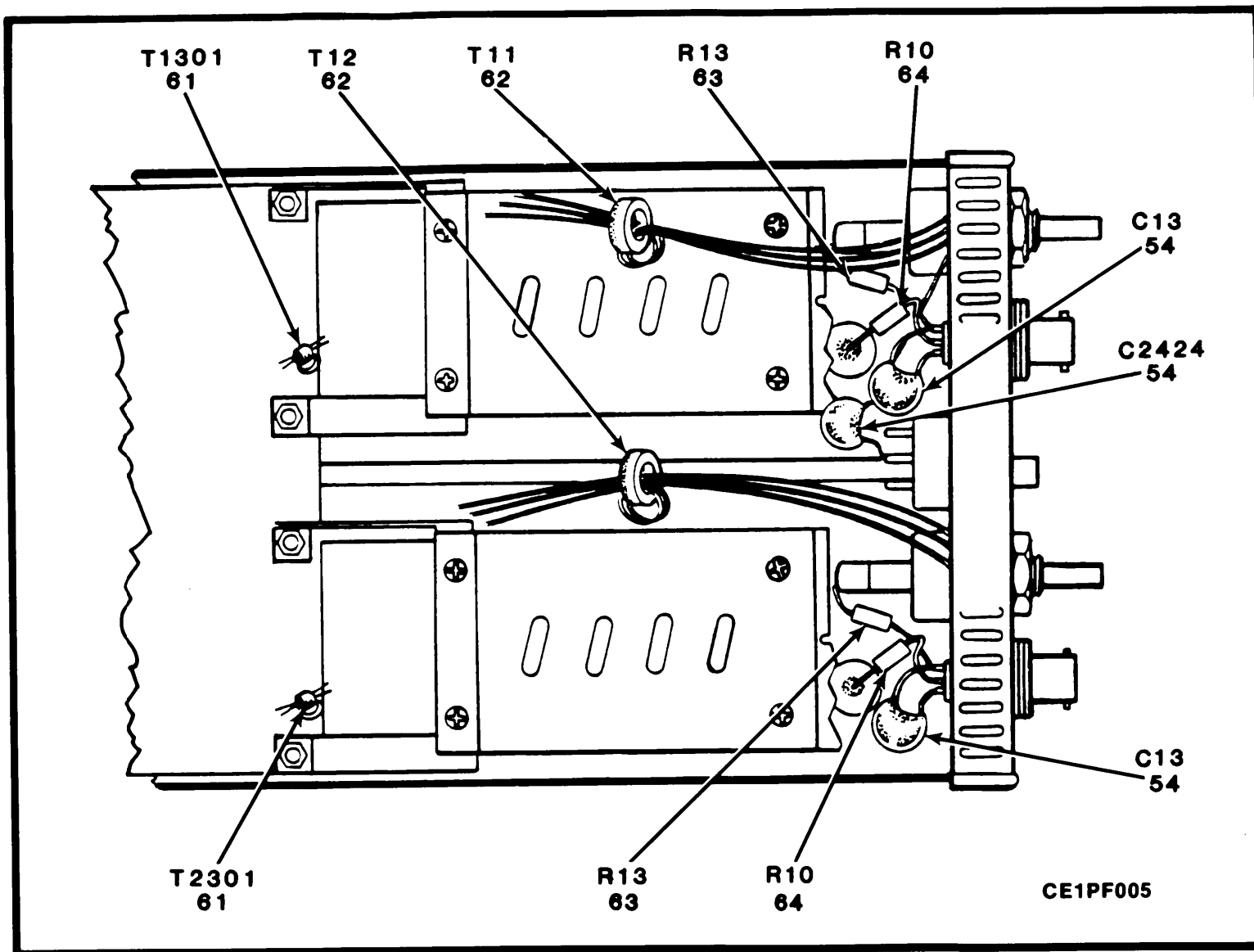


Figure 1. Dual Trace Amplifier AM-6785/U (Sheet 5 of 5)

(1) ITEM NO	(2) SMR CODE	(3) FSCM	(4) PART NUMBER	(5) DESCRIPTION AND USABLE ON CODE (UOC)	(6) QTY
				GROUP 00 DUAL TRACE AMPLIFIER, AM-6785/U	
				FIG.1	
1	XBHZZ	80009	337-1064-04	PLATE,ELECTRICAL SH	2
2	PAHZZ	80009	214-1061-00	SPRING,FLAT	1
3	PAHZZ	59873	211-0105-00	SCREW,MACHINE	4
4	XBHZZ	80009	426-0736-00	FRAME SECTION, TOP	1
5	PAHZZ	96906	MS35206-213	SCREW,MACHINE	4
6	PAHHH	80009	670-2549-03	CONNECTOR, MALE, ORIF	1
7	PAHZZ	80009	213-0192-00	SCREW, TAPPING, THREA	4
8	XBHZZ	80009	386-1402-00	PANEL, REAR	1
9	PAHZZ	80009	262-0965-01	SWITCH ROTARY, WIRED	1
10	PAHZZ	80009	670-2310-08	CIRCUIT CARD ASSEMB	2
11	XBHZZ	80009	426-0737-00	FRAME SECTION, BTM	1
12	PAHZZ	80009	214-1054-00	CLIP, SPRING TENSION	1
13	PAHZZ	80009	105-0075-00	STRIKE, CATCH	1
14	PAHZZ	80009	131-1075-00	CONTACT, ELECTRICAL	1
15	XBHZZ	80009	386-1447-52	PANEL, BLANK	1
16	PAHZZ	80009	348-0235-00	SHIELDING GASKET, EL	2
17	XBHZZ	59873	214-1280-00	SPRING, HELICAL, EXTE	1
18	PAHZZ	80009	211-0030-00	SCREW, MACHINE	4
19	PAHZZ	73743	2X20319-402	NUT, PLAIN, HEXAGON	4
20	PAHZZ	80009	358-0216-00	BUSHING, SLEEVE	1
21	PAHZZ	59873	260-0816-00	SWITCH, SLIDE	2
22	PAHZZ	73743	12157-50	NUT, PLAIN, HEX	6
23	PAHZZ	80009	670-2324-08	CIRCUIT CARD ASSEMB	2
24	PAHZZ	73743	2X28269-402	NUT, PLAIN, HEXAGON	1
25	XBHZZ	80009	407-0912-00	BRACKET, DOUBLE	1
26	PAHZZ	59873	210-0012-00	WASHER, LOCK	1
27	PAHZZ	80009	220-0547-01	NUT, BLOCK	4
28	PAHZZ	80009	366-1059-00	KNOB	2
29	PAOZZ	80009	366-1077-00	KNOB	2
30	PAHZZ	80009	213-0048-00	SETSCREW	1
31	XBHZZ	80009	333-1594-00	PANEL, FRONT	1
32	PAOZZ	80009	366-1299-00	KNOB	2
33	PAOZZ	80009	366-0215-02	KNOB	2
34	PAOZZ	80009	366-1165-00	KNOB	1
35	PAHZZ	80009	105-0076-00	RELEASE BAR, LATCH	1
36	PAOZZ	80009	366-1058-45	KNOB	1
37	PAHZZ	13257	52-022-094-0187	PIN, SPRING	1
38	PAOZZ	80009	366-1308-00	KNOB	2
39	PAHZZ	80009	213-0075-00	SETSCREW	1
40	PAHZZ	24931	28JR168-1	CONNECTOR, RECEPTACL	2
41	PAHZZ	80009	129-0554-01	POST, ELECTRICAL-MEC	2
42	PAHZZ	80009	211-0116-00	SCREW, ASSEMBLED WAS	2
43	PAHZZ	80009	211-0001-00	SCREW, MACHINE	6
44	PAHZZ	80009	131-0907-00	CONTACT, ELECTRICAL	4
45	PAHZZ	80009	210-0053-00	WASHER, LOCK	6
46	PAHZZ	80009	210-1008-00	WASHER, FLAT	6
47	PAHZZ	83385	211-0007-00	SCREW, MACHINE	2

(1) ITEM NO	(2) SMR CODE	(3) FSCM	(4) PART NUMBER	(5) DESCRIPTION AND USABLE ON CODE (UOC)	(6) QTY
48	PAHZZ	80009	210-0288-00	TERMINAL, LUG	2
49	PAHZZ	80009	210--0586-00	NUT, PLAIN, ASSEMBLED	2
50	XBHZZ	80009	200-1442-00	COVER, ATTENUATOR	2
51	XBHZZ	80009	407-1172-00	BRACKET, DOUBLE	2
52	PAHZZ	80009	129-0299-00	POST, ELECTRICAL-MEC	8
53	PAHZZ	78189	1204-00-00-0541C	WASHER, LOCK	4
54	PAHZZ	80009	283-0000-00	CAPACITOR, FIXED, CER	2
55	PAHZZ	12697	381CM39700	RESISTOR, VARIABLE, N	2
56	XBHZZ	80009	441-1097-00	CHASSIS, ELECTRICAL	2
57	PAHZZ	80009	220-0497-00	NUT, PLAIN, HEXAGON	4
58	PAHZZ	80009	211-0097-00	SCREW, MACHINE	4
59	XBHZZ	80009	337-1716-00	SHIELD, ELECTRICAL	2
60	PAHZZ	80009	213-0055-00	SCREW, TAPPING, THREA	2
61	PAHZZ	80009	120-0286-00	TRANSFORMER, RADIO F	2
62	PAHZZ	01121	T037C351A	CORE, ADJUSTABLE TUN	2
63	PAHZZ	81349	RCR07G101JS	RESISTOR, FIXED, COMP	2
64	PAHZZ	81349	RCR07G560JS	RESISTOR, FIXED, COMP	3

END OF FIGURE









### REFERENCE DESIGNATION-TO-ITEM NUMBER TABLE

REF DES	ITEM NO.	REF DES	ITEM NO.	REF DES	ITEM NO.	REF DES	ITEM NO.	REF DES	ITEM NO.	REF DES	ITEM NO.	REF DES	ITEM NO.	REF DES	ITEM NO.
C820	1	C2331	8	Q840	25	R908	31	R1336	59	R1517	49	R2351	54	R2353	76
C840	1	C2332	9	Q860	25	R912	40	R1338	60	R1519	45	R2353	65	R2531	63
C860	2	C2336	10	Q880	25	R914	40	R1339	60	R1520	76	R2401	62	R2533	58
C880	3	C2339	3	Q920	26	R920	33	R1340	61	R1523	76	R2403	62	R2701	62
C920	1	C2345	11	Q940	26	R928	36	R1341	62	R1531	63	R2410	49	R2703	62
C940	1	C2423	6	Q960	27	R930	36	R1343	62	R1533	77	R2411	81	R2705	78
C960	2	C2431	12	Q980	27	R940	33	R1345	63	R1701	62	R2413	67	R2711	79
C980	3	C2433	13	Q1050	28	R946	38	R1347	64	R1703	62	R2415	82	R2712	79
C1012	4	C2434	14	Q1070	28	R960	41	R1351	54	R1705	78	R2416	67	R2714	68
C1014	5	C2435	10	Q1470	29	R980	36	R1353	65	R1711	79	R2418	68	R2716	79
C1018	4	C2436	1	Q1490	29	R990	39	R1401	62	R1712	79	R2419	69	R2717	79
C1022	4	C2480	19	Q2470	29	R992	39	R1403	62	R1714	68	R2420	70	R2719	68
C1024	5	C2431	16	Q2490	29	R1010	36	R1413	66	R1716	79	R2421	70	R2720	76
C1028	4	C2533	14	R802	30	R1012	36	R1416	67	R1717	79	R2425	51	R2721	80
C1032	6	C2720	20	R804	30	R1032	42	R1418	68	R1719	68	R2430	60	R2723	76
C1034	6	C2721	18	R806	31	R1034	42	R1419	69	R1720	76	R2431	71	RT1334	83
C1070	7	CR860	21	R808	31	R1050	43	R1420	70	R1721	80	R2432	60	RT1433	83
C1311	6	CR880	21	R810	32	R1052	44	R1421	70	R1723	76	R2434	72	RT2334	83
C1327	6	CR960	21	R811	32	R1054	45	R1425	51	R2311	51	R2435	63	RT2433	83
C1329	6	CR980	21	R812	30	R1060	46	R1430	60	R2313	51	R2436	73	U1350	84
C1331	8	CR1319	21	R814	30	R1062	43	R1431	71	R2315	52	R2466	74	U1450	84
C1332	9	CR1465	21	R820	33	R1063	47	R1432	60	R2317	53	R2467	74	U1550	85
C1336	10	CR2319	21	R822	34	R1065	48	R1434	72	R2319	54	R2470	69	U1750	85
C1339	3	CR2465	21	R824	35	R1070	49	R1435	63	R2320	55	R2472	75	U2350	84
C1345	11	CR2476	21	R828	36	R1072	50	R1436	73	R2323	55	R2474	47	U2450	86
C1431	12	CR2496	21	R829	37	R1074	45	R1466	74	R2327	56	R2476	79	U2550	85
C1433	13	L806	22	R830	36	R1311	51	R1467	74	R2329	56	R2490	48	U2750	85
C1434	14	L808	22	R832	34	R1313	51	R1470	48	R2331	57	R2492	75		
C1435	10	L860	23	R834	35	R1315	52	R1472	75	R2332	79	R2494	47		
C1436	1	L880	23	R840	33	R1317	53	R1474	47	R2334	38	R2496	79		
C1480	15	L980	23	R846	38	R1319	54	R1490	69	R2336	59	R2498	46		
C1490	6	L1345	22	R860	36	R1320	55	R1492	75	R2338	60	R2511	49		
C1531	16	L2345	22	R880	36	R1323	55	R1494	47	R2339	60	R2512	49		
C1533	17	LR1010	24	R890	39	R1327	56	R1498	46	R2340	61	R2514	45		
C1721	18	LR1014	24	R892	39	R1329	56	R1511	49	R2341	62	R2516	49		
C2311	6	LR1020	24	R902	32	R1331	57	R1512	49	R2343	62	R2517	49		
C2327	6	LR1024	24	R904	32	R1332	58	R1514	45	R2345	63	R2519	45		
C2329	6	Q820	25	R906	31	R1334	38	R1516	49	R2347	64	R2520	76		

Figure 2. Circuit Card Assembly: Amplifier (A2) (Sheet 3 of 3)

(1) ITEM NO	(2) SMR CODE	(3) FSCM	(4) PART NUMBER	(5) DESCRIPTION AND USABLE ON CODE (UOC)	(6) QTY
GROUP 01 CIRCUIT CARD ASSY AMPLIFIER (A2)					
FIG. 2					
1	PAHZZ	80009	283-0010-00	CAPACITOR, FIXED, CER	6
2	PAHZZ	00853	D151E161F0	CAPACITOR, FIXED, MIC	2
3	PAHZZ	28480	0160-2666	CAPACITOR, FIXED, CER	2
4	PAHZZ	80009	290-0536-00	CAPACITOR, FIXED, ELE	4
5	PAHZZ	81349	CK63AW103M	CAPACITOR, FIXED, CER	2
6	PAHZZ	81349	CC22UJ510G	CAPACITOR, FIXED, CER	2
7	PAHZZ	72982	301-000 Z5D0 171 J	CAPACITOR, FIXED, CE	1
8	PAHZZ	81349	CCR75CG330GR	CAPACITOR, FIXED, CER	1
9	PAHZZ	72982	8131-050-651-474 M	CAPACITOR, FIXED, CER	2
10	PAHZZ	18796	518-000G7-45	CAPACITOR, VARIABLE	4
11	PAHZZ	80009	281-0218-00	CAPACITOR, VARIABLE,	2
12	PAHZZ	81349	M39014/02-1332	CAPACITOR, FIXED, CER	2
13	PAHZZ	72982	301-000C0G0150G	CAPACITOR, FIXED, CER	2
14	PAHZZ	59660	301-000-X5P0-331 K	CAPACITOR, FIXED, CER	2
15	PAHZZ	81349	CV35A090	CAPACITOR, VARIABLE	1
16	PAHZZ	72982	518-000A5-15	CAPACITOR, VARIABLE,	2
17	PAHZZ	72982	8131N039E105Z	CAPACITOR, FIXED, CER	1
18	PAHZZ	37695	265011-17	CAPACITOR, VARIABLE,	2
19	PAHZZ	28480	0150-0078	CAPACITOR, FIXED, CER	1
20	PAHZZ	81349	CC22CK1R0C	CAPACITOR, FIXED, CER	1
21	PAHZZ	03508	841A5091	SEMICONDUCTOR DEVIC	10
22	PAHZZ	80009	108-0420-00	COIL, RADIO FREQUENC	4
23	PAHZZ	80009	108-0311-00	COIL, RADIO FREQUENC	3
24	PAHZZ	80009	108-0184-00	COIL, RADIO FREQUENC	4
25	PAHZZ	80009	153-0606-00	SEMICONDUCTOR DEVIC	4
26	PAHZZ	80009	151-0271-00	TRANSISTOR	2
27	PAHZZ	80131	2N4258	TRANSISTOR	2
28	PAHZZ	80131	2N5551	TRANSISTOR	2
29	PAHZZ	80131	2N3565	TRANSISTOR	4
30	PAHZZ	81349	RCR07G560JS	RESISTOR, FIXED, COMP	4
31	PAHZZ	81349	JAN2N2222A	RES, FXD	4
32	PAHZZ	81349	RCR07G111JS	RESISTOR, FIXED, COMP	4
33	PAHZZ	16845	1000-412-12	RESISTOR, FIXED	4
34	PAHZZ	81349	RNC60K2001FS	RESISTOR, FIXED, FILM	2
35	PAHZZ	81349	RNC60K3240FS	RESISTOR, FIXED, FILM	2
36	PAHZZ	16845	1000-409-15	TRANSISTOR	9
37	PAHZZ	75042	CEATO-4220F	RESISTOR, FIXED, FILM	1
38	PAHZZ	81349	RCR07G121JS	RESISTOR, FIXED, COMP	4
39	PAHZZ	81349	RN65F1001F	RESISTOR, FIXED, FILM	4
40	PAHZZ	28480	0683-3905	RESISTOR, FIXED, COMP	2
41	PAHZZ	16845	1000-409-15	TRANSISTOR	1
42	PAHZZ	81349	RCR07G330JS	RESISTOR, FIXED, COMP	2
43	PAHZZ	01121	CB1035	RESISTOR, FIXED, COMP	2
44	PAHZZ	16845	1000-409-15	RES, FXD	1

(1) ITEM NO	(2) SMR CODE	(3) FSCM	(4) PART NUMBER	(5) DESCRIPTION AND USABLE ON CODE (UOC)	(6) QTY
45	PAHZZ	81349	RCR07G751JS	RESISTOR, FIXED, COMP	6
46	PAHZZ	01121	CB9115	RESISTOR, FIXED, COMP	3
47	PAHZZ	81349	RCR07G331JS	RESISTOR, FIXED, COMP	5
48	PAHZZ	81349	RCR07G561JS	RESISTOR, FIXED, COMP	3
49	PAHZZ	81349	RCR07G102JS	RESISTOR, FIXED, COMP	10
50	PAHZZ	81349	RCR07G822JS	RESISTOR, FIXED, COMP	1
51	PAHZZ	01121	CB5125	RESISTOR, FIXED, COMP	6
52	PAHZZ	81349	RCR07G392JS	RESISTOR, FIXED, COMP	2
53	PAHZZ	80294	3329P-L58-202	RESISTOR, VARIABLE, N	2
54	PAHZZ	01121	CB4725	RESISTOR, FIXED, COMP	4
55	PAHZZ	81349	RN65F6810F	RESISTOR, FIXED, FILM	4
56	PAHZZ	81349	RCR07G822JS	RESISTOR, FIXED, COMP	4
57	PAHZZ	81349	RCR07G132JS	RESISTOR, FIXED, COMP	2
58	PAHZZ	81349	RCR07G242JS	RESISTOR, FIXED, COMP	2
59	PAHZZ	80740	62-53-5	RESISTOR, VARIABLE, N	2
60	PAHZZ	81349	RCR07G360JS	RESISTOR, FIXED, COMP	8
61	PAHZZ	81349	RCR07G181JS	RESISTOR, FIXED, COMP	2
62	PAHZZ	81349	RCR07G360JS	RESISTOR, FIXED, COMP	12
63	PAHZZ	80009	311-0978-00	RESISTOR, VARIABLE, N	6
64	PAHZZ	81349	RNC65K2800FS	RESISTOR, FIXED, FILM	2
65	PAHZZ	80009	311-1268-00	RESISTOR, VARIABLE, N	2
66	PAHZZ	81349	RCR07G272JS	RESISTOR, FIXED, COMP	1
67	PAHZZ	01121	CB2015	RESISTOR, FIXED, COMP	3
68	PAHZZ	81349	RCR07G152JS	RESISTOR, FIXED, COMP	6
69	PAHZZ	81349	RCR07G511JS	RESISTOR, FIXED, COMP	4
70	PAHZZ	75042	CECTO-1101F	RESISTOR, FIXED, FILM	4
71	PAHZZ	01121	CB1225	RESISTOR, FIXED, COMP	2
72	PAHZZ	01121	CB1825	RESISTOR, FIXED, COMP	2
73	PAHZZ	80009	311-1269-00	RESISTOR, VARIABLE, N	2
74	PAHZZ	81349	RCR07G273JS	RESISTOR, FIXED, COMP	4
75	PAHZZ	01121	CB1835	RESISTOR, FIXED, COMP	4
76	PAHZZ	81349	RN65F1371F	RESISTOR, FIXED, FILM	8
77	PAHZZ	81349	RCR07G332JS	RESISTOR, FIXED, COMP	1
78	PAHZZ	01121	CB6215	RESISTOR, FIXED, COMP	2
79	PAHZZ	01121	CB2025	RESISTOR, FIXED, COMP	11
80	PAHZZ	81349	RCR07G270JS	RESISTOR, FIXED, COMP	2
81	PAHZZ	80009	311-0635-00	RESISTOR, VARIABLE, N	1
82	PAHZZ	81349	RCR07G162JS	RESISTOR, FIXED, COMP	1
83	PAHZZ	50157	2D1595	RESISTOR, THERMAL	4
84	PAHZZ	27014	LM320K5-0	MICROCIRCUIT, LINEAR	3
85	PAHZZ	80009	155-0078-01	MICROCIRCUIT, LINEAR	4
86	PAHZZ	80009	155-0078-10	MICROCIRCUIT, LINEAR	1

END OF FIGURE

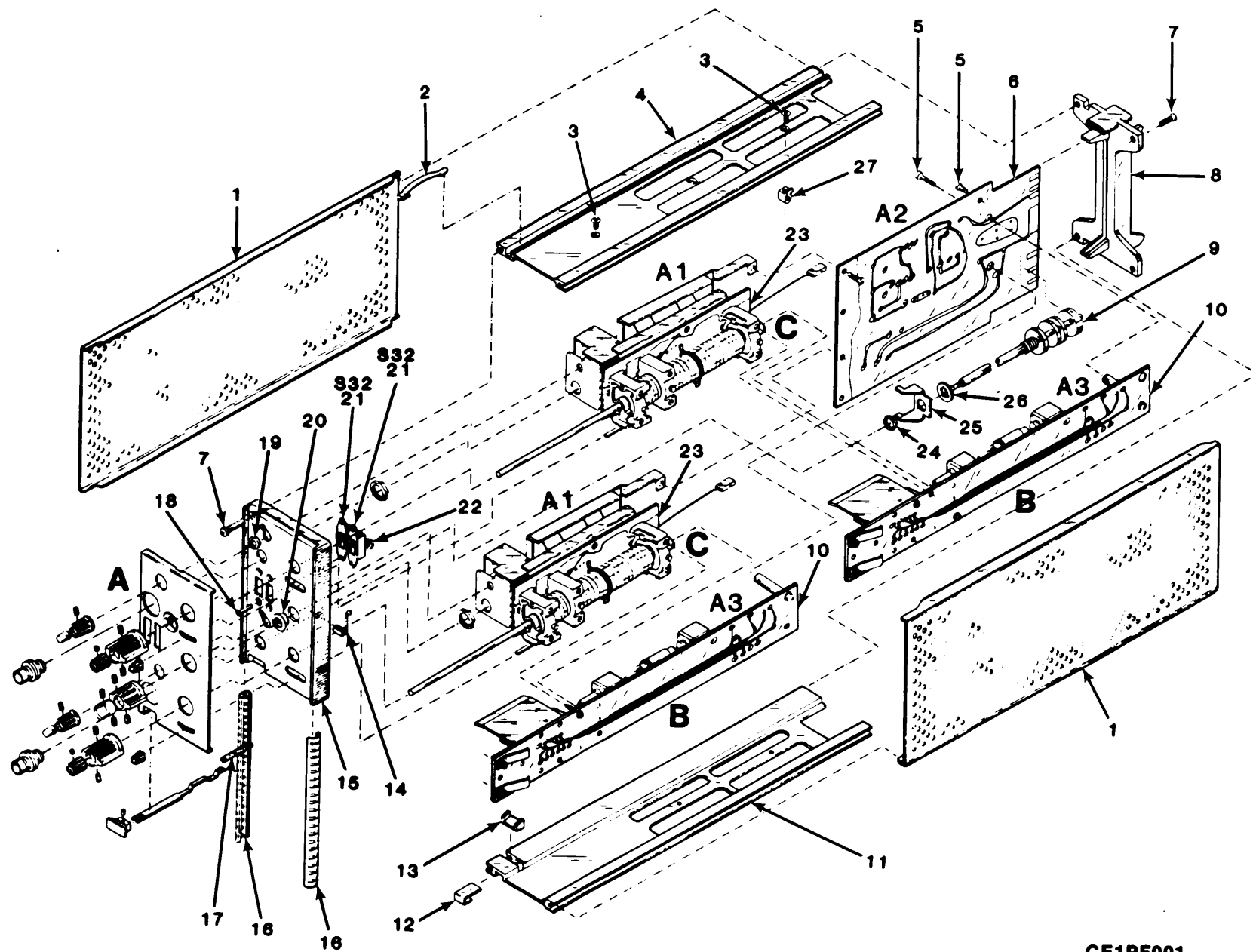


Figure 1A. Dual Trace Amplifier AM-6785A/U (Sheet 1 of 6)

CE1PF001

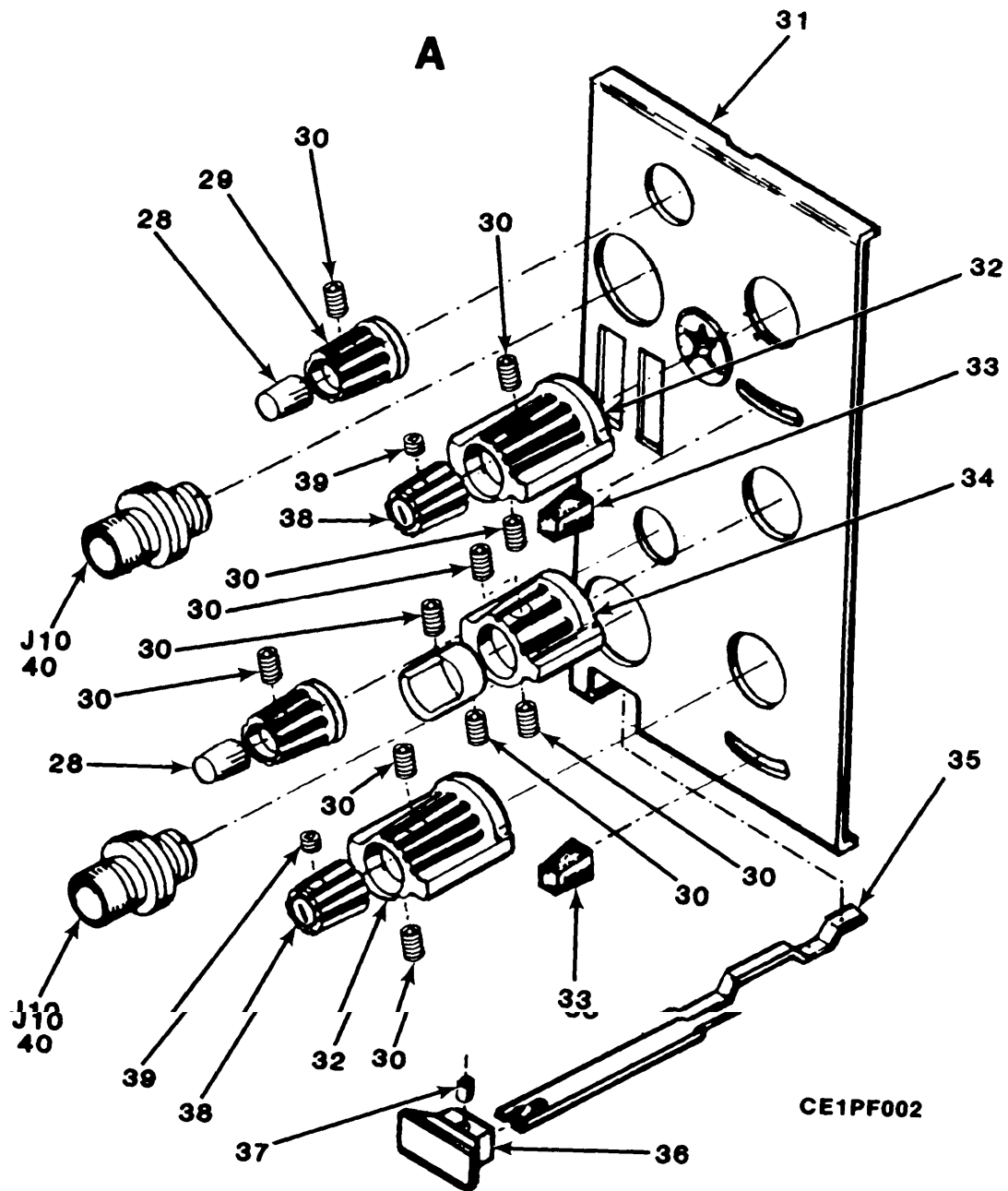


Figure 1A. Dual Trace Amplifier AM-6785A/U (Sheet 2 of 6)



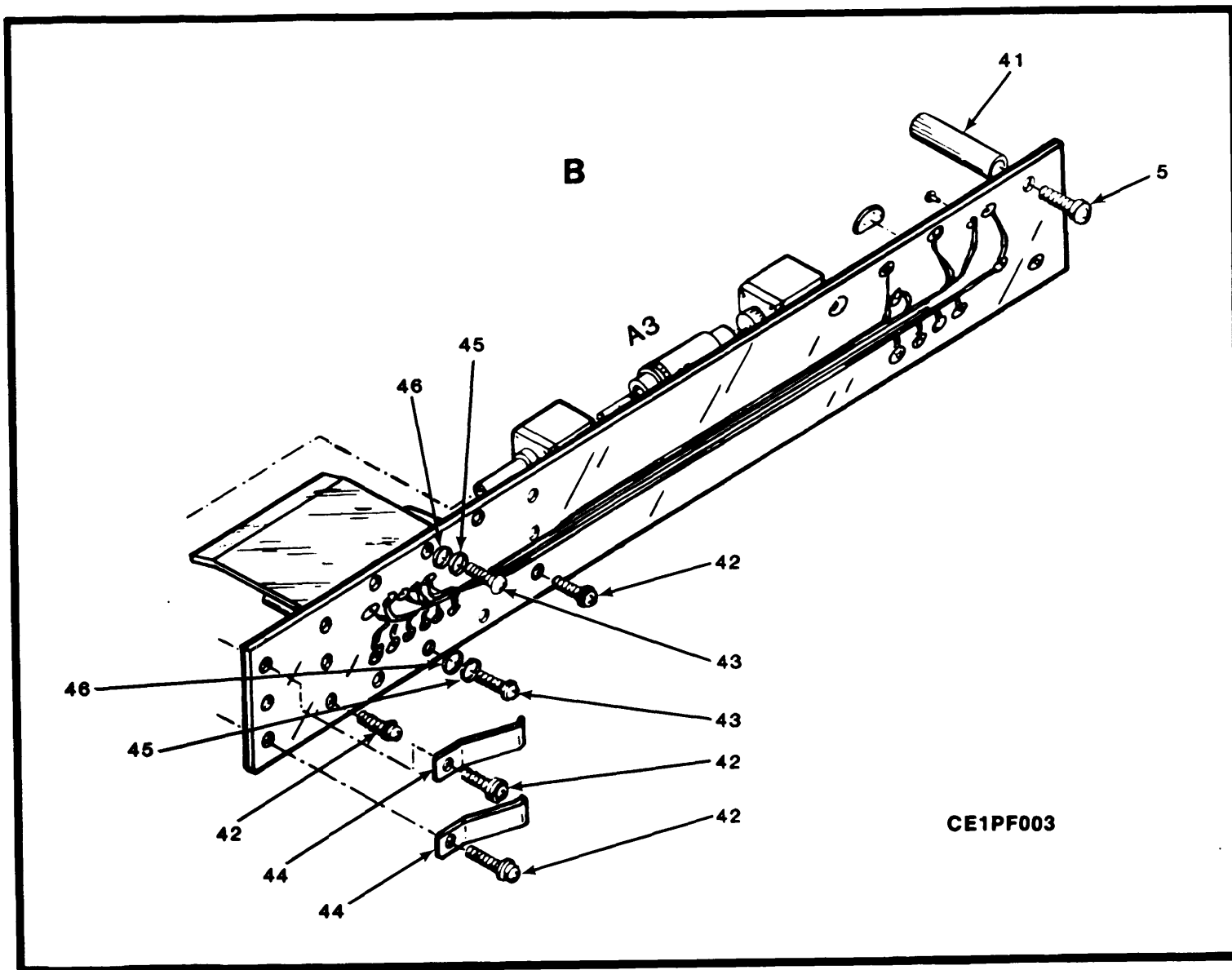


Figure 1A. Dual Trace Amplifier AM-6785A/U (Sheet 3 of 6)

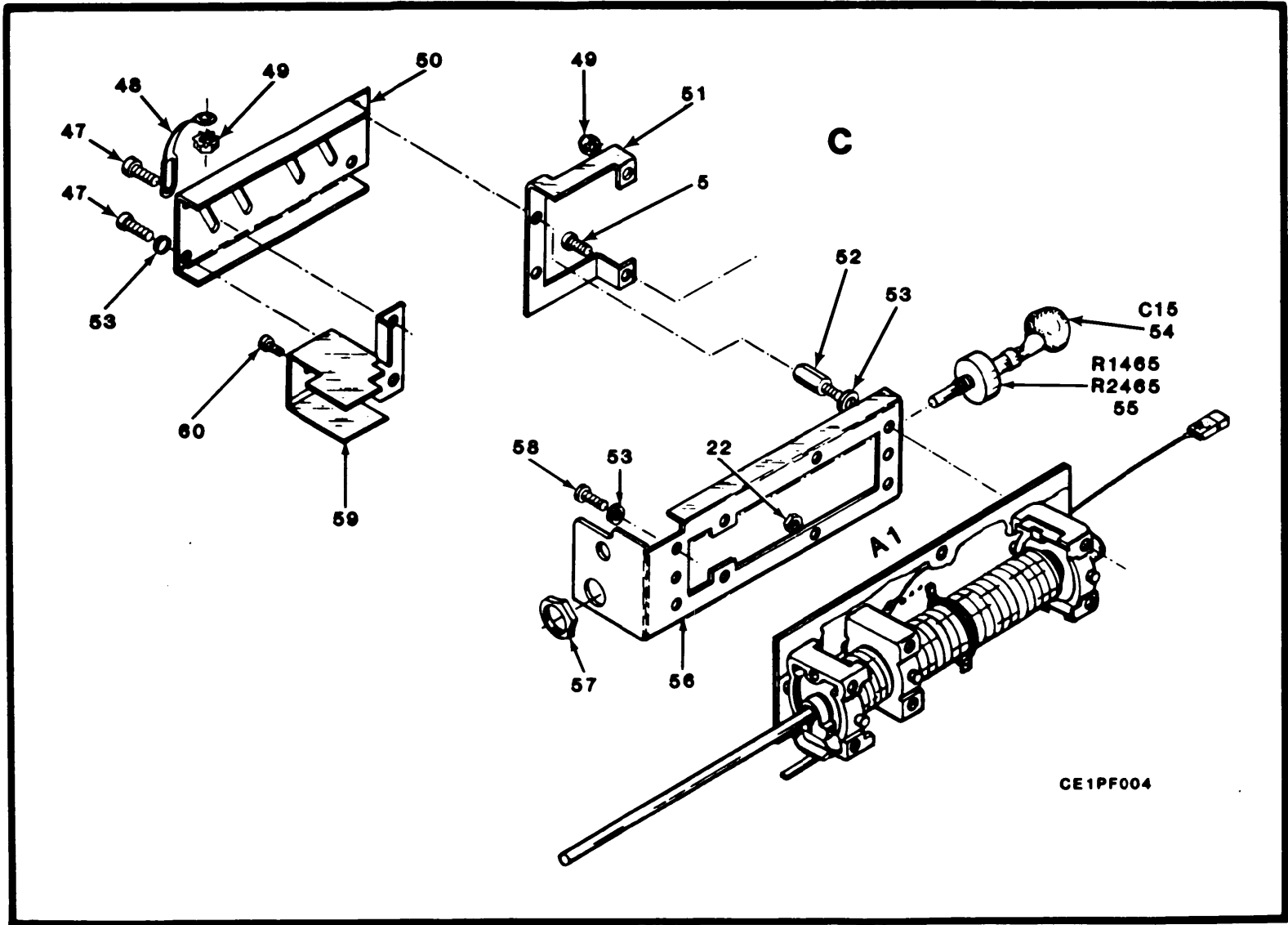


Figure 1A. Dual Trace Amplifier AM-6785A/U (Sheet 4 of 6)

CE1PF004

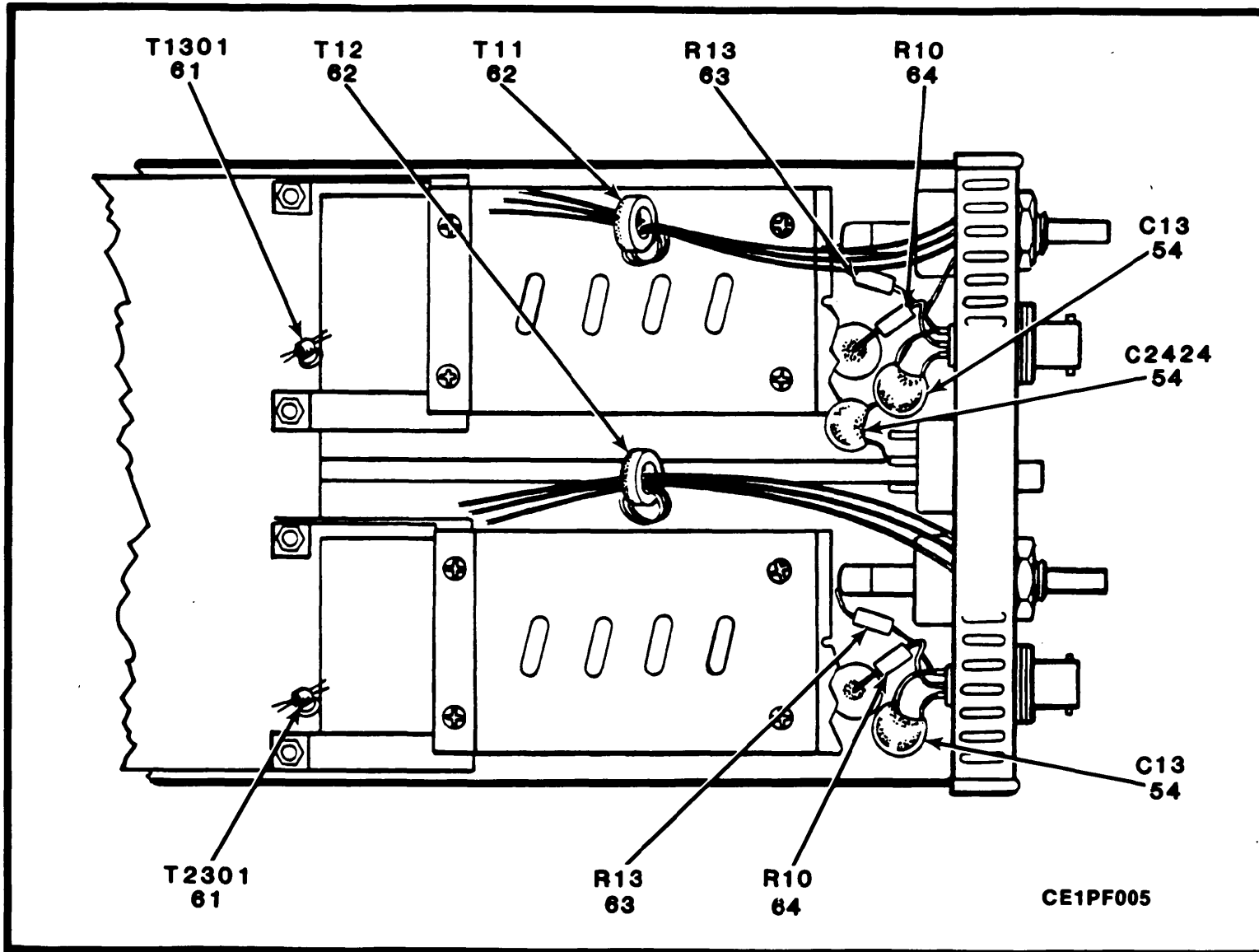
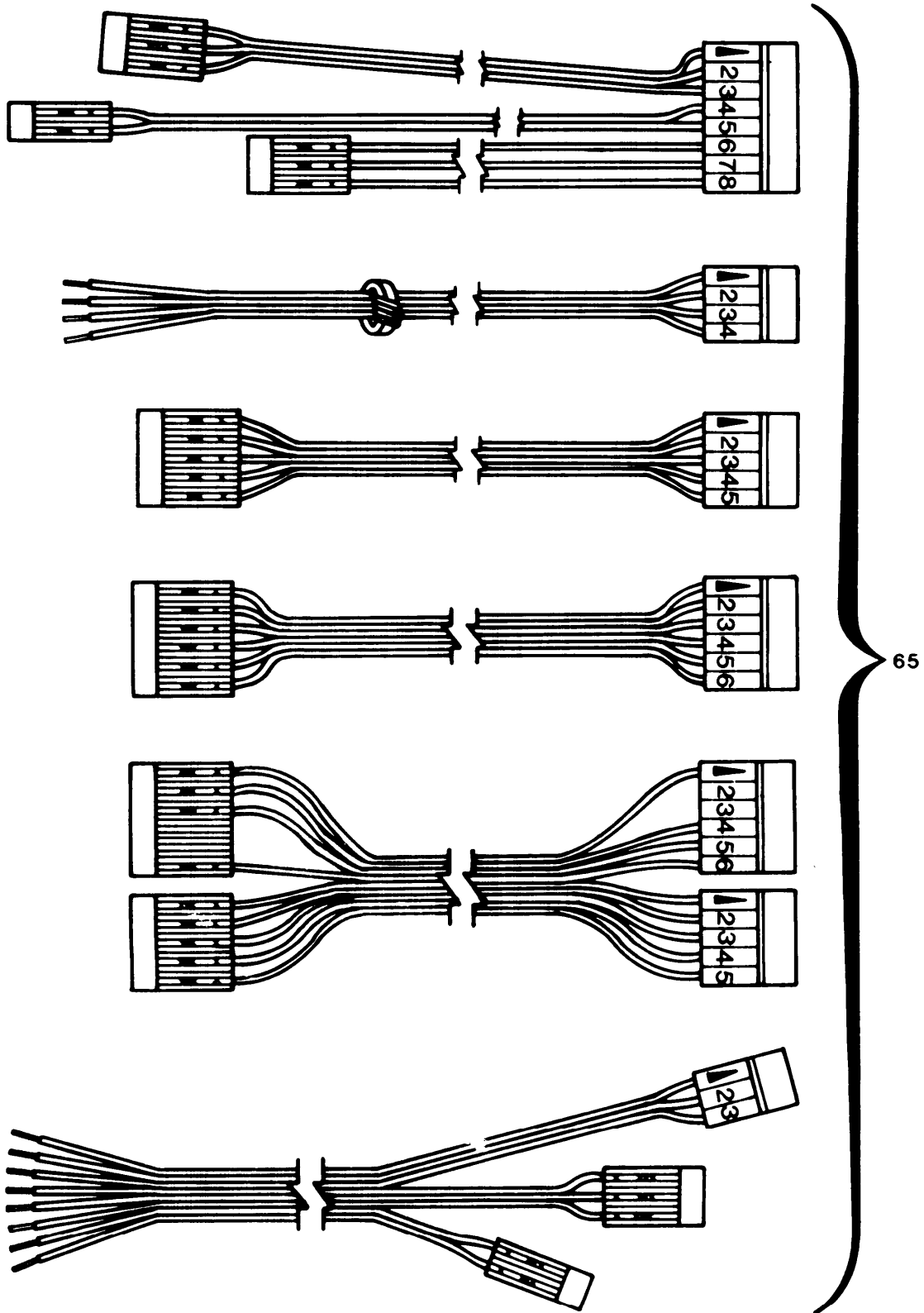


Figure 1A. Dual Trace Amplifier AM-6785A/U (Sheet 5 of 6)



CE1PF012

Figure 1A. Dual Trace Amplifier AM-6785A/U (Sheet 6 of 6)

(1) ITEM NO	(2) SMR CODE	(3) FSCM	(4) PART NUMBER	(5) DESCRIPTION AND USABLE ON CODE (UOC)	(6) QTY
				GROUP 00 DUAL TRACE AMPLIFIER, AM-6785A/U	
				FIG.1A	
1	PAHZZ	80009	337-1064-12	SHIELD,ELECTRICAL,C	2
2	PAHZZ	80009	214-1061-00	SPRING,FLAT	1
3	PAHZZ	59873	211-0105-00	SCREW,MACHINE	4
4	XBHZZ	80009	426-0736-00	FR SECT,PLUG-IN	1
5	PAHZZ	96906	MS-35206-213	SCREW,MACHINE	4
6	PAHHH	80009	670-2549-21	CIRCUIT CARD ASSEMB	1
7	PAHZZ	80009	213-0793-00	SCREW,TAPPING,THREA	4
8	PAHZZ	80009	386-1402-00	PANEL,REAR	1
9	XBHZZ	80009	262-0965-02	SWITCH,WIRED	1
10	PAHZZ	80009	670-2310-09	CIRCUIT CARD ASSEMB	2
11	XBHZZ	80009	426-0737-00	FR SECT,PLUG-IN	1
12	PAHZZ	80009	214-1054-00	CLIP,SPRING TENSION	1
13	PAHZZ	80009	105-0075-00	STRIKE,CATCH	1
14	PAHZZ	80009	131-1075-00	CONTACT,ELECTRICAL	1
15	XBHZZ	80009	386-1447-54	SUBPANEL,FRONT	1
16	PAHZZ	80009	348-0235-00	SHIELDING GASKET,EL	2
17	PAHZZ	80009	214-1280-00	SPRING,HELICAL,EXTE	1
18	PAHZZ	80009	211-0030-00	SCREW,MACHINE	4
19	PAHZZ	73743	2X20319-402	NUT,PLAIN,HEXAGON	2
20	PAHZZ	80009	358-0216-00	BUSHING,SLEEVE	1
21	PAHZZ	80009	260-1833-00	SWITCH,SLIDE	2
22	PAHZZ	73743	12157-50	NUT,PLAIN,HEX	6
23	PAHZZ	80009	670-2324-08	CIRCUIT CARD ASSEMB	2
24	PAHZZ	73743	2X28269-402	NUT,PLAIN,HEXAGON	1
25	XBHZZ	80009	407-0912-00	BRACKET,CKT BD	1
26	PAHZZ	59873	210-0012-00	WASHER,LOCK	1
27	PAHZZ	80009	220-0547-01	NUT,BLOCK	4
28	PAHZZ	80009	366-1059-00	KNOB	2
29	PAOZZ	80009	366-1077-00	KNOB	2
30	PAHZZ	80009	213-0048-00	SETSCREW	4
31	XBHZZ	80009	333-1594-01	PANEL,FRONT	1
32	PAOZZ	80009	366-1299-00	KNOB	2
33	PAOZZ	80009	366-0215-02	KNOB	2
34	PAOZZ	80009	366-1165-00	KNOB	1
35	PAHZZ	80009	105-0076-04	BAR,ACTUATOR,ELECTR	1
36	PAOZZ	80009	366-1058-45	KNOB	1
37	PAHZZ	72962	52-022-094-0187	PIN,SPRING	1
38	PAOZZ	80009	366-1308-00	KNOB	2
39	PAOZZ	88044	AN565DC6H3	SETSCREW	2
40	PAHZZ	80009	131-0679-02	CONNECTOR,RECEPTACL	2
41	PAHZZ	80009	129-0554-01	POST,ELECTRICAL-MEC	2
42	PAHZZ	80009	211-0292-00	SCREW,ASSEMBLED WAS	12
43	PAHZZ	80009	211-0001-00	SCREW,MACHINE	6
44	PAHZZ	80009	131-0907-00	CONTACT,ELECTRICAL	4
45	PAHZZ	80009	210-0053-00	WASHER,LOCK	6
46	PAHZZ	80009	210-1110-00	WASHER,FLAT	6
47	PAHZZ	83385	211-0007-00	SCREW,MACHINE	8

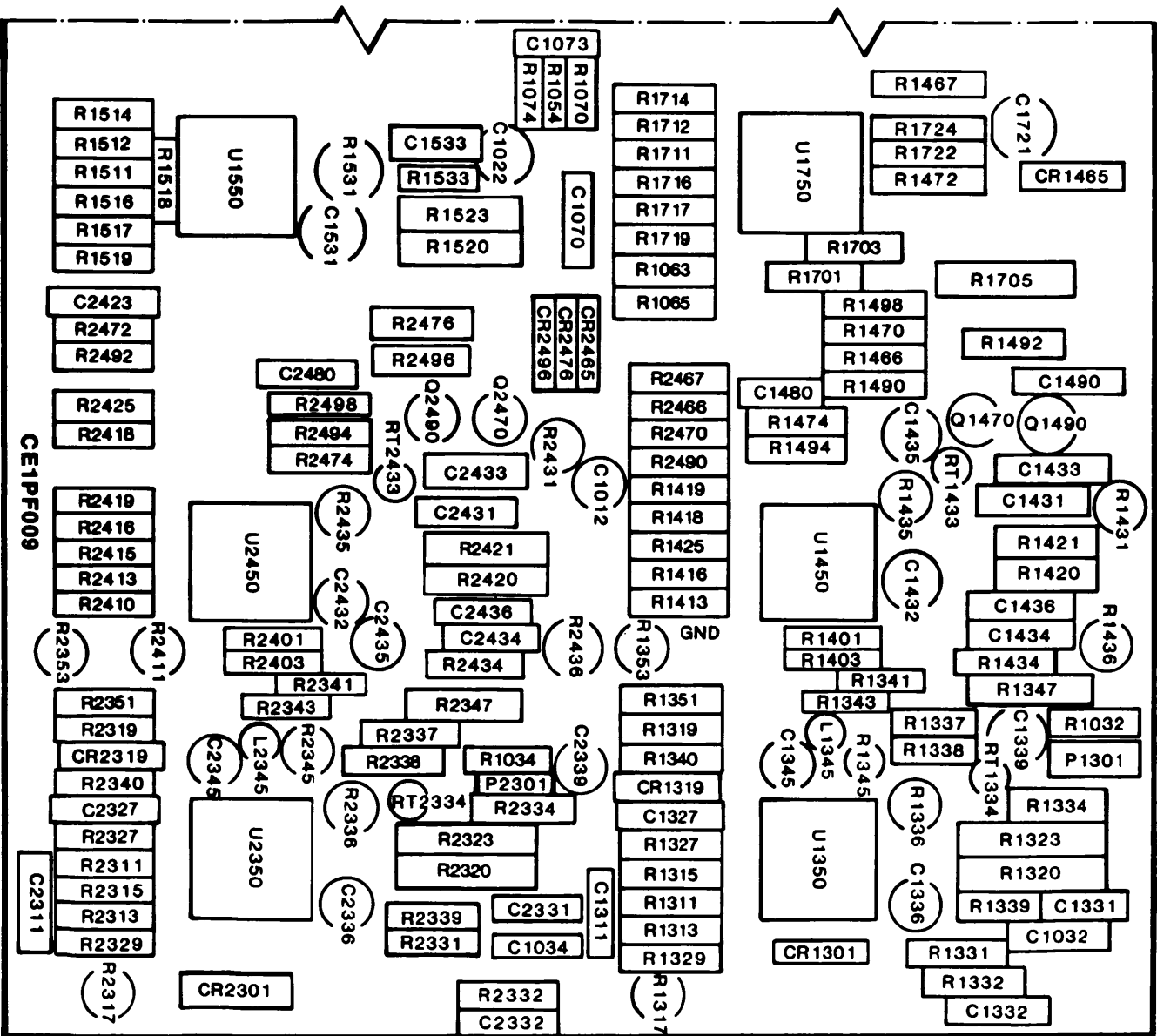
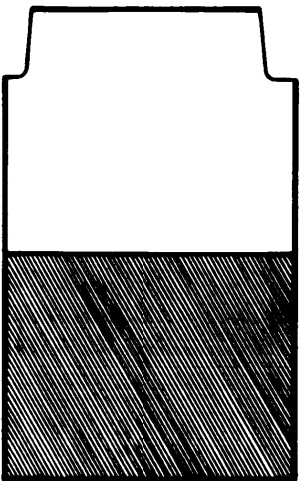
(1) ITEM NO	(2) SMR CODE	(3) FSCM	(4) PART NUMBER	(5) DESCRIPTION AND USABLE ON CODE (UOC)	(6) QTY
48	PAHZZ	80009	210-0288-00	TERMINAL, LUG	2
49	PAHZZ	83385	841-4-40	NUT, PLAIN, ASSEMBLED	2
50	XBHZZ	80009	200-1442-00	COVER, CHASSIS	2
51	XBHZZ	80009	407-1172-00	BRACKET, CKT BD	2
52	PAHZZ	80009	129-0299-00	POST, ELECTRICAL-MEC	8
53	PAHZZ	80009	210-0004-00	WASHER, LOCK	12
54	PAHZZ	80009	283-0000-00	CAPACITOR, FIXED, CER	2
55	PAHZZ	12697	381-CM39700	RESISTOR, VARIABLE, N	2
56	XBHZZ	80009	441-1097-00	CHAS, PL-IN UNIT	2
57	PAHZZ	80009	220-0497-00	NUT, PLAIN, HEXAGON	4
58	PAHZZ	80009	211-0097-00	SCREW, MACHINE	4
59	XBHZZ	80009	337-1716-00	SHIELD, ELEC	2
60	PAHZZ	80009	213-0055-00	SCREW, TAPPING, THREA	2
61	PAHZZ	80009	120-0286-00	TRANSFORMER, RADIO F	4
62	PAHZZ	78488	57-3443	CORE, ELECTROMAGNET	3
63	PAHZZ	81349	RCR07G101JS	RESISTOR, FIXED, COMP	2
64	PAHZZ	80009	315-0560-00	RESISTOR, FIXED, COMP	2
65	PAHZZ	80009	2150-02	CABLE ASSEMBLY, SPEC	1

END OF FIGURE









**C1338 C2338 T1430  
T1520 T2430 T2520  
LOCATED ON BACK  
OF BOARD**

Figure 2A. Circuit Card Assembly: Amplifier (A2) (Sheet 2 of 3)

REFERENCE DESIGNATION-TO-ITEM NUMBER TABLE

REF DES	ITEM NO.	REF DES	ITEM NO.	REF DES	ITEM NO.	REF DES	ITEM NO.	REF DES	ITEM NO.	REF DES	ITEM NO.	REF DES	ITEM NO.	REF DES	ITEM NO.
C820	1	CR2319	6	LR1024	27	R906	34	R1334	40	R1517	52	R2343	33	R2519	78
C840	1	C2331	9	Q820	28	R908	34	R1336	61	R1518	79	R2345	64	R2520	80
C860	2	C2332	10	Q840	28	R912	43	R1337	39	R1519	78	R2347	65	R2523	80
C880	3	C2336	11	Q860	28	R914	43	R1338	62	R1520	81	R2351	57	R2531	64
C920	1	C2338	12	Q880	28	R920	36	R1339	62	R1523	81	R2353	66	R2701	67
C940	1	C2339	11	Q920	29	R928	39	R1340	63	R1531	64	R2401	67	R2703	67
C960	2	C2345	13	Q940	29	R930	39	R1341	33	R1533	81	R2403	67	R2705	82
C980	3	C2423	6	Q960	30	R940	36	R1343	33	R1701	67	R2410	52	R2711	37
C1012	4	C2431	14	Q980	30	R946	40	R1345	64	R1703	67	R2411	84	R2712	37
C1014	5	C2432	15	Q1050	31	R960	44	R1347	65	R1705	82	R2413	69	R2714	70
C1018	4	C2433	16	Q1070	31	R980	44	R1351	57	R1711	37	R2415	59	R2716	37
C1022	4	C2434	17	Q1470	32	R990	42	R1353	66	R1712	37	R2416	69	R2717	37
C1024	5	C2435	11	Q1490	32	R992	42	R1401	67	R1714	70	R2418	70	R2719	70
C1028	4	C2436	18	Q2470	32	R1010	44	R1403	67	R1716	37	R2419	38	R2720	80
C1032	6	C2480	23	Q2490	32	R1012	44	R1413	68	R1717	37	R2420	71	R2722	83
C1034	6	C2531	20	R802	33	R1032	45	R1416	69	R1719	71	R2421	71	R2723	80
C1070	7	C2721	22	R804	33	R1034	45	R1418	70	R1720	81	R2425	54	R2724	83
C1073	8	CR860	24	R806	34	R1050	46	R1419	38	R1722	83	R2431	72	RT1334	85
C1311	6	CR880	24	R808	34	R1052	47	R1420	71	R1723	80	R2434	73	RT1433	85
C1327	6	CR960	24	R810	35	R1054	48	R1421	71	R1724	83	R2435	64	RT2334	85
C1331	9	CR980	24	R811	35	R1060	49	R1425	54	R2311	54	R2436	74	RT2433	85
C1332	10	CR1301	24	R812	33	R1062	46	R1431	72	R2313	54	R2466	75	U1350	86
C1336	11	CR1319	24	R814	33	R1063	50	R1434	73	R2315	55	R2467	75	U1450	86
C1338	12	CR1465	24	R820	36	R1065	51	R1435	65	R2317	56	R2470	38	U1550	86
C1339	11	CR2301	24	R822	37	R1070	52	R1436	74	R2319	57	R2472	76	U1750	86
C1345	13	CR2319	24	R824	38	R1072	53	R1466	75	R2320	58	R2474	50	U2350	86
C1431	14	CR2465	24	R828	39	R1074	48	R1467	75	R2323	58	R2476	37	U2450	86
C1432	15	CR2476	24	R830	39	R1311	54	R1470	51	R2327	53	R2490	51	U2550	86
C1433	16	CR2496	24	R832	37	R1313	54	R1472	76	R2329	53	R2492	76	U2750	86
C1434	17	L860	25	R834	38	R1315	55	R1474	50	R2331	59	R2494	50	VR824	87
C1435	11	L880	25	R840	36	R1317	56	R1490	38	R2332	60	R2496	37	VR834	87
C1436	18	L960	25	R846	40	R1319	57	R1492	76	R2334	40	R2498	77		
C1480	19	L980	25	R860	41	R1320	58	R1494	50	R2336	61	R2511	52		
C1490	6	L1345	26	R880	41	R1323	58	R1498	77	R2337	39	R2512	52		
C1531	20	L2345	26	R890	42	R1327	53	R1511	52	R2338	62	R2514	78		
C1533	21	LR1010	27	R892	42	R1329	53	R1512	52	R2339	62	R2516	52		
C1721	22	LR1014	27	R902	35	R1331	59	R1514	78	R2340	63	R2517	52		
C2311	6	LR1020	27	R904	35	R1332	60	R1516	52	R2341	33	R2518	79		

Figure 2A. Circuit Card Assembly: Amplifier (A2) (Sheet 3 of 3)

CE1PF011

(1) ITEM NO	(2) SMR CODE	(3) FSCM	(4) PART NUMBER	(5) DESCRIPTION AND USABLE ON CODE (UOC)	(6) QTY
GROUP 01 CIRCUIT CARD ASSY AMPLIFIER (A2)					
FIG. 2A					
1	PAHZZ	59873	283-0341-00	CAPACITOR, FIXED, CER	4
2	PAHZZ	00853	D151E161F0	CAPACITOR, FIXED, MIC	2
3	PAHZZ	72982	308-000C0G0390J	CAPACITOR, FIXED, CER	2
4	PAHZZ	80009	290-0804-00	CAPACITOR, FIXED, ELE	4
5	PAHZZ	80009	281-0773-00	CAPACITOR, FIXED, CER	2
6	PAHZZ	80009	283-0000-00	CAPACITOR, FIXED, CER	8
7	PAHZZ	72982	301000Z5D0171J	CAPACITOR, FIXED, CER	1
8	PAHZZ	81349	CCR75CG330GR	CAPACITOR, FIXED, CER	1
9	PAHZZ	81349	CC30UJ680G	CAPACITOR, FIXED, CER	2
10	PAHZZ	59873	283-0203-00	CAPACITOR, FIXED, CER	2
11	PAHZZ	80009	281-0158-00	CAPACITOR, VARIABLE	6
12	PAHZZ	72982	8111B061C0G220J	CAPACITOR, FIXED, CER	2
13	PAHZZ	80009	281-0218-00	CAPACITOR, VARIABLE,	2
14	PAHZZ	59660	855-536Y5E0222J	CAPACITOR, FIXED, CER	2
15	PAHZZ	81349	CV35A090	CAPACITOR, VARIABLE,	2
16	PAHZZ	59660	301-000C0G0150J	CAPACITOR, FIXED, CER	2
17	PAHZZ	80009	281-0546-00	CAPACITOR, FIXED, CER	2
18	PAHZZ	72982	8121N083X7R0153K	CAPACITOR, FIXED CER	2
19	PAHZZ	28480	0150-0078	CAPACITOR, FIXED, CER	1
20	PAHZZ	72982	518-000A5-15	CAPACITOR, VARIABLE,	2
21	PAHZZ	72314	03167230	CAPACITOR, FIXED, CER	1
22	PAHZZ	37695	265011-17	CAPACITOR, VARIABLE,	2
23	PAHZZ	04222	7001-1343	CAPACITOR, FIXED, CER	1
24	PAHZZ	03508	841A5091	SEMICONDUCTOR DEVIC	12
25	PAHZZ	80009	108-0311-00	COIL, RADIO FREQUENC	4
26	PAHZZ	80009	108-0420-00	COIL, RADIO FREQUENC	2
27	PAHZZ	80009	108-0184-00	COIL, RADIO FREQUENC	4
28	PAHZZ	80009	153-0653-00	TRANSISTOR	4
29	PAHZZ	04713	SPS8236	TRANSISTOR	2
30	PAHZZ	80131	2N4258	TRANSISTOR	2
31	PAHZZ	81349	JAN2N2222A	TRANSISTOR	2
32	PAHZZ	80131	2N3565	TRANSISTOR	4
33	PAHZZ	80009	315-0560-00	RESISTOR, FIXED, COMP	8
34	PAHZZ	81349	RN65F93R1F	RESISTOR, FIXED, FILM	4
35	PAHZZ	81349	RCR07G111JS	RESISTOR, FIXED, COMP	4
36	PAHZZ	16845	1000-412-12	RESISTOR, FIXED	4
37	PAHZZ	01121	CB2025	RESISTOR, FIXED, COMP	12
38	PAHZZ	81349	RCR07G511JS	RESISTOR, FIXED, COMP	6
39	PAHZZ	81349	RCR07G271JS	RESISTOR, FIXED, COMP	6
40	PAHZZ	81349	RCR07G121JS	RESISTOR, FIXED, COMP	4
41	PAHZZ	81349	RCR07G161JS	RESISTOR, FIXED, COMP	2
42	PAHZZ	81349	RN65F1001F	RESISTOR, FIXED, FILM	4
43	PAHZZ	28480	0683-3905	RESISTOR, FIXED, COMP	2
44	PAHZZ	16845	1000-409-15	TRANSISTOR	4
45	PAHZZ	81349	RCR05G330JS	RESISTOR, FIXED, COMP	2
46	PAHZZ	01121	CB1035	RESISTOR, FIXED, COMP	2
47	PAHZZ	81349	RCR07G101JS	RESISTOR, FIXED, COMP	1

(1) ITEM NO	(2) SMR CODE	(3) FSCM	(4) PART NUMBER	(5) DESCRIPTION AND USABLE ON CODE (UOC)	(6) QTY
48	PAHZZ	81349	RCR07G751JS	RESISTOR, FIXED, COMP	2
49	PAHZZ	81349	RCR20G911JS	RESISTOR, FIXED, COMP	1
50	PAHZZ	01121	CB3315	RESISTOR, FIXED, COMP	5
51	PAHZZ	81349	RCR07G561JS	RESISTOR, FIXED, COMP	3
52	PAHZZ	81349	RCR07G102JS	RESISTOR, FIXED, COMP	10
53	PAHZZ	81349	RCR07G822JS	RESISTOR, FIXED, COMP	5
54	PAHZZ	01121	CB5125	RESISTOR, FIXED, COMP	6
55	PAHZZ	01121	CB3925	RESISTOR, FIXED, COMP	2
56	PAHZZ	80294	3329P-L58-202	RESISTOR, VARIABLE, N	2
57	PAHZZ	01121	CB4725	RESISTOR, FIXED, COMP	2
58	PAHZZ	81349	RNC55K6810FS	RESISTOR, FIXED, FILM	4
59	PAHZZ	81349	RCR07G132JS	RESISTOR, FIXED, COMP	3
60	PAHZZ	81349	RCR07G242JS	RESISTOR, FIXED, COMP	2
61	PAHZZ	80294	3329PL58/101	RESISTOR, VARIABLE, N	2
62	PAHZZ	81349	RCR07G360JS	RESISTOR, FIXED, COMP	4
63	PAHZZ	01121	CB1815	RESISTOR, FIXED, COMP	2
64	PAHZZ	80009	311-1260-00	RESISTOR, VARIABLE, N	5
65	PAHZZ	81349	RNC65K2800FS	RESISTOR, FIXED, FILM	3
66	PAHZZ	80009	311-1268-00	RESISTOR, VARIABLE, N	2
67	PAHZZ	81349	RNC55K60R4FS	RESISTOR, FIXED, FILM	8
68	PAHZZ	81349	RCR07G272JS	RESISTOR, FIXED, COMP	1
69	PAHZZ	01121	CB2015	RESISTOR, FIXED, COMP	3
70	PAHZZ	81349	RCR07G152JS	RESISTOR, FIXED, COMP	5
71	PAHZZ	75042	CECTO-1101F	RESISTOR, FIXED, FILM	5
72	PAHZZ	80294	3329P-L58-502	RESISTOR, VARIABLE, N	2
73	PAHZZ	81349	RCR07G222JS	RESISTOR, FIXED, COMP	2
74	PAHZZ	32997	3329P-L58-203	RESISTOR, VARIABLE, N	2
75	PAHZZ	01121	CB2735	RESISTOR, FIXED, COMP	4
76	PAHZZ	01121	CB1835	RESISTOR, FIXED, COMP	4
77	PAHZZ	01121	CB9115	RESISTOR, FIXED, COMP	2
78	PAHZZ	01121	CB6215	RESISTOR, FIXED, COMP	4
79	PAHZZ	57668	NTR25J-E 820E	RES, FXD, FILM	2
80	PAHZZ	81349	RN65F1371F	RESISTOR, FIXED, FILM	5
81	PAHZZ	81349	RCR07G151JS	RESISTOR, FIXED, COMP	4
82	PAHZZ	81349	RNC55K1690FS	RESISTOR, FIXED, FILM	2
83	PAHZZ	01121	CB1505	RESISTOR, FIXED, COMP	4
84	PAHZZ	32997	3329P-L58-102	RESISTOR, VARIABLE, N	1
85	PAHZZ	50157	2D1595	RESISTOR, THERMAL	4
86	PAHZZ	80009	155-0078-10	MICROCIRCUIT, LINEAR	8
87	PAHZZ	04713	SZG195	SEMICONDUCTOR DEVIC	2

END OF FIGURE

CROSS-REFERENCE INDEXES

NATIONAL STOCK NUMBER INDEX

STOCK NUMBER	FIG.	ITEM	STOCK NUMBER	FIG.	ITEM
5305-00-005-8245	1	42	5999-00-434-2894	1	16
5305-00-006-6624	1	60	5905-00-434-5424	2	73
5910-00-013-9660	2	18	5940-00-434-9240	1	48
3120-00-016-8665	1	20	5355-00-435-1113	1	33
5905-00-102-5289	2	79	5355-00-438-9479	1	28
5905-00-104-8358	2	50	5310-00-470-3187	1	26
	2	56	5950-00-472-0426	2	22
5905-00-104-8362	2	57	5340-00-480-3640	1	12
5961-00-105-7681	2	21	5905-00-497-4330	2	81
5905-00-105-7768	2	48	5905-00-498-6059	2	40
5905-00-106-1248	2	82	5950-00-506-4351	2	24
5905-00-106-1356	2	68	5355-00-508-2208	1	32
5905-00-110-7620	2	49	5355-00-508-2223	1	38
5905-00-111-4727	2	66	5950-00-540-9278	2	23
5905-00-113-4860	2	80	6625-00-548-1286	1	9
5905-00-114-0710	2	47	5961-00-548-1896	2	25
5905-00-116-2394	2	69	5310-00-562-3401	1	27
5905-00-119-3504	2	74	5999-00-563-0044	1	14
5905-00-119-8812	2	38	5905-00-566-3797	2	65
5905-00-126-6683	2	77	5905-00-572-3489	1	55
5905-00-126-6696	2	45	5315-00-579-9841	1	37
5905-00-126-6698	2	60	5340-00-612-6116	1	52
	2	62	5305-00-625-9541	1	39
5905-00-133-0440	1	64	5905-00-625-9624	2	53
	2	30	5910-00-688-8702	1	54
5905-00-135-6045	2	42	5905-00-726-1811	2	39
5905-00-136-3891	2	78	5905-00-756-6452	2	63
5905-00-136-8406	2	58	5961-00-780-8368	2	27
5905-00-138-1285	2	34	5910-00-805-6630	2	20
5905-00-141-0742	2	61	5910-00-806-0675	2	6
5905-00-141-0743	2	52	5910-00-822-5683	2	5
5905-00-141-1183	1	63	5310-00-836-3520	1	49
5910-00-143-0501	2	12	5305-00-841-8060	1	3
5961-00-189-1266	2	26	5961-00-858-6538	2	28
5910-00-192-6726	2	14	5910-00-879-5921	2	1
5310-00-231-4954	1	19	5305-00-889-3116	1	5
5935-00-236-7554	1	40	5905-00-905-6279	2	72
5910-00-244-7530	2	16	5905-00-909-3885	2	43
5305-00-245-4882	1	43	5905-00-909-3919	2	67
5905-00-344-1720	2	35	5905-00-911-3753	2	54
5905-00-369-6931	2	32	5905-00-911-3754	2	51
5910-00-378-0354	2	10	5905-00-911-3801	2	75
6625-00-390-3842	1	35	5905-00-919-5713	2	71
5310-00-407-4601	1	24	5905-00-926-8496	2	76
5355-00-409-7160	1	34	5905-00-927-5449	2	46
5340-00-415-5214	1	13	5961-00-930-5325	2	29
5355-00-419-4045	1	29	5950-00-932-7115	1	61
5905-00-426-7885	2	70	5961-00-951-8757	2	31
5910-00-430-5806	2	3	5910-00-952-1060	2	19
5930-00-431-2331	1	21	5905-00-985-5971	2	55

CROSS-REFERENCE INDEXES

NATIONAL STOCK NUMBER INDEX

STOCK NUMBER	FIG.	ITEM	STOCK NUMBER	FIG.	ITEM
5910-01-014-4263	2	13			
5962-01-014-6529	2	85			
5962-01-015-3894	2	86			
5962-01-016-6711	2	84			
5360-01-029-2164	1	2			
5895-01-030-0995	1	6			
5910-01-031-0626	2	2			
5910-01-033-2103	2	15			
5910-01-033-9072	2	17			
5905-01-034-0704	2	83			
5355-01-035-7587	1	36			
5950-01-035-7712	1	62			
5910-01-070-3510	2	8			
5999-01-082-1868	1	44			
5910-01-085-1204	2	4			
5310-01-085-4746	1	53			
5910-01-087-3662	2	11			
5905-01-109-1715	2	64			
5310-01-115-8854	1	45			
6625-01-126-2489	1	23			
6625-01-126-2490	1	10			
5310-01-133-2199	1	57			
5305-01-141-6520	1	7			
5961-01-148-8412	2	36			
	2	41			
	2	44			
5905-01-149-5102	2	33			
5305-01-155-4343	1	47			
5305-01-156-3734	1	58			
5340-01-156-8907	1	41			
5305-01-158-6230	1	18			
5310-01-188-9558	1	46			

CROSS-REFERENCE INDEXES

NATIONAL STOCK NUMBER INDEX

STOCK NUMBER	FIG.	ITEM	STOCK NUMBER	FIG.	ITEM
5305-00-006-6624	1A	60	5905-00-434-5424	2A	74
5910-00-013-9660	2A	22	5940-00-434-9240	1A	48
3120-00-016-8665	1A	20	5355-00-435-1113	1A	33
5910-00-071-7365	2A	16	5355-00-438-9479	1A	28
5905-00-102-5289	2A	37	5910-00-465-9742	2A	14
5905-00-104-8358	2A	53	5905-00-466-1216	2A	45
5905-00-104-8362	2A	59	5310-00-470-3187	1A	26
5961-00-105-7681	2A	24	5950-00-472-0426	2A	26
5905-00-105-7764	2A	73	5340-00-480-3640	1A	12
5905-00-105-7768	2A	51	5905-00-481-1331	2A	67
5905-00-106-1274	2A	49	5905-00-498-6059	2A	43
5905-00-106-1356	2A	70	5950-00-506-4351	2A	27
5905-00-110-7620	2A	52	5355-00-508-2208	1A	32
5905-00-111-1686	2A	41	5355-00-508-2223	1A	38
5905-00-111-4727	2A	68	5950-00-540-9278	2A	25
5905-00-116-2394	2A	38	5310-00-562-3401	1A	27
5905-00-119-3503	2A	39	5999-00-563-0044	1A	14
5905-00-119-8811	2A	81	5905-00-566-3797	2A	66
5905-00-119-8812	2A	40	5905-00-572-3489	1A	55
5905-00-126-6696	2A	48	5315-00-579-9841	1A	37
5905-00-126-6698	2A	62	5340-00-612-6116	1A	52
5905-00-133-0440	1A	64	5905-00-625-9624	2A	56
	2A	33	5910-00-688-8702	1A	54
	2A	78		2A	6
5905-00-136-3891	2A	60	5905-00-726-1811	2A	42
5905-00-136-8406	2A	60			
5905-00-141-1183	1A	63	5310-00-767-4944	1A	53
	2A	47	5961-00-780-8368	2A	30
5961-00-189-1266	2A	29	5910-00-827-6274	2A	9
5310-00-231-4954	1A	19	5310-00-836-3520	1A	49
5905-00-238-7075	2A	63	5305-00-841-8060	1A	3
5910-00-244-7530	2A	20	5910-00-866-6616	2A	21
5305-00-245-4882	1A	43	5910-00-879-6813	2A	3
5910-00-247-8942	2A	23	5305-00-889-3116	1A	5
5905-00-270-1395	2A	82	5905-00-905-6277	2A	83
5905-00-270-1400	2A	58	5905-00-909-3885	2A	46
5305-00-282-5806	1A	39	5905-00-909-3919	2A	69
5360-00-343-4303	1A	17	5905-00-909-3965	2A	50
5910-00-359-8928	2A	7	5905-00-911-3753	2A	57
5905-00-369-6931	2A	35	5905-00-911-3754	2A	54
5905-00-369-7639	2A	72	5905-00-911-3801	2A	76
5910-00-372-0582	2A	10	5905-00-911-3815	2A	75
5910-00-378-0354	2A	11	5905-00-915-0536	2A	55
5310-00-407-4601	1A	24	5905-00-926-8496	2A	80
5355-00-409-7160	1A	34	5905-00-927-5449	2A	77
5340-00-415-5214	1A	13	5961-00-930-5325	2A	32
5355-00-419-4045	1A	29	5950-00-932-7115	1A	61
5905-00-426-7885	2A	71	5905-00-938-1189	2A	34
5910-00-433-3955	2A	1	5961-00-951-8757	2A	31
5999-00-434-2894	1A	16	5910-00-952-1060	2A	19
5905-00-434-5416	2A	64	5910-00-984-2340	2A	17

CROSS-REFERENCE INDEXES

NATIONAL STOCK NUMBER INDEX

STOCK NUMBER	FIG.	ITEM	STOCK NUMBER	FIG.	ITEM
5905-01-014-2911	2A	61			
5935-01-014-4325	1A	40			
5962-01-015-3894	2A	86			
5360-01-029-2164	1A	2			
5910-01-031-0626	2A	2			
5910-01-033-2103	2A	15			
5905-01-034-0704	2A	85			
5355-01-035-7587	1A	36			
5910-01-062-0508	2A	5			
5910-01-062-0510	2A	12			
5910-01-070-3510	2A	8			
5999-01-082-1868	1A	44			
5910-01-087-3662	2A	13			
5905-01-099-2523	2A	84			
5905-01-109-1715	2A	65			
5310-01-115-8854	1A	45			
5961-01-123-8662	2A	87			
5910-01-123-9845	2A	4			
6625-01-126-2489	1A	23			
6625-01-128-2695	1A	8			
5950-01-130-8272	1A	62			
5310-01-133-2199	1A	57			
5305-01-134-0714	1A	42			
5961-01-143-8333	2A	28			
5961-01-148-8412	2A	44			
5905-01-149-5102	2A	36			
5305-01-155-4343	1A	47			
5305-01-156-3734	1A	58			
5305-01-156-5100	1A	7			
5340-01-156-8907	1A	41			
5305-01-158-6230	1A	18			
6625-01-186-2618	1A	10			
5930-01-187-7849	1A	21			
6625-01-190-6180	1A	6			
5930-01-201-6382	1A	35			



SECTION IV

CROSS-REFERENCE INDEXES

PART NUMBER INDEX				
FSCM	PART NUMBER	STOCK NUMBER	FIG.	ITEM
01121	CB1035	5905-00-909-3885	2	43
01121	CB1225	5905-00-919-5713	2	71
01121	CB1825	5905-00-905-6279	2	72
01121	CB1835	5905-00-911-3801	2	75
01121	CB2015	5905-00-909-3919	2	67
01121	CB2025	5905-00-102-5289	2	79
01121	CB4725	5905-00-911-3753	2	54
01121	CB5125	5905-00-911-3754	2	51
01121	CB6215	5905-00-136-3891	2	78
01121	CB9115	5905-00-927-5449	2	46
81349	CCR75CG330GR	5910-01-070-3510	2	8
81349	CC22CK1R0C	5910-00-805-6630	2	20
81349	CC22UJ510G	5910-00-806-0675	2	6
75042	CEATO-4220F		2	37
75042	CECT0-1101F	5905-00-426-7885	2	70
81349	CK63AW103M	5910-00-822-5683	2	5
81349	CV35A090	5910-01-033-2103	2	15
00853	D151E161F0	5910-01-031-0626	2	2
81349	JAN2N2222A	5961-00-951-8757	2	31
27014	LM320K5-0	5962-01-016-6711	2	84
96906	MS35206-213	5305-00-889-3116	1	5
81349	M39014/02-1332	5910-00-143-0501	2	12
81349	RCR07G101JS	5905-00-141-1183	1	63
81349	RCR07G102JS	5905-00-110-7620	2	49
81349	RCR07G111JS	5905-00-369-6931	2	32
81349	RCR07G121JS	5905-00-119-8812	2	38
81349	RCR07G132JS	5905-00-104-8362	2	57
81349	RCR07G152JS	5905-00-106-1356	2	68
81349	RCR07G162JS	5905-00-106-1248	2	82
81349	RCR07G181JS	5905-00-141-0742	2	61
81349	RCR07G242JS	5905-00-136-8406	2	58
81349	RCR07G270JS	5905-00-113-4860	2	80
81349	RCR07G272JS	5905-00-111-4727	2	66
81349	RCR07G273JS	5905-00-119-3504	2	74
81349	RCR07G330JS	5905-00-135-6045	2	42
81349	RCR07G331JS	5905-00-114-0710	2	47
81349	RCR07G332JS	5905-00-126-6683	2	77
81349	RCR07G360JS	5905-00-126-6698	2	60
			2	62
81349	RCR07G392JS	5905-00-141-0743	2	52
81349	RCR07G511JS	5905-00-116-2394	2	69
81349	RCR07G560JS	5905-00-133-0440	1	64
			2	30
81349	RCR07G561JS	5905-00-105-7768	2	48
81349	RCR07G751JS	5905-00-126-6696	2	45
81349	RCR07G822JS	5905-00-104-8358	2	50
			2	56
81349	RNC60K2001FS	5905-00-138-1285	2	34
81349	RNC60K3240FS	5905-00-344-1720	2	35
81349	RNC65K2800FS	5905-01-109-1715	2	64
81349	RN65F1001F	5905-00-726-1811	2	39

SECTION IV

CROSS-REFERENCE INDEXES

PART NUMBER INDEX				
FSCM	PART NUMBER	STOCK NUMBER	FIG.	ITEM
81349	RN65F1371F	5905-00-926-8496	2	76
81349	RN65F6810F	5905-00-985-5971	2	55
01121	T037C351A	5950-01-035-7712	1	62
28480	0150-0078	5910-00-952-1060	2	19
28480	0160-2666	5910-00-430-5806	2	3
28480	0683-3905	5905-00-498-6059	2	40
16845	1000-409-15	5961-01-148-8412	2	36
			2	41
			2	44
16845	1000-412-12	5905-01-149-5102	2	33
80009	105-0075-00	5340-00-415-5214	1	13
80009	105-0076-00	6625-00-390-3842	1	35
80009	108-0184-00	5950-00-506-4351	2	24
80009	108-0311-00	5950-00-540-9278	2	23
80009	108-0420-00	5950-00-472-0426	2	22
80009	120-0286-00	5950-00-932-7115	1	61
78189	1204-00-00-0541C	5310-00-085-4746	1	53
73743	12157-50		1	22
80009	129-0299-00	5340-00-612-6116	1	52
80009	129-0554-01	5340-01-156-8907	1	41
80009	131-0907-00	5999-01-082-1868	1	44
80009	131-1075-00	5999-00-563-0044	1	14
80009	151-0271-00	5961-00-189-1266	2	26
80009	153-0606-00	5961-00-548-1896	2	25
80009	155-0078-01	5962-01-014-6529	2	85
80009	155-0078-10	5962-01-015-3894	2	86
50157	2D1595	5905-01-034-0704	2	83
80131	2N3565	5961-00-930-5325	2	29
80131	2N4258	5961-00-780-8368	2	27
80131	2N5551	5961-00-858-6538	2	28
73743	2X20319-402	5310-00-231-4954	1	19
73743	2X28269-402	5310-00-407-4601	1	24
80009	200-1442-00		1	50
80009	210--0586-00	5310-00-836-3520	1	49
59873	210-0012-00	5310-00-470-3187	1	26
80009	210-0053-00	5310-01-115-8854	1	45
80009	210-0288-00	5940-00-434-9240	1	48
80009	210-1008-00	5310-01-188-9558	1	46
80009	211-0001-00	5305-00-245-4882	1	43
83385	211-0007-00	5305-01-155-4343	1	47
80009	211-0030-00	5305-01-158-6230	1	18
80009	211-0097-00	5305-01-156-3734	1	58
59873	211-0105-00	5305-00-841-8060	1	3
80009	211-0116-00	5305-00-005-8245	1	42
80009	213-0048-00		1	30
80009	213-0055-00	5305-00-006-6624	1	60
80009	213-0075-00	5305-00-625-9541	1	39
80009	213-0192-00	5305-01-141-6520	1	7
80009	214-1054-00	5340-00-480-3640	1	12
80009	214-1061-00	5360-01-029-2164	1	2
59873	214-1280-00		1	17

## SECTION IV

## CROSS-REFERENCE INDEXES

PART NUMBER INDEX				
FSCM	PART NUMBER	STOCK NUMBER	FIG.	ITEM
88044	AN565DC6H3	5305-00-282-5806	1A	39
01121	CB1035	5905-00-909-3885	2A	46
01121	CB1505	5905-00-905-6277	2A	83
01121	CB1815	5905-00-238-7075	2A	63
01121	CB1835	5905-00-911-3801	2A	76
01121	CB2015	5905-00-909-3919	2A	69
01121	CB2025	5905-00-102-5289	2A	37
01121	CB2735	5905-00-911-3815	2A	75
01121	CB3315	5905-00-909-3965	2A	50
01121	CB3925	5905-00-915-0536	2A	55
01121	CB4725	5905-00-911-3753	2A	57
01121	CB5125	5905-00-911-3754	2A	54
01121	CB6215	5905-00-136-3891	2A	78
01121	CB9115	5905-00-927-5449	2A	77
81349	CCR75CG330GR	5910-01-070-3510	2A	8
81349	CC30UJ680G	5910-00-827-6274	2A	9
75042	CECT0-1101F	5905-00-426-7885	2A	71
81349	CV35A090	5910-01-033-2103	2A	15
00853	D151E161F0	5910-01-031-0626	2A	2
81349	JAN2N2222A	5961-00-951-8757	2A	31
96906	MS-35206-213	5305-00-889-3116	1A	5
57668	NTR25J-E 820E		2A	79
81349	RCR05G330JS	5905-00-466-1216	2A	45
81349	RCR07G101JS	5905-00-141-1183	1A	63
			2A	47
81349	RCR07G102JS	5905-00-110-7620	2A	52
81349	RCR07G111JS	5905-00-369-6931	2A	35
81349	RCR07G121JS	5905-00-119-8812	2A	40
81349	RCR07G132JS	5905-00-104-8362	2A	59
81349	RCR07G151JS	5905-00-119-8811	2A	81
81349	RCR07G152JS	5905-00-106-1356	2A	70
81349	RCR07G161JS	5905-00-111-1686	2A	41
81349	RCR07G222JS	5905-00-105-7764	2A	73
81349	RCR07G242JS	5905-00-136-8406	2A	60
81349	RCR07G271JS	5905-00-119-3503	2A	39
81349	RCR07G272JS	5905-00-111-4727	2A	68
81349	RCR07G360JS	5905-00-126-6698	2A	62
81349	RCR07G511JS	5905-00-116-2394	2A	38
81349	RCR07G561JS	5905-00-105-7768	2A	51
81349	RCR07G751JS	5905-00-126-6696	2A	48
81349	RCR07G822JS	5905-00-104-8358	2A	53
81349	RCR20G911JS	5905-00-106-1274	2A	49
81349	RNC55K1690FS	5905-00-270-1395	2A	82
81349	RNC55K60R4FS	5905-00-481-1331	2A	67
81349	RNC55K6810FS	5905-00-270-1400	2A	58
81349	RNC65K2800FS	5905-01-109-1715	2A	65
81349	RN65F1001F	5905-00-726-1811	2A	42
81349	RN65F1371F	5905-00-926-8496	2A	80
81349	RN65F93R1F	5905-00-938-1189	2A	34
04713	SPS8236	5961-00-189-1266	2A	29
04713	SZG195	5961-01-123-8662	2A	87

SECTION IV

CROSS-REFERENCE INDEXES

PART NUMBER INDEX				
FSCM	PART NUMBER	STOCK NUMBER	FIG.	ITEM
28480	0150-0078	5910-00-952-1060	2A	19
72314	03167230	5910-00-866-6616	2A	21
28480	0683-3905	5905-00-498-6059	2A	43
16845	1000-409-15	5961-01-148-8412	2A	44
16845	1000-412-12	5905-01-149-5102	2A	36
80009	105-0075-00	5340-00-415-5214	1A	13
80009	105-0076-04	5930-01-201-6382	1A	35
80009	108-0184-00	5950-00-506-4351	2A	27
80009	108-0311-00	5950-00-540-9278	2A	25
80009	108-0420-00	5950-00-472-0426	2A	26
80009	120-0286-00	5950-00-932-7115	0A	61
73743	12157-50		1A	22
80009	129-0299-00	5340-00-612-6116	1A	52
80009	129-0554-01	5340-01-156-8907	1A	41
80009	131-0679-02	5935-01-014-4325	1A	40
80009	131-0907-00	5999-00-563-0044	1A	44
80009	153-0653-00	5961-01-143-8333	1A	14
80009	153-0653-00	5961-01-143-8333	2A	28
80009	155-0078-10	5962-01-015-3894	2A	86
50157	2D1595	5905-01-034-0704	2A	85
80131	2N3565	5961-00-930-5325	2A	32
80131	2N4258	5961-00-780-8368	2A	30
73743	2X20319-402	5310-00-231-4954	1A	19
73743	2X28269-402	5310-00-407-4601	1A	24
80009	200-1442-00		1A	50
80009	210-0004-00	5310-00-767-4944	1A	53
59873	210-0012-00	5310-00-470-3187	1A	26
80009	210-0053-00	5310-01-115-8854	1A	45
80009	210-0288-00	5940-00-434-9240	1A	48
80009	210-1110-00		1A	46
80009	211-0001-00	5305-00-245-4882	1A	43
83385	211-0007-00	5305-01-155-4343	1A	47
80009	211-0030-00	5305-01-158-6230	1A	18
80009	211-0097-00	5305-01-156-3734	1A	58
59873	211-0105-00	5305-00-841-8060	1A	3
80009	211-0292-00	5305-01-134-0714	1A	42
80009	213-0048-00		1A	30
80009	213-0055-00	5305-00-006-6624	1A	60
80009	213-0793-00	5305-01-156-5100	1A	7
80009	214-1054-00	5340-00-480-3640	1A	12
80009	214-1061-00	5360-01-029-2164	1A	2
80009	214-1280-00	5360-00-343-4303	1A	17
80009	2150-02		1A	65
80009	220-0497-00	5310-01-133-2199	1A	57
80009	220-0547-01	5310-00-562-3401	1A	27
80009	260-1833-00	5930-01-187-7849	1A	21
80009	262-0965-02		1A	9
37695	265011-17	5910-00-013-9660	2A	22
80009	281-0158-00	5910-00-378-0354	2A	11
80009	281-0218-00	5910-01-087-3662	2A	13
80009	281-0546-00	5910-00-984-2340	2A	17

SECTION IV

CROSS-REFERENCE INDEXES

PART NUMBER INDEX				
FSCM	PART NUMBER	STOCK NUMBER	FIG.	ITEM
80009	220-0497-00	5310-01-133-2199	1	57
80009	220-0547-01	5310-00-562-3401	1	27
59873	260-0816-00	5930-00-431-2331	1	21
80009	262-0965-01	6625-00-548-1286	1	9
37695	265011-17	5910-00-013-9660	2	18
24931	28JR168-1	5935-00-236-7554	1	40
80009	281-0218-00	5910-01-087-3662	2	11
80009	283-0000-00	5910-00-688-8702	1	54
80009	283-0010-00	5910-00-879-5921	2	1
80009	290-0536-00	5910-01-085-1204	2	4
72982	301-000 Z5D0 171			7
	J			
59660	301-000-X5P0-331	5910-00-192-6726	2	14
	K			
72982	301-000C0G0150G	5910-01-014-4263	2	13
80009	311-0635-00	5905-00-497-4330	2	81
80009	311-0978-00	5905-00-756-6452	2	63
80009	311-1268-00	5905-00-566-3797	2	65
80009	311-1269-00	5905-00-434-5424	2	73
80294	3329P-L58-202	5905-00-625-9624	2	53
80009	333-1594-00		1	31
80009	337-1064-04		1	1
80009	337-1716-00		1	59
80009	348-0235-00	5999-00-434-2894	1	16
80009	358-0216-00	3120-00-016-8665	1	20
80009	366-0215-02	5355-00-435-1113	1	33
80009	366-1058-45	5355-01-035-7587	1	36
80009	366-1059-00	5355-00-438-9479	1	28
80009	366-1077-00	5355-00-419-4045	1	29
80009	366-1165-00	5355-00-409-7160	1	34
80009	366-1299-00	5355-00-508-2208	1	32
80009	366-1308-00	5355-00-508-2223	1	38
12697	381CM39700	5905-00-572-3489	1	55
80009	386-1402-00		1	8
80009	386-1447-52		1	15
80009	407-0912-00		1	25
80009	407-1172-00		1	51
80009	426-0736-00		1	4
80009	426-0737-00		1	11
80009	441-1097-00		1	56
72982	518-000A5-15	5910-00-244-7530	2	16
18796	518-000G7-45	5910-00-378-0354	2	10
13257	52-022-094-0187	5315-00-579-9841	1	37
80740	62-53-5		2	59
80009	670-2310-08	6625-01-126-2490	1	10
80009	670-2324-08	6625-01-126-2489	1	23
80009	670-2549-03	5895-01-030-0995	1	6
72982	8131-050-651-474		2	9
	M			
72982	8131N039E105Z	5910-01-033-9072	2	17
03508	841A5091	5961-00-105-7681	2	21

SECTION IV

CROSS-REFERENCE INDEXES

FIGURE AND ITEM NUMBER INDEX				
FIG.	ITEM	STOCK NUMBER	FSCM	PART NUMBER
1	1		80009	337-1064-04
1	2	5360-01-029-2164	80009	214-1061-00
1	3	5305-00-841-8060	59873	211-0105-00
1	4		80009	426-0736-00
1	5	5305-00-889-3116	96906	MS35206-213
1	6	5895-01-030-0995	80009	670-2549-03
1	7	5305-01-141-6520	80009	213-0192-00
1	8		80009	386-1402-00
1	9	6625-00-548-1286	80009	262-0965-01
1	10	6625-01-126-2490	80009	670-2310-08
1	11		80009	426-0737-00
1	12	5340-00-480-3640	80009	214-1054-00
1	13	5340-00-415-5214	80009	105-0075-00
1	14	5999-00-563-0044	80009	131-1075-00
1	15		80009	386-1447-52
1	16	5999-00-434-2894	80009	348-0235-00
1	17		59873	214-1280-00
1	18	5305-01-158-6230	80009	211-0030-00
1	19	5310-00-231-4954	73743	2X20319-402
1	20	3120-00-016-8665	80009	358-0216-00
1	21	5930-00-431-2331	59873	260-0816-00
1	22		73743	12157-50
1	23	6625-01-126-2489	80009	670-2324-08
1	24	5310-00-407-4601	73743	2X28269-402
1	25		80009	407-0912-00
1	26	5310-00-470-3187	59873	210-0012-00
1	27	5310-00-562-3401	80009	220-0547-01
1	28	5355-00-438-9479	80009	366-1059-00
1	29	5355-00-419-4045	80009	366-1077-00
1	30		80009	213-0048-00
1	31		80009	333-1594-00
1	32	5355-00-508-2208	80009	366-1299-00
1	33	5355-00-435-1113	80009	366-0215-02
1	34	5355-00-409-7160	80009	366-1165-00
1	35	6625-00-390-3842	80009	105-0076-00
1	36	5355-01-035-7587	80009	366-1058-45
1	37	5315-00-579-9841	13257	52-022-094-0187
1	38	5355-00-508-2223	80009	366-1308-00
1	39	5305-00-625-9541	80009	213-0075-00
1	40	5935-00-236-7554	24931	28JR168-1
1	41	5340-01-156-8907	80009	129-0554-01
1	42	5305-00-005-8245	80009	211-0116-00
1	43	5305-00-245-4882	80009	211-0001-00
1	44	5999-01-082-1868	80009	131-0907-00
1	45	5310-01-115-8854	80009	210-0053-00
1	46	5310-01-188-9558	80009	210-1008-00
1	47	5305-01-155-4343	83385	211-0007-00
1	48	5940-00-434-9240	80009	210-0288-00
1	49	5310-00-836-3520	80009	210--0586-00
1	50		80009	200-1442-00
1	51		80009	407-1172-00

SECTION IV

CROSS-REFERENCE INDEXES

FIGURE AND ITEM NUMBER INDEX				
FIG.	ITEM	STOCK NUMBER	FSCM	PART NUMBER
1	52	5340-00-612-6116	80009	129-0299-00
1	53	5310-01-085-4746	78189	1204-00-00-0541C
1	54	5910-00-688-8702	80009	283-0000-00
1	55	5905-00-572-3489	12697	381CM39700
1	56		80009	441-1097-00
1	57	5310-01-133-2199	80009	220-0497-00
1	58	5305-01-156-3734	80009	211-0097-00
1	59		80009	337-1716-00
1	60	5305-00-006-6624	80009	213-0055-00
1	61	5950-00-932-7115	80009	120-0286-00
1	62	5950-01-035-7712	01121	T037C351A
1	63	5905-00-141-1183	81349	RCR07G101JS
1	64	5905-00-133-0440	81349	RCR07G560JS
2	1	5910-00-879-5921	80009	283-0010-00
2	2	5910-01-031-0626	00853	D151E161F0
2	3	5910-00-430-5806	28480	0160-2666
2	4	5910-01-085-1204	80009	290-0536-00
2	5	5910-00-822-5683	81349	CK63AW103M
2	6	5910-00-806-0675	81349	CC22UJ510G
2	7		72982	301-000 Z5D0 171 J
2	8	5910-01-070-3510	81349	CCR75CG330GR
2	9		72982	8131-050-651-474 M
2	10	5910-00-378-0354	18796	518-000G7-45
2	11	5910-01-087-3662	80009	281-0218-00
2	12	5910-00-143-0501	81349	M39014/02-1332
2	13	5910-01-014-4263	72982	301-000C0G0150G
2	14	5910-00-192-6726	59660	301-000-X5P0-331 K
2	15	5910-01-033-2103	81349	CV35A090
2	16	5910-00-244-7530	72982	518-000A5-15
2	17	5910-01-033-9072	72982	8131N039E105Z
2	18	5910-00-013-9660	37695	265011-17
2	19	5910-00-952-1060	28480	0150-0078
2	20	5910-00-805-6630	81349	CC22CK1R0C
2	21	5961-00-105-7681	03508	841A5091
2	22	5950-00-472-0426	80009	108-0420-00
2	23	5950-00-540-9278	80009	108-0311-00
2	24	5950-00-506-4351	80009	108-0184-00
2	25	5961-00-548-1896	80009	153-0606-00
2	26	5961-00-189-1266	80009	151-0271-00
2	27	5961-00-780-8368	80131	2N4258
2	28	5961-00-858-6538	80131	2N5551
2	29	5961-00-930-5325	80131	2N3565
2	30	5905-00-133-0440	81349	RCR07G560JS
2	31	5961-00-951-8757	81349	JAN2N2222A
2	32	5905-00-369-6931	81349	RCR07G111JS
2	33	5905-01-149-5102	16845	1000-412-12
2	34	5905-00-138-1285	81349	RNC60K2001FS
2	35	5905-00-344-1720	81349	RNC60K3240FS

SECTION IV

CROSS-REFERENCE INDEXES

FIGURE AND ITEM NUMBER INDEX				
FIG.	ITEM	STOCK NUMBER	FSCM	PART NUMBER
2	36	5961-01-148-8412	16845	1000-409-15
2	37		75042	CEAT0-4220F
2	38	5905-00-119-8812	81349	RCR07G121JS
2	39	5905-00-726-1811	81349	RN65F1001F
2	40	5905-00-498-6059	28480	0683-3905
2	41	5961-01-148-8412	16845	1000-409-15
2	42	5905-00-135-6045	81349	RCR07G330JS
2	43	5905-00-909-3885	01121	CB1035
2	44	5961-01-148-8412	16845	1000-409-15
2	45	5905-00-126-6696	81349	RCR07G751JS
2	46	5905-00-927-5449	01121	CB9115
2	47	5905-00-114-0710	81349	RCR07G331JS
2	48	5905-00-105-7768	81349	RCR07G561JS
2	49	5905-00-110-7620	81349	RCR07G102JS
2	50	5905-00-104-8358	81349	RCR07G822JS
2	51	5905-00-911-3754	01121	CB5125
2	52	5905-00-141-0743	81349	RCR07G392JS
2	53	5905-00-625-9624	80294	3329P-L58-202
2	54	5905-00-911-3753	01121	CB4725
2	55	5905-00-985-5971	81349	RN65F6810F
2	56	5905-00-104-8358	81349	RCR07G822JS
2	57	5905-00-104-8362	81349	RCR07G132JS
2	58	5905-00-136-8406	81349	RCR07G242JS
2	59		80740	62-53-5
2	60	5905-00-126-6698	81349	RCR07G360JS
2	61	5905-00-141-0742	81349	RCR07G181JS
2	62	5905-00-126-6698	81349	RCR07G360JS
2	63	5905-00-756-6452	80009	311-0978-00
2	64	5905-01-109-1715	81349	RNC65K2800FS
2	65	5905-00-566-3797	80009	311-1268-00
2	66	5905-00-111-4727	81349	RCR07G272JS
2	67	5905-00-909-3919	01121	CB2015
2	68	5905-00-106-1356	81349	RCR07G152JS
2	69	5905-00-116-2394	81349	RCR07G511JS
2	70	5905-00-426-7885	72042	CECT0-1101F
2	71	5905-00-919-5713	01121	CB1225
2	72	5905-00-905-6279	01121	CB1825
2	73	5905-00-434-5424	80009	311-1269-00
2	74	5905-00-119-3504	81349	RCR07G273JS
2	75	5905-00-911-3801	01121	CB1835
2	76	5905-00-926-8496	81349	RN65F1371F
2	77	5905-00-126-6683	81349	RCR07G332JS
2	78	5905-00-136-3891	01121	CB6215
2	79	5905-00-102-5289	01121	CB2025
2	80	5905-00-113-4860	81349	RCR07G270JS
2	81	5905-00-497-4330	80009	311-0635-00
2	82	5905-00-106-1248	81349	RCR07G162JS
2	83	5905-01-034-0704	50157	2D1595
2	84	5962-01-016-6711	27014	LM320K5-0
2	85	5962-01-014-6529	80009	155-0078-01
2	86	5962-01-015-3894	80009	155-0078-10



SECTION IV

CROSS-REFERENCE INDEXES

FSCM	PART NUMBER INDEX PART NUMBER	STOCK NUMBER	FIG.	ITEM
80009	281-0773-00	5910-01-062-0508	2A	5
80009	283-0000-00	5910-00-688-8702	1A	54
			2A	6
59873	283-0203-00	5910-00-372-0582	2A	10
59873	283-0341-00	5910-00-433-3955	2A	1
80009	290-0804-00	5910-01-123-9845	2A	4
59660	301-000C0G0150J	5910-00-071-7365	2A	16
72982	301000Z5D0171J	5910-00-359-8928	2A	7
72982	308-000C0G0390J	5910-00-879-6813	2A	3
80009	311-1260-00	5905-00-434-5416	2A	64
80009	311-1268-00	5905-00-566-3797	2A	66
80009	315-0560-00	5905-00-133-0440	1A	64
			2A	33
32997	3329P-L58-102	5905-01-099-2523	2A	84
80294	3329P-L58-202	5905-00-625-9624	2A	56
32997	3329P-L58-203	5905-00-434-5424	2A	74
80294	3329P-L58-502	5905-00-369-7639	2A	72
80294	3329PL58/101	5905-01-014-2911	2A	61
80009	333-1594-01		1A	31
80009	337-1064-12		1A	1
80009	337-1716-00		1A	59
80009	348-0235-00	5999-00-434-2894	1A	16
80009	358-0216-00	3120-00-016-8665	1A	20
80009	366-0215-02	5355-00-435-1113	1A	36
80009	366-1058-45	5355-01-035-7587	1A	36
80009	366-1059-00	5355-00-438-9479	1A	28
80009	366-1077-00	5355-00-419-4045	1A	29
80009	366-1165-00	5355-00-409-7160	1A	34
80009	366-1299-00	5355-00-508-2208	1A	32
80009	366-1308-00	5355-00-508-2223	1A	38
12697	381-CM39700	5905-00-572-3489	1A	55
80009	386-1402-00	6625-01-128-2695	1A	8
80009	386-1447-54		1A	15
80009	407-0912-00		1A	25
80009	407-1172-00		1A	51
80009	426-0736-00		1A	4
80009	426-0737-00		1A	11
80009	441-1097-00		1A	56
72982	518-000A5-15	5910-00-244-7530	2A	20
72962	52-022-094-0187	5315-00-579-9841	1A	37
78488	57-3443	5950-01-130-8272	1A	62
80009	670-2310-09	6625-01-186-2618	1A	10
80009	670-2324-08	6625-01-126-2489	1A	23
80009	670-2549-21	6625-01-190-6180	1A	6
04222	7001-1343	5910-00-247-8942	2A	23
72982	8111B061C0G220J	5910-01-062-0510	2A	12
72982	8121N083X7R0153K		2A	18
83385	841-4-40	5310-00-836-3520	1A	49
03508	841A5091	5961-00-105-7681	2A	24
59660	855-536Y5E0222J	5910-00-465-9742	2A	14

SECTION IV

CROSS-REFERENCE INDEXES

FIGURE AND ITEM NUMBER INDEX				
FIG.	ITEM	STOCK NUMBER	FSCM	PART NUMBER
1A	1		80009	337-1064-12
1A	2	5360-01-029-2164	80009	214-1061-00
1A	3	5305-00-841-8060	59873	211-0105-00
1A	4		80009	426-0736-00
1A	5	5305-00-889-3116	96906	MS-35206-213
1A	6	6625-01-190-6180	80009	670-2549-21
1A	7	5305-01-156-5100	80009	213-0793-00
1A	8	6625-01-128-2695	80009	386-1402-00
1A	9		80009	262-0965-02
1A	10	6625-01-186-2618	80009	670-2310-09
1A	11		80009	426-0737-00
1A	12	5340-00-480-3640	80009	214-1054-00
1A	13	5340-00-415-5214	80009	105-0075-00
1A	14	5999-00-563-0044	80009	131-1075-00
1A	15		80009	386-1447-54
1A	16	5999-00-434-2894	80009	348-0235-00
1A	17	5360-00-343-4303	80009	214-1280-00
1A	18	5305-01-158-6230	80009	211-0030-00
1A	19	5310-00-231-4954	73743	2X20319-402
1A	20	3120-00-016-8665	80009	358-0216-00
1A	21	5930-01-187-7849	80009	260-1833-00
1A	22		73743	12157-50
1A	23	6625-01-126-2489	80009	670-2324-08
1A	24	5310-00-407-4601	73743	2X28269-402
1A	25		80009	407-0912-00
1A	26	5310-00-470-3187	59873	210-0012-00
1A	27	5310-00-562-3401	80009	220-0547-01
1A	28	5355-00-438-9479	80009	366-1059-00
1A	29	5355-00-419-4045	80009	366-1077-00
1A	30		80009	213-0048-00
1A	31		80009	333-1594-01
1A	32	5355-00-508-2208	80009	366-1299-00
1A	33	5355-00-435-1113	80009	366-0215-02
1A	34	5355-00-409-7160	80009	366-1165-00
1A	35	5930-01-201-6382	80009	105-0076-04
1A	36	5355-01-035-7587	80009	366-1058-45
1A	37	5315-00-579-9841	72962	52-022-094-0187
1A	38	5355-00-508-2223	80009	366-1308-00
1A	39	5305-00-282-5806	88044	AN565DC6H3
1A	40	5935-01-014-4325	80009	131-0679-02
1A	41	5340-01-156-8907	80009	129-0554-01
1A	42	5305-01-134-0714	80009	211-0292-00
1A	43	5305-00-245-4882	80009	211-0001-00
1A	44	5999-01-082-1868	80009	131-0907-00
1A	45	5310-01-115-8854	80009	210-0053-00
1A	46		80009	210-1110-00
1A	47	5305-01-155-4343	80009	211-0007-00
1A	48	5940-00-434-9240	80009	210-0288-00
1A	49	5310-00-836-3520	83385	841-4-40
1A	50		80009	200-1442-00
1A	51		80009	407-1172-00

SECTION IV

CROSS-REFERENCE INDEXES

FIGURE AND ITEM NUMBER INDEX				
FIG.	ITEM	STOCK NUMBER	FSCM	PART NUMBER
1A	52	5340-00-612-6116	80009	129-0299-00
1A	53	5310-00-767-4944	80009	210-0004-00
1A	54	5910-00-688-8702	80009	283-0000-00
1A	55	5905-00-572-3489	12697	381-CM39700
1A	56		80009	441-1097-00
1A	57	5310-01-133-2199	80009	220-0497-00
1A	58	5305-01-156-3734	80009	211-0097-00
1A	59		80009	337-1716-00
1A	60	5305-00-006-6624	80009	213-0055-00
1A	61	5950-00-932-7115	80009	120-0286-00
1A	62	5950-01-130-8272	78488	57-3443
1A	63	5905-00-141-1183	81349	RCR07G101JS
1A	64	5905-00-133-0440	80009	315-0560-00
1A	65		80009	2150-02
2A	1	5910-00-433-3955	59873	283-0341-00
2A	2	5910-01-031-0626	00853	D151E161F0
2A	3	5910-00-879-6813	72982	308-000C0G0390J
2A	4	5910-01-123-9845	80009	290-0804-00
2A	5	5910-01-062-0508	80009	281-0773-00
2A	6	5910-00-688-8702	80009	283-0000-00
2A	7	5910-00-359-8928	72982	301000Z5D0171J
2A	8	5910-01-070-3510	81349	CCR75CG330GR
2A	9	5910-00-827-6274	81349	CC30UJ680G
2A	10	5910-00-372-0582	59873	283-0203-00
2A	11	5910-00-378-0354	80009	281-0158-00
2A	12	5910-01-062-0510	72982	8111B061C0G220J
2A	13	5910-01-087-3662	80009	281-0218-00
2A	14	5910-00-465-9742	59660	855-536Y5E0222J
2A	15	5910-01-033-2103	81349	CV35A090
2A	16	5910-00-071-7365	59660	301-000C0G0150J
2A	17	5910-00-984-2340	80009	281-0546-00
2A	18		72982	8121N083X7R0153K
2A	19	5910-00-952-1060	28480	0150-0078
2A	20	5910-00-244-7530	72982	518-000A5-15
2A	21	5910-00-866-6616	72314	03167230
2A	22	5910-00-013-9660	37695	265011-17
2A	23	5910-00-247-8942	04222	7001-1343
2A	24	5961-00-105-7681	03508	841A5091
2A	25	5950-00-540-9278	80009	108-0311-00
2A	26	5950-00-472-0426	80009	108-0420-00
2A	27	5950-00-506-4351	80009	108-0184-00
2A	28	5961-01-143-8333	80009	153-0653-00
2A	29	5961-00-189-1266	04713	SPS8236
2A	30	5961-00-780-8368	80131	2N4258
2A	31	5961-00-951-8757	81349	JAN2N2222A
2A	32	5961-00-930-5325	80131	2N3565
2A	33	5905-00-133-0440	80009	315-0560-00
2A	34	5905-00-938-1189	81349	RN65F93R1F
2A	35	5905-00-369-6931	81349	RCR07G111JS
2A	36	5905-01-149-5102	16845	1000-412-12
2A	37	5905-00-102-5289	01121	CB2025

SECTION IV

CROSS-REFERENCE INDEXES

FIGURE AND ITEM NUMBER INDEX

FIG.	ITEM	STOCK NUMBER	FSCM	PART NUMBER
2A	38	5905-00-116-2394	81349	RCR07G511JS
2A	39	5905-00-119-3503	81349	RCR07G271JS
2A	40	5905-00-119-8812	81349	RCR07G121JS
2A	41	5905-00-111-1686	81349	RCR07G161JS
2A	42	5905-00-726-1811	81349	RN65F1001F
2A	43	5905-00-498-6059	28480	0683-3905
2A	44	5961-01-148-8412	16845	1000-409-15
2A	45	5905-00-466-1216	81349	RCR05G330JS
2A	46	5905-00-909-3885	01121	CB1035
2A	47	5905-00-141-1183	81349	RCR07G101JS
2A	48	5905-00-126-6696	81349	RCR07G751JS
2A	49	5905-00-106-1274	81349	RCR20G911JS
2A	50	5905-00-909-3965	01121	CB3315
2A	51	5905-00-105-7768	81349	RCR07G561JS
2A	52	5905-00-110-7620	81349	RCR07G102JS
2A	53	5905-00-104-8358	81349	RCR07G822JS
2A	54	5905-00-911-3754	01121	CB5125
2A	55	5905-00-915-0536	01121	CB3925
2A	56	5905-00-625-9624	80294	3329P-L58-202
2A	57	5905-00-911-3753	01121	CB4725
2A	58	5905-00-270-1400	81349	RNC55K6810FS
2A	59	5905-00-104-8362	81349	RCR07G132JS
2A	60	5905-00-136-8406	81349	RCR07G242JS
2A	61	5905-01-014-2911	80294	3329PL58/101
2A	62	5905-00-126-6698	81349	RCR07G360JS
2A	63	5905-00-238-7075	01121	CB1815
2A	64	5905-00-434-5416	80009	311-1260-00
2A	65	5905-01-109-1715	81349	RNC65K2800FS
2A	66	5905-00-566-3797	80009	311-1268-00
2A	67	5905-00-481-1331	81349	RNC55K60R4FS
2A	68	5905-00-111-4727	01121	RCR07G272JS
2A	69	5905-00-909-3919	01121	CB2015
2A	70	5905-00-106-1356	81349	RCR07G152JS
2A	71	5905-00-426-7885	75042	CECT0-1101F
2A	72	5905-00-369-7639	80294	3329P-L58-502
2A	73	5905-00-105-7764	81349	RCR07G222JS
2A	74	5905-00-434-5424	32997	3329P-L58-203
2A	75	5905-00-911-3815	01121	CB2735
2A	76	5905-00-911-3801	01121	CB1835
2A	77	5905-00-927-5449	01121	CB9115
2A	78	5905-00-136-3891	01121	CB6215
2A	79		57668	NTR25J-E 820E
2A	80	5905-00-926-8496	81349	RN65F1371F
2A	81	5905-00-119-8811	81349	RCR07G151JS
2A	82	5905-00-270-1395	81349	RNC55K1690FS
2A	83	5905-00-905-6277	01121	CB1505
2A	84	5905-01-099-2523	32997	3329P-L58-102
2A	85	5905-01-034-0704	50157	2D1595
2A	86	5962-01-015-3894	80009	155-0078-10
2A	57	5961-01-123-8662	04713	SZG195

RECOMMENDED CHANGES TO EQUIPMENT TECHNICAL PUBLICATIONS



THEN... JOT DOWN THE DOPE ABOUT IT ON THIS FORM. CAREFULLY TEAR IT OUT. FOLD IT AND DROP IT IN THE MAIL!

SOMETHING WRONG WITH THIS PUBLICATION?

FROM (PRINT YOUR UNIT'S COMPLETE ADDRESS)  
 Commander  
 Stateside Army Depot  
 ATTN: AMSTA-US  
 Stateside, N.J. 07703-5007

DATE SENT  
 10 July 1975

PUBLICATION NUMBER TM 11-5840-340-20P	PUBLICATION DATE 23 Jan 78	PUBLICATION TITLE Radar Set AN/PRC-76
--	-------------------------------	--

BE EXACT PIN-POINT WHERE IT IS				IN THIS SPACE TELL WHAT IS WRONG AND WHAT SHOULD BE DONE ABOUT IT:
PAGE NO	PARA-GRAPH	FIGURE NO	TABLE NO	
33				For item 2, change the NSN to read: 5835-00-134-9186. Reason: Accuracy.
44		19		Identify the cover on the junction box (item no. 5). Reason: It is a separate item and is not called out on figure 19.
45				Add the cover of the junction box as an item in the listing for figure 19. Reason: Same as above

SAMPLE

PRINTED NAME, GRADE OR TITLE AND TELEPHONE NUMBER SSG I. M. DeSpirit of 999-1776	SIGN HERE 
---	---------------

TEAR ALONG PERFORATED LINE

FILL IN YOUR  
UNIT'S ADDRESS

FOLD BACK

DEPARTMENT OF THE ARMY

\_\_\_\_\_  
\_\_\_\_\_

POSTAGE AND FEES PAID  
DEPARTMENT OF THE ARMY  
DOD 314



OFFICIAL BUSINESS  
PENALTY FOR PRIVATE USE \$300

**SAMPLE**

Commander  
US Army Communications-Electronics Command  
and Fort Monmouth  
ATTN: AMSEL-ME-MP  
Fort Monmouth, New Jersey 07703-5000

TEAR ALONG PERFORATED LINE



FILL IN YOUR  
UNIT'S ADDRESS



FOLD BACK

DEPARTMENT OF THE ARMY

\_\_\_\_\_  
\_\_\_\_\_

OFFICIAL BUSINESS  
PENALTY FOR PRIVATE USE \$300

POSTAGE AND FEES PAID  
DEPARTMENT OF THE ARMY  
DOD 314



TEAR ALONG PERFORATED LINE

Commander  
US Army Communications-Electronics Command  
and Fort Monmouth  
ATTN: AMSEL-ME-MP  
Fort Monmouth, New Jersey 07703-5000





FILL IN YOUR  
UNIT'S ADDRESS

FOLD BACK

DEPARTMENT OF THE ARMY

---

---

OFFICIAL BUSINESS  
PENALTY FOR PRIVATE USE \$300

POSTAGE AND FEES PAID  
DEPARTMENT OF THE ARMY  
DOD 314



TEAR ALONG PERFORATED LINE

Commander  
US Army Communications-Electronics Command  
and Fort Monmouth  
ATTN: AMSEL-ME-MP  
Fort Monmouth, New Jersey 07703-5000

RECOMMENDED CHANGES TO EQUIPMENT TECHNICAL PUBLICATIONS



THEN...JOT DOWN THE DOPE ABOUT IT ON THIS FORM. CAREFULLY TEAR IT OUT, FOLD IT AND DROP IT IN THE MAIL.

**SOMETHING WRONG WITH THIS PUBLICATION?**

FROM: (PRINT YOUR UNIT'S COMPLETE ADDRESS)

DATE SENT

PUBLICATION NUMBER  
TM 11-6625-3190-24P

PUBLICATION DATE  
15 April 1989

PUBLICATION TITLE  
Dual Trace Amplifier  
AM-6785/U and AM-6785A/U

BE EXACT PIN-POINT WHERE IT IS

PAGE NO.	PARA-GRAPH	FIGURE NO.	TABLE NO.
----------	------------	------------	-----------

IN THIS SPACE TELL WHAT IS WRONG AND WHAT SHOULD BE DONE ABOUT IT:

TEAR ALONG PERFORATED LINE

PRINTED NAME GRADE OR TITLE AND TELEPHONE NUMBER

SIGN HERE

DA FORM 2028-2  
1 JUL 79

PREVIOUS EDITIONS ARE OBSOLETE

P.S. - IF YOUR OUTFIT WANTS TO KNOW ABOUT YOUR RECOMMENDATION MAKE A CARBON COPE OF THIS AND GIVE IT TO YOUR HEADQUARTERS.

FILL IN YOUR  
UNIT'S ADDRESS

FOLD BACK

DEPARTMENT OF THE ARMY

\_\_\_\_\_  
\_\_\_\_\_

OFFICIAL BUSINESS  
PENALTY FOR PRIVATE USE \$300

POSTAGE AND FEES PAID  
DEPARTMENT OF THE ARMY  
DOD 314



TEAR ALONG PERFORATED LINE

Commander  
US Army Communications-Electronics Command  
and Fort Monmouth  
ATTN: AMSEL-ME-MP  
Fort Monmouth, New Jersey 07703-5000

By Order of the Secretary of the Army:

Official:

CARL E. VUONO  
*General, United States Army*  
*Chief of Staff*

R.L. DILWORTH  
*Brigadier General, United States Army*  
*The Adjutant General*

DISTRIBUTION:

To be distributed in accordance with DA Form 12-51 literature requirements for AM-6785/U.





