

TECHNICAL MANUAL

UNIT, INTERMEDIATE DIRECT SUPPORT, AND
INTERMEDIATE GENERAL SUPPORT MAINTENANCE
REPAIR PARTS AND SPECIAL TOOLS LIST

FOR

TEST SET, RADIO FREQUENCY POWER
AN/USM-491

(NSN 6625-01-191-7679)

Distribution authorized to the Department of Defense and DOD contractors only for official use or for administration or operational purposes. This determination was made on 15 June 1987. Other requests for this document will be referred to Commander, US Army Communications-Electronics Command and Fort Monmouth, ATTN: AMSEL-ME-P, Fort Monmouth, NJ 07703-5000.

DESTRUCTION NOTICE— Destroy by any method that will prevent disclosure of contents or reconstruction of the document.

HEADQUARTERS, DEPARTMENT OF THE ARMY

15 SEPTEMBER 1987

TECHNICAL MANUAL

HEADQUARTERS
DEPARTMENT OF THE ARMY

NO. 11-6625-3164-24P

Washington, DC, 15 September 1987

**UNIT, INTERMEDIATE DIRECT SUPPORT, AND
INTERMEDIATE GENERAL SUPPORT MAINTENANCE
REPAIR PARTS AND SPECIAL TOOLS LIST
FOR
TEST SET, RADIO FREQUENCY POWER
AN/USM-491
(NSN 6625-01-191-7679)**

Current as of

REPORTING ERRORS AND RECOMMENDING IMPROVEMENT

You can help improve this manual. If you find any mistakes or if you know of a way to improve the procedures, please let us know. Mail your letter, DA Form 2028 (Recommended Changes to Publications and Blank Forms), or DA Form 2028-2 located in back of this manual direct to: Commander, US Army Communications-Electronics Command and Fort Monmouth, ATTN: AMSEL-ME-MP, Fort Monmouth, New Jersey 07703-5000.

In either case, a reply will be furnished direct to you.

Table of Contents

		Page	Illus Figure
Section	I. Introduction	1	
	II. Repair Parts List	1-1	
Group	00 Test Set, Radio Frequency Power	1-1	1
	01 4200 RF Microwattmeter	2-1	2
	02 Power Sensor (No parts authorized)		
Section	III. Special Tools List (Nonapplicable)		
	IV. Cross-Reference Index		
	National Stock Number Index	I-1	
	Part Number Index	I-2	
	Figure and item Number index	I-4	

SECTION I

INTRODUCTION

1. SCOPE

This manual lists and authorizes spares and repair parts; special tools; special test, measurement, and diagnostic equipment (TMDE); and other special support equipment required for performance of unit, intermediate direct support, and intermediate general support maintenance of the AN/USM-491. It authorizes the requisitioning, issue, and disposition of spares, repair parts and special tools as indicated by the source, maintenance and recoverability (SMR) codes.

2. GENERAL

This Repair Parts and Special Tools List is divided into the following sections:

a. Section II. Repair Parts List. A list of spares and repair parts authorized by this RPSTL for use in the performance of maintenance. The list also includes parts which must be removed for replacement of the authorized parts. Parts lists are composed of functional groups in ascending numeric sequence, with parts in each group listed in ascending item number sequence. Figure numbers are listed directly beneath the group header.

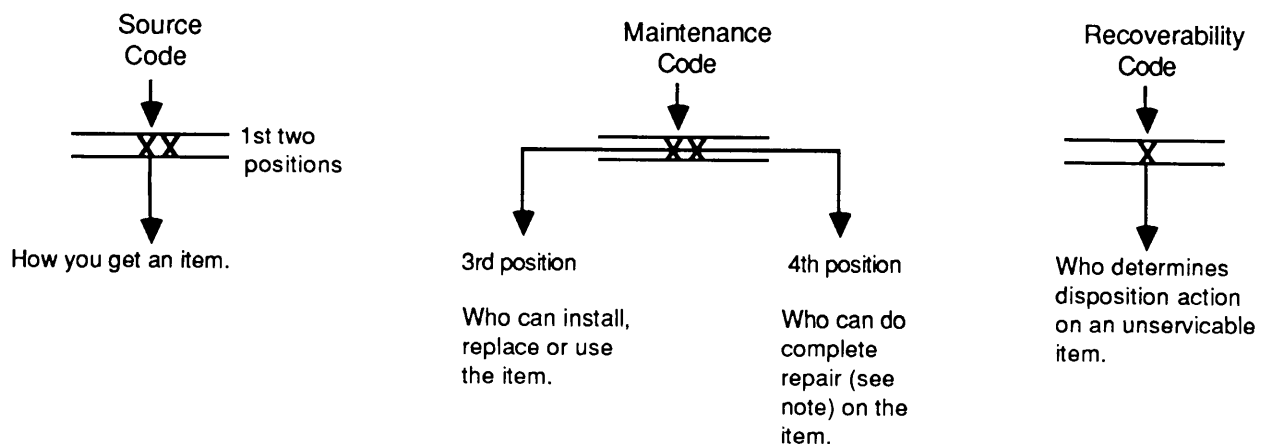
b. Section III. Special Tools List. Not applicable.

c. Section IV. National Stock Number and Part Number Index. A list, in National item identification number (NIIN) sequence, of all National stock numbered items appearing in the listing, followed by a list in alphanumeric sequence of all part numbers appearing in the listings. National stock numbers and part numbers are cross-referenced to each illustration figure and item number appearance.

3. Explanation of Columns (Section II and III)

a. Item No. (Column (1)). Indicates the number used to identify items called out in the illustration.

b. SMR Code (Column (2)). The source, maintenance, and recoverability (SMR) code is a five-position code containing supply/requisitioning information, maintenance category authorization criteria, and disposition instruction, as shown in the following breakout:



NOTE

Complete repair: Maintenance capacity, capability, and authority to perform all corrective maintenance tasks of the "Repair" function in a use/user environment in order to restore serviceability to a failed item.

(1) Source code. The source code tells you how to get an item needed for maintenance, repair, or overhaul of an end item/equipment. Explanations of source codes follow:

Code	Explanation
<p>PA PB PC PD PE PF PG</p>	<p>Stocked items; use the applicable NSN to request/requisition items with these source codes. They are authorized to the category indicated by the code entered in the third positions of the SMR code.</p> <p style="text-align: center;">NOTE</p> <p>Items coded PC are subject to deterioration.</p>
<p>KD KF KB</p>	<p>Items with these codes are not to be requested/requisitioned individually. They are part of a kit which is authorized to the maintenance category indicated in the third position of the SMR code. The complete kit must be requisitioned and applied.</p>
<p>MO - Made at org/AVUM category MF - Made at DS/AVUM category MH - Made at GS category ML - Made at Specialized Repair Activity (SRA) MD - Made at Depot</p>	<p style="text-align: center;">Explanation</p> <p>Items with these codes are not to be requested/requisitioned individually. They must be made from bulk material which is identified by the part number in the description and usable on code (UOC) column and listed in the Bulk Material group of the repair parts list. If the item is authorized to you by the third position code of the SMR code, but the source code indicates it is made at a higher category, order the item from the higher category of maintenance.</p>

AO - Assembled by org/AVUM category
AF - Assembled by DS/AVIM category
AH - Assembled by GS category
AL - Assembled by SRA
AD - Assembled by Depot

Expl anati on

Items with these codes are not be be requested/ requisitioned individually. The parts that make up the assembled item must be requisitioned or fabricated and assembled at the category of maintenance indicated by the source code. If the disposition code of the SMR code authorizes you to replace the item, but the source code indicates the item is assembled at a higher category, order the item from the higher category of maintenance.

Code Expl anati on

- XA - Do not requisition an "XA" coded item. Order its next higher assembly.
- XB - If an "XB" item is not available from salvage, order it using the FSCM and part number given.
- XC - Installation drawing, diagram, instruction sheet, field service drawing, that is identified by manufacturers part number.
- XD - Item is not stocked. Order an "XD" coded item through normal supply channels using the FSCM and part number given, if no NSN is available.

NOTE

Cannibalization or controlled exchange, when authorized, may be used as a source of supply for items with the above source codes, except for those source coded "XA" or those aircraft support items restricted by requirements of AR 750-1.

(2) Maintenance code. Maintenance codes tell you the category of maintenance authorized to USE and REPAIR support items. The maintenance codes are entered in the third and fourth positions of the SMR code as follows:

(a) The maintenance code entered in the third position tells you the lowest maintenance category authorized to remove, replace, and use an item. The maintenance code entered in the third position will indicate authorization to one of the following categories of maintenance.

- C - Crew or operator maintenance done within organizational or aviation maintenance.
- O - organizational or aviation unit category can remove, replace, and use the item.
- F - Direct support or aviation intermediate category can remove, replace, and use the item.
- H - General support category can remove, replace, and use the item.
- L - Specialized repair activity can remove, replace, and use the item.
- D - Depot category can remove, replace, and use the item.

(b) The maintenance code entered in the fourth position tells whether or not the item is to be repaired and identifies the lowest maintenance category with the capability to do complete repair (i.e., perform all authorized repair functions). This position will contain one of the following maintenance codes.

NOTE

Some limited repair may be done on the item at a lower category of maintenance, if authorized by the Maintenance Allocation Chart (MAC) and SMR codes.

Code	Application/Explanation
O	Organizational or aviation unit is the lowest category that can do complete repair of the item.
F	Direct support or aviation intermediate is the lowest category that can do complete repair of the item.
H	General support is the lowest category that can do complete repair of the item.
L	Specialized repair activity (designate the specialized repair activity) is the lowest category that can do complete repair of the item.
D	Depot is the lowest category that can do complete repair of the item.
Z	Nonreparable. No repair is authorized.
B	No repair is authorized (No parts or special tools are authorized for the maintenance of a "B" coded item). However, the item may be reconditioned by adjusting, lubricating, etc., at the user category.

(3) Recoverability code. Recoverability codes are assigned to items to indicate the disposition action on unserviceable items. The recoverability code is entered in the fifth position of the SMR Code as follows:

Recoverability Codes	Application/Explanation
Z	Nonreparable Item. When unserviceable, condemn and dispose of the item at the category of maintenance shown in the third position of SMR code.
O	Reparable item. When uneconomically repairable, condemn and dispose of the item at organizational or aviation unit category.
F	Reparable item. When uneconomically repairable, condemn and dispose of the item at direct support or aviation intermediate category.
H	Reparable item. When uneconomically repairable, condemn and dispose of the item at general support category.
D	Reparable item. When beyond lower category repair capability, return to depot. Condemnation and disposal of item not authorized below depot category.
L	Reparable item. Condemnation and disposal not authorized below specialized repair activity (SRA).
A	Item requires special handling or condemnation procedures because of specific reasons (e.g., precious metal content, high dollar value, critical material, or hazardous material). Refer to appropriate manuals/ directives for specific instructions.

c. FSCM (Column (3)). The Federal Supply Code for Manufacturer (FSCM) is a 5-digit numeric code which is used to identify the manufacturer, distributor, or Government agency, etc., that supplies the item.

d. Part Number (Column (4)). Indicates the primary number used by the manufacturer (individual, company, firm, corporation, or Government activity), which controls the design and characteristics of the item by means of its engineering drawings, specifications, standards, and inspection requirements to identify an item or range of items.

NOTE

When you use a NSN to requisition an item, the item you receive may have a different part number from the part ordered.

e. Description and Usable on Code (UOC) (Column (5)). This column includes the following information.

(1) The Federal item name and, when required, a minimum description to identify the item.

(2) The statement "END OF FIGURE" appears just below the last item description in Column (5) for a given figure in both section II and section III.

f. Qty (Column (6)). Indicates the quantity of the item used in the breakout shown on the illustration figure, which is prepared for a functional group, subfunctional group, or an assembly.

4. EXPLANATION OF COLUMNS (SECTION IV)

a. National Stock Number (NSN) Index.

(1) Stock number column. This column lists the NSN by National item identification number (NIIN) sequence. The NIIN consists of the last nine digits of the NSN. When using this column to locate an item, ignore the first four digits of the NSN. When requisitioning items use the complete NSN (13 digits).

(2) Fig. column. This column lists the number of the figure where the item is identified/located. The illustrations are in numerical sequence in sections II and III.

(3) Item column. The item number identifies the item associated with the figure listed in the adjacent Fig. column. This item is also identified by the NSN listed on the same line.

b. Part Number Index. Part numbers in this index are listed by part number in ascending alphanumeric sequence.

(1) FSCM column. This column lists the Federal supply code for manufacturer (FSCM).

(2) Part number column. This column indicates the part number assigned to the item.

(3) Stock number column. This column lists the National stock number for the associated part number and manufacturer identified in the part number and FSCM columns to the left.

(4) Fig. column. This column lists the number of the figure where the item is identified/located in sections II and III.

(5) Item column. The item number is that number assigned to the item as it appears in the figure referenced in the adjacent figure number column.

5. SPECIAL INFORMATION

National Stock Numbers. National stock numbers (NSNs) that are missing from P source coded items have been applied for and will be added to this TM by future change/revision when they are entered in the Army Master Data File (AMDF). Until the NSNs are established and published, submit exception requisitions to: Commander, US Army Communications-Electronics Command and Fort Monmouth, ATTN: AMSEL-MM, Fort Monmouth, NJ 07703-5000 for the part required to support your equipment.

6. HOW TO LOCATE REPAIR PARTS

a. When National stock number or part number is not known.

(1) First. Using the table of contents, determine the assembly group or subassembly group to which the item belongs. This is necessary since figures are prepared for assembly groups and subassembly groups, and listings are divided into the same groups.

(2) Second. Find the figure covering the assembly group or subassembly group to which the item belongs.

(3) Third. Identify the item on the figure and note the item number.

(4) Fourth. Refer to the Repair Parts List for the figure to find the part number for the item number noted on the figure.

(5) Fifth. Refer to the Part Number Index to find the NSN, if assigned.

b. When National stock number or part number is known.

(1) First. Using the index of National stock numbers and part numbers, find the pertinent National stock number or part number. The NSN index is in National item identification number (NIIN) sequence (para 4a(1)). The part numbers in the part number index are listed in ascending alphanumeric sequence (para 4b). Both indexes cross-reference you to the illustration figure and item number of the item you are looking for.

(2) Second. After finding the figure and item number, verify that the item is the one you're looking for, then locate the item number in the repair parts list for the figure.

7. ABBREVIATIONS

Not applicable.

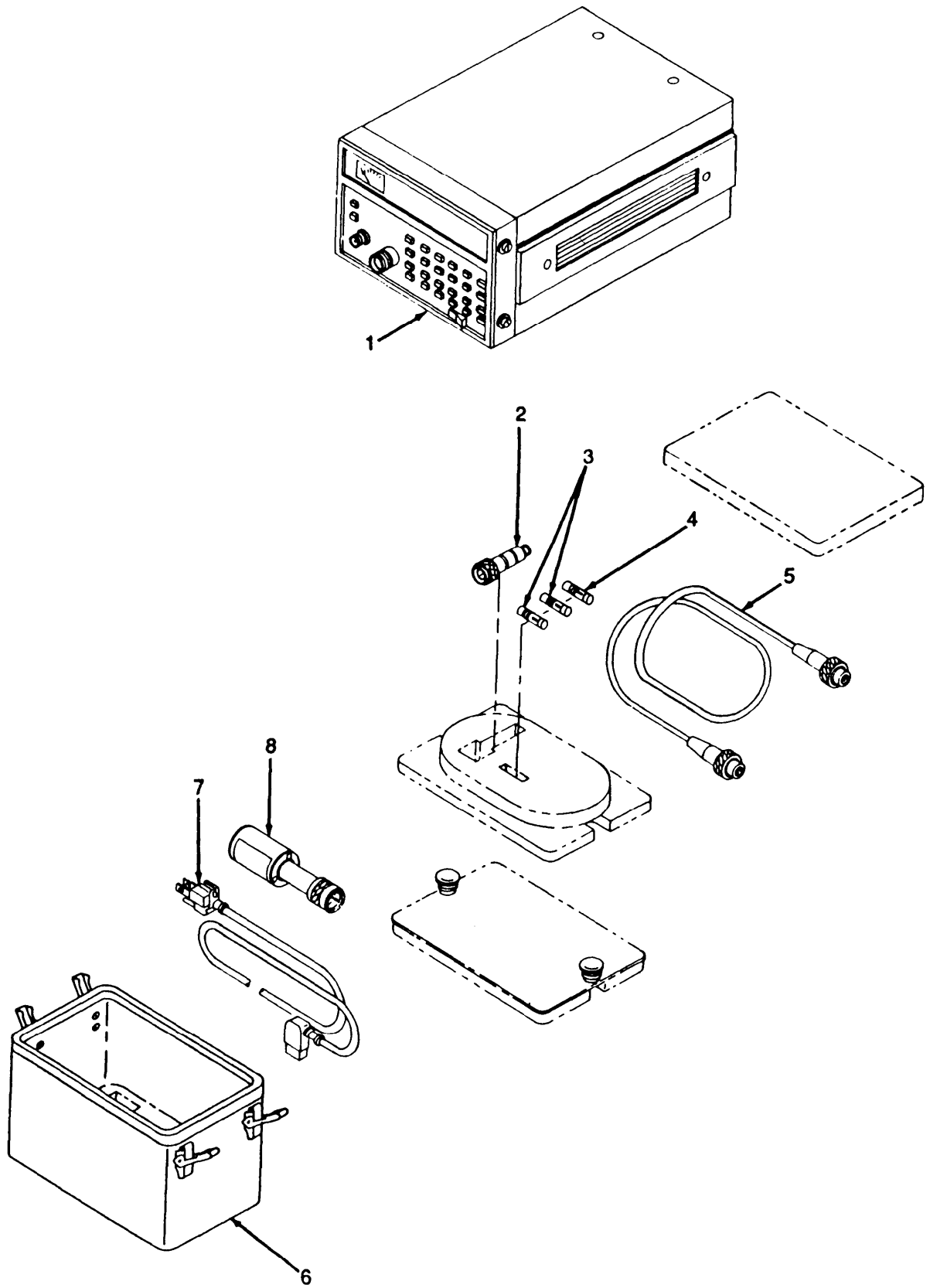
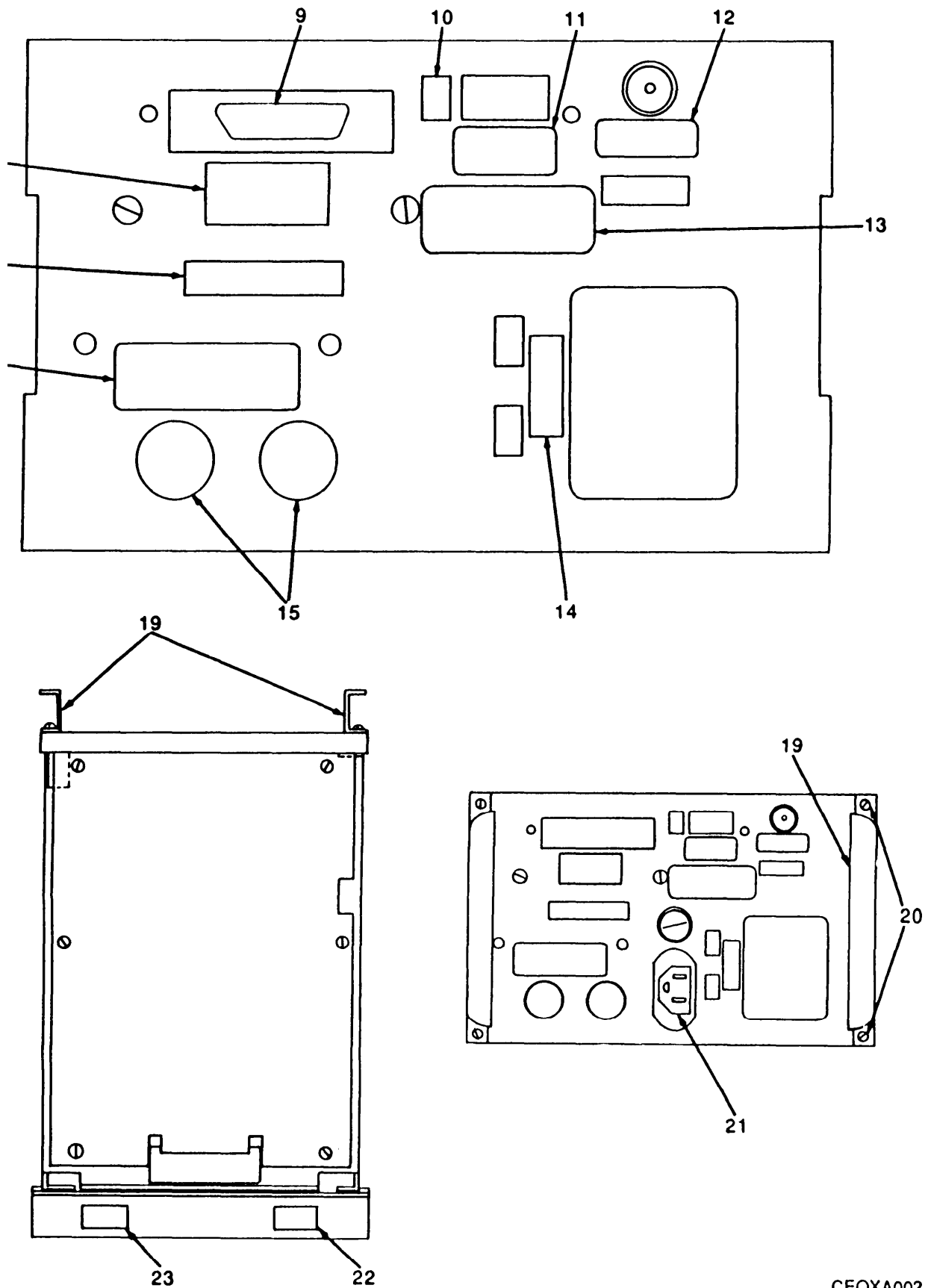


Figure 1. Test Set, Radio Frequency Power AN/USM-491 (Sheet 1 of 2)

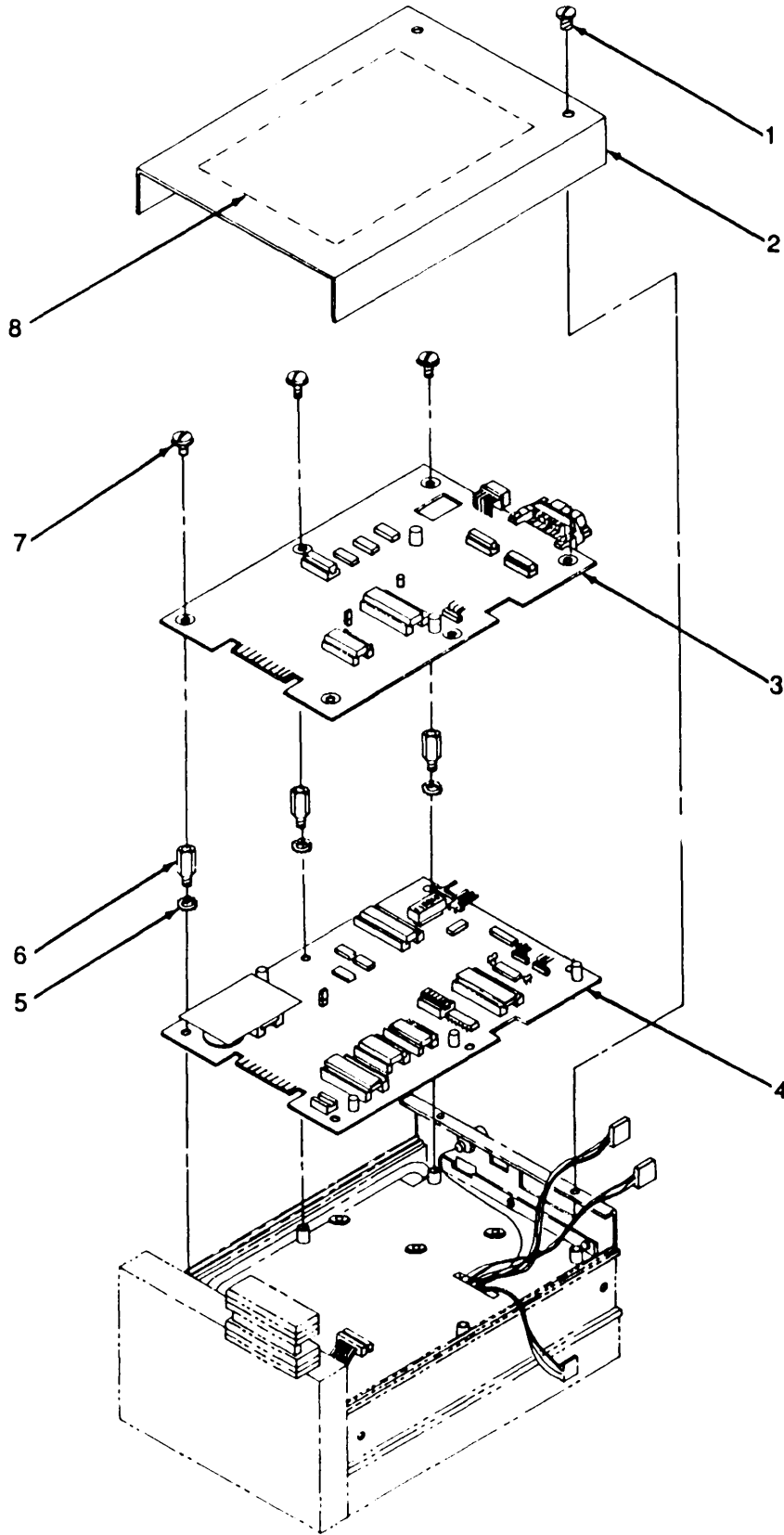


CEOXA002

Figure 1. Test Set, Radio Frequency Power AN/USM-491 (Sheet 2 of 2)

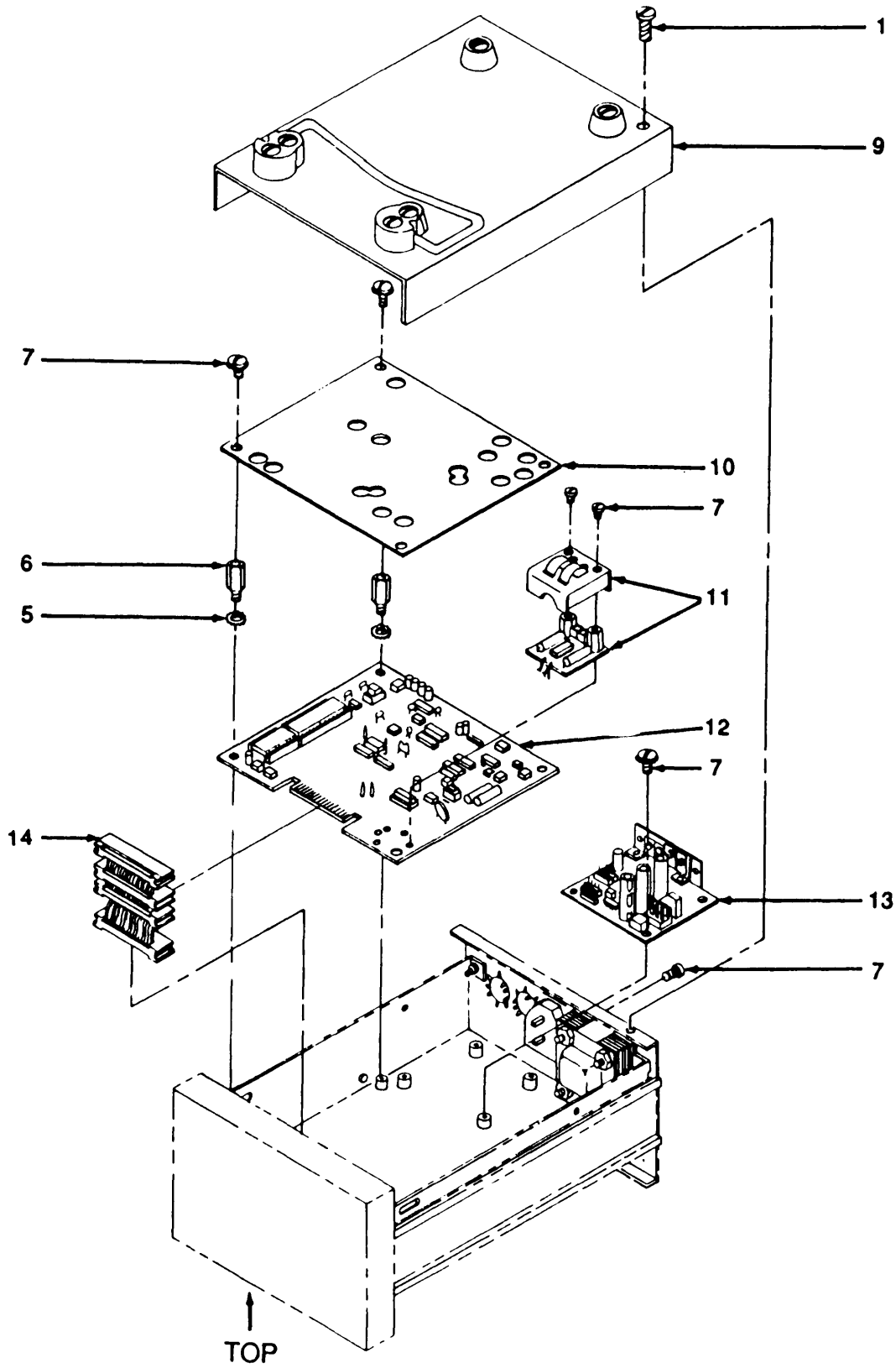
SECTION II (1) ITEM NO	(2) SMR CODE	(3) FSCM	TM11-6625-3164-24P (4) PART NUMBER	(5) DESCRIPTION AND USABLE ON CODE (UOC)	(6) QTY
GROUP 00 TEST SET RADIO FREQ. POWER					
FIGURE 1					
1	XAHHH	04901	04233400A	RF MICROWATTMETER RF MICROWATTMETER, 4200	1
2	PAOZZ	04901	95105401A	ATTENUATOR, FIXED ATTENUATOR, 20 DB, 5W	1
3	PAOZZ	54426	MDL2/10	FUSE, 0.2 AMP, 250V M FUSE, 0.2 AMP, 250V MDL SLO-BLO	2
4	PAOZZ	54426	MDL3/10	FUSE, 0.3 AMP, 250V M FUSE, 0.3 AMP, 250V MDL SLO-BLO	1
5	PAOZZ	04901	09170501A	CABLE ASSEMBLY, SPEC CABLE ASSY, POWER SENSOR	1
6	XBOZZ	04901	04240000A	COVER ASSY, ACCE COVER ASSY, ACCESSORY	1
7	PAOZZ	70903	CH9461	CORD, FIBROUS CORD, LINE	1
8	PAHBH	04901	04105658A	POWER SENSOR ASSEMB POWER SENSOR, 4200-6E-S/16	1
9	XBOZZ	04901	48329924A	COVER, DUST, RECPT 24 COVER, DUST, RECPT, 24 CIR	1
10	XBOZZ	04901	78274500A	LABEL, BITSWITCH LABEL, BITSWITCH	1
11	XBOZZ	04901	782704000	LABEL, BITSWITCH LABEL, BIT SWITCH	1
12	XBOZZ	04901	782705000	LABEL, REAR PANEL R LABEL, REAR PANEL (RECORDER)	1
13	XBOZZ	0490	782644000	LABEL, ACC AND OPTIO LABEL, ACC AND OPTION	1
14	XBOZZ	04901	78271203A	LABEL, VOLTAGE LABEL, VOLTAGE	1
15	PAHZZ	04901	75513000A	BUTTON, PLUG PLUG, BUTTON, MOD	2
16	XBOZZ	04901	782642000	LABEL, MODEL/SERIAL LABEL/MODEL SERIAL NUMBER	1
17	XBOZZ	04901	78271100A	LABEL, REAR FUSE LABEL, REAR FUSE	1
18	XBOZZ	04901	78273700A	LABEL, LINE VOLTAGE LABEL, LINE VOLTAGE WARNING	1
19	XBOZZ	04901	730921000	BRACKET, LINE CORD BRACKET, LINE CORD	2
20	PAOZZ	04901	911027000	SCREW SCREW, 6-32 X 1/4 BH SS SEMS	4
21	XBOZZ	04901	78271700A	LABEL, STOP LABEL, STOP	1
22	XBOZZ	04901	78273900A	LABEL, WARRANTY LABEL, WARRANTY	1
23	XBOZZ	04901	78273800A	LABEL, GOV POWER MET LABEL, GOV POWER METER	1

END OF FIGURE



CEOXA003

Figure 2. 4200 RF Microwattmeter (Sheet 1 of 6)



CEOXA004

Figure 2. 4200 RF Microwattmeter (Sheet 2 of 6)

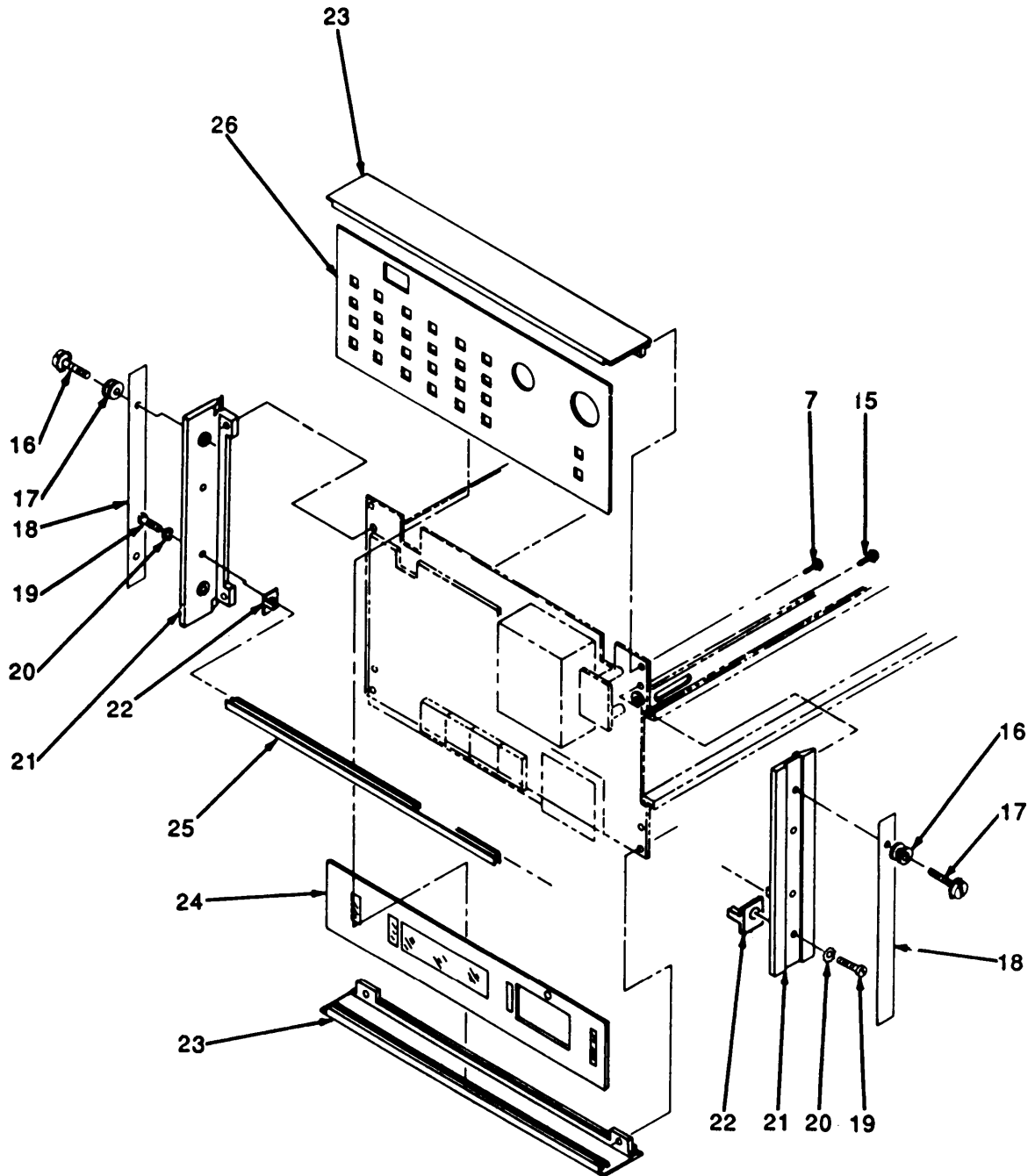
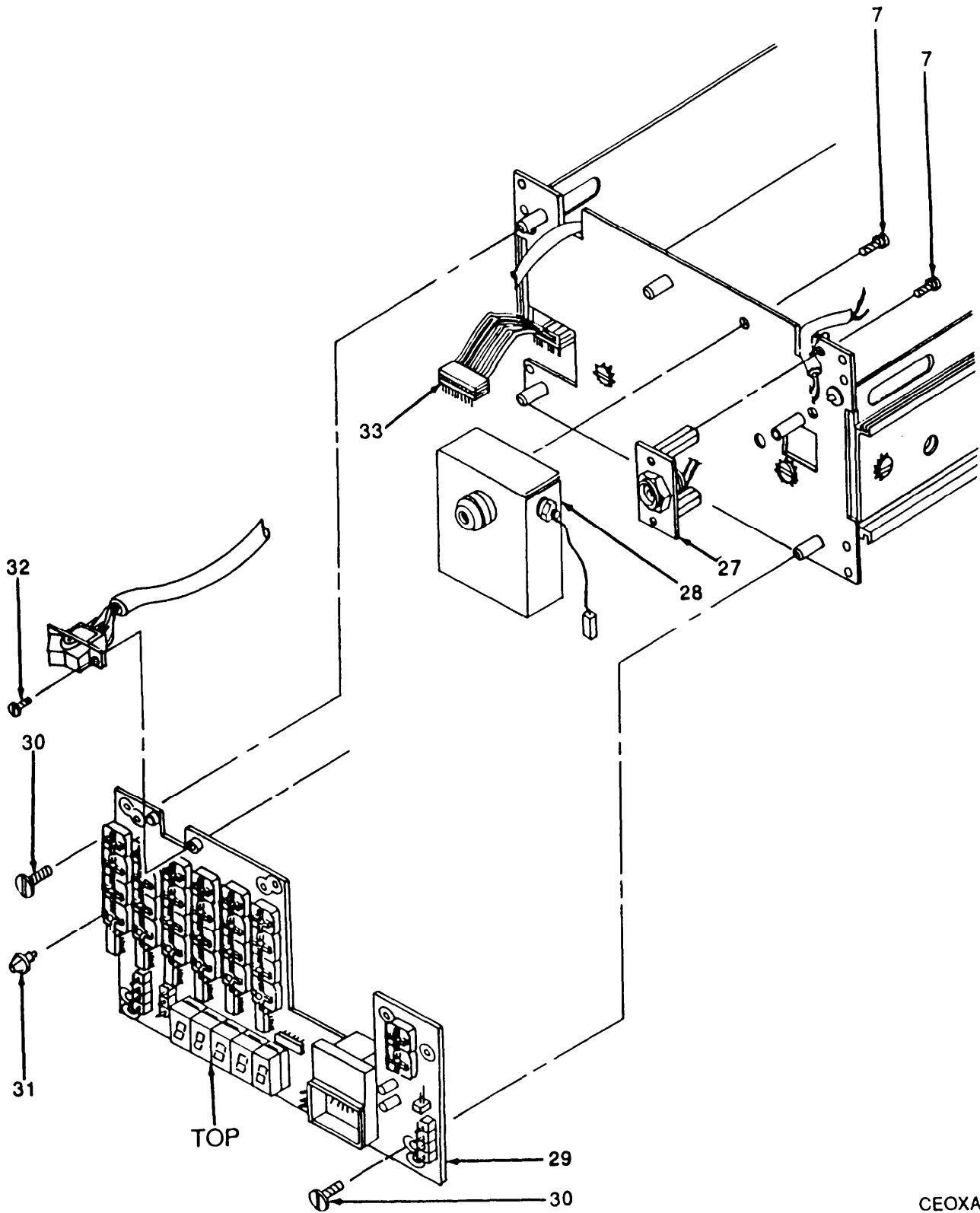


Figure 2. 4200 RF Microwattmeter (Sheet 3 of 6)



CEOXA006

Figure 2. 4200 RF Microwattmeter (Sheet 4 of 6)

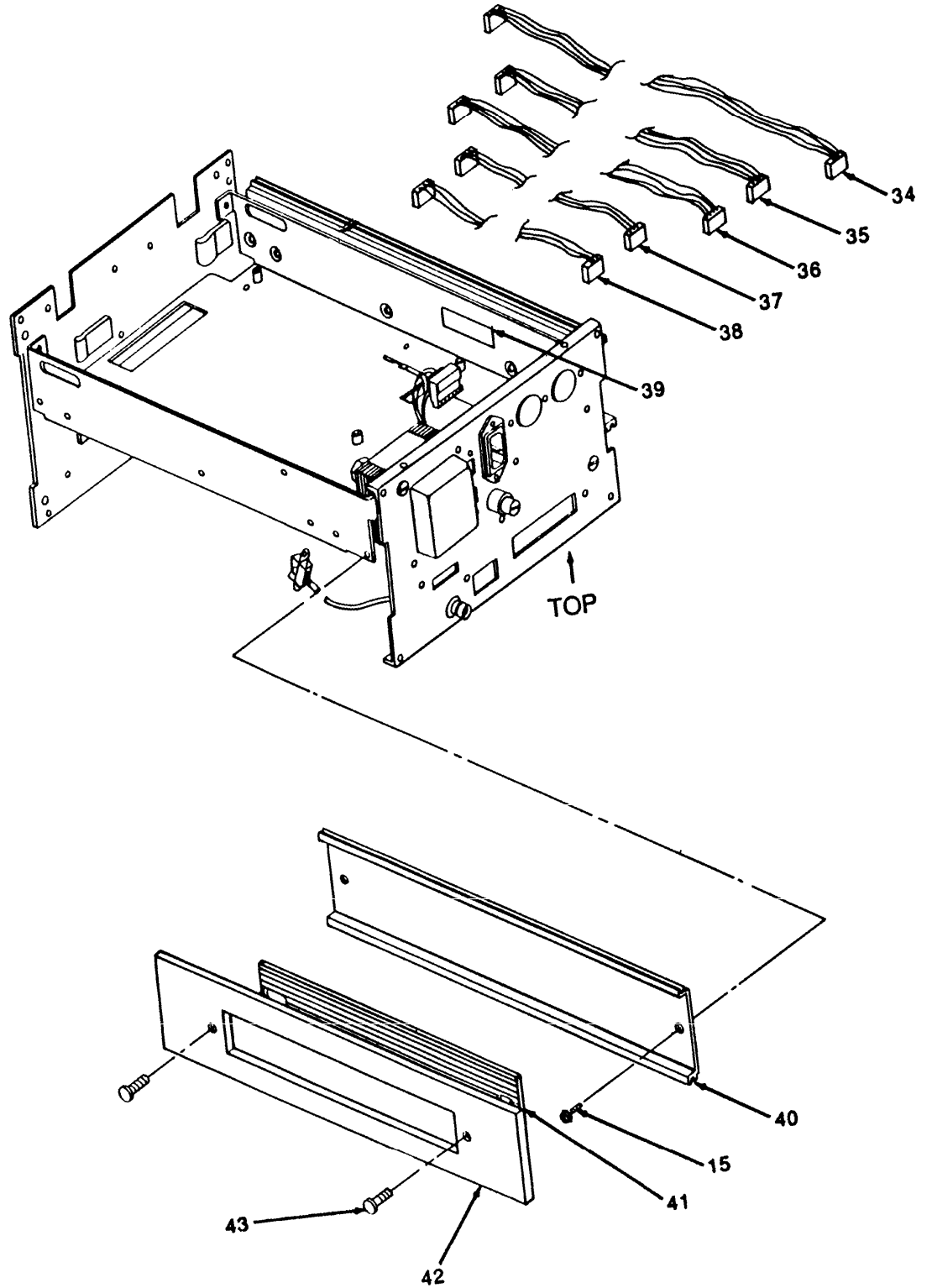
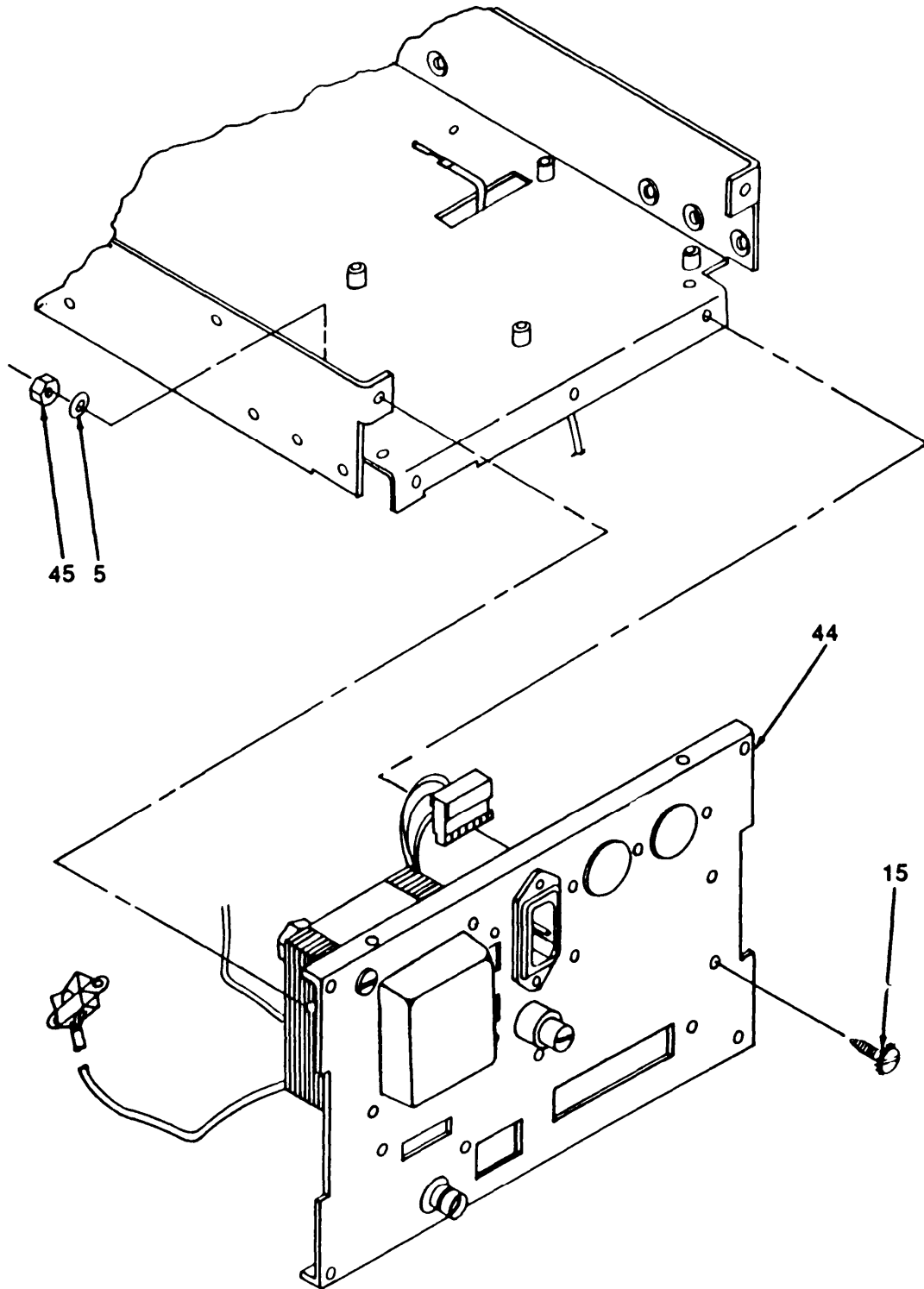


Figure 2. 4200 RF Microwattmeter (Sheet 5 of 6)



CEOXA008

Figure 2. 4200 RF Microwattmeter (Sheet 6 of 6)

SECTION II (1) ITEM NO	(2) SMR CODE	(3) FSCM	TM11-6625-3164-24P (4) PART NUMBER	(5) DESCRIPTION AND USABLE ON CODE (UOC)	(6) QTY
GROUP 01 RF MICRO-WATTMETER					
FIGURE 2					
1	PAHZZ	04901	79326901A	SCREW,BINDING HEAD SCREW,6-32 X 1/ 4 SLOT BH SS BLK	4
2	XBHZZ	04901	60048604A	COVER, TOP COVER, TOP	1
3	PAHZZ	04901	04231701B	TEST SET SUBASSEMBL INTERFACE BOARD, PWA	1
4	PAHZZ	04901	04223400E	CIRCUIT CARD ASSEMB CONTROL BOARD, PWA	1
5	PAHZZ	04901	843002000	WASHER, LOCK #6 INT WASHER, LOCK, #6 INT	2
6	PAHZZ	06540	MF0812CB5-18	STANDOFF, 1/4 HEX STANDOFF, 1/4 HEX, 3/4 IN. LONG	4
7	PAHZZ	04901	911002000	SCREW SCREW, 4-40 X 1/4, BH, SS, SEMS	2
8	XBHZZ	04901	78500002A	ENVELOPE, TRANSPAREN HOLDER, DATA SH, 6X9", VINYL	1
9	XBHZZ	04901	04235704A	COVER, BOTTOM ASSY COVER, BOTTOM ASSY	1
10	XBHZZ	04901	60453701A	SHIELD INPUT, MARK SHIELD INPUT, MARKING	1
11	PAHZZ	04901	04222501A	CHOPPER, ELECTRONIC CHOPPER MODULE	1
12	PAHZZ	04901	04223001B	CIRCUIT CARD ASSEMB INPUT BOARD, PWA	1
13	PAHZZ	04901	04223100C	CIRCUIT CARD ASSEMB POWER SUPPLY, PWA	1
14	PAHZZ	04901	920052000	CABLE ASSEMBLY, SPEC CABLE FLAT UNIT, 40 PIN	1
15	PAHZZ	04901	911027000	SCREW SCREW, 6-32 X 1/4 BH SS SEMS	7
16	PAHZZ	04901	48319101A	CLAWBOLT, TOP, MODIFI BOLT, CLAW TOP MODIFIED	4
17	PAHZZ	04901	911056000	SCREW SCREW, 8-32 X 1/2, BH SS SENMS	4
18	XBHZZ	04901	782363020	DECAL, TRIM STRIP DECAL, TRIM STRIP	2
19	PAHZZ	04901	793241000	SCREW SCREW, 2-56 X 1/4 BH BR NP	1
20	PAHZZ	04901	843024000	WASHER, LOCK WASHER, LOCK #2	2
21	XBHZZ	04901	73091902A	TRIM STRIP UNIT, RIG TRIM STRIP UNIT, RIGHT AND LEFT	2
22	XBHZZ	04901	730925000	SUP PNL, BRACKET UN SUPPORT PANEL, BRACKET UNIT	2
23	XBHZZ	04901	60458502A	TRIM STRIP, TOP & BO TRIM STRIP, TOP & BOTTOM	2
24	XBHZZ	04901	603310010	PANEL, DISPLAY, MARKE PANEL, DISPLAY, MARKED	1
25	XBHZZ	04901	60469502A	SUPPORT, PANEL SUPPORT, PANEL	1
26	XBHZZ	04901	60330905A	PANEL, FRONT, MARKED PANEL, FRONT, MARKED	1
27	PAHZZ	04901	042354000	CONNECTOR, PLUG, ELEC CONNECTOR INPUT ASSY	1
28	PAHZZ	04901	042360000	CALIBRATOR, ELECTRIC CALIBRATOR ASSY	1
29	PAHZZ	04901	04235800C	CIRCUIT CARD ASSEMB DISPLAY BOARD, PWA	1
30	PAHZZ	04901	911005000	SCREW SCREW, 4-40 X 7/16	5
31	XBHZZ	04901	77546400B	BUTTON, BLANK SWITCH BUTTON, BLANK	26

SECTION II		TM11-6625-3164-24P				
(1)	(2)	(3)	(4)	(5)	(6)	
ITEM	SMR	FSCM	PART	DESCRIPTION AND USABLE ON CODE (UOC)	QTY	
NO	CODE		NUMBER			
32	PAHZZ	04901	793193000	SWITCH ACTUATOR		
33	PAHZZ	04901	920046	SCREW SCREW,2-56 X 3/16,BH SS	2	
34	PAHZZ	04901	571142	CABLE ASSEMBLY,SPEC CABLE UNIT,16	1	
35	PAHZZ	04901	571143	PIN		
36	PAHZZ	04901	571144	CABLE ASSEMBLY,SPEC CABLE ASSY,PS	1	
37	PAHZZ	04901	571147	TO DISPLAY		
38	PAHZZ	04901	571145	CABLE ASSEMBLY,SPEC CABLE ASSY,PS	1	
39	XBHZZ	04901	782570000	TO INPUT		
40	XBHZZ	04901	60331602A	CABLE ASSEMBLY,SPEC CABLE ASSY,S	1	
41	XBHZZ	04901	796149000	TO CONTROL		
42	XBHZZ	04901	60049104A	CABLE ASSEMBLY,SPEC CABLE ASSY,PS	1	
43	PAHZZ	04901	79326902A	TO INTERFACE		
44	PAHZZ	04901	04235501A	CABLE ASSEMBLY,SPEC CABLE ASSY,PS	1	
45	PAHZZ	04901	745277000	LABEL,RT SIDE FRAME LABEL,RIGHT	1	
				SIDE FRAME		
				TRIM STRIP,SIDE TRIM STRIP,SIDE	2	
				HANDLE,FABRICATED HANDLE,FABRICATED	2	
				COVER,SIDE UNIT COVER,SIDE UNIT	2	
				SCREW,BINDING HEAD SCREW,6-32 X 1/2	4	
				SLOT BH SS BLK		
				PANEL ASSEMBLY,REAR REAR PANEL ASSY	1	
				NUT,PLAIN,HEXAGON NUT,HEX,SS,6-32	2	
				X 1/4		

END OF FIGURE

CROSS-REFERENCE INDEXES

STOCK NUMBER	NATIONAL STOCK NUMBER INDEX		FIG	ITEM
	FIG	ITEM		
6150-01-198-7228	2	37		
6150-01-198-7229	2	33		
6150-01-199-0355	2	34		
6625-01-199-7244	2	36		
6625-01-200-2794	2	38		
6150-01-201-2687	2	35		
4020-01-251-4714	1	7		
6625-01-252-5418	1	8		
6625-01-257-2070	2	28		
5999-01-257-3523	2	29		
5999-01-257-3524	2	4		
5999-01-257-3525	2	12		
5999-01-257-3526	2	13		
6150-01-263-3592	1	5		
6150-01-263-9760	2	14		
5985-01-264-1882	1	2		
6625-01-264-2769	2	11		
6625-01-266-3214	2	3		
5310-01-267-9161	2	45		
5310-01-267-9208	2	20		
5310-01-268-0076	2	5		
5305-01-268-5790	2	32		
5340-01-268-6972	1	15		
5305-01-268-7663	2	19		

CROSS-REFERENCE INDEXES

FSCM	PART NUMBER	PART NUMBER INDEX STOCK NUMBER	FIG	ITEM
70903	CH9461	4020-01-251-4714	1	7
54426	MDL2/10		1	3
54426	MDL3/10		1	4
06540	MF0812CB5-18		2	6
04901	04105658A	6625-01-252-5418	1	8
04901	04222501A	6625-01-264-2769	2	11
04901	04223001B	5999-01-257-3525	2	12
04901	04223100C	5999-01-257-3526	2	13
04901	04223400E	5999-01-257-3524	2	4
04901	04231701B	6625-01-266-3214	2	3
04901	04233400A		1	1
04901	042354000		2	27
04901	04235501A		2	44
04901	04235704A		2	9
04901	04235800C	5999-01-257-3523	2	29
04901	042360000	6625-01-257-2070	2	28
04901	04240000A		1	6
04901	09170501A	6150-01-263-3592	1	5
04901	48319101A		2	16
04901	48329924A		1	9
04901	571142	6150-01-199-0355	2	34
04901	571143	6150-01-201-2687	2	35
04901	571144	6625-01-199-7244	2	36
04901	571145	6625-01-200-2794	2	38
04901	571147	6150-01-198-7228	2	37
04901	60048604A		2	2
04901	60049104A		2	42
04901	60330905A		2	26
04901	603310010		2	24
04901	60331602A		2	40
04901	60453701A		2	10
04901	60458502A		2	23
04901	60469502A		2	25
04901	73091902A		2	21
04901	730921000		1	19
04901	730925000		2	22
04901	745277000	5310-01-267-9161	2	45
04901	75513000A	5340-01-268-6972	1	15
04901	77546400B		2	31
04901	782363020		2	18
04901	782570000		2	39
04901	782642000		1	16
04901	782644000		1	13
04901	782704000		1	11
04901	782705000		1	12
04901	78271100A		1	17
04901	78271203A		1	14
04901	78271700A		1	21
04901	78273700A		1	18
04901	78273800A		1	23
04901	78273900A		1	22

CROSS-REFERENCE INDEXES

FSCM	PART NUMBER	PART NUMBER INDEX STOCK NUMBER	FIG	ITEM
04901	78274500A		1	10
04901	78500002A		2	8
04901	793193000	5305-01-268-5790	2	32
04901	793241000	5305-01-268-7663	2	19
04901	79326901A		2	1
04901	79326902A		2	43
04901	796149000		2	41
04901	843002000	5310-01-268-0076	2	5
04901	843024000	5310-01-267-9208	2	20
04901	911002000		2	7
04901	911005000		2	30
04901	911027000		1	20
			2	15
04901	911056000		2	17
04901	920046	6150-01-198-7229	2	33
04901	920052000	6150-01-263-9760	2	16
04901	95105401A	5985-01-264-1882	1	2

CROSS-REFERENCE INDEXES

FIG	ITEM	FIGURE AND ITEM NUMBER INDEX		PART NUMBER
		STOCK NUMBER	FSCM	
1	1		04901	04233400A
1	2	5985-01-264-1882	04901	95105401A
1	3		54426	MDL2/10
1	4		54426	MDL3/10
1	5	6150-01-263-3592	04901	09170501A
1	6		04901	04240000A
1	7	4020-01-251-4714	70903	CH9461
1	8	6625-01-252-5418	04901	04105658A
1	9		04901	48329924A
1	10		04901	78274500A
1	11		04901	782704000
1	12		04901	782705000
1	13		04901	782644000
1	14		04901	78271203A
1	15	5340-01-268-6972	04901	75513000A
1	16		04901	782642000
1	17		04901	78271100A
1	18		04901	78273700A
1	19		04901	730921000
1	20		04901	911027000
1	21		04901	78271700A
1	22		04901	78273900A
1	23		04901	78273800A
2	1		04901	79326901A
2	2		04901	60048604A
2	3	6625-01-266-3214	04901	04231701B
2	4	5999-01-257-3524	04901	04223400E
2	5	5310-01-268-0076	04901	843002000
2	6		06540	MF0812CB5-18
2	7		04901	911002000
2	8		04901	78500002A
2	9		04901	04235704A
2	10		04901	60453701A
2	11	6625-01-264-2769	04901	04222501A
2	12	5999-01-257-3525	04901	04223001B
2	13	5999-01-257-3526	04901	04223100C
2	14	6150-01-263-9760	04901	920052000
2	15		04901	911027000
2	16		04901	48319101A
2	17		04901	911056000
2	18		04901	782363020
2	19	5305-01-268-7663	04901	793241000
2	20	5310-01-267-9208	04901	843024000
2	21		04901	73091902A
2	22		04901	730925000
2	23		04901	60458502A
2	24		04901	603310010
2	25		04901	60469502A
2	26		04901	60330905A
2	27		04901	042354000
2	28	6625-01-257-2070	04901	042360000

CROSS-REFERENCE INDEXES

FIG	ITEM	FIGURE AND ITEM NUMBER INDEX		PART NUMBER
		STOCK NUMBER	FSCM	
2	29	5999-01-257-3523	04901	04235800C
2	30		04901	911005000
2	31		04901	77546400B
2	32	5305-01-268-5790	04901	793193000
2	33	6150-01-198-7229	04901	920046
2	34	6150-01-199-0355	04901	571142
2	35	6150-01-201-2687	04901	571143
2	36	6625-01-199-7244	04901	571144
2	37	6150-01-198-7228	04901	571147
2	38	6625-01-200-2794	04901	571145
2	39		04901	782570000
2	40		04901	60331602A
2	41		04901	796149000
2	42		04901	60049104A
2	43		04901	79326902A
2	44		04901	04235501A
2	45	5310-01-267-9161	04901	745277000

RECOMMENDED CHANGES TO EQUIPMENT TECHNICAL PUBLICATIONS

SOMETHING WRONG WITH THIS PUBLICATION?



THEN... JOT DOWN THE DOPE ABOUT IT ON THIS FORM. CAREFULLY TEAR IT OUT. FOLD IT AND DROP IT IN THE MAIL!

FROM: (PRINT YOUR UNIT'S COMPLETE ADDRESS)
 Commander
 Stateside Army Depot
 ATTN: AMSTA-US
 Stateside, N.J. 07703-5007

DATE SENT
 10 July 1975

PUBLICATION NUMBER TM 11-5840-340-20P	PUBLICATION DATE 23 Jan 78	PUBLICATION TITLE Radar Set AN/PRC-76
--	-------------------------------	--

BE EXACT PIN-POINT WHERE IT IS				IN THIS SPACE TELL WHAT IS WRONG AND WHAT SHOULD BE DONE ABOUT IT:
PAGE NO	PARA-GRAPH	FIGURE NO	TABLE NO	
33				For item 2, change the NSN to read: 5835-00-134-9186. <u>Reason:</u> Accuracy.
44		19		Identify the cover on the junction box (item no. 5). <u>Reason:</u> It is a separate item and is not called out on figure 19.
45				Add the cover of the junction box as an item in the listing for figure 19. <u>Reason:</u> Same as above

SAMPLE

PRINTED NAME, GRADE OR TITLE AND TELEPHONE NUMBER
 SSG I. M. DeSpirit of 999-1776

SIGN HERE

TEAR ALONG PRIORITIZED LINE

FILL IN YOUR
UNIT'S ADDRESS

FOLD BACK

DEPARTMENT OF THE ARMY

POSTAGE AND FEES PAID
DEPARTMENT OF THE ARMY
DOD 314



OFFICIAL BUSINESS
PENALTY FOR PRIVATE USE \$300

SAMPLE

Commander
US Army Communications-Electronics Command
and Fort Monmouth
ATTN: AMSEL-ME-MP
Fort Monmouth, New Jersey 07703-5007

TEAR ALONG PERFORATED LINE

RECOMMENDED CHANGES TO EQUIPMENT TECHNICAL PUBLICATIONS



THEN...JOT DOWN THE DOPE ABOUT IT ON THIS FORM. CAREFULLY TEAR IT OUT, FOLD IT AND DROP IT IN THE MAIL.

SOMETHING WRONG WITH THIS PUBLICATION?

FROM: (PRINT YOUR UNIT'S COMPLETE ADDRESS)

DATE SENT

PUBLICATION NUMBER

TM 11-6625-3164-24P

PUBLICATION DATE

15 Sep 1987

PUBLICATION TITLE

Test Set, Radio Frequency Power AN/USM-491

BE EXACT PIN-POINT WHERE IT IS

PAGE NO.	PARA-GRAPH	FIGURE NO.	TABLE NO.

IN THIS SPACE TELL WHAT IS WRONG AND WHAT SHOULD BE DONE ABOUT IT:

TEAR ALONG PERFORATED LINE

PRINTED NAME GRADE OR TITLE AND TELEPHONE NUMBER

SIGN HERE

DA FORM 2028-2
1 JUL 79

PREVIOUS EDITIONS ARE OBSOLETE

P.S.--IF YOUR OUTFIT WANTS TO KNOW ABOUT YOUR RECOMMENDATION MAKE A CARBON COPE OF THIS AND GIVE IT TO YOUR HEADQUARTERS.

FILL IN YOUR
UNIT'S ADDRESS

FOLD BACK

DEPARTMENT OF THE ARMY

OFFICIAL BUSINESS
PENALTY FOR PRIVATE USE \$300

POSTAGE AND FEES PAID
DEPARTMENT OF THE ARMY
DOD 314



TEAR ALONG PERFORATED LINE

Commander
US Army Communications-Electronics Command
and Fort Monmouth
ATTN: AMSEL-ME-MP
Fort Monmouth, New Jersey 07703-5000

RECOMMENDED CHANGES TO EQUIPMENT TECHNICAL PUBLICATIONS



THEN...JOT DOWN THE DOPE ABOUT IT ON THIS FORM. CAREFULLY TEAR IT OUT, FOLD IT AND DROP IT IN THE MAIL.

SOMETHING WRONG WITH THIS PUBLICATION?

FROM: (PRINT YOUR UNIT'S COMPLETE ADDRESS)

DATE SENT

PUBLICATION NUMBER

TM 11-6625-3164-24P

PUBLICATION DATE

15 Sep 1987

PUBLICATION TITLE

Test Set, Radio Frequency Power AN/USM-491

BE EXACT PIN-POINT WHERE IT IS

PAGE NO.

PARA-GRAPH

FIGURE NO.

TABLE NO.

IN THIS SPACE TELL WHAT IS WRONG AND WHAT SHOULD BE DONE ABOUT IT:

TEAR ALONG PERFORATED LINE

PRINTED NAME GRADE OR TITLE AND TELEPHONE NUMBER

SIGN HERE

FILL IN YOUR
UNIT'S ADDRESS

FOLD BACK

DEPARTMENT OF THE ARMY

OFFICIAL BUSINESS
PENALTY FOR PRIVATE USE \$300

POSTAGE AND FEES PAID
DEPARTMENT OF THE ARMY
DOD 314



TEAR ALONG PERFORATED LINE

Commander
US Army Communications-Electronics Command
and Fort Monmouth
ATTN: AMSEL-ME-MP
Fort Monmouth, New Jersey 07703-5000

RECOMMENDED CHANGES TO EQUIPMENT TECHNICAL PUBLICATIONS



SOMETHING WRONG WITH THIS PUBLICATION?

THEN...JOT DOWN THE DOPE ABOUT IT ON THIS FORM. CAREFULLY TEAR IT OUT, FOLD IT AND DROP IT IN THE MAIL.

FROM: (PRINT YOUR UNIT'S COMPLETE ADDRESS)

DATE SENT

PUBLICATION NUMBER

TM 11-6625-3164-24P

PUBLICATION DATE

15 Sep 1987

PUBLICATION TITLE

Test Set, Radio Frequency Power AN/USM-491

BE EXACT PIN-POINT WHERE IT IS

PAGE NO.	PARA-GRAPH	FIGURE NO.	TABLE NO.

IN THIS SPACE TELL WHAT IS WRONG AND WHAT SHOULD BE DONE ABOUT IT:

TEAR ALONG PERFORATED LINE

PRINTED NAME GRADE OR TITLE AND TELEPHONE NUMBER

SIGN HERE

DA FORM 2028-2
1 JUL 79

PREVIOUS EDITIONS ARE OBSOLETE

P.S...IF YOUR OUTFIT WANTS TO KNOW ABOUT YOUR RECOMMENDATION MAKE A CARBON COPE OF THIS AND GIVE IT TO YOUR HEADQUARTERS.

FILL IN YOUR
UNIT'S ADDRESS

FOLD BACK

DEPARTMENT OF THE ARMY

OFFICIAL BUSINESS
PENALTY FOR PRIVATE USE \$300

POSTAGE AND FEES PAID
DEPARTMENT OF THE ARMY
DOD 314



TEAR ALONG PERFORATED LINE

Commander
US Army Communications-Electronics Command
and Fort Monmouth
ATTN: AMSEL-ME-MP
Fort Monmouth, New Jersey 07703-5000

By Order of the Secretary of the Army:

Official:

CARL E. VUONO
General, United States Army
Chief of Staff

R. L. DILWORTH
Brigadier General, United States Army
The Adjutant General

DISTRIBUTION;

To be distributed in accordance with DA Form 12-36 literature requirements for AN/USM-491.

PIN: 062363-000