

TM 11-5820-770-24P

TECHNICAL MANUAL

**ORGANIZATIONAL DIRECT SUPPORT AND GENERAL
SUPPORT MAINTENANCE REPAIR PARTS AND SPECIAL
TOOLS LISTS (INCLUDING DEPOT MAINTENANCE REPAIR
PARTS AND SPECIAL TOOLS)
FOR
RECEIVING SET, RADIO AN/URR-71
(NSN 5820-00-013-8944)**

HEADQUARTERS,

DEPARTMENT

OF

**THE ARMY
NOVEMBER 1976**

**ORGANIZATIONAL, DIRECT SUPPORT, AND GENERAL SUPPORT
 MAINTENANCE REPAIR PARTS AND SPECIAL TOOLS LISTS
 (INCLUDING DEPOT MAINTENANCE REPAIR PARTS AND SPECIAL TOOLS)
 FOR
 RECEIVING SET, RADIO AN/URR-71
 (NSN 5820-00-013-8944)**

Current as of 28 June 1976

REPORTING OF ERRORS

You can improve this manual by recommending improvements using DA Form 2028-2 (Test) located in the back of the manual. Simply tear out the self addressed form, fill it out as shown on the sample, fold it where shown, and drop it in the mail.

If there are no blank DA Form 2028-2 (Test) in the back of your manual, use the standard DA Form 2028 (Recommended Changes to Publications and Blank Forms) and forward to the Commander, US Army Electronics Command, ATTN: DRSEL-MA-Q, Fort Monmouth, New Jersey 07703.

In either case a reply will be furnished direct to you.

Table of Contents

	Page	Illus Figure
SECTION I. Introduction	1-1	
II. Repair parts list	2-1	
Group 00 Receiving Set, Radio AN/URR-71	2-1	1
01 Receiver, Radio R-1518/UR	2-1	2
0101 Radio assembly	2-1	3
010101 Control panel assembly	2-5	4
010102 Gear and tuner assembly	2-7	5
01010201 RF tuner assembly	2-7	5
0101020101 Tuner subassembly	2-9	5
0101010111 Motherboard circuit card assembly	2-9	6
01010201012 RF preselector circuit card assembly	2-9	7
01010201013 First RF amplifier circuit card assembly	2-9	8
01010201014 Second RF amplifier circuit card assembly	2-13	9
01010201015 Third RF amplifier circuit card assembly	2-15	10
01010201016 Oscillator-mixer circuit card assembly	2-15	11
010103 IF amplifier assembly	2-18	12
01010301 I.F. amplifier circuit card assembly (See next higher assembly)		
010104 Detector assembly	2-20	13
01010401 Detector circuit card assembly (See next higher assembly)		
010105 Power supply assembly	2-24	14
Regulator assembly	2-24	15
01010501 Power supply circuit card assembly (See next higher assembly)		
01010502 Regulator circuit card assembly (See next higher assembly)		
010106 Calibration oscillator assembly	2-27	16
01010601 Calibration oscillator circuit card assembly (See next higher assembly)		
0102 Dust cover assembly	2-27	17
Cover assembly	2-27	18
010201 Cover assembly (battery) (See next higher assembly)		
02 Antenna AS-2887/UR (No parts authorized)		
03 Field Pack, Canvas CW-1005/UR (No parts authorized)		
Group 11 Maintenance items set	2-27	19
Cable assembly 2W3	2-31	20

	Page	Illus Figure
SECTION III. Special tools lists (Not applicable)		
IV. National stock number and part number index	4-1	

SECTION I INTRODUCTION

1. Scope

This manual lists repair parts required for performance of organizational, direct support, and general support maintenance of the AN/URR-71.

2. General

This Repair Parts and Special Tools List is divided into the following sections:

a. Section II. Repair Parts List. A list of repair parts authorized for use in the performance of maintenance. The list also includes parts which must be removed for replacement of the authorized parts. Parts lists are composed of functional groups in ascending numerical sequence, with the parts in each group listed in figure and item number sequence.

b. Section III. Special Tools List. Not applicable.

c. Section IV. National Stock Number and Part Number Index. A list, in ascending numerical sequence, of all National stock numbers appearing in the listings, followed by a list, in alphanumeric sequence, of all part numbers appearing in the listings. National stock number and part numbers are cross-referenced to each illustration figure and item number appearance.

3. Explanation of Columns

The following provides an explanation of columns found in the tabular listings

a. Illustration. This column is divided as follows:

(1) *Figure number.* Indicates the figure number of the illustrations in which the item is shown.

(2) *Item number.* The number used to identify each item called out in the illustration.

b. Source, Maintenance, and Recoverability Codes (SMR).

(1) *Source code.* Source codes are assigned to support items to indicate the manner of acquiring support items for maintenance, repair, or overhaul of end items. Source codes are entered in the first and second positions of the Uniform SMR Code format as follows:

<i>Code</i>	<i>Definition</i>
PA -	Item procured and stocked for anticipated or known usage.
PD -	Support item, excluding support equipment, procured for initial issue or outfitting and stocked only for subsequent or additional initial issues or outfitting. Not subject to automatic replenishment.
AH -	Item to be assembled at general support maintenance level.

<i>Code</i>	<i>Definition</i>
XA -	Item is not procured or stocked because the requirements for the item will result in the replacement of the next higher assembly.
XB -	Item is not procured or stocked. If not available through salvage, requisition.
XD -	A support item that is not stocked. When required, item will be procured through normal supply channels.

NOTE

Cannibalization or salvage may be used as a source of supply for any items source coded above except those coded XA, XD, and aircraft support items as restricted by AR 700-42.

(2) *Maintenance code.* Maintenance codes are assigned to indicate the levels of maintenance authorized to USE and REPAIR support items. The maintenance codes are entered in the third and fourth positions of the Uniform SMR Code format as follows:

(a) The maintenance code entered in the third position will indicate the lowest maintenance level authorized to remove, replace, and use the support item. The maintenance code entered in the third position will indicate one of the following levels of maintenance:

<i>Code</i>	<i>Application/Explanation</i>
O -	Support item is removed, replaced, used at the organizational level.
F -	Support item is removed, replaced, used at the direct support level.
H -	Support item is removed, replaced, used at the general support level.

(b) The maintenance code entered in the fourth position indicates whether the item is to be repaired and identifies the lowest maintenance level with the capability to perform complete repair (i.e., all authorized maintenance functions). This position will contain one of the following maintenance codes:

<i>Code</i>	<i>Application/Explanation</i>
F -	The lowest maintenance level capable of complete repair of the support item is the direct support level.
H -	The lowest maintenance level capable of complete repair of the support item is the general support level.
Z -	Nonreparable. No repair is authorized.
D -	The lowest maintenance level of complete repair of the the support of is the depot level, performed by depot.

(3) *Recoverability code.* Recoverability codes are assigned to support items to indicate the disposition action or unserviceable items. The recoverability code is entered in the fifth position of the Uniform SMR Code format as follows:

<i>Recoverability Codes</i>	<i>Definition</i>
Z - Nonreparable item.	When unserviceable, condemn and dispose at the level indicated in position 3.
F - Repairable item.	When uneconomically repairable, condemn and dispose at the direct support level.
H - Repairable item.	When uneconomically repairable, condemn and dispose at the general support level.
D - Repairable item.	When beyond lower level repair capability, return to depot. Condemnation and disposal not authorized below depot level.

c. National Stock Number. Indicates the National stock number assigned to the item and will be used for requisitioning purposes.

d. Part Number. Indicates the primary number used by the manufacturer (individual, company, firm, corporation, or Government activity), which controls the design and characteristics of the item by means of its engineering drawings, specifications standards, and inspection requirements, to identify an item or range of items.

NOTE

When a stock numbered item is requisitioned, the repair part received may have a different part number than the part being replaced.

e. Federal Supply Code for Manufacturer (FSCM). The FSCM is a 5-digit numeric code listed in SB 708-42 which is used to identify the manufacturer, distributor, or Government agency, etc.

f. Description. Indicates the Federal item name and, if required, a minimum description to identify the item.

g. Unit of Measure (U/M). Indicates the standard of the basic quantity of the listed item as used in performing the actual maintenance function. This measure is expressed by a two-character alphabetical abbreviation (e.g., ea. in, pr, etc.). When the unit of measure differs from the unit of issue, the lowest unit of issue that will satisfy the required units of measure will

be requisitioned.

h. Quantity Incorporated in Unit. Indicates the quantity of the item used in the breakout shown on the illustration figure, which is prepared for a functional group, subfunctional group, or an assembly.

4. Special Information

a. Detailed assembly instructions for items source coded to be assembled are found in TM 11-5820-770-14. Assembly components are listed immediately following the item to be assembled.

b. The following publication pertains to AN/URR-71 and its components

TM 11-5820-770-14, Receiving Set, Radio AN/URR-71

5. How to Locate Repair Parts

a. When National stock number or part number is unknown.

(1) *First.* Using the table of contents, determine the functional group within which the repair part belongs. This is necessary since illustrations are prepared for functional groups and listings are divided into the same groups.

(2) *Second.* Find the illustration covering the functional group to which the repair part belongs.

(3) *Third.* Identify the repair part on the illustration and note the illustration figure and item number of the repair part.

(4) *Fourth.* Using the Repair Parts Listing, find the figure and item number noted on the illustration.

b. When National stock number or part number is known.

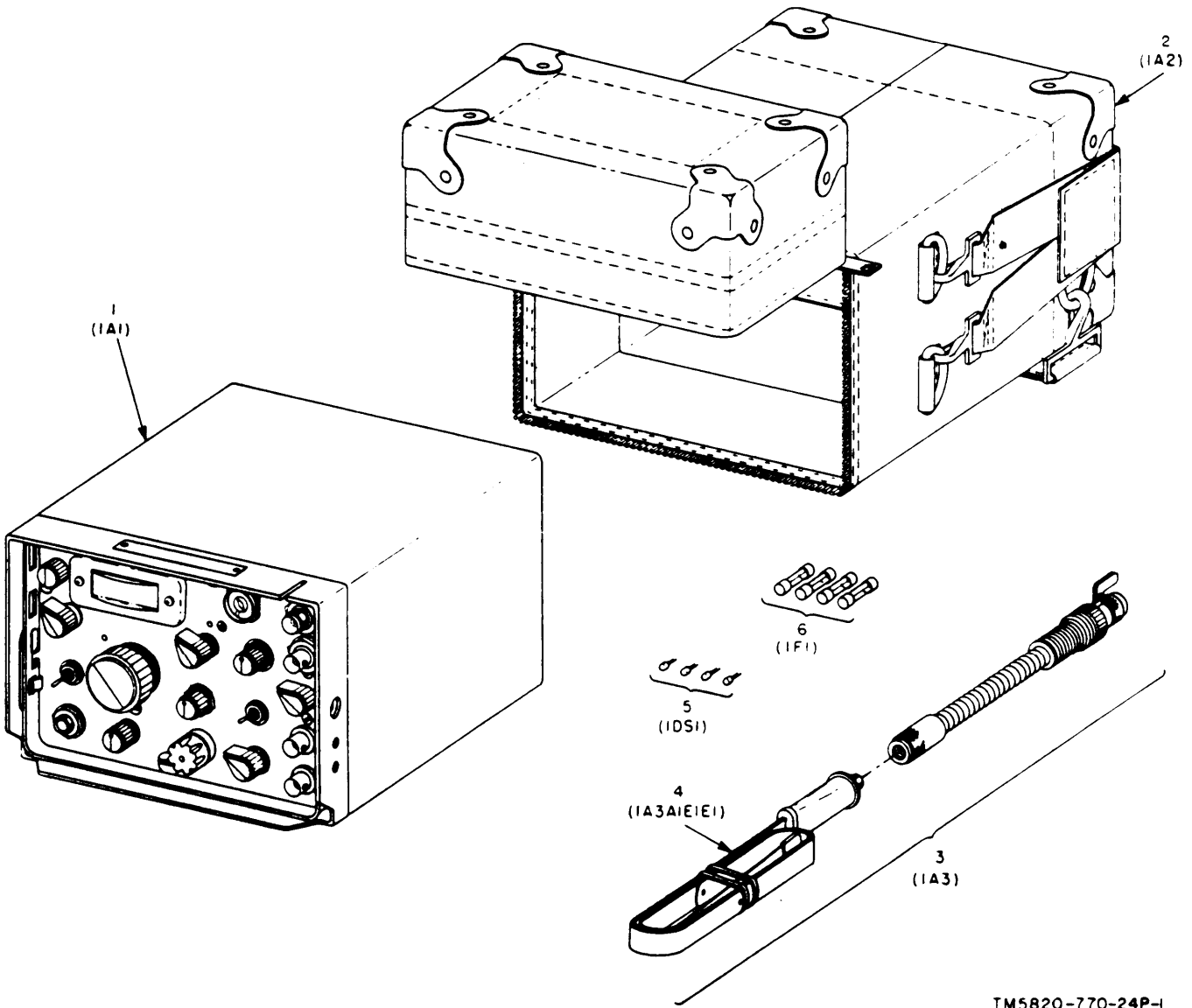
(1) *First.* Using the Index of National Stock Numbers and Part Numbers, find the pertinent National stock number or part number. This index is in ascending NSN sequence followed by a list of part numbers in ascending alphameric sequence, cross-referenced to the illustration figure number and item number.

(2) *Second.* After finding the figure and item number, locate the figure and item number in the repair parts list.

6. Abbreviations

Not applicable.

SECTION II REPAIR PARTS LIST							
(1)	(2)	(3)	(4)	(5)	(6)	(7)	(8)
ILLUSTRATION	SMR	NATIONAL	PART	FSCM	DESCRIPTION	UNIT	QTY
(A)	CODE	STOCK	NUMBER			OF	INC
FIG	ITEM	NUMBER				MEAS	IN
NO.	NO.					USABLE ON	UNIT
						CODE	
					GROUP: 00 RECEIVING SET,RADIO AN/URR-71		
1	1	PD0DD	5820-00-013-9001	R1518UR	80058	RECEIVER,RADIO R-1518/UR ASSY	EA 1
1	2	PA0DD	5820-00-763-3101	CW1005UR	80058	FIELD PACK,CANVAS,CW-1005/UR	EA 1
1	3	PAOFF	5820-00-013-9005	AS2887UR	80058	ANTENNA,AS-2887/UR ASSEMBLY	EA 1
1	4	PAOZZ	5820-00-319-0605	SMC182396	80063	LEAF ASSEMBLY	EA 1
1	5	PAHZZ	6240-01-014-8617	SMB747787	80063	LAMP,INCANDESCENT,MOD	EA 1
1	6	PAOZZ		F02A250V1-8A	81349	FUSE,CARTRIDGE	EA 1
					GROUP: 01 RECEIVER,RADIO R-1518/UR		
2	1	XDFFD		SMD747273	80063	RADIO ASSEMBLY	EA 1
2	2	XBHHD		SMD747300	80063	DUST COVER ASSEMBLY	EA 1
2	3	XDHZZ		SMB746973-7	80063	SCREW,ALTERED	EA 1
2	4	PAFZZ		SMD747237	80063	HANDLE,BOW	EA 1
					GROUP: 0101 RADIO ASSEMBLY		
3	1	XAHHD		SMD747287	80063	IF AMPLIFIER ASSEMBLY	EA 1
3	2	PAHZZ		SMC747637	80063	ACTUATOR SWITCH	EA 1
3	3	PAHZZ	5310-00-043-4708	NAS620C2	80205	WASHER,FLAT	EA 16
3	4	PAHZZ	5305-00-054-5637	MS51957-3	96906	SCREW,MACHINE	EA 2
3	5	XDHZZ		SMD747356	80063	COVER	EA 1
3	6	PAHZZ	5310-00-543-4652	MS35333-69	96906	WASHER,LOCK	EA 4
3	8	XDHZZ		SMB747355-2	80063	POST,ELEC EQPT	EA 4
3	9	PAHHH	5820-01-017-6492	SMD747600	80063	CKT CARD ASSEMBLY,IF AMPLIFIER	EA 1
3	10	PAFHD		SMD747754	80063	POWER SUPPLY ASSEMBLY	EA 1
3	11	PAHZZ	5305-00-054-5641	MS51957-7	96906	SCREW,MACHINE	EA 4
3	12	PAHZZ	5310-00-928-2690	NAS1640-2	80205	WAHSER,LOCK	EA 4
3	13	PAHHH	5820-01-017-6978	SMD747567	80063	CKT CD SSY,POWER SUPPLY	EA 1
3	14	PAHHH	5820-01-017-6979	SMD747050	80063	CKT CD ASSY,REGULATOR	EA 1
3	15	PAFZZ		SMD746994	80063	TRANSFORMER,POWER	EA 1
3	16	XDHZZ		SMB747279	80063	POST,ELEC EQPT	EA 1
3	17	PAHZZ		SRE14S36N	81312	CONNECTOR,RECEPT,ELEC	EA 1
3	18	PAHZZ		SRE7S36N	81312	CONNECTOR,RECEPT,ELEC	EA 2
3	9	PAHZZ		16-0803-188	19505	CONNECTOR,PLUG,ELEC	EA 1
3	20	AHHHH		SMC747517	80063	CABLE ASSEMBLY,RF	EA 1
					(ASSEMBLE USING ITEM 19 AND 47)		
3	21	XDHZZ		MS24693C26	96906	SCREW	EA 2
3	22	AHHHH		SMC747519	80063	CABLE ASSEMBLY,RF	EA 1
					(ASSEMBLE USING ITEM 19 AND 48)		
3	23	PAHZZ	5305-00-054-5648	MS51957-14	96906	SCREW,MACHINE	EA 2
3	24	PAHZZ	5305-00-225-6400	MS24693C3	96906	SCREW,MACHINE	EA 5
3	25	PAHZZ	5305-00-908-2829	MS24693C8	96906	SCREW,MACHINE	EA 1



TM5820-770-24P-1

FIGURE 1. RECEIVING SET, RADIO AN/URR-71.

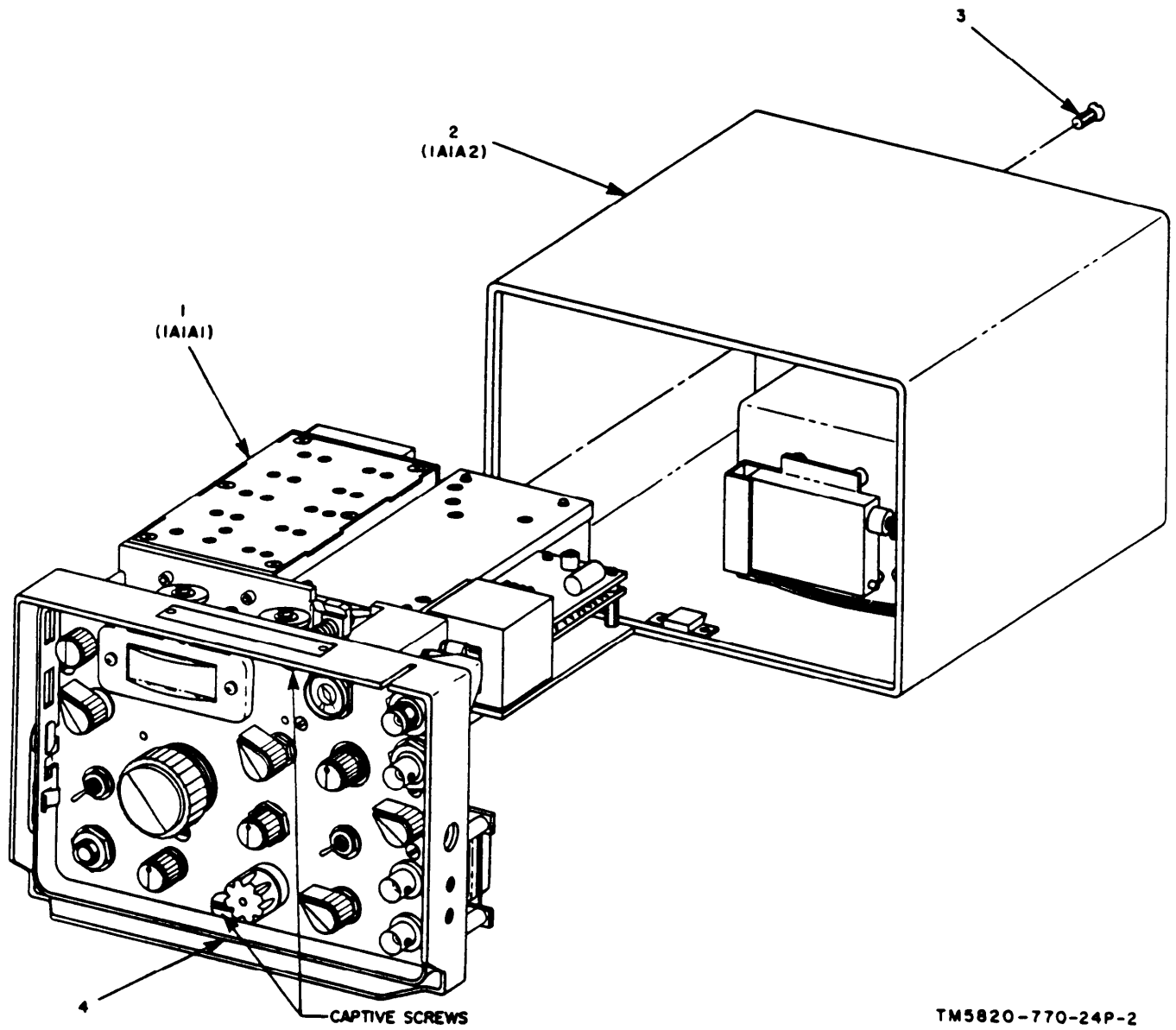


FIGURE 2. RECEIVER, RADIO R-1518/UR.

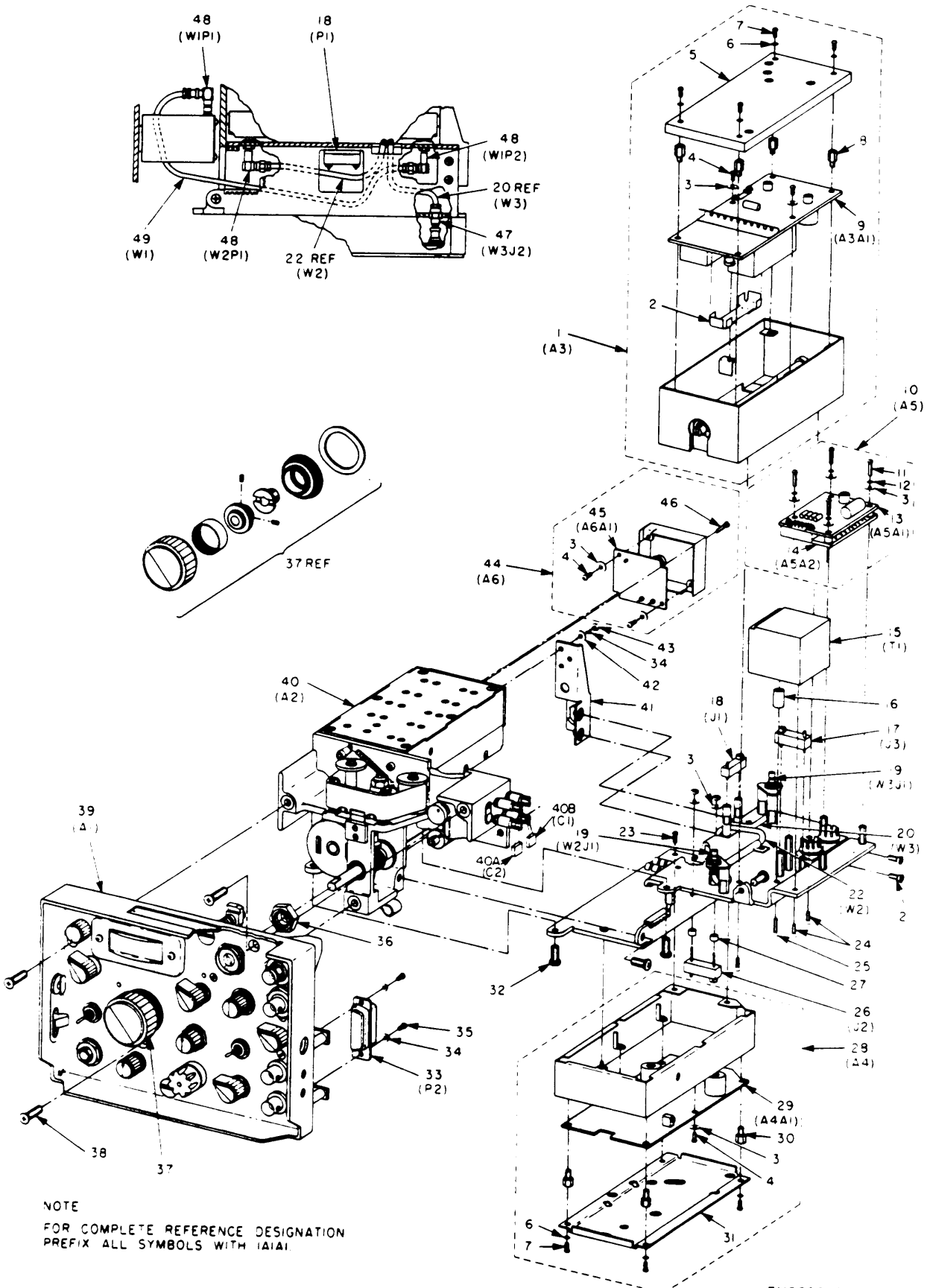


FIGURE 3. RADIO ASSEMBLY, 1A1A1.

TM5820-770-24P-3

SECTION II REPAIR PARTS LIST (CONTINUED)

(1) ILLUSTRATION (A) FIG NO.	(2) SMR (B) ITEM NO.	(3) NATIONAL STOCK NUMBER	(4) PART NUMBER	(5) FSCM	(6) DESCRIPTION	(7) UNIT OF MEAS	(8) QTY INC IN UNIT	
3	26	PAHZZ	SRE14S36N634	81312	CONNECTORRECEPT, ELEC	EA	1	
3	27	XDHZZ	SMB747408	80063	POST, ELEC EQPT	EA	2	
3	28	XDHZZ	SMD747288	80063	DETECTOR ASSEMBLY	EA	1	
3	29	PAHHH	5820-01-012-8688	SMD747603	80063	CKT CARD ASSY, DETECTOR	EA	1
3	30	XDHZZ	SMB747355-1	80063	POST, ELEC EQPT	EA	4	
3	31	XDHZZ	SMD747360	80063	COVER	EA	1	
3	32	PAHZZ	5305-00-054-6651	MS51957-27	96906	SCREW, MACHINE	EA	4
3	33	PAHZZ	5935-00-975-6265	M24308-3-2	81349	CONNECTOR, RECEPTACLE, ELEC	EA	1
3	34	PAHZZ	5310-00-933-8118	NAS1540-4	80205	WASHER, LOCK	EA	2
3	35	PAHZZ	5305-00-054-5647	MS51957-13	96906	SCREW, MACHINE	EA	2
3	36	PAHZZ	5930-00-823-0482	M5423-09-02	81349	BOOT, DUST AND MOISTURE SEAL	EA	1
3	37	PAHZZ	227395	499	KNOB, TUNING	EA	1	
3	38	XDHZZ	SMB746973-4	80063	SCREW, ALTERED	EA	3	
3	39	PAFHD	SMD747274	80063	CONTROL PANEL ASSEMBLY	EA	1	
3	40	PAHHD	SMD747276	80063	GEAR AND TUNER ASSEMBLY	EA	1	
3	40A	PAHZZ	5910-00-893-6745	CK05BX102K	81349	CAPACITOR, FIXED	EA	1
3	40B	PAHZZ	5910-00-114-0510	CK05BX223K	81349	CAPACITOR, FIXED	EA	1
3	41	XDHZZ	SMC747800	80063	BRACKET	EA	1	
3	42	XDHZZ	NAS620C4	80205	WASHER FLAT	EA	3	
3	43	XDHZZ	NAS671C4	80205	NUT, HEX	EA	3	
3	44	XDHZZ	SMC747289	80063	CALIBRATION OSCILLATOR ASSY	EA	1	
3	45	PAHHH	5820-01-017-6493	SMD747362	80063	CKT CARD ASSY, CLAIBRATION OSC	EA	1
3	46	PAHZZ	5305-00-054-5645	MS51957-10	96906	SCREW, MACHINE	EA	2
3	47	PAHZZ	16-0201-188	19505	CONNECTOR, PLUG, ELEC	EA	1	
3	48	PAHZZ	16-0205-188	19505	CONNECTOR, PLUG, ELEC	EA	3	
3	49	AHHHH	SMC747518	80063	CABLE ASSEMBLY, RF	EA	1	
					(ASSEMBL USING ITEM 48)			
					GROUP: 010101 CONTROL PANEL ASSEMBLY			
4	1	PAHZZ	RV6SAYSA1030	81349	RESISTOR, VARIABLE	EA	1	
4	2	PAHZZ	SMB747787	80063	LAMP, INCANDESCENT, MODIFIED	EA	1	
4	3	PAHZZ	SMB747256	80063	DETENT ASSEMBLY, IF	EA	1	
4	4	PAHZZ	J97964	1121	SWITCH-RESISTOR VARIABLE	EA	1	
4	5	PAHZZ	SMB747295	80063	GASKET	EA	1	
4	6	PAHZZ	16-0204-000	19505	CONNECTOR, RECEPT, ELEC	EA	2	
4	7	PAHZZ	SMD747312	80063	CAPACITOR, VARIABLE, AIR DIELECTRIC	EA	1	
4	8	PAHZZ	5930-00-892-9327	8867K8	27193	SWITCH, TOGGLE	EA	1
4	9	PAHZZ	SMD747308	80063	SWITCH, ROTARY	EA	1	
4	10	PAHZZ	10CRM1-2-09	94375	SWITCH, ROTARY, COAXIAL	EA	1	
4	11	PAHZZ	CK05BX103M	81349	CAPACITOR, FIXED, CERAMIC DIELECTRIC	EA	2	
4	12	XDHZZ	SMB745973-5	80063	SCREW, ALTERED	EA	2	
4	13	PAFZZ	5355-00-980-5647	MS91528-OP2B	96906	KNOB	EA	1
4	14	PAHZZ	5935-00-997-8026	M39012-24-0002	81349	CONNECTOR, RECEPTACLE, ELEC	EA	2

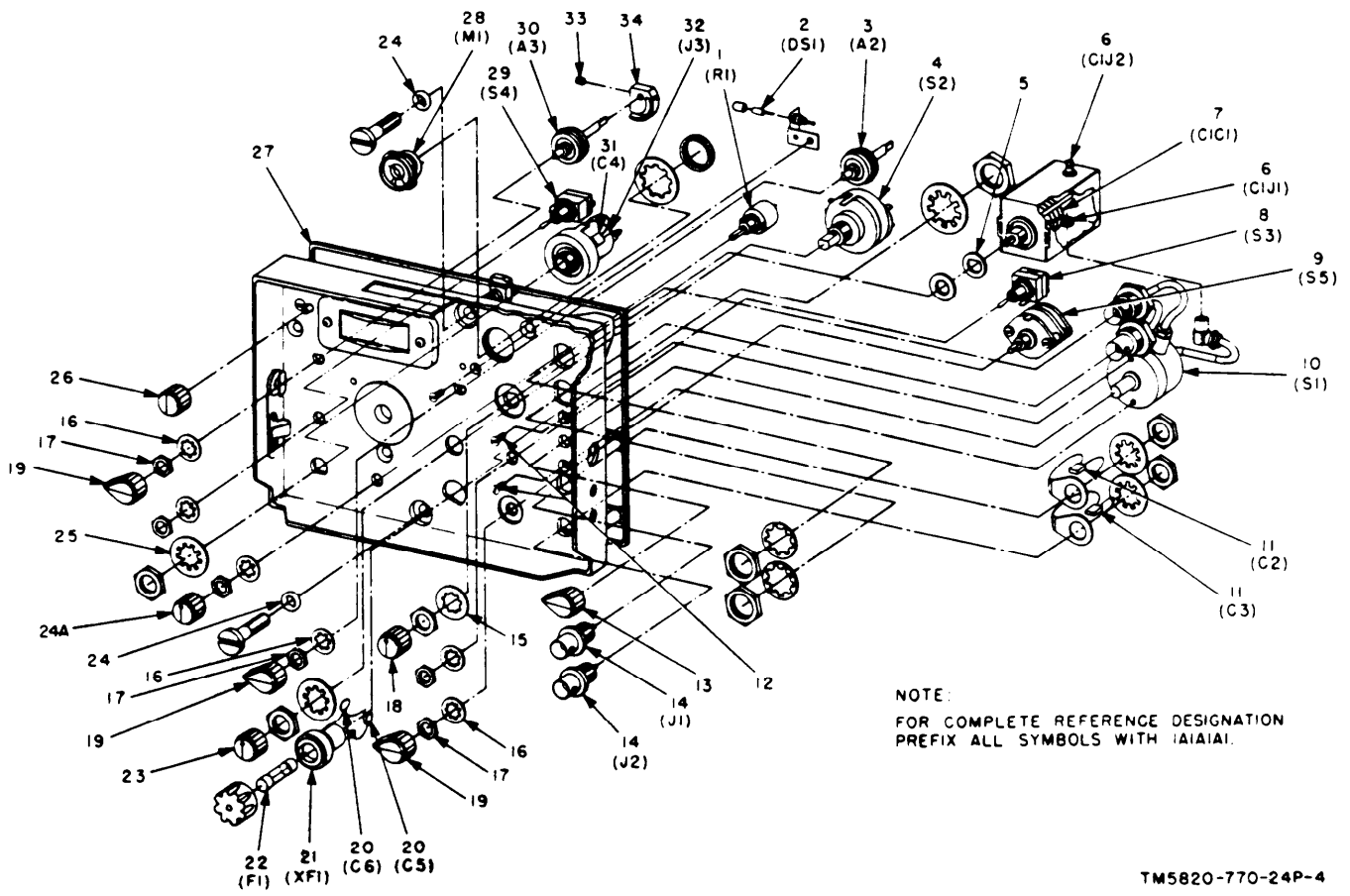
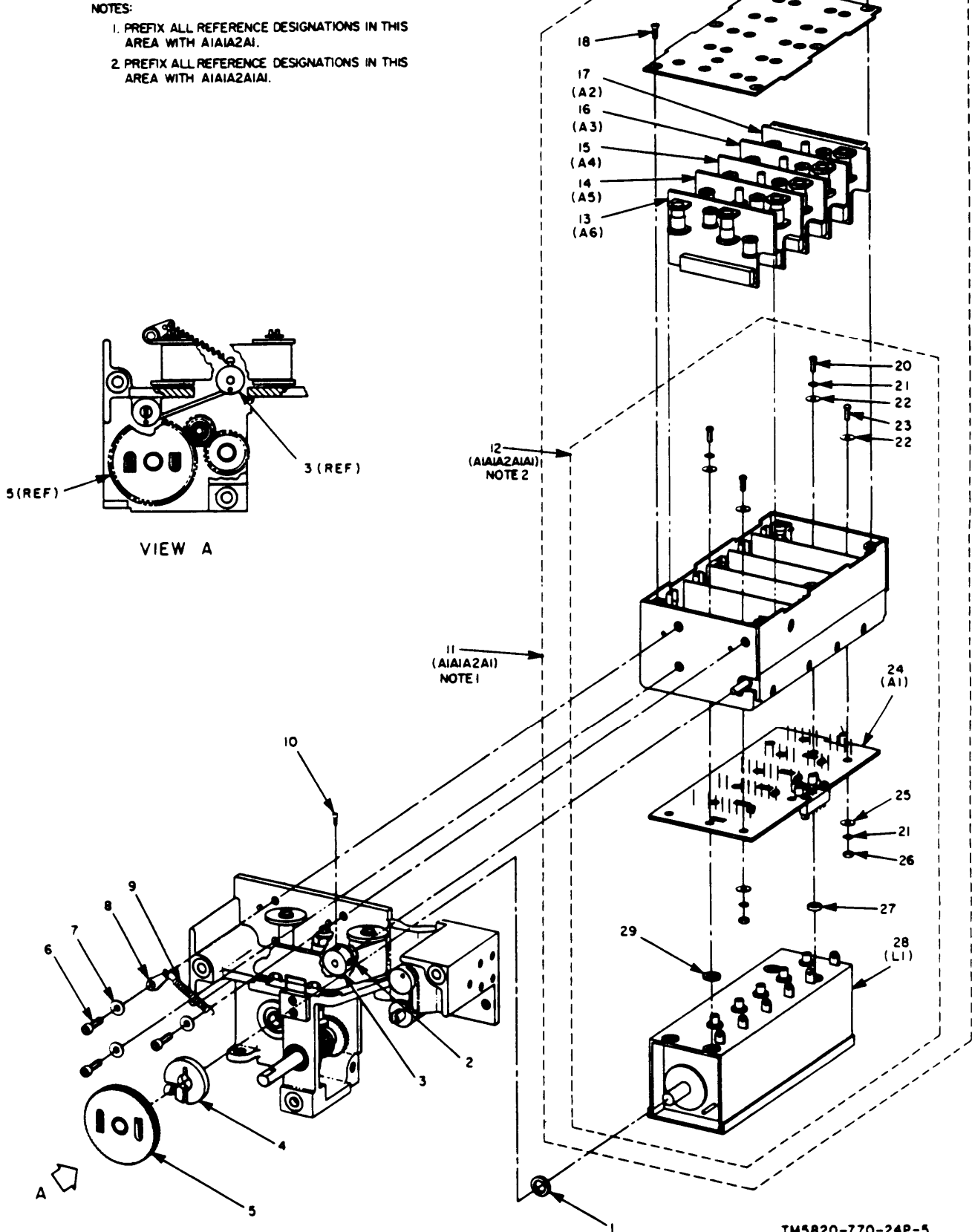


FIGURE 4. CONTROL PANEL ASSEMBLY, 1A1A1A1.

SECTION 11 REPAIR PARTS LISTF (CONTINUED)

(1) ILLUSTRATION (A) FIG NO.	(2) SMR CODE ITEM NO.	(3) NATIONAL STOCK NUMBER	(4) PART NUMBER	(5) FSCM	(6) DESCRIPTION	(7) UNIT OF MEAS	(8) QTY INC IN UNIT
4	15	PAFZZ	1218-04CADIRIDITE TYPE2	78189	WASHER, LOCK	EA	1
4	16	XDHZZ	1214-05CADIRIDITE TYPE2	78189	WASHER, LOCK	EA	3
4	17	XDHZZ	5310-00-139-7088 MS25082C13	96906	NUT, PLAIN, HEXAGON	EA	3
4	18	PAFZZ	MS91528-OMM3B	96906	KNOB	EA	1
4	19	PAFZZ	5355-00-043-1947 MS91528-OP3B	96906	KNOB	EA	3
4	20	PAHZZ	CK61BX331K	81349	CAPACITOR, FIXED	EA	2
4	21	PAHZZ	5920-00-556-0144 FHN20G	81349	FUSEHOLDER	EA	1
4	22	PAFZZ	FO2A250V1-8A	81349	FUSE, CARTRIDGE	EA	1
4	23	PAFZZ	MS91528-OMM2B	96906	KNOB	EA	1
4	24	PAHZZ	5330-00-542-1365 MS28775-009	96906	PACKING, PREFORMED	EA	2
4	24A	PAHZZ	MS91528-OMM1B	96906	KNOB	EA	1
4	25	XDHZZ	1220-02CADIRIDITE TYPE2	78189	WASHER, LOCK	EA	1
4	26	PAFZZ	5355-00-935-7640 MS91528-0N3B	96906	KNOB	EA	1
4	27	PAFZZ	SMC746966	80063	GASKET	FT	1
4	28	PAFZZ	951-17228	77221	METER, SPECIAL SCALE	EA	1
4	29	PAHZZ	5930-00-126-1667 MS24655-311	96906	SWITCH, TOGGLE	EA	1
4	30	PAHZZ	SMB747327	80063	DETENT ASSEMBLY, RF	EA	1
4	31	PAHZZ	5910-00-022-2760 CK06BX104K	81349	CAPACITOR, FIXED, CERAMIC DIELECTRIC	EA	1
4	32	PAHZZ	5935-00-434-8771 M641-18-1	81349	JACK, TELEPHONE	EA	1
4	33	XDHZZ	MS51923-123	96906	PIN, SPRING	EA	1
4	34	XDHZZ	SMC747336	80063	CAM, LOCKING	EA	1
GROUP: 010102 GEAR AND TUNER ASSEMBLY							
5	1	XDHZZ	G70-9	328	SPACER, SLEEVE	EA	1
5	2	PAHZZ	5305-00-619-4577 MS51021-3	96906	SETSCREW	EA	2
5	3	XDHZZ	SMC747407	80063	SWIVEL	EA	1
5	4	XDHZZ	SMC747789	80063	COLLAR, SHAFT	EA	1
5	5	XDHZZ	MZ4E48P1	328	GEAR, ANTIBACKLASH, SPUR	EA	1
5	6	XDHZZ	MS16995-18	96906	SCREW, MACHINE	EA	3
5	7	PAHZZ	5310-00-773-7624 NAS620C6	80205	WASHER, FLAT	EA	3
5	8	XDHZZ	MS77068-2	96906	TERMINAL LUG	EA	1
5	9	XDHZZ	SMC747820	80063	SPRING	EA	1
5	10	XDHZZ	MS16995-2	96906	SCREW, CAP	EA	1
5	11	XDHZZ	SMD747776	80063	RF TUNER SUBASSEMBLY	EA	1
GROUP: 01010201 RF TUNER ASSEMBLY							
5	12	PAHHD	SMD747697	80063	RF TUNER AND AMPLIFIER ASSEMBLY	EA	1
5	13	PAHHH	5820-01-010-5098 SMD747666	80063	CKT CARD ASSY, OSCILLATOR MIXER	EA	1
5	14	PAHHH	5820-01-009-4895 SMD747669	80063	CKT CARD ASSY, 3RD RF AMPLIFIER	EA	1
5	15	PAHHH	5820-01-012-5850 SMD747672	80063	CKT CARD ASSY, 2ND RF AMPLIFIER	EA	1
5	16	PAHHH	5820-01-010-5100 SMD747675	80063	CKT CARD ASSY, 1ST RF AMPLIFIER	EA	1
5	17	PAHHH	5820-01-018-2229 SMD747678	80063	CKT CARD ASSY, PRESELECTOR BOARD	EA	1
5	18	XDHZZ	MS24693C2	96906	SCREW	EA	6
5	19	XDHZZ	SMD747694	80063	COVER	EA	1



TM5820-770-24P-5

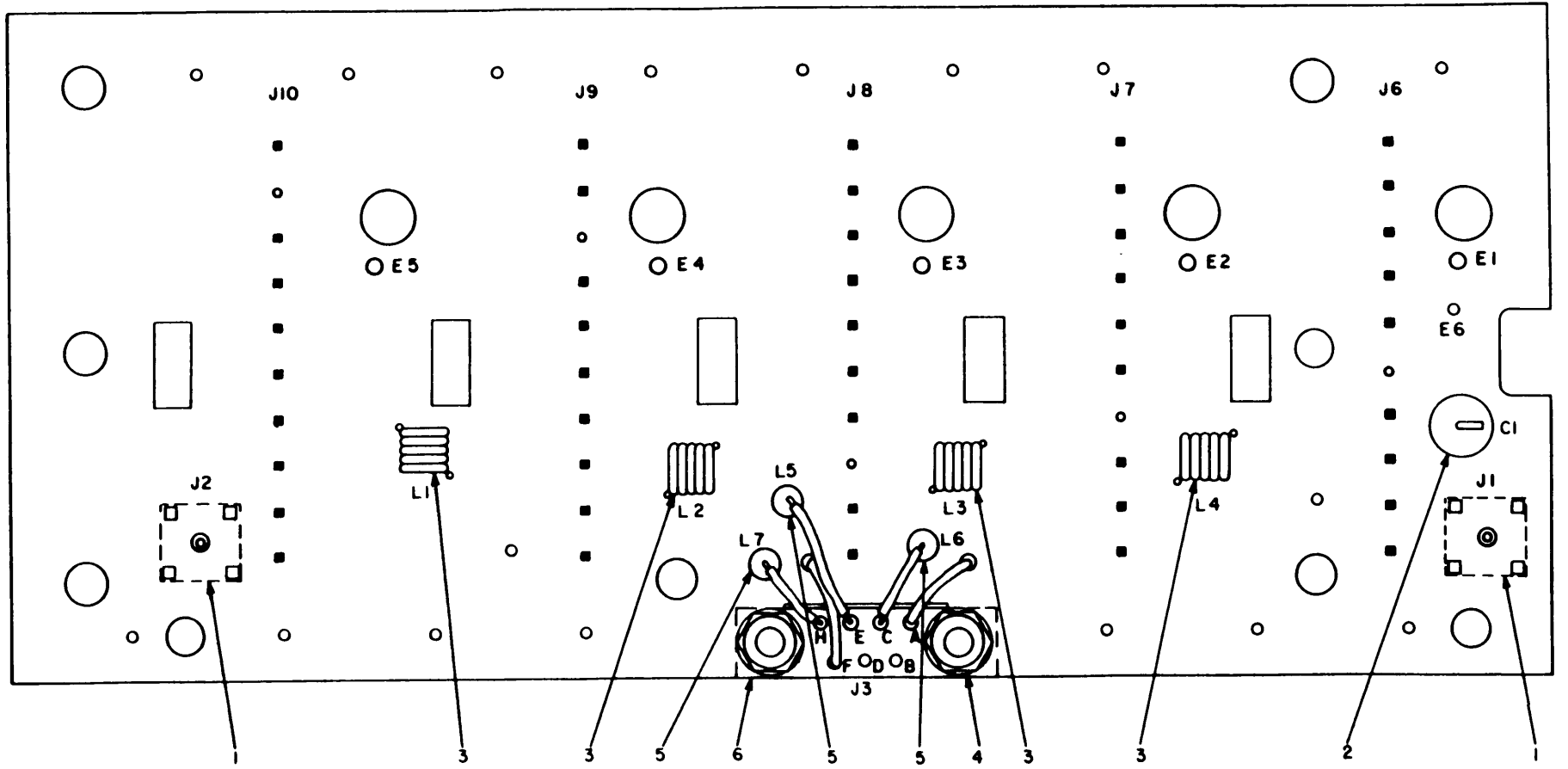
FIGURE 5. GEAR AND TUNER ASSEMBLY, 1A1A1A2.

SECTION II REPAIR PARTS LIST (CONTINUED)								
(1)	(2)	(3)	(4)	(5)	(6)		(7)	(8)
ILLUSTRATION	SMR	NATIONAL	PART	FSCM	DESCRIPTION		UNIT	QTY
(A)	CODE	STOCK	NUMBER				OF	INC
FIG	ITEM	NUMBER				USABLE ON	MEAS	IN
NO.	NO.					CODE		UNIT
5	20	PAHZZ	5305-00-054-5650	MS51957-16	96906	SCREW, MACHINE	EA	4
5	21	PAHZZ	5310-00-933-8118	NAS1640-4	80205	WASHER, LOCK	EA	7
5	22	PAHZZ	5310-00-057-0573	NAS620C4	80205	WASHER, FLAT	EA	8
5	23	PAHZZ	5305-00-054-5649	MS51957-15	96906	SCREW, MACHINE	EA	3
5	24	PAHHH	5820-01-017-9160	SMD747606	80063	CKT CARD ASSY, MOTHERBOARD, RF	EA	1
5	25	PAHZZ	5310-00-782-1349	AN960C4	88044	WASHER, FLAT	EA	2
5	26	XDHZZ	5310-00-208-3786	NAS671C4	80205	NUT, PLAIN, HEXAGON	EA	3
5	27	XDHZZ		SMB747786-1	80063	WASHER, SPECIAL	EA	1
5	28	PAHZZ		SMC747449	80063	TUNER, RADIO FREQUENCY	EA	1
5	29	XDHZZ		SMB747786-2	80063	WASHER, SPECIAL GROUP: 01010201011 MOTHERBOARD CIRCUIT CARD ASSEMBLY	EA	3
6	1	PAHZZ	5935-00-539-1940	16-0209-000	19505	CONNECTOR, RECEPTACLE, ELEC	EA	2
6	2	PAHZZ		SMC747144-1	80063	CAPACITOR, FIXED, CERAMIC DIELECTRIC	EA	1
6	3	PAHZZ		SMC747755	80063	COIL, RF	EA	4
6	4	PAHZZ	5310-00-043-4708	NAS620C2	80205	WASHER, FLAT	EA	2
6	5	PAHZZ	5950-00-031-4557	MS75084-12	96906	COIL, RF	EA	3
6	6	PAHZZ		SRE7P95N	81312	CONNECTOR, RECEPTACLE, ELEC GROUP: 01010201012 RF PRESELECTOR CIRCUIT CARD ASSY	EA	1
7	1	PAHZZ		CMR03C8R0D0CL	81349	CAPACITOR, FIXED, MICA DIELECTRIC	EA	2
7	2	PAHZZ	5910-00-933-4886	VC961	73899	CAPACITOR, VARIABLE	EA	1
7	3	PAHZZ		CMR03E680J0YL	81349	CAPACITOR, FIXED, MICA DIELECTRIC	EA	1
7	4	PAHZZ		SMC747744	80063	COIL, RF	EA	1
7	5	PAHZZ		8121A100U2J100J	72982	CAPACITOR, TEMP COMP	EA	1
7	6	PAHZZ	5905-00-114-0711	RCR07G472JS	81349	RESISTOR, FIXED, COMPOSITION	EA	1
7	7	PAHZZ	5910-00-893-6745	CK05BX102K	81349	CAPACITOR, FIXED, CERAMIC DIELECTRIC	EA	1
7	8	PAHZZ		CMR03C5R0D0CL	81349	CAPACITOR, FIXED, MICA DIELECTRIC	EA	1
7	9	PAHZZ		85929-2	779	CONNECTOR, RECEPTACLE, ELEC	EA	1
7	10	PAHZZ		CRM03E200D0AL	81349	CAPACITOR, FIXED, MICA DIELECTRIC	EA	1
7	11	PAHZZ	5910-00-992-3306	PC51J110	81349	CAPACITOR, VARIABLE, GLASS DIELECTRIC	EA	1
7	12	PAHZZ		SMC747757	80063	COIL, RF	EA	1
7	13	PAHZZ		CMR03C100D0CL	81349	CAPACITOR, FIXED, MICA DIELECTRIC	EA	1
7	14	PAHZZ		MTRF2	12617	SWITCH, REED GROUP: 01010201013 FIRST RF AMPLIFIER CKT CARD ASSY	EA	2
8	1	PAHZZ		SMC747756	80063	COIL, RF	EA	1
8	2	PAHZZ	5910-00-124-0659	CK05BX103K	81349	CAPACITOR, FIXED, CERAMIC DIELECTRIC	EA	3
8	3	PAHZZ	5910-00-933-4886	VC961	73899	CAPACITOR, VARIABLE	EA	1
8	4	PAHZZ		CMR03E68CJ0YL	81349	CAPACITOR, FIXED, MICA DIELECTRIC	EA	1
8	5	PAHZZ		SMC747744	80063	COIL, RF	EA	1
8	6	PAHZZ	5905-00-110-7620	RCR07G102JS	81349	RESISTOR, FIXED, COMPOSITION	EA	3
8	7	PAHZZ		8121A100U2J100J	72982	CAPACITOR, TEMP COMP	EA	1
8	8	PAHZZ	5950-00-243-0093	MS75084-09	96906	COIL, RF	EA	1
8	9	PAHZZ	5905-00-104-8360	RCR07G623JS	81349	RESISTOR, FIXED, COMPOSITION	EA	1

NOTE:

FOR COMPLETE REFERENCE DESIGNATION PREFIX
ALL SYMBOLS WITH 1A1A1A2A1A1A1.

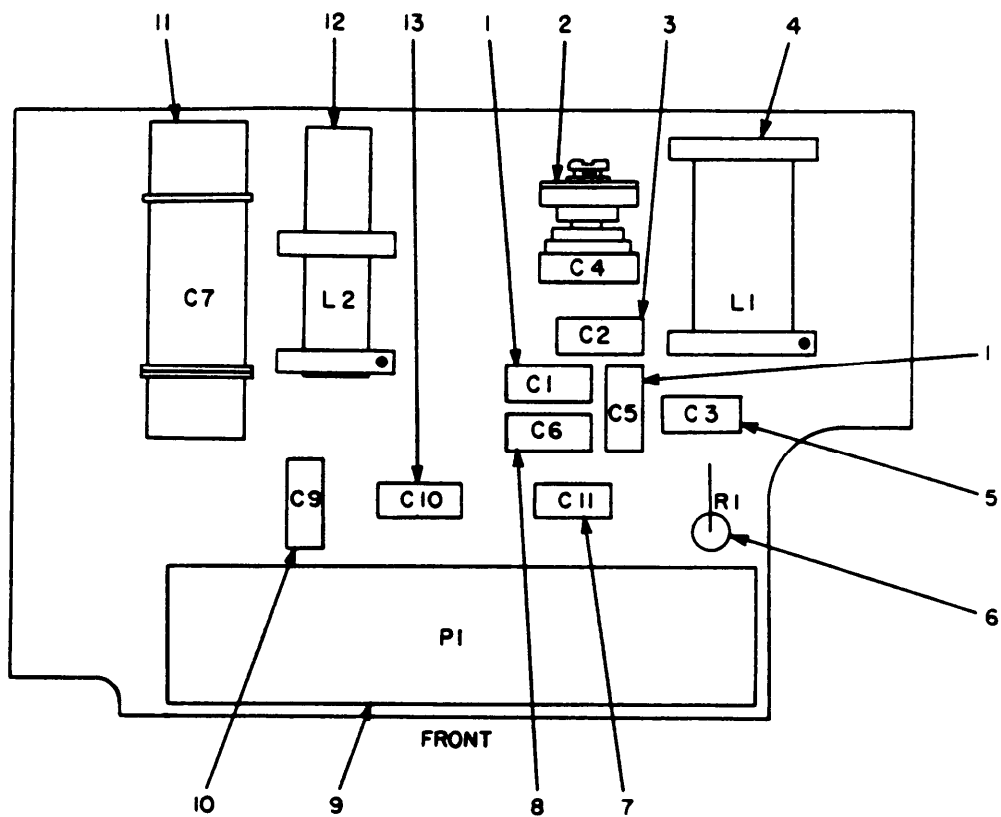
2-10



TM11-5820-770-24P

TM5820-770-24P-6

FIGURE 6. CIRCUIT CARD ASSEMBLY, MOTHERBOARD, RF, 1A1A1A2A1A1A1.



NOTE:
 FOR COMPLETE REFERENCE DESIGNATION PREFIX
 ALL SYMBOLS WITH 1A1A1A2A1A2.

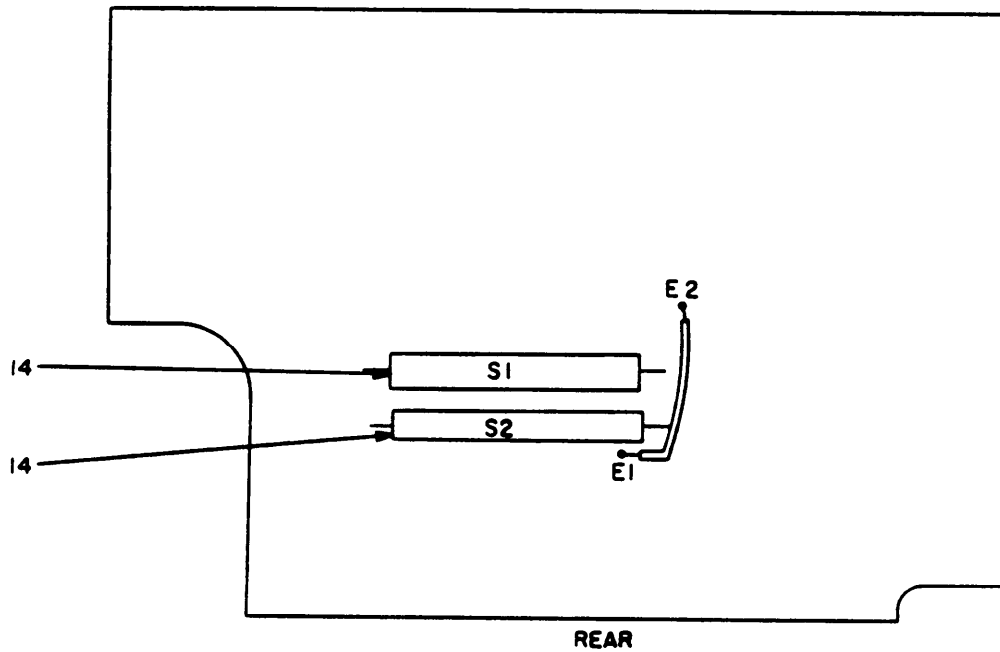
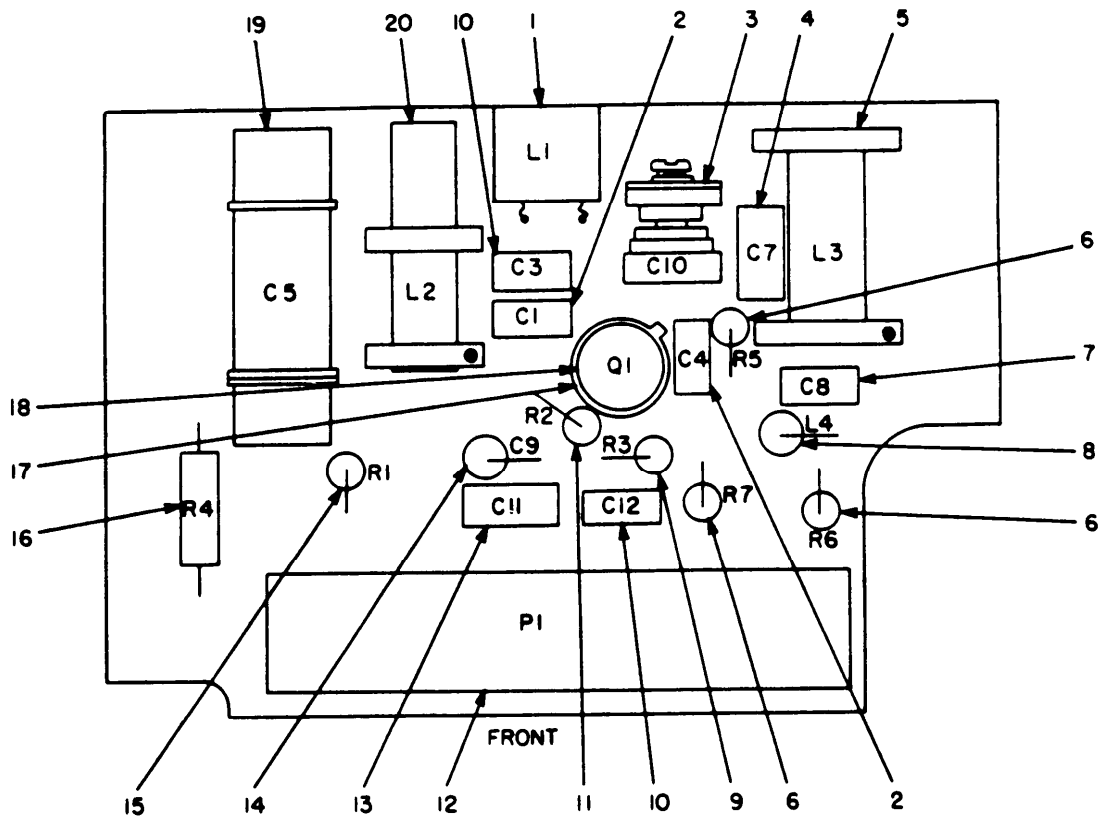


FIGURE 7. CIRCUIT CARD ASSEMBLY, PRESELECTOR, 1A1A1A2A1A2.



NOTE:
 FOR COMPLETE REFERENCE DESIGNATION PREFIX
 ALL SYMBOLS WITH 1A1A1A2A1A3.

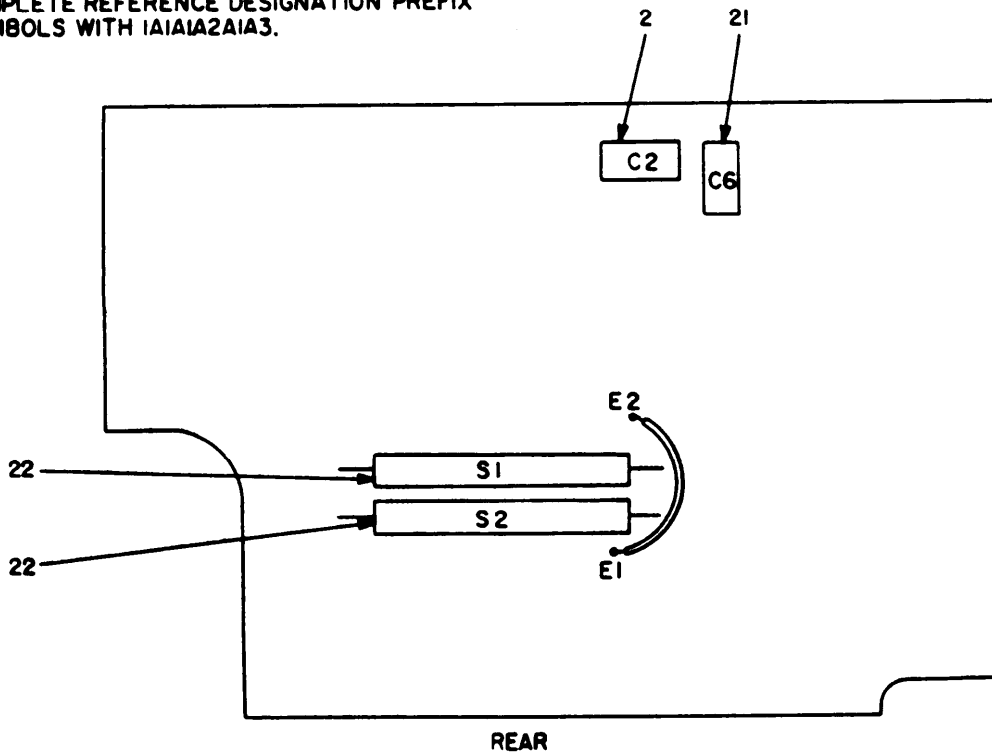
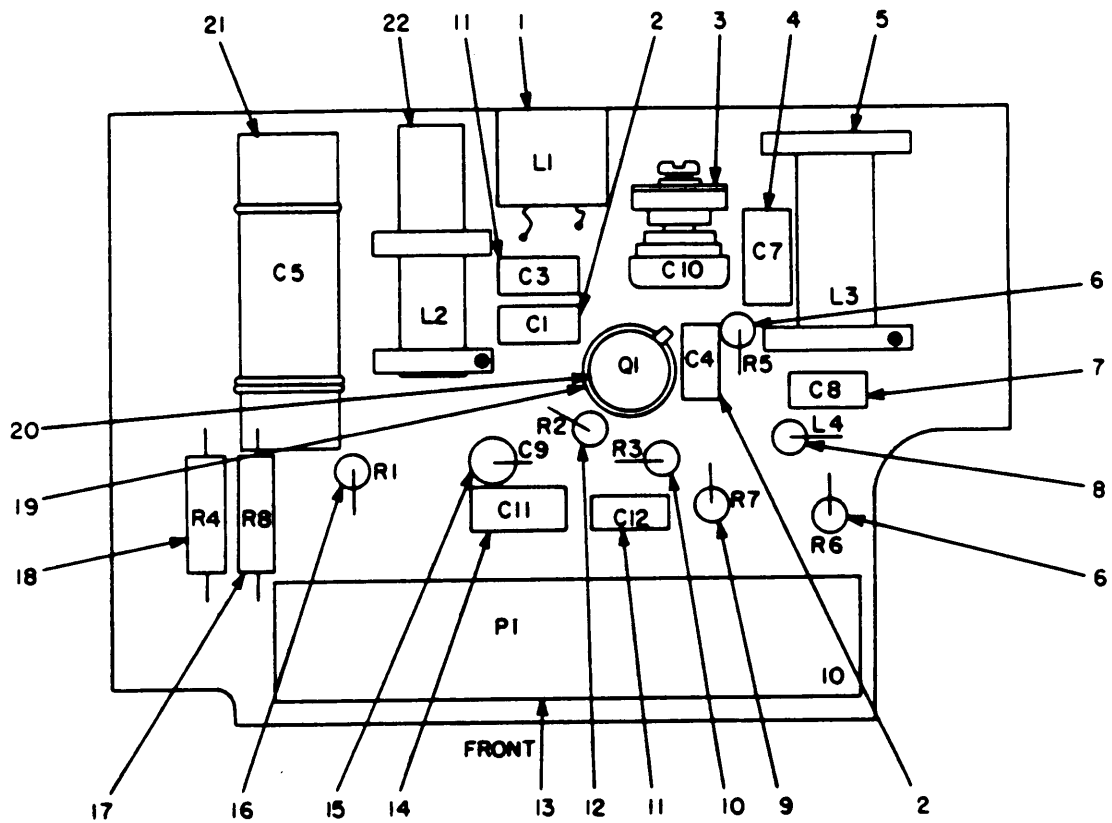


FIGURE 8. CIRCUIT CARD ASSEMBLY, 1ST RF AMPL, 1A1A1A2A1A3.

SECTION II REPAIR PARTS LIST (CONTINUED)

(1) ILLUSTRATION (A) FIG NO.	(2) SMR CODE ITEM NO.	(3) NATIONAL STOCK NUMBER	(4) PART NUMBER	(5) FSCM	(6) DESCRIPTION	(7) UNIT OF MEAS	(8) QTY INC IN UNIT
8	10	PAHZZ 5910-00-893-6745	CK05BX102K	81349	CAPACITOR, FIXED, CERAMIC DIELECTRIC	EA	2
8	11	PAHZZ 5905-00-141-0741	RCR07G364JS	81349	RESISTOR, FIXED, COMPOSITION	EA	1
8	12	PAHZZ	85929-2	779	CONNECTOR, RECEPTACLE, ELECTRIC	EA	1
8	13	PAHZZ	CMR03C150D0AL	81349	CAPACITOR, FIXED, MICA DIELECTRIC	EA	1
8	14	PAHZZ	QC1-0UUF0RM5PCT	95121	CAPACITOR, FIXED, CERAMIC DIELECTRIC	EA	1
8	15	PAHZZ 5905-00-106-3666	RCR07G103JS	81349	RESISTOR, FIXED COMPOSITION	EA	1
8	16	PAHZZ 5905-00-120-9154	RCR07G471JS	81349	RESISTOR, FIXED COMPOSITION	EA	1
8	17	PAHZZ 5999-00-854-9013	7717-43DAP	13101	PAD, TRANSISTOR	EA	1
8	18	PAHZZ	SMC747746	80063	TRANSISTOR	EA	1
8	19	PAHZZ 5910-00-992-3306	PC51J110	81349	CAPACITOR, VARIABLE, GLASS DIELECTRIC	EA	1
8	20	PAHZZ	SMC747745	80063	COIL, RF	EA	1
8	21	PAHZZ	8121A100P3K2R7J	72982	CAPACITOR, TEMP COMP	EA	1
8	22	PAHZZ	MTRF2	12617	SWITCH, REED	EA	2
GROUP: 01010201014 SECOND RF AMPLIFIER CIRCUIT CARD							
ASSEMBLY							
9	1	PAHZZ	SMC747756	80063	COIL, RF	EA	1
9	2	PAHZZ 5910-00-124-0659	CK05BX103K	81349	CAPACITOR, FIXED, CERAMIC DIELECTRIC	EA	3
9	3	PAHZZ 5910-00-933-4886	VC961	73899	CAPACITOR, VARIABLE	EA	1
9	4	PAHZZ	CMR03E680J0YL	81349	CAPACITOR, FIXED, MICA DIELECTRIC	EA	1
9	5	PAHZZ	SMC747744	80063	COIL, RF	EA	1
9	6	PAHZZ 5905-00-110-7020	RCR07G102JS	81349	RESISTOR, FIXED, COMPOSITION	EA	2
9	7	PAHZZ	8121A100U2J100J	72982	CAPACITOR, TEMP COMP	EA	1
9	8	PAHZZ 5950-00-243-0093	MS75084-09	96906	COIL, RF	EA	1
9	9	PAHZZ 5905-00-111-4750	RCR07G301	81349	RESISTOR, FIXED, COMPOSITION	EA	1
9	10	PAHZZ 5905-00-141-0717	RCR07G473JS	81349	RESISTOR, FIXED, COMPOSITION	EA	1
9	11	PAHZZ 5910-00-893-6745	CK05BX102K	81349	CAPACITOR, FIXED, CERAMIC DIELECTRIC	EA	2
9	12	PAHZZ 5905-00-141-0741	RCR07G364JS	81349	RESISTOR, FIXED, COMPOSITION	EA	1
9	13	PAHZZ	85929-1	779	CONNECTOR, RECEPTACLE, ELECTRIC	EA	1
9	4	PAHZZ	CMR03C150D0AL	81349	CAPACITOR, FIXED, MICA DIELECTRIC	EA	1
9	15	PAHZZ	QC1-0UUF0RM5PCT	95121	CAPACITOR, FIXED, CERAMIC DIELECTRIC	EA	1
9	16	PAHZZ 5905-00-106-3666	RCR07G103JS	81349	RESISTOR, FIXED, COMPOSITION	EA	1
9	17	PAHZZ	RCR07G204JS	81349	RESISTOR, FIXED, COMPOSITION	EA	1
9	18	PAHZZ 5905-00-120-9154	RCR07G471JS	81349	RESISTOR, FIXED, COMPOSITION	EA	1
9	19	PAHZZ 5999-00-854-9013	7717-43DAP	13103	PAD, TRANSISTOR	EA	1
9	20	PAHZZ	SMC747746	80063	TRANSISTOR	EA	1
9	21	PAHZZ 5910-00-992-3306	PC51J110	81349	CAPACITOR, VARIABLE, GLASS DIELECTRIC	EA	1
9	22	PAHZZ	SMC747745	80063	COIL, RF	EA	1
9	23	PAHZZ	8121A100P3K2R7J	72982	CAPACITOR, TEMP COMP	EA	1
9	24	PAHZZ	MTRF2	12617	SWITCH, REED	EA	2



NOTE:
FOR COMPLETE REFERENCE DESIGNATION PREFIX
ALL SYMBOLS WITH 1A1A1A2A1A4.

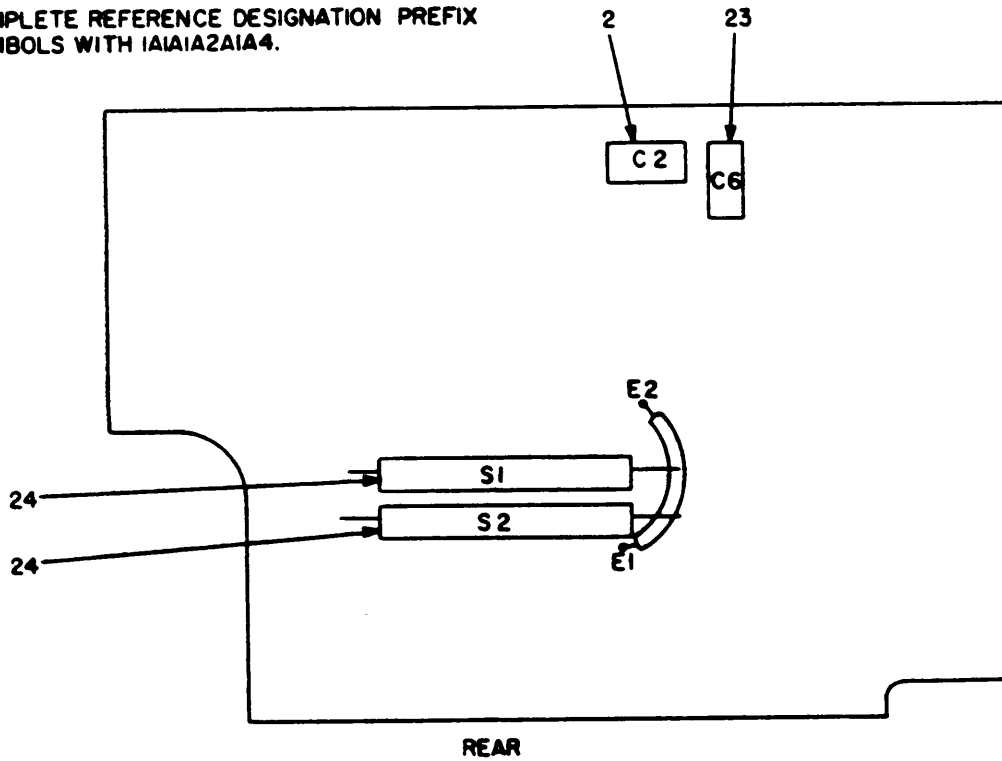
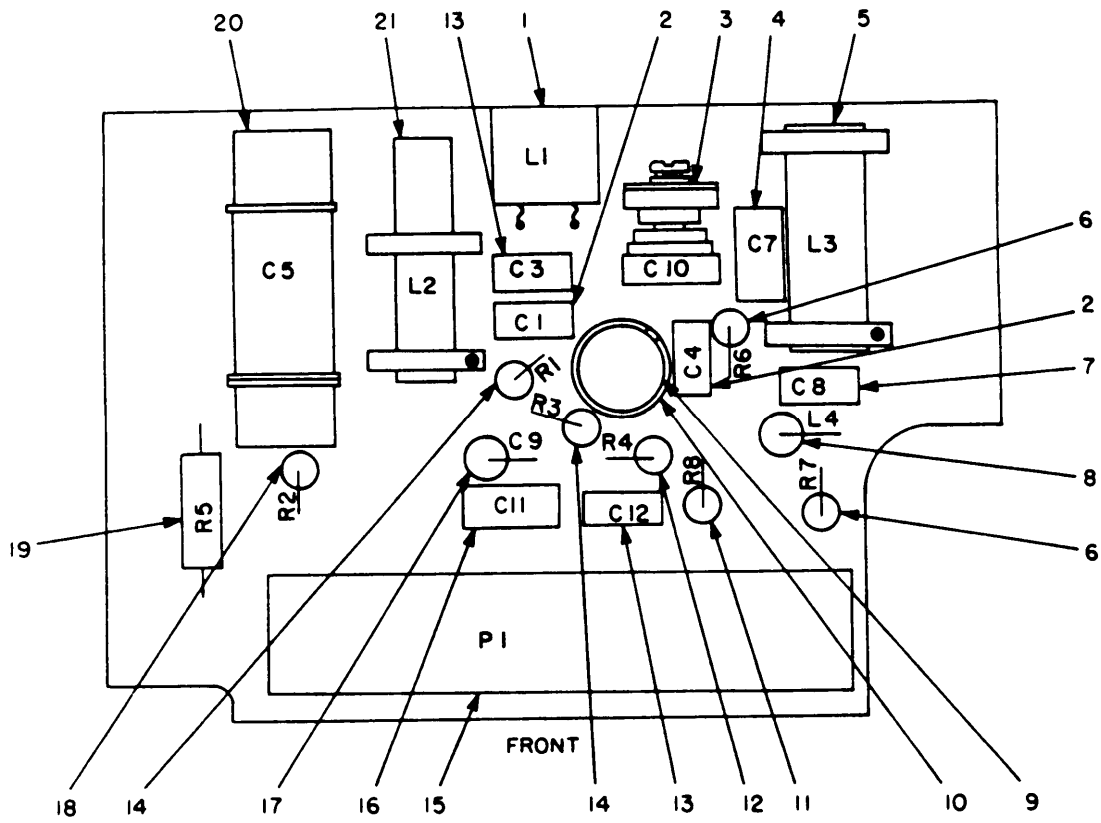


FIGURE 9. CIRCUIT CARD ASSEMBLY, 2ND RF AMPL, 1A1A1A2A1A4.

SECTION II REPAIR PARTS LIST (CONTINUED)

(1) ILLUSTRATION (A) FIG NO.	(2) SMR (B) ITEM NO.	(3) NATIONAL STOCK NUMBER	(4) PART NUMBER	(5) FSCM	(6) DESCRIPTION	(7) UNIT OF MEAS	(8) QTY INC IN UNIT	
10	1	PAHZZ	SMC747756	80063	COIL,RF	EA	1	
10	2	PAHZZ	5910-00-124-0659	CK05BX103K	81349	CAPACITOR, FIXED, CERAMIC DIELECTRIC	EA	3
10	3	PAHZZ	5910-00-933-4886	VC961	73899	CAPACITOR, VARIABLE	EA	1
10	4	PAHZZ		CMR03E680J0YL	81349	CAPACITOR, FIXED, MICA DIELECTRIC	EA	1
10	5	PAHZZ		SMC747744	80063	COIL, RF	EA	1
10	6	PAHZZ	5905-00-110-7020	RCR07G102JS	81349	RESISTOR, FIXED, COMPOSITION	EA	2
10	7	PAHZZ		8121A100U2J100J	72982	CAPACITOR, TEMP COMP	EA	1
10	8	PAHZZ	5905-00-243-0093	MS75084-09	96906	COIL, RF	EA	1
10	9	PAHZZ	5305-00-054-5643	SMC747746	80063	TRANSISTOR	EA	1
10	10	PAHZZ	5999-00-854-9013	7717-43DAP	13103	PAD, TRANSISTOR	EA	1
10	11	PAHZZ	5905-00-111-4750	RCR07G301JS	81349	RESISTOR, FIXED, COMPOSITION	EA	1
10	12	PAHZZ	5905-00-141-0717	RCR07G473JS	81349	RESISTOR, FIXED, COMPOSITION	EA	1
10	13	PAHZZ	5910-00-893-6745	CK05BX102K	81349	CAPACITOR, FIXED, CERAMIC DIELECTRIC	EA	2
10	14	PAHZZ	5905-00-141-0741	RCR07G364JS	81349	RESISTOR, FIXED, COMPOSITION	EA	2
10	15	PAHZZ		85929-2	779	CONNECTOR, RECEPTACLE, ELEC	EA	1
10	16	PAHZZ		CMR03C150D0AL	81349	CAPACITOR, FIXED, MICA DIELECTRIC	EA	1
10	17	PAHZZ		QC0-68UUF0M5PCT	95121	CAPACITOR, FIXED, CERAMIC DIELECTRIC	EA	1
10	18	PAHZZ	5905-00-114-5344	RCR07G184JS	81349	RESISTOR, FIXED, COMPOSITION	EA	1
10	19	PAHZZ	5905-00-120-9154	RCR07G471JS	81349	RESISTOR, FIXED, COMPOSITION	EA	1
10	20	PAHZZ	5910-00-992-3306	PC51J110	81349	CAPACITOR, VARIABLE, GLASS DIELECTRIC	EA	1
10	21	PAHZZ		SMC747745	80063	COIL, RF	EA	1
10	22	PAHZZ		8121A100P3K2R7J	72982	CAPACITOR, TEMP COMP	EA	1
10	23	PAHZZ		MTRF2	12617	SWITCH, REED	EA	2
GROUP: 01010201016 OSCILLATOR-MIXER CIRCUIT CARD								
ASSEMBLY								
11	1	PAHZZ		8121A100P3K2R7J	72982	CAPACITOR, TEMP COMP	EA	1
11	2	PAHZZ	5999-00-854-9013	7717-43DAP	13103	PAD, TRANSISTOR	EA	1
11	3	PAHZZ		SMC747746	80063	TRANSISTOR	EA	1
11	4	PAHZZ		SMC747741	80063	COIL, RF	EA	1
11	5	PAHZZ		8121A100U2J100J	72982	CAPACITOR, TEM COMP	EA	1
11	6	PAHZZ	5910-00-124-0659	CK05BX103K	81349	CAPACITOR, FIXED, CERAMIC DIELECTRIC	EA	3
11	7	PAHZZ	5905-00-111-4750	RCR07G301JS	81349	RESISTOR, FIXED, COMPOSITION	EA	1
11	8	PAHZZ	5910-00-933-4886	VC961	73899	CAPACITOR, VARIABLE	EA	1
11	9	PAHZZ		CMR03F151J0YL	81349	CAPACITOR, FIXED, MICA DIELECTRIC	EA	1
11	10	PAHZZ		CMR03E270J0YL	81349	CAPACITOR, FIXED, MICA DIELECTRIC	EA	2
11	11	PAHZZ	5905-00-120-9154	RCR07G471JS	81349	RESISTOR, FIXED, COMPOSITION	EA	1
11	12	PAHZZ	5905-00-116-2394	RCR07G511JS	81349	RESISTOR, FIXED, COMPOSITION	EA	1
11	13	PAHZZ		RCR07G204JS	81349	RESISTOR, FIXED COMPOSITION	EA	1



NOTE:
 FOR COMPLETE REFERENCE DESIGNATION PREFIX
 ALL SYMBOLS WITH 1A1A2A1A5.

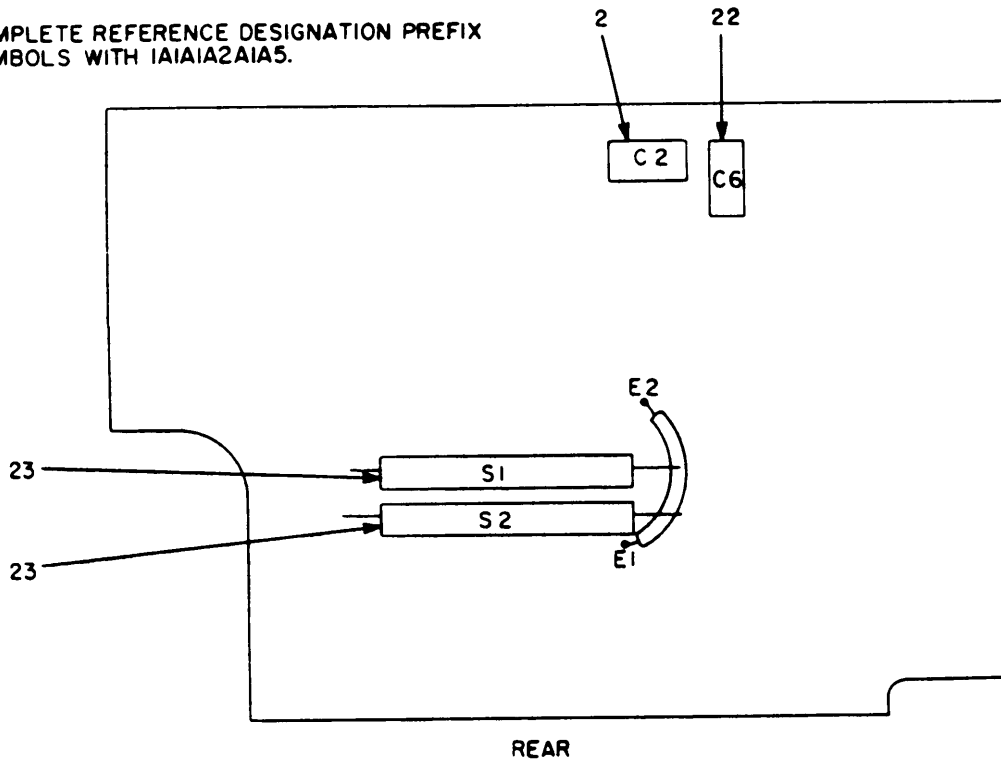
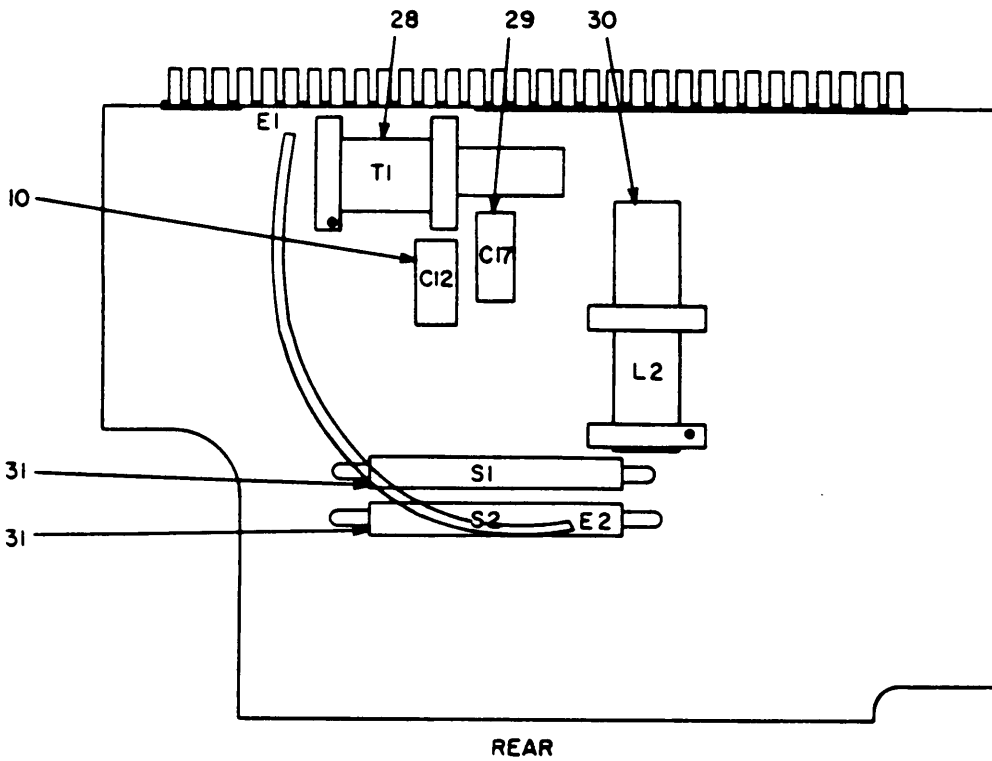
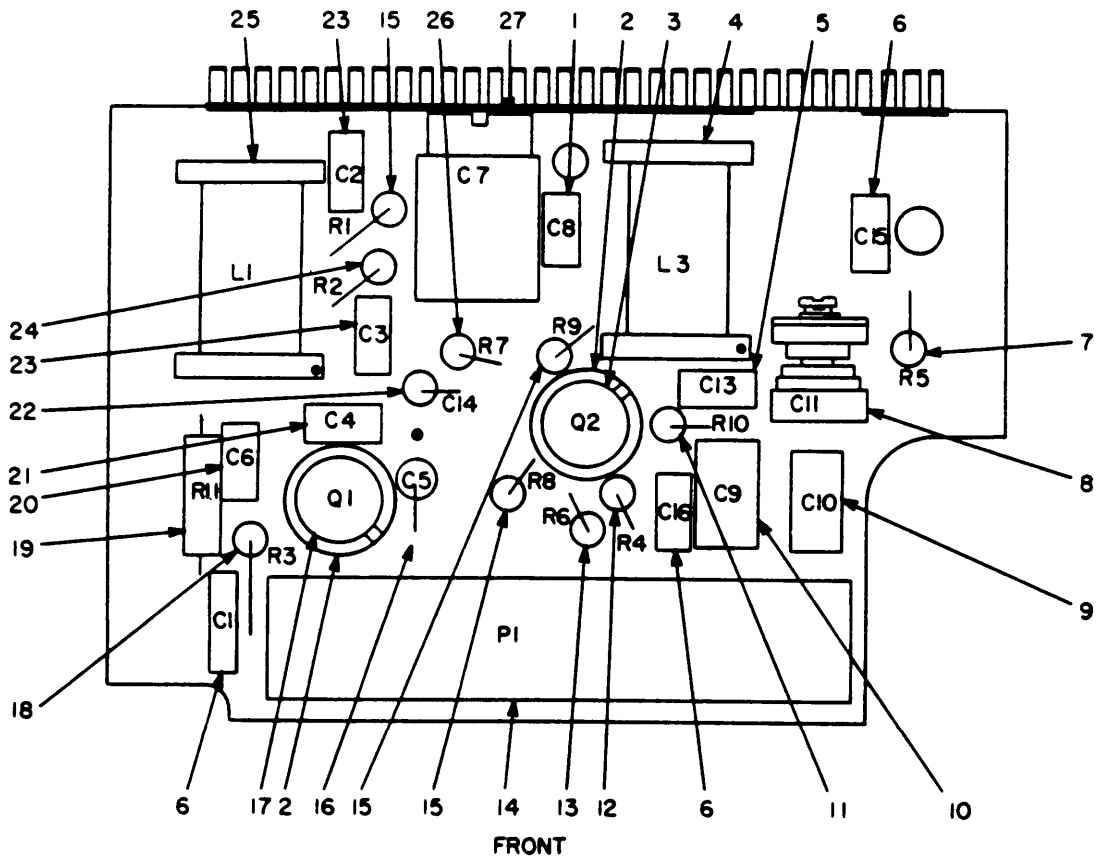


FIGURE 10. CIRCUIT CARD ASSEMBLY, 3RD RF AMPL, 1A1A2A1A5.
 2-16

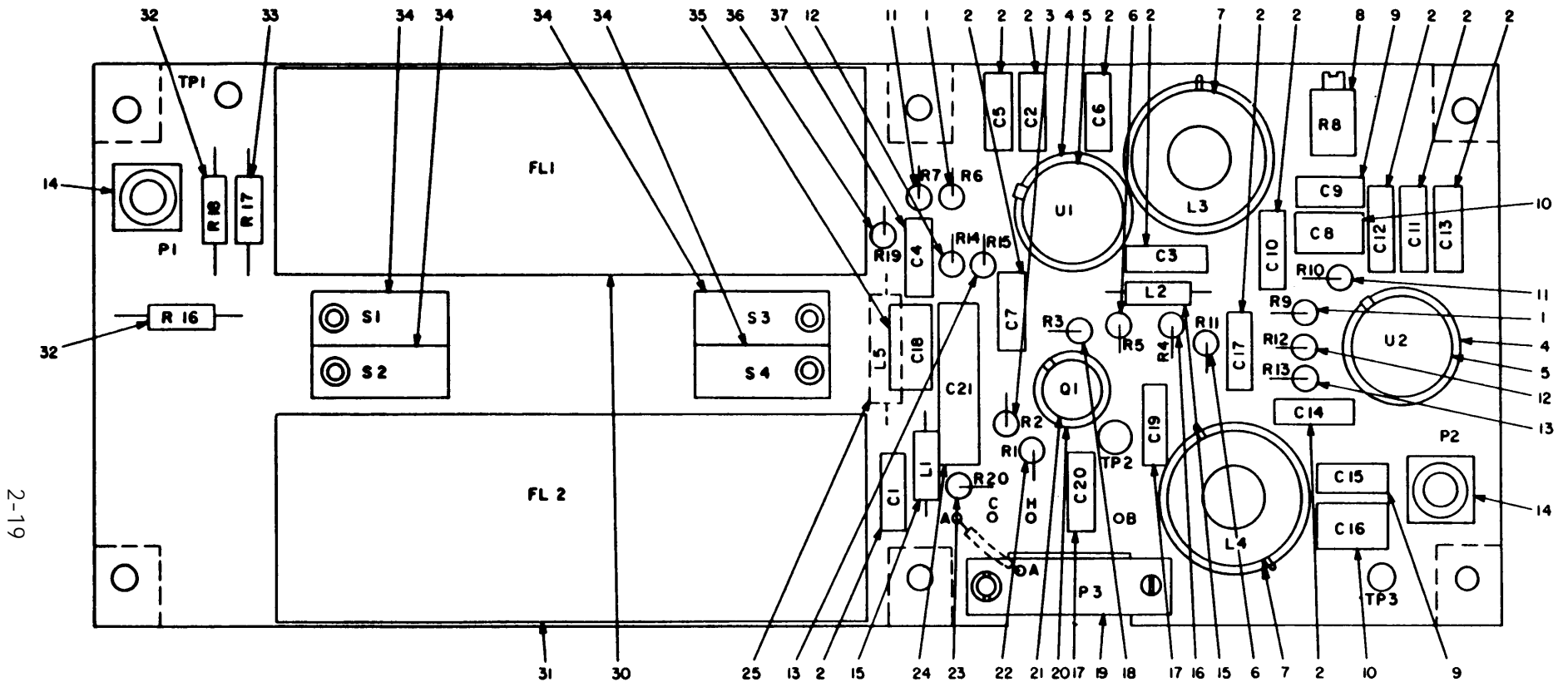


NOTE:
FOR COMPLETE REFERENCE DESIGNATION PREFIX
ALL SYMBOLS WITH 1A1A2A1A6.

TM5820-770-24P-11

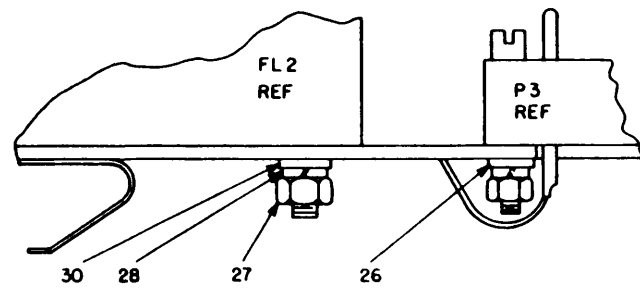
FIGURE 11. CIRCUIT CARD ASSEMBLY, OSC MIXER, 1A1A2A1A6.

SECTION II REPAIR PARTS LIST (CONTINUED)						TM11-5820-770-24P		
(1)	(2)	(3)	(4)	(5)	(6)		(7)	(8)
ILLUSTRATION	SMR	NATIONAL	PART	FSCM	DESCRIPTION		UNIT	QTY
(A)	(B)	STOCK	NUMBER				OF	INC
FIG	ITEM	NUMBER				USABLE ON	MEAS	IN
NO.	NO.					CODE		UNIT
11	14	PAHZZ	5910-00-933-4886	85929-2	00779	CONNECTOR, RECEPTACLE, ELEC	EA	1
11	15	PAHZZ	5905-00-106-3666	RCR07G103JS	81349	RESISTOR, FIXED, COMPOSITION	EA	3
11	16	PAHZZ		QC0-68UUF0M5PCT	95121	CAPACITOR, FIXED, CER DIEL	EA	1
11	17	PAHZZ		2N918	81349	TRANSISTOR	EA	1
11	18	PAHZZ	5905-00-110-7020	RCR07G102JS	81349	RESISTOR, FIXED, COMPOSITION	EA	1
11	19	PAHZZ		RCR07G510JS	81349	RESISTOR, FIXED, COMPOSITION	EA	1
11	20	PAHZZ		CMR03C180D0CL	81349	CAPACITOR, FIXED, MICA DIEL	EA	1
11	21	PAHZZ	5910-00-893-6745	CK05BX102K	81349	CAPACITOR, FIXED, CERAMIC DIEL	EA	1
11	22	PAHZZ		SMC747144-3	80063	CAPACITOR, FIXED, CERAMIC DIEL	EA	1
11	23	PAHZZ	5910-00-113-9448	CK05BX681K	81349	CAPACITOR, FIXED, CERAMIC DIEL	EA	2
11	24	PAHZZ	5905-00-106-1356	RCR07G152JS	81349	RESISTOR, FIXED, COMPOSITION	EA	1
11	25	PAHZZ		SMC747742	80063	COIL, RF	EA	1
11	26	PAHZZ		RCR07G913JS	81349	RESISTOR, FIXED, COMPOSITION	EA	1
11	27	PAHZZ	5910-00-924-4307	PC41J4RS	81349	CAPACITOR, VARIABLE, GLASS DIEL	EA	1
11	28	PAHZZ		SMC747740	80063	TRANSFORMER, RF	EA	1
11	29	PAHZZ		CMR03F121J0YL	81349	CAPACITOR, FIXED, MICA DIEL	EA	1
11	30	PAHZZ		SMC747743	80063	COIL, RF	EA	1
11	31	PAHZZ		MTRF2	12617	SWITCH, REED	EA	2
11	32			DELETED				
						GROUP: 010103 IF AMPLIFIER ASSEMBLY		
12	1	PAHZZ	5905-00-106-1278	RCR07G123JS	81349	RESISTOR, FIXED, COMPOSITION	EA	2
12	2	PAHZZ	5910-00-013-3718	CK06BX103K	81349	CAPACITOR, FIXED, CERAMIC, DIEL	EA	12
12	3	PAHZZ	5905-00-111-1684	RCR07G155JS	81349	RESISTOR, FIXED, COMPOSITION	EA	1
12	4	PAHZZ	5999-00-115-8357	10050DAP	07047	MOUNTING PAD, ELEC EQPT	EA	2
12	5	PAHZZ	5962-00-793-3539	SMC747077	80063	INTEGRATED CIRCUIT	EA	2
12	6	PAHZZ	5905-00-141-1183	RCR07G101JS	81349	RESISTOR, FIXED, COMPOSITION	EA	2
12	7	PAHZZ	5950-00-049-5593	52133	03550	INDUCTOR, VARIABLE	EA	2
12	8	PAHZZ	5905-00-517-9764	RJ26CX202	81349	RESISTOR, VARIABLE	EA	1
12	9	PAHZZ		CMR03F121J0YL	81349	CAPACITOR, FIXED, MICA DIEL	EA	2
12	10	PAHZZ		CMR03F201J0YL	81349	CAPACITOR, FIXED, MICA DIEL	EA	2
12	11	PAHZZ	5905-00-111-1679	RCR07G512JS	81349	RESISTOR, FIXED, COMPOSITION	EA	2
12	12	PAHZZ	5905-00-116-2394	RCR07G511JS	81349	RESISTOR, FIXED, COMPOSITION	EA	2
12	13	PAHZZ	5905-00-135-3971	RCR07G150JS	81349	RESISTOR, FIXED, COMPOSITION	EA	2
12	14	PAHZZ		16-0820-001	19505	CONNECTOR, RECEPTACLE, ELEC	EA	2
12	15	PAHZZ	5950-00-031-4559	MS75084-14	96906	COIL, RF	EA	2
12	16	PAHZZ	5905-00-115-2261	RCR07G912JS	96906	RESISTOR, FIXED, COMPOSITION	EA	1
12	17	PAHZZ	5910-00-022-2760	CK06BX104K	81349	CAPACITOR, FIXED, CERAMIC DIEL	EA	2
12	18	PAHZZ	5905-00-141-0743	RCR07G392JS	81349	RESISTOR, FIXED, COMPOSITION	EA	1
12	19	PAHZZ		SRE7P95N	81312	CONNECTOR, RECEPT, ELEC	EA	1
12	20	XAHZZ	5999-00-854-9013	7717-43DAP	13103	PAD, TRANSISTOR	EA	1



2-19

TM11-5820-770-24P



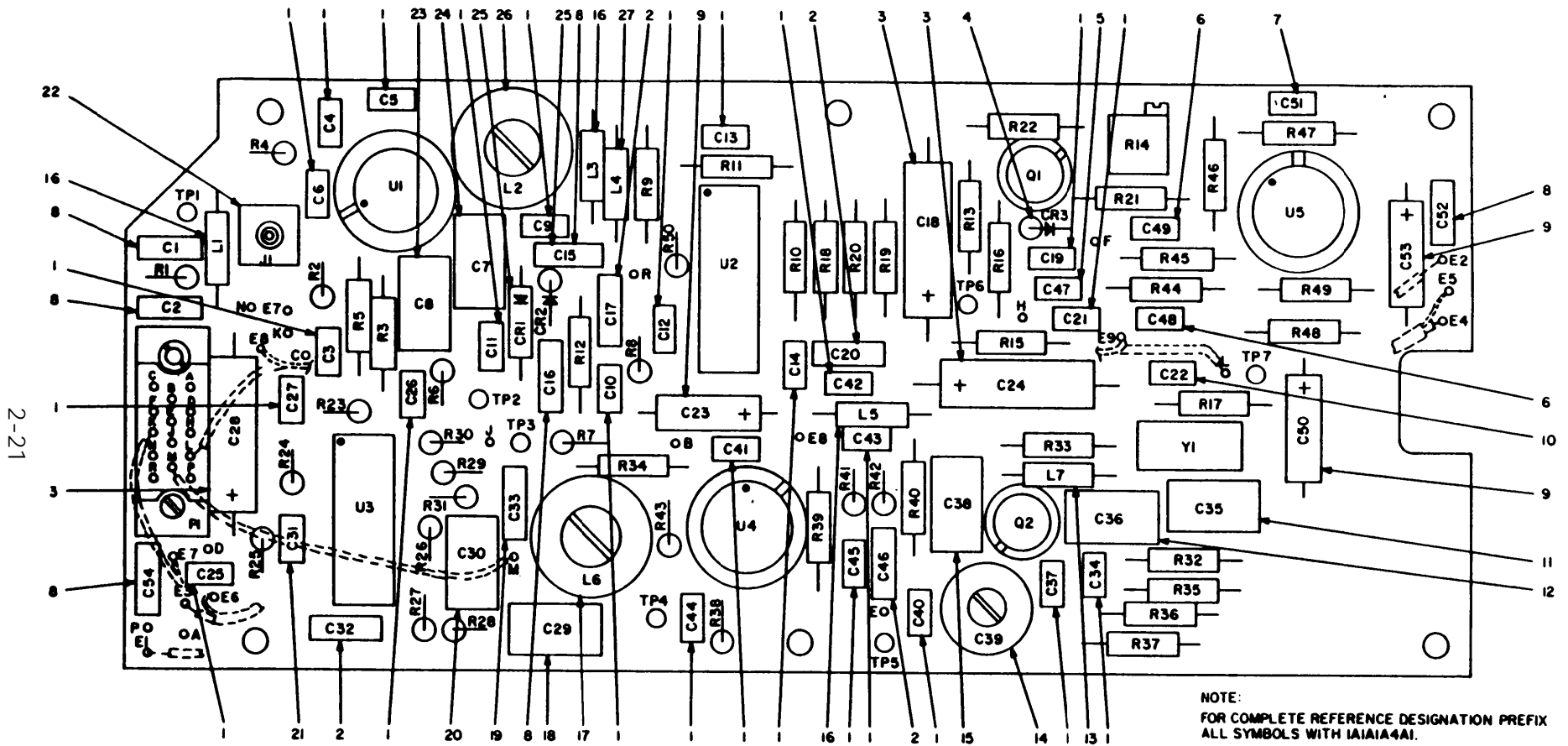
NOTE:
FOR COMPLETE REFERENCE DESIGNATION PREFIX
ALL SYMBOLS WITH 1A1A3A1.

TM5820-770-24P-12

FIGURE 12. CIRCUIT CARD ASSEMBLY, IF. AMPLIFIER, 1A1A3A1.

SECTION II REPAIR PARTS LIST (CONTINUED)

(1) ILLUSTRATION (A) FIG NO.	(2) SMR CODE (B) ITEM NO.	(3) NATIONAL STOCK NUMBER	(4) PART NUMBER	(5) FSCM	(6) DESCRIPTION	(7) UNIT OF MEAS	(8) QTY INC IN UNIT
12	21	PAHZZ 5961-00-226-8579	2N930	81349	TRANSISTOR	EA	1
12	22	PAHZZ 5905-00-111-1681	RCR07G134JS	81349	RESISTOR, FIXED, COMPOSITION	EA	1
12	23	PAHZZ 5905-00-131-9729	RCR07G302JS	81349	RESISTOR, FIXED, COMPOSITION	EA	1
12	24	PAHZZ	CM06FD561J03	81349	CAPACITOR, FIXED, MICA DIELECTRIC	EA	1
12	25	PAHZZ 5950-00-734-3940	MS18130-8	96906	COIL, RADIO FREQUENCY	EA	1
12	26	PAHZZ 5310-00-043-4708	NAS620C2	80205	WASHER, FLAT	EA	2
12	27	PAHZZ 5310-00-020-3786	NAS671C4	80205	NUT, PLAIN, HEXAGON	EA	4
12	28	PAHZZ 5310-00-093-8118	NAS1640-4	80205	WASHER, LOCK	EA	4
12	29	PAHZZ 5310-00-057-0573	NAS620C4	80205	WASHER, FLAT	EA	4
12	30	PAHZZ	SMD747566-1	80063	FILTER, BANDPASS	EA	1
12	31	PAHZZ	SMD747566-2	80063	FILTER, BANDPASS	EA	1
12	32	PAHZZ 5905-00-111-4750	RCR07G301JS	81349	RESISTOR, FIXED, COMPOSITION	EA	2
12	33	PAHZZ 5905-00-115-7953	RCR07G180JS	81349	RESISTOR, FIXED, COMPOSITION	EA	1
12	34	PAHZZ 5930-00-403-8848	MS24547-2	96906	SWITCH, PUSH	EA	4
12	35	PAHZZ	CM04FA331J03	81349	CAPACITOR, FIXED, MICA DIELECTRIC	EA	1
12	36	PAHZZ 5905-00-131-1255	RCR07G122JS	81349	RESISTOR, FIXED, COMPOSITION	EA	1
12	37	PAHZZ 5910-00-124-0659	CK05BX103K	81349	CAPACITOR, FIXED, CERAMIC DIELECTRIC	EA	1
GROUP: 010104 DETECTOR ASSEMBLY							
13	1	PAHZZ 5910-00-124-0659	CK05BX103K	81349	CAPACITOR, FIXED, CERAMIC DIELECTRIC	EA	23
13	2	PAHZZ 5910-00-113-5459	CK06BX394K	81349	CAPACITOR, FIXED, CERAMIC DIELECTRIC	EA	4
13	3	PAHZZ 5910-00-007-2003	M39003-01-2289	81349	CAPACITOR, FIXED, ELECTROLYTIC	EA	3
13	4	PAHZZ	1N458	81349	SEMICONDUCTOR DEVICE, DIODE	EA	1
13	5	PAHZZ 5910-00-113-5277	CK05BX222K	81349	CAPACITOR, FIXED, CERAMIC DIELECTRIC	EA	1
13	6	PAHZZ 5910-00-098-8670	CK05BX152K	81349	CAPACITOR, FIXED, CERAMIC DIELECTRIC	EA	2
13	7	PAHZZ	CM04FD150J03	81349	CAPACITOR, FIXED, MICA DIELECTRIC	EA	1
13	8	PAHZZ 5910-00-010-8717	CK05BX104K	81349	CAPACITOR, FIXED, CERAMIC DIELECTRIC	EA	6
13	9	PAHZZ 5910-00-007-2002	M39003-01-2283	81349	CAPACITOR, FIXED, ELECTROLYTIC	EA	3
13	10	PAHZZ 5910-00-114-0510	CK05BX223K	81349	CAPACITOR, FIXED, CERAMIC DIELECTRIC	EA	1
13	11	PAHZZ 5910-00-064-4697	CM04ED470J03	81349	CAPACITOR, FIXED, MICA DIELECTRIC	EA	1
13	12	PAHZZ	CM04FC301J03	81349	CAPACITOR, FIXED, MICA DIELECTRIC	EA	1
13	13	PAHZZ 5950-00-309-7904	MS75084-05	96906	COIL, RF	EA	1
13	14	PAHZZ 5910-00-403-8872	CV31D350	81349	CAPACITOR, VAR, CERAMIC DIELECTRIC	EA	1
13	15	PAHZZ	CM04FD750J03	81349	CAPACITOR, FIXED, MICA DIELECTRIC	EA	1
13	16	PAHZZ 5950-00-031-4559	MS75084-14	96906	COIL, RF	EA	3
13	17	PAHZZ 5950-00-493-5595	52168	3550	INDUCTOR, VARIABLE	EA	1
13	18	PAHZZ 5910-00-134-9604	CM04CD070D03	81349	CAPACITOR, FIXED, MICA DIELECTRIC	EA	1
13	19	PAHZZ 5910-00-010-8721	CK06BX105K	81349	CAPACITOR, FIXED, CERAMIC DIELECTRIC	EA	1
13	20	PAHZZ 5910-00-044-4064	CM04ED330G03	81349	CAPACITOR, FIXED, MICA DIELECTRIC	EA	1
13	21	PAHZZ	CK05BX471K	81349	CAPACITOR, FIXED, CERAMIC DIELECTRIC	EA	1
13	22	PAHZZ	16-0225-000	19505	CONNECTOR, RECEPTACLE, ELEC	EA	1

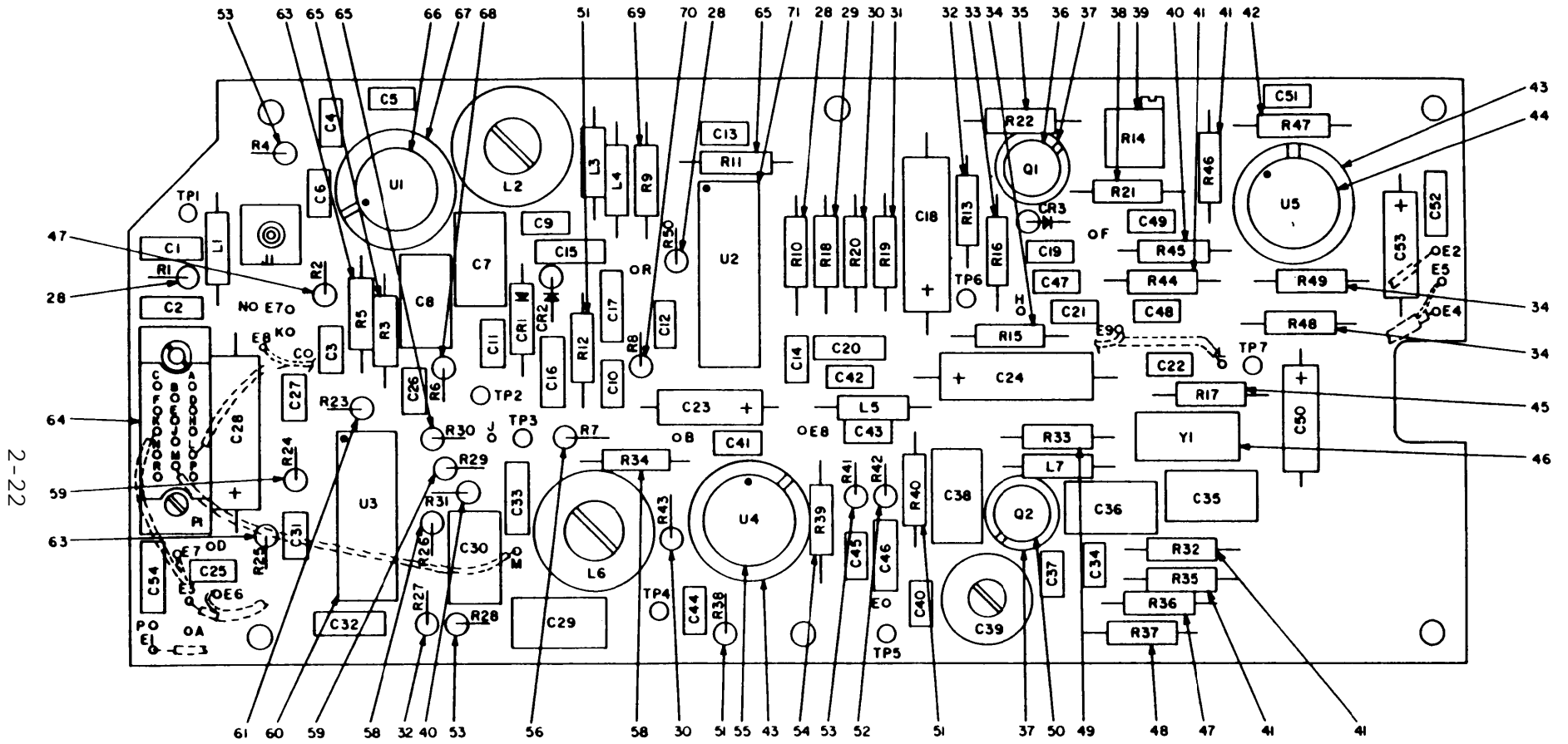


2-21

TM11-5820-770-24P

TM5820-770-24P-13

FIGURE 13. CIRCUIT CARD ASSEMBLY, DETECTOR, 1A1A1A4A1.(SHT 1 OF 2).



2-22

TM11-5820-770-24P

NOTE
 FOR COMPLETE REFERENCE DESIGNATION PREFIX
 ALL SYMBOLS WITH 1A1A1A4A1.

TM5820-770-24P-138

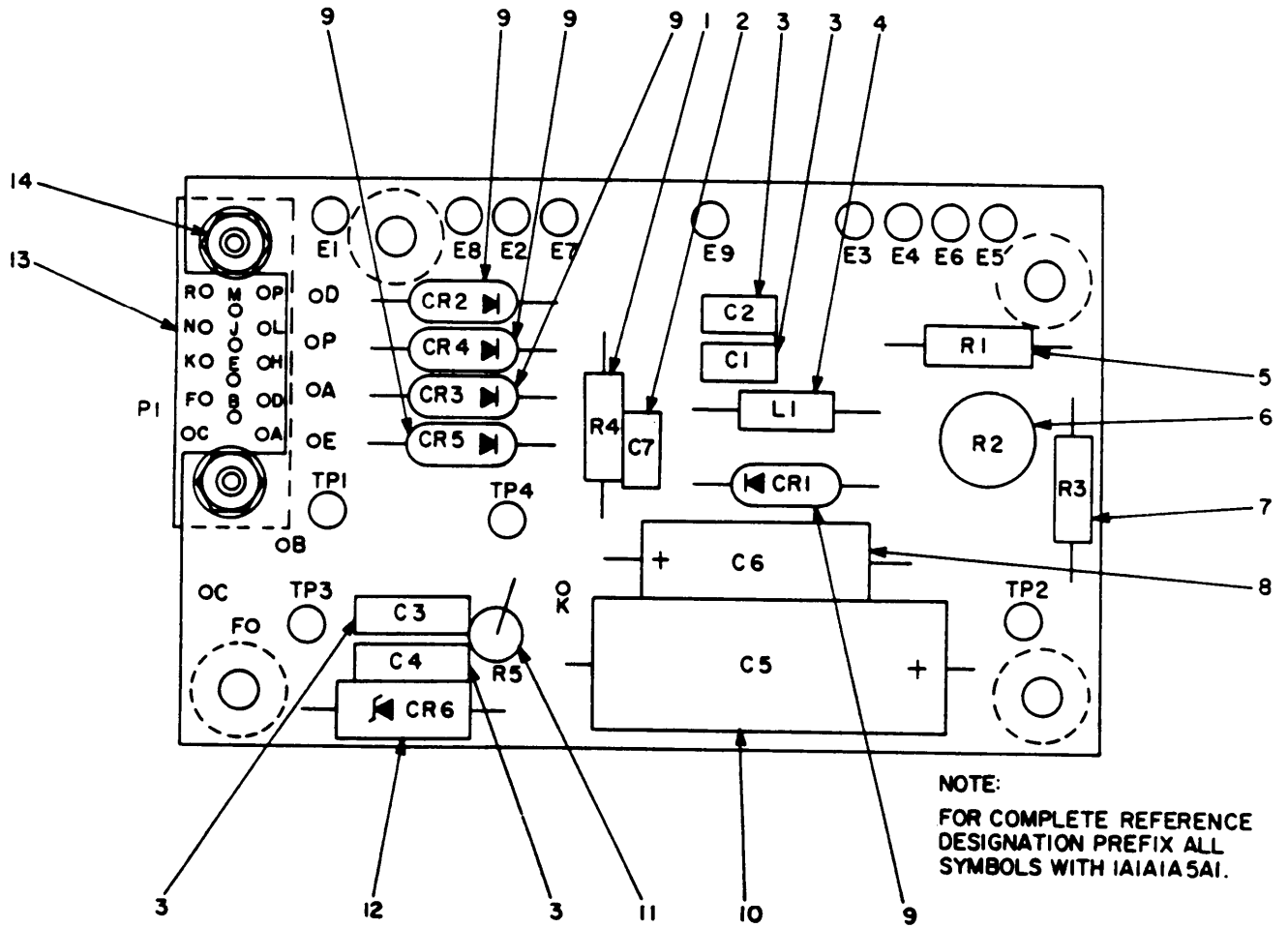
FIGURE 13. CIRCUIT CARD ASSEM DETECTOR, 1A1A1A4A1.(SHT 2 OF 2).

SECTION II REPAIR PARTS LIST (CONTINUED)

(1) ILLUSTRATION (A) FIG NO.	(2) SMR CODE ITEM NO.	(3) NATIONAL STOCK NUMBER	(4) PART NUMBER	(5) FSCM	(6) DESCRIPTION	(7) UNIT OF MEAS	(8) QTY INC IN UNIT
13	23	PAHZZ 5910-00-407-4638	CM04FD241J03	81349	CAPACITOR, FIXED, MICA DIELECTRIC	EA	1
13	24	PAHZZ 5910-00-460-5976	CM04FD121J03	81349	CAPACITOR, FIXED, MICA DIELECTRIC	EA	2
13	25	PAHZZ	1N995	81349	SEMICONDUCTOR DEVICE, DIODE	EA	2
13	26	PAHZZ 5950-00-493-5593	52133	3550	INDUCTOR, VARIABLE	EA	1
13	27	PAHZZ	MS75084-16	96906	COIL, RF	EA	1
13	28	PAHZZ 5905-00-131-1255	RCR07G122JS	81349	RESISTOR, FIXED, COMPOSITION	EA	3
13	29	PAHZZ 5905-00-110-7622	RCR07G682JS	81349	RESISTOR, FIXED, COMPOSITION	EA	1
13	30	PAHZZ 5905-00-106-1356	RCR07G152JS	81349	RESISTOR, FIXED, COMPOSITION	EA	2
13	31	PAHZZ 5905-00-141-0744	RCR07G562JS	81349	RESISTOR, FIXED, COMPOSITION	EA	1
13	32	PAHZZ 5905-00-115-8055	RCR07G393JS	81349	RESISTOR, FIXED, COMPOSITION	EA	2
13	33	PAHZZ	RCR07G335JS	81349	RESISTOR, FIXED, COMPOSITION	EA	1
13	34	PAHZZ 5905-00-110-0388	RCR07G104JS	81349	RESISTOR, FIXED, COMPOSITION	EA	3
13	35	PAHZZ 5905-00-131-9729	RCR07G302JS	81349	RESISTOR, FIXED, COMPOSITION	EA	1
13	36	PAHZZ 5961-00-226-8579	2N930	81349	TRANSISTOR	EA	1
13	37	PAHZZ 5999-00-854-9013	7717-43DAP	13103	PAD, TRANSISTOR	EA	2
13	38	PAHZZ	RCR07G913JS	81349	RESISTOR, FIXED, COMPOSITION	EA	1
13	39	PAHZZ 5905-00-411-1109	RJ26CX253	81349	RESISTOR, VARIABLE	EA	1
13	40	PAHZZ	RCR07G473JS	81349	RESISTOR, FIXED, COMPOSITION	EA	2
13	41	PAHZZ	RCR07G513JS	81349	RESISTOR, FIXED, COMPOSITION	EA	4
13	42	PAHZZ	RCR07G275JS	81349	RESISTOR, FIXED, COMPOSITION	EA	1
13	43	PAHZZ 5999-00-054-0339	7717-19DAP	13103	MOUNTING PAD, ELEC EQPT	EA	2
13	44	PAHZZ	M38510-10101CGC	80063	INTEGRATED CIRCUIT	EA	1
13	45	PAHZZ 5905-00-114-0708	RCR07G202JS	81349	RESISTOR, FIXED, COMPOSITION	EA	2
13	46	PAHZZ	CR64BU10-700	80063	CRYSTAL, QUARTZ	EA	1
13	47	PAHZZ 5910-00-068-3887	RCR07G512JS	81349	RESISTOR, FIXED, COMPOSITION	EA	2
13	48	PAHZZ 5905-00-113-4863	RCR07G300JS	81349	RESISTOR, FIXED, COMPOSITION	EA	1
13	49	PAHZZ 5905-00-136-8406	RCR07G242JS	81349	RESISTOR, FIXED, COMPOSITION	EA	1
13	50	PAHZZ	2N918	81349	TRANSISTOR	EA	1
13	51	PAHZZ 5905-00-106-3666	RCR07G103JS	81349	RESISTOR, FIXED, COMPOSITION	EA	3
13	52	PAHZZ 5905-00-141-0743	RCR07G392JS	81349	RESISTOR, FIXED, COMPOSITION	EA	1
13	53	PAHZZ 5905-00-106-1276	RCR07G123JS	81349	RESISTOR, FIXED, COMPOSITION	EA	3
13	54	PAHZZ 5905-00-116-2394	RCR07G511JS	81349	RESISTOR, FIXED, COMPOSITION	EA	1
13	55	PAHZZ	SMC747622	80063	INTEGRATED CIRCUIT	EA	1
13	56	PAHZZ 5905-00-119-3504	RCR07G273JS	81349	RESISTOR, FIXED, COMPOSITION	EA	1
13	57	PAHZZ	DELETED				
13	58	PAHZZ 5905-00-106-9356	RCR07G203JS	81349	RESISTOR, FIXED, COMPOSITION	EA	2
13	59	PAHZZ 5905-00-120-9154	RCR07G471JS	81349	RESISTOR, FIXED, COMPOSITION	EA	2
13	60	PAHZZ	SMC747623	80063	INTEGRATED CIRCUIT	EA	1
13	61	PAHZZ 5905-00-114-0711	RCR07G472JS	81349	RESISTOR, FIXED, COMPOSITION	EA	1
13	62	PAHZZ 5310-00-043-4708	NAS620C2	80205	WASHER, FLAT	EA	2

SECTION II REPAIR PARTS LIST (CONTINUED)

(1) ILLUSTRATION (A) FIG NO.	(2) SMR CODE ITEM NO.	(3) NATIONAL STOCK NUMBER	(4) PART NUMBER	(5) FSCM	(6) DESCRIPTION	(7) UNIT OF MEAS	(8) QTY INC IN UNIT
13	63	PAHZZ 5905-00-135-3971	RCR07G150JS	81349	RESISTOR, FIXED, COMPOSITION	EA	2
13	64	PAHZZ	SRE14P95N	81312	CONNECTOR, RECEPT, ELEC	EA	1
13	65	PAHZZ 5905-00-110-7020	RCR07G102JS	81349	RESISTOR, FIXED, COMPOSITION	EA	3
13	66	PAHZZ 5962-00-079-3539	SMC747077	80063	INTEGRATED CIRCUIT	EA	1
13	67	PAHZZ 5999-00-115-8357	10050DAP	7047	MOUNTING PAD, ELEC EQPT	EA	1
13	68	PAHZZ 5905-00-105-7768	RCR07G561JS	81349	RESISTOR, FIXED, COMPOSITION	EA	1
13	69	PAHZZ 5905-00-116-8555	RCR07G153JS	81349	RESISTOR, FIXED, COMPOSITION	EA	1
13	70	PAHZZ 5905-00-135-3973	RCR07G221JS	81349	RESISTOR, FIXED, COMPOSITION	EA	1
13	71	PAHZZ	SMC747621	80063	INTEGRATED CIRCUIT	EA	1
GROUP: 010105 POWER SUPPLY ASSEMBLY							
14	1	PAHZZ 5905-00-126-6688	RCR07G8R2JS	81349	RESISTOR, FIXED, COMPOSITION	EA	1
14	2	PAHZZ	CK05BX102K	81349	CAPACITOR, FIXED, CERAMIC DIELECTRIC	EA	1
14	3	PAHZZ 5910-00-893-6745	CK06BX104K	81349	CAPACITOR, FIXED, CERAMIC DIELECTRIC	EA	3
14	4	PAHZZ 5910-00-154-0547	MS75084-14	96906	COIL, RF	EA	1
14	5	PAHZZ 5905-00-106-1278	RCR07G123JS	81349	RESISTOR, FIXED, COMPOSITION	EA	1
14	6	PAHZZ 5905-00-758-4034	RJ50CP502	81349	RESISTOR, VARIABLE	EA	1
14	7	PAHZZ 5905-00-110-7622	RCR07G682JS	81349	RESISTOR, FIXED, COMPOSITION	EA	1
14	8	PAHZZ	M39003-01-2304	81349	CAPACITOR, FIXED, ELECTROLYTIC	EA	1
14	9	PAHZZ 5961-00-876-6047	1N645	81349	SEMICONDUCTOR DEVICE, DIODE	EA	5
14	10	PAHZZ	M39003-01-2312	81349	CAPACITOR, FIXED, ELECTROLYTIC	EA	1
14	11	PAHZZ 5905-00-233-4038	RN55D1743F	81349	RESISTOR, FIXED, FILM	EA	1
14	12	PAHZZ	1N4968	81349	SEMICONDUCTOR DEVICE, DIODE	EA	1
14	13	PAHZZ	SRE14P95N	81312	CONNECTOR, RECEPT, ELEC	EA	1
14	14	PAHZZ 5310-00-043-4708	NAS620C2	80205	WASHER, FLAT	EA	2
15	1	PAHZZ 5905-00-104-5755	RCR20G100JS	81349	RESISTOR, FIXED, COMPOSITION	EA	1
15	2	PAHZZ 5961-00-996-1805	2N3767	4713	TRANSISTOR	EA	1
15	3	PAHZZ 5305-00-054-5648	MS1957-14	96906	SCREW, MACHINE	EA	4
15	4	PAHZZ 5310-00-057-0573	NAS620C4	80205	WASHER, FLAT	EA	4
15	5	PAHZZ 5310-00-933-8118	NAS1640-4	80205	WASHER, LOCK	EA	4
15	6	PAHZZ 5310-00-208-3786	NAS671C4	81205	NUT, PLAIN, HEXAGON	EA	4
15	7	PAHZZ	1N5309	81349	SEMICONDUCTOR DEVICE, DIODE	EA	2
15	8	PAHZZ	1N967B	81349	SEMICONDUCTOR DEVICE, DIODE	EA	1
15	9	PAHZZ	69F2371G8	6001	CAPACITOR, FIXED, ELECTROLYTIC	EA	1
15	10	PAHZZ 5910-00-010-8717	CK05BX104K	81349	CAPACITOR, FIXED, CERAMIC DIELECTRIC	EA	1
15	11	PAHZZ 5999-00-854-9013	7717-43DAP	13103	PAD, TRANSISTOR	EA	1
15	12	PAHZZ 5961-00-226-8579	2N930	81349	TRANSISTOR	EA	1
15	13	PAHZZ 5910-00-893-6745	CK05BX102K	81349	CAPACITOR, FIXED, CERAMIC DIELECTRIC	EA	1
15	14	PAHZZ 5961-00-226-8579	SMC747625	80063	INTEGRATED CIRCUIT	EA	1



TM5820-770-24P-14

FIGURE 14. CIRCUIT CARD ASSEMBLY, POWER SUPPLY, 1A1A1A5A1.

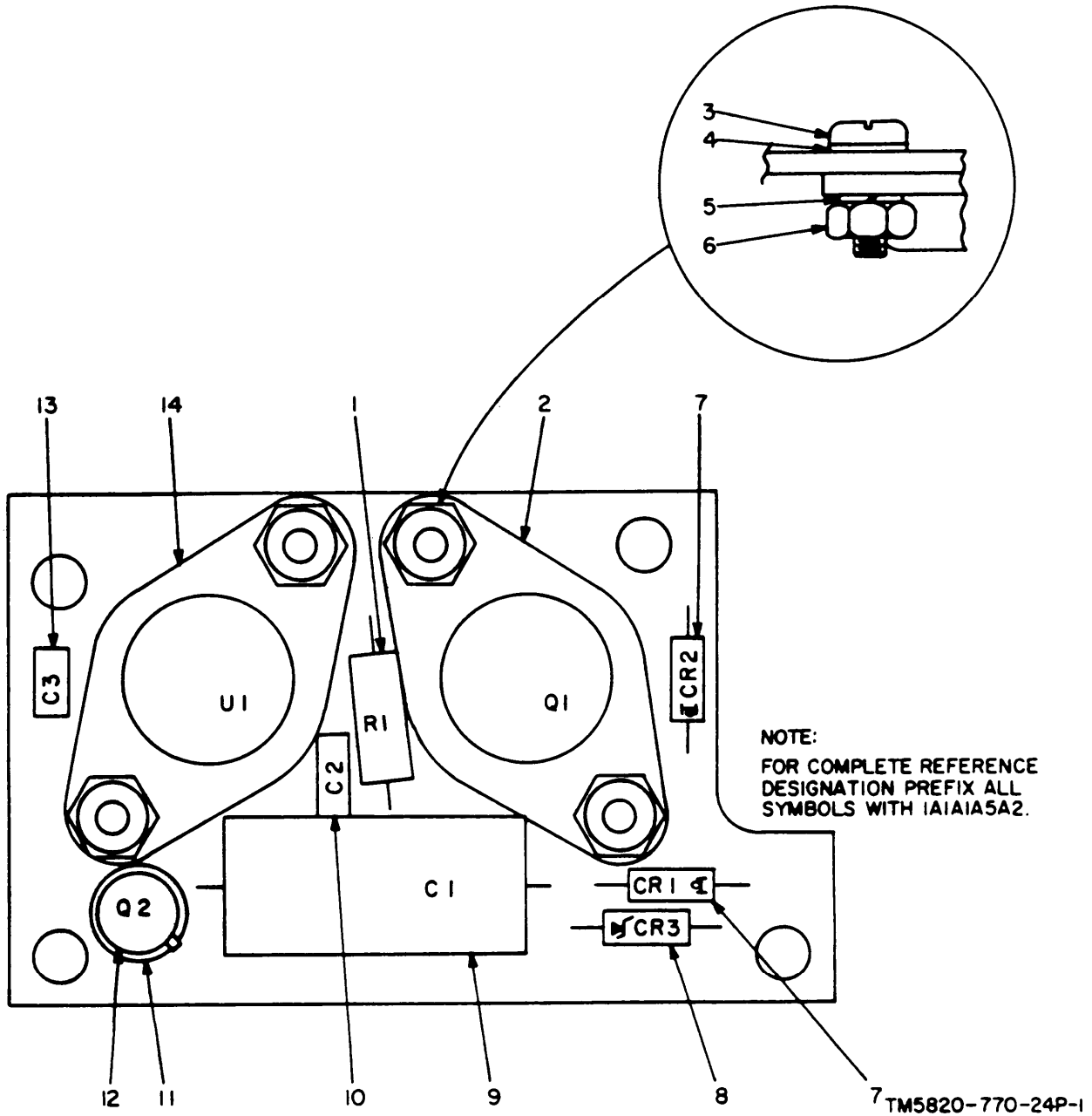
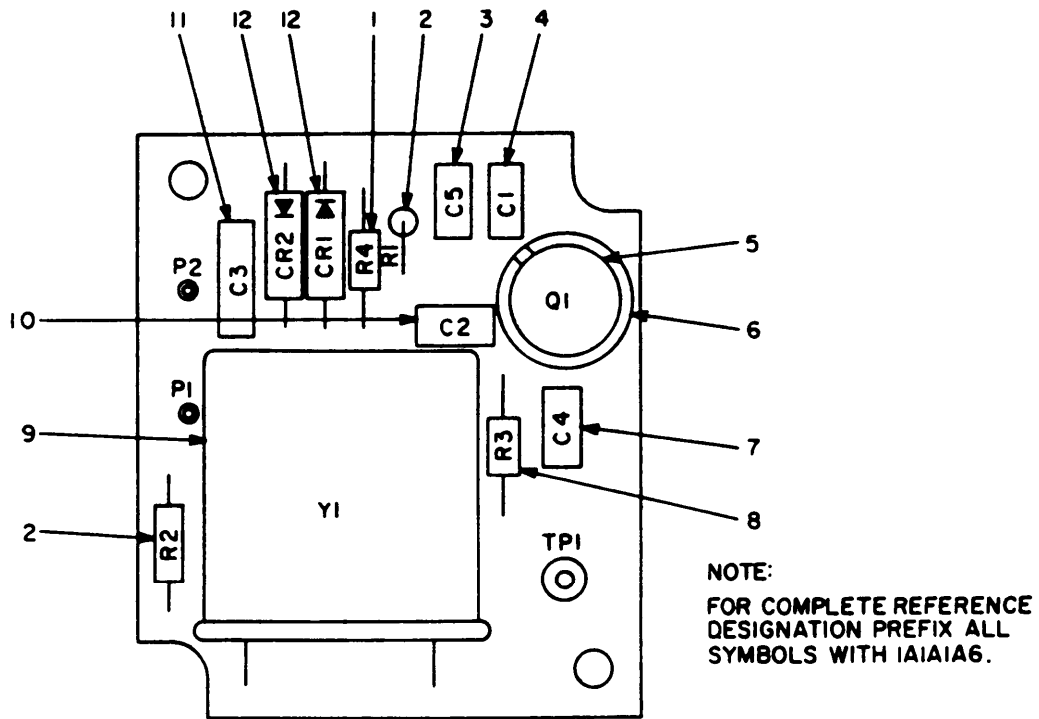


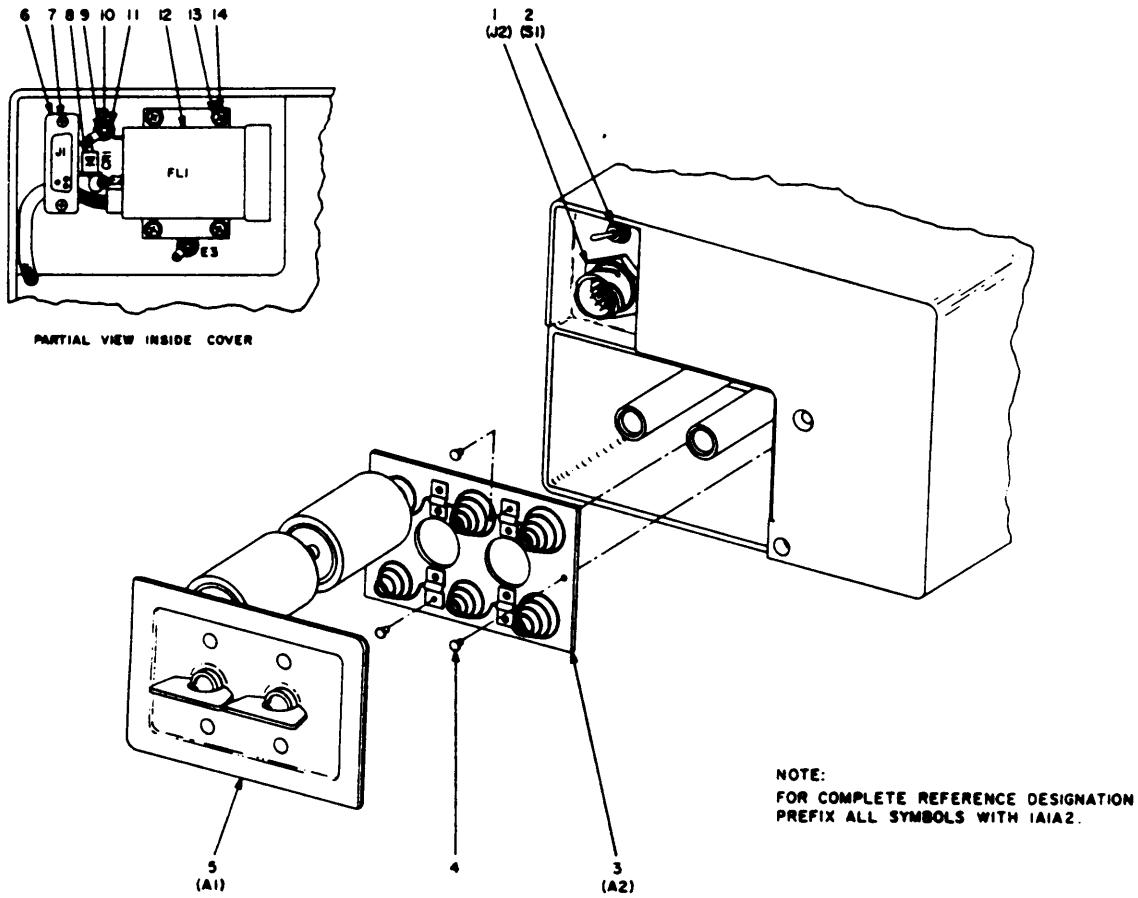
FIGURE 15. CIRCUIT CARD ASSEMBLY, REGULATOR, 1A1A1A5A2.

SECTION II REPAIR PARTS LIST (CONTINUED)							
(1)	(2)	(3)	(4)	(5)	(6)	(7)	(8)
ILLUSTRATION	SMR	NATIONAL	PART	FSCM	DESCRIPTION	UNIT	QTY
(A)	(B)	STOCK	NUMBER			OF	INC
FIG	ITEM	NUMBER				MEAS	IN
NO.	NO.					USABLE ON	UNIT
						CODE	
16	1	PAHZZ	5905-00-458-9500	RCR05G361JS	81349	RESISTOR, FIXED, COMPOSITION	EA 1
16	2	PAHZZ	5905-00-412-3776	RCR05G183JS	81349	RESISTOR, FIXED, COMPOSITION	EA 2
16	3	PAHZZ	5910-00-113-5328	CK05BX151K	81349	CAPACITOR, FIXED, CERAMIC DIELECTRIC	EA 1
16	4	PAHZZ	5910-00-113-5445	CK05BX101K	81349	CAPACITOR, FIXED, CERAMIC DIELECTRIC	EA 1
16	5	PAHZZ		2N1225	81349	TRANSISTOR	EA 1
16	6	PAHZZ	5999-00-854-9013	7717-43DAP	13103	PAD, TRANSISTOR	EA 1
16	7	PAHZZ	5910-00-113-5687	CK05BX390K	81349	CAPACITOR, FIXED, CERAMIC DIELECTRIC	EA 1
16	8	PAHZZ	5905-00-470-9481	RCR05G202JS	18349	RESISTOR, FIXED, COMPOSITION	EA 1
16	9	PAHZZ	5905-00-141-0717	SMC747441	80063	CRYSTAL, QUARTZ	EA 1
16	10	PAHZZ	5910-00-893-6745	CK05BX102K	81349	CAPACITOR, FIXED, CERAMIC DIELECTRIC	EA 1
16	11	PAHZZ	5910-00-022-2760	CK06BX104K	81349	CAPACITOR, FIXED, CERAMIC DIELECTRIC	EA 1
16	12	PAHZZ		SMC747442	80063	SEMICONDUCTOR DEVICE, DIODE	EA 2
						GROUP: 0102 DUST COVER ASSEMBLY	
17	1	PAHZZ		SCDL598903	80063	CONNECTOR	EA 1
17	2	PAHZZ	5930-00-892-9714	MS24656-231	96906	SWITCH, TOGGLE	EA 1
17	3	PAHZZ		SMC747226	80063	CONTACT ASSEMBLY	EA 1
17	4	XDHZZ		MS16535-138	96906	RIVET, TUBULAR	EA 1
17	5	PAOHH		SMC747215	80063	COVER ASSEMBLY	EA 1
17	6	PAHZZ	5935-00-856-2659	DAMF15S	71468	CONNECTOR, RECEPT, ELECTRIC	EA 1
17	7	PAHZZ	5305-00-054-5638	MS51957-4	96906	SCREW, MACHINE	EA 2
17	8	PAHZZ		1N91	4713	SEMICONDUCTOR DEVICE, DIODE	EA 1
17	9	PAHZZ	5310-00-903-1509	NAS620C5	80205	WASHER, FLAT	EA 1
17	10	PAHZZ		MS16535-141	96906	RIVET, TUBULAR	EA 1
17	11	PAHZZ	5310-00-994-1649	5607-14	86928	WASHER, SHOULDERED	EA 1
17	12	PAHZZ		A2285	23939	FILTER, POWER	EA 1
17	13	PAHZZ	5310-00-933-8118	NAS1640-4	80205	WASHER, LOCK	EA 4
17	14	XDHZZ		MS51957-12	96906	SCREW, MACHINE	EA 4
18	1	PAHZZ		SMC747221	80063	SCREW, ASSEMBLY	EA 2
18	2	PAHZZ		MS28775-008	96906	PACKING, PREFORMED	EA 2
18	3	PAHZZ		SMB747217	80063	GASKET	EA 1
18	4	PAHZZ	5365-00-725-0969	MS1633-401	96906	RING, RETAINING	EA 2
						GROUP: 11 MAINTENANCE ITEM SET	
		PDHZZ	5820-01-018-2138	SMB747494	80063	MAINTENANCE ITEM SET	EA 1
19	1	PDHZZ		56-0528-000	19505	ADAPTER, CONNECTOR	EA 1
19	2	PDHZZ	5935-00-192-4760	M642-4-1	81349	PLUG, TELEPHONE	EA 1
19	3	PDHZZ		435-2589-01-00-00	71279	TOOL, ALIGNMENT	EA 1
19	4	PDHZZ		SMC747488	80063	TOOL, ALIGNMENT	EA 1
19	5	PDHZZ	5305-00-054-5646	MS3116E10-6S	96906	CONNECTOR, PLUG, ELECTRICAL	EA 2



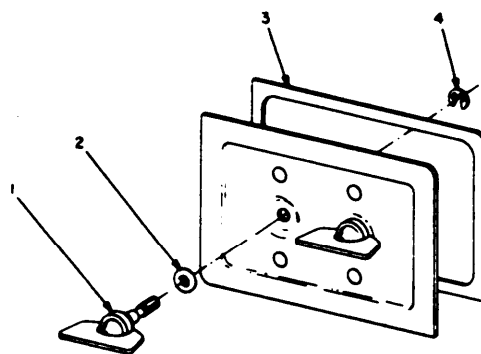
TM5820-770-24P-16

FIGURE 16. CIRCUIT CARD ASSEMBLY, CALIBRATION OSC, 1A1A1A6A1.



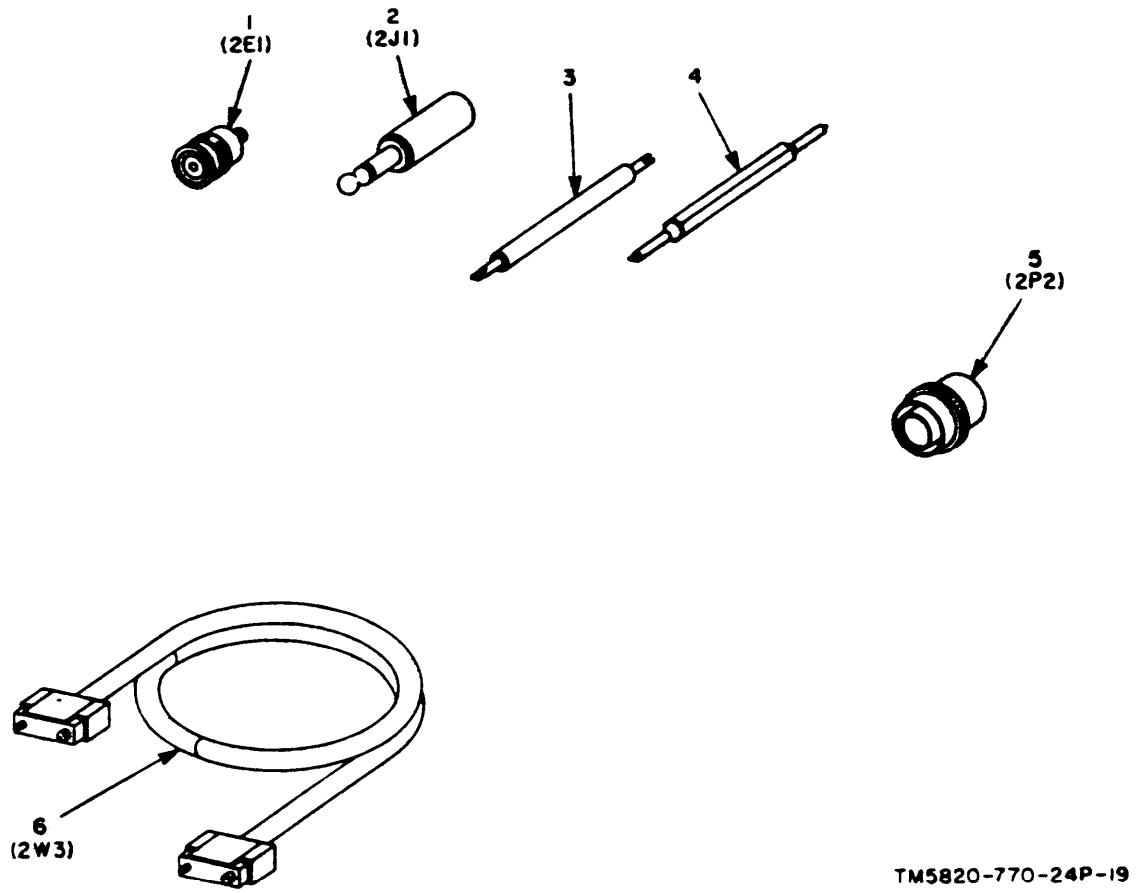
TM5820-770-24P-17

FIGURE 17. DUST COVER ASSEMBLY, 1A1A2.



TM5820-770-24P-18

FIGURE 18. COVER ASSEMBLY.

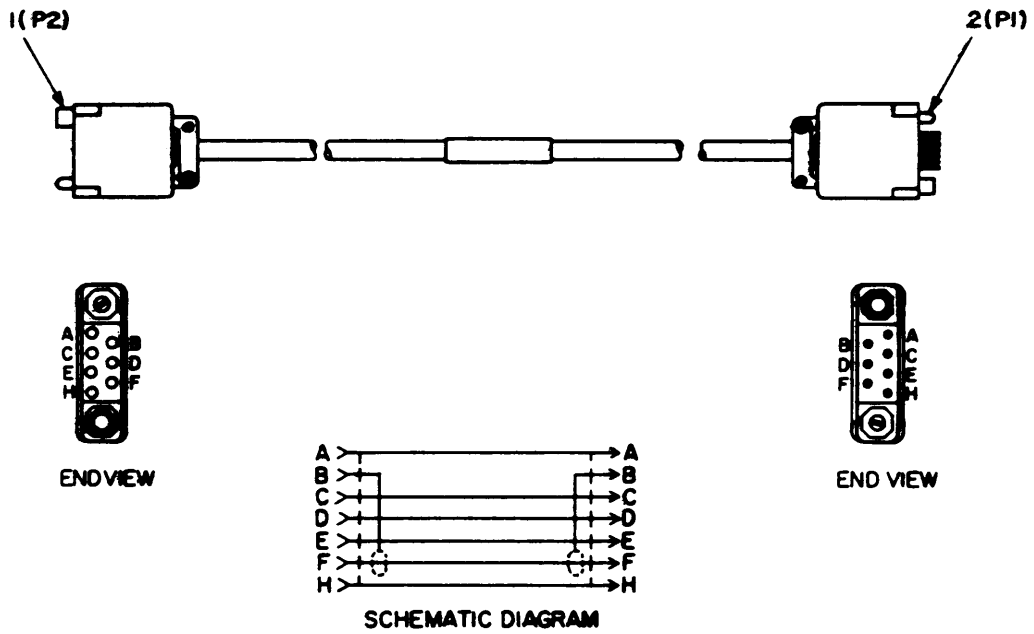


TM5820-770-24P-19

FIGURE 19. MAINTENANCE ITEM SET.

SECTION II REPAIR PARTS LIST (CONTINUED)

(1)	(2)	(3)	(4)	(5)	(6)	(7)	(8)	
ILLUSTRATION	SMR	NATIONAL	PART	FSCM	DESCRIPTION	UNIT	QTY	
(A)	(B)	STOCK	NUMBER			OF	INC	
FIG	ITEM	NUMBER				MEAS	IN	
NO.	NO.					USABLE ON	UNIT	
						CODE		
19	6	PDHZZ	SMD747270	80063	CABLE ASSEMBLY	EA	1	
20	1	XAHZZ	SRE7S36N	81312	CONNECTOR, RECEPT, ELEC	EA	1	
20	2	XAHZZ	5820-00-763-3101	SRE7P95N	81312	CONNECTOR, RECEPT, ELEC	EA	1



NOTE:
 FOR COMPLETE REFERENCE DESIGNATION PREFIX
 ALL SYMBOLS WITH 2W4. TM5820-770-24P-20

FIGURE 20. CABLE ASSEMBLY, 2W3.

SECTION IV NATIONAL STOCK NUMBER AND PART NUMBER INDEX

NOTE: LATEST NATIONAL STOCK NUMBER AND PART NUMBER ARE INCLUDED

AT END OF INDEX

STOCK NUMBER	FIG. NO.	ITEM NO.	STOCK NUMBER	FIG. NO.	ITEM NO.
5305-00-054-5637	3	4	5905-00-106-1278	13	53
5305-00-054-5638	17	7		14	5
5305-00-054-5641	3	11	5905-00-106-1356	11	24
5305-00-054-5645	3	46		13	30
5305-00-054-5647	3	35	5905-00-106-3666	8	15
5305-00-054-5648	3	23		9	16
	15	3		11	15
5305-00-054-5649	5	23		13	51
5305-00-054-5650	5	20	5905-00-106-9356	13	58
5305-00-054-6651	3	32	5905-00-110-0388	13	34
5305-00-225-6400	3	24	5905-00-110-7020	9	6
5305-00-619-4577	5	2		10	6
5305-00-908-2829	3	25		11	18
5310-00-043-4708	3	2		13	65
	6	4	5905-00-110-7620	8	6
	12	26	5905-00-110-7622	13	29
	13	62		14	7
	14	14	5905-00-111-1679	12	11
5310-00-054-5636	3	7	5905-00-111-1681	12	22
5310-00-057-0573	5	22	5905-00-111-1684	12	3
	12	29	5905-00-111-4750	9	9
	15	4		10	11
5310-00-139-7088	4	17		11	7
5310-00-208-3786	5	26		12	32
	12	27	5905-00-113-4863	13	48
	15	6	5905-00-114-0708	13	45
5310-00-543-4652	3	6	5905-00-114-0711	7	6
5310-00-773-7624	5	7		13	61
5310-00-782-1349	5	25	5905-00-114-5344	10	18
5310-00-903-1509	17	9	5905-00-115-2261	12	16
5310-00-928-2690	3	12	5905-00-115-7953	12	33
5310-00-933-8118	3	34	5905-00-115-8055	13	32
	5	21	5905-00-116-2394	11	12
	12	28		12	12
	15	5		13	54
	17	13	5905-00-116-8555	13	69
5310-00-994-1649	17	11	5905-00-119-3504	13	56
5330-00-542-1365	4	24	5905-00-120-9154	8	16
5355-00-043-1947	4	19		9	18
5355-00-935-7640	4	26		10	19
5355-00-980-5647	4	13		11	11
5365-00-725-0969	18	4		13	59
5820-00-013-9001	1	1	5905-00-126-6688	14	1
5820-00-013-9005	1	3	5905-00-131-1255	12	36
5820-00-763-3101	1	2		13	28
5905-00-041-1109	13	39	5905-00-131-9729	12	23
5905-00-104-5755	15	1		13	35
5905-00-104-8360	8	9	5905-00-135-3971	12	13
5905-00-105-7768	13	68		13	63
5905-00-106-1278	12	1	5905-00-135-3973	13	70

SECTION IV NATIONAL STOCK NUMBER AND PART NUMBER INDEX (CONTINUED)

STOCK NUMBER	FIG. NO.	ITEM NO.	STOCK NUMBER	FIG. NO.	ITEM NO.
5905-00-136-8406	13	49	5910-00-893-6745	7	7
5905-00-141-0717	9	10		8	10
	10	12		9	11
5905-00-141-0741	8	11		10	13
	9	12		11	21
5905-00-141-0741	10	14		14	3
5905-00-141-0743	12	18		15	13
	13	52		16	10
5905-00-141-0744	13	31	5910-00-924-4307	11	27
5905-00-141-1183	12	6	5910-00-933-4886	7	2
5905-00-233-4038	14	11		8	3
5905-00-412-3776	16	2		9	3
5905-00-458-9500	16	1		10	3
5905-00-470-9481	16	8		11	8
5905-00-517-9764	12	8	5910-00-992-3306	7	11
5905-00-758-4034	14	6		8	19
5910-00-007-2002	13	9		9	21
5910-00-007-2003	13	3		10	20
5910-00-010-8717	15	10	5920-00-556-0144	4	21
	13	8	5930-00-126-1667	4	29
5910-00-010-8721	13	19	5930-00-403-8848	12	34
5919-00-018-8718	12	2	5930-00-823-0482	3	36
5910-00-044-4064	13	20	5930-00-892-9327	4	8
5910-00-064-4697	13	11	5930-00-892-9714	17	2
5910-00-098-8670	13	6	5935-00-192-4760	19	2
5910-00-113-5277	13	5	5935-00-434-8771	4	32
5910-00-113-5328	16	3	5935-00-539-1940	6	1
5910-00-113-5445	16	4	5935-00-856-2659	17	6
5910-00-113-5459	13	2	5935-00-975-6265	3	33
			5935-00-997-8026	4	14
			5950-00-031-4557	6	5
			5950-00-031-4559	12	15
				13	16
5910-00-113-5687	16	7		14	4
5910-00-113-9448	11	23	5950-00-243-0093	8	8
5910-00-114-0510	13	10		9	8
	3	40B		10	8
5910-00-124-0659	8	2	5950-00-309-7904	13	13
	9	2	5950-00-493-5593	12	7
	10	2		13	26
	11	6	5950-00-493-5595	13	17
	12	37	5950-00-734-3940	12	25
	13	1	5961-00-087-6047	14	9
5910-00-134-9604	13	18	5961-00-226-8579	12	21
5910-00-144-4381	14	8		13	36
5910-00-154-0547	14	10		15	12
5910-00-403-8872	13	14	5961-00-996-1805	15	2
5910-00-407-4638	13	23	5962-00-079-3539	12	5
5910-00-460-5976	13	24		13	66
5910-00-893-6745	3	40A	5999-00-054-0339	13	43

SECTION IV NATIONAL STOCK NUMBER AND PART NUMBER INDEX (CONTINUED)

STOCK NUMBER	FIG. NO.	ITEM NO.	STOCK NUMBER	FIG. NO.	ITEM NO.
5999-00-115-8357	12	4	5999-00-854-9013	11	2
	13	67		12	20
5999-00-854-9013	8	17	13	37	
	9	19	15	11	
	10	10	16	6	

SECTION IV NATIONAL STOCK NUMBER AND PART NUMBER INDEX

PART NO.	FSCM	FIG. NO.	ITEM NO.	PART NO.	FSCM	FIG. NO.	ITEM NO.
AN960C4	88044	5	25	CMR03E680J0YL	81349	9	4
AS2887UR	80058	1	3			10	4
A2285	23939	17	12	CMR03F121J0YL	81349	11	29
CK05BX101K	81349	16	4			12	9
CK05BX102K	81349	7	7	CMR03F151J0YL	81349	11	9
		8	0	CMR03F201J0YL	81349	12	10
		9	11	CM04CD070D03	81349	13	18
		10	13	CM04ED330G03	81349	13	20
		11	21	CM04ED470J03	81349	13	11
		15	13	CM04FA331J03	81349	12	35
		16	10	CM04FC301J03	81349	13	12
		14	2	CM04FD121J03	81349	13	24
CK05BX103K	81349	8	2	CM04FD150J03	81349	13	7
		9	2	CM04FD241J03	81349	13	23
		10	2	CM04FD750J03	81349	13	15
		11	6	CM06FD561J03	81349	12	24
		12	37	CR64BU10-700	80063	13	46
		13	1	CV31D350	81349	13	14
CK05BX103M	81349	4	11	CW1005UR	80058	1	2
CK05BX104K	81349	15	10	DAMF15S	71468	17	6
		13	8	FHN20G	81349	4	21
CK05BX151K	81349	16	3	F02A250V1-8A	81349	4	22
CK05BX152K	81349	13	6			1	6
CK05BX222K	81349	13	5	G70-9	00328	5	1
CK05BX223K	81349	13	10	J97964	01121	4	4
CK05BX390K	81349	16	7	MS16535-138	96906	17	4
CK05BX471K	81349	13	21	MS16535-141	96906	17	10
CK05BX681K	81349	11	23	MS16633-4018	96906	18	4
CK06BX103K	81349	12	2	MS16995-2	96906	5	10
CK06BX104K	81349	14	3	MS16995-18	96906	5	6
		4	31	MS18130-8	96906	12	25
		12	17	MS24547-2	96906	12	34
		16	11	MS24655-311	96906	4	29
CK06BX105K	81349	13	19	MS24656-231	96906	17	2
CK06BX394K	81349	13	2	MS24693C2	96906	5	18
CK61BX331K	81349	4	20	MS24693C26	96906	3	21
CMR03C1R0D0CL	81349	11	16	MS24693C3	96906	3	24
CMR03C100D0CL	81349	7	13	MS24693C8	96906	3	25
CMR03C150D0AL	81349	8	13	MS25082C13	96906	4	17
		9	14	MS28775-008	96906	18	2
		10	16	MS28775-009	96906	4	24
CMR03C180D0CL	81349	11	20	MS3116E10-6S	96906	19	5
CMR03C5R0D0CL	81349	7	8	MS35333-69	96906	3	6
CMR03C8R0D0CL	81349	7	1	MS35333-74	96906	4	16
CMR03E200D0AL	81349	7	10	MS51021-3	96906	5	2
CMR03E270J0YL	81349	11	10	MS51923-123	96906	4	33
		11	32	MS51957-10	96906	3	46
CMR03E680J0YL	81349	7	3	MS51957-12	96906	17	14
		8	4	MS51957-13	96906	3	35

SECTION IV NATIONAL STOCK NUMBER AND PART NUMBER INDEX

PART NO.	FSCM	FIG. NO.	ITEM NO.	PART NO.	FSCM	FIG. NO.	ITEM NO.
MS51957-14	96906	3	23	NAS620C2	80205	3	2
		15	3			6	4
MS51957-15	96906	5	23			12	26
MS51957-16	96906	5	20			13	62
MS51957-2	96906	3	7			14	14
MS51957-27	96906	3	32	NAS620C4	80205	3	42
MS51957-3	96906	3	4			5	22
MS51957-4	96906	17	7			12	29
MS51957-7	96906	3	11			15	4
MS75084-05	96906	13	13	NAS620C5	80205	17	9
MS75084-09	96906	8	8	NAS620C6	80205	5	7
		9	8	NAS671C4	80205	3	43
		10	8			5	26
MS75084-12	96906	6	5			12	27
MS75084-14	96906	12	15			15	6
		13	16	PC41J4R5	81349	11	27
		14	4	PC51J110	81349	7	11
MS75084-16	96906	13	27			8	19
MS77068-2	96906	5	8			9	21
MS91528-OMM1B	96906	4	24A			10	20
MS91528-OMM2B	96906	4	23	QC0-68UUFP0M-			
MS91528-OMM3B	96906	4	18	5PCT	95121	10	17
MS91528-ON3B	96906	4	26	QC1-0UUFP0RM-			
MS91528-OP2B	96906	4	13	5PCT	95121	8	14
MS91528-OP3B	96906	4	19			9	15
MTRF2	12617	7	14	RCR05G183JS	81349	16	2
		8	22	RCR05G202JS	81349	16	8
		9	24	RCR05G361JS	81349	16	1
		10	23	RCR07G101JS	81349	12	6
		11	31	RCR07G102JS	81349	8	6
MZ4E48P1	00328	5	5			9	6
M24308-3-2	81349	5	33			10	6
M38510-10101CGC	80063	13	44			11	18
M39003-01-2283	81349	13	9			13	65
M39003-01-2289	81349	13	3	RCR07G103JS	81349	8	15
M39003-01-2304	81349	14	8			9	16
M39003-01-2312	81349	14	10			11	15
						13	51
M39012-24-0002	81349	4	14	RCR07G104JS	81349	13	34
M5423-09-02	81349	3	36	RCR07G122JS	81349	12	36
M641-18-1	81349	4	32			13	28
M642-4-1	81349	19	2	RCR07G123JS	81349	12	1
NAS1640-2	80205	3	12			13	53
NAS1640-4	80205	3	34			14	5
		5	21	RCR07G134JS	81349	12	22
		12	28	RCR07G150JS	81349	12	13
		15	5			13	63
		17	13	RCR07G152JS	81349	11	24

SECTION IV NATIONAL STOCK NUMBER AND PART NUMBER INDEX

PART NO.	FSCM	FIG. NO.	ITEM NO.	PART NO.	FSCM	FIG. NO.	ITEM NO.
RCR07G152JS	81349	13	30	RCR07G913JS	81349	13	38
RCR07G153JS	81349	13	69	RCR20G100JS	81349	15	1
RCR07G155JS	81349	12	3	RJ26CX202	81349	12	8
RCR07G180JS	81349	12	33	RJ26CX253	81349	13	39
RCR07G184JS	81349	10	18	RJ50CP502	81349	14	6
RCR07G202JS	81349	7	6	RN55D1743F	81349	14	11
		13	45	RV6SAYSAL03D	81349	4	1
RCR07G203JS	81349	13	58	R1518UR	80058	1	1
RCR07G204JS	81349	9	17	SCDL598903	80063	17	1
		11	13	SMB746973-4	80063	3	38
RCR07G221JS	81349	13	70	SMB746973-5	80063	4	12
RCR07G242JS	81349	13	49	SMB746973-7	80063	2	3
RCR07G273JS	81349	13	56	SMB747217	80063	18	1
RCR07G275JS	81349	13	42	SMB747256	80063	4	3
RCR07G300JS	81349	13	48	SMB747279	80063	3	16
RCR07G301JS	81349	9	9	SMB747295	80063	4	5
		10	11	SMB747327	80063	4	30
		11	7	SMB747355-1	80063	3	30
		12	32	SMB747355-2	80063	3	8
RCR07G302JS	81349	12	23	SMB747408	80063	3	27
		13	35	SMB747494	80063	19	
RCR07G335JS	81349	13	33	SMB747786-1	80063	5	27
RCR07G364JS	81349	8	11	SMB747786-2	80063	5	29
		9	12	SMB747787	80063	1	5
		10	14			4	2
RCR07G392JS	81349	12	18	SMC182396	80063	1	4
		13	52	SMC746966	80063	4	27
RCR07G393JS	81349	13	32	SMC747077	80063	12	5
RCR07G471JS	81349	8	16			13	66
		9	18	SMC747144-1	80063	6	2
		10	19	SMC747144-3	80063	11	22
		11	11	SMC747215	80063	17	5
		13	59	SMC747221	80063	18	1
RCR07G472JS	81349	7	6	SMC747226	80063	17	3
		13	61				
RCR07G473JS	81349	13	40	SMC747289	80063	3	44
		9	10	SMC747336	80063	4	34
		10	12	SMC747407	80063	5	3
RCR07G510JS	1349	11	19	SMC747441	80063	16	9
RCR07G511JS	81349	11	12	SMC747442	80063	16	12
		12	12	SMC747449	80063	5	28
		13	54	SMC747488	80063	19	4
RCR07G512JS	81349	13	47				
		12	11	SMC747517	80063	3	20
RCR07G513JS	81349	13	41	SMC747518	80063	3	49
RCR07G561JS	81349	13	68	SMC747519	80063	3	22
RCR07G562JS	81349	13	31	SMC747621	80063	13	71
RCR07G623JS	81349	8	9	SMC747622	80063	13	55
RCR07G682JS	81349	13	29	SMC747623	80063	13	60
		14	7	SMC747625	80063	15	14
RCR07G8R2JS	81349	14	1	SMC747637	80063	3	2
RCR07G912JS	81349	12	16	SMC747740	80063	11	28
RCR07G913JS	81349	11	26		80063		

SECTION IV NATIONAL STOCK NUMBER AND PART NUMBER INDEX

PART NO.	FSCM	FIG. NO.	ITEM NO.	PART NO.	FSCM	FIG. NO.	ITEM NO.
SMC747741	80063	11	4	SMD747678	80063	5	17
SMC747742	80063	11	25	SMD747694	80063	5	19
SMC747743	80063	11	30	SMD747697	80063	5	12
SMC747744	80063	7	4	SMD747754	80063	3	10
		8	5	SMD747776	80063	5	11
		9	5	SRE14P95N	81312	13	64
		10	5			14	13
SMC747745	80063	8	20	SRE14S36N	81312	3	17
		9	22	SRE14S36N634	81312	3	26
		10	21	SRE7P95N	81312	6	6
SMC747746	80063	8	18			12	19
		9	20			20	2
		10	9	SRE7S36N	81312	3	18
		11	3			20	1
SMC747755	80063	6	3	VC961	73899	7	2
SMC747756	80063	8	1			8	3
		9	1			9	3
		10	1			10	3
SMC747757	80063	7	12			11	8
SMC747789	80063	5	4	1N458	81349	13	4
SMC747800	80063	3	41	1N4968	81349	14	12
SMC747820	80063	5	9	1N5309	81349	15	7
SMD746994	80063	3	15	1N645	81349	14	9
SMD747050	80063	3	14	1N91	04713	17	8
SMD747237	80063	2	4	1N967B	81349	15	8
				1N995	81349	13	25
SMD747270	80063	19	6	10CRM1-2-09	94375	4	10
SMD747273	80063	2	1	10050DAP	07047	12	4
SMD747274	80063	3	39			13	67
SMD747276	80063	3	40	1214-05CAD1R1D1TE	78189	4	16
SMD747287	80063	3	1	TYPE 2			
SMD747288	80063	3	28	1218-04CAD1R1D1TE	78189	4	15
SMD747300	80063	2	2	TYPE 2			
SMD747308	80063	4	9	1220-02CAD1R1D1TE	78189	4	25
SMD747312	80063	4	7	TYPE 2			
SMD747356	80063	3	5	16-0201-188	19505	3	47
SMD747360	80063	3	31	16-0204-000	19505	4	6
SMD747362	80063	3	45	16-0205-188	19505	3	48
SMD747566-1	80063	12	30	16-0209-000	19505	6	1
SMD747566-2	80063	12	31	16-0225-000	19505	13	22
SMD747567	80063	3	13	16-0803-188	19505	3	19
SMD747600	80063	3	9	16-0820-001	19505	12	14
SMD747603	80063	3	29	2N1225	81349	16	5
SMD747606	80063	5	24	2N3767	04713	15	2
SMD747666	80063	5	13	2N918	81349	11	17
SMD747669	80063	5	14			13	50
SMD747672	80063	5	15	2N930	81349	12	21
SMD747675	80063	5	16			13	36

SECTION IV NATIONAL STOCK NUMBER AND PART NUMBER INDEX

PART NO.	FSCM	FIG. NO.	ITEM NO.	PART NO.	FSCM	FIG. NO.	ITEM NO.
2N930	81349	15	12	7717-43DAP	13103	16	6
227395	49956	3	37	8121A100P3K2R7J	72982	8	21
52133	03550	12	7			9	23
		13	26			10	22
52168	03550	13	17			11	1
56-0528-000	19505	19	1	8121A100U2J100J	72982	7	5
5607-14	86928	17	11			8	7
69F2371G8	06001	15	9			9	7
7717-19DAP	13103	13	43			10	7
7717-43DAP	13103	8	17			11	6
		9	19	85929-2	00779	7	9
		10	10			8	12
		11	2			9	13
		12	20			10	15
		13	37			11	14
		15	11	8867K8	27193	4	8

LATEST NATIONAL STOCK NUMBER ASSIGNMENTS

STOCK NUMBER	FIG NO.	ITEM NO.
5820-00-319-0605	1	4
5820-01-009-4895	5	14
5820-01-010-5098	5	13
5820-01-010-5100	5	16
5820-01-012-5850	5	15
5820-01-012-8688	3	29
5820-01-017-6492	3	9
5820-01-017-6493	3	45
5820-01-017-6978	3	13
5820-01-017-6979	3	14
5820-01-017-9160	5	24
5820-01-018-2229	5	17
5910-00-022-2760	4	31
5910-00-022-2760	12	17
5910-00-022-2760	16	11
6240-01-014-8617	1	5

LATEST PART NUMBER ASSIGNMENTS

PART NO.	FSCM	FIG. NO.	ITEM NO.
435-2589-01-00-00	71279	19	3

RECOMMENDED CHANGES TO EQUIPMENT TECHNICAL MANUALS



SOMETHING WRONG WITH THIS MANUAL?

THEN...JOT DOWN THE DOPE ABOUT IT ON THIS FORM, TEAR IT OUT, FOLD IT AND DROP IT IN THE MAIL!

FROM: (YOUR UNIT'S COMPLETE ADDRESS)

Commander
Stateside Army Depot
ATTN: AMSTA-US
Stateside, N.J. 07703

DATE 10 July 1975

PUBLICATION NUMBER

TM 11-5840-340-12

DATE

23 Jan 74

TITLE

Radar Set AN/SPC-76

BE EXACT...PIN-POINT WHERE IT IS

IN THIS SPACE TELL WHAT IS WRONG AND WHAT SHOULD BE DONE ABOUT IT:

PAGE NO.	PARA-GRAPH	FIGURE NO.	TABLE NO.
2-25	2-28		
3-10	3-3		3-1
5-6	5-8		
		F03	

Recommend that the installation antenna alignment procedure be changed through to specify a 2° IFF antenna lag rather than 1°.

REASON: Experience has shown that with only a 1° lag, the antenna servo system is too sensitive to wind gusting in excess of 25 knots, and has a tendency to rapidly accelerate and decelerate as it hunts, causing strain to the drive train. Hunting is minimized by adjusting the lag to 2° without degradation of operation.

Item 5, Function column. Change "2 db" to "3db."

REASON: The adjustment procedure for the TRANS POWER FAULT indicator calls for a 3 db (500 watts) adjustment to light the TRANS POWER FAULT indicator.

Add new step f.1 to read, "Replace cover plate removed in step e.1, above."

REASON: To replace the cover plate.

Zone C 3. On J1-2, change "+24 VDC to "+5 VDC."

REASON: This is the output line of the 5 VDC power supply. + 24 VDC is the input voltage.

TEAR ALONG DOTTED LINE

TYPED NAME, GRADE OR TITLE, AND TELEPHONE NUMBER

SSG I. M. DeSpirito 999-1776

SIGN HERE:

SSG I. M. DeSpirito

DA FORM 2028-2 (TEST)

P.S.--IF YOUR OUTFIT WANTS TO KNOW ABOUT YOUR MANUAL "FIND," MAKE A CARBON COPY OF THIS AND GIVE IT TO YOUR HEADQUARTERS.

HISA 1686-75

FILL IN YOUR
UNIT'S ADDRESS

FOLD BACK

DEPARTMENT OF THE ARMY

OFFICIAL BUSINESS

PENALTY FOR PRIVATE USE, \$300

POSTAGE AND FEES PAID
DEPARTMENT OF THE ARMY
DOD-314



Commander
US Army Electronics Command
ATTN: DRSEL-MA-Q
Fort Monmouth, New Jersey 07703

TEAR ALONG DOTTED LINE

FOLD BACK

FILL IN YOUR
UNIT'S ADDRESS

FOLD BACK

DEPARTMENT OF THE ARMY

OFFICIAL BUSINESS

PENALTY FOR PRIVATE USE, \$300

POSTAGE AND FEES PAID
DEPARTMENT OF THE ARMY
DOD-314



Commander
US Army Electronics Command
ATTN: DRSEL-MA-Q
Fort Monmouth, New Jersey 07703

TEAR ALONG DOTTED LINE

FOLD BACK



SOMETHING WRONG WITH THIS MANUAL?

THEN...JOT DOWN THE DOPE ABOUT IT ON THIS FORM, TEAR IT OUT, FOLD IT AND DROP IT IN THE MAIL!

FROM: (YOUR UNIT'S COMPLETE ADDRESS)

DATE

PUBLICATION NUMBER

DATE

TITLE

BE EXACT...PIN-POINT WHERE IT IS

IN THIS SPACE TELL WHAT IS WRONG AND WHAT SHOULD BE DONE ABOUT IT:

PAGE NO.

PARA-GRAPH

FIGURE NO.

TABLE NO.

TEAR ALONG DOTTED LINE

TYPED NAME, GRADE OR TITLE, AND TELEPHONE NUMBER

SIGN HERE:

FILL IN YOUR
UNIT'S ADDRESS

FOLD BACK

DEPARTMENT OF THE ARMY

OFFICIAL BUSINESS
PENALTY FOR PRIVATE USE, \$300

POSTAGE AND FEES PAID
DEPARTMENT OF THE ARMY
DOD-314



Commander
US Army Electronics Command
ATTN: DRSEL-MA-Q
Fort Monmouth, New Jersey 07703

TEAR ALONG DOTTED LINE

FOLD BACK

By Order of the Secretary of the Army:

BERNARD W. ROGERS
General, United States Army
Chief of Staff

Official:

PAUL T. SMITH
Major General, United States Army
The Adjutant General

DISTRIBUTION:

Active Army:

USASA (2)
 COE (1)
 TSG (1)
 USAARENBD (1)
 DARCOM (1)
 TRADOC (2)
 OS Maj Comd (4)
 LOGCOMDS (3)
 MICOM (2)
 TECOM (2)
 USACC (4)
 MDW (1)
 Armies (1)
 Corps (2)
 HISA (Ft Monmouth) (33)
 Svc Colleges (1)
 USASIGS (5)
 USAADS (2)
 USAFAS (2)
 USAARMS (2)
 USAIS (2)
 USAES (2)

USAICS (3)
 MAAG (1)
 USARMIS (1)
 Instls (2) except
 Ft Gordon (10)
 Ft Huachuca (10)
 Ft Carson (5)
 Ft Richardson (ECOM Ofc) (2)
 LBAD (14)
 SAAD (30)
 TOAD (14)
 SHAD (3)
 Ft Gillem (10)
 Sig FLDMS (1)
 USAERDAA (1)
 USAERDAW (1)
 Units org under fol TOE:
 (1 copy each unit)
 11-500 (AA-AC)
 29-134
 29-136

NG: None

USAR: None

For explanation of abbreviations used, see AR 310-50.

