

TECHNICAL MANUAL

ORGANIZATIONAL, DIRECT SUPPORT, AND GENERAL SUPPORT
MAINTENANCE REPAIR PARTS AND SPECIAL TOOLS LIST
(INCLUDING DEPOT MAINTENANCE REPAIR PARTS AND SPECIAL TOOLS)
FOR
TEST SET, RADIO AN/GRM-114
(NSN 6625-01-108-6206)

ORGANIZATIONAL, DIRECT SUPPORT, AND GENERAL SUPPORT
MAINTENANCE REPAIR PARTS AND SPECIAL TOOLS LIST
(INCLUDING DEPOT MAINTENANCE REPAIR PARTS AND SPECIAL TOOLS)
FOR
TEST SET, RADIO AN/GRM-114
(NSN 6625-01-108-6206)
Current as of 24 November 1982

REPORTING ERRORS AND RECOMMENDING IMPROVEMENTS

You can help improve this manual. If you find any mistakes or if you know of a way to improve the procedures, please let us know. Mail your letter, DA Form 2028 (Recommended Changes to Publication and Blank Forms), or DA Form 2028-2 located in the back of this manual direct to: Commander, US Army Communication-Electronics Command and Fort Monmouth, ATTN DRSEL-ME-MP, Fort Monmouth, NJ 07703.

In either case, a reply will be furnished direct to you.

Table of Contents

SECTION		Page	Illus Figure
	I. Introduction	1	
	II. Repair Parts List	5	
	00 Test Set, Radio AN/GRM-114	5	1
	01 Mechanical Assembly Composite A1	15	2
	0101 Mechanical Assembly Front Panel A1A1	21	3
	Mechanical Assembly Front Panel A1A1, Rear View	23	4
	010101 Wire Harness Assembly Front Panel A1A1A1	25	5
	0102 Mechanical Assembly Upper Floor A1A3	27	6
	010202 Mechanical Assembly Het Amp 2 Prescaler A1A3A1	29	7
	0107 Mechanical Assembly Rear Panel A1A8	31	8
	Mechanical Assembly Rear Panel A1A8, Overall View	35	9
	010701 Mechanical Assembly Duty Cycle Regulator A1A8A1	37	10
	0117 Mechanical Assembly Spetrum Analyzer A1A18	41	11
	01170501 Mechanical Assembly Horizontal Sweep Switch A1A18A5A1	43	12
	01170503 Wire Harness Assembly Spectrum Analyzer	45	13
	0118 Mechanical Assembly First Mixer A1A19	47	14
	0123 Mechanical Assembly Lower Floor A1A24	49	15
	02 Case Assembly	51	16
	0201 Composite Assembly A2a1	53	17
SECTION	III. Repair Parts List (Not applicable)		
	IV. National Stock Number and Part Number Index	54	

SECTION I

INTRODUCTION

1. Scope

This manual lists spares and repair parts; special tools; special test, measurement, and diagnostic equipment (TMDE), and other special support equipment required for performance of organizational, direct support, and general support maintenance of the AN/GRM-114. It authorizes the requisitioning and issue of spares and repair parts as indicated by the source and maintenance codes.

2. General

This Repair Parts and Special Tools List is divided into the following sections:

a. Section II. Repair Parts List. A list of spares and repair parts authorized for use in the performance of maintenance. The list also includes parts which must be removed for replacement of the authorized parts. Parts list are composed of functional groups in numeric sequence, with the parts in each group listed in figure and item number sequence.

b. Section III. Special Tools List. Not applicable.

c. Section IV. National Stock Number and Part Number Index. A list, in National item identification number (NIIN) sequence, of all National stock numbers (NSN) appearing in the listings, followed by a list, in alphameric sequence, of all part numbers appearing in the listings. National stock numbers and part numbers are cross-referenced to each illustration figure and item number appearance.

3. Explanation of Columns

a. Illustration. This column is divided as follows:

(1) *Figure number.* Indicates the figure number of the illustration on which the item is shown.

(2) *Item number.* The number used to identify item called out in the illustration.

b. Source, Maintenance, and Recoverability (SMR) Codes.

(1) *Source code.* Source codes indicate the manner of acquiring support items for maintenance, repair, or overhaul of end items. Source codes are entered in the first and second positions of the Uniform SMR Code format as follows:

<i>Code</i>	<i>Definition</i>
PA	Item procured and stocked for anticipated or known usage.
PB	Item procured and stocked for insurance purpose

<i>Code</i>	<i>Definition</i>
	because essentiality dictates that a minimum quantity be available in the supply system.
MH	Item to be manufactured or fabricated at the general support maintenance level.
MD	Item to be manufactured or fabricated at the depot maintenance level.
XA	Item is not procured or stocked because the requirements for the item will result in the replacement of the next higher assembly.
XD-A	support item that is not stocked. When required, item will be procured through normal supply channels.

NOTE

Cannibalization or salvage may be used as a source of supply for any items source coded above except those coded XA and aircraft support items as restricted by AR 700-42.

(2) *Maintenance code.* Maintenance codes are assigned to indicate the levels of maintenance authorized to USE and REPAIR support items. The maintenance codes are entered in the third and fourth positions of the Uniform SMR Code format as follows:

(a) The maintenance code entered in the third position will indicate the lowest maintenance level authorized to remove, replace, and use the support item. The maintenance code entered in the third position will indicate one of the following levels of maintenance:

<i>Code</i>	<i>Application/Explanation</i>
H	Support item is removed, replaced, used at the general support level.
D	Support items that are removed, replaced, used at depot, mobile depot, specialized repair activity only.

(b) The maintenance code entered in the fourth position indicates whether the item is to be repaired and identifies the lowest maintenance level with the capability to perform complete repair (i.e., all authorized maintenance functions). This position will contain one of the following maintenance codes:

<i>Code</i>	<i>Application/Exp!anation</i>
H	The lowest maintenance level capable of complete repair of the support item is the general support level.
D	The lowest maintenance level capable of complete repair of the support item is the depot level.
Z	Nonreparable. No repair is authorized.

(3) *Recoverability code*. Recoverability codes are assigned to support items to indicate the disposition action on unserviceable items. The recoverability code is entered in the fifth position of the Uniform SMR Code format as follows:

<i>Recoverability codes</i>	<i>Definition</i>
Z-Nonreparable item.	When unserviceable, condemn and dispose at the level indicated in position 3.
H-Reparable item.	When uneconomically reparable, condemn and dispose at the general support level.
D-Reparable item.	When beyond lower level repair capability, return to depot. Condemnation and disposal not authorized below depot level.

c. National Stock Number. Indicates the National stock number assigned to the item and will be used for requisitioning purposes.

d. Federal Supply Code for Manufacturer (FSCM). The FSCM is a 5-digit numeric code listed in SB 708-41/42 which is used to identify the manufacturer, distributor, or Government agency, etc.

e. Part Number. Indicates the primary number used by the manufacturer (individual, company, firm, corporation, or Government activity), which controls the design and characteristics of the item by means of its engineering drawings, specifications, standards, and inspection requirements to identify an item or range of items.

NOTE

When a stock numbered item is requisitioned, the repair part received may have a different part number than the part being replaced.

f. Description. Indicates the Federal item name and, if required, a minimum description to identify the item.

g. Unit of Measure (U/M). Indicates the standard of the basic quantity of the listed item as used in performing the actual maintenance function. This measure is expressed by a two-character alphabetical abbreviation (e.g., ea, in, pr, etc). When the unit of measure differs from the unit of issue, the lowest unit of issue that will satisfy the required units of measure will be requisitioned.

h. Quantity Incorporated in Unit. Indicates the quantity of the item used in the breakout shown on the illustration figure, which is prepared for a functional group, subfunctional group, or an assembly.

4. Special Information

a. Detailed manufacturing instructions for items

source coded to be manufactured or fabricated are found in TM 11-6625-3016-14.

b. The following publication pertains to the AN/GRM- 114 and its components:

TM 11-6625-3016-10-1, Test Set, Radio, AN/GRM-114 (To be published).

TM 11-6625-3016-14, Test Set, Radio, AN/GRM-114 (To be published).

TM 11-6625-3016-20-1, Test Set, Radio, AN/GRM-114 (To be published).

c. National stock numbers (NSN's) that are missing from P source coded items have been applied for and will be added to this TM by future change/revision when they are entered in the Army Master Data File (AMDF). Until the NSN's are established and published, submit exception requisitions to: commander, US Army Communications-Electronics Command and Fort Monmouth, ATTN: DRSEL-MM, Fort Monmouth, NJ 07703 for the part required to support your equipment.

5. How to Locate Repair Parts

a. When National stock number or part number is unknown.

(1) *First*. Using the table of contents, determine the functional group within which the item belongs. This is necessary since illustrations are prepared for functional groups and listings are divided into the same groups.

(2) *Second*. Find the illustration covering the functional group to which the item belongs.

(3) *Third*. Identify the item on the illustration and note the illustration figure and item number of the item.

(4) *Fourth*. Using the Repair Parts Listing, find the figure and item number noted on the illustration.

b. When National stock number or part number is known.

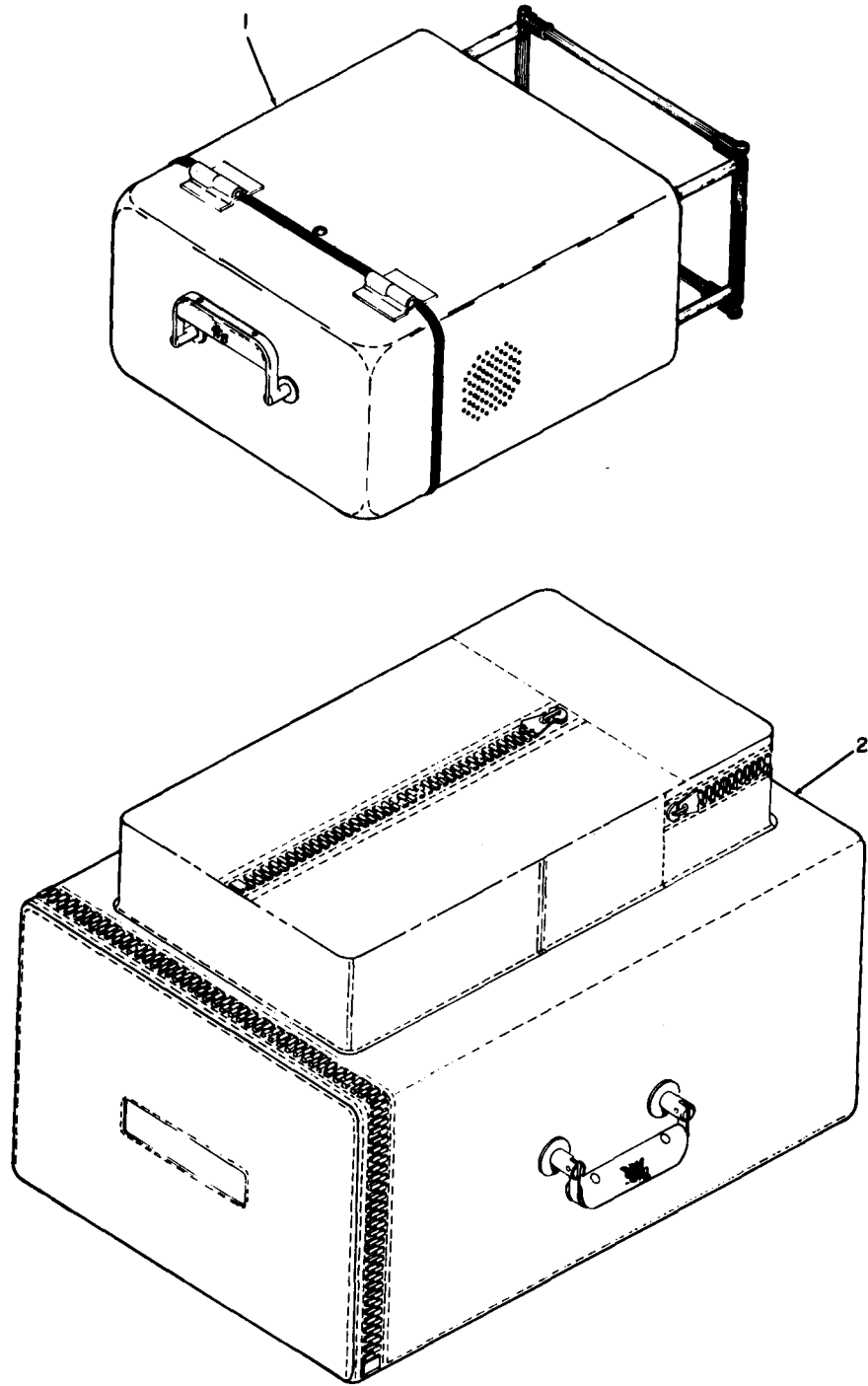
(1) *First*. Using the Index of National Stock Numbers and Part Numbers, find the pertinent National stock number or part number. This index is in NIIN sequence followed by a list of part numbers in alphanumeric sequence, cross-referenced to the illustration figure number and item number.

(2) *Second*. After finding the figure and item number, locate the figure and item number in the repair parts list.

6. Abbreviations

Not applicable.

(Next printed page is 4)



ELBANO01

Figure 1. Test Set, Radi o AN/GRM-114.

SECTION II (1) ILLUSTRATION		(2)	(3)	TM11-6625-3016-24P (4) (5)		(6) DESCRIPTION	(7)	(8)
(A) FIG NO	(B) ITEM NO	SMR CODE	NATIONAL STOCK NUMBER	FSCM	PART NUMBER		USABLE ON CODE	U/M UNIT
						GROUP 00 TEST SET, RADIO AN/GRM-114		
1	1	PAHDD	6625-01-131-3439	51190	7019-2342-901	CASE ASSEMBLY	EA	1
1	2	XADDD		51190	7003-2364-101	COMP ASSY	EA	1

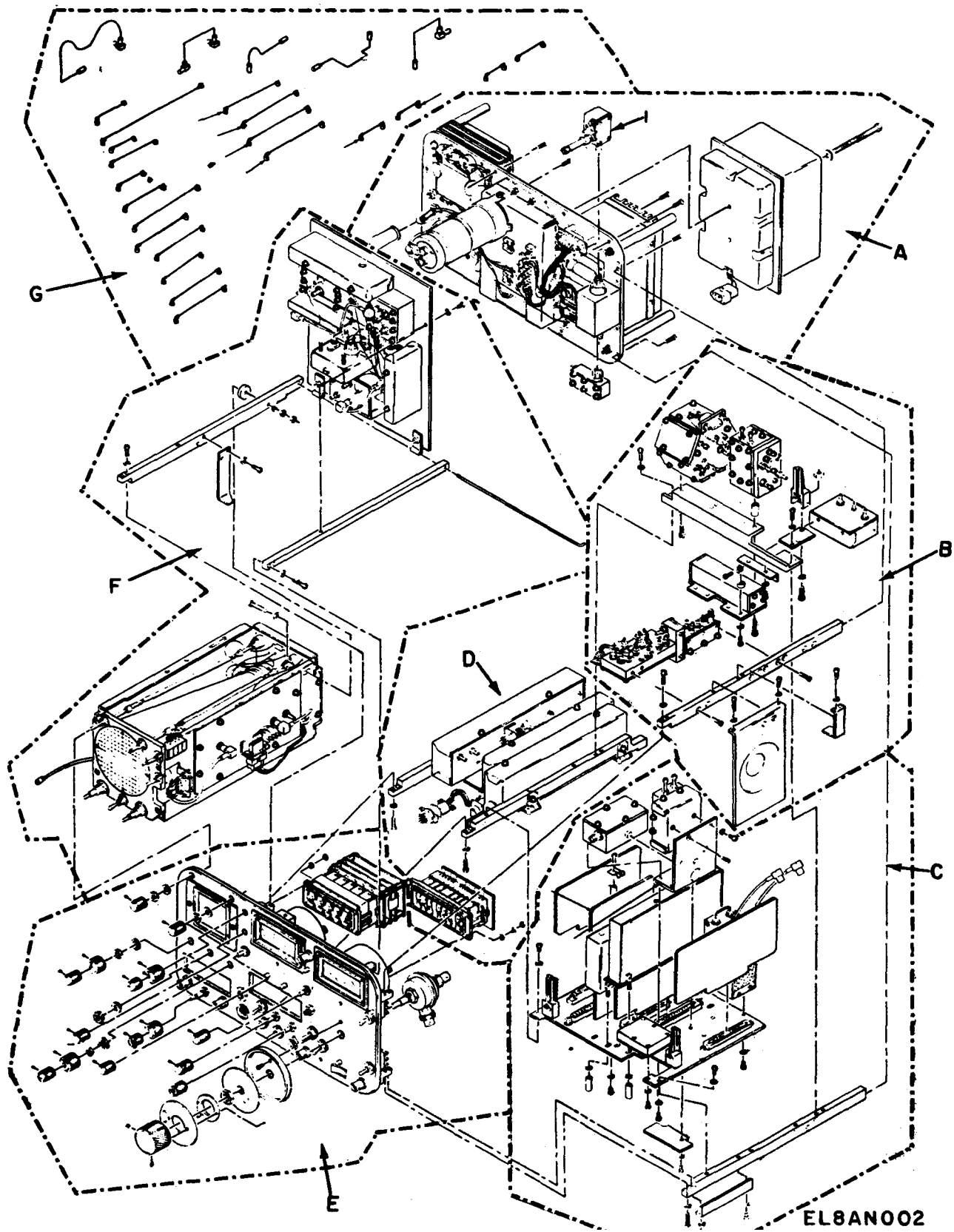
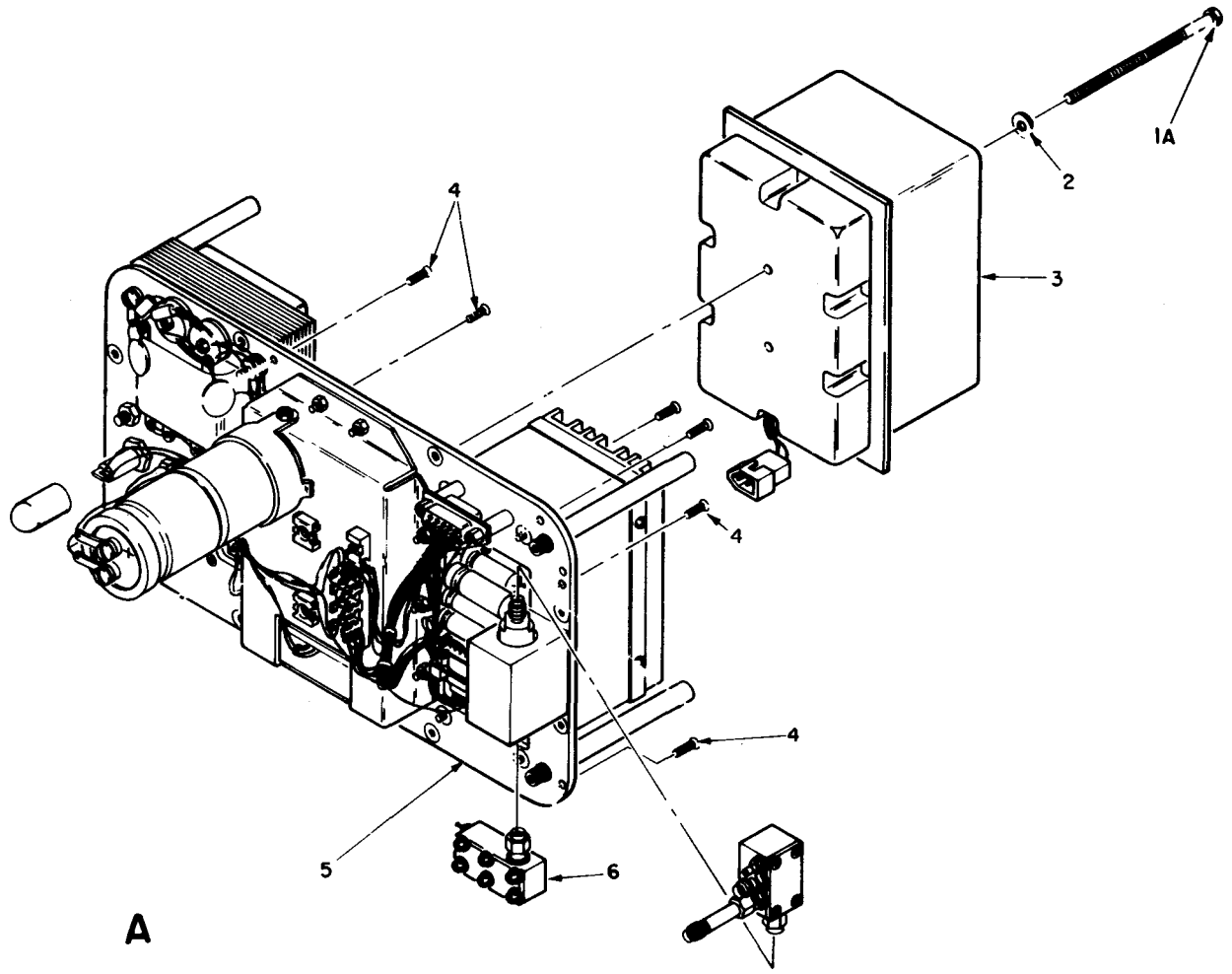


Figure 2. Mechanical Assembly Composite A1 (Sheet 1 of 8).

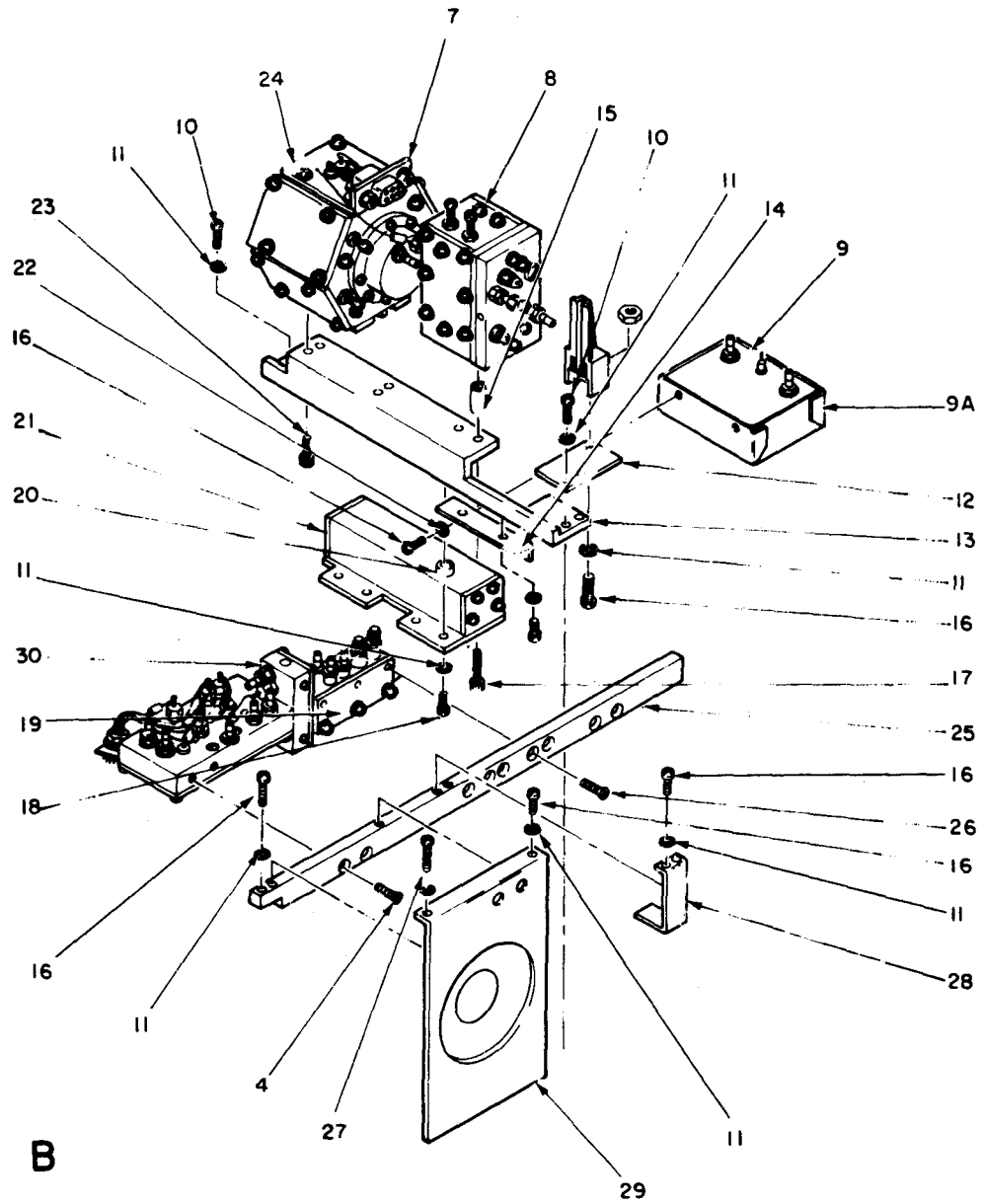
8



A

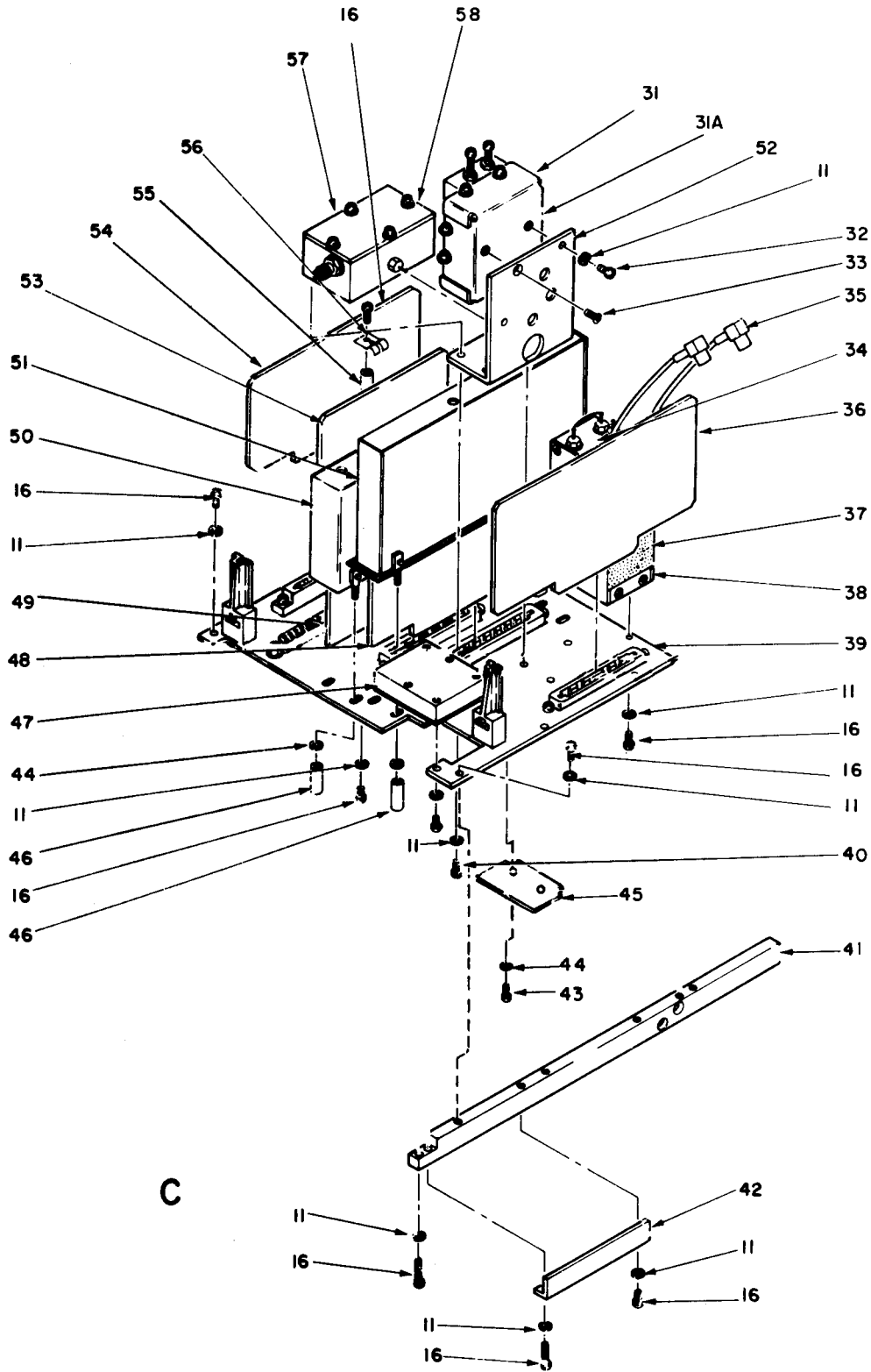
EL8AN023

Figure 2. Mechanical Assembly Composite A1 (Sheet 2 of 8).



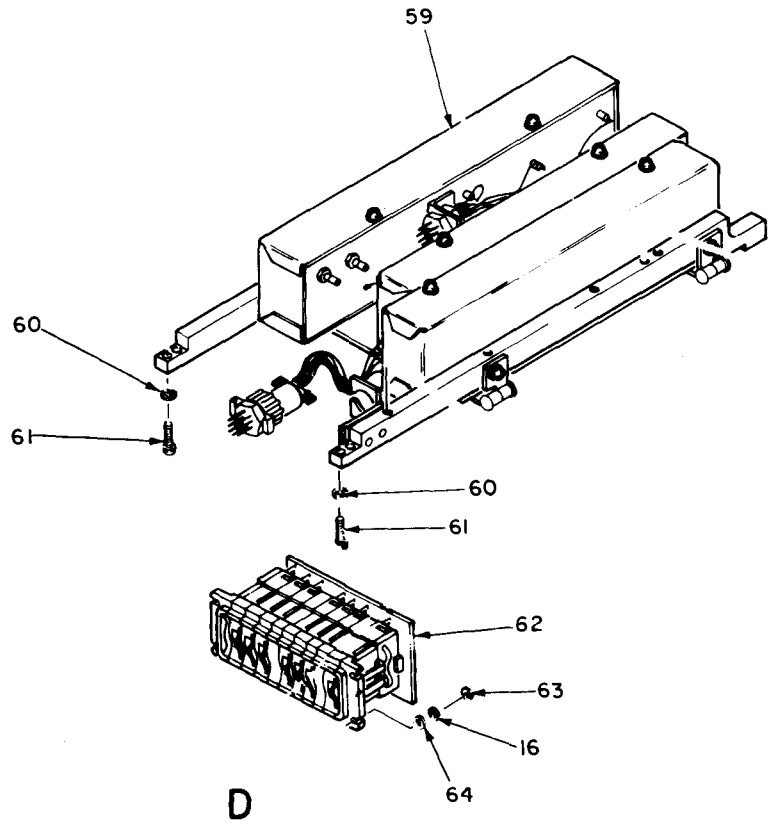
EL8ANO18

Figure 2. Mechanical Assembly Composite A1 (Sheet 3 of 8).



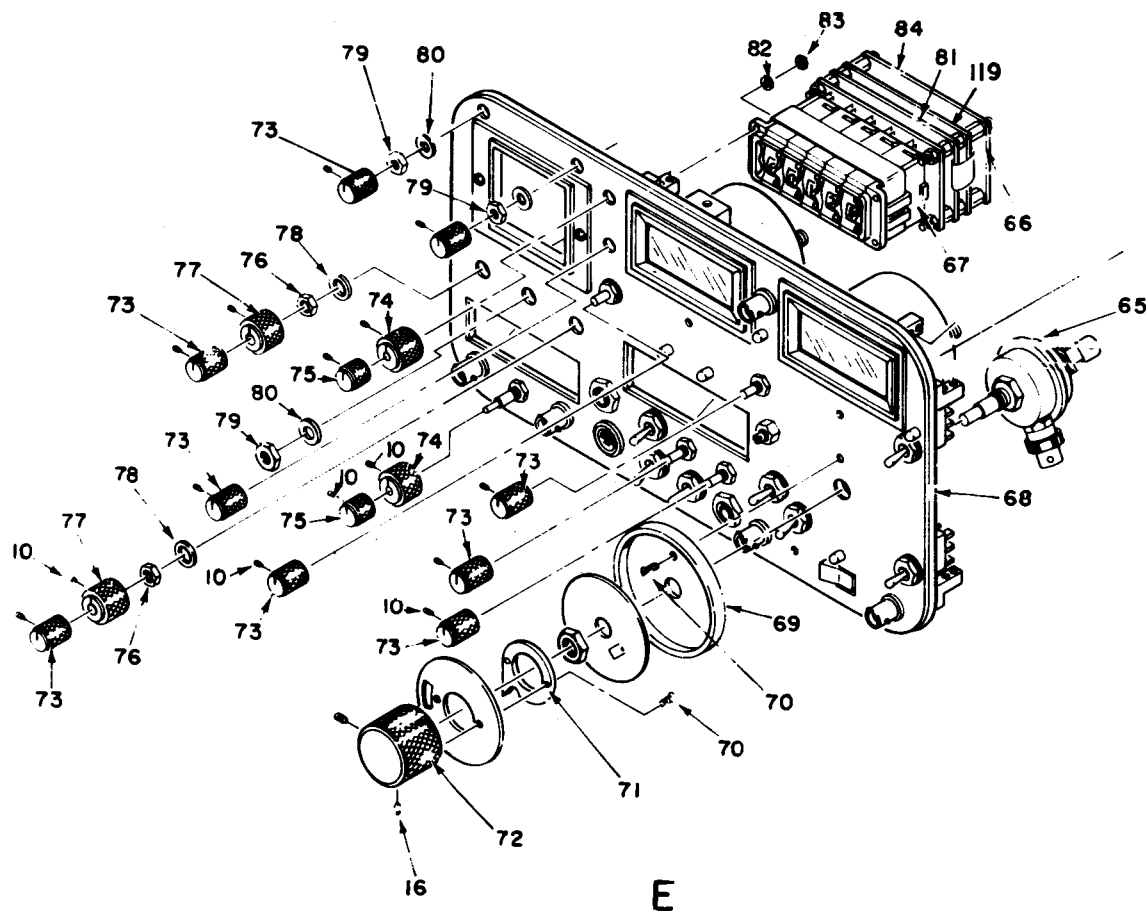
EL 8AN019

Figure 2. Mechanical Assembly Composite A1 (Sheet 4 of 8).



EL8AN020

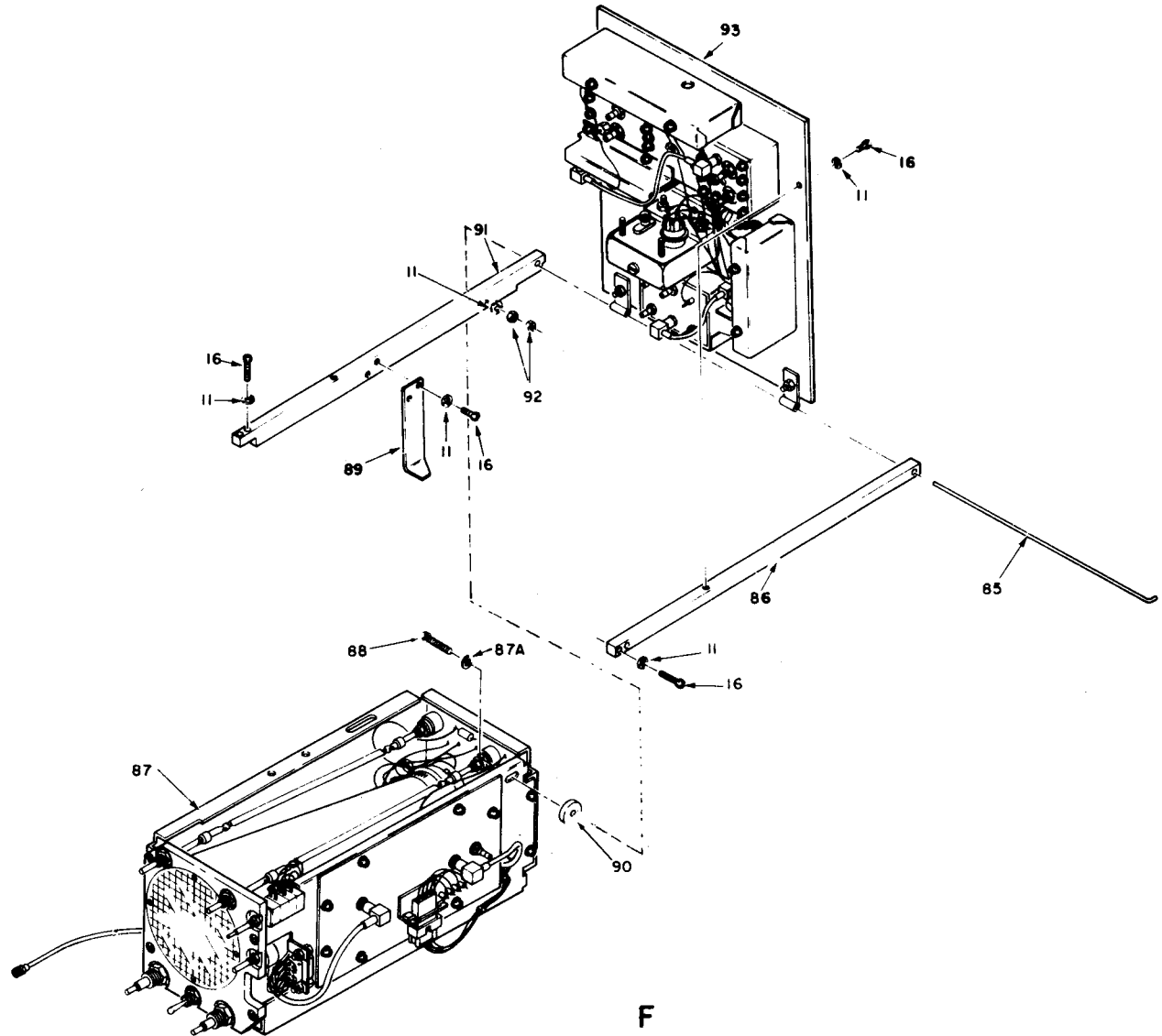
Figure 2. Mechanical Assembly Composite A1 (Sheet 5 of 8).



12

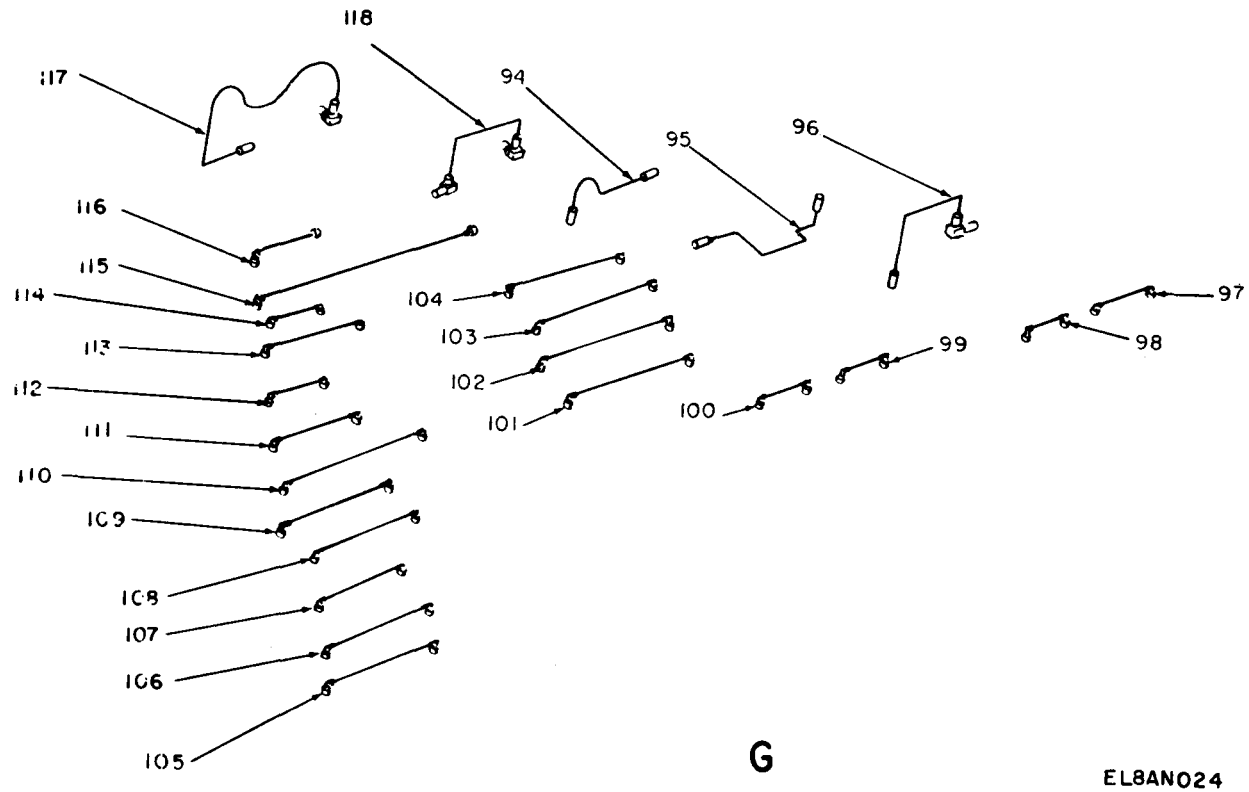
EL8AN021

Figure 2. Mechanical Assembly Composite A1 (Sheet 6 of 8).



EL8AN022

Figure 2. Mechanical Assembly Composite A1 (Sheet 7 of 8)



1 4

Figure 2. Mechanical Assembly Composite A1 (Sheet 8 of 8).

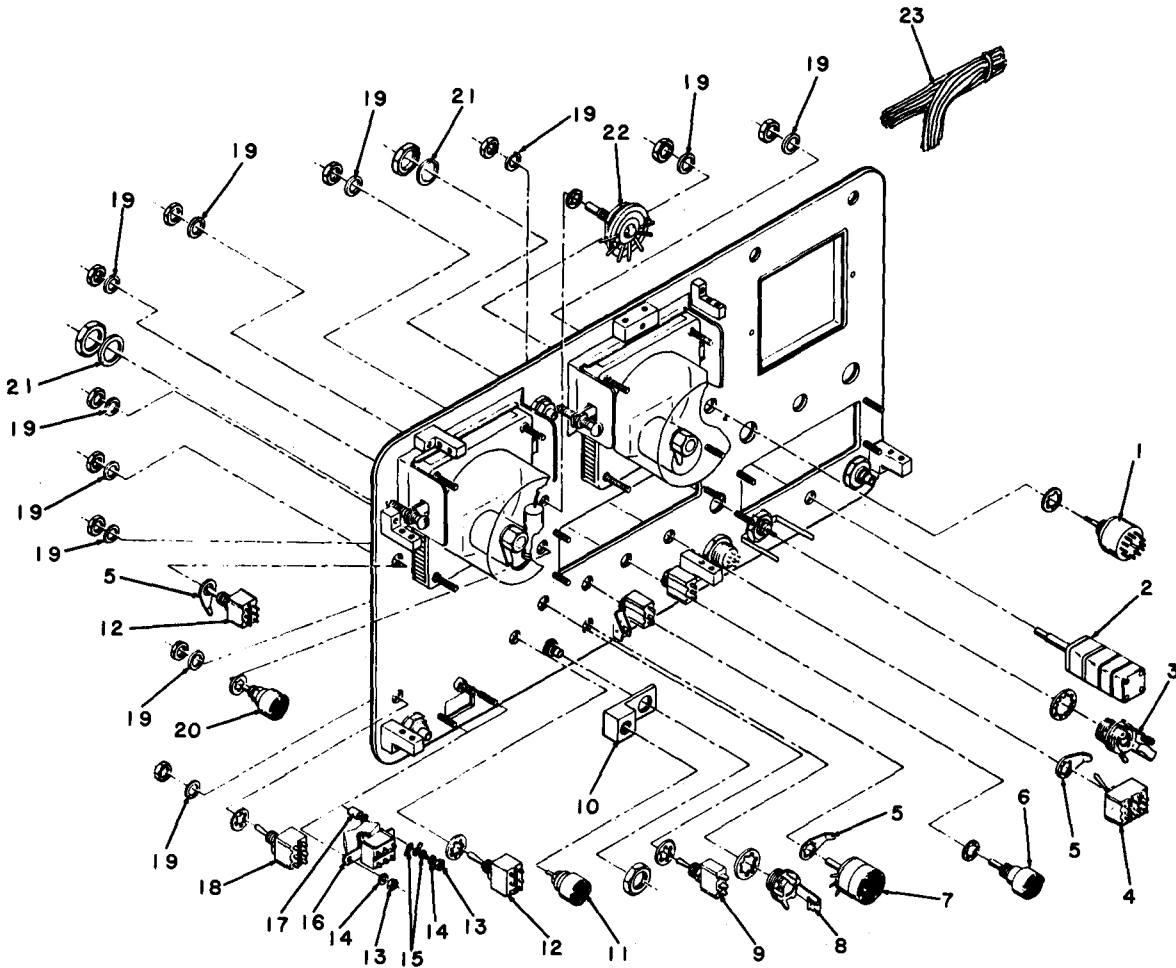
SECTION II (1) ILLUSTRATION		(2)	(3)	TM11-6625-3016-24P		(6)	(7)	(8)
(A) FIG NO	(B) ITEM NO	SMR CODE	NATIONAL STOCK NUMBER	(4) FSCM	(5) PART NUMBER	DESCRIPTION	USABLE ON CODE	QTY INC IN UNIT
GROUP 01 MECHANICAL ASSEMBLY COMPOSITE A1								
2	1	PAHZZ	6625-01-108-0966	51190	7005-2373-700	POWER MONITOR	EA	1
2	1A	PAHZZ	5305-00-054-6661	96906	MS51957-37	SCREW,MACHINE	EA	2
2	2	PAHZZ	5310-00-167-0752	88044	AN960D10L	WASHER,FLAT	EA	2
2	3	PAHZZ		51190	7005-2338-001	BATTERY,MOD	EA	1
2	4	PAHZZ	5305-00-763-6963	96906	MS51957-28	SCREW,MACHINE	EA	7
2	5	XAHHH		51190	7005-2338-001	MECH ASSY	EA	1
2	6	XDHZZ		51190	7005-2374-000	MECH ASSY	EA	1
2	7	PAHZZ	6625-01-108-0956	51190	7015-2309-700	HEX BLOCK ASSY	EA	1
2	8	PAHZZ	6625-01-109-1677	51190	7013-2329-700	SWITCH ASSEMBLY	EA	1
2	9	PAHZZ	6625-01-109-0697	51190	7018-2359-100	FILTER ASSEMBLY	EA	1
2	9A	XADZZ		51190	7010-2330-300	PRINTED CKT BD ASSY	EA	1
2	10	PAHZZ	5305-00-054-5644	96906	MS51957-11	SCREW,MACHINE	EA	4
2	11	PAHZZ	5310-00-193-7577	96906	MS35333-36	WASHER,LOCK	EA	4
2	12	PAHZZ		51190	2506-2333-900	PLATE,MOUNTING	EA	1
2	13	XDHZZ		51190	1400-2329-000	BRACKET,MTG	EA	1
2	14	MDHZZ		51190	1400-2375-800	BRACKET,MTG	EA	1
2	15	XADZZ		51190	2800-7600-116	SPACER	EA	2
2	16	PAHZZ	5305-00-054-5653	96906	MS51957-19	SCREW,MACHINE	EA	2
2	17	XADZZ		96906	MS16995-12	SCREW,MACH	EA	2
2	18	PAHZZ	5305-00-054-5650	96906	MS51957-16	SCREW,MACHINE	EA	4
2	19	PAHHH	6625-01-108-0953	51190	7005-2373-300	FIRST MIXER ASSY	EA	1
2	20	XADZZ		51190	2800-2600-161	SPACER	EA	4
2	21	PAHZZ		51190	7018-2340-200	FILTER,BAND PASS	EA	1
2	22	XADZZ		96906	MS35233-131	WASHER,LOCK	EA	2
2	23	PAHZZ	5305-00-959-0379	96906	MS16995-10	SCREW,CAP,SOCKET HE	EA	4
2	24	XADZZ		51190	7010-2310-100	PRINTED CKT BD ASSY	EA	1
2	25	XDHZZ		51190	1404-2316-700	RAIL,SPRT	EA	1
2	26	PAHZZ	5305-00-768-0336	96906	MS51959-17	SCREW,MACHINE	EA	3
2	27	PAHZZ	5305-00-054-5651	96906	MS51957-17	SCREW,MACHINE	EA	1
2	28	PAHZZ		51190	4503-2376-300	RETAINER	EA	1
2	29	PAHZZ		51190	5950-2323-400	SPEAKER ASSEMBLY	EA	1
2	30	PAHZZ		51190	7017-2346-200	SECOND MIXER	EA	1
2	31	PAHZZ		51190	7048-2351-600	MULTIPIER AMPLIFIER	EA	1
2	31A	XADZZ		51190	7010-2351-300	PRINTED CKT BD ASSY	EA	1
2	32	PAHZZ	5305-00-764-2966	96906	MS51959-2	SCREW,MACHINE	EA	3
2	33	PAHZZ	5305-00-777-6039	96906	MS51959-12	SCREW,MACHINE	EA	1
2	34	XADZZ		51190	7010-2372-100	PRINTED CKT BD ASSY	PA	1
2	35	XADZZ		51190	6050-0021-410	COAX ASSY	EA	1
2	36	PAHZZ	6625-01-108-0959	51190	7010-2357-300	AUDIO BD	EA	1

SECTION II		TM11-6625-3016-24P						
(1)	(2)	(3)	(4)	(5)	(6)	(7)	(8)	
ILLUSTRATION		NATIONAL			DESCRIPTION	USABLE ON CODE	QTY	
(A)	(B)	STOCK	FSCM	PART			INC	
FIG	ITEM	NUMBER		NUMBER			IN	
NO	NO						UNIT	
		SMR				U/M		
		CODE						
2	37	PAHZZ	6625-01-108-0952	51190	7005-2372-500		EA	1
2	38	XADZZ		51190	7010-2372-400		PA	1
2	39	PAHZZ		51190	7005-2363-701		EA	1
2	40	PAHZZ	5305-00-054-5636	96906	MS51957-2		EA	4
2	41	XDHZZ		51190	1404-2316-500		EA	1
2	42	XDHZZ		51190	1400-2357-500		EA	1
2	43	PADZZ	5305-00-054-5638	96906	MS51957-4		EA	2
2	44	PADZZ		96906	MS35233-131		EA	2
2	45	PAHZZ		51190	7010-2373-100		EA	1
2	46	PADZZ		51190	2850-7617-400		EA	9
2	47	PAHZZ	6625-01-108-0967	51190	7022-2360-200		EA	1
2	48	PADZH	6625-01-108-0961	51190	7010-2342-400		EA	1
2	49	PADZH	6625-01-108-0960	51190	7010-2349-300		EA	1
2	50	XAHZZ		51190	1415-2348-500		EA	1
2	51	XAHZZ		51190	1415-2344-200		EA	1
2	52	XADZZ		51190	1400-2327-400		EA	1
2	53	PAHZZ	6625-01-108-0958	51190	7010-2342-300		EA	1
2	54	PAHZZ	6625-01-109-1670	51190	7010-2367-201		EA	1
2	55	XAHZZ		51190	2813-7600-163		EA	1
2	56	XAHZZ		51190	4503-2342-600		EA	1
2	57	PAHZZ	6625-01-109-1673	51190	7014-2355-400		EA	1
2	58	XADZZ		51190	7010-2354-900		EA	1
2	59	PAHHH	6625-01-131-2623	51190	7005-2349-201		EA	1
2	60	PAHZZ	5310-00-193-7577	96906	MS35333-36		EA	4
2	61	PAHZZ	5305-00-054-5651	96906	MS51957-17		EA	4
2	62	PAHZZ		51190	7013-2343-300		EA	1
2	63	PAHZZ	5310-00-938-2013	96906	MS35649-224		EA	4
2	64	PAHZZ	5310-00-167-0657	88044	AN960-3		EA	4
2	65	XDHZZ		51190	6500-2353-400		EA	1
2	66	XADZZ		51190	7010-2374-600		EA	1
2	67	XADZZ		18324	NE5532N		EA	1
2	68	XAHHH		51190	7005-2377-700		EA	1
2	69	PAHZZ		51190	2405-2302-700		EA	1
2	70	PAHZZ	5305-00-727-8833	96906	MS51959-3		EA	1
2	71	PAHZZ		51190	2401-2347-600		EA	1
2	72	PAHZZ		51190	2402-2347-700		EA	1
2	73	PAHZZ		51190	2402-0921-900		EA	9
2	74	PAHZZ		51190	2402-0940-000		EA	2
2	75	PAHZZ		51190	2402-0018-300		EA	2
2	76	PAHZZ	5310-00-934-9765	96906	MS35650-304		EA	2

SECTION II (1) ILLUSTRATION		(2)	(3)	TM11-6625-3016-24P		(6)	(7)	(8)
(A) FIG NO	(B) ITEM NO	SMR CODE	NATIONAL STOCK NUMBER	(4) FSCM	(5) PART NUMBER	DESCRIPTION	USABLE ON CODE	U/M
2	77	PAHZZ		51190	2402-0922-000	KNOB		EA 2
2	78	PAHZZ		51190	2840-7600-205	WASHER		EA 2
2	79	PADZZ	5310-00-400-5503	96906	MS35650-3254	NUT,PLAIN,HEXAGON		EA 1
2	80	PADZZ		51190	2840-7600-208	WASHER		EA 1
2	81	XADZZ		51190	7010-2375-200	PRINTED CKT BD ASSY		EA 1
2	82	XAHZZ		96906	MS35233-131	WASHER, LOCK		EA 4
2	83	XAHZZ		96906	MS35649-224	NUT,PLAIN,HEXAGON		EA 4
2	84	PAHZZ	6625-01-108-0964	51190	7005-2375-300	tone GENERATOR		EA 1
2	85	XDHZZ		51190	2509-2317-100	ROD, HINGE		EA 1
2	86	XDHZZ		51190	1404-2316-400	RAIL, SPRT		EA 1
2	87	XADDD		51190	7029-2362-600	MECH ASSY		EA 1
2	87A	PADZZ	5310-00-782-1349	96906	MS15795-804	WASHER, FLAT		EA 1
2	88	PADZZ		51190	2807-7632-600	SCREW, EXTERNALLY RE		EA 1
2	89	XDDZZ		51190	4503-2335-500	RETAINER		EA 1
2	90	PADZZ		51190	2840-7600-219	WASHER		EA 1
2	91	XDDZZ		51190	1404-2316-600	RAIL, SPRT		EA 1
2	92	PADZZ	5310-00-934-9748	96906	MS35649-244	NUT,PLAIN,HEXAGON		EA 2
2	93	XAHHH		51190	7006-2364-400	MECH ASSY		EA 1
2	94	PBDZZ		51190	6042-2375-600	CABLE, RADIO FREQUEN		EA 1
2	95	PBDZZ		51190	6042-2375-700	CABLE, RADIO FREQUEN		EA 1
2	96	PBDZZ		51190	6042-2375-500	CABLE, RADIO FREQUEN		EA 1
2	97	PBDZZ		51190	6050-9900-100	CABLE, RADIO FREQUEN		EA 1
2	98	PBDZZ		51190	6050-0320-720	CABLE, RADIO FREQUEN		EA 1
2	99	PBDZZ		51190	6050-0320-620	CABLE, RADIO FREQUEN		EA 1
2	100	PBDZZ		51190	6050-0060-745	CABLE, RADIO FREQUEN		EA 1
2	101	PBDZZ		51190	6050-0052-325	CABLE, RADIO FREQUEN		EA 1
2	102	PBDZZ		51190	6050-0050-925	CABLE, RADIO FREQUEN		EA 1
2	103	PBDZZ		51190	6050-0042-220	CABLE, RADIO FREQUEN		EA 1
2	104	PBDZZ		51190	6050-0042-120	CABLE, RADIO FREQUEN		EA 3
2	105	PBDZZ		51190	6050-0042-020	CABLE, RADIO FREQUEN		EA 2
2	106	PBDZZ		51190	6050-0041-970	CABLE, RADIO FREQUEN		EA 1
2	107	PBDZZ		51190	6050-0041-820	CABLE, RADIO FREQUEN		EA 2
2	108	PBDZZ		51190	6050-0041-720	CABLE, RADIO FREQUEN		EA 2
2	109	PBDZZ		51190	6050-0041-620	CABLE, RADIO FREQUEN		EA 1
2	110	PBDZZ		51190	6050-0041-320	CABLE, RADIO FREQUEN		EA 3
2	111	PBDZZ		51190	6050-0041-220	CABLE, RADIO FREQUEN		EA 1
2	112	PBDZZ		51190	6050-0040-870	CABLE, RADIO FREQUEN		EA 1
2	113	PADZZ		51190	6050-0040-620	CABLE, RADIO FREQUEN		EA 1
2	114	PBDZZ		51190	6050-0040-570	CABLE, RADIO FREQUEN		EA 2
2	115	PBDZZ		51190	6050-0033-440	CABLE, RADIO FREQUEN		EA 1

SECTION II		TM11-6625-3016-24P							
(1)	(2)	(3)	(4)	(5)	(6)		(7)	(8)	
ILLUSTRATION		NATIONAL			DESCRIPTION			QTY	
(A)	(B)	STOCK		PART				INC	
FIG	ITEM	NUMBER	FSCM	NUMBER		USABLE ON CODE	U/M	IN	
NO	NO							UNIT	
2	116	PBDZZ	51190	6050-0010-805	CABLE,RADIO FREQUEN			EA 1	
2	117	PBDZZ	51190	6042-2376-600	CABLE,RADIO FREQUEN			EA 1	
2	118	PBDZZ	51190	6042-2376-400	CABLE,RADIO FREQUEN			EA 1	
2	119	PAHZZ	51190	7010-2374-900	PRINTED CKT BOARD ASSY			EA 1	

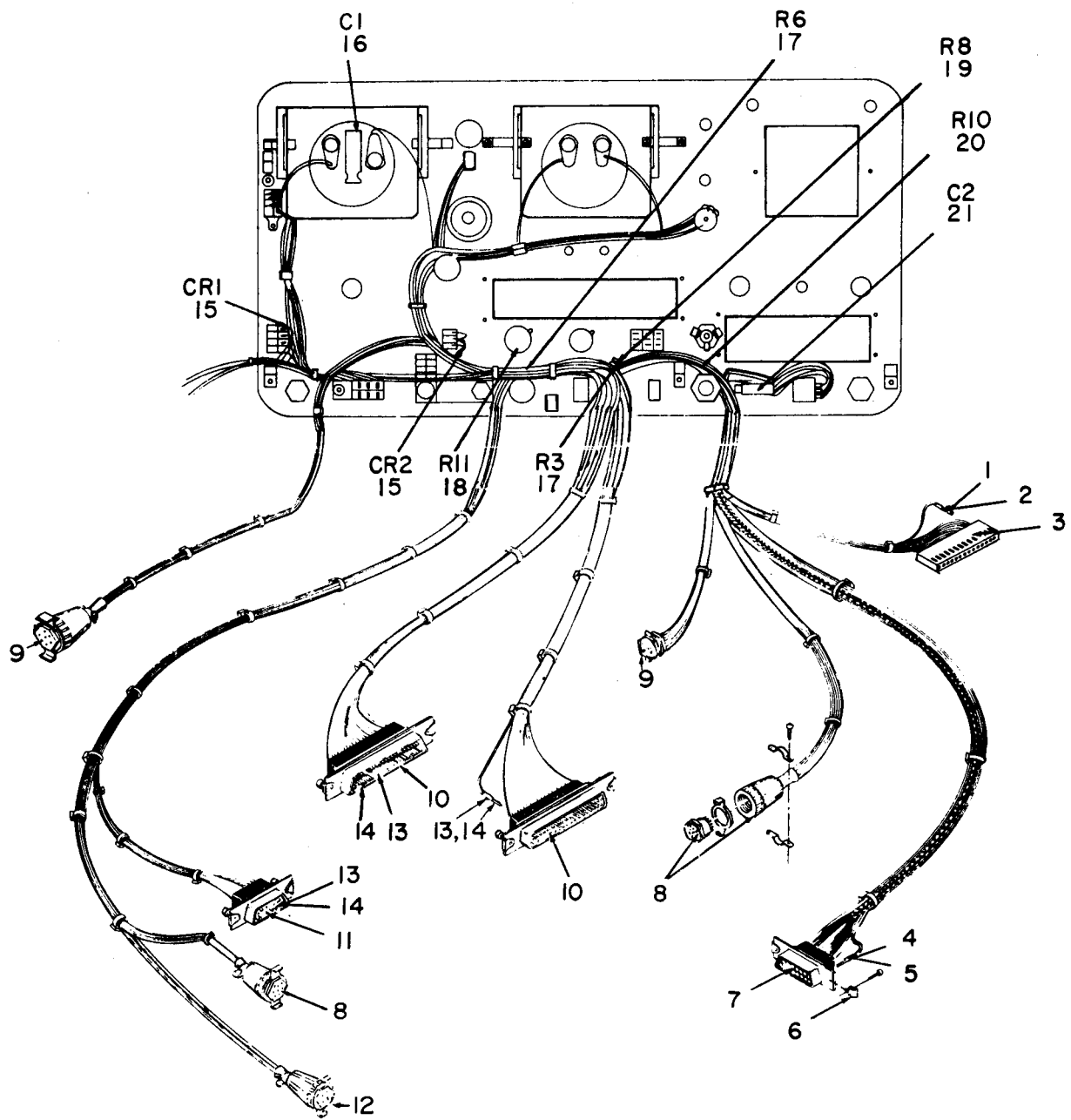
SECTION II (1) ILLUSTRATION		(2)	(3)	TM11-6625-3016-24P		(6)	(7)	(8)
(A) FIG NO	(B) ITEM NO	SMR CODE	NATIONAL STOCK NUMBER	(4) FSCM	(5) PART NUMBER	DESCRIPTION	USABLE ON CODE	U/M INC IN UNIT
GROUP 0101 MECHANICAL ASSEMBLY FRONT								
PANEL A1A1								
3	1	MDDZZ		51190	2100-2325-800	BLOCK,MTG,FRT PNL	EA	6
3	2	MDDZZ		51190	1405-2300-501	PANEL,FRONT STRL	EA	1
3	3	MDDZZ		51190	2403-2377-901	OVERLAY,FRT PANEL	EA	1
3	4	PAHZZ		65092	20044005-005	METER,DEVN/POWER	EA	1
3	5	PAHZZ		65092	20871172-001	BEZEL,INSTRUMENT MO	EA	2
3	6	PAHZZ		00303	BEPB-BLACK	LIGHT,INDICATOR	EA	5
3	7	PAHZZ	6240-00-878-1965	92966	680	LAMP,INCANDESCENT	EA	5
3	8	PAHZZ	6210-00-378-3727	00303	ABP	LENS,LIGHT	EA	1
3	9	PAHZZ	6210-00-378-3695	00303	GBP	LENS,LIGHT	EA	4
3	10	PAHZZ		70903	RA2.310NYL	CONNECTOR	EA	1
3	11	PAHZZ	5940-00-500-7227	74868	31-759	TERMINAL,LUG	EA	1
3	12	PAHZZ	5935-00-853-7596	81349	M39012/21-0002	CONNECTOR,RECEPTACL	EA	1
3	13	PAHZZ	5305-00-054-6661	96906	MS51957-37	SCREW,MACHINE	EA	2
3	14	XDHZZ		51190	2406-2301-500	BEZEL,CRT	EA	1
3	15	PAHZZ	5305-00-770-2533	96906	MS51959-13	SCREW,MACHINE	EA	2
3	16	MDDZZ		51190	2100-2334-400	BLOCK,MTG FRT PNL	EA	1
3	17	PAHZZ		19505	4-70-36	ADAPTER,CONNECTOR	EA	4
3	18	PAHZZ		73906	20044005-004	METER,FREQ ERROR	EA	1



EL8AN004

Figure 4. Mechanical Assembly Front Panel A1A1, Rear View.

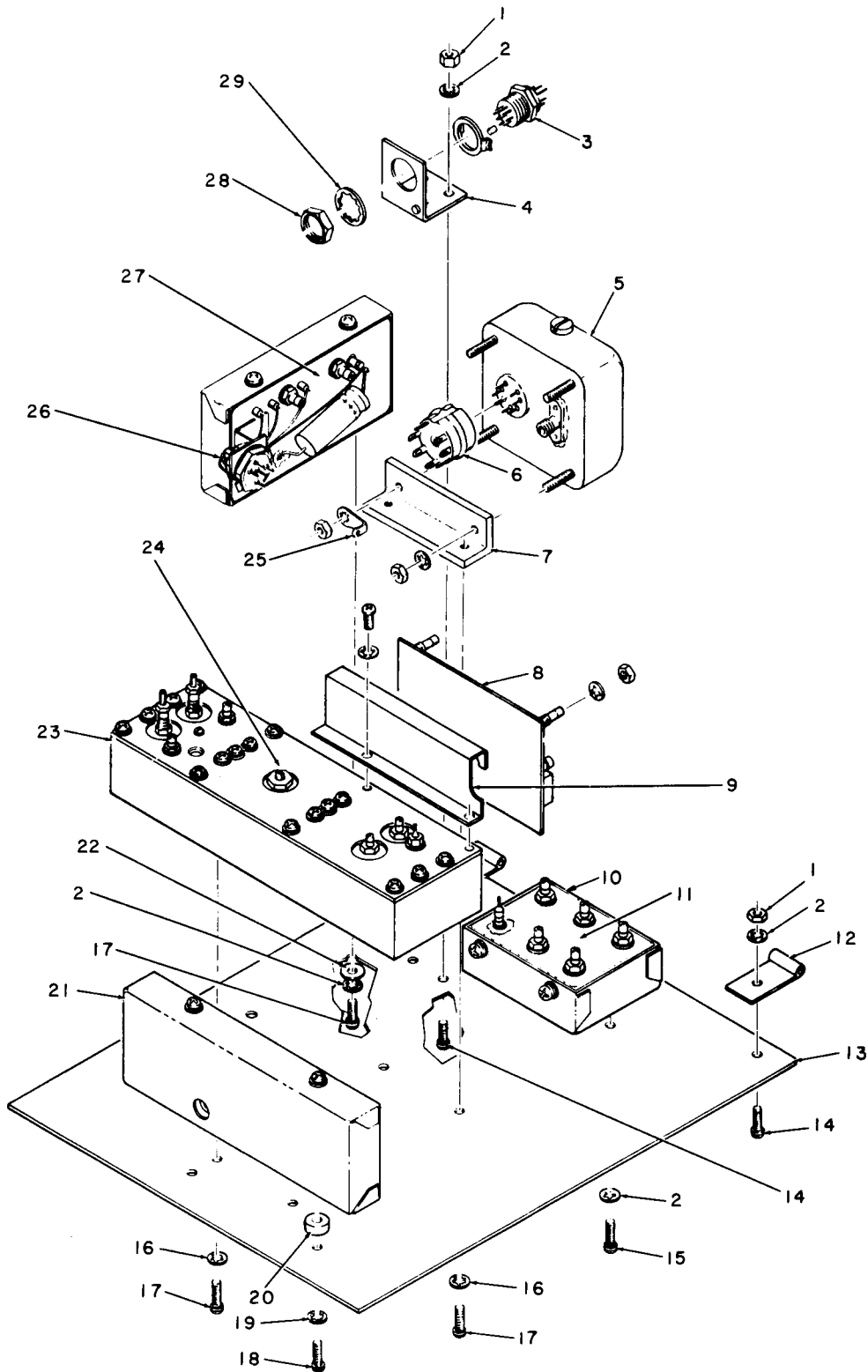
SECTION II		TM11-6625-3016-24P						
(1)	(2)	(3)	(4)	(5)	(6)	(7)	(8)	
ILLUSTRATION		NATIONAL			DESCRIPTION	USABLE ON CODE	QTY	
(A)	(B)	STOCK	FSCM	PART			INC	
FIG	ITEM	NUMBER		NUMBER			IN	
NO	NO						UNIT	
4	1	PAHZZ	5930-01-036-1112	81073	51CD30-01-1AJN		EA	1
4	2	PAHZZ		51190	4756-0000-010		EA	1
4	3	PAHZZ	5935-00-539-1192	82389	12B		EA	1
4	4	PAHZZ	5930-01-057-1686	09353	7301SYZQE		EA	1
4	5	PAHZZ		83330	1468-1/4		EA	7
4	6	PAHZZ		51190	4750-7617-800		EA	1
4	7	PAHZZ		51190	4750-7617-100		EA	1
4	8	PAHZZ	5935-00-192-4789	81349	M641/12-1		EA	1
4	9	PAHZZ	5930-01-029-2802	09353	7101SYZQ		EA	3
4	10	MDDZZ		51190	1400-2303-200		EA	1
4	11	PAHZZ		51190	4750-7616-800		EA	1
4	12	PAHZZ	5930-00-112-4266	09353	7211SYZQ		EA	2
4	13	PAHZZ	5310-00-938-2013	96906	MS35649-224		EA	2
4	14	PAHZZ		96906	MS35233-131		EA	2
4	15	XADZZ		79963	75		EA	3
4	16	PAHZZ		09353	7207J12Q3		EA	1
4	17	PAHZZ		51190	2800-7600-139		EA	2
4	18	PAHZZ		09353	7213SYZQ		EA	1
4	19	PAHZZ		51190	2840-7600-208		EA	1
4	20	PAHZZ	5905-00-539-2994	81349	RV6NAYS254A		EA	1
4	21	PAHZZ		51190	2840-7600-205		EA	1
4	22	PAHZZ		51190	5119-7618-100		EA	1
4	23	XADDD		51190	7007-2377-800		EA	1



EL8AN005

Figure 5. Wire Harness Assembly Front Panel A1A1A1.

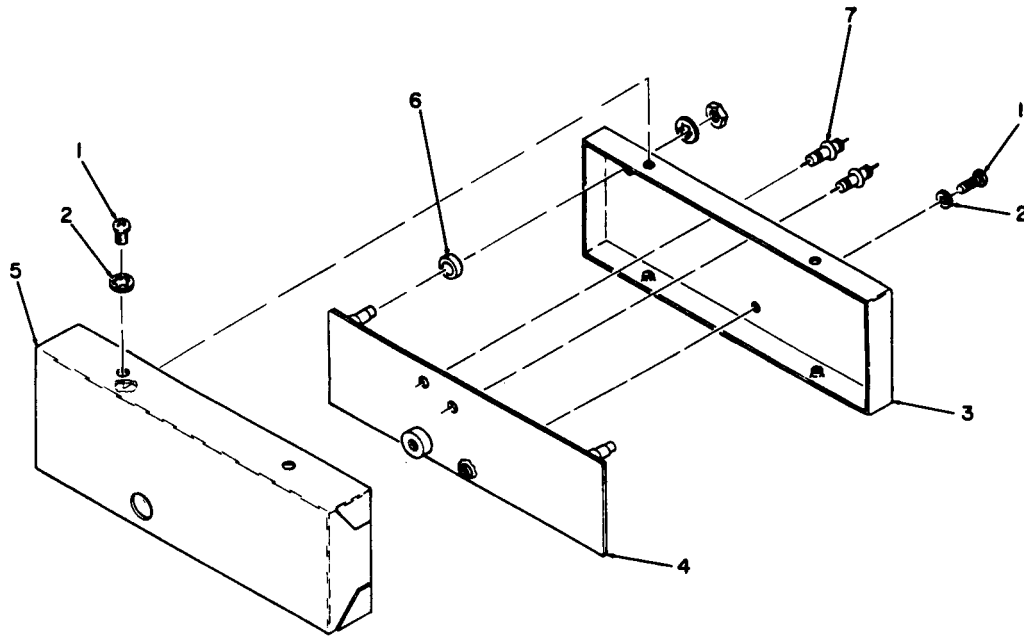
SECTION II (1) ILLUSTRATION		(2)	(3)	TM11-6625-3016-24P		(6)	(7)	(8)
(A) FIG NO	(B) ITEM NO	SMR CODE	NATIONAL STOCK NUMBER	(4) FSCM	(5) PART NUMBER	DESCRIPTION	USABLE ON CODE	U/M
GROUP 010101 WIRE HARNESS ASSEMBLY FRONT								
PANEL A1A1A1								
5	1	PADZZ		27264	08-50-0114	CONTACT, ELECTRICAL		EA 14
5	2	PADZZ	5999-01-083-0891	00779	66506-9	CONTACT, ELECTRICAL		EA 15
5	3	PADZZ		31157	22-01-2151	CONNECTOR		EA 1
5	4	PADZZ	5999-01-088-4121	00779	66504-3	CONTACT, ELECTRICAL		EA 3
5	5	PADZZ	5999-01-075-7360	00779	66505-9	CONTACT, ELECTRICAL		EA 5
5	6	PADZZ	5305-01-034-3993	18342	205980-1	RETAINER KIT, SCREW		EA 8
5	7	PADZZ	5935-00-032-9560	96214	539409-4	CONNECTOR BODY, RECE		EA 1
5	8	PADZZ	5935-00-910-5086	95238	C9-20SGDVS38C	CONNECTOR, PLUG, ELEC		EA 2
5	9	PADZZ	5935-00-912-2331	18876	9986606	CONNECTOR, PLUG, ELEC		EA 1
5	10	PADZZ	5935-01-013-7223	00779	205210-1	CONNECTOR BODY, RECE		EA 2
5	11	PADZZ	5935-00-032-9564	96214	539409-3	CONNECTOR BODY, RECE		EA 1
5	12	PADZZ	5935-00-258-1924	81312	M5SLSH19C	CONNECTOR, PLUG, ELEC		EA 1
5	13	PADZZ		18342	66506-3	CONTACT, ELECTRICAL		EA 24
5	14	PADZZ		18342	66507-3	CONTACT, ELECTRICAL		EA 43
5	15	PADZZ	5961-00-938-1135	81349	JAN1N4148	SEMICONDUCTOR DEVIC		EA 2
5	16	PADZZ		88124	NLW500-6	CAPACITOR, FIXED ELE		EA 1
5	17	PADZZ	5905-00-106-3666	81349	RCR07G103JS	RESISTOR, FIXED, COMP		EA 2
5	18	PADZZ	5905-00-114-0710	81349	RCR07G331JS	RESISTOR, FIXED, COMP		EA 1
5	19	PADZZ	5905-00-498-6053	28480	0684-2231	RESISTOR, FIXED, COMP		EA 1
5	20	PADZZ	5905-00-487-8874	28480	0684-1211	RESISTOR, FIXED, COMP		EA 1
5	21	PADZZ		27735	PE13-.047-80-20	CAPACITOR, FIXED, PLA		EA 1



EL8AN006

Figure 6. Mechanical Assembly Upper Floor A1A3.

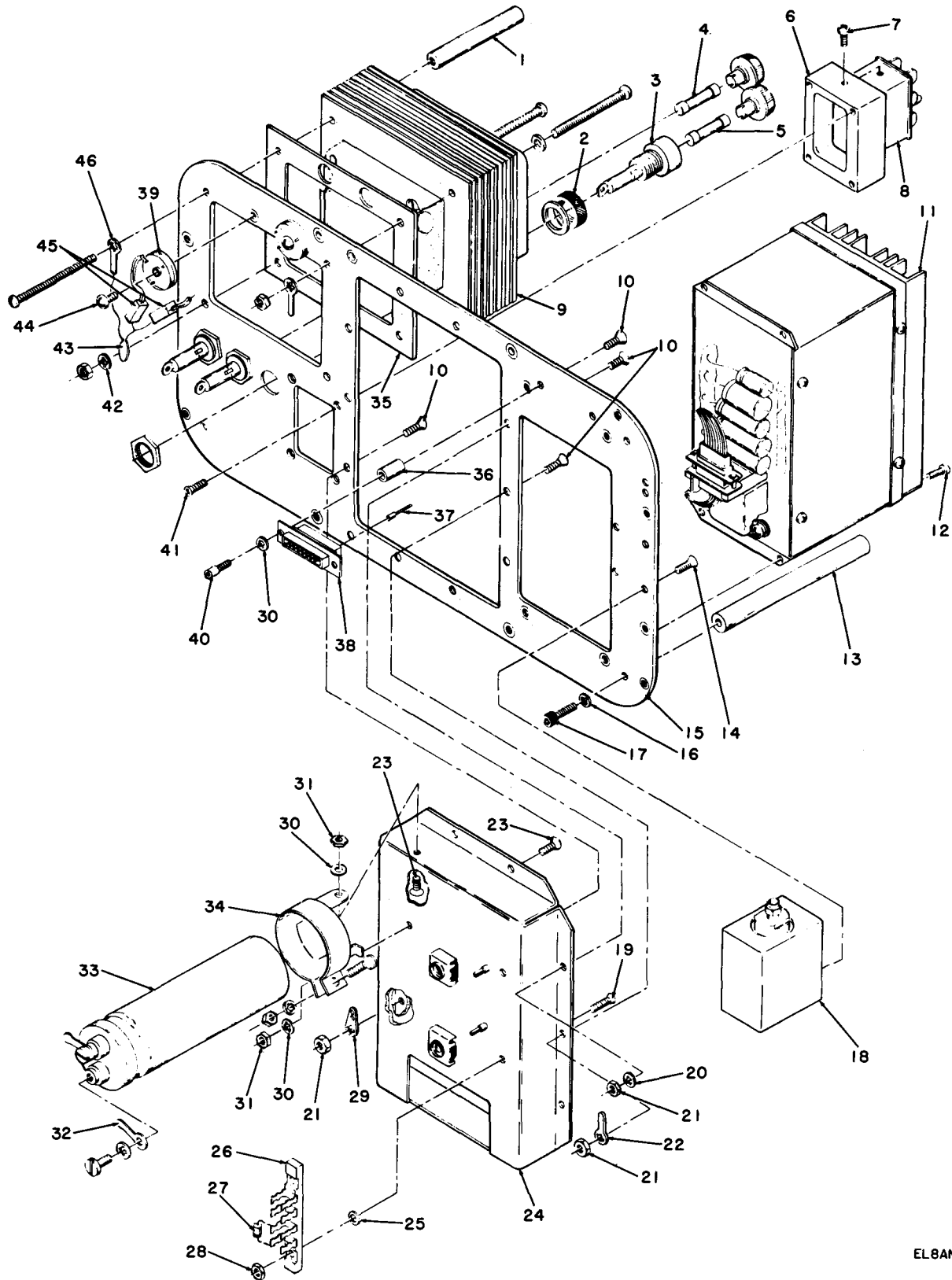
SECTION II (1) ILLUSTRATION		(2)	(3)	TM11-6625-3016-24P		(6)	(7)	(8)
(A) FIG NO	(B) ITEM NO	SMR CODE	NATIONAL STOCK NUMBER	(4) FSCM	(5) PART NUMBER	DESCRIPTION	USABLE ON CODE	U/M UNIT
GROUP 0102 MECHANICAL ASSEMBLY UPPER								
FLOOR,ALA3								
6	1	PADZZ	5310-00-934-9748	96906	MS35649-244	NUT,PLAIN,HEXAGON	EA	2
6	2	PADZZ	5310-00-193-7577	96906	MS35333-36	WASHER,LOCK	EA	2
6	3	PADZZ	5935-00-903-9778	95238	C9-20PVRNGD	CONNECTOR,RECEPTACL	EA	1
6	4	XDDZZ		51190	1400-2341-000	BRACKET,MTG	EA	1
6	5	PAHZZ	6625-01-108-0951	51190	5850-0000-010	TXCO REF OSC	EA	1
6	6	PAHZZ		00629	8578	SOCKET,PLUG-IN,ELEC	EA	1
6	7	XDHZZ		51190	1400-2364-800	BRACKET,MTG	EA	1
6	8	PAHZZ		51190	7010-2368-600	CIRCUIT CARD ASSEMB	EA	1
6	9	MDDZZ		51190	1400-2369-400	BRACKET,MTG	EA	1
6	10	PAHZZ	6625-01-108-0968	51190	7014-2362-000	TXCO DIST AMPLIFIER	EA	1
6	11	XADZZ		51190	7010-2361-900	PRINTED CKT BD ASSY	EA	1
6	12	XDHZZ		51190	2832-2317-000	HINGE	EA	2
6	13	XDHZZ		51190	2506-2360-800	FLOOR	EA	1
6	14	PAHZZ	5305-00-054-6661	96906	MS51957-37	SCREW,MACHINE	EA	2
6	15	PAHZZ	5305-00-054-5653	96906	MS51957-19	SCREW,MACHINE	EA	4
6	16	XAHZZ		96906	MS35333-36	WASHER,LOCK	EA	6
6	17	XAHZZ		96906	MS51957-37	SCREW,MACHINE	EA	4
6	18	XAHZZ		96906	MS51957-37	SCREW,MACHINE	EA	4
6	19	PAHZZ		96906	MS35233-131	WASHER,LOCK	EA	4
6	20	XAHZZ		51190	2800-7600-161	SPACER	EA	2
6	21	PAHZZ	6625-01-108-0965	51190	7024-2322-500	HET AMP 2PRESICAL AY	EA	1
6	22	XAHZZ		96906	MS27183-4	WASHER,FLAT	EA	2
6	23	PAHZZ	6625-01-108-0957	51190	7025-2356-000	VCO	EA	1
6	24	XADZZ		51190	7010-2355-900	PRINTED CKT BD ASSY	EA	1
6	25	PADZZ	5940-00-156-7196	96906	MS77072-2	TERMINAL,LUG	EA	1
6	26	PAHZZ	6625-01-108-0963	51190	7026-2321-700	CLOCK DIVIDER	EA	1
6	27	XADZZ		51190	7010-2309-300	PRINTED CKT BD ASSY	EA	1
6	28	PAHZZ	5310-00-934-9761	96906	MS35649-264	NUT,PLAIN,HEXAGON	EA	2
6	29	PAHZZ		96906	MS35333-131	WASHER,LOCK	EA	1



ELBAN007

Figure 7. Mechanical Assembly Het Amp 2 Prescaler A1A3A1.

SECTION II (1) ILLUSTRATION		(2)	(3)	TM11-6625-3016-24P		(6)	(7)	(8)
(A) FIG NO	(B) ITEM NO	SMR CODE	NATIONAL STOCK NUMBER	(4) FSCM	(5) PART NUMBER	DESCRIPTION	USABLE ON CODE	U/M
GROUP 010202 MECHANICAL ASSEMBLY, HET AMP								
2 PRESCALER, A1A3A1								
7	1	PAHZZ	5305-00-054-5644	96906	MS51957-11	SCREW, MACHINE	EA	1
7	2	PAHZZ		96906	MS35233-131	WASHER, LOCK	EA	1
7	3	PAHZZ		51190	1415-2314-801	COVER, BOTTOM	EA	1
7	4	XAHZZ		51190	7010-2368-400	PRINTED CKT BD ASSY	EA	1
7	5	XAHZZ		51190	1415-2314-802	COVER, TOP	EA	1
7	6	XAHZZ		51190	2800-7600-154	SPACER	EA	2
7	7	XAHZZ		33095	51-713-002	FILTER, FEEDTHRU	EA	2

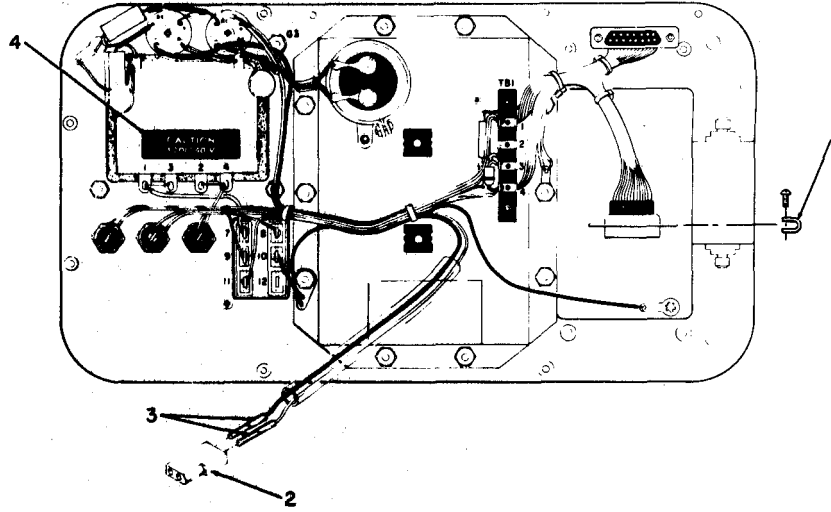


EL8AN008

Figure 8. Mechanical Assembly Rear Panel A1A3.

SECTION II (1) ILLUSTRATION (A) (B) FIG ITEM NO NO		(2) SMR CODE	(3) NATIONAL STOCK NUMBER	TM11-6625-3016-24P (4) (5) FSCM PART NUMBER		(6) DESCRIPTION	(7) USABLE ON CODE U/M	(8) QTY INC IN UNIT
GROUP 0107 MECHANICAL ASSEMBLY, REAR PANEL								
A1A8								
8	1	MHHZZ		51190	1421-2338-100	SPACER, AL	EA	1
8	2	MHHZZ		51190	2800-7600-162	SPACER, AL	EA	3
8	3	PAHZZ	5920-00-892-9311	81349	FHN26G1	FUSEHOLDER, EXTRACTO	EA	3
8	4	PAHZZ	5920-00-056-6620	71400	AGC-7-1/2	FUSE, CARTRIDGE	EA	2
8	5	PAHZZ	5920-00-156-7375	81349	F02B250V1-1/4A	FUSE, CARTRIDGE	EA	1
8	6	MHHZZ		51190	1416-2313-600	BLOCK, MTG	EA	1
8	7	PADZZ	5305-00-763-6963	96906	MS51957-28	SCREW, MACHINE	EA	2
8	8	PAHZZ		54492	P-2406-AB	CONNECTOR	EA	1
8	9	PADZZ		54068	NT-2310	TRANSFORMER	EA	1
8	10	PADZZ	5305-00-763-6958	96906	MS51959-24	SCREW, MACHINE	EA	10
8	11	PADZZ	6625-01-108-0962	51190	7023-2338-400	DUTY CYCLE REGULATED	EA	1
8	12	PADZZ	5305-00-054-6649	96906	MS51957-25	SCREW, MACHINE	EA	4
8	13	PADZZ		51190	1421-2338-200	SPACER	EA	3
8	14	PADZZ	5305-00-763-6963	96906	MS51957-28	SCREW, MACHINE	EA	4
8	15	MDDZZ		51190	1405-2337-901	PANEL, REAR, STRL	EA	1
8	16	PADZZ		96906	MS35333-131	WASHER, LOCK	EA	3
8	17	PADZZ	5305-00-068-5412	96906	MS16995-4	SCREW, CAP, SOCKET HE	EA	3
8	18	PADZZ	6625-01-109-1669	51190	2901-7624-600	ATTENUATUR	EA	1
8	19	PADZZ	5305-00-768-0336	96906	MS51959-17	SCREW, MACHINE	EA	2
8	20	PADZZ		96906	MS35333-131	WASHER, LOCK	EA	8
8	21	PADZZ	5310-00-934-9761	96906	MS35649-264	NUT, PLAIN, HEXAGON	EA	10
8	22	PADZZ	5940-00-156-7196	96906	MS77072-2	TERMINAL, LUG	EA	1
8	23	PADZZ	5305-00-770-2533	96906	MS51959-13	SCREW, MACHINE	EA	2
8	24	PADZZ		51190	1414-2311-800	COVER, BATTERY	EA	1
8	25	PADZZ	5310-00-950-1310	96906	MS27183-4	WASHER, FLAT	EA	2
8	26	PADZZ	5940-00-204-8225	71785	4-170	TERMINAL BOARD	EA	1
8	27	PADZZ		22229	NS2001	SEMICONDUCTOR DEVIC	EA	1
8	28	PADZZ	5310-00-934-9739	96906	MS35649-242	NUT, PLAIN, HEXAGON	EA	2
8	29	PADZZ	5940-00-156-7345	96906	MS77067-2	TERMINAL, LUG	EA	1
8	30	PADZZ	5310-00-193-7577	96906	MS35333-36	WASHER, LOCK	EA	2
8	31	PADZZ	5310-00-934-9748	96906	MS35649-244	NUT, PLAIN, HEXAGON	EA	2
8	32	PADZZ	5940-00-156-7373	96906	MS77074-6	TERMINAL, LUG	EA	2
8	33	PADZZ	5910-01-079-7273		CGS-133U025R4C3P 90201 H	CAPACITOR, FIXED, ELE	EA	1
8	34	PADZZ		51190	2109-7616-700	CLAMP	EA	1
8	35	PADZZ		51190	2100-2335-900	PLATE, MOUNTING, TRAN	EA	1
8	36	PADZZ		51190	2800-7600-138	SPACER	EA	2
8	37	PADZZ	5999-01-088-4121	00779	66504-3	CONTACT, ELECTRICAL	EA	30

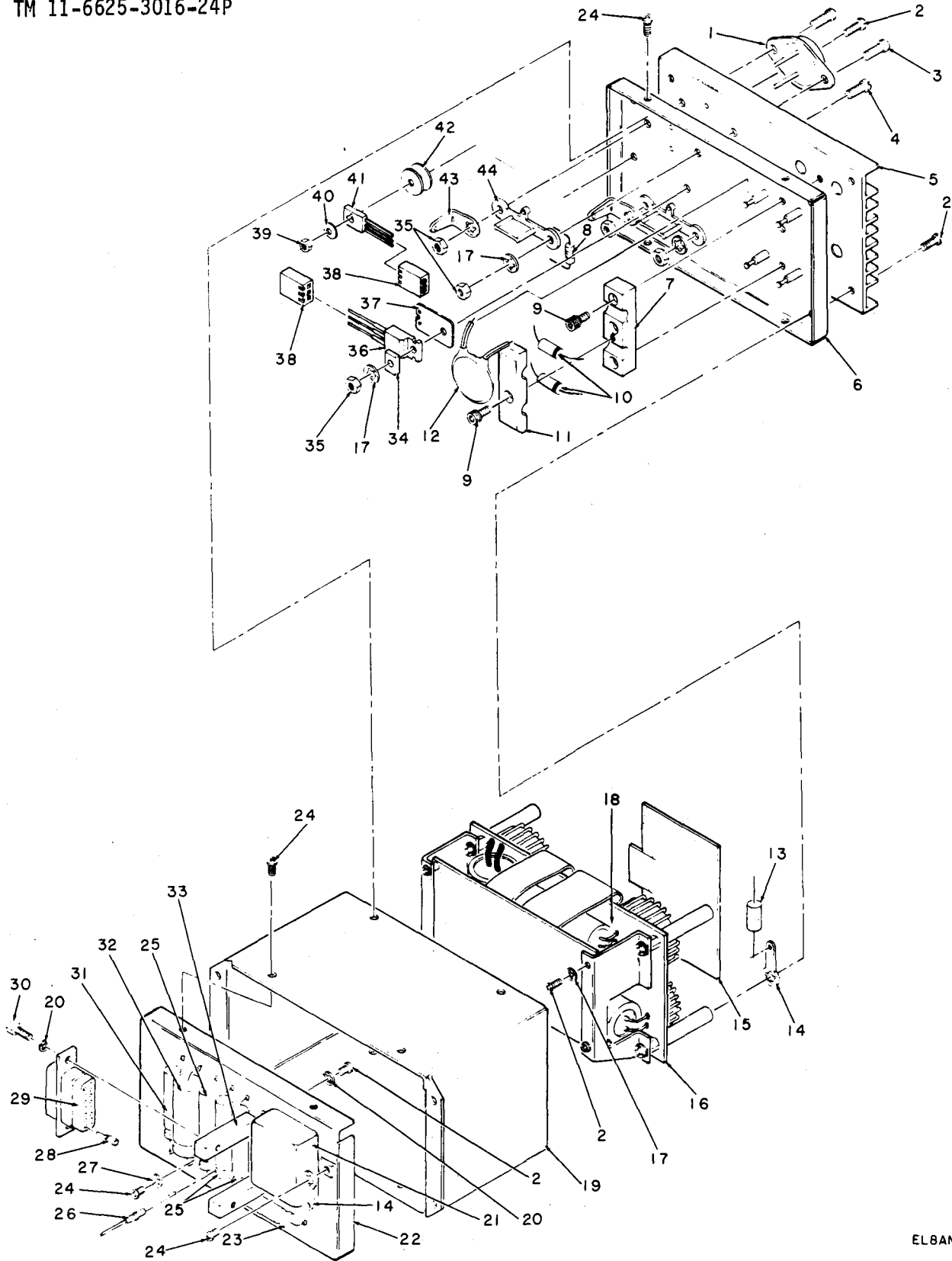
SECTION II		TM11-6625-3016-24P						(7)	(8)
(1)	(2)	(3)	(4)	(5)	(6)				
ILLUSTRATION					DESCRIPTION			QTY	
(A)	(B)	NATIONAL		PART				INC	
FIG	ITEM	STOCK	FSCM	NUMBER		USABLE	ON	IN	
NO	NO	NUMBER				CODE	U/M	UNIT	
8	38	PADZZ	5935-00-032-9560	96214	539409-4			EA	2
8	39	PADZZ	5961-01-103-5607	83701	PK-10			EA	2
8	40	PADZZ		51190	2850-7601-301			EA	2
8	41	PAHZZ	5305-00-770-2579	96906	MS51959-15			EA	4
8	42	PAHZZ	5310-00-019-0676	96906	MS35333-109			EA	2
8	43	PADZZ	5910-00-577-1138	99942	DD103			EA	2
8	44	PADZZ	5305-00-054-5649	96906	MS51957-15			EA	4
8	45	PADZZ		97137	PW-5-.1-10			EA	2
8	46	PADZZ		83330	1411-8			EA	2



EL8AN009

Figure 9. Mechanical Assembly Rear Panel A1A3, Overall I View.

SECTION II (1) ILLUSTRATION		TM11-6625-3016-24P				(6) DESCRIPTION	(7) USABLE ON CODE	(8) QTY INC IN UNIT
(A) FIG NO	(B) ITEM NO	(2) SMR CODE	(3) NATIONAL STOCK NUMBER	(4) FSCM	(5) PART NUMBER			
9	1	PADZZ	5305-01-034-3993	18342	205980-1	RETAINER KIT,SCREW	EA	1
9	2	PADZZ		31157	03-09-1022	CONNECTOR,RECEPTACL	EA	1
9	3	PADZZ	5999-00-624-9397	27264	02-09-1103	CONTACT,ELECTRICAL	EA	2
9	4	PADZZ		51190	2400-8002-000	LABEL,CAUTION	EA	1

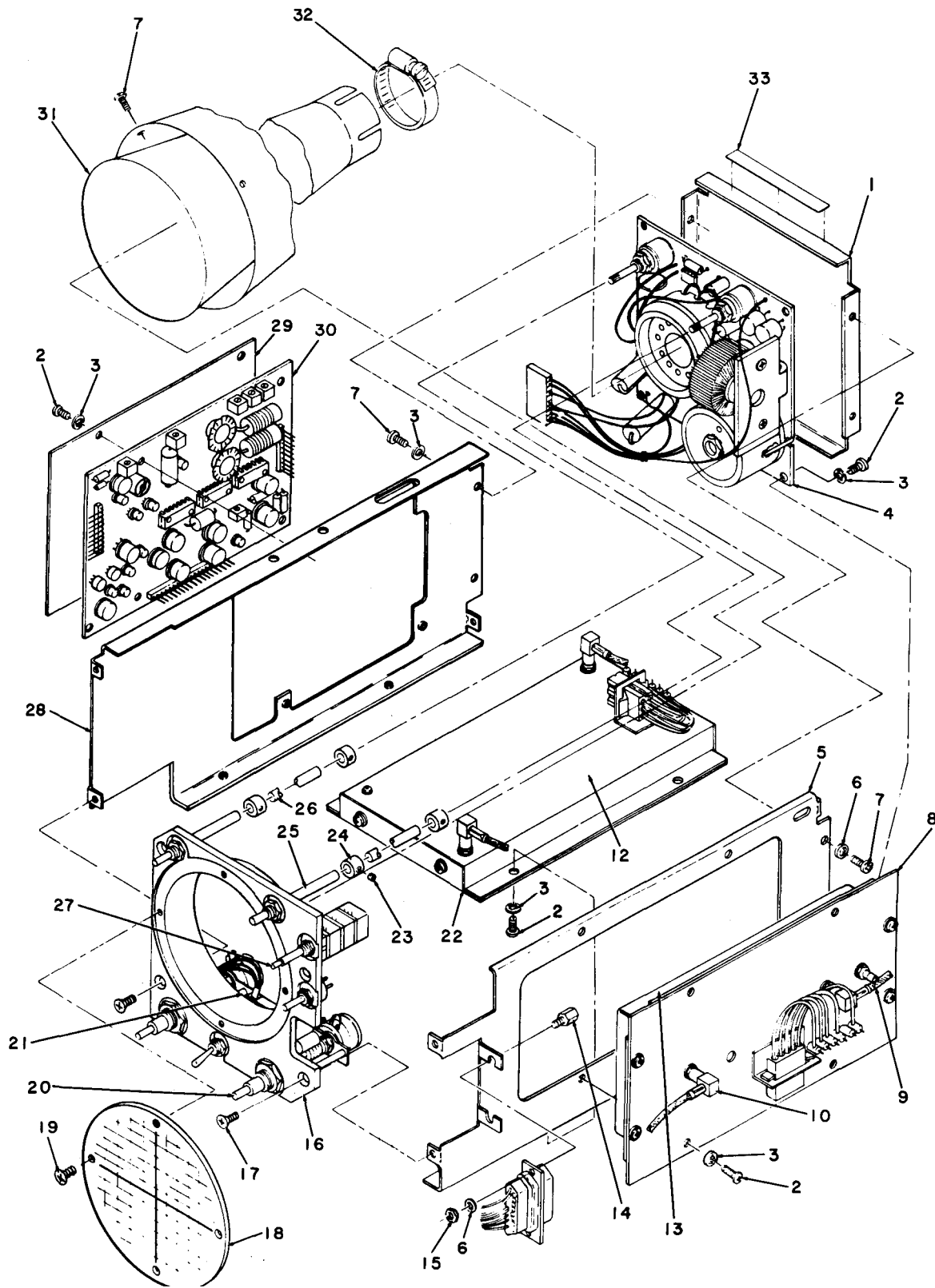


ELBANO IO

Figure 10. Mechanical Assembly Duty Cycle Regulator A1A8A1.

SECTION II (1) ILLUSTRATION (A) (B) FIG ITEM NO NO		(2) SMR CODE	(3) NATIONAL STOCK NUMBER	TM11-6625-3016-24P (4) (5) FSCM PART NUMBER		(6) DESCRIPTION	(7) USABLE ON CODE U/M	(8) QTY INC IN UNIT
GROUP 010701 MECHANICAL ASSEMBLY, DUTY								
CYCLE REGULATOR A1A8A1								
10	1	PADZZ	5961-01-007-2231	80131	2N5879	TRANSISTOR	EA	2
10	2	PADZZ	5305-00-054-5644	96906	MS51957-11	SCREW, MACHINE	EA	4
10	3	PADZZ	5305-00-054-6653	96906	MS51957-29	SCREW, MACHINE	EA	4
10	4	PADZZ		51190	2804-0375-051	SCREW, MACHINE	EA	1
10	5	MDDZZ		51190	2506-2337-500	HEAT SINK	EA	1
10	6	MDDZZ		51190	1414-2337-600	COVER	EA	1
10	7	MDDZZ		51190	5400-2378-500	HEAT SINK	EA	1
10	8	PADZZ	5905-00-477-1419	01121	CB1501	RESISTOR, FIXED, COMP	EA	1
10	9	PADZZ	5305-00-068-5276	96906	MS16995-9	SCREW, CAP, SOCKET HE	EA	3
10	10	PADZZ		83701	RWB020A	SEMICONDUCTOR DEVIC	EA	2
10	11	MDDZZ		51190	5400-2378-600	HEAT SINK	EA	1
10	12	PADZZ	5910-00-577-1138	99942	DD103	CAPACITOR, FIXED, CER	EA	1
10	13	PADZZ		27735	MPC13-1-50-5	CAPACITOR, FIXED, MET	EA	1
10	14	PADZZ	5940-00-204-9158	96906	MS77072-1	TERMINAL, LUG	EA	2
10	15	MDDZZ		51190	3107-2354-500	INSULATOR	EA	1
10	16	PADZZ		51190	7010-2334-900	CIRCUIT CARD ASSEMB	EA	1
10	17	PADZZ		96906	MS35333-131	WASHER, LOCK	EA	4
10	18	XADZZ		51190	7010-2309-000	PRINTED CKT BD ASSY	EA	1
10	19	XDDZZ		51190	1414-2337-700	COVER	EA	1
10	20	PADZZ	5310-00-782-1349	96906	MS15795-804	WASHER, FLAT	EA	2
10	21	PADZZ		32640	93G83-4-X-65	RELAY	EA	1
10	22	MDDZZ		51190	2506-2337-800	COVER	EA	1
10	23	PADZZ	5910-00-060-9391	14655	NLW50-50	CAPACITOR, FIXED, ELE	EA	1
10	24	PADZZ	5305-00-764-2966	96906	MS51959-2	SCREW, MACHINE	EA	4
10	25	PADZZ	5910-01-112-0835	90201	TT25X300A	CAPACITOR, FIXED, ELE	EA	3
10	26	PADZZ	5915-00-116-6571	33095	51-708-001	FILTER, RADIO FREQUE	EA	6
10	27	PADZZ	5310-00-782-1349	96906	MS15795-804	WASHER, FLAT	EA	1
10	28	PADZZ	5999-01-083-0891	00779	66506-9	CONTACT, ELECTRICAL	EA	15
10	29	PADZZ	5935-00-032-9564	96214	539409-3	CONNECTOR BODY, RECE	EA	1
10	30	PADZZ		51190	2850-7601-301	SCREW, MACHINE	EA	2
10	31	PADZZ		88124	NLW500-6	CAPACITOR, FIXED ELE	EA	1
10	32	PADZZ	5910-01-097-2748	90201	TC1520C	CAPACITOR, FIED, ELE	EA	1
10	33	PADZZ		51190	2813-7618-400	SPACER	EA	2
10	34	PADZZ		02735	NR231A	WASHER	EA	1
10	35	PAHZZ	5310-00-934-9761	96906	MS35649-264	NUT, PLAIN, HEXAGON	EA	4
10	36	PADZZ	5961-01-012-9316	80131	2N6109	TRANSISTOR	EA	1
10	37	PADZZ		02735	DF1038	INSULATOR, WASHER	EA	1
10	38	PADZZ	5935-01-123-9863	27264	10-17-2032	CONNECTOR	EA	2

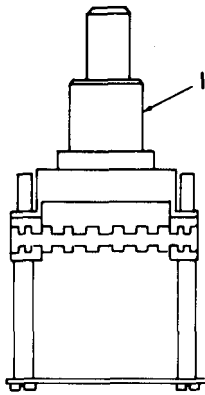
SECTION II (1) ILLUSTRATION		TM11-6625-3016-24P						
(A) FIG NO	(B) ITEM NO	(2) SMR CODE	(3) NATIONAL STOCK NUMBER	(4) FSCM	(5) PART NUMBER	(6) DESCRIPTION	(7) USABLE ON CODE	(8) QTY INC IN UNIT
10	39	PADZZ	5310-00-934-9739	96906	MS35649-242	NUT, PLAIN, HEXAGON	EA	1
10	40	PADZZ	5310-01-080-9226	04713	B52200F006	WASHER, SPRING TENS	EA	1
10	41	PADZZ	5961-01-005-6607	80131	2N5195	TRANSISTOR	EA	1
10	42	PADZZ	5970-01-103-9859	04713	B52600F003	INSULATOR, WASHER	EA	2
10	43	PADZZ	5940-00-513-3264	83330	1410-6	TERMINAL, LUG	EA	2
10	44	MDDZZ		31223	PT1-1	MOUNTING PAD, ELECTR	EA	2



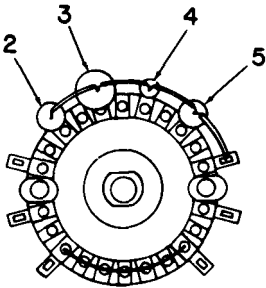
ITEM II IS NOT USED.

Figure 11. Mechanical Assembly Spectrum Analyzer A1A18.

SECTION II (1) ILLUSTRATION		(2)	(3)	TM11-6625-3016-24P		(6)	(7)	(8)
(A) FIG NO	(B) ITEM NO	SMR CODE	NATIONAL STOCK NUMBER	(4) FSCM	(5) PART NUMBER	DESCRIPTION	USABLE ON CODE	U/M INC IN UNIT
						GROUP 0117 MECHANICAL ASSEMBLY, SPECTRUM		
						ANALYZER, A1A18		
11	1	PADZZ		51190	1414-2314-000	COVER, REAR	EA	1
11	2	PADZZ	5305-00-054-5653	96906	MS51957-19	SCREW, MACHINE	EA	4
11	3	PADZZ	5310-00-193-7577	96906	MS35333-36	WASHER, LOCK	EA	2
11	4	PADZZ	6625-01-108-0954	51190	7010-2362-400	SCOPE INVERTER BD	EA	1
11	5	MDDZZ		51190	1415-2362-200	FRAME, SIDE	EA	1
11	6	PADZZ	5310-00-193-7577	96906	MS35333-36	WASHER, LOCK	EA	2
11	7	PADZZ	5305-00-764-2966	96906	MS51959-2	SCREW, MACHINE	EA	2
11	8	PADZZ	6625-01-109-1671	51190	7030-2363-200	ANALYZER MODULE	EA	1
11	9	XADZZ		51190	6050-0040-720	COAX ASSY	EA	1
11	10	PADZZ		51190	6050-0040-620	CABLE, RADIO FREQUEN	EA	1
11	12	XADZZ		51190	7010-2359-400	PRINTED CKT BD ASSY	EA	1
11	13	XADZZ		51190	7010-2359-300	PRINTED CKT BD ASSY	EA	1
11	14	PADZZ		51190	2850-7601-301	SCREW, MACHINE	EA	2
11	15	PADZZ	5310-00-934-9739	96906	MS35649-242	NUT, PLAIN, HEXAGON	EA	2
11	16	PADZZ		51190	7028-2366-900	ANALYZER, SPECTRUM, F	EA	1
11	17	PADZZ	5305-00-770-2533	96906	MS51959-13	SCREW, MACHINE	EA	4
11	18	PAHZZ		51190	2517-2361-700	GRADICULE	EA	1
11	19	PAHZZ	5305-00-764-2964	96906	MS51959-4	SCREW, MACHINE	EA	4
11	20	XADZZ		51190	7013-2366-700	MECH ASSY	EA	1
11	21	PADZZ		51190	7007-2364-600	WIRING HARNESS	EA	1
11	22	PADZZ	6625-01-109-1672	51190	7030-2363-300	ANALYZER MODULE	EA	1
11	23	XADZZ		96906	MS51957-11	SCREW, MACHINE	EA	4
11	24	XADZZ		51190	2405-2369-900	RING, CL	EA	4
11	25	XADZZ		51190	2518-7616-000	BEARING, PANEL	EA	2
11	26	XADZZ		51190	2513-2369-800	SHAFT	EA	2
11	27	XADZZ		51190	7013-2366-800	MECH ASSY	EA	1
11	28	PAHZZ		51190	1415-2363-100	FRAME SIDE	EA	1
11	29	XDHZZ		51190	3107-2365-300	INSULATOR	EA	1
11	30	PADZZ	6625-01-108-0955	51190	7010-2362-500	SCOPE MAIN BD	EA	1
11	31	PADZZ	5960-00-088-9897	81349	3RP1A	ELECTRON TUBE	EA	1
11	32	PADZZ		30463	6620	CLAMP, HOSE	EA	1
11	33	MDDZZ		51190	2400-8009-000	LABEL, CAUTION	EA	1



SIDE VIEW

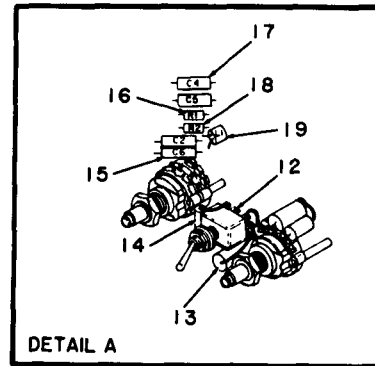
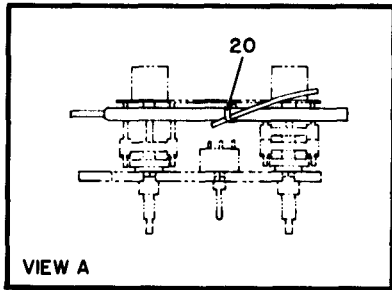
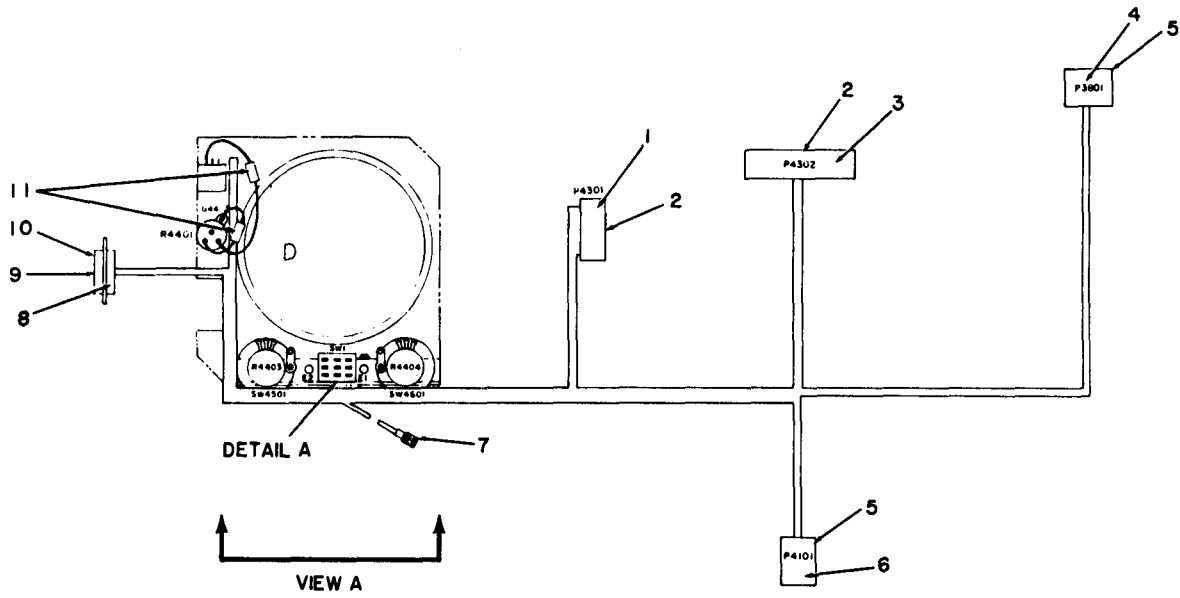


TOP VIEW

EL8ANOI2

Figure 12. Mechanical Assembly Horizontal Sweep Switch A1A18A5A1.

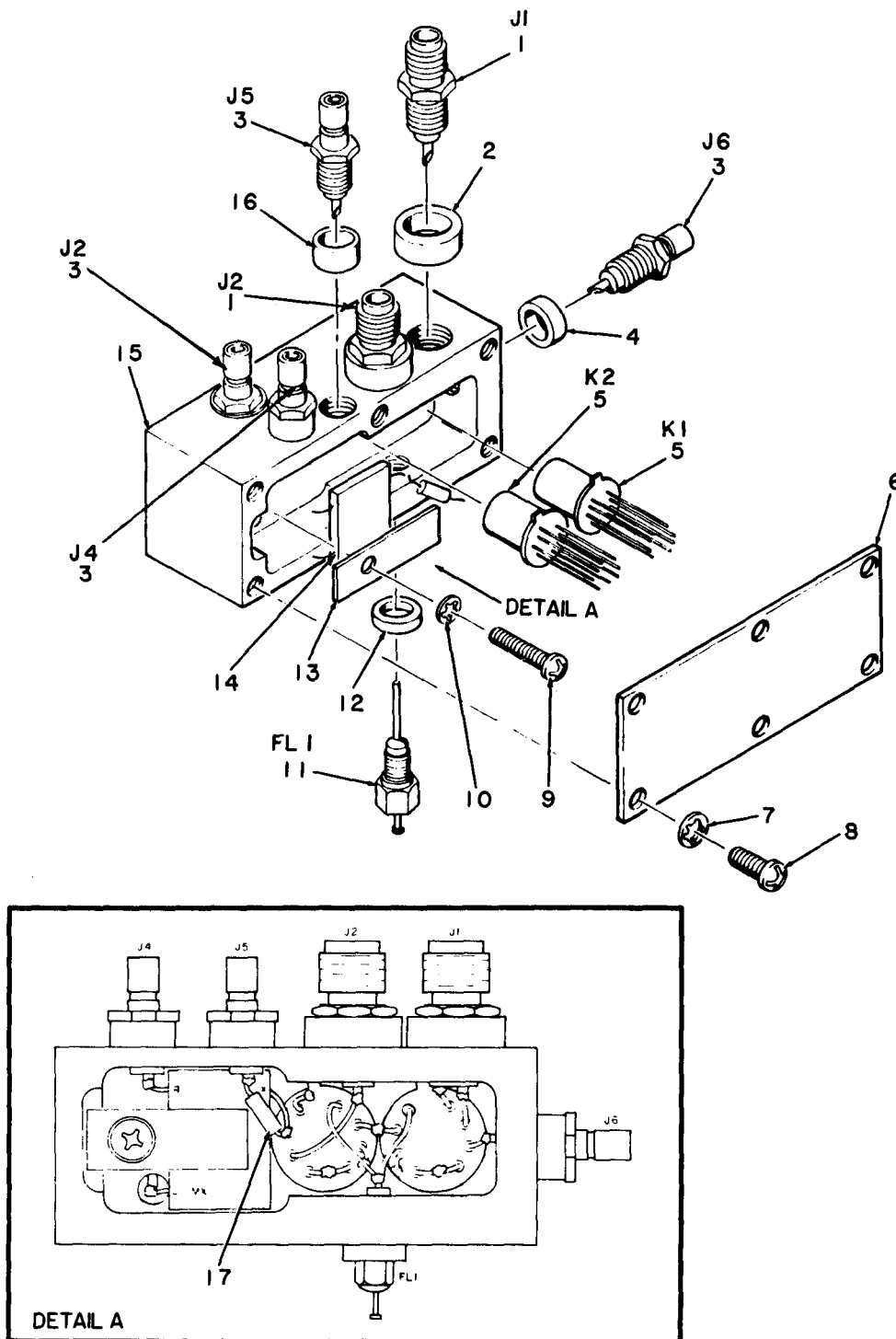
SECTION II		TM11-6625-3016-24P					
(1)	(2)	(3)	(4)	(5)	(6)	(7)	(8)
ILLUSTRATION		NATIONAL			DESCRIPTION		QTY
(A)	(B)	STOCK		PART		USABLE ON CODE	INC
FIG	ITEM	NUMBER	FSCM	NUMBER		U/M	IN
NO	NO						UNIT
					GROUP 01170501 MECHANICAL ASSEMBLY,		
					HORIZONTAL SWEEP SWITCH		
					A1A18A5A1		
12	1	PADZZ	11237	5P6043A	SWITCH, ROTARY		EA 1
12	2	PADZZ	27735	PC12-.01-50-5	CAPACITOR, FIXED, PLA		EA 1
12	3	PADZZ	27735	PC12-.1-50-5	CAPACITOR, FIXED, PLA		EA 1
12	4	PADZZ	5910-01-123-0747	31433	T322B105K035AS		EA 1
12	5	PADZZ	5910-00-248-9346	05397	T322C106K020AS		EA 1



ELBAND13

Figure 13. Wire Harness Assembly Spectrum Analyzer A1A18A5A3.

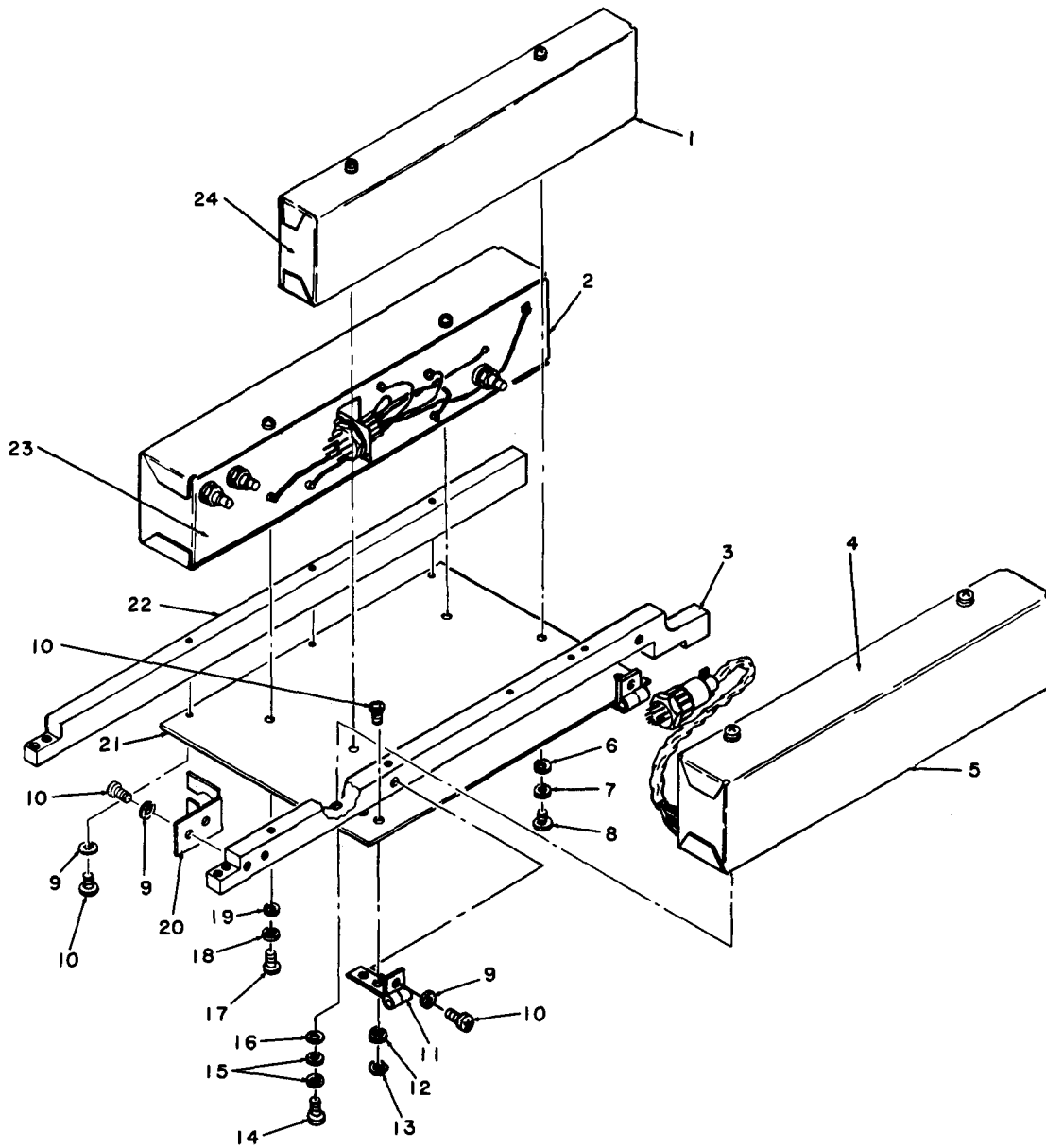
SECTION II (1) ILLUSTRATION		(2)	(3)	TM11-6625-3016-24P		(6)	(7)	(8)
(A) FIG NO	(B) ITEM NO	SMR CODE	NATIONAL STOCK NUMBER	(4) FSCM	(5) PART NUMBER	DESCRIPTION	USABLE ON CODE	U/M
						GROUP 01170503 WIRE HARNESS ASSEMBLY, SPECTRUM ANALYZER A1A18A5A3		
13	1	PADZZ	5935-01-082-5293	27264	22-01-2101	CONNECTOR BODY, RECE	EA	1
13	2	PADZZ		27264	08-56-0110	CONTACT, ELECTRICAL	EA	23
13	3	PADZZ	5935-01-036-3441	27264	22-01-2181	CONNECTOR, PLUG, ELEC	EA	1
13	4	PADZZ	5935-00-032-9553	27264	03-06-2055	CONNECTOR BODY, RECE	EA	1
13	5	PADZZ	5999-00-540-9143	27264	02-06-2132	CONTACT, ELECTRICAL	EA	11
13	6	PADZZ	5935-00-309-8502	27264	1625-6P1	CONNECTOR BODY, PLUG	EA	1
13	7	PADZZ		51190	6050-0070-890	CABLE, RADIO FREQUEN	EA	1
13	8	PADZZ	5935-00-032-9564	96214	539409-3	CONNECTOR BODY, RECE	EA	1
13	9	PADZZ		18342	66506-3	CONTACT, ELECTRICAL	EA	3
13	10	PADZZ		18342	66507-3	CONTACT, ELECTRICAL	EA	5
13	11	PADZZ	5905-00-135-6046	81349	RCR07G681JS	RESISTOR, FIXED, COMP	EA	2
13	12	PADZZ	5930-00-162-1858	09353	7303SYZQ	SWITCH, TOGGLE	EA	1
13	13	PADZZ		27735	PE11-.1-200-5	CAPACITOR, FIXED, PLA	EA	1
13	14	PADZZ		31433	T322D685M035AS	CAPACITOR, FIXED	EA	1
13	15	PADZZ		27735	PC12-.01-50-5	CAPACITOR, FIXED, PLA	EA	2
13	16	PADZZ		28363	C41001F	RESISTOR, FIXED, FILM	EA	1
13	17	PADZZ		27735	PE13-.0015-80-5	CAPACITOR, FIXED, PLA	EA	2
13	18	PADZZ		28363	C41000F	RESISTOR, FIXED, FILM	EA	1
13	19	PADZZ		99800	2534-36	COIL, RADIO FREQUENC	EA	1
13	20	PADZZ	5975-00-111-3208	96906	MS3367-5-9	STRAP, TIEDOWN, ELECT	EA	20



EL8ANO14

Figure 14. Mechanical Assembly First Mixer A1A19.

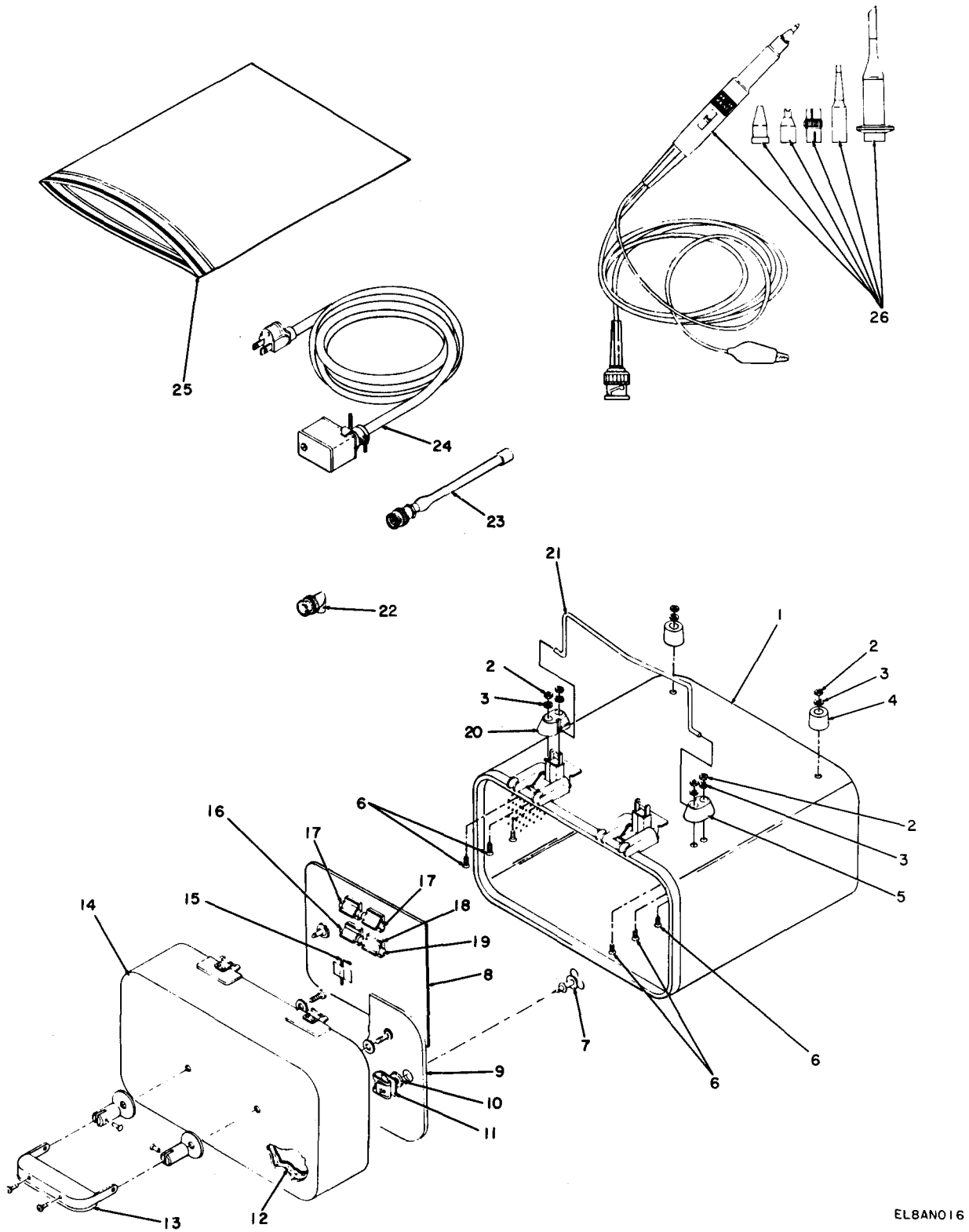
SECTION II (1) ILLUSTRATION		(2)	(3)	TM11-6625-3016-24P		(6)	(7)	(8)
(A) FIG NO	(B) ITEM NO	SMR CODE	NATIONAL STOCK NUMBER	FSCM	PART NUMBER	DESCRIPTION	USABLE ON CODE	QTY INC IN UNIT
						GROUP 0118 MECHANICAL ASSEMBLY, FIRST MIXER, ALA19		
14	1	PAHZZ		19505	60-9939-090	CONNECTOR, RECEPTACL	EA	2
14	2	PAHZZ		51190	2800-7600-111	SPACER	EA	2
14	3	PAHZZ		19505	17-0219-000	CONNECTOR	EA	4
14	4	PAHZZ		51190	2800-7600-154	SPACER	EA	1
14	5	PAHZZ		11532	732-12	RELAY	EA	2
14	6	MHHZZ		51190	1414-2373-500	COVER, MIXER	EA	1
14	7	PAHZZ	5310-00-193-7577	96906	MS35333-36	WASHER, LOCK	EA	3
14	8	PAHZZ	5305-00-764-2966	96906	MS51959-2	SCREW, MACHINE	EA	3
14	9	PAHZZ	5305-00-054-6661	96906	MS51957-37	SCREW, MACHINE	EA	1
14	10	PAHZZ		96906	MS35233-131	WASHER, LOCK	EA	1
14	11	PAHZZ	5915-01-084-6573	33095	51-712-001	FILTER, RADIO FREQUE	EA	1
14	12	PAHZZ		51190	2800-7600-179	SPACER	EA	1
14	13	PAHZZ		51190	4503-2373-600	RETAINER	EA	1
14	14	PAHZZ	5895-01-128-3218	21912	MD-614	MIXER	EA	1
14	15	MHHZZ		51190	2100-2373-400	ENCLOSURE	EA	1
14	16	PAHZZ		51190	2800-7600-180	SPACER	EA	2
14	17	PAHZZ		28363	C42490F	RESISTOR, FIXED, FILM	EA	1



EL8AN015

Figure 15. Mechanical Assembly Lower Floor A1A24.

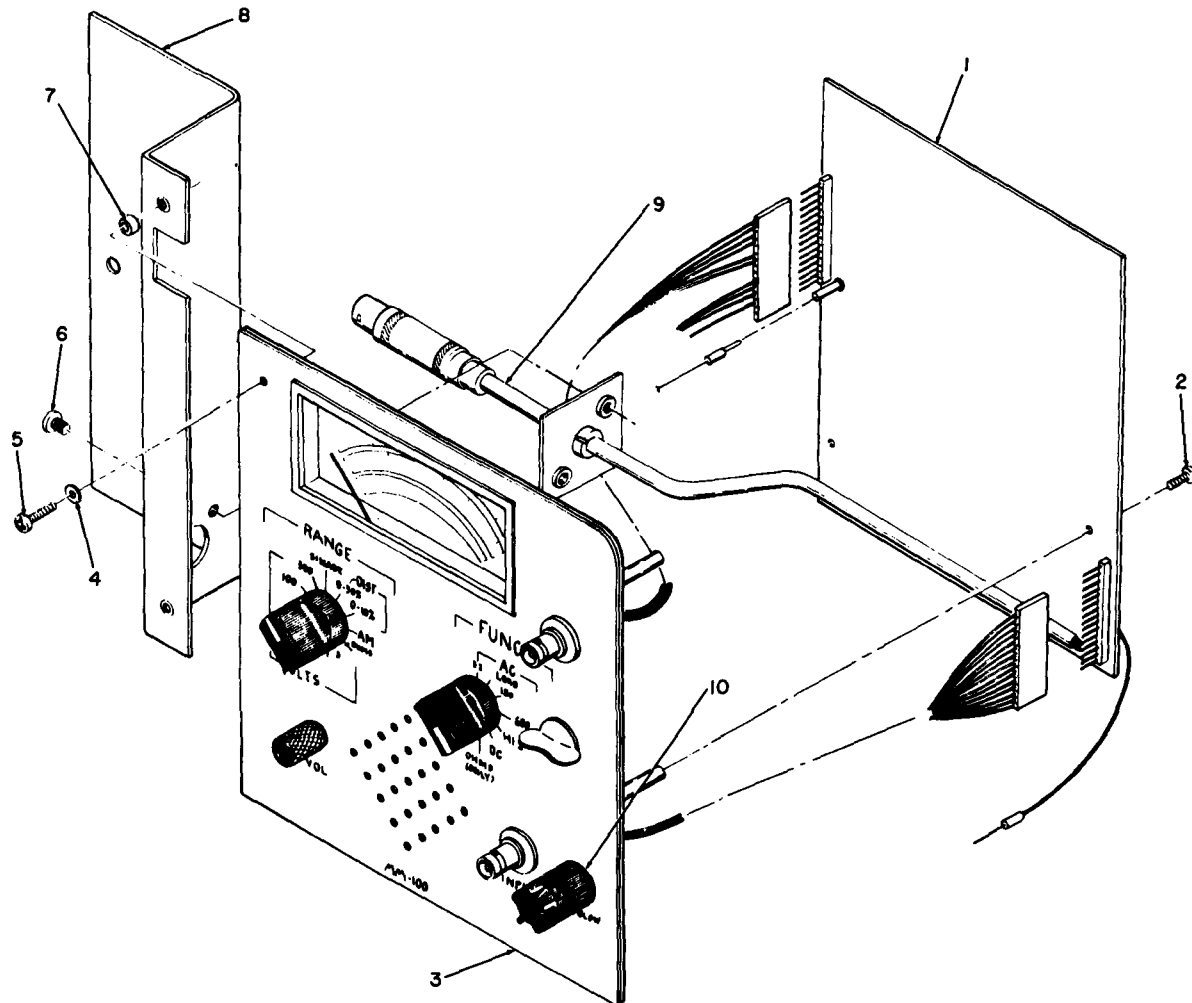
SECTION II (1) ILLUSTRATION		(2)	(3)	TM11-6625-3016-24P		(6)	(7)	(8)
(A) FIG NO	(B) ITEM NO	SMR CODE	NATIONAL STOCK NUMBER	(4) FSCM	(5) PART NUMBER	DESCRIPTION	USABLE ON CODE	U/M UNIT
GROUP 0123 MECHANICAL ASSEMBLY, LOWER								
FLOOR,ALA24								
15	1	PAHZZ	6625-01-109-1676	51190	7017-2321-900	MIXER ASSEMBLY	EA	1
15	2	PAHZZ	6625-01-109-1674	51190	7005-2376-200	FM AM GENERATOR	EA	1
15	3	XAHZZ		51190	1404-2316-300	RAIL, SPRT	EA	1
15	4	PAHZZ	6625-01-109-1675	51190	7027-2348-300	RECEIVER ASSEMBLY	EA	1
15	5	XADZZ		51190	7010-2348-200	PRINTED CKT BD ASSY	EA	1
15	6	XAHZZ		96906	MS27183-4	WASHER, FLAT	EA	2
15	7	XAHZZ		96906	MS35333-36	WASHER, LOCK	EA	2
15	8	XAHZZ		96906	MS51957-19	SCREW, MACHINE	EA	2
15	9	PAHZZ	5310-00-193-7577	96906	MS35333-36	WASHER, LOCK	EA	2
15	10	PAHZZ	5305-00-054-5653	96906	MS51957-19	SCREW, MACHINE	EA	2
15	11	XDHZZ		51190	2832-0016-901	HINGE	EA	2
15	12	PAHZZ		96906	MS35233-131	WASHER, LOCK	EA	4
15	13	PAHZZ	5310-00-938-2013	96906	MS35649-224	NUT, PLAIN, HEXAGON	EA	4
15	14	XAHZZ		96906	MS51957-19	SCREW, MACHINE	EA	2
15	15	XAHZZ		96906	MS35333-36	WASHER, LOCK	EA	4
15	16	XAHZZ		96906	MS27183-4	WASHER, FLAT	EA	2
15	17	XAHZZ		96906	MS51957-19	SCREW, MACHINE	EA	2
15	18	XAHZZ		96906	MS35333-36	WASHER, LOCK	EA	2
15	19	XAHZZ		96906	MS27183-4	WASHER, FLAT	EA	2
15	20	XDHZZ		51190	1400-2340-900	BRACKET, MTG	EA	1
15	21	XAHZZ		51190	2506-2310-200	FLOOR	EA	1
15	22	XDHZZ		51190	1404-2325-700	RAIL, SPRT	EA	1
15	23	XADZZ		51190	7010-2376-100	PRINTED CKT BD ASSY	EA	1
15	24	XADZZ		51190	7010-2309-500	PRINTED CKT BD ASSY	EA	1



ELBAN016

Figure 16. Case Assembly A2.

SECTION II (1) ILLUSTRATION		(2)	(3)	TM11-6625-3016-24P		(6)	(7)	(8)
(A) FIG NO	(B) ITEM NO	SMR CODE	NATIONAL STOCK NUMBER	(4) FSCM	(5) PART NUMBER	DESCRIPTION	USABLE ON CODE	U/M
						GROUP 02 CASE ASSEMBLY A2		
16	1	PAHZZ		51190	1412-7635-600	CASE,MODIFIED	EA	1
16	2	PAHZZ	5310-00-934-9761	96906	MS35649-264	NUT,PLAIN,HEXAGON	EA	2
16	3	PAHZZ		96906	MS35333-131	WASHER,LOCK	EA	2
16	4	PAHZZ		51190	1421-0000-500	FOOT,CONICAL	EA	2
16	5	PAHZZ		51190	1421-0000-201	FOOT,MTG	EA	1
16	6	PAHZZ	5305-00-764-2964	96906	MS51959-4	SCREW,MACHINE	EA	2
16	7	PAHZZ		94222	85-12-160-16	FASTENER,RECEPTACLE	EA	2
16	8	PADZZ		51190	1414-2379-100	COVER,ACCESSORY	EA	1
16	9	PAHDD		51190	7003-2380-000	COMPOSITE ASSEMBLY	EA	1
16	10	PAHZZ	5310-00-822-8525	94222	85-34-101-20	WASHER,SPLIT	EA	2
16	11	PAHZZ		94222	85-47-101-15	RECEPTACLE,TURNLOCK	EA	2
16	12	XAHZZ		51190	3107-2380-600	INSULATOR	EA	1
16	13	PAHZZ		51190	1407-0000-002	HANDLE	EA	1
16	14	PAHZZ		51190	1412-7635-700	CASE COVER	EA	1
16	15	PAHZZ		39428	7122H13	KEY,HEX	EA	1
16	16	PAHZZ	5920-00-156-7375	81349	F02B250V1-1/4A	FUSE,CARTRIDGE	EA	1
16	17	PAHZZ	5920-00-056-6620	71400	AGC-7-1/2	FUSE,CARTRIDGE	EA	2
16	18	PAHZZ		25706	670-1/4	CLIP,SPRING TENSION	EA	4
16	19	PAHZZ	5920-00-518-1790	81349	F02A250V3/8A	FUSE,CARTRIDGE	EA	1
16	20	PAHZZ		51190	1421-0000-200	FOOT,MTG	EA	1
16	21	XAHZZ		51109	1422-0001-000	BAIL,STAND	EA	1
16	22	PAHZZ	5935-01-032-5404	81349	M55339/14-00306	ADAPTER,CONNECTOR	EA	1
16	23	PAHZZ		51190	1201-7616-500	ANTENNA ASSEMBLY	EA	1
16	24	PAHZZ		51190	6041-2326-602	CABLE ASSEMBLY,POWE	EA	1
16	25	PAHZZ		20208	9380	BAG,PLASTIC	EA	1
16	26	XAHZZ		51190	6500-2380-800	MINOR ASSY	EA	1



ELBANO 17

Figure 17. Composite Assembly A2A1.

SECTION II (1) ILLUSTRATION		(2)	(3)	TM11-6625-3016-24P		(6)	(7)	(8)
(A) FIG NO	(B) ITEM NO	SMR CODE	NATIONAL STOCK NUMBER	(4) FSCM	(5) PART NUMBER	DESCRIPTION	USABLE ON CODE	U/M
GROUP 0201 COMPOSITE ASSEMBLY A2A1								
17	1	PADZZ		51190	7010-2380-300	PRINTED CKT BD ASSY	EA	1
17	2	XAHZZ		96906	MS51957-37	SCREW,MACHINE	EA	3
17	3	PADZZ		51190	7005-2380-400	PANEL,FR	EA	1
17	4	PADZZ	5310-00-582-5965	96906	MS35338-44	WASHER,LOCK	EA	2
17	5	PADZZ	5305-00-054-6653	96906	MS51957-29	SCREW,MACHINE	EA	2
17	6	XAHZZ		96906	MS51957-37	SCREW,MACHINE	EA	2
17	7	XAHZZ		51190	2800-7600-150	SPACER	EA	2
17	8	XAHZZ		51190	6500-2379-400	BRACKET,FR PANEL	EA	1
17	9	XADZZ		51190	6046-2379-900	CABLE ASSY	EA	1
17	10	PAOZZ	5920-00-280-5029	81349	F02A250V1/32A	FUSE,CARTRIDGE	EA	1

NATIONAL STOCK NUMBER AND PART NUMBER INDEX

STOCK NUMBER	FIGURE NO	ITEM NO	STOCK NUMBER	FIGURE NO	ITEM NO
5310-00-019-0676	8	42	5305-00-763-6958	8	10
5935-00-032-9553	13	4	5305-00-763-6963	2	4
5935-00-032-9560	5	7	5305-00-763-6963	8	7
5935-00-032-9560	8	38	5305-00-763-6963	8	14
5935-00-032-9564	5	11	5305-00-764-2964	11	19
5935-00-032-9564	10	29	5305-00-764-2964	16	6
5935-00-032-9564	13	8	5305-00-764-2966	2	32
5305-00-054-5636	2	40	5305-00-764-2966	10	24
5305-00-054-5638	2	43	5305-00-764-2966	11	7
5305-00-054-5644	2	10	5305-00-764-2966	14	8
5305-00-054-5644	7	1	5305-00-768-0336	2	26
5305-00-054-5644	10	2	5305-00-768-0336	8	19
5305-00-054-5649	8	44	5305-00-770-2533	3	15
5305-00-054-5650	2	18	5305-00-770-2533	8	23
5305-00-054-5651	2	27	5305-00-770-2533	11	17
5305-00-054-5651	2	61	5305-00-770-2579	8	41
5305-00-054-5653	2	16	5305-00-777-6039	2	33
5305-00-054-5653	6	15	5310-00-782-1349	2	87A
5305-00-054-5653	11	2	5310-00-782-1349	10	20
5305-00-054-5653	15	10	5310-00-782-1349	10	27
5305-00-054-6649	8	12	5310-00-822-8525	16	10
5305-00-054-6653	10	3	5935-00-853-7596	3	12
5305-00-054-6653	17	5	6240-00-878-1965	3	7
5305-00-054-6661	2	1A	5920-00-892-9311	8	3
5305-00-054-6661	3	13	5935-00-903-9778	6	3
5305-00-054-6661	6	14	5935-00-910-5086	5	8
5305-00-054-6661	14	9	5935-00-912-2331	5	9
5920-00-056-6620	8	4	5310-00-934-9739	8	28
5920-00-056-6620	16	17	5310-00-934-9739	10	39
5910-00-060-9391	10	23	5310-00-934-9739	11	15
5305-00-068-5276	10	9	5310-00-934-9748	2	92
5305-00-068-5412	8	17	5310-00-934-9748	6	1
5960-00-088-9897	11	31	5310-00-934-9748	8	31
5905-00-106-3666	5	17	5310-00-934-9761	6	28
5975-00-111-3208	13	20	5310-00-934-9761	8	21
5930-00-112-4266	4	12	5310-00-934-9761	10	35
5905-00-114-0710	5	18	5310-00-934-9761	16	2
5915-00-116-6571	10	26	5310-00-934-9765	2	76
5905-00-135-6046	13	11	5961-00-938-1135	5	15
5940-00-156-7196	6	25	5310-00-938-2013	2	63
5940-00-156-7196	8	22	5310-00-938-2013	4	13
5940-00-156-7345	8	29	5310-00-938-2013	15	13
5940-00-156-7373	8	32	5310-00-950-1310	8	25
5920-00-156-7375	8	5	5305-00-959-0379	2	23
5920-00-156-7375	16	16	5961-01-005-6607	10	41
5930-00-162-1858	13	12	5961-01-007-2231	10	1
5310-00-167-0657	2	64	5961-01-012-9316	10	36
5310-00-167-0752	2	2	5935-01-013-7223	5	10
5935-00-192-4789	4	8	5930-01-029-2802	4	9
5310-00-193-7577	2	11	5935-01-032-5404	16	22
5310-00-193-7577	2	60	5305-01-034-3993	5	6
5310-00-193-7577	6	2	5305-01-034-3993	9	1
5310-00-193-7577	8	30	5930-01-036-1112	4	1
5310-00-193-7577	11	3	5935-01-036-3441	13	3
5310-00-193-7577	11	6	5930-01-057-1686	4	4
5310-00-193-7577	14	7	5999-01-075-7360	5	5
5310-00-193-7577	15	9	5910-01-079-7273	8	33
5940-00-204-8225	8	26	5310-01-080-9226	10	40
5940-00-204-9158	10	14	5935-01-082-5293	13	1
5910-00-248-9346	12	5	5999-01-083-0891	5	2
5935-00-258-1924	5	12	5999-01-083-0891	10	28
5920-00-280-5029	17	10	5915-01-084-6573	14	11
5935-00-309-8502	13	6	5999-01-088-4121	5	4
6210-00-378-3695	3	9	5999-01-088-4121	8	37
6210-00-378-3727	3	8	5910-01-097-2748	10	32
5310-00-400-5503	2	79	5961-01-103-5607	8	39
5905-00-477-1419	10	8	5970-01-103-9859	10	42
5905-00-487-8874	5	20	6625-01-108-0951	6	5
5905-00-498-6053	5	19	6625-01-108-0952	2	37
5940-00-500-7227	3	11	6625-01-108-0953	2	19
5940-00-513-3264	10	43	6625-01-108-0954	11	4
5920-00-518-1790	16	19	6625-01-108-0955	11	30
5935-00-539-1192	4	3	6625-01-108-0956	2	7
5905-00-539-2994	4	20	6625-01-108-0957	6	23
5999-00-540-9143	13	5	6625-01-108-0958	2	53
5910-00-577-1138	8	43	6625-01-108-0959	2	36
5910-00-577-1138	10	12	6625-01-108-0960	2	49
5310-00-582-5965	17	4	6625-01-108-0961	2	48
5999-00-624-9397	9	3	6625-01-108-0962	8	11
5305-00-727-8833	2	70	6625-01-108-0963	6	26

SECTION IV
 NATIONAL STOCK NUMBER AND PART NUMBER INDEX

TM11-6625-3016-24P

STOCK NUMBER	FIGURE NO	ITEM NO	STOCK NUMBER	FIGURE NO	ITEM NO
6625-01-108-0964	2	84	6625-01-109-1674	15	2
6625-01-108-0965	6	21	6625-01-109-1675	15	4
6625-01-108-0966	2	1	6625-01-109-1676	15	1
6625-01-108-0967	2	47	6625-01-109-1677	2	8
6625-01-108-0968	6	10	5910-01-112-0835	10	25
6625-01-109-0697	2	9	5910-01-123-0747	12	4
6625-01-109-1669	8	18	5935-01-123-9863	10	38
6625-01-109-1670	2	54	5895-01-128-3218	14	14
6625-01-109-1671	11	8	6625-01-131-2623	2	59
6625-01-109-1672	11	22	6625-01-131-3439	1	1
6625-01-109-1673	2	57			

FSCM	PART NUMBER	FIGURE NO	ITEM NO	FSCM	PART NUMBER	FIGURE NO	ITEM NO
00303	ABP	3	8	96906	MS35333-36	15	18
71400	AGC-7-1/2	8	4	96906	MS35333-36	15	7
71400	AGC-7-1/2	16	17	96906	MS35338-44	17	4
88044	AN960-3	2	64	96906	MS35649-224	2	63
88044	AN960D10L	2	2	96906	MS35649-224	2	83
00303	BEPB-BLACK	3	6	96906	MS35649-224	4	13
04713	B52200F006	10	40	96906	MS35649-224	15	13
04713	B52600F003	10	42	96906	MS35649-242	8	28
01121	CB1501	10	8	96906	MS35649-242	10	39
90201	CGS-133U025R4C3PH	8	33	96906	MS35649-242	11	15
28363	C41000F	13	18	96906	MS35649-244	2	92
28363	C41001F	13	16	96906	MS35649-244	6	1
28363	C42490F	14	17	96906	MS35649-244	8	31
95238	C9-20PVRNGD	6	3	96906	MS35649-264	6	28
95238	C9-20SGDVS38C	5	8	96906	MS35649-264	8	21
99942	DD103	8	43	96906	MS35649-264	10	35
99942	DD103	10	12	96906	MS35649-264	16	2
02735	DF1038	10	37	96906	MS35650-304	2	76
81349	FHN26G1	8	3	96906	MS35650-3254	2	79
81349	F02A250V1/32A	17	10	96906	MS51957-11	2	10
81349	F02A250V3/8A	16	19	96906	MS51957-11	7	1
81349	F02B250V1-1/4A	8	5	96906	MS51957-11	10	2
81349	F02B250V1-1/4A	16	16	96906	MS51957-11	11	23
00303	GBP	3	9	96906	MS51957-15	8	44
81349	JAN1N4148	5	15	96906	MS51957-16	2	18
21912	MD-614	14	14	96906	MS51957-17	2	27
27735	MPC13-1-50-5	10	13	96906	MS51957-17	2	61
96906	MS15795-804	2	87A	96906	MS51957-19	2	16
96906	MS15795-804	10	20	96906	MS51957-19	6	15
96906	MS15795-804	10	27	96906	MS51957-19	11	2
96906	MS16995-10	2	23	96906	MS51957-19	15	10
96906	MS16995-12	2	17	96906	MS51957-19	15	14
96906	MS16995-4	8	17	96906	MS51957-19	15	17
96906	MS16995-9	10	9	96906	MS51957-19	15	8
96906	MS27183-4	6	22	96906	MS51957-2	2	40
96906	MS27183-4	8	25	96906	MS51957-25	8	12
96906	MS27183-4	15	16	96906	MS51957-28	2	4
96906	MS27183-4	15	19	96906	MS51957-28	8	7
96906	MS27183-4	15	6	96906	MS51957-28	8	14
96906	MS3367-5-9	13	20	96906	MS51957-29	10	3
96906	MS35233-131	2	44	96906	MS51957-29	17	5
96906	MS35233-131	2	82	96906	MS51957-37	2	1A
96906	MS35233-131	2	22	96906	MS51957-37	3	13
96906	MS35233-131	4	14	96906	MS51957-37	6	14
96906	MS35233-131	6	19	96906	MS51957-37	6	17
96906	MS35233-131	7	2	96906	MS51957-37	6	18
96906	MS35233-131	14	10	96906	MS51957-37	14	9
96906	MS35233-131	15	12	96906	MS51957-37	17	6
96906	MS35333-109	8	42	96906	MS51957-37	17	2
96906	MS35333-131	6	29	96906	MS51957-4	2	43
96906	MS35333-131	8	16	96906	MS51959-12	2	33
96906	MS35333-131	8	20	96906	MS51959-13	3	15
96906	MS35333-131	10	17	96906	MS51959-13	8	23
96906	MS35333-131	16	3	96906	MS51959-13	11	17
96906	MS35333-36	2	11	96906	MS51959-15	8	41
96906	MS35333-36	2	60	96906	MS51959-17	2	26
96906	MS35333-36	6	2	96906	MS51959-17	8	19
96906	MS35333-36	6	16	96906	MS51959-2	2	32
96906	MS35333-36	8	30	96906	MS51959-2	10	24
96906	MS35333-36	11	3	96906	MS51959-2	11	7
96906	MS35333-36	11	6	96906	MS51959-2	14	8
96906	MS35333-36	14	7	96906	MS51959-24	8	10
96906	MS35333-36	15	9	96906	MS51959-3	2	70
96906	MS35333-36	15	15	96906	MS51959-4	11	19

SECTION IV
 NATIONAL STOCK NUMBER AND PART NUMBER INDEX

TM11-6625-3016-24P

FSCM	PART NUMBER	FIGURE NO	ITEM NO	FSCM	PART NUMBER	FIGURE NO	ITEM NO
96906	MS51959-4	16	6	51190	1415-2348-500	2	50
96906	MS77067-2	8	29	51190	1415-2362-200	11	5
96906	MS77072-1	10	14	51190	1415-2363-100	11	28
96906	MS77072-2	6	25	51190	1416-2313-600	8	6
96906	MS77072-2	8	22	51190	1421-0000-200	16	20
96906	MS77074-6	8	32	51190	1421-0000-201	16	5
81349	M39012/21-0002	3	12	51190	1421-0000-500	16	4
81312	M5SLSH19C	5	12	51190	1421-2338-100	8	1
81349	M55339/14-00306	16	22	51190	1421-2338-200	8	13
81349	M641/12-1	4	8	51190	1422-0001-000	16	21
18324	NE5532N	2	67	83330	1468-1/4	4	5
14655	NLW50-50	10	23	27264	1625-6P1	13	6
88124	NLW500-6	5	16	19505	17-0219-000	14	3
88124	NLW500-6	10	31	80131	2N5195	10	41
02735	NR231A	10	34	80131	2N5879	10	1
22229	NS2001	8	27	80131	2N6109	10	36
54068	NT-2310	8	9	73906	20044005-004	3	18
54492	P-2406-AB	8	8	65092	20044005-005	3	4
27735	PC12-.01-50-5	12	2	00779	205210-1	5	10
27735	PC12-.01-50-5	13	15	18342	205980-1	5	6
27735	PC12-.1-50-5	12	3	18342	205980-1	9	1
27735	PE11-.1-200-5	13	13	65092	20871172-001	3	5
27735	PE13-.0015-80-5	13	17	51190	2100-2325-800	3	1
27735	PE13-.047-80-20	5	21	51190	2100-2334-400	3	16
83701	PK-10	8	39	51190	2100-2335-900	8	35
31223	PT1-1	10	44	51190	2100-2373-400	14	15
97137	PW-5-.1-10	8	45	51190	2109-7616-700	8	34
70903	RA2.310NYL	3	10	27264	22-01-2101	13	1
81349	RCR07G103JS	5	17	31157	22-01-2151	5	3
81349	RCR07G331JS	5	18	27264	22-01-2181	13	3
81349	RCR07G681JS	13	11	51190	2400-8002-000	9	4
81349	RV6NAYS254A	4	20	51190	2400-8009-000	11	33
83701	RWB020A	10	10	51190	2401-2347-600	2	71
90201	TC1520C	10	32	51190	2402-0018-300	2	75
90201	TT25X300A	10	25	51190	2402-0921-900	2	73
31433	T322B105K035AS	12	4	51190	2402-0922-000	2	77
05397	T322C106K020AS	12	5	51190	2402-0940-000	2	74
31433	T322D685M035AS	13	14	51190	2402-2347-700	2	72
27264	02-06-2132	13	5	51190	2403-2377-901	3	3
27264	02-09-1103	9	3	51190	2405-2302-700	2	69
27264	03-06-2055	13	4	51190	2405-2369-900	11	24
31157	03-09-1022	9	2	51190	2406-2301-500	3	14
28480	0684-1211	5	20	51190	2506-2310-200	15	21
28480	0684-2231	5	19	51190	2506-2333-900	2	12
27264	08-50-0114	5	1	51190	2506-2337-500	10	5
27264	08-56-0110	13	2	51190	2506-2337-800	10	22
27264	10-17-2032	10	38	51190	2506-2360-800	6	13
82389	12B	4	3	51190	2509-2317-100	2	85
51190	1201-7616-500	16	23	51190	2513-2369-800	11	26
51190	1400-2303-200	4	10	51190	2517-2361-700	11	18
51190	1400-2327-400	2	52	51190	2518-7616-000	11	25
51190	1400-2329-000	2	13	99800	2534-36	13	19
51190	1400-2340-900	15	20	51190	2800-2600-161	2	20
51190	1400-2341-000	6	4	51190	2800-7600-111	14	2
51190	1400-2357-500	2	42	51190	2800-7600-116	2	15
51190	1400-2364-800	6	7	51190	2800-7600-138	8	36
51190	1400-2369-400	6	9	51190	2800-7600-139	4	17
51190	1400-2375-800	2	14	51190	2800-7600-150	17	7
51190	1404-2316-300	15	3	51190	2800-7600-154	7	6
51190	1404-2316-400	2	86	51190	2800-7600-154	14	4
51190	1404-2316-500	2	41	51190	2800-7600-161	6	20
51190	1404-2316-600	2	91	51190	2800-7600-162	8	2
51190	1404-2316-700	2	25	51190	2800-7600-179	14	12
51190	1404-2325-700	15	22	51190	2800-7600-180	14	16
51190	1405-2300-501	3	2	51190	2804-0375-051	10	4
51190	1405-2337-901	8	15	51190	2807-7632-600	2	88
51190	1407-0000-002	16	13	51190	2813-7600-163	2	55
83330	1410-6	10	43	51190	2813-7618-400	10	33
83330	1411-8	8	46	51190	2832-0016-901	15	11
51190	1412-7635-600	16	1	51190	2832-2317-000	6	12
51190	1412-7635-700	16	14	51190	2840-7600-205	2	78
51190	1414-2311-800	8	24	51190	2840-7600-205	4	21
51190	1414-2314-000	11	1	51190	2840-7600-208	2	80
51190	1414-2337-600	10	6	51190	2840-7600-208	4	19
51190	1414-2337-700	10	19	51190	2840-7600-219	2	90
51190	1414-2373-500	14	6	51190	2850-7601-301	8	40
51190	1414-2379-100	16	8	51190	2850-7601-301	10	30
51190	1415-2314-801	7	3	51190	2850-7601-301	11	14
51190	1415-2314-802	7	5	51190	2850-7617-400	2	46
51190	1415-2344-200	2	51	51190	2901-7624-600	8	18

SECTION IV
 NATIONAL STOCK NUMBER AND PART NUMBER INDEX

TM11-6625-3016-24P

FSCM	PART NUMBER	FIGURE NO	ITEM NO	FSCM	PART NUMBER	FIGURE NO	ITEM NO
81349	3RP1A	11	31	51190	7005-2338-001	2	5
74868	31-759	3	11	51190	7005-2349-201	2	59
51190	3107-2354-500	10	15	51190	7005-2363-701	2	39
51190	3107-2365-300	11	29	51190	7005-2372-500	2	37
51190	3107-2380-600	16	12	51190	7005-2373-300	2	19
71785	4-170	8	26	51190	7005-2373-700	2	1
19505	4-70-36	3	17	51190	7005-2374-000	2	6
				51190	7005-2375-300	2	84
51190	4503-2335-500	2	89	51190	7005-2376-200	15	2
51190	4503-2342-600	2	56	51190	7005-2377-700	2	68
51190	4503-2373-600	14	13	51190	7005-2380-400	17	3
51190	4503-2376-300	2	28	51190	7006-2364-400	2	93
51190	4750-7616-800	4	11	51190	7007-2364-600	11	21
51190	4750-7617-100	4	7	51190	7007-2377-800	4	23
51190	4750-7617-800	4	6	51190	7010-2309-000	10	18
51190	4756-0000-010	4	2	51190	7010-2309-300	6	27
11237	5P6043A	12	1	51190	7010-2309-500	15	24
33095	51-708-001	10	26	51190	7010-2310-100	2	24
33095	51-712-001	14	11	51190	7010-2330-300	2	9A
33095	51-713-002	7	7	51190	7010-2334-900	10	16
81073	51CD30-01-1AJN	4	1	51190	7010-2342-300	2	53
51190	5119-7618-100	4	22	51190	7010-2342-400	2	48
96214	539409-3	5	11	51190	7010-2348-200	15	5
96214	539409-3	10	29	51190	7010-2349-300	2	49
96214	539409-3	13	8	51190	7010-2351-300	2	31A
96214	539409-4	5	7	51190	7010-2354-900	2	58
96214	539409-4	8	38	51190	7010-2355-900	6	24
51190	5400-2378-500	10	7	51190	7010-2357-300	2	36
51190	5400-2378-600	10	11	51190	7010-2359-300	11	13
51190	5850-0000-010	6	5	51190	7010-2359-400	11	12
51190	5950-2323-400	2	29	51190	7010-2361-900	6	11
19505	60-9939-090	14	1	51190	7010-2362-400	11	4
51190	6041-2326-602	16	24	51190	7010-2362-500	11	30
51190	6042-2375-500	2	96	51190	7010-2367-201	2	54
51190	6042-2375-600	2	94	51190	7010-2368-400	7	4
51190	6042-2375-700	2	95	51190	7010-2368-600	6	8
51190	6042-2376-400	2	118	51190	7010-2372-100	2	34
51190	6042-2376-600	2	117	51190	7010-2372-400	2	38
51190	6046-2379-900	17	9	51190	7010-2373-100	2	45
51190	6050-0010-805	2	116	51190	7010-2374-600	2	66
51190	6050-0021-410	2	35	51190	7010-2375-200	2	81
51190	6050-0033-440	2	115	51190	7010-2376-100	15	23
51190	6050-0040-570	2	114	51190	7010-2380-300	17	1
51190	6050-0040-620	2	113	51190	7013-2329-700	2	8
51190	6050-0040-620	11	10	51190	7013-2343-300	2	62
51190	6050-0040-720	11	9	51190	7013-2366-700	11	20
51190	6050-0040-870	2	112	51190	7013-2366-800	11	27
51190	6050-0041-220	2	111	51190	7014-2355-400	2	57
51190	6050-0041-320	2	110	51190	7014-2362-000	6	10
51190	6050-0041-620	2	109	51190	7015-2309-700	2	7
51190	6050-0041-720	2	108	51190	7017-2321-900	15	1
51190	6050-0041-820	2	107	51190	7017-2346-200	2	30
51190	6050-0041-970	2	106	51190	7018-2340-200	2	21
51190	6050-0042-020	2	105	51190	7018-2359-100	2	9
51190	6050-0042-120	2	104	51190	7019-2342-901	1	1
51190	6050-0042-220	2	103	51190	7022-2360-200	2	47
51190	6050-0050-925	2	102	51190	7023-2338-400	8	11
51190	6050-0052-325	2	101	51190	7024-2322-500	6	21
51190	6050-0060-745	2	100	51190	7025-2356-000	6	23
51190	6050-0070-890	13	7	51190	7026-2321-700	6	26
51190	6050-0320-620	2	99	51190	7027-2348-300	15	4
51190	6050-0320-720	2	98	51190	7028-2366-900	11	16
51190	6050-9900-100	2	97	51190	7029-2362-600	2	87
51190	6500-2353-400	2	65	51190	7030-2363-200	11	8
51190	6500-2379-400	17	8	51190	7030-2363-300	11	22
51190	6500-2380-800	16	26	51190	7048-2351-600	2	31
30463	6620	11	32	09353	7101SYZQ	4	9
00779	66504-3	5	4	39428	7122H13	16	15
00779	66504-3	8	37	09353	7207J12Q3	4	16
00779	66505-9	5	5	09353	7211SYZQ	4	12
18342	66506-3	5	13	09353	7213SYZQ	4	18
18342	66506-3	13	9	09353	7301SYZQE	4	4
00779	66506-9	5	2	09353	7303SYZQ	13	12
00779	66506-9	10	28	11532	732-12	14	5
18342	66507-3	5	14	79963	75	4	15
18342	66507-3	13	10	94222	85-12-160-16	16	7
25706	670-1/4	16	18	94222	85-34-101-20	16	10
92966	680	3	7	94222	85-47-101-15	16	11
51190	7003-2364-101	1	2	00629	8578	6	6
51190	7003-2380-000	16	9	32640	93GB3-4-X-65	10	21

SECTION IV
NATIONAL STOCK NUMBER AND PART NUMBER INDEX

TM11-6625-3016-24P

FSCM	PART NUMBER	FIGURE NO	ITEM NO	FSCM	PART NUMBER	FIGURE NO	ITEM NO
20208	9380	16	25	18876	9986606	5	9

LATEST NATIONAL STOCK NUMBER AND PART NUMBER ASSIGNMENTS

FSCM	PART NUMBER	FIGURE NO	ITEM NO	FSCM	PART NUMBER	FIGURE NO	ITEM NO
51190	7005-7624-500	2	3				
51190	7010-2374-900	2	119				

RECOMMENDED CHANGES TO EQUIPMENT TECHNICAL PUBLICATIONS



THEN... JOT DOWN THE DOPE ABOUT IT ON THIS FORM. CAREFULLY TEAR IT OUT, FOLD IT AND DROP IT IN THE MAIL!

SOMETHING WRONG WITH THIS PUBLICATION?

FROM: (PRINT YOUR UNIT'S COMPLETE ADDRESS)
 Commander
 Stateside Army Depot
 ATTN: AMSTA-US
 Stateside, N.J. 07703

DATE SENT
 10 July 1975

PUBLICATION NUMBER
 TM 11-5840-340-20P

PUBLICATION DATE
 23 Jan 78

PUBLICATION TITLE
 Radar Set AN/PRC-76

BE EXACT... PIN-POINT WHERE IT IS

PAGE NO.	PARA-GRAPH	FIGURE NO.	TABLE NO.
33			
44		19	
45			

IN THIS SPACE TELL WHAT IS WRONG AND WHAT SHOULD BE DONE ABOUT IT:

For item 2, change the NSN to read: 5835-00-134-9186.
 Reason: Accuracy.

Identify the cover on the junction box (item no. 5).
 Reason: It is a separate item and is not called out on figure 19.

Add the cover of the junction box as an item in the listing for figure 19.
 Reason: Same as above

EXAMPLE

PRINTED NAME, GRADE OR TITLE, AND TELEPHONE NUMBER
 SSG I. M. DeSpirit of 999-1776

SIGN HERE

RECOMMENDED CHANGES TO EQUIPMENT TECHNICAL PUBLICATIONS



THEN...JOT DOWN THE DOPE ABOUT IT ON THIS FORM. CAREFULLY TEAR IT OUT, FOLD IT AND DROP IT IN THE MAIL.

SOMETHING WRONG WITH THIS PUBLICATION?

FROM: (PRINT YOUR UNIT'S COMPLETE ADDRESS)

DATE SENT

PUBLICATION NUMBER

TM 11-6625-3016-24P

PUBLICATION DATE

PUBLICATION TITLE Test Set, Radio

AN/GRM-114

BE EXACT PIN-POINT WHERE IT IS

PAGE NO.

PARA-GRAPH

FIGURE NO.

TABLE NO.

IN THIS SPACE TELL WHAT IS WRONG AND WHAT SHOULD BE DONE ABOUT IT:

TEAR ALONG PERFORATED LINE

PRINTED NAME GRADE OR TITLE AND TELEPHONE NUMBER

SIGN HERE

DA FORM 2028-2
1 JUL 79

PREVIOUS EDITIONS ARE OBSOLETE

P.S.--IF YOUR OUTFIT WANTS TO KNOW ABOUT YOUR RECOMMENDATION MAKE A CARBON COPY OF THIS AND GIVE IT TO YOUR HEADQUARTERS.

FILL IN YOUR
UNIT'S ADDRESS



FOLD BACK

DEPARTMENT OF THE ARMY

OFFICIAL BUSINESS
PENALTY FOR PRIVATE USE \$300

POSTAGE AND FEES PAID
DEPARTMENT OF THE ARMY
DOD 314



1980 RELEASE UNDER E.O. 14176

Commander
US Army Communications-Electronics Command
and Fort Monmouth
ATTN: DRSEL-ME-MP
Fort Monmouth, New Jersey 07703

RECOMMENDED CHANGES TO EQUIPMENT TECHNICAL PUBLICATIONS



THEN...JOT DOWN THE DOPE ABOUT IT ON THIS FORM. CAREFULLY TEAR IT OUT, FOLD IT AND DROP IT IN THE MAIL.

SOMETHING WRONG WITH THIS PUBLICATION?

FROM: (PRINT YOUR UNIT'S COMPLETE ADDRESS)

DATE SENT

PUBLICATION NUMBER

TM 11-6625-3016-24P

PUBLICATION DATE

PUBLICATION TITLE Test Set, Radio

AN/GRM-114

BE EXACT PIN-POINT WHERE IT IS

PAGE NO.

PARA-GRAPH

FIGURE NO.

TABLE NO.

IN THIS SPACE TELL WHAT IS WRONG AND WHAT SHOULD BE DONE ABOUT IT:

TEAR ALONG PERFORATED LINE

PRINTED NAME GRADE OR TITLE AND TELEPHONE NUMBER

SIGN HERE

DA FORM 2028-2 JUL 79

PREVIOUS EDITIONS ARE OBSOLETE

P.S.-IF YOUR OUTFIT WANTS TO KNOW ABOUT YOUR RECOMMENDATION MAKE A CARBON COPY OF THIS AND GIVE IT TO YOUR HEADQUARTERS.

FILL IN YOUR
UNIT'S ADDRESS

FOLD BACK

DEPARTMENT OF THE ARMY

OFFICIAL BUSINESS
PENALTY FOR PRIVATE USE \$300

POSTAGE AND FEES PAID
DEPARTMENT OF THE ARMY
DOD 314



TEAR ALONG PERFORATED LINE

Commander
US Army Communications-Electronics Command
and Fort Monmouth
ATTN: DRSEL-ME-MP
Fort Monmouth, New Jersey 07703

FILL IN YOUR
UNIT'S ADDRESS

FOLD BACK

DEPARTMENT OF THE ARMY

OFFICIAL BUSINESS
PENALTY FOR PRIVATE USE \$300

POSTAGE AND FEES PAID
DEPARTMENT OF THE ARMY
DOD 314



Commander
US Army Communications-Electronics Command
and Fort Monmouth
ATTN: DRSEL-ME-MP
Fort Monmouth, New Jersey 07703

By Order of the Secretary of the Army:

Official:

ROBERT M. JOYCE
Major General, United States Army
The Adjutant General

E. C. MEYER
General, United States Army
Chief of Staff

DISTRIBUTION:

To be distributed in accordance with DA Form 12-51, Direct Support and General Support Maintenance requirements for AN/VRC-12.

