

**TECHNICAL MANUAL**

**GENERAL SUPPORT MAINTENANCE  
REPAIR PARTS AND SPECIAL TOOLS LISTS  
FOR**

**TEST SET, TELETYPEWRITER  
TS-800/UGM-1 AND TS-800A/UGM-1**

**(NSN 6625-00-965-0197)**

**This publication has been printed by the  
UNITED STATES ARMY PUBLICATIONS CENTER,  
ST. LOUIS, MISSOURI, to meet your needs  
on a timely basis.**



TECHNICAL MANUAL }  
 No. 11-6625-620-40P-2 }

HEADQUARTERS  
 DEPARTMENT OF THE ARMY  
 WASHINGTON, DC, 28 February 1979

**GENERAL SUPPORT MAINTENANCE  
 REPAIR PARTS AND SPECIAL TOOLS LISTS**

**FOR**

**TEST SET, TELETYPEWRITER  
 TS-800/UGM-1 AND TS-800A/UGM-1  
 (NSN 6625-00-965-0197)**

*Current as of 5 October 1978*

**REPORTING OF ERRORS**

**You can improve this manual by recommending improvements using DA Form 2028-2 located in the back of the manual. Simply tear out the self-addressed form, fill it out as shown on the sample fold it where shown, and drop it in the mail.**

**If there are no blank DA Form 2028-2 in the back of your manual, use the standard DA Form 2028 (Recommended Changes to Publications and Blank Forms) and forward to the Commander, US Army Communications and Electronics Materiel Readiness Command, ATTN: DRSEL-ME-MQ, Fort Monmouth, NJ 07703.**

**In either case a reply will be furnished direct to you.**

**Table of Contents**

	Page	Illus Figure
SECTION I. Introduction . . . . .	1	
II. Repair Parts List . . . . .	5	
Group 01 Teletypewriter Test Set TS-800/UGM-1 and TS-800 A/UGM-1. . . . .	5	1
0101 Test Set, Teletypewriter . . . . .	7	2
Front Panel Assembly . . . . .	9	3
Chassis Assembly . . . . .	11	4
Rear Panel . . . . .	13	5
010101 Power supply . . . . .	17	6
010102 Test Set Subassembly A1 . . . . .	21	7
010103 Test Set Subassembly A2 . . . . .	23	8
010104 Test Set Subassembly A3 . . . . .	25	9
010105 Test Set Subassembly A4 . . . . .	27	10
010106 Test Set Subassembly A5 . . . . .	29	11
010107 Test Set Subassembly A6 . . . . .	31	12
010108 Test Set Subassembly A7 . . . . .	33	13
010109 Test Set Subassembly A8 . . . . .	35	14
010110 Test Set Subassembly A9, A10, A11, A12, A13 . . . . .	37	15
010111 Test Set Subassembly A14 . . . . .	39	16

\*This manual together with TM 11-6425-620-20P, 28 February 1979 supersedes TM 11-6625-620-25P-2, August 1971.

Table of Contents—Continued

	Page	IlluS Figure
010112 Test Set Subassembly A15.....	41	17
010113 Hardness Board Assembly.....	43	18
SECTION III. <b>Special Tools List (Nonapplicable)</b>		
IV. National Stock Number and Part Number Index.....	44	

# SECTION I

## INTRODUCTION

---

### 1. Scope

This manual lists spares and repair parts: special tools; special test, measurement, and diagnostic equipment (TM DE), and other special support equipment required for performance of general support maintenance of the TS-800/UGM-1 and TS-800A/UGM-1. It authorizes the requisitioning and issue of spares and repair parts as indicated by the source and maintenance codes.

### 2. General

This Repair Parts and Special Tools List is divided into the following sections:

*a. Section II. Repair Parts List.* A list of spares and repair parts authorized for use in the performance of maintenance. The list also includes parts which must be removed for replacement of the authorized parts. Parts lists are composed of functional groups in numeric sequence, with the parts in each group listed in figure and item number sequence.

*b. Section III. Special Tools List.* Not applicable.

*c. Section IV. National Stock Number and Part Number Index.* A list, in National item identification number (N I IN) sequence, of all National stock numbers (NSN) appearing in the listings, followed by a list, in alphameric sequence, of all part numbers appearing in the listings. National stock numbers and part numbers are cross-referenced to each illustration figure and item number appearance.

### 3. Explanation of Columns

*a. Illustration.* This column is divided as follows:

(1) *Figure number.* Indicates the figure number of the illustration on which the item is shown.

(2) *Item number.* The number used to identify item tailed out in the illustration.

*b. Source, Maintenance, and Recoverability (SMR) Codes.*

(1) *Source code.* Source codes indicate the manner of acquiring support items for maintenance, repair, or overhaul of end items. Source codes are entered in the first and second positions of the Uniform SMR Code format as follows:

<i>Code</i>	<i>Definition</i>
PA-	Item procured and stocked for anticipated or known usage.
XA-	Item is not procured or stocked because the requirements for the item will result in the replacement of the next higher assembly.

<i>Code</i>	<i>Definition</i>
XD-A	support item that is not stocked. When required, item will be procured through normal supply channels.

#### NOTE

Cannibalization or salvage may be used as a source of supply for any items source coded above except those coded XA and aircraft support items as restricted by AR 700-42.

(2) *Maintenance code.* Maintenance codes are assigned to indicate the levels of maintenance authorized to USE and REPAIR support items. The maintenance codes are entered in the third and fourth positions of the Uniform SMR Code format as follows:

(a) The maintenance code entered in the third position will indicate the lowest maintenance level authorized to remove, replace, and use the support item. The maintenance code entered in the third position will indicate one of the following levels of maintenance:

<i>Code</i>	<i>Application/Explanation</i>
O-	Support item is removed, replaced, used at the organizational level.
H-	Support item is removed, replaced, used at the general support level.

(b) The maintenance code entered in the fourth position indicates whether the item is to be repaired and identifies the lowest maintenance level with the capability to perform complete repair (i.e., all authorized maintenance functions). This position will contain one of the following maintenance codes:

<i>Code</i>	<i>Application/Explanation</i>
H-	The lowest maintenance level capable of complete repair of the support item is the general support level.
Z-	Nonreparable. No repair is authorized.

(3) *Recoverability code.* Recoverability codes are assigned to support items to indicate the disposition action on unserviceable items. The recoverability code is entered in the fifth position of the Uniform SMR Code format as follows:

<i>Recoverability codes</i>	<i>Definition</i>
Z-	Nonreparable item. When unserviceable, condemn and dispose at the level indicated in position 3.
D-	Reparable item. When beyond lower level repair

Recoverability  
codes

Definition

capability, return to depot. Condemnation and disposal not authorized below depot level.

c. *National Stock Number.* Indicates the National stock number assigned to the item and will be used for requisitioning purposes.

d. *Part Number.* Indicates the primary number used by the manufacturer (individual, company, firm, corporation, or Government activity), which controls the design and characteristics of the item by means of its engineering drawings, specifications, standards, and inspection requirements to identify an item or range of items.

**NOTE**

When a stock-numbered item is requisitioned the repair part received may have a different part number than the part being replaced.

e. *Federal Supply Code for Manufacturer (FSCM).*

The FSCM is a 5-digit numeric code listed in SB 708-42 which is used to identify the manufacturer, distributor, or Government agency, etc.

f. *Description.* Indicates the Federal item name and, if required, a minimum description to identify the item.

g. *Unit of Measure (U/M).* Indicates the standard of the basic quantity of the listed item as used in performing the actual maintenance function. This measure is expressed by a two-character alphabetical abbreviation (e.g., ea. in, pr. etc). When the unit of measure differs from the unit of issue, the lowest unit of issue that will satisfy the required units of measure will be requisitioned.

h. *Quantity Incorporated in Unit.* Indicates the quantity of the item used in the breakout shown on the illustration figure, which is prepared for a functional group, subfunctional group, or an assembly.

**4. Special Information**

a. Usable on codes are shown in the description column. Uncoded items are applicable to all models. Identification of the usable on codes used in this publication are:

code  
DRE  
DRF

Used on  
TS-800/UGM-1  
TS-800A/UGM-1

b. The following publications pertain to the TS-800/UGM-1 and TS-800A/UGM-1 and their components:

TM 11-6625-620-12, Test Set, Teletypewriter AN/UGM-1

TM 11-6625-620-20P, Test Set, Teletypewriter AN/UGM-1

TM 11-6625-620-45-2, Test Set, Teletypewriter TS-800/UGM-1

**5. How to Locate Repair Parts**

a. When National stock number or part number is unknown.

(1) *First.* Using the table of contents, determine the functional group within which the item belongs. This is necessary since illustrations are prepared for functional groups and listings are divided into the same groups.

(2) *Second* Find the illustration covering the fictional group to which the item belongs.

(3) *Third* Identify the item on the illustration and note the illustration figure and item number of the item.

(4) *Fourth.* Using the Repair Parts Listing, find the figure and item number noted on the illustration.

b. When National stock number or part number is known.

(1) *First.* Using the index of National Stock Numbers and Parts Numbers, find the pertinent National stock number or part number. This index is in NIIN sequence followed by a list of part numbers in alphameric sequence, cross-referenced to the illustration figure number and item number.

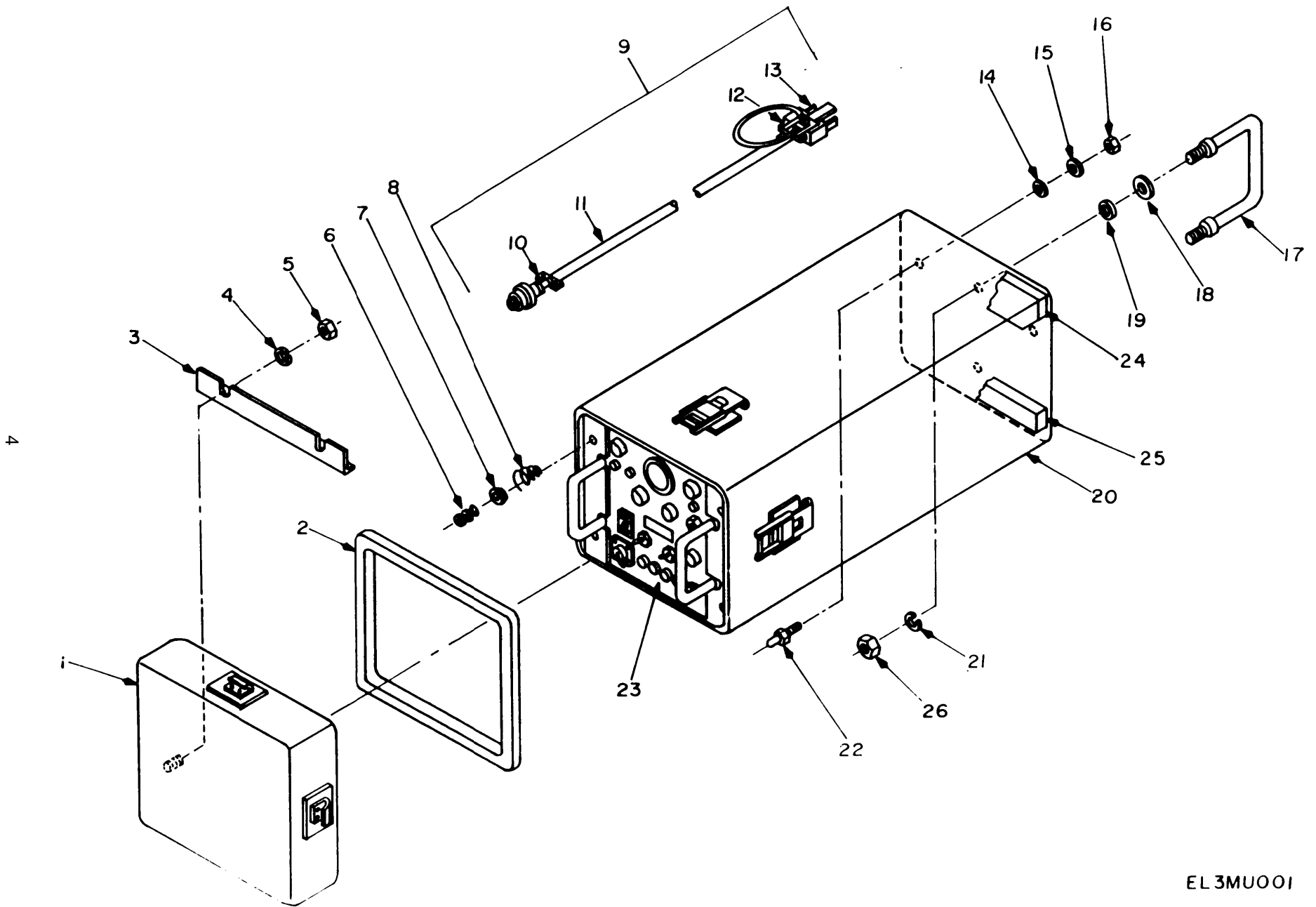
(2) *Second* After finding the figure and item number, locate the figure and item number in the repair parts list.

**6. Abbreviations**

Not applicable.

(Next printed page is 4)





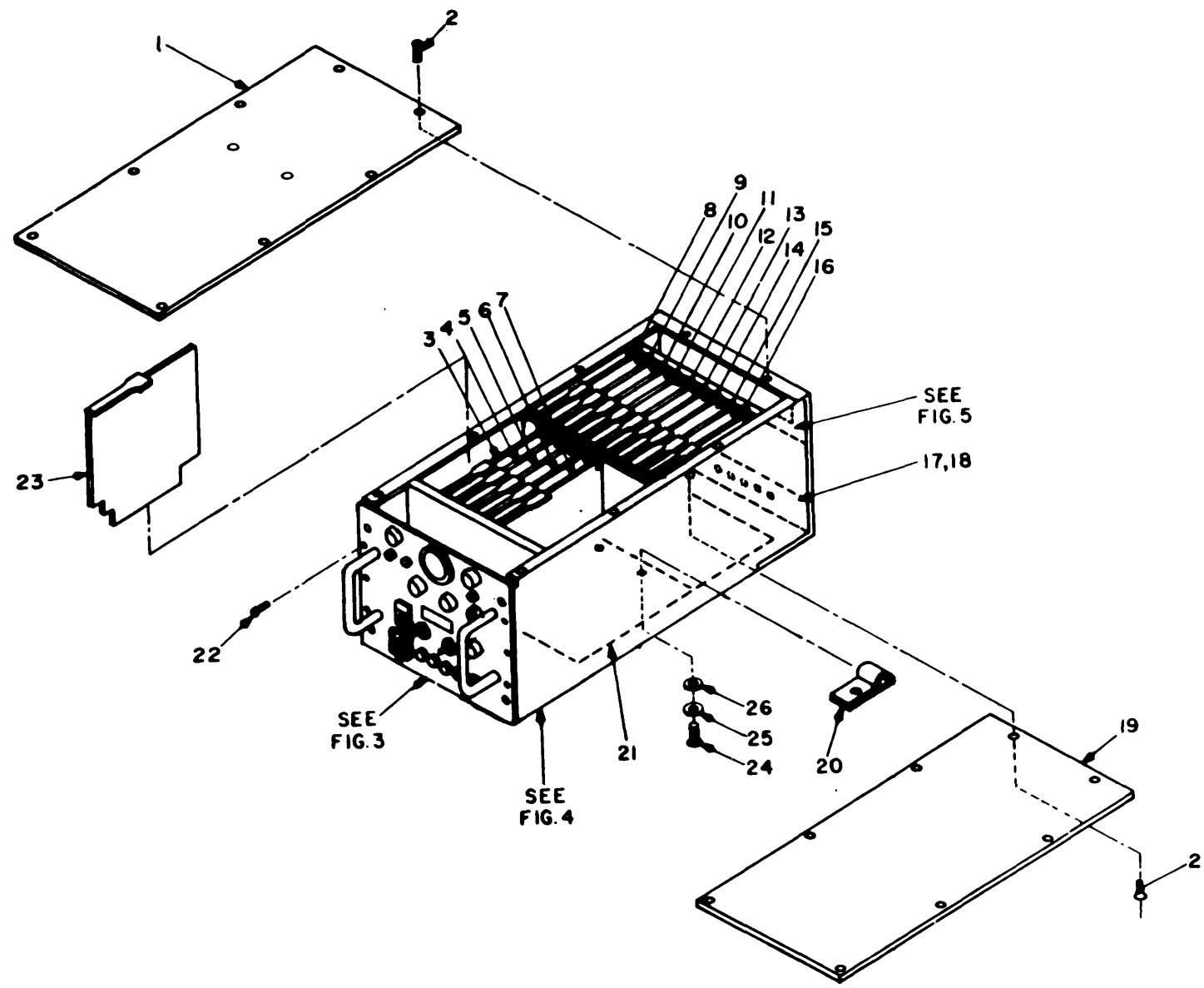
TM11-6625-620-40P-2

EL3MU001

Figure 1. Teletypewriter Test Set TS-800/UGM-I and TS-800A/UGM-I.



SECTION II								
(1)	(2)	(3)	(4)	(5)	(6)	(7)	(8)	
ILLUSTRATION								
(A)	(B)						QTY	
FIG	ITEM	SMR	NATIONAL	PART			INC	
NO.	NO.	CODE	STOCK	NUMBER	FSCM	USABLE ON CODE	IN	
			NUMBER				UNIT	
GROUP 01 TELETYPEWRITER TEST SET								
TS-800/UGM-1 AND TS-800A/UGM-1								
1	1	XDHZZ		SMD552572	80063	COVER	EA 1	
1	2	XDHZZ		SMC552632	80063	GASKET, RUBBER	EA 1	
1	3	XDHZZ		SMB552736	80063	BRACKET	EA 1	
1	4	PAHZZ	5310-00-543-5933	MS35333-73	96906	WASHER, LOCK	EA 2	
1	5	PAHZZ	5310-00-903-5966	MS35690-410	96906	NUT, PLAIN, HEXAGON	EA 2	
1	6	XDHZZ		SMC552765-22	80063	STUD ASSEMBLY	EA 4	
1	7	XDHZZ		SMA552767-1	80063	WASHER, RETAINING	EA 4	
1	8	XDHZZ		SMB552571	80063	SPRING, COMPRESSION	EA 4	
1	9	PAHZZ	5995-00-469-2277	SM-B-552580	80063	CABLE ASSEMBLY, SPEC	EA 1	
1	10	XDHZZ		MS3116E12-35	96906	CONNECTOR, PLUG	EA 1	
1	11	PAHZZ	6145-00-284-0579	C003MGF3-18-0340	81349	CABLE, POWER, ELECTRI	EA 1	
1	12	XDHZZ		SMB430875	09922	TERMINAL, LUG	EA 1	
1	13	PAHZZ	5935-00-843-7362	UP131M	81349	CONNECTOR, PLUG, ELEC	EA 1	
1	14	XDHZZ		SMB552633-3	80063	WASHER, SEAL	EA 2	
1	15	PAHZZ	5310-00-582-5677	MS15795-810	96906	WASHER, FLAT	EA 4	
1	16	PAHZZ	5310-00-903-5966	MS35690-410	96906	NUT, PLAIN, HEXAGON	EA 2	
1	17	XDHZZ		SMC552634	80063	HANDLE, BAIL	EA 1	
1	18	PAHZZ	5310-00-773-7618	MS15795-814	96906	WASHER, FLAT	EA 2	
1	19	XDHZZ		SMB552633-2	80063	WASHER, SEAL	EA 2	
1	20	XDHZZ		SMD552567	80063	CASE, TEST SET	EA 1	
1	21	PAHZZ	5310-00-616-7998	MS35334-21	96906	WASHER, LOCK	EA 2	
1	22	XDHZZ		SMB552630	96906	PIN, GUIDE	EA 2	
1	23	XDHHD		SMD552699	80063	UNIT ASSEMBLY	DRE EA 1	
1	23	XDHHD		SMD889358	80063	UNIT ASSEMBLY	DRF EA 1	
1	24	XDHZZ		SMB552680	80063	CUSHION, SUPPORT	EA 1	
1	25	XDHZZ		SMB552681	80063	CUSHION, SUPPORT	EA 1	
1	26	PAHZZ	5310-00-903-1524	MS35690-630	96906	NUT, PLAIN, HEXAGON	EA 2	



EL3MU002

Figure 2. Test Set, Teletypewriter.

SECTION II								
(1)	(2)	(3)	(4)	(5)	(6)	(7)	(8)	
ILLUSTRATION								
(A)	(B)						QTY	
FIG	ITEM	SMR	NATIONAL	PART	DESCRIPTION		INC	
NO.	NO.	CODE	STOCK	NUMBER	FSCM	USABLE ON CODE	IN	
			NUMBER	NUMBER			UNIT	
GROUP 0101 TEST SET, TELETYPEWRITER								
2	1	XDHZZ		SMC552551	80063	COVER, TOP	EA 1	
2	2	PAHZZ	5305-00-068-6529	MS35233-28	96906	SCREW, MACHINE	EA 16	
2	3	PAHHD	6625-00-926-4464	SMD552455	80063	CKT CARD ASSY A2	EA 1	
2	4	PAHHD	6625-00-950-7635	SMD552459	80063	CKT CARD ASSY A3	EA 1	
2	5	PAHHD	6625-00-950-7545	SMD552460	80063	CKT CARD ASSY A4	EA 1	
2	6	PAHHD	6625-00-950-7554	SMD552452	80063	CKT CARD ASSY A5	EA 1	
2	7	PAHHD	6625-00-950-7557	SMD552451	80063	CKT CARD ASSY A6	EA 1	
2	8	PAHHD	6625-00-950-9113	SMD552462GRP2	80063	CKT CARD ASSY A7	EA 1	
2	9	PAHHD	6625-00-950-7480	SMD552454	80063	CKT CARD ASSY A8	EA 1	
2	10	PAHHD	6625-00-405-9107	SMD552453GRP1	80063	CKT CARD ASSY A9	EA 1	
2	11	PAHHD	6625-00-405-9108	SMD552453GRP2	80063	CKT CARD ASSY A10	EA 1	
2	12	PAHHD	6625-00-405-9109	SMD552453GRP3	80063	CKT CARD ASSY A11	EA 1	
2	13	PAHHD	6625-00-421-0569	SMD552453GRP4	80063	CKT CARD ASSY A12	EA 1	
2	14	PAHHD	6625-00-405-9111	SMD552453GRP5	80063	CKT CARD ASSY A13	EA 1	
2	15	PAHHD	6625-00-950-8415	SMD552457	80063	CKT CARD ASSY A14	EA 1	
2	16	PAHHD	6625-00-950-8126	SMD552458	80063	CKT CARD ASSY A15	EA 1	
2	17	PAHZZ	5305-00-054-6669	MS35233-44	96906	SCREW, MACHINE	EA 6	
2	18	XDHHD		SMD552712	80063	POWER SUPPLY	EA 1	
2	19	XDHZZ		SMD552628	80063	COVER, BOTTOM	EA 1	
2	20	XDHZZ		MS25281-6	96906	CLAMP, CABLE	EA 2	
2	21	PAHHD	6625-00-405-9104	SMD552714	80063	ASSY HARNESS BD	EA 1	
2	22	XDHZZ		MS35249-52	80063	SCREW MACHINE	EA 1	
2	23	PAHHD	6625-00-950-7637	SMD552456	80063	CKT CARD ASSY A1	EA 1	
2	24	XDHZZ		MS35233-30	96906	SCREW, MACHINEE	EA 2	
2	25	PAHZZ	5310-00-011-1041	MS35338-79	96906	WASHER	EA 2	
2	26	PAHZZ	5310-00-983-8483	MS27183-5	96906	WASHER, FLAT	EA 2	

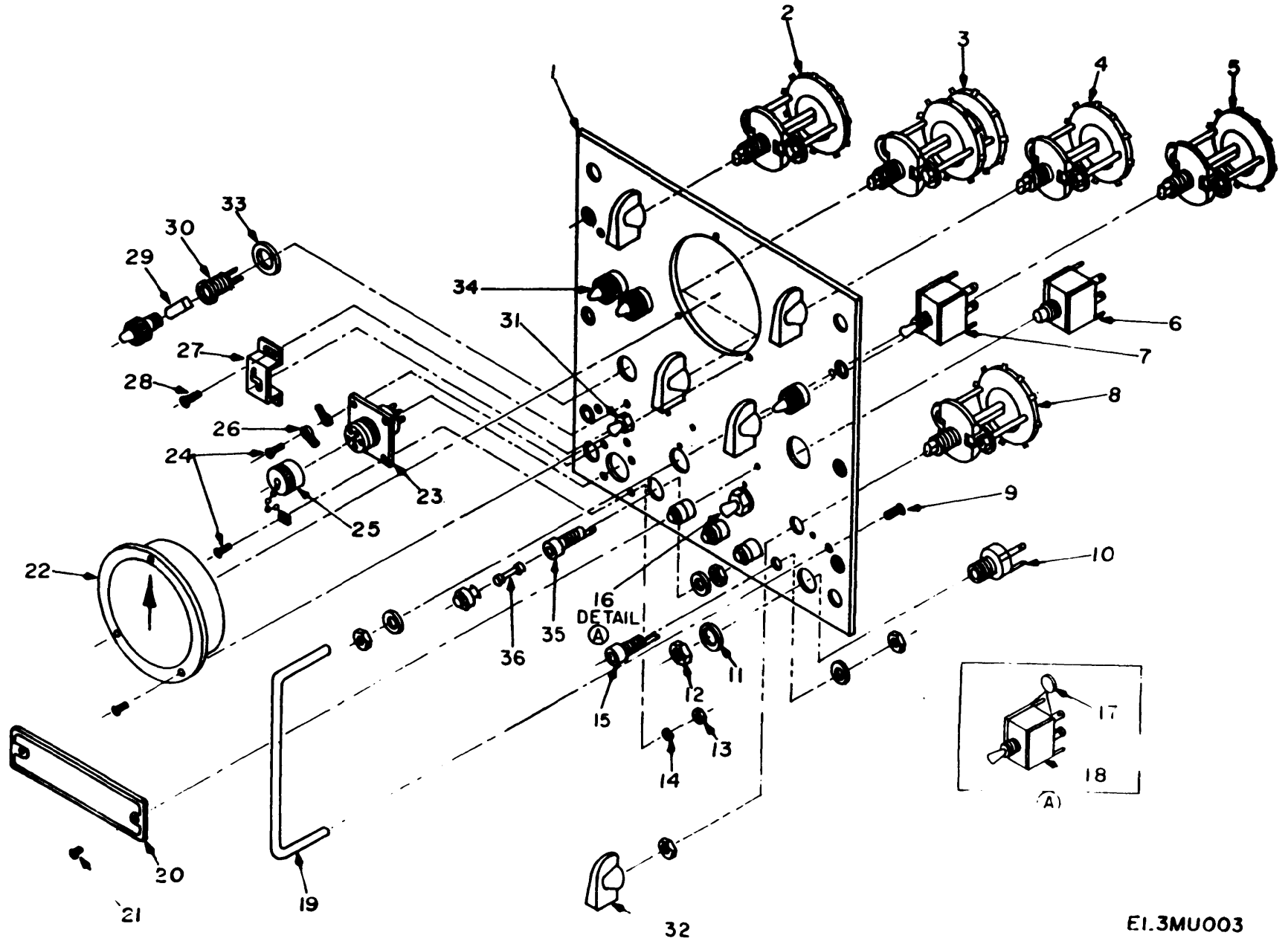
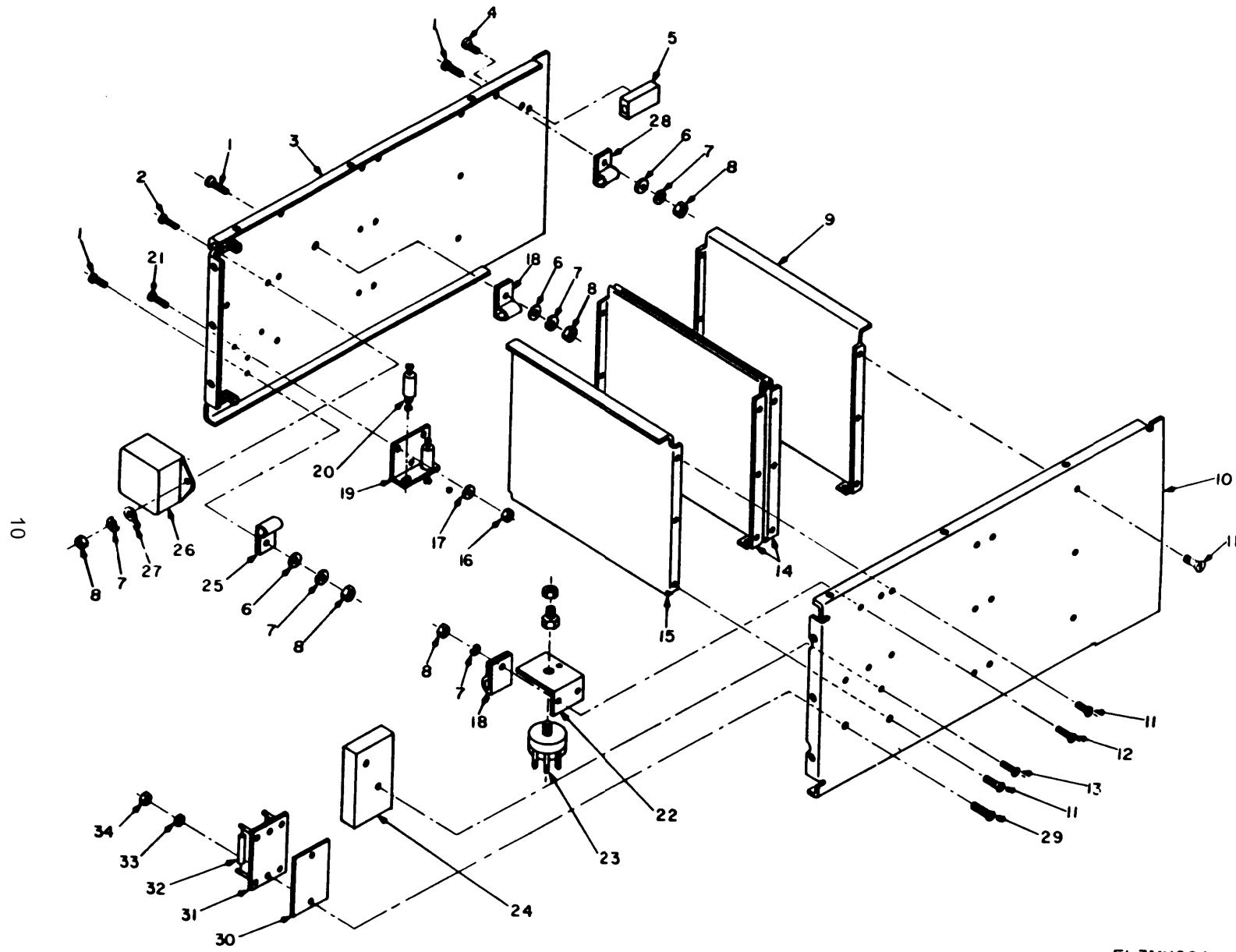


Figure 3. Front Panel Assembly.

EI.3MU003

SECTION II								(7)	(8)
(1)	(2)	(3)	(4)	(5)	(6)			(7)	(8)
ILLUSTRATION									QTY
(A)	(B)								INC
FIG	ITEM	SMR	NATIONAL	PART					IN
NO.	NO.	CODE	STOCK	NUMBER	FSCM		USABLE ON CODE	U/M	UNIT
			NUMBER						
3	1	XDHZZ		SMD552697	80063	PANEL ASSEMBL		EA	1
3	2	XDHZZ		SMA552694	80063	SWITCH, ROTARY		EA	1
3	3	XDHZZ		SMA552693	80063	SWITCH, ROTARY		EA	1
3	4	XDHZZ		SMA552696	80063	SWITCH, ROTARY		EA	1
3	5	XDHZZ		SMA552695	80063	SWITCH, ROTARY		EA	1
3	6	PAHZZ	5930-00-501-4955	MS25089-3CR	96906	SWITCH, PUSH		EA	1
3	7	PAHZZ	5930-00-615-7896	MS25098-22	96906	SWITCH, TOGGLE		EA	1
3	8	PAHZZ	5930-00-951-6501	SMB552639	80063	SWITCH, ROTARY		EA	1
3	9	XDHZZ	5305-00-059-3660	MS35234-64	96906	SCREW, MACHINE		EA	4
3	10	XDHZZ		SMB552779	80063	JACK, TELEPHONE		EA	1
3	11	XDHZZ		SMB552135	80063	WASHER, NYLON		EA	1
3	12	XDHZZ		SMB552657	80063	NUT, HEX		EA	1
3	13	PAHZZ	5310-00-934-9748	MS35649-244	96906	NUT, FLAIN, HEX		EA	4
3	14	PAHZZ	5310-00-933-8118	MS35338-78	96906	WASHER, SPLIT		EA	4
3	15	PAHZZ	5935-00-577-2337	MS16108-5A	96906	JACK, TIP		EA	1
3	16	XDHZZ		SMB552641	80063	SWITCH, TOGGLE ASSY		EA	1
3	17	XDHZZ		SMB552702	80063	RESISTOR, THERMAL		EA	1
3	18	PAHZZ	5920-00-504-8634	MS25100-23	96906	SWITCH, TOGGLE		EA	1
3	19	XDHZZ	5340-00-840-0954	MS39087-4	96906	HANDLE, BOW		EA	2
3	20	XDHZZ		SMB552654	80063	PLAT		EA	1
3	21	XDHZZ		MS21318-4	96906	SCREW, DRIVE		EA	2
3	22	PAHZZ	6625-00-172-2070	SMB552703	80063	METER, SPECIAL SCALE		EA	1
3	23	PAHZZ	5935-00-995-5782	MS3112E12-3P	96906	CONNECTOR, RECEPACL		EA	1
3	24	PAHZZ	5305-00-054-5649	MS35233-15	96906	SCREW, MACHINE		EA	4
3	25	XDHZZ		SMB552646	80063	CAP, PROTECTIVE, DUST		EA	1
3	26	XDHZZ		SMB579852-1	80063	TERMINAL, LUG		EA	2
3	27	XDHZZ		SMB552791	80063	STOP, SWITCH		EA	1
3	28	XDHZZ		MS35233-28	96906	SCREW, MACHINE		EA	2
3	29	PAOZZ	6240-00-892-4420	MS25252NE2D	96906	LAMP, INCANDESCENT		EA	4
3	30	PAHZZ	6210-00-808-8604	MS25257-4	96906	LIGHT, INDICATOR		EA	1
3	31	PAHZZ	5930-00-615-9376	MS35059-21	96906	SWITCH, TOGGLE		EA	1
3	32	PAOZZ	5355-00-556-0145	MS91528-1K2B	96906	KNOB		EA	5
3	33	PAHZZ	5310-00-983-8483	MS27183-5	96906	WASHER, FLAT		EA	1
3	34	XDHZZ		SMB552701	80063	LIGHT, INDICATOR		EA	3
3	35	PAHZZ	5920-00-556-0144	FHN20G	81349	FUSEHOLDER, EXTRACTO		EA	4
3	36	PAOZZ	5920-00-043-2641	F02B250V1-4A	81349	FUSE, CARTRIDGE		EA	4

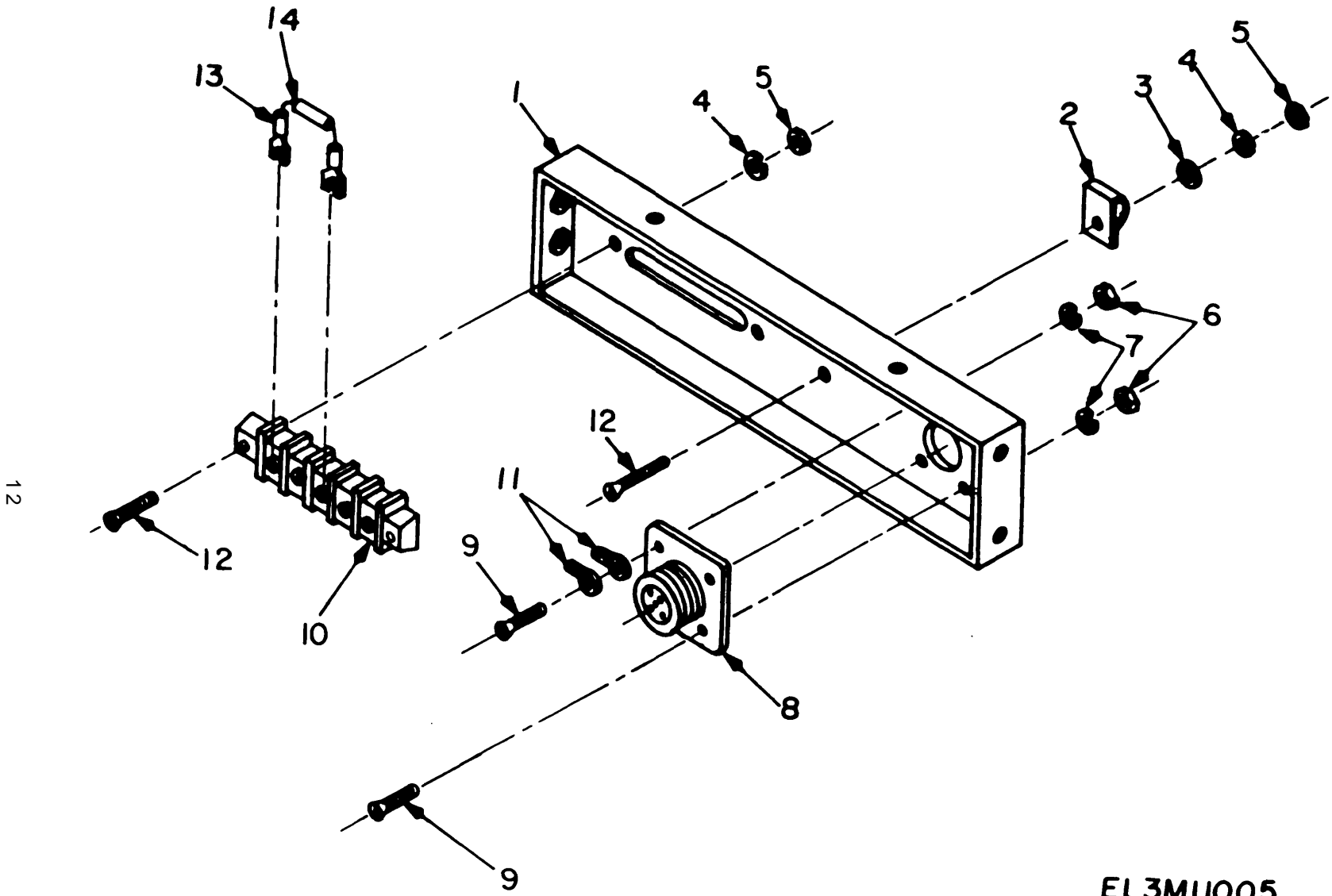


TM 11-6625-620-40P-2

EL3MU004

Figure 4. Chassis Assembly.

SECTION II									
(1)	(2)	(3)	(4)	(5)	(6)	(7)	(8)		
ILLUSTRATION								QTY	
(A)	(B)		NATIONAL		DESCRIPTION			INC	
FIG	ITEM	SMR	STOCK	PART				IN	
NO.	NO.	CODE	NUMBER	NUMBER	FSCM	USABLE ON CODE	U/M	UNIT	
4	1	PAHZZ	5305-00-054-6655	MS35233-31	96906	SCREW,MACHINE	EA	5	
4	2	PAHZZ	5305-00-543-2774	MS35233-32	96906	SCREW MACHINE	EA	2	
4	3	XDHZZ		SMD552704	80063	PANEL LEFT	EA	1	
4	4	XDHZZ		SMB552776-2	80063	SCREW,SELF LOCK	EA	4	
4	5	XDHZZ		SMB552600	80063	RECEPTACLE	EA	2	
4	6	PAHZZ	5310-00-983-8483	MS27183-5	96906	WASHER,FLAT	EA	5	
4	7	PAHZZ	5310-00-011-1041	MS35338-79	96906	WASHER	EA	9	
4	8	PAHZZ	5310-00-934-9761	MS35649-264	96906	NUT,PLAIN,HEX	EA	9	
4	9	XDHZZ		SMD552719GRP1	80063	CARD GUIDE	EA	1	
4	10	XDHZZ		SMD552708	80063	PANDEL,RIGHT SIDE	EA	1	
4	11	PAHZZ	5305-00-068-6529	MS35233-28	96906	SCREW,MACHINE	EA	24	
4	12	PAHZZ	5305-00-059-8251	MS35229-29	96906	SCREW,MACHINE	EA	2	
4	13	XDHZZ		SMB552776-1	80063	SCREW,MACHINE	EA	2	
4	14	XDHZZ		SMD552613	80063	CARD GUIDE	EA	2	
4	15	XDHZZ		SMD552719GRP2	80063	CARD GUIDE	EA	1	
4	16	PAHZZ	5310-00-934-9761	MS35649-264	96906	NUT,PLAIN,HEX	DRF	EA	3
4	17	PAHZZ	5310-00-011-1041	MS35338-79	96906	WASHER,SPLIT	DRF	EA	3
4	18	XDHZZ		MS25281-6	96906	CLAMP,LOOP	DRF	EA	2
4	19	XDHZZ		SMC889349	80063	BRACKET,MTG	DRF	EA	1
4	20	PAHZZ	5915-00-451-4261	RF2550-20	13619	FILTER,RF	DRF	EA	2
4	21	PAHZZ	5305-00-054-6655	MS35233-31	96906	SCREW,MACHINE	DRF	EA	3
4	22	XDHZZ		SMB552707	80063	BRACKET,MOUNTING	EA	1	
4	23	PAHZZ	5905-00-539-2479	RV4LAYS502A	81349	RESISTOR,VARIABLE,N	EA	1	
4	24	PAHZZ	5915-00-402-7174	SMB552706	80063	FILTER,INPUT	EA	1	
4	25	XDHZZ		MS25281-6	96906	CLAMP LOOP	EA	2	
4	26	PAHZZ	5915-00-230-8529	SMB552612	80063	FILTER,RADIO FREQUE	EA	1	
4	27	XDHZZ		SMB579852-2	80063	TERMINAL,LUG	EA	1	
4	28	PAHZZ	5340-00-988-3210	MS25281-4	96906	CLAMP,LOOP	EA	2	
4	29	PAHZZ	5305-00-059-8251	MS35229-29	96906	SCREW,MACHINE	EA	2	
4	30	XDHZZ		SMB889347	80063	PLATE,INSULATOR	DRF	EA	1
4	31	XDHZZ		SMB889353	80063	TERMINAL BOARD	DRF	EA	1
4	32	PAHZZ	5950-01-028-9571	MS14049-3	96906	COIL,RF	DRF	EA	2
4	33	PAHZZ	5310-00-011-1041	MS35338-79	96906	WASHER,SPLIT	DRF	EA	2
4	34	PAHZZ	5310-00-934-9761	MS35649-264	96906	NUT,PLAIN,HEX	DRF	EA	2



12

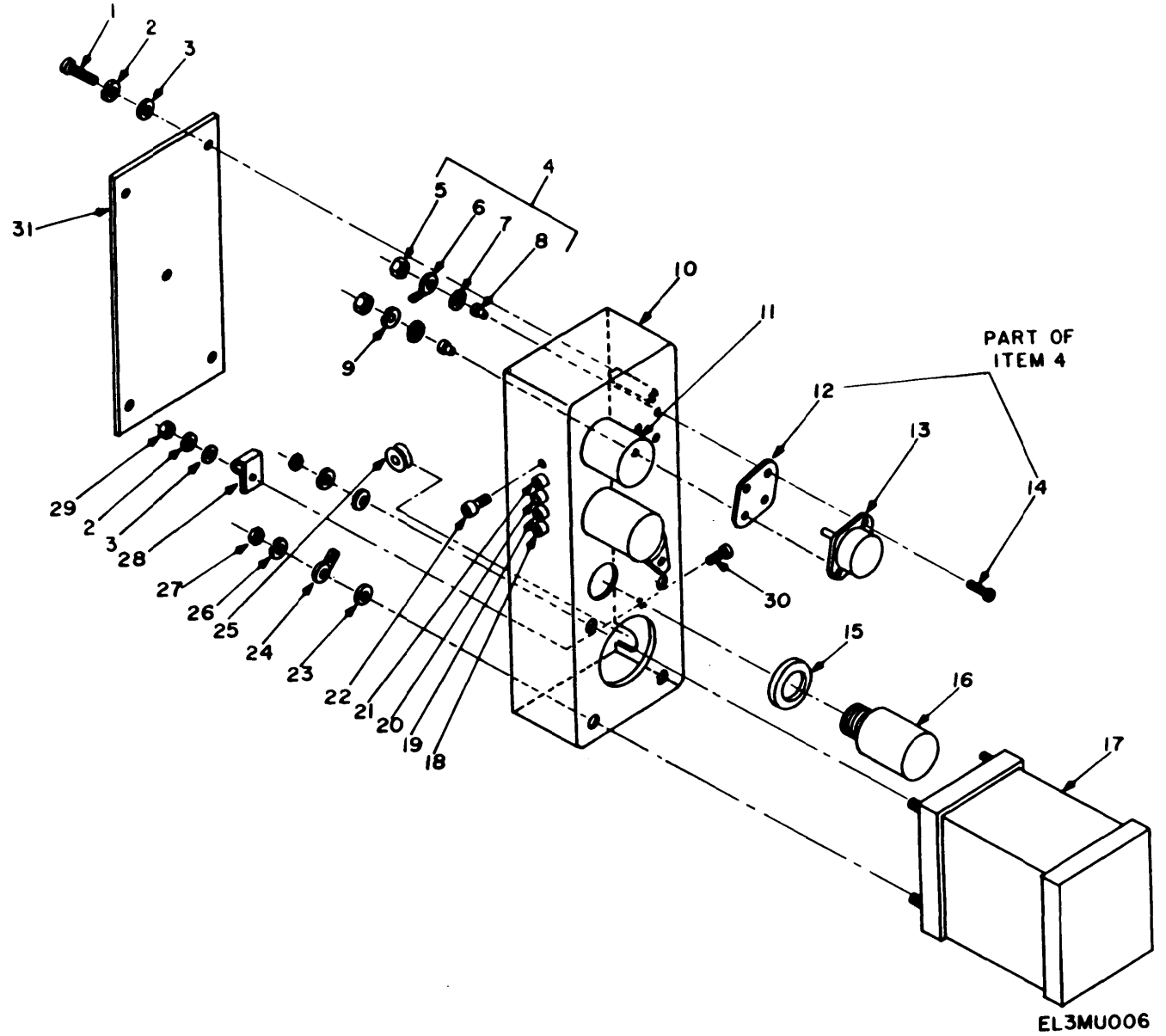
EL3MU005

Figure 5. Rear Panel.



SECTION II		(2)	(3)	(4)	(5)	(6)	(7)	(8)
(1)	ILLUSTRATION							
(A)	(B)		NATIONAL	PART		DESCRIPTION		QTY
FIG	ITEM	SMR	STOCK	NUMBER	FSCM		USABLE ON CODE	INC
NO.	NO.	CODE	NUMBER	NUMBER				IN
								UNIT
5	1	XDHZZ		SMC552711	80063	BRACKET, MOUNTING		EA 1
5	2	XDHZZ		MS25281-2	96906	CLAMP, CABLE		EA 1
5	3	PAHZZ	5310-00-983-8483	MS27183-5	96906	WASHER, FLAT		EA 1
5	4	PAHZZ	5310-00-011-1041	MS35338-79	96906	WASHER		EA 3
5	5	PAHZZ	5310-00-934-9761	MS35649-264	96906	NUT, PLAIN, HEX		EA 3
5	6	PAHZZ	5310-00-934-9748	MS35649-244	96906	NUT, PLAIN, HEX		EA 4
5	7	PAHZZ	5310-00-933-8118	MS35338-78	96906	WASHER, SPLIT		EA 4
5	8	PAHZZ	5935-00-995-5782	MS3112E12-3P	96906	CONNECTOR, RECEPTACL		EA 1
5	9	PAHZZ	5305-00-054-5649	MS35233-15	96906	SCREW, MACHINE		EA 4
5	10	XDHZZ		SMB552611	80063	TERMINAL BOARD		EA 1
5	11	XDHZZ		SMB579852-1	80063	TERMINAL LUG		EA 2
5	12	XDHZZ		MS35233-30	96906	SCREW, MACHINE		EA 3
5	13	PAHZZ	5940-00-815-5511	YAE18Z2	09922	TERMINAL, LUG		EA 2
5	14	PAHZZ	5905-00-279-1724	RC32GF151J	81349	RESISTOR		EA





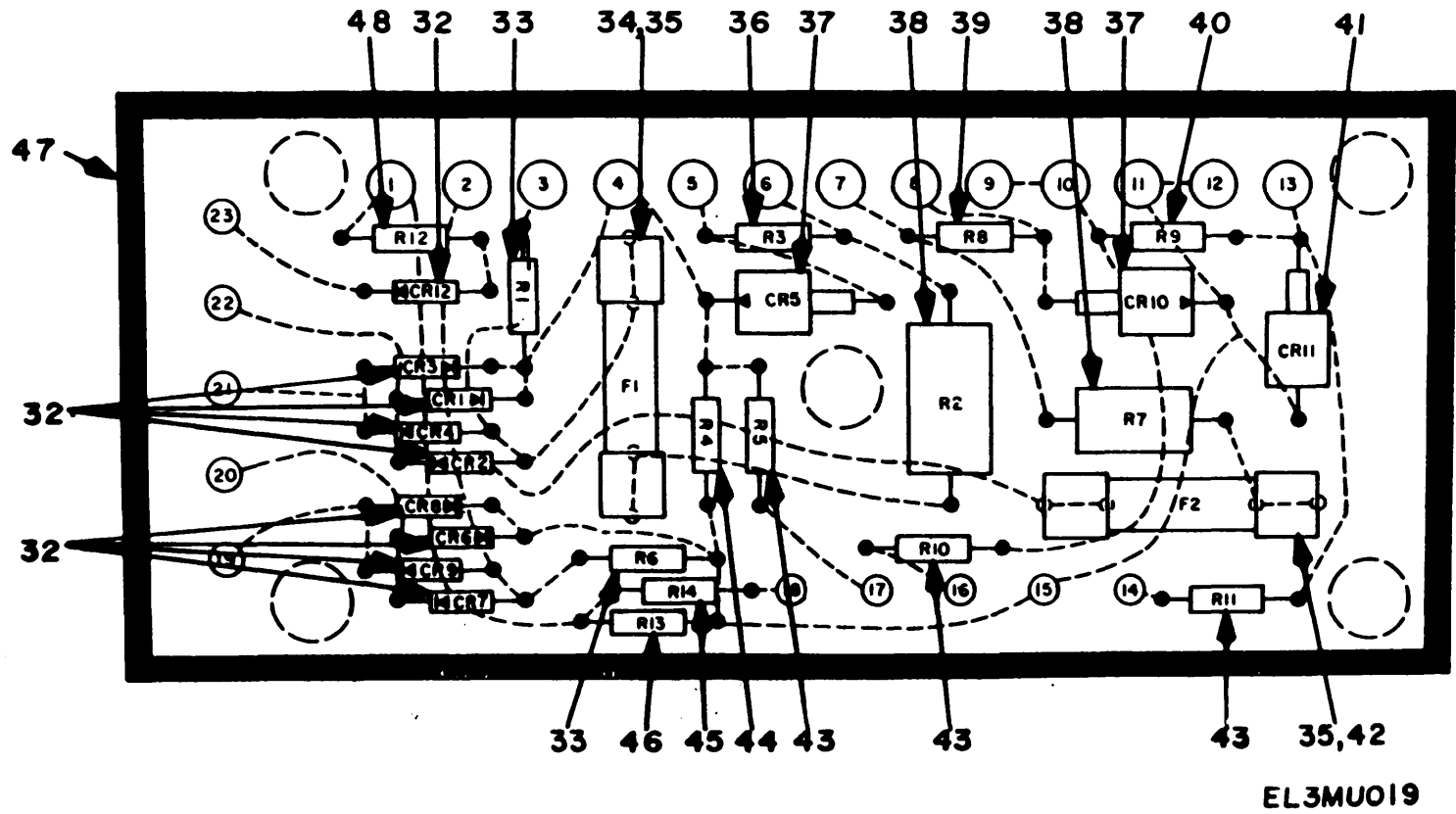


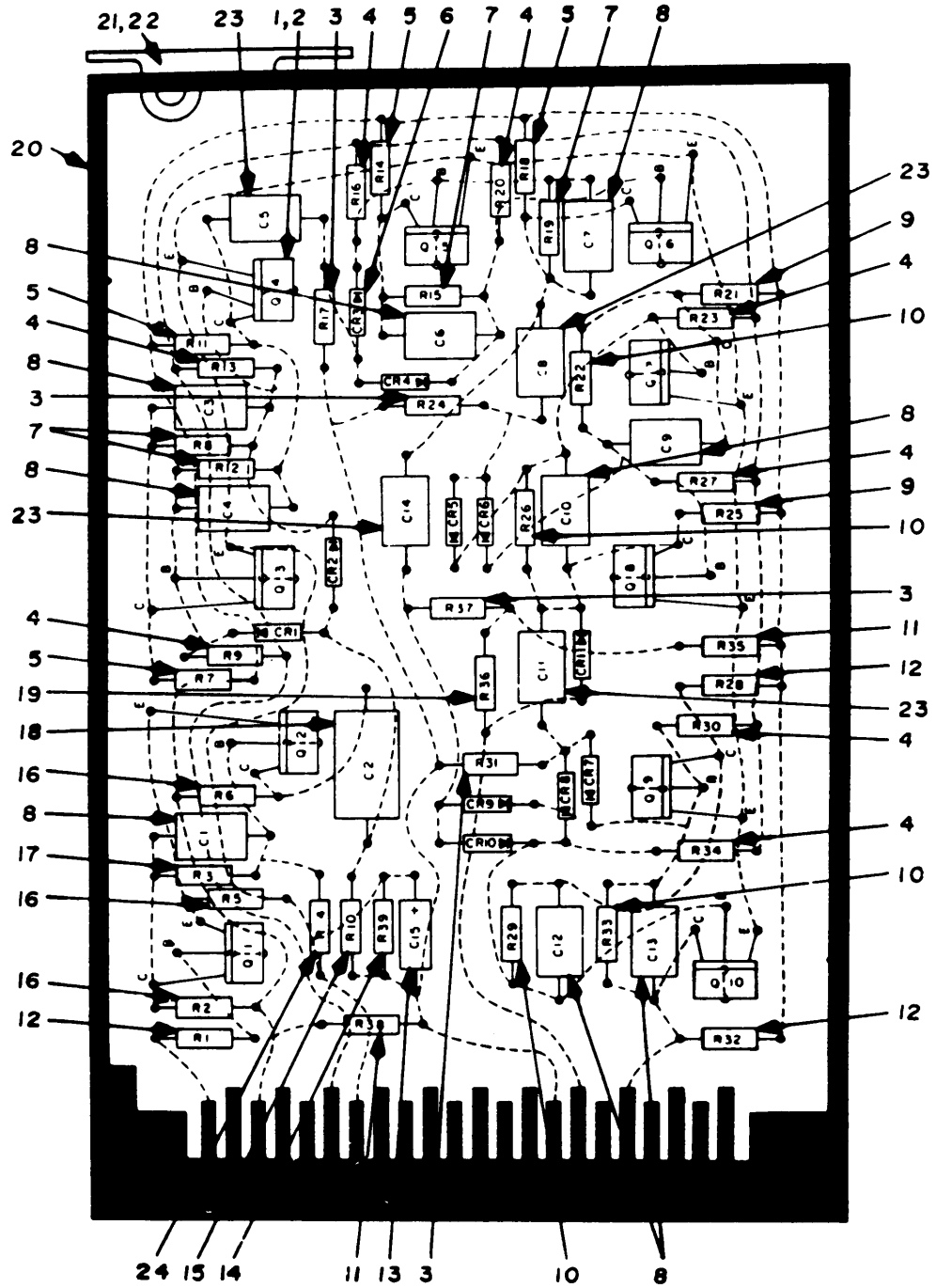
Figure 6. Power Supply (Sheet 2 of 2).

SECTION II		(2)	(3)	(4)	(5)	(6)	(7)	(8)
(1)	ILLUSTRATION							
(A)	(B)		NATIONAL	PART		DESCRIPTION		QTY
FIG	ITEM	SMR	STOCK	NUMBER	FSCM		USABLE ON CODE	INC
NO.	NO.	CODE	NUMBER	NUMBER				IN
								UNIT
GROUP 010101 POWER SUPPLY								
6	1	PAHZZ	5305-00-054-6651	MS35233-27	96906	SCREW, MACHINE		EA 4
6	2	PAHZZ	5310-00-011-1041	MS35338-79	96906	WASHER		EA 5
6	3	PAHZZ	5310-00-983-8483	MS27183-5	96906	WASHER, FLAT		EA 5
6	4	XDHZZ		SMB552159	80063	MOUNTING KIT		EA 2
6	5	PAHZZ	5310-00-934-9739	MS35649-242	96906	NUT, PLAIN, HEXAGON		EA 2
6	6	XDHZZ		SMB552159-3	80063	TERMINAL, LUG		EA 1
6	7	XDHZZ		SMB552159-7	80063	WASHER, FLAT		EA 2
6	8	XDHZZ		SMB552159-2	80063	SPACER, SLEEVE		EA 2
6	9	PAHZZ	5310-00-193-7577	MS35333-19	96906	WASHER, LOCK		EA 1
6	10	XDHZZ		SMD552721	80063	CHASSIS SUBASSEMBLY		EA 1
6	11	PAHZZ	5910-00-177-6752	CE41C100M	81350	CAPACITOR, FIXED, ELE		EA 1
6	12	XDHZZ		SMB552159-1	80063	INSULATOR, PLATE		EA 1
6	13	PAHZZ	5961-00-821-8976	JAN2N297A	81349	TRANSISTOR		EA 2
6	14	PAHZZ	5305-00-889-3001	MS35225-31	96906	SCREW, MACHINE		EA 2
6	15	XDHZZ		SMB552774	80063	WASHER, INSULATED		EA 3
6	16	PAHZZ	5910-00-944-3501	CE41C451G	81349	CAPACITOR, FIXED, ELE		EA 2
6	17	PAHZZ	5950-00-689-1492	SM-C-552723	80063	TRANSFORMER, POWER, S		EA 1
6	18	XDHZZ		SMB552623-10	80063	JACK, TIP		EA 1
6	19	XDHZZ		SMB552623-5	80063	JACK, TIP		EA 1
6	20	XDHZZ		SMB552623-8	80063	JACK, TIP		EA 1
6	21	XDHZZ		SMB552623-1	80063	JACK, TIP		EA 1
6	22	XDHZZ		SMB552623-3	80063	JACK, TIP		EA 1
6	23	PAHZZ	5310-00-809-8544	MS27183-7	96906	WASHER, FLAT		EA 4
6	24	XDHZZ		SMB552662	80063	TERMINAL, LUG		EA 1
6	25	XDHZZ		SMB552636	80063	GROMMET, RUBBER		EA 1
6	26	PAHZZ	5310-00-054-1830	MS35338-80	96906	WASHER		EA 4
6	27	PAHZZ	5310-00-934-9759	MS35649-284	96906	NUT, PLAIN, HEXAGON		EA 4
6	28	XDHZZ	5340-00-721-5315	MS25281-5	96906	CLAMP, LOOP		EA 1
6	29	PAHZZ	5310-00-934-9761	MS35649-264	96906	NUT, PLAIN, HEX		EA 1
6	30	PAHZZ	5305-00-054-6662	MS35233-38	96906	SCREW, MACHINE		EA 1
6	31	PAHHD	6625-00-405-9098	SMD552461	80063	POWER SUPPLY SUBASSEMBLY		EA 1
6	32	PAHZZ	5961-00-577-6084	1N645	81349	SEMICONDUCTOR DEVIC		EA 9
6	33	PAHZZ	5905-00-279-2522	RC20GF154J	81349	RESISTOR, FIXED, COMP		EA 2
6	34	PAHZZ	5920-00-296-0451	F02A250V1-8A	81349	FUSE, CARTRIDGE		EA 1
6	35	XDHZZ		SMB552752	80063	CLIP, FUSE		EA 2
6	36	PAHZZ	5905-00-192-3973	RC20GF471J	81349	RESISTOR, FIXED, COMP		EA 1
6	37	PAHZZ	5961-00-826-0491	1N3024B	81349	SEMICONDUCTOR DVC D		EA 2
6	38	PAHZZ	5905-00-081-6137	RW69V5R1	81349	RESISTOR, FIXED, WIRE		EA 2
6	39	PAHZZ	5905-00-192-3971	RC20GF331J	81349	RESISTOR, FIXED, COMP		EA 1

## SECTION II

(1)	(2)	(3)	(4)	(5)	(6)	(7)	(8)
ILLUSTRATION							
(A)	(B)		NATIONAL		DESCRIPTION		QTY
FIG	ITEM	SMR	STOCK	PART			INC
NO.	NO.	CODE	NUMBER	NUMBER	FSCM	USABLE ON CODE	IN
							UNIT
6	40	PAHZZ	5905-00-279-3516	RC20GF910J	81349		EA 1
6	41	PAHZZ	5961-00-579-4965	1N3020B	81349		EA 1
6	42	PAHZZ	5920-00-043-2641	F02A250V1-4A	81349		EA 1
6	43	PAHZZ	5905-00-195-6806	RC20GF102J	81349		EA 3
6	44	PAHZZ	5905-00-279-1870	RC20GF132J	81349		EA 1
6	45	PAHZZ	5905-00-279-3506	RC20GF332J	81349		EA 1
6	46	PAHZZ	5905-00-195-6761	RC20GF104J	81349		EA 1
6	47	XAHZZ		SMD552491	80063		EA 1
6	48	PAHZZ	5905-00-252-4018	RC20GF470J	81349		EA 1





NOTES

A1

- 1. ALL TRANSISTORS ARE ITEM 1, TRANSISTOR CLIPS ARE ITEM 2.
- 2. ALL DIODES ARE ITEM 6.

EL3MU007

Figure 7. Test Set Subassembly A1.



SECTION II								
(1)	(2)	(3)	(4)	(5)	(6)	(7)	(8)	
ILLUSTRATION								
(A)	(B)						QTY	
FIG	ITEM	SMR	NATIONAL	PART	DESCRIPTION		INC	
NO.	NO.	CODE	STOCK	NUMBER	FSCM	USABLE ON CODE	IN	
			NUMBER				UNIT	
GROUP 010102 TEST SET SUBASSEMBLY A1								
7	1	PAHZZ	5961-00-853-1079	JAN2N1305	81349	TRANSISTOR	EA 10	
7	2	XDHZZ		SMB552753	81349	CLIP, ELECTRICAL	EA 10	
7	3	PAHZZ	5905-00-279-3503	RC20GF682J	81349	RESISTOR, FIXED, COMP	EA 4	
7	4	PAHZZ	5905-00-279-1871	RC20GF164J	81349	RESISTOR, FIXED, COMP	EA 8	
7	5	PAHZZ	5905-00-279-2019	RC20GF512J	81349	RESISTOR, FIXED, COMP	EA 4	
7	6	PAHZZ	5961-00-556-2091	1N270	81349	SEMICONDUCTOR	EA 11	
7	7	PAHZZ	5905-00-279-3496	RC20GF513J	81349	RESISTOR, FIXED, COMP	EA 4	
7	8	XDHZZ		CM15DD241JN3	81349	CAPACITOR, FIXEDMICA	EA 9	
7	9	PAHZZ	5905-00-116-8568	RC20GF752J	81349	RESISTOR, FIXED, COMP	EA 2	
7	10	PAHZZ	5905-00-114-5441	RC20GF563J	81349	RESISTOR, FIXED, COMP	EA 4	
7	11	PAHZZ	5905-00-279-2616	RC20GF153J	81349	RESISTOR, FIXED, COMP	EA 2	
7	12	PAHZZ	5905-00-185-8510	RC20GF103J	81349	RESISTOR, FIXED, COMP	EA 3	
7	13	PAHZZ	5910-00-936-1334	CSR13G105K0577	81349	CAPACITO	EA 1	
7	14	PAHZZ	5905-00-195-6806	RC20GF102J	81349	RESISTOR, FIXED, COMP	EA 1	
7	15	PAHZZ	5905-00-190-8887	RC20GF202J	81349	RESISTOR, FIXED, COMP	EA 1	
7	16	PAHZZ	5905-00-279-1880	RC20GF272J	81349	RESISTOR, FIXED, COMP	EA 3	
7	17	PAHZZ	5905-00-192-0649	RC20GF203J	81349	RESISTOR, FIXED, COMP	EA 1	
7	18	XDHZZ		CM20DD681JN3	81349	CAPACITOR, FIXEDMICA	EA 1	
7	19	PAHZZ	5905-00-279-3508	RC20GF112J	81349	RESISTOR, FIXED, COMP	EA 1	
7	20	XAHZZ		SMD552486	80063	PRINTED	EA 1	
7	21	XDHZZ		SMC552178-2	80063	HANDLE	EA 1	
7	22	XDHZZ		SMB552185-3	80063	EYELET	EA 1	
7	23	XDHZZ		CM15C151JN1	81349	CAPACITOR, FIXEDMICA	EA 4	
7	24	PAHZZ	5905-00-249-3661	RC20GF683J	81349	RESISTOR, FIXED, COMP	EA 1	

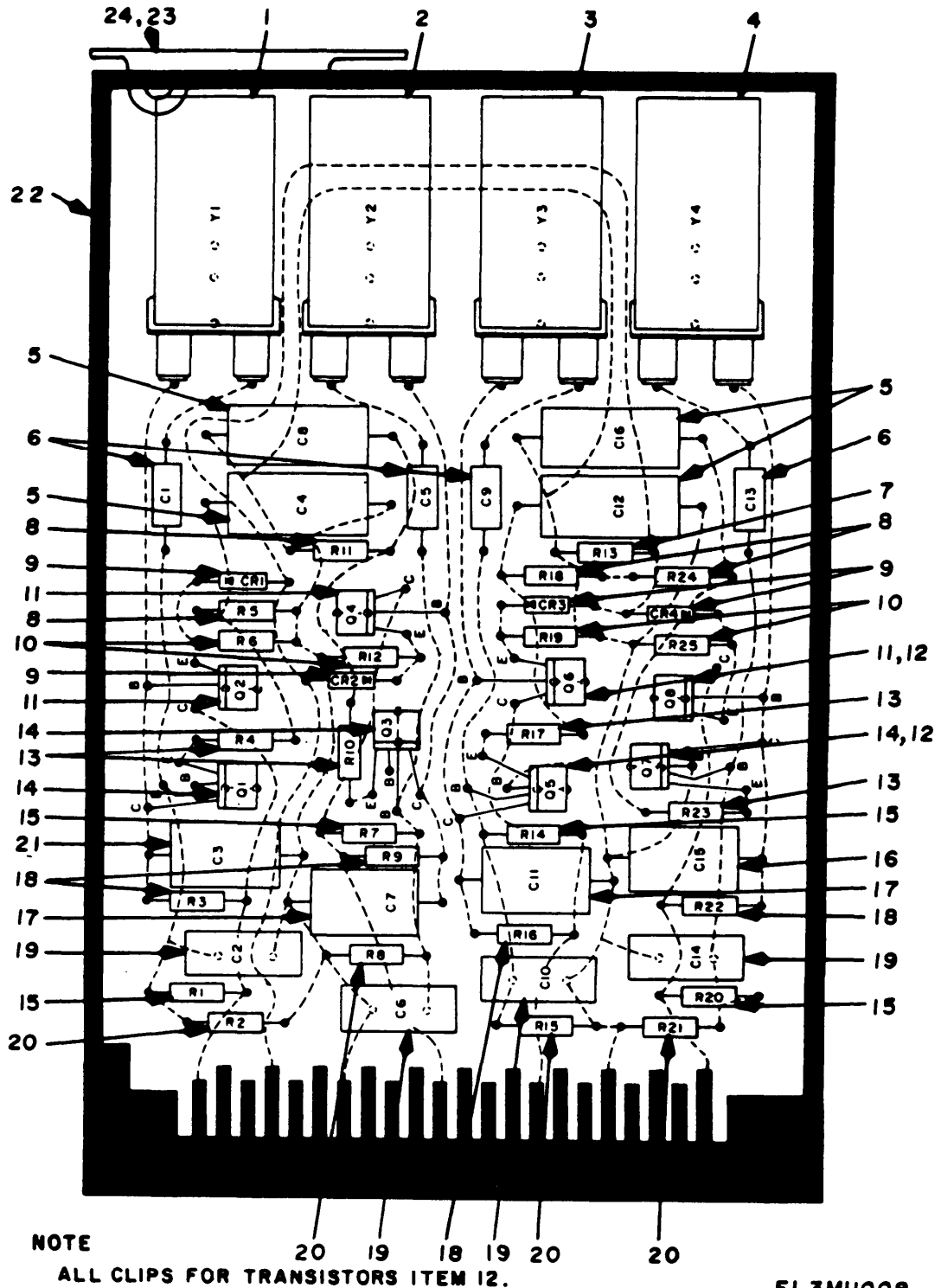
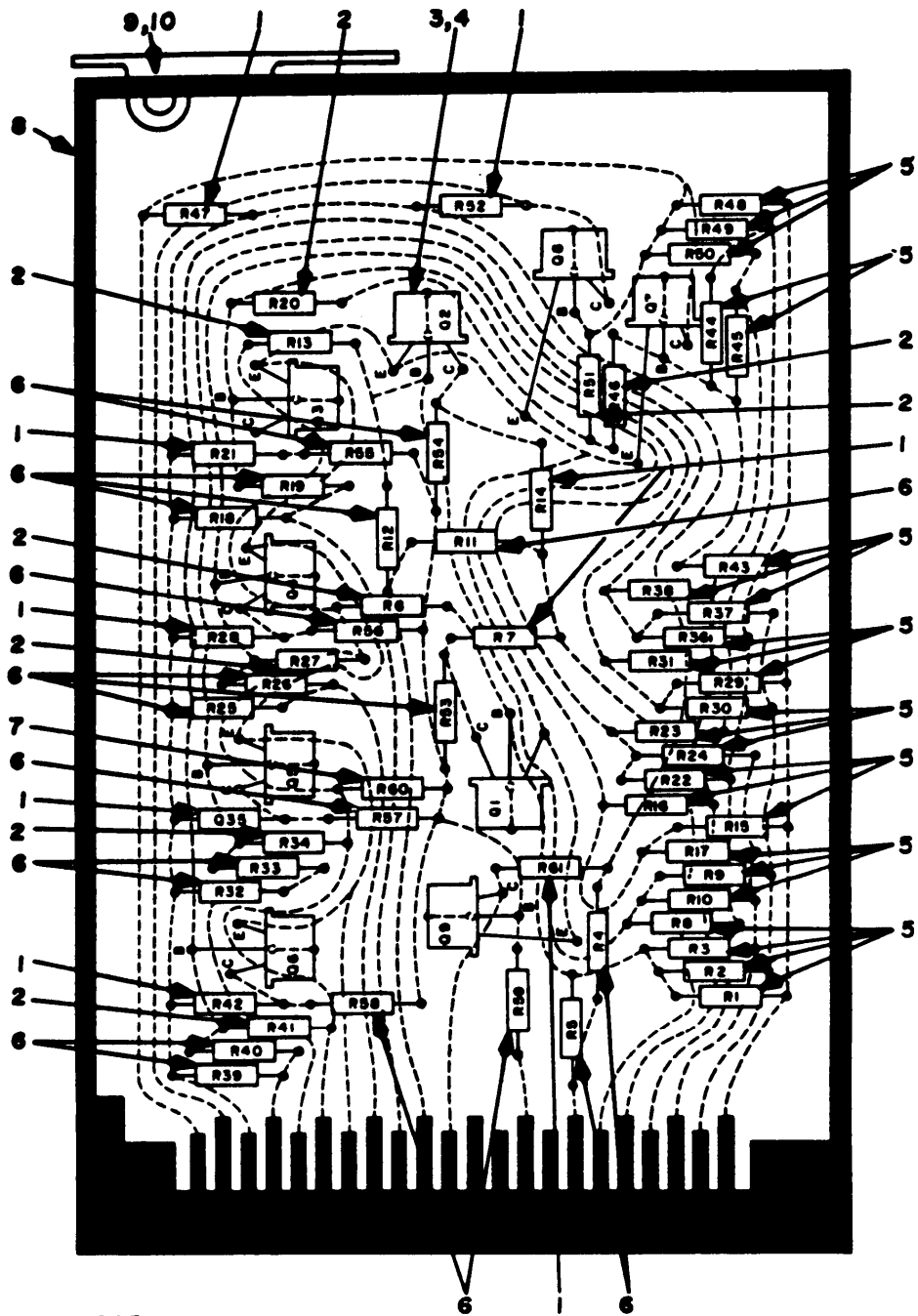


Figure 8. Test Set Subassembly A2.

SECTION II								
(1)	(2)	(3)	(4)	(5)	(6)	(7)	(8)	
ILLUSTRATION								
(A)	(B)				DESCRIPTION		QTY	
FIG	ITEM	SMR	NATIONAL	PART			INC	
NO.	NO.	CODE	STOCK	NUMBER	FSCM	USABLE ON CODE	IN	
			NUMBER				UNIT	
GROUP 010103 TEST SET SUBASSEMBLY A2								
8	1	XDHZZ		CR37AU93-21KC	81349	CRYSTAL UNIT	EA 1	
8	2	XDHZZ		CR37AU102-4KC	81349	CRYSTAL UNIT	EA 1	
8	3	XDHZZ		CR37AU151-921KC	81349	CRYSTAL UNIT	EA 1	
8	4	XDHZZ		CR27AU153-6KC	81349	CRYSTAL UNIT	EA 1	
8	5	PAHZZ	5910-00-621-9880	CP05A1KB104K1	81349	CAPACITOR, FIXED, PL	EA 4	
8	6	PAHZZ	5910-00-727-3548	CM15CD200JN3	81349	CAPACITOR, FIXED, MIC	EA 4	
8	7	PAHZZ	5905-00-195-6806	RC20GF102J	81349	RESISTOR, FIXED, CUMP	EA 1	
8	8	PAHZZ	5905-00-279-1870	RC20GF132J	81349	RESISTOR, FIXED, COMP	EA 4	
8	9	PAHZZ	5961-00-556-2091	1N270	81349	SEMICONDUCTOR	EA 4	
8	10	PAHZZ	5905-00-279-2616	RC20GF153J	81349	RESISTOR, FIXED, COMP	EA 4	
8	11	PAHZZ	5961-00-853-1079	JAN2N1305	81349	TRANSISTOR	EA 4	
8	12	XDHZZ		SMB552753	80063	CLIP, ELECTRICAL	EA 8	
8	13	PAHZZ	5905-00-279-3520	RC20GF200J	81349	RESISTOR, FIXED, COMP	EA 4	
8	14	PAHZZ	5961-00-989-6706	JAN2N1224	81349	TRANSISTOR	EA 4	
8	15	PAHZZ	5905-00-249-3661	RC20GF683J	81349	RESISTOR, FIXED, COMP	EA 4	
8	16	XDHZZ		CM15DD331JN3	81349	CAPACITOR, FIXEDMICA	EA 1	
8	17	XDHZZ		CM15DD471JN3	81349	CAPACITOR, FIXEDMICA	EA 2	
8	18	PAHZZ	5905-00-279-3504	RC20GF472J	81349	RESISTOR, FIXED, COMP	EA 4	
8	19	XDHZZ		CM06DD202J03	81349	CAPACITOR, FIXEDMICA	EA 4	
8	20	PAHZZ	5905-00-116-8568	RC20GF752J	81349	RESISTOR, FIXED, COMP	EA 4	
8	21	XDHZZ		CM20DD681JN3	81349	CAPACITOR, FIXEDMICA	EA 1	
8	22	XAHZZ		SMD552485	80063	PRINTED	EA 1	
8	23	XDHZZ		SMB552185-3	80063	HANDLE, EXTRACTOR, MA	EA 1	
8	24	XDHZZ		SMB552185-3	80063	EYELET	EA 1	



NOTE

1. ALL TRANSISTORS ITEM 3, ALL CLIPS ITEM 4.

EL3MU009

A3

Figure 9. Test Set Subassembly A3.

SECTION II

(1)	(2)	(3)	(4)	(5)	(6)	(7)	(8)
ILLUSTRATION							
(A)	(B)	NATIONAL			DESCRIPTION		QTY
FIG	ITEM	STOCK	PART			USABLE ON CODE	INC
NO.	NO.	NUMBER	NUMBER	FSCM			IN
							UNIT
GROUP 010104 TEST SET SUBASSEMBLY A3							
9	1	PAHZZ 5905-00-279-2616	RC20GF153J	81349	RESISTOR, FIXED, COMP		EA 9
9	2	PAHZZ 5905-00-192-3981	RC20GF124J	81349	RESISTOR, FIXED, COMP		EA 8
9	3	PAHZZ 5961-00-853-1079	JAN2N1305	81349	TRANSISTOR		EA 9
9	4	XDHZZ	SMB552753	80063	CLIP, ELECTRICAL		EA 9
9	5	PAHZZ 5905-00-279-3498	RC20GF433J	81349	RESISTOR, FIXED, COMP		EA 24
9	6	PAHZZ 5905-00-249-4256	RC20GF363J	81349	RESISTOR, FIXED, COMP		EA 19
9	7	PAHZZ 5905-00-279-3494	RC20GF823J	81349	RESISTOR, FIXED, COMP		EA 1
9	8	XAHZZ	SMD552489	80063	PRINTED		EA 1
9	9	XDHZZ	SMC552178-6	80063	HANDLE		EA 1
9	10	XDHZZ	SMB552185-3	80063	EYELET		EA 1

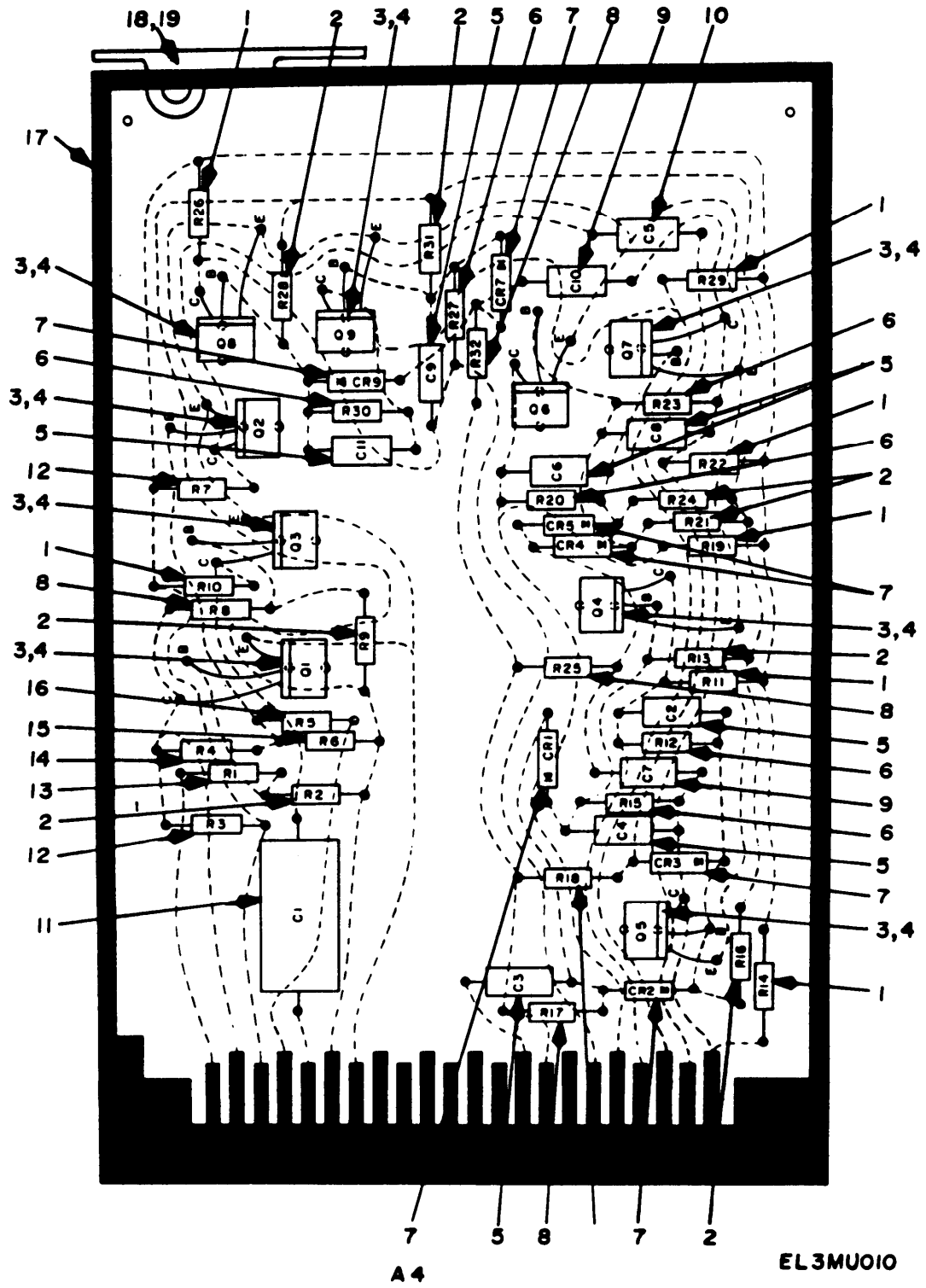


Figure 10. Test Set Subassembly A4.

SECTION II		(2)	(3)	(4)	(5)	(6)	(7)	(8)	
(1)	ILLUSTRATION								
(A)	(B)		NATIONAL			DESCRIPTION		QTY	
FIG	ITEM	SMR	STOCK	PART				INC	
NO.	NO.	CODE	NUMBER	NUMBER	FSCM		USABLE ON CODE	IN	
								UNIT	
GROUP 010105 TEST SET SUBASSEMBLY A4									
10	1	PAHZZ	5905-00-279-2019	RC20GF512J	81349	RESISTOR, FIXED, COMP		EA	7
10	2	PAHZZ	5905-00-279-1871	RC20GF164J	81349	RESISTOR, FIXED, COMP		EA	8
10	3	PAHZZ	5961-00-853-1079	JAN2N1305	81349	TRANSISTOR		EA	9
10	4	XDHZZ		SMB552753	80063	CLIP, ELECTRICAL		EA	9
10	5	XDHZZ		CM15DD221JN3	81349	CAPACITOR, FIXEDMICA		EA	7
10	6	PAHZZ	5905-00-249-4256	RC20GF363J	81349	RESISTOR, FIXED, COMP		EA	6
10	7	PAHZZ	5961-00-556-2091	1N270	81349	SEMICONDUCTOR		EA	7
10	8	PAHZZ	5905-00-279-3499	RC20GF273J	81349	RESISTOR, FIXED, COMP		EA	5
10	9	PAHZZ	5910-00-234-9976	CM15CD151JN3	81349	CAPACITOR, FIXED, MIC		EA	2
10	10	XDHZZ		CM15DD241JN3	81349	CAPACITOR, FIXEDMICA		EA	1
10	11	XDHZZ		CP05A1KC104K1	81349	CAPACITO		EA	1
10	12	PAHZZ	5905-00-279-2616	RC20GF153J	81349	RESISTOR, FIXED, COMP		EA	2
10	13	PAHZZ	5905-00-279-3496	RC20GF513J	81349	RESISTOR, FIXED, COMP		EA	1
10	14	PAHZZ	5905-00-192-3978	RC20GF303J	81349	RESISTOR, FIXED, COMP		EA	1
10	15	PAHZZ	5905-00-195-6761	RC20GF104J	81349	RESISTOR, FIXED, COMP		EA	1
10	16	PAHZZ	5905-00-114-5441	RC20GF563J	81349	RESISTOR, FIXED, COMP		EA	1
10	17	XAHZZ		SMD552490	80063	PRINTED		EA	1
10	18	XDHZZ		SMC552178-8	80063	HANDLE, EXTRACTOR		EA	1
10	19	XDHZZ		SMB552185-3	80063	EYELET		EA	1

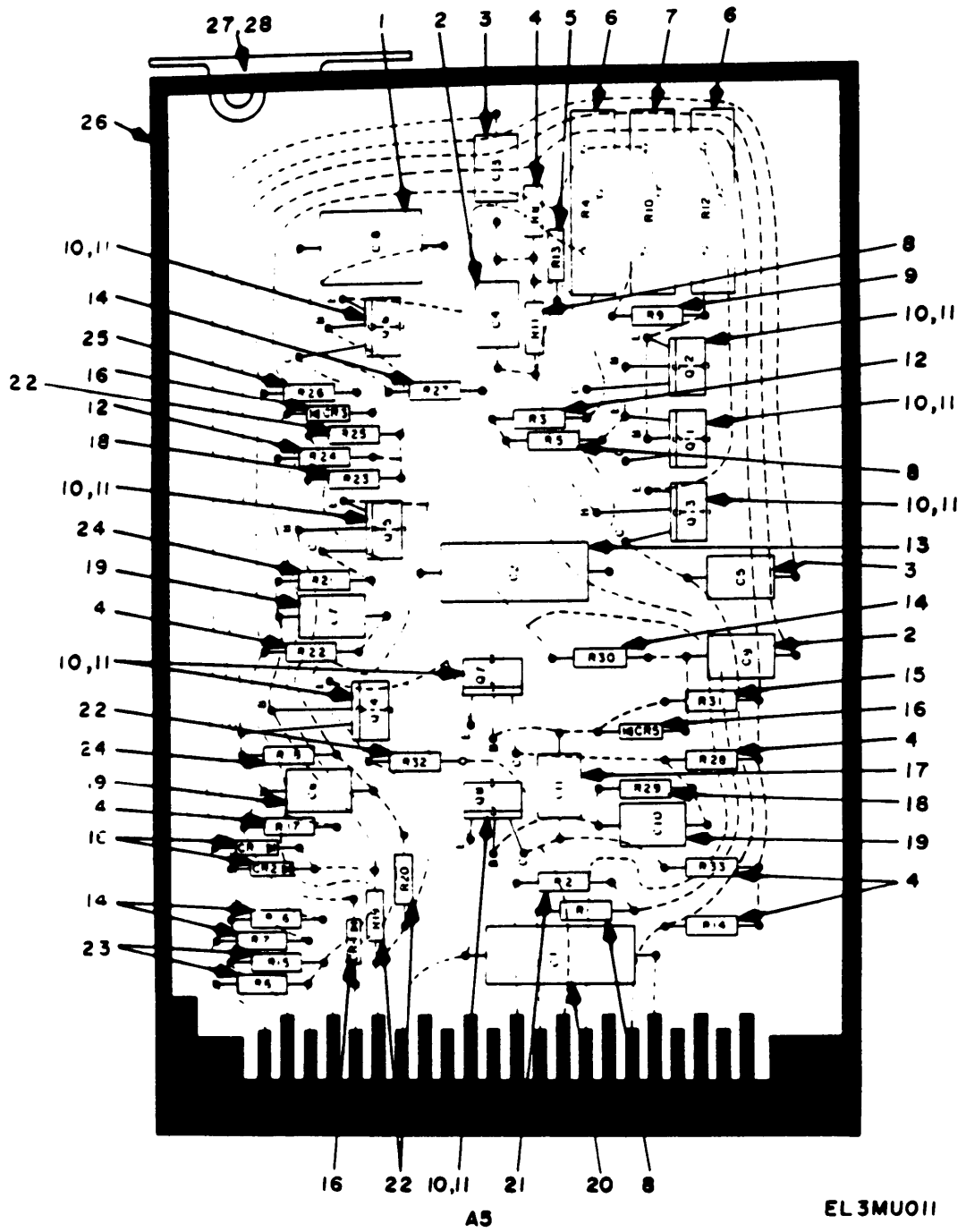


Figure 11. Test Set Subassembly A5.



SECTION II		(2)	(3)	(4)	(5)	(6)	(7)	(8)
(1)	ILLUSTRATION							
(A)	(B)		NATIONAL			DESCRIPTION		QTY
FIG	ITEM	SMR	STOCK	PART	FSCM		USABLE ON CODE	INC
NO.	NO.	CODE	NUMBER	NUMBER				IN
								UNIT
GROUP 010106 TEST SET SUBASSEMBLY A5								
11	1	XDHZZ		CM15ED751JN1	81349	CAPACITOR, FIXEDMICA		EA 1
11	2	XDHZZ		CM15DD241JN3	81349	CAPACITOR, FIXEDMICA		EA 2
11	3	XDHZZ		CM15DD361JN3	81349	CAPACITOR, FIXEDMICA		EA 2
11	4	PAHZZ	5905-00-185-8510	RC20GF103J	81349	RESISTOR, FIXED, COMP		EA 6
11	5	PAHZZ	5905-00-279-1867	RC20GF114J	81349	RESISTOR, FIXED, COMP		EA 1
11	6	PAHZZ	5905-00-079-3497	RT11C2P502	81349	RESISTOR, VARIABLE, W		EA 2
11	7	PAHZZ	5905-00-761-5398	RT11C2P103	81349	RESISTOR, VARIABLE, W		EA 1
11	8	PAHZZ	5905-00-192-3978	RC20GF303J	81349	RESISTOR, FIXED, COMP		EA 3
11	9	PAHZZ	5905-00-279-2019	RC20GF512J	81349	RESISTOR, FIXED, COMP		EA 1
11	10	PAHZZ	5961-00-853-1079	JAN2N1305	81349	TRANSISTOR		EA 8
11	11	XDHZZ		SMB552753	81349	CLIP, ELECTRICAL		EA 8
11	12	PAHZZ	5905-00-249-3661	RC20GF683J	81349	RESISTOR, FIXED, COMP		EA 2
11	13	PAHZZ	5910-00-621-9880	CP05A1KB104K1	81349	CAPACITOR, FIXED, PL		EA 1
11	14	PAHZZ	5905-00-279-3499	RC20GF273J	81349	RESISTOR, FIXED, COMP		EA 4
11	15	PAHZZ	5905-00-195-6761	RC20GF104J	81349	RESISTOR, FIXED, COMP		EA 1
11	16	PAHZZ	5961-00-556-2091	1N270	81349	SEMI-CONDUCTOR		EA 5
11	17	XDHZZ		CM15DD331JN3	81349	CAPACITOR, FIXEDMICA		EA 1
11	18	PAHZZ	5905-00-249-3656	RC20GF623J	81349	RESISTOR, FIXED, COMP		EA 2
11	19	XDHZZ		CM15DD221JN3	81349	CAPACITOR, FIXEDMICA		EA 3
11	20	PAHZZ	5910-00-632-7429	CP05A1KC473K1	81349	CAPACITOR, FIXED, PLA		EA 1
11	21	PAHZZ	5905-00-190-8889	RC20GF101J	81349	RESISTOR, FIXED, COMP		EA 1
11	22	PAHZZ	5905-00-279-1871	RC20GF164J	81349	RESISTOR, FIXED, COMP		EA 4
11	23	PAHZZ	5905-00-279-3502	RC20GF123J	81349	RESISTOR, FIXED, COMP		EA 2
11	24	PAHZZ	5905-00-114-5441	RC20GF563J	81349	RESISTOR, FIXED, COMP		EA 2
11	25	PAHZZ	5905-00-279-2616	RC20GF153J	81349	RESISTOR, FIXED, COMP		EA 1
11	26	XAHZZ		SMD552482	80063	PRINTED		EA 1
11	27	XDHZZ		SMC552178-10	80063	HANDLE, EXTRACTOR		EA 1
11	28	XDHZZ		SMB552185-3	80063	EYELET		EA 1

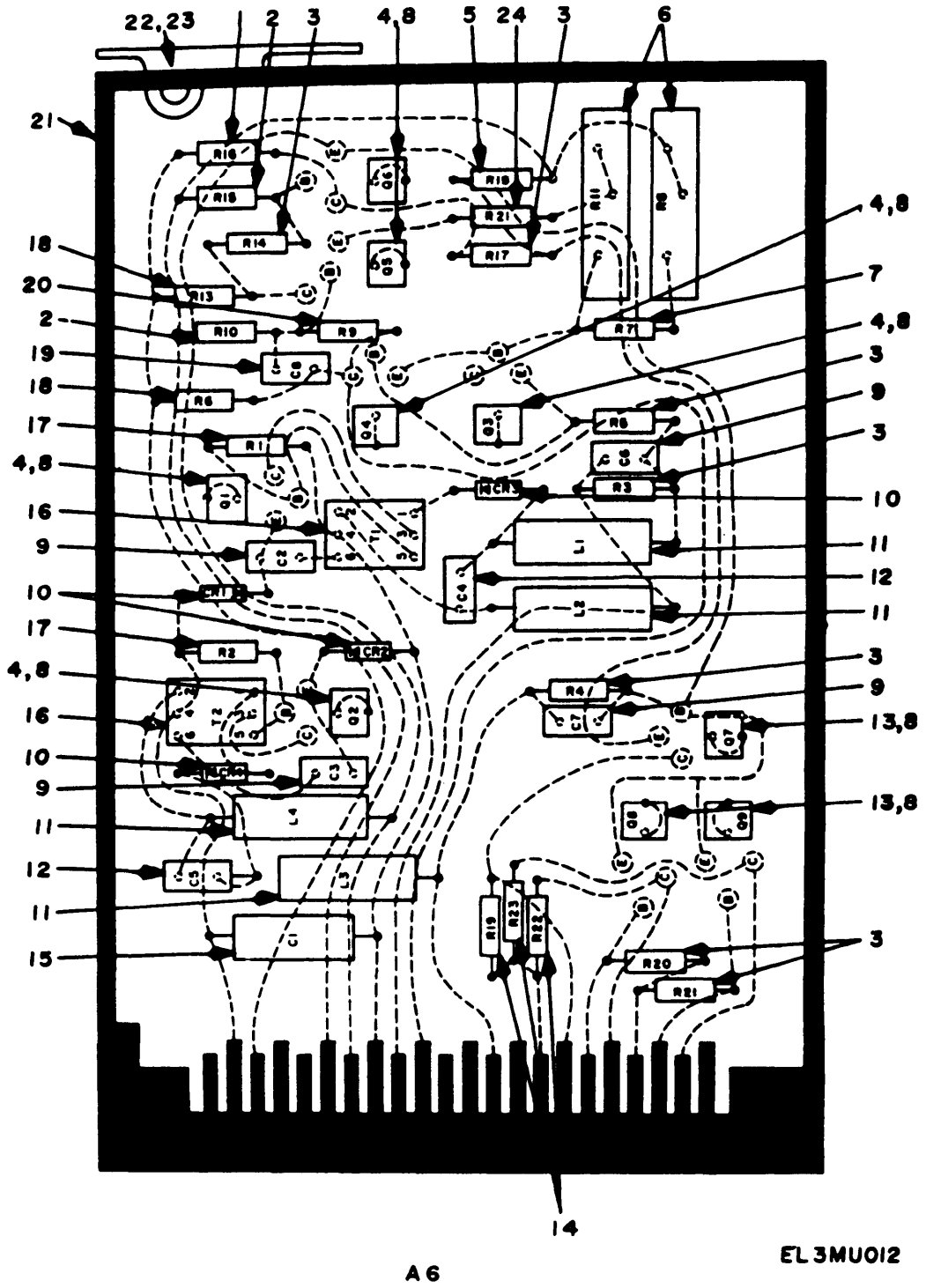
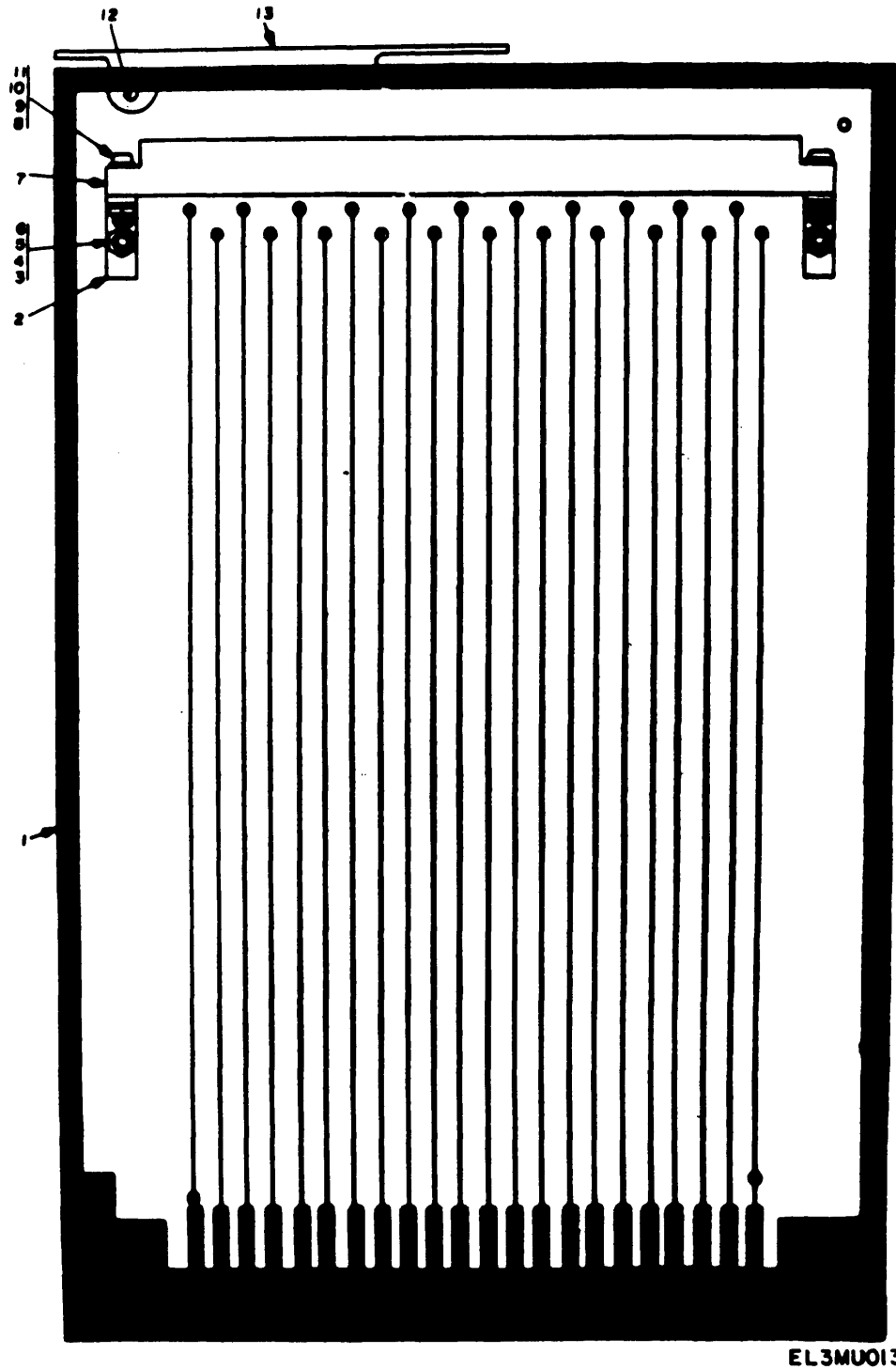


Figure 12. Test Set Subassembly A6.

SECTION II		(2)	(3)	(4)	(5)	(6)	(7)	(8)	
(1)	ILLUSTRATION								
(A)	(B)		NATIONAL			DESCRIPTION		QTY	
FIG	ITEM	SMR	STOCK	PART				INC	
NO.	NO.	CODE	NUMBER	NUMBER	FSCM		USABLE ON CODE	IN	
								UNIT	
GROUP 010107 TEST SET SUBASSEMBLY A6									
12	1	PAHZZ	5905-00-279-2019	RC20GF512J	81349	RESISTOR, FIXED, COMP		EA	1
12	2	PAHZZ	5905-00-195-6761	RC20GF104J	81349	RESISTOR, FIXED, COMP		EA	2
12	3	PAHZZ	5905-00-192-3978	RC20GF303J	81349	RESISTOR, FIXED, COMP		EA	7
12	4	PAHZZ	5961-00-853-1079	JAN2N1305	81349	TRANSISTOR		EA	6
12	5	PAHZZ	5005-00-279-3496	RC20GF513J	81349	RESISTOR, FIXED, COMP		EA	1
12	6	PAHZZ	5905-00-068-5919	RT11C2P202	81349	RESISTOR, VARIABLE		EA	2
12	7	PAHZZ	5905-00-279-1751	RC20GF302J	81349	RESISTOR, FIXED, COMP		EA	1
12	8	XDHZZ		SM8552753	80053	CLIP, ELECTRICAL		EA	9
12	9	XDHZZ		CM05DD151J03	81349	CAPACITOR, FIXEDMICA		EA	4
12	10	PAHZZ	5961-00-556-2091	1N270	81349	SEMICONDUCTOR		EA	4
12	11	PAHZZ	5950-00-781-9745	MS75055-2	96906	COIL, RADIO FREQUENC		EA	4
12	12	XDHZZ		CM05DD471J03	81349	CAPACITOR, FIXEDMICA		EA	2
12	13	PAHZZ	5961-00-729-1059	2N398A	81349	TRANSISTOR		EA	3
12	14	PAHZZ	5905-00-192-3981	RC20GF124J	81349	RESISTOR, FIXED, COMP		EA	3
12	15	PAHZZ	5910-00-821-4702	CP05A1KE103K3	81349	CAPACITOR, FIXED, PAP		EA	1
12	16	XDHZZ		SM8552761	80063	TRANSFORMER		EA	2
12	17	PAHZZ	5905-00-106-1282	RC20GF223J	81349	RESISTOR, FIXED, COMP		EA	2
12	18	PAHZZ	5905-00-279-3505	RC20GF392J	81349	RESISTOR, FIXED, COMP		EA	2
12	19	XDHZZ		CM05FD111JN3	81349	CAPACITOR, FIXEDMICA		EA	1
12	20	PAHZZ	5905-00-254-9201	RC20GF473J	81349	RESISTOR, FIXED, COMP		EA	1
12	21	XAHZZ		SMD552481	80063	PRINTED		EA	1
12	22	XDHZZ		SMC552178-12	80063	HANDLE, EXTRACTOR		EA	1
12	23	XDHZZ		SMB8552185-3	80063	EYELET		EA	1
12	24	PAHZZ	5905-00-279-3511	RC20GF511J	81349	RESISTOR, FIXED, COMP		EA	1

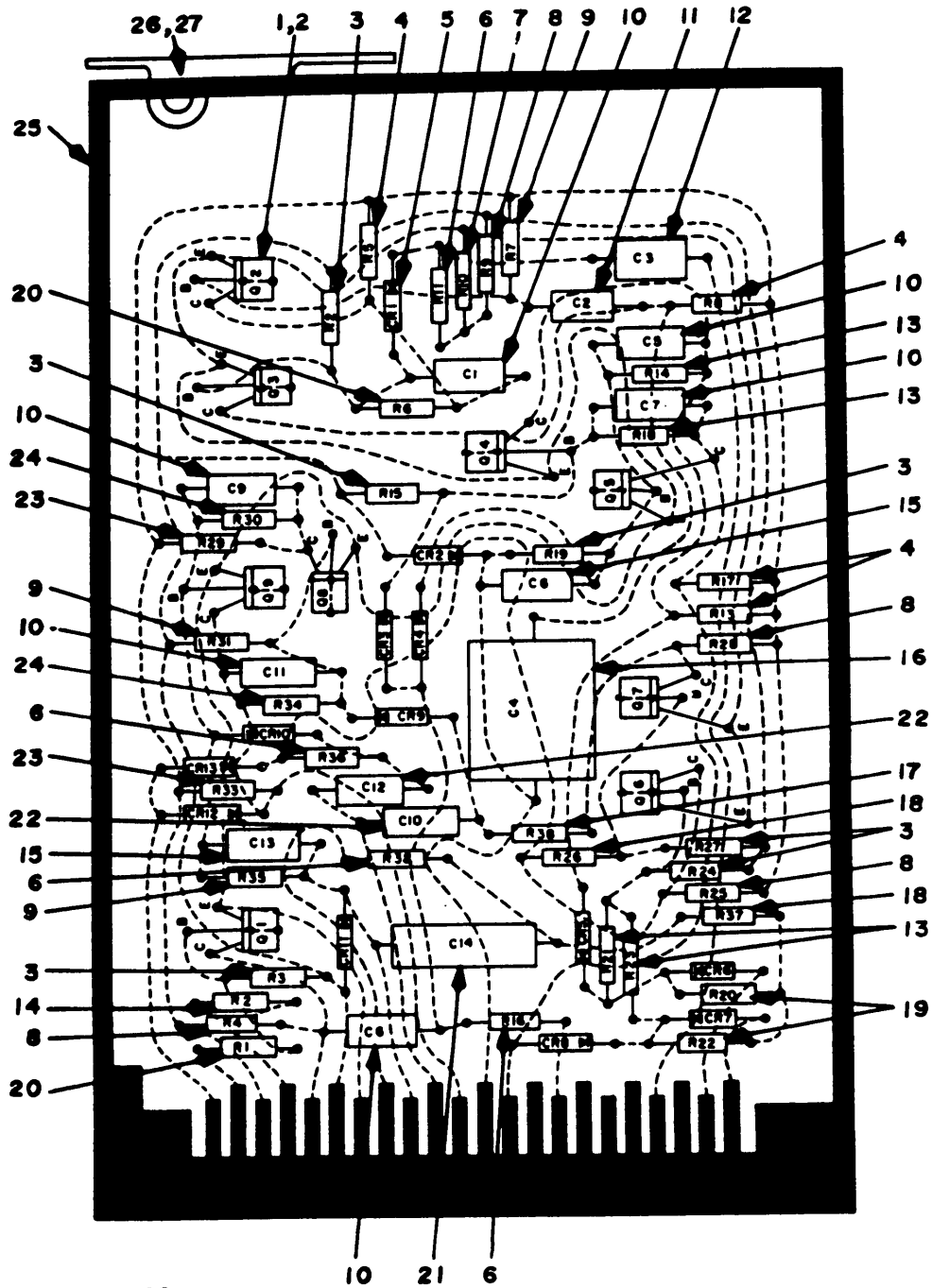


EL3MU013

Figure 13. Test Set Subassembly A7.

SECTION II

(1)	(2)	(3)	(4)	(5)	(6)	(7)	(8)
ILLUSTRATION							
(A)	(B)	NATIONAL			DESCRIPTION		QTY
FIG	ITEM	STOCK	PART	FSCM		USABLE ON CODE	INC
NO.	NO.	NUMBER	NUMBER				IN
							UNIT
GROUP 010108 TEST SET SUBASSEMBLY A7							
13	1	XAHZZ	SMD552492GRP2	80063	PRINTED		EA 1
13	2	XDHZZ	SMB552739	80063	BRACKET		EA 2
13	3	PAHZZ	5305-00-054-5647	MS35233-13	96906	SCREW,MACHINE	EA 2
13	4	PAHZZ	5310-00-934-9748	MS35649-244	96906	NUT,PLAIN,HEX	EA 2
13	5	PAHZZ	5310-00-782-1349	MS15795-304	96906	WASHER,FLAT	EA 2
13	6	PAHZZ	5310-00-933-8118	MS35338-78	96906	WASHER,SPLIT	EA 2
13	7	XDHZZ	SMB552541	80063	CONNECTOR,RCPT		EA 1
13	8	XDHZZ	5305-00-515-7219	MS35233-17	96906	SCREW,MACHINE	EA 2
13	9	PAHZZ	5310-00-934-9748	MS35649-244	96906	NUT,PLAIN,HEX	EA 2
13	10	PAHZZ	5310-00-782-1349	MS15795-304	96906	WASHER,FLAT	EA 2
13	11	PAHZZ	5310-00-933-8118	MS35338-78	96906	WASHER,SPLIT	EA 2
13	12	XDHZZ	SMB552185-3	80063	EYELET		EA 1
13	13	XDHZZ	SMC552178-14	80063	HANDLE,EXTRACTOR		EA 1



**NOTES:**

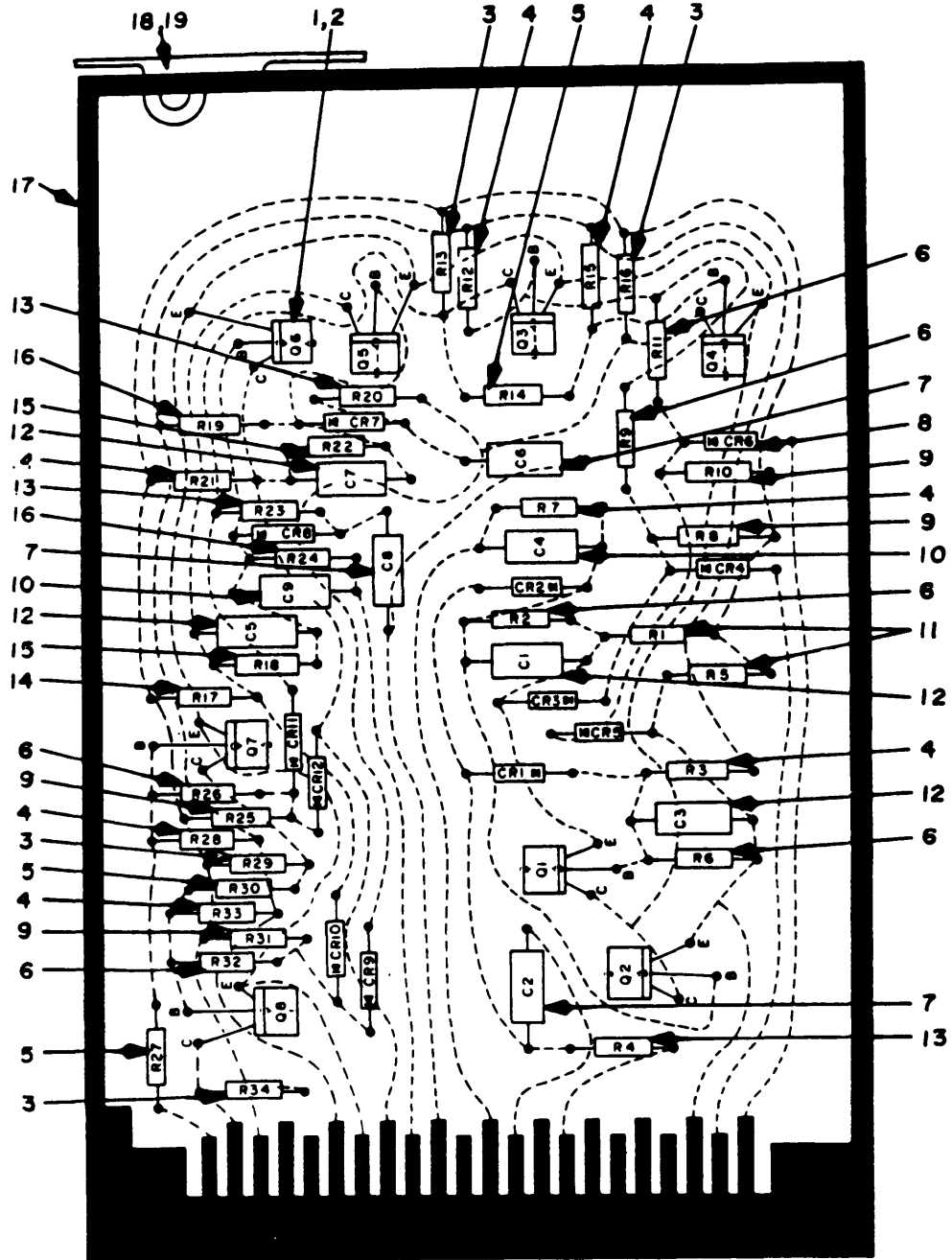
- 1. ALL TRANSISTORS ARE ITEM 1, TRANSISTOR CLIPS ARE ITEM 2.
- 2. ALL DIODES ARE ITEM 5.

EL3MU014

A8

Figure 14. Test Set Subassembly A8.

SECTION II								
(1)	(2)	(3)	(4)	(5)	(6)	(7)	(8)	
ILLUSTRATION								
(A)	(B)				DESCRIPTION		QTY	
FIG	ITEM	SMR	NATIONAL STOCK	PART			INC	
NO.	NO.	CODE	NUMBER	NUMBER	FSCM	USABLE ON CODE	IN	
							UNIT	
GROUP 010109 TEST SET SUBASSEMBLY A8								
14	1	PAHZZ	5961-00-853-1079	JAN2N1305	81349	TRANSISTOR	EA 9	
14	2	XDHZZ		SMB552753	80063	CLIP, ELECTRICAL	EA 9	
14	3	PAHZZ	5905-00-279-1871	RC20GF164J	81349	RESISTOR, FIXED, COMP	EA 6	
14	4	PAHZZ	5905-00-185-8510	RC20GF103J	81349	RESISTOR, FIXED, COMP	EA 4	
14	5	PAHZZ	5961-00-556-2091	1M270	81349	SEMICONDUCTOR	EA 13	
14	6	PAHZZ	5905-00-279-3499	RC20GF273J	81349	RESISTOR, FIXED, COMP	EA 4	
14	7	PAHZZ	5905-00-279-3508	RC20GF112J	81349	RESISTOR, FIXED, COMP	EA 1	
14	8	PAHZZ	5905-00-279-2616	RC20GF153J	81349	RESISTOR, FIXED, COMP	EA 4	
14	9	PAHZZ	5905-00-195-6761	RC20GF104J	81349	RESISTOR, FIXED, COMP	EA 3	
14	10	PAHZZ	5910-00-172-3271	CM15FD221JN3	81349	CAPACITOR, FIXED, MIC	EA 6	
14	11	PAHZZ	5910-00-950-1477	CM20FD681JN3	81349	CAPACITOR, FIXED, MIC	EA 1	
14	12	PAHZZ	5910-00-762-2945	CM15FD471JN3	81349	CAPACITOR, FIXED, MIC	EA 1	
14	13	PAHZZ	5905-00-114-5441	RC20GF563J	81349	RESISTOR, FIXED, COMP	EA 6	
14	14	PAHZZ	5905-00-279-3496	RC20GF513J	81349	RESISTOR, FIXED, COMP	EA 1	
14	15	PAHZZ	5910-00-832-5724	CM15ED680JN3	81349	CAPACITOR, FIXED, MIC	EA 2	
14	16	XDHZZ		CM35FD103JN3	81349	CAPACITOR, FIXED, MICA	EA 1	
14	17	PAHZZ	5905-00-190-8889	RC20GF101J	81349	RESISTOR, FIXED, COMP	EA 1	
14	18	PAHZZ	5905-00-249-3661	RC20GF683J	81349	RESISTOR, FIXED, COMP	EA 2	
14	19	PAHZZ	5905-00-171-1998	RC20GF333J	81349	RESISTOR, FIXED, COMP	EA 2	
14	20	PAHZZ	5905-00-249-3656	RC20GF623J	81349	RESISTOR, FIXED, COMP	EA 2	
14	21	PAHZZ	5910-00-821-4702	CP05A1KE103K3	81349	CAPACITOR, FIXED, PAP	EA 1	
14	22	XDHZZ		CM15FD151JN3	81349	CAPACITOR, FIXED MICA	EA 2	
14	23	PAHZZ	5905-00-116-8568	RC20GF752J	81349	RESISTOR, FIXED, COMP	EA 2	
14	24	PAHZZ	5905-00-279-3497	RC20GF393J	81349	RESISTOR, FIXED, COMP	EA 2	
14	25	XAHZZ		SMD552484	80063	PRINTED	EA 1	
14	26	XDHZZ		SMC552178-16	80063	HANDLE, EXTRACTOR	EA 1	
14	27	XDHZZ		SMB552185-3	80063	EYELET	EA 1	



**NOTE:**

- 1. ALL TRANSISTORS ARE ITEM 1, TRANSISTOR CLIPS ARE ITEM 2.
- 2. ALL DIODES ARE ITEM 8.

**A9 THRU A13**

**EL3MU015**

Figure 15. Test Set Subassembly A9 thru A13.



SECTION II		(2)	(3)	(4)	(5)	(6)	(7)	(8)
(1)	ILLUSTRATION							
(A)	(B)		NATIONAL			DESCRIPTION		QTY
FIG	ITEM	SMR	STOCK	PART			USABLE ON CODE	INC
NO.	NO.	CODE	NUMBER	NUMBER	FSCM			IN
							U/M	UNIT
GROUP 010110 TEST SET SUBASSEMBLY								
A9,A10,A11,A12,A13								
15	1	PAHZZ	5961-00-853-1079	JAN2N1305	81349	TRANSISTOR	EA	8
15	2	XDHZZ		SMB552753	80063	CLIP,ELECTRICAL	EA	8
15	3	PAHZZ	5905-00-279-2616	RC20GF153J	81349	RESISTOR, FIXED, COMP	EA	4
15	4	PAHZZ	5905-00-279-1871	RC20GF164J	81349	RESISTOR, FIXED, COMP	EA	6
15	5	PAHZZ	5905-00-249-3661	RC20GF683J	81349	RESISTOR, FIXED, COMP	EA	3
15	6	PAHZZ	5905-00-114-5441	RC20GF563J	81349	RESISTOR, FIXED, COMP	EA	6
15	7	XDHZZ		CM15FD151JN3	81349	CAPACITOR, FIXED, MICA	EA	3
15	8	PAHZZ	5961-00-556-2091	1N270	81349	SEMICONDUCTOR	EA	12
15	9	PAHZZ	5905-00-171-1998	RC20GF333J	81349	RESISTOR, FIXED, COMP	EA	4
15	10	PAHZZ	5910-00-832-5724	CM15ED680JN3	81349	CAPACITOR, FIXED, MIC	EA	2
15	11	PAHZZ	5005-00-185-8510	RC20GF103J	81349	RESISTOR, FIXED, COMP	EA	2
15	12	PAHZZ	5910-00-172-3271	CM15FD221JN3	81349	CAPACITOR, FIXED, MIC	EA	4
15	13	PAHZZ	5905-00-279-3499	RC20GF273J	81349	RESISTOR, FIXED, COMP	EA	3
15	14	PAHZZ	5905-00-116-8568	RC20GF752J	81349	RESISTOR, FIXED, COMP	EA	2
15	15	PAHZZ	5905-00-279-3497	RC20GF393J	81349	RESISTOR, FIXED, COMP	EA	2
15	16	PAHZZ	5905-00-195-6761	RC20GF104J	81349	RESISTOR, FIXED, COMP	EA	2
15	17	XAHZZ		SMD552483	80063	PRINTED	EA	1
15	18	XDHZZ		SMC552178-18	80063	HANDLE, EXTRACTOR	EA	1
15	19	XDHZZ		SMB552185-3	80063	EYELET	EA	1

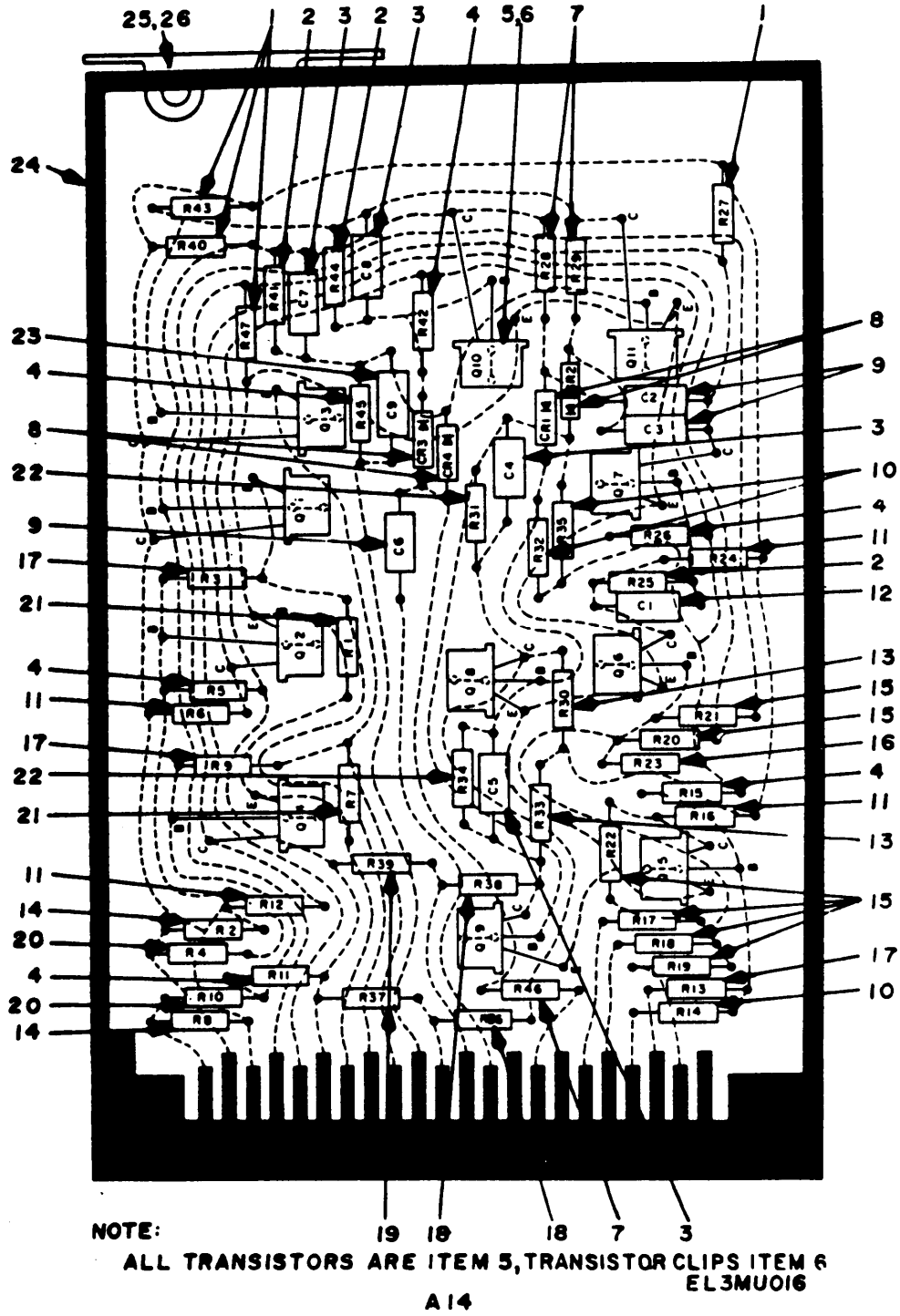


Figure 16. Test Set Subassembly A14.

SECTION II								
(1)	(2)	(3)	(4)	(5)	(6)	(7)	(8)	
ILLUSTRATION								
(A)	(B)				DESCRIPTION		QTY	
FIG	ITEM	SMR	NATIONAL STOCK	PART			INC	
NO.	NO.	CODE	NUMBER	NUMBER	FSCM	USABLE ON CODE	IN	
							UNIT	
GROUP 010111 TEST SET SUBASSEMBLY A14								
16	1	PAHZZ	5905-00-185-8510	RC20GF103J	81349	RESISTOR, FIXED, COMP	EA 4	
16	2	PAHZZ	5905-00-114-5441	RC20GF563J	81349	RESISTOR, FIXED, COMP	EA 3	
16	3	PAHZZ	5910-00-172-3271	CM15FD221JN3	81349	CAPACITOR, FIXED, MIC	EA 4	
16	4	PAHZZ	5905-00-279-1871	RC20GF164J	81349	RESISTOR, FIXED, COMP	EA 6	
16	5	PAHZZ	5961-00-853-1079	JAN2N1305	81349	TRANSISTOR	EA 11	
16	6	XDHZZ		SMB552753	80063	CLIP, ELECTRICAL	EA 11	
16	7	PAHZZ	5905-00-279-3499	RC20GF273J	81349	RESISTOR, FIXED, COMP	EA 3	
16	8	PAHZZ	5961-00-556-2091	1N270	81349	SEMICONDUCTOR	EA 4	
16	9	XDHZZ		CM15FD151JN3	81349	CAPACITOR, FIXED, MICA	EA 3	
16	10	PAHZZ	5905-00-254-7100	RC20GF913J	81349	RESISTOR, FIXED, COMP	EA 3	
16	11	PAHZZ	5905-00-279-2616	RC20GF153J	81349	RESISTOR, FIXED, COMP	EA 4	
16	12	PAHZZ	5910-00-762-2945	CM15FD471JN3	81349	CAPACITOR, FIXED, MIC	EA 1	
16	13	PAHZZ	5905-00-116-8568	RC20GF752J	81349	RESISTOR, FIXED, COMP	EA 2	
16	14	PAHZZ	5905-00-279-3496	RC20GF513J	81349	RESISTOR, FIXED, COMP	EA 2	
16	15	PAHZZ	5905-00-254-9201	RC20GF473J	81349	RESISTOR, FIXED, COMP	EA 6	
16	16	PAHZZ	5905-00-279-1867	RC20GF114J	81349	RESISTOR, FIXED, COMP	EA 1	
16	17	PAHZZ	5905-00-249-3661	RC20GF683J	81349	RESISTOR, FIXED, COMP	EA 3	
16	18	PAHZZ	5905-00-192-3978	RC20GF303J	81349	RESISTOR, FIXED, COMP	EA 2	
16	19	PAHZZ	5905-00-249-3656	RC20GF623J	81349	RESISTOR, FIXED, COMP	EA 2	
16	20	PAHZZ	5905-00-279-3497	RC20GF393J	81349	RESISTOR, FIXED, COMP	EA 2	
16	21	PAHZZ	5905-00-195-6806	RC20GF102J	81349	RESISTOR, FIXED, COMP	EA 2	
16	22	PAHZZ	5905-00-192-0649	RC20GF203J	81349	RESISTOR, FIXED, COMP	EA 2	
16	23	PAHZZ	5910-00-832-5724	CM15ED680JN3	81349	CAPACITOR, FIXED, MIC	EA 1	
16	24	XAHZZ		SMD552487	80063	PRINTED	EA 1	
16	25	XDHZZ		SMC552178-28	80063	HANDLE, EXTRACTOR	EA 1	
16	26	XDHZZ		SMB552185-3	80063	EYELET	EA 1	

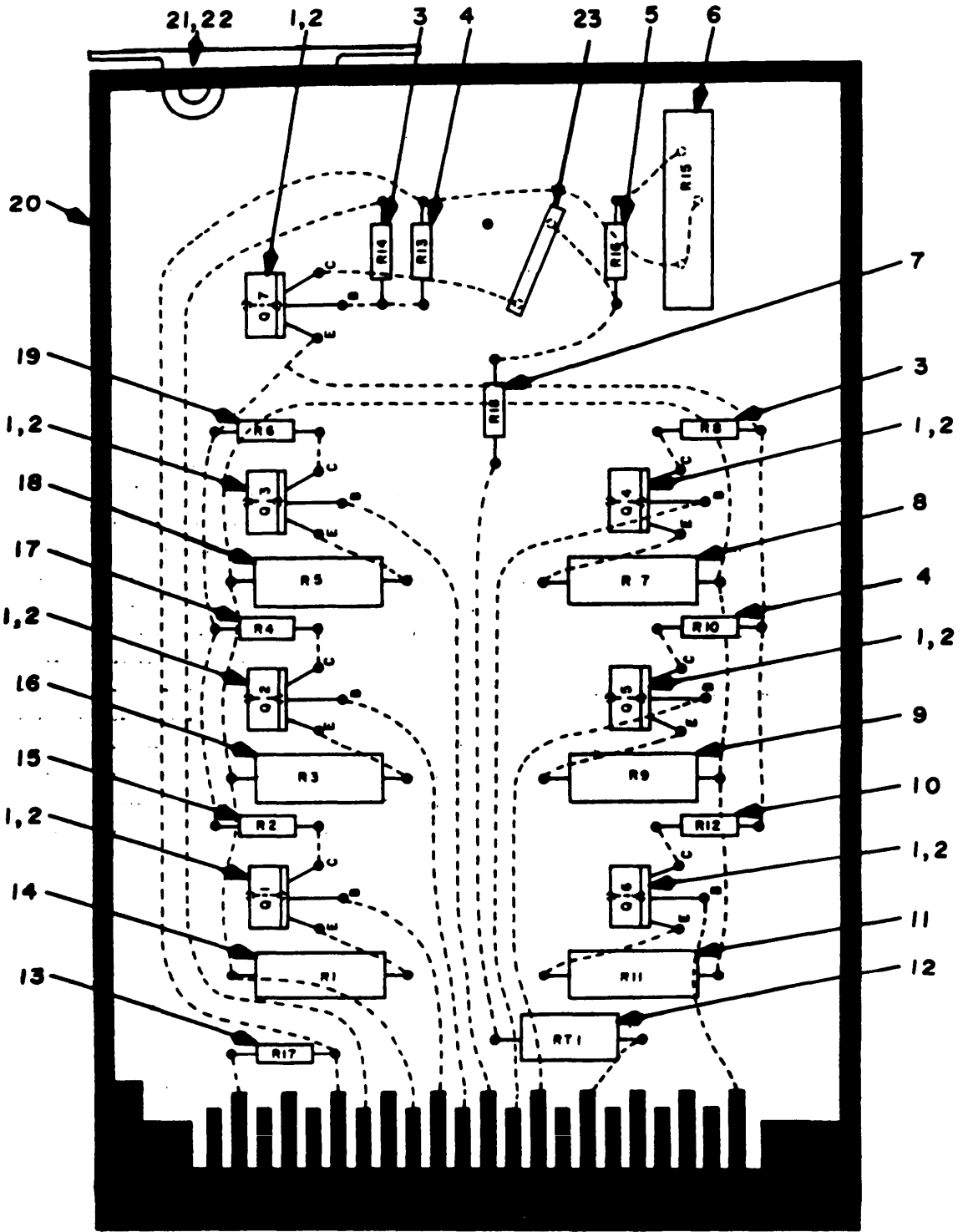
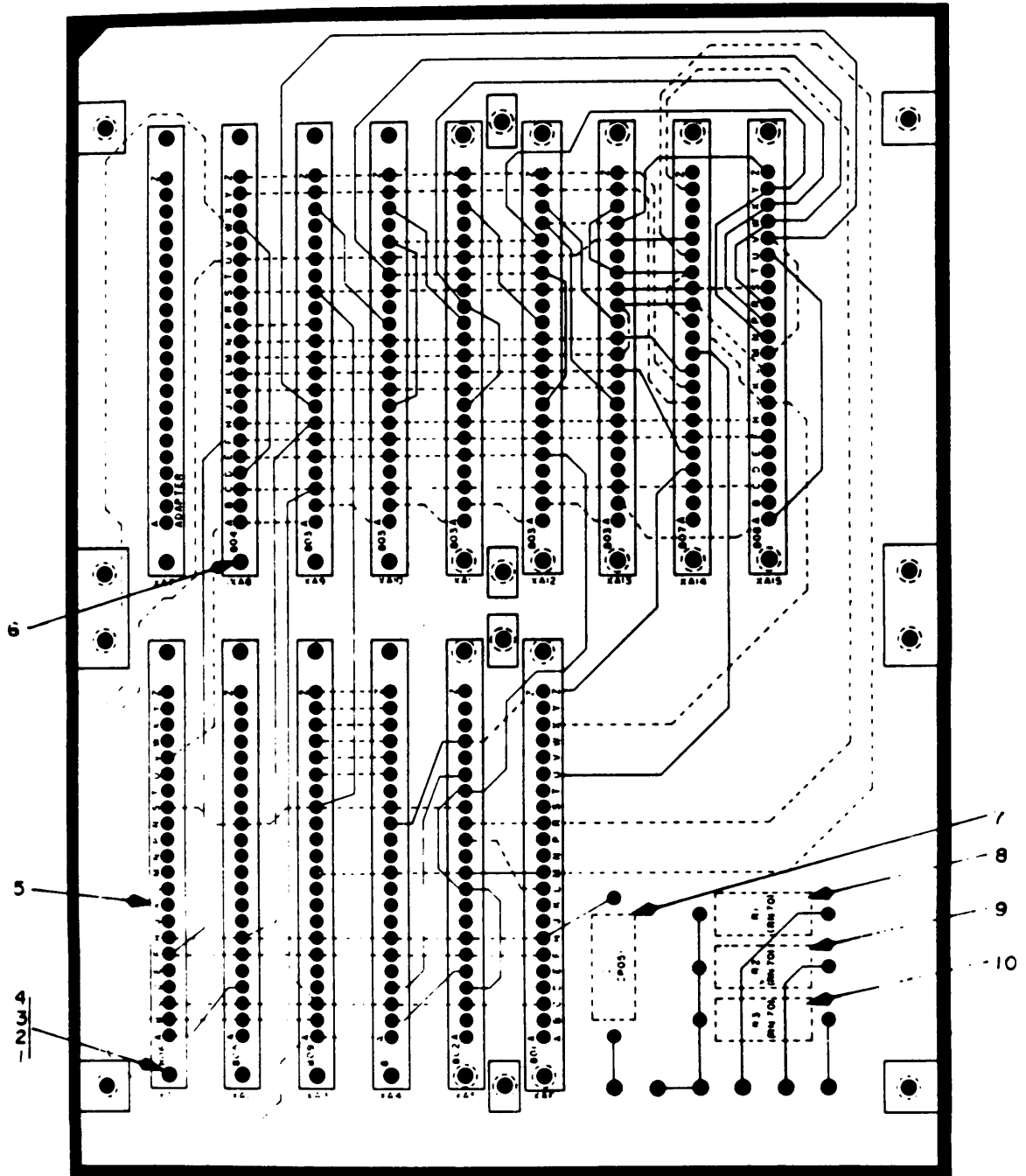


Figure 17. Test Set Subassembly A15.

SECTION II								(7)	(8)
(1)	(2)	(3)	(4)	(5)	(6)			(7)	(8)
ILLUSTRATION									
(A)	(B)		NATIONAL		DESCRIPTION			QTY	INC
FIG	ITEM	SMR	STOCK	PART				IN	IN
NO.	NO.	CODE	NUMBER	NUMBER	FSCM	USABLE ON CODE	U/M	UNIT	
GROUP 010112 TEST SET SUBASSEMBLY A15									
17	1	PAHZZ	5961-00-949-1432	JAN2N2219A	81349	TRANSISTOR		EA	7
17	2	XDHZZ		SMB552177-1	80063	TRANSIPAD		EA	7
17	3	PAHZZ	5905-00-190-8887	RC20GF202J	81349	RESISTOR, FIXED, COMP		EA	2
17	4	PAHZZ	5905-00-195-6806	RC20GF102J	81349	RESISTOR, FIXED, COMP		EA	2
17	5	PAHZZ	5905-00-252-4018	RC20GF470J	81349	RESISTOR, FIXED, COMP		EA	1
17	6	PAHZZ	5905-01-056-3134	RT11C2P101	81349	RESISTOR, VARIABLE, W		EA	1
17	7	PAHZZ	5905-00-279-3508	RC20GF112J	81349	RESISTOR, FIXED, COMP		EA	1
17	8	PAHZZ	5905-00-078-8808	RN70D2491F	81349	RESISTOR, FIXED, FILM		EA	1
17	9	PAHZZ	5905-00-057-5476	RN70D1241F	81349	RESISTOR, FIXED, FILM		EA	1
17	10	PAHZZ	5905-00-279-3511	RC20GF511J	81349	RESISTOR, FIXED, COMP		EA	1
17	11	PAHZZ	5905-00-088-0985	RN70D6190F	81349	RESISTOR, FIXED, FILM		EA	1
17	12	XDHZZ		SMB552756	81349	RESISTOR, THERMAL		EA	1
17	13	PAHZZ	5905-00-279-1757	RC20GF152J	81349	RESISTOR, FIXED, COMP		EA	1
17	14	PAHZZ	5905-00-993-3174	RN70D2002F	81349	RESISTOR, FIXED, FILM		EA	1
17	15	PAHZZ	5905-00-279-3501	RC20GF163J	81349	RESISTOR, FIXED, COMP		EA	1
17	16	PAHZZ	5905-00-993-9099	RN70D1002F	81349	RESISTOR, FIXED, FILM		EA	1
17	17	PAHZZ	5905-00-299-1971	RC20GF822J	81349	RESISTOR, FIXED, COMP		EA	1
17	18	PAHZZ	5905-00-087-0587	RN70D4991F	81349	RESISTOR, FIXED, FILM		EA	1
17	19	PAHZZ	5905-00-257-0935	RC20GF432J	81349	RESISTOR, FIXED, COMP		EA	1
17	20	XAHZZ		SM0552488	8063	PRINTED		EA	1
17	21	XDHZZ		SMC552178-30	80063	HANDLE, EXTRACTOR		EA	1
17	22	XDHZZ		SMB552185-3	80063	EYELET		EA	1
17	23	XDHZZ		SMB552759	80063	JUMPER		EA	1



NOTE  
ALL CONNECTORS ARE ITEM 5.

EL3MU018

Figure 18. Harness Boad Assembly.

SECTION II

(1)	(2)	(3)	(4)	(5)	(6)	(7)	(8)
ILLUSTRATION							
(A)	(B)	NATIONAL			DESCRIPTION		QTY
FIG	ITEM	STOCK	PART			USABLE ON CODE	INC
NO.	NO.	NUMBER	NUMBER	FSCM			IN
							UNIT
GROUP 010113 HARNESS BOARD ASSEMBLY							
18	1	PAHZZ	5305-00-054-6655	MS35233-31	96906	SCREW,MACHINE	EA 28
18	2	PAHZZ	5310-00-934-9761	MS35649-264	96906	NUT,PLAIN,HEX	EA 30
18	3	PAHZZ	5310-00-983-8483	MS27183-5	9906	WASHER,FLAT	EA 30
18	4	XDHZZ	5310-00-011-1041	MS35338-79	96906	WASHER	EA 30
18	5	XDHZZ		SMB552540	80063	CONNECTO	EA 15
18	6	XDMZZ	5305-00-054-6657	MS35233-33	96906	SCREW,MACHINE	EA 2
18	7	PAHZZ	5910-00-621-9880	CP05A1EB104K1	81349	CAPACITOR,FIXED,PL	EA 1
18	8	PAHZZ	5905-00-088-3107	RN70D4220F	81349	RESISTOR,FIXED,FILM	EA 1
18	9	PAHZZ	5905-00-781-8127	RN70D7320F	81349	RESISTOR,FIXED,FILM	EA 1
18	10	PAHZZ	5905-00-726-7467	RN70D1370F	81349	RESISTOR,FIXED,FILM	EA 1

SECTION IV

NATIONAL STOCK NUMBER AND PART NUMBER INDEX

NOTE: LATEST NATIONAL STOCK NUMBER AND PART NUMBER ASSIGNMENTS ARE INCLUDED AT END OF INDEX.

STOCK NUMBER	FIGURE NO.	ITEM NO.	STOCK NUMBER	FIGURE NO.	ITEM NO.
5310-00-011-1041	2	25	5905-00-195-6806	7	14
5310-00-011-1041	4	7	5905-00-195-6806	8	7
5310-00-011-1041	4	17	5905-00-195-6806	16	21
5310-00-011-1041	4	33	5905-00-195-6806	17	4
5310-00-011-1041	5	4	5915-00-230-8529	4	26
5310-00-011-1041	6	2	5910-00-234-9976	10	9
5310-00-011-1041	18	4	5905-00-249-3656	11	18
5310-00-054-1830	6	26	5905-00-249-3656	14	20
5305-00-054-5647	13	3	5905-00-249-3656	16	19
5305-00-054-5649	3	24	5905-00-249-3661	7	24
5305-00-054-5649	5	9	5905-00-249-3661	6	15
5305-00-054-6651	6	1	5905-00-249-3661	11	12
5305-00-054-6655	4	1	5905-00-249-3661	14	18
5305-00-054-6655	4	21	5905-00-249-3661	15	5
5305-00-054-6655	18	1	5905-00-249-3661	16	17
5305-00-054-6657	18	6	5905-00-249-4256	9	6
5305-00-054-6662	6	30	5905-00-249-4256	10	6
5305-00-054-6669	2	17	5905-00-252-4018	6	48
5905-00-057-5476	17	9	5905-00-252-4018	17	5
5305-00-059-3660	3	9	5905-00-254-7100	16	10
5305-00-059-8251	4	12	5905-00-254-9201	12	20
5305-00-059-8251	4	29	5905-00-254-9201	16	15
			5905-00-257-0935	17	19
			5905-00-279-1724	5	14
			5905-00-279-1751	12	7
5905-00-068-5919	12	6	5905-00-279-1757	17	13
5305-00-068-6529	2	2	5905-00-279-1867	11	5
5305-00-068-6529	4	11	5905-00-279-1867	16	16
5905-00-078-8808	17	8	5905-00-279-1870	6	44
5905-00-079-3497	11	6	5905-00-279-1870	8	8
5905-00-081-6137	6	38	5905-00-279-1871	7	4
5905-00-087-0587	17	18	5905-00-279-1871	10	2
5905-00-088-0985	17	11	5905-00-279-1871	11	22
5905-00-088-3107	18	8	5905-00-279-1871	14	3
5905-00-106-1282	12	17	5905-00-279-1871	15	4
5905-00-114-5441	7	10	5905-00-279-1871	16	4
5905-00-114-5441	10	16	5905-00-279-1880	7	16
5905-00-114-5441	11	4	5905-00-279-2019	7	5
5905-00-114-5441	14	13	5905-00-279-2019	10	1
5905-00-114-5441	15	6	5905-00-279-2019	11	9
5905-00-114-5441	16	2	5905-00-279-2019	12	1
5905-00-116-8568	7	9	5905-00-279-2522	6	33
5905-00-116-8568	8	20	5905-00-279-2616	7	11
5905-00-116-8568	14	23	5905-00-279-2616	8	10
5905-00-116-8568	15	14	5905-00-279-2616	9	1
5905-00-116-8568	16	13	5905-00-279-2616	10	12
5905-00-171-1998	14	19	5905-00-279-2616	11	25
5905-00-171-1998	15	9	5905-00-279-2616	14	8
6625-00-172-2070	3	22	5905-00-279-2616	15	3
5910-00-172-3271	14	10	5905-00-279-2616	16	11
5910-00-172-3271	15	12	5905-00-279-3494	9	7
5910-00-172-3271	16	3	5905-00-279-3496	7	7
5910-00-177-6752	6	11	5905-00-279-3496	10	13
5905-00-185-8510	7	12	5905-00-279-3496	12	5
5905-00-185-8510	11	4	5905-00-279-3496	14	14
5905-00-185-8510	14	4	5905-00-279-3496	16	14
5905-00-185-8510	15	11	5905-00-279-3497	14	24
5905-00-185-8510	16	1	5905-00-279-3497	15	15
5905-00-190-8887	7	15	5905-00-279-3497	16	20
5905-00-190-8887	17	3	5905-00-279-3498	9	5
5905-00-190-8889	11	21	5905-00-279-3499	10	8
5905-00-190-8889	14	17	5905-00-279-3499	11	14
5905-00-192-0649	7	17	5905-00-279-3499	14	6
5905-00-192-0649	16	22	5905-00-279-3499	15	13
5905-00-192-3971	6	39	5905-00-279-3499	16	7
5905-00-192-3973	6	36	5905-00-279-3501	17	15
5905-00-192-3978	10	14	5905-00-279-3502	11	23
5905-00-192-3978	11	8	5905-00-279-3503	7	3
5905-00-192-3978	12	3	5905-00-279-3504	8	18
5905-00-192-3978	16	18	5905-00-279-3505	12	18
5905-00-192-3981	9	2	5905-00-279-3506	6	45
5905-00-192-3981	12	14	5905-00-279-3508	7	19
5310-00-193-7577	6	9	5905-00-279-3508	14	7
5905-00-195-6761	6	46	5905-00-279-3508	17	7
5905-00-195-6761	10	15	5905-00-279-3511	12	24
5905-00-195-6761	11	15	5905-00-279-3511	17	10
5905-00-195-6761	12	2	5905-00-279-3516	6	40
5905-00-195-6761	14	9	5905-00-279-3520	8	13
5905-00-195-6761	15	16	6145-00-284-0579	1	11
5905-00-195-6806	6	43	5905-00-299-1971	17	17



NATIONAL STOCK NUMBER AND PART NUMBER INDEX

STOCK NUMBER	FIGURE NO.	ITEM NO.	STOCK NUMBER	FIGURE NO.	ITEM NO.
5915-00-402-7174	4	24	5910-00-832-5724	15	10
6625-00-405-9098	6	31	5910-00-832-5724	16	23
6625-00-405-9104	2	21	5340-00-840-0954	3	19
5995-00-469-2277	1	9	5935-00-843-7362	1	13
			5961-00-853-1079	7	1
5930-00-501-4955	3	6	5961-00-853-1079	8	11
5305-00-515-7219	13	8	5961-00-853-1079	9	3
5905-00-539-2479	4	3	5961-00-853-1079	10	3
5305-00-543-2774	4	2	5961-00-853-1079	11	10
5310-00-543-5933	1	4	5961-00-853-1079	12	4
5920-00-556-0144	3	35	5961-00-853-1079	14	1
5355-00-556-0145	3	32	5961-00-853-1079	15	1
5961-00-556-2091	7	6	5961-00-853-1079	16	5
5961-00-556-2091	8	9	5305-00-889-3001	6	14
5961-00-556-2091	10	7	5310-00-903-1524	1	26
5961-00-556-2091	11	16	5310-00-903-5966	1	5
5961-00-556-2091	12	10	5310-00-903-5966	1	16
5961-00-556-2091	14	5	6625-00-926-4464	2	3
5961-00-556-2091	15	8	5310-00-933-8118	3	14
5961-00-556-2091	16	8	5310-00-933-8118	5	7
5935-00-577-2337	3	15	5310-00-933-8118	13	6
5961-00-577-6084	6	32	5310-00-933-8118	13	11
5961-00-579-4965	6	41	5310-00-934-9739	6	5
5310-00-582-5677	1	15	5310-00-934-9748	3	13
5930-00-615-7896	3	7	5310-00-934-9748	5	6
5930-00-615-9376	3	31	5310-00-934-9748	13	4
5310-00-616-7998	1	21	5310-00-934-9748	13	9
5910-00-621-9880	8	5	5310-00-934-9759	6	27
5910-00-621-9880	11	13	5910-00-936-1334	7	13
5910-00-621-9880	18	7	5910-00-944-3501	6	16
5910-00-632-7429	11	20	5910-00-950-1477	14	11
5930-00-655-1508	3	18	6625-00-950-7480	2	9
5950-00-689-1492	6	17	6625-00-950-7545	2	5
5340-00-721-5315	6	28	6625-00-950-7554	2	6
5905-00-726-7467	18	10	6625-00-950-7557	2	7
5910-00-727-3548	8	6	6625-00-950-7635	2	4
5905-00-761-5398	11	7	6625-00-950-7637	2	23
5910-00-762-2945	14	12	6625-00-950-8126	2	16
5910-00-762-2945	16	12	6625-00-950-8415	2	15
5310-00-773-7618	1	18	5930-00-951-6501	3	8
5905-00-781-8127	18	9	5310-00-983-8483	2	26
5950-00-781-9745	12	11	5310-00-983-8483	3	33
5310-00-782-1349	13	5	5310-00-983-8483	4	6
5310-00-782-1349	13	10	5310-00-983-8483	5	3
6210-00-808-8604	3	30	5310-00-983-8483	6	3
5310-00-809-8544	6	23	5310-00-983-8483	18	3
5940-00-815-5511	5	13	5340-00-988-3210	4	28
5910-00-821-4702	12	15	5905-00-993-3174	17	14
5910-00-821-4702	14	21	5905-00-993-9099	17	16
5961-00-821-8976	6	13	5935-00-995-5782	3	23
5961-00-826-0491	6	37	5935-00-995-5782	5	8
			5950-01-028-9571	4	32
5910-00-832-5724	14	15	5905-01-056-3134	17	6

PART NUMBER	FSCM	FIG NO	ITEM NO	PART NUMBER	FSCM
CE41C100M	81350	6	11	CM15FD151JN3	81349
CE41C451G	81349	6	16	CM15FD151JN3	81349
CM05DD151J03	81349	12	9	CM15FD151JN3	81349
CM05DD471J03	81349	12	12	CM15FD221JN3	81349
CM05FD111JN3	81349	12	19	CM15FD221JN3	81349
CM06DD202J03	81349	8	19	CM15FD221JN3	81349
CM15CD151JN3	81349	10	9	CM15FD471JN3	81349
CM15CD200JN3	81349	8	6	CM15FD471JN3	81349
CM15C151JN1	81349	7	23	CM20DD681JN3	81349
CM15DD221JN3	81349	10	5	CM20DD681JN3	81349
CM15DD221JN3	81349	11	19	CM20FD681JN3	81349
CM15DD241JN3	81349	7	8	CM35FD103JN3	81349
CM15DD241JN3	81349	10	10	CP05A1EB104K1	81349
CM15DD241JN3	81349	11	2	CP05A1KB104K1	81349
CM15DD331JN3	81349	8	16	CP05A1KB104K1	81349
CM15DD331JN3	81349	11	17	CP05A1KC104K1	81349
CM15DD361JN3	81349	11	3	CP05A1KC473K1	81349
CM15DD471JN3	81349	8	17	CP05A1KE103K3	81349
CM15ED680JN3	81349	14	15	CP05A1KE103K3	81349
CM15ED680JN3	81349	15	10	CR27AU153-6KC	81349
CM15ED680JN3	81349	16	23	CR37AU102-4KC	81349
CM15ED751JN1	81349	11	1	CR37AU151-921KC	81349

NATIONAL STOCK NUMBER AND PART NUMBER INDEX

PART NUMBER	FSCM	FIG. NO.	ITEM NO.	PART NUMBER	FSCM	FIG. NO.	ITEM NO.
CR37AU93-21KC	81349	8	1	MS35649-264	96906	4	16
CSR13G105K0577	81349	7	13	MS35649-264	96906	4	34
C003MGF3-18-0340	81349	1	11	MS35649-264	96906	5	5
FHN20G	81349	3	35	MS35649-264	96906	6	29
F02A250V1-4A	81349	6	42	MS35649-264	96906	18	2
F02A250V1-8A	81349	6	34	MS35649-284	96906	6	27
F02B250V1-4A	81349	3	36	MS35690-410	96906	1	5
JAN2N2219A	81349	17	1	MS35690-410	96906	1	16
MS14049-3	96906	4	32	MS35690-630	96906	1	26
MS15795-304	96906	13	5	MS39087-4	96906	3	19
MS15795-304	96906	13	10	MS75055-2	96906	12	11
MS15795-810	96906	1	15	MS91528-1K2B	96906	3	32
MS15795-814	96906	1	18	RC20GF101J	81349	11	21
MS16108-5A	96906	3	15	RC20GF101J	81349	14	17
MS21318-4	96906	3	21	RC20GF102J	81349	6	43
MS25089-3CR	96906	3	6	RC20GF102J	81349	7	14
MS25098-22	96906	3	7	RC20GF102J	81349	8	7
MS25100-23	96906	3	18	RC20GF102J	81349	16	21
MS25252NE2D	96906	3	29	RC20GF102J	81349	17	4
MS25257-4	96906	3	30	RC20GF103J	81349	7	1
MS25281-2	96906	5	2	RC20GF103J	81349	11	4
MS25281-4	96906	4	28	RC20GF103J	81349	14	4
MS25281-5	96906	6	28	RC20GF103J	81349	15	11
MS25281-6	96906	2	20	RC20GF103J	81349	16	1
MS25281-6	96906	4	18	RC20GF104J	81349	6	46
MS25281-6	96906	4	25	RC20GF104J	81349	10	15
MS27183-5	96906	2	26	RC20GF104J	81349	11	15
MS27183-5	96906	3	33	RC20GF104J	81349	12	22
MS27183-5	96906	4	6	RC20GF104J	81349	14	9
MS27183-5	96906	5	3	RC20GF104J	81349	15	16
MS27183-5	96906	6	3	RC20GF112J	81349	7	19
MS27183-5	96906	18	3	RC20GF112J	81349	14	7
MS27183-7	96906	6	23	RC20GF112J	81349	17	7
MS3112E12-3P	96906	3	23	RC20GF114J	81349	11	5
MS3112E12-3P	96906	5	8	RC20GF114J	81349	16	16
MS3116E12-35	96906	1	10	RC20GF123J	81349	11	23
MS35059-21	96906	3	31	RC20GF124J	81349	9	2
MS35225-31	96906	6	14	RC20GF124J	81349	12	14
MS35229-29	96906	4	12	RC20GF132J	81349	6	44
MS35229-29	96906	4	29	RC20GF132J	81349	8	8
MS35233-13	96906	13	3	RC20GF152J	81349	17	13
MS35233-15	96906	3	24	RC20GF153J	81349	7	11
MS35233-15	96906	5	9	RC20GF153J	81349	8	10
MS35233-17	96906	13	8	RC20GF153J	81349	9	1
MS35233-27	96906	6	1	RC20GF153J	81349	10	12
MS35233-28	96906	2	2	RC20GF153J	81349	11	25
MS35233-28	96906	3	28	RC20GF153J	81349	14	8
MS35233-28	96906	4	11	RC20GF153J	81349	15	3
MS35233-30	96906	2	24	RC20GF153J	81349	16	11
MS35233-30	96906	5	12	RC20GF154J	81349	6	33
MS35233-31	96906	4	1	RC20GF163J	81349	17	15
MS35233-31	96906	4	21	RC20GF164J	81349	7	4
MS35233-31	96906	18	1	RC20GF164J	81349	10	2
MS35233-32	96906	4	2	RC20GF164J	81349	11	22
MS35233-33	96906	18	6	RC20GF164J	81349	14	3
MS35233-38	96906	6	30	RC20GF164J	81349	15	4
MS35233-44	96906	2	17	RC20GF164J	81349	16	4
MS35234-64	96906	3	9	RC20GF200J	81349	8	13
MS35249-52	80063	2	22	RC20GF202J	81349	7	15
MS35333-19	96906	6	9	RC20GF202J	81349	17	3
MS35333-73	96906	1	4	RC20GF203J	81349	7	17
MS35334-21	96906	1	21	RC20GF203J	81349	16	22
MS35338-78	96906	3	14	RC20GF223J	81349	12	17
MS35338-78	96906	5	7	RC20GF272J	81349	7	16
MS35338-78	96906	13	6	RC20GF273J	81349	10	8
MS35338-78	96906	13	11	RC20GF273J	81349	11	14
MS35338-79	96906	2	25	RC20GF273J	81349	14	6
MS35338-79	96906	4	7	RC20GF273J	81349	15	13
MS35338-79	96906	4	17	RC20GF273J	81349	16	7
MS35338-79	96906	4	33	RC20GF302J	81349	12	7
MS35338-79	96906	5	4	RC20GF303J	81349	10	14
MS35338-79	96906	6	2	RC20GF303J	81349	11	8
MS35338-79	96906	18	4	RC20GF303J	81349	12	3
MS35338-80	96906	6	26	RC20GF303J	81349	16	18
MS35649-242	96906	6	5	RC20GF331J	81349	6	39
MS35649-244	96906	3	13	RC20GF332J	81349	6	45
MS35649-244	96906	5	6	RC20GF333J	81349	14	19
MS35649-244	96906	13	4	RC20GF333J	81349	15	9
MS35649-244	96906	13	9	RC20GF363J	81349	9	6
MS35649-264	96906	4	8	RC20GF363J	81349	10	6

NATIONAL STOCK NUMBER AND PART NUMBER INDEX

PART NUMBER	FSCM	FIG. NO.	ITEM NO.	PART NUMBER	FSCM	FIG. NO.	ITEM NO.
RC20GF392J	81349	12	18	SMB552185-3	80063	8	24
RC20GF393J	81349	14	24	SMB552185-3	80063	9	10
RC20GF393J	81349	15	15	SMB552185-3	80063	10	19
RC20GF393J	81349	16	20	SMB552185-3	80063	11	28
RC20GF432J	81349	17	19	SMB552185-3	80063	12	23
RC20GF433J	81349	9	5	SMB552185-3	80063	13	12
RC20GF470J	81349	6	48	SMB552185-3	80063	14	27
RC20GF470J	81349	17	5	SMB552185-3	80063	15	19
RC20GF471J	81349	6	36	SMB552185-3	80063	16	26
RC20GF472J	81349	8	18	SMB552185-3	80063	17	22
RC20GF473J	81349	12	20	SMB552540	80063	18	5
RC20GF473J	81349	16	15	SMB552541	80063	13	7
RC20GF511J	81349	12	24	SMB552571	80063	1	8
RC20GF511J	81349	17	10	SMB552600	80063	4	5
RC20GF512J	81349	7	5	SMB552611	80063	5	10
RC20GF512J	81349	10	1	SMB552612	80063	4	26
RC20GF512J	81349	11	9	SMB552623-1	80063	6	21
RC20GF512J	81349	12	1	SMB552623-10	80063	6	18
RC20GF513J	81349	7	7	SMB552623-3	80063	6	22
RC20GF513J	81349	10	13	SMB552623-5	80063	6	19
RC20GF513J	81349	12	5	SMB552623-8	80063	6	20
RC20GF513J	81349	14	14	SMB552630	96906	1	22
RC20GF513J	81349	16	14	SMB552633-2	80063	1	19
RC20GF563J	81349	7	10	SMB552633-3	80063	1	14
RC20GF563J	81349	10	16	SMB552636	80063	6	25
RC20GF563J	81349	11	24	SMB552639	80063	3	8
RC20GF563J	81349	14	13	SMB552641	80063	3	16
RC20GF563J	81349	15	6	SMB552646	80063	3	25
RC20GF563J	81349	16	2	SMB552654	80063	3	20
RC20GF623J	81349	11	18	SMB552657	80063	3	12
RC20GF623J	81349	14	20	SMB552662	80063	6	24
RC20GF623J	81349	16	19	SMB552680	80063	1	24
RC20GF682J	81349	7	3	SMB552681	80063	1	25
RC20GF683J	81349	7	24	SMB552701	80063	3	34
RC20GF683J	81349	8	15	SMB552702	80063	3	17
RC20GF683J	81349	11	12	SMB552703	80063	3	22
RC20GF683J	81349	14	18	SMB552706	80063	4	24
RC20GF683J	81349	15	5	SMB552707	80063	4	22
RC20GF683J	81349	16	17	SMB552736	80063	1	3
RC20GF752J	81349	7	9	SMB552739	80063	13	2
RC20GF752J	81349	8	20	SMB552752	80063	6	35
RC20GF752J	81349	14	23	SMB552753	80063	8	12
RC20GF752J	81349	15	14	SMB552753	80063	9	4
RC20GF752J	81349	16	13	SMB552753	80063	10	4
RC20GF822J	81349	17	17	SMB552753	80063	12	8
RC20GF823J	81349	9	7	SMB552753	80063	14	2
RC20GF910J	81349	6	40	SMB552753	80063	15	2
RC20GF913J	81349	16	10	SMB552753	80063	16	6
RC32GF151J	81349	5	14	SMB552753	81349	7	2
RN70D1002F	81349	17	16	SMB552753	81349	11	11
RN70D1241F	81349	17	9	SMB552756	81349	17	12
RN70D1370F	81349	18	10	SMB552759	80063	17	23
RN70D2002F	81349	17	14	SMB552761	80063	12	16
RN70D2491F	81349	17	8	SMB552774	80063	6	15
RN70D4220F	81349	18	8	SMB552776-1	80063	4	13
RN70D4991F	81349	17	18	SMB552776-2	80063	4	4
RN70D6190F	81349	17	11	SMB552779	80063	3	10
RN70D7320F	81349	18	9	SMB552791	80063	3	27
RT11C2P101	81349	17	6	SMB579852-1	80063	3	26
RT11C2P103	81349	11	7	SMB579852-1	80063	5	11
RT11C2P202	81349	12	6	SMB579852-2	80063	4	27
RT11C2P502	81349	11	6	SMB8889347	80063	4	30
RV4LAYSAS02A	81349	4	23	SMB889353	80063	4	31
RW69V5R1	81349	6	38	SMC552178-10	80063	11	27
SM-B-552580	80063	1	9	SMC552178-12	80063	12	22
SM-C-552723	80063	6	17	SMC552178-14	80063	13	13
SMA552693	80063	3	3	SMC552178-16	80063	14	26
SMA552694	80063	3	2	SMC552178-18	80063	15	18
SMA552695	80063	3	5	SMC552178-2	80063	7	21
SMA552696	80063	3	4	SMC552178-28	80063	16	25
SMA552767-1	80063	1	7	SMC552178-30	80063	17	21
SMB430875	9922	1	12	SMC552178-4	80063	8	23
SMB552135	80063	3	11	SMC552178-6	80063	9	9
SMB552159	80063	6	4	SMC552178-8	80063	10	18
SMB552159-1	80063	6	12	SMC552551	80063	2	1
SMB552159-2	80063	6	8	SMC552632	80063	1	2
SMB552159-3	80063	6	6	SMC552634	80063	1	17
SMB552159-7	80063	6	7	SMC552711	80063	5	1
SMB552177-1	80063	17	2	SMC552765-22	80063	1	6
SMB552185-3	80063	7	22				

NATIONAL STOCK NUMBER AND PART NUMBER INDEX

PART NUMBER	FSCM	FIG. NO.	ITEM NO.	PART NUMBER	FSCM	FIG. NO.	ITEM NO.
SMC889349	80063	4	19	SMD552699	80063	1	23
SMD552451	80063	2	7	SMD552704	80063	4	3
SMD552452	80063	2	6	SMD552708	80063	4	10
SMD552453GRP1	80063	2	10	SMD552712	80063	2	18
SMD552453GRP2	80063	2	11	SMD552714	80063	2	21
SMD552453GRP3	80063	2	12	SMD552719GRP1	80063	4	9
SMD552453GRP4	80063	2	13	SMD552719GRP2	80063	4	15
SMD552453GRP5	80063	2	14	SMD552721	80063	6	10
SMD552454	80063	2	9	SMD889358	80063	1	23
SMD552455	80063	2	3	UP131M	81349	1	13
SMD552456	80063	2	23	YAE18Z2	9922	5	13
SMD552457	80063	2	15	1N270	81349	7	6
SMD552458	80063	2	16	1N270	81349	8	9
SMD552459	80063	2	4	1N270	81349	10	7
SMD552460	80063	2	5	1N270	81349	11	16
SMD552461	80063	6	31	1N270	81349	12	10
SMD552462GRP2	80063	2	8	1N270	81349	14	5
SMD552481	80063	12	21	1N270	81349	15	8
SMD552482	80063	11	26	1N270	81349	16	8
SMD552483	80063	15	17	1N3020B	81349	6	41
SMD552484	80063	14	25	1N3024B	81349	6	37
SMD552485	80063	8	22	1N645	81349	6	32
SMD552486	80063	7	20	2N398A	81349	12	13
SMD552487	80063	16	24				
SMD552488	80063	17	20				
SMD552489	80063	9	8				
SMD552490	80063	10	17				
SMD552491	80063	6	47				
SMD552492GRP2	80063	13	1				
SMD552567	80063	1	20				
SMD552572	80063	1	1				
SMD552613	80063	4	14				
SMD552628	80063	2	19				
SMD552697	80063	3	1				

LATEST NATIONAL STOCK NUMBER ASSIGNMENTS

STOCK NUMBER	FIGURE NO.	ITEM NO.
5920-00-043-2641	6	42
5920-00-296-0451	6	34
6625-00-405-9107	2	10
6625-00-405-9108	2	11
6625-00-405-9109	2	12
6625-00-405-9111	2	14
6625-00-421-0569	2	13
5915-00-451-4261	4	20
5920-00-504-8634	3	36
5961-00-729-1059	12	13
6240-00-892-4420	3	29
5310-00-934-9761	4	8
5310-00-934-9761	4	16
5310-00-934-9761	4	34
5310-00-934-9761	5	5
5310-00-934-9761	6	29
5310-00-934-9761	18	2
5961-00-949-1432	17	1
6625-00-950-9113	2	8
5961-00-989-6706	8	14

LATEST PART NUMBER ASSIGNMENTS

PART NUMBER	FIG. FSCM	ITEM NO.	NO.
JAN2N1224	81349	8	14
JAN2N1305	81349	7	1
JAN2N1305	81349	8	11
JAN2N1305	81349	9	3
JAN2N1305	81349	10	3
JAN2N1305	81349	11	10
JAN2N1305	81349	12	4
JAN2N1305	81349	14	1
JAN2N1305	81349	15	1
JAN2N1305	81349	16	5
JAN2N297A	81349	6	13
RF2550-20	13619	4	20



# SOMETHING WRONG WITH THIS MANUAL?

THEN... JOT DOWN THE DOPE ABOUT IT ON THIS FORM. TEAR IT OUT, FOLD IT AND DROP IT IN THE MAIL!

FROM: (YOUR UNIT'S COMPLETE ADDRESS)

Commander  
Stateside Army Depot  
ATTN: AMSTA-US  
Stateside, N.J. 07703

DATE 10 July 1975

PUBLICATION NUMBER TM 11-5840-340-20P	DATE 23 Jan 78	TITLE Radar Set AN/PRC-76
--	-------------------	------------------------------

BE EXACT... PIN-POINT WHERE IT IS				IN THIS SPACE TELL WHAT IS WRONG AND WHAT SHOULD BE DONE ABOUT IT:
PAGE NO.	PARA-GRAPH	FIGURE NO.	TABLE NO.	
33				For item 2, change the NSN to read: 5835-00-134-9186. <u>Reason:</u> Accuracy.
44		19		Identify the cover on the junction box (item no. 5). <u>Reason:</u> It is a separate item and is not called out on figure 19.
45				Add the cover of the junction box as an item in the listing for figure 19. <u>Reason:</u> Same as above.

TEAR ALONG DOTTED LINE

TYPED NAME, GRADE OR TITLE, AND TELEPHONE NUMBER

SSG I. M. DeSpirito 999-1776

SIGN HERE:

*SSG I. M. DeSpirito*

DA FORM 2028-2  
1 AUG 74

P.S.--IF YOUR OUTFIT WANTS TO KNOW ABOUT YOUR MANUAL "FIND," MAKE A CARBON COPY OF THIS AND GIVE IT TO YOUR HEADQUARTERS.





# SOMETHING WRONG WITH THIS MANUAL?

THEN... JOT DOWN THE DOPE ABOUT IT ON THIS FORM, TEAR IT OUT, FOLD IT AND DROP IT IN THE MAIL!

FROM: (YOUR UNIT'S COMPLETE ADDRESS)

DATE

PUBLICATION NUMBER

TM 11-6625-620-40P-2

DATE

28 FEB 79

TITLE

Test Set, Teletypewriter  
TS-800/UGM-1 & TS-800A/UGM-1

BE EXACT... PIN-POINT WHERE IT IS

PAGE NO.

PARA-GRAPH

FIGURE NO.

TABLE NO.

IN THIS SPACE TELL WHAT IS WRONG AND WHAT SHOULD BE DONE ABOUT IT:

TEAR ALONG DOTTED LINE

TYPE NAME, GRADE OR TITLE AND TELEPHONE NUMBER

SIGN HERE:

FILL IN YOUR  
UNIT'S ADDRESS

FOLD BACK

DEPARTMENT OF THE ARMY

\_\_\_\_\_  
\_\_\_\_\_

OFFICIAL BUSINESS  
PENALTY FOR PRIVATE USE, \$300

POSTAGE AND FEES PAID  
DEPARTMENT OF THE ARMY  
000-314



Commander  
US Army Communications and  
Electronics Materiel Readiness Command  
ATTN: DRSEL-ME-MQ  
Fort Monmouth, New Jersey 07703

TEAR ALONG DOTTED LINE

FOLD BACK





# SOMETHING WRONG WITH THIS MANUAL?

THEN... JOT DOWN THE DOPE ABOUT IT ON THIS FORM, TEAR IT OUT, FOLD IT AND DROP IT IN THE MAIL!

FROM: (YOUR UNIT'S COMPLETE ADDRESS)

---

DATE

PUBLICATION NUMBER TM 11-6625-620-40P-2	DATE 28 FEB 79	TITLE Test Set, Teletypewriter TS-800/UGM-1 & TS-800A/UGM-1
--	-------------------	---

BE EXACT... PIN-POINT WHERE IT IS				IN THIS SPACE TELL WHAT IS WRONG AND WHAT SHOULD BE DONE ABOUT IT:
PAGE NO.	PARA-GRAPH	FIGURE NO.	TABLE NO.	

TEAR ALONG DOTTED LINE

TYPED NAME, GRADE OR TITLE, AND TELEPHONE NUMBER	SIGN HERE:
--	------------

DA FORM 2028-2  
1 AUG 74

P.S.--IF YOUR OUTFIT WANTS TO KNOW ABOUT YOUR MANUAL "FIND," MAKE A CARBON COPY OF THIS AND GIVE IT TO YOUR HEADQUARTERS.

FILL IN YOUR  
UNIT'S ADDRESS

FOLD BACK

DEPARTMENT OF THE ARMY

OFFICIAL BUSINESS

PENALTY FOR PRIVATE USE, \$300

POSTAGE AND FEES PAID  
DEPARTMENT OF THE ARMY  
000-314



Commander  
US Army Communications and  
Electronics Materiel Readiness Command  
ATTN: DRSEL-ME-MQ  
Fort Monmouth, New Jersey 07703

TEAR ALONG DOTTED LINE

FOLD BACK

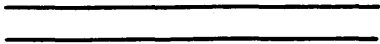
REVERSE OF DA FORM 2026-2



FILL IN YOUR  
UNIT'S ADDRESS

FOLD BACK

DEPARTMENT OF THE ARMY



OFFICIAL BUSINESS

PENALTY FOR PRIVATE USE, \$300

POSTAGE AND FEES PAID  
DEPARTMENT OF THE ARMY  
DDO-314



Commander  
US Army Communications and  
Electronics Materiel Readiness Command  
ATTN: DRSEL-ME-MQ  
Fort Monmouth, New Jersey 07703

TEAR ALONG DOTTED LINE

FOLD BACK

By Order of the Secretary of the Army:

**BERNARD W. ROGERS**  
*General, United States Army*  
*Chief of Staff*

Official:

**J. C. PENNINGTON**  
*Major General, United States Army*  
*The Adjutant General*

**DISTRIBUTION:**

*Active Army*

USAINSCOM (2)	Units org under fol TOE:	
COE(1)	9(1 cy each. UNOINDC)	
TSG(1)	29-207 (2)	57
USAARENB(1)	29-610(2)	57-100
DARCOM (1)	6-615	67
TRADOC (2)	6-616	77-100
OS Maj Cored (4)	7	
TECOM (2)	10-207	
USACC (4)	11-15	
MDW(1)	11-16	
Armies (2)	11-17	
Corps (2)	11-19	
Svc Colleges(1)	11-35	
USASIGS (5)	11-37	
USAADS (2)	11-38	
USAFAS (2)	11-97	
USAAR.MS (2)	11-98	
USAIS(21)	11-117	
USAES(2)	11-215	
USAICS (3)	11-216	
MAAG(1)	11-302	
USARMIS(1)	11-327	
USAERDAW (1)	11-347	
USAERDAA (1)	11-357	
HQ 7th Sig Comd (5)	11-367	
Fort Gordon (10)	11-368	
Fort Gillem (10)	11-377	
Fort Carson (5)	29-51	
Ft Monmouth (HISA) (26)	29-55	
Ft Richardson (CERCOM) (2)	29-57	
Army Dep (1) except	29-102	
LBAD(14)	29-105	
SAAD(30)	29-134	
TOAD(14)	29-136	
SHAD(3)	29-207	
USA Dep(1)	29-245	
Sig.Sec USA Dep (1)	29-500	

NG: None

USAR: None

For explanation of abbreviations used, see AR 310-50

**PIN: 038995-000**