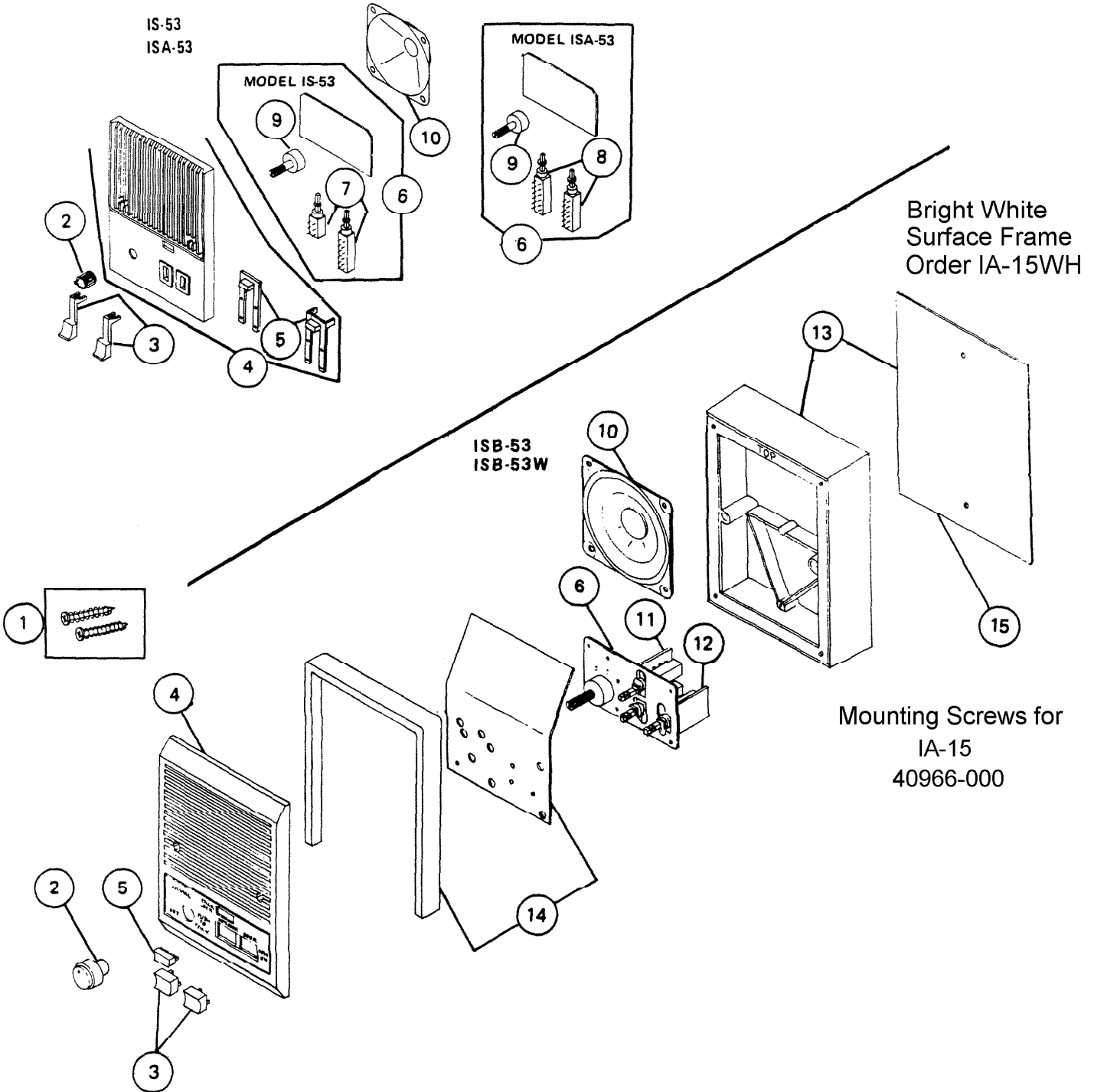



PARTS LIST

EFFECTIVE DATE	MODEL	PRODUCT GROUP
JUNE 1988	ISB-53W NEW IS-53, ISA-53, ISB-53 REVISED	Electronics



REF	ORIGINAL PART NO	* PART DESCRIPTION		MODEL USED ON	CURRENT REPLACEMENT PART NO
1	10966	MOUNTING SCREWS White 7434A-000	(2)	IS 53/ISA-53	40966-000
	7434A		(2)	ISB-53	7434A-000
	8851A		(4)	ISB-53W	8851A-000
2	39294	KNOB White 9341A-000	IS-53/ISA-53		39294-000
	7430A		ISB-53/ISB-53W		7430A-000
3	39749	PUSHBUTTON White 9971A-000	IS-53/ISA-53		39749-000
	7429A		ISB-53/ISB-53W		7429A-000
4	42255	SPEAKER PANEL White 9359A-000	IS-53/ISA-53		42255-000
	7427A		ISB-53/ISB-53W		7427A-000
5	38638	PUSHBUTTON LOCK White 9970A-000	IS-53		38638-000
	38914		ISA-53		38914-000
	7428A		ISB-53/ISB-53W		7428A-000
6	41507	P.C. BOARD ASSEMBLY – COMPLETE (with switches)	IS-53		41507-000
	42256		ISA-53		42256-000
	7432A		ISB-53		7432A-000
	8849A		ISB-53W		8849A-000
7	34637	SWITCH (one (1) each required)	D.P.D.T.	IS-53	34633-000
	34684		4 P.D.T.		34684-000
8	34684	SWITCH –(two (2) required)	ISA-53		34684-000
9	34059	POTENTIOMETER	IS-53/ISA-53		34059-000
10	36076	SPEAKER – 3-1/2", 16 OHM	IS-53/ISA-53		36076-000
	8848A		ISB-53W		8848A-000
11	8267A	DOUBLE SWITCH P.C. BOARD	ISB-53		8267A-000
12	8266A	SINGLE SWITCH P.C. BOARD	ISB-53		8266A-000
13	32303	SURFACE-MOUNT SLEEVE w/GASKET	ISB-53W		2677A-000
14	2674A	SEAL KIT	ISB-53W		2674A-000
15	8831A	GASKET — MOUNTING SLEEVE	ISB-53W		8831A-000
					 NOTE: Always order by current part number.