

**TECHNICAL MANUAL**

**UNIT, DIRECT SUPPORT,  
AND GENERAL SUPPORT MAINTENANCE  
REPAIR PARTS AND SPECIAL TOOLS LIST  
(INCLUDING DEPOT MAINTENANCE REPAIR PARTS  
AND SPECIAL TOOLS)**

**FOR  
OPTICAL FIBER TEST SET  
TS-4320(P)/G  
(NSN 6625-01-355-4087) (EIC: N/A)**

**Distribution authorized to the Department of Defense and DOD contractors only for official use or for administrative or operational purposes. This determination was made on 15 December 1991. Other requests for this document will be referred to Commander, U.S. Army Communications-Electronics Command and Fort Monmouth, ATTN: AMSEL-LC-LM-LT, Fort Monmouth, New Jersey 07703-5007.**

**DESTRUCTION NOTICE - Destroy by any method that will prevent disclosure of the contents or reconstruction of the document.**

---

**HEADQUARTERS, DEPARTMENT OF THE ARMY**

**1 SEPTEMBER 1993**

TECHNICAL MANUAL

No. 11-6625-3271-24P

HEADQUARTERS  
DEPARTMENT OF THE ARMY  
Washington, DC, 1 September 1993

**UNIT, GENERAL SUPPORT AND  
DEPOT MAINTENANCE  
REPAIR PARTS AND SPECIAL TOOLS LIST  
FOR  
OPTICAL FIBER TEST SET  
TS-4320(P)/G  
(NSN 6625-01-355-4087) (EIC: N/A)**

**Current as of 1 June 1993**

**REPORTING ERRORS AND RECOMMENDING IMPROVEMENTS**

You can help improve this manual. If you find any mistakes or if you know of a way to improve the procedures, please let us know. Mail your letter, DA Form 2028 (Recommended Changes to Publications and Blank Forms), or DA Form 2028-2, located in back of this manual direct to: Commander, US Army Communications-Electronics Command and Fort Monmouth, ATTN: AMSEL-LC-LM-LT, Fort Monmouth, NJ 07703-5007. In either case, a reply will be furnished to you.

**TABLE OF CONTENTS**

		Page	Illus/ Figure
SECTION I.	INTRODUCTION .....	1	
	II. REPAIR PARTS LIST .....	1-1	
GROUP 00	Test Set, Optical Fiber TS-4320(P/G) .....	1-1	1
01	Reflectometer, Optical Time Domain, 1 .....	2-1	2
	0101 Test Set Subassembly, 1A2 .....	3-1	3
	0102 Light Signal Receiver-Transmitter Subassembly, 1A5 .....	4-1	4
	010201 Circuit Card Assembly, with Laser, 1A5A2 .....	5-1	5
	0103 Light Signal Receiver-Transmitter Subassembly, 1A3 .....	6-1	6
	010301 Circuit Card Assembly, with Laser, 1A3A1 .....	7-1	7
	0104 Light Signal Receiver-Transmitter Subassembly, 1A4 .....	8-1	8
	010401 Circuit Card Assembly, with Laser, 1A4A1 .....	9-1	9
02	Inverter, Power, Static, 15 .....	10-1	10
SECTION III.	SPECIAL TOOLS LIST .....	11-1	
GROUP 03	Special Tools .....	11-1	11
SECTION IV.	CROSS-REFERENCE INDEXES .....	I-1	
	National Stock Numbers Index .....	I-1	
	Part Number Index .....	I-3	
	Figure and Item Number Index .....	I-9	

## SECTION 1 INTRODUCTION

### 1. Scope.

This manual lists and authorizes spares and repair parts; special tools; special test, measurement, and diagnostic equipment (TMDE); and other special support equipment required for performance of unit, general support and depot maintenance of the TS-4320(P)/G. It authorizes the requisitioning, issue, and disposition of spares, repair parts and special tools as indicated by the source, maintenance and recoverability (SMR) codes.

### 2. General.

This Repair Parts and Special Tools List is divided into the following sections:

a. Section II. Repair Parts List. A list of spares and repair parts authorized by the RPSTL for use in the performance of maintenance. The list also includes parts which must be removed for replacement of the authorized parts. Parts lists are composed of functional groups in ascending item number sequence, with the parts in each group listed in item number sequence. Special Tools are also listed in this section. Figure numbers are listed directly beneath the group header.

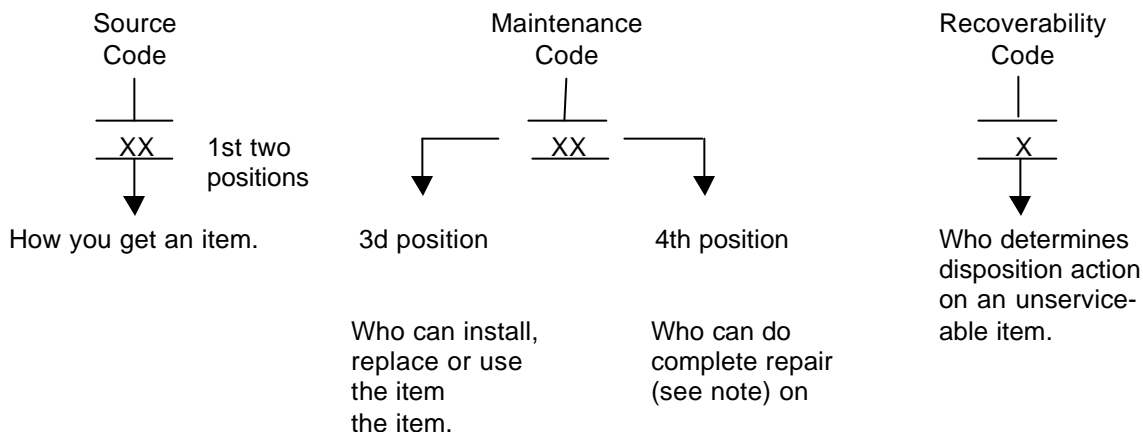
b. Section III. Special Tools List. A list of special tools, special TMDE, and other special support equipment authorized by this RPSTL (as indicated by Basis of Issue (BOI) information in Description and Usable On Code column) for the performance of maintenance.

c. Section IV. Cross-Reference Indexes. A list, in National item identification number (NIIN) sequence, of all National stock numbered items appearing in the listing, followed by a list in alphanumeric sequence of all part numbers appearing in the listing. National stock numbers and part numbers are cross-referenced to each illustration figure and item appearance. The figure number and item number index lists figure and item numbers in numeric sequence and cross-references National stock numbers, Commercial and Government Entity Code and part numbers.

### 3. Explanation of Columns (Sections II and III).

a. Item No. (Column (1)). Indicates the number used to identify items called out in the illustration.

b. SMR Code (Column (2)). The source, maintenance, and recoverability (SMR) code is a five-position code containing supply/requisitioning information, maintenance category authorization criteria, and disposition instruction, as shown in the following breakout:



**NOTE**

**Complete Repair: Maintenance capacity, capability, and authority to perform all corrective maintenance tasks of the "Repair" function in a use/user environment in order to restore serviceability to a failed item.**

(1) Source Code. The source code tells you how to get an item needed for maintenance, repair, or overhaul of an end item/equipment. Explanations of source codes follows:

<i>Code</i>	<i>Explanation</i>
<div style="border-left: 1px solid black; border-right: 1px solid black; border-bottom: 1px solid black; padding: 5px; display: inline-block;">                     PA PB PC PD PE PF PG                 </div>	Stocked items; use the applicable NSN to request/requisition items with these source codes. They are authorized to the category indicated by the code entered in the third position of the SMR code.

**NOTE**

**Items coded PC are subject to deterioration.**

<div style="border-left: 1px solid black; border-right: 1px solid black; border-bottom: 1px solid black; padding: 5px; display: inline-block;">                     KD KF KB                 </div>	Items with these codes are not to be requested/requisitioned individually. They are part of a kit which is authorized to the maintenance category indicated in the third position of the SMR Code. The complete kit must be requisitioned and applied.
---	--

<div style="border-left: 1px solid black; border-right: 1px solid black; border-bottom: 1px solid black; padding: 5px; display: inline-block;">                     MO - Made at org/AVUM category                      MF - Made at DS/AVUM category                      MH - Made at GS category                      ML - Made at Specialized Repair Activity (SRA)                      MD - Made at Depot                 </div>	Items with these codes are not to be requested/requisitioned individually. They must be made from bulk material which is identified by the part number in the description and usable on code (UOC) column and listed in the Bulk Material group of the repair parts list. If the item is authorized to you by the third position code of the SMR code, but the source code indicates it is made at a higher category, order the item from the higher category of maintenance.
--	---

<div style="border-left: 1px solid black; border-right: 1px solid black; border-bottom: 1px solid black; padding: 5px; display: inline-block;">                     AO - Assembled by org/AVUM category                      AF - Assembled by DS/AVIM category                      AH - Assembled by GS category                      AL - Assembled by SRA                      AD - Assembled by Depot                 </div>	Items with these codes are not to be requested/requisitioned individually. The parts that make up the assembled item must be requisitioned or fabricated and assembled at the category of maintenance indicated by the source code. If the third position code of the SMR code authorizes you to replace the item, but the source code indicates the item is assembled at a higher category, order the item from the higher category of maintenance.
---	--

<i>Code</i>	<i>Explanation</i>
XA -	Do not requisition an "XA" coded item. Order its next higher assembly.
XB -	If an "XB" item is not available from salvage, order it using the CAGE and part number given.
XC -	Installation drawing, diagram, instruction sheet, field service drawing, that is identified by manufacturer's part number.
XD -	Item is not stocked. Order an "XD"-coded item through normal supply channels using the CAGE and part number given, if no NSN is available.

**NOTE**

**Cannibalization or controlled exchange, when authorized, may be used as a source of supply for items with the above source codes, except for those source coded "XA" or those aircraft support items restricted by requirements of AR 750-1.**

(2) Maintenance Code. Maintenance codes tell you the category (s) of maintenance authorized to USE and REPAIR support items. The maintenance codes are entered in the third and fourth positions of the SMR code as follows:

(a) The maintenance code entered in the third position tells you the lowest maintenance category authorized to remove, replace, and use an item. The maintenance code entered in the third position will indicate authorization to one of the following categories of maintenance.

<i>Code</i>	<i>Application/Explanation</i>
C -	Crew or operator maintenance done within organizational or aviation maintenance.
O -	Organizational or aviation unit category can remove, replace, and use the item.
F -	Direct support or aviation intermediate category can remove, replace, and use the item.
H -	General support category can remove, replace, and use the item.
L -	Specialized repair activity can remove, replace, and use the item.
D -	Depot category can remove, replace, and use the item.

(b) The maintenance code entered in the fourth position tells whether or not the item is to be repaired and identifies the lowest maintenance category with the capability to do complete repair (i.e., perform all authorized repair functions.) This position will contain one of the following maintenance codes.

**NOTE**

**Some limited repair may be done on the item at a lower category of maintenance, if authorized by the Maintenance Allocation Chart (MAC) and SMR codes.**

<i>Code</i>	<i>Application/Explanation</i>
O -	Organizational or aviation unit is the lowest category that can do complete repair of the item.
F -	Direct support or aviation intermediate is the lowest category that can do complete repair of the item.
H -	General support is the lowest category that can do complete repair of the item.
L -	Specialized repair activity (designate the specialized repair activity) is the lowest category that can do complete repair of the item.
D -	Depot is the lowest category that can do complete repair of the item.

**TM 11-6625-3271-24P**

- Z - Nonreparable. No repair is authorized.
- B - No repair is authorized. (No parts or special tools are authorized for the maintenance of a "B" coded item). However, the item may be reconditioned by adjusting, lubricating, etc., at the user category.

(3) Recoverability Code. Recoverability codes are assigned to items to indicate the disposition action on unserviceable items. The recoverability code is entered in the fifth position of the SMR Code as follows:

*Recoverability  
Codes*

*Application/Explanation*

- Z - Nonreparable item. When unserviceable, condemn and dispose of the item at the category of maintenance shown in third position of SMR Code.
- O - Repairable item. When uneconomically repairable, condemn and dispose of the item at organizational or aviation unit category.
- F - Repairable item. When uneconomically repairable, condemn and dispose of the item at the direct support or aviation intermediate category.
- H - Repairable item. When uneconomically repairable, condemn and dispose of the item at the general support category.
- D - Repairable item. When beyond lower category repair capability, return to depot. Condemnation and disposal of item not authorized below depot category.
- L - Repairable item. Condemnation and disposal not authorized below specialized repair activity (SRA).
- A - Item requires special handling or condemnation procedures because of specific reasons (e.g., precious metal content, high dollar value, critical material, or hazardous material). Refer to appropriate manuals/ directives for specific instructions.

c. CAGE (Column (3)). The Commercial and Government Entity Code (CAGE) is a 5-digit alphanumeric code which is used to identify the manufacturer, distributor, or Government agency, etc., that supplies the item.

d. Part Number (Column (4)). Indicates the primary number used by the manufacturer (individual, company, firm, corporation, or Government activity), which controls the design and characteristics of the item by means of its engineering drawings, specifications standards, and inspection requirements to identify an item or range of items.

**NOTE**

**When you use a NSN to requisition an item, the item you receive may have a different part number from the part ordered.**

- e. Description and Usable on Code (UOC) (Column (5)). This column includes the following information:
  - (1) The Federal item name and, when required, a minimum description to identify the item.
  - (2) In the Special Tools list section, the basis of issue (BOI) appears as the last line(s) in the entry for each special tool, special TMDE.
  - (3) The statement "END OF FIGURE" appears just below the last item description in Column 5 for a given figure in both Section II and Section III.
- f. QTY (Column (6)). Indicates the quantity of the item used in the breakout shown on the illustration figure, which is prepared for a functional group, subfunctional group, or an assembly. A "V" appearing in this column in lieu of a quantity indicates that the quantity is variable and the quantity may vary from application to application.

**4. Explanation of Columns (Section IV).**

a. National Stock Number (NSN) Index.

(1) Stock Number column. This column lists the NSN by National item identification number (NIIN) sequence. The NIIN consists of the last nine digits of the NSN. When using this column to locate an item, ignore the first four digits of the NSN. When requisitioning items use NSN (13 digits).

(2) FIG. column. This column lists the number of the figure where the item is identified/located. The illustrations are in numerical order in Section II and III.

(3) ITEM column. The item number identifies the item associated with the figure listed in the adjacent FIG. column. This item is also identified by the NSN listed on the same line.

b. Part Number Index. Part numbers in this index are listed by part number in ascending numeric sequence.

(1) CAGE column. The Commercial and Government Entity Code (CAGE) is a 5-digit alphameric code used to identify the manufacturer, distributor, or Government agency, etc., that supplies the item.

(2) Part Number column. This column indicates the part number assigned to the item.

(3) Stock Number column. This column lists the National Stock Number for the associated part number and manufacturer identified in the Part Number and CAGE columns to the left.

(4) Fig. column. This column lists the number of the figure where the item is identified/located in Section II and III.

(5) Item column. The item number is that number assigned to the item as it appears in the figure referenced in the adjacent figure number column.

c. Figure and Item Number Index.

(1) Fig. column. This column lists the number of the figure where the item is identified/located in Section II and III.

(2) Item column. The item number is that number assigned to the item as it appears in the figure referenced in the adjacent figure number column.

(3) Stock Number column. This column lists the National Stock Number for the item.

(4) CAGE column. The Commercial and Government Entity Code (CAGE) is a 5-digit alphameric code used to identify the manufacturer, distributor, or Government agency, etc., that supplies the item.

(5) Part Number column. Indicates the primary number used by the manufacturer (individual, firm corporation, or Government activity), which controls the design and characteristics of the item by means of its engineering drawings, specifications standards, and inspection requirements to identify an item or range of items.

**5. Special Information.**

a. Associated Publications. The publications listed below pertain to the TS-4320(P)/G and its components:

TM 11-6625-3271-12, Optical Fiber Test Set TS-4320(P)/G

TM 11-6625-3271-40, Optical Fiber Test Set TS-4320(P)/G

b. National Stock Numbers. National stock numbers (NSN's) that are missing from P source coded items have been applied for and will be added to this TM by future change/revision when they are entered in the Army Master Data File (AMDF). Until the NSN's are established and published, submit exception requisitions to: Commander, US Army Communications-Electronics Command and Fort Monmouth, ATTN: AMSEL-LC-MM, Fort Monmouth, NJ. 07703-5000 for the part required to support your equipment.

**6. How to Locate Repair Parts.**

a. When National stock number or part number is not known.

(1) First. Using the table of contents, determine the assembly group or subassembly group to which the item belongs. This is necessary since figures are prepared for assembly groups and subassembly groups, and listings are divided into the same groups.

(2) Second. Find the figure covering the assembly group or subassembly group to which the item belongs.

(3) Third. Identify the item on the figure and note the item number.

(4) Fourth. Refer to the Repair Parts List for the figure to find the part number for the item number noted on the figure.

(5) Fifth. Refer to the Part Number Index to find the NSN, if assigned.

b. When National stock number or part number is known.

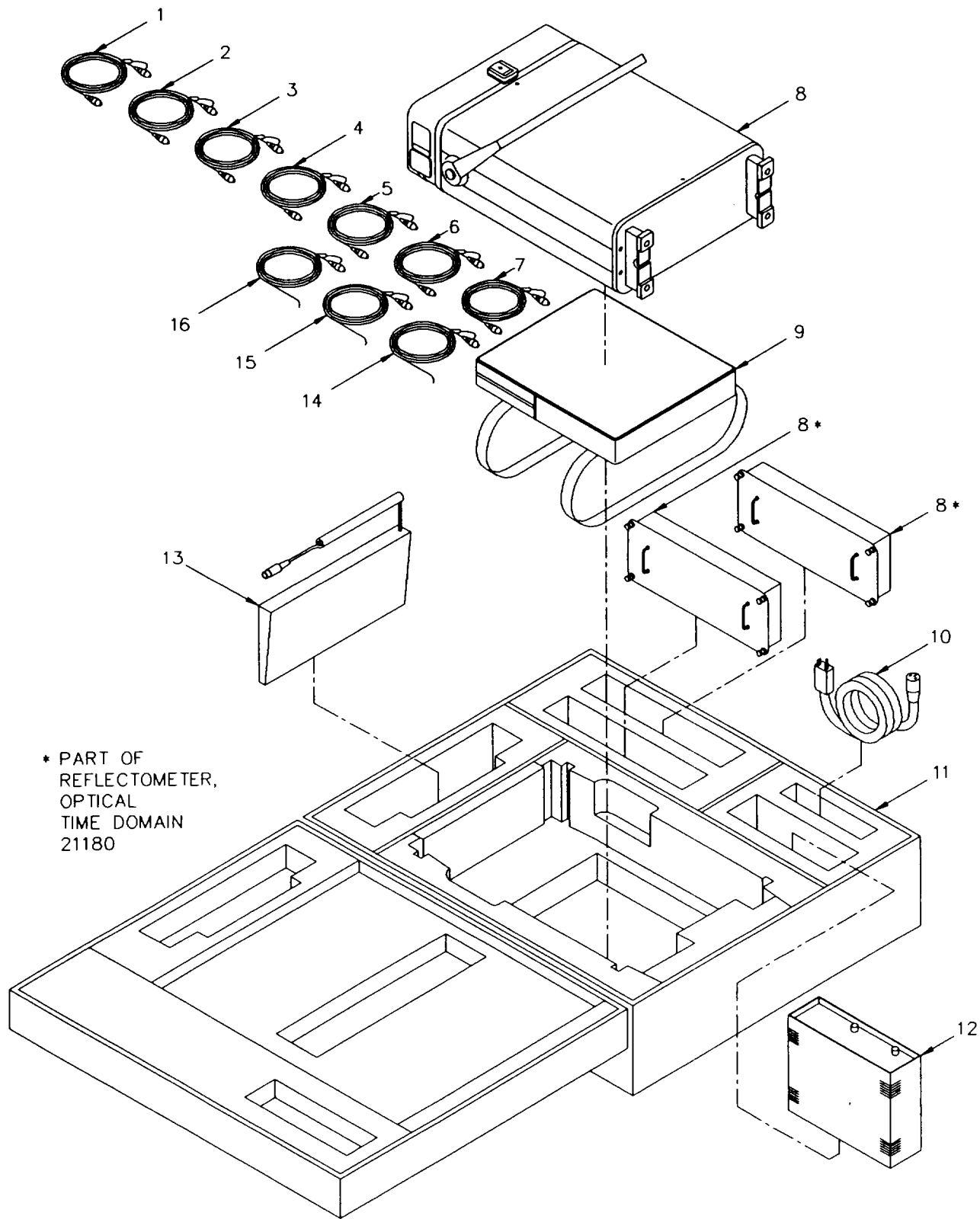
(1) First. Using the index of National stock numbers and part numbers, find the pertinent National stock number or part number. The NSN index is in National Item Identification Number (NIIN) sequence (part 4a(1)). The part numbers in the part number index are listed in ascending alphanumeric sequence (para 4b). Both indexes cross-reference you to the illustration figure and item number of the item you are looking for.

(2) Second. After finding the figure and item number, verify that the item is the one you're looking for, then locate the item number in the repair parts list for the figure.

**7. Abbreviations.**

Not applicable





CE2NCO01

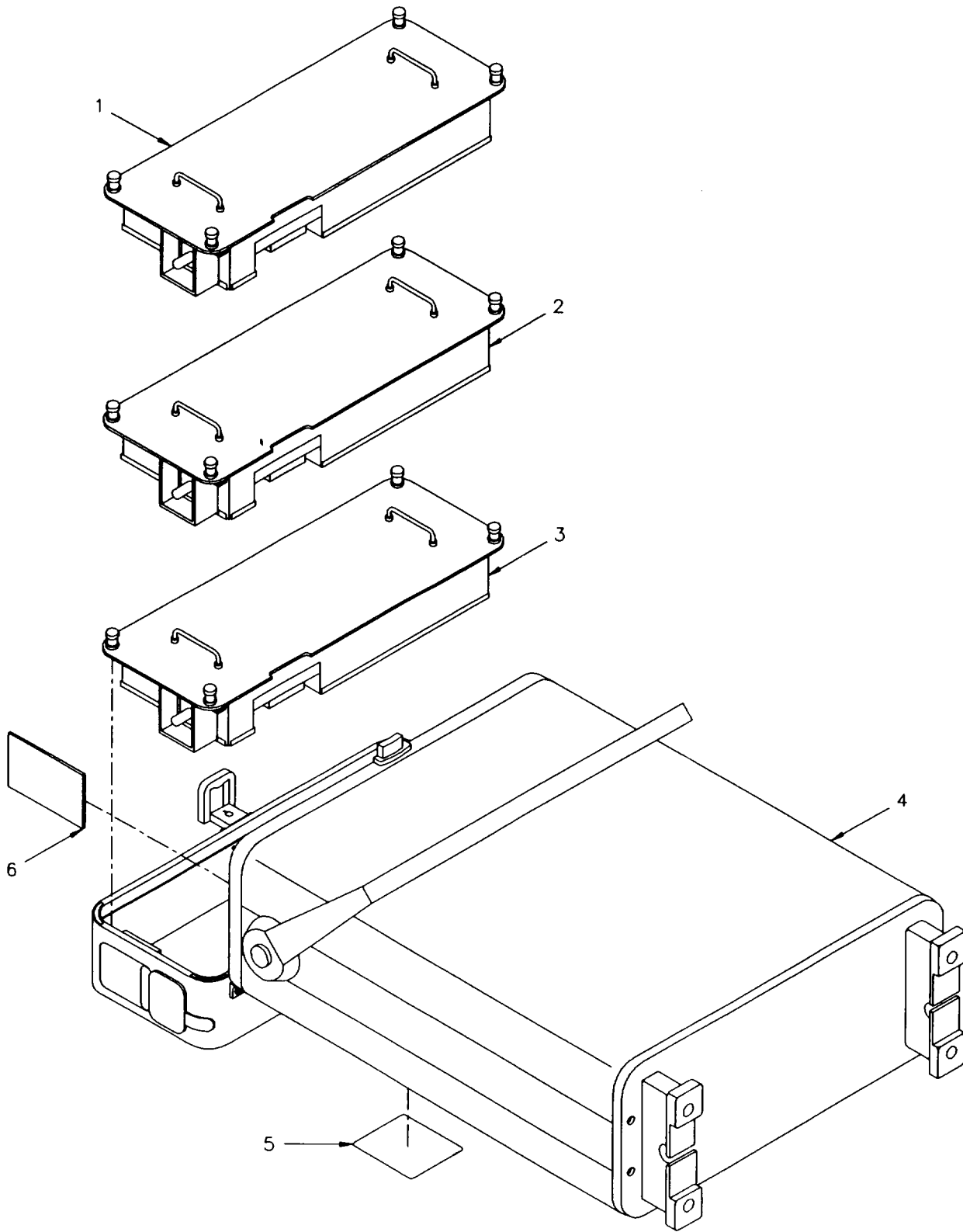
Figure 1. Test Set , Optical Fiber TS-4320(P)/G.

SECTION II

TM 11-6625-3271-24P

(1) ITEM NO	(2) SMR CODE	(3) CAGEC	(4) PART NUMBER	(5) DESCRIPTION AND USABLE ON CODES (UOC)	(6) QTY
				GROUP 00: TEST SET,OPTICAL FIBRE TS-4320(P)/G	
1	PAOZZ	51275	22711-22360	CABLE ASSEMBLY, FIBE.....	1
2	PAOZZ	51275	22711-22359	CABLE ASSEMBLY, FIBE.....	1
3	PAOZZ	51275	22711-22358	CABLE ASSEMBLY, FIBE .....	1
4	PAOZZ	51275	22711-22362	CABLE ASSEMBLY, FIBE.....	1
5	PAOZZ	51275	22711-22361	CABLE ASSEMBLY, FIBE.....	1
6	PAOZZ	51275	22711-22364	CABLE ASSEMBLY, FIBE.....	1
7	PAOZZ	51275	22711-22363	CABLE ASSEMBLY, FIBE.....	1
8	PAODH	51275	21180	REFLECTOMETER, OPTIC SEE FIGURE 2 .....	1
				FOR PARTS BREAKDOWN.....	
9	XBOZZ	51275	21188	BAG, TEXTILE .....	1
10	PAOZZ	51275	22939	CABLE ASSEMBLY, POWE.....	1
11	XBOZZ	51275	21189	CASE, TEST SET .....	1
12	PAOHH	51275	22348	INVERTER, POWER, STAT SEE FIGURE 10 .....	1
				FOR PARTS BREAKDOWN.....	
13	PAHZZ	51275	14970	KEYBOARD, DATA ENTRY. ....	1
14	PAOZZ	51275	22711-22365	CABLE ASSEMBLY, FIBE.....	1
15	PAOZZ	51275	22711-22367	CABLE ASSEMBLY, FIBE.....	1
16	PAOZZ	51275	22711-22366	CABLE ASSEMBLY, FIBE.....	1

END OF FIGURE



CE2NCO02

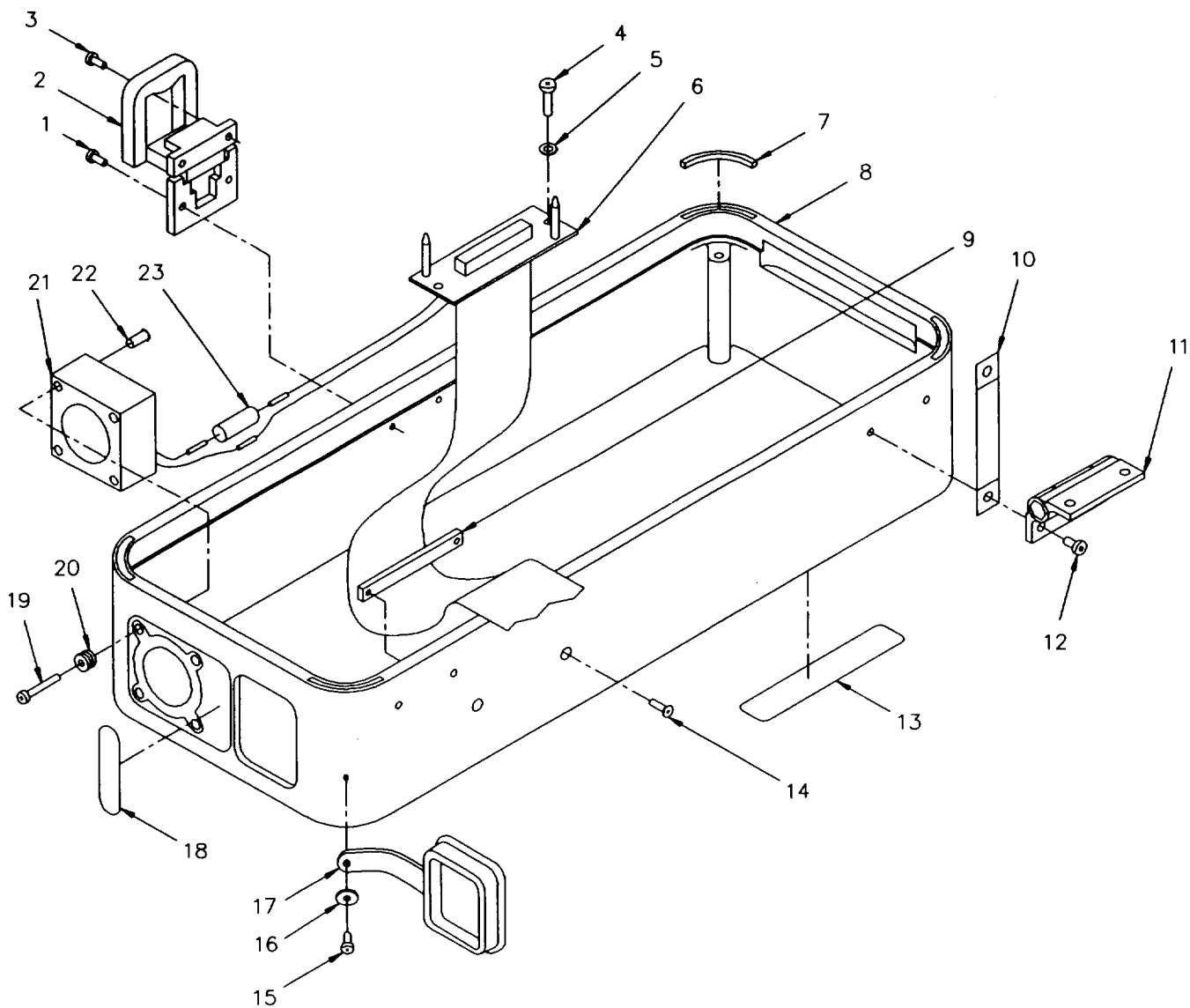
Figure 2. Reflectometer, Optical Time Domain, 1.

**SECTION II**

**TM 11-6625-3271-24P**

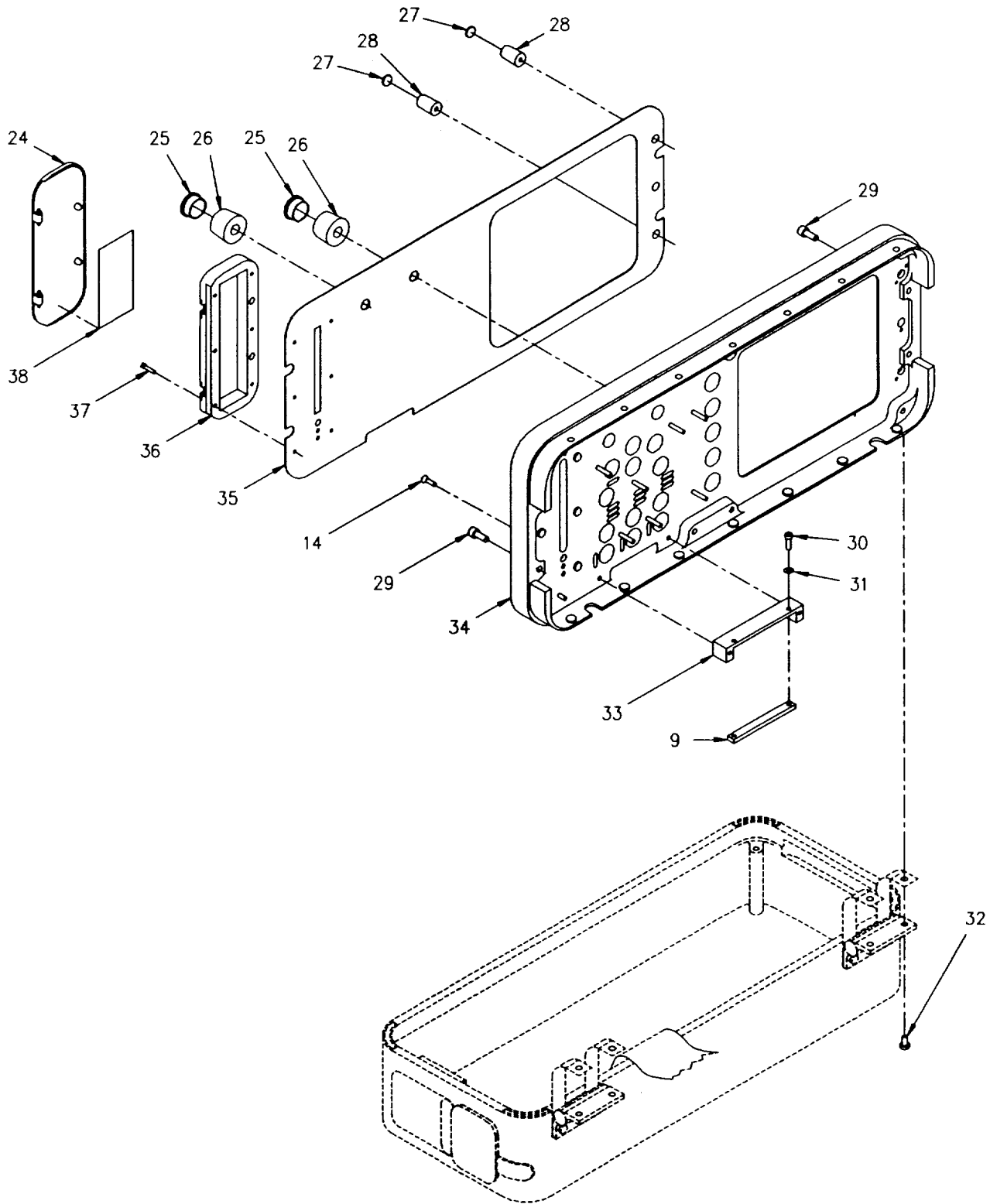
(1) ITEM NO	(2) SMR CODE	(3) CAGEC	(4) PART NUMBER	(5) DESCRIPTION AND USABLE ON CODES (UOC)	(6) QTY
				GROUP 01: REFFLECTOMETER,OPTICAL TIME DOMAIN,1	
1	PAHDD	51275	21305	LIGHT SIGNAL RECEIV SEE FIGURE 4..... FOR BREAKDOWN.....	1
2	PAHDD	51275	21332	LIGHT SIGNAL RECEIV SEE FIGURE 6..... FOR BREAKDOWN.....	1
3	PAHDD	51275	22548	LIGHT SIGNAL RECEIVSEE FIGURE 8..... FOR BREAKDON .....	1
4	PAHHH	51275	21179	TEST SET SUBASSEMBL SEE FIGURE 3..... FOR BREAKDOWN.....	1
5	XBHZZ	51275	22712	MARKER, IDENTIFICATI .....	1
6	PAHZZ	51275	21174	CIRCUIT CARD ASSEMB.....	1

END OF FIGURE



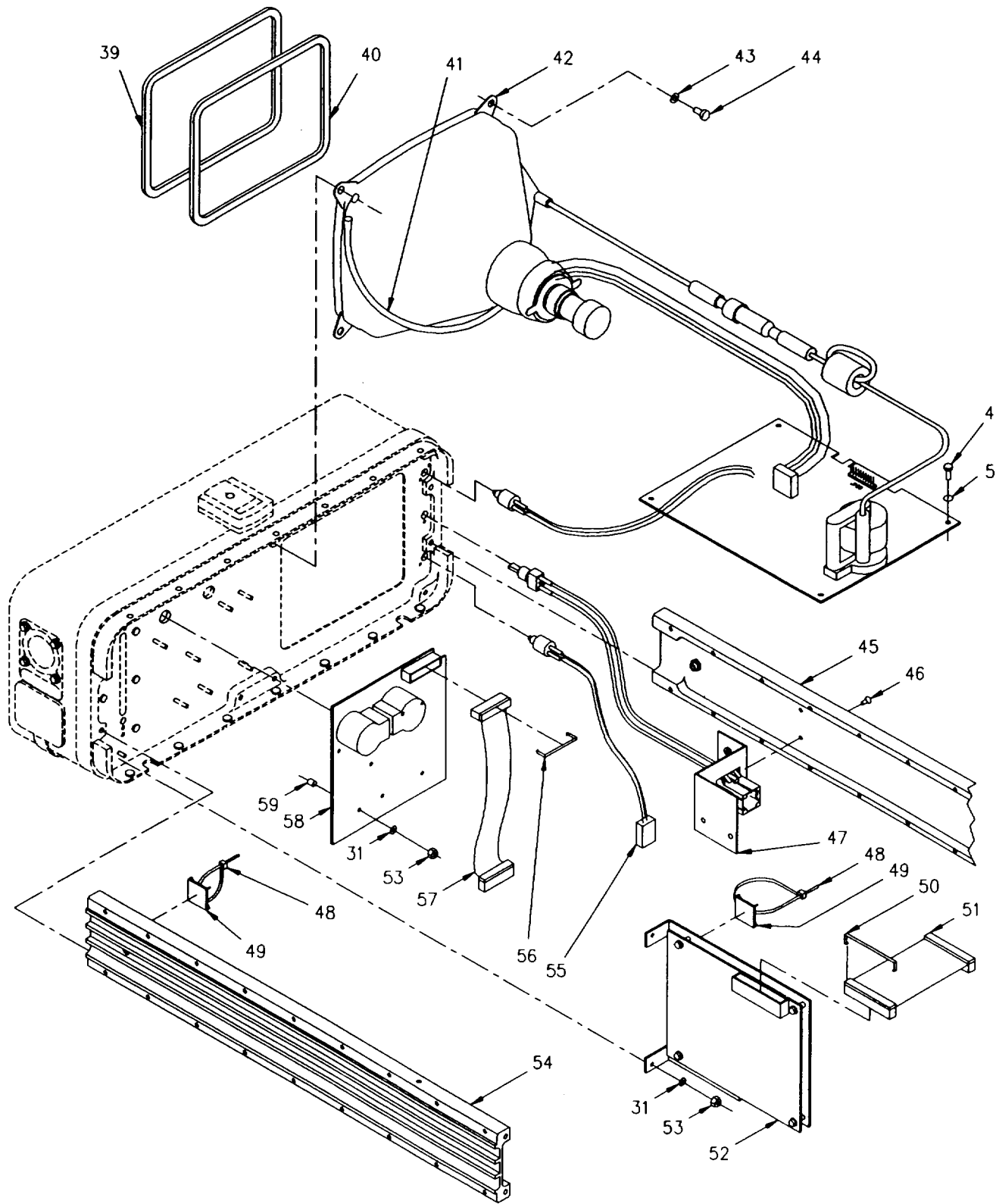
CE2NCO03

Figure 3. Test Set Subassembly, 1A2 (sheet 1 of 7).



CE2NCO04

Figure 3. Test Set Subassembly, 1A2 (sheet 2 of 7).

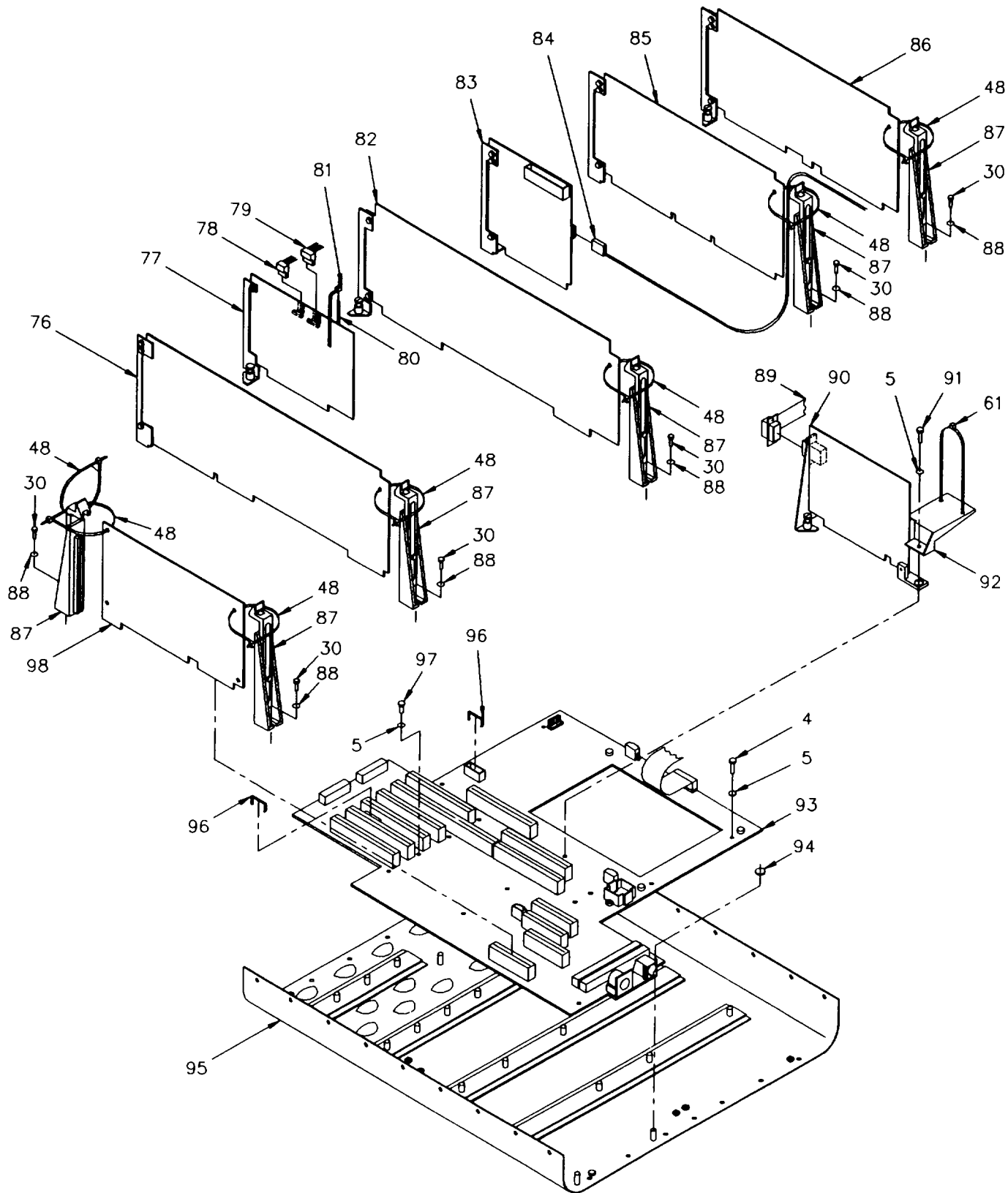


CE2NCO05

Figure 3. Test Set Subassembly, 1A2 (sheet 3 of 7).

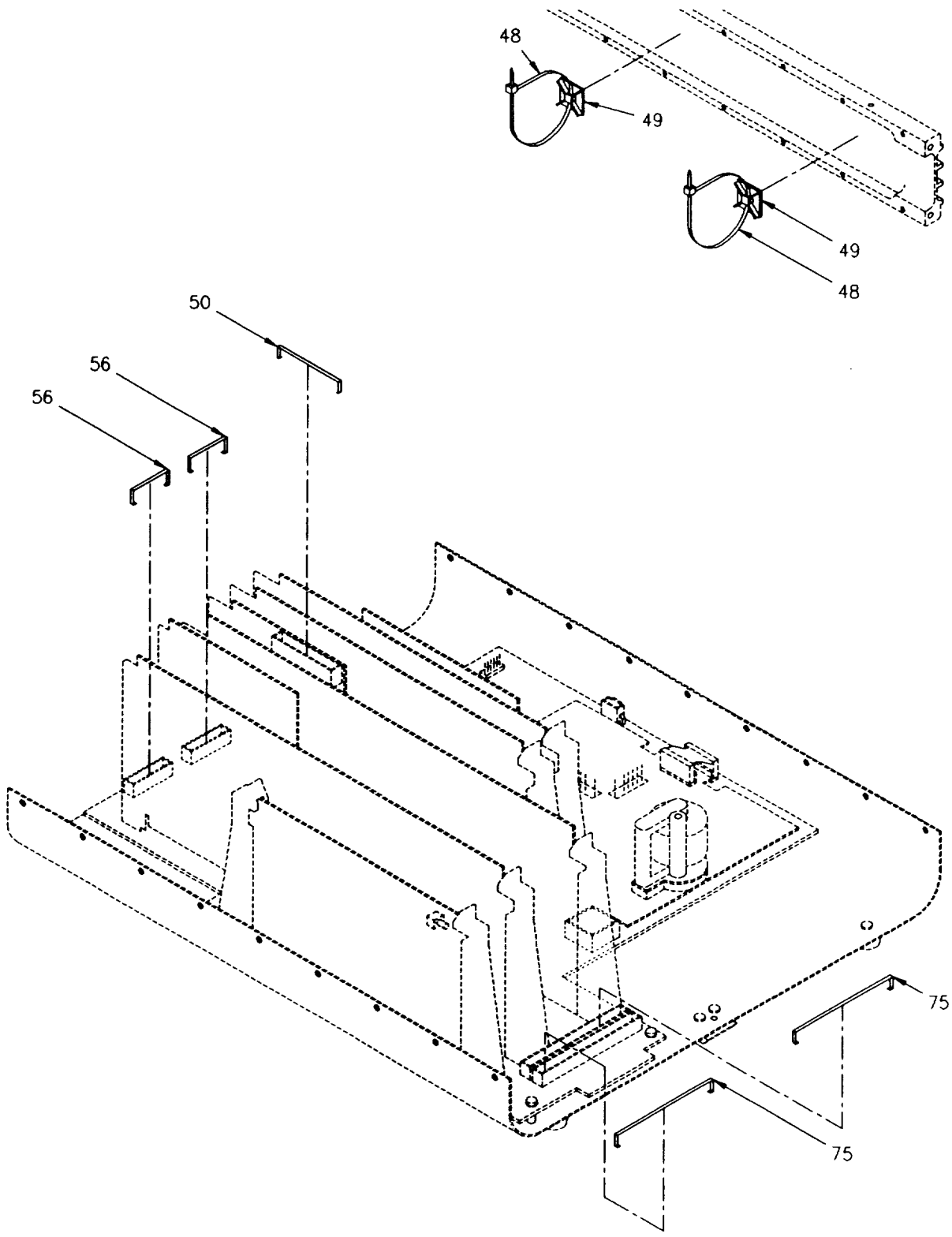






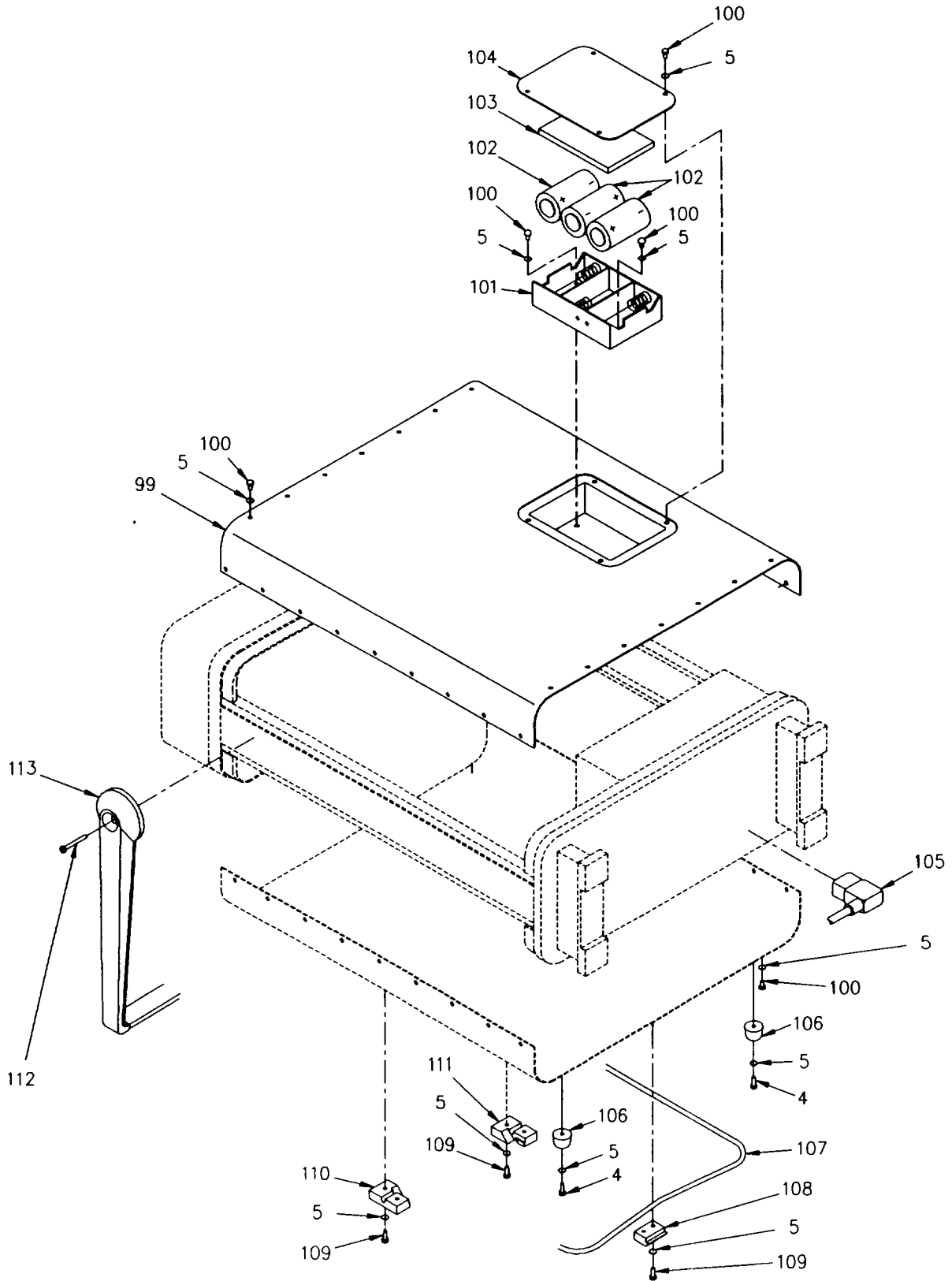
CE2NCO07

Figure 3. Test Set Subassembly, 1A2 (sheet 5 of 7).



CE2NCO08

Figure 3. Test Set Subassembly, 1A2 (sheet 6 of 7).



CE2NC09

Figure 3. Test Set Subassembly, 1A2 (sheet 7 of 7).

## SECTION II

TM 11-6625-3271-24P

(1) ITEM NO	(2) SMR CODE	(3) CAGEC	(4) PART NUMBER	(5) DESCRIPTION AND USABLE ON CODES (UOC)	(6) QTY
GROUP 0101: TEST SET SUBASSEMBLY,1A2					
1	PAHZZ	51275	23026-22422	SCREW, TAPPING.....	2
2	PAHZZ	51275	22303	CATCH, CLAMPING.....	1
3	PAHZZ	51275	22988	SCREW, MACHINE.....	2
4	PAHZZ	39428	91773A148	SCREW, MACHINE.....	25
5	PAHZZ	96906	MS35333-37	WASHER, LOCK.....	103
6	PAHZZ	51275	15588	CABLE ASSEMBLY, SPEC.....	1
7	XBHZZ	51275	15709	BUMPER, NONMETALLIC.....	4
8	XBHZZ	51275	21124	COVER, ACCESS.....	1
9	XBHZZ	51275	14590	STRAP, RETAINING.....	2
10	PAHZZ	51275	23362	STRIP, ELECTRICAL GR.....	4
11	PAHZZ	94222	E6-10-301-20	HINGE, BUTT.....	2
12	PAHZZ	51275	22988-12276	SCREW, CAP, SOCKET HE.....	4
13	XBHZZ	51275	14251	LABEL.....	1
14	PAHZZ	96906	M551959-15	SCREW, MACHINE.....	4
15	PAHZZ	74445	64002	SCREW, CAP, SOCKET HE.....	1
16	PAHZZ	51275	22968-12345	WASHER, FLAT.....	1
17	XBHZZ	51275	15920	COVER, ACCESS.....	1
18	XBHZZ	51275	21096	LABEL.....	1
19	PAHZZ	97424	N97P9016-1	SCREW, MACHINE.....	4
20	PAHZZ	96906	MS35489-140	GROMMET, NONMETALLIC.....	4
21	PAHZZ	51275	20742	FAN, TUBEAXIAL.....	1
22	PAHZZ	51275	23110-14263	NUT, PLAIN, CLINCH.....	4
23	PAHZZ	51275	20743	SWITCH, THERMOSTATIC.....	1
24	XBHZZ	51275	15953	COVER, ACCESS.....	1
25	PAOZZ	51275	15571	CAP, KNOB ATTACHMENT.....	2
26	PAOZZ	51275	15570	KNOB.....	2
27	PAOZZ	51275	11955	CAP, KNOB ATTACHMENT.....	2
28	PAOZZ	51275	11954	KNOB.....	2
29	PAHZZ	51275	22987-12235	SCREW, CAP, SOCKET HE.....	8
30	PAHZZ	96906	MS51957-15	SCREW, MACHINE.....	8
31	PAHZZ	51275	22967-11599	WASHER, LOCK.....	11
32	PAHZZ	74445	64008	SCREW, MACHINE.....	4
33	XBHZZ	51275	15562	STRAP, RETAINING.....	1
34	XBHZZ	51275	23283	BEZEL, INSTRUMENT MO.....	1
35	XBHZZ	51275	22572	PANEL, CONTROL, ELECT.....	1
36	PAHZZ	51275	15954	SEAL, PLAIN.....	1
37	PAHZZ	51275	22987-12231	SCREW, CAP, SOCKET HE.....	6
38	XBHZZ	51275	21128	LABEL.....	1
39	PAHZZ	51275	22489	FILTER, LIGHT, CATHOD.....	1
40	PAHZZ	51275	20106	GASKET.....	1
41	PAHZZ	51275	14407	SPRING, HELICAL, EXTE.....	1
42	PAHZZ	51275	22291	ELECTRON TUBE.....	1
43	PAHZZ	78189	1208	WASHER, LOCK.....	4
44	PAHZZ	82340	4248-7-43G	SCREW, MACHINE.....	4
45	XBHZZ	51275	23356	BRACKET, MOUNTING.....	1
46	PAHZZ	96906	MS24667-1	SCREW, CAP, SOCKET HE.....	2
47	PAHZZ	OSUV4	6-10-3	CABLE ASSEMBLY, POWE.....	1
48	PAHZZ	51275	11689	STRAP, TIEDOWN .ELECT.....	11
49	PAHZZ	51275	22970-14312	MOUNTING BASE, TIEDO.....	4
50	PAHZZ	51275	22940-13647	CLIP, SPRING TENSION.....	2

## SECTION II

TM 11-6625-3271-24P

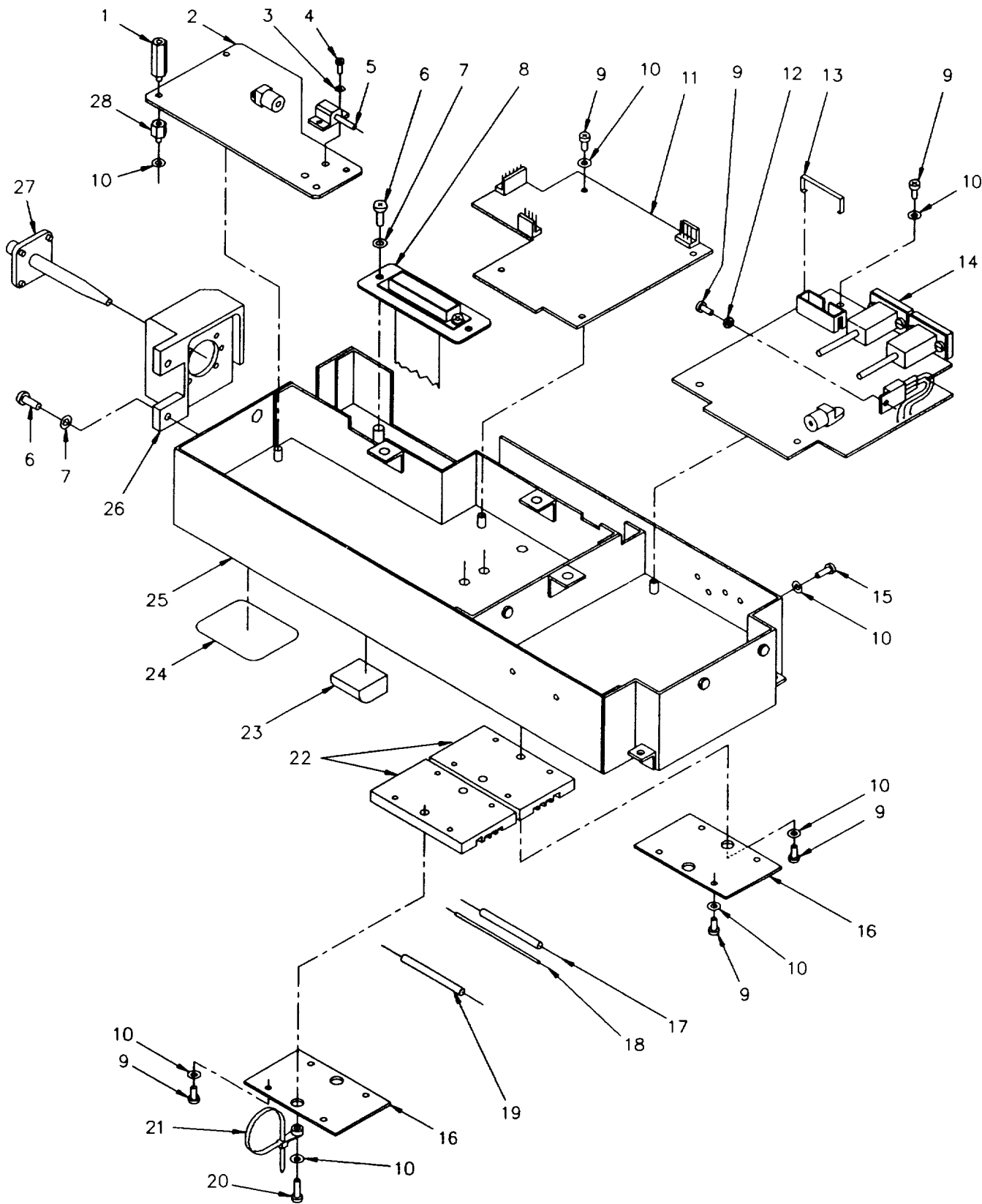
(1) ITEM NO	(2) SMR CODE	(3) CAGEC	(4) PART NUMBER	(5) DESCRIPTION AND USABLE ON CODES (UOC)	(6) QTY
51	PAHZZ	51275	21175	CABLE ASSEMBLY, SPEC.....	1
52	PAHZZ	51275	21090	CIRCUIT CARD ASSEMB.....	1
53	PAHZZ	96906	MS35649-242	NUT, PLAIN, HEXAGON.....	9
54	XBHZZ	51275	23355	BRACKET, MOUNTING.....	1
55	PAHZZ	51275	22576	WIRING HARNESS.....	1
56	PAHZZ	51275	22940-13646	RETAINER, SOCKET, PLUG.....	3
57	PAHZZ	51275	15376	CABLE ASSEMBLY, SPEC.....	1
58	PAHZZ	51275	15337	CIRCUIT CARD ASSEMB FRONT PANEL.....	1
59	XBHZZ	51275	16328	SPACER, SLEEVE.....	7
60	XBHZZ	51275	23357	PANEL ASSEMBLY, REAR.....	1
61	PAHZZ	51275	14906	STRAP, TIEDOWN, ELECT.....	5
62	PAHZZ	01121	714168-04	SCREW, MACHINE.....	1
63	PAHZZ	51275	23371	STRIP, ELECTRICAL GR.....	1
64	XBHZZ	51275	23284	BEZEL, INSTRUMENT MO.....	1
65	PAHZZ	00779	207952-1	BOLT, ASSEMBLED WASH.....	5
66	XBHZZ	51275	15704	HARDWARE KIT, ELECTR.....	1
67	PAHZZ	51275	22970-14313	MOUNTING BASE, TIEDO.....	2
68	PAOZZ	71400	GDC-2A	FUSE, CARTRIDGE.....	2
69	PAOZZ	51275	22582	FUSE, CARTRIDGE.....	2
70	XBHZZ	51275	23018	LABEL.....	1
71	PAHZZ	51275	22512	POWER SUPPLY.....	1
72	PAHZZ	51275	20676	SCREW, SHOULDER.....	2
73	XBHZZ	51275	20133	LEG, ELECTRICAL EQUI.....	1
74	PAHZZ	78189	501-250800-00	NUT, PLAIN, ASSEMBLED.....	2
75	PAHZZ	51275	22940-15351	RETAINER, SOCKET, PLUG.....	4
76	PAHZZ	51275	15341	CIRCUIT CARD ASSEMB.....	1
77	PAHZZ	51275	22128	CIRCUIT CARD ASSEMB.....	1
78	PAHZZ	51275	22129	CABLE ASSEMBLY, SPEC.....	1
79	PAHZZ	51275	22130	CABLE ASSEMBLY, SPEC.....	1
80	PAHZZ	51275	20941	STRAP, TIEDOWN, ELECT.....	1
81	PAHZZ	51275	15494	STRAP, TIEDOWN, ELECT.....	1
82	PAHZZ	51275	21747	CIRCUIT CARD ASSEMB.....	1
83	PAHZZ	51275	21087	CIRCUIT CARD ASSEMB.....	1
84	PAHZZ	51275	23346	LEAD, STORAGE BATTE R.....	1
85	PAHZZ	51275	21177	CIRCUIT CARD ASSEMB.....	1
86	PAHZZ	51275	15840	CIRCUIT CARD ASSEMB.....	1
87	PAHZZ	51275	20877	HOLDER, ELECTRICAL C.....	6
88	PAHZZ	51275	22971-15968	WASHER, LOCK.....	6
89	PAHZZ	51275	15379	CABLE ASSEMBLY, SPEC.....	1
90	PAHZZ	51275	15589	CIRCUIT CARD ASSEMB.....	1
91	PAHZZ	35012	30-295-401-46	SCREW, MACHINE.....	1
92	XBHZZ	51275	23447	BRACKET, FERRITE.....	1
93	PAHZZ	51275	21178	BACK ,PLANE, ASSEMBLY.....	1
94	PAHZZ	51275	23111-12404	WASHER, FLAT.....	13
95	XBHZZ	51275	23286	COVER, ELECTRONIC CO.....	1
96	PAHZZ	51275	22940-15705	CLIP, SPRING TENSION.....	2
97	PAHZZ	82340	75500-56	SCREW, MACHINE.....	1
98	PAHZZ	51275	15593	CIRCUIT CARD ASSEMB.....	1
99	XBHZZ	51275	23285	COVER, ELECTRONIC CO.....	1
100	PAHZZ	96906	M551957-26	SCREW, MACHINE.....	70
101	PAHZZ	51275	23347	RETAINER, BATTERY.....	1
102	PAOZA	51275	23016	CELL BATTERY.....	3

**SECTION II**

**TM 11-6625-3271-24P**

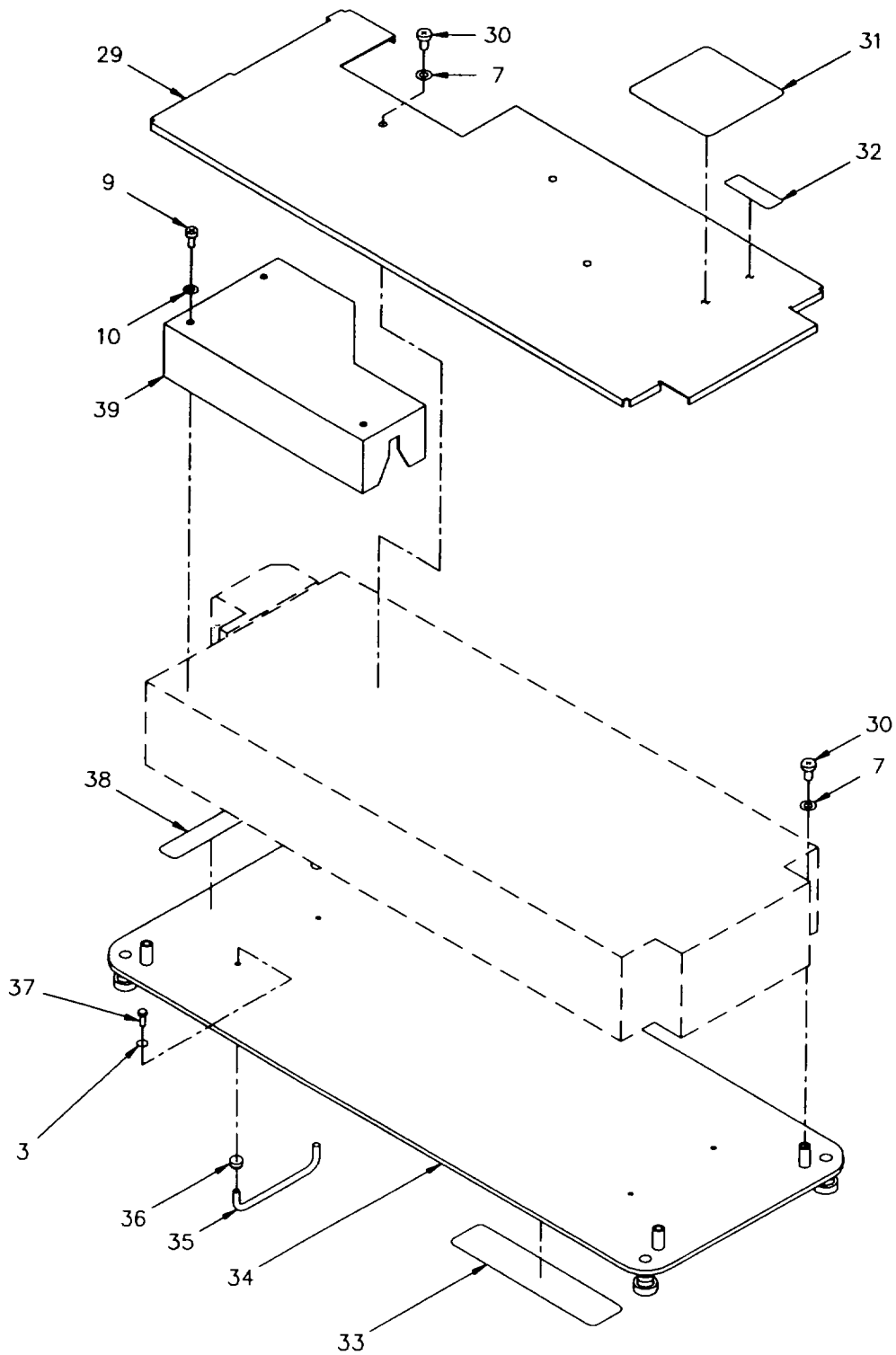
(1) ITEM NO	(2) SMR CODE	(3) CAGEC	(4) PART NUMBER	(5) DESCRIPTION AND USABLE ON CODES (UOC)	(6) QTY
103	XBHZZ	51275	23358	PAD, CUSHIONING .....	1
104	XBHZZ	51275	23289	COVER, ACCESS .....	1
105	PAOZZ	16428	17507	CABLE ASSEMBLY, SPEC.....	1
106	PAHZZ	51275	11456	FOOT, ELECTRICAL EQU .....	4
107	XBHZZ	51275	15890	BAIL, RETAINING.....	1
108	XBHZZ	51275	23461	CLAMP, RIM CLINCHING .....	1
109	PAHZZ	39428	90272A146	SCREW, MACHINE .....	6
110	XBHZZ	51275	15895	CLAMP, BLOCK .....	1
111	XBHZZ	51275	15896	CLAMP, BLOCK .....	1
112	PAHZZ	51275	22925	SCREW, MACHINE .....	2
113	XBHZZ	51275	21778	HANDLE, BAIL .....	1

END OF FIGURE



CE2NC01 0

Figure 4. Light Signal Receiver-Transmitter Subassembly, 1A5 (sheet 1 of 2).



CE2NC011

Figure 4. Light Signal Receiver-Transmitter Subassembly, 1A5 (sheet 2 of 2).

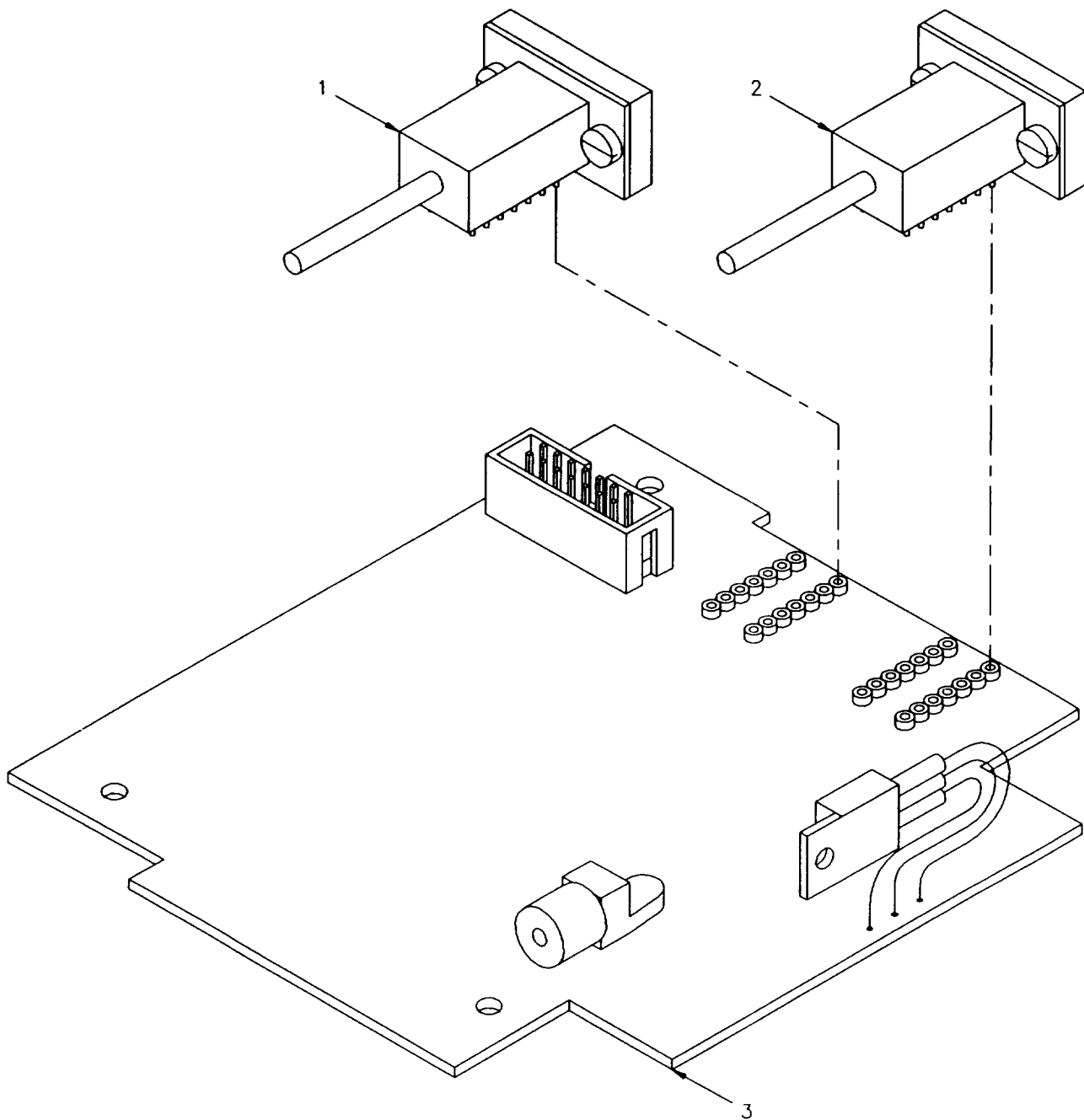


## SECTION II

TM 11-6625-3271-24P

(1) ITEM NO	(2) SMR CODE	(3) CAGEC	(4) PART NUMBER	(5) DESCRIPTION AND USABLE ON CODES (UOC)	(6) QTY
				GROUP 0102: LIGHT SIGNAL RECEIVER- TRANSMITTER SUBASSEMBLY, 1A5	
1	PADZZ	06540	9732-55-0440	POST, ELECTRICAL-MEC.....	3
2	PADZZ	51275	22487	CIRCUIT CARD ASSEMB.....	1
3	PADZZ	96906	MS35333-35	WASHER, LOCK .....	6
4	PADZZ	70318	3157139 02	SCREW, MACHINE.....	2
5	PADZZ	51275	15210	SEMICONDUCTOR DEVIC.....	1
6	PADZZ	39428	90272A146	SCREW, MACHINE .....	4
7	PADZZ	96906	MS35333-37	WASHER, LOCK .....	11
8	PADZZ	51275	20629	CABLE ASSEMBLY, SPEC.....	1
9	PADZZ	01121	628210-04	SCREW, MACHINE .....	22
10	PADZZ	51275	22967-11599	WASHER, LOCK .....	264
11	PADZZ	51275	22553	CIRCUIT CARD ASSEMB.....	1
12	PADZZ	13103	7721-7PPS	INSULATOR, BUSHING.....	1
13	PADZZ	51275	22940-15619	CLIP, SPRING TENSION.....	1
14	PADDD	51275	22550	CIRCUIT CARD ASSEMB SEE FIGURE 9..... FOR PARTS BREAKDOWN.....	1
15	PADZZ	51275	22981	SCREW, MACHINE .....	2
16	XBDZZ	51275	14860	COVER, ACCESS .....	2
17	PADZZ	51275	14603	COUPLER, FIBER OPTIC.....	1
18	PADZZ	51275	14948	SPLICE, FIBER OPTIC.....	5
19	PADZZ	51275	14602	COUPLER, FIBER OPTIC.....	1
20	PADZZ	96906	MS51957-15	SCREW, MACHINE .....	1
21	PADZZ	51275	11471	STRAP, TIEDOWN, ELECT.....	1
22	XBDZZ	51275	13571	BRACKET, MOUNTING .....	2
23	PADZZ	51275	22957-11658	CLIP, SPRING TENSION.....	6
24	XBHZZ	51275	22206	LABEL .....	1
25	XBDZZ	51275	15574	CHASSIS, ELECTRICAL.....	1
26	XBDZZ	51275	15576	BRACKET, MOUNTING .....	1
27	PADZZ	51275	22354	CONNECTOR ASSEMBLY .....	1
28	PADZZ	06540	9724-SS-0440-7	POST, ELECTRICAL-MEC.....	2
29	XBDZZ	51275	15575	COVER, ACCESS .....	1
30	PADZZ	01121	714168-04	SCREW, MACHINE .....	7
31	XBHZZ	51275	14941	LABEL .....	1
32	XBHZZ	51275	22713	LABEL .....	1
33	XBHZZ	51275	22549	LABEL .....	1
34	XBHZZ	51275	15573	COVER, ACCESS .....	1
35	XBDZZ	51275	14472	HANDLE, BAIL .....	2
36	PADZZ	51275	14473	FERRULE, HANDLE .....	4
37	PADZZ	51275	22989-12237	SCREW, MACHINE .....	4
38	XBHZZ	51275	14942	LABEL .....	1
39	XBDZZ	51275	21996	COVER, ACCESS .....	1

END OF FIGURE



CE2NC012

Figure 5. Circuit Card Subassembly, With Laser, 1A5A2.

**SECTION II**

**TM 11-6625-3271-24P**

(1) ITEM NO	(2) SMR CODE	(3) CAGEC	(4) PART NUMBER	(5) DESCRIPTION AND USABLE ON CODES (UOC)	(6) QTY
				GROUP 010201: CIRCUIT CARD ASSEMBLY, WITH LASER, 1A5A2	
1	PADZZ	51275	16183	LASER DIODE, FIBER 0 .....	1
2	PADZZ	51275	15772	LASER DIODE, FIBER 0 .....	1
3	PADZZ	51275	22551	CIRCUIT CARD ASSEMB .....	1

END OF FIGURE

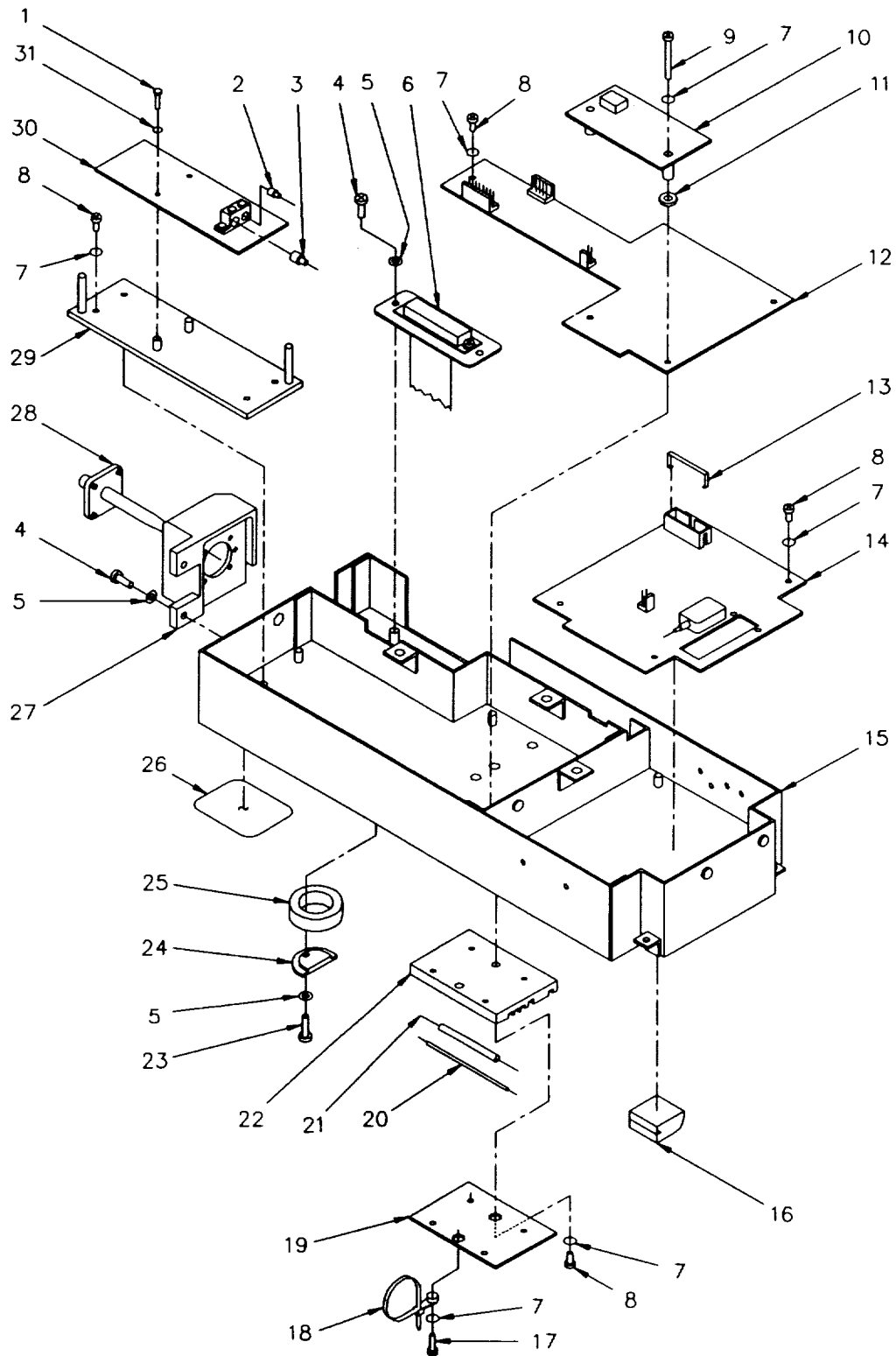
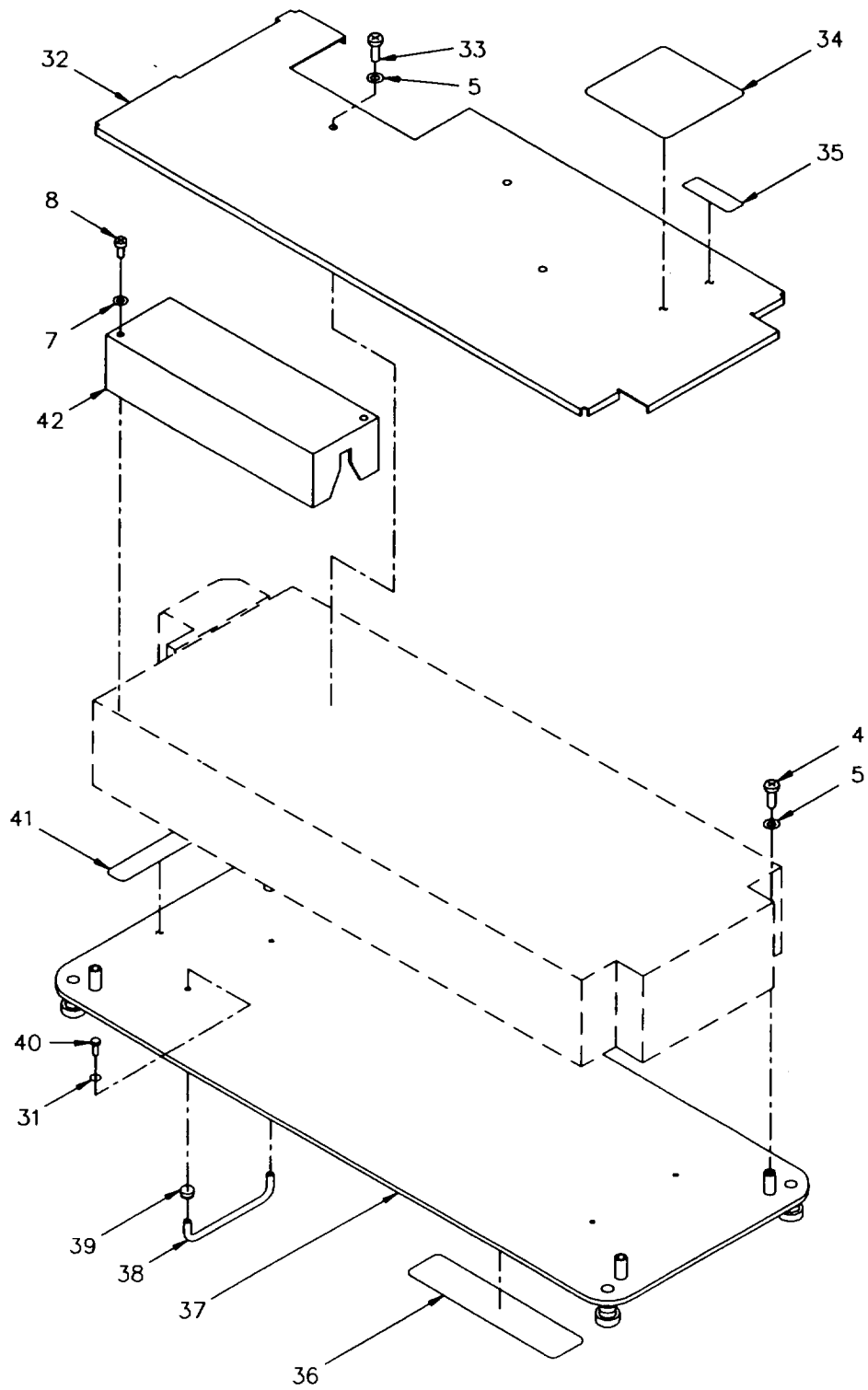


Figure 6. Light Signal Receiver-Transmitter Subassembly, 1A3 (sheet 1 of 2).



CE2NC014

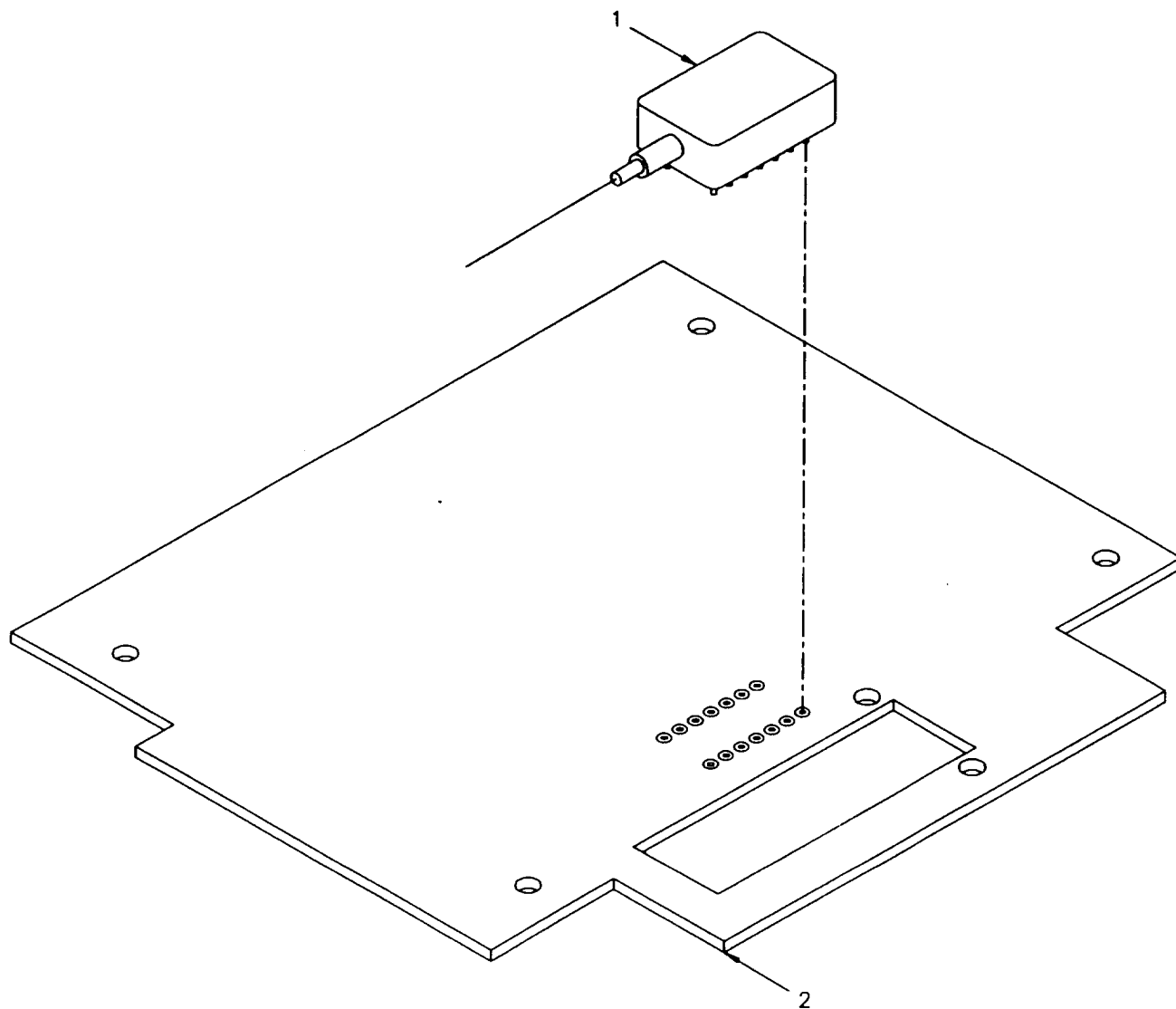
Figure 6. Light Signal Receiver-Transmitter Subassembly, 1A3 (sheet 2 of 2).

## SECTION II

TM 11-6625-3271-24P

(1) ITEM NO	(2) SMR CODE	(3) CAGEC	(4) PART NUMBER	(5) DESCRIPTION AND USABLE ON CODES (UOC)	(6) QTY
GROUP 0103: LIGHT SIGNAL RECEIVER- TRANSMITTER SUBASSEMBLY, 1A3					
1	PADZZ	70318	3157139 02	SCREW, MACHINE .....	2
2	PADZZ	51275	20078	CABLE ASSEMBLY, SPEC.....	1
3	PADZZ	51275	11376	SEMICONDUCTOR DEVIC.....	1
4	PADZZ	39428	90272A146	SCREW, MACHINE .....	8
5	PADZZ	96906	MS35333-37	WASHER, LOCK .....	12
6	PADZZ	51275	20081	CABLE ASSEMBLY, SPEC.....	1
7	PADZZ	51275	22967-11599	WASHER, LOCK .....	23
8	PADZZ	01121	628210-04	SCREW, MACHINE .....	21
9	PADZZ	97424	N97P9016-1	SCREW, MACHINE .....	2
10	PADZZ	51275	20067	CIRCUIT CARD ASSEMB.....	1
11	PADZZ	51275	23111-15433	WASHER, FLAT .....	2
12	PADZZ	51275	21307	CIRCUIT CARD ASSEMB .....	1
13	PADZZ	51275	22940-15619	CLIP, SPRING TENSION .....	1
14	PADDD	51275	21311	CIRCUIT CARD ASSEMB SEE FIGURE 5..... FOR BREAKDOWN.....	1
15	XBDZZ	51275	15574	CHASSIS, ELECTRICAL.....	1
16	PADZZ	51275	22957-11658	CLIP, SPRING TENSION .....	6
17	PADZZ	96906	M551957-15	SCREW, MACHINE .....	1
18	PADZZ	51275	11471	STRAP, TIEDOWN, ELECT.....	1
19	XBDZZ	51275	20231	COVER, ACCESS .....	1
20	PADZZ	51275	14948	SPLICE, FIBER OPTIC.....	3
21	PADZZ	51275	11244	COUPLER, FIBER OPTIC.....	1
22	XBDZZ	51275	20230	BRACKET, MOUNTING .....	1
23	PADZZ	39428	91773A148	SCREW, MACHINE .....	1
24	PADZZ	51275	15867	CLAMP, SYNCHRO.....	1
25	PADZZ	51275	15795	SHIELDING BEAD, ELEC.....	2
26	XBHZZ	51275	22206	LABEL .....	1
27	XBDZZ	51275	15576	BRACKET, MOUNTING .....	1
28	PADZZ	51275	22353	CONNECTOR ASSEMBLY .....	1
29	XBDZZ	51275	15578	PLATE, MOUNTING .....	1
30	PADZZ	51275	21309	CIRCUIT CARD ASSEMB.....	1
31	PADZZ	96906	MS35333-35	WASHER, LOCK .....	6
32	XBDZZ	51275	15575	COVER, ACCESS .....	1
33	PADZZ	01121	714168-04	SCREW, MACHINE .....	3
34	XBHZZ	51275	14941	LABEL .....	1
35	XBHZZ	51275	22713	LABEL .....	1
36	XBHZZ	51275	22468	LABEL .....	1
37	XBDZZ	51275	15573	COVER, ACCESS .....	1
38	XBDZZ	51275	14472	HANDLE, BAIL .....	2
39	PADZZ	51275	14473	FERRULE, HANDLE .....	4
40	PADZZ	51275	22989-12237	SCREW, MACHINE .....	4
41	XBHZZ	51275	14942	LABEL .....	1
42	XBDZZ	51275	15577	COVER, ACCESS .....	1

END OF FIGURE



CE2NC015

Figure 7. Circuit Card Subassembly, With Loser, 1A3A1.

**SECTION II**

**TM 11-6625-3271-24P**

(1) ITEM NO	(2) SMR CODE	(3) CAGEC	(4) PART NUMBER	(5) DESCRIPTION AND USABLE ON CODES (UOC)	(6) QTY
				GROUP 010301: CIRCUIT CARD ASSEMBLY, WITH LASER, 1A3A1	
1	PADZZ	51275	13159	LASER DIODE, FIBER 0 .....	1
2	PADZZ	51275	21312	CIRCUIT CARD ASSEMB .....	1

END OF FIGURE



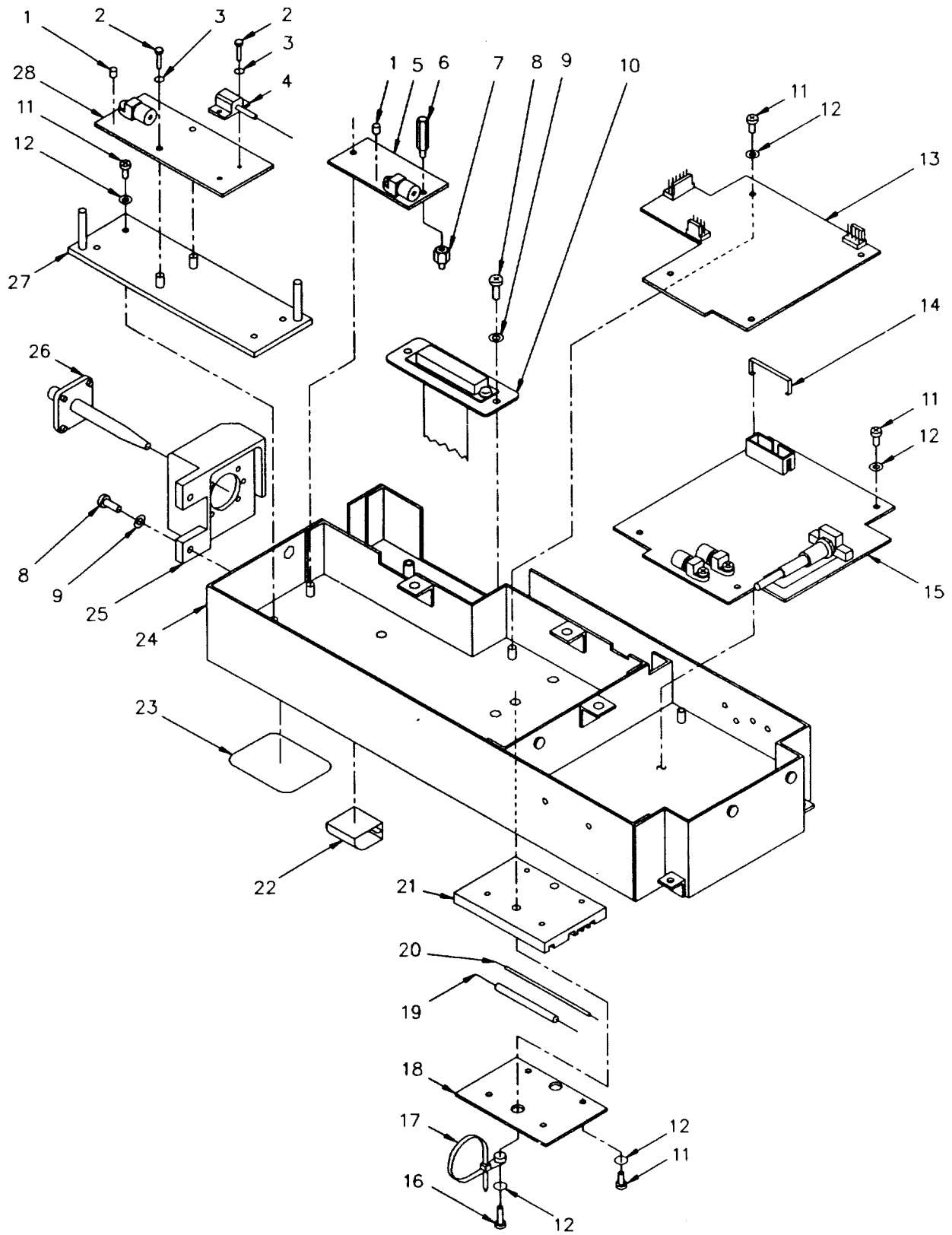
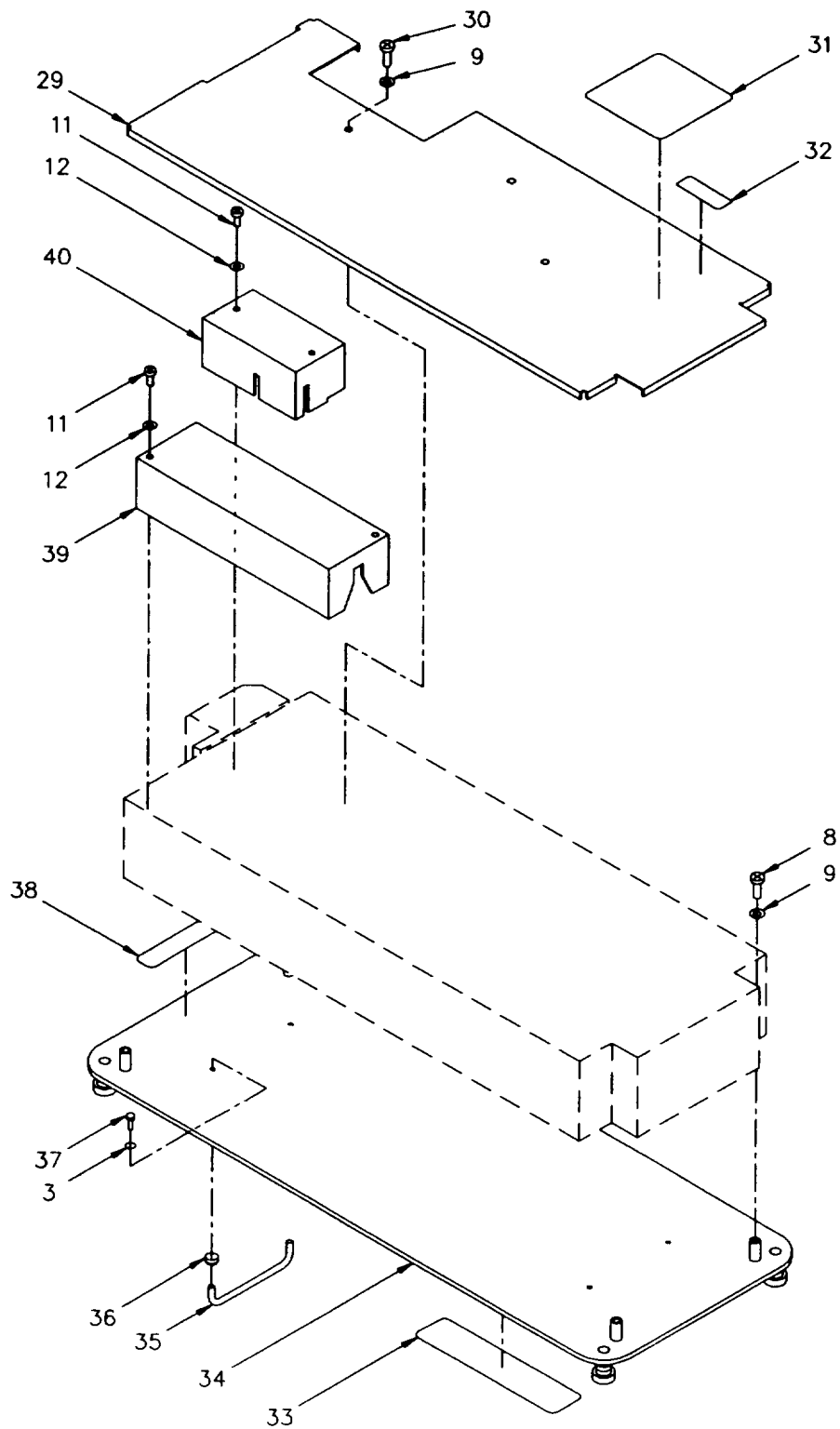


Figure 8. Light Signal Receiver-Transmitter Subassembly, 1A4 (sheet 1 of 2).



CE2NC017

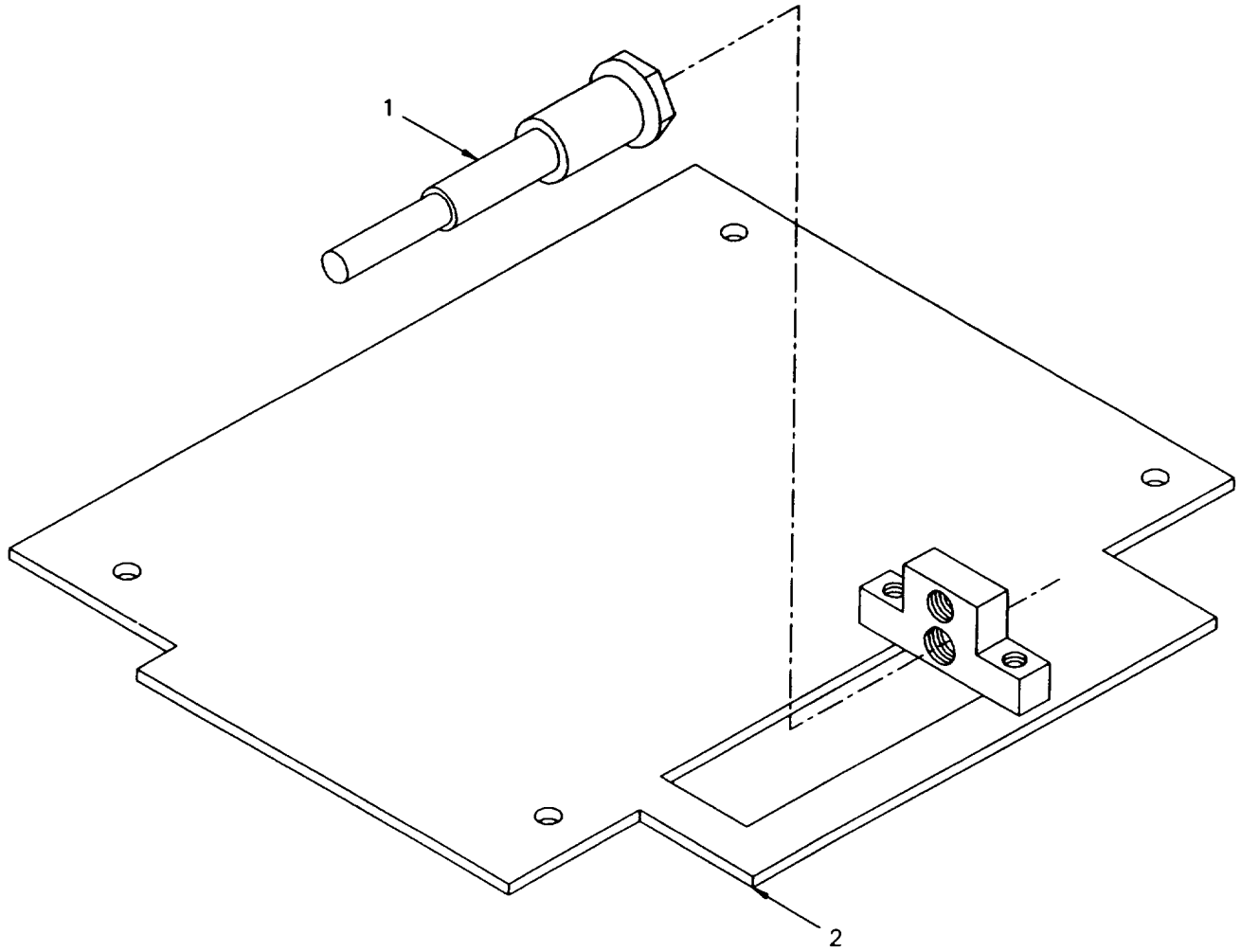
Figure 8. Light Signal Receiver-Transmitter Subassembly, 1A4 (sheet 2 of 2).

## SECTION II

TM 11-6625-3271-24P

(1) ITEM NO	(2) SMR CODE	(3) CAGEC	(4) PART NUMBER	(5) DESCRIPTION AND USABLE ON CODES (UOC)	(6) QTY
GROUP 0104: LIGHT SIGNAL RECEIVER- TRANSMITTER SUBASSEMBLY, 1A4					
1	XBDZZ	51275	11862	SHIELDING BEAD, ELEC .....	2
2	PADZZ	70318	3157139 02	SCREW, MACHINE .....	4
3	PADZZ	96906	MS35333-35	WASHER , LOCK .....	8
4	PADZZ	51275	20380	SEMICONDUCTOR DEVIC.....	1
5	PADZZ	51275	21346	CIRCUIT CARD ASSEMB.....	1
6	PADZZ	80205	NAS1829-3C11	POST, ELECTRICAL-MEC.....	2
7	PADZZ	51275	11185	POST, ELECTRICAL-MEC.....	1
8	PADZZ	39428	90272A146	SCREW, MACHINE .....	8
9	PADZZ	96906	M535333-37	WASHER, LOCK .....	11
10	PADZZ	51275	20629	CABLE ASSEMBLY, SPEC.....	1
11	PADZZ	01121	628210-04	SCREW, MACHINE .....	22
12	PADZZ	51275	22967-11599	WASHER, LOCK.....	22
13	PADZZ	51275	21334	CIRCUIT CARD ASSEMB.....	1
14	PADZZ	51275	22940-15619	CLIP, SPRING TENSION.....	1
15	PADDD	51275	21338	CIRCUIT CARD ASSEMB SEE FIGURE 7.....	1
FOR BREAKDOWN.....					
16	PADZZ	96906	MS51957-15	SCREW, MACHINE .....	1
17	PADZZ	51275	11471	STRAP, TIEDOWN, ELECT .....	1
18	XBDZZ	51275	20231	COVER, ACCESS .....	9
19	PADZZ	51275	11244	COUPLER, FIBER OPTIC .....	1
20	PADZZ	51275	14948	SPLICE, FIBER OPTIC.....	4
21	XBDZZ	51275	20230	BRACKET, MOUNTING .....	1
22	PADZZ	51275	22957-11658	CLIP, SPRING TENSION .....	6
23	XBHZZ	51275	22206	LABEL .....	1
24	XBDZZ	51275	15574	CHASSIS, ELECTRICAL.....	1
25	XBDZZ	51275	15576	BRACKET, MOUNTING .....	1
26	PADZZ	51275	22353	CONNECTOR ASSEMBLY .....	1
27	XBDZZ	51275	15578	PLATE, MOUNTING .....	1
28	PADZZ	51275	21336	CIRCUIT CARD ASSEMB .....	1
29	XBDZZ	51275	15575	COVER, ACCESS .....	1
30	PADZZ	01121	714168-04	SCREW, MACHINE .....	3
31	XBHZZ	51275	14941	LABEL .....	1
32	XBHZZ	51275	22713	LABEL .....	1
33	XBHZZ	51275	22469	LABEL .....	1
34	XBHZZ	51275	15573	COVER, ACCESS .....	1
35	XBDZZ	51275	14472	HANDLE, BAIL . .....	2
36	PADZZ	51275	14473	FERRULE, HANDLE . .....	4
37	PADZZ	51275	22989-12237	SCREW, MACHINE .....	4
38	XBHZZ	51275	14942	LABEL .....	1
39	XBDZZ	51275	15577	COVER, ACCESS .....	1
40	XBDZZ	51275	21278	COVER, ACCESS .....	1

END OF FIGURE



CE2NC018

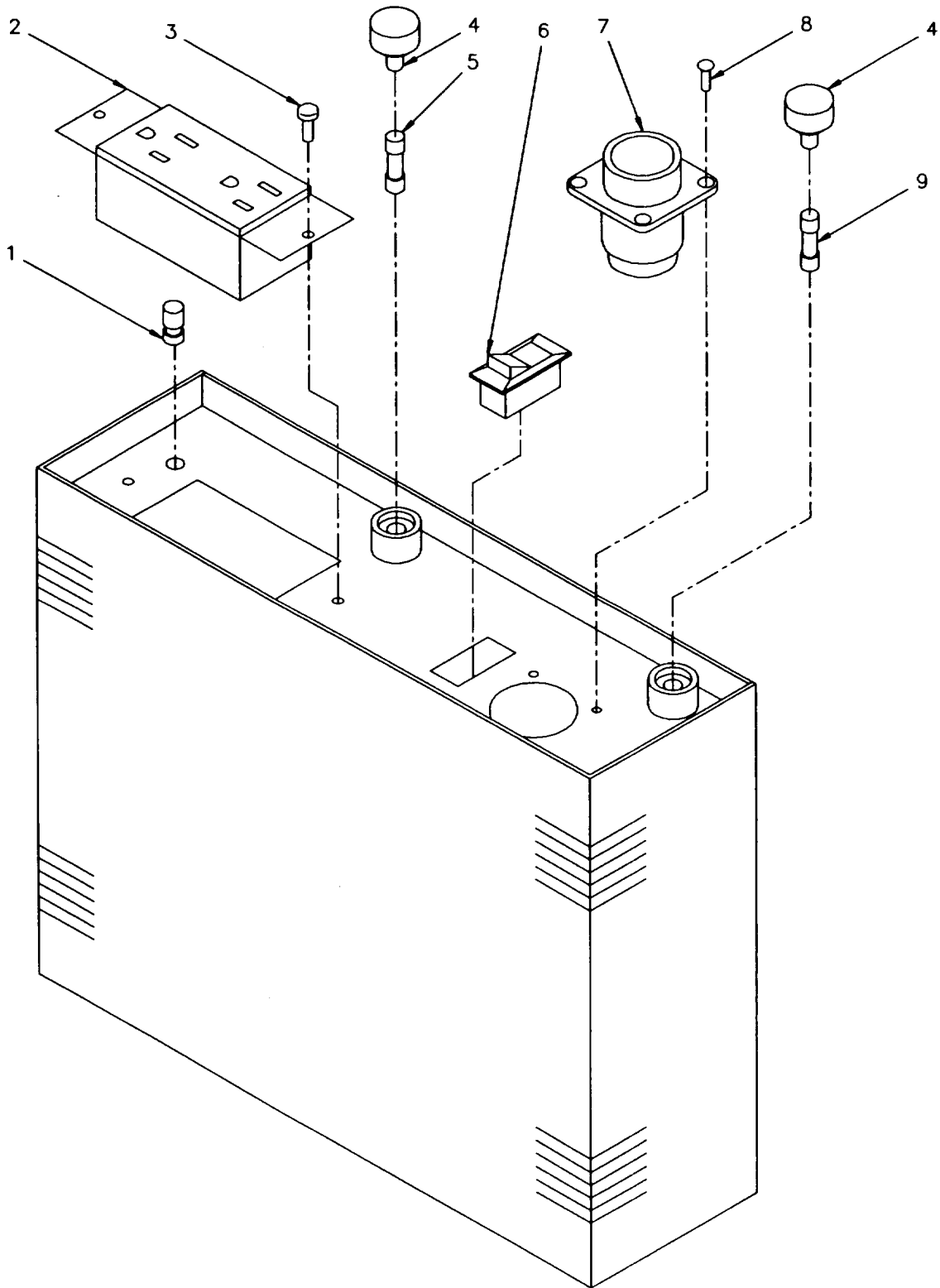
Figure 9. Circuit Card Subassembly, With Laser, 1A4A1.

**SECTION II**

**TM 11-6625-3271-24P**

(1) ITEM NO	(2) SMR CODE	(3) CAGEC	(4) PART NUMBER	(5) DESCRIPTION AND USABLE ON CODES (UOC)	(6) QTY
				GROUP 010401: CIRCUIT CARD ASSEMBLY, WITH LASER, 1A4A1	
1	PADZZ	51275	15159	LASER DIODE, FIBER 0 .....	1
2	PADZZ	51275	21339	CIRCUIT CARD ASSEMB.....	1

END OF FIGURE



CE2NC019

Figure 10. Inverter, Power, Static, 15.

**SECTION II**

**TM 11-6625-3271-24P**

(1) ITEM NO	(2) SMR CODE	(3) CAGEC	(4) PART NUMBER	(5) DESCRIPTION AND USABLE ON CODES (UOC)	(6) QTY
GROUP 02: INVERTER, POWER, STATIC, 15					
1	PAHZZ	58361	MV5752	LIGHT EMITTING DIOD .....	1
2	PAHZZ	51275	23969	CONNECTOR, RECEPTACL .....	1
3	PAHZZ	39428	90272A146	SCREW, MACHINE .....	2
4	PAHZZ	71400	HTB-241	FUSEHOLDER, EXTRACTO .....	2
5	PAOZO	81349	F02B250V2A	FUSE, CARTRIDGE .....	1
6	PAHZZ	51275	23968	SWITCH, TOGGLE . .....	1
7	PAHZZ	51275	23970	LEAD ASSEMBLY, ELECT .....	1
8	PAHZZ	96906	MS24667-1	SCREW, CAP, SOCKET HE .....	4
9	PAOZA	81349	F03B125V30AS	FUSE, CARTRIDGE .....	1

END OF FIGURE

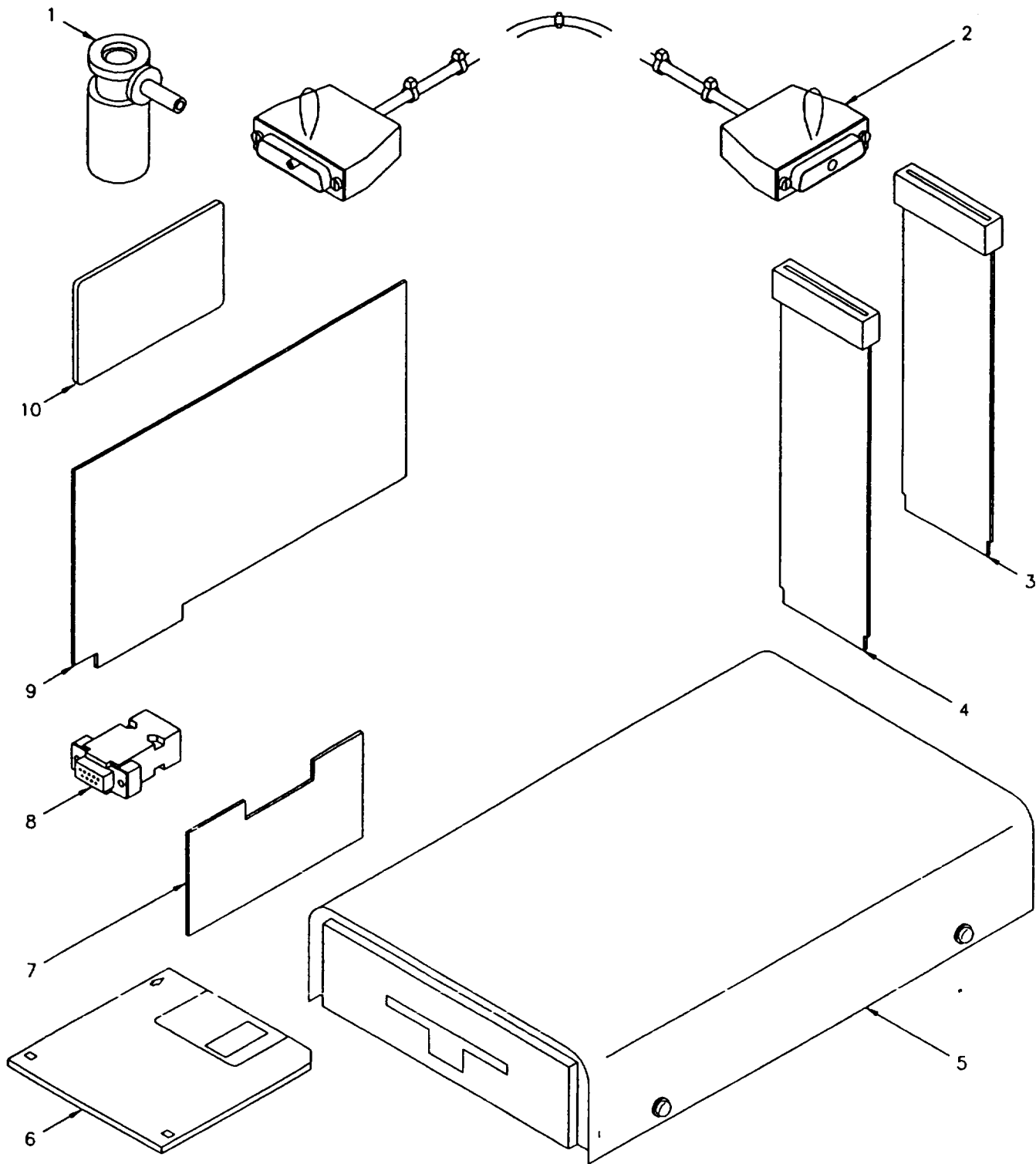


Figure 11. Special Tools.



**SECTION III**

**TM 11-6625-3271-24P**

(1) ITEM NO	(2) SMR CODE	(3) CAGEC	(4) PART NUMBER	(5) DESCRIPTION AND USABLE ON CODES (UOC)	(6) QTY
GROUP 03: SPECIAL TOOLS					
1	PFHZZ	51275	LPTF-1047	CONNECTOR, PLUG, ELEC.....	
2	PFDZZ	51275	LPTF-1055	CABLE ASSEMBLY, SPEC.....	
3	PFHZZ	51275	LPTF-1049	EXTENDER CARD, ELECT.....	
4	PFHZZ	51275	LPTF-1048	EXTENDER CARD, ELECT.....	
5	PFHZZ	51275	LPTF-1107	DISK DRIVE UNIT .....	
6	PFHZZ	51275	LPTF-1108	DISK PROGRAM, AOTOM .....	
7	PFHZZ	51275	LPTF-1056	CIRCUIT CARD ASSY.....	
8	PFHZZ	51275	LPTF-1109	CONNECTOR ASSEMBLY .....	
9	PFHZZ	51275	LPTF-1111	CIRCUIT CARD ASSY.....	
10	PFHZZ	51275	LPTF-1112	CIRCUIT CARD ASSY.....	

END OF FIGURE

## CROSS-REFERENCE INDEXES

## NATIONAL STOCK NUMBER INDEX

STOCK NUMBER	FIG.	ITEM	STOCK NUMBER	FIG.	ITEM
5920-00-031-5181	10	4	5305-01-346-2285	8	2
5305-00-054-5649	3	30	5305-01-351-5131	3	4
	4	20		6	23
	6	17	5305-01-360-2461	3	91
	8	16	6030-01-364-3839	2	2
5305-00-054-6650	3	100	5305-01-364-8019	4	9
5305-00-068-8429	3	46		6	8
	10	8		8	11
5310-00-193-7491	3	43	5305-01-364-8035	3	62
5920-00-228-7882	10	5		4	30
5310-00-579-0079	3	5		6	33
	4	7		8	30
	6	5	6030-01-364-8143	2	1
	8	9	5998-01-364-8859	6	14
5310-00-579-5554	4	3	5998-01-364-8860	4	14
	6	31	5998-01-365-5671	8	15
	8	3	6030-01-365-5680	2	3
5920-00-581-3856	10	9	5305-01-366-3042	3	97
5310-00-696-5173	3	74	5960-01-370-6267	3	42
5305-00-770-2579	3	14	5930-01-370-6420	3	23
6135-00-835-7216	3	102	5930-01-370-6423	10	6
5340-00-857-6175	4	28	5305-01-370-6957	3	72
5340-00-857-6189	4	1	5305-01-370-7317	3	112
5310-00-934-9739	3	53	6020-01-370-8017	1	14
5970-01-088-0280	4	12	6020-01-370-8018	1	15
5305-01-090-6330	3	15	6020-01-370-8019	1	16
5920-01-092-6839	3	68	6020-01-370-8020	1	1
5975-01-125-5251	4	21	6020-01-370-8021	1	2
	6	18	6020-01-370-8022	1	3
	8	17	6020-01-370-8023	1	4
5305-01-164-5484	3	109	6020-01-370-8024	1	5
	4	6	6020-01-370-8025	1	6
	6	4	6020-01-370-8026	1	7
	8	8	5998-01-370-8149	2	6
	10	3	5998-01-370-8150	3	58
5975-01-205-3769	3	61	5998-01-370-8151	3	82
5340-01-223-7953	8	7	5998-01-370-8152	3	77
5305-01-235-9649	3	32	5998-01-370-8153	3	76
5980-01-238-7903	10	1	5998-01-370-8154	3	85
5340-01-247-7064	8	6	5998-01-370-8155	3	86
5340-01-269-0978	3	11	5998-01-370-8156	3	90
5306-01-296-7805	3	65	5998-01-370-8157	3	98
5975-01-296-9756	3	49	6005-01-370-8414	4	19
5325-01-315-6377	3	20	6060-01-370-8435	4	27
6150-01-327-7059	3	105	5355-01-370-8527	3	26
5305-01-339-8019	3	44	5995-01-370-8541	3	55
5305-01-341-9685	3	19	5995-01-370-8557	3	57
	6	9	5995-01-370-8558	3	79
5305-01-346-2285	4	4	5995-01-370-8559	3	89
	6	1	5995-01-370-8560	3	78

## CROSS-REFERENCE INDEXES

## NATIONAL STOCK NUMBER INDEX

STOCK NUMBER	FIG.	ITEM	STOCK NUMBER	FIG.	ITEM
5995-01-370-8561	3	51	5330-01-371-2343	3	40
5995-01-370-8562	6	2	5998-01-371-2527	3	87
5995-01-370-8586	3	6	5935-01-371-3125	10	2
5995-01-370-8587	6	6	5340-01-371-3160	6	24
5995-01-370-8588	4	8	5310-01-371-4065	6	11
	8	10	5310-01-371-4746	3	22
5340-01-370-8925	3	96	5950-01-371-4777	6	25
5340-01-370-8926	3	50	5998-01-371-4801	3	93
5340-01-370-8927	4	13	5998-01-371-4803	3	83
	6	13	5998-01-371-4804	3	52
	8	14	5998-01-371-4805	7	2
5340-01-370-8956	3	2	5998-01-371-4806	6	30
5340-01-371-0182	4	23	5998-01-371-4807	6	10
	6	16	5998-01-371-4808	6	12
	8	22	5998-01-371-4809	9	2
5355-01-371-0200	3	28	5998-01-371-4810	8	28
5355-01-371-0203	3	25	5998-01-371-4811	8	5
5355-01-371-0204	3	27	5998-01-371-4812	8	13
6160-01-371-0218	3	101	5998-01-371-4813	4	2
5995-01-371-0236	3	47	5998-01-371-4814	5	3
6140-01-371-0305	3	84	6625-01-371-4818	2	4
4140-01-371-0323	3	21	5935-01-371-5251	11	1
6130-01-371-0412	3	71	5935-01-371-5318	3	56
6130-01-371-0417	1	12	5935-01-371-5319	3	75
5999-01-371-0537	3	63	6032-01-371-6717	7	1
5999-01-371-0538	3	10	5998-01-371-6834	4	11
6033-01-371-0986	8	4	5340-01-371-7924	4	36
6033-01-371-0987	4	5		6	39
6032-01-371-0991	9	1		8	36
6032-01-371-0992	5	2	5995-01-371-8116	11	2
6005-01-371-1008	4	17	5975-01-371-8240	3	106
5998-01-371-1042	11	4	5975-01-371-8282	3	48
5998-01-371-1043	11	3	5975-01-371-8283	3	81
6625-01-371-1044	1	8	5975-01-371-8284	3	80
6625-01-371-1066	3	39	6625-01-372-2300	1	13
5310-01-371-1640	3	16	6150-01-372-3350	10	7
5310-01-371-1946	3	31	6032-01-372-4116	5	1
	4	10	5975-01-372-6685	3	67
	6	7	5305-01-376-9542	3	3
	8	12	5305-01-376-9619	4	15
5920-01-371-2070	3	69			
6033-01-371-2110	6	3			
6005-01-371-2195	6	21			
	8	19			
6060-01-371-2196	4	18			
	6	20			
	8	20			
6060-01-371-2292	6	28			
	8	26			
5330-01-371-2339	3	36			

## CROSS-REFERENCE INDEXES

## PART NUMBER INDEX

CAGEC	PART NUMBER	STOCK NUMBER	FIG.	ITEM
94222	E6-10-301-20	5340-01-269-0978	3	11
81349	F02B250V2A	5920-00-228-7882	10	5
81349	F03B125V30AS	5920-00-581-3856	10	9
71400	GDC-2A	5920-01-092-6839	3	68
71400	HTB-24I	5920-00-031-5181	10	4
51275	LPTF-1047	5935-01-371-5251	11	1
51275	LPTF-1048	5998-01-371-1042	11	4
51275	LPTF-1049	5998-01-371-1043	11	3
51275	LPTF-1055	5995-01-371-8116	11	2
51275	LPTF-1056		11	7
51275	LPTF-1107		11	5
51275	LPTF-1108		11	6
51275	LPTF-1109		11	8
51275	LPTF-1111		11	9
51275	LPTF-1112		11	10
96906	MS24667-1	5305-00-068-8429	3	46
			10	8
96906	MS35333-35	5310-00-579-5554	4	3
			6	31
			8	3
96906	MS35333-37	5310-00-579-0079	3	5
			4	7
			6	5
			8	9
96906	MS35489-140	5325-01-315-6377	3	20
96906	MS35649-242	5310-00-934-9739	3	53
96906	MS51957-15	5305-00-054-5649	3	30
			4	20
			6	17
			8	16
96906	MS51957-26	5305-00-054-6650	3	100
96906	MS551959-15	5305-00-770-2579	3	14
58361	MV5752	5980-01-238-7903	10	1
80205	NAS1829-3C11	5340-01-247-7064	8	6
97424	N97P9016-1	5305-01-341-9685	3	19
			6	9
51275	11185	5340-01-223-7953	8	7
51275	11244	6005-01-371-2195	6	21
			8	19
51275	11376	6033-01-371-2110	6	3
51275	11456	5975-01-371-8240	3	106
51275	11471	5975-01-125-5251	4	21
			6	18
			8	17
51275	11689	5975-01-371-8282	3	48
51275	11862		8	1
51275	11954	5355-01-371-0200	3	28
51275	11955	5355-01-371-0204	3	27
78189	1208	5310-00-193-7491	3	43
51275	13159	6032-01-371-6717	7	1
51275	13571		4	22

## PART NUMBER INDEX

CAGEC	PART NUMBER	STOCK NUMBER	FIG.	ITEM
51275	14251		3	13
51275	14407		3	41
51275	14472		4	35
			6	38
			8	35
51275	14473	5340-01-371-7924	4	36
			6	39
			8	36
51275	14590		3	9
51275	14602	6005-01-370-8414	4	19
51275	14603	6005-01-371-1008	4	17
51275	14860		4	16
51275	14906	5975-01-205-3769	3	61
51275	14941		4	31
			6	34
			8	31
51275	14942		4	38
			6	41
			8	38
51275	14948	6060-01-371-2196	4	18
			6	20
			8	20
51275	14970	6625-01-372-2300	1	13
51275	15159	6032-01-371-0991	9	1
51275	15210	6033-01-371-0987	4	5
51275	15337	5998-01-370-8150	3	58
51275	15341	5998-01-370-8153	3	76
51275	15376	5995-01-370-8557	3	57
51275	15379	5995-01-370-8559	3	89
51275	15494	5975-01-371-8283	3	81
51275	15562		3	33
51275	1557D	5355-01-370-8527	3	26
51275	15571	5355-01-371-0203	3	25
51275	15573		4	34
			6	37
			8	34
51275	15574		4	25
			6	15
			8	24
51275	15575		4	29
			6	32
			8	29
51275	15576		4	26
			6	27
			8	25
51275	15577		6	42
			8	39
51275	15578		6	29
			8	27
51275	15588	5995-01-370-8586	3	6
51275	15589	5998-01-370-8156	3	90

## CROSS-REFERENCE INDEXES

## PART NUMBER INDEX

CAGEC	PART NUMBER	STOCK NUMBER	FIG.	ITEM
51275	15593	5998-01-370-8157	3	98
51275	15704		3	66
51275	15709		3	7
51275	15772	6032-01-371-0992	5	2
51275	15795	5950-01-371-4777	6	25
51275	15840	5998-01-370-8155	3	86
51275	15867	5340-01-371-3160	6	24
51275	15890		3	107
51275	15895		3	110
51275	15896		3	111
51275	15920		3	17
51275	15953		3	24
51275	15954	5330-01-371-2339	3	36
51275	16183	6032-01-372-4116	5	1
51275	16328		3	59
16428	17507	6150-01-327-7059	3	105
51275	20067	5998-01-371-4807	6	10
51275	20078	5995-01-370-8562	6	2
51275	20081	5995-01-370-8587	6	6
51275	20106	5330-01-371-2343	3	40
51275	20133		3	73
51275	20230		6	22
			8	21
51275	20231		6	19
			8	18
51275	20380	6033-01-371-0986	8	4
51275	20629	5995-01-370-8588	4	8
			8	10
51275	20676	5305-01-370-6957	3	72
51275	20742	4140-01-371-0323	3	21
51275	20743	5930-01-370-6420	3	23
00779	207952-1	5306-01-296-7805	3	65
51275	20877	5998-01-371-2527	3	87
51275	20941	5975-01-371-8284	3	80
51275	21087	5998-01-371-4803	3	83
51275	21090	5998-01-371-4804	3	52
51275	21096		3	18
51275	21124		3	8
51275	21128		3	38
51275	21174	5998-01-370-8149	2	6
51275	21175	5995-01-370-8561	3	51
51275	21177	5998-01-370-8154	3	85
51275	21178	5998-01-371-4801	3	93
51275	21179	6625-01-371-4818	2	4
51275	21180	6625-01-371-1044	1	8
51275	21188		1	9
51275	21189		1	11
51275	21278		8	40
51275	21305	6030-01-364-8143	2	1
51275	21307	5998-01-371-4808	6	12
51275	21309	5998-01-371-4806	6	30

## PART NUMBER INDEX

CAGEC	PART NUMBER	STOCK NUMBER	FIG.	ITEM
51275	21311	5998-01-364-8859	6	14
51275	21312	5998-01-371-4805	7	2
51275	21332	6030-01-364-3839	2	2
51275	21334	5998-01-371-4812	8	13
51275	21336	5998-01-371-4810	8	28
51275	21338	5998-01-365-5671	8	15
51275	21339	5998-01-371-4809	9	2
51275	21346	5998-01-371-4811	8	5
51275	21747	5998-01-370-8151	3	82
51275	21778		3	113
51275	21996		4	39
51275	22128	5998-01-370-8152	3	77
51275	22129	5995-01-370-8560	3	78
51275	22130	5995-01-370-8558	3	79
51275	22206		4	24
			6	26
			8	23
51275	22291	5960-01-370-6267	3	42
51275	22303	5340-01-370-8956	3	2
51275	22348	6130-01-371-0417	1	12
51275	22353	6060-01-371-2292	6	28
			8	26
51275	22354	6060-01-370-8435	4	27
51275	22468		6	36
51275	22469		8	33
51275	22487	5998-01-371-4813	4	2
51275	22489	6625-01-371-1066	3	39
51275	22512	6130-01-371-0412	3	71
51275	22548	6030-01-365-5680	2	3
51275	22549		4	33
51275	22550	5998-01-364-8860	4	14
51275	22551	5998-01-371-4814	5	3
51275	22553	5998-01-371-6834	4	11
51275	22572		3	35
51275	22576	5995-01-370-8541	3	55
51275	22582	5920-01-371-2070	3	69
51275	22711-22358	6020-01-370-8022	1	3
51275	22711-22359	6020-01-370-8021	1	2
51275	22711-22360	6020-01-370-8020	1	1
51275	22711-22361	6020-01-370-8024	1	5
51275	22711-22362	6020-01-370-8023	1	4
51275	22711-22363	6020-01-370-8026	1	7
51275	22711-22364	6020-01-370-8025	1	6
51275	22711-22365	6020-01-370-8017	1	14
51275	22711-22366	6020-01-370-8019	1	16
51275	22711-22367	6020-01-370-8018	1	15
51275	22712		2	5
51275	22713		4	32
			6	35
			8	32
51275	22925	5305-01-370-7317	3	112

## CROSS-REFERENCE INDEXES

## PART NUMBER INDEX

CAGEC	PART NUMBER	STOCK NUMBER	FIG.	ITEM
51275	22939		1	10
51275	22940-13646	5935-01-371-5318	3	56
51275	22940-13647	5340-01-370-8926	3	50
51275	22940-15351	5935-01-371-5319	3	75
51275	22940-15619	5340-01-370-8927	4	13
			6	13
			8	14
51275	22940-15705	5340-01-370-8925	3	96
51275	22957-11658	5340-01-371-0182	4	23
			6	16
			8	22
51275	22967-11599	5310-01-371-1946	3	31
			4	10
			6	7
			8	12
51275	22968-12345	5310-01-371-1640	3	16
51275	22970-14312	5975-01-296-9756	3	49
51275	22970-14313	5975-01-372-6685	3	67
51275	22971-15968		3	88
51275	22981	5305-01-376-9619	4	15
51275	22987-12231		3	37
51275	22987-12235		3	29
51275	22988	5305-01-376-9542	3	3
51275	22988-12276		3	12
51275	22989-12237		4	37
			6	40
			8	37
51275	23016	6135-00-835-7216	3	102
51275	23018		3	70
51275	23026-22422		3	1
51275	23110-14263	5310-01-371-4746	3	22
51275	23111-12404		3	94
51275	23111-15433	5310-01-371-4065	6	11
51275	23283		3	34
51275	23284		3	64
51275	23285		3	99
51275	23286		3	95
51275	23289		3	104
51275	23346	6140-01-371-0305	3	84
51275	23347	6160-01-371-0218	3	101
51275	23355		3	54
51275	23356		3	45
51275	23357		3	60
51275	23358		3	103
51275	23362	5999-01-371-0538	3	10
51275	23371	5999-01-371-0537	3	63
51275	23447		3	92
51275	23461		3	108
51275	23968	5930-01-370-6423	10	6
51275	23969	5935-01-371-3125	10	2
51275	23970	6150-01-372-3350	10	7



## PART NUMBER INDEX

CAGEC	PART NUMBER	STOCK NUMBER	FIG.	ITEM
35012	30-295-401-46	5305-01-360-2461	3	91
70318	3157139 02	5305-01-346-2285	4	4
			6	1
			8	2
82340	4248-7-43G	5305-01-339-8019	3	44
78189	501-250800-00	5310-00-696-5173	3	74
0SUV4	6-10-3	5995-01-371-0236	3	47
01121	628210-04	5305-01-364-8019	4	9
			6	8
			8	11
74445	64002	5305-01-090-6330	3	15
74445	64008	5305-01-235-9649	3	32
01121	714168-04	5305-01-364-8035	3	62
			4	30
			6	33
			8	30
82340	75500-56	5305-01-366-3042	3	97
13103	7721-7PPS	5970-01-088-0280	4	12
39428	90272A146	5305-01-164-5484	3	109
			4	6
			6	4
			8	8
			10	3
39428	91773A148	5305-01-351-5131	3	4
			6	23
06540	9724-SS-0440-7	5340-00-857-6175	4	28
06540	9732-SS-0440	5340-00-857-6189	4	1

## CROSS-REFERENCE INDEXES

FIGURE AND ITEM NUMBER INDEX				
FIG.	ITEM	STOCK NUMBER	CAGEC	PART NUMBER
1	1	6020-01-370-8020	51275	22711-22360
1	2	6020-01-370-8021	51275	22711-22359
1	3	6020-01-370-8022	51275	22711-22358
1	4	6020-01-370-8023	51275	22711-22362
1	5	6020-01-370-8024	51275	22711-22361
1	6	6020-01-370-8025	51275	22711-22364
1	7	6020-01-370-8026	51275	22711-22363
1	8	6625-01-371-1044	51275	21180
1	9		51275	21188
1	10		51275	22939
1	11		51275	21189
1	12	6130-01-371-0417	51275	22348
1	13	6625-01-372-2300	51275	14970
1	14	6020-01-370-8017	51275	22711-22365
1	15	6020-01-370-8018	51275	22711-22367
1	16	6020-01-370-8019	51275	22711-22366
2	1	6030-01-364-8143	51275	21305
2	2	6030-01-364-3839	51275	21332
2	3	6030-01-365-5680	51275	22548
2	4	6625-01-371-4818	51275	21179
2	5		51275	22712
2	6	5998-01-370-8149	51275	21174
3	1		51275	23026-22422
3	2	5340-01-370-8956	51275	22303
3	3	5305-01-376-9542	51275	22988
3	4	5305-01-351-5131	39428	91773A148
3	5	5310-00-579-0079	96906	M535333-37
3	6	5995-01-370-8586	51275	15588
3	7		51275	15709
3	8		51275	21124
3	9		51275	14590
3	10	5999-01-371-0538	51275	23362
3	11	5340-01-269-0978	94222	E6-10-301-20
3	12		51275	22988-12276
3	13		51275	14251
3	14	5305-00-770-2579	96906	MS51959-15
3	15	5305-01-090-6330	74445	64002
3	16	5310-01-371-1640	51275	22968-12345
3	17		51275	15920
3	18		51275	21096
3	19	5305-01-341-9685	97424	N97P9016-1
3	20	5325-01-315-6377	96906	MS35489-140
3	21	4140-01-371-0323	51275	20742
3	22	5310-01-371-4746	51275	23110-14263
3	23	5930-01-370-6420	51275	20743
3	24		51275	15953
3	25	5355-01-371-0203	51275	15571
3	26	5355-01-370-8527	51275	15570
3	27	5355-01-371-0204	51275	11955
3	28	5355-01-371-0200	51275	11954
3	29		51275	22987-12235

## CROSS-REFERENCE INDEXES

FIGURE AND ITEM NUMBER INDEX				
FIG.	ITEM	STOCK NUMBER	CAGEC	PART NUMBER
3	30	5305-00-054-5649	96906	MS51957-15
3	31	5310-01-371-1946	51275	22967-11599
3	32	5305-01-235-9649	74445	64008
3	33		51275	15562
3	34		51275	23283
3	35		51275	22572
3	36	5330-01-371-2339	51275	15954
3	37		51275	22987-12231
3	38		51275	21128
3	39	6625-01-371-1066	51275	22489
3	40	5330-01-371-2343	51275	20106
3	41		51275	14407
3	42	5960-01-370-6267	51275	22291
3	43	5310-00-193-7491	78189	1208
3	44	5305-01-339-8019	82340	4248-7-43G
3	45		51275	23356
3	46	5305-00-068-8429	96906	MS24667-1
3	47	5995-01-371-0236	OSUV4	6-10-3
3	48	5975-01-371-8282	51275	11689
3	49	5975-01-296-9756	51275	22970-14312
3	50	5340-01-370-8926	51275	22940-13647
3	51	5995-01-370-8561	51275	21175
3	52	5998-01-371-4804	51275	21090
3	53	5310-00-934-9739	96906	MS35649-242
3	54		51275	23355
3	55	5995-01-370-8541	51275	22576
3	56	5935-01-371-5318	51275	22940-13646
3	57	5995-01-370-8557	51275	15376
3	58	5998-01-370-8150	51275	15337
3	59		51275	16328
3	60		51275	23357
3	61	5975-01-205-3769	51275	14906
3	62	5305-01-364-8035	01121	714168-04
3	63	5999-01-371-0537	51275	23371
3	64		51275	23284
3	65	5306-01-296-7805	00779	207952-1
3	66		51275	15704
3	67	5975-01-372-6685	51275	22970-14313
3	68	5920-01-092-6839	71400	GDC-2A
3	69	5920-01-371-2070	51275	22582
3	70		51275	23018
3	71	6130-01-371-0412	51275	22512
3	72	5305-01-370-6957	51275	20676
3	73		51275	20133
3	74	5310-00-696-5173	78189	501-250800-00
3	75	5935-01-371-5319	51275	22940-15351
3	76	5998-01-370-8153	51275	15341
3	77	5998-01-370-8152	51275	22128
3	78	5995-01-370-8560	51275	22129
3	79	5995-01-370-8558	51275	22130
3	80	5975-01-371-8284	51275	20941

## CROSS-REFERENCE INDEXES

FIG.	ITEM	FIGURE AND ITEM NUMBER INDEX		PART NUMBER
		STOCK NUMBER	CAGEC	
3	81	5975-01-371-8283	51275	15494
3	82	5998-01-370-8151	51275	21747
3	83	5998-01-371-4803	51275	21087
3	84	6140-01-371-0305	51275	23346
3	85	5998-01-370-8154	51275	21177
3	86	5998-01-370-8155	51275	15840
3	87	5998-01-371-2527	51275	20877
3	88		51275	22971-15968
3	89	5995-01-370-8559	51275	15379
3	90	5998-01-370-8156	51275	15589
3	91	5305-01-360-2461	35012	30-295-401-46
3	92		51275	23447
3	93	5998-01-371-4801	51275	21178
3	94		51275	23111-12404
3	95		51275	23286
3	96	5340-01-370-8925	51275	22940-15705
3	97	5305-01-366-3042	82340	75500-56
3	98	5998-01-370-8157	51275	15593
3	99		51275	23285
3	100	5305-00-054-6650	96906	M551957-26
3	101	6160-01-371-0218	51275	23347
3	102	6135-00-835-7216	51275	23016
3	103		51275	23358
3	104		51275	23289
3	105	6150-01-327-7059	16428	17507
3	106	5975-01-371-8240	51275	11456
3	107		51275	15890
3	108		51275	23461
3	109	5305-01-164-5484	39428	90272A146
3	110		51275	15895
3	111		51275	15896
3	112	5305-01-370-7317	51275	22925
3	113		51275	21778
4	1	5340-00-857-6189	06540	9732-SS-0440
4	2	5998-01-371-4813	51275	22487
4	3	5310-00-579-5554	96906	MS35333-35
4	4	5305-01-346-2285	70318	3157139 02
4	5	6033-01-371-0987	51275	15210
4	6	5305-01-164-5484	39428	90272A146
4	7	5310-00-579-0079	96906	MS35333-37
4	8	5995-01-370-8588	51275	20629
4	9	5305-01-364-8019	01121	628210-04
4	10	5310-01-371-1946	51275	22967-11599
4	11	5998-01-371-6834	51275	22553
4	12	5970-01-088-0280	13103	7721-7PPS
4	13	5340-01-370-8927	51275	22940-15619
4	14	5998-01-364-8860	51275	22550
4	15	5305-01-376-9619	51275	22981
4	16		51275	14860
4	17	6005-01-371-1008	51275	14603
4	18	6060-01-371-2196	51275	14948

## CROSS-REFERENCE INDEXES

FIG.	ITEM	FIGURE AND ITEM NUMBER INDEX		PART NUMBER
		STOCK NUMBER	CAGEC	
4	19	6005-01-370-8414	51275	14602
4	20	5305-00-054-5649	96906	MS51957-15
4	21	5975-01-125-5251	51275	11471
4	22		51275	13571
4	23	5340-01-371-0182	51275	22957-11658
4	24		51275	22206
4	25		51275	15574
4	26		51275	15576
4	27	6060-01-370-8435	51275	22354
4	28	5340-00-857-6175	06540	9724-55S-0440-7
4	29		51275	15575
4	30	5305-01-364-8035	01121	714168-04
4	31		51275	14941
4	32		51275	22713
4	33		51275	22549
4	34		51275	15573
4	35		51275	14472
4	36	5340-01-371-7924	51275	14473
4	37		51275	22989-12237
4	38		51275	14942
4	39		51275	21996
5	1	6032-01-372-4116	51275	16183
5	2	6032-01-371-0992	51275	15772
5	3	5998-01-371-4814	51275	22551
6	1	5305-01-346-2285	70318	3157139 02
6	2	5995-01-370-8562	51275	20078
6	3	6033-01-371-2110	51275	11376
6	4	5305-01-164-5484	39428	90272A146
6	5	5310-00-579-0079	96906	MS35333-37
6	6	5995-01-370-8587	51275	20081
6	7	5310-01-371-1946	51275	22967-11599
6	8	5305-01-364-8019	01121	628210-04
6	9	5305-01-341-9685	97424	N97P9016-1
6	10	5998-01-371-4807	51275	20067
6	11	5310-01-371-4065	51275	23111-15433
6	12	5998-01-371-4808	51275	21307
6	13	5340-01-370-8927	51275	22940-15619
6	14	5998-01-364-8859	51275	21311
6	15		51275	15574
6	16	5340-01-371-0182	51275	22957-11658
6	17	5305-00-054-5649	96906	MS51957-15
6	18	5975-01-125-5251	51275	11471
6	19		51275	20231
6	20	6060-01-371-2196	51275	14948
6	21	6005-01-371-2195	51275	11244
6	22		51275	20230
6	23	5305-01-351-5131	39428	91773A148
6	24	5340-01-371-3160	51275	15867
6	25	5950-01-371-4777	51275	15795
6	26		51275	22206
6	27		51275	15576

## CROSS-REFERENCE INDEXES

FIG.	ITEM	FIGURE AND ITEM NUMBER INDEX		PART NUMBER
		STOCK NUMBER	CAGEC	
6	28	6060-01-371-2292	51275	22353
6	29		51275	15578
6	30	5998-01-371-4806	51275	21309
6	31	5310-00-579-5554	96906	MS35333-35
6	32		51275	15575
6	33	5305-01-364-8035	01121	714168-04
6	34		51275	14941
6	35		51275	22713
6	36		51275	22468
6	37		51275	15573
6	38		51275	14472
6	39	5340-01-371-7924	51275	14473
6	40		51275	22989-12237
6	41		51275	14942
6	42		51275	15577
7	1	6032-01-371-6717	51275	13159
7	2	5998-01-371-4805	51275	21312
8	1		51275	11862
8	2	5305-01-346-2285	70318	3157139 02
8	3	5310-00-579-5554	96906	MS35333-35
8	4	6033-01-371-0986	51275	20380
8	5	5998-01-371-4811	51275	21346
8	6	5340-01-247-7064	80205	NA51829-3C11
8	7	5340-01-223-7953	51275	11185
8	8	5305-01-164-5484	39428	90272A146
8	9	5310-00-579-0079	96906	MS35333-37
8	10	5995-01-370-8588	51275	20629
8	11	5305-01-364-8019	01121	628210-04
8	12	5310-01-371-1946	51275	22967-11599
8	13	5998-01-371-4812	51275	21334
8	14	5340-01-370-8927	51275	22940-15619
8	15	5998-01-365-5671	51275	21338
8	16	5305-00-054-5649	96906	MS51957-15
8	17	5975-01-125-5251	51275	11471
8	18		51275	20231
8	19	6005-01-371-2195	51275	11244
8	20	6060-01-371-2196	51275	14948
8	21		51275	20230
8	22	5340-01-371-0182	51275	22957-11658
8	23		51275	22206
8	24		51275	15574
8	25		51275	15576
8	26	6060-01-371-2292	51275	22353
8	27		51275	15578
8	28	5998-01-371-4810	51275	21336
8	29		51275	15575
8	30	5305-01-364-8035	01121	714168-04
8	31		51275	14941
8	32		51275	22713
8	33		51275	22469
8	34		51275	15573

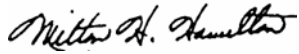
## CROSS-REFERENCE INDEXES

FIG.	ITEM	FIGURE AND ITEM NUMBER INDEX		PART NUMBER
		STOCK NUMBER	CAGEC	
8	35		51275	14472
8	36	5340-01-371-7924	51275	14473
8	37		51275	22989-12237
8	38		51275	14942
8	39		51275	15577
8	40		51275	21278
9	1	6032-01-371-0991	51275	15159
9	2	5998-01-371-4809	51275	21339
10	1	5980-01-238-7903	58361	MV5752
10	2	5935-01-371-3125	51275	23969
10	3	5305-01-164-5484	39428	90272A146
10	4	5920-00-031-5181	71400	HTB-24I
10	5	5920-00-228-7882	81349	F02B250V2A
10	6	5930-01-370-6423	51275	23968
10	7	6150-01-372-3350	51275	23970
10	8	5305-00-068-8429	96906	MS24667-1
10	9	5920-00-581-3856	81349	F03B125V30AS
11	1	5935-01-371-5251	51275	LPTF-1047
11	2	5995-01-371-8116	51275	LPTF-1055
11	3	5998-01-371-1043	51275	LPTF-1049
11	4	5998-01-371-1042	51275	LPTF-1048
11	5		51275	LPTF-1107
11	6		51275	LPTF-1108
11	7		51275	LPTF-1056
11	8		51275	LPTF-1109
11	9		51275	LPTF-1111
11	10		51275	LPTF-1112

By Order of the Secretary of the Army:

**GORDON R. SULLIVAN**  
*General, United States Army*  
*Chief of Staff*

Official:



**MILTON H. HAMILTON**  
*Administrative Assistant to the*  
*Secretary of the Army*  
05036

**DISTRIBUTION:**

To be distributed in accordance with DA Form 12-36-E, block 9525, Requirements for TM 11-6625-3271-24P.

\*U.S. GOVERNMENT PRINTING OFFICE: 1993 - 710-084/80318



RECOMMENDED CHANGES TO EQUIPMENT TECHNICAL PUBLICATIONS



THEN... JOT DOWN THE DOPE ABOUT IT ON THIS FORM, CAREFULLY TEAR IT OUT, FOLD IT AND DROP IT IN THE MAIL!

SOMETHING WRONG WITH THIS PUBLICATION?

FROM: (PRINT YOUR UNIT'S COMPLETE ADDRESS)  
 Commander  
 Stateside Army Depot  
 ATTN: AMSTA-US  
 Stateside, N.J. 07703-5007

DATE SENT  
 10 July 1975

PUBLICATION NUMBER TM 11-5840-340-20P	PUBLICATION DATE 23 Jan 78	PUBLICATION TITLE Radar Set AN/PRC-76
--	-------------------------------	--

BE EXACT... PIN-POINT WHERE IT IS

PAGE NO	PARA-GRAPH	FIGURE NO	TABLE NO
33			
44		19	
45			

IN THIS SPACE TELL WHAT IS WRONG AND WHAT SHOULD BE DONE ABOUT IT:

For item 2, change the NSN to read: 5835-00-134-9186.  
Reason: Accuracy.

Identify the cover on the junction box (item no. 5).  
Reason: It is a separate item and is not called out on figure 19.

Add the cover of the junction box as an item in the listing for figure 19.  
Reason: Same as above

SAMPLE

S

PRINTED NAME, GRADE OR TITLE, AND TELEPHONE NUMBER  
 SSG I. M. DeSpirit of 999-1776

SIGN HERE

TEAR ALONG PERFORATED LINE

FILL IN YOUR  
UNIT'S ADDRESS

FOLD BACK

DEPARTMENT OF THE ARMY

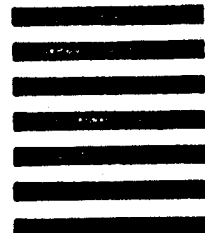
\_\_\_\_\_  
\_\_\_\_\_

OFFICIAL BUSINESS

**BUSINESS REPLY MAIL**



PLEASE AFFIX  
STAMP --  
POSTAGE  
REQUIRED



Commander  
US Army Communications-Electronics Command  
and Fort Monmouth  
ATTN: AMSEL-LC-LM-LT  
Fort Monmouth, New Jersey 07703-5007

**SAMPLE**



FOLD BACK

TEAR ALONG PERFORATED LINE

RECOMMENDED CHANGES TO EQUIPMENT TECHNICAL PUBLICATIONS



THEN...JOT DOWN THE DOPE ABOUT IT ON THIS FORM. CAREFULLY TEAR IT OUT. FOLD IT AND DROP IT IN THE MAIL.

**SOMETHING WRONG** WITH THIS PUBLICATION?

FROM: (PRINT YOUR UNIT'S COMPLETE ADDRESS)

DATE SENT

PUBLICATION NUMBER

PUBLICATION DATE

PUBLICATION TITLE

BE EXACT PIN-POINT WHERE IT IS

PAGE NO.	PARA-GRAPH	FIGURE NO.	TABLE NO.
----------	------------	------------	-----------

IN THIS SPACE TELL WHAT IS WRONG AND WHAT SHOULD BE DONE ABOUT IT:

TEAR ALONG PERFORATED LINE

PRINTED NAME GRADE OR TITLE AND TELEPHONE NUMBER

SIGN HERE

FILL IN YOUR  
UNIT'S ADDRESS

FOLD BACK

DEPARTMENT OF THE ARMY

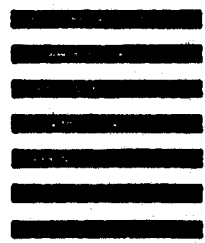
\_\_\_\_\_  
\_\_\_\_\_

OFFICIAL BUSINESS

**BUSINESS REPLY MAIL**



PLEASE AFFIX  
STAMP --  
POSTAGE  
REQUIRED



Commander  
US Army Communications-Electronics Command  
and Fort Monmouth  
ATTN: AMSEL-LC-LM-LT  
Fort Monmouth, New Jersey 07703-5007

TEAR ALONG PERFORATED LINE



FOLD BACK

