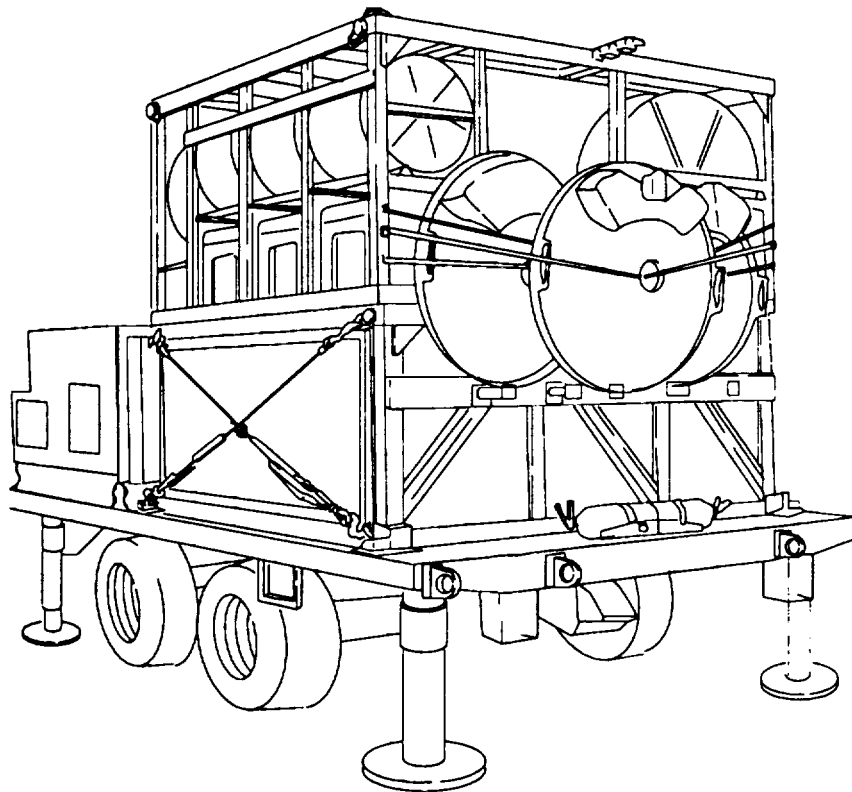


**Technical Manual
UNIT AND DIRECT SUPPORT MAINTENANCE
REPAIR PARTS AND SPECIAL TOOLS LIST**



**ANTENNA SUPPORT GROUP
OE-481/TRC
(NSN 5985-01-333-9688) (EIC: N/A)**

Distribution is authorized to Department of Defense and DOD contractors only for official use or for administration or operational purposes. This determination was made on 1 August, 1991. Other requests for this document will be referred to Commander, US Army Communications-Electronics Command and Fort Monmouth, ATTN; AMSEL-LC-LM-LT, Fort Monmouth, NJ 07703-5007.
DESTRUCTION NOTICE - Destroy by any method that will prevent disclosure of contents or reconstruction of the document.

**UNIT AND DIRECT SUPPORT MAINTENANCE
REPAIR PARTS AND SPECIAL TOOLS LIST
FOR
ANTENNA SUPPORT GROUP OE-481/TRC
(NSN 5985-01-333-9688) (EIC: N/A)**

Current as of 15 May 1993

REPORTING ERRORS AND RECOMMENDING IMPROVEMENTS

You can help improve this manual. If you find any mistakes or if you know of a way to improve the procedures, please let us know. Mail your letter, DA Form 2028 (Recommended Changes to Publications and Blank Forms) or DA Form 2028-2 located in back of this manual direct to: Commander, U.S. Army Communications-Electronics Command and Fort Monmouth, ATTN: AMSEL-LC-LM-LT, Fort Monmouth, New Jersey 07703-5007. A reply will be furnished to you.

TABLE OF CONTENTS

	Page	Illus/ Figure
Section I. INTRODUCTION	1	
Section II. REPAIR PARTS LIST	1-1	
Group 00 Antenna Support Group.....	1-1	1
Group 01 Pallet Assembly, Transport.....	2-1	2
0101 Pallet Section, Upper.....	3-1	3
0102 Pallet Section, Lower.....	4-1	4
0103 Davit Assembly.....	5-1	5
Group 02 Trailer Assembly	6-1	6
0201 Generator Set Diesel (See TM 5-6115-585-24P For Parts)		
0202 Switch Box Assembly.....	7-1	7
Section III SPECIAL TOOLS LIST		Not applicable
Section IV. CROSS-REFERENCE INDEXES	I-1	
National stock number index	I-1	
Part number index	I-3	
Figure and item number index.....	I-7	

**SECTION I
INTRODUCTION**

1. SCOPE

This RPSTL lists and authorizes spares and repair parts; special tools; special test, measurement, and diagnostic equipment (TMDE); and other special support equipment required for the performance of organizational and direct support maintenance of the Antenna Support Group. It authorizes the requisitioning, issue, and disposition of spares, repair parts and special tools as indicated by the source, maintenance, and recoverability (SMR) codes.

2. GENERAL

This Repair Parts and Special Tools List is divided into the following sections:

a. Section II. Repair Parts List. A list of spares and repair parts authorized by this RPSTL for use in the performance of maintenance. This list also includes parts which must be removed for replacement of the authorized parts. Parts lists are composed of functional groups in ascending item number sequence, with the parts in each group listed in ascending item number sequence. Figure numbers are listed directly beneath the group header. Bulk materials are listed in item name sequence. Repair part kits are listed separately in their own functional group within Section II. Repair parts for reparable special tools are also listed in this section. Items listed are shown on the associated illustration.

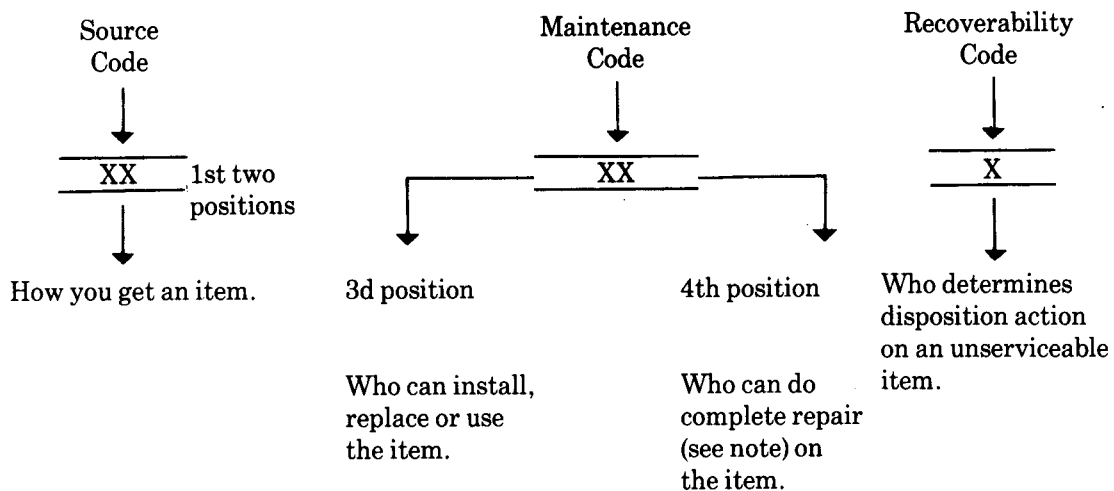
b. Section III. Special Tools List. A list of special tools, special TMDE, and other special support equipment authorized by this RPSTL as indicated by Basis of Issue (BOI) information in (column (5)) for the performance of maintenance.

c. Section IV Cross-Reference Indexes. A list, in National item identification number (NIIN) sequence, of all National stock numbered items appearing in the listing, followed by a list in alphameric sequence of all part numbers appearing in the listings. National stock numbers and part numbers are cross-referenced to each illustration figure and item number appearance. The figure number and item number index lists figure and item numbers in numeric sequence and cross-references National stock number, Commercial and Government Entity Code, and part numbers.

3. EXPLANATION OF COLUMNS (Section II and m)

a. Item No. (Column (1)). Indicates the number used to identify items called out in the illustrations.

b. SMR Code (Column (2)). The source, maintenance, and recoverability (SMR) code is a five-position code containing supply/requisitioning information, maintenance category authorization criteria and disposition instruction, as shown in the following breakout:



NOTE

Complete repair: Maintenance capacity, capability, and authority to perform all corrective maintenance tasks of the "repair" function in a use/user environment in order to restore serviceability to a failed item.

(1) Source code. The source code tells you how to get an item needed for maintenance, repair, or overhaul of an end item/equipment. Explanations of source codes follows:

Code Explanation

PA
PB
PC
PD
PE
PF
PG

Stocked items: use the applicable NSN to request/requisition items with these source codes. They are authorized to the level indicated tab by the code entered in the third position of the SMR code.

NOTE

Items coded PC are subject to deterioration.

KD
KF
KB

Items with these codes are not to be requested/ requisitioned individually. They are part of a kit which is authorized to the maintenance category indicated in the third position of the SMR code. The complete kit must be requisitioned and applied.

MO—Made at org/
AVUM category
MF—Made at DS/
AVUM category
MH—Made at GS
category
ML—Made at
Specialized
Repair Activity
(SRA)
MD—Made at Depot

Items with these codes are not to be requested/requisitioned individually. They must be made from bulk material which is identified by the part number in the description and usable on code (UOC) column and listed in the Bulk Material group of the repair parts list. If the item is authorized to you by the position code of the SMR code, but the source code indicates it is made at a higher category, order the item from the higher category of maintenance.

AO—Assembled by
org/AVUM
category
AF—Assembled by
DS/AVUM
category
AH—Assembled by
GS category
AL—Assembled by
SRA
AD—Assembled by
Depot

Items with these codes are not to be requested/requisitioned individually. The parts that make up the assembled item must be requisitioned or fabricated and assembled at the category of maintenance indicated by the source code. If the third position code of the SMR code authorizes you to replace the item, but the source code indicates the item is assembled at a higher category order the item from the higher category of maintenance.

Code Explanation

- XA - Do not requisition an "XA" coded item. Order its next higher assembly.
- XB - If an "XB" item is not available from salvage, order it using the CAGEC and part number given.
- XC - Installation drawing, diagram, instruction sheet, field service drawing, that is identified by manufacturer's part number.
- XD - Item is not stocked. Order an "XD" coded item through normal supply channels using the CAGEC and part number given, if no NSN is available.

NOTE

Cannibalization or controlled exchange, when authorized, may be used as a source of supply for items with the above source codes, except for those source coded "XA" or those aircraft support items restricted by requirements of AR 750-1.

(2) Maintenance code. Maintenance codes tell you the category of maintenance authorized to USE and REPAIR support items. The maintenance codes are entered in the third and fourth positions of the SMR code as follows:

(a) The maintenance code entered in the third position tells you the lowest maintenance category authorized to remove, replace, and use an item. The maintenance code entered in the third position will indicate authorization to one of the following categories of maintenance.

Code	Application/Explanation
C -	Crew or operator maintenance done within organizational or aviation maintenance.
O -	Organizational or aviation unit category can remove, replace, and use the item.
F -	Direct support or aviation intermediate category can remove, replace, and use the item.
H -	General support category can remove, replace, and use the item.
L -	Specialized repair activity can remove, replace, and use the item.
D -	Depot category can remove, replace, and use the item.

(b) The maintenance code entered in the fourth position tells whether or not the item is to be repaired and identifies the lowest maintenance category with the capability to do complete repair (i.e., perform all authorized repair functions). This position will contain one of the following maintenance codes.

NOTE

Some limited repair may be done on the item at a lower category of maintenance, if authorized by the Maintenance Allocation Chart (MAC) and SMR codes.

Code	Explanation
O -	Organizational or aviation unit is the lowest category that can do complete repair of the item.
F -	Direct support or aviation intermediate is the lowest category that can do complete repairs of the item.
H -	General support is the lowest category that can do complete repair of the item.
L -	Specialized repair activity (designate the specialized repair activity) is the lowest category that can do complete repair of the item.
D -	Depot is the lowest category that can do complete repair of the item.
Z -	Nonreparable. No repair is authorized.
B -	No repair is authorized. (No parts or special tools are assigned for the maintenance of a "B" coded item.) However, the item may be reconditioned by adjusting, lubricating, etc., at the user category.

(3) Recoverability code. Recoverability codes are assigned to items to indicate the disposition action on unserviceable items. The recoverability code is entered in the fifth position of the SMR code as follows:

Recoverability

Code	Application/Explanation
Z -	Nonreparable item. When unserviceable, condemn and dispose of the item at the category of maintenance shown in the third position of SMR code.
O -	Reparable item. When uneconomically reparable, condemn and dispose of the item at organizational or aviation unit category.

Recoverability

Code

Application/Explanation

- F - Repairable item. When uneconomically repairable, condemn and dispose of the item at direct support or aviation intermediate category.
- H - Repairable item. When uneconomically repairable, condemn and dispose of the item at general support category.
- D - Repairable item. When beyond lower category repair capability, return to depot. Condemnation and disposal of item not authorized below depot category.
- L - Repairable item. Condemnation and disposal not authorized below specialized repair activity (SRA).
- A - Item requires special handling or condemnation procedures because of specific reasons (e.g., precious metal content, high dollar value, critical material, or hazardous material. Refer to appropriate manuals/directives for specific instructions.

c. CAGEC (Column (3)). The Commercial and Government Entity Code (CAGEC) is a 5digit numeric code which is used to identify the manufacturer, distributor, or Government agency, etc., that supplies the item.

d. Part Number (column (4)). Indicates the primary number used by the manufacturer (individual, company, firm, corporation, or Government activity), which controls the design and characteristics of the item by means of its engineering drawings, specifications, standards, and inspection requirements to identify an item or range of items.

NOTE

When you use an NSN to requisition an item, the item you receive may have a different part number from the part ordered.

e. Description and Usable on Code (UOC) (Column (5)). This column includes the following information.

(1) The Federal item name and, when required, a minimum description to identify the item.

(2) The physical security classification of the item is indicated by the parenthetical entry (insert applicable physical Security classification abbreviation, e.g., Phy Sec C (C) - Confidential, Phy Sec C I (S) - Secret, Phy Sec C (T) - Top Secret).

(3) Items that are included in kits and sets are listed below the name of the kit or set.

(4) Spare/repair parts that make up an assembled item are listed immediately following the assembled item line entry.

(5) Part numbers for bulk materials are referenced in this column in the line entry for the item to be manufactured/fabricated.

(6) When the item is not used with all serial numbers of the same model, the effective serial numbers are shown on the last line of the description (before UOC).

(7) Usable on code, when applicable (para 5).

(8) In the Special Tools section, the basis of issue (BOI) appears as the last line in the entry for each special tool, special TMDE, and other special support equipment. When density of equipments supported exceeds density spread indicated in the basis of issue, the total authorization is increased proportionately.

(9) The statement "END OF FIGURE" appears just below the last item description in Column (5) for a given figure in both section II and section III.

f. Qty (Column (6)). Indicates the quantity of the item used in the breakout shown on the illustration figure, which is prepared for a functional group, subfunctional group, or an assembly. A "V" appearing in this column in lieu of a quantity indicates that the quantity is variable and the quantity may vary from application to application.

4. EXPLANATION OF COLUMNS (Section IV)

a. National Stock Number (NSN) Index-

(1) Stock number column. This column lists the NSN by National item identification number (NIIN) sequence. The NIIN consists of the last nine digits of the NSN. When using this column to locate an item, ignore the first four digits of the NSN. When requisitioning items use the complete NSN (13 digits) sequence.

(2) Fig. column. This column lists the number of the figure where the item is identified/located. The illustrations are in numerical sequence in sections H and III.

(3) Item column. The item number identifies the item associated with the figure listed in the adjacent Fig. column. This item is also identified by the NSN listed on the same line.

b. Part Number Index. Part numbers in this index are listed by part number in ascending alphmeric sequence.

(1) CAGEC column. This column lists the Commercial and Government Entity Code (CAGEC).

(2) Part number column. This column indicates the part number assigned to the item.

(3) Stock number column. This column lists the National stock number for the associated part number and manufacturer identified in the part number and CAGEC columns to the left.

(4) Fig. column. This column lists the number of the figure where the item is identified/located in sections II and m.

(5) Item column. The item number is that number assigned to the item as it appears in the figure referenced in the adjacent figure number column.

c. Figure and Item Number Index.

(1) Fig. column. This column lists the number of the figure where the item is identified/located in sections II and III.

(2) Item column. The item number is that number assigned to the item as it appears in the figure referenced in the adjacent figure number column

(3) Stock number column. This column lists the National stock number for the item.

(4) CAGEC column. The Commercial and Government Entity Code (CAGEC) is a 5-digit numeric code used to identify the manufacturer, distributor, or Government agency, etc., that supplies the item.

(5) Part number column. Indicates the primary number used by the manufacturer (individual, firm, corporation, or Government activity), which controls the design and characteristics of the item by means of its engineering drawings, specifications, standards, and inspection requirements to identify an item or range of items.

5. SPECIAL INFORMATION

a. Usable on Code. Not applicable.

b. Fabrication Instructions. Bulk materials required to manufacture items are listed in the bulk material functional group of this RPSTL. Part numbers for bulk materials are also referenced in the description column of the line item entry for the item to be manufactured/fabricated.

c. Kits. Line item entries for repair part kits appear in a group in section II (refer to table of contents).

d. Index Numbers. Items which have the word BULK in the figure column will have an index number shown in the item number column. This index number is a cross-reference between the National Stock Number/Part Number Index and the bulk material list in section II.

e. Associated Publications. The publications listed below pertain to the Antenna Support Group.

<u>Publication</u>	<u>Short Title</u>
TM 11-5-6115-585-12/-34-24P	Generator
TM 5-6115-594-14&P	Power Plant AN/MHQ- 18
TM 9-2330-376-14&P	Trailer, Flatbed M 1061AI
TM 11-5820-864-12	Radio Repeater Set AN/TRC-174
TM 11-5820-865-12	Radio Terminal Set AN/TRC-173
TM 11-5820-926-12	Radio Repeater Set AN/TRC- 138A
TM 11-5820-931-12	Radio Terminal Set AN/TRC- 175

Publication

Short Title

TM 11-5820-1088-12
 TM 11-5820-1089-12
 TM 11-5820-1090-12
 TM 11-5820-1091-12
 TM 11-5985-392-13
 TM 11-5985-394-13/-23P

Radio Terminal Set AN/TRC-175A
 Radio Repeater Set AN/TRC-174A
 Radio Terminal Set AN/TRC-173A
 Radio Repeater Set AN/TRC-138B
 Antenna Support Group OE48 1/TRC
 Mast AB-1373[TRC

f Illustrations - Listing. Only those parts coded "C" or "O" in the third position of the SMR code are listed in the tabular listing; therefore, there may be a break in the item number sequence, figure number and page number. Only illustrations containing organizational or aviation unit authorized items appear in this RPSTL.

h. National Stock Numbers. National stock numbers (NSN's) that are missing from P source coded items have been applied for and will be added to this TM by future change/revision when they are entered in the Army Master Data File (AMDF). Until the NSN's are established and published, submit exception requisitions to: Commander, US Army Communications-Electronics Command and Fort Monmouth, ATTN: AMSEL-LC-MM, Fort Monmouth, NJ 07703-5007 for the part required to support your equipment.

6. HOW TO LOCATE REPAIR PARTS

a. When National stock number or part number is not known.

(1) First. Using the table of contents, determine the assembly group or subassembly group to which the item belongs. This is necessary since figures are prepared for assembly groups and subassembly groups, and listings are divided into the same groups.

(2) Second. Find the figure covering the assembly group or subassembly group to which the item belongs.

(3) Third. Identify the item on the figure and note the item number.

(4) Fourth. Refer to the Repair Parts Lists for the figure to find the part number for the item number noted on the figure.

(5) Fifth. Refer to the Part Number Index to find the NSN, if assigned.

b. When National stock number or part number is known.

(1) First. Using the index of National stock numbers and part numbers, find the pertinent National stock number or part number. The NSN index is in National item identification number (NIIN) sequence (para 4a(l)). The part numbers in the part number index are listed in ascending alphameric sequence (para 4b). Both indexes cross-reference you to the illustration figure and item number of the item you are looking for.

(2) Second. After finding the figure and item number, verify that the item is the one you're looking for, then locate the item number in the repair parts list for the figure.

7 ABBREVIATIONS

Not applicable.

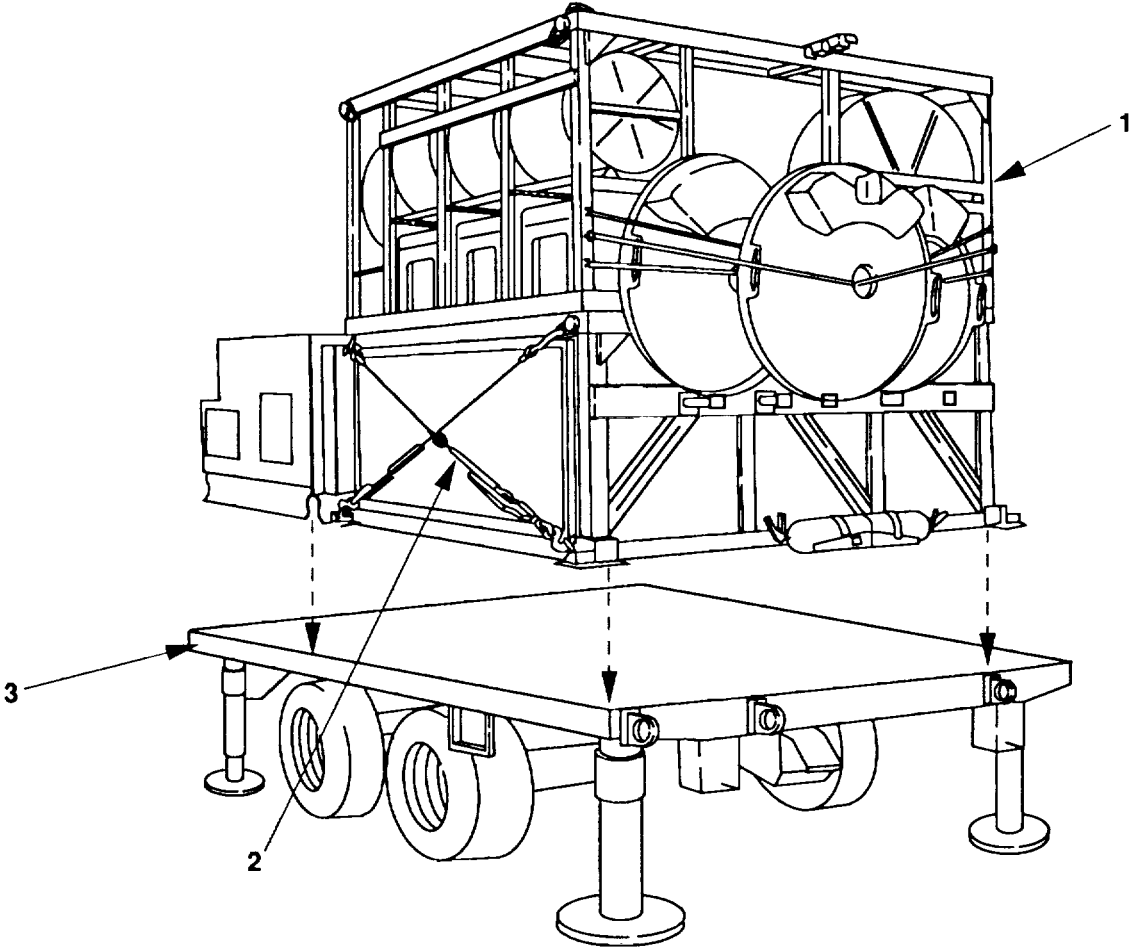


Figure 1. Antenna Support Group

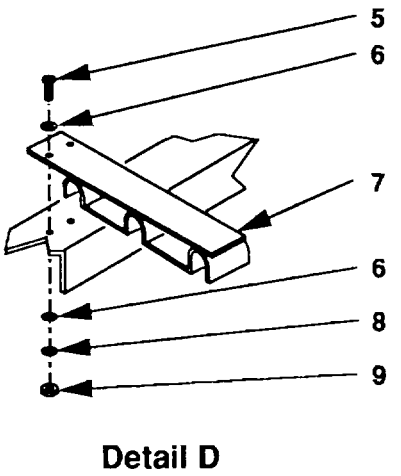
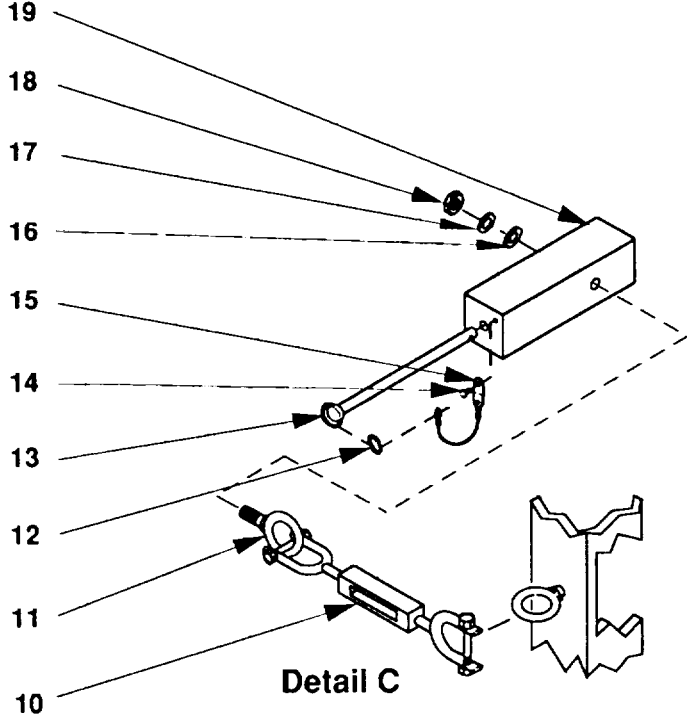
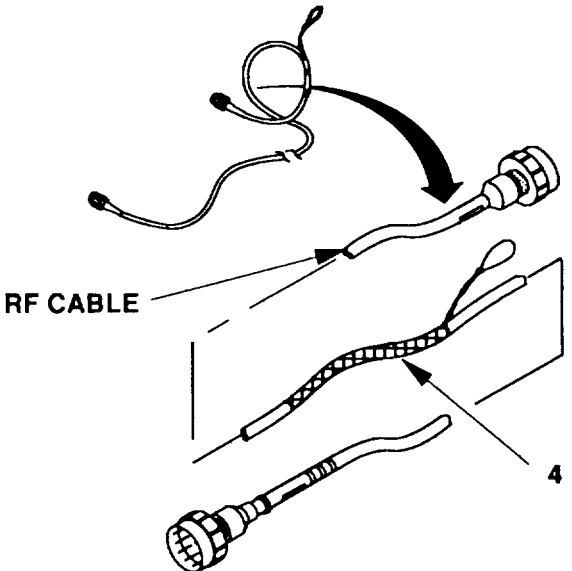
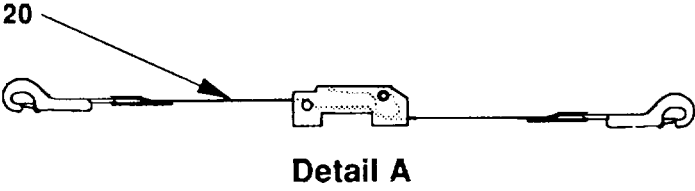
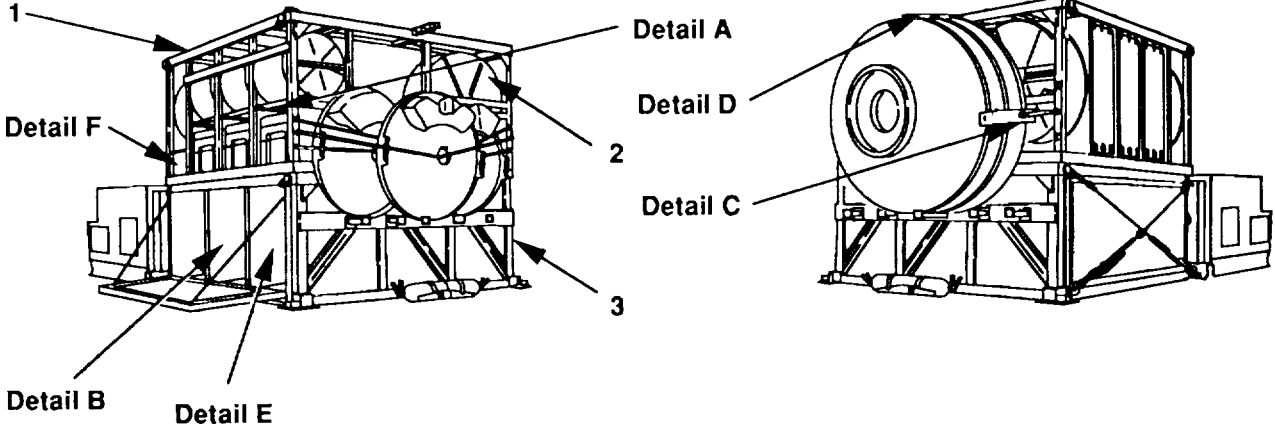
(1) ITEM NO	(2) SMR CODE	(3) CAGEC	(4) PART NUMBER	(5) DESCRIPTION AND USABLE ON CODES (UOC)	(6) QTY
-------------------	--------------------	--------------	-----------------------	--	------------

GROUP 00 ANTENNA SUPPORT GROUP

FIGURE 1

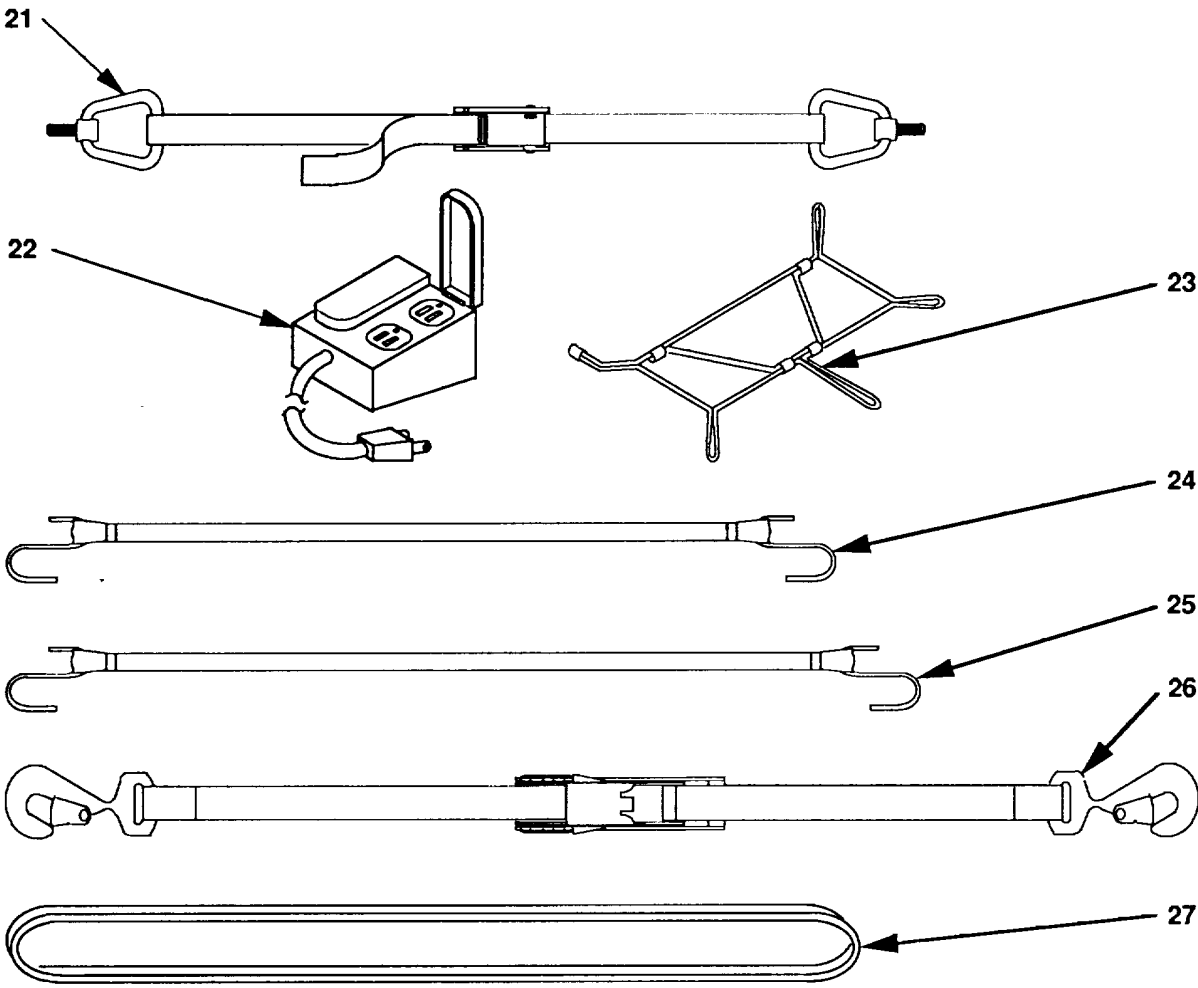
1	PEOFF	80063	A3156731-001 FOR	PALLET ASSY, TRANSP (SEE FIGURE 2..... DETAILS)	1
2	PAOZZ	80063	A3156761-004	TIE DOWN, CARGO, VEHI	4
3	XBOFF	80063	A3156771-001	TRAILER ASSEMBLY (SEE FIGURE 6 FOR..... DETAILS)	1

END OF FIGURE

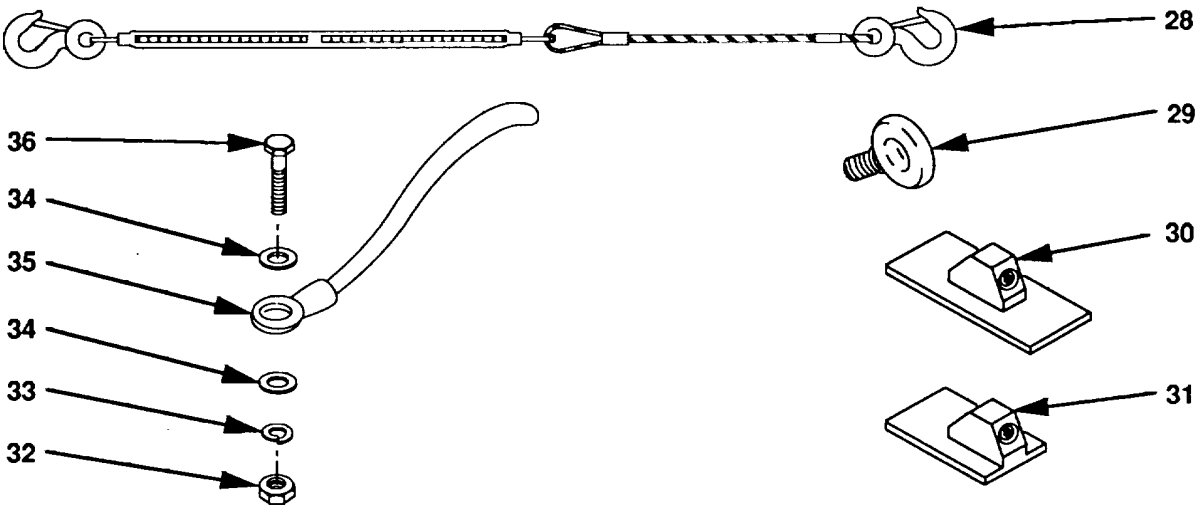


CE2KU002

Figure 2. Pallet Assembly, Transport (Sheet 1 of 3)



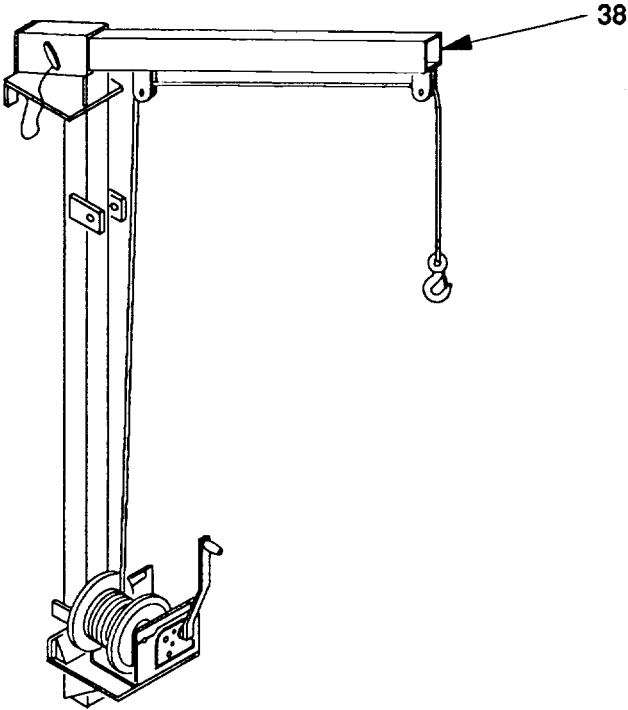
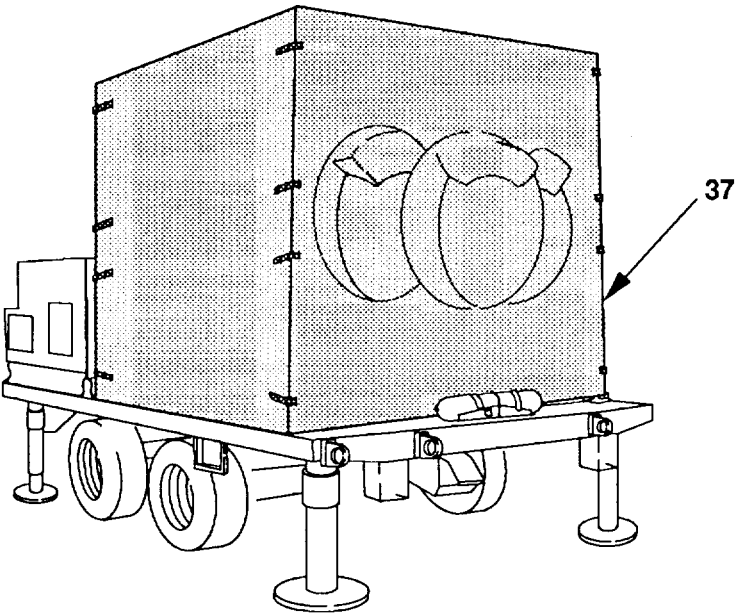
Detail E



Detail F

CE2KU003

Figure 2. Pallet Assembly, Transport (Sheet 2 of 3)

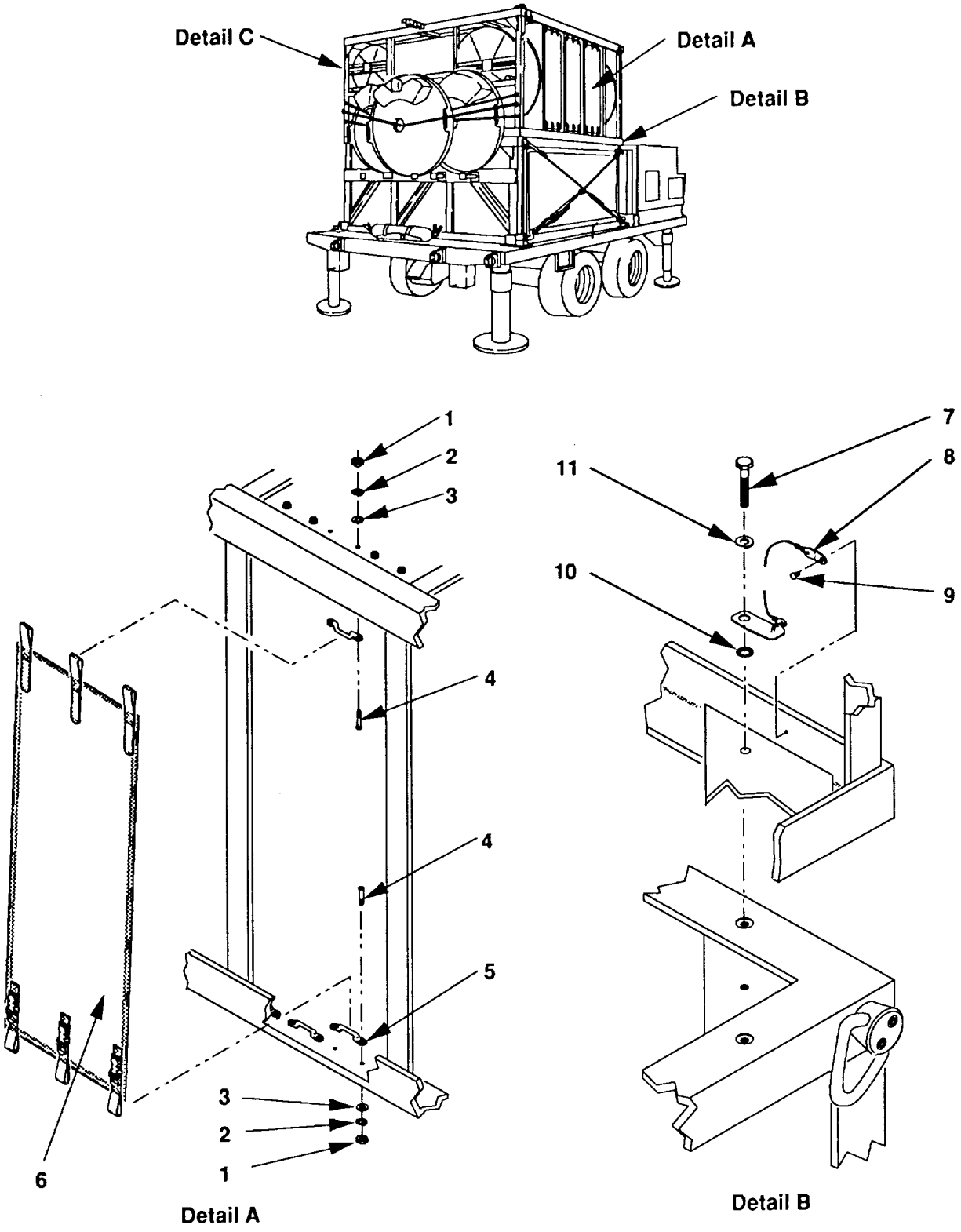


CE2KU004

Figure 2. Pallet Assembly, Transport (Sheet 3 of 3)

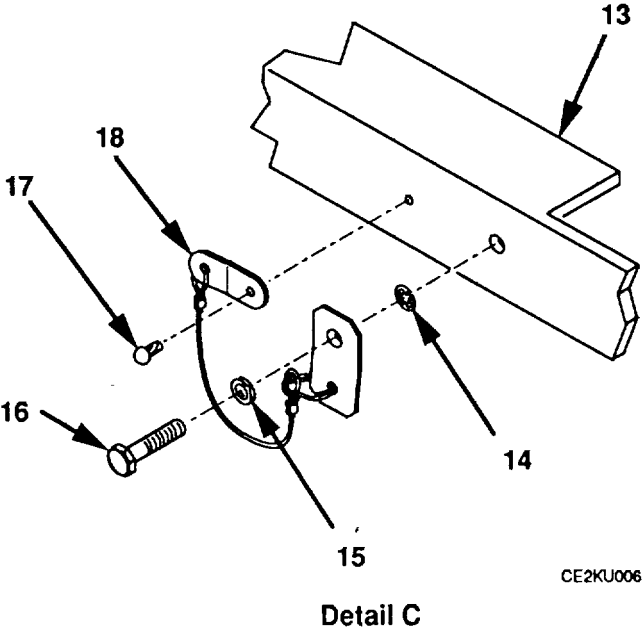
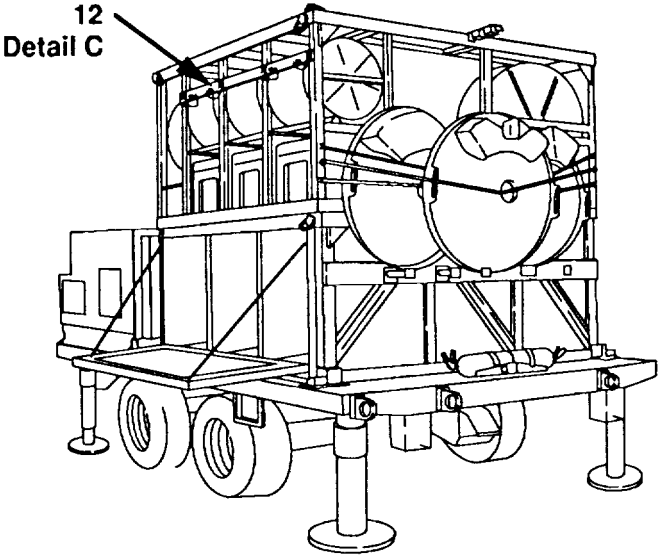
SECTION II					
(1)	(2)	(3)	(4)	(5)	(6)
ITEM NO	SMR CODE	CAGEC	PART NUMBER	DESCRIPTION AND USABLE ON CODES (UOC)	QTY
GROUP 01 PALLET ASSEMBLY, TRANSPORT					
FIGURE 2					
1	XBOFF	80063	A3156733-001	PALLET SECTION, UPPE (SEE FIGURE 3..... FOR DETAILS)	1
2	XBOZZ	80063	A3156728-001	REEL ASSEMBLY.....	2
3	XBOFF	80063	A3156732-001	PALLET SECTION, LOWE (SEE FIGURE 4..... FOR DETAILS).....	1
4	PAOZZ	80063	A3156777-001	GRIP, CABLE, WOVEN.....	3
5	PAOZZ	96906	MS90725-36	BOLT, MACHINE.....	2
6	PAOZZ	96906	MS15795-811	WASHER, FLAT.....	4
7	PAOZZ	80063	A3156759-001	SPACER, PLATE.....	1
8	PAOZZ	96906	MS35338-45	WASHER, LOCK.....	2
9	PAOZZ	96906	M535649-2312	NUT, PLAIN, HEXAGON.....	2
10	PAOZZ	96906	MS51562-2Z	TURNBUCKLE.....	2
11	PAOZZ	96906	M551937-3	BOLT, EYE.....	2
12	PAOZZ	80063	A3156784-001	RING, RETAINING.....	2
13	PAOZZ	96906	M5S17987C1090	PIN, QUICK RELEASE.....	2
14	PAOZZ	96906	M521318-46	SCREW, DRIVE.....	2
15	PAOZZ	80063	A3156794-002	WIRE ROPE ASSEMBLY.....	2
16	PAOZZ	96906	M535338-141	WASHER, LOCK.....	2
17	PAOZZ	96906	MS15795-814	WASHER, FLAT.....	4
18	PAOZZ	96906	M551967-8	NUT, PLAIN, HEXAGON.....	2
19	PAOZZ	80063	A3156787-001	BRACKET, MOUNTING.....	2
20	PAOZZ	80063	A3156757-002	TIE DOWN, CARGO VEHI.....	3
21	PAOZZ	80063	A3156757-003	TIE DOWN, CARGO, VEHI.....	3
22	PAOZZ	80063	A3156758-001	CORD ASSEMBLY, ELECT.....	1
23	PAOZZ	80063	A3156741-001	REEL, CABLE.....	6
24	PAOZZ	80063	A3156755-001	STRAP, RETAINING.....	8
25	PAOZZ	80063	A3156755-002	STRAP, RETAINING.....	8
26	PAOZZ	80063	A3156757-001	TIE DOWN, CARGO, VEHI.....	1
27	PAOZZ	80063	A3156757-004	TIE DOWN, CARGO, VEHI.....	1
28	PAOZZ	80063	A3156761-002	TIE DOWN, CARGO, VEHI.....	4
29	XBOZZ	80063	SC-B-595075	EYEBOLT.....	6
30	XBOZZ	80063	SC-D-595074	PLATE.....	2
31	XBOZZ	80063	A3156788-001	PLATE.....	2
32	PAOZZ	96906	MS16203-29	NUT, PLAIN, HEXAGON.....	1
33	PAOZZ	96906	M535338-105	WASHER, LOCK.....	1
34	PAOZZ	88044	AN961-8165	WASHER, FLAT.....	2
35	PAOZZ	80063	A3156789-001	CABLE ASSEMBLY, SPEC.....	1
36	PAOZZ	96906	M535309-418	SCREW, CAP, HEXAGON H.....	1
37	PAOZZ	80063	A3156745-001	TARPAULIN.....	1
38	XBOOO	80063	A3156797-001	DAVIT ASSEMBLY (SEE FIGURE 5 FOR..... DETAILS)	1

END OF FIGURE



CE2KU005

Figure 3. Pallet Section, Upper (Sheet 1 of 2)



CE2KU006

Figure 3. Pallet Section, Upper (Sheet 2 of 2)

(1) ITEM NO	(2) SMR CODE	(3) CAGEC	(4) PART NUMBER	(5) DESCRIPTION AND USABLE ON CODES (UOC)	(6) QTY
GROUP 0101 PALLET SECTION, UPPER					
FIGURE 3					
1	PAOZZ	96906	MS35650-304	NUT, PLAIN, HEXAGON	36
2	PAOZZ	96906	MS35338-138	WASHER, LOCK.....	36
3	PAOZZ	03640	6301812	WASHER, FLAT.....	36
4	PAOZZ	96906	MS51960-67	SCREW, MACHINE	36
5	PAOZZ	19220	6411E	LOOP, STRAP FASTNER	18
6	PAOZZ	80063	A3156796-001	TARPAULIN	3
7	PAOZZ	96906	MS90728-117	SCREW, CAP, HEXAGON H.....	8
8	PAOZZ	80063	A3156770-001	WIRE ROPE ASSEMBLY	8
9	PAOZZ	96906	MS21318-46.	SCREW, DRIVE	8
10	PAOZZ	80063	A3156769-002	RING, RETAINING.....	8
11	PAOZZ	96906	MS35338-143	WASHER, LOCK.....	8
12	XBOOO	80063	A3156774-001	BRACKET ASSEMBLY	1
13	PAOZZ	80063	A3156775-001	BRACKET, MOUNTING	1
14	PAOZZ	80063	A3156769-001	RING, RETAINING	4
15	PAOZZ	96906	M5S35338-139	WASHER, LOCK.....	4
16	PAOZZ	96906	M535307-307	SCREW, CAP, HEXAGON H	4
17	PAOZZ	96906	MS21318-46	SCREW, DRIVE.....	4
18	PAOZZ	80063	A3156770-002	WIRE ROPE ASSEMBLY	4

END OF FIGURE

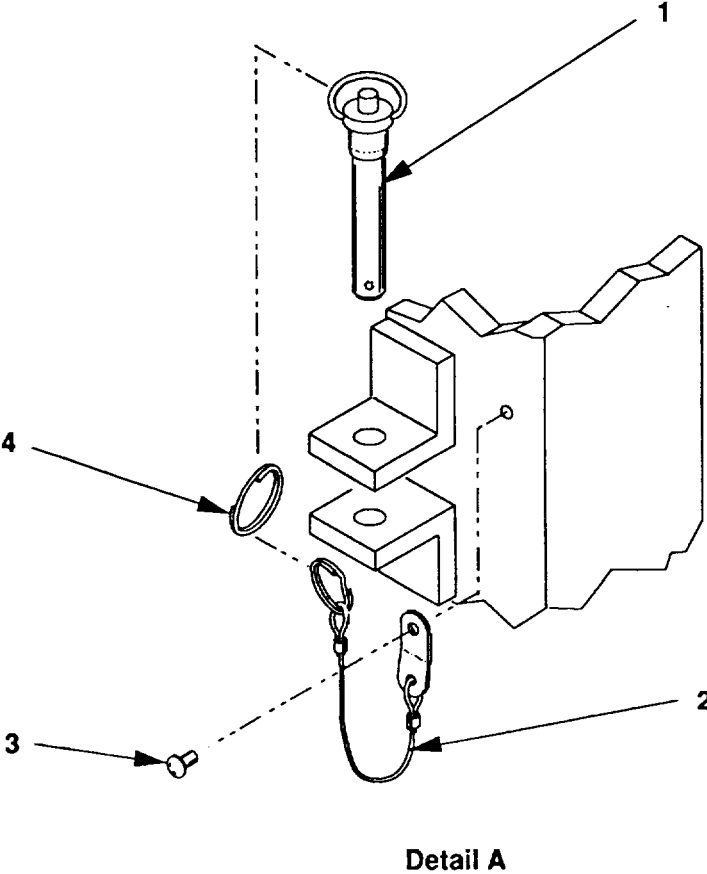
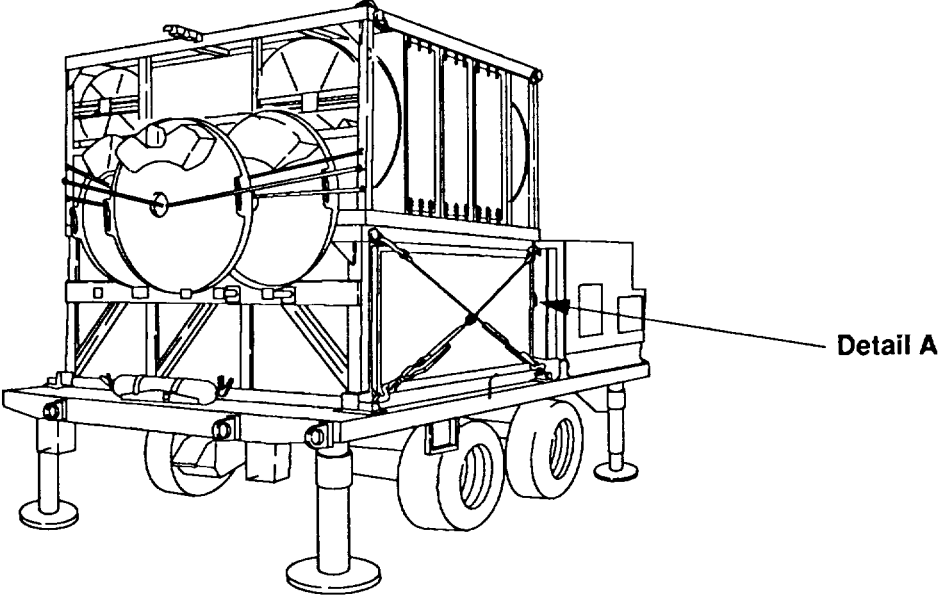


Figure 4. Pallet Section, Lower

(1) ITEM NO	(2) SMR CODE	(3) CAGEC	(4) PART NUMBER	(5) DESCRIPTION AND USABLE ON CODES (UOC)	(6) QTY
-------------------	--------------------	--------------	-----------------------	--	------------

GROUP 0102 PALLET SECTION, LOWER

FIGURE 4

1	PAOZZ	96906	M517987C620	PIN, QUICK RELEASE	4
2	XBOZZ	80063	A3156794-001	LANYARD, STEEL	4
3	PAOZZ	96906	M521318-46	SCREW, DRIVE	4
4	PAOZZ	80063	A3156784-001	RING, RETAINING.....	4

END OF FIGURE

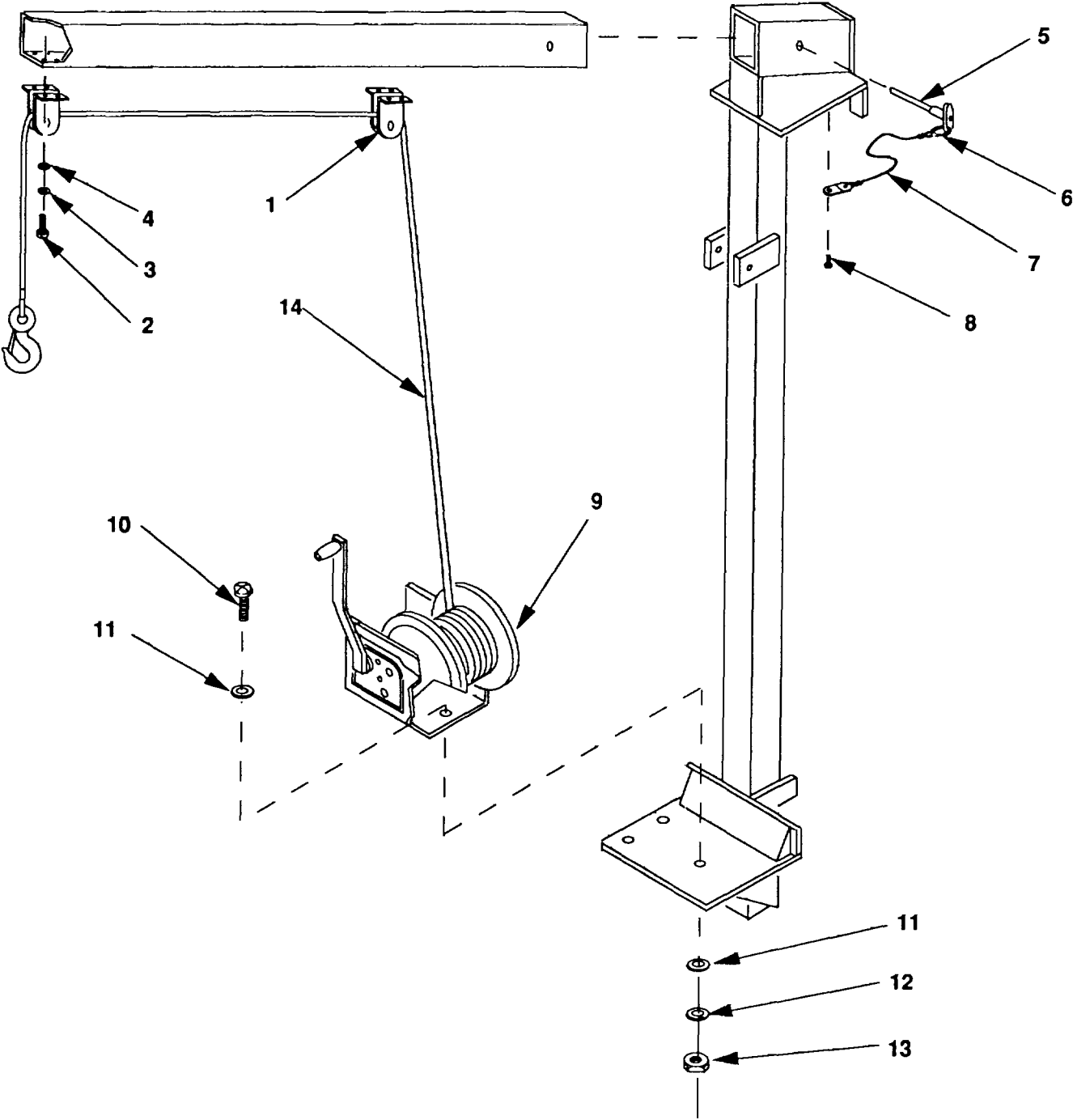


Figure 5. Davit Assembly

(1) ITEM NO	(2) SMR CODE	(3) CAGEC	(4) PART NUMBER	(5) DESCRIPTION AND USABLE ON CODES (UOC)	(6) QTY
-------------------	--------------------	--------------	-----------------------	--	------------

GROUP 0103 DAVIT ASSEMBLY

FIGURE 5

1	PAOZZ	80063	A3156798-002	PULLEY, FLAT.....	2
2	PAOZZ	96906	MS51957-43	SCREW, MACHINE	8
3	PAOZZ	96906	MS35338-137	WASHER, LOCK.....	8
4	PAOZZ	96906	M515795-841	WASHER, FLAT.....	8
5	PAOZZ	96906	M517987C630	PIN, QUICK RELEASE	1
6	PAOZZ	80063	A3156784-001	RING, RETAINING.....	1
7	PAOZZ	80063	A3156794-001	WIRE ROPE ASSEMBLY	1
8	PAOZZ	96906	MSZ21318-47	SCREW, DRIVE.....	1
9	PAOZZ	80063	A3156798-001	WINCH, DRUM, HAND OPE	1
10	PAOZZ	96906	M590725-64	SCREW, CAP, HEXAGON H.....	3
11	PAOZZ	96906	M515795-814	WASHER, FLAT.....	6
12	PAOZZ	96906	M535338-141	WASHER, LOCK.....	3
13	PAOZZ	96906	M551967-8	NUT, PLAIN, HEXAGON	3
14	PAOZZ	80063	A3156798-003	WIRE ROPE ASSEMBLY	1

END OF FIGURE

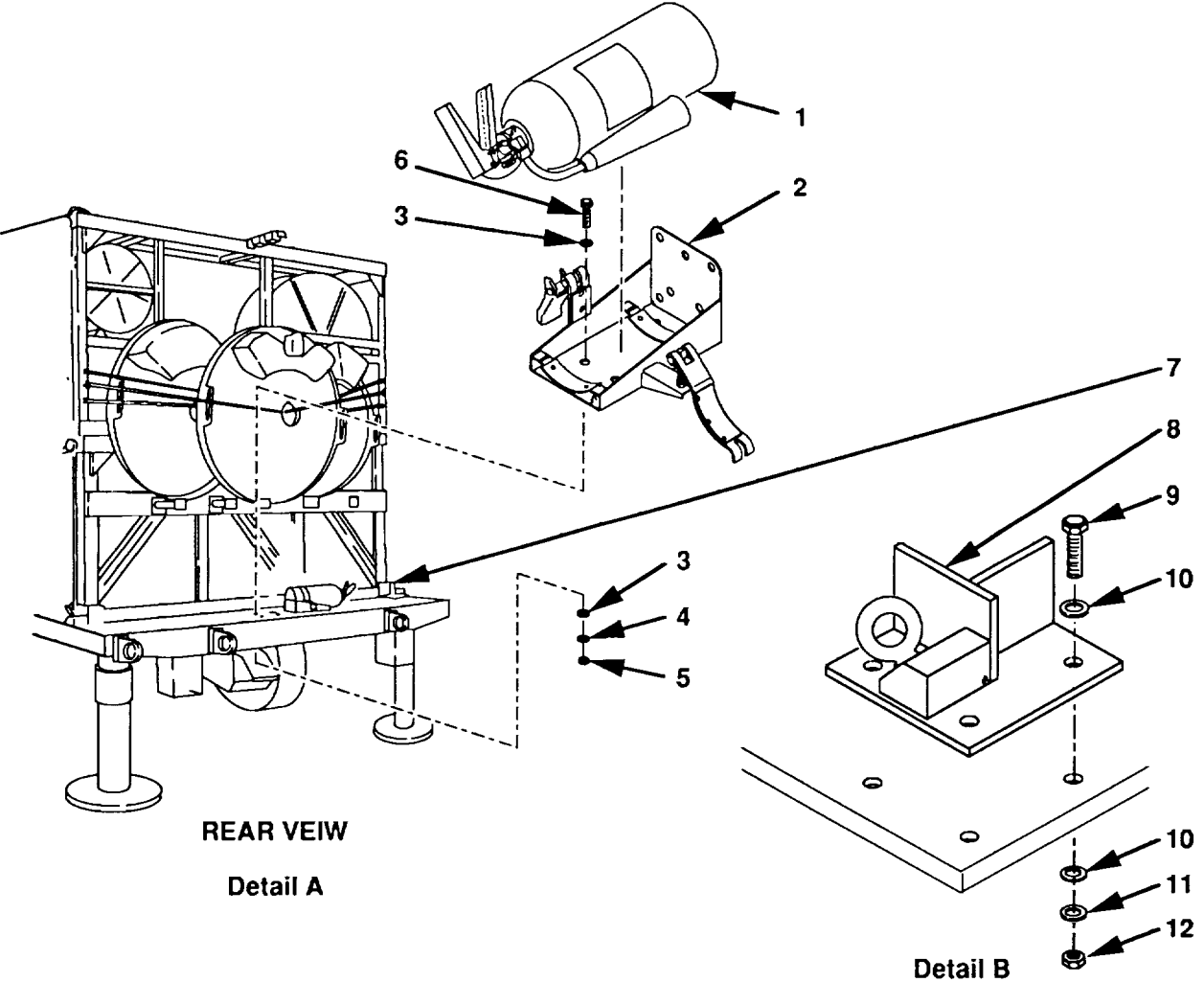
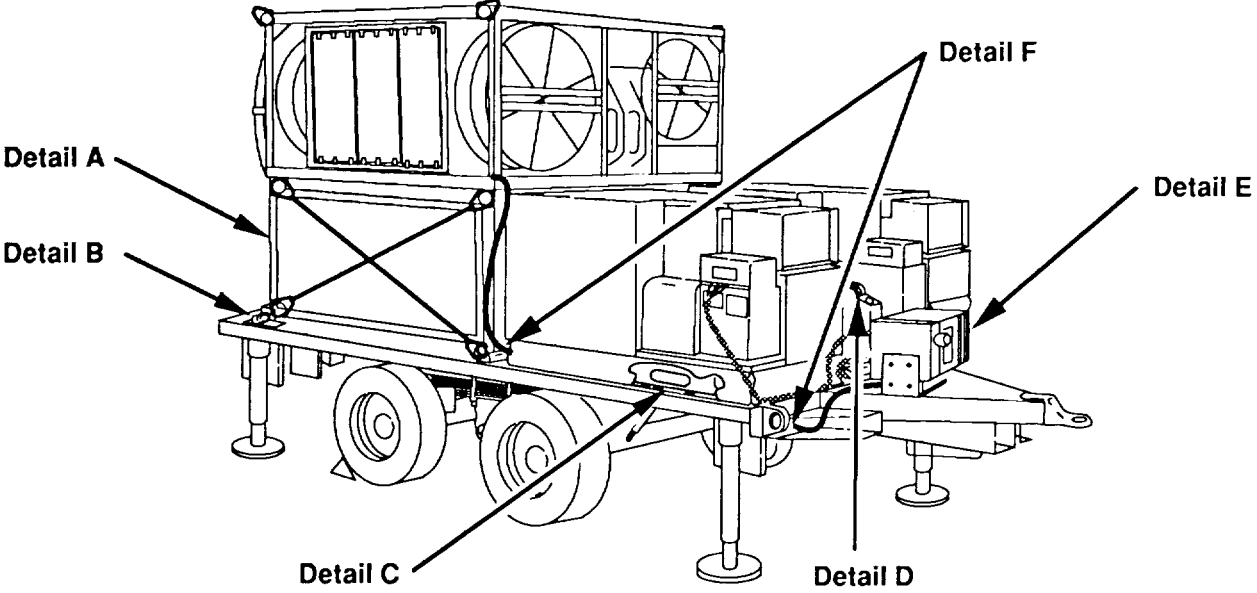
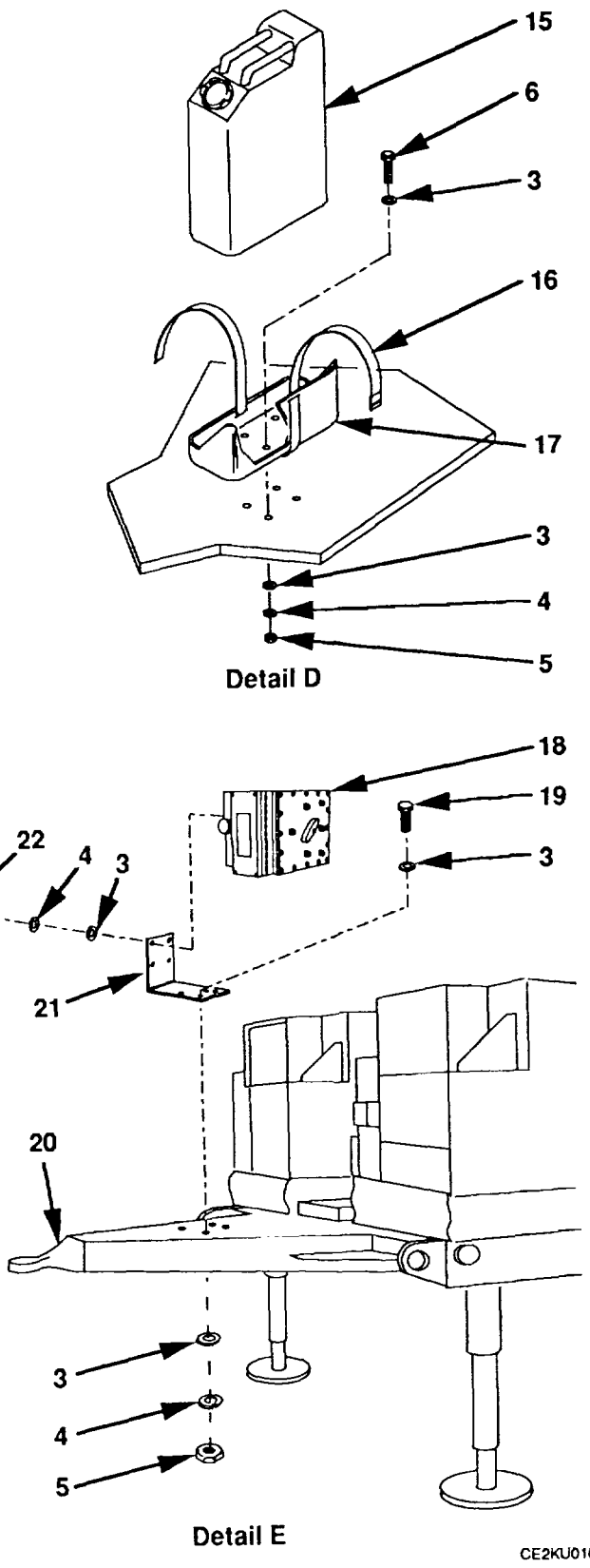
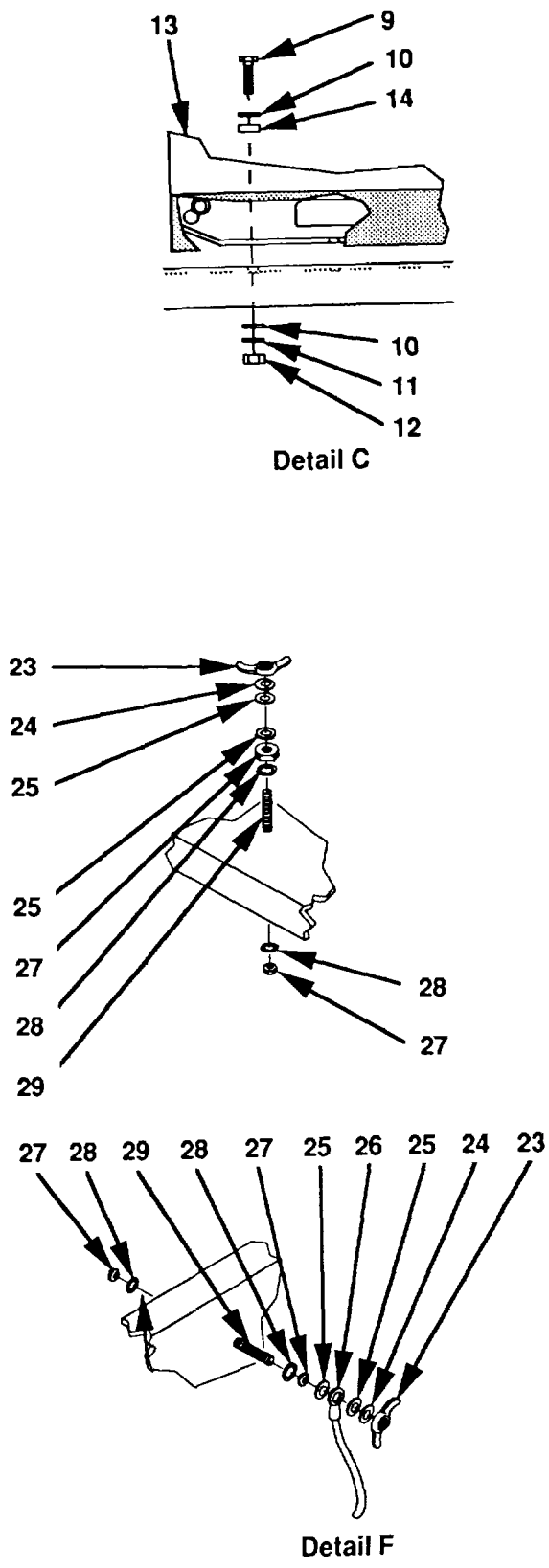


Figure 6. Trailer Assembly (Sheet 1 of 2)



CE2KU010

Figure 6. Trailer Assembly (Sheet 2 of 2)

(1) ITEM NO	(2) SMR CODE	(3) CAGEC	(4) PART NUMBER	(5) DESCRIPTION AND USABLE ON CODES (UOC)	(6) QTY
SECTION II					
GROUP 02 TRAILER ASSEMBLY					
FIGURE 6					
1	PAOZZ	80063	SC-D-539482	EXTINGUISHER, FIRE, C	2
2	PAOZZ	97403	13214E1235	BRACKET, FIRE EXTING.....	2
3	PAOZZ	96906	MS15795-814	WASHER, FLAT.....	60
4	PAOZZ	96906	MS35338-141	WASHER, LOCK.....	32
5	PAOZZ	96906	MS51967-8	NUT, PLAIN, HEXAGON	28
6	PAOZZ	96906	MS90728-61	SCREW, CAP, HEXAGON H.....	24
7	PAOZZ	80063	A3156766-002	BRACKET, MOUNTING.....	2
8	PAOZZ	80063	A3156766-001	BRACKET, MOUNTING.....	2
9	PAOZZ	96906	M590728-115	SCREW, CAP, HEXAGON H.....	28
10	PAOZZ	96906	MS15795-818	WASHER, FLAT.....	56
11	PAOZZ	96906	MS35338-143	WASHER, LOCK.....	28
12	PAOZZ	96906	MS51967-14	NUT, PLAIN-HEXAGON	28
13	PAODD	30554	MEP-003A	GENERATOR SET DIESE (SEE TM 5-6115-..... 585-24P FOR PARTS	2
14	PAOZZ	80205	A3156786-001	WASHER, BEVEL.....	16
15	PAOZZ	81902	14196P1	CAN, GASOLINE, MILITA.....	4
16	PAOZZ	19207	8690527	STRAP, WEBBING	4
17	PAOZZ	97403	13211E4921	BRACKET ASSEMBLY, LI.....	4
18	XBFFF	80063	A3079275	SWITCH BOX ASSEMBLY (SEE FIGURE 7	1
19	PAOZZ	96906	M590728-63	SCREW, CAP, HEXAGON H.....	4
20	XBODD	80063	A3156772-001	TRAILERCMODIFIED).....	1
21	PAOZZ	80063	A3156768-001	BRACKET, MOUNTING.....	1
22	PAOZZ	96906	MS90725-64	SCREW, CAP, HEXAGON H.....	4
23	PAOZZ	96906	M535425-75	NUT, PLAIN, WING	2
24	PAOZZ	96906	M535338-103	WASHER, LOCK.....	2
25	PAOZZ	88044	AN961-616S	WASHER, FLAT.....	4
26	PAOZZ	80063	A3156789-002	CABLE ASSEMBLY, SPEC.....	1
27	PAOZZ	96906	M516203-27	NUT, PLAIN, HEXAGON	4
28	PAOZZ	96906	M535333-110	WASHER, LOCK.....	4
29	PAOZZ	80063	A3079294	STUD, CONTINUOUS THR.....	2

END OF FIGURE

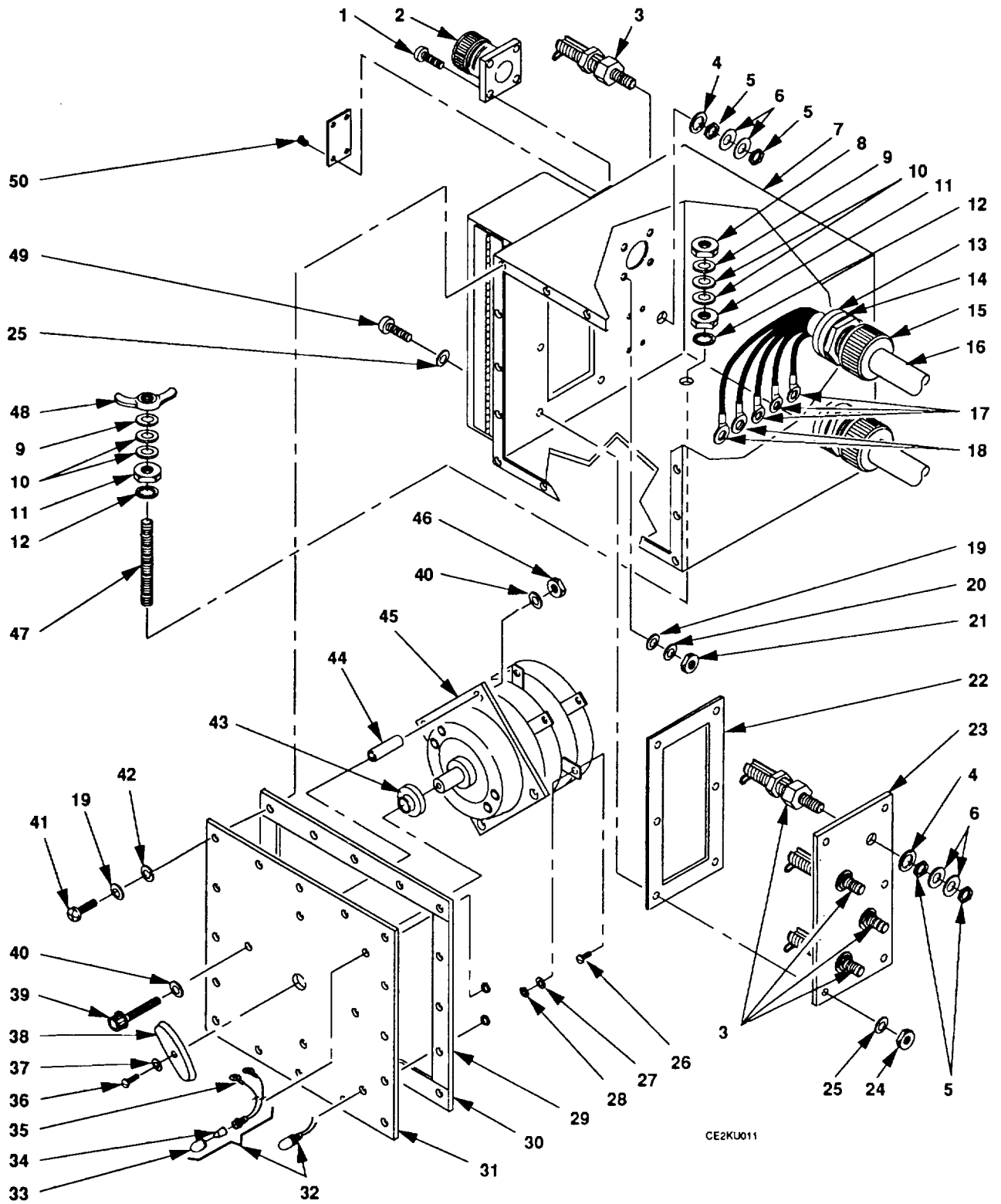


Figure 7. Switch Box Assembly

SECTION II					
(1)	(2)	(3)	(4)	(5)	(6)
ITEM NO	SMR CODE	CAGEC	PART NUMBER	DESCRIPTION AND USABLE ON CODES (UOC)	QTY
GROUP 0202 SWITCH BOX ASSEMBLY					
FIGURE 7					
1	PAFZZ	96906	MS51958-68	SCREW, MACHINE	4
2	PAFZZ	96906	M590555C32412S	CONNECTOR, RECEPTACL	1
3	PAFZZ	96906	MS39347-4	TERMINAL, STUD	5
4	PAFZZ	96906	MS35333-113	WASHER, LOCK.....	5
5	PAFZZ	96906	M516203-41	NUT, PLAIN, HEXAGON	10
6	PAFZZ	88044	AN961-816S	WASHER, FLAT.....	10
7	XBFFF	80063	A3079276	BOX WELDED ASSEMBLY	1
8	PAFZZ	96906	MS16203-27	NUT, PLAIN, HEXAGON	1
9	PAFZZ	96906	MS35338-103	WASHER, LOCK.....	2
10	PAFZZ	88044	AN961-616S	WASHER, FLAT.....	4
11	PAFZZ	96906	M516203-39	NUT, PLAIN, HEXAGON	2
12	PAFZZ	96906	M535333-110	WASHER, LOCK.....	2
13	PAFZZ	80063	A3079287	GASKET.....	2
14	PAFZZ	80063	A3079288	WASHER, FLAT.....	.2
15	PAFZZ	80063	A3079286	TUBE, STUFFING.....	2
16	XBFFF	80063	A3079295-002	CABLE ASSEMBLY	1
17	PAFZZ	96906	MS25036-130	TERMINAL, LUG.....	4
18	PAFZZ	96906	MS25036-131	TERMINAL, LUG.....	2
19	PAFZZ	96906	M527183-42	WASHER, FLAT.....	20
20	PAFZZ	96906	MS35338-138	WASHER, LOCK.....	4
21	PAFZZ	96906	M535650-304	NUT, PLAIN, HEXAGON	4
22	XBFZZ	80063	A3079285	GASKET, TERMINAL BD	1
23	XBFZZ	80063	A3079284	TERMINAL BOARD	1
24	PAFZZ	96906	M551922-1	NUT, SELF-LOCKING, HE	6
25	PAFZZ	96906	MS27183-10	WASHER, FLAT.....	12
26	PAFZZ	96906	M535215-95	SCREW, MACHINE	9
27	PAFZZ	96906	M535335-91	WASHER, LOCK.....	9
28	PAFZZ	96906	MS35650-3385T	NUT, PLAIN, HEXAGON	9
29	PAFZZ	80063	A3079303	GASKET.....	2
30	PAFZZ	80063	A3079281	GASKET.....	2
31	XBFZZ	80063	A3079280	COVER, SWITCH BOX	1
32	PAFZZ	80063	A3079298-002	INDICATOR, LIGHT	2
33	PAOZZ	81349	LC33CN2	LENS, LIGHT	2
34	PAOZZ	81349	LH88/2	LIGHT, INDICATOR.....	2
35	PAFZZ	96906	M525036-105	TERMINAL, LUG.....	4
36	PAOZZ	82121	02016-29	SCREW, MACHINE	1
37	PAOZZ	82121	02015-15	WASHER, LOCK.....	1
38	PAOZZ	82121	07000-1	KNOB	1
39	PAFZZ	96906	M516997-150	SCREW, CAP, SOCKET HE.....	4
40	PAFZZ	80063	SCD13617-8	WASHER, FLAT.....	8
41	PAFZZ	96906	M535207-267	SCREW, MACHINE	16
42	PAFZZ	96906	M535338-43	WASHER, LOCK.....	16
43	PAFZZ	80063	A3079308	GASKET.....	1
44	PAFZZ	96906	MSZ28775-015	PACKING, PREFORMED	4
45	PAFZZ	80063	A3079289	SWITCH, ROTARY	1
46	PAFZZ	96906	MS51922-33	NUT, SELF-LOCKING, HE	4
47	PAFZZ	80063	A3079294	STUD, CONTINUOUS THR.....	1

SECTION II					
(1)	(2)	(3)	(4)	(5)	(6)
ITEM	SMR		PART		
NO	CODE	CAGEC	NUMBER	DESCRIPTION AND USABLE ON CODES (UOC)	QTY
48	PAFZZ	96906	M535425-75	NUT, PLAIN, WING	1
49	PAFZZ	96906	M535206-283	SCREW, MACHINE	6
50	PAFZZ	96906	M521318-20	SCREW, DRIVE	12

END OF FIGURE

CROSS- REFERENCE-INDEXES
NATIONAL STOCK NUMBER INDEX

STOCK NUMBER	FIG.	ITEM	STOCK NUMBER	FIG.	ITEM
5310-00-006-8286	7	5	5305-00-688-2111	6	19
5310-00-014-5850	7	19	5310-00-732-0558	2	18
5305-00-021-3620	3	16		5	13
5310-00-022-8847	6	28		6	5
	7	12	5310-00-767-9425	6	10
5310-00-042-4229	7	4	5310-00-768-0318	6	12
5310-00-045-3296	7	42	5310-00-773-7618	2	17
5306-00-050-0346	2	11		5	11
5305-00-054-6668	5	2		6	3
5305-00-059-3664	7	1	5310-00-809-4058	7	25
5305-00-071-1324	3	4	5310-00-809-5998	7	40
5305-00-071-2071	6	9	5310-00-829-9981	2	9
5305-00-071-2073	3	7	5310-00-913-9776	7	27
5310-00-088-1251	7	24	5310-00-933-8119	5	3
5305-00-088-5916	7	39	5310-00-933-8120	3	2
5940-00-113-9833	7	18		7	20
5935-00-114-9740	7	2	5310-00-933-8121	3	15
5940-00-115-5007	7	17	5310-00-933-8778	3	11
4010-00-128-8860	2	15		6	11
5340-00-135-5052	4	1	5310-00-934-9765	3	1
5940-00-143-4773	7	35		7	21
6210-00-183-0576	7	34	5940-00-958-1214	7	3
5310-00-184-8971	6	24	2540-00-968-4060	6	16
	7	9	5310-00-984-7042	2	16
7240-00-222-3088	6	15		5	12
4210-00-223-4857	6	2		6	4
5310-00-225-5328	5	4	5305-00-988-1727	7	49
5310-00-225-6993	7	46	5305-00-993-1851	7	41
5305-00-253-5614	7	50	5310-01-004-9129	6	25
5305-00-253-5625	2	14		7	10
	3	9	5310-01-026-5824	7	11
	3	17	5306-01-075-8519	2	5
	4	3	5310-01-078-5996	6	23
5305-00-253-5626	5	8		7	48
4210-00-270-4512	6	1	5310-01-125-3678	3	10
5310-00-407-9566	2	8	5305-01-135-7258	7	26
5310-00-411-0687	7	28	5355-01-162-3704	7	38
6115-00-465-1030	6	13	5310-01-188-1690	2	34
2590-00-473-6331	6	17		7	6
6210-00-481-3334	7	33	3950-01-270-9543	5	9
5340-00-522-0381	3	5	5305-01-325-8387	5	10
5305-00-543-2419	6	6		6	22
5305-00-558-5424	2	36	4010-01-348-2296	3	8
5310-00-577-5354	2	33	4010-01-348-2297	3	18
5310-00-584-7995	6	27	5340-01-348-2353	2	19
	7	8	4933-01-349-0602	2	23
5310-00-584-8000	2	32	2540-01-349-0613	2	37
5310-00-595-6772	3	3	3990-01-349-5346	2	28
5330-00-618-5361	7	44	3990-01-349-5347	1	2
5310-00-680-6745	2	6	5365-01-350-5661	2	7

**CROSS- REFERENCE-INDEXES
NATIONAL STOCK NUMBER INDEX**

STOCK NUMBER	FIG.	ITEM	STOCK NUMBER	FIG.	ITEM
5340-01-351-8004	6	21			
5340-01-351-9079	3	13			
5340-01-352-1672	6	8			
5995-01-352-1685	2	35			
5995-01-352-1686	6	26			
6150-01-352-1687	2	22			
5340-01-352-6811	6	7			
5315-01-358-4828	5	5			
5315-01-358-4829	2	13			
5340-01-358-8653	2	10			
5310-01-359-2201	7	37			
5305-01-359-3560	7	36			
5340-01-359-3633	2	25			
5307-01-359-3680	6	29			
	7	47			
5365-01-359-3852	2	12			
	4	4			
	5	6			
5310-01-359-4647	3	14			
5365-01-359-6808	7	14			
5340-01-359-6948	2	24			
5340-01-359-7092	7	43			
5330-01-359-8920	7	13			
5330-01-359-8921	7	30			
5330-01-359-8922	7	29			
4010-01-360-2078	5	7			
3990-01-361-5974	2	27			
3990-01-361-5975	2	20			
3990-01-361-5976	2	21			
5120-01-361-6031	2	4			
3990-01-361-7546	2	26			
6210-01-362-4138	7	32			
3940-01-363-8267	5	1			
2540-01-364-1619	3	6			

**NATIONAL STOCK NUMBER AND PART NUMBER INDEX
PART NUMBER INDEX**

CAGEC	PART NUMBER	STOCK NUMBER	FIG.	ITEM
88044	AN961-616S	5310-01-004-9129	6	25
			7	10
88044	AN961-816S	5310-01-188-1690	2	34
			7	6
80063	A3079275		6	18
80063	A3079276		7	7
80063	A3079280		7	31
80063	A3079281	5330-01-359-8921	7	30
80063	A3079284		7	23
80063	A3079285		7	22
80063	A3079286		7	15
80063	A3079287	5330-01-359-8920	7	13
80063	A3079288	5365-01-359-6808	7	14
80063	A3079289		7	45
80063	A3079294	5307-01-359-3680	6	29
			7	47
80063	A3079295-002		7	16
80063	A3079298-002	6210-01-362-4138	7	32
80063	A3079303	5330-01-359-8922	7	29
80063	A3079308	5340-01-359-7092	7	43
80063	A3156728-001		2	2
80063	A3156731-001		1	1
80063	A3156732-001		2	3
80063	A3156733-001		2	1
80063	A3156741-001	4933-01-349-0602	2	23
80063	A3156745-001	2540-01-349-0613	2	37
80063	A3156755-001	5340-01-359-6948	2	24
80063	A3156755-002	5340-01-359-3633	2	25
80063	A3156757-001	3990-01-361-7546	2	26
80063	A3156757-002	3990-01-361-5975	2	20
80063	A3156757-003	3990-01-361-5976	2	21
80063	A3156757-004	3990-01-361-5974	2	27
80063	A3156758-001	6150-01-352-1687	2	22
80063	A3156759-001	5365-01-350-5661	2	7
80063	A3156761-002	3990-01-349-5346	2	28
80063	A3156761-004	3990-01-349-5347	1	2
80063	A3156766-001	5340-01-352-1672	6	8
80063	A3156766-002	5340-01-352-6811	6	7
80063	A3156768-001	5340-01-351-8004	6	21
80063	A3156769-001	5310-01-359-4647	3	14
80063	A3156769-002	5310-01-125-3678	3	10
80063	A3156770-001	4010-01-348-2296	3	8
80063	A3156770-002	4010-01-348-2297	3	18
80063	A3156771-001		1	3
80063	A3156772-001		6	20
80063	A3156774-001		3	12
80063	A3156775-001	5340-01-351-9079	3	13
80063	A3156777-001	5120-01-361-6031	2	4
80063	A3156784-001	5365-01-359-3852	2	12
			4	4
			5	6

**NATIONAL STOCK NUMBER AND PART NUMBER INDEX
PART NUMBER INDEX**

CAGEC	PART NUMBER	STOCK NUMBER	FIG.	ITEM
80205	A3156786-001		6	14
80063	A3156787-001	5340-01-348-2353	2	19
80063	A3156788-001		2	31
80063	A3156789-001	5995-01-352-1685	2	35
80063	A3156789-002	5995-01-352-1686	6	26
80063	A3156794-001		4	2
		4010-01-360-2078	5	7
80063	A3156794-002	4010-00-128-8860	2	15
80063	A3156796-001	2540-01-364-1619	3	6
80063	A3156797-001		2	38
80063	A3156798-001	3950-01-270-9543	5	9
80063	A3156798-002	3940-01-363-8267	5	1
80063	A3156798-003		5	14
81349	LC33CN2	6210-00-481-3334	7	33
81349	LH88/2	6210-00-183-0576	7	34
30554	MEP-003A	6115-00-465-1030	6	13
96906	M515795-811	5310-00-680-6745	2	6
96906	M515795-814	5310-00-773-7618	2	17
			5	11
			6	3
96906	MS15795-818	5310-00-767-9425	6	10
96906	M515795-841	5310-00-225-5328	5	4
96906	MS16203-27	5310-00-584-7995	6	27
			7	8
96906	MS16203-29	5310-00-584-8000	2	32
96906	M516203-39	5310-01-026-5824	7	11
96906	M516203-41	5310-00-006-8286	7	5
96906	M516997-150	5305-00-088-5916	7	39
96906	M517987C1090	5315-01-358-4829	2	13
96906	MS17987C620	5340-00-135-5052	4	1
96906	M517987C630	5315-01-358-4828	5	5
96906	M521318-20	5305-00-253-5614	7	50
96906	M521318-46	5305-00-253-5625	2	14
			3	9
			3	17
			4	3
96906	M521318-47	5305-00-253-5626	5	8
96906	M525036-105	5940-00-143-4773	7	35
96906	MS25036-130	5940-00-115-5007	7	17
96906	M525036-131	5940-00-113-9833	7	18
96906	M527183-10	5310-00-809-4058	7	25
96906	MS27183-42	5310-00-014-5850	7	19
96906	M528775-015	5330-00-618-5361	7	44
96906	MS35206-283	5305-00-988-1727	7	49
96906	M535207-267	5305-00-993-1851	7	41
96906	M535215-95	5305-01-135-7258	7	26
96906	M535307-307	5305-00-021-3620	3	16
96906	M535309-418	5305-00-558-5424	2	36
96906	M535333-110	5310-00-022-8847	6	28
			7	12
96906	M535333-113	5310-00-042-4229	7	4

**NATIONAL STOCK NUMBER AND PART NUMBER INDEX
PART NUMBER INDEX**

CAGEC	PART NUMBER	STOCK NUMBER	FIG.	ITEM
96906	M535335-91	5310-00-913-9776	7	27
96906	MS35338-103	5310-00-184-8971	6	24
			7	9
96906	MS35338-105	5310-00-577-5354	2	33
96906	MS35338-137	5310-00-933-8119	5	3
96906	MS35338-138	5310-00-933-8120	3	2
			7	20
96906	MS35338-139	5310-00-933-8121	3	15
96906	M535338-141	5310-00-984-7042	2	16
			5	12
			6	4
96906	M535338-143	5310-00-933-8778	3	11
			6	11
96906	MS35338-43	5310-00-045-3296	7	42
96906	M535338-45	5310-00-407-9566	2	8
96906	M535425-75	5310-01-078-5996	6	23
			7	48
96906	M535649-2312	5310-00-829-9981	2	9
96906	M535650-304	5310-00-934-9765	3	1
			7	21
96906	MS35650-3385T	5310-00-411-0687	7	28
96906	MS39347-4	5940-00-958-1214	7	3
96906	MS51562-2Z	5340-01-358-8653	2	10
96906	M551922-1	5310-00-088-1251	7	24
96906	M551922-33	5310-00-225-6993	7	46
96906	M551937-3	5306-00-050-0346	2	11
96906	M551957-43	5305-00-054-6668	5	2
96906	M551958-68	5305-00-059-3664	7	1
96906	M551960-67	5305-00-071-1324	3	4
96906	M551967-14	5310-00-768-0318	6	12
96906	M551967-8	5310-00-732-0558	2	18
			5	13
			6	5
96906	MS90555C324125	5935-00-114-9740	7	2
96906	M590725-36	5306-01-075-8519	2	5
96906	MS90725-64	5305-01-325-8387	5	10
			6	22
96906	M590728-115	5305-00-071-2071	6	9
96906	M590728-117	5305-00-071-2073	3	7
96906	MS90728-61	5305-00-543-2419	6	6
96906	MS90728-63	5305-00-688-2111	6	19
80063	SC-B-595075		2	29
80063	SC-D-539482	4210-00-270-4512	6	1
80063	SC-D-595074		2	30
80063	SCD13617-8	5310-00-809-5998	7	40
82121	02015-15	5310-01-359-2201	7	37
82121	02016-29	5305-01-359-3560	7	36
82121	07000-1	5355-01-162-3704	7	38
97403	13211E4921	2590-00-473-6331	6	17
97403	13214E1235	4210-00-223-4857	6	2
81902	14196P1	7240-00-222-3088	6	15

NATIONAL STOCK NUMBER AND PART NUMBER INDEX
PART NUMBER INDEX

CAGEC	PART NUMBER	STOCK NUMBER	FIG.	ITEM
03640	6301812	5310-00-595-6772	3	3
19220	6411E	5340-00-522-0381	3	5
19207	8690527	2540-00-968-4060	6	16

**NATIONAL STOCK NUMBER AND PART NUMBER INDEX
PART NUMBER INDEX**

CAGEC	PART NUMBER	STOCK NUMBER	FIG.	ITEM
1	1		80063	A3156731-001
1	2	3990-01-349-5347	80063	A3156761-004
1	3		80063	A3156771-001
2	1		80063	A3156733-001
2	2		80063	A3156728-001
2	3		80063	A3156732-001
2	4	5120-01-361-6031	80063	A3156777-001
2	5	5306-01-075-8519	96906	MS90725-36
2	6	5310-00-680-6745	96906	M515795-811
2	7	5365-01-350-5661	80063	A3156759-001
2	8	5310-00-407-9566	96906	MS35338-45
2	9	5310-00-829-9981	96906	MS35649-2312
2	10	5340-01-358-8653	96906	MS51562-2Z
2	11	5306-00-050-0346	96906	MS51937-3
2	12	5365-01-359-3852	80063	A3156784-001
2	13	5315-01-358-4829	96906	M517987C1090
2	14	5305-00-253-5625	96906	MS21318-46
2	15	4010-00-128-8860	80063	A3156794-002
2	16	5310-00-984-7042	96906	MS35338-141
2	17	5310-00-773-7618	96906	M515795-814
2	18	5310-00-732-0558	96906	M551967-8
2	19	5340-01-348-2353	80063	A3156787-001
2	20	3990-01-361-5975	80063	A3156757-002
2	21	3990-01-361-5976	80063	A3156757-003
2	22	6150-01-352-1687	80063	A3156758-001
2	23	4933-01-349-0602	80063	A3156741-001
2	24	5340-01-359-6948	80063	A3156755-001
2	25	5340-01-359-3633	80063	A3156755-002
2	26	3990-01-361-7546	80063	A3156757-001
2	27	3990-01-361-5974	80063	A3156757-004
2	28	3990-01-349-5346	80063	A3156761-002
2	29		80063	SC-B-595075
2	30		80063	SC-D-595074
2	31		80063	A3156788-001
2	32	5310-00-584-8000	96906	M516203-29
2	33	5310-00-577-5354	96906	M535338-105
2	34	5310-01-188-1690	88044	AN961-8165
2	35	5995-01-352-1685	80063	A3156789-001
2	36	5305-00-558-5424	96906	M535309-418
2	37	2540-01-349-0613	80063	A3156745-001
2	38		80063	A3156797-001
3	1	5310-00-934-9765	96906	M535650-304
3	2	5310-00-933-8120	96906	M535338-138
3	3	5310-00-595-6772	03640	6301812
3	4	5305-00-071-1324	96906	MS51960-67
3	5	5340-00-522-0381	19220	6411E
3	6	2540-01-364-1619	80063	A3156796-001
3	7	5305-00-071-2073	96906	MS90728-117
3	8	4010-01-348-2296	80063	A3156770-001
3	9	5305-00-253-5625	96906	M521318-46
3	10	5310-01-125-3678	80063	A3156769-002

CROSS REFERENCE INDEXES

FIG.	ITEM	FIGURE AND ITEM NUMBER INDEX STOCK NUMBER	CAGEC	PART NUMBER
3	11	5310-00-933-8778	96906	M535338-143
3	12		80063	A3156774-001
3	13	5340-01-351-9079	80063	A3156775-001
3	14	5310-01-359-4647	80063	A3156769-001
3	15	5310-00-933-8121	96906	MS35338-139
3	16	5305-00-021-3620	96906	MS35307-307
3	17	5305-00-253-5625	96906	M521318-46
3	18	4010-01-348-2297	80063	A3156770-002
4	1	5340-00-135-5052	96906	MS17987C620
4	2		80063	A3156794-001
4	3	5305-00-253-5625	96906	MS21318-46
4	4	5365-01-359-3852	80063	A3156784-001
5	1	3940-01-363-8267	80063	A3156798-002
5	2	5305-00-054-6668	96906	MS51957-43
5	3	5310-00-933-8119	96906	MS35338-137
5	4	5310-00-225-5328	96906	M515795-841
5	5	5315-01-358-4828	96906	M517987C630
5	6	5365-01-359-3852	80063	A3156784-001
5	7	4010-01-360-2078	80063	A3156794-001
5	8	5305-00-253-5626	96906	MS21318-47
5	9	3950-01-270-9543	80063	A3156798-001
5	10	5305-01-325-8387	96906	M590725-64
5	11	5310-00-773-7618	96906	M515795-814
5	12	5310-00-984-7042	96906	M535338-141
5	13	5310-00-732-0558	96906	M551967-8
5	14		80063	A3156798-003
6	1	4210-00-270-4512	80063	SC-D-539482
6	2	4210-00-223-4857	97403	13214E1235
6	3	5310-00-773-7618	96906	M515795-814
6	4	5310-00-984-7042	96906	M535338-141
6	5	5310-00-732-0558	96906	M551967-8
6	6	5305-00-543-2419	96906	M590728-61
6	7	5340-01-352-6811	80063	A3156766-002
6	8	5340-01-352-1672	80063	A3156766-001
6	9	5305-00-071-2071	96906	MS90728-115
6	10	5310-00-767-9425	96906	MS15795-818
6	11	5310-00-933-8778	96906	M535338-143
6	12	5310-00-768-0318	96906	MS51967-14
6	13	6115-00-465-1030	30554	MEP-003A
6	14		80205	A3156786-001
6	15	7240-00-222-3088	81902	14196P1
6	16	2540-00-968-4060	19207	8690527
6	17	2590-00-473-6331	97403	13211E4921
6	18		80063	A3079275
6	19	5305-00-688-2111	96906	MS90728-63
6	20		80063	A3156772-001
6	21	5340-01-351-8004	80063	A3156768-001
6	22	5305-01-325-8387	96906	M590725-64
6	23	5310-01-078-5996	96906	M535425-75
6	24	5310-00-184-8971	96906	M535338-103
6	25	5310-01-004-9129	88044	AN961-616S

CROSS REFERENCE INDEXES

FIG.	ITEM	FIGURE AND ITEM NUMBER INDEX STOCK NUMBER	CAGEC	PART NUMBER
6	26	5995-01-352-1686	80063	A3156789-002
6	27	5310-00-584-7995	96906	MS16203-27
6	28	5310-00-022-8847	96906	MS35333-110
6	29	5307-01-359-3680	80063	A3079294
7	1	5305-00-059-3664	96906	MS51958-68
7	2	5935-00-114-9740	96906	M590555C32412S
7	3	5940-00-958-1214	96906	M539347-4
7	4	5310-00-042-4229	96906	M535333-113
7	5	5310-00-006-8286	96906	M516203-41
7	6	5310-01-188-1690	88044	AN961-8165
7	7		80063	A3079276
7	8	5310-00-584-7995	96906	M516203-27
7	9	5310-00-184-8971	96906	MS35338-103
7	10	5310-01-004-9129	88044	AN961-6165
7	11	5310-01-026-5824	96906	M516203-39
7	12	5310-00-022-8847	96906	M535333-110
7	13	5330-01-359-8920	80063	A3079287
7	14	5365-01-359-6808	80063	A3079288
7	15		80063	A3079286
7	16		80063	A3079295-002
7	17	5940-00-115-5007	96906	MS25036-130
7	18	5940-00-113-9833	96906	MS25036-131
7	19	5310-00-014-5850	96906	MS27183-42
7	20	5310-00-933-8120	96906	MS35338-138
7	21	5310-00-934-9765	96906	M535650-304
7	22		80063	A3079285
7	23		80063	A3079284
7	24	5310-00-088-1251	96906	M551922-1
7	25	5310-00-809-4058	96906	MS27183-10
7	26	5305-01-135-7258	96906	MS35215-95
7	27	5310-00-913-9776	96906	MS35335-91
7	28	5310-00-411-0687	96906	M535650-3385T
7	29	5330-01-359-8922	80063	A3079303
7	30	5330-01-359-8921	80063	A3079281
7	31		80063	A3079280
7	32	6210-01-362-4138	80063	A3079298-002
7	33	6210-00-481-3334	81349	LC33CN2
7	34	6210-00-183-0576	81349	LH88/2
7	35	5940-00-143-4773	96906	M525036-105
7	36	5305-01-359-3560	82121	02016-29
7	37	5310-01-359-2201	82121	02015-15
7	38	5355-01-162-3704	82121	07000-1
7	39	5305-00-088-5916	96906	M516997-150
7	40	5310-00-809-5998	80063	SCD13617-8
7	41	5305-00-993-1851	96906	M535207-267
7	42	5310-00-045-3296	96906	M535338-43
7	43	5340-01-359-7092	80063	A3079308
7	44	5330-00-618-5361	96906	M528775-015
7	45		80063	A3079289
7	46	5310-00-225-6993	96906	M551922-33
7	47	5307-01-359-3680	80063	A3079294

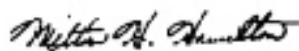
CROSS REFERENCE INDEXES

FIG.	ITEM	FIGURE AND ITEM NUMBER INDEX STOCK NUMBER	CAGEC	PART NUMBER
7	48	5310-01-078-5996	96906	M535425-75
7	49	5305-00-988-1727	96906	M535206-283
7	50	5305-00-253-5614	96906	MS21318-20

By Order of the Secretary of the Army:

GORDON R. SULLIVAN
General, United States Army
Chief of Staff

Official:



MILTON H. HAMILTON
Administrative Assistant to the
Secretary of the Army
03541

DISTRIBUTION:

To be distributed in accordance with DA Form 12-36-E, block 9395, requirements for TM 11-5895-392-23P.

* U.S. GOVERNMENT PRINTING OFFICE: 1993-710-084/80095

RECOMMENDED CHANGES TO EQUIPMENT TECHNICAL PUBLICATIONS



THEN... JOT DOWN THE DOPE ABOUT IT ON THIS FORM. CAREFULLY TEAR IT OUT, FOLD IT AND DROP IT IN THE MAIL!

SOMETHING WRONG WITH THIS PUBLICATION?

FROM: (PRINT YOUR UNIT'S COMPLETE ADDRESS)

DATE SENT

PUBLICATION NUMBER

TM 11-5825-270-10

PUBLICATION DATE

23 Jul 81

PUBLICATION TITLE

Radio Frequency R-2176/FRN

BE EXACT... PIN-POINT WHERE IT IS

PAGE NO.

PARA-GRAPH

FIGURE NO.

TABLE NO.

IN THIS SPACE TELL WHAT IS WRONG AND WHAT SHOULD BE DONE ABOUT IT:

TEAR ALONG PERFORATED LINE

PRINTED NAME, GRADE OR TITLE, AND TELEPHONE NUMBER

SIGN HERE:

DA FORM 2028-2
1 JUL 79

PREVIOUS EDITIONS ARE OBSOLETE.

P.S.—IF YOUR OUTFIT WANTS TO KNOW ABOUT YOUR RECOMMENDATION MAKE A CARBON COPY OF THIS AND GIVE IT TO YOUR HEADQUARTERS.

