

TECHNICAL MANUAL

**ORGANIZATIONAL AND DIRECT SUPPORT MAINTENANCE
REPAIR PARTS AND SPECIAL TOOLS LISTS
FOR
TELEPHONE SET TA-1/PT
(NSN5805-00-521-1320) (EIC: N/A)**

This publication is required for official use of for administrative or operational purposes only. Distribution is limited to US Government agencies. Other requests for this document must be referred to Commander, US Army Communications-Electronics Command and Fort Monmouth, ATTN: AMSEL-LC-LM-LT, Fort Monmouth, New Jersey 07703-5007.

DESTRUCTION NOTICE - Destroy by any method that will prevent disclosure of contents or reconstruction of the document.

**HEADQUARTERS, DEPARTMENT OF THE ARMY
15 AUGUST 1992**

Change

No. 1

HEADQUARTERS
DEPARTMENT OF THE ARMY
Washington, DC, 1 April 1996

ORGANIZATIONAL AND DIRECT SUPPORT MAINTENANCE
REPAIR PARTS AND SPECIAL TOOLS LISTS
FOR
TELEPHONE SET TA-1/PT
(NSN 5805-00-521-1320) (EIC: N/A)

TM 11-5805-243-23P, 15 August 1992, is changed as follows:

1. Remove old pages and insert new pages as indicated below. New or changed material is indicated by a vertical bar in the margin of the page.

<i>Remove pages</i>	<i>Insert pages</i>
1-1	1-1
Figure 2 (Sheet 1 of 4) and (Sheet 2 of 4)	Figure 2 (Sheet 1 of 4) and (Sheet 2 of 4)
2-1	2-1
3-1 and Figure 4	3-1 and Figure 4
4-1 and Figure 5	4-1 and Figure 5
5-1 and Figure 6	5-1 and Figure 6
6-1 and Figure 7	6-1 and Figure 7
7-1	7-1
1-1 through 1-4	1-1 through 1-4
1-5	1-5

2. File this change sheet in front of the manual for reference purposes.


Distribution authorized to US Government agencies and their contractors for official use or for administrative or operational purposes only. This determination was made on 15 October 1993. Other requests for this document must be referred to Commander, US Army Communications-Electronics Command and Fort' Monmouth, ATTN: AMSEL-LC- LEO-P-MM-T, Fort Monmouth, New Jersey 07703-5007.

DESTRUCTION NOTICE -- Destroy by any method that will prevent disclosure of contents or reconstruction of the document.

By Order of the Secretary of the Army:

DENNIS J. REIMER
General, United States Army
Chief of Staff

Official:


JOEL B. HUDSON
Acting Administrative Assistant to the
Secretary of the Army
01695

DISTRIBUTION:

To be distributed in accordance with DA Form 12-36-E, block 9185,
requirements for TM 11-5805-243-23P.

Technical Manual
No. 11-5805-243-23P

HEADQUARTERS
DEPARTMENT OF THE ARMY
Washington, DC, 15 August 1992

**Organizational and Direct Support Maintenance
Repair Parts and Special Tools Lists
for
TELEPHONE SET TA-1/PT
(NSN 5805-00-521-1320) (EIC:N/A)**

Current as of 1 May 1992

REPORTING ERRORS AND RECOMMENDING IMPROVEMENTS

You can help improve this manual. If you find any mistakes or if you know of a way to improve the procedures, please let us know. Mail your letter, DA Form 2028 (Recommended Changes to Publications and Blank Forms), or DA Form 2028-2 located in the back of this manual direct to: Commander, US Army Communications-Electronics Command and Fort Monmouth, ATTN: AMSEL-LC-LM-LT, Fort Monmouth, New Jersey 07703-5000. A reply will be furnished direct to you .

TABLE OF CONTENTS

			Page	IIIUs/ Figure
Section	I	Introduction	1	
	II	Repair Parts List	1-1	
Group	00	Telephone Set TA-1/PT	1-1	1
	01	Chassis Assembly	2-1	2
		0101 Handset Cover Assembly	3-1	3
		0102 Terminal Block Assembly	4-1	4
		010201 Handset Cord Assembly	5-1	5
	02	Handset Housing Assembly	6-1	6
	03	Case and Cover Assembly	7-1	7
Section	III	Special Tools List (Not applicable)		
	IV	Cross Reference Indexes		
		National Stock Number Index	I-1	
		Part Number Index	I-2	
		Figure and Item Number index.....	I-5	

*This publication supersedes TM 11-5805-243-20P, 31 January 1976 and TM 11-5805-243-34P, 17 January 1977 and all changes.

CHAPTER 1 INTRODUCTION

1. SCOPE

This manual lists and authorizes spares and repair parts; special tools; special test, measurement, and diagnostic equipment (TMDE); and other special support equipment required for the performance of organizational maintenance of the Telephone Set TA-1 /PT. It authorizes the requisitioning, issue, and disposition of spares, repair parts and special tools as indicated by the source, maintenance, and recoverability (SMR) codes.

2. GENERAL

This Repair Parts and Special Tools List is divided into the following sections:

a. *Section II. Repair Parts List.* A list of spares and repair parts authorized by this RPSTL for use in the performance of maintenance. This list also includes parts which must be removed for replacement of the authorized parts. Parts lists are composed of functional groups in ascending item number sequence, with the parts in each group listed in ascending item number sequence. Figure numbers are listed directly beneath the group header. Bulk materials are listed in item name sequence. Repair part kits are listed separately in their own functional group within Section II. Repair parts for reparable special tools are also listed in this section. Items listed are shown on the associated illustration.

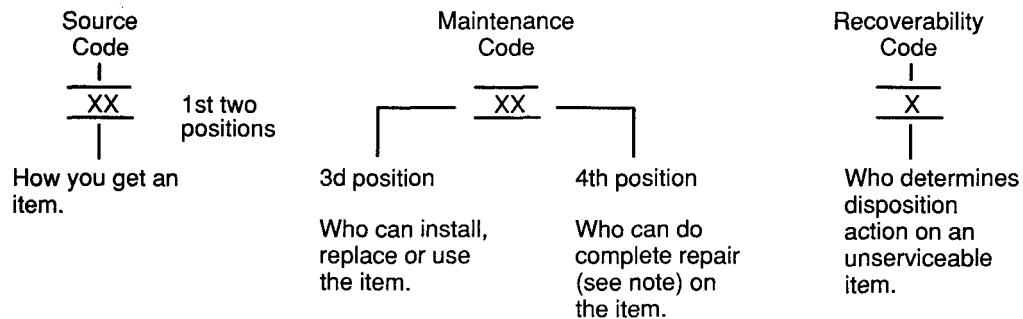
b. *Section III. Special Tools List.* Not applicable.

c. *Section IV Cross-Reference Indexes.* A list, in National item identification number (NIIN) sequence, of all National stock numbered items appearing in the listing, followed by a list in alphameric sequence of all part numbers appearing in the listings. National stock numbers and part numbers are cross-referenced to each illustration figure and item number appearance. The figure number and item number index lists figure and item numbers in numeric sequence and cross-references National stock number, Commercial and Government Entity Code, and part numbers.

3. EXPLANATION OF COLUMNS (Section II and III)

a. *Item No. (Column (1)).* Indicates the number used to identify items called out in the illustrations,

b. *SMR Code (Column (2)).* The source, maintenance, and recoverability (SMR) code is a five-position code containing supply/requisitioning information, maintenance category authorization criteria and disposition instruction, as shown in the following breakout:



NOTE

Complete repair: Maintenance capacity, capability, and authority to perform all corrective maintenance tasks of the "repair" function in a use/user environment in order to restore serviceability to a failed item.

(1) Source code. The source code tells you how to get an item needed for maintenance, repair, or overhaul of an end item/equipment. Explanations of source codes follows:

<i>Code</i>	<i>Explanation</i>
PA PB PC PD PE PF PG	Stocked items: use the applicable NSN to request/requisition items with these source codes. They are authorized to the category indicated by the code entered in the third position of the SMR code.

NOTE

Items coded PC are subject to deterioration.

KD
 KF
 KB

Items with these codes are not to be requested/requisitioned individually. They are part of a kit which is authorized to the maintenance category indicated in the third position of the SMR code. The complete kit must be requisitioned and applied.

MO – Made at org/AVUM category
 MF – Made at DS/AVIM category
 MH – Made at GS category
 ML – Made at Specialized Repair Activity (SRA)
 MD – Made at Depot

Items with these codes are not to be requested/requisitioned individually. They must be made from bulk material which is identified by the part number in the description and usable on code (UOC) column and listed in the Bulk Material group of the repair parts list. If the item is authorized to you by the third position code of the SMR code, but the source code indicates it is made at a higher category, order the item from the higher category of maintenance.

AO – Assembled by org/AVUM category
 AF – Assembled by DS/AVIM category
 AH – Assembled by GS category
 AL – Assembled by SRA
 AD – Assembled by Depot

Items with these codes are not to be requested/requisitioned individually. The parts that make up the assembled item must be requisitioned or fabricated and assembled at the category of maintenance indicated by the source code. If the third position code of the SMR code authorizes you to replace the item, but the source code indicates the item is assembled at a higher category, order the item from the higher category of maintenance.

Code	Explanation
XA	– Do not requisition an “XA” coded item. Order its next higher assembly.
XB	- If an “XB” item is not available from salvage, order it using the CAGEC and part number given.
XC	- Installation drawing, diagram, instruction sheet, field service drawing, that is identified by manufacturer’s part number.
XD	- Item is not stocked. Order an “XD” coded item through normal supply channels using the CAGEC and part number given, if no NSN is available.

NOTE

Cannibalization or controlled exchange, when authorized, may be used as a source of supply for items with the above source codes, except for those source coded “XA” or those aircraft support items restricted by requirements of AR 750–1.

(2) *Maintenance code.* Maintenance codes tell you the category of maintenance authorized to USE and REPAIR support items. The maintenance codes are entered in the third and fourth positions of the SMR code as follows:

(a) The maintenance code entered in the third position tells you the lowest maintenance category authorized to remove, replace, and use an item. The maintenance code entered in the third position will indicate authorization to one of the following categories of maintenance.

Code	Application/Explanation
C	- Crew or operator maintenance done within organizational or aviation maintenance.
O	- organizational or aviation unit category can remove, replace, and use the item.
F	- Direct support or aviation intermediate category can remove, replace, and use the item.
H	- General support category can remove, replace, and use the item.
L	- Specialized repair activity can remove, replace, and use the item.
D	- Depot category can remove, replace, and use the item.

(b) The maintenance code entered in the fourth position tells whether or not the item is to be repaired and identifies the lowest maintenance category with the capability to do complete repair (i.e., perform all authorized repair functions). This position will contain one of the following maintenance codes.

NOTE

Some limited repair may be done on the item at a lower category of maintenance, if authorized by the Maintenance Allocation Chart (MAC) and SMR codes.

Code.	Explanation
O	- Organizational or aviation unit is the lowest category that can do complete repair of the item.
F	- Direct support or aviation intermediate is the lowest category that can do complete repair of the item.
H	- General support is the lowest category that can do complete repair of the item.
L	- Specialized repair activity (designate the specialized repair activity) is the lowest category that can do complete repair of the item.
D	- Depot is the lowest category that can do complete repair of the item.
Z	- Nonreparable. No repair is authorized.
B	- No repair is authorized. (No parts or special tools are assigned for the maintenance of a “B” coded item.) However, the item may be reconditioned by adjusting, lubricating, etc., at the user category,

(3) *Recoverability code.* Recoverability codes are assigned to items to indicate the disposition action on unserviceable items. The recoverability code is entered in the fifth position of the SMR code as follows:

Recoverability Code	Application/Explanation
Z	- Nonreparable item. When unserviceable, condemn and dispose of the item at the category of maintenance shown in the third position of SMR code.
O	- Repairable item. When uneconomically repairable, condemn and dispose of the item at organizational or aviation unit category.

Recoverability

Code	Application/Explanation
F	- Reparable item. When uneconomically reparable, condemn and dispose of the item at direct support or aviation intermediate category.
H	- Reparable item. When uneconomically reparable, condemn and dispose of the item at general support category.
D	- Reparable item. When beyond lower category repair capability, return to depot. Condemnation and disposal of item not authorized below depot category.
L	- Reparable item. Condemnation and disposal not authorized below specialized repair activity (SRA).
A	- Item requires special handling or condemnation procedures because of specific reasons (e.g., precious metal content, high dollar value, critical material, or hazardous material. Refer to appropriate manuals/directives for specific instructions.

c. *CAGEC (Column (3))*. The Commercial and Government Entity Code (CAGEC) is a 5-digit numeric code which is used to identify the manufacturer, distributor, or Government agency, etc., that supplies the item.

d. *Part Number (Column (4))*. Indicates the primary number used by the manufacturer (individual, company, firm, corporation, or Government activity), which controls the design and characteristics of the item by means of its engineering drawings, specifications, standards, and inspection requirements to identify an item or range of items.

NOTE

When you use an NSN to requisition an item, the item you receive may have a different part number from the part ordered.

e. *Description and Usable on Code (UOC) (Column (5))*. This column includes the following information.

(1) The Federal item name and, when required, a minimum description to identify the item.

(2) The physical security classification of the item is indicated by the parenthetical entry (*insert applicable physical security classification abbreviation, e.g., Phy Sec C1 (C) – Confidential, Phy Sec C1 (S) - Secret, Phy Sec C1 (T) - Top Secret*).

(3) Items that are included in kits and sets are listed below the name of the kit or set.

(4) Spare/repair parts that make up an assembled item are listed immediately following the assembled item line entry.

(5) Part numbers for bulk materials are referenced in this column in the line entry for the item to be manufactured/fabricated.

(6) When the item is not used with all serial numbers of the same model, the effective serial numbers are shown on the last line of the description (before UOC).

(7) Usable on code, when applicable (para 5).

(8) In the Special Tools section, the basis of issue (BOI) appears as the last line in the entry for each special tool, special TMDE, and other special support equipment. When density of equipments supported exceeds density spread indicated in the basis of issue, the total authorization is increased proportionately.

(9) The statement "END OF FIGURE" appears just below the last item description in Column (5) for a given figure in both section II and section III.

f. *Qty (Column (6))*. Indicates the quantity of the item used in the breakout shown on the illustration figure, which is prepared for a functional group, subfunctional group, or an assembly. A "V" appearing in this column in lieu of a quantity indicates that the quantity is variable and the quantity may vary from application to application.

4. EXPLANATION OF COLUMNS (Section IV)

a. National Stock Number (NSN) Index.

(1) *Stock number column.* This column lists the NSN by National item identification number (NIIN) sequence. The NIIN consists of the last nine digits of the NSN. When using this column to locate an item, ignore the first four digits of the NSN. When requisitioning items use the complete NSN (13 digits) sequence. The NIIN consists of the last nine digits of the NSN. When using this column to locate an item, ignore the first four digits of the NSN. When requisitioning items use the complete NSN (13 digits).

(2) *Fig. column.* This column lists the number of the figure where the item is identified/located. The illustrations are in numerical sequence in sections II and III.

(3) *Item column.* The item number identifies the item associated with the figure listed in the adjacent Fig. column. This item is also identified by the NSN listed on the same line.

b. *Part Number Index.* Part numbers in this index are listed by part number in ascending alphameric sequence.

(1) *CAGEC column.* This column lists the Commercial and Government Entity Code (CAGEC).

(2) *Part number column.* This column indicates the part number assigned to the item.

(3) *Stock number column.* This column lists the National stock number for the associated part number and manufacturer identified in the part number and CAGEC columns to the left.

(4) *Fig. column.* This column lists the number of the figure where the item is identified/located in sections II and III.

(5) *Item column.* The item number is that number assigned to the item as it appears in the figure referenced in the adjacent figure number column.

c. Figure and Item Number Index.

(1) *Fig. column.* This column lists the number of the figure where the item is identified/located in sections II and III.

(2) *Item column.* The item number is that number assigned to the item as it appears in the figure referenced in the adjacent figure number column.

(3) *Stock number column.* This column lists the National stock number for the item.

(4) *CAGEC column.* The Commercial and Government Entity Code (CAGEC) is a 5-digit numeric code used to identify the manufacturer, distributor, or Government agency, etc., that supplies the item.

(5) *Part number column.* Indicates the primary number used by the manufacturer (individual, firm, corporation, or Government activity), which controls the design and characteristics of the item by means of its engineering drawings, specifications, standards, and inspection requirements to identify an item or range of items.

5. SPECIAL INFORMATION

a. *Associated Publications.* The publications listed below pertain to the TA-1 /PT and its components:

TM 11-5805-243-12	Telephone Set TA-1 /PT
TM 11-5805-243-35	Telephone Set TA-1 /PT

b. *Illustrations – Listing.* The illustrations in this RPSTL are identical to those published in TM 11-5805-367-34P-1-1. Only those parts coded “C” or “O” in the third position of the SMR code are listed in the tabular listing; therefore, there may be a break in the item number sequence, figure number and page number. Only illustrations containing organizational or aviation unit authorized items appear in this RPSTL.

c. *National Stock Numbers.* National stock numbers (NSN’S) that are missing from P source coded items have been applied for and will be added to this TM by future change/revision when they are entered in the Army Master Data File (AMDF). Until the NSN’S are established and published, submit exception requisitions to: Commander, US Army Communications–Electronics Command and Fort Monmouth, ATTN: AMSEL–LC–MM, Fort Monmouth, NJ 07703–5007 for the part required to support your equipment.

6. HOW TO LOCATE REPAIR PARTS

a. When National stock number or part number is not known.

(1) *First.* Using the table of contents, determine the assembly group or subassembly group to which the item belongs. This is necessary since figures are prepared for assembly groups and subassembly groups, and listings are divided into the same groups.

(2) *Second.* Find the figure covering the assembly group or subassembly group to which the item belongs.

(3) *Third.* Identify the item on the figure and note the item number.

(4) *Fourth.* Refer to the Repair Parts Lists for the figure to find the part number for the item number noted on the figure.

(5) *Fifth.* Refer to the Part Number Index to find the NSN, if assigned.

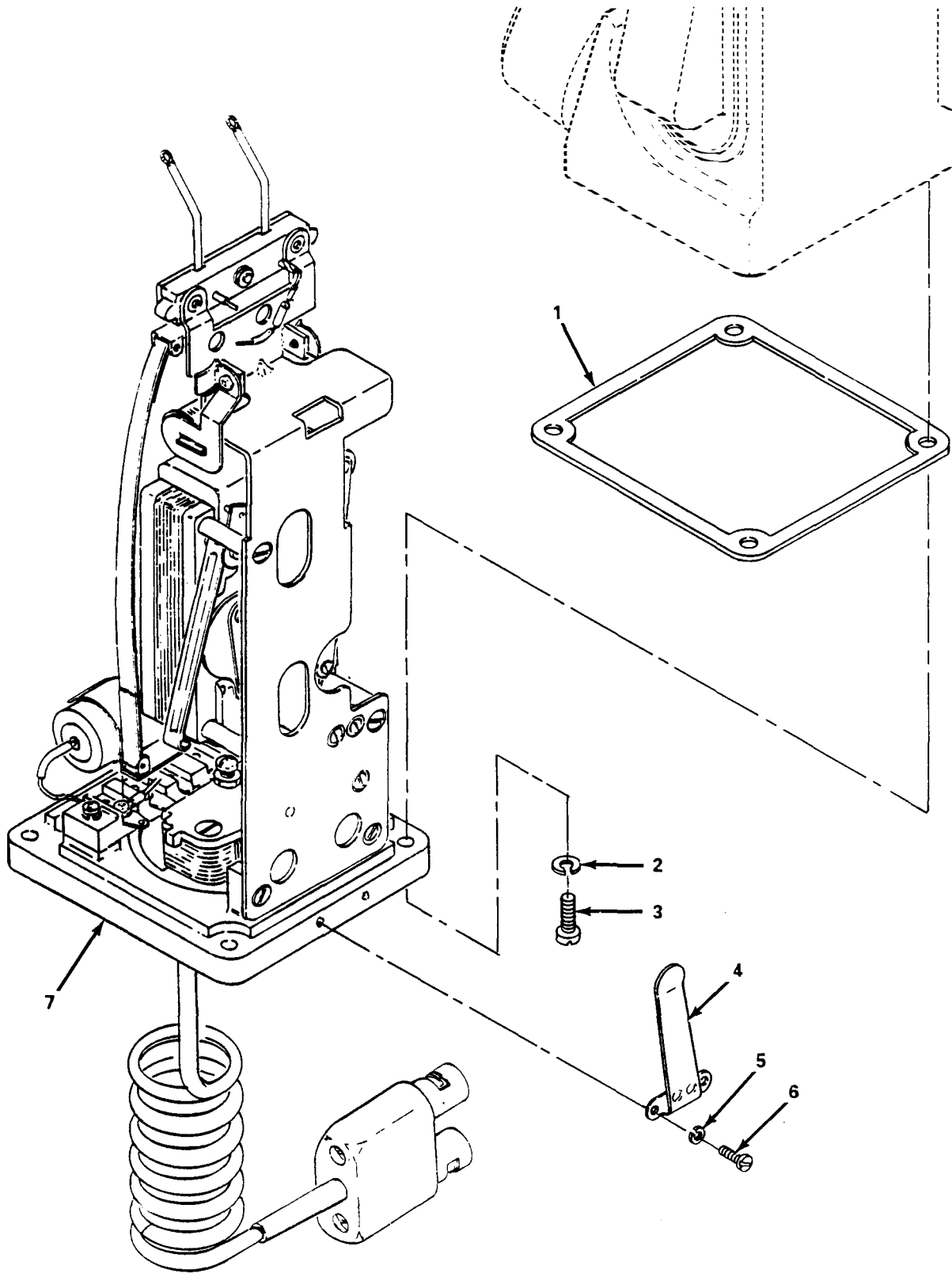
b. When National stock number or part number is known.

(1) *First.* Using the index of National stock numbers and part numbers, find the pertinent National stock number or part number. The NSN index is in National item identification number (NIIN) sequence (para4a(l)). The part numbers in the part number index are listed in ascending alphameric sequence (para4b). Both indexes cross-reference you to the illustration figure and item number of the item you are looking for.

(1) *Second.* After finding the figure and item number, verify that the item is the one you're looking for, then locate the item number in the repair parts list for the figure.

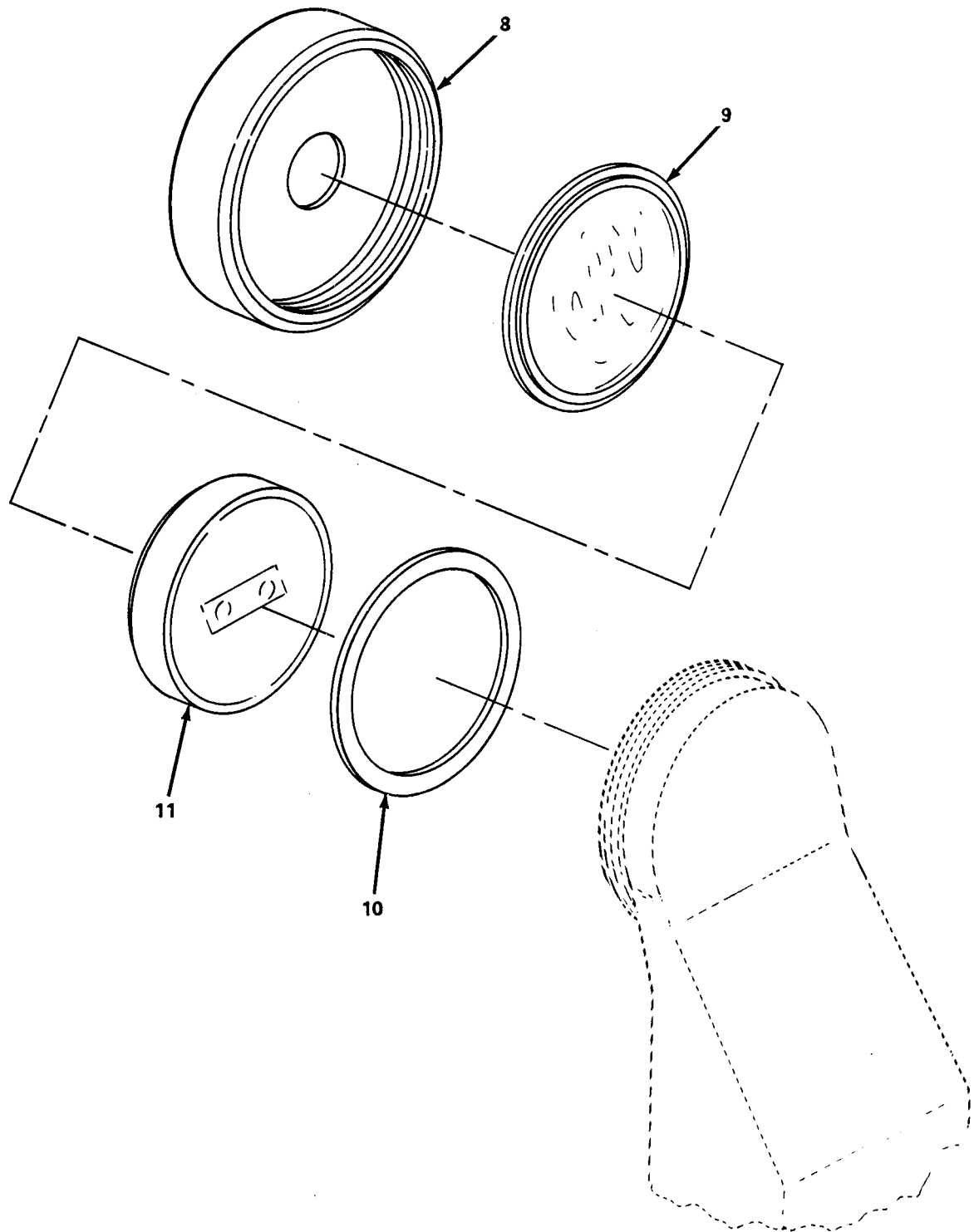
7. ABBREVIATIONS

Not applicable.



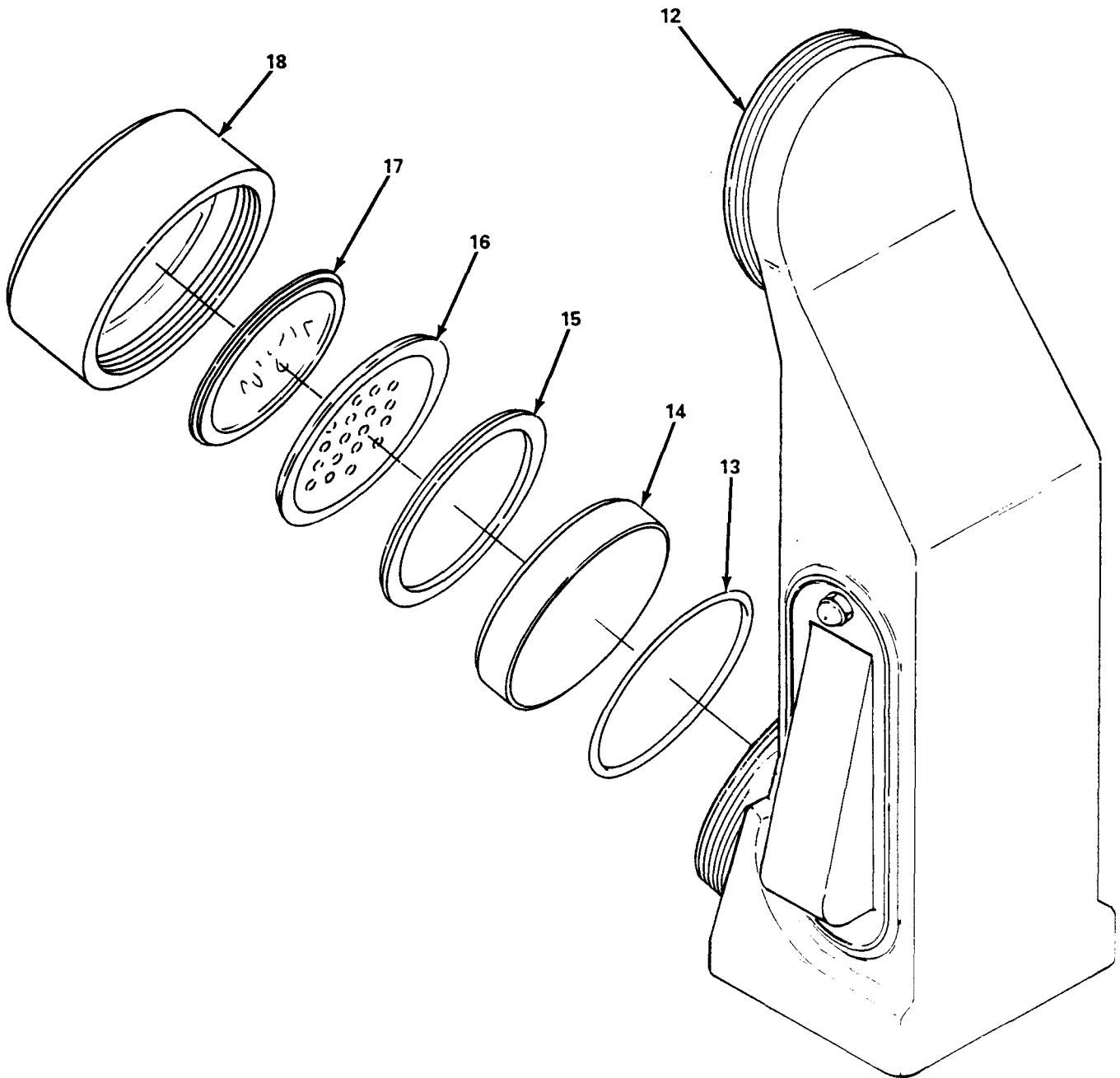
EL1A0001

Figure 1. Telephone Set TA-1/PT (Sheet 1 of 4).



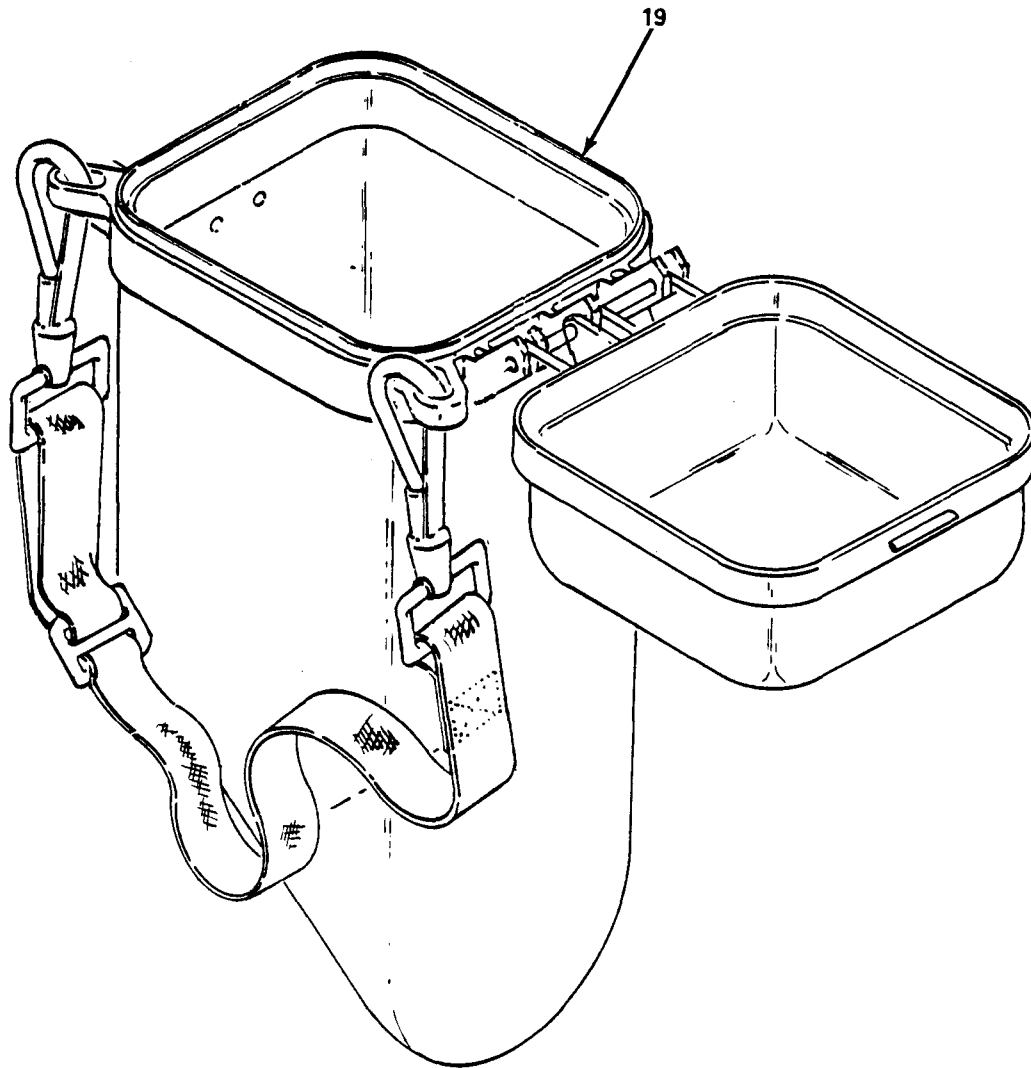
EL1 A0002

Figure 1. Telephone Set TA- I/PT (Sheet 2 of 4).



EL1A0003

Figure 1. Telephone Set TA- I/PT (Sheet 3 of 4).

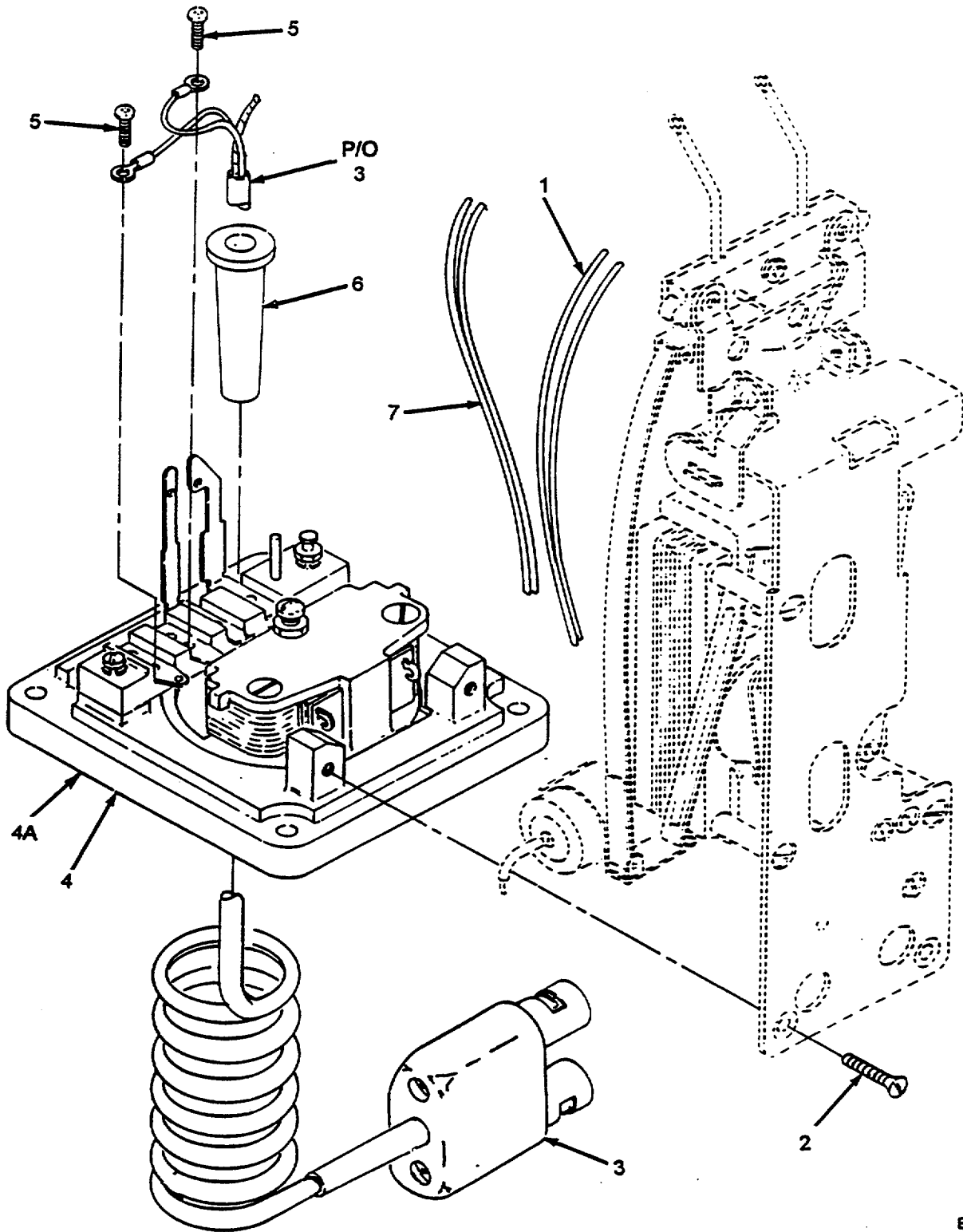


EL1A0004

Figure 1. Telephone Set TA- I/PT (Sheet 4 of 4).

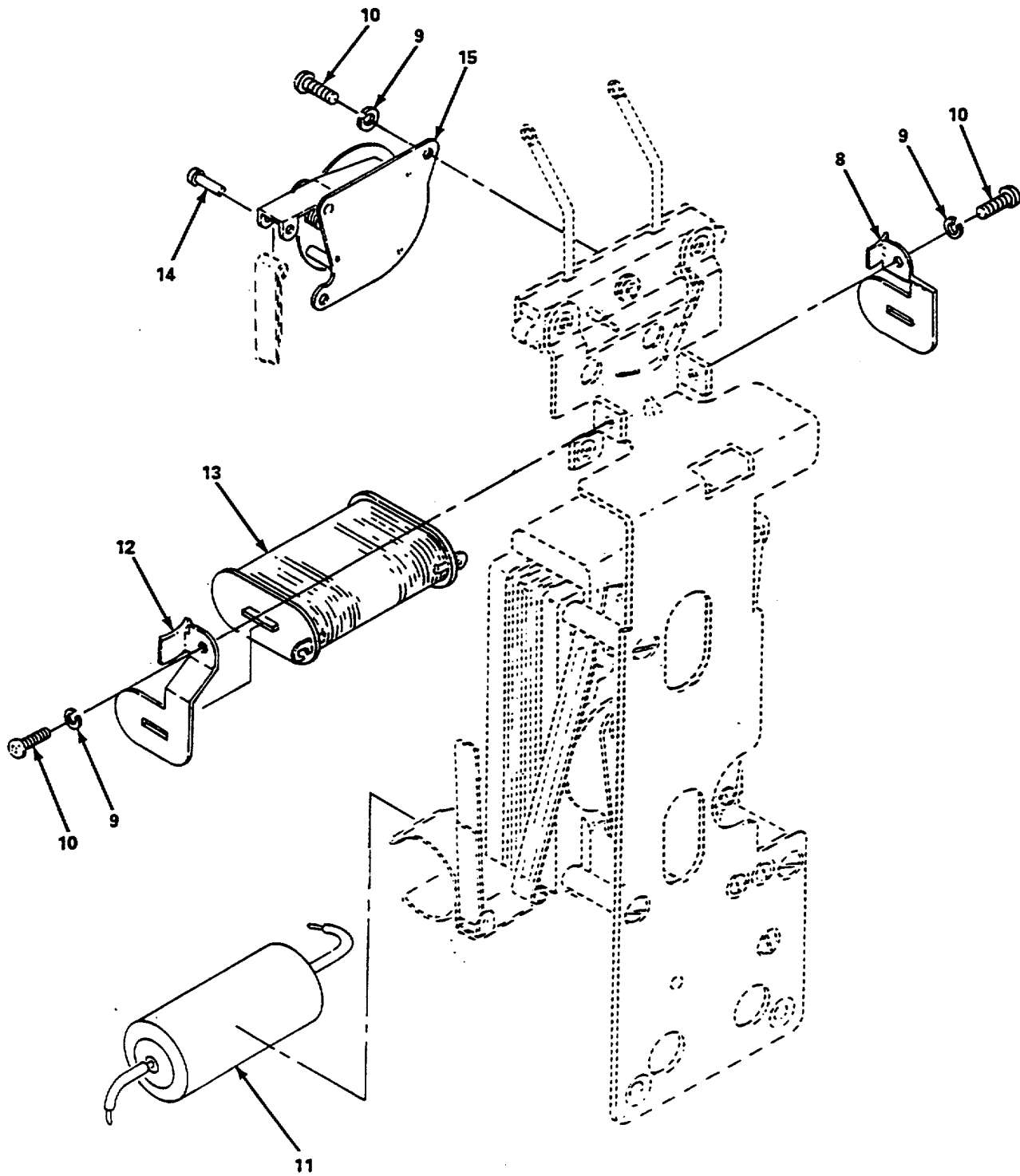
SECTION II					
(1)	(2)	(3)	(4)	(5)	(6)
ITEM NO	SMR CODE	CAGEC	PART NUMBER	DESCRIPTION AND USABLE ON CODES (UOC)	QTY
GROUP 00 TELEPHONE SET TA-I/PT FIGURE 1					
1	PAFZZ	80063	SM-B-168934	GASKET	1
2	PAOZZ	96906	MS35333-36	WASHER,LOCK	4
3	PAFZZ	96906	MS35206-217	SCREW,MACHINE	4
4	PAOZZ	80063	SM-B-168935	LIP,SPRING TENSION.....	1
5	PAOZZ	96906	MS35333-37	WASHER,LOCK	2
6	PAOZZ	96906	MS35206-227	SCREW,MACHINE	2
7	XBFFF	80063	SM-D-189374	HASSIS ASSEMBLY (SEE FIGURE 2 FOR BREAKDOWN)	1
8	PAOZZ	80063	SM-B-143122	CAP,ELECTRICAL	
9	PAOZZ	80063	SM-B-169076GP2	DIAPHRAGM,EARPHONE	1
10	PAOZZ	80063	SM-B-169079	GASKET	
11	PAOZZ	80063	SM-D-189373	EARPHONE ELEMENT	1
12	XBFFF	80063	SM-D-189378	HANDSET HOUSING ASS (SEE FIGURE 6 FOR BREAKDOWN)	1
13	XBOZZ	96906	MS29561-223	PACKING,PREFORMED.....	1
14	PAOZZ	81349	TA-Z21/PT	MICROPHONE ELEMENT	1
15	PAOZZ	80063	SM-B-169081	SUPPORT,RESONATOR,T.....	1
16	XBOZZ	80063	SM-B-169082	RESONATOR,EARPHONE	1
17	PAOZZ	80063	SM-B-169076GP1	DIAPHRAGM,MICROPHON.....	1
18	PAOZZ	80063	SM-B-143123	CAP,ELECTRICAL	1
19	PAOFF	80063	SM-D-143140	CASE,TELEPHONE SET (SEE FIGURE 7 FOR BREAKDOWN)	1

END OF FIGURE



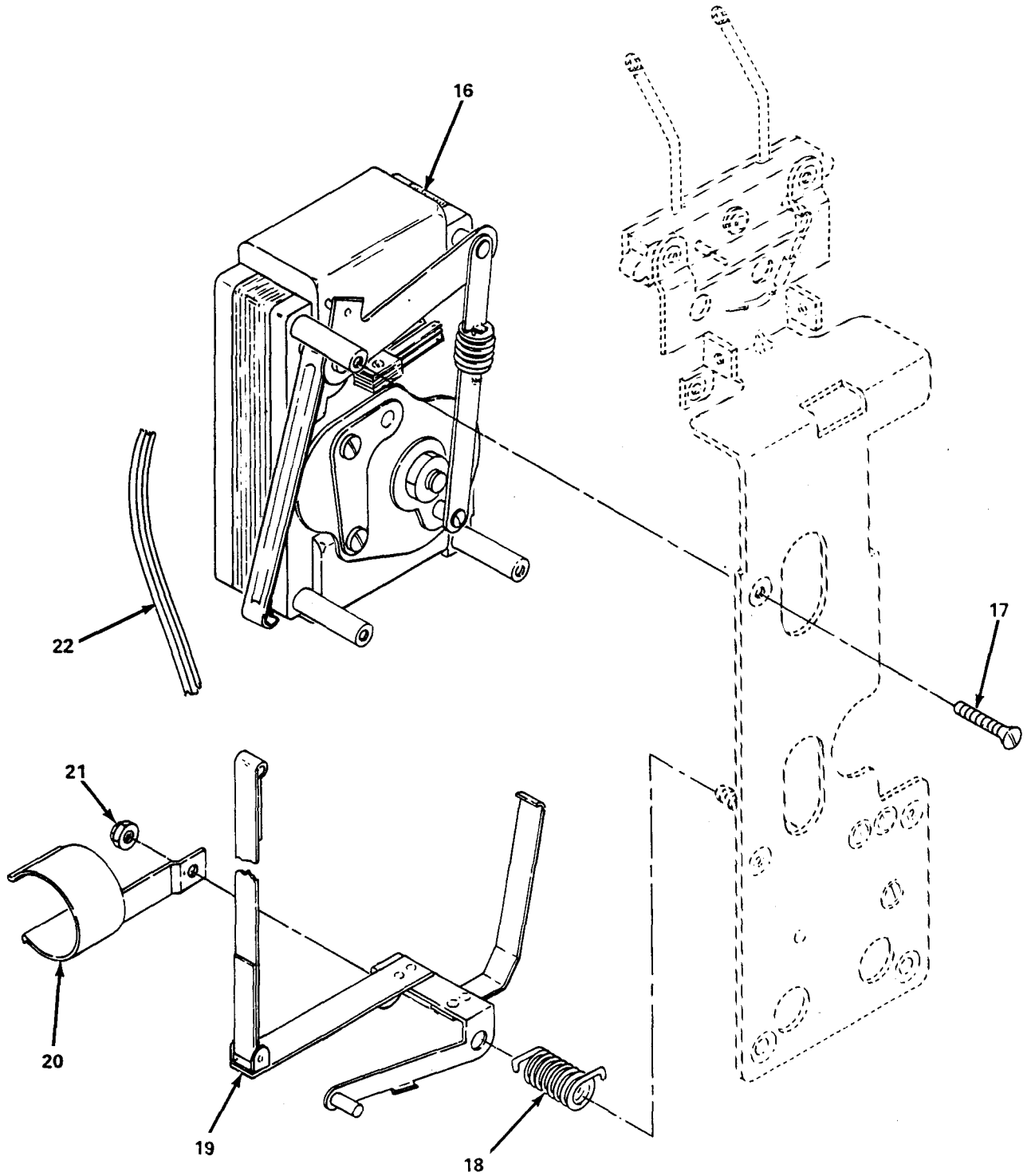
EL1A0005

Figure 2. Chassis Assembly (Sheet 1 of 4).



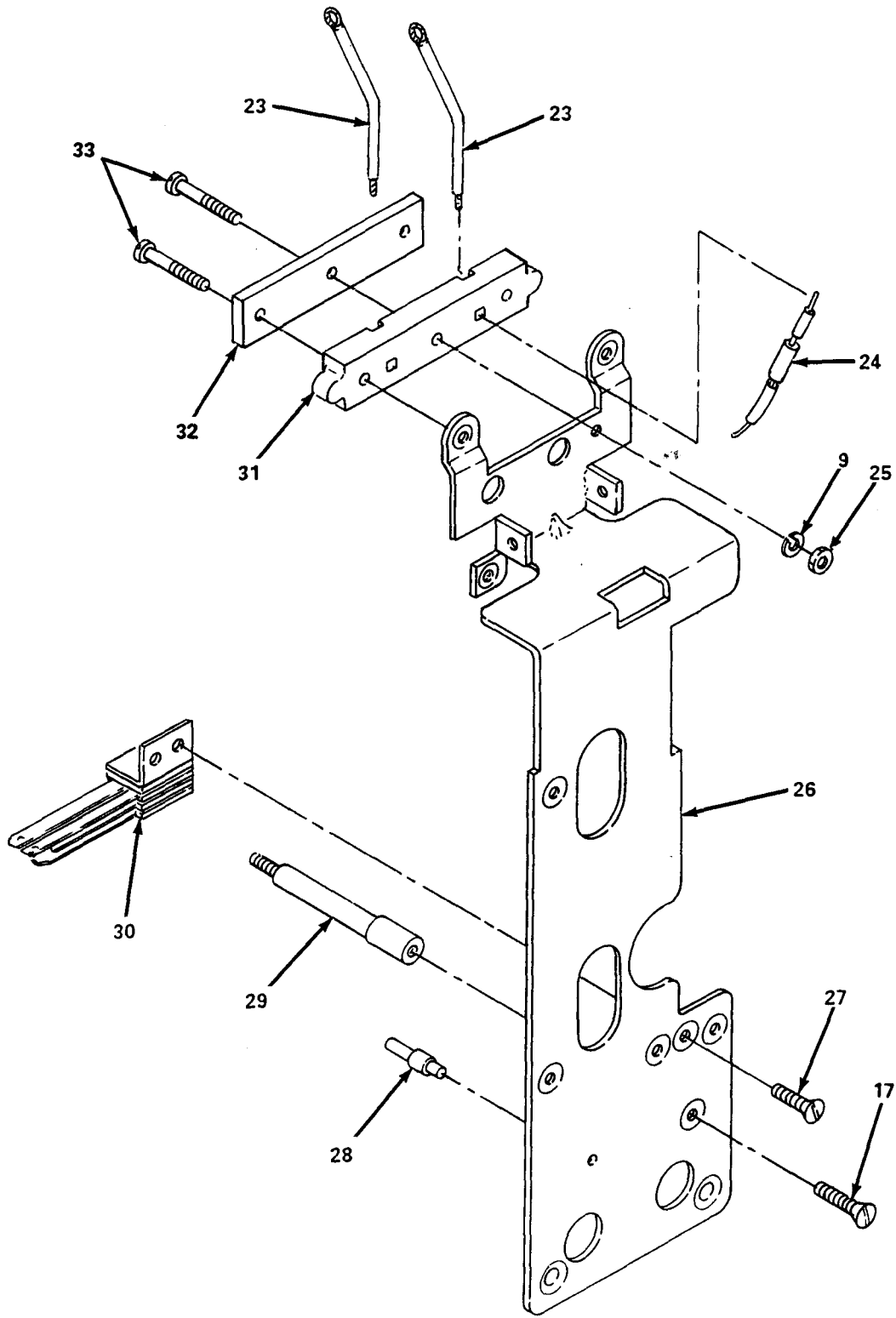
EL1A0006

Figure 2. Chassis Assembly (Sheet 2 of 4).



EL1A0007

Figure 2. Chassis Assembly (Sheet 3 of 4).



EL1A0008

Figure 2. Chassis Assembly (Sheet 4 of 4).

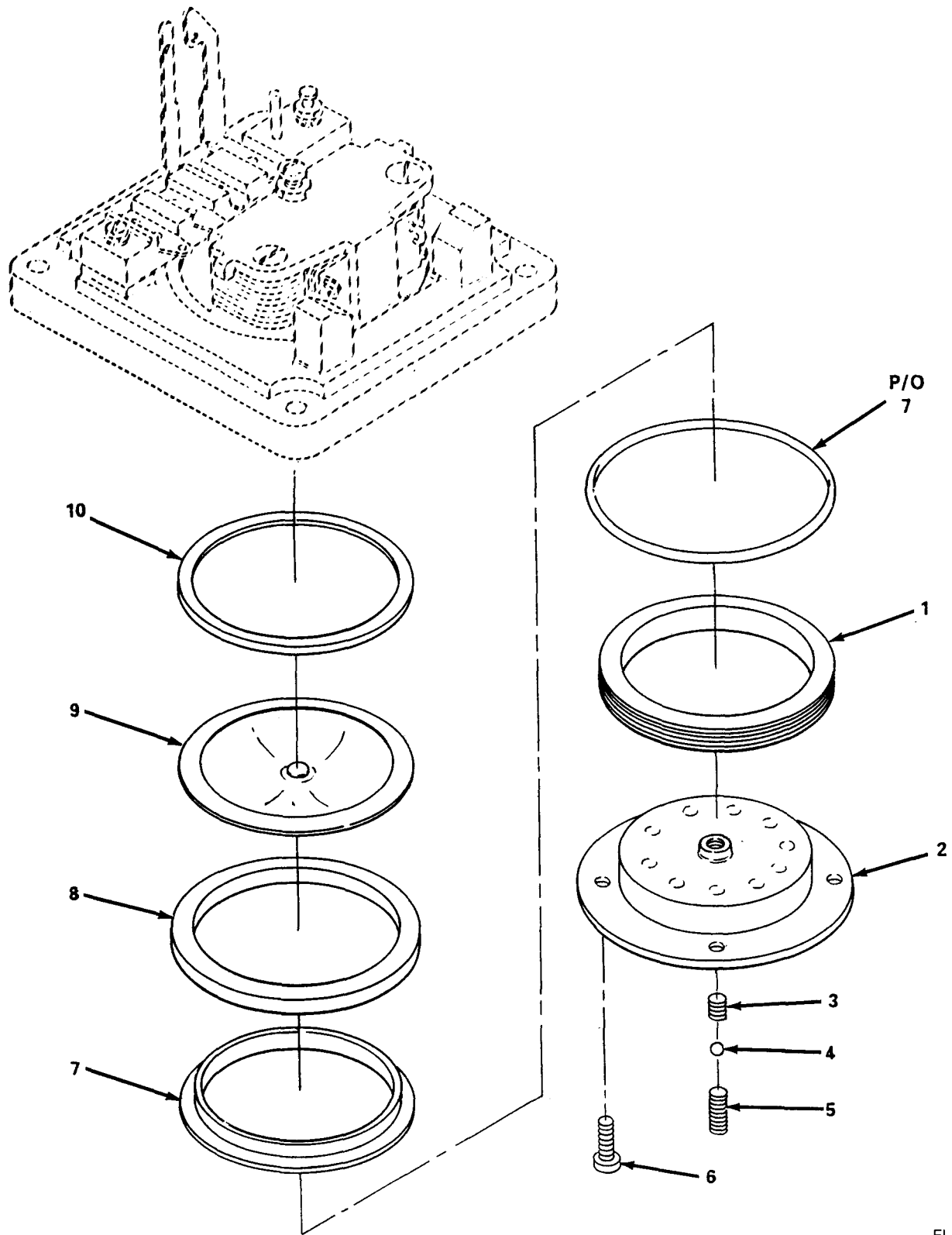
SECTION II

TM11-5805-243-23P

(1) ITEM NO	(2) SMR CODE	(3) CAGEC	(4) PART NUMBER	(5) DESCRIPTION AND USABLE ON CODES (UOC)	(6) QTY
GROUP 010002 CHASSIS ASSEMBLY					
FIGURE 2					
1	XBFZZ	80063	SM-B-189381	WIRING ASSEMBLY	L
2	PAFZZ	96906	MS35190-221	SCREW,MACHINE	2
3	PAFFF	60468	8319	TERMINAL BOARD (SEE FIGURE 4 FOR BREAKDOWN)	1
4	XBFFF	80063	SM-D-189379	HANDSET COVER ASSY (SEE FIGURE 3..... FOR BREAKDOWN)	1
4A	PAFZZ	80063	A3214303	HANDSET COVER ASSY (REPLACES ITEM..... # 4 WHEN REPAIR PARTS NOT AVAILABLE)	1
5	PAFZZ	96906	MS35214-1	SCREW,MACHINE	2
6	XBFZZ	80063	SM-B-169032	SLEEVE, TELEPHONE CO	1
7	XBFZZ	80063	SM-B-189382	WIRING ASSEMBLY	1
8	PAFZZ	80063	SM-B-169022-2	POLE PIECE,MAGNET	1
9	PAFZZ	96906	MS35333-35	WASHER,LOCK	5
10	PAFZZ	96906	MS35206-202	SCREW,MACHINE	4
11	PAFZZ	18876	8016498	CAPACITOR,FIXED,MET	1
12	PAFZZ	80063	SM-B-169022-1	POLE PIECE,MAGNET	1
13	PAFZZ	80063	SM-C-189366	OIL,ELECTRICAL	1
14	PAFZZ	80063	SM-B-169053	RIVET,BLIND.....	1
15	PAFZZ	80063	SM-C-168967	INDICATOR,VISUAL,HA	1
16	PAFZZ	80063	SM-D-189375	GENERATOR,RINGING,H	1
17	PAFZZ	96906	MS35190-211	SCREW,MACHINE	4
18	PAFZZ	80063	SM-B-169047	SPRING,HELICAL,TORS	1
19	PAFZZ	80063	SM-C-189386	HOLDER, MOUTHPIECE	1
20	XBFZZ	80063	SM-B-169042	RETAINER,CAPACITOR	1
21	PAFZZ	96906	MS21044-NO4	NUT,SELF-LOCKING,HE	1
22	XBFZZ	80063	SM-C-189363	WIRING ASSEMBLY	1
23	XBFZZ	80063	SM-B-169050	CONTACT ASSEMBLY,EL	2
24	PAFZZ	81349	RCR20G472JS	RESISTOR,FIXED,COMP	1
25	PAFZZ	96906	MS35649-222	NUT,PLAIN,HEXAGON	1
26	XBFZZ	80063	SM-D-168902	MOUNTING PLATE	1
27	PAFZZ	96906	MS35190-210	SCREW,MACHINE	2
28	PAFZZ	80063	SM-B-169046	PIN,SHOULDER,HEADLE.....	1
29	XBFZZ	80063	SM-B-169043	DEP REPORTED STK-NO	1
30	PAFZZ	80063	SM-C-189365	CONTACT ASSEMBLY,EL.....	1
31	PAFZZ	80063	SM-B-169048	TERMINAL BOARD	1
32	XBFZZ	80063	SM-B-189389	DEP REPORTED STK-NO	1
33	PAFZZ	96906	MS35214-5	SCREW,MACHINE	3

END OF FIGURE

Change 1 2-1



EL1A0009

Figure 3. Handset Cover Assembly (Sheet 1 of 2).

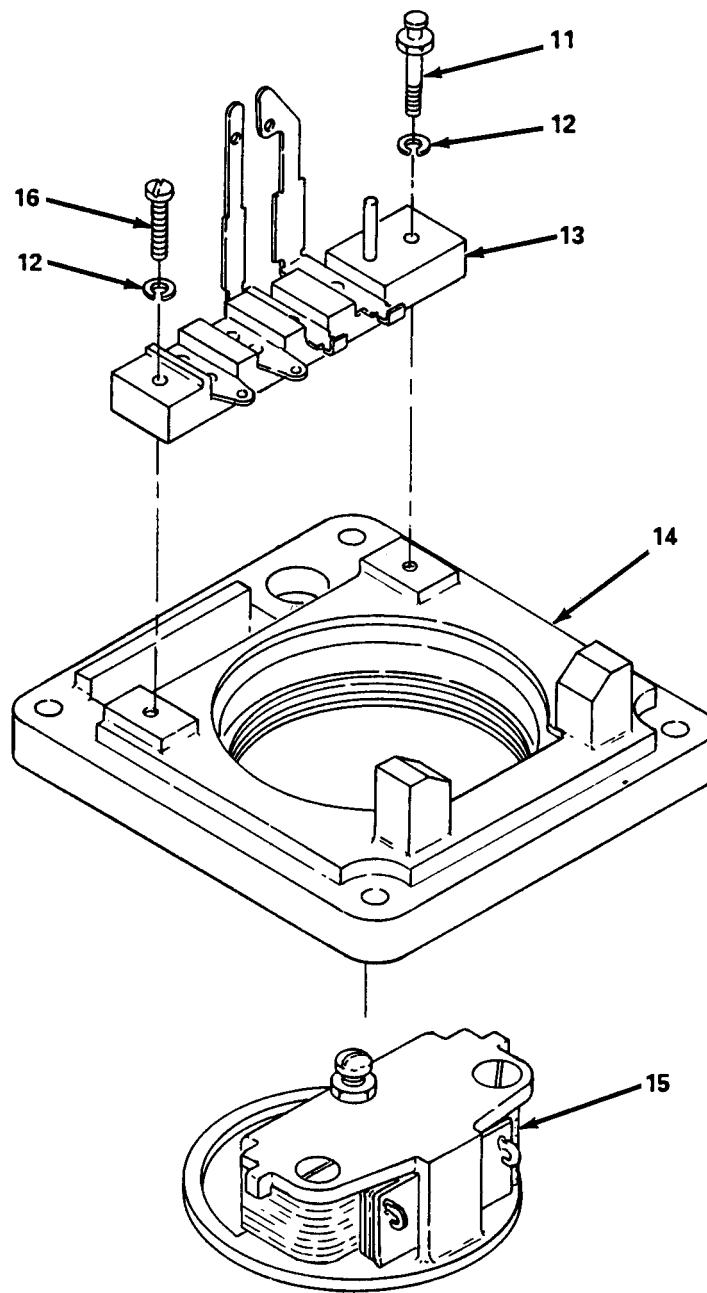


Figure 3. Handset Cover Assembly (Sheet 2 of 2).

(1) ITEM NO	(2) SMR CODE	(3) CAGEC	(4) PART NUMBER	(5) DESCRIPTION AND USABLE ON CODES (UOC)	(6) QTY
-------------------	--------------------	--------------	-----------------------	--	------------

**GROUP 0101 HANDSET COVER ASSEMBLY
FIGURE 3**

1	PAFZZ	80063	SM-B-169018	NUT,PLAIN,ROUND.....	1
2	PAFZZ	80063	SM-C-168986	OVER,MICROPHONE.....	1
3	PAFZZ	80063	SM-D-189379-3	SETSCREW.....	1
4	XBFZZ	80063	SM-D-189379-2	BALL.....	1
5	XBFZZ	96906	MS51981-9	SETSCREW.....	1
6	PAFZZ	96906	MS35190-210	SCREW,MACHINE.....	4
7	PAFZZ	80063	SM-B-169020	RING,IRETAINING.....	1
8	PAFZZ	80063	SM-B-143125	GASKET.....	1
9	PAFZZ	80063	SM-B-169007	DIAPHRAM,BUZZER,HAN.....	1
10	PAFZZ	80063	SM-B-169019	SPACER,RING.....	1
11	PAFZZ	80063	SM-B-169017	STUD,SELF-LOCKING.....	1
12	PAFZZ	96906	MS35333-3S	WASHER,LOCK.....	2
13	PAFZZ	80063	SM-C-169012	TERMINAL BOARD.....	1
14	PAFZZ	80063	SM-C-168985	HANDSET HOUSING COV.....	1
15	PAFZZ	80063	SM-C-189369	BUZZER.....	1
16	PAFZZ	96906	MS35206-204	SCREW,:ACHINE.....	1

END OF FIGURE

Change 1 3-1

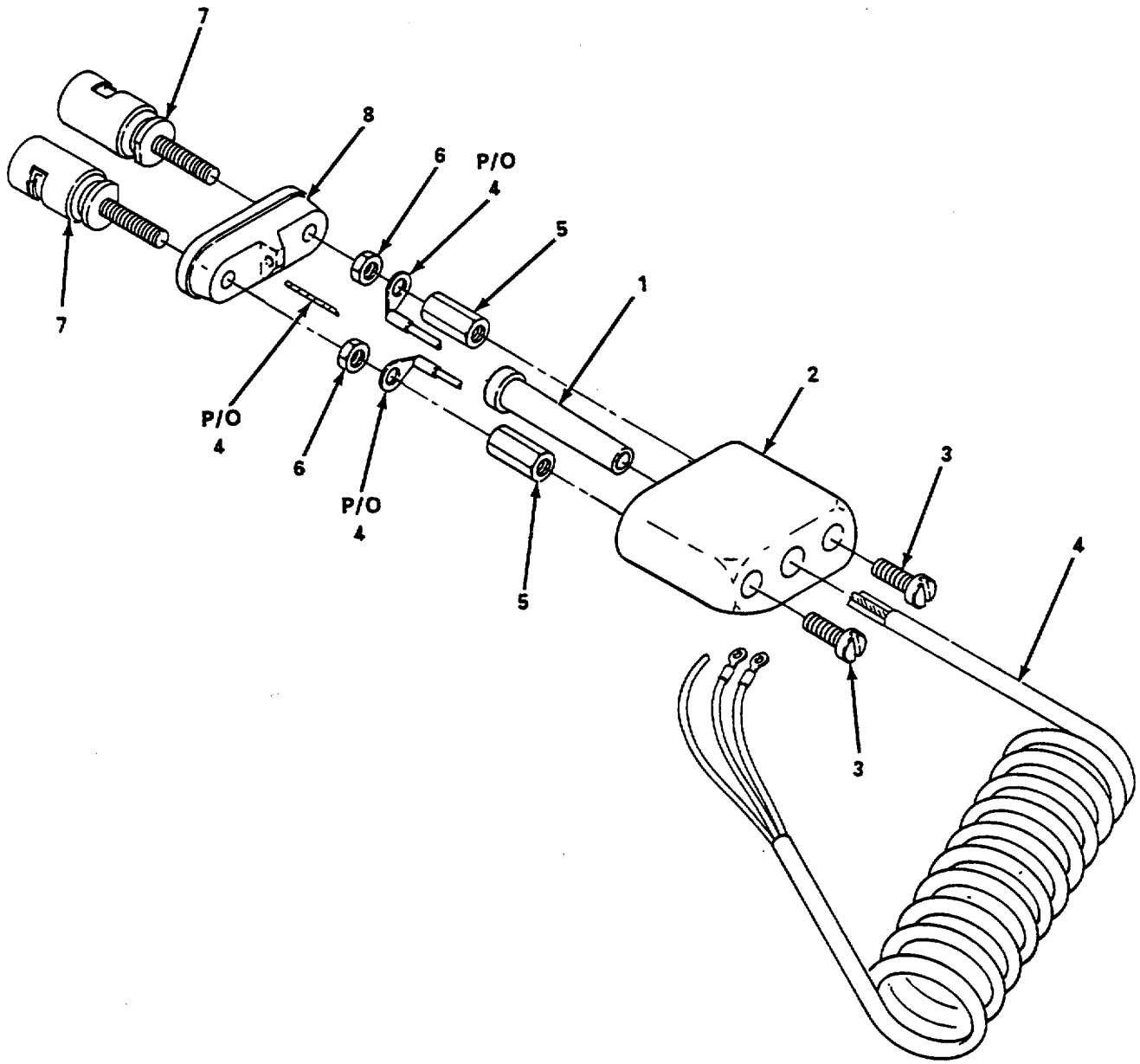


Figure 4. Terminal Block Assembly.

(1) ITEM NO	(2) SMR CODE	(3) CAGEC	(4) PART NUMBER	(5) DESCRIPTION AND USABLE ON CODES (UOC)	(6) QTY
SECTION II					
GROUP 0102 TERMINAL BLOCK ASSEMBLY					
FIGURE 4					
1	XBFZZ	80063	SM-B-169032	SLEEVE, TELEPHONE CO.....	1
2	PAFZZ	80063	SM-B-169030	OVER, CORD ASSEMBLY.....	1
3	PAFZZ	96906	MS-35273-43	SCREW, MACHINE.....	2
4	PAFFF	80063	SM-B-169034	ORD ASSEMBLY, ELECT (SEE FIGURE 5).....	1
				FOR BREAKDOWN).....	
5	PAFZZ	80063	SM-B-169031	NUT, PLAIN, HEXAGON.....	2
6	PAFZZ	80063	SM-B-169075	NUT, PLAIN, HEXAGON.....	2
7	PAFZZ	80063	SM-B-169033	POST, BINDING, ELECTR.....	2
8	PAFZZ	80063	SM-B-169029	TERMINAL BOARD.....	
END OF FIGURE					

Change 1 4-1

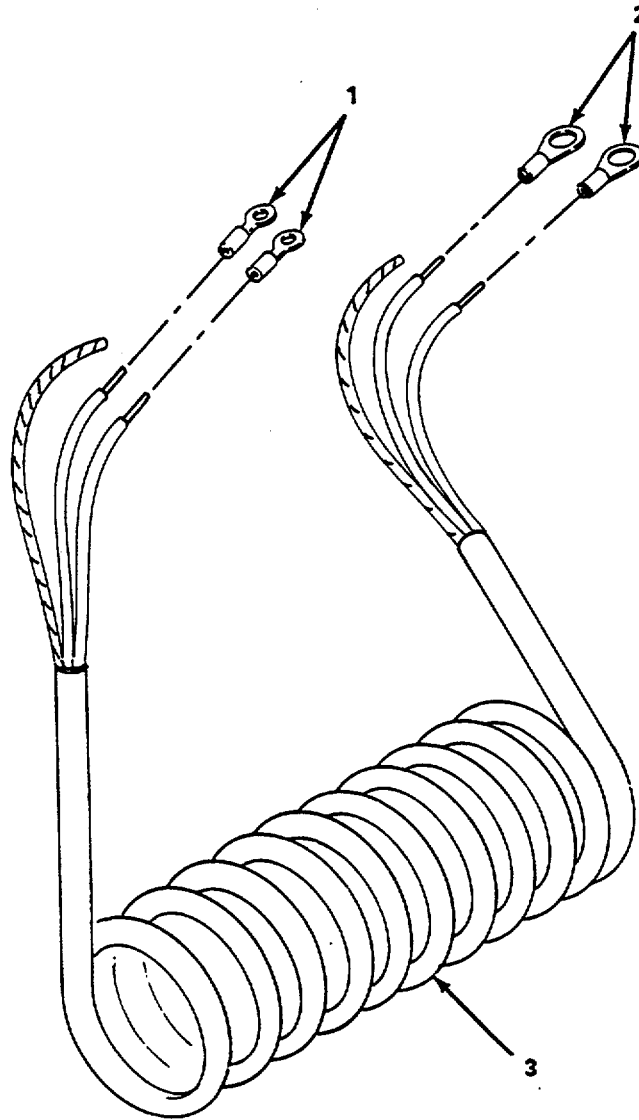


Figure 5. Handset Cord Assembly.

(1) ITEM NO	(2) SMR CODE	(3) CAGEC	(4) PART NUMBER	(5) DESCRIPTION AND USABLE ON CODES (UOC)	(6) QTY
-------------------	--------------------	--------------	-----------------------	--	------------

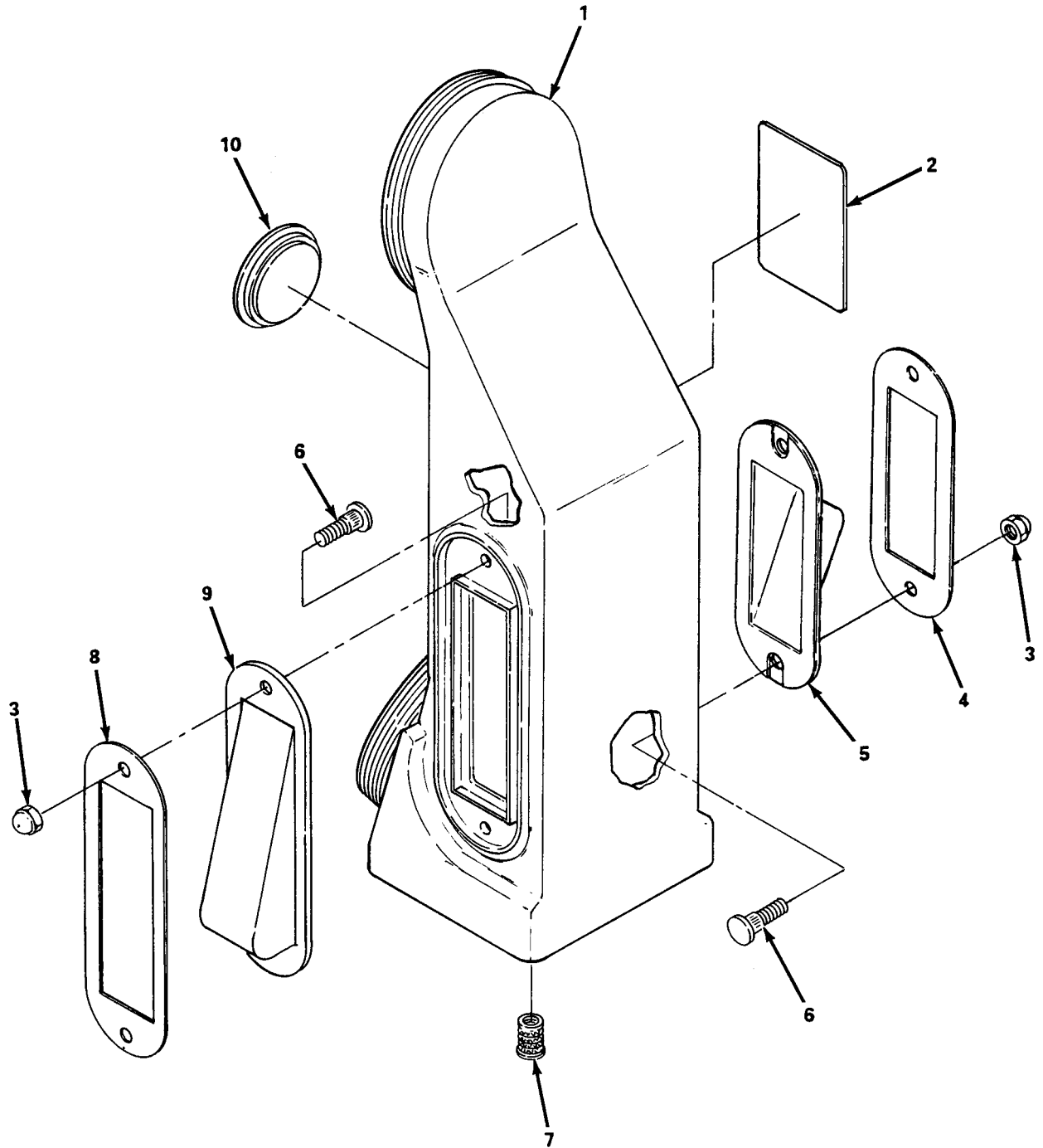
GROUP 010201 HANDSET CORD ASSEMBLY

FIGURE 5

1	PAFZZ	80063	SM-B-169034-2	TERMINAL,LUG	2
2	PAFZZ	80063	SM-B-169034-1	TERMINAL,LUG	2
3	PAFZZ	80063	SM-B-169034-3	HANDSET CORD	1

END OF FIGURE

Change 1 5-1



EL1A0013

Figure 6. Handset Housing Assembly.

(1) ITEM NO	(2) SMR CODE	(3) CAGEC	(4) PART NUMBER	(5) DESCRIPTION AND USABLE ON CODES (UOC)	(6) QTY
-------------------	--------------------	--------------	-----------------------	--	------------

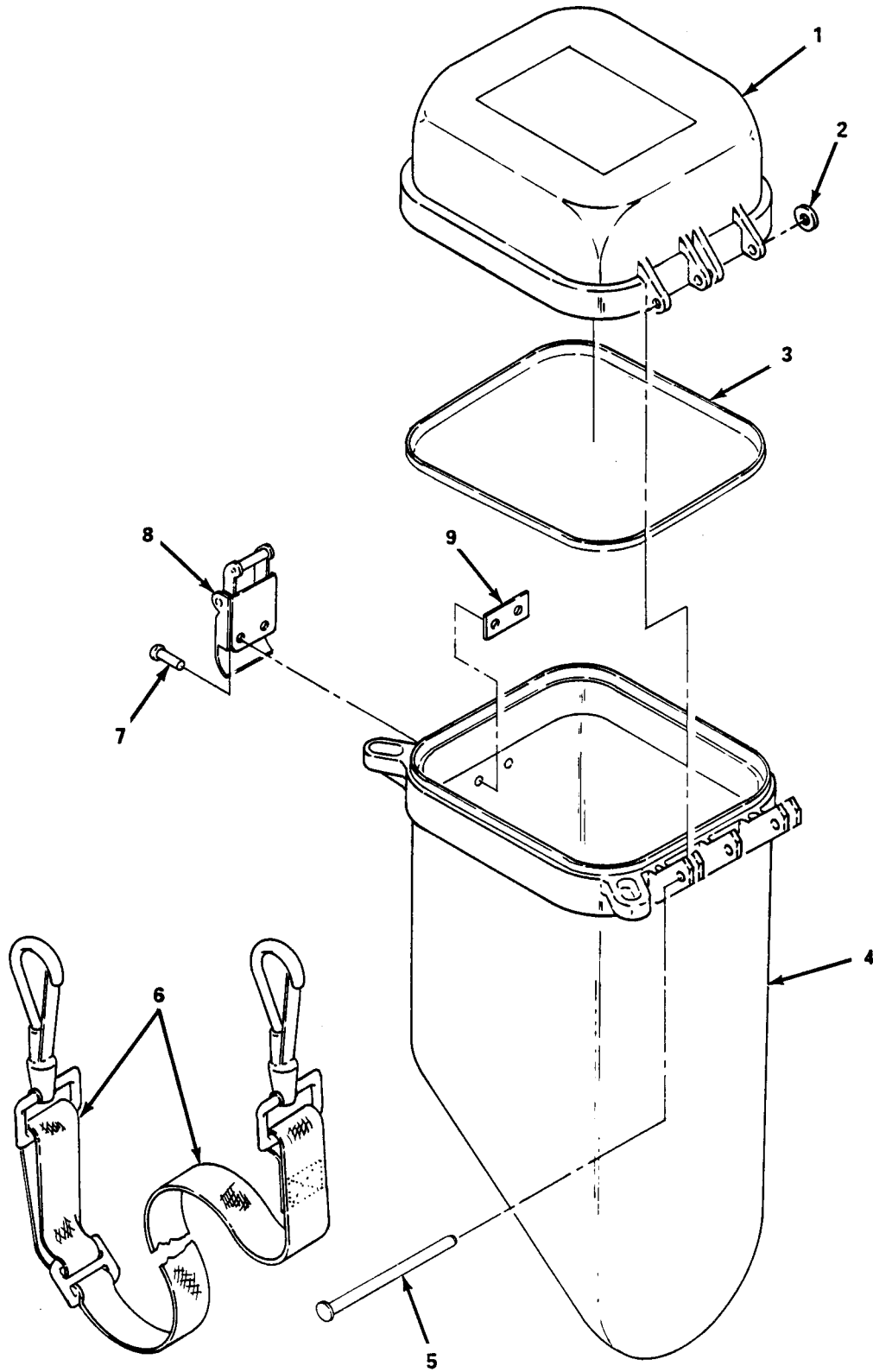
GROUP 02 HANDSET HOUSING ASSEMBLY

FIGURE 6

1	PAFZZ	80063	SM-D-169061	HANDLE,HANDSET	1
2	XBFZZ	80063	SM-B-168966	NAMEPLATE	1
3	XBOZZ	80063	SM-B-169073	NUT,PLAIN,CAP.....	4
4	PAOZZ	80063	SM-B-169070	OVER,AESS	1
5	PAOZZ	80063	SC-C-143762	OVER,AESS	1
6	PAOZZ	80063	SM-B-169062	BOLT,RIBBED SHOULDE.....	4
7	PAOZZ	80063	SM-B-990297	INSERT,SCREW THREAD	4
8	PAOZZ	80063	SM-B-169071	RETAINER,GENERATOR	1
9	XBOZZ	80063	SC-C-143845	BOOT,DUST AND MOIST	1
10	XBFZZ	80063	SM-B-169064	WINDOW	1

END OF FIGURE

Change 1 6-1



EL1A0014

Figure 7. Case and Cover Assembly.

(1) ITEM NO	(2) SMR CODE	(3) CAGEC	(4) PART NUMBER	(5) DESCRIPTION AND USABLE ON CODES (UOC)	(6) QTY
-------------------	--------------------	--------------	-----------------------	--	------------

GROUP 03 CASE AND COVER ASSEMBLY

FIGURE 7

1	XBFZZ	80063	SM-C-143132	COVER	1
2	PAFZZ	80063	SM-B-143127	WASHER,FLAT	1
3	PAFZZ	80063	SM-C-143133	GASKET	1
4	XBFZZ	80063	SM-D-143135	CASE	1
5	XBFZZ	80063	SM-B-143129	PIN,STRAIGHT,HEADED	1
6	XBOZZ	80063	SM-C-170376	STRAP,WEBBING	1
7	PAFZZ	80063	SM-B-143128	RIVET,BLIND	2
8	XBFZZ	80063	SM-B-143130	CATCH,CLAMPING	1
9	XBFZZ	80063	SM-B-143126	PLATE,MARKING,BLANK	1

END OF FIGURE

Change 1 7-1

CROSS- REFERENCE-INDEXES
NATIONAL STOCK NUMBER INDEX

STOCK NUMBER	FIG.	ITEM	STOCK NUMBER	FIG.	ITEM
5305-00-059-8226	2	5	5965-01-099-2989	6	1
5340-00-064-5426	1	4	5310-01-100-8467	3	1
5940-00-072-5536	3	13	5306-01-101-8529	6	6
5310-00-088-0551	2	21	5307-01-102-2162	3	11
5905-00-141-0595	2	24	5310-01-104-6818	4	6
5999-00-162-1259	1	8	5895-01-104-7067	3	14
5965-00-168-9615	3	9	5999-01-105-8246	2	8
5310-00-193-7577	1	2	5999-01-137-9204	2	12
5305-00-226-7221	4	3	5315-01-159-5828	2	28
5965-00-341-9311	1	11	6350-01-384-5713	3	15
5965-00-341-9312	1	14	5340-01-416-9958	6	5
5895-00-543-1881	1	19	5895-01-419-3423	2	4A
5910-00-553-7282	2	11			
5999-00-577-9566	1	18			
5310-00-579-0079	1	5			
5310-00-579-5554	2	9			
	3	12			
5360-00-588-2321	2	18			
5940-00-615-8711	2	31			
5940-00-642-2413	4	7			
5940-00-653-3391	4	8			
5310-00-655-9276	4	5			
5330-00-698-0413	1	1			
5330-00-698-0414	1	10			
5999-00-698-0416	2	30			
5950-00-698-0421	2	13			
5965-00-698-0423	3	2			
5975-00-698-0425	4	2			
5965-00-698-0426	1	17			
5965-00-698-0428	1	9			
5805-00-698-0429	2	16			
5805-00-698-0430	2	15			
5340-00-698-0432	2	19			
5330-00-698-0434	1	15			
5305-00-762-7482	2	10			
5340-00-766-3407	6	4			
5340-00-766-3408	6	8			
5305-00-812-3549	2	33			
5995-00-823-2148	4	4			
5305-00-889-2999	1	3			
5310-00-934-9738	2	25			
5305-00-957-6263	2	27			
	3	6			
5305-00-958-5483	2	2			
5305-00-959-2345	2	17			
5330-00-978-2130	3	8			
5305-00-984-4984	1	6			
5305-00-988-1167	3	16			
5355-01-098-4676	3	7			
5365-01-098-4695	3	10			

Change 1 I-1

**NATIONAL STOCK NUMBER AND PART NUMBER INDEX
PART NUMBER INDEX**

CAGEC	PART NUMBER	STOCK NUMBER	FIG.	ITEM
80063	A3214303	5895-01-419-3423	2	4A
96906	MS-35273-43	5305-00-226-7221	4	3
96906	MS21044-N04	5310-00-088-0551	2	21
96906	MS29561-223		1	13
96906	MS35190-210	5305-00-957-6263	2	27
			3	6
96906	MS35190-211	5305-00-959-2345	2	17
96906	MS35190-221	5305-00-958-5483	2	2
96906	MS35206-202	5305-00-762-7482	2	10
96906	MS35206-204	5305-00-988-1167	3	16
96906	MS35206-217	5305-00-889-2999	1	3
96906	MS35206-227	5305-00-984-4984	1	6
96906	M535214-1	5305-00-059-8226	2	5
96906	MS35214-5	5305-00-812-3549	2	33
96906	M535333-3S	5310-00-579-5554	3	12
96906	M535333-35	5310-00-579-5554	2	9
96906	MS35333-36	5310-00-193-7577	1	2
96906	M535333-37	5310-00-579-0079	1	5
96906	MS35649-222	5310-00-934-9738	2	25
96906	MS51981-9		3	5
81349	RCR20G472JS	5905-00-141-0595	2	24
80063	SC-C-143762	5340-01-416-9958	6	5
80063	SC-C-143845		6	9
80063	SM-B-143122	5999-00-162-1259	1	8
80063	SM-B-143123	5999-00-577-9566	1	18
80063	SM-B-143125	5330-00-978-2130	3	8
80063	SM-B-143126		7	9
80063	SM-B-143127		7	2
80063	SM-B-143128		7	7
80063	SM-B-143129		7	5
80063	SM-B-143130		7	8
80063	SM-B-168934	5330-00-698-0413	1	1
80063	SM-B-168935	5340-00-064-5426	1	4
80065	SM-B-168966		6	2
80063	SM-B-169007	5965-00-168-9615	3	9
80063	SM-B-169017	5307-01-102-2162	3	11
80065	SM-B-169018	5310-01-100-8467	3	1
80063	SM-B-169019	5365-01-098-4695	3	10
80063	SM-B-169020	5365-01-098-4676	3	7
80063	SM-B-169022-1	5999-01-137-9204	2	12
80063	SM-B-169022-2	5999-01-105-8246	2	8
80063	SM-B-169029	5940-00-653-3391	4	8
80063	SM-B-169030	5975-00-698-0425	4	2
80063	SM-B-169031	5310-00-655-9276	4	5
80063	SM-B-169032		2	6
			4	1
80063	SM-B-169033	5940-00-642-2413	4	7
80063	SM-B-169034	5995-00-823-2148	4	4
80063	SM-B-169034-1		5	2
80063	SM-B-169034-2		5	1
80063	SM-B-169034-3		5	3

Change 1 I-2



**NATIONAL STOCK NUMBER AND PART NUMBER INDEX
PART NUMBER INDEX**

CAGEC	PART NUMBER	STOCK NUMBER	FIG.	ITEM
80063	SM-B-169042		2	20
80063	SM-B-169043		2	29
80063	SM-B-169046	5315-01-159-5828	2	28
80063	SM-B-169047	5360-00-588-2321	2	18
80063	SM-B-169048	5940-00-615-8711	2	31
80063	SM-B-169050		2	23
80063	SM-B-169053		2	14
80063	SM-B-169062	5306-01-101-8529	6	6
t0063	SM-B-169064		6	10
80063	SM-B-169070	5340-00-766-3407	6	4
80063	SM-B-169071	5340-00-766-3408	6	8
80063	SM-B-169073		6	3
80063	SM-B-169075	5310-01-104-6818	4	6
80063	SM-B-169076GP1	5965-00-698-0426	1	17
80063	SM-B-169076GP2	5965-00-698-0428	1	9
80063	SM-B-169079	5330-00-698-0414	1	10
80063	SM-B-169081	5330-00-698-0434	1	15
80063	SM-B-169082		1	16
80063	SM-B-189381		2	1
80063	SM-B-189382		2	7
80063	SM-B-189389		2	32
80063	SM-B-990297		6	7
80063	SM-C-143132		7	1
80063	SM-C-143133		7	3
80063	SM-C-168967	5805-00-698-0430	2	15
80063	SM-C-168985	5895-01-104-7067	3	14
80063	SM-C-168986	5965-00-698-0423	3	2
80063	SM-C-169012	5940-00-072-5536	3	13
80063	SM-C-170376		7	6
80063	SM-C-189363		2	22
80063	SM-C-189365	5999-00-698-0416	2	30
80063	SM-C-189366	5950-00-698-0421	2	13
80063	SM-C-189369	6350-01-384-5713	3	15
80063	SM-C-189386	5340-00-698-0432	2	19
.80063	SM-D-143135		7	4
80063	SM-D-143140	5895-00-543-1881	1	19
80063	SM-D-168902		2	26
80063	SM-D-169061	5965-01-099-2989	6	1
80063	SM-D-189373	5965-00-341-9311	1	11
80063	SM-D-189374		1	7
80063	SM-D-189375	5805-00-698-0429	2	16
80063	SM-D-189378		1	12
80063	SM-D-189379		2	4
80063	SM-D-189379-2		3	4
80063	SM-D-189379-3		3	3
81349	TA-121/PT	5965-00-341-9312	1	14
18876	8016498	5910-00-553-7282	2	11
60468	8319		2	3

Change 1 I-3



CROSS REFERENCE INDEXES

FIG.	ITEM	FIGURE AND ITEM NUMBER INDEX STOCK NUMBER	CAGEC	PART NUMBER
1	1	5330-00-698-0413	80063	SM-B-168934
1	2	5310-00-193-7577	96906	MS35333-36
1	3	5305-00-889-2999	96906	MS35206-217
1	4	5340-00-064-5426	80063	SM-B-168935
1	5	5310-00-579-0079	96906	MS35333-37
1	6	5305-00-984-4984	96906	MS35206-227
1	7		80063	SM-D-189374
1	8	5999-00-162-1259	80063	SM-B-143122
1	9	5965-00-698-0428	80063	SM-B-169076GP2
1	10	5330-00-698-0414	80063	SM-B-169079
1	11	5965-00-341-9311	80063	SM-D-189373
1	12		80063	SM-D-189378
1	13		96906	MS29561-223
1	14	5965-00-341-9312	81349	TA-121/PT
1	15	5330-00-698-0434	80063	SM-B-169081
1	16		80063	SM-B-169082
1	17	5965-00-698-0426	80063	SM-B-169076GP1
1	18	5999-00-577-9566	80063	SM-B-143123
1	19	5895-00-543-1881	80063	SM-D-143140
2	1		80063	SM-B-189381
2	2	5305-00-958-5483	96906	MS35190-221
2	3		60468	8319
2	4		80063	SM-D-189379
2	4A	5895-01-419-3423	80063	A3214303
2	5	5305-00-059-8226	96906	MS35214-1
2	6		80063	SM-B-169032
2	7		80063	SM-B-189382
2	8	5999-01-105-8246	80063	SM-B-169022-2
2	9	5310-00-579-5554	96906	MS35333-35
2	10	5305-00-762-7482	96906	MS35206-202
2	11	5910-00-553-7282	18876	8016498
2	12	5999-01-137-9204	80063	SM-B-169022-1
2	13	5950-00-698-0421	80063	SM-C-189366
2	14		80063	SM-B-169053
2	15	5805-00-698-0430	80063	SM-C-168967
2	16	5805-00-698-0429	80063	SM-D-189375
2	17	5305-00-959-2345	96906	MS35190-211
2	18	5360-00-588-2321	80063	SM-B-169047
2	19	5340-00-698-0432	80063	SM-C-189386
2	20		80063	SM-B-169042
2	21	5310-00-088-0551	96906	MS21044-N04
2	22		80063	SM-C-189363
2	23		80063	SM-B-169050
2	24	5905-00-141-0595	81349	RCR20G472JS
2	25	5310-00-934-9738	96906	M535649-222
2	26		80063	SM-D-168902
2	27	5305-00-957-6265	96906	MS35190-210
2	28	5315-01-159-5828	80063	SM-B-169046
2	29		80063	SM-B-169043
2	30	5999-00-698-0416	80063	SM-C-189365
2	31	5940-00-615-8711	80063	SM-B-169048

Change 1 I-4



CROSS REFERENCE INDEXES

FIG.	ITEM	FIGURE AND ITEM NUMBER INDEX STOCK NUMBER	CAGEC	PART NUMBER
2	32		80063	SM-B-189389
2	33		96906	MS35214-5
5	1	5305-00-812-3549	80063	SM-B-169018
3	2	5310-01-100-8467	80063	SM-C-168986
3	3	5965-00-698-0423	80063	SM-D-189379-3
3	4		80063	SM-D-189379-2
3	5		96906	MS51981-9
3	6	5305-00-957-6263	96906	MS35190-210
3	7	5365-01-098-4676	80063	SM-B-169020
3	8	5330-00-978-2130	80063	SM-B-143125
3	9	5965-00-168-9615	80063	SM-B-169007
3	10	5365-01-098-4695	80063	SM-B-169019
3	11	5307-01-102-2162	80063	SM-B-169017
3	12	5310-00-579-5554	96906	MS35333-3S
3	13	5940-00-072-5536	80063	Sh-C-169012
3	14	5895-01-104-7067	80063	SM-C-168985
3	15	6350-01-384-5713	80063	SM-C-189369
3	16	5305-00-988-1167	96906	MS35206-204
4	1		80063	SM-B-169032
4	2	5975-00-698-0425	80063	SM-B-169030
4	3	5305-00-226-7221	96906	MS-35273-43
4	4	5995-00-823-2148	80063	SM-B-169034
4	5	5310-00-655-9276	80063	SM-B-169031
4	6	5310-01-104-6818	80063	SM-B-169075
4	7	5940-00-642-2413	80063	SM-B-169033
4	8	5940-00-653-3391	80063	SM-B-169029
5	1		80063	SM-B-169034-2
5	2		80063	SM-B-169034-1
5	3		80063	SM-B-169034-3
6	1	5965-01-099-2989	80063	SM-D-169061
6	2		80063	SM-B-168966
6	3		80063	SM-B-169073
6	4	5340-00-766-3407	80063	SM-B-169070
6	5	5340-01-416-9958	80063	SC-C-143762
6	6	5306-01-101-8529	80063	SM-B-169062
6	7		80063	SM-B-990297
6	8	5340-00-766-3408	80063	SM-B-169071
6	9		80063	SC-C-143845
6	10		80063	SM-B-169064
7	1		80063	SM-C-143132
7	2		80063	SM-B-143127
7	3		80063	SM-C-143133
7	4		80063	SM-D-143135
7	5		80063	SM-B-143129
7	6		80063	SM-C-170376
7	7		80063	SM-B-143128
7	8		80063	SM-B-143130
7	9		80063	SM-B-143126

Change 1 I-5

RECOMMENDED CHANGES TO EQUIPMENT TECHNICAL PUBLICATIONS



THEN... JOT DOWN THE DOPE ABOUT IT ON THIS FORM. CAREFULLY TEAR IT OUT, FOLD IT AND DROP IT IN THE MAIL!

SOMETHING WRONG WITH THIS PUBLICATION?

FROM: (PRINT YOUR UNIT'S COMPLETE ADDRESS)
 Commander
 Stateside Army Depot
 ATTN: AMSTA-US
 Stateside, N.J. 07703-5007

DATE SENT
 10 July 1975

PUBLICATION NUMBER
 TM 11-5840-340-20P

PUBLICATION DATE
 23 Jan 78

PUBLICATION TITLE
 Radar Set AN/PRC-76

BE EXACT... PIN-POINT WHERE IT IS

PAGE NO	PARA-GRAPH	FIGURE NO	TABLE NO
33			
44		19	
45			

IN THIS SPACE TELL WHAT IS WRONG AND WHAT SHOULD BE DONE ABOUT IT:

For item 2, change the NSN to read: 5835-00-134-9186.
 Reason: Accuracy.

Identify the cover on the junction box (item no. 5).
 Reason: It is a separate item and is not called out on figure 19.

Add the cover of the junction box as an item in the listing for figure 19.
 Reason: Same as above

SAMPLE

TEAR ALONG PERFORATED LINE

PRINTED NAME, GRADE OR TITLE, AND TELEPHONE NUMBER
 SSG I. M. DeSpirit of 999-1776

SIGN HERE

FILL IN YOUR
UNIT'S ADDRESS

FOLD BACK

DEPARTMENT OF THE ARMY



OFFICIAL BUSINESS

NO POSTAGE
NECESSARY
IF MAILED
IN THE
UNITED STATES

BUSINESS REPLY MAIL

FIRST CLASS MAIL PERMIT NO. 144 RED BANK, NJ

POSTAGE WILL BE PAID BY

Commander
US Army Communications-Electronics Command
and Fort Monmouth
ATTN: AMSEL-LC-LM-LT
Fort Monmouth, New Jersey 07703-9988



TEAR ALONG PERFORATED LINE

SAMPLE



FOLD BACK

RECOMMENDED CHANGES TO EQUIPMENT TECHNICAL PUBLICATIONS



THEN...JOT DOWN THE DOPE ABOUT IT ON THIS FORM. CAREFULLY TEAR IT OUT. FOLD IT AND DROP IT IN THE MAIL.

SOMETHING WRONG WITH THIS PUBLICATION?

FROM: (PRINT YOUR UNIT'S COMPLETE ADDRESS)

DATE SENT

PUBLICATION NUMBER

PUBLICATION DATE

PUBLICATION TITLE

BE EXACT PIN-POINT WHERE IT IS

PAGE NO.

PARA-GRAPH

FIGURE NO.

TABLE NO.

IN THIS SPACE TELL WHAT IS WRONG AND WHAT SHOULD BE DONE ABOUT IT:

TEAR ALONG PERFORATED LINE

PRINTED NAME GRADE OR TITLE AND TELEPHONE NUMBER

SIGN HERE

FILL IN YOUR
UNIT'S ADDRESS

FOLD BACK

DEPARTMENT OF THE ARMY

OFFICIAL BUSINESS



NO POSTAGE
NECESSARY
IF MAILED
IN THE
UNITED STATES

BUSINESS REPLY MAIL
FIRST CLASS MAIL PERMIT NO. 144 RED BANK, NJ

POSTAGE WILL BE PAID BY

Commander
US Army Communications-Electronics Command
and Fort Monmouth
ATTN: AMSEL-LC-LM-LT
Fort Monmouth, New Jersey 07703-5007



TEAR ALONG PERFORATED LINE



FOLD BACK

RECOMMENDED CHANGES TO EQUIPMENT TECHNICAL PUBLICATIONS



THEN...JOT DOWN THE DOPE ABOUT IT ON THIS FORM. CAREFULLY TEAR IT OUT. FOLD IT AND DROP IT IN THE MAIL.

SOMETHING WRONG WITH THIS PUBLICATION?

FROM: (PRINT YOUR UNIT'S COMPLETE ADDRESS)

DATE SENT

PUBLICATION NUMBER

PUBLICATION DATE

PUBLICATION TITLE

BE EXACT PIN-POINT WHERE IT IS

PAGE NO.	PARA-GRAPH	FIGURE NO.	TABLE NO.
----------	------------	------------	-----------

IN THIS SPACE TELL WHAT IS WRONG AND WHAT SHOULD BE DONE ABOUT IT:

TEAR ALONG PERFORATED LINE

PRINTED NAME GRADE OR TITLE AND TELEPHONE NUMBER

SIGN HERE

FILL IN YOUR
UNIT'S ADDRESS

FOLD BACK

DEPARTMENT OF THE ARMY



OFFICIAL BUSINESS

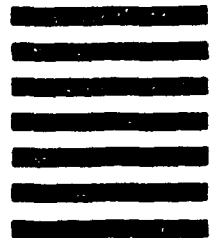
BUSINESS REPLY MAIL

FIRST CLASS MAIL PERMIT NO. 144 RED BANK, NJ

POSTAGE WILL BE PAID BY

Commander
US Army Communications-Electronics Command
and Fort Monmouth
ATTN: AMSEL-LC-LM-LT
Fort Monmouth, New Jersey 07703-5007

NO POSTAGE
NECESSARY
IF MAILED
IN THE
UNITED STATES



FOLD BACK

TEAR ALONG PERFORATED LINE

RECOMMENDED CHANGES TO EQUIPMENT TECHNICAL PUBLICATIONS

SOMETHING WRONG WITH THIS PUBLICATION?



THEN...JOT DOWN THE DOPE ABOUT IT ON THIS FORM. CAREFULLY TEAR IT OUT. FOLD IT AND DROP IT IN THE MAIL.

FROM: (PRINT YOUR UNIT'S COMPLETE ADDRESS)

DATE SENT

PUBLICATION NUMBER

PUBLICATION DATE

PUBLICATION TITLE

BE EXACT PIN-POINT WHERE IT IS

PAGE NO.	PARA-GRAPH	FIGURE NO.	TABLE NO.

IN THIS SPACE TELL WHAT IS WRONG AND WHAT SHOULD BE DONE ABOUT IT:

Large empty space for providing details of the error and recommended corrections.

PRINTED NAME GRADE OR TITLE AND TELEPHONE NUMBER

SIGN HERE

TEAR ALONG PERFORATED LINE

FILL IN YOUR
UNIT'S ADDRESS

FOLD BACK

DEPARTMENT OF THE ARMY



OFFICIAL BUSINESS

BUSINESS REPLY MAIL
FIRST CLASS MAIL PERMIT NO. 144 RED BANK NJ

POSTAGE WILL BE PAID BY

Commander
US Army Communications-Electronics Command
and Fort Monmouth
ATTN: AMSEL-LC-LM-LT
Fort Monmouth, New Jersey 07703-5007

NO POSTAGE
NECESSARY
IF MAILED
IN THE
UNITED STATES



TEAR ALONG PERFORATED LINE




FOLD BACK

By Order of the Secretary of the Army:

GORDON R. SULLIVAN
General, United States Army
Chief of Staff

Official:


MILTON H. HAMILTON
Administrative Assistant to the
Secretary of the Army
02062

DISTRIBUTION:

To be distributed in accordance with DA Form 12-36-E,
block 9185, requirements for TM11-5805-243-23P.

