

TM 11-2737

WAR DEPARTMENT TECHNICAL MANUAL

INSTALLATION OF RADIO AND FACSIMILE EQUIPMENT IN SHELTER HO-17- ()

RESTRICTED. DISSEMINATION OF RESTRICTED MATTER.
No person is entitled solely by virtue of his grade or position
to knowledge or possession of classified matter. Such matter
is entrusted only to those individuals whose official duties
require such knowledge or possession. (See also paragraph
23b, AR 380-5, 15 March 1944.)

WAR DEPARTMENT • MAY 1945

INSTALLATION OF RADIO
AND FACSIMILE EQUIPMENT
IN SHELTER HO-17- ()



WAR DEPARTMENT

MAY 1945

RESTRICTED. DISSEMINATION OF RESTRICTED MATTER.
No person is entitled solely by virtue of his grade or position to knowledge or possession of classified matter. Such matter is entrusted only to those individuals whose official duties require such knowledge or possession.
(See also paragraph 23b, AR 380-5, 15 March 1944.)

WAR DEPARTMENT
Washington 25, D. C., 17 May 1945

TM 11-2737, Installation of Radio and Facsimile Equipment in Shelter
HO-17-(), is published for the information and guidance of all concerned.

[AG 300.7 (18 Apr 45)]

BY ORDER OF THE SECRETARY OF WAR:

OFFICIAL:

J. A. ULIO
Major General
The Adjutant General

G. C. MARSHALL
Chief of Staff

DISTRIBUTION:

AAF (5); AGF (5); ASF (2); T of Opn (5); Dept (5); Def Comd (2);
Base Comd (5); AAF Comd (2); Arm & Sv Bd (2); S Div ASF (1);
Tech Sv (2); SvC (5); Area ASVC (2); WDGS Lib (5); PC&S (2);
PE (2); Dep 11 (2); Gen Oversea SOS Dep (Sig Sec) (2); GH (2);
M Conc C (2); Air Base Hosp (2); Gen Sv Sch (5); Sp Sv Sch (10);
USMA (10); ROTC (5); Lab 11 (2); Sig AS (2); Rep Shop 11 (2);
A (5); D (2); AF (2). Three (3) copies to each of the following: T/O
& E 11-7; 11-15; 11-47; 11-107; 11-127; 11-147; 11-500, Sig Serv Orgn
(EG); 11-587; 11-592; 11-597.

Refer to FM 21-6 for explanation of distribution formula.

CONTENTS

SECTION I. GUIDE TO USE OF THIS MANUAL.

	<i>Paragraph</i>	<i>Page</i>
Purpose	1	1
Equipment	2	1
Holes and brackets.....	3	1
Preliminary check	4	1
Operating check	5	1
II. IGNITION NOISE SUPPRESSION IN SHELTER HO-17-().		
General	6	2
Procedure	7	2
III. RADIO SET SCR-510-().		
Required parts	8	3
Assembly and installation.....	9	3
IV. FACSIMILE EQUIPMENT RC-58-().		
Required parts	10	5
Assembly and installation.....	11	5

DESTRUCTION NOTICE

WHY —To prevent the enemy from using or salvaging this equipment for his benefit.

WHEN—When ordered by your commander.

HOW —1. Smash—Use sledges, axes, handaxes, pickaxes, hammers, crowbars, heavy tools.

2. Cut—Use axes, handaxes, machetes.

3. Burn—Use gasoline, kerosene, oil, flame throwers, incendiary grenades.

4. Explosives—Use firearms, grenades, TNT.

5. Disposal—Bury in slit trenches, fox holes, other holes. Throw in streams. Scatter.

USE ANYTHING IMMEDIATELY AVAILABLE FOR DESTRUCTION OF THIS EQUIPMENT

WHAT—1. Smash—All vacuum tubes, crystals, control dials, coupling coils, transformers, speakers in receivers, external loudspeakers, microphones, headsets, dynamotors, and cable connectors.

2. Cut—All connecting wires, cording, and cabling.

3. Burn—All equipment, and all associated training, technical, and installation manuals.

4. Bury or scatter—All remains, after destroying their usefulness.

DESTROY EVERYTHING

SAFETY NOTICE

This equipment uses high voltages which are dangerous to life. Observe all safety precautions.

1. Make no adjustments inside the equipment with the power switch on.

2. Do not operate the equipment with the shields removed.

3. Do not connect power to any unit of these radio sets until operating instructions have been read completely.

SECTION I

GUIDE TO USE OF THIS MANUAL

1. Purpose

This manual provides methods and procedure, based upon actual field experience, or installation of radio and facsimile equipment in Shelter HO-17-(). Items required to make a complete operating installation are listed for each set. Official nomenclature followed by empty parentheses, such as Headset HS-30-(), is used to indicate any model of equipment regardless of its procurement.

2. Equipment

Installations covered include the following equipments:

- Radio Set SCR-510-()
- Facsimile Equipment RC-58-()

3. Holes and Brackets

Brackets required for installation of the radio equipment are normally drilled and installed prior to de-

livery of Shelter HO-17-(). Drilling instructions are given in this manual for any other necessary holes and brackets. Do not relocate any holes or brackets unless absolutely necessary.

4. Preliminary Check

Study the illustrations, the installation methods outlined, and any subsequent changes to this manual before proceeding with installation of equipment.

Caution: Shelter HO-17-() has a 12-volt electrical system. Before installing the equipments, be sure they are designed for 12-volt operation; otherwise, tubes may burn out or dynamotors may be damaged.

5. Operating Check

Carefully study the Technical Manual covering the equipment before trying to operate it; then make a thorough operating check to determine whether the equipment has been properly installed and is in working order.

SECTION II

IGNITION NOISE SUPPRESSION IN SHELTER HO-17-()

6. General

Excessive ignition or other electrical noises may interfere with the operation of radio equipment in Shelter HO-17-(). The Technical Manual issued with the vehicle will be helpful in locating the source of the noise, since it describes the suppression system used. Instructions for operating radio equipment used in the vehicle also should be studied. For further information on ignition noise suppression, see TM 11-483.

7. Procedure

Locate and suppress ignition noises as follows:

a. Start the motor of the vehicle and turn on the radio set. Put the receiver sensitivity control at *maximum*; then, listening to the receiver output with a headset, slowly tune the receiver over the entire range of frequencies to be used for communication.

b. When the frequency (or frequencies) with greatest noise level is found, turn off the vehicle engine. If this noise continues, the source is outside the ignition system. If noise stops, the trouble is in the ignition system.

c. Start the engine again. Adjust the receiver sensitivity control until engine noises can be distinguished easily from static, etc. Interference may then be identified as follows:

d. Interference from other electrical parts and circuits of the vehicle, such as panel gauges and heater fans, can usually be identified by turning off the gauges, fans, or other suspected mechanisms individually.

e. If the source of interference still cannot be found by any of the preceding methods, connect a probe antenna (fig. 7) to the antenna terminal of the radio set. Slowly move the loop of the probe antenna over the various parts of the electrical system of the vehicle. Keep the loop close to, but not in contact with, the part being examined. Noise from interference-producing parts should be heard in the receiver.

f. Usually interference can be eliminated by cleaning, tightening, or replacing noise-producing parts. Examine and tighten all suppressor and shielding components, and all connections and grounding bonds. Clean the surface under them. This will assure good electrical contact between wires and terminals, and between metal casings and the frame of the vehicle. (Insulated but ungrounded metal parts absorb and reradiate electrical noises.)

g. If interference persists, suppressor components should be checked by substituting new ones. If a replacement is not available, disconnect the suspected component, and test capacitors, resistors, and chokes within it. Replace any that are defective.

Interference	Usual source
Popping sound: corresponds to ignition firing; stops when engine is turned off; accelerates when engine is raced.	Ignition system.
Intermittent, clicking sound: lingers for several seconds when ignition is turned off.	Generator regulator.
Whining sound: varies with speed of engine; ceases only when generator stops rotating.	Generator.
Sparking, or continuous crackling noise.	Brushes and commutator of generator.

SECTION III

RADIO SET SCR-510-()

8. Required Parts

Items necessary for installation of Radio Set SCR-510-() in Shelter HO-17-() are listed below:

Quantity	Stock No.	Item	Quantity	Stock No.	Item
1	6Q338-150	Alignment Tool TL-150 or	1 ²	2A2088-48	Mast Base MP-48 or MP-48-A
	6Q349	TL-207	1	2A2090-50	Mast Base Bracket MP-50
2	3A41	Battery BA-41, internal, in-	2	2A2352	Mast Sections MS-52 and
		cluding spare	2	2A2353	MS-53, including spare
2	2Z6721-429	Bracket FT-429	1 ¹	2B1645	Microphone T-45
1 ¹	4B417-4	Chest Set TD-4	1	2Z6721-317	Mounting FT-317-()
2	2Z2651-424	Clamp MC-424, including spare	1	2Z6721-250	Mounting FT-250-()
1	3E1509	Cord CD-509	1	2Z7155	Plug PL-55
12 ft	3E2218	Cordage CO-218	1	2Z7168	Plug PL-68
1	2Z3400-108	Cover BG-108, for mast base	1 ³	3H4496-120	Power Supply Unit PE-120-()
80	2Z3543	Crystal Holder FT-243, with	1		Radio mounting bracket, in-
		crystal			cluding hardware
1		Fitting, for tying down mast	1	2G5360	Radio Receiver and Transmitter
		sections			BC-620-(), including one
1	6L50-510HO-14	Hardware bag			set of tubes installed, and
1 ¹	2B800-16	Headset H-16/U	1	2Z8056	Roll BG-56-()
2		Insulator, for tying down mast	2 ³	3H6713	Vibrator VB-13-(), 12 volts
		sections	5 ft	1B128	Wire W-128
1	2C1738	Interphone Control Box			
		BC-606-()			
2	6D13038	TM 11-605, for Radio Set			
		SCR-510-()			

¹ When Chest Set TD-4, Headset H-16/U, and Microphone T-45 are not available, use Headset HS-30-(), Microphone T-17, and Cords CD-307-A and CD-933.

² Mast Base AB-15 GR (2A2081-15) may be substituted for Mast Base MP-48 or MP-48-A.

³ If Power Supply Unit PE-120-() is not available use Plate Supply Unit PE-97-(). In this case Vibrator VB-13-() will not be required.

9. Assembly and Installation

Components of Radio Set SCR-510-() should be installed in Shelter HO-17-() as shown in figure 1 and as directed below.

Note. Relocate circulating fan, installed in production or by authority of MWO Sig 11-281-8, to any suitable position in Shelter HO-17-() before installing Radio Set SCR-510-().

Part and location

Mast Base Bracket MP-50 and Brackets FT-429 (items 6 and 28, fig. 1), on front of shelter, upper right corner.

Mast Base MP-48 or MP-48-A and Wire W-128 (items 7 and 11, fig. 1), on mast base bracket.

Method and materials

Drill required 11/32-inch holes in front wall of shelter as shown on drilling detail of figure 1. Using hardware provided, install Mast Base Bracket MP-50 in position on outer side of shelter using Brackets FT-429 for reinforcement on inside wall.

Refer to figure 6 for assembly of mast base with Wire W-128. Remove internal lead-in assembly from mast base and use external lead-in. Cut wire to 28 inches; strip insulation from 1/2 inch of each end, and solder-tin tips. Solder terminal lug, item 8, to end of wire. Pass wire through insulators, items 14 and 15. Allow sufficient slack wire between items 14 and 15 to permit flexing of mast base spring, and tighten setscrews in items 14 and 15. Remove washers and nut, items 2, 3, and 4, from bottom of mast base. Insert stem of mast base, item 1, into hole in mast base bracket. Place flat-washer, item 2, over item 1, underneath. Place lockwasher,

Bracket (item 29, fig. 1) in upper right front corner of shelter.

Mounting FT-250-() (item 4, fig. 1), on above bracket.

Radio Receiver and Transmitter BC-620-() and Battery BA-41 (item 1, fig. 1), on Mounting FT-250-().

Part and location

Mounting FT-317-() (item 5, fig. 1), on right wall of shelter, forward, lower corner.

Power Supply Unit PE-120-() and Vibrator VB-13-() (items 2 and 3, fig. 1), on Mounting FT-317-().

Cord CD-509 (item 12, fig. 1).

Interphone Control Box BC-606-(), Cordage CO-218, Plugs PL-55 and PL-68 (items 10, 13, 14, and 15, fig. 1), on ceiling of shelter.

Mast Sections MS-52 and MS-53, and Clamp MC-424 (items 8 and 9, fig. 1), on mast base.

item 3, over item 1. Place nut, item 4, over item 1 and tighten firmly. Run wire through 11/32-inch hole in front wall of shelter next to mast base bracket, and solder terminal (item 30, fig. 1) to tip of wire for connection to radio set.

Assemble four sections of bracket (fig. 1). Refer to drilling detail in figure 1 for drilling of sides and ceiling of shelter. Install assembled bracket in position shown, using hardware provided.

Fasten mounting to bracket with hardware provided, as shown in figure 1.

If Battery BA-41 is not already installed in receiver and transmitter, install it as follows: remove screws around outer edge of front panel and pull receiver and transmitter chassis from case. Remove cover of battery compartment located on chassis near front panel. Place Battery BA-41 into compartment, being careful to engage plug into socket of battery. Replace cover.

Note. Before replacing chassis in its case make sure that all tubes are pressed down firmly in their proper sockets, that crystals for the desired operating frequencies are in their proper sockets with retaining clip in position, and that the two toggle switches near left side of chassis are in ON position.

Place Radio Receiver and Transmitter BC-620-() on Mounting FT-250-() and secure with snap-slide fasteners provided.

Method and materials

Drill required holes in right side wall of shelter as shown in drilling diagram in figure 1. Secure mounting to right wall in position as shown in figure 1, and secure with hardware provided.

Open case of Power Supply Unit PE-120-() and remove chassis cover. Install Vibrator VB-13-() in its socket. Place one vibrator in spare socket. Make sure that connector link is in BC-620 position, that change-over plug is set for 12 volts, and that tubes are pressed down firmly in their proper sockets. Replace cover on chassis and close lid of power supply unit. Secure to Mounting FT-317-() with hood fasteners provided. Route power cord to battery at front left side of shelter as shown in figure 1, using clamp No. 4 to secure cord.

Use Cord CD-509 to connect Radio Receiver and Transmitter BC-620-() to Power Supply Unit PE-120-() and secure in place with No. 4 clamps, as shown in figure 1.

Install interphone control box on ceiling of shelter in position as shown in figure 1, using hardware provided with box. Refer to figure 5 for wiring diagram of interphone control box.

Screw mast sections together, and place clamp over joint to prevent loss of sections. Install in Mast Base MP-48 or MP-48-A. When mast sections are not installed, stow in Roll BG-56-(), and place Cover BG-108 over mast base.

SECTION IV

FACSIMILE EQUIPMENT RC-58-()

10. Required Parts

Items necessary for installation Facsimile Equipment RC-58-() in Shelter HO-17-() are listed below:

Quantity	Stock No.	Item	Quantity	Stock No.	Item
1	2C408	Amplifier BC-908-(), including two Dynamotor DM-21-(), Mounting FT-318-(), set of installed tubes, fuses, and lamps	1	2Z3400-118	Cover BG-118-(), for recorder scanner
1	2Z2599-108	Chest CH-108-(), for spare parts	1	2Z3400-128	Cover BG-128-(), for amplifier
1	2Z2599-260	Chest CH-260, for Amplifier BC-908-(), including hardware	1	6L50-58HO-14	Hardware bag
1	2Z2599-261	Chest CH-261, for Rectifier RA-54-(), including hardware	2	6Z1036-10	Outlet box
1	2Z2599-262	Chest CH-262, for Recorder Scanner BC-918-(), including hardware	1	6Z3160	Plug No. 7411
1	6Z3147	Connector No. 61007 and Bondnut BL-50	1	6Z1734.4	Plug No. 7542
1	6Z3147-1	Connector No. 61004 and Bondnut BL-50	1	6Z7591-12	Plug No. 7572
1	3E1606	Cord CD-606-(), connecting amplifier to recorder scanner	2	2Z7155	Plug PL-55
1	3E1608	Cord CD-608-(), connecting amplifier to rectifier	2	2Z7168	Plug PL-68
15 ft	—	Cord, No. 16 lamp, rubber-covered, two-conductor	1	2C262-918	Recorder Scanner BC-918-(), 12-volt, including two Motor MO-28-(), Mounting FT-328-(), set of tubes installed, two Vibrator VB-3-(), two Resistor RS-288-(), two regulator resistors
15 ft	3E2134	Cord CO-134	1	3H4684	Rectifier RA-54-()
15 ft	3E2144	Cordage CO-144	1	6Z7809-8.1	Receptacle, two-wire duplex
15 ft	3E2145	Cordage CO-145	1	6Z7809-9.1	Receptacle, three-wire duplex
			50 rolls	6M1540	Tape M-298
			2	6C25-58/SP	Spare parts group
			1	6D13047	TM 11-374, for Facsimile Equipment RC-58-()
			5 ft	1B128	Wire W-128
			1	6M2200	Writing Stand MC-308-()

11. Assembly and Installation

Components of Facsimile Equipment RC-58-() should be installed in Shelter HO-17-() as shown in figures 2, 3, and 4 and as directed below.

Part and location

Outlet boxes, connectors, bondnuts, plugs, and receptacles (items 28, 31, 32, 33, 23, 24, 25, 26, and 27, fig. 2).

Method and materials

Refer to figure 4. Connect plug cap No. 7411 to one end of Cord CO-134 and slip connector No. 61007 over other end. Remove a knock-out in one outlet box and secure connector No. 61007 in hole with a Bondnut BL-50. Connect wires of Cord CO-134 to three-wire duplex receptacle. Connect No. 16 lamp cord to plug cap No. 7542 and to two-wire duplex receptacle, and secure in knock-out hole in other outlet box, using connector No. 61004 and Bondnut BL-50. Remove lugs from 12-volt cord, furnished with Rectifier RA-54-() and leading from rectifier to outlet box. Install plug cap No. 7572. Secure assembled outlet boxes to floor of Shelter HO-17-() with No. 10 by 5/8-inch wood screws as shown in figure 3. Secure receptacles to their respective outlet boxes. Route cords to Junction Box JB-70 as shown in figure 3, and plug into proper receptacles.

Rectifier RA-54-() and Chest CH-261 (items 3 and 11, fig. 2).

Place Chest CH-261 on suitable working surface with face down. Remove four screws securing back of chest, and lift back panel away. Place Rectifier RA-54-() in chest, with front panel of rectifier facing chest. Line up holes in shock mount of rectifier with teenuts in front panel of chest, and secure rectifier with hardware provided. Refer to figures 2 and 3. Place Chest CH-261 on floor, forward of Chest CH-119-(), with back of Chest CH-261 against right wall of Shelter HO-17-(), and secure staples to floor at each end of chest as shown, with screws provided. Secure chest in place with turnbuckles and rod assemblies provided engaging hood ends of rods in handles of chest and in staples secured to floor. Plug cords from Rectifier RA-54-() and Chest CH-261 into receptacles previously installed, as shown in figure 3.

Chest CH-260, Mounting FT-318-(), and Amplifier BC-908-() (items 12, 8, and 1, fig. 2).

Secure Mounting FT-318-() to floor of Chest CH-260 with screws and lockwashers provided. Place Amplifier BC-908-() on mounting and secure with snap-slide fasteners provided. Place Chest CH-260 on top of Chest CH-261 and secure with hook fasteners provided. Connect Cord CD-608-() to Amplifier BC-908-() and Rectifier RA-54-() as shown in figure 3.

Chest CH-262, Mounting FT-328-(), and Recorder Scanner BC-918-() (items 10, 9, 2, fig. 2).

Secure Mounting FT-328-() to floor of Chest CH-262 with screws and lockwashers provided. Place recorder scanner on mounting and secure with snap-slide fasteners provided. Place Chest CH-262 on top of Chest CH-260 and secure in place with hook fasteners provided. Secure top of Chest CH-262 to wall of Shelter HO-17-() with catches and No. 10 x 1-inch wood screws provided with Chest CH-262.

Part and location

Wire W-128 and terminal (items 20 and 38, fig. 2).

Method and materials

Solder terminal to one end of Wire W-128. Secure terminal with wing bolt securing rear panel of Radio Transmitter BC-610-(), as shown in detail of figure 2. Route wire amplifier, cut to required length, and connect to GND binding post on amplifier. Cut another length of Wire W-128 for connection from GND binding post on recorder scanner to GND binding post on amplifier as shown in figure 3.

Cord CD-606-() (item 16, fig. 2).

Connect between amplifier and recorder scanner.

Chest CH-108-() and catch (items 13 and 34, fig. 2).

Place chest on floor of Shelter HO-17-(), left side, as shown in figure 2. Attach catch on each end of chest and on floor of shelter with wood screws provided for securing chest to floor.

Cordage CO-144 and Cordage CO-145,
and Plugs PL-55 and PL-68 (items
14, 15, 22, and 21, fig. 2).

Prepare two cords for connecting amplifier to Radio Set SCR-399-() by connecting a Plug PL-55 to each end of Cordage CO-144, and a Plug PL-68 to each end of Cordage CO-145. Insert one Plug PL-55 into either PHONE jack, and insert one Plug PL-68 into either MICRO jack on front panel of amplifier. Route cords and secure with clamps as shown in figure 2. For operation with Radio Set SCR-399-(), insert Plug PL-55 into HEADSET jack on Junction Box JB-70-() and insert Plug PL-68 into CARBON-MIC 1 jack on Speech Amplifier BC-614-(). For operation with Radio Set SCR-510-(), insert Plugs PL-55 and PL-68 into jacks on Interphone Control Box BC-606-().

Writing Stand MC-308-().

Place in Chest CH-120-() or in any convenient place in Shelter HO-17-().

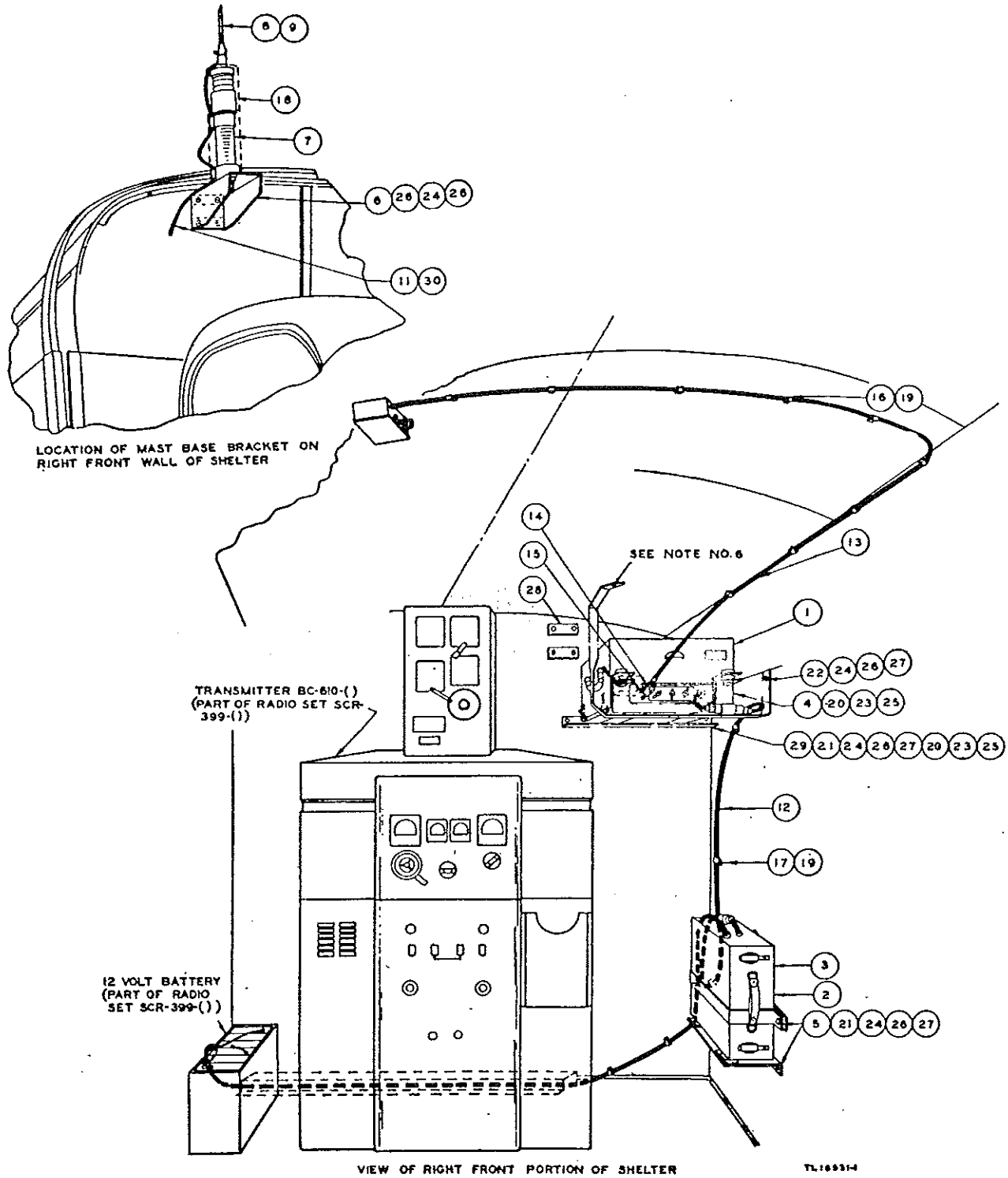


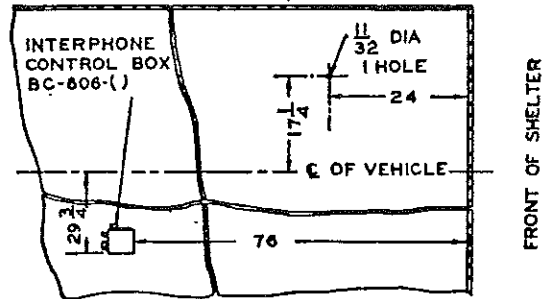
Figure 1. Installation of Radio Set

ITEM NO.	NAME OF ITEM	QUAN. REQ.
1	RADIO RECEIVER AND TRANSMITTER BC-520-()	1
2	POWER SUPPLY UNIT PE-120-()	1
3	VIBRATOR VB-13-()	1
4	MOUNTING FT-250-()	1
5	MOUNTING FT-317-()	1
6	MAST BASE BRACKET MP-50	1
7	MAST BASE MP-48 OR MP-48-A	1
8	MAST SECTION MS-52 WITH CLAMP MC-424	1
9	MAST SECTION MS-53	1
10	INTERPHONE CONTROL BOX BC-606-()	1
11	WIRE W-128 28 IN. LONG SEE NOTE 2	1
12	CORD CO-509	1
13	CORDAGE CO-218 12 FT. LONG	1
14	PLUG PL-55	1
15	PLUG PL-68	1
16	CLAMP NO. 1 PER FIG. 8	6
17	CLAMP NO. 4 PER FIG. 8	6
18	COVER BC-108 SEE NOTE 3	1
19	ROUNDHEAD WOOD SCREW NO. 10 X 1/2 LONG	18
20	HEX. HEAD MACH. SCREW 1/4-20 X 1/2 LONG	8
21	HEX. HEAD MACH. SCREW 5/16-24 X 3 LONG	14
22	HEX. HEAD MACH. SCREW 5/16-24 X 3 3/4 LONG	1
23	HEX. NUT 1/4-20 STD.	8
24	HEX. NUT 5/16-24 STD.	12
25	LOCKWASHER S.A.E. STD. FOR 1/4 SCREW	8
26	LOCKWASHER S.A.E. STD. FOR 5/16 SCREW	12
27	FLATWASHER S.A.E. STD. FOR 5/16 SCREW	8
28	BRACKET FT-489	2
29	BRACKET	1
30	TERMINAL SEE NOTE 2	1

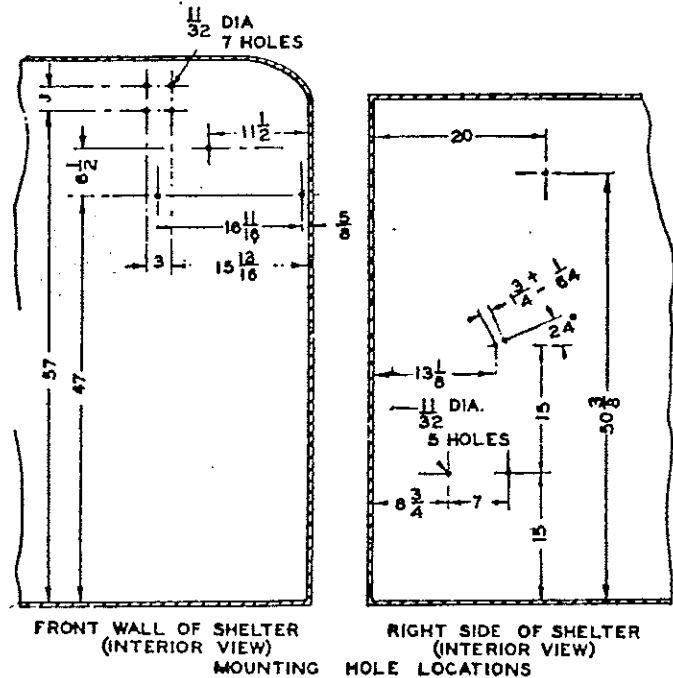
NOTES:

- FOR ADDITIONAL COMPONENTS AND SPARE PARTS, SEE COMPONENT PARTS LIST.
- (11) CUT TO PROPER LENGTH. TIN ONE END FOR ANTENNA CONNECTION AND SOLDER (30) TO OTHER END.
- USE (18) WHEN MAST SECTIONS ARE NOT INSTALLED.
- DRAWING REFERENCES:
WIRING DIAGRAM FOR REMOTE CONTROL OF RADIO SET SCR-510-() FROM INTERPHONE CONTROL BOX BC-606-(), FIGURE 5.
- (16) AND (17) SHALL BE SPACED APPROXIMATELY 10 INCHES APART.
- MOUNTING HOLE SHALL BE MADE WATERPROOF WITH ELASTIC CEMENT.
- DIMENSIONS WHERE NOT SHOWN OTHERWISE ARE IN INCHES.

RIGHT SIDE OF SHELTER

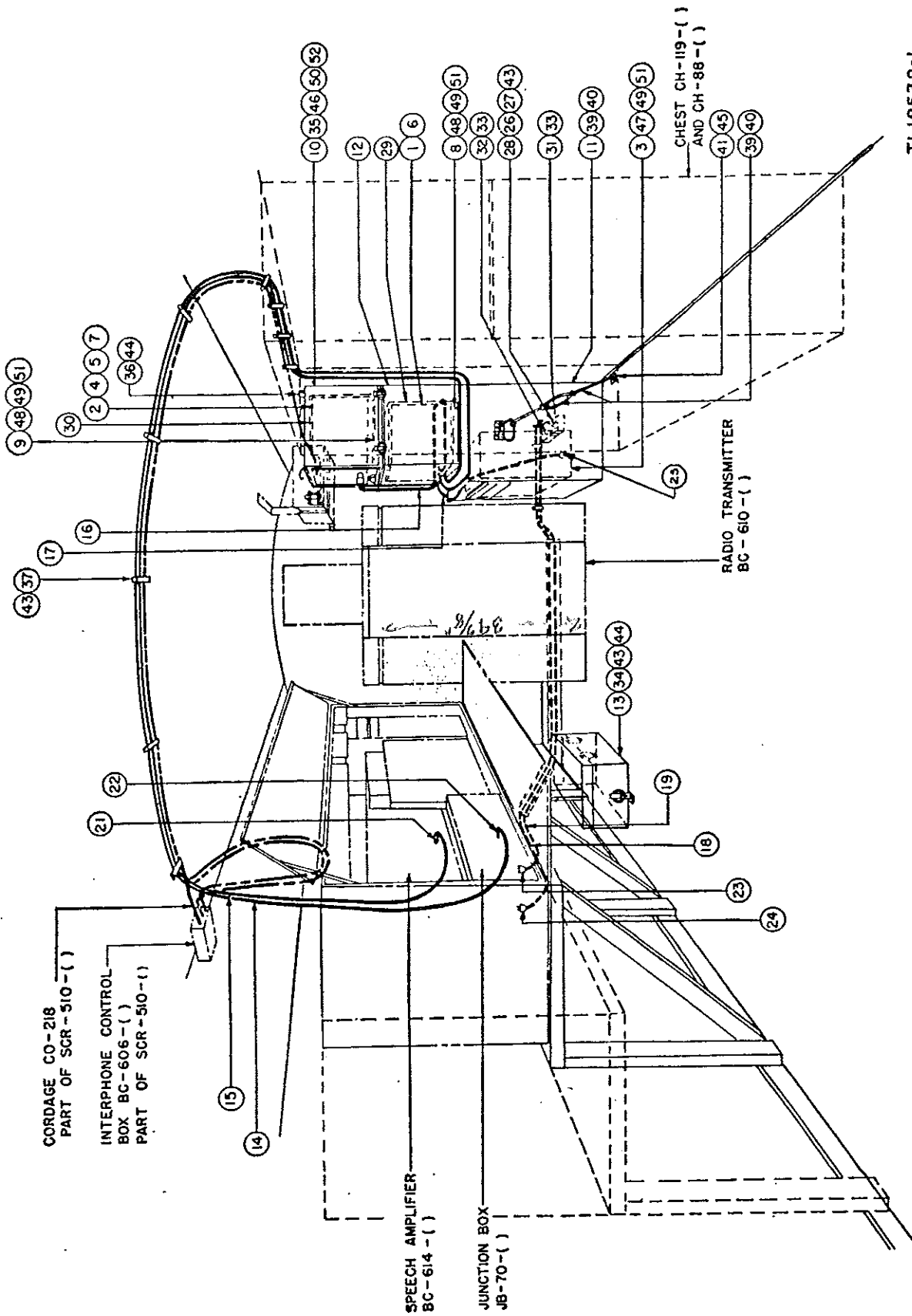


MOUNTING LOCATION FOR INTERPHONE CONTROL BOX BC-606-() AND RADIO MOUNTING BRACKET ON ROOF OF SHELTER (CEILING VIEW FROM INSIDE SHELTER)



SCR-510-() in Shelter HO-17-().

TL 18531-2

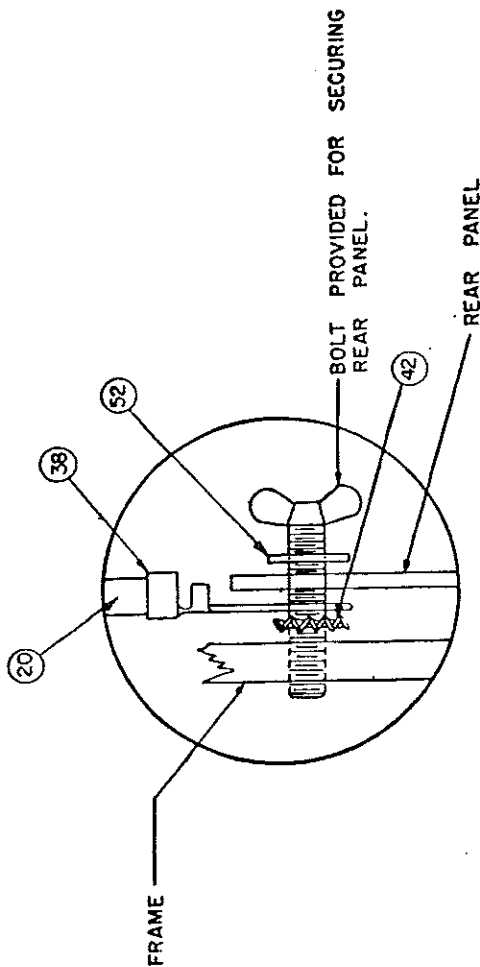


PICTORIAL VIEW FROM REAR OF SHELTER HQ-17-()

TL18532-1

Figure 2. Installation of Facsimile

Equipment RC-58-() in Shelter HO-17-().



DETAIL SHOWING METHOD OF GROUNDING

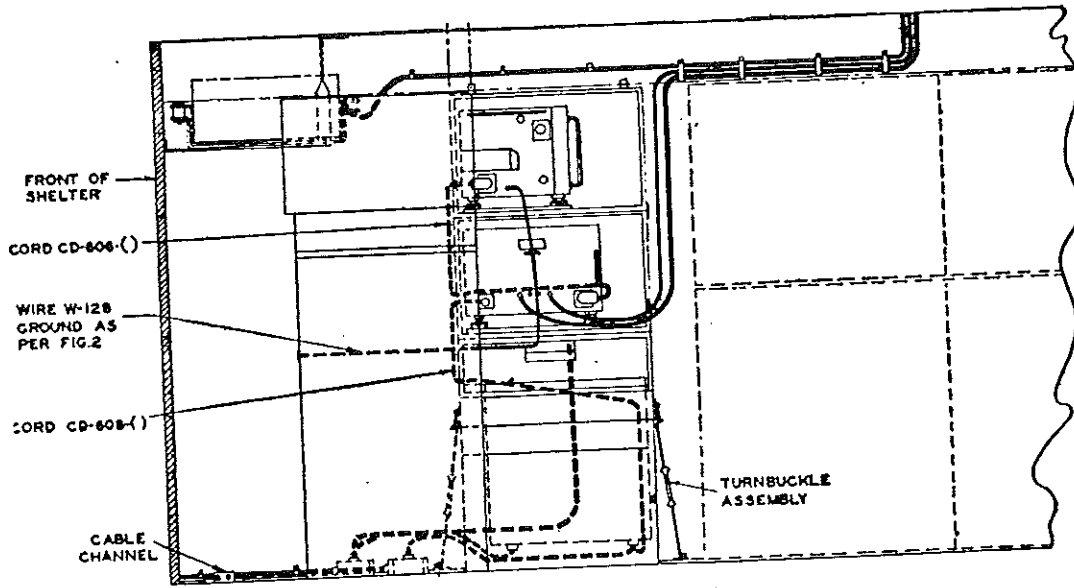
(20) TO BC-610-()

NOTES:

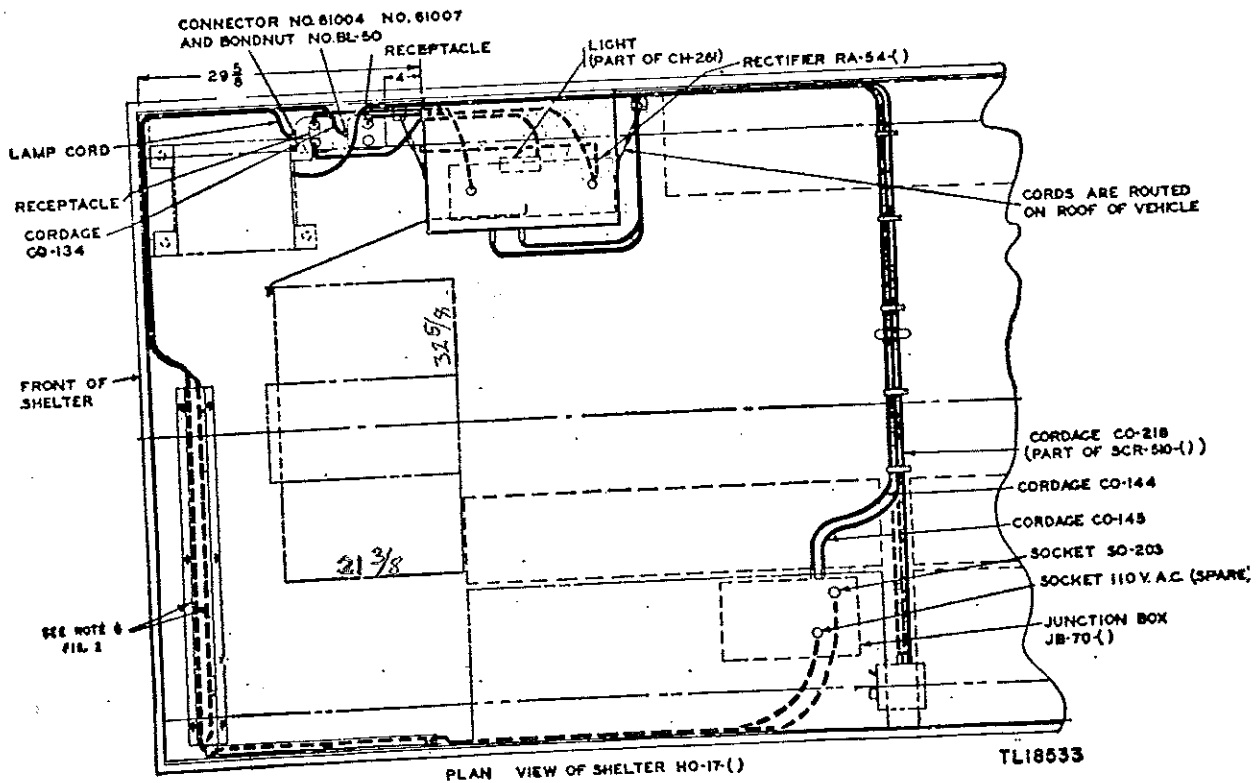
1. FOR ADDITIONAL COMPONENTS AND SPARE PARTS, SEE COMPONENT PARTS LIST.
2. REMOVE SECTION OF 1/4 IN. ROUND HOLDING ON FLOOR TO SET EQUIPMENT FLUSH WITH WALL.
3. (14) (15) (21) AND (22) MAY BE USED IN CONJUNCTION WITH SCR-510-() BC-312-(), BC-392-(), AND BC-610-() BY ALTERNATE CONNECTIONS AS SHOWN IN FIG 3.
4. (37) SPACED AT 8 TO 10 INCH INTERVALS ALONG ROUTING OF CORDS, AS REQUIRED.
5. (19) IN ACCORDANCE WITH SIGNAL CORPS SPECIFICATION NO. 71-700.
6. REMOVE LUGS FROM 12 VOLT CORD (FURNISHED WITH (3)) LEADING FROM (3) TO (28). INSTALL PLUG (25) AT TERMINAL END.
7. DRAWING REFERENCES:
 AUXILIARY VIEWS - - - - - FIG. 3
 WIRING DIAGRAM - - - - - FIG. 4
8. (34) (43) AND (44) ARE USED WITH CHEST CH-108-().

ITEM NO.	NAME OF ITEM	QUAN. REQ.
1	AMPLIFIER BC-908-()	1
2	RECORDER SCANNER BC-918-()	1
3	RECTIFIER RA-54-()	1
4	VIBRATOR YB-3-()	1
5	RESISTOR RS-288-()	1
6	DYNAMOTOR DA-21-()	1
7	MOTOR MO-28-()	1
8	MOUNTING FT-318-()	1
9	MOUNTING FT-328-()	1
10	CHEST CH-262	1
11	CHEST CH-261	1
12	CHEST CH-260	1
13	CHEST CH-108-() SEE NOTE 8	1
14	CORDAGE CO-144 15 FT. LONG SEE NOTE 3	1
15	CORDAGE CO-145 15 FT. LONG SEE NOTE 3	1
16	CORD CO-606-()	1
17	CORD CO-608-()	1
18	LAMP CORD 15 FT. LONG	1
19	CORD CO-134 15 FT. LONG SEE NOTE 5	1
20	WIRE W-128 3 FT. LONG	1
21	PLUG PL-58	1
22	PLUG PL-55	1
23	PLUG CAP 7411	1
24	PLUG CAP 7542	1
25	PLUG CAP 7572	1
26	TWO-CONDUCTOR RECEPTACLE	1
27	THREE-CONDUCTOR RECEPTACLE	1
28	OUTLET BOX	1
29	COVER BG-128-()	1
30	COVER BG-118-()	1
31	CONNECTOR NO. 61007	1
32	CONNECTOR NO. 61004	1
33	BONDNUT NO. BL-50	1
34	CATCH SEE NOTE 8	1
35	CATCH	1
36	CATCH TOP	1
37	CLAMP NO. 7 PER FIG. 8 SEE NOTE 4	1
38	TERMINAL	1
39	ROD	1
40	TURNBUCKLE	1
41	STAPLE	1
42	SHAKEPROOF WASHER NO. 10 1/2 E.T.	1
43	ROUND HEAD WOOD SCREW NO. 10 X 5/8 IN. LONG	25
44	ROUND HEAD WOOD SCREW NO. 10 X 1 IN.	8
45	FLAT HEAD WOOD SCREW NO. 10 X 1 1/2 IN. LONG	8
46	ROUND HEAD MACH. SCREW NO. 10 - 32 X 3/4 IN. LONG	4
47	ROUND HEAD MACH. SCREW 1/4 - 20 X 3/4 IN. LONG	4
48	ROUND HEAD MACH. SCREW 1/4 - 20 X 3/4 IN. LONG	8
49	TEENUT 1/4 - 20 STD.	12
50	HEX NUT NO. 10 - 32 STD.	4
51	LOCKWASHER S.A.E. REG. FOR 1/4 IN. SCREW	12
52	WASHER STD. FOR NO. 10 SCREW	5

TL18532-2



RIGHT WALL ELEVATION



PLAN VIEW OF SHELTER HO-17(-)

TL18533

Figure 3. Installation of Facsimile Equipment RC-58(-) in Shelter HO-17(-), auxiliary views.

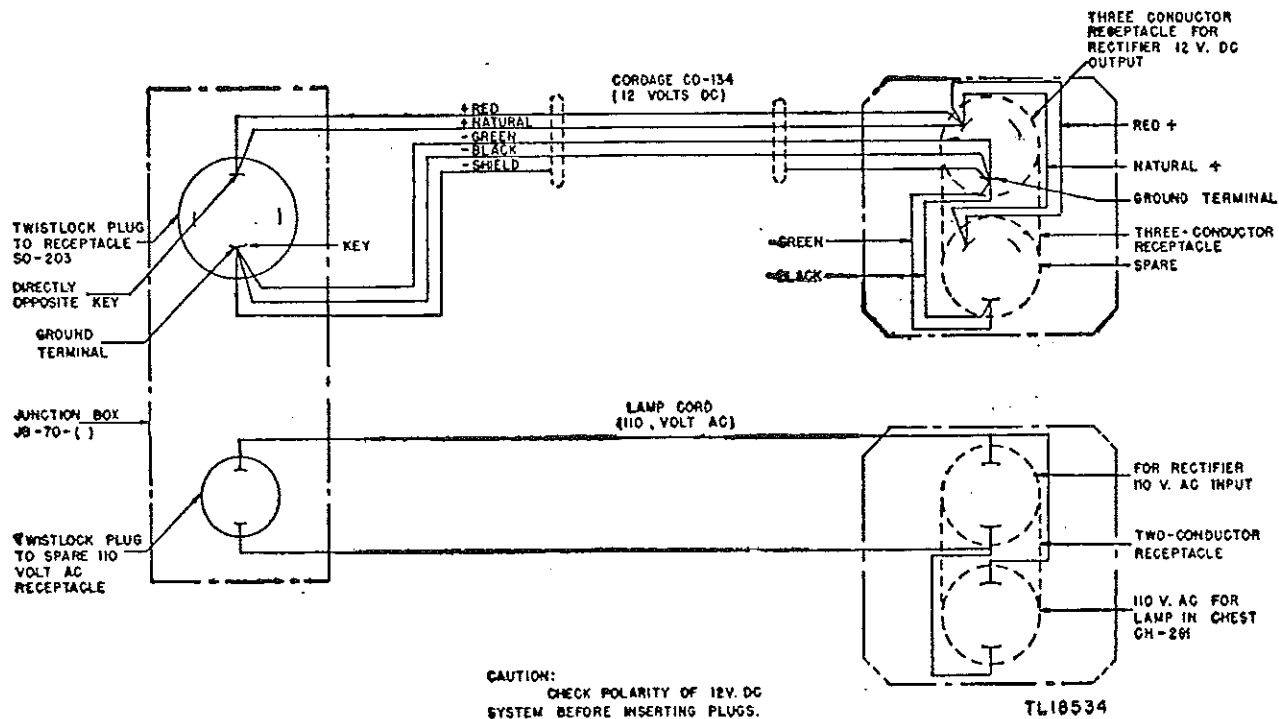


Figure 4. Wiring diagram for terminal boxes used with Facsimile Equipment RC-58-() in Shelter HO-17-().

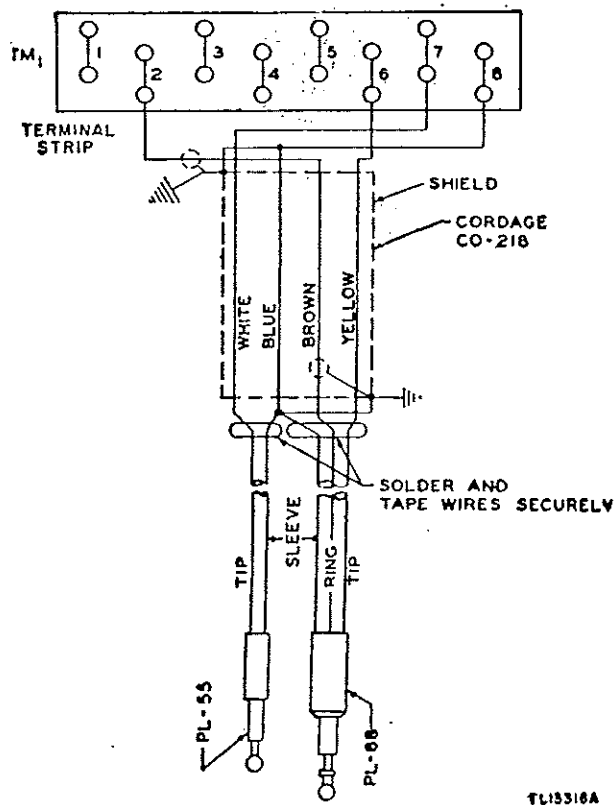


Figure 5. Wiring diagram for remote control of Radio Set SCR-510-() from terminal strip of Interphone Control Box BC-606-().

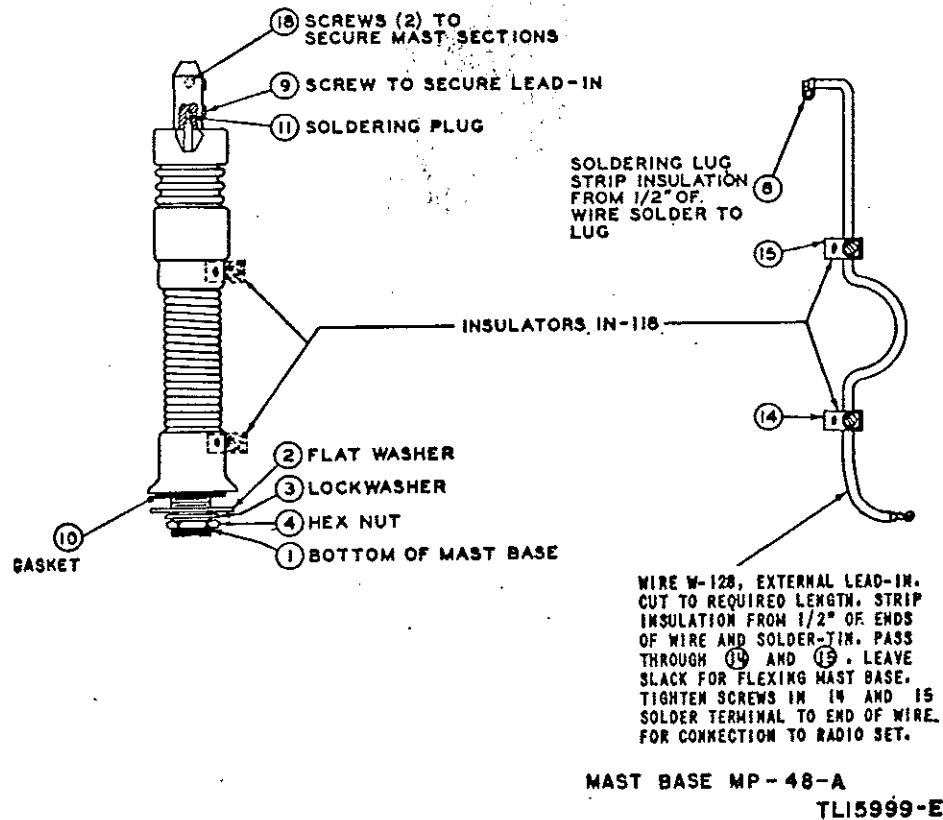
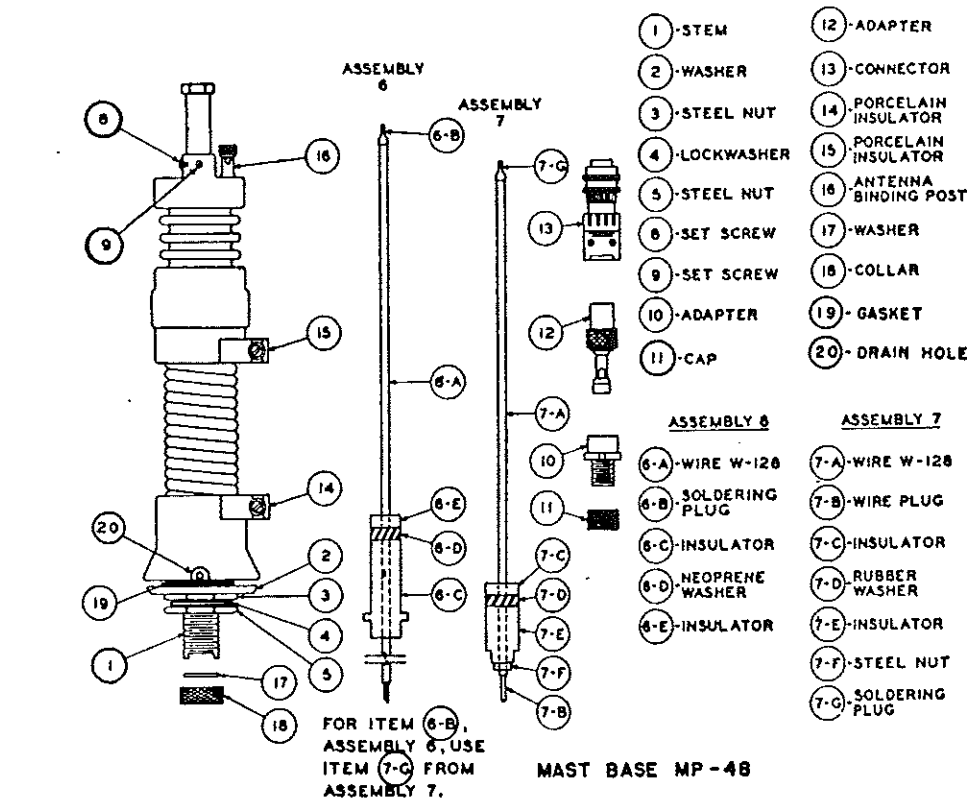


Figure 6. Mast Base MP-48 or MP-48-A, assembly for installation.

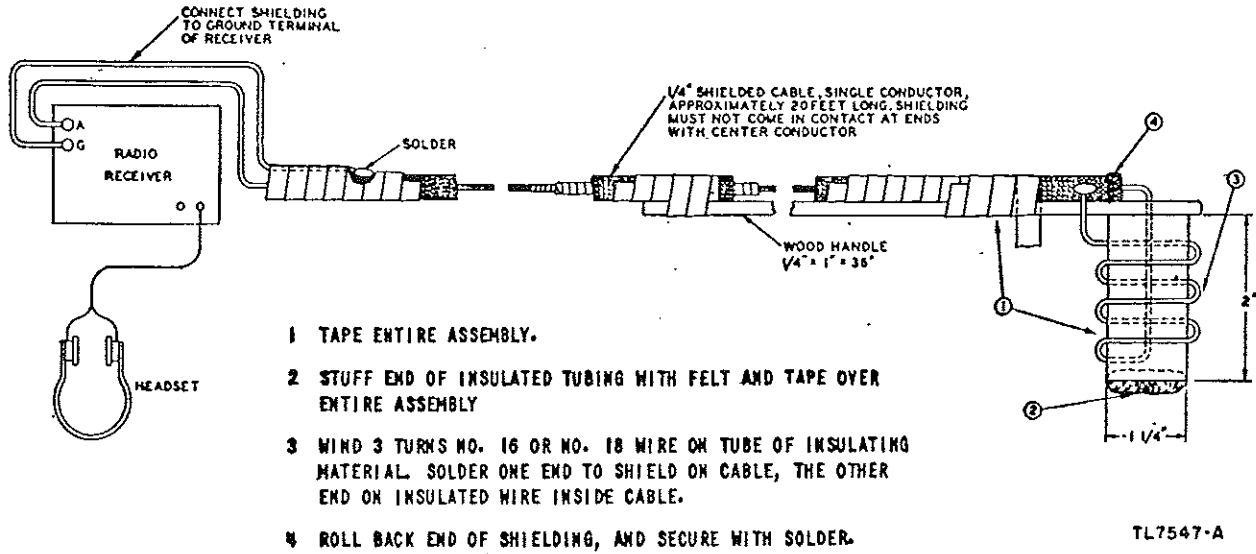
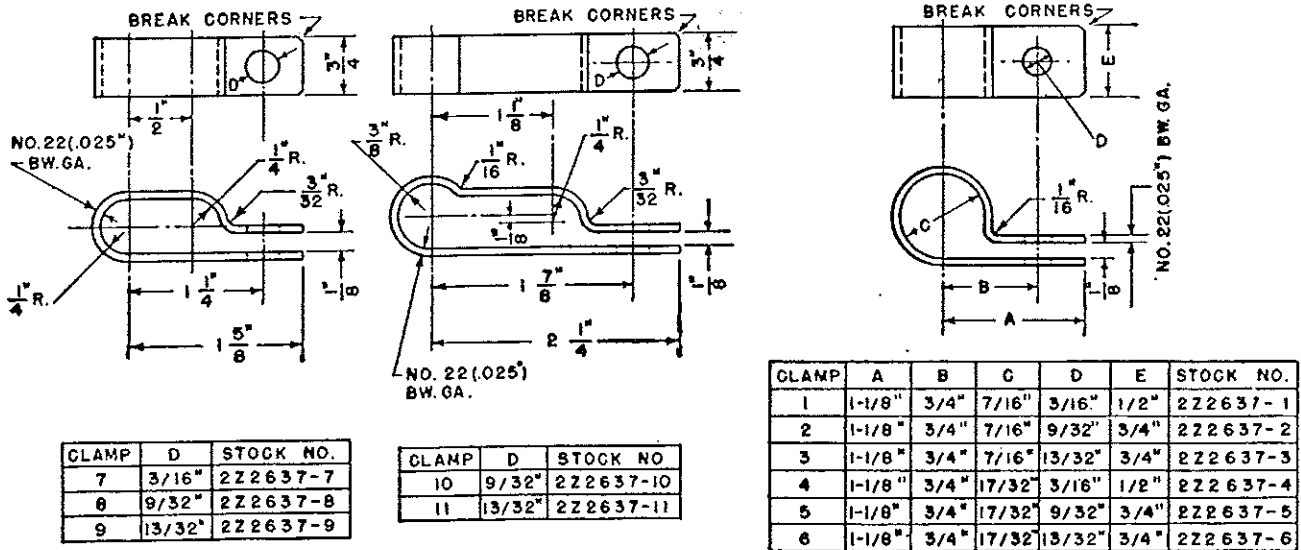


Figure 7. Probe antenna.



NOTE:
TOLERANCES $\pm 1/32$ ".

Figure 8. Clamps for radio cordage.

TL13319