

TECHNICAL MANUAL

**UNIT, INTERMEDIATE DIRECT SUPPORT
AND GENERAL SUPPORT MAINTENANCE
REPAIR PARTS AND SPECIAL TOOLS LIST
FOR**

**SIGNAL GENERATOR SG-1122/U
(NSN 6625-00-155-5990)**

Distribution authorized to the Department of Defense and DOD contractors only for official use or for administration or operational purposes. This determination was made on 22 September 1988. Other requests for this document will be referred to Commander, US Army Communications -Electronics Command and Fort Monmouth, ATTN: AMSEL-LC-ME-P, Fort Monmouth, NJ 7703-5000.

DESTRUCTION NOTICE - Destroy by any method that will prevent disclosure of contents or reconstruction of the document.

HEADQUARTERS, DEPARTMENT OF THE ARMY

1 JANUARY 1989

Technical Manual

No. 11-6625-2858-24P

HEADQUARTERS
DEPARTMENT OF THE ARMY
Washington, DC, 1 January 1989

UNIT, INTERMEDIATE DIRECT SUPPORT,
AND GENERAL SUPPORT MAINTENANCE
REPAIR PARTS AND SPECIAL TOOLS LIST

FOR

SIGNAL GENERATOR SG-1122/U
(NSN 6625-00-155-5990)

Current as of 1 October 1988

REPORTING ERRORS AND RECOMMENDING IMPROVEMENTS

You can help improve this manual. If you find any mistakes or if you know of a way to improve the procedures, please let us know. Mail your letter, DA Form 2028 (Recommended Changes to Publications and Blank Forms), or DA Form 2028-2 located in back of this manual direct to: Commander, US Army Communications Electronics Command and Fort Monmouth, ATTN: AMSEL-LC-ME-PS, Fort Monmouth, New Jersey 07703-5000. In either case, a reply will be furnished direct to you.

Table of Contents

			Page	Illus/ Figure
Section	I.	Introduction	1	
	II.	Repair Parts List	1-1	
Group	00	Signal Generator SG-1122/U.....	1-1	1
	01	Low Frequency Counter Assembly (A1).....	2-1	2
	02	Video ALC Amplifier Circuit Card Assembly (A8).....	3-1	3
	03	Rectifier Circuit Card Assembly (A1 5).....	4-1	4
	04	Motherboard Circuit Card Assembly (A1 8).....	5-1	5

*This manual supersedes so much of TM 11-6625-2858-24&P, 16 October 1981, as pertains to repair parts and special tools list.

Table of Contents-Continued

			Page	Illus/ Figure
Section III.	Special Tools List (Not applicable)			
IV.	Cross-Reference Indexes			
	National Stock Number Index..		I-1	
	Part Number Index..		I-3	
	Figure and Item Number Index		I-7	

SECTION I.**INTRODUCTION**

1. Scope

This manual lists and authorizes spares and repair parts; special tools; special test, measurement, and diagnostic equipment (TMDE); and other special support equipment required for performance of unit, intermediate direct support, and general support maintenance of the SG-1122/U. It authorizes the requisitioning, issue, and disposition of spares, repair parts and special tools as indicated by the source, maintenance and recoverability (SMR) codes.

2. General

This Repair Parts and Special Tools List is divided into the following sections:

a. Section II. Repair Parts List. A list of spares and repair parts authorized by this RPSTL for use in the performance of maintenance. The list also includes parts which must be removed for replacement of the authorized parts. Parts list are composed of functional groups in ascending item number sequence. Figure numbers are listed directly beneath the group header.

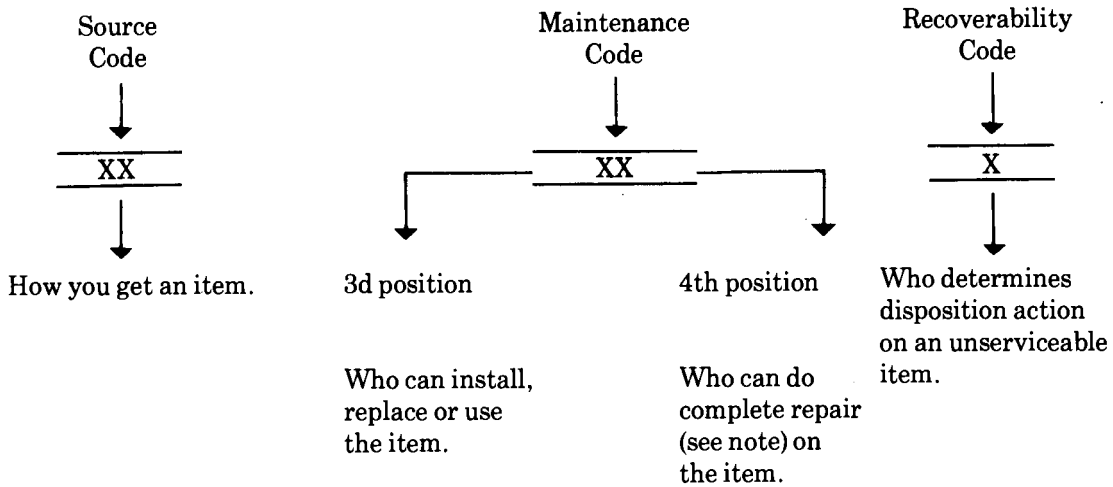
b. Section III. Special Tools List. Not applicable.

c. Section IV. Cross-Reference Indexes. A list, in National item identification number (NIIN) sequence, of all National stock numbered items appearing in the listing, followed by a list in alphameric sequence of all part numbers appearing in the listings. National stock numbers and part numbers are cross-referenced to each illustration figure and item number appearance. The figure number and item number index lists figure and item numbers in numeric sequence and cross-references National stock number, Federal Supply Code for Manufacturer and part numbers.

3. Explanation of Columns (Section II and III)

a. Item No. (Column (1)). Indicates the number used to identify items called out in the illustration.

b. SMR Code (Column (2)). The source, maintenance, and recoverability (SMR) code is a five-position code containing supply/requisitioning information, maintenance category authorization criteria, and disposition instruction, as shown in the following breakout:



NOTE

Complete repair: Maintenance capacity, capability, and authority to perform all corrective maintenance tasks of the "repair" function in a use/user environment in order to restore serviceability to a failed item.

(1) Source code. The source code tells you how to get an item needed for maintenance, repair, or overhaul of an end item/equipment.

Explanations of source codes follows:

Code

Explanation

- PA
- PB
- PC
- PD
- PE
- PF
- PG

Stocked items: use the applicable NSN to request/requisition items with these source codes. They are authorized to the category indicated by the code entered in the third position of the SMR code.

NOTE

Items coded PC are subject to deterioration.

Items with these codes are not to be requested/requisitioned individually. They are part of a kit which is authorized to the maintenance category indicated in the third position of the SMR code. The complete kit must be requisitioned and applied.

- KD
- KF
- KB

Code

Explanation

MO—Made at org/
AVUM category
MF—Made at DS/
AVUM category
MH—Made at GS
category
ML—Made at
Specialized
Repair Activity
(SRA)
MD—Made at Depot

Items with these codes are not to be requested/requisitioned individually. They must be made from bulk material which is identified by the part number in the description and usable on code (UOC) column and listed in the Bulk Material group of the repair parts list. If the item is authorized to you by the third position code of the SMR code, but the source code indicates it is made at a higher category, order the item from the higher category of maintenance.

AO—Assembled by
org/AVUM
category
AF—Assembled by
DS/AVUM
category
AH—Assembled by
GS category
AL—Assembled by
SRA
AD—Assembled by
Depot

Items with these codes are not to be requested/requisitioned individually. The parts that make up the assembled item must be requisitioned or fabricated and assembled at the category of maintenance indicated by the source code. If the third position code of the SMR code authorizes you to replace the item, but the source code indicates the item is assembled at a higher category, order the item from the higher category of maintenance.

5

Code

Explanation

- XA - Do not requisition an "XA" coded item. Order its next higher assembly.
- XB - If an "XB" item is not available from salvage, order it using the FCSM and part number given.
- XC - Installation drawing, diagram, instruction sheet, field service drawing, that is identified by manufacturer's part number.
- XD - Item is not stocked. Order an "XD" coded item through normal supply channels using the FSCM and part number given, if not available.

NOTE

Cannibalization or controlled exchange, when authorized, may be used as a source of supply for items with the above source codes, except for those source coded "XA" or those aircraft support items restricted by requirements of AR 750-1.

(2) Maintenance code. Maintenance codes tell you the category of maintenance authorized to USE and REPAIR support items. The maintenance codes are entered in the third and fourth positions of the SMR code as follows:

(a) The maintenance code entered in the third position tells you the lowest maintenance category authorized to remove, replace, and use an item. The maintenance code entered in the third position will indicate authorization to one of the following categories of maintenance.

<u>Code</u>	<u>Application/Explanation</u>
C -	Crew or operator maintenance done within organizational or aviation maintenance.
O -	Organizational or aviation unit category can remove, replace, and use the item.
F -	Direct support or aviation intermediate category can remove, replace, and use the item.
H -	General support category can remove, replace, and use the item.
L -	Specialized repair activity can remove, replace, and use the item.
D -	Depot category can remove, replace, and use the item.

(b) The maintenance code entered in the fourth position tells whether or not the item is to be repaired and identifies the lowest maintenance category with the capability to do complete repair (i.e., perform all authorized repair functions). This position will contain one of the following maintenance codes.

NOTE

Some limited repair may be done on the item at a lower category of maintenance, if authorized by the Maintenance Allocation Chart (MAC) and SMR codes.

<u>Code</u>	<u>Application/Explanation</u>
O -	Organizational or aviation unit is the lowest category that can do complete repair of the item.
F -	Direct support or aviation intermediate is the lowest category that can do complete repair of the item.
H -	General support is the lowest category that can do complete repair of the item.
L -	Specialized repair activity (designate the specialized repair activity) is the lowest category that can do complete repair of the item.
D -	Depot is the lowest category that can do complete repair of the item.

<u>Code</u>	<u>Application/Explanation</u>
Z	- Nonreparable. No repair is authorized.
B	- No repair is authorized. (No parts or special tools are authorized for the maintenance of a "B" coded item.) However, the item may be reconditioned by adjusting, lubricating, etc., at the user category.

(3) Recoverability code. Recoverability codes are assigned to items to indicate the disposition action on unserviceable items. The recoverability code is entered in the fifth position of the SMR Code as follows:

<u>Recoverability codes</u>	<u>Application/Explanation</u>
Z	- Nonreparable item. When unserviceable, condemn and dispose of the item at the category of maintenance shown in the third position of SMR code.
O	- Reparable item. When uneconomically repairable, condemn and dispose of the item at organizational or aviation unit category.
F	- Reparable item. When uneconomically repairable, condemn and dispose of the item at direct support or aviation intermediate category.
H	- Reparable item. When uneconomically repairable, condemn and dispose of the item at general support category.
D	- Reparable item. When beyond lower category repair capability, return to depot. Condemnation and disposal of item not authorized below depot category.
L	- Reparable item. Condemnation and disposal not authorized below specialized repair activity (SRA).
A	- Item requires special handling or condemnation procedures because of specific reasons (e.g., precious metal content, high dollar value, critical material, or hazardous material). Refer appropriate manuals/directives for specific instructions.

c. FSCM (Column (3)). The Federal Supply Code for Manufacturer (FSCM) is a 5-digit numeric code which is used to identify the manufacturer, distributor, or Government agency, etc., that supplies the item.

d. Part Number (Column (4)). Indicates the primary number used by the manufacturer (individual, company, firm, corporation, or Government activity), which controls the design and characteristics of the item by means of its engineering drawings, specifications, standards, and inspection requirements to identify an item or range of items.

NOTE

When you use an NSN to requisition an item, the item you receive may have a different part number from the part ordered.

e. Description and Usable on Code (UOC) (Column (5)). This column includes the following information.

(1) The Federal item name and, when required, a minimum description to identify the item.

(2) The statement "END OF FIGURE" appears just below the last item description in Column (5) for a given figure in both section II and section III.

f. Qty (Column (6)). Indicates the quantity of the item used in the breakout shown on the illustration figure, which is prepared for a functional group, subfunctional group, or an assembly. A "V" appearing in this column in lieu of a quantity indicates that the quantity is variable and the quantity may vary from application to application.

4. Explanation of Columns (Section IV)

a. National Stock Number (NSN) Index.

(1) Stock number column. This column lists the NSN by National item identification number (NIIN) sequence. The NIIN consists of the last nine digits of the NSN. When using this column to locate an item, ignore the first four digits of the NSN. When requisitioning items use the complete NSN (13 digits).

(2) Fig. column. This column lists the number of the figure where the item is identified/located. The illustrations are in numerical sequence in sections II and III.

(3) Item column. The item number identifies the item associated with the figure listed in the adjacent Fig. column. This item is also identified by the NSN listed on the same line.

b. Part Number Index. Part numbers in this index are listed by part number in ascending alphanumeric sequence.

(1) FSCM column. This column lists the Federal supply code for manufacturer.

(2) Part number column. This column indicates the part number assigned to the item.

(3) Stock number column. This column lists the National stock number for the associated part number and manufacturer identified in the part number and FSCM columns to the left.

(4) Fig. column. This column lists the number of the figure where the item is identified/located in sections II and III.

(5) Item column. The item number is that number assigned to the item as it appears in the figure referenced in the adjacent figure number column.

c. Figure and Item Number Index.

(1) Fig. column. This column lists the number of the figure where the item is identified/located in sections II and III.

(2) Item column. The item number is that number assigned to the item as it appears in the figure referenced in the adjacent figure number column.

(3) Stock number column. This column lists the National stock number for the item.

(4) FSCM column. The Federal supply code for manufacturer (FSCM) is a 5-digit numeric code used to identify the manufacturer, distributor, or Government agency, etc., that supplies the item.

(5) Part number column. Indicates the primary number used by the manufacturer (individual, firm, corporation, or Government activity), which controls the design and characteristics of the item by means of its engineering drawings, specifications, standards, and inspection requirements to identify an item or range of item.

5. Special Information

a. Associated Publications. The following publication pertains to the SG-1122/U and its components:

TM 11-6625-2858-14&P, Signal Generator SG-1122/U

b. National Stock Numbers. National stock numbers (NSN's) that are missing from P source coded items have been applied for and will be added to this TM by future change/revision when they are entered in the Army Master Data File (AMDF). Until the NSN's are established and published, submit exception requisitions to: Commander, US Army Communications-Electronics Command and Fort Monmouth, ATTN: AMSEL-LC-MM, Fort Monmouth, NJ 07703-5000 for the part to support your equipment.

6. How to Locate Repair Parts

a. When National stock number or part number is not known.

(1) First. Using the table of contents, determine the assembly group or subassembly group to which the item belongs. This is necessary since figures are prepared for assembly groups and subassembly groups, and listings are divided into the same groups.

(2) Second. Find the figure covering the assembly group or subassembly group to which the item belongs.

(3) Third. Identify the item on the figure and note the item number.

(4) Fourth. Refer to the Repair Parts List for the figure to find the part number for the item number noted on the figure.

(5) Fifth. Refer to the Part Number Index to find the NSN, if assigned.

b. When National stock number or part number is known.

(1) First. Using the index of National stock numbers and part numbers, find the pertinent National stock number or part number. The NSN index is in National item identification number (NIIN) sequence (para 4a(l)). The part numbers in the part number index are listed in ascending alphameric sequence (para 4b). Both indexes cross-reference you to the illustration figure and item number of the item you are looking for.

(2) Second. After finding the figure and item number, verify that the item is the one you're looking for, then locate the item number in the repair parts list for the figure.

7. Abbreviations

Not applicable.

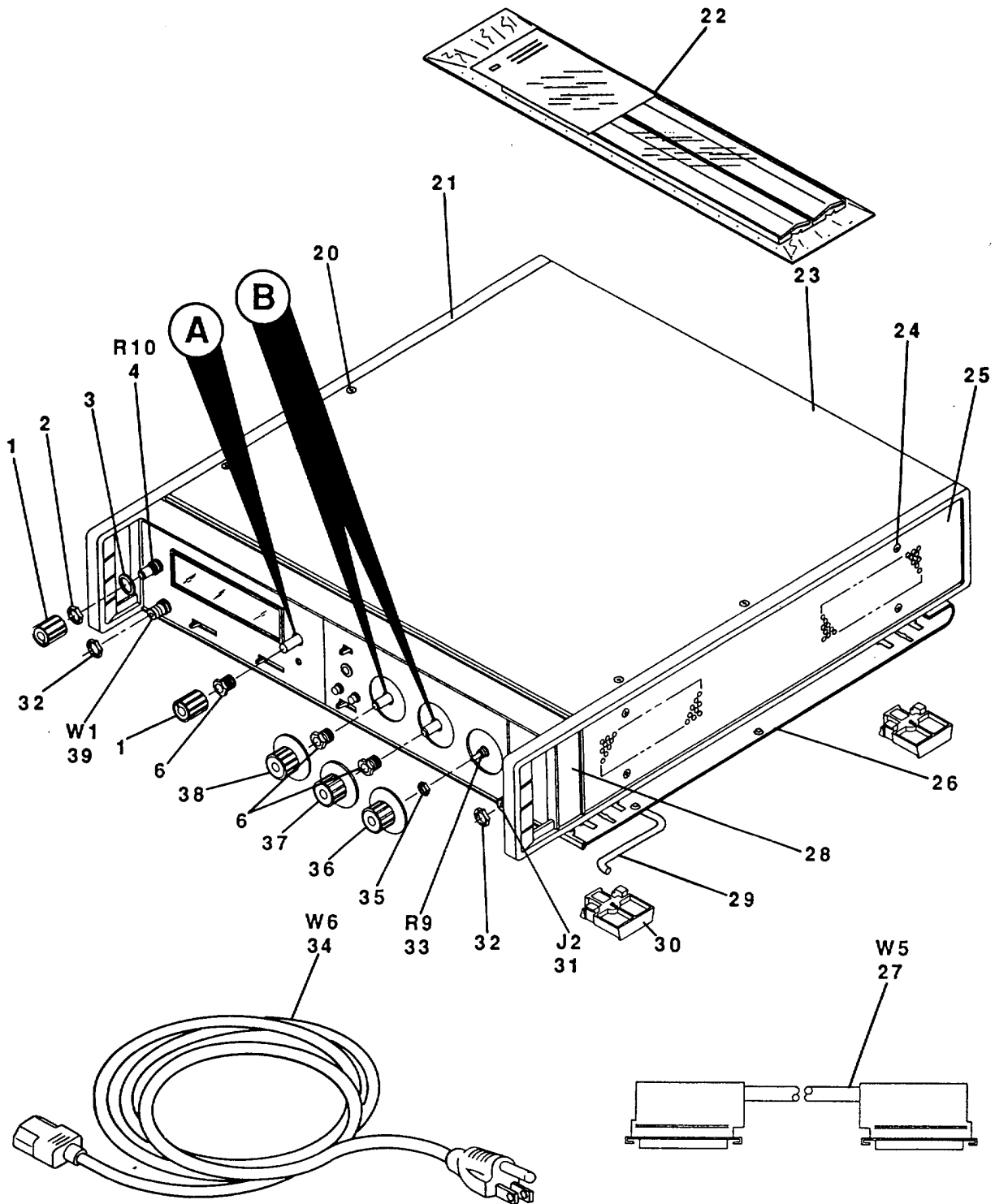
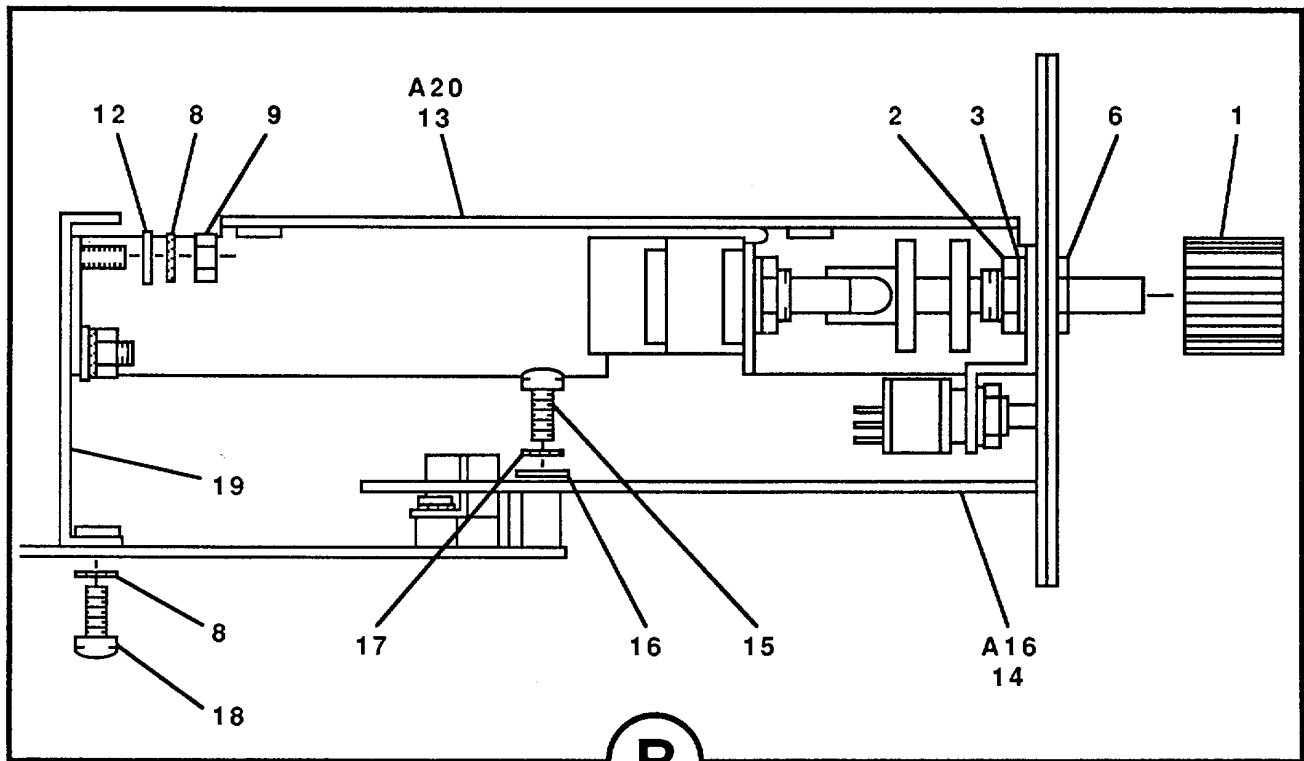
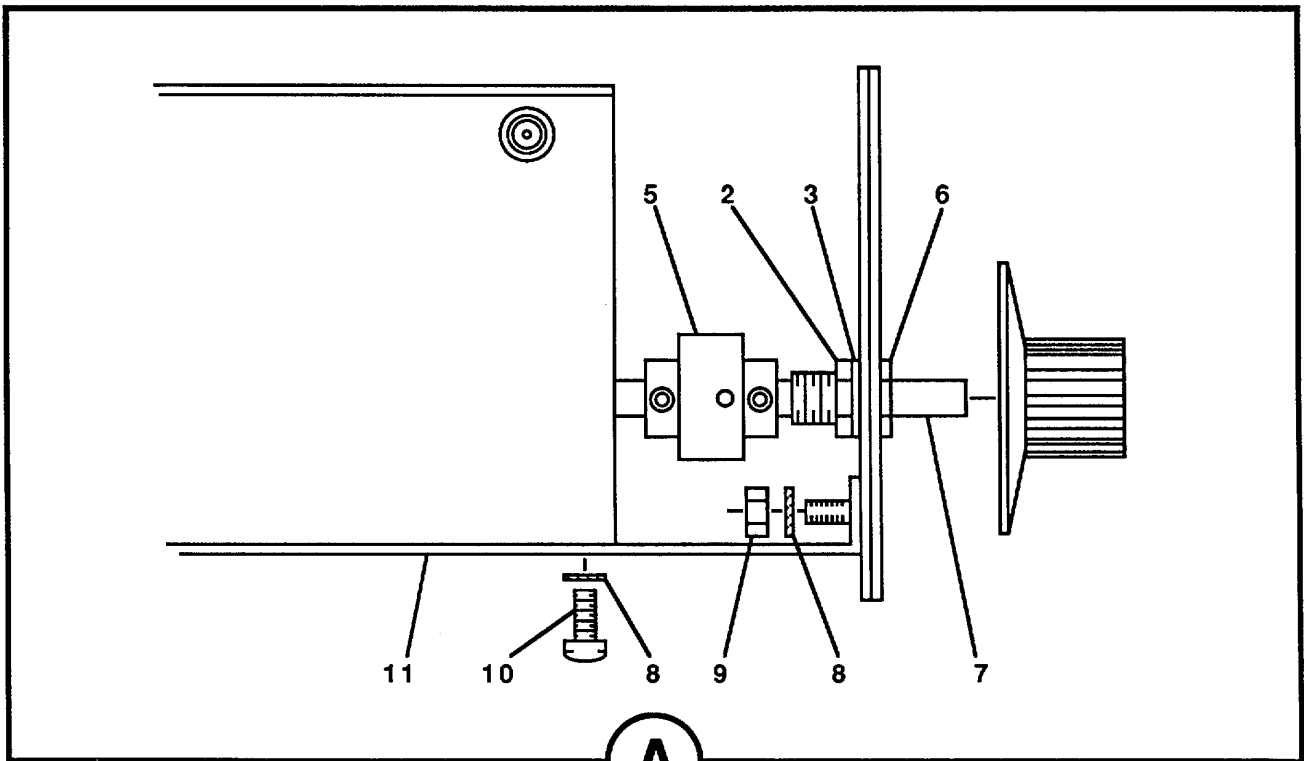


Figure 1. Signal Generator SG-1122/U (Sheet 1 of 9).



CE1KR002

Figure 1. Signal Generator SG-1122/U (Sheet 2 of 9).

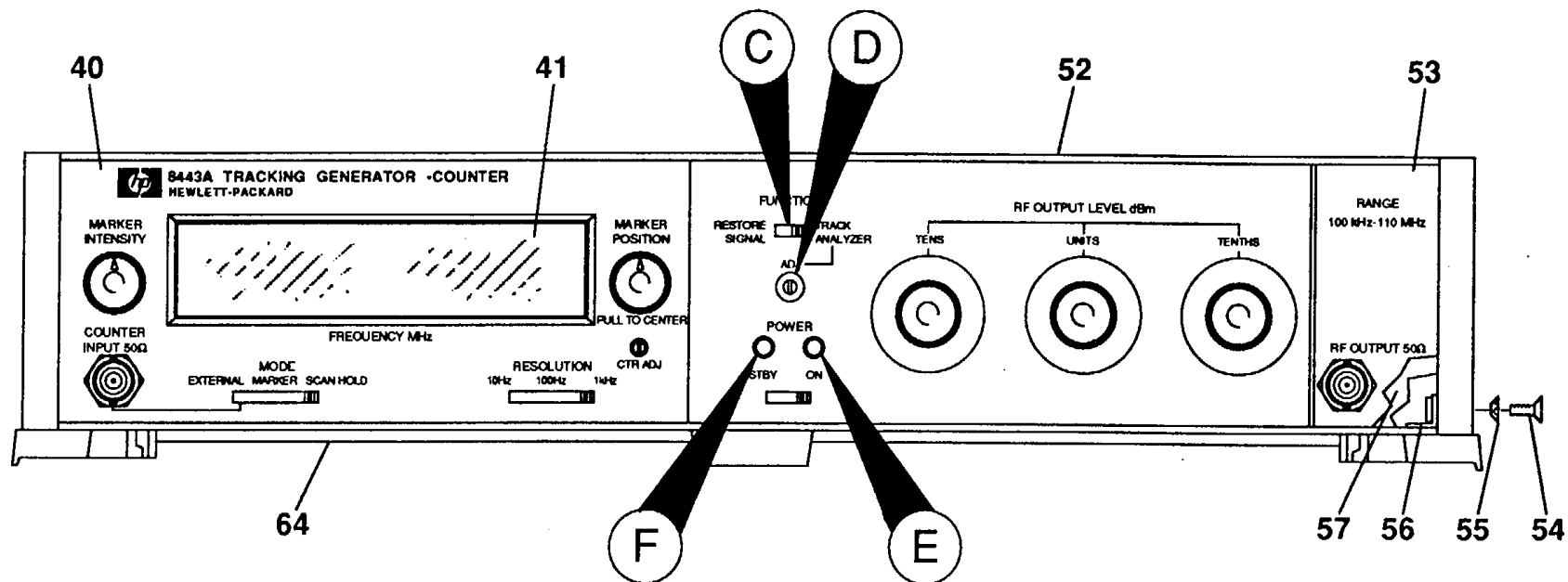
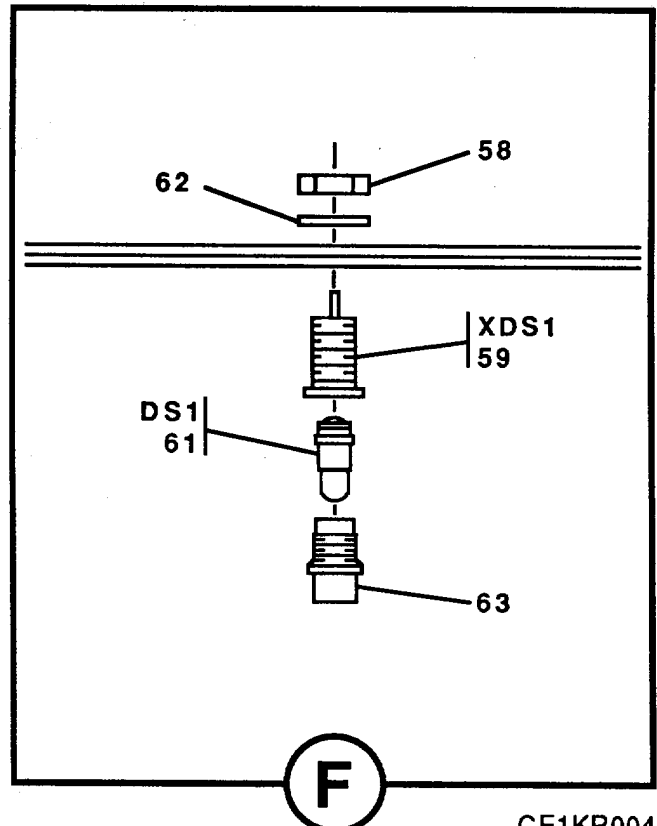
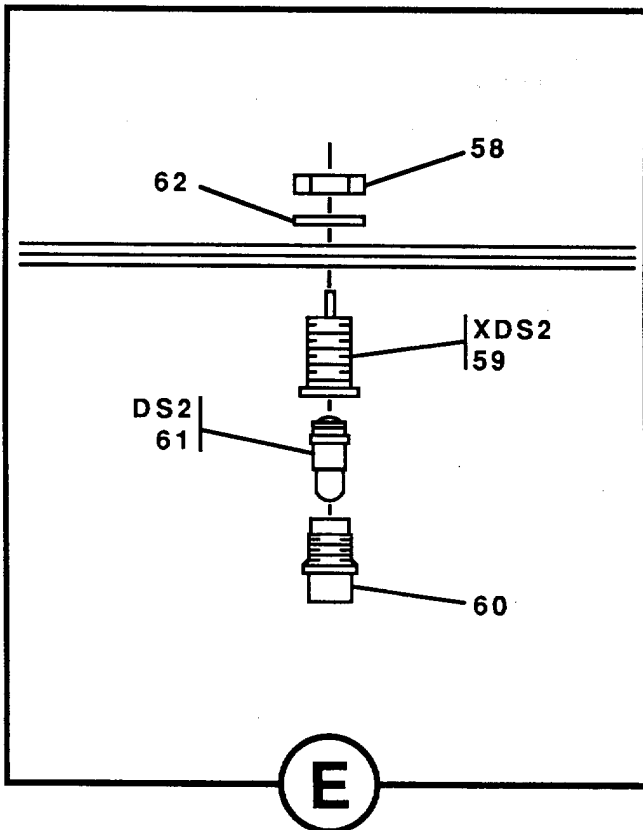
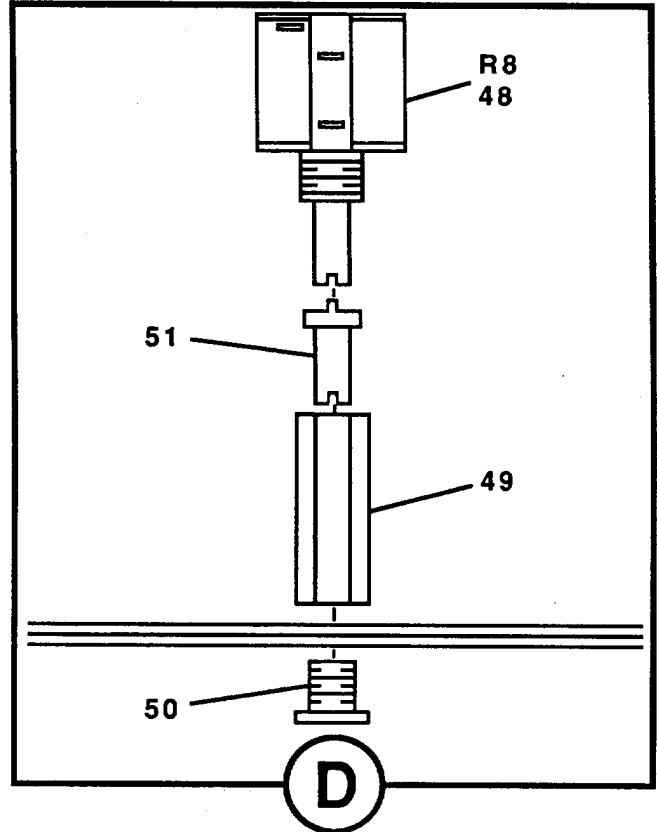
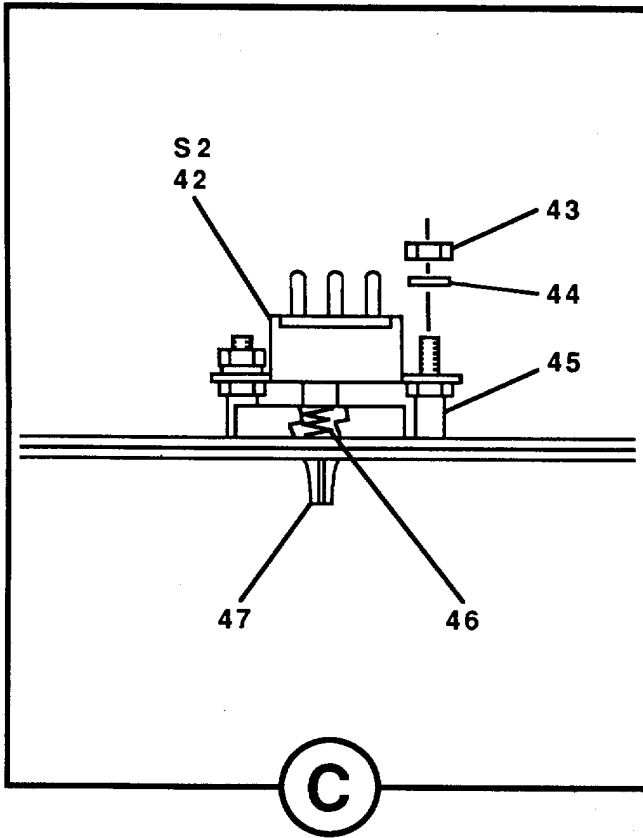
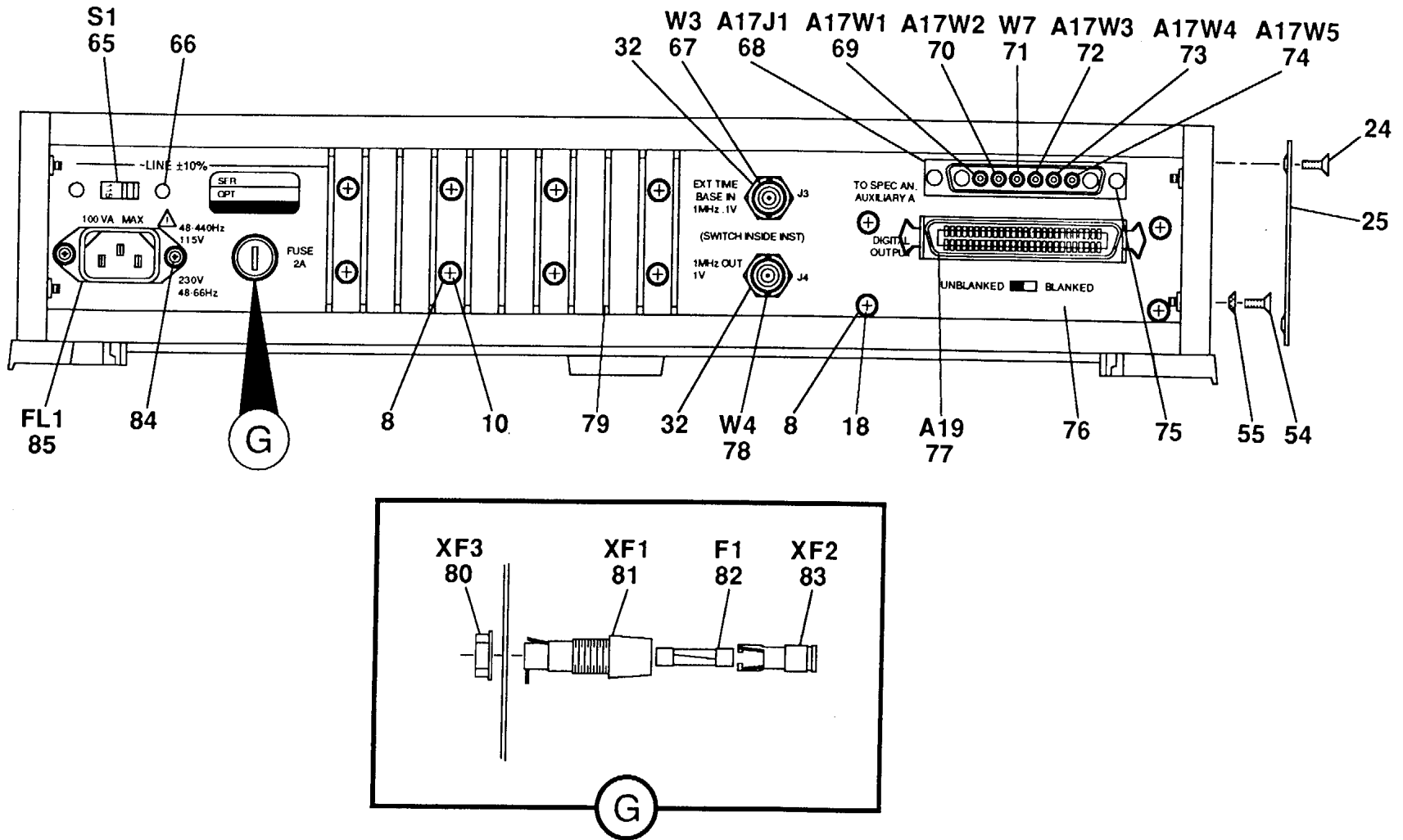


Figure 1. Signal Generator SG-1122/U (Sheet 3 of 9).



CE1KR004

Figure 1. Signal Generator SG-1122/U Sheet 4 of 9).



CE1KR005

Figure 1. Signal Generator SG-1122/U Sheet 5 of 9).

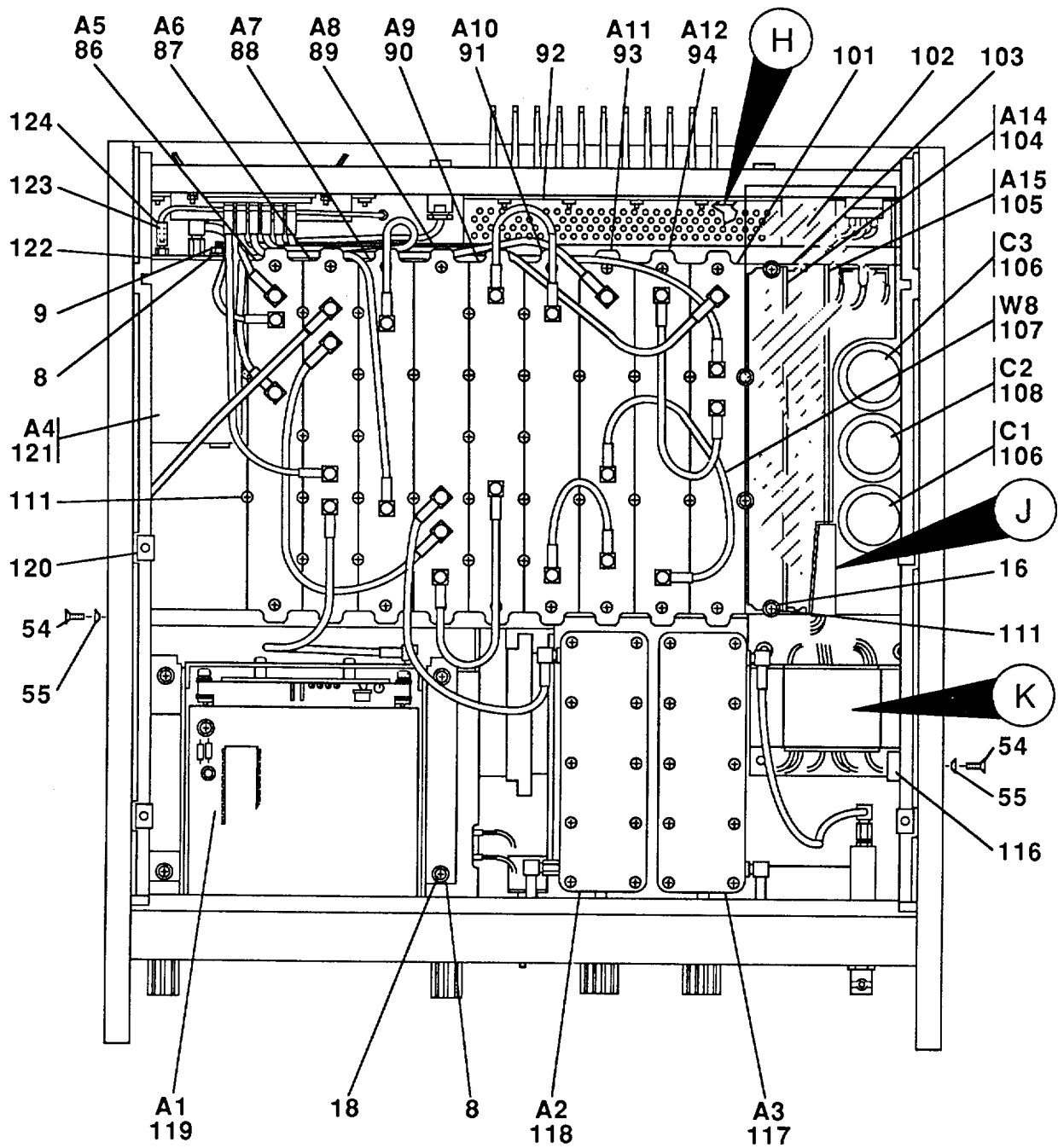
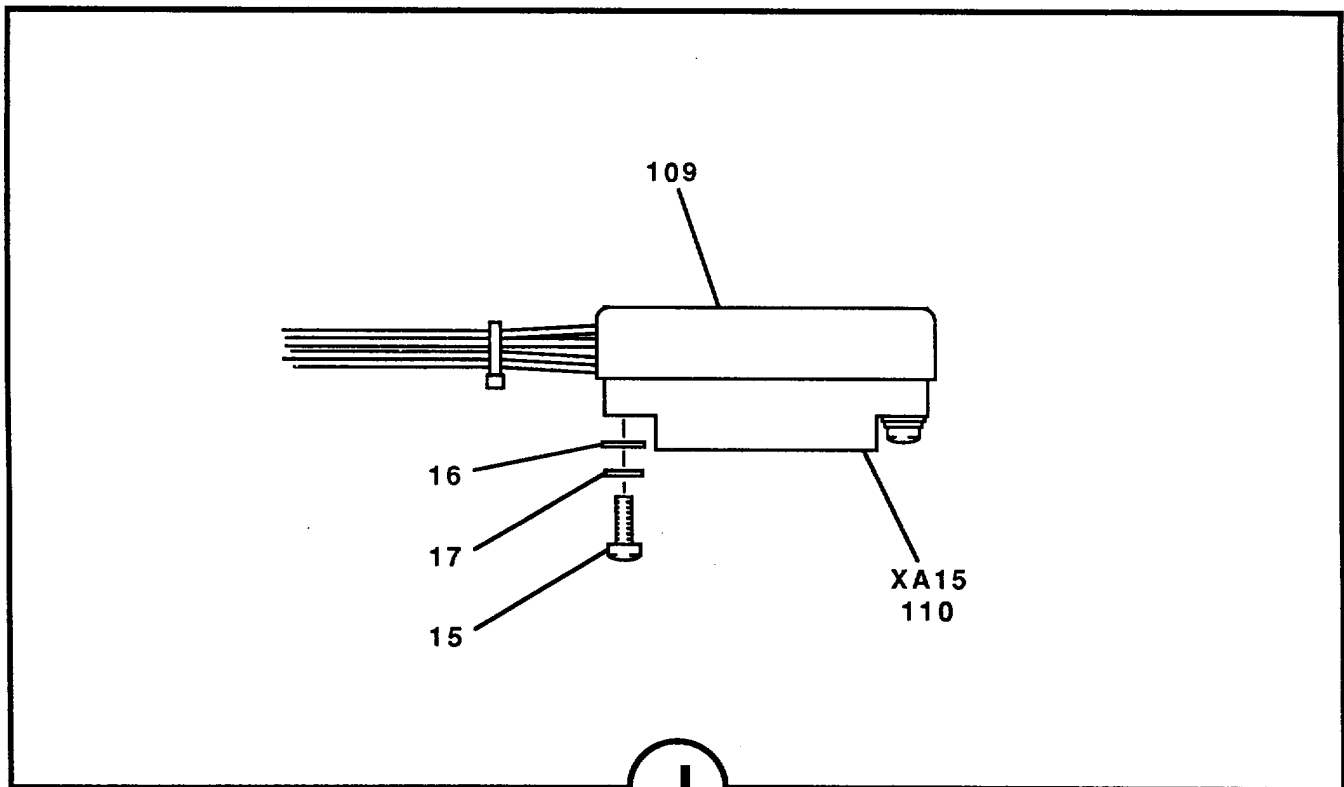
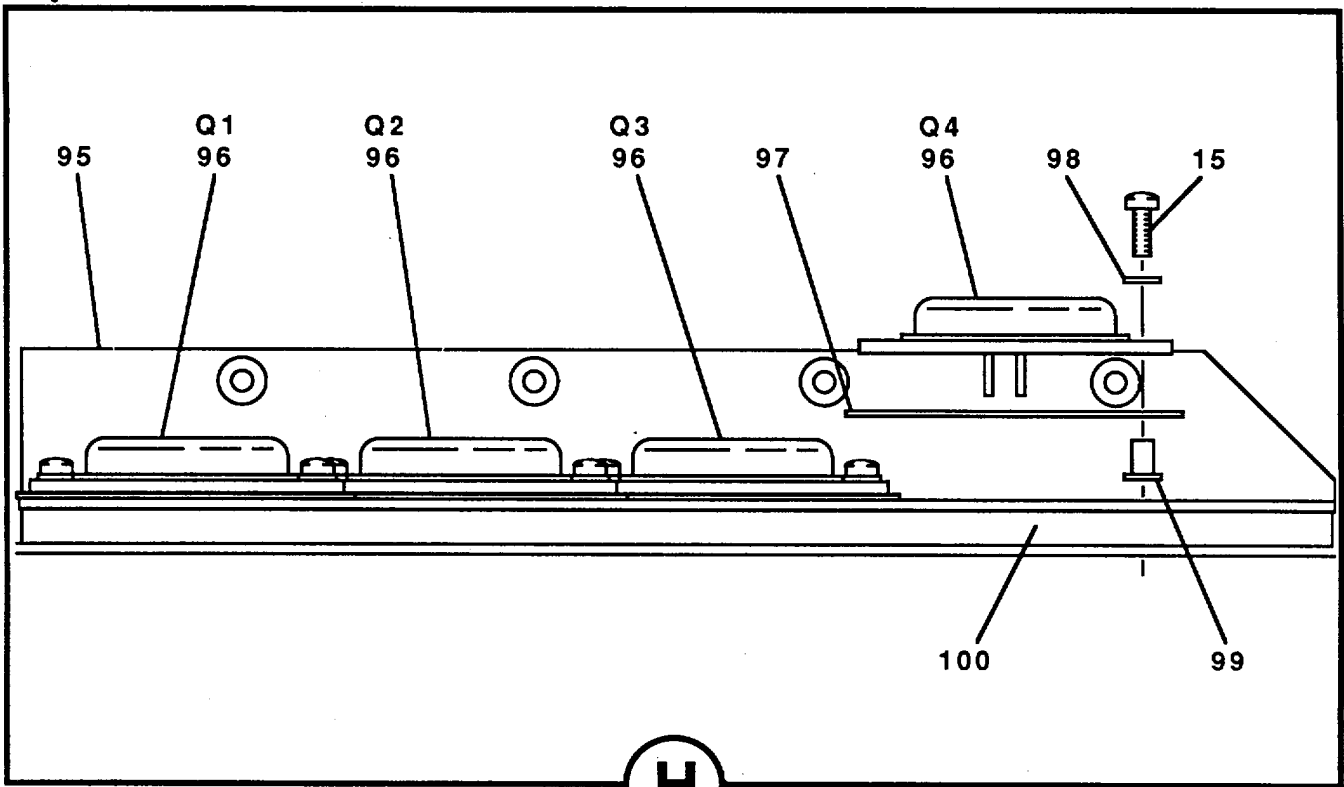
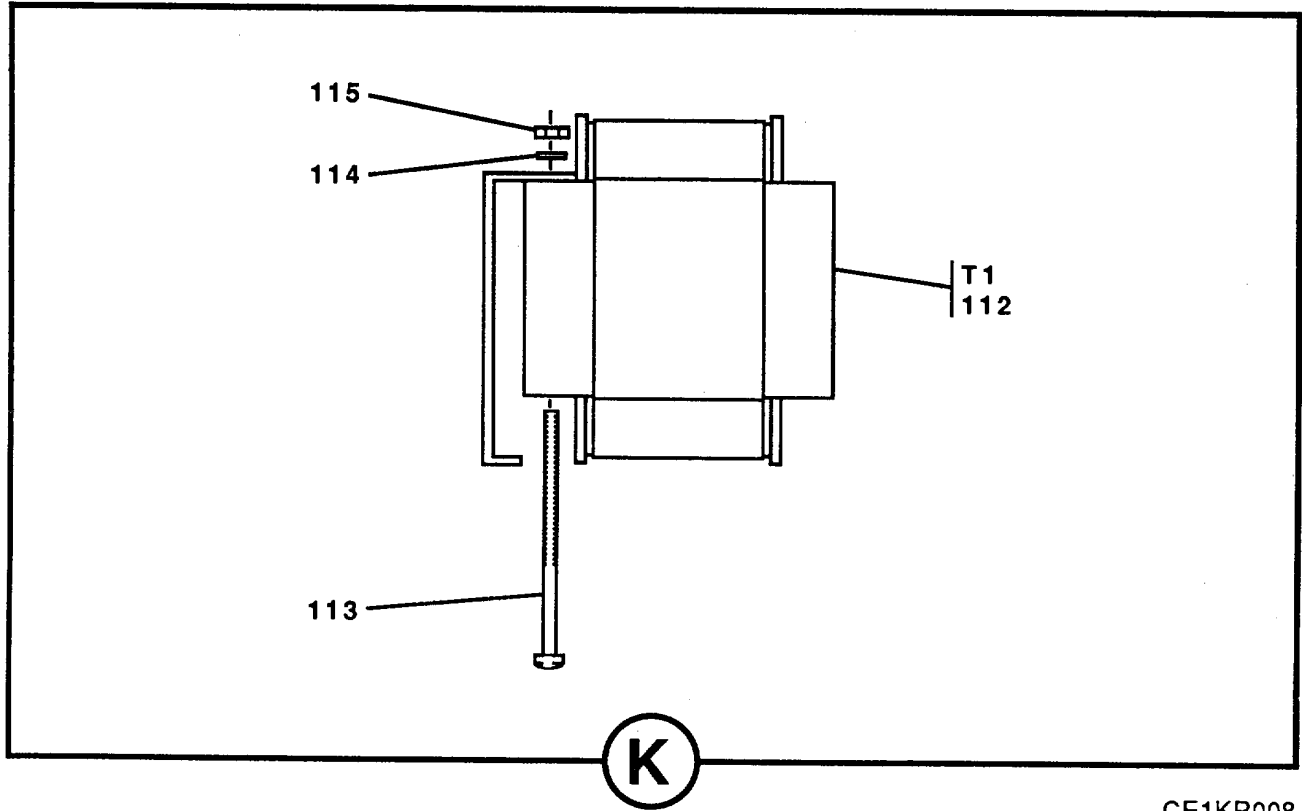


Figure 1. Signal Generator SG-1122/U (Sheet 6 of 9).



CE1KR007

Figure 1. Signal Generator SG-1122/U (Sheet 7 of 9).



CE1KR008

Figure 1. Signal Generator SG-1122/U (Sheet 8 of 9).

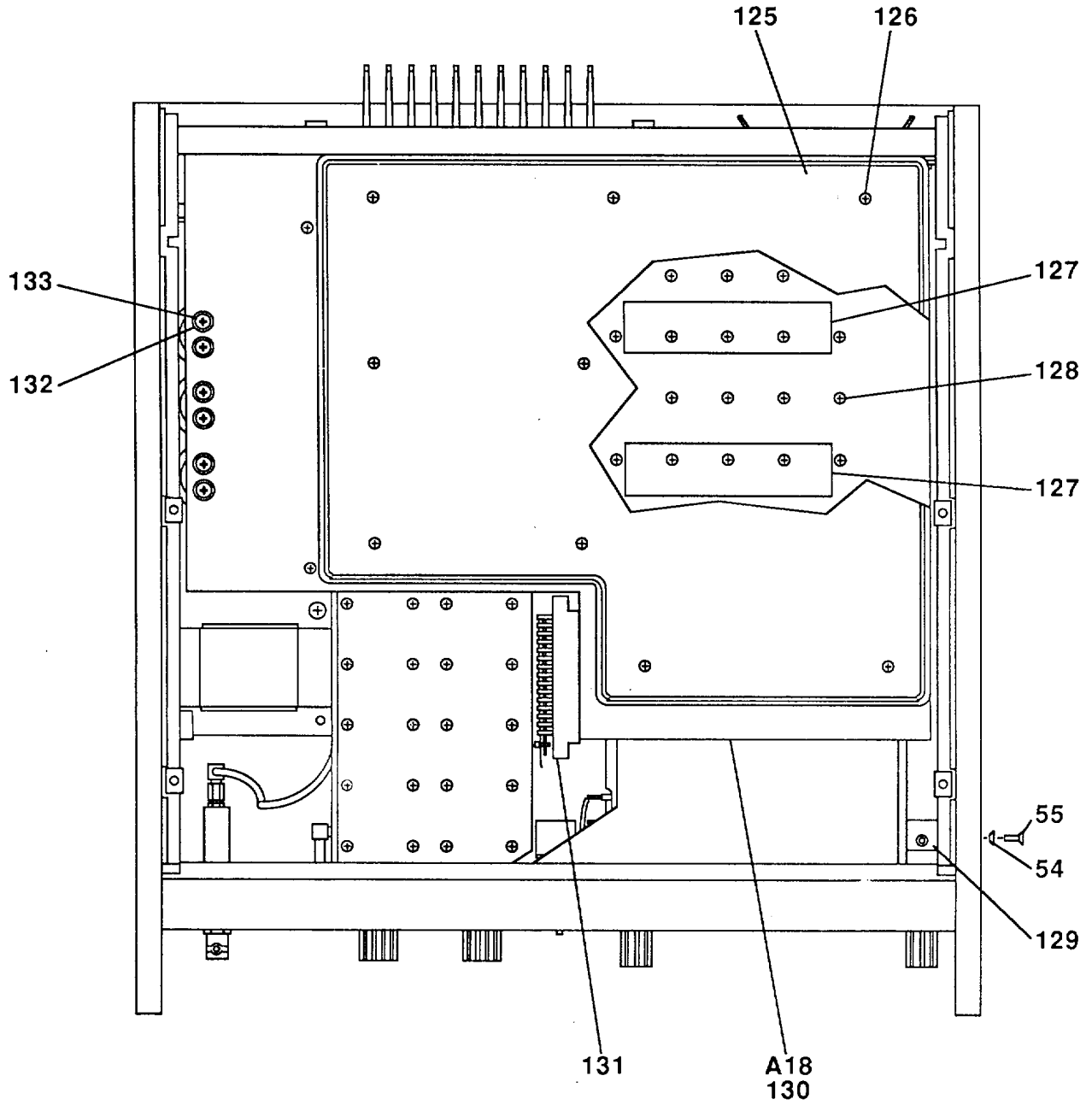


Figure 1. Signal Generator SG-1122/U (Sheet 9 of 9).

CE1KR009

SECTION II.

(1) ITEM NO	(2) SMR CODE	(3) FSCM	(4) PART NUMBER	(5) DESCRIPTION AND USABLE ON CODE (UOC)	(6) QTY
GROUP 00 SIGNAL GENERATOR SG-1122/U					
FIG. 1					
1	PAOZZ	28480	0370-0084	KNOB	2
2	PAHZZ	28480	2950-0001	NUT	4
3	PAHZZ	28480	2190-0016	WASHER,LOCK	4
4	PAHZZ	28480	2100-2729	RESISTOR,VARIABLE,N	1
5	XBHZZ	28480	5060-0254	COUPLER,SHAFT,FLEX	2
6	XBHZZ	28480	08443-20005	BUSHING,MACH THREAD	3
7	XBHZZ	28480	08443-20004	SHAFT,STRAIGHT	2
8	PAHZZ	96906	MS35335-29	WASHER,LOCK	47
9	PAHZZ	96906	MS35649-264	NUT,PLAIN,HEXAGON	19
10	PAHZZ	96906	M551957-31	SCREW,MACHINE	16
11	XBHZZ	28480	08443-00006	CHASSIS,ELEC EQPT	1
12	PAHZZ	28480	3050-0010	WASHER,FLAT	2
13	PAHZZ	28480	08443-60003	TEST SET SUBASSEMBL	1
14	PAHZZ	28480	08443-60038	CIRCUIT CARD ASSEMB	1
15	PAHZZ	96906	MS51957-17	SCREW,MACHINE	12
16	PAHZZ	96906	AN960C4L	WASHER,FLAT	10
17	PAHZZ	96906	MS35340-40	WASHER,LOCK	6
18	PAHZZ	96906	MS51957-27	SCREW,MACHINE	19
19	XBHZZ	28480	08443-00004	SUPPORT,CIRCUIT CD	1
20	PAHZZ	96906	MS51959-29	SCREW,MACHINE	8
21	XBHZZ	28480	5060-0730	FRAME	2
22	PAOZZ	28480	5060-8543	PARTS KIT,ELECTRONI	1
23	XBHZZ	28480	5060-8589	COVER, TOP	1
24	PAHZZ	96906	M524693C24	SCREW,MACHINE	8
25	XBHZZ	28480	5000-8595	COVER,SIDE	2
26	XBHZZ	28480	5060-8713	COVER,BOTTOM	1
27	PAHZZ	52708	08443-60009	CABLE ASSEMBLY,RADI	1
28	PAHZZ	28480	5000-0050	STRIP,TRIM	2
29	PAOZZ	28480	1490-0030	BASE,TEST SET CASE	1
30	PAOZZ	28480	5060-0767	FOOT ASSEMBLY,OSC	5
31	XDHZZ	28480	08553-60164	CAPACITOR,ELECTRICA	1
32	PAHZZ	28480	0590-1251	NUT,PLAIN,HEXAGON	4
33	PAHZZ	28480	2100-2501	RESISTOR,VARIABLE,W	1
34	PAHZZ	24342	12201	CABLE ASSEMBLY,POWE	1
35	PAHZZ	24454	A7039589P1	NUT,PLAIN,HEXAGON	1
36	PAOZZ	28480	08443-00063	DIAL ASSEMBLY	1
37	PAOZZ	28480	08443-00062	DIAL ASSEMBLY	1
38	PAOZZ	28480	08443-00061	DIAL ASSEMBLY	1
39	PAHZZ	28480	08443-60061	CABLE ASSY	1
40	XBHZZ	28480	08443-00053	PANEL,FRONT	1
41	XBHZZ	28480	08443-40009	WINDOW,OBSERVATION	1
42	PAHZZ	28480	3101-0070	SWITCH,SLIDE	1
43	PAHZZ	96906	MS35649-224	NUT,PLAIN,HEXAGON	2
44	XBHZZ	78189	1702-00	WASHER,LOCK	2
45	XBHZZ	2848,0	0380-0793	SPACER,SLEEVE	2
46	XBHZZ	28480	460-0297	SPRING,CMPRSN	1
47	XBHZZ	28480	8443-40006	ACTUATOR,SWITCH	1
48	PAHZZ	28480	100-2886	RESISTOR,VARIABLE,W	1

PCN X43CXXCO64R PAGE 1

TM-CODE ABC

PRINTER:

Shoot all print-out and
Illustration pages at 100X.

Only shoot left-hand side of
print-out pages.

Illustration page MUST be an
even page facing the first page
of matching RPSTL page which
IS an odd page. If there are
multiple Illustration pages for
the same figure, the LAST
page of the multiple
Illustration MUST be an even
page. To accomplish this, blank
pages have been inserted.
Please DO NOT remove them.
Trim Size: 8S" x 11"

SECTION II

TM 11-6625-2858-24P

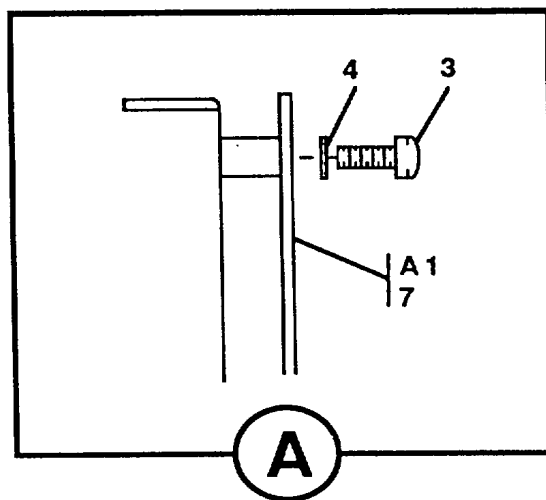
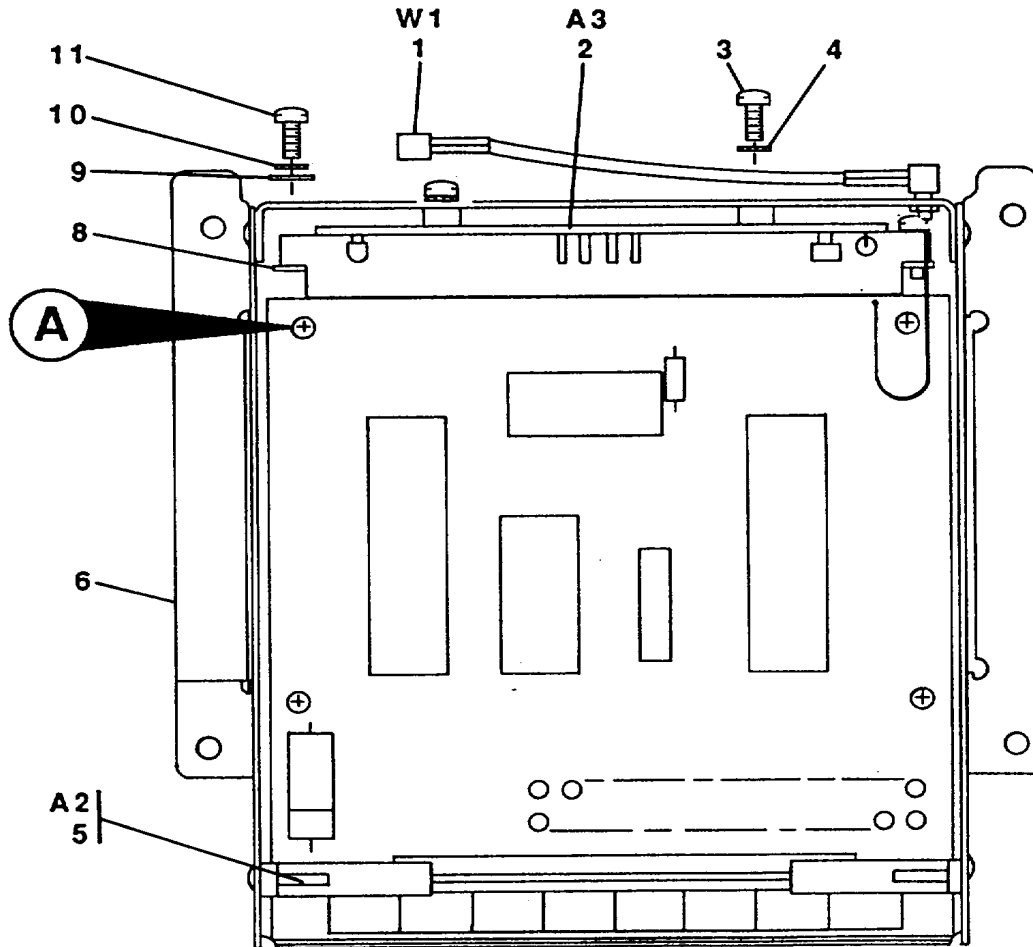
(1) ITEM NO	(2) SMR CODE	(3) FSCM	(4) PART NUMBER	(5) DESCRIPTION AND USABLE ON CODE (UOC)	(6) QTY	PCN X43CXXCO64R PAGE 2 TM-CODE ABC
49	PAHZZ	28480	1410-0112	PLUG,MACHINE THREAD	1	
50	XBHZZ	28480	08443-20008	BUSHING,MACH THREAD	1	
51	XBHZZ	28480	08443-20010	TIE ROD,RESISTOR	1	
52	XBHZZ	28480	5020-6850	TRIM,CABINET	1	
53	XBHZZ	28480	08443-00051	PANEL,FRONT	1	
54	PAHZZ	96906	MS51959-43	SCREW,MACHINE	22	
55	PAHZZ	96906	MS35336-15	WASHER,LOCK	22	
56	XBHZZ	28480	08443-00021	BRACKET,MTG,PANEL	4	
57	XBHZZ	28480	08443-00055	PANEL,FRONT	1	
58	XBHZZ	28480	2950-0052	NUT,PLAIN,HEX	2	
59	PAHZZ	28480	1450-0153	LAMPHOLDER	2	
60	PAOZZ	28480	1450-0157	LENS,LIGHT	1	
61	PAOZZ	28480	2140-0253	LAMP,INCANDESCENT	2	
62	PAHZZ	96906	MS35333-74	WASHER,LOCK	2	
63	PAOZZ	28480	1450-0493	LENS,LIGHT	1	
64	XBHZZ	28480	5020-6851	TRIM,CABINET	1	
65	PAHZZ	28480	3101-1234	SWITCH,SLIDE	1	
66	PAHZZ	96906	MS16535-154	RIVET,TUBULAR	2	
67	PAHZZ	28480	08443-60059	CABLE ASSY	1	
68	PAHZZ	28480	1251-2366	CONNECTOR,RECEPTACL	1	
69	PAHZZ	28480	08443-60052	CABLE ASSY	1	
70	PAHZZ	28480	08443-60055	CABLE ASSY	1	
71	PAHZZ	28480	08443-60079	CABLE ASSEMBLY	1	
72	PAHZZ	28480	08443-60054	CABLE ASSY	1	
73	PAHZZ	28480	08443-60053	CABLE ASSY	1	
74	PAHZZ	28480	08443-60063	CABLE ASSY	1	
75	PAHZZ	71785	D53018	HARDWARE KIT,ELECTR	2	
76	XBHZZ	28480	08443-00003	PANEL,REAR	1	
77	PAHZZ	28480	08443-60089	TEST SET SUBASSEMBL	1	
78	PAHZZ	28480	08443-60060	CABLE ASSY	1	
79	XBHZZ	28480	08443-20006	HTSK,ELEC-ELEK CMPT	1	
80	PAHZZ	28480	2110-0569	NUT,PLAIN,EXTENDED	1	
81	PAHZZ	28480	2110-0564	FUSEHOLDER,EXTRACTO	1	
82	PAOZZ	81349	F02A250V2A	FUSE,CARTRIDGE	1	
83	PAOZZ	28480	2110-0565	FUSEHOLDER SUBASSEM	1	
84	PAHZZ	96906	MS51957-15	SCREW,MACHINE	2	
85	PAHZZ	28480	9100-3121	FILTER,RADIO FREQUE	1	
86	PAHZZ	28480	08443-60048	CIRCUIT CARD ASSEMB	1	
87	PAHZZ	28480	08443-60047	TEST SET SUBASSEMBL	1	
88	PAHZZ	28480	08443-60046	TEST SET SUBASSEMBL	1	
89	PAHHH	28480	08443-60045	CIRCUIT CARD ASSEMB SEE FIGURE 3 FOR PARTS BREAKDOWN	1	
90	PAHZZ	28480	08443-60044	CIRCUIT CARD ASSEMB	1	
91	PAHZZ	28480	08443-60043	CIRCUIT CARD ASSEMB	1	
92	XBHZZ	28480	08443-00046	COVER,ACCESS	1	
93	PAHZZ	28480	08443-60042	CIRCUIT CARD ASSEMB	1	
94	PAHZZ	28480	08443-60041	TEST SET SUBASSEMBL	1	
95	XBHZZ	28480	08443-00018	BRACKET,MOUNTING	1	
96	PAHZZ	81349	JAN2N3055	TRANSISTOR	4	
97	PAHZZ	55285	K-4-05	INSULATOR,XSTR	4	
98	PAHZZ	96906	MS35335-57	WASHER,LOCK	8	
99	PAHZZ	28480	0340-0433	SPACER,SLEEVE	8	

SECTION II

TM 11-6625-2858-24P

(1) ITEM NO	(2) SMR CODE	(3) FSCM	(4) PART NUMBER	(5) DESCRIPTION AND USABLE ON CODE (UOC)	(6) QTY	PCN X43CXXCO64R PAGE 3 TM-CODE ABC
100	XBHZZ	28480	08443-40003	INSULATOR,PLATE	1	
101	PAHZZ	28480	08443-60077	CIRCUIT CARD ASSEMB	1	
102	XBHZZ	28480	08443-00078	COVER,ACCESS	1	
103	XBHZZ	28480	08443-20001	PLATE,ELEC SHIELD	11	
104	PAHZZ	28480	08443-60015	CIRCUIT CARD ASSEMB	1	
105	PAHZZ	28480	08443-60118	CIRCUIT CARD ASSEMB SEE FIGURE 4 FOR PARTS BREAKDOWN	1	
106	PCHZZ	56289	36D132G050AA2A	CAPACITOR,FIXED,ELE	2	
107	PAHZZ	28480	08443-60080	CABLE ASSEMBLY	1	
108	PAHZZ	28480	0180-2290	CAPACITOR	1	
109	XBHZZ	28480	5040-0327	SHIELD,ELEC CONN	1	
110	PAHZZ	71785	251-06-30-261	CONNECTOR,RECEPTACL	1	
111	XBHZZ	28480	0624-0099	SCREW,TPG,THD FMG	52	
112	PAHZZ	28480	9100-2886	TRANSFORMER,POWER	1	
113	PAHZZ	96906	MS51957-54	SCREW,MACHINE	3	
114	PAHZZ	96906	MS35338-156	WASHER,LOCK	3	
115	PAHZZ	96906	MS35649-284	NUT,PLAIN,HEXAGON	3	
116	XBHZZ	28480	08443-00020	BRACKET,MTG,XFMR	1	
117	PAHZZ	28480	5086-7357	ATTENUATOR,VARIABLE	1	
118	PAHZZ	28480	5086-7358	ATTENUATOR,VARIABLE	11	
119	PAHHH	28480	08443-60117	LOW FREQUENCY CENTE SEE FIGURE 2 FOR PARTS BREAKDOWN	1	
120	XBHZZ	73330	C1925-632-5	NUT,SHEET SPRING	8	
121	PAHZZ	28480	0960-0079	OSCILLATOR,CRYSTAL	1	
122	XBHZZ	28480	08443-00005	SUPPORT,CIRCUIT CD	1	
123	PAHZZ	28480	1200-0063	CONTACT,ELECTRICAL	2	
124	XBHZZ	28480	5021-5359	INSULATOR,SLEEVE	2	
125	XBHZZ	28480	08443-00022	PLATE,ELEC SHIELD	1	
126	PAHZZ	96906	M551959-1	SCREW,MACHINE	10	
127	XBHZZ	28480	5040-0331	SHIELD,ELECTRICAL	2	
128	XBHZZ	28480	0624-0100	SCREW,TPG,THD FMG	77	
129	XBHZZ	28480	08443-00079	BRACKET,MOUNTING	1	
130	PAHHH	28480	08443-60016	CIRCUIT CARD ASSEMB SEE FIGURE 5 FOR PARTS BREAKDOWN	1	
131	PAHZZ	26742	186-387-02	CONNECTOR,RCPT,ELEC	1	
132	PAHZZ	96906	MS35333-35	WASHER,LOCK	6	
133	PAHZZ	96906	MS51958-61	SCREW,MACHINE	6	
				END OF FIGURE		

NOTE: PREFIX ALL REFERENCE DESIGNATORS WITH A1



CE1KR010

Figure 2. Low Frequency Counter Assembly.

SECTION II

TM 11-6625-2858-24P

(1) ITEM NO	(2) SMR CODE	(3) FSCM	(4) PART NUMBER	(5) DESCRIPTION AND USABLE ON CODE (UOC)	(6) QTY
PCN X43CXXC064R PAGE 4					
TM-CODE ABC					
GROUP 01 LOW FREQUENCY COUNTER					
ASSEMBLY (AI)					
FIG. 2					
1	PAHZZ	28480	08443-60064	CABLE ASSY	1
2	PAHZZ	28480	08443-60095	CIRCUIT CARD ASSEMB	1
3	PAHZZ	96906	MS51957-13	SCREW,MACHINE	6
4	PAHZZ	96906	MS35335-57	WASHER,LOCK	6
5	PAHZZ	28480	08443-60091	DISPLAY,OPTOELECTRO	1
6	XBHZZ	28480	08443-00072	CHASSIS,ELEC EQPT	1
7	PAHZZ	28480	08443-60090	CIRCUIT CARD ASSEMB	1
8	XBHZZ	28480	08443-00044	GUIDE,CIRCUITCARD	1
9	PAHZZ	28480	3050-0010	WASHER,FLAT	2
10	PAHZZ	96906	MS35338-136	WASHER,LOCK	2
11	PAHZZ	96906	MS51957-30	SCREW,MACHINE	2
END OF FIGURE					

NOTE: PREFIX ALL REFERENCE DESIGNATORS WITH A8

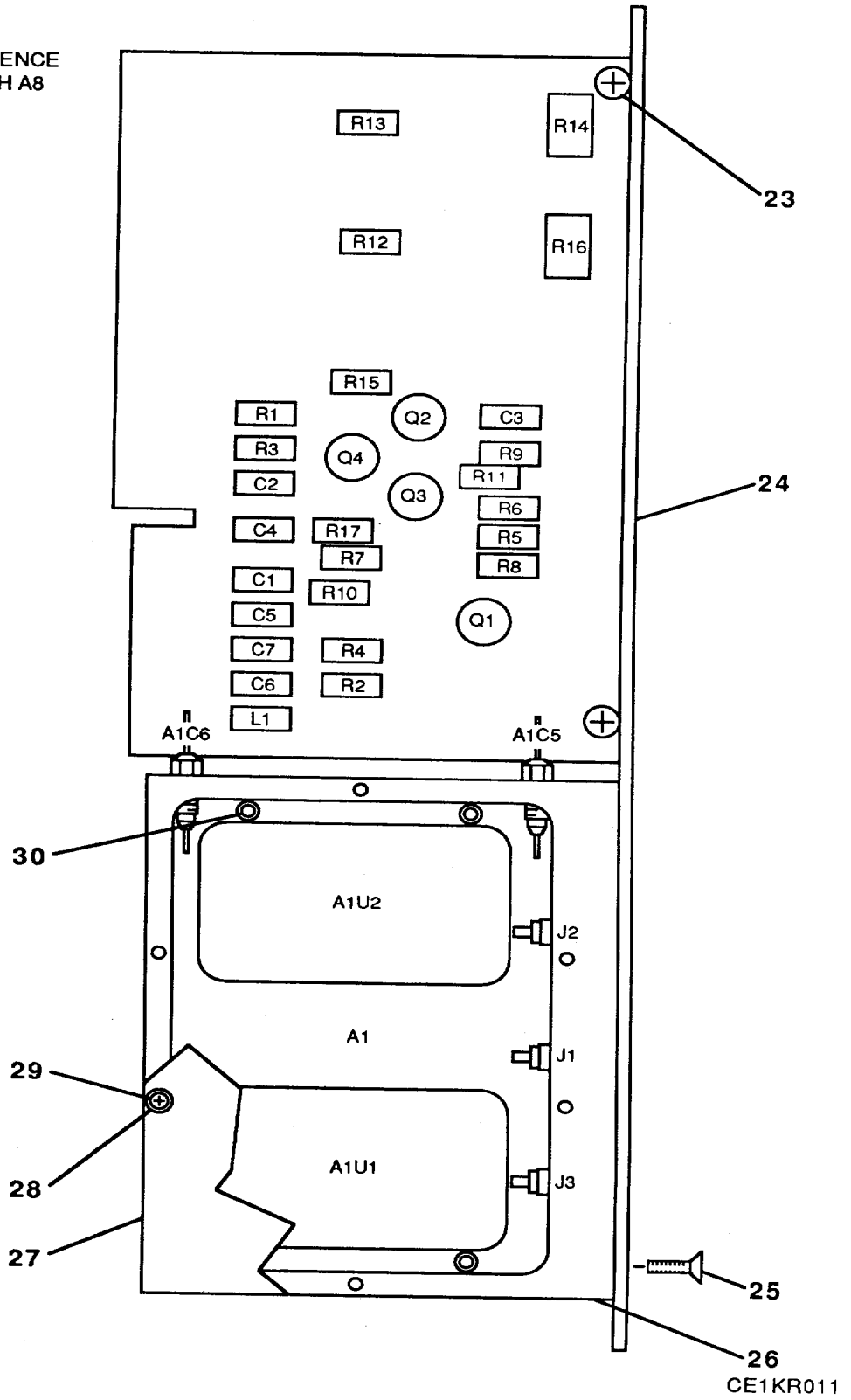


Figure 3. Video ALC Amplifier Circuit Card Assembly (Sheet 1 of 2).

REF DES	ITEM NO	REF DES	ITEM NO	REF DES	ITEM NO	REF DES	ITEM NO	REF DES	ITEM NO	REF DES	ITEM NO
A1	1										
A1C5	2										
A1C6	2										
A1U1	3										
A1U2	4										
C1	5										
C2	6										
C3	7										
C4	5										
C5	5										
C6	5										
C7	5										
J1	8										
J2	8										
J3	8										
11	9										
Q1	10										
Q2	11										
Q3	12										
Q4	12										
R1	13										
R2	14										
R3	13										
R4	15										
R5	16										
R6	16										
R7	17										
R8	13										
R9	18										
R10	13										
R11	13										
R12	19										
R13	20										
R14	21										
R15	18										
R16	22										
R17	16										

Figure 3. Video ALC Amplifier Circuit Card Assembly (Sheet 2 of 2).

SECTION II

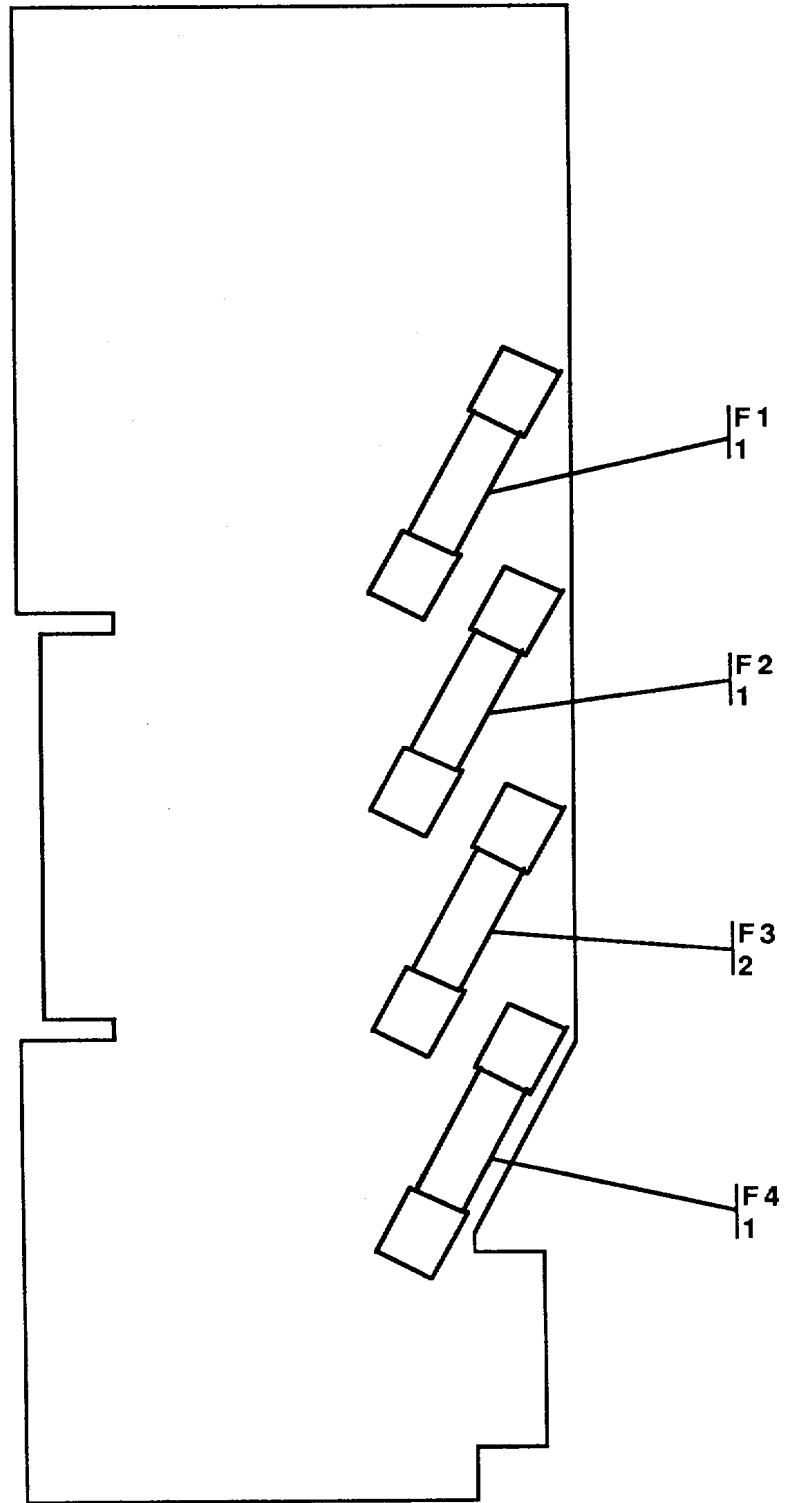
TM 11-6625-2858-24P

(1) ITEM NO	(2) SMR CODE	(3) FSCM	(4) PART NUMBER	(5) DESCRIPTION AND USABLE ON CODE (UOC)	(6) QTY
GROUP 02 VIDEO ALC AMPLIFIER CIRCUIT					
CARD ASSEMBLY (A8)					
FIG. 3					
1	PAHZZ	28480	08443-60022	CIRCUIT CARD ASSEMB	1
2	PAHZZ	28480	0160-3036	CAPACITOR, FIXED, CER	2
3	PAHZZ	28480	5086-7010	MICROCIRCUIT, LINEAR	1
4	PAHZZ	28480	5086-7099	MICROCIRCUIT, LINEAR	1
5	PAHZZ	72982	855-024W5T502M	CAPACITOR, FIXED, CER	5
6	PAHZZ	81349	CM10FD101G03	CAPACITOR, FIXED, MIC	1
7	PAHZZ	81349	M39003/01-3058	CAPACITOR, FIXED, ELE	1
8	PAHZZ	28480	1250-1194	CONNECTOR, RECEPTACL	3
9	PAHZZ	96906	MS14046-1	COIL, RADIO FREQUENC	1
10	PAHZZ	28480	1854-0221	SEMICONDUCTOR DEVIC	1
11	PAHZZ	28480	1853-0020	TRANSISTOR	1
12	PAHZZ	28480	1854-0071	TRANSISTOR	2
13	PAHZZ	81349	RCR07G113JS	RESISTOR, FIXED, COMP	5
14	PAHZZ	81349	RCR07G156JS	RESISTOR, SPECIAL	1
15	PAHZZ	81349	RCRO7G104JS	RESISTOR, FIXED, COMP	1
16	PAHZZ	81349	RCR07G131JS	RESISTOR, FIXED, COMP	3
17	PAHZZ	81349	RCR07G303JS	RESISTOR, FIXED, COMP	1
18	PAHZZ	81349	RCR07G102JS	RESISTOR, FIXED, COMP	2
19	PAHZZ	81349	RNC60K5622FS	RESISTOR, FIXED, FILM	1
20	PAHZZ	81349	RNC60K7501FS	RESISTOR, FIXED, FILM	1
21	PAHZZ	80294	3329W1-502	RESISTOR, VARIABLE, N	1
22	PAHZZ	32997	3329WT22-503	RESISTOR, VARIABLE, N	1
23	PAHZZ	28480	0624-0097	SCREW, TOPPING	2
24	XBHZZ	28480	08443-20032	COVER, ACCESS	1
25	PAHZZ	96906	MS51959-1	SCREW, MACHINE	4
26	XBHZZ	28480	08443-20002	HOUSING, ELEC EQPT	1
27	XBHZZ	28480	08443-00029	PLATE, ELEC SHIELD	1
28	XBHZZ	78189	1702-00	WASHER, LOCK	6
29	PAHZZ	96906	MS51957-3	SCREW, MACHINE	6
30	XBHZZ	28480	3030-0220	SCREW, CAP, SOCKET HD	4
END OF FIGURE					

PCN X43CXXCO64R PAGE 5

TM-CODE ABC

NOTE: PREFIX ALL REFERENCE
DESIGNATORS WITH A15



CE1KR012

Figure 4. Rectifier Circuit Card Assembly.

SECTION II

TM 11-6625-2858-24P

(1) ITEM NO	(2) SMR CODE	(3) FSCM	(4) PART NUMBER	(5) DESCRIPTION AND USABLE ON CODE (UOC)	(6) QTY
				GROUP 03 RECTIFIER CIRCUIT CARD	
				ASSEMBLY (A15)	
				FIG. 4	
1	PAHZZ	81349	F02A250VIA	FUSE,CARTRIDGE	3
2	PAHZZ	81349	F02A250V2A	FUSE,CARTRIDGE	1
				END OF FIGURE	

PCN X43CXXC064R PAGE 6

TM-CODE ABC

NOTE: PREFIX ALL REFERENCE DESIGNATORS WITH A18

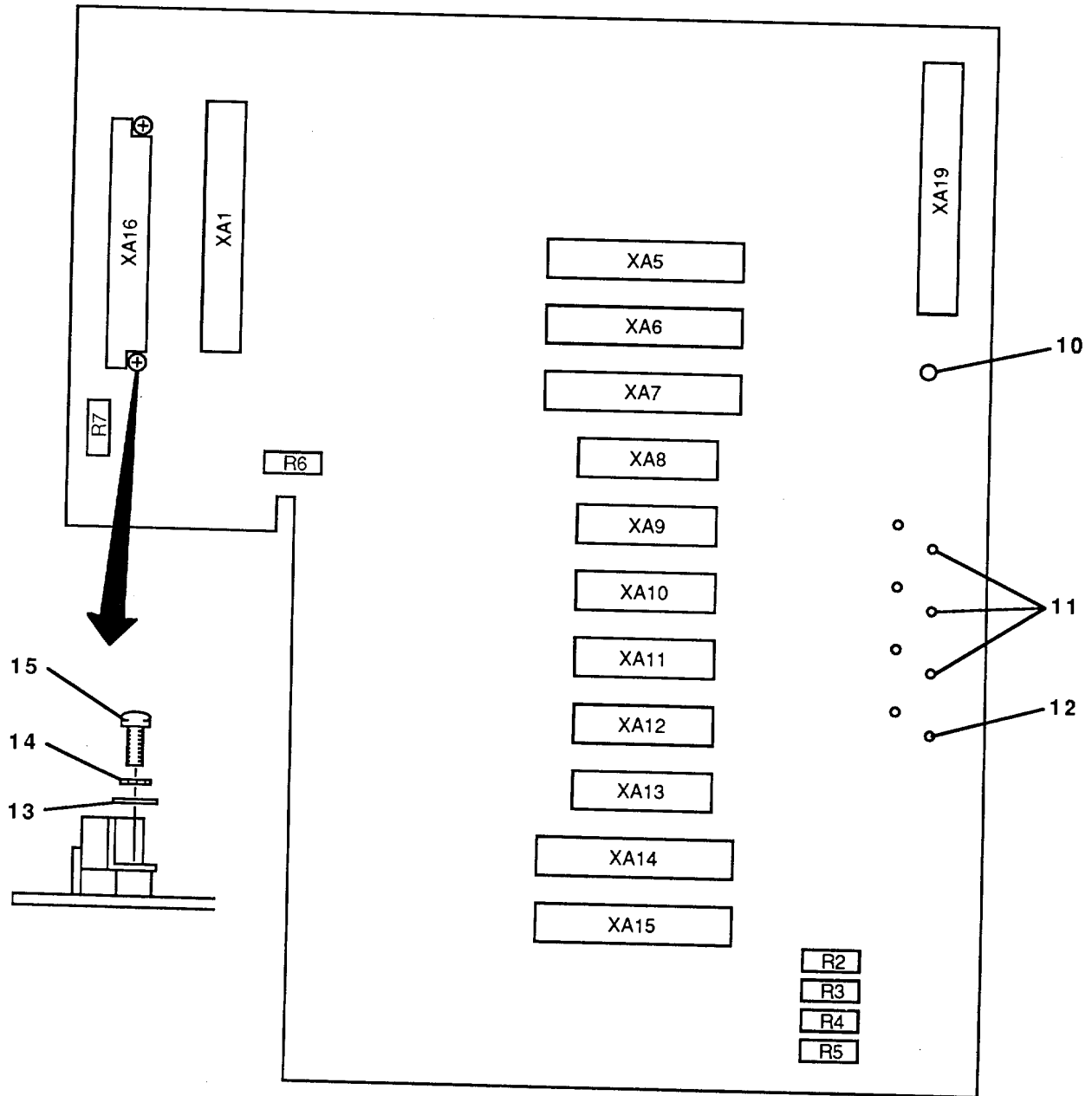


Figure 5. Motherboard Circuit Card Assembly (Sheet 1 of 2).

CE1KR013

REF DES	ITEM NO	REF DES	ITEM NO	REF DES	ITEM NO	REF DES	ITEM NO	REF DES	ITEM NO	REF DES	ITEM NO
R2	1										
R3	1										
R4	2										
R5	1										
R6	3										
R7	4										
XA1	5										
XA5	6										
XA6	6										
XA7	6										
XA8	7										
XA9	7										
XA10	7										
XA11	7										
XA12	7										
XA13	7										
XA14	6										
XA15	6										
XA16	8										
XA19	9										

Figure 5. Motherboard Circuit Card Assembly (Sheet 2 of 2).

SECTION II

(1) ITEM NO	(2) SMR CODE	(3) FSCM	(4) PART NUMBER	(5) DESCRIPTION AND USABLE ON CODE (UOC)	(6) QTY
GROUP 04 MOTHERBOARD CIRCUIT CARD ASSEMBLY (A18) FIG. 5					
1	PAHZZ	28480	0811-1666	RESISTOR, FIXED, WIRE	3
2	PAHZZ	28480	0811-1661	RESISTOR, FIXED, WIRE	1
3	PAHZZ	81349	RCR07G361JS	RESISTOR, FIXED, COMP	1
4	PAHZZ	81349	RCR07G201JS	RESISTOR, FXD, CMPSN	1
5	PAHZZ	71785	252-12-30-300	CONNECTOR, RECEPTACL	5
7	PAHZA	28480	1251-0472	CONNECTOR, RECEPTACL	6
8	PAHZZ	28480	1251-2091	CONNECTOR, RCPT, ELEC	1
9	PAHZZ	28480	1251-2026	CONNECTOR, RECEPTACL	1
10	PAHZZ	28480	0360-0124	TERMINAL, STUD	1
11	PAHZZ	28480	1251-2313	SOCKET, ELECTRONIC C	8
12	PAHZZ	00779	1-331677-3	CONTACT, ELECTRICAL	2
13	PAHZZ	96906	AN960C4L	WASHER, FLAT	2
14	PAHZZ	96906	MS35335-57	WASHER, LOCK	2
15	PAHZZ	96906	MS51957-14	SCREW, MACHINE	2

END OF FIGURE

CROSS- REFERENCE-INDEXES
NATIONAL STOCK NUMBER INDEX

SECTION IV.
STOCK NUMBER

FIG. ITEM

STOCK NUMBER

FIG. ITEM

PCN X43CXXC074R PAGE 1
TM-ABC

5905-00-006-6988
5305-00-054-5637
5305-00-054-5647
5305-00-054-5648
5305-00-054-5649
5305-00-054-5651
5305-00-054-6651
5305-00-054-6654
5305-00-054-6655
5305-00-054-6681
5310-00-058-3599

5305-00-059-3657
5305-00-066-7326
5935-00-104-1184
5905-00-104-8370
5905-00-104-8374
5905-00-110-0388
5905-00-110-7620
5905-00-121-9920
5905-00-136-8405
5961-00-137-4608
5910-00-138-1326
6240-00-143-6558
5935-00-147-7384
5905-00-189-2479
5910-00-189-3178
5961-00-199-6008
5905-00-222-3549
5905-00-227-6900
5920-00-280-4960

5920-00-280-8342
5950-00-308-7930
6625-00-355-4807
6625-00-355-4826
6625-00-355-4835
6625-00-355-4836
6625-00-355-4837
6625-00-355-4838
6625-00-355-4855
6625-00-355-4860
5985-00-357-3712
5985-00-357-3713
6625-00-357-3715
6625-00-357-3724
6625-00-357-3725
6625-00-359-7814
5955-00-361-8741

3 20
3 29
2 3
5 15
1 84
1 15
1 18
2 11
1 10
1 113
1 98
2 4
5 14
1 133
1 24
5 11
5 3
3 14
3 15
3 18
3 17
3 16
3 12
3 2
1 61
5 5
3 19
3 7
1 96
5 2
3 21
1 82
4 2
4 1
3 9
1 14
1 94
1 93
1 91
1 90
1 88
1 87
1 86
1 118
1 117
1 13
1 104
1 130
1 89
1 121

5905-00-369-6932
5310-00-401-6931
5905-00-402-7082
5915-00-405-1216
5930-00-406-8746
5365-00-417-5217
5365-00-419-4714
5905-00-431-3183
5935-00-446-4102
5935-00-446-8768
5935-00-448-2236
5310-00-450-3324
5905-00-478-1229
5905-00-478-1274
5962-00-483-1953
5962-00-504-0511
5999-00-511-4046
5950-00-513-2747
5910-00-524-5817
6625-00-532-2333
6625-00-534-6808
5310-00-550-0286
5310-00-550-3350
5935-00-570-6119
5310-00-579-5554
5310-00-595-6425

5310-00-616-3554
5310-00-655-9505
5305-00-727-8832
6625-00-760-9521
5305-00-765-4257
5305-00-766-2422

5355-00-809-9329
5961-00-836-1887
5910-00-836-6258
5910-00-866-3123
5310-00-869-4199
6210-00-869-6864
5320-00-879-6606
6625-00-903-0348
5961-00-904-2540
5930-00-919-1755
5310-00-929-6395
5310-00-934-9759
5310-00-934-9761
5999-00-937-4420
5310-00-938-2013
5935-00-974-6874

3 13
1 3
5 1
1 85
1 65
1 49
1 99
1 33
3 8
5 9
5 6
1 2
1 4
1 48
3 3
3 4
5 12
1 112
3 5
1 101
3 1
1 55
1 35
1 75
1 132
1 16
5 13
1 8
1 17
1 20
1 29
1 54
1 126
3 25
1 1
3 10
1 106
3 6
1 114
1 60
1 66
1 30
3 11
1 42
2 10
1 115
1 9
1 123
1 43
1 110

SECTION IV

TM 11-6625-2858-24P

CROSS- REFERENCE-INDEXES

NATIONAL STOCK NUMBER INDEX

STOCK NUMBER	FIG.	ITEM
5940-00-993-9338	5	10
6625-01-014-8071	1	28
6625-01-044-2417	1	27
6250-01-082-7506	1	59
5920-01-087-0836	1	83
5920-01-087-1951	1	81
5310-01-096-5618	1	12
	2	9
5310-01-097-7987	1	80
6210-01-107-5830	1	63
6625-01-109-3482	2	1
6625-01-109-3483	1	74
6625-01-109-3484	1	39
6625-01-109-3485	1	78
6625-01-109-3486	1	67
6625-01-109-3489	1	70
6625-01-109-3490	1	72
6625-01-109-3491	1	73
6625-01-109-3492	1	69
5910-01-109-9767	1	108
6150-01-111-1717	1	34
5935-01-112-7298	5	7
5935-01-114-2577	1	68
5905-01-120-0861	3	22
5995-01-137-3130	1	71
5995-01-137-3131	1	107
5305-01-227-3218	3	23
5310-01-257-1699	1	32
6625-01-278-4982	1	22
6625-01-278-4999	1	77
5999-01-278-9338	1	105
5980-01-279-0106	2	5
5999-01-279-0156	2	7
5999-01-279-0157	2	2

FIG. ITEM

PCN X43CXXC074R PAGE 1
TM-CODE ABC

CROSS -REFERENCE INDEXES

FSCM	PART NUMBER	PART NUMBER INDEX		ITEM	PCN X43CXXC084R PAGE 1 TM-CODE ABC
		STOCK NUMBER	FIG.		
96906	AN960C4L	5310-00-595-6425	1	16	
			5	13	
24454	A7039589P1	5310-00-550-3350	1	35	
81349	CM10FD101G03	5910-00-866-3123	3	6	
73330	C1925-632-5		1	120	
71785	D53018	5935-00-570-6119	1	75	
81349	F02A250VIA	5920-00-280-8342	4	1	
81349	F02A250V2A	5920-00-280-4960	1	82	
			4	2	
81349	JAN2N3055	5961-00-199-6008	1	96	
55285	K-4-05		1	97	
96906	MS14046-1	5950-00-308-7930	3	9	
96906	MS16535-154	5320-00-879-6606	1	66	
96906	MS24693C24	5305-00-066-7326	1	24	
96906	MS35333-35	5310-00-579-5554	1	132	
96906	M535333-74		1	62	
96906	MS35335-29	5310-00-616-3554	1	8	
96906	M535335-57	5310-00-058-3599	1	98	
			2	4	
			5	14	
96906	MS35336-15	5310-00-550-0286	1	55	
96906	MS35338-136	5310-00-929-6395	2	10	
96906	MS35338-156	5310-00-869-4199	1	114	
96906	MS35340-40	5310-00-655-9505	1	17	
96906	MS35649-224	5310-00-938-2013	1	43	
96906	MS35649-264	5310-00-934-9761	1	9	
96906	MS35649-284	5310-00-934-9759	1	115	
96906	MS51957-13	5305-00-054-5647	2	3	
96906	MS51957-14	5305-00-054-5648	5	15	
96906	MS51957-15	5305-00-054-5649	1	84	
96906	MS51957-17	5305-00-054-5651	1	15	
96906	MS51957-27	5305-00-054-6651	1	18	
96906	MS51957-3	5305-00-054-5637	3	29	
96906	MS51957-30	5305-00-054-6654	2	11	
96906	M551957-31	5305-00-054-6655	1	10	
96906	MS51957-54	5305-00-054-6681	1	113	
96906	MS51958-61	5305-00-059-3657	1	133	
96906	MS51959-1	5305-00-766-2422	1	126	
			3	25	
96906	MS51959-29	5305-00-727-8832	1	20	
96906	MS51959-43	5305-00-765-4257	1	54	
81349	M39003/01-3058	5910-00-189-3178	3	7	
81349	RCR07G104JS	5905-00-110-0388	3	15	
81349	RCR07G102JS	5905-00-110-7620	3	18	
81349	RCR07G113JS	5905-00-369-6932	3	13	
81349	RCR07G131JS	5905-00-136-8405	3	16	
81349	RCR07G156JS	5905-00-104-8374	3	14	
81349	RCR07G201JS		5	4	
81349	RCR07G303JS	5905-00-121-9920	3	17	
81349	RCR07G361JS	5905-00-104-8370	5	3	
81349	RNC60K5622FS	5905-00-189-2479	3	19	

CROSS -REFERENCE INDEXES

FSCM	PART NUMBER	PART NUMBER INDEX		ITEM	PCN X43CXXC084R TM - CODE ABC
		STOCK NUMBER	FIG.		
81349	RNC60K7501FS	5905-00-006-6988	3	20	
28480	0160-3036	5910-00-138-1326	3	2	
28480	0180-2290	5910-01-109-9767	1	108	
28480	0340-0433	5365-00-419-4714	1	99	
28480	0360-0124	5940-00-993-9338	5	10	
28480	0370-0084	5355-00-809-9329	1	1	
28480	0380-0793		1	45	
28480	0590-1251	5310-01-257-1699	1	32	
28480	0624-0097	5305-01-227-3218	3	23	
28480	0624-0099		1	111	
28480	0624-0100		1	128	
28480	0811-1661	5905-00-222-3549	5	2	
28480	0811-1666	5905-00-402-7082	5	1	
28480	08443-00003		1	76	
28480	08443-00004		1	19	
28480	08443-00005		1	122	
28480	08443-00006		1	11	
28480	08443-00018		1	95	
28480	08443-00020		1	116	
28480	08443-00021		1	56	
28480	08443-00022		1	125	
28480	08443-00029		3	27	
28480	08443-00044		2	8	
28480	08443-00046		1	92	
28480	08443-00051		1	53	
28480	08443-00053		1	40	
28480	08443-00055		1	57	
28480	08443-00061		1	38	
28480	08443-00062		1	37	
28480	08443-00063		1	36	
28480	08443-00072		2	6	
28480	08443-00078		1	102	
28480	08443-00079		1	129	
28480	08443-20001		1	103	
28480	08443-20002		3	26	
28480	08443-20004		1	7	
28480	08443-20005		1	6	
28480	08443-20006		1	79	
28480	08443-20008		1	50	
28480	08443-20010		1	51	
28480	08443-20032		3	24	
28480	08443-40003		1	100	
28480	08443-40006		1	47	
28480	08443-40009		1	41	
28480	08443-60003	6625-00-357-3715	1	13	
52708	08443-60009	6625-01-044-2417	1	27	
28480	08443-60015	6625-00-357-3724	1	104	
28480	08443-60016	6625-00-357-3725	1	130	
28480	08443-60022	6625-00-534-6808	3	1	
28480	08443-60038	6625-00-355-4807	1	14	
28480	08443-60041	6625-00-355-4826	1	94	

CROSS -REFERENCE INDEXES

FSCM	PART NUMBER	PART NUMBER INDEX		ITEM	PCN X43CXXC084R TM - CODE ABC
		STOCK NUMBER	FIG.		
28480	08443-60042	6625-00-355-4835	1	93	
28480	08443-60043	6625-00-355-4836	1	91	
28480	08443-60044	6625-00-355-4837	1	90	
28480	08443-60045	6625-00-359-7814	1	89	
28480	08443-60046	6625-00-355-4838	1	88	
28480	08443-60047	6625-00-355-4855	1	87	
28480	08443-60048	6625-00-355-4860	1	86	
28480	08443-60052	6625-01-109-3492	1	69	
28480	08443-60053	6625-01-109-3491	1	73	
28480	08443-60054	6625-01-109-3490	1	72	
28480	08443-60055	6625-01-109-3489	1	70	
28480	08443-60059	6625-01-109-3486	1	67	
28480	08443-60060	6625-01-109-3485	1	78	
28480	08443-60061	6625-01-109-3484	1	39	
28480	08443-60063	6625-01-109-3483	1	74	
28480	08443-60064	6625-01-109-3482	2	1	
28480	08443-60077	6625-00-532-2333	1	101	
28480	08443-60079	5995-01-137-3130	1	71	
28480	08443-60080	5995-01-137-3131	1	107	
28480	08443-60089	6625-01-278-4999	1	77	
28480	08443-60090	5999-01-279-0156	2	7	
28480	08443-60091	5980-01-279-0106	2	5	
28480	08443-60095	5999-01-279-0157	2	2	
28480	08443-60117		1	119	
28480	08443-60118	5999-01-278-9338	1	105	
28480	08553-60164		1	31	
28480	0960-0079	5955-00-361-8741	1	121	
00779	1-331677-3	5999-00-511-4046	5	12	
28480	1200-0063	5999-00-937-4420	1	123	
24342	12201	6150-01-111-1717	1	34	
28480	1250-1194	5935-00-446-4102	3	8	
28480	1251-0472	5935-01-112-7298	5	7	
28480	1251-1887	5935-00-147-7384	5	5	
28480	1251-2026	5935-00-446-8768	5	9	
28480	1251-2091		5	8	
28480	1251-2313	5935-00-104-1184	5	11	
28480	1251-2366	5935-01-114-2577	1	68	
28480	1410-0112	5365-00-417-5217	1	49	
28480	1450-0153	6250-01-082-7506	1	59	
28480	1450-0157	6210-00-869-6864	1	60	
28480	1450-0493	6210-01-107-5830	1	63	
28480	1460-0297		1	46	
28480	1490-0030	6625-00-760-9521	1	29	
78189	1702-00		1	44	
			3	28	
28480	1853-0020	5961-00-904-2540	3	11	
28480	1854-0071	5961-00-137-4608	3	12	
28480	1854-0221	5961-00-836-1887	3	10	
26742	186-387-02		1	131	
28480	2100-2501	5905-00-431-3183	1	33	
28480	2100-2729	5905-00-478-1229	1	4	

CROSS -REFERENCE INDEXES

PART NUMBER INDEX

FSCM	PART NUMBER	STOCK NUMBER	FIG.	ITEM
28480	2100-2886	5905-00-478-1274	1	48
28480	2110-0564	5920-01-087-1951	1	81
28480	2110-0565	5920-01-087-0836	1	83
28480	2110-0569	5310-01-097-7987	1	80
28480	2140-0253	6240-00-143-6558	1	61
28480	2190-0016	5310-00-401-6931	1	3
71785	251-06-30-261	5935-00-974-6874	1	110
71785	252-12-30-300	5935-00-448-2236	5	6
28480	2950-0001	5310-00-450-3324	1	2
28480	2950-0052		1	58
28480	3030-0220		3	30
28480	3050-0010	5310-01-096-5618	1	12
			2	9
28480	3101-0070	5930-00-919-1755	1	42
28480	3101-1234	5930-00-406-8746	1	65
32997	3329WT22-503	5905-01-120-0861	3	22
80294	3329W1-502	5905-00-227-6900	3	21
56289	36D132G050AA2A	5910-00-836-6258	1	106
28480	5000-0050	6625-01-014-8071	1	28
28480	5000-8595		1	25
28480	5020-6850		1	52
28480	5020-6851		1	64
28480	5021-5359		1	124
28480	5040-0327		1	109
28480	5040-0331		1	127
28480	5060-0254		1	5
28480	5060-0730		1	21
28480	5060-0767	6625-00-903-0348	1	30
28480	5060-8543	6625-01-278-4982	1	22
28480	5060-8589		1	23
28480	5060-8713		1	26
28480	5086-7010	5962-00-483-1953	3	3
28480	5086-7099	5962-00-504-0511	3	4
28480	5086-7357	5985-00-357-3713	1	117
28480	5086-7358	5985-00-357-3712	1	118
72982	855-024W5T502M	5910-00-524-5817	3	5
28480	9100-2886	5950-00-513-2747	1	112
28480	9100-3121	5915-00-405-1216	1	85

CROSS-REFERENCE INDEXES

FIGURE AND ITEM NUMBER INDEX

FIG.	ITEM	STOCK NUMBER	FSCM	PART NUMBER	PCN X43CXXF014R TM - CODE ABC
1	1	5355-00-809-9329	28480	0370-0084	
1	2	5310-00-450-3324	28480	2950-0001	
1	3	5310-00-401-6931	28480	2190-0016	
1	4	5905-00-478-1229	28480	2100-2729	
1	5		28480	5060-0254	
1	6		28480	08443-20005	
1	7		28480	08443-20004	
1	8	5310-00-616-3554	96906	MS35335-29	
1	9	5310-00-934-9761	96906	MS35649-264	
1	10	5305-00-054-6655	96906	MS51957-31	
1	11		28480	08443-00006	
1	12	5310-01-096-5618	28480	3050-0010	
1	13	6625-00-357-3715	28480	08443-60003	
1	14	6625-00-355-4807	28480	08443-60038	
1	15	5305-00-054-5651	96906	MS51957-17	
1	16	5310-00-595-6425	96906	AN960OC4L	
1	17	5310-00-655-9505	96906	MS35340-40	
1	18	5305-00-054-6651	96906	MS51957-27	
1	19		28480	08443-00004	
1	20	5305-00-727-8832	96906	MS51959-29	
1	21		28480	5060-0730	
1	22	6625-01-278-4982	28480	5060-8543	
1	23		28480	5060-8589	
1	24	5305-00-066-7326	96906	MS24693C24	
1	25		28480	5000-8595	
1	26		28480	5060-8713	
1	27	6625-01-044-2417	52708	08443-60009	
1	28	6625-01-014-8071	28480	5000-0050	
1	29	6625-00-760-9521	28480	1490-0030	
1	30	6625-00-903-0348	28480	5060-0767	
1	31		28480	08553-60164	
1	32	5310-01-257-1699	28480	0590-1251	
1	33	5905-00-431-3183	28480	2100-2501	
1	34	6150-01-111-1717	24342	12201	
1	35	5310-00-550-3350	24454	A7039589P1	
1	36		28480	08443-00063	
1	37		28480	08443-00062	
1	38		28480	08443-00061	
1	39	6625-01-109-3484	28480	08443-60061	
1	40		28480	08443-00053	
1	41		28480	08443-40009	
1	42	5930-00-919-1755	28480	3101-0070	
1	43	5310-00-938-2013	96906	MS35649-224	
1	44	78189	1702-00		
1	45		28480	0380-0793	
1	46		28480	1460-0297	
1	47		28480	08443-40006	
1	48	5905-00-478-1274	28480	2104-2886	
1	49	5365-00-417-5217	28480	1410-0112	
1	50		28480	08443-20008	
1	51		28480	08443-20010	

CROSS-REFERENCE INDEXES

FIGURE AND ITEM NUMBER INDEX

FIG.	ITEM	STOCK NUMBER	FSCM	PART NUMBER	PCN X43CXXF014R PAGE 2 TM - CODE ABC
1	52	28480	5020-6850		
1	53	28480	08443-00051		
1	54	5305-00-765-4257	96906	MS51959-43	
1	55	5310-00-550-0286	96906	MS35336-15	
1	56		28480	08443-00021	
1	57		28480	08443-00055	
1	58		28480	2950-0052	
1	59	6250-01-082-7506	28480	1450-0153	
1	60	6210-00-869-6864	28480	1450-0157	
1	61	6240-00-143-6558	28480	2140-0253	
1	62	96906	M535333-74		
1	63	6210-01-107-5830	28480	1450-0493	
1	64		28480	5020-6851	
1	65	5930-00-406-8746	28480	3101-1234	
1	66	5320-00-879-6606	96906	MS16535-154	
1	67	6625-01-109-3486	28480	08443-60059	
1	68	5935-01-114-2577	28480	1251-2366	
1	69	6625-01-109-3492	28480	08443-60052	
1	70	6625-01-109-3489	28480	08443-60055	
1	71	5995-01-137-3130	28480	08443-60079	
1	72	6625-01-109-3490	28480	08443-60054	
1	73	6625-01-109-3491	28480	08443-60053	
1	74	6625-01-109-3483	28480	08443-60063	
1	75	5935-00-570-6119	71785	D53018	
1	76		28480	08443-00003	
1	77	6625-01-278-4999	28480	08443-60089	
1	78	6625-01-109-3485	28480	08443-60060	
1	79		28480	08443-20006	
1	80	5310-01-097-7987	28480	2110-0569	
1	81	5920-01-087-1951	28480	2110-0564	
1	82	5920-00-280-4960	81349	F02A250V2A	
1	83	5920-01-087-0836	28480	2110-0565	
1	84	5305-00-054-5649	96906	MS51957-15	
1	85	5915-00-405-1216	28480	9100-3121	
1	86	6625-00-355-4860	28480	08443-60048	
1	87	6625-00-355-4855	28480	08443-60047	
1	88	6625-00-355-4838	28480	08443-60046	
1	89	6625-00-359-7814	28480	08443-60045	
1	90	6625-00-355-4837	28480	08443-60044	
1	91	6625-00-355-4836	28480	08443-60043	
1	92		28480	08443-00046	
1	93	6625-00-355-4835	28480	08443-60042	
1	94	6625-00-355-4826	28480	08443-60041	
1	95		28480	08443-00018	
1	96	5961-00-199-6008	81349	JAN2N3055	
1	97	55285	K-4-05		
1	98	5310-00-058-3599	96906	MS35335-57	
1	99	5365-00-419-4714	28480	0340-0433	
1	100		28480	08443-40003	
1	101	6625-00-532-2333	28480	08443-60077	
1	102		28480	08443-00078	

CROSS-REFERENCE INDEXES

FIGURE AND ITEM NUMBER INDEX

FIG.	ITEM	STOCK NUMBER	FSCM	PART NUMBER	PCN X43CXXF014R PAGE TM - CODE ABC
1	103		28480	08443-20001	
1	104	6625-00-357-3724	28480	08443-60015	
1	105	5999-01-278-9338	28480	08443-60118	
1	106	5910-00-836-6258	56289	36D132G050AA2A	
1	107	5995-01-137-3131	28480	08443-60080	
1	108	5910-01-109-9767	28480	0180-2290	
1	109		28480	5040-0327	
1	110	5935-00-974-6874	71785	251-06-30-261	
1	111		28480	0624-0099	
1	112	5950-00-513-2747	28480	9100-2886	
1	113	5305-00-054-6681	96906	MS51957-54	
1	114	5310-00-869-4199	96906	MS35338-156	
1	115	5310-00-934-9759	96906	MS35649-284	
1	116		28480	08443-00020	
1	117	5985-00-357-3713	28480	5086-7357	
1	118	5985-00-357-3712	28480	5086-7358	
1	119		28480	08443-60117	
1	120		73330	C1925-632-5	
1	121	5955-00-361-8741		28480	0960-0079
1	122		28480	08443-00005	
1	123	5999-00-937-4420		28480	1200-0063
1	124		28480	5021-5359	
1	125		28480	08443-00022	
1	126	5305-00-766-2422	96906	MS51959-1	
1	127		28480	5040-0331	
1	128		28480	0624-0100	
1	129		28480	08443-00079	
1	130	6625-00-357-3725	28480	08443-60016	
1	131		26742	186-387-02	
1	132	5310-00-579-5554	96906	MS35333-35	
1	133	5305-00-059-3657	96906	MS51958-61	
2	1	6625-01-109-3482	28480	08443-60064	
2	2	5999-01-279-0157	28480	08443-60095	
2	3	5305-00-054-5647	96906	MS51957-13	
2	4	5310-00-058-3599	96906	M535335-57	
2	5	5980-01-279-0106	28480	08443-60091	
2	6		28480	08443-00072	
2	7	5999-01-279-0156	28480	08443-60090	
2	8		28480	08443-00044	
2	9	5310-01-096-5618	28480	3050-0010	
2	10	5310-00-929-6395	96906	MS35338-136	
2	11	5305-00-054-6654	96906	MS51957-30	
3	1	6625-00-534-6808	28480	08443-60022	
3	2	5910-00-138-1326	28480	0160-3036	
3	3	5962-00-483-1953	28480	5086-7010	
3	4	5962-00-504-0511	28480	5086-7099	
3	5	5910-00-524-5817	72982	855-024W5T502M	
3	6	5910-00-866-3123	81349	CM10FD101G03	
3	7	5910-00-189-3178	81349	M39003/01-3058	
3	8	5935-00-446-4102	28480	1250-1194	
3	9	5950-00-308-7930	96906	MS14046-1	

CROSS-REFERENCE INDEXES

FIGURE AND ITEM NUMBER INDEX

FIG.	ITEM	STOCK NUMBER	FSCM	PART NUMBER
3	10	5961-00-836-1887	28480	1854-0221
3	11	5961-00-904-2540	28480	1853-0020
3	12	5961-00-137-4608	28480	1854-0071
3	13	5905-00-369-6932	81349	RCR07G113JS
3	14	5905-00-104-8374	81349	RCR07G156JS
3	15	5905-00-110-0388	81349	RCR07G104JS
3	16	5905-00-136-8405	81349	RCR07G131JS
3	17	5905-00-121-9920	81349	RCR07G303JS
3	18	5905-00-110-7620	81349	RCR07G102JS
3	19	5905-00-189-2479	81349	RNC60K5622FS
3	20	5905-00-006-6988	81349	RNC60K7501FS
3	21	5905-00-227-6900	80294	3329W1-502
3	22	5905-01-120-0861	32997	3329WT22-503
3	23	5305-01-227-3218	28480	0624-0097
3	24		28480	08443-20032
3	25	5305-00-766-2422	96906	MS51959-1
3	26		28480	08443-20002
3	27		28480	08443-00029
3	28		78189	1702-00
3	29	5305-00-054-5637	96906	MS51957-3
3	30		28480	3030-0220
4	1	5920-00-280-8342	81349	F02A250V1A
4	2	5920-00-280-4960	81349	F02A250V2A
5	1	59.05-00-402-7082	28480	0811-1666
5	2	5905-00-222-3549	28480	0811-1661
5	3	5905-00-104-8370	81349	RCR07G361JS
5	4		81349	RCR07G201JS
5	5	5935-00-147-7384	28480	1251-1887
5	6	5935-00-448-2236	71785	252-12-30-300
5	7	5935-01-112-7298	28480	1251-0472
5	8		28480	1251-2091
5	9	5935-00-446-8768	28480	1251-2026
5	10	5940-00-993-9338	28480	0360-0124
5	11	5935-00-104-1184	28480	1251-2313
5	12	5999-00-511-4046	00779	1-331677-3
5	13	5310-00-595-6425	96906	AN960C4L
5	14	5310-00-058-3599	96906	MS35335-57
5	15	5305-00-054-5648	96906	MS51957-14

By Order of the Secretary of the Army:

Official:

R.L. DILWORTH
Brigadier General, United States Army
The Adjutant General

CARL E. VUONO
General, United States Army
Chief of Staff

DISTRIBUTION:

To be distributed in accordance with DA Form 12-36 unit and DS/GS requirements for SG-1122/U.

RECOMMENDED CHANGES TO EQUIPMENT TECHNICAL PUBLICATIONS



THEN... JOT DOWN THE DOPE ABOUT IT ON THIS FORM, CAREFULLY TEAR IT OUT, FOLD IT AND DROP IT IN THE MAIL!

SOMETHING WRONG WITH THIS PUBLICATION?

FROM: (PRINT YOUR UNIT'S COMPLETE ADDRESS)

DATE SENT

PUBLICATION NUMBER

PUBLICATION DATE

PUBLICATION TITLE

BE EXACT... PIN-POINT WHERE IT IS

IN THIS SPACE TELL WHAT IS WRONG AND WHAT SHOULD BE DONE ABOUT IT:

PAGE NO.

PARA-GRAPH

FIGURE NO.

TABLE NO.

TEAR ALONG PERFORATED LINE

PRINTED NAME, GRADE OR TITLE, AND TELEPHONE NUMBER

SIGN HERE:

DA FORM 2028-2 JUL 79

PREVIOUS EDITIONS ARE OBSOLETE.

P.S.—IF YOUR OUTFIT WANTS TO KNOW ABOUT YOUR RECOMMENDATION MAKE A CARBON COPY OF THIS AND GIVE IT TO YOUR HEADQUARTERS.

