

TECHNICAL MANUAL

**GENERAL SUPPORT MAINTENANCE
REPAIR PARTS AND SPECIAL TOOLS LIST**

FOR

**AMPLIFIER, POWER SUPPLY
AM-7152/GRC-213A(V)I**

Distribution authorized to the Department of Defense and DOD contractors only for official use or for administration or operational purposes. This determination was made on 19 October 1989. Other requests for this document will be referred to Commander, US Army Communications-Electronics command and Fort Monmouth, ATTN: AMSEL-LC-ME-P, Fort Monmouth, NJ 07703-5000.

DESTRUCTION NOTICE - Destroy by any method that will prevent disclosure of contents or reconstruction of the document.

HEADQUARTERS, DEPARTMENT OF THE ARMY

1 FEBRUARY 1990

Technical Manual

No. n-5820-923-40P

HEADQUARTERS
DEPARTMENT OF THE ARMY
Washington, DC, 1 February 1990

GENERAL SUPPORT MAINTENANCE
REPAIR PARTS AND SPECIAL TOOLS LIST
FOR
AMPLIFIER, POWER SUPPLY AM-7152/GRC-213A(V)1

Current as of 1 November 1989

REPORTING ERRORS AND RECOMMENDING IMPROVEMENTS

You can help improve this manual. If you find any mistakes or if you know of a **way** to improve the procedures, please let us know. Mail your letter, DA Form 2028 [Recommended Changes to Publications and Blank Forms) , or DA Form 2028-2 located in back of this manual direct to: Commander, US Army Communications-Electronics Command and Fort Monmouth, ATTN: AMSEL-LC-ME-PS , Fort Monmouth, New Jersey 07703-5000. In either case, a reply will be furnished direct to you.

Table of Contents

		Page	Illus/ Figure
Section	I.	Introduction	1
	II.	Repair Parts list	1-1
Group	02	AM-7152/GRC-213A, Amplifier, Power Supply	1-1 1
		0201 Control Panel	2-1 2
		0202 Amplifier - Squelch Circuit Card Assembly (See next higher assembly)	
		0203 Card Cage Assembly (See next higher assembly)	
		020301 Vehicular Intercom Circuit Card Assembly (See next higher assembly)	
		020302 Power Conditioner Circuit Card Assembly (See next higher assembly)	
Section	III.	Special Tools	
Group	40	Special Tools List	3-1 3
Section	IV.	Cross-Reference Indexes	
		National Stock Number Index	I-1
		Part Number Index	I-2
		Figure and Item Number Index	I-3

SECTION I
INTRODUCTION

1. Scope

This manual lists and authorizes spares and repair parts; special tools; special test, measurement, and diagnostic equipment (TMDE); and other special support equipment required for performance of general support maintenance of the AM-7152/GRC-213A(V)1. It authorizes the requisitioning, issue, and disposition of spares, repair parts and special tools as indicated by the source, maintenance and recoverability (SMR) codes.

2. General

This Repair Parts and Special Tools List is divided into the following sections:

a. Section II. Repair Parts List. A list of spares and repair parts authorized by this RPSTL for use in the Performance of maintenance. The list also includes parts which must-be removed for replacement of the authorized parts. Parts lists are composed of functional groups in ascending numeric sequence, with the parts in each group listed in ascending item number sequence. Figure numbers are listed directly beneath the group header.

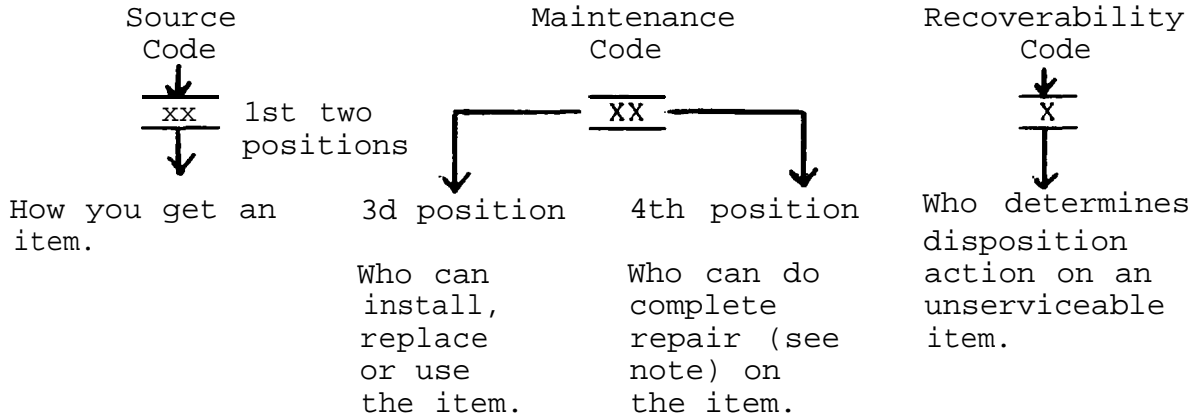
b. Section III. Special Tools List. A list of special tools, special TMDE, and other special support equipment authorized by this RPSTL (as indicated by Basis of Issue (BOI) information in (column 5)) for the performance of maintenance.

c. Section IV. Cross-Reference Indexes. A list, in National item identification number (NIIN) sequence, of all National stock numbered items appearing in the listing, followed by a list in alphameric sequence of all part numbers appearing in the listings. National stock numbers and part numbers are cross-referenced to each illustration figure and item number appearance. The figure number and item number index lists figure and item numbers in numeric sequence and cross-references National stock number, Federal Supply Code for Manufacturer and part numbers.

3. Explanation of Columns (Section II and III)

a. Item No. (Column (1)). Indicates the number used to identify items called out in the illustration.

b. SMR Code (Column (2)). The source, maintenance, and recoverability (SMR) code is a five-position code containing supply/requisitioning information, maintenance category authorization criteria, and disposition instruction, as shown in the following breakout:



NOTE

Complete repair: Maintenance capacity, capability, and authority to perform all corrective maintenance tasks of the "repair" function in a use/user environment in order to restore serviceability to a failed item.

(1) Source code. The source code tells you how to get an item needed for maintenance, repair, or overhaul of an end item/equipment. Explanations of source codes follows:

<u>Code</u>	<u>Explanation</u>
PA	Stocked items: use the applicable NSN to request/requisition items with these source codes. They are authorized to the category indicated by the code entered in the third position of the SMR code.
PB	
PC	
PD	
PE	
PF	
PG	

NOTE

Items coded PC are subject to deterioration.

KD	Items with these codes are not to be requested/requisitioned individually. They are part of a kit which is authorized to the maintenance category indicated in the third position of the SMR code. The complete kit must be requested and applied.
KF	
KB	

<u>Code</u>	<u>Explanation</u>
MO - Made at org/AVUM category	Items with these codes are not to be requested/requisitioned individually. They must be made from bulk material which is identified by the part number in the description and usable on code (UOC) column and listed in the Bulk Material group of the repair parts list. If the item is authorized to you by the third position code of the SMR code, but the source code indicates it is made at a higher category, order the item from the higher category of maintenance.
MF - Made at DS/AVIM category	
MH - Made at GS category	
ML - Made at Specialized Repair Activity (SRA)	
MD - Made at Depot	

AO - Assembled by org/AVUM category	Items with these codes are not to be requested/requisitioned individually. The parts that make up the assembled item must be requisitioned or fabricated and assembled at the category of maintenance indicated by the source code. If the third position code of the SMR code authorizes you to replace the item, but the source code indicates the item is assembled at a higher category, order the item from the higher category of maintenance.
AF - Assembled by DS/AVIM category	
AH - Assembled by GS category	
AL - Assembled by SRA	
AD - Assembled by Depot	

<u>Code</u>	<u>Explanation</u>
XA - Do not requisition an "XA" coded item. Order its next higher assembly.	
XB - If an "XB" item is not available from salvage, order it using the FCSM and part number given.	
xc - Installation drawing, diagram, instruction sheet, field service drawing, that is identified by manufacturer's part number .	
XD - Item is not stocked. Order an "XD" coded item through normal supply channels using the FSCM and part number given, if no NSN is available.	

NOTE

Cannibalization or controlled exchange, when authorized, may be used as a source of supply for items with the above source codes, except for those source coded "XA" or those aircraft support items restricted by requirements of AR 750-1.

(2) Maintenance code. Maintenance codes tell you the category of maintenance authorized to USE and REPAIR support items. The maintenance codes are entered in the third and fourth positions of the SMR code as follows:

(a) The maintenance code entered in the third position tells you the lowest maintenance category authorized to remove, replace, and use an item. The maintenance code entered in the third position will indicate authorization to one of the following categories of maintenance.

<u>Code</u>	<u>Application/Explanation</u>
C -	Crew or operator maintenance done within organizational or aviation maintenance.
O -	Organizational or aviation unit category can remove, replace, and use the item.
F -	Direct support or aviation intermediate category can remove, replace, and use the item.
H -	General support category can remove, replace, and use the item.
L -	Specialized repair activity can remove, replace, and use the item.
D -	Depot category can remove, replace, and use the item.

(b) The maintenance code entered in the fourth position tells whether or not the item is to be repaired and identifies the lowest maintenance category with the capability to do complete repair (i.e., perform all authorized repair functions). This position will contain one of the following maintenance codes.

NOTE

Some limited repair may be done on the item at a lower category of maintenance, if authorized by the Maintenance Allocation Chart (MAC) and SMR codes.

<u>Code</u>	<u>Application/Explanation</u>
O -	Organizational or aviation unit is the lowest category that can do complete repair of the item.
F -	Direct support or aviation intermediate is the lowest category that can do complete repair of the item.
H -	General support is the lowest category that can do complete repair of the item.
L -	Specialized repair activity (designate the specialized repair activity) is the lowest category that can do complete repair of the item.
D -	Depot is the lowest category that can do complete repair of the item.

<u>Code</u>	<u>Application/Explanation</u>
-------------	--------------------------------

- Z - Nonreparable. No repair is authorized.
- B - No repair is authorized. (No parts or special tools are authorized for the maintenance of a "B" coded item.) However, the item may be reconditioned by adjusting, lubricating, etc., at the user category.

(3) Recoverability code. Recoverability codes are assigned to items to indicate the disposition action on unserviceable items. The recoverability code is entered in the fifth position of the SMR Code as follows:

<u>Recoverability codes</u>	<u>Application/Explanation</u>
-----------------------------	--------------------------------

- Z - Nonreparable item. When unserviceable, condemn and dispose of the item at the category of maintenance shown in the third position of SMR code.
- 0 - Repairable item. When uneconomically repairable, condemn and dispose of the item at organizational or aviation unit category.
- F - Repairable item. When uneconomically repairable, condemn and dispose of the item at direct support or aviation intermediate category.
- H - Repairable item. When uneconomically repairable, condemn and dispose of the item at general support category.
- D - Repairable item. When beyond lower category repair capability, return to depot. Condemnation and disposal of item not authorized below depot category.
- L - Repairable item. Condemnation and disposal not authorized below specialized repair activity (SRA).
- A - Item requires special handling or condemnation procedures because of specific reasons (e.g., precious metal content, high dollar value, critical material, or hazardous material) . Refer appropriate manuals/directives for specific instructions.

FSCM (Column (3)). The Federal Supply Code for Manufacturer (FSCM) is a 5-digit numeric code which is used to identify the manufacturer, distributor, or Government agency, etc., that supplies the item.

d. Part Number (Column (4)). Indicates the primary number used by the manufacturer (individual, company, firm, corporation, or Government activity) , which controls the design and characteristics of the item by means of its engineering drawings, specifications, standards, and inspection requirements to identify an item or range of items.

NOTE

When you use an NSN to requisition an item, the item you receive may have a different part number from the part ordered.

e. Description and Usable on Code (UOC) (Column (5)). This column includes the following information.

(1) The Federal item name and, when required, a minimum description to identify the item.

(2) In the Special Tools section, the basis of issue (BOI) appears as the last line in the entry for each special tool, special TMDE, and other special support equipment. When density of equipments supported exceeds density spread indicated in the basis of issue, the total authorization is increased proportionately.

(3) The statement "END OF FIGURE" appears just below the last item description in Column (5) for a given figure in both section II and section III.

f. Qty (Column (6)). Indicates the quantity of the item used in the breakout shown on the illustration figure, which is prepared for a functional group, subfunctional group, or an assembly. A "V" appearing in this column in lieu of a quantity indicates that the quantity is variable and the quantity may vary from application to application.

4. Explanation of Columns (Section IV)

a. National Stock Number (NSN) Index.

item (1) Stock number column. This column lists the NSN by National identification number (NIIN) sequence. The NIIN consists of the last nine digits of the NSN. When using this column to locate an item, ignore the first four digits of the NSN. When requisitioning items use the complete NSN (13 digits) .

(2) Fig. column. This column lists the number of the figure where the item is identified/located . The illustrations are in numerical sequence in sections II and III.

(3) Item column . The item number identifies the item associated with the figure listed in the adjacent Fig. column. This item is also identified by the NSN listed on the same line.

b. Part Number Index. Part numbers in this index are listed by part-number in ascending alphameric sequence.

(1) FSCM column. This column lists the Federal supply code for manufacturer (FSCM).

(2) Part number column. This column indicates the part number assigned to the item.

(3) Stock number column. This column lists the National stock number for the associated part number and manufacturer identified in the part number and FSCM columns to the left.

(4) Fig. column. This column lists the number of the figure where the item is identified/located in sections II and III.

(5) Item column. This item number is that number assigned to the item as it appears in the figure referenced in the adjacent figure number column.

c. Figure and Item Number Index.

(1) Fig. column. This column lists the number of the figure where the item is identified/located in sections II and III.

(2) Item column. The item number is that number assigned to the item as it appears in the figure referenced in the adjacent figure number column.

(3) Stock number column. This column lists the National stock number for the item.

(4) FSCM column. The Federal supply code for manufacturer (FSCM) is a 5-digit numeric code used to identify the manufacturer, distributor, or Government agency, etc. , that supplies the item.

(5) Part number column. Indicates the primary number used by the manufacturer (individual, firm, corporation, or Government activity) , which controls the design and characteristics of the item by means of its engineering drawings, specifications, standards, and inspection requirements to identify an item or range of item.

5. Special Information

a. Associated Publications. The publications listed below pertain to the AM-7152/GRC-213A(V) and its components:

TM 11-5820-467-24P, Antenna Group AN/GRA-50

TM 11-5820-477-23P, Radio Control Set, AN/GRC-39A, AN/GRC-39B, and AN/GRC-39C

TM 11-5820-923-40, Amplifier, Power Supply AM-7152/GRC-213

TM 11-5820-1045-12, Radio Set AN/GRC-193B(V)1

TM 11-5820-1045-20P, Radio Set AN/GRC-193B(V)1

TM 11-5820-1045-34, Radio Set AN/GRC-193B(V)1

TM 11-5820-1045-40P, Radio Set AN/GRC-193B(V)1

TM 11-5820-923-40P

TM 11-5820-1046-12, Radio Set AN/PRC-194B(V)4
TM 11-5820-1046-20P, Radio Set AN/PRC-104B(V)4
TM 11-5820-1046-40, Radio Set AN/PRC-104B(V)
TM 11-5820-1046-40P, Radio Set AN/PRC-104B(V)4
TM 11-5820-1047-12, Radio Set AN/GRC-213A(V)1
TM 11-5820-1047-20P, Radio Set AN/GRC-213A(V)1
TM 11-5985-379-14&P, Antenna, AS-2259/GR

b. National Stock Numbers. National stock numbers (NSN'S) that are 'missing from P source coded items have been applied for and will be added to this TM by future change/revision when they are entered in the Army Master Data File (AMDF). Until the NSN'S are established and published, submit exception requisitions to: Commander, US Army Communications-Electronics Command and Fort Monmouth, ATTN: AMSEL-LC-MM, Fort Monmouth, NJ 07703-5000 for the part required to support your equipment.

6. How to Locate Repair Parts

a. When National stock number or part number is not known.

(1) First. Using the table of contents, determine the assembly group or subassembly group to which the item belongs. This is necessary since figures are prepared for assembly groups and subassembly groups, and listings are divided into the same groups.

(2) Second. Find the figure covering the assembly group or subassembly group to which the item belongs.

(3) Third. Identify the item on the figure and note the item number .

(4) Fourth. Refer to the Repair Parts List for the figure to find the part number for the item number noted on the figure.

(5) Fifth. Refer to the Part Number Index to find the NSN, if assigned.

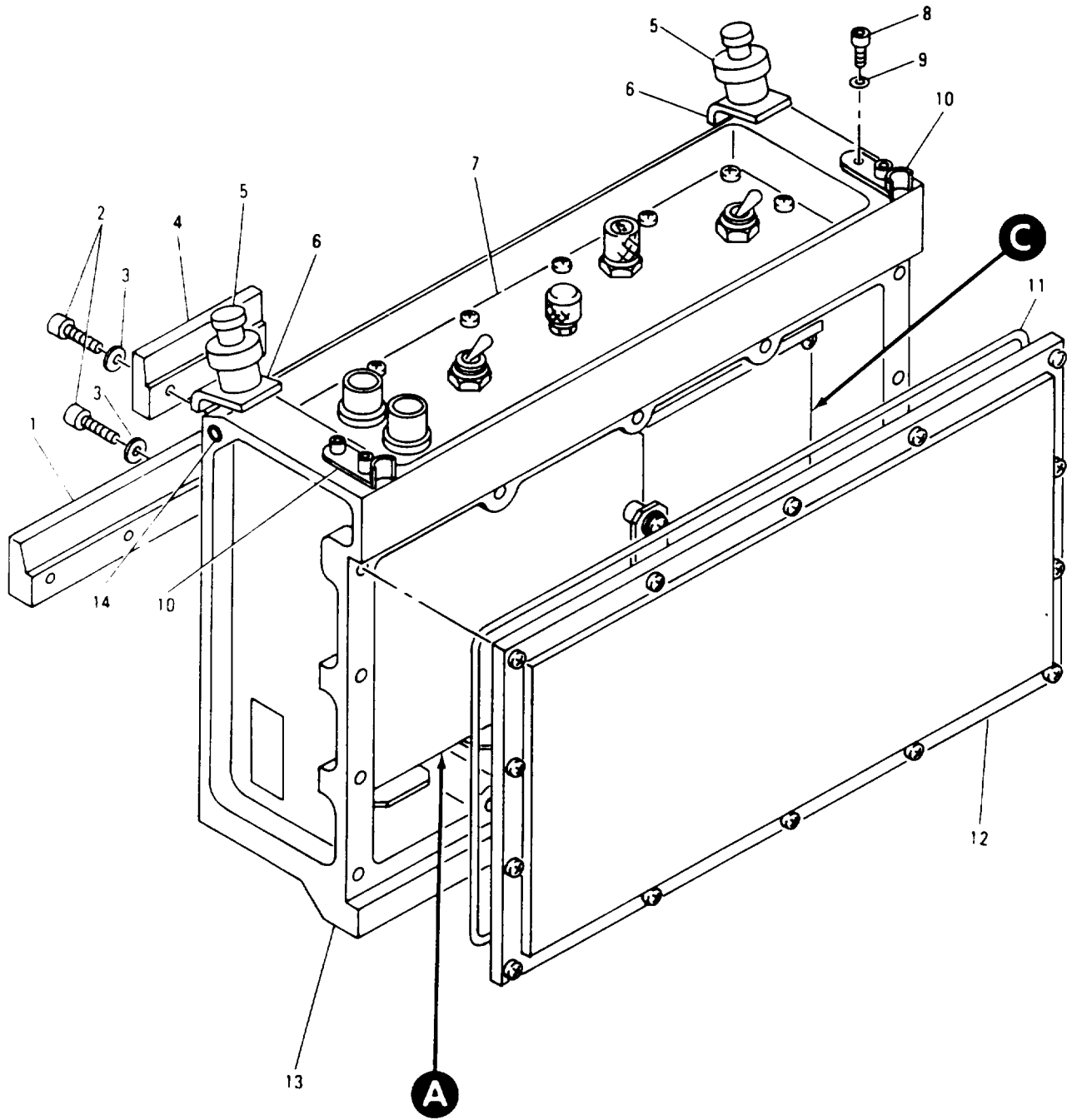
b. When National stock number or part number is known.

(1) First. Using the index of National stock numbers and part numbers, find the pertinent National stock number or part number. The NSN index is in National item identification number (NIIN) sequence (para 4a(1)). The part numbers in the part number index are listed in ascending alphameric sequence (para 4b). Both indexes cross-reference you to the illustration figure and item number of the item you are looking for.

(2) Second. After finding the figure and item number, verify that the item is the one you're looking for, then locate the item number in the repair parts list for the figure.

7. Abbreviations

Not applicable.



CE2AT001

Figure 1. AM-7152/GRC-213A Amplifier, Power Supply (Sheet 1 of 3)

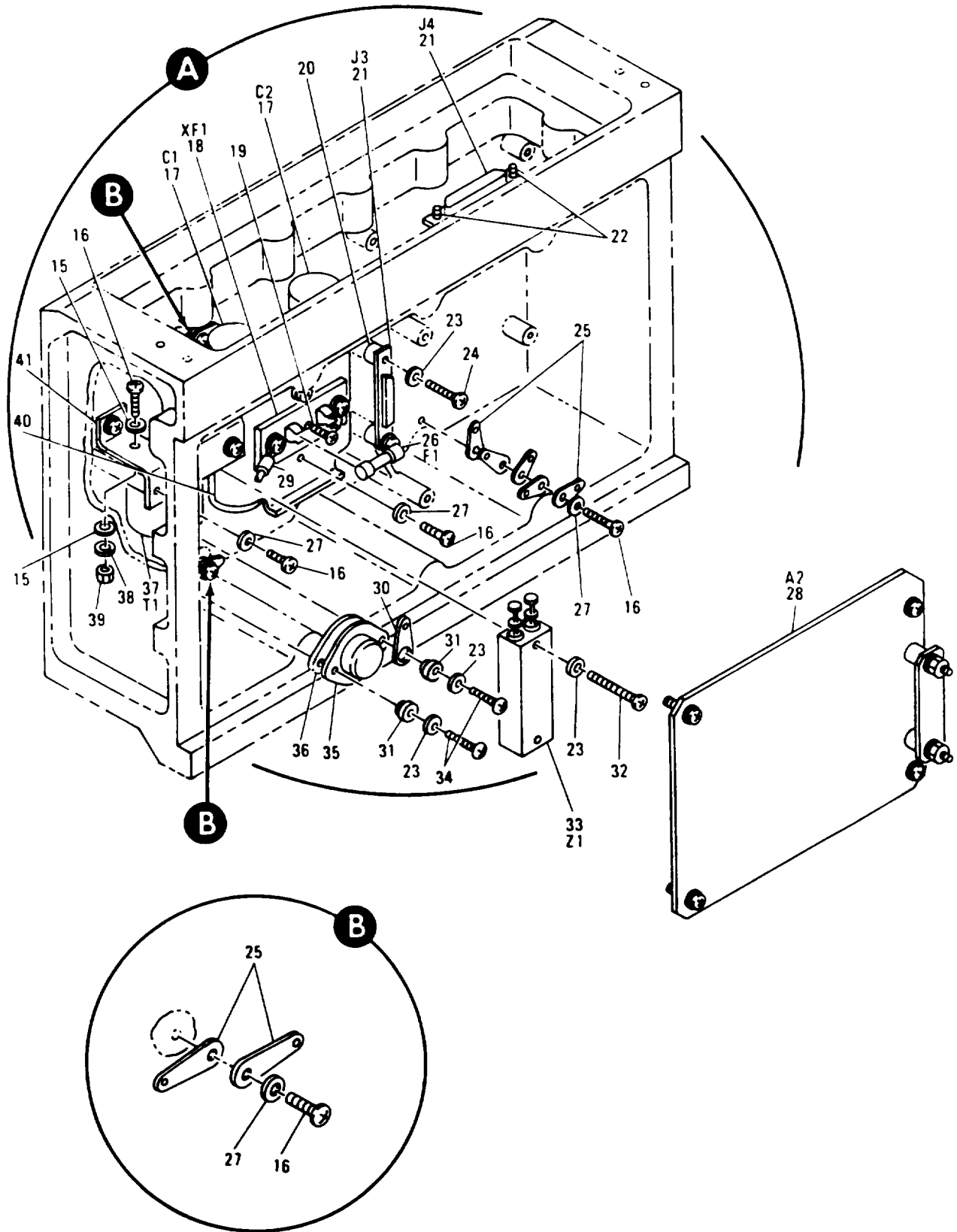
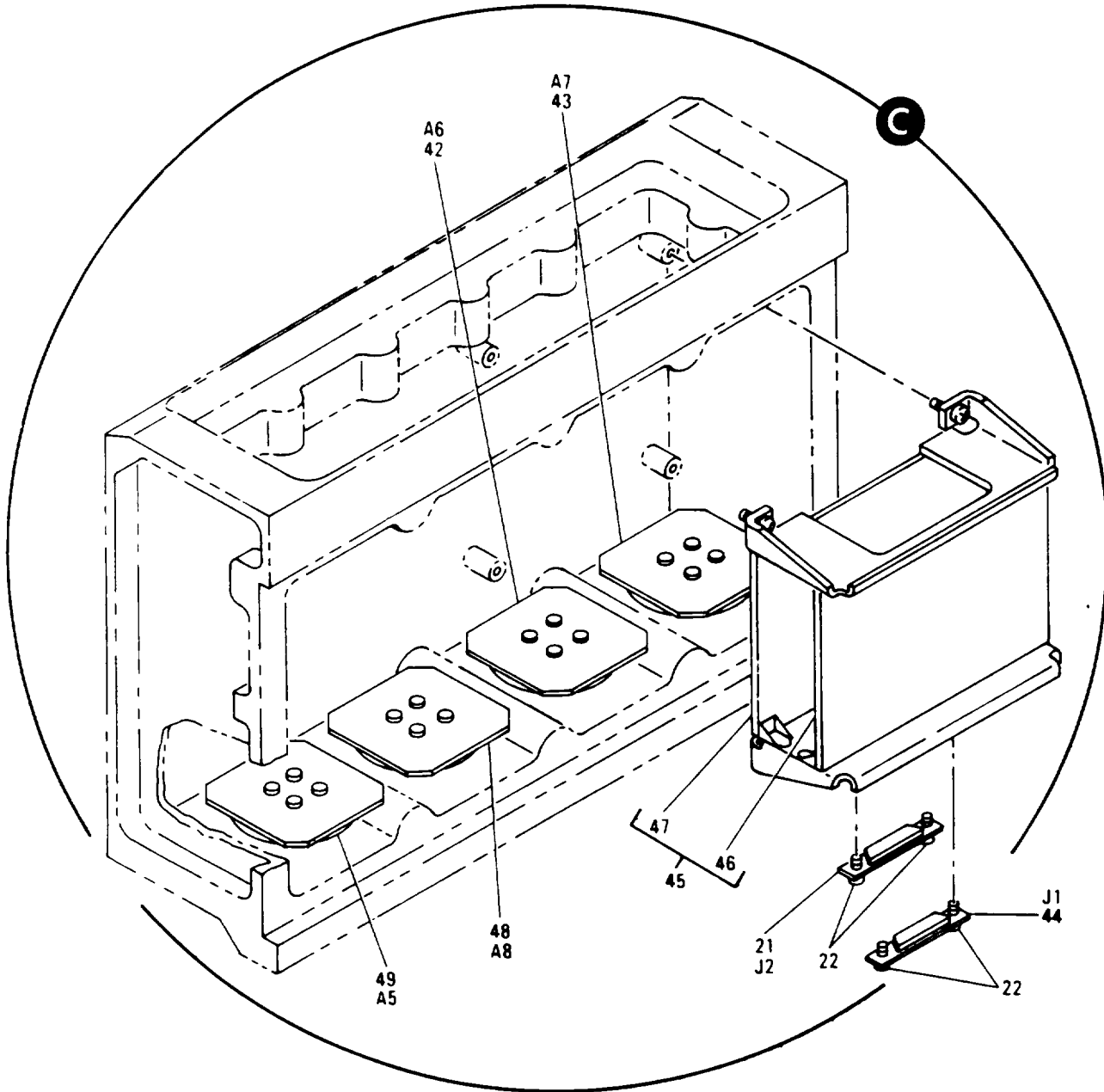


Figure 1. AM-7152/GRC213A Amplifier, Power Supply (Sheet 2 of 3)



CE2AT003

Figure 1. AM-7152/GRC-213A Amplifier, Power Supply (Sheet 3 of 3)

(1) ITEM NO	(2) SMR CODE	(3) FSCM	(4) PART NUMBER	(5) DESCRIPTION AND USABLE ON CODE (UOC)	(6) QTY
GROUP 02 AM-7152/GRC-213A					
AMPLIFIER, POWER SUPPLY					
FIGURE 1					
1	PAHZZ	87990	755002B9107	CLAMP, HOUSING RETAI	1
2	PAHZZ	96906	MS16996-12	SCREW, CAP, SOCKET HE	5
3	PAHZZ	80205	NAS620C10L	WASHER, FLAT	5
4	PAHZZ	87990	755002B9106	CLAMP, HOUSING RETAI	1
5	PAHZZ	96906	MS14108-3	BOLT ASSEMBLY, CLAMP	2
6	PAHZZ	87990	755002B9108	CLAMP, FASTENER	2
7	PAHHH	87990	755002B9200	PANEL CONTROL (SEE FIG 2 FOR BREAKDOWN)	1
8	PAHZZ	96906	MS16995-26	SCREW, CAP, SOCKET HE	4
9	PAHZZ	81349	AN960C8L	WASHER, FLAT	4
10	PAHZZ	13636	43-9507-01-901	STRIKE, CATCH	2
11	XBHZZ	8X321	755002B9115-1	SEAL, HOUSING	1
12	XBHZZ	87990	755002B9111	COVER, AMPL, PWR SPLY	1
13	XBHZZ	87990	755002B9110	HSG, AMPL, PWR SPLY	1
14	PAHZZ	96906	MS16562-223	PIN, SPRING	2
15	PAHZZ	80205	NAS620C6L	WASHER, FLAT	18
16	PAHZZ	96906	MS51957-28	SCREW, MACHINE	11
17	PAHZZ	81349	M39018-03-1142M	CAPACITOR, FIXED	2
18	PAHZZ	81349	M21346-3-14	FUSEHOLDER	1
19	PAHZZ	96906	MS24693C29	SCREW, MACHINE	1
20	PAHZZ	80205	NAS43DD0-32	SPACER, SLEEVE	2
21	PAHZZ	81349	M24308-1-3	CONNECTOR, RECEPTACL	3
22	PAHZZ	81349	M24308/25-9	SCREW-LOCK ASSEMBLY	6
23	PAHZZ	80205	NAS620C4L	WASHER, FLAT	6
24	PAHZZ	96906	MS51957-19	SCREW, MACHINE	2
25	PAHZZ	96906	MS35431-3	TERMINAL, LUG	9
26	PAHZZ	81349	F03A125V30AS	FUSE, CARTRIDGE	1
27	PAHZZ	81349	AN960C6L	WASHER, FLAT	9
28	PAHDD	87990	755002B9190	CIRCUIT CARD ASSEMB	1
29	PAHZZ	96906	MS25036-149	TERMINAL, LUG	2
30	PAHZZ	96906	MS35431-5	TERMINAL, LUG	1
31	PAHZZ	51506	15090-062-130-N	WASHER	2
32	PAHZZ	96906	MS51957-21	SCREW, MACHINE	2
33	PAHZZ	24444	GZ25028A	DIODE	1
34	PAHZZ	96906	MS51957-16	SCREW, MACHINE	2
35	PAHZZ	81349	JAN2N6277	TRANSISTOR	1
36	PAHZZ	18565	60-11-4305-1671	INSULATOR, PLATE	1
37	PAHZZ	81349	M27/2-01	TRANSFORMER	1
38	PAHZZ	96906	MS35338-136	WASHER, LOCK	2
39	PAHZZ	96906	MS35649-264	NUT, PLAIN, HEXAGON	2
40	PAHZZ	87990	755002B9109	BRACKET, MOUNTING-FI	1
41	PAHZZ	87990	755002B9114	BRACKET, MOUNTING-XF	1
42	XBHZZ	87990	755002B9140	CONNECTOR ASSEMBLY,	1
43	XBHZZ	87990	755002B9150	ELECTRONIC COMPONEN	1
44	PAHZZ	81349	M24308-1-2	CONNECTOR, RECEPTACL	1
45	XBHHH	87990	755002B9160	CARD CAGE ASSY	1
46	PAHDD	87990	755002B9170	CIRCUIT CARD ASSEMB	1

(1) ITEM NO	(2) SMR CODE	(3) FSCM	(4) PART NUMBER	(5) DESCRIPTION AND USABLE ON CODE (UOC)	(6) QTY
47	PAHDD	87990	755002B9180	CIRCUIT CARD ASSEMB	1
48	XBHZZ	87990	755002B9130	CONNECTOR ASSEMBLY,	1
49	XBHZZ	87990	755002B9120	CONNECTOR ASSEMBLY,	1

END OF FIGURE

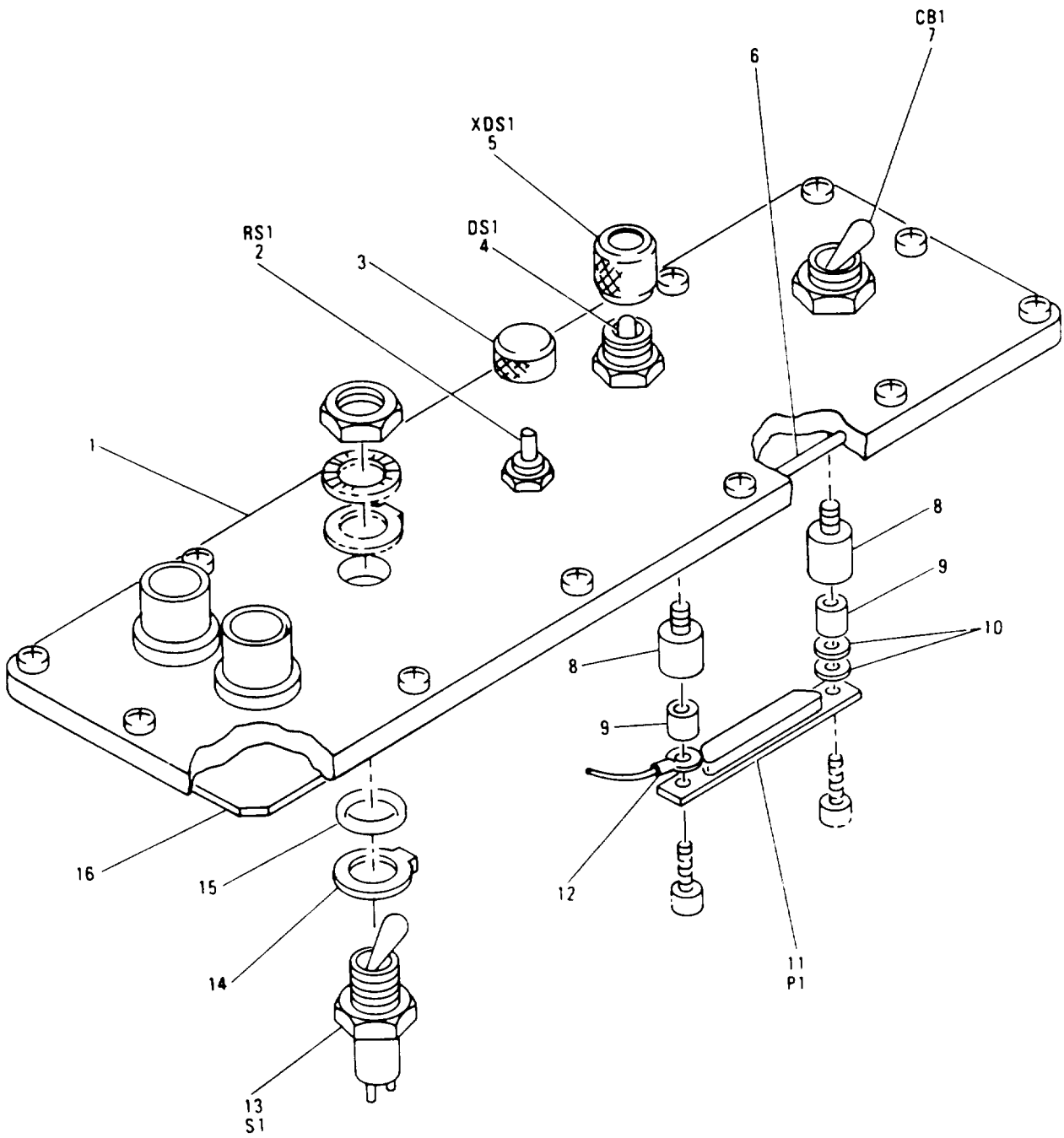
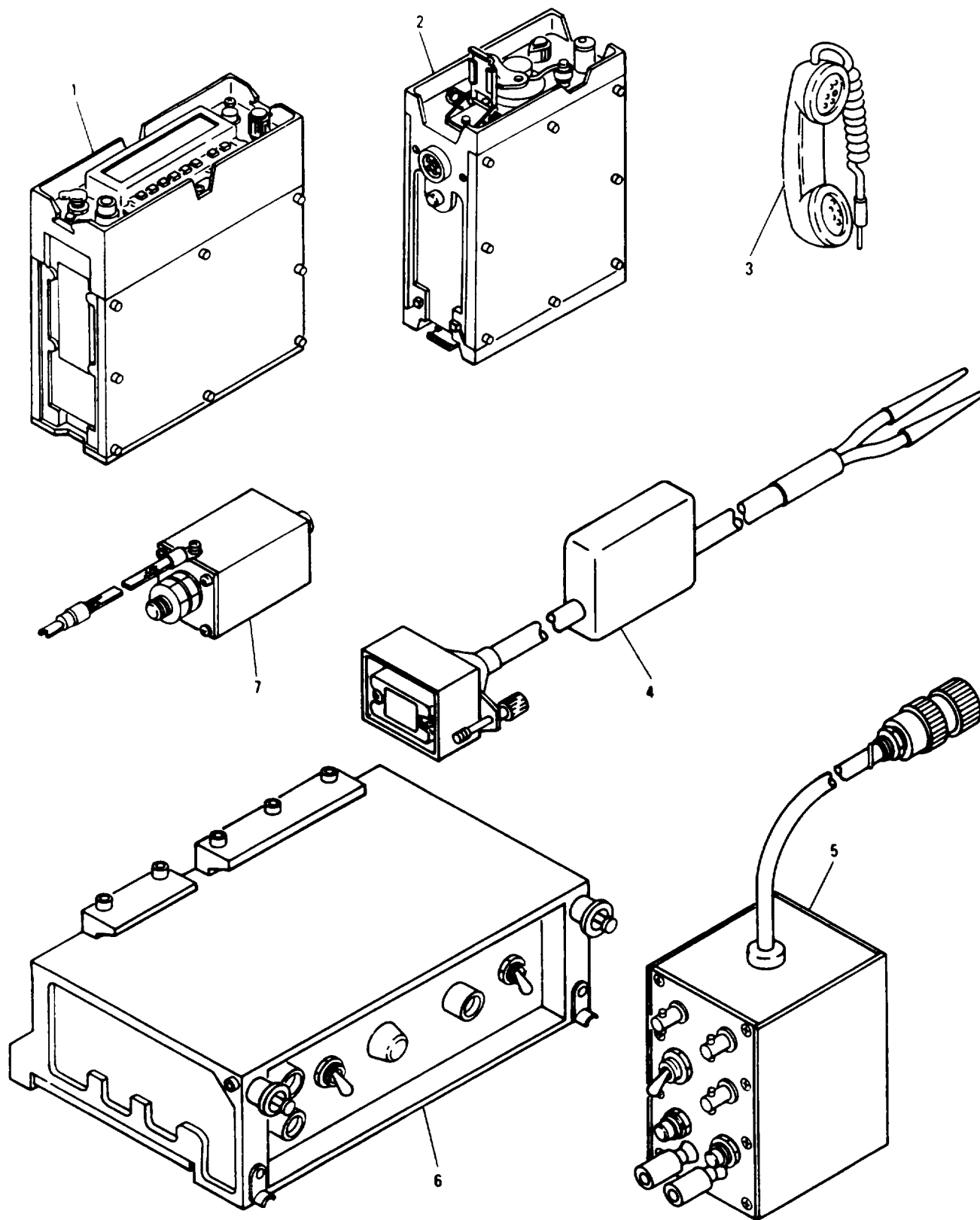


Figure 2. Control Panel

(1) ITEM NO	(2) SMR CODE	(3) FSCM	(4) PART NUMBER	(5) DESCRIPTION AND USABLE ON CODE (UOC)	(6) QTY
GROUP 0201 CONTROL PANEL					
FIGURE 2					
1	XBHZZ	87990	755002B9207	PANEL,FRONT	1
2	PAHZZ	01121	JS1P044P103UA	RESISTOR,VARIABLE,N	1
3	PAOZZ	96906	MS91528-1E2B	KNOB	1
4	PAOZZ	96906	MS25237-387	LAMP,INCANDESCENT	1
5	PAOZZ	96906	MS25041-2	LIGHT,INDICATOR	1
6	XBHZZ	87990	755002B9206-1	SEAL,PANEL	1
7	PAHZZ	81349	M39019-01-236	CIRCUIT BREAKER	1
8	PAHZZ	87990	755002B9205	EXTENSION STUD	2
9	PAHZZ	80205	NAS43DD0-16	SPACER,SLEEVE	2
10	PAHZZ	80205	NAS620C4L	WASHER,FLAT	2
11	PAHZZ	81349	M24308-3-3	CONNECTOR,RECEPTACL	1
12	PAHZZ	96906	MS25036-148	TERMINAL,LUG	1
13	PAHZZ	96906	MS90310-221	SWITCH,TOGGLE	1
14	PAHZZ	96906	MS25081-4	WASHER,KEY	1
15	PAHZZ	81349	M5423-16-01	BOOT,DUST AND MOIST	1
16	XBHZZ	87990	755002B9210	CIRCUIT CARD ASSEMB	1

END OF FIGURE



CE2AT005

Figure 3. Special Tools list (Sheet 1 of 2)

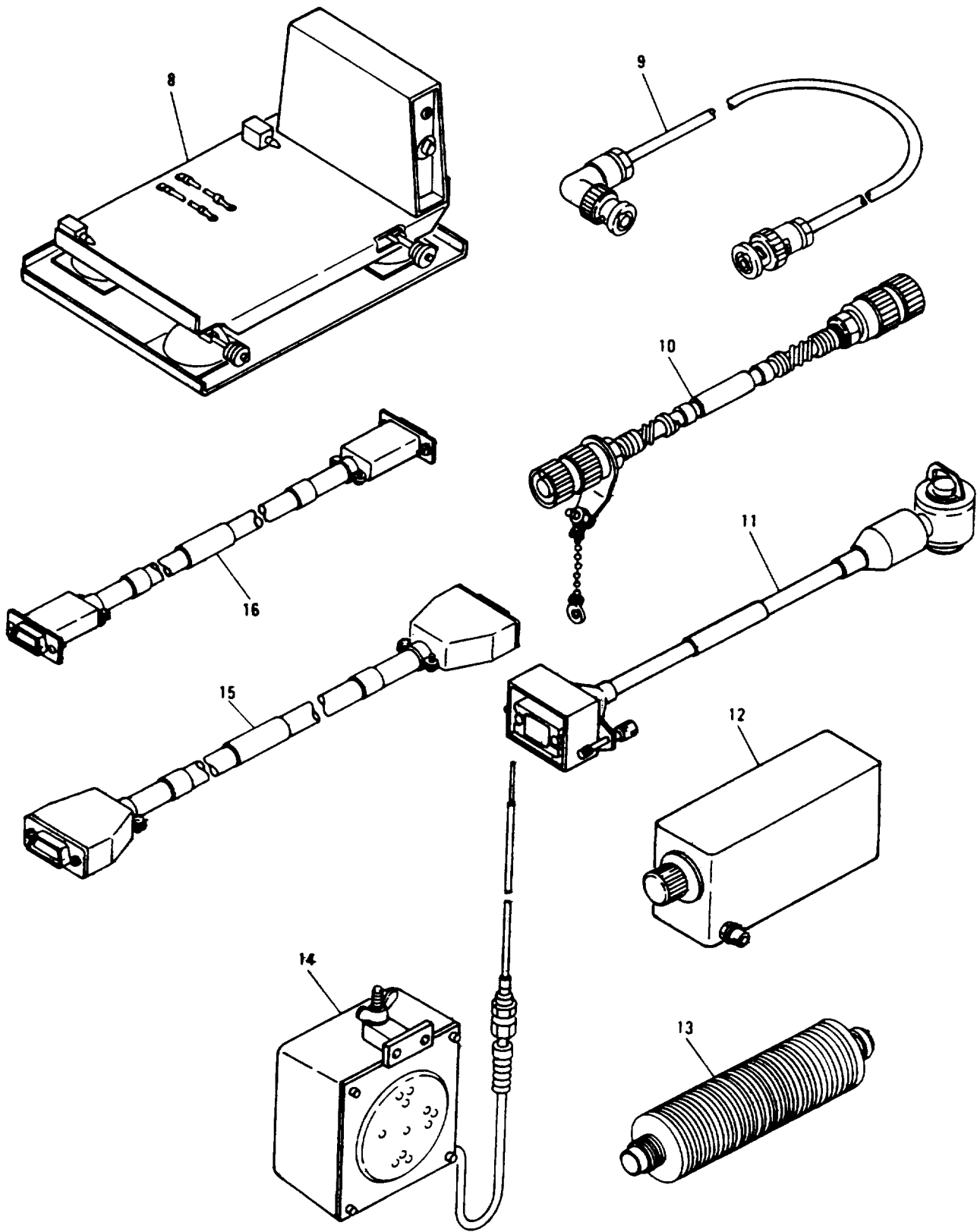


Figure 3. Special Tools List (Sheet 2 of 2)

(1) ITEM NO	(2) SMR CODE	(3) FSCM	(4) PART NUMBER	(5) DESCRIPTION AND USABLE ON CODE (UOC)	(6) QTY
-------------------	--------------------	-------------	-----------------------	---	------------

GROUP 40 SPECIAL TOOLS LIST
(BOI) 1 PER GENERAL SUPPORT

FIGURE 3

1	PEHHH	80058	RT-1209/URC	RECEIVER-TRANSMITTE	
2	PEHDD	80058	AM-6874/PRC-104	AMPLIFIER,RADIO FRE	
3	PEHZZ	80058	H250A/U	HANDSET	
4	PEHZZ	87990	755002A1255	CABLE POWER BENCH T	
5	PEHZZ	87990	755002B9400	ADAPTER AUDIO INPUT	
6	PEHDD	80058	AM-7152/GRC-213	AMPLIFIER-POWER SUP	
7	PEHZZ	87990	755002B9410	ADAPTER,WHIP	
8	PEHHH	80058	MT-6234/GRC-213	MOUNTING BASE,ELECT	
8	PEHHH	80058	MT-6234/GRC-113	MOUNTING BASE,ELECT	
9	PEHZZ	87990	755002B9017	CABLE ASSEMBLY,RADI	
10	PEHZZ	87990	755002B9018	CABLE ASSY AUDIO	
11	PEHZZ	87990	755002B9019	CABLE ASSEMBLY,POWE	
12	PEHZZ	87990	755002B9497	ATTENUATOR,STEP	
13	PEHZZ	87990	755002B9496	ATTENUATOR,COAXIAL	
14	PEHZZ	80058	LS-454/U	LOUDSPEAKER,PERMANE	
15	PEHZZ	87990	755002B9432	CABLE,EXTENDER	
16	PEHZZ	87990	755002B9431	CABLE,EXTENDER,POWE	
17	PEHZZ	80058	CX4720VRC10FT	CABLE ASSEMBLY,POWE (NOT ILLUSTRATED)	

END OF FIGURE

CROSS-REFERENCE INDEXES

NATIONAL STOCK NUMBER INDEX

STOCK NUMBER	FIG.	ITEM	STOCK NUMBER	FIG.	ITEM
5965-00-043-3463	3	3	5995-01-219-9516	3	11
5940-00-050-2308	1	25	5905-01-245-9626	2	2
5310-00-054-0041	1	15			
5305-00-054-5650	1	34			
5305-00-054-5653	1	24			
5305-00-054-5655	1	32			
5305-00-054-6652	1	16			
5305-00-088-9665	1	19			
5940-00-113-9828	2	12			
5940-00-271-7258	1	30			
5920-00-296-1677	1	26			
5935-00-351-6135	1	21			
5935-00-439-3748	2	11			
5935-00-498-5785	1	44			
6210-00-542-6393	2	5			
5940-00-557-1629	1	29			
5310-00-558-6207	1	9			
5365-00-632-3102	2	9			
5365-00-632-3103	1	20			
5310-00-638-9857	1	27			
5310-00-723-9676	1	23			
	2	10			
6240-00-763-7744	2	4			
5310-00-781-9483	1	3			
5995-00-823-2726	3	17			
5315-00-826-3251	1	14			
5965-00-876-2375	3	14			
5930-00-913-3641	2	13			
5340-00-917-4549	1	10			
5310-00-924-5968	2	14			
5310-00-929-6395	1	38			
5310-00-934-9761	1	39			
5305-00-958-6517	1	2			
5305-00-988-7602	1	8			
5355-00-994-3435	2	3			
5820-01-065-5044	3	2			
5340-01-066-9671	1	5			
5895-01-069-2638	3	1			
5925-01-073-0851	2	7			
5970-01-090-1015	1	36			
5820-01-127-5855	3	6			
5820-01-133-3973	3	8			
5975-01-141-5368	2	15			
5961-01-142-1110	1	35			
5935-01-179-3497	1	22			
6220-01-197-8865	1	7			
5820-01-197-8926	1	46			
5820-01-197-8927	1	47			
5820-01-197-8928	1	28			
5995-01-213-5188	3	9			

CROSS-REFERENCE INDEXES

FSCM	PART NUMBER	PART NUMBER INDEX		FIG.	ITEM
		STOCK	NUMBER		
80058	AM-6874/PRC-104	5820-01-065-5044		3	2
80058	AM-7152/GRC-213	5820-01-127-5855		3	6
81349	AN960C6L	5310-00-638-9857		1	27
81349	AN960C8L	5310-00-558-6207		1	9
80058	CX4720VRC10FT	5995-00-823-2726		3	17
81349	F03A125V30AS	5920-00-296-1677		1	26
24444	GZ25028A			1	33
80058	H250A/U	5965-00-043-3463		3	3
81349	JAN2N6277	5961-01-142-1110		1	35
01121	JS1P044P103UA	5905-01-245-9626		2	2
80058	LS-454/U	5965-00-876-2375		3	14
96906	MS14108-3	5340-01-066-9671		1	5
96906	MS16562-223	5315-00-826-3251		1	14
96906	MS16995-26	5305-00-988-7602		1	8
96906	MS16996-12	5305-00-958-6517		1	2
96906	MS24693C29	5305-00-088-9665		1	19
96906	MS25036-148	5940-00-113-9828		2	12
96906	MS25036-149	5940-00-557-1629		1	29
96906	MS25041-2	6210-00-542-6393		2	5
96906	MS25081-4	5310-00-924-5968		2	14
96906	MS25237-387	6240-00-763-7744		2	4
96906	MS35338-136	5310-00-929-6395		1	38
96906	MS35431-3	5940-00-050-2308		1	25
96906	MS35431-5	5940-00-271-7258		1	30
96906	MS35649-264	5310-00-934-9761		1	39
96906	MS51957-16	5305-00-054-5650		1	34
96906	MS51957-19	5305-00-054-5653		1	24
96906	MS51957-21	5305-00-054-5655		1	32
96906	MS51957-28	5305-00-054-6652		1	16
96906	MS90310-221	5930-00-913-3641		2	13
96906	MS91528-1E2B	5355-00-994-3435		2	3
80058	MT-6234/GRC-213	5820-01-133-3973		3	8
81349	M21346-3-14			1	18
81349	M24308-1-2	5935-00-498-5785		1	44
81349	M24308-1-3	5935-00-351-6135		1	21
81349	M24308-3-3	5935-00-439-3748		2	11
81349	M24308/25-9	5935-01-179-3497		1	22
81349	M27/2-01			1	37
81349	M39018-03-1142M			1	17
81349	M39019-01-236	5925-01-073-0851		2	7
81349	M5423-16-01	5975-01-141-5368		2	15
80205	NAS43DD0-16	5365-00-632-3102		2	9
80205	NAS43DD0-32	5365-00-632-3103		1	20
80205	NAS620C10L	5310-00-781-9483		1	3
80205	NAS620C4L	5310-00-723-9676		1	23
				2	10
80205	NAS620C6L	5310-00-054-0041		1	15
80058	RT-1209/URC	5895-01-069-2638		3	1
51506	15090-062-130-N			1	31
13636	43-9507-01-901	5340-00-917-4549		1	10
18565	60-11-4305-1671	5970-01-090-1015		1	36

CROSS-REFERENCE INDEXES

FSCM	PART NUMBER	PART NUMBER INDEX		FIG.	ITEM
		STOCK NUMBER			
87990	755002A1255			3	4
87990	755002B9017	5995-01-213-5188		3	9
87990	755002B9018			3	10
87990	755002B9019	5995-01-219-9516		3	11
87990	755002B9106			1	4
87990	755002B9107			1	1
87990	755002B9108			1	6
87990	755002B9109			1	40
87990	755002B9110			1	13
87990	755002B9111			1	12
87990	755002B9114			1	41
8X321	755002B9115-1			1	11
87990	755002B9120			1	49
87990	755002B9130			1	48
87990	755002B9140			1	42
87990	755002B9150			1	43
87990	755002B9160			1	45
87990	755002B9170	5820-01-197-8926		1	46
87990	755002B9180	5820-01-197-8927		1	47
87990	755002B9190	5820-01-197-8928		1	28
87990	755002B9200	6220-01-197-8865		1	7
87990	755002B9205			2	8
87990	755002B9206-1			2	6
87990	755002B9207			2	1
87990	755002B9210			2	16
87990	755002B9400			3	5
87990	755002B9410			3	7
87990	755002B9431			3	16
87990	755002B9432			3	15
87990	755002B9496			3	13
87990	755002B9497			3	12

CROSS-REFERENCE INDEXES

FIGURE AND ITEM NUMBER INDEX				
FIG.	ITEM	STOCK NUMBER	FSCM	PART NUMBER
1	1		87990	755002B9107
1	2	5305-00-958-6517	96906	MS16996-12
1	3	5310-00-781-9483	80205	NAS620C10L
1	4		87990	755002B9106
1	5	5340-01-066-9671	96906	MS14108-3
1	6		87990	755002B9108
1	7	6220-01-197-8865	87990	755002B9200
1	8	5305-00-988-7602	96906	MS16995-26
1	9	5310-00-558-6207	81349	AN960C8L
1	10	5340-00-917-4549	13636	43-9507-01-901
1	11		8X321	755002B9115-1
1	12		87990	755002B9111
1	13		87990	755002B9110
1	14	5315-00-826-3251	96906	MS16562-223
1	15	5310-00-054-0041	80205	NAS620C6L
1	16	5305-00-054-6652	96906	MS51957-28
1	17		81349	M39018-03-1142M
1	18		81349	M21346-3-14
1	19	5305-00-088-9665	96906	MS24693C29
1	20	5365-00-632-3103	80205	NAS43DD0-32
1	21	5935-00-351-6135	81349	M24308-1-3
1	22	5935-01-179-3497	81349	M24308/25-9
1	23	5310-00-723-9676	80205	NAS620C4L
1	24	5305-00-054-5653	96906	MS51957-19
1	25	5940-00-050-2308	96906	MS35431-3
1	26	5920-00-296-1677	81349	F03A125V30AS
1	27	5310-00-638-9857	81349	AN960C6L
1	28	5820-01-197-8928	87990	755002B9190
1	29	5940-00-557-1629	96906	MS25036-149
1	30	5940-00-271-7258	96906	MS35431-5
1	31		51506	15090-062-130-N
1	32	5305-00-054-5655	96906	MS51957-21
1	33		24444	GZ25028A
1	34	5305-00-054-5650	96906	MS51957-16
1	35	5961-01-142-1110	81349	JAN2N6277
1	36	5970-01-090-1015	18565	60-11-4305-1671
1	37		81349	M27/2-01
1	38	5310-00-929-6395	96906	MS35338-136
1	39	5310-00-934-9761	96906	MS35649-264
1	40		87990	755002B9109
1	41		87990	755002B9114
1	42		87990	755002B9140
1	43		87990	755002B9150
1	44	5935-00-498-5785	81349	M24308-1-2
1	45		87990	755002B9160
1	46	5820-01-197-8926	87990	755002B9170
1	47	5820-01-197-8927	87990	755002B9180
1	48		87990	755002B9130
1	49		87990	755002B9120
2	1		87990	755002B9207
2	2	5905-01-245-9626	01121	JS1P044P103UA

CROSS-REFERENCE INDEXES

FIG.	ITEM	FIGURE AND ITEM NUMBER INDEX		
		STOCK NUMBER	FSCM	PART NUMBER
2	3	5355-00-994-3435	96906	MS91528-1E2B
2	4	6240-00-763-7744	96906	MS25237-387
2	5	6210-00-542-6393	96906	MS25041-2
2	6		87990	755002B9206-1
2	7	5925-01-073-0851	81349	M39019-01-236
2	8		87990	755002B9205
2	9	5365-00-632-3102	80205	NAS43DD0-16
2	10	5310-00-723-9676	80205	NAS620C4L
2	11	5935-00-439-3748	81349	M24308-3-3
2	12	5940-00-113-9828	96906	MS25036-148
2	13	5930-00-913-3641	96906	MS90310-221
2	14	5310-00-924-5968	96906	MS25081-4
2	15	5975-01-141-5368	81349	M5423-16-01
2	16		87990	755002B9210
3	1	5895-01-069-2638	80058	RT-1209/URC
3	2	5820-01-065-5044	80058	AM-6874/PRC-104
3	3	5965-00-043-3463	80058	H250A/U
3	4		87990	755002A1255
3	5		87990	755002B9400
3	6	5820-01-127-5855	80058	AM-7152/GRC-213
3	7		87990	755002B9410
3	8	5820-01-133-3973	80058	MT-6234/GRC-213
3	9	5995-01-213-5188	87990	755002B9017
3	10		87990	755002B9018
3	11	5995-01-219-9516	87990	755002B9019
3	12		87990	755002B9497
3	13		87990	755002B9496
3	14	5965-00-876-2375	80058	LS-454/U
3	15		87990	755002B9432
3	16		87990	755002B9431
3	17	5995-00-823-2726	80058	CX4720VRC10FT

RECOMMENDED CHANGES TO EQUIPMENT TECHNICAL PUBLICATIONS



THEN, JOT DOWN THE DOPE ABOUT IT ON THIS FORM. CAREFULLY TEAR IT OUT, FOLD IT AND DROP IT IN THE MAIL.

SOMETHING WRONG WITH THIS PUBLICATION?

FROM (PRINT YOUR UNIT'S COMPLETE ADDRESS)
 Commander
 Stateside Army Depot
 ATTN: AMSTA-US
 Stateside, N.J. 07703-5007

DATE SENT
 10 July 1975

PUBLICATION NUMBER: TM 11-5840-340-20P
 PUBLICATION DATE: 23 Jan 78
 PUBLICATION TITLE: Radar Set AN/PRC-76

BE EXACT PIN-POINT WHERE IT IS				IN THIS SPACE TELL WHAT IS WRONG AND WHAT SHOULD BE DONE ABOUT IT:
PAGE NO	PARA GRAPH	FIGURE NO	TABLE NO	
33				For item 2, change the NSN to read: 5835-00-134-9186. Reason: Accuracy.
44		19		Identify the cover on the junction box (item no. 5). Reason: It is a separate item and is not called out on figure 19.
45				Add the cover of the junction box as an item in the listing for figure 19. Reason: Same as above

SAMPLE

TEAR ALONG PERFORATED LINE

PRINTED NAME GRADE OR TITLE AND TELEPHONE NUMBER
 SSG I. M. DeSpirit of 999-1776

SIGN HERE

FILL IN YOUR
UNIT'S ADDRESS

FOLD BACK

DEPARTMENT OF THE ARMY

OFFICIAL BUSINESS



SAMPLE

Commander
US Army Communications-Electronics Command
and Fort Monmouth
ATTN: AMSEL-LC-ME-PS
Fort Monmouth, New Jersey 07703-5000

TEAR ALONG PERFORATED LINE

RECOMMENDED CHANGES TO EQUIPMENT TECHNICAL PUBLICATIONS

SOMETHING WRONG WITH THIS PUBLICATION?



THEN...JOT DOWN THE DOPE ABOUT IT ON THIS FORM. CAREFULLY TEAR IT OUT, FOLD IT AND DROP IT IN THE MAIL.

FROM: (PRINT YOUR UNIT'S COMPLETE ADDRESS)

DATE SENT

PUBLICATION NUMBER
TM 11-5820-923-40P

PUBLICATION DATE
1 February 90

PUBLICATION TITLE *Amplifier, Power*
Supply AM-7152/GRC-213A(V)1

BE EXACT PIN-POINT WHERE IT IS

PAGE NO.	PARA-GRAPH	FIGURE NO.	TABLE NO.

IN THIS SPACE TELL WHAT IS WRONG AND WHAT SHOULD BE DONE ABOUT IT:

TEAR ALONG PERFORATED LINE

PRINTED NAME GRADE OR TITLE AND TELEPHONE NUMBER

SIGN HERE

DA FORM 2028-2
1 JUL 79

PREVIOUS EDITIONS ARE OBSOLETE

P.S.--IF YOUR OUTFIT WANTS TO KNOW ABOUT YOUR RECOMMENDATION MAKE A CARBON COPE OF THIS AND GIVE IT TO YOUR HEADQUARTERS.

FILL IN YOUR
UNIT'S ADDRESS

FOLD BACK

DEPARTMENT OF THE ARMY

OFFICIAL BUSINESS



TEAR ALONG PERFORATED LINE

Commander
US Army Communications-Electronics Command
and Fort Monmouth
ATTN: AMSEL-LC-ME-PS
Fort Monmouth, New Jersey 07703-5000

RECOMMENDED CHANGES TO EQUIPMENT TECHNICAL PUBLICATIONS



THEN...JOT DOWN THE DOPE ABOUT IT ON THIS FORM. CAREFULLY TEAR IT OUT, FOLD IT AND DROP IT IN THE MAIL.

SOMETHING WRONG WITH THIS PUBLICATION?

FROM: (PRINT YOUR UNIT'S COMPLETE ADDRESS)

DATE SENT

PUBLICATION NUMBER
TM 11-5820-923-40P

PUBLICATION DATE
1 February 90

PUBLICATION TITLE
Amplifier, Power Supply AM-7152/GRC-213A(V)1

BE EXACT PIN-POINT WHERE IT IS

PAGE NO.	PARA-GRAPH	FIGURE NO.	TABLE NO.

IN THIS SPACE TELL WHAT IS WRONG AND WHAT SHOULD BE DONE ABOUT IT:

PRINTED NAME GRADE OR TITLE AND TELEPHONE NUMBER

SIGN HERE

TEAR ALONG PERFORATED LINE

FILL IN YOUR
UNIT'S ADDRESS

FOLD BACK

DEPARTMENT OF THE ARMY

OFFICIAL BUSINESS



TEAR ALONG PERFORATED LINE

Commander
US Army Communications-Electronics Command
and Fort Monmouth
ATTN: AMSEL-LC-ME-PS
Fort Monmouth, New Jersey 07703-5000

RECOMMENDED CHANGES TO EQUIPMENT TECHNICAL PUBLICATIONS



SOMETHING WRONG WITH THIS PUBLICATION?

THEN...JOT DOWN THE DOPE ABOUT IT ON THIS FORM. CAREFULLY TEAR IT OUT, FOLD IT AND DROP IT IN THE MAIL.

FROM: (PRINT YOUR UNIT'S COMPLETE ADDRESS)

DATE SENT

PUBLICATION NUMBER
TM 11-5820-923-40P

PUBLICATION DATE
1 February 90

PUBLICATION TITLE Amplifier, Power
Supply AM-7152/GRC-213A(V)1

BE EXACT PIN-POINT WHERE IT IS

PAGE NO.	PARA-GRAPH	FIGURE NO.	TABLE NO.

IN THIS SPACE TELL WHAT IS WRONG AND WHAT SHOULD BE DONE ABOUT IT:

TEAR ALONG PERFORATED LINE

PRINTED NAME GRADE OR TITLE AND TELEPHONE NUMBER

SIGN HERE

DA FORM 2028-2
JUL 79

PREVIOUS EDITIONS ARE OBSOLETE

P.S.--IF YOUR OUTFIT WANTS TO KNOW ABOUT YOUR RECOMMENDATION MAKE A CARBON COPE OF THIS AND GIVE IT TO YOUR HEADQUARTERS.

FILL IN YOUR
UNIT'S ADDRESS

FOLD BACK

DEPARTMENT OF THE ARMY

OFFICIAL BUSINESS



TEAR ALONG PERFORATED LINE

Commander
US Army Communications-Electronics Command
and Fort Monmouth
ATTN: AMSEL-LC-ME-PS
Fort Monmouth, New Jersey 07703-5000

By Order of the Secretary of the Army:

Official:

CARL E. VUONO
General, United States Army
Chief of Staff

WILLIAM J. MEEHAN II
Brigadier General, United States Army
The Adjutant General

DISTRIBUTION:

To be distributed in accordance with DA Form 12-51 DS/GS requirements for AN/GRC-213.

*U.S. GOVERNMENT PRINTING OFFICE : 1994 0 - 155-187

